



Indoor / Outdoor 4 MP PoE Day / Night Network Camera

TV-IP314PI (v1.0R)

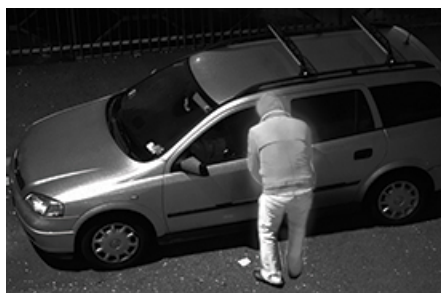
- 4 MP HD resolution
- Compact IP66 weather rated housing
- Night vision up to 30 m (100 ft.)
- Save installation costs with Power over Ethernet (PoE)
- Program motion detection recording and email alerts
- Wide Dynamic Range image balancing
- ONVIF and IPv6 support

The Indoor / Outdoor 4 MP PoE Day / Night Network Camera, model TV-IP314PI, provides powerful 4 megapixel night vision in complete darkness for up to 30 meters (100 ft.). Even in extreme environments, this ultra-compact camera will function all year, thanks to an IP66 weather-rated housing. Use the included pro-grade software to manage up to 32 TRENDnet cameras, or download the free iOS® or Android™ mobile app.



Power over Ethernet (PoE)

PoE offers cost savings and the flexibility to install this compact bullet camera in the desired location.



Day / Night HD Surveillance

Powerful 4 MP video at 20 fps in H.264+ compression (2 MP 1080p at 30 fps) and 30 m night vision provide 24-hour surveillance.



Outdoor Ready

Built for extreme environments with an IP66 weather rating and an operating temperature range of -30 – 60 °C (-22 – 140 °F).

Networking Solution



- 1 PoE port
- 2 Power port
- 3 Adjustable mounting bracket
- 4 IP66 housing
- 5 IR LEDs

Hardware



Adjustable Bracket

Fully adjustable integrated mounting bracket provides installation flexibility



PoE

Save installation costs with Power over Ethernet (IEEE 802.3af)



Outdoor Ready

Outdoor IP66 weather rated and an operating temperature range of -30 – 60 °C (-22 – 140 °F)

Performance



4 Megapixel

Record 2688 x 1520 pixel video at 20 fps in H.264+ compression



Night Vision

Night vision up to 30 m (100 ft.) in complete darkness



Smart IR

Dynamic IR adjustment optimizes night visibility



WDR

120 dB Wide Dynamic Range improves video quality in high contrast lighting environments

Camera Management



Multi-Language Interface

Support for English, French, Spanish, German, and Russian



Advanced Playback

Advanced in-camera archived video review functionality



Storage

SMB / CIFS support with notification if storage drive is full



Motion Detection

Create motion detection windows with separate sensitivity settings and event triggers



Recording Schedule

Define a weekly recording schedule



Tamper Detection

Receive tamper detection video clips via email



IPv6

IPv6 support



ONVIF / PSIA

ONVIF (Profile S, Profile G) and PSIA compliant



Free Apps

See live video on a mobile device with free iOS® and Android™ apps



Complimentary Software

Complimentary pro-grade software to manage up to TRENDnet 32 cameras

Specifications

Lens

- Focal length: 4 mm, F2.0
- Focal depth: 20 cm +
- Lens: fixed focus
- Sensor: 1/3" progressive scan CMOS
- DNR: 3D DNR
- WDR: 120 dB
- Zoom: user define zoom area

Viewing Angle

- Horizontal: 83°
- Vertical: 45°
- Diagonal: 98°

Minimum Illumination

- IR off: 0.01 lux
- IR on: 0 lux
- Built-in IR cut filter
- 30 m IR illumination distance
- Smart IR

Video Resolution

- H.264, H.264+: 2688 x 1520 up to 20 fps (1920 x 1080 up to 30 fps)
- MJPEG: 704 x 480 up to 30 fps

Hardware Standards

- IEEE 802.3
- IEEE 802.3u
- IEEE 802.3x
- IEEE 802.3af

Device Interface

- 10/100 Mbps PoE port
- Power port (for non-PoE installations, adapter sold separately)
- Grounding point
- Integrated articulated mounting base
- Reset button

Network Protocol

- IPv4, IPv6, UDP, TCP, ICMP, ONVIF Profile S and Profile G, PSIA
- DHCP, NTP, DNS, DDNS, SMTP, FTP, SNMP (v1, v2c, v3)
- NFS, SMB/CIFS

- HTTP, HTTPS
- PPPoE
- UPnP, Bonjour, RTSP, RTP, RTCP, SSL

Operating Temperature

- -30 – 60 °C (-22 – 140 °F)

Operating Humidity

- Max. 95% non-condensing

Certifications

- CE
- FCC

Dimensions

- 55 x 55 x 80 mm (2.2 x 2.2 x 3.15 in.)

Weight

- 362 g (0.8 lb.)

Power

- Input: PoE (802.3af)
- Consumption: 5 Watts max.

Optional Power Supply (Sold separately)

- Input: 100 – 240 V AC 50/60 Hz 0.5 A
- Output: 12 V DC 1 A
- 5.5 mm barrel connector
- TRENDnet power adapter, model 12VDC1A (not included)

Management Interface

- Multi-language support: English, French, German, Russian, and Spanish
- IP address filter
- QoS traffic prioritization
- Time, date, and text overlay
- Image settings: brightness, contrast, saturation, hue, sharpness, smart IR, exposure time (1/3 – 1/100,000), scan rate, mirror, flip, WDR, back light compensation, white balance, digital noise reduction
- WDR enhances video quality in high contrast daytime lighting
- Digital Noise Reduction enhances night vision quality
- Recording: to computer, NAS, SMB / CIFS share, or through software

- Scheduled recording: continuous and motion detection
- Motion detection fields: define custom motion detection areas, motion sensitivity, and dynamic motion analysis
- Privacy masks: define custom privacy mask areas
- Video tamper detection: email notification if the viewing field darkens suddenly
- Video playback interface: playback recorded video from remote storage
- Alert messages: storage full, storage error, and illegal login
- Snapshot: real time snapshot, motion detection with schedule, video tamper detection with schedule
- Supported dynamic DNS services: Dyn.com and NO-IP.com
- Management Setting: maximum 32 user accounts
- Supports remote management
- Compatibility: Internet Explorer® 9.0 or higher, Firefox® 13.0 or higher, Safari® 4.0 or higher

TRENDnetView Pro Software

- Supports up to 32 TRENDnet cameras
- Multiple language support
- Set recording options (motion detection, schedule, event trigger)
- Search and playback
- Custom viewing modes and options
- Compatibility: Windows® 10, 8.1, 8, 7, Vista, XP, Windows Server® 2003, 2008, 2012

TRENDnet IPView App

- Free iOS® and Android™ app
- View your camera on your mobile device
- Take snapshots

Warranty

- 3 year limited

Package Contents

- TV-IP314PI
- CD-ROM (Utility Software & User's Guide)
- Quick Installation Guide
- Camera mounting hardware

