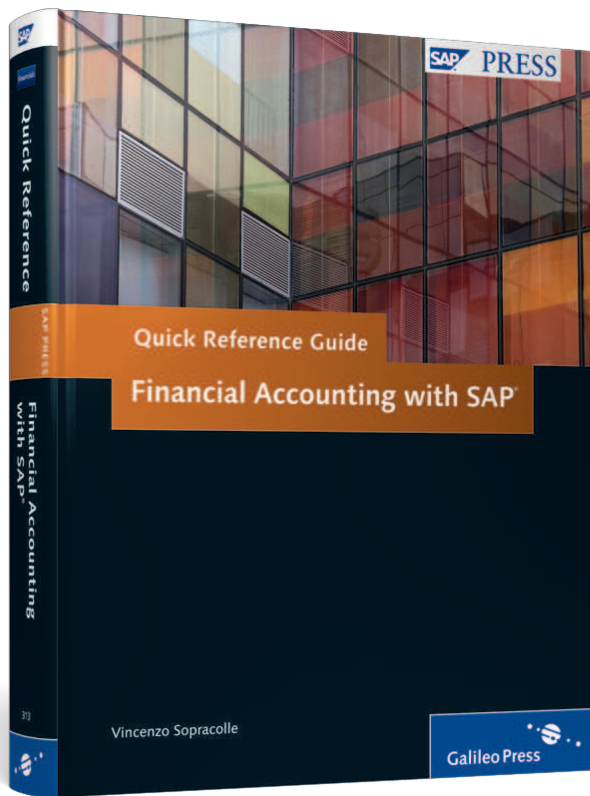


Vincenzo Sopracolle

## Quick Reference Guide: Financial Accounting with SAP®



 Galileo Press®

Bonn • Boston

# Contents at a Glance

<b>1</b>	<b>General SAP Configuration for Financial Accounting .....</b>	<b>17</b>
<b>2</b>	<b>Organizational Structure: Definition and Assignment .....</b>	<b>43</b>
<b>3</b>	<b>General Ledger Configuration .....</b>	<b>77</b>
<b>4</b>	<b>General Ledger Accounts and Postings .....</b>	<b>155</b>
<b>5</b>	<b>Accounts Receivable and Accounts Payable .....</b>	<b>225</b>
<b>6</b>	<b>Asset Accounting .....</b>	<b>359</b>
<b>7</b>	<b>Banking .....</b>	<b>463</b>
<b>8</b>	<b>Special Purpose Ledger .....</b>	<b>523</b>
<b>A</b>	<b>Tables and Views .....</b>	<b>591</b>
<b>B</b>	<b>Transaction Codes .....</b>	<b>605</b>
<b>C</b>	<b>Program Codes .....</b>	<b>621</b>
<b>D</b>	<b>Menu Paths and Customizing Paths .....</b>	<b>625</b>
<b>E</b>	<b>The Author .....</b>	<b>643</b>

# Contents

Introduction .....	15
--------------------	----

## **1 General SAP Configuration for Financial Accounting ..... 17**

1.1 Countries .....	17
1.1.1 Defining Countries in mySAP Systems .....	19
1.1.2 Setting Country-Specific Checks .....	21
1.1.3 FAQ and Troubleshooting Tips .....	26
1.2 Currencies .....	28
1.2.1 Creating a New Currency .....	28
1.2.2 Setting Decimal Places .....	30
1.2.3 Checking Exchange Rate Types .....	32
1.2.4 Defining Translation Ratios for Currency Translations .....	35
1.2.5 Entering Exchange Rates .....	37
1.2.6 Manual Entry Versus Automatic Retrieval of the Exchange Rate .....	38
1.2.7 FAQ and Troubleshooting Tips .....	40
1.3 Summary .....	42

## **2 Organizational Structure: Definition and Assignment ..... 43**

2.1 Definition of Organizational Entities Relevant to Financial Accounting .....	43
2.1.1 Company .....	44
2.1.2 Company Code .....	46
2.1.3 Credit Control Area .....	53
2.1.4 Business Area .....	55
2.1.5 Consolidation Business Area .....	57
2.1.6 Functional Area .....	57
2.1.7 Controlling Area .....	59
2.1.8 Operating Concern .....	61
2.1.9 FAQ and Troubleshooting Tips .....	62
2.2 Assignment of Organizational Entities Relevant to Financial Accounting .....	65
2.2.1 Company Code to Company .....	66

2.2.2	Company Code to Credit Control Area .....	66
2.2.3	Business Area to Consolidation Business Area .....	67
2.2.4	Company Code to Controlling Area .....	68
2.2.5	Controlling Area to Operating Concern .....	69
2.2.6	Plant to Company Code .....	70
2.2.7	Sales Organization to Company Code .....	71
2.2.8	Personnel Area to Company Code .....	72
2.2.9	FAQ and Troubleshooting Tips .....	73
2.3	Summary .....	74

### **3 General Ledger Configuration ..... 77**

3.1	Company Code Settings .....	77
3.2	Parallel Currencies .....	82
3.2.1	Defining Additional Local Currencies (Maximum of Two) .....	83
3.2.2	Defining Additional Local Currencies with Additional Ledgers (Classic General Ledger) .....	85
3.3	Fiscal Year Variants .....	87
3.3.1	FAQ and Troubleshooting Tips .....	89
3.4	Configuring Charts of Accounts and General Ledger Accounts .....	90
3.4.1	Defining Charts of Accounts .....	90
3.4.2	Defining Account Groups .....	93
3.4.3	Configuring Screen Layout for Creating, Displaying, and Changing General Ledger Accounts .....	95
3.4.4	Defining Retained Earnings Accounts .....	97
3.4.5	FAQ and Troubleshooting Tips .....	98
3.5	Configuring General Ledger Settings for Postings .....	99
3.5.1	Defining Document Types .....	99
3.5.2	Defining Posting Keys .....	103
3.5.3	Maintaining Field Statuses from the General Ledger Account .....	107
3.5.4	Defining Number Ranges .....	109
3.5.5	FAQ and Troubleshooting Tips .....	112
3.6	SAP General Ledger Settings Only .....	116
3.6.1	Defining General Ledgers .....	116
3.6.2	Defining Ledger Groups .....	117
3.6.3	Leading and Non-Leading Ledger Settings .....	119

3.6.4	Assigning Scenarios .....	121
3.6.5	Configuring Document Splitting .....	123
3.6.6	Configuring Document Types and Number Ranges for Non-Leading Ledger Postings .....	128
3.6.7	Defining Segments .....	129
3.6.8	Defining Profit Centers .....	130
3.6.9	FAQ and Troubleshooting Tips .....	132
3.7	Validations and Substitutions .....	135
3.7.1	Validations .....	135
3.7.2	Substitutions .....	145
3.7.3	FAQ and Troubleshooting Tips .....	148
3.8	Automatic Account Determination .....	150
3.8.1	Differences in General Ledger Account Clearing .....	150
3.8.2	Exchange Rate Differences .....	152
3.9	Summary .....	154

## **4 General Ledger Accounts and Postings ..... 155**

4.1	General Ledger Accounting Master Data .....	155
4.1.1	General Ledger Account Management .....	156
4.1.2	Primary Cost Elements .....	174
4.1.3	Master Data Reporting and Utilities .....	177
4.1.4	FAQ and Troubleshooting Tips .....	179
4.2	General Ledger Accounting Postings .....	182
4.2.1	Posting with the Classic General Ledger .....	182
4.2.2	Posting with SAP General Ledger .....	192
4.2.3	Financial Accounting Documents Generated from IDocs .....	194
4.2.4	Editing General Ledger Documents .....	197
4.2.5	Clearing General Ledger Open Items .....	203
4.2.6	Reversal of Financial Accounting Documents .....	207
4.2.7	FAQ and Troubleshooting Tips .....	210
4.3	Tax on Sales/Purchases for Financial Accounting Documents .....	216
4.3.1	Tax on Sales/Purchases Configuration .....	216
4.3.2	Tax Reporting .....	220
4.3.3	FAQ and Troubleshooting Tips .....	222
4.4	Summary .....	224

<b>5</b>	<b>Accounts Receivable and Accounts Payable .....</b>	<b>225</b>
5.1	Customer Master Data .....	225
5.1.1	Configuring Customer Master Data .....	226
5.1.2	Managing Customer Master Data .....	235
5.1.3	Reporting and Utilities for Customer Master Data .....	250
5.1.4	FAQ and Troubleshooting Tips .....	255
5.2	Vendor Master Data .....	258
5.2.1	Configuring Vendor Master Data .....	258
5.2.2	Managing Vendor Master Data .....	264
5.2.3	Reporting and Utilities for Vendor Master Data .....	271
5.2.4	FAQ and Troubleshooting Tips .....	273
5.3	Configuring Business Transactions in Accounts Receivable and Accounts Payable .....	275
5.3.1	Maintaining Payment Terms .....	275
5.3.2	Defining Default Document Types for Enjoy Transactions .....	280
5.3.3	Defining Payment Block Reasons .....	281
5.3.4	Configuring Automatic Payments .....	283
5.3.5	Configuring Dunning Procedures .....	293
5.3.6	Configuring Interest Calculations .....	295
5.3.7	Customizing Exchange Rate Calculations .....	301
5.3.8	Configuring Special General Ledger Indicators for Accounts Receivable Posting .....	305
5.3.9	FAQ and Troubleshooting Tips .....	308
5.4	Accounts Receivable Postings .....	309
5.4.1	Financial Accounting Outgoing Invoices .....	309
5.4.2	Outgoing Credit Memos in Financial Accounting .....	316
5.4.3	Manual Incoming Payments and Clearings .....	318
5.4.4	Posting and Clearing Down Payments .....	322
5.4.5	Posting with Special General Ledger Indicator .....	324
5.4.6	Reporting Customer and Vendor Line Items .....	325
5.4.7	FAQ and Troubleshooting Tips .....	328
5.5	Accounts Payable Postings .....	331
5.5.1	Financial Accounting Incoming Invoices .....	331
5.5.2	Financial Accounting Incoming Credit Memos .....	335
5.5.3	Automatic Outgoing Payments .....	336
5.5.4	FAQ and Troubleshooting Tips .....	341

5.6	Accounts Receivable and Accounts Payable Period-End Functions .....	342
5.6.1	Automatically Clearing Open Items .....	342
5.6.2	Dunning .....	346
5.6.3	Calculating Interest and Invoicing .....	351
5.6.4	Foreign Currency Valuation .....	354
5.6.5	FAQ and Troubleshooting Tips .....	357
5.7	Summary .....	358
<b>6</b>	<b>Asset Accounting .....</b>	<b>359</b>
6.1	Configuring Asset Accounting .....	359
6.1.1	Copying Charts of Depreciation .....	360
6.1.2	Setting the Chart of Depreciation for Customizing .....	362
6.1.3	Assigning Charts of Depreciation .....	363
6.1.4	Defining Asset Classes .....	364
6.1.5	Deactivating Asset Classes in Charts of Depreciation .....	365
6.1.6	Defining Number Ranges for Asset Master Data .....	366
6.1.7	Specifying Account Determination .....	367
6.1.8	Creating Screen Layout Rules .....	368
6.1.9	Defining Evaluation Groups .....	370
6.1.10	Defining Validations for Asset Master Data .....	372
6.1.11	Substitutions for Asset Master Data .....	375
6.1.12	Defining Depreciation Areas .....	376
6.1.13	Specifying Transfer of APC Values to Another Depreciation Area .....	379
6.1.14	Specifying the Transfer of Depreciation Terms from Another Depreciation Area .....	380
6.1.15	Integrating Depreciation Areas and the SAP General Ledger .....	381
6.1.16	Deactivating Depreciation Areas in Asset Classes .....	383
6.1.17	Specifying General Ledger Accounts for APC Posting and Depreciation .....	384
6.1.18	Specifying Posting Keys for Asset Posting .....	388
6.1.19	Specifying Document Type for Depreciation .....	388
6.1.20	Defining Depreciation Area Currency .....	389
6.1.21	Maintaining Depreciation Keys .....	391
6.1.22	Activating Controlling Objects for Posting in Asset Accounting .....	394

6.1.23	Activating Controlling Objects for Posting in Asset Accounting per Company Codes .....	395
6.1.24	Specifying Posting Rules for Depreciation .....	397
6.1.25	Transaction Types .....	399
6.1.26	Configuring the Asset History Sheet .....	404
6.1.27	Using Asset Accounting Enhancements (User Exits) .....	407
6.1.28	FAQ and Troubleshooting Tips .....	408
6.2	Asset Master Data Management .....	411
6.2.1	Creating a Main Asset .....	411
6.2.2	Creating Sub-Assets .....	415
6.2.3	Blocking Assets .....	416
6.2.4	Deleting Assets .....	417
6.2.5	Creating Assets with Acquisition or Transfer Transactions .....	418
6.2.6	Reporting on Asset Master Data .....	419
6.2.7	FAQ and Troubleshooting Tips .....	422
6.3	Posting Transactions to Assets .....	424
6.3.1	Posting Acquisitions with Automatic Offsetting Entries ...	424
6.3.2	Posting Acquisitions with Financial Accounting Vendor Invoices .....	427
6.3.3	Posting Acquisitions from Logistics (Settlement from WBS or Internal Order) .....	428
6.3.4	Posting Acquisitions from Affiliated Companies .....	430
6.3.5	Transferring Assets from Company to Company (in the Same Client) .....	431
6.3.6	Transferring from Asset to Asset Within Company Codes ...	434
6.3.7	Posting a Retirement .....	436
6.3.8	Posting an Unplanned Depreciation .....	438
6.3.9	Changing an Asset Document .....	439
6.3.10	Reversing an Asset Document .....	440
6.3.11	Using the Asset Explorer .....	441
6.3.12	FAQ and Troubleshooting Tips .....	443
6.4	Depreciation and Other Periodic Postings .....	446
6.4.1	Executing Depreciation Runs .....	448
6.4.2	Periodic Posting of Transactions .....	451
6.4.3	FAQ and Troubleshooting Tips .....	453
6.5	Year-End Activities .....	455
6.5.1	Running Fiscal Year Changes .....	456
6.5.2	Executing Fiscal Year Closings .....	457



6.5.3	Reopening Closed Fiscal Years .....	459
6.5.4	FAQ and Troubleshooting Tips .....	460
6.6	Summary .....	462

## **7 Banking ..... 463**

7.1	Bank Data (Database of Bank Branches) .....	463
7.1.1	Bank Data Manual Update .....	464
7.1.2	Mass Update with Local Database .....	467
7.1.3	Mass Update with the BIC Database .....	469
7.1.4	Bank Branch Data Deletion .....	472
7.1.5	FAQ and Troubleshooting Tips .....	472
7.2	House Banks and House Bank Accounts .....	473
7.2.1	Defining House Banks .....	474
7.2.2	Defining House Bank Accounts .....	475
7.2.3	FAQ and Troubleshooting Tips .....	477
7.3	Bank Chains .....	478
7.3.1	Customizing Bank Chains .....	478
7.3.2	Maintaining Bank Chains .....	481
7.3.3	Bank Chains in Payments .....	484
7.3.4	FAQ and Troubleshooting Tips .....	485
7.4	Electronic Bank Statements .....	486
7.4.1	Configuring Electronic Bank Statements .....	486
7.4.2	Importing Electronic Bank Statements into SAP .....	496
7.4.3	FAQ and Troubleshooting Tips .....	504
7.5	Cash Journal .....	505
7.5.1	Customizing Cash Journals .....	506
7.5.2	Cash Journal Postings .....	511
7.5.3	Cash Journal Reporting .....	518
7.5.4	FAQ and Troubleshooting Tips .....	519
7.6	Summary .....	521

## **8 Special Purpose Ledger ..... 523**

8.1	Special Purpose Ledger Configuration .....	523
8.1.1	Installing Table Groups .....	524
8.1.2	Defining Field Movement .....	526
8.1.3	Creating the Ledger .....	529

8.1.4	Assigning Companies or Company Codes to the Ledger .....	531
8.1.5	Special Ledger Settings for Company and Company Codes .....	533
8.1.6	Assigning Activities to the Special Ledger .....	535
8.1.7	Configuring the Ledger Selection .....	537
8.1.8	Configuring Validations and Substitutions .....	539
8.1.9	Configuring Manual Special Ledger Postings .....	540
8.1.10	FAQ and Troubleshooting Tips .....	547
8.2	Special Ledger Postings .....	552
8.2.1	Posting from Other SAP Components .....	552
8.2.2	Posting Within the Special Ledger .....	556
8.2.3	Actual Allocations in the Special Ledger .....	558
8.2.4	FAQ and Troubleshooting Tips .....	559
8.3	Main Special Ledger Functionalities .....	561
8.3.1	Balance Carryforward .....	561
8.3.2	Reconciliation Between Ledgers .....	565
8.3.3	Actual Data Transfer .....	567
8.3.4	Deleting and Reposting Data .....	570
8.3.5	Reconciliation Between Total Data and Line Items .....	573
8.3.6	FAQ and Troubleshooting Tips .....	574
8.4	Total Data Reporting .....	575
8.5	Other Special Ledger Functionalities .....	578
8.5.1	Plan Data in the Special Ledger .....	578
8.5.2	Rollup .....	579
8.5.3	FAQ and Troubleshooting Tips .....	586
8.6	Summary .....	587

<b>Appendices .....</b>	<b>589</b>
-------------------------	------------

A	Tables and Views .....	591
B	Transaction Codes .....	605
C	Program Codes .....	621
D	Menu Paths and Customizing Paths .....	625
E	The Author .....	643
	Index .....	645

*This chapter covers the functions related to the global assignment of organizational entities in Financial Accounting, with major emphasis on company codes and controlling areas.*

## **2 Organizational Structure: Definition and Assignment**

In this chapter, we discuss the definition and assignment of the organizational entities relevant to Financial Accounting. The first section focuses on how to define these entities, and the second section focuses on how to assign them.

### **2.1 Definition of Organizational Entities Relevant to Financial Accounting**

In this section, we explain how to define the following organizational entities relevant for Financial Accounting:

- ▶ Company
- ▶ Company code
- ▶ Credit control area
- ▶ Business area
- ▶ Consolidation business area
- ▶ Functional area
- ▶ Controlling area
- ▶ Operating concern

#### **Note**

For information about segments, please refer to Section 3.6.7; for information about profit centers, refer to Section 3.6.8.

## 2.1.1 Company

### Quick Reference

**Menu path:** IMG • ENTERPRISE STRUCTURE • DEFINITION • FINANCIAL ACCOUNTING • DEFINE COMPANY

**Transaction:** OX15

**Table/view:** T880/V\_T880

A *company* (also known as an *internal trading partner*) is an organizational unit used for consolidation purposes. In general, you don't post directly to a company; instead, you assign a company code to a company and then post to that company code. By assigning a company to a company code, the company inherits the postings of the other company codes assigned to that company. In addition to being assigned to a company code, a company can also be assigned to customers and vendors, which helps you keep track of the transactions against your business partners. (Company codes will be discussed in more detail in Section 2.1.2, Company Code.)

Change View "Internal trading partners": Details	
New Entries	
Company	1000
Company name	IDES AG
Name of company 2	
Detailed information	
Street	Lyoner Stern 23
PO Box	
Postal code	60441
City	Frankfurt
Country	DE
Language Key	DE
Currency	EUR

**Figure 2.1** Company Data Record

You can create or change companies using Transaction OX15 (Figure 2.1). To create a new company, select the New Entries button, and then specify the name, address, language, and currency. (In general, the naming convention of the companies is defined by the parent company, the holding company of your group; if you

don't know it, check with your accounting department.) Then save. No additional activity is required in this step.

#### Companies in a Global Special Ledger

If you use companies in a global special ledger, you have to assign the company to the ledger. (We discuss this in more detail in Chapter 8, Special Purpose Ledger.)

If the company is used in non-standard tables (i.e., tables that start with a Z or a Y), you may need to update them when you create a new company. You can search for non-standard tables that use the company by following these steps:

1. Run Transaction SE11.
2. Select the Data Type option, and specify the RASSC value. Then select UTILITIES • WHERE-USED LIST.
3. Select the Table Fields option, and click on the Search Area button.
4. In the Object Name field, specify the values Y\* and Z\*. Confirm the selection, and click the Continue button (  ). The system then displays a list of the non-standard tables that use the company.

#### Searching the Usage of Company in Tables

In some tables, it's possible to use a data type different from RASSC. To see all similar data types, specify the RASSC data type, and then click on the Display button. In the following screen, the domain to which the data type belongs is displayed; double-click on the domain (for RASSC, it's RCOMP). From UTILITIES • WHERE-USED LIST, select Data Elements. The system displays all of the similar data elements.

The company is also used to keep track of transactions that are performed against a subject that belongs to the same consolidation group. For this purpose, you can manually specify a company in the Financial Accounting document. Alternatively, you can specify the company in the following types of master data (if you do this, the documents that use these master data will automatically contain this information):

- ▶ Assets (Table ANLA)
- ▶ General ledger account (Table SKA1)
- ▶ Customer (Table KNA1)
- ▶ Vendor (Table LFA1)

## 2.1.2 Company Code

### Quick Reference

**Menu path:** IMG • ENTERPRISE STRUCTURE • DEFINITION • FINANCIAL ACCOUNTING • EDIT, COPY, DELETE, CHECK COMPANY CODE

**Transactions:** OX02 (edit company code), EC01 (copy, delete, check company code)


**Table/view:** T001/V\_T001

You can create a company code in two ways:

- ▶ Copy an existing company code and then change the necessary settings (e.g., the company code description, the currency, etc.). The system automatically performs most of the necessary customizing settings, copying them from the reference company code.
- ▶ Create a company code from scratch; in this case, you need to perform all of the company code customizing settings step by step.

When you run Transaction EC01, the system presents two alternatives (Figure 2.2):

#### ▶ Copy, Delete, Check Company Code


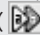
Due to the large number of customizing steps needed to configure a company code from scratch, we highly recommend using this method. To copy an existing company code to the new one, select the Copy Org. Object button (  ) and specify the reference company code (From Company Code) and the company code to be created (To Company Code). Confirm. The system asks you two questions:

- ▶ Do you want to copy the general ledger accounts from the reference company code? You should always answer “No” if the new company code must have a different chart of accounts. However, you can always copy the accounts from a reference company using Transaction FS15. In general, we recommend not copying the general ledger accounts.
- ▶ Do you want to create the new company code with a different currency? If yes, specify the new currency.

After the copy is done, review the company code customizing with the transactions listed in Table 2.1. All of the relevant settings are described in detail in subsequent chapters.

### Deleting and Renaming Company Codes

In the screen where you copy the company code, you can also perform two additional activities:

- ▶ Delete the company code: If you incorrectly created a company code, and you've never used it in a production system, you can use the Delete button (  ) to erase all of the customizing settings that refer to the specified company code.
- ▶ Rename the company code: If you created a company code with an incorrect ID, and you've never used it in a production system, you can use the Rename button (  ) so that all customizing settings that refer to the specified company code are transferred to a company code with a new ID. (The old company code will no longer exist in the system.)

### ▶ Edit Company Code Data

Use this transaction to start the creation of a company code with the step-by-step technique. Specify company code ID, name, and address. Then perform all of the needed customizing settings; you can use Table 2.1 as a checklist. Note that many of the listed transactions may not be needed in your SAP implementation.

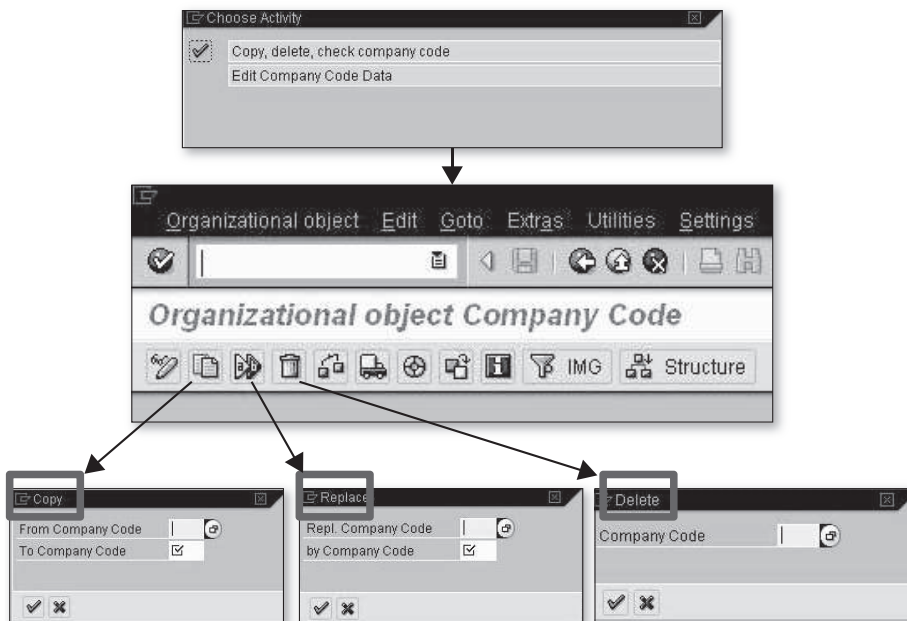


Figure 2.2 Company Code Definition Tools

**Non-Standard Tables**

If you need to add the company code to non-standard tables and you want to know which tables must be updated, follow the procedure described in Section 2.1.1, Company Code, using the data type BUKRS.

Table 2.1 can be used as a checklist for creating a company code from scratch. Note that only the customizing that involves company-code-specific entries is included. If the new company code belongs to a country for which no specific configuration is already available in the system, you must perform additional steps (e.g., the definition of VAT codes in the new country).

Transaction	Description
OX02	Edit, Copy, Delete, Check Company Code
OX16	Assign Company Code to Company
OB38	Assign Company Code to Credit Control Area
OF18	Assign Company Code to Financial Management Area
OX19	Assign Company Code to Controlling Area
OX18	Assign Plant to Company Code
OVX3	Assign Sales Organization to Company Code
OX01	Assign Purchasing Organization to Company Code
OH05	Assignment of Personnel Area to Company Code
OBB5	Cross-System Company Codes
OBY6	Enter Global Parameters
OB22	Define Additional Local Currencies
OBR3	Set Company Code to Productive
OB37	Assign Company Code to a Fiscal Year Variant
OBB9	Assign Posting Period Variants to Company Code
FBN1	Define Document Number Ranges
OBH1	Copy Number Ranges to Company Code
OBH2	Copy Number Ranges to Fiscal Year
OB28	Validation in Accounting Documents
OBBH	Substitution in Accounting Documents

**Table 2.1** Checklist for Creating a New Company Code



Transaction	Description
OB64	Define Maximum Exchange Rate Difference per Company Code
OBC5	Assign Company Code to Field Status Variants
OBA4	Define Tolerance Groups for Employees
OB32	Document Change Rules, Line Item
OB63	Enable Fiscal Year Default
OB68	Default Value Date
OBWJ	Assign Company Code to a Workflow Variant for Parking Documents
SM30/TBUVTX	Transfer Posting of Tax for Cross-Company Code Transactions
SM30/V_T001WT	Assign Withholding Tax Types to Company Codes
SM30/V_T001_EXT	Activate Extended Withholding Tax
OB62	Assign Company Code to Chart of Accounts
OB67	Assign Company Code to Rule Type (Sample Accounts)
OB78	Assign Programs for Correspondence Types
OBYA	Prepare Cross-Company Code Transactions
SM30/V_001_NP	Permit Negative Posting
SM30/V_TACE001_BUKRS	Assign Company Codes to Accrual Engine
sm30/V_TACE_COMBINATN	Accrual Engine: Assign Accounting Principle to Company Code
OB21	Define Screen Layout per Company Code (Customers)
OB24	Define Screen Layout per Company Code (Vendors)
SM30/V_T076B	Assign Company Code for EDI Incoming Invoice
OBBE	Define Reason Codes (Manual Outgoing Payments)
OB60	Prepare Cross-Company Code Manual Payments
FBZP	Automatic Payment Global Setup
OBZO	Define Document Types for Enjoy Transactions
OBA3	Define Tolerances (Customers)
SPRO/V_T076B	Assign Company Code for EDI Payment Advice Notes

**Table 2.1** Checklist for Creating a New Company Code (Cont.)

Transaction	Description
OB61	Define Dunning Areas
SM30/T047	Company Code Dunning Control
OBBA	Define Value Date Rules
OBA8	Bill of Exchange Receivables: Define Additional Days for Remaining Risk
OB54	Define Failed Payment Transactions (Bills of Exchange)
OT67	Returned Bills of Exchange Payable: Define Exception Types
OT68	Define Account for Returned Bills of Exchange
OT65	Assign Forms for Returned Bills of Exchange Payable
OT66	Define Sender Details for Form for Returned Bills of Exchange
SM30/V_T018V	Define Clearing Accts. for Receiving Bank for Acct. Transfer
SM30/V_ATPRA_FI	Define Clearing Accounts for Cross-Country Bank Account Transfers
SM30/V_T042Y	Bank Clearing Account Determination
SM30/V_TBKDC	Define Diff. in Days Betw. Value Date of House/Partner Bank
SM30/V_TBKPV	Define Number of Days Between Payment Run Date and Value Date at House Bank
SM30/V_T042EA	Define ALE-Compatible Payment Methods
OBAV	Prepare Payment Authorization/POR Procedure
SM30/V_TCJ_MAX_AMOUNT	Cash Journal: Amount Limit
FBCJC1	Define Number Range Intervals for Cash Journal Documents
FBCJC0	Set Up Cash Journal
FBCJC2	Create, Change, Delete Business Transactions (Cash Journal)
FBCJC3	Set Up Print Parameters for Cash Journal
OAB1	Assign Chart of Depreciation to Company Code
AO11	Specify Number Assignment Across Company Codes
OBCL	Assign Input Tax Indicator for Non-Taxable Acquisitions
OAYN	Specify Financial Statement Version for Asset Reports
OAB3	Specify Document Type for Posting of Depreciation

**Table 2.1** Checklist for Creating a New Company Code (Cont.)

Transaction	Description
OAYR	Assets: Specify Intervals and Posting Rules for Depreciation
ACSET	Specify Account Assignment Types for Account Assignment Objects
OAMK	Assets: Reset Reconciliation Accounts
SM30/V_T093C_APER	Specify Document Type for Periodic Posting of Asset Values
OAYK	Specify Amount for Low Value Assets
OAYO	Specify Rounding of Net Book Value and/or Depreciation
OAYJ	Specify Changeover Amount
OAYI	Specify Memo Value for Depreciation Areas
SM30/V_T093C_06	Specify Other Versions on Company Code Level
OAYP	Define Reduction Rules for Shortened Fiscal Years
SM30/V_T093C_07	Use of Half Months in the Company Code
OAYL	Specify Areas for Individual Period Weighting
OAYH	Define Depreciation Areas for Foreign Currencies
OAYM	Specify Depreciation Areas for Group Assets
AO25	Define Unit-of-Production Depreciation
AFAM_093B	Propose Values for Depreciation Areas and Company Codes
AFAM_093C	Propose Acquisition Only in Capitalization Year for Company Codes
SM30/V_T093C_10	Assign Time-Dependent Period Controls to Dep. Keys
OAW2	Define Maximum Base Value
OAYQ	Reserves for Special Depreciation: Specify Gross or Net Procedure
OAYR	Revaluation of Fixed Assets: Maintain Posting Rules
SM30/J_1AVAA02	Revaluation of Fixed Assets: Revaluation Keys
SM30/J_1AVAA05A	Maintain Additional Settings for Inflation Transaction Types
AO31	Net Worth Tax: Specify Depreciation Area
SM30/V_T093C_16	Assets: Specify Time-Independent Management of Organiz. Units

**Table 2.1** Checklist for Creating a New Company Code (Cont.)

Transaction	Description
AOCO	Specify Cost Center Check Across Company Codes
OARC	Assets: Specify Retention Periods for Archiving
OACV	Assets: Define Validation
OACS	Assets: Define Substitution
sm30/V_T093C_NOSKONTO	Prevent Subsequent Capitalization of Discounts
OA01	Determine Asset for Gain/Loss Individually (Substitution)
AO72	Post Net Book Value Instead of Gain/Loss
OAAZ	Asset Under Construction: Assign Settlement Profile to Company Code
OAYU	Specify Capitalization of AUC/Down-Payment
SM30/V_T093C_15	Asset Under Construction: Assign Value Date Variant to Company Code
SM30/V_T093C_09	Assets: Set Company Code Status
OAYE	Asset Data Transfer: Specify Sequence of Depreciation Areas
SM30/V_T093C_08	Asset Data Transfer: Specify Transfer Date/Last Closed Fiscal Year
OAYC	Asset Data Transfer: Specify Last Period Posted in Prv. System (Transf. During FY)
SM30/V_T093C_11	Asset Data Transfer: Specify Entry of Net Book Value (No Accum. Ordinary Depr.)
OAYF	Asset Data Transfer: Recalculate Depreciation for Previous Years
SM30/V_T093C_12	Asset Data Transfer: Recalculate Base Insurable Values
OAYG	Asset Data Transfer: Recalculate Replacement Values
OAYD	Asset Data Transfer: Transfer Foreign Currency Areas
GCL2	Assign Company Code to Ledger
GCVV	Maintain Local Validations (Special Ledger)
GCVX	Maintain Local Substitutions (Special Ledger)
GCP3	Maintain Local Version Parameters (Special Ledger)
GB02	Maintain Local Number Ranges - Plan (Special Ledger)

**Table 2.1** Checklist for Creating a New Company Code (Cont.)

Transaction	Description
GB04	Maintain Local Number Ranges - Actuals (Special Ledger)
SM37	Check Variants in Scheduled Programs
SM30	Check Company Code Usage in Non-Standard (Y* or Z*) Tables
SE71	Check Forms (SAPscripts)
SMARTFORMS	Check Smart Forms
SO10	Check Standard Texts

**Table 2.1** Checklist for Creating a New Company Code (Cont.)

### 2.1.3 Credit Control Area

#### Quick Reference

**Menu path:** IMG • ENTERPRISE STRUCTURE • DEFINITION • FINANCIAL ACCOUNTING • DEFINE CREDIT CONTROL AREA

**Transaction:** OB45

**Table/view:** T014/V\_T014

The credit control area is the organizational unit under which the credit management tools of Financial Accounting are managed. It can be company-code-specific, or comprise more than one company code. (See Section 2.2.2, Company Code to Credit Control Area, for more information about the relationship between the credit control area and the company code.)

Use Transaction OB45 to create a new credit control area or to check the settings of existing ones (Figure 2.3). Specify the credit control area code (four digits) and the description.

The following additional customizing settings are available for each credit control area:

► **Currency** (📍)

One credit control area can comprise many company codes. The company codes can have different local currencies, but there is just one credit limit. The currency in which the credit limit is managed is specified here, in the credit control area.

**Change View "Credit Control Areas": Details**

Cred.contr.area: 0001    Credit control area 0001

Currency: EUR ①

**Data for updating SD**

Update: 000012 ②

FY Variant: K4 ③

**Default data for automatically creating new customers**

Risk category: ④

Credit limit: ⑤

Rep. group: ⑥

**Organizational data**

All co. codes ⑦

Update	Short Descript.
	No update from SD documents
000012	Open order value on time axis, delivery and bill.doct value
000015	Open delivery and billing document value
000018	Open delivery value for sales order, open billing doct value

4 Entries found

**Figure 2.3** Credit Control Area Customizing Settings

► **Data for Updating SD (②)**

The settings in this area of Figure 2.3 are extremely important for credit controlling. The Update field specifies which SD (Sales and Distribution) documents update the credit exposure of the customer, which is compared to the credit limit when a new transaction is carried out. The credit exposure is recorded in the customer credit master (Transaction FD32) and is broken down into the following four values:

- Sales orders
- Deliveries
- Billing documents not posted to Financial Accounting
- Financial Accounting balances

When a sales order is delivered, the sales order exposure is reduced, and the exposure for the deliveries is increased. The same happens for the other steps in the sales chain. The Update field specifies whether the credit exposure is updated when you receive an order from a customer, or when the goods are delivered. Four options are available:

- **Blank:** No update from SD. Only the Financial Accounting documents update the credit exposure. SD orders, delivery, and billing documents not yet

posted to Financial Accounting don't have any effect on the credit exposure.

- ▶ **000012:** The sales orders, deliveries, billing documents, and Financial Accounting documents update the credit exposure.
- ▶ **000015:** Deliveries and Financial Accounting documents update the credit exposure.
- ▶ **000018:** Sales orders, billing documents, and Financial Accounting documents update the credit exposure.
- ▶ **FY Variant (3)**  
This is used to update the value for the sales order exposure based on the forecasted delivery date (Table SSSS).
- ▶ **Risk Category (4)**  
If you specify a value here, all of the newly created customers (in one of the company codes that belong to the credit control area) are automatically assigned to the specified risk category.
- ▶ **Credit Limit (5)**  
If you specify a value here, all of the newly created customers (in one of the company codes that belong to the credit control area) automatically receive the specified credit limit.
- ▶ **Rep. Group (6)**  
If you specify a value here, all of the newly created customers (in one of the company codes that belong to the credit control area) are automatically assigned to the specified representative group.
- ▶ **All Co. Codes (7)**  
If you select this flag, all of the company codes present in the system can post to this credit control area.

#### 2.1.4 Business Area

##### Quick Reference

**Menu path:** IMG • ENTERPRISE STRUCTURE • DEFINITION • FINANCIAL ACCOUNTING • DEFINE BUSINESS AREA

**Transaction:** OX03

**Table/view:** TGSB/V\_TGSB

The business area is an organizational unit that you can use freely for internal or external reporting to depict segmentation of your business within or across company codes. The business area is available in general ledger reporting (in both the classic General Ledger and the new SAP General Ledger), and can be set up in the special ledger tables.

You create a business area using Transaction OX03 (Figure 2.4). Specify the business area code (four digits) and the description, and save your entries.

Business Area	Description
0001	Business area 0001
0002	Oil & Gas
0009	Credit CHECK
001	JAVA
002	SAP
003	BPO
004	Call Centre

**Figure 2.4** Business Areas

If you use the consolidation business areas, you assign the business area to the consolidation business area; see Section 2.2.3, Business Area to Consolidation Business Area, for more details about this.

The business area can be assigned to the following financial and controlling objects:

- ▶ Asset classes (Table ANKA)
- ▶ Fixed assets (Table ANLP)
- ▶ Cost centers (Table CSKS)
- ▶ Internal orders (Table AUFK)
- ▶ Investment program positions (Table IMPR)
- ▶ Project definitions (Table PROJ)
- ▶ WBS elements (Table PRPS)

If you need to add the business area to non-standard-tables, and you want to know which tables must be updated, follow the procedure described in Section 2.1.1, Company, using the data type GSBER.



## 2.1.5 Consolidation Business Area

### Quick Reference

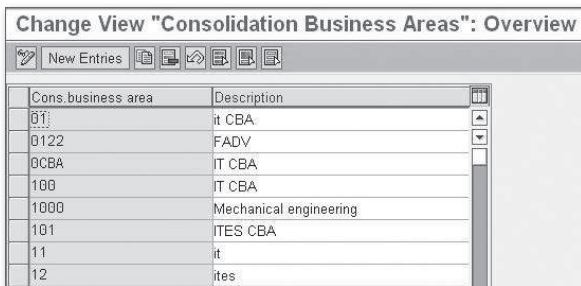
**Menu path:** IMG • ENTERPRISE STRUCTURE • DEFINITION • FINANCIAL ACCOUNTING • MAINTAIN CONSOLIDATION BUSINESS AREA

**Transaction:** OCC1

**Table/view:** TGSBK/V\_ TGSBK

You manage company codes and assign them to companies for consolidation purposes. In the same way, you can assign business areas to consolidation business areas for internal consolidation purposes.

Create a consolidation business area using Transaction OCC1 (Figure 2.5). Specify the consolidation business area code (four digits long, according to the naming convention defined in your SAP implementation) and description. Then assign the business areas to the consolidation business areas, as described in Section 2.2.3, Business Area to Consolidation Business Area.



Cons. business area	Description
01	it CBA
0122	FADV
0CBA	IT CBA
100	IT CBA
1000	Mechanical engineering
101	ITES CBA
11	it
12	ites

**Figure 2.5** Consolidation Business Area

The consolidation business area can be managed in general ledgers, special ledgers, and in the SAP consolidation tools.

## 2.1.6 Functional Area

### Quick Reference

**Menu path:** IMG • ENTERPRISE STRUCTURE • DEFINITION • FINANCIAL ACCOUNTING • DEFINE FUNCTIONAL AREA

**Transactions:** OKBD (older releases), FM\_FUNCTION (new releases)

**Table/view:** TFKB/V\_TFKB

With the functional area, you can keep track of the macro-departments where costs and revenues arise, for example:

- ▶ Administration
- ▶ Production
- ▶ Procurement
- ▶ Sales
- ▶ Human Resources

This type of accounting (i.e., accounting by department) is called *cost-of-sales accounting*.

You create functional areas using Transaction FM\_FUNCTION (OKBD in older releases). For each of them, specify the functional area ID (16-digit maximum) and the functional area description (Figure 2.6).

**Figure 2.6** Functional Area Definition

Functional area transaction data are updated in real time in the ledger OF (Total Table GLFUNCT, and Line Item Table GLFUNCA). The functional area can also be used in your general ledgers and special ledgers.

You can assign the functional area in the master data of the following objects:

- ▶ Fixed assets (Table ANLP)
- ▶ Cost elements (Table CSKA)

- ▶ Cost centers (Table CSKS)
- ▶ Cost center categories (Table TKA05)
- ▶ Internal orders (Table AUFK)
- ▶ Investment program positions (Table IMPR)
- ▶ Project definitions (Table PROJ)
- ▶ WBS elements (Table PRPS)
- ▶ General ledger accounts (Table SKA1)

It's also possible to use substitutions for the functional data update:

- ▶ Transaction OBZM for functional area substitutions
- ▶ Transaction OBBZ for assigning the substitutions to company codes

#### Note on Functional Area Activation

To use the functional data in the master data specified previously and to have the transaction data updated by functional area, you need to activate the cost of sales accounting in customizing. Go to FINANCIAL ACCOUNTING • FINANCIAL ACCOUNTING GLOBAL SETTINGS • COMPANY CODE • COST OF SALES ACCOUNTING • ACTIVATE COST OF SALES ACCOUNTING. You also need to update the settings of the ledger OF using Transaction GCL2; for example, you need to assign the company code to the ledger. Refer to Chapter 7, Banking, for more details about this.

If you need to add the functional area in non-standard tables and you want to know which tables must be updated, follow the procedure described in Section 2.1.1, Company, using the data type FKBER.

## 2.1.7 Controlling Area

#### Quick Reference

**Menu path:** IMG • ENTERPRISE STRUCTURE • DEFINITION • CONTROLLING • MAINTAIN CONTROLLING AREA

**Transaction:** OX06

**Table/view:** TKA01/V\_TKA01\_GD

The controlling area is the organizational unit under which the Controlling (CO) module works. Cost centers, profit centers, WBS elements, internal orders, and cost elements are all objects whose master data are managed under a controlling

area. You assign one or more company codes to a controlling area; see Section 2.2.4, Company Code to Controlling Area, for instructions about how to do this.

#### Note on Controlling Area Creation

Refer to a SAP Controlling manual for a full description of how to create a controlling area. A brief description is provided in this manual, but a more comprehensive description is beyond the scope of the book.

Create the controlling area using Transaction OX06, and follow these steps:

1. Select New Entries, and specify the controlling area code (four digits, according to the naming convention defined for your SAP installation) and a description. Then select Basic Data.

**Change View "Basic data": Details**

New Entries

Controlling Area

Basic data

Controlling Area: 1000 Distribution

Name: CO Europe

Person Responsible:

Assignment Control

CoCd->CO Area: Cross-company-code cost accounting

Controlling area same as company code

Currency Setting

Currency Type: 30 Group currency

Currency: EUR Euro (EMU currency as of 01 ...  Diff. CCode Currency

CurrVal. Prof.:  Active

Other Settings

Chart of Accts: INT Chart of accounts - international

Fiscal Year Variant: K4 Calendar year, 4 spec. periods

Setting for Authorization Hierarchies for Cost Centers

Do Not Use Std Hier.  Alternative Hierarchy1

Alternative Hierarchy2

Setting for Authorization Hierarchies for Profit Centers

Do Not Use Std Hier.  Alternative Hierarchy1

Alternative Hierarchy2

**Figure 2.7** Controlling Area Settings

2. In the Basic Data screen (Figure 2.7), specify some of the most important settings of the controlling area; refer to a CO manual for a comprehensive descrip-

tion of the meaning of those settings. For the organizational structure definition, the CoCd → CO Area field is fundamental; here, you specify if the controlling area can be assigned to exactly one company code (Controlling Area Same as Company Code) or to more than one company code (Cross-Company-Code Cost Accounting).

## 2.1.8 Operating Concern

### Quick Reference

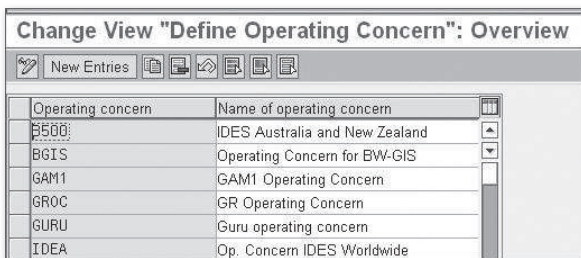
**Menu path:** IMG • ENTERPRISE STRUCTURE • DEFINITION • CONTROLLING • CREATE OPERATING CONCERN

**Transaction:** KEP8

**Table:** TKEB

The operating concern is the organizational unit that occupies the highest level of the SAP organizational hierarchy. It is used in the Profitability Analysis module, where you can analyze the profit and loss of your company according to multiple dimensions, such as customers, regions, products, and so on. You assign controlling areas to exactly one operating concern; thus, each company code is also assigned to exactly one operating concern. Refer to a CO manual for a comprehensive guide to the creation of the operating concern and the configuration of the COPA SAP module; a more thorough discussion than is provided here is beyond the scope of this book.

Using Transaction KEP8 (Figure 2.8), you can create the operating concern ID and the description. All of the specific customizing settings and the generation of the COPA environment are performed using Transaction KEA0.



The screenshot shows the SAP 'Define Operating Concern' transaction in 'Overview' mode. The window title is 'Change View "Define Operating Concern": Overview'. Below the title bar are several icons, including a search icon and a 'New Entries' button. The main area contains a table with two columns: 'Operating concern' and 'Name of operating concern'. The table lists several operating concerns with their IDs and descriptions.

Operating concern	Name of operating concern
B500	IDES Australia and New Zealand
BGIS	Operating Concern for BW-GIS
GAM1	GAM1 Operating Concern
GR0C	GR Operating Concern
GURU	Guru operating concern
IDEA	Op. Concern IDES Worldwide

**Figure 2.8** Operating Concern

### 2.1.9 FAQ and Troubleshooting Tips

Next we answer some frequently asked questions and offer helpful troubleshooting tips.

#### FAQ

1. **Question:** Are the company and the trading partner the same object in SAP?

**Answer:** Yes. The terms "company," "trading partner," and "internal trading partner" are synonymous and all refer to the same organizational unit in SAP.

2. **Question:** What is the difference between the company and the global company code?

**Answer:** The company is used in your system to keep track of the company code transactions and intercompany transactions from a consolidation point of view; the global company code is needed to exchange information between SAP systems with ALE (Application Linking and Embedding) interfaces.

3. **Question:** When I copy one company code into another, what happens to the number ranges?

**Answer:** The number ranges are copied from one company code to the other but not recorded into the transport request. For internal number ranges, the last number used is also copied.

4. **Question:** I've changed the update mode in the credit control area and transported to production. What should I do to have the new settings applied to all of the existing customers?

**Answer:** If the update mode is changed, the system has to re-read all of the relevant SD and Financial Accounting documents to get the credit exposure updated. Run Transaction F.28 for the reconstruction of the credit limit.

5. **Question:** I haven't specified any default data for new customers (Risk Category, Credit Limit, and Rep. Group left blank). I expected that the new customers would be set up with a credit limit of zero; instead, there is no data in FD32, and the credit control doesn't work at all for the customer. What's wrong?

**Answer:** If you don't specify any default value in the credit control area settings, the new customers are automatically set up as irrelevant to credit controlling (in technical terms, the record in Table KNKK, where the credit control information is stored, isn't created). To make the customer relevant for credit controlling, you must manually process the customer using Transaction FD32. If you want to ensure that new customers are automatically set up for credit

controlling, make sure at least one entry in the Default Data for Automatically Creating New Customers area (refer to Figure 2.3) is supplied. This guarantees that the customer is automatically created in Table KNKK.

6. **Question:** If I put a default value for Risk Category and/or Rep. Group, but I don't specify any default credit limit, will the new customers automatically have a credit limit of zero?

**Answer:** Yes, exactly.

7. **Question:** What is the relationship between the business area and the company code? Can I specify the possible business areas for each company code?

**Answer:** There is no hierarchical relationship between the company code and the business area; as such, there is no standard customizing activity to assign a business area to a company code, or to assign a company code to a business area. If you want to limit the possible business areas in one company code, you can create a validation. If the control requires a complete mapping between several business areas and company codes, it may be worth creating a non-standard table. In this case, you must use a user exit in the validation to use the table for control purposes.

8. **Question:** Can I still use the business area in SAP General Ledger?

**Answer:** Yes, the business area can be used as a dimension in SAP General Ledger. If you look at the standard total table for SAP General Ledger, FAGL-FLEXT, the field RBUSA (Business Area) is included, so you don't need to enhance the SAP General Ledger tables using Transaction FAGL\_GINS. However, if you are planning to upgrade from the classic General Ledger to SAP General Ledger, you should consider using profit centers and segments instead, as SAP is focusing its development on these two dimensions for segment reporting.

9. **Question:** Is table group GLFUNC\* still available if I use SAP General Ledger?

**Answer:** Yes, it can be used as a dimension in SAP General Ledger. If you look at the standard total table for SAP General Ledger, FAGLFLEXT, the field RFAREA (Functional Area) is included, so you don't need to enhance the SAP General Ledger tables using Transaction FAGL\_GINS.

10. **Question:** If I change the assignment of an object to a functional area, does it affect the old postings or only the newly created postings?

**Answer:** In general ledger accounting tables and in the GLFUNC\* tables, the system updates the records with the functional area available at the time of

the postings. The reporting that reads these tables reads the historical assignment to the functional area, not the assignment at the time the report is run.

11. **Question:** In my SAP implementation, SAP General Ledger isn't active. I'm trying to run Program RFBILA00, but I can't get the functional area in the output.

**Answer:** The functional area isn't updated in Table GLT0, where the transaction data is read from Program RFBILA00. The function isn't supported.

12. **Question:** What does the generation of the COPA environment mean?

**Answer:** The COPA tables are specific to each operating concern; in other words, the COPA table names include the name of each operating concern. Therefore, the COPA tables are created by you, online, after you have completed the COPA customizing. The COPA environment generation is the creation of the COPA operating-concern-specific tables.

13. **Question:** Why is it possible to create the operating concern with Transaction KEP8 with minimal settings (operating concern code and ID)? Wouldn't it be better to create an operating concern using Transaction KEA0, where a complete COPA setup is possible?

**Answer:** The system allows the creation of an operating concern with minimal settings so that the user can build up the enterprise structure, including the assignment of controlling areas to operating concerns, in an early stage of the SAP implementation project. At this point, it's likely that high-level decisions on the structure of the controlling have been made, but all of the details about the building of the COPA module (characteristics, key figures, etc.) aren't yet defined.

### Troubleshooting Tips

1. **Issue:** The extended withholding tax customizing isn't copied.

**Solution:** Create the customizing manually. Maintain views (Transaction SM30) V\_T001WT and V\_T001\_EXT with the company-code-relevant data.

2. **Issue:** I receive error message TK455, "Enter numeric values only," when copying the company code.

**Solution:** The error and the relevant solution is described in SAP Note 494490.



3. **Issue:** I receive message FC125, "Certain data was not copied," when copying the company code.

**Solution:** This is just an information message. The following assignments aren't copied from the source to the destination company code:

- ▶ Assignment of company code to company. Perform this assignment using Transaction OX16
- ▶ Assignment of company code to FM area. Perform this assignment using Transaction OF18.
- ▶ Assignment of company code to cross-system company code (or global company code). Perform this assignment using Transaction OBY6.
- ▶ Assignment of company code to controlling area. Perform this assignment using Transaction OX19.

4. **Issue:** I receive error message FC158 when copying the company code.

**Solution:** If the source company code is assigned to profit center ledger 8A, the destination company code inherits the same assignment — even though the assignment to the controlling area isn't copied. You can't use profit center accounting in a company code without assigning the company code to a controlling area; to avoid this error message, make sure this is done.

## 2.2 Assignment of Organizational Entities Relevant to Financial Accounting

Now that you understand how to define the organizational entities relevant for Financial Accounting, we explain how to assign them. In this section, we discuss the following assignments:

- ▶ Company code to company
- ▶ Company code to credit control area
- ▶ Business area to consolidation business area
- ▶ Company code to controlling area
- ▶ Controlling area to operating concern
- ▶ Plant to company code
- ▶ Sales organization to company code
- ▶ Personnel area to company code

(Refer to the appropriate manuals for information about the creation of plants, sales organizations, and personnel areas; because they aren't Financial Accounting or Controlling organizational entities, we don't discuss them here.)

### 2.2.1 Company Code to Company

#### Quick Reference

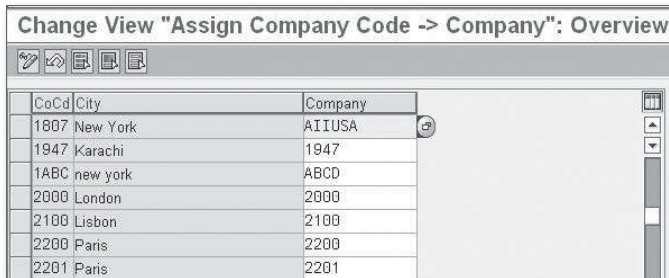
**Menu path:** IMG • ENTERPRISE STRUCTURE • ASSIGNMENT • FINANCIAL ACCOUNTING • ASSIGN COMPANY CODE TO COMPANY

**Transaction:** OX16

**Table/view:** T001/V\_001\_Y

For consolidation purposes, each company code can be assigned to a company. Use Transaction OX16 (Figure 2.9) for this purpose. The system automatically presents all of the company codes available, and you specify the company to which they belong in the Company column. Save your settings. Note that this step can also be performed in Transaction OBY6, together with all of the most relevant settings of the company code.

Change View "Assign Company Code -> Company": Overview



CoCd	City	Company
1807	New York	AIUSA
1947	Karachi	1947
1ABC	new york	ABCD
2000	London	2000
2100	Lisbon	2100
2200	Paris	2200
2201	Paris	2201

Figure 2.9 Assign Company Code to Company

### 2.2.2 Company Code to Credit Control Area

#### Quick Reference

**Menu path:** IMG • ENTERPRISE STRUCTURE • ASSIGNMENT • FINANCIAL ACCOUNTING • ASSIGN COMPANY CODE TO CREDIT CONTROL AREA

**Transaction:** OB38

**Table/view:** T001/V\_001\_X

The SAP Credit Management module allows you to keep track of the credit exposure of customers and also to set credit limits. You can also issue warnings or error messages if the credit exposures overrun a certain percentage of the credit limit. The credit management isn't performed at the company code level but at the credit control area level, and you must assign each company code to a credit control area. The same credit control area can have one or many company codes assigned to it. Each time a transaction relevant for the credit control is performed in the company code, the credit exposure in the connected credit control area is updated, and the credit limit set in the connected credit control area is checked.

You assign the company code to the credit control area in customizing using Transaction OB38. The system presents all of the company codes, and you specify the connected credit control area in the relevant column (Figure 2.10). In addition, you can specify whether it's possible to use a different credit control area in the document itself by selecting the Overwrite CC Area flag in the last column of the screen.

Change View "Assign company code -> credit control area": Overview

Co...	Company Name	City	CC...	Ov
0001	SAP GmbH	Wien		
1000	IDES AG	Frankfurt	1000	
2000	IDES UK	London	1000	
2100	IDES Portugal	Lisbon	1000	
2200	IDES France	Paris	1000	
2300	IDES España	Barcelona	1000	
2400	IDES Italia	Milano	1000	
2500	IDES Netherlands	Rotterdam	1000	
3000	IDES US INC	New York	3000	
3010	Euro Subsidiary - Belgium	Brussels	3000	
4000	IDES Canada	Toronto	3000	
4500	Canadian Company	Toronto	4500	
5000	IDES Japan	Tokyo	5000	
6000	IDES Me...			
7000	IDES Bra...			
7500	IDES Arg...			
7600	IDES Co...			
7700	IDES Ve...			
7800	IDES Pe...			
8000	IDES CH...			
AT01	IDES AG & Co. KG	Frankfurt	1000	

Many (company code)  
TO  
One (credit control area)  
ASSIGNMENT

Activate the possibility  
to specify the credit  
control area in each  
document

Figure 2.10 Assigning Company Code to Credit Control Area

### 2.2.3 Business Area to Consolidation Business Area

#### Quick Reference

**Menu path:** IMG • ENTERPRISE STRUCTURE • ASSIGNMENT • FINANCIAL ACCOUNTING • ASSIGN BUSINESS AREA TO CONSOLIDATION BUSINESS AREA

**Transaction:** OBB6

**Table/view:** TGSB/V\_GSB\_A

You assign each business area to a consolidation business area using Transaction OBB6. The system presents all of the business areas available in the system and allows you to assign them to a consolidation business area in the Cons.Bus.Area column. This is all you need to do under the Enterprise Structure definition.

Note that the consolidation business area has a very limited use in the SAP environment; as such, you should make an in-depth investigation before deciding to use this organizational unit in your SAP implementation. For example, unlike the business area, the consolidation business area isn't updated in the general ledger total tables GLT0 and FLAGFLEXT, so it's not available in most of the standard Financial Accounting reports.

### 2.2.4 Company Code to Controlling Area

#### Quick Reference

**Menu path:** IMG • ENTERPRISE STRUCTURE • ASSIGNMENT • CONTROLLING • ASSIGN COMPANY CODE TO CONTROLLING AREA

**Transaction:** OX19

**Table/view:** TKA02/V\_TKA02

You assign each company code to a controlling area to manage your internal controlling in an integrated way. Note that activities such as internal allocations of costs can be performed between objects (such as cost centers) that belong to different company codes only if the two company codes belong to the same controlling area.

To assign a company code to a controlling area, use the path specified in the preceding box and follow these steps (Figure 2.11):

1. Select a Controlling area, and double-click the Assignment of Company Code(s) folder (❶).

2. In the right side of the resulting screen, you can see the company codes assigned to the controlling area you have selected (❶). To assign a new controlling area, select New Entries.
3. If you click on the matchcode for the company codes, the system displays all of the company codes not yet assigned to a controlling area. Select the company code you want to assign, and save your entries.

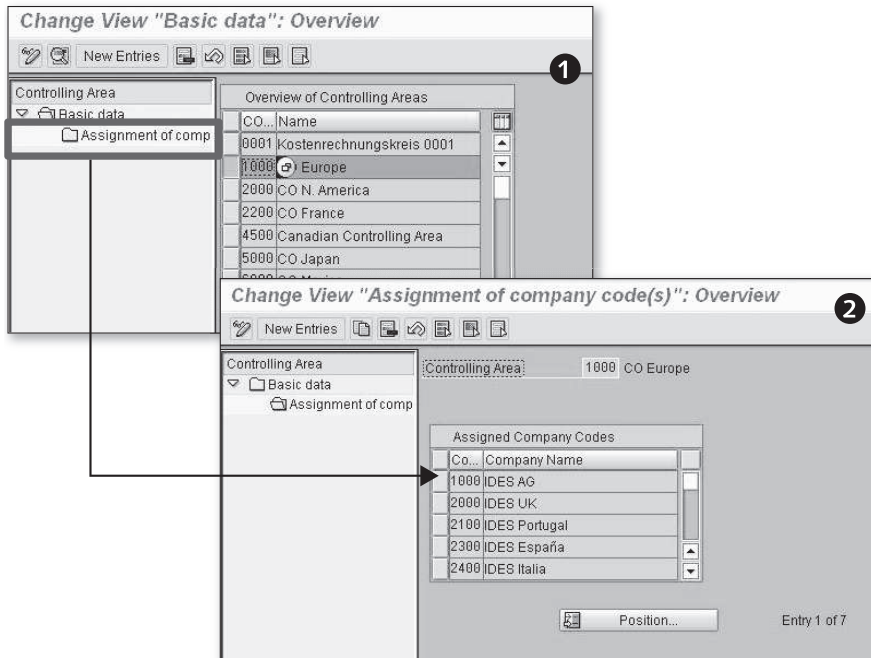


Figure 2.11 Assign Company Code to Controlling Area

### 2.2.5 Controlling Area to Operating Concern

#### Quick Reference

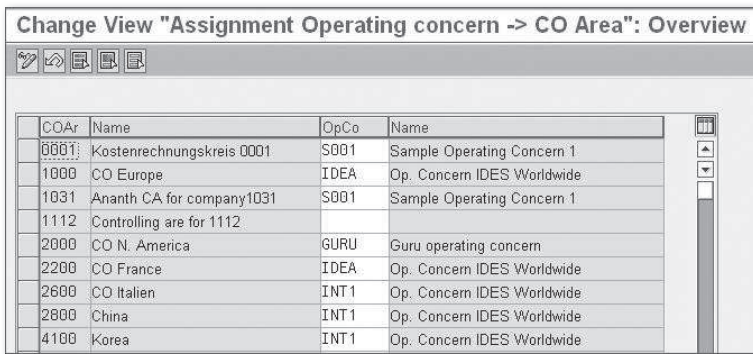
**Menu path:** IMG • ENTERPRISE STRUCTURE • ASSIGNMENT • CONTROLLING • ASSIGN CONTROLLING AREA TO OPERATING CONCERN

**Transaction:** KEKK

**Table/view:** TKA01\_ER/TKA01\_ER

You can assign several controlling areas to one operating concern using Transaction KEKK (Figure 2.12). The system displays all of the controlling areas available in the system and allows you to assign them to the operating concern in the OpCo column. That's all you need to do under the Enterprise Structure definition.

In assigning a controlling area to an operating concern, you also indirectly assign the company code to the operating concern. Refer to a Controlling manual to fully understand the consequence of this assignment; a more thorough discussion is beyond the scope of this book.



COAr	Name	OpCo	Name
0001	Kostenrechnungskreis 0001	S001	Sample Operating Concern 1
1000	CO Europe	IDEA	Op. Concern IDES Worldwide
1031	Ananth CA for company1031	S001	Sample Operating Concern 1
1112	Controlling are for 1112		
2000	CO N. America	GURU	Guru operating concern
2200	CO France	IDEA	Op. Concern IDES Worldwide
2600	CO Italien	INT1	Op. Concern IDES Worldwide
2800	China	INT1	Op. Concern IDES Worldwide
4100	Korea	INT1	Op. Concern IDES Worldwide

**Figure 2.12** Assigning Controlling Area to Operating Concern

## 2.2.6 Plant to Company Code

### Quick Reference

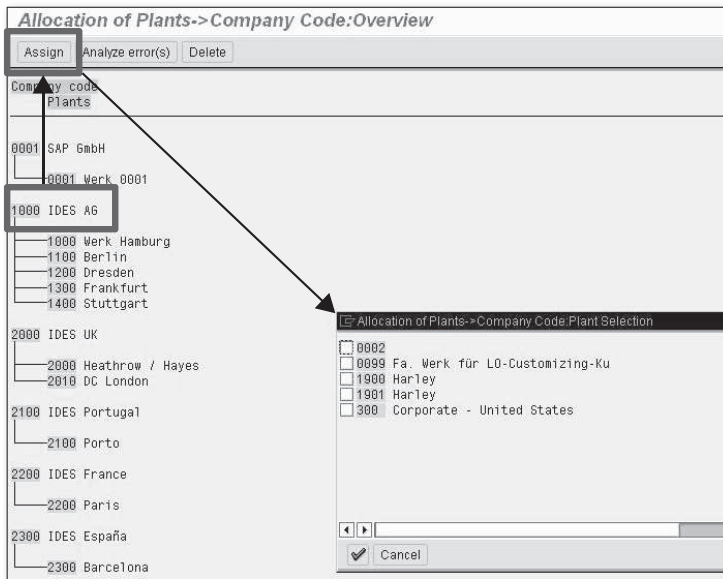
**Menu path:** IMG • ENTERPRISE STRUCTURE • ASSIGNMENT • LOGISTICS GENERAL • ASSIGN PLANT TO COMPANY CODE

**Transaction:** OX18

**Table/view:** T001K\_ASSIGN/V\_T001K\_ASSIGN

The plant is the basic organizational unit in the Logistics modules and can represent a factory, branch, or any physical segmentation of a legal entity. Each plant is assigned to exactly one company code. The assignment of the plant to a company code can be performed by a Materials Management (MM) expert or by a Financial Accounting expert, depending on the organizational rules defined in your company. To perform the assignment, follow this procedure:

1. Select Transaction OX18 (Figure 2.13). The system displays a list of all of the company codes present in the system and all of the plants assigned to each of them.
2. If you need to assign a new plant to an existing company code, position the cursor on the company code, and click the Assign button.
3. The system displays a list of the plants not yet assigned to any company code. Select your plant, and click the Continue button (  ). Save your entries.



**Figure 2.13** Assign Plant to Company Code

If you make a mistake in the assignment and the plant has never been used, you can correct the mistake by positioning the cursor over the plant and pressing the Delete button. Then follow the procedure just described to perform the correct assignment.

### 2.2.7 Sales Organization to Company Code

#### Quick Reference

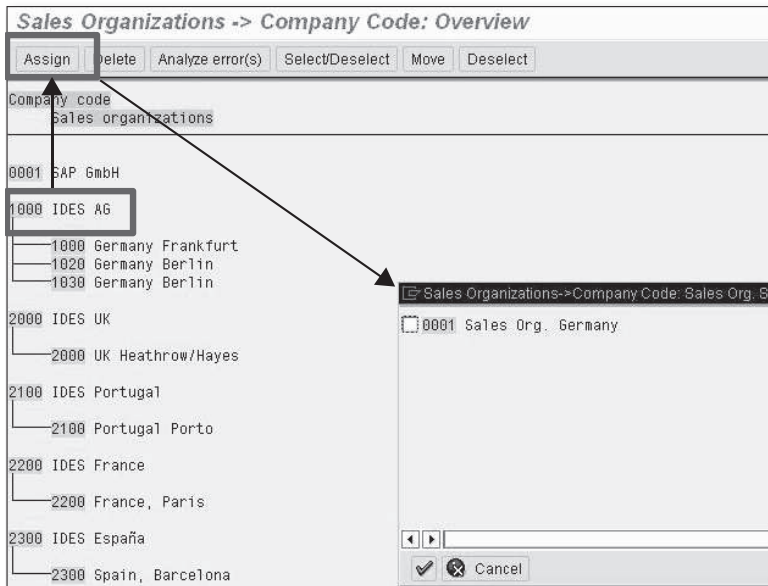
**Menu path:** IMG • ENTERPRISE STRUCTURE • ASSIGNMENT • SALES AND DISTRIBUTIONS • ASSIGN SALES ORGANIZATION TO COMPANY CODE

**Transaction:** OVX3

**Table/view:** TVKO/V\_TVKO\_ASSIGN

Each sales organization is assigned to exactly one company code. The assignment of the sales organization to a company code can be performed by an SD expert or by a Financial Accounting expert, depending on the organizational rules defined in your company. To perform the assignment, follow these steps:

1. Select Transaction OVX3 (Figure 2.14). The system displays a list of all of the company codes present in the system and of the sales organization assigned to each of them.
2. If you need to assign a new sales organization to an existing company code, position the cursor over the company code, and click Assign.
3. The system displays a list of all of the sales organizations not yet assigned to any company codes. Select your sales organization, and confirm the selection. Save your entries.



**Figure 2.14** Assign Sales Organization to Company Code

If you make a mistake in the assignment and the sales organization has never been used, you can correct the mistake by positioning the cursor over the sales organization and pressing the Delete button. Then follow the procedure just described to perform the correct assignment.



### 2.2.8 Personnel Area to Company Code

#### Quick Reference

**Menu path:** IMG • ENTERPRISE STRUCTURE • ASSIGNMENT • HUMAN RESOURCES MANAGEMENT • ASSIGNMENT OF PERSONNEL AREA TO COMPANY CODES

**Table/view:** T500P/V\_T500P

The personnel area is an organizational unit used in SAP Human Resources Management (SAP HRM). Each personnel area must be assigned to exactly one company code. Because the assignment requires an in-depth knowledge of SAP HRM, we strongly recommend that this customizing activity is performed by, or in coordination with, an SAP HRM consultant. A more thorough description of this process is beyond the scope of this book.

### 2.2.9 FAQ and Troubleshooting Tips

Next we answer some frequently asked questions and offer helpful troubleshooting tips.

#### FAQ

1. **Question:** What happens if I change the assignment of a company code to a company when the company code is already productive?

**Answer:** You shouldn't change assignments when a company code is already in use in a production system. If you do, all of the tables (e.g., global special ledgers) that derive the company from the company code master data (field T001-RCOMP) will adopt the new assignment from a certain point in time, which will result in data inconsistencies. Reports that read the assignment from Table T001 will present one result (all of the data will be presented with the new assignment), while reports that read the line items or the total record will present the historical assignment (some data on the old company, and other data on the new company). The investigation and correction of such inconsistencies can be very time consuming, and you can never be certain that they have all been reconciled. Therefore, we strongly recommend not making this type of change in a production system.

2. **Question:** Can I change the assignment of a company code to a controlling area?

**Answer:** You can't change the assignment of a company code to a controlling area after the company code is productive and has postings. If you need to reassign a company code to a different controlling area, you have two viable options. The first is to create a new company code and perform a traditional data migration; the second is to use the services from the dedicated SAP team (contact the SLO [System Landscape Optimization] service reference from SAP). In any case, the reassignment of a company code to a different controlling area is a complex activity that should be managed as a dedicated project.

3. **Question:** Can I change the assignment of a plant to a company code?

**Answer:** You can't reassign the plant to another company code if the plant is productive. If you need to reassign a plant to a different company code, you have two viable options. The first is to create a new plant and perform a traditional data migration; the second is to use the services from the dedicated SAP team (contact the SLO service reference from SAP). In any case, the reassignment of a plant to a different company code is a complex activity that should be managed as a dedicated project.

4. **Question:** Can I assign a controlling area to an operating concern for which the environment generation hasn't taken place?

**Answer:** Yes, this is possible. Transaction KEP8 allows you to create an operating concern with just the ID (four digits) and the description, without any generation of the relevant environment. This allows the assignment of the operating concern to controlling areas.

### Troubleshooting Tip

1. **Issue:** I can't assign a company code to a controlling area.

**Solution:** This means that the Controlling area has the Controlling Area Same as Company Code option selected; see Section 2.1.7, Controlling Area, for more details. If you want to assign more than one company code to the Controlling area, change the setting in the Controlling area using Transaction OX06.

2. **Issue:** Can I change the assignment of a sales organization to a company code?

**Solution:** You can't reassign the sales organization to another company code if the sales organization is productive. If you need to reassign a sales organization to a different company code, you have two viable options. The first is to create a new sales organization and perform a traditional data migration; the second is to use the services from the dedicated SAP team (contact the SLO service reference from SAP). In any case, the reassignment of a sales organization to a dif-

ferent company code is a complex activity that should be managed as a dedicated project.

## 2.3 Summary

In this chapter, we covered the definition and assignment of those entities relevant to Financial Accounting. In the first section, we explained the definition of the following entities:

- ▶ Company
- ▶ Company code
- ▶ Credit control area
- ▶ Business area
- ▶ Consolidation business area
- ▶ Functional area
- ▶ Controlling area
- ▶ Operating concern

In the second section, we explained how to make the following assignments:

- ▶ Company code to company
- ▶ Company code to credit control area
- ▶ Business area to consolidation business area
- ▶ Company code to controlling area
- ▶ Controlling area to operating concern
- ▶ Plant to company code
- ▶ Sales organization to company code
- ▶ Personnel area to company code

In the next chapter, we discuss the configuration of SAP General Ledger.

# Index

2nd currency, 530

3rd currency, 531

## A

---

AAACC\_OBJ, 396

ABO2, 439

ABO3, 433

ABO8, 440

ABAA, 438, 439

ABAON, 436

ABAVN, 436

ABKA, 364

ABKB, 365

ABST2, 458

ABT1N, 418, 431, 445

ABUMN, 418, 434, 444

ABZON, 418, 424, 425

ABZP, 430

Account Assignment Model, 188

Account Assignment Template, 192

Account currency, 158

Account determination, 301, 367, 384, 412

Account group, 93, 156, 226, 229, 232, 237, 249, 263

Account holder, 242

Accounting clerk, 234, 235, 247, 264

Accounting principles, 301, 305

Account Key column, 220

Account management, 243, 266

Account modification, 490

Account modification rule, 500

Accounts blocked by proposal, 330

Accounts for exchange rate valuation, 301, 303

Accounts for exchange rate valuation by valuation area, 304

Accounts for tax codes, 219

Accounts per valuation area, 305

Account symbol, 490, 494

*Enhancement FEB00001, 490*

Account symbols, 299, 489, 491

Account symbols and general ledger accounts, 490

Account type, 102, 103, 104, 115, 198, 200, 204, 277

Accumulated depreciation account, 453

Acquisition, 433

Acquisition from affiliated company, 430, 431

Acquisition value, 379

Acquisition with automatic offsetting entry, 424

Acquisition with FI vendor invoice, 427

ACSET, 396, 397

Activate version, 541

Activation of CO objects, 394, 395

Active scenario, 481, 482

Activities Like G/L button, 536

Activity groups, 537

Actual data transfer, 567

Actual line items, 525

Additional local currencies, 153

Additional log, 338

Additional selections, 319

Address, 238

Adjustment postings, 256

Adoption of APC values, 380

Adoption of depreciation terms, 380, 381

AFAB, 444, 448, 453, 454, 461

AFAMA, 391

AFBP, 453

AJAB, 457

AJRW, 456

AL11, 468

ALE, 79

- All company codes, 283
- Allocations in the special ledger, 558
- Alphanumeric range, 257
- Alternative account number, 159, 476
- Alternative chart of accounts, 91, 98
- Alternative exchange rate type, 36
- Alternative payer, 243, 245
- Alternative reconciliation account, 306
- ALV, 197, 325, 327, 328, 349
- Always check, 533
- Always dunning, 294
- AM01, 368
- AM05, 365
- Amount in document currency, 311
- Amount limit, 297
- ANEA, 372
- ANEK, 424, 427, 431, 436
- ANEP, 372, 424, 427, 431, 436
- ANKB, 383
- ANLA, 372, 411, 415, 416, 418
- ANLB, 372, 411, 415, 418
- ANLC, 372
- ANLP, 453
- ANLV, 372
- ANLZ, 372, 373, 411, 412, 415, 418
- ANTS, 373
- AO11, 367
- AO90, 384, 455
- Application areas, 539
- APQI, 195
- A productive print of the dunning letters, 350
- AR102, 473
- Archiving, 248
- Archiving bank data, 472
- AS01, 411
- AS02, 422
- AS05, 416
- AS06, 417, 421
- AS08, 366
- AS11, 415
- ASKB, 424, 431, 451, 461
- Assessments, 559
- Asset account, 328
- Asset class, 364, 365, 368, 409, 412, 415, 422
- Asset class deactivated, 423
- Asset Explorer, 438, 441, 442, 443
- Asset history sheet, 404
- Asset master number ranges, 367
- Asset reconciliation accounts, 388
- Asset transfer, 444
- Asset under construction, 429
- Asset value date, 410
- Assign a company code to a controlling area, 73
- Assign activity, 535
- Assign bank accounts to transaction types, 487
- Assign business area to consolidation business area, 67
- Assign company code to company, 66
- Assign company code to controlling area, 68, 69
- Assign company code to credit control area, 66, 67
- Assign controlling area to operating concern, 69, 70
- Assigning activities to the special ledger, 535
- Assigning chart of depreciation, 363
- Assigning companies or company codes to the ledger, 531
- Assigning number ranges to customer account groups, 234
- Assignment, 244
- Assignment of a company code to a company, 73
- Assign personnel area to company code, 72
- Assign plant to company code, 70, 71, 74
- Assign sales organization to company code, 71, 72
- Assign the down payment, 322

AUSZUG.TXT, 498, 505  
 Authorization group, 507  
 Automatic account determination, 150  
 Automatic clearing of open items, 342  
 Automatic clearing program, 206  
 Automatic clearing result, 345  
 Automatic clearing rules, 204  
 Automatic creation of cost elements, 92  
 Automatic creation of primary cost elements, 176  
 Automatic outgoing payments, 336  
 Automatic payment parameters, 337  
 Automatic payment program, 241, 283  
 Automatic payment result, 339  
 Automatic payments configuration, 283  
 Automatic postings for foreign currency valuation, 301  
 Available amount for outgoing payments, 292  
 AW01N, 441

## **B**

---

BAdI FAGL\_DERIVE\_PSEGMENT, 133  
 BAdI FAGL\_DERIVE\_SEGMENT, 133  
 Balance carryforward, 563  
 Balance check, 542  
 Balance sheet account, 157, 203, 384  
 Bank account, 241, 475, 490  
 Bank account number, 23, 290, 485  
 Bank account statement, 318  
 Bank branch, 463, 464, 466, 474  
 Bank branch data  
   *AR102*, 472  
 Bank branch data deletion, 472  
 Bank branch master data, 464  
 Bank chain, 463, 478, 479, 481, 484, 485  
   *Bank chains in the payments*, 484  
   *Bank chains customizing*, 478  
   *Correspondent bank*, 478  
   *Define the scenario*, 479  
   *Intermediary bank*, 478  
   *Receiver bank key*, 482  
   *Receiver-specific bank chain*, 483  
   *SAP Note 842128*, 484  
   *Search strategy*, 482  
   *Supplement payment method*, 482  
 Bank chains are not active, 485  
 Bank chains in payments, 484  
 Bank chains scenario, 478  
 Bank clearing account, 319, 493  
 Bank country, 470  
 Bank country key, 485  
 Bank data, 24, 319, 463  
 Bank data manual update, 464  
 Bank determination, 291  
 Bank key, 23, 24, 241, 464, 465, 471, 472, 473, 485  
   *Bank key control*, 465  
 Bank name, 466  
 Bank number, 465, 471, 473  
 Bank number length, 23  
 Bank statement, 488, 496  
 Bank statement transaction types, 486, 487  
 Bank type, 242  
 Baseline date, 276, 310  
 Batch input, 102, 195  
 Batch input session, 451  
 BAUP, 467, 472  
 BD87, 214  
 BELNR, 499  
 BIC, 23, 469, 471  
 BIC database, 469, 470  
 Billing documents, 54  
 Bill of exchange, 241, 285, 306  
 BKPF, 114, 182, 198, 209, 313  
 Blocked for creation, 163  
 Blocked for planning, 163  
 Blocked for posting, 163  
 Blocking an asset, 416, 417  
 Blocking customer accounts, 248  
 Blocking indicator, 533

- Blocking vendor accounts, 269
  - Block key, 277
  - BNKA, 83, 86, 87, 90, 93, 97, 99, 103, 107, 109, 116, 117, 129, 130, 135, 156, 166, 172, 173, 176, 178, 189, 195, 201, 204, 205, 208, 226, 230, 232, 234, 235, 241, 248, 249, 251, 259, 262, 264, 269, 272, 290, 336, 342, 346, 354, 360, 363, 364, 365, 366, 367, 368, 370, 372, 464, 467, 468, 469, 471, 472
  - Boolean rule, 138, 538
  - Boolean statement, 141
  - BSAD, 275
  - BSAK, 275
  - BSEG, 123, 313
  - BSEG\_ADD, 117, 193
  - BSET, 220
  - BSID, 275, 313
  - BSIK, 123, 275
  - Bundling, 499
  - Business area, 55, 56, 63
  - Business area financial statement, 82
  - Business object BUS1093, 38
  - Business transaction, 124, 125, 127, 508, 513, 520
  - Business transaction type, 508
  - Business transaction variant, 125, 127
- C**
- 
- Calculate interest on items paid before due date, 297
  - Calendar type, 296
  - Callup point, 139, 144, 149, 188
  - Callup points, 539
  - Carryforward, 97, 99, 530
  - Cash balance, 514
  - Cash discount, 320
  - Cash documents, 516
  - Cash journal, 463, 505, 509, 510, 511, 514, 521
    - Balance display for display period, 514*
    - Business transactions, 508*
    - Business transaction type, 508*
    - Cash journal document, 511*
    - Cash journal postings, 511*
    - Cash journal reporting, 518*
    - Cash journals definition, 506*
    - Cash journal working area, 512*
    - Checks, 515*
    - Delete a cash journal document, 517*
    - Document status, 518*
    - Number ranges, 510*
    - Release a cash journal document to accounting, 516*
  - Cash management, 81
  - Cash payment, 512
  - Cash receipts, 513
  - CDHDR, 179, 257, 420
  - CDPOS, 179, 257
  - CEPC, 133
  - CFM, 33
  - Change GL documents, 197
  - Change line items with FBL3N, 202
  - Change of account group, 249
  - Changes to asset master records, 419
  - Changes to the customer account, 257
  - Changing an asset document, 439
  - Changing the line item fields, 200
  - Characteristics, 526
  - Chart of accounts, 90, 175, 204, 384
  - Chart of depreciation, 360, 362, 363, 365, 377, 384, 408
  - Check double postings, 560
  - Check for existing records, 554, 568
  - Checking rule, 22
  - Checklist for creating a company code, 48
  - Check number, 515
  - Check receipts, 513, 515
  - Checks in the cash journal, 515
  - City file, 25
  - Classic transaction, 332
  - Cleared items, 275, 326

- Clearing, 150, 318
- Clearing currency, 344, 345
- Clearing date, 344
- Clearing differences, 151
- Clearing documents, 208
- Clearing document type, 287
- Clearing GL open items, 203
- Clearing parameters, 205
- Clearing the open items, 329
- Clear the offsetting account, 424
- Closing balance, 514
- CMOD, 490, 574
- CO-IO, 428
- Collection authorization, 243, 287
- Company, 44, 79, 240, 533, 548, 571
- Company code, 44, 46, 47, 48, 60, 63, 91, 109, 111, 133, 184, 199, 200, 363, 409, 529, 533, 571
- Company code currency, 84, 533, 534
- Company code is productive, 422
- Company code level data, 243, 266
- Company code productive, 73
- Company code settings for the ledger, 534
- Company code to company, 66
- Complete document, 136
- Condition rule, 538
- Consolidation business area, 56, 57, 68
- Constant value, 147, 375
- Control data, 158, 238, 239
- Control integration, 92
- Control key, 242, 291, 476
- Controlling area, 59, 80
- Controlling area same as company code, 61, 74
- Converting a bank statement file to the MultiCash format, 497
- Converting files, 496
- COPA, 61
- CO-PS, 428, 429
- Copy company code, 62
- Copy, delete, check company code, 46
- Correspondence, 234, 246
- Correspondent bank, 478, 482
- Cost center, 116
- Cost item, 333
- Cost-of-sales accounting, 58
- Country, 17, 19, 26, 216
- Country chart of accounts, 79
- Country data, 467
- Country-specific checks, 21, 465
- Country-specific controls, 17, 18
- Create a customer, 235, 236
- Creating a rollover, 583
- Creating a special ledger, 529
- Credit control area, 53, 54, 79
- Credit exposure, 54
- Credit limit, 55, 307
- Credit management, 66
- Credit memo - general, 316, 335
- Cross-company-code cost accounting, 61
- Cross-company code posting, 556
- Cross-rate exchange rate, 33
- CSKA, 176
- CSKB, 176
- CSKT, 176
- Currency, 28, 184, 548
- Currency allowed, 287
- Currency class, 488
- Currency key, 29
- Currency type, 21, 40, 50, 84, 153
- Customer address data, 238
- Customer communication data, 239
- Customer item, 311
- Customer mass change, 253, 254
- Customer master data deletion, 252
- Customer master data management, 235
- Customer number ranges, 232, 233
- Customer posting, 509
- Customers credit memo, 281
- Customers invoice, 281
- Customers to be included in the run, 348
- Custom fields, 526
- Customizing cash journals, 506



**D**

---

- Data elements, 45
- Data medium exchange, 474, 484
- Data type, 45
- Day limit, 276
- Days 1, 276
- Days 2, 276
- Days 3, 276
- Days and percentages, 311
- Days in arrears, 294
- Deactivation date, 437
- Deactivation of depreciation areas, 383
- Deactivation on, 412
- Debit/Credit indicator, 104
- DEBITOR, 257
- Decimal places, 30, 31
- Default document type, 280, 281
- Default value in the credit control area, 62
- Delete customer master data, 251
- Delete customers, 248
- Delete data for special ledger, 571
- Delete tax amount, 329
- Delete the proposal, 340
- Deleting an asset, 417
- Deleting cash journal document, 517
- Deletion and reposting of data, 570
- Deletion flag, 166, 168, 252
- Deletion of customer master data, 251
- Deletion of special ledger data, 570
- Deletion of vendor master data, 272
- Deliveries, 54
- Deposit checks, 520
- Depreciation accounts, 384
- Depreciation area, 373, 377, 384, 409, 441
- Depreciation area 01, 380
- Depreciation area currency, 389
- Depreciation areas, 376
- Depreciation key, 391, 394, 414, 425
- Depreciation run, 379, 448, 455
- Depreciation start date, 444
- Depreciation terms, 380, 422, 459
- Derived depreciation area, 377
- Development key, 524
- Different address for the same customer, 256
- Direct exchange rate, 37
- Direct postings, 541
- Discount, 276
- Display, 94, 96, 228
- Display Error Only option, 196
- Display zero records, 577
- Distribution amount, 288
- Distribution channel, 237
- Division, 237
- DME, 283, 287, 290, 338, 341, 474, 484
- DME engine, 341
- DME file, 485
- Document complete, 147
- Document currency, 185
- Document date, 184
- Document header, 136, 139, 146
- Document number, 109, 185, 214
- Document overview, 555
- Documents entered up to, 338
- Documents excluded from the dunning, 350
- Documents posted up to, 347
- Document type, 99, 100, 125, 127, 128, 184, 310, 332, 426, 507, 550
- Document type for depreciation, 388
- Document type for payment, 287
- Document types for manual postings, 542
- Document types for special ledger, 543
- Down payment clearing, 324
- Down payment posting, 323
- Down payment request, 322
- Down payments, 306, 322, 342
- Down payments received, 322
- Dunning, 268, 346
- Dunning areas, 293
- Dunning block, 293, 295, 350
- Dunning configuration, 293
- Dunning data, 346, 347

Dunning date, 347  
 Dunning form, 295  
 Dunning interval in days, 294  
 Dunning letters, 346, 350  
 Dunning levels, 294  
 Dunning list, 349  
 Dunning notice, 350  
 Dunning print with scheduling, 349  
 Dunning procedure, 247, 293, 349  
 Dunning procedure configuration, 293  
 Dunning process, 247  
 Dunning program parameters, 347  
 Dunning program status, 348  
 Dunning proposal, 346, 348  
 Dunning recipient, 256  
 Dunning run, 349  
 Dynamic selections, 353

## E

---

Earnings, 97  
 EC01, 46  
 EC08, 360  
 EDI, 474  
 Elect. Bank Statement Format, 498  
 Electronic bank statement, 463, 486, 495, 500, 504, 520  
   *Account symbols, 489*  
   *Assignment of house bank accounts to bank statement transaction types, 487*  
   *Electronic bank statement configuration, 486*  
   *External transaction types, 495*  
   *Posting rule, 492*  
   *Post to accounting, 501*  
   *Reprocess, 501*  
 Electronic bank statements, 486, 496  
 EMU, 34  
 Enhancements, 407  
 Enhancement SAPMF02H, 90  
 Enjoy transactions, 280, 281, 313, 333  
 Entering exchange rates, 38  
 Enterprise structure, 78  
 Entry view, 123  
 Error AA203, 423  
 Error AA694, 454  
 Error AA761, 461  
 Error AAP0105, 454  
 Error AAP0184, 445  
 Error ACC\_AA029, 410  
 Error AU133, 455  
 Error F5557, 410  
 Error FX213, 213  
 Error GLT2076, 455  
 Error AA130, 423  
 Error F5A055, 521  
 Error F5A071, 520  
 Error GU779, 575  
 Error SV074, 411  
 Error PZ876, 478, 485  
 EU Country, 21  
 EURX, 34, 41  
 Evaluation groups, 370  
 Events, 27  
 Exception list, 340  
 Exchange difference accounts, 346  
 Exchange rate, 32, 37, 38, 314  
 Exchange rate calculation, 301  
 Exchange rate differences, 152  
 Exchange rate type, 32, 33, 34, 35, 37, 41, 85, 103, 302, 338  
 Exchange rate valuation, 354, 356  
 Exchange rate valuation result, 356  
 Exchange rate valuation selection screen, 356  
 Executing a rollout, 585  
 Expense, 509  
 Exposure is recorded in the customer credit master (Transaction FD32), 54  
 Express installation, 529  
 Extended log, 348, 354  
 Extended withholding tax, 64  
 External, 113  
 External number range, 256  
 External number ranges, 545  
 External transaction types, 495

**F**

---

- F.05, 354
- F.13, 205, 212, 342
- F13E, 342
- F-27, 316
- F-29, 329
- F-39, 329
- F-41, 335
- F-43, 331
- F.80, 209
- F-90, 427
- F-91, 424, 427
- F-92, 436
- F110, 245, 283, 336, 484
- F150, 247, 346
- F5263, 505
- FAGL\_BELNR\_LD, 128, 193
- FAGL\_DOCNR\_LD, 128
- FAGL\_FC\_VAL, 301, 354, 358
- FAGL\_FC\_VALUATION, 354
- FAGLFLEXA, 123
- FAGLFLEXT, 116, 120, 130, 193
- FAGL\_LEDGER\_CUST093, 134
- FAGL\_LEDGER\_SCEN, 121
- FAGL\_SCENARIO, 121
- FAGL\_SCEN\_FIELDS, 121
- FAGL\_SEGM, 129
- FAGL\_SPLIT\_FIELD, 125
- FAGL\_TLDGRP, 117
- FAGL\_TLDGRP\_MAP, 117
- Fast entry, 189
- FB01, 104, 183, 188, 189, 313, 331, 427, 436
- FB01L, 193
- FB08, 105, 207, 208
- FB50, 91, 183, 189, 190, 211, 335
- FB50L, 193
- FB60, 189, 281, 331, 333, 335
- FB65, 189, 281, 335
- FB70, 189, 281, 313, 314, 315, 328, 335
- FB75, 189, 281, 316
- FBCJ, 511
- FBCJC0, 506
- FBCJC1, 510
- FBCJC2, 508
- FBIS, 169
- FBL3N, 180, 181, 201
- FBL5N, 240, 323, 325
- FBN1, 101, 109
- FBRA, 105, 207
- FBV0, 190, 313
- FBZ1, 308, 318
- FBZP, 245, 283, 338, 474
- FD01, 235
- FD05, 248
- FD06, 248
- FD32, 54, 62, 307
- FD33, 307
- FEBA\_BANK\_STATEMENT, 501
- FEBAN, 498, 501, 503
- FEBC, 496
- FEBEP, 500
- FEBKO, 500
- FEBP, 501, 505
- FF\_5, 497, 498, 501
- FI01, 464
- FI12, 474, 475
- FIBD, 481
- FIBF, 27, 477
- FIBHU, 483
- FIBPU, 483
- FIBTU, 483
- Field-field assignment, 147, 375
- Field length, 22
- Field movements, 523, 526, 527, 536, 548, 580, 584
- Field status, 96, 105, 107, 113, 115, 191, 211, 227, 230, 250, 259, 262, 314
- Field status group, 94, 105, 107, 160, 211
- Field status variant, 79, 107, 108
- FI incoming credit memos, 335
- FI incoming invoices, 331
- FI invoices, 310
- File name, 168

- FINT, 161, 298  
 FI outgoing credit memos, 316  
 First acquisition on, 412  
 Fiscal address, 241  
 Fiscal year, 87, 109, 110  
 Fiscal year 9999, 114  
 Fiscal year change, 456, 457, 459  
 Fiscal year closing, 457, 459  
 Fiscal year variant, 55, 79, 87, 88, 119, 120, 453, 533, 551  
 Fixed fields, 526  
 FK01, 264, 266  
 FK05, 269  
 FK06, 269  
 FKBER, 59  
 FLAGFLEXT, 68  
 Flagging for deletion, 163  
 FM\_FUNCTION, 57  
 FMLGD\_H\_ELKO, 486, 492  
 Foreign currency, 37  
 Foreign payments, 289  
 Format of the bank statement, 504  
 FS00, 109, 156, 162, 175, 180  
 FS15, 165, 168, 169  
 FS16, 165, 168, 169  
 FSK2, 172  
 FSM1, 173  
 FSP0, 156  
 FSS0, 156  
 FSTAG, 115  
 FSTVA, 115  
 FTXP, 217, 222, 223  
 Functional area, 57, 58  
 Functional area activation, 59  
 Functional area substitutions, 59  
 FV50, 190, 313  
 FV626, 505
- G**
- 
- GB01, 149, 556  
 GB04, 543, 544, 552  
 GB05, 543, 552  
 GB06, 572  
 GB11, 548, 556  
 GB16, 572  
 GBB0, 372  
 GBB1, 372, 375  
 GCAC, 565  
 GCBX, 542  
 GCD1, 560  
 GCDE, 570  
 GCF2, 526  
 GCGS, 573  
 GCI4, 526  
 GCIN, 526  
 GCIQ, 524, 529  
 GCL2, 531, 533, 535, 537, 560  
 GCP1, 546  
 GCP2, 546  
 GCR2, 580  
 GCR5, 580  
 GCS5, 562  
 GCS6, 562  
 GCS7, 562  
 GCU1, 552, 567  
 GCU3, 552, 567, 569  
 GCU4, 552, 567  
 GCU5, 552, 567  
 GCVI, 541, 560  
 GCVV, 539  
 GCVW, 539  
 GCVX, 539  
 GCVY, 539  
 GD13, 576  
 GD23, 554  
 General bank chains, 481, 483  
 General data, 236  
 General ledger accounts, 491, 493  
 General level data, 265  
 General search, 479  
 Generation error, 551  
 Generation of validations, 144  
 Get exchange rate, 189  
 GL20, 582  
 GL21, 583

GL25, 585  
 GL26, 585  
 GL account, 107, 109, 126, 150, 156, 162, 164, 172, 174, 178, 179, 180, 185, 196  
 GL account mass maintenance, 171  
 GL accounts, 172, 179  
 GL accounts copy, 165  
 GL accounts for APC posting and depreciation, 384  
 GL accounts mass change, 170  
 GLFUNCT, 58  
 Global company code, 79  
 Global company currency, 84  
 Global documents, 572  
 Global number ranges, 543, 544  
 Global postings, 552  
 Global retained earning account, 562  
 Global special ledger, 45  
 Global table group, 525, 547  
 GLPCT, 130  
 GLT0, 86  
 GLU1, 539, 547, 551  
 GLU2, 547, 551  
 GL view, 123  
 Grace periods, 294  
 Group account number, 158  
 Group chart of accounts, 91, 92  
 Group currency, 84  
 Grouping of invoices, 285  
 GSBER, 56  
 GVTR, 564  
 GVTRS001, 574

## H

---

Hard currency, 84  
 Hard currency, 21  
 Header data, 319  
 Header text, 183  
 Head office, 244  
 History sheet groups, 404  
 History sheet version, 404  
 Hold, 313

Hold function, 313  
 Holding company, 44  
 House bank, 161, 245, 290, 463, 490, 502  
     *Data medium exchange details*, 474  
     *EDI details*, 474  
 House bank account determination, 292  
 House bank accounts, 289, 290, 292, 473, 475, 487, 492, 502  
     *Alternative Acct.No.*, 476  
     *Currency*, 477  
     *GL account*, 477  
     *House bank accounts definition*, 475  
 House bank general ledger account, 492  
 House bank key, 477  
 House banks, 289, 463, 473

## I

---

IBAN, 26, 243, 287, 290, 472, 476, 477, 485  
 IDoc, 194, 211  
 IFRS, 130  
 Importing bank statements, 498, 505  
 Inactive profit center, 135  
 Incoming payment, 318, 320, 321, 493  
 Index-based currency, 21  
 Infoset, 179, 274, 421  
 Installing table groups, 524  
 Installment payments, 275  
 Intercompany asset transfer, 432, 434  
 Intercompany postings, 102  
 Interest calculation, 298, 352  
     *Output list*, 353  
 Interest calculation configuration, 295  
 Interest calculation customizing, 298  
 Interest calculation to, 352  
 Interest calculation type, 295, 296  
 Interest cycle, 245  
 Interest indicator, 161, 295, 351, 353  
 Interest on arrears calculation, 295  
 Interest on debit items, 297  
 Interest rate, 300, 357  
 Interest rates calculation, 300

Intermediary bank, 478, 480  
 Internal/external, 110  
 Internal number ranges, 62, 114  
 Internal order, 428, 430  
 Internal trading partner, 44  
 INTITHE, 351  
 INTITIT, 351  
 Inventory number, 412  
 Inverted exchange rate, 34  
 Invoice – general, 331  
 Invoice reference, 308, 317, 336  
 Invoice reference document number, 317  
 Invoice reference line item, 317  
 Invoice reference year, 317  
 ISO, 17, 29  
 Item category, 127

## **K**

---

KA01, 175, 182  
 KCH5N, 135  
 KDF, 303  
 KE51, 130, 133  
 KE52, 135  
 KE56, 134  
 KEKK, 69  
 KEP8, 61  
 Key Word/Translation Tab, 161, 162  
 KNA1, 104, 227, 235  
 KNAS, 235  
 KNB1, 104, 227, 230, 235  
 KNB5, 227, 230, 235  
 KNBK, 235  
 KNC1, 105  
 KNKK, 235  
 KNVV, 235

## **L**

---

Last dunned, 247  
 Last number, 111  
 Leading ledger, 117, 120, 129, 133, 134, 381

Leading ledger depreciation area, 410  
 Leading zeros, 491  
 Ledger, 116  
 Ledger 0F, 58  
 Ledger definition, 548  
 Ledger group, 118, 193, 305, 382, 410  
 Ledger posting allowed, 529, 551  
 Ledger productive, 530  
 Ledgers, 116, 328  
 Ledger selection, 523, 537, 538, 549  
 Ledger selection rule, 549  
 Ledger settings, 531  
 LFA1, 264  
 LFAS, 264  
 LFB1, 264  
 LFBK, 264  
 LFM1, 264  
 Line item, 136, 140, 146  
 Line items mass change, 202  
 Line item table, 550  
 Local bank payments, 485  
 Local code, 472  
 Local currencies, 83, 120, 410  
 Local documents, 572  
 Local number ranges, 543, 544  
 Local postings, 552  
 Local retained earning account, 562  
 Local table group, 525, 547  
 Logical database, 180, 274  
 Logical database ADA, 420  
 Logical field groups, 368  
 Logical system, 571  
 LSMW, 38, 201, 253

## **M**

---

MAHNS, 346  
 Main asset, 411, 413  
 Maintain number ranges, 582  
 Maintenance Language, 91  
 Mandatory, 105  
 Manual creations of cost elements, 92  
 Manual credit notes, 317

Manual incoming payment, 318  
 Manual payment block, 282  
 Manual special ledger postings, 540  
 Mark for deletion, 163  
 Mark the customer for deletion, 249  
 MASS, 170, 253, 273, 274  
 Mass change, 201, 253  
 Mass deletion, 570  
 Mass reversal of FI documents, 209  
 Matchcode of the account group, 237  
 Max exchange rate deviation, 39, 81  
 MB03, 555  
 Message AR102, 473  
 Message BF00257, 473  
 Message BF00323, 473  
 Message BF00407, 27  
 Message F5†212, 39  
 Message F5A055, 521  
 Message F5A071, 520  
 Message F4858, 114  
 Message F5201, 454  
 message F5212, 81  
 Message F5272, 115  
 Message F5522, 115  
 Message FAGL\_LEDGER\_CUST012, 134  
 Message FAGL\_LEDGER\_CUST013, 134  
 Message FC125, 64  
 Message FC447, 215  
 Message FS219, 213  
 Message GI192, 561  
 Message GI251, 574  
 Message GI505, 561  
 Message GI558, 561  
 Message GI732, 575  
 Message GU780, 575  
 Message KI235, 213  
 Message number, 139  
 Message PZ876, 485  
 Message SV033, 214  
 Message type, 138  
 MHND, 346  
 MHNK, 346  
 Min.days in arrears, 294

Minimum amount, 294  
 Minimum amounts for Outgoing and Incoming payments, 285  
 Minimum and maximum amount for each payment to be issued, 288  
 Minimum number of days, 350  
 MM document, 555  
 MultiCash, 497, 498, 505  
 MWS, 330

## **N**

---

National code, 463  
 Negative posting, 81, 102  
 Net book value, 444  
 New country, 18  
 New currency, 28, 40  
 New General Ledger, 121, 149, 183, 192  
 Next payment date, 338  
 No exchange rate differences, 285  
 No forex rate differences, 82  
 No interest payment, 297  
 Non-leading ledger, 120, 121, 129  
 Non-standard table, 45, 48  
 Normal items, 326  
 Noted items, 327  
 Note to payee, 493, 495, 503  
 NRIV, 109, 115, 232, 366, 410, 510, 545  
 Number range, 62, 101, 109, 111, 112, 113, 115, 128, 232, 259, 263, 409, 422, 423, 510, 519, 550, 551  
 Number range group, 544  
 Number ranges for actual postings, 543  
 Number ranges for asset master data, 366  
 Number range transport, 112

## **O**

---

O7F1, 319  
 O20B, 255  
 OA77, 369  
 OA78, 369  
 OA79, 404

OAAQ, 459  
OAAAR, 459  
OABC, 379  
OABD, 380  
OACS, 373, 375  
OACV, 372  
OADB, 376  
OAOA, 364  
OAOB, 363, 364  
OAPL, 362, 383  
OAV8, 370, 412  
OAV9, 404  
OAVA, 370, 412  
OAYH, 389  
OAYZ, 383  
OB05, 234  
OB05K, 264  
OB07, 32  
OB08, 37  
OB09, 152  
OB13, 90, 91, 162, 175  
OB15, 172  
OB18, 293  
OB20, 230  
OB21, 229, 255  
OB22, 83, 119, 410  
OB23, 261  
OB24, 259  
OB26, 95  
OB27, 281  
OB28, 144, 310  
OB29, 87  
OB32, 198  
OB32A, 200  
OB37, 546  
OB38, 66  
OB40, 219  
OB41, 103, 115, 226, 229, 230, 234,  
248, 249, 253, 259, 261, 262, 264, 269,  
273, 316, 331, 335, 336, 342, 346, 354,  
362, 363, 364, 365, 366, 375, 376, 379,  
380, 383  
OB45, 53  
OB46, 295, 296  
OB53, 562  
OB59, 301  
OB61, 293  
OB67, 172  
OB74, 204, 357  
OB81, 295, 296, 300  
OB82, 295, 300  
OB83, 295, 296, 300  
OBA0, 150  
OBA1, 301  
OBA4, 150  
OBA7, 99  
OBAC, 295  
OBAR, 226  
OBB6, 67  
OBB8, 275, 279  
OBB9, 275, 279  
OBBH, 145  
OBBS, 35, 42  
OBBW, 256  
OBC4, 107, 115  
OBCL, 388  
OBD2, 226, 362, 363, 364, 365, 366,  
375, 376, 379, 380, 383  
OBD3, 259  
OBD4, 93  
OBH1, 109, 111  
OBH2, 109  
Object BUS3006, 170  
Object table\_1, 525  
Object table\_2, 525  
OBR2, 251, 272  
OBS2, 86  
OBV1, 295  
OBXR, 306, 322  
OBXT, 306  
OBXY, 306  
OBXZ, 150  
OBY6, 78, 91, 119  
OBYA, 284  
OBYD, 388  
OBYM, 306



OBYN, 306  
 OBYR, 306  
 OBZO, 280  
 OCC1, 57  
 OKB2, 175, 176, 177  
 OKB3, 175, 176  
 OKBD, 57  
 One Time Account field, 227  
 Only balance in local currency, 158  
 Only exit, 148  
 Open and cleared items, 326  
 Opening balance, 514  
 Open item, 150, 152, 209, 275  
 Open item clearing selection screen, 343  
 Open Item Management, 159  
 Open items at key date, 326  
 Open item selection, 319  
 Operating concern, 61  
 Operational chart of accounts, 78, 91, 98  
 Optimize column width, 576  
 Optional, 96, 105, 228  
 Optional entry, 94  
 Ordinary depreciation start, 414  
 Organizational structure, 43  
 Outgoing payment with cash discount from, 285  
 Output control, 297  
 Output Determination Procedure field, 227  
 Overlap, 257  
 OVX3, 71  
 OX02, 46  
 OX03, 55  
 OX06, 59  
 OX15, 44, 240  
 OX16, 66  
 OX18, 70  
 OX19, 68  
 OY01, 19  
 OY03, 28  
 OY04, 29, 30  
 OY17, 21, 465

## P

---

Parallel accounts, 116  
 Parallel area, 410  
 Parallel company codes, 116  
 Parallel currency, 21, 83, 410  
 Parent company, 44  
 Park, 190, 313  
 Parked items, 327  
 Park the document, 313  
 Partial payment, 320  
 Partner functions, 256  
 Partner-specific chain, 483  
 Passive split, 322  
 Paying company code, 283, 285  
 Payment block, 245, 281, 282, 330  
 Payment medium, 287  
 Payment method, 245, 277, 288, 310, 341  
 Payment method in company code, 288  
 Payment method in country, 286  
 Payment program configuration, 284  
 Payment proposal, 282, 336, 339, 341  
 Payment proposal list, 339  
 Payment run, 341  
 Payments abroad, 478  
 Payment terms, 275, 276, 282  
 Payment to bank account, 508  
 Payment to foreign customers, 287  
 Payment transaction, 105, 238, 241, 245, 268  
 PDF, 353, 357  
 Period, 184  
 Period control, 425  
 Periodicity of depreciation, 397  
 Periodic posting of transactions, 451  
 Physical deletion of an asset, 418  
 P&L accounts, 213  
 Plan data in the special ledger, 578  
 Plan line items, 525  
 Planned posting run, 448  
 Planning in special ledger, 578

P&L statement account type, 157, 562  
 Post account, 466  
 Postal code, 25  
 Post automatically only, 161  
 Post bank account, 23  
 Post-capitalization, 445  
 Posting area, 493  
 Posting block, 163  
 Posting configuration for interest, 299  
 Posting cycle, 454  
 Posting date, 184, 551, 556  
 Posting imported statements, 501  
 Posting key, 103, 105, 185, 190, 211, 314, 336, 388, 427, 493  
 Posting period, 87, 88, 118, 214, 546, 550, 561  
 Posting period variant, 80, 119, 120  
 Posting rule, 454, 491, 492, 494, 495, 500  
 Posting scheme, 299  
 Posting specification, 299  
 Posting type, 494  
 Posting without tax allowed, 159  
 Posting with special G/L indicator, 324  
 Post manually to the special ledger, 528  
 Postprocessing, 499, 501  
 Post subsequently to special ledger, 548  
 Post the bank statement, 499  
 Post with reference, 188  
 Prerequisite, 138, 374  
 Primary cost element, 174, 175, 177, 574  
 Process/foreground, 196  
 Productive, 81  
 Productive ledgers, 572  
 Productive status, 574  
 Profitability analysis, 514  
 Profit center, 116, 131  
 Propose Fiscal Year, 82  
 Purchase account, 82  
 Purchasing organization data, 264

## Q

---

Queries, 421  
 Queries on GL accounts, 178  
 Query on vendor master data, 274

## R

---

RABEWH\_ALV01, 453  
 RAJABS00, 457  
 RAPERB2000, 451  
 RAPOST2000, 448  
 Rate, 184  
 Real CO account assignment, 311  
 Real depreciation area, 377  
 Realized exchange rate differences, 153, 304  
 REBZG, 302, 308  
 Receipt from bank account, 508  
 Receiver bank, 482  
 Receiver bank account, 483  
 Receiver-specific bank chains, 483  
 Receiver-specific search, 479  
 Receiver table, 527, 583  
 Reconciliation account, 159, 243, 256, 306, 307, 324, 385  
 Reconciliation between ledgers, 565  
 Reconciliation between total data and line items, 573  
 Record type, 570  
 Reference, 183  
 Reference asset, 415  
 Reference company code, 409  
 Reference interest rates, 295  
 Reference rate, 300  
 Region, 466  
 REGUH, 336, 484  
 REGUP, 336  
 REGUS, 330, 336  
 Relationship browser, 555  
 Released to Financial Accounting, 517

- Releasing cash journal documents to Financial Accounting, 516
- Reopen fiscal year, 459, 460
- Repeat, 448
- Reporting on customer master data, 250
- Reporting on vendor master data, 271
- Report Painter, 576
- Report Writer, 576
- Reposting of special ledger data, 573
- Reposting to special ledger, 573
- Representative group, 55
- Representative ledger, 129, 134
- Reprocessing, 501, 503
- Required, 96, 228
- Required entry, 94
- Required master record specifications, 287
- Reset bank data, 472
- Reset set, 583
- Reset valuation, 358
- Residual items, 321
- Restart, 448
- Retained earning account, 534, 562, 563
- Retirement, 433, 436
- Retirement by scrapping, 437, 438
- Revalue the open items in foreign currency, 354
- Revenue, 509
- Revenue item, 312
- Reversal document., 210
- Reversal of documents with cleared items, 207
- Reversal of FI documents, 207
- Reversal posting key, 105
- Reverse a rollup, 585
- Reverse a special ledger document, 572
- Reverse document type, 101
- Reversing an asset document, 440, 441
- Rework ledger, 529
- RF\_BELEG, 109, 115
- RFBIBL00, 211
- RFBILA00, 91
- RFBISA10, 166
- RFBISA20, 166
- RFBVALL\_0, 467
- RFBVBIC\_0, 469
- RFCASH00, 518
- RFDABL00, 257
- RFDKVVZ00, 250
- RFDUML00, 105
- RFEBDK00, 497
- RFEBKA00, 498
- RFEBKA30, 501
- RFFO\*, 287
- RFIMPNBS, 38
- RFINTITAR, 351
- RFITEMAP, 325
- RFITEMAR, 325
- RFKUML00, 105
- RFMAHN21, 349
- RFNRIV10, 109
- RFNRIV20, 109
- RFSABL00, 179
- RFSEPA01, 180
- RFSEPA02, 181
- RFSKPL00, 177, 178
- RFSKVZ00, 178
- RFUMSV00, 220, 222, 227
- RFZALI20, 484
- RGG0, 556
- RGL0, 556
- RGUCOMP4, 565
- RGUDEL00, 572
- RGUGBR00, 144, 551
- RGUREC10, 548, 552, 553
- RGUREC20, 548, 552
- RGUREC30, 548, 552
- RGUREP03, 549, 572, 574
- RGUSLSEP, 573
- Risk Category, 55
- RKEPCU40, 548, 552
- Rollup, 579, 578, 585
- Rollup allowed, 529
- Rollup document type, 581

- Rollup header, 583
  - Rollup in test mode, 586
  - Rollup sequences, 583
  - Rollup set, 583
  - Rollup substitutions, 581
  - RSBDCSUB, 211
  - Rule, 584
  - Run date, 337, 347
- S**
- 
- SA38, 164
  - Sales order, 54
  - Sales organization, 237
  - Sales-related, 105
  - Sample account, 172, 173, 174
  - SAPF019, 81, 164, 179, 251, 257, 272, 274
  - SAPF020, 81
  - SAPF023, 472
  - SAPF061, 472
  - SAPF080, 209
  - SAPF100, 153, 301, 354
  - SAPF101, 256
  - SAPF110V, 336
  - SAPF124, 204, 205, 212, 342
  - SAPF124E, 212
  - SAPF150V, 346
  - SAPFGVTR, 564
  - SAPLGD13, 576
  - SAP Note 132012, 467
  - SAPscript, 247, 269, 295
  - SAP Smart Form, 295, 353, 357
  - SAP Smart Forms, 239
  - SAP unchangeable fields, 197
  - Scenario, 479, 485
  - Screen layout, 95, 259
  - Screen layout for activities, 230, 231, 261
  - Screen layout per company code, 229, 260
  - Screen layout rules, 364, 368, 370, 412, 422
  - Screen variant, 191, 211, 315, 335
  - SD invoice, 555
  - SE11, 45, 180
  - SE38, 164
  - SE71, 239, 247, 269
  - Search strategy, 482, 485
  - Second currency, 561
  - Segment, 116, 133
  - Sender bank, 482
  - Sender table, 527
  - Sending company code, 284
  - Sending table, 580
  - Set country-specific checks, 18
  - Set deletion flag, 468
  - Set the chart of depreciation, 362
  - Setting for deletion customer accounts, 248
  - Setting for deletion vendor accounts, 269
  - Shortened fiscal year, 87
  - Simulation, 187, 190, 312, 313
  - Single payment, 246
  - Single payment for marked items, 289
  - SKA1, 90, 156, 170, 178, 179
  - SKAT, 156, 179
  - SKB1, 90, 156, 170, 178, 179
  - SKM1, 173, 174
  - SLO service, 73
  - SM35, 168, 195
  - Smart Forms, 247, 269
  - Sort key, 160, 244
  - SOST, 234
  - Source currency, 85
  - Special A/R posting type, 305
  - Special general ledger indicator, 322, 324, 342, 494
  - Special G/L account configuration, 307
  - Special G/L transactions, 115, 294, 327
  - Special G/L transactions to be paid, 285
  - Special ledger, 45, 105, 116, 554
  - Special ledger document, 555
  - Special ledger document types, 545
  - Special ledger posting periods, 547

Special ledger postings, 552  
 Special ledger settings for company and company codes, 533  
 Special period, 88  
 Special purpose ledger, 523  
 Special purpose ledger configuration, 523  
 Special reserves accounts, 384  
 Specific documents deletion, 570  
 SPF, 357  
 Splitting, 124, 125  
 Splitting activation, 124  
 Splitting method, 127  
 SQ01, 421  
 SQ02, 421  
 SQ03, 421  
 Standard chart of depreciation, 408  
 Standard hierarchy, 135  
 Start of depreciation, 444  
 Statistical key figures, 559  
 Status, 516  
 Status of cash documents, 518  
 STCD1, 25  
 STCD2, 25  
 STCEG, 257  
 Store quantities, 531  
 Street postcode, 25  
 SU01, 235  
 Sub-asset, 412, 415, 422, 443  
 Submit, 211  
 Sub-number, 412  
 Substitution, 145, 146, 147, 148, 149, 375, 422, 539, 540, 552, 580  
 Substitutions for asset master data, 375  
 Summary table, 525, 529  
 Supplement automatic postings, 161  
 Suppress, 94  
 Suppressed, 96, 105, 228  
 SWIFT, 23, 24, 287, 463, 465, 466, 469, 471  
 SYST, 372

## T

---

T001, 46, 66, 78, 120, 172  
 T001A, 83  
 T001B, 118  
 T001K\_ASSIGN, 70  
 T001S, 234, 264  
 T003, 99, 133  
 T003D, 280  
 T004, 90, 175  
 T004M, 172  
 T004R, 172  
 T005, 19, 21  
 T007A, 217  
 T008, 281  
 T8G12, 125  
 T8G17, 126  
 T009, 87  
 T009B, 87  
 T009Y, 87  
 T012, 474  
 T014, 53  
 T028B, 487  
 T028D, 492  
 T028G, 495  
 T028V, 486  
 T030, 97, 150, 219  
 T030B, 388  
 T030H, 301, 346, 358  
 T030HB, 301, 346, 358  
 T033, 301  
 T033F, 295, 492  
 T033GI, 490  
 T033I, 489  
 T040S, 293  
 T043, 150  
 T043S, 150  
 T043T, 150  
 T044A, 301  
 T047A, 293  
 T047M, 293  
 T052, 275  
 T052S, 275

- T056, 295
- T056A, 295
- T056P, 295
- T056R, 295
- T056U, 295
- T056UX, 357
- T056X, 295
- T074, 113
- T074U, 105
- T077D, 226
- T077K, 259
- T077S, 93
- T082A, 368
- T087, 370
- T087G, 370
- T090NA, 391
- T090NAZ, 391
- T093, 376
- T093A, 379, 380
- T093\_ACCOBJ, 394
- T093B, 389, 459
- T093C\_00, 363
- T093SB, 375
- T093V, 372
- T095, 384
- T095A, 367
- T095B, 384
- T095P, 384
- T807, 583
- T807H, 583
- T880, 44
- T881, 86, 116
- T882, 531, 533
- T882G, 119, 120
- T884C, 562
- T886A, 535
- T886B, 535
- T888, 526
- T889, 542
- Table groups, 524, 547, 548
- TABWQ, 404
- TACC\_BWBER\_PR, 301
- Target company code, 168
- Target ledger, 568
- Target special G/L indicator, 307
- Tax amounts, 314
- Tax base is net value, 82
- Tax category, 158
- Tax code, 216, 218, 219, 222, 223, 310, 311, 330
- Tax code configuration, 218
- Tax data, 158, 310
- Tax entered incorrect, 330
- Tax number, 241
- Tax Number 1, 25
- Tax Number 2, 25
- Tax percentage, 222
- Tax procedure, 21, 26, 216
- Tax reporting, 220
- Tax type, 217
- TBAER, 198
- TBCH0, 479
- TBCH1, 479
- TBCHAIN0, 481
- TBCHAIN1, 481
- TBCHAIN2, 483
- TBCHAIN21, 483
- TBSL, 103, 226, 230, 232, 234, 235, 248, 249, 251, 259, 262, 264, 269, 272, 336, 342, 346, 354, 360, 363, 364, 365, 366, 367, 368, 370, 372
- TCJ\_BALANCE, 511
- TCJ\_C\_JOURNALS, 506
- TCJ\_DOCUMENTS, 511
- TCJ\_POSITIONS, 511
- TCJ\_TRANSACTIONS, 508
- TCURF, 35
- TCURMNT, 37
- TCURR, 37
- TCURV, 32
- TCURX, 30
- Terms of payment, 275, 278, 279, 297
- Test or production system, 41
- Test print of the dunning letters, 350
- TF123, 204, 205, 357
- TFKB, 57

TG802, 126  
 TGSB, 55, 67  
 TGSBK, 57  
 Time-based terms, 295  
 Time-based terms (reference rate), 295  
 Time dependent, 413  
 TKA01, 59  
 TKA01\_ER, 69  
 TKA02, 68  
 TKEB, 61  
 TSKA, 92, 175, 176  
 Tolerance days, 297  
 Tolerance days for payables, 284  
 Tolerance groups, 150  
 Tolerance rule, 151  
 Tolerances, 344  
 Total cash payments, 514  
 Total cash receipts, 514  
 Total check receipts, 514  
 Total data reporting, 575  
 Trading partner, 44, 102, 157, 240, 431  
 Transaction currency, 530  
 Transaction FILE, 170  
 Transaction type, 198, 200, 399, 425, 486, 487  
 Transaction type group, 410  
 Transfer company to company, 431  
 Transfer data from Controlling, 567, 569  
 Transfer data from CO-OM, 552  
 Transfer data From Financial Accounting, 552, 567  
 Transfer data from Materials Management, 552, 567, 568  
 Transfer data from Sales and Distribution, 552, 567, 569  
 Transfer days, 297  
 Transfer within the company code, 434  
 Translation date, 85, 185  
 Translation date type, 85  
 Translation ratios, 35  
 Transport a tax code, 223  
 TVKO, 71  
 Two previous fiscal year open, 461

## U

---

UMSATZ.TXT, 498, 505  
 Unlock a session, 196  
 Unplanned depreciation, 438, 444, 445, 453, 454  
 Unplanned posting run, 449  
 Updated bank branches, 468  
 Updating mode, 553  
 Upload all of the banks, 467  
 Useful life, 414  
 User-defined charts of depreciation, 360  
 User exits, 143, 373, 375, 407, 409  
 User fields, 413  
 User group, 421  
 User tables, 577  
 Utilities in FB01, 188

## V

---

V\_001\_B, 78  
 Validation, 135, 144, 310, 372, 373, 409, 411, 539, 540, 549, 551, 552  
 Validation generation, 144  
 Validations for asset master data, 372  
 Validation transport, 144  
 Validation type, 534  
 Validation working area, 141  
 Valuated exchange rate differences, 153  
 Valuation areas, 301, 304, 305, 355  
 Valuation key date, 354  
 Valuation method, 301, 302, 355  
 Valuation of open items in foreign currency, 152  
 Valuation principle, 302  
 Variable field movement, 529  
 VAT, 21, 25  
 VAT configuration, 216  
 VAT number, 223  
 VAT registration number, 26, 27  
 VBUND, 102  
 Vendor account group, 259, 260  
 Vendor bank data, 267

Vendor creation, 265  
 Vendor invoice, 281  
 Vendor invoice header data, 334  
 Vendor items, 327, 333  
 Vendor list, 271  
 Vendor mass change, 272, 273  
 Vendor master data management, 264  
 Vendor number ranges, 262, 263  
 Vendor posting, 509  
 Vendors credit memo, 281  
 Vendors to be included in the run, 338  
 Version, 550, 570  
 Version 1, 549  
 Versions for actual data, 542  
 VF03, 555  
 V\_FAGL\_T882, 133  
 V\_T001\_EXT, 64  
 V\_T001WT, 64  
 V\_T082A\_10, 415

## **W**

---

WBS, 428, 430  
 Workflow, 341

Workflow variant, 79  
 Write line items, 530, 533

## **X**

---

XBLNR, 499  
 XD01, 235, 236  
 XD07, 249  
 XDN1, 233  
 XK01, 264, 266

## **Y**

---

Year-dependent, 87  
 Year end closing, 458

## **Z**

---

Zero balance, 125  
 ZZ\_SL\_ANALYZE\_RELEASE46, 566