

WEIL-McLAIN

WGOOil-Fired
Water Boiler*an ISO 9001 Certified Company*

WGO

GOLD Series 3

OIL-FIRED WATER BOILER



Ratings — (8 sizes)

75,000 – 257,000 BTUH NET

0.70 – 2.55 GPH #2 FUEL OIL

- **Dedicated water-only boiler**
No tankless heater or cover plate to leak
- **High efficiency**
Save fuel with 85% & higher AFUE
- **Convertible flue (rear/top)**
Easy switch from rear to top flue
- **Swing-away burner door**
Easy to open or remove; full access to chamber
- **Easy inspection & cleaning**
Quick-open cover; top cleaning full width
- **Factory-wired circulator**
Circulator harness wired; circulator ships loose
- **Service switch**
Easy power disconnect for servicing boiler
- **Recessed target wall**
Design protects target wall from flue brush
- **Captured seal nipple port design**
Grooves protect seals from contaminants
- **Burner shipped separately**
... for maximum flexibility



As an **ENERGY STAR** Partner,
Weil-McLain has determined
that this product meets the
ENERGY STAR guidelines
for energy efficiency.



WEIL-McLAIN

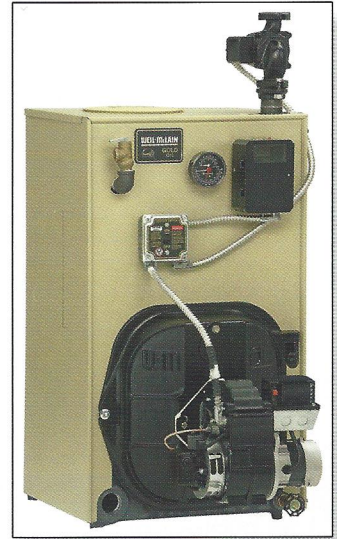
... Heating America!

Presenting . . . the Weil-McLain **WGO GOLD** — a residential oil-fired hot water boiler without a tankless heater opening, with all the features installers and homeowners have asked for — **Outstanding performance . . . innovative design . . . easier to install and service . . . top or back venting . . . limited lifetime warranty . . .** just a few of the advantages that make the WGO GOLD boiler the industry's best value. And best of all, the WGO GOLD boiler is made by Weil-McLain, America's leading name in cast iron boilers for over a century.

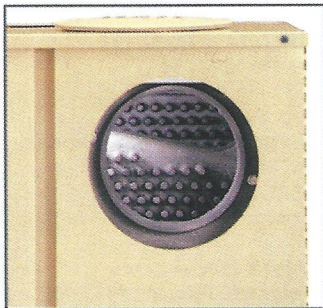
The WGO GOLD is available packaged or knockdown. Burners are ordered and shipped separately — to give you maximum flexibility. Use any of the approved burners from Weil-McLain, including Beckett AFG, Carlin EZ and Riello.

P-WGO *Packaged* — Factory assembled and wired with jacket, circulator and controls (WGO-2 through -6). Circulator is shipped loose for mounting on supply or return.

A-WGO *Knockdown* — Factory assembled sections with jacket installed (except A-WGO-7, -8 & -9), controls packed separately (WGO-2 through -9). A-WGO-7 through A-WGO-9 blocks are skidded for shipment. For easier handling, these units can be separated into two blocks since short draw rods are used in the middle of the assembly.

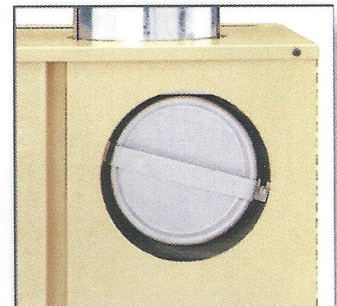


Convertible flue (rear or top)



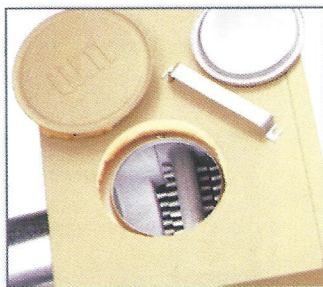
As shipped (rear flue)

The WGO has two flue outlets — one in back, one on top — to provide complete venting flexibility. The boiler is shipped ready for back venting with an aluminized steel cap on the top flue outlet. If top venting is desired, the flue cap can be quickly removed and attached to the back outlet. Two special L-brackets are supplied to make it easy to connect flue pipe to either outlet.



Converted (top flue)

Easy inspection/top cleaning



Flueways can be visually inspected without taking apart the vent pipe by removing the jacket cap and flue outlet cap from the unused flue outlet.

Removing the flue collector hood provides complete access to all flueways for fast, thorough cleaning. And the placement of the heat pins provides specific paths for flue brush travel. No stuck brushes!





OIL-FIRED WATER BOILER **WGO**

Swing-away burner door/recessed target wall

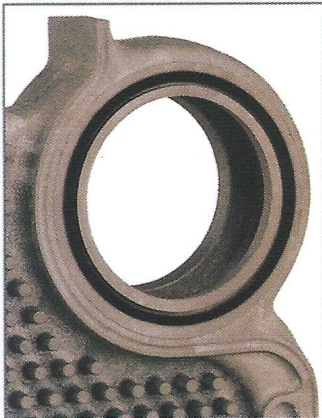


The full swing-away burner door provides easy access to the entire combustion area to simplify inspection, cleaning and burner servicing. If desired, the door can be easily removed from the hinges. A quick-disconnect plug breaks power to burner when door is open.

The WGO target wall fits securely into the recess in the wide back section. Flue brushes can't contact the target wall because of the unique rear section heat exchanger design.



Cast iron sections/captured seals



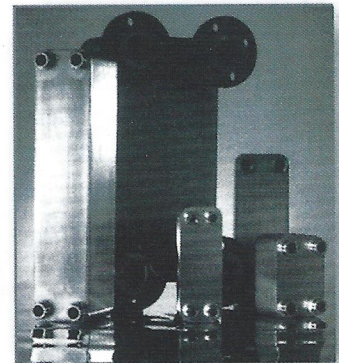
- Rely on WGO boilers — WGO boilers use cast iron sections, proven for durability and long life. Weil-McLain boilers have often provided 35 years or more of reliable service.
- The WGO's heat pin design yields high efficiency, yet is more tolerant of varying job conditions and makes cleaning faster and easier.
- High-temperature rope compressed between the sections makes a gas-tight seal in the flueways.
- Weil-McLain captured seal — Boiler sections want room to move as they heat and cool. The WGO's modern elastomer seals provide the ultimate freedom for the cast iron to flex (unlike rigid metal push nipples), preventing leaks caused by expansion and contraction. And the precision-machined port grooves secure the seals in place and protect them from contaminants in the water.

PLUS-line indirect-fired water heaters and WM heat exchangers



Weil-McLain also offers a complete line of indirect-fired water heaters for use with the GOLD boiler. These heaters produce high volume hot water and feature efficient operation, fast installation, less maintenance, and long life.

Weil-McLain WMBP and WMPH heat exchangers offer increased versatility for your heating system and take advantage of the high efficiency and reliability of the GOLD boiler.



Ratings



DOE



Equipment

Boiler model number	I=B=R burner capacity GPH Note 1	DOE heating capacity MBH Notes 2 & 3	Net I=B=R ratings		DOE seasonal efficiency % AFUE	Draft loss through boiler inches w.c. Note 6	Minimum I=B=R chimney size		
			MBH Notes 3 & 5				Rectangular inches	Round inches	Height feet
*-WGO-2	0.70	86	75		86.4	.010	8 x 8	6	15
*-WGO-3	0.95	115	100		85.3	.020			
*-WGO-4	1.20	145	126		85.0	.010			
*-WGO-5	1.45	175	152		85.0	.015			
*-WGO-6	1.75	212	184		85.0	.015			
*-WGO-7	2.00	242	210		85.0	.015	8 x 12	8	20
*-WGO-8	2.30	266 (Note 4)	231	--	--	.025			
*-WGO-9	2.55	295 (Note 4)	257	--	--	.030			

* Substitute "P" for packaged boiler (WGO-2 through WGO-6 only). Substitute "A" for boiler only (2 through 9).

1. No. 2 fuel oil — Commercial Standard Specification CS75-56. Heating value of oil — 140,000 BTU/Gal.

2. Based on standard test procedures prescribed by the United States Department of Energy at combustion condition of 13½% CO₂ and -0.02" W.C. draft.

3. MBH refers to thousands of BTU per hour.

4. I=B=R gross output.

5. Net I=B=R ratings are based on net installed radiation adequate for the requirements of the building, including a piping and pickup allowance of 1.15 — sufficient for normal conditions. Provide additional allowance only for unusual piping and pickup loads. Consult a Weil-McLain representative.

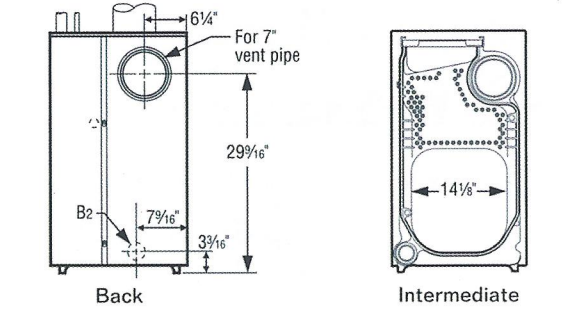
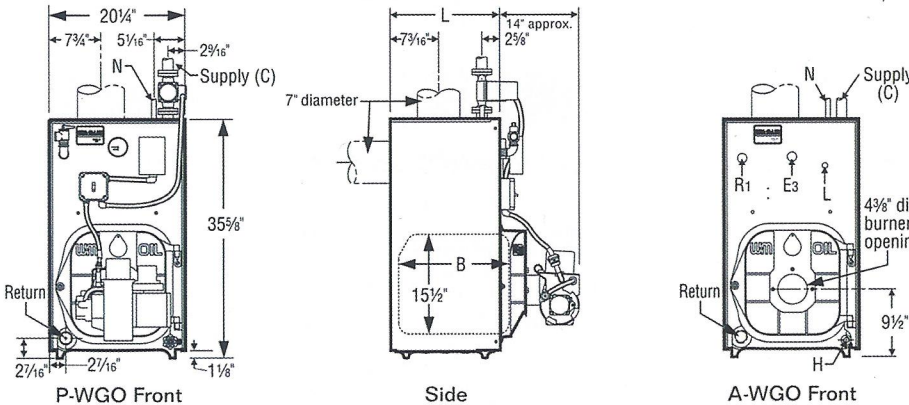
6. Listed draft losses are for standard burner settings.

Dimensions

Boiler model number	Supply "C" (inches)		Return (inches)	Dimensions (inches)		Approx. shipping wt. (lbs) (Note 1)
	P-WGO	A-WGO		B	L	
WGO-2				10 ½	13 ¾	540
WGO-3	1 ¼ (circulator flange)	1 ½	1 ½	13 ½	16 7/8	595
WGO-4				13 5/8	16 7/8	645
WGO-5	1 ½ (circulator flange)	1 ½	1 ½	16 7/8	20	760
WGO-6				20	23 1/8	860
WGO-7				23 1/8	26 1/4	930
WGO-8	not applicable	1 ½	1 ½	26 1/4	29 3/8	1,030
WGO-9				29 3/8	32 1/2	1,135

Crate Dimensions: Height — 39 Width — 23 Length (*-WGO-2, -3, -4) — 27 / (*-WGO-5, -6) — 33

Note 1: Weights based on P-WGO units 2 – 6 and A-WGO units 7 – 9 with all components including burner.



Tapping location	Size (inches)	Control
B ₂	1 ½	Alternate return — "A" units only
E ₃	½	Pressure/temperature gauge
H	¾	Drain valve
L	¾	High limit/circulator control
N	½	Piping to expansion tank or automatic air vent
R ₁	¾	Relief valve

Standard Equipment

- Limited lifetime warranty on boiler sections
- Factory tested
- Factory-assembled cast iron sections with the following parts installed. (Jacket and collector hood are not assembled on 7-, 8- and 9-section blocks.)
 - Insulated steel jacket
 - Aluminized steel flue collector hood with flue cap on top outlet
- Swing-away burner mounting door
- Refractory blanket and target wall in combustion area
- Circulator (Taco 007) — supplied with "P" units only
- Comb. Temp. Controls, LWCO & Circulator Relay
- Electrical junction box with wiring harnesses
- Junction box cover plate with service switch
- Two vent pipe brackets
- Pressure/temperature gauge
- 30 PSIG ASME relief valve (boiler sections tested for 50 PSIG working pressure)
- Drain valve
- Balanced draft damper

Optional Equipment

- High-efficiency flame-retention oil burner (Beckett AFG, Carlin EZ or Riello). Specify 2-stage fuel unit (optional) if required.
- Weil-McLain 5-year or 10-year Homeowner Protection Plan
- Weil-McLain Indirect-Fired Water Heaters

In the interest of continual improvements in product and performance, Weil-McLain reserves the right to change specifications without notice.



Locate our Sales Offices by visiting our website:
www.weil-mclain.com

Weil-McLain
500 Blaine Street
Michigan City, IN 46360-2388