

# Gateway Central™

## Quick Start Guide





# Welcome to Gateway Central™

## WHAT'S NEEDED

1. Supported Lantronix Gateways:



SGX 5150



PremierWave® XC  
HSPA+



PremierWave® XN



xPico® 200 Series



PremierWave® 2050

2. Network connectivity from your gateways to the Internet and for access to Lantronix Gateway Central at:

<https://gatewaycentral.lantronix.com>

3. Most recent firmware from <http://www.lantronix.com/support/downloads> and installed on your gateway.

4. Lantronix DeviceInstaller™ software for firmware upgrade and Gateway Central provisioning: (version **4.4.0.7** or greater is required)

<https://www.lantronix.com/products/deviceinstaller/>

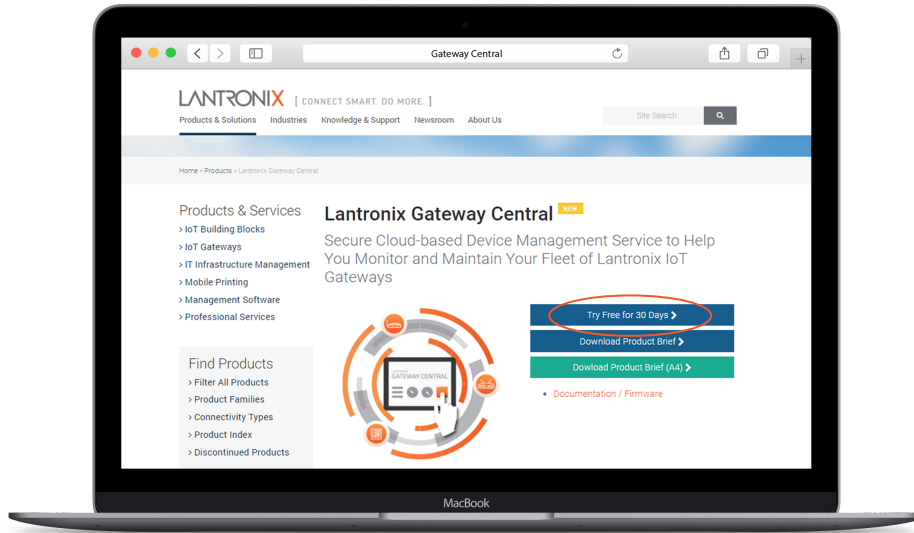
## TECHNICAL SUPPORT

For technical support queries, visit <http://www.lantronix.com/support> or call (800) 422-7044 Monday – Friday from 6:00 a.m. – 5:00 p.m., Pacific Time, excluding holidays.

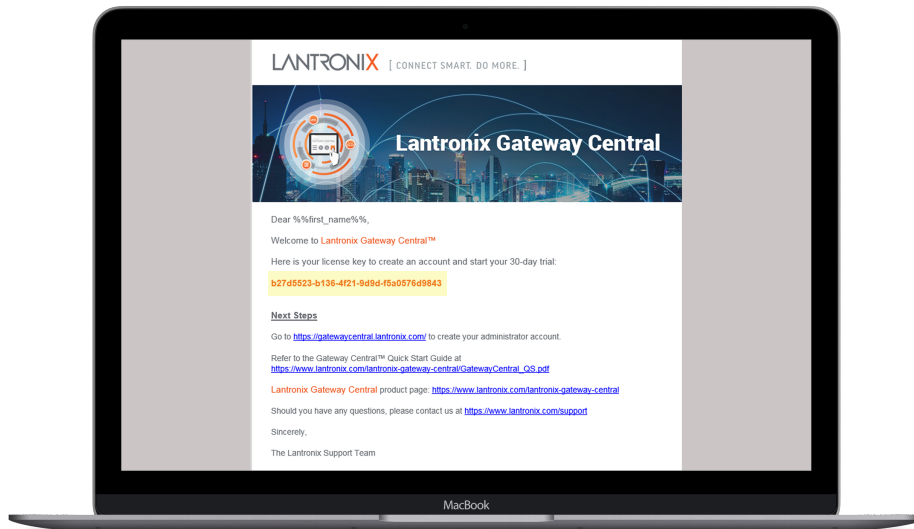


# STEP 1. GETTING STARTED WITH GATEWAY CENTRAL

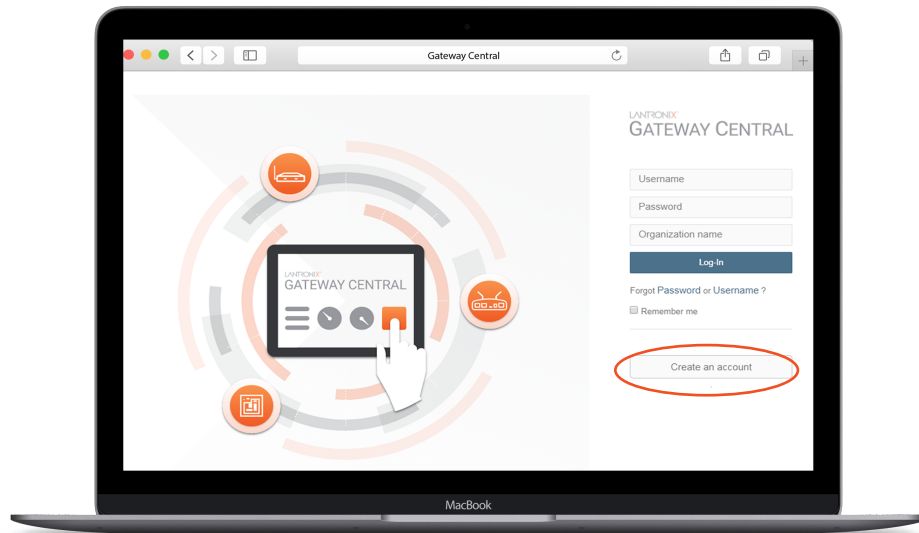
Let's get you going with your Gateway Central account!



- 1.1 Sign up for your Lantronix Gateway Central 30-Day Free Trial account. Go to: <https://www.lantronix.com/lantronix-gateway-central> and click on the **Try Free for 30 Days** button.



- 1.2 You will receive an email with a **License Key** and a link to the Lantronix Gateway Central portal to create your account: <https://gatewaycentral.lantronix.com>



1.3 On the Gateway Central Log-in screen:

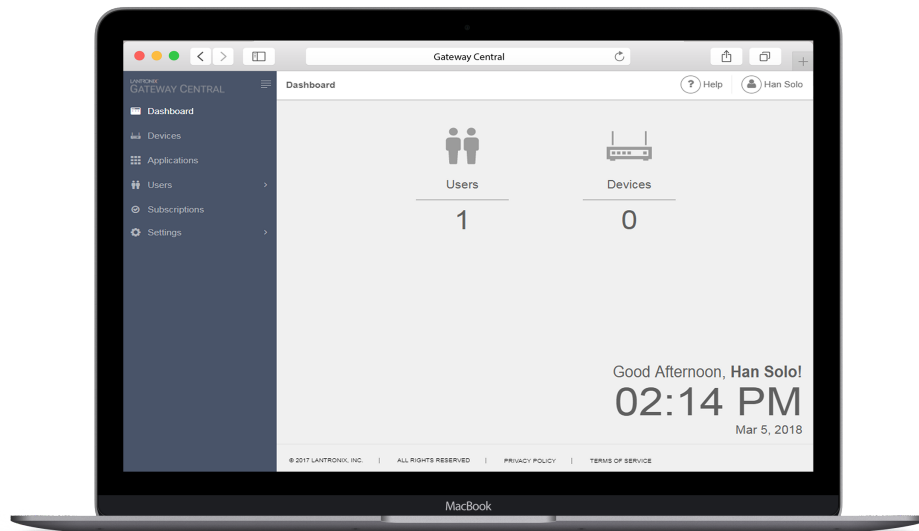
- Click **Create an Account** to see the input screen.
- Enter your information and the **License Key** that was included in the email sent to you.
- Complete Account Registration by clicking the **Create Account** button.

You will receive an email to verify your address. Click the included link for verification.

Your account is now available for log-in at <https://gatewaycentral.lantronix.com>

## STEP 2. LOGGING IN AS AN ADMINISTRATOR

Your account was generated as an "Administrator" for Gateway Central.

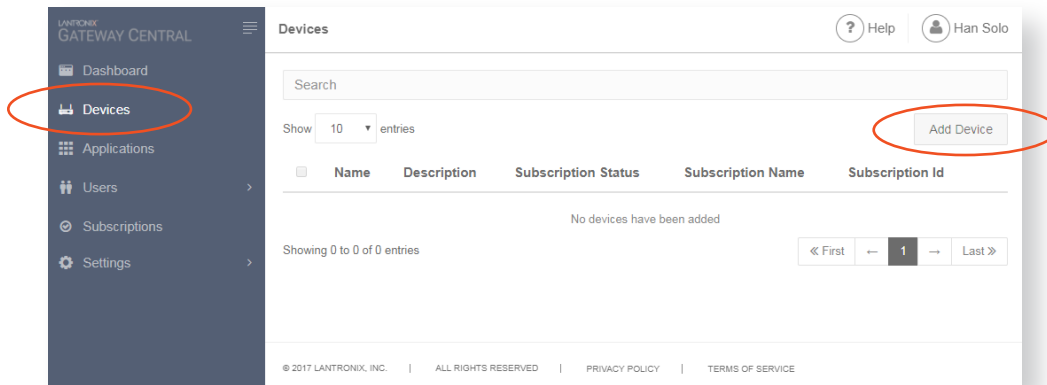


2.1 Go to <https://gatewaycentral.lantronix.com> and log in with your username, password and organization name.

2.2 You can now add your gateway devices, attach them to a subscription and invite users.

## STEP 3. ADDING GATEWAYS

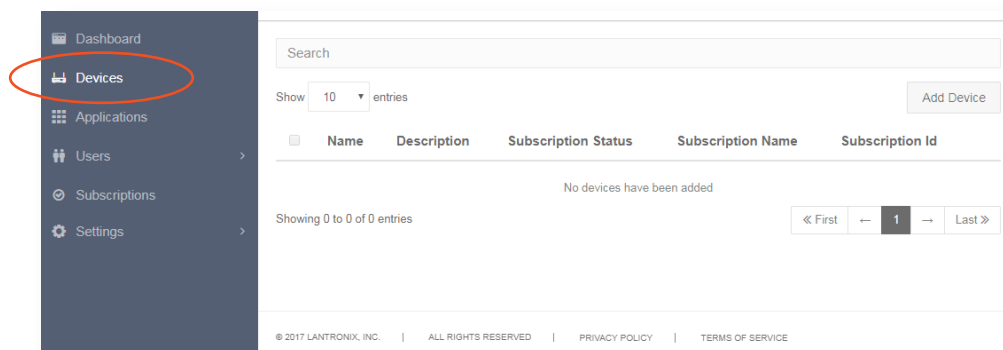
The instructions below will show you how to add gateways to Gateway Central.



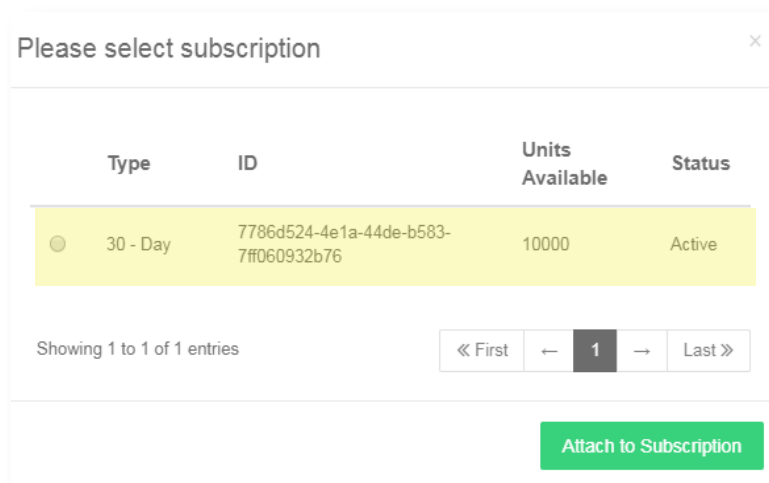
3.1 Click **Devices** in the left navigation menu and select the **Add Device** button.

The screenshot shows the 'Add Device' dialog box with the 'Manual' tab selected. The dialog contains four input fields: 'Serial Number', 'Device ID', 'Device Name', and 'Device Description (optional)'. Each field has a placeholder text matching its label. At the bottom right of the dialog is a green 'Import' button.

3.2 To add a single gateway, enter the **Serial Number** and **Device ID** found on the label of your gateway in the Add Device dialog.



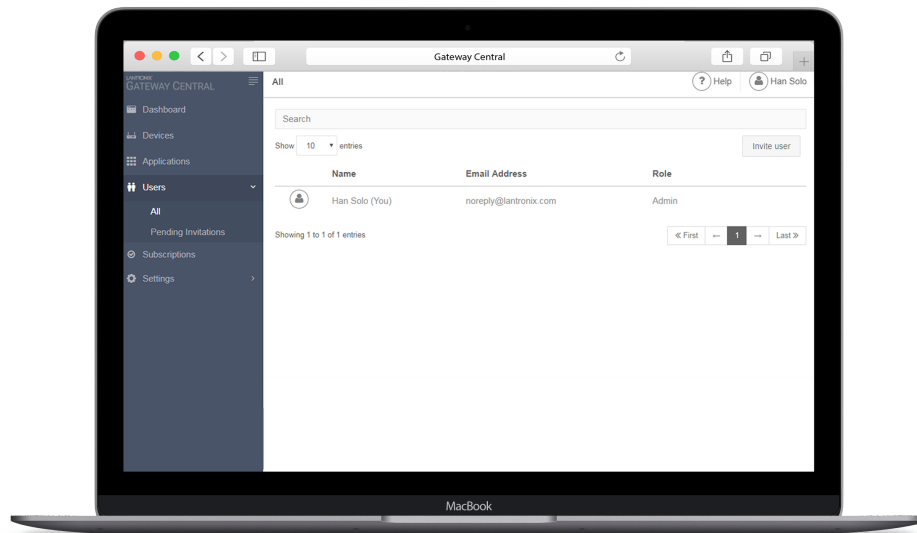
3.3 Next, attach your gateways to your 30-day trial subscription. Click **Devices** in the side menu.



- 3.4 Select the checkbox next to the gateways you want to attach, then click **Attach to Subscription**. Select the **30-day** subscription, and then click **Attach to Subscription**. Your gateway is now ready to be monitored and managed by Gateway Central!

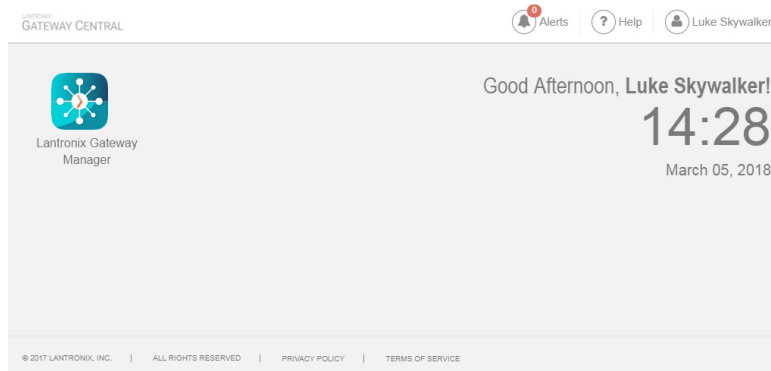
## STEP 4. ADDING USERS

Add Users to access Gateway Central and centrally manage Lantronix Gateways.

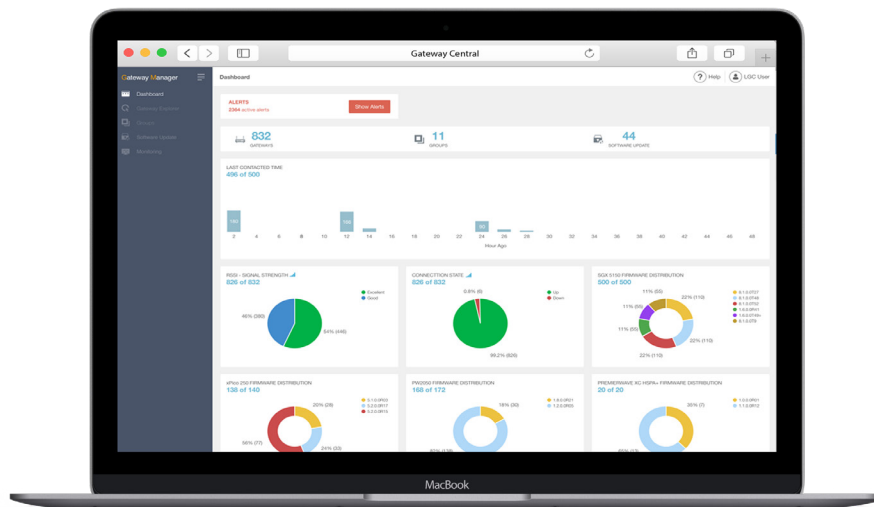


- 4.1 Select the **Users** side menu and click **All**. Next, click the **Invite User** button.

4.2 Enter the user's first name, last name and email address. Click **Invite**. This will send an email inviting the user to join Lantronix Gateway Central.



4.3 User(s) will complete the registration process and log in. Users reside under your same organization name. Once inside Gateway Central, Users will see the above Gateway Central User Home Page. Click **Lantronix Gateway Manager Application** to monitor and manage your Gateways.



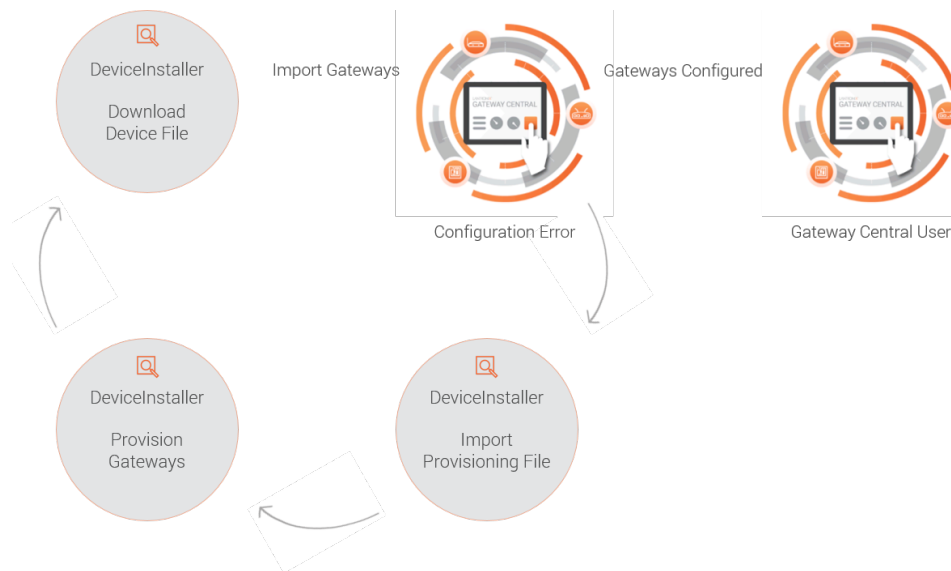
4.4 Upon launching Gateway Manager, the user is shown the dashboard management interface. Refer to the online help to better understand each of the panes in Gateway Manager. **Users can now start managing gateways remotely with Gateway Central!**

# PREPARING LANTRONIX GATEWAYS FOR BULK IMPORT INTO GATEWAY CENTRAL USING DEVICEINSTALLER™

To perform a bulk import of gateways, or if the gateways do not have a 32-character Device ID, please follow the DeviceInstaller instructions in this section of the Quick Start Guide. This section will show you how to set-up, configure and provision gateways using DeviceInstaller™.

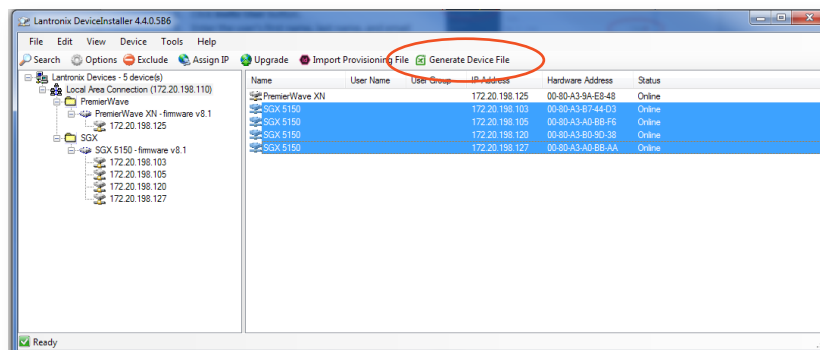
DeviceInstaller generates a Lantronix gateway **Device File** to import multiple gateways into Gateway Central. The Gateway Central configuration is verified for each gateway; if one or more gateways requires an update, a **Provisioning File** will be provided to update the gateways using DeviceInstaller. If you do not already have DeviceInstaller installed on your desktop, visit:

<https://www.lantronix.com/products/deviceinstaller/>



## STEP 1. GENERATE A DEVICE FILE TO IMPORT GATEWAYS

Using DeviceInstaller, generate a **Device File** to import selected gateways into Gateway Central.

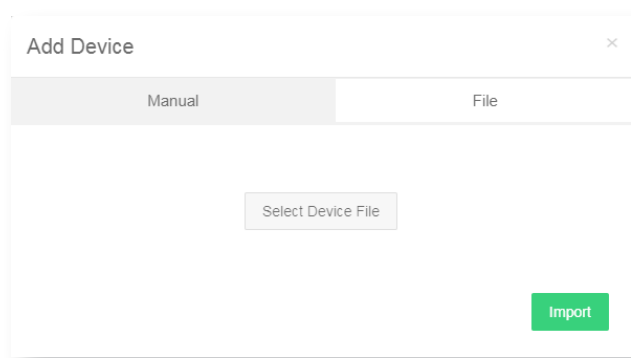
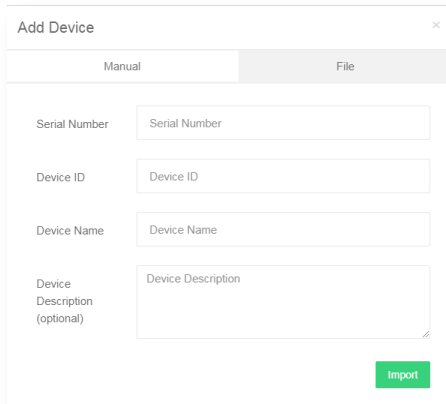


1. Run DeviceInstaller.
2. Select the gateways you wish to manage from Gateway Central from the list of discovered gateways in the right-hand pane.
3. Click **Generate Device File**.
4. Click **Download** to save the **Device File**.
5. Use the **Device File** with Gateway Central to **Add Device by File**.



## STEP 2. ADDING LANTRONIX GATEWAYS BY DEVICE FILE

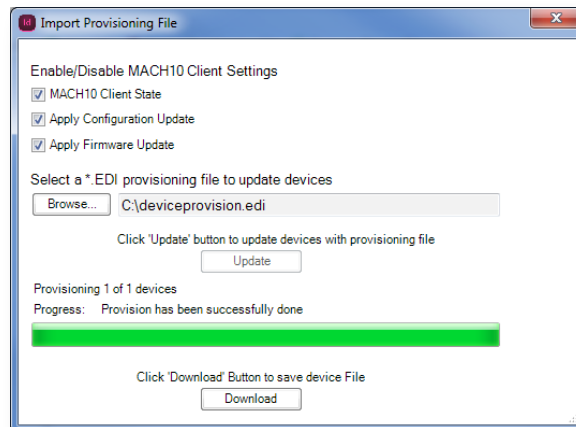
In Gateway Central administration, import the gateways using the **Device File**. If configuration updates are needed, Gateway Central will generate a new **Provisioning File**.



1. Click **Select Device File**.
2. Choose the **Device File** created by DeviceInstaller.
3. Click **Import**.
4. If gateways are not configured for Gateway Central, an error will be displayed.
5. A gateway **Provisioning File** will be created for use with DeviceInstaller.
6. Download the **Provisioning File**.

## STEP 3. PROVISION GATEWAYS USING A PROVISIONING FILE

In DeviceInstaller, use the new **Provisioning File** to update the gateways.



1. Run DeviceInstaller.
2. DeviceInstaller will discover the gateways.
3. From the discovery list, select the gateways you previously identified to manage from Gateway Central.
4. Click **Import Provisioning File**.
5. Check all **MACH10® Client Settings** to enable the features
6. Click **Browse** and select a **Provisioning File** generated by Gateway Central.
7. Click **Update** to update gateways.
8. Click Download to save the new **Device File**.
9. Use the new **Device File** for bulk import of gateways into Gateway Central.