

GROUP

# WALLARA WATERS IN WALLAN PHASE 2 LANDSCAPE MASTER PLAN

FRASERS PROPERTY AUSTRALIA

19 NOVEMBER 2018



PAGE INTENTIONALLY LEFT BLANK

## CONTENTS

+ Overall Vision	5
+ Landscape Structure Plan	6
+ Illustrative Master Plan	7
+ Typical Streetscape	8
+ Highway Reserve Interface	9
+ Wetland Park Interface	11
+ Street Furniture	12
+ Streetscape Planting Palette	14
+ Streetscape Planting Strategy	15
+ Open Space Planting Palette	16
+ Open Space Planting Strategy	17
+ Wetland Planting Palette	20

REV	DATE	PREPARED BY	APPROVED BY
A	19.11.2018	Zhi Cai / Iris Chung	David Dreadon

PAGE INTENTIONALLY LEFT BLANK

# WALLARA WATERS OVERALL VISION

## Phase 2

The landscape character for Wallara Waters reflects a contemporary urban development in an attractive rural context. This character has been established in initial development phases and will continue into the development of Phase 2.

Rural vernacular will be referenced along with a modern aesthetic in structures and park furniture. Picnic shelters and park furniture will be steel framed with refined timber slats where appropriate. Stone walls will be used to add a sense of warmth and permanence to the landscape, framing park entrances, providing seating and retaining walls.

Streetscapes will reflect some of the essential character of Wallan (and the northern plains) through tree planting. Evergreen native trees will provide shade, shelter and potential habitat for local birdlife. While a mixture of hardy exotic species will form highlights and seasonal spectacle.

Within the parks and open spaces, there will be a mix of natives and exotics to provide year round interest and shelter. Native trees and low planting will line the linear reserves to provide a green buffer. While there will be areas of informality within the parks, trees will be predominantly used to create structure within the landscape and define open space areas. The open space reserves will provide opportunities for a variety and flexibility of uses, accommodating both passive and informal recreation activities. All main parks will be provided with a range of high quality recreation facilities that will accommodate and encourage a broad range of users.

The Phase 2 Wallara Waters landscape will provide a green and attractive, contemporary landscape environment for this new residential area of Wallan.



Moondara Terrace open recreation space and shelter



Cardinia Place park stone wall and open space



Cardinia Place park shelter



Entry bridge over wetlands



Entry drive with swale



Wetland walkways

# LANDSCAPE STRUCTURE PLAN



Wallara Waters in Wallara Master Plan

## 1 Ha park - Baron Rise

- + Picnic setting
- + BBQ facilities
- + Basketball half court
- + 4-yr old playground
- + informal kickabout area

## PHASE 1 BALANCE

- KEY
- ① RECREATIONAL OPEN SPACE - PASSIVE
  - ② RECREATIONAL OPEN SPACE - DRAINAGE
  - ③ LINEAR PARK LINK
  - HIKE AND BIKE PATH (2.5M)





# TYPICAL STREETSCAPES



Typical 16m access street section



Typical 20m access street section



Typical 20m access street section - adjacent to creek reserve



## HIGHWAY RESERVE INTERFACE

The reserves forming the buffer between the highway acoustic fence and residential streets are to make good use of an open passive recreational space.

Native trees and shrubs are planted along the fence line to soften the boundary, attract local bird species and provide shade.

A 2.5m shared path provides an active amenity for pedestrians, cyclists and scooters, connecting the north-south areas. CPTED principles should be used when designing planting alongside the path, particularly where the path runs between the acoustic fence and residential fencing.

An open grassed area lends itself for activities such as off-leash dog walking, an informal kick-about or play area and passive recreation. This is complimented by bench seating.

Along the street front, low planting can be used to the kerb edge intermittently to increase the street appeal of the reserve and create a sense of quiet enclosure from within the reserve.

Ornamental species are allocated for street trees to add to the street appeal and provide seasonal interest.



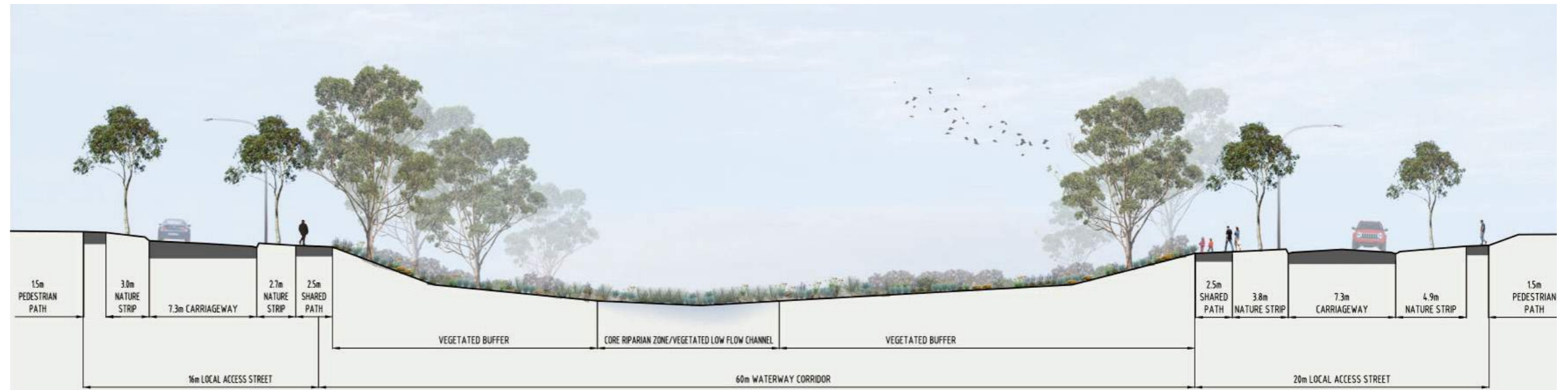
Typical section 16m access street - adjacent to freeway acoustic fence & reserve



Plan of typical 16m access street - adjacent to freeway acoustic fence & reserve

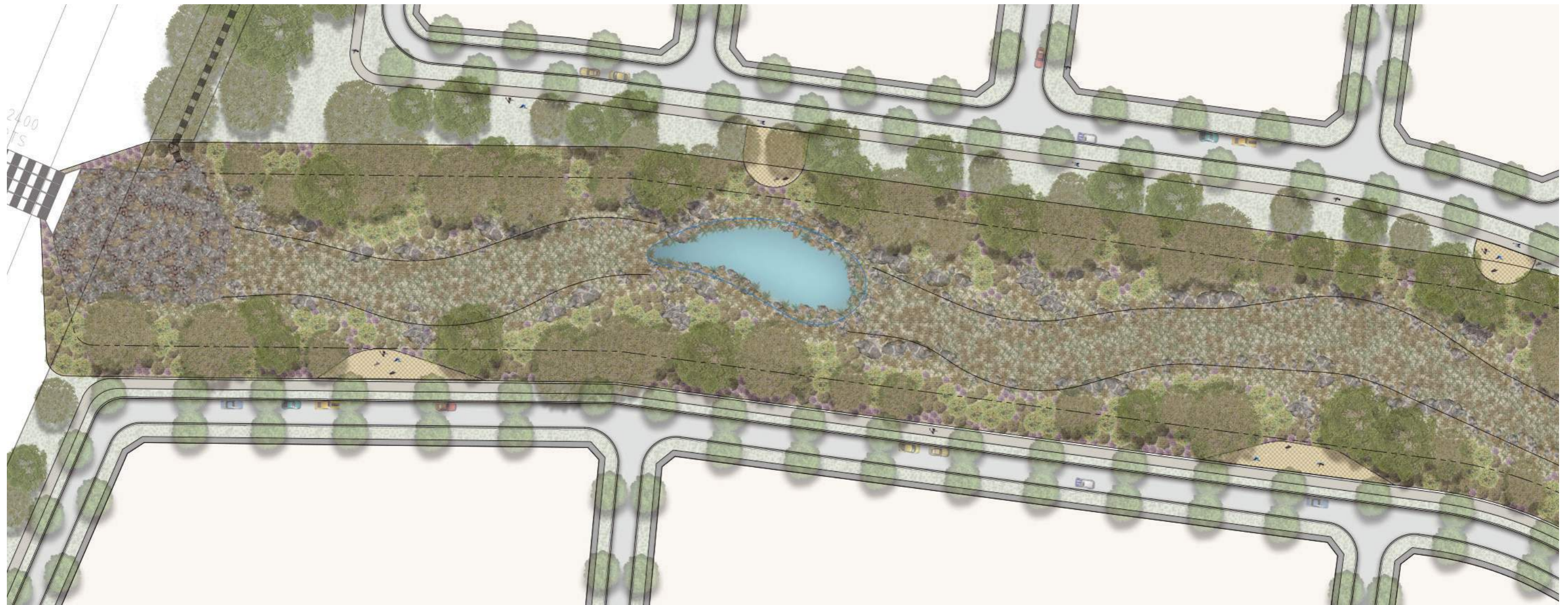
PAGE INTENTIONALLY LEFT BLANK

WETLAND PARK INTERFACE



Typical cross section of Taylors Creek Waterway and wetland park to the north of Phase 2  
 - for illustrative purposes only, design of waterway subject to Melbourne Water and Council's approval

1:2,000 @ A3



Plan of Taylors Creek Waterway and wetland park to the north of Phase 2  
 - for illustrative purposes only, design of waterway subject to Melbourne Water and Council's approval

0 5 10 20  
 1:1,000 @ A3

# FURNITURE PALETTE

Continuation of the existing palette as used in phase 1 is recommended to show consistency across the development.



Moondara Terrace park shelter



Cardinia Place park shelter



Cardinia Place park playground



Stone pavement + concrete paths



Exposed concrete aggregate pavement + contrast brick pavers



Exposed concrete aggregate pavement + stabilised granitic gravel



Timber slat benches



Timber slat seats



Timber slat picnic settings



Rough stone walls

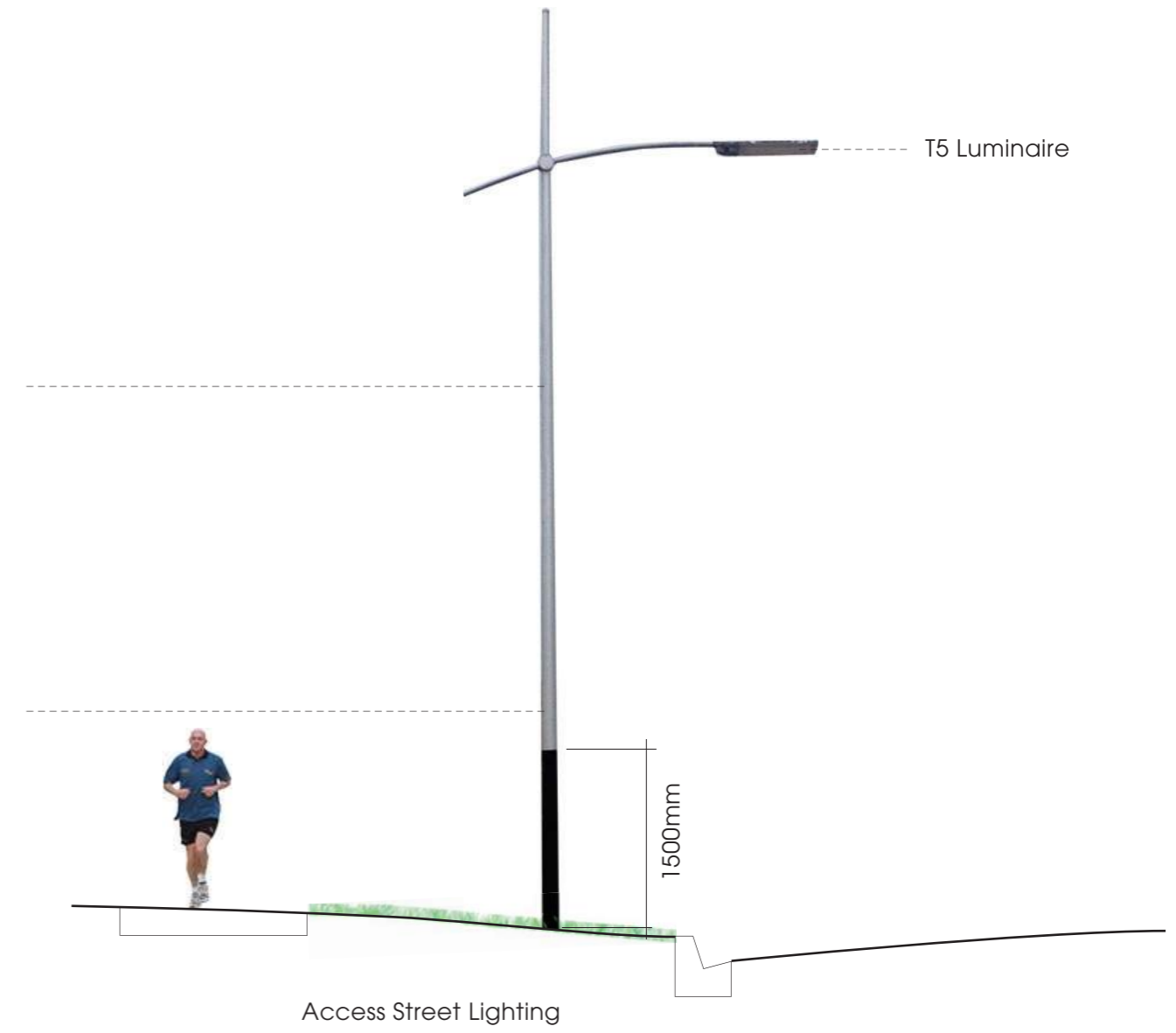
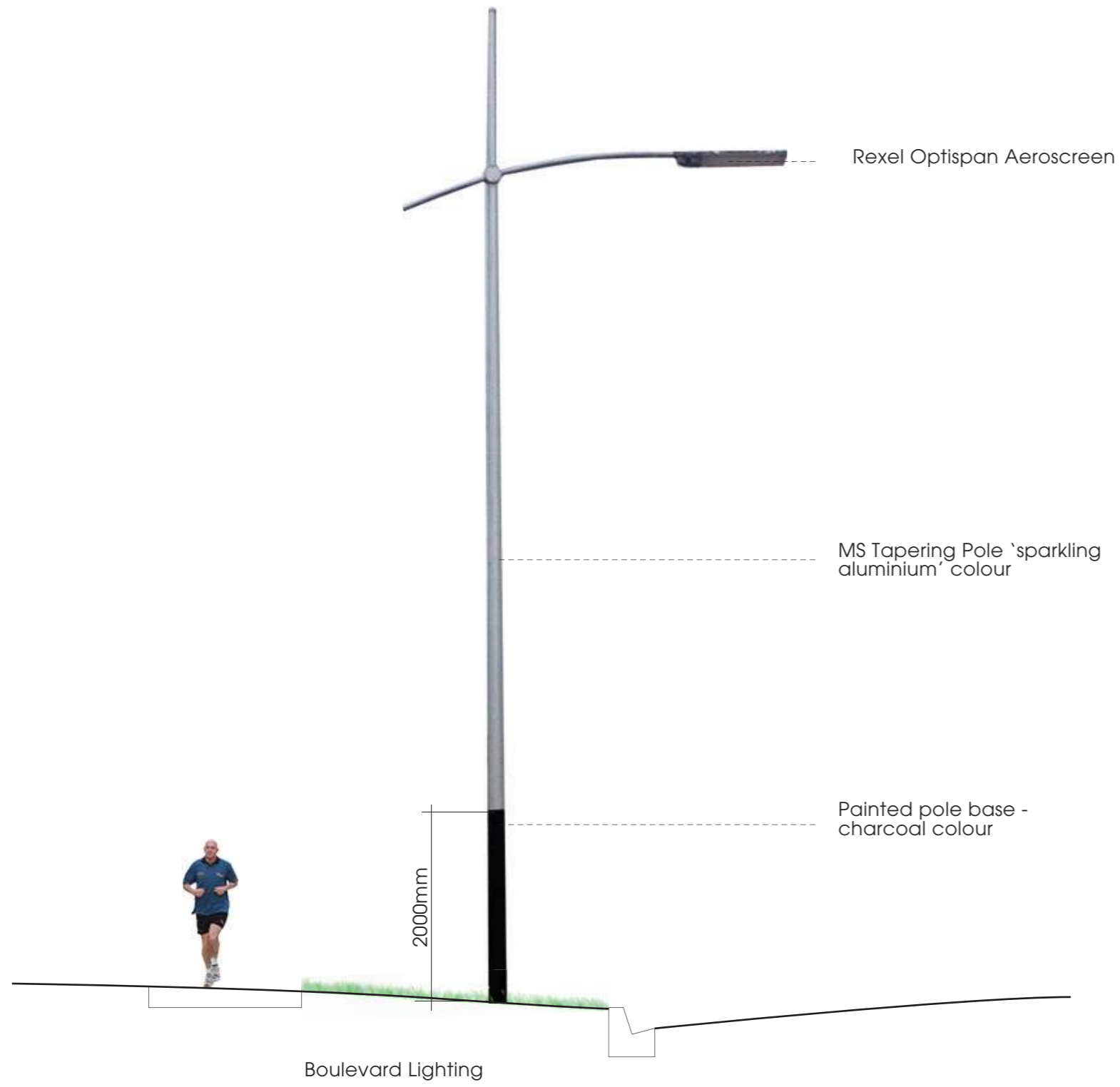


Aluminium bins



Double BBQ with timber slat casing

FURNITURE PALETTE



# STREETSCAPE PLANTING PALETTE

Botanical name	Common name	Height	Spread
<i>Corymbia ficifolia</i>	Red Flowering Gum	15m	10m
<i>Eucalyptus mannifera</i> ssp. 'Little Spotty'	Dwarf Spotted Gum	7m	6m
<i>Fraxinus pennsylvanica</i> 'Urbanite'	Urbanite Ash	15m	8m
<i>Fraxinus angustifolia</i> 'Raywood'	Claret Ash	12m	9m
<i>Lagerstroemia indica</i> 'Townhouse'	Crepe Myrtle	9m	8m
<i>Pyrus calleryana</i> x <i>P. betulaefolia</i> . 'Edgedell'	Edgewood	8m	6m
<i>Tristaniopsis laurina</i>	Water Gum	12-15m	4-6m



*Corymbia ficifolia*



*Eucalyptus mannifera* ssp. 'Little Spotty'



*Fraxinus pennsylvanica* 'Urbanite'



*Fraxinus angustifolia* 'Raywood'



*Lagerstroemia indica* 'Townhouse'



*Pyrus calleryana* x *P. betulaefolia*. 'Edgedell'



*Tristaniopsis laurina*

# STREET TREE STRATEGY

Code	Botanical name	common name
CF	<i>Corymbia ficifolia</i>	Red Flowering Gum
EL	<i>Eucalyptus mannifera</i> ssp. 'Little Spotty'	Dwarf Spotted Gum
FP	<i>Fraxinus pennsylvanica</i> 'Urbanite'	Urbanite Ash
FR	<i>Fraxinus angustifolia</i> 'Raywood'	Claret Ash
LF	<i>Lagerstroemia fauriei</i> 'Townhouse'	Crepe Myrtle
PP	<i>Pyrus calleryana</i> x <i>P. betulaefolia</i> . 'Edgedell'	Edgewood
TL	<i>Tristanopsis laurina</i>	Water Gum

The existing Wallara Waters Boulevard in Phase 1 of the development has been planted with *Ulmus parvifolia* along its nature strips, *Tristanopsis laurina* along the central swale/median strip, and *Corymbia citriodora* within its roundabouts. These species are to be considered for continuation along the length of Wallara Waters Boulevard within Phase 2 (current development scope). However this also will need to be reviewed at detailed design, based on the success (or failure) of the existing planting in Stage 1 works.

Alternative street tree species may include: *Corymbia maculata*, *Lophostemon confertus*, *Hymenosporum flavum*, *Eucalyptus leucoxylon* ssp. *Connata* and *Pyrus calleryana* 'Aristocrat'.

Ornamental street trees have been specified in the nature strips along the wetland and creek interfaces to distinguish between the two types of public open spaces. Opportunity exists to have larger wetland trees close to the road reserve but within the wetland and creek areas.



## RECREATIONAL OPEN SPACE PLANTING

Botanical name	common name	height	spread
<i>Acer freemanii</i> 'Autumn Blaze'	Red Maple	9m	6m
<i>Allocasuarina verticillata</i>	Drooping She-oak	4-10m	2-6m
<i>Angophora costata</i>	Smooth-Barked Apple	20m	12m
<i>Corymbia ficifolia</i>	Red Flowering Gum	5-8m	5-8m
<i>Corymbia maculata</i>	Spotted Gum	20-25m	8-12m
<i>Eucalyptus mannifera</i> ssp. 'Mannifera'	Red Spotted Gum	10-15m	5-12m
<i>Eucalyptus scoparia</i>	Wallangara White Gum	8-12m	5-10m
<i>Grevillea robusta</i>	Silky Oak	12-25m	15m
<i>Lagerstroemia indica</i> x <i>fauriei</i>	Crepe Myrtle	3-6m	4m
<i>Pyrus calleryana</i> 'Aristocrat'	Flowering Pear	5-10m	3-8m



*Acer freemanii* 'Autumn Blaze'



*Allocasuarina verticillata*



*Angophora costata*



*Corymbia ficifolia*



*Corymbia maculata*



*Eucalyptus scoparia*



*Eucalyptus mannifera* ssp. 'Mannifera'



*Grevillea robusta*



*Lagerstroemia indica* x *fauriei*



*Pyrus calleryana* 'Aristocrat'



# RECREATIONAL OPEN SPACE TREES

Botanical name	common name
<i>Acer freemanii</i> 'Autumn Blaze'	Red Maple
<i>Allocasuarina verticillata</i>	Drooping She-oak
<i>Angophora costata</i>	Smooth-Barked Apple
<i>Corymbia ficifolia</i>	Red Flowering Gum
<i>Corymbia maculata</i>	Spotted Gum
<i>Eucalyptus mannifera</i> ssp. 'Mannifera'	Red Spotted Gum
<i>Eucalyptus scoparia</i>	Wallangara White Gum
<i>Lagerstroemia indica</i> x <i>fauriei</i>	Crepe Myrtle
<i>Pyrus calleryana</i> 'Aristocrat'	Flowering Pear

## KEY

- 1 RECREATIONAL OPEN SPACE - PASSIVE
- 2 RECREATIONAL OPEN SPACE - DRAINAGE
- 3 LINEAR PARK LINK



## OPEN SPACE PLANTING

Botanical name	Common name
<i>Acacia acinacea</i>	Gold-dust Wattle
<i>Acacia verticillata</i>	Prickly Moses
<i>Angiozanthos flacidus</i> 'orange', 'pink', 'red', 'yellow'	Kangaroo Paws
<i>Austrodanthonia caespitosa</i>	Common Wallaby Grass
<i>Austrodanthonia duttoniana</i>	Brown-black Wallaby Grass
<i>Austrodanthonia eriantha</i>	Reddish Wallaby Grass
<i>Austrodanthonia setacea</i>	Bristly Wallaby Grass
<i>Austrostipa gibbosa</i>	Spurred Spear-grass
<i>Austrostipa rudis</i>	Veined Spear-grass
<i>Banksia integrifolia</i> 'prostrate form'	Roller Coaster
<i>Banksia marginata</i> 'dwarf form'	Silver Banksia
<i>Banksia spinulosa</i> 'Birthday Candles'	Banksia Birthday Candles
<i>Bursaria spinosa</i>	Sweet bursaria
<i>Cassinia arcuata</i>	Drooping Cassinia
<i>Cassinia longifolia</i>	Shiny Cassinia
<i>Chrysocephalum apiculatum</i>	Common Everlasting
<i>Chrysocephalum semipapposum</i>	Clustered Everlasting
<i>Convolvulus erubescens</i>	Pink Bindweed
<i>Correa glabra</i>	Rock Correa



*Acacia acinacea*



*Acacia verticillata*



*Bursaria spinosa*



*Cassinia longifolia*



*Cassinia arcuata*



*Correa glabra*



*Dodonaea viscosa* ssp. *cuneata*



*Grevillea* 'Robyn Gordon'



*Grevillea rosmarinifolia* 'Canberra Gem'



*Kunzea ericoides*



*Solanum laciniatum*



*Rhagodia spinescens*



*Westringia fruticosa* 'Wynabbie Gem'

## OPEN SPACE PLANTING

Botanical name	Common name
<i>Dianella amoena</i>	Matted Flax-lily
<i>Dianella caerulea</i> 'Breeze'	Flax Lily
<i>Dianella longifolia</i>	Pale Glax-lily
<i>Dianella longifolia</i> 'Tanika'	Spiny Headed Mat-rush
<i>Dianella revoluta</i>	Black-anther Flax-lily
<i>Dichondra repens</i>	Kidney Weed
<i>Dodonaea viscosa</i> ssp. <i>cuneata</i>	Wedge-leafed hop-bush
<i>Grevillea</i> 'Robyn Gordon'	Grevillea
<i>Grevillea rosmarinifolia</i>	'Canberra Gem' Grevillea
<i>Kennedia prostrata</i>	Running Postman
<i>Kunzea ericoides</i>	Burgan
<i>Poa labillardieri</i>	Common Tussock-grass
<i>Rhagodia spinescens</i>	Rhagodia
<i>Solanum laciniatum</i>	Large Kangaroo Apple
<i>Themeda triandra</i>	Kangaroo Grass
<i>Westringia fruticosa</i> 'Wynabbie Gem'	Native rosemary
<i>Xanthorrhoea australis</i>	Grass Tree



*Angiozanthos* ssp.



*Austrodanthonia caespitosa*



*Austrostipa gibbosa*



*Dianella amoena*



*Poa labillardieri*



*Themeda triandra*



*Xanthorrhoea australis*



*Banksia integrifolia* 'prostrate form'



*Banksia marginata* 'dwarf form'



*Banksia spinulosa* 'Birthday Candles'



*Chrysocephalum apiculatum*



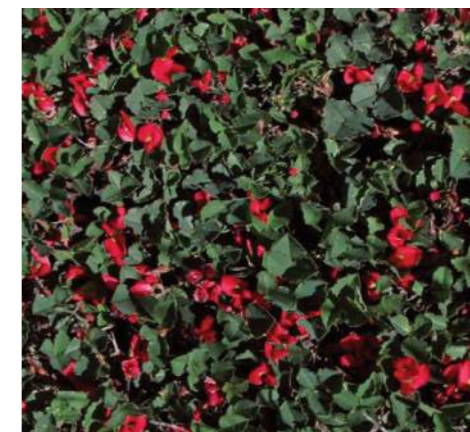
*Chrysocephalum semipapposum*



*Convolvulus erubescens*



*Dichondra repens*



*Kennedia prostrata*



*Myoporum parvifolium*

## WETLAND AND WATERWAY PLANTING

Botanical name	common name	height	spread
<i>Acacia melanoxylon</i>	Blackwood	14m	5m
<i>Allocasuarina verticillata</i>	Drooping She-oak	4-10m	2-6m
<i>Angophora costata</i>	Smooth-Barked Apple	20m	12m
<i>Corymbia ficifolia</i>	Red Flowering Gum	5-8m	5-8m
<i>Corymbia maculata</i>	Spotted Gum	20-25m	8-12m
<i>Eucalyptus camaldulensis</i>	River Red Gum	20m	15m
<i>Eucalyptus mannifera</i> ssp. 'Mannifera'	Red Spotted Gum	10-15m	5-12m
<i>Eucalyptus ovata</i>	Swamp Gum	10m	5m
<i>Eucalyptus polyanthemos</i>	Red Box	15m	12m
<i>Eucalyptus scoparia</i>	Wallangara White Gum	8-12m	5-10m
<i>Grevillea robusta</i>	Silky Oak	12-25m	15m
<i>Melaleuca styphelioides</i>	Prickly-leaved Paperbark	10m	6m

Final plant selection and location to be confirmed at detailed design.



*Acacia melanoxylon*



*Allocasuarina verticillata*



*Angophora costata*



*Corymbia ficifolia*



*Corymbia maculata*



*Eucalyptus scoparia*



*Eucalyptus mannifera* ssp. 'Mannifera'



*Grevillea robusta*



*Melaleuca styphelioides*



*Eucalyptus camaldulensis*

# WETLAND AND WATERWAY PLANTING

Botanical name	Common name
<i>Anigozanthos flavidus</i>	Kangaroo paw
<i>Bolboschoenus medianus</i>	Marsh Club-rush
<i>Carex appressa</i>	Tall Sedge
<i>Carex tereticaulis</i>	Basket Sedge
<i>Cladium procerum</i>	Leafy Twig-rush
<i>Cyperus lucidus</i>	Leafy Flat-sedge
<i>Disphyma crassifolium</i>	Pigface
<i>Eleocharis acuta</i>	Common Spike-rush
<i>Eremophila 'Kalbarri Carpet'</i>	Emu Bush
<i>Ficinia nodosa</i>	Knobby Club-rush
<i>Gahnia sieberiana</i>	Red-fruited Saw-sedge
<i>Juncus flavidus</i>	Yellow Rush
<i>Lomandra longifolia 'Tanika'</i>	Matt Rush
<i>Muehlenbeckia florulenta</i>	Tangled Lignum
<i>Myriophyllum crispatum</i>	Upright Water-milfoil
<i>Pennisetum 'Purple Lea'</i>	Fountain Grass
<i>Poa labillardieri 'Eskdale'</i>	Common Tussock-grass
<i>Potamogeton ochreatus</i>	Blunt Pondweed
<i>Sarcocornia quinqueflora</i>	Beaded Glasswort
<i>Schoenoplectus tabernaemontani</i>	River Club-rush
<i>Themeda triandra</i>	Kangaroo Grass
<i>Triglochin procerum</i>	Water Ribbons
<i>Vallisneria australis</i>	Eel-grass



Anigozanthos flavidus



Bolboschoenus medianus



Carex tereticaulis



Carex appressa



Poa labillardieri



Themeda triandra



Disphyma crassifolium



Eleocharis acuta



Ficinia nodosa



Eremophila 'Kalbarri Carpet'



Gahnia sieberiana



Lomandra longifolia 'Tanika'



Myriophyllum crispatum



Pennisetum 'Purple Lea'



Sarcocornia quinqueflora



Triglochin procerum