

Product Overview



About ELAC

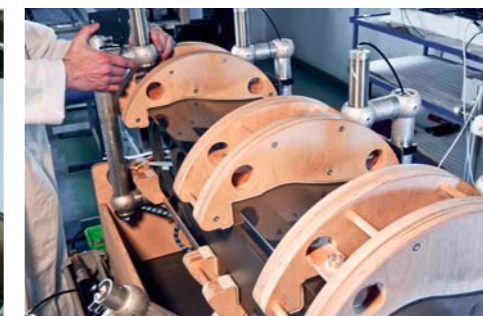
Brilliant sound, timeless design, the latest technical innovations, the finest materials and processing – all of this is what distinguishes ELAC premium loudspeakers from others. To top it off, the ELAC team possesses customer service qualities that are second to none. At ELAC we do not just build loudspeakers, we are passionate about what they produce - as shown by the many awards received for our products worldwide..

Finest in German engineering is what ELAC stands for. We develop all of our loudspeakers in Germany, and manufacture most of them in the country as well. In the production process every end product undergoes 100% final testing; a set of strict standards that are also applied to the subassemblies.

But you don't need words to describe how good ELAC speakers are – you just need to listen.



Finest German Engineering





Line 600

The high end ELAC flagship FS 609 CE impresses all down the line



A floor-standing speaker that is like a cathedral: the FS 609 CE towers over them all. Extremely high performing and equipped with 4Pi II and X-JET sound transducers, this loudspeaker meets the highest audiophile demands. The FS 609 CE represents the best that ELAC has to offer – in every respect.

FS 609 CE



▲ Bi-wiring connection and solid spikes



◀ Controlled highs
Optimal adjustment of volume and cut-off frequency of the 4Pi II tweeter





FS 607 CE

The "little" sister of the FS 609 CE with growth potential is available with the omnidirectional 4Pi II tweeter as an option.

This extraordinary loudspeaker will convince the audio gourmet in all situations.

- ▼ Top plate of the FS 607 CE
- ▼ FS 607 CE with 4 Pi II tweeter



- ▲ Bi-wiring connection and gold-plated jumpers
- ◀ Titanium shadow high-gloss special finish

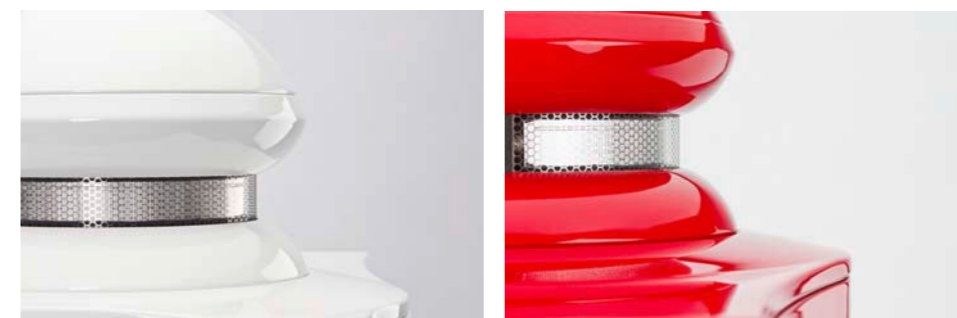


4Pi Plus.2

The 4Pi Plus.2 additional tweeter is the ideal add-on feature for any of ELAC's high-quality floor-standing loudspeakers. It separates the sound from the loudspeakers to fill the entire room. The result: you can virtually bathe in the music, it surrounds you so.



Special painting available (optionally)



The loudspeakers of the 600 series are optionally available as special painting versions in all RAL colors. Examples:

- ◀◀ White High Gloss, optional individual finish
- ◀ Red High Gloss, optional individual finish



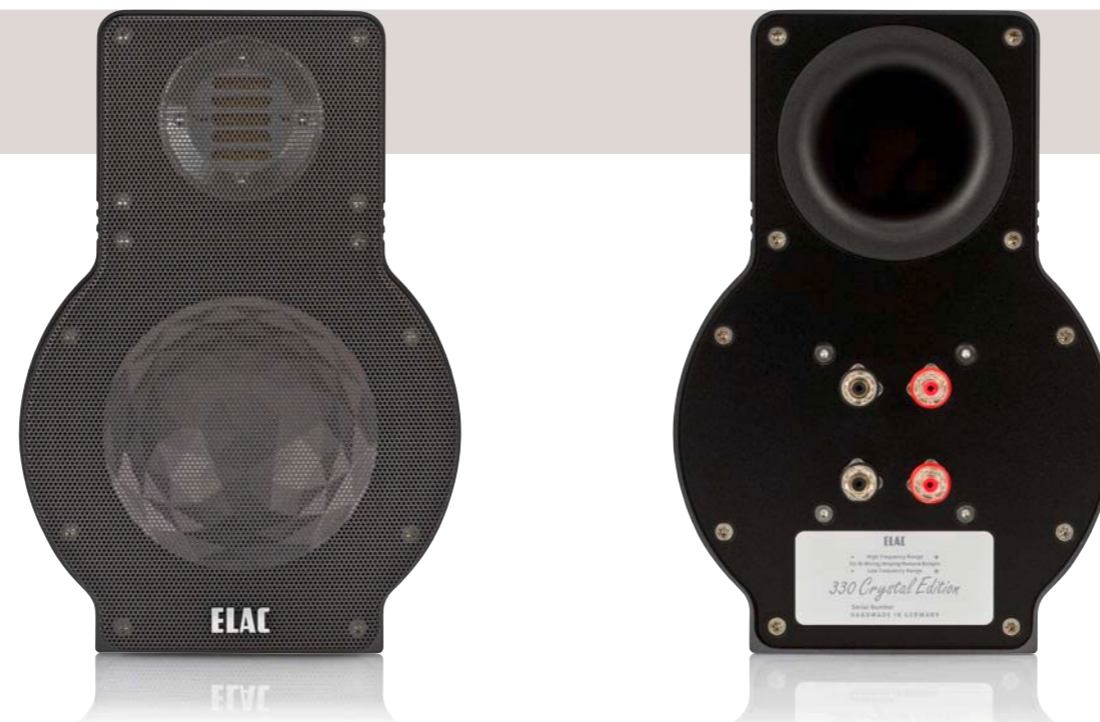
Line 300

The perfect synthesis
of the latest technology
and compact design



An unique look for its extraordinary acoustics: the ELAC 330 CE deviates from the classic straight-line design of ELAC's other loudspeakers. The fascinating structure of the crystal membrane draws attention to this technical speciality in an attractive manner. But the ELAC 330 CE is not just good looking – it also sounds wonderful. This visually exotic specimen rests among ELAC's acoustically powerful, compact models.

ELAC 330 CE



▶ ELAC 330 CE on optional LS 65 II Stand



ELAC 310 CE, ELAC 310 Indies Black

Clear the ring for a little-big one: at 6.5 kg the ELAC 310 CE is somewhat of a lightweight, but its powerful sound qualities make it a world champion among the compact models. The ELAC 310 CE has won many honours worldwide in international title fights.

Selected components and a significant optical appearance result in a sensual experience with the special edition model Indies Black.



ELAC 301.2

Probably the smallest hi-fi loudspeaker in the world. Thanks to its mini-dimensions, the ELAC 301.2 can be ideally integrated in any living space – with maximum sound and unique acoustic reproduction.



- ▲ Special edition model 310 Indies Black
- ▼ High Power Air Coil

▲ 310 CE, White High Gloss

▲ Actual size



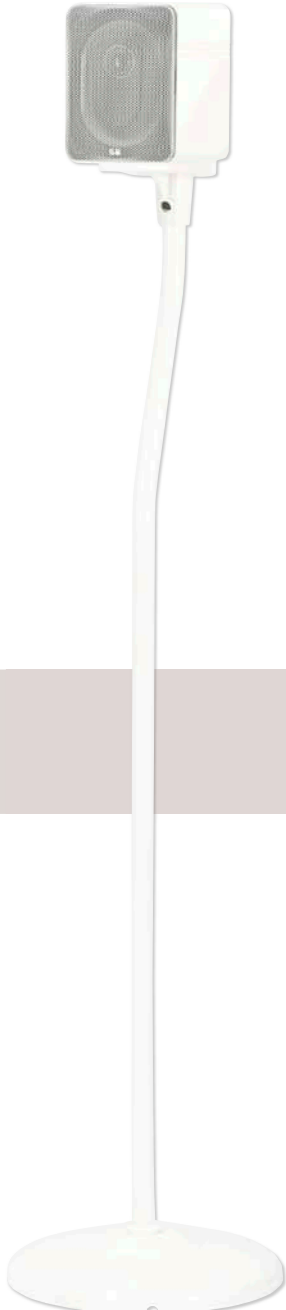
- ◀ Bi-wiring connection
- ◀◀ Detail of speaker grille



◀ Wall mount included

Optional accessories:

- ▶ Desktop Stand, Silver High Gloss
- ▶ Cinema LS Stand, White High Gloss





Line 240

The multi-award winning product line from ELAC



◀ Bi-wiring connection

FS 249, FS 248, FS 247

When it comes to the floor-standing loudspeakers of the 240 series, listeners don't just sit in front of them - they feel as if they were inside the sound. The ELAC developers devoted particular attention to three-dimensional orientation of the sound when designing this line. They achieved a sense of space that gives the listener the feeling of being in the middle of an orchestra.

It is no coincidence that the FS 247 is ELAC's best-selling loudspeaker worldwide.





BS 244, Black High Gloss



BS 243, Black High Gloss

BS 244, BS 243

Even when set up close to the wall, the BS 243 and BS 244 hold their own, although they are at their most effective on the optionally available stands. Their sound qualities convey a special 3D-acoustic feeling, as does the rest of the 240 line.



CC 241

Whether an action film, a talk show or a Wagner opera – the CC 241 presents every TV and film event at its best acoustical potential. Specially designed for the reproduction of voices, the CC 241 expands the range of musically-optimised loudspeakers to all-inclusive sound, ensuring you always get the best seat in your own home cinema.



With grille:
 ◀ Black High Gloss
 ◀◀ White High Gloss



◀ Bi-wiring connection
 ▶ ELAC 243 on optional LS 70 II Stand



Configuration levels:
 ◀ On-wall loudspeaker WS 1235 (with grille)
 ◀◀ In-wall loudspeaker IW 1230
 ▶ Subwoofer SUB 2040 ESP
 ▶▶ Subwoofer SUB 2060 D





Line 240 Black Edition

The stylish ones – They're ELAC's Ladies in Black: Their elegant black appearance accord something mysterious to the 240 series Black Edition. Their outfit already indicates the technical and acoustical progress of the ELAC classics.



Exclusive special edition of the most decorated ELAC line



High Power Air Coil

To realize the best sound, the crossovers of all Black Edition models are equipped with high grade components, such as king size air coils.



BS 243 Black Edition

Small, strong, valuable. Designed as a bookshelf speaker, the BS 243 Black Edition – mounted on a speaker stand – doesn't have any problem to compete with a grown-up floor stand speaker.



BS 244 Black Edition

The powerhouse within the compact speakers - with an astonishing range: Powerful in the bass range, crystal clear in the treble range, authentic in the reproduction of voices. Finished in every aspect.



CC 241 Black Edition

The fitting center speaker for the 240 Black Edition series: The CC 241 Black Edition is the ideal supporter for the "black line" within the home cinema range. HiFi sound for blockbusters.



FS 247 Black Edition

The origin of the Black Edition family - This slim floorstander of the black line fits perfectly into your living room. Easy living in ELAC quality. Even more concentrated in the bass range and even lighter in the treble range, the FS 247 Black Edition profits of its nearly lossless crossover.



FS 248 Black Edition

A loudspeaker that seems to be taken out of the New Yorkian skyline: Black, high and extremely slim. The FS 248 is the skyscraper of the line, optically and acoustically. Transparent in sound, especially the treble range of this speaker is more intensive than of any other speaker out of this line. The perfect percussion performer.



FS 249 Black Edition

The „Black Beauty's" top model, taller than all the other speakers out of this line. For all the listeners who also want to show the impressive HiFi quality. Thanks to their dimensions and the special inner structure, the FS 249 Black Edition comes with the volume, which is necessary to flood even larger rooms with sound.

Line 180



Flawless beauty meets crisp sound – The 180 line is the ideal solution for the sophisticated music listener



- Configuration levels:
- ◀ On-Wall loudspeaker WS 1235 (with grille)
 - ◀◀ In-wall loudspeaker IW 1230
 - ▶ Subwoofer SUB 2030



CC 181

Flat screen meets unequalled loudspeaker: with the CC 181, ELAC offers a centre speaker that remains optically inconspicuous thanks to its slight cabinet depth and is ideal for wall fitting.

BS 182

Optional, but not compulsory: the BS 182 can be placed on shelves without compromising its sound. Where other speakers have no room to express themselves because everything is too cramped, the BS 182 is nowhere near these limits, thanks to its unique down-firing bass reflex tuning.

FS 187

The slim FS 187 represents the ideal loudspeaker for those who are searching for a slim column, which doesn't dominate the room.

It is especially suitable for medium-sized rooms, and for positioning close to walls.

Line 60.2

Irresistibly minimalist design – the 60.2 line looks as good as it sounds!



Configuration levels:

- ▲ Subwoofer SUB 2030
- ▼ In-wall loudspeaker IW 1130



CC 61.2

Sound, music and dialogues – whoever likes films at home in cinema quality needs a loudspeaker system that is convincing in voice ranges too. This applies to the 60.2 line without restrictions, thanks to the CC 61.2.

BS 62.2, BS 63.2

All the world's a stage – unfortunately, not many loudspeakers manage to show it. This is no problem for ELAC loudspeakers. The BS 63.2 and BS 62.2 actually manage to sound even bigger than they are. At a height of 33 or 26 cm they look small, but put on a big performance.

FS 67.2

The 2½-way FS 67.2 loudspeaker convinces thanks to its natural music reproduction and elegant appearance. Its delicate sound qualities and do not feel pushed into a corner even when positioned close to the wall.

FS 68.2

The floor standing FS 68.2 is an impressive three-way loudspeaker from the 60.2 line. The powerhouse of the 60.2 family rests in its ability to fill large rooms with its clear sound.

Line 50.2

Top quality at a modest price
– clear and modern in design
with silk matt painted front



▼ *The SUB 2030 provides for deep, dry bass tones*



CC 51.2

If you opt for the 50.2 line, you need not compromise when it comes to home cinema sound either. The CC 51.2 is a centre speaker completely in tune with the philosophy of the line: small, smart and affordable.

BS 52.2, BS 53.2

Think you have no space for loudspeakers? Think again. With the BS 53.2 ELAC offers a compact solution that sets even the smallest building rocking. Those who would like something even smaller than previously introduced will like the BS 52.2. Its small size makes it the ultimate shelf loudspeaker.

FS 57.2

Narrower, but no less attractive in sound and price: the FS 57.2 is the speaker that makes cost-conscious sound lovers prick up their ears. An audio princess for the home.

FS 58.2

"Music box" or front loudspeaker with a licence to thrill. The FS 58.2 is a high-performance centre for both hi-fi and home cinema systems. Its striking crystal membrane technology catches the eye.

Cinema

For those who like the "Big Picture".



▲ Cinema CM 24, horizontal or for wall fitting

◀ Design base for Cinema CM 24



▲ Cinema CM 24 with optional design base

▲ Cinema Pipe with glass design base

Starlet, Starlet CM

Hollywood without starlets? Unthinkable. Home cinema without Starlets? Conceivable, but what a loss! Starlet speakers with the matching Starlet centre speakers ensure a resounding presentation for every great film despite their smaller dimensions, particularly in combination with ELAC subwoofers.

Cinema 2 SAT, Cinema XL Center

The satellite in orbit: surround systems conquer space in all of its dimensions with the Cinema 2 SAT. With an ELAC subwoofer and the wide-directional Cinema XL Centre at the heart of the home cinema galaxy, the Cinema 2 SAT transforms viewers into space travellers. Available in silver or black anodised aluminium cabinets, the looks of this satellite system are harmonious too.

Cinema CM 24 , Cinema Pipe

The *magic flute* of ELAC loudspeakers: the Cinema Pipe with its slender, upright form demonstrates pure elegance, designed for equally elegant flat screens. It is a loudspeaker which gives free reign to Mozart's *Queen of the Night* even at her very highest notes.

Loudspeaker Sets

2.1 Stereo Sets



2.1 Anniversary Set
SUB 2060 D and two ELAC 301.2.



2.1 Set 2030 / 301.2
SUB 2030 and two ELAC 301.2.



2.1 MicroMagic
MicroSUB 2010.2 and two ELAC 301.2.



2.1 Set 111.2 / 301.2
SUB 111.2 ESP and two ELAC 301.2.

5.1 Surround Sets



5.1 Set 2060 D / 301.2
SUB 2060 D and four ELAC 301.2.



5.1 Set 2030 / 301.2
SUB 2030 and five ELAC 301.2.



5.1 SUB 2040 / 301.2
SUB 2040 ESP and five ELAC 301.2.



5.1 Cinema 2040 XL III
SUB 111.2 ESP, Cinema XL Center and four Cinema 2 SAT.



5.1 Starlet
SUB 111.2 ESP, Starlet CM and four Starlet.



5.1 CINEMA 3 ESP V
SUB 111.2 ESP and five ELAC 301.2.

5.0 Surround Sets

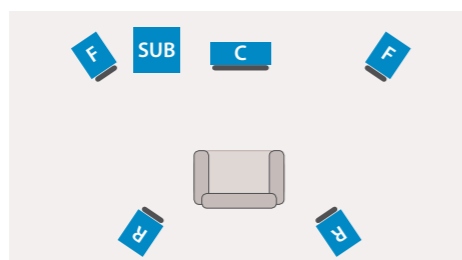


5.0 Set 301.2
Five ELAC 301.2.

Custom Sets

Tip: Customize your

stereo or surround set individually!



Graphics: 5.1 Set individually
Subwoofer + Center + Front + Rear.

No audition room is equal to another. Therefore with ELAC's surround sets you are able to assemble your individual setup with several single components out of the respective line.

The center speaker is the base for an unforgettable surround experience. Perfectly supported by bookshelf- or floorstanding speakers. A subwoofer completes the setup in the bass range.



5.1 Set, Line 240 Black Edition
SUB 2060 D, CC 241 BE, two BS 243 BE, two FS 247 BE.



5.1 Set, Line 240, special painting (against surcharge)
SUB 2060 D, CC 241, two BS 243, two FS 247.



5.1 Set, Line 60.2, walnut
SUB 111.2 ESP, CC 61.2, two BS 63.2, two FS 67.2.

Subwoofer



(MicroSub 2010.2, SUB 2060 D)



MicroSUB 2010.2

As the MicroSUB 2010.2 shows in an impressive way, the quality of the acoustical presentation doesn't necessarily depend on the physical size of the audio source. It reproduces abyssal bass with an incredible lightness and precision. By the way, thanks to the built-in multi channel amplifier, the MicroSUB 2010.2 also powers the connected satellite speakers – once it is connected, the user gets a 2.1 system with excellent sound reproduction.

SUB 111.2 ESP

The workhorse among the ELAC subwoofers: capable of versatile use and thanks to ESP technology protected against over-modulation, the SUB 111.2 ESP provides loyal and reliable service. Recommended as bass reinforcement for the 60.2, 50.2 and Cinema lines, the SUB 111.2 ESP has proven its worth for years as a popular entry model of the ELAC subwoofer world.

SUB 2030

Deep and dry, this is the sound of the SUB 2030 – just like it ought to be for a closed box subwoofer with a 25 cm woofer. Particularly recommended for 180, 60.2, 50.2 and Cinema loudspeakers.

SUB 2040 ESP

With the SUB 2040 ESP, the air vibrates, and not the cabinet. The SUB 2040 ESP can be adjusted to ideally suit the most widely varying spatial circumstances. It is best combined with the 180 and 240 line loudspeakers. A real bass player.

SUB 2060 D

Whoever wants their 300 or 240 line loudspeakers to do even more should look no further than the SUB 2060 D. Outwardly strikingly slender and elegant, its "inner strength" provides astounding power, in conjunction with highest precision ever. An attractive subwoofer which offers more than deep bass only.

Active loudspeakers



▲ AM 50 Slave AM 50 Master ▲

AM 50

Sympathic, this is the way the AM 50 stereo set presents itself from any point of view. First the matt lacquered cabinets come into view. In combination with the metal grille and the black driver units, the AM 50 is an optical highlight, no matter if it is positioned on a sideboard, close to the TV or on the desktop.

AM 150

The unbeatable all-rounder: whether in a computer, as near field monitor or in the hi-fi system, the AM 150 is distinguished by its versatility.

Thanks to its numerous control options, high sound adaptability and amazing value for money, the AM 150 is class champion.

AM 180

You're only one connection away from the acoustical pleasure. The AM 180 maintains what you need for an impressive acoustical experience. With the aluminum sandwich woofer, the JET tweeter finds the perfect playing partner. With help of the sophisticated electronics, this small-sized loudspeaker sounds as a much larger one.

Custom Install

The (nearly) invisibles



▼ BS 52.2, compact loudspeakers perfect for extension. Film lovers adore it.

▲ IC 1010 Side view of in-wall loudspeaker. IW 1130, IW 1230 ▲

▲ Plaster frame for installation of in-wall loudspeakers in solid walls

▲ Flush mounting frame – Wooden frame for installing in-wall loudspeakers

▲ Back with terminal and four-fold wall suspension

▲ With metal grille



IC 1010

It feels like the walls themselves are singing with ELAC's built-in loudspeakers. They are able to be inconspicuously integrated in room walls or ceilings - unseen, but not unheard.

The smallest of its kind at ELAC, the IC 1010, meets hi-fi demands and provides sound that is invisible.

IW 1130, IW 1230

Looking for team members? The IW 1130 and IW 1230 are ideal additional acoustic features for every home cinema system. The IW 1130 reinforces the 60.2 line. The IW 1230 matches well with the 180, 240 and 300 lines.

WS 1135, WS 1235

Whether hanging on the wall, sitting upright on a shelf or horizontally on their side, the WS 1135 and WS 1235 sound excellent in every location. These wall loudspeakers are also ideal team players. The WS 1135 is acoustically adapted to the 60.2 line and the WS 1235 to the 180, 240 and 300 lines.

Accessories



◀ Stand LS 70 II



Speaker stand LS 65 II
High Gloss Black
Can be used with the ELAC 330 CE
Height incl. 30 mm for the spikes): 717 mm
Base W x D: 290 x 325 mm



Speaker stand LS 70 II
High Gloss: White, Titanium, Black
Can be used with: ELAC 310 CE, ELAC 310 BE and other compact loudspeakers
Height incl. Spikes: 726 mm
Base W x D: 240 x 290 mm



Speaker stand Cinema LS stand
High Gloss Black, High Gloss White, Silver finish
Can be used with: ELAC 301. 2, Starlet and Cinema 2 SAT



Wall mount 310
High Gloss: White, Titanium, Black
Can be used with: ELAC 310 CE, ELAC 310 BE



Cleaning set
Care and polishing set for high-gloss surfaces.

The tricky ones



High definition spike
Metal, high gloss chromed
Thread: M8
Can be used with: 200, 240, 300 and 600 lines



14 mm spike
Plastic / metal, black / silver
Thread: M8
Can be used with: 240, 200 lines



M6 spike
Metal, high gloss chromed
Thread: M6
Can be used with: 60.2, 50 lines2



Bass control (BC)
Polyethylene foam plug for bass reflex speakers with bass reflex tubes of 60 or 70 mm in diameter. The Bass Control plug closes the bassreflex vent and may compensate problematical acoustical circumstances, e.g. if the speakers have to be positioned close to the wall.



Vario Bass Control (VBC, Vario BC)
Two-part plug to influence bass level. Reduces the effective cross-section of the bass reflex tubes in two stages. For bass reflex tube with 70 and 55 mm diameter.



JET dispersion control (JET DC)
Fitted in front of the JET tweeter, the JET DC enables a wide frequency lowering of the treble level within a wide angle radiation cone by about 0.5 dB and this almost irrespective of frequency.

High-low line level converter
High-low line level converter. Problem solver for sources which have only one loudspeaker output (no line output) (e.g. mini- or midi-systems) to connect active loudspeakers to such sources. Galvanic decoupling of input and output signal by transformers, with level conversions of loudspeaker level to line level.



D/A converter, optical, stereo
For connecting active loudspeakers, preamplifiers (or integrated amplifiers) without optical digital input to sources with only optical digital output, e.g. TFT flat screen TVs.



Ground loop isolator
Ground loop insulator. Problem solver when it comes to hum pickups (e.g. with some notebooks near active loudspeakers) for galvanic decoupling of input and output signal by transformers. Without level loss. For direct looping into an existing RCA connection.



ELAC Wireless Set Stereo
The Audio signal is transmitted losslessly (CD quality) from the transmitter to the receiver. Plug & Play through the accessory kit.



Technical specifications



White High Gloss



Silver High Gloss, ELAC 301.2



Black High Gloss

	FS 609 CE
Height x Width x Depth	1,310 x 319 x 354 mm
Weight	46 kg
Type	4 ½-Way, bass reflex
Woofer	3 x 180 mm, AS-XR cone, LLD
Midrange	1 x 105/50 mm, COAX II
Tweeter	JET III, magn. shielding, 4Pi II
Crossover frequency	150 / 550 / 2,500 / (6,000) Hz
Frequency range (IEC 268-5)	25 to 53,000 Hz
Sensitivity	89 dB / 2.83 V/m
Suitable for amplifiers from ... to	4 - 8 Ω
Recommended amplifier power	80 - 500 W/channel
Nominal / Peak power handling	250 W / 300 W
Nominal impedance	4 Ω
Minimum impedance	3.6 Ω / 29 Hz
Finishes	Black High Gloss, Titan Shadow
Accessories included in delivery:	Bass Control 60 mm Ø, metal grille

	FS 607 CE
Height x Width x Depth	1,155 x 319 x 354 mm
Weight	37 kg
Type	3 ½-Way, bass reflex
Woofer	2 x 180 mm, AS-XR cone, LLD
Midrange	1 x 105/50 mm, COAX II
Tweeter	JET III, magn. shielding
Crossover frequency	150 / 550 / 2,700 Hz
Frequency range (IEC 268-5)	28 to 50,000 Hz
Sensitivity	89 dB / 2.83 V/m
Suitable for amplifiers from ... to	4 - 8 Ω
Recommended amplifier power	80 - 400 W/channel
Nominal / Peak power handling	200 W / 250 W
Nominal impedance	4 Ω
Minimum impedance	3.4 Ω / 85 Hz
Finishes	Black High Gloss, Titan Shadow
Accessories included in delivery:	Bass Control 60 mm Ø, metal grille

	310 CE
Height x Width x Depth	208 x 123 x 282 mm
Weight	6.25 kg
Type	2-Way, bass reflex
Woofer	1 x 115 mm, AS-XR cone
Midrange	-
Tweeter	JET III, magn. shielding
Crossover frequency	3,200 Hz
Frequency range (IEC 268-5)	42 to 50,000 Hz
Sensitivity	86 dB / 2.83 V/m
Suitable for amplifiers from ... to	4 Ω
Recommended amplifier power	50 - 150 W/channel
Nominal / Peak power handling	70 W / 90 W
Nominal impedance	4 Ω
Minimum impedance	3.4 Ω / 280 Hz
Finishes	Black and White High Gloss, Titan Shadow
Accessories included in delivery:	metal grille, JET DC

	310 IB
Height x Width x Depth	208 x 123 x 282 mm
Weight	6,6 kg
Type	2-Way, bass reflex
Woofer	1 x 115 mm, AS-XR cone
Midrange	-
Tweeter	JET III, magn. shielding
Crossover frequency	3,200 Hz
Frequency range (IEC 268-5)	42 to 50,000 Hz
Sensitivity	86 dB / 2,83 V/m
Suitable for amplifiers from ... to	4 Ω
Recommended amplifier power	50 - 150 W/channel
Nominal / Peak power handling	70 W / 90 W
Nominal impedance	4 Ω
Minimum impedance	3,4 Ω / 280 Hz
Finishes	Black High Gloss
Accessories included in delivery:	metal grille, JET DC

	301.2
Height x Width x Depth	121 x 91 x 136 mm
Weight	ca. 1.5 kg
Type	2-Way, closed box
Woofer	78 x 108 mm Ø, AS oval, magn. shielding
Midrange	-
Tweeter	silk cone, 20 mm magn. shielding
Crossover frequency	80 / 2,390 Hz
Frequency range (IEC 268-5)	80 to 35,000 Hz
Sensitivity	86 dB / 2.83 V/m
Suitable for amplifiers from ... to	4 - 8 Ω
Recommended amplifier power	20 - 120 W/channel
Nominal / Peak power handling	60 W / 75 W
Nominal impedance	4 Ω
Minimum impedance	3.5 Ω / 1,200 Hz
Finishes	Black, Silver and White High Gloss
Accessories included in delivery:	Wall bracket, metal grille

	FS 249
Height x Width x Depth	1,147 x 260 x 368 mm
Weight	27.2 kg
Type	3-Way, bass reflex
Woofer	2 x 180 mm, AS-XR cone
Midrange	1 x 140 mm, AS-XR cone
Tweeter	JET III, magn. shielding
Crossover frequency	500 / 3,000 Hz
Frequency range (IEC 268-5)	28 to 50,000 Hz
Sensitivity	90 dB / 2.83 V/m
Suitable for amplifiers from ... to	4 - 8 Ω
Recommended amplifier power	30 - 400 W/channel
Nominal / Peak power handling	200 W / 250 W
Nominal impedance	4 Ω
Minimum impedance	3.0 Ω / 120 Hz
Finishes	Black and White High Gloss
Accessories included in delivery:	Bass Control 60 mm Ø, fabric grille, JET DC

	FS 248
Height x Width x Depth	1,173 x 230 x 368 mm
Weight	22.8 kg
Type	3 ½-Way, bass reflex
Woofer	3 x 150 mm, AS-XR cone
Midrange	1 x 140 mm, AS-XR cone
Tweeter	JET III, magn. shielding
Crossover frequency	180 / 450 / 2,900 Hz
Frequency range (IEC 268-5)	30 to 50,000 Hz
Sensitivity	89.5 dB / 2.83 V/m
Suitable for amplifiers from ... to	4 - 8 Ω
Recommended amplifier power	30 - 300 W/channel
Nominal / Peak power handling	150 W / 220 W
Nominal impedance	4 Ω
Minimum impedance	3.9 Ω / 110 Hz
Finishes	Black and White High Gloss
Accessories included in delivery:	Bass Control 60 mm Ø, fabric grille, JET DC

	4Pi Plus.2
Height x Width x Depth	143 x 150 x 250 mm
Weight	4 kg
Type	Add-on tweeter
Woofer	-
Midrange	-
Tweeter	4Pi II
Crossover frequency	10,000, 12,000, 15,000 Hz
Frequency range (IEC 268-5)	10,000 to 50,000 Hz
Sensitivity	84 to 92 dB / 2.83 V/m
Suitable for amplifiers from ... to	4 - 8 Ω
Recommended amplifier power	20 - 400 W/channel
Nominal / Peak power handling	400 W / 600 W
Nominal impedance	6 Ω
Minimum impedance	3.5 Ω / >10,000 Hz
Finishes	Black High Gloss, Titan Shadow
Accessories included in delivery:	

	330 CE
Height x Width x Depth	274 x 188 x 345 mm
Weight	10 kg
Type	2-Way, bass reflex
Woofer	1 x 180 mm, AS-XR cone, LLD
Midrange	-
Tweeter	JET III, magn. shielding
Crossover frequency	2,900 Hz
Frequency range (IEC 268-5)	40 to 50,000 Hz
Sensitivity	87.5 dB / 2.83 V/m
Suitable for amplifiers from ... to	4 - 8 Ω
Recommended amplifier power	30 - 200 W/channel
Nominal / Peak power handling	80 W / 120 W
Nominal impedance	4 Ω
Minimum impedance	3.8 Ω / 195 Hz
Finishes	Black High Gloss
Accessories included in delivery:	Vario BC 70 mm Ø, metal grille, JET DC

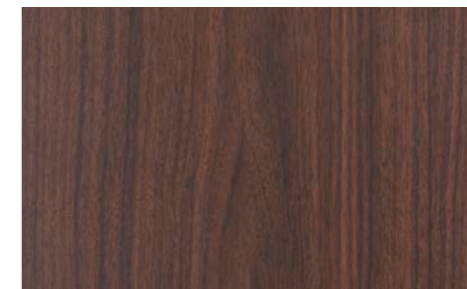
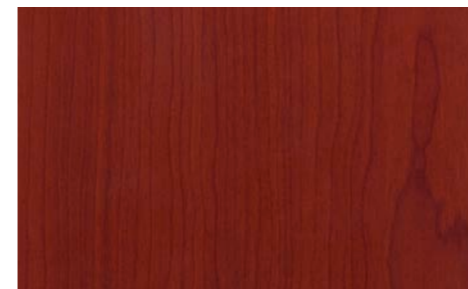
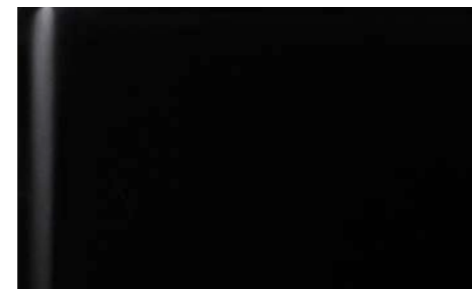
	FS 247
Height x Width x Depth	1,021 x 220 x 320 mm
Weight	16.8 kg
Type	2 ½-Way, bass reflex
Woofer	2 x 150 mm, AS-XR cone (150 mm)
Midrange	JET III, magn. shielding
Tweeter	450 / 2,500 Hz
Crossover frequency	30 to 50,000 Hz
Frequency range (IEC 268-5)	89 dB / 2.83 V/m
Sensitivity	4 - 8 Ω
Suitable for amplifiers from ... to	30 - 250 W/channel
Recommended amplifier power	120 W / 160 W
Nominal / Peak power handling	4 Ω
Nominal impedance	3.4 Ω / 210 Hz
Minimum impedance	Black and White High Gloss,
Finishes	Bass Control 60 mm Ø, fabric grille, JET DC
Accessories included in delivery:	

	BS 244
Height x Width x Depth	330 x 200 x 282 mm
Weight	7.4 kg
Type	2-Way, bass reflex
Woofer	1 x 180 mm, AS-XR cone
Midrange	-
Tweeter	JET III, magn. shielding
Crossover frequency	2,600 Hz
Frequency range (IEC 268-5)	38 to 50,000 Hz
Sensitivity	88 dB / 2.83 V/m
Suitable for amplifiers from ... to	4 - 8 Ω
Recommended amplifier power	30 - 200 W/channel
Nominal / Peak power handling	80 W / 120 W
Nominal impedance	4 Ω
Minimum impedance	3.5 Ω / 190 Hz
Finishes	Black and White High Gloss
Accessories included in delivery:	Vario BC 70 mm Ø, fabric grille, JET DC

	BS 243
Height x Width x Depth	285 x 170 x 232 mm
Weight	5.2 kg
Type	2-Way, bass reflex
Woofer	1 x 150 mm, AS-XR cone
Midrange	-
Tweeter	JET III, magn. shielding
Crossover frequency	2,700 Hz
Frequency range (IEC 268-5)	41 to 50,000 Hz
Sensitivity	87 dB / 2.83 V/m
Suitable for amplifiers from ... to	4 - 8 Ω
Recommended amplifier power	30 - 150 W/channel
Nominal / Peak power handling	60 W / 80 W
Nominal impedance	4 Ω
Minimum impedance	3.6 Ω / 240 Hz
Finishes	Black and White High Gloss
Accessories included in delivery:	Vario BC 55 mm Ø, fabric grille, JET DC

	CC 241
Height x Width x Depth	170 x 430 x 350 mm
Weight	9.4 kg
Type	2 ½-Way, bass reflex
Woofer	2 x 150 mm, AS-XR cone
Midrange	-
Tweeter	JET III, magn. shielding
Crossover frequency	450 / 2,600 Hz
Frequency range (IEC 268-5)	34 to 50,000 Hz
Sensitivity	89 dB / 2.83 V/m
Suitable for amplifiers from ... to	4 - 8 Ω
Recommended amplifier power	30 - 200 W/channel
Nominal / Peak power handling	110 W / 140 W
Nominal impedance	4 Ω
Minimum impedance	3.6 Ω / 190 Hz
Finishes	Black and White High Gloss,
Accessories included in delivery:	Vario BC 70 mm Ø, fabric grille, JET DC

	FS 249 BE
Height x Width x Depth	1,147 x 260 x 368 mm
Weight	28,7 kg
Type	3-Way, bass reflex
Woofer	2 x 180 mm, AS-XR cone
Midrange	1 x 140 mm, AS-XR cone
Tweeter	JET III, magn. shielding
Crossover frequency	500 / 3,000 Hz
Frequency range (IEC 268-5)	28 to 50,000 Hz
Sensitivity	90 dB / 2,83 V/m
Suitable for amplifiers from ... to	4 - 8 Ω
Recommended amplifier power	30 - 400 W/channel
Nominal / Peak power handling	200 W / 250 W
Nominal impedance	4 Ω
Minimum impedance	3,0 Ω / 120 Hz
Finishes	Black High Gloss
Accessories included in delivery:	Bass Control 60 mm Ø, fabric grille, JET DC



Titan Shadow; Line 600, 330 CE, 310 CE, SUB 2060 D

Silk Matt White; Line 180, AM 150, SUB 2030, SUB 2040 ESP, SUB 111.2 ESP

Silk Matt Black; AM 150; SUB 2030, SUB 111.2 ESP

Dark Cherry; Line 50.2

Walnut; Line 60.2

Black Ash; Line 60.2; Linie 50.2

	FS 248 BE	FS 247 BE	BS 244 BE	BS 243 BE	FS 68.2	FS 67.2	BS 63.2	BS 62.2	CC 61.2
Height x Width x Depth	1.173 x 230 x 368 mm	1.021 x 220 x 320 mm	330 x 200 x 282 mm	285 x 170 x 232 mm	1,080 x 250 x 335 mm	950 x 220 x 300 mm	330 x 205 x 265 mm	260 x 160 x 262 mm	170 x 435 x 265 mm
Weight	24,3 kg	17,8 kg	7,9 kg	5,7 kg	20 kg	14,5 kg	7 kg	4,5 kg	7,5 kg
Type	3 ½-Way, bass reflex	2 ½-Way, bass reflex	2-Way, bass reflex	2-Way, bass reflex	3-Way, bass reflex	2 ½-Way, bass reflex	2-Way, bass reflex	2-Way, bass reflex	2-Way, bass reflex
Woofer	3 x 150 mm, AS-XR cone	2 x 150 mm, AS-XR cone	1 x 180 mm, AS-XR cone	1 x 150 mm, AS-XR cone	2 x 175 mm, AS cone	2 x 140 mm, AS cone, magn. shielding	1 x 175 mm, AS cone	1 x 135 mm, AS cone	2 x 140 mm, AS cone, magn. shielding
Midrange	1 x 140 mm, AS-XR cone	(150 mm)	–	–	1 x 140 mm, AS cone, magn. shielding	(1 x 140 mm, AS cone, magn. shielding)	–	–	–
Tweeter	JET III, magn. shielding	JET III, magn. shielding	JET III, magn. shielding	JET III, magn. shielding	1 x 25 mm, silk dome, magn. shielding	1 x 25 mm, silk dome, magn. shielding	1 x 25 mm, silk dome, magn. shielding	1 x 25 mm, silk dome	1 x 25 mm, silk dome, magn. shielding
Crossover frequency	180 / 450 / 2.900 Hz	450 / 2.500 Hz	2.600 Hz	2.700 Hz	600 / 2,200 Hz	500 / 2.200 Hz	2,300 Hz	2,300 Hz	2,100 Hz
Frequency range (IEC 268-5)	30 to 50.000 Hz	30 to 50.000 Hz	38 to 50.000 Hz	41 to 50.000 Hz	38 to 25,000 Hz	38 to 25,000 Hz	44 to 25,000 Hz	48 to 25,000 Hz	48 to 25,000 Hz
Sensitivity	89,5 dB / 2,83 V/m	89 dB / 2,83 V/m	88 dB / 2,83 V/m	87 dB / 2,83 V/m	89 dB / 2.83 V/m	88 dB / 2.83 V/m	88 dB / 2.83 V/m	86,5 dB / 2.83 V/m	88,5 dB / 2.83 V/m
Suitable for amplifiers from ... to	4 - 8 Ω	4 - 8 Ω	4 - 8 Ω	4 - 8 Ω	4 - 8 Ω	4 - 8 Ω	4 - 8 Ω	4 - 8 Ω	4 - 8 Ω
Recommended amplifier power	30 - 300 W/channel	30 - 250 W/channel	30 - 200 W/channel	30 - 150 W/channel	20 - 180 W/channel	20 - 150 W/channel	20 - 120 W/channel	20 - 120 W/channel	20 - 150 W/channel
Nominal / Peak power handling	150 W / 220 W	120 W / 160 W	80 W / 120 W	60 W / 80 W	110 W / 150 W	80 W / 120 W	60 W / 80 W	50 W / 70 W	80 W / 120 W
Nominal impedance	4 Ω	4 Ω	4 Ω	4 Ω	6 Ω	6 Ω	6 Ω	6 Ω	6 Ω
Minimum impedance	3,9 Ω / 110 Hz	3,4 Ω / 210 Hz	3,5 Ω / 190 Hz	3,6 Ω / 240 Hz	4,6 Ω / 135 Hz	5,2 Ω / 220 Hz	4,9 Ω / 240 Hz	4,6 Ω / 260 Hz	4,8 Ω / 230 Hz
Finishes	Black High Gloss	Black High Gloss	Black High Gloss	Black High Gloss	Walnut and Ash Black	Walnut and Ash Black	Walnut and Ash Black	Walnut and Ash Black	Walnut and Ash Black
Accessories included in delivery:	Bass Control 60 mm Ø, fabric grille, JET DC	Bass Control 60 mm Ø, fabric grille, JET DC	Vario BC 70 mm Ø, fabric grille, JET DC	Vario BC 55 mm Ø, fabric grille, JET DC	Vario BC 70 mm Ø, magn. fixed fabric grille	Vario BC 70 mm Ø, magn. fixed fabric grille	Vario BC 70 mm Ø, magn. fixed fabric grille	Vario BC 55 mm Ø, magn. fixed fabric grille	Vario BC 55 mm Ø, magn. fixed fabric grille

	CC 241 BE	FS 187	BS 182	CC 180	FS 58.2	FS 57.2	BS 53.2	BS 52.2	CC 51.2
Height x Width x Depth	170 x 430 x 350 mm	975 x 210 x 290 mm	290 x 160 x 262 mm	158 x 435 x 350 mm	1,070 x 250 x 335 mm	940 x 200 x 300 mm	285 x 170 x 235 mm	210 x 136 x 165 mm	160 x 445 x 280 mm
Weight	10,4 kg	15 kg	5,5 kg	8,5 kg	20 kg	14 kg	5,5 kg	2,3 kg	7 kg
Type	2 ½-Way, bass reflex	2 ½-Way, bass reflex	2-Way, bass reflex	2 ½-Way, bass reflex	3-Way, bass reflex	2 ½-Way, bass reflex	2-Way, bass reflex	2-Way, closed	2-Way, bass reflex
Woofer	2 x 150 mm, AS-XR cone	2 x 140 mm, AS cone	1 x 135 mm, AS cone	2 x 135 mm, AS cone, magn. shielding	2 x 175 mm, cone	2 x 145 mm, cone	1 x 145 mm, cone	1 x 110 mm, cone	2 x 145 mm, cone, magn. shielding
Midrange	–	–	–	–	1 x 145 mm, cone	–	–	–	–
Tweeter	JET III, magn. shielding	JET III, magn. shielding	JET III, magn. shielding	JET III, magn. shielding	1 x 25 mm, silk dome	1 x 25 mm, silk dome	1 x 25 mm, silk dome	1 x 25 mm, silk dome	1 x 25 mm, silk dome
Crossover frequency	450 / 2.600 Hz	700 / 2,700 Hz	2,500 Hz	700 / 2,600 Hz	600 / 2,400 Hz	700 / 2,000 Hz	2,200 Hz	2,500 Hz	2,200 Hz
Frequency range (IEC 268-5)	34 to 50.000 Hz	36 to 50,000 Hz	46 to 50,000 Hz	44 to 50,000 Hz	38 to 25,000 Hz	38 to 25,000 Hz	46 to 25,000 Hz	65 to 25,000 Hz	44 to 25,000 Hz
Sensitivity	89 dB / 2,83 V/m	88 dB / 2.83 V/m	86 dB / 2.83 V/m	87 dB / 2.83 V/m	90 dB / 2.83 V/m	89 dB / 2.83 V/m	87 dB / 2.83 V/m	84 dB / 2.83 V/m	89 dB / 2.83 V/m
Suitable for amplifiers from ... to	4 - 8 Ω	4 - 8 Ω	4 - 8 Ω	4 - 8 Ω	4 - 8 Ω	4 - 8 Ω	4 - 8 Ω	4 - 8 Ω	4 - 8 Ω
Recommended amplifier power	30 - 200 W/channel	20 - 200 W/channel	20 - 140 W/channel	20 - 170 W/channel	20 - 180 W/channel	20 - 150 W/channel	20 - 120 W/channel	20 - 120 W/channel	20 - 150 W/channel
Nominal / Peak power handling	110 W / 140 W	90 W / 130 W	60 W / 80 W	80 W / 110 W	100 W / 140 W	80 W / 120 W	50 W / 70 W	40 W / 60 W	70 W / 110 W
Nominal impedance	4 Ω	6 Ω	6 Ω	6 Ω	4 Ω	4 Ω	4 Ω	6 Ω	4 Ω
Minimum impedance	3,6 Ω / 190 Hz	5,0 Ω / 220 Hz	4,9 Ω / 250 Hz	5,1 Ω / 210 Hz	3,2 Ω / 130 Hz	3,6 Ω / 205 Hz	3,7 Ω / 210 Hz	4,8 Ω / 240 Hz	3,5 Ω / 200 Hz
Finishes	Black High Gloss	Silk Matt Black and White	Silk Matt Black and White	Silk Matt Black and White	Ash Black and Dark Cherry	Ash Black and Dark Cherry	Ash Black and Dark Cherry	Ash Black and Dark Cherry, Silk Matt White	Ash Black and Dark Cherry
Accessories included in delivery:	Vario BC 70 mm Ø, fabric grille, JET DC	BC 60 mm Ø, metal and fabric grille	metal and fabric grille, magn. fixed	metal and fabric grille, magn. fixed	Vario BC 70 mm Ø, metal grille	Vario BC 70 mm Ø, metal grille	Vario BC 55 mm Ø, metal grille	Vario BC 55 mm Ø, metal grille	metal grille



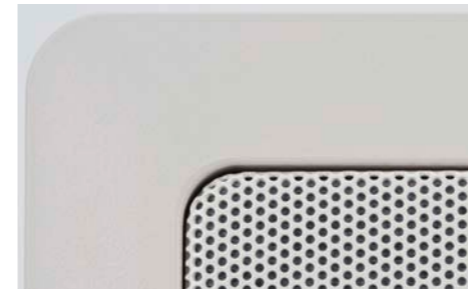
White High Gloss (Starlet)



Black Aluminium High Gloss (Cinema)



Silver Aluminium Brushed (Cinema)



Arctic White (IC, IW)

	Starlet	Starlet CM	Cinema 2 SAT	Cinema XL Center	IC 1010	IW 1130	IW 1230	WS 1135	WS 1235
Height x Width x Depth	117 x 90 x 103 mm	90 x 215 x 103 mm	132 x 88 x 102 mm	88 x 290 x 102 mm	232 x 107 mm 199 mm 0 x 120 mm	308 x 220 x 115 mm 275 x 190 x 105 mm	308 x 220 x 115 mm 275 x 190 x 105 mm	320 x 230 x 116 mm	320 x 230 x 116 mm
Mounting hole									
Weight	0.85 kg	1.6 kg	1 kg	2 kg	2 kg	2.5 kg	3 kg	3.7 kg	4.2 kg
Type	2-Way, closed	2 ½-Way, closed	2-Way, closed	2-Way, closed	2-Way, back open	2-Way, closed	2-Way, closed	2-Way, closed	2-Way, closed
Woofer	1 x 80 mm, cone, magn. shielding	2 x 80 mm, cone, magn. shielding	1 x 80 mm, cone, magn. shielding	2 x 80 mm, cone, magn. shielding	1 x 165 mm, cone	1 x 140 mm, AS cone, magn. shielding	1 x 140 mm, AS cone, magn. shielding	1 x 140 mm, AS cone, magn. shielding	1 x 140 mm, AS cone, magn. shielding
Midrange	–	–	–	–	–	–	–	–	–
Tweeter	1 x 19 mm, ringdome, magn. shielding	1 x 19 mm, ringdome, magn. shielding	1 x 19 mm, ringdome, magn. shielding	1 x 25 mm, silk dome, magn. shielding	1 x 25 mm, cone, coaxial	1 x 25 mm, silk dome, magn. shielding	JET III, magn. shielding	1 x 25 mm, silk dome	JET III, magn. shielding
Crossover frequency	3,800 Hz	95 / 1,300 / 3,800 Hz	90 / 3,800 Hz	85 / 3,800 Hz	3,000 Hz	2,200 Hz	3,100 Hz	2,200 Hz	3,100 Hz
Frequency range (IEC 268-5)	100 to 21,000 Hz	95 to 21,000 Hz	90 to 21,000 Hz	85 to 21,000 Hz	35 to 25,000 Hz	60 to 25,000 Hz	60 to 50,000 Hz	60 to 25,000 Hz	60 to 50,000 Hz
Sensitivity	84 dB / 2.83 V/m	87 dB / 2.83 V/m	85 dB / 2.83 V/m	87 dB / 2.83 V/m	88 dB / 2.83 V/m	86 dB / 2.83 V/m	86 dB / 2.83 V/m	86 dB / 2.83 V/m	86 dB / 2.83 V/m
Suitable for amplifiers from ... to	4 - 8 Ω	4 - 8 Ω	4 - 8 Ω	4 - 8 Ω	4 - 8 Ω	4 - 8 Ω	4 - 8 Ω	4 - 8 Ω	4 - 8 Ω
Recommended amplifier power	20 - 120 W/channel	20 - 150 W/channel	20 - 120 W/channel	20 - 150 W/channel	20 - 120 W/channel	20 - 150 W/channel	30 - 150 W/channel	20 - 150 W/channel	30 - 150 W/channel
Nominal / Peak power handling	40 W / 60 W	55 W / 75 W	45 W / 65 W	60 W / 80 W	50 W / 70 W	55 W / 80 W	55 W / 80 W	55 W / 80 W	55 W / 80 W
Nominal impedance	6 Ω	6 Ω	6 Ω	6 Ω	8 Ω	8 Ω	8 Ω	8 Ω	8 Ω
Minimum impedance	4.8 Ω / 500 Hz	4.6 Ω / 500 Hz	4.8 Ω / 450 Hz	4.8 Ω / 450 Hz	7.3 Ω / 200 Hz and 5.3 Ω / 16,000 Hz	6.3 Ω / 250 Hz	6.1 Ω / 260 Hz	6.3 Ω / 250 Hz	6.1 Ω / 260 Hz
Finishes	Black and White High Gloss	Black and White High Gloss	Black Aluminium High Gloss, Silver Aluminium Brushed	Black Aluminium High Gloss, Silver Aluminium Brushed	Arctic White	Arctic White	Arctic White	Silk Matt Black and White	Silk Matt Black and White
Accessories included in delivery:	Wall bracket	Wall bracket	Wall bracket	Wall bracket					

	Cinema 24 CM	Cinema Pipe
Height x Width x Depth	88 x 610 x 102 mm	900 x 88 x 102 mm
Weight	4.5 kg	6 kg
Type	2 ½-Way, closed	2 ½-Way, closed
Woofer	4 x 80 mm, cone, magn. shielding	4 x 80 mm, cone, magn. shielding
Midrange	–	–
Tweeter	1 x 25 mm, silk dome, magn. shielding	1 x 25 mm, silk dome, magn. shielding
Crossover frequency	80 / 900 / 3,800 Hz	80 / 900 / 3,800 Hz
Frequency range (IEC 268-5)	80 to 21,000 Hz	80 to 21,000 Hz
Sensitivity	90 dB / 2.83 V/m	89 dB / 2.83 V/m
Suitable for amplifiers from ... to	4 - 8 Ω	4 - 8 Ω
Recommended amplifier power	20 - 150 W/channel	20 - 150 W/channel
Nominal / Peak power handling	80 W / 110 W	80 W / 100 W
Nominal impedance	6 Ω	6 Ω
Minimum impedance	4.8 Ω / 360 Hz	4.8 Ω / 400 Hz
Finishes	Black Aluminium High Gloss	Black Aluminium High Gloss, Silver Aluminium Brushed



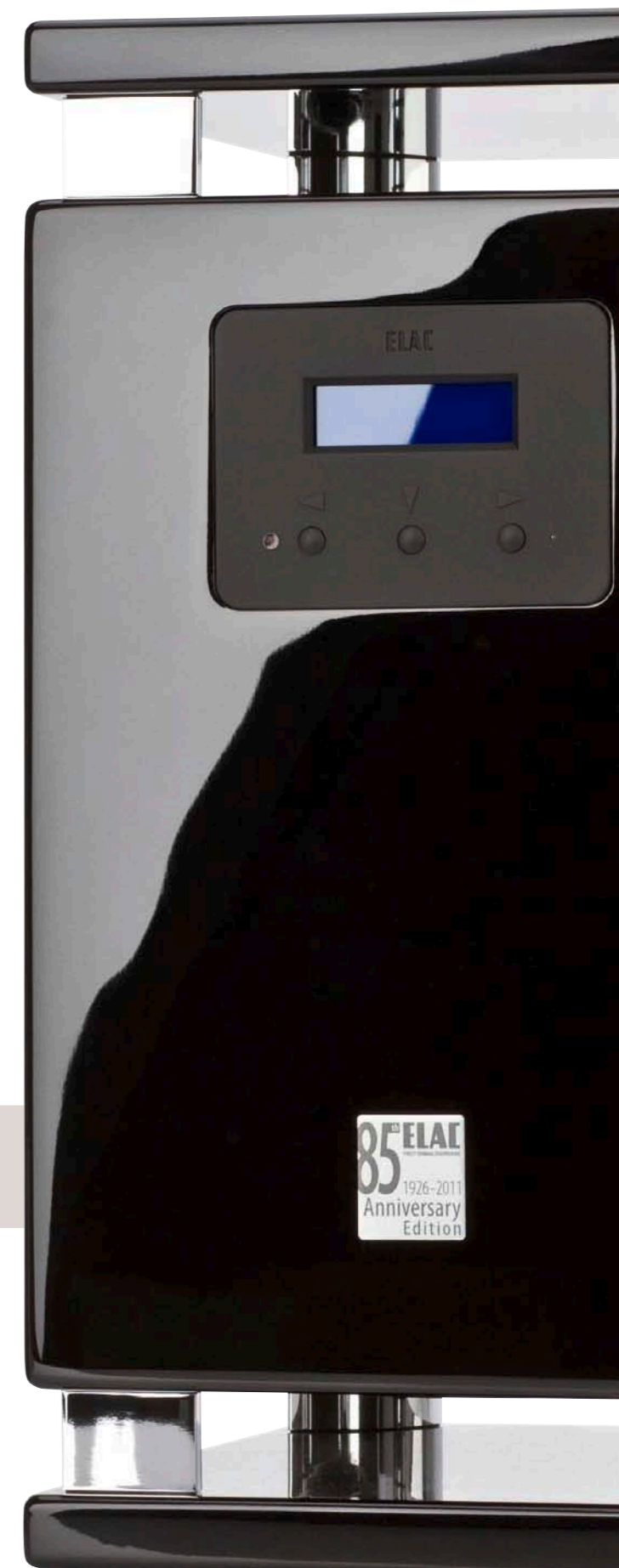
	AM 50 Stereo Set	AM 150	AM 180
Height x Width x Depth	210 x 136 x 165 mm	290 x 195 x 280 mm	290 x 195 x 280 mm
Weight	2.5 kg	7.8 kg	7.4 kg
Type	Master: 2-way active closed Slave: 2-way closed	2-Way active, bass reflex	2-Way active, bass reflex
Woofer	1 x 110 mm, cone	1 x 130 mm, cone, magn. shielding	1 x 130 mm, AS cone, magn. shielding
Tweeter	1 x 25 mm, dome	1 x 25 mm, dome, magn. shielding	JET III, magn. shielding
Crossover frequency	2,500 Hz	3,000 Hz	3,000 Hz
Frequency range (IEC 268-5)	50 to 25,000 Hz	48 to 30,000 Hz	38 to 50,000 Hz
Maximum amplifier power	2 x 25 W	Woofer: 50 W Tweeter: 25 W	Woofer: 55 W Tweeter: 28 W
Input	Master: Analogue: 2 x unbalanced (RCA, 3.5 mm TRS), 1 x ELAC WL Interface (USB-B). Digital: 1 x USB-Interface (USB-A, sound card emulation).	Analogue: 1 x unbalanced (RCA), 2x balanced (XLR, 6,35 mm TRS). Digital: 1 x S/PDIF (RCA), 1 x AES/EBU (XLR), up to 48 kHz.	Analogue: 1 x unbalanced (RCA), 2x balanced (XLR, 6.3 mm TRS). Digital: 2 x S/PDIF (RCA, Toslink), 1 x AES/EBU (XLR), up to 48 kHz.
Output	Master: speaker-out	1 x digital S/PDIF (RCA), pass through	Digital: 2 x S/PDIF thru (RCA, Toslink)
Finishes	Silk Matt White	Black and White Silk Matt	Black and White High Gloss
Front cover	metal grille	–	fabric grille, magn. fixed

	SUB 2060 D	SUB 2040 ESP	SUB 2030	SUB 111.2 ESP
Height x Width x Depth	440 x 230 x 300 mm	410 x 257 x 358 mm	356 x 300 x 315 mm	400 x 257 x 400 mm
Weight	16.5 kg	17.7 kg	14 kg	13 kg
Type	1-Way active, 2 woofers in closed box, remote control	1-Way active, 2 woofers in closed box	1-Way active	1-Way active, bass reflex
Woofer	2 x 180 mm, AS Cone, LLD	2 x 200 mm, AS Cone	1 x 250 mm, Cone	1 x 200 mm, AS cone
Upper cutoff frequency	40 to 180 Hz	40 to 180 Hz	44 - 160 Hz	40 to 180 Hz
Frequency range (IEC 268-5)	29 to 240 Hz	25 to 240 Hz	20 - 180 Hz	35 to 240 Hz
Maximum amplifier power	330 W	300 W	350 W	100 W
Finishes	Black and White High Gloss, Titan Shadow	Black High Gloss, Titan, Silk Matt White	Silk Matt Black	Cherry, Black, Silver and Titan High Gloss front; Silk Matt Black and White; Dark Cherry and Walnut
Optional accessories	-	-	Wireless Set Stereo	-

	MicroSUB 2010.2
Height x Width x Depth	218 x 150 x 178 mm
Weight	4.8 kg
Type	1-Way active, 2 woofers in closed cabinet, remote control
Woofer	2 x 115 mm, AS cone
Upper cutoff frequency	40, 80, 120, 180 Hz, adjustable
Frequency range (IEC 268-5)	36 to 200 Hz
Maximum amplifier power	55 W for subwoofer 55 W for satellites
Power consumption	< 1 W (StandBy) / max. 100 W
Input analogue	2 x unbalanced (RCA, 3.5 mm TRS), 1 x ELAC WL Interface (USB-B)
Input digital	1 x S/PDIF (optical / Toslink, up to 96 kHz / 24 Bit), 1 x USB-Interface (USB-A, sound card emulation, up to 48 KHz / 16 Bit)
Output	2 x Speaker-Out (L/R)
Finishes	Black and White High Gloss
Optional accessories	Wireless Set Stereo

For technical details, please consult
www.elac.com

ELAC 301.2 Anniversary Set, Black High Gloss



Subject to errors and amendment.

Subject to errors and amendment.

Sonos® and ZonePlayer® are registered trademarks of Sonos Inc. USA.
Apple® and AirPort Express® are registered trademarks of Apple Inc. USA.



ELAC Electroacoustic GmbH
Rendsburger Landstraße 215 • 24113 Kiel • Germany
Tel. +49-431-64774-0 • www.elac.com