

### GO KOPANNGWA GA DITHULAGANYO TSA TSAMAIISO YA TIKOLOGO TSA MOEPO WA MAMATWAN LE TSA MOEPO WA MIDDELPLAATS, KAPA BOKONE

TLHAKOLE 2023

#### 1. MATSENO

Hotazel Manganese Mines (Pty) Ltd (HMM) e na le Tshwanelo ya go Epa [Mining Right (MR)] le Thulaganyo ya Tsamaiso ya Tikologo [Environmental Management Programme (EMPr)] ya moepo wa khuti e e bulegileng ya mankanane o itseweng e le Moepo wa Mamatwan (MMT), o o epiwang ke South32, le moepo o o kgolokwe o o ka fa tlase ga lefatshe o itseweng e le Moepo wa Middelplaats (Middelplaats).

Moepo wa MMT le wa Middelplaats o bokgakala jwa dikilometara di ka nna 25 go ya borwa jwa toropo ya Hotazel mo dikarolong dingwe tsa polasi ya Adams 328; Goold 329; Sinterfontein 748; Mamatwan 331; Moab 700 le Middelplaats 332, mo Masepaleng wa Kgaolo wa John Taolo Gaetsewe le Masepala wa Selegae wa Joe Morolong, mo Porofenseng ya Kapa Bokone, Aforika Borwa.



Setshwantsho 1: Khuti e e bulegileng kwa Moepo wa Mamatwan

HMM e setse e na le ditetla tsa go dirisa tikologo [environmental authorisations (EAs)] le dilaesense kafa tlase ga:

- Molao wa Tlhabololo ya Diminerale le Didirisiwa tsa Petoroliamo, 2002 (Molao 28 wa 2002) (MPRDA);
- Molao wa Bosetšhaba wa Tsamaiso ya Tikologo, 1998 (Molao 107 wa 1998) (NEMA);
- Tsamaiso ya Bosetšhaba ya Tikologo: Molao wa Matlakala 59 wa 2008 (NEM: WA); le
- Tsamaiso ya Bosetšhaba ya Tikologo: Molao wa Boleng jwa Moya, 2004 (Molao 57 wa 2003) (NEM:AQA).

Jaaka karolo ya maano a yone a a tsweleng a moepo, HMM e rulaganya go dira mo MMT le Middelplaats jaaka setheo se le nosi mo tshipi e e epiwang mo Middelplaats e tla tlhotlha kwa lefelong la go tlhotlha la MMT. Go akanyetsa diphetogo tseno, HMM e akantsha go kopanya

di-EMPr tsa ditiro tsa Middelplaats MMT (e go ya pele re tla e bitsang Porojeke e e akantshtsweng).

#### 2. TSAMAIISO YA TETLA YA GO DIRISA TIKOLOGO

Pele ga gore Porojeke eno e e akantshtsweng e simolole, ditetla tse di latelang di a tlhokega:

- Karolo 102 go ya ka MPRDA e e tswang kwa Lefapheng la Didirisiwa tsa Diminerale le Maatla [Department of Mineral Resources and Energy (DMRE)].
- EA go ya ka NEMA mo ditirong tse di mo Lenaaneng la Kitsiso 1, 2014 (GN R 983 wa 2014), Lenaane la Kitsiso 2, (GN R 984 wa 2014)) le Lenaane la Kitsiso 2, (GN R 985 wa 2014) e e tswang kwa DMRE.
- Laesense ya matlakala go ya ka Molao wa bosetšhaba wa Tsamaiso ya Matlakala a Tikologo (GNR, 921 wa 2013), Karolo B: Go tlhamiwa kgotsa go baakanya maje a a latlhweng kgotsa maje a a saletseng, e e tswang kwa DMRE.

**Tsamaiso ya Tshekatsheko le Tlhatlhobo ya Ditlamorago mo Tikologong [Environmental Impact Assessment (S&EIA)]** e a tlhokega go dira kopo ya ditetla tse di kwadilweng fa godimo go ya ka Melawana ya EIA, 2014.

#### BOIKAELELO JWA TOKUMENTE ENO

Tokumente eno e baakanyeditswe go go naya tshedimosetso ka:

- Porojeke e e akantshtsweng;
- Ditschedi, setso le loago le ikonomi ya motheo ya tikologo mo lefelong la Porojeke e e akantshtsweng;
- Tsamaiso ya tlhatlhobo ya tikologo e e latelwang;
- Ditlamorago tse di ka nnang gone mo ditshedding, setsong le mo loagong le mo ikonoming gammogo le ditshwaelo tse di maleba tsa baitseanape; le
- Kafa o ka tshwaelang ka teng mo tsamaisong ya tlhatlhobo ya tikologo.

#### BAGAKOLODI KE BOMANG?

SLR Consulting (South Africa) (Pty) Ltd (SLR), setheo se se ikemetseng sa bagakolodi ba tikologo, e tlhomilwe ke HMM go laola tsamaiso ya tetla ya go dirisa tikologo.

#### SEABE SA GAGO

O ile wa supiwa jaaka Motsayakarolo yo o Kgalthegang le yo o Amegang [Interested and Affected Party (I&AP)] yo gongwe a ka batlang go nawa tshedimosetso kaga Porojeke e e akantshtsweng le go tshwaela ka tsamaiso ya tetla ya go dirisa tikologo le dipego.

O na le tshono ya go sekaseka tokumente eno le go romela ditshwaelo tsa gago tsa ntsha go SLR gore di akarediwe mo tsamaisong ya tlhatlhobo ya tikologo. Gape o tla nawa tshono ya go sekaseka le go tshwaela ka S&EIA & EMPr.

**Dikakgelo tsotlhe di tla kwalwa le go akarediwa mo dipepong tse di romelwang gore go dirwe tshwetso.**

#### KAFA O KA TSIBOGANG KA GONE

Ditsibogo tsa tokumente eno di ka romelwa ka pampiri ya dikagelo e e gokagantsweng, gotsa ka internet, le/kgotsa ka go buisana le motho yo o kwadilweng fa fatshe.

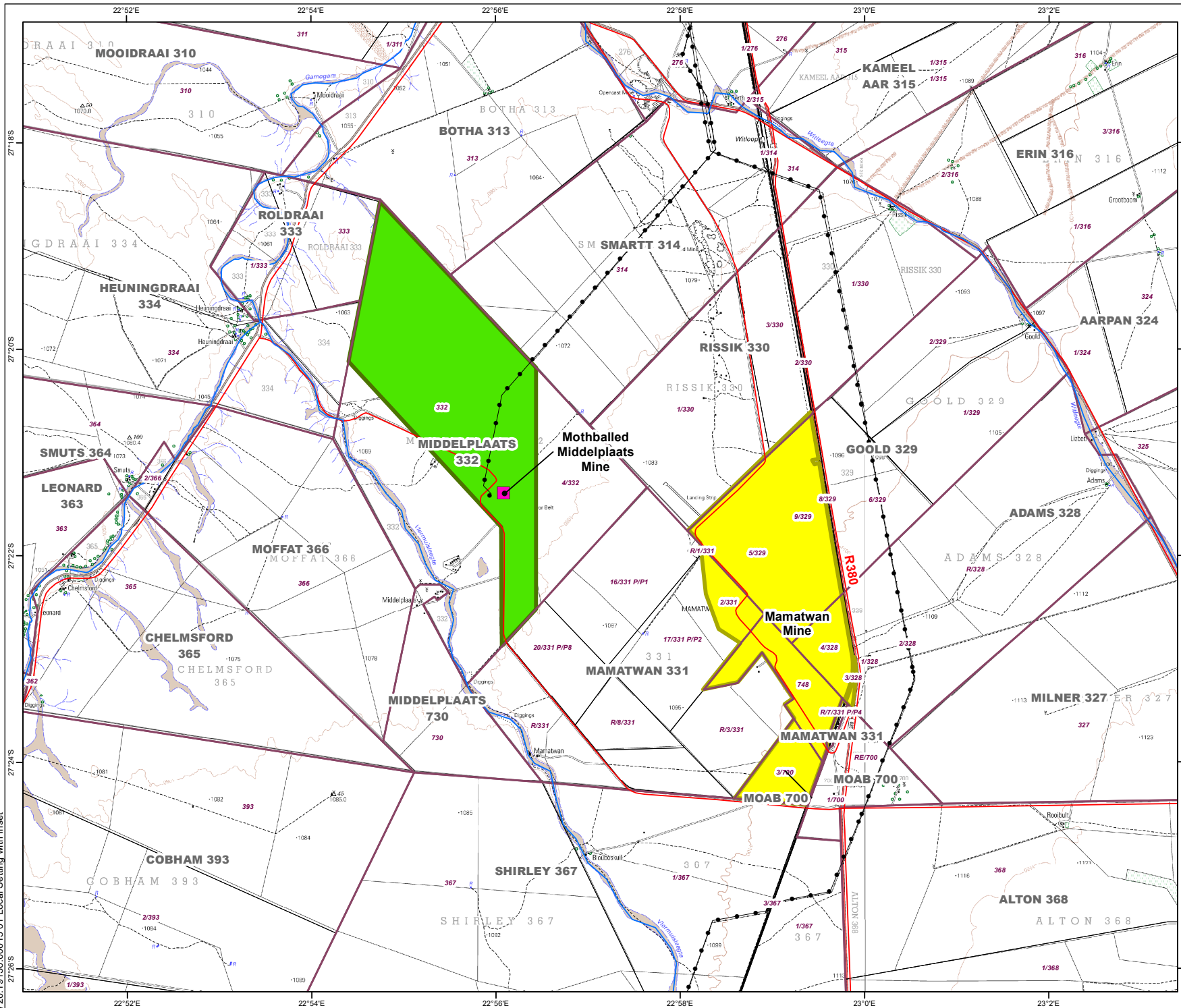


#### O KA IKGOLAGANYA LE MANG?

**Moikgolaganyi wa SLR:** Mukondeleli Makoya

**Mog:** (011) 467 0945

**Imeli:** south32-emprconsolidation@slrconsulting.com



**Legend**

- Roads
- Power Lines
- Rivers
- Farm Boundaries
- Mamatwan Mining Right Area
- Middelplaats Mining Right Area

N

0 1 2  
KM

Scale: 1:64 500 @ A3  
 Coordinate System: TM WG23  
 Projection: Transverse Mercator  
 Datum: Hartreebeekhoek 1994

**SOUTH32 EMPR  
CONSOLIDATION PROJECT**

**LOCAL SETTING**

**SLR**

PO BOX 1596  
CRAMERVIEW  
JOHANNESBURG  
2060  
T: +27 (11) 467-0945  
www.slrconsulting.com

Project No: 720.10023.00013	Prepared By: BG/KLS
Map Ref No: 01	Date: 17/01/2023

720.19136.00013.01 Local Setting with Inset

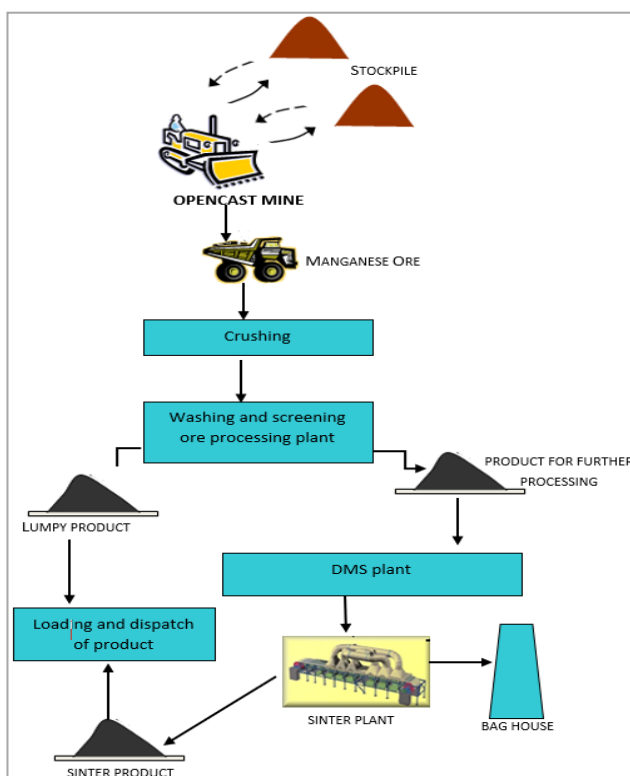
### 3. DINTLHAKAKARETISO TSA DITIRO TSE DI SETSENG DI DIRWA

#### DITIRO KWA MMT

Moepo wa MMT o dirwa ke South32 Limited (South32). Tiro ya MMT ke ya moepo wa khuti e e bulegileng o o tihomileng mogopolo mo majeng a mankanese a a gaufi le boalo jwa lefatshe mo Hotazel Formation, mme fa e sale o epiwa go tloga ka 1964. Dikago tsa konokono tsa moepo ke khuti e e bulegileng, ditsela tsa dilori, lefelo la go latlhela manya a a epilweng, dikago tsa go tšhwatla maje le tsa go sekirina, tsa go tlotlha le go tlotlhora, mabolokelo a dilwana tse di farologaneng, mabolokelo a mmu o o fa godimo, mafelo a matlapa a a latlhilweng, kago ya go rwala ya terene, diofisi, mafelo a go berekela, ntlo ya go fetola diaparo, le dikago tse di laolang go tsema le go tswa mo kgorong.

Tsamaiso ya maemo a a kwa godimo ya ditiro tsa MMT e tshalosiwa le go bontshiwa mo Setshwantsho 2 fa fatshe:

- Maje a mankanese a a tlotlhorwa ka mekgwa ya go thunya le ya go dirisa lori le garawe.
- Mmu o o fa godimo le matlapa a a latlhilweng a bolokiwa mo mafelong a a farologaneng.
- Manya a feta mo dikgatong tse di farologaneng tsa go tšhwatla, go tshotsa le go sekirina.
- Maje a a makwete a rekisetswa batho ba bangwe fa maje a a setseng a romelwa kwa kagong ya Dense Media Separator (DMS) go a baakanyetsa go tlotlhorwa.
- Go tlotlhora (ka go oketsa mogote) go tthagisa dikuno tsa boleng jo bo kwa godimo tse di rekisetswang batho ba bangwe.



Setshwantsho 2: Tshobokanyo ya kgopolo ya tsamaiso ya Moepo wa Mamatwan

#### DITIRO KWA MIDDELPLAATS

Middelplaats, ke moepo o o kgolokwe o o ka fa tlase ga lefatshe wa mankanese, o o neng wa tswalwa ka dingwaga tsa bo1980, mme ga jaana o khurumeditswe ke metsi. Moepo ga o dire ga jaana, mme gone ditiro tse di lekanyeditsweng tsa go epa di a dirwa go ya ka tetla ya bosheng le Tshwanelo ya go Epa e e neilweng HMM ka November 2021. Dikago tsa konokono tsa moepo o o kgolokwe tse di leng teng ga jaana mo saeteng di akaretsa mogala o o tsholetsang o o tlhamaletseng, mogala o o isang kwa tlase, mabolokelo, lefelo la go bolokela maje, letangwana, dikago tsa bobolokelo le jarata e e latlhilweng ya Eskom.



Setshwantsho 3: Moepo wa Middelplaats (gone jaanong)

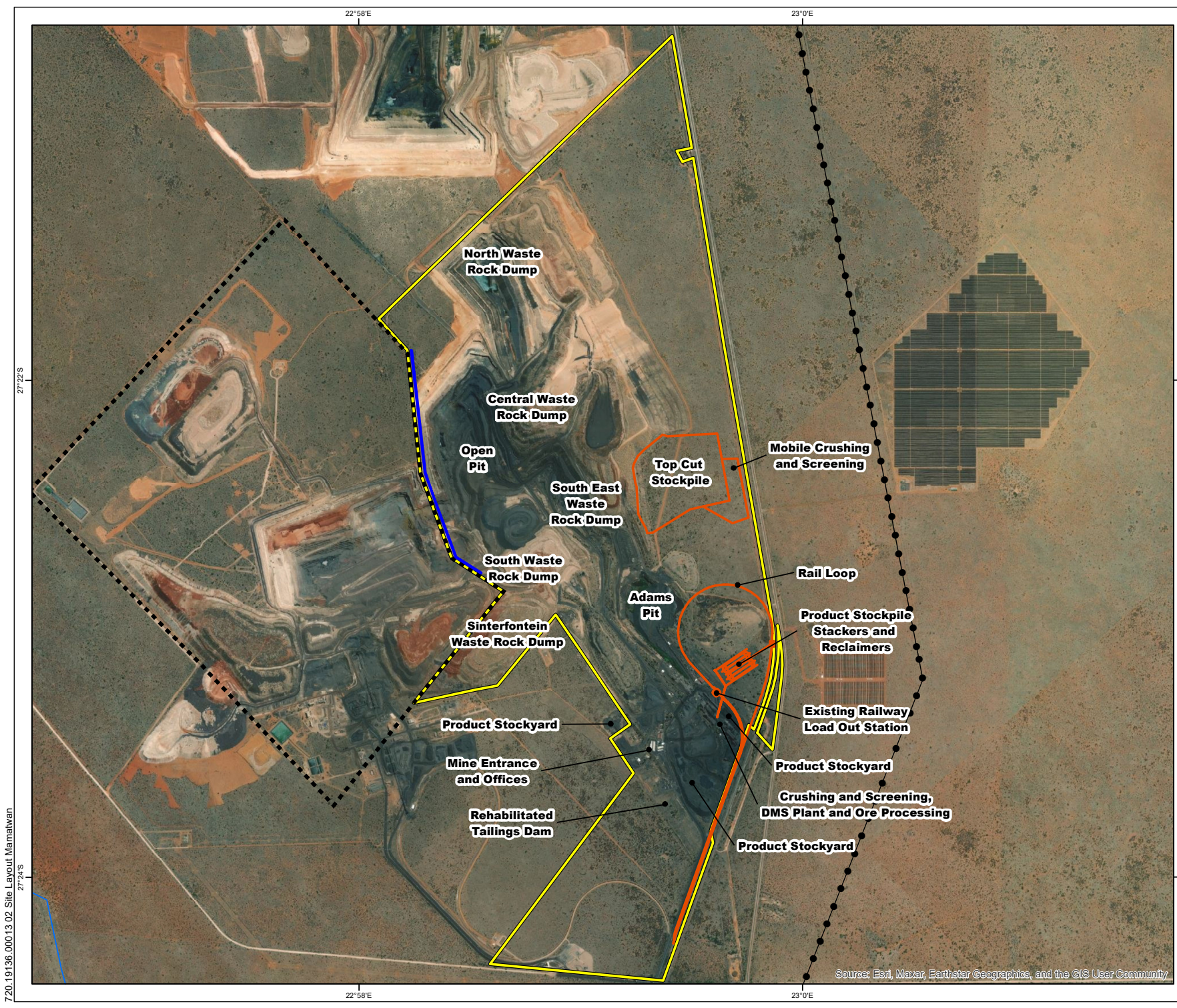
### 4. DINTLHAKAKARETISO TSA POROJEKE E E AKANTSHITSWENG

Jaaka karolo ya maano a yone a a tsweleng a moepo, HMM e rulaganya go dira mo MMT le Middelplaats jaaka setheo se le nosi mo tshipi e e epiwang mo Middelplaats e tla tlotlhora kwa lefelong la go tlotlha la MMT. Go akanyetsa diphetogo tseno, HMM e akantsha go kopanya di-EMPr tsoopedi tsa ditiro tsa Middelplaats le MMT gore di dire e le EMPr e le nngwe.

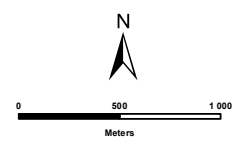
Jaaka karolo ya Porojeke e e akantshitsweng, ga go a lebelelwa gore go nne le tlokego ya ditiro dipe kgotsa dikago dipe fela tse disha tse di oketsegileng, fela kwantle ga tse di setseng di akantshitswe. Leba Setshwantsho 2 go bona tlhaloso ya dikago.

### 5. GO AKANYEDIWA GA DIPOROJEKE TSE DI FAROLOGANENG

Go akanyediwa ga diporojeke tse di farologaneng go lekanyeditswe, e re ka ditiro le dikago tsa moepo tsa MMT le Middelplaats di dumeletswe. Porojeke e e akantshitsweng e batla gore go rulaganngwe EMPR e le nosi fela e e akaretsang ditiro le dikago tse di dumeletsweng tsa MMT le Middelplaats.



- Legend**
- Mamatwan Mining Right Area
  - Tshipi Mining Right Area
  - Barrier Pillar
  - Powerlines



Scale: 1:26 500 @ A3  
 Coordinate System: TM WG23  
 Projection: Transverse Mercator  
 Datum: Harlebeesthoek 1994

**SOUTH32 EMPR  
 CONSOLIDATION PROJECT**

**APPROVED SITE LAYOUT  
 MAMATWAN**

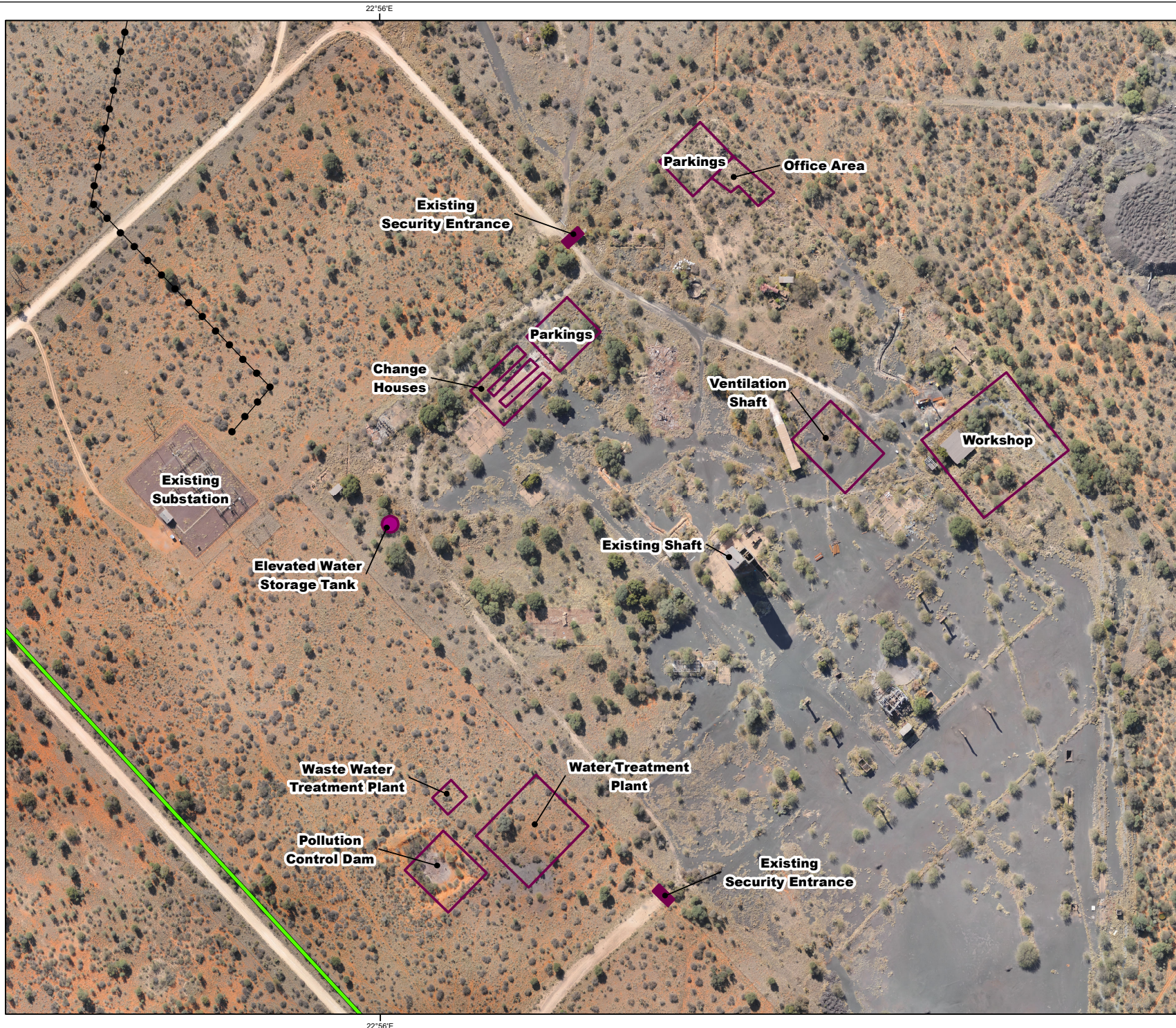
**SLR**  
 PO BOX 1596  
 CRAMERVIEW  
 JOHANNESBURG  
 2060  
 T: +27 (11) 467-0945  
 www.slrconsulting.com

Project No: 720.10023.00013	Prepared By: BG
Map Ref No: 02	Date: 25/01/2023

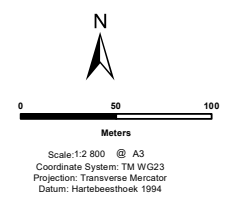
720.19136.00013.02 Site Layout Mamatwan

Source: Esri, Maxar, Earthstar Geographics, and the GIS User Community

720-19136-00013.03 Site Layout Middelplaats



- Legend**
- Middelplaats Mining Right Area
  - Powerlines



**SOUTH32 EMPR  
CONSOLIDATION PROJECT**

**APPROVED SITE LAYOUT  
MIDDELPLAATS**

**SLR** PO BOX 1596  
CRAMERVUE  
JOHANNESBURG  
2060  
T: +27 (11) 467-0945  
www.slrconsulting.com

Project No: 720.10023.00013	Prepared By: BG
Map Ref No: 02	Date: 25/01/2023

## 6. DINTLHAKAKARETSO TSA TIKOLOGO YA MOTHEO

Fa tlase fano ke tlhaloso ya motheo ya seemo sa tikologo e e leng gone:

### TIKOLOGO YA DITSHEDI

Meepo ya MMT le Middelplaats e mo lefelong le ka kakaretso le tlhalosiwang le le sephapati mme le na le mekgokolosa e e bonolo. Popego ya tlhologo ya kwa MMT gammogo le kwa Middelplaats e ile ya kgorelediwa ke go nna teng ga ditiro tsa moepo le dikago tsa ga jaana le tsa bogologolo. Popego ya tlhologo ya lefelo e tlhotlhelediwa gape ke go nna teng ga Moepo wa Tshipi Borwa, o o kgaoganyang MMT le Middelplaats, le Moepo wa United Manganese of Kalahari, o o kwa bokone jwa MMT.

Meepo ya MMT le Middelplaats e dikologilwe ke mefuta ya dimela ya Savanna Biome le Kathu Bushveld. Lefelo la tshwanelo ya go epa la MMT le kgorelediwa thatathata ke dikago le ditiro tse di setseng di le gone tsa moepo, le fa go ntse jalo, dikarolong tsa dimela tsa tlhologo ga di a kgorelediwa le e seng ka namana. Bontsi jwa Lefelo la Tshwanelo ya go Epa la Middelplaats le sa ntse le sa kgorelediwa ka namana. Lefelo le le sa kgorelediwang ka namana le bonala ka dileyara tsa ditlhare/ditlhatshana le ditlhare tsa konokono tse di tlhokometsweng sentle. Bontsi jwa mefuta ya dijalo tse di sireleditsweng tse di jaaka *Vachellia erioloba* (Camel Thorn), *Vachellia haematoxylon* (Gray Camel Thorn), *Boophone disticha* (Tumbleweed) le *Harpagophytum procumbens* (Devils Claw) di teng.



Setshwantsho 4:  
Tumbleweed



Setshwantsho 5: lelomo la  
Tumbleweed



### Setshwantsho 6: Setlhare sa Camel Thorn (pods)

Ga go na noka e e gaufi le Lefelo la Tshwanelo ya go Epa la MMT. Le fa go ntse jalo, Noka ya Vleermuisleegte le ya Gamagara, di bokgakala jwa dikilometara di ka nna 1.6 le 5.6 bophirima jwa Moepo wa Middelplaats. Molatswana wa Noka ya Gamagara o mo lefelong la Tshwanelo ya go Epa la Middelplaats (Setshwantsho 1). Dinoka tseno ga di elele ka metlha mme ka ntlha ya seno, di elela fela ka nako ya dipula tse dikgolo, mme di itsege ka go kgala metsi ka dingwaga di le dintsi. Gape ga di a ikaega ka moggwa o mongwe wa go bona metsi a a mo godimo ga lefatshe. Metsi a a dirisiwang ke batho ba bangwe go dikologa lefelo la Porojeke e e akantshitsweng ke metsi a ka fa tlase ga lefatshe a a borilweng, le metsi a ka fa tlase ga lefatshe a a tswang mo Sekemeng sa Kabelo ya Metsi sa Vaal Gamagara.

### TIKOLOGO YA SETSO

Meepo ya MMT le Middelplaats e mo lefelong le e leng gore, ka kakaretso, le nnile le palo e nnye ya batho ka go bo e le tikologo e e omeletseng, mme ka ntlha ya seno, fa e le gore go kile ga nna le batho ba ba kileng ba aga koo, ba ka bo ba agile mo dinokeng kgotsa gaufi le tsone. Go tla go fitlha ga jaana, ga go ise go lemogiwe disaete tsa ngwaoboswa/setso tse di tlhomologileng mo teng ga mafelo a Porojeke e e akantshitsweng.

Mafelo a a akantshitsweng a khurumeditswe ka botlalo ke Setlhopho sa Maje a Kalahari (Cenozoic Kalahari Group), mafika a Griqualand West Basin a a tswang mo Transvaal Supergroup. Go ya ka PalaeoMap ya SAHRIS, palo ya Ditshedi tsa Bogologolo e kwa tlase.

### TIKOLOGO YA LOAGO LE IKONOMI

Meepo ya MMT le Middelplaats e mo lefelong le le kgakala, mo toropo e e gaufi, Hotazel, e leng dikilometara di ka nnang 25 go tswa kwa lefelong la Porojeke e e akantshitsweng. E re ka lefelo leno le le seka-sekaka, dipolasi tse di kwa thoko di dikologile moepo wa MMT le Middelplaats. Ditiro tsa dipolasi tse di dikologileng gantsi ke tsa go itshedisa, mo ditiro tsa temothuo di lekanyeditsweng go diruiwa tse di fulang le diruiwa tsa diphologolo tsa naga. Ga go na merafe e e gaufi le lefelo la Porojeke e e akantshitsweng.

## 7. DITLHATHOBO TSA BAITSEANAPE

Ditlathobo tse di latelang tsa baitseanape di tla dirwa go neelana ka tshedimotsetso ya tsamaiso ya tetla ya go dirisa tikologo:

- Tlathobo ya Ditshedi tsa Mefutafuta mo Lefatsheng (Dimela le Diphologolo);
- Tlathobo ya Ditshedi tsa Mefutafuta mo Metsing a a Seng Letswai;
- Tlathobo ya Setso/Ngwaoboswa le Ditshedi tsa Bogologolo;

- Tlhatlhubo ya Mmu, Bokgoni jwa Lefatshe le Tiriso ya Lefatshe, le Thutopatlisiso ya Temothuo;
- Tlhatlhubo ya Metsi a a Kafa Tlase ga Lefatshe;
- Tlhatlhubo ya Boleng jwa Moya;
- Tlhatlhubo ya Modumo; le
- Kabelo ya Thuso ya Madi.

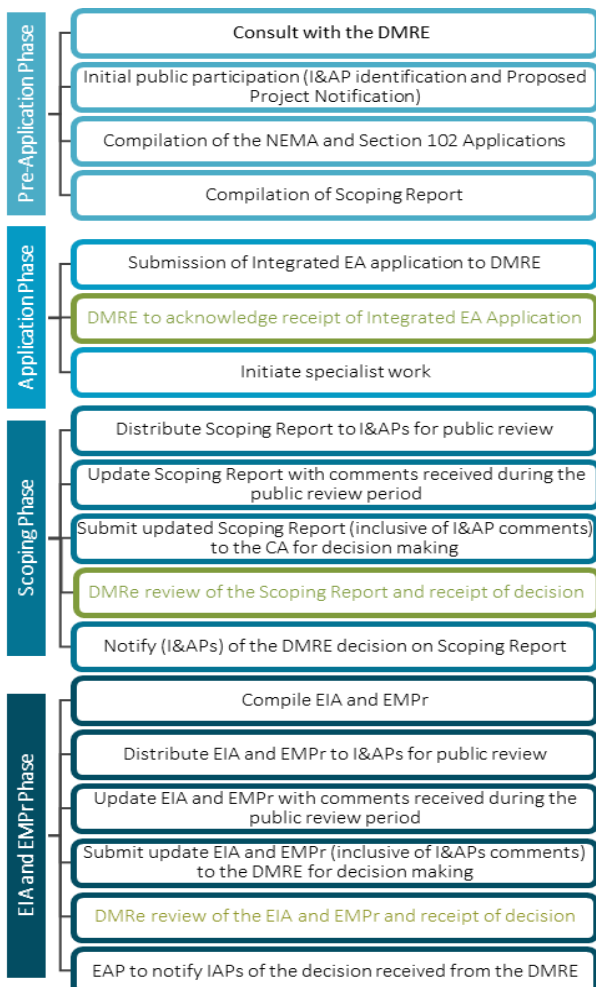
**Dikhopi tsa ditlhatlhubo tsa baitseanape tse di kwadilweng fa godimo di tla nna karolo ya S&EIA le EMPr, tse di tla romelwang go di-I&AP tsotlhe gore ba e sekaseke le go akgela ka tsone.**

## 8. TSAMAISO YA TETLA YA GO DIRISA TIKOLOGO LE YA GO TSAYA KAROLO GA SETŠHABA

### TSAMAISO YA TETLA YA GO DIRISA TIKOLOGO

Tsamaiso ya tetla ya go dirisa tikologo e neelana ka tshedimose tso e e amanang le dintlha tsa tsamaiso gammogo le tikologo e e tlileng go dirisiwa. E lemoga le go tthatlhoba, ka tirisanommogo le di-I&AP, melemo le mathata a ditlamorago mo ditsheding, setsong, le mo loagong le ikonoming. Gape tsamaiso ya tetla ya go dirisa tikologo e bega ka dikgato tsa botsamaisi tse di tlhokegang go mekamekana le ditlamorago ka tsela e e amogelesegang e bile e akaretsa dipatlafalo tsa dithulaganyo tsa go baya leitlho (mo go tlhokegang).

Porojeke e e akantshitsweng e tlile go tlhoka Tetla ya go Dirisa Tikologo [Environmental Authorisation (EA)] le phetogo ya EMPr ya ga jaana ya meepo, e re ka porojeke e akaretsa ditiro tse di mo lenaaneng la Melawana ya EIA, 2014. Kafa tlase ga NEMA, ditiro tse di mo lenaaneng di thibetswe go ka simolola go fitlhelela tetla e e kwadilweng e ebonwang go tswa kwa Molaoding yo o Maleba (DMRE). Go ya ka Karolo 102 ya MPRDA, EMPr e ka se fetolwe kgotsa ya farologana kwantle ga tumelelo e e kwadilweng ya DMRE. Tsamaiso ya tetla ya go dirisa tikologo e e tla latelwa go dira kopo ya ditetla tse di tlhalositsweng, ke **Tsamaiso ya S&EIA**. Dikgato tsa tsamaiso le dinako tse di beilweng di bontshitswe fa fatshe.



### TSAMAISO YA GO TSAYA KAROLO GA SETŠHABA

Boikaelelo jwa tsamaiso ya go tsaya karolo ga setšhaba ke go itsise di-I&AP ka Porojeke e e akantshitsweng le go ba naya tshono ya go ntsha mathata kgotsa matshwenyego a bone malebana le Porojeke e e akantshitsweng. Malebana le seno, di-I&AP di tla itsisiwe ka Porojeke e e akantshitsweng ka dipolatelyo tse di farologaneng, tse di tla akaretsang dikitsiso mo lefelong; dipapatso; le ka melaetsa e e romelwang ka imeili le SMS. Fa S&EIA le EMPr (go akaretsa ditlathlho tsa baitseanape) di weditswe, di-I&AP tso tse di tla itsisiwe ka go nna teng ga pego gore ba e sekaseke le go akgela ka yone mo malatsing a le 30. S&EIA le EMPr di tla nna teng go dirisiwa dipolatelyo tsa dijithale (weboasae ya SLR) kwantle le fa go dirilwe kopo ya dikhopi tsa pampiri. Ditshobokanyo Tse e Seng Tsa Setegeniki tsa S&EIA le EMPr le tsona di tla rulaganngwa (ka Seesemane, Seburu le Setswana), mme di tla anamisiwa ka imeili go di-I&AP tso tse di mo lenaaneng la tshedimose tso la porojeke. S&EIA le EMPr e tla tlhabololwa gore e akaretse dikagelo tso tse di amogetsweng ka nako ya tshakatsheko ya setšhaba. S&EIA le EMPr eno e e tlhabolotsweng, e e akaretsang dikagelo le matshwenyego otlhe a I&AP, e tla romelwa go DMRE gore e dire tshwetso.

Tsamaiso ya go tsaya karolo ga setšhaba e tla dirwa go ya ka dipatlafalo tsa Kgaolo 6 tsa Melawana ya EIA, 2014. Di-I&AP tse di lemogilweng le tse di tla amegang mo tsamaisong ya tetla ya go dirisa tikologo di kwadilwe fa fatshe:

#### DI-I&AP TSE DI AMEGANG MO TSAMAISONG YA TETLA YA GO DIRISA TIKOLOGO

##### BENG BA LEFATSHE, BADIRISI BA LEFATSHE LE DI-I&AP TSE DINGWE

- Beng ba lefatshe ba ba dikologileng, badirisi ba lefatshe le merafe.
- Mekgatlho le balekane ba e seng ba Puso.
- Meepo le madirelo a a dikologileng.
- Ditheo tsa puso.

##### MOLAODI YO O TSHWANELANG

- DMRE

##### BALAODI BA BA AKGELANG

- Lefapha Kapa Bokone la Tikologo le Tshireletso ya Tlhago.
- Lefapha la Dikgwa, Ditlhapi le Tikologo.
- Lefapha la Kapa Bokone la Temothuo, Merero ya Tikologo, Tlhabololo ya Metseselegae le Tlhabololo ya Lefatshe (go akaretsa Mokhomishenara wa Ditleleimi tsa Lefatshe).
- Setheo sa Aforika Borwa sa Metswedi ya Ngwaoboswa.
- Lefapha la Metsi le Kgeleloleswe.

##### BALAODI BA SELEGAE

- Masepala wa Kgaolo wa John Taolo Gaetsewe.
- Masepala wa Selegae wa Joe Morolong.

**Tsweetswee re itsise fa e le gore go na le batsayakarolo bape ba bangwe ba ba tshwanetseng go akarediwa.**



**HOTAZEL MANGANESE MINES (PTY) LTD  
TOKUMENTE YA TSHEDIMOSETSO YA LEMORAGO**

**GO KOPANNGWA GA DITHULAGANYO TSA TSAMAISO YA TIKOLOGO TSA  
MOEPO WA MAMATWAN LE TSA MOEPO WA MIDDELPLAATS, KAPA BOKONE**

**TLHAKOLE 2023**

<b>DINTLHA TSA MOTSAKAROLO YO O KGATLHEGANG LE YO O AMEGANG</b>	<b>LETLHA</b>	
<b>LEINA</b>		
<b>MOKGATLHO/KHAMPANI</b>		
<b>ATERESE YA POSO</b>		
	<b>KHOUTO YA POSO</b>	
<b>NOMORO YA MOGALA</b>		
<b>ATERESE YA IMEILI</b>		
<b>TWEETSWE NKWADISENG JAACA MOTSAKAROLO YO O KGATLHEGANG &amp; AMEGANG (I&amp;AP) E LE GORE NKA AMOGELA TSHEDIMOSETSO LE DIKITSISO TSE DI OKETSEGILENG KA NAKO YA TSAMAISO YA TETLA YA GO DIRISA TIKOLOGO</b>	<b>EE</b>	<b>NNYAA</b>
<b>O KA RATA GO AMOGELA DIKITSISO JANG?</b>	<b>IMEILI</b>	
	<b>POSO</b>	
	<b>SMS</b>	

**TWEETSWE KWALA DIKAGELO LE DIPOTSO TSA GAGO FANO (tweetswe dirisa pampiri e nngwe fa o batla)**

**TWEETSWE AKARETSANG BADIRI KA NNA/DITSALA/BAAGELANI BA BA LATELANG JAACA DI-I&AP TSA POROJEKE ENO:**

**Tweetswe romela foromo e e tladitsweng go:**

**Moikgolaganyi wa SLR: Mukondeleli Makoya**

**Mog: (011) 467 0945**

**Imeili: south32-emprconsolidation@slrconsulting.com**

Fa o neelana ka tshedimisetso ya gago ya botho go ikwadisa jaaka I&AP mo Porojekeng eno e e akantshitsweng, o dumelela SLR go laola tshedimisetso ya gago go ya ka Molao wa Tshireletso ya Tshedimisetso ya Botho, Molao 4 wa 2013. Fa o ikwadisa le go neelana ka dintlha tsa gago tsa go ikgolaganya jaaka Motsayakarolo yo o Kgatlhegang le yo o Amegang (I&AP) mo Porojekeng eno, o tla akarediwa mo lenaaneng la tshedimisetso la SLR la I&AP. Go tla tsewa gore e re ka o le I&AP mo Porojekeng eno, o letla SLR go boloka le go dirisa Tshedimisetso ya gago ya Botho jaaka karolo ya lenaane la tshedimisetso ya dintlha tsa go ikgolaganya mo Tlhatlhobong eno ya Ditlamorago mo Tikologong le mo Loagong (ESIA) le/kgotsa tse dingwe, le gore o tlhomamisa gore o a dumela gore SLR e ikgolaganye le wena malebana le ditiro tsa ESIA eno le/kgotsa tse dingwe. SLR e ka se dirise Tshedimisetso ya gago ya Botho, kwantle ga fa e le gore go letlelelwa kgotsa ke patlafalo ya ditiro tsa ESIA, kgotsa fa e le gore ke patlafalo ya molao kgotsa pholisi ya setšhaba. SLR e tla dirisa mekgwa ya pabalesego e e utlwalang le e e maleba go sireletsa Tshedimisetso ya Botho, le go tla ka tsela e e utlwalang go thibela go senyega, go latlhega kgotsa go fitlhelelwa mo go sa tshwanelang kgotsa go phasaladiwa go go sa tshwanelang ga tshedimisetso ya botho, kwantle ga fa e le patlafalo ya ditiro tsa ESIA kgotsa fa e le gore ke patlafalo ya Molao ope kgotsa pholisi epe fela ya setšhaba. O ka kopa gore Tshedimisetso ya gago ya Botho e phimolwe mo lenaaneng la tshedimisetso la I&AP ka nako epe fela ka go ikgolaganya le SLR

**RE LEBOGELA SEABE SA GAGO!!!**

