

Since 1978
ATEC Trans-Tool
has maintained
a reputation for
manufacturing and
supplying the most
complete line of
specialty tools and
equipment for the
transmission
industry.

Reproduction of this material in whole or in part is strictly prohibited without prior written consent by ATEC Trans-Tool, LP, including all part numbers, drawings, pictures, logos, or descriptions. Reproduction of any or any part of these items is civilly and/or criminally punishable by law.

Specifications and descriptions on products in this catalog may change without notice.

Copyright ©2007 ATEC Trans-Tool
All intellectual property and
copyrights reserved.

TRANSMISSION GENERAL TOOLS & EQUIPMENT

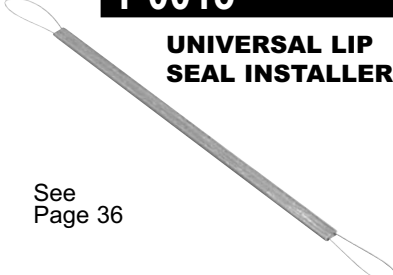
TRANSMISSION SERVICE

a. Case Sleaving	30
b. Bushing Driver Kits & Accessories	31-32
c. Transmission-Support & Holding	33
d. Air Test Plates	34
e. Clutch Spring Compressors	35
f. Specialty Tools & Equipment	36-38

TRANSMISSION
GEN. TOOLS-EQUIP

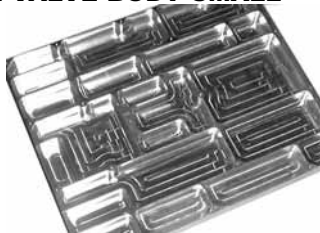
FEATURED PRODUCTS

T-0015
**UNIVERSAL LIP
SEAL INSTALLER**




See
Page 36

See
Page 37 **T-0170- M**
**METAL VALVE BODY SMALL
PARTS
TRAY**



T-0171
**TRANSMISSION
FOOT PRESS**




See
Page 35

See
Page 31 **T-0220-39**
**MASTER BUSHING
DRIVER KIT**

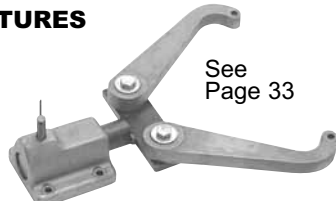


T-0158-HD
**CLUTCH
DRUM
SPRING
COMPRESSOR**



See
Page 42

T-0156-A
**FULL LINE TRANSMISSION
SUPPORT-HOLDING
FIXTURES**



See
Page 33

Contact Your Local Distributor
or Mobile Tool Truck Dealer



PH: 1-800-531-5978 24 Hr. FAX 210-225-2114
www.atec-trans-tool.com

TRANSMISSION TOOLS & EQUIPMENT

TRANSMISSION SERVICE

Case Sleeving Tool Kits

Our case sleeving tools allow rebuilders to bore out worn areas of a transmission case, such as the governor bore, and install a sleeve in this area. With more cases becoming hard-to-find and prices increasing, these tool kits will reduce rebuilding costs by quickly and easily refurbishing a case to be rebuilt.

T-0107

Governor Bore Repair Tool GM 350, 400



T-0107-D

Governor Bore Bushing Driver



30104-A

Governor Bore Bushing
For GM 350, 400
For T-0107 & T-0107-D

T-0495

Governor Bore Case Sleeving Tool Kit
For Ford C3, A4LD (RWD)



T-0495-SL

Bushing Replacement
For T-0495

T-1116

Rear Case Bushing Sleeving Tool Kit For Ford C6 ('66-'80)
Use T-2795-A adaptor for E4OD (RWD)



T-1116-SL-A

Bushing Replacement For T-1116 (rear w/o oil grooves)

T-1116-SL-B

Bushing Replacement For T-1116 (front w/ oil grooves)

T-1195

Governor Bore Case Sleeving Tool Kit
For GM 180/180C/Postal Vehicles

T-1195-SL

Bushing Replacement
For T-1195

Reproduction of this material in whole or in part is strictly prohibited without prior written consent by ATEC Trans-Tool, LP, including all part numbers, drawings, pictures, logos, or descriptions. Reproduction of any or any part of these items is civilly and/or criminally punishable by law.

T-1695

Governor Bore Case Sleeving Tool Kit
For FIOD-AOD (RWD) w/ Overdrive)
T-1690-SL-E AODE

T-1695-SL

Bushing Replacement For T-1695
AOD only

T-1690-SL-E

Bushing Replacement AODE only



T-2195

Governor Bore Case Sleeving Tool Kit
For Toyota, Isuzu, Volvo (RWD)

T-2195-SL

Bushing Replacement For T-2195



T-2494

Oil Pump Needle Bearing & Seal Tool For Ford AXOD

T-2494-SL

Bushing Replacement For T-2494



T-2495

Valve Body Cover Pump Driveshaft Bore Repair Tool

T-2495-SL

Bushing Replacement For T-2495



T-2795

Output Shaft Rear Washer Case Resurfacing Tool Kit
For Ford C6

T-2795-SL

Bushing Replacement
For T-2795

T-2795-A

E4OD (RWD) Adaptor
For T-1093, T-2795

Cuts case surface where the output shaft's rear washer is seated, creating the ability to install an oversized heavy duty bronze washer which will save the worn case.



T-2995

Rear Bushing Case Boring Tool
For 4L80E

T-2995-SL

Bushing Replacement
For T-2995



Contact Your Local Distributor
or Tool Truck Dealer



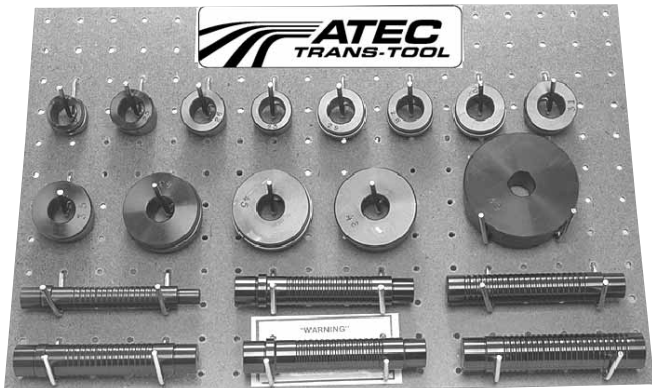
PH: 1-800-531-5978 24 Hr. FAX 210-225-2114
www.atec-trans-tool.com

TRANSMISSION TOOLS & EQUIPMENT

TRANSMISSION SERVICE

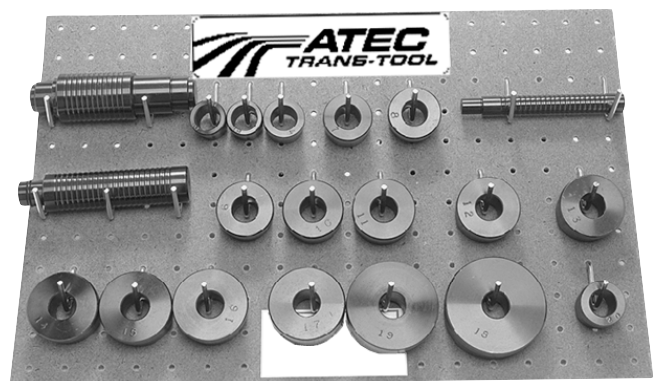
Bushing Driver Kits

BUSHING DRIVER KIT T-0220-19 19 Piece Solid Steel Kit



To be used to update the T-0220-20 bushing driver kit to make a complete 39 piece kit

BUSHING DRIVER KIT T-0220-20 20 Piece Solid Steel Kit



Drives most popular domestic bushings. Can be expanded in the future with T-0220-19

MASTER BUSHING DRIVER KIT- 39 PC T-0220-39

Most complete kit in the industry. Drives over 200 different bushing - foreign & domestic
Comes complete with numbered application chart and board

GM

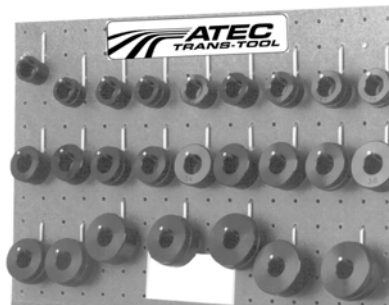
125/125C
180/180C
200/200-4R/200C
250/250-C
325/325-4L
350/350C
400, 440-T4
700-R4
Powerglide
Super Turbine 300

FORD

A4LD, AOD
ATX, C3,
C 4/5, C6,
FMX, Jatco

CHRYSLER

A404/413/470
727
904/999



All bushing drivers available individually For longer driver handle, order T-0220-DR06A

T-1093

UNIVERSAL DRIVER HANDLE

For threaded bushing drivers



T-0220-DR06A

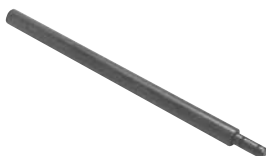
LONG UNIV. BUSHING DRIVER HANDLE



T-0220-EX

EXTENSION DRIVER HANDLE

For Multiple Step Bushing Driver Kits Only



T-0220-30

BUSHING DRIVER KIT 30 Piece



T-0280-C

CHISEL BUSHING CUTTER SEAL REMOVER

* Use curl cut method
* Also use as tailpipe cutter



Reproduction of this material in whole or in part is strictly prohibited without prior written consent by ATEC Trans-Tool, LP, including all part numbers, drawings, pictures, logos, or descriptions. Reproduction of any or any part of these items is civilly and/or criminally punishable by law.

Contact Your Local Distributor
or Mobile Tool Truck Dealer



PH: 1-800-531-5978 24 Hr. FAX 210-225-2114
www.atec-trans-tool.com

TRANSMISSION
GEN. TOOLS-EQUIP

TRANSMISSION TOOLS & EQUIPMENT

TRANSMISSION SERVICE

Bushing Driver Kits



T-0220-AOD

BUSHING DRIVER KIT

For Ford AOD



T-0220-RI

BEARING RACE INSTALLER

Patented
 * Adjustable for all races 1 9/16" to 2 7/16" I.D.
 * Impact resistant head for positive dead blow drive
 * Can use extension driver T-0220-TH



T-0220-350

BUSHING DRIVER KIT

For GM 250, 250C, 350, 350C



T-0220-TH

Long Dead Blow Extension Driver

(use with T-0220-RI)



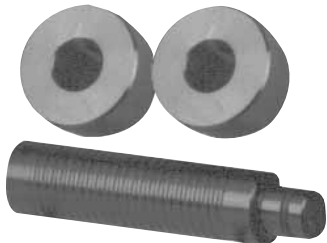
3 Piece Multiple Step Bushing Driver Kit



T-0220-USAFE

DRIVER KIT FOR STABILIZER BUSHING SEALS

10 Piece Kit
 Chrysler, GM, Ford, others



T-0220-440MM

BUSHING DRIVER KIT

Fits metric bushing in GM 440T4



T-0220-US-1

STABILIZER BUSHING & SEAL

Chrysler '78 and up left side - standard



T-0220-US-2

STABILIZER BUSHING & SEAL

Chrysler '78 and up left side - narrow



T-0220-US-3

STABILIZER BUSHING & SEAL

Chrysler '78 and up right side - narrow



T-0220-US-4

STABILIZER BUSHING & SEAL

GM '85 and up (440T4) either side



T-0220-US-5

STABILIZER BUSHING & SEAL

GM '80 and up either side



T-0220-US-6

STABILIZER BUSHING & SEAL

Ford '85 and up either side



T-0220-RM

UNIVERSAL BUSHING REMOVER KIT

For use with T-0154-HD & T-0154-C

Reproduction of this material in whole or in part is strictly prohibited without prior written consent by ATEC Trans-Tool, LP, including all part numbers, drawings, pictures, logos, or descriptions. eproduction of any or any part of these items is civilly and/or criminally punishable by law.

TRANSMISSION GEN. TOOLS-EQUIP

Contact Your Local Distributor or Tool Truck Dealer



PH: 1-800-531-5978 24 Hr. FAX 210-225-2114
 www.atec-trans-tool.com

TRANSMISSION TOOLS & EQUIPMENT

TRANSMISSION SERVICE

Transmission Support & Holding Fixtures

TRANSMISSION HOLDING FIXTURE



T-0156-A

Includes Base

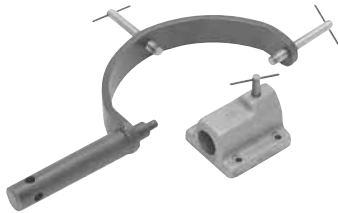
- * Bench mounts
- * Full 360 degree swing
- * 90 degree locking increments
- * Fits popular domestic & foreign transmissions

T-0156-AF

Without Base

(Same features as above)

GM TRANSMISSION HOLDING FIXTURE



T-0156-B

Includes Base

- * Bench mounts
- * Full 360 degree swing
- * 90 degree locking increments
- * All steel construction
- * Allows work comfort at any angle
- * Allows easy access to work on valve body

T-0156-BF

Without Base

(Same features as above)



T-0156-BB

HOLDING FIXTURE BASE

(Adapts To:)

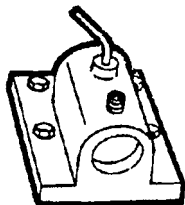
- | | |
|--------------|-----------|
| T-0156-AF | T-0156-BF |
| T-1200-F | T-2409-F |
| T-2800-F | T-0156-B |
| Bench Mounts | |

T-0156-KM

UNIVERSAL HOLDING FIXTURE BASE

For use with T-2018-F GM holding fixture

Bench Mounts



GENERAL SERVICE SUPPORT AND HOLDING FIXTURES ON PAGES 17

GM TRANSMISSION HOLDING FIXTURE

T-1200

Includes Base

For GM 125/125C
GM 440-T4

- * Bench mounts



T-1200-F

Without Base

(Same features as above)

GM TRANSMISSION HOLDING FIXTURE

T-2018-F

Without Base

(For Base Order
T-0156-KM)

For GM 4T40-E

- * Bench mounts



FORD TRANSMISSION HOLDING FIXTURE

T-2409-F

Without Base
(For Base Order
T-0156-BB)

For Ford Transaxles



FORD TRANSMISSION HOLDING FIXTURE

T-2800-F

Without Base
(For Base Order
T-0156-BB)

For Ford E40D



TRANSMISSION GEN. TOOL-EQUIP

Reproduction of this material in whole or in part is strictly prohibited without prior written consent by ATEC Trans-Tool, LP, including all part numbers, drawings, pictures, logos, or descriptions. Reproduction of any or any part of these items is civilly and/or criminally punishable by law.

Contact Your Local Distributor
or Mobile Tool Truck Dealer



PH: 1-800-531-5978 24 Hr. FAX 210-225-2114

www.atec-trans-tool.com

TRANSMISSION TOOLS & EQUIPMENT

TRANSMISSION SERVICE

Air Test Plates

Air test plates allows testing a transmission for leaks and valve body performance without complete reassembly or filling the transmission with fluid. Our air test plates are machined for reliable testing

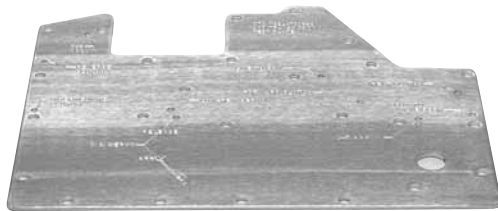
GENERAL MOTORS



T-2017

Applications	Page	Part Number
125C (3T40)	41	T-1237
180C (3L30)	42	T-1047
200C	45	T-1087
200-4R	45	T-1717
250, 350	48	T-1017
350C	48	T-1017-A
325-4L		T-1117
400 (3L80)	51	T-1247
440-T4 (4T60)	52	T-2017
(4T60-E)	52	T-2017-A
700-R4 (4L60)	58	T-1517
(4L60-E)	58	T-1517-A
(4L80-E)	61	T-2917

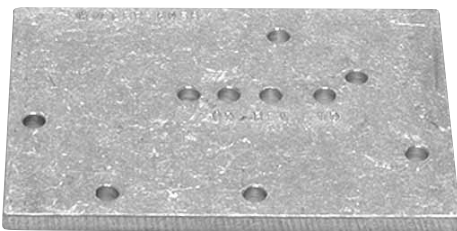
FORD



T-1617

Applications	Page	Part Number
C-3	64	T-0417
A4LD / 5R55E / 4R44E	67	T-2617
C-6	69	T-0427
AOD	74	T-1617
AODE / 4R70W	74	T-1617-A
ATX	77	T-1817
AXOD	82	T-2417
AXOD-E	82	T-2417-A
E4OD / 4R100	84	T-2817
4EAT, G4AEL	98	T-2717

CHRYSLER



T-1442

Applications	Page	Part Number
A-500, 904, 727	92	T-1317
A-604	93	T-1442
404, 413, 470	91	T-1427
A-606	95	T-3217

MISCELLANEOUS



T-2147

Applications	Page	Part Number
Toyota 130	100	T-2147
Hyundai		T-5217
Suzuki		T-5117

Reproduction of this material in whole or in part is strictly prohibited without prior written consent by ATEC Trans-Tool, LP, including all part numbers, drawings, pictures, logos, or descriptions. Reproduction of any or any part of these items is civilly and/or criminally punishable by law.

Contact Your Local Distributor
or Tool Truck Dealer

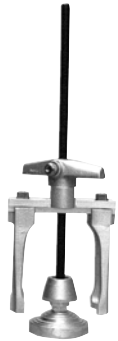


PH: 1-800-531-5978 24 Hr. FAX 210-225-2114
www.atec-trans-tool.com

TRANSMISSION TOOLS & EQUIPMENT

TRANSMISSION SERVICE

Clutch Spring Compressors



T-0157

**UNIVERSAL QUICK
LOCK SPRING
COMPRESSOR**



T-0157- K

**COMPRESSION
RING KIT**



T-0158

**TRANSMISSION
CLUTCH SPRING
COMPRESSOR**

(available individually)
Only tool you will need to
remove clutch pistons from
virtually all automatic
transmissions, foreign and
domestic

- * Adapters included for
Ford ATX, AOD, AXOD
- * Use on clutch drums with
center shafts.

[Order adapter T-1456 for
use on Chrysler 604]



T-0158- SPA

**SNAPRESS
UPDATE KIT**

Updates early model
Snapress * compressors to
the T-0158-SP version



T-0158- ZF18

**3-4 CLUTCH SPRING
COMPRESSOR
ADAPTER**

For ZF-HP18

TRANSMISSION FOOT PRESS



T-0171

For removal of snap rings
in drum.

For removal of snap rings
in rear of case.

Includes longer legs for
late model transmissions.

INDIVIDUAL ADAPTERS



T-0158- J

**JAWS
For T-0158**



T-0158- HD

**CLUTCH DRUM
SPRING
COMPRESSOR**

MOST ECONOMICAL

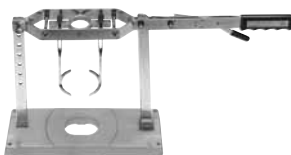
- * Long legs for deep
drums
- * Mounts on work bench
or vise



T-0158- 4L

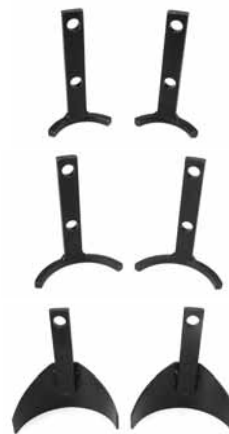
**SPRING
COMPRESSOR
LEG SET**

For use with T-0158-HD
and T-0171 only



T-0158- SP

**SNAPRESS
CLUTCH SPRING
COMPRESSOR**



T-0171- A

Small loop

T-0171- B

Large loop

T-0171- C

Cone shape



T-0171- J

**ADJUSTABLE SPRING
COMPRESSOR
ADAPTER**

Fits T-0171

- * Compresses 3 areas for
more positive action.
- * A simple twist for all
adjustments
- * Heavy duty construction

Reproduction of this material in whole or in part is strictly prohibited without prior written consent by ATEC Trans-Tool, LP, including all part numbers, drawings, pictures, logos, or descriptions. Reproduction of any or any part of these items is civilly and/or criminally punishable by law.

Contact Your Local Distributor
or Mobile Tool Truck Dealer



PH: 1-800-531-5978 24 Hr. FAX 210-225-2114

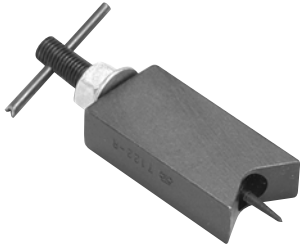
www.atec-trans-tool.com

TRANSMISSION
GEN. TOOLS-EQUIP

TRANSMISSION TOOLS & EQUIPMENT

TRANSMISSION SERVICE

Specialty Tools And Equipment

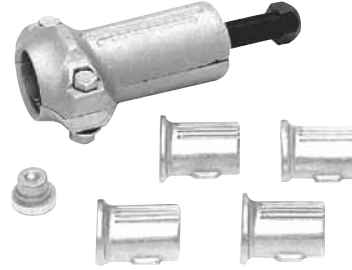


T-0004

**VALVE BODY LOCK
PIN REMOVER**

T-0004- RT

REPLACEMENT TIP



T-0033- A

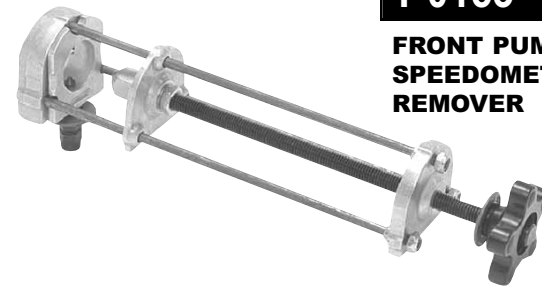
**HEAVY DUTY FRONT
PUMP REMOVER**

- * E-Z removal of Ford, GM and Chrysler front pumps.
- * Quick change boots adapt for GM & Chrysler
- * Slide hammer adaptable
- * Removes pump without it rocking



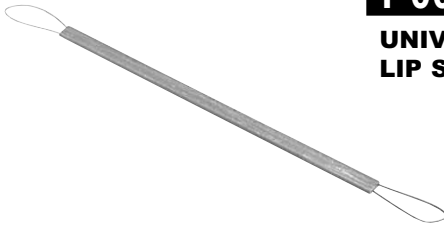
T-0007

**UNIVERSAL
SPEEDOMETER
DRIVEN GEAR
REMOVER**



T-0153- HD

**FRONT PUMP &
SPEEDOMETER GEAR
REMOVER**



T-0015

**UNIVERSAL
LIP SEAL INSTALLER**

T-0164

PLUG - A - SEAL



T-0030- A

**" H " GAUGE
UNIVERSAL
FRONT PUMP
CLEARANCE GAUGE**

Longer, more coverage



T-0170

SMALL PARTS TRAY

GET ORGANIZED

- * Made of oil resistant plastic
- * 13.5" x 18"
- * 15 compartments



T-0033

**UNIVERSAL PUMP
REMOVER**

Quickly removes
conventional type pumps
without damage



T-0170- A

**VALVE BODY PARTS
TRAY**

- * Made of oil resistant plastic
- * 13.5" x 18"
- * 30 compartments keep valve body parts separated

Reproduction of this material in whole or in part is strictly prohibited without prior written consent by ATEC Trans-Tool, LP, including all part numbers, drawings, pictures, logos, or descriptions. Reproduction of any or any part of these items is civilly and/or criminally punishable by law.

Contact Your Local Distributor
or Tool Truck Dealer

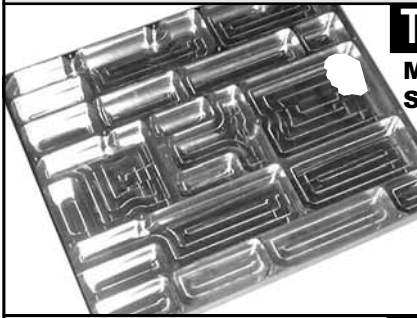


PH: 1-800-531-5978 24 Hr. FAX 210-225-2114
www.atec-trans-tool.com

TRANSMISSION TOOLS & EQUIPMENT

TRANSMISSION SERVICE

Specialty Tools And Equipment



T-0170- M

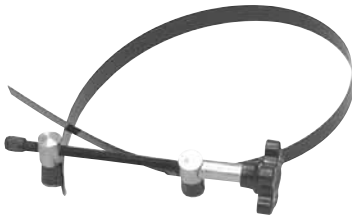
METAL VALVE BODY SMALL PARTS TRAY

- * Heavy duty metal construction

T-0222

GM & CHRYSLER FRONT PUMP ALIGNMENT BAND

The only tool needed for most GM & Chrysler transmissions



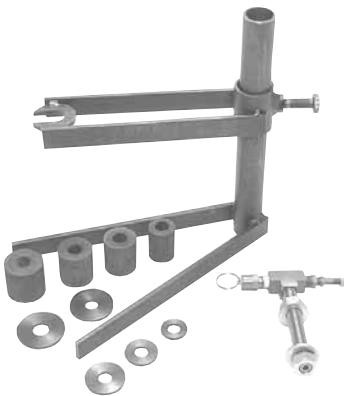
T-0222- A

FORD FRONT PUMP ALIGNMENT BAND

T-1052

UNIVERSAL TORQUE CONVERTER LEAK TESTER

- * Fits domestic & foreign
- * Includes fittings and adapters
- * Detects even smallest leaks
- * Instruction Manual



RPK-1052

REPLACEMENT PARTS KIT FOR T-1052

T-1081

CONVERTER HOUSING SEAL REMOVER

Use with T-0154-HD
T-0099



Reproduction of this material in whole or in part is strictly prohibited without prior written consent by ATEC Trans-Tool, LP, including all part numbers, drawings, pictures, logos, or descriptions. Reproduction of any or any part of these items is civilly and/or criminally punishable by law.

T-1090- HD

OIL COOLER LINE FLUSHER

- * Completely self contained
- * Closed filtering system reuses cleaning fluid
- * Positive displacement pump
- * Carbon bearings for heavy-duty operation
- * All bronze pump body
- * Replaceable filter cartridge
- * Heavy-duty motor
- * Includes: hoses, filter and fittings
- * Ready for operation
- * A must for late model and lock up units



REPLACEMENT FILTER (For T-1090-HD...above)

001730

T-1091

PULSATING TRANSMISSION COOLER FLUSHER

Flushes cooler before installing rebuilt transmission. Air operated. Removable filter. Includes adapters and hoses. No solvents.



T-3425

COOLER LINE BANJO FITTINGS

- * Quick easy hook-up for flushing transmission cooler
 - * Use w/ large flusher or aerosol cans
- For Ford 4R20E, 4EAT
Chrysler diesel truck,
Mazda, Nissan, Infinity,
B.M.W., Mercedes



Contact Your Local Distributor
or Mobile Tool Truck Dealer



PH: 1-800-531-5978 24 Hr. FAX 210-225-2114
www.atec-trans-tool.com

TRANSMISSION
GEN. TOOLS-EQUIP

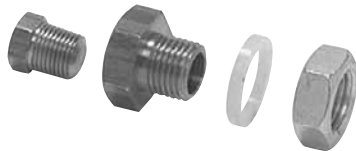
TRANSMISSION TOOLS & EQUIPMENT

TRANSMISSION SERVICE

Specialty Tools And Equipment

T-3020

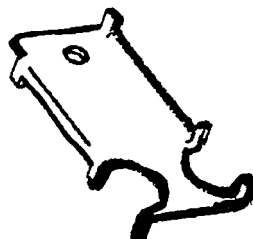
DRAIN PLUG KIT



- * Installs with one simple drilled hole
- * Eliminates oil spills when changing fluid or rebuilding

T-3237

TRS ALIGNMENT TOOL



Universal

30110

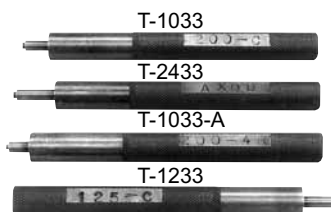
GM 350 ADAPTER PLATE



- * Replace the Chevrolet 350 & 400 transmission with the plentiful B.P.O.C. 350 & 400
- * Replace the 4-speed stick with the super performance B.P.O.C.400

T-5033- K

REVERSE CLUTCH FEED OIL PIPE SEAL INSTALLER KIT (4 Pieces)



AXOD, 125, 125C, 200, 200C, 200-4R
Also sold separately.

T-8010

TRANSMISSION TEMPERATURE GAUGE



- * 150 - 320 degrees
- * Includes mounting bracket, lamp and sending unit

T-3236

UNIVERSAL BEARING SPLITTER



Heavy duty fixture for removing bearing and gears

NEW ITEM

T-9201

"ONE FITS ALL" GRINDING WHEEL

IMAGE NOT AVAILABLE

- * Super abrasive cutting properties
- * Lasts up to ten times longer than regular wheels
- * Use of corner cutters eliminated

- - WANTED NEW TOOLS - -
IF YOU HAVE SUGGESTIONS FOR TOOLS YOU WOULD LIKE TO SEE INCLUDED IN OUR LINE OF PRODUCTS PLEASE DROP US AN EMAIL OR LETTER WITH A COMPLETE DESCRIPTION OF THE PRODUCT AND, IF POSSIBLE, A PHOTO, ADVERTISEMENT OR FLYER.

Reproduction of this material in whole or in part is strictly prohibited without prior written consent by ATEC Trans-Tool, LP, including all part numbers, drawings, pictures, logos, or descriptions. Reproduction of any or any part of these items is civilly and/or criminally punishable by law.

Contact Your Local Distributor
or Tool Truck Dealer



PH: 1-800-531-5978 24 Hr. FAX 210-225-2114
www.atec-trans-tool.com

**GENERAL MOTORS
OLD TO NEW
TRANSMISSION
CONVERTIONS**

AUTOMATIC TRANSMISSION SPECIFIC TOOLS

125C	(3T40)
180C	(3L30)
180C-4 Spd Elec.....	(4L30-E)
400	(3L80)
4 Spd Elec.....	(4L80-E)
440-T4	(4T60)
440-T4 Elec	(4T60-E)
475 (HD400)	(3L80-HD)
700-R4	(4L60)
700-R4 Elec.....	(4L60-E)
MH1	(4T80-E)
4 Spd FWD	(4T40-E)

FOR: GENERAL MOTORS

Transmission Type

a. 125, 125C (3T40) (3T40-E).....	40-41
b. 180, 180C (3L30) (4L30-E).....	42-43
c. 200, 200C, 200-4R	44-45
d. 250, 250-C, 350, 350C	46-48
e. 325, 325-4L	49
f. 375, 400 (3L80), 425, 475 (3L80-HD)	50-51
g. 440-T4, F7, (4T60) (4T60-E) (4T65-E)	52-54
h. (4T40-E)	55
i. (4T80-E)	56
j. 700-R4 (4L60) (4L60-E)	57-59
k. (4L80-E)	60-61
l. Powerglide.	62
m. JF403-E (Nissan)	62

Reproduction of this material in whole or in part is strictly prohibited without prior written consent by ATEC Trans-Tool, LP, including all part numbers, drawings, pictures, logos, or descriptions. Reproduction of any or any part of these items is civilly and/or criminally punishable by law.

Specifications and descriptions on products in this catalog may change without notice.

Copyright ©2007 ATEC Trans-Tool
All intellectual property and copyrights reserved.

FEATURED PRODUCTS

T-1503

STATOR SHAFT TEFLON SEAL INSTALLER RESIZER



See Page 58

T-0158-HD

CLUTCH DRUM SPRING COMPRESSOR



See Page 42

T-2926

FOURTH CLUTCH PISTON & HOUSING LIP SEAL



See Page 61

INSTALLER PROTECTOR KIT

T-1574

TURBINE SHAFT TEFLON SEAL INSTALLER-RESIZER



See Page 59

See Page 53

T-2004

INPUT SHAFT TEFLON SEAL INSTALLATION KIT



See Page 58

T-1055

OIL PUMP REMOVER



Contact Your Local Distributor
or Mobile Tool Truck Dealer



PH: 1-800-531-5978 24 Hr. FAX 210-225-2114
www.atec-trans-tool.com

GM TRANSMISSION
TOOLS-EQUIP

AUTOMATIC TRANSMISSION TOOLS

GENERAL MOTORS

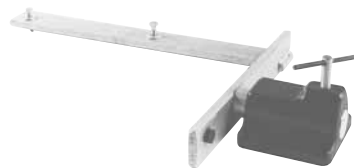
125, 125C (3T40) (3T40E)



T-0154- HD

SLIDE HAMMER SET HEAVY DUTY

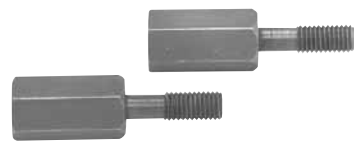
* With 3/8" threaded shaft tip



T-1200

HOLDING FIXTURE WITH BASE

(Also 440-T4, 4T60-E)



T-0154- E

1/2" SLIDE HAMMER ADAPTERS

[Use with T-0154-HD]

T-1200- F

HOLDING FIXTURE WITHOUT BASE

T-1201

OUTPUT SHAFT C-RING REMOVER & INSTALLER

(Also 440-T4, 4T60-E)



T-1264

CONVERTER END PLAY CHECKER

Also use as a side gear checking tool
(Also 200-4R, 4T60E, 4L60E, 3L80)

T-1202- A

CLUTCH ASSEMBLY AND FINAL DRIVE REMOVER-INSTALLER

(Also 440-T4, 4T60-E)



T-1059- B

METAL LO-REVERSE CLUTCH CENTER SUP- PORT UNIT REMOVER- INSTALLER

(Also 200, 200C, 325, 325-4L)

T-1203

OUTPUT SHAFT LOAD- ING AND ALIGNING TOOL

(Also 325, 325-4L, 440-T4, 4T60-E)



T-1059-HD

METAL LO-REVERSE CLUTCH CENTER SUP- PORT UNIT REMOVER- INSTALLER

* Positive locking action.
Works with or without
bushing intact
* Built-in slide hammer - to
remove "bound" housings.
(Also 200, 200C, 325, 325-4L)

T-1205

SEAL BEARING RACE INSTALLER

[Use with T-1093]

(Also 440-T4, 4T60-E)



T-1112

CUP PLUG INSTALLER

(Also 325, 325-4L)

Reproduction of this material in whole or in part is strictly prohibited without prior written consent by ATEC Trans-Tool, LP, including all part numbers, drawings, pictures, logos, or descriptions. Reproduction of any or any part of these items is civilly and/or criminally punishable by law.

Contact Your Local Distributor
or Tool Truck Dealer



PH: 1-800-531-5978 24 Hr. FAX 210-225-2114
www.atec-trans-tool.com

AUTOMATIC TRANSMISSION TOOLS

GENERAL MOTORS

125, 125C (3T40) (3T40E)



T-1206

PARK NEUTRAL SWITCH ALIGNER
For (3T40E)

(Also 4T60E)



T-1237

AIR TEST PLATE



T-1207

AXLE SHAFT PULLER
For (3T40E)
Tripot drive joint '81- up

[Use with T-0154-HD]



T-1238

AXLE SHAFT REMOVER

[Use with T-0154-HD]



T-1208

AXLE SHAFT SEAL INSTALLER
Installs axle seal w/o
removal of output shaft
(Use with T-1093)

(Also: 440-T4, 4T60,
4T60-E)



T-1239

BAND APPLY PIN GAUGE



T-1208-A

RIGHT & LEFT AXLE SEAL INSTALLER
* Installs axle seal without
removal of output shaft,
while in or out of car.

(Also 440-T4)



T-1263

CONVERTER SEAL INSTALLER



T-1217

BOOT SEAL CLAMP INSTALLER



T-1274

TURBINE SHAFT SEAL INSTALLER - RESIZER

125 cover side only

(Also 440-T4)



T-1233

125/125C REVERSE CLUTCH FEED OIL PIPE SEAL INSTALLER



T-1274-A

TURBINE SHAFT SEAL INSTALLER-RESIZER

125C case side only

(Also 440-T4)

Reproduction of this material in whole or in part is strictly prohibited without prior written consent by ATEC Trans-Tool, LP, including all part numbers, drawings, pictures, logos, or descriptions. Reproduction of any or any part of these items is civilly and/or criminally punishable by law.

GM TRANSMISSION TOOLS-EQUIP

Contact Your Local Distributor
or Mobile Tool Truck Dealer



PH: 1-800-531-5978 24 Hr. FAX 210-225-2114
www.atec-trans-tool.com

AUTOMATIC TRANSMISSION TOOLS

GENERAL MOTORS

180, 180C (3L30) (4L30-E)



T-0030- A

**" H " GAUGE
UNIVERSAL FRONT
PUMP CLEARANCE
GAUGE**

Longer more coverage



T-0085

**FRONT PUMP
SEALER TOOL**



T-0131

**EXTENSION HOUSING
SEAL INSTALLER**



T-0134

**FRONT PUMP SEAL
INSTALLER**



T-0154- HD

**HEAVY DUTY SLIDE
HAMMER SET**

With 3/8" threaded shaft tip



T-0158- HD

**CLUTCH DRUM
SPRING
COMPRESSOR**

(Other models on pg 49)



T-0160

**EXTENSION HOUSING
BUSHING REMOVER
AND INSTALLER**

(Also 200, 200C, 200-4R)



T-0160- A

**EXTENSION HOUSING
BUSHING REMOVER-
INSTALLER & OUTPUT
SHAFT SUPPORT
FIXTURE**



T-1001

**SHIFT LEVER SEAL
REMOVER-INSTALLER**

Does not require
draining fluid



T-1001- PV

**SHIFT LEVER SEAL
REMOVER-INSTALLER**

Does not require
draining fluid

Longer Version



T-1047

AIR TEST PLATE



T-1055

OIL PUMP REMOVER
For (4L30-E)



T-1068

**FRONT END PLAY
CHECKING ADAPTER**
For (4L30-E)

[Use with T-1055]



T-1080

**CONVERTER
HOUSING TO FRONT
PUMP ALIGNMENT**
Early 1969-1981 No 4L30E

T-1080- PV

**SAME AS ABOVE FOR
POSTAL VEHICLES**

Reproduction of this material in whole or in part is strictly prohibited without prior written consent by ATEC Trans-Tool, LP, including all part numbers, drawings, pictures, logos, or descriptions. Reproduction of any or any part of these items is civilly and/or criminally punishable by law.

AUTOMATIC TRANSMISSION TOOLS

GENERAL MOTORS

180, 180C (3L30) (4L30-E)



T-1080-A

CONVERTER HOUSING TO FRONT PUMP ALIGNMENT TOOL
Late 1982-Up
Pontiac Only
No postal vehicles
3L30E



T-1080-B

PUMP ALIGNMENT TOOL

4L30E



T-1081

CONVERTER HOUSING SEAL REMOVER

[Use with T-0154-HD
T-0099]



T-1082

SECOND CLUTCH PISTON SEAL INSTALLER AND PROTECTOR



T-1085-A

THIRD CLUTCH SNAP RING COMPRESSOR

Late '79 - up



T-1088

OIL PUMP SUN GEAR INSTALLER

[Use with T-1093]



T-1089

SERVO PISTON RING INSTALLER



T-1264

CONVERTER END PLAY CHECKER
Also use as a side gear checking tool

(Also 200-4R, 4T60E, 4L60E, 3L80)



T-2012

CRANKSHAFT HUB HOLDING FIXTURE
For 4L30-E

To allow removal of the hold-down nut.



T-2013

REAR HUB HOLDING TOOL
For 4L30-E

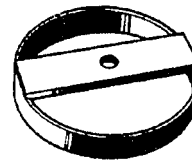
Also hold axle flange & transmission flange.



T-2014

EXTENSION HOUSING SEAL INSTALLER
For 4L30-E

Used to install to the proper depth.



T-2039

OVERRUN CLUTCH SPRING COMPRESSOR ADAPTER



T-2040

SERVO-3rd CLUTCH SPRING COMPRESSOR
For 3L30, 4L30-E



T-2041

ALIGNMENT PIN
For 3L30, 4L30-E
2 required
(Also 250, 350)



T-2143

TURBINE SHAFT SIZING RING TOOL
[For 4L30E]

Reproduction of this material in whole or in part is strictly prohibited without prior written consent by ATEC Trans-Tool, LP, including all part numbers, drawings, pictures, logos, or descriptions. Reproduction of any or any part of these items is civilly and/or criminally punishable by law.

Contact Your Local Distributor
or Mobile Tool Truck Dealer



PH: 1-800-531-5978 24 Hr. FAX 210-225-2114

www.atec-trans-tool.com

GM TRANSMISSION
TOOLS-EQUIP

AUTOMATIC TRANSMISSION TOOLS

GENERAL MOTORS

200, 200C, 200-4R



T-0030- A
"H" GAUGE
UNIVERSAL FRONT PUMP
CLEARANCE GAUGE



T-0033
HEAVY DUTY FRONT
PUMP REMOVER



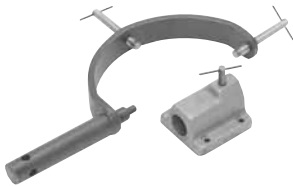
T-0126
ACCUMULATOR PISTON
COMPRESSOR ADAPTER
 (Also: 375, 400, (3L80) 475 (3L80-HD))



T-0127
ACCUMULATOR-
SERVO PISTON
REMOVER
 [Use with T-0126]
 (Also: 325, 400 (3L80) (3L80-HD))



T-0131
EXTENSION HOUSING
SEAL INSTALLER



T-0156- B
HOLDING FIXTURE
WITH BASE



T-0156- BF
FIXTURE W/O BASE

T-0160
EXTENSION HOUSING
BUSHING REMOVER
AND INSTALLER
 Can be used while in car
 (Also: 3L30)



T-0160- A
EXTENSION HOUSING
BUSHING REMOVER-
INSTALLER &
OUTPUT SHAFT
SUPPORT FIXTURE
 *Speeds up process



T-0166
LINE A PUMP KIT



T-0222
FRONT PUMP
ALIGNMENT BAND



T-1001
SHIFT LEVER SEAL
REMOVER-INSTALLER



T-1033
REVERSE CLUTCH FEED OIL PIPE
SEAL INSTALLER For 200, 200C



T-1033- A
REVERSE CLUTCH FEED OIL PIPE
SEAL INSTALLER For 2004-R



T-1055
OIL PUMP REMOVER
& END PLAY TOOL
 [Use with T-1068]
 (Also 700-R4)



T-1056
DIRECT CLUTCH LIP
SEAL INSTALLER
AND PROTECTOR
 (Also 325, 325-4L)



T-1057
LO-REVERSE CLUTCH
LIP SEAL INSTALLER
AND PROTECTOR
 (Also 325, 325-4L)



T-1264
CONVERTER END
PLAY CHECKER

Reproduction of this material in whole or in part is strictly prohibited without prior written consent by ATEC Trans-Tool, LP, including all part numbers, drawings, pictures, logos, or descriptions. Reproduction of any or any part of these items is civilly and/or criminally punishable by law.

Contact Your Local Distributor
 or Tool Truck Dealer

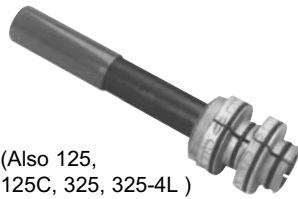


PH: 1-800-531-5978 24 Hr. FAX 210-225-2114
www.atec-trans-tool.com

AUTOMATIC TRANSMISSION TOOLS

GENERAL MOTORS

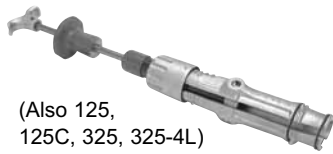
200, 200C, 200-4R



(Also 125, 125C, 325, 325-4L)

T-1059- B

METAL LO-REVERSE CLUTCH CENTER SUPPORT UNIT REMOVER AND INSTALLER



(Also 125, 125C, 325, 325-4L)

T-1059- HD

HEAVY DUTY LO-REVERSE CLUTCH CENTER SUPPORT UNIT REMOVER AND INSTALLER



T-1060
OUTPUT SHAFT & REAR UNIT SUPPORT FIXTURE
200, 200C Only
[For 200-4R must use T-1760]



T-1060- P
REPLACEMENT PLUNGER
FOR T-1060



T-1060- A
OUTPUT SHAFT & REAR UNIT SUPPORT FIXTURE
*Doubles as holding fixture



T-1061

INTERMEDIATE BAND APPLY PIN GAUGE
(Also: 325, 325-4L)



T-1063
PUMP SEAL INSTALLER
(Also: 700-R4, 4L60)



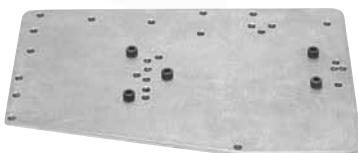
[Use with T-1055]

T-1068
END PLAY CHECKING FIXTURE ADAPTER 245MM TORQUE CONVERTER



T-1072

SNAP RING REMOVER AND INSTALLER



T-1087

AIR TEST PLATE
200C Only

[For 200-R4 use T-1717]



T-1702

PRESSURE REGULATOR VALVE SNAP RING INSTALLER
For 200-4R Only
(Also 700-R4, 4L60)



T-1703

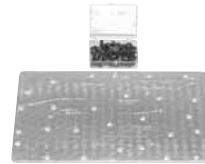
FRONT PUMP SPRING LOADER TOOL



T-1705

FOURTH CLUTCH COMPRESSOR AND CENTER SUPPORT REMOVER TOOL

For 200-4R Only



T-1717

VALVE BODY AIR TEST PLATE

For 200-4R Only



T-1727

OVERRUN CLUTCH INNER PISTON LIP SEAL INSTALLER PROTECTOR

For 200-4R Only



T-1735

SERVO COVER DEPRESSOR

* For use with pan on
* On or off car use (Also 700-R4)



T-1739

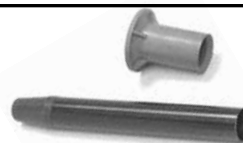
FORWARD & DIRECT CLUTCH REMOVER & INSTALLER, END PLAY CHECKER AND SHAFT BUSHING REMOVER For 200-4R Only



T-1760

OUTPUT SHAFT SUPPORT FIXTURE

For 200-4R Only [Use with T-1060]



T-1774

TURBINE SHAFT SEAL INSTALLER-RESIZER

For 200-4R Only

Reproduction of this material in whole or in part is strictly prohibited without prior written consent by ATEC Trans-Tool, LP, including all part numbers, drawings, pictures, logos, or descriptions. Reproduction of any or any part of these items is civilly and/or criminally punishable by law.

Contact Your Local Distributor
or Mobile Tool Truck Dealer



PH: 1-800-531-5978 24 Hr. FAX 210-225-2114

www.atec-trans-tool.com

GM TRANSMISSION
TOOLS-EQUIP

AUTOMATIC TRANSMISSION TOOLS

GENERAL MOTORS

250, 250C, 350, 350C



T-0030- A
"H" GAUGE
UNIVERSAL FRONT
PUMP CLEARANCE
GAUGE

Longer & more coverage



T-0033
HEAVY DUTY FRONT
PUMP REMOVER



T-0033- A
HEAVY DUTY FRONT
PUMP REMOVER



T-0085
FRONT PUMP
SEALER TOOL



T-0107
GOVERNOR BORE
REPAIR TOOL

[Use with T-30104-A,
 T-0107-D]



T-0107- D
GOVERNOR BORE
BUSHING DRIVER

[Use with T-30104-A,
 T-0107]



T-0127
ACCUMULATOR
SERVO PISTON
REMOVER



T-0131
EXTENSION HOUSING
SEAL INSTALLER



T-0134
FRONT PUMP SEAL
INSTALLER



T-0135
LIP SEAL INSTALLER
PROTECTOR KIT

Available Individually

Forward

T-0135- A

Direct

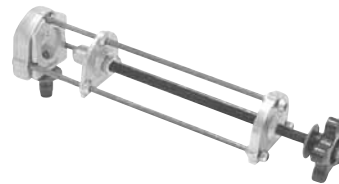
T-0135- B

Intermediate

T-0135- C



T-0151
REAR CLUTCH
SPRING
COMPRESSOR



T-0153- HD
FRONT PUMP &
SPEEDOMETER
GEAR REMOVER



T-0154- HD
HEAVY DUTY SLIDE
HAMMER SET
 With 3/8" threaded
 shaft tip

Reproduction of this material in whole or in part is strictly prohibited without prior written consent by ATEC Trans-Tool, LP, including all part numbers, drawings, pictures, logos, or descriptions. Reproduction of any or any part of these items is civilly and/or criminally punishable by law.

GM TRANSMISSION TOOLS-EQUIP

Contact Your Local Distributor
 or Tool Truck Dealer

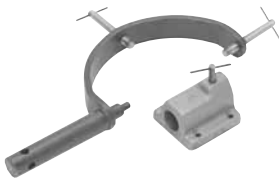


PH: 1-800-531-5978 24 Hr. FAX 210-225-2114
www.atec-trans-tool.com

AUTOMATIC TRANSMISSION TOOLS

GENERAL MOTORS

250, 250C, 350, 350C



T-0156- B

**TRANSMISSION
HOLDING FIXTURE
WITH BASE**

T-0156- BF

ABOVE W/O BASE



T-0814- A

**ACCUMULATOR
PRY BAR**



T-0814- C

**ACCUMULATOR
PRY BAR
WITH BOLT**



T-0160- A

**EXTENSION HOUSING
BUSHING REMOVER -
INSTALLER AND
OUTPUT SHAFT
SUPPORT FIXTURE**



T-0166

LINE A PUMP KIT



T-1001

**SHIFT LVER SEAL
REMOVER-INSTALLER**

* Works without
draininig fluid



T-0220-20

**BUSHING
DRIVER KIT
(20 Piece)**



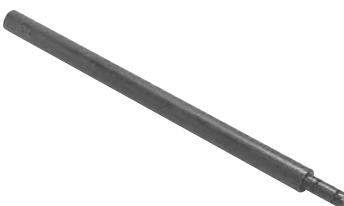
T-1006

**GOVERNOR HOLDING
FIXTURE**



T-0220-350

**3 PIECE MULTIPLE
STEP BUSHING
DRIVER KIT**



T-0220- EX

**EXTENSION DRIVER
HANDLE**

For multiple step bushing
driver kits only

**For more information
about ATEC products,
log onto our website:
www.atec-trans-tool.com**

Reproduction of this material in whole or in part is strictly prohibited without prior written consent by ATEC Trans-Tool, LP, including all part numbers, drawings, pictures, logos, or descriptions. Reproduction of any or any part of these items is civilly and/or criminally punishable by law.

Contact Your Local Distributor
or Mobile Tool Truck Dealer



PH: 1-800-531-5978 24 Hr. FAX 210-225-2114

www.atec-trans-tool.com

GM TRANSMISSION
TOOLS-EQUIP

AUTOMATIC TRANSMISSION TOOLS

GENERAL MOTORS

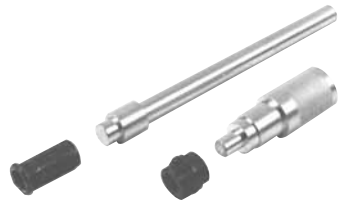
250, 250C, 350, 350C



T-1017
AIR TEST PLATE

[For 250, 350C]

T-1017- A
FOR 350C ONLY



T-1039- A
**STATOR BUSHING
REMOVER-INSTALLER**



T-1043- A
**BUSHING REMOVER
AND INSTALLER**



T-1055
OIL PUMP REMOVER

[When used with T-1068]



T-1068
**END PLAY CHECKING
FIXTURE ADAPTER
245MM TORQUE
CONVERTER**

[Use with T-1055]



T-1071- A
**DIRECT CLUTCH
ACCUMULATOR
PISTON REMOVER
AND INSTALLER**



T-1072
**SNAP RING REMOVER
AND INSTALLER**



T-1097
**FRONT PUMP
ALIGNMENT TOOL**



T-1264
**CONVERTER END
PLAY CHECKER**



T-2041
ALIGNMENT PIN

2 required
(Also: 3L30, 4L30E)



30104-A
**GOVERNOR BORE
BUSHING**

[Use with T-0107, T-0107-D]



30110
ADAPTER PLATE 350

* Replace 350 with the plentiful B.P.O.C. 350

Reproduction of this material in whole or in part is strictly prohibited without prior written consent by ATEC Trans-Tool, LP, including all part numbers, drawings, pictures, logos, or descriptions. Reproduction of any or any part of these items is civilly and/or criminally punishable by law.

Contact Your Local Distributor
or Tool Truck Dealer



PH: 1-800-531-5978 24 Hr. FAX 210-225-2114
www.atec-trans-tool.com

AUTOMATIC TRANSMISSION TOOLS

GENERAL MOTORS

325, 325-4L



T-0085
FRONT PUMP SEALER TOOL



T-1061
INTERMEDIATE BAND APPLY PIN GAUGE



T-0134
FRONT PUMP SEAL INSTALLER



T-1072
SNAP RING REMOVER AND INSTALLER



T-1001
SHIFT LEVER SEAL REMOVER-INSTALLER
* Removes & installs without draining fluid



T-1092
BEARING RACE INSTALLER
Also: 3L80, 375, 400, 3L80-HD, 475, 4L60, 4L60E, 700-R4, 325, 325-4L, JF403E-GEO



T-1056
DIRECT CLUTCH LIP SEAL INSTALLER & PROTECTOR
Also: 200, 200C, 200-4R



T-1112
CUP PLUG INSTALLER



T-1057
REVERSE CLUTCH LIP SEAL PROTECTOR
Also: 200, 200C, 200-4R



T-1174
TURBINE SHAFT TEFLON SEAL INSTALLER - RESIZER



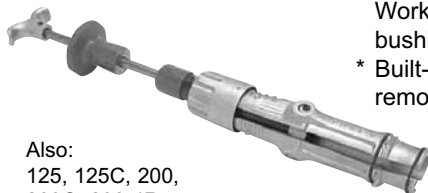
Also: 125, 125C, 200, 200C, 200-4R

T-1059-B
METAL LO-REVERSE CLUTCH CENTER SUPPORT UNIT REMOVER-INSTALLER



T-1203
OUTPUT SHAFT LOADING & ALIGNING TOOL
Also: 125, 125C, 440-T4

METAL - HEAVY DUTY LO-REVERSE CLUTCH CENTER SUPPORT UNIT REMOVER & INSTALLER



Also: 125, 125C, 200, 200C, 200-4R

T-1059-HD
* Positive locking action. Works with or without bushing intact
* Built-in slide hammer - to remove "bound" housings



T-1217
BOOT SEAL CLAMP INSTALLER



T-1264
CONVERTER END PLAY CHECKER

Reproduction of this material in whole or in part is strictly prohibited without prior written consent by ATEC Trans-Tool, LP, including all part numbers, drawings, pictures, logos, or descriptions. Reproduction of any or any part of these items is civilly and/or criminally punishable by law.

Contact Your Local Distributor
or Mobile Tool Truck Dealer



PH: 1-800-531-5978 24 Hr. FAX 210-225-2114
www.atec-trans-tool.com

AUTOMATIC TRANSMISSION TOOLS

GENERAL MOTORS

375, 400, (3L80), 425, 475 (3L80-HD)



T-0030- A

**"H" GAUGE
UNIVERSAL FRONT PUMP
CLEARANCE GAUGE**

* Longer, more coverage



T-0033

**UNIVERSAL PUMP
REMOVER**

* Quickly removes
conventional type pumps
without damage.



T-0033- A

**HEAVY DUTY FRONT
PUMP REMOVER**



T-0085

**FRONT PUMP
SEALER TOOL**



T-0099

**UNIVERSAL
SEAL REMOVER**



T-0107

**GOVERNOR BORE
REPAIR TOOL**

[Use with T-0107-D]



T-0107- D

**GOVERNOR BORE
BUSHING DRIVER**

[Use with bushing 30104-A] For repair tool order T-0107



T-0124

**LIP SEAL INSTALLER
PROTECTOR KIT**

T-0124-A Inner; T-0124-B Outer; T-0124-C Intermediate



T-0125

**REAR GEAR ASSEMBLY
REMOVER AND INSTALLER**

[Use with T-0099]



T-0126

**ACCUMULATOR
PISTON COMPRESSOR
ADAPTER**

For remover order T-0127



T-0127

**ACCUMULATOR
SERVO PISTON
REMOVER**

[Use with T-0126]



T-0128

**REAR GEAR HOLDING
FIXTURE ADAPTER**

[Use with T-0129]



T-0129

HOLDING FIXTURE

[Use with T-0128]



T-0131

**EXTENSION HOUSING
SEAL INSTALLER**

* Small shaft
For 400 only



T-0133

**EXTENSION SEAL
INSTALLER**



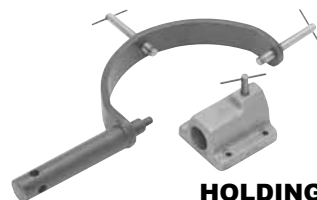
T-0134

**FRONT PUMP SEAL
INSTALLER**



T-0153-HD

FRONT PUMP AND SPEEDOMETER GEAR REMOVER



T-0156- B

**TRANSMISSION
HOLDING FIXTURE
WITH BASE**

T-0156- BF

HOLDING FIXTURE WITHOUT BASE

Reproduction of this material in whole or in part is strictly prohibited without prior written consent by ATEC Trans-Tool, LP, including all part numbers, drawings, pictures, logos, or descriptions. Reproduction of any or any part of these items is civilly and/or criminally punishable by law.

AUTOMATIC TRANSMISSION TOOLS

GENERAL MOTORS

375, 400, (3L80), 425, 475 (3L80-HD)



T-0158-HD

**CLUTCH DRUM
SPRING
COMPRESSOR**



T-1055

OIL PUMP REMOVER



T-0160-A

**EXTENSION HOUSING
BUSHING REMOVER &
INSTALLER**



T-1072

**SNAP RING REMOVER
AND INSTALLER**



T-0161

**EXTENSION HOUSING
BUSHING REMOVER
AND INSTALLER [GM]**



T-1092

**BEARING RACE
INSTALLER**

Also: 4L60, 4L60-E, 700R4, 325, 325-4L, JF403E-Geo



T-0163- A

**HEAVY DUTY
VACUUM PUMP**



T-1094

**REAR PINION
BEARING RACE
INSTALLER**

Also used to install crankshaft gear



T-0163- C

**PRESSURE GAUGE
* 0-100 Lbs.**



T-1097

**FRONT PUMP
ALIGNMENT BAND**

For 375, 400 only.
Also: 350, 700-R4, Powerglide

T-0163- D

**PRESSURE GAUGE
* 0-300 lbs**



T-1247

AIR TEST PLATE

For 400 (3L80)



T-0166

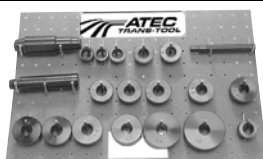
LINE A PUMP KIT



T-1264

**CONVERTER END
PLAY CHECKER**

Also used as a side gear checking tool.
Also: 200-4R, 3T40E, 4T60E, 4L60E



T-0220-20

**BUSHING DRIVER KIT
(20 Piece)**



T-1502

**SPEED SENSOR ROTOR
INSTALLER KIT**



T-1001

**SHIFT LEVER SEAL
REMOVER-INSTALLER**



30104- A

GOVERNOR BORE BUSHING

[Use with T-0107, T-0107-D]



T-1006

**GOVERNOR HOLDING
FIXTURE**

Reproduction of this material in whole or in part is strictly prohibited without prior written consent by ATEC Trans-Tool, LP, including all part numbers, drawings, pictures, logos, or descriptions. Reproduction of any or any part of these items is civilly and/or criminally punishable by law.

Contact Your Local Distributor
or Mobile Tool Truck Dealer



PH: 1-800-531-5978 24 Hr. FAX 210-225-2114
www.atec-trans-tool.com

GM TRANSMISSION
TOOLS-EQUIP

AUTOMATIC TRANSMISSION TOOLS

GENERAL MOTORS

440-T4, F7 (4T60) (4T60-E) (4T65-E)



T-1093

UNIVERSAL DRIVER HANDLE

For threaded bushing drivers



T-1205

SEAL AND BEARING RACE INSTALLER

Use with T-1093

Also: 125, 125C,



T-1200

HOLDING FIXTURE WITH BASE



T-1206

PARK-NEUTRAL SWITCH ALIGNER

Also: (3T40E)

T-1200-F

HOLDING FIXTURE WITHOUT BASE

Use with T-0156-BB
Also 125, 125C



T-1208

AXLE SHAFT SEAL INSTALLER

* Installs without removal of output shaft
[Use with T-1093 driver handle]



T-1201

OUTPUT SHAFT C-RING REMOVER AND INSTALLER

Also 125, 125C



T-1208-A

RIGHT & LEFT AXLE SEAL INSTALLER

* Installs axle seal without removal of output shaft while in or out of car



T-1202-A

CLUTCH ASSEMBLY AND FINAL DRIVE REMOVER-INSTALLER

Also: 125, 125C



T-1209

MODULATOR CHECKING TOOL

* '87 to current



T-1203

OUTPUT SHAFT LOADING AND ALIGNING TOOL

To remove final drive order T-1202-A

Also: 125, 125C, 325, 325-4L



T-1217

BOOT SEALER CLAMP INSTALLER



T-1264

CONVERTER END PLAY CHECKER

Also use as side gear checking tool.

Also: 200-4, (3T40E) (4K60E) (3K80)

Reproduction of this material in whole or in part is strictly prohibited without prior written consent by ATEC Trans-Tool, LP, including all part numbers, drawings, pictures, logos, or descriptions. Reproduction of any or any part of these items is civilly and/or criminally punishable by law.

Contact Your Local Distributor
or Tool Truck Dealer



PH: 1-800-531-5978 24 Hr. FAX 210-225-2114
www.atec-trans-tool.com

AUTOMATIC TRANSMISSION TOOLS

GENERAL MOTORS

440-T4, F7 (4T60) (4T60-E) (4T65-E)



T-1263

**TORQUE CONVERTER
SEAL INSTALLER**

Also: 125, 125C



T-1274

**TURBINE SHAFT
TEFLON SEAL
INSTALLER-RESIZER**

* 440-T4 cover side only

Also: 125, 125C



T-1274- A

**TURBINE SHAFT
TEFLON SEAL
INSTALLER-RESIZER**

* 440-T4 case side only
Also: 125, 125C



T-2003

**OUTPUT SHAFT LOAD-
ING TOOL ADAPTER**

[Use with T-1203]



T-2004

**INPUT SHAFT
TEFLON SEAL
INSTALLATION KIT**

Also 4T80E

All tools can be ordered
individually- below



T-2004- A

**INPUT SHAFT SEAL
INSTALLER**



T-2004- B

**INPUT SHAFT SEAL
GUIDE**



T-2004- C

**INPUT SHAFT SEAL
RESIZER**



T-2005

**OUTPUT SHAFT
LOADING TOOL
ADAPTER**

For (4T60-E) only
[Use with T-1203]



T-2006

**THERMO ELEMENT
HEIGHT GAUGE**



T-2007

**SPROCKET SUPPORT
BEARING INSTALLER**
[Use with T-1215 bushing
driver handle]

NO
PHOTO
AVAILABLE

T-2008

**AXLE SEAL
INSTALLER**
[Left side]



T-2017

**VALVE BODY AIR
TEST PLATE**
For 440-T4 (4T60)

T-2017-A

**VALVE BODY
AIR TEST PLATE**
For (4T60-E)

Reproduction of this material in whole or in part is strictly prohibited without prior written consent by ATEC Trans-Tool, LP, including all part numbers, drawings, pictures, logos, or descriptions. Reproduction of any or any part of these items is civilly and/or criminally punishable by law.

Contact Your Local Distributor
or Mobile Tool Truck Dealer



PH: 1-800-531-5978 24 Hr. FAX 210-225-2114

www.atec-trans-tool.com

GM TRANSMISSION
TOOLS-EQUIP

AUTOMATIC TRANSMISSION TOOLS

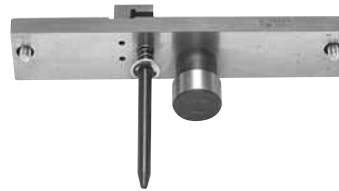
GENERAL MOTORS

440-T4, F7 (4T60) (4T60-E) (4T65-E)



T-2027

**INPUT CLUTCH
PISTON LIP SEAL
INSTALLER
PROTECTOR**



T-2055

**INPUT SHAFT END
PLAY TOOL**

- * Check correct input shaft end play tolerance
- * No dial indicator required



T-2028

**THIRD CLUTCH
PISTON LIP SEAL
INSTALLER
PROTECTOR**



T-2056

**2nd CLUTCH PISTON
SEAL INSTALLER**

For (4T60-E) only



T-2029

**AXLE REMOVAL
WEDGE**

- * Remove the retaining ring to the output shaft-carrier assembly



T-2059

**CLUTCH ASSEMBLY
FINAL DRIVE
REMOVER-INSTALLER**

For (4T60-E)



T-2042

**DRIVESHAFT
BEARING REMOVER
AND INSTALLER**

For (4T65-E)

- * Double ended tool

T-2061

**1-2 AND REVERSE
BANDS APPLY PIN
GAUGE**

- * Necessary tool for gauging dimensions for selection of the proper length of apply pins



T-2043

**SECOND CLUTCH
PISTON SEAL
INSTALLER**

For (4T65-E)

- * Allows installation in the clutch housing, protecting it from damage



T-2062

**1-2 BAND STOP
INSTALLER**

Reproduction of this material in whole or in part is strictly prohibited without prior written consent by ATEC Trans-Tool, LP, including all part numbers, drawings, pictures, logos, or descriptions. Reproduction of any or any part of these items is civilly and/or criminally punishable by law.

AUTOMATIC TRANSMISSION TOOLS

GENERAL MOTORS

(4T40-E)

**T-0154-HD****HEAVY DUTY SLIDE HAMMER SET**

With 3/8" threaded shaft tip

**T-1206****PARK NEUTRAL SWITCH ALIGNER****T-2011****FORWARD CLUTCH INNER SEAL REMOVER**

[Use with 3 jaw puller]

**T-2015****OUTPUT SHAFT SEAL REMOVER**

* Access the stub shaft axle sleeve where standard pullers cannot be used.

**T-2016****OUTPUT SHAFT SLEEVE INSTALLER**

* Install new sleeve onto the output (stub) shaft while maintaining a lateral runout of .001".

**T-2018-F****HOLDING FIXTURE**

[Use with T-0156-KM]

**T-2019****FWD-REV CLUTCH INNER SEAL INSTALLER**

* Used to press the inner seal into the forward clutch housing.

**T-2020****2nd CLUTCH SPRING COMPRESSOR****T-2021****REVERSE CLUTCH INNER SEAL INSTALLER**

* Driver used to install the seal assembly onto the reverse clutch.

**T-2023****2nd ROLLER CLUTCH INSTALLER**

* Plastic driver used to install the retainer onto the reverse clutch housing.

**T-2024****COAST CLUTCH SPRING COMPRESSOR**

Allows the retaining ring to be removed or installed.

**T-2026****COOLER PIPE SEAL REMOVER AND INSTALLER****T-2026-A****PIPE SEAL INSTALLER BOLT**

This tool is a longer forcing screw that can be used on both seal positions in the 4T40E case which has been modified in the cooler line attachment area.

**T-2030****INPUT SHAFT TEFLON SEAL INSTALLER KIT**

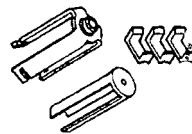
Installs seals on direct/coast clutch assembly.

**T-2035****TRANS CONNECTOR REMOVER**

* Remove the transaxle wiring harness connector from the trans case.

**T-2036****AXLE SEAL INSTALLER**

* Includes a driver and protector for inner axle seal lip for installing right and left axle seals into the case.

**T-2037****TORQUE CONVERTER SEAL REMOVER****T-2038****MANUAL SHAFT PIN INSTALLER**

This tool is used as a driver to achieve the proper height.

**T-2058****OUTPUT SHAFT ASSEMBLY REMOVER AND INSTALLER**

Use with T-0154-HD and 4L60-E

Reproduction of this material in whole or in part is strictly prohibited without prior written consent by ATEC Trans-Tool, LP, including all part numbers, drawings, pictures, logos, or descriptions. Reproduction of any or any part of these items is civilly and/or criminally punishable by law.

Contact Your Local Distributor
or Mobile Tool Truck Dealer

PH: 1-800-531-5978 24 Hr. FAX 210-225-2114

www.atec-trans-tool.com

GM TRANSMISSION
TOOLS-EQUIP

AUTOMATIC TRANSMISSION TOOLS

GENERAL MOTORS

(4T80-E)



T-1206

**PARK NEUTRAL
SWITCH ALIGNER**



T-3305

**COAST CLUTCH SEAL
PROTECTOR**

* Inner seal



T-2004

**INPUT SHAFT SEAL
INSTALLER**

(Also: 440-T4)



T-3306

**TORQUE CONVERTER
SEAL INSTALLER**



T-3300

**TRANSAXLE HOLDING
FIXTURE**

{Use with T-0156-KM}



T-3307

**CASE COVER TO
SHAFT SEAL
REMOVER-INSTALLER**



T-3301

**AXLE SHAFT SEAL
INSTALLER SET**



T-3308

**SPROCKET SHAFT
SEAL INSTALLER**



T-3302

**FORWARD COAST
CLUTCH ASSEMBLY
REMOVER AND
INSTALLER**



T-3309

**VALVE BODY GUIDE
PINS**

(Set of 3)



T-3303

**REVERSE CLUTCH
SEAL PROTECTOR**

* Inner seal



T-3310

**DRIVE SPROCKET
SEAL INSTALLER**

[Use with T-1093]



T-3304

**FORWARD CLUTCH
SEAL PROTECTOR**

* Inner seal



T-3311

**INPUT END PLAY
LIFTING TOOL**

Reproduction of this material in whole or in part is strictly prohibited without prior written consent by ATEC Trans-Tool, LP, including all part numbers, drawings, pictures, logos, or descriptions. Reproduction of any or any part of these items is civilly and/or criminally punishable by law.

Contact Your Local Distributor
or Tool Truck Dealer



PH: 1-800-531-5978 24 Hr. FAX 210-225-2114
www.atec-trans-tool.com

AUTOMATIC TRANSMISSION TOOLS

GENERAL MOTORS

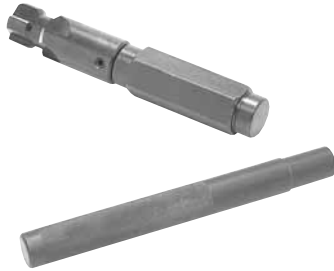
700-R4 (4L60) (4L60-E)



T-0030- A
"H" GAUGE
UNIVERSAL FRONT
PUMP CLEARANCE
GAUGE



T-0160- A
EXTENSION HOUSING
BUSHING REMOVER
INSTALLER AND
OUTPUT SHAFT
SUPPORT FIXTURE
 * Eases & speeds removal
 and replacement of
 bushings.



T-0107
GOVERNOR BORE
REPAIR TOOL
 [Use with T-0107-D]



T-0163- A
VACUUM PUMP
HEAVY DUTY STYLE



T-0107- D
GOVERNOR BORE
BUSHING DRIVER
 [Use with bushing
 #30104-A]



T-0163- C
PRESSURE GAUGE
 0 - 100 lbs

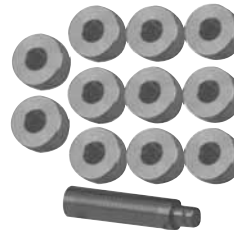


T-0127
ACCUMULATOR
SERVO PISTON
REMOVER

T-0163- D
PRESSURE GAUGE
 0 - 300 lbs



T-0131
EXTENSION HOUSING
SEAL INSTALLER



T-0220-700R4
BUSHING
DRIVER KIT



T-0149
INPUT CLUTCH
HOUSING SPRING
COMPRESSOR



T-1001
SHIFT LEVER SEAL
REMOVER-INSTALLER



T-0151
REAR CLUTCH SPRING
COMPRESSOR

T-1001-PV

Same as above for
 postal vehicles



T-1264
CONVERTER END
PLAY CHECKER

Also:
 200-4R, 3T40E, 4T60E, 3L80

Reproduction of this material in whole or in part is strictly prohibited without prior written consent by ATEC Trans-Tool, LP, including all part numbers, drawings, pictures, logos, or descriptions. Reproduction of any or any part of these items is civilly and/or criminally punishable by law.

GM TRANSMISSION
 TOOLS-EQUIP

Contact Your Local Distributor
 or Mobile Tool Truck Dealer



PH: 1-800-531-5978 24 Hr. FAX 210-225-2114
 www.atec-trans-tool.com

AUTOMATIC TRANSMISSION TOOLS

GENERAL MOTORS

700-R4 (4L60) (4L60-E)



T-1055
OIL PUMP REMOVER
AND END PLAY TOOL

When used with T-1068
Also: 200, 200C, 200-4-R,
250, 350, 350-C



T-1501
SPEED SENSOR
REMOVER



T-1063
PUMP SEAL
INSTALLER



T-1502
SPEED SENSOR
ROTOR INSTALLER
KIT



T-1068
FRONT END PLAY
TOOL

* 245MM torque converter
[Use with T-1055]

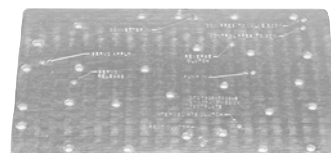


T-1503
STATOR SHAFT
TEFLON SEAL
INSTALLER RESIZER

(4L60-E only)



T-1071- A
DIRECT CLUTCH
ACCUMULATOR
PISTON REMOVER
AND INSTALLER



T-1517
AIR TEST PLATE
(4L60 only)



T-1092
BEARING RACE
INSTALLER

T-1517- A
AIR TEST PLATE
(4L60-E only)



T-1527
OVERRUN CLUTCH
INNER LIP SEAL
INSTALLER
PROTECTOR



T-1097
FRONT PUMP
ALIGNMENT BAND

Also: 250, 350, 350C



T-1528
FORWARD CLUTCH
INNER LIP SEAL
INSTALLER
PROTECTOR

Reproduction of this material in whole or in part is strictly prohibited without prior written consent by ATEC Trans-Tool, LP, including all part numbers, drawings, pictures, logos, or descriptions. Reproduction of any or any part of these items is civilly and/or criminally punishable by law.

AUTOMATIC TRANSMISSION TOOLS

GENERAL MOTORS

700-R4 (4L60) (4L60-E)



T-1529

**PARK NEUTRAL
SWITCH ALIGNER**



T-1574- B

**TURBINE SHAFT
SEAL RESIZER**



T-1560

**OUTPUT SHAFT
SUPPORT FIXTURE**



T-1702

**PRESSURE REGULATOR
VALVE SNAP RING
INSTALLER**

Also: 200-4R



T-1703

**FRONT PUMP SPRING
LOADER TOOL**



T-1561

**INTERMEDIATE BAND
APPLY PIN GAUGE**

* Go / NO GO Gauge
selects correct length
of apply pin



T-1735

**SERVO COVER
DEPRESSOR**

* Use with pan on.

Also: 200, 200C, 200-4R



T-1571

SUN GEAR PULLER

* Removes heat damaged
sun gear when bonded to
upper planetary set.



T-1891

**TRANS OIL COOLER
LINE DISCONNECT**

* '96-later light
duty trucks.



**TURBINE SHAFT
TEFLON SEAL
INSTALLER-RESIZER**



T-2009

END PLAY ADAPTER
For (4L60E)

T-1574

(4L60 only)

- * Prevents distortion during installation.
- * One tool will set all 4 rings.
- * See thru resizer prevents improper seal installation
- * Instructions included

T-1574-LONG

(4160E only)

- * Prevents distortion during installation.
- * One tool will set all 4 rings.
- * See thru resizer extended length prevents improper seal installation
- * Instructions included



T-2030

**INPUT SHAFT
TEFLON SEAL
INSTALLER KIT**

Installs seals on
direct/coast clutch
assembly.



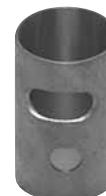
T-1574- A

**TURBINE SHAFT SEAL
INSTALLER**



T-3423

**EXTENSION HOUSING
SEAL INSTALLER**



30104- A

**GOVERNOR BORE
BUSHING (GM)**

[Use with T-0107,
T-0107-D]

GM TRANSMISSION
TOOLS-EQUIP

Reproduction of this material in whole or in part is strictly prohibited without prior written consent by ATEC Trans-Tool, LP, including all part numbers, drawings, pictures, logos, or descriptions. Reproduction of any or any part of these items is civilly and/or criminally punishable by law.

Contact Your Local Distributor
or Mobile Tool Truck Dealer



PH: 1-800-531-5978 24 Hr. FAX 210-225-2114

www.atec-trans-tool.com

AUTOMATIC TRANSMISSION TOOLS

GENERAL MOTORS

(4L80-E)



T-0128

REAR GEAR HOLDING FIXTURE ADAPTER

Use with T-0129



T-0129

REAR GEAR HOLDING FIXTURE

Use with T-0128



T-1891

TRANS OIL COOLER LINE DISCONNECT

'96-later light duty trucks

Also: 700-R4, (4L60)
(4L60-E)



T-2002

DIRECT CLUTCH ASSEMBLY REMOVER INSTALLER



T-2025

BAND APPLY PIN CHECKING TOOL



T-2031

EXTENSION HOUSING OIL PUMP SEAL INSTALLER

[Use with T-2054 for slip
yoke prop application]



T-2053

OIL PUMP ASSEMBLY REMOVER AND INSTALLER



T-2054

REAR EXTENSION HOUSING OIL SEAL INSTALLER

* Slip yoke design
propshaft.



T-2057

DIRECT CLUTCH SPIRAL SNAP RING INSTALLER



T-2058

OUTPUT SHAFT ASSEMBLY REMOVER INSTALLER

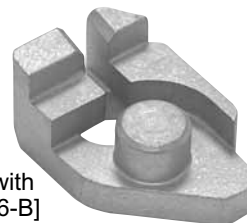
Use with T-0154-HD
and 4L60-E



T-2059

CLUTCH ASSEMBLY FINAL DRIVE REMOVER INSTALLER

Also: (4T60-E)



T-2901

TRANSMISSION HOLDING FIXTURE ADAPTER

* Allows assembly &
disassembly from
a bench base.

[Use with
T-0156-B]



T-2902

INTERMEDIATE CLUTCH PISTON COMPRESSOR

Reproduction of this material in whole or in part is strictly prohibited without prior written consent by ATEC Trans-Tool, LP, including all part numbers, drawings, pictures, logos, or descriptions. Reproduction of any or any part of these items is civilly and/or criminally punishable by law.

AUTOMATIC TRANSMISSION

GENERAL MOTORS

(4L80-E)



T-2903

OIL PUMP ASSEMBLY TEFLON SEAL INSTALLER AND RESIZER KIT

3 Piece Kit - installs each seal into its groove.



T-2927

OVER RUN CLUTCH PISTON LIP SEAL INSTALLER PROTECTOR

* Protects inner seal when assembling.



T-2904

CENTER SUPPORT TEFLON SEAL INSTALLER AND RESIZER KIT

3 piece kit



T-2928

FORWARD CLUTCH PISTON LIP SEAL INSTALLER PROTECTOR KIT

* Protects inner and outer seals while servicing.



T-2905

INTERMEDIATE CLUTCH PACK ALIGNMENT TOOL



T-2930

FORWARD & DIRECT CLUTCH INNER SEAL PROTECTOR INSTALLER

[Use with T-2924, T-2925]



T-2917

AIR TEST PLATE



T-2962

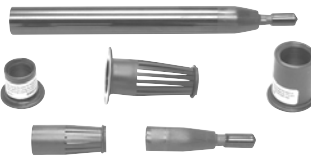
PUMP ALIGNMENT BAND



T-2924

DIRECT CLUTCH OUTER SEAL PROTECTOR INSTALLER

[Use with T-2930, T-2925]



T-2974

TURBINE SHAFT TEFLON SEAL INSTALLER-RESIZER KIT (6 pieces)

* Helps in installing each seal into its groove & sizes or compresses each seal into the grooves.



T-2925

SECOND CLUTCH INNER SEAL PROTECTOR INSTALLER



T-2995

REAR BUSHING CASE BORING TOOL

T-2995-SL
Replacement Sleeves



T-2926

FOURTH CLUTCH PISTON & HOUSING LIP SEAL INSTALLER PROTECTOR KIT

* Protects the inner & outer seals when servicing the 4th clutch piston.



T-3422

CENTER SUPPORT THREAD REAMER

* Includes reamer and gauge pin.

Reproduction of this material in whole or in part is strictly prohibited without prior written consent by ATEC Trans-Tool, LP, including all part numbers, drawings, pictures, logos, or descriptions. Reproduction of any or any part of these items is civilly and/or criminally punishable by law.

Contact Your Local Distributor
or Mobile Tool Truck Dealer



PH: 1-800-531-5978 24 Hr. FAX 210-225-2114

www.atec-trans-tool.com

GM TRANSMISSION
TOOLS-EQUIP

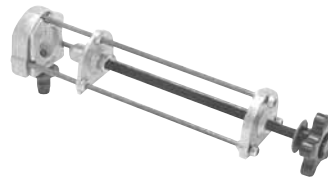
AUTOMATIC TRANSMISSION TOOLS

GENERAL MOTORS

POWERGLIDE



T-0033
HEAVY DUTY
FRONT PUMP PULLER



T-0153- HD
FRONT PUMP AND
SPEEDOMETER GEAR
REMOVER



T-0033- A
HEAVY DUTY FRONT
PUMP REMOVER



T-0160- A
EXTENSION HOUSING
BUSHING REMOVER
INSTALLER AND
OUTPUT SHAFT
SUPPORT FIXTURE
* Eases & speeds process.



T-0085
FRONT PUMP
SEALER TOOL



T-1001
SHIFT LEVER SEAL
REMOVER-INSTALLER



T-0131
EXTENSION HOUSING
SEAL INSTALLER



T-1097
FRONT PUMP
ALIGNMENT BAND

Also: 250, 350, 350C, 375,
400, 700-R4



T-0134
FRONT PUMP SEAL
INSTALLER

* Small shaft

SATURN TOOLS



T-0150
REAR CLUTCH SPRING
COMPRESSOR

T-3530
CLUTCH PISTON SEAL
INSTALLER SET

T-3531
SERVO
PISTON SEAL
INSTALLER SET



JF403-E (Nissan Transmission Used By GM - Geo)



T-1092
BEARING RACE
INSTALLER



[Front axle - use with universal two jaw puller]

T-2210
SIDE BEARING
PULLER PILOT



T-1208
AXLE SHAFT SEAL
INSTALLER
[Use with T-1093]



T-2211
SERVO PISTON
CLUTCH SPRING
COMPRESSOR



T-2208
BEARING PULLER
BRIDGE



T-2212
BEARING
CUP REMOVER

Reproduction of this material in whole or in part is strictly prohibited without prior written consent by ATEC Trans-Tool, LP, including all part numbers, drawings, pictures, logos, or descriptions. Reproduction of any or any part of these items is civilly and/or criminally punishable by law.

Contact Your Local Distributor
or Tool Truck Dealer



PH: 1-800-531-5978 24 Hr. FAX 210-225-2114
www.atec-trans-tool.com

FORD
 OLD TO NEW
 TRANSMISSION
 CONVERSIONS

AUTOMATIC TRANSMISSION SPECIFIC TOOLS

- A4LD-Elec(4R44E)
-(4R55E)
- A4LD 5 Spd.....(5R55E)
- AOD-EW(4R70W)
- 4 Spd FWD(CD4E)
- AXOD-E.....(AX4S)
- 4 Spd FWD(AX4N)
- 4EAT Probe.....(G4A-EL)
- F4EAT Escort(F4A-EL)
- GF4EAT(GF4A-EL)
- 4F20-E Villager(RE4F04A)

Reproduction of this material in whole or in part is strictly prohibited without prior written consent by ATEC Trans-Tool, LP, including all part numbers, drawings, pictures, logos, or descriptions. Reproduction of any or any part of these items is civilly and/or criminally punishable by law.

Specifications and descriptions on products in this catalog may change without notice.

Copyright ©2007 ATEC Trans-Tool
 All intellectual property and copyrights reserved.

FOR: FORD

Transmission Type

- a. C-3, A4LD
 (4R44E) (4R55E) (5R55E) (5R55N)64-67
- b. C-4, C-5.....68
- c. C-6.....69-70
- d. AOD, AOD-E, AOD-EW (4R70W)71-75
- ATX 82-84
- f. AXOD, AXOD-E (AX4S) (AX4N)79-82
- g. E4OD.....83-84
- h. 4EAT (G4A-EL), F4EAT (F4A-EL)
 (G-4EAT)85-86
- i. (CD4E).....87-88
- j. 4F20-E (RE4F04A)89

FEATURED PRODUCTS

T-0033



**HEAVY DUTY
 FRONT PUMP
 REMOVER**

See
 Page 71

See
 Page 84 **T-2805**



**CLUTCH
 REMOVER
 INSTALLER**

See
 Page 79 **T-0004**



**VALVE BODY
 LOCK PIN
 REMOVER**

See
 Page 87 **T-2400**



**LIP SEAL INSTALLER
 PROTECTOR KIT**


A. B. C.

See
 Page 81 **T-1600-K**



**LIP SEAL INSTALLER
 PROTECTOR KIT**

T-0158-HD



**CLUTCH
 DRUM
 SPRING
 COMPRESSOR**

See
 Page 76

Contact Your Local Distributor
 or Mobile Tool Truck Dealer



PH: 1-800-531-5978 24 Hr. FAX 210-225-2114
 www.atec-trans-tool.com

FORD TRANSMISSION
 TOOLS-EQUIP

AUTOMATIC TRANSMISSION TOOLS

FORD

C3, A4LD (4R44E) (4R55E) (5R55E) (5R55N)



T-0030- A
"H" GAUGE
UNIVERSAL FRONT
PUMP CLEARANCE
GAUGE



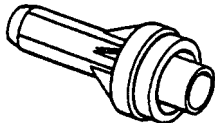
T-0409
OVERRUN CLUTCH
GUIDE
 For: A4LD, 4R44E, 4R55E,
 5R55E



T-0130
BOOT TYPE
EXTENSION HOUSING
SEAL INSTALLER



T-0414
FRONT SERVO COVER
COMPRESSOR



T-0137
EXTENSION HOUSING
SEAL REPLACER
 For: A4LD, 4R44E, 4R55E



T-0417
AIR TEST PLATE
 (C3 Only)



T-0159
EXTENSION HOUSING
BUSHING REMOVER
AND INSTALLER
 (C3 Only)



T-0429
OIL PUMP ALIGNING
GAUGE KIT
 (5 PIECES)
 Gauges Available Individually



T-0168- A
BELL HOUSING TO
PUMP ALIGNMENT
TOOL



T-0429- A

T-0429- B

T-0429- C

T-0429- D

T-0429- E



T-0168- B
PUMP TO GEAR
ALIGNMENT TOOL
 Up to 90



T-0168- C
HEAVY DUTY
PUMP TO GEAR
ALIGNMENT TOOL
 Up to 90



T-0168- CU
FRONT PUMP
ALIGNMENT TOOL
 90 up



T-0431
CLUTCH INSTALLER
GUIDE
 Also for A4LD, 5R55E and 4R55E



T-0168- K
BELL HOUSING TO
PUMP & PUMP TO
GEAR ALIGNMENT
TOOL KIT



T-0432
PNP REMOVER AND
REPLACER
 For A4LD. Also: AOD

Reproduction of this material in whole or in part is strictly prohibited without prior written consent by ATEC Trans-Tool, LP, including all part numbers, drawings, pictures, logos, or descriptions. Reproduction of any or any part of these items is civilly and/or criminally punishable by law.

FORD TRANSMISSION TOOLS-EQUIP

Contact Your Local Distributor
 or Tool Truck Dealer



PH: 1-800-531-5978 24 Hr. FAX 210-225-2114
 www.atec-trans-tool.com

AUTOMATIC TRANSMISSION TOOLS

FORD

C3, A4LD (4R44E) (4R55E) (5R55E) (5R55N)



T-0437

INNER SEAL PROTECTOR

For A4LD



T-0468

FRONT PUMP SEAL INSTALLER

For: A4LD (5R55E)



T-0438

MANUAL LEVER OIL SEAL INSTALLER

For: A4LD (4R44E) (4R55E) (5R55E)

Also: AOD, AOD-E, E40D



T-0469

PUMP SEAL STAKING TOOL

For: A4LD (5R55E)



T-0439

PISTON INNER SEAL PROTECTOR

For: (4R44E) (4R55E) (5R55E) (5R55N)

(5R55S) (5R55W)



T-0480

A4LD HOLDING FIXTURE ADAPTER

For: A4LD



T-0440

OUTER SEAL PROTECTOR

For: A4LD (4R44E) (4R55E) (5R55E)



T-0481

GAUGE BAR

For: A4LD



T-0443

HOUSING BUSHING INSTALLER

For: A4LD (4R44E) (4R55E) (5R55E)

(5R55N) (5R55S) (5R55W)



T-0484

VALVE BODY GUIDE .235 PIN

For: (4R44E) (4R55E) (5R55E)



T-0450

END PLAY CHECKING TOOL

For all Ford transmissions except ATX



T-0485

VALVE BODY GUIDE .248 PIN

For: (4R44E) (4R55E) (5R55E)



T-0486

COAST CLUTCH SEAL SIZING TOOL

For: (4R44E) (4R55E) (5R55E)



T-0487

DIRECT CLUTCH SEAL SIZING TOOL

For: (4R44E) (4R55E) (5R55E)

Reproduction of this material in whole or in part is strictly prohibited without prior written consent by ATEC Trans-Tool, LP, including all part numbers, drawings, pictures, logos, or descriptions. Reproduction of any or any part of these items is civilly and/or criminally punishable by law.

Contact Your Local Distributor
or Mobile Tool Truck Dealer



PH: 1-800-531-5978 24 Hr. FAX 210-225-2114
www.atec-trans-tool.com

FORD TRANSMISSION
TOOLS-EQUIP

AUTOMATIC TRANSMISSION TOOLS

FORD

C3, A4LD (4R44E) (4R55E) (5R55E) (5R55N)



For:
(4R44E)
(4R55E) (5R55E)

T-0488

TSS GAUGE



T-0489

CONVERTER GUIDE PIN

For: (4R44E) (4R55E) (5R55E)



T-0490

FRONT PUMP SEAL SIZER

For: (4R44E) (4R55E) (5R55E)



T-0492

TRANSMISSION TEST PLATE

For: (4R44E) (4R55E)



T-0493

SERVO COVER COMPRESSOR

For: (4R44E) (4R55E)
(5R55E)



T-0494

PUMP SEAL STAKING TOOL ADAPTER

For: (4R44E) (4R55E) (5R55E)



T-0495

GOVERNOR BORE CASE SLEWING TOOL

[Use with T-0495-SL]



T-0495-SL

GOVERNOR BORE BUSHING REPLACEMENT

[For T-0495]



T-0497

SERVO COVER COMPRESSOR

For: (5R55E)

Reproduction of this material in whole or in part is strictly prohibited without prior written consent by ATEC Trans-Tool, LP, including all part numbers, drawings, pictures, logos, or descriptions. Reproduction of any or any part of these items is civilly and/or criminally punishable by law.



T-0500

PUMP BEARING INSTALLER

For: (5R55E)

[Use with T-1215 bushing driver handle]



T-0501

CENTER SUPPORT BEARING INSTALLER

For: (5R55E)

[Use with T-1215 bushing driver handle]



T-0502

FORWARD CLUTCH BEARING INSTALLER

For: (5R55E)

[Use with T-1215 bushing driver handle]



T-0503

SLEEVE, ONE WAY CLUTCH

For: (5R55E)

[Use with T-0504]

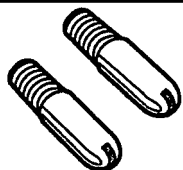


T-0504

PUSHER, ONE WAY CLUTCH

For: (5R55E)

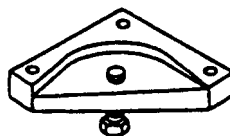
[Use with T-0503]



T-0506

TRANSMISSION BELL HOUSING GUIDE PIN

For (4R44E) (4R55E) (5R55E)



T-0507

SELECTING GAUGE

For: A4LD, (4R44E) (4R55E) (5R55E)



T-0508

HOUSING BUSHING REMOVER

For: C3, A4LD

FORD TRANSMISSION TOOLS-EQUIP

Contact Your Local Distributor
or Tool Truck Dealer



PH: 1-800-531-5978 24 Hr. FAX 210-225-2114
www.atec-trans-tool.com

AUTOMATIC TRANSMISSION TOOLS

FORD

C3, A4LD (4R44E) (4R55E) (5R55E) (5R55N)



T-0509

REVERSE DRUM 1 WAY CLUTCH PUSHER

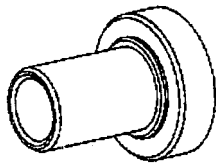
For: (4R55E) (5R55E)



T-0510

REVERSE DRUM 1 WAY CLUTCH PUSHER

For:(4R55E) (5R55E)



T-0511

OUTPUT SHAFT BEARING INSTALLER

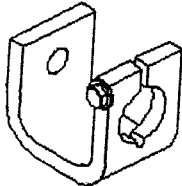
For: (5R55E)



T-0512

CONVERTER SEAL INSTALLER

For: (5R55E)



T-0513

TRANSMISSION PUMP PULLER

For: (5R55N)



T-0514

PUMP ALIGNMENT PINS

For: (5R55N) (5R55S) (5R55W)



T-0515

OIL PUMP TO TRANS CASE ALIGNMENT PINS

For: (5R55N) (5R55S) (5R55W)



T-0516

GAUGE BAR

For: (5R55N)



T-0517

CUSHION SPRING COMPRESSOR

For: (5RR5N)



T-0518

SERVO COVER COMPRESSOR

For: (5RR5N)



T-0519

FLEX PLATE ALIGNER

For: (5R55N)



T-0520

OUTPUT FLANGE INSTALLER

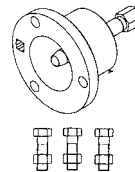
For: (5R55N)



T-0521

AIR TEST PLATE

For: (5R55N)



T-0522

OUTPUT FLANGE REMOVER

For: (5R55N)



T-2324

BAND ADJUSTER WRENCH KIT

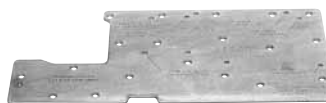
* Set at 10 foot pounds
For: A4LD (4R44E) (5R55E) Also: C6



T-2601

PUMP SEAL STAKING TOOL

For: A4LD



T-2617

VALVE BODY TEST PLATE

For: A4LD



T-5015

OVERDRIVE SPRAG INSTALLER

For: A4LD

Reproduction of this material in whole or in part is strictly prohibited without prior written consent by ATEC Trans-Tool, LP, including all part numbers, drawings, pictures, logos, or descriptions. Reproduction of any or any part of these items is civilly and/or criminally punishable by law.

Contact Your Local Distributor
or Mobile Tool Truck Dealer



PH: 1-800-531-5978 24 Hr. FAX 210-225-2114

www.atec-trans-tool.com

FORD TRANSMISSION
TOOL-EQUIP

AUTOMATIC TRANSMISSION TOOLS

FORD

C4, C5



T-0033

**HEAVY DUTY
FRONT PUMP
REMOVER**



T-0163- A

**HEAVY DUTY
VACUUM PUMP**



T-0033- A

**HEAVY DUTY
FRONT PUMP
REMOVER**



T-0163- C

**PRESSURE GAUGE
0 - 100 POUNDS**



T-0130

**BOOT TYPE
EXTENSION HOUSING
SEAL INSTALLER**

T-0163- D

**PRESSURE GAUGE
0 - 300 POUNDS**



T-0131

**EXTENSION HOUSING
SEAL INSTALLER**

For: C4 Only



T-0450

**END PLAY
CHECK TOOL**

All Ford Trans
except ATX



T-0132

**FRONT PUMP SEAL
INSTALLER**

For: C4 Only



T-0154- HD

**HEAVY DUTY SLIDE
HAMMER SET**



T-1028

**REVERSE CLUTCH
LIP SEAL
INSTALLER AND
PROTECTOR**

For: C5 Only '81-current



T-0156- A

**HOLDING FIXTURE
WITH BASE**

* Bench mounts
* 360 degree swing

T-0156- AF

WITHOUT BASE

T-0158- HD

**CLUTCH DRUM
SPRING
COMPRESSOR**



T-0160- A

**EXTENSION HOUSING
BUSHING REMOVER
INSTALLER AND
OUTPUT SHAFT
SUPPORT FIXTURE**



T-1890

**COOLER LINE QUICK
DISCONNECT TOOL**

* Removes push lock
connectors found at both
the radiator &
transmission connections
on '83 thru current Ford
vehicles & the '82
Lincoln Continental
overdrive trans.

Reproduction of this material in whole or in part is strictly prohibited without prior written consent by ATEC Trans-Tool, LP, including all part numbers, drawings, pictures, logos, or descriptions. Reproduction of any or any part of these items is civilly and/or criminally punishable by law.

FORD TRANSMISSION
TOOLS-EQUIP

Contact Your Local Distributor
or Tool Truck Dealer



PH: 1-800-531-5978 24 Hr. FAX 210-225-2114
www.atec-trans-tool.com

AUTOMATIC TRANSMISSION TOOLS

FORD

C6



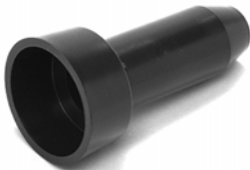
T-0033

**HEAVY DUTY
FRONT PUMP
REMOVER**



T-0033- A

**HEAVY DUTY
FRONT PUMP
REMOVER**



T-0130

**BOOT TYPE
EXTENSION
HOUSING SEAL
INSTALLER**



T-0133

**REAR SEAL
INSTALLER**



T-0136

**FRONT PUMP OIL
SEAL INSTALLER**



T-0152

**REAR CLUTCH
SPRING
COMPRESSOR**



T-0156- A

**TRANSMISSION
HOLDING FIXTURE
WITH BASE**

T-0156- AF

**HOLDING FIXTURE
WITHOUT BASE**



T-0157

**UNIVERSAL QUICK
LOCK CLUTCH
SPRING
COMPRESSOR**

T-0157-K

Compression ring kit
for T-0157



T-0158- HD

**CLUTCH DRUM
SPRING
COMPRESSOR**



T-0161- A

**EXTENSION HOUSING
BUSHING REMOVER
AND INSTALLER**

[Ford]

Also: 727, FMX, E4OD



T-0163- A

**VACUUM PUMP
HEAVY DUTY**



T-0163- C

**PRESSURE GAUGE
0 - 100 POUNDS**

T-0163- D

**PRESSURE GAUGE
0 - 300 POUNDS**

FORD TRANSMISSION
TOOL-EQUIP

Reproduction of this material in whole or in part is strictly prohibited without prior written consent by ATEC Trans-Tool, LP, including all part numbers, drawings, pictures, logos, or descriptions. Reproduction of any or any part of these items is civilly and/or criminally punishable by law.

Contact Your Local Distributor
or Mobile Tool Truck Dealer



PH: 1-800-531-5978 24 Hr. FAX 210-225-2114
www.atec-trans-tool.com

AUTOMATIC TRANSMISSION TOOLS

FORD

C6



T-0427

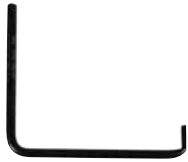
AIR TEST PLATE

Also: E4ODD,
4R70W



T-0428

**EXTENSION HOUSING
SEAL INSTALLER**



T-0442

**CONVERTER CLUTCH
HOLDING TOOL**

Also: AOD, AOD-E, AXOD,
ATX, 4R70W



T-0444

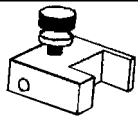
SEAL PROTECTOR

Also: E40D



T-0450

END PLAY CHECKING TOOL
All Ford Transmissions except ATX



T-0479

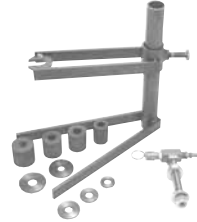
VRV SETTING BLOCK

Also: E40D



T-0496

**BUSHING INSTALLER
REMOVER**



T-1052

**UNIVERSAL TORQUE
CONVERTER LEAK TESTER**

RPK-1052

REPLACEMENT FOR T-1052



T-1890

**COOLER LINE QUICK
DISCONNECT TOOL**

* Removes push lock connectors found at both the radiator & transmission connections on '83 thru current Ford vehicles & the '82 Lincoln Continental overdrive trans. Order T-1889 for replacement part.



Also:
CD4E

T-2321

**MANUAL LEVER SEAL
INSTALLER**

**For more information
about ATEC products,
log onto our website:
www.atec-trans-tool.com**

Reproduction of this material in whole or in part is strictly prohibited without prior written consent by ATEC Trans-Tool, LP, including all part numbers, drawings, pictures, logos, or descriptions. Reproduction of any or any part of these items is civilly and/or criminally punishable by law.

Contact Your Local Distributor
or Tool Truck Dealer



PH: 1-800-531-5978 24 Hr. FAX 210-225-2114
www.atec-trans-tool.com

AUTOMATIC TRANSMISSION TOOLS

FORD

AOD, AOD-E, AOD-EW (4R70W)



T-0033
HEAVY DUTY FRONT
PUMP REMOVER



T-0156- A
TRANSMISSION
HOLDING FIXTURE
WITH BASE



T-0033- A
HEAVY DUTY FRONT
PUMP REMOVER

T-0156- AF
ABOVE HOLDING
FIXTURE WITHOUT
BASE



T-0157
UNIVERSL QUICK LOCK
CLUTCH
SPRING COMPRESSOR



T-0131
EXTENSION HOUSING
SEAL INSTALLER

T-0157- K
COMPRESSION
RING KIT



T-0158- HD
CLUTCH DRUM
SPRING
COMPRESSOR



T-0132
FRONT PUMP
SEAL INSTALLER

Does not work on 4R70W



T-0160- A
EXTENSION HOUSING
BUSHING REMOVER
INSTALLER AND
OUTPUT SHAFT
SUPPORT FIXTURE

* Eases & speeds process



T-0136
FRONT PUMP OIL
SEAL REPLACER

Also: C6, E4OD, 4R70W

T-0220-AOD
BUSHING
DRIVER KIT



T-0154- B
10mm SLIDE HAMMER
ADAPTERS

T-0154- HD
HEAVY DUTY SLIDE
HAMMER SET



T-0428
EXTENSION HOUSING
SEAL REPLACER

For: (4R70W)

Also: C6, E4OD

Reproduction of this material in whole or in part is strictly prohibited without prior written consent by ATEC Trans-Tool, LP, including all part numbers, drawings, pictures, logos, or descriptions. Reproduction of any or any part of these items is civilly and/or criminally punishable by law.

Contact Your Local Distributor
or Mobile Tool Truck Dealer



PH: 1-800-531-5978 24 Hr. FAX 210-225-2114

www.atec-trans-tool.com

FORD TRANSMISSION
TOOLS-EQUIP

AUTOMATIC TRANSMISSION TOOLS

FORD

AOD, AOD-E, AOD-EW (4R70W)



T-0431

**CLUTCH INSTALLER
GUIDE**

Also for A4LD, 5R55E and 4R55E



T-0442

**CONVERTER CLUTCH
HOLDING TOOL**

Also: C6, AXOD, ATX



T-0432

**PNP REMOVER AND
INSTALLER**



T-0446

**OIL PUMP BUSHING
INSTALLER**



T-0436

**UNIVERSAL OIL SEAL
REMOVER**



T-0447

**OIL PUMP BUSHING
REMOVER**

For AOD, AOD-E, (4R70W)



T-0438

**MANUAL LEVER OIL
SEAL INSTALLER**

For AOD, AOD-E
Also: AL4D, (4R4E) (4R55E)
(5R55E), E4OD



T-0450

**END PLAY
CHECKING TOOL**



T-0441

**ONE WAY CLUTCH
TOOL**



T-1600- K

**LIP SEAL INSTALLER
PROTECTOR KIT**

Prevents cutting and rolling during installation.
A complete set to insure proper installation of lip seals.
Available Individually (see next page)



**For more information
about ATEC products,
log onto our website:
www.atec-trans-tool.com**

Reproduction of this material in whole or in part is strictly prohibited without prior written consent by ATEC Trans-Tool, LP, including all part numbers, drawings, pictures, logos, or descriptions. Reproduction of any or any part of these items is civilly and/or criminally punishable by law.

Contact Your Local Distributor
or Tool Truck Dealer



PH: 1-800-531-5978 24 Hr. FAX 210-225-2114
www.atec-trans-tool.com

AUTOMATIC TRANSMISSION TOOLS

FORD

AOD, AOD-E, AOD-EW (4R70W)



T-1601

**THROTTLE VALVE
CABLE GAUGE**

For: AOD, AOD-E



T-1602

**THROTTLE VALVE
GAUGE BLOCK**



T-1603

**REAR CASE BUSHING
R & R**

For: AOD-E



T-1605

**TORQUE CONVERTER
CHECKING TOOL**



T-1606

**OIL PRESSURE
GAUGE SET**

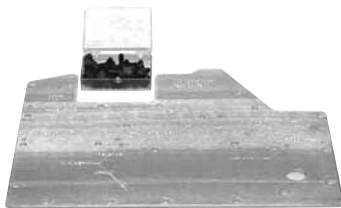
For: AOD



T-1613

**CLUTCH PISTON LIP
SEAL PROTECTOR**

For: AOD, AOD-E, 4R70W



T-1617

AIR TEST PLATE

For: AOD

T-1617- A

AIR TEST PLATE

For: AOD-E



T-1618

**DIRECT DRIVE
SOLID SEALING
RING INSTALLER
KIT**



T-1619

**SERVO REMOVER
INSTALLER
OVERDRIVE &
LOW-REVERSE SERVO**

For: AODE

Also for AX4N Coast



T-1624

**DIRECT CLUTCH
INNER LIP SEAL
INSTALLER
PROTECTOR**



T-1625

**FORWARD CLUTCH
INNER LIP SEAL
INSTALLER
PROTECTOR**



T-1626

**REVERSE CLUTCH
OUTER LIP SEAL
INSTALLER
PROTECTOR**



T-1627

**REVERSE CLUTCH
INNER LIP SEAL
INSTALLER
PROTECTOR**

FORD TRANSMISSION
TOOLS-EQUIP

Reproduction of this material in whole or in part is strictly prohibited without prior written consent by ATEC Trans-Tool, LP, including all part numbers, drawings, pictures, logos, or descriptions. Reproduction of any or any part of these items is civilly and/or criminally punishable by law.

Contact Your Local Distributor
or Mobile Tool Truck Dealer



PH: 1-800-531-5978 24 Hr. FAX 210-225-2114

www.atec-trans-tool.com

AUTOMATIC TRANSMISSION TOOLS

FORD

AOD, AOD-E, AOD-EW (4R70W)



T-1628

**DIRECT CLUTCH
OUTER LIP SEAL
INSTALLER
PROTECTOR**



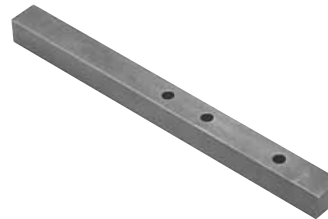
T-1641

**VALVE BODY
GUIDE PINS**



T-1629

**INTERMEDIATE
CLUTCH LIP SEAL
INSTALLER
PROTECTOR**



T-1643

**END PLAY AND
CLEARANCE
GAUGE BAR**



T-1630

**FORWARD CLUTCH
OUTER LIP SEAL
INSTALLER
PROTECTOR**



T-1665

**CASE REAR
BUSHING INSTALLER**



T-1632

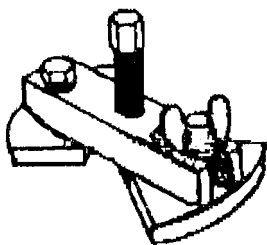
**SERVO PISTON
REMOVER**



T-2329

**SUN GEAR
BUSHING INSTALLER**

For: AOD only



T-1633

**SERVO PISTON
SELECTOR**



T-1695

**GOVERNOR BORE
CASE SLEAVING
TOOL KIT**

For: AOD, AOD-E

[Use with T-1695-SL]



T-1634

**SERVO PISTON
REMOVER INSTALLER**

For: AOD-E



T-1695- SL

**BUSHING
REPLACEMENT**

[Use with T-1695] AOD only

T-1690-SLE

AODE Replacement for
T-1695

Reproduction of this material in whole or in part is strictly prohibited without prior written consent by ATEC Trans-Tool, LP, including all part numbers, drawings, pictures, logos, or descriptions. Reproduction of any or any part of these items is civilly and/or criminally punishable by law.

FORD TRANSMISSION
TOOLS-EQUIP

Contact Your Local Distributor
or Tool Truck Dealer



PH: 1-800-531-5978 24 Hr. FAX 210-225-2114
www.atec-trans-tool.com

AUTOMATIC TRANSMISSION TOOLS

FORD

AOD, AOD-E, AOD-EW (4R70W)

T-1890

COOLER AND FUEL LINE DISCONNECT TOOL



* Removes push lock connectors found at both the radiator & transmission connections on '83 thru current Fords & '82 Lincoln overdrive.

T-2416

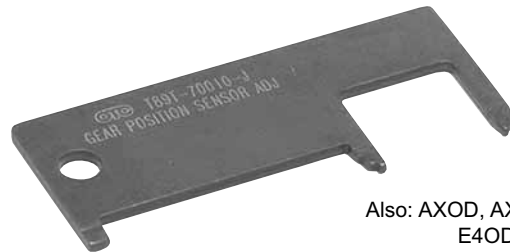
OIL COOLER LINE DISCONNECT TOOL



Also: AXOD, ATX

T-2802- A

GEAR POSITION SENSOR ADJUSTER (TRS ALIGNMENT TOOL)



Also: AXOD, AXOD-E, AX4N, E4OD, AOD, AODE

T-2142

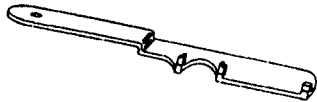
AODE INPUT SHAFT SIZING RING TOOL



T-2327

MLPS ALIGNMENT TOOL

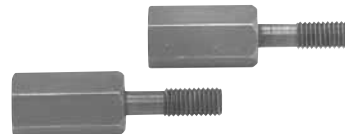
For 4R70W, 4R44E, 4R55E, A4LD



Also: E4OD

T-2806

PUMP PULLER ADAPTERS



Works on (E4OD) (4R70W) (AOD) (AODE)

T-2408

OUTPUT SEAL INSTALLER

For AOD, AOD-E

Also: E4OD



For more information about ATEC products, log onto our website:

www.atec-trans-tool.com

Reproduction of this material in whole or in part is strictly prohibited without prior written consent by ATEC Trans-Tool, LP, including all part numbers, drawings, pictures, logos, or descriptions. Reproduction of any or any part of these items is civilly and/or criminally punishable by law.

Contact Your Local Distributor or Mobile Tool Truck Dealer



PH: 1-800-531-5978 24 Hr. FAX 210-225-2114
www.atec-trans-tool.com

FORD TRANSMISSION TOOLS-EQUIP

AUTOMATIC TRANSMISSION TOOLS

FORD

ATX



T-0154- HD
**HEAVY DUTY SLIDE
HAMMER SET**



T-0452
**CONVERTER
REACTOR SUPPORT
TOOL KIT**



T-0157
**UNIVERSAL QUICK
LOCK SPRING
COMPRESSOR**



T-0453
BEARING INSTALLER

T-0157- K
**COMPRESSION
RING KIT**
[For: T-0157]



T-0458
**END PLAY
CHECK TOOL**



T-0158
**AUTOMATIC
TRANSMISSION
CLUTCH SPRING
COMPRESSOR KIT**

- * For foreign & domestic
- * Removes clutch pistons
- * Adapters included for AOD, AXOD, ATX.
- * Can be used on clutch drums with center shafts.
- * Instructions included



T-0460
BEARING REMOVER

For: ATX (FLC)
Also: AXOD, 4EAT type F, G



T-0158- HD
**CLUTCH DRUM
SPRING
COMPRESSOR**

- * Most economical universal unit.
- * Longer legs for deep drums.
- * Mounts directly on work bench or vise



T-0461
**DIFFERENTIAL
INSTALLER**

Also: 4EAT



T-0442
**CONVERTER CLUTCH
HOLDING TOOL**

Also: C6, AOD, AOD-E,
(4R70W), AXOD

**For more information
about ATEC products,
log onto our website:
www.atec-trans-tool.com**

Reproduction of this material in whole or in part is strictly prohibited without prior written consent by ATEC Trans-Tool, LP, including all part numbers, drawings, pictures, logos, or descriptions. Reproduction of any or any part of these items is civilly and/or criminally punishable by law.

Contact Your Local Distributor
or Tool Truck Dealer



PH: 1-800-531-5978 24 Hr. FAX 210-225-2114
www.atec-trans-tool.com

AUTOMATIC TRANSMISSION TOOLS

FORD

ATX



T-0464
BEARING CONE
INSTALLER

For: ATX 1.25" I.D. 8.0"
'66 thru '79
Also: 4EAT



T-0467
CONVERTOR SEAL
INSTALLER

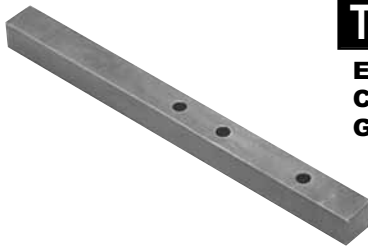
Also: 4EAT TYPE F



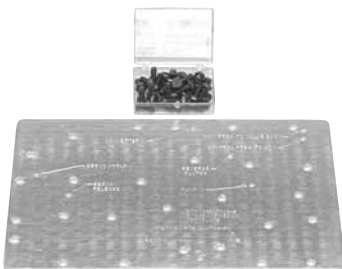
T-0470
TV LINKAGE
ADJUSTMENT TOOL



T-1641
VALVE BODY
GUIDE PINS



T-1643
END PLAY AND
CLEARANCE
GAUGE BAR



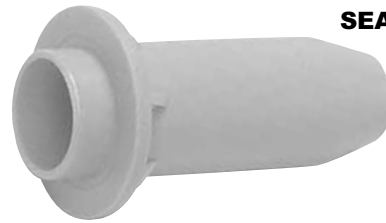
T-1817
AIR TEST PLATE
WITH BOLT KIT



T-1863
FRONT PUMP
SEAL INSTALLER



T-0099
UNIVERSAL SEAL
REMOVER



T-0131
EXTENSION HOUSING
SEAL INSTALLER



T-0132
FRONT PUMP SEAL
INSTALLER



T-0133
REAR SEAL
INSTALLER



T-0161- A
EXTENSION HOUSING
BUSHING REMOVER
AND INSTALLER

Also: C6, 727, E4OD



T-0450
END PLAY
CHECKING TOOL

Reproduction of this material in whole or in part is strictly prohibited without prior written consent by ATEC Trans-Tool, LP, including all part numbers, drawings, pictures, logos, or descriptions. Reproduction of any or any part of these items is civilly and/or criminally punishable by law.

FORD TRANSMISSION
TOOLS-EQUIP

Contact Your Local Distributor
or Mobile Tool Truck Dealer



PH: 1-800-531-5978 24 Hr. FAX 210-225-2114

www.atec-trans-tool.com

AUTOMATIC TRANSMISSION TOOLS

FORD

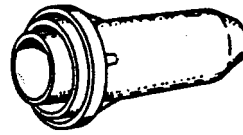
ATX



T-1864
**DIFFERENTIAL
ROTATOR AND
AXLE REMOVER**



T-2323
**CONVERTER HUB
SEAL INSTALLER**



T-2341
**DIFFERENTIAL
SEAL INSTALLER**

Also: 4EAT type F, G



T-1890
**COOLER AND FUEL
LINE DISCONNECT
TOOL**

* Removes push lock connectors found at both the radiator & transmission connections on '83 thru current Fords & '82 Lincoln overdrive.



T-2410
**FRONT HUB
INSTALLER**



T-2322
**THROTTLE SHAFT
SEAL INSTALLER**

Also: CD4E



T-2411
**FRONT HUB
REMOVER**



T-2416
**OIL COOLER LINE
DISCONNECT TOOL**

Also: AOD, AXOD

**For more information
about ATEC products,
log onto our website:
www.atec-trans-tool.com**

Reproduction of this material in whole or in part is strictly prohibited without prior written consent by ATEC Trans-Tool, LP, including all part numbers, drawings, pictures, logos, or descriptions. Reproduction of any or any part of these items is civilly and/or criminally punishable by law.

Contact Your Local Distributor
or Tool Truck Dealer

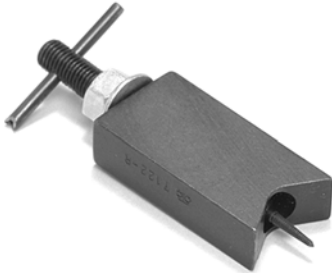


PH: 1-800-531-5978 24 Hr. FAX 210-225-2114
www.atec-trans-tool.com

AUTOMATIC TRANSMISSION TOOLS

FORD

AXOD, AXOD-E (AX4S) (AX4N)



T-0004

**VALVE BODY LOCK
PIN REMOVER**

T-0004- RT

**REPLACEMENT TIPS
FOR T-0004**



T-0460

BEARING REMOVER

For AXOD

Also: ATX, 4EAT (type F,G)



T-0156- A

**TRANSMISSION
HOLDING FIXTURE
WITH BASE**



T-1619

**SERVO REMOVER
INSTALLER
OVERDRIVE &
LOW-REVERSE SERVO**

For AX4N Coast

Also for: AODE

T-0156- AF

**HOLDING FIXTURE
WITHOUT BASE**



T-1650

**CONVERTER
SEAL REMOVER**

For (AX4N)



T-0436

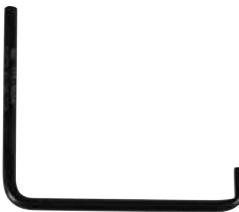
**UNIVERSAL OIL
SEAL REMOVER**



T-1651

**LUBE TUBE
REMOVER**

For (AX4N)



T-0442

**CONVERTER CLUTCH
HOLDING TOOL**

Also: C6, AOD, AOD-E
(4R70W), ATX



T-1652

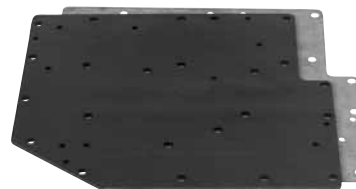
**LOW AND
INTERMEDIATE
CLUTCH PISTON LIP
SEAL PROTECTOR**

For (AX4N)



T-0450

**END PLAY
CHECKING TOOL**



T-1653

AIR TEST PLATE

For (AX4N)

T-1654

GASKET ONLY

Reproduction of this material in whole or in part is strictly prohibited without prior written consent by ATEC Trans-Tool, LP, including all part numbers, drawings, pictures, logos, or descriptions. Reproduction of any or any part of these items is civilly and/or criminally punishable by law.

Contact Your Local Distributor
or Mobile Tool Truck Dealer



PH: 1-800-531-5978 24 Hr. FAX 210-225-2114

www.atec-trans-tool.com

FORD TRANSMISSION
TOOLS-EQUIP

AUTOMATIC TRANSMISSION TOOLS

FORD

AXOD, AXOD-E (AX4S) (AX4N)



T-1655

**REVERSE CLUTCH
PLANET ASSEMBLY
COLLET**

For (AX4N)



T-1662

**REVERSE PISTON LIP
SEAL PROTECTOR**

For (AX4N)



T-1656

**LUBE TUBE SEAL
REPLACER**

For (AX4N)



T-1664

**DRIVER SPROCKET
WHEEL INSTALLER**

For (AX4N) (AX4S)



T-1657

**FRONT CLUTCH
LOADING TOOL
SCREW**

For (AX4N)



T-2325

**OUTPUT SEAL
INSTALLER**

Also: CD4E



T-1658

**OUTPUT SHAFT SEAL
REPLACER PILOT**

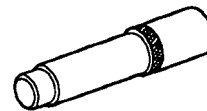
For (AX4N)



T-1659

BEARING REMOVER

For (AX4N)



T-2397

**PUMP BODY
GUIDE PIN**

For (AXOD)



T-1660

**INTERMEDIATE
CLUTCH BALANCE
PISTON LIP SEAL
PROTECTOR**

For (AX4N)



T-2398

**PUMP BEARING-SEAL
REMOVER**

For (AX4N) (AX4S)



T-1661

**SHIM SELECTION
GAUGE**

For (AX4N)



T-2399

**PUMP BEARING-SEAL
INSTALLER**

For (AX4N) (AX4S)

Reproduction of this material in whole or in part is strictly prohibited without prior written consent by ATEC Trans-Tool, LP, including all part numbers, drawings, pictures, logos, or descriptions. Reproduction of any or any part of these items is civilly and/or criminally punishable by law.

Contact Your Local Distributor
or Tool Truck Dealer



PH: 1-800-531-5978 24 Hr. FAX 210-225-2114

www.atec-trans-tool.com

AUTOMATIC TRANSMISSION TOOLS

FORD

AXOD, AXOD-E (AX4S) (AX4N)



A



B



C

T-2400

LIP SEAL INSTALLER PROTECTOR KIT

Available Individually

T-2400- A

Direct Clutch
Piston Protector

T-2400- B

Seal Protector - Reverse

T-2400- C

Forward/Intermediate
Clutch Seal Protector



T-2405

STATOR AND DRIVEN SPROCKET BEARING INSTALLER



T-2406

DIRECT INTERMEDIATE CLUTCH BUSHING INSTALLER



T-2401

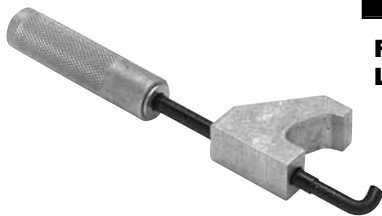
OVERDRIVE SERVO ROD TOOL



T-2407

VALVE AND PUMP SHAFT BODY GUIDE PINS

* ESSENTIAL: Prevents misalignment of oil pump and valve body.



T-2402

FRONT CLUTCH LOADING TOOL



T-2409- F

HOLDING FIXTURE WITHOUT BASE



T-2403

LOW INTERMEDIATE SERVO ROD TOOL

T-0156-BB

HOLDING FIXTURE BASE FOR T-2409- F



T-2404

FRONT PLANETARY BUSHING INSTALLER



T-2410

FRONT HUB INSTALLER



T-2411

FRONT HUB REMOVER

Reproduction of this material in whole or in part is strictly prohibited without prior written consent by ATEC Trans-Tool, LP, including all part numbers, drawings, pictures, logos, or descriptions. Reproduction of any or any part of these items is civilly and/or criminally punishable by law.

Contact Your Local Distributor
or Mobile Tool Truck Dealer



PH: 1-800-531-5978 24 Hr. FAX 210-225-2114
www.atec-trans-tool.com

FORD TRANSMISSION TOOLS-EQUIP

AUTOMATIC TRANSMISSION TOOLS

FORD

AXOD, AXOD-E (AX4S) (AX4N)



T-2415

**BIMETAL HEIGHT
GAUGE TOOL**



T-2421

**OUTPUT SHAFT
SEAL INSTALLER**



T-2416

**OIL COOLER LINE
DISCONNECT TOOL**

Use with T-1889
Replacement Kit

Also: AOD, ATX



T-2433

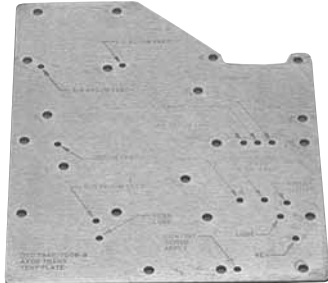
**REVERSE CLUTCH
FEED OIL PIPE
SEAL INSTALLER**

For: AXOD



T-2463

**CONVERTER OIL
SEAL INSTALLER**



T-2417

AIR TEST PLATE
For: AXOD

T-2417- A

AIR TEST PLATE
For: AXOD-E



T-2470

**REVERSE DRUM &
PLANETARY GEARS
REMOVER-INSTALLER**



T-2418

**CONVERTER
GUIDE SLEEVE**

[Use with T-0450]



T-2494

**OIL PUMP NEEDLE
BEARING AND
SEAL TOOL**

* For bearing replacement



T-2420

END PLAY TOOL



T-2495

**VALVE BODY COVER
PUMP DRIVE SHAFT
BORE REPAIR TOOL**

T-2495- SL

**BUSHING
REPLACEMENT**

For: T-2495

Reproduction of this material in whole or in part is strictly prohibited without prior written consent by ATEC Trans-Tool, LP, including all part numbers, drawings, pictures, logos, or descriptions. Reproduction of any or any part of these items is civilly and/or criminally punishable by law.

Contact Your Local Distributor
or Tool Truck Dealer



PH: 1-800-531-5978 24 Hr. FAX 210-225-2114
www.atec-trans-tool.com

AUTOMATIC TRANSMISSION TOOLS

FORD

E40D



T-0033

UNIVERSAL PUMP REMOVER

* Quickly removes conventional type pumps without damage.



T-0438

OIL SEAL INSTALLER

Also: AOD, AOD-E, A4LD, (5R55E) (4R44E) (4R55E)



T-0444

SEAL PROTECTOR

Also: C6



T-0034

UNIVERSAL SEAL PULLER

* Insert tip of the tool behind seal & leverage works for you.
* Eliminates hammering & digging.



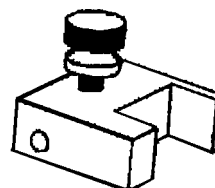
T-0450

END PLAY CHECKING TOOL



T-0133

EXTENSION HOUSING SEAL INSTALLER



T-0479

VRV SETTING BLOCK

Also: C6



T-0136

FRONT PUMP OIL SEAL INSTALLER

Also: C6, AOD, AOD-E, (4R70W)



T-2408

OUTPUT SHAFT BUSHING INSTALLER



T-0161- A

EXTENSION HOUSING BUSHING REMOVER AND INSTALLER



T-0428

EXTENSION HOUSING SEAL INSTALLER

Also: C6, (4R70W)

For more information about ATEC products, log onto our website: www.atec-trans-tool.com

Reproduction of this material in whole or in part is strictly prohibited without prior written consent by ATEC Trans-Tool, LP, including all part numbers, drawings, pictures, logos, or descriptions. Reproduction of any or any part of these items is civilly and/or criminally punishable by law.

Contact Your Local Distributor or Mobile Tool Truck Dealer



PH: 1-800-531-5978 24 Hr. FAX 210-225-2114

www.atec-trans-tool.com

FORD TRANSMISSION TOOLS-EQUIP

AUTOMATIC TRANSMISSION TOOLS

FORD

E4OD



T-2409

**REAR CASE BUSHING
REPLACER SET**

Also: C6



T-2804

**CLUTCH SPRING
FIXTURE**

* All metal



T-2412

**OUTPUT SHAFT
BUSHING INSTALLER**



T-2805

**CLUTCH REMOVER
INSTALLER**

* Works on new & older
clutch drums.



T-2716-A

**RETURN SPRING
COMPRESSOR**
Low & Reverse Brake
Piston '89- current



T-2806

**PUMP PULLER
ADAPTERS**

Works on (E4OD)
(4R70W) (AOD) (AODE)



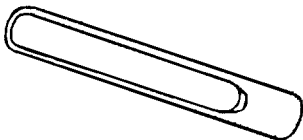
T-2800- F

**HOLDING FIXTURE
WITHOUT BASE**
[Use with base T-0156-BB]



T-2808

**PRESSURE
REGULATOR SNAP
RING INSTALLER**



T-0156- BB

**HOLDING FIXTURE
BASE**

T-2817

AIR TEST PLATE



T-2802- A

**GEAR POSITION
SENSOR ADJUSTER**

Also: AOD, AOD-E, AXOD,
AXOD-E

T-2862

ALIGNMENT BAND



T-2803

**FRONT PUMP
ALIGNING PIN**

Reproduction of this material in whole or in part is strictly prohibited without prior written consent by ATEC Trans-Tool, LP, including all part numbers, drawings, pictures, logos, or descriptions. Reproduction of any or any part of these items is civilly and/or criminally punishable by law.

AUTOMATIC TRANSMISSION TOOLS

FORD

4EAT (G4A-EL), F4EAT (F4A-EL), (G-4EAT)



T-0450

END PLAY CHECKING TOOL



T-1641

VALVE BODY GUIDE PINS

For 4EAT Type F, G
Also: AOD, AOD-E

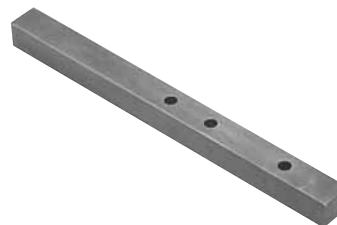


T-0460

BEARING REMOVER

For 4EAT-Types F, G

Also: AXOD, ATX



T-1643

END PLAY AND CLEARANCE GAUGE BAR

For 4EAT
Also: AOD, AOD-E



T-0461

DIFFERENTIAL INSTALLER

For 4EAT-Types F, G

Also: ATX



T-2708

CONVERTER SEAL INSTALLER

For 4EAT Type F, G



T-0464

BEARING CONE INSTALLER

For 4EAT-Types F, G

1.25 I.D. 8.0"
* 1965 Thru 1979
Also: ATX (FLC)



T-2709

PRELOAD TORQUE ADAPTER

For 4EAT Type F, G



T-0467

CONVERTER SEAL INSTALLER

For 4EAT-Type F

Also: ATX



T-2710

DIFFERENTIAL BEARING CUP INSTALLER

For 4EAT Type F, G



T-0471

OIL SENSOR REMOVER INSTALLER

For 4EAT Type G

Reproduction of this material in whole or in part is strictly prohibited without prior written consent by ATEC Trans-Tool, LP, including all part numbers, drawings, pictures, logos, or descriptions. Reproduction of any or any part of these items is civilly and/or criminally punishable by law.

Contact Your Local Distributor
or Mobile Tool Truck Dealer



PH: 1-800-531-5978 24 Hr. FAX 210-225-2114

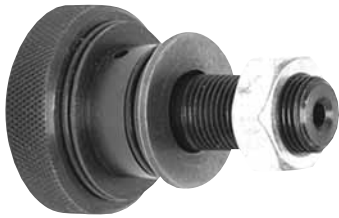
www.atec-trans-tool.com

FORD TRANSMISSION
TOOLS-EQUIP

AUTOMATIC TRANSMISSION TOOLS

FORD

4EAT (G4A-EL), F4EAT (F4A-EL), (G-4EAT)



T-2712

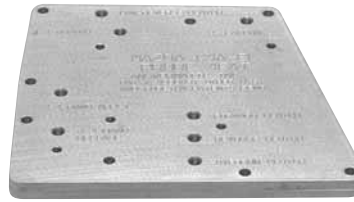
TORQUE CONVERTER LEAK CHECK ADAPTER

For 4EAT Type G
Use with T-1052

T-2712-A

TORQUE CONVERTER LEAK CHECK ADAPTER

For 4EAT Type F
Use with T-1052



T-2717

AIR TEST PLACE

For: (G4AEL)



T-2718

LOW REVERSE CLUTCH SPRING COMPRESSOR

For: F-4EAT (G4A-EL)

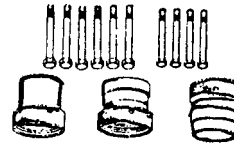


T-2713

LIP SEAL INSTALLER PROTECTOR

For 4EAT Type F, G

* Installs reverse piston & low-reverse clutch piston lip seals



T-2722

SHIM SELECTION SET

For 4EAT Type F, G



T-2714

COASTING PISTON LIP SEAL INSTALLER PROTECTOR

For 4EAT Type F, G



T-2723

SHIM SELECTION GAUGE

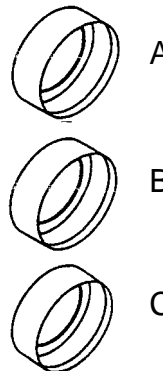
For 4EAT Type F



T-2715

TURBINE SHAFT HOLDER

For 4EAT Type G



T-2724

SEAL PROTECTOR SET (3 Piece)

For 4EAT Type F

AVAILABLE INDIVIDUALLY

T-2724-A

T-2724-B

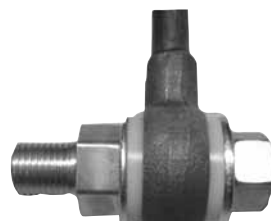
T-2724-C



T-2716-A

RETURN SPRING COMPRESSOR

* Low & reverse brake piston



T-3425

COOLER LINE BANJO FITTING

For: 4EAT

Also: (4F20-E), Mazda, Nissan, Infinite, BMW, Mercedes

Reproduction of this material in whole or in part is strictly prohibited without prior written consent by ATEC Trans-Tool, LP, including all part numbers, drawings, pictures, logos, or descriptions. Reproduction of any or any part of these items is civilly and/or criminally punishable by law.

Contact Your Local Distributor
or Tool Truck Dealer



PH: 1-800-531-5978 24 Hr. FAX 210-225-2114

www.atec-trans-tool.com

AUTOMATIC TRANSMISSION TOOLS

FORD

CD4E



T-0450
END PLAY
CHECKING TOOL



T-2306
SHIFTER SHAFT
ALIGNMENT TOOL



T-2301
CLUTCH PISTON LIP
SEAL PROTECTOR KIT



T-2307
SPRAG INSTALLER



T-2302
CONVERTER SEAL
INSTALLER



T-2308
NEEDLE BEARING
INSTALLER



T-2303
NEEDLE BEARING
REMOVER INSTALLER



T-2309
SERVO COVER
REMOVER AND
INSTALLER



T-2304
TRANSMISSION
MOUNTING BRACKET



T-2310
SERVO PISTON ROD
SELECTION TOOL



T-2305
OIL PUMP
REMOVAL BOLTS



T-2311
VALVE BODY
GUIDE PINS

Reproduction of this material in whole or in part is strictly prohibited without prior written consent by ATEC Trans-Tool, LP, including all part numbers, drawings, pictures, logos, or descriptions. Reproduction of any or any part of these items is civilly and/or criminally punishable by law.

Contact Your Local Distributor
or Mobile Tool Truck Dealer



PH: 1-800-531-5978 24 Hr. FAX 210-225-2114
www.atec-trans-tool.com

FORD TRANSMISSION
TOOLS-EQUIP

AUTOMATIC TRANSMISSION TOOLS

FORD

CD4E



T-2312
PUMP ALIGNMENT
PINS



T-2319
END PLAY CHECKING
TOOL SLEEVE



T-2313
GAUGE BAR



T-2320
DIRECT CLUTCH
PISTON LIP SEAL
PROTECTOR



T-2314
PRELOAD TOOL
ADAPTER
ALIGNER SET



T-2321
MANUAL LEVER SEAL
INSTALLER

Also: C6



T-2315
AIR TEST PLATE



T-2322
THROTTLE SHAFT
SEAL INSTALLER

Also: ATX

T-2316
GASKET FOR T-2315



T-2317
GAUGE BAR
SPACER SET



T-2325
OUTPUT SEAL
INSTALLER

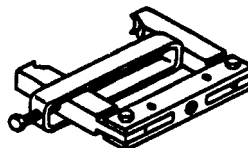
Also: AXOD



T-2318
LUBE TUBE
INSTALLER SET



T-2725
MLPS ALIGNMENT
TOOL



T-2726
CONVERTOR SEAL
REMOVER

Reproduction of this material in whole or in part is strictly prohibited without prior written consent by ATEC Trans-Tool, LP, including all part numbers, drawings, pictures, logos, or descriptions. Reproduction of any or any part of these items is civilly and/or criminally punishable by law.

Contact Your Local Distributor
or Tool Truck Dealer



PH: 1-800-531-5978 24 Hr. FAX 210-225-2114
www.atec-trans-tool.com

AUTOMATIC TRANSMISSION TOOLS

FORD

4F20E (RE4FO4A)

T-0450

**END PLAY
CHECKING TOOL**



T-0476

**SHIFT LEVER SEAL
INSTALLER**



For 4F20E

T-0472

**GEAR PISTON
SENSOR ADJUSTER**



For 4F20E

T-0477

**DIFFERENTIAL
SEAL INSTALLER**



For 4F20E

T-0473

**DIFFERENTIAL
ROTATOR**



For 4F20E

T-0478

**CLUTCH SPRING
COMPRESSOR BAR**



For 4F20E

T-0474

**BEARING RETAINER
INSTALLER**



For 4F20E

T-0483

**END PLAY
CHECKING TOOL**



For 4F20E

T-0475

**SHIM SELECTION
BOLT SET**



For 4F20E

T-3425

**COOLER LINE
BANJO FITTING**



Reproduction of this material in whole or in part is strictly prohibited without prior written consent by ATEC Trans-Tool, LP, including all part numbers, drawings, pictures, logos, or descriptions. Reproduction of any or any part of these items is civilly and/or criminally punishable by law.

Contact Your Local Distributor
or Mobile Tool Truck Dealer



PH: 1-800-531-5978 24 Hr. FAX 210-225-2114
www.atec-trans-tool.com

FORD TRANSMISSION
TOOL-EQUIP

**CHRYSLER
OLD TO NEW
TRANSMISSION
CONVERSIONS**

404.....	(30TH)
413, 470.....	(31TH)
500.....	(40RH) (42RH)
518.....	(46RH)
618.....	(47RH)
604.....	(41TE)
604 LD.....	(40TE)
604 AWD.....	(41AE)
606.....	(42LE)
727.....	(36RH) (37RH)
904.....	(30RH)
998.....	(31RH)
999.....	(32RH)

Reproduction of this material in whole or in part is strictly prohibited without prior written consent by ATEC Trans-Tool, LP, including all part numbers, drawings, pictures, logos, or descriptions. Reproduction of any or any part of these items is civilly and/or criminally punishable by law.

Specifications and descriptions on products in this catalog may change without notice.

Copyright ©2007 ATEC Trans-Tool
All intellectual property and copyrights reserved.

AUTOMATIC TRANSMISSION SPECIFIC TOOLS

FOR: CHRYSLER

Transmission Type

- a. 404 (30TH), 413, 470 (31TH)98
- b. 500 (40RH) (42RH) (42RE) (44RE),
518 (46RH) (46RE),
618 (47RH) (47RE)99
- c. 604, 604-E (40TE) (41TE) (41AE),
607.....100-101
- d. 606 (42LE).....102-103
- e. 727 (36RH) (37RH),104
- f. 904 (30RH), 998 (31RH),
999 (32RH).....105-106

FOR: MISCELLANEOUS

Transmission Type

- Toyota, Mitsubishi/Hyundai,
Mercedes, Renault, Volvo.....107

FEATURED PRODUCTS

T-0033

**UNIVERSAL
PUMP
REMOVER**



See
Page 105

T-1302

**HEAVY DUTY
DIRECT
CLUTCH
SPRING
COMPRESSOR**



See
Page 99

T-1307

**SPLINE
ALIGNMENT
TOOL**



See
Page 99

T-1420-K

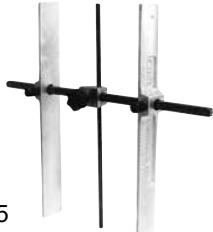
**OVERDRIVE REVERSE
REACTION PLATE SPRING
COMPRESSOR KIT**



See
Page 100

T-0030-A

**"H" GAUGE
UNIVERSAL
FRONT PUMP
CLEARANCE
GAUGE**



See
Page 105

T-1435-A

**TRANSFER
SHAFT
BEARING
SNAP-RING
REMOVER
INSTALLER**



See
Page 100

Contact Your Local Distributor
or Tool Truck Dealer



PH: 1-800-531-5978 24 Hr. FAX 210-225-2114
www.atec-trans-tool.com

AUTOMATIC TRANSMISSION TOOLS

CHRYSLER

404 (30TH), 413, 470 (31TH)



T-0033

UNIVERSAL PUMP REMOVER

* Quickly removes conventional type pumps without damage.



T-1452

BEARING AND SEAL INSTALLER (31TH)

* Use with T-3208 to install differential bearing. Used on rear wheel "blue" hub seal. Also: (41AE)



T-1406

DIFFERENTIAL BEARING CONE REMOVER



T-1453

BEARING CUP AND CONE REMOVER INSTALLER KIT

* New bronze collet for strength.

Also: 604, 604-E, 607



T-1409

OVERRUN CLUTCH ASSEMBLY INSTALLER

BEARING CUPS IN:

- * Transfer shaft bearing cup retainer
- * Differential bearing cup retainer
- * Output bearing cups
- * Governor support retainer
- * Extension housing

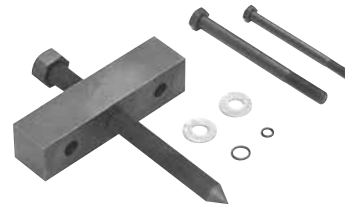
BEARING CONES IN:

- * Transfer shafts
- * Differential assembly
- * Rear carrier
- * Output shaft gear
- * Transfer shaft gear
- * Rear annulus gear



T-1418

TRANSFER SHAFT & DIFFERENTIAL GEAR BEARING CUP (RACE) AND EXTENSION REMOVER



T-1454

OUTPUT AND TRANSFER SHAFT GEAR REMOVER

* Fits both early & late models



T-1432

BEARING PULLER SET
For (31TH)

* Removes rear carrier, output gear, and transfer gear bearing cones.

Also: 604, (41TE), (41AE) (42LE)



T-1460

OUTPUT AND TRANSFER GEAR HOLDER REMOVER & INSTALLER

* Up to 1979 1/2



T-1427

AIR TEST PLATE



T-1462

ADAPTER FOR T-1407 AND T-1460

* For use on 1979 1/2 and up

PHOTO NOT AVAILABLE

T-1448

DIFFERENTIAL SEAL AND CUP INSTALLER

For (31TH)

* Installs differential, extension housing oil seals & differential bearing cups. (Also: 604, (40TE)(41TE)(41AE)

Reproduction of this material in whole or in part is strictly prohibited without prior written consent by ATEC Trans-Tool, LP, including all part numbers, drawings, pictures, logos, or descriptions. Reproduction of any or any part of these items is civilly and/or criminally punishable by law.



T-3208

UNIVERSAL DRIVE HANDLE

For (31TH)

[Use with T-1452]

Contact Your Local Distributor or Mobile Tool Truck Dealer



PH: 1-800-531-5978 24 Hr. FAX 210-225-2114

www.atec-trans-tool.com

CHRYSLER TRANS. TOOLS-EQUIP.

AUTOMATIC TRANSMISSION TOOLS

CHRYSLER

500 (40RH) (42RH) (42RE) (44RE), 518 (46RH) (46RE), 618 (47RH) (47RE)



T-1301

**O.D. PISTON SHIM
AND INTER. SHAFT
SPACER GAUGE**

For: 500, 518 only



T-1302

**HEAVY DUTY DIRECT
CLUTCH SPRING
COMPRESSOR**
Part of T-1318

For: 500, 518 only

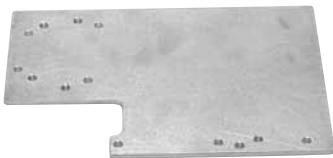


T-1307

**SPLINE ALIGNMENT
TOOL**

Part of T-1318

For: 500, 518 only



T-1317

AIR TEST PLATE

Also: 727, 904



T-1318

**SPRING COMPRESSOR
ALIGNMENT SHAFT**

* Disassemble &
reassemble the
overdrive unit

For: 500, (40RH) (42RH)
(46RH) (46RE)



T-1319

**TRANS BAND
ADAPTER**

For (42RE) (44RE) (46RE)
(46RH) (47RE)

* Use with torque wrench to
adjust transmission bands
Also: 727 (36RH),
904 (30RH) (32RH)



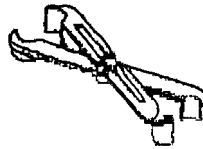
T-1320

**FRONT PUMP SEAL
INSTALLER**

For (42RE) (44RE) (46RE)
(47RE)

[Use with T-3208]

Also: (36RH)



T-1321

**COOLING LINE
DISCONNECT TOOL**

From RWD vehicles '97
up Both 3/8" & 1/2" lines



T-1322

**OVERDRIVE PISTON
SEAL INSTALLER**

For 4 Sp. RWD '96-up



T-1323

**OUTPUT SHAFT
BUSHING REMOVER**

For (46RE)



T-1441

**RETAINING CLIP
INSTALLER- REMOVER**

For (42RE) (44RE) (46RE)
(47RE)

* Used to compress front
clutch assembly.

Also: 727 (36RH), (32RH)



T-3229

**FRONT PUMP OIL
SEAL INSTALLER**

For (42RE) (44RE)

Also: 604 (41TE), (42LE),
(30RH)



T-1450

**REAR EXTENSION
HOUSING SEAL
INSTALLER**

For (42RE) (44RE) (46RE)
(47RE)

[Use with T-3208]

Also: 904, (32RH), (36RH),



T-3208

UNIVERSAL DRIVE HANDLE

[Use with T-1450 and T-1320]



T-3210

THRUST PLATE GAUGE BAR

Use with a dial caliper or depth gauge to
select the proper thrust plate.

Reproduction of this material in whole or in part is strictly prohibited without prior written consent by ATEC Trans-Tool, LP, including all part numbers, drawings, pictures, logos, or descriptions. Reproduction of any or any part of these items is civilly and/or criminally punishable by law.

Contact Your Local Distributor
or Tool Truck Dealer



PH: 1-800-531-5978 24 Hr. FAX 210-225-2114
www.atec-trans-tool.com

AUTOMATIC TRANSMISSION TOOLS

CHRYSLER

604, 604-E (40TE) (41TE) (41AE), 607



T-1420-K

**OVERDRIVE REVERSE
REACTION PLATE
SPRING
COMPRESSOR KIT**



T-1436

**TRANSFER AND
OUTPUT GEAR
BEARING CONE
INSTALLER**



T-1430

**INPUT CLUTCH
OUTER LIP SEAL
INSTALLER
PROTECTOR**



T-1437

**2-4 PISTON SPRING
COMPRESSOR**
* Center bolt to be used
with T-1431 and T-1443
Also: (42LE)



T-1431

**OVERDRIVE AND
REVERSE REACTION
PLATE SPRING
COMPRESSOR**
[Use with center bolt from
T-1437 and T-1443]

Also: (42LE)



T-1438

**UNDER DRIVE SPRING
RETAINER SEAL
INSTALLER**



T-1432

**BEARING CONE
REMOVER SET**

* Can be used with T-1447
on 41TE



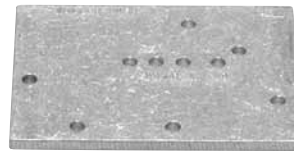
T-1439

**TRANSFER SHAFT BEARING
CONE INSTALLER**



T-1433

**FRONT BEARING CUP
AND TRANSFER
SHAFT REMOVER AND
INSTALLER**



T-1442

AIR TEST PLATE



T-1435

**TRANSFER SHAFT
BEARING SNAP-RING
REMOVER-INSTALLER**



T-1443

**OVERDRIVE AND
REVERSE SPRING
COMPRESSOR**
For 604, (41TE) (41AE)
* Removes retaining ring
[Use with T-1431 and
center bolt from T-1437]

Also: (42LE)



T-1435-A

**TRANS SHAFT
BEARING SNAP RING
REMOVER-INSTALLER**

For: 604

Also: (Toyota 140, 150, 540)



T-1445

**TRANSFER AND
OUTPUT GEAR
BEARING RACE CUP
REMOVER**

Reproduction of this material in whole or in part is strictly prohibited without prior written consent by ATEC Trans-Tool, LP, including all part numbers, drawings, pictures, logos, or descriptions. Reproduction of any or any part of these items is civilly and/or criminally punishable by law.

Contact Your Local Distributor
or Mobile Tool Truck Dealer



PH: 1-800-531-5978 24 Hr. FAX 210-225-2114

www.atec-trans-tool.com

CHRYSLER TRANS.
TOOL-EQUIP

AUTOMATIC TRANSMISSION TOOLS

CHRYSLER

604, 604-E (40TE) (41TE) (41AE), 607



T-1446

**OUTPUT AND
TRANSFER GEAR
HOLDER**



T-1455

**DIFFERENTIAL
ASSEMBLY BEARING
REMOVER**

For: 604, 604-E
* Heavy duty all bronze jaws
* No chisels or cut off
wheels needed.
* Won't damage bearing
mount area.



T-1447

**DIFFERENTIAL
BEARING REMOVER**

* Used on front hub &
bearing assemblies in
FWD vehicles to '94 [Use
with T-1432 to remove
differential bearing from
(41TE)] '94 - up



T-1456

**CLUTCH SPRING
COMPRESSOR
ADAPTOR**

For: 604, 604-E
[Use with T-0158]

PHOTO
NOT AVAILABLE

T-1448

SEAL AND CUP INSTALLER

For 604, (40TE) (41TE) (41AE)

* Installs differential, extension housing oil seals &
differential bearing cups. Also: (31TH)



T-3201

**INNER DIFFERENTIAL
ADJUSTMENT
WRENCH**

Also: 606



T-1449

**FRONT PUMP OIL
SEAL REMOVER**

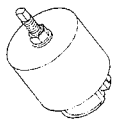
For: (41TE)
* Removes front camshaft
seal in 3.0 Liter OHC V-6
engines
Also (42LE), (30RH), (32RH)



T-3202

**SPLINED SOCKET
WRENCH**

Also: 606 (42LE)



T-1451

**BEARING CUP
REMOVER**

For 604, (40TE) (41TE)
(41AE)

* Removes transfer shaft &
differential bearing cups.



T-3208

**UNIVERSAL DRIVE
HANDLE**

[Use with T-1452]



T-1452

**BEARING AND SEAL
INSTALLER**

For (41AE)

* Use on rear wheel "blue"
hub seal.
[Use with T-3208 to install
differential bearing.]



T-3229

**FRONT PUMP OIL
SEAL INSTALLER**

For: 604 Torqueflite &
Loadflite

* Use on LH vehicles
Also: (42LE)



T-1453

**BEARING CUP AND
CONE REMOVER
INSTALLER KIT**

* New bronze collet



T-3232

**OUTPUT & TRANSFER
SHAFT GEAR HOLDER**

During removal &
installation process



T-3234

**OIL PUMP HOUSING
SEAL INSTALLER**

For: (41TE) all wheel drive
mini vans

Reproduction of this material in whole or in part is strictly prohibited without prior written consent by ATEC Trans-Tool, LP, including all part numbers, drawings, pictures, logos, or descriptions. Reproduction of any or any part of these items is civilly and/or criminally punishable by law.

Contact Your Local Distributor
or Tool Truck Dealer



PH: 1-800-531-5978 24 Hr. FAX 210-225-2114
www.atec-trans-tool.com

AUTOMATIC TRANSMISSION TOOLS

CHRYSLER

606 (42LE)



T-1431

OVERDRIVE AND REVERSE REACTION PLATE SPRING COMPRESSOR (42LE)

[Use with T-1437 center bolt and T-1443]
Also: 604 (41TE) (41AE)



T-3202

SPLINED SOCKET WRENCH

Also: 604



T-1432

BEARING CONE PULLER SET

For (42LE)
* Removes rear carrier, output gear, and transfer gear bearing cones.
[Use with T-3208]
Also: (31TH), 604 (41TE) (41AE)



T-3203

DIFFERENTIAL BEARING PRELOAD WRENCH



T-1437

2-4 PISTON SPRING COMPRESSOR (42LE)

* Center bolt to be used with T-1431 and T-1443
Also: 604, (41TE) (41AE)



T-3204

MAIN & TRANSFER SHAFT RETAINING NUT WRENCH

* For removing and installing
[Use with T-3202]



T-1443

OVERDRIVE AND REVERSE SPRING COMPRESSOR (42LE)

* Removes retaining ring
[Use with T-1431 and center bolt from T-1437. Also: 604, (41TE) (41AE)]



T-3205

TRANSFER SHAFT FRONT BEARING CUP INSTALLER



T-3206

TRANSFER SHAFT FRONT BEARING CUP REMOVER

[Use with T-3208]



T-1449

FRONT PUMP OIL SEAL REMOVER (42LE)

* Removes front camshaft seal in 3.0 Liter OHC V-6 engines
Also: (41TE), (30RH) (32RH) (36RH)



T-3207

TRANSFER SHAFT REAR BEARING CUP REMOVER



T-3208

UNIVERSAL DRIVE HANDLE

[Use with T-3206 and T-1419]



T-3200

DIFFERENTIAL TURNING FORK WRENCH



T-3209

TRANSFER SHAFT SEAL REMOVER KIT

For (42LE)



T-3201

INNER DIFFERENTIAL ADJUSTMENT WRENCH

Also: 604



T-3211

COLLET SET

For (42LE)
* Removes the output shaft bearing cone on the rear carrier '93 to current.
[Use with T-1432]

Reproduction of this material in whole or in part is strictly prohibited without prior written consent by ATEC Trans-Tool, LP, including all part numbers, drawings, pictures, logos, or descriptions. Reproduction of any or any part of these items is civilly and/or criminally punishable by law.

Contact Your Local Distributor
or Mobile Tool Truck Dealer



PH: 1-800-531-5978 24 Hr. FAX 210-225-2114

www.atec-trans-tool.com

CHRYSLER TRANS.
TOOLS-EQUIP

AUTOMATIC TRANSMISSION TOOLS

CHRYSLER

606 (42LE)



T-3213

MAIN & TRANSFER SHAFT SPROCKET REMOVER INSTALLER

For (42LE)
* Removes as a single unit '93 to current.



T-3214

DIFFERENTIAL INNER & OUTER ADJUSTER SEAL INSTALLER

For (42LE)
* Install the inner and outer adjuster seals '93-current



T-3215

TRANSFER SHAFT REAR & BAFFLE BEARING CUP INSTALLER For (42LE)
[Use with an arbor press]



T-3216

TRANSFER SHAFT RETAINING NUT STAKING TOOL

For (42LE)
* Use during assembly
[Use with an arbor press]



T-3218

TRANSFER SHAFT OIL SEAL PROTECTOR
For (42LE)
* '93 to current



T-3219

TRANSFER SHAFT HOLDING FIXTURE

For (42LE)
* Use during installation of transfer shaft seal, rear transfer shaft bearing cup and bearing cone.
* '93 to current



T-3220

OUTPUT SHAFT FRONT BEARING CUP REMOVER

For (42LE) * '93 - current



T-3221

OUTPUT SHAFT REAR BEARING CUP REMOVER

For (42LE)
* '93 to current



T-3222

OUTPUT SHAFT RETAINING NUT STAKING TOOL

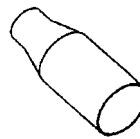
For (42LE) * '93 to current
* Use after installation on LH vehicles.
[Use with arbor press]



T-3223

LONG STUB SHAFT REMOVER

For (42LE) * '93 to current
[Use with T-0154- HD]



T-3224

STUB SHAFT OIL SEAL PROTECTOR

For (42LE)
'93 to current



T-3225

TRANSFER SHAFT SEAL INSTALLER

For (42LE) * '93 to current



T-3226

OUTPUT SHAFT REAR BEARING CONE SUPPORT PLATE

For (42LE) * '93 to current
* Use during installation
* Also use to install ball bearing on stub shaft.



T-3229

FRONT PUMP OIL SEAL INSTALLER

For (42LE)
* Use on LH vehicles. Also: 604 torqueflite & Loadflite



T-3230

CARRIER BEARING INSTALLER

For (42LE)
* Also use to install the differential side carrier bearing in cars with 8 1/4" rear axles. [Use T-3208]



T-3235

TRANSFER DRIVEN BEARING GEAR INSTALLER

For Colt & Summit

Reproduction of this material in whole or in part is strictly prohibited without prior written consent by ATEC Trans-Tool, LP, including all part numbers, drawings, pictures, logos, or descriptions. Reproduction of any or any part of these items is civilly and/or criminally punishable by law.

Contact Your Local Distributor
or Tool Truck Dealer



PH: 1-800-531-5978 24 Hr. FAX 210-225-2114
www.atec-trans-tool.com

AUTOMATIC TRANSMISSION TOOLS

CHRYSLER

727 (36RH) (37RH)



T-0030-A
**UNIVERSAL "H"
 GAUGE FRONT PUMP
 CLEARANCE GAUGE**



T-0033
**UNIVERSAL PUMP
 REMOVER**
 * Removes conventional
 pumps without damage.



T-0033-A
**HEAVY DUTY FRONT
 PUMP REMOVER**



T-0085
**FRONT PUMP
 SEALER TOOL**



T-0099
**UNIVERSAL SEAL
 REMOVER**



T-0133
**EXTENSION HOUSING
 SEAL INSTALLER**



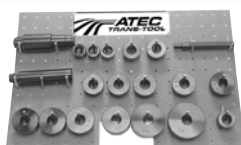
T-0158- HD
**CLUTCH DRUM
 SPRING
 COMPRESSOR**
 * Long legs for lock ups
 * Mounts directly on work
 bench or vise
 Also: 904 series



T-0161- A
**EXTENSION HOUSING
 BUSHING REMOVER
 AND INSTALLER**



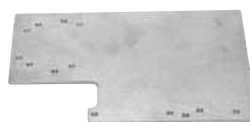
T-0166
LINE A PUMP KIT



T-0220-20
**COMPLETE BUSHING
 DRIVER KIT**



T-1031- A
**SHIFT SELECTOR
 SHAFT SEAL
 REMOVER INSTALLER**
 *No draining of trans fluid.



T-1317
AIR TEST PLATE
 Also: 500, 904



T-1319
**TRANS BAND
 ADAPTER 727 (36RH)**
 * Use with torque wrench to
 adjust transmission bands



T-1320
**FRONT PUMP SEAL
 INSTALLER For (36RH)**
 [Use with T-3208]



T-1441
**RETAINING CLIP
 INSTALLER REMOVER**
 For 727 (36RH)
 * Used to compress front
 clutch assembly.



T-1449
**FRONT PUMP OIL
 SEAL REMOVER (36RH)**
 * Front camshaft seal in
 3.0 liter OHC V-6 engines.



T-1450
**REAR EXTENSION
 HOUSING SEAL
 INSTALLER For (36RH)**
 [Use with T-3208]



T-3208
**UNIVERSAL DRIVE
 HANDLE**
 [Use with T-1450, T-1320]

**For more information
 about ATEC products,
 log onto our website:
www.atec-trans-tool.com**

Contact Your Local Distributor
 or Mobile Tool Truck Dealer



PH: 1-800-531-5978 24 Hr. FAX 210-225-2114
www.atec-trans-tool.com

CHRYSLER TRANS.
 TOOL-EQUIP

AUTOMATIC TRANSMISSION TOOLS

CHRYSLER

904 (30RH), 998 (31RH), 999 (32RH)



T-0030- A

**"H" GAUGE
UNIVERSAL FRONT
PUMP CLEARANCE
GAUGE**



T-0033

**UNIVERSAL PUMP
REMOVER**

* Removes conventional
type pumps without
damage.



T-0033- A

**HEAVY DUTY FRONT
PUMP REMOVER**



T-0099

**UNIVERSAL SEAL
REMOVER**



T-0130

**BOOT TYPE
EXTENSION SEAL
INSTALLER**



T-0154- HD

**HEAVY DUTY
SLIDE HAMMER SET**



T-0156- A

**TRANSMISSION
HOLDING FIXTURE
WITH BASE**

T-0156- AF

**ABOVE WITHOUT
BASE**



T-0158- HD

**CLUTCH DRUM
SPRING
COMPRESSOR**

* Most economical unit
* Long legs for lock ups
* Mounts directly on work
bench or vise.

Also: 727 series



T-0160- A

**EXTENSION HOUSING
BUSHING REMOVER
INSTALLER AND
OUTPUT SHAFT
SUPPORT FIXTURE**

* Speeds up process



T-0163- A

**VACUUM PUMP
HEAVY DUTY**



T-0163- C

PRESSURE GAUGE

0 - 100 pounds

T-0163- D

PRESSURE GAUGE

0 - 300 pounds



T-0166

LINE A PUMP KIT

Reproduction of this material in whole or in part is strictly prohibited without prior written consent by ATEC Trans-Tool, LP, including all part numbers, drawings, pictures, logos, or descriptions. Reproduction of any or any part of these items is civilly and/or criminally punishable by law.

AUTOMATIC TRANSMISSION TOOLS

CHRYSLER

904 (30RH), 998 (31RH), 999 (32RH)

T-1031-A

**SHIFT SELECTOR
SHAFT SEAL
REMOVER AND
INSTALLER**



Does not require
draining transmission
fluid.

T-1441

**RETAINING CLIP
INSTALLER AND
REMOVER**
For (32RH)

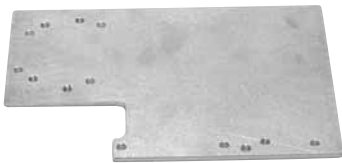


* Used to compress front
clutch assembly

Also: (42RE) (44RE) (46RE)
(47RE), 727 (36RH)

T-1317

AIR TEST PLATE



Also: 500, 727

T-1449

**FRONT PUMP OIL
SEAL REMOVER** For
(30RH) (32RH)



* Removes front camshaft
seal in 3.0 liter OHC V-6
engines.

Also: (41TE), (42LE), (36RH)

T-1319

**TRANS BAND
ADAPTER**

For 904 (30RH) (32RH)



* Use with torque wrench
to adjust transmission
bands

Also: (42RE) (44RE) (46RE)
(47RE) (46RH), 727 (36RH)

T-1450

**REAR EXTENSION
HOUSING SEAL
INSTALLER**

For 904 (32RH)



[Use with T-3208]

Also: (42RE) (44RE) (46RE)
(47RE), (36RH)

T-3208

**UNIVERSAL DRIVE
HANDLE**

[Use with T-1450]



T-3229

**FRONT PUMP OIL
SEAL INSTALLER**
For (30RH)



Also: (42RE) (44RE), 604
(41TE), (42LE)

**For more
information
about
ATEC products,
log onto our website:**

www.atec-trans-tool.com

Reproduction of this material in whole or in part is strictly prohibited without prior written consent by ATEC Trans-Tool, LP, including all part numbers, drawings, pictures, logos, or descriptions. Reproduction of any or any part of these items is civilly and/or criminally punishable by law.

Contact Your Local Distributor
or Mobile Tool Truck Dealer



PH: 1-800-531-5978 24 Hr. FAX 210-225-2114

www.atec-trans-tool.com

AUTOMATIC TRANSMISSION SPECIFIC TOOLS

MITSUBISHI OLD TO NEW TRANSMISSION CONVERSIONS

KM171-5F3A21-2
 KM172-5F3A22-A
 KM175-5..... F4A22-2
 KM176-5F4A21-2
 KM177-8F4A23-2
 ('92-AWD)W4A32-1
 (w/14Bolt Pan)F4A33-1

HYUNDAI

Scoupe/AccentA4A-F1

Reproduction of this material in whole or in part is strictly prohibited without prior written consent by ATEC Trans-Tool, LP, including all part numbers, drawings, pictures, logos, or descriptions. Reproduction of any or any part of these items is civilly and/or criminally punishable by law.

Specifications and descriptions on products in this catalog may change without notice.

Copyright ©2007 ATEC Trans-Tool
All intellectual property and copyrights reserved.

TOYOTA



T-1435-A

**TRANS SHAFT BEARING SNAP RING
REMOVER-INSTALLER**

For: 140, 150, 540 Also: (Chrysler 604)



T-2147

**TOYOTA
AIR TEST PLATE**



T-2162

**TOYOTA FRONT PUMP
ALIGNMENT BAND**



T-2195

**TOYOTA GOVERNOR BORE CASE
SLEWING TOOL KIT**

[Use with T-2195-SL]



T-2195- SL

**TOYOTA GOVERNOR BORE CASE
SLEWING TOOL BUSHING
REPLACEMENT** [Use with T-2195]

MITSUBISHI / HYUNDAI



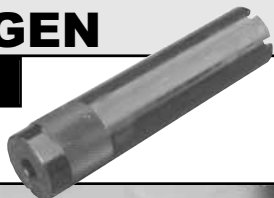
T-2145

**MITSUBISHI-HYUNDAI
END CLUTCH PISTON
INSTALLER**

VOLKSWAGEN

T-3550

**VW PINION SHAFT
RETAINER WRENCH**



MERCEDES



T-2146

**MERCEDES LINKAGE
GROMMET**

RENAULT

MB1/MJ3

VOLVO

AW55, AW70, AW71



T-5299

**RENAULT
CLUTCH DRUM TOOL**

- * Opens and closes tangs on overdrive clutch unit.
- * Pays for itself with one use.
- * Fits '79 and later E-1 and E-2 models



T-0159- A

**VOLVO
EXTENSION
HOUSING BUSHING
REMOVER AND
INSTALLER**

Contact Your Local Distributor
or Tool Truck Dealer



PH: 1-800-531-5978 24 Hr. FAX 210-225-2114
www.atec-trans-tool.com