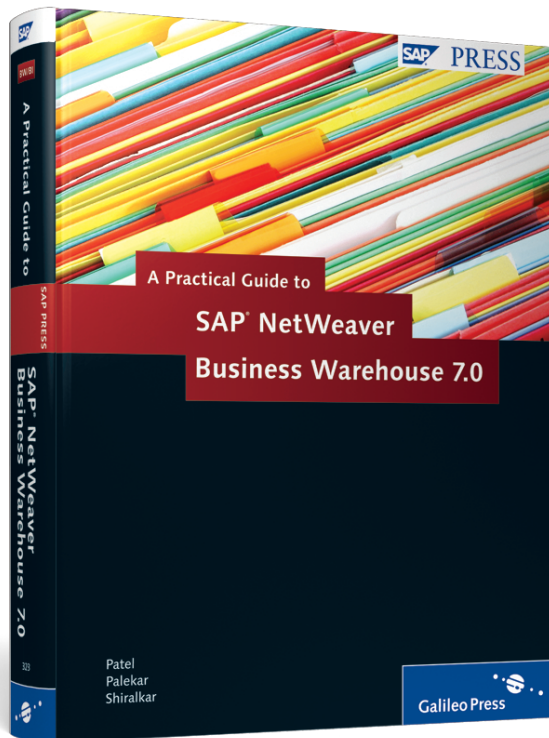


Bharat Patel, Amol Palekar, Shreekant Shiralkar

A Practical Guide to SAP® NetWeaver Business Warehouse (BW) 7.0



Contents at a Glance

1	The Business Scenario: ABCD Corp.	27
2	SAP NetWeaver Business Warehouse – Overview	35
3	InfoObjects and Master Data	69
4	DataStore Objects	115
5	InfoCubes	141
6	InfoProviders	173
7	Extraction, Transformation, and Loading	213
8	Extraction from an SAP Source System	297
9	BEx Query Designer	317
10	Reporting and Analysis	399
11	Web Application Designer	453
12	Integrated Planning	495
13	Reporting with SAP BusinessObjects	573
14	Administration and Monitoring	605
15	Advanced Features	655
A	Case Study: ABCD Corp.	669
B	Glossary	679
C	Important OSS Notes	685
D	The Authors	687

Contents

Preface	17
An Introduction to Business Intelligence	21
1 The Business Scenario: ABCD Corp.	27
1.1 ABCD Corp.: Company Overview	27
1.2 Marketing Network	28
1.3 The Sales and Billing Process	29
1.4 Business Intelligence Requirements	32
1.5 The Business Planning Scenario	33
1.6 Summary	34
2 SAP NetWeaver Business Warehouse – Overview	35
2.1 Evolution of SAP NetWeaver BW	35
2.2 Layers of SAP NetWeaver BW	38
2.2.1 Extraction Layer	39
2.2.2 Staging Layer	40
2.2.3 Transformation Layer	40
2.2.4 Loading Layer	41
2.2.5 Reporting and Analysis Layer	41
2.2.6 Planning and Advanced Analytics Layer	41
2.3 Basic Navigation in SAP NetWeaver BW	43
2.3.1 Logging On to SAP NetWeaver BW	43
2.3.2 Screen Elements	45
2.3.3 Basic Navigation Functions	46
2.3.4 Hide/Unhide	48
2.4 Data Warehousing Workbench Functions	53
2.5 Activation of SAP Business Content	56
2.5.1 Grouping	60
2.5.2 Collection Mode	61
2.5.3 Display	61
2.5.4 Activating the InfoObject	61

2.6	Implementation/Architecture Options with SAP NetWeaver BW	64
2.6.1	Core Landscape	64
2.6.2	Peripheral Landscape	65
2.7	Avenues of SAP NetWeaver BW Learning	66
2.8	Summary	67

3 InfoObjects and Master Data 69

3.1	Types of InfoObjects	70
3.2	Creating an InfoArea	71
3.3	Creating an InfoObject Catalog	73
3.4	Creating a Characteristic InfoObject	76
3.4.1	Reference Characteristic Field	77
3.4.2	Template Field	77
3.5	Configuring a Characteristic InfoObject	78
3.5.1	General Tab	78
3.5.2	Business Explorer Tab	80
3.5.3	Master Data/Texts Tab	82
3.5.4	Hierarchy Tab	87
3.5.5	Attributes Tab	92
3.5.6	Compounding Tab	97
3.6	Creating a Key Figure InfoObject	98
3.6.1	Template Field	99
3.6.2	Reference Key Figure Field	99
3.7	Configuring a Key Figure InfoObject	100
3.7.1	Type/Unit Tab	100
3.7.2	Aggregation Tab	105
3.7.3	Additional Properties Tab	110
3.8	Creating a Unit InfoObject	112
3.9	Summary	114

4 DataStore Objects 115

4.1	Introduction to DataStore Objects	115
4.1.1	Definition and Purpose	115
4.1.2	Types of DSOs	118

4.2	Architecture of the Standard DSO	119
4.2.1	Types of Tables	119
4.2.2	Activation Process for a Standard DSO	120
4.2.3	ORECORDMODE	124
4.3	Designing a DSO	125
4.4	Configuration of the Standard DSO	128
4.4.1	Key Settings in a Standard DSO	128
4.4.2	Including InfoObjects in the DSO	130
4.4.3	Entering Data Fields	132
4.5	Configuration of Write-Optimized DSOs	135
4.6	Configuration of Direct Update DSOs	137
4.7	Usage Scenarios for DSOs	138
4.7.1	Data Staging	139
4.7.2	Temporary Storage Area	139
4.7.3	Analysis Process Designer	139
4.7.4	Pseudo-Delta	139
4.8	Summary	140
5	InfoCubes	141
5.1	Modeling InfoCubes	141
5.1.1	Key Terms	142
5.1.2	Assignment Tables for Characteristics and Key Figures	143
5.1.3	Create Bubble Models	143
5.1.4	Dimensions	145
5.1.5	Classic Star Schema	146
5.1.6	The Extended Star Schema	147
5.1.7	InfoCube Considerations	150
5.2	Types of InfoCubes	150
5.2.1	Standard InfoCube	151
5.2.2	Real-Time InfoCube	151
5.2.3	VirtualProvider InfoCube	151
5.3	Creating a Standard InfoCube	152
5.3.1	Initial Setup	152
5.3.2	Using Templates for InfoObject Selection	154
5.3.3	Editing Dimensions	156
5.3.4	Adding New Dimensions	160
5.3.5	Adding Characteristics to Dimensions	161

5.3.6	Adding Key Figures to an InfoCube	164
5.3.7	Selecting Navigation Attributes	166
5.3.8	Activating the InfoCube	167
5.4	Provider-Specific Properties	168
5.4.1	Setting Provider-Specific Properties for a Single InfoObject	169
5.4.2	Setting Provider-Specific Properties for Multiple InfoObjects	170
5.5	Summary	172
6	InfoProviders	173
6.1	Introduction to MultiProvider	173
6.2	Designing a MultiProvider	175
6.3	InfoSets	188
6.3.1	Usage	188
6.4	Creating an InfoSet	191
6.5	Additional Navigation Capabilities	199
6.5.1	Auto Arrange	200
6.5.2	Navigator	200
6.5.3	Link Maintenance	202
6.6	Global Properties	203
6.6.1	Join Is Time-Dependent	204
6.6.2	Most Recent Reporting for InfoObjects	204
6.6.3	Left Outer Join: Add Filter Value to On-Condition	206
6.6.4	Temporal Join	206
6.6.5	Changing the InfoSet Visual Setting	207
6.7	Left Outer Join in an InfoSet	208
6.8	Introduction to VirtualProviders	210
6.9	Summary	211
7	Extraction, Transformation, and Loading	213
7.1	Introduction to ETL	213
7.1.1	Elements in the ETL Process	213
7.1.2	Data Acquisition Interfaces	216
7.1.3	Transformation	217
7.1.4	Loading	218

7.2	Loading Master Data from a Flat File Source System to an InfoObject	219
7.2.1	Creating a Flat File Source System	219
7.2.2	Creating a DataSource	221
7.2.3	Creating and Activating a Transformation	234
7.2.4	Creating a DTP for Loading Master Data	239
7.2.5	Creating an InfoPackage and Starting Data Extraction	245
7.2.6	Monitoring Data Extraction to the PSA	250
7.2.7	Monitoring the Data Transfer Process (DTP)	255
7.2.8	Maintaining Master Data	258
7.3	Loading Transaction Data from a Source System to a DSO	260
7.3.1	Step 2: Creating a Transaction DataSource	261
7.3.2	Step 3: Creating a Transformation	265
7.4	Loading Data from a DSO to an InfoCube	279
7.4.1	Time Conversion Transformation	281
7.4.2	Routine	282
7.5	Temporary Storage Areas and Error Stacks	286
7.6	Data Extraction from Non-SAP systems	293
7.6.1	DB Connect	294
7.6.2	UD Connect	295
7.7	Summary	296

8 Extraction from an SAP Source System 297

8.1	Settings in SAP ERP	298
8.2	Activating Business Content DataSources	298
8.3	Data Extraction Using the Logistic Cockpit	299
8.3.1	Initialization/Full Upload	300
8.3.2	Delta Loads	301
8.3.3	Data Extraction	302
8.4	Generic DataSources	304
8.4.1	Settings for a Generic DataSource	306
8.4.2	Creating a Generic DataSource	308
8.5	Making Generic DataSources Delta Capable	311
8.5.1	Delta-Specific Field Area	312
8.5.2	Settings Area	312
8.6	Extractor Checker	314
8.7	Summary	316

9	BEx Query Designer	317
9.1	BEx Tools Landscape	317
9.2	Example Scenario	319
9.3	BEx Query Designer	320
9.3.1	BEx Query Designer Screen Layout	320
9.3.2	BEx Query Designer Menu Bar	323
9.4	Create a Simple BEx Query	324
9.4.1	Define Filter	326
9.4.2	Define Rows/Columns	328
9.4.3	Execute the Query and Analyze Data	330
9.5	OLAP Variables	333
9.5.1	Types of Variables	334
9.5.2	Processing Types of Variables	335
9.6	Variable Editor	338
9.6.1	Characteristic Variables (Manual Entry/Default Value)	339
9.6.2	Characteristic Variables (Replacement Path)	345
9.6.3	Characteristic Variables (Customer Exit)	345
9.6.4	Formula Variables	348
9.6.5	Text Variables	350
9.7	Filters — Selection Objects	351
9.8	Structures	356
9.8.1	Key Figure Structures	356
9.8.2	Characteristic Structures	357
9.8.3	Reusing Structures	358
9.9	Selections and Formulas	360
9.9.1	Selection	361
9.9.2	Formula	364
9.10	Restricted Key Figures	368
9.11	Calculated Key Figures	370
9.12	Properties of Query Elements	372
9.12.1	Set Properties of Characteristic Query Elements	372
9.12.2	Set Properties of Key Figure Query Elements	376
9.12.3	Query Properties	381
9.13	Conditions	384
9.14	Exceptions	388
9.15	Report-to-Report Interface	393
9.16	Summary	397

10 Reporting and Analysis 399

10.1	Running Queries in BEx Analyzer	399
10.1.1	Execute a Query in BEx Analyzer	401
10.1.2	BEx Analysis Functions	405
10.2	Performing Information Analysis in BEx Analyzer	407
10.2.1	Applying Filters	407
10.2.2	Navigation Options	408
10.3	Local Properties and Formulas in BEx Analyzer	411
10.3.1	Local Properties of a Characteristic	411
10.3.2	Local Properties of a Key Figure	413
10.3.3	Local Query Properties	414
10.3.4	Local Formula	416
10.4	Saving and Reusing Workbooks in BEx Analyzer	418
10.5	Building an Analysis Application in BEx Analyzer	420
10.5.1	BEx Design Functions	420
10.5.2	Build a Simple Analysis Application	422
10.6	Running Queries in BEx Web Analyzer	431
10.6.1	Create a New Analysis with BEx Web Analyzer	432
10.6.2	BEx Web Analyzer Functions	434
10.7	Performing Information Analysis in BEx Web Analyzer	436
10.8	Analysis Filters and Settings in BEx Web Analyzer	441
10.9	Information Broadcasting	444
10.9.1	Information Broadcasting in BEx Web Analyzer	444
10.9.2	Maintain Broadcasting Settings on Different BEx Objects	448
10.9.3	Create a New Setting in BEx Broadcaster	449
10.10	Summary	452

11 Web Application Designer 453

11.1	Web Application Designer Overview	453
11.1.1	Starting the Web Application Designer	454
11.1.2	Different Screen Areas of Web Application Designer	455
11.2	Create a Simple Web Application	457
11.2.1	Create a Data Provider	457
11.2.2	Using an Analysis Web Item	459
11.2.3	Using a Dropdown Box	460

11.2.4	Creating Charts	463
11.2.5	Adding a Command Button	464
11.2.6	Arrange Web Items	468
11.2.7	Validate and Save the Web Template	470
11.2.8	Execute Web Template	471
11.3	Web Items	473
11.3.1	Standard Web Items	473
11.3.2	Advanced	480
11.3.3	Miscellaneous	483
11.4	Working with Commands	486
11.4.1	Commands for Data Providers	488
11.4.2	Commands for Planning Applications	491
11.4.3	Commands for Web Items	492
11.4.4	Commands for Web Templates	492
11.5	Web Template Properties	493
11.6	Summary	494

12 Integrated Planning 495

12.1	An Overview of Planning	496
12.2	Planning Requirements in ABCD Corp.	498
12.3	SAP NetWeaver BW Integrated Planning Components	499
12.3.1	Planning Modeler and Planning Wizard	501
12.3.2	Real-Time InfoCube	504
12.3.3	Characteristic Relationships	507
12.3.4	Data Slices	514
12.3.5	Aggregation Level	517
12.3.6	Planning Filter	521
12.3.7	Planning Functions	526
12.3.8	Planning Sequence	542
12.3.9	Input-Ready Query	545
12.4	Planning Applications	550
12.4.1	Excel-Based Planning Application	550
12.4.2	Web-Based Planning Applications	557
12.5	Planning Locks	569
12.6	Changes to Data in Real-Time InfoCubes	571
12.7	Summary	572

13 Reporting with SAP BusinessObjects 573

13.1	Basic Elements of a SAP BusinessObjects Universe	574
13.2	Creating a Universe	577
13.2.1	Based on an InfoCube	577
13.2.2	Based on a BEx Query	585
13.3	Web Intelligence	588
13.3.1	Creating a Web Intelligence Report Based on a Universe	589
13.3.2	Editing and Formatting Web Intelligence Documents	595
13.3.3	Performing Local Calculations in a WebI Document	599
13.4	Summary	604

14 Administration and Monitoring 605

14.1	DSO Administration and Maintenance	605
14.1.1	InfoProvider Administration Screen Tasks — DSO	606
14.1.2	Performance Improvement Tasks	614
14.2	InfoCube Administration and Maintenance	616
14.2.1	InfoProvider Administration Screen Tasks — InfoCube	616
14.2.2	Performance Improvement Tasks	624
14.3	Aggregates	625
14.4	Compression	633
14.5	Process Chain	634
14.5.1	Creating a Process Chain	635
14.5.2	Setting Email Alerts	641
14.6	Analysis Authorizations	644
14.6.1	Step 1: Define the InfoObject	645
14.6.2	Step 2: Create an Authorization Object	646
14.6.3	Step 3: Assign a User ID	649
14.7	Other Administration and Maintenance Tasks	650
14.7.1	Executing an Attribute Hierarchy Change Run	650
14.7.2	Deleting Extra Aggregates	651
14.7.3	Deleting PSA Data	652
14.7.4	Deleting DTP Temporary Storage	652
14.7.5	Using Report SAP_INFOCUBE_DESIGNS	652
14.7.6	Checking Data Consistency	652
14.8	Summary	653

15 Advanced Features	655
15.1 Open Hub	655
15.1.1 The Open Hub Concept	655
15.1.2 Creating an Open Hub Destination	655
15.2 Analysis Process Designer	658
15.2.1 Analysis Workbench	658
15.2.2 Creating an Analysis Process	660
15.3 Remodeling	662
15.3.1 Need for Remodeling	663
15.3.2 Creating Remodeling Rules	664
15.4 Summary	665
Appendices	667
A Case Study: ABCD Corp.	669
B Glossary	679
C Important OSS Notes	685
D The Authors	687
Index.....	689

A clear and comprehensive business requirement leads to a better design of a business intelligence solution. In this chapter, we present a basic sales process scenario for a company, which will be used as a reference in subsequent chapters.

1 The Business Scenario: ABCD Corp.

Business managers always prefer making informed decisions, a process enabled by *business intelligence (BI)* solutions. A good BI solution improves the efficiency and transparency of operations, offers better control over the outcomes of decisions, and allows you to fully explore all of the options at your disposal. It can also assist in the automation of managerial processes.

The process of making decisions for sales growth based on quantitative information is *sales analytics*, which forms one of the most common requirements for BI solutions across different companies around the world. For this reason, we've chosen to build a simple sales analytics example for a typical company, called *ABCD Corp.* In the process of building sales analytics for ABCD Corp., we explain all aspects of designing a data warehouse solution based on SAP NetWeaver Business Warehouse (SAP NetWeaver BW) version 7.0.

This chapter describes ABCD Corp. and then describes the entities involved in the typical selling processes. Each entity and the process will be referred to throughout the book as we build different components of an analytics solution using SAP NetWeaver BW (version 7.0).

1.1 ABCD Corp.: Company Overview

ABCD Corp. is a company located in North America with headquarters in New York City. It sells different electronics and white goods (i.e., appliances) to its customers, who are spread all over the world (Figure 1.1).

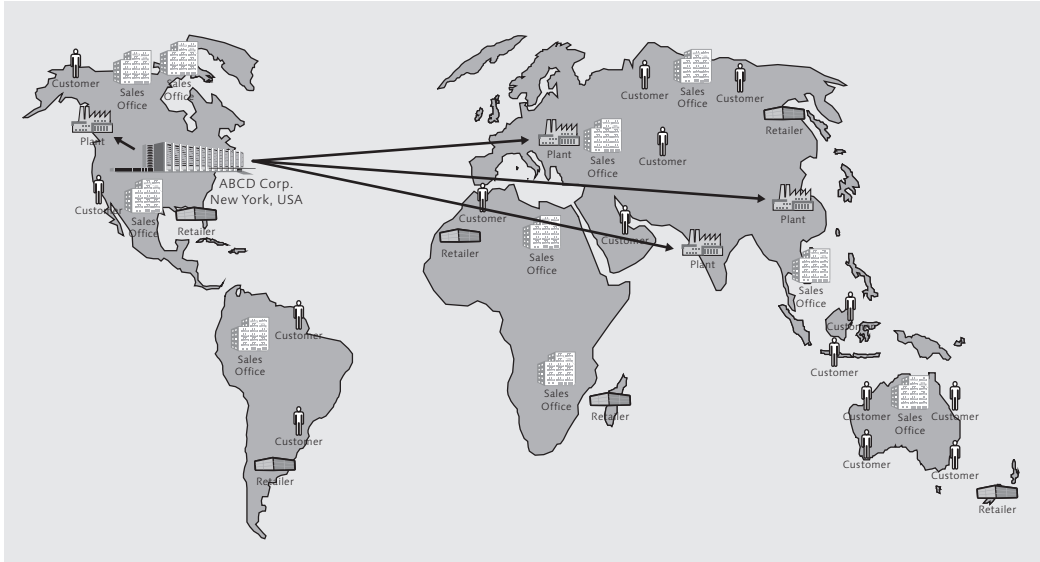


Figure 1.1 Overview of ABCD Corp.

1.2 Marketing Network

ABCD Corp. has more than 90 worldwide customers, which are either retail chains or independent stores (see Table A.3 in Appendix A, Case Study: ABCD Corp.). The company has three main markets — North America, Europe, and Asia-Pacific — and each market has one or more regional marketing offices. Within the US, the customers are grouped by states; outside the US, they are grouped under their respective country or city (e.g., London). ABCD Corp. has sales offices in most cities where customers are located, and the sales offices report to their corresponding regional marketing office. Figure 1.2 shows a hierarchy of the marketing network.

Each sales office has one or more salesperson, and each customer is serviced by a specific salesperson who maintains regular contact with his customers, mainly for the purpose of taking *sales orders* from them. Whenever an order is placed, a *sales transaction* is created in the SAP system located at the sales office. The salesperson then contacts his sales office with the details of the order. If the regular sales office is closed, the salesman contacts a sales office in a nearby country to ensure on-time delivery to the customer. Salespeople are rotated from customer to customer after a certain period of time or after the achievement of set target sales.

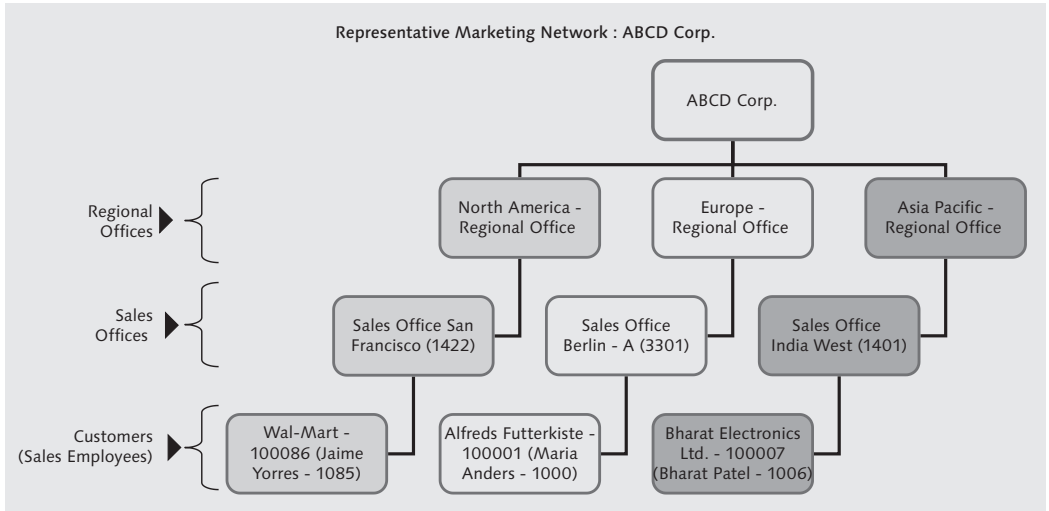


Figure 1.2 Overview of ABCD Corp. Marketing Network

ABCD Corp. has more than 30 products, which are logically grouped into 3 portfolios: Consumer Electronics, Domestic Appliances, and Consumer Lifestyle (see Table A.7 in Appendix A). The company has four manufacturing plants to supply these products (see Table A.2 in Appendix A).

1.3 The Sales and Billing Process

ABCD Corp. sells its products through two different *selling channels*: either *directly* or through the *Internet*. Product sales happen via a *billing document*; a typical flow of information generated by the creation of a billing document is illustrated in Figure 1.3.

Each billing document is represented by a unique number. Within the billing document, one or more products is listed, each of which is identified with an *item number*. In addition to the item numbers, the billing document also lists the quantity sold and a selling price for each product. In most cases, ABCD Corp. receives payment for products sold when they are delivered to the customer; in some cases, larger customers are permitted to make delayed payments.

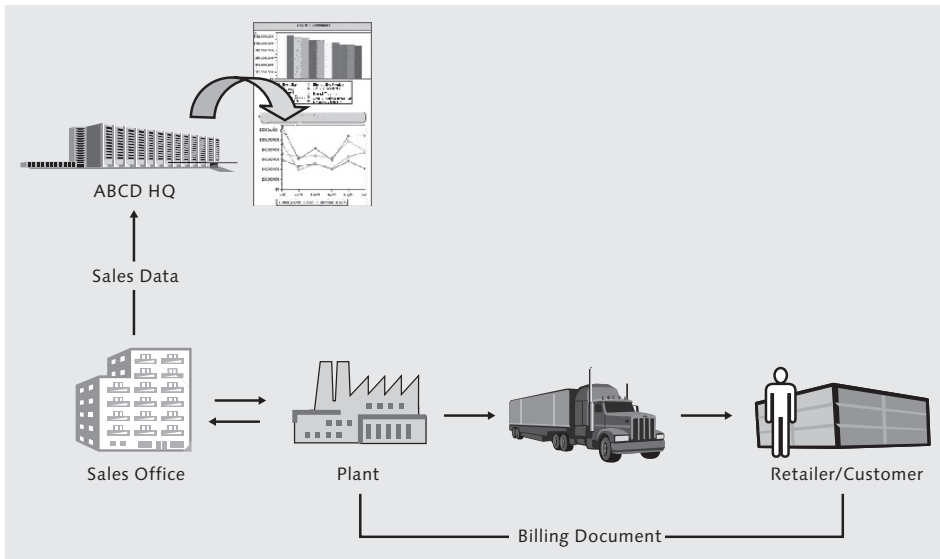


Figure 1.3 Overview of ABCD Corp. Selling Process

The *terms of payment* and *type of billing document* for transactions differ based on the method by which the transaction has taken place. For example, a specific type of billing document is generated if the customer makes the payment using a credit card or any other mode of delayed payment, and a different type of billing document is generated for immediate payments (see Table A.9 in Appendix A).

If the product is sold to a customer outside the US, the corresponding billing document is identified as an export; within the US, it is treated as a domestic sale (see Table A.10 in Appendix A).

Whenever the value of a record in the billing document is more than \$10,000 USD, the transaction is identified as a *high-value transaction*, and the billing document is marked with an indicator to differentiate it from those with lower transaction values.

Similarly, if the cost of any item in the bill is listed without a value (i.e., is a free item), the system is designed to identify such a record separately (see Table A.11 in Appendix A). Normally, most items require payment; however, for special occasions (the holiday season, clearing sales, etc.), some low-value products (e.g., cords or batteries) are provided free with a bigger purchase. Such items are listed with an item category of DC, whereas normal items are identified with an item category of NOR. The cost of items under item category DC is recorded on the billing document, but taxes or other costs are not recorded.

Figure 1.4 shows a sample billing document for ABCD Corp.

ABCD Corp.

Trail's Head Gourmet **1** 100081 ST

USA **2** 1000811 DOM **3** Cons. Elec (CE)

Kirkland (SG: 998) **4** SO : 100
SD : 4300

Salesman **5** Helvetius Nagy (1080)

DATE	Order Detail	AMOUNT
05/19/1999	1. NOR 21000 Video Camera 10	350.00
ACCOUNT BALANCE		\$ 350.00

IMPORTANT NOTICE
Goods will be delivered within 24Hrs of Order

You may be eligible for **FREE** Accessories. Please see the back of this statement for details.

Goods Manufactured & Delivered from Plant at **7** USA

8 Channel : Direct (DR)
Type of Transaction : On Cash (CH)

Billing Value Link **9** XX \$ 350.00

Figure 1.4 ABCD Corp. Sample Billing Document

The sample billing document shows how the business entities and processes are presented. Information such as customer name, customer code, and customer group are captured in **1** of Figure 1.4; the billing document number and type of billing transaction are captured in **2**; and the product group is captured in **3**.

The billing document also provides information about the sales office, sales district, and sales group that services the customer. The name and code of the salesperson responsible for a specific sale is captured in **5**.

The product, product code, type of item, and product description is captured in **6** of the figure. Information on the plant that manufactured and dispatched the product is captured in **7**. The type of transaction and selling channel are reflected on the

lower section of the billing document (⑨), as are the type of billing value and gross billing amount (⑨). Finally, each item in the billing document has information such as quantity, cost, and net value in USD.

Returns

For product returns, a credit is issued to the customer. Each item in the return billing document has detailed information about the transaction, such as the quantity, cost, net value, and so on.

1.4 Business Intelligence Requirements

ABCD Corp. wants to have a global BI solution for sales analysis that accesses business transaction data from SAP (as the main data source) and Excel sheets, or *flat files* (as the secondary data source). The goal is to build a robust and scalable BI solution based on SAP NetWeaver BW that has reporting capabilities with the following guiding principles:

- ▶ Ease the management of the company at the corporate and local level through improved control and visibility.
- ▶ Move to a more digitalized company to support growth and enable quicker integration of new acquisitions.
- ▶ Increase return on investments by optimizing the cost and time spent on the design, deployment, and maintenance of the BI solution. Use SAP NetWeaver BW Business Content, which addresses a significant number of sales analysis requirements.

ABCD Corp. wants to analyze its sales process and find answers to the following types of questions:

- ▶ What products are selling in different sales organizations?
- ▶ Which product lines or specific products are selling highest or lowest?
- ▶ How do ABCD Corp.'s current year compare to the previous year?
- ▶ What are the top 10 best-selling products?

The *analysts* of ABCD Corp. require the solution to allow them to easily create their own reports when existing reports do not meet their reporting needs. The *auditors* of ABCD Corp. require the solution to provide traceability to specific billing documents for a customer when the need arises to analyze instances of variances; additionally, this sales document level investigation must be addressed in SAP NetWeaver BW, instead of in the transactional system. The *IT team* at ABCD Corp. requires the solu-

tion to be automated for most processes, including email alerts of successes or failures of systemic processes; they also require that the existing SAP R/3 system work at optimal efficiency by removing old data related to business-critical transactions from the OLTP (online transaction processing) system. The *head of planning* at ABCD Corp. requires the BI solution to compare actual and planned sales to ascertain and address the causes of variances or to correct plan figures.

In this book, the concept, design, and development of different SAP NetWeaver BW components are explained by using each of these requirements as examples.

1.5 The Business Planning Scenario

Within ABCD Corp., *sales planning* is an annual cycle for all three sales organizations: 1000 (APAC), 2000 (Europe), and 3000 (North America). Each sales organization projects sales figures according to three different divisions or product ranges: Consumer Electronics (CE), Daily Appliances (DA), and Consumer Lifestyle Appliances (CL). This is a high-level plan for the organization, and high-level values for each of the product ranges are transferred to different products belonging to these product ranges.

Each sales organization has a product range manager who is responsible for planning the sales of each product under his assigned product range. The plan for a year (January to December) is divided into quarters; thus, there are four planning periods: Quarter 1 (Q1), Quarter 2 (Q2), Quarter 3 (Q3), and Quarter 4 (Q4). Figure 1.5 is a graphical representation of this scenario.

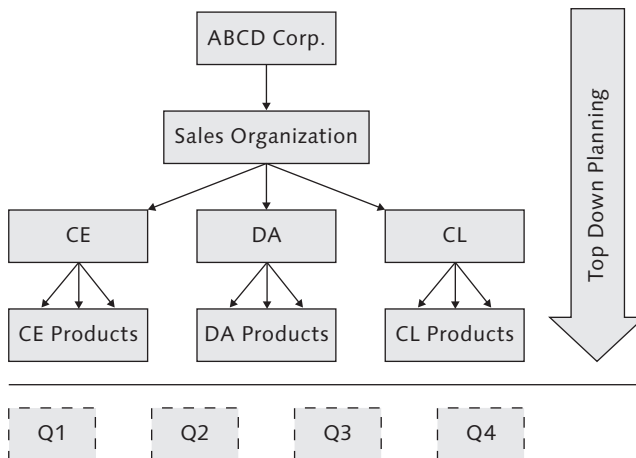


Figure 1.5 Overview of ABCD Corp. Sales Planning Process

This business scenario description should provide you with an understanding of ABCD Corp. and its sales process. In Appendix A, Case Study: ABCD Corp., we provide additional information in the form of tables, which have more details about the business scenario. These tables also include the specific SAP codes used to identify each element.

1.6 Summary

In this chapter, we explained a very basic business scenario for a typical company. We also explained the BI needs for this company, specifically those related to analyzing its sales process. While creating the scenario, we've addressed some aspects with more detail than others; those explained in detail relate to the realization of the technical requirements we discussed in Section 1.4, Business Intelligence Requirements, and are dealt with in subsequent chapters of this book. In the next chapter, we provide a brief overview of SAP NetWeaver BW.

Index

ORECORDMODE, 124
1: N relationship, 144

A

ABAP code, 80, 485
ABAP editor, 228, 283
ABAP function modules, 541
ABAP programming, 307
ABAP routine, 282, 283
ABAP stack, 319
ABC classification, 43
Access Type for Result Values section, 375
Access Type of Result Values, 549
Activate a DataSource, 298, 303
Activate Data, 129
Activation messages, 198
Activation of SAP Business Content, 56
Activation process, 205
Activation Queue table, 118, 119, 121, 134
Active Data table, 118
Active Navigation parameter, 474
Adapter, 227
Adapter parameter, 262
Add drilldown, 437
Add-Ins tab, 400
Additive delta, 313, 571
Add step for planning function, 543
Ad-hoc analysis, 318, 319, 331, 399, 431
Ad-hoc query, 431
Administer Data Target, 256
Administration, 47, 53, 54
Advanced analysis, 42, 658
Advanced web item, 456, 473, 480
Affected Data Providers setting, 462
After Images setting, 262
Aggregate, 605
Aggregated results, 125
Aggregation, 105, 106, 278, 376

Aggregation level, 174, 176, 500, 503, 504, 517, 519, 520, 535
Alert Level setting, 389
ALPHA, 230
Amount, 100
Analog Distribution, 548
Analog Distribution (Self-Reference), 548
Analysis application, 420, 422, 429
Analysis authorization, 649
Analysis filters, 441
Analysis grid, 420, 423, 550
Analysis mode, 420, 428
Analysis process, 393, 658, 662
Analysis Process Designer, 139, 655, 658
Analysis Process Designer (APD), 42
Analysis toolbar, 405, 420, 424
Analysis web item, 459, 473, 559
Analysis Workbench, 658
Analyzer, 399
APD, 137, 658
API, 506
API interface, 151
Appearance, 595
Application component, 222, 261
Application component hierarchy, 306
Application components, 298
Application Help button, 407
Application Process Designer (APD), 118
Application programming interfaces (API), 118
Application toolbar, 45
ASAP Accelerators, 66
Assign commands, 494
Assignment Details button, 395
Association analysis, 42
Attribute, 78, 85, 142, 235, 258, 512
Attribute hierarchy change run, 204, 651
Attribute Only checkbox, 111
Attributes, 321
Authentication mode, 578
Authorization, 335, 337, 605

Auto Arrange, 200
Automatic data processing, 504

B

Back to Start, 408
BAPI, 153, 211
Basic Data Provider commands list, 488
Basic Functions category, 366
Before image, 129
Before List Calculation setting, 390
Behavior, 474
Behavior section, 494
BEx Analysis Toolbox, 401
BEx Analyzer menu, 401
BEx Description text box, 111
BEx Design Toolbox, 401
BI Content, 47, 54, 55
BI-Java, 496
Billing document, 29, 30
BI solution, 26, 32
Bitmap index, 159
Books and professional journals, 66
Boolean Operators category, 366
Bottom-up planning, 497
Breakpoint, 244
Broadcast and Export option, 445
Broadcast E-Mail (Bursting) type, 450
Broadcast E-Mail type, 450
Broadcasting, 449
Broadcasting settings, 446, 448
Broadcasting Wizard, 444, 449
Broadcast (Multi Channel) type, 451
Broadcast to the Portal type, 450
Broadcast to the Printer type, 450
B-Tree, 159
Bubble model, 143, 145
Business Explorer, 78, 80
Business Explorer (BEx), 399
Business Explorer tools, 317
Business intelligence, 21, 22, 35
Business intelligence solution, 27
Business planning portal role, 501
Business scenario, 27
Business transaction, 115
Business Warehouse Information System, 35

Button, 426
Button Group web item, 465, 477, 559
Button settings, 465
BW BEx Query option, 395
BW Query Connection, 585

C

Calculated key figure, 335, 368, 370, 376
Calculated key figures, 587
Calculated Results As, 414
Calculate Single Values As, 414
Calculations tab, 380, 413, 414
Calendar day, 312
Cell Content section, 475
Cell definition, 358
Cell Restrictions tab, 391
Cells tab area, 358
Change indicator, 545
Change Log table, 118, 119, 123, 134
Change mode, 416
Change Variables button, 429
Characteristic, 71, 321, 333, 359, 663
Characteristic Assignment tab, 385
Characteristic InfoObject, 76
Characteristic properties, 373, 374
Characteristic relationship, 499, 504, 507, 511, 533, 535
Characteristic relationship - derive, 509
Characteristic relationship \bar{n} check, 508
Characteristic relationship \bar{n} propose, 509
Characteristic Relationships option, 375
Characteristic restriction, 523
Characteristic Restrictions area, 352
Characteristic Restrictions bar, 355
Characteristic Restrictions section, 321, 326
Characteristic setting, 462
Characteristic structure, 356, 357
Characteristic usage, 527
Characteristic value variable, 334
Characteristic variable, 336, 339, 345
Chart, 403
Charts, 597
Chart type, 464
Chart web item, 463
Chart wizard, 475

- Checkbox group, 421
 - Check, propose, and derive, 507
 - CKF, 370
 - Classes, 575
 - Cleansing of data, 117
 - Closed-loop planning, 497
 - Closed-loop process, 498
 - Clustering, 42
 - Cognos, 295
 - Collection mode, 61
 - Column, 328
 - Command button, 464
 - Command buttons, 551
 - Command field, 45
 - Commands, 427, 486
 - Commands for Data Cells list, 489
 - Commands for Data Providers section, 487
 - Commands for Planning Applications folder, 562
 - Commands for Planning Applications section, 487
 - Commands for Web Items group, 487, 492
 - Commands for Web Templates group, 492
 - Commands for Web Templates section, 487
 - Command type, 553
 - Command via Command Wizard, 561
 - Command Wizard, 463, 465, 477, 486, 564
 - Comment, 436
 - Complex aggregation level, 518
 - Compounding, 78, 97
 - Compounding tab, 97
 - Compression, 605, 633
 - Condition, 335, 384, 387, 422
 - Conditions, 489
 - Conditions tab, 416, 442
 - Condition state, 430
 - Constant selection, 378, 379
 - Constant Selection setting, 378
 - Container Layout web item, 481
 - Container web item, 482
 - Context menu, 473
 - Context Menu web item, 485
 - Conversion routine, 80, 230
 - Conversions tab, 379
 - Conversion Type field, 380
 - Convert to Formula function, 411
 - CO-PA, 39
 - Copy function, 528, 529
 - Core landscape, 64
 - Create a web application, 453
 - Create Dimensions, 160
 - Create InfoSet, 191
 - Create MultiProvider, 176
 - Creating a universe, 577
 - Creating planning applications, 458
 - Creating web applications, 453
 - Crystal Reports, 451
 - Cumulative key figure, 109
 - Currency Conversion tab, 416
 - Currency translation, 540
 - Currency Translation section, 380
 - Currency Translation Type, 540
 - Currency/Unit tab, 341, 350
 - Custom code, 348
 - Custom dimension, 154
 - Customer-defined dimension, 158
 - Customer exit, 309, 335, 338, 345, 346
 - Customer exit variable, 348, 353
 - Custom Extension web item, 485
 - Custom planning function, 526
- ## D
-
- Data access driver, 578
 - Database Connect, 39
 - Database shared libraries, 294
 - Database table, 659
 - Data binding, 460, 461, 464
 - Data Binding section, 474
 - Data Binding Type property, 461
 - Data cell, 413
 - Data consistency, 499, 652
 - Data field, 117, 130, 132
 - Data Format field, 228, 262
 - Data Formatting tab, 415
 - Data Functions category, 366
 - Data load mode, 506
 - Data mapping, 40
 - Data mining, 42, 658
 - Data mining model, 660
 - Data package, 238, 241
 - Data Package, 157, 177
 - Data provider, 427, 453, 457, 460, 473, 476

- Data Provider Commands for Axes group, 488
- Data Provider Commands for Characteristics group, 489
- Data Provider Commands for Conditions/Exceptions group, 489
- Data Provider Commands for Documents group, 491
- Data Provider Commands for Filter Values group, 490
- Data Provider Commands for Hierarchies group, 490
- Data Provider Commands for Open/Save Functions group, 490
- Data Provider of Type Filter, 458
- Data Provider setting, 462
- Data Provider-Specific Command, 427, 428
- Data Provider tab, 443
- Data Provider web item, 484
- Data retention, 652
- Data selection, 245
- Data separator, 247
- Data Separator parameter, 262
- Data slice, 500, 504, 514
- Data source, 659
- DataSource, 40, 230, 235
- DataSource tree, 221
- DataSource type, 224
- Data staging, 139
- Data staging process, 118
- Data StoreDataStore Object, 173, 176
- DataStore Object, 115, 155, 235
- Data Store Object option, 512
- Data tab, 597
- Data target, 69, 116, 151, 173, 180, 286, 660
- Data to be changed, 526
- Data transfer process, 239, 255, 657
- Data validation, 117
- Data volume, 652
- Data Warehousing Workbench, 45, 46, 50, 53, 506, 658
- Date, 104
- DB Connect, 39, 294
- DBSL, 294
- Debugger, 314
- Debugging, 244
- Decimal Places text box, 111
- Decision making, 24
- Decision tree, 42
- Default value, 336, 343
- Default Values area, 321
- Default Values tab, 341
- Delete function, 535
- Delete invalid combinations, 535
- Deleting data from setup tables, 301
- Delta, 301
- Delta-enabled, 39
- Delta identification, 312
- Delta process, 225, 226
- Delta Process parameter, 262
- Delta queue, 39, 301
- Derivation, 511
- Derived characteristic, 513
- Design function, 420
- Design item, 550
- Design mode, 420, 428, 550
- Design toolbar, 405, 420
- Destination, 657
- Destination data format, 40
- Detail object, 575, 582
- Dimension, 142, 170
- Dimension ID, 146
- Dimension object, 575
- Dimension table, 146, 147, 149
- DIM_ID, 148, 150
- Direct access, 225, 227, 308
- Direct Access, 153
- Direct Access parameter, 262
- Direct assignment, 236, 267, 280
- Direct delta, 302
- Direct input, 162
- Direct Input box, 326
- Direct update DSO, 118, 137, 660, 661
- Disaggregation, 548
- Display, 595
- Display Attribute, 94
- Display message, 556
- Display mode, 416
- Display Options tab, 416
- Display parameters settings, 462
- Display/Suppress Messages, 483
- Display text box, 111
- Distribution by key, 537
- Distribution by reference data, 539
- Distribution function, 537

Distribution key, 537, 538
 Distribution type, 449
 Distribution weight, 538
 Document, 47, 54, 55, 436
 Document class, 482
 Domain, 307
 Drag and drop, 318, 410, 427
 Drill-across, 329, 332
 Drilldown, 322, 329, 408, 439
 Dropdown box, 421, 424, 460
 Dropdown Box web item, 477
 DSO, 115, 127
 DTP, 227
 DTP for direct access, 211
 DTP monitor, 255, 289
 Duplicate data, 129
 Duplicate Data Recs., 225

E

Edit Chart, 464
 Edit Dimensions, 157
 Edit Format, 595
 Edit MultiProvider, 176, 185
 Edit Query, 595
 EDP, 21
 Efficiency, 173
 Electronic data processing, 21
 Email addresses, 445
 Email alert, 32
 End routine, 238
 Enterprise Resource Planning, 21
 Entire Hierarchy Is Time-Dependent, 90
 Equal distribution, 548
 ERP, 21
 Error DTP, 241, 242, 286, 291
 Error handling, 242
 Error messages, 422
 Errors and Warnings area, 457
 Error stack, 242
 ETL, 498
 ETL scenario, 232
 Evolution of SAP NetWeaver BW, 35
 Example scenario, 319
 Excel, 464
 Excel add-in, 399
 Excel-based planning application, 501, 550
 Excel interface, 399
 Exception, 335, 388, 422, 450
 Exception aggregation, 107, 108, 109
 Exception Aggregation, 377
 Exceptions, 489
 Exceptions tab, 442
 Exclude characteristic value, 438
 Exclusion filter, 438
 Execute Planning Function command, 427
 Execute Planning Function command type, 553
 Execution with Trace button, 543
 Executive Information System (EIS), 35
 Expert mode, 276
 Expert routine, 239
 Export to Excel, 436
 Extended star schema, 147, 150, 161, 172
 External Access to the Query, 577
 External system, 432
 Extraction layer, 39
 Extraction message, 252
 Extraction mode, 240
 Extraction tab, 228
 Extract structure, 308

F

F4 search, 168
 Fact table, 146, 148, 150, 158
 Favorite Commands tab, 466
 Favorites, 50, 52
 Field Assignments box, 395
 Field for conditions, 528
 Fields to be changed, 527
 Field to be changed, 528
 Field to be used in conditions, 527
 File Name parameter, 262
 File Source System, 220
 Fill OLAP Cache type, 451
 Filter, 321, 326, 334, 351, 354, 403, 503, 521, 558
 Filter button, 407
 Filter by characteristic value, 439
 Filter Command, 428
 Filter link, 441

- Filter pane, 403
- Filter Pane web item, 476
- Filter restriction, 524
- Filters, 421
- Filter tab, 521
- Filter Value Selection During Query Execution section, 375
- Find/Search, 50
- Fixed Length, 228
- Fixed List of Options setting, 478
- Flat file, 660
- Flat file interface, 39
- Forecast data, 536
- Forecasting, 536
- Forecast strategy, 536
- Forecast value, 536
- Format Text, 602
- Formula, 335, 356, 358, 360, 364, 368, 411, 540, 587, 601
- Formula builder, 276
- Formula definition, 366
- Formula editor, 364, 540, 541, 5999
- Formula Toolbar, 600
- Formula variable, 335, 348, 366
- FOX (Formula Extension), 540
- Free characteristic, 328, 332
- Free Characteristics area, 322
- Full Upload, 226
- Function module, 211, 307

G

- General Search, 51
- Generate Combinations function, 535
- Generate valid proposals, 508
- Generic DataSource, 297, 304
- Generic delta, 311
- Geo-characteristics, 483
- Geographical characteristic, 483
- Global properties, 203
- Global SAP NetWeaver BW, 66
- Global Settings button, 405
- Goto, 411
- Granularity, 142
- Graphical display, 403, 442
- Graphical format, 463

- Graphic tab, 442
- Grouping, 60
- Group web item, 482

H

- Header rows, 247
- Header Rows parameter, 262
- Hide Repeated Key Values checkbox, 382
- Hierarchical Filter Selection web item, 480
- Hierarchies, 333
- Hierarchy, 78, 87, 235, 374
- Hierarchy Display, 208
- Hierarchy node variable, 334, 337
- Hierarchy option, 512
- Hierarchy structure, 512
- Hierarchy tab, 412
- Hierarchy variable, 334
- Hierarchy, Version Dependent, 88
- High Cardinality, 159
- Highlight section, 377
- Historical data, 300, 536
- Historical value, 505
- Horizontal drilldown, 332
- How-to guides, 66
- HTML, 453, 454, 485
- Hyperion, 295

I

- Identification of key figures, 186
- Identify characteristics, 182
- Implementation/architecture options with SAP NetWeaver BW, 64
- Index, 127
- InfoArea, 71
- InfoCube, 47, 116, 141, 152, 173, 176, 235
- InfoCube activation, 167, 172
- InfoCube definition, 162
- InfoCube design, 146, 150
- InfoCube model, 149
- Info Field web item, 483
- InfoObject, 69, 174, 176, 230, 235
- InfoObject Assignment, 272
- InfoObject catalog, 73, 74, 98

InfoObject Catalog, 130, 155
 InfoObject Direct Input, 131, 162
 InfoPackage, 40, 231, 249, 252, 255, 260, 262
 InfoProvider, 47, 69, 116, 173, 211, 317, 321, 354, 360, 368, 433, 503, 664
 InfoProvider area, 368
 InfoProvider screen area, 370
 InfoProvider tab, 358
 InfoProvider Type, 153
 Information, 404
 Information analysis, 407
 Information broadcasting, 434, 444
 Information button, 434
 Information hub, 64
 Information lifecycle management, 37
 Information technology, 21, 26
 Informix, 294
 InfoSet, 173, 174, 176, 188, 211, 235
 InfoSet definition, 194
 InfoSet join, 193
 InfoSet Maintenance, 208
 InfoSource, 130, 155, 235
 Infoview, 589
 Initialization, 301
 Inner join, 188, 208
 Input Field web item, 483
 Input help, 168
 Input Help, 523
 Input-ready query, 380, 383, 416, 501, 521, 545, 557
 Input-Ready (Relevant for Locking), 548
 Insert Button function, 421
 Insert InfoObjects, 164
 Insert Messages design item, 422
 Insert Table button, 468
 INT4, 229
 Integer, 103
 Integrated Planning, 38, 41, 374, 383, 495
 Integration Kit, 573, 574
 Integrity, 651
 Internal Display setting, 474, 494
 Internal table, 237
 Internal variable, 541
 Intervals Permitted in Hierarchy, 92
 Inverse transformation, 211
 Item number, 29

J

J2EE engine, 295, 496
 JavaScript, 465, 486
 Java stack, 319
 Join, 188, 206, 662
 Join condition, 196, 210, 662
 Jump target, 393, 494

K

Keep Filter Value function, 411
 Key, 193
 Key Date field, 381
 Key field, 117, 130
 Key figure, 71, 154, 177, 185, 321, 356, 359, 363, 366, 581, 582, 586
 Key Figure, 369
 Key figure InfoObject, 98
 Key figure properties, 376, 377, 378, 379, 380
 Key figure query element, 376
 Key figures, 408
 Key figure structure, 356, 361
 Key Figure with Maximum Precision checkbox, 111

L

Latitude, 82
 Layered architecture, 36
 Layout tab, 456
 Layout/XHTML, 456
 Leaves, 87
 Left outer join, 188, 189, 206, 208
 Link maintenance, 202, 208
 Link web item, 484
 LIS communication structure, 302
 List Box web item, 480
 List of conditions, 422, 428
 List of Conditions web item, 484
 List of Documents web item, 483
 List of exceptions, 422
 List of Exceptions web item, 484
 Load Example Data, 229
 Loading, 129

Loading layer, 39, 41
 Local calculation, 390, 589, 599
 Local calculations, 489
 Local formula, 416, 417
 Local properties, 411, 413
 Local query properties, 414
 Local workstation, 227
 Locking conflict, 570
 LO Customizing Cockpit, 302
 LO DataSources, 299
 Logical definition, 188
 Logical grouping, 181
 Logistics Information System (LIS), 35
 Log message, 232
 LO initialization table, 303
 Longitude, 82
 Long text, 84
 Loop function, 541
 Lowercase Letters option, 80

M

M

N relationship, 143
 Magic quadrant, 25
 Manual entry/default value, 335, 339
 Manual planning, 501, 545, 570
 Mapping of BEx elements, 586
 Map web item, 483
 Master data, 82, 166, 173, 204, 659
 Master data attribute, 223, 259, 660, 304
 Master Data Attributes option, 512
 Master data load, 239
 Master Data option, 375
 Master data/texts, 78, 223
 Materials Requirement Planning, 21
 Mathematical Functions category, 366
 MDX cache, 451
 Measure object, 575, 582, 587
 Medium length text, 84
 Menu bar, 45
 Menu Bar web item, 484
 Message, 323
 Metadata, 56
 Metadata lifecycle management, 37
 Metadata Repository, 47, 54, 55

Microsoft Excel, 399
 Microsoft Excel 2003, 401
 Microsoft Excel 2007, 401
 Miscellaneous web items, 456, 473
 Miscellaneous web items group, 483
 Modeling, 47, 51, 53, 152, 219, 221, 234
 MRP, 21
 Multidimensional model, 141
 Multidimensional source, 293
 Multidimensional structure, 295
 Multiple queries, 424
 MultiProvider, 173, 211, 306, 518
 Myself connection, 59

N

Naming convention, 76
 Navigational attribute, 80, 94, 587
 Navigational State tab, 415
 Navigation attribute, 127, 132, 137, 154, 166, 177, 184, 326
 Navigation options, 408
 Navigation pane, 421, 433, 436, 440
 Navigation Pane web item, 476
 Navigation step, 408
 Navigator, 48, 200
 Nesting InfoAreas, 47
 Network display, 207
 New Analysis, 432
 New Status for Changed Records, 313
 New Variable option, 339
 Node, 87
 Non-cumulative key figure, 109
 Non-Cumulative key figure, 110
 Not Assigned (#), 537, 538
 Not assigned i#i, 513
 Not Assigned (#) Values, 518
 Not Input-Ready (Not Relevant for Locking), 548
 Not Input-Ready (Relevant for Locking), 548
 Number, 102
 Number format, 228
 Number Format tab, 413
 Numeric Pointer, 312

O

Object, 575
 Object-specific properties, 170
 Object type, 58
 ODBO, 432, 585
 Offset, 354, 364, 531
 OHD, 655
 OLAP, 141, 388
 OLAP cache, 451
 OLAP characteristic variables, 523
 OLAP cube, 580
 OLAP universe, 574
 OLAP variable, 333, 500
 OLE DB for OLAP, 383, 577
 OLTP, 141, 498
 OLTP system, 32
 Online analytical processing (OLAP), 36
 Open hub, 655
 Open hub destination, 655
 Open hub service, 655
 Open Variable dialog, 466
 Operand, 366
 Operation, 665
 Operational Data Store, 115
 Operational planning, 497
 Operator, 601
 Operators, 417
 Oracle database, 159
 Outer join, 188
 Output format, 445
 Overview of Scheduled Settings link, 448
 Overview tab page, 456, 471
 Overwrite, 116, 279

P

Package ID, 119
 Package size, 241
 Paging settings, 475
 Parallel processing, 175, 248
 Parameter value, 527
 Partner Academy, 66
 Percentage Functions category, 366
 Performance, 151, 451
 Peripheral landscape, 65

Persistence staging area, 245
 Persistent staging area (PSA), 40
 Personalization, 343
 Person Respons. text box, 111
 Planning, 496
 Strategic planning, 497
 Planning and advanced analytics layer, 39, 41
 Planning application, 420, 491, 501, 550
 Planning component, 499
 Planning filter, 500, 521, 525, 546
 Planning function, 491, 500, 503, 521, 526, 554
 Planning function type, 526
 Planning lock, 569, 571
 Planning Modeler, 510, 525, 542
 Planning sequence, 427, 500, 503, 542
 Planning-Specific Command, 427, 552
 Planning tab, 374
 Planning variable, 500
 Planning version, 514
 Planning Wizard, 504, 525
 Posted Values option, 375
 Postprocess DataSource, 299
 Pre-built function, 526
 Precalculated values, 451
 Precalculate Value Set type, 451
 Presentation Options tab, 416
 Preview, 329
 Preview section, 541
 Print Version function, 436
 Process chain, 55, 605
 Processing mode, 243, 252
 Processing type, 351
 Processing types of variables, 335
 Process Variables command, 427
 Program Element, 541
 Project for SAP enhancement, 346
 Prompt, 587, 588, 593
 Properties, 322
 Properties of query elements, 372
 Properties pane, 457
 Properties Pane web item, 485
 Proposal, 229
 Provider-specific properties, 168, 169
 PSA, 40, 225, 232, 245
 PSA Maintenance, 253, 254
 Pseudo-delta, 139

Q

QM status, 251
 Quality Status, 129
 Quantity, 102
 Query, 69
 Query filter, 458, 590, 592
 Query output, 331, 388, 392
 Query properties, 381, 382, 383
 Query Properties option, 414
 Query Properties section, 548
 Query result, 595
 Query view, 428, 458
 Query View Selection option, 478
 Query Views option, 426
 Queued Delta, 302

R

Radio button group, 422
 Radio Button Group web item, 478
 RDBMS, 293
 Read master data, 270
 Ready for input, 588
 Realignment run, 651
 Real time, 210
 Real-time access, 225
 Real-time behavior, 151, 506
 Real-time InfoCube, 151, 499, 504
 Real-time mode, 506
 Receiver, 118, 393, 395
 Reconcile, 306
 Reconstruction, 614
 Reference, 99
 Reference characteristic, 377
 Reference characteristic field, 342
 Reference data, 526, 537, 539
 Refresh, 419
 Regional marketing office, 28
 Remodeling, 655, 662
 Remodeling rule, 664
 Remove drilldown, 440
 Remove Drilldown option, 409
 Remove Reference option, 355, 359
 Remove result rows, 438

Repair, 652
 Replace, 663
 Replacement path, 335, 336, 337, 345, 348, 351
 Replacement Path tab, 341
 Report elements, 597
 Reporting and analysis, 38, 317, 399
 Reporting and analysis layer, 39, 41
 Reporting with SAP BusinessObjects, 383
 Report Painter, 35
 Report title, 595
 Report-to-report interface, 393, 397, 494
 Report-to-report interface (RRI), 117
 Repost by characteristic relationships, 533
 Reposted value, 532
 Repost function, 532, 533
 Request GUID, 120, 136
 Request ID, 633
 Request number, 252
 Request SID, 119
 Restricted key figure, 368, 378, 587
 Restructure table, 303
 Result object, 590
 Result Position section, 383
 Result Rows section, 374
 Reusable component, 354
 Reusable web item, 485
 Revaluation, 528
 Revaluation factor, 537
 Revaluation planning function, 536
 Reverse +/- Sign for Nodes, 92
 RKF, 369
 ROCANCEL, 124
 Role, 58
 Rollup, 651
 Root node, 87
 Row/Columns screen area, 328
 Rows, 328
 Rows/Columns, 321
 Rows/Columns area, 360
 RRI, 393, 396
 RRI Open Mode, 494
 RSAX_BIW_GET_DATA_SIMPLE, 307
 Run Query, 593

S

- Sales analysis requirements, 32
- Sales analytics, 27
- Sales office, 28
- Sales planning, 33
- Sales planning scenario, 495, 496, 498
- Sales process, 34
- Sales transaction, 28
- Sample billing document, 31
- Sample class, 512
- BEx Analysis Functions, 405
- BEx Analyzer, 317, 318, 399, 420, 431, 501
- BEx Analyzer add-in, 401
- BEx Broadcaster, 434, 444, 448, 449
- BEx design functions, 420
- BEx design toolbar, 550
- BEx functions, 401
- BEx iView, 448
- BEx object, 448
- BEx query, 659
- BEx Query Designer, 156, 317, 318, 320, 388, 431, 453, 501, 525, 545
- BEx Query Designer menu bar, 323
- BEx report designer, 319
- BEx tools, 405, 448
- BEx variable, 517, 588
- BEx variables, 540
- BEx web analyzer, 319, 331, 399, 431, 444, 448
- BEx web analyzer functions, 434
- BEx web application designer, 318, 453
- SAP Business Content, 25, 32, 36, 37, 71, 338
- SAP Business Content DataSource, 139
- SAP Business Explorer (BEx), 41, 317, 453
- SAP BusinessObjects, 573
- SAP Business Suite, 36, 39
- SAP Connectivity component, 573
- SAP Developers Network, 66
- SAP Easy Access, 45
- SAP exit, 335, 338
- SAP GUI, 43, 453, 454
- SAP help documentation, 407
- SAP Help Portal, 66
- S-API, 314
- SAP J2EE Server, 501
- SAP logon pad, 43
- SAP logon screen, 44
- SAP NetWeaver BW InfoProviders, 458
- SAP NetWeaver BW MDX driver, 573
- SAP NetWeaver BW query driver, 573
- Save planning function, 532
- Save workbook, 405, 430
- Scalability, 173, 655
- Scalable platform, 36
- Scheduler, 245
- Scheduling settings, 446
- Scoring and weighted score tables, 43
- Script web item, 485
- Search, 52
- Secondary index, 133
- Security, 605
- Selection, 358, 360, 361, 362, 368, 378, 587
- Selection object, 351, 355
- Selection screen, 353
- Selection Type column, 396
- Selling channel, 29, 31
- Semantic Groups setting, 238
- Semantic key, 124, 125
- Semantic layer, 573, 574, 588
- Sender, 118, 393, 395
- Sender/receiver assignment, 396
- Sender/Receiver Assignment, 394
- Settings, 441
- Setup table, 301
- Short text, 84
- SID, 147, 148, 150
- SIDs Generation, 128
- SID table, 147
- SID Table, 148
- Simple aggregation level, 545
- Simulate Installation, 63
- Single Document web item, 482
- Single-sign on (SSO), 578
- Single Values, 352
- Slice-n-dice mode of reporting, 23
- SOB, 355
- Software application, 22
- Sort, 411
- Sorting section, 373
- Sorting tab, 413
- Source characteristic, 513

- Source data format, 40
 - Source system, 252
 - Source unit, 540
 - SQL statement, 206
 - Staging BAPIs, 40
 - Staging layer, 39, 40
 - Standalone tool, 454
 - Standard aggregation, 377
 - Standard DSO, 118, 119
 - Standard DTP, 291
 - Standard forecasting methods, 536
 - Standard formula function, 541
 - Standard function, 526
 - Standard InfoCube, 151, 181, 506
 - Standard toolbar, 45
 - Standard web items, 456, 473
 - Start menu, 454
 - Startup View, 548
 - Static parameters, 554
 - Statistical forecasting methods, 536
 - Status bar, 45
 - Strategic planning, 497
 - Structure, 356, 358
 - Subclass, 581, 586
 - Summation, 279
 - Suppression of zero values, 443
 - Suppress Zeros section, 383
 - Surrogate ID, 128, 147
 - Swap, 409
 - Swap Axes function, 411
 - Swap characteristics, 438
 - System lifecycle management, 37
 - System message, 544, 569
 - System Messages web item, 483
- T**
-
- Table, 403
 - Tab Pages web item, 482
 - Tabular and graphical format, 457
 - Tabular display, 442
 - Tabular format, 459, 473
 - Target unit, 540
 - Target Unit field, 380
 - Task, 322
 - Technical architecture, 35
 - Technical characteristic, 71
 - Technical key, 119, 125, 136
 - Technical model, 146
 - Technical status, 251
 - Template, 99, 597
 - Templates, 130
 - Temporal join, 190, 206
 - Temporary storage, 287, 290, 652
 - Temporary storage area, 139
 - Testing planning function, 543
 - Test input template, 504
 - Text, 333
 - Text element, 422
 - Texts, 235
 - Text-type file, 227
 - Text variable, 334, 350
 - Text View field, 373
 - Text web item, 484
 - Ticker web item, 484
 - Time, 104, 177
 - Time characteristic, 71, 514
 - Time characteristics, 180
 - Time conversion transformation, 281
 - Time dependency, 95
 - Time-dependent, 190
 - Time-dependent attribute, 95, 206
 - Time-Dependent Hierarchy Structure, 91
 - Time-dependent master data, 258
 - Timestamp, 312
 - Title bar (dynamic menu bar), 45
 - Title properties, 595
 - Toggle Drag and Drop State command, 427
 - Toggle State button, 442
 - Top 10, 32
 - Top-down distribution, 538, 548
 - Top-down planning, 497
 - Top N, 385
 - Total Status, 251
 - Tracing authorization, 314
 - Transaction code RSA5, 298
 - Transaction code SBIW, 298
 - Transaction Data, 223
 - Transaction DataSource, 304
 - Transaction LBWG, 301
 - Transaction RSO2, 304

Transfer Application Component Hierarchy, 299
 Transfer Values command, 427
 Transformation, 40, 234, 235, 261, 265, 280, 295, 657, 660, 662
 Transformation layer, 39, 40
 Transformation program, 239
 Transformation rule, 274
 Transformation type, 238, 281
 Transitive attribute, 190
 Translation, 47, 54, 55
 Transport Connection, 47, 54, 55
 Tree, 48
 Tree Display, 207
 Trigonometric Functions category, 366
 Type of Distribution, 548
 Type of Variable setting, 342
 Types of aggregation level, 518
 Types of InfoCube, 150
 Types of variables, 334

U

UD Connect, 39, 295
 Union, 188
 Unique Data Record, 129
 Unit, 71, 177
 Unit conversion, 540
 Unit Conversion section, 380
 Unit dimension, 166
 Unit InfoObject, 112
 Universal Data Connect, 39
 Universe, 573, 574, 585
 Universe classes, 581, 586
 Universe Designer, 577
 Universe element, 586
 Universe parameter, 578
 Unserialized V3, 302
 Update collection run, 302
 Update Data, 130
 Update mode, 252
 Update table, 302
 User entry variable, 537
 User Master Record setting, 228

V

V1 update, 302
 Validate on Server option, 470
 Validate option, 470
 Value Display section, 373
 Value Display tab, 383
 Values Ranges, 352
 Variable, 326, 353, 364, 402, 424
 Variable editor, 338, 346
 Variable Is Ready for Input checkbox, 343, 346
 Variables, 530
 Variable screen, 464
 Variable Screen button, 441
 Variable Selection, 478
 Variable Sequence tab, 381
 Variables view, 523
 Variable type, 337
 Variable value, 544
 Variable values, 405
 Vertical drilldown, 332
 Virtual InfoProvider, 151
 VirtualProvider, 173, 210, 211, 306

W

Warning, 422
 Web analyzer, 38, 453
 Web application designer, 317, 501
 Web-based planning application, 557, 567
 WebI document, 588
 Web Intelligence, 573, 574, 588
 Web interface, 399
 WebI report, 589
 Web item, 318, 456, 457, 473
 Web item group, 456
 Web Item Parameters tab, 457, 463, 474
 Web services, 39
 Web template, 318, 323, 453, 466
 Web template properties, 493
 Web Template web item, 480
 Where-Used List, 323
 With Text, 83
 Workbook, 318, 323, 405, 418, 423, 429

Workbook properties, 422
Workbook settings, 422
Workbook-Specific Command, 427
Write mode, 507
Write-optimized DSO, 118, 135, 136

X

XHTML, 453, 456, 468, 470
XML, 454

XMLA, 432
XML generation, 484

Z

Zero suppression, 416
Zero values, 416