

*celebrating 30 years*

# IMAGINE

**WHAT MORE WE CAN BUILD**



**Habitat for Humanity®**

East Bay/Silicon Valley

2016 Annual Report







LETTER

FROM THE

LEADERSHIP

In 2016, we celebrated a momentous 30 years of service to a single vision: a world where everyone has a decent place to live. As we continue to reach for that vision, we are proud to have served over 7,000 people and to be part of the global movement of Habitat for Humanity International that has brought affordable homeownership to nearly 10 million people worldwide.

Keeping an eye on the big picture of affordable housing for all, we maintain a keen focus on building dreams here at home. And as we reflect on our 30-year history, we see the impact of our work to build these dreams. We connected our partner families with their potential and they stepped into lives of stability and opportunity and looked toward the future. Those families achieved the dream of homeownership. And that dream lives on in the generations that follow, their children growing into educated, generous, ambitious, and positive adults.

Along the way, we faced big challenges like the Loma Prieta earthquake, a growing concern for the environment, and a volatile and expensive housing market, leading us to grow and adapt. Over 30 years, we met these challenges with new ideas and innovation: large-scale, high-density developments, green building, a broader range of housing services, innovative funding channels, and advocacy—we have forged new paths to success.

And now, facing an increasingly complex housing market that remains out of reach for so many, we must continue to grow, adapt, and respond to the unique challenges and opportunities in our communities. We answer this need with a redoubled effort to help more people break the cycle of poverty. We support the health and wellness of our homeowners and our planet with our robust green building program. To address the Bay Area's complex matrix of housing issues and the wide range of people affected by them, we create programs that bolster neighborhoods, keep current homeowners in their homes, and equip more families with the tools to become homeowners.

We join with other Habitat affiliates across the state to advocate for systemic policy changes that will make affordable housing a reality for more people. And we create new partnerships, grow new funding streams, and seek new resources to keep reaching ever higher.

Through all the trials and triumphs, we imagine more. We dream big, and we find the courage, focus, and resources to work toward those dreams. Our imagination lives in the work of our board and staff, in the hands of our volunteers, in the hearts of our donors, and in the strength and perseverance of the families we serve. This imagination will carry us to the future, where all people have a decent place to call home. We have achieved so much in our first 30 years. Now, imagine what more we can build.

Sincerely,

Larry Briggs  
Board Chair

Janice Jensen  
President & CEO

# CELEBRATING 30 YEARS OF INNOVATION

Thirty years ago, small groups of people gathered together to create an organization that would address the dire need for affordable housing in their communities. Starting as three separate affiliates of Habitat for Humanity—Mt. Diablo, East Bay, and Bay and Valley (later renamed Silicon Valley)—we've grown into a movement of people across Alameda, Contra Costa, and Santa Clara counties, building homes and fighting for affordable ownership housing.

Each affiliate started one home at a time: planning, fundraising, recruiting volunteers, and renovating dilapidated homes in partnership with local families. When thousands of families were displaced by the Loma Prieta earthquake, it was clear: we needed to expand and innovate to serve more people.

From this early turning point, we capitalized on our momentum and evolved our organization—leading to more high-density developments, building green, expanding into new programs, and advocating at local, state, and national levels.

**Innovation, evolution, expansion—this is how we serve.**





## INNOVATION BUILDING BIG

Spurred by the 1989 devastating 6.9 earthquake that displaced thousands, we started our first 40-home development. Habitat embarked on a growing commitment to building big: large-scale, multi-home developments to aggressively address the Bay Area's affordable housing needs.

**1991**  
Starting with the first Build-A-Thon in Richmond, 20 events have jump-started 9 large developments and 176 homes, enabling us to complete them much faster.

**2000**  
Dedicated 40 homes in Oakland, Habitat's first major multi-home development.

**2006**  
Home Builders Blitz completed 6 homes in 2 weeks.

**2010**  
Dedicated 54 homes in Oakland, the largest Habitat development in CA.

**TO DATE**  
25 large developments completed.



## INNOVATION EXPANDING PROGRAMS

The housing crash left many homeowners foreclosed upon and decimated the dream of homeownership for others. Habitat evolved once again and expanded our services to serve more people in more ways: stabilizing neighborhoods, preserving existing homeownership, and helping more families qualify for affordable housing programs.

**2009**  
The housing bubble peaked in 2006 and reached its lowest point in 2009.

**2009**  
We launched the Neighborhood Stabilization Program to renovate foreclosed and abandoned homes.

**2010**  
We started the Neighborhood Revitalization Initiative to work with communities on projects that improve safety & livability.

**2010**  
We launched our Housing Counseling Program to help families repair their credit and prepare for homeownership.

**2012**  
The Home Repair Program was started to help homeowners with critical repairs, preserving long-term homeownership.

**2013**  
Home Repair Program added Veterans Build Initiative.



Bay and Valley Habitat forms, later Habitat Silicon Valley

**1987**

East Bay Habitat forms

**1986**

East Bay Habitat dedicates first home in Oakland

**1988**

**1989**

Mt. Diablo Habitat forms

**1990**

**1991**  
Bay and Valley Habitat dedicates first home in Alviso

Mt. Diablo dedicates first home in Pittsburg

**1993**

**1995**  
All Women's Crew forms at Mt. Diablo Habitat

Affiliates host first AmeriCorps members

**1996**

**2000**

**MILESTONE**  
\$1M global investment: 500 homes and 2,517 people served

**2004**

**2005**  
Tri-Valley Interfaith Group completes first "All Faith Home"

**2007**

Mt. Diablo and East Bay Habitats merge, forming Habitat East Bay

**2008**

**MILESTONE**  
250 homes completed locally

**2009**

**2009**  
First affiliate Global Village trip goes to El Salvador

**2010**

Playhouse Program launches in Silicon Valley

**2011**

East Bay and Silicon Valley Habitats merge into HEBSV

**2013**

HEBSV receives Affiliate of Distinction Award (1 of only 7 affiliates)

HEBSV hosts the Jimmy and Rosalynn Carter Work Project

**2015**

Building on Faith Framing Blitz, the largest all-faith build in HEBSV history

**MILESTONE**  
500 homes completed locally

**2015**

**2016**

STEM Playhouse Program launches

HEBSV celebrates 30th Anniversary

**2016**

## INNOVATION BUILDING GREEN

In 2000, in response to a growing concern for the environment and the health and well-being of homeowners, Habitat pioneered our green building program. Beginning with simple improvements, we evolved our building and design methods into a cutting-edge green building program that has been emulated by other Habitat affiliates across the country.



**2003**  
First green homes dedicated in Oakland. From the beginning we used innovative techniques like solar panels, passive solar design, and solar hot water, as well as alternative building materials and drought-tolerant landscaping.

**2004**  
First ReStore opened in Oakland, diverting waste from landfills and raising funds for homes.

**2009-10**  
First Habitat in CA to be certified LEED Gold and Platinum. Awarded LEED for Neighborhood Development for creating better, more sustainable, well-connected neighborhoods.

**2015**  
Opened 4th ReStore, now in Oakland, San Jose, Santa Clara, and Concord.

**2016**  
Habitat adopts Zero Net Energy building code requirements for 2020.



## INNOVATION ADVOCACY

In 2011, it became evident that the state would likely dissolve redevelopment agencies. As Habitat stood to lose a primary funding source for housing development, it was clear we needed to take action. The 43 California affiliates immediately formed Habitat California to advocate for statewide affordable housing policy and funding.

**2012**  
Redevelopment agencies in California dissolved. Habitat CA fought to retain funding for developments in progress, allowing HEBSV to retain two-thirds of its pipeline.

**2013-15**  
Habitat co-authored, sponsored, and supported dozens of legislative bills for affordable housing funding and stronger public policy.

**2015**  
Habitat CA-sponsored bill AB 668 was signed into law, allowing property taxes on deed restricted homes to be assessed at the affordable mortgage and not market value, thus properly taxing Habitat homeowners.



**2016**  
Successfully passed three local measures, securing \$2.1 billion in bond funding for affordable housing.  
• Measure A1, Alameda County  
• Measure KK, Oakland  
• Measure A, Santa Clara County

**ONGOING**  
HEBSV will continue to advocate for national service to preserve our strong AmeriCorps program.



# HABITAT FOR HUMANITY'S GLOBAL IMPACT

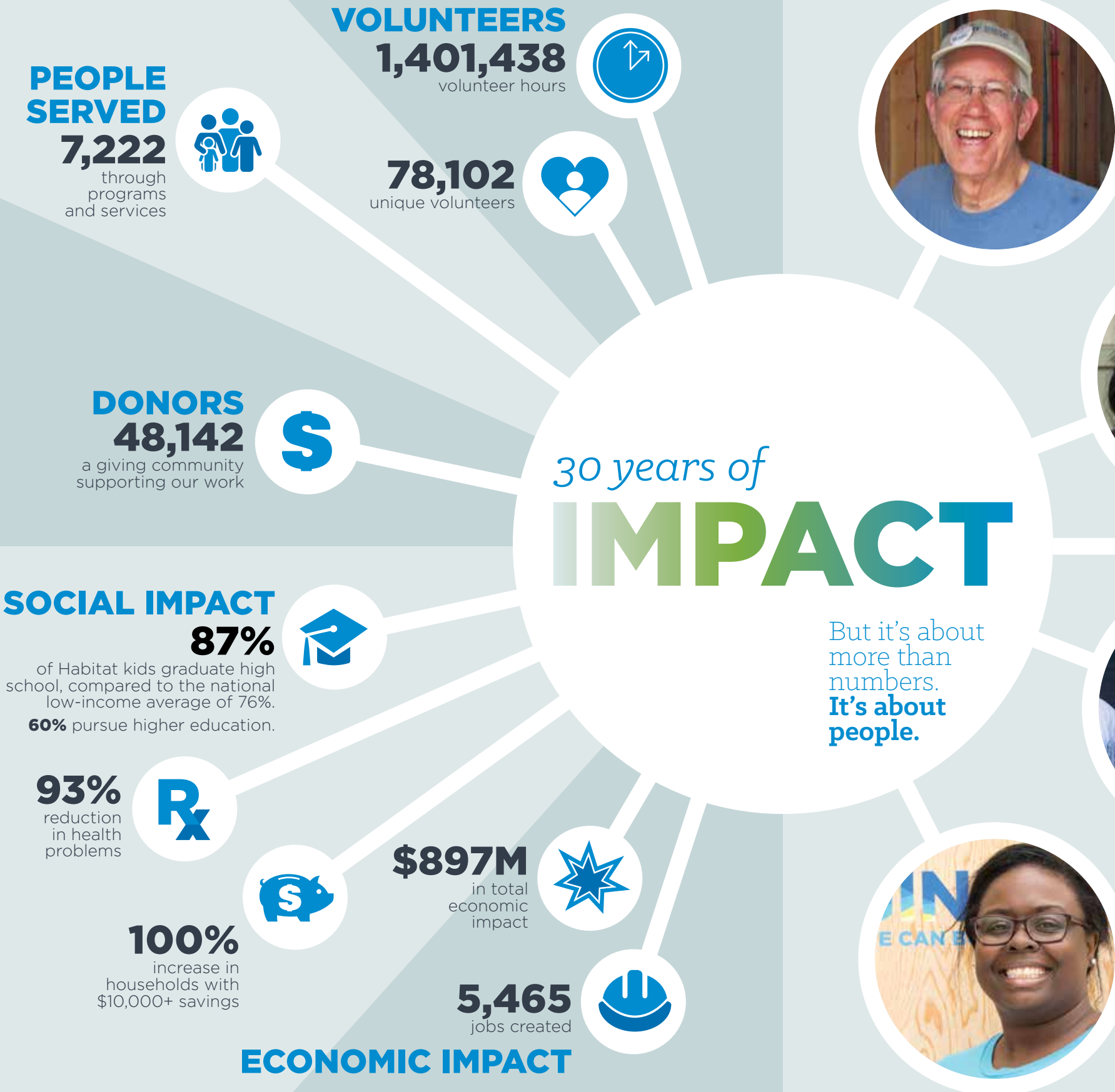
Habitat for Humanity is a global movement that has made affordable housing and shelter a worldwide priority. Habitat was named the 2016 Social Services Brand of the Year and is a trusted organization whose global impact is recognized around the world.

Since Habitat for Humanity International's founding in 1976, we have served more than **9.8 MILLION PEOPLE** through new home construction, renovation, improvements and repairs, and increased access to homeownership.

Annually, we mobilize more than **1.8 MILLION VOLUNTEERS** to build, advocate, and raise awareness about the global need for shelter.

The impact right in our backyard is equally significant. We are proud of what we've done for Habitat kids and families. We are proud that our work has created jobs and economic opportunities. We are proud of the impact we've had on the Bay Area. And you—our donors and volunteers—made this possible.





**MIKE HELLER**  
*long-term Habitat Volunteer (12 years)*

I value the opportunity to positively affect people's lives, as happens with families buying the homes we build. The Habitat operating model, focusing on not only need but willingness to truly partner with Habitat, is very appealing to me. Working at Habitat is a perfect complement to missions work I do for my church.



**JASMIN BARAJAS-RIOS**  
*growing up in a Habitat home (age 8)*

I love my house because my whole family is happy, even my little dog is happy, and I have my own room. Thank you to everyone who helped build our house.



**ROLAND TREVINO**  
*Board Member*

I'm amazed by Habitat's impact, transforming lives through the power of homeownership. As a PG&E employee, I am especially proud of creative programs like Solar Habitat, bringing affordable, clean energy to every Habitat homeowner.



**SHAWNTATE JOHNSON**  
*future Habitat Homeowner*

When on site, I close my eyes and see my boys playing outside, something they aren't allowed to do at our current house. I can see my family sitting at the kitchen table eating, laughing, and enjoying each other's company. I look around and I see a community I will be proud to be a part of, one that is full of good influences and role models for my children.




*It's because of Habitat that my daughters are successful today.*

**ROSA RESENDEZ**  
*Habitat Homeowner*

We had dreams of owning our own house, but it was just too hard. When we were notified that we were chosen to be a Habitat family, that was the happiest, happiest day of our lives!

It was wonderful to see the house come up from the ground up. Every piece of wood and every little nail that went in was done with just so much love. The volunteers just came, they didn't know us, but they wanted to help us. To me, I will never forget that feeling of just... being cared for. It was a time in my life when I felt that humanity was wonderful.

Because of this house, because of Habitat, my husband and I were able to put our daughters through college. They all graduated from universities, one with a master's degree. We were able to concentrate on them and not worry about where we were going to live. It's because of Habitat that my daughters are successful today.



# IMAGINE WHAT MORE WE CAN BUILD

Looking to our future, we are **imagining more.**

We are **building more.**

We are **deepening our engagement** in communities.

We are **preparing families** for successful homeownership.

And we are **building a solid foundation** of diversified support, seeking increased investment from donors and sponsors, as well as expanding unique funding streams like ReStore and the Playhouse Program.

With an acute shortage of affordable housing, the Bay Area needs action. The vision is affordable housing for everyone. Habitat is the solution.

When we make deep investments in our programs and are willing to participate in making our vision a reality, we can provide a home for everyone. **Imagine what more we can build.**





## HIGH DENSITY DEVELOPMENTS

The need for affordable housing is urgent. So we're focusing our efforts and using our resources efficiently—by building dense and building big.

### ♥ VOLUNTEER

With seven developments in the pipeline, we need you—volunteers across our communities—now more than ever.

### \$ FINANCIAL

Your support—from small donations to home sponsorships—is vital as we build more large-scale developments.



## EXPAND CRITICAL HOME REPAIR

When senior, disabled, veteran, or other fixed-income homeowners can't afford critical home repairs, they risk displacement. Fixing structural, safety, and accessibility problems preserves ownership and stabilizes communities.

### ♥ VOLUNTEER

Groups and skilled volunteers needed.

### \$ FINANCIAL

\$10k replaces a leaky roof. \$5k builds an accessibility ramp. \$1.5k modifies a home for fire safety and fall prevention.



## STRENGTHEN HOUSING COUNSELING

Buying a home is a complex process. Our HUD-approved Housing Counseling Program—group workshops, one-on-one counseling, and First Time Homebuyer classes—prepares families for homeownership and strengthens financial health.

### ⚙ EXPERTISE

Financial institutions, nonprofit organizations, and local municipalities can refer clients to our program.

### \$ FINANCIAL

\$350 provides the staffing, expertise, and educational materials to prepare a family for homeownership.



## GROW RESTORE OPERATIONS

Revenue from our four ReStores enables us to expand our programs and serve more people. By selling donated new and gently-used home improvement materials to the public, we divert waste from landfills while store profits support home building.

### ♥ VOLUNTEER

ReStores in Oakland, Concord, Santa Clara, and San Jose run on volunteer staffing. Regular, committed volunteers are essential to our ReStores' success.

### \$ FINANCIAL

Donation partnerships with suppliers, stores, and contractors for new items help us meet high demand from the community for our best selling items.



## EXPAND PLAYHOUSE PROGRAM

Innovation fuels our funding. While engaging groups in team building, we create a playhouse for deserving kids and generate funding for Habitat homes. With students, we bring together service learning and STEM core curriculum.

### \$ FINANCIAL

Groups donate \$2k per playhouse to cover materials, staff, transportation, and a donation to support home building.

### ⚙ EXPERTISE

STEM Pilot Sponsors provide experts to teach STEM concepts and donate \$25k to educate 100+ students.

### ♥ VOLUNTEER

Volunteers drive preparation, leadership, event logistics, and education. Join prep crew or become an event leader.

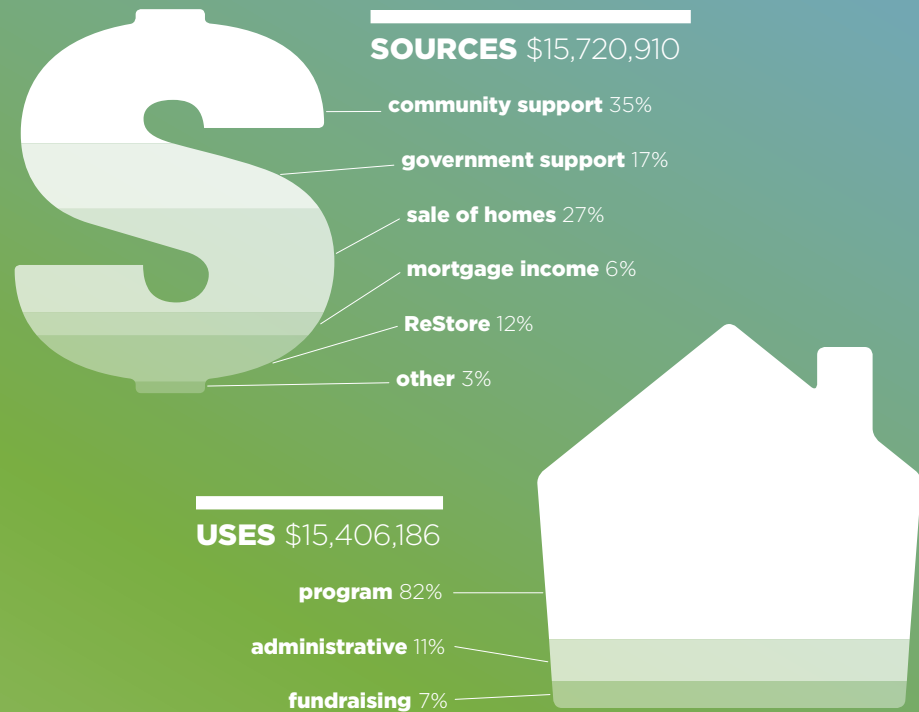
## HOUSING PIPELINE





# STATEMENT OF FUNDING

THREE YEAR AVERAGE: FY14, FY15, FY16



## FISCAL RESPONSIBILITY

At Habitat East Bay/Silicon Valley, we take pride in using donor dollars wisely. We steward contributions efficiently and effectively, invest

the vast majority of donor dollars into our housing programs, and allocate only a small percentage of funds to overhead expenses. We're proud to have earned the 4-Star rating by Charity Navigator, its highest donor rating.

Habitat East Bay/Silicon Valley's EIN number is 94-3053687. We are an active 501(c)(3) nonprofit in full compliance and in good standing with the IRS. Our funders include individuals, corporations, foundations, and faith organizations, and we receive grants and no-interest loans from local government sources. For more information, including our audited financial statements and our IRS Form 990s, visit [HabitatEBSV.org/FiscalResponsibility](http://HabitatEBSV.org/FiscalResponsibility).



Affiliate of Distinction 2015-2017

In recognition of our programmatic strengths, financial stewardship, and community service, we are one of fourteen affiliates nationwide to receive Habitat for Humanity International's "Affiliate of Distinction" designation.

# THANK YOU DONORS

Fiscal Year 2016 July 1, 2015 to June 30, 2016.  
 ◀ Dream Builder Society Member

## \$1,000,000+ Individuals

Anonymous

## \$250,000-\$499,999 Companies and Organizations

Dean & Margaret Leshner Foundation  
 Pacific Gas & Electric Company

## \$100,000-\$249,999 Companies and Organizations

Presbyterian Women in the Presbyterian Church (U.S.A.)  
 Wells Fargo Housing Foundation and Matching Gift Program

## Individuals

Anonymous (2)  
 Rick and Melinda Reed  
 Clyde A. Stone and Margaret A. Stone Trust

## \$50,000-\$99,999 Companies and Organizations

Cisco Systems, Inc. and The Cisco Foundation  
 Dow Chemical Company  
 Google, Inc. and Matching Gifts Program  
 Grifols, Inc.  
 Menlo Church  
 Samsung Research America  
 Simpson Strong-Tie  
 Sobrato Family Foundation

## \$25,000-\$49,999 Companies and Organizations

Adobe Foundation  
 Change A Life Foundation  
 Charles Schwab Bank and The Charles Schwab Foundation  
 Chegg, Inc.  
 Chevron Humankind

Matching Gift Program  
 Ernst & Young LLP  
 Federal Home Loan Bank of San Francisco  
 GATCO Inc.  
 Georgia Pacific  
 HEDCO Foundation  
 Home Consignment Center, Campbell  
 The Home Depot  
 Italy Designs  
 James Hardie Building Products

Meriwest Credit Union  
 Miller Starr Regalia  
 Move, Inc./Realtor.com  
 Orchard Supply Hardware  
 Patelco Credit Union  
 Prime Source  
 SanDisk Corporation and Matching Gift Program  
 Synaptics, Inc  
 Thrivent Financial  
 Valspar

Workday Foundation  
 Zinus, Inc.

## Individuals

Marcie and John Comyns  
 Michael and Mary Ellen Fox  
 Robert and Barbara Frick  
 Neil W. and Amelia G. McDaniel Trust  
 Harvey and Lillian Silbert Foundation  
 Patricia and Alan Yarrington

## \$10,000-\$24,999 Companies and Organizations

Anonymous  
 AvalonBay Communities, Inc.  
 Bank of America Charitable Foundation  
 Brocade Communications Inc.  
 The Clorox Company  
 eBay Inc.  
 Ellie Mae  
 EMC Corporation  
 Facebook  
 First Presbyterian Church of Berkeley  
 First Republic Bank  
 Heritage Bank of Commerce  
 Hunter Douglas  
 Infor Global Solutions  
 K2 Pure Solutions  
 Kaiser Permanente  
 KLA-Tencor Foundation  
 KTG GROUP, INC.  
 Lowe's  
 McKinsey & Company, Inc.  
 Micron Technology  
 Microsoft  
 Paul Mitchell Schools East Bay  
 Regency Centers  
 Toyota Motor Sales  
 Travelers Insurance  
 Uniquely X-Cell Inc.  
 US Bank  
 VMware, Inc.

## Individuals

Anonymous (4)  
 Robert J. and Stacy S. Ashby  
 Fred and Sue Bockmann  
 Wai and Glenda Chang  
 John Dains  
 George L. Shields Foundation, Inc.  
 Garry and Lynn Goodall  
 Stella B. Gross Charitable Trust  
 Gregory Hemmi and Rhonda Gruber  
 Bruce and Diana Juhlin  
 Steve and Sandy Martino  
 Mark and Mary Maxson  
 Carolyn and Fritz Redeker  
 Mark and Susan Stutzman  
 John and Donna Warnken-Brill  
 Jacqueline Wnukowski  
 Paul and Renee Woolway

## Individuals

Anonymous (2)  
 Teri Bommarito  
 Elizabeth Bowles  
 Brandenburg Family Foundation  
 Gordon Chaffee and Nancy Kedzierski  
 Robin Feinman-Marino  
 Gregory and Caroline Gretscht  
 Paul Hale  
 Leonard and Louiselle Holmes  
 Jennifer Hom and Jiang Wu  
 The Ken and Judith Joy Family Foundation  
 Dave and Carol Moyer  
 Richard and Seda Otto  
 Ralph Pais and Gayl Huston  
 Joanne Price  
 Kim and Steve Richardson  
 The Scandling Family Foundation  
 Porter E. & Helenmae  
 Thompson Foundation  
 Robert and Lisa Wheatley  
 Marta Wilde

## \$2,500-\$4,999 Companies and Organizations

AAI Design  
 Applied Materials  
 Arch Mortgage Insurance Company  
 AssetMark  
 Bay Area Plumbing Supply

Altera Corporation  
 Asbury United  
 Methodist Church  
 Automatic Data Processing Inc.  
 Bank of the West  
 BloomReach, Inc.  
 Chipman Relocations  
 Consignment Plus, Walnut Creek  
 The Core Group  
 CSAA Insurance Group  
 Davis Home Pros  
 Destination Wealth Management  
 Dictionary.Com  
 Green Waste Recovery  
 Hewlett-Packard Company  
 Los Altos United  
 Methodist Church  
 Mobile Modular  
 Netgear  
 Nissan  
 The Oakland Athletics  
 Community Fund  
 OSISOFT, LLC  
 Owens Corning  
 Foundation Inc.  
 Paramount Construction Services  
 Parker Hannifin Corporation  
 Piedmont Community Church  
 Polaris Management Group Inc.  
 Prologis  
 San Ramon Valley United  
 Methodist Church  
 SC Builders  
 Sears Home Improvement  
 Sequoia Equities  
 Service West  
 Saint Matthew  
 Lutheran Church  
 Stanford University  
 Stryker  
 Sun Power Corporation  
 Tesla Motors, Inc  
 TriNet  
 Turner Construction Company  
 Valley Fine Foods  
 Venegas Company, Inc.  
 Walnut Creek Presbyterian Church  
 Whirlpool  
 Xilinx, Inc.

Bay Equity, LLC  
 Benjamin Moore Paint  
 Bethel Lutheran Church and School  
 Cadence Design Systems Inc.  
 California Garden Clubs, Inc.  
 CapRidge Partners  
 Cardinal Health Foundation  
 Christ the King Church  
 Ciena  
 Citizens Bank  
 Congregation Beth Am  
 Corban Floor Coverings  
 CoreLogic  
 Crowne Plaza Hotel, Burlingame  
 Daltile & Stone  
 Dudum Real Estate Group  
 EAH Housing  
 Egnyte  
 Ethan Allen  
 EVB  
 Fireclay Tile  
 First American Title Company  
 Gainsight  
 GE Healthcare  
 Golden Gate Chapter Vintage  
 Volkswagen Club of America  
 Grace Presbyterian Church  
 Guilkey Construction  
 InfoSys  
 Intacct Corporation  
 Intel Volunteer Grant Program  
 Jabil Circuit, Inc.  
 Jane Grossman Consulting  
 Lam Research  
 Lawrence Livermore  
 National Lab  
 LinkedIn Corporation  
 Lynnewood United  
 Methodist Church  
 Maxim Integrated  
 Mechanics Bank  
 Mission City Community Fund  
 Motorola  
 Nest Labs  
 NetApp  
 NetScout Systems Inc.  
 Orchard Supply Hardware  
 Our Lady of Guadalupe Parish  
 Pine Cone Lumber  
 The Produce Exchange  
 Rotary Club of San Jose  
 St. Andrew's  
 Presbyterian Church  
 St. Charles Borromeo  
 Catholic Church  
 St. Joan of Arc Parish  
 Saint Jude's Episcopal Church  
 Starbucks Coffee Company  
 Sunset Development  
 Company  
 Synopsys  
 Teen Challenge  
 Trinity United  
 Methodist Church  
 Union Bank  
 United Way Silicon Valley  
 University Electric Company  
 Upwork  
 WCI  
 Western Digital Corporation  
 White & Case LLP  
 Zscaler

## Individuals

Anonymous (7)  
 Ellen Ackerman  
 Gary and Joy Addiego  
 David Barron and Jean McClellan  
 Bryce and Darla Beck  
 Berky Benevolent Foundation  
 Lucy Bradshaw  
 Ralph and Lauren Briskin  
 Wilma Chappell  
 Johnson and Louise H. Clark  
 Charitable Foundation  
 Rebecca Dowdakin and Flora  
 McMartin  
 Stephen Dudley  
 The Angene Feves Trust

Walter and Amy Fong  
 Susan J. Forsythe  
 Mark W. Frick  
 Maria Geyer  
 David Gleason  
 Shivani Gupta  
 Colin and Julia Holland  
 Mark and Lynne Humphrey  
 Rangarajan Jayaraman  
 Janice Jensen  
 Bome Kim  
 Andrew and Tina Laiho  
 Thomas Lawer  
 Kristin and Kent Lincoln  
 Brian and Vicki Magstadt  
 John and Dorothy McDonald  
 Douglas Merrell  
 Herb and Virginia  
 Morgenthaler  
 John M. Nadler  
 Sergio Nakai  
 Micheal O'Shea  
 Jamie Parry  
 Sandra Patterson and  
 Stephen Burr  
 Matthew Pecci  
 Donald and Patricia Pecko  
 Janet and Scott Pollak  
 Derek A. and Valerie  
 W. Sanders  
 Lowell and Patricia Sando  
 Bret and Christine Sewell  
 Donald and Barbara Snyder  
 D. Blake Spears and  
 Lanz Lowen  
 Daniel D. Springer  
 Eric Talley  
 Wesley Tanaka  
 Steven and Sheila Taylor  
 Leonard and Carolyn Tom  
 William and Frances Vaculin  
 Cynthia Weeks  
 Dan Wood  
 Douglas T. Yoshinaga

### \$1,000-\$2,499

**Companies and Organizations**  
 Anonymous  
 Ace Hardware  
 Aeris Communications, Inc.  
 Ashby Lumber  
 Association of General  
 Contractors  
 Bats Dam Power Project, Inc.  
 Big Red Construction  
 Company  
 BlackRock Financial  
 Management, Inc.  
 Cal Window and Fireplace  
 Campbell United  
 Methodist Church  
 Catholic Community  
 of Pleasanton  
 Christ Episcopal Church  
 of Alameda  
 Chubb & Son  
 City Team Ministries  
 Clayton Valley  
 Presbyterian Church  
 Commerce Home Mortgage  
 Cordis  
 Council of Real Estate Brokers,  
 Northern California CRB  
 Cree  
 Cupertino DeAnza Lions  
 Charities, Inc.  
 CW Horton General  
 Contractors  
 Daimler  
 Double Tree, Newark  
 DTB Development  
 East Bay Community  
 Foundation  
 Economy Lumber  
 Empire Realty Associates  
 ExxonMobil Foundation,  
 Volunteer Involvement  
 Program  
 Faegre Baker Daniels LLP  
 Fairmont Designs  
 Federal Realty

First Presbyterian Church  
 Livermore  
 Galaxy Lighting  
 General Plumbing Supply  
 Giveback Homes  
 Grace Lutheran Church  
 GraceWay Presbyterian  
 Church  
 Group Delphi  
 Guidewire  
 Holy Cross Lutheran Church  
 Hope Center Covenant Church  
 Imerys  
 Infoedge  
 InnoVista  
 Instagram  
 Johnson Controls  
 Juniper Networks  
 KZ Tile Company  
 Lakeshore Avenue Baptist  
 Church  
 Levi Strauss & Company  
 Lockheed Martin Employees'  
 Foundation  
 Los Gatos Museum  
 Association  
 Lowry's Waterproofing  
 Makoni Construction  
 Meredith Corporation  
 Piedmont Planning Systems  
 Presbyterian Church  
 of Los Gatos  
 Qualcomm  
 Republic Dumpster  
 Return Path Inc  
 Rockridge Geotechnical, Inc.  
 Rosewood Hotel, Menlo Park  
 Rubicon Realty Advisors, Inc.  
 San Lorenzo Hardware  
 Skadden, Arps, Slate,  
 Meagher & Flom, LLP  
 Skoll Foundation  
 Saint Andrew's  
 Episcopal Church  
 Stone Church of Willow Glen  
 SugarCRM  
 Sunnyvale Lumber  
 Sunnyvale Presbyterian  
 Church  
 Survey Monkey  
 Tandus Centiva  
 The Bath Studio  
 The Tile Shop  
 The Woods Apartments  
 The Thomas Hodge  
 Foundation  
 Tile Plus  
 Varian Medical Systems  
 Water Concepts  
 Wonderful Giving

### Individuals

Anonymous (25)  
 Thomas and Frieda Alessi  
 Gary Amado and Judy  
 Guilkey-Amado  
 Elisabeth Andreason  
 Patricia V. Angell  
 Ricardo and Ana Arevalo  
 Barry and Jo Ariko  
 Thomas and Kathryn  
 S. Bartley  
 Ophelia Basgal and  
 Gary Fitschen  
 Marilyn and Brian Beck  
 Arvind Bedi  
 Carole and John Beebe  
 Raghavendra Bhagavatha  
 Napoleon and Sharon  
 Brandford  
 Lawrence and Barbara Briggs  
 William and Emily Brizendine  
 Pamela Brotherton-Sedano  
 and Edward Sedano  
 Carolyn Broughton  
 Carol Brown and Tom  
 Spalding  
 George and Marilyn Brown  
 Michael and Stephanie  
 Bugbee  
 Robert Burns  
 Kathleen Callahan

Anna and Nathaniel Chan  
 Frank Cheng  
 Bradley Cless  
 Karen Colonias  
 Steven W. Constable  
 Russell and Jackie Cowgill  
 Daniel and Linda Curtis  
 Douglas and Gisela Daetz  
 William Danielson  
 Sakti Das  
 Elayne and Philip Dauber  
 Richard and Rosie Davis  
 The Depolo Foundation  
 Dennis Drake and Janet Davy  
 Louis and Kathy Dye  
 John F. and Marjory C. Eller  
 Alexander Ertis  
 Donna Ervin  
 Kathleen M. Esch  
 Michael and Patricia Evans  
 Jeremy G. Fair  
 Richard and Wanda Finn  
 Fredrick J. Fisher  
 Rita L. Fisher and  
 Kathleen Patrick  
 Benjamin Fisher and  
 Margaret Fisher  
 Bruce and Kathleen Fitzgerald  
 Emma and William Fleming  
 Barbara K. Florin  
 Mona M. FosterWhite  
 Thomas and Kelly Fratar  
 Andrew Fryett  
 Paul Fujii  
 Al Garren Fund  
 Hannah Garza  
 Linda Gilchrist  
 Paul Goodwin  
 David and Maryann Grinstead  
 Carol and Joseph Grundfest  
 Marcie Gutierrez and  
 Bret Dickey  
 Jerry and Joanne Haag  
 Mary and Thomas  
 Haak-Frendscho  
 Adam Hamalian  
 Narvelle Handy  
 Teresa Hanna  
 Marisue Hansen  
 Melinda Harris  
 Beverly and Jonathan Harris  
 Steve and Anne Hartman  
 Misha Heacock  
 Tim and Mary Healy  
 Hans Heineken  
 Sharon Heyler  
 William and Frances Hinsberg  
 Martha Hood  
 Carol Hoskins  
 Bryce Ikeda and  
 Kristine Soorian  
 Nitin Ingle  
 Suzan Jackson  
 Cindy Jarvis and Allan Grimes  
 Roger Johnson  
 Mark and Kelly Johnson  
 Rebecca Jones  
 Tim and Sarah Jur Foundation  
 Steven A. Jurecki  
 Nicole and Thomas Katona  
 Steven and Judy Kazan  
 Marilyn Kecso  
 L.E. Keller and T.C. Williams  
 Garrett and Sherri Kennedy  
 Colm and Stephanie Kennedy  
 Jennifer Kernforward  
 Kieve Foundation  
 Kenneth and Grace Kim  
 Leif and Ivonne King  
 Lenore Kirvay  
 David and Julie Klenske  
 Tamara G. and Kenneth  
 D. Kolda  
 Anita Kratka  
 Mr. and Mrs. Krause  
 Kevin D. and Claudine W. Lally  
 Roger and Sue Lang  
 Joseph D. Lattuada  
 James and Sharon  
 M. Lawrence  
 Thomas and Gabrielle Layton  
 Albert Lee

Amy Lee  
 Michael Leung  
 Tina Levine  
 Rich and Marty Lewis  
 Brian V. Lewis and  
 Renee J. Arst  
 Stewart and Margaret Lewis  
 Tony Li  
 Wei Li  
 Donald Lowmiller  
 Cynthia and Karen Luna  
 McVeigh  
 Virginia and Jim Lyons  
 Mary and Donald Macleod  
 Diann and Jo Major  
 Frederick David Maxcy  
 Steven and Alita McCann  
 The McLin Family Foundation  
 David and Rachel A. Metz  
 Karri and Peter Michell  
 Kenneth and Cheryl Miller  
 Rodger and Laura Miller  
 Laurie Moelling  
 Kevin and Kathleen Moisan  
 Elizabeth Moore  
 Mark Moore  
 Krysta Morgenthaler  
 and Valerie Coleman  
 Richard Morris  
 Barbara E. Moyer  
 Peter and Kathleen Muller  
 John Murphy  
 Nicolaou Family Fund  
 Allyson Nolte Tilles  
 and Dean Tilles  
 Nootbaar Family Fund  
 Ann Norton  
 Lawrence Oberly  
 Judy F. Oliphant  
 David H. Paulson  
 Julie J. Pearce  
 Carol Penskar  
 Geraldine and Priscilla Peters  
 Russell Peterson  
 Charles Peterson  
 Mr. & Mrs. Byard Pierson  
 Spencer and Margot Platt  
 Leslie A. Poltrack  
 Muthu Ponnambalam  
 Lori and Robert Prince  
 John D. Ralls  
 Jim Redovian  
 William Reller  
 Edward and Teresa Ritelli  
 Kimberly A. Robbie  
 Richard Rodriguez  
 Randy and Ellen Roig  
 Jay Rosenberg  
 Frederick and Cindy Round  
 Courtney Rubin  
 David Ruff  
 Kate and Douglas Rundle  
 Edward Ryba  
 Vince and Patricia Salinas  
 May Saypam  
 Michael Scott  
 Maria Segal  
 Joan and Lynn Seppala  
 Sushil and Dipti Shah  
 Merrill and Patricia Shanks  
 The Shevel-Selo  
 Charitable Fund  
 Stan Shore  
 Roger and Josephine Skinner  
 Mary and Susan Spaeth  
 Samuel J. Spagnolo  
 Jan Speth  
 Helmut and Sigrid Spieler  
 Tom Sramek, Jr.  
 Gail St. John  
 Harold and Diane W. Steuber  
 Rhonda Stewart  
 John and Margaret Stienstra  
 Brett Stineman and  
 Linda Larkin  
 Gary Stuart  
 Dennis and Susan Stuart  
 Thomas and Sarah Sturm  
 Raymond A. Tabar  
 Bernard Tagholm and  
 Madeleine Stephens  
 Kheng Tan

# SPECIAL THANKS

A special thank you to our legacy volunteers and donors

## LIFETIME ORGANIZATIONAL DONORS—\$1M+

\$3M+



THRIVENT  
FINANCIAL®

\$1M+



## LIFETIME INDIVIDUAL DONORS—\$100,000+

**\$2,000,000+**  
Anonymous

**\$500,000+**  
Mark J. Bluth  
Estate of Carl  
Wolf

**\$250,000+**  
Anonymous  
Blackledge Trust  
Marcie and John  
Comyns  
Clarice Garrison  
Janis Mazna  
Knox Trust

G. Alizabeth  
LeTourneau  
Trust  
Linda L. Lucas  
Living Trust  
Michael Sachs  
Dorothy F.  
Stevens Trust

**\$100,000+**  
Anonymous (5)  
Robert and  
Stacy Ashby  
Janette L.  
Boehm

Wai and Glenda  
Chang  
Anita M. Dean  
Trust  
Myra Reinhard  
Family  
Foundation  
Robert and  
Barbara Frick  
George L.  
Shields  
Foundation, Inc.  
Roger and Judith  
Houghton  
Trudis Heinecke  
Robert Knight

Rich and  
Marty Lewis  
Neil W. and  
Amelia G.  
McDaniel Trust  
Rick and Melinda  
Reed  
Janet Schilling  
Frances  
Stevenson Trust  
Clyde A. Stone  
and Margaret  
A. Stone Trust  
Patricia and Alan  
Yarrington

## LIFETIME VOLUNTEERS—2,500+ HOURS

**17,500+ hours**  
David More

**15,000+ hours**  
Jim Meyer,  
in memory

**5,000+ hours**  
Mike Balun,  
in memory  
Jeff Gaylord  
Patrick Hamm

Jim Latshaw,  
in memory  
Roger Wedel

**2,500+ hours**  
Diane Agnone  
Curtis Boyle  
Cecile Burfeind  
Joe Garcia  
Laura Goderez  
Allan Hadad  
Kathy Hale  
George Heeg

Mike Heller  
Bruce Henry  
Scott Holt  
John Lee  
Jim Loos  
Bob Mayers  
David McCreath  
Dorothy  
McDonald  
Ray Mensing  
Bill Miller,  
in memory  
Dave O'Hara

Dave Paulson  
Spencer Platt  
Les Poltrack  
Marlyn Poulin  
John Ralls  
Frank Regalado  
Don Snyder  
Barbara Snyder  
Lauri Steel  
Gordon Steel  
Nick Stoughton  
Richard Trevisan



## BIG IMPACT

Through our ReStore and fundraising programs, your donations add up to big impact.



**\$2,532,249**  
ReStore  
donors & shoppers



**\$669,594**  
Playhouse  
Program  
participants



**\$361,423**  
Cycle of Hope  
donors & sponsors



**\$325,201**  
Build-A-Thon  
sponsors & participants

Taylor Charitable Foundation  
Alyce F. Thornton  
Charles and Janet Totman  
Richard and Carolyn Treakle  
Roland and Teresa Trevino  
Mark and Kathryn Tucker  
Cecelia and Teresa Tutt  
Gillesa Ullman  
Urban Foundation IV  
Alejandra Valle  
William Van Melle and  
Patricia Ho  
Shari VanLoo  
Aili Vieira Da Rosa  
Joan Wade  
Tom and Katherine Waugh  
Dr. John Wehner and Dr.  
Asuncion Martinez  
Randall Weingarten  
Debbie A. Wick  
William Wiegand and  
Judith Petroski  
Sidney Williams  
Nancy A. Williams  
Donna Wills  
Wanda Wilson  
Thomas Wolf  
Wendy Wolfe and  
Michael Anciaux  
Mary and Michael R. Wolfe  
Edward and Trina Won  
Patty and Jack Wright  
Foundation  
Jennifer Wrigley  
Ping Wu  
Yoko Yamamoto  
Tina Yuen

### \$500-\$999 Companies and Organizations

Academic Travel Services  
Boston Scientific  
Business Wire  
Calpipe Industries  
Cardinal Health  
City of San Jose  
Covenant Presbyterian Church  
The David and Lucile Packard  
Foundation  
First Presbyterian Church of  
San Leandro  
Four Seasons Apartments  
John Knox Presbyterian  
Church  
Knights of Columbus  
St. Francis of Assisi  
Council #4981  
Lafayette United  
Methodist Church  
Montclair Presbyterian Church  
Northrop Grumman Corp.  
Pathway Community Church  
Salesforce.com Foundation

San Francisco Bay Area  
Rapid Transit  
Smith NMTC Associates, LLC  
St. Luke Lutheran Church  
The Doctors Company  
United Way of  
Metropolitan Atlanta  
United Way of Metropolitan  
Chicago c/o Crusade  
of Mercy  
Veeva Systems Inc.  
VISA International's Employee  
Giving Campaign  
West San Jose-  
Campbell Lions

### Individuals

Anonymous (53)  
Clinton and Lorie Abbott  
Candace and Scott  
Abrahamson  
Phil Alne  
Diana Anderson  
Steven Anderson  
Eric H. Anderson and  
Tracey L. Stanelun  
Gladys Anenson  
Rick Arnesen  
Yuk Averill  
Ayers Family Fund  
Darcy J. Babbitt  
Ralph and Laura Babcock  
Parthasarathi Baral  
Ruth Barcelon  
James Bardsley  
Charles and Irene Beebe  
Jeffrey Lynn Beresini  
Mary Bernstein  
Cesar Betioli  
Jim and Carol Bever  
Janis Black  
Dona Boatright  
Severin Borenstein and  
Margaret Stewart  
Ruth E. Bracklein  
James H. and Margaret  
M. Brady  
Victor and Barbara Brochard  
Carl and Lisa Brodsky  
Michael Brody  
John and M. Christine Brown  
Christopher Buchholz  
and Christy Sinclair  
Thomas Burgei  
Roland Burgess  
Alan and Mary Burnham  
Deborah Butler  
Johnnie and Dell Raye Byrd  
Patrick and Shirley  
Campbell Foundation  
Lisa Carlin  
Margaret and Richard  
Chaffee  
Jon and Tina Chambers  
Eunice M. Childs

Michael J. Chinn  
Ronald and Susan Choy  
William H. Cilker Family  
Foundation  
Ronda Clark  
Herbert and Eve Clark  
Bonnie and Alan Clark  
Keith and Christine Clendenen  
Nathan Cope  
Richard W. Crawford  
Ann Cretin  
Renee Crow  
Cunning Charitable Trust  
Kathleen and Reese Cutler  
Veronica Daly and  
Sheldon Clark  
David and Marina A. Darrin  
Kayshav Dattatri  
Cheryl Davis  
Robin and Barry DeMartini  
David and Mary Dennis  
Kathryn Denniston  
Kathryn Dernham  
Karl and Meribeth Detweiler  
Susan R. Dickey  
Anh Do  
Paula Downey  
Eric and Linda Drattell  
Sheree and Glenn Drummond  
Dunlop Family Trust  
James and Sandra Earl  
Bruce Ede  
Roger and Jane Emanuel  
Bartt Emerson  
Grant M. Erickson  
Gregory and Anne Evans  
Derek Ewin  
Mary Ann Fake  
Mark and Jessica Fiedler  
Katherine Fields  
Christopher and Heidi Finan  
Harry and Sheila Fish  
Joel S. Forrest  
Kenneth J. Fosina  
Robert A. Foster  
Tsais Family Foundation  
Lynda and Stephen Fox  
Andrew Franklin  
Corinne and Mark Franks  
Mary and James French  
Nancy Friedman  
David and Pamela Fullerton  
Vincent L. Fung  
Kevin and Roxane Gahagan  
Bob and Marilyn Garibaldi  
Raymond and Lucille Garon  
Ronald and Jane Gies  
Heidi Giordano and  
Elena Ortiz  
Nathan and Edwina Graham  
Mark Grovhoug  
John Gustafson  
Elaine Hamilton  
Maurice and Harriet Hanauer  
Jeffrey and Jeff Hargreaves  
Margot and Michael Harrigan  
David S. Hayne  
Margaret A. Henderson  
Guy R. Henshaw  
Keith Hertzner  
Nathan Hickey  
Robert Hopkins  
Lowell Horan  
Matthew Howard  
Sue and Rick Howell  
Steven and Michelle Hunt  
Edwin and Dorothy Ives  
Rangaswamy Jagannathan  
Kathryn and Jeffrey Janoff  
A. Diehl and Patricia Jenkins  
Linda and William John  
Lisa Johnson  
V. Scott Jones and  
Cecilia Jones  
Denya and Thomas P. Jur  
Jean Kaelin  
JoAnn Kahn and Thomas Lyon  
David and Lois J. Kail  
Fazal and Shahnaz Kaka

Arvin Kan  
The Kaplan Family  
Donald and Patricia Kassner  
Francis and Margaret Keeler  
Daniel and Tracy Keller  
Laura Kennedy  
Timothy and Elizabeth  
Kientzle  
Audrey and Thomas Killick  
Rosalind and Sung-Hou Kim  
Peter and Jenny Kim  
Eric A. Klem  
Harry and Joanne Knapp  
Kathleen and Janet Knapp  
Michael and Kathryn Knappe  
Linda Kolar  
Donna S. and William  
A. Krepick  
Craig Kurtz  
Hoover and Terry Langston  
Jack and Jennifer LaSalle  
Michael Laster  
Jeremy Lau  
Rose E. Laymon  
Eileen Le  
Thomas Lindemuth  
Patrick and Emily Lo  
Victoria J. Lombardo  
Jan Looney  
Steven and Carol Love  
Chris Lutz and Margaret  
O'Halloran  
Jan and John Makin  
Susan Manning  
Vincent Marchi  
Patricia Marshall  
Hilario Mata  
Laura Dale Mattos  
Karen McBeath  
Thomas and M. Diane  
McBroom  
Sandra McConnell  
Hugh and Deborah McDevitt  
Susan J. Melly  
Howard and Diana Mendenhall  
Roberto A. Montero Jr.  
Barry and Paula Moore  
James and Sharon Moore  
William J. Morhous  
Bruce Muirhead  
Susan and Paul S. Nagata  
Paresh Nagda  
Paul and Antje Newhagen  
Quang Nguyen  
Randall and Barbara Niemeier  
Armin Nikfar  
William Norwalk  
Joseph Obegi  
Amy Olli  
Katherine Oven  
Zeese Papanikolas and  
Ruth Fallenbaum  
Terence Parker and  
Yolanda Burrell  
Alan Parker and  
Rebecca Zenger  
Lorraine Parmer  
Brock and Rebecca Parsons  
Vivien K. Partridge  
Robert and Maryjane T. Pauley  
Christopher Peak  
Joseph Pease  
Janelle Pena  
Robert M. Perricone  
Benjamin and Christy Pierce  
David Pitson and  
Wendy Stewart  
Polgar Family Trust  
John and Penny Pollock  
Mr. and Mrs. Eric Poncelet  
Pratt King Family Fund  
Jonathan Purnell  
Brian Quigley  
Adrian Rayment  
Stephen and Corlyne Recht  
Jim Redovian  
Fred and Tricia Reichert  
Tracy Reid

Ronald and Mary Ann  
Rettig-Zucchi  
Larry and Susan Ricksen  
Leslie Robbins  
Janeen Robertson  
John Rosebraugh  
Roger Rushing and  
Amy Dryden  
Jack and Jodie Russi  
Puneet Sarna  
Birgit Sauer and Eric Werner  
Philip Schafer  
Daniel Schickele  
Paul Schinke  
Martha Schrader  
Henry Schulman  
Alice Sgourakis  
Shruti Sharma  
Lissa M. Sheldon  
Parker Shelton  
I Fan Shih  
Marcia K. and Gary G. Shrago  
Roberta Silverstein  
and S. Sperber  
Corey M. Simon  
Bob Singsank and Joan Lucas  
Krishanth Skandakumaran  
John Smartt  
Mary G. Smith  
Chakra Srivatsa

Susan and Bruce Stangeland  
Andrew Starr  
John E. and Diane L. States  
Gordon and Lauri Steel  
Laura Steinman  
Jane Stenmark  
Claudette Surma  
Julia Sword  
Sahar Tawfik  
Tim and Jody Tempel  
Harold and Priscilla Thilmony  
Louis and Janet Toepfer  
Charles and Judith Tucker  
Richard and Chrystyna  
Umstattat  
M. Sylvia Vasquez  
Nicole Vezina  
Janet Wade  
Belinda Walker  
Gerald and Marguerite Wallace  
Holly and Barry Walter  
Steve Walton  
Anne Waters and  
Stephen Buffi  
Steven Weinberg and  
Georganne Weinberg-Ferrier  
Steven and Meredith Westfall  
Joan L. Wickstrom  
John Wilkes  
Michael Williams

## A GIVING COMMUNITY

Thank you to our giving community, where every donation matters. An additional **3,484 donors** gave an impressive **\$375,694!**



**\$135,382**  
452 donors  
gave \$250-499  
**\$171,195**  
1,339 donors  
gave \$100-249  
**\$69,117**  
1,693 donors  
gave \$1-99

H. Leabah Winter  
Mary-Jane Wood  
Bob and Gay J. Wright  
Mark Wrighton  
Sheri and Wylie York  
Cary and Marie Young

Jody Zaitlin and Mark  
Nienberg  
Rebecca Zenger and  
Alan Parker  
Olivier Zyngier

## BOARD OF DIRECTORS

**Larry Briggs, Chair**  
Executive Vice President  
(retired), Bank of America

**Roland I. Trevino, Vice Chair**  
Vice President, Gas  
Engineering and Design,  
Pacific Gas and Electric  
Company

**David Barron, Treasurer**  
Attorney, Kawakami Barron  
& Lam LLP

**Kate Rundle, Assistant Treasurer**  
Senior Vice President and  
General Counsel (retired),  
OANDA Corporation

**Kristin Lincoln, Secretary**  
CEO, LiveWire

**Mona FosterWhite, Assistant Secretary**  
Attorney, Law Offices of  
Mona M. FosterWhite

**Bret Sewell, Officer at Large**  
Business Development  
Executive

**Gary Addiego**  
School Principal and District  
Coordinator (retired), Orinda  
Intermediate School

**Pam Brotherton-Sedano**  
Hospital Executive

**Johnnie Byrd**  
Examining Manager,  
Federal Reserve Bank  
of San Francisco

**Rae Colombage**  
Executive Vice President  
and Area Director,  
Citibank, Consumer Bank

**Robert Frick**  
Vice Chairman of the  
Board and CFO (retired),  
Bank of America

**Scott Jones**  
Vice President & Financial  
Consultant, Charles  
Schwab & Company, Inc.

## FOUNDATION BOARD

**Gary Kershner**

Attorney, Law Offices  
of Gary R. Kershner

**Andrew Laiho**

Senior Production Leader  
& Associate Director,  
Dow Chemical

**Rodger Miller**

Manager Land Development  
Purchasing, Northern CA  
Division, Pulte Group, Inc.

**Jonas Moe**

Vice President, Marketing  
Strategy, Ellie Mae, Inc.

**John Nadler**

Yoga Teacher

**Vince Salinas**

President, Home Loans,  
Patelco Credit Union

**Tim Tempel**

President, Principal,  
The Core Group

**Paul V. Woolway**

President and Chief Executive  
Officer, Charles Schwab Bank

**Robert Frick, Chair**  
Vice Chairman of the  
Board and CFO (retired),  
Bank of America

**Joseph Ansaneli**

CEO, Gladly

**David Demas**

Partner, Deloitte

**Michael E. Fox**

President (retired),  
M.E. Fox & Company, Inc.

**Garry Goodall**

Principal, Financial Services,  
Ernst & Young LLP

**Steve Martino**

Chief Information Security  
Officer; Vice President,  
Information Security,  
Cisco Systems

**Paul V. Woolway**

President and Chief Executive  
Officer, Charles Schwab Bank

## GOVERNMENT PARTNERS

**State of California**  
Department of Housing and  
Community Development  
CalHome Program  
California Strategic Growth  
Council  
Affordable Housing and  
Sustainable Communities  
Program

**Counties & Municipalities**


Contra Costa County  
City of Hayward  
City of Livermore  
City of Dublin  
City of Oakland  
City of San Jose  
City of Milpitas  
City of Fremont

## 30TH ANNIVERSARY SPONSORS



Anonymous Mike & Mary Ellen Fox Robert & Barbara Frick Garry & Lynn Goodall  
Bruce & Diana Juhlin The Neil W. and Amelia G. McDaniel Trust Anonymous

# THANK YOU



We bring people together to build homes, communities, and hope. We revitalize neighborhoods, build affordable and sustainable homes, and empower families through successful homeownership. Since 1986, we have partnered with volunteers, the community, and qualified families with limited incomes to strengthen communities in Alameda, Contra Costa, and Santa Clara counties.

---

## HABITAT FOR HUMANITY EAST BAY/SILICON VALLEY

**EAST BAY:** 2619 Broadway, Oakland, CA 94612

**SILICON VALLEY:** 513 Valley Way, Milpitas, CA 95035  
866.450.4432 | [HabitatEBSV.org](http://HabitatEBSV.org) | [@HabitatEBSV](https://twitter.com/HabitatEBSV)