



# Gold Cup

## 1ST PLACE WINNER

Best Missouri Newspaper Class 1

## 32 News 22 Advertising Awards

# LC RECORD

# SATURDAY

FEBRUARY 1, 2020

VOL 2 ISSUE 69

LACLEDE COUNTY RECORD

ONE DOLLAR



## Eye in the sky

City buys drone to help with inspections

**STEVE SMITH**  
SSMITH@LACLEDERECORD.COM

An unmanned aerial vehicle will help the City of Lebanon inspect its facilities.

The Lebanon City Council approved the purchase of a drone Monday.

See 'DRONE' / page A12

## INDEX

**A LOOK BACK**.....Page A5  
**CALENDAR**.....Page A2  
**CLASSIFIEDS**.....Pages A9-A10  
**COMICS**.....Page A11  
**FAITH**.....Page A7  
**OPINION**.....Page A4  
**SPORTS**.....Page A6

## DEATHS

**Edward L. Musgrave Sr.**  
**Terumi Zolnowski**  
**Ruth Marie "Ree" McElvaney**  
**Araia Joe Stofer**  
**Michael R. Brown**  
Holman-Howe/Lebanon  
**Nina Kay Myers**  
**Shadel's Colonial**  
**Robert "Robby" Jo Carroll Jr.**  
Holman-Howe/Hartville  
**Robert Louis Rettinghaus**  
Russell Colonial/St. Clair



See Pages A2 - A3

## NEWS TIPS?

contact our news staff  
**417-717-TIPS**  
editor@laclede-record.com  
• all tips must include contact phone number



Follow us on  
**twitter**  
@lacledeNews



Find us on  
**Facebook**  
@LacledeCountyRecord



6 89076 87994 1

# Two killed in Springfield wreck



Photos by Andrew Jansen/Springfield News-Leader

**Above, Caleb Brown and Mason Ivey died** Friday morning when their vehicle crashed into this house near the intersection of National Avenue and Seminole Street in Springfield. Below, Springfield Police officers investigate the scene of the accident.

## Caleb Brown, 20, and Mason Ivey, 21, both of Lebanon, died after their car crashed into a home Friday morning

**LCR STAFF**  
EDITOR@LACLEDERECORD.COM

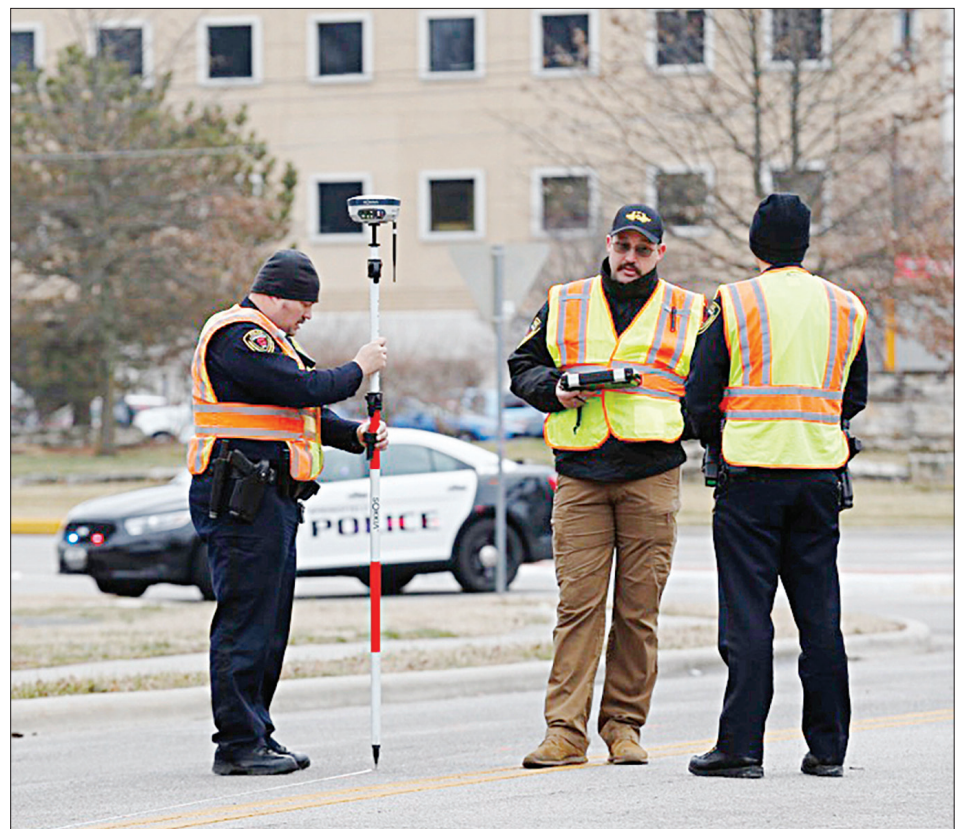
Two Lebanon residents were killed when their car crashed into a home early Friday morning in Springfield.

They were identified by the Springfield Police Department as Caleb Brown, 20, and Mason Ivey, 21.

According to the SPD, Brown, who was driving the 2004 Ford Mustang, was pronounced dead at the scene. Ivey was taken to a Springfield hospital, where he died from injuries sustained in the crash.

Springfield Police officers responded to the crash at 1:06 a.m. in the area of National Avenue and Seminole Street. At the scene officers discovered that a 2004 Ford Mustang, traveling westbound had crashed into a home at 2207 S. Florence St. There were people inside the home, but no one inside was injured, according to a press release from the SPD.

The investigation is on-going but police said preliminary tests revealed intoxication is believed to have been a factor in the crash. This is the first fatal motor vehicle crash in Springfield for 2020.



## Conway says agreement will save money, increase law enforcement coverage

**FINES MASSEY**  
EDITOR@LACLEDERECORD.COM

The City of Conway says that a recent agreement with the Laclede County Sheriff's Office that closed the Conway Police Department will save the city money and provide more law enforcement coverage.

According to Conway's Facebook page, the city had been spending about \$65,000 a year to run the Conway Police Department. About \$15,000 of that

expense was covered by fines on traffic tickets, leaving the city to pay about \$45,000 to cover the difference.

In the new agreement with the LCSO, which will provide a full-time deputy to the area, Conway pays the LCSO \$30,000 each year to pay the salary and benefits of the deputy.

"Conway will triple the coverage and save \$15,000 in the process," the post says.

See 'CONWAY' / page A8



LCR photo/Steve Smith

**People can now drop off** recycling at Lebanon's Public Works site.

## Recycling now accepted at Lebanon Public Works

**STEVE SMITH**  
SSMITH@LACLEDERECORD.COM

The City of Lebanon will now accept recyclables for Laclede Industries at the Public Works facility located at 1401 W. Commercial Street.

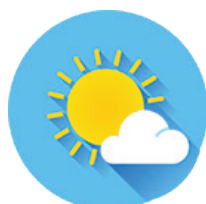
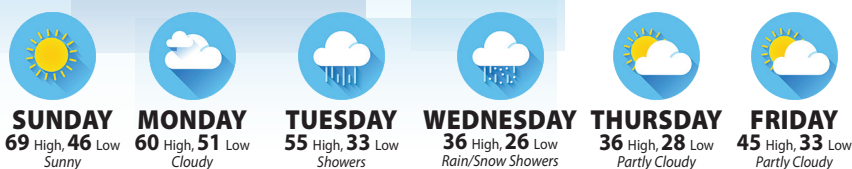
See 'RECYCLING' / page A12





LC WEATHER

"Trick or Treat"  
Wyatt Wood, Maplecrest Elementary



**TODAY**  
49 High, 40 Low  
Mostly Sunny

WEATHER PROVIDED BY SHEER BLISS PHOTOGRAPHY • 417-322-3814

**EDWARD L. MUSGRAVE SR.**

LEBANON, MISSOURI



**EDWARD L. MUSGRAVE SR.**

Edward L. Musgrave Sr., 79, of Lebanon, died Wednesday, Jan. 29, 2020, in Lebanon North Nursing and Rehabilitation.

He was born April 16, 1940, in Oklahoma City, Okla. to Bobby Newton and Edna Nadine Greeson Musgrave.

On July 23, 1966, he married Darline Lucille Harris in Reno, Nev.

He was preceded in death by his parents, and two sons, Larry Vance and James Vance.

Edward was raised in Moore, Okla. and graduated from high school there. He entered the military as a young man and served his country faithfully in the United States Navy for ten years. After he and Darline were married, they moved to California, and then made their home in Semi Valley, Calif. for eight years. The family moved to Lebanon in 1976. Ed was trained to be an electrician in the Navy, and then worked at Marathon Electric and the H.D. Lee Company in

Lebanon for several years. He also enjoyed working on lawn mowers in his spare time. Edward had made his profession of faith in Christ and was a member of First Assembly of God in Lebanon.

Survivors include his wife Darline of the home; a daughter, Jamie Musgrave of Oklahoma City, Okla.; six sons, Brent Vance, David Vance and his wife Randa, Brad Vance and his wife Sharon, all of Lebanon; Randy Vance of Eldon; Edward Musgrave Jr. and his wife Christie of Creighton, Mo., and Mark Musgrave of Oklahoma City, Okla.; nine grandchildren, 26 great-grandchildren; a sister, Bobby Joyce Maheux of Moore, Okla. and several nieces and nephews.

A graveside service for Edward L. Musgrave Sr. will be held at 11 a.m. Saturday, Feb. 1, 2020, in Veterans' Park in Mount Rose Memorial Park in Lebanon with Full Military Honors with Brad Vance speaking, under the direction of Holman-Howe Funeral Home of Lebanon. Friends may call at their convenience in the Holman-Howe Funeral Home. Memorial contributions to Carol Maniaci's Food Pantry may be made through the funeral home. For more information or to view or sign the online memorial visit [www.holmanhowe.com](http://www.holmanhowe.com).



**NINA KAY MYERS**

LEBANON, MISSOURI



**NINA KAY MYERS**

Nina Kay Myers, 69, of Lebanon, died Wednesday, Jan. 29, 2020, in Springfield.

She was born Sept. 21, 1950, in Lebanon, Mo. to Wayne and Claudine Doty Myers.

Nina was preceded in death by her parents; one brother, J.D. Myers and a sister-in-law, Bonnie Myers.

She was a babysitter for many years, caring for many children, including her great nieces and great-great-nieces and nephews. She loved children deeply.

Nina was an active and faithful member of First Freewill Baptist Church.

Survivors include three children, Randi Nelson and her husband Kevin of Joplin; Carrie Myers and Alan

Myers and his wife Linda, all of Lebanon, five grandchildren, Ashlynn, Bat, Brennan, Kale and Annalee; one niece, Terri Williams; two nephews, Mike Myers and Brian Myers and his wife Kristie, all of Lebanon, MO; great-nieces, Kaley Deckard, Hayden Landon and Emma Myers; great-great-nieces and nephews, Kaleb, Kameron and Khloe Myers, and Ava and Quaid Deckard; other relatives and many friends.

A graveside service and burial for Nina Kay Myers will be held at 10 a.m. Tuesday, Feb. 4, 2020 in the Simlin-Harrill Cemetery with Pastors Andy Rains and Luke Feeney officiating, under the direction of Shadel's Colonial Chapel of Lebanon. Visitation will be 6-8 p.m. Monday at Shadel's Colonial Chapel. In lieu of flowers, the family has asked memorials be made to the family of Nina. Donations may be left at or mailed to Shadel's Colonial Chapel, P.O. Box 948 or 1101 N. Lynn, Lebanon, Mo. 65536. Sign guest book at [www.shadelscolonialchapel.com](http://www.shadelscolonialchapel.com).



**ARAIA JOE STOFER**

LEBANON, MISSOURI

Infant Araia Joe Stofer, of Lebanon, died Friday morning, Jan. 31, 2020, at Mercy Hospital Lebanon.

She is survived by her mother Winter D. Symes, and her father Cody Stofer, both of Lebanon; two brothers, John Jemes and Corbin Jemes, both of Lebanon; her sister, Heavenly Jemes of Lebanon; her grandmother, Rendell Pickard of Lebanon, and her grandfather, Brian Symes of Fordland.

Funeral services for infant Araia Joe Stofer will be

held at 10 a.m. Tuesday, Feb. 4, 2020, at Holman-Howe Funeral Home in Lebanon. Burial will be in Mount Rose Memorial Park in Lebanon. A memorial has been established and contributions may be made through the funeral home. For more information or to view or sign the online memorial visit [www.holmanhowe.com](http://www.holmanhowe.com).



**MICHAEL R. BROWN**

LEBANON, MISSOURI

Michael R. Brown, 64, of Lebanon, died Thursday evening, Jan. 30, 2020.

Arrangements for Michael R. Brown are incom-

plete at this time and will be announced by Holman-Howe Funeral Home of Lebanon. For more information or to view or sign the online memorial visit [www.holmanhowe.com](http://www.holmanhowe.com).

Just Arrived!

**Demdaco Jewelry**

Special! **\$2.99 EACH**

Mfg. List Price \$18.00

**Shepherd Hills Factory Outlets**

Store Hours: 8am-8pm Daily  
(417)532-7000  
1900 West Elm, Lebanon

**Community Calendar**

**SATURDAY, FEBRUARY 1**

HUGHES CENTER DANCE — 7-10 p.m. with Dave Perryman.

**MONDAY, FEBRUARY 3**

ALCOHOLICS ANONYMOUS — noon Monday and Wednesday, 6 p.m. Friday, 5 p.m. Sunday at St. Francis De Sales Catholic Church.

**TUESDAY, FEBRUARY 4**



COPD SUPPORT GROUP — 3 p.m. at Lebanon-Laclede County Library Benage Room.

LACLEDE COUNTY GENEALOGICAL SOCIETY — 7 p.m. in lower level of Hughes Senior Center. Program by Linda Hall on her Hatfield ancestors. -

ALCOHOLICS ANONYMOUS — 6 p.m. every Tuesday at Southern Heights Christian Church. FFI: 533-4244.

**WEDNESDAY, FEBRUARY 5**



NAMI — MENTAL ILLNESS SUPPORT GROUP — for mentally ill, family and friends welcome, 10-11 a.m. and 5:30-6:30 p.m. at Lebanon-Laclede County Library. FFI: 417-718-1616.

TOPS NO. 1164 MEETING — 9:30-11 a.m. at Southern Heights Christian Church. FFI: Lynn Sachs 533-7774 or Ruth Porter 532-4727.



TOPS MEETING NO. 0945 — 4:15-6 p.m. at Heritage Baptist Temple, 699 Lynn St. FFI: 532-9895 or 532-7298.

LEBANON HOST LIONS — noon at T's Redneck Steakhouse.

**THURSDAY, FEBRUARY 6**



WIDOWS BREAKFAST — 8:45 a.m. at Elm Street Eatery.

**FRIDAY, FEBRUARY 7**

ELKS LODGE STEAK NIGHT — 6-8 p.m. on old Route 66. 8 oz. steak cooked to order, salad, baked potato, Texas toast, dessert, coffee or tea, all for \$12.

**SATURDAY, FEBRUARY 8**



LACLEDE LITERACY COUNCIL CASINO & GAME NIGHT — 7-10 p.m. at St. Francis De Sales Catholic Church. Craps, roulette, black jack, bingo, slot machines and more. Silent auction. Concession stand.

COUNTY LINE BAND DANCE — 7 p.m. at Conway Community Center. Bring finger foods.

STOUTLAND HIGH SCHOOL JUNIOR CLASS FUNDRAISER — 11 a.m.-2 p.m. at Robin's Cafe in Stoutland. Choice of fried chicken or pulled pork, mashed potatoes or baked potatoes, corn or green beans, desserts. \$10 per plate.



CORN HOLE TOURNAMENT — sign up starts 5 p.m., first toss 6 p.m. at Lebanon Elks Lodge, Old Route 66, \$10 per person.

**TUESDAY, FEBRUARY 11**

ALZHEIMER'S CAREGIVERS SUPPORT GROUP — 12:30 p.m. at Lebanon/Laclede County Library Benage Room. FFI: 532-3999.

LEBANON ART GUILD MEETING — 5:30 p.m. at Lebanon-Laclede County Library.

**Keep In Touch With Your Community**

We're at the corner of Commercial Street and Jefferson Avenue in downtown Lebanon. We're open 8:00 a.m.-5:00 p.m. Monday-Friday, except holidays

You can reach us by mail: P.O. Box 192, Lebanon, Mo., 65536  
Telephone: (417) 532-9131 | Fax: (417) 532-8140

Publication No. USPS 308-320 PERIODICALS POSTAGE PAID AT LEBANON, MO 65536

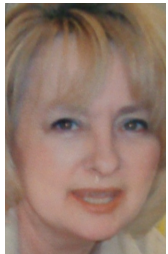
Dalton Wright, President & Owner  
Beth Chism, Publisher  
417-532-9131 | [beth@ozarkmedia.com](mailto:beth@ozarkmedia.com)  
Published Wednesday & Saturday

Postmaster: The subscription rates include delivery/postage, state and local taxes. Subscribers become the owners of the Laclede County Record before it is mailed or delivered and assume the risk of loss or damage at that time. Postmaster: Send address changes to Lebanon Publishing Co. Inc., P.O. Box 192, Lebanon, MO 65536.

LC RECORD  
LACLEDE COUNTY RECORD

## Some 'Cold' Thoughts in Stoutland, Missouri

### Stoutland Tidbits



Marie Brown

Old Man Winter, Jack Frost, and Mother Nature spent the last week making me want for spring. I was whiny, cranky, and ill-tempered from not being warm enough.

Coffee, hot chocolate, or hot tea, and the seed catalogs didn't seem to give me happy thoughts of any warmer weather to come. I am finding that the older I get the more I really do hate to be chilled. I can't seem to warm up. The old bones creak, wobble, and stiffen just at the thought of the cold.

The Icy Trio seemed to have finished their temper tantrums on Sunday. It was a pleasant winter day. I just as soon that the cantankerous Winter Three take sleeping pills for the rest of the polar season in Missouri.

Congratulations to Elliot and Doris Smith celebrating their 66th wedding anniversary. That seems like a long time to me until I think that Jim and I are only a decade behind.

Jim will be turning the big 65 on Tuesday, Feb. 4. I will be making (maybe buy) his favorite cake, German Chocolate. If you are out and about on that evening, stop by the old homestead and give Jim some happy wishes and have a slice of cake with coffee. The door will be welcoming until about 9:00-9:30, then I can't guarantee that I will be awake.

Some other events that you might want to add to your February Calendar would include; Ladies Night Out at the Baptist Church. This is a monthly event which includes a light supper (usually themed: soup, salad, bake potato bar, etc.), a short devotion, and a project.

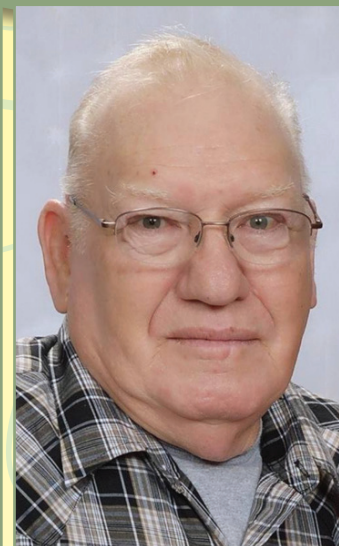
Past projects have included Bible Journaling, plastic bag basket making, card making, and more. February's meeting is Thursday, the 27th.

Truelove Quartet is bringing a gospel music event to LifePoint Church Friday, Feb. 21. Gospel recording artists; the Bowling Family, the Bowling Sisters, and Truelove Quartet will be sharing in music. All donations and offerings will be for the Brandon Zuber Family.

The Cookie Bookies Book Club met at the Sanctuary in Richland for its January Meeting. Owner and operator of the coffee and quilt shop, Nita Bechtel, was a wonderful host. The business is in the old Methodist Church on Pine Street. The facility is beautiful and welcoming. The coffee was superb. Check it out!

There is still one month remaining to enroll in Stoutland Library's Winter Reading Program. Readers have an opportunity to win prizes-just for reading! The program is open to adults, teens, and children.

## Robert Louis Rettinghaus, Sr.



Known to some as Bob and to some as Red, of Union, MO, formerly St. Clair, MO, departed this life in Columbia, MO, on January 25, 2020, having reached the age of seventy-two years, seven months and twenty-one days. Bob was born in Newton, IA, on June 4, 1947, son of Louis Henry Rettinghaus and Lucille Delee Rettinghaus nee Meyer. On August 31, 1968, he was united in marriage to Toyea Lynn Fisher and three children came to bless this union.

Bob is survived by two sons, Robert L. Rettinghaus, Jr., known to all as Rob, of St. Clair, MO and Jason Rettinghaus and wife, Adrienne, of Wentzville, MO; by one daughter, Teresa Glaser, known to all as Teri, and husband, Brad, of New Haven, MO; by three sisters, Janice Jacobsma and husband, Jake, of Hospers, IA, Linda Rost and husband, Gary, of Lake Park, IA and Shirley Kirkpatrick of Peel, AR; by eleven grandchildren, five great-grandchildren, brothers and sisters-in-law, nieces, nephews, great and great-great-nieces and nephews, cousins and many friends.

Bob was preceded in death by his parents, Louis and Lucille Rettinghaus; by his wife, Toyea Rettinghaus; by two brothers, Ronald and Richard Rettinghaus, and by one grandchild, Hailey Rettinghaus.

Bob was a Christian and member of Bethel Baptist Church in Lonedell, MO. He was proud to have served his country in the United States Army during the Vietnam War, entering on February 28, 1966, and receiving his honorable discharge on February 27, 1969. He was a member of the VFW Post 2482 in St. Clair, MO. Bob was a truck driver by trade and member and retiree of Teamsters Local 682 in St. Louis, MO. He primarily drove lumber trucks throughout his career. He enjoyed working with wood and playing cards. Fishing was a favorite hobby and he especially enjoyed taking his grandchildren on fishing trips, creating many great memories. He was an avid bowler and enjoyed bowling on leagues and socializing with friends. Travelling after he retired was another of his pastimes. What meant most to him was time spent with his family. The love they shared and many precious memories they created will be cherished by all.

Funeral services were held at 10:00 AM Saturday, February 1, 2020, at Russell Colonial Funeral Home in St. Clair, MO with the Rev. Ben Kingston officiating. Interment with full military honors was in Crestview Memorial Park, St. Clair, MO. Memorials may be made to VFW Post 2482, St. Clair, MO.

## LC OBITUARIES

### RUTH MARIE "REE" McELVANEY

LEBANON, MISSOURI



RUTH MARIE "REE" McELVANEY

1993; a son-in-law, Don Ogle Jr.; a brother, Tommy Harrill, and a sister, Peggy Harrill Palmer.

Ruth Marie was born and raised in Lebanon and graduated from Lebanon High School in the Class of 1958. After she and Bobby were married, they lived in various locations, including Germany, while Bobby served in the military. Through the years, Ruth Marie was a devoted homemaker to her husband and family, and supported Bobby in his endeavors as a teacher and minister of Christ.

She accepted Christ as her personal Savior early in her life at Antioch Baptist Church, where she served as the piano player for several years. Later, she and

Ruth Marie "Ree" McElvaney, 79, of Lebanon, died Saturday morning, Jan. 25, 2020, at her home near Lebanon.

She was born Aug. 29, 1940, in Lebanon, Mo. to W.L. "Bill" and Clara B. Peterson Harrill.

On July 23, 1960, she married Bobby L. McElvaney.

She was preceded in death by her parents; a son, Randy McElvaney in

Bobby were youth ministers for a time.

Survivors include her loving husband of 59 years, Bobby of the home; a daughter, Cindy Ogle Payne and her husband Brian of Lebanon; five grandchildren, Ashley Sicard and her husband Chad, Josh Ogle and his wife Ashley, Lindsay Lafferty and her husband Shane, Levi McElvaney and his wife Brooke, and Andrew McElvaney and his wife Marissa; nine great-grandchildren, Britney, Keeley, and Mason Sicard, Even, Brayli, and Addison Ogle, Kadence and Karsyn McElvaney, and Will Lafferty; three brothers, Bill Harrill and his wife Vera, Stanley Harrill and his wife Debbie, and Howard Harrill and his wife Mary Lou, all of Lebanon; two sisters, Linda Harrill of Lebanon and Gloria Lackey of North Carolina; a number of nieces and nephews, as well as a host of other relatives and friends.

Funeral services for Ruth Marie "Ree" McElvaney were held at 2 p.m. Wednesday, Jan. 29, 2020, at the Holman-Howe Funeral Home in Lebanon with the Rev. Larry Atkins officiating. Burial was in Antioch Cemetery, under the direction of Holman-Howe Funeral Home of Lebanon. Visitation was from 6-7:30 p.m. Tuesday in the funeral home. Memorial contributions to the American Cancer Society may be made through the funeral home.

For more information or to view or sign the online memorial visit [www.holmanhowe.com](http://www.holmanhowe.com).



### TERUMI ZOLNOWSKI

ST. ROBERT, MISSOURI



TERUMI ZOLNOWSKI

moved with her parents to the United States, while her father was serving in the military. She modeled for a time and then became a devoted homemaker and loving mother to her family. Terumi followed the

Terumi Zolnowski, 60, of St. Robert, died Tuesday evening, Jan. 28, 2020, at her home.

She was born Sept. 5, 1959, in Okinawa, Japan to Martin and Mieko Zolnowski.

Terumi was preceded in death by her former husband, Gary Lee Kotlowski.

She was born and raised in Japan. She then

Catholic faith throughout her life.

She is survived by a daughter, Jean Marie Kotlowski of St. Robert; two sons, Chris Kotlowski, and Gary Kotlowski, both of St. Robert; four grandchildren, Isaiah, Skylor, Dawson, and Gary; her parents, Martin and Micko Zolnowski of Waynesville; a sister, Jeanie Wilson of Philadelphia, Pa.; several nieces and nephews, as well as a host of other relatives and friends.

A graveside service and burial for Terumi Zolnowski was held at 10 a.m. Friday, Jan. 31, 2020, at Sunset Memorial Estates in Waynesville with Father John Groner officiating, under the direction of Holman-Howe Funeral Home of Lebanon. Memorial contributions to the American Cancer Society may be made through the funeral home. For more information or to view or sign the online memorial visit [www.holmanhowe.com](http://www.holmanhowe.com).



### ROBERT JO CARROLL JR.

CAMDENTON, MISSOURI



ROBERT "ROBBY" JO CARROLL JR.

Robert "Robby" Jo Carroll Jr., 54, of Camdenton, died Monday evening, Jan. 27, 2020, in his home.

He is survived by his wife Lanette of the home; two sons, Bobby and Joey Carroll, both of Grovespring; a stepdaughter, Kayla Pennington of Springfield; a brother, Chris Cook of Niangua; four sisters, Sally Lee of

Phillipsburg; Cindy Baker of Lebanon; Nancy Kelly of Mansfield and Gale Peltzer of Niangua; his mother, Betty Cook of Niangua; other relatives and many friends.

Funeral services for Robert "Robby" Jo Carroll Jr. will be held at 11 a.m. Saturday, Feb. 1, 2020, in the Holman-Howe Funeral Home in Hartville.

Burial will be in Mount Olive Cemetery, west of Hartville on Trail Blazer Road.

Online condolences may be made at [www.holmanhowehartville.com](http://www.holmanhowehartville.com)



# Love is in the Air

**Add the following to your diffuser & enjoy!**

- 1 Drop Patchouli Oil
- 3 Drops Jasmine Absolute Oil
- 5 Drops Geranium Oil

Love At First Scent  
ROMANTIC ESSENTIAL OILS KIT

**Nature's Pantry**  
417-533-3608  
WWW.NATURESPANTRYHEALTH.COM

Hours: Sun 11 to 5  
Mon-Thur 9 to 5:30 • Fri 9-5  
55 & Older 10% Senior Discount  
Every Fri. & Sun.  
555 East Elm St  
in Chalet Village • Lebanon, MO

Send calendar of events items to [kirk@laclede-record.com](mailto:kirk@laclede-record.com)

### Unique & Antique Home Decor

- Jewelry
- Accessories
- Furniture
- MUCH MORE!

**Military Discounts of %10 off**

*Mister Selectic*

**Antiques and Vintage Decor**  
304 West 2nd St., Lebanon  
417-755-3183

Email letters to the editor to editor@laclede-record.com. Letters must be 400 words or less and include the writer's name and city of residence.

### STRAIGHT FROM THE HART

# Virus scare reminds us to be cautious

Let me be entirely transparent here. I love Chinese food and I especially love Chinese buffets at local restaurants. But would I eat food from a Chinese street market or one that is identified as a "wet" market? Absolutely not, although there is no danger of my ever being close to such places. Wet markets, in case that's a new term to you as it was to me, are places that sell dead and live animals out in the open to be used for food and medicine. This includes poultry, fish, reptiles and pigs (and sometimes other items that our palates would deem to be too gross for human consumption).

By now, you've all heard the rumors about the coronavirus being caused by the Chinese habit of eating bats and other disgusting creatures. The video which has gone viral on Facebook has been debunked as not even taking place in Wuhan at all where bat isn't a delicacy. It actually featured the host of an online travel show eating a whole bat in Palau, a Pacific Island nation, as part of food shows where American chefs and travel hosts have shown in

### COMMENTARY



JOAN HART

the past.

In an article written by James Palmer, a senior editor at Foreign Policy on Jan. 27, he states that although the virus, at present, does seem to have originated in bats, it's unclear how it made its way to humans.

I am once again being more careful about reading the fine print on certain packaged food items, and I won't buy anything that contains food with a reference to China. But I have been doing that for years especially since the pet food scare and the infant formula scare of several years ago.

So I can pretty much avoid eating food prepared and sold on the



streets of China, but I have to take certain pharmaceutical drugs just to lower my constant pain to a level where I can make it through the days. And many of you are even more dependent on medicines to treat life-threatening physical conditions.

I don't have space to elaborate on the threat we all face from our medicines, which are made mostly in China and India, but I am going to use brief talking points for the rest of this column just to give you something to think about or research on your own.

Remember the recent headlines last fall about carcinogen-tainted

blood pressure medication? The FDA says its regulatory system of data review and inspections is effective, but a leading data analytics firm shows violations of data integrity continue to happen in China and India where our FDA investigators announce inspections ahead of time which gives plants time to clean up any evidence of unsanitary conditions or wrongdoing. Here in the States, FDA inspectors show up unannounced for inspections. In 2014 when the FDA experimented by giving Indian drug manufacturers no advance notice, serious violations rose by almost 60 percent.

In January 2019 at in-doco Remedies in India, the manufacturing plant faked the data to justify the release to market of the diabetes drug glimepiride. It was found to not meet quality standards and should not have been released to patients.

At a Cleveland Clinic, heart transplant patients ended up suffering organ rejection after taking an ineffective Indian-made immunosuppressant.

We certainly need more affordable medicines, but at what risk to us? To ensure high quality, the FDA should end its practice of advance notice inspections. Prescription drug labels aren't required to inform you about where your drugs are made. Roughly 80 percent of the drugs sold here originate from India or China.

(Joan Hart is a lifelong Lebanon resident, a former Missouri Human Rights Commissioner, and a retired legal secretary, insurance agent and pastor. Also a poet, essayist and columnist. You can find her at "Straight From The Hart" on Facebook.)

# LETTERS TO THE EDITOR

## The Scheme

Last Thursday at 4:30 p.m. during the impeachment trial, House manager Rep. Zoe Lofgren, in her words, described the "Trump Scheme" to smear Biden, listing a timeline she said "began in 2018."

She neglected to list key facts that are relevant, which I stated in my letter printed Dec. 28.

- In 2014, after Ukraine ousts its Russian bent president, VP Joe Biden delivers US money appropriated for Ukraine defense of Russia.

- As Ukraine receives US money, Hunter Biden and his partner Decon Archer join the board of a Ukrainian Natural Gas company, Burisma, receiving far above normal pay.

- In 2015, Petro Poroshenko is elected president of Ukraine.

- On April 21, 2019, Poroshenko lost the Ukraine election to Volodymyr Zelensky.

- On April 25, 2019, Joe Biden announces his run for president.

Note: a country's energy source is part of it's defense. American money was paid to Burisma because Ukraine needed energy for it's defense, which paid Hunter Biden. Shouldn't everyone receive a percentage of US appropriated money?

Trump knew Burisma was a corrupt business in Ukraine and was investigating it long before April, as was listed by Lofgren's timeline, but was stonewalled by Poroshenko's administration. Trump just continued the investigation with

the new administration.

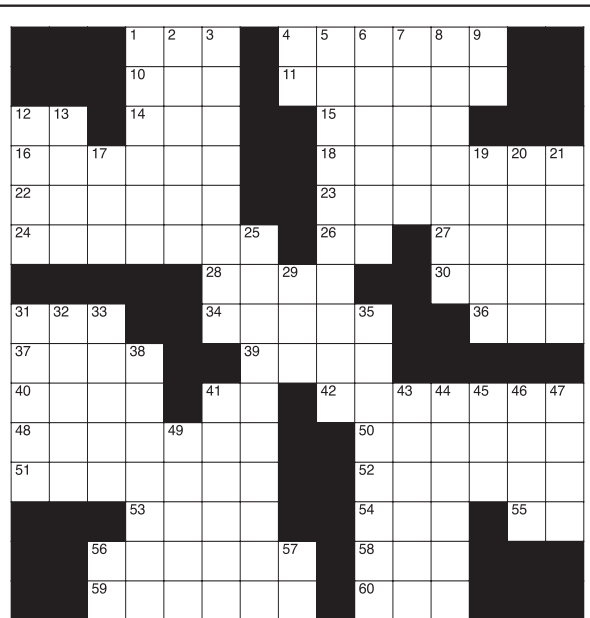
Joe Biden's announcement, after surety of a new president in Ukraine, just initiated the "Impeachment Scheme" now being played out in the Senate and stalled the investigation of racketeering by his son.

Every accusation made by House managers can be seen in actions they themselves are taking.

Adam Schiff's statement, "The framers of the Constitution were concerned by possible abuse of powers" is being portrayed by their abuse of the impeachment power.

Joe Biden and Democrats are like unions, "They Stick Together For Their Cause!"

Alex Miller  
Lebanon



### CLUES ACROSS

- Hair care product
- Looped
- It's present in all living cells
- Choose
- South Dakota
- Cash machine
- Of the pia mater
- Ancient Egyptian documents
- Layers at the back of the eyeballs
- Not perceived
- Look over
- Improve a tire
- Time zone
- Main branch of Islam
- Bark of the mulberry tree
- Sea eagles
- Records heart muscle activity (abbr.)
- Famed Hollywood producer
- Yuck!
- Reject outright and bluntly
- 500, car race
- Small heap or pile
- Type of degree (abbr.)
- Contagious skin disease
- Erases from a surface
- In an enthusiastic way
- Begin again
- Intricately produced pattern
- It flows NW to the Seine
- Be obliged to repay
- Southeast
- Slip in
- Leisure time activity
- Breastbones
- Sun up in New York

### CLUES DOWN

- More cloudy
- Main course
- Protect with plastic
- Equally
- Rebukes
- Friend to a salesman
- Warm up
- Overshadow
- Interior lineman in football
- San Antonio hoopster
- Comedian Cook
- Time zone
- First PM of India
- Performing perfectly
- A way to hide
- Former NBA commissioner
- Peter's last name
- Outlying suburb of London
- Used to cut steak
- Deep inlets
- Type of tree
- Done openly and unashamedly
- Indigenous person of N. Africa
- Confessed openly
- A way to separate with an instrument
- Influential journalist Tarbell
- Manning and Roth are two
- One who cares for horses in India
- Something to believe in
- Form of "to be"
- Atomic #73

## Starnes Auto LLC

**Auto body & Auto Glass**  
Lebanon, MO

1999 CHEVY SUBURBAN	WHITE, 2WD, 179,XXX MILES.....	<b>\$2,950</b>
2001 CHEVY TAHOE	GREEN, 4WD, 303,XXX MILES.....	<b>\$2,800</b>
2001 CHEVY TRACKER	RED, 5-SPEED, 2WD, 130,XXX MILES.....	<b>\$1,750</b>
2001 GMC SIERRA 1500	GREEN, EXT CAB, SLT, 4X4, 225,XXX MILES.....	<b>\$3,950</b>
2003 CHEVY S10 EXT	PEWTER, 68,XXX MILES.....	<b>\$4,200</b>
2003 GMC YUKON DENALI	BLACK, AWD, 188,XXX MILES.....	<b>\$5,250</b>
2005 CHEVY SUBURBAN	BLUE, 4X4, 202,XXX MILES.....	<b>\$4,200</b>
2005 CHEVY TAHOE LT	PEWTER, 4WD, 207,XXX MILES.....	<b>\$4,450</b>
2005 GMC YUKON DENALI	CHARCOAL, AWD, 199,XXX MILES.....	<b>\$4,200</b>
2007 CHEVY TAHOE	PEWTER, 239,XXX MILES.....	<b>\$7,250</b>
2008 PONTIAC G6	SILVER, 4 CYL, 120,XXX MILES.....	<b>\$4,250</b>
2008 SATURN AURA XR	BLACK, 73,XXX MILES.....	<b>\$5,450</b>
2009 CHEVY MALIBU LT	SILVER, 114,XXX MILES.....	<b>\$5,200</b>
2009 GMC ACADIA	SILVER, 106,XXX MILES.....	<b>\$7,250</b>
2010 PONTIAC G6	BLACK, 4D, 108,XXX MILES.....	<b>\$4,950</b>
2013 CADILLAC SRX	SILVER, 61 XXX MILES.....	<b>\$14,500</b>
2013 CHEVY EQUINOX LT	BLUE, 2WD, 55 XXX MILES.....	<b>\$11,500</b>
2014 CHEVY EQUINOX LT	WHITE, AWD, 69,XXX MILES.....	<b>\$9,450</b>
2015 CHEVY EQUINOX LT	GOLD, 2WD, 72 XXX MILES.....	<b>\$9,500</b>
2015 CHEVY EQUINOX LS	WHITE, 2WD, 27 XXX MILES.....	<b>\$12,500</b>

**417-588-3159**  
**22115 RT. 66 • LEBANON**

**FREE!**  
Savings include an American Standard Right Height Toilet FREE! (\$500 Value)

*American Standard*  
Walk-In Tubs  
**WALK-IN BATHTUB SALE!**  
SAVE \$1,500

- ✓ Backed by American Standard's 140 years of experience
- ✓ Ultra low entry for easy entering & exiting
- ✓ Patented Quick Drain® Technology
- ✓ Lifetime Warranty on the bath AND installation, INCLUDING labor backed by American Standard
- ✓ 44 Hydrotherapy jets for an invigorating massage

Limited Time Offer! Call Today!  
**844-801-9454**  
Or visit: [www.walkintubinfo.com/MO](http://www.walkintubinfo.com/MO)

**GRAND ALASKAN CRUISE & TOUR**

12 days, departs May - Sep, 2020

**FROM \$1,749**  
**\$1,499\***

**1-888-749-8399**  
Promo code N7017

\*Prices are per person based on double occupancy plus \$299 taxes & fees. Single supplement and seasonal surcharges may apply. Add-on airfare available. Offers apply to new bookings only, made by 3/31/20. Other terms and conditions may apply. Ask your Travel Consultant for details.

**News Tips? 417-717-8477**

**PUZZLE SOLUTION**

		G	E	L		A	R	C	H	E	D	
		R	N	A		S	E	L	E	C	T	
S	D	A	T	M		P	I	A	L			
P	A	P	Y	R	I		R	E	T	I	N	A
U	N	S	E	E	N		I	N	S	P	E	C
R	E	T	R	E	A	D		M	T		S	H
						T	A	P	A		E	R
E	K	G				E	V	A	N	S		U
S	N	U	B			I	N	D	Y			
H	I	L	L			B	D		S	C	A	B
E	F	F	A	C	E	S			A	V	I	D
R	E	S	T	A	R	T			M	O	S	A
			A	U	B	E			O	W	E	S
			I	N	S	E	R	T		R	E	C
			S	T	E	R	N	A		E	D	T



**KIRK PEARCE**  
KIRK@LACLEDERECORD.COM

Here's a look at events in Laclede County and the surrounding area from Jan. 25-Feb. 1.

**50 YEARS AGO**  
**1970**  
\*\*\*\*\*

Fifty-seven people attended the showing of a wildlife film at the Bennett Spring State Park Nature Interpretive Center and organized a local Audubon Club.  
\*\*\*\*\*

Marsha Hamilton was installed as Worthy Advisor at the Lebanon Assembly No. 93 Order of Rainbow For Girls. Installing officers were Jan Strickland, Mary Jane Edwards, Kathy Hyde, Phyllis Owen, Joe Martin and Gerri Howe.  
\*\*\*\*\*

Showing at the Star Theatre is The Sterile Cuckoo featuring Liza Minnelli, Wendell Burton and Tim McClaine.  
\*\*\*\*\*

Ray Vibbard has purchased Shetley Engine Repair in Lebanon from G.V. Shetley. Vibbard has been associated with the firm for a number of years. James Brown will continue as a mechanic with them.  
\*\*\*\*\*

This week's members of the Medley Drug Co. Stork Club are: Jan. 16: Mr. and Mrs. J. David Gibson, Boy, Lebanon; Jan. 17: Mr. and Mrs. Don

Myers, Girl, Richland; Mr. and Mrs. Bruce Hough, Boy, Lebanon; Jan. 19: Mr. and Mrs. Jack Nutter, Girl, Lebanon; Jan. 20: Mr. and Mrs. Joe McCulloch, Boy, Lebanon; Mr. and Mrs. Keith Lewis, Boy, Lebanon; Jan. 21: Mr. and Mrs. Ronnie Monnig, Girl, Camdenton; Jan. 22: Mr. and Mrs. Phillip McGuire, Girl, Huggins.  
\*\*\*\*\*

A trophy presentation ceremony was held at Bowl A Rena Lanes last Saturday for winners sponsored by the American Junior Bowling Congress. Trophies were presented to Debbie Hemphill, Mike Jamison, Stanley Vandergrift, Janet Churchill, Sue Price, Steve Ernst, Terri Lemery, Steve Vandergrift, and Gary Runge.  
\*\*\*\*\*

The Lebanon freshman basketball team defeated Fort Wood Thursday night by a score of 49-41. Members of the 'A' team are Steve Bell, Mike Doolittle, Victor Adkins, Stanley Chambers, Tony Denny, Kent Johnson, Jerry Hofman and John North. Coach is Jim Purvis and manager is Lee Henry. Members of the 'B' team are Larry Brewer, Randy Reid, Terry Long, Charles Reading, Brad Goodart, Shelva Hart, Paul Daniels, Pat O'Malley, Joe Pickering, Tim Compton, Johnny Donald, Kerry Long and Clinton Hughes. Manager is Chris Sandlin.  
\*\*\*\*\*

Laclede County Conservation released a second batch of wild turkeys Saturday in La-

# AT ABO STORE AND POST OFFICE



The first automobile at Abo, Mo. is shown in the early 1900s with Joe Chandler, owner of Abo Store. Standing in back is his brother-in-law, Rufus Wright. Abo Store and Post Office was located off what is now Garrett Road off Route N. If you would like old photos printed in the Laclede County Record, bring them to the Laclede County Record office, 100 E. Commercial St., Monday through Friday or mail them to Kirk Pearce at Lebanon Publishing Co., P.O. Box 192, Lebanon, Mo. 65536. Photos will be returned. Photos can also be emailed to kirk@laclede-record.com.

clade County near the Laclede-Dallas County line. They hope to have a wild turkey season in the next three years.  
\*\*\*\*\*

The Lebanon Business and Professional Club celebrated their 41st anniversary at Wyota Inn. Members of the committee were Peggy Sanders, Edythe Miller, Mary Owens, Mrs. Bill Scrivener, Pauline Ponder, Jeanie Harrison, Helen Lope-man and Bethel Shipman.  
\*\*\*\*\*

**Country Correspondence: White Oak Pond:** Mr. and Mrs. Keith Lewis have a new baby boy named Kevin Scott. **Sleeper:** Mr. and Mrs. Loran Gregory entertained with a music party Sunday night. **Lonesome Hill:** A birthday party

was held was enjoyed Jan. 24 in the Robert Hyde home for the 9th birthday of Jeffrey Hyde. **Bolles:** Dawn Jenkins celebrated her very first birthday Jan. 27.  
\*\*\*\*\*

**Area deaths:** Edna Schwartz, 63, 770 Brice; Alfa Lisech, 54, of Conway; Loretta Bean, 51, Conway; Irving Wilcox, 79, Route 2, Lebanon; Della Jane Stewart, 86, 664 North Jefferson; Rendell Goodwin, 43, Route 5, Lebanon; Maud Luttrell, 78, 103 Cedarcrest; Lova Alice Tait, 68, of Phillipsburg.  
\*\*\*\*\*

**25 YEARS AGO**

**1995**  
\*\*\*\*\*

The Missouri Division of Tourism honored Don Hawkins and Terry Graven of Sand Spring Resort for their work in tourism of Missouri.  
\*\*\*\*\*

Fifth grade winners of the American Revolution Essay Contest are Erin Allen, Amy Shields, Kira Reyes, and Patrice Hutton.  
\*\*\*\*\*

The Laclede County Shrine Club installed new officers for 1995: Gary Helton, Brad Bemby, Ron Morgans and Don Colson. Past Rajah Randy Sutter presented Colson with the Laclede County Shriner of the Year Award.  
\*\*\*\*\*

**10 YEARS AGO**  
**2010**  
\*\*\*\*\*

Lebanon educator and community leader Edythe W. Miller died Jan. 26 at age 90. She was instrumental in forming of the first kindergarten program in the Lebanon schools. In 2006, she was inducted into the Lebanon Wall of Honor.  
\*\*\*\*\*

The Lebanon wrestling team honored six seniors and split a tri-match on Thursday against Ozark and Poplar Bluff: Jon Lazo, Kyle Hansen, Zach Drinkall, Nick Nekola, Dave Stewart and Dustin Lundgren.  
\*\*\*\*\*

Yellowjacket of the Week is Aaron Starnes, son of Mike and Sallie Starnes.

**Your Surgery Is A Large Investment**  
Make sure your rehabilitation is of THE HIGHEST quality!

Ask your doctor about **YOUR THERAPY TODAY!**

All Insurance Accepted

Mon. Wed. Fri. 8:00am - 5:00pm  
Thurs. 1:00pm - 5:00pm

**Kelly Alexander**  
Licensed Therapist

**Advance**  
Physical Therapy

144 Evergreen Parkway • Lebanon, MO • 417-991-3440

**The Terraces**

**Services Provided:**

- Laundry Services • Housekeeping Services
- Medication Distribution Assistance
- Transportation Services
- 3 Meals Daily in Dining Room
- Daily Activities • Satellite TV Services
- Nurse on Call 24/7
- Building is Staffed 24 hours a day

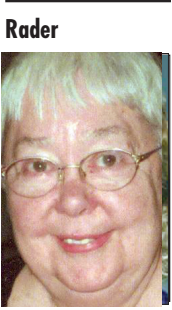
Starting rates are \$1700.00 for one person, one bedroom. Please call or come by for additional information.

*"We've Dedicated Our Lives to Yours"*

**Lebanon South Nursing & Rehabilitation**  
514 W. Fremont Road  
Lebanon, MO 65536  
(417) 532-5351  
lebanonsouthnursingrehab.com

LC **COMMUNITY**

## Birthday Celebration Held for Tyler Reid



**Diane Whitwer**

I'm (Kathryn Langdon) filling in for Diane as she, Jim and Gary have flown to Washington state to be with Kelly. Keep Kelly and the family in your prayers. If anyone wishes to help with expenses for Kelly, they can send donations to Gary Shaff-stall, at P.O. Box 45, Niangua, Mo 65713. Medications have been over \$3000.00 a month for one prescription, plus ER, test, hospital visits, plus travel. This all can be very costly. Any help would be appreciated.

Well, another week of snow and ice has kept a few people at home and a few had to slide around and head back home. Bertha Terry, Leona Medlock and Majorie Welch weren't able to get out for their Saturday lunch trip to the Morgan Store. Too slick at their doorsteps and the ice still lingering on the road.

Mary Stillwell remains in the Christian Care Center in Lebanon, but have heard she is eating better now and starting to get her strength back. Prayers for her also.

Birthday celebrations this week are for Darrell Smittle, Marjorie Welch, Alice Vessey Bates, Bertha Terry, Tyler Reid, Shirley Reid, Barrett Strickland, Rod Sherrer, Matthew Lewis, Starr Terry and Amy Grisaffe. February birthday for Cydney Keesling and Anniversary for Greg and Shirley Reid. A birthday celebration was had for Tyler Reid with all the family going out to eat in Springfield. I heard there was going to be strawberry cake and ice cream to celebrate Bertha's birthday later.

Pastor Paul Peckman was guest speaker at Immanuel Lutheran Church at Rader. His sermon was from 1 Corinthians 1; 10-18. Larry and I attended Faith Lutheran Church in Springfield and after church we took my Aunt Emma Burrell out for breakfast at Cracker Barrel. Mike and Nikki Langdon joined us. We couldn't leave without shopping some there.

Coming home we stopped by Webco to visit Barb Medlock. She is healing from a recent fall and is doing well. Also saw Bill Fair.

**Don't Be Shy**

Let us help this Valentine's Day! Shop sexy lingerie and gifts to rekindle the romance.

**Free Gift**  
With Purchase of \$35 or More  
January 25th - February 17th  
**Fri-Sat 20% OFF**

**Shades of Gray Boutique**

417-718-0715  
HOURS: TUES. - SAT. 12 PM TO 8 PM  
CLOSED SUN. & MON  
110 E. COMMERCIAL ST., LEBANON

# Lebanon wins in first round of home tournament

ALEX BOYER  
ALEX@LACLEDERECORD.COM

In their first round game of the Lebanon Mid-Missouri Bank I-44 Lady's Classic on Thursday night, the Lebanon High School girls' basketball team defeated the St. Charles Pirates, 58-37.

It was a back-and-forth contest for a majority of the first quarter with the Lady 'Jackets unable to stop the Pirates' inside presence of Chanel Davis, but a 14 point first half for senior Jenna Glendenning and eight points from freshman Raegan McCowan gave LHS a 33-27 lead heading into halftime.

During the second half, the defense of Lebanon was stifling and held St. Charles to only ten points in the final two quarters. Along with solid performances from Glendenning and McCowan, LHS also got nine crucial points from sophomore Destiny Zimdars and 10

points from Makayah Alexander.

"I thought Destiny Zimdars came in and did a nice job defensively and with rebounding as well as scoring," Lebanon head coach Jacky Payne said. "Jenna knocked down four three-pointers for us (on Thursday) and she has been working on that part of her game after practices."

Overall, Payne said he was happy to get a win in his home tournament and move to the right side of the bracket.

"I thought we played hard and looked pretty good at spurts," he stated. "It was all over the place at times and had trouble getting a consistent flow, especially with them (St. Charles) hitting three's and stayed in the game with that."

"Our defense stepped up in the second half. I'm proud of the kids and told



LCR photo/Alex Boyer

Lebanon senior Jenna Glendenning dribbles the ball up the court against St. Charles in the first round of the Lebanon Mid-Missouri Bank I-44 Lady's Classic on Thursday night in Boswell Auditorium. LHS won the game, 58-37.

them after the game that the key is just getting to the winners side regardless of if the win looked good or not."

LHS was scheduled to

play Lee's Summit West in the semifinal round on Friday at 7:30 p.m. If Lebanon wins, they will play in the championship game on Saturday at 3:30 p.m. or in the third-place game at 2 p.m.

Scoring for Lebanon on Thursday: Jocee Petty-John 3, Jenna Glendenning

19, Makayah Alexander 10, Raegan McCowan 12, Chloe Shivers 2, Destiny Zimdars 9, Quincey Glendenning 3.

## SPORTS IN BRIEF

### Harlem Globetrotters coming to Lebanon

The world famous Harlem Globetrotters will be bringing their presence to Lebanon at 7 p.m. on Wednesday, February 5 at Boswell Auditorium.

According to the team website, the Globetrotters are worldwide icons, synonymous with family entertainment and great basketball skills. The Globetrotters represent 90-plus years of breaking down barriers, acts of goodwill

and a commitment to fans that goes beyond the game.

In all, close to 750 men and women have played for the world famous team, a team which has entertained popes, kings, queens, and presidents around the globe.

The team will be making a stop in Lebanon and you won't want to miss high-flying dunks, hilarious stunts, a new record-breaking attempt

and unforgettable family moments.

Fans who are interested can get tickets by going to the team website, clicking tickets, and then selecting

the February 5 date at Lebanon.

General Admission tickets cost \$25 each and other ticket options are included.

— LCR Staff Report

## Meadowview Dutch Market

Discount & Surplus Groceries  
Prices Subject to Stock on Hand  
Sale Dates January 29<sup>nd</sup>, 2020 to February 4<sup>th</sup>, 2020

Call To Order 417-993-3017

# DELI SPECIAL

COOKED SALAMI ..... REG. \$3.45 LB. .... SALE \$2.95 LB.  
GREEN ONION CHEESE ..... REG. \$5.35 LB. .... SALE \$4.85 LB.

TRY our fresh homemade DELI sandwiches: TURKEY, HAM, ROAST BEEF, ITALIAN, BLT, PULLED PORK AND BLT PULLED PORK (MADE YOUR WAY!)  
COME IN OR CALL to order! ALSO Custom Deli trays! Veggie OR FRESH Meat-N-Cheese!

NOW ACCEPTING CREDIT, DEBIT CARDS & EBT

**QUICK EASY MEALS**

Fully Cooked, Popcorn  
**Chicken 99¢ LB.** APPROX 5 LB.

**French Fries 79¢ LB.** APPROX 5 LB. BAG

**Skinless, Polish Sausage 99¢ LB.** APPROX 6 LB.

**50 lb. Russet Potatoes \$12<sup>95</sup>**

**Cheese Whiz \$8<sup>49</sup>** 6.5 LB. (\$1.30 LB.)

**MAKES GREAT MAC-N-CHEESE WITH ELBOW MACARONI 20¢ LB.**

**FROM THE DELI CUSTOM MADE PARTY TRAYS!**

CALL & ORDER 417-993-3017

**TRUCK LOAD SALE**

**ALL YOGURT \$1<sup>99</sup> EA. OR LESS 12 CT. CASE**

**5 lb Cottage Cheese \$2<sup>99</sup>**

**3 Pepper CoJack & Smoked Gouda \$2<sup>49</sup> LB.**

**WHILE SUPPLIES LAST**

**417-993-3017**

23 Miles West on Hwy 64 • Right on T Hwy • 9 miles • Left on E Hwy 1 mile on Left  
HOURS: MON-THURS 8-5PM • FRI 8-6PM • SAT 8-5PM

## Friends & Family Referral Program

FOR YOU **\$50** FOR THEM

## MID-MISSOURI BANK

Spread the news and help your loved ones find a better bank—with Mid-Missouri Bank. When you tell a friend or family member about us, and they open a new checking or savings account, we'll reward each of you with a \$50 cash bonus. And, there's no limit on how much referral cash you can earn!

Modern Advantages. Hometown Bank Experience. And now, bonus cash back. All from Mid-Missouri Bank.

MidMoBank.com | 417.588.1000 | 278 N. Jefferson, MO 65536

Member FDIC



Mercy Hospital Lebanon sponsors Hometown Heroes

STEVE SMITH • SSMITH@LACLEDERECORD.COM

Mercy Hospital Lebanon will serve as Title Sponsor of this year's Hometown Heroes breakfast.

Mercy presented a check for \$5,000 and this will be the hospital's first year to serve as the Title Sponsor of the annual event where local people are recognized as heroes and honored by the community.

LAF Administrator, Melinda Fries, thanked Mercy Hospital Lebanon for being the Title Sponsor.

"This is a unique sponsorship," she said in a press release. "We only have one Title Sponsor each year. Mercy Hospital Lebanon's sponsorship helps to underwrite inspirational videos of neighbors helping neighbors in Laclede County."

Judy O'Connor-Snyder, Executive Director-Operations for Mercy Hospital Lebanon stated, "We are so grateful to be a long-standing part of a wonderful community that is full of people who go above and beyond. We get to witness heroics every day in our health care facilities, and we jumped at the chance to help share similar stories of our friends' and neighbors' actions."

Fries said Mercy Hospital Lebanon's sponsorship shows their commitment to the community.

"It tells us how committed they are to be celebrating the positive parts of the community with one of the most inspiring events we have in Laclede County."

The 2020 Hometown Heroes will be announced early February, said Fries.

The 2020 Hometown Heroes breakfast will be held at 7a.m. April 23 at the Cowan Civic Center.

Missouri Supreme Court decision will mean little change for voters

STEVE SMITH SSMITH@LACLEDERECORD.COM

Laclede County voters are expected to see little change at the polls following a Missouri Supreme Court decision that forbids the Secretary of State's office from requiring photo identification for voters.

In a 5-2 decision last month, the court upheld a lower court decision that said the Secretary of State could not publish information indicating that photo identification is required to vote.

Laclede County Clerk Linda Cansler said this would eliminate a required affidavit for some voters.

"The only thing that we will see as a change is that the affidavit that's in our poll pad

will no longer be necessary," Cansler said. "Otherwise, everything is the same as it has been."

Cansler said her office has been requesting photo IDs since some kind of ID is required to vote.

"For those who have always had some form of ID, there will be nothing different for them," Cansler said. "For the ones that would walk in with no ID, they'll still have the provisional ballot just like they would have before. The only thing it would affect is if you walk in and you had a bank statement or any other form of ID besides a photo ID. If you had walked in before with one of those and wanted to be able to vote, you would

have had an affidavit that says everything it needed to by state law. You'd sign it then go ahead and get your ballot. This eliminates that affidavit now."

Cansler said her office will be following the issue in the state legislature.

"It's what the courts have decided we need to do and I know there is some work in progress in Jeff City but I am not familiar enough with the bills to speak to those," she said.

At issue in the Supreme Court decision is a 2016 vote by Missourians to allow legislators to create requirements for voters to identify themselves at the polling place, including using photo IDs.

The law adopted by

the state said voters were to present a valid photo ID, or to sign a sworn statement and present some other form of identification in order to cast a regular ballot.

The affidavit also asked voters to certify that they knew Missouri had photo ID requirements, and that the voters did not possess a valid form of personal identification.

The opinion said one voter who presented a voter identification card and signed an affidavit in 2017 "testified the language of the affidavit was confusing and ambiguous because it required them to state they do not possess personal identification when they, in fact, did have their voter identification card."

KYTV 3 - NBC

6:00-6:30 Regular Scheduled Programming
SATURDAY, FEBRUARY 01
7:00 Ozarks Today Weekend Edition
8:00 Today
8:30 The Champion Within
9:00 Earth Odyssey
10:00 Consumer 101
10:30 Vets Saving Pets
11:00 A New Leaf
11:30 EPL Soccer- Wolverhampton vs. Manchester
1:30 Premier League Goal Zone
2:00 ISU Figure Skating

4:00 FIS Freestyle Skiing
5:00 50PlusPrime
6:00 KY3 News @ 6 p.m.
6:30 Wheel of Fortune
7:00 Dateline NBC
9:30 Saturday Night Live
10:00 KY3 News @ Ten
SUNDAY, FEBRUARY 02
7:00 Ozark Today Weekend Edition
8:00 Sunday Today
9:00 Meet the Press
10:00 In Touch

11:00 Jack Hannah's Into the Wild
11:30 NHL Hockey- Penguins vs Capitals
2:00 FIS Snowboarding
3:00 ISU Figure Skating
5:00 KY3 News @ 5
6:00 America's Got Talent: The Champions
8:00 Ellen's Game of Games
10:00 KY3 News @ 10
MONDAY, FEBRUARY 03
6:00 KY3 News @ 6

6:30 Wheel of Fortune
7:00 AGF: The Champions
9:00 Manifest
10:00 KY3 News @ 10
TUESDAY, FEBRUARY 04
4:00 The Ellen DeGeneres Show
5:00 KY3 News @ 5
6:30 Wheel of Fortune
7:00 Ellen's Game of Games
8:00 State of the Union Address
10:00 KY3 News @ Ten
WEDNESDAY, FEBRUARY 05

4:00 The Ellen DeGeneres Show
5:00 KY3 News @ 5
6:30 Wheel of Fortune
7:00 Chicago Med
8:00 Chicago Fire
9:00 Chicago P.D.
10:00 KY3 News @ 10
THURSDAY, FEBRUARY 06
5:00 KY3 News @ 5
6:30 Wheel of Fortune
7:00 Brooklyn Nine-Nine
8:00 Will & Grace

KYTV 3.3 - CW

6:00-6:30 Regular Scheduled Programming
SATURDAY, FEBRUARY 01
7:00 KY3 Ozarks Today
8:00 Jack Hanna's
9:30 This Old House
10:00 Chicken Soup for the Soul's Animal Tales
10:30 Did I Mention Invention?
11:00 Raw Travel
11:30 Real Life 101
12:00 Short Circuit 2
2:00 Murdoch Mysteries
3:00 Dateline

4:00 Black-ish
5:00 Mike & Molly
5:30 Last Man Standing
6:00 Elementary
7:00 Castle
8:00 KY3 News @ 9
8:30 In Depth
9:00 The Big Bang Theory
SUNDAY, FEBRUARY 02
7:00 KY3 Ozarks Today
8:00 Full Court Press
8:30 P. Allen Smith Garden Style

9:00 Beautiful Homes and Great Estates
9:30 Ron Hazelton's HouseCalls
10:00 Today's Homeowner
11:30 Mad Dog & Merrill's Midwest Grill'n
12:00 Heartland
1:00 Sporting Classics
1:30 Raised Hunting
2:00 Emerald Tails
2:30 Sqwincher Outdoors
3:00 The Outdoorsman with Buck

3:30 Whacked Out Sports
4:00 In Depth
4:30 GAMETIME
5:00 Mike & Molly
5:30 Last Man Standing
6:00 Batwoman
7:00 Supergirl
8:00 KY3 News @ 9 Weekend
8:30 The Big Bang Theory
MONDAY, FEBRUARY 03
4:00 Last Man Standing
4:30 2 Broke Girls

5:00 Mike & Molly
5:30 Last Man Standing
6:00 All American
7:00 Black Lightning
8:00 KY3 News @ 9
TUESDAY, FEBRUARY 04
5:00 Mike & Molly
5:30 Last Man Standing
6:00 The Flash
7:00 DC's Legends of Tomorrow
8:00 KY3 News @ 9
WEDNESDAY, FEBRUARY 05

OPT 21 - PBS

6:00-6:30 Regular Scheduled Programming
SATURDAY, FEBRUARY 01
7:30 Peg + Cat
8:00 Clifford the Big Red Dog
8:30 Pinkalicious & Peterrific
9:00 Sesame Street
9:30 Esme & Roy
10:00 Super WHY!
10:30 Daniel Tiger's Neighborhood
11:30 Dinosaur Train
12:00 Pinkalicious & Peterrific
1:00 Let's Go Luna!
1:30 Nature Cat
2:00 Arthur
3:00 Odd Squad
4:00 Molly of Denali

4:30 Xavier Riddle and the Secret Museum
5:00 Wild Kratts
6:00 Xavier Riddle and the Secret Museum
8:00 Ready Jet Go!
8:30 Word Girl
SUNDAY, FEBRUARY 02
7:30 Peg + Cat
8:00 Clifford the Big Red Dog
8:30 Pinkalicious & Peterrific
9:00 Sesame Street
9:30 Esme & Roy
10:00 Super WHY!
10:30 Daniel Tiger's Neighborhood

11:30 Dinosaur
12:00 Pinkalicious & Peterrific
1:00 Let's Go Luna!
1:30 Nature Cat
2:00 Arthur
3:00 Odd Squad
4:00 Molly of Denali
4:30 Xavier Riddle and the Secret Museum
5:00 Wild Kratts
6:00 Xavier Riddle and the Secret Museum
8:00 Ready Jet Go!
8:30 WordGirl
9:00 Let's Go Luna!
MONDAY, FEBRUARY 03

5:00 Wild Kratts
6:00 Xavier Riddle and the Secret Museum
6:30 Molly of Denali
7:00 Odd Squad
7:30 Arthur
8:00 Ready Jet Go!
8:30 World Girl
TUESDAY, FEBRUARY 04
5:00 Wild Kratts
6:00 Xavier Riddle and the Secret Museum
6:30 Molly of Denali
7:00 Odd Squad
7:30 Arthur
8:00 Ready Jet Go!
THURSDAY, FEBRUARY 06
5:00 Wild Kratts
6:00 Xavier Riddle and the Secret Museum
6:30 Molly of Denali
7:00 Odd Squad

7:30 Arthur
8:00 Ready Jet Go!
8:30 WordGirl
FRIDAY, FEBRUARY 07
4:30 Let's Go Luna!
4:30 Nature Cat
5:00 Wild Kratts
6:00 Let's Go Luna!
8:30 Word Girl
9:00 Sesame Street

KRFBK 49- FOX

6:00-6:30 Regular Scheduled Programming
SATURDAY, FEBRUARY 01
7:00 Dragonfly-TV
7:30 Biz Kids
8:00 Animal Rescue
8:30 Dog Tales
9:00 Weekend Marketplace
10:30 NCAA Basketball- Xavier vs. Seton Hall
12:00 NCAA Basketball- Michigan State vs. University of Wisconsin (Madison) (LIVE)

2:00 Fox College Hoops Extra
2:30 Lock It In
3:30 Inside Wilder vs. Fury II
4:00 PBC Countdown Deontay Wilder vs Tyson Fury 2
5:00 American Ninja Warrior
6:00 Magnify
7:00 NFL Honors
9:00 The Mystery Hour
SUNDAY, FEBRUARY 02
7:00 Super Ozarks Fox AM

8:00 Fox News Sunday
9:00 Ozarks Live!
10:00 Skip and Shannon: Undisputed
11:00 Road to the Super Bowl
12:00 Super Bowl Kick-off Show
1:00 NFL on Fox-Pre-game Show
5:30 NFL Football- 49ers vs Chiefs (LIVE)
9:00 NFL Post-game Show

MONDAY, FEBRUARY 03
5:00 TMZ
5:30 Family Feud
6:30 FOX News @ 6:30
7:00 9-1-1
8:00 Prodigal Son
TUESDAY, FEBRUARY 04
5:00 TMZ
6:00 Family Feud
6:30 FOX News @ 6:30
7:00 Gordon Ramsay's 24 Hours

8:30 WordGirl
WEDNESDAY, FEBRUARY 05
5:00 Wild Kratts
6:00 Xavier Riddle and the Secret Museum
6:30 Molly of Denali
7:00 Odd Squad
7:30 Arthur
8:00 Ready Jet Go!
THURSDAY, FEBRUARY 06
5:00 Wild Kratts
6:00 Xavier Riddle and the Secret Museum
6:30 Molly of Denali
7:00 Odd Squad

KOLR 10 - CBS

6:00-6:30 Regular Scheduled Programming
SATURDAY, FEBRUARY 01
6:00 CBS This Morning
8:00 Lucky Dog
8:30 The Henry Ford's Innovation Nation
9:00 Mission Unstoppable
9:30 Pet Vet Dream Team
10:00 Hope in the Wild
10:30 Best Friends FURever
11:00 Wild About Animals

12:30 NCAA-Basketball- Connecticut vs Memphis
5:00 Judge Judy
5:30 CBS Weekend News
6:00 The Big Game Tailgate
6:30 Chiefs Insider
7:00 NCIS
8:00 FBI
9:00 48 Hours
SUNDAY, FEBRUARY 02

7:30 Living Word
8:00 Sunday Morning
9:30 Face the Nation
11:00 PBR Bull Riding
12:00 NACC Basketball- Georgetown vs St. John's
2:00 PGA Golf- Phoenix Open
5:00 Made in Hollywood
6:00 60 Minutes
7:00 NCIS

8:00 FBI
9:00 NCIS
10:00 KOLR 10 News @ 10
MONDAY, FEBRUARY 03
6:00 KOLR 10 News
6:30 ET Entertainment
7:00 The Neighborhood
7:30 Bob Hearts Abishola
8:00 All Rise
9:00 Bull

TUESDAY, FEBRUARY 04
6:30 ET Entertainment
7:00 NCIS
8:00 State of the Union Address
WEDNESDAY, FEBRUARY 05
7:00 Survivor at 40: Greatest Moments and Players
8:00 Criminal Minds
10:00 KOLR News @ 10
THURSDAY, FEBRUARY 06

KSPR 33 - ABC

6:00-6:30 Regular Scheduled Programming
SATURDAY, FEBRUARY 01
7:00 Good Morning America
9:00 Jack Hanna's Wild Countdown
9:30 Ocean Treks
10:00 Heart of Heroes
10:30 Rock the Park
11:00 Hiring America
11:30 Texas Music Scene
12:00 Winter X Games
1:00 NFL Football
2:00 NCAA Basketball-

Oklahoma State vs Oklahoma
4:00 African American Short Films
5:00 Jeopardy!
6:00 KSPR News @ 6
6:30 The Big Bang Theory
7:00 NBA: The Jump
7:30 NBA Basketball- 76ers vs Celtics
10:00 KSPR News @ 10
SUNDAY, FEBRUARY 02
7:00 Good Morning America

8:00 Dr. Robert Jeffreys
8:30 Christian Worship Hour
9:30 This Week with George Stephanopoulos
10:30 Know Your Bible
12:00 Small Town Big Deal
12:30 NBA Countdown
1:00 NBA Basketball- New Orleans Pelicans vs Houston Rockets
3:30 Raw Travel
4:00 Pet Tales with Greta
5:00 KSPR News @ 5

7:30 Bless This Mess
8:00 State of the Union Address
10:00 KSPR News @ 10
WEDNESDAY, FEBRUARY 05
6:00 KSPR News @ 6
6:30 The Big Bang Theory
7:00 The Bachelor
8:00 Modern Family
9:00 Stumptown
10:00 KSPR News @ 10
THURSDAY, FEBRUARY 06
6:30 The Big Bang Theory

7:00 Station 19
8:00 Grey's Anatomy
9:00 A Million Little Things
10:00 KSPR News @ 10
FRIDAY, FEBRUARY 07
6:00 KSPR News @ 6
6:30 The Big Bang Theory
7:00 The Democratic Debate
7:30 Fresh Off the Boat
10:00 KSPR News @ 10

LET US HELP YOU WITH YOUR WINTER DEBRIS. B&N TREE SERVICE AND DEBRIS REMOVAL LLC. 573-528-7648

The Roof Specialists. Your trusted and reliable source for quality roof repair and replacement at affordable prices. D & K Roofing. Call today for an appointment! Free Estimates. Over 40 Years Experience. Lebanon 417-718-5450. danpocain74@gmail.com

DON'S AUTO GLASS. SINCE 1968! 417-532-6071 • 371 W. Elm St. donsautoglass.com

TV GUIDE FOR THE WEEK OF FEBRUARY 01, 2020



**NO HUNTING, FISHING OR TRESPASSING**

To hunters, fishers, trappers, trespassers, day or night. The undersigned prohibit either hunting, fishing, trapping or trespassing on their property. Violators will be liable to prosecution. Note: this is a Public Notice, NOT a legal notice. To place your listing call 417-532-9131

**LC RECORD**

\$15 per year (1 line ad)  
Each additional line is \$2

**APPLING/NICKLES FARMS**

**DANNY BREEDEN FARMS**, Stoutland

**BENNETT FARM**, Stoutland, MO

**HENRY FORD FARMS**, Stoutland & Richland

**CARL JOHNSON**

**P&J O'DELL FARM**, Laclede County

**MILLCREEK FARMS**

Mike Reading  
Grindstone Rd

**Agri-Business**

2006 CURLY TOBIANO MARE, 45" high, registered ICHO/NAC, Broke to drive, has had one foal. \$1,750. Niangua, 417-880-0025.

**ALFALFA HAY FOR SALE**  
4X5 Round Bales  
22% protein  
166 Bales, high moisture, weighing 1500#s  
226 bales dry hay weighing 1000#s  
**\$100 each at the Yard**  
Delivery Available  
**417-343-4958**  
Karen Asher

**New Owners!!**  
Ben & Jessica Joiner  
**Brush Clearing**  
Fence Line Clearing  
• Land Clearing • Road & Trails Opened • Wood Lot Thinning  
417-718-5564 • www.gvbrush.com  
**GREAT VIEWS BRUSH CLEARING**

Nice pair of 1" Belta Driving Lines for team of horses. \$50 for set. 417-718-5347, Conway.

**Announcements**

**Special Notices 140**

**WANT TO BUY or EXCHANGE**  
Annual Group Photos of **BLAND SCHOOL**  
541-884-0170  
Leave Phone Number

**Employment**

Claws & Paws looking for full-time employment, must love animals and be able to handle large animals. Apply at 18705 Gateway Rd, Lebanon, MO. No phone calls, please.

**LEBANON HOUSING AUTHORITY**

Is currently taking applications for a full time **Maintenance Position** Must have basic knowledge in Carpentry, Plumbing, Electrical and Heating/Air Conditioning  
**Benefits Included**

Application forms may be obtained at:  
**1225 Maple Lane**  
**Lebanon, MO 65536**  
7:30am-4:30pm  
Monday-Friday

**Opportunities 207**

**Smith Hardwood Lumber**

is looking for someone full time. **Wood working experience preferred.** Please call **417-532-9593** 7AM-3:45PM or **417-533-9596** after hours

**Transportation/ Drivers 220**

**Lebanon Ready Mix Truck Driver Needed**  
Must have valid Class A-CDL with air brake endorsement. Hauling rock, sand & cement. Must apply in person at **24427 Rt. 66 (Willard Quarries)**  
**No phone calls please**  
EOE



is looking for an **Over The Road Driver**  
Min. of 1 years exp. and good driving record required.  
Apply within at:  
**901 Cowan Dr.**  
**Lebanon, MO 65536**

**Merchandise**

**Electronics 337**

New in box Insignia Voice Google Assistant portable voice activated speaker. \$35. 417-718-5347.

**Garage Sales**

**Miscellaneous 358**

Electric Wheelchair: New \$1,400. 417-588-9387.

Justice Brand Sofa: Like new, Cream colored w/rose colored roses. \$200 Firm. 417-532-7398.

**Expert Jewelry Repair & Appraisal**  
**GALLERIA FINE JEWELRY**  
100 E. Commercial  
[www.galleriafinejewelry.com](http://www.galleriafinejewelry.com)

Buffet cabinet, heavy, excellent condition, Oak. Cash Only, \$150, 417-217-9089.

Military Field Jacket, Large, Brand new. \$40. 417-322-4432.

**Miscellaneous 358**

3 Mens XXL Cashmere Long Sleeve V-Neck Pullover Sweaters, Navy, Taupe and Light Blue, all excellent. \$25 each or \$20 each for 2 or more. 417-718-5347.

32 Paperback Books by Johanna Lindsay. 50 cents each or \$13 all. 417-588-3855.

Tires For Ford: 185/60 R15. \$90 for all. Like New! 417-532-1800 or 322-4432

Electric Wheelchair: Used. \$400. 417-588-9387.

Lot of 72 "The Antiques Journal" Magazines, years 1974-75, 1978-80, Mar-Dec 1977, Jan-Feb 1981. \$30 for all. Grovespring, 417-533-9484.

Black Vinyl Tonneau Cover for 2006-2019 Toyota Tacoma pick-up, 5' bed. New in box. \$75. 417-288-8181.

Lift Chair: New. \$500. 417-588-9387.

**Musical Instruments 360**

Palatino Hand Carved Fiddle Outfit: top-Solid Spruce, back and sides constructed of Solid Maple, padded zip case. \$75. 417-664-2362.

**Piano Tuning** By Lance Link of Link Family Music  
  
**417-718-3607**

New Fender Ukulele Venice: black with new on-stage deluxe gig bag, 96 chords Ukulele chart. \$100. 417-664-2362.

**Featured Home**



**\$289,900 | MLS#20005332**



All Brick Earthbern on 28.5 ac m/l 3 bedrooms, 2 bath home home features vaulted ceilings w/ wooden beams in living areas. beautiful acreage w/a great mixture of woods and pastures and a nice pond for livestock. living room features a floor to ceiling brick fireplace. kitchen has nice skylights for lots of natural lighting. Don't miss this great property with nice home and acreage. Home is due for some cosmetic work, otherwise in very good condition. There is nice horse barn/workshop and barn for the animals. Property is in two parcels, one w/home is 19.87 m/l and the other, which in past had a single wide mobile home on it is 8.63 ac m/l.

**Teresa Paterno**  
417-533-SOLD

Paterno Realty • 525 E. Elm Suite A, Lebanon, MO 65563 • 417-718-6393



**SELL IT FAST IN THE CLASSIFIEDS!**



Pick up a copy of the most recent Lebanon, MO area Real Estate Guide at any Real Estate Office in town.

**DEADLINES**

WEEKEND 11 AM Friday  
WEDNESDAY 11 AM Tuesday  
**TRADER** Magazine  
THURSDAY 12 PM Monday

- AGRI-BUSINESS
- ANNOUNCEMENTS
- EMPLOYMENT
- GARAGE SALES
- MERCHANDISE
- REAL ESTATE RENTALS
- RECREATION
- SERVICES
- TRANSPORTATION



# COMICS!

**GARFIELD BY JIM DAVIS**

I'M ACTUALLY IN A PRETTY GOOD MOOD

I JUST HAVEN'T TOLD MY FACE YET

**BLONDIE BY DEAN YOUNG & DENIS LEBRUN**

HUH? NO PIGSKIN POPPERS THIS YEAR?

WE ADDED THEM TO OUR TOUCHDOWN TACO PLATTER

ADD HALFTIME HOT WINGS AND A FOOTBALL FUDGE CAKE THAT YOU'RE GUARANTEED NOT TO FUMBLE!

GIMME 2!

HOW DID SUPER BOWL SALES GO TODAY?

NEW RECORD! 29 PLATTERS AND 3 MARRIAGE PROPOSALS!

**HERMAN BY JIM UNGER**

"Your honor, my client thinks ten years is a little harsh and requests permission to approach the bench."

**FAMILY CIRCUS BY BIL KEANE**

"Yes, but isn't chocolate cake loaded with vitamins, too?"

**DILBERT BY SCOTT ADAMS**

IF YOU NEED ANY HELP AT ALL, JUST LET ME KNOW.

I NEED A LOT OF HELP. BE HERE AT 8 AM AND PLAN TO WORK LATE.

THIS IS AWKWARD, BUT I DIDN'T MEAN A WORD OF WHAT I SAID.

**FOR BETTER OR FOR WORSE BY LYNN JOHNSON**

HOW WAS BABY-SITTING?

ELEVEN BUCKS! I PUT UP WITH THREE ZOMBIES FROM HELL FOR ELEVEN BUCKS!

THERE'S GOTTA BE A BETTER WAY TO MAKE A LIVING!

YOU'RE ALMOST AS SURE YOU COULD WASH DISHES, STOCK SHELVES OR SUEEP FLOORS SOMEWHERE

BUT THAT'S BORING!-AN' IT ONLY PAYS MINIMUM WAGE!

WELL, IT'S BETTER THAN I GET.

I DO ALL THOSE THINGS FOR NOTHING.

**BARNEY GOOGLE AND SNUFFY SMITH BY FRED LASSWELL**

WANT ME T'DO THEM DISHES FER YA, HONEYPOT?

OR FILL TH' WOODBOX?

GO PRACTICE YORE VENTRILLYQUISM SOMEHAR ELSE, JUGHAID, 'FORE WE BOTH GIT IN TROUBLE !!

**BEETLE BAILEY BY MORT WALKER**

ISN'T BEETLE DONE WITH THE DISHES? HE'S BEEN IN THERE FOR HOURS

HE'S PROBABLY JUST BEING THOROUGH

**HAGAR THE HORRIBLE BY CHRIS BROWNE**

CHECK, PLEASE! WE NEED TO GET GOING!

CERTAINLY! WOULD YOU LIKE TO BOX THE LEFTOVERS?

NO THANKS! THE TABLECLOTH WILL DO!

**PEANUTS BY CHARLES M. SCHULZ**

IT'S GOING TO BE A TESTIMONIAL DINNER FOR CHARLIE BROWN

I KNOW HIM...THE ROUND-HEADED KID.

IT'S TO SHOW OUR APPRECIATION FOR ALL HE'S DONE AS OUR TEAM MANAGER

I HATE SHOWING APPRECIATION

ANYWAY, YOU'RE INVITED SO PLEASE TRY TO COME.

I WON'T GO UNLESS I CAN SIT AT THE HEAD TABLE!



## Dear Abby

### Siblings Come Home To Visit, But Not With Family Members

DEAR ABBY: A good friend of mine is giving a baby shower next month for her grandson and granddaughter-in-law. She wants to invite many of her longtime friends to the shower, but most of them have little or no history or relationship with her grandson or his wife, and neither one really wants them to be invited. The grandmother, however, thinks it would be rude not to. Your thoughts?

DEAR INVITED: Someone should remind your good friend that the celebration is not for her, and that showers aren't supposed to be hosted by close relatives but by friends of the honoree. Not only would your friend's contemporaries not be offended if they are not invited, they would probably feel relieved. People of

Great-Grandma-To-Be's generation have been through so many showers they aren't likely to have hurt feelings if the younger generation takes over, unless they're very close to the honoree.

Dear Abby is written by Abigail Van Buren, also known as Jeanne Phillips, and was founded by her mother, Pauline Phillips. Contact Dear Abby at [www.DearAbby.com](http://www.DearAbby.com) or P.O. Box 69440, Los Angeles, CA 90069.

For an excellent guide to becoming a better conversationalist and a more sociable person, order "How to Be Popular." Send your name and mailing address, plus check or money order for \$8 (U.S. funds) to: Dear Abby, Popularity Booklet, P.O. Box 447, Mount Morris, IL 61054-0447. (Shipping and handling are included in the price.)

**See Service**  
Spray Foam Insulation  
Closed cell or open cell form available  
Choose the thickness of your insulation

<b>Closed Cell</b>	<b>Open Cell</b>	Both types of foam fill voids and stay where they are put to provide better insulation than fiberglass or cellulose
• Higher R. value	• Lower Cost	
• Vapor barrier	• Sound Deadening	
• Structural benefit	• Fire resistant	
• Fire Resistant		

Call Joseph See (417) 733-6936 WE ACCEPT FINANCING  
Located near Buffalo, MO AVAILABLE

**NEIGHBORHOOD'S HOME IMPROVEMENT STORE**  
Where QUALITY Doesn't Cost MORE  
19850 HOUSTON RD. • LEBANON, MO 65536  
417-533-5080 • 1-888-776-0038  
[www.neighborhoods-inc.com](http://www.neighborhoods-inc.com)

**SKELTONS' KEY & LOCK**

**24 Hour Lockout Service**

Automotive • Residential  
Commercial • Lock • Rekey

417-322-5220 • 750 S. Jefferson

**MARK YOUR CALENDARS FOR What's Happening IN LEBANON, Missouri**

**EVERY WEDNESDAY AND THURSDAY**

Storytime will be held at the Lebanon-Laclede County Library at 10:00 a.m. in Andy's Room. This program is geared towards 2-6 year olds with a different theme being covered each week! For mor details call 417-532-2148.

**WEDNESDAY, FEBRUARY 5**

Don't miss the one and only Harlem Globetrotters at the Boswell Auditorium at 7:00 p.m. General admission tickets are \$25 per person.

**SATURDAY, FEBRUARY 8**

Enjoy the indoor sale of automobilia and advertising at the It's a Gas Swap Meet at the Cowan Civic Center from 8:00 a.m.-12:00 p.m. \$5 per person with children 12 and under entering for free.

2020 Market Steer Weigh-In for the Laclede County Fair will be held from 9-11:00 a.m. There will be a \$5 fee for each animal weighed in with a maximum of two head per person. For more information call 417-991-8040.

**SATURDAY, FEBRUARY 15**

Bennett Spring State Park invites you to be a citizen scientist for a day from 8:00 a.m.-4:00 p.m. Search for birds by walking on one of the many Great Missouri Birding Trails. For more details contact 417-532-4307.

**SATURDAY, FEB. 22 - SUNDAY, FEB. 23**

The RK Gun Show is back at the Cowan Civic Center for a two day show you won't want to miss! Saturday hours are 9:00 a.m.-5:00 p.m. with Sunday hours lasting from 9:00 a.m.-3:00 p.m.

**TUESDAY, FEBRUARY 25**

Head to Starlight Lanes for the Kiwanis Bowling Tournament from 6:30-9:30 p.m. and help benefit the kids in our community! Five member teams are \$125 and includes 2 games and shoe rental. Don't forget the bake sale, silent auction, and 50/50 cash giveaway included in the event! Book your team today by contacting 417-594-2384.

**SUNDAY, MARCH 1**

Opening Day of Trout Season at Bennett Spring State Park starting at 6:30 a.m. Call the park store for questions at 417-532-4307.

**TUESDAY, MARCH 3**

The Carden International Circus will be at the Cowan Civic Center once again with two show times at 4:00 p.m. and 6:30 p.m. Come out an hour before each show time for a meet and greet with the circus stars!

**FRIDAY, MARCH 13 - SATURDAY, MARCH 14**

The Missouri Pet Breeders Association will be held at the Cowan Civic Center for a two-day event with over 100 vendors, speakers, and more!

**SATURDAY, MARCH 28**

The Spring Lebanon Community Wide Garage Sale and Marketplace will be held at the Cowan Civic Center from 8:00 a.m.-4:00 p.m. Free admission to shoppers with food available on site!

Visit our website for a complete list of events!  
[www.visitlebanonmo.org](http://www.visitlebanonmo.org)  
**1-844-4LEBANON**  
INFO@VISITLEBANONMO.ORG

**Don't Let Pain Hold You Back!**

**Come Meet Dr. Swick at Whitty Chiropractic**

Dr. Swick's approach & techniques are centered around gentle, low-force, specific adjustments

- Gentle Chiropractic • Upper Cervical
- Activator Technique or Instrument Adjusting

Call or Stop By to Meet Dr. Swick Today!

Dr. Margaret K. Swick  
417-532-5462  
291 N. Adams, Lebanon MO  
**WHITTY CHIROPRACTIC**  
WHITTYCHIROPRACTIC.COM

# Recycling

from page A1

Linda Kimrey, CEO of Laclede Industries said she had been approached by the city about extending recycling hours.

"We kind of discussed it and it was one of the options available, that's a monitored site, that makes it accessible to people outside the normal hours that we keep Monday through Thursday and it gives people more options," Kimrey said.

Hours are 8 a.m. to 4 p.m. Mondays through Fridays and 9 a.m. to 2 p.m. on the Saturdays of Feb. 22, March 21 and April 25.

During these times, you may recycle your cardboard, tin cans, aluminum cans, Plastics 1 and 2 as well as office paper, newspaper, and magazines.

Items should be clean and pre-sorted. The City of Lebanon also accepts household hazardous waste.

Laclede Industries is also continuing its recycling service.

The same items accepted by the city are accepted at Laclede Industries, 941 Utah St., 8 a.m. to 2 p.m. Mondays through Thursdays and the second Saturday of each month from 9-11 a.m.

# Drone

from page A1

Electric Superintendent Travis Long said it would be used for inspecting poles and steel structures.

"We'll be able to see if there's any kind of rotting on the poles, any kind of aging on the steel structures," he said.

According to Long, the street department would use it for stormwater inspections, video of traffic flow.

The codes department will use it for rooftop inspections of tall structures.

The water department will use it to inspect water towers.

"They'll make sure there's no rust, no paint problems," Long said.

The drone also includes an infrared camera.

"That will give us an IR image, a heat signature image, for the electric department on our high voltage lines that's pretty critical to see where our problems are, where we're heating up," he said. "We have a lot of structure, old bells, old glass insulators that we're still using, we can see if there's a crack in those. That will show a heat signature, heat build-up."

The drone will allow electric and water grid inspections, right-of way inspections, water tower inspections, and infra-red imaging.



**LEBANON**  
MISSOURI  
Friendly people. Friendly place.®

Long said it would help inspect things that would otherwise be hard to access.

"We have some 85 foot wooden poles, we know they've been out there awhile," he said. "You can't see the top of that pole. You can't see the rot, with this we'll be able to get within a couple of feet of it."

He explained the drone uses a global positioning system to get within centimeters of an object. "It's going to be a great tool in the tool belt," Long said. "We'll be able to get a lot of data from it and catch problems early."

The City was awarded a safety grant of up to \$10,000 from Missouri Employers Mutual which will help to offset the cost of the drone. The city purchased the Matrice Drone Kit from Ozark Laser with the low bid of \$32,046.

## NOTICE OF TRUSTEE'S SALE

A default has accrued on a certain note secured by a deed of trust executed by, **Billie Geers AND Carl Kramer** dated **6/29/2018** and recorded on **7/2/2018** in **Book 274 Page 599**, in the Recorder's office for **Laclede County, Missouri**. The successor trustee will on **February 24, 2020** between the hours of 9:00 am and 5:00 pm, more particularly at **11:30AM, at the Adams Avenue Front Door of the Laclede County Courthouse, 200 North Adams Street, Lebanon, Missouri** sell at public venue to the highest bidder for cash (certified funds only), the following real estate:

**ALL OF LOT FOUR (4) OF TROUTMAN ESTATES, A SUBDIVISION IN LEBANON, LACLEDE COUNTY, MISSOURI, AS PER THE RECORDED PLAT THEREOF, RECORDED IN PLAT BOOK 5 PAGE 11, LACLEDE COUNTY RECORDER'S OFFICE.**

Commonly known as: **1005 Troutman Dr, Lebanon, Missouri 65536**

for the purpose of satisfying said indebtedness and the costs of executing this trust.

**CSM Foreclosure Trustee Corp. Successor Trustee (800) 652-4080**  
4x02/01/2020, 02/08/2020, 02/15/2020, 02/22/2020  
CSM File 26-19-01872  
**NOTE: This office is a debt collector.**

(02)-01-08-15-22

Missouri, sell at public venue to the highest bidder for cash:

**A tract of land located in the Northeast Quarter of the Southeast Quarter of Section 9, Township 34 North, Range 16 West, Laclede County, Missouri, described as follows: Commencing at the Northwest corner of the Northeast Quarter of the Southeast Quarter of Section 9; thence along the West line of said Northeast Quarter of the Southeast Quarter South 00 degrees 18 minutes 10 seconds West 44.32 feet to the Southerly Right of Way of New Buffalo Road; thence along said Right of Way the following courses: South 89 degrees 53 minutes 10 seconds East 439.99 feet; thence South 88 degrees 34 minutes 10 seconds East 11.89 feet to the point of beginning; thence continuing along said Right of Way South 88 degrees 34 minutes 10 seconds East 396.18 feet; thence departing from said Right of Way South 02 degrees 12 minutes 50 seconds East 839.97 feet; thence North 88 degrees 34 minutes 10 seconds West 435.24 feet; thence North 00 degrees 27 minutes 10 seconds East 838.40 feet to the point of beginning., commonly known as 18898 Finch Rd, Lebanon, MO, 65536**

subject to all prior easements, restrictions, reservations, covenants and encumbrances now of record, if any, to satisfy the debt and costs.

**County Criers, LLC Successor Trustee**  
First Publication: January 18, 2020. For more information, visit [www.southlaw.com](http://www.southlaw.com)

**NOTICE**  
Pursuant to the Fair Debt Collection Practices Act, 15 U.S.C. §1692c(b), no information concerning the collection of this debt may be given without the prior consent of the consumer given directly to the debt collector or the express permission of a court of competent jurisdiction. The debt collector is attempting to collect a debt and

any information obtained will be used for that purpose (Casefile No. 224921-928117).

**SouthLaw, P.C.**  
13160 Foster Suite 100  
Overland Park, KS 66213-2660  
(913) 663-7600  
File No. 224921  
(01)18-25, (02)-01-08

## NOTICE OF TRUSTEE'S SALE

A default has accrued on a certain note secured by a deed of trust executed by, **Patrick L. Gladden AND Donna J. Gladden** dated **7/5/2007** and recorded on **7/19/2007** in **Book 242 Page 8009**, in the Recorder's office for **Laclede County, Missouri**. The successor trustee will on **February 24, 2020** between the hours of 9:00 am and 5:00 pm, more particularly at **11:30AM, at the Adams Avenue Front Door of the Laclede County Courthouse, 200 North Adams Street, Lebanon, Missouri** sell at public venue to the highest bidder for cash (certified funds only), the following real estate:

**TAX ID NUMBER: 05-60-14-000-000-006-00**

**LAND SITUATED IN THE COUNTY OF LACLEDE IN THE STATE OF MO**

**A TRACT OF LAND DESCRIBED AS COMMENCING AT THE NORTHWEST CORNER OF THE SOUTHWEST QUARTER OF THE NORTH-EAST QUARTER OF SECTION 14, TOWNSHIP 35, RANGE 17, THENCE SOUTH 390 FEET; THENCE DUE EAST 75 FEET; THENCE NORTHEASTERLY TO A POINT 360 FEET FROM THE PLACE OF BEGINNING, THENCE WEST TO THE POINT OF BEGINNING.**

**COMMONLY KNOWN AS: 29681 MAINE DRIVE, ELDRIDGE, MO 65463**

Commonly known as: **29681 Maine Dr, Eldridge, Missouri 65463**

for the purpose of satisfying said indebtedness and the costs of executing this trust.  
**CSM Foreclosure Trustee Corp. Successor Trustee (800) 652-4080**

until 10 AM local time on February 13th 2020. The Mark Twain National Forest is an Equal Opportunity Service provider.

## LEGAL NOTICE

**INVITATION TO BID FOR 2 DISPATCH CONSOLES AND 2 MOSWIN APPROVED MOBILES FOR OEM LACLEDE COUNTY, MISSOURI**

The Laclede County Commissioners are seeking sealed bids for 2 dispatch consoles and 2 moswin approved mobiles for Office of Emergency Management. Sealed bids are to be turned in by February 11, 2020, by 8:30 AM to the County Commission, 200 N Adams, Lebanon, MO 65536. For list of specs please go to our website at [lacledecountrymissouri.org](http://lacledecountrymissouri.org) or call Mike Cheek at 417-533-5203. The Laclede County Commission reserves the right to accept or reject any or all bids, or to waive any formalities in the bidding/proposal process. Upon award contractors/subcontractors are required to comply with all the State of Missouri statutes.

(02)-01

**REQUEST FOR BIDS**  
CITY FLEET BID FY20  
BID NUMBER:  
MD-99-200211-F-422

The City of Lebanon, Missouri ("The City") invites bids from qualified organizations to provide 2020 or newer vehicles to the City. Bids will be accepted until 2:00 P.M. Tuesday February 11th, 2020. For more information, contact: Jessica Meiners, Purchasing Agent (417) 991-2321 or [jmeiners@lebanonmo.org](mailto:jmeiners@lebanonmo.org) or download it from the City of Lebanon webpage at [www.lebanonmissouri.org](http://www.lebanonmissouri.org).

**City of Lebanon**  
Attn: City Clerk  
PO Box 111  
Lebanon, MO 65536  
Project Number  
EL-80-200211-F-424  
(01)-29, (02)-01-05

## USDA FOREST SERVICE

**GRAZING AREA**

The Houston/Rolla/Cedar Creek Ranger District of the Mark Twain National Forest will be accepting bids for 1 grazing allotment. The Dry Branch is located in Southeastern Laclede County south of Falcon, MO. On Forest Service System Road 5108. For more information about this area, or to request a bid prospectus please contact the Houston/ Rolla/ Cedar Creek District Office at 417-967-4194. Sealed bids will be accepted

**REQUEST FOR BIDS**  
MATERIAL FOR PROJECT  
#388 FEEDER 1040  
IMPROVEMENTS BID  
NUMBER: EL-80-200211-F-424

The City of Lebanon, Missouri ("The City") invites bids from qualified organizations for the purchase of miscellaneous material for project #388 feeder 1040 improvements to the City. Bids will be accepted until 2:00 P.M. Tuesday February 11th, 2020. For more information, contact: Kevin Barber, (417) 991-3934 or [kbarber@lebanonmo.org](mailto:kbarber@lebanonmo.org) or download it from the City of Lebanon webpage at [www.lebanonmissouri.org](http://www.lebanonmissouri.org).

**City of Lebanon**  
Attn: City Clerk  
PO Box 111  
Lebanon, MO 65536  
Project Number  
EL-80-200211-F-424  
(01)-29, (02)-01

**LEGAL NOTICE**  
INVITATION TO BID FOR 2 DISPATCH CONSOLES AND 2 MOSWIN APPROVED MOBILES FOR OEM LACLEDE COUNTY, MISSOURI

The Laclede County Commissioners are seeking sealed bids for 2 dispatch consoles and 2 moswin approved mobiles for Office of Emergency Management. Sealed bids are to be turned in by February 11, 2020, by 8:30 AM to the County Commission, 200 N Adams, Lebanon, MO 65536. For list of specs please go to our website at [lacledecountrymissouri.org](http://lacledecountrymissouri.org) or call Mike Cheek at 417-533-5203. The Laclede County Commission reserves the right to accept or reject any or all bids, or to waive any formalities in the bidding/proposal process. Upon award contractors/subcontractors are required to comply with all the State of Missouri statutes.

(02)-01

**ORDER NOW FOR**

## Valentines DAY

FEBRUARY 14

# Pams Flowers LLC

**417-991-3366**

**Delivery Available Satisfaction Guaranteed**

**Roses, Fresh Flowers, Candy Bags, Balloons, Silk Arrangments, Plants**

519 North Jefferson, Lebanon  
Open: Mon-Fri 8:30am-5pm  
[www.pamsflowersllc.com](http://www.pamsflowersllc.com)



## Position Openings on Second Shift 2pm - 10pm

for R.N., L.P.N., C.N.A., and Nursing Assistants  
(Certification Provided by LNNR)

**\*\*SIGN ON BONUS for R.N., L.P.N., C.N.A.\*\***

New Wage scales currently in place plus benefits offered!

100% Tuition coverage for LPN and LPN to RN Bridge Programs, available for all employees.

**Apply in person at**

596 Morton Rd or online at [www.lebanonnorthnursingrehab.com](http://www.lebanonnorthnursingrehab.com)

### LEBANON NORTH NURSING & REHAB

596 Morton Road Lebanon, MO 65536 • 417-532-9173

