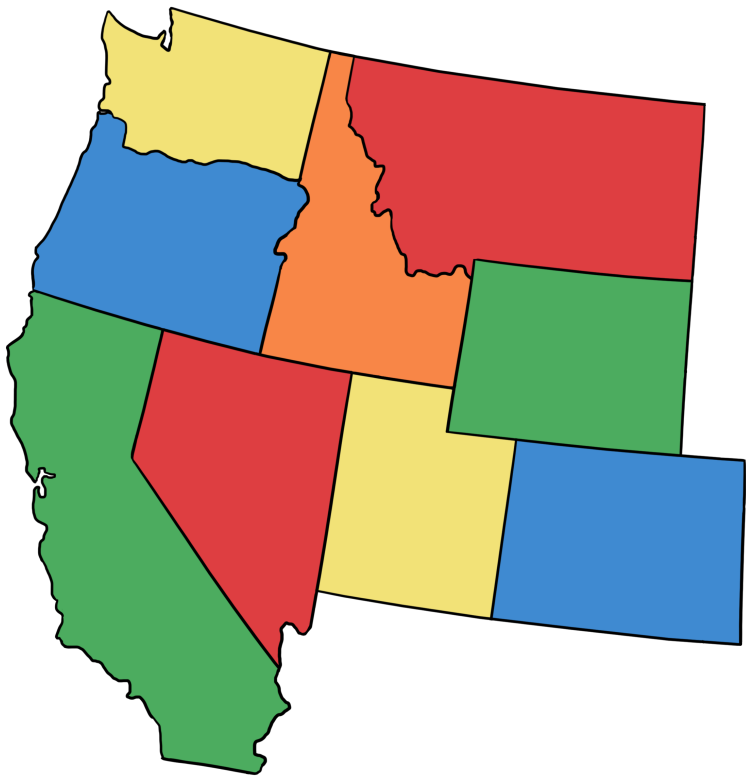
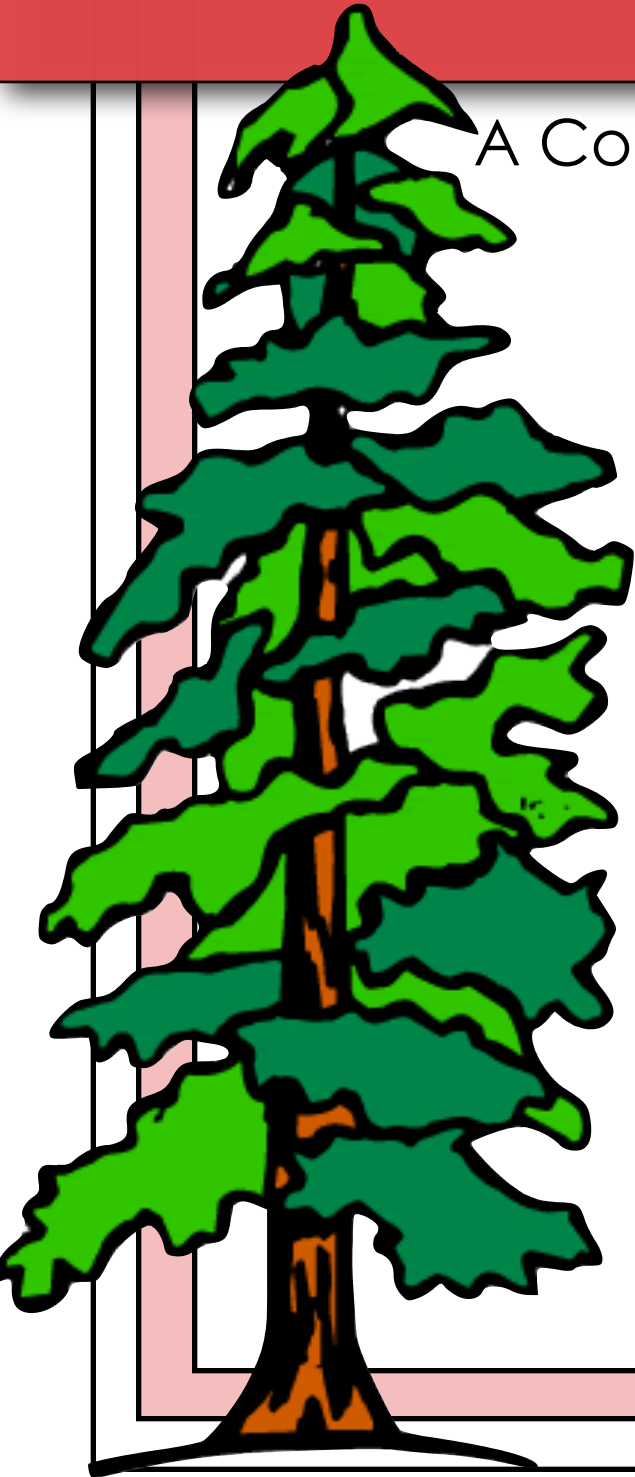


REGIONS OF THE UNITED STATES
WEST REGION

A Complete Social Studies Unit

by Jill Russ



THANK YOU

Thank you for downloading this item. If you have questions, concerns, or general comments, please feel free to contact me at jillsruss@gmail.com. If you are pleased with your purchase, please leave [feedback at TpT](#) to let others know how this resource can help them. Thank you again for your purchase!

~ Jill

View a full listing of my products at
<http://www.teacherspayteachers.com/Store/Jill-Russ>



© 2013 Jill Russ: Russ Resources
All rights reserved.

Purchase of this unit entitles the purchaser the right to reproduce the pages in limited quantities for **single classroom use only**.

Redistributing, editing, selling, or posting this item or any part thereof on the Internet is strictly prohibited without first gaining permission from the author. Duplication for more than one classroom, an entire school, an entire school system, or for commercial purposes is strictly forbidden without written permission from the publisher, Russ Resources.

Copying any part of this product and placing it on the Internet in any form (even a personal/classroom website) is a violation of the Digital Millennium Copyright Act (DMCA). These items can be picked up in a Google search and then shared worldwide for free.

About this Unit

Florida Sunshine State Standards Addressed:

- » **SS.3.G.2.2:** Identify the five regions of the United States.
- » **SS.3.G.2.3:** Label the states in each of the five regions of the United States.
- » **SS.3.G.2.4:** Describe the physical features of the United States, Canada, Mexico, and the Caribbean.
- » **SS.3.G.2.5:** Identify natural and man-made landmarks in the United States, Canada, Mexico, and the Caribbean.
- » **SS.3.G.3.1:** Describe the climate and vegetation in the United States, Canada, Mexico, and the Caribbean.
- » **SS.3.G.3.2:** Describe the natural resources in the United States, Canada, Mexico, and the Caribbean.
- » **SS.3.G.4.1:** Explain how the environment influences settlement patterns in the United States, Canada, Mexico, and the Caribbean.
- » **SS.3.G.4.2:** Identify the cultures that have settled the United States, Canada, Mexico, and the Caribbean.
- » **SS.3.G.4.3:** Compare the cultural characteristics of diverse populations in one of the five regions of the United States with Canada, Mexico, or the Caribbean.
- » **SS.3.G.4.4:** Identify contributions from various ethnic groups to the United States.

Using the Unit

This packet contains everything you will need to teach your students about the West Region. This unit contains a reading text with an anticipation guide and questions.

This is my recommended plan for using the materials in this packet.

First, you will need to make copies of all of the student pages. Your students will need copies of the text pages and Reading Guide and Questions for each student.

For each day's lesson, the students will read one section in the reading packet, answer the questions on the Reading Guide.

- a. Have students complete the "Before" section of the Reading Guide. Stress that this column is not graded, but will let them (and you) see what they've learned during their reading.
- b. Have students independently read the first section of the text, or read and discuss the section as a whole group.
- c. Have students complete the "After" section of the Reading Guide and answer the other questions for that section.
- d. Either that same day or the next day, discuss the answers to the Anticipation Guide and Questions.

Coordinating Products

West Region Quiz: <http://www.teacherspayteachers.com/Product/Five-Regions-of-the-United-States-West-Region-Quiz-113519>

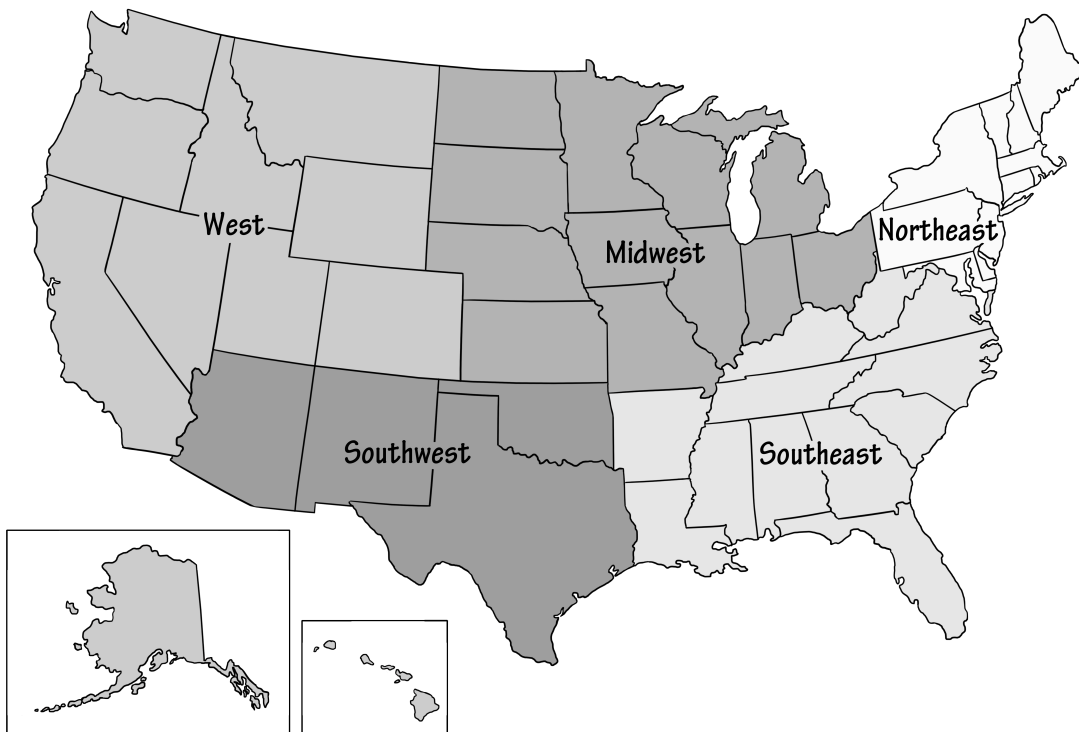
West Region Study Guide: <http://www.teacherspayteachers.com/Product/Five-Regions-of-the-United-States-West-Region-Study-Guide-113522>

West Region Scrapbook: <http://www.teacherspayteachers.com/Product/Five-Regions-of-the-United-States-West-Region-Scrapbook-113521>

Products for the Northeast, Midwest, Southwest, and Southeast Regions: <http://www.teacherspayteachers.com/Store/Jill-Russ/Category/Five-Regions-of-the-US>



The West Region



By Jill Russ

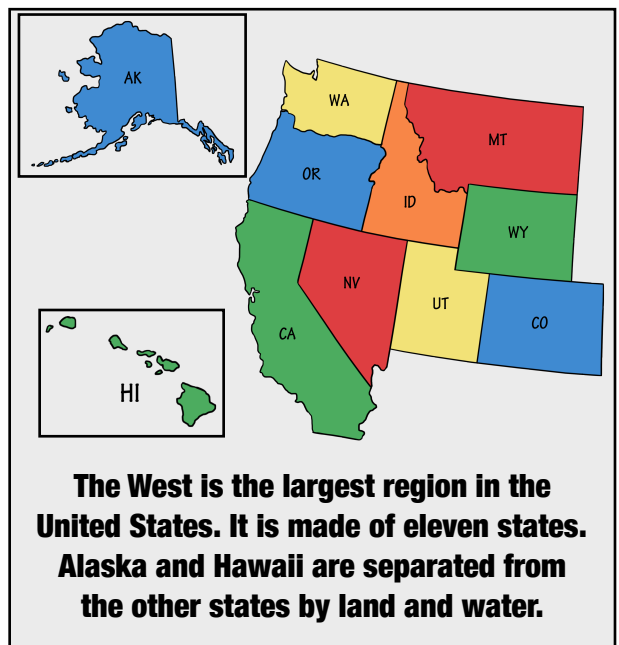
The West Region



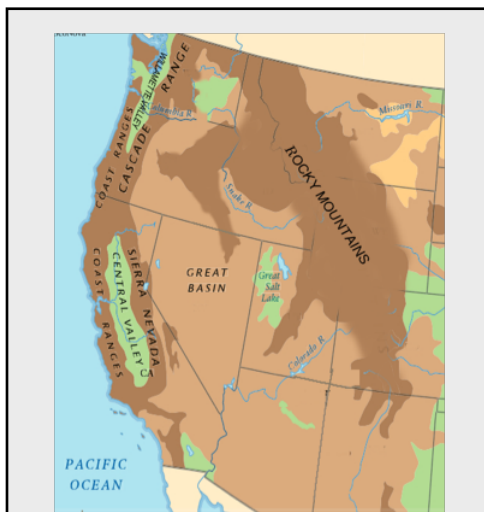
Our country's largest region goes from the cold, frozen tundra of Alaska to the warm, sunny beaches of Hawaii and California. In between, you'll find mountains, valleys, deserts, and even volcanoes and a rain forest!

Land and Water

Several mountain ranges cover much of the West. The largest mountain range is the Rocky Mountains, which forms the eastern edge of the region. The Rockies begin far to the north, in Canada. From there, the Rockies stretch south all the way to Mexico, across Montana, Idaho, Wyoming, and Colorado. The



The West is the largest region in the United States. It is made of eleven states. Alaska and Hawaii are separated from the other states by land and water.



The Coast Ranges, the Sierra Nevadas, the Cascade Range, and the Rocky Mountains are all found in the West region.

The Rocky Mountain Range is nearly 3,000 miles long, and hundreds of miles wide.

Along the Pacific coast, more mountain ranges form a giant H on the map. The Coast Ranges make up the first long line of the H. The low mountains of the Coast Ranges seem to rise right out of the Pacific Ocean. They form cliffs in many places along the coast all the way up to Alaska. The highest mountain in the United States, Mount Denali, is part of the Coast Range. Mount Denali in Alaska is 20,320 feet



The high, jagged peaks of the Sierra Nevada Mountains surround the fertile soil of the Central Valley.

high. The Sierra Nevada Mountains in the south and the Cascade Mountains in the north form the second long line of the H. These mountains are covered with forests.

The rocks of the Sierra Nevada Mountains are the remains of ancient magma chambers that fed volcanoes and then eroded away. Those volcanoes are extinct, but some volcanoes are still active. Volcanic eruptions happen, but not often. A famous eruption happened in 1980, when Mount Saint Helens erupted explosively. This eruption destroyed 215 square miles of forest, melted ice and snow on the mountain, and caused landslides and floods. Animals were killed and some people lost their lives.

Several valleys lie in between the Coast Ranges, the Sierra Nevada Mountains, and the Cascade Mountains. Two of the valleys, Central Valley and Willamette Valley, are covered with deep, rich soil. Many rivers travel

through these two valleys.

The Great Basin lies in the middle of the West region. A basin is a low, bowl-shaped landform that is lower than the land around it. The broad, flat valley of the Great Basin is mostly covered by the Great Basin Desert and the Mojave Desert. The Great Basin Desert is the largest desert in the United States. Death Valley, a part of the Mojave Desert, is the hottest, driest, and lowest place in the United States. Death Valley is 282 feet below sea level. The highest temperature ever recorded in Death Valley was 134 degrees.

Believe it or not, the West region also has a rain forest. The rain forest that runs along the Pacific Coast from California all the way to Alaska is the largest temperate rainforest in the world. Temperate rain forests are very wet, ancient forests that rarely freeze or get very hot. Temperate rain forests are also close to the ocean. Some of the large, old trees such as the giant redwoods, Sitka spruce and western hemlock reach over 300 feet tall and live over 500 years.



These giant redwood trees are part of the temperate rainforest in the West region.

The Great Salt Lake is one of the largest lakes in the US. The Great Salt Lake is about 75 miles long and 35 miles wide, but it is very shallow. Most of the lake is only three feet deep. Unlike most lakes, the Great Salt Lake is full of very salty water--even saltier than the ocean--because several rivers flow into the lake, but no water flows out. When the water evaporates, salt is left behind. The Great Salt Lake is too salty for fish. The only animals that live in the lake are tiny brine shrimp. Although they are small, brine shrimp are an important food source for the millions of birds that live around the lake. Dry and flat areas called salt flats surround the Great Salt Lake. The salt flats were left behind when Lake Bonneville, a big prehistoric lake, dried up thousands of years ago.



Alaska and Hawaii, being apart from the other states, are very different from the rest of the states in this region. The northern part of Alaska is tundra, a cold, flat, treeless land. Hawaii is made up of eight main islands. Its islands were made long ago by volcanoes that grew up out of the Pacific Ocean, two of which are still active.

Climate

Just as the West has many different landforms, the West has many different climates, too. You could travel from cold and rainy climates to extremely hot and dry climates all in this region. The western part of the region along the Pacific Coast receives a lot of rain. The coastal areas have mild, wet winters and cool, foggy, or cloudy summers. As you travel east across the region through the Great Basin, the rainfall amounts decrease and the temperature gets warmer. In the Rocky Mountains, there is heavy snow in the winter. The snow remains on the ground for months at a time. Once the snow melts, the water goes into the Colorado, Rio Grande, and other rivers.

Alaska has a unique climate. It is cold and wet for much of the year. Many places in

Alaska receive as much as 100 inches of precipitation a year. Because Alaska is farther from the equator than any other state, it is the coldest state. Alaska has short summers and long winters. Its winters are so cold that houseflies can't survive there. Lakes and rivers are frozen for most of the year.

Hawaii lies closer to the equator than any other U.S. state. Its climate is sunny and warm all year round, but not too hot due to cool ocean winds. There is a lot of rainfall all year. This helps palm trees and other tropical plants to grow year round. The island of Kauai has the wettest place on earth, receiving almost 40 feet of rain a year.

The Pacific Coast lies over many fault lines, which increases the danger of earthquakes. The most famous is California's San Andreas Fault, which is more than 600 miles long.

Products and Natural Resources

The most important natural resource in the West is the Pacific Ocean. Fishing is an important industry up and down the coast. There are many important ports along the Pacific Ocean. A port is a place for receiving ships and transferring cargo. Here, goods are traded with Japan and Asia.



The Columbia River is very important to the West region. Dams on the river help make a lot of electricity. Many businesses use this electric power. Farmers use water from the river to irrigate crops. Columbia River waters irrigate more than 8 million acres of land. Both farmers and businesspeople use the river for transportation. Many goods travel on the Columbia to ports along the Pacific Ocean.

Soil is another important resource. In the Central Valley and the Willamette Valley, there are many fruit and vegetable farms. The Central Valley is called “America's Fruit and Salad Bowl.”



More than 150 fruits and vegetables are grown there. Crops grown in the area include apricots, almonds, strawberries, cabbage, lettuce, tomatoes, grapes, avocados, asparagus, oranges, cotton, and corn. Potatoes, green beans, onions, and broccoli are also grown in the valley. Washington is known for its apples. Washington produces more apples than any other state. Central Valley supplies a lot of the food for the United States and for the rest of the world.



The West region is a center of the wood products industry. Wood products include lumber, plywood, cardboard, and paper. Much of the wood used in the United States comes from the West. Wood is used to build houses, furniture, musical instruments, and much more.



Idaho is home to vast potato farms, and the Idaho potato is sold by almost every supermarket in the United States. About three-fourths of Idaho's potato crop is now processed and sold as frozen french fries, instant mashed potatoes, or similar products. The rest are sold as baking potatoes.



Hawaii is famous for its pineapples. You can also find sugarcane in Hawaii. The plant is grown on plantations. Once it is harvested, it is sent to sugar mills. This is where the table sugar we use is produced. Bananas, rice, coffee, and macadamia nuts are also grown in Hawaii.



Salt is one of the most important things that people get from the Great Salt Lake. In fact, over 4 million pounds of salt gets taken from it every year. They get the salt by pumping water into giant, shallow ponds. When the water evaporates, the salt is left behind. It can take up to three years for all of the water in the pond to evaporate.

Another valuable resource in the West Region is oil. Oil was discovered in Alaska in the 1960s in the North Slope. The North Slope is near the Arctic Ocean. The oil was found in Prudhoe Bay. Once it was found, it needed to be transported to other areas. The Trans-Alaska Pipeline was built to carry oil from the North Slope. From the North Slope, it travels to Prince William Sound in Valdez, Alaska. The oil is pumped into supertankers. These supertankers carry the oil to other parts of the U.S.



and the world. One stop is in San Francisco, California. San Francisco has oil refineries. The refineries prepare the oil so it can be used in homes and businesses.

The Rocky Mountains are a source of many minerals. Deposits of copper, gold, and silver have been found within the mountains. Gold was found in California in 1848. During the Gold Rush when people were moving west in search of riches, a small town in Colorado called Leadville was a popular mining spot for gold. The miners found some gold, but it was hard to separate the gold from the local sand. The miners found that the heavy brown sand they were digging in was actually full of silver and lead. Then, instead of a Gold Rush, there was a Silver Boom. More and more people moved to the area in search of silver. Leadville became one of the world's largest silver camps. Soon, the Silver Boom ended, but Leadville was lucky. Other valuable minerals were found in this area. One is molybdenum. Molybdenum is used in the production of high-strength steel.

The steel produced in the West is used to manufacture other products. Aircraft are made in southern California. The state's warm climate makes it perfect for testing airplanes. Aircraft are also made in Seattle, Washington. You will also find ship-building industries on the Pacific Coast. Fishing boats, tankers, and battleships are made in Washington and Hawaii.

During the last twenty years, technology industries have started in the West in an area known as Silicon Valley. Silicon is a valuable mineral that is used to make



computer parts. There are about three thousand software companies and many other technology businesses in the area. There are many research centers in the West. These research centers are owned by our government. They test missiles, aircraft, and weapons. In the Great Basin, there is valuable open space. Missiles and military weapons are tested there.

Landmarks

The West region's natural features have been popular with travelers. Some of the most beautiful national parks are located in this region. The United States Congress established Yellowstone National Park in 1872 as the world's first National Park. Yellowstone National Park covers 3,472 square miles. That's bigger than the states of Delaware and Rhode Island combined. There is an active volcano in the park. There are about 2,000 earthquakes there every year. The park also has more than 300 geysers. A geyser is a type of hot spring that shoots boiling hot water and steam into the air. Old Faithful is one of the most well known geysers. The name Old Faithful was chosen because the geyser is predictable. It erupts about every 91 minutes. Each eruption lasts from 1½ to 5 minutes. Today, up to 4 million people come to visit Yellowstone each year.



Rising 1,267 feet above the surrounding ground, Devils Tower was designated America's first national monument in 1906. The site is considered sacred to the Lakota and other tribes in the area. Devils Tower is the core of a volcano, exposed by erosion. The magma cooled and crystallized into hexagonal columns separated by vertical cracks. The parallel cracks make it a popular place for rock climbers.



When the Golden Gate Bridge was completed in 1937, it was the longest suspension bridge in the world. The bridge is almost 9,000 feet long and has two beautiful towers that are 820 feet tall.

While most bridges are painted steel gray to protect them from corrosion, the Golden Gate bridge is painted International Orange to help it blend in with the red-orange tones of the rocks and hills around San Francisco Bay.



Tourists visit Alaska and Hawaii each year. People travel to Alaska to see its beautiful glaciers. Cruise ships sail through the waterways of Alaska to allow people to see the glaciers up close.

Visitors to Hawaii go for its tropical weather and landscape. The warm weather year round makes its beaches the place to visit. People also visit the volcanoes of Hawaii.



Many mining towns in the West started in out-of-the-way places where gold and silver deposits were found. In a brief time they became boom towns. These towns grew quickly as thousands of prospectors and merchants moved to those places. However, when the gold or silver ran out, the towns were abandoned. The miners moved on to new strikes and claims. Other citizens left too. Without money from the miners,

businesses closed. Soon, all that remained of the town were the deserted buildings and vacant lots. Many of these ghost towns are still standing today. People come to ghost towns to see what life was like during the Gold Rush.

Disneyland is in southern California. It is part of a giant entertainment industry. This industry began by making movies. America's first movies were made in the Northeast. The moviemakers needed sunny days to film outdoors. The Northeast is often cloudy and rainy. A few moviemakers found the sunshine they needed in southern California. Los

Angeles, the second largest city in the nation, is now the home of the Hollywood movie industry. The movie industry soon attracted a man named Walt Disney. Disney arrived in southern California in 1923 with one big goal. He wanted to make people happy. Disney's cartoons delighted kids of all ages. So did his movies, television shows, and the “magic kingdom” of Disneyland. Disneyland opened in 1955. This year, as many as 14 million people will visit the park.



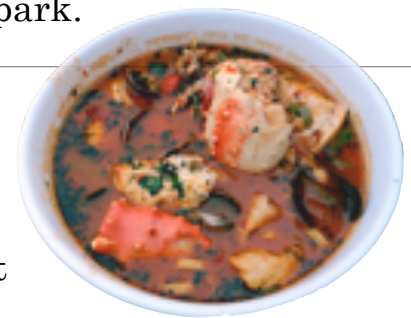
Culture

Food

The coastal waters of the Pacific Ocean provide abundant seafood. Salmon is often baked on a board of cedar wood.

Oysters are served barbecued, baked, fried, or raw on the shell. One popular dish is cioppino, a stew made with a mixture of different kinds of fish and shellfish.

Because of the many Chinese and Japanese immigrants in the region, Asian foods are popular in the west. Chinese railroad workers in the 1800s introduced Americans to egg foo young, chow mien, and sushi. The California Roll, a type of sushi made with avocado, rice and seaweed, was invented in Los Angeles.



The favorite local food of the Hawaiian Islands is saimin, a kind of ramen noodle soup. Eaten at any time of day, you can find this soup at snack bars, coffee shops, and even at McDonald's in Hawaii. At luaus, people often eat Kalua pig. A whole pig, often with an apple in its mouth, is covered with banana leaves and cooked in a pit in the sand.



The native people of Alaska have an unusual version of ice cream, a concoction made from reindeer fat, seal oil, freshly fallen snow, fresh berries, and sometimes ground fish. Air is whipped in by hand so that it slowly cools into foam. Women traditionally made Eskimo ice cream, called akutaq, after the first catch of a polar bear or seal, for funerals, or almost any other celebration. Today, Eskimo ice cream is usually made with Crisco shortening instead of reindeer fat.

Fun

The Pacific Coast and Hawaii are known for surfing. Every morning before sunrise, dedicated surfers head for the beach. In the 1970s, a group of teenagers in California combined their surfing skills with skateboards to create the skateboarding we know today with tricks, jumps, and ramps.



In warm weather, people enjoy hiking on mountain trails or through the rain forest, mountain climbing, and kayaking. Many people travel to the West coast in the spring to watch for gray whales migrating in the Pacific Ocean. In the winter, snow sports are popular. Snowboarding was invented in Baker, Washington, which has the highest annual snowfall of any ski area in the world. People also enjoy snow skiing and snowshoeing.

Dogsled racing is a favorite sport in Alaska. The Iditarod, the most famous race, begins in Anchorage, and ends 1,150 miles later in Nome. A few teams of dogs and their mushers, or drivers, have covered that distance in an amazing nine days. No wonder this event is called the “Last Great Race on Earth.”



The native people of Hawaii developed a dance form known as the hula. Often performed at parties called luaus, the hula is traditionally accompanied by a chant called a mele. Instruments such as the ukulele and the ipu (gourd drum) also accompany the dance. Both men and women wear leis (flower or leaf wreaths) around their heads, ankles, wrists, and necks. Originally, the hula was performed to honor the ancient Hawaiian gods or a particularly powerful chief. It remains an important part of Hawaiian culture.

The West Region

Before you begin reading each section, write True or False in the “Before” column. After you read, write True or False in the “After” column. Then answer the questions.

Land and Water of the West Region

	Before	After
1. The West is the largest region in the United States.		
2. Mount Washington is the highest mountain in the United States.		
3. Death Valley is the hottest, driest, and lowest place in the United States.		
4. There is a rain forest in the West region.		

1. What are the three mountain ranges that are in the West region?

2. What is a basin?

3. How is the Great Salt Lake different from most lakes?

4. Why are Alaska and Hawaii different from the other states in the West region?

Climate

	Before	After
1. Many places in Alaska receive 100 inches of precipitation a year.		
2. The West region has many earthquakes.		
3. All of the West region is cool and foggy for most of the year.		

1. How is the climate along the coast different from the climate in the Great Basin?

2. Why is Alaska the coldest state?

3. Why is Hawaii not too hot, even though it is close to the equator?

Products and Natural Resources

	Before	After
1. The most important natural resource in the West is the Pacific Ocean.		
2. Part of the West region is known as "America's Fruit and Salad Bowl."		
3. The Trans-Pacific Pipeline carries oil from Hawaii to oil refineries in California.		
4. Aircraft are built and tested in the West region.		

1. Why is the Columbia River important to the West region?

2. What products are made from steel in the West region?

3. How do people get salt from the Great Salt Lake?

4. What products come from Hawaii?

Landmarks

	Before	After
1. The Golden Gate Bridge got its name because it is painted gold.		
2. Rock climbers can climb up the core of an ancient volcano in the West region.		

1. What is Old Faithful?

2. What is a ghost town?

Culture

	Before	After
1. The luau is a traditional dance from Hawaii.		
2. Snowboarding and skateboarding were both developed in the West region.		

1. What is the Iditarod?

2. How is Eskimo ice cream different from regular ice cream?

The West Region

Before you begin reading each section, write True or False in the “Before” column. After you read, write True or False in the “After” column. Then answer the questions.

Land and Water of the West Region

	Before	After
1. The West is the largest region in the United States.		TRUE
2. Mount Washington is the highest mountain in the United States.		FALSE
3. Death Valley is the hottest, driest, and lowest place in the United States.		TRUE
4. There is a rain forest in the West region.		TRUE

1. What are the three mountain ranges that are in the West region?

Coast Ranges, Sierra Nevadas, Cascade Range, Rocky Mountains

2. What is a basin?

a low, bowl-shaped landform that is lower than the land around it

3. How is the Great Salt Lake different from most lakes?

It is one of the largest lakes. It is very shallow. It is full of salt water.

4. Why are Alaska and Hawaii different from the other states in the West region?

They are separated from the rest of the states. Hawaii is much closer to the equator, and Alaska is much closer to the North Pole.

Climate

	Before	After
1. Many places in Alaska receive 100 inches of precipitation a year.		TRUE
2. The West region has many earthquakes.		TRUE
3. All of the West region is cool and foggy for most of the year.		FALSE

1. How is the climate along the coast different from the climate in the Great Basin?

The area along the coast gets a lot of rain. It is cool and foggy in the summer. The Great Basin doesn't get as much rain and it is warmer.

2. Why is Alaska the coldest state?

Alaska is much farther from the equator than any other state. It is the closest state to the North Pole.

3. Why is Hawaii not too hot, even though it is close to the equator?

Cool winds from across the ocean help keep the land areas cool.

Products and Natural Resources

	Before	After
1. The most important natural resource in the West is the Pacific Ocean.		TRUE
2. Part of the West region is known as "America's Fruit and Salad Bowl."		TRUE
3. The Trans-Pacific Pipeline carries oil from Hawaii to oil refineries in California.		FALSE
4. Aircraft are built and tested in the West region.		TRUE

1. Why is the Columbia River important to the West region?

Dams on the river help make a lot of the electricity used in the region. Its water is used to irrigate much farmland. It is used for transportation and for moving goods to other ports.

2. What products are made from steel in the West region?

Aircraft, fishing boats, tankers, battleships

3. How do people get salt from the Great Salt Lake?

Salty water is pumped into shallow ponds. The sun evaporates the water, leaving just salt behind.

4. What products come from Hawaii?

pineapples, sugarcane, bananas, rice, coffee, macadamia nuts

Landmarks

	Before	After
1. The Golden Gate Bridge got its name because it is painted gold.		FALSE
2. Rock climbers can climb up the core of an ancient volcano in the West region.		TRUE

1. What is Old Faithful?

a geyser that erupts on a predictable schedule inside Yellowstone National Park

2. What is a ghost town?

a place that used to be a town during the Gold Rush but then was abandoned, leaving the empty buildings that are still standing

Culture

	Before	After
1. The luau is a traditional dance from Hawaii.		TRUE
2. Snowboarding and skateboarding were both developed in the West region.		TRUE

1. What is the Iditarod?

a famous dogsled race that runs from Anchorage to Nome in Alaska

2. How is Eskimo ice cream different from regular ice cream?

It is made with reindeer fat, seal oil, snow, berries, and sometimes ground fish.

Photo Credits

- Phithy54. "Bonneville Basin, Mount Bonneville." 20 October 2009. Online image. Wikimedia Commons. <http://commons.wikimedia.org/wiki/File:Bonneville_Basin_Mount_Bonneville.jpg>
- NPS Photo. "Redwood and People." 23 March 2006. Online image. Wikimedia Commons. <http://commons.wikimedia.org/wiki/File:Redwood_and_people_02.jpg>
- Gaba, Eric. "Alaska area compared to conterminous US." October 2008. Online image. Wikimedia Commons. <http://commons.wikimedia.org/wiki/File:Alaska_area_compared_to_conterminous_US.svg>
- NOAA. "Line0534." Unknown. Online image. Wikimedia Commons. <<http://en.wikipedia.org/wiki/File:Line0534.jpg>>
- US Department of Agriculture. "Truck Load of Ponderosa Pine." Online image. Wikimedia Commons. <http://commons.wikimedia.org/wiki/File:Truck_load_of_ponderosa_pine,_Edward_Hines_Lumber_Co_operations_in_Malheur_National_Forest,_Grant_County,_Oregon,_July_1942.jpg>
- Uribe, Rufino. "Cut Sugarcane." 9 September 2006. Online image. Wikimedia Commons. <http://en.wikipedia.org/wiki/File:Cut_sugarcane.jpg>
- Bezaire, Dave. "Trans-Alaska Pipeline at Delta Junction." 22 June 2009. Online image. Wikimedia Commons. <http://commons.wikimedia.org/wiki/File:Trans-Alaska_Pipeline_at_Delta_Junction.jpg>
- McNeill, Jeff. "Boeing 747-8 Test Planes in Assembly." 15 July 2009. Online image. Flickr. <<http://www.flickr.com/photos/jeffmcneill/3728987922/sizes/m/in/photostream/>>
- US Department of the Interior. "Old Faithful Geyser from Geyser Hill Overlook." Unknown. Online image. US Geological Survey. <http://3dparks.wr.usgs.gov/yell/recent/html2/old_faithful438.htm>
- Yool, Andrew. "Devils Tower National Monument, Wyoming, USA." 4 September 2003. Online image. Wikimedia Commons. <http://en.wikipedia.org/wiki/File:A_Yool_DevilsTower_04Sep03_exif.jpg>
- Hathorn, Billy. "US Mint, Denver, Colorado, 2010." 31 July 2010. Online image. Wikimedia Commons. <http://commons.wikimedia.org/wiki/File:U.S._Mint_in_Denver,_CO_IMG_5527.JPG>
- Gedstrom. "Train Station, Rhyolite, Nevada." 24 November 2006, Online image. Wikimedia Commons. <http://en.wikipedia.org/wiki/File:Rhyolite_Train_Station_20061124.JPG>
- Demonic, Kelly Sue. "Cioppino!" 24 July 2006. Online image. Wikimedia Commons. <<http://commons.wikimedia.org/wiki/File:Cioppino.jpg>>
- Niewiroski, Rich. "Golden Gate Bridge." 1 January 2007. Online image. Wikimedia Commons. <<http://en.wikipedia.org/wiki/File:GoldenGateBridge-001.jpg>>
- Kquilono. "Emily Apostle Island Sled Dog Race." 11 June 2007. Online image. Wikimedia Commons. <http://commons.wikimedia.org/wiki/File:Emily_Apostle_Island_Sled_Dog_Race.jpg>
- Stiner, Megan L. "Surfing in Hawaii." 28 October 2008. Online image. Wikimedia Commons. <http://commons.wikimedia.org/wiki/File:Surfing_in_Hawaii.jpg>

Map clip art by Wendy Candler at www.digitalclassroomclipart.com