

# Tswana names for Plants and Animals

edited by Kathrin Heiden

This document was created from [Tsammalex](http://tsammalex.clld.org) on 2015-05-13.

Tsammalex is published under a Creative Commons Attribution 4.0 International License and should be cited as

*Christfried Naumann & Steven Moran & Guillaume Segerer & Robert Forkel (eds.)  
2015. Tsammalex: A lexical database on plants and animals. Leipzig: Max Planck  
Institute for Evolutionary Anthropology. (Available online at  
<http://tsammalex.clld.org>, Accessed on 2015-05-13.)*

A full list of contributors is available at <http://tsammalex.clld.org/contributors>

The list of references cited in this document is available at  
<http://tsammalex.clld.org/sources>

**Kingdom: Animalia**

**Phylum: Arthropoda**

**Class: Arachnida**

**Order: other**

**Family: other**

**Solifugae** .

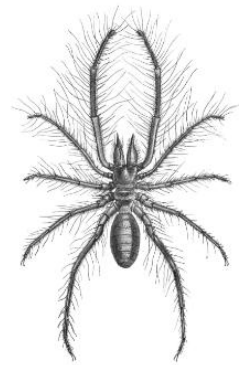
- seléalēi . *di* .



(CC) BY-SA © Braboowi



(CC) BY-SA © unknown (AshLin)



(CC) MARK © Anonymous

**Class: Insecta**

**Order: Coleoptera**

**Family: Dermestidae**

**Dermestes** .

- tshóle (ditshôlê) .
- tshwéle (ditshwêlê) .



(CC) BY-SA © André Karwath

**Family: Dryophthoridae**

[Sitophilus](#) Hertz, 1927 .

- **motóútwāna (metóútwana)** .
- **mogólágańg . me-**.



(CC) BY-SA © Sarefo

[Sitophilus granarius](#) .

- **tshupa . di-**.
- **motóútwāna (metóútwana)** .
- **mogólágańg . me-**.



(CC) BY-SA © Sarefo



Public Domain by Romwriter

### Family: Meloidae

#### [Mylabris](#) .

- tetsá . di-.

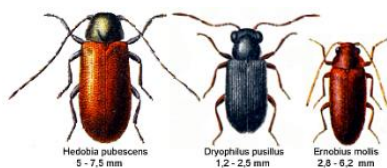


(CC) BY-SA © Siga

### Family: other

#### [Anobiidae](#) .

- bakê . bó-.



Public Domain by Edmund Reitter († 15. März 1920)

#### [Carabidae](#) .

- serotêlapúdúdū . di-.





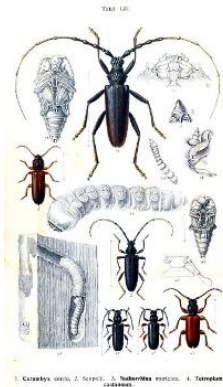
Public Domain by Christfried Naumann



Public Domain by Christfried Naumann

[Cerambycidae](#) .

- **kgantsíkíntsíkí (di-, bó-)** .



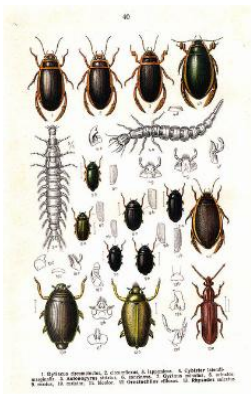
Public Domain by Edmund Reitter (1845–1920)



Public Domain by unknown (12hhj i2hhj)

[Gyrinidae](#) .

- **mmámagále . bó-**
- **thálē . bó-**



Public Domain by Edmund Reitter (1845–1920)

Lampyridae .

- senakángwêdí . di-.
- tshikanokána . di-.



(CC) BY-SA © unknown (6th Happiness)



(CC) BY-SA © Nevit Dilmen

Lycidae .

- podílē . bó-.



(CC) BY-SA © L. Shyamal



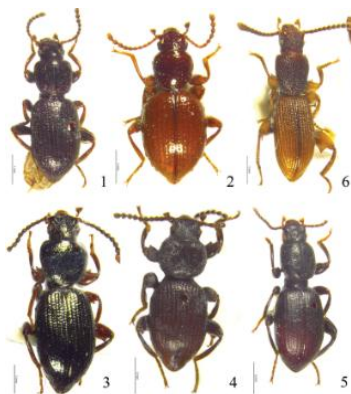
(CC) BY-SA © Korall

Tenebrionidae .

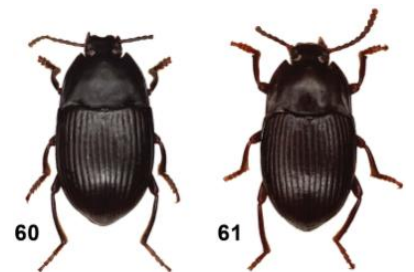
- leségô . ma-.



Public Domain by Christfried Naumann



(CC) BY © ZooKeys



(CC) BY © ZooKeys

**Order: Diptera**

**Family: other**

**Tabanidae** .

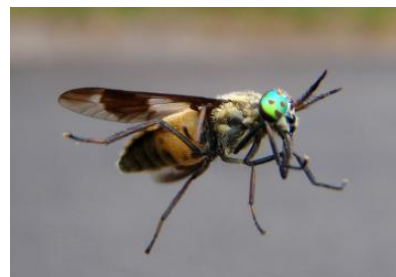
- seboba . di-.



Public Domain by unknown (Pudding4brains)



(CC) BY-SA © Fritz Geller-Grimm



(CC) BY-NC © Chris Moody

**Order: Hemiptera**

**Family: other**

**Belostomatidae** .

- mmálegáre . bó-.



BELOSTOMATIDAE - HETEROPTERA

(CC) BY-SA ©



Public Domain by unknown (Ltshears)

**Coreidae** .

- podílē . bó-.





(CC) BY-SA © unknown (User:Sarefo)

[Nepidae](#) .

- mmálegáre . bó-.



Public Domain by unknown (Jeffdelonge)



Public Domain by unknown (XenonX3)

[Pentatomidae](#) .

- podílē . bó-.



(CC) BY-SA © Lildobe



Public Domain by PimRijkee

**Order: Hymenoptera**

**Family: Formicidae**

*Camponotus maculatus* (Fabricius, 1782) .

- mmántlópī . bó-.



(CC) BY-SA © April Nobile



(CC) BY © Jeff Heath and the Dogon and Bangime Languages Project

*Carebara vidua* Smith, 1858 .

- ntlhwá . di-.



(CC) BY-SA © April Nobile



(CC) BY-SA © April Nobile

**Family: Halictidae**

*Nomia* .

- tlápī . di-.



(CC) BY-NC-SA © National Museum of Natural History Collections



(CC) BY ©

Family: other

*Pompilidae* .

- *mofu . me-*.



(CC) BY-SA © unknown (Alvesgaspar)



Public Domain by Dave Hood

*Vespidae* .

- *moruthwánē . me-*.



(CC) BY © James Niland



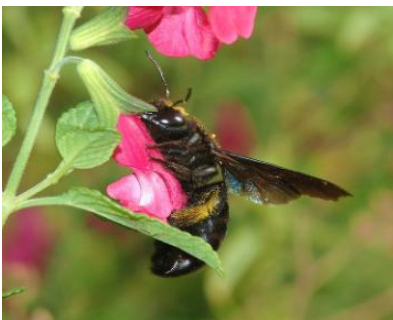
Public Domain by Christfried Naumann



(CC) BY-SA © Soebe

*Xylocopidae* .

- *mmárnmoó . bó-*.



(CC) BY-SA © Alvesgaspar



PD ©



(CC) BY-SA ©

Order: Lepidoptera



Family: other

[Psychidae](#) .

- mogótómodúané (megôtómoduane) .



(CC) BY-SA © Dumi



(CC) BY © Michael Kurz



(CC) PUBLICDOMAIN © František ŠARŽÍK

Order: Orthoptera

Family: Acrididae

[Locusta migratoria migratorioides](#) .

- molómē . me-.



(CC) BY-SA © unknown (ChriKo)



(CC) BY-SA © unknown (ChriKo)



(CC) BY © Jeff Heath and the Dogon and Bangime Languages Project

[Locustana pardalina](#) .

- segongwane . di-.

[Nomadacris septemfasciata](#) .

- kgópe (dikgópê) .
- tsiakgópe (ditsiakgópê) .
- tsiê . di-.



Public Domain by unknown (ChriKo ?)



(CC) BY-SA © Christiaan Kooyman

**Family: Pyrgomorphidae**

[Phymateus viridipes](#) .

- lešôtôtúa . ma-



(CC) BY-NC-SA © Bernard DUPONT



(CC) BY-NC-SA © Bernard DUPONT



(CC) MARK © Androstachys

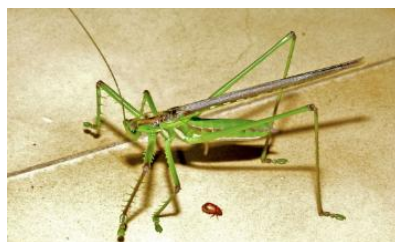
**Family: Tettigoniidae**

[Clonia](#) .

- lešáódi . ma-



(CC) BY-NC-SA © Bernard DUPONT



(CC) BY-NC-SA © Bernard DUPONT

**Family: other**



[Gryllidae](#) .

- senyétse (dinyêtsê) .



(CC) BY-SA © Cody Hough



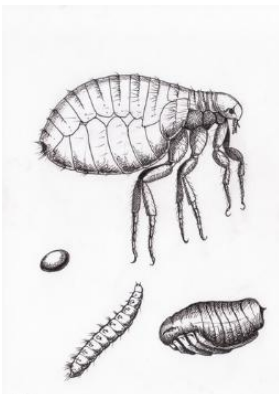
(CC) BY-SA © Luis Miguel Bugallo Sánchez

**Order: Siphonaptera**

**Family: Pulicidae**

[Pulex irritans](#) Linnaeus, 1758 .

- letsétsē (matsêtsê) .



(CC) BY-SA © Zsoldos Márton



(CC) BY ©



(CC) BY © Michael Wunderli

**Order: other**

**Family: other**

[Blattodea](#) .

- sebatíbogógo (dibatibogôgô) .



(CC) BY-SA © unknown (□□□)



(CC) BY-SA © Lmbuga

**Class: Malacostraca**

**Order: Decapoda**

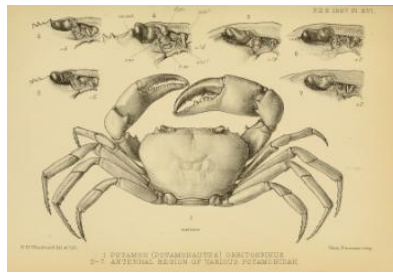
**Family: Potamonautidae**

**Potamonautes** .

- lekakaúwē (makakauwê) .



(CC) BY-SA © Purves, M / Michaelwild at en.wikipedia



(CC) MARK © G.M.Woodward



(CC) BY-SA ©

**Phylum: Chordata**

**Class: Amphibia**

**Order: Anura**

**Family: Brevicipitidae**

**Breviceps adpersus** Peters, 1882 .

- sógódí-kae . bó-.
- sennánátswíí . ði-.
- tsíníníkaé . bó-.



(CC) BY-SA ©



(CC) BY © Jens Reissig and Sean Thomas

**Family: Pyxicephalidae**

[Amietia angolensis](#) (Bocage, 1866) .

- lenkôgwana . ma-



(CC) BY-SA ©

[Pyxicephalus adspersus](#) Tschudi, 1838 .

- letlamêtló . ma-



(CC) BY-SA ©



Public Domain by Alexis Naumann



(CC) MARK © Ltshears

**Class: Aves**

**Order: Accipitriformes**

**Family: Accipitridae**

**[Haliaeetus vocifer](#)** (Daudin, 1800) . Characteristics: carnivore; body-length: 63-73 cm; white head, breast and tail; brown belly and forewings; black wings. Biotope: freshwater, coast. ([Sinclair 1994](#): 72)

- kgóádirá . bó.



(CC) BY-SA © Mehmet Karatay



(CC) BY-SA © Mehmet Karatay

**[Micronisus gabar](#)** (Daudin, 1800) . Characteristics: carnivore; body-length: 30-34 cm; grey throat and breast; reddish legs and cere; grey wings. Biotope: woodland. ([Sinclair 1994](#): 86)

- seéfamaeba . di-.
- segóotsánē (digôôtsane) .



(CC) BY © Neil Strickland



PD US ©



(CC) BY ©

**Family: Sagittariidae**

**[Sagittarius serpentarius](#)** (J. F. Miller, 1779) .

- rá mólangwána . bó-.
- tlangwé . bó-.





Public Domain by Taa DoBeS team  
(Boden/Güldemann/Naumann)



(CC) BY-SA ©



Public Domain by Taa DoBeS team  
(Boden/Güldemann/Naumann)

## Order: Anseriformes

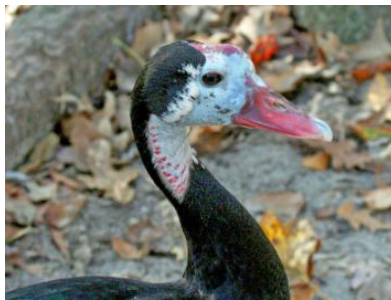
### Family: Anatidae

[Plectropterus gambensis](#) (Linnaeus, 1766) . Characteristics: herbivore; body-length: 100 cm, black plumage on the back; white on the belly; red bill; white face;. Biotope: grassland. ([Sinclair 1994](#): 64)

- sefúdimátshikhwí . di-.



(CC) BY-SA © Appaloosa



(CC) BY-SA © Dick Daniels

### Family: other

#### [Anatidae](#) .

- sefúdi . di-.
- pídípidi . di-.



(CC) BY-SA © Casliber



(CC) BY-SA © Karrackoo

**Order: Bucerotiformes**

**Family: Bucerotidae**

[Tockus erythrorhynchus](#) (Temminck, 1823) .

- korwé-modíngwaná . bó-.
- korwé . bó-.



(CC) BY-NC © ellisms



(CC) BY-SA © Mehmet Karatay



(CC) BY © Biodiversity Heritage Library

[Tockus flavirostris](#) (Rüppell, 1835) .

- korwé . bó-.



(CC) BY-SA ©



(CC) BY-SA ©



(CC) BY-SA © unknown (eric from USA)

***Tockus nasutus*** (Linnaeus, 1766) .

- korwé . bó-.



(CC) BY-NC © inaturalist



(CC) BY-SA © Lip Kee from Singapore, Republic of Singapore



(CC) BY © Biodiversity Heritage Library

**Order: Charadriiformes**

**Family: Burhinidae**

***Burhinus capensis*** (Lichtenstein, 1823) .

- mongwángwa . me-.





(CC) BY-SA © Jutta ? unknown



(CC) BY-SA © Cburnett?



(CC) BY © Jeff Heath and the Dogon and Bangime Languages Project

### Family: Charadriidae

[\*Vanellus coronatus\*](#) (Boddaert, 1783) .

- lethéjwané (mathêjwane) .



(CC) BY-SA ©



(CC) BY-SA ©



(CC) BY-SA ©

### Family: Glareolidae

[\*Rhinoptilus chalcopterus\*](#) (Temminck, 1824) .

- mmálapáleóme . bó-.





Public Domain by Nicolas Huet



(CC) BY-NC-SA © Bart Wursten

### Family: Turnicidae

[\*Turnix sylvaticus\*](#) (Desfontaines, 1789) . Characteristics: omnivore; body-length: 14 cm; speckled brown plumage.  
Biotope: grassland, woodland. ([Sinclair 1994](#): 100)

- lephurrwane . ma-.



(CC) BY-SA ©



(CC) BY-NC-SA © Bernard DUPONT



Public Domain by John Gould & Elizabeth Gould

### Order: Ciconiiformes

### Family: Ciconiidae

[\*Ciconia abdimii\*](#) Lichtenstein, 1823 . Characteristics: carnivore; body-length: 76 cm; black plumage; white lower back and rump; greenish bill and legs;. ([Sinclair 1994](#): 58)

- lekôllwane . ma-.



Public Domain by Taa DoBeS team  
(Boden/Güldemann/Naumann)



Public Domain by Taa DoBeS team  
(Boden/Güldemann/Naumann)



Public Domain by Taa DoBeS team  
(Boden/Güldemann/Naumann)

[Leptoptilos crumeniferus](#) (Lesson, 1831) . Characteristics: carnivore; body-length: 150 cm; white body, black wings; naked head and neck; large, pointy bill; whitish legs. ([Sinclair 1994](#): 58)

- leköllwane . ma-.



(CC) BY-SA © Ltshears



(CC) BY-SA © unknown (User:Cacophony)

**Order: Coliiformes**

**Family: other**

[Coliidae](#) .

- letsíabábā . ma-.
- rámarúngwánā . bó-.



(CC) BY-SA © Jerry Friedman

**Order: Columbiformes**

**Family: Columbidae**

**[Columba arquatrix](#)** Temminck, 1808 .

- leebaropé . *ma-*.



(CC) BY-SA © unknown (Monkey Boy)

**[Columba guinea](#)** Linnaeus, 1758 .

- leebaropé . *ma-*.



(CC) BY-SA © unknown (Ltshears)



(CC) BY-SA © unknown (ChriKo)

**[Oena capensis](#)** (Linnaeus, 1766) .

- rámokúdínyāne . *bó-*.



(CC) BY-SA © Lip Kee from Singapore, Republic of Singapore



(CC) BY-NC-SA © David Blank



[http://en.wikipedia.org/wiki/public\\_domain](http://en.wikipedia.org/wiki/public_domain) © C. G. Finch-Davies (1875-1920)

***Streptopelia senegalensis*** (Linnaeus, 1766) .

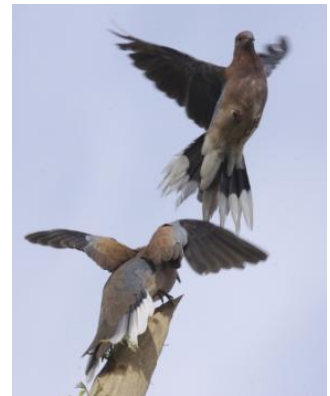
- tsôkwáne . bó-.



(CC) BY-SA ©



(CC) BY-SA © Lip Kee



(CC) BY-SA ©

**Order: Coraciiformes**

**Family: Coraciidae**

***Coracias caudatus*** Linnaeus, 1766 .

- letleretlére (matlêrêtlêrê) .



Public Domain by Taa DoBeS team  
(Boden/Güldemann/Naumann)



(CC) BY-SA © Mosmas ?

[Coracias garrulus](#) Linnaeus, 1758 .

- letleretlère (matlêrêtlêrê) .



(CC) BY-SA © Christian Svane



Public Domain by John Gould

**Order: Cuculiformes**

**Family: Cuculidae**

[Centropus superciliosus](#) Hemprich & Ehrenberg, 1829 .

- lehútútū . ma-.





(CC) BY-SA © Lip Kee Yap



(CC) BY-SA © frederic.salein



(CC) BY-SA © Lip Kee Yap

**Order: Falconiformes**

**Family: Falconidae**

***Falco biarmicus*** Temminck, 1825 . Characteristics: carnivore; body-length: 40-45 cm, rufous and black head and crown; pinkish underside; dark back. Biotope: grassland, desert, mountains. ([Sinclair 1994](#): 88)

- lekgotlhwé (makgôtlhwê) .



Public Domain by Taa DoBeS team  
(Boden/Güldemann/Naumann)



(CC) MARK © creator:Louis Agassiz Fuertes



Public Domain by Taa DoBeS team  
(Boden/Güldemann/Naumann)

***Falco chicquera*** Daudin, 1800 . Characteristics: carnivore; body-length: 30-36 cm, chestnut head and nape; dark brown moustach-like patches on the face; black and white barred belly; white throat; grey tail with black band. Biotope: savanna, dry area; river course. ([Sinclair 1994](#): 90)

- phákālāne . bó-



(CC) BY © Koshy Koshy



(CC) BY-SA © Peter Last



(CC) BY © Jeff Heath and the Dogon and Bangime Languages Project

***Falco naumanni*** Fleischler, 1818 . Characteristics: carnivore; body-length: 30 cm, chestnut, unspotted back; grey head, tail and secondaries. Biotope: grassland. ([Sinclair 1994](#): 92)

- seéfamaeba . di-.
- segóotsánē (digôôtsane) .



Public Domain by Neil Gray



Public Domain by Neil Gray

***Falco peregrinus*** Tunstall, 1771 . Characteristics: carnivore; body-length: 34-38 cm, black forehead and crown; black moustach-like marks in the face; white underside speckled with black. Biotope: rocky area. ([Sinclair 1994](#): 88)

- lekgotlhwé (makgôtlhwê) .



(CC) BY-SA © Carl Mueller



(CC) BY-SA © Keven Law



Public Domain by Naumann

***Falco rupicoloides*** A. Smith, 1829 . Characteristics: carnivore; body-length: 36-40 cm, plumage chestnut with black spots and bars; whitish underwing. ([Sinclair 1994](#): 92)

- seéfamaeba . di-.
- segóotsánē (digôôtsane) .



(CC) BY-SA © Thomas Schoch



(CC) BY-SA © D. Gordon E. Robertson

**Order: Galliformes**

**Family: Numididae**

***Numida meleagris*** (Linnaeus, 1758) . Characteristics: omnivore; body-length: 56 cm; grey plumage with white dots; blue and red skin on the head. Biotope: grassland, woodland. ([Sinclair 1994](#): 102)

- kgáka . di-.



(CC) BY-SA ©



(CC) BY © Jeff Heath and the Dogon and Bangime

Languages Project



(CC) BY © Chris Eason

**Family: Phasianidae**

***Coturnix coturnix*** (Linnaeus, 1758) . Characteristics: omnivore; body-length: 18 cm; speckled brown plumage. Biotope: grassland. ([Sinclair 1994](#): 100)

- lephurrwane . ma-.





(CC) BY-SA © Luis Miguel Bugallo Sánchez



Public Domain by Naumann: Naturgeschichte der  
Vögel Mitteleuropas, Band VI, Tafel 14 - Gera, 1897

**Order: Gruiformes**

**Family: Otididae**

[Ardeotis kori](#) (Burchell, 1822) .

- **kgóri (dikgôri)** .



Public Domain by Taa DoBeS team  
(Boden/Güldemann/Naumann)



Public Domain by Taa DoBeS team  
(Boden/Güldemann/Naumann)

[Eupodotis afra](#) (Linnaeus, 1758) .

- **motlatlágwé (metlatlagwê)** .



(CC) BY-SA © Susann Eurich



(CC) BY-SA © Andrew Massyn

[Eupodotis ruficrista](#) (A. Smith, 1836) .

- mokgwébā (mekgwêba) .



(CC) BY-SA © Frederic Salein



(CC) BY-SA © Chris Eason

**Order: Musophagiformes**

**Family: Musophagidae**

[Corythaixoides concolor](#) (A. Smith, 1833) .

- mokówé . me-.



(CC) BY-SA © Axel Bührmann



(CC) BY-SA © Axel Bührmann

**Order: Passeriformes**

**Family: Alaudidae**

[Eremopterix leucotis](#) (Stanley, 1814) .

- rámokwákwadí . bó-.



(CC) BY © Jeff Heath and the Dogon and Bangime Languages Project



(CC) MARK © creator:Andrew Smith



(CC) BY-NC © Werner Witte

**[Mirafrā sabota](#)** (A. Smith, 1836) .

- **sebóta . di-**



(CC) BY-NC-SA © Bernard DUPONT



Public Domain by



(CC) BY ©

**Family: Cisticolidae**

**[Prinia flavicans](#)** (Vieillot, 1821) .

- **tôntôbane . bó-**



Public Domain by



(CC) BY-SA © William Nortje



(CC) BY-SA © Charlesjsharp



[Prinia subflava](#) (Gmelin, 1789) .

- **tôntôbane . bó-**.



(CC) BY-NC-SA © Bernard DUPONT



(CC) BY-SA © Alan Manson



(CC) MARK © creator:Andrew Smith

**Family: Corvidae**

[Corvus albicollis](#) Latham, 1790 .

- **legákabé . ma-**.



(CC) BY-SA © unknown (Yoky)



(CC) BY-SA © Masa Sakano

[Corvus albus](#) Statius Muller, 1776 .

- **legákabé . ma-**.



(CC) BY-SA © Thomas Schoch



(CC) BY-SA © Myburgh

***Corvus capensis*** Lichtenstein, 1823 .

- legákabé . ma-.



Public Domain by Taa DoBeS team  
(Boden/Güldemann/Naumann)



Public Domain by Taa DoBeS team  
(Boden/Güldemann/Naumann)

**Family: Dicruridae**

***Dicrurus adsimilis*** (Bechstein, 1794) .

- kúámesí . bó-.



Public Domain by Taa DoBeS team  
(Boden/Güldemann/Naumann)



Public Domain by Taa DoBeS team  
(Boden/Güldemann/Naumann)

**Family: Fringillidae**

[Serinus alario](#) (Linnaeus, 1758) .

- tsílwané . bó-.



(CC) BY-SA © Alan Manson



(CC) BY-SA © Alan Manson

**Family: Laniidae**

[Corvinella melanoleuca](#) (Jardine, 1831) .

- motsúlodí (metsulôdi) .



(CC) BY-SA © unknown (Quartl)



(CC) BY-SA © D. Gordon E. Robertson

[Lanius collaris](#) Linnaeus, 1766 .

- setômêlamítlwa . di-.



(CC) BY-SA © Lip Kee



(CC) BY-SA © Jerry Friedman

**Family: Malaconotidae**

[Laniarius atrococcineus](#) (Burchell, 1822) .

- kgaragoba . bó-



(CC) BY-SA © Claude Gibney Finch-Davies



(CC) BY-SA © Hans Hillewaert

[Prionops plumatus](#) (Shaw, 1809) .

- leranthatha . ma-



(CC) BY-SA © Gabriel Buissart



**Family: Motacillidae**

[Motacilla capensis](#) Linnaeus, 1766 .

- moselekatáne (mesêlêkatane) .



(CC) BY-SA ©



(CC) BY-SA © Joachim Huber



(CC) MARK © creator:Heinrich von Kittlitz

**Family: Muscicapidae**

[Erythropygia paena](#) A. Smith, 1836 .

- phéne-wá-gáē . bó-.



(CC) BY-SA © Alastair Rae

[Myrmecocichla formicivora](#) (Wilkes, 1817) .

- lepińg . ma-.



(CC) BY ©



(CC) BY-SA © Alastair Rae



(CC) BY-NC © Werner Witte



**Family: Passeridae**

[Passer domesticus](#) (Linnaeus, 1758) .

- tswéré . bó-



(CC) BY-SA © Malene Thyssen



Public Domain by S. Möller

[Passer griseus](#) (Vieillot, 1817) .

- tswéré . bó-



(CC) BY-SA ©



(CC) BY © Jeff Heath and the Dogon and Bangime Languages Project



(CC) BY-SA © Tom Tarrant

[Passer melanurus](#) (Statius Muller, 1776) .

- thórobé . bó-
- tswéré . bó-



(CC) BY-SA © Hans Hillewaert



(CC) BY-SA © Hans Hillewaert

[Passer motitensis](#) (A. Smith, 1836) .

- tsweré . bó-.



(CC) BY © Derek Keats



(CC) BY-NC © inaturalist



(CC) BY-SA © Shyamal

[Petronia superciliaris](#) Blyth, 1845 .

- tsweré . bó-.



(CC) BY © Derek Keats



(CC) BY-SA © Alan Manson



[http://en.wikipedia.org/wiki/public\\_domain](http://en.wikipedia.org/wiki/public_domain) © Henrik

Grönvold (1858-1940)

[Plocepasser mahali](#) A. Smith, 1836 .

- mogálē (me-, bó-) .



Public Domain by Taa DoBeS team  
(Boden/Güldemann/Naumann)



(CC) BY-NC-SA © Gerald and Buff Corsi



(CC) MARK © creator:Andrew Smith

### Family: Ploceidae

[Bubalornis albirostris](#) (Vieillot, 1817) .

- letlolemóráká . *ma-*.



(CC) BY © Jeff Heath and the Dogon and Bangime  
Languages Project



(CC) BY © Jeff Heath and the Dogon and Bangime  
Languages Project

[Euplectes orix](#) (Linnaeus, 1758) .

- mohúbē (mehubê) .



(CC) BY-SA © Manfred Werner / Tsui



(CC) BY-SA © Manfred Werner / Tsui

[Euplectes progne](#) (Boddaert, 1783) .

- molépē (melepê) .



- **molópē (melepê) .**



(CC) BY-SA © Jayanth Sharma



(CC) BY-SA © NJR ZA

***Ploceus velatus*** Vieillot, 1819 .

- **talé . bó-.**
- **thaga . di-.**



(CC) BY © Simon J. Tonge



(CC) BY © Chris Eason



(CC) BY-SA ©

***Quelea quelea*** (Linnaeus, 1758) .

- **moragánē . me-.**
- **thaga . di-.**



(CC) BY © Pawel Ryszawa



(CC) MARK © Creator:John Gerrard Keulemans



(CC) BY-SA © Alastair Rae

***Sporopipes squamifrons*** (A. Smith, 1836) .

- **letsétsénkánē (matsêtsênkane) .**





(CC) BY-SA ©



Public Domain by



(CC) BY-SA ©

**Family: Pycnonotidae**

[Pycnonotus barbatus](#) (Desfontaines, 1789) .

- morítííkolé . bó-



(CC) BY © Valentina



(CC) BY-SA © Lip Kee Yap



Author died more than 70 years ago public domain  
images ©

**Family: Sturnidae**

[Onychognathus morio](#) (Linnaeus, 1766) .

- lengôdí . ma-



(CC) BY-SA © Lip Kee Yap



(CC) BY-SA © Lip Kee Yap

**Family: Sylviidae**

[Turdoides bicolor](#) (Jardine, 1831) .

- letsheganóga (matshêganôga) .



(CC) BY ©



(CC) BY-SA ©



(CC) BY-SA ©

[Turdoides jardineii](#) (A. Smith, 1836) .

- letsheganóga (matshêganôga) .



(CC) BY-SA ©



(CC) BY © Simon J. Tonge



(CC) MARK © creator:Andrew Smith

**Family: Turdidae**

[Monticola rupestris](#) (Vieillot, 1818) .

- phéne-wá-sélokó . bó-.



(CC) BY ©



(CC) BY-SA © Alan Manson



(CC) BY ©

[Turdus litsitsirupa](#) .

- letsútsúropú . ma-.



(CC) BY-SA © Flickr user Alastair Rae . Photo uploaded to commons by user ltshears



(CC) BY-SA © SandyCole  
(mailto:sandyc@dicksandy.org)



(CC) MARK © creator:Andrew Smith

**Family: Viduidae**

[Vidua paradisaea](#) (Linnaeus, 1758) .

- molépē (melepê) .
- molópē (melopê) .





(CC) BY-NC-SA © Arthur Chapman



(CC) BY-SA © Doug Janson



(CC) BY © Biodiversity Heritage Library

Family: other

[Nectariniidae](#) .

- **semónamónē (dimonamonê)** .



(CC) BY-SA © Lip Kee Yap



(CC) BY-SA © Lip Kee Yap

Order: Pelecaniformes

Family: Ardeidae

[Bubulcus ibis](#) (Linnaeus, 1758) . Characteristics: carnivore; body-length: 54 cm; white and light brown plumage; yellow bill; breeding bird has a red bill; often found in association with cattle. Biotope: grassland. ([Sinclair 1994](#): 54)

- **moleánē . me-**.





(CC) BY-SA © Atamari



(CC) BY-SA © Atamari



(CC) BY © Jeff Heath and the Dogon and Bangime Languages Project

### Family: Scopidae

[\*Scopus umbretta\*](#) Gmelin, 1789 . Characteristics: carnivore; body-length: 56 cm; dark brown plumage; long legs; hammer-shaped profile of the head; long dark bill. Biotope: freshwater. ([Sinclair 1994](#): 60)

- mmámasíloánoká . bó-.



(CC) BY-SA © Derek Ramsey



(CC) BY-SA © Sebastian Ritter



(CC) BY-SA ©

### Order: Piciformes

### Family: Indicatoridae

[\*Prodotiscus regulus\*](#) Sundevall, 1850 .

- tshéthho . bó-.



(CC) BY-SA © Alan Manson



(CC) BY-SA © Alan Manson



(CC) MARK © Creator:John Gerrard Keulemans

### Family: Ramphastidae

[\*Trachyphonus vaillantii\*](#) Ranzani, 1821 .

- kopáóōpe . bó-.



(CC) BY-SA © Joachim Huber



(CC) BY-SA © Chris Eason



(CC) BY-SA ©

### Order: Psittaciformes

Family: other

[\*Psittacidae\*](#) .

- péolwánē (dipêolwane) .



(CC) BY-SA © unknown (nico)



(CC) BY-SA © David Buranich Jr.

**Order: Strigiformes**

**Family: Strigidae**

[Otus leucotis](#) (Temminck, 1820) .

- makgôtlhwê . bó-.



Public Domain by Adrian Pingstone

**Family: Tytonidae**

[Tyto alba](#) (Scopoli, 1769) .

- lekutikurru . ma-.



(CC) BY-SA ©



Public Domain by Racheeo ??



(CC) BY-SA ©

[Tyto capensis](#) (A. Smith, 1834) .

- lekutikurru . ma-.



Public Domain by Hayleyk



(CC) BY-NC-SA © EOL China Regional Center



(CC) MARK © John Gould, HC Richter

**Family: other**

[Caprimulgidae](#) .

- ubáne . bó-.



(CC) BY-SA © Jerry Oldenettel



**Order: Struthioniformes**

**Family: Struthionidae**

[Struthio camelus](#) Linnaeus, 1758 .

- ntšhwé . bó-.
- mmántšhwé . bó-.



Public Domain by Taa DoBeS team  
(Boden/Güldemann/Naumann)



Public Domain by Taa DoBeS team  
(Boden/Güldemann/Naumann)



Public Domain by Roland Kiessling

**Order: Upupiformes**

**Family: Upupidae**

[Upupa epops](#) Linnaeus, 1758 .

- lerénkéte (marénkêtê) .
- ráselépe . bó-.



(CC) BY-SA ©



(CC) BY-SA ©



(CC) BY © Biodiversity Heritage Library

**Class: Mammalia**

**Order: Artiodactyla**

**Family: Bovidae**

**[Aepyceros melampus](#)** (Lichtenstein, 1812) . Characteristics: herbivore; height: 90 cm; females lack horns. Biotope: savanna, scrubforest, grassland.

- **phalá . di-**



(CC) BY-SA © Hans Hillewaert



(CC) BY-SA © Hans Hillewaert



(CC) BY-SA © Hans Hillewaert

**[Aepyceros melampus petersi](#)** Bocage, 1879 . Characteristics: herbivore; height: 90 cm, dull brown coat, lighter brown on the flanks and white on the belly; black blaze on the face; females are smaller and lack horns. Biotope: woodland. ([Cillié 1997](#): 18)

- **phala .**



(CC) BY-SA © Hans Hillewaert



(CC) BY-SA © Yathin S Krishnappa

**[Alcelaphus buselaphus](#)** (Pallas, 1766) . Characteristics: herbivore; height: 110-150 cm; the coat is glossy red-brown; the outside of the legs and the tail are black; the buttocks are light; there is a black blaze on the face; the snout is very long; the shoulders are humped and the back is sloped; the horns rise from a single pedicel and are S-shaped;. Biotope: savanna, shrubland, grassland, woodland,. ([Cillié 1997](#): 76)

- **kgáma . di-**





(CC) BY-SA © Hans Hillewaert



(CC) BY-SA © Hans Hillewaert



Public Domain by Güldemann/Naumann

***Antidorcas marsupialis*** (Zimmermann, 1780) . Characteristics: herbivore; height: 90 cm; white face with two brown stripes; light brown back, white belly; both sexes have horns. Biotope: savanna, grassland. (Cillié 1997: 20)

- **tshéphe (ditshêphê)** .



Public Domain by Taa DoBeS team  
(Boden/Güldemann/Naumann)



Public Domain by Taa DoBeS team  
(Boden/Güldemann/Naumann)



Public Domain by Taa DoBeS team  
(Boden/Güldemann/Naumann)

***Bos taurus*** Linnaeus, 1758 .

- **kgomo** [q<sup>h</sup>omó] . -/di-. "cow".



(CC) BY-SA ©



PD ©



Public Domain by Christfried Naumann

***Capra hircus*** Linnaeus, 1758 .

- **podi** [pódi] . -/di-. "goat". Related words: dipodi 'goat'.



(CC) BY © Simon J. Tonge



(CC) BY © High Contrast



Public Domain by Christfried Naumann

***Connochaetes gnou*** (Zimmermann, 1780) . Characteristics: herbivore; height: 100-120 cm; the coat is dark brown; the white tail is long and horse-like; they have a straight, light brown mane; the face is dark and has hair on the nose and a beard; both sexes have horns that curl forward;. Biotope: savanna, scrubforest, grassland. ([Cillié 1997](#): 80)

- **púdúmō (dipudumô)** .



Public Domain by Vassil



Public Domain by Vassil



Public Domain by Gustav Mützel

***Connochaetes taurinus*** (Burchell, 1823) . Characteristics: herbivore; height: 115-145 cm; the coat is dark grey-brown with vertical darker stripes on the neck and flanks; the mane, face, beard and long tail are black; both sexes have horns that curve sideways; the males are considerably larger than the females. Biotope: savanna, grassland, woodland. ([Cillié 1997](#): 82)

- **kgókōng (dikgókōng)** .





Public Domain by Taa DoBeS team  
(Boden/Güldemann/Naumann)



Public Domain by Taa DoBeS team  
(Boden/Güldemann/Naumann)



Public Domain by Taa DoBeS team  
(Boden/Güldemann/Naumann)

***Damaliscus lunatus*** (Burchell, 1823) . Characteristics: herbivore; height: 100-150cm; the coat is dark reddish-brown; they have a dark blaze on the face; also the upper parts of the legs are black; they have a hump on the shoulders and the back slopes downwards: both sexes have horns; the horns are ringed and S-shaped;. Biotope: savanna, scrubforest, grassland. (Cillié 1997: 74)

- **tshesébe (ditshêsêbê)** .



(CC) BY-SA © Paulmaz



(CC) BY-SA © Daniel Fafard (Dreamdan)

***Damaliscus pygargus phillipsi*** Harper, 1939 . Characteristics: herbivore; height: 85-100cm; the neck and top of the back are brown; the flanks and buttocks are darker; the belly and part of the legs are white; the face is brown with a small blaze above the eyes and a big blaze on the snout; the ears are white and pointy; the tail is black and bushy; both sexes have horns; it differs from the Bontebok by the blazes on the face being separated;. Biotope: grassland. (Cillié 1997: 70)

- **nônê . di-**



Public Domain by Christfried Naumann

***Hippotragus niger*** (Harris, 1838) . Characteristics: herbivore; height: 135 cm; the coat is dark brown on the back and white on the belly and buttocks; the face is white with three vertical black stripes; both sexes have horns which curve backwards; the female is slightly smaller than the male. Biotope: savanna, grassland, woodland. (Cillié 1997: 36)

- kwalaté . bo-.
- phalafala . di-.



(CC) BY-SA © Dezidor



Public Domain by Unknown

***Oreotragus oreotragus*** (Zimmermann, 1783) . Characteristics: herbivore; height: 60 cm; thick yellow to grey-brown coat with white belly; large tear-shaped markings in front of the eyes; males are smaller than females and have short (8 cm), erect horns; the klipspringer is stouter than the duiker which also lacks the tear marks;. Biotope: rocky area, mountains. (Cillié 1997: 50)

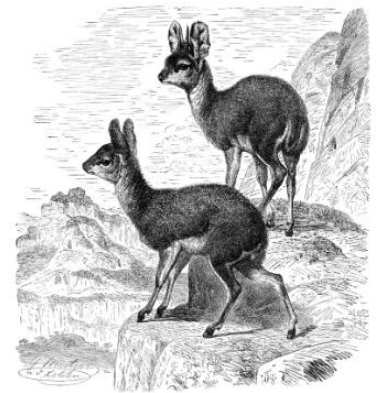
- mokábáowánē . me-.



(CC) BY-SA © Mirella Riesch / Christoph Aeschlimann



(CC) BY-SA © Munificent



(CC) MARK © Wikimedia Commons

***Oryx gazella*** (Linnaeus, 1758) . Characteristics: herbivore; height: 120 cm; the coat is light brown to ash grey with a black stripe along the flanks and on the back; white face with black patches on the snout and high on the forehead; both sexes have long straight horns; females are slightly smaller than males,. Biotope: savanna, grassland, semi-arid desert. (Cillié 1997: 32)

- **kúkāma . di-**.



Public Domain by Güldemann/Naumann



Public Domain by Taa DoBeS team  
(Boden/Güldemann/Naumann)



Public Domain by Taa DoBeS team  
(Boden/Güldemann/Naumann)

***Ovis aries*** Linnaeus, 1758 .

- **nku [nkú] . -/di-** "sheep". Related words: dinku 'sheep'.



(CC) BY-SA ©



(CC) BY-SA © Jörg Hempel



(CC) BY © Simon J. Tonge

***Pelea capreolus*** (Forster, 1790) . Characteristics: herbivore; height: 100 cm; brown, woolly coat; the belly and the underparts of the tail are white; long and pointy ears; the males are bigger than the females and have straight horns; the grey reebok can be distinguished from the mountain reebok by the straight horns and the lack of the black spots below the ears;. Biotope: grassland, mountains. (Cillié 1997: 48)

- **mhéle (mefele, phéle, di-) .**





(CC) BY-SA © unknown (en>User:Cburnett)



Public Domain by



Public Domain by

***Raphicerus campestris*** (Thunberg, 1811) . Characteristics: herbivore; height: 55cm; light brown to brick brown coat, the belly and the insides of the legs are white; the males are smaller than the females and have short (9 cm), straight and very sharp horns; the steenbok differs from the Oribi by the brown tail,. Biotope: savanna, grassland, woodland, semi-arid desert. (Cillié 1997: 54)

- malopé . bó-.
- phúdufúdu . di-.



(CC) BY-SA ©



(CC) BY-SA ©



Public Domain by

***Redunca arundinum*** (Boddaert, 1785) . Characteristics: herbivore; height: 85cm, the coat is yellowish brown on the back and white on the belly, the forelegs are dark brown in front, the tail is bushy and white underneath, males are larger and have horns, the southern reedbuck can be distinguished from the Impala by the lack of the three black stripes on the hindquarters and the less red colour, and from the mountain reedbuck by its bigger size and the habitat. Biotope: savanna, marshland, grassland. (Cillié 1997: 44)

- motsósā . me-.





(CC) BY © Jack Versloot



(CC) BY-SA © Winfried Bruenken



Public Domain by

***Sylvicapra grimmia*** (Linnaeus, 1758) . Characteristics: herbivore; height: 50cm; the coat varies in colour from light grey-brown to red-brown; the belly and the insides of the legs are white; the front legs have vertical black stripes; there is a tuft of long, black hair on the forehead; the short tail is dark on top and white underneath; females are larger and lack horns;. Biotope: savanna, grassland, woodland, mountains. ([Cillié 1997](#): 64)

- photi . di-.



Public Domain by unknown (Chuckupd)



(CC) BY-NC-SA © Bernard DUPONT



(CC) BY © Biodiversity Heritage Library

***Syncerus caffer*** (Sparrman, 1779) . Characteristics: herbivore; height: 1-1,7m; this cattle-like animal is born with a light reddish-brown coat that darkens with age until it is grey-black; both sexes are horned, but the horns of the male are especially large with thick bosses;. Biotope: savanna, scrubforest, forest, grassland. ([Cillié 1997](#): 84)

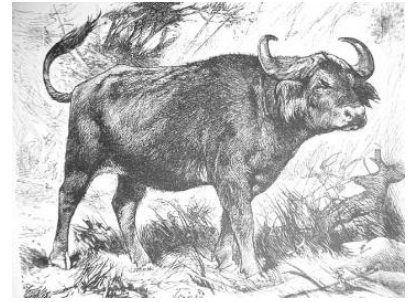
- náre . di-.



(CC) BY-SA © unknown, Haplochromis?



(CC) BY © Stig Nygaard



(CC) MARK © Wikimedia Commons

**[Taurotragus oryx](#)** (Pallas, 1766) .

- **phófu (diphôfu) .**



Public Domain by Christfried Naumann



(CC) BY-SA ©

**[Tragelaphus scriptus](#)** (Pallas, 1766) . Characteristics: herbivore; height: 75-110 cm, white spots on the legs and flanks, females are smaller, lighter in colour and lack horns. Biotope: savanna, forest, shrubland, grassland, woodland, freshwater. ([Cillié 1997](#): 22)

- **serôlêbotlhóko . di-**



(CC) BY-SA © Chiswick Chap



(CC) BY-SA © D. Gordon E. Robertson



(CC) MARK © Rüppell, Eduard, 1794-1884



***Tragelaphus strepsiceros*** (Pallas, 1766) . Characteristics: herbivore; height: 140 cm, pale-grey to brownish- grey coat, white, vertical stripes on the flanks, white chevron mark between the eyes, hump on the shoulders, males have twisted horns,. Biotope: savanna, forest, shrubland, grassland. (Cillié 1997: 28)

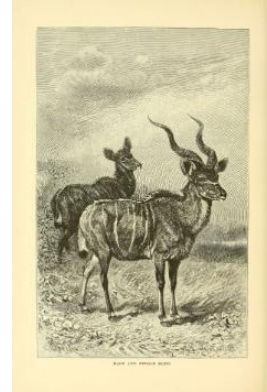
- tholó (dithôlô) .



(CC) BY-SA ©



(CC) BY-SA ©



(CC) BY © Biodiversity Heritage Library

#### Family: Giraffidae

***Giraffa camelopardalis*** (Linnaeus, 1758) . Characteristics: herbivore; characteristic are the long legs and the very long neck; the whitish-yellow body is covered with brown patches that get darker as the animal ages; on top of the head are two short horns that are covered with black hair; they have a mane of short, stiff hair;. Biotope: savanna, scrubforest, grassland, woodland. (Cillié 1997: 96)

- thutlwa . di-



Public Domain by Taa DoBeS team  
(Boden/Güldemann/Naumann)



Public Domain by Taa DoBeS team  
(Boden/Güldemann/Naumann)



Public Domain by Taa DoBeS team  
(Boden/Güldemann/Naumann)

#### Family: Hippopotamidae

***Hippopotamus amphibius*** Linnaeus, 1758 . Characteristics: herbivore; height: 150-165 cm; this very large semiaquatic animal is generally grey-brown but the belly and skinfolds are yellowish-pink; it has a very large mouth; the nostrils and the eyes are on top of the head; the ears are small and rounded;. Biotope: freshwater, swamps. (Cillié 1997: 106)

- kubú . di-



Public Domain by Christfried Naumann



© Geoff Gallice

**Family: Suidae**

[Phacochoerus aethiopicus](#) (Pallas, 1766) .

- kolobê . *di-*. "pig".



(CC) BY © Simon J. Tonge



(CC) BY-NC © inaturalist



(CC) MARK © Frank E. Beddard

**Order: Carnivora**

**Family: Canidae**

[Canis lupus familiaris](#) Linnaeus, 1758 .

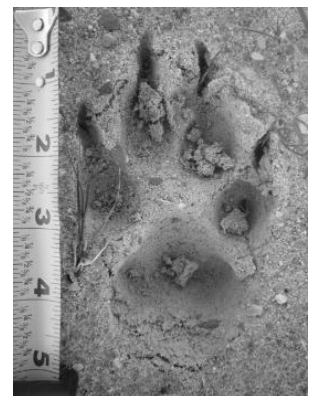
- ntša ~ ntšwa [ntʃwá] . *-/di-*. "dog". Related words: dintša 'dog'.



(CC) BY-SA ©



(CC) BY © Simon J. Tonge



(CC) BY-NC © inaturalist



***Canis mesomelas*** Schreber, 1775 . Characteristics: omnivore; height: 30-50cm; the body and legs are red-brown; the insides of the legs, the belly and the throat are whitish; on the back and shoulders is a characteristic black saddle; the ears stand erect; the tail is bushy and black; the Black-backed Jackal is smaller than the Side-striped Jackal and lacks the white tip on the tail;. Biotope: savanna, scrubforest, grassland. (Cillié 1997: 134)

- **phókójwē** . *bó*-.



Public Domain by Taa DoBeS team  
(Boden/Güldemann/Naumann)



Public Domain by Taa DoBeS team  
(Boden/Güldemann/Naumann)



Public Domain by Taa DoBeS team  
(Boden/Güldemann/Naumann)

***Lycaon pictus*** (Temminck, 1820) . Characteristics: carnivore; height: 75cm; these canids have a short dark snout and large, round ears; the body and legs are white with yellow, brown and black blotches, the bushy tail is white; the pattern and colour differs among individuals; down the centre of the forehead is a dark stripe;. Biotope: savanna, forest, grassland, woodland. (Cillié 1997: 130)

- **lekanyane** [lɪkənani] . *le-/ma-*. "wild dog".
- **letéané** [lɪtʰani] . *le-/ma-*. "wild dog".
- **letlhálerwā** [lɪtʰáɫrwa] . *le-/ma-*. "wild dog".



(CC) BY © Michael Gäbler



(CC) BY-SA © Bart Swanson



(CC) BY-SA © Evan Summerson, Kaizerza

***Otocyon megalotis*** (Desmarest, 1822) . Characteristics: insectivore; height 30-40 cm; the Bat-eared Fox gets its name from the big (14 cm), rounded ears; the coat is brownish-grey with a lighter belly, it is very fluffy; the bushy,black tail has a black tip;. Biotope: savanna, grassland. (Cillié 1997: 136)

- **motlhósē** (*metlhôse*) .



(CC) BY-SA ©



(CC) BY © Simon J. Tonge



(CC) BY-SA © Hans Hillewaert

***Vulpes chama*** (A. Smith, 1833) . Characteristics: carnivore; height 30 cm; the fur is black or silver grey with the flanks and underside yellow; the tip of the bushy tail is always black; it is more slender than the Bat-eared Fox and its ears are smaller;. Biotope: arid savanna, semi-arid shrubland. ([Cillié 1997](#): 138)

- **phókójwē . bó-**.



(CC) BY-SA ©



(CC) BY-SA © Susann Eurich



Public Domain by Friedrich Wilhelm Kuhnert  
(1865–1926), Brehms Tierleben, Small Edition 1927

## Family: Felidae

***Acinonyx jubatus*** (Schreber, 1775) . Characteristics: carnivore; height: 70-90 cm, the Cheetah is a large cat with long legs and a small head; the coat is yellowish-white with black spots; the ears are small and round; the Cheetah is the fastest land animal reaching speeds of more than 100 km/h; it can be distinguished from the Leopard by its longer legs and the characteristic tear marks extending from the eyes to the mouth;. Biotope: grassland, desert. ([Cillié 1997](#): 114)

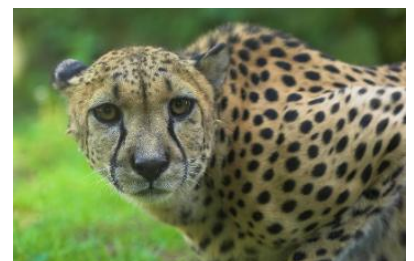
- **lengau . ma-**.



(CC) BY-SA © Paul Maritz



(CC) BY-SA © Malene Thyssen



(CC) BY-SA © Marcus T. Jaschen



**[Caracal caracal](#)** (Schreber, 1776) . Characteristics: carnivore; the coat is reddish-brown to brick-red, the belly and chest are white; this cat has remarkably strong hind legs and a short tail; the ears are large and pointed with large tufts of black hair, the back of the ear is black; they have black marks around the eyes and at the base of the whiskers;. Biotope: savanna, scrubforest, grassland, rocky area. ([Cillié 1997](#): 116)

- **thwánē . di-**.



(CC) BY-SA © € Van 3000 [2] from belgium belgikske  
belgiuistan - United Tribes ov Europe



(CC) BY-NC-SA © David Bygott

**[Felis nigripes](#)** Burchell, 1824 . Characteristics: carnivore: height: 25cm; this is the smallest cat in Africa; its coat varies from cinnamon to tawny and is patterned with dark spots that merge to form rings and stripes on the tail, legs and neck;. Biotope: savanna, scrubforest, grassland, desert. ([Cillié 1997](#): 122)

- **phágê . di-**.
- **sebalabolokwane . di-**.



(CC) BY-SA © Zbyszko



(CC) BY-SA © Ltshears

**[Felis sylvestris lybica](#)** . Characteristics: carnivore; the African Wild Cat resembles the domestic cat; its colour varies from grey to dark grey with reddish stripes on the legs and a reddish tinge on the back of the ears; they are larger than the African black-footed Cat and have less spots;. Biotope: savanna, forest, shrubland, grassland, rocky area, desert, mountains. ([Cillié 1997](#): 120)

- **tibê . di-**.
- **cf. phágê 'black-footed cat' (Felis nigripes) . di-**.



Public Domain by Christfried Naumann



Public Domain by Christfried Naumann

***Leptailurus serval*** (Schreber, 1776) . Characteristics: carnivore; height 55-65cm; the Serval is a slender cat with long legs, a small head and large rounded ears; the colour ranges from dull white to golden-yellow with black stripes down the neck and black spots on the body; it can be distinguished from the Cheetah by the lack of tear marks and the larger ears;. Biotope: savanna, forest, grassland. ([Cillió 1997](#): 118)

- **etotswe . ma-**.



(CC) BY-SA © unknown



(CC) PUBLICDOMAIN © Stolz, Gary M.

***Panthera leo*** (Linnaeus, 1758) . Characteristics: carnivore; height: 110-120 cm; the Lion is the largest cat in Africa and the only one where the males have manes, the colour of the mane ranges from blonde to black; the back of the round ears is black; the males are much larger than the females and have manes;. Biotope: savanna, scrubforest, forest, grassland, mountains. ([Cillió 1997](#): 110)

- **taú . di-**.



(CC) BY ©



© Geoff Gallice



Public Domain by Taa DoBeS team

(Boden/Güldemann/Naumann)



***Panthera pardus pardus*** (Linnaeus, 1758) . Characteristics: carnivore; height: 45-80 cm; the Leopard has shorter legs than most felines; the colour of its coat varies from white to golden-brown, with black spots, often 6 to 8 spots form a rosette; the ears are rounded; it differs from the Cheetah in having shorter legs and rosette-like spots, also it lacks the tear marks from eye to mouth;. Biotope: savanna, rainforest, grassland, desert. ([Cillié 1997](#): 112)

- **nkwê . di-**.



(CC) BY ©



(CC) BY-SA ©



PD ©

### Family: Herpestidae

***Cynictis penicillata*** (G.[Baron] Cuvier, 1829) . Characteristics: carnivore; the colour varies from yellowish-red to grey; the underside is slightly lighter;. Biotope: savanna, shrubland, grassland, semi-arid desert. ([Cillié 1997](#): 150)

- **mošwé (mešwè) .**
- **ramošwé . bó-**.



Public Domain by Christfried Naumann



Public Domain by Christfried Naumann



Public Domain by Christfried Naumann

***Galerella sanguinea*** (Rüppell, 1835) . Characteristics: omnivore; the colour of this Mongoose is usually correlated with the soil colour for camouflage and ranges from yellowish-grey to reddish; the long and upwards bent tail has a black tip;. ([Cillié 1997](#): 152)

- **kganó . bó-**.



(CC) BY-SA © Sara&Joachim



Public Domain by Andrew Smith (1797-1872)



(CC) BY © Jeff Heath and the Dogon and Bangime Languages Project

[Helogale parvula](#) (Sundevall, 1847) . Characteristics: carnivore; body-length: 20-30 cm; the coat is dark brown to rust-brown; the ears are prominent;. Biotope: savanna, forest, shrubland. ([Cillié 1997](#): 162)

- leswékétē . ma-



(CC) BY-SA © unknown (Jutta234)



(CC) BY-SA © Haplochromis

[Ichneumia albicauda](#) (G.[Baron] Cuvier, 1829) . Characteristics: omnivore; body-length 60cm; the coat is grey-brown; the hind legs are very long causing the back to slant forward when it walks; the tail is covered in long white hair;. Biotope: savanna, forest, grassland, woodland. ([Cillié 1997](#): 156)

- lesêlamotlhaka . ma-



(CC) BY-SA © MCSchaeffer



(CC) MARK © Frank E. Beddard



(CC) BY © Jeff Heath and the Dogon and Bangime Languages Project

***Suricata suricatta*** (Schreber, 1776) . Characteristics: carnivore; body-length: 25-35cm; the colour is silvery-brown with darker spots which may merge into crosslines on the lower back; the tail is not bushy and dark tipped;. Biotope: savanna, semi-arid desert. ([Cillié 1997](#): 164)

- **letôtôtô . ma-**.



PD ©



(CC) BY-SA ©

#### Family: Hyaenidae

***Crocuta crocuta*** (Erxleben, 1777) . Characteristics: carnivore; height: 70-90 cm; the colour ranges from dull yellow to white, with irregular dark spots;it has a short mane and overall short hair; the animal has a large head with round ears, e strong neck and a sloping back;. Biotope: savanna,scrubforest, montane forest, grassland. ([Cillié 1997](#): 124)

- **phíri . dí-**.
- **phíri-é-thámágā (diphiri-tse-dithamaga) .**



(CC) BY-SA © Gastrocycle



(CC) BY © Marieke Kuijpers



(CC) BY-SA © Jerry Friedman

***Hyaena brunnea*** Thunberg, 1820 . Characteristics: carnivore; height: 70-80 cm; the animal is dark brown with a light cloak on the shoulders and neck, the back and neck are covered in long fur; the belly and forehead are lighter coloured; the legs are dark and have light rings; it has large, pointy ears; the forequarters are more strongly developed than the hindquarters, the back is sloping;. Biotope: savanna, grassland, desert. ([Cillié 1997](#): 126)

- **mosonokwane . me-**.
- **phírítshwāna . bó-**.





(CC) BY-SA © unknown ( <http://www.pistoleros.no> )



(CC) BY-NC-SA © Picasa



(CC) MARK © Alfred Edmund Brehm (1829-1884)

***Proteles cristata*** (Sparman, 1783) . Characteristics: insectivore; height: 40-50 cm; the coat is brownish-yellow with approximately five distinct vertical stripes on the back; the snout and lower parts of the legs are black; the bushy tail has a black tip; it has large, rotatable ears; it can be distinguished from the Hyaenas by its smaller size;. Biotope: savanna, grassland. ([Cillié 1997](#): 128)

- **thukhwí . bó-**.



(CC) BY-SA © Dominik Käuferle, Dkaeufelerle



(CC) BY-SA ©



Author died more than 70 years ago public domain  
images ©

### Family: Mustelidae

***Aonyx capensis*** (Schinz, 1821) . Characteristics: carnivore; body-length: 75-90 cm; the upper parts of the body are chestnut while the belly, chest, throat and face are lighter coloured; the paws are clawless except for three digits of the hind paws; they can be distinguished from the Spotted-necked Otter by the bigger size and the lack of spots on the throat;. Biotope: freshwater. ([Cillié 1997](#): 168)

- **lenyíbi . ma-**.



Public Domain by unknown (Ruby 1x2)

***Mellivora capensis*** (Schreber, 1776) . Characteristics: omnivore; height: 25-30cm; the body is black with a broad, greyish-white saddle on the back and head; the legs are short and equipped with sharp claws; the black tail is short; the ears are very small;. Biotope: savanna, forest, grassland. ([Cillié 1997](#): 140)

- **magógwē . bó-**
- **matshwáne . bó-**



(CC) BY-SA ©



(CC) BY-SA © Matěj Bařha



(CC) MARK © Creator:Joseph Smit

***Poecilogale albinucha*** (Gray, 1864) .

- **nakēdi . di-**



Public Domain by Devonpike



Author died more than 70 years ago public domain

images ©

**Family: Viverridae**

[\*Genetta genetta\*](#) (Linnaeus, 1758) . Characteristics: carnivore; this cat-like animal has a grey coat with black spots on it; the tail is very long and has grey and black rings, the tip is always white; the ears are very thin and rounded; each individual has a characteristic face mask;. Biotope: savanna, forest, scrubforest, grassland. ([Cillié 1997](#): 144)

- **tshípa . di-**



(CC) BY © Jeff Heath and the Dogon and Bangime  
Languages Project



(CC) BY © Jeff Heath and the Dogon and Bangime  
Languages Project



(CC) BY-SA © Liné1

[\*Genetta genetta pulchra\*](#) .

- **tshípálōré . bó-**

[\*Genetta tigrina\*](#) (Schreber, 1776) . Characteristics: carnivore; this cat-like animal has a greyish-white coat with dark spots; the tail is long and dark with white rings, the tip is black; a distinct band of dark hair begins just behind the shoulders and ends at the base of the tail; there are white spots underneath the eyes and the cheeks are white, these white areas are divided by a dark mark;. Biotope: savanna, forest, grassland, fynbos. ([Cillié 1997](#): 146)

- **tshípa-thókoló . di-**



Public Domain by Wyman & Sons Limited



(CC) BY-SA © Altaileopard, Jochen Ackermann

**Order: Erinaceomorpha**

**Family: Erinaceidae**

[\*Atelerix frontalis\*](#) (A. Smith, 1831) . Characteristics: insectivore; the back and flanks are covered with black and white spines; on the forehead is a characteristic white band; the snout is pointed;. Biotope: savanna, scrubforest, grassland. ([Cillié 1997](#): 180)

- **setlhóng . di-**





Public Domain by Christfried Naumann

## Order: Lagomorpha

### Family: Leporidae

***Lepus capensis*** Linnaeus, 1758 . Characteristics: herbivore; this typical hare has well developed hind legs for running and leaping; the ears as well as the eyes are large; the colour of the coat varies from light brown to reddish to sandy grey; the females are larger than the males;. Biotope: grassland, desert. ([Cillié 1997](#): 186)

- **matshwárátsélāna . bó-**



(CC) BY-SA © benjamint



(CC) MARK © Creator:Joseph Smit



(CC) BY-SA © Haplochromis

***Lepus europaeus*** Pallas, 1778 .

- **modíoló (medióló) .**



(CC) BY-SA © Hans-Jörg Hellwig

***Lepus saxatilis*** F. Cuvier, 1823 . Characteristics: herbivore; body-length: 45-65cm; the fur on the back is grizzled gray with black speckles; the belly is white; the short tail is dark on top and white underneath; the erect ears are prominent; the Scrub Hare is larger than the Cape Hare. Biotope: savanna, woodland. ([Cillié 1997](#): 184)

- **mmútlwa (mebutla)** . "hare".
- **modíoló** . *me-*. "bush hare".
- . "scrub hare".



(CC) BY-SA © Masteraah



GNU Free Documentation License © Lee R. Berger,  
uploaded by Profberger at en.wikipedia

***Pronolagus randensis*** Jameson, 1907 . Characteristics: herbivore; this rabbit has a salt-and-pepper fur of reddish-brown colour; the underparts are lighter; the chin and cheeks are whitish-grey; it has strong hind legs and large, sparsely haired ears;. ([Cillié 1997](#): 188)

- **tlhólwê** . *bó-*.

**Order: Macroscelidea**

**Family: Macroscelididae**

***Elephantulus intufi*** (A. Smith, 1836) . Characteristics: carnivore; length: 24cm, tail-length: 12cm; grey-brownish coloured fur; elongated highly mobile snout; thin round ears; white rings around the large eyes; long sparsely haired tail;. Biotope: savanna, scrubforest, grassland, woodland. ([Stuart and Stuart 2007](#): 34)

- **nthúfē** . *bó-*.



(CC) BY-SA ©



(CC) BY-SA ©

**Order: Perissodactyla**

**Family: Rhinocerotidae**

[Ceratotherium simum](#) (Burchell, 1817) . Characteristics: herbivore; height: 150-180cm; the body is barrel-shaped with a low hanging head; the ears are pointy; the head is long with two horns on the snout, the front horn being the bigger one ( $\pm 85$  cm); the square lips are characteristic; the white Rhinoceros is bigger than the black Rhinoceros. Biotope: savanna, forest, grassland. ([Cillié 1997](#): 102)

- **mogôfú . me-**.
- **tshúkūdu . di-**.



(CC) BY-SA © Ryan Harvey



(CC) BY-SA © unknown (Wj32)

[Diceros bicornis](#) (Linnaeus, 1758) . Characteristics: herbivore; height: 130-180cm; the the body is barrel shaped with the head held higher than the white Rhinoceros does; the ears are rounded; two horns grow on the snout, the front one is usually larger; the upper lip is pointed;. Biotope: savanna, scrubforest, grassland, desert. ([Cillié 1997](#): 104)

- **bóbodilényane (bôbodilényane) .**
- **mogôfú . me-**.
- **tshúkūdu . di-**.



(CC) BY-SA ©



(CC) BY-SA ©



Public Domain by Christfried Naumann

**Order: Pholidota**

**Family: Manidae**



**[Manis temminckii](#)** Smuts, 1832 . Characteristics: insectivore; body-length: 40-70cm; this animal is covered in very hard, brown scales, giving it a pine-cone like look; only the belly, face and insides of the strong legs are naked; it has a small head with a pointed snout; the tongue is very long (25 cm) and sticky making it perfect for ant and termite hunt;. Biotope: savanna, scrubforest, forest, grassland. ([Cillié 1997](#): 174)

- **kgága . di-**



Public Domain by Masteraah



Public Domain by Masteraah

## Order: Primates

### Family: Galagonidae

**[Galago moholi](#)** A. Smith, 1836 . Characteristics: omnivore; body-length: 14-17cm; this small primate has light brown fur with a yellow tinge towards the belly and limbs; the extremely large, bare ears can be moved independently and have four vertical ridges; the large eyes are surrounded by a dark mask; the hind legs are longer than the forelegs;. Biotope: savanna, forest, grassland, semi-arid woodland. ([Cillié 1997](#): 196)

- **mogwelé . me-**



(CC) BY-SA © Joachim Huber

***Otolemur crassicaudatus*** (É. Geoffroy Saint-Hilaire, 1812) . Characteristics: omnivore; body-length: 25-50 cm, tail-length: 30-50 cm; the silvery-brown to grey fur is thick and woolly, the underside is lighter coloured; the large eyes ears are characteristic; the hind legs are very powerful and larger than the forelegs; it is bigger than the Moholi Bushbaby and its tail is much thicker and woollier;. Biotope: forest. ([Cillié 1997](#): 198)

- **mogwelé . me-**



(CC) BY-SA © unknown (buecherfresser)



(CC) BY-SA © Hans Hillewaert (Lycaon)

## Order: Proboscidea

### Family: Elephantidae

***Loxodonta africana*** (Blumenbach, 1797) . Characteristics: herbivore; height: 3-3,75m; the African Bush elephant has large flat ears; its trunk ends with two opposing extensions; both sexes have large tusks; females are smaller and have smaller tusks;. Biotope: savanna, marshland, forest, grassland, desert, swamps. ([Cillié 1997](#): 100)

- **tlôu . di-**



(CC) BY-SA © nickandmel2006



Public Domain by Gorgo

## Order: Rodentia

### Family: Bathyergidae

[\*Cryptomys hottentotus\*](#) (Lesson, 1826) . Characteristics: herbivore; body-length: 10-16 cm; the thick fur is grey or brown, in some individuals a white blaze is found on the head; the eyes are not well developed;. Biotope: savanna, grassland. (Cillié 1997: 211)

- serúnya . di-.



CC-Zero ©

#### Family: Hystricidae

[\*Hystrix africae australis\*](#) Peters, 1852 . Characteristics: herbivore; body-length: 60-80 cm; this very large rodent is covered with quills and spines; the 30-50 cm long quills are white with black rings; the belly, legs and face are covered with short, coarse hair; females are larger than males;. Biotope: savanna, forest, shrubland, grassland, rocky area. (Cillié 1997: 182)

- nokó . di-.



(CC) BY-SA © unknown (emijrp)



(CC) BY-SA © unknown

#### Family: Muridae

[\*Aethomys namaquensis\*](#) (A. Smith, 1834) . Characteristics: herbivore; length:23-29 cm, tail-length: 15 cm; the fur is yellowish-brown with lighter underparts; the tail is covered in scales. Biotope: savanna, forest, shrubland, grassland, rocky area, desert. (Cillié 1997: 213)

- lek .





(CC) BY ©

***Mus indutus*** (Thomas, 1910) .

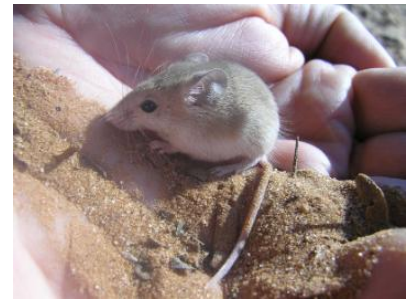
- **pêba . di-** "mouse".



Public Domain by Güldemann/Naumann



Public Domain by Güldemann/Naumann



Public Domain by Güldemann/Naumann

***Rhabdomys pumilio*** (Sparman, 1784) . Characteristics: herbivore; length: 19cm; the fur is brown on the back and white on the belly; an the back are four characteristic dark stripes;. Biotope: montane savanna. ([Cillié 1997](#): 213)

- **tádi . di-**



(CC) BY-NC-SA © Arthur Chapman



(CC) BY © Simon J. Tonge



(CC) BY-SA © C.R.Selvakumar

**Family: Myoxidae**

***Graphiurus murinus*** (Desmarest, 1822) . Characteristics: omnivore; body-length: 7-16cm; the fur is grey on the back and white on the underparts; the tail is long(5-13 cm) and fluffy; the eyes have a black mark around them; the ears are round;. Biotope: savanna, forest, grassland. ([Cillié 1997](#): 211)

- **tsíkôtsíkô . bó-**



(CC) BY-NC-SA © James Dowling-Healey



(CC) BY-SA © Николай Усик /  
<http://paradoxusik.livejournal.com/>



(CC) MARK © Wikimedia Commons

### Family: Pedetidae

***Pedetes capensis*** (Forster, 1778) . Characteristics: omnivore; body-length: 35-45 cm; the Springhare is actually a rodent; with its powerful hind legs and the short forelegs it resembles a small kangaroo (though unrelated), it can leap over 2m in one jump; the colour of the coat varies from pale grey to reddish brown, the underparts are white; the long tail always has a broad black tip; it has long ears and conspicuously large eyes;. Biotope: savanna, grassland, desert. ([Cillie 1997](#): 190)

- **tshipó . bó-**.
- **matsípané . bó-**.
- **ntlóle . bó-**.



(CC) BY-NC-SA © Bernard DUPONT



(CC) BY-NC-SA © Bernard DUPONT



(CC) MARK © Creator:Richard Lydekker

### Family: Sciuridae

***Paraxerus cepapi*** (A. Smith, 1836) . Characteristics: omnivore; body-length: 35 cm, half of which is tail; the colour varies depending on the region from pale grey to brown; the head and legs are rusty coloured; the chest is lighter coloured; the long, bushy tail is carried extended backwards;. Biotope: savanna, woodland. ([Cillie 1997](#): 194)

- **sepêpê . di-**.
- **setlhorá . di-**.





(CC) BY © Simon J. Tonge



(CC) BY © Simon J. Tonge



Public Domain by Androstachys

**[Xerus inauris](#)** (Zimmermann, 1780) . Characteristics: omnivore; body-length: 45 cm; the fur is cinnamon on the back and white on the face, belly, and insides of the leg; on the flanks are characteristic white stripes; the bushy tail is as long as the body itself and covered with long whitish hair; the ears are simple openings on the side of the head and the eyes are fairly large;. Biotope: savanna, grassland, desert, dune. ([Cillié 1997](#): 192)

- **samánē . bó-**
- **sekátamósimá . di-**



(CC) BY-NC-SA © Bernard DUPONT



(CC) BY-SA ©



(CC) BY © Neil Strickland

### Family: **Thryonomyidae**

**[Thryonomys swinderianus](#)** (Temminck, 1827) . Characteristics: herbivore; body-length: 60cm; the Greater Canerat's heavyset body is covered in a coarse, yellowish-brown pelage; the underside is much lighter; they have rounded ears; they are bigger than the Lesser Canerat;. Biotope: marshland. ([Cillié 1997](#): 178)

- **lebódi . ma-**





(CC) BY-SA ©



(CC) MARK © GMutzet / Alfred Brehm



Public Domain by

## Order: Tubulidentata

### Family: Orycteropodidae

[\*Orycteropus afer\*](#) (Pallas, 1766) . Characteristics: insectivore; height: 60 cm; this animal has a long pig-like snout, large, erect ears and a thick tail; most of the body is naked, only the legs are covered with dark hair; the forefeet have strong claws for digging; it has a long (30 cm), sticky tongue which allows it to catch termites and ants;. Biotope: savanna, grassland. ([Cillié 1997](#): 172)

- thákadú . di-.



Public Domain by Christfried Naumann



(CC) BY-SA ©



(CC) BY-SA ©

## Class: Reptilia

### Order: Crocodylia

### Family: Crocodylidae

[\*Crocodylus niloticus\*](#) Laurenti, 1768 .

- kwêna . di-.



(CC) BY-SA © MathKnight and Zachi Evenor



(CC) BY-SA © Marco Schmidt



(CC) BY-SA © Atamari

**Order: Squamata**

**Family: Amphisbaenidae**

**Monopeltis** .

- seleká . di-.



(CC) BY-NC-SA © Museum of Comparative Zoology,  
Harvard



(CC) BY-NC-SA © Museum of Comparative Zoology,  
Harvard



(CC) BY-NC-SA © Museum of Comparative Zoology,  
Harvard

**Family: Atractaspididae**

**Atractaspis bibronii** Smith, 1849 .

- phíka . di-.



(CC) BY-NC-SA © Koen D.



(CC) BY-NC-SA © Koen D.

### Family: Boidae

[\*Python sebae\*](#) (Gmelin, 1789) .

- tlhwáre . di-.



(CC) BY-SA © Joachim Huber



(CC) BY © Tigerpython



(CC) MARK © Sir Andrew Smith

### Family: Chamaeleonidae

[\*Chamaeleo dilepis\*](#) Leach, 1819 .

- lebódu (mabôdu) .
- lelóbu (malóbu) .
- leóbu (maóbu) .
- kgomêla . bó-.





(CC) BY-SA © Alex Antener



(CC) BY-SA © unknown

**Family: Colubridae**

[Dispholidus typus](#) (Smith, 1828) .

- legwére . *ma-*.



(CC) BY-SA © Rishaada

[Psammophylax tritaeniatus](#) (Günther, 1868) .

- mosélényáne . *me-*.

**Family: Cordylidae**

[Cordylus tropidosternum](#) (Cope, 1869) .

- mmámágwai . *bó-*.



(CC) BY-SA © unknown (User:Haplochromis)

**Family: Elapidae**

[Hemachatus haemachatus](#) (Bonnaterre, 1790) .

- káke . bó-



(CC) BY-SA © Lee R. Berger



(CC) BY-SA © Lee R. Berger

[Naja haje](#) (Linnaeus, 1758) .

- káke . bó-



Public Domain by John Walker, Head



(CC) BY © Jeff Heath and the Dogon and Bangime Languages Project



Public Domain by Ltshears

[Naja nigricollis](#) Reinhardt, 1843 .

- káke . bó-



(CC) BY © Luca Boldrini



(CC) BY © Jeff Heath and the Dogon and Bangime Languages Project

**Family: Gekkonidae**

[\*Pachydactylus capensis\*](#) (Smith, 1846) .

- mmámágwātagwatane . bó-.
- tshegísané . bó-.

**Family: Gerrhosauridae**

[\*Gerrhosaurus flavigularis\*](#) Wiegmann, 1828 .

- lekgáólatshéga . ma-.



Public Domain by Lebrun



(CC) BY-SA © William Kreijkes

**Family: Lacertidae**

[\*Eremias\*](#) .

- ntséané . bó-.



(CC) BY-SA © Andrew Butko



(CC) PUBLICDOMAIN © Barbod Safaei

**Family: Scincidae**

[\*Trachylepis capensis\*](#) (Gray, 1831) .

- lekgáólatshéga . ma-.





(CC) MARK © Abu Shawka



(CC) MARK © Abu Shawka



(CC) BY-SA ©

[Trachylepis striata](#) (Peters, 1844) .

- mokgantsútswane . me-.



(CC) BY-SA © D. Gordon E. Robertson



(CC) BY © Jeff Heath and the Dogon and Bangime Languages Project



(CC) BY-NC © inaturalist

**Family: Varanidae**

[Varanus exanthematicus](#) (Bosc, 1792) .

- gopánē . bó-.
- kgwathé . bó-.



(CC) BY-NC © inaturalist



(CC) BY-SA ©



(CC) BY ©

[Varanus niloticus](#) (Linnaeus, 1766) .

- póló . *di-*.
- pólómêtsí . *di-*.



(CC) BY © Simon J. Tonge



Public Domain by Alexis Naumann



(CC) BY-NC-SA © Description de l'Égypte, Book 34 (1826), Volume I - Planches : Histoire Naturelle.

## Family: Viperidae

[Bitis arietans](#) (Merrem, 1820) .

- lebolobólo . *ma-*.



(CC) BY-NC-SA © Gerald and Buff Corsi



Public Domain by Alexis Naumann



Public Domain by Alexis Naumann

## Order: Testudines

### Family: Pelomedusidae

[Pelomedusa subrufa](#) (Bonnaterre, 1789) .

- khádubánē . *di-*.





(CC) BY-SA © Ltshears



(CC) BY © Jeff Heath and the Dogon and Bangime Languages Project



(CC) BY © Jeff Heath and the Dogon and Bangime Languages Project

**Family: Testudinidae**

[Geochelone pardalis](#) (Bell, 1828) .

- khúdútlou (dikhudutlôu) .



Public Domain by Christfried Naumann



Public Domain by Christfried Naumann



Public Domain by Christfried Naumann

[Kinixys belliana](#) Gray, 1831 .

- makgákgánē . bó-.



(CC) BY-SA © unknown

**Phylum: other**

**Class: Aves**



**Order: Falconiformes**

**Family: Accipitridae**

[Aegyptiinae](#) . Biotope: check.

- lenông . *ma-*.

**Class: other**

**Order: Coleoptera**

**Family: Buprestidae**

[Sternocera orissa](#) .

- lebitsé . *ma-*.



(CC) BY-NC-SA © Bernard DUPONT



(CC) BY-NC-SA © Bernard DUPONT



(CC) BY-SA ©

**Kingdom: Metazoa**

**Phylum: Arthropoda**

**Class: Insecta**

**Order: Diptera**

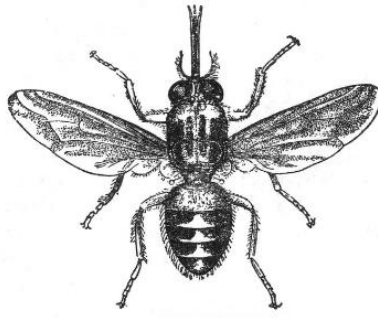
**Family: Glossinidae**

[Glossina](#) .

- tsétsē (ditsétsê) .



(CC) BY-SA © Nevit Dilmen



Public Domain by Meyers Lexikon 1888/90

**Phylum: Chordata**

**Class: Mammalia**

**Order: Primates**

**Family: Cercopithecidae**

[\*Papio ursinus\*](#) (Kerr, 1792) . Characteristics: omnivore; body-length: 50-115 cm, tail-length: 50-70 cm; the fur is generally dark brown to grey on the back and lighter on the underparts and on the sides of the face; the face is long and downwards-sloping; the first part of the long tail is carried upwards while the rest hangs down;. Biotope: savanna, scrubforest, grassland, woodland. ([Cillié 1997](#): 204)

- tshwêne . di-.



(CC) BY-SA © Graham



(CC) BY © Simon J. Tonge



PD ©

**Order: Rodentia**

**Family: Bathyergidae**

[\*Cryptomys holosericeus\*](#) .

- serúnya . di-.

**Phylum: Platyhelminthes**

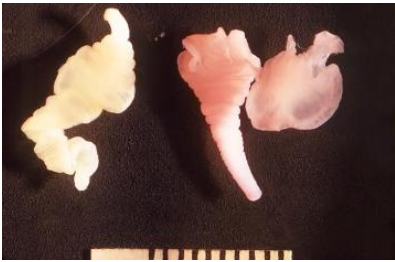
**Class: Cestoda**

**Order: Cyclophyllidea**

**Family: Taeniidae**

[Taenia solium](#) .

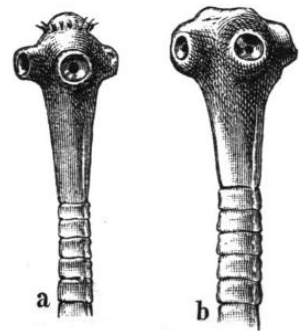
- *mphê . di-*.



(CC) PUBLICDOMAIN © Public Health Image Library



(CC) BY-SA © Roberto J. Galindo



Public Domain by

**Kingdom: Plantae**

**Phylum: Magnoliophyta**

**Class: Magnoliopsida**

**Order: Saxifragales**

**Family: Crassulaceae**

[Kalanchoe lanceolata](#) (Forssk.) Persoon .

- *semónyã . di-*.



(CC) BY-NC © Bart Wursten



(CC) BY-NC © Bart Wursten



(CC) BY-NC-SA © Research Institute Senckenberg



**Phylum: Pteridophyta**

**Class: Leptosporangiopsida**

**Order: Polypodiales**

**Family: Sinopteridaceae**

[Pellaea calomelanos](#) .

- phatadikgágánē .



Public Domain by Rotational



(CC) BY-NC © Petra Ballings



(CC) BY-NC-SA © Missouri BG!

**Phylum: Tracheophyta**

**Class: Liliopsida**

**Order: Asparagales**

**Family: Amaryllidaceae**

[Boophone disticha](#) (L.f.) Herb. . Characteristics: deciduous, perennial; up to 30 cm; partially buried bulb; erect greyish-green leaves that form a characteristic fan-shaped crown; pink, sweet scented flowers in a spherical inflorescence. Biotope: sandy soil, dune. ([Van Rooyen et al. 2001](#): 120)

- legwáma .



Public Domain by Christfried Naumann



(CC) BY-SA © Hans Hillewaert



Public Domain by Daderot

[Scadoxus puniceus](#) (L.) Friis & Nordal .

- **mathubadifala** .



(CC) BY © Simon J. Tonge



Public Domain by Rotational



(CC) BY-NC © Paul Hubbard

**Family: Asparagaceae**

[Asparagus africanus](#) Lam. . Characteristics: shrub, up to 2m tall, curved branches with sharp spines, leaf-like structures (cladodes) in dense clusters, sweetly scented white flowers, fruit is a red berry. Biotope: sandy soil. ([Van Rooyen et al. 2001](#): 60)

- **lenálaláńkwē (lenalalankwê)** .



(CC) BY-NC-SA © Research Institute Senckenberg



(CC) BY-NC-SA © Research Institute Senckenberg



(CC) BY-NC © Bart Wursten

*Asparagus larycinus* Burch. .

- leunyélé (leunyêlé) .



(CC) BY-SA © Cillas



(CC) BY-SA © Cillas

*Ledebouria* .

- tshóojáphiri .



(CC) BY-SA © Dysmorodrepanis

*Ledebouria marginata* (Baker) Jessop .

- bogokgwé (bogôkgwê) .



- mosítákgômó . me-.

[Sansevieria aethiopica](#) Thunb. .

- mosókélátsebéng (mesòkêlatsêbêng) .



(CC) BY-NC © Bart Wursten



(CC) BY-NC © Bart Wursten



(CC) BY ©

[Scilla nervosa](#) (Burch.) van der Merwe .

- tsônyá . di-.



(CC) BY-NC © Robert v. Blittersdorff



(CC) BY-NC © Robert v. Blittersdorff



(CC) BY-NC © Bart Wursten

**Family: Hypoxidaceae**

[Hypoxis nitida](#) Burch. ex Ker Gawl. .

- tshúko-yá-poó (tshukô-ya-pôô) .



(CC) BY-SA © Raffi Kojian

**Family: Xanthorrhoeaceae**

[Aloe cryptopoda](#) Baker .

- segolobé .



(CC) BY-SA © unknown (BotBln)

**Order: Poales**

**Family: Cyperaceae**

[Cyperus longus](#) L. .

- tótówāne (tôtôwane) .



(CC) BY-SA © Ximénez



Public Domain by Adolphus Ypey, published by Kurt Stüber

***Cyperus margaritaceus*** . Characteristics: small sedge; up to 50 cm tall; light-coloured inflorescence. Biotope: rocky area, sandy soil. ([Burke 2007](#): 102)

- **monákaládi** . *me-*.



(CC) BY-NC-SA © Research Institute Senckenberg

***Fimbristylis hispidula*** (Vahl) R.W.Haines .

- **phogwana** .

***Schoenoplectus muricinux*** (C.B.Clarke) J.Raynal . Characteristics: perennial sedge; up to 1,5 m tall; woody rhizome; reduced leaves; inflorescence is a cluster of congested, straw-coloured spikelets with brownish markings; the fruit is shining black when mature. Biotope: river course. ([Van Rooyen et al. 2001](#): 114)

- **motawane** . *me-*.

**Family: Poaceae**



***Aristida congesta*** Roem. & Schult. . Characteristics: tufted grass, 70cm tall, long white hair where the leaf blade and the leaf sheath join, inflorescence is a dens panicle, spikelets with three awns. Biotope: semi- arid desert, dry river course. ([Van Rooyen et al. 2001](#): 88)

- selóka .



(CC) BY-NC © Petra Ballings



(CC) BY-NC © Petra Ballings



(CC) BY-NC © Petra Ballings

***Cymbopogon plurinodis*** (K.Schum.) C.E.Hubb. .

- marágomagólo (maragômagolo) .

***Eleusine indica*** (L.) Gaertn. .

- selékangwétsi (dilekangwétsi) .
- tékangwétsī (tekangwétsi) .



(CC) BY © Jeff Heath and the Dogon and Bangime Languages Project



(CC) BY-SA © Tau'olunga



(CC) BY © Jeff Heath and the Dogon and Bangime Languages Project

***Eragrostis rigidior*** Hochst. .

- rrátháthê .



(CC) BY-NC © Petra Ballings



(CC) BY-NC © Petra Ballings



(CC) BY-NC © Petra Ballings

[Hyparrhenia filipendula pilosa](#) .

- sesígo .



(CC) BY © Harry Rose



(CC) BY © Harry Rose



(CC) BY-NC-SA © Missouri Botanical Garden

[Melinis repens](#) (Willd.) Zizka .

- sanyáne .



(CC) BY-SA © J.M. Garg



(CC) BY-SA © Tau'olunga



(CC) BY-SA © J.M. Garg

***Panicum maximum*** Jacq. .

- **mháfa** .



(CC) BY © Forest & Kim Starr



(CC) BY-SA © Tau'olunga



(CC) MARK © USDA NRCS PLANTS Database

***Pennisetum glaucum*** (L.) R.Br. .

- **lebelébelé (mabêlêbêlê)** .



(CC) BY-NC-SA © Research Institute Senckenberg



(CC) BY-NC-SA © Research Institute Senckenberg



(CC) BY-NC-SA © Delile, A.R., 1813. Description de l'Égypte

***Themeda triandra*** Forssk. .

- **tlhógokgólwané (tlhógôkgolwane)** .





(CC) BY-SA © Peripitus



(CC) BY © John Tann



(CC) BY © Biodiversity Heritage Library

**Family: Typhaceae**

[Typha capensis](#) (Rohrb.) N.E.Br. .

- bokhukhwane .



(CC) BY-NC © Bart Wursten



(CC) BY-NC © Bart Wursten



Public Domain by Andrew Massyn

**Class: Magnoliopsida**

**Order: Apiales**

**Family: Apiaceae**

[Pappea capensis](#) Eckl. & Zeyh. .

- mopénnweéng (mepênnwêeng) .
- motháta . me-.



(CC) BY-SA © NJR ZA



(CC) BY-NC © Mark Hyde



(CC) BY-NC © Rob Burrett

**Family: Araliaceae**

[Cussonia paniculata](#) Eckl. & Zeyh. .

- mosétse (mesêtsê) .



(CC) BY-SA © Frank Vincentz



(CC) BY-SA ©



(CC) BY-SA ©

**Order: Asterales**

**Family: Asteraceae**

[Berkheya radula](#) .

- ntšhwê-yá-badísa .



(CC) BY-SA © Magnus Manske



(CC) BY-SA © Magnus Manske

[Conyza bonariensis](#) L. .

- kgótodúa (kgôtôdua) .



(CC) BY-SA © unknown (ja:user:sphl)



(CC) BY-SA © unknown

[Dicoma anomala](#) .

- tlhôngyá .



(CC) BY-SA © JMK

[Gazania krebsiana serrulata](#) .

- sešwešwe . di-.





(CC) BY-NC © MA Hyde



(CC) BY-NC © MA Hyde

**[Geigeria burkei](#)** .

- pelo-ê-botlhóko (pelo-ê-botlhoko) .



(CC) BY-NC © Bart Wursten



(CC) BY-NC © Bart Wursten



(CC) BY-NC © Bart Wursten

**[Gnaphalium undulatum](#)** (Michx.) Elliott .

- kgótodúa (kgôtôdua) .
- sepalêlabasímané .

**[Helichrysum paronychioides](#)** .

- phaté-yá-ngáka (phatê-ya-ngaka) .

**[Nidorella resedifolia](#)** . Characteristics: erect herb; up to 1 m tall; deeply divided, hairy leaves; groups of small yellow flowerheads composed only of disc florets. Biotope: rocky area. ([Burke 2007](#): 86)

- kgótodúa (kgôtôdua) .



(CC) BY-NC © Bart Wursten



(CC) BY-NC © Bart Wursten



(CC) BY-NC © Bart Wursten

*Senecio longiflorus* DC. .

- mosíama .



(CC) BY-NC © Christian Bravard



(CC) MARK © Daderot



(CC) BY-NC © Christian Bravard

*Tagetes minuta* .

- galérale .



(CC) BY-NC © Bart Wursten



(CC) BY-SA ©



(CC) BY ©



**[Tarchonanthus camphoratus](#)** . Characteristics: shrub or tree, 1-8m tall depending on climate, greyish-green, oblongate leaves with whitish felt, creamy-white flowerheads in terminal panicles, the small fruit is covered with white hairs. Biotope: savanna, grassland, woodland, sandy soil, stony soil. ([Van Rooyen et al. 2001](#): 58)

- **mhatlhá** .
- **mofatlhá** . *me-*.



Public Domain by Abu Shawka



(CC) BY-SA © Paul venter



(CC) BY-SA © JMK

**[Xanthium spinosum](#)** .

- **sepôdísi** .
- **setlhabakolobê** .



(CC) BY-SA © Xemenendura



(CC) BY-NC-SA © Tony Rodd



(CC) BY-NC-SA © Jerry Oldenettel

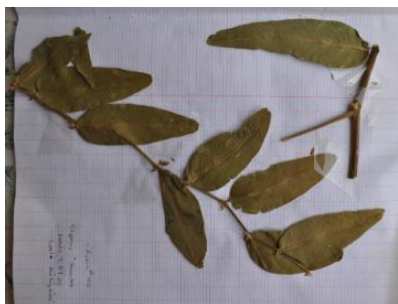
**Order: Brassicales**

**Family: Capparaceae**

**[Capparis tomentosa](#)** Lam. .

- **motawana** . *me-*.





(CC) BY © Jeff Heath and the Dogon and Bangime  
Languages Project

**Order: Caryophyllales**

**Family: Amaranthaceae**

**[Achyranthes aspera](#)** L. .

- lešwê .
- motshwárákganó .



(CC) BY-SA © Frank Vincentz



(CC) BY-SA © Frank Vincentz

**Order: Celastrales**

**Family: Celastraceae**

**[Gymnosporia heterophylla](#)** (Eckl. & Zeyh.) Loes. .

- motlhonó . me-.



Public Domain by unknown (Rotational)



Public Domain by unknown (Rotational)



Public Domain by unknown (Rotational)

## Order: Cucurbitales

### Family: Cucurbitaceae

***Citrullus lanatus*** (Thunb.) Matsumura & Nakai . Characteristics: annual, creeping herb; the hairy leaves are divided into 3-5 lobes; male and female flowers grow on the same plant and are yellow; the fruit is round with a diameter of 15-20 cm and a yellow and green surface. Biotope: sandy soil, dune. ([Van der Walt and le Riche 1999](#): 110; [Van Rooyen et al. 2001](#): 148)

- mokaté (mekatê) .



(CC) BY © Jeff Heath and the Dogon and Bangime Languages Project



Public Domain by Christfried Naumann

***Kedrostis hirtella*** (Forssk. ex J. F. Gmel.) C. Jeffrey .

- mogákángwagá .

***Momordica balsamina*** L. . Characteristics: perennial climber; leaves are divided into 5-7 lobes, the margins toothed; the flowers are white to yellow with fused petals; the egg-shaped fruit is orange to red when ripe and covered with spines; the plant emits an unpleasant smell when bruised. Biotope: savanna, sandy soil. ([Van Rooyen et al. 2001](#): 152)

- twiítwií .



(CC) BY © Jeff Heath and the Dogon and Bangime  
Languages Project



(CC) BY-SA © H. Zell



(CC) BY © Jeff Heath and the Dogon and Bangime  
Languages Project

**Order: Ericales**

**Family: Ebenaceae**

**[Diospyros lycioides](#)** Desf. .

- lethanyu .
- motlhajwa .
- lethhájwa . *ma-*.



(CC) BY-NC © Petra Ballings



(CC) BY-NC-SA © Research Institute Senckenberg



(CC) BY-NC © Mark Hyde

**[Euclea crispa](#)** (Thunb.) Gürke .

- serétlwaná (serétlwana) .
- motlhaletsogane .





(CC) BY-SA ©



(CC) BY-SA ©



(CC) BY-SA ©

**[Euclea natalensis](#)** A.DC. .

- motlhakola . me-



(CC) BY-SA © JMK



(CC) BY-SA © JMK



(CC) BY-SA © JMK

**[Euclea undulata](#)** Thunb. .

- motlhakolane . me-



(CC) BY-SA ©



(CC) BY-SA ©



(CC) BY-SA ©

**Family: Sapotaceae**

**[Englerophytum magalismontanum](#)** (Sond.) T.D.Penn. .

- motlhátswa . me-



(CC) BY-NC © Bart Wursten



(CC) BY-NC-SA © Research Institute Senckenberg



(CC) BY-NC © Bart Wursten

**[Mimusops zeyheri](#)** Sond. .

- mmúpudú (mebupudu) .



(CC) BY-SA ©



(CC) BY-SA © original uploader|Paul venter|wikipedia|en



(CC) BY-NC-SA © Research Institute Senckenberg

**Order: Fabales**

**Family: Fabaceae**

**[Acacia ataxacantha](#)** DC. .

- mogôkatau .



(CC) BY-SA © JMK



(CC) BY-SA © JMK



(CC) BY-SA © JMK



**[Acacia caffra](#)** (Thunb.)Willd. .

- **moruthare** . *me-*.



(CC) BY-SA © JMK



(CC) BY-SA © Paul Venter



(CC) BY-SA © Paul Venter

**[Acacia erioloba](#)** E.Mey. . Characteristics: 4 - 12 m tall, yellow flowers, woody pods 130 mm long, grey-green leaves 100 mm, leaflets 13 mm, straight thorns 60 mm, rough fissured bark. Biotope: arid savanna, grassland, dry river course.

([Carruthers \(eds.\) 2000](#): 250; [Van der Walt and le Riche 1999](#): 39; [Van Rooyen et al. 2001](#): 26)

- **mogôtlhô** . *me-*.
- **mokala** . *me-*.



Public Domain by Christfried Naumann



Public Domain by Christfried Naumann

**[Acacia fleckii Schinz](#)** .

- **mhafú (mefafu)** .
- **mmafú (mebafu)** .
- **mophóka** . *me-*.





(CC) BY-NC © Bart Wursten



(CC) BY-NC © Bart Wursten



(CC) BY-NC © Bart Wursten

**[Acacia hebeclada hebeclada](#)** . Characteristics: 2 – 6 m tall, white flowers, hairy leaves and pods. Biotope: dry savanna, grassland, dry river course, dune. ([Van der Walt and le Riche 1999](#): 51; [Van Rooyen et al. 2001](#): 42)

- **setšhí** .



Public Domain by Christfried Naumann



Public Domain by Christfried Naumann



Public Domain by Christfried Naumann

**[Acacia hereroensis](#)** Engl. . Characteristics: 5 m tall; paired, hooked thorns; long spikes of cream-coloured flowers; fruit is a long, flat, red-brown pod. Biotope: rocky area. ([Burke 2007](#): 26)

- **mokgwarípa . me-**

**[Acacia karroo](#)** Hayne . Characteristics: 3 - 6 m tall, yellow flowers. Biotope: savanna, arid savanna, grassland, river course. ([Carruthers \(eds.\) 2000](#): 250; [Van Rooyen et al. 2001](#): 30)

- **mooka(na) . me-**



(CC) BY-SA © Kurt Stueber



(CC) BY-SA © Sten Porse

***Acacia luederitzii*** Engl. . Characteristics: up to 8 m tall, creamy-white flowers. Biotope: shrubland, grassland. ([Van der Walt and le Riche 1999](#): 49; [Van Rooyen et al. 2001](#): 30)

- **Mokala .**



Public Domain by Christfried Naumann



Public Domain by Christfried Naumann



Public Domain by Christfried Naumann

***Acacia mellifera*** (M.Vahl)Benth. . Characteristics: shrub, white flowers, small feather-shaped round leaves, small blackish hook thorns in pairs, very thorny. Biotope: dry savanna, grassland. ([Van der Walt and le Riche 1999](#): 64; [Van Rooyen et al. 2001](#): 42)

- **mongana . me-**
- **monga .**



Public Domain by Christfried Naumann



Public Domain by Christfried Naumann



Public Domain by Christfried Naumann

***Acacia nigrescens*** Oliv. .

- **mokgwa .**





(CC) BY © Steven Haw

**[Acacia nilotica subsp. kraussiana](#)** (Benth.)Brenan .

- **mogá . me-**
- **motsha .**



(CC) BY-SA © JMK



(CC) BY-SA © JMK

**[Acacia robusta](#)** Burch. .

- **mokhu . me-**



(CC) BY-SA © JMK



(CC) BY-NC © Bart Wursten



(CC) BY-SA © JMK

**[Acacia tortilis subsp. heteracantha](#)** (Burch.)Brenan .

- **mosú . me-**
- **mosunyana .**





(CC) BY-NC © Bart Wursten



(CC) BY-NC © Bart Wursten



(CC) BY-NC © Bart Wursten

***Bauhinia petersiana*** Bolle . Characteristics: shrub; 2m tall; lobed leaves; large white flowers with large, crinkly petals, long, many-seeded pods;. ([Van Rooyen et al. 2001](#): 44)

- **motshentshe** .



(CC) BY-NC-SA © Research Institute Senckenberg



(CC) BY-NC-SA © Research Institute Senckenberg



(CC) BY-NC-SA © Research Institute Senckenberg

***Burkea africana*** Hook. .

- **monatô . me-**.



Public Domain by unknown (Rotational)



Public Domain by unknown (Rotational)

***Colophospermum mopane*** (Benth.)Leonard .

- **mophánē . me-**.



Public Domain by Teo Gómez

[Crotalaria lotoides](#) Benth. .

- **motswápeló . me-**



(CC) BY-NC-SA © MBG

[Crotalaria orientalis](#) Verd. . Characteristics: shrub, 1m tall, straight stems, small leaves, whitish to yellow flowers (similar to pea-flower), the fruit is an inflated pod. Biotope: sandy soil, dune. ([Van Rooyen et al. 2001](#): 66)

- **motšhibí .**



Public Domain by Christfried Naumann



Public Domain by Christfried Naumann



Public Domain by Christfried Naumann

***Dichrostachys cinerea*** (L.)Wight & Arn. . Characteristics: shrub or small tree; 1-3m tall, flowers in an elongated drooping spike, composed of two sections: a pink tuft of sterile flowers and below a section of fertile yellow flowers; the pods are curly and twisted;. Biotope: grassland, sandy soil. ([Van Rooyen et al. 2001](#): 44)

- **moséleséle (mesêlêsêlê)** .



(CC) BY © Jeff Heath and the Dogon and Bangime Languages Project



(CC) BY © Jeff Heath and the Dogon and Bangime Languages Project



(CC) BY © Jeff Heath and the Dogon and Bangime Languages Project

***Dolichos pratensis*** (E.Mey.)Taub. .

- **thagaraga-é-tshwêú** .

***Elephantorrhiza burkei*** Benth. .

- **mosítsánē . me-**.



(CC) BY-NC © M Coates Palgrave



(CC) BY-NC © M Coates Palgrave

***Elephantorrhiza elephantina*** (Burch.)Skeels . Characteristics: small shrub, up to 60cm tall, extended underground tuberous root system, annual stems, creamy-yellow racemes, turning brown with age, woody flat pods, roots edible. Biotope: arid savanna, grassland, sandy soil, dune. ([Van der Walt and le Riche 1999](#): 101; [Van Rooyen et al. 2001](#): 68)

- **mositsane** .





Public Domain by Christfried Naumann



Public Domain by Christfried Naumann



(CC) BY-NC © Bart Wursten

[Lonchocarpus nelsii](#) (Schinz)Heering & Grimme .

- **mhata** .

[Mundulea sericea](#) (Willd.)A.Chev. .

- **mosítátlou** . *me-*.
- **ntsandzandlopfu** .
- **maibana** .
- **mohato** .
- **mosikatse** .
- **mosita-thlou** .
- **moswaatlou** .



(CC) BY © Jeff Heath and the Dogon and Bangime Languages Project



(CC) BY-NC © Bart Wursten



(CC) BY © Jeff Heath and the Dogon and Bangime Languages Project

[Otoptera burchellii](#) DC. .

- **tshíkáditháta** .



(CC) BY-NC © Bart Wursten



(CC) BY-NC © Bart Wursten



(CC) BY-NC © Bart Wursten

***Peltophorum africanum*** Sond. .

- **mosêtlhá . me-**



(CC) BY-SA © JMK



(CC) BY-NC-SA © Bernard DUPONT



(CC) BY-NC-SA © Research Institute Senckenberg

***Senna italica*** Mill. . Characteristics: perennial herb; up to 40 cm tall; hairy stems rise from a black, woody rootstock; pinnately compound leaves; leaflets with rounded tips; yellow flowers; fruit is a large and flat pod. Biotope: savanna, grassland. ([Van der Walt and le Riche 1999](#): 107; [Van Rooyen et al. 2001](#): 134)

- **sebeta .**



(CC) BY-NC © Bart Wursten



Public Domain by Gertrud Boden



(CC) BY-NC © Bart Wursten



***Tylosema esculentum*** (Burch.)A.Schreib. . Characteristics: shrub or small tree, up to 6m tall, large egg-shaped leaves, covered with short, soft, tawny hairs, greenish-white to yellowish flowers in axillary clusters, fruit is a yellow to brown berry. Biotope: savanna, sandy soil. ([Van der Walt and le Riche 1999](#): 107; [Van Rooyen et al. 2001](#): 136)

- marami .
- morama .



Public Domain by Gertrud Boden



(CC) MARK © Tracey Slotta



Public Domain by Gertrud Boden

**Order: Gentianales**

**Family: Apocynaceae**

***Asclepias fruticosa*** .

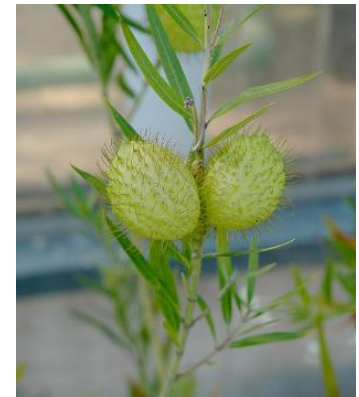
- motímolá .



(CC) BY-SA © unknown (User:Carstor ?)



(CC) BY-SA © User:Carstor



(CC) BY-SA © Carstor

***Caralluma*** Heding, 1931 .

- morúpi .





Public Domain by Conrad Loddiges



(CC) BY-SA © Marco Schmidt

### Family: Rubiaceae

*[Psydrax livida](#)* (Hiern) Bridson .

- **mmílórotswánē (mmilôrôtswanw)** .



(CC) BY-SA ©



(CC) BY-NC © Rob Burrett



(CC) BY-NC © Bart Wursten

*[Vangueria infausta](#)* Burch. . Characteristics: shrub or small tree, up to 6m tall, large egg-shaped leaves, covered with short, soft, tawny hairs, greenish-white to yellowish flowers in axillary clusters, fruit is a yellow to brown berry.

Biotope: savanna, grassland, rocky area, dune. ([Van Rooyen et al. 2001](#): 56)

- **mmílō (mmilô, mebilô)** .
- **mothwányē (mothwanyê)** .



(CC) BY-SA ©



(CC) BY-NC © Bart Wursten



(CC) BY-SA © Marco Schmidt

**Order: Lamiales**

**Family: Acanthaceae**

[Barleria pretoriensis](#) C. B. Cl. . Characteristics: erect, perennial herb; up to 75 cm tall; smooth stems grow from a woody rootstock; opposite, lanceolate leaves with a toothed margin; leaf ends in a sharp spine; white, tubular flowers that turn mauve with age; fruit is a hairy capsule.

- mathé-á-monáte .

**Family: Lamiaceae**

[Vitex zeyheri](#) Sond. ex Schauer .

- mokwele . me-.

**Family: Oleaceae**

[Olea europaea africana](#) . Characteristics: up to 6 m tall tree, small cream or white, sweetly scented flowers,. Biotope: woodland, rocky area, river course. ([Van Rooyen et al. 2001](#): 36)

- motlhwáre . me-.



(CC) BY © Forest & Kim Starr



(CC) BY © Forest and Kim Starr



(CC) BY © Forest and Kim Starr

**Family: Pedaliaceae**

[Dicerocaryum zanguebarium](#) (Lour.) Merrill .

- mokatsé . me-.

[Harpagophytum procumbens](#) . Characteristics: perennial herb, purple flowers with yellow inside throat, fruit capsules with long bent hooks, woody creepers up to 1,5 m long, root tubers used as medicine. Biotope: sandy soil. ([Van der Walt and le Riche 1999](#): 103; [Van Rooyen et al. 2001](#): 144)

- makakarê .



Public Domain by Christfried Naumann



Public Domain by Christfried Naumann



Public Domain by Christfried Naumann

**Family: Scrophulariaceae**

[Buddleja saligna](#) Willd. .

- motlhwárétshógwāna .



Public Domain by unknown (Rotational)

**Family: Verbenaceae**

[Lippia scaberrima](#) Sond. .

- mosúkutswánē . me-.

**Order: Malpighiales**

**Family: Chrysobalanaceae**







(CC) BY-NC-SA © Research Institute Senckenberg



(CC) BY-NC-SA © Research Institute Senckenberg



(CC) BY-NC © Rob Burrett

[Ricinus communis](#) L. .

- **mokúrē (mekurè)** .



(CC) BY-SA © Andreas Früh (Andel)



(CC) BY-SA © H. Zell



(CC) BY © Jeff Heath and the Dogon and Bangime Languages Project

[Spirostachys africana](#) Sond. .

- **morúkúru . me-**



(CC) BY ©



Public Domain by Paul Venter



(CC) BY-NC © Bart Wursten

**Tragia rupestris** Sond. .

- seábêtsánē . di-.

Family: Phyllanthaceae

**Bridelia mollis** Hutch. .

- mokókónāla . me-.
- mokókwelé . me-.



(CC) BY-NC © Bart Wursten



(CC) BY-NC © Bart Wursten



(CC) BY-SA © JMK

**Phyllanthus maderaspatensis** L. . Characteristics: perennial herb; up to 30 cm tall; lanceolate leaves; small, singular, yellow to green flowers; fruit is a small capsule on a slender stalk. Biotope: sandy soil. ([Van Rooyen et al. 2001](#): 174)

- leêtsane .



(CC) BY-NC © BT Wursten



(CC) BY-NC © BT Wursten



(CC) BY-NC © BT Wursten

**Securinega virosa** (Roxb. ex Willd.) Royle .

- monwána . me-.



<http://tsammalex.clld.org/>



(CC) BY-NC © Bart Wursten



(CC) BY-NC-SA © Research Institute Senckenberg



(CC) BY ©

## Order: Malvales

## Family: Malvaceae

### [Adansonia digitata](#) L. .

- **mowana** .



Public Domain by unknown



(CC) BY © Jeff Heath and the Dogon and Bangime Languages Project



(CC) BY © Jeff Heath and the Dogon and Bangime Languages Project

### [Grewia avellana](#) .

- **moragoamogumahadi** .



(CC) BY-NC © Royal Botanic Garden&nbsp;Edinburgh

***Grewia flava*** DC. . Characteristics: slightly hairy shrub, up to 3m tall, pale green leaves, yellow flowers, red-brown round fruits 8 mm in diameter. Biotope: dry savanna, dry river courses, sandy soil. ([Van der Walt and le Riche 1999](#): 70; [Van Rooyen et al. 2001](#): 48)

- **morétlwa (morétlwa)** .



Public Domain by Christfried Naumann



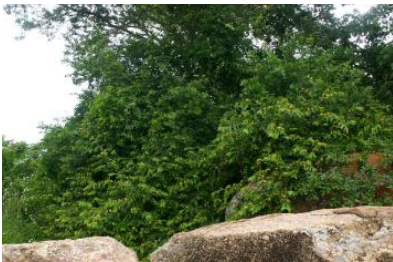
Public Domain by Christfried Naumann



(CC) BY-SA ©

***Grewia flavescens*** Juss. . Characteristics: shrub; 2-3 m tall; 4-angled stems; large hairy leaves; yellow flowers grow in axillary clusters; small, two- or four-lobed fruit. Biotope: rocky area, dry river course, sandy soil. ([Burke 2007](#): 44)

- **mokgomphata** .



(CC) BY-NC © Bart Wursten



(CC) BY-NC-SA © Research Institute Senckenberg



(CC) BY-NC-SA © Research Institute Senckenberg

***Grewia occidentalis*** L. .

- **mogwána . me-**
- **mokukutu** .



(CC) BY © Forest & Kim Starr



(CC) BY-SA © Marco Schmidt



(CC) BY-NC-SA © Missouri BG!

**[Triumfetta rhomboidea](#)** Jacq. .

- sebábêtsánē . di-.



(CC) BY-NC © Bart Wursten



(CC) BY-NC © Bart Wursten



(CC) BY-NC © Bart Wursten

**Family: Sterculiaceae**

**[Dombeya rotundifolia](#)** (Hochst.) Planch. .

- mōkgófa .
- motubane .





(CC) BY-SA © unknown



(CC) BY-SA © unknown



(CC) BY-SA © unknown

**Family: Thymelaeaceae**

**[Gnidia capitata](#) L. f. .**

- **kgósi-yá-dítlháre (kgôsi-ya-ditlhare) .**



(CC) BY-NC-SA © MBG



(CC) BY-NC-SA © MBG



(CC) BY-NC-SA © MBG

**Order: Myrtales**

**Family: Combretaceae**

**[Combretum hereroense](#) .**

- **mokábi . me-.**



(CC) BY-NC © Bart Wursten



(CC) BY-NC © Bart Wursten



(CC) BY-NC-SA © Bernard DUPONT

***Terminalia sericea*** Burch. ex DC. . Characteristics: 4-8m tall, cream to pale yellow flowers, silvery-grey leaves. Biotope: savanna, sandy soil, dune. ([Carruthers \(eds.\) 2000](#): 270; [Van der Walt and le Riche 1999](#): 60; [Van Rooyen et al. 2001](#): 36)

- **mogónonó (megônônô)** .
- **mokúbu . me-**.



Public Domain by Christfried Naumann



Public Domain by Taa documentation team  
(Boden/Güldemann/Naumann)



Public Domain by Christfried Naumann

**Order: Oxalidales**

**Family: Oxalidaceae**

***Oxalis corniculata*** L. .

- **botsítsibósané** .
- **motswáitswái . me-**.



(CC) BY-SA © Dalgial



(CC) BY-SA © Olaf Leillinger

**Order: Ranunculales**

**Family: Ranunculaceae**

[Clematis oweniae](#) Thunb. .

- segopé (segopê) .



(CC) BY-NC © Bart Wursten



(CC) BY-NC © Bart Wursten



(CC) BY-NC © Bart Wursten

**Order: Santalales**

**Family: Loranthaceae**

[Tapinanthus natalitius](#) .

- bolêtswa .





(CC) BY-SA © JMK



(CC) BY-SA © JMK



(CC) BY-SA © JMK

**Family: Ximeniaceae**

**[Ximenia americana](#)** L. .

- morétológánē .
- serêtologane .
- morétóloga-wá-pódi (morétologa-wa-podi) .



(CC) BY-NC-SA © Research Institute Senckenberg



(CC) BY © Jeff Heath and the Dogon and Bangime  
Languages Project



(CC) BY © Jeff Heath and the Dogon and Bangime  
Languages Project

**Order: Sapindales**

**Family: Anacardiaceae**

**[Searsia lancea](#)** (L. f.) F. A. Barkley .

- mošábéle (mešabêlé) .



(CC) BY © Bri Weldon



(CC) BY © Tatiana Gerus



(CC) BY © Bri Weldon

**Order: Saxifragales**

**Family: Crassulaceae**

**[Kalanchoe paniculata](#)** Harv. .

- bolatsí .



(CC) BY-SA © JMK

**[Kalanchoe rotundifolia](#)** (Haw.) Haw. .

- majwana .







Public Domain by Christfried Naumann



Public Domain by Christfried Naumann

**Order: Vitales**

**Family: Vitaceae**

***Cissus quadrangularis* L. .**

- **mabófē (mabôfê) .**



(CC) BY-SA © Marco Schmidt



(CC) BY © Jeff Heath and the Dogon and Bangime

Languages Project



(CC) BY © Jeff Heath and the Dogon and Bangime

Languages Project

**Order: Zygophyllales**

**Family: Zygophyllaceae**

***Tribulus terrestris* L. .** Characteristics: creeping growth, yellow flowers, flower 1 cm in diameter, soft-haired leaves, woody, sharp, spiny fruits that can puncture animals' hoofs, bare feet and bicycle tyres. ([Van der Walt and le Riche 1999](#): 109)

- **mosêtlhô . me-**
- **tshêtlhô . di-**



(CC) BY © Jeff Heath and the Dogon and Bangime Languages Project



(CC) BY-SA © Stan Shebs



(CC) BY-SA © Stan Shebs

**Phylum: other**

**Class: other**

**Order: Rosales**

**Family: Rhamnaceae**

**[Ziziphus zeyheriana](#) .**

• **sekgálófatshé .**



(CC) BY-NC © Bart Wursten



(CC) BY-NC © Bart Wursten



(CC) BY-NC © Bart Wursten

**Kingdom: Viridiplantae**

**Phylum: Streptophyta**

**Class: Magnoliopsida**

**Order: Boraginales**

**Family: Ehretiaceae**

***Ehretia rigida*** . Characteristics: Shrub, 1-3m tall, small green leaves clustered on reduced shots, the pale mauve, bluish or white tubular flowers are sweetly scented, the berry changes from yellow to black while ripening,. Biotope: forest, arid woodland. ([Van Rooyen et al. 2001](#): 50)

- morôbê . me-.



Public Domain by Christfried Naumann



Public Domain by Rotational



Public Domain by Rotational

## Order: Brassicales

### Family: Capparaceae

***Boscia albitrunca*** (Burch.) Gilg & Gilg-Ben. . Characteristics: 2–4m tall, small flowers, no petals, grey to whitish-grey bark. Biotope: savanna, woodland, sandy soil. ([Carruthers \(eds.\) 2000](#): 247; [Van der Walt and le Riche 1999](#): 55; [Van Rooyen et al. 2001](#): 24)

- motlôpí .



Public Domain by Taa documentation team  
(Boden/Güldemann/Naumann)



Public Domain by Christfried Naumann



Public Domain by Christfried Naumann

***Maerua angolensis*** .

- moratlêtlá .





(CC) BY-NC © Bart Wursten



(CC) BY-NC © Bart Wursten



(CC) BY © Jeff Heath and the Dogon and Bangime Languages Project

**Order: Caryophyllales**

**Family: Amaranthaceae**

***Aerva leucura*** Moq. .

- **letlhógótshwéū (letlhôgôtshwêū)** .



(CC) BY-NC © Bart Wursten



(CC) BY-NC © Bart Wursten



(CC) BY-NC © Bart Wursten

***Pupalia lappacea*** (L.) Juss. . Characteristics: erect or sprawling herb; up to 90 cm tall; stems with multiple opposite branches that grow from nodes; branches are 4-angled; the mature inflorescence is up to 50 cm long and has green flowers; fruit is a capsule with shiny brown seeds. Biotope: sandy soil. ([Van Rooyen et al. 2001](#): 156)

- **bogómā** .
- **moruphaphiri/moshutlhaphiri** .



(CC) BY-NC © Bart Wursten



(CC) BY-NC © Bart Wursten



Public Domain by Christfried Naumann

**Order: Fabales**

**Family: Polygalaceae**

[\*Securidaca longipedunculata\*](#) Fresen. .

- mmabá .



(CC) BY-NC-SA © Research Institute Senckenberg



(CC) BY-NC © Bart Wursten



(CC) BY-SA © Marco Schmidt

**Order: Gentianales**

**Family: Apocynaceae**

[\*Carissa bispinosa\*](#) .

- serókólo .





(CC) BY-SA ©



(CC) BY-NC © Bart Wursten



(CC) BY-NC © Bart Wursten

[Cynanchum viminale](#) .

- morárô .



(CC) BY-NC-SA © Research Institute Senckenberg



(CC) BY-NC © Bart Wursten



(CC) BY-SA © Ton Rulkens

**Family: Loganiaceae**

[Strychnos madagascariensis](#) Poir. .

- mogorwagorwana . me-



(CC) BY-SA © Ton Rulkens from Mozambique



(CC) BY-NC-SA © Research Institute Senckenberg

[Strychnos pungens](#) Solered. .

- morutlá . me-





Public Domain by Rotational



(CC) BY-SA ©



(CC) BY-SA ©

**Order: Lamiales**

**Family: Lamiaceae**

[Leonotis microphylla](#) (Gürke) Iwarsson .

- semónamónē (dimonamonê) .

[Salvia runcinata](#) L.f. .

- setlêpêtlêpê .



(CC) BY-NC-SA © MBG



(CC) BY-NC-SA © MBG

[Tetradenia riparia](#) (Hochst.) Codd .

- borethe .



(CC) BY-SA © Ton Rulkens



(CC) BY-SA © Ton Rulkens



(CC) BY-SA ©

**Family: Verbenaceae**

***Lantana rugosa*** Thunb. .

- **selaólē (selaolê)** .



(CC) BY-NC © Bart Wursten



(CC) BY-NC © Bart Wursten



(CC) BY-SA © JMK

***Lippia javanica*** (Burm.f.) Spreng. .

- **mosúkutswánē . me-**



(CC) BY-NC © Bart Wursten



(CC) BY-NC © Bart Wursten



(CC) BY-NC © Bart Wursten

**Order: Malpighiales**

**Family: Ochnaceae**

[Ochna pulchra](#) Hook. . Characteristics: shrub or tree, up to 6m tall, shiny light green leaves, small sweetly-scented pale yellow flowers. Biotope: woodland, sandy soil. ([Van Rooyen et al. 2001](#): 50)

- monyêlênyêlê . me-.



Public Domain by Rotational



Public Domain by Rotational



Public Domain by Rotational

**Family: Peraceae**

[Clutia pulchella](#) L. .

- pódímolwêtse (podimolwêtse) .



(CC) BY-SA © JMK



(CC) BY-SA © JMK



(CC) BY-SA © JMK

**Order: Malvales**

**Family: Malvaceae**

[Hibiscus engleri](#) K. Schum. .

- sebábêtsánê . di-.





(CC) BY-NC © Bart Wursten



(CC) BY-NC © Bart Wursten



(CC) BY-NC © Bart Wursten

**Order: Myrtales**

**Family: Combretaceae**

[Combretum apiculatum](#) . Characteristics: shrub or small tree; up to 10 m tall; shiny, oblong leaves with a notch at the tip. Biotope: rocky area. ([Burke 2007](#): 32)

- mofúdírī . me-.



(CC) BY © brianvds



(CC) BY-NC © Bart Wursten

[Combretum erythrophyllum](#) (Burch.) Sond. .

- modubú(noká) . me-.



(CC) BY-NC © Bart Wursten



(CC) BY-NC © Bart Wursten



(CC) BY-NC © Bart Wursten

**[Combretum molle](#)** R. Br. ex G. Don .

- **modubatshípi . me-**



Public Domain by Rotational

**[Combretum zeyheri](#)** Sond. .

- **modubana . me-**



(CC) BY-SA © JMK



(CC) BY-NC-SA © Research Institute Senckenberg



(CC) BY-NC-SA © Research Institute Senckenberg

**Order: Proteales**

**Family: Proteaceae**

**[Faurea saligna](#)** Harv. .

- **monyéna . me-**



Public Domain by Rotational



(CC) BY-NC © Bart Wursten



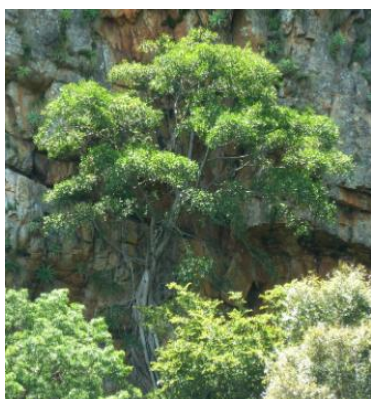
Public Domain by Rotational

**Order: Rosales**

**Family: Moraceae**

***Ficus ingens*** (Miq.) Miq. .

- motlhátsā . me-.



(CC) BY-SA ©



(CC) BY-SA ©



CC-Zero ©

***Ficus salicifolia*** (Vahl) C. C. Berg .

- motlhátsā . me-.





(CC) BY-SA © JMK



(CC) BY-SA © Paul venter



(CC) BY-SA © JMK

**Family: Rhamnaceae**

**[Berchemia zeyheri](#)** (Sond.) Grubov .

- **moé . me-**.



(CC) BY-NC © Bart Wursten



(CC) BY-NC © Bart Wursten



(CC) BY-NC © Bart Wursten

**[Ziziphus mucronata](#)** . Characteristics: 2 - 5 m tall, yellowish-green flowers, greyish-brown bark, thorns in pairs.  
Biotope: river course, arid area. ([Carruthers \(eds.\) 2000](#): 263; [Van Rooyen et al. 2001](#): 34)

- **mokgálo . me-**.
- **mokalabata . me-**.



Public Domain by Christfried Naumann



(CC) BY-NC-SA © Research Institute Senckenberg



Public Domain by Gertrud Boden

**Family: Urticaceae**

[Pouzolzia hypoleuca](#) Solms .

- mongólóló (mengôloló) .



(CC) BY-NC © Bart Wursten



(CC) BY-SA © JMK



(CC) BY-SA © JMK

**Order: Santalales**

**Family: Santalaceae**

[Osyris lanceolata](#) Salzm. ex Decne . Characteristics: evergreen shrub; up to 4 m tall; alternat, lance-shaped leaves; small cream-coloured flowers grow in clusters in the leaf-axils; small, red fleshy fruit. Biotope: rocky area. ([Burke 2007](#): 34)

- mase .



(CC) BY-SA © Xemenendura



(CC) BY-SA © Xemenendura



(CC) BY-SA © Xemenendura

**Family: Ximeniaceae**

[Ximenia caffra](#) Sond. .

- morétológa (morêtologa) .





(CC) BY-NC-SA © Bernard DUPONT



(CC) BY-SA © Paul venter



(CC) BY-NC © Bart Wursten

**Order: Sapindales**

**Family: Anacardiaceae**

***Lannea discolor*** (Sond.) Engl. .

- **moôjwáne . me-**



(CC) BY-SA © JMK



(CC) BY-NC-SA © Research Institute Senckenberg



(CC) BY-NC-SA © Research Institute Senckenberg

***Ozoroa paniculosa*** (Sond.) R. & A. Fernandes .

- **monokánē . me-**



(CC) BY-SA © JMK



(CC) BY-SA © Paul venter



(CC) BY-SA © Paul venter



[Rhus pyroides](#) (L.) F. A. Barkley .

- **mogôdíri . me-**



(CC) BY-SA © JMK



(CC) BY-NC © Scamperdale



(CC) BY-SA © JMK

[Searsia leptodictya](#) (Diels) T.S.Yi, A.J.Mill. & J.Wen .

- **motšhótlhwáne . me-**



(CC) BY-SA ©



(CC) BY-SA © JMK

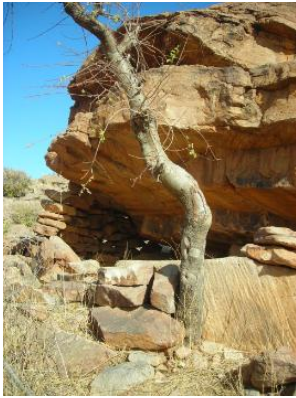


(CC) BY-SA ©

**Family: Burseraceae**

[Commiphora africana](#) (Rich.) Engl. .

- **seroka .**



(CC) BY © Jeff Heath and the Dogon and Bangime  
Languages Project



(CC) BY © Jeff Heath and the Dogon and Bangime  
Languages Project



(CC) BY © Jeff Heath and the Dogon and Bangime  
Languages Project

***Commiphora glandulosa*** Schinz .

- **morôká . me-**



(CC) BY-NC © Bart Wursten



(CC) BY-NC © Bart Wursten



(CC) BY-NC © Bart Wursten

**Order: Solanales**

**Family: Convolvulaceae**

***Turbina oblongata*** (E. Mey. ex Choisy) A. Meeuse .

- **mokátélō (mokatêlō) .**



(CC) BY-SA © Marco Schmidt

**Order: Vitales**

Family: Vitaceae

[Rhoicissus tridentata](#) .

- thagaraga .



(CC) BY-SA ©



(CC) BY-NC-SA © Research Institute Senckenberg



(CC) BY-NC © Bart Wursten

Class: other

Order: Polypodiales

Family: Pteridaceae

[Cheilanthes hirta](#) .

- phatadikgágānē .



(CC) BY-NC © P Ballings



(CC) BY-NC © P Ballings