

Toro Tegu names for Plants and Animals

edited by Jeffrey Heath and Steven Moran

This document was created from [Tsammalex](http://tsammalex.clld.org) on 2015-05-13.

Tsammalex is published under a Creative Commons Attribution 4.0 International License and should be cited as

*Christfried Naumann & Steven Moran & Guillaume Segerer & Robert Forkel (eds.)
2015. Tsammalex: A lexical database on plants and animals. Leipzig: Max Planck
Institute for Evolutionary Anthropology. (Available online at
<http://tsammalex.clld.org>, Accessed on 2015-05-13.)*

A full list of contributors is available at <http://tsammalex.clld.org/contributors>

The list of references cited in this document is available at
<http://tsammalex.clld.org/sources>

Kingdom: Animalia

Phylum: Arthropoda

Class: Arachnida

Order: Ixodida

Family: Ixodidae

[*Rhipicephalus turanicus*](#) Pomerantsev, 1936 .

- sǎy . "small tick sp."

Order: Prostigmata

Family: Leeuwenhoekiidae

[*Dinothrombium tinctorium*](#) .

- àrⁿá pùṅùlò bārⁿí: . "small scarlet-red velvet mite that emerges in fields after rains".



(CC) BY © Jeff Heath and the Dogon and Bangime
Languages Project



(CC) BY © Jeff Heath and the Dogon and Bangime
Languages Project

Order: Solifugae

Family: Galeodidae

[*Galeodes olivieri*](#) Simon, 1879 .

- yⁿàṅà-yⁿáṅà . "wind scorpion, sun scorpion".



(CC) BY © Jeff Heath and the Dogon and Bangime Languages Project



(CC) BY © Jeff Heath and the Dogon and Bangime Languages Project



(CC) BY © Jeff Heath and the Dogon and Bangime Languages Project

Class: Chilopoda

Order: Scolopendromorpha

Family: Scolopendridae

[Scolopendra](#) .

- **nènènsá:rá** . "large biting centipede (scolopender)".



(CC) BY © Sam Fraser-Smith



(CC) BY-SA © Matt Reinbold



(CC) BY © Jeff Heath and the Dogon and Bangime Languages Project

Class: Diplopoda

Order: Spirostreptida

Family: Spirostreptidae

[Archispirostreptus](#) .

- **gòròngò:sí** . "giant millipede".



(CC) BY © Jeff Heath and the Dogon and Bangime
Languages Project



(CC) BY © Jeff Heath and the Dogon and Bangime
Languages Project

Class: Insecta

Order: Coleoptera

Family: Bostrichidae

[Sinoxylon senegalense](#) Karsch, 1881 .

- **hêm** . "large horned powderpost beetle sp. (wood-boring)".

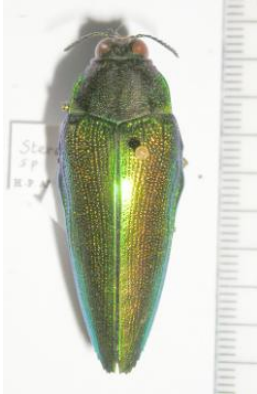


(CC) BY © Jeff Heath and the Dogon and Bangime
Languages Project

Family: Buprestidae

[Steraspis](#) .

- **bâtâŋ-kóngùró** . "buprestid beetle sp. (dark)".



(CC) BY © Jeff Heath and the Dogon and Bangime
Languages Project



(CC) BY-NC-SA © Bernard DUPONT



(CC) BY-NC-SA © Bernard DUPONT

Family: Cetoniidae

[Oplostomus fuligineus](#) (Olivier, 1789) .

- **dáŋgà-pétò** . "black cetonid beetle (in flowers of Diospyros)".
- **dá:nò-péttù** . "black cetonid beetle (in flowers of Diospyros)".
- **dáŋgà-pé** . "black cetonid beetle (in flowers of Diospyros)".
- **dá:ŋàpéttù** . "black cetonid beetle (in flowers of Diospyros)".



(CC) BY-SA ©

[Pachnoda cordata](#) (Drury, 1773) .

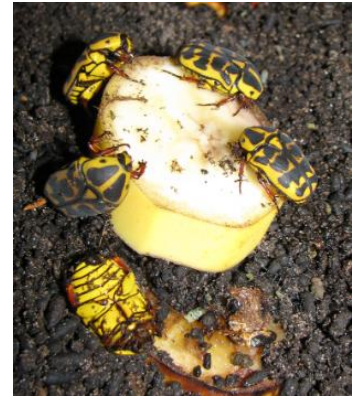
- **dáŋgà-pétò** . "millet-eating cetonid beetle sp. (orange with large black blotches)".
- **dá:nò-péttù** . "millet-eating cetonid beetle sp. (orange with large black blotches)".
- **dáŋgà-pé** . "millet-eating cetonid beetle sp. (orange with large black blotches)".
- **dá:ŋàpéttù** . "millet-eating cetonid beetle sp. (orange with large black blotches)".



(CC) BY © Jeff Heath and the Dogon and Bangime
Languages Project



(CC) BY © Jeff Heath and the Dogon and Bangime
Languages Project



(CC) BY-SA ©

Family: Meloidae

[Zonitoscema gigantea](#) .

- b̀̀r̀̀-̀̀b̀̀r̀̀-̀̀d̀̀e k̀̀p̀̀i . "large tan-colored blister beetle sp. that eats young millet heads".

Family: Scarabaeidae

[Allogymnopleurus aeneus](#) (Harold, 1875) .

- c̀̀è̀c̀̀è̀ b̀̀s̀̀d̀̀-̀̀m̀̀ì̀ḡ̀̀r̀̀-̀̀ǹ̀ù̀ . "dung beetle sp. (scarabaeid)".



(CC) BY © Jeff Heath and the Dogon and Bangime
Languages Project

Order: Diptera

Family: Tachinidae

[Sarcophaga](#) .

- ỳ̀ǹ̀ḡ̀̀g̀̀ỳ̀ǹ̀ b̀̀r̀̀ǹ̀à̀̀:r̀̀ǹ̀á̀̀ . "large, sluggish flesh fly".



(CC) PUBLICDOMAIN © Jan Moravec



(CC) BY-NC-SA © BioImages - the Virtual Fieldguide
(UK)



(CC) BY © Jeff Heath and the Dogon and Bangime
Languages Project

Order: Hemiptera

Family: Belostomatidae

Lethocerus .

- **cècè gòhùnú** . "giant water bug".



(CC) BY © Jeff Heath and the Dogon and Bangime
Languages Project



(CC) BY © Jeff Heath and the Dogon and Bangime
Languages Project



(CC) BY © Jeff Heath and the Dogon and Bangime
Languages Project

Family: Coreidae

Anoplocnemis curvipes .

- **núm cècè** . "tip wilter bug (leaf-footed bug, legume-eating)".



(CC) BY © Jeff Heath and the Dogon and Bangime Languages Project

Order: Hymenoptera

Family: Apidae

Apis mellifera Linnaeus, 1758 .

- **kà:yũŋ** . "honey bee".



(CC) BY-SA ©



(CC) BY © Treesha Duncan

Family: Eumenidae

Delta emarginatum (Linnaeus, 1758) .

- **zĩzĩm** . "black mud wasp (mud-dauber)".



(CC) BY-SA ©



(CC) BY © Jeff Heath and the Dogon and Bangime Languages Project



(CC) BY-SA ©

Polistes .

- **gàlàŋ bàr"i:** . "brownish paper wasp sp. with yellow cross-bands, nest in leaves".



(CC) BY-NC © Biopix



(CC) BY © Miroslav Deml



(CC) BY-NC-SA © Flickr

Family: Formicidae

Camponotus maculatus (Fabricius, 1782) .

- **y"à:ηà-úsó sôη** . "honey ant (yellow, fast-moving)".



(CC) BY-SA © April Nobile



(CC) BY © Jeff Heath and the Dogon and Bangime Languages Project

Cataglyphis .

- **y"à:ηà-ùsó sôη** . "long-legged, very fast black ant in sand".



(CC) BY-NC-SA © Valter Jacinto



(CC) BY-NC-SA © Valter Jacinto



(CC) BY-SA ©

Messor .

- **cèrú** . "large black grain-eating ant sp. in fields".



(CC) BY-NC-SA © April Nobile



(CC) BY © Jeff Heath and the Dogon and Bangime Languages Project



(CC) BY-NC-SA © April Nobile

Pachycondyla .

- **mèmèr jém** . "stinging black ant sp.".



(CC) BY © Jeff Heath and the Dogon and Bangime Languages Project



(CC) BY-NC-SA © April Nobile



(CC) BY-NC-SA © April Nobile

Order: Neuroptera

Family: Myrmeleontidae

Lachlathetes furfuraceus (Rambur, 1842) .

- **y"àṅà-y"àṅà tú:"sú tá:fi** . "ant lion sp. (adult) with colored wings".



(CC) BY © Jeff Heath and the Dogon and Bangime Languages Project



(CC) BY © Jeff Heath and the Dogon and Bangime Languages Project



(CC) BY © Jeff Heath and the Dogon and Bangime Languages Project

Order: Orthoptera

Family: Acrididae

[Acrotylus blondeli](#) .

- dùṅùnú káyà . "grasshopper sp."
- ìsòsúměy káyà . "grasshopper sp."



©

[Anacridium melanorhodon](#) .

- kà: yèrú . "grasshopper sp. (tree locust)"
- kàyà yèrú . "grasshopper sp. (tree locust)"



(CC) BY © Jeff Heath and the Dogon and Bangime

Languages Project

[Cataloipus cymbiferus](#) .

- gòròṅgò:sĩ-tàpĩní: . "grasshopper sp."
- gòròṅgò:sĩ-tàpĩné . "grasshopper sp."
- gòròṅgò:sĩ-tàmné . "grasshopper sp."



(CC) BY © Jeff Heath and the Dogon and Bangime Languages Project

Cryptocatantops haemorrhoidalis .

- **núm-tóki** : "grasshopper sp."
- **nátĩ kàyà** . "grasshopper sp."
- **nátĩrĩ kàyà** . "grasshopper sp."



(CC) BY © Jeff Heath and the Dogon and Bangime Languages Project



(CC) BY © Jeff Heath and the Dogon and Bangime Languages Project



(CC) BY © Jeff Heath and the Dogon and Bangime Languages Project

Diabolocatantops axillaris .

- **nátĩ kàyà** . "grasshopper sp."
- **nátĩrĩ kàyà** . "grasshopper sp."



(CC) BY © Jeff Heath and the Dogon and Bangime Languages Project



(CC) BY © Jeff Heath and the Dogon and Bangime Languages Project



(CC) BY © Jeff Heath and the Dogon and Bangime Languages Project

[Eurysternacris brevipes](#) .

- kàyà kú-kópì: . "grasshopper sp."
- kàyà kú-kófi: . "grasshopper sp."



(CC) BY © Jeff Heath and the Dogon and Bangime Languages Project



(CC) BY © Jeff Heath and the Dogon and Bangime Languages Project

[Gastrimargus africanus](#) .

- bà:bà númlé . "grasshopper sp."



(CC) BY-SA © ChriKo



(CC) BY-SA © ChriKo

[Harpezocatantops stylifer](#) .

- b̀̀:ɾ̀̀ kàyà . "grasshopper sp."

[Heteracris annulosa](#) .

- è̀̀é̀:r̀̀ kàyà . "grasshopper sp."
- m̀̀ǹǹ kàyà . "grasshopper sp."



(CC) BY © Jeff Heath and the Dogon and Bangime Languages Project



(CC) BY © Jeff Heath and the Dogon and Bangime Languages Project



(CC) BY © Jeff Heath and the Dogon and Bangime Languages Project

[Hieroglyphus daganensis](#) .

- zĩnâŋ-gǫŋgùrǫ . "grasshopper sp."



(CC) BY © Jeff Heath and the Dogon and Bangime Languages Project



(CC) BY © Jeff Heath and the Dogon and Bangime Languages Project



(CC) BY © Jeff Heath and the Dogon and Bangime Languages Project

[Kraussia angulifera](#) .

- kòmbùrùkòyó . "grasshopper sp."



(CC) BY © Jeff Heath and the Dogon and Bangime Languages Project



(CC) BY © Jeff Heath and the Dogon and Bangime Languages Project

[Kraussella amabile](#) .

- sègùm-ségĩrè . "grasshopper sp."
- sègùm-ségěy . "grasshopper sp."



(CC) BY © Jeff Heath and the Dogon and Bangime
Languages Project



(CC) BY © Jeff Heath and the Dogon and Bangime
Languages Project

[Oedaleus senegalensis](#) .

- pèrêm-pémme . "grasshopper sp."



(CC) BY © Jeff Heath and the Dogon and Bangime
Languages Project



(CC) BY © Jeff Heath and the Dogon and Bangime
Languages Project



(CC) BY-SA ©

[Ornithacris cavroisi](#) .

- kà:-y"àṅá . "grasshopper sp."



(CC) BY © Jeff Heath and the Dogon and Bangime
Languages Project



PD ©

[Schistocerca gregaria](#) .

- kàyà m̀̀sú . "pilgrim locust (gregarious phase)".



PD ©



Public Domain by



PD NASA ©

[Scintharista notabilis](#) .

- t́ŕ k̀̀ỳ . "grasshopper sp."



(CC) BY © Jeff Heath and the Dogon and Bangime Languages Project



(CC) BY © Jeff Heath and the Dogon and Bangime Languages Project



PD ©

[Sherifuria haningtoni](#) .

- bó:ní-sélè-là:wà . "grasshopper sp."
- bó:ní-sélè-dà:w`á . "grasshopper sp."



(CC) BY © Jeff Heath and the Dogon and Bangime Languages Project



(CC) BY © Jeff Heath and the Dogon and Bangime Languages Project



(CC) BY © Jeff Heath and the Dogon and Bangime Languages Project

[Zacompsa festa](#) .

- dą̀gá-péřĩ . "grasshopper sp."
- dą̀ká-péřĩ . "grasshopper sp."



(CC) BY © Jeff Heath and the Dogon and Bangime Languages Project



(CC) MARK © Christiaan Kooyman



(CC) BY © Jeff Heath and the Dogon and Bangime Languages Project

Family: Gryllidae

[Gryllus bimaculatus](#) .

- cècè-tòńéy-bàsà . "large black cricket"



(CC) BY-SA ©



(CC) BY-NC-SA © Valter Jacinto



PD ©

Family: Pyrgomorphidae

[Chrotogonus senegalensis](#) .

- kàyà kòfú . "toad grasshopper"



(CC) BY © Jeff Heath and the Dogon and Bangime Languages Project



(CC) BY © Jeff Heath and the Dogon and Bangime Languages Project

[Poecilotheres bufonius hieroglyphicus](#) .

- sé:kèy kàyà . "grasshopper sp."



(CC) BY © Jeff Heath and the Dogon and Bangime Languages Project



(CC) BY © Jeff Heath and the Dogon and Bangime Languages Project

[Pyrgomorpha vigneaudi](#) .

- yókúm-dó:rèy . "grasshopper sp."



PD ©

Phylum: Chordata

Class: Actinopterygii

Order: Osteoglossiformes

Family: Mormyridae

[Marcusenius senegalensis](#) .

- nĩ-nà: kàyěy . "trunkfish (small fish sp. with protruding lower lip)".



(CC) BY © Jeff Heath and the Dogon and Bangime
Languages Project



(CC) BY © Jeff Heath and the Dogon and Bangime
Languages Project



(CC) BY © Jeff Heath and the Dogon and Bangime
Languages Project

Class: Aves

Order: Accipitriformes

Family: Accipitridae

[*Gyps africanus*](#) Salvadori, 1865 . Characteristics: nivore; body-length: 110 cm, wedge-shaped tail and long, narrow wings; rust-coloured below and dark above; pale head with black face and 'beard'. Biotope: savanna, woodland. ([Sinclair 1994](#): 70)

- **jàybàn dònùsú** . "white-backed vulture".



(CC) BY-SA © unknown



(CC) BY-SA © Mark Robinson

[*Gyps rueppellii*](#) (A. E. Brehm, 1852) . Characteristics: carnivore; body-length: 115 cm, brown plumage; wings with dark flight feathers and pale linings. ([Sinclair 1994](#): 70)

- **jàybàn-ná** : "Rueppell's griffon vulture".
- **jàybàn kú pótò** . "Rueppell's griffon vulture".



PD ©



(CC) BY-NC-SA © Gerald and Buff Corsi



PD ©

Micronisus gabar (Daudin, 1800) . Characteristics: carnivore; body-length: 30-34 cm; grey throat and breast; reddish legs and cere; grey wings. Biotope: woodland. ([Sinclair 1994](#): 86)

- **cîlà** . "gabar goshawk".



(CC) BY © Neil Strickland



PD US ©



(CC) BY ©

Milvus migrans (Boddaert, 1783) . Characteristics: carnivore; body-length: 56 cm; long forked tail; dark plumage. ([Sinclair 1994](#): 88)

- **kòtòrò-kôw** . "kite (hawk)".



(CC) BY-SA © Thomas Kraft



(CC) BY-NC © inaturalist



(CC) BY-SA ©

[Necrosyrtes monachus](#) (Temminck, 1823) . Characteristics: carnivore; body-length: 70 cm; brown plumage; bare head with red skin. ([Sinclair 1994](#): 72)

- **jàybàn kú-kógúsi** . "hooded vulture".



(CC) BY-SA © Atamari



(CC) BY-NC © Scott Bowers



(CC) BY-NC-SA © Steve Garvie

[Neophron percnopterus](#) (Linnaeus, 1758) . Characteristics: carnivore; body-length: 62 cm; white plumage; wings with black primaries; white tail. ([Sinclair 1994](#): 72)

- **gòríyò** . "Egyptian vulture".



PD ©



(CC) BY-SA © Kousik Nandy



(CC) BY ©

[Terathopius ecaudatus](#) (Daudin, 1800) . Characteristics: carnivore; body-length: 55-70 cm; black, white and chestnut plumage; short tail; long wings; red face. Biotope: semi-desert. ([Sinclair 1994](#): 74)

- **tèw píró** . "bateleur hawk".



(CC) BY © Derek Keats



(CC) BY-SA ©



Public Domain by

Order: Anseriformes

Family: Anatidae

[Alopochen aegyptiaca](#) (Linnaeus, 1766) . Characteristics: omnivore; body-length: 70 cm; brown plumage; darker on the upperwing; dark brown patch on the chest; brown and white bill. Biotope: freshwater. ([Sinclair 1994](#): 64)

- bá:wɲgàl . "Egyptian goose".



(CC) BY-SA ©



(CC) BY-SA ©

[Dendrocygna viduata](#) (Linnaeus, 1766) . Characteristics: herbivore; body-length: 48 cm; black head with white face; brown plumage; dark belly; blue-tipped black bill. Biotope: freshwater. ([Sinclair 1994](#): 64)

- yèrè- [fiː-ˈfiː] . "white-faced whistling duck".



(CC) BY-NC © Gabriela F. Ruellan



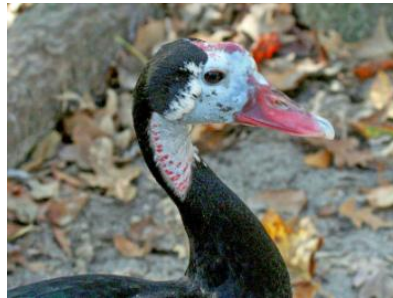
(CC) BY-SA ©

Plectropterus gambensis (Linnaeus, 1766) . Characteristics: herbivore; body-length: 100 cm, black plumage on the back; white on the belly; red bill; white face;. Biotope: grassland. ([Sinclair 1994](#): 64)

- **yèrè-bèlú** . "spur-winged goose".



(CC) BY-SA © Appaloosa



(CC) BY-SA © Dick Daniels

Sarkidiornis melanotos (Pennant, 1769) . Characteristics: omnivore; body-length: 65 - 80 cm, black and white plumage; speckled grey head; male larger than female; in breeding season the male has a large comb on the bill. Biotope: freshwater. ([Sinclair 1994](#): 64)

- **yèrè-à"sú** . "knob-billed goose".



(CC) BY ©



(CC) BY-SA ©



(CC) BY-SA © Lip Kee

Order: Apodiformes

Family: Apodidae

[Apus affinis](#) (J. E. Gray, 1830) .

- árjéjébè . "little African swift".



(CC) MARK © creator:Thomas Hardwicke

[Tachymarptis aequatorialis](#) (J. W. von Müller, 1851) .

- árjéjébè . "mottled swift".

Order: Bucerotiformes

Family: Bucerotidae

[Tockus erythrorhynchus](#) (Temminck, 1823) .

- ògò-dò:bù píró . "red-billed hornbill".



(CC) BY-NC © ellisms



(CC) BY-SA © Mehmet Karatay



(CC) BY © Biodiversity Heritage Library

[Tockus nasutus](#) (Linnaeus, 1766) .

- ògò-dò:bù jém . "grey hornbill".



(CC) BY-NC © inaturalist



(CC) BY-SA © Lip Kee from Singapore, Republic of Singapore



(CC) BY © Biodiversity Heritage Library

Family: Bucorvidae

[Bucorvus abyssinicus](#) (Boddaert, 1783) .

- **jìrò jém** . "Abyssinian ground hornbill".



(CC) BY © Jeff Heath and the Dogon and Bangime Languages Project

Order: Charadriiformes

Family: Burhinidae

[Burhinus capensis](#) (Lichtenstein, 1823) .

- **yèkê:ké** . "spotted thick-knee".
- **wèkê:ké** . "spotted thick-knee".



(CC) BY-SA © Jutta ? unknown



(CC) BY-SA © Cburnett?



(CC) BY © Jeff Heath and the Dogon and Bangime Languages Project

Family: Charadriidae

[Vanellus tectus](#) (Boddaert, 1783) .

- kéléntè . "black-headed lapwing (plover)".



(CC) BY-NC-SA © Bernard DUPONT



(CC) MARK © ChriKo



(CC) BY © Noel Reynolds

Family: Glareolidae

[Rhinoptilus chalcopterus](#) (Temminck, 1824) .

- y"à:ɲà-èsá . "bronze-winged courser".



Public Domain by Nicolas Huet



(CC) BY-NC-SA © Bart Wursten

Order: Ciconiiformes

Family: Ciconiidae

[Ciconia abdimii](#) Lichtenstein, 1823 . Characteristics: carnivore; body-length: 76 cm; black plumage; white lower back and rump; greenish bill and legs;. ([Sinclair 1994](#): 58)

- zà:"sá . "Abdim's stork".



Public Domain by Taa DoBeS team
(Boden/Güldemann/Naumann)



Public Domain by Taa DoBeS team
(Boden/Güldemann/Naumann)



Public Domain by Taa DoBeS team
(Boden/Güldemann/Naumann)

[Ciconia ciconia](#) (Linnaeus, 1758) . Characteristics: carnivore; body-length: 102 cm; white plumage; black wings; red bill and legs. Biotope: grassland. ([Sinclair 1994](#): 60)

- kòmṣăy . "white stork".



(CC) BY-SA © Dick Daniels



(CC) BY © Bogdan Giușcă

[Leptoptilos crumeniferus](#) (Lesson, 1831) . Characteristics: carnivore; body-length: 150 cm; white body, black wings; naked head and neck; large, pointy bill; whitish legs. ([Sinclair 1994](#): 58)

- **zĩmbó** . "marabou stork".



(CC) BY-SA © Ltshears



(CC) BY-SA © unknown (User:Cacophony)

Order: Columbiformes

Family: Columbidae

[Columba guinea](#) Linnaeus, 1758 .

- **gù-gàsà** . "speckled pigeon".



(CC) BY-SA © unknown (Ltshears)



(CC) BY-SA © unknown (ChriKo)

[Columba livia](#) Gmelin, 1789 .

- **gù jém** . "rock pigeon, rock dove".
- **gù tólón jéw^ɾi** . "rock pigeon, rock dove".
- **tólón jéw^ɾey** . "rock pigeon, rock dove".
- **tùsùm** . "pigeon (domestic)".



(CC) BY-SA © Mike Pennington



(CC) BY-SA © J.M.Garg

[Oena capensis](#) (Linnaeus, 1766) .

- gèrêngè:"sí: . "long-tailed pigeon, namaqua dove".



(CC) BY-SA © Lip Kee from Singapore, Republic of Singapore



(CC) BY-NC-SA © David Blank



http://en.wikipedia.org/wiki/public_domain © C. G.

Finch-Davies (1875-1920)

[Streptopelia senegalensis](#) (Linnaeus, 1766) .

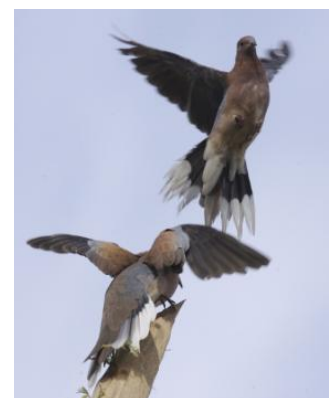
- pétkílëy . "laughing dove".



(CC) BY-SA ©



(CC) BY-SA © Lip Kee



(CC) BY-SA ©

[*Streptopelia vinacea*](#) (Gmelin, 1789) .

- ò:dú pètkìlèy . "doves with black nape rings (vinaceous dove; mourning dove)".
- ò:dú pèl-kìlèy . "doves with black nape rings (vinaceous dove; mourning dove)".



(CC) BY ©

Order: Coraciiformes

Family: Alcedinidae

[*Halcyon senegalensis*](#) (Linnaeus, 1766) .

- sày là:wá . "woodland kingfisher".



(CC) BY-SA ©



(CC) BY-SA © User:Justin.Tweedie



Public Domain by

Family: Coraciidae

[*Coracias abyssinicus*](#) Hermann, 1783 .

- àngàrà . "Abyssinian roller".



PD ©



(CC) BY-SA ©

Family: Meropidae

[*Merops albicollis*](#) Vieillot, 1817 .

- **kíròṅkácè** . "white-throated bee-eater".



(CC) BY © Ron Knight from Seaford, East Sussex,
United Kingdom



(CC) BY-SA ©



(CC) BY © Gerhard Singer

Order: Cuculiformes

Family: Cuculidae

[*Centropus senegalensis*](#) (Linnaeus, 1766) .

- **bògòtórò** . "Senegal coucal".
- **tú:tù** . "Senegal coucal".



(CC) BY © ThomHasi



(CC) BY © Jeff Heath and the Dogon and Bangime Languages Project

Order: Falconiformes

Family: Falconidae

Falco alopex (Heuglin, 1861) .

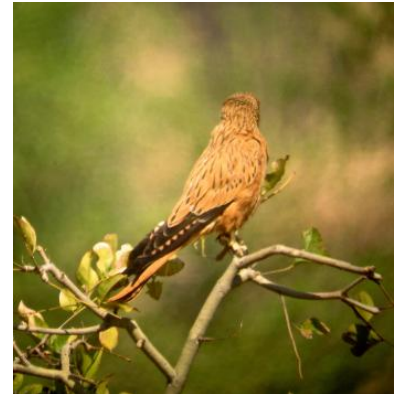
- kěːˀ-kèːˀ . "fox-kestrel".



(CC) BY-SA ©



Public Domain by



(CC) BY-NC © inaturalist

Falco biarmicus Temminck, 1825 . Characteristics: carnivore; body-length: 40-45 cm, rufous and black head and crown; pinkish underside; dark back. Biotope: grassland, desert, mountains. ([Sinclair 1994](#): 88)

- tɛ̀w dɛ̀m . "lanner falcon".



Public Domain by Taa DoBeS team
(Boden/Güldemann/Naumann)



(CC) MARK © creator:Louis Agassiz Fuertes



Public Domain by Taa DoBeS team
(Boden/Güldemann/Naumann)

Falco peregrinus Tunstall, 1771 . Characteristics: carnivore; body-length: 34-38 cm, black forehead and crown; black moustach-like marks in the face; white underside speckled with black. Biotope: rocky area. ([Sinclair 1994](#): 88)

- **tèw dēm** . "peregrine falcon".



(CC) BY-SA © Carl Mueller



(CC) BY-SA © Keven Law



Public Domain by Naumann

Falco tinnunculus Linnaeus, 1758 . Characteristics: carnivore; body-length: 33-39 cm, chestnut back with black spots; grey head; barred and spottet underwing. Biotope: rocky area, mountains. ([Sinclair 1994](#): 92)

- **kê:ⁿ-kê:ⁿ** . "rock kestrel".



(CC) BY-SA ©



(CC) BY-SA ©



(CC) BY-SA ©

Order: Galliformes

Family: Numididae

[Numida meleagris](#) (Linnaeus, 1758) . Characteristics: omnivore; body-length: 56 cm; grey plumage with white dots; blue and red skin on the head. Biotope: grassland, woodland. ([Sinclair 1994](#): 102)

- **yǔŋ** . "guinea-fowl".



(CC) BY-SA ©



(CC) BY © Jeff Heath and the Dogon and Bangime Languages Project



(CC) BY © Chris Eason

Family: Phasianidae

[Francolinus](#) .

- **súgú** . "francolin".



(CC) BY ©



(CC) PUBLICDOMAIN © Stolz, Gary M.



Public Domain by

[*Ptilopachus petrosus*](#) (Gmelin, 1789) .

- ògùrù èsěy . "stone partridge".



(CC) BY-SA ©



(CC) BY © Jeff Heath and the Dogon and Bangime
Languages Project



(CC) BY © Jeff Heath and the Dogon and Bangime
Languages Project

Order: Gruiformes

Family: Gruidae

[*Balearica pavonina*](#) (Linnaeus, 1758) .

- kùwⁿá . "crowned crane".



Public Domain by



(CC) BY ©

Family: Otididae

[Ardeotis arabs](#) (Linnaeus, 1758) .

- **jìrò-pìrù àrà** . "Arabian bustard".
- **jìrò-pìrù jém** . "Arabian bustard".



(CC) BY ©



(CC) BY-SA ©

[Eupodotis senegalensis](#) (Vieillot, 1820) .

- **kàtàrà-kâwⁿ** . "white-bellied (= Senegal) bustard".



(CC) BY-SA © Lip Kee



(CC) BY-SA ©



(CC) MARK © Creator:Claude Gibney Finch-Davies

[Lissotis melanogaster](#) (Rüppell, 1835) .

- **kàtàrà-kàw** cèlkú-jèm . "black-bellied bustard".



Public Domain by



Public Domain by

[Neotis denhami](#) (Children & Vigors, 1826) .

- **ǰìrò-ǰìrù ǰírú** . "Denham's bustard".
- **ǰìrò-ǰìrù yá** . "Denham's bustard".



Public Domain by



(CC) BY-SA ©



(CC) BY-NC-SA © Bernard DUPONT

Order: Passeriformes

Family: Cisticolidae

[Spiloptila clamans](#) (Cretzschmar, 1826) .

- **sày kálísi** . "cricket warbler".
- **sày-tiyé-tiyè** . "cricket warbler".
- **sày té:-tè** . "cricket warbler".



(CC) BY © Jeff Heath and the Dogon and Bangime Languages Project



(CC) BY © Jeff Heath and the Dogon and Bangime Languages Project



Public Domain by

Family: Corvidae

[Corvus albus](#) Statius Muller, 1776 .

- gá:"gà:"n . "pied crow".



(CC) BY-SA © Thomas Schoch



(CC) BY-SA © Myburgh

[Corvus ruficollis](#) Lesson, 1831 .

- gà:"gà:"n bálá . "black crow".



(CC) MARK © G. G. White – delineator. W. H. Dougal – engraver



(CC) BY-SA © Lip Kee Yap



(CC) BY-NC © Biopix

Family: Estrildidae

[Amadina fasciata](#) (Gmelin, 1789) .

- **bàtá-lótè** . "cut-throat finch".



(CC) BY © Jeff Heath and the Dogon and Bangime Languages Project



(CC) BY © Jeff Heath and the Dogon and Bangime Languages Project

[Lagonosticta senegala](#) (Linnaeus, 1766) .

- **sày bārⁿⁱ** . "red-billed firefinch".



(CC) BY © Original uploader was ThomHasi at en.wikipedia



Public Domain by Veli Pohjonen



(CC) BY © msafari2425

[Uraeginthus bengalus](#) (Linnaeus, 1766) .

- **sày zór^{zò}rù** . "red-cheeked cordon-bleu".



(CC) BY ©



(CC) BY-SA ©



Public Domain by

Family: Hirundinidae

[Ptyonoprogne fuligula pusilla](#) (Zedlitz, 1908) .

- yèré:rè . "rock martin (swallow)".



(CC) BY © Jeff Heath and the Dogon and Bangime

Languages Project



(CC) BY © Jeff Heath and the Dogon and Bangime

Languages Project



(CC) BY © Jeff Heath and the Dogon and Bangime

Languages Project

Family: Muscicapidae

[Cercotrichas galactotes](#) (Temminck, 1820) .

- d̩d̩:s̩yà . "rufous scrub-robin".
- d̩d̩:"s̩y . "rufous scrub-robin".

[Passer luteus](#) (Lichtenstein, 1823) .

- **sày píri:** . "golden sparrow".



(CC) BY-SA © Christiaan Kooyman



(CC) BY © Jeff Heath and the Dogon and Bangime
Languages Project



(CC) BY-SA ©

Family: Ploceidae

[Bubalornis albirostris](#) (Vieillot, 1817) .

- **sí:"sà:"** . "white-billed buffalo-weaver".



(CC) BY © Jeff Heath and the Dogon and Bangime
Languages Project



(CC) BY © Jeff Heath and the Dogon and Bangime
Languages Project

[Euplectes franciscanus](#) (Isert, 1789) .

- **sày dònó** . "northern red bishop (bird)".



(CC) BY © Jeff Heath and the Dogon and Bangime Languages Project



(CC) BY-SA ©



(CC) BY © Jeff Heath and the Dogon and Bangime Languages Project

[Ploceus cucullatus](#) (Statius Muller, 1776) .

- **sày dònó** . "village weaver (bird)".



(CC) BY © Simon J. Tonge



(CC) BY © Simon J. Tonge



(CC) BY © Simon J. Tonge

[Ploceus luteolus](#) (Lichtenstein, 1823) .

- **sày sítĩ** . "little weaver, slender-billed weaver (bird)".



(CC) BY-NC © Scott Bowers



(CC) BY © Joaquim Grave

[Quelea quelea](#) (Linnaeus, 1758) .

- **bátàlótà** . "black-faced dioch (bird)".
- **bátàlótè** . "black-faced dioch (bird)".
- **sày m̀̀sí:** . "black-faced dioch (bird)".



(CC) BY © Pawel Ryszawa



(CC) MARK © Creator:John Gerrard Keulemans



(CC) BY-SA © Alastair Rae

Sporopipes frontalis (Daudin, 1800) .

- **sày dònó** . "scaly-fronted (speckle-fronted) weaver".



(CC) BY-SA ©



(CC) BY-SA ©



PD ©

Family: Sturnidae

Buphagus africanus Linnaeus, 1766 .

- **nàjá sày** . "oxpecker (bird)".



(CC) BY-SA © Steve Garvie from Dunfermline, Fife, Scotland



(CC) BY-SA © Steve Garvie from Dunfermline, Fife, Scotland



(CC) BY © Biodiversity Heritage Library

[Lamprotornis caudatus](#) (Statius Muller, 1776) .

- **sày jém** . "long-tailed glossy starling".
- **sày jém báná gòrò** . "long-tailed glossy starling".



(CC) BY-SA © Salix



(CC) BY © Thom Haslam



(CC) BY © Biodiversity Heritage Library

[Lamprotornis chalybaeus](#) Hemprich & Ehrenberg, 1828 .

- **săy sòlò** . "greater blue-eared starling (= blue-eared glossy starling)".



(CC) BY © Jeff Heath and the Dogon and Bangime Languages Project



(CC) BY © Jeff Heath and the Dogon and Bangime Languages Project



(CC) MARK © creator:Joseph Smit. Richard Bowdler Sharpe (text)

[Lamprotornis pulcher](#) (Statius Muller, 1776) .

- **sày gǐrò-dé:fi:** . "chestnut-bellied starling".



(CC) BY-SA © ChriKo



(CC) BY © Jeff Heath and the Dogon and Bangime Languages Project



(CC) BY © Jeff Heath and the Dogon and Bangime Languages Project

[Onychognathus neumanni](#) (Alexander, 1908) .

- **sǎy sòlò** . "crag chestnut-winged (= Neumann's) starling".

Family: Viduidae

[Vidua orientalis](#) Heuglin, 1870 .

- **nànâm-dóri** . "Sahel paradise whydah (esp. breeding male)".

Order: Pelecaniformes

Family: Ardeidae

[Bubulcus ibis](#) (Linnaeus, 1758) . Characteristics: carnivore; body-length: 54 cm; white and light brown plumage; yellow bill; breeding bird has a red bill; often found in association with cattle. Biotope: grassland. ([Sinclair 1994](#): 54)

- **yèlěj** . "cattle egret".
- **káŋ-kòkò píri** . "cattle egret".



(CC) BY-SA © Atamari



(CC) BY-SA © Atamari



(CC) BY © Jeff Heath and the Dogon and Bangime Languages Project

Order: Psittaciformes

Family: Psittacidae

[Psittacula krameri](#) (Scopoli, 1769) .

- **dàlkàwòysá** . "rose-ringed parakeet (= Senegal long-tailed parrot)".



(CC) BY © Jeff Heath and the Dogon and Bangime Languages Project



(CC) BY © Jeff Heath and the Dogon and Bangime Languages Project



(CC) BY © Jeff Heath and the Dogon and Bangime Languages Project

Order: Strigiformes

Family: Strigidae

[Bubo ascalaphus](#) Savigny, 1809 .

- **y"à:ɲà-dúru** . "desert eagle-owl".



(CC) BY © Jeff Heath and the Dogon and Bangime Languages Project



(CC) BY © Jeff Heath and the Dogon and Bangime Languages Project



(CC) BY © Jeff Heath and the Dogon and Bangime Languages Project

[Bubo cinerascens](#) Guerin-Meneville, 1843 .

- **y"à:ɲà-dúru** . "vermiculated (or: greyish) eagle-owl".



(CC) BY © Jeff Heath and the Dogon and Bangime Languages Project



(CC) BY © Jeff Heath and the Dogon and Bangime Languages Project



(CC) BY © Jeff Heath and the Dogon and Bangime Languages Project

[Ptilopsis leucotis](#) (Temminck, 1820) .

- **kòṅòmǐ:mà:** . "northern white-faced owl".



(CC) BY-NC © inaturalist



Public Domain by

Family: Tytonidae

[Tyto alba](#) (Scopoli, 1769) .

- **ĩmísàì** . "barn owl".
- **ĩmúsàyi:** . "barn owl".



(CC) BY-SA ©



Public Domain by Racheeo ??



(CC) BY-SA ©

Order: Struthioniformes

Family: Struthionidae

[Struthio camelus](#) Linnaeus, 1758 .

- ḡḡò-tòḡíyà . "ostrich".



Public Domain by Taa DoBeS team
(Boden/Güldemann/Naumann)



Public Domain by Taa DoBeS team
(Boden/Güldemann/Naumann)



Public Domain by Roland Kiessling

Order: Upupiformes

Family: Upupidae

[Upupa epops](#) Linnaeus, 1758 .

- ḡùrùm-sòḡëy ḡàrùm-sòḡëy . "hoopoe".



(CC) BY-SA ©



(CC) BY-SA ©



(CC) BY © Biodiversity Heritage Library

Class: Mammalia

Order: Artiodactyla

Family: Bovidae

[Damaliscus korrigum](#) (Ogilby, 1837) .

- ናካሳ . "korrigum (antelope close to topi), 100 kg (horselike, glossy; long horns curving backward then forward, black patch on upper legs, ochre-colored lower legs)".



(CC) BY ©



(CC) MARK © Philip Sclater



(CC) BY ©

[Sylvicapra grimmia](#) (Linnaeus, 1758) . Characteristics: herbivore; height: 50cm; the coat varies in colour from light grey-brown to red-brown; the belly and the insides of the legs are white; the front legs have vertical black stripes; there is a tuft of long, black hair on the forehead; the short tail is dark on top and white underneath; females are larger and lack horns;. Biotope: savanna, grassland, woodland, mountains. ([Cillie 1997](#): 64)

- ኮሶሶ . "bush duiker, 45-70 cm shoulder height, 15-20 kg (goatlike, males with short vertical horns o 18 cm, can leap)".



Public Domain by unknown (Chuckupd)



(CC) BY-NC-SA © Bernard DUPONT



(CC) BY © Biodiversity Heritage Library

Syncerus caffer (Sparrman, 1779) . Characteristics: herbivore; height: 1-1,7m; this cattle-like animal is born with a light reddish-brown coat that darkens with age until it is grey-black; both sexes are horned, but the horns of the male are especially large with thick bosses;. Biotope: savanna, scrubforest, forest, grassland. (Cillié 1997: 84)

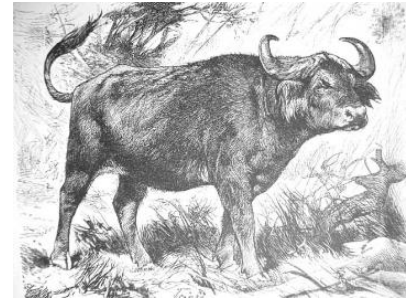
- **nàṅà-yèrú** . "African buffalo".



(CC) BY-SA © unknown, Haplochromis?



(CC) BY © Stig Nygaard



(CC) MARK © Wikimedia Commons

Family: Hippopotamidae

Hippopotamus amphibius Linnaeus, 1758 . Characteristics: herbivore; height: 150-165 cm; this very large semiaquatic animal is generally grey-brown but the belly and skinfolds are yellowish-pink; it has a very large mouth; the nostrils and the eyes are on top of the head; the ears are small and rounded;. Biotope: freshwater, swamps. (Cillié 1997: 106)

- **bàṅá** . "hippo".



Public Domain by Christfried Naumann



© Geoff Gallice

Family: Suidae

[Phacochoerus africanus](#) (Gmelin, 1788) . Characteristics: omnivore; the body is grey and sparsely covered with long bristles; there is a mane of dark hair with lighter tips; the adults have large tusks which curve over the broad snout; the males have larger tusks than the females and have three pairs of warts on the sides of the face; they run with their tail up;. Biotope: savanna, grassland, desert. ([Cillié 1997](#): 92)

- **tóru** . "warthog (boar)".



© Geoff Gallice



(CC) BY-SA © Delphine Bruyere



(CC) PUBLICDOMAIN © Trisha M Shears

Order: Carnivora

Family: Canidae

[Canis adustus adustus](#) Sundevall, 1847 .

- **őw-ĩši** . "side-striped jackal".

[Canis aureus](#) Linnaeus, 1758 .

- **těnām-dólù** . "golden jackal".



(CC) BY-SA © D. Gordon E. Robertson



(CC) BY-NC-SA © David Bygott



(CC) BY © Jeff Heath and the Dogon and Bangime Languages Project

Lycaon pictus (Temminck, 1820) . Characteristics: carnivore; height: 75cm; these canids have a short dark snout and large, round ears; the body and legs are white with yellow, brown and black blotches, the bushy tail is white; the pattern and colour differs among individuals; down the centre of the forehead is a dark stripe;. Biotope: savanna, forest, grassland, woodland. (Cillié 1997: 130)

- à"sámà-sú:mà . "wild dog".



(CC) BY © Michael Gäbler



(CC) BY-SA © Bart Swanson



(CC) BY-SA © Evan Summerson, Kaizerza

Vulpes pallida (Cretzschmar, 1826) .

- íwěy . "sand fox, pale fox".



Public Domain by

Family: Felidae

Acinonyx jubatus (Schreber, 1775) . Characteristics: carnivore; height: 70-90 cm, the Cheetah is a large cat with long legs and a small head; the coat is yellowish-white with black spots; the ears are small and round; the Cheetah is the fastest land animal reaching speeds of more than 100 km/h; it can be distinguished from the Leopard by its longer legs and the characteristic tear marks extending from the eyes to the mouth;. Biotope: grassland, desert. (Cillié 1997: 114)

- màrú . "cheetah".



(CC) BY-SA © Paul Maritz



(CC) BY-SA © Malene Thyssen



(CC) BY-SA © Marcus T. Jaschen

Felis margarita Loche, 1858 .

- **nǐw^á** . "sand cat, 2-3 kg (sandy yellow, ears widely spaced)".



(CC) BY-SA ©



(CC) BY ©



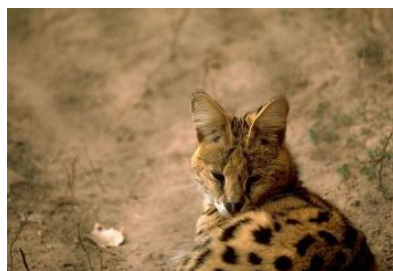
(CC) BY-SA ©

Leptailurus serval (Schreber, 1776) . Characteristics: carnivore; height 55-65cm; the Serval is a slender cat with long legs, a small head and large rounded ears; the colour ranges from dull white to golden-yellow with black stripes down the neck and black spots on the body; it can be distinguished from the Cheetah by the lack of tear marks and the larger ears;. Biotope: savanna, forest, grassland. ([Cillié 1997](#): 118)

- **tǒrǒ-bàsà** . "serval cat, 12 kg (spotted; long legs, pointed ears)".



(CC) BY-SA © unknown



(CC) PUBLICDOMAIN © Stolz, Gary M.

Panthera leo (Linnaeus, 1758) . Characteristics: carnivore; height: 110-120 cm; the Lion is the largest cat in Africa and the only one where the males have manes, the colour of the mane ranges from blonde to black; the back of the round ears is black; the males are much larger than the females and have manes;. Biotope: savanna, scrubforest, forest, grassland, mountains. (Cillié 1997: 110)

- **òw à-nú** . "lion".



(CC) BY ©



© Geoff Gallice



Public Domain by Taa DoBeS team

(Boden/Güldemann/Naumann)

Family: Herpestidae

Atilax paludinosus (G.[Baron] Cuvier, 1829) . Characteristics: carnivore; body-length: 45-60cm; the fur of this large mongoose ranges from black to rust-brown; the underside and the cheeks are lighter; the head is broad and the ears lie flat;. Biotope: savanna, scrubforest, rainforest, grassland, freshwater. (Cillié 1997: 158)

- **kèsà jém** . "marsh mongoose (dark, to 4 kg, swims along river banks)".



(CC) BY-NC-SA © David Bygott



(CC) BY © Jeff Heath and the Dogon and Bangime

Languages Project

Galerella sanguinea (Rüppell, 1835) . Characteristics: omnivore; the colour of this Mongoose is usually correlated with the soil colour for camouflage and ranges from yellowish-grey to reddish; the long and upwards bent tail has a black tip;. (Cillié 1997: 152)

- **jèljèlëy** . "slender mongoose (small, tip of tail black or red, less than 1 kg)".
- **gèrgèlëy** . "slender mongoose (small, tip of tail black or red, less than 1 kg)".



(CC) BY-SA © Sara&Joachim



Public Domain by Andrew Smith (1797-1872)



(CC) BY © Jeff Heath and the Dogon and Bangime Languages Project

Herpestes ichneumon (Linnaeus, 1758) . Characteristics: carnivore; body-length: 50-60 cm; they have a long, low-slung form; the grey coat is dotted with brownish speckles; the tail ends with a black tassel;. Biotope: marshland, swamps.

(Cillié 1997: 166)

- **kèsà dù:"sú** . "Egyptian mongoose, ichneumon (large, to 4 kg)".



(CC) BY-SA © □□□□□□

Ichneumia albicauda (G.[Baron] Cuvier, 1829) . Characteristics: omnivore; body-length 60cm; the coat is grey-brown; the hind legs are very long causing the back to slant forward when it walks; the tail is covered in long white hair;.

Biotope: savanna, forest, grassland, woodland. (Cillié 1997: 156)

- **kèsà bànà-cínó pírù** . "white-tailed mongoose (to 4 kg)".
- **kèsà ́:lò** . "white-tailed mongoose (to 4 kg)".



(CC) BY-SA © MCSchaeffer



(CC) MARK © Frank E. Beppard



(CC) BY © Jeff Heath and the Dogon and Bangime Languages Project

Mungos mungo (Gmelin, 1788) . Characteristics: carnivore; body-length: 30-45 cm; the colour varies from light grey to reddish-brown with dark crossbands on the back; the ears are small and round; the snout is pointed;. Biotope: savanna, scrubforest, grassland, woodland, rocky area. (Cillié 1997: 160)

- **kèsà àⁿsú** . "banded mongoose (to 2 kg)".



(CC) BY-SA © unknown (JP)



(CC) BY-SA © unknown (JP)



Public Domain by Daderot

Family: Mustelidae

Ictonyx striatus (Perry, 1810) . Characteristics: carnivore; height 10-15cm; this short legged predator has black fur with 4 parallel, white stripes on the back; it has white marks underneath the ears and between the eyes;. Biotope: savanna, forest, grassland, woodland, semi-desert, swamps, mountains. (Cillié 1997: 148)

- **kèsà yá:-dígè** . "zorilla (polecat)".



(CC) BY © Jeff Heath and the Dogon and Bangime

Languages Project



CC-Zero ©



(CC) BY-NC-SA © Antonius El Kommos

Mellivora capensis (Schreber, 1776) . Characteristics: omnivore; height: 25-30cm; the body is black with a broad, greyish-white saddle on the back and head; the legs are short and equipped with sharp claws; the black tail is short; the ears are very small;. Biotope: savanna, forest, grassland. ([Cillié 1997](#): 140)

- **gǎynà** . "ratel (honey badger)".



(CC) BY-SA ©



(CC) BY-SA © Matěj Bařha



(CC) MARK © Creator:Joseph Smit

Family: Viverridae

Genetta genetta (Linnaeus, 1758) . Characteristics: carnivore; this cat-like animal has a grey coat with black spots on it; the tail is very long and has grey and black rings, the tip is always white; the ears are very thin and rounded; each individual has a characteristic face mask;. Biotope: savanna, forest, scrubforest, grassland. ([Cillié 1997](#): 144)

- **kòlùrú** . "genet".



(CC) BY © Jeff Heath and the Dogon and Bangime
Languages Project



(CC) BY © Jeff Heath and the Dogon and Bangime
Languages Project



(CC) BY-SA © Liné1

Order: Chiroptera

Family: Emballonuridae

Taphozous mauritanus E. Geoffroy, 1818 . Characteristics: insectivore; body-length: 10-11cm, wing-span: 18-20cm; the dorsal pelage is grizzles grey, the ventral fur is characteristically white; the ears are large and triangular;. Biotope: savanna, forest, grassland, swamps. ([Cillié 1997](#): 208)

- wⁿà:sù gíríngísí . "tomb bat".
- wⁿà:sù kírn'ú-gé:"sí: . "tomb bat".



(CC) BY © Frank Vassen



(CC) BY-SA © Mimi Neumann



(CC) BY-NC © inaturalist

Family: Pteropodidae

Eidolon helvum (Kerr, 1792) . Characteristics: herbivore; length: 19cm, wingspan: 75cm; dog-like face; yellowish fur with no obvious markings; black wings;. Biotope: savanna, rainforest, grassland. ([Stuart and Stuart 2007](#): 46)

- wⁿà:sù gòròŋ-góbò . "straw-colored fruit bat sp.".
- wⁿà:sù gòròŋ-gòmpó . "straw-colored fruit bat sp.".
- wⁿà:sù gòròŋ-gòŋgó . "straw-colored fruit bat sp.".



(CC) BY © Jeff Heath and the Dogon and Bangime Languages Project



(CC) BY-NC © inaturalist



(CC) BY-NC © inaturalist

[Rousettus aegyptiacus](#) (E. Geoffroy, 1810) . Characteristics: herbivore; body-length: 15cm, wing-span: 60cm; dark brown fur; pointy ears;. Biotope: savanna, forest, grassland. ([Cillié 1997](#): 207)

- wⁿà:sù nàm-báŋú . "blackish fruit bat sp."
- wⁿà:sù nàm-báŋ . "blackish fruit bat sp."



(CC) BY-SA © Artemy Voikhansky



(CC) BY-SA ©



(CC) BY-NC-SA © Description de l'Égypte, Book 34 (1826), Volume I - Planches : Histoire Naturelle.

Order: Erinaceomorpha

Family: Erinaceidae

[Atelerix albiventris](#) (Wagner, 1841) .

- yⁿà:ŋà-pé . "hedgehog"



(CC) BY © Jeff Heath and the Dogon and Bangime Languages Project



(CC) BY © Jeff Heath and the Dogon and Bangime Languages Project

Order: Hyracoidea

Family: Procaviidae

[Procavia capensis ruficeps](#) (Hemprich and Ehrenberg, 1832) .

- **dàkóró** . "rock hyrax, dassie, 3-4 kg".



(CC) BY © Jeff Heath and the Dogon and Bangime Languages Project

Order: Lagomorpha

Family: Leporidae

[Lepus capensis](#) Linnaeus, 1758 . Characteristics: herbivore; this typical hare has well developed hind legs for running and leaping; the ears as well as the eyes are large; the colour of the coat varies from light brown to reddish to sandy grey; the females are larger than the males;. Biotope: grassland, desert. ([Cillié 1997](#): 186)

- **zòmèyⁿ jém** . "hare variety (darker, bigger)".
- **zòmèyⁿ pírú** . "hare variety (lighter-colored, smaller)".
- **zòmèyⁿ** . "hare (all forms)".



(CC) BY-SA © benjamint



(CC) MARK © Creator:Joseph Smit



(CC) BY-SA © Haplochromis

Order: Primates

Family: Cercopithecidae

Erythrocebus patas (Schreber, 1774) .

- kà:nù bārⁿú . "patas monkey".



(CC) BY-SA ©



(CC) BY ©



(CC) BY-SA © Brocken Inaglory

Papio anubis (Lesson, 1827) .

- kà:nù jém . "baboon".



(CC) BY-NC-SA © Gerald and Buff Corsi



(CC) BY-NC-SA © Gerald and Buff Corsi



(CC) BY © Simon J. Tonge

Family: Galagonidae

Galago senegalensis É. Geoffroy Saint-Hilaire, 1796 .

- ŋĩrǎ kà:nù jérëy . "Senegal galago".



(CC) BY-SA ©



(CC) MARK © Gustav Mühel



(CC) BY-NC-SA © Robertsphotos1

Order: Proboscidea

Family: Elephantidae

[*Loxodonta africana*](#) (Blumenbach, 1797) . Characteristics: herbivore; height: 3-3,75m; the African Bush elephant has large flat ears; its trunk ends with two opposing extensions; both sexes have large tusks; females are smaller and have smaller tusks;. Biotope: savanna, marshland, forest, grassland, desert, swamps. ([Cillié 1997](#): 100)

- ḡḏḡ . "elephant".



(CC) BY-SA © nickandmel2006



Public Domain by Gorgo

Order: Rodentia

Family: Hystricidae

[*Hystrix cristata*](#) Linnaeus, 1758 .

- jèlá bàsà . "porcupine".



(CC) BY-SA ©



(CC) MARK © creator:Thomas Hardwicke

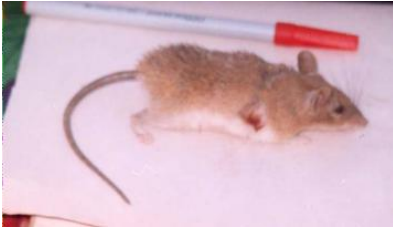


(CC) BY-NC-SA © David Bygott

Family: Muridae

[*Acomys johannis*](#) .

- èyⁿ dúgúró gúšì: . "spiny-haired mouse sp.".



(CC) BY © Jeff Heath and the Dogon and Bangime Languages Project



(CC) BY © Jeff Heath and the Dogon and Bangime Languages Project

Arvicanthis niloticus (Desmarest, 1822) .

- èy" dàrà jém . "unstriped grass rat (diurnal)".



(CC) BY © Jeff Heath and the Dogon and Bangime Languages Project



(CC) BY © Jeff Heath and the Dogon and Bangime Languages Project



(CC) BY © Jeff Heath and the Dogon and Bangime Languages Project

Cricetomys gambianus Waterhouse, 1840 . Characteristics: omnivore; total length: 80 cm, tail-length: 40 cm; grey-brown fur on the back, belly lighter; long naked tail which is white towards the end; dark eye-ring; long thin ears;. Biotope: savanna, forest, grassland. ([Stuart and Stuart 2007](#): 108)

- gùgúsù . "giant pouched rat (about 2 kilos)".



(CC) BY-SA ©



(CC) BY-SA ©



(CC) BY © Jeff Heath and the Dogon and Bangime Languages Project

[*Gerbillus*](#) Todaro, 1995 .

- èyⁿ bārⁿi: . "gerbil".



(CC) MARK © Wikimedia Commons



(CC) MARK © Joseph Smit



(CC) BY © Shah Jahan

[*Mastomys natalensis*](#) (Smith, 1834) . Characteristics: herbivore; length: 24cm, tail-length: 11cm; underparts paler than upperparts, females have up to 12 pairs of nipples. Biotope: savanna, forest, shrubland, human settlement. ([Stuart and Stuart 2007](#): 126)

- èyⁿ ófi: . "African soft-furred rat (grey or black form)".
- èyⁿ jém . "black form of African soft-furred rat (house mouse)".

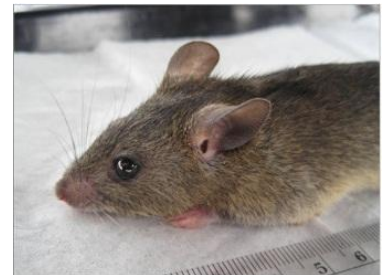


(CC) BY © Jeff Heath and the Dogon and Bangime

Languages Project



(CC) BY ©



(CC) BY ©

[*Myomys daltoni*](#) (Thomas, 1892) .

- èyⁿ b̃b̃b̃gú . "Dalton's mouse (small, light-colored, belly white, tail longer than body, in field or houses, can climb)".



(CC) BY © Zbyszek Boratynski



(CC) BY © Jeff Heath and the Dogon and Bangime

Languages Project



(CC) BY © Jeff Heath and the Dogon and Bangime

Languages Project

Family: Sciuridae

[*Heliosciurus gambianus*](#) (Ogilby, 1835) .

- àlmàwrí: . "Gambian sun squirrel (arboreal)".
- àràràwrí: . "Gambian sun squirrel (arboreal)".



(CC) BY © N3ddo!



(CC) BY © N3ddo!

Order: Soricomorpha

Family: Soricidae

[*Crocidura cinderella*](#) Thomas, 1911 .

- èyⁿ bàbàŋké . "tiny white-toothed shrew sp.".
- èyⁿ kásémĩ: . "tiny white-toothed shrew sp.".



(CC) BY © Jeff Heath and the Dogon and Bangime

Languages Project

Order: Tubulidentata

Family: Orycteropodidae

[*Orycteropus afer*](#) (Pallas, 1766) . Characteristics: insectivore; height: 60 cm; this animal has a long pig-like snout, large, erect ears and a thick tail; most of the body is naked, only the legs are covered with dark hair; the forefeet have strong claws for digging; it has a long (30 cm), sticky tongue which allows it to catch termites and ants;. Biotope: savanna, grassland. (Cillié 1997: 172)

- àwⁿá . "aardvark, 50 kg".



Public Domain by Christfried Naumann



(CC) BY-SA ©



(CC) BY-SA ©

Class: Reptilia

Order: Crocodylia

Family: Crocodylidae

[*Crocodylus niloticus*](#) Laurenti, 1768 .

- tàgàwán . "Nile crocodile".



(CC) BY-SA © MathKnight and Zachi Evenor



(CC) BY-SA © Marco Schmidt



(CC) BY-SA © Atamari

Order: Squamata

Family: Agamidae

[*Agama sankaranica*](#) Chabanaud, 1918 .

- cèŋ bār^{fi} . "ground-dwelling agama lizard sp.".



(CC) BY © Jeff Heath and the Dogon and Bangime Languages Project



(CC) BY © Jeff Heath and the Dogon and Bangime Languages Project



(CC) BY © Jeff Heath and the Dogon and Bangime Languages Project

[*Uromastyx geyri*](#) Müller, 1922 .

- ùgùnù . "spiny-tailed lizard sp."



(CC) BY-SA ©



(CC) BY-SA ©



(CC) BY © Jeff Heath and the Dogon and Bangime Languages Project

Family: Boidae

[*Gongylophis muelleri*](#) Angel, 1938 .

- tǎn-tǎḡé . "sand boa, thick-bodied venomous snake sp."



(CC) BY © Jeff Heath and the Dogon and Bangime Languages Project



(CC) BY © Jeff Heath and the Dogon and Bangime Languages Project



(CC) BY © Jeff Heath and the Dogon and Bangime Languages Project

[*Python regius*](#) (Shaw, 1802) .

- néḡé-sáyī: . "southern python".



(CC) BY © Squamata55



(CC) BY © Brian Gratwicke



(CC) BY-SA ©

[Python sebae](#) (Gmelin, 1789) .

- sùṅù-ná: . "rock python".



(CC) BY-SA © Joachim Huber



(CC) BY © Tigerpython



(CC) MARK © Sir Andrew Smith

Family: Chamaeleonidae

[Chamaeleo africanus](#) Laurenti, 1768 .

- ḡḡ-zílá . "chameleon".



(CC) BY © Jeff Heath and the Dogon and Bangime Languages Project



(CC) BY © Jeff Heath and the Dogon and Bangime Languages Project



(CC) BY © Jeff Heath and the Dogon and Bangime Languages Project

Family: Colubridae

[Psammophis elegans](#) (Shaw, 1802) .

- **súw^ᵛᵛ** . "arboreal colubrid snake sp."



(CC) BY © Jeff Heath and the Dogon and Bangime Languages Project



(CC) BY © Jeff Heath and the Dogon and Bangime Languages Project



(CC) BY © Jeff Heath and the Dogon and Bangime Languages Project

[Psammophis sibilans](#) (Linnaeus, 1758) .

- **sùw^ᵛ-kàmsú** . "terrestrial colubrid snake sp."
- **súw^ᵛᵛ** . "terrestrial colubrid snake sp."



(CC) BY © Jeff Heath and the Dogon and Bangime Languages Project



(CC) BY © Jeff Heath and the Dogon and Bangime Languages Project



(CC) BY-SA ©

Family: Elapidae

[Naja haje](#) (Linnaeus, 1758) .

- **àw bār^ᵛú** . "Egyptian cobra".



Public Domain by John Walker, Head



(CC) BY © Jeff Heath and the Dogon and Bangime Languages Project



Public Domain by Ltshears

[Naja nigricollis](#) Reinhardt, 1843 .

- àw jém . "spitting cobra".



(CC) BY © Luca Boldrini



(CC) BY © Jeff Heath and the Dogon and Bangime Languages Project

Family: Gekkonidae

[Ptyodactylus ragazzii](#) Anderson, 1898 .

- zàzàgùrà . "fan-footed house gecko".



(CC) BY © Jeff Heath and the Dogon and Bangime Languages Project



(CC) BY © Jeff Heath and the Dogon and Bangime Languages Project

[Tarentola ehippiata](#) O'shaughnessy, 1875 .

- ò:dú zàzàgùrà . "arboreal gecko sp".
- òw zàzàkòrà . "arboreal gecko sp".



(CC) BY-NC-SA © Thomas Brown



(CC) BY-NC-SA © Thomas Brown



(CC) BY © Jeff Heath and the Dogon and Bangime Languages Project

Family: Scincidae

Chalcides ocellatus (Forskål, 1775) .

- **öw sèmà** . "spotted skink sp. (thick body, very short legs)".



(CC) BY © Jeff Heath and the Dogon and Bangime
Languages Project

Trachylepis quinquetaeniata (Lichtenstein, 1823) .

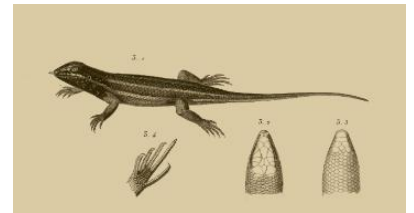
- **íló sèmà** . "five-lined skink".



(CC) BY-NC-SA © cultnat



(CC) BY © Jeff Heath and the Dogon and Bangime
Languages Project



(CC) BY-NC-SA © Description de l'Egypte, Book 34
(1826), Volume I - Planches : Histoire Naturelle.

Family: Varanidae

Varanus niloticus (Linnaeus, 1766) .

- **sàrí** . "Nile monitor lizard (climbs trees near water)".



(CC) BY © Simon J. Tonge



Public Domain by Alexis Naumann



(CC) BY-NC-SA © Description de l'Egypte, Book 34
(1826), Volume I - Planches : Histoire Naturelle.

Family: Viperidae

[Bitis arietans](#) (Merrem, 1820) .

- ṽmnà . "puff adder".



(CC) BY-NC-SA © Gerald and Buff Corsi



Public Domain by Alexis Naumann



Public Domain by Alexis Naumann

[Echis leucogaster](#) Roman, 1972 .

- èːⁿ-dúněy . "viper sp.".
- kàròŋ-kà:sí . "viper sp.".



(CC) BY © Jeff Heath and the Dogon and Bangime Languages Project



(CC) BY © Jeff Heath and the Dogon and Bangime Languages Project



(CC) BY © Jeff Heath and the Dogon and Bangime Languages Project

[Echis ocellatus](#) Stemmler, 1970 .

- fòskíré . "viper sp.".
- pòs-kíré . "viper sp.".
- kàròŋ-kà:sí . "viper sp.".



(CC) BY © Jeff Heath and the Dogon and Bangime Languages Project



(CC) BY © Jeff Heath and the Dogon and Bangime Languages Project



(CC) BY © Jeff Heath and the Dogon and Bangime Languages Project

Order: Testudines

Family: Pelomedusidae

[Pelomedusa subrufa](#) (Bonnaterre, 1789) .

- àkòrò gákkìl . "small aquatic tortoise (rainy season)".



(CC) BY-SA © Ltshears



(CC) BY © Jeff Heath and the Dogon and Bangime Languages Project



(CC) BY © Jeff Heath and the Dogon and Bangime Languages Project

Family: Testudinidae

[Geochelone sulcata](#) (Miller, 1779) .

- círú . "giant tortoise (terrestrial)".



(CC) BY © Jeff Heath and the Dogon and Bangime Languages Project



(CC) BY © Jeff Heath and the Dogon and Bangime Languages Project



(CC) BY © Jeff Heath and the Dogon and Bangime Languages Project

Class: Sarcopterygii

Order: Lepidosireniformes

Family: Protopteridae

[Protopterus annectens](#) (Owen, 1839) .

- lélú . "African lungfish".



(CC) BY ©



(CC) BY-SA ©



(CC) MARK © G.H.Ford

Class: other

Order: Bucerotiformes

Family: Bucerotidae

[Tockus sp.](#) .

- ògò-dò:bú . "hornbill spp. (grey and red-billed)".

Kingdom: Fungi

Phylum: Basidiomycota

Class: Agaricomycetes

Order: Agaricales

Family: Agaricaceae

[*Podaxis pistillaris*](#) (L.) Fr. 1829 .

- zĩrⁿá . "puffball".



(CC) BY © Jeff Heath and the Dogon and Bangime Languages Project



(CC) BY © Jeff Heath and the Dogon and Bangime Languages Project



(CC) BY-NC-SA © Douglas Smith

Kingdom: Metazoa

Phylum: Arthropoda

Class: Arachnida

Order: Scorpiones

Family: Buthidae

[*Androctonus amoreuxi*](#) .

- nènéné . "fat-tailed scorpion".



(CC) BY © Jeff Heath and the Dogon and Bangime Languages Project



(CC) BY © Jeff Heath and the Dogon and Bangime Languages Project



(CC) BY © Jeff Heath and the Dogon and Bangime Languages Project

Kingdom: Plantae

Phylum: Magnoliophyta

Class: Liliopsida

Order: Commelinales

Family: Commelinaceae

[Commelina forskalaei](#) .

- pùtùrù-pǔ: . "herb sp."



(CC) BY © Jeff Heath and the Dogon and Bangime Languages Project



(CC) BY © Jeff Heath and the Dogon and Bangime Languages Project



(CC) BY © Jeff Heath and the Dogon and Bangime Languages Project

Order: Poales

Family: Poaceae

[Digitaria ciliaris var. ciliaris](#) .

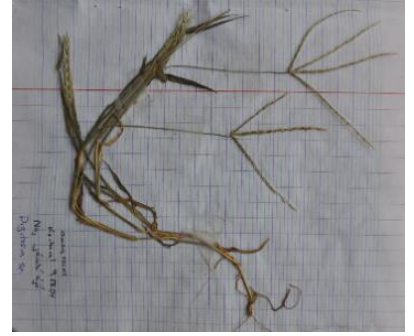
- bàrmàtànǎ . "grass sp."



(CC) BY © Jeff Heath and the Dogon and Bangime Languages Project



(CC) BY © Jeff Heath and the Dogon and Bangime Languages Project



(CC) BY © Jeff Heath and the Dogon and Bangime Languages Project

Class: Magnoliopsida

Order: Brassicales

Family: Capparaceae

[Cadaba glandulosa](#) Forssk. .

- [àrà-m] -túró . "scrambling shrub sp."



(CC) BY © Jeff Heath and the Dogon and Bangime Languages Project



(CC) BY © Jeff Heath and the Dogon and Bangime Languages Project

[Crataeva adansonii subsp. odora](#) .

- ògò-lùwó . "tree sp."



(CC) BY © Jeff Heath and the Dogon and Bangime
Languages Project



(CC) BY © Jeff Heath and the Dogon and Bangime
Languages Project



(CC) BY © Jeff Heath and the Dogon and Bangime
Languages Project

Order: Caryophyllales

Family: Molluginaceae

[Limeum pterocarpum var. pterocarpum](#) .

- **jìrò-lùró sòlò** . "herb sp."
- **gǎŋ tàgí** = > . "herb sp."



(CC) BY © Jeff Heath and the Dogon and Bangime
Languages Project



(CC) BY © Jeff Heath and the Dogon and Bangime
Languages Project



(CC) BY © Jeff Heath and the Dogon and Bangime
Languages Project

Order: Garryales

Family: Garryaceae

[Grewia flavescens var flavescens](#) .

- **àsàmpò:lú** . "shrub sp."
- **sùmèy ná-dúŋgúrù** . "shrub sp."



(CC) BY © Jeff Heath and the Dogon and Bangime Languages Project



(CC) BY © Jeff Heath and the Dogon and Bangime Languages Project



(CC) BY © Jeff Heath and the Dogon and Bangime Languages Project

Order: Lamiales

Family: Acanthaceae

[Blepharis linariifolia](#) .

- **yⁿòη-tólúró** . "medicinal herb sp."



(CC) BY © Jeff Heath and the Dogon and Bangime Languages Project



(CC) BY © Jeff Heath and the Dogon and Bangime Languages Project



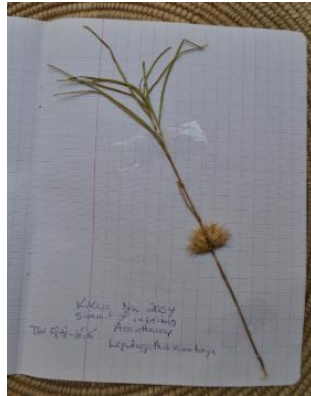
(CC) BY © Jeff Heath and the Dogon and Bangime Languages Project

[Lepidagathis anobrya](#) Nees .

- **něn-tèrà** . "herb sp."



(CC) BY-NC-SA © Research Institute Senckenberg



(CC) BY © Jeff Heath and the Dogon and Bangime

Languages Project



(CC) BY © Jeff Heath and the Dogon and Bangime

Languages Project

Family: Lamiaceae

[Endostemon tereticaulis](#) (Poir.) M.R.Ashby .

- kàyõŋ-kùwò . "herb sp."



(CC) BY © Jeff Heath and the Dogon and Bangime

Languages Project



(CC) BY-NC © Bart Wursten



(CC) BY-NC © Bart Wursten

Order: Malvales

Family: Malvaceae

[Bombax costatum](#) Pellegrin & Vuillet .

- tógúró . "tree sp."



(CC) BY © Jeff Heath and the Dogon and Bangime
Languages Project



(CC) BY © Jeff Heath and the Dogon and Bangime
Languages Project

[Cienfuegosia digitata](#) Cav. .

- [ɛrⁿà-bèrùm ĩ-mú] tǐwⁿà . "prostrate herb sp."



(CC) BY © Jeff Heath and the Dogon and Bangime
Languages Project



(CC) BY © Jeff Heath and the Dogon and Bangime
Languages Project



(CC) BY © Jeff Heath and the Dogon and Bangime
Languages Project

[Grewia lasiodiscus](#) K. Schum. .

- só:rěy . "shrub sp."



(CC) BY-NC-SA © Research Institute Senckenberg



(CC) BY-NC-SA © Research Institute Senckenberg



(CC) BY © Jeff Heath and the Dogon and Bangime
Languages Project

[Grewia tenax \(Forsk.\) Fiori](#) .

- **tálkà-másé:rù** . "shrub sp."



(CC) BY © Jeff Heath and the Dogon and Bangime Languages Project



(CC) BY © Jeff Heath and the Dogon and Bangime Languages Project



(CC) BY © Jeff Heath and the Dogon and Bangime Languages Project

Order: Myrtales

Family: Combretaceae

[Combretum aculeatum](#) Vent. .

- **jé:ⁿ-súŋ** . "shrub sp."



(CC) BY © Jeff Heath and the Dogon and Bangime Languages Project



(CC) BY © Jeff Heath and the Dogon and Bangime Languages Project



(CC) BY © Jeff Heath and the Dogon and Bangime Languages Project

Order: Rosales

Family: Cannabaceae

[Celtis toka](#) (Forssk.) F.N. Hepper & J.R.I. Wood .

- **só** . "tree sp."



(CC) BY © Jeff Heath and the Dogon and Bangime Languages Project



(CC) BY © Jeff Heath and the Dogon and Bangime Languages Project



(CC) BY-NC-SA © Marco Schmidt

Family: Moraceae

[Ficus cordata subsp. lecardii C.C. Berg.](#)

- **cíçirⁿⁱ** . "fig tree sp."



(CC) BY © Jeff Heath and the Dogon and Bangime Languages Project



(CC) BY © Jeff Heath and the Dogon and Bangime Languages Project



(CC) BY © Jeff Heath and the Dogon and Bangime Languages Project

Order: Sapindales

Family: Anacardiaceae

[Lannea microcarpa](#) Engl. & K. Krause .

- **cíwá** . "wild grape ree".



(CC) BY-NC-SA © Research Institute Senckenberg



(CC) BY © Jeff Heath and the Dogon and Bangime Languages Project



(CC) BY © Jeff Heath and the Dogon and Bangime Languages Project

Order: Solanales

Family: Convolvulaceae

Ipomoea coscinosperma Hochst. ex Choisy .

- **sòlò wórúm-wórèy** . "trailing vine sp."



(CC) BY © Jeff Heath and the Dogon and Bangime
Languages Project



(CC) BY © Jeff Heath and the Dogon and Bangime
Languages Project



(CC) BY © Jeff Heath and the Dogon and Bangime
Languages Project

Merremia pinnata (Hochst. ex Choisy) Hall. fil. .

- **kùlùrò-sòlò** . "trailing vine sp."



(CC) BY © Jeff Heath and the Dogon and Bangime
Languages Project



(CC) BY © Jeff Heath and the Dogon and Bangime
Languages Project



(CC) BY-NC © Bart Wursten

Class: other

Order: Brassicales

Family: Cleomaceae

[Cleome sp.](#) .

- ó"sù . "herb sp."

Phylum: Tracheophyta

Class: Liliopsida

Order: Alismatales

Family: Araceae

[Pistia stratiotes](#) L. .

- sàmbírì ~ sàmírì . "water lettuce".



(CC) BY © Forest & Kim Starr



(CC) BY © Forest & Kim Starr



(CC) BY-NC © Bart Wursten

[Stylochaeton lancifolius](#) .

- dùm-sùgùrú . "herb sp."



(CC) BY © Jeff Heath and the Dogon and Bangime Languages Project



(CC) BY-NC-SA © Research Institute Senckenberg



(CC) BY-NC-SA © Research Institute Senckenberg

Order: Arecales

Family: Arecaceae

[Borassus aethiopum](#) Mart. .

- **síw** . "palm sp."



(CC) BY © Jeff Heath and the Dogon and Bangime Languages Project



(CC) BY © Jeff Heath and the Dogon and Bangime Languages Project



(CC) BY © Jeff Heath and the Dogon and Bangime Languages Project

[Elaeis guineensis](#) Jacq. .

- **těyⁿ** . "oil palm (imported)"



(CC) BY-NC-SA © Research Institute Senckenberg



(CC) BY-SA ©



(CC) BY-SA © Cayambe

[Hyphaene thebaica](#) (L.) Mart. .

- **tăy** . "doum palm"



(CC) BY © Jeff Heath and the Dogon and Bangime Languages Project



(CC) BY-NC-SA © Bibliotheca Alexandrina - EOL Ar



(CC) BY © Jeff Heath and the Dogon and Bangime Languages Project

Order: Asparagales

Family: Amaryllidaceae

[Crinum ornatum](#) (Aiton) Herb. .

- ògùrù bósó . "wild onion sp."



(CC) BY © Jeff Heath and the Dogon and Bangime Languages Project



(CC) BY © Jeff Heath and the Dogon and Bangime Languages Project



(CC) BY © Jeff Heath and the Dogon and Bangime Languages Project

[Pancratium trianthum](#) Herb. .

- gàgà éjúné . "wild onion sp."



(CC) BY © Jeff Heath and the Dogon and Bangime Languages Project



(CC) BY © Jeff Heath and the Dogon and Bangime Languages Project



(CC) BY © Jeff Heath and the Dogon and Bangime Languages Project

Family: Asparagaceae

[Asparagus flagellaris](#) (Kunth) Baker .

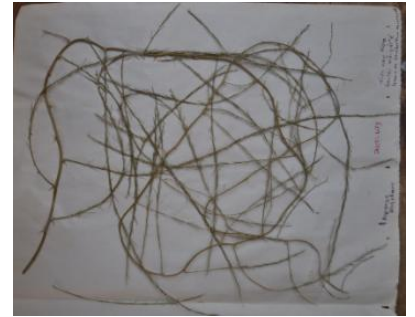
- àrà ósón d̀̀r̀̀ k̀̀ǹ̀í: . "scrambling vine sp."
- àrà wóyón àndèpè k̀̀l̀̀í: . "scrambling vine sp."



(CC) BY © Jeff Heath and the Dogon and Bangime Languages Project



(CC) BY © Jeff Heath and the Dogon and Bangime Languages Project



(CC) BY © Jeff Heath and the Dogon and Bangime Languages Project

[Sansevieria](#) .

- sólúkó ~ sólkó . "agave sp."



(CC) BY © Forest & Kim Starr



(CC) BY-SA ©



(CC) BY © Forest & Kim Starr

Family: Xanthorrhoeaceae

[Aloe tenuifolia](#) .

- ïsikàjákkà . "small aloe sp."



(CC) BY © Jeff Heath and the Dogon and Bangime Languages Project



(CC) BY © Jeff Heath and the Dogon and Bangime Languages Project



(CC) BY © Jeff Heath and the Dogon and Bangime Languages Project

Order: Commelinales

Family: Pontederiaceae

[Heteranthera callifolia](#) Rchb. ex Kunth .

- tórú-kùr^mi . "herb sp."



(CC) BY © Jeff Heath and the Dogon and Bangime
Languages Project



(CC) BY © Jeff Heath and the Dogon and Bangime
Languages Project



(CC) BY © Jeff Heath and the Dogon and Bangime
Languages Project

Order: Poales

Family: Cyperaceae

[Cyperus amabilis](#) Vahl .

- mà jém . "sedge sp."



(CC) BY © Jeff Heath and the Dogon and Bangime
Languages Project



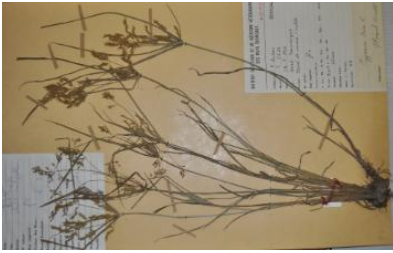
(CC) BY © Jeff Heath and the Dogon and Bangime
Languages Project



(CC) BY © Jeff Heath and the Dogon and Bangime
Languages Project

[Cyperus iria](#) L. .

- mà jém . "sedge sp."



(CC) BY © Jeff Heath and the Dogon and Bangime Languages Project



(CC) BY © Jeff Heath and the Dogon and Bangime Languages Project



(CC) MARK © USDA NRCS PLANTS Database

[Cyperus rotundus](#) L. .

- má-mù: . "sedge sp."



(CC) BY © Jeff Heath and the Dogon and Bangime Languages Project



(CC) BY © Jeff Heath and the Dogon and Bangime Languages Project



(CC) BY © Jeff Heath and the Dogon and Bangime Languages Project

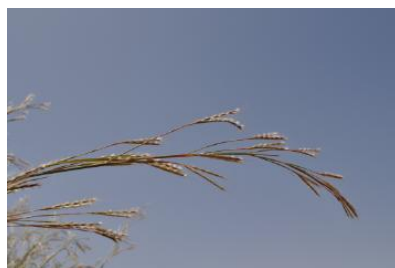
Family: Poaceae

[Andropogon gayanus bisquamulatus](#) .

- jéyⁿ . "tall grass sp."



(CC) BY © Jeff Heath and the Dogon and Bangime Languages Project



(CC) BY © Jeff Heath and the Dogon and Bangime Languages Project



(CC) BY © Jeff Heath and the Dogon and Bangime Languages Project

Aristida funiculata Trin. & Rupr. .

- **bùrò-sógú** . "grass sp."



(CC) BY © Jeff Heath and the Dogon and Bangime Languages Project



(CC) BY © Jeff Heath and the Dogon and Bangime Languages Project



(CC) BY © Jeff Heath and the Dogon and Bangime Languages Project

Aristida stipoides Lam. .

- **dùŋ-dírá** . "grass sp."



(CC) BY © Jeff Heath and the Dogon and Bangime Languages Project



(CC) BY © Jeff Heath and the Dogon and Bangime Languages Project



(CC) BY © Jeff Heath and the Dogon and Bangime Languages Project

Brachiaria lata (Schumach.) C.E.Hubb. .

- **kàtá** . "grass sp."



(CC) BY © Jeff Heath and the Dogon and Bangime Languages Project



(CC) BY © Jeff Heath and the Dogon and Bangime Languages Project



(CC) BY © Jeff Heath and the Dogon and Bangime Languages Project

[Cenchrus biflorus](#) Roxb. .

- **κόνόη** . "burrgrass".



(CC) BY © Jeff Heath and the Dogon and Bangime
Languages Project



(CC) BY © Jeff Heath and the Dogon and Bangime
Languages Project



(CC) BY © Jeff Heath and the Dogon and Bangime
Languages Project

[Cymbopogon caesius giganteus](#) .

- **ísí-círá** . "giant lemon grass sp.".
- **sùgò-cèrú** . "giant lemon grass sp.".



(CC) BY © Jeff Heath and the Dogon and Bangime
Languages Project



(CC) BY © Jeff Heath and the Dogon and Bangime
Languages Project



(CC) BY © Jeff Heath and the Dogon and Bangime
Languages Project

[Cymbopogon schoenanthus](#) (L.) Spreng. .

- **ámká** . "lemon grass sp.".



(CC) BY © Jeff Heath and the Dogon and Bangime
Languages Project



(CC) MARK © Jose Hernandez



(CC) BY-NC © Edinburgh!

[Dactyloctenium aegyptium](#) (L.) Willd. .

- **ḍá:ηgò** . "grass sp."



(CC) BY © Jeff Heath and the Dogon and Bangime
Languages Project



(CC) BY © Jeff Heath and the Dogon and Bangime
Languages Project



(CC) BY © Jeff Heath and the Dogon and Bangime
Languages Project

[Diheteropogon hagerupii](#) Hitchc. .

- **κḍynó** . "grass sp."



(CC) BY © Jeff Heath and the Dogon and Bangime
Languages Project



(CC) BY © Jeff Heath and the Dogon and Bangime
Languages Project



(CC) BY © Jeff Heath and the Dogon and Bangime
Languages Project

[Eragrostis tremula](#) Hochst. ex Steud. .

- zèrí . "grass sp."



(CC) BY © Jeff Heath and the Dogon and Bangime
Languages Project



(CC) BY © Jeff Heath and the Dogon and Bangime
Languages Project



(CC) BY © Jeff Heath and the Dogon and Bangime
Languages Project

[Oryza barthii](#) A.Chev. .

- sǎy mò . "wild rice sp.". Lit. "bird's rice".



(CC) BY © Jeff Heath and the Dogon and Bangime
Languages Project



(CC) BY © Jeff Heath and the Dogon and Bangime
Languages Project



(CC) BY © Jeff Heath and the Dogon and Bangime
Languages Project

[Panicum laetum](#) Kunth .

- gà:"sí . "wild fonio (grass)". From HS .



(CC) BY © Jeff Heath and the Dogon and Bangime
Languages Project



(CC) BY-NC-SA © Missouri BG!



(CC) BY © Jeff Heath and the Dogon and Bangime
Languages Project

Pennisetum pedicellatum Trin. .

- **sòlò-gǔyⁿ** . "grass sp."



(CC) BY-NC-SA © Research Institute Senckenberg



(CC) BY © Jeff Heath and the Dogon and Bangime Languages Project



(CC) BY © Jeff Heath and the Dogon and Bangime Languages Project

Schoenefeldia gracilis Kunth .

- **pòtòrò-pòw sòlò** . "grass sp."



(CC) BY-NC-SA © Research Institute Senckenberg



(CC) BY-NC-SA © Research Institute Senckenberg



(CC) BY © Jeff Heath and the Dogon and Bangime Languages Project

Setaria pumila (L.f.) Roem. & Schult. .

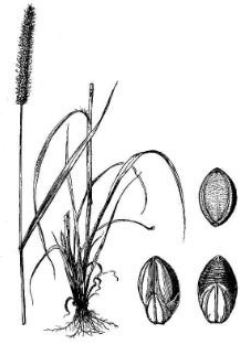
- **dīngīliyà** . "grass sp."



(CC) BY © Jeff Heath and the Dogon and Bangime Languages Project



(CC) PUBLICDOMAIN © Pavel Šinkyřík



(CC) MARK © USDA NRCS PLANTS Database

Class: Magnoliopsida

Order: Asterales

Family: Asteraceae

[Acanthospermum hispidum](#) .

- d̀̀g̀̀d̀̀g̀̀-̀̀ẁ̀ . "prickly herb sp."



(CC) BY © Jeff Heath and the Dogon and Bangime Languages Project



(CC) BY © Jeff Heath and the Dogon and Bangime Languages Project

[Bidens biternata](#) .

- t̀̀ǹ̀m̀̀ s̀̀r̀̀r̀̀ . "herb sp.". Lit. "hyena's spear".



(CC) BY © Jeff Heath and the Dogon and Bangime
Languages Project



(CC) BY © Jeff Heath and the Dogon and Bangime
Languages Project

[Dicoma tomentosa](#) .

- **dàm-ná** : "herb sp."
- **gàw-dâm** . "herb sp."



(CC) BY © Jeff Heath and the Dogon and Bangime
Languages Project



(CC) BY-NC © Bart Wursten



(CC) BY © Jeff Heath and the Dogon and Bangime
Languages Project

[Vernonia galamensis](#) (Willd.) H. Rob. .

- **ténăm sàrò** . "herb sp.". Lit. "hyena's spear".



(CC) BY © Jeff Heath and the Dogon and Bangime
Languages Project



(CC) BY © Jeff Heath and the Dogon and Bangime
Languages Project

Order: Boraginales

Family: Boraginaceae

[Cordia sinensis](#) Lam. .

- sǒŋ-sà:rá . "tree sp.". Lit. "it has no name".



(CC) BY © Jeff Heath and the Dogon and Bangime
Languages Project



(CC) BY © Jeff Heath and the Dogon and Bangime
Languages Project



(CC) BY © Jeff Heath and the Dogon and Bangime
Languages Project

Order: Brassicales

Family: Capparaceae

[Boscia senegalensis](#) Lam. .

- èrê:ré . "shrub sp.".



(CC) BY © Jeff Heath and the Dogon and Bangime Languages Project



(CC) BY © Jeff Heath and the Dogon and Bangime Languages Project



(CC) BY © Jeff Heath and the Dogon and Bangime Languages Project

[Cadaba farinosa](#) .

- **lùwò-sínúŋ** . "scrambling shrub sp."



(CC) BY © Jeff Heath and the Dogon and Bangime Languages Project



(CC) BY © Jeff Heath and the Dogon and Bangime Languages Project



(CC) BY © Jeff Heath and the Dogon and Bangime Languages Project

[Capparis sepiaria](#) L. .

- **gòrí** . "thorny liana sp."



(CC) BY © Jeff Heath and the Dogon and Bangime Languages Project



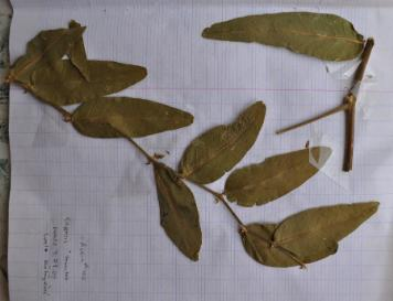
(CC) BY © Jeff Heath and the Dogon and Bangime Languages Project



(CC) BY © Jeff Heath and the Dogon and Bangime Languages Project

[Capparis tomentosa](#) Lam. .

- **tà-òrbú** . "thorny liana sp."



(CC) BY © Jeff Heath and the Dogon and Bangime
Languages Project

[Maerua crassifolia](#) Forssk. .

- **bíbisi:** . "tree sp."



(CC) BY © Jeff Heath and the Dogon and Bangime
Languages Project



(CC) BY © Jeff Heath and the Dogon and Bangime
Languages Project



(CC) BY © Jeff Heath and the Dogon and Bangime
Languages Project

Family: Cleomaceae

[Arivela viscosa](#) .

- **ò"sù árèy** . "herb sp."



(CC) BY © Jeff Heath and the Dogon and Bangime
Languages Project



(CC) BY © Jeff Heath and the Dogon and Bangime
Languages Project



(CC) BY © Jeff Heath and the Dogon and Bangime
Languages Project

[Gynandropsis gynandra](#) L. . Characteristics: annual herb; palmately compound leaves; white flowers; fruit is an elongated capsule on a long stalk. Biotope: dry river course, mountains. ([Van Rooyen et al. 2001](#): 164; [Burke 2007](#): 80)

- ó"sù . "herb sp."
- ò"sù-yá: . "herb sp."



(CC) BY © Jeff Heath and the Dogon and Bangime
Languages Project



(CC) BY © Forest & Kim Starr

Order: Caryophyllales

Family: Amaranthaceae

[Achyranthes aspera sicula](#) .

- èsà-àrá dùwěy . "herb sp."



(CC) BY © Jeff Heath and the Dogon and Bangime
Languages Project



(CC) BY © Jeff Heath and the Dogon and Bangime
Languages Project



(CC) BY © Jeff Heath and the Dogon and Bangime
Languages Project

[Celosia trigyna](#) L. .

- árúkúsú-bòŋ-ká:réy . "herb sp.". From HS Songhay .



(CC) BY © Jeff Heath and the Dogon and Bangime
Languages Project



(CC) BY © Jeff Heath and the Dogon and Bangime
Languages Project



(CC) BY © Jeff Heath and the Dogon and Bangime
Languages Project

Family: Caryophyllaceae

[Polycarpaea corymbosa](#) (L.) Lam. .

- pètíkìlèy-tàjá . "herb sp.".



(CC) BY © Jeff Heath and the Dogon and Bangime Languages Project



(CC) BY-NC © Bart Wursten



(CC) BY-NC © Bart Wursten

Family: Molluginaceae

[*Mollugo nudicaulis*](#) Lam. .

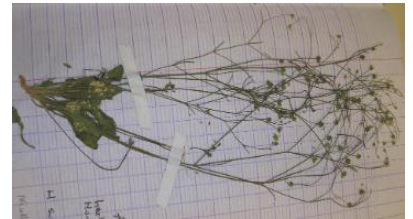
- zĩrⁿàtègĩ . "herb sp.".



(CC) BY-NC © Bart Wursten



(CC) BY-NC © Bart Wursten



(CC) BY © Jeff Heath and the Dogon and Bangime Languages Project

Family: Nyctaginaceae

[*Boerhavia repens*](#) L. . Characteristics: annual herb with thick roots and slender, hairy stems; egg- or lance-shaped leaves (3 cm); usually 2-7 white, pink or mauve flowers in clusters at the tips of shoots. Biotope: dry river course. ([Van Rooyen et al. 2001](#): 126)

- pàràmpàrà-m-jěm . "herb sp. (hogweed)".



(CC) BY © Jeff Heath and the Dogon and Bangime
Languages Project



(CC) BY © Jeff Heath and the Dogon and Bangime
Languages Project



(CC) BY © Jeff Heath and the Dogon and Bangime
Languages Project

Family: Portulacaceae

[Portulaca oleracea](#) L. .

- **pàràmpàrà-m-jěm** . "purslane (weed)".
- **yà:gìrèy bǎw** . "purslane (weed)".



(CC) BY © Jeff Heath and the Dogon and Bangime
Languages Project



(CC) BY © Forest & Kim Starr



(CC) BY © Jeff Heath and the Dogon and Bangime
Languages Project

Order: Cucurbitales

Family: Cucurbitaceae

[Citrullus lanatus](#) (Thunb.) Matsumura & Nakai . Characteristics: annual, creeping herb; the hairy leaves are divided into 3-5 lobes; male and female flowers grow on the same plant and are yellow; the fruit is round with a diameter of 15-20 cm and a yellow and green surface. Biotope: sandy soil, dune. ([Van der Walt and le Riche 1999](#): 110; [Van Rooyen et al. 2001](#): 148)

- **kònò bǎrⁿú** . "watermelon (cultivated, eaten raw)".
- **kònò gágásěy** . "watermelon variety (cooked as a vegetable)".



(CC) BY © Jeff Heath and the Dogon and Bangime
Languages Project



Public Domain by Christfried Naumann

Coccinia grandis (L.) Voigt .

- **nèŋ-gùrùmà gùrú** . "wild melon sp. (cucumber shape)".



(CC) BY © Jeff Heath and the Dogon and Bangime
Languages Project



(CC) BY © Jeff Heath and the Dogon and Bangime
Languages Project



(CC) BY © Jeff Heath and the Dogon and Bangime
Languages Project

Momordica Bamber, 1999 .

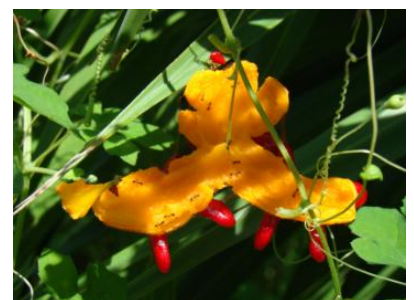
- **nèŋ-gùrùmà tükëy** . "liana spp."



(CC) PUBLICDOMAIN © Michael Kesl



(CC) BY-SA ©



(CC) BY-SA ©

Order: Ericales

Family: Ebenaceae

[Diospyros mespiliformis](#) Hochst. ex A.DC. .

- òṅgú . "tree sp."



(CC) BY © Jeff Heath and the Dogon and Bangime Languages Project



(CC) BY © Jeff Heath and the Dogon and Bangime Languages Project



(CC) BY © Jeff Heath and the Dogon and Bangime Languages Project

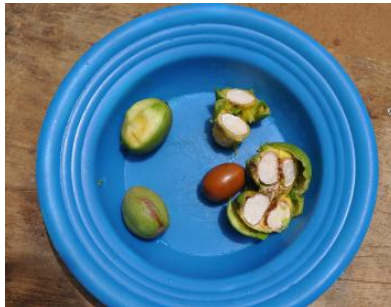
Family: Sapotaceae

[Vitellaria paradoxa paradoxa](#) .

- m̀s̀i . "karité (tree)".



(CC) BY © Jeff Heath and the Dogon and Bangime Languages Project



(CC) BY © Jeff Heath and the Dogon and Bangime Languages Project



(CC) BY © Jeff Heath and the Dogon and Bangime Languages Project

Order: Fabales

Family: Fabaceae

[Abrus precatorius](#) L. .

- àlámbár"i: . "herb with hard red-and-black berries".



(CC) BY © Jeff Heath and the Dogon and Bangime Languages Project



(CC) BY © Jeff Heath and the Dogon and Bangime Languages Project

[Acacia senegal](#) (L.)Willd. .

- **bára** . "gum tree (acacia)".



(CC) BY © Jeff Heath and the Dogon and Bangime Languages Project



(CC) BY © Jeff Heath and the Dogon and Bangime Languages Project

[Acacia seyal](#) Delile .

- **sèṅá** . "acacia sp.".



(CC) BY © Jeff Heath and the Dogon and Bangime Languages Project



(CC) BY © Jeff Heath and the Dogon and Bangime Languages Project

[Acacia tortilis](#) (Forssk.)Hayne .

- **bísěy** . "acacia sp."



(CC) BY © Jeff Heath and the Dogon and Bangime Languages Project



(CC) BY © Jeff Heath and the Dogon and Bangime Languages Project

[Albizia chevalieri](#) Harms .

- **lòròbà-kùnó** . "tree sp."



(CC) BY © Jeff Heath and the Dogon and Bangime Languages Project



(CC) BY © Jeff Heath and the Dogon and Bangime Languages Project



(CC) BY © Jeff Heath and the Dogon and Bangime Languages Project

[Alysicarpus ovalifolius](#) (Schum.)Leonard .

- **síṅká:rè** . "herb sp."



(CC) BY © Jeff Heath and the Dogon and Bangime Languages Project



(CC) BY © Jeff Heath and the Dogon and Bangime Languages Project



(CC) BY © Jeff Heath and the Dogon and Bangime Languages Project

[Bauhinia reticulata](#) DC. .

- **kòrbá** . "tree sp."



(CC) BY © Jeff Heath and the Dogon and Bangime Languages Project



(CC) BY © Jeff Heath and the Dogon and Bangime Languages Project



(CC) BY © Jeff Heath and the Dogon and Bangime Languages Project

[Bauhinia rufescens](#) Lam. .

- **téléŋ** . "tree sp."



(CC) BY © Jeff Heath and the Dogon and Bangime Languages Project



(CC) BY © Jeff Heath and the Dogon and Bangime Languages Project



(CC) BY © Jeff Heath and the Dogon and Bangime Languages Project

[Chamaecrista absus](#) (L.)H.S.Irwin & Barneby .

- **ǰírònjěyⁿ** . "bush sp."



(CC) BY © Jeff Heath and the Dogon and Bangime Languages Project



(CC) BY © Jeff Heath and the Dogon and Bangime Languages Project



(CC) BY © Jeff Heath and the Dogon and Bangime Languages Project

[Chamaecrista mimosoides](#) (L.)Greene .

- sòlò-bébéréy . "herb sp."



(CC) BY © Jeff Heath and the Dogon and Bangime Languages Project



(CC) BY © Jeff Heath and the Dogon and Bangime Languages Project

[Chamaecrista nigricans](#) (Vahl)Greene .

- àsanâm dádàr^{na} . "herb sp."



(CC) BY © Jeff Heath and the Dogon and Bangime Languages Project



(CC) BY © Jeff Heath and the Dogon and Bangime Languages Project



(CC) BY © Jeff Heath and the Dogon and Bangime Languages Project

[*Crotalaria podocarpa*](#) DC. . Characteristics: annual herb with spreading stems; up to 3 cm tall; trifoliate leaves; pale yellow flowers; fruit is an inflated pod with stiff hair. Biotope: sandy soil. ([Van Rooyen et al. 2001](#): 130)

- **írò sòlò** . "herb sp."



(CC) BY © Jeff Heath and the Dogon and Bangime
Languages Project



(CC) BY © Jeff Heath and the Dogon and Bangime
Languages Project



(CC) BY © Jeff Heath and the Dogon and Bangime
Languages Project

[*Dalbergia melanoxylon*](#) Guill. & Perr. .

- **dógúró** . "tree sp."



(CC) BY © Jeff Heath and the Dogon and Bangime
Languages Project



(CC) BY © Jeff Heath and the Dogon and Bangime
Languages Project



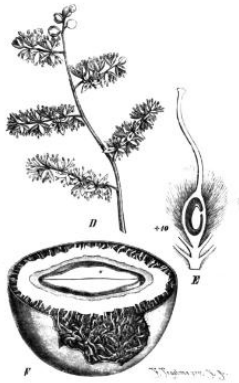
(CC) BY © Jeff Heath and the Dogon and Bangime
Languages Project

[*Detarium senegalense*](#) J.F.Gmel. .

- **pèlú** . "tree sp."



(CC) BY © Jeff Heath and the Dogon and Bangime Languages Project



Public Domain by



CC-Zero ©

Dichrostachys cinerea (L.)Wight & Arn. . Characteristics: shrub or small tree; 1-3m tall, flowers in an elongated drooping spike, composed of two sections: a pink tuft of sterile flowers and below a section of fertile yellow flowers; the pods are curly and twisted;. Biotope: grassland, sandy soil. ([Van Rooyen et al. 2001](#): 44)

- **ṭirbú** . "shrub sp."
- **ṭirùbú** . "shrub sp."



(CC) BY © Jeff Heath and the Dogon and Bangime Languages Project



(CC) BY © Jeff Heath and the Dogon and Bangime Languages Project



(CC) BY © Jeff Heath and the Dogon and Bangime Languages Project

Faidherbia albida (Delile)A.Chev. .

- **kùńó** . "balanzan tree".



(CC) BY-NC © Bart Wursten



(CC) BY-NC-SA © Research Institute Senckenberg



(CC) BY-NC © Bart Wursten

[Indigofera leprieurii](#) Baker f. .

- **hĩlambò:lù árèy** . "herb sp."



(CC) BY © Jeff Heath and the Dogon and Bangime Languages Project



(CC) BY © Jeff Heath and the Dogon and Bangime Languages Project



(CC) BY © Jeff Heath and the Dogon and Bangime Languages Project

[Indigofera tinctoria tinctoria](#) .

- **sĩjíné** . "herb sp."



(CC) BY © Jeff Heath and the Dogon and Bangime Languages Project



(CC) BY © Jeff Heath and the Dogon and Bangime Languages Project



(CC) BY © Jeff Heath and the Dogon and Bangime Languages Project

Lonchocarpus laxiflorus Guill. & Perr. .

- **dày"sá:rá** . "tree sp."



(CC) BY © Jeff Heath and the Dogon and Bangime
Languages Project



(CC) BY © Jeff Heath and the Dogon and Bangime
Languages Project



(CC) BY © Jeff Heath and the Dogon and Bangime
Languages Project

Neptunia oleracea Lour. .

- **tàgá cèlà** . "floating vine sp."



(CC) BY-NC-SA © Research Institute Senckenberg



(CC) BY-NC © Karine Aigner



(CC) BY © Jeff Heath and the Dogon and Bangime
Languages Project

Parkia biglobosa (Jacq.)G.Don .

- **lòró** . "locust-bean (nééré) tree".



(CC) BY-NC-SA © Research Institute Senckenberg



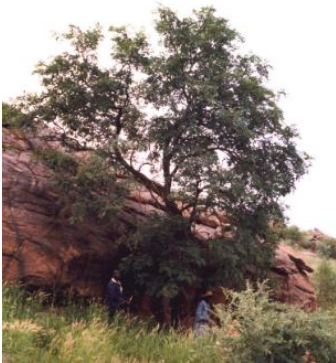
(CC) BY-NC-SA © Research Institute Senckenberg



(CC) BY-SA ©

[Pterocarpus erinaceus](#) Poir. .

- wàýá . "tree sp."



(CC) BY © Jeff Heath and the Dogon and Bangime
Languages Project



(CC) BY © Jeff Heath and the Dogon and Bangime
Languages Project



(CC) BY © Jeff Heath and the Dogon and Bangime
Languages Project

[Pterocarpus lucens](#) Guill. & Perr. .

- bèwrá . "tree sp."



(CC) BY-NC-SA © Research Institute Senckenberg



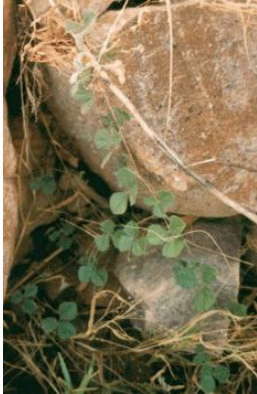
(CC) BY-NC-SA © Research Institute Senckenberg



(CC) BY © Jeff Heath and the Dogon and Bangime
Languages Project

[Rhynchosia minima memnonia](#) .

- **nĩní: jéṅé** . "vine sp.". Lit. "sun look.at".



(CC) BY © Jeff Heath and the Dogon and Bangime
Languages Project



(CC) BY © Jeff Heath and the Dogon and Bangime
Languages Project



(CC) BY © Jeff Heath and the Dogon and Bangime
Languages Project

[Senna italica italica](#) .

- **bâl-báléwà** . "bush sp."
- **bâl-bálé:rè** . "bush sp."
- **dùrù-gàngùrá** . "bush sp."
- **dùrù-gàṅrà** . "bush sp."



(CC) BY © Jeff Heath and the Dogon and Bangime
Languages Project



(CC) BY © Jeff Heath and the Dogon and Bangime
Languages Project



(CC) BY © Jeff Heath and the Dogon and Bangime
Languages Project

[Senna obtusifolia](#) (L.)H.S.Irwin & Barneby .

- **gàngùrá** . "herb sp."
- **gàṅrà** . "herb sp."



(CC) BY © Jeff Heath and the Dogon and Bangime
Languages Project



(CC) PUBLICDOMAIN © Michael Kesi



(CC) BY © Jeff Heath and the Dogon and Bangime
Languages Project

Tamarindus indica L. .

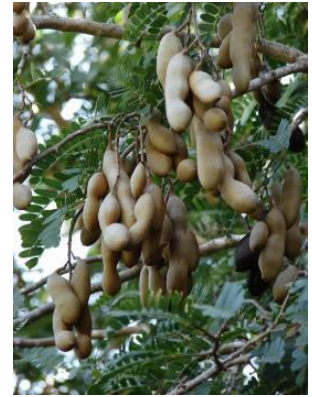
- òmnú . "tamarind".



(CC) BY © Jeff Heath and the Dogon and Bangime
Languages Project



(CC) BY © Jeff Heath and the Dogon and Bangime
Languages Project



(CC) BY © Forest & Kim Starr

Tephrosia bracteolata bracteolata .

- hīlāwàmbòlú ~ hīlā:mbòlú . "herb or shrub sp.".



(CC) BY © Jeff Heath and the Dogon and Bangime
Languages Project



(CC) BY © Jeff Heath and the Dogon and Bangime
Languages Project



(CC) BY © Jeff Heath and the Dogon and Bangime
Languages Project

Tephrosia mossiensis A.Chev. .

- **sáŋà-bèrè** . "bush sp."



(CC) BY-NC-SA © Research Institute Senckenberg



(CC) BY-NC-SA © Research Institute Senckenberg



(CC) BY © Jeff Heath and the Dogon and Bangime Languages Project

Vachellia nilotica .

- **pèŋrá** . "acacia sp."
- **pèŋgùrá** . "acacia sp."



(CC) BY © Jeff Heath and the Dogon and Bangime Languages Project



(CC) BY © Jeff Heath and the Dogon and Bangime Languages Project



(CC) BY © Jeff Heath and the Dogon and Bangime Languages Project

Vigna .

- **kâ:nú-nùm** . "wild cow-pea".



(CC) BY © Jeff Heath and the Dogon and Bangime
Languages Project



(CC) BY © Jeff Heath and the Dogon and Bangime
Languages Project



(CC) BY © Jeff Heath and the Dogon and Bangime
Languages Project

[Zornia glochidiata](#) DC. .

- **déngé:rè** . "herb sp.". From Ful .



(CC) BY-NC © Bart Wursten



(CC) BY-NC © Bart Wursten



(CC) BY-NC © Bart Wursten

Order: Gentianales

Family: Apocynaceae

[Calotropis procera](#) .

- **sé:kèy** . "shrub sp.".



(CC) BY © Jeff Heath and the Dogon and Bangime
Languages Project



(CC) BY © Jeff Heath and the Dogon and Bangime
Languages Project

Caralluma acutangula Decne. .

- **ḏīw-pára** . "succulent plant sp."
- **tènàm-yà:mà:rí** . "succulent plant sp.". Lit. "hyena-xxx".



(CC) BY © Jeff Heath and the Dogon and Bangime
Languages Project



(CC) BY © Jeff Heath and the Dogon and Bangime
Languages Project



(CC) BY © Jeff Heath and the Dogon and Bangime
Languages Project

Saba senegalensis (A. DC.) Pichon .

- **àkú** . "zaban (woody liana)".



(CC) BY-NC-SA © Research Institute Senckenberg



(CC) BY © Jeff Heath and the Dogon and Bangime
Languages Project



(CC) BY-NC-SA © Research Institute Senckenberg

Family: Rubiaceae

Feretia apodanthera Delile .

- **yàbìbirí** . "shrub sp."



(CC) BY © Jeff Heath and the Dogon and Bangime
Languages Project



(CC) BY © Jeff Heath and the Dogon and Bangime
Languages Project

Gardenia ternifolia Schumach. & Thonn. .

- **kòkó** . "shrub sp."



(CC) BY © Jeff Heath and the Dogon and Bangime
Languages Project



(CC) BY © Jeff Heath and the Dogon and Bangime
Languages Project



(CC) BY © Jeff Heath and the Dogon and Bangime
Languages Project

Mitracarpus hirtus (L.) DC. .

- **dá:mbòlsòlò** . "herb sp."



(CC) BY © Jeff Heath and the Dogon and Bangime Languages Project



(CC) BY © Jeff Heath and the Dogon and Bangime Languages Project



(CC) BY © Jeff Heath and the Dogon and Bangime Languages Project

[Spermacoce chaetocephala](#) DC. .

- **dá:mbòl sòlò** . "herb sp."



(CC) BY © Jeff Heath and the Dogon and Bangime Languages Project



(CC) BY-NC-SA © Research Institute Senckenberg



(CC) BY © Jeff Heath and the Dogon and Bangime Languages Project

Order: Lamiales

Family: Lamiaceae

[Ocimum americanum](#) L. . Characteristics: herb; up to 50 cm tall; elongated leaves in clusters; pink to white flowers; .
([Burke 2007](#): 86)

- **ǰìrònjěy** . "bush sp."
- **sùgùrù-lètú** . "bush sp."



(CC) BY © Jeff Heath and the Dogon and Bangime Languages Project



(CC) BY © Jeff Heath and the Dogon and Bangime Languages Project



(CC) BY © Jeff Heath and the Dogon and Bangime Languages Project

Family: Orobanchaceae

[*Striga hermonthica*](#) (Del.) Benth. .

- ífí-círá . "herb sp.".



(CC) BY-NC-SA © Research Institute Senckenberg



(CC) BY-NC-SA © Research Institute Senckenberg



(CC) BY-NC-SA © Delile, A.R., 1813. Description de l'Égypte

Family: Pedaliaceae

[*Ceratotheca sesamoides*](#) Endl. .

- ïsó òrèy yá: . "herb sp.".



(CC) BY © Jeff Heath and the Dogon and Bangime
Languages Project



(CC) BY © Jeff Heath and the Dogon and Bangime
Languages Project



(CC) BY © Jeff Heath and the Dogon and Bangime
Languages Project

Sesamum alatum P. Thonn. .

- **nàŋ zélé** . "wild sesame (herb)".



(CC) BY-NC © Bart Wursten



(CC) BY-NC © Bart Wursten



(CC) BY-NC © Bart Wursten

Order: Malpighiales

Family: Euphorbiaceae

Chrozophora brocchiana (Vis.) Schweinf. .

- **nàm-lòró** . "bush sp.".



(CC) BY © Jeff Heath and the Dogon and Bangime Languages Project



(CC) BY © Jeff Heath and the Dogon and Bangime Languages Project



(CC) BY © Jeff Heath and the Dogon and Bangime Languages Project

[Euphorbia austro-occidentalis](#) Thell. .

- êm púllò . "prostrate herb sp."



(CC) BY © Jeff Heath and the Dogon and Bangime Languages Project



(CC) BY © Jeff Heath and the Dogon and Bangime Languages Project



(CC) BY © Jeff Heath and the Dogon and Bangime Languages Project

[Euphorbia balsamifera](#) Aiton .

- bàrà:rà . "balsam-spurge (shrub)".



(CC) BY © Jeff Heath and the Dogon and Bangime Languages Project



(CC) BY © Jeff Heath and the Dogon and Bangime Languages Project



(CC) BY-NC © Edinburgh!

[Euphorbia chapmanii](#) Oudejans .

- **ḏīw** . "thorny bush".

[Ricinus communis](#) L. .

- **àlá-cìlò** . "shrub sp.".



(CC) BY-SA © Andreas Früh (Andel)



(CC) BY-SA © H. Zell



(CC) BY © Jeff Heath and the Dogon and Bangime Languages Project

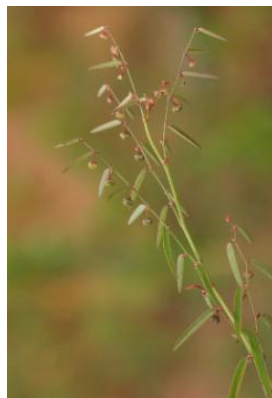
Family: Phyllanthaceae

[Phyllanthus pentandrus](#) Schumach. & Thonn. .

- **sòlò-bébéréy** . "herb sp.".



(CC) BY © Jeff Heath and the Dogon and Bangime Languages Project



(CC) BY-NC © Bart Wursten



(CC) BY-NC © Bart Wursten

[Phyllanthus reticulatus reticulatus](#) .

- **sásàr"íy"à** . "shrub sp.".



(CC) BY © Jeff Heath and the Dogon and Bangime Languages Project



(CC) BY-NC © Bart Wursten



(CC) BY-NC © Bart Wursten

Order: Malvales

Family: Malvaceae

[Abelmoschus esculentus](#) (L.) Moench .

- **t̀r̀f̀** . "okra".



(CC) BY-SA © Delince.J



(CC) BY-SA © Earth100

[Adansonia digitata](#) L. .

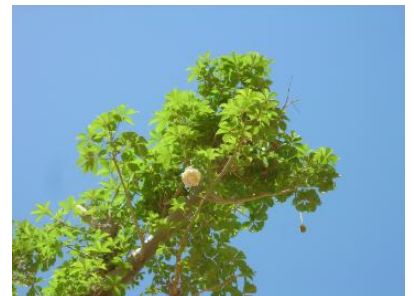
- **̀r̀s̀** . "baobab tree".



Public Domain by unknown



(CC) BY © Jeff Heath and the Dogon and Bangime Languages Project



(CC) BY © Jeff Heath and the Dogon and Bangime Languages Project

[Ceiba pentandra](#) (L.) Gaertn. .

- **bàtéj** . "tree sp."



(CC) BY © Jeff Heath and the Dogon and Bangime Languages Project



(CC) BY-NC-SA © Reinaldo Aguilar

[Corchorus](#) Patrini, 1965 .

- **ísó òrèy àrà** . "herb sp."



(CC) BY-NC-SA © Research Institute Senckenberg



(CC) BY-NC © Bart Wursten

[Grewia villosa](#) Willd. .

- **búru-só:dè** . "shrub sp."
- **gúru-só:gè** . "shrub sp."



(CC) BY-NC © Bart Wursten



(CC) BY © Jeff Heath and the Dogon and Bangime
Languages Project



(CC) BY-NC © Bart Wursten

[Hibiscus cannabinus](#) L. .

- **săy à"sù** . "erect herb sp.". Lit. "bird's roselle".
- **săy dòṅùnù ~ săy dòṅnù** . "erect herb sp.".
- **"bird's roselle.plant"** . "erect herb sp.".



(CC) BY © Jeff Heath and the Dogon and Bangime
Languages Project



(CC) BY © Jeff Heath and the Dogon and Bangime
Languages Project



(CC) BY © Jeff Heath and the Dogon and Bangime
Languages Project

[Hibiscus longisepalus](#) Hochr. .

- **[yàgà-yàgà] - [árèy]** . "bush sp.".



(CC) BY © Jeff Heath and the Dogon and Bangime Languages Project



(CC) BY © Jeff Heath and the Dogon and Bangime Languages Project



(CC) BY © Jeff Heath and the Dogon and Bangime Languages Project

Hibiscus ovalifolius (Forssk.) Vahl .

- **dú-yàgàyàgà** . "bush sp."
- **[yàgà-yàgà] -yá** . "bush sp."



(CC) BY © Jeff Heath and the Dogon and Bangime Languages Project



(CC) BY © Jeff Heath and the Dogon and Bangime Languages Project

Hibiscus sabdariffa L. .

- **àⁿsú** . "roselle".
- **kówró** . "red calyx of roselle".



(CC) BY © Jeff Heath and the Dogon and Bangime
Languages Project



(CC) BY-NC-SA © Marie Fourdrigniez



(CC) BY © Jeff Heath and the Dogon and Bangime
Languages Project

[Waltheria indica](#) L. .

- núw"ó-ná . "bush sp."



(CC) BY © Jeff Heath and the Dogon and Bangime
Languages Project



(CC) BY © Jeff Heath and the Dogon and Bangime
Languages Project



(CC) BY © Jeff Heath and the Dogon and Bangime
Languages Project

Order: Myrtales

Family: Lythraceae

[Lawsonia inermis](#) L. .

- púddí . "henna bush".



(CC) BY © Jeff Heath and the Dogon and Bangime Languages Project

Order: Nymphaeales

Family: Nymphaeaceae

Nymphaea .

- kùr^{ní} . "water lily (all spp.)".
- bòlò:tí . "water lily (fruit)".



(CC) BY-NC-SA © Mary Keim



(CC) BY-NC-SA © Research Institute Senckenberg



(CC) BY-NC © Bart Wursten

Order: Rosales

Family: Moraceae

Ficus sycomorus .

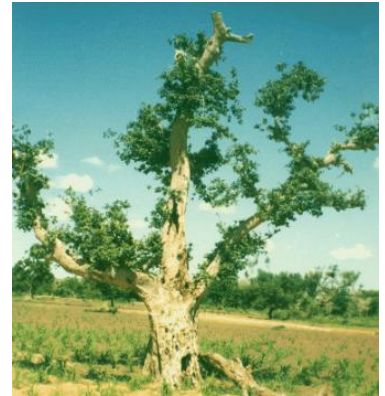
- kùm-gǎ:ⁿ . "fig tree sp.".
- kùm-gàwⁿá . "fig tree sp.".



(CC) BY © Jeff Heath and the Dogon and Bangime Languages Project



(CC) BY © Jeff Heath and the Dogon and Bangime Languages Project



(CC) BY © Jeff Heath and the Dogon and Bangime Languages Project

Family: Rhamnaceae

[*Ziziphus mauritiana*](#) Lam. .

- òrùbú ~ òrbú . "jujube (shrub)".



(CC) BY-SA ©



(CC) BY © Jeff Heath and the Dogon and Bangime Languages Project



(CC) BY-NC © Bart Wursten

Order: Santalales

Family: Ximeniaceae

[*Ximenia americana*](#) L. .

- òḡòr"òbàr"í: . "thorny shrub sp."
- ò:r"òbàr"í: . "thorny shrub sp."



(CC) BY-NC-SA © Research Institute Senckenberg



(CC) BY © Jeff Heath and the Dogon and Bangime Languages Project



(CC) BY © Jeff Heath and the Dogon and Bangime Languages Project

Order: Sapindales

Family: Anacardiaceae

***Mangifera indica* L. .**

- màṅgórò . "mango".



(CC) BY-NC-SA © Research Institute Senckenberg



(CC) BY © Jeff Heath and the Dogon and Bangime Languages Project



(CC) BY-SA ©

***Sclerocarya birrea* .**

- bǎyⁿó . "tree sp".



(CC) BY © Jeff Heath and the Dogon and Bangime Languages Project



(CC) BY-NC-SA © Research Institute Senckenberg



(CC) BY © Jeff Heath and the Dogon and Bangime Languages Project

Family: Meliaceae

[Azadirachta indica](#) A. Juss. .

- ànàsá:rá tīwⁿà . "neem tree".



(CC) BY © Jeff Heath and the Dogon and Bangime Languages Project



(CC) BY © Jeff Heath and the Dogon and Bangime Languages Project

[Khaya senegalensis](#) (Desv.) A. Juss. .

- pèrè:ré . "tree sp.".



(CC) BY © Jeff Heath and the Dogon and Bangime Languages Project



(CC) BY-NC-SA © Research Institute Senckenberg



(CC) BY © Jeff Heath and the Dogon and Bangime Languages Project

Family: Rutaceae

[Citrus limon](#) (L.) Burm. f. .

- lè:mbùrù nôm . "lemon".
- lé:mbùrù . "citrus fruit".



(CC) PUBLICDOMAIN © Pavel Buršík



(CC) BY-SA ©



(CC) BY-SA ©

[Citrus sinensis](#) L. .

- lè:mbùru ètú . "orange".



(CC) BY-SA © Mifa



(CC) BY © Jeff Heath and the Dogon and Bangime Languages Project



(CC) BY © Jeff Heath and the Dogon and Bangime Languages Project

[Vepris heterophylla](#) (Engl.) Letouzey .

- kèṅkèlì-bá . "kinkeliba shrub".



(CC) BY-NC © Philippe Birnbaum



(CC) BY-NC © Philippe Birnbaum



(CC) BY-NC © Philippe Birnbaum

Order: Solanales

Family: Convolvulaceae

Evolvulus alsinoides (L.) L. . Characteristics: herb with perennial rootstock; up to 20 cm tall; slender, hairy leaves; blue flowers with fused petals. Biotope: sandy soil. ([Burke 2007](#): 84)

- sàrkíyà . "herb sp."



(CC) BY-NC-SA © Research Institute Senckenberg



(CC) BY © India Biodiversity Portal



(CC) BY © Jeff Heath and the Dogon and Bangime Languages Project

Ipomoea aquatica Forsskal .

- tàlà:lá . "trailing vine sp."



(CC) BY © Jeff Heath and the Dogon and Bangime Languages Project



(CC) BY © Jeff Heath and the Dogon and Bangime Languages Project



(CC) BY © Jeff Heath and the Dogon and Bangime Languages Project

Jacquemontia tamnifolia (L.) Griseb. .

- sèlò wórúm-wórèy . "sprawling herb sp."



(CC) BY © Jeff Heath and the Dogon and Bangime Languages Project



(CC) BY © Jeff Heath and the Dogon and Bangime Languages Project

Family: Solanaceae

[*Solanum incanum*](#) L. . Characteristics: shrub, 80cm tall, many branches that are covered with hairs and spines, large lobed leaves, purplish-white flowers, fruit turns from green to yellow when ripe. Biotope: dry river course. ([Van Rooyen et al. 2001](#): 76)

- tà-bïy"ó . "thorny bush sp."



(CC) BY © Jeff Heath and the Dogon and Bangime Languages Project



(CC) BY-NC © Bart Wursten



(CC) BY © Jeff Heath and the Dogon and Bangime Languages Project

Order: Vitales

Family: Vitaceae

[*Cissus quadrangularis*](#) L. .

- kálùrá . "liana sp."



(CC) BY-SA © Marco Schmidt



(CC) BY © Jeff Heath and the Dogon and Bangime Languages Project



(CC) BY © Jeff Heath and the Dogon and Bangime Languages Project

Order: Zygophyllales

Family: Zygophyllaceae

[*Balanites aegyptiacus*](#) .

- m̀nó . "wild date tree".



(CC) BY © Jeff Heath and the Dogon and Bangime
Languages Project



(CC) BY © Jeff Heath and the Dogon and Bangime
Languages Project



(CC) BY © Jeff Heath and the Dogon and Bangime
Languages Project

[*Tribulus terrestris*](#) L. . Characteristics: creeping growth, yellow flowers, flower 1 cm in diameter, soft-haired leaves, woody, sharp, spiny fruits that can puncture animals' hoofs, bare feet and bicycle tyres. ([Van der Walt and le Riche 1999](#): 109)

- **màmàṅgĩrè** . "herb sp."



(CC) BY © Jeff Heath and the Dogon and Bangime
Languages Project



(CC) BY-SA © Stan Shebs



(CC) BY-SA © Stan Shebs

Class: other

Order: Ranunculales

Family: Menispermaceae

[*Tinospora bakis*](#) (A.Rich.) Miers .

- **ǎn-sèsérè** . "woody liana sp."



(CC) BY © Jeff Heath and the Dogon and Bangime Languages Project



(CC) BY © Jeff Heath and the Dogon and Bangime Languages Project



(CC) BY © Jeff Heath and the Dogon and Bangime Languages Project

Order: Sapindales

Family: Anacardiaceae

Lannea humilis (Oliv.) Engl. .

- dórúbâ:y . "tree sp."



(CC) BY © Jeff Heath and the Dogon and Bangime Languages Project



(CC) BY © Jeff Heath and the Dogon and Bangime Languages Project



(CC) BY © Jeff Heath and the Dogon and Bangime Languages Project

Kingdom: Viridiplantae

Phylum: Streptophyta

Class: Magnoliopsida

Order: Boraginales

Family: Boraginaceae

Trichodesma africanum (L.) R. Br. .

- **dògòdògò-síwó** . "herb sp."



(CC) BY © Jeff Heath and the Dogon and Bangime Languages Project



(CC) BY ©



(CC) BY-NC-SA © Bibliotheca Alexandrina - EOL Ar

Order: Brassicales

Family: Capparaceae

Boscia angustifolia A. Rich. .

- **kúrúkúlěy** . "tree sp."



(CC) BY © Jeff Heath and the Dogon and Bangime Languages Project



(CC) BY © Jeff Heath and the Dogon and Bangime Languages Project



(CC) BY © Jeff Heath and the Dogon and Bangime Languages Project

Boscia salicifolia Oliv. .

- **lùwò gùrú** . "tree sp."



(CC) BY © Jeff Heath and the Dogon and Bangime Languages Project



(CC) BY © Jeff Heath and the Dogon and Bangime Languages Project



(CC) BY © Jeff Heath and the Dogon and Bangime Languages Project

Maerua angolensis .

- làláwà . "tree sp."



(CC) BY-NC © Bart Wursten



(CC) BY-NC © Bart Wursten



(CC) BY © Jeff Heath and the Dogon and Bangime Languages Project

Family: Salvadoraceae

Salvadora persica L. .

- súlkĩ . "shrub sp."
- súlúkĩ . "shrub sp."



(CC) BY © Jeff Heath and the Dogon and Bangime Languages Project



(CC) BY © Jeff Heath and the Dogon and Bangime Languages Project



(CC) BY-NC © Bart Wursten

Order: Caryophyllales

Family: Amaranthaceae

[Pupalia lappacea](#) (L.) Juss. . Characteristics: erect or sprawling herb; up to 90 cm tall; stems with multiple opposite branches that grow from nodes; branches are 4-angled; the mature inflorescence is up to 50 cm long and has green flowers; fruit is a capsule with shiny brown seeds. Biotope: sandy soil. ([Van Rooyen et al. 2001](#): 156)

- èyⁿ nójúm-nójèy . "herb sp."



(CC) BY-NC © Bart Wursten



(CC) BY-NC © Bart Wursten



Public Domain by Christfried Naumann

Order: Celastrales

Family: Celastraceae

[Gymnosporia senegalensis](#) .

- gíyàl-gó:tèl . "tree sp. with long thorns".



(CC) BY © Jeff Heath and the Dogon and Bangime
Languages Project



(CC) BY-NC-SA © Research Institute Senckenberg



(CC) BY © Jeff Heath and the Dogon and Bangime
Languages Project

Loeseneriella africana (Willd.) R. Wilczek .

- **kàmà-nèṅé** . "woody liana sp.".



(CC) BY © Jeff Heath and the Dogon and Bangime
Languages Project



(CC) BY-NC-SA © Research Institute Senckenberg



(CC) BY © Jeff Heath and the Dogon and Bangime
Languages Project

Order: Cucurbitales

Family: Cucurbitaceae

Cucumis prophetarum prophetarum .

- **gàdǒy** . "inedible wild melon sp.".
- **gòṅ kònèy árèy** . "inedible wild melon sp.".



(CC) BY © Jeff Heath and the Dogon and Bangime Languages Project



(CC) BY © Jeff Heath and the Dogon and Bangime Languages Project



(CC) BY © Jeff Heath and the Dogon and Bangime Languages Project

[Cucumis pustulatus](#) Hook. f. .

- gòŋ kònèy yă:y . "horned melon".



(CC) BY © Jeff Heath and the Dogon and Bangime Languages Project



(CC) BY © Jeff Heath and the Dogon and Bangime Languages Project



(CC) BY © Jeff Heath and the Dogon and Bangime Languages Project

Order: Fabales

Family: Fabaceae

[Vachellia amythetophylla](#) .

- sèwrú . "thorny tree sp."
- àrà:rà-ná: . "thorny tree sp."



(CC) BY © Jeff Heath and the Dogon and Bangime Languages Project



(CC) BY © Jeff Heath and the Dogon and Bangime Languages Project



(CC) BY © Jeff Heath and the Dogon and Bangime Languages Project

Order: Gentianales

Family: Apocynaceae

[Caralluma adscendens](#) (Roxb.) Haw. .

- **déwònàñjéy** . "succulent plant sp."



(CC) BY © Jeff Heath and the Dogon and Bangime Languages Project



(CC) BY © Jeff Heath and the Dogon and Bangime Languages Project



(CC) BY © Jeff Heath and the Dogon and Bangime Languages Project

[Cynanchum hastifolium](#) .

- **tòlòbèté** . "liana sp."



(CC) BY © Jeff Heath and the Dogon and Bangime Languages Project



(CC) BY © Jeff Heath and the Dogon and Bangime Languages Project

Leptadenia hastata .

- **kóngèy** . "vine sp."



(CC) BY-NC-SA © Research Institute Senckenberg



(CC) BY © Jeff Heath and the Dogon and Bangime
Languages Project



(CC) BY © Jeff Heath and the Dogon and Bangime
Languages Project

Leptadenia pyrotechnica (Forssk.) Decne. .

- **lòbàr^hiyà-dígi** . "bush sp."



(CC) BY © Jeff Heath and the Dogon and Bangime
Languages Project



(CC) BY-NC-SA © Bibliotheca Alexandrina - EOL Ar



(CC) BY-SA ©

Pentatropis nivalis .

- **sèḡá-pùròpàgò** . "trailing vine sp."



(CC) BY © Jeff Heath and the Dogon and Bangime Languages Project



(CC) BY © Jeff Heath and the Dogon and Bangime Languages Project



(CC) BY © Jeff Heath and the Dogon and Bangime Languages Project

[Pergularia tomentosa](#) L. .

- **fúnà-fúnà** . "bush sp."
- **púnà-púnà** . "bush sp."
- **fùnà-fùnà àrà** . "bush sp."
- **pùnà-pùnà àrà** . "bush sp."



(CC) BY © Jeff Heath and the Dogon and Bangime Languages Project



(CC) BY © Jeff Heath and the Dogon and Bangime Languages Project



(CC) BY © Jeff Heath and the Dogon and Bangime Languages Project

[Xysmalobium heudelotianum](#) N. E. Br. .

- **ǎndàsírĭ** . "trailing vine sp."



(CC) BY-NC © Rob Burrett



(CC) BY-NC © Rob Burrett



(CC) BY © Jeff Heath and the Dogon and Bangime Languages Project

Order: Lamiales

Family: Bignoniaceae

[Stereospermum kunthianum](#) Cham. .

- súšyⁿ . "tree sp."



(CC) BY-NC © Bart Wursten



(CC) BY-NC © Bart Wursten



(CC) BY © Jeff Heath and the Dogon and Bangime
Languages Project

Family: Lamiaceae

[Leonotis nepetifolia africana](#) .

- gǝŋ-sàrù . "herb sp."



(CC) BY © Jeff Heath and the Dogon and Bangime
Languages Project



(CC) BY © Jeff Heath and the Dogon and Bangime
Languages Project



(CC) BY © Jeff Heath and the Dogon and Bangime
Languages Project

Family: Pedaliaceae

[Rogeria adenophylla](#) .

- kókóró . "tall herb sp."



(CC) BY © Jeff Heath and the Dogon and Bangime
Languages Project



(CC) BY © Jeff Heath and the Dogon and Bangime
Languages Project



(CC) BY © Jeff Heath and the Dogon and Bangime
Languages Project

Order: Malpighiales

Family: Elatinaceae

[*Bergia suffruticosa*](#) (Del.) Fenzl .

- tàgá cèlà . "herb sp."



(CC) BY © Jeff Heath and the Dogon and Bangime
Languages Project



(CC) BY © Jeff Heath and the Dogon and Bangime
Languages Project



(CC) BY © Jeff Heath and the Dogon and Bangime
Languages Project

Order: Malvales

Family: Malvaceae

[*Abutilon glaucum*](#) (Forst. f.) Schltld. .

- bíbí:" . "bush sp."



(CC) BY © Jeff Heath and the Dogon and Bangime Languages Project



(CC) BY © Jeff Heath and the Dogon and Bangime Languages Project



(CC) BY © Jeff Heath and the Dogon and Bangime Languages Project

Grewia bicolor Juss. .

- sùmèy-lèrí . "shrub sp."



(CC) BY © Jeff Heath and the Dogon and Bangime Languages Project



(CC) BY © Jeff Heath and the Dogon and Bangime Languages Project



(CC) BY © Jeff Heath and the Dogon and Bangime Languages Project

Sida cerradoensis Krapov. .

- yàgà-yágà . "bush sp."



(CC) BY © Jeff Heath and the Dogon and Bangime Languages Project



(CC) BY © Jeff Heath and the Dogon and Bangime Languages Project



(CC) BY © Jeff Heath and the Dogon and Bangime Languages Project

Order: Myrtales

Family: Combretaceae

[Anogeissus leiocarpa](#) (DC.) Guill. & Perr. .

- **wàrú** . "tree sp."



(CC) BY © Jeff Heath and the Dogon and Bangime
Languages Project



(CC) BY © Jeff Heath and the Dogon and Bangime
Languages Project



(CC) BY © Jeff Heath and the Dogon and Bangime
Languages Project

[Combretum glutinosum](#) Perr. ex DC. .

- **kòrùṅgòtó** . "tree sp."



(CC) BY © Jeff Heath and the Dogon and Bangime
Languages Project



(CC) BY © Jeff Heath and the Dogon and Bangime
Languages Project



(CC) BY © Jeff Heath and the Dogon and Bangime
Languages Project

[Combretum micranthum](#) G. Don .

- **gǔyⁿ** . "shrub sp."



(CC) BY © Jeff Heath and the Dogon and Bangime
Languages Project



(CC) BY © Jeff Heath and the Dogon and Bangime
Languages Project



(CC) BY © Jeff Heath and the Dogon and Bangime
Languages Project

Guiera senegalensis J.F.Gmel. .

- **gùtú** . "shrub sp."
- **lòlòmpàgú** . "shrub sp."



(CC) BY © Jeff Heath and the Dogon and Bangime
Languages Project



(CC) BY © Jeff Heath and the Dogon and Bangime
Languages Project



(CC) BY © Jeff Heath and the Dogon and Bangime
Languages Project

Order: Rosales

Family: Moraceae

Ficus abutilifolia (Miq.) Miq. .

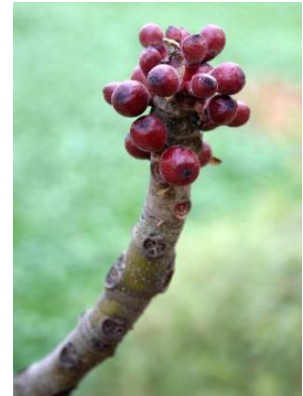
- **kùm-cérécété** . "fig tree sp."
- **kùm-kérékété** . "fig tree sp."



(CC) BY © Jeff Heath and the Dogon and Bangime Languages Project



(CC) BY © Jeff Heath and the Dogon and Bangime Languages Project



(CC) BY-NC © Bart Wursten

Ficus platyphylla Del. .

- **kùm bār^u** . "fig tree sp."



(CC) BY © Jeff Heath and the Dogon and Bangime Languages Project



(CC) BY © Jeff Heath and the Dogon and Bangime Languages Project



(CC) BY © Jeff Heath and the Dogon and Bangime Languages Project

Family: Rhamnaceae

Ziziphus abyssinica Hochst. ex A. Rich. .

- **tà-òrbú** . "shrub similar to jujube". Lit. "hyena-jujube".



(CC) BY-NC-SA © Research Institute Senckenberg



(CC) BY-NC-SA © Research Institute Senckenberg



(CC) BY © Jeff Heath and the Dogon and Bangime Languages Project

Ziziphus mucronata . Characteristics: 2 - 5 m tall, yellowish-green flowers, greyish-brown bark, thorns in pairs.
Biotope: river course, arid area. ([Carruthers \(eds.\) 2000](#): 263; [Van Rooyen et al. 2001](#): 34)

- **tà-òrbú** . "shrub sp. (false jujube)". Lit. "hyena-jujube".



Public Domain by Christfried Naumann



(CC) BY-NC-SA © Research Institute Senckenberg



Public Domain by Gertrud Boden

Order: Sapindales

Family: Burseraceae

Commiphora africana (Rich.) Engl. .

- **bòsùw"á** . "bdellium (shrub)".
- **bòsùw"à zélé** . "bdellium (shrub, variety)".



(CC) BY © Jeff Heath and the Dogon and Bangime
Languages Project



(CC) BY © Jeff Heath and the Dogon and Bangime
Languages Project



(CC) BY © Jeff Heath and the Dogon and Bangime
Languages Project

Order: Vitales

Family: Vitaceae

[Ampelocissus africana](#) (Lour.) Merrill .

- ǎwⁿà-ná: àyⁿà . "liana sp."



(CC) BY © Jeff Heath and the Dogon and Bangime
Languages Project



(CC) BY © Jeff Heath and the Dogon and Bangime
Languages Project



(CC) BY © Jeff Heath and the Dogon and Bangime
Languages Project

Class: other

Order: Fabales

Family: Fabaceae

[Senegalia ataxacantha](#) .

- àrànsàj píró . "scrub acacia sp. (often liana)".



(CC) BY © Jeff Heath and the Dogon and Bangime
Languages Project



(CC) BY © Jeff Heath and the Dogon and Bangime
Languages Project



(CC) BY © Jeff Heath and the Dogon and Bangime
Languages Project

[Senegalia macrostachya](#) .

- àrànsàŋ gáŋgùrùmà . "acacia sp.".



(CC) BY © Jeff Heath and the Dogon and Bangime
Languages Project



(CC) BY © Jeff Heath and the Dogon and Bangime
Languages Project



(CC) BY © Jeff Heath and the Dogon and Bangime
Languages Project

Kingdom: other

Phylum: other

Class: other

Order: other

Family: other

[Sternocera interrupta](#) .

- wàsâŋ-kôwró . "buprestid beetle (black with white spots)".



(CC) BY © Ben Sale



(CC) BY © Jeff Heath and the Dogon and Bangime Languages Project



(CC) BY © Jeff Heath and the Dogon and Bangime Languages Project

Trachyderma hispida .

- **tèmá kùsúbà** . "darkling beetle sp. in houses".



(CC) BY © Jeff Heath and the Dogon and Bangime Languages Project