

Jamsay names for Plants and Animals

edited by Jeffrey Heath and Steven Moran

This document was created from [Tsammalex](#) on 2015-05-13.

Tsammalex is published under a Creative Commons Attribution 4.0 International License and should be cited as

*Christfried Naumann & Steven Moran & Guillaume Segerer & Robert Forkel (eds.)
2015. Tsammalex: A lexical database on plants and animals. Leipzig: Max Planck
Institute for Evolutionary Anthropology. (Available online at
<http://tsammalex.clld.org>, Accessed on 2015-05-13.)*

A full list of contributors is available at <http://tsammalex.clld.org/contributors>

The list of references cited in this document is available at
<http://tsammalex.clld.org/sources>

Kingdom: Animalia

Phylum: Arthropoda

Class: Arachnida

Order: Prostigmata

Family: Leeuwenhoekiidae

[Dinothrombium tinctorium](#) .

- àⁿá-nâ: . "small scarlet-red velvet mite that emerges in fields after rains". Lit. "rain-mother".



(CC) BY © Jeff Heath and the Dogon and Bangime
Languages Project



(CC) BY © Jeff Heath and the Dogon and Bangime
Languages Project

Order: Solifugae

Family: Galeodidae

[Galeodes olivieri](#) Simon, 1879 .

- bù-bò:ró . "wind scorpion, sun scorpion".
- à-dòròm-bàjú . "wind scorpion, sun scorpion".



(CC) BY © Jeff Heath and the Dogon and Bangime
Languages Project



(CC) BY © Jeff Heath and the Dogon and Bangime
Languages Project



(CC) BY © Jeff Heath and the Dogon and Bangime
Languages Project

Class: Chilopoda

Order: Scolopendromorpha

Family: Scolopendridae

[Scolopendra](#) .

- **nèmnè só:nó** . "large biting centipede (scolopender)". Lit. "scorpion-pointed".



(CC) BY © Sam Fraser-Smith



(CC) BY-SA © Matt Reinbold



(CC) BY © Jeff Heath and the Dogon and Bangime Languages Project

Class: Diplopoda

Order: Spirostreptida

Family: Spirostreptidae

[Archispirostreptus](#) .

- **gònò-gòrú ~ gòrúm-gó:nó** . "giant millipede".



(CC) BY © Jeff Heath and the Dogon and Bangime Languages Project



(CC) BY © Jeff Heath and the Dogon and Bangime Languages Project

Class: Insecta

Order: Coleoptera

Family: Cetoniidae

[Pachnoda cordata](#) (Drury, 1773) .

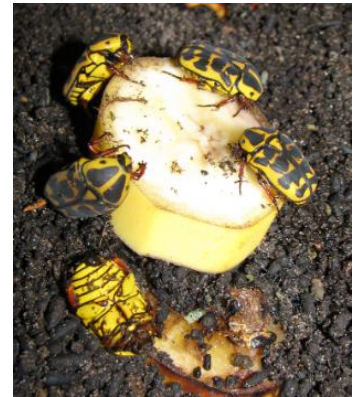
- yà:ŋà-nô: ~ cǐ-cè: yà:ŋà-nô: . "millet-eating cetonid beetle sp. (orange with large black blotches)".



(CC) BY © Jeff Heath and the Dogon and Bangime Languages Project



(CC) BY © Jeff Heath and the Dogon and Bangime Languages Project



(CC) BY-SA ©

[Pachnoda marginata](#) (Drury, 1773) .

- yà:ŋà-nô: ~ cǐ-cè: yà:ŋà-nô: . "cetonid beetle sp., dark with orange margin, in tree flowers".



(CC) BY © Jeff Heath and the Dogon and Bangime Languages Project



(CC) BY-SA ©



(CC) BY © Jeff Heath and the Dogon and Bangime Languages Project

Family: Chrysomelidae

[Callosobruchus maculatus](#) (Fabricius, 1775) .

- nĩm mà cǐ-cé: . "cowpea weevil, tiny beetle that infests stored cow-peas". Lit. "cow.pea's beetle".



(CC) BY © Jeff Heath and the Dogon and Bangime
Languages Project

Family: Meloidae

[Lydomorphus dusaulti](#) .

- jòn-nà:-jòrù jém . "shiny greenish black blister beetle with red thorax". Lit. "... black".



(CC) BY © Jeff Heath and the Dogon and Bangime
Languages Project

Family: Scarabaeidae

[Allogymnopleurus aeneus](#) (Harold, 1875) .

- [cǐ-cè:] - [bè:- [bèjùrⁿ-ú]] . "dung beetle sp. (scarabaeid)". Lit. "beetle [shit-roll]" .



(CC) BY © Jeff Heath and the Dogon and Bangime
Languages Project

Order: Diptera

Family: Tachinidae

Actia .

- **dóŋò** . "tiny fly that makes a little honey".



(CC) BY © Jeff Heath and the Dogon and Bangime
Languages Project

Musca .

- **bòròdíyà** . "banana".
- **nàmàsá** . "banana". From Bam .

Sarcophaga .

- **ŋù:-jèm bò:mó** . "large, sluggish flesh fly". Lit. "fly stupid".



(CC) PUBLICDOMAIN © Jan Moravec



(CC) BY-NC-SA © BioImages - the Virtual Fieldguide
(UK)



(CC) BY © Jeff Heath and the Dogon and Bangime
Languages Project

Order: Hemiptera

Family: Belostomatidae

[Lethocerus](#) .

- búró némnè . "giant water bug". Lit. "pond's scorpion".



(CC) BY © Jeff Heath and the Dogon and Bangime
Languages Project



(CC) BY © Jeff Heath and the Dogon and Bangime
Languages Project



(CC) BY © Jeff Heath and the Dogon and Bangime
Languages Project

Order: Hymenoptera

Family: Apidae

[Apis mellifera](#) Linnaeus, 1758 .

- yùŋ-kàràwá . "honey bee". Lit. "honey-entrust".



(CC) BY-SA ©



(CC) BY © Treesha Duncan

Family: Eumenidae

Polistes .

- **ná:núm** . "brownish paper wasp sp. with yellow cross-bands, nest in leaves".



(CC) BY-NC © Biopix



(CC) BY © Miroslav Deml



(CC) BY-NC-SA © Flickr

Family: Formicidae

Camponotus maculatus (Fabricius, 1782) .

- **gĩ-gõn** . "honey ant (yellow, fast-moving)".



(CC) BY-SA © April Nobile



(CC) BY © Jeff Heath and the Dogon and Bangime

Languages Project

Camponotus sericeus (Fabricius, 1798) .

- **ǎn- [nùmò-kúmò]** . "large, rugged black ant sp.".



(CC) BY-SA ©



(CC) BY-SA ©



(CC) BY-SA ©

Cataglyphis .

- **ámà mà** [sòm-ĩ:] -kǝ:ŋǝ . "red and black ant sp.". Lit. "God's colt".



(CC) BY-NC-SA © Valter Jacinto



(CC) BY-NC-SA © Valter Jacinto



(CC) BY-SA ©

Messor .

- **čĩ-čěn** . "large black grain-eating ant sp. in fields".



(CC) BY-NC-SA © April Nobile



(CC) BY © Jeff Heath and the Dogon and Bangime Languages Project



(CC) BY-NC-SA © April Nobile

Pachycondyla .

- **mĩ-mèn jém** . "stinging black ant sp.".
- **[mĩ-mèn] -círé** . "winged form of Pachycondyla ant". Lit. "ant-fly.away".



(CC) BY © Jeff Heath and the Dogon and Bangime Languages Project



(CC) BY-NC-SA © April Nobile



(CC) BY-NC-SA © April Nobile

Order: Lepidoptera

Family: Crambidae

[*Coniesta ignefusalis*](#) Hampson, 1919 .

- **kàrá** . "millet stem-borer (snout-moth caterpillar in millet stem)".
- **[sù-sùm] -pégù ~ sùm-pégù** . "millet stem-borer (snout-moth caterpillar in millet stem)".

Family: Saturniidae

[*Gonimbrasia*](#) .

- **kòmno sú-sùm** . "large, colorful saturniid caterpillar sp.". Lit. "Piliostigma.tree-grub".



(CC) BY © Simon J. Tonge



(CC) BY © Jeff Heath and the Dogon and Bangime Languages Project



(CC) BY © Jeff Heath and the Dogon and Bangime Languages Project

Family: Sphingidae

[*Agrius convolvuli*](#) Linnaeus, 1758 .

- **sù-sùm** **[[kĩ-kòjú] -nâ:] -[yà-bíndé]** . "large sphingid caterpillar in plant roots, with black spots on its side and a soft hornlike appendage over its tail, on plants".



(CC) BY © Jeff Heath and the Dogon and Bangime
Languages Project

Order: Mantodea

Family: Eremiaphilidae

[Eremiaphila reticulata](#) .

- **ámà mà jàndúró** . "fat brown eremiaphilid mantis sp.". Lit. "God's donkey".

Order: Neuroptera

Family: Myrmeleontidae

[Creoleon africanus](#) (Rambur, 1842) .

- **jú: nâ:** . "ant lion sp. (adult) with hyaline (colorless) wings". Lit. "millet's mother".

[Lachlathetes furfuraceus](#) (Rambur, 1842) .

- **yà:ɲà- [kù:ⁿ- [kǎ-yⁿ]]** . "ant lion sp. (adult) with colored wings".
- **[à-jàɲàwⁿà] - [kù:ⁿ-kǎ-yⁿ]** . "ant lion sp. (adult) with colored wings". Lit. "forked-[head-shave]".



(CC) BY © Jeff Heath and the Dogon and Bangime
Languages Project



(CC) BY © Jeff Heath and the Dogon and Bangime
Languages Project



(CC) BY © Jeff Heath and the Dogon and Bangime
Languages Project

Order: Orthoptera

Family: Acrididae

[Anacridium melanorhodon](#) .

- kóru-kàjà . "grasshopper sp. (tree locust)".



(CC) BY © Jeff Heath and the Dogon and Bangime
Languages Project

[Cataloipus cymbiferus](#) .

- sòm- [kí-kâ:] . "grasshopper sp.".



(CC) BY © Jeff Heath and the Dogon and Bangime
Languages Project

[Catantops stramineus](#) .

- [nàm-sègè]-gùnó . "grasshopper sp.". Lit. "Catantopinae-slave".



(CC) BY-SA ©

[Cryptocatantops haemorrhoidalis](#) .

- nàm-sègè àrⁿá . "grasshopper sp.". Lit. "Catantopinae male".



(CC) BY © Jeff Heath and the Dogon and Bangime Languages Project



(CC) BY © Jeff Heath and the Dogon and Bangime Languages Project



(CC) BY © Jeff Heath and the Dogon and Bangime Languages Project

[Diabolocatantops axillaris](#) .

- **nám-ségè** . "grasshopper sp."
- **nàm-sègè yǎ:** . "grasshopper sp.". Lit. "Catantopinae female".



(CC) BY © Jeff Heath and the Dogon and Bangime Languages Project



(CC) BY © Jeff Heath and the Dogon and Bangime Languages Project



(CC) BY © Jeff Heath and the Dogon and Bangime Languages Project

[Harpezocatantops stylifer](#) .

- **[nàm-sègè]-gùno** . "grasshopper sp.". Lit. "Catantopinae-slave".

[Heteracris leani](#) .

- **nánàm-jǐ:** . "grasshopper sp."



PD ©



(CC) BY-SA ©

[Hieroglyphus daganensis](#) .

- dò:jú . "grasshopper sp."



(CC) BY © Jeff Heath and the Dogon and Bangime
Languages Project



(CC) BY © Jeff Heath and the Dogon and Bangime
Languages Project



(CC) BY © Jeff Heath and the Dogon and Bangime
Languages Project

[Homoxyrhopes punctipennis](#) .

- sòm- [kí-kâ:] . "grasshopper sp."



(CC) BY © Jeff Heath and the Dogon and Bangime
Languages Project



(CC) BY © Jeff Heath and the Dogon and Bangime
Languages Project

[Kraussaria angulifera](#) .

- án-cèré . "grasshopper sp."
- yà-màṅá ~ yè-màṅá . "grasshopper sp."



(CC) BY © Jeff Heath and the Dogon and Bangime
Languages Project



(CC) BY © Jeff Heath and the Dogon and Bangime
Languages Project

[Kraussella amabile](#) .

- mén- [kí-kâ:] . "grasshopper sp.". Lit. "bracelet grasshopper".



(CC) BY © Jeff Heath and the Dogon and Bangime Languages Project



(CC) BY © Jeff Heath and the Dogon and Bangime Languages Project

Oedaleus senegalensis .

- **pélé-pêw** . "grasshopper sp."



(CC) BY © Jeff Heath and the Dogon and Bangime Languages Project



(CC) BY © Jeff Heath and the Dogon and Bangime Languages Project



(CC) BY-SA ©

Schistocerca gregaria .

- **bán- [dī-dêyⁿ]** . "pilgrim locust (solitary phase)".



PD ©



Public Domain by



PD NASA ©

[Scintharista notabilis](#) .

- **tóró-** [kí-kâ:] . "grasshopper sp.". Lit. "mountain's grasshopper".
- **tùmó-** [kí-kâ:] ~ **tùmó mà kǐ-kǎ:** . "grasshopper sp.". Lit. "rock grasshopper".



(CC) BY © Jeff Heath and the Dogon and Bangime Languages Project



(CC) BY © Jeff Heath and the Dogon and Bangime Languages Project



PD ©

[Sherifuria haningtoni](#) .

- **dò:jú** . "grasshopper sp.".



(CC) BY © Jeff Heath and the Dogon and Bangime Languages Project



(CC) BY © Jeff Heath and the Dogon and Bangime Languages Project



(CC) BY © Jeff Heath and the Dogon and Bangime Languages Project

Family: Pyrgomorphidae

[Chrotogonus senegalensis](#) .

- **núnúr^u**- [kí-kâ:] . "toad grasshopper". Lit. "Hereafter-grasshopper".



(CC) BY © Jeff Heath and the Dogon and Bangime Languages Project



(CC) BY © Jeff Heath and the Dogon and Bangime Languages Project

[Poeciloceris bufonius hieroglyphicus](#) .

- pǒw- [kí-kâ:] . "grasshopper sp.". Lit. "Calotropis grasshopper".



(CC) BY © Jeff Heath and the Dogon and Bangime Languages Project



(CC) BY © Jeff Heath and the Dogon and Bangime Languages Project

[Pyrgomorpha vignaudi](#) .

- sǒn-ná:-sǒrù . "grasshopper sp.".



PD ©

Phylum: Chordata

Class: Actinopterygii

Order: Siluriformes

Family: Bagridae

[Bagrus bajad](#) .

- góró í:jù . "light-colored bayad sp. (catfish)". Lit. "pond fish".



(CC) BY © Jeff Heath and the Dogon and Bangime Languages Project



(CC) BY © Jeff Heath and the Dogon and Bangime Languages Project



(CC) BY © Jeff Heath and the Dogon and Bangime Languages Project

Class: Amphibia

Order: Anura

Family: Dicroglossidae

[Hoplobatrachus occipitalis](#) (Günther, 1858) .

- èŋèr"è-círé . "groove-crowned bullfrog (young)". Lit. "frog-fly.away".
- èŋèr"è- [nà:-pó:jú] . "groove-crowned bullfrog (adult)".
- úgúrí ~ búgúrí . "groove-crowned bullfrog (adult)".



(CC) BY © Jeff Heath and the Dogon and Bangime Languages Project



(CC) BY © Jeff Heath and the Dogon and Bangime Languages Project



(CC) BY © Jeff Heath and the Dogon and Bangime Languages Project

Family: Ranidae

[Hylarana galamensis](#) (Duméril and Bibron, 1841) .

- èŋèr"è-círé . "Galam striped frog". Lit. "frog-fly.away".



(CC) BY © Jeff Heath and the Dogon and Bangime Languages Project



(CC) BY-NC © inaturalist



(CC) BY-NC © Drewes, R.C.

Class: Aves

Order: Accipitriformes

Family: Accipitridae

Accipiter badius (Gmelin, 1788) . Characteristics: carnivore; body-length: 28-30 cm; grey plumage above; russet barring below; yellow legs and cere. ([Sinclair 1994](#): 86)

- **tĩ-tèw cě:ηè** . "shikra (sparrowhawk)".



(CC) BY-SA © Ravi Vaidyanathan



(CC) BY-SA © J.M.Garg

Aquila rapax (Temminck, 1828) . Characteristics: carnivore; body-length: 65-80 cm; variable colouration ranging from dark brown to allmost white; pale underside. ([Sinclair 1994](#): 76)

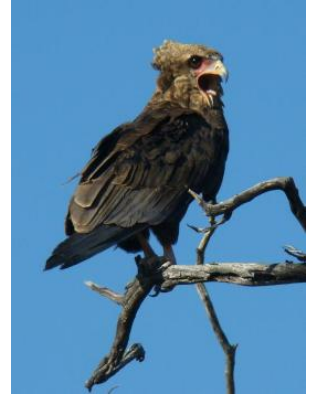
- **màṅá-[ɲĩ-ɲâ:]** . "tawny eagle".



Public Domain by Taa DoBeS team
(Boden/Güldemann/Naumann)



(CC) BY-SA © Lip Kee



Public Domain by Taa DoBeS team
(Boden/Güldemann/Naumann)

[Buteo auguralis](#) Salvadori, 1865 .

- cě:ŋ jàráwà . "red-necked buzzard (eats lizards)".



(CC) BY ©

[Gyps rueppellii](#) (A. E. Brehm, 1852) . Characteristics: carnivore; body-length: 115 cm, brown plumage; wings with dark flight feathers and pale linings. ([Sinclair 1994](#): 70)

- tèt-w-dùwó ~ [tĩ-tèt]-dùwó . "Rueppell's griffon vulture".



PD ©



(CC) BY-NC-SA © Gerald and Buff Corsi



PD ©

Micronisus gabar (Daudin, 1800) . Characteristics: carnivore; body-length: 30-34 cm; grey throat and breast; reddish legs and cere; grey wings. Biotope: woodland. ([Sinclair 1994](#): 86)

- [fí-tèw] - [cě:ŋè] . "gabar goshawk".
- cě:ŋè . "gabar goshawk".



(CC) BY © Neil Strickland



PD US ©



(CC) BY ©

Milvus migrans (Boddaert, 1783) . Characteristics: carnivore; body-length: 56 cm; long forked tail; dark plumage. ([Sinclair 1994](#): 88)

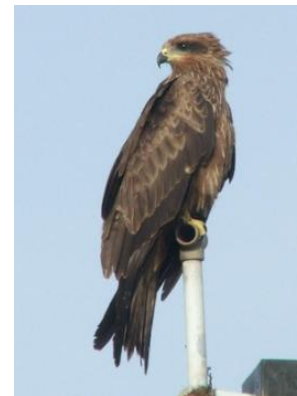
- jèmè-kómó . "kite (hawk)". Lit. "bag-crumpled".



(CC) BY-SA © Thomas Kraft



(CC) BY-NC © inaturalist



(CC) BY-SA ©

Necrosyrtes monachus (Temminck, 1823) . Characteristics: carnivore; body-length: 70 cm; brown plumage; bare head with red skin. ([Sinclair 1994](#): 72)

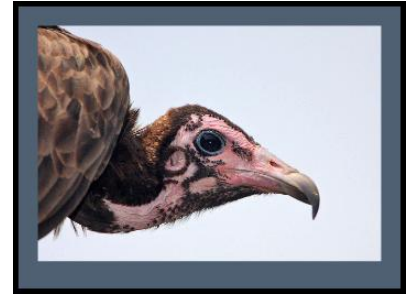
- júggà:rà . "hooded vulture".
- jùggà:rè jém . "hooded vulture". Lit. "vulture black".



(CC) BY-SA © Atamari



(CC) BY-NC © Scott Bowers



(CC) BY-NC-SA © Steve Garvie

Neophron percnopterus (Linnaeus, 1758) . Characteristics: carnivore; body-length: 62 cm; white plumage; wings with black primaries; white tail. ([Sinclair 1994](#): 72)

- **tòn-tòn píró** . "Egyptian vulture".
- **jùggà:rè píró** . "Egyptian vulture". Lit. "vulture white".



PD ©



(CC) BY-SA © Kousik Nandy



(CC) BY ©

Terathopus ecaudatus (Daudin, 1800) . Characteristics: carnivore; body-length: 55-70 cm; black, white and chestnut plumage; short tail; long wings; red face. Biotope: semi-desert. ([Sinclair 1994](#): 74)

- **àr"à-kô** . "bateleur hawk". Lit. "rain-...".



(CC) BY © Derek Keats



(CC) BY-SA ©



Public Domain by

Order: Anseriformes

Family: Anatidae

[*Dendrocygna viduata*](#) (Linnaeus, 1766) . Characteristics: herbivore; body-length: 48 cm; black head with white face; brown plumage; dark belly; blue-tipped black bill. Biotope: freshwater. ([Sinclair 1994](#): 64)

- **tàyà-è:rè cîré** . "white-faced whistling duck". Lit. "duck red".



(CC) BY-NC © Gabriela F. Ruellan



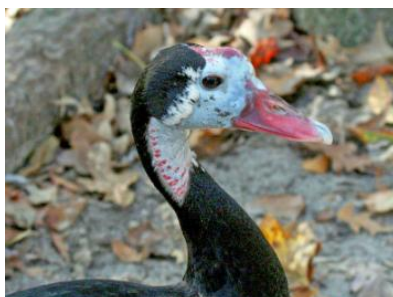
(CC) BY-SA ©

[*Plectropterus gambensis*](#) (Linnaeus, 1766) . Characteristics: herbivore; body-length: 100 cm, black plumage on the back; white on the belly; red bill; white face;. Biotope: grassland. ([Sinclair 1994](#): 64)

- **[tàyà-è:rè]-běj** . "spur-winged goose".



(CC) BY-SA © Appaloosa



(CC) BY-SA © Dick Daniels

[*Sarkidiornis melanotos*](#) (Pennant, 1769) . Characteristics: omnivore; body-length: 65 - 80 cm, black and white plumage; speckled grey head; male larger than female; in breeding season the male has a large comb on the bill. Biotope: freshwater. ([Sinclair 1994](#): 64)

- **[tàyà-è:rè]-céré** . "knob-billed goose". Lit. "duck-...".



(CC) BY ©



(CC) BY-SA ©



(CC) BY-SA © Lip Kee

Order: Apodiformes

Family: Apodidae

[*Apus affinis*](#) (J. E. Gray, 1830) .

- wèrè-wèrè . "little African swift".
- àjúwⁿ-ò-[dǒyⁿ-pírù] . "little African swift".



(CC) MARK © creator:Thomas Hardwicke

[*Tachymarptis aequatorialis*](#) (J. W. von Müller, 1851) .

- [wèrè-wèrè] -jà:ŋá . "mottled swift". Lit. "swift-...".

Order: Bucerotiformes

Family: Bucerotidae

[*Tockus erythrorhynchus*](#) (Temminck, 1823) .

- òyò-dògù pírú . "red-billed hornbill". Lit. "hornbill white".



(CC) BY-NC © ellisms



(CC) BY-SA © Mehmet Karatay



(CC) BY © Biodiversity Heritage Library

[Tockus nasutus](#) (Linnaeus, 1766) .

- ሕጎ-ደዕጎ ጅጠ . "grey hornbill". Lit. "hornbill black".



(CC) BY-NC © inaturalist



(CC) BY-SA © Lip Kee from Singapore, Republic of Singapore



(CC) BY © Biodiversity Heritage Library

Family: Bucorvidae

[Bucorvus abyssinicus](#) (Boddaert, 1783) .

- ጅጠ ጅጠ . "Abyssinian ground hornbill". Lit. "eye black".



(CC) BY © Jeff Heath and the Dogon and Bangime Languages Project

Order: Charadriiformes

Family: Burhinidae

[Burhinus capensis](#) (Lichtenstein, 1823) .

- yà:ŋà-èŋé . "spotted thick-knee".
- ɲàŋà-èŋé . "spotted thick-knee".



(CC) BY-SA © Jutta ? unknown



(CC) BY-SA © Cburnett?



(CC) BY © Jeff Heath and the Dogon and Bangime Languages Project

Family: Charadriidae

[Vanellus tectus](#) (Boddaert, 1783) .

- cǐ-cèr"éw" . "black-headed lapwing (plover)".



(CC) BY-NC-SA © Bernard DUPONT



(CC) MARK © ChriKo



(CC) BY © Noel Reynolds

Family: Glareolidae

[*Cursorius temminckii*](#) Swainson, 1822 .

- sugù pir^ɪ: . "Temminck's courser".



(CC) BY © <https://www.flickr.com/photos/rainbirder>



(CC) MARK © William Swainson, F.R.S., F.L.S.



(CC) BY © Chandres

[*Rhinoptilus chalcopterus*](#) (Temminck, 1824) .

- cǐ-cèr^ɪɛwⁿ . "bronze-winged courser".
- [kǐ-kèr^ɪɛwⁿ] -gùñǒ-n . "bronze-winged courser".



Public Domain by Nicolas Huet



(CC) BY-NC-SA © Bart Wursten

Family: Jacanidae

[*Actophilornis africanus*](#) (Gmelin, 1789) . Characteristics: carnivore; body-length: 28 cm; red-brown body; white throat; yellow breast; black neck; blue bill and forehead. Biotope: flooded grassland, freshwater. ([Sinclair 1994](#): 102)

- pòr^h-wâ: . "jacana".



(CC) BY ©



(CC) BY-SA ©

Order: Ciconiiformes

Family: Ciconiidae

[*Ciconia abdimii*](#) Lichtenstein, 1823 . Characteristics: carnivore; body-length: 76 cm; black plumage; white lower back and rump; greenish bill and legs;. ([Sinclair 1994](#): 58)

- [à-kòrò] -má:ɲá ~ [à-kòrò] -má:ɲú . "Abdim's stork".



Public Domain by Taa DoBeS team
(Boden/Güldemann/Naumann)



Public Domain by Taa DoBeS team
(Boden/Güldemann/Naumann)



Public Domain by Taa DoBeS team
(Boden/Güldemann/Naumann)

Ciconia ciconia (Linnaeus, 1758) . Characteristics: carnivore; body-length: 102 cm; white plumage; black wings; red bill and legs. Biotope: grassland. ([Sinclair 1994](#): 60)

- **kòmó- [fí-têw]** . "white stork". Lit. "war hawk".



(CC) BY-SA © Dick Daniels



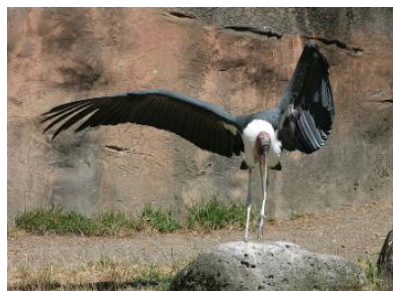
(CC) BY © Bogdan Giușcă

Leptoptilos crumeniferus (Lesson, 1831) . Characteristics: carnivore; body-length: 150 cm; white body, black wings; naked head and neck; large, pointy bill; whitish legs. ([Sinclair 1994](#): 58)

- **sámàlówòn** . "marabou stork".



(CC) BY-SA © Ltshears



(CC) BY-SA © unknown (User:Cacophony)

Order: Columbiformes

Family: Columbidae

[Columba guinea](#) Linnaeus, 1758 .

- **púrúgú-dègé** . "speckled pigeon". Lit. "off.white-stunted".



(CC) BY-SA © unknown (Ltshears)



(CC) BY-SA © unknown (ChriKo)

[Columba livia](#) Gmelin, 1789 .

- **kĩ-kàjà jém** . "rock pigeon, rock dove". Lit. "pigeon black".
- **kĩ-kàjà** . "pigeon (domestic)".
- **kĩ-kàjà gùmò-gùmò** . "pigeon (domestic)". Lit. "pigeon ...".



(CC) BY-SA © Mike Pennington



(CC) BY-SA © J.M.Garg

[Oena capensis](#) (Linnaeus, 1766) .

- **pèllè-[sùn-dún]** . "long-tailed pigeon, namaqua dove".



(CC) BY-SA © Lip Kee from Singapore, Republic of Singapore



(CC) BY-NC-SA © David Blank



http://en.wikipedia.org/wiki/public_domain © C. G. Finch-Davies (1875-1920)

Streptopelia senegalensis (Linnaeus, 1766) .

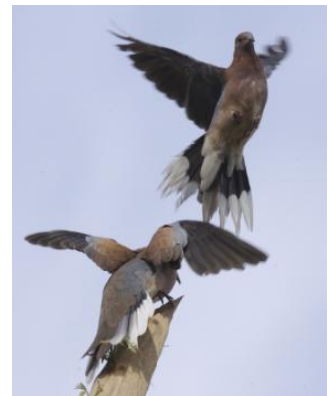
- **pèllè** . "laughing dove".
- **úrò-pèllè** . "laughing dove". Lit. "house-dove".



(CC) BY-SA ©



(CC) BY-SA © Lip Kee



(CC) BY-SA ©

Streptopelia vinacea (Gmelin, 1789) .

- **èjú-pèllè** . "doves with black nape rings (vinaceous dove; mourning dove)". Lit. "outback-dove".
- **pèllè pírú** . "doves with black nape rings (vinaceous dove; mourning dove)". Lit. "dove white".



(CC) BY ©

Order: Coraciiformes

Family: Alcedinidae

[Halcyon senegalensis](#) (Linnaeus, 1766) .

- dānà- [ḏḡḏ-dògú] . "woodland kingfisher".
- "hunt-hornbill" . "woodland kingfisher".



(CC) BY-SA ©



(CC) BY-SA © User:Justin.Tweedie



Public Domain by

Family: Coraciidae

[Coracias abyssinicus](#) Hermann, 1783 .

- ḏḡḡ-sě:rùm . "Abyssinian roller". Lit. "[to-]chief-entrusted".



PD ©



(CC) BY-SA ©

Family: Meropidae

[Merops albicollis](#) Vieillot, 1817 .

- ùrⁿó- [sá:j-í:ⁿ] . "white-throated bee-eater".



(CC) BY © Ron Knight from Seaford, East Sussex,
United Kingdom



(CC) BY-SA ©



(CC) BY © Gerhard Singer

Order: Cuculiformes

Family: Cuculidae

[*Centropus senegalensis*](#) (Linnaeus, 1766) .

- **bògó** . "Senegal coucal".



(CC) BY © ThomHasi



(CC) BY © Jeff Heath and the Dogon and Bangime
Languages Project

Order: Falconiformes

Family: Falconidae

[*Falco chicquera*](#) Daudin, 1800 . Characteristics: carnivore; body-length: 30-36 cm, chestnut head and nape; dark brown moustach-like patches on the face; black and white barred belly; white throat; grey tail with black band. Biotope: savanna, dry area; river course. ([Sinclair 1994](#): 90)

- **jà:m-làgú** . "red-necked falcon (takes guinea-fowl)". Lit. "guinea.fowl-strike".



(CC) BY © Koshy Koshy



(CC) BY-SA © Peter Last



(CC) BY © Jeff Heath and the Dogon and Bangime Languages Project

Order: Galliformes

Family: Numididae

[*Numida meleagris*](#) (Linnaeus, 1758) . Characteristics: omnivore; body-length: 56 cm; grey plumage with white dots; blue and red skin on the head. Biotope: grassland, woodland. ([Sinclair 1994](#): 102)

- **ɲã:m** . "guinea-fowl".



(CC) BY-SA ©



(CC) BY © Jeff Heath and the Dogon and Bangime Languages Project



(CC) BY © Chris Eason

Family: Phasianidae

[*Francolinus bicalcaratus*](#) (Linnaeus, 1766) .

- **súgù** . "double-spurred francolin".



(CC) BY © Biodiversity Heritage Library



(CC) BY © Jeff Heath and the Dogon and Bangime Languages Project



(CC) BY © Jeff Heath and the Dogon and Bangime Languages Project

Ptilopachus petrosus (Gmelin, 1789) .

- ስ፡ፕ፡ጅ-ጅገጅ . "stone partridge". Lit. "monkey-chicken".
- wègùrú-wêy . "stone partridge".



(CC) BY-SA ©



(CC) BY © Jeff Heath and the Dogon and Bangime Languages Project



(CC) BY © Jeff Heath and the Dogon and Bangime Languages Project

Order: Gruiformes

Family: Gruidae

Balearica pavonina (Linnaeus, 1758) .

- kùwⁿá . "crowned crane".



Public Domain by



(CC) BY ©

Family: Otididae

[*Ardeotis arabs*](#) (Linnaeus, 1758) .

- [jìrè-pìrù] -sùgù . "Arabian bustard". Lit. "bustard-francolin".



(CC) BY ©



(CC) BY-SA ©

[*Eupodotis senegalensis*](#) (Vieillot, 1820) .

- kǐ-kàrâw . "white-bellied (= Senegal) bustard".



(CC) BY-SA © Lip Kee



(CC) BY-SA ©



(CC) MARK © Creator:Claude Gibney Finch-Davies

[*Neotis denhami*](#) (Children & Vigors, 1826) .

- jìrè-pírú . "Denham's bustard". Lit. "eye white".

- **jìrè-pìrù jém** . "Denham's bustard". Lit. "bustard black".



Public Domain by



(CC) BY-SA ©



(CC) BY-NC-SA © Bernard DUPONT

Order: Passeriformes

Family: Alaudidae

Eremopteryx leucotis (Stanley, 1814) .

- **bĩ-bô: ~ bô:-bô:** . "chestnut-backed sparrow lark".
- **kú:"-sóyórò** . "chestnut-backed sparrow lark". Lit. "head-multicolored".



(CC) BY © Jeff Heath and the Dogon and Bangime Languages Project



(CC) MARK © creator:Andrew Smith



(CC) BY-NC © Werner Witte

Family: Cisticolidae

Spiloptila clamans (Cretzschmar, 1826) .

- **kã:-lè-ĩré-m** . "cricket warbler". Lit. "I am bigger than a grasshopper".



(CC) BY © Jeff Heath and the Dogon and Bangime Languages Project



(CC) BY © Jeff Heath and the Dogon and Bangime Languages Project



Public Domain by

Family: Corvidae

[Corvus albus](#) Statius Muller, 1776 .

- **ká:nà** . "pied crow".



(CC) BY-SA © Thomas Schoch



(CC) BY-SA © Myburgh

[Corvus ruficollis](#) Lesson, 1831 .

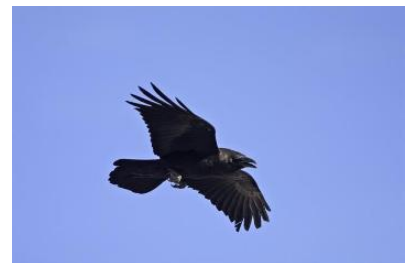
- **kà:nà jém** . "black crow". Lit. "crow black".



(CC) MARK © G. G. White – delineator. W. H. Dougal – engraver



(CC) BY-SA © Lip Kee Yap



(CC) BY-NC © Biopix

[Ptilostomus afer](#) (Linnaeus, 1766) .

- sà:gó . "piapiac (magpie)".



(CC) BY-SA ©



(CC) BY © Jeff Heath and the Dogon and Bangime Languages Project



(CC) BY-SA ©

Family: Emberizidae

[Emberiza striolata sahari](#) J. Levaillant, 1850 .

- cèndò:ró . "house bunting".



(CC) BY ©



(CC) BY © Biodiversity Heritage Library



(CC) BY-NC-SA © Stefano Doglio

Family: Estrildidae

[Amadina fasciata](#) (Gmelin, 1789) .

- [bĩ-bĩ:jù] - [yògó-bân] . "cut-throat finch". Lit. "quelea-throat-red".
- _x0008_ ʒibĩli:sà-hĩrsĩ-állà-jábâ:y . "cut-throat finch". From Ful "the Devil slaughtered [it], Allah did not agree" .



(CC) BY © Jeff Heath and the Dogon and Bangime Languages Project



(CC) BY © Jeff Heath and the Dogon and Bangime Languages Project

[Lagonosticta senegala](#) (Linnaeus, 1766) .

- àrùjénè- [sá:j-í:] . "red-billed firefinch". Lit. "paradise's bird".



(CC) BY © Original uploader was ThomHasi at en.wikipedia



Public Domain by Veli Pohjonen



(CC) BY © msafari2425

[Lonchura cantans](#) (Gmelin, 1789) .

- píró-ɲèɲè . "warbling silverbill".



(CC) BY-SA ©



(CC) BY © Jeff Heath and the Dogon and Bangime Languages Project



(CC) BY-NC © inaturalist

Family: Hirundinidae

[Ptyonoprogne fuligula pusilla](#) (Zedlitz, 1908) .

- àsamà-cêl . "rock martin (swallow)". Lit. "Asama[name]-...".
- jèmè- [cí-cêl] ~ jèmè- [cí-cél] . "rock martin (swallow)". Lit. "blacksmith-...".



(CC) BY © Jeff Heath and the Dogon and Bangime Languages Project



(CC) BY © Jeff Heath and the Dogon and Bangime Languages Project



(CC) BY © Jeff Heath and the Dogon and Bangime Languages Project

Family: Muscicapidae

[Myrmecocichla aethiops](#) Cabanis, 1850 .

- ùⁿḁ-sà:jī:ⁿ . "northern anteater-chat".



(CC) BY-SA ©



(CC) BY-NC-SA © Gerald and Buff Corsi



(CC) BY-SA ©

Family: Nectariniidae

[Nectarinia pulchella](#) (Linnaeus, 1766) .

- ùmùⁿú- [sá:j-í:ⁿ] . "beautiful (= long-tailed) sunbird". Lit. "tamarind's bird".



(CC) BY © Bob



(CC) BY © Biodiversity Heritage Library



(CC) BY © Jeff Heath and the Dogon and Bangime Languages Project

Family: Passeridae

Passer griseus (Vieillot, 1817) .

- **fi-lôm** . "grey-headed sparrow".



(CC) BY-SA ©



(CC) BY © Jeff Heath and the Dogon and Bangime Languages Project



(CC) BY-SA © Tom Tarrant

Passer luteus (Lichtenstein, 1823) .

- **[yòrò-pìr"é] - [sá:j-í:]** . "golden sparrow". Lit. "yellow bird".



(CC) BY-SA © Christiaan Kooyman



(CC) BY © Jeff Heath and the Dogon and Bangime Languages Project



(CC) BY-SA ©

Family: Ploceidae

Bubalornis albirostris (Vieillot, 1817) .

- **sà-gùmó** . "white-billed buffalo-weaver".



(CC) BY © Jeff Heath and the Dogon and Bangime
Languages Project



(CC) BY © Jeff Heath and the Dogon and Bangime
Languages Project

Euplectes franciscanus (Isert, 1789) .

- **[ɲù:-pírú] - [sá:j-í:]** . "northern red bishop (bird)". Lit. "[millet-white]'s bird".
- **[wàrà-gó-m] - [tò:-gó-m] - [mí-lá:-ɲú:-néw"é:]** . "northern red bishop (bird)". Lit. "I don't farm, I don't sow, I am first to taste the millet".
- **[wàrà-gó-m] - [tò:-gó-m]** . "northern red bishop (bird)". Lit. "I don't farm, I don't sow".



(CC) BY © Jeff Heath and the Dogon and Bangime
Languages Project



(CC) BY-SA ©



(CC) BY © Jeff Heath and the Dogon and Bangime
Languages Project

Ploceus cucullatus (Statius Muller, 1776) .

- **ǰírè-bàn-ǰó:ɲó** . "village weaver (bird)". Lit. "eye-red-very.red".
- **[yòrò-pǐr"é] - [sá:j-í:]** . "village weaver (bird)". Lit. "yellow bird".



(CC) BY © Simon J. Tonge



(CC) BY © Simon J. Tonge



(CC) BY © Simon J. Tonge

[Ploceus luteolus](#) (Lichtenstein, 1823) .

- [ỵr̀r̀-ɸ̣r̀ⁿé] - [sá:j-ĩ:ⁿ] . "little weaver, slender-billed weaver (bird)". Lit. "yellow bird".



(CC) BY-NC © Scott Bowers



(CC) BY © Joaquim Grave

[Quelea quelea](#) (Linnaeus, 1758) .

- bí-bí:jù . "black-faced dioch (bird)".
- ká:-bân . "black-faced dioch (bird)". Lit. "mouth-red".
- [sà:j-ĩ:ⁿ] - [ká:-bân] . "black-faced dioch (bird)". Lit. "bird mouth-red".



(CC) BY © Pawel Ryszawa



(CC) MARK © Creator:John Gerrard Keulemans



(CC) BY-SA © Alastair Rae

[Sporopipes frontalis](#) (Daudin, 1800) .

- kú:ⁿ- [ḳɔwⁿ̣-ɸ̣éŋ̣è] . "scaly-fronted (speckle-fronted) weaver".



(CC) BY-SA ©



(CC) BY-SA ©



PD ©

Family: Sturnidae

[Buphagus africanus](#) Linnaeus, 1766 .

- **nàḡá-[sá:j-í:ḡ]** . "oxpecker (bird)". Lit. "cow's bird".



(CC) BY-SA © Steve Garvie from Dunfermline, Fife, Scotland



(CC) BY-SA © Steve Garvie from Dunfermline, Fife, Scotland



(CC) BY © Biodiversity Heritage Library

[Lamprotornis caudatus](#) (Statius Muller, 1776) .

- **kò:rḡi:-kà:rḡi:ḡ** . "long-tailed glossy starling".



(CC) BY-SA © Salix



(CC) BY © Thom Haslam



(CC) BY © Biodiversity Heritage Library

[Lamprotornis chalybaeus](#) Hemprich & Ehrenberg, 1828 .

- **sà-jêm** . "greater blue-eared starling (= blue-eared glossy starling)". Lit. "bird-black".



(CC) BY © Jeff Heath and the Dogon and Bangime Languages Project



(CC) BY © Jeff Heath and the Dogon and Bangime Languages Project



(CC) MARK © creator:Joseph Smit. Richard Bowdler Sharpe (text)

[Lamprotornis pulcher](#) (Statius Muller, 1776) .

- **tè:ⁿ-tê:ⁿ ~ tĩ-tê:ⁿ** . "chestnut-bellied starling".
- **sè:ⁿ-sê:ⁿ ~ sĩ-sê:ⁿ** . "chestnut-bellied starling".



(CC) BY-SA © ChriKo



(CC) BY © Jeff Heath and the Dogon and Bangime Languages Project



(CC) BY © Jeff Heath and the Dogon and Bangime Languages Project

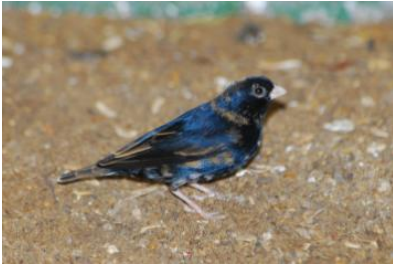
[Onychognathus neumanni](#) (Alexander, 1908) .

- **ǎyⁿ** . "crag chestnut-winged (= Neumann's) starling".

Family: Viduidae

[Vidua chalybeata](#) (Statius Muller, 1776) .

- **gàrá-[sá:j-í:]** . "village indigobird". Lit. "indigo-bird".



(CC) BY-NC-SA © David Blank



(CC) BY-SA © Hectonichus



(CC) BY © Jeff Heath and the Dogon and Bangime Languages Project

Order: Pelecaniformes

Family: Ardeidae

Bubulcus ibis (Linnaeus, 1758) . Characteristics: carnivore; body-length: 54 cm; white and light brown plumage; yellow bill; breeding bird has a red bill; often found in association with cattle. Biotope: grassland. ([Sinclair 1994](#): 54)

- **káj-kòkò píró** . "cattle egret". Lit. "... white".
- **kòmó- [tí-têw]** . "wood ibis". Lit. "war hawk".



(CC) BY-SA © Atamari



(CC) BY-SA © Atamari



(CC) BY © Jeff Heath and the Dogon and Bangime Languages Project

Family: Scopidae

Scopus umbretta Gmelin, 1789 . Characteristics: carnivore; body-length: 56 cm; dark brown plumage; long legs; hammer-shaped profile of the head; long dark bill. Biotope: freshwater. ([Sinclair 1994](#): 60)

- **bùrà:dǒŋ** . "hamerkop".



(CC) BY-SA © Derek Ramsey



(CC) BY-SA © Sebastian Ritter



(CC) BY-SA ©

Order: Piciformes

Family: Picidae

[*Dendropicos goertae*](#) (Statius Muller, 1776) .

- kóm- [tí-tógù] . "grey woodpecker". Lit. "tree.hole-peck".



(CC) BY ©



(CC) BY-SA ©



(CC) BY © Jeff Heath and the Dogon and Bangime Languages Project

Family: Ramphastidae

[*Lybius vieilloti*](#) (Leach, 1815) .

- tó:-tà:-tó: . "Vieillot's barbet".



Public Domain by



(CC) BY-SA © Gossipguy

Order: Psittaciformes

Family: Psittacidae

[Psittacula krameri](#) (Scopoli, 1769) .

- **sà-gǒ** : "rose-ringed parakeet (= Senegal long-tailed parrot)".



(CC) BY © Jeff Heath and the Dogon and Bangime
Languages Project



(CC) BY © Jeff Heath and the Dogon and Bangime
Languages Project



(CC) BY © Jeff Heath and the Dogon and Bangime
Languages Project

Order: Pteroclidiformes

Family: Pteroclididae

[Pterocles exustus](#) Temminck, 1825 .

- **pǐ-pòtú** . "chestnut-bellied sandgrouse". Lit. "mud".



(CC) BY-NC-SA © David Bygott



Public Domain by



Public Domain by

Order: Strigiformes

Family: Caprimulgidae

[Caprimulgus tristigma](#) Rüppell, 1840 .

- **bè:rú** . "nightjar, freckled".



Public Domain by



(CC) BY ©

Family: Strigidae

[Bubo cinerascens](#) Guerin-Meneville, 1843 .

- **dûn** . "vermiculated (or: greyish) eagle-owl".
- **dùn jém** . "vermiculated (or: greyish) eagle-owl". Lit. "owl black".



(CC) BY © Jeff Heath and the Dogon and Bangime
Languages Project



(CC) BY © Jeff Heath and the Dogon and Bangime
Languages Project



(CC) BY © Jeff Heath and the Dogon and Bangime
Languages Project

[Glaucidium perlatum](#) (Vieillot, 1817) .

- **dùn pé:** . "pearl-spotted owlet".
- **dùn ké:w** . "pearl-spotted owlet".



(CC) BY-SA © Derek Ramsey



(CC) BY-SA © ChriKo ?

[Ptilopsis leucotis](#) (Temminck, 1820) .

- **dùn-jĩṅé** . "northern white-faced owl".
- **dùn ké:w** . "northern white-faced owl".



(CC) BY-NC © inaturalist



Public Domain by

Family: Tytonidae

[Tyto alba](#) (Scopoli, 1769) .

- [í-n] - [sá:j-í:ⁿ] . "barn owl". Lit. "child's bird".
- úrⁿ-ùm mà sà:j-í:ⁿ . "barn owl". Lit. "children's bird".
- sà-bè:rú . "barn owl".
- sà-t̂: . "barn owl".
- dùn bán . "barn owl".



(CC) BY-SA ©



Public Domain by Racheo ??



(CC) BY-SA ©

Order: Struthioniformes

Family: Struthionidae

[Struthio camelus](#) Linnaeus, 1758 .

- òḡḡ-yógó . "ostrich". Lit. "chief-tomorrow".
- d̂l-gó-d̂l . "ostrich (hunters' term)".



Public Domain by Taa DoBeS team
(Boden/Güldemann/Naumann)



Public Domain by Taa DoBeS team
(Boden/Güldemann/Naumann)



Public Domain by Roland Kiessling

Order: Suliformes

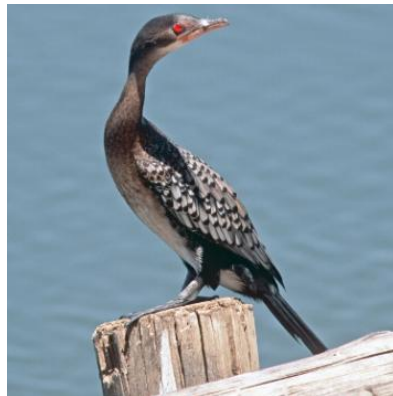
Family: Phalacrocoracidae

[Microcarbo africanus](#) (Gmelin, 1789) . Characteristics: carnivore; body-length: 52 cm; black plumage; pale area on the back; orange face patch; small crest on the forehead. Biotope: marine habitat. ([Sinclair 1994](#): 50)

- [ɲě-m] - [sĩ-sěy] . "long-tailed cormorant". Lit. "women-..."



(CC) BY-NC-SA © Bernard DUPONT



(CC) BY-NC © Greg Lasley



(CC) BY-NC-SA © Martin Grimm

Order: Upupiformes

Family: Upupidae

[Upupa epops](#) Linnaeus, 1758 .

- [[ká:-lè] -sóyóy] - [[gòró-lè] -sóyóy] . "hoopoe".



(CC) BY-SA ©



(CC) BY-SA ©



(CC) BY © Biodiversity Heritage Library

Class: Mammalia

Order: Artiodactyla

Family: Bovidae

[Bos taurus primigenius](#) Bojanus, 1827 .

- **ἄρῃ** . "cow, cattle".



(CC) BY-NC © Biopix



(CC) BY-NC © Biopix

[Damaliscus korrigum](#) (Ogilby, 1837) .

- **ἄρῃ** . "korrigum (antelope close to topi), 100 kg (horselike, glossy; long horns curving backward then forward, black patch on upper legs, ochre-colored lower legs)".



(CC) BY ©



(CC) MARK © Philip Sclater



(CC) BY ©

[Gazella dama](#) (Pallas, 1766) .

- èjù-èrⁿé . "dama gazelle, 1 m shoulder height, 40-75 kg (face and belly white, red-brown top, short curled horns)".
Lit. "outback-...".



PD ©



PD ©



(CC) MARK © Philip Sclater

[Gazella dorcas](#) (Linnaeus, 1758) .

- wèrù bán . "dorcas gazelle, 60 cm shoulder height, 15-20 kg (long ears, horns have annular rings and converge at top)".



(CC) BY-NC-SA © cultnat



(CC) BY-NC-SA © cultnat



(CC) PUBLICDOMAIN © Tree of Life web project

[*Hippotragus equinus koba*](#) (Gray, 1872) .

- **káyⁿ** . "roan antelope, 1.3 m shoulder height, 250 kg (heavy fur, mane, black-tipped tail and ears)".



(CC) BY © Jeff Heath and the Dogon and Bangime
Languages Project



(CC) BY © Jeff Heath and the Dogon and Bangime
Languages Project

[*Ourebia ourebi quadriscopa*](#) (C. H. Smith, 1827) .

- **ùwⁿ᠑** . "orebi, 45-60 cm shoulder height, 7-16 kg (goatlike, short vertical horns)".



(CC) BY © Jeff Heath and the Dogon and Bangime
Languages Project

[*Sylvicapra grimmia*](#) (Linnaeus, 1758) . Characteristics: herbivore; height: 50cm; the coat varies in colour from light grey-brown to red-brown; the belly and the insides of the legs are white; the front legs have vertical black stripes; there is a tuft of long, black hair on the forehead; the short tail is dark on top and white underneath; females are larger and lack horns;. Biotope: savanna, grassland, woodland, mountains. ([Cillié 1997](#): 64)

- **ló:jú** . "bush duiker, 45-70 cm shoulder height, 15-20 kg (goatlike, males with short vertical horns o 18 cm, can leap)".
- **lò:jù jém** . "bush duiker, 45-70 cm shoulder height, 15-20 kg (goatlike, males with short vertical horns o 18 cm, can leap)".



Public Domain by unknown (Chuckupd)



(CC) BY-NC-SA © Bernard DUPONT



(CC) BY © Biodiversity Heritage Library

Syncerus caffer (Sparrman, 1779) . Characteristics: herbivore; height: 1-1,7m; this cattle-like animal is born with a light reddish-brown coat that darkens with age until it is grey-black; both sexes are horned, but the horns of the male are especially large with thick bosses;. Biotope: savanna, scrubforest, forest, grassland. (Cillie 1997: 84)

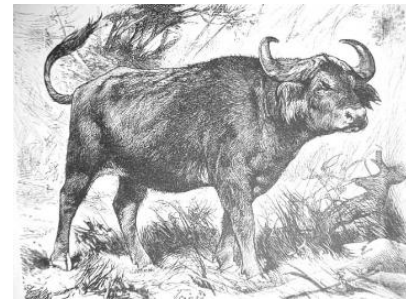
- èjù-nàṅá . "African buffalo". Lit. "outback-cow".
- ègè-nàṅá . "African buffalo".



(CC) BY-SA © unknown, Haplochromis?



(CC) BY © Stig Nygaard



(CC) MARK © Wikimedia Commons

Tragelaphus scriptus scriptus (Pallas, 1766) .

- ègè-èrⁿé ~ èjù-èrⁿé . "bushbuck, 61-100 cm shoulder height, reddish with white markings". Lit. "bush-goat".
- èjù-bèrú . "bushbuck, 61-100 cm shoulder height, reddish with white markings".



(CC) BY © Jeff Heath and the Dogon and Bangime

Languages Project

Family: Giraffidae

[*Giraffa camelopardalis*](#) (Linnaeus, 1758) . Characteristics: herbivore; characteristic are the long legs and the very long neck; the whitish-yellow body is covered with brown patches that get darker as the animal ages; on top of the head are two short horns that are covered with black hair; they have a mane of short, stiff hair; . Biotope: savanna, scrubforest, grassland, woodland. ([Cillié 1997](#): 96)

- **wīl-wīl** . "giraffe".



Public Domain by Taa DoBeS team
(Boden/Güldemann/Naumann)



Public Domain by Taa DoBeS team
(Boden/Güldemann/Naumann)



Public Domain by Taa DoBeS team
(Boden/Güldemann/Naumann)

Family: Hippopotamidae

[*Hippopotamus amphibius*](#) Linnaeus, 1758 . Characteristics: herbivore; height: 150-165 cm; this very large semiaquatic animal is generally grey-brown but the belly and skinfolds are yellowish-pink; it has a very large mouth; the nostrils and the eyes are on top of the head; the ears are small and rounded;. Biotope: freshwater, swamps. ([Cillié 1997](#): 106)

- **bǎŋ** . "hippo".



Public Domain by Christfried Naumann



© Geoff Gallice

Family: Suidae

[*Phacochoerus africanus*](#) (Gmelin, 1788) . Characteristics: omnivore; the body is grey and sparsely covered with long bristles; there is a mane of dark hair with lighter tips; the adults have large tusks which curve over the broad snout; the males have larger tusks than the females and have three pairs of warts on the sides of the face; they run with their tail up;. Biotope: savanna, grassland, desert. ([Cillié 1997](#): 92)

- **tórú** . "warthog (boar)".



© Geoff Gallice



(CC) BY-SA © Delphine Bruyere



(CC) PUBLICDOMAIN © Trisha M Shears

Sus scrofa Linnaeus, 1758 .

- tórú . "pig".



(CC) BY-SA © Jerzy Strzelecki



(CC) BY-SA ©



(CC) BY-SA © Volker.G

Order: Carnivora

Family: Canidae

Canis lupus familiaris Linnaeus, 1758 .

- èjù-ìjú . "dog". Lit. "outback-dog".



(CC) BY-SA ©



(CC) BY © Simon J. Tonge



(CC) BY-NC © inaturalist

[*Vulpes pallida*](#) (Cretzschmar, 1826) .

- **yùrùgú** . "sand fox, pale fox".



Public Domain by

Family: Felidae

[*Acinonyx jubatus*](#) (Schreber, 1775) . Characteristics: carnivore; height: 70-90 cm, the Cheetah is a large cat with long legs and a small head; the coat is yellowish-white with black spots; the ears are small and round; the Cheetah is the fastest land animal reaching speeds of more than 100 km/h; it can be distinguished from the Leopard by its longer legs and the characteristic tear marks extending from the eyes to the mouth;. Biotope: grassland, desert. ([Cillié 1997](#): 114)

- **tǐ-tà: hě:yⁿ** . "cheetah". Lit. "hyena ...".



(CC) BY-SA © Paul Maritz



(CC) BY-SA © Malene Thyssen



(CC) BY-SA © Marcus T. Jaschen

[*Caracal caracal*](#) (Schreber, 1776) . Characteristics: carnivore; the coat is reddish-brown to brick-red, the belly and chest are white; this cat has remarkably strong hind legs and a short tail; the ears are large and pointed with large tufts of black hair, the back of the ear is black; they have black marks around the eyes and at the base of the whiskers;. Biotope: savanna, scrubforest, grassland, rocky area. ([Cillié 1997](#): 116)

- **sá:mà-sú:mò** . "caracal, 13 kg (solitary)".



(CC) BY-SA © € Van 3000 [2] from belgium belgiske
belgiuistan - United Tribes ov Europe



(CC) BY-NC-SA © David Bygott

Felis margarita Loche, 1858 .

- **nǐ-nǐw^hè pírú** . "sand cat, 2-3 kg (sandy yellow, ears widely spaced)". Lit. "cat white".
- **dúrúbà** . "sand cat, 2-3 kg (sandy yellow, ears widely spaced)".



(CC) BY-SA ©



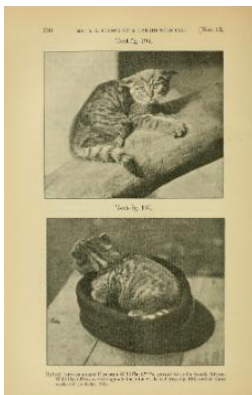
(CC) BY ©



(CC) BY-SA ©

Felis sylvestris *Schreber, 1775* .

- **nǐ-nǐw^hè púrúgú** . "wild cat. 4-5 kg (grey or buff)". Lit. "cat off.white".
- **nǐ-nǐw^hè jém** . "wild cat. 4-5 kg (grey or buff)". Lit. "cat black".
- **dùrùbà jém** . "wild cat. 4-5 kg (grey or buff)". Lit. "cat black".



Public Domain by

Leptailurus serval (Schreber, 1776) . Characteristics: carnivore; height 55-65cm; the Serval is a slender cat with long legs, a small head and large rounded ears; the colour ranges from dull white to golden-yellow with black stripes down the neck and black spots on the body; it can be distinguished from the Cheetah by the lack of tear marks and the larger ears;. Biotope: savanna, forest, grassland. ([Cillié 1997](#): 118)

- **pí-píw** . "serval cat, 12 kg (spotted; long legs, pointed ears)".
- **tà:-mân** . "serval cat, 12 kg (spotted; long legs, pointed ears)". Lit. "hyena-...".



(CC) BY-SA © unknown



(CC) PUBLICDOMAIN © Stolz, Gary M.

Panthera leo (Linnaeus, 1758) . Characteristics: carnivore; height: 110-120 cm; the Lion is the largest cat in Africa and the only one where the males have manes, the colour of the mane ranges from blonde to black; the back of the round ears is black; the males are much larger than the females and have manes;. Biotope: savanna, scrubforest, forest, grassland, mountains. ([Cillié 1997](#): 110)

- **dùŋ-yàrá** . "lion". Lit. "elephant-imitate".
- **yàrá-dùròmbòjú** . "lion (hunters' word)".



(CC) BY ©



© Geoff Gallice



Public Domain by Taa DoBeS team
(Boden/Güldemann/Naumann)

Panthera pardus (Linnaeus, 1758) .

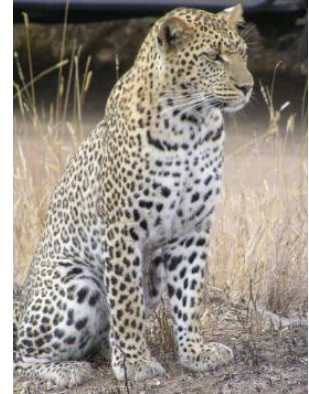
- **ĩ-tà: ñùr^ó ~ tà: ñùr^ó** . "leopard". Lit. "hyena ...".



(CC) BY-SA © Haplochromis



(CC) BY-SA ©



(CC) BY-SA © user at project|JanErkamp|wikipedia|en

Family: Herpestidae

Atilax paludinosus (G.[Baron] Cuvier, 1829) . Characteristics: carnivore; body-length: 45-60cm; the fur of this large mongoose ranges from black to rust-brown; the underside and the cheeks are lighter; the head is broad and the ears lie flat;. Biotope: savanna, scrubforest, rainforest, grassland, freshwater. (Cillié 1997: 158)

- sè: jém . "marsh mongoose (dark, to 4 kg, swims along river banks)".
- kèjè jém . "marsh mongoose (dark, to 4 kg, swims along river banks)".



(CC) BY-NC-SA © David Bygott



(CC) BY © Jeff Heath and the Dogon and Bangime

Languages Project

Galerella sanguinea (Rüppell, 1835) . Characteristics: omnivore; the colour of this Mongoose is usually correlated with the soil colour for camouflage and ranges from yellowish-grey to reddish; the long and upwards bent tail has a black tip;. (Cillié 1997: 152)

- sà̀nà̀-gà̀nà̀r̀́á . "slender mongoose (small, tip of tail black or red, less than 1 kg)".
- sà̀nà̀r̀́á . "slender mongoose (small, tip of tail black or red, less than 1 kg)".



(CC) BY-SA © Sara&Joachim



Public Domain by Andrew Smith (1797-1872)



(CC) BY © Jeff Heath and the Dogon and Bangime Languages Project

Herpestes ichneumon (Linnaeus, 1758) . Characteristics: carnivore; body-length: 50-60 cm; they have a long, low-slung form; the grey coat is dotted with brownish speckles; the tail ends with a black tassel;. Biotope: marshland, swamps.

(Cillié 1997: 166)

- **kòròní** . "Egyptian mongoose, ichneumon (large, to 4 kg)".



(CC) BY-SA © □□□□□□

Ichneumia albicauda (G.[Baron] Cuvier, 1829) . Characteristics: omnivore; body-length 60cm; the coat is grey-brown; the hind legs are very long causing the back to slant forward when it walks; the tail is covered in long white hair;.

Biotope: savanna, forest, grassland, woodland. (Cillié 1997: 156)

- **cèjè pírú** . "white-tailed mongoose (to 4 kg)". Lit. "mongoose white".
- **kèjè bán** . "white-tailed mongoose (to 4 kg)".



(CC) BY-SA © MCSchaeffer



(CC) MARK © Frank E. Beddard



(CC) BY © Jeff Heath and the Dogon and Bangime Languages Project

Family: Hyaenidae

[Crocuta crocuta](#) (Erxleben, 1777) . Characteristics: carnivore; height: 70-90 cm; the colour ranges from dull yellow to white, with irregular dark spots;it has a short mane and overall short hair; the animal has a large head with round ears, e strong neck and a sloping back;. Biotope: savanna,scrubforest, montane forest, grassland. ([Cillié 1997](#): 124)

- **ĩ-tà: wěyⁿ-wèyⁿ ~ ĩ-tà: yêy-yêy** . "spotted hyena". Lit. "hyena onomat."



(CC) BY-SA © Gastrocycle



(CC) BY © Marieke Kuijpers



(CC) BY-SA © Jerry Friedman

[Hyaena hyaena](#) (Linnaeus, 1758) .

- **ĩ-tà: kójórⁿó-kôy** . "striped hyena". Lit. "hyena ...".
- **ĩ-tà: ná:** . "striped hyena". Lit. "hyena main".



(CC) BY-NC-SA © David Bygott



(CC) BY © Simon J. Tonge



(CC) MARK © Beddard, Frank E. (Frank Evers), 1858-1925

Family: Mustelidae

Ictonyx striatus (Perry, 1810) . Characteristics: carnivore; height 10-15cm; this short legged predator has black fur with 4 parallel, white stripes on the back; it has white marks underneath the ears and between the eyes;. Biotope: savanna, forest, grassland, woodland, semi-desert, swamps, mountains. ([Cillié 1997](#): 148)

- ḏḡḏ-téḡḡ . "zorilla (polecat)". Lit. "chief-..."



(CC) BY © Jeff Heath and the Dogon and Bangime Languages Project



CC-Zero ©



(CC) BY-NC-SA © Antonius El Kommos

Mellivora capensis (Schreber, 1776) . Characteristics: omnivore; height: 25-30cm; the body is black with a broad, greyish-white saddle on the back and head; the legs are short and equipped with sharp claws; the black tail is short; the ears are very small;. Biotope: savanna, forest, grassland. ([Cillié 1997](#): 140)

- ḏḡḡḡḡḡḡḡ ~ ḏḡḡḡḡḡḡḡḡ . "ratel (honey badger)".
- jèḡḡḡḡḡḡḡḡ . "ratel (honey badger) (hunters' term)".



(CC) BY-SA ©



(CC) BY-SA © Matěj Bařha



(CC) MARK © Creator:Joseph Smit

Family: Viverridae

Genetta genetta (Linnaeus, 1758) . Characteristics: carnivore; this cat-like animal has a grey coat with black spots on it; the tail is very long and has grey and black rings, the tip is always white; the ears are very thin and rounded; each individual has a characteristic face mask;. Biotope: savanna, forest, scrubforest, grassland. ([Cillié 1997](#): 144)

- kòḡḡḡḡḡḡḡ . "genet".
- ḡḡḡḡḡḡḡḡḡḡ kòḡḡḡḡḡḡḡḡ . "genet".

- kònùrⁿú . "genet".



(CC) BY © Jeff Heath and the Dogon and Bangime Languages Project



(CC) BY © Jeff Heath and the Dogon and Bangime Languages Project



(CC) BY-SA © Liné1

[*Genetta thierryi*](#) Matschie, 1902 .

- kònùrⁿù bán . "Hausa genet".



(CC) BY-SA ©



(CC) BY-SA © Rosevear, Donovan Reginald

Order: Erinaceomorpha

Family: Erinaceidae

[*Atelerix albiventris*](#) (Wagner, 1841) .

- [à-kòrò] -pé:jú . "hedgehog". Lit. "...-sheep".



(CC) BY © Jeff Heath and the Dogon and Bangime Languages Project



(CC) BY © Jeff Heath and the Dogon and Bangime Languages Project

Equus quagga Boddaert, 1785 . Characteristics: herbivore; height: 110-145cm; this Zebra is thick built and short legged; the body is white with thick,vertical, black stripes alternating with lighter shadow stripes; the stripes become less distinct towards the hooves; the ears are small;. Biotope: savanna, grassland, desert. ([Cillié 1997](#): 86)

- àlámbá:ná:jè . "zebra (not in Mali)".



(CC) BY ©



(CC) BY ©



(CC) BY ©

Order: Primates

Family: Cercopithecidae

Erythrocebus patas (Schreber, 1774) .

- ò:r"ò bán . "patas monkey". Lit. "monkey red".
- pùlò-ò:r"ó . "patas monkey". Lit. "Fulbe-monkey".



(CC) BY-SA ©



(CC) BY ©



(CC) BY-SA © Brocken Inaglory

Papio anubis (Lesson, 1827) .

- ò:r"ò dègè . "baboon". Lit. "monkey statuette".



(CC) BY-NC-SA © Gerald and Buff Corsi



(CC) BY-NC-SA © Gerald and Buff Corsi



(CC) BY © Simon J. Tonge

Order: Proboscidea

Family: Elephantidae

[*Loxodonta africana*](#) (Blumenbach, 1797) . Characteristics: herbivore; height: 3-3,75m; the African Bush elephant has large flat ears; its trunk ends with two opposing extensions; both sexes have large tusks; females are smaller and have smaller tusks;. Biotope: savanna, marshland, forest, grassland, desert, swamps. ([Cillié 1997](#): 100)

- **dǔŋ** . "elephant".
- **dùn-dàŋá** . "elephant".



(CC) BY-SA © nickandmel2006



Public Domain by Gorgo

Order: Rodentia

Family: Hystricidae

[*Hystrix cristata*](#) Linnaeus, 1758 .

- **cèm-sèŋé** . "porcupine". Lit. "point-exposed".
- **sàyàrà-wáyá** . "porcupine (hunters' term)".



(CC) BY-SA ©



(CC) MARK © creator:Thomas Hardwicke



(CC) BY-NC-SA © David Bygott

Family: Muridae

[Arvicanthis niloticus](#) (Desmarest, 1822) .

- **ù-jùwⁿò pújúrⁿúm** . "unstriped grass rat (diurnal)". Lit. "mouse lump.of.earth".



(CC) BY © Jeff Heath and the Dogon and Bangime
Languages Project



(CC) BY © Jeff Heath and the Dogon and Bangime
Languages Project



(CC) BY © Jeff Heath and the Dogon and Bangime
Languages Project

[Cricetomys gambianus](#) Waterhouse, 1840 . Characteristics: omnivore; total length: 80 cm, tail-length: 40 cm; grey-brown fur on the back, belly lighter; long naked tail which is white towards the end; dark eye-ring; long thin ears;. Biotope: savanna, forest, grassland. ([Stuart and Stuart 2007](#): 108)

- **gù-gùjú** . "giant pouched rat (about 2 kilos)".



(CC) BY-SA ©



(CC) BY-SA ©



(CC) BY © Jeff Heath and the Dogon and Bangime
Languages Project

Gerbillus Todaro, 1995 .

- **ù-jùw"ò píró** . "gerbil". Lit. "mouse white".



(CC) MARK © Wikimedia Commons



(CC) MARK © Joseph Smit



(CC) BY © Shah Jahan

Mastomys natalensis (Smith, 1834) . Characteristics: herbivore; length: 24cm, tail-length: 11cm; underparts paler than upperparts, females have up to 12 pairs of nipples. Biotope: savanna, forest, shrubland, human settlement. ([Stuart and Stuart 2007](#): 126)

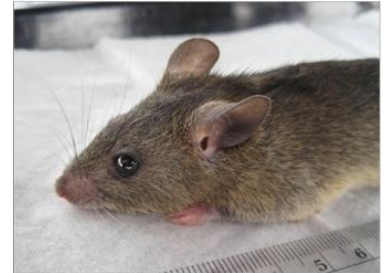
- **ù-jùw"ò jém** . "black form of African soft-furred rat (house mouse)". Lit. "mouse black".



(CC) BY © Jeff Heath and the Dogon and Bangime Languages Project



(CC) BY ©



(CC) BY ©

Myomys daltoni (Thomas, 1892) .

- **ù-jùw"ò píró** . "Dalton's mouse (small, light-colored, belly white, tail longer than body, in field or houses, can climb)". Lit. "mouse white".



(CC) BY © Zbyszek Boratynski



(CC) BY © Jeff Heath and the Dogon and Bangime Languages Project



(CC) BY © Jeff Heath and the Dogon and Bangime Languages Project

Family: Sciuridae

[Heliosciurus gambianus](#) (Ogilby, 1835) .

- **kóm-tòḡórṁḡ** . "Gambian sun squirrel (arboreal)". Lit. "tree.hole-..." .



(CC) BY © N3ddo!



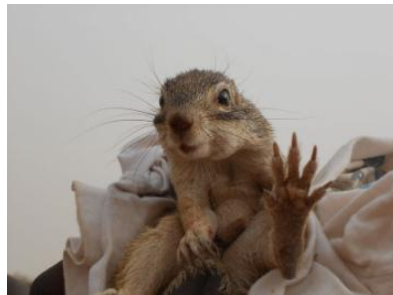
(CC) BY © N3ddo!

[Xerus erythropus](#) (É. Geoffroy Saint-Hilaire, 1803) .

- **èjù-lè-kó:** . "striped ground squirrel (terrestrial) (hunters' term)". Lit. "[outback-in]-devour".



(CC) MARK © Boissel Philippe



(CC) BY © Flickr



(CC) BY ©

Order: Soricomorpha

Family: Soricidae

[Crocidura cinderella](#) Thomas, 1911 .

- **jĩ-jùwⁿò sèjù-sàjù ~ ù-jùwⁿò sèjù ~ ù-jùwⁿò sèjù-sàjù** . "tiny white-toothed shrew sp." .
- **ù-jùwⁿò ká:-sí:** . "tiny white-toothed shrew sp." . Lit. "mouse mouth-pointed" .



(CC) BY © Jeff Heath and the Dogon and Bangime

Languages Project

Order: Tubulidentata

Family: Orycteropodidae

[Orycteropus afer](#) (Pallas, 1766) . Characteristics: insectivore; height: 60 cm; this animal has a long pig-like snout, large, erect ears and a thick tail; most of the body is naked, only the legs are covered with dark hair; the forefeet have strong claws for digging; it has a long (30 cm), sticky tongue which allows it to catch termites and ants;. Biotope: savanna, grassland. ([Cillié 1997](#): 172)

- ḡw"ḡ . "aardvark, 50 kg".



Public Domain by Christfried Naumann



(CC) BY-SA ©



(CC) BY-SA ©

Class: Reptilia

Order: Crocodylia

Family: Crocodylidae

[Crocodylus niloticus](#) Laurenti, 1768 .

- áyá . "Nile crocodile".
- ḡátà . "Nile crocodile".



(CC) BY-SA © MathKnight and Zachi Evenor



(CC) BY-SA © Marco Schmidt



(CC) BY-SA © Atamari

Order: Squamata

Family: Agamidae

[Agama sankaranica](#) Chabanaud, 1918 .

- **tùrù-kú:ʔ** cê:ŋ . "ground-dwelling agama lizard sp.". Lit. "termitary agama".



(CC) BY © Jeff Heath and the Dogon and Bangime Languages Project



(CC) BY © Jeff Heath and the Dogon and Bangime Languages Project



(CC) BY © Jeff Heath and the Dogon and Bangime Languages Project

[Uromastyx geyri](#) Müller, 1922 .

- **ḍùŋ-báná** . "spiny-tailed lizard sp.".



(CC) BY-SA ©



(CC) BY-SA ©



(CC) BY © Jeff Heath and the Dogon and Bangime Languages Project

Family: Atractaspididae

[Atractaspis watsoni](#) Boulenger, 1908 .

- **céré-kòndòṅò-è:-wě-y** . "mole viper".



(CC) BY © Jeff Heath and the Dogon and Bangime
Languages Project



(CC) BY © Jeff Heath and the Dogon and Bangime
Languages Project



(CC) BY © Jeff Heath and the Dogon and Bangime
Languages Project

Family: Boidae

[Gongylophis muelleri](#) Angel, 1938 .

- **tóm-tèṅé** . "sand boa, thick-bodied venomous snake sp.".



(CC) BY © Jeff Heath and the Dogon and Bangime
Languages Project



(CC) BY © Jeff Heath and the Dogon and Bangime
Languages Project



(CC) BY © Jeff Heath and the Dogon and Bangime
Languages Project

[Python sebae](#) (Gmelin, 1789) .

- **lù:rò ná:** . "rock python". Lit. "snake main".



(CC) BY-SA © Joachim Huber



(CC) BY © Tigerpython



(CC) MARK © Sir Andrew Smith

Family: Chamaeleonidae

[Chamaeleo africanus](#) Laurenti, 1768 .

- ðʏǝ-n jí:nè . "chameleon". Lit. "chief ...".



(CC) BY © Jeff Heath and the Dogon and Bangime
Languages Project



(CC) BY © Jeff Heath and the Dogon and Bangime
Languages Project



(CC) BY © Jeff Heath and the Dogon and Bangime
Languages Project

Family: Colubridae

[Psammophis elegans](#) (Shaw, 1802) .

- sà-nà-sà-rú . "arboreal colubrid snake sp.". Lit. "...-move.fast".



(CC) BY © Jeff Heath and the Dogon and Bangime
Languages Project



(CC) BY © Jeff Heath and the Dogon and Bangime
Languages Project



(CC) BY © Jeff Heath and the Dogon and Bangime
Languages Project

[Psammophis sibilans](#) (Linnaeus, 1758) .

- **pú-pún** . "terrestrial colubrid snake sp."
- **lù:rò- [pú-pún]** . "terrestrial colubrid snake sp."



(CC) BY © Jeff Heath and the Dogon and Bangime Languages Project



(CC) BY © Jeff Heath and the Dogon and Bangime Languages Project



(CC) BY-SA ©

Family: Elapidae

[Naja haje](#) (Linnaeus, 1758) .

- **lù:rò- [jù-jùw^ó]** ~ **lù:rò- [jĩ-jùw^ó]** ~ **lù:rò- [ù-jùw^ó]** . "Egyptian cobra". Lit. "snake mouse".



Public Domain by John Walker, Head



(CC) BY © Jeff Heath and the Dogon and Bangime Languages Project



Public Domain by Ltshears

[Naja nigricollis](#) Reinhardt, 1843 .

- **lù:rò- [jù-jùw^ó]** ~ **lù:rò- [jĩ-jùw^ó]** ~ **lù:rò- [ù-jùw^ó]** . "spitting cobra". Lit. "snake mouse".
- **lù:rò- [ù-jùw^ò] kàró-bân** . "spitting cobra (form with red bands under neck)". Lit. "... neck-red".



(CC) BY © Luca Boldrini



(CC) BY © Jeff Heath and the Dogon and Bangime Languages Project

Family: Gekkonidae

[Tarentola ehippiata](#) O'shaughnessy, 1875 .

- ár-[kĩ-kájà] . "arboreal gecko sp."



(CC) BY-NC-SA © Thomas Brown



(CC) BY-NC-SA © Thomas Brown



(CC) BY © Jeff Heath and the Dogon and Bangime Languages Project

[Tropicolotes tripolitanus](#) Peters, 1880 .

- kǒyⁿ-jéǵé . "tiny, insect-like gecko sp. in earth".



(CC) BY-NC-SA © Arie van der Meijden



(CC) BY © Jeff Heath and the Dogon and Bangime Languages Project



(CC) BY © Jeff Heath and the Dogon and Bangime Languages Project

Family: Scincidae

[Chalcides ocellatus](#) (Forskål, 1775) .

- ó:nó . "spotted skink sp. (thick body, very short legs)".



(CC) BY © Jeff Heath and the Dogon and Bangime Languages Project

Trachylepis perrotetii (Duméril & Bibron, 1839) .

- **ò:nò-bàn-dúló** . "spotted skink sp. (relatively long legs)". Lit. "skink red-upside.down".
- **lù:ró-sě:nè** . "spotted skink sp. (relatively long legs)".



(CC) BY © liesvanrompaey



(CC) BY © Lies Van Rompae



(CC) BY © Jeff Heath and the Dogon and Bangime Languages Project

Trachylepis quinquetaeniata (Lichtenstein, 1823) .

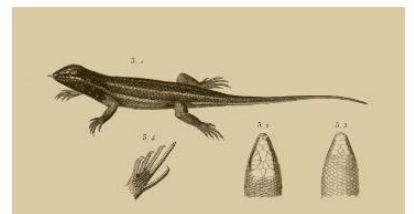
- **ò:nò-sè:mérù** . "five-lined skink". Lit. "skink ...".
- **lù:ró sé:nè** . "five-lined skink".



(CC) BY-NC-SA © cultnat



(CC) BY © Jeff Heath and the Dogon and Bangime Languages Project



(CC) BY-NC-SA © Description de l'Égypte, Book 34 (1826), Volume I - Planches : Histoire Naturelle.

Family: Varanidae

Varanus griseus (Daudin, 1803) .

- ù:n . "grey monitor lizard (very long tail, terrestrial)".
- è:-lì-pé: . "grey monitor lizard sp. (hunters' word)". Lit. "weeps before seeing".



(CC) PUBLICDOMAIN © Omid Mozaffari



(CC) BY-NC-SA © cultnat



(CC) BY-NC-SA © Description de l'Égypte, Book 34 (1826), Volume I - Planches : Histoire Naturelle.

Varanus niloticus (Linnaeus, 1766) .

- ãŋ . "Nile monitor lizard (climbs trees near water)".



(CC) BY © Simon J. Tonge



Public Domain by Alexis Naumann



(CC) BY-NC-SA © Description de l'Égypte, Book 34 (1826), Volume I - Planches : Histoire Naturelle.

Family: Viperidae

Bitis arietans (Merrem, 1820) .

- lù:rò-[kí-kúrù] ~ lù:rò-[kú-kúrù] . "puff adder". Lit. "snake-...".



(CC) BY-NC-SA © Gerald and Buff Corsi



Public Domain by Alexis Naumann



Public Domain by Alexis Naumann

[*Cerastes vipera*](#) (Linnaeus, 1758) .

- **tó̄m-tè̄hɛ́** . "sand viper".



(CC) BY-SA © LA Dawson



(CC) BY © Jeff Heath and the Dogon and Bangime Languages Project

Order: Testudines

Family: Pelomedusidae

[*Pelomedusa subrufa*](#) (Bonnaterre, 1789) .

- **wà̄jà-círú** . "small aquatic tortoise (rainy season)".



(CC) BY-SA © Ltshears



(CC) BY © Jeff Heath and the Dogon and Bangime Languages Project



(CC) BY © Jeff Heath and the Dogon and Bangime Languages Project

Family: Testudinidae

[*Geochelone sulcata*](#) (Miller, 1779) .

- **à-kò̄hò̄r"ó** . "giant tortoise (terrestrial)".



(CC) BY © Jeff Heath and the Dogon and Bangime Languages Project



(CC) BY © Jeff Heath and the Dogon and Bangime Languages Project



(CC) BY © Jeff Heath and the Dogon and Bangime Languages Project

Class: Sarcopterygii

Order: Lepidosireniformes

Family: Protopteridae

[Protopterus annectens](#) (Owen, 1839) .

- ɪ:jù-néné . "African lungfish".



(CC) BY ©



(CC) BY-SA ©



(CC) MARK © G.H.Ford

Class: other

Order: Bucerotiformes

Family: Bucerotidae

[Tockus sp.](#) .

- ɔ̀ỳd̀-̀d̀ògú . "hornbill spp. (grey and red-billed)".

Kingdom: Fungi

Phylum: Basidiomycota

Class: Agaricomycetes

Order: Agaricales

Family: Agaricaceae

[*Podaxis pistillaris*](#) (L.) Fr. 1829 .

- **tǎ:-búgúrú** . "puffball". Lit. "hyena-...".



(CC) BY © Jeff Heath and the Dogon and Bangime Languages Project



(CC) BY © Jeff Heath and the Dogon and Bangime Languages Project



(CC) BY-NC-SA © Douglas Smith

Kingdom: Metazoa

Phylum: Arthropoda

Class: Arachnida

Order: Scorpiones

Family: Buthidae

[*Androctonus amoreuxi*](#) .

- **nèmné** . "fat-tailed scorpion".



(CC) BY © Jeff Heath and the Dogon and Bangime
Languages Project



(CC) BY © Jeff Heath and the Dogon and Bangime
Languages Project



(CC) BY © Jeff Heath and the Dogon and Bangime
Languages Project

Family: Scorpionidae

[Pandinus imperator](#) .

- **dũŋ némnè** . "black emperor scorpion". Lit. "elephant's scorpion".

Class: Insecta

Order: Isoptera

Family: Termitidae

[Macrotermes subhyalinus](#) .

- **cè: ná:** . "large winged termite sp. that swarms at dusk early in the rainy season (edible)". Lit. "winged.termite main".

Order: Lepidoptera

Family: Noctuidae

[Heliocheilus albipunctella](#) .

- **[sù-sùm] -bórò** . "millet head-miner (caterpillar in millet grain spike)".

Phylum: Chordata

Class: Amphibia

Order: Anura

Family: Bufonidae

[Amietophrynus channingi](#) .

- úgúrú ~ búgúrú . "toad (large, with load call)".

Class: Reptilia

Order: Squamata

Family: Colubridae

[Bamanophis dorri](#) (Lataste, 1888) .

- ná:mbĩbárà . "colubrid snake sp.".



(CC) BY © Jeff Heath and the Dogon and Bangime Languages Project



(CC) BY © Jeff Heath and the Dogon and Bangime Languages Project



(CC) BY © Jeff Heath and the Dogon and Bangime Languages Project

Kingdom: Plantae

Phylum: Magnoliophyta

Class: Liliopsida

Order: Commelinales

Family: Commelinaceae

[Commelina forskalaei](#) .

- bûr- [cĩ-céré] ~ bûl- [cè-céré] . "herb sp." . Lit. "...-saddle".



(CC) BY © Jeff Heath and the Dogon and Bangime Languages Project



(CC) BY © Jeff Heath and the Dogon and Bangime Languages Project



(CC) BY © Jeff Heath and the Dogon and Bangime Languages Project

Order: Poales

Family: Poaceae

[Digitaria ciliaris var. ciliaris](#)

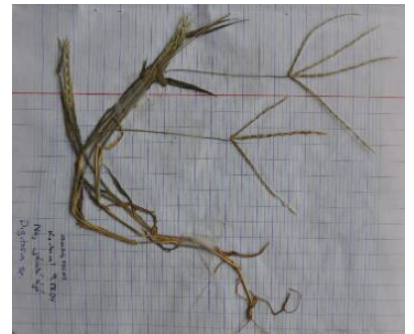
- bàⁿmàⁿà-tàⁿǰá ~ bà^rmàⁿ-tàⁿǰá . "grass sp.".



(CC) BY © Jeff Heath and the Dogon and Bangime Languages Project



(CC) BY © Jeff Heath and the Dogon and Bangime Languages Project



(CC) BY © Jeff Heath and the Dogon and Bangime Languages Project

Class: Magnoliopsida

Order: Brassicales

Family: Capparaceae

[Crataeva adansonii subsp. odora](#)

- à^rⁿá-wè:y . "tree sp." . Lit. "rain-...".



(CC) BY © Jeff Heath and the Dogon and Bangime
Languages Project



(CC) BY © Jeff Heath and the Dogon and Bangime
Languages Project



(CC) BY © Jeff Heath and the Dogon and Bangime
Languages Project

Order: Caryophyllales

Family: Molluginaceae

Limeum pterocarpum* var. *pterocarpum .

- ስ፡ፕ፡ጎ-ጥጎጎ . "herb sp.". Lit. "monkey-shoe".
- ስ፡ፕ፡ጎ ስ፡ፕ፡ጎ ስ፡ፕ፡ጎ ጎጎ . "herb sp.". Lit. "monkey's shoe".



(CC) BY © Jeff Heath and the Dogon and Bangime
Languages Project



(CC) BY © Jeff Heath and the Dogon and Bangime
Languages Project



(CC) BY © Jeff Heath and the Dogon and Bangime
Languages Project

Order: Cucurbitales

Family: Cucurbitaceae

***Cucumis melo* subsp. *agrestis* var. *agrestis* Naudin** .

- ርጅ፡ጎ- [ጎጎ-ጎጎ] . "wild melon sp.". Lit. "agama-melon".



(CC) BY © Jeff Heath and the Dogon and Bangime
Languages Project



(CC) BY © Jeff Heath and the Dogon and Bangime
Languages Project



(CC) BY © Jeff Heath and the Dogon and Bangime
Languages Project

Order: Garryales

Family: Garryaceae

[Grewia flavescens var flavescens](#) .

- ò:jà- [gòrò-gárá] . "shrub sp.". Lit. "Grewia-angular.stem".
- gúrsó:jè . "shrub sp.".



(CC) BY © Jeff Heath and the Dogon and Bangime
Languages Project



(CC) BY © Jeff Heath and the Dogon and Bangime
Languages Project



(CC) BY © Jeff Heath and the Dogon and Bangime
Languages Project

Order: Lamiales

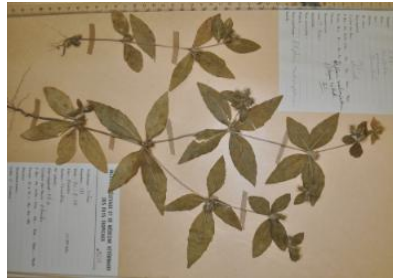
Family: Acanthaceae

[Blepharis linariifolia](#) .

- já:m-sómdù . "medicinal herb sp.".



(CC) BY © Jeff Heath and the Dogon and Bangime
Languages Project



(CC) BY © Jeff Heath and the Dogon and Bangime
Languages Project



(CC) BY © Jeff Heath and the Dogon and Bangime
Languages Project

Family: Lamiaceae

[Endostemon tereticaulis](#) (Poir.) M.R.Ashby .

- **jiré-figjù** . "herb sp."



(CC) BY © Jeff Heath and the Dogon and Bangime
Languages Project



(CC) BY-NC © Bart Wursten



(CC) BY-NC © Bart Wursten

Order: Laurales

Family: Hernandiaceae

[Gyrocarpus americanus subsp. pinnatilobus](#) .

- **yé-bòm** . "tree sp."

Order: Malpighiales

Family: Malpighiaceae

[Acridocarpus monodii](#) Arènes & P.Jaeger ex Birnbaum & J.Florence .

- **ǰimni-béré** . "shrub sp."

Order: Malvales

Family: Malvaceae

[Bombax costatum](#) Pellegrin & Vuillet .

- **ťǰǰr"ó** . "tree sp."



(CC) BY © Jeff Heath and the Dogon and Bangime
Languages Project



(CC) BY © Jeff Heath and the Dogon and Bangime
Languages Project

[Cienfuegosia digitata](#) Cav. .

- **[àmà-tígè] -bén-gǰǰró** . "prostrate herb sp.". Lit. "Amatige['s]-tomtom-tapstick".
- **[bèr-ǰirè-m] -gǰ:rò** . "prostrate herb sp.". Lit. "herders' kola.nut".



(CC) BY © Jeff Heath and the Dogon and Bangime
Languages Project



(CC) BY © Jeff Heath and the Dogon and Bangime
Languages Project



(CC) BY © Jeff Heath and the Dogon and Bangime
Languages Project

[Grewia lasiodiscus](#) K. Schum. .

- **gúrǰ:jè** . "shrub sp."



(CC) BY-NC-SA © Research Institute Senckenberg



(CC) BY-NC-SA © Research Institute Senckenberg



(CC) BY © Jeff Heath and the Dogon and Bangime Languages Project

[Grewia tenax \(Forsk.\) Fiori](#) .

- ð:jð- [gòrò-gárá] . "shrub sp."



(CC) BY © Jeff Heath and the Dogon and Bangime Languages Project



(CC) BY © Jeff Heath and the Dogon and Bangime Languages Project



(CC) BY © Jeff Heath and the Dogon and Bangime Languages Project

Order: Myrtales

Family: Combretaceae

[Combretum aculeatum](#) Vent. .

- cémpé . "shrub sp."
- [bèr-jirè] -é:ré . "shrub sp.". Lit. "herder-peanut".



(CC) BY © Jeff Heath and the Dogon and Bangime Languages Project



(CC) BY © Jeff Heath and the Dogon and Bangime Languages Project



(CC) BY © Jeff Heath and the Dogon and Bangime Languages Project

[Terminalia macroptera](#) Guill. & Perr. .

- **kòyó** . "tree sp."



(CC) BY © Jeff Heath and the Dogon and Bangime Languages Project



(CC) BY © Jeff Heath and the Dogon and Bangime Languages Project



(CC) BY © Jeff Heath and the Dogon and Bangime Languages Project

Order: Rosales

Family: Cannabaceae

[Celtis toka](#) (Forssk.) F.N. Hepper & J.R.I. Wood .

- **gánkò** . "tree sp."



(CC) BY © Jeff Heath and the Dogon and Bangime Languages Project



(CC) BY © Jeff Heath and the Dogon and Bangime Languages Project



(CC) BY-NC-SA © Marco Schmidt

Family: Moraceae

[Ficus cordata subsp. lecardii C.C. Berg.](#)

- sèrú-mèṅnêm ~ sër-mèṅnêm . "fig tree sp."



(CC) BY © Jeff Heath and the Dogon and Bangime Languages Project



(CC) BY © Jeff Heath and the Dogon and Bangime Languages Project



(CC) BY © Jeff Heath and the Dogon and Bangime Languages Project

Order: Sapindales

Family: Anacardiaceae

[Lannea microcarpa](#) Engl. & K. Krause .

- cíwé . "wild grape ree".



(CC) BY-NC-SA © Research Institute Senckenberg



(CC) BY © Jeff Heath and the Dogon and Bangime Languages Project



(CC) BY © Jeff Heath and the Dogon and Bangime Languages Project

Order: Solanales

Family: Convolvulaceae

[Ipomoea coscinosperma](#) Hochst. ex Choisy .

- láynĩ . "trailing vine sp."



(CC) BY © Jeff Heath and the Dogon and Bangime
Languages Project



(CC) BY © Jeff Heath and the Dogon and Bangime
Languages Project



(CC) BY © Jeff Heath and the Dogon and Bangime
Languages Project

[Merremia pinnata](#) (Hochst. ex Choisy) Hall. fil. .

- gôm-tólò . "trailing vine sp."



(CC) BY © Jeff Heath and the Dogon and Bangime
Languages Project



(CC) BY © Jeff Heath and the Dogon and Bangime
Languages Project



(CC) BY-NC © Bart Wursten

Order: Vitales

Family: Vitaceae

[Cissus populnea](#) Guill. & Perr. .

- èpé- [mí-méy] . "liana sp.". Lit. "chicken-...".



(CC) BY-NC-SA © Marco Schmidt



(CC) BY © Jeff Heath and the Dogon and Bangime Languages Project



(CC) BY © Jeff Heath and the Dogon and Bangime Languages Project

Phylum: Tracheophyta

Class: Liliopsida

Order: Alismatales

Family: Araceae

[Pistia stratiotes](#) L. .

- **búró-sèréwè** . "water lettuce". Lit. "pond-...".



(CC) BY © Forest & Kim Starr



(CC) BY © Forest & Kim Starr



(CC) BY-NC © Bart Wursten

[Stylochaeton lancifolius](#) .

- **jàmdùrù-sûn** . "herb sp.". Lit. "donkey-ear".



(CC) BY © Jeff Heath and the Dogon and Bangime
Languages Project



(CC) BY-NC-SA © Research Institute Senckenberg



(CC) BY-NC-SA © Research Institute Senckenberg

Order: Arecales

Family: Arecaceae

[Borassus aethiopum](#) Mart. .

- **sím** . "palm sp."



(CC) BY © Jeff Heath and the Dogon and Bangime
Languages Project



(CC) BY © Jeff Heath and the Dogon and Bangime
Languages Project



(CC) BY © Jeff Heath and the Dogon and Bangime
Languages Project

[Elaeis guineensis](#) Jacq. .

- **tě:n** . "oil palm (imported)".



(CC) BY-NC-SA © Research Institute Senckenberg



(CC) BY-SA ©



(CC) BY-SA © Cayambe

[Hyphaene thebaica](#) (L.) Mart. .

- jélé:jù ~ jéllé:jù . "doum palm".



(CC) BY © Jeff Heath and the Dogon and Bangime Languages Project



(CC) BY-NC-SA © Bibliotheca Alexandrina - EOL Ar



(CC) BY © Jeff Heath and the Dogon and Bangime Languages Project

[Phoenix dactylifera](#) L. .

- jò:ⁿ-mùno . "date palm".
- tàmbòrò-ná: . "date palm".



(CC) MARK © Mmcknight4



(CC) BY-SA ©



(CC) BY-SA © Nevit Dilmen

Order: Asparagales



(CC) BY © Jeff Heath and the Dogon and Bangime
Languages Project



(CC) BY © Jeff Heath and the Dogon and Bangime
Languages Project



(CC) BY © Jeff Heath and the Dogon and Bangime
Languages Project

Pancratium trianthum Herb. .

- **kà:ŋà-é:ré** . "wild onion sp.". Lit. "crow-peanut".
- **nènè- [cèj-ú]** . "wild onion sp.".



(CC) BY © Jeff Heath and the Dogon and Bangime
Languages Project



(CC) BY © Jeff Heath and the Dogon and Bangime
Languages Project



(CC) BY © Jeff Heath and the Dogon and Bangime
Languages Project

Family: Asparagaceae

Asparagus flagellaris (Kunth) Baker .

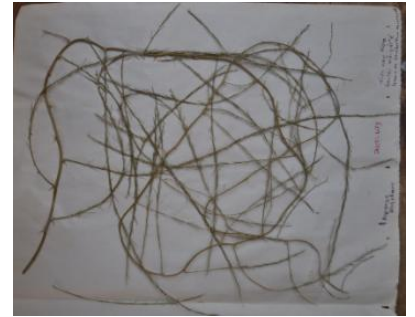
- **cè:ŋ-ĩr^oé** . "scrambling vine sp.". Lit. "agama.lizard-tooth".



(CC) BY © Jeff Heath and the Dogon and Bangime Languages Project



(CC) BY © Jeff Heath and the Dogon and Bangime Languages Project



(CC) BY © Jeff Heath and the Dogon and Bangime Languages Project

Sansevieria liberica Gérôme & Labroy .

- **nàṅà-nèné** . "agave sp."



(CC) BY-NC-SA © Research Institute Senckenberg



(CC) BY-NC-SA © Research Institute Senckenberg



(CC) BY © Jeff Heath and the Dogon and Bangime Languages Project

Family: Xanthorrhoeaceae

Aloe tenuifolia .

- **nàṅà-nèné** . "small aloe sp."



(CC) BY © Jeff Heath and the Dogon and Bangime Languages Project



(CC) BY © Jeff Heath and the Dogon and Bangime Languages Project



(CC) BY © Jeff Heath and the Dogon and Bangime Languages Project

Order: Dioscoreales

Family: Dioscoreaceae

[Dioscorea alata](#) L. .

- kû: . "yam".



(CC) BY ©



(CC) BY-SA ©



(CC) BY © Forest & Kim Starr

Order: Poales

Family: Cyperaceae

[Afrotrilepis pilosa](#) (Boeckeler) J.Raynal .

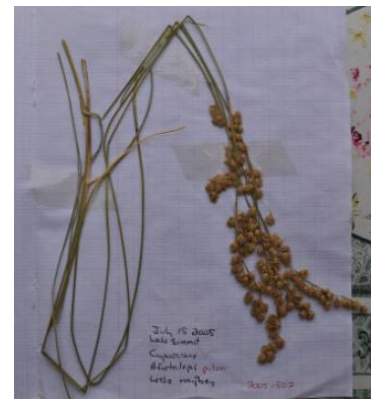
- èjègèré . "sedge sp.".



(CC) BY © Jeff Heath and the Dogon and Bangime
Languages Project



(CC) BY © Jeff Heath and the Dogon and Bangime
Languages Project



(CC) BY © Jeff Heath and the Dogon and Bangime
Languages Project

[Cyperus articulatus](#) L. .

- løyò-ná: . "sedge sp.". Lit. "...-plant".
- lóyó . "sedge sp.".



(CC) BY © Jeff Heath and the Dogon and Bangime Languages Project



(CC) BY © Jeff Heath and the Dogon and Bangime Languages Project



(CC) BY © Jeff Heath and the Dogon and Bangime Languages Project

[Cyperus esculentus](#) L. .

- ɲɔ̃:m . "sedge sp."



(CC) BY © Jeff Heath and the Dogon and Bangime Languages Project



(CC) BY © Jeff Heath and the Dogon and Bangime Languages Project



(CC) MARK © USDA NRCS PLANTS Database

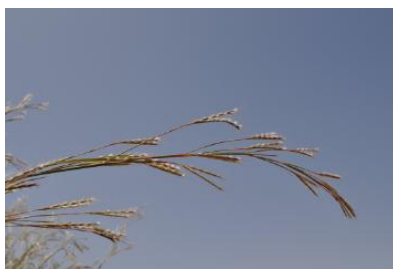
Family: Poaceae

[Andropogon gayanus bisquamulatus](#) .

- ôm . "tall grass sp."



(CC) BY © Jeff Heath and the Dogon and Bangime Languages Project



(CC) BY © Jeff Heath and the Dogon and Bangime Languages Project



(CC) BY © Jeff Heath and the Dogon and Bangime Languages Project

Aristida adscensionis L. . Characteristics: tufted, annual grass, 80cm tall, the nodes and parts of the inflorescence are purple, the inflorescence is a compact panicle with three-awned spikelets. Biotope: dry river course. ([Van Rooyen et al. 2001](#): 88)

- ðyð yórolóm . "grass sp."



(CC) BY © Jeff Heath and the Dogon and Bangime Languages Project



(CC) BY © Jeff Heath and the Dogon and Bangime Languages Project



(CC) BY © Jeff Heath and the Dogon and Bangime Languages Project

Brachiaria .

- sàrù:-kōw . "grass sp.". Lit. "wild.fonio-shell".



(CC) BY © Forest & Kim Starr



(CC) BY © Forest & Kim Starr



(CC) BY-NC © Bart Wursten

Brachiaria lata (Schumach.) C.E.Hubb. .

- sǒm-sájú: . "grass sp.". Lit. "horse-wild.fonio".



(CC) BY © Jeff Heath and the Dogon and Bangime Languages Project



(CC) BY © Jeff Heath and the Dogon and Bangime Languages Project



(CC) BY © Jeff Heath and the Dogon and Bangime Languages Project

Cenchrus biflorus Roxb. .

- **kómnó** . "burrgrass".



(CC) BY © Jeff Heath and the Dogon and Bangime
Languages Project



(CC) BY © Jeff Heath and the Dogon and Bangime
Languages Project



(CC) BY © Jeff Heath and the Dogon and Bangime
Languages Project

Cenchrus prieurii (Kunth) Maire .

- **kòmno-kùràngú** . "grass similar to burrgrass". Lit. "burrgrass-...".



(CC) BY © Jeff Heath and the Dogon and Bangime
Languages Project



(CC) BY © Jeff Heath and the Dogon and Bangime
Languages Project



(CC) BY © Jeff Heath and the Dogon and Bangime
Languages Project

Chrysopogon nigritanus (Benth.) Veldkamp .

- **pé:jé** . "tall, clumpy grass sp.".



(CC) BY © Jeff Heath and the Dogon and Bangime
Languages Project



(CC) BY © Jeff Heath and the Dogon and Bangime
Languages Project



(CC) BY © Jeff Heath and the Dogon and Bangime
Languages Project

[Cymbopogon caesius giganteus](#) .

- èjè-gèrè . "giant lemon grass sp."



(CC) BY © Jeff Heath and the Dogon and Bangime
Languages Project



(CC) BY © Jeff Heath and the Dogon and Bangime
Languages Project



(CC) BY © Jeff Heath and the Dogon and Bangime
Languages Project

[Cymbopogon schoenanthus](#) (L.) Spreng. .

- jàm-dè:né . "lemon grass sp." . Lit. "donkey-...".



(CC) BY © Jeff Heath and the Dogon and Bangime
Languages Project



(CC) MARK © Jose Hernandez



(CC) BY-NC © Edinburgh!

Cynodon dactylon (L.) Pers. .

- **cí-cérjù** . "couch grass (Bermuda grass)".



(CC) BY © Jeff Heath and the Dogon and Bangime
Languages Project



(CC) BY © Jeff Heath and the Dogon and Bangime
Languages Project



(CC) BY © Jeff Heath and the Dogon and Bangime
Languages Project

Dactyloctenium aegyptium (L.) Willd. .

- **déjè** . "grass sp.".
- **nà:-[dò:-[dǒ-y]]** . "grass sp.". Lit. "mother-insult-VblN".



(CC) BY © Jeff Heath and the Dogon and Bangime Languages Project



(CC) BY © Jeff Heath and the Dogon and Bangime Languages Project



(CC) BY © Jeff Heath and the Dogon and Bangime Languages Project

[Digitaria exilis](#) (Kippist) Stapf .

- **ṛ̀ṛ̀ṛ̀** . "fonio (grain)".



(CC) BY ©



PD USDA ARS ©



PD USAID ©

[Echinochloa colona](#) (L.) Link .

- **sõm-sájû:** . "grass sp.". Lit. "horse-wild.fonio".



(CC) BY © Jeff Heath and the Dogon and Bangime Languages Project



(CC) BY © Jeff Heath and the Dogon and Bangime Languages Project



(CC) BY © Jeff Heath and the Dogon and Bangime Languages Project

Elionurus elegans Kunth .

- **pó:-bèré-nàḡá-yówó** . "grass sp."



(CC) BY © Jeff Heath and the Dogon and Bangime
Languages Project



(CC) BY © Jeff Heath and the Dogon and Bangime
Languages Project



(CC) BY © Jeff Heath and the Dogon and Bangime
Languages Project

Enteropogon prieurii (Kunth) Clayton .

- **ḡyḡ pírú** . "grass sp." . Lit. "grass white".



(CC) BY © Jeff Heath and the Dogon and Bangime
Languages Project



(CC) BY © Jeff Heath and the Dogon and Bangime
Languages Project



(CC) BY © Jeff Heath and the Dogon and Bangime
Languages Project

Eragrostis pilosa (L.) P.Beauv. .

- **cě-y** . "grass sp." . Lit. "pick.off-VblN".
- **sà:mà-[cě-y]** . "grass sp."



(CC) MARK © USDA NRCS PLANTS Database



(CC) MARK © Tracey Slotta



(CC) BY © Jeff Heath and the Dogon and Bangime Languages Project

Oryza barthii A.Chev. .

- **búró árà** . "wild rice sp.". Lit. "pond rice".



(CC) BY © Jeff Heath and the Dogon and Bangime Languages Project



(CC) BY © Jeff Heath and the Dogon and Bangime Languages Project



(CC) BY © Jeff Heath and the Dogon and Bangime Languages Project

Oryza sativa L. .

- **árá** . "rice".



(CC) BY-SA ©



(CC) BY-SA © Wikimedia Commons



(CC) BY-SA © Judgefloro

[Oxytenanthera abyssinica](#) (A.Rich.) Munro .

- **kàr^hi:n** . "bamboo".



(CC) BY-NC-SA © Research Institute Senckenberg



(CC) BY-NC-SA © Research Institute Senckenberg



(CC) BY © Jeff Heath and the Dogon and Bangime Languages Project

[Panicum laetum](#) Kunth .

- **sà-nú:** . "wild fonio (grass)". Lit. "bird-fonio".



(CC) BY © Jeff Heath and the Dogon and Bangime Languages Project



(CC) BY-NC-SA © Missouri BG!



(CC) BY © Jeff Heath and the Dogon and Bangime Languages Project

[Panicum subalbidum](#) Kunth .

- **ní:-sǎ:r^hǎ** . "tall grass sp.".



(CC) BY © Jeff Heath and the Dogon and Bangime Languages Project



(CC) BY © Jeff Heath and the Dogon and Bangime Languages Project



(CC) BY © Jeff Heath and the Dogon and Bangime Languages Project

Pennisetum glaucum (L.) R.Br. .

- **ɲú:** . "millet (pearl millet)".



(CC) BY-NC-SA © Research Institute Senckenberg



(CC) BY-NC-SA © Research Institute Senckenberg



(CC) BY-NC-SA © Delile, A.R., 1813. Description de l'Egypte

Pennisetum pedicellatum Trin. .

- **bù:-nà:-bù:** . "grass sp.". Lit. "...-mother-..".



(CC) BY-NC-SA © Research Institute Senckenberg



(CC) BY © Jeff Heath and the Dogon and Bangime Languages Project



(CC) BY © Jeff Heath and the Dogon and Bangime Languages Project

[Saccharum officinarum](#) L. .

- **sùkòrò-cè:rú** . "sugar cane". Lit. "sugar-stem".



(CC) BY © Forest & Kim Starr



(CC) BY © Forest & Kim Starr



(CC) BY-SA © B.navez

[Schoenefeldia gracilis](#) Kunth .

- **célbù** . "grass sp.".



(CC) BY-NC-SA © Research Institute Senckenberg



(CC) BY-NC-SA © Research Institute Senckenberg



(CC) BY © Jeff Heath and the Dogon and Bangime Languages Project

Sorghum arundinaceum (Desv.) Stapf .

- èmè-sá:rⁿá . "grass sp.". Lit. "sorghum-...".



(CC) BY-NC © Petra Ballings



(CC) BY-NC © Petra Ballings



(CC) BY © Jeff Heath and the Dogon and Bangime Languages Project

Sorghum bicolor (L.) Moench .

- èmé . "sorghum (sweet)".
- sà:n-círⁿè . "sorghum (sweet)".



(CC) BY-SA ©



(CC) BY-NC © Marco Schmidt



(CC) BY-NC © Marco Schmidt

Triticum aestivum L. .

- álkámà . "wheat".



(CC) BY © Dag Terje Filip Endresen



(CC) BY-SA ©



(CC) BY-SA ©

[Zea mays](#) L. .

- **pòrò:-nú:** . "corn (maize)". Lit. "okra-millet".



(CC) BY-SA ©



(CC) BY ©



(CC) BY-SA ©

Order: Zingiberales

Family: Zingiberaceae

[Aframomum melegueta](#) K.Schum. .

- **ǰírè-ǰíǰù** . "melegueta (nut sold in markets as eye medicine)".



(CC) BY-NC © Scamperdale



(CC) BY © Inna Moody



(CC) BY-SA © Lemmikipuu

[Zingiber officinale](#) Roscoe .

- **ɲàmà-kû:** . "ginger". From Bam .
- **kàkà:-dùrù ~ kàkà:-díri** . "ginger".



(CC) BY © Jeff Heath and the Dogon and Bangime Languages Project



(CC) BY ©



Public Domain by

Class: Magnoliopsida

Order: Apiales

Family: Apiaceae

[Ammodaucus leucotrichus](#) Coss. .

- **àrgà-púnò** . "spice sp.".



(CC) BY-SA ©

Order: Asterales

Family: Asteraceae

[Acanthospermum hispidum](#) .

- **cébbè-kúmá:sì** . "prickly herb sp.". From Ful "burrgrass-Kumasi[city in Ghana]" .



(CC) BY © Jeff Heath and the Dogon and Bangime Languages Project



(CC) BY © Jeff Heath and the Dogon and Bangime Languages Project

[Sphaeranthus angustifolius](#) .

- **dé:fé** . "herb sp."



(CC) BY © Jeff Heath and the Dogon and Bangime Languages Project



(CC) BY © Jeff Heath and the Dogon and Bangime Languages Project

Order: Boraginales

Family: Boraginaceae

[Cordia myxa](#) L. .

- **kôl** . "tree sp.". From Fr colle 'glue', glue is made from the tree .



(CC) BY © Jeff Heath and the Dogon and Bangime Languages Project



(CC) BY-NC-SA © Research Institute Senckenberg



(CC) BY © Jeff Heath and the Dogon and Bangime Languages Project

[Cordia sinensis](#) Lam. .

- **gàṅà-pìgú** . "tree sp.". Lit. "...-rub.between.palms".



(CC) BY © Jeff Heath and the Dogon and Bangime Languages Project



(CC) BY © Jeff Heath and the Dogon and Bangime Languages Project



(CC) BY © Jeff Heath and the Dogon and Bangime Languages Project

[Euploca strigosa](#) (Willd.) Diane & Hilger .

- **tīm-tīm àr"á** . "herb sp.". Lit. "... male".



(CC) BY-NC-SA © Research Institute Senckenberg



(CC) BY © Jeff Heath and the Dogon and Bangime Languages Project



(CC) BY © Jeff Heath and the Dogon and Bangime Languages Project

Order: Brassicales

Family: Capparaceae

[Boscia senegalensis](#) Lam. .

- **è:ré** . "shrub sp.".



(CC) BY © Jeff Heath and the Dogon and Bangime Languages Project



(CC) BY © Jeff Heath and the Dogon and Bangime Languages Project



(CC) BY © Jeff Heath and the Dogon and Bangime Languages Project

[Capparis sepiaria](#) L. .

- **tǎ:-órówò** . "thorny liana sp."



(CC) BY © Jeff Heath and the Dogon and Bangime Languages Project



(CC) BY © Jeff Heath and the Dogon and Bangime Languages Project



(CC) BY © Jeff Heath and the Dogon and Bangime Languages Project

[Maerua crassifolia](#) Forssk. .

- **jí-pǐ:n** . "tree sp."



(CC) BY © Jeff Heath and the Dogon and Bangime Languages Project



(CC) BY © Jeff Heath and the Dogon and Bangime Languages Project



(CC) BY © Jeff Heath and the Dogon and Bangime Languages Project

Family: Cleomaceae

[Arivela viscosa](#) .

- ù:nùm àr"á . "herb sp.". Lit. "Cleome male".



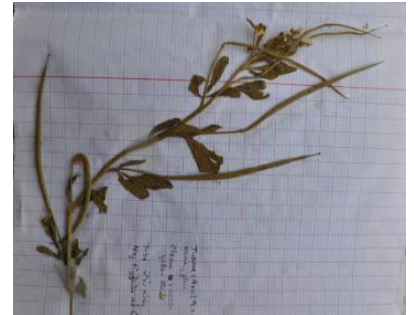
(CC) BY © Jeff Heath and the Dogon and Bangime

Languages Project



(CC) BY © Jeff Heath and the Dogon and Bangime

Languages Project



(CC) BY © Jeff Heath and the Dogon and Bangime

Languages Project

[Gynandropsis gynandra](#) L. . Characteristics: annual herb; palmately compound leaves; white flowers; fruit is an elongated capsule on a long stalk. Biotope: dry river course, mountains. ([Van Rooyen et al. 2001](#): 164; [Burke 2007](#): 80)

- ú:nùm ~ í-?ú:nùm . "herb sp."
- ù:nùm yă: . "herb sp.". Lit. "Cleome female".



(CC) BY © Jeff Heath and the Dogon and Bangime

Languages Project



(CC) BY © Forest & Kim Starr

Order: Caryophyllales

Family: Amaranthaceae

[Achyranthes aspera sicala](#) .

- cè:n-îr"é . "herb sp.". Lit. "agama.lizard-tooth".
- pèllè-îr"é . "herb sp."



(CC) BY © Jeff Heath and the Dogon and Bangime
Languages Project



(CC) BY © Jeff Heath and the Dogon and Bangime
Languages Project



(CC) BY © Jeff Heath and the Dogon and Bangime
Languages Project

[Amaranthus dubius](#) Mart. ex Thell. .

- **ɲùgú** . "herb sp."



(CC) BY © Jeff Heath and the Dogon and Bangime
Languages Project



(CC) BY © Jeff Heath and the Dogon and Bangime
Languages Project



(CC) BY © Jeff Heath and the Dogon and Bangime
Languages Project

Family: Molluginaceae

[Mollugo nudicaulis](#) Lam. .

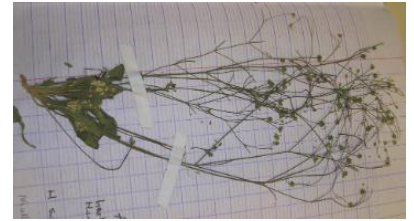
- [dɔ̀yɔ̀-bà̀yà̀] -sám̀nà̀ . "herb sp.". Lit. "pauper-soap".



(CC) BY-NC © Bart Wursten



(CC) BY-NC © Bart Wursten



(CC) BY © Jeff Heath and the Dogon and Bangime
Languages Project

Family: Nyctaginaceae

Boerhavia repens L. . Characteristics: annual herb with thick roots and slender, hairy stems; egg- or lance-shaped leaves (3 cm); usually 2-7 white, pink or mauve flowers in clusters at the tips of shoots. Biotope: dry river course. ([Van Rooyen et al. 2001](#): 126)

- òndògòrò-jè:mé . "herb sp. (hogweed)". Lit. "...shard".



(CC) BY © Jeff Heath and the Dogon and Bangime
Languages Project



(CC) BY © Jeff Heath and the Dogon and Bangime
Languages Project



(CC) BY © Jeff Heath and the Dogon and Bangime
Languages Project

Family: Phytolaccaceae

Gisekia pharnaceoides L. .

- pùlò-jídù . "prostrate herb sp.". From Ful "Fulbe-friend" .
- sòm-púpúr"úm . "prostrate herb sp.". Lit. "horse-lump.of.earth".



(CC) BY © Jeff Heath and the Dogon and Bangime Languages Project



(CC) BY-NC © Bart Wursten



Public Domain by

Family: Polygonaceae

[*Persicaria decipiens*](#) (R. Br.) K. L. Wilson .

- **dà-nà-dâm** . "aquatic herb sp.". Lit. "hunter-tinder".



(CC) BY-NC © inaturalist



(CC) BY-NC © Bart Wursten



(CC) BY © Jeff Heath and the Dogon and Bangime Languages Project

Family: Portulacaceae

[*Portulaca oleracea*](#) L. .

- **pù-là-jídù** . "purslane (weed)". From Ful "Fulbe-friend" .



(CC) BY © Jeff Heath and the Dogon and Bangime
Languages Project



(CC) BY © Forest & Kim Starr



(CC) BY © Jeff Heath and the Dogon and Bangime
Languages Project

Order: Cucurbitales

Family: Cucurbitaceae

[*Citrullus colocynthis*](#) (L.) Schrader .

- **gù-gùn jé:rù** . "colocynth (inedible wild melon)". Lit. "melon bitter".



(CC) BY © Jeff Heath and the Dogon and Bangime
Languages Project



(CC) BY © Jeff Heath and the Dogon and Bangime
Languages Project

[*Citrullus lanatus*](#) (Thunb.) Matsumura & Nakai . Characteristics: annual, creeping herb; the hairy leaves are divided into 3-5 lobes; male and female flowers grow on the same plant and are yellow; the fruit is round with a diameter of 15-20 cm and a yellow and green surface. Biotope: sandy soil, dune. ([Van der Walt and le Riche 1999](#): 110; [Van Rooyen et al. 2001](#): 148)

- **[gù-gùn] ná** . "watermelon (cultivated, eaten raw)". Lit. "melon main".
- **gù-gùn** . "watermelon (cultivated, all forms)".



(CC) BY © Jeff Heath and the Dogon and Bangime
Languages Project



Public Domain by Christfried Naumann

Coccinia grandis (L.) Voigt .

- **çě:ŋ-ká:mbè** . "wild melon sp. (cucumber shape)".



(CC) BY © Jeff Heath and the Dogon and Bangime
Languages Project



(CC) BY © Jeff Heath and the Dogon and Bangime
Languages Project



(CC) BY © Jeff Heath and the Dogon and Bangime
Languages Project

Cucurbita Vanhöffen, 1914 .

- **gó:r"ó** . "squash".



PD ©



(CC) BY-SA ©



(CC) BY-SA © Michal Mañas

Lagenaria siceraria (Molina) Standl. .

- **kàjù-ná:** . "gourd (calabash) plant". Lit. "calabash-mother".
- **tùgùn-ná:** . "gourd (calabash) plant". Lit. "ladle-mother".



(CC) BY © Jeff Heath and the Dogon and Bangime
Languages Project



(CC) BY © Forest & Kim Starr



(CC) BY © Forest & Kim Starr

Momordica balsamina L. . Characteristics: perennial climber; leaves are divided into 5-7 lobes, the margins toothed; the flowers are white to yellow with fused petals; the egg-shaped fruit is orange to red when ripe and covered with spines; the plant emits an unpleasant smell when bruised. Biotope: savanna, sandy soil. ([Van Rooyen et al. 2001](#): 152)

- **cènè-mě̀n** . "liana sp.".



(CC) BY © Jeff Heath and the Dogon and Bangime
Languages Project



(CC) BY-SA © H. Zell



(CC) BY © Jeff Heath and the Dogon and Bangime
Languages Project

Mukia maderaspatana L. .

- **[ɛ̀rˀɛ̀-jĩ̀r-ù] -cìwé** . "liana sp. with inedible red berry". Lit. "goatherd's wild grape".



(CC) BY © Jeff Heath and the Dogon and Bangime Languages Project



(CC) BY-NC © Bart Wursten



(CC) BY © Jeff Heath and the Dogon and Bangime Languages Project

Order: Ericales

Family: Ebenaceae

[*Diospyros mespiliformis*](#) Hochst. ex A.DC. .

- ḡḡ . "tree sp."



(CC) BY © Jeff Heath and the Dogon and Bangime Languages Project



(CC) BY © Jeff Heath and the Dogon and Bangime Languages Project



(CC) BY © Jeff Heath and the Dogon and Bangime Languages Project

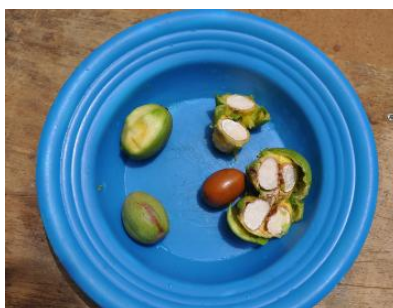
Family: Sapotaceae

[*Vitellaria paradoxa paradoxa*](#) .

- mǐjǔ . "karité (tree)".



(CC) BY © Jeff Heath and the Dogon and Bangime
Languages Project



(CC) BY © Jeff Heath and the Dogon and Bangime
Languages Project



(CC) BY © Jeff Heath and the Dogon and Bangime
Languages Project

Order: Fabales

Family: Fabaceae

[Abrus precatorius](#) L. .

- **sà-pê:m** . "herb with hard red-and-black berries".



(CC) BY © Jeff Heath and the Dogon and Bangime
Languages Project



(CC) BY © Jeff Heath and the Dogon and Bangime
Languages Project

[Acacia seyal](#) Delile .

- **sèmèṅé** . "acacia sp.".
- **sèmèṅè-ná** : "acacia sp.". Lit. "... mother".



(CC) BY © Jeff Heath and the Dogon and Bangime
Languages Project



(CC) BY © Jeff Heath and the Dogon and Bangime
Languages Project

[Acacia tortilis](#) (Forssk.)Hayne .

- **bísôm** ~ **búsôm** . "acacia sp."



(CC) BY © Jeff Heath and the Dogon and Bangime
Languages Project



(CC) BY © Jeff Heath and the Dogon and Bangime
Languages Project

[Aeschynomene indica](#) L. .

- **ílwâl** ~ **ílwâl** . "tall herb sp."
- **sílwâl** . "tall herb sp."



(CC) BY © Jeff Heath and the Dogon and Bangime
Languages Project



(CC) BY © Jeff Heath and the Dogon and Bangime
Languages Project



(CC) BY © Jeff Heath and the Dogon and Bangime
Languages Project

[Albizia chevalieri](#) Harms .

- **kǎ:-sǎmnà** . "tree sp."
- **yòró-sǎmnà** . "tree sp.". Lit. "Parkia-soap".



(CC) BY © Jeff Heath and the Dogon and Bangime
Languages Project



(CC) BY © Jeff Heath and the Dogon and Bangime
Languages Project



(CC) BY © Jeff Heath and the Dogon and Bangime
Languages Project

[Alysicarpus ovalifolius](#) (Schum.)Leonard .

- **kámbé** . "herb sp."



(CC) BY © Jeff Heath and the Dogon and Bangime
Languages Project



(CC) BY © Jeff Heath and the Dogon and Bangime
Languages Project



(CC) BY © Jeff Heath and the Dogon and Bangime
Languages Project

[Arachis hypogaea](#) L. .

- **jòw^h-é:ré** . "peanut". Lit. "Songhay-peanut".
- **mùrù-é:ré** . "peanut". Lit. "Mossi-peanut".



(CC) BY-SA © Pollinator



(CC) BY-NC-SA © Research Institute Senckenberg



(CC) BY © Roberto Verzo

Bauhinia reticulata DC. .

- **kòmno** . "tree sp."



(CC) BY © Jeff Heath and the Dogon and Bangime Languages Project



(CC) BY © Jeff Heath and the Dogon and Bangime Languages Project



(CC) BY © Jeff Heath and the Dogon and Bangime Languages Project

Bauhinia rufescens Lam. .

- **sá-téllé** . "tree sp."



(CC) BY © Jeff Heath and the Dogon and Bangime Languages Project



(CC) BY © Jeff Heath and the Dogon and Bangime Languages Project



(CC) BY © Jeff Heath and the Dogon and Bangime Languages Project

[Canavalia africana](#) Dunn .

- **lù:rò-lǒy** . "liana sp.". Lit. "snake-medicine".



(CC) BY © Jeff Heath and the Dogon and Bangime
Languages Project

[Cassia sieberiana](#) DC. .

- **cèm-céréwé** . "tree sp.".



(CC) BY © Jeff Heath and the Dogon and Bangime
Languages Project



(CC) BY © Jeff Heath and the Dogon and Bangime
Languages Project



(CC) BY © Jeff Heath and the Dogon and Bangime
Languages Project

[Chamaecrista mimosoides](#) (L.)Greene .

- **silwàl àrⁿá** . "herb sp.". Lit. "... male".



(CC) BY © Jeff Heath and the Dogon and Bangime
Languages Project



(CC) BY © Jeff Heath and the Dogon and Bangime
Languages Project

[Chamaecrista nigricans](#) (Vahl)Greene .

- **silwàl yǎ:** . "herb sp.". Lit. "... female".



(CC) BY © Jeff Heath and the Dogon and Bangime
Languages Project



(CC) BY © Jeff Heath and the Dogon and Bangime
Languages Project



(CC) BY © Jeff Heath and the Dogon and Bangime
Languages Project

[Crotalaria podocarpa](#) DC. . Characteristics: annual herb with spreading stems; up to 3 cm tall; trifoliate leaves; pale yellow flowers; fruit is an inflated pod with stiff hair. Biotope: sandy soil. ([Van Rooyen et al. 2001](#): 130)

- **[nĩ-nĩ:] jéŋé** . "herb sp.".



(CC) BY © Jeff Heath and the Dogon and Bangime
Languages Project



(CC) BY © Jeff Heath and the Dogon and Bangime
Languages Project



(CC) BY © Jeff Heath and the Dogon and Bangime
Languages Project

[Crotalaria retusa](#) L. .

- **[nĩ-nĩ:] jéŋé** . "herb sp.".



(CC) BY © Jeff Heath and the Dogon and Bangime
Languages Project



(CC) BY © Jeff Heath and the Dogon and Bangime
Languages Project



(CC) BY © Jeff Heath and the Dogon and Bangime
Languages Project

[Dalbergia melanoxylon](#) Guill. & Perr. .

- cèrù-cèné . "tree sp."



(CC) BY © Jeff Heath and the Dogon and Bangime
Languages Project



(CC) BY © Jeff Heath and the Dogon and Bangime
Languages Project



(CC) BY © Jeff Heath and the Dogon and Bangime
Languages Project

[Daniellia oliveri](#) (Rolfe) Hutch. & Dalziel .

- cèjé . "tree sp."



(CC) BY © Jeff Heath and the Dogon and Bangime
Languages Project



(CC) BY © Jeff Heath and the Dogon and Bangime
Languages Project



(CC) BY © Jeff Heath and the Dogon and Bangime
Languages Project

Detarium microcarpum Guill. & Perr. .

- **ṗõn** . "tree sp."



(CC) BY © Jeff Heath and the Dogon and Bangime
Languages Project



(CC) BY-NC-SA © Research Institute Senckenberg



(CC) BY © Jeff Heath and the Dogon and Bangime
Languages Project

Dichrostachys cinerea (L.)Wight & Arn. . Characteristics: shrub or small tree; 1-3m tall, flowers in an elongated drooping spike, composed of two sections: a pink tuft of sterile flowers and below a section of fertile yellow flowers; the pods are curly and twisted;. Biotope: grassland, sandy soil. ([Van Rooyen et al. 2001](#): 44)

- **ṫĩñjú** . "shrub sp."



(CC) BY © Jeff Heath and the Dogon and Bangime
Languages Project



(CC) BY © Jeff Heath and the Dogon and Bangime
Languages Project



(CC) BY © Jeff Heath and the Dogon and Bangime
Languages Project

[Faidherbia albida](#) (Delile)A.Chev. .

- sé:ɲé . "balanzan tree".



(CC) BY-NC © Bart Wursten



(CC) BY-NC-SA © Research Institute Senckenberg



(CC) BY-NC © Bart Wursten

[Indigofera tinctoria tinctoria](#) .

- gàrà . "herb sp.".
- gàrà ná: . "herb sp.". Lit. "indigo main".



(CC) BY © Jeff Heath and the Dogon and Bangime
Languages Project



(CC) BY © Jeff Heath and the Dogon and Bangime
Languages Project



(CC) BY © Jeff Heath and the Dogon and Bangime
Languages Project

Lonchocarpus laxiflorus Guill. & Perr. .

- [à-bòn] - [sà:-rá] . "tree sp." . Lit. "it has no name".



(CC) BY © Jeff Heath and the Dogon and Bangime
Languages Project



(CC) BY © Jeff Heath and the Dogon and Bangime
Languages Project



(CC) BY © Jeff Heath and the Dogon and Bangime
Languages Project

Parkia biglobosa (Jacq.)G.Don .

- yòró . "locust-bean (néré) tree".



(CC) BY-NC-SA © Research Institute Senckenberg



(CC) BY-NC-SA © Research Institute Senckenberg



(CC) BY-SA ©

[Prosopis africana](#) (Guill. & Perr.)Taub. .

- **cĩrè-ná:** . "a wood for blacksmiths' charcoal". Lit. "charcoal-mother".



(CC) BY © Jeff Heath and the Dogon and Bangime
Languages Project



(CC) BY © Jeff Heath and the Dogon and Bangime
Languages Project

[Prosopis juliflora](#) (Sw.)DC. .

- **ànsà:rà-bǎ:rù** . "tree sp. (planted)". Lit. "white.person-Acacia.nilotica".

[Pterocarpus erinaceus](#) Poir. .

- **wày"á** . "tree sp.".



(CC) BY © Jeff Heath and the Dogon and Bangime
Languages Project



(CC) BY © Jeff Heath and the Dogon and Bangime
Languages Project



(CC) BY © Jeff Heath and the Dogon and Bangime
Languages Project

[Pterocarpus lucens](#) Guill. & Perr. .

- **bèrèwé** . "tree sp.".



(CC) BY-NC-SA © Research Institute Senckenberg



(CC) BY-NC-SA © Research Institute Senckenberg



(CC) BY © Jeff Heath and the Dogon and Bangime Languages Project

Rhynchosia minima (L.)DC. .

- **yàgùm-túgò** . "vine sp.". Lit. "...-head.cushion".



(CC) BY-NC © Katharina Schumann



(CC) BY-NC-SA © Rob Westerduijn



(CC) BY © Dick Culbert

Senna italica italica .

- **[àmà-tìgè] -gàṅùr"ú** . "bush sp.". Lit. "Amatige's Cassia".
- **[àmà-cèpè] -gàṅùr"ú** . "bush sp.". Lit. "Amacenie's Cassia".



(CC) BY © Jeff Heath and the Dogon and Bangime Languages Project



(CC) BY © Jeff Heath and the Dogon and Bangime Languages Project



(CC) BY © Jeff Heath and the Dogon and Bangime Languages Project

Senna obtusifolia (L.)H.S.Irwin & Barneby .

- **gàṅùr"ú** . "herb sp.".
- **lùwó** . "herb sp.". Lit. "edible.leaf".



(CC) BY © Jeff Heath and the Dogon and Bangime Languages Project



(CC) PUBLICDOMAIN © Michael Kesi



(CC) BY © Jeff Heath and the Dogon and Bangime Languages Project

[Senna occidentalis](#) (L.)Link .

- **děbà-lóbbò** . "bush sp.". From Ful "pretty woman" .



(CC) BY-NC © Bart Wursten



(CC) BY © John Tann



Public Domain by

[Sesbania sesban](#) (L.)Merr. .

- **sǎ:-[pù:-pǎ:]** . "tree sp."



(CC) BY © Jeff Heath and the Dogon and Bangime Languages Project



(CC) BY-NC-SA © Research Institute Senckenberg



(CC) BY-NC-SA © Research Institute Senckenberg

Tamarindus indica L. .

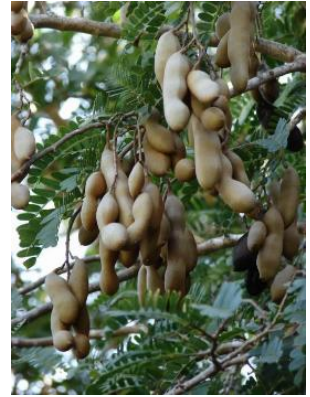
- ùmùr^ù . "tamarind".



(CC) BY © Jeff Heath and the Dogon and Bangime Languages Project



(CC) BY © Jeff Heath and the Dogon and Bangime Languages Project



(CC) BY © Forest & Kim Starr

Tephrosia mossiensis A.Chev. .

- gàrà- [gǎl-là] . "bush sp".



(CC) BY-NC-SA © Research Institute Senckenberg



(CC) BY-NC-SA © Research Institute Senckenberg



(CC) BY © Jeff Heath and the Dogon and Bangime Languages Project

Vachellia nilotica .

- bã:rù . "acacia sp".



(CC) BY © Jeff Heath and the Dogon and Bangime
Languages Project



(CC) BY © Jeff Heath and the Dogon and Bangime
Languages Project



(CC) BY © Jeff Heath and the Dogon and Bangime
Languages Project

[Vigna](#) .

- **j̀̀ǹ̀ǹ̀m** . "wild cow-pea". Lit. "Songhay-cowpea".



(CC) BY © Jeff Heath and the Dogon and Bangime
Languages Project



(CC) BY © Jeff Heath and the Dogon and Bangime
Languages Project



(CC) BY © Jeff Heath and the Dogon and Bangime
Languages Project

[Vigna subterranea](#) (L.)Verdc. .

- **è:rè ná:** . "ground nut". Lit. "peanut main".



(CC) BY-SA © Kembangraps



(CC) MARK © Kkibumba



(CC) BY-SA ©

[Vigna unguiculata](#) (L.)Walp. .

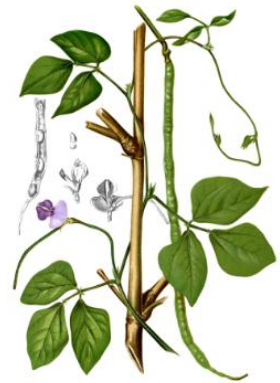
- **nĩm** . "cow-pea".



(CC) BY-SA ©



(CC) BY-SA © Ton Rulkens



Public Domain by

[Zornia glochidiata](#) DC. .

- **ḍeḡem-bé:rè** . "herb sp.". From Ful .



(CC) BY-NC © Bart Wursten



(CC) BY-NC © Bart Wursten



(CC) BY-NC © Bart Wursten

Order: Gentianales

Family: Apocynaceae

[Calotropis procera](#) .

- **põw** . "shrub sp.".



(CC) BY © Jeff Heath and the Dogon and Bangime
Languages Project



(CC) BY © Jeff Heath and the Dogon and Bangime
Languages Project

[Caralluma acutangula](#) Decne. .

- [tĩ-tã: nã:] mà kòw^h . "succulent plant sp.". Lit. "hyena's mother's macari.spice".



(CC) BY © Jeff Heath and the Dogon and Bangime
Languages Project



(CC) BY © Jeff Heath and the Dogon and Bangime
Languages Project



(CC) BY © Jeff Heath and the Dogon and Bangime
Languages Project

[Saba senegalensis](#) (A. DC.) Pichon .

- kã:mbè . "zaban (woody liana)".



(CC) BY-NC-SA © Research Institute Senckenberg



(CC) BY © Jeff Heath and the Dogon and Bangime
Languages Project



(CC) BY-NC-SA © Research Institute Senckenberg

Family: Rubiaceae

Feretia apodanthera Delile .

- **ǰi:rù-ná:** . "shrub sp.". Lit. "stirring.stick-tree".



(CC) BY © Jeff Heath and the Dogon and Bangime
Languages Project



(CC) BY © Jeff Heath and the Dogon and Bangime
Languages Project

Mitracarpus hirtus (L.) DC. .

- **əyò kú:n-pírù** . "herb sp.". Lit. "grass head-white".



(CC) BY © Jeff Heath and the Dogon and Bangime
Languages Project



(CC) BY © Jeff Heath and the Dogon and Bangime
Languages Project



(CC) BY © Jeff Heath and the Dogon and Bangime
Languages Project

Mitragyna inermis (Willd.) Kuntze .

- **bùtǒ:** . "tree sp.".



(CC) BY © Jeff Heath and the Dogon and Bangime
Languages Project



(CC) BY © Jeff Heath and the Dogon and Bangime
Languages Project



(CC) BY © Jeff Heath and the Dogon and Bangime
Languages Project

Sarcocephalus latifolius Sm. .

- **kĩ-kòrⁿôwⁿ** . "tree sp."



(CC) BY-NC-SA © Research Institute Senckenberg



(CC) BY-NC-SA © Research Institute Senckenberg



(CC) BY © Jeff Heath and the Dogon and Bangime
Languages Project

Order: Lamiales

Family: Acanthaceae

Hygrophila auriculata (Hamilt.) M.R. Almeida & S.M. Almeida .

- **wàr-cěm ~ wàr-kěm** . "herb sp.". Lit. "antelope-point".



(CC) BY © Jeff Heath and the Dogon and Bangime
Languages Project



(CC) BY © Jeff Heath and the Dogon and Bangime
Languages Project



(CC) BY © Jeff Heath and the Dogon and Bangime
Languages Project

Family: Lamiaceae

[*Hyptis spicigera*](#) (Aubl.) Harley & J.F.B.Pastore .

- **búró-** [pé-díjè] . "herb sp.". Lit. "pond-Xylopia".



(CC) BY © Jeff Heath and the Dogon and Bangime
Languages Project



(CC) BY © Jeff Heath and the Dogon and Bangime
Languages Project



(CC) BY-NC-SA © Research Institute Senckenberg

[*Leucas martinicensis*](#) (Jacq.) R.Br. .

- **búró-** [pé-díjè] . "herb sp.". Lit. "pond-Xylopia".



(CC) BY © Jeff Heath and the Dogon and Bangime
Languages Project



(CC) BY-NC © Bart Wursten



(CC) BY © Jeff Heath and the Dogon and Bangime
Languages Project

[*Ocimum americanum*](#) L. . Characteristics: herb; up to 50 cm tall; elongated leaves in clusters; pink to white flowers; .
(Burke 2007: 86)

- **jiré-figjù** . "bush sp."



(CC) BY © Jeff Heath and the Dogon and Bangime
Languages Project



(CC) BY © Jeff Heath and the Dogon and Bangime
Languages Project



(CC) BY © Jeff Heath and the Dogon and Bangime
Languages Project

Family: **Orobanchaceae**

[*Striga hermonthica*](#) (Del.) Benth. .

- **dô** . "herb sp."



(CC) BY-NC-SA © Research Institute Senckenberg



(CC) BY-NC-SA © Research Institute Senckenberg



(CC) BY-NC-SA © Delile, A.R., 1813. Description de l'Egypte

Family: Pedaliaceae

Ceratotheca sesamoides Endl. .

- ጅጅጅ . "herb sp."



(CC) BY © Jeff Heath and the Dogon and Bangime Languages Project



(CC) BY © Jeff Heath and the Dogon and Bangime Languages Project



(CC) BY © Jeff Heath and the Dogon and Bangime Languages Project

Sesamum alatum P. Thonn. .

- èjú-námṛù . "wild sesame (herb)". Lit. "outback-sesame".
- [ĩnè-čĩnè] -námṛú . "wild sesame (herb)". Lit. "[person-phantom]-sesame".



(CC) BY-NC © Bart Wursten



(CC) BY-NC © Bart Wursten



(CC) BY-NC © Bart Wursten

Sesamum indicum .

- **námprú** . "sesame".



(CC) BY-NC-SA © Research Institute Senckenberg



(CC) BY-NC-SA © Research Institute Senckenberg



(CC) MARK © Franz Eugen Köhler, Köhler's
Medizinal-Pflanzen

Family: Plantaginaceae

Scoparia dulcis L. .

- **fím-fím** . "herb sp.".
- **à-fím-fím** . "herb sp.".



(CC) BY © India Biodiversity Portal



(CC) BY-NC-SA © Research Institute Senckenberg



(CC) BY-SA ©

Order: Magnoliales

Family: Annonaceae

[Hexalobus monopetalus](#) (A. Rich.) Engl. & Diels .

- cèŋálà . "tree sp."



(CC) BY © Jeff Heath and the Dogon and Bangime Languages Project



(CC) BY © Jeff Heath and the Dogon and Bangime Languages Project



(CC) BY © Jeff Heath and the Dogon and Bangime Languages Project

[Xylopiya aethiopica](#) (Dunal) A. Rich. .

- pè-díŋé . "grains of Selim".



(CC) BY-NC-SA © TanzaniaPlantCollaboration



(CC) BY ©



(CC) BY-NC-SA © TanzaniaPlantCollaboration

Order: Malpighiales

Family: Euphorbiaceae

[Euphorbia austro-occidentalis](#) Thell. .

- pèllè-írù . "prostrate herb sp.". Lit. "dove-milk".



(CC) BY © Jeff Heath and the Dogon and Bangime Languages Project



(CC) BY © Jeff Heath and the Dogon and Bangime Languages Project



(CC) BY © Jeff Heath and the Dogon and Bangime Languages Project

[Euphorbia balsamifera](#) Aiton .

- **ǰi:-ǰǎ:** . "balsam-spurge (shrub)".



(CC) BY © Jeff Heath and the Dogon and Bangime Languages Project



(CC) BY © Jeff Heath and the Dogon and Bangime Languages Project



(CC) BY-NC © Edinburgh!

[Euphorbia chapmanii](#) Oudejans .

- **ǰi:** . "thorny bush".

[Manihot esculenta](#) Crantz .

- **bàlà-kù:ⁿ ~ bànà-kù:ⁿ** . "cassava, manioc". From Bam .



(CC) BY © Jeff Heath and the Dogon and Bangime
Languages Project



(CC) BY-SA © Ton Rulkens



(CC) BY © Forest & Kim Starr

[Ricinus communis](#) L. .

- [gù-gùn] -tògòró . "shrub sp."



(CC) BY-SA © Andreas Fröh (Andel)



(CC) BY-SA © H. Zell



(CC) BY © Jeff Heath and the Dogon and Bangime
Languages Project

Family: Phyllanthaceae

[Phyllanthus reticulatus reticulatus](#) .

- dú:rù . "shrub sp." . From Ful .



(CC) BY © Jeff Heath and the Dogon and Bangime Languages Project



(CC) BY-NC © Bart Wursten



(CC) BY-NC © Bart Wursten

Order: Malvales

Family: Malvaceae

[Abelmoschus esculentus](#) (L.) Moench .

- **póró** . "okra".



(CC) BY-SA © Delincee.J



(CC) BY-SA © Earth100

[Adansonia digitata](#) L. .

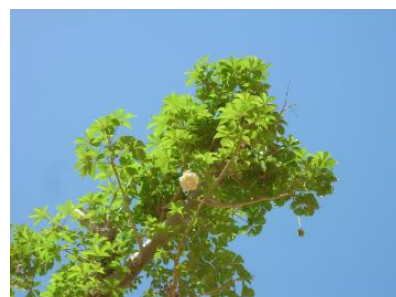
- **ðrð-ná** : "baobab tree".
- **ðró** . "baobab tree".
- **ṭṭṭir"é** . "baobab tree".



Public Domain by unknown



(CC) BY © Jeff Heath and the Dogon and Bangime
Languages Project



(CC) BY © Jeff Heath and the Dogon and Bangime
Languages Project

Ceiba pentandra (L.) Gaertn. .

- **ǰim** . "tree sp."



(CC) BY © Jeff Heath and the Dogon and Bangime
Languages Project



(CC) BY-NC-SA © Reinaldo Aguilar

Corchorus Patriti, 1965 .

- **ǰrò-yè-bònó** . "herb sp.". Lit. "baobab.leaf-...-be.smeared".



(CC) BY-NC-SA © Research Institute Senckenberg



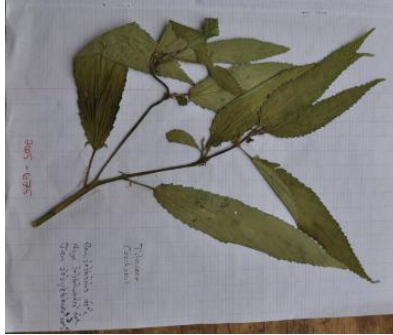
(CC) BY-NC © Bart Wursten

[Corchorus olitorius](#) L. .

- òrò-yè-bònò àr"á . "herb sp.". Lit. "Corchorus male".



(CC) BY © Jeff Heath and the Dogon and Bangime Languages Project



(CC) BY © Jeff Heath and the Dogon and Bangime Languages Project

[Gossypium hirsutum](#) L. .

- nǎ:m . "cotton".



(CC) BY-NC-SA © Arthur Chapman



(CC) BY-NC © Bart Wursten



(CC) BY © Jeff Heath and the Dogon and Bangime Languages Project

[Grewia villosa](#) Willd. .

- ò:jà- [gòrò-gárá] . "shrub sp.". Lit. "Grewia-angular.stem".



(CC) BY-NC © Bart Wursten



(CC) BY © Jeff Heath and the Dogon and Bangime Languages Project



(CC) BY-NC © Bart Wursten

[Hibiscus cannabinus](#) L. .

- àrù-bèlèngá . "erect herb sp."



(CC) BY © Jeff Heath and the Dogon and Bangime
Languages Project



(CC) BY © Jeff Heath and the Dogon and Bangime
Languages Project



(CC) BY © Jeff Heath and the Dogon and Bangime
Languages Project

[Hibiscus longisepalus](#) Hochr. .

- yàgùrù-yǎ: . "bush sp."



(CC) BY © Jeff Heath and the Dogon and Bangime
Languages Project



(CC) BY © Jeff Heath and the Dogon and Bangime
Languages Project



(CC) BY © Jeff Heath and the Dogon and Bangime
Languages Project

[Hibiscus ovalifolius](#) (Forssk.) Vahl .

- àrá-é:rù-m . "bush sp."



(CC) BY © Jeff Heath and the Dogon and Bangime
Languages Project



(CC) BY © Jeff Heath and the Dogon and Bangime
Languages Project

[Hibiscus sabdariffa](#) L. .

- ànú . "roselle".
- èḡèr"è-ànú . "roselle".



(CC) BY © Jeff Heath and the Dogon and Bangime
Languages Project



(CC) BY-NC-SA © Marie Fourdrigniez



(CC) BY © Jeff Heath and the Dogon and Bangime
Languages Project

[Sida abutifolia](#) Mill. .

- béré-sá:mà . "bush sp.".



(CC) BY-NC © inaturalist



(CC) BY-NC © Picasa



(CC) BY © Jeff Heath and the Dogon and Bangime Languages Project

[Sida spinosa](#) L. .

- ṣn-wárⁿá . "herb sp.". Lit. "xxx".



(CC) BY-NC © Bart Wursten



(CC) BY-NC © Bart Wursten



(CC) MARK © USDA NRCS PLANTS Database

[Waltheria indica](#) L. .

- núwⁿó-ṣwⁿḍ . "bush sp.". Lit. "fire-in.law".



(CC) BY © Jeff Heath and the Dogon and Bangime Languages Project



(CC) BY © Jeff Heath and the Dogon and Bangime Languages Project



(CC) BY © Jeff Heath and the Dogon and Bangime Languages Project

Order: Myrtales

Family: Lythraceae

[Lawsonia inermis](#) L. .

- púddù . "henna bush".



(CC) BY © Jeff Heath and the Dogon and Bangime
Languages Project

Family: Myrtaceae

[Eucalyptus astringens](#) (Maiden) Maiden .

- šīnwà:rù ná: ~ šīnwà:rù ná: ~ šīñwà:rù-ná: . "eucalyptus tree". Lit. "eucalyptus tree".

[Psidium guajava](#) .

- bùyà:gú . "guava".



(CC) BY ©



(CC) BY © Forest & Kim Starr



(CC) MARK © Galapagos Islands.

Family: Onagraceae

[*Ludwigia erecta*](#) (L.) Hara .

- **pùlò-jídù** . "herb sp.". From Ful "Fulbe-friend" .



(CC) BY © Jeff Heath and the Dogon and Bangime
Languages Project



(CC) BY © Jeff Heath and the Dogon and Bangime
Languages Project



(CC) BY © Jeff Heath and the Dogon and Bangime
Languages Project

Order: Nymphaeales

Family: Nymphaeaceae

[*Nymphaea lotus*](#) L. .

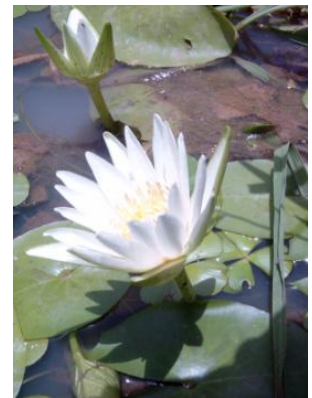
- **bèlè-kūn** . "water lily sp.". Lit. "Bella-water.lily".



(CC) BY © Jeff Heath and the Dogon and Bangime
Languages Project



(CC) BY © Jeff Heath and the Dogon and Bangime
Languages Project



(CC) BY-NC-SA © Research Institute Senckenberg

[*Nymphaea micrantha*](#) Guill. & Perr. .

- **kùn-é:ré** . "water lily sp. (small tuft on leaf, 4 sepals, first-year of growth, small but tasty rhizome)". Lit. "water.lily-peanut".
- **kùn ná:** . "water lily sp. (tuft on leaf above petiole, leaf margin entire, leaf oval, 4 sepals, large rhizome)". Lit. "water.lily main".



(CC) BY © Jeff Heath and the Dogon and Bangime Languages Project



(CC) BY © Jeff Heath and the Dogon and Bangime Languages Project



(CC) BY © Jeff Heath and the Dogon and Bangime Languages Project

Order: Piperales

Family: Piperaceae

[Piper guineense](#) Schum. & Thonn. .

- fě:-fě: . "African black pepper".



(CC) BY-NC © Scamperdale



(CC) BY-NC © International Institute of Tropical Agriculture



(CC) BY-NC © Scamperdale

Order: Rosales

Family: Moraceae

[Ficus sycomorus](#) .

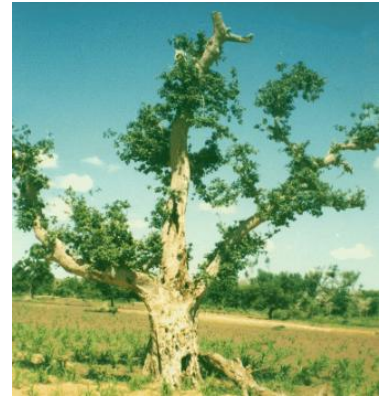
- gǎ:n . "fig tree sp.".



(CC) BY © Jeff Heath and the Dogon and Bangime Languages Project



(CC) BY © Jeff Heath and the Dogon and Bangime Languages Project



(CC) BY © Jeff Heath and the Dogon and Bangime Languages Project

Family: Rhamnaceae

[*Ziziphus mauritiana*](#) Lam. .

- òròwó . "jujube (shrub)".



(CC) BY-SA ©



(CC) BY © Jeff Heath and the Dogon and Bangime Languages Project



(CC) BY-NC © Bart Wursten

Order: Santalales

Family: Ximeniaceae

[*Ximenia americana*](#) L. .

- ò:r"i:-bà:r"i:" . "thorny shrub sp.".



(CC) BY-NC-SA © Research Institute Senckenberg



(CC) BY © Jeff Heath and the Dogon and Bangime Languages Project



(CC) BY © Jeff Heath and the Dogon and Bangime Languages Project

Order: Sapindales

Family: Anacardiaceae

Anacardium occidentale L. .

- ànsà:rà-gǎ:ⁿ . "cashew tree (planted)". Lit. "white.person-sycomore.fig".
- sôm . "cashew tree (planted)".



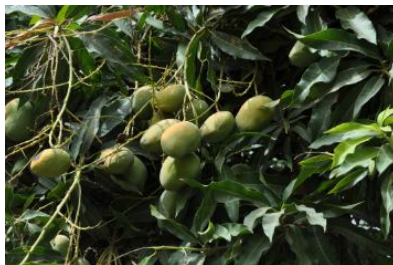
(CC) BY © Jeff Heath and the Dogon and Bangime Languages Project

Mangifera indica L. .

- mǎŋgòrò [tone] . "mango".
- mǎŋgòró . "mango".



(CC) BY-NC-SA © Research Institute Senckenberg



(CC) BY © Jeff Heath and the Dogon and Bangime Languages Project



(CC) BY-SA ©

[Sclerocarya birrea](#) .

- **biːˀ** . "tree sp."



(CC) BY © Jeff Heath and the Dogon and Bangime Languages Project



(CC) BY-NC-SA © Research Institute Senckenberg



(CC) BY © Jeff Heath and the Dogon and Bangime Languages Project

[Spondias mombin](#) Jacq. .

- **í-èrˀéwˀɛ** . "tree sp."



(CC) BY © Jeff Heath and the Dogon and Bangime Languages Project



(CC) BY-NC-SA © Research Institute Senckenberg



(CC) BY © Jeff Heath and the Dogon and Bangime Languages Project

Family: Meliaceae

[Azadirachta indica](#) A. Juss. .

- **gó:jú** . "neem tree".



(CC) BY © Jeff Heath and the Dogon and Bangime
Languages Project



(CC) BY © Jeff Heath and the Dogon and Bangime
Languages Project

Khaya senegalensis (Desv.) A. Juss. .

- **pèrú** . "tree sp."



(CC) BY © Jeff Heath and the Dogon and Bangime
Languages Project



(CC) BY-NC-SA © Research Institute Senckenberg



(CC) BY © Jeff Heath and the Dogon and Bangime
Languages Project

Family: Rutaceae

Citrus limon (L.) Burm. f. .

- **lè:mbùrù nôm** . "lemon". Lit. "citrus sour".
- **lè:mbúrù** . "citrus fruit".



(CC) PUBLICDOMAIN © Pavel Buršík



(CC) BY-SA ©



(CC) BY-SA ©

[Citrus sinensis](#) L. .

- **lè:mbùrù-bâ:** . "orange". From Bam "citrus-mother" .
- **lè:mbùrù òùgú** . "orange". Lit. "citrus big".



(CC) BY-SA © Mifa



(CC) BY © Jeff Heath and the Dogon and Bangime Languages Project



(CC) BY © Jeff Heath and the Dogon and Bangime Languages Project

[Vepris heterophylla](#) (Engl.) Letouzey .

- **kènkèlè-bâ:** . "kinkeliba shrub". From Bam .



(CC) BY-NC © Philippe Birnbaum



(CC) BY-NC © Philippe Birnbaum



(CC) BY-NC © Philippe Birnbaum

Family: Sapindaceae

[Lepisanthes senegalensis](#) (Poir.) Leenhouts .

- **gú:r^ᵐᵔ** . "tree sp. " .

- **bíjjè** . "tree sp. "



(CC) BY © Jeff Heath and the Dogon and Bangime
Languages Project



(CC) BY © Jeff Heath and the Dogon and Bangime
Languages Project



(CC) BY © Jeff Heath and the Dogon and Bangime
Languages Project

Order: Solanales

Family: Convolvulaceae

Ipomoea batatas (L.) Lam. .

- **wósó** . "sweet potato".
- **màsà-kú:** . "sweet potato". From Bam .
- **[bànà-kù:] -nǎ:** . "sweet potato".



(CC) BY-SA ©



CC-Zero ©



(CC) BY-SA ©

Ipomoea obscura (L.) Ker Gawler .

- **láyñi** . "liana sp.".



(CC) BY © Jeff Heath and the Dogon and Bangime
Languages Project



(CC) BY © Jeff Heath and the Dogon and Bangime
Languages Project



(CC) BY © Jeff Heath and the Dogon and Bangime
Languages Project

[Jacquemontia tamnifolia](#) (L.) Griseb. .

- **yè-gú-m tógò** . "sprawling herb sp."



(CC) BY © Jeff Heath and the Dogon and Bangime
Languages Project



(CC) BY © Jeff Heath and the Dogon and Bangime
Languages Project

Family: Solanaceae

[Capsicum](#) (H.L. Clark, 1917) .

- **cèpèl** . "pepper".



(CC) BY-SA ©

[Nicotiana](#) (H.L. Clark, 1917) .

- **tówò** . "tobacco".



(CC) BY ©



(CC) BY-SA ©



(CC) BY-SA ©

Solanum incanum L. . Characteristics: shrub, 80cm tall, many branches that are covered with hairs and spines, large lobed leaves, purplish-white flowers, fruit turns from green to yellow when ripe. Biotope: dry river course. ([Van Rooyen et al. 2001](#): 76)

- **jìrè-púpúr^um** . "thorny bush sp."



(CC) BY © Jeff Heath and the Dogon and Bangime Languages Project



(CC) BY-NC © Bart Wursten



(CC) BY © Jeff Heath and the Dogon and Bangime Languages Project

Solanum melongena L. .

- **ànsà:rà-céréwé** . "European eggplant". Lit. "white.person-eggplant".



(CC) BY ©



(CC) BY-SA ©



(CC) BY-SA © Ranjith Siji from Cochin, India

[Solanum tuberosum](#) L. .

- póm-té:rù . "potato". From Fr .



(CC) BY-SA ©



(CC) BY-SA ©



(CC) BY-SA ©

Order: Vitales

Family: Vitaceae

[Cissus quadrangularis](#) L. .

- jà-nà-jà-rù . "liana sp.". Lit. "donkey-knock.down".



(CC) BY-SA © Marco Schmidt



(CC) BY © Jeff Heath and the Dogon and Bangime

Languages Project



(CC) BY © Jeff Heath and the Dogon and Bangime

Languages Project

Order: Zygophyllales

Family: Zygophyllaceae

[Balanites aegyptiacus](#) .

- m̀ǹǹ . "wild date tree".



(CC) BY © Jeff Heath and the Dogon and Bangime
Languages Project



(CC) BY © Jeff Heath and the Dogon and Bangime
Languages Project



(CC) BY © Jeff Heath and the Dogon and Bangime
Languages Project

[*Tribulus terrestris*](#) L. . Characteristics: creeping growth, yellow flowers, flower 1 cm in diameter, soft-haired leaves, woody, sharp, spiny fruits that can puncture animals' hoofs, bare feet and bicycle tyres. ([Van der Walt and le Riche 1999](#): 109)

- **té-kòyòrò** . "herb sp."



(CC) BY © Jeff Heath and the Dogon and Bangime
Languages Project



(CC) BY-SA © Stan Shebs



(CC) BY-SA © Stan Shebs

Class: other

Order: Ranunculales

Family: Menispermaceae

[*Tinospora bakis*](#) (A.Rich.) Miers .

- **bà:-bèrēm** . "woody liana sp."



(CC) BY © Jeff Heath and the Dogon and Bangime
Languages Project



(CC) BY © Jeff Heath and the Dogon and Bangime
Languages Project



(CC) BY © Jeff Heath and the Dogon and Bangime
Languages Project

Kingdom: Viridiplantae

Phylum: Streptophyta

Class: Magnoliopsida

Order: Brassicales

Family: Capparaceae

[Boscia angustifolia](#) A. Rich. .

- è:rè sèréwè . "tree sp.". Lit. "wild.pea-...".



(CC) BY © Jeff Heath and the Dogon and Bangime
Languages Project



(CC) BY © Jeff Heath and the Dogon and Bangime
Languages Project



(CC) BY © Jeff Heath and the Dogon and Bangime
Languages Project

[Boscia salicifolia](#) Oliv. .

- ðγð-lùwó . "tree sp.". Lit. "chief-edible.leaf".



(CC) BY © Jeff Heath and the Dogon and Bangime Languages Project



(CC) BY © Jeff Heath and the Dogon and Bangime Languages Project



(CC) BY © Jeff Heath and the Dogon and Bangime Languages Project

[Maerua angolensis](#) .

- **lùwò ná:** . "tree sp.". Lit. "edible.leaf main".



(CC) BY-NC © Bart Wursten



(CC) BY-NC © Bart Wursten



(CC) BY © Jeff Heath and the Dogon and Bangime Languages Project

Family: Salvadoraceae

[Salvadora persica](#) L. .

- **húrôw** . "shrub sp.".



(CC) BY © Jeff Heath and the Dogon and Bangime Languages Project



(CC) BY © Jeff Heath and the Dogon and Bangime Languages Project



(CC) BY-NC © Bart Wursten

Order: Caryophyllales

Family: Aizoaceae

[Zaleya pentandra](#) (L.) C. Jeffrey .

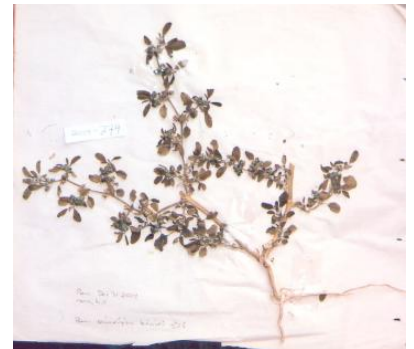
- òndògòrò-jè:mé . "herb sp.". Lit. "...-shard".



(CC) BY-NC © Bart Wursten



(CC) BY-NC © Bart Wursten



(CC) BY © Jeff Heath and the Dogon and Bangime Languages Project

Family: Amaranthaceae

[Nothosaerva brachiata](#) (L.) Wight .

- ǎn-[nù:sěy"] . "herb sp.". Lit. "...-[millet-grain]".



(CC) BY © Jeff Heath and the Dogon and Bangime

Languages Project



(CC) BY-NC © Bart Wursten



(CC) BY-NC © Bart Wursten

Pandiaka angustifolia (Vahl) Hepper .

- **kùːˀ-pĩrù jĩrè-nùˀò-lõy** . "herb sp." . Lit. "head-white eye-sickness-medicine".



(CC) BY © Jeff Heath and the Dogon and Bangime

Languages Project



(CC) BY © Jeff Heath and the Dogon and Bangime

Languages Project



(CC) BY © Jeff Heath and the Dogon and Bangime

Languages Project

Pupalia lappacea (L.) Juss. . Characteristics: erect or sprawling herb; up to 90 cm tall; stems with multiple opposite branches that grow from nodes; branches are 4-angled; the mature inflorescence is up to 50 cm long and has green flowers; fruit is a capsule with shiny brown seeds. Biotope: sandy soil. ([Van Rooyen et al. 2001](#): 156)

- **dòŋ-nàː-dõŋ** . "herb sp." . Lit. "adhere-mother-adhere".



(CC) BY-NC © Bart Wursten



(CC) BY-NC © Bart Wursten



Public Domain by Christfried Naumann

Order: Celastrales

Family: Celastraceae

[Gymnosporia senegalensis](#) .

- **gíyâl-gó:têl** . "tree sp. with long thorns". From Ful "thorn-one", has large, well-separated thorns .



(CC) BY © Jeff Heath and the Dogon and Bangime
Languages Project



(CC) BY-NC-SA © Research Institute Senckenberg



(CC) BY © Jeff Heath and the Dogon and Bangime
Languages Project

[Loeseneriella africana](#) (Willd.) R. Wilczek .

- **cê:** . "woody liana sp."



(CC) BY © Jeff Heath and the Dogon and Bangime
Languages Project



(CC) BY-NC-SA © Research Institute Senckenberg



(CC) BY © Jeff Heath and the Dogon and Bangime
Languages Project

Order: Cucurbitales

Family: Cucurbitaceae

[Cucumis prophetarum prophetarum](#) .

- **cě:ŋ- [gú-gûn]** . "inedible wild melon sp.". Lit. "agama-melon".



(CC) BY © Jeff Heath and the Dogon and Bangime
Languages Project



(CC) BY © Jeff Heath and the Dogon and Bangime
Languages Project



(CC) BY © Jeff Heath and the Dogon and Bangime
Languages Project

[Cucumis pustulatus](#) Hook. f. .

- **[ɛrè-tòŋó] - [yà:- [nĩ:-kúnó-n]]** . "horned melon". Lit. "one who goes and puts water in the chickens' trough".



(CC) BY © Jeff Heath and the Dogon and Bangime Languages Project



(CC) BY © Jeff Heath and the Dogon and Bangime Languages Project



(CC) BY © Jeff Heath and the Dogon and Bangime Languages Project

Order: Fabales

Family: Polygalaceae

[Securidaca longepedunculata](#) .

- **t̀r̀ó** . "tree sp."



(CC) BY © Jeff Heath and the Dogon and Bangime Languages Project



(CC) BY © Jeff Heath and the Dogon and Bangime Languages Project



(CC) BY © Jeff Heath and the Dogon and Bangime Languages Project

Order: Gentianales

Family: Apocynaceae

[Caralluma adscendens](#) (Roxb.) Haw. .

- **[ij-í:] -d̀úr̀ò** . "succulent plant sp.". Lit. "puppy-tail".



(CC) BY © Jeff Heath and the Dogon and Bangime Languages Project



(CC) BY © Jeff Heath and the Dogon and Bangime Languages Project



(CC) BY © Jeff Heath and the Dogon and Bangime Languages Project

[Cynanchum viminale](#) .

- **dùŋ-kòrʼi:** . "vine sp.". Lit. "elephant-intestine".



(CC) BY-NC-SA © Research Institute Senckenberg



(CC) BY-NC © Bart Wursten



(CC) BY-SA © Ton Rulkens

[Glossonema boveanum](#) .

- **sí-sê:** . "herb sp.".



(CC) BY © Jeff Heath and the Dogon and Bangime Languages Project



(CC) BY © Jeff Heath and the Dogon and Bangime Languages Project



(CC) BY © Jeff Heath and the Dogon and Bangime Languages Project

[Leptadenia hastata](#) .

- **lùwò-tǒ** : "vine sp.". Lit. "edible.leaf-...".



(CC) BY-NC-SA © Research Institute Senckenberg



(CC) BY © Jeff Heath and the Dogon and Bangime
Languages Project



(CC) BY © Jeff Heath and the Dogon and Bangime
Languages Project

[Leptadenia pyrotechnica](#) (Forssk.) Decne. .

- **nùmò-bànà-mǔŋ** . "bush sp.". Lit. "hand-left-knot".



(CC) BY © Jeff Heath and the Dogon and Bangime
Languages Project



(CC) BY-NC-SA © Bibliotheca Alexandrina - EOL Ar



(CC) BY-SA ©

[Pergularia tomentosa](#) L. .

- **pòrúm** . "bush sp.".



(CC) BY © Jeff Heath and the Dogon and Bangime Languages Project



(CC) BY © Jeff Heath and the Dogon and Bangime Languages Project



(CC) BY © Jeff Heath and the Dogon and Bangime Languages Project

[Xysmalobium heudelotianum](#) N. E. Br. .

- **sí-sêyⁿ** . "trailing vine sp."



(CC) BY-NC © Rob Burrett



(CC) BY-NC © Rob Burrett



(CC) BY © Jeff Heath and the Dogon and Bangime Languages Project

Order: Lamiales

Family: Acanthaceae

[Peristrophe paniculata](#) (Forssk.) I.Darbysh. .

- **jèrè-ðyó** . "herb sp." . Lit. "harvest-grass".



(CC) BY ©



(CC) BY ©



(CC) BY © Jeff Heath and the Dogon and Bangime Languages Project

Family: Bignoniaceae

[Stereospermum kunthianum](#) Cham. .

- àyò-béré . "tree sp.". Lit. "chief-stick".
- sá-pèrúm . "tree sp.".



(CC) BY-NC © Bart Wursten



(CC) BY-NC © Bart Wursten



(CC) BY © Jeff Heath and the Dogon and Bangime Languages Project

Family: Lamiaceae

[Vitex doniana](#) Sweet .

- àrùmùr^ó ~ àrùmùnó . "tree sp.".



(CC) BY © Jeff Heath and the Dogon and Bangime Languages Project



(CC) BY-NC-SA © Research Institute Senckenberg



(CC) BY © Jeff Heath and the Dogon and Bangime Languages Project

Order: Malpighiales

Family: Elatinaceae

[Bergia suffruticosa](#) (Del.) Fenzl .

- sí-sègèrè . "herb sp.".



(CC) BY © Jeff Heath and the Dogon and Bangime
Languages Project



(CC) BY © Jeff Heath and the Dogon and Bangime
Languages Project



(CC) BY © Jeff Heath and the Dogon and Bangime
Languages Project

Order: Malvales

Family: Malvaceae

[Grewia bicolor](#) Juss. .

- ṣ:ǰṣ . "shrub sp."
- ḁ:jḁ ná: . "shrub sp.". Lit. "Grewia main".



(CC) BY © Jeff Heath and the Dogon and Bangime
Languages Project



(CC) BY © Jeff Heath and the Dogon and Bangime
Languages Project



(CC) BY © Jeff Heath and the Dogon and Bangime
Languages Project

Order: Myrtales

Family: Combretaceae

[Anogeissus leiocarpa](#) (DC.) Guill. & Perr. .

- wǎn . "tree sp."



(CC) BY © Jeff Heath and the Dogon and Bangime
Languages Project



(CC) BY © Jeff Heath and the Dogon and Bangime
Languages Project



(CC) BY © Jeff Heath and the Dogon and Bangime
Languages Project

[Combretum glutinosum](#) Perr. ex DC. .

- bà:r^{na} . "tree sp."



(CC) BY © Jeff Heath and the Dogon and Bangime
Languages Project



(CC) BY © Jeff Heath and the Dogon and Bangime
Languages Project



(CC) BY © Jeff Heath and the Dogon and Bangime
Languages Project

[Combretum micranthum](#) G. Don .

- gǔ:ⁿ . "shrub sp."
- gù:ⁿ bán . "shrub sp.". Lit. "... red".



(CC) BY © Jeff Heath and the Dogon and Bangime
Languages Project



(CC) BY © Jeff Heath and the Dogon and Bangime
Languages Project



(CC) BY © Jeff Heath and the Dogon and Bangime
Languages Project

[Guiera senegalensis](#) J.F.Gmel. .

- gù:rú . "shrub sp."



(CC) BY © Jeff Heath and the Dogon and Bangime
Languages Project



(CC) BY © Jeff Heath and the Dogon and Bangime
Languages Project



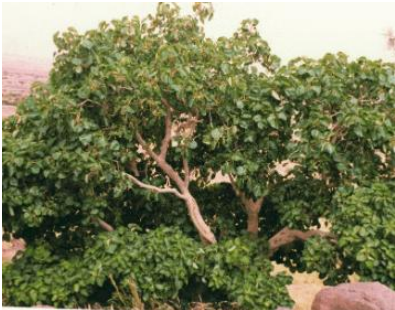
(CC) BY © Jeff Heath and the Dogon and Bangime
Languages Project

Order: Rosales

Family: Moraceae

[Ficus abutilifolia](#) (Miq.) Miq. .

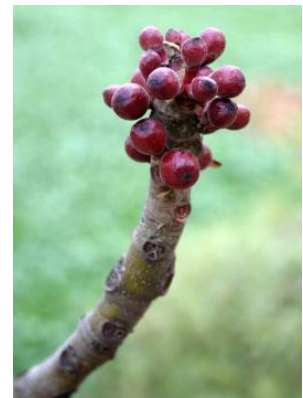
- kǔm-jèréwè . "fig tree sp.". Lit. "fig-...".



(CC) BY © Jeff Heath and the Dogon and Bangime
Languages Project



(CC) BY © Jeff Heath and the Dogon and Bangime
Languages Project



(CC) BY-NC © Bart Wursten

[Ficus platyphylla](#) Del. .

- kǔm . "fig tree sp."



(CC) BY © Jeff Heath and the Dogon and Bangime
Languages Project



(CC) BY © Jeff Heath and the Dogon and Bangime
Languages Project



(CC) BY © Jeff Heath and the Dogon and Bangime
Languages Project

Commiphora pedunculata (Kotschy & Peyr.) Engl. .

- **dò:rù-kâ:** . "shrub sp."



(CC) BY © Jeff Heath and the Dogon and Bangime
Languages Project



(CC) BY © Jeff Heath and the Dogon and Bangime
Languages Project

Order: Solanales

Family: Solanaceae

Physalis lagascae R. & S. .

- **èpé mà cèpèl** . "herb sp.". Lit. "chicken's chili.pepper".
- **yĩ-yàgàrà ~ yàgàrà** . "herb sp.". Lit. "itch".



(CC) BY © Jeff Heath and the Dogon and Bangime Languages Project



(CC) BY © Jeff Heath and the Dogon and Bangime Languages Project



(CC) BY © Jeff Heath and the Dogon and Bangime Languages Project

Order: Vitales

Family: Vitaceae

[Ampelocissus africana](#) (Lour.) Merrill .

- [bèrù-jîr-ù] -cíwé . "liana sp.". Lit. "herder-wild.grape".



(CC) BY © Jeff Heath and the Dogon and Bangime Languages Project



(CC) BY © Jeff Heath and the Dogon and Bangime Languages Project



(CC) BY © Jeff Heath and the Dogon and Bangime Languages Project

Class: other

Order: Fabales

Family: Fabaceae

[Senegalia ataxacantha](#) .

- wàrè pírú . "scrub acacia sp. (often liana)". Lit. "scrub.acacia white".



(CC) BY © Jeff Heath and the Dogon and Bangime
Languages Project



(CC) BY © Jeff Heath and the Dogon and Bangime
Languages Project



(CC) BY © Jeff Heath and the Dogon and Bangime
Languages Project

[Senegalia laeta](#) .

- **bàlkóró** . "acacia sp.".



(CC) BY © Jeff Heath and the Dogon and Bangime
Languages Project



(CC) BY © Jeff Heath and the Dogon and Bangime
Languages Project



(CC) BY © Jeff Heath and the Dogon and Bangime
Languages Project

[Senegalia macrostachya](#) .

- **à-pá:ná** . "acacia sp.".



(CC) BY © Jeff Heath and the Dogon and Bangime
Languages Project



(CC) BY © Jeff Heath and the Dogon and Bangime
Languages Project



(CC) BY © Jeff Heath and the Dogon and Bangime
Languages Project

Order: Solanales

Family: Solanaceae

[*Solanum mixed library*](#) .

- cĕréwé . "African eggplant".

Kingdom: other

Phylum: other

Class: other

Order: other

Family: other

[*Acrotylus sp. 1WA*](#) .

- tùmó- [kí-kâ:] . "grasshopper sp.". Lit. "rock grasshopper".

[*Trachyderma hispida*](#) .

- cĭ-cĕ: gúmúr^ó . "darkling beetle sp. in houses". Lit. "beetle ...".



(CC) BY © Jeff Heath and the Dogon and Bangime

Languages Project