

The China plant trait database: toward a comprehensive regional compilation of functional traits for land plants

Article

Supporting information

Wang, H., Harrison, S. P., Prentice, I. C., Yang, Y., Bai, F., Togashi, H. F., Wang, M., Zhou, S. and Ni, J. (2018) The China plant trait database: toward a comprehensive regional compilation of functional traits for land plants. *Ecology*, 99 (2). 500. ISSN 0012-9658 doi: <https://doi.org/10.1002/ecy.2091> Available at <https://centaur.reading.ac.uk/73603/>

It is advisable to refer to the publisher's version if you intend to cite from the work. See [Guidance on citing](#).

To link to this article DOI: <http://dx.doi.org/10.1002/ecy.2091>

Publisher: Wiley

All outputs in CentAUR are protected by Intellectual Property Rights law, including copyright law. Copyright and IPR is retained by the creators or other copyright holders. Terms and conditions for use of this material are defined in the [End User Agreement](#).

www.reading.ac.uk/centaur

CentAUR

Central Archive at the University of Reading

Reading's research outputs online

1 **The China Plant Trait Database: towards a comprehensive regional compilation of functional**
2 **traits for land plants**

3 Han Wang^{1,*}, Sandy P. Harrison^{1,2}, I. Colin Prentice^{1,3}, Yanzheng Yang^{4,1}, Fan Bai⁵, Henrique
4 Furstenuau Togashi^{6,7}, Meng Wang¹, Shuangxi Zhou⁶, Jian Ni^{8,9}

5 1: State Key Laboratory of Soil Erosion and Dryland Farming on the Loess Plateau, College of
6 Forestry, Northwest A&F University, Yangling 712100, China

7 2: School of Archaeology, Geography and Environmental Sciences (SAGES), Reading University,
8 Reading, RG6 6AB, UK

9 3: AXA Chair of Biosphere and Climate Impacts, Imperial College London, Silwood Park Campus,
10 Buckhurst Road, Ascot SL5 7PY, UK

11 4: Ministry of Education Key Laboratory for Earth System Modelling, Department of Earth System
12 Science, Tsinghua University, Beijing 100084, China

13 5: State Key Laboratory of Vegetation and Environmental Change, Institute of Botany, Chinese
14 Academy of Science, Beijing 100093, China

15 6: Department of Biological Sciences, Macquarie University, North Ryde, NSW 2109, Australia

16 7: The Ecosystem Modelling and Scaling Infrastructure Facility, Macquarie University, North
17 Ryde, NSW 2109, Australia

18 8: College of Chemistry and Life Sciences, Zhejiang Normal University, Yingbin Avenue 688,
19 321004 Jinhua, China

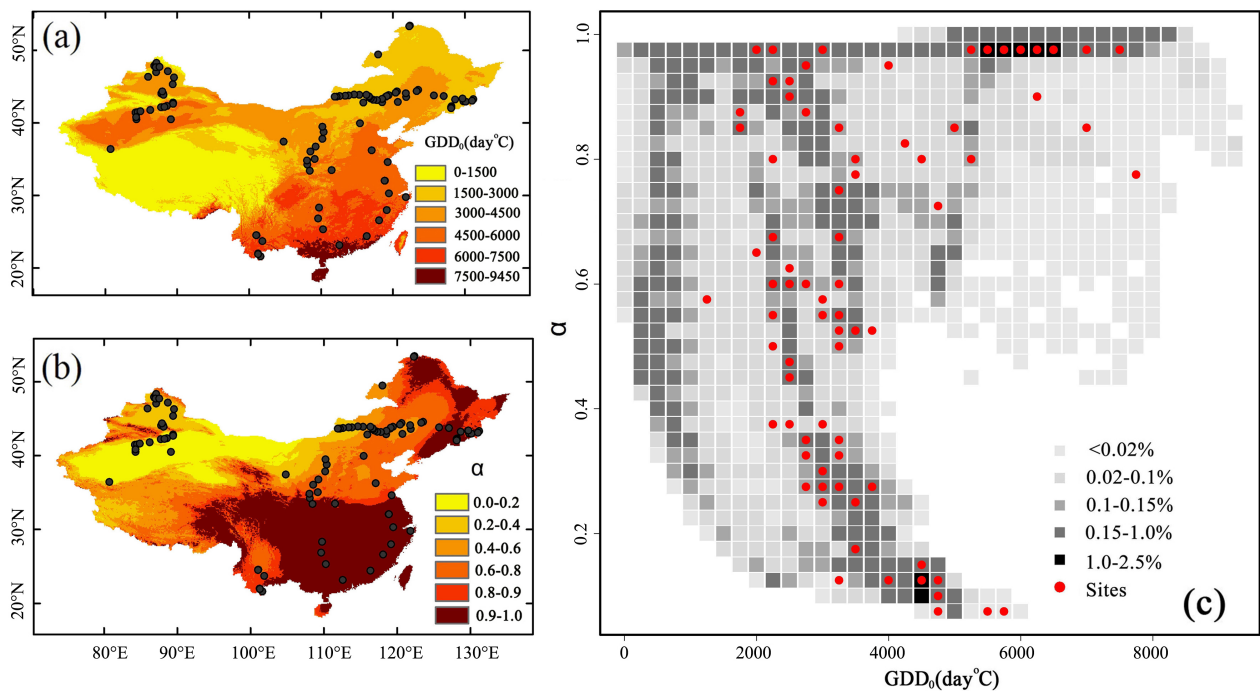
20 9: State Key Laboratory of Environmental Geochemistry, Institute of Geochemistry, Chinese
21 Academy of Sciences, Lincheng West Road 99, 550081 Guiyang, China

22 **Introduction**

23 Plant traits, or more properly plant functional traits (Lavorel et al., 2007; Violle et al., 2007), are
24 observable characteristics that are assumed to reflect eco-evolutionary responses to external
25 conditions (McIntyre et al., 1999; Weiher et al., 1999; Lavorel et al., 2007). They are widely used to
26 represent the responses of vegetation to environmental conditions, and also the effects of vegetation
27 on the environmental and climate, at scales from individuals to biomes. There is a wealth of
28 empirical studies documenting the relationship between specific traits, or groups of traits, in relation
29 to specific environmental constraints, including climate, nutrient availability and disturbance (see
30 syntheses in e.g. Fonseca et al., 2000; Wright et al., 2004; Wright et al., 2005; Diaz et al., 2006;
31 Craine et al., 2009; Ordoñez et al., 2009; Poorter et al., 2009; Hodgson et al., 2011; Poorter et al.,
32 2012; Diaz et al., 2016). More recent work has focused on theoretical understanding of the
33 relationship between traits, function and environment (e.g. Maire et al., 2012; Prentice et al., 2014;
34 Dong et al., 2016; Wang et al., 2016). This forms the basis for using quantitative expressions of
35 these relationships to model the response of plants and ecosystems to environmental change.
36 However, despite considerable progress in both areas, there are still many questions that remain
37 unanswered including e.g., the relative importance of species replacement versus phenotypic
38 plasticity in determining observed trait-environment relationships (Prentice et al., 2011; Meng et al.,
39 2015), the role of within-ecosystem heterogeneity in the expression of key plant traits (Sakschewski
40 et al., 2015), or the controls of plant trait syndromes and the degree to which the existence of such
41 syndromes (Shipley et al., 2006; Liu et al., 2010) can be used to simplify the modelling of plant
42 behavior (Kleidon et al., 2009; Scheiter and Higgins, 2009; van Bodegom et al., 2012, 2014;
43 Scheiter et al., 2013; Fyllas et al., 2014; Wang et al., 2016). The compilation of large data sets,
44 representing a wide range of environmental conditions and including information on a wide range
45 of morphometric, chemical and photosynthesis traits is central to further analyses (Paula et al.,
46 2009; Kattge et al., 2011; Falster et al., 2015).

47 Here we document a new database of plant functional trait information from China. In contrast to
48 previously published studies (Zheng et al., 2007 a, b; Cai et al., 2009; Prentice et al., 2011; Meng et
49 al., 2015), this database has been designed to provide a comprehensive sampling of the different
50 types of vegetation and climate in China. Although some of the data have been included in public-
51 access databases (e.g. TRY: Kattge et al., 2011), we have standardized the taxonomy and applied a
52 consistent method to calculate photosynthetic traits.

53 The climate of China is diverse, and thus it is possible to sample an extremely large range of
 54 moisture and temperature regimes. Growing season temperatures, as measured by the accumulated
 55 temperature sum above 0°C (GDD₀), ranges from close to zero to over 9000 °C days. Moisture
 56 availability, as measured by the ratio of actual to equilibrium evapotranspiration (α) ranges from 0
 57 (hyper-arid) to 1 (saturated): as calculated by Gallego-Sala et al. (2011) (Figure 1). Although
 58 gradients in temperature and moisture are not completely orthogonal, it is possible to find both cold
 59 and warm deserts and wet and dry tropical environments. As a result, most major vegetation types
 60 are represented in the country, with the exception of Mediterranean-type woodlands and forests
 61 (Figure 2). China is characterized by highly seasonal (summer-dominant) monsoonal rainfall, and
 62 there is no equivalent of the winter wet/summer dry climate of Mediterranean regions. Although
 63 much of the natural vegetation of China has been altered by human activities, there are extensive
 64 areas of natural vegetation. Access to these areas is facilitated by the creation of a number of
 65 ecological transects, including the Northeast China Transect (NECT: Ni and Wang, 2004; Nie et al.,
 66 2012; Li et al., 2016) and the North-South Transect of Eastern China (NSTEC: Gao et al., 2003;
 67 Sheng et al., 2011; Gao et al., 2013). In addition, the ChinaFlux network (Leuning and Yu, 2006;
 68 Yu et al., 2006) provides good access to a number of sites with regionally typical natural vegetation.
 69 The China Plant Trait Database currently contains information from **122** sites (Table 1, Figure 1),
 70 which sample the variation along these major climate and vegetation gradients (Figure 2).



71
 72 **Figure 1:** The geographic and climatic distribution of sites in the China Plant Trait Database. The
 73 underlying base maps at 10km resolution show geographic variation in (a) an index of moisture

74 availability (α), which is the ratio of actual to equilibrium evapotranspiration; (b) the accumulated
 75 temperature sum above 0°C (GDD0); and (c) the frequency distribution of 10 km grid cells (grey
 76 squares) in this climate space. The sites are shown as black dots in panels (a) and (b) and as red dots
 77 in panel (c).

78 This paper is structured as follows: Section A provides information about the database as a whole.
 79 The section on the second level metadata (research origin descriptions) is divided into two parts: the
 80 first part describes six generic subprojects which apply to all of the data (specifically taxonomic
 81 standardization, estimation of photosynthetic capacities, provision of photosynthetic pathway
 82 information, plant functional type classification, climate data, provision of standardized vegetation
 83 descriptions) while the second part describes the characteristics of the field data collection. This
 84 second part consists of eleven separate fieldwork subprojects, each of which used somewhat
 85 different sampling strategies and involved the collection of different types of trait data. Most of the
 86 fieldwork subprojects included multiple sites. The final sections of the paper describe the data set
 87 status and accessibility, and the data structural descriptors.

88 **Table 1:** Sites included in the China Plant Trait Database

Site Name	Latitude	Longitude	Collection year	Source	References/Field subproject
NECTS01	42.88	118.48	2006	Authors	Prentice et al. (2011); Meng et al. (2015); see NECT2006
NECTS02	43.64	119.02	2006	Authors	Prentice et al. (2011); Meng et al. (2015); see NECT2006
NECTS03	43.02	129.78	2006	Authors	Prentice et al. (2011); Meng et al. (2015); see NECT2006
NECTS04	42.98	130.08	2006	Authors	Prentice et al. (2011); Meng et al. (2015); see NECT2006
NECTS05	43.30	131.15	2006	Authors	Prentice et al. (2011); Meng et al. (2015); see NECT2006
NECTS06	43.12	131.00	2006	Authors	Prentice et al. (2011); Meng et al. (2015); see NECT2006
NECTS07	43.39	129.67	2006	Authors	Prentice et al. (2011); Meng et al. (2015); see NECT2006

NECTS08	43.25	128.64	2006	Authors	Prentice et al. (2011); Meng et al. (2015); see NECT2006
NECTS09	43.73	127.03	2006	Authors	Prentice et al. (2011); Meng et al. (2015); see NECT2006
NECTS10	43.81	125.68	2006	Authors	Prentice et al. (2011); Meng et al. (2015); see NECT2006
NECTS11	44.59	123.51	2006	Authors	Prentice et al. (2011); Meng et al. (2015); see NECT2006
NECTS12	44.43	123.27	2006	Authors	Prentice et al. (2011); Meng et al. (2015); see NECT2006
NECTS13	43.60	121.84	2006	Authors	Prentice et al. (2011); Meng et al. (2015); see NECT2006
NECTS14	44.12	121.77	2006	Authors	Prentice et al. (2011); Meng et al. (2015); see NECT2006
NECTS15	44.39	120.55	2006	Authors	Prentice et al. (2011); Meng et al. (2015); see NECT2006
NECTS16	44.22	120.37	2006	Authors	Prentice et al. (2011); Meng et al. (2015); see NECT2006
NECTS17	43.88	119.38	2006	Authors	Prentice et al. (2011); Meng et al. (2015); see NECT2006
NECTS18	43.76	119.12	2006	Authors	Prentice et al. (2011); Meng et al. (2015); see NECT2006
NECTS19	43.34	118.49	2006	Authors	Prentice et al. (2011); Meng et al. (2015); see NECT2006
NECTS20	43.19	117.76	2006	Authors	Prentice et al. (2011); Meng et al. (2015); see NECT2006
NECTS21	43.22	117.24	2006	Authors	Prentice et al. (2011); Meng et al. (2015); see NECT2006
NECTS22	43.39	116.89	2006	Authors	Prentice et al. (2011); Meng et al. (2015); see NECT2006
NECTS23	43.55	116.68	2006	Authors	Prentice et al. (2011); Meng et al. (2015); see NECT2006

NECTS24	43.69	116.64	2006	Authors	Prentice et al. (2011); Meng et al. (2015); see NECT2006
NECTS25	43.91	116.31	2006	Authors	Prentice et al. (2011); Meng et al. (2015); see NECT2006
NECTS26	43.90	115.32	2006	Authors	Prentice et al. (2011); Meng et al. (2015); see NECT2006
NECTS27	43.94	114.61	2006	Authors	Prentice et al. (2011); Meng et al. (2015); see NECT2006
NECTS28	43.83	113.83	2006	Authors	Prentice et al. (2011); Meng et al. (2015); see NECT2006
NECTS29	43.80	113.36	2006	Authors	Prentice et al. (2011); Meng et al. (2015); see NECT2006
NECTS30	43.72	112.59	2006	Authors	Prentice et al. (2011); Meng et al. (2015); see NECT2006
NECTS31	43.63	112.17	2006	Authors	Prentice et al. (2011); Meng et al. (2015); see NECT2006
NECTS32	43.66	111.92	2006	Authors	Prentice et al. (2011); Meng et al. (2015); see NECT2006
NECTS33	43.65	111.89	2006	Authors	Prentice et al. (2011); Meng et al. (2015); see NECT2006
NSTEC01	36.24	117.02	2007	Authors	Meng et al. (2015); see NSTEC2007
NSTEC02	34.64	119.24	2007	Authors	Meng et al. (2015); see NSTEC2007
NSTEC03	32.05	118.86	2007	Authors	Meng et al. (2015); see NSTEC2007
NSTEC04	30.29	119.44	2007	Authors	Meng et al. (2015); see NSTEC2007
NSTEC05	29.80	121.79	2007	Authors	Meng et al. (2015); see NSTEC2007
NSTEC06	27.98	119.14	2007	Authors	Meng et al. (2015); see NSTEC2007

NSTEC07	26.59	118.05	2007	Authors	Meng et al. (2015); see NSTEC2007
NSTEC08	24.41	116.34	2007	Authors	Meng et al. (2015); see NSTEC2007
NSTEC09	23.17	112.54	2007	Authors	Meng et al. (2015); see NSTEC2007
NSTEC10	25.32	110.25	2007	Authors	Meng et al. (2015); see NSTEC2007
NSTEC11	26.84	109.60	2007	Authors	Meng et al. (2015); see NSTEC2007
NSTEC12	28.34	109.73	2007	Authors	Meng et al. (2015); see NSTEC2007
NSTEC13	33.50	111.49	2007	Authors	Meng et al. (2015); see NSTEC2007
NSTEC14	39.95	115.42	2007	Authors	Meng et al. (2015); see NSTEC2007
X001	48.19	87.02	2005	Authors	Meng et al. (2015); see Xinjiang2005
X002	46.40	85.95	2005	Authors	Meng et al. (2015); see Xinjiang2005
X003	47.04	87.09	2005	Authors	Meng et al. (2015); see Xinjiang2005
X004	47.83	86.85	2005	Authors	Meng et al. (2015); see Xinjiang2005
X005	47.94	86.83	2005	Authors	Meng et al. (2015); see Xinjiang2005
X006	48.17	87.08	2005	Authors	Meng et al. (2015); see Xinjiang2005
X007	48.11	87.01	2005	Authors	Meng et al. (2015); see Xinjiang2005
X035	48.33	87.12	2005	Authors	Meng et al. (2015); see Xinjiang2005

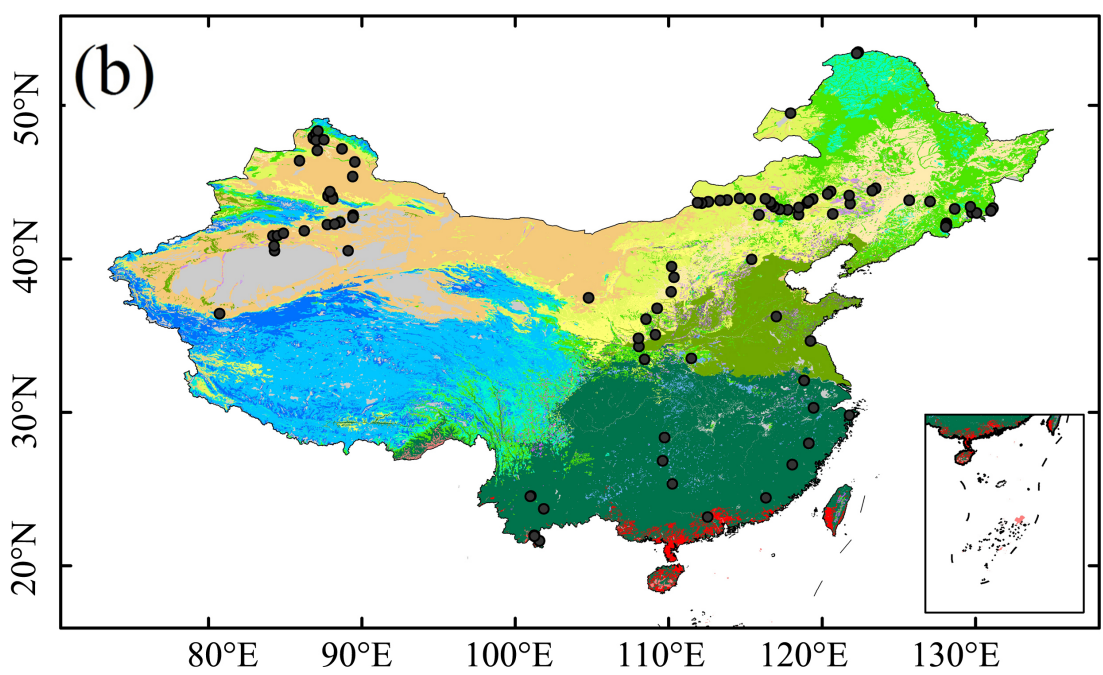
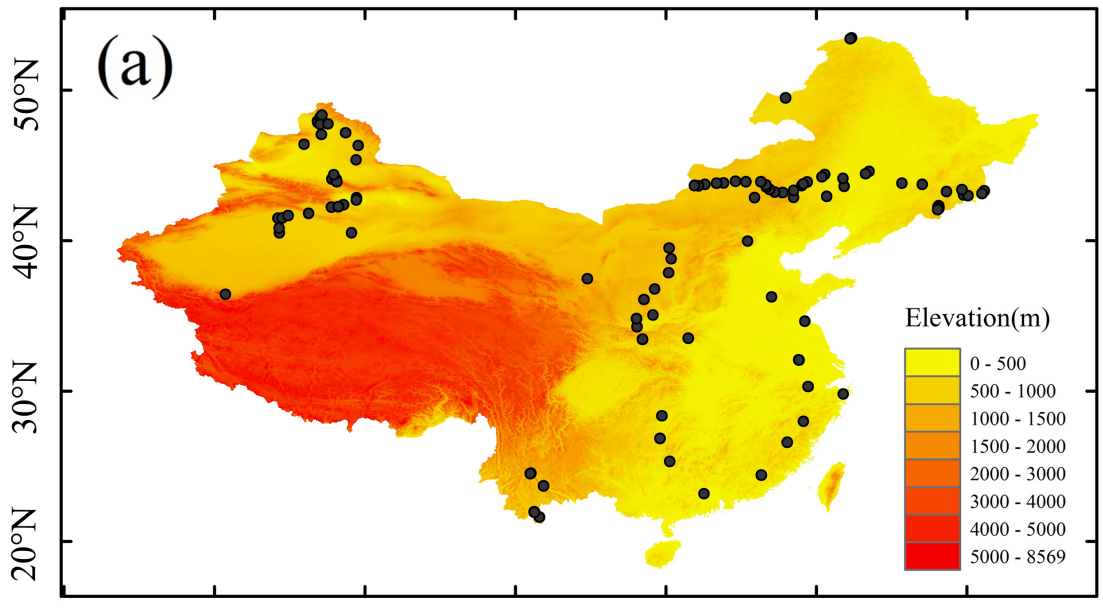
X008	48.33	87.12	2005	Authors	Meng et al. (2015); see Xinjiang2005
X009	47.72	87.02	2005	Authors	Meng et al. (2015); see Xinjiang2005
X010	47.74	87.54	2005	Authors	Meng et al. (2015); see Xinjiang2005
X011	47.16	88.70	2005	Authors	Meng et al. (2015); see Xinjiang2005
X012	46.30	89.55	2005	Authors	Meng et al. (2015); see Xinjiang2005
X013	45.36	89.40	2005	Authors	Meng et al. (2015); see Xinjiang2005
X014	44.12	87.81	2005	Authors	Meng et al. (2015); see Xinjiang2005
X015	44.08	87.79	2005	Authors	Meng et al. (2015); see Xinjiang2005
X016	44.07	88.08	2005	Authors	Meng et al. (2015); see Xinjiang2005
X017	44.00	88.06	2005	Authors	Meng et al. (2015); see Xinjiang2005
X018	43.93	88.11	2005	Authors	Meng et al. (2015); see Xinjiang2005
X034	43.93	88.11	2005	Authors	Meng et al. (2015); see Xinjiang2005
X019	42.84	89.44	2005	Authors	Meng et al. (2015); see Xinjiang2005
X020	42.73	89.44	2005	Authors	Meng et al. (2015); see Xinjiang2005
X021	42.69	89.42	2005	Authors	Meng et al. (2015); see Xinjiang2005
X022	42.37	88.57	2005	Authors	Meng et al. (2015); see Xinjiang2005

X023	42.22	87.76	2005	Authors	Meng et al. (2015); see Xinjiang2005
X024	41.81	86.25	2005	Authors	Meng et al. (2015); see Xinjiang2005
X025	40.51	84.32	2005	Authors	Meng et al. (2015); see Xinjiang2005
X026	40.83	84.29	2005	Authors	Meng et al. (2015); see Xinjiang2005
X027	41.48	84.21	2005	Authors	Meng et al. (2015); see Xinjiang2005
X028	41.50	84.51	2005	Authors	Meng et al. (2015); see Xinjiang2005
X029	41.66	84.89	2005	Authors	Meng et al. (2015); see Xinjiang2005
X030	42.25	88.23	2005	Authors	Meng et al. (2015); see Xinjiang2005
X031	43.90	88.12	2005	Authors	Meng et al. (2015); see Xinjiang2005
X033	40.51	89.11	2005	Authors	Meng et al. (2015); see Xinjiang2005
X032	40.83	84.29	2005	Authors	Meng et al. (2015); see Xinjiang2005
XBTG Rainforest	21.92	101.27	2012	Authors	Unpublished; see Yunnan2012
Unholy Mt	21.98	101.24	2012	Authors	Unpublished; see Yunnan2012
Mengla 1 Rainforest	21.61	101.58	2012	Authors	Unpublished; see Yunnan2012
Mengla 2 Midslope	21.62	101.58	2012	Authors	Unpublished; see Yunnan2012
Long Ling 1	21.62	101.58	2012	Authors	Unpublished; see Yunnan2012

Ailaoshan Flux	24.54	101.03	2013	Authors	Unpublished; see Yunnan2013
Ailaoshan Dwarf	24.54	101.03	2013	Authors	Unpublished; see Yunnan2013
Ailaoshan Mid	24.50	100.99	2013	Authors	Unpublished; see Yunnan2013
Mandan Shrub	23.69	101.85	2013	Authors	Unpublished; see Yunnan2013
Mandan Wood	23.69	101.86	2013	Authors	Unpublished; see Yunnan2013
Ansai_2005	36.77	109.25	2005	Literature	Zheng et al. (2007a, b); see Zheng2007
Fuxian_2005	36.07	108.53	2005	Literature	Zheng et al. (2007a, b); see Zheng2007
Mizhi_2005	37.85	110.17	2005	Literature	Zheng et al. (2007a, b); see Zheng2007
Ningshan	33.43	108.43	2005	Literature	Zheng et al. (2007a, b); see Zheng2007
Shenmu_2005	38.78	110.35	2005	Literature	Zheng et al. (2007a, b); see Zheng2007
Tongchuan	35.05	109.13	2005	Literature	Zheng et al. (2007a, b); see Zheng2007
Yangling	34.27	108.07	2005	Literature	Zheng et al. (2007a, b); see Zheng2007
Yongshou	34.82	108.03	2005	Literature	Zheng et al. (2007a, b); see Zheng2007
Site 1	21.93	101.25	2004	Literature	Cai et al. (2009); see Cai2009
Longwangshan	32.07	118.82	2002	Literature	Sun et al. (2006); see Sun2006
Zijingshan	32.05	118.83	2002	Literature	Sun et al. (2006); see Sun2006

Cele	36.42	80.72	2008	Literature	Liu et al. (2010); see Liu2010
Fukang	44.37	87.92	2008	Literature	Liu et al. (2010); see Liu2010
Shapotou	37.45	104.78	2008	Literature	Liu et al. (2010); see Liu2010
Ordos	39.49	110.20	2008	Literature	Liu et al. (2010); see Liu2010
Otindag	42.86	115.89	2008	Literature	Liu et al. (2010); see Liu2010
Naiman	42.93	120.69	2008	Literature	Liu et al. (2010); see Liu2010
Hulunbeir	49.48	117.95	2008	Literature	Liu et al. (2010); see Liu2010
Changbai 1	42.32	128.12	2014	Authors	Unpublished; see Bai2012
Changbai 6	42.28	128.10	2014	Authors	Unpublished; see Bai2012
Changbai 15	42.23	128.08	2014	Authors	Unpublished; see Bai2012
Changbai 15b	42.18	128.13	2014	Authors	Unpublished; see Bai2012
Changbai 46	42.13	128.11	2014	Authors	Unpublished; see Bai2012
Changbai 57	42.09	128.07	2014	Authors	Unpublished; see Bai2012
Changbai 109	42.07	128.07	2014	Authors	Unpublished; see Bai2012
Changbai 54	42.06	128.06	2014	Authors	Unpublished; see Bai2012
Mohe Flux	53.47	122.34	2016	Authors	Unpublished; see NAFU2016

Mohe Ghost-train	53.46	122.34	2016	Authors	Unpublished; see NAFU2016
Mohe Hilltop	53.39	122.25	2016	Authors	Unpublished; see NAFU2016
Qinling Mixed Forest	33.44	108.44	2016	Authors	Unpublished; see NAFU2016



Vegetation type

- | | |
|--|---|
| ■ Alpine tundra and steppe | ■ Subtropical forest complex |
| ■ Boreal and subalpine forest and shrubland | ■ Subtropical montane forest |
| ■ Cold-resistant crops | ■ Tropical rainforest complex |
| ■ Cold-resistant crops with deciduous orchards | ■ Tropical monsoon forest |
| ■ Sparse alpine vegetation | ■ Temperate steppe |
| ■ Temperate deciduous forest complex | ■ Temperate crops |
| ■ Temperate woodland and dry grassland | ■ Temperate desert |
| ■ Temperate needleleaf forest | ■ No vegetation |
| ■ Subtropical deciduous and mixed forest | |

91 **Figure 2:** The location of sites (black dots) in the China Plant Trait Database. The underlying base
92 maps at 10km resolution show (a) topography and (b) vegetation. Vegetation types are derived from
93 Wang et al., (2013).

94 **METHODS**

95 **METADATA CLASS I. DATA SET DESCRIPTORS**

96 **A. DATA SET IDENTITY**

97 The China Plant Trait Database

98 **B. DATA SET IDENTIFICATION CODE:**

99 **C. DATA SET DESCRIPTORS:**

100 **1. Originators:**

101 The sampling programme and the database were designed by WH, SPH and ICP. WH and SPH
102 compiled the database. YY assisted with literature searches. NJ provided climate and the vegetation
103 atlas data. All co-authors contributed unpublished or published trait data.

104 **2. Abstract.** Plant functional traits provide information about adaptations to climate and
105 environmental conditions, and can be used to explore the existence of alternative plant strategies
106 within ecosystems. Trait data are also increasingly being used to provide parameter estimates for
107 vegetation models. Here we present a new database of plant functional traits from China. Most
108 global climate and vegetation types can be found in China, and thus the database is relevant for
109 global modelling. The China Plant Trait Database contains information on morphometric, physical,
110 chemical and photosynthetic traits from 122 sites spanning the range from boreal to tropical, and
111 from deserts and steppes through woodlands and forests, including montane vegetation. Data
112 collection at each site was based either on sampling the dominant species or on a stratified sampling
113 of each ecosystem layer. The database contains information on 1215 unique species, though many
114 species have been sampled at multiple sites. The original field identifications have been
115 taxonomically standardized to the Flora of China. Similarly, derived photosynthetic traits, such as
116 electron-transport and carboxylation capacities, were calculated using a standardized method. To

117 facilitate trait-environment analyses, the database also contains detailed climate and vegetation
118 information for each site.

119 **D. Keywords**

120 plant traits, leaf morphometry, leaf economics, leaf chemistry, photosynthetic properties, J_{\max} , V_{\max}

121 **METADATA CLASS II. RESEARCH ORIGIN DESCRIPTORS**

122 **B. SPECIFIC SUBPROJECT DESCRIPTION**

123 **GENERIC SUBPROJECTS**

124 **Taxonomic standardization**

125 Data from: Sandy Harrison; standardization of taxon names as recorded in fieldwork subprojects

126 1. Site description

127 All sites in database.

128 2. Experimental or sampling design

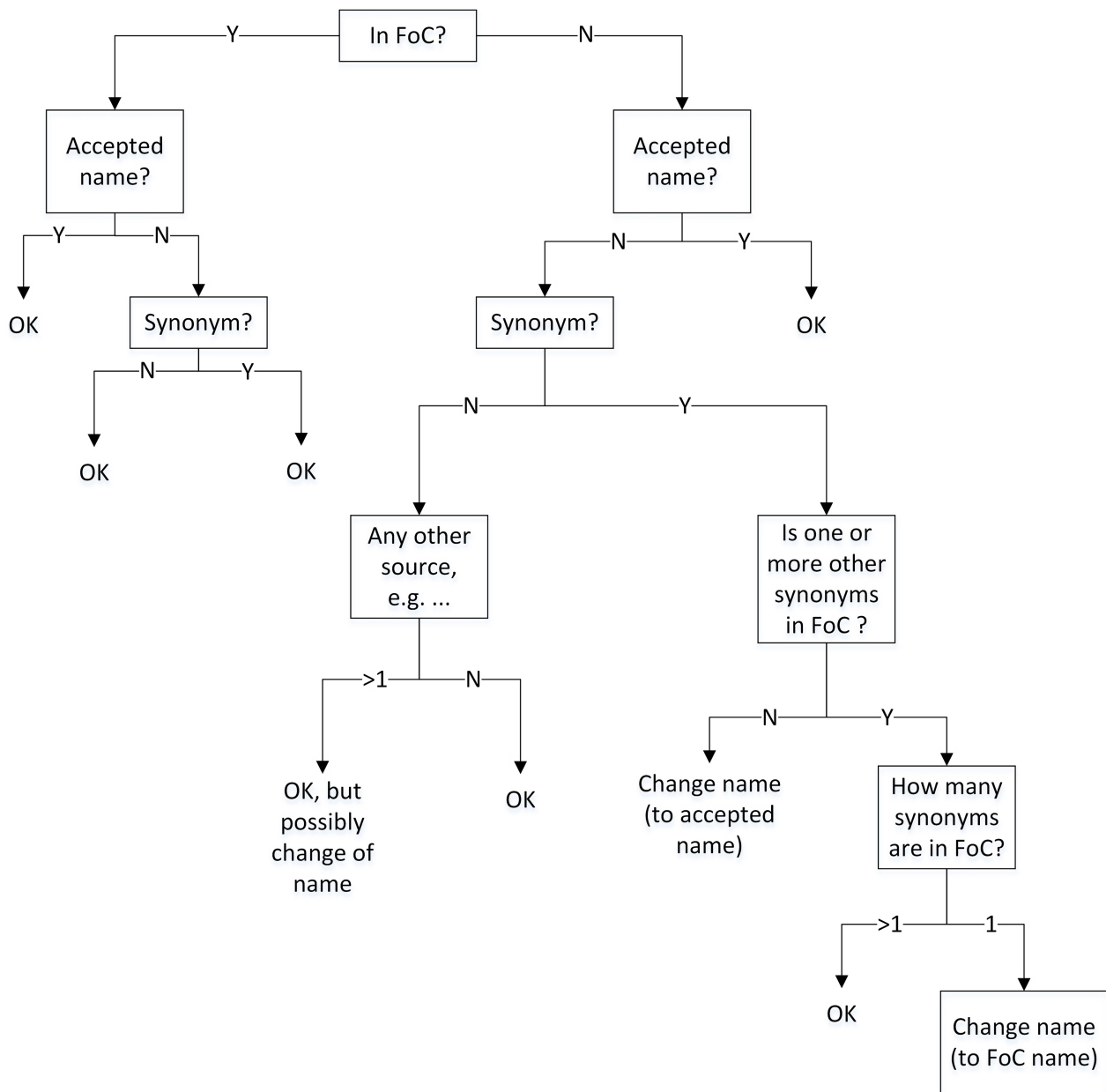
129 a. Variables included: Species ID, Original genus, Original species, Accepted genus, Accepted
130 species, Site ID, Sample ID, Chinese name

131 3. Research methods

132 The sampled taxa were identified in the field by a taxonomist familiar with the local vegetation,
133 most usually using a regional flora. To facilitate comparison between sites, it was necessary to
134 translate these identifications to a common standard. We use the online version of the Flora of
135 China (FoC) as our common standard (http://www.efloras.org/flora_page.aspx?flora_id=2).
136 However, not all of the field-identified species were accepted or included in the Flora of China and
137 thus it was not possible to assign them unambiguously to an accepted taxonomic name. In these
138 cases, we followed a standard procedure to standardize the taxonomy (Figure 4) by first checking
139 whether the name was accepted according to the Plant List (<http://www.theplantlist.org/>), and then
140 checking to see whether there were any synonyms for these accepted names and whether these
141 synonyms were included in the FoC. In a limited number of cases, either there were several

142 synonyms for an accepted name, or the field-assigned name could not be identified either in the
143 FoC or in the Plant List (or in alternative sources such as the Virtual Herbarium of China or
144 TROPICOS). In these cases we have retained the original name. The decisions about taxonomy are
145 described in the table Taxonomic Standardization. The names assigned originally in the field and
146 the accepted standardized names used in the database are given in the table Species Translations. In
147 the subprojects describing fieldwork measurements, we provided the standardized taxonomy for
148 each species, rather than the original names recorded in the field or in the literature.

149 The database also includes a Table that provides the Chinese translation of each of the species that
150 is recognized and accepted by the Flora of China. The written Chinese nomenclature system does
151 not follow the Linnaean system. This Table is designed to facilitate the use of the database by
152 botanists in China. There are no translations of names that are not recognized by the Flora of China
153 and are used in the database by default.



154
 155 **Figure 3:** Flowchart showing the decision tree used to determine the names used in the China Plant
 156 Database (accepted names) and encapsulated in the Taxonomic Corrections table

157 4. Study contacts: Sandy Harrison (s.p.harrison@reading.ac.uk)

158 **Estimation of photosynthetic capacities**

159 Data from: Han Wang and Colin Prentice; calculation of photosynthetic capacities from
 160 photosynthesis field measurements using standardized methodology

161 1. Site description

162 Sites from the fieldwork-based subprojects: NAFU2016, Yunnan2012, Yunnan2013, Cai2009,
163 Zheng2007.

164 2. Experimental or sampling design

165 a. Variables included: V_{cmax} , J_{max}

166 3. Research methods

167 Carboxylation capacity (V_{cmax}) was calculated from the rate of photosynthesis under light and CO₂
168 saturation (A_{sat}) using the so-called one-point method, whose accuracy has been demonstrated
169 against a large data set of A - c_i curves by De Kauwe et al. (2016):

$$170 \quad V_{cmax} = A_{sat} / \{(c_i - \Gamma^*) / (c_i + K) - 0.01\}$$

171 where c_i is the leaf internal CO₂ concentration, Γ^* is the photorespiratory compensation point and K
172 the effective Michaelis-Menten coefficient of Rubisco, both calculated at the measurement
173 temperature and site elevation (mean atmospheric pressure) according to the formulae, *in vivo*
174 reference values and activation energies provided by Bernacchi *et al.* (2001). This method to
175 calculate V_{cmax} depends on the assumption that measurement at saturating light intensity eliminates
176 electron-transport limitation of photosynthesis (De Kauwe et al. 2016). Electron-transport capacity
177 (J_{max}) was then calculated analogously on the assumption that high CO₂ concentration eliminates
178 Rubisco limitation of photosynthesis:

$$179 \quad J_{max} = 4 (A_{max} + 0.01 V_{cmax}) (c_i + 2\Gamma^*) / (c_i - \Gamma^*)$$

180 Values of V_{cmax} and J_{max} are given at the temperatures at which A_{sat} and A_{max} respectively were
181 measured; they have not been corrected to a standard temperature.

182 In a few cases, where field-measured $c_i:c_a$ ratios were not provided but $\delta^{13}C$ measurements were
183 available, estimates of the $c_i:c_a$ ratio were made using the method of Cornwell et al. (2017) to
184 calculate isotopic discrimination (Δ) from $\delta^{13}C$ (correcting for atmospheric $\delta^{13}C$, approximated as a
185 function of time of collection and latitude), and a commonly used simple formula:

$$186 \quad c_i/c_a = (\Delta - 4.4) / (27 - 4.4)$$

187 to derive the $c_i:c_a$ ratio from Δ (see e.g. Cernusak et al. 2013).

188 We include the calculated photosynthetic capacities in the list of variables available for each of the
189 fieldwork subprojects.

190 4. Study contacts: Han Wang (wanghan_sci@yahoo.com)

191 **Standardization of photosynthetic pathway information**

192 Data from: Sandy Harrison; provision of information on photosynthetic pathway for all species in
193 database

194 1. Site description:

195 All sites in database.

196 2. Experimental or sampling design

197 a. Variables included: Species ID, Photo Path

198 3. Research methods

199 Information on photosynthetic pathway (C3, C4, CAM) was derived based on the identification of
200 the pathway for a specific species from the literature, based either on anatomical or isotopic
201 evidence. There are a large number of literature compilations on the photosynthetic pathway of
202 Chinese plants (e.g. Liu et al., 2004; Wang, 2004; Wang, 2005; Liu and Wang, 2006; Su et al.,
203 2011; Wang and Ma, 2016). Where this information was not available from Chinese studies we
204 used similar compilations from other regions of the world (e.g. Winter, 1981; Ueno and Takeda,
205 1992; Akani et al., 1997; Bruhl and Wilson, 2007; Atia et al., 2014; Osborne et al., 2014). We do
206 not include information on photosynthetic pathway for any species unless there is confirmation in
207 the literature.

208 4. Study contacts: Sandy Harrison (s.p.harrison@reading.ac.uk)

209 **Plant Functional Type (PFT) classification**

210 Data from: Sandy Harrison; provision of information allowing classification of species to
211 standardized plant functional types (PFTs) for all species in database

212 1. Site description

213 All sites in database

214 2. Experimental or sampling design

215 a. Variables included: Sample ID, Life form, Plant phenology, Leaf type, Leaf phenology

216 3. Research methods

217 Here we recognize 19 distinct life forms: tree, small tree, low to high shrub, erect dwarf shrub,
218 prostrate dwarf shrub, liana, climber, forb, cushion forb, rosette forb, graminoid, bamboo, cycad,
219 geophyte, stem succulent, succulent, pteridophyte, epiphyte, parasite. Plant phenology is recorded
220 as perennial, biennial or annual. The primary distinction in leaf phenology is between deciduous
221 and evergreen, but the classification used in the database also recognizes facultative deciduousness
222 (semi-deciduous) and leaf-exchangers (i.e. plants that retain their leaves for nearly the whole year
223 but drop and replace all of the leaves in a single short period, rather than replacing some leaves
224 continuously through the year as evergreens do). The concept of leaf phenology is only relevant for
225 woody perennials (trees, shrubs, lianas) and so is not recorded for other plants such as forbs or non-
226 woody climbers.

227 Although these four pieces of information are used by many modellers in the definition of plant
228 functional types (PFTs) (Prentice et al., 2007; Harrison et al., 2010), we recognize that they are not
229 strictly species-specific traits. Thus, some species can occur as a tree, a small tree or a shrub (e.g.
230 *Cyclobalanopsis obovatifolia*), or as a shrub or liana (e.g. *Smilax discotis*), depending on
231 environmental conditions. Similarly, some species can occur as either a liana or a shrub, depending
232 on the environmental conditions. Some species can behave as an evergreen or deciduous plant,
233 depending on moisture availability (e.g. *Ulmus parvifolia*). Thus, this information is recorded for
234 individual species at each site and no attempt is made to ensure that a given species is classified
235 identically at all sites. There are several different classifications of life form (e.g. Raunkiær, 1934;
236 Box, 1981; Prentice et al., 1992; Cornelissen et al., 2003).

237 **Climate data**

238 Data from: Jian Ni, Yanzheng Yang, Han Wang; Jian Ni provided 1 km resolution gridded
239 climatologies of temperature, precipitation and sunshine hours, Yanzheng Yang extracted climate
240 data for each site, and Han Wang estimated bioclimatic variables for site.

241 1. Site description

242 All sites in database

243 2. Experimental or sampling design

244 a. Variables included: Site ID, Lat_grid, Long_grid, Temp Jan, Temp Feb, Temp Mar, Temp April,
245 Temp May, Temp June, Temp July, Temp Aug, Temp Sep, Temp Oct, Temp Nov, Temp Dec, Prec
246 Jan, Prec Feb, Prec Mar, Prec April, Prec May, Prec June, Prec July, Prec Aug, Prec Sep, Prec Oct,
247 Prec Nov, Prec Dec, Sunh Jan, Sunh Feb, Sunh Mar, Sunh April, Sunh May, Sunh June, Sunh July,
248 Sunh Aug, Sunh Sep, Sunh Oct, Sunh Nov, Sunh Dec, MTCO, MAT, MI, alpha, GDD0, mGDD0,
249 PAR0, mPAR0, Prec timing, Prec season, MMP, MAP

250 3. Research methods

251 We derived the climatologies from records from 1814 meteorological stations (740 stations have
252 observations from 1971 to 2000, the rest from 1981 to 1990), interpolated to a 0.01 grid using a
253 three-dimensional thin-plate spline (ANUSPLIN version 4.36; Hancock and Hutchinson, 2006). We
254 then extracted information on monthly mean temperature, precipitation and percentage of possible
255 sunshine hours for each site, and calculated the mean temperature of the coldest month (MTCO),
256 mean annual temperature (MAT), mean monthly precipitation (MMP) and mean annual
257 precipitation (MAP). The climate data were used as inputs to the STASH model (Gallego-Sala et
258 al., 2011), a generic environmental and water-balance model that simulates radiation,
259 evapotranspiration, plant-available moisture and other bioclimatic variables. Thus, in addition to the
260 more conventional meteorological variables, the database contains information on total annual
261 photosynthetically active radiation during the growing season when mean daily temperatures are
262 $>0^{\circ}\text{C}$ (PAR0), the daily mean photosynthetically active radiation during the growing season
263 (mPAR0), growing degree days above a baseline of 0°C (GDD0), the daily mean temperature
264 during the growing season (mGDD0), the ratio of actual to equilibrium evapotranspiration (α), and
265 a moisture index (MI). We also calculated the timing of peak rainfall and rainfall seasonality, using
266 metrics as described in Kelley et al. (2013).

267 4. Study contacts: Han Wang (wanghan_sci@yahoo.com)

268 **Standardization of vegetation description**

269 Data from: Jian Ni, Yanzheng Yang, Han Wang, Sandy Harrison; Jian Ni provided the Vegetation
270 Map of China, Yanzheng Yang extracted the vegetation type for each site, Han Wang and Sandy
271 Harrison provided the clustered vegetation type and biome classification.

272 1. Site description

273 All sites in database

274 2. Experimental or sampling design

275 a. Variables included: Site ID, Fundamental vegetation type, Clustered vegetation type, Biome
276 classification

277 3. Research methods

278 The local vegetation was not necessarily recorded in the field at each site; where descriptions were
279 provided, they did not follow a standard, documented classification scheme. We have therefore
280 provided descriptions of the typical vegetation at the location of all the sites in the database using
281 three alternative sources of information. First, we extracted information from the digital vegetation
282 map of China at the scale of 1:1 million (ca. 250 - 500 m: Zhang et al. 2007). This map classifies
283 vegetation according to 55 plant communities (48 natural plant communities and seven cropping
284 systems). We also provide a simpler vegetation classification, which was derived from this map by
285 Wang et al. (2013) using k-means clustering of the 55 vegetation types based on their bioclimatic
286 context. The resulting re-classification recognises 16 distinct vegetation types. Finally, we also
287 classify the vegetation according to biome, broadly following the scheme used in the BIOME4
288 vegetation model (Kaplan et al., 2003). The biome classification was derived from either the field
289 descriptions or listings of the dominant plant functional types present or on the likely translation of
290 the vegetation map classifications.

291 4. Study contacts: Han Wang (wanghan_sci@yahoo.com)

292 **FIELD SUBPROJECTS**

293 **Bai2012**

294 Data from: Bai Fan (Unpublished)

295 1. Site description

296 a. Site(s) type(s): mixed coniferous and broad-leaved forests, mixed coniferous forest, sub-alpine
297 coniferous forest, birch forest, alpine tundra

298 b. Geography

299 Latitude (°N), longitude (°E), altitude (m above sea level): 42.32, 128.12, 885; 42.28, 128.1, 946;
300 42.23, 128.08, 1034; 42.18, 128.13, 1164; 42.13, 128.11, 1322; 42.09, 128.07, 1595; 42.07, 128.07,
301 1707; 42.06, 128.06, 1859

302 c. Site(s) history: natural vegetation

303 2. Experimental or sampling design

304 a. Design characteristics: All tree and shrub species on the plots were sampled

305 b. Variables included: Average LA, SLA, LMA, LDMC, Cmass, Nmass, Pmass, Narea, Parea

306 c. Species sampled: *Abies nephrolepis*, *Acer mandshuricum*, *Acer pictum*, *Acer*
307 *pseudosieboldianum*, *Acer tegmentosum*, *Acer ukurunduense*, *Corylus mandshurica*, *Deutzia*
308 *parviflora* var. *amurensis*, *Eleutherococcus senticosus*, *Fraxinus mandshurica*, *Larix olgensis*,
309 *Lonicera praeflorens*, *Maackia amurensis*, *Philadelphus schrenkii*, *Pinus koraiensis*, *Quercus*
310 *mongolica*, *Rhamnus davurica*, *Ribes maximowiczianum*, *Sorbaria sorbifolia*, *Spiraea*
311 *chamaedryfolia*, *Syringa reticulata* subsp. *amurensis*, *Tilia amurensis*, *Ulmus davidiana* var.
312 *japonica*, *Ulmus laciniata*, *Euonymus verrucosus*, *Padus avium*, *Populus davidiana*, *Ribes*
313 *mandshuricum*, *Viburnum burejaeticum*, *Acer komarovii*, *Acer barbinerve*, *Berberis amurensis*,
314 *Lonicera edulis*, *Lonicera maximowiczii*, *Picea jezoensis* var. *komarovii*, *Picea koraiensis*, *Rosa*
315 *acicularis*, *Vaccinium uliginosum*, *Ribes horridum*, *Betula ermanii*, *Rhododendron aureum*, *Sorbus*
316 *pohuashanensis*, *Viburnum koreanum*

317 3. Research methods

318 a. Year collected: 2014

319 b. Hard traits:

320 Hard traits were measured following standardized protocols (Cornelissen et al., 2003) for five
321 individuals per species. Leaf area (LA) was calculated as fresh leaf area with pixel counting
322 software WinFolia (Regent Instruments, Toronto, Canada) from digital scans. For needle-leaved

323 trees, leaf area was estimated using the volume replacement method and vernier caliper
324 measurements to obtain length, width and thickness. Leaves were dried (at 60 °C) to constant
325 weight and weighed. Specific leaf area (SLA) was calculated as leaf area divided by oven-dried
326 mass. Leaf dry mass per area (LMA) is the inverse of SLA. Leaf dry matter content (LDMC) is leaf
327 oven-dry weight divided by fresh weight.

328 Leaf carbon content (Cmass) and leaf nitrogen content (Nmass) were measured in the laboratory
329 using an elemental analyser (vario EL III). Leaf phosphorus content (Pmass) was measured using
330 Mo-Sb colorimetric method with ultraviolet spectrophotometer. Area based nutrient contents (Carea,
331 Narea, Parea) were derived by the database compilers using the SLA data.

332 4. Study contacts: Fan Bai (baifan823@ibcas.ac.cn), Han Wang (wanghan_sci@yahoo.com)

333 **NAFU2016**

334 Data from: Unpublished data from Sandy Harrison, Colin Prentice, Han Wang, Meng Wang,
335 Yanzheng Yang

336 1. Site description

337 a. Site(s) type(s): boreal deciduous forest, temperate mixed forest

338 b. Geography

339 Latitude (°N), longitude (°E), altitude (m above sea level): 53.47, 122.34, 290; 53.46, 122.34, 325;
340 53.39, 122.25, 638; 33.44, 108.44, 1514

341 c. Site(s) history: natural vegetation

342 2. Experimental or sampling design

343 a. Design characteristics: A checklist of vascular species at each site was created, and the most
344 common species from each of the structural components of the community were sampled.

345 b. Variables included: Average LA, SLA, LMA, LDMC, Cmass, Nmass, Pmass, Kmass, Narea,
346 Parea, Karea, d13C:12C, Leaf texture, Leaf colour-adaxial, Leaf colour-abaxial, Leaf size, Leaf
347 thickness, Leaf orientation, Leaf display, Leaf shape, Leaf margin, Leaf hairs, Leaf pubescence,
348 Leaf pruinose, Leaf rugose, Leaf waxy, Leaf hypostomatic, Leaf revolute, Leaf involute, Leaf

349 aromatic, Leaf fetid, Leaf driptip, Leaf terminal notch, Leaf surface patterning, Leaf succulence,
350 Leaf spines, Leaf thorns, Leaf retention, Stem form, Stem colour, Stem photo, Stem hairy, Stem
351 pubescent, Stem pruinose, Stem rugose, Stem succulent, Stem spines, Stem thorns, Bark deciduous,
352 Spines elsewhere, Thorns elsewhere, Amax_Photo, Amax_Gs, Amax_Ci:Ca, Amax_E, Amax_VPD,
353 Amax_Tleaf, Amax_CO2, Asat_Photo, Asat_Gs, Asat_Ci:Ca, Asat_E, Asat_VPD, Asat_Tleaf,
354 Asat_CO2

355 c. Species sampled: *Alnus hirsuta*, *Betula fruticosa*, *Betula platyphylla*, *Calamagrostis angustifolia*,
356 *Equisetum arvense*, *Geranium wilfordii*, *Larix gmelinii*, *Ledum palustre*, *Phedimus aizoon*, *Pinus*
357 *sylvestris* var. *mongolica*, *Potentilla fruticosa*, *Rhododendron simsii*, *Rosa acicularis*, *Salix*
358 *raddeana*, *Saussurea japonica*, *Thalictrum aquilegifolium*, *Trollius chinensis*, *Vaccinium*
359 *uliginosum*, *Vaccinium vitis-idaea*, *Vicia sepium*, *Adenophora tetraphylla*, *Fragaria orientalis*,
360 *Populus davidiana*, *Pyrola asarifolia*, *Ribes mandshuricum*, *Sanguisorba officinalis*, *Sorbaria*
361 *sorbifolia*, *Spiraea pubescens*, *Avena fatua*, *Gymnocarpium jessoense*, *Maianthemum bifolium*,
362 *Rubus arcticus*, *Rubus clivicola*, *Paris verticillata*, *Acer oliverianum*, *Anemone hupehensis*, *Carex*
363 *siderosticta*, *Carpinus tschonoskii*, *Celastrus orbiculatus*, *Cornus controversa*, *Cornus kousa* var.
364 *chinensis*, *Elaeagnus umbellata*, *Epimedium sagittatum*, *Euonymus alatus*, *Fargesia nitida*, *Hedera*
365 *nepalensis*, *Holboellia angustifolia*, *Ilex pernyi*, *Juglans mandshurica*, *Kalopanax septemlobus*,
366 *Lespedeza buergeri*, *Litsea pungens*, *Neillia sinensis*, *Paederia foetida*, *Petasites japonicus*, *Pinus*
367 *armandii*, *Pinus tabuliformis*, *Quercus aliena* var. *acutiserrata*, *Rodgersia aesculifolia*, *Schisandra*
368 *sphenanthera*, *Smilax discotis*, *Smilax stans*, *Styrax hemsleyanus*, *Toxicodendron vernicifluum*,
369 *Tsuga chinensis*, *Unknown fern*, *Unknown grass*

370 3. Research methods

371 a. Year collected: 2016

372 b. Hard traits:

373 At least 10 g of leaves were collected for each species. Sunlit leaves of tree species were obtained
374 with long-handled twig shears. The samples were subdivided for the measurement of specific leaf
375 area, leaf dry matter content and the contents of carbon, nitrogen, phosphorus and potassium. The
376 measurements used are averages of three replicates. Leaf area (LA) was determined by scanning
377 five leaves (or more in the case of small leaves, to make up a total area ≥ 20 cm² per species) with a
378 laser scanner and measured using Photoshop on the scanned images. Leaf fresh weight was
379 measured in the field. Dry weight was obtained after air-drying for several days and then oven

380 drying at 75 °C for 48 h. Leaf dry matter content (LDMC) is leaf oven-dry weight divided by fresh
381 weight. Specific leaf area (SLA) was then expressed as the ratio between leaf area and leaf dry
382 mass. LMA is the inverse of SLA. Leaf carbon content (Cmass) was measured by the potassium
383 dichromate volumetric method and leaf nitrogen content (Nmass) by the microkjeldahl method.
384 Leaf phosphorus (Pmass) was analysed colorimetrically (Shimadzu UV-2550). Leaf potassium
385 (Kmass) was measured by Flame Atomic Emission Spectrophotometry (PE 5100 PC). The area-
386 based leaf chemical contents (Carea, Narea, Parea, Karea) were derived as a product of mass based
387 content and LMA. $\delta^{13}\text{C}$ (d13C:12C) was measured using a Finnigan MAT DELTAplusXP Isotope
388 Ratio Mass Spectrometer (Finnigan Corporation, San Jose, CA).

389 c. Morphometric traits:

390 All the morphometric traits were assessed in the field by the same two people (ICP, SPH) using a
391 standardized reporting sheet.

392 d. Photosynthetic traits:

393 The light-saturated rate of net CO₂ fixation under ambient CO₂ (Asat_Photo) and the light-saturated
394 rate of net CO₂ fixation at high CO₂ (Amax_Photo) were obtained from LiCor 6400 measurements
395 in the field. The data on the conditions under which these measurements were made were also
396 collected, including vapour pressure deficit (Asat_VPD, Amax_VPD), leaf temperature
397 (Asat_Tleaf, Amax_Tleaf), the ratio of leaf internal to ambient CO₂ (Asat_Ci:Ca, Amax_Ci:Ca),
398 stomatal conductance (Asat_Gs, Amax_Gs) and transpiration rate (Asat_E, Amax_E).

399 4. Study contacts: Sandy Harrison (s.p.harrison@reading.ac.uk) & Han Wang
400 (wanghan_sci@yahoo.com)

401 **NECT2006**

402 Data from:

403 Prentice, I. C., T. Meng, H. Wang, S. P. Harrison, J. Ni, and G. Wang. 2011. Evidence for a
404 universal scaling relationship of leaf CO₂ drawdown along a moisture gradient. *New Phytologist*
405 190: 169-180;

406 Meng, T.-T., H. Wang, S. P. Harrison, I. C. Prentice, J. Ni, and G. Wang. 2015. Responses of leaf
407 traits to climatic gradients: adaptive variation versus competition shifts. *Biogeosciences* 12: 5339-
408 5352)

409 Additional unpublished morphometric data from Sandy Harrison and Colin Prentice

410 1. Site description

411 a. Site(s) type(s): desert, temperate shrubland, temperate grassland, steppe, temperate broadleaf
412 deciduous forest, temperate deciduous woodland, and temperate needleleaf forest

413 b. Geography

414 Latitude (°N), longitude (°E), altitude (m above sea level): 42.88, 118.48, 1024; 43.64, 119.02, 781;
415 43.02, 129.78, 136; 42.98, 130.08, 114; 43.3, 131.15, 289; 43.12, 131, 244; 43.39, 129.67, 224;
416 43.25, 128.64, 601; 43.73, 127.03, 390; 43.81, 125.68, 252; 44.59, 123.51, 146; 44.43, 123.27, 150;
417 43.6, 121.84, 203; 44.12, 121.77, 202; 44.39, 120.55, 448; 44.22, 120.37, 372; 43.88, 119.38, 601;
418 43.76, 119.12, 729; 43.34, 118.49, 707; 43.19, 117.76, 889; 43.22, 117.24, 1259; 43.39, 116.89,
419 1267; 43.55, 116.68, 1261; 43.69, 116.64, 1211; 43.91, 116.31, 1199; 43.9, 115.32, 1196; 43.94,
420 114.61, 1123; 43.83, 113.83, 1166; 43.8, 113.36, 1017; 43.72, 112.59, 974; 43.63, 112.17, 999;
421 43.66, 111.92, 1005; 43.65, 111.89, 1017

422 c. Site(s) history: natural vegetation

423 2. Experimental or sampling design

424 a. Design characteristics: all sites were occupied by visually homogeneous uncultivated vegetation.
425 For most of the grasslands, which were grazed and finding undisturbed sites was impossible, sites
426 with minimal signs of recent disturbance were sampled. A checklist of vascular species at each site
427 was created, from which the common species were sampled.

428 b. Variables included: Average LA, SLA, LMA, LDMC, Cmass, Nmass, Pmass, Kmass, Narea,
429 Parea, Karea, d13C:12C, d15N:14N, Leaf texture, Leaf colour-adaxial, Leaf colour-abaxial, Leaf
430 size, Leaf thickness, Leaf orientation, Leaf display, Leaf shape, Leaf margin, Leaf hairs, Leaf
431 pubescence, Leaf pruinose, Leaf rugose, Leaf waxy, Leaf hypostomatic, Leaf revolute, Leaf
432 involute, Leaf aromatic, Leaf fetid, Leaf driptip, Leaf terminal notch, Leaf surface patterning, Leaf
433 succulence, Leaf spines, Leaf thorns, Leaf retention, Stem form, Stem colour, Stem photo, Stem

434 hairy, Stem pubescent, Stem pruinose, Stem rugose, Stem succulent, Stem spines, Stem thorns,
435 Bark deciduous, Spines elsewhere, Thorns elsewhere, Fv:Fm, QY

436 c. Species sampled: *Allium senescens*, *Artemisia frigida*, *Artemisia gmelinii*, *Astragalus galactites*,
437 *Astragalus scaberrimus*, *Cleistogenes squarrosa*, *Euphorbia esula*, *Euphorbia humifusa*, *Lespedeza*
438 *davurica*, *Leymus chinensis*, *Polygala tenuifolia*, *Potentilla discolor*, *Scutellaria baicalensis*, *Stipa*
439 *krylovii*, *Thalictrum* sp., *Thymus mongolicus*, *Unidentified forb 1*, *Unidentified grass 1*, *Agropyron*
440 *cristatum*, *Allium* sp., *Anemarrhena asphodeloides*, *Artemisia scoparia*, *Artemisia* sp., *Caragana*
441 *microphylla*, *Cynanchum thesioides*, *Delphinium grandiflorum*, *Echinops* sp., *Erodium*
442 *stephanianum*, *Glycyrrhiza uralensis*, *Haplophyllum dauricum*, *Heteropappus altaicus*, *Medicago*
443 *ruthenica*, *Oxytropis* sp., *Potentilla tanacetifolia*, *Saussurea japonica*, *Saussurea parviflora*,
444 *Scutellaria scordifolia*, *Serratula centauroides*, *Sesamum indicum*, *Stellera chamaejasme*,
445 *Taraxacum mongolicum*, *Thalictrum squarrosus*, *Tragus racemosus*, *Tribulus terrestris*,
446 *Unidentified forb 2.1 (scrof)*, *Unidentified geophyte*, *unidentified scroph*, *Unidentified semi-rosette*
447 *forb 1*, *Unidentified stoloniferous grass*, *Acer pictum*, *Astilbe chinensis*, *Betula utilis*, *Carex*
448 *pediformis*, *Clematis* sp., *Corylus heterophylla*, *Dioscorea nipponica*, *Euonymus alatus*, *Fraxinus*
449 *chinensis subsp. rhynchophylla*, *Hemerocallis middendorffii*, *Lespedeza bicolor*, *Lonicera*
450 *chrysantha*, *Philadelphus tenuifolius*, *Populus davidiana*, *Pteridium aquilinum*, *Ribes amurensis*,
451 *Rosa* sp., *Streptopus streptopoides*, *Thalictrum tuberiferum*, *Tilia amurensis*, *Tilia mandshurica*,
452 *Ulmus davidiana var. japonica*, *Urtica angustifolia*, *Viola* sp., *Artemisia sylvatica*, *Asparagus*
453 *dauricus*, *Calamagrostis epigejos*, *Carex* sp., *Flueggea suffruticosa*, *Ixeris chinensis*, *Lathyrus*
454 *davidii*, *Phlomis maximowiczii*, *Pinus tabuliformis*, *Polygonatum odoratum*, *Prunus padus*, *Quercus*
455 *mongolica*, *Rhamnus schneideri*, *Rubia sylvatica*, *Syneilesis aconitifolia*, *Vicia amoena*, *Viola*
456 *variegata*, *Acer tataricum subsp. ginnala*, *Adenophora tetraphylla*, *Aegopodium alpestre*,
457 *Agrimonia pilosa*, *Asparagus* sp., *Betula albosinensis*, *Betula platyphylla*, *Bromus inermis*,
458 *Campanula glomerata*, *Crataegus* sp., *Eleutherococcus sessiliflorus*, *Equisetum hyemale*, *Fraxinus*
459 *mandshurica*, *Geum* sp., *Larix olgensis*, *Maackia amurensis*, *Mukdenia rossii*, *Onoclea sensibilis*,
460 *Parasenecio hastatus*, *Phellodendron amurense*, *Phragmites australis*, *Rhamnus* sp., *Salix*
461 *gracilistyla*, *Salix viminalis*, *Sorbaria sorbifolia*, *Viburnum sargentii*, *Vicia unijuga*, *Aconitum*
462 *volubile*, *Angelica amurensis*, *Arctium lappa*, *Aster scaber*, *Brachybotrys paridiformis*, *Carex*
463 *appendiculata*, *Caulophyllum robustum*, cf *Prunus/Malus* sp., *Chloranthus japonicus*,
464 *Chrysosplenium alternifolium*, *Eleutherococcus senticosus*, *Equisetum arvense*, *Impatiens furcillata*,
465 *Lonicera maackii*, *Lychnis fulgens*, *Paeonia obovata*, *Pinus koraiensis*, *Rubia* sp., *unidentified*
466 *annual forb*, *Vitis amurensis*, *Artemisia keiskeana*, *Atractylodes japonica*, *Bupleurum*

467 *longiradiatum*, *Clematis fusca* var. *violacea*, *Convallaria majalis*, *Dracocephalum argunense*,
468 *Euonymus verrucosus*, *Euphorbia lucorum*, *Peucedanum terebinthaceum*, *Picea* sp., *Ranunculus*
469 *chinensis*, *Rhododendron* sp., *Scutellaria* sp., *Sedum aizoon*, *Synurus deltoides*, *Trifolium lupinaster*,
470 *Viola acuminata*, *Viola* sp. 1, *Viola* sp. 2, *Viola* sp. 3, *Aconitum kirinense*, *Actaea asiatica*, *Carex*
471 *siderosticta*, *Clintonia udensis*, *Fragaria orientalis*, *Galium dahuricum* var. *lasiocarpum*,
472 *Geranium* sp., *Lilium lancifolium*, *Monotropa hypopitys*, *Paris verticillata*, *Rubus* sp., *Sambucus* sp.,
473 *Ulmus macrocarpa*, *Unidentified forb 2*, *Unidentified forb 3*, *Acer mandshuricum*, *Acer*
474 *tegmentosum*, *Aconitum paniculigerum*, *Actinidia arguta*, *Adiantum pedatum*, *Aralia elata*,
475 *Arisaema heterophyllum*, *Cardamine macrophylla*, *Carex meyeriana*, *Carpinus cordata*, *Dryopteris*
476 *crassirhizoma*, *Glycine soja*, *Hylodesmum podocarpum* subsp. *oxyphyllum*, *Juglans mandshurica*,
477 *Lonicera subhispidata*, *Lygodium alpestre*, *Matteuccia struthiopteris*, *Rubia cordifolia*, *Sanicula*
478 *chinensis*, *Streptopus* sp., *Unidentified ground creeper*, *Viburnum burejaeticum*, *Viola biflora*,
479 *Allium ramosum*, *Artemisia lavandulifolia*, *Artemisia mongolica*, *Artemisia sieversiana*, *Carex*
480 *duriuscula*, *Clematis hexapetala*, *Clematis terniflora* var. *mandshurica*, *Crataegus pinnatifida*,
481 *Crepidiastrum denticulatum*, *Echinochloa crus-galli*, *Iris lactea*, *Kummerowia striata*, *Legousia*
482 *falcata*, *Linum stelleroides*, *Pilosella vaillantii*, *Platycodon grandiflorus*, *Potentilla chinensis*,
483 *Setaria viridis*, *Siphonostegia chinensis*, *Sonchus brachyotus*, *Tripolium pannonicum*, *unidentified*
484 *forb*, *Artemisia anethifolia*, *Aster ageratoides*, *Chloris virgata*, *Inula britannica*, *Kalimeris*
485 *integrifolia*, *Lamium japonicum*, *Melilotus suaveolens*, *Polygonum sibiricum*, *Puccinella*
486 *chinampoensis*, *Sanguisorba officinalis*, *Suaeda glauca*, *Thalictrum simplex*, *Amaranthus*
487 *retroflexus*, *Astragalus adsurgens*, *Eragrostis minor*, *Hieracium denticulatum*, *Kochia scoparia* var.
488 *sieversiana*, *Plantago depressa*, *Potentilla flagellaris*, *Taraxacum ussuriense*, *Xanthium*
489 *strumarium*, *Atriplex gmelinii*, *Chenopodium glaucum*, *Lepidium apetalum*, *Limonium bicolor*,
490 *Metaplexis japonica*, *Salsola collina*, *Sphaerophysa salsula*, *Thermopsis lanceolata*, *Tournefortia*
491 *sibirica*, *Aristida adscensionis*, *Chenopodium acuminatum*, *Allium mongolicum*, *Convolvulus*
492 *arvensis*, *Hedysarum fruticosum*, *Leontopodium leontopodioides*, *Lespedeza juncea*, *Patrinia*
493 *rupestris*, *Pennisetum flaccidum*, *Rhaponticum uniflorum*, *Cuscuta chinensis*, *Dysphania aristata*,
494 *Echinops gmelinii*, *Eragrostis cilianensis*, *Ferula bungeana*, *Medicago lupulina*, *Salix gordejvii*,
495 *Salsola kali* subsp. *ruthenica*, *Agropyron michnoi*, *Artemisia annua*, *Ephedra distachya*,
496 *Polygonum divaricatum*, *Arnebia guttata*, *Atraphaxis manshurica*, *Belamcanda chinensis*,
497 *Cynanchum acutum* subsp. *sibiricum*, *Dianthus chinensis*, *Geranium transbaicalicum*, *Potentilla*
498 *conferta*, *Saposhnikovia divaricata*, *Serratula glauca*, *Sophora flavescens*, *Bassia dasyphylla*,
499 *Scutellaria viscidula*, *Allium neriniflorum*, *Dontostemon integrifolius*, *Leonurus japonicus*, *Carex*
500 *korshinskyi*, *Filifolium sibiricum*, *Potentilla acaulis*, *Potentilla bifurca*, *Stipa grandis*, *Achnatherum*

501 *sibiricum*, *Allium condensatum*, *Bupleurum scorzonerifolium*, *Chenopodium album*, *Cymbaria*
502 *dahurica*, *Galium verum*, *Kochia prostrata*, *Nepeta multifida*, *Orostachys malacophylla*, *Spiraea*
503 *trilobata*, *Cirsium setosum*, *Poa angustifolia*, *Psammochloa villosa*, *Adenophora gmelinii*,
504 *Adenophora stenanthina*, *Astragalus variabilis*, *Gentiana dahurica*, *Oxytropis myriophylla*,
505 *Phlomis tuberosa*, *Caragana stenophylla*, *Ephedra sinica*, *Allium polyrhizum*, *Artemisia pubescens*,
506 *Convolvulus ammannii*, *unidentified chenopod 1*, *Ajania achilleoides*, *Cleistogenes songorica*,
507 *Peganum harmala*, *Scorzonera divaricata*, *Allium bidentatum*, *Allium leucocephalum*, *Festuca*
508 *dahurica*, *Stipa caucasica*, *Astragalus sp.*, *Atraphaxis bracteata*, *Caragana tibetica*, *Hippolytia*
509 *trifida*, *Stipa tianschanica*, *Allium tenuissimum*, *Haplophyllum tragacanthoides*, *Krascheninnikovia*
510 *ceratoides*, *Limonium aureum*, *Reaumuria soongarica*, *Salsola passerina*, *Scorzonera muriculata*

511 3. Research methods

512 a. Year collected: 2006

513 b. Hard traits:

514 Hard traits were measured on samples collected in the field following standard methods
515 (Cornelissen et al., 2011). At least 10 g of leaves were collected for each species. Sunlit leaves of
516 tree species were obtained with long-handled twig shears. The samples were subdivided for the
517 measurement of specific leaf area, leaf dry matter content and the contents of carbon, nitrogen,
518 phosphorus and potassium. The measurements used are averages of three replicates. Leaf area was
519 determined by scanning five leaves (or more in the case of small leaves, to make up a total area \geq
520 20 cm² per species) with a laser scanner. Areas (Average LA) were measured using Photoshop on
521 the scanned images. Leaf fresh weight was measured in the field. Dry weight was obtained after air-
522 drying for several days and then oven drying at 75 °C for 48 h. Leaf dry matter content (LDMC)
523 was expressed as leaf oven-dry weight divided by fresh weight. Specific leaf area (SLA) was then
524 expressed as the ratio between leaf area and leaf dry mass. LMA is the inverse of SLA. Leaf carbon
525 content (C_{mass}) was measured by the potassium dichromate volumetric method and leaf nitrogen
526 content (N_{mass}) by the microkjeldahl method. Leaf phosphorus (P_{mass}) was analysed
527 colorimetrically (Shimadzu UV-2550). Leaf potassium (K_{mass}) was measured by Flame Atomic
528 Emission Spectrophotometry (PE 5100 PC). The area based leaf chemical contents (C_{area}, N_{area},
529 P_{area}, K_{area}) were derived as a product of mass based content and LMA. $\delta^{13}\text{C}$ (d13C:12C) and
530 $\delta^{15}\text{N}$ (d15N:14N) were measured using a Finnigan MAT DELTAplusXP Isotope Ratio Mass
531 Spectrometer (Finnigan Corporation, San Jose, CA).

532 c. Morphological traits

533 All the morphometric traits were assessed in the field by the same two people (ICP, SPH) using a
534 standardized reporting sheet.

535 d. Photosynthetic traits

536 Fv:Fm (the ratio of variable fluorescence to maximal fluorescence) and quantum yield (QY) were
537 measured using a FluorPen FP100 (Photon Systems Instruments, Czech Republic). Fv:Fm measures
538 the potential rate of photosynthetic electron transport while QY measures the actual rate. QY is
539 correlated with photosynthetic rate, although it also includes the diversion of electrons to non-
540 photosynthetic activities such as the elimination of reactive oxygen species (Cavender-Bares and
541 Bazzaz, 2004).

542 4. Study contacts: Han Wang (wanghan_sci@yahoo.com) and Sandy Harrison
543 (s.p.harrison@reading.ac.uk)

544 **NSTEC2007**

545 Data from:

546 Meng, T.-T., H. Wang, S. P. Harrison, I. C. Prentice, J. Ni, and G. Wang. 2015. Responses of leaf
547 traits to climatic gradients: adaptive variation versus competition shifts. *Biogeosciences* 12: 5339-
548 5352

549 Additional unpublished morphometric data from Sandy Harrison and Colin Prentice

550 1. Site description

551 a. Site(s) type(s): temperate evergreen needleleaf forest, subtropical deciduous broadleaf forest,
552 subtropical mixed forest, subtropical evergreen broadleaf forest, tropical shrubland, tropical
553 grassland, subtropical evergreen needleleaf forest, temperate shrubland

554 b. Geography

555 Latitude (°N), longitude (°E), altitude (m above sea level): 36.24, 117.02, 368; 34.64, 119.24, 59;
556 32.05, 118.86, 76; 30.29, 119.44, 299; 29.8, 121.79, 231; 27.98, 119.14, 294; 26.59, 118.05, 239;
557 24.41, 116.34, 195; 23.17, 112.54, 240; 25.32, 110.25, 199; 26.84, 109.6, 390; 28.34, 109.73, 220;
558 33.5, 111.49, 449; 39.95, 115.42, 1253

559 c. Site(s) history: natural vegetation

560 2. Experimental or sampling design

561 a. Design characteristics: A checklist of vascular species at each site was created, from which the
562 common species were sampled.

563 b. Variables included: Average LA, SLA, LMA, LDMC, Cmass, Nmass, Pmass, Kmass, Narea,
564 Parea, Karea, Leaf texture, Leaf colour-adaxial, Leaf colour-abaxial, Leaf size, Leaf thickness, Leaf
565 orientation, Leaf display, Leaf shape, Leaf margin, Leaf hairs, Leaf pubescence, Leaf pruinose,
566 Leaf rugose, Leaf waxy, Leaf hypostomatic, Leaf revolute, Leaf involute, Leaf aromatic, Leaf fetid,
567 Leaf driptip, Leaf terminal notch, Leaf surface patterning, Leaf succulence, Leaf spines, Leaf thorns,
568 Leaf retention, Stem form, Stem colour, Stem photo, Stem hairy, Stem pubescent, Stem pruinose,
569 Stem rugose, Stem succulent, Stem spines, Stem thorns, Bark deciduous, Spines elsewhere, Thorns
570 elsewhere

571 c. Species sampled: *Broussonetia papyrifera*, *Grewia biloba*, *Pinus tabuliformis*, *Quercus*
572 *acutissima*, *Quercus fabrei*, *Robinia pseudoacacia*, *Spiraea trilobata*, *Vitex negundo* var.
573 *heterophylla*, *Vitis heyneana* subsp. *ficifolia*, *Albizia kalkora*, *Cerasus japonica*, *Clerodendrum*
574 *trichotomum*, *Dalbergia hupeana*, *Glochidion puberum*, *Lespedeza thunbergii*, *Platyclusus*
575 *orientalis*, *Platycodon grandiflorus*, *Quercus serrata* var. *breviopetiolata*, *Vitex negundo*,
576 *Zanthoxylum schinifolium*, *Acer buergerianum*, *Alangium chinense*, *Aphananthe aspera*, *Celtis*
577 *sinensis*, *Cercis chinensis*, *Cinnamomum camphora*, *Euonymus alatus*, *Firmiana simplex*,
578 *Hylodesmum podocarpum* subsp. *oxyphyllum*, *Ilex cornuta*, *Juniperus chinensis* var. *chinensis*,
579 *Kalopanax septemlobus*, *Ligustrum lucidum*, *Lindera glauca*, *Liquidambar formosana*, *Maclura*
580 *tricuspidata*, *Osmanthus fragrans*, *Paederia foetida*, *Parthenocissus tricuspidata*, *Phyllostachys*
581 *heteroclada*, *Pinus massoniana*, *Pistacia chinensis*, *Pittosporum tobira*, *Quercus aliena*, *Rosa*
582 *cymosa*, *Rubus parvifolius*, *Serissa serissoides*, *Smilax glaucochina*, *Symplocos paniculata*,
583 *Trachelospermum jasminoides*, *Ulmus parvifolia*, *Vernicia fordii*, *Castanopsis eyrei*, *Castanopsis*
584 *sclerophylla*, *Cunninghamia lanceolata*, *Cyclobalanopsis glauca*, *Diospyros lotus*, *Eurya*
585 *rubiginosa* var. *attenuata*, *Gardenia jasminoides*, *Ilex chinensis*, *Lindera aggregata*, *Loropetalum*
586 *chinense*, *Osmanthus cooperi*, *Photinia glabra*, *Rhaphiolepis indica*, *Rhododendron mariesii*,
587 *Rhododendron ovatum*, *Schima superba*, *Smilax china*, *Symplocos sumuntia*, *Vaccinium*
588 *mandarinorum*, *Wisteria sinensis*, *Ardisia crenata* var. *bicolor*, *Ardisia japonica*, *Camellia fraterna*,
589 *Camellia oleifera*, *Castanopsis carlesii*, *Castanopsis fargesii*, *Celastrus orbiculatus*, *Cleyera*

590 *japonica*, *Cyclobalanopsis gilva*, *Cyclobalanopsis gracilis*, *Cyclobalanopsis stewardiana*,
591 *Dalbergia mimosoides*, *Damnacanthus indicus*, *Dioscorea cirrhosa*, *Dioscorea oppositifolia*,
592 *Elaeocarpus japonicus*, *Eurya rubiginosa*, *Lithocarpus glaber*, *Machilus thunbergii*, *Morinda*
593 *umbellata*, *Myrica rubra*, *Neolitsea aurata* var. *chekiangensis*, *Ormosia henryi*, *Pleioblastus*
594 *amarus*, *Stauntonia chinensis*, *Styrax japonicus*, *Symplocos heishanensis*, *Symplocos stellaris*,
595 *Symplocos viridissima*, *Tylophora silvestris*, *Viburnum erosum*, *Acer cordatum*, *Adina pilulifera*,
596 *Adinandra megaphylla*, *Ampelopsis cantoniensis*, *Antidesma japonicum*, *Callerya reticulata*,
597 *Callicarpa rubella*, *Camellia sinensis*, *Castanopsis fissa*, *Coptosapelta diffusa*, *Cryptomeria*
598 *japonica*, *Distylium myricoides*, *Embelia vestita*, *Euscaphis japonica*, *Ficus pandurata*, *Ficus*
599 *pumila*, *Ilex pubescens*, *Indigofera decora* var. *ichangensis*, *Itea omeiensis*, *Kadsura*
600 *longipedunculata*, *Lasianthus japonicus*, *Laurocerasus spinulosa*, *Litsea wilsonii*, *Lonicera humilis*,
601 *Maesa japonica*, *Oreocnide frutescens*, *Pericampylus glaucus*, *Pittosporum illicioides*, *Premna*
602 *fordii*, *Rosa laevigata*, *Rubus corchorifolius*, *Sabia swinhoei*, *Sageretia thea*, *Smilax glabra*, *Styrax*
603 *obassis*, *Tarenna mollissima*, *Toxicodendron succedaneum*, *Trachelospermum axillare*, *Ulmus*
604 *changii*, *Vaccinium bracteatum*, *Actinidia eriantha*, *Aidia cochinchinensis*, *Alyxia sinensis*,
605 *Ampelopsis grossedentata*, *Ardisia lindleyana*, *Camellia cordifolia*, *Castanopsis fordii*, *Celastrus*
606 *hypoleucus*, *Choerospondias axillaris*, *Daphniphyllum oldhamii*, *Diospyros kaki*, *Diploclisia*
607 *glaucescens*, *Eurya nitida*, *Ficus fulva*, *Fissistigma oldhamii*, *Gnetum parvifolium*, *Helicia*
608 *cochinchinensis*, *Ilex viridis*, *Indocalamus tessellatus*, *Lyonia ovalifolia* var. *elliptica*, *Millettia*
609 *dielsiana*, *Mussaenda pubescens*, *Paulownia kawakamii*, *Phoebe hunanensis*, *Photinia bodinieri*,
610 *Photinia parvifolia*, *Rubus columellaris*, *Sarcandra glabra*, *Sloanea sinensis*, *Smilax lanceifolia*,
611 *Styrax calvescens*, *Styrax odoratissimus*, *Syzygium austrosinense*, *Tarennoidea wallichii*, *Vernicia*
612 *montana*, *Dendrotrophe varians*, *Diospyros morrisiana*, *Diospyros tutcheri*, *Elaeocarpus*
613 *glabripetalus*, *Engelhardia roxburghiana*, *Evodia fargesii*, *Evodia leptota*, *Glochidion eriocarpum*,
614 *Ilex asprella*, *Litsea cubeba*, *Litsea machiloides*, *Mussaenda erosa*, *Rhaphiolepis lanceolata*,
615 *Rhododendron mariae*, *Rhodomyrtus tomentosa*, *Schefflera heptaphylla*, *Schima remotiserrata*,
616 *Tarenna attenuata*, *Triadica cochinchinensis*, *Acronychia pedunculata*, *Aporosa dioica*, *Ardisia*
617 *divergens*, *Ardisia hanceana*, *Ardisia hypargyrea*, *Blastus cochinchinensis*, *Calamus thysanolepis*,
618 *Canarium album*, *Caryota maxima*, *Castanopsis chinensis*, *Cryptocarya chinensis*, *Cryptocarya*
619 *concinna*, *Dasymaschalon rostratum*, *Diospyros eriantha*, *Dischidia chinensis*, *Erycibe obtusifolia*,
620 *Erythrophleum fordii*, *Ficus virens*, *Fissistigma glaucescens*, *Garcinia oblongifolia*, *Gironniera*
621 *subaequalis*, *Gnetum montanum*, *Ixora chinensis*, *Lindera chunii*, *Machilus chinensis*, *Melastoma*
622 *sanguineum*, *Meliosma cuneifolia*, *Memecylon ligustrifolium*, *Microdesmis caseariifolia*, *Ormosia*
623 *glaberrima*, *Picrasma chinensis*, *Piper chinense*, *Psychotria serpens*, *Rourea minor*, *Sarcosperma*

624 *arboreum*, *Smilax hypoglauca*, *Sterculia lanceolata*, *Syzygium acuminatissimum*, *Tetracera*
625 *sarmentosa*, *Tetrastigma hemsleyanum*, *Tetrastigma planicaule*, *Alchornea trewioides*, *Bauhinia*
626 *championii*, *Celastrus hindsii*, *Croton tigilium*, *Decaspermum fruticosum*, *Ficus variolosa*, *Fordia*
627 *cauliflora*, *Ilex hylonoma*, *Litsea coreana* var. *sinensis*, *Maclura cochinchinensis*, *Myrsine*
628 *kwangsiensis*, *Pueraria montana* var. *lobata*, *Radermachera sinica*, *Smilax biumbellata*, *Triadica*
629 *rotundifolia*, *Zanthoxylum bungeanum*, *Acer coriaceifolium*, *Camellia furfuracea*, *Carya*
630 *hunanensis*, *Celastrus gemmatus*, *Clematis armandii*, *Dalbergia hancei*, *Dichroa febrifuga*,
631 *Diospyros miaoshanica*, *Euonymus dielsianus*, *Eurya loquaiana*, *Ficus henryi*, *Hovenia acerba*,
632 *Hylodesmum podocarpum* subsp. *fallax*, *Laurocerasus zippeliana*, *Ligustrum sinense*, *Lindera*
633 *communis*, *Lindera megaphylla*, *Litsea coreana*, *Machilus pauhoi*, *Macropanax rosthornii*, *Maesa*
634 *perlaria*, *Mallotus philippensis*, *Parthenocissus laetevirens*, *Phoebe sheareri*, *Photinia*
635 *beauverdiana*, *Piper hancei*, *Piper wallichii*, *Rubus ichangensis*, *Rubus irenaeus*, *Rubus malifolius*,
636 *Sageretia henryi*, *Smilax polycolea*, *Symplocos cochinchinensis* var. *laurina*, *Tetrastigma*
637 *wulinshanense*, *Toxicodendron sylvestre*, *Turpinia arguta*, *Viburnum brachybotryum*, *Viburnum*
638 *dilatatum*, *Akebia trifoliata*, *Aralia chinensis*, *Castanea seguinii*, *Cinnamomum appelianum*,
639 *Clerodendrum mandarinorum*, *Cornus wilsoniana*, *Diospyros cathayensis*, *Elaeagnus henryi*,
640 *Eleutherococcus trifoliatus*, *Eurya alata*, *Ficus heteromorpha*, *Ficus sarmentosa* var. *henryi*,
641 *Hylodesmum podocarpum*, *Jasminum lanceolaria*, *Mahonia japonica*, *Mussaenda shikokiana*,
642 *Rhamnus leptophylla*, *Zanthoxylum echinocarpum*, *Artemisia capillaris*, *Asparagus brachyphyllus*,
643 *Coriaria nepalensis*, *Cotinus coggygria*, *Lespedeza bicolor*, *Lonicera tatarinowii*, *Periploca sepium*,
644 *Pyrus betulifolia*, *Quercus baronii*, *Quercus chenii*, *Rhus chinensis*, *Vitis bryoniifolia*, *Zelkova*
645 *serrata*, *Abelia biflora*, *Acer pictum*, *Cornus bretschneideri* var. *bretschneideri*, *Corylus*
646 *heterophylla*, *Fraxinus bungeana*, *Juglans mandshurica*, *Lonicera maackii*, *Quercus mongolica*,
647 *Rubus xanthocarpus*, *Spiraea pubescens*, *Tilia paucicostata*, *Ulmus davidiana* var. *japonica*

648 3. Research methods

649 a. Year collected: 2007

650 b. Hard traits:

651 Hard traits were measured on samples collected in the field following standard methods
652 (Cornelissen et al., 2011). At least 10 g of leaves were collected for each species. Sunlit leaves of
653 tree species were obtained with long-handled twig shears. The samples were subdivided for the
654 measurement of specific leaf area, leaf dry matter content and the contents of carbon, nitrogen,

655 phosphorus and potassium. The measurements used are averages of three replicates. Leaf area was
656 determined by scanning five leaves (or more in the case of small leaves, to make up a total area \geq
657 20 cm² per species) with a laser scanner. Areas (Average LA) were measured using Photoshop on
658 the scanned images. Leaf fresh weight was measured in the field. Dry weight was obtained after air-
659 drying for several days and then oven drying at 75 °C for 48 h. Leaf dry matter content (LDMC)
660 was expressed as leaf oven-dry weight divided by fresh weight. Specific leaf area (SLA) was then
661 expressed as the ratio between leaf area and leaf dry mass. LMA is the inverse of SLA. Leaf carbon
662 content (Cmass) was measured by the potassium dichromate volumetric method and leaf nitrogen
663 content (Nmass) by the microkjeldahl method. Leaf phosphorus (Pmass) was analysed
664 colorimetrically (Shimadzu UV-2550). Leaf potassium (Kmass) was measured by Flame Atomic
665 Emission Spectrophotometry (PE 5100 PC). The area based leaf chemical contents (Carea, Narea,
666 Parea, Karea) were derived as a product of mass based content and LMA.

667 c. Morphometric traits:

668 All the morphometric traits were assessed in the field by the same two people (ICP, SPH) using a
669 standardized reporting sheet.

670 4. Study contacts: Jian Ni (nijian@vip.skleg.cn), Han Wang (wanghan_sci@yahoo.com) and Sandy
671 Harrison (s.p.harrison@reading.ac.uk)

672 **Xinjiang2005**

673 Data from: Meng, T.-T., H. Wang, S. P. Harrison, I. C. Prentice, J. Ni, and G. Wang. 2015.
674 Responses of leaf traits to climatic gradients: adaptive variation versus competition shifts.
675 Biogeosciences 12: 5339-5352

676 Additional unpublished morphometric data from Sandy Harrison and Colin Prentice

677 1. Site description

678 a. Site(s) type(s): desert, temperate steppe, temperate shrubland, and temperate deciduous
679 woodland

680 b. Geography

681 Latitude (°N), longitude (°E), altitude (m above sea level): 48.19, 87.02, 272; 46.4, 85.94, 701;
682 47.04, 87.09, 620; 47.83, 86.85, 499; 47.94, 86.83, 481; 48.17, 87.08, 709; 48.11, 87.01, 1100;

683 48.33, 87.12, 1595; 48.33, 87.12, 1595; 47.72, 87.02, 498; 47.74, 87.54, 521; 47.16, 88.7, 750; 46.3,
684 89.55, 885; 45.36, 89.4, 1068; 44.12, 87.81, 513; 44.08, 87.79, 583; 44.07, 88.08, 852; 43.99, 88.06,
685 1060; 43.93, 88.11, 1430; 43.93, 88.11, 1430; 42.84, 89.44, -91; 42.73, 89.44, -136; 42.69, 89.42, -
686 146; 42.37, 88.57, 1721; 42.22, 87.76, 1445; 41.81, 86.25, 1444; 40.51, 84.32, 931; 40.83, 84.29,
687 921; 41.48, 84.21, 928; 41.5, 84.51, 919; 41.66, 84.89, 902; 42.25, 88.23, 966; 43.9, 88.12, 1935;
688 40.51, 89.11, 70; 40.83, 84.29, 26

689 c. Site(s) history: natural vegetation

690 2. Experimental or sampling design

691 a. Design characteristics: Only dominant species were sample at 19 sites; the remaining 16 sites
692 were sampled for a limited number of key species. Details can be found in the 'Sites' table in the
693 database

694 b. Variables included: Average LA, SLA, LMA, LDMC, Nmass, Narea, Leaf texture, Leaf colour-
695 adaxial, Leaf colour-abaxial, Leaf size, Leaf thickness, Leaf orientation, Leaf display, Leaf shape,
696 Leaf margin, Leaf hairs, Leaf pubescence, Leaf pruinose, Leaf rugose, Leaf waxy, Leaf
697 hypostomatic, Leaf revolute, Leaf involute, Leaf aromatic, Leaf fetid, Leaf driptip, Leaf terminal
698 notch, Leaf surface patterning, Leaf succulence, Leaf spines, Leaf thorns, Leaf retention, Stem form,
699 Stem colour, Stem photo, Stem hairy, Stem pubescent, Stem pruinose, Stem rugose, Stem succulent,
700 Stem spines, Stem thorns, Bark deciduous, Spines elsewhere, Thorns elsewhere

701 c. Species sampled: *Agriophyllum squarrosum*, *Halogeton sp.*, *Haloxyton ammodendron*, *Kalidium*
702 *foliatum*, *Reaumuria soongarica*, *Salicornia europaea*, *Salsola sp.*, *Suaeda microphylla*,
703 *Amaranthus sp.*, *Artemisia sp.*, *Atriplex centralasiatica*, *Chenopodium iljinii*, *Chloris sp.*,
704 *Corispermum chinganicum*, *Cynoglossum divaricatum*, *Eragrostis minor*, *Halogeton glomeratus*,
705 *Halostachys caspica*, *Nitraria roborowskii*, *Nitraria tangutorum*, *Salsola collina*, *Stipa sp.*,
706 *Sympegma regelii*, *Tribulus terrestris*, *Zygophyllum fabago*, *Ajania fruticulosa*, *Alhagi sparsifolia*,
707 *Allium polyrhizum*, *Anabasis salsa*, *Astragalus sp.*, *Ceratocarpus arenarius*, *Cleistogenes*
708 *squarrosa*, *Krascheninnikovia ceratoides*, *Serratula marginata*, *Allium chrysanthum*, *Anabasis sp.*,
709 *Artemisia desertorum*, *Atraphaxis frutescens*, *Bassia dasyphylla*, *Kochia prostrata*, *Limonium sp.*,
710 *Limonium sp.1*, *Limonium sp.2*, *Nanophyton erinaceum*, *Pyrethrum sp.*, *Setaria viridis*, *Suaeda*
711 *salsa*, *unidentified chenopod*, *Xanthium strumarium*, *Aristida adscensionis*, *Asterothamnus centrali-*
712 *asiaticus*, *Calligonum rubicundum*, *Ephedra intermedia*, *Saussurea epilobioides*, *Sonchus oleraceus*,
713 *Artemisia scoparia*, *Asteraceae sp.*, *Carex sp.*, *Carlina biebersteinii*, *Chenopodiaceae sp.*,

714 *Chenopodium sp.*, *Chenopodium vulvaria*, *Dianthus chinensis*, *Dracocephalum sp.*, *Echinops sp.*,
715 *Geranium sp.*, *Polygonum aviculare*, *Achillea millefolium*, *Juniperus chinensis*, *Juniperus sabina*
716 *var. sabina*, *Spiraea media*, *Larix sibirica*, *Cyperus sp.*, *Erodium oxyrrhynchum*, *Fragaria*
717 *pentaphylla*, *Meconopsis sp.*, *Mentha sp.1*, *Mentha sp.2*, *Nepeta cataria*, *Polygonum sp.*, *Potentilla*
718 *sp.*, *Stachys sp.*, *Thymus mongolicus*, *Achnatherum splendens*, *Artemisia kanashiroi*, *Caragana*
719 *microphylla*, *Cynanchum chinense*, *Myosotis asiatica*, *Nitraria sibirica*, *Plantago lanceolata*,
720 *Polycnemum arvense*, *Senecio sp.*, *Silene sp.*, *Sophora alopecuroides*, *Sphaerophysa salsula*,
721 *Peganum harmala*, *Suaeda prostrata*, *Anabasis truncata*, *Artemisia frigida*, *Haloxylon sp.*,
722 *Anabasis aphylla*, *Amaranthus retroflexus*, *Suaeda physophora*, *Tamarix sp.*, *Poa annua*,
723 *Solanaceae sp.*, *Suaeda sp.*, *Askellia flexuosa*, *Cirsium sp.*, *Urtica cannabina*, *Euphorbia sp.*,
724 *Medicago sativa*, *Portulaca oleracea*, *Potentilla bifurca*, *Spiraea mongolica*, *Berberis amurensis*,
725 *Corydalis pallida*, *Cotoneaster multiflorus*, *Populus euphratica*, *Rosa sp.*, *Rumex sp.*, *Ulmus pumila*,
726 *Berberis sp.*, *Karelinia caspia*, *Lycium ruthenicum*, *Phragmites australis*, *Tamarix hispida*,
727 *Ephedra glauca*, *Zygophyllum kaschgaricum*, *Zygophyllum xanthoxylon*, *Brassicaceae sp.*, *Suaeda*
728 *heterophylla*, *unidentified forb*, *Myricaria sp.*, *Anemone sp.*, *Caltha palustris*, *Picea schrenkiana*,
729 *Stellaria soongorica*, *Taraxacum sp.*, *Trifolium sp.*, *unknown sp.*, *Viola sp.*, *Ammopiptanthus*
730 *mongolicus*, *Euonymus maackii*, *Poaceae sp. 1*, *Poaceae sp. 2*

731 3. Research methods

732 a. Year collected: 2005

733 b. Hard traits:

734 Hard traits were measured on samples collected in the field following standard methods
735 (Cornelissen et al., 2011). At least 10 g of leaves were collected for each species, except for a few
736 species with very small leaves at the driest sites, where at least 2 g of leaves were collected. Sunlit
737 leaves of tree species were obtained with long-handled twig shears. The samples were subdivided
738 for the measurement of specific leaf area, leaf dry matter content and nitrogen contents. The
739 measurements used are averages of three replicates. Leaf area was determined by scanning three
740 replicate sets of five leaves (or more in the case of small leaves, to make up a total area ≥ 20 cm²
741 per replicate) with a laser scanner. Areas (Average LA) were measured using Photoshop on the
742 scanned images. Leaf fresh weight was measured in the field. Dry weight was obtained after air-
743 drying for several days and then oven drying at 75 °C for 48 h. Leaf dry matter content (LDMC) is
744 leaf oven-dry weight divided by fresh weight. Specific leaf area (SLA) was then expressed as the

745 ratio between leaf area and leaf dry mass. LMA is the inverse of SLA. Leaf leaf nitrogen content
746 (N_{mass}) by the microkjeldahl method. Area-based leaf nitrogen contents (N_{area}) were derived by
747 the database compilers as a product of mass based content and LMA.

748 c. Morphometric traits:

749 All the morphometric traits were assessed in the field by the same two people (ICP, SPH) using a
750 standardized reporting sheet.

751 4. Study contacts: Jian Ni (nijian@vip.skleg.cn) and Sandy Harrison (s.p.harrison@reading.ac.uk)

752 **Yunnan2012**

753 Data from: Sandy Harrison, Jian Ni, Colin Prentice, Henrike Furstenau Togashi, Han Wang
754 (Unpublished)

755 1. Site description

756 a. Site(s) type(s): tropical evergreen broadleaf forest, tropical shrubland, tropical deciduous
757 broadleaf forest

758 b. Geography

759 Latitude (°N), longitude (°E), altitude (m above sea level): 21.92, 101.27, 502; 21.98, 101.24, 1075;
760 21.61, 101.58, 668; 21.62, 101.58, 828; 21.62, 101.58, 1034

761 c. Site(s) history: natural vegetation

762 2. Experimental or sampling design

763 a. Design characteristics: A checklist of vascular species at each site was created, from which the
764 common species were sampled.

765 b. Variables included: Average LA, SLA, LMA, LDMC, C_{mass}, N_{mass}, P_{mass}, K_{mass}, N_{area},
766 P_{area}, K_{area}, δ¹³C:12C, δ¹⁵N:14N, Leaf texture, Leaf colour-adaxial, Leaf colour-abaxial, Leaf
767 size, Leaf thickness, Leaf orientation, Leaf display, Leaf shape, Leaf margin, Leaf hairs, Leaf
768 pubescence, Leaf pruinose, Leaf rugose, Leaf waxy, Leaf hypostomatic, Leaf revolute, Leaf
769 involute, Leaf aromatic, Leaf fetid, Leaf driptip, Leaf terminal notch, Leaf surface patterning, Leaf
770 succulence, Leaf spines, Leaf thorns, Leaf retention, Stem form, Stem colour, Stem photo, Stem

771 hairy, Stem pubescent, Stem pruinose, Stem rugose, Stem succulent, Stem spines, Stem thorns,
772 Bark deciduous, Spines elsewhere, Thorns elsewhere, Amax_Photo, Amax_Gs, Amax_Ci:Ca,
773 Amax_E, Amax_VPD, Amax_Tleaf, Amax_CO2, Asat_Photo, Asat_Gs, Asat_Ci:Ca, Asat_E,
774 Asat_VPD, Asat_Tleaf, Asat_CO2, Vcmax, Jmax

775 c. Species sampled: *Acacia pennata*, *Aesculus lantsangensis*, *Ailanthus fordii*, *Albizia lucidior*,
776 *Alstonia scholaris*, *Amischotholype hispida*, *Antiaris toxicaria*, *Ardisia virens*, *Baccaurea ramiflora*,
777 *Barringtonia macrostachya*, *Bolbitis heteroclita*, *Canarium album*, *Castanopsis indica*, *Elatostema*
778 *rupestre*, *Embelia vestita*, *Ficus auriculata*, *Ficus cyrtophylla*, *Ficus subulata*, *Garcinia cowa*,
779 *Garuga floribunda* var. *gamblei*, *Justicia patentiflora*, *Knema cinerea* var. *glauca*, *Laurocerasus*
780 *zippeliana*, *Leea compactiflora*, *Lepisanthes senegalensis*, *Macropanax decandrus*, *Magnolia*
781 *henryi*, *Millettia leptobotrya*, *Parashorea chinensis*, *Pellacalyx yunnanensis*, *Phlogacanthus*
782 *curviflorus*, *Phoebe lanceolata*, *Pittosporopsis kerrii*, *Poikilospermum lanceolatum*, *Pometia*
783 *pinnata*, *Psychotria calocarpa*, *Psychotria henryi*, *Pterospermum menglunense*, *Sterculia*
784 *brevissima*, *Stereospermum colais*, *Syzygium megacarpum*, *Tetrastigma cauliflorum*, *Vitex quinata*,
785 *Xerospermum bonii*, *Ziziphus fungii*, *Actinodaphne henryi*, *Antidesma acidum*, *Aporosa*
786 *yunnanensis*, *Balakata baccata*, *Benkara sinensis*, *Betula alnoides*, *Bridelia stipularis*,
787 *Campylotropis pinetorum*, *Canthium horridum*, *Castanopsis argyrophylla*, *Castanopsis hystrix*,
788 *Celastrus paniculatus*, *Choerospondias axillaris*, *Cibotium barometz*, *Crassocephalum crepidioides*,
789 *Cratoxylum cochinchinense*, *Dalbergia pinnata*, *Dicranopteris ampla*, *Engelhardia spicata*, *Eurya*
790 *pittosporifolia*, *Fordia cauliflora*, *Gnetum montanum*, *Ilex godajam*, *Leea indica*, *Meliosma*
791 *arnottiana*, *Phoebe puwenensis*, *Sarcosperma arboreum*, *Saurauia yunnanensis*, *Schima wallichii*,
792 *Smilax hypoglauca*, *Tarennoidea wallichii*, *Thysanolaena latifolia*, *Toddalia asiatica*, *Toona ciliata*,
793 *Toxicodendron acuminatum*, *Trema tomentosa*, *Turpinia pomifera*, *Urena lobata*, *Acanthus*
794 *leucostachyus*, *Alphonsea monogyna*, *Anthocephalus chinensis*, *Antidesma montanum*, *Boehmeria*
795 *clidemioides*, *Byttneria aspera*, *Caesalpinia coriaria*, *Capparis fohaiensis*, *Cinnamomum*
796 *bejolghota*, *Cleidion brevipetiolatum*, *Diospyros hasseltii*, *Diospyros nigrocortex*, *Duabanga*
797 *grandiflora*, *Dysoxylum gotadhora*, *Elaeocarpus glabripetalus*, *Elaeocarpus rugosus*, *Hopea*
798 *chinensis*, *Knema furfuracea*, *Knema globularia*, *Maesa permollis*, *Mitrephora tomentosa*, *Mycetia*
799 *gracilis*, *Orophea creaghii*, *Ostodes katharinae*, *Phrynium placentarium*, *Saprosma ternatum*,
800 *Sloanea tomentosa*, *Smilax zeylanica*, *Terminalia myriocarpa*, *Tetrastigma planicaule*, *Uncaria*
801 *laevigata*, *Ardisia thyrsoiflora*, *Beilschmiedia purpurascens*, *Castanopsis echinocarpa*, *Diospyros*
802 *sp.*, *Elaeocarpus sylvestris*, *Elaeocarpus varunua*, *Lithocarpus grandifolius*, *Lithocarpus sp.*, *Litsea*
803 *verticillata*, *Nephelium chryseum*, *Polyalthia simiarum*, *Syzygium oblatum*, *Actinodaphne obovata*,

804 *Bauhinia erythropoda*, *Costus speciosus*, *Desmos yunnanensis*, *Ficus semicordata*, *Glochidion*
805 *lanceolarium*, *Gnetum parvifolium*, *Goniothalamus griffithii*, *Lasianthus verticillatus*, *Lithocarpus*
806 *auriculatus*, *Litsea monopetala*, *Melastoma malabathricum*, *Phoebe shearerii*, *Poikilospermum*
807 *suaveolens*, *Pollicia thyrsoiflora*, *Sarcosperma kachinense* var. *simondii*, *Tabernaemontana*
808 *corymbosa*, *Walsura pinnata*

809 3. Research methods

810 a. Year collected: 2012

811 b. Hard traits:

812 Hard traits were measured on samples collected in the field following standard methods
813 (Cornelissen et al., 2011). At least 10 g of leaves were collected for each species. Sunlit leaves of
814 tree species were obtained with long-handled twig shears. The samples were subdivided for the
815 measurement of specific leaf area, leaf dry matter content and the contents of carbon, nitrogen,
816 phosphorus and potassium. The measurements used are averages of three replicates. Leaf area was
817 determined by scanning five leaves (or more in the case of small leaves, to make up a total area \geq
818 20 cm² per species) with a laser scanner. Areas (Average leaf area) were measured using Photoshop
819 on the scanned images. Leaf fresh weight was measured in the field. Dry weight was obtained after
820 air-drying for several days and then oven drying at 75 °C for 48 h. Leaf dry matter content (LDMC)
821 was expressed as leaf oven-dry weight divided by fresh weight. Specific leaf area (SLA) was then
822 expressed as the ratio between leaf area and leaf dry mass. LMA is the inverse of SLA. Leaf carbon
823 content (C_{mass}) was measured by the potassium dichromate volumetric method (Slepetiene et al.,
824 2008) and leaf nitrogen content (N_{mass}) by the microkjeldahl method (Bremner, 1960). Leaf
825 phosphorus (P_{mass}) was analysed colorimetrically (Shimadzu UV-2550). Leaf potassium (K_{mass})
826 was measured by Flame Atomic Emission Spectrophotometry (PE 5100 PC). The area based leaf
827 chemical contents (C_{area}, N_{area}, P_{area}, K_{area}) were derived as a product of mass based content
828 and LMA. $\delta^{13}\text{C}$ (d13C:12C) and $\delta\delta^{15}\text{N}$ (d15N:14N) was measured using a Finnigan MAT
829 DELTAplusXP Isotope Ratio Mass Spectrometer (Finnigan Corporation, San Jose, CA).

830 c. Morphometric traits:

831 All the morphometric traits were assessed in the field by the same two people (ICP, SPH) using a
832 standardized reporting sheet.

833 d. Photosynthetic traits:

834 The light-saturated rate of net CO₂ fixation under ambient CO₂ (Asat_Photo) and the light-saturated
835 rate of net CO₂ fixation at high CO₂ (Amax_Photo) were obtained from LiCor 6400 measurements
836 in the field. The data on the conditions under which these measurements were made were also
837 collected, such as vapour pressure deficit (Asat_VPD, Amax_VPD), leaf temperature (Asat_Tleaf,
838 Amax_Tleaf), the ratio of leaf internal to ambient CO₂ (Asat_Ci:Ca, Amax_Ci:Ca), stomatal
839 conductance (Asat_Gs, Amax_Gs) and transpiration rate (Asat_E, Amax_E).

840 4. Study contact: Han Wang (wanghan_sci@yahoo.com) and Sandy Harrison
841 (s.p.harrison@reading.ac.uk)

842 **Yunnan2013**

843 Data from: Unpublished contribution from Sandy Harrison, Jian Ni, Colin Prentice, Shuangxi Zhou

844 1. Site description

845 a. Site(s) type(s): subtropical evergreen broadleaf forest, tropical shrubland, tropical grassland

846 b. Geography

847 Latitude (°N), longitude (°E), altitude (m above sea level): 24.54, 101.03, 2394; 24.54, 101.03,
848 2637; 24.5, 100.99, 2056; 23.69, 101.85, 758; 23.69, 101.86, 772

849 c. Site(s) history: natural vegetation

850 2. Experimental or sampling design

851 a. Design characteristics: A checklist of vascular species at each site was created. Common species
852 representing the structure of the whole community were sampled.

853 b. Variables included: Average LA, SLA, LMA, LDMC, Cmass, Carea, Nmass, Narea, d13C:12C,
854 d15N:14N, Leaf texture, Leaf colour-adaxial, Leaf colour-abaxial, Leaf size, Leaf thickness, Leaf
855 orientation, Leaf display, Leaf shape, Leaf margin, Leaf hairs, Leaf pubescence, Leaf pruinose,
856 Leaf rugose, Leaf waxy, Leaf hypostomatic, Leaf revolute, Leaf involute, Leaf aromatic, Leaf fetid,
857 Leaf driptip, Leaf terminal notch, Leaf surface patterning, Leaf succulence, Leaf spines, Leaf thorns,
858 Leaf retention, Stem form, Stem colour, Stem photo, Stem hairy, Stem pubescent, Stem pruinose,
859 Stem rugose, Stem succulent, Stem spines, Stem thorns, Bark deciduous, Spines elsewhere, Thorns

860 elsewhere, Amax_Photo, Amax_Gs, Amax_Ci:Ca, Amax_E, Amax_VPD, Amax_Tleaf,
861 Amax_CO2, Asat_Photo, Asat_Gs, Asat_Ci:Ca, Asat_E, Asat_VPD, Asat_Tleaf, Asat_CO2,
862 Vcmax, Jmax

863 c. Species sampled: *Acer campbellii*, *Actinidia glaucocallosa*, *Ardisia crenata*, *Aucuba chlorascens*,
864 *Camellia forrestii* var. *forrestii*, *Carex perakensis*, *Castanopsis wattii*, *Celastrus orbiculatus*,
865 *Daphne papyracea* var. *papyracea*, *Disporum sessile*, *Dryopteris wallichiana*, *Eriobotrya*
866 *bengalensis*, *Euonymus vagans*, *Eurya jintungensis*, *Fargesia wuliangshanensis*, *Gamblea ciliata*
867 var. *evodiifolia*, *Ilex corallina*, *Ilex gintungensis*, *Illicium simonsii*, *impatiens rubrostriata*,
868 *Lithocarpus hancei*, *Lithocarpus xylocarpus*, *Machilus gamblei*, *Machilus yunnanensis*, *Mahonia*
869 *duclouxiana*, *Manglietia insignis*, *Neolitsea chuii*, *Plagiogyria pycnophylla*, *Rhododendron*
870 *leptothrium*, *Rosa longicuspis*, *Rubus paniculatus*, *Schima noronhae*, *Stewartia pteropetiolata*,
871 *Symplocos anomala*, *Symplocos ramosissima*, *Symplocos sumuntia*, *Ainsliaea spicata*, *Carex*
872 *nemostachys*, *Clethra delavayi*, *Gaultheria griffithiana*, *Heterosmilax chinensis*, *Lithocarpus*
873 *crassifolius*, *Lithocarpus grandifolius*, *Lyonia ovalifolia*, *Lyonia villosa*, *Pinus armandii*,
874 *Rhododendron irroratum*, *Schefflera fengii*, *Schefflera shweliensis*, *Smilax menispermoidea*,
875 *Stranvaesia davidiana*, *Symplocos dryophila*, *Ternstroemia gymnanthera*, *Vaccinium duclouxii*,
876 *Acystopteris japonica*, *Alnus nepalensis*, *Anneslea fragrans*, *Camellia pitardii*, *Castanopsis fleuryi*,
877 *Craibiodendron yunnanense*, *Dichroa febrifuga*, *Diplopterygium laevissimum*, *Eurya trichocarpa*,
878 *Hypericum uralum*, *Isodon sculponiatus*, *Leucosceptrum canum*, *Lithocarpus dealbatus*,
879 *Lithocarpus truncatus*, *Lyonia ovalifolia* var. *lanceolata*, *Maesa indica*, *Millettia dielsiana*, *Myrica*
880 *esculenta*, *Pinus kesiya*, *Rhododendron microphyton*, *Rubus alceifolius*, *Schima argentea*, *Schima*
881 *wallichii*, *Senecio scandens*, *Smilax ocreata*, *Tetrastigma serrulatum*, *Tripterygium wilfordii*,
882 *Yushania multiramea*, *Albizia kalkora*, *Bothriochloa pertusa*, *Bridelia tomentosa*, *Buchanania*
883 *latifolia*, *Cajanus scarabaeoides*, *Callicarpa nudiflora*, *Carissa spinarum*, *Cipadessa baccifera*,
884 *Corallodiscus lanuginosus*, *Crotalaria linifolia*, *Dendrolobium triangulare*, *Dinetus racemosus*,
885 *Diospyros yunnanensis*, *Fraxinus malacophylla*, *Geodorum densiflorum*, *Heteropogon contortus*,
886 *Isodon amethystoides*, *Lannea coromandelica*, *Maytenus hookeri*, *Myriopteron extensum*, *Olea*
887 *europaea* subsp. *cuspidata*, *Osteomeles schwerinae*, *Parthenocissus tricuspida*, *Phyllanthus*
888 *emblica*, *Pistacia weinmanniifolia*, *Polyalthia cerasoides*, *Setaria plicata*, *Symplocos racemosa*,
889 *Tephrosia purpurea*, *Terminthia paniculata*, *Vitex negundo*, *Woodfordia fruticosa*, *Barleria cristata*,
890 *Boea clarkeana*, *Bombax ceiba*, *Bridelia stipularis*, *Caesalpinia sappan*, *Campylotropis delavayi*,
891 *Cryptolepis buchananii*, *Cyclobalanopsis helferiana*, *Eriobotrya prinoides*, *Eriolaena spectabilis*,

892 *Garuga forrestii*, *Haldina cordifolia*, *Jasminum subhumile*, *Panicum sumatrense*, *Psidium guajava*,
893 *Smilax ferox*, *Tarenna depauperata*, *Trema angustifolia*, *unknown sp.*

894 3. Research methods

895 a. Year collected: 2013

896 b. Hard traits:

897 Hard traits were measured on samples collected in the field following standard methods
898 (Cornelissen et al., 2011). At least 10 g of leaves were collected for each species. Sunlit leaves of
899 tree species were obtained with long-handled twig shears. The samples were subdivided for the
900 measurement of specific leaf area, leaf dry matter content and the contents of carbon, nitrogen,
901 phosphorus and potassium. The measurements used are averages of three replicates. Leaf area was
902 determined by scanning five leaves (or more in the case of small leaves, to make up a total area \geq
903 20 cm² per species) with a laser scanner. Areas (Average LA) were measured using Photoshop on
904 the scanned images. Leaf fresh weight was measured in the field. Dry weight was obtained after air-
905 drying for several days and then oven drying at 75 °C for 48 h. Leaf dry matter content (LDMC)
906 was expressed as leaf oven-dry weight divided by fresh weight. Specific leaf area (SLA) was then
907 expressed as the ratio between leaf area and leaf dry mass. LMA is the inverse of SLA. Leaf carbon
908 content (Cmass) was measured by the potassium dichromate volumetric method and leaf nitrogen
909 content (Nmass) by the microkjeldahl method. The area based leaf chemical contents (Carea, Narea)
910 were derived as a product of mass based content and LMA. $\delta^{13}\text{C}$ (d13C:12C) and $\delta^{15}\text{N}$ (d15N:14N)
911 were measured using a Finnigan MAT DELTAplusXP Isotope Ratio Mass Spectrometer (Finnigan
912 Corporation, San Jose, CA).

913 c. Morphometric traits:

914 All the morphometric traits were assessed in the field by the same two people (ICP, SPH) using a
915 standardized reporting sheet.

916 d. Photosynthetic traits:

917 The light-saturated rate of net CO₂ fixation under ambient CO₂ (Asat_Photo) and the light-saturated
918 rate of net CO₂ fixation at high CO₂ (Amax_Photo) were obtained from LiCor 6400 measurements
919 in the field. The data on the conditions under which these measurements were made were also
920 collected, including vapour pressure deficit (Asat_VPD, Amax_VPD), leaf temperature

921 (Asat_Tleaf, Amax_Tleaf), the ratio of leaf internal to ambient CO₂ (Asat_Ci:Ca, Amax_Ci:Ca),
922 stomatal conductance (Asat_Gs, Amax_Gs) and transpiration rate (Asat_E, Amax_E).

923 4. Study contacts: Jian Ni (nijian@vip.skleg.cn), Han Wang (wanghan_sci@yahoo.com) and Sandy
924 Harrison (s.p.harrison@reading.ac.uk)

925 **Cai2009**

926 Data from:

927 Cai Z.Q., S.A. Schnitzer and F. Bongers. 2009. Seasonal differences in leaf-level physiology give
928 lianas a competitive advantage over trees in a tropical seasonal forest. *Oecologia* **161**: 25-33

929 1. Site description

930 a. Site(s) type(s): tropical seasonal forest

931 b. Geography

932 Latitude (°N), longitude (°E), altitude (m above sea level): 21.93, 101.25, 560

933 c. Site(s) history: natural vegetation

934 2. Experimental or sampling design

935 a. Design characteristics: 18 evergreen C₃ liana species and 16 evergreen C₃ tree species were
936 sampled. For each tree and liana species, 4 to 6 leaves were sampled from the same individual (2 to
937 3 individuals per species) at the end of both dry (March to April) and wet (September) seasons.

938 b. Variables included: Average LA, SLA, LMA, Nmass, Pmass, Narea, Parea, d13C:12C,
939 Asat_Photo, Asat_Tleaf, Asat_CO2, Asat_VPD

940 c. Species sampled: *Baccaurea ramiflora*, *Barringtonia macrostachya*, *Bauhinia glauca*, *Bauhinia*
941 *yunnanensis*, *Byttneria aspera*, *Callerya oosperma*, *Carallia brachiata*, *Castanopsis indica*,
942 *Celastrus paniculatus*, *Combretum latifolium*, *Ficus auriculata*, *Ficus callosa*, *Ficus cyrtophylla*,
943 *Ficus hirta*, *Ficus subulata*, *Ficus superba*, *Fissistigma polyanthoides*, *Fissistigma polyanthum*,
944 *Gnetum parvifolium*, *Hopea chinensis*, *Iodes ovalis*, *Leea asiatica*, *Lepisanthes senegalensis*, *Litsea*
945 *panamanja*, *Mayodendron igneum*, *Millettia dielsiana*, *Securidaca inappendiculata*, *Syzygium*

946 *megacarpum*, *Tetrastigma planicaule*, *Tinomiscium petiolare*, *Uncaria macrophylla*, *Uncaria*
947 *rhynchophylla*, *Ventilago calyculata*, *Ziziphus attopensis*

948 3. Research methods

949 a. Year collected: 2004

950 b. Hard traits:

951 Leaf area (Average LA) was measured with a leaf area meter (Li- 3000A; Li-Cor). Leaf dry mass
952 and leaf mass area (LMA) or specific leaf area (SLA) was measured on leaves oven-dried for a
953 minimum of 48 h at 70°C. Leaf samples were then ground for elemental analyses in the
954 Biogeochemical Laboratory of the Kunming Division of the Xishuangbanna Tropical Botanical
955 Garden, The Chinese Academy of Sciences. Leaf nitrogen concentration per unit leaf dry mass
956 (Nmass) was determined using the semi-micro Kjeldahl wet digestion procedure. Leaf phosphorus
957 concentration per unit leaf dry mass (Pmass) was measured by atomic absorption spectrum-
958 photometry (AAS, Type 932GBC; ScientiWc Equipment, Australia). Area based leaf nitrogen and
959 phosphorus contents (Narea, Parea) were derived by the database compilers as a product of mass
960 based nutrient content and LMA. $\delta^{13}\text{C}$ (d13C:12C) of all species was measured on 2 mg grounded
961 subsamples of leaves using a Thermo Finnigan MAT stable isotope mass spectrometer at the Stable
962 Isotope Laboratory in Institute of Botany, The Chinese Academy of Sciences.

963 c. Photosynthetic traits

964 Branches of trees and the liana species from the upper canopy were collected using a tree pruner
965 attached to a long handle between 9:30 and 11:00 a.m. Stems from the collected branches were cut
966 under water within 10 minutes of collection and immersed in deionized water to maintain the xylem
967 water column prior to photosynthesis measurement. Photosynthetic traits were measured on fully
968 expanded, recently matured sun canopy leaves. The rate of CO₂ assimilation per unit area
969 (Asat_Photo) under a light-saturating irradiance (Photon Flux density > 1,500 mol m⁻² s⁻¹, provided
970 by an internal red/blue LED light source; LI6400-02B) was measured under ambient CO₂
971 concentration (~380 ppm, Asat_CO2) with a portable photosynthetic system (Li-6400; LiCor,
972 Lincoln, NE, USA). Leaf temperature and vapor pressure deficit in the cuvette were kept at 25–
973 26°C (Asat_Tleaf) and less than 1 kPa (Asat_VPD), respectively.

974 4. Study contacts: Yanzheng Yang (yanzheng148@163.com)

975 **Liu2010**

976 Data from:

977 Liu G., G.T. Freschet, X. Pan, J. H. C. Cornelissen, Y. Li and M. Dong. 2010. Coordinated
978 variation in leaf and root traits across multiple spatial scales in Chinese semi-arid and arid
979 ecosystems. *New Phytologist* **188**: 543-553

980 1. Site description

981 a. Site(s) type(s): semi-arid and arid

982 b. Geography

983 Latitude (°N), longitude (°E), altitude (m above sea level): 36.42, 80.72, 1318; 44.37, 87.92, 1250;
984 37.45, 104.78, 500; 39.49, 110.2, 1290; 42.86, 115.89, 1240; 42.93, 120.69, 350; 49.48, 117.95, 550

985 c. Site(s) history: natural vegetation

986 2. Experimental or sampling design

987 a. Design characteristics: Dominant species, representing 80–90% of total vascular plant biomass
988 of the ecosystem, were sampled in each community. At least 10 individuals of each species were
989 sampled (random sampling within 0.25 ha area) to account for intraspecific variation. All living
990 leaves were collected while fully mature and before the onset of senescence.

991 b. Variables included: SLA, LMA, Nmass, Narea

992 c. Species sampled: *Agriophyllum squarrosum*, *Artemisia* sp., *Bassia dasyphylla*, *Calligonum*
993 *mongolicum*, *Corispermum heptapotamicum*, *Halogeton glomeratus*, *Krascheninnikovia ceratoides*,
994 *Reaumuria soongarica*, *Salsola kali* subsp. *ruthenica*, *Sympegma regelii*, *Zygophyllum xanthoxylon*,
995 *Astragalus oxyglottis*, *Ceratocarpus arenarius*, *Eragrostis minor*, *Horaninovia ulicina*, *Nitraria*
996 *sibirica*, *Petrosimonia sibirica*, *Salsola* sp.a, *Salsola* sp.b, *Salsola* sp.c, *Seriphidium terrae-albae*,
997 *Stipagrostis pennata*, *Allium mongolicum*, *Artemisia capillaris*, *Artemisia ordosica*, *Cleistogenes*
998 *songorica*, *Lespedeza davurica*, *Salsola laricifolia*, *Salsola passerina*, *Stipa tianschanica*, *Artemisia*
999 *sphaerocephala*, *Astragalus melilotoides*, *Caragana korshinskii*, *Cleistogenes squarrosa*,
1000 *Corispermum mongolicum*, *Cynanchum thesioides*, *Dysphania aristata*, *Euphorbia humifusa*,
1001 *Ixeridium gracile*, *Oxytropis racemosa*, *Poa annua*, *Setaria viridis*, *Agropyron cristatum*,

1002 *Agropyron desertorum*, *Agropyron mongolicum*, *Artemisia frigida*, *Artemisia halodendron*,
1003 *Artemisia scoparia*, *Calamagrostis epigejos*, *Chenopodium acuminatum*, *Inula britannica*,
1004 *Potentilla acaulis*, *Salsola collina*, *Thalictrum squarrosus*, *Thymus mongolicus*, *Caragana*
1005 *microphylla*, *Echinochloa crus-galli*, *Lespedeza juncea*, *Medicago ruthenica*, *Sophora flavescens*,
1006 *Hedysarum fruticosum*, *Oxytropis hailarensis*, *Rhodiola rosea*

1007 3. Research methods

1008 a. Year collected: 2008

1009 b. Hard traits:

1010 Ten leaves were scanned individually at 300 dpi resolution for each plant species using a BenQ
1011 5550 scanner, then oven-dried (60°C, 48 h) and weighed. Scanned leaves were analysed using
1012 IMAGE J software (<http://rsbweb.nih.gov/ij/>) to obtain the leaf area (LA). Specific leaf area (SLA)
1013 was then expressed as the ratio between leaf area and leaf dry mass. Leaf mass per area (LMA) is
1014 the inverse of SLA. Leaf nitrogen concentration (Nmass) was measured with Kjeldahl
1015 determination (BUCHI AutoKjeldahl Unit K-370) from air-dried sub-samples, which were first
1016 ground and subsequently oven-dried for 24 h at 60°C. Area-based leaf nitrogen content (Narea) was
1017 derived by the database compilers as a product of Narea and LMA.

1018 4. Study contacts: Yanzheng Yang (yanzheng148@163.com)

1019 **Sun2006**

1020 Data from:

1021 Sun S., D. Jin, R. Li. 2006. Leaf emergence in relation to leaf traits in temperate woody species in
1022 East-Chinese *Quercus fabri* forests. *Acta Oecologica* **30**: 212-222

1023 1. Site description

1024 a. Site(s) type(s): subtropical deciduous broadleaf forest

1025 b. Geography

1026 Latitude (°N), longitude (°E), altitude (m above sea level): 32.07, 118.82, 130; 32.05, 118.83, 130

1027 c. Site(s) history: natural vegetation

1028 2. Experimental or sampling design

1029 a. Design characteristics: All woody dicotyledonous species were sampled at each site. Non-shaded
1030 mature individuals within the canopy were sampled for tree species. Mature individuals were
1031 sampled for shrub species, but no attempt was made to screen for light attenuation above the plant
1032 crown.

1033 b. Variables included: Average LA, SLA, LMA

1034 c. Species sampled: *Acer buergerianum*, *Acer tataricum* subsp. *ginnala*, *Broussonetia papyrifera*,
1035 *Celtis sinensis*, *Dalbergia hupeana*, *Diospyros lotus*, *Flueggea suffruticosa*, *Grewia biloba*,
1036 *Ligustrum lucidum*, *Ligustrum quihoui*, *Lindera angustifolia*, *Lindera glauca*, *Liquidambar*
1037 *formosana*, *Maclura tricuspidata*, *Morus alba*, *Pistacia chinensis*, *Platycarya strobilacea*, *Pueraria*
1038 *montana* var. *lobata*, *Quercus fabrei*, *Rhamnus crenata*, *Rosa multiflora*, *Rubus parvifolius*, *Smilax*
1039 *china*, *Symplocos paniculata*, *Ulmus parvifolia*, *Vitex negundo*, *Wisteria sinensis*, *Aphananthe*
1040 *aspera*, *Diospyros kaki*, *Elaeagnus multiflora*, *Euonymus alatus*, *Euscaphis japonica*, *Firmiana*
1041 *simplex*, *Kalopanax septemlobus*, *Lonicera japonica*, *Magnolia denudata*, *Ohwia caudata*, *Photinia*
1042 *parvifolia*, *Premna microphylla*, *Quercus variabilis*, *Rhamnus globosa*, *Rhus chinensis*, *Rubus*
1043 *swinhoei*, *Serissa serissoides*, *Viburnum dilatatum*

1044 3. Research methods

1045 a. Year collected: 2002

1046 b. Hard traits:

1047 More than 50 mature and healthy leaves were sampled for each species. The leaves were scanned
1048 and their areas (LA) calculated using MapInfo software. The leaves were oven-dried to constant dry
1049 mass at 70 °C. Leaf mass per area (LMA) was calculated by dividing leaf dry mass by leaf area.
1050 Specific leaf area (SLA) is the inverse of LMA.

1051 4. Study contacts: Yanzheng Yang (yanzheng148@163.com)

1052 **Zheng2007**

1053 Data from:

1054 Zheng S. X. and Z. P. Shangguan. 2007a. Spatial patterns of foliar stable carbon isotope
1055 compositions of C₃ plant species in the Loess Plateau of China. *Ecological Research* **22**: 342-353.

1056 Zheng S. X. and Z. P. Shangguan. 2007b. Spatial patterns of photosynthetic characteristics and leaf
1057 physical traits of plants in the Loess Plateau of China. *Plant Ecology* **191**: 279-293.

1058 1. Site description

1059 a. Site(s) type(s): north subtropical humid evergreen broadleaf forest

1060 b. Geography

1061 Latitude (°N), longitude (°E), altitude (m above sea level): 36.77, 109.25, 1125; 36.07, 108.53,
1062 1353; 37.85, 110.17, 1103; 33.43, 108.43, 1614; 38.78, 110.35, 1255; 35.05, 109.13, 1324; 34.27,
1063 108.07, 468; 34.82, 108.03, 1454

1064 c. Site(s) history: natural vegetation

1065 2. Experimental or sampling design

1066 a. Design characteristics:

1067 Representative examples of trees, shrubs, and herbs were sampled. Field measurements were made
1068 between 09:00 and 11:30 h on clear days in June 2005. The measured leaves were mostly from the
1069 ends of branches in the lower canopy, but about 8 cm below the topmost surface of the shrubs and
1070 herbaceous plants. Photosynthetic measurements were made on three or four mature and fully
1071 expanded sunlit leaves from 10 individuals of each species. These leaves were then collected for
1072 measurements of other traits.

1073 b. Variables included: SLA, LMA, Nmass, Narea, d13C:12C, Asat_Photo, Asat_Tleaf, Asat_CO2

1074 c. Species sampled: *Acer truncatum*, *Agropyron cristatum*, *Amorpha fruticosa*, *Artemisia gmelinii*,
1075 *Artemisia subdigitata*, *Berberis amurensis*, *Caragana korshinskii*, *Carex lanceolata*, *Cornus*
1076 *macrophylla*, *Cotoneaster acutifolius*, *Euphorbia humifusa*, *Forsythia suspensa*, *Hippophae*
1077 *rhamnoides*, *Imperata cylindrica* var. *major*, *Lespedeza davurica*, *Lonicera hispida*, *Periploca*
1078 *sepium*, *Pinus tabuliformis*, *Populus simonii*, *Potentilla acaulis*, *Prinsepia uniflora*, *Pulsatilla*
1079 *chinensis*, *Pyrus betulifolia*, *Robinia pseudoacacia*, *Rosa hugonis*, *Rubus parvifolius*, *Sophora*
1080 *daurica*, *Spiraea pubescens*, *Syringa oblata*, *Thalictrum simplex*, *Ulmus davidiana* var. *japonica*,

1081 *Ulmus pumila*, *Xanthoceras sorbifolium*, *Ziziphus jujuba* var. *spinosa*, *Acer erianthum*, *Acer*
1082 *tataricum* subsp. *ginnala*, *Artemisia giraldii*, *Betula platyphylla*, *Bothriochloa ischaemum*,
1083 *Elaeagnus pungens*, *Eleutherococcus senticosus*, *Glycyrrhiza uralensis*, *Ostryopsis davidiana*,
1084 *Platyclusus orientalis*, *Populus davidiana*, *Prunus davidiana*, *Prunus setulosa*, *Pyrus pyrifolia*,
1085 *Quercus wutaishanica*, *Smilax vaginata*, *Sorbus hupehensis* var. *aperta*, *Astragalus adsurgens*,
1086 *Cynanchum mongolicum*, *Lespedeza bicolor*, *Medicago sativa*, *Melilotus albus*, *Themeda triandra*,
1087 *Wikstroemia chamaedaphne*, *Ampelopsis aconitifolia*, *Anemone vitifolia*, *Artemisia argyi*, *Axyris*
1088 *amaranthoides*, *Berberis circumserrata*, *Betula utilis*, *Clematis obscura*, *Consolida ajacis*, *Cornus*
1089 *kousa* subsp. *chinensis*, *Cornus officinalis*, *Corylus heterophylla*, *Elaeagnus glabra*, *Lespedeza*
1090 *cyrtobotrya*, *Lonicera japonica*, *Medicago lupulina*, *Onobrychis viciifolia*, *Paederia foetida*, *Pinus*
1091 *bungeana*, *Potentilla fruticosa*, *Potentilla multicaulis*, *Quercus acutissima*, *Quercus aliena* var.
1092 *acutiserrata*, *Rubus innominatus*, *Setaria viridis*, *Thalictrum baicalense*, *Thalictrum foeniculaceum*,
1093 *Vaccaria hispanica*, *Salix miyabeana*, *Prunus pilosiuscula*, *Tilia mongolica*, *Atriplex littoralis*,
1094 *Diospyros kaki*, *Lonicera chrysantha* var. *koehneana*, *Populus hopeiensis*, *Rhamnus arguta*

1095 3. Research methods

1096 a. Year collected: 2005

1097 b. Hard traits:

1098 The projected leaf area was measured with a planimeter (LI-3000A) and the dry mass was measured
1099 after the leaves had been oven-dried at 70°C for at least 48 h to a constant mass. The leaf mass per
1100 area (LMA) was computed as the ratio of leaf dry mass to leaf area (LA). Specific leaf area (SLA)
1101 is the inverse of LMA. The dried leaf samples from each species were combined for chemical
1102 analysis; the leaves were ground to a uniformly fine powder with a plant sample mill (1093 Sample
1103 Mill), and then sieved with a 1 mm-mesh screen before chemical analysis. A 200 mg sample was
1104 used to determine the leaf nitrogen concentration by the modified Kjeldahl method. The digests
1105 were used to determine the N concentration (Nmass) with a Kjeltex analyzer (Kjeltex 2300
1106 Analyzer Unit). Area-based N concentration (Narea) was calculated as the product of Nmass and
1107 LMA. $\delta^{13}\text{C}$ (d13C:12C) was measured on all species using a MAT-251 stable isotope mass
1108 spectrometer (Finnigan, San Jose, USA) in the State Key Laboratory of Soil and Sustainable
1109 Agriculture, Institute of Soil Science, Chinese Academy of Sciences.

1110 c. Photosynthetic traits:

111 The light-saturated photosynthetic rates (Asat_photo) of the fully expanded leaves of the plant
112 species were measured with an open gas-exchange system (LI-6400, Li-Cor) and 2 by 3 cm
113 broadleaf chamber with integrated light source (LI-6400-02B, Li-Cor). During the measurements,
114 the leaf chamber temperature (Asat_Tleaf) was kept at 25°C, the vapor pressure deficit in the
115 chamber was <1.0 kPa, the CO₂ concentration (Asat_CO2) was set to 390 ppm in the chamber, and
116 the leaves were exposed to a photosynthetic photon flux density (PPFD) of 1800 $\mu\text{mol m}^{-2} \text{s}^{-1}$ with
117 the light source. The PPFD was light saturated for all the species measurements. The Asat_Photo
118 was measured 3 min after the rates of photosynthesis and transpiration had become stable.

119 4. Study contacts: Yanzheng Yang (yanzheng148@163.com)

120 **CLASS III. DATA SET STATUS AND ACCESSIBILITY**

121 **A. Status**

122 **Latest update:** Version 1 of this database described and submitted with this manuscript was
123 processed on 2017-09-05.

124 **Latest archive date**

125 2017-09-05

126 **Metadata status:** Metadata are complete to the submitted data.

127 **Data verification:**

128 Nearly **75%** of the sites were sampled by the same team and following standardized measurement
129 protocols. The remaining data were extracted from the literature, but only in cases where the
130 publication provided both an adequate description of the sampling protocol and methods, the
131 individual sites could be accurately located, and where the primary data were provided in Tables.

132 A number of quality checks were applied to the original data. The largest effort was expended on
133 standardizing the taxonomy (see detailed explanation in subproject Taxonomic Standardization).
134 Quality control procedures were also applied to ensure that units were standardized and reported
135 correctly. We checked individual data types for outliers by plotting the measurements. We also
136 compared the ranges of measurements against expected ranges. We cross-checked for
137 inconsistencies between different measurements, including e.g. comparing scanned measurements

1138 of leaf area and field-based CLAMP classifications of leaf area. In most cases where we identified
1139 outliers or discrepancies, these issues could be resolved by checking field records or original data
1140 sheets. In a few cases, these inconsistencies and/or errors were present in the field records – these
1141 doubtful measurements have been removed from the database.

1142 Apart from the data directly collected from the field measurements, some site-specific, species-
1143 specific or sample-specific variables were derived systematically by the compilers of database,
1144 including species taxonomy, photosynthetic capacities, photosynthetic pathway, plant functional
1145 types, vegetation and climate. The method used to derive these variables are described under the
1146 respective sub-projects. These variables are thus consistent between sites and make the comparison
1147 among sites from different sources plausible.

1148 **B. Accessibility**

1149 Storage location and medium: The data are stored as the China Plant Trait Database (v1.0) in
1150 PANGAEA (<https://doi.pangaea.de/10.1594/PANGAEA.871819>). Development versions of the
1151 dataset will continue to be made available.

1152 **Contact persons:** Queries about individual specific data points can be directed to the contributing
1153 author for that study. For queries about the entire dataset, please contact Han Wang.

1154 **Copyright restrictions:** The dataset is released under a Creative Commons BY licence. When
1155 using the dataset, we kindly request that you cite this article, recognizing the hard work that went
1156 into collecting the data and the authors' willingness to make it publicly available.

1157 **Costs:** None.

1158 **CLASS IV. DATA STRUCTURAL DESCRIPTORS**

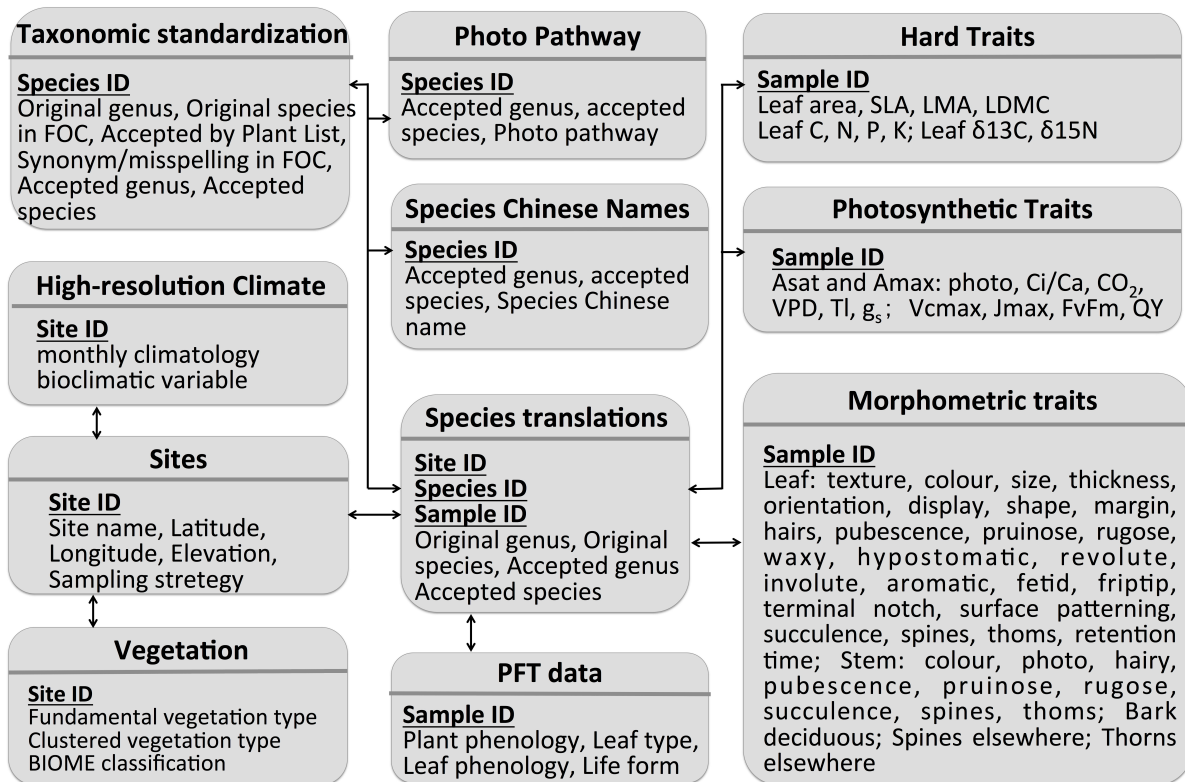
1159 **A. Data Set Files**

1160 The data are stored a relational database (ACCESS), which is consist of **11** linked tables.
1161 Specifically: Sites, Taxonomic Corrections, Species Translations, Chinese Names, Photo Pathway,
1162 PFT Data, Morphometric Data, Leaf Hard Traits, Photosynthesis Measurements, Climate Data,
1163 Vegetation Data. Figure 4 shows the relationships between these tables, allowing the database to be
1164 reconstructed. A detailed description of each of the tables is given below.

1165 **Figure 4:** The structure of the database, showing the individual component tables and the
 1166 relationships between these tables

1167 These elements are available as

- 1168 1. An ACCESS database file
- 1169 2. a series of csv files.



1170 **B. Variable definitions**

1171 **Table 2:** Definitions of the variables included in each of the 11 database tables.

Table Name	Field label	Definition	Format
Sites	Site ID	Unique code identifying each site	Numeric
	Site Name	Site name as given by original authors or as defined by us where there was no unique name given to the site	Text

	Latitude	Latitude in decimal degrees	Numeric
	Longitude	Longitude in decimal degrees	Numeric
	Elevation	Elevation in meters above sea level	Numeric
	Collection month	Month of sampling	Numeric
	Collection year	Year of sampling	Numeric
	Source	Contact person or publication	Text
	Sampling strategy	Method used for sampling, where SS is stratified sampling, PSS is sampling of a limited number of strata, D is sampling of dominant species only, and A is sampling of a limited number of key species at a site.	Text
Taxonomic Standardization	Original genus	Genus as recorded in the field	Text
	Original species	Species as recorded in the field	Text
	Accepted by FoC	Whether taxon is recognized and accepted according to the Flora of China (FoC), recorded as either yes or no	Text
	Accepted by PL	Whether taxon is recognized and accepted according to the Plant List (PL), recorded as either yes or no	Text

	PL synonym	Whether there is one or more synonyms for the accepted taxon given in the Plant List, recorded as either yes or no	Text
	FoC synonym/mis-spelling	Whether the synonym(s) listed in the Plant List are listed as an accepted name in FoC	Text
	Decision	Decision about which version of the name to use in the database, where priority is given to accepted names in FoC and alternatives are only used if there is no accepted name following the allocation scheme described in Figure 3.	Text
	Taxonomic notes	Additional information on taxonomy, including e.g. identification of misspellings in FoC, information about the number of synonyms etc	Text
	Accepted genus	Genus name determined through taxonomic checking	Text
	Accepted species	Species name determined through taxonomic checking	Text
	Family	Assignment of the taxon to the higher taxonomic grouping of family	Text
	Species ID	Unique identifier for each species in the database	Text
Species	Site ID	Unique code identifying each site	Numeric

Translations			
	Original genus	Genus name recorded in the field	Text
	Original species	Species name recorded in the field	Text
	Accepted genus	Genus name determined through taxonomic checking	Text
	Accepted species	Species name determined through taxonomic checking	Text
	Species ID	Unique identification of each species, used in species-specific data tables (e.g. Photo Pathway)	Text
	Sample ID	Unique identification of each species for which there are records, i.e. every species at each site	Numeric
Chinese names	Species ID	Unique identification of each species, used in species-specific data tables (e.g. Photo Pathway)	Text
	Accepted genus	Genus name determined through taxonomic checking	Text
	Accepted species	Species name determined through taxonomic checking	Text
	Chinese name	Name of accepted species in Chinese characters	Text
Photo pathway	Species ID	Unique identification of each species,	Text

	Photo Path	Photosynthetic pathway (C ₃ , C ₄ or CAM)	Text
PFT data	Sample ID	Unique identification of each species for which there are records, i.e. every species at each site	Numeric
	Life form	Assignment to life form (tree, small tree, low to high shrub, erect dwarf shrub, prostrate dwarf shrub, liana, climber, forb, cushion forb, rosette forb, graminoid, bamboo, cycad, geophyte, stem succulent, succulent, pteridophyte, epiphyte, parasite)	Text
	Plant phenology	Description of longevity of the plant itself (perennial, biennial or annual)	Text
	Leaf type	Description of leaf type (aphyllous, broad, needle, scale)	Text
	Leaf phenology	Assignment based on longevity of leaves for woody plants (deciduous, semi-deciduous, leaf-exchanger, evergreen)	Text
Morphometric data	Sample ID	Unique identification of each species for which there are records, i.e. every species at each site	Numeric
	Leaf texture	Description of the texture of a leaf, particularly as related to flexibility and/or toughness as distinct from surface characteristics. Six classes are recognized: fleshy, papery, malacophyll, leathery,	Text

		coriaceous, rigidly coriaceous	
	Leaf colour - adaxial	The colour of the upper surface of the leaf (i.e. the surface facing the stem) e.g. bright green, green, dark green, mottled green, pale green, glaucous, yellow-green, yellow, silvery-grey	Text
	Leaf colour - abaxial	The colour of the lower surface of the leaf (i.e. the surface facing the stem) e.g. bright green, green, dark green, mottled green, pale green, brown-green, glaucous, yellow-green, pale brown, purple, reddish-green, white, yellow, silvery-grey	Text
	Leaf size	Categorical classification of typical leaf size as estimated using the modified CLAMP scheme (pico, lepto, nano, micro, noto, meso, macro)	Text
	Leaf thickness	Categorical classification of typical leaf thickness, approximately where thick is >2mm, medium (0.5-2mm), thin (<0.5mm)	Text
	Leaf orientation	Categorical description of the angle of the individual leaf with respect to the stem (erect, semi-erect, patent, pendulous, reclinate)	Text
	Leaf display	Organisation of leaves within the individual plant canopy, either 2D or 3D	Text

	Leaf shape	Description of the shape of the leaf blade (or leaflet in the case of compound leaves) shape (acicular, cordate, deltoid, elliptic, falcate, hastate, lanceolate, linear, lyrate, obcordate, oblanceolate, oblong, obovate, orbicular, oval, ovate, reniform, runcinate, sagittate, spatulate, cordate-lanceolate, elliptic-lanceolate, linear-lanceolate, ovate-lanceolate, fishtail, palmate, pinnatifid, rhomboid, tulip-shaped, trilobite, quinquilobate, septemlobate)	Text
	Leaf margin	Description of the nature of the margin of the leaf of leaflet (entire, finely toothed, toothed, crenate, crenulate, lobed, dissected, highly dissected, incised)	Text
	Leaf hairs	Indication of presence or absence of hairs on the leaf; if hairs are present, the location is also recorded (adaxial, abaxial, on midrib or veins, marginal, basal)	Text
	Leaf pubescence	Indication of presence or absence of very fine hairs or pubescence on the leaf; if present, the location is also recorded (adaxial, abaxial, on midrib or veins, marginal)	Text
	Leaf pruinosity	Indication of presence or absence of a bloom or powdery secretion that can be removed mechanically on the leaf; if present, the location is also recorded	Text

		(adaxial, abaxial, on midrib or veins)	
	Leaf rugose	Indication of presence or absence of surface roughness caused by surface protrusions on a leaf; if present, the location is also recorded (adaxial, abaxial, on midrib or veins)	Text
	Leaf waxy	Indication of whether or not there is a continuous waxy deposit on the surface of the leaf. A distinction was made in the field between waxy and glossy surfaces, presumed to reflect differences in the structure of this epicuticular layer (waxy, glossy, no wax)	Text
	Leaf hypostomatic	Indication of whether stomata were present only on the abaxial side of the leaf	Text
	Leaf revolute	Indication of whether the leaf margin was curled downwards toward the underside of the leaf. A distinction was made between leaves that showed slight and pronounced curling. (yes, slightly, no)	Text
	Leaf involute	Indication of whether the leaf margin was curled toward the upper side of the leaf. A distinction was made between leaves that showed slight and pronounced curling. (yes, slightly, no)	Text
	Leaf aromatic	Indication of whether the leaves contain aromatic compounds, assessed from the smell of the leaves when broken in the	Text

		field	
	Leaf fetid	Indication of whether the leaves have a rank or unpleasant smell when broken in the field	Text
	Leaf driptip	Presence/absence of an elongated and downward oriented extension at the tip of the leaf or leaflet blade, assumed to relate to removal of excess water	Text
	Leaf terminal notch	Presence/absence of a notch or narrow cleft at the tip of the leaf or leaflet blade	Text
	Leaf succulence	Indication of whether the leaf stores water, assessed from whether the leaves are thick and fleshy and whether water is released when the leaf is broken. A distinction is made in the field between slightly succulent (swollen) leaves and truly succulent leaves (yes, slightly, no)	Text
	Leaf spines	Presence/absence of leaf spines; if spines are present, the location is also recorded (adaxial, abaxial, on midrib or veins, marginal, terminal)	Text
	Leaf thorns	Presence/absence of leaf thorns; if thorns are present, the location is also recorded (adaxial, abaxial, on midrib or veins, marginal, terminal)	Text
	Leaf retention	An estimate of the length of time evergreen leaves are retained and	Number

	time	functioning, based on counting the number of cohorts using scarring or branching of the shoots to identify cohorts. The estimate is made in whole years, and is records as <1 for annually-deciduous trees.	
	Stem form	Description of the appearance of the stem, in terms of shape, and/or the presence of protuberances, attachments, or markings (non-distinctive, triangular, quadrangular, winged, ridged, corky, leaves attached directly, deciduous sheath, white lines, white spots)	Text
	Stem colour	Description of the base colour of the stem (black, dark brown, brown, pale brown, green-brown, grey-brown, green-brown, red-brown, dark green, green, pale green, green-purple, yellow-green, red-green, glaucous, silver-grey, grey, yellow, purple, red)	Text
	Stem photo	Indication of whether the stem is photosynthetic or not	Text
	Stem hairy	Indication of presence or absence of hairs on the stem; if present, the density is also records (yes, finely, no)	Text
	Stem pubescent	Indication of presence or absence of very fine hairs or pubescence on the stem; if present, the density is also records (yes,	Text

		finely, no)	
	Stem pruinose	Indication of presence or absence of a bloom or powdery secretion that can be removed mechanically on the leaf	Text
	Stem rugose	Indication of presence or absence of a rough surface caused by protuberances	Text
	Stem succulent	Indication of presence or absence of water-retention in the stem	Text
	Stem spines	Presence/absence of spines on the stem; where spines are defined as for leaves	Text
	Stem thorns	Presence/absence of thorns on the stem; where thorns are defined as for leaves	Text
	Bark deciduous	Indication of whether the bark is shed on a regular basis; bark shedding as a result of specific damage (e.g. insect attack, fire damage) is not taken into consideration. If the bark is deciduous, the way in which bark is detached is recorded (non-deciduous, chunk, strip, fissured).	Text
	Spines elsewhere	Presence/absence of spines on the trunk or major branches; where spines are defined as for leaves	Text
	Thorns elsewhere	Presence/absence of thorns on the trunk or major branches; where thorns are defined as for leaves	Text

Hard traits	Sample ID	Unique identification of each species for which there are records, i.e. every species at each site	Numeric
	Average LA	Average leaf area (m ²)	Numeric
	SLA	Specific leaf area (m ² /kg)	Numeric
	LMA	Leaf mass per unit area (kg/m ²)	Numeric
	LDMC	Leaf dry matter content (mg/g)	Numeric
	Cmass	Leaf carbon content (g/kg)	Numeric
	Nmass	Leaf nitrogen content (g/kg)	Numeric
	Pmass	Leaf phosphorus content (g/kg)	Numeric
	Kmass	Leaf potassium content (g/kg)	Numeric
	Narea	Leaf nitrogen content per unit area (g/m ²)	Numeric
	Parea	Leaf phosphorus content per unit area (g/m ²)	Numeric
	Karea	Leaf potassium content per unit area (g/m ²)	Numeric
	d13C:12C	The ratio of ¹³ C to ¹² C stable isotopes in the leaf (unitless)	Numeric
	d15N:14N	The ratio of ¹⁵ N to ¹⁴ N stable isotopes in the leaf (unitless)	Numeric

Photo Traits	Sample ID	Unique identification of each species for which there are records, i.e. every species at each site	Numeric
	Amax_Photo	Rate of photosynthesis under light and CO ₂ saturation (umol/m ² /s)	Numeric
	Amax_Gs	Stomatal conductance to water at which Amax was measured (mol/m ² /s)	Numeric
	Amax_Ci:Ca	Ratio of internal to external CO ₂ when Amax was measured (unitless)	Numeric
	Amax_E	Respiration rate when Amax was measured (mmol/m ² /s)	Numeric
	Amax_VPD	The vapour pressure deficit at which Amax was measured (kPA)	Numeric
	Amax_Tleaf	The temperature at which Amax was measured (°C)	Numeric
	Amax_CO2	The CO ₂ level at which Amax was measured (ppm)	Numeric
	Asat_Photo	Rate of photosynthesis under light saturation (umol/m ² /s)	Numeric
	Asat_Gs	Stomatal conductance to water at which Asat was measured (mol/m ² /s)	Numeric
	Asat_Ci:Ca	Ratio of internal to external CO ₂ when Asat was measured	Numeric

	Asat_E	Respiration rate when Asat was measured (mmol/m ² /s)	Numeric
	Asat_VPD	The vapour pressure deficit at which Amax was measured (kPa)	Numeric
	Asat_Tleaf	The temperature at which Asat was measured (°C)	Numeric
	Asat_CO2	The CO ₂ level at which Asat was measured (ppm)	Numeric
	Vcmax	carboxylation capacity (umol/m ² /s)	Numeric
	Jmax	electron-transport capacity (umol/m ² /s)	Numeric
	Fv:Fm	Potential rate of photosynthetic electron transport (F _v /F _m) as measured by chlorophyll fluorescence	Numeric
	QY	Actual rate of photosynthetic electron transport (QY) as measured by chlorophyll fluorescence	Numeric
Climate data	Site ID	Unique code identifying each site	Numeric
	Lat_grid	Latitude of the centre of the 1 km gridded climatology used to obtain climate data for each site; note this does not correspond exactly to the latitude of the site (°).	Numeric
	Long_grid	Longitude of the centre of the 1 km gridded climatology used to obtain	Numeric

		climate data for each site; note this does not correspond exactly to the latitude of the site (°).	
	Temp Jan	Mean January temperature as obtained from the 1 km gridded climatology (°C)	Numeric
	Temp Feb	Mean February temperature as obtained from the 1 km gridded climatology (°C)	Numeric
	Temp Mar	Mean March temperature as obtained from the 1 km gridded climatology (°C)	Numeric
	Temp April	Mean April temperature as obtained from the 1 km gridded climatology (°C)	Numeric
	Temp May	Mean May temperature as obtained from the 1 km gridded climatology (°C)	Numeric
	Temp June	Mean June temperature as obtained from the 1 km gridded climatology (°C)	Numeric
	Temp July	Mean July temperature as obtained from the 1 km gridded climatology (°C)	Numeric
	Temp Aug	Mean August temperature as obtained from the 1 km gridded climatology (°C)	Numeric
	Temp Sep	Mean September temperature as obtained from the 1 km gridded climatology (°C)	Numeric
	Temp Oct	Mean October temperature as obtained from the 1 km gridded climatology (°C)	Numeric

	Temp Nov	Mean November temperature as obtained from the 1 km gridded climatology (°C)	Numeric
	Temp Dec	Mean December temperature as obtained from the 1 km gridded climatology (°C)	Numeric
	Prec Jan	Mean January precipitation as obtained from the 1 km gridded climatology (mm)	Numeric
	Prec Feb	Mean February precipitation as obtained from the 1 km gridded climatology (mm)	Numeric
	Prec Mar	Mean March precipitation as obtained from the 1 km gridded climatology (mm)	Numeric
	Prec April	Mean April precipitation as obtained from the 1 km gridded climatology (mm)	Numeric
	Prec May	Mean May precipitation as obtained from the 1 km gridded climatology (mm)	Numeric
	Prec June	Mean June precipitation as obtained from the 1 km gridded climatology (mm)	Numeric
	Prec July	Mean July precipitation as obtained from the 1 km gridded climatology (mm)	Numeric
	Prec Aug	Mean August precipitation as obtained from the 1 km gridded climatology (mm)	Numeric
	Prec Sep	Mean September precipitation as obtained from the 1 km gridded climatology (mm)	Numeric

	Prec Oct	Mean October precipitation as obtained from the 1 km gridded climatology (mm)	Numeric
	Prec Nov	Mean November precipitation as obtained from the 1 km gridded climatology (mm)	Numeric
	Prec Dec	Mean December precipitation as obtained from the 1 km gridded climatology (mm)	Numeric
	Sunh Jan	Mean January sunshine hours as obtained from the 1 km gridded climatology and expressed as a percentage of total possible sunshine hours (%)	Numeric
	Sunh Feb	Mean February sunshine hours as obtained from the 1 km gridded climatology and expressed as a percentage of total possible sunshine hours (%)	Numeric
	Sunh Mar	Mean March sunshine hours as obtained from the 1 km gridded climatology and expressed as a percentage of total possible sunshine hours (%)	Numeric
	Sunh April	Mean April sunshine hours as obtained from the 1 km gridded climatology and expressed as a percentage of total possible sunshine hours (%)	Numeric
	Sunh May	Mean May sunshine hours as obtained from the 1 km gridded climatology and expressed as a percentage of total possible	Numeric

		sunshine hours (%)	
	Sunh June	Mean June sunshine hours as obtained from the 1 km gridded climatology and expressed as a percentage of total possible sunshine hours (%)	Numeric
	Sunh July	Mean July sunshine hours as obtained from the 1 km gridded climatology and expressed as a percentage of total possible sunshine hours (%)	Numeric
	Sunh Aug	Mean August sunshine hours as obtained from the 1 km gridded climatology and expressed as a percentage of total possible sunshine hours (%)	Numeric
	Sunh Sep	Mean September sunshine hours as obtained from the 1 km gridded climatology and expressed as a percentage of total possible sunshine hours (%)	Numeric
	Sunh Oct	Mean October sunshine hours as obtained from the 1 km gridded climatology and expressed as a percentage of total possible sunshine hours (%)	Numeric
	Sunh Nov	Mean November sunshine hours as obtained from the 1 km gridded climatology and expressed as a percentage of total possible sunshine hours (%)	Numeric

	Sunh Dec	Mean December sunshine hours as obtained from the 1 km gridded climatology and expressed as a percentage of total possible sunshine hours (%)	Numeric
	MTCO	Mean temperature of the coldest month (°C)	Numeric
	MAT	Mean annual temperature (°C)	Numeric
	MI	Ratio of actual evapotranspiration to precipitation (unitless)	Numeric
	alpha	Ratio of actual to equilibrium evapotranspiration, or α (unitless)	Numeric
	GDD0	Growing degree days above a baseline of 0°C (° days)	Numeric
	mGDD0	Daily mean temperature during the growing season when temperatures are >0°C (°C)	Numeric
	PAR0	Total annual photosynthetically active radiation (mol photon m ⁻²)	Numeric
	mPAR0	Daily mean photosynthetically active radiation during the growing season when temperatures are >0°C (mol photon m ⁻²)	Numeric
	Prec timing	The timing of peak precipitation, expressed as a vector where January 1 st is	Numeric

		arbitrarily set to an angle of 0°	
	Prec season	The seasonality of precipitation, where 0 means that precipitation is equally distributed in every month of the year and 1 means that precipitation is concentrated in one month of the year (unitless)	Numeric
	MMP	Mean monthly precipitation (mm)	Numeric
	MAP	Mean annual precipitation (mm)	Numeric
Vegetation data	Site ID	Unique code identifying each site	Numeric
	Fundamental vegetation type	Vegetation type at the site as given in the digital vegetation map of China	Text
	Clustered vegetation type	Vegetation type at the site as given by Wang et al. (2013)	Text
	Biome classification	Description of the biome represented at the site, based on field descriptions or the dominant plant functional types represented	Text

172

173 **Table 3:** The total number of trait measurements available for key traits.

Trait	Level (for measurement)	Number of measurements
Photo Path	species	1008
Life form	samples	2522
Plant phenology	samples	2522

Leaf type	samples	2522
Leaf phenology	samples	2522
Leaf texture	samples	1932
Leaf colour - adaxial	samples	1952
Leaf colour - abaxial	samples	1953
Leaf size	samples	1929
Leaf thickness	samples	1874
Leaf orientation	samples	1916
Leaf display	samples	1902
Leaf shape	samples	1803
Leaf margin	samples	1876
Leaf hairs	samples	1859
Leaf pubescence	samples	1859
Leaf pruinose	samples	1859
Leaf rugose	samples	1881
Leaf waxy	samples	1881
Leaf hypostomatic	samples	1881
Leaf revolute	samples	1881
Leaf involute	samples	1881
Leaf aromatic	samples	1881
Leaf fetid	samples	1881

Leaf driptip	samples	1881
Leaf terminal notch	samples	1881
Leaf succulence	samples	1881
Leaf spines	samples	1883
Leaf thorns	samples	1883
Leaf retention time	samples	93
Stem form	samples	1870
Stem colour	samples	1869
Stem photo	samples	1870
Stem hairy	samples	1870
Stem pubescent	samples	1869
Stem pruinose	samples	1870
Stem rugose	samples	1870
Stem succulent	samples	1870
Stem spines	samples	1870
Stem thorns	samples	1870
Bark deciduous	samples	1975
Spines elsewhere	samples	1875
Thorns elsewhere	samples	93
Average LA	samples	1983
SLA	samples	2119

LMA	samples	2119
LDMC	samples	1607
Cmass	samples	1391
Nmass	samples	1889
Pmass	samples	1263
Kmass	samples	1122
Narea	samples	1880
Parea	samples	1260
Karea	samples	1119
d13C:12C	samples	987
d15N:14N	samples	726
Amax_Photo	samples	405
Amax_Gs	samples	405
Amax_Ci:Ca	samples	405
Amax_E	samples	405
Amax_VPD	samples	405
Amax_Tleaf	samples	405
Amax_CO2	samples	405
Asat_Photo	samples	599
Asat_Gs	samples	423
Asat_Ci:Ca	samples	423

Asat_E	samples	423
Asat_VPD	samples	423
Asat_Tleaf	samples	599
Asat_CO2	samples	598
Vcmax	samples	560
Jmax	samples	405
Fv:Fm	samples	475
QY	samples	477

1175 **Acknowledgements**

1176 We acknowledge all the authors of the subprojects (ZQ Cai, SA Schnitzer, F Bongers, G Liu, GT
1177 Freschet, X Pan, JHC Cornelissen, Y Li, M Dong, S Sun, D Jin, R Li, SX Zheng and ZP
1178 Shangguan), who published their raw allowing it to be compiled in this database. We also thank
1179 Changhui Peng for his support of the NWAUFU group (WH, SPH, ICP, YY, MW), and Chunzi Guo,
1180 Guangqi Li, Yuhong Liu, Yangyang Wu and Jinlong Zhang for their support during the field work
1181 in Yunnan. This research is supported by National Natural Science Foundation (31600388), the
1182 China State Administration of Foreign Expert Affairs under the High-End Foreign Expert
1183 programme at Northwest A&F University (GDW20156100290, GDW20166100147), the National
1184 Basic Research Programme of China (2013CB956704), the Visiting Professorships at the Institute
1185 of Botany and the Institute of Geochemistry, Chinese Academy of Sciences. This research is a
1186 contribution to the AXA Chair Programme in Biosphere and Climate Impacts and the Imperial
1187 College initiative on Grand Challenges in Ecosystems and the Environment. SPH acknowledges the
1188 support of the ERC-funded project GC2.0 (Global Change 2.0: Unlocking the past for a clearer
1189 future, grant number 694481). JN and FB acknowledge National Natural Science Foundation of
1190 China (41471049, 3130379).

1191 **Literature Cited**

- 1192 Akhani, H., P. Trimborn, and H. Ziegler. 1997. Photosynthetic pathways in Chenopodiaceae from
1193 Africa, Asia and Europe with their ecological, phytogeographical and taxonomical importance.
1194 *Plant Systemics and Evolution* **206**: 187. doi:10.1007/BF00987948
- 1195 Atia, A., M. Rabhi, A. Debez, C. Abdelly, H. Gouia, C. C. Haouari, and A. Smaoui, A. 2014.
1196 Ecophysiological aspects and photosynthetic pathways in 105 plants species in saline and arid
1197 environments of Tunisia. *Arid Land* **6**: 762-770.
- 1198 Bernacchi, C., E. Singaas, C. Pimentel, A. Portis Jr, and S. Long. 2001. Improved temperature
1199 response functions for models of Rubisco-limited photosynthesis. *Plant, Cell & Environment* **24**:
1200 253-259.
- 1201 Box, E. E. O. 1981. Macroclimate and plant forms: an introduction to predictive modeling in
1202 phytogeography. Springer Science & Business Media.
- 1203 Bruhl, J.J. and Wilson, K.L., 2007. Towards a comprehensive survey of C₃ and C₄ photosynthetic

204 pathways in Cyperaceae. *Aliso* **23**: 99-148.

205 Cai Z.Q., S.A. Schnitzer and F. Bongers. 2009. Seasonal differences in leaf-level physiology give
206 lianas a competitive advantage over trees in a tropical seasonal forest. *Oecologia* **161**: 25-33.

207 Cavender-Bares, J. and Bazzaz, F. A. 2004. From leaves to ecosystems: assessing photosynthesis
208 and plant function in ecological studies, in: Chlorophyll Fluorescence: a Signature of
209 Photosynthesis, edited by: Papageorgiou, G. C. and Govindjee, G., Kluwer, *Dordrecht*, pp 737–755

210 Cernusak, L. A., N. Ubierna, K. Winter, J. A. M. Holtum, J. D. Marshall, and G. D. Farquhar. 2013.
211 Environmental and physiological determinants of carbon isotope discrimination in terrestrial plants.
212 *New Phytologist* **200**: 950-965.

213 Cornelissen, J. H. C., S. Schnitzer, E. Garnier, S. Diaz, N. Buchmann, D. E. Gurvich, P. B. Reich,
214 H. ter Steege, H. D. Morgan, M. G. A. van der Heijden, J. G. Pausas and H. Poorter. 2003. A
215 handbook of protocols for standardized and easy measurement of plant functional traits worldwide.
216 *Australian Journal of Botany* **51**: 335-380.

217 Cornwell W.K., I. Wright, J. Turner, V. Maire, M. Barbour, L. Cernusak, T. Dawson, D. Ellsworth,
218 G. Farquhar, H. Griffiths, C. Keitel, A. Knohl, P. Reich, D. Williams, R. Bhaskar, J.H.C.
219 Cornelissen, A. Richards, S. Schmidt, F. Valladares, C. Körner, E. Schulze, N. Buchmann, L.
220 Santiago, 2017. Data from: A global dataset of leaf $\delta^{13}\text{C}$ values. Dryad Digital Repository.
221 <http://dx.doi.org/10.5061/dryad.3jh61>

222 Craine, J. M., A. J. Poorter, M. P. M. Aïdar, M. Bustamante, T. E. Dawson, E. A. Hobbie, A.
223 Kahmen, M. C. Mack, K. K. McLauchlan, A. Michelsen, G. B. Nardoto, L. H. Pardo, J. Peñuelas,
224 P. B. Reich, E. A. G. Schuur, W. D. Stock, P. H. Templer, R. A. Virginia, J. M. Welker, and I. J.
225 Wright. 2009. Global patterns of foliar nitrogen isotopes and their relationships with climate,
226 mycorrhizal fungi, foliar nutrient concentrations, and nitrogen availability. *New Phytologist* **183**:
227 980-992.

228 De Kauwe, M. G., Y.-S. Lin, I. J. Wright, B. E. Medlyn, K. Y. Crous, D. S. Ellsworth, V. Maire, I.
229 C. Prentice, O. K. Atkin, A. Rogers, Ü. Niinemets, S. P. Serbin, P. Meir, J. Uddling, H. F. Togashi,
230 L. Tarvainen, L. K. Weerasinghe, B. J. Evans, F. Y. Ishida, and T. F. Domingues. 2016, A test of
231 the ‘one-point method’ for estimating maximum carboxylation capacity from field-measured, light-
232 saturated photosynthesis. *New Phytologist* **210**: 1130-1144.

- 233 Díaz, S., S. Lavorel, S. Lavorel, V. Falczuk, F. Casanoves, D. G. Milchunas, C. Skarpe, G. Rusch,
234 M. Sternberg, I. Noy-meir, J. Landsberg, W. Zhang, H. Clark, and B.D. Campbell. 2006. Plant trait
235 responses to grazing – a global synthesis. *Global Change Biology* **12**: 1-29.
- 236 Díaz, S., J. Kattge, J. H. C. Cornelissen, I. J. Wright, S. Lavorel, S. Dray, B. Reu, M. Kleyer, C.
237 Wirth, I. C. Prentice, E. Garnier, G. Boenisch, M. Westoby, H. Poorter, P. B. Reich, A. T. Moles, J.
238 Dickie, A. N. Gillison, A. E. Zanne, J. Chave, S. J. Wright, S. Sheremetev, H. Jactel, C. Baraloti, B.
239 Cerabolini, S. Pierce, B. Shipley, D. Kirkup, F. Casanoves, J. Joswig, A. Günther, V. Falczuk, N.
240 Rüger, M. D. Mahecha, and L.D. Gorné. 2016. The global spectrum of plant form and function.
241 *Nature* **529**: 167-171.
- 242 Dong, N., I. C. Prentice, B.J. Evans, S. Caddy-Retalic, A.J. Lowe, and I. J. Wright. 2016. Leaf
243 nitrogen from first principles: field evidence for adaptive variation with climate, *Biogeosciences*
244 *Discussions* doi:10.5194/bg-2016-89
- 245 Falster, D. S., R. A. Duursma, M. I. Ishihara, D. R. Barneche, R. G. FitzJohn, A. Vårhammar, M.
246 Aiba, M. Ando, N. Anten, M. J. Aspinwall, J. L. Baltzer, C. Baraloto, M. Battaglia, J. J. Battles, B.
247 Bond-Lamberty, M. van Breugel, J. Camac, Y. Claveau, L. Coll, M. Dannoura, S. Delagrangé, J.-C.
248 Domec, F. Fatemi, W. Feng, V. Gargaglione, Y. Goto, A. Hagihara, J. S. Hall, S. Hamilton, D.
249 Harja, T. Hiura, R. Holdaway, L. S. Hutley, T. Ichie, E. J. Jokela, A. Kantola, J. W. G. Kelly, T.
250 Kenzo, D. Kenzo, B. D. Kloeppel, T. Kohyama, A. Komiyama, J.-P. Laclau, C. H. Lusk, D. A.
251 Maguire, G. le Maire, A. Mäkelä, L. Markesteijn, J. Marshall, K. McCulloh, I. Miyata, K. Miyata,
252 S. Mori, R. W. Mori, M. Nagano, S. L. Naidu, Y. Nouvellon, A. P. O'Grady, K. L. O'Hara, T.
253 Ohtsuka, N. Osada, O. O. Osunkoya, P. L. Peri, A. M. Petritan, L. Poorter, A. Portsmouth, C. Potvin,
254 J. Ransijn, D. Reid, S. C. Ribeiro, S. D. Roberts, R. Rodríguez, A. Saldaña-Acosta, I. Santa-Regina,
255 K. Sasa, N. G. Selaya, S. C. Sillett, F. Sterck, K. Takagi, T. Tange, H. Tanouchi, D. Tissue, T.
256 Umehara, H. Utsugi, M. A. Vadeboncoeur, F. Valladares, P. Vanninen, J. R. Wang, E. Wenk, R.
257 Williams, F. de Aquino Ximenes, A. Yamaba, T. Yamada, T. Yamakura, R. D. Yanai and R. A.
258 York. 2015. BAAD: a Biomass And Allometry Database for woody plants. *Ecology* **96**: 1445.
259 doi:10.1890/14-1889.1
- 260 Fonseca, C. R., J. M. Wright, B. Collins and M. Westoby. 2000. Shifts in trait-combinations along
261 rainfall and phosphorus gradients. *Journal of Ecology* **88**: 964-977
- 262 Fyllas, N. M., E. Gloor, L. M. Mercado, S. Sitch, C. A. Quesada, T. F. Domingues, D. R. Galbraith,
263 A. Torre-Lezama, E. Vilanova, H. Ramírez-Angulo, N. Higuchi, D. A. Neill, M. Silveira, L.

- 264 Ferreira, G. A. Aymard C., Y. Malhi, O. L. Ferreira and J. Lloyd. 2014. Analysing Amazonian
265 forest productivity using a new individual and trait-based model (TFS v.1). *Geoscientific Model*
266 *Development* **7**: 1251-1269
- 267 Gallego-Sala, A. V., J. M. Clark, J. I. House, H. G. Orr, I. C. Prentice, P. Smith, T. Farewell and S.
268 J. Chapman. 2011. Bioclimatic envelope model of climate change impacts on blanket peatland
269 distribution in Great Britain, *Climate Research* **45**: 151–162.
- 270 Gao, Q., X.-B. Li and X-S Yang. Responses of vegetation and primary production in north-south
271 transect of eastern China to global change under land use constraint. 2003. *Acta Botanica. Sinica*.
272 **45**: 1274-1284.
- 273 Gao, Y., X. Liu, C. Min, H. He, G. Yu, M. Liu, X. Zhu and Q. Wang. 2013. Estimation of the
274 North–South Transect of Eastern China forest biomass using remote sensing and forest inventory
275 data. *International Journal of Remote Sensing* **34**: 15, 5598-5610.
- 276 Hancock, P.A. and M.F. Hutchinson. Spatial interpolation of large climate data sets using bivariate
277 thin plate smoothing splines. 2006. *Environmental Modelling & Software* **21**: 1684-1694.
- 278 Harrison, S.P., I.C. Prentice, J-P. Sutra, D. Barboni, K.E. Kohfeld and J. Ni. 2010. Ecophysiological
279 and bioclimatic foundations for a global plant functional classification. *Journal of Vegetation*
280 *Science* **21**: 300-317.
- 281 Hodgson J. G., G. Montserrat-Martí, M. Charles, G. Jones, P. Wilson, B. Shipley, M. Sharafi, B. E.
282 L. Cerabolini, J. H. C. Cornelissen, S.R. Band, A. Bogard, P. Castro-Díez, J. Guerrero-Campo, C.
283 Palmer, M. C. Pérez-Rantomé, G. Carter, A. Hynd, A. Romo-Díez, L. de Torres Espuny and F.
284 Royo Pla. 2011. Is leaf dry matter content a better predictor of soil fertility than specific leaf area?
285 *Annals of Botany* **108**:1337-1345.
- 286 Kaplan, J.O., N.H. Bigelow, P.J. Bartlein, T.R. Christensen, W. Cramer, W., S.P. Harrison, N.V.
287 Matveyeva, A.D. McGuire, D.F. Murray, I.C. Prentice, V.Y. Razzhivin, B. Smith, D.A. Walker,
288 P.M. Anderson, A.A. Andreev, L.B. Brubaker, M.E. Edwards and A.V. Lozhkin. 2003. Climate
289 change and Arctic ecosystems II: Modeling, palaeodata-model comparisons, and future projections.
290 *Journal of Geophysical Research-Atmosphere* **108**: No. D19, 8171.
- 291 Kattge, J., S. Díaz, S. Lavorel, I. C. Prentice, P. Leadley, G. Bönisch, E. Garnier, M. Westoby, P. B.
292 Reich, I. J. Wright, J. H. C. Cornelissen, C. Violle, S. P. Harrison, P. M. van Bodegom, M.

1293 Reichstein, N. A. Soudzilovskaia, D. D. Ackerly, M. Anand, O. Atkin, M. Bahn, T. R. Baker, D.
 1294 Baldocchi, R. Bekker, C. Blanco, B. Blonder, W. Bond, R. Bradstock, D. E. Bunker, F. Casanoves,
 1295 J. Cavender-Bares, J. Chambers, F. S. Chapin, J. Chave, D. Coomes, W. K. Cornwell, J. M. Craine,
 1296 B. H. Dobrin, W. Durka, J. Elser, B.J. Enquist, G. Esser, M. Estiarte, W. F. Fagan, J. Fang, F.
 1297 Fernández, A. Fidelis, B. Finegan, O. Flores, H. Ford, D. Frank, G. T. Freschet, N. M. Fyllas, R.
 1298 Gallagher, W. Green, A. G. Gutierrez, T. Hickler, S. Higgins, J. G. Hodgson, A. Jalili, S. Jansen, A.
 1299 J. Kerkhoff, D. Kirkup, K. Kitajima, M. Kleyer, S. Klotz, J. M. H. Knops, K. Kramer, I. Kühn, H.
 1300 Kurokawa, D. Laughlin, T. D. Lee, M. Leishman, F. Lens, T. Lenz, S. L. J. Lewis, J. Llusà, F.
 1301 Louault, S. Ma, M. D. Mahecha, P. Manning, T. Massad, B. Medlyn, J. Messier, A. Moles, S.
 1302 Müller, K. Nadrowski, S. Naeem, U. Niinemets, S. Nöllert, A. Nüske, R. Ogaya, J. Joleksyn, V. G.
 1303 Onipchenko, Y. Onoda, J. Ordoñez, G. Overbeck, W. Ozinga, S. Patiño, S. Paula, J. G. Pausas, J.
 1304 Peñuelas, O. L. Phillips, V. Pillar, H. Poorter, L. Poorter, P. Poschlod, R. Proulx, A. Rammig, S.
 1305 Reinsch, B. Reu, L. Sack, B. Salgado, J. Sardans, S. Shiodera, B. Shipley, E. Sosinski, J-F.
 1306 Soussana, E. Swaine, N. Swenson, K. Thompson, P. Thornton, M. Waldram, E. Weiher, M. White,
 1307 S. J. Wright, S. Zaehle, A. E. Zanne and C. Wirth. 2011. TRY – a global database of plant traits.
 1308 *Global Change Biology* **17**: 2905–2935.

1309 Kleidon, A., J. Adams, R. Pavlick and B. Reu. 2009. Simulated geographic variations of plant
 1310 species richness, evenness and abundance using climatic constraints on plant functional diversity.
 1311 *Environmental Research Letter* **4**: 014007.

1312 Lavorel, S., S. Díaz, H. Cornelissen, E. Garnier, S. P. Harrison, S. McIntyre, J. Pausas, N. Pérez-
 1313 Harguindeguy and C. Urcely. 2007. Plant functional types: are we getting any closer to the Holy
 1314 Grail? In: Canadell, J., Pitelka, L.F. and Pataki, D. (Eds) *Terrestrial Ecosystems in a Changing*
 1315 *World*. Springer-Verlag, pp. 149-164.

1316 Li, Q., Z. Urcely K. Mo and L. Zhang. 2016. Ecohydrological optimality in Northeast China
 1317 Transect. *Hydrology Earth System Sciences Discussion* doi:10.5194/hess-2016-235

1318 Leuning, R. and G. R. Yu. 2006. Carbon exchange research in ChinaFLUX. *Agricultural and*
 1319 *Forest Meteorology* **137**: 123-124.

1320 Liu G., G.T. Freschet, X. Pan, J. H. C. Cornelissen, Y. Li and M. Dong. 2010. Coordinated
 1321 variation in leaf and root traits across multiple spatial scales in Chinese semi-arid and arid
 1322 ecosystems. *New Phytologist* **188**: 543-553

- 1323 Liu, X. Q. and R. Z. Wang. 2006. Photosynthetic pathway and morphological functional types in
1324 the vegetation from North-Beijing agro-pastoral ecotone, China. *Photosynthetica* **44**: 365-386.
- 1325 Liu, X. Q., R. Z. Wang and Y. Z. Li. 2004. Photosynthetic pathway types in rangeland plant species
1326 from Inner Mongolia, North China. *Photosynthetica* **42**: 339-344.
- 1327 McIntyre S., S. Lavorel, J. Landsberg and T. D. A. Forbes. 1999. Disturbance response in
1328 vegetation – towards a global perspective on functional traits. *Journal of Vegetation Science* **10**:
1329 621-630
- 1330 Maire, V., P. Martre, J. Kattge, F. Gastal, G. Esser, S. Fontaine, and J.-F. Soussana. 2012. The
1331 coordination of leaf photosynthesis links C and N fluxes in C₃ plant species. *PloS one* **7**:e38345.
- 1332 Meng, T.-T., H. Wang, S. P. Harrison, I. C. Prentice, J. Ni, and G. Wang. 2015. Responses of leaf
1333 traits to climatic gradients: adaptive variation versus competition shifts. *Biogeosciences* **12**: 5339-
1334 5352.
- 1335 Ni, J. and G. H. Wang. 2004. Northeast China Transect (NECT): ten year synthesis and future
1336 challenges. *Acta Botanica Sinica*. **46**: 379-391.
- 1337 Nie, Q., J. Xu, M. Ji, L. Cao, Y. Yang, *et al.* 2012. The vegetation coverage dynamic coupling with
1338 climatic factors in Northeast China Transect. *Environmental Management* **50**: 405-17.
- 1339 Ordoñez J. C., P. M. van Bodegom, J. P. M. Witte, I. J. Wright, P. B. Reich, R. Aerts. 2009. A
1340 global study of relationships between leaf traits, climate and soil measures of nutrient fertility.
1341 *Global Ecology and Biogeography* **18**:137-149
- 1342 Osborne, C. P., A. Salomaa, T. A. Kluyver, V. Visser, E. A. Visser, O. Morrone, M. S. Vorontsova,
1343 W. D. Clayton, D. A. Simposn. 2014. A global database of C₄ photosynthesis in grasses. *New*
1344 *Phytologist* **204**: 441-446
- 1345 Paula S., M. Arianoutsou, D. Kazanis, Ç. Tavsanoğlu, F. Lloret, C. Buhk, F. Ojeda, B. Luna, J. M.
1346 Moreno, A. Rodrigo, J. M. Espelta, S. Palacio, B. Fernández-Santos, P. M. Fernandes, and J. G.
1347 Pausas. 2009. Fire-related traits for plant species of the Mediterranean Basin. *Ecology* **90**: 1420.
- 1348 Poorter H., Ü. Niinemets, L. Poorter, I. J. Wright, and R. Villar. 2009. Causes and consequences of
1349 variation in leaf mass per area (LMA): a meta-analysis, *New Phytologist* **182**: 565-588

- 1350 Poorter H., K. J. Niklas, et al. 2012. Biomass allocation to leaves, stems and roots: meta-analyses of
1351 interspecific variation and environmental control. *New Phytologist* **193**: 30-50
- 1352 Prentice, I. C., W. Cramer, S. P. Harrison, R. Leemans, R. A. Monserud, and A. M. Solomon. 1992.
1353 A global biome model based on plant physiology and dominance, soil properties and climate.
1354 *Journal of Biogeography* **19**: 117–134.
- 1355 Prentice, I. C., A. Bondeau, W. Cramer, S. P. Harrison, T. Harrison, W. Lucht, S. Sitch, B. Smith,
1356 and M. T. Sykes. 2007. Dynamic global vegetation modelling: quantifying terrestrial ecosystem
1357 responses to large-scale environmental change. In: Canadell, J., Pitelka, L. & Pataki, D. (eds.)
1358 *Terrestrial ecosystems in a changing world*. pp. 175–192. Springer-Verlag, Berlin.
- 1359 Prentice, I. C., T. Meng, H. Wang, S. P. Harrison, J. Ni, and G. Wang. 2011. Evidence for a
1360 universal scaling relationship of leaf CO₂ drawdown along a moisture gradient. *New Phytologist*
1361 **190**: 169-180.
- 1362 Prentice, I. C., N. Dong, S. M. Gleason, V. Maire, I. J. Wright. 2014. Balancing the costs of carbon
1363 gain and water loss: testing a new quantitative framework for plant functional ecology, *Ecology*
1364 *Letters* **17**: 82-91
- 1365 Raunkiaer, C. 1934. The life-forms of plants and statistical plant geography. Clarendon Press,
1366 Oxford, UK
- 1367 Sakschewski B., W. von Bloh et al. 2015 Leaf and stem economics spectra drive diversity of
1368 functional plant traits in a dynamic global vegetation model. *Global Change Biology* **21**: 2711-2725
- 1369 Scheiter, S., and S. I. Higgins. 2009. Impacts of climate change on the vegetation of Africa: an
1370 adaptive dynamic vegetation model. *Global Change Biology* **15**: 2224-2246
- 1371 Scheiter, S., L. Langam, and S. I. Higgins. 2013. Next-generation dynamic global vegetation
1372 models: learning from community ecology. *New Phytologist* **198**: 957-969
- 1373 Sheng, W., S. Ren, G. Yu, et al., 2011. Patterns and driving factors of WUE and NUE in natural
1374 forest ecosystems along the North-South Transect of Eastern China. *Journal of Geographical*
1375 *Sciences* **21**: 651
- 1376 Shipley B., M. J. Lechowicz, I. Wright, P. B. Reich. 2006. Fundamental trade-offs generating the
1377 worldwide leaf economics spectrum. *Ecology* **87**: 535-541

- 1378 Su, X. P., T. T. Xie and Z. J. Zhou. 2011. C₄ plant species and geographical distribution in relation
1379 to climate in the desert vegetation of China. *Sciences in Cold and Arid Regions* **3**: 0381-0391.
- 1380 Sun S., D. Jin, R. Li. 2006. Leaf emergence in relation to leaf traits in temperate woody species in
1381 East-Chinese Quercus fabri forests. *Acta Oecologica* **30**: 212-222.
- 1382 Ueno, O. and T. Takeda. 1992. Photosynthesis pathways, ecological characteristics, and the
1383 geographical distribution of the Cyperaceae in Japan. *Oecologia* **89**: 195-203.
- 1384 Violle C., M. L. Navas, D. Vile, E. Kazakou, C. Fortunel, I. Hummel, and E. Garnier. 2007. Let the
1385 concept of trait be functional! *Oikos* **116**: 882-892
- 1386 van Bodegom, P. M., J. C. Douma, J. P. M. Douma, J. C. Ordoñez, R. P. Ordoñez, and R. Aerts.
1387 2012. Going beyond limitations of plant functional types when predicting global ecosystem-
1388 atmosphere fluxes: exploring the merits of traits-based approaches, *Global Ecology and*
1389 *Biogeography* **21**: 625–636.
- 1390 van Bodegom, P. M., J. C. Douma, and L. M. Verheijen. 2014. A fully traits-based approach to
1391 modeling global vegetation distribution, *Proceedings of the National Academy of Sciences of the*
1392 *United States of America. Natl. Acad. Sci. USA* **111**: 13733–13738
- 1393 Wang H., I. C. Prentice, J. Ni. 2013. Data-based modelling and environmental sensitivity of
1394 vegetation in China. *Biogeosciences* **10**: 5817-5830.
- 1395 Wang H., I. C. Prentice et al., 2016 A universal model for carbon dioxide uptake by plants, *bioRxiv*
1396 <http://dx.doi.org/10.1101/040246> (preprint)
- 1397 Wang, R. Z. 2004. Photosynthetic pathways and life form types for native plant species from
1398 Hulunbeier Rangelands, Inner Mongolia, North China. *Photosynthetica* **42**: 219-227.
- 1399 Wang, R. Z., 2005. C₃ and C₄ photosynthetic pathways and life form types for native species from
1400 agro-forestry region, Northeastern China. *Photosynthetica* **43**: 535-549.
- 1401 Wang, R. and L. Ma. 2016. Climate-driven C₄ plant distributions in China: divergence in C₄ taxa.
1402 *Scientific Reports* **6**: article 27977

- 1403 Weiher, E., A. van der Werf, K. Thompson, M. Roderick, E. Garnier, and O. Eriksson. 1999.
1404 Challenging Theophrastus: A common core list of plant traits for functional ecology. *Journal of*
1405 *Vegetation Science* **10**: 609-620.
- 1406 Winter K. 1981. C₄ plants of high biomass in arid regions of Asia—occurrence of C₄ photosynthesis
1407 in Chenopodiaceae and Polygonaceae from the Middle East and USSR. *Oecologia* **48**: 100–106.
- 1408 Wright, I. J., P. B. Reich, M. Westoby, D. D. Ackerly, et al. 2004. The world-wide leaf economics
1409 spectrum, *Nature* **428**: 821–827.
- 1410 Wright I. J., P. B. Reich, J. H. C. Cornelissen et al. 2005. Assessing the generality of global leaf
1411 traits relationships. *New Phytologist* **166**: 485–496.
- 1412 Yu, G. R., X. F. Wen, X. M. Sun, B. D. Tanner, X. Lee, J. Y. Chen. 2006. Overview of
1413 ChinaFLUX and evaluation of its eddy covariance measurement. *Agricultural and Forest*
1414 *Meteorology* **137**: 125-137.
- 1415 Zhang X. et al. (Editorial Committee of Vegetation Atlas of China). Vegetation Atlas of China.
1416 2007. Geological Publishing House: Xi'an, China.
- 1417 Zheng S. X. and Z. P. Shangguan. 2007a. Spatial patterns of foliar stable carbon isotope
1418 compositions of C₃ plant species in the Loess Plateau of China. *Ecological Research* **22**: 342-353.
- 1419 Zheng S. X. and Z. P. Shangguan. 2007b. Spatial patterns of photosynthetic characteristics and leaf
1420 physical traits of plants in the Loess Plateau of China. *Plant Ecology* **191**: 279-293.