

Insects of Seed Cones

IN EASTERN CANADA

FIELD GUIDE



33708

Insects of Seed Cones in Eastern Canada
FIELD GUIDE

Jean J Turgeon, Peter de Groot, Jon D Sweeney

Natural Resources Canada
Canadian Forest Service

Insects of seed cones in eastern Canada

Jean J Turgeon, Peter de Groot
Natural Resources Canada
Canadian Forest Service
Great Lakes Forestry Centre
Sault Ste. Marie, Ontario
Canada

Jon D Sweeney
Natural Resources Canada
Canadian Forest Service
Atlantic Forestry Centre
Fredericton, New Brunswick
Canada

Canadian Cataloguing in Publication Data

Turgeon, Jean J.

Insects of seeds cones in eastern Canada: field guide

Rev. version of 'Management of insect pests of cones in seed orchards in eastern Canada', 1992.

Co-published by the Ontario Ministry of Natural Resources.

"Field guide— Cover.

Includes bibliographical references.

ISBN 0-662-35099-5

Cat. no. Fo124-2/2004E

1. Insect pests - Canada, Eastern. 2. Conifers - Seeds - Canada, Eastern.
3. Conifers - Diseases and pests - Canada, Eastern. 4. Cones (Botany) - Canada, Eastern.
- I. de Groot, P. (Peter) II. Sweeney, Jonathan David, 1956- III. Great Lakes Forestry Centre.
- IV. Ontario. Ministry of Natural Resources. V. Turgeon, Jean J. Management of insect pests of cones in seed orchards in eastern Canada.

SD401.64C3T872004 634.9'67'09713 C2004-980186-4

© 2005, Queen's Printer for Ontario Printed in Ontario, Canada

Cover photograph by: Ecki Brokerhoff

Additional copies of this publication are available from the addresses below:

Ministry of Natural Resources
Ontario Forest Research Institute
PO Box 969
1235 Queen Street East
Sault Ste. Marie, Ontario
P6A 5N5
Tel: (705) 946-2981
Fax: (705) 946-2030

Publications Office
Natural Resources Canada
Canadian Forest Service
Great Lakes Forestry Centre
1219 Queen Street East
Sault Ste. Marie, Ontario
P6A 2E5

Tel: (705) 541-9461

Fax: (705) 541-5700

TABLE OF CONTENTS

Preface	(iii)
Preface to first edition	(v)
Acknowledgements	(vi)
Insect communities of seed cones	
Seed cone as a habitat	1
Insect diversity and community structure	2
<i>Associations</i>	2
<i>Feeding patterns</i>	5
<i>Life cycles</i>	6
<i>Host specificity</i>	8
Insect-seed cone relationships	8
<i>Adjustments within a season</i>	8
<i>Adjustments among seasons</i>	10
Host selection	12
Identifying insects infesting seed cones	
Introduction	15
Insects damaging BALSAM FIR cones	17
Insects damaging EASTERN LARCH cones	19
Insects damaging SPRUCE cones	22
Insects damaging PINE cones	26
Insects damaging EASTERN HEMLOCK cones	30
Fact sheets on insect pests	
Introduction	33
Fact sheets	
<i>Coleoptera</i>	35
<i>Diptera</i>	41
<i>Hemiptera</i>	63
<i>Hymenoptera</i>	69
<i>Lepidoptera</i>	79
Insects in natural stands	
Introduction	101
Assessing cone crops and insect damage	101
Insects in seed orchards	
Introduction	103
Cone Crop Monitoring	103
ConeSys	104
<i>Cone Crop Monitoring System</i>	105
<i>Information Management System</i>	105
<i>Decision Support System</i>	105
Glossary	107
References	109
Additional reading	121
Appendix A	123

PREFACE

Insects of seed cones in eastern Canada is a revised version of the field guide "Management of insect pests of cones in seed orchards in eastern Canada". The title of the guide was changed to reflect a shift in emphasis. The objective of the original version was to provide seed orchard managers with the fundamental, but essential, information necessary to optimize seed production by maintaining the most common insect pests encountered in coniferous seed orchards at tolerable levels. The switch in emphasis was necessary because at the time the original guide was published, in 1992, the components of an insect pest management system in eastern Canada seed orchard had not been fully developed yet. Nonetheless, there was a critical and urgent need to introduce these systems immediately to users in a simple and concise manner with the understanding that it would pave the way for the more comprehensive and fully operational cone crop monitoring system that was being developed. This monitoring system has now been published elsewhere (de Groot *et al.* 1995, 1996, 1998). Thus, a guiding principle for this revised version has been to shift away from the pest management emphasis of the original version and to focus on the biological information available on the communities of insects infesting this resource, whose abundance fluctuates greatly in time and space. In addition, the biological information generated through research in the past decade is presented and the number of native conifer genera treated is increased from 3 to 5: balsam fir and eastern hemlock have been added to eastern larch, spruces and pines.

Insects of seed cones in eastern Canada is written to assist seed collectors, foresters and seed orchard managers and other non-entomologists from northeastern North America in general, and from Ontario in particular, to detect, recognize and identify insects associated with this resource. Although the look of this guide has changed, its dimensions have been retained to ensure that it can be taken to, and used in the field. At the same time, it can be incorporated easily into the binder "A seed manual for Ontario", which contains the latest version of "Guidelines for tree seed crop forecasting and collecting".

Insects of seed cones in eastern Canada has been divided into 5 sections. The first section contains general information on the diversity and ecology of the insect communities associated with seed cones of these hosts. It begins with definitions and examples of the various categories of associations, patterns of resource utilization (or guilds) and groups of life cycles specific to this insect fauna. Also presented is a new section providing a synopsis of the relationship between insects and seed cones. Also new is a section on our current knowledge on how insect find and select cones for feeding or egg laying.

The second section is a simple key combined with a photographic aid that has been proven during the past decade to provide speedy and, for the most part, reliable identification of the insects damaging cones and seeds of balsam fir, eastern larch, spruces, pines and eastern hemlock. The keys follow the process of examination and handling of cones one would undertake under field conditions: that is 1), determine whether the exterior of the cone is damaged; and 2), bisect the cone to determine whether the inside is damaged.

For each step, there is often several possible causal agents. The most common types of damage one would encounter under field conditions have been described. Each description is coupled with a colour photograph illustrating, as closely as possible, the damage one would see whether the insect is present or absent. This section should facilitate and expedite pest identification, especially by non-entomologists.

The third section provides a summary of the biological information available on these insects. It includes taxonomic and morphological information available for most insects listed in the key to damage, as well as essential information about the geographic distribution, life history, damage, economic importance, monitoring tools and management options currently available. The delivery of information in point form has been maintained to minimize the amount of reading necessary to obtain the desired details or facts.

The fourth section describes some simple methods that seed collectors can use in natural stands to assess cone crops for insect damage whereas the fifth section describes a formal method to assess the quantity and quality of a cone crop in a seed orchard. A brief introduction to CONESYS is provided. CONESYS consists of three modules: 1) the Cone Crop Monitoring System, which provides data on the size of the cone crop and expected damage at various times through the development of the cone crop; 2) the Information Management System, which provides information on the biology and damage from insects, and control products available and expected efficacy, and 3) the Decision Support System, which provides costs and benefit calculations for various pest control options. This section illustrates how pest management can be integrated into a crop management program (cone crop monitoring system) without a duplication of efforts. Also this information should facilitate effective use of the information provided in section 3.

It is hoped that with all these transformations and improvements, **Insects of seed cones in eastern Canada** will remain the most widely consulted reference for easy to access information on insects infesting seed cones of conifers native to northeastern North America.

PREFACE TO FIRST EDITION

Management of insect pests is only one of the many tasks associated with the production of genetically improved seeds. To date, the information provided on insect pest management in seed orchards has usually been limited to the introduction of the major pests and to a list of the pesticides available for population suppression. Insect pest management is much more complex than that and must also be integrated into the resource management scheme of the orchard. Effective and rational pest management requires an accurate identification of the pest, a basic understanding of its biology, methods to monitor its presence and evaluate its abundance, as well as tactics and strategies to prevent or control damage. This guide provides seed orchard managers with fundamental, but essential, pest management information on the most common insect pests encountered in coniferous seed orchards in a simple, concise and comprehensive manner.

This guide is divided into 3 sections. The principle components of seed orchard pest management are presented in the first section. It includes a chapter on the development of a cone crop monitoring system, followed by chapters on general guidelines and methods for monitoring, assessing impact, preventing and controlling cone and seed insects. This section illustrates how pest management can be integrated into a crop management program (cone crop monitoring system) without a duplication of efforts. Also this information should facilitate effective use of the information provided in sections 2 and 3.

The second section is a key to identify damage caused by cone and seed insects of larch, pine and spruce. The keys are accompanied by pictures illustrating, as closely as possible, the damage observed under field conditions. This section should facilitate and expedite pest identification by non-entomologists.

All information currently available on the distribution, general description, life history, damage and management options of the most common cone and seed insects is synthesized in the third section. Tables indicating the feeding periods or the time insects attack their host in relation to host phenology are included. This information should provide a sound basis for pest management decisions.

Sections of this guide will be updated when new knowledge of the biology and management of insect pests of coniferous seed cones is obtained.

ACKNOWLEDGEMENTS

The work involved in the original and revised versions were funded by the Ontario Ministry of Natural Resources, Applied Science and Technology and by Natural Resources Canada.

We have been extremely fortunate to have worked with several outstanding individuals in the preparation of this field guide. We are particularly grateful to Victoria Santana (Sault Ste Marie, Ontario) and Karen Jamieson (Natural Resources Canada, Great Lakes Forestry Centre) for their tireless and painstaking efforts in preparing this publication. Victoria was responsible for the design and layout of both versions, and Karen for the editing.

We sincerely appreciate the assistance of Beverly Aelick, in gathering and synthesizing the reference material for the original version and of Isabelle Ochoa, in **scanning all of the photographs and in preparing the excellent line drawings of insects and feeding patterns for the revised version.** We gratefully acknowledge Vic Wearn, Ontario Ministry of Natural Resources, for his encouragement and assistance for this publication from its inception. Al Foley and Barb Boysen, Ontario Ministry of Natural Resources, were instrumental in making the idea of a revised version a reality.

We thank Bruno Boulet, Joe Churcher, Elizabeth de Groot, Gordon Miller, Yves Prévost, Don Summers and Rick West for their reviews and comments on the original version. Finally, we extend our gratitude to the following who kindly allowed the reproduction of some of their photographs: Norma Nelson and Bev Aelick (Natural Resources Canada, formerly Forestry Canada, Forest Pest Management Institute), Edward Rayner (Natural Resources Canada, formerly Forestry Canada, Ontario Region), Chuck Jones (NRCan-GLFC), Thérèse Arcand (Natural Resources Canada, formerly Forestry Canada, Quebec Region), Doug Ruth, Gordon Miller and Al Hedlin (Natural Resources Canada, formerly Forestry Canada, Pacific and Yukon Region), Yves Prévost (Lakehead University, Thunder Bay, Ontario), Gary DeBarr (USDA, Forest Service, Athens, Georgia), and the Forest Insect and Disease Survey (Natural Resources Canada, formerly Canadian Forestry Service).

Jean J Turgeon, Peter de Groot, Jon D Sweeney

INSECT COMMUNITIES OF SEED CONES

The seed cone as a habitat

Before addressing the issue of diversity and structure of insect communities associated with **seed cones**¹, it is essential to describe this habitat. Most seed cones consist of a main axis bearing spirally arranged bract/fertile ovuliferous scales (Figure 1). Each bract associated with an ovuliferous scale, which bears exposed seeds, is joined at the base to the cone **axis**. Because of the diversity of their characteristics (bract, dwarf-shoot, ovules, seed wing, aril), seed cones vary in length (0.2 cm - 60 cm), shape, and colour. Thus, each seed cone represents a discrete microhabitat.

Seed cone development, which is extremely rapid especially when compared to tree life, is characterized by significant morphological and biochemical transformations. The reproductive cycle of conifers in general is broadly similar and can be summarised as follows: 1, reproductive buds are initiated in the growing season preceding the spring in which seed cones become externally visible; 2, seed cone buds burst open at specific periods to receive pollen, which

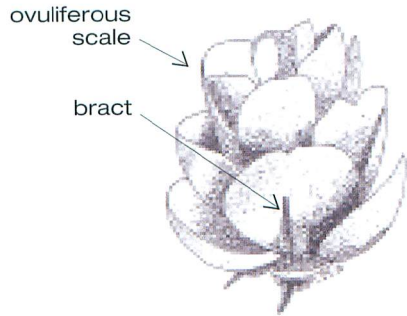


Figure 1. Seed cone

is carried by wind; 3, the time between pollination and fertilization varies from a few days to several months, depending on the type of reproductive cycle; 4, following fertilization, cones develop rapidly at first and mature slowly; and 5, seeds disperse immediately or shortly after cones lignify – although some species don't shed their seeds for several years. The most notable difference is in the duration of the cycle (i.e., time between reproductive bud initiation and seed maturity). In some Pinaceae, such as in species of *Abies*, *Larix*, *Picea* and *Tsuga*, the cycle lasts 2 years: pollination of the seed cone and cone maturation both occur during the same year, the year after bud initiation (i.e., year 2). In other Pinaceae, such as *Pinus* spp., the cycle lasts three years: pollination also occurs during year 2, but development stops shortly after pollination, in mid-summer, and fertilization occurs in year 3, shortly after seed cone development resumes in the spring. In this case, cone maturation (increase in size and weight) occurs the year after pollination.

In natural forests, conifers take several years before producing seed cones, but once production has begun, it usually increases with tree age and continues for the rest of the tree's life. Production is highly irregular in both space (among trees within a stand and among stands) and time (from year-to-year). The abundance of cones produced varies among species and is influenced by nutritional factors, environmental conditions, site characteristics and altitude. For most conifers, large seed crops are synchronized and episodic, a phenomenon referred to as masting. For most species, the intervals between

¹ Throughout this guide, words in bold font are defined in the glossary

most years vary between 2-10 years and are interspersed by years of moderate, light or no cone crops. The distribution of seed cones usually varies among crown levels. Often, the upper crown, where light is more abundant, generally produces more cones than shaded areas. The greatest level of spatial heterogeneity within and between trees, as well as between stands, occurs on edges and during years of poor to moderate crops, when production is either limited to a few trees, or to few cones on several trees.

Insect diversity and community structure

Not all insects found in seed cones feed on, or destroy, seed cones or seeds. Seed cones are inhabited primarily by insect species that feed on plant tissues (i.e., **phytophages**). These insects create suitable conditions for the development of other groups of insects such as those that feed on decaying matter (e.g., **saprophages**) and on fungi (e.g., **mycophages**). In addition, feeding galleries created by phytophagous insects occasionally serve as hibernating sites for other groups of insects. Associated with all these insects are parasitoids and predators. Detailed knowledge of the entire insect community is limited to a handful of conifer species. There is a paucity of information on the natural enemies that attack insects infesting seeds and cones predominantly because the cryptic nature of these insects makes it difficult to ascertain the associations between insects and parasitoids.

There are approximately 400 species of phytophagous insects infesting the seed cones of world conifers; in eastern Canada, about 60 species of insects have been recorded on the native species of balsam fir, eastern larch, black, red and white spruce, jack, red, pitch, and white pine, and eastern hemlock (Table 1). All 60 species appear native to North America. This fauna comprises Coleoptera (e.g., cone beetles), Diptera (e.g., cone maggots, cone midges, resin midges, etc), Hemiptera (e.g., seed bugs, aphids, etc.), Hymenoptera (e.g., seed chalcids) and Lepidoptera (e.g., cone moths, cone borers, seed moths, coneworms, etc.). Note that several of these genera (i.e., *Strobilomyia*, *Megastigmus*, *Eucosma*, *Cydia*, etc.) are found in cones of conifers from around the world, only the species name is different. Most of the insect species found in cones of northeastern North America conifers are moths (Table 1).

Based on available host records, the diversity of most species of conifers from northeastern North America is limited to 12 species of phytophages or less (Table 1). Only eastern larch, black and white spruce appear to have a more diverse insect fauna. There is little doubt that many more host records remain to be established as detailed studies are lacking for several species of conifers, especially for those of little economic importance.

Associations: Insects can affect the survival of seeds directly by feeding on seed-cones, or indirectly by damaging foliage, twigs and branches that bear reproductive structures. Only a few of the 60 species found in northeastern North America can cause significant economic damage: the remainder typically have a low or unknown impact (Table 1). Some of the insects that have a direct impact on seed-cones feed exclusively on reproductive structures and cannot develop without them. These insects are known in the scientific literature as **conophytes**, but in this guide, we will refer to these insects as obligatory.

Other insects, which are not dependent on these structures for survival but will feed upon them opportunistically, are known as **heteroconophytes** but will be referred to as facultative. For the majority of northeastern conifers, most insects found in seed cones are obligatory: about 80% or higher (Table 1). Again the only exceptions are eastern larch and black spruce where the proportion of obligatory species is around 50%. The much lower proportion of obligatory species in these hosts can be attributed in part to detailed life table studies that revealed the presence of many facultative insects feeding on seed cones in the early stages of cone development. Nonetheless the focus of this guide will remain on obligatory species. Note that species from the same genus typically have the same type of associations (i.e., obligatory or facultative).

Feeding patterns: Four patterns of feeding upon seed cone tissues have been recognised for phytophagous insects. In the scientific literature they are referred to as conophagous, conospermatophagous, spermatophagous, and ecto-spermatophagous; however, for the purpose of brevity and simplicity, these feeding patterns will be referred to as Pattern I, II, III, and IV, respectively. Pattern I consists of feeding upon either cone axis, bracts or scales without specifically targeting seeds, although on occasion, tunnelling by larvae may result in some seeds being damaged or destroyed accidentally (Figure 2; Pattern I). Pattern II involves the consumption of cone and seed tissues by insects that move from seed to seed in a clear, discriminate pattern (Figure 2; Pattern II). Pattern III consists of feeding upon the endosperm from within seeds (Figure 2; Pattern III), whereas Pattern IV involves the consumption of endosperm, either partially or completely, by inserting piercing mouthparts from the cone's surface (Figure 2; Pattern IV). Patterns I-III are made by larvae whereas Pattern IV is caused by nymphs and adults alike.

The feeding patterns of most insects found in seed cones of conifers from northeastern North America have been determined (Table 1). Facultative insects typically feed by grazing upon the outside of cone scales (i.e., Pattern I). This surface feeding, often characterised by the presence of coarse frass pellets, is usually easy to detect by a visual examination of the cone's surface, but is often difficult to associate to a specific feeder because of its nondiscriminatory nature. Species such as the spruce budworm, however, can either tunnel through the cone at random, damaging seeds by accident or consume the cone entirely especially when populations reach outbreak conditions and current-year foliage is scarce. Obligatory insects, on the other hand, have developed feeding strategies that target exclusively specific tissues of the cones and thus are considered much more specialised than facultative insects. One of the benefits of this specialisation is that it maximises the utilisation of the cone and reduces competition for resources by the species infesting the same cone, a strategy that would ensure survival of many insects species, especially when cones are scarce. All four feeding patterns are encountered among obligatory species. Obligatory species belonging to the same genus have similar feeding patterns. For example, all species of *Conophthorus*, *Strobilomyia* and *Megastigmus* share Pattern I, II and III, respectively. It appears this pattern applies to the entire community of world conifer seed cones irrespective of the host exploited. For most conifer species, there are typically more species feeding on cone tissues (Pattern I) than on cone and seed tissues (Pattern II). Feeding on seed tissues (Pattern III and IV) is limited to a few species

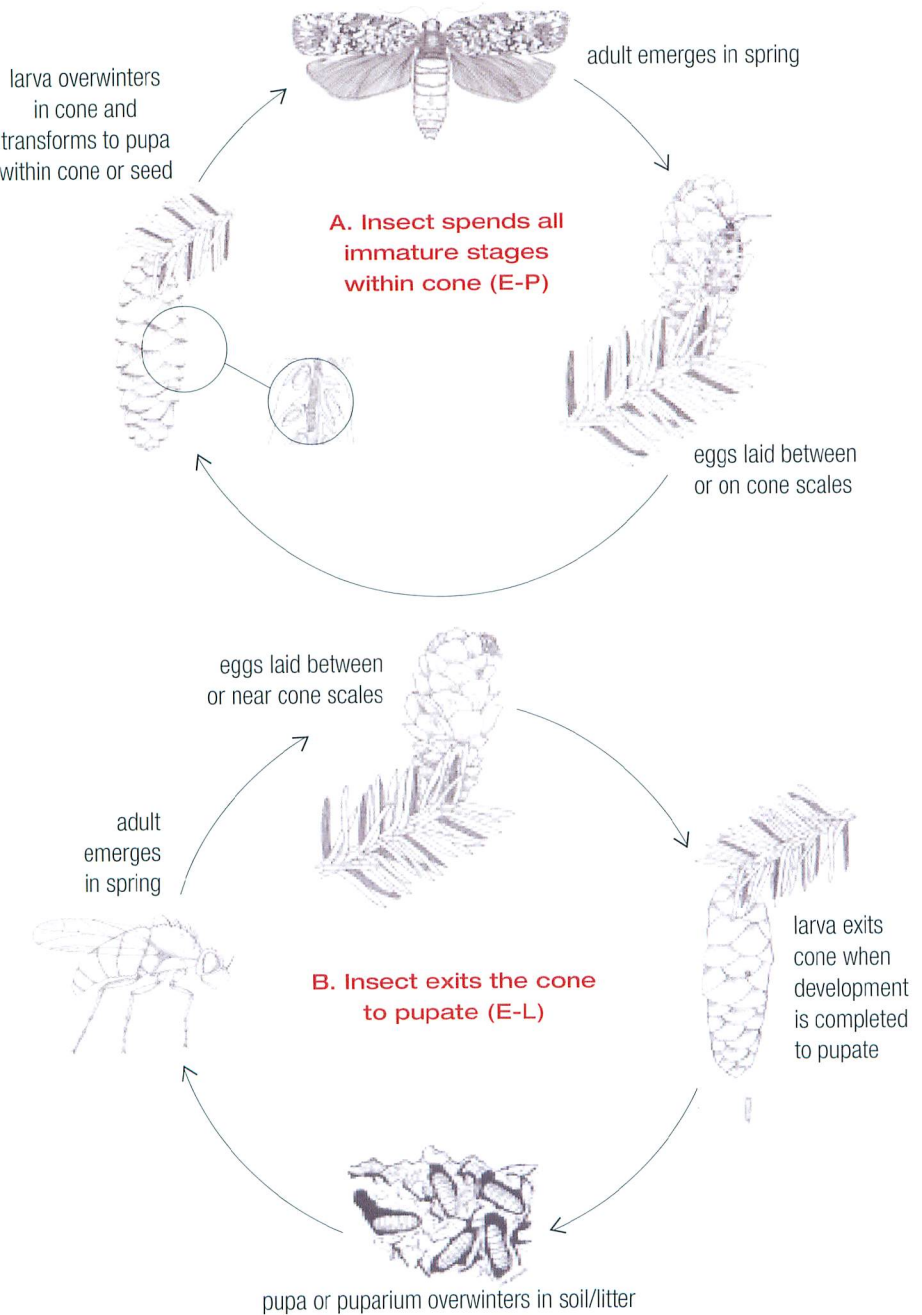
only (Table 1). Eggs of most obligatory species are laid between the cone scales, the bud scales or seeds. Thus, detection of most species is difficult because their eggs are small and the larvae develop inside cones and seeds (which offer protection) leaving little or no evidence of their presence. Consequently, detection occurs after damage has either started or has been completed; one exception are cone beetles.

Grazing by most facultative defoliators and needle miners (Pattern I) generally has a minimal impact on seed cone survival; however, extensive surface feeding can result in misshaped or twisted cones and reduce seed extractability significantly. When taken individually, most facultative species have a low impact on the seed crop; however, when taken as a group the impact can be important, especially during outbreaks. For obligatory species, the impact associated with each feeding pattern varies substantially within and among patterns: from light, where extraction of a few seeds is prevented, to complete destruction, where the cone is killed prior to maturation. For example, some cone gall midge larvae form a small gall on cone scales near the axis (Pattern I), and can prevent extraction of 1 or 2 healthy seeds if the gall is located near the seeds of the infested scale. Pine cone beetle larvae, on the other hand, feed at random within cones (Pattern I), but all seeds are destroyed because the stem has been girdled by the female at the time of attack. Infestations by insects that mine the cones (Pattern II) do not necessarily result in the loss of all the viable seeds; thus the impact is likely function of the number of individuals in a cone and the seed-destroying capacity of each larva. A single spruce cone maggot can destroy an average of 65% of the seeds within a white spruce cone and about 75% of those from a black spruce cone. The filled seeds remaining in these cones are smaller than normal seeds but can germinate successfully; however, there is a significant reduction in extractability. Larvae of seed chalcids and seed midges (Pattern III) each consume one seed during their development. Thus the impact of this type of feeding is equivalent to the proportion of seed infested. Estimates of impact for the western conifer seed bug (Pattern IV) varies substantially among host species: Douglas fir (<5-70%), western white pine (70-80%), ponderosa pine (<55%), on whitebark pine (<2.1%) and lodgepole pine (<95%).

Life cycles: Almost all obligatory insects from northeastern North America have a **univoltine** life cycle. There is, however, a subtle variation in life cycle among the obligatory species that is noteworthy. Some species spend all immature stages of development (i.e., egg, larva and pupa) within the cone or seed (Figure 3a) whereas others exit the cone as a mature larva and pupate either in the litter or in the ground (Figure 3b). These types of life cycles, known in the literature as **endoconophytic** and **exoconophytic**, respectively, will be referred to as egg to pupa (hereafter E-P) or egg to larva (hereafter E-L) cycles. The type of life cycle is known for all obligatory species (Table 1). Obligatory species belonging to the same genus usually have similar types of life cycles irrespective of the host infested. For example, all *Cydia* spp. have an E-P cycle whereas all *Strobilomyia* and *Eucosma* spp. have an E-L cycle. Notable exceptions are *Conophthorus resinosae*, which overwinters in shoots whereas *Conophthorus coniperda* remains in cones, and *Dioryctria* spp., which either remain in cones or leave cones to pupate.

Figure 3.

TYPES OF LIFE CYCLES FOR INSECTS INFESTING SEED CONES



Species with an E-P cycle overwinter as **diapausing** larvae or pupae within the brood cone or seed still attached to the tree or on the ground. Conversely, species with an E-L cycle overwinter in the duff beneath the tree or on the tree, either as diapausing pupae (e.g., *Strobilomyia* spp.) or mature larvae (e.g., *Dioryctria* spp.), but also as adults (e.g., *Conophthorus* spp.). Facultative insects rarely complete their life cycle within a cone as they move to foliage once it is available.

There appears to be relationships between the type of feeding pattern, the level of host specificity, the host plant and the type of life cycle. For example, all species with feeding Pattern III have an E-P life cycle; about 60% of the monophagous feeders have an E-P cycle compared to only 25% for oligophagous species; the number of species with an E-L cycle infesting balsam fir, eastern larch and pines is much greater than that with an E-P cycle whereas on spruces the opposite is observed.

Host specificity: Most obligatory species are moderately host specific, as indicated by the small number of hosts exploited (Table 1). Overall, about 70% of the obligatory species from northeastern North America with known host records are monophagous (i.e., feeding is apparently restricted to species from a single genus of Pinaceae); the remainder are oligophagous (i.e., feeding is apparently restricted to two or more genera of Pinaceae). On most conifer species, there is similar proportion of monophagous and oligophagous species.

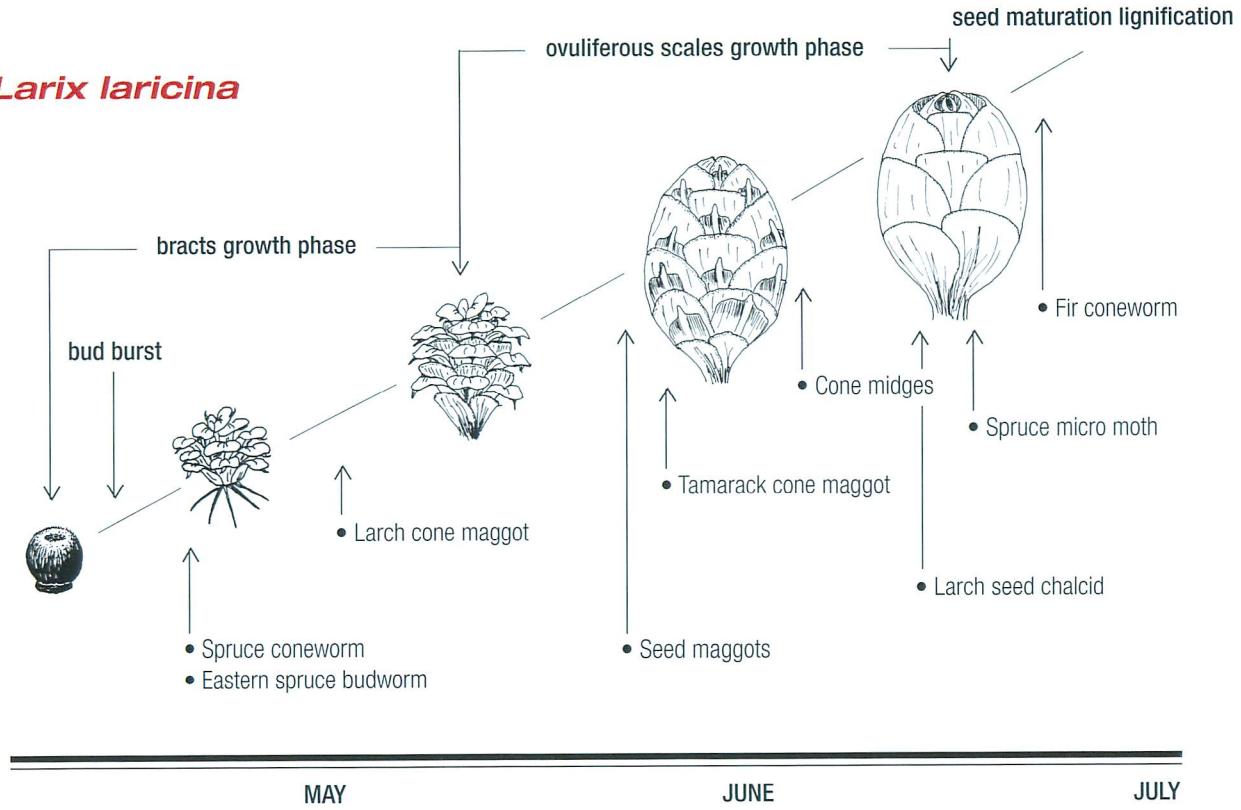
The degree of host specialization varies among feeding patterns. The proportion of monophagous species is much higher among obligatory species with a feeding Pattern II (12 out of 14) or III (5 out of 7) than among those with a Pattern I (6 out of 13). These patterns suggest a unique and specialized fauna.

Insect-seed cone relationships

Fluctuations in the production of seed cones by the host tree is the single most important regulating mechanism in the population dynamics of most obligatory species. Besides evolving feeding strategies, cone feeders also had to develop strategies to adjust to the temporal availability of seed cones within seasons to enable synchrony of attack with seed cone development, and between seasons to ensure availability of cones.

Adjustments within a season: In northeastern North America, the relationship between seed cone **phenology** and the time of colonization by obligatory and facultative species have been established for some species (e.g., *Larix*, *Picea*, and *Pinus*; Figures 4,5 and 6). Facultative insects do not lay eggs on or near the cones. The larvae usually initiate cone attack when seed-cones begin to burst open or at the time cones are about to release seeds, when cone and foliage tissues are relatively similar in composition. Conversely, most obligatory insects initiate cone attack by laying eggs between cone or bud scales when the seed-cones are open to receive pollen, with only a few species (e.g., seed chalcids) laying eggs in seeds when the cones are about half their mature length. At that time, cones are soft and contain high levels of sugars and low proportions of indigestible fibres. Obligatory species typically remain in cones until **lignification** is complete or seeds

Larix laricina



drawings by Bev Aalick

RELATIONSHIP BETWEEN THE TIME INSECTS INITIATE
CONE ATTACK AND CONE PHENOLOGY OF EASTERN LARCH
Figure 4.

are released, except for *Strobilomyia* spp. which exit cones shortly after the rapid growth phase is completed. The exit period generally lasts much longer than the **oviposition** period, and can be influenced by external cues such as rainfall. The mechanism enabling insects to synchronize colonization with specific phases of seed cone development is poorly understood.

Adjustments among seasons: As indicated above, the intervals between **mast** years, which varies among conifer species, are interspersed by several years of moderate, light or no cone crops. Insects have developed several adaptations to cope with these, sometimes drastic, annual variations in seed cone abundance. These adaptations seem designed mainly to assure survival of some individuals and to prevent extinction in the absence of cones rather than to maintain current population levels, or to permit populations to recover quickly.

Some species offset annual fluctuations by attacking seed cones from a wide variety of hosts (e.g., *Dioryctria abietivorella*); others infest different tree structures of different hosts (e.g., *Conophthorus resinosa*). Dispersal flights to locate cone producing stands have also been reported. Also, some obligatory species adjust oviposition by increasing, or decreasing the number of eggs laid per attacked cone when the cone crop decreases or increases. The most common strategy adopted by obligatory species infesting conifers with two year cycles (e.g., balsam fir, eastern larch) is prolonged **diapause**, where insects remain in diapause for more than a year. Of the 36 obligatory species infesting the seed cones of northeastern North American conifers, at least 23 are capable of prolonged diapause for a minimum of 1 to 3 additional years. Several parasitoids of these species are also capable of a prolonged diapause that is well synchronized with that of the host.

Typically, prolonged diapause occurs at the overwintering site (e.g., cone, duff, or seed in duff) and begins when insects reach the overwintering stage: either late instars (e.g., species of *Megastigmus* and *Cydia*) or pupae (e.g., species of *Strobilomyia* and *Earomyia*). The capacity to extend diapause is higher among obligatory species infesting conifers with two year cycles than among those with three year cycles. For example, between 60 and 85% of the species infesting seed cones of balsam fir, eastern larch and spruces are capable of prolonged diapause compared to less than 30% for those infesting pines (Table 1).

There is evidence to suggest that the incidence and duration of prolonged diapause varies among insects of the same species occupying the same cone, different cones on the same tree, different trees in the same stand and different sites, but appears independent of densities in seed cones. The communities of obligatory species are composed of individuals originating from different years. For most species, there is a negative relationship between the incidence of prolonged diapause and the size of the cone crop the year following larval feeding (i.e., an increase in cone production the following year should result in lower incidence of prolonged diapause).

Picea spp.

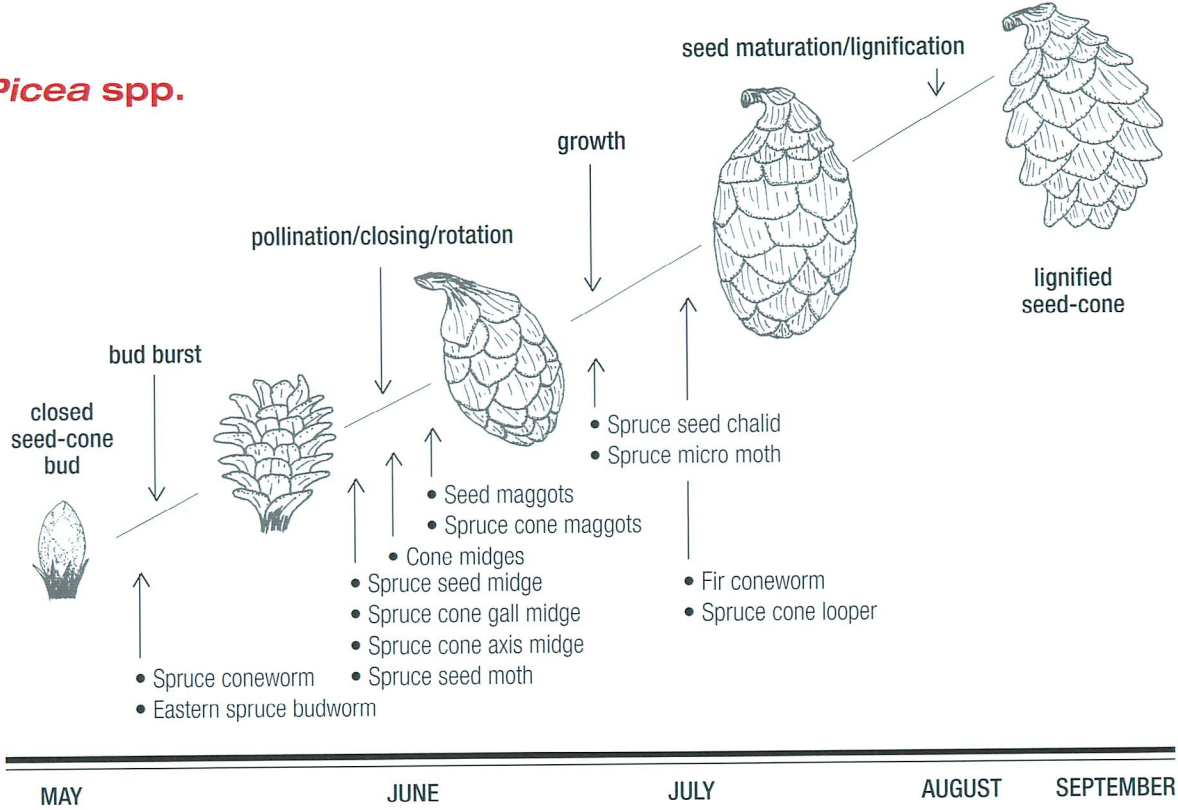


Figure 5.

RELATIONSHIP BETWEEN THE TIME INSECTS INITIATE CONE ATTACK AND CONE PHENOLOGY OF SPRUCE

drawings by Bev Aelick

Except for two species of *Eucosma* (feeding Pattern II), which infest pine cones, all obligatory species with a feeding Pattern II or III have the capability to extend diapause. Only 35% of the obligatory species with a feeding Pattern I can extend diapause.

The factors regulating the induction and termination of prolonged diapause are poorly understood. **Abiotic** factors such as temperature, rainfall, and solar radiation as well as biotic factors such as host and maternal effect can play a primary role in diapause initiation of some obligatory species. The role of biotic factors on induction of prolonged diapause, however, appears limited to obligatory species that exploit seed cones at the time seed cone bud initiation occurs. Also, it has been suggested that the chemical composition of seed cones during larval development has an effect on the prolonged diapause of some species. For some obligatory species in prolonged diapause, termination was sometimes positively correlated with the cone production of host trees, whereas for others no relationship could be established. Prolonged diapause is probably terminated by the action of abiotic factors because diapausing individuals are either in the litter or in a cone or a seed in the duff. Temperatures occurring at specific periods in the spring preceding emergence seemed effective in predicting the proportion of some species that terminated prolonged diapause. Alternatively, termination of diapause or prolonged diapause could be genetically programmed. Females could produce a progeny with a mixture of diapause lengths with various proportions of a female's progeny ending diapause in any given year.

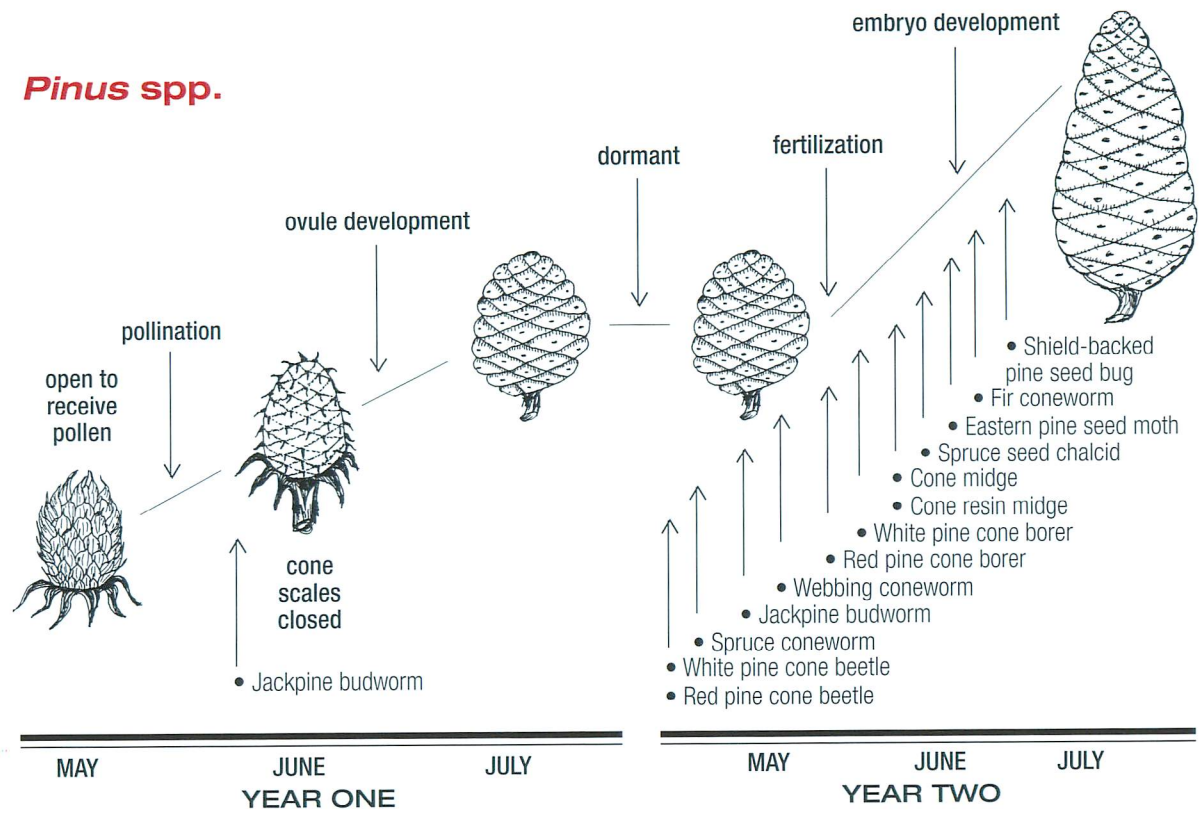
Host selection

For facultative species such as *Choristoneura* spp., seed cones are selected by larvae capable of significant movements to find cones. For obligatory species, adult females are responsible for seed cone recognition and selection and the progeny is bound to the female's choice except for a few species of *Eucosma* and *Eupithecia* whose larvae often move to another cone to complete development. Furthermore, most obligatory species mate either on cones, or in the vicinity of cones or cone producing trees, suggesting that cones probably act as "rendez vous" sites for both sexes. Thus, for these obligatory insects, effective host recognition and selection processes are required by adults to adjust to variations in the spatial distribution of seed cones.

For insects of seed cones, the plant selection process can be arbitrarily divided into three elements: detection of cone producing trees from a distance, from nearby, and detection of seed cones from within the tree canopy. There is increasing evidence suggesting that several obligatory species rely on a combination of visual (e.g., tree silhouette, size, shape, as well as cone size, shape, colour and contrast with foliage) and olfactory (e.g., scent emitted by trees or cones) cues, operating sequentially or simultaneously, in locating cone producing trees or seed cones.

Traps mimicking these stimuli can be hung in front of trees or within the canopy and used to attract adults, thus serving as monitoring tools. The response of insects to visual cues provided by trees or cones may vary among sexes and can be influenced by the reproductive and nutritional status of the individual insect.

Pinus spp.



RELATIONSHIP BETWEEN THE TIME INSECTS INITIATE CONE ATTACK AND CONE PHENOLOGY OF PINE
Figures 6.

IDENTIFYING INSECTS INFESTING SEED CONES

Introduction

The ability to identify the species of insects attacking the cones and seeds of conifers is critically important for pest management. This is because pest control methods are developed, tested, and approved for certain species or groups of insects. In other words, what works for one species is not necessarily effective against another one. Thus, failure to correctly identify the insects can result in ineffective and costly pest management and possibly in illegal use of registered insecticides. Furthermore, to prevent seed losses it is critical that insect identification be performed in a timely manner so that appropriate damage assessment be initiated as soon as possible.

Insect identification, a process that may on occasion take several weeks (from shipping the insect to actual identification), is based on certain unique morphological, behavioural, chemical or other traits and is performed by taxonomists. For those working in the field, these traits are often difficult or impossible to see with the naked eye and require special equipment and training available only to taxonomists. Fortunately, most insects have specific feeding habits and thus leave a characteristic signs of damage that we believe are much easier to see and recognise by those working in the field. Furthermore, most insects feed preferentially on a specific host genus (i.e., spruce, pine, etc.): only a handful feed on several host genera. A list of each insect and feeding characteristics was compiled for each host genus, and, when possible, associated with a photograph that best illustrated the damage one would see. With this information, an easy-to-use key was developed to aid in the identification of insects attacking the cones and seed of balsam fir, eastern larch, spruce, pine and eastern hemlock, in eastern Canada.

The first step is to determine whether there is evidence of insect damage on the cones surface:

- 1 There is external evidence of damage.....List of possible insects
- 1' There is NO external evidence of damage.....Proceed to step 2

The second step consists of slicing the cone in half lengthwise, along the axis, and determining whether there is evidence of damage to the seeds:

- 2 Damage to seed is visible.....List of possible insects
- 2' Damage to seed is NOT visible.....List of possible insects

For insects leaving external evidence of damage, the external damage is described first, and is followed by a description of internal damage which can be observed once the cone is bisected. NEVER ASSUME THAT BECAUSE A CONE LOOKS HEALTHY FROM THE OUTSIDE THAT IT CONTAINS HEALTHY VIABLE SEEDS INSIDE. Thus, we urge you to take the time to bisect healthy cones as well. Insects leaving no external evidence of damage have been divided into two groups based on the presence or absence of visible damage to the seeds, once the cone is bisected. After matching the damage you observe to a photograph or a description,

read the name of the insect or insects, and the page number (in brackets) where you will find additional information on the insect.

This method of identification is not fool-proof and doesn't work for every cone and seed insect, but it does work in the vast majority of cases.

INSECTS DAMAGING BALSAM FIR CONES

INSECTS LEAVING EXTERNAL EVIDENCE OF DAMAGE



T Arcand

- conspicuous reddish-brown, coarse frass and webbing holding several cones together; one or more ragged holes; extensive tunnelling inside cone, usually free of debris.

fir coneworm (89)

(Dioryctria abietivorella)



T Arcand

- small ragged holes on cone surface; small amounts of frass and resinous material around entrance holes.

spruce cone loopers (99)

(Eupithecia albicapitata)

(Eupithecia mutata)



Canadian Forest Service

- cone exterior partially consumed; webbing and coarse frass adhering to surface of cone and surrounding needles.

eastern spruce budworm (81)

(Choristoneura fumiferana)

balsam fir

INSECTS DAMAGING BALSAM FIR CONES

INSECTS LEAVING **NO** EXTERNAL EVIDENCE OF DAMAGE



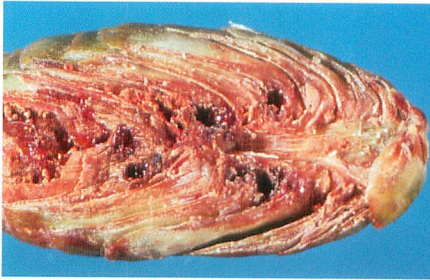
Oregon State University

Damage to seeds **is** visible

- small amount of frass present; attacked seeds become flat, resinous, and dark brown.

seed maggots (45)

(Earomyia atterima)



E Rayner

- spiral tunnel around cone axis filled with resin and frass; seeds can be partially or totally consumed; small amounts of brown boring and fecal debris.

balsam fir cone maggot¹

(Strobilomyia carbonaria)



D Ruth

Damage to seeds **is not** visible

- seeds appear normal; endosperm consumed entirely by insect.

balsam fir seed chalcid (77)

(Megastigmus specularis)

balsam fir

¹ There is insufficient information to prepare a fact sheet, but this insect's appearance resembles that of a spruce cone maggot (except in size). Damage by spruce cone maggot shown here.

INSECTS DAMAGING EASTERN LARCH CONES

INSECTS LEAVING EXTERNAL EVIDENCE OF DAMAGE



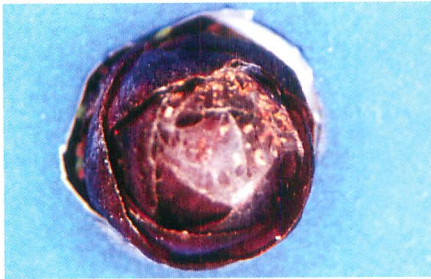
T Arcand

- cone enveloped in coarse frass and webbing in early June.
spruce coneworm (93)
(*Dioryctria reniculelloides*)
(shown on black spruce)



Canadian Forest Service

- cone partially consumed; webbing and frass adhering to surface.
eastern spruce budworm (81)
(*Choristoneura fumiferana*)



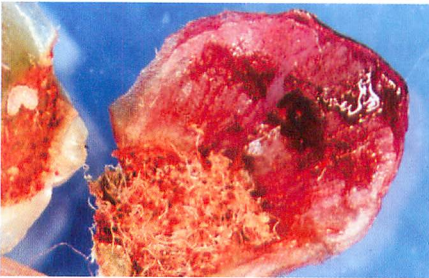
N Nelson

- conspicuous, coarse frass and webbing around tip of cone in late June; extensive tunnelling inside cone.
fir coneworm (89)
(*Dioryctria abietivorella*)

eastern larch

INSECTS DAMAGING EASTERN LARCH CONES

INSECTS LEAVING **NO** EXTERNAL EVIDENCE OF DAMAGE



N Nelson

Damage to seeds **is** visible

- spiral tunnelling around cone axis; all seeds totally consumed; large amounts of filamentous and granular frass.

larch cone maggot (57)
(*Strobilomyia laricis*)



N Nelson

- spiral tunnelling around cone axis; seeds partially to totally consumed; small amount of filamentous frass.

tamarack cone maggot (61)
(*Strobilomyia viaria*)



N Nelson

- resin can occur between scales; no tunnelling or debris is present; damaged seeds are brown.

cone midges (53)
(*Resseliella* spp.)



Oregon State University

- small amount of frass present; attacked seeds become flat, resinous, and dark brown.

seed maggots (45)
(*Earomyia* spp.)
(shown on balsam fir)

eastern larch

INSECTS DAMAGING EASTERN LARCH CONES

INSECTS LEAVING **NO** EXTERNAL EVIDENCE OF DAMAGE



T Arcand

- tunnel around the axis; small granular frass present.
spruce micro moth¹
(*Endopiza piceana*)



Canadian Forest Service

- Damage to seeds **is not** visible
- seeds appear normal; endosperm consumed entirely by insect.
larch seed chalcid (75)
(*Megastigmus laricis*)

eastern larch

¹ There is insufficient information to prepare a fact sheet.

INSECTS DAMAGING SPRUCE CONES

INSECTS LEAVING EXTERNAL EVIDENCE OF DAMAGE



T Arcand

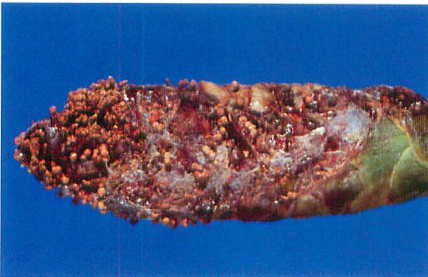
- ragged holes on cone surface; small amounts of frass and resinous material around entrance holes.

spruce cone loopers (99)

(*Eupithecia albicapitata*)

(*Eupithecia mutata*)

(shown on balsam fir)



N Nelson

- small entrance hole in lower half of cone surface; granular, fine, reddish-brown frass trapped in webbing on outside of cone below the hole.

spruce micro moth¹

(*Endopiza piceana*)



B Aelick

- from late June or early July, a small exit hole can be found on cone surface; infested cones usually smaller than healthy cones; spiral tunnel around cone axis filled with resin and frass; seeds and scales partially or totally consumed with small amounts of brown boring and fecal debris.

black spruce cone maggot (55)

(*Strobilomyia appalachensis*)

or

white spruce cone maggot (59)

(*Strobilomyia neanthracina*)

spruce

¹ There is insufficient information to prepare a fact sheet.

INSECTS DAMAGING SPRUCE CONES

INSECTS LEAVING EXTERNAL EVIDENCE OF DAMAGE



J Turgeon

- conspicuous reddish-brown, coarse frass and webbing holding several cones together; one or more ragged holes; extensive tunnelling inside cone, usually free of debris.

fir coneworm (89)

(Dioryctria abietivorella)



E Rayner

- cone exterior partially consumed; webbing and coarse frass adhering to surface of cone and surrounding needles.

eastern spruce budworm (81)

(Choristoneura fumiferana)



T Arcand

- infested cones and surrounding shoots enveloped in coarse frass and webbing; severely infested cones hollowed out.

spruce coneworm (93)

(Dioryctria reniculelloides)

spruce

INSECTS DAMAGING SPRUCE CONES

INSECTS LEAVING **NO** EXTERNAL EVIDENCE OF DAMAGE

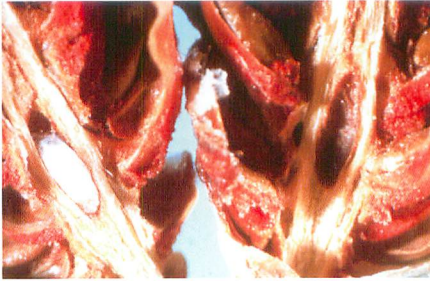


D Ruth

Damage **is** visible, but **not** on seed

- small swelling or gall on the inner surface of cone scales or near the seed, which may prevent seed extraction.

spruce cone gall midge (47)
(*Kaltenbachiola canadensis*)



T Arcand

- small chamber in cone axis; seeds show no apparent damage.

spruce cone axis midge (49)
(*Kaltenbachiola rachiphaga*)

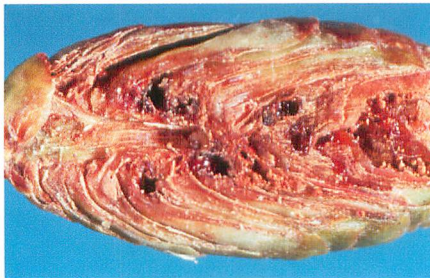


D Ruth

Damage to seeds **is** visible

- resin can occur between scales; no tunnelling or debris is present; damaged seeds are brown.

cone midges (53)
(*Resseliella* spp.)



E Rayner

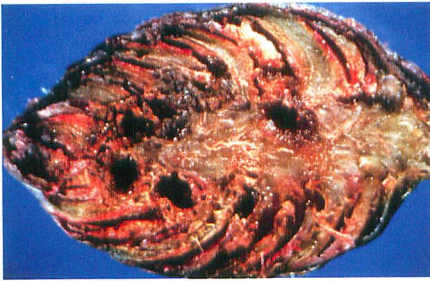
- silk in tunnels between seed pairs; small holes with fine frass on either side of cone slice; seeds partially to completely consumed and fused to scale.

spruce seed moth (85)
(*Cydia strobilella*)

spruce

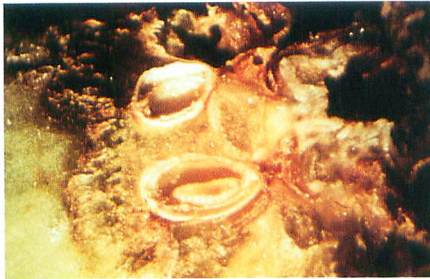
INSECTS DAMAGING SPRUCE CONES

INSECTS LEAVING **NO** EXTERNAL EVIDENCE OF DAMAGE



Y Prevost

- spiral tunnel around cone axis filled with resin and frass; seeds can be partially or totally consumed; small amounts of brown boring and fecal debris.
black spruce cone maggot (55) (*Strobilomyia appalachensis*)
white spruce cone maggot (59) (*Strobilomyia neanthracina*)



D Ruth

- infested seeds are larger than normal seeds.
spruce seed midge (51) (*Mayetiola carpophaga*)



Oregon State University

- attacked seeds are flat and dark brown; can contain resin.
seed maggots (45) (*Earomyia* spp.)
(shown on balsam fir)



N Nelson

- Damage to seeds **is not** visible
• seeds can be slightly enlarged but show no other form of damage; endosperm consumed entirely by insect.
spruce seed chalcid (71) (*Megastigmus atedius*)

spruce

INSECTS DAMAGING PINE CONES

INSECTS LEAVING EXTERNAL EVIDENCE OF DAMAGE



J Turgeon

- distinctive yellow pitch tube, either on, or near, the cone petiole; pitch tube turns grey; cone becomes hard and dry with a shrivelled appearance.
- white pine cone beetle (37)**
(Conophthorus coniperda)



P de Groot

- transverse groove in cone base; resin accumulation mixed with fecal and boring debris at entrance hole; cone turns brown and hardens; interior of cone contains fine brown powder.
- red pine cone beetle (39)**
(Conophthorus resinosae)



E Rayner

- one to all cone scales shrivelled and brown; dry resin flakes may be present on cone exterior; fluid resin between attacked cone scales; no tunnelling or debris present; cones may be smaller than normal.
- cone resin midge (43)**
(Asynapta hopkinsi)



T Arcand

- one or more ragged holes; conspicuous, coarse frass and webbing around the entrance hole; extensive tunnelling inside the cone, usually free of debris.
- fir coneworm (89)**
(Dioryctria abietivorella)

pine

INSECTS DAMAGING PINE CONES

INSECTS LEAVING EXTERNAL EVIDENCE OF DAMAGE



B Aelick

- single conspicuous hole near cone base with tightly webbed semi-coarse reddish-brown frass over the entrance hole; large excavation deep within seed-bearing region of cone containing dried resin, frass, and webbing.

webbing coneworm (91)

(Dioryctria disclusa)



T Arcand

- red pine cone with numerous small, round holes, or a few oblong holes in upper half on side of cone; exterior of cone almost always free of frass; no webbing found inside cone; cone interior packed with mixture of frass and resin; extensive tunnelling in cone.

red pine cone borer (95)

(Eucosma monitorana)



E Rayner

- white pine cone peppered with many small holes and covered with patches of extruding frass; cone interior is packed with a mixture of frass and resin; extensive tunnelling in cone.

white pine cone borer (97)

(Eucosma tocullionana)

pine

INSECTS DAMAGING PINE CONES

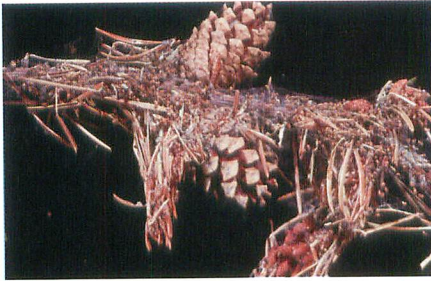
INSECTS LEAVING EXTERNAL EVIDENCE OF DAMAGE



P de Groot

- one or more brown shrunken cone scales; resin can occur between scales; no funnelling or debris is present; damaged seeds are brown.

cone midges (53)
(*Resseliella* spp.)



E Rayner

- one or more holes may be present on cone surface; feeding on cone surface and surrounding needles with frass and webbing adhering to remaining needles; cone may be distorted due to destroyed conductive tissue.

jack pine budworm (83)
(*Choristoneura pinus pinus*)

INSECTS DAMAGING PINE CONES

INSECTS LEAVING **NO** EXTERNAL EVIDENCE OF DAMAGE



P de Groot

Damage to seeds **is** visible

- tunnelling in cone axis; seed coat partially destroyed; remainder of seed coat glued to the scale, and filled with a mixture of frass and resin.

eastern pine seed moth (87)
(Cydia toreuta)



G DeBarr

Damage to seeds **is not** visible

- seed ovules damaged before seed coat hardening, are small or flattened; seeds damaged after seed coat hardening can only be detected by x-rays and are totally or partially empty.

shield-backed pine seed bug (67)

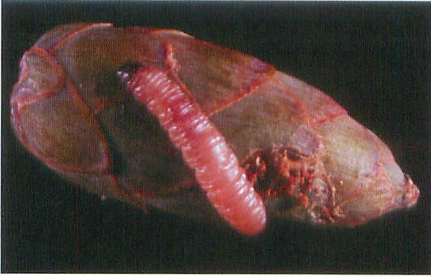
(Tetyra bipunctata)

or

western conifer seed bug (65)
(Leptoglossus occidentalis)

INSECTS DAMAGING EASTERN HEMLOCK CONES

INSECTS LEAVING EXTERNAL EVIDENCE OF DAMAGE



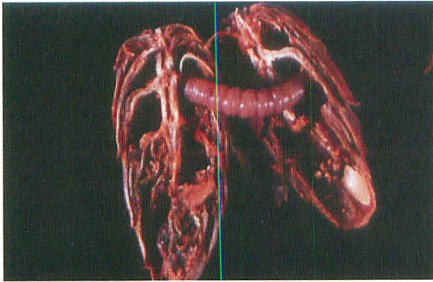
C. Jones

- ragged holes on cone surface; small amounts of frass and resinous material around entrance holes; spiral tunnel around cone axis with seeds and scales partially or totally consumed and fused to scale with small amounts of brown boring and fecal debris.
- spruce cone looper (99)**
(Eupithecia mutata)

eastern hemlock

INSECTS DAMAGING EASTERN HEMLOCK CONES

INSECTS LEAVING **NO** EXTERNAL EVIDENCE OF DAMAGE



C. Jones

Damage to seeds **is** visible

- seeds partially to completely consumed and fused to scale with small amounts of brown boring and fecal debris.

spruce cone looper (99)

(Eupithecia mutata)



C. Jones

Damage to seeds **is not** visible

- seeds appear normal; endosperm consumed entirely by insect.

hemlock seed chalcid (73)

(Megastigmus hoffmeyer)

eastern hemlock

FACT SHEETS ON INSECT PESTS

Introduction

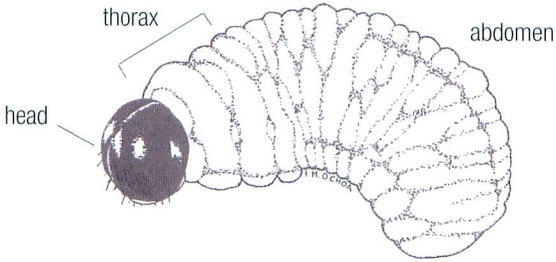
A fact sheet has been prepared for most obligatory, but only for a few of the major facultative, insects found in northeastern Canada. The information available on a few rare obligatory (e.g., *Barbara mappana*, *Strobilomyia carbonaria*, etc.,) and several frequently encountered, but minor, facultative insects (e.g., *Endopiza piceana*, *Holcocerina immaculella*, *Hapleginella conicola*, etc.,) is currently insufficient to prepare individual fact sheets.

Each fact sheet provides a synthesis of the taxonomic information necessary to perform more detailed literature searches on a specific insect. In addition, the most useful morphological characteristics that should enable the user to recognise and identify each insect at any stage of development, is presented in point form. If the morphological description does not match that of the insect found in the cone, yet matches the description of damage, you likely have the wrong insect species. Also included is a list of hosts (listed alphabetically, rather than preferentially) as well as a synopsis of the information available on distribution, type of damage it causes, importance, best way to sample/detect the insect, and management options available. The fact sheets have been arranged by insect order (e.g., Coleoptera, Diptera, etc.,) and alphabetically using the scientific name of the insect's genus. The fact sheets from each insect order are preceded by generic diagrams depicting the morphological features of the immature and mature stages of development.

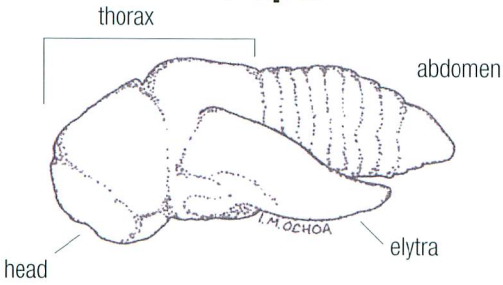
The life cycle of each insect has been presented graphically. The presence of each stage of development, as indicated by the bar, is not specific to any particular region of eastern Canada and thus should be viewed as a generic representation rather than an accurate depiction of the actual period of occurrence in the field. Life cycles are also dependent on weather and thus vary from year to year.

COLEOPTERA

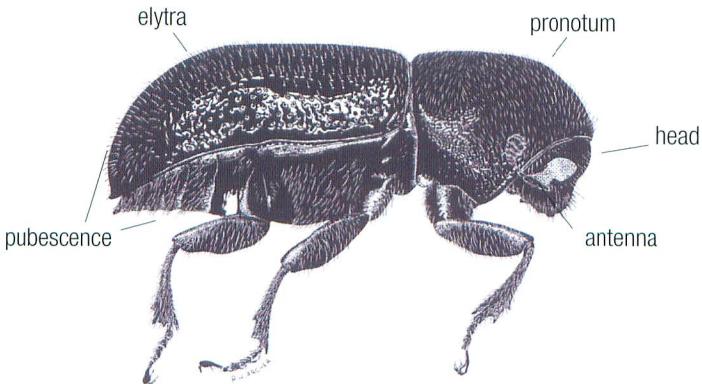
Larva



Pupa



Adult



WHITE PINE CONE BEETLE



Adult

E Rayner



Entrance hole

J Turgeon

TAXONOMY

Order (Family): Coleoptera (Scolytidae)

Scientific name: *Conophthorus coniperda* (Schwarz)

Synonym(s):

French name: Scolyte des cônes du pin blanc

INSECT DESCRIPTION

Egg: pearl white; 0.7-0.8 by 0.5 mm; ovoid; laid in galleries cut along centre of cone

Larva: two instars; creamy white with light brown head; 1.0-3.0 mm long; curved; legless; develops in dead cone

Pupa: white when first formed; after 4 or 5 days, the mouth parts, eye areas, and the end of the elytra darken; develops in dead cone on the ground

Adult: shiny black; 2.4-3.0 mm long; stout; cylindrical-shaped; covered with erect hairs (i.e., **pubescence**); beetle usually overwinters in dead cone on ground

Insect Stage	MONTH											
	J	F	M	A	M	J	J	A	S	O	N	D
Egg												
Larva												
Pupa												
Adult												

Coleoptera

HOST: PINE (eastern white)

DISTRIBUTION: found throughout the range of eastern white pine

DAMAGE: entrance hole at cone and petiole junction surrounded by a distinctive yellow-brown pitch tube, which later turns greyish; conductive tissue severed near entrance hole causes seed development to cease; all seeds destroyed; cone becomes brown, shrivelled, and hard.

IMPORTANCE: up to 100% of a cone crop can be destroyed; seed mortality is 100% within each cone; one female can kill as many as 4 cones

DETECTION AND MONITORING: dissect cone to find all life stages; look for dead cones on ground after mid-July; barrier trap baited with sex **pheromone** is available

CONTROL

Silvicultural: raking and burning beetle-infested cones in the fall, or in the spring before beetle emergence, effectively reduces populations

Biological: none available

Chemical: soil application or stem implants of systemic insecticides have reduced populations; contact insecticides on small trees can be effective if foliage does not obstruct deposition of insecticide on the petiole and base of the cone

REFERENCES

Biology: Henson (1961,1966); Graber (1964); Odell and Godwin (1964); Godwin and Odell (1965); Morgan and Mailu (1976); Ebel *et al.* (1980); Hedlin *et al.* (1981); DeBarr *et al.* (1982); Brown and Amirault (1985); DeBarr (1989); Fogal and Plowman (1989); Valenti *et al.* (1990); de Groot *et al.* (1991, 1992, 1998); Birgersson *et al.* (1995); de Groot and DeBarr (1998, 2000); Rappaport *et al.* (2000)
Control: Morgan and Mailu (1976); DeBarr *et al.* (1982); Brown and Amirault (1985); Fogal and Plowman (1989); Valenti *et al.* (1990); Miller *et al.* (1995); Zylstra *et al.* (1995).

NOTES:

RED PINE CONE BEETLE



Adult and Larva

B Aelick



Damaged cone

B Aelick

TAXONOMY

Order (Family): Coleoptera (Scolytidae)

Scientific name: *Conophthorus resinosae* Hopkins

Synonym(s): *Conophthorus banksianae* McPherson; *Conophthorus virginianae* Hopkins

French name: Scolyte des cônes du pin rouge

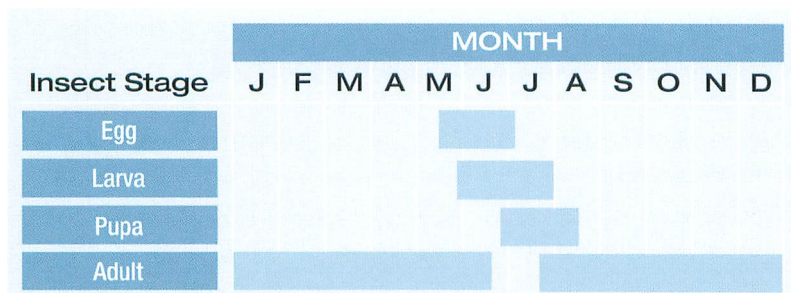
INSECT DESCRIPTION

Egg: pearl white; 0.9-1.0 by 0.5-0.8 mm; ovoid; laid in niches cut in gallery in centre of cone

Larva: two instars; creamy white with light brown head; 1.0-4.0 mm long; curved; soft-bodied and legless; develops in dead cone

Pupa: white when newly formed, darkening first on mandibles, eyes, and ends of elytra; 2.8-3.3 mm long; develops in dead cone on the tree

Adult: shiny black; 3.0-3.5 mm long; cylindrical-shaped beetle with sparse **pubescence**; overwinters in red pine shoot on forest floor



INSECTS OF SEED CONES IN EASTERN CANADA

HOSTS: PINE (red, jack)

DISTRIBUTION: found throughout the range of red pine

DAMAGE: cone dry and shrivelled; transverse groove at base of cone; resin accumulation mixed with fecal and boring debris near entrance hole; cone contains fine, granular frass; young adult leaves the cone and bores into a branchlet, usually within 2 cm of bud tip; beetle-infested bud breaks off and drops to the ground, beginning in August

IMPORTANCE: between 60-100% of cones can be destroyed; 100% of seeds per cone are destroyed; one female can destroy up to 15 cones; rare on jack pine cones but common on jack pine shoots

DETECTION AND MONITORING: dissect cone to find all life stages; look for adults in buds on the ground after mid-September and before early May; barrier trap baited with sex **pheromone** is available

CONTROL

Silvicultural: raking and burning beetle-infested buds in the fall, or in the spring before beetle emergence, effectively reduces populations

Biological: none available

Chemical: soil application or stem implants of systemic insecticides have reduced populations; contact insecticides on small trees can be effective if foliage does not obstruct deposition of insecticide on the petiole and base of the cone

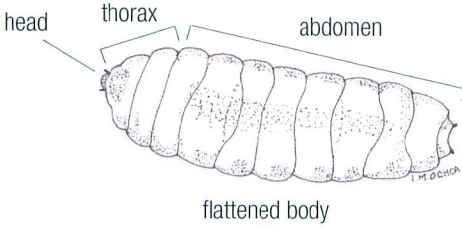
REFERENCES

Biology: Lyons (1956,1957c); Hard (1964); McPherson *et al.* (1970); Mattson (1971); Miller (1978); Hedlin *et al.* (1981); Brown and Amirault (1985); Rauf *et al.* (1985); de Groot (1986); de Groot (1991); de Groot and Borden (1991, 1992); de Groot *et al.* (1992, 2002); de Groot and Fleming (1994); de Groot and Zylstra (1995); Miller *et al.* (1995); Pierce *et al.* (1995); de Groot and MacDonald (1999); Rappaport *et al.* (2000)
Control: Miller (1978); Miller *et al.* (1995); Zylstra *et al.* (1995)

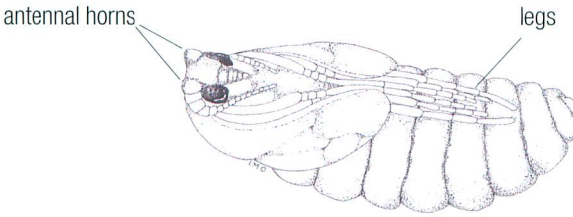
NOTES:

DIPTERA

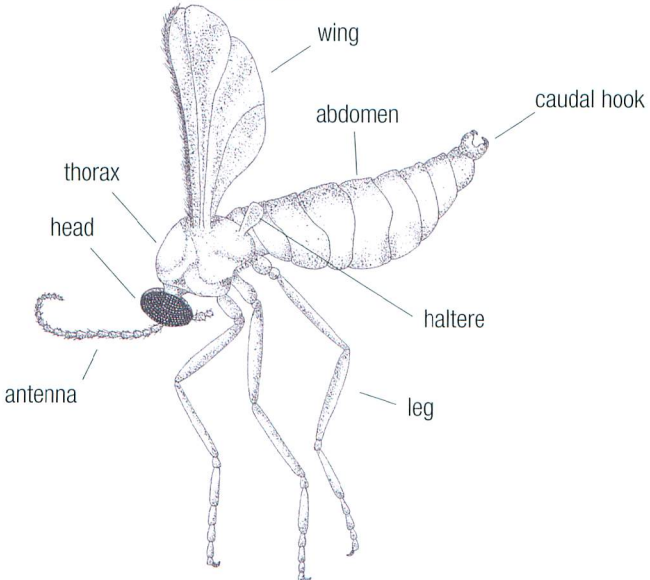
Larva



Pupa

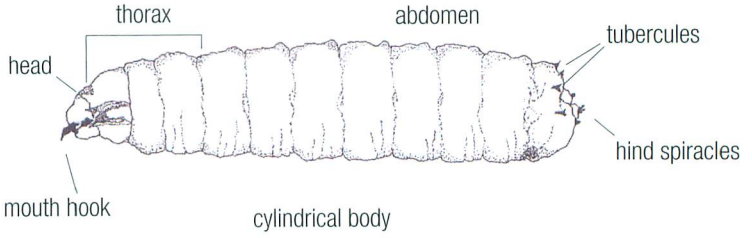


Adult

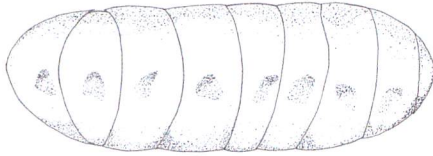


DIPTERA

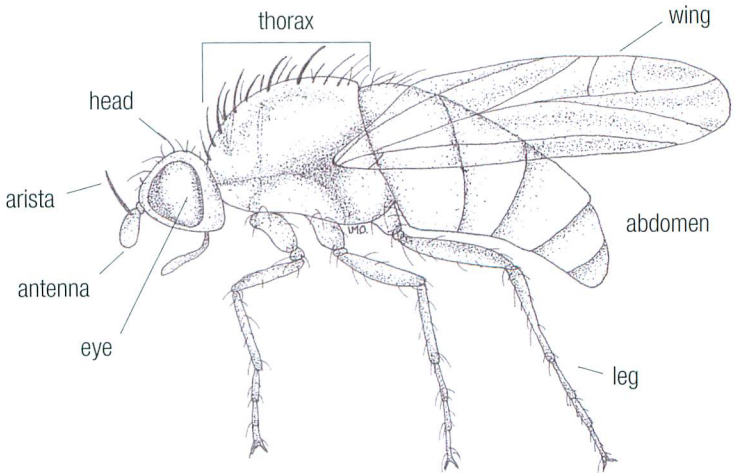
Larva



Puparium



Adult

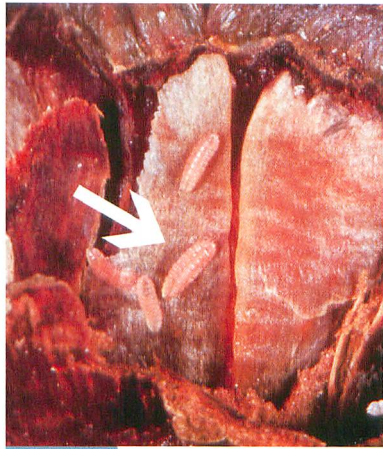


CONE RESIN MIDGE



Adult

T Arcand



Larva

E Rayner

TAXONOMY

Order (Family): Diptera (Cecidomyiidae)

Scientific name: *Asynapta hopkinsi* Felt

Synonym(s): *Asynapta keeni* (Foote); *Rubsaamenia* sp.

French name: Cécidomyie de la résine des cônes

INSECT DESCRIPTION

Egg: no description available

Larva: young midge almost colourless, 0.5 mm long; mature midge white, 2.0-3.0 mm long; slightly dorso-ventrally flattened with small **head capsule**; no **spatula** evident on underside; found in clusters between cone scales

Pupa: brown; **sclerotized**; found in a cocoon in cone or in the soil beneath tree

Adult: pink abdomen; clear wings; antennae are 2.0 mm

Insect Stage	MONTH											
	J	F	M	A	M	J	J	A	S	O	N	D
Egg												
Larva												
Pupa												
Adult												

Diptera

HOSTS: PINE (jack, red)

DISTRIBUTION: widely distributed

DAMAGE: distorted and brown cone scales; flakes of crystallized resin on exterior; notably free of any boring debris

IMPORTANCE: typically less than 10% of the cones are attacked; rarely more than 15% of the seeds per cone are lost

DETECTION AND MONITORING: dissect cone to find larvae; no **attractant** available

CONTROL

Silvicultural: none available

Biological: none available

Chemical: soil application of systemic insecticides has been effective in reducing populations

REFERENCES

Biology: Lyons (1957b,1957c); Hard (1964); Kulhavy *et al.* (1976); Ebel *et al.* (1980); Brown and Amirault (1985); Churcher *et al.* (1985); Rauf *et al.* (1985); de Groot (1986); Katovich and Kulman (1987a)

Control: Rush *et al.* (1987); Fogal and Plowman (1989)

NOTES:

SEED MAGGOTS



Egg

Canadian Forest Service



Larva

Canadian Forest Service

TAXONOMY

Order (Family): Diptera (Lonchaeidae)

Scientific name: *Earomyia* spp.

Synonym(s):

French name: Mouches conophages

INSECT DESCRIPTION

Egg: white; about 1.5 mm long; cylindrical; glossy; laid on inner surface of seed cone scales

Larva: creamy white; shiny; about 8.0 by 1.0 mm when mature, elongated with two distinct sharp black **mouth hooks** at head end; two prominent blunt projections (i.e., **spiracles**) on posterior; develops in seeds

Puparium: dark red-brown; 4.5-5.5 by 1.5mm; oblong with two prominent blunt projections on posterior; found in the cone or in duff beneath tree; capable of extended diapause

Adult: blue-black; shiny; **halteres** always black; wing length is about 4.0-5.0 mm

Insect Stage	MONTH											
	J	F	M	A	M	J	J	A	S	O	N	D
Egg												
Larva												
Pupa												
Adult												

Diptera

HOSTS: FIR (balsam); LARCH (eastern); SPRUCE (white)

DISTRIBUTION: found throughout the range of fir and tamarack

DAMAGE: no external evidence of cone attack; larva tunnels around cone **axis** tunneling from seed to seed; attacked seeds are flat, limp and almost black; only a small amount of fine frass is produced

IMPORTANCE: typically less than 5% of the cone crop is damaged; a single larva destroys up to 25% of seeds

DETECTION AND MONITORING: dissect cone to find egg and larva;
no **attractant** available

CONTROL

Silvicultural: remove infested cones from seed orchard in late summer and destroy before larvae drop

Biological: none available

Chemical: none available

REFERENCES

Biology: McAlpine (1956); Keen (1958); Kulhavy *et al.* (1976); Hedlin *et al.* (1981); McAlpine and Steyskal (1982); Brown and Amirault (1985);
Control: none available

NOTES:

SPRUCE CONE GALL MIDGE



Adult

J Sweerey



Larva

T Arcand

TAXONOMY

Order (Family): Diptera (Cecidomyiidae)

Scientific name: *Kaltenbachiola canadensis* (Felt)

Synonym(s): *Dasineura canadensis* Felt

French name: Cécidomyie galligène des cônes de l'épinette

INSECT DESCRIPTION

Egg: whitish; 0.3 by 0.1 mm; oblong; smooth **chorion**; laid in groups of 2-3 on receptive cone scale during pollination

Larva: three instars; orange and about 3.0 mm long when mature; slightly dorso-ventrally flattened with small, faintly **sclerotized head capsule**; **spatula** present on underside near front end; head capsule no wider than spatula; without prominent lobes at hind end; antennae small; develops and overwinters in cone scales below seed wing or near seed; capable of extended diapause

Pupa: whitish in early stages, turning darker as it matures; about 2.5 mm long;

Insect Stage	MONTH												
	J	F	M	A	M	J	J	A	S	O	N	D	
Egg													
Larva													
Pupa													
Adult													

Diptera

antennal horn stout, rounded with one sharp tooth; found in a white cocoon in the same cavity as larva

Adult: dark brown; about 2.2 mm long; mosquito-like

HOSTS: SPRUCE (black, red, white)

DISTRIBUTION: found throughout the range of spruce

DAMAGE: larva burrows through the seed wing or near the **axis** below the seed, forming a small gall; if the gall is adjacent to developing seeds, extraction can be difficult, otherwise the damage is minimal

IMPORTANCE: up to 90% of the cones can be infested; seed mortality is rare; individual trees can suffer heavier losses; if gall is adjacent to the seed(s), one larvae can prevent extraction of 1-2 healthy seeds

DETECTION AND MONITORING: dissect cone before it closes completely to find egg, and thereafter for other life stages; no **attractant** available

CONTROL

Silvicultural: remove infested cones from seed orchard and destroy

Biological: none available; probably maintained at low densities by parasitoids

Chemical: soil application of systemic insecticides has been effective in reducing populations

REFERENCES

Biology: Tripp (1955); Tripp and Hedlin (1956); Hedlin (1973, 1974); Hedlin *et al.* (1981); Brown and Amirault (1985); Churcher *et al.* (1985); Prévost *et al.* (1988)

Control: Fogal and Lopushanski (1984); Churcher *et al.* (1985); Fogal and Plowman (1989)

NOTES:

SPRUCE CONE AXIS MIDGE



Adult

Y Prévost



Pupa in white cocoon

N Nelson

TAXONOMY

Order (Family): Diptera (Cecidomyiidae)

Scientific name: *Kaltenbachiola rachiphaga* (Tripp)

Synonym(s): *Dasineura rachiphaga* Tripp

French name: Cécidomyie des cônes de l'épinette

INSECT DESCRIPTION

Egg: whitish; 0.3 by 0.1 mm; oblong; laid at extreme base of seed cone scale or near the **rachis** when cones are open for pollination

Larva: three instars; yellowish-orange; about 3.0 mm long when mature; slightly dorso-ventrally flattened with small, faintly **sclerotized head capsule**; **spatula** present on underside near front end; head capsule no wider than spatula; without prominent lobes at hind end; antennae small; develops and overwinters in the cone rachis; capable of extended **diapause**

Pupa: whitish in early stages, turning darker as it matures; about 2.5 mm long;

Insect Stage	MONTH											
	J	F	M	A	M	J	J	A	S	O	N	D
Egg												
Larva												
Pupa												
Adult												

antennal horn stout, rounded with one sharp tooth; found in a white cocoon in the same cavity as larva

Adult: dark brown; about 2.2 mm long; mosquito-like

HOSTS: SPRUCE (black, red, white)

DISTRIBUTION: found throughout the range of spruce

DAMAGE: larva creates a small cavity in the cone **axis**; this cavity does not affect the seed production or viability, but could disrupt the flow of nutrients to the seed

IMPORTANCE: up to 60% of the cones can be infested; 1 to 3 larva(e) per black spruce cone have little impact on seed production and viability; more than 5 larvae per cone could impact on seed production

DETECTION AND MONITORING: dissect cone before it closes completely to find egg, and thereafter for other life stages; no **attractant** available

CONTROL

Silvicultural: remove infested cones from seed orchard and destroy

Biological: none available; additional work is required with *B. bassiana* (Bals.) Vuill.; probably maintained at low densities by parasitoids

Chemical: foliar application of systemic insecticides has been effective

REFERENCES

Biology: Tripp (1955); Tripp and Hedlin (1956); Ruth *et al.* (1980); Hedlin *et al.* (1981); Brown and Amirault (1985); Churcher *et al.* (1985); West (1985); Prévost (1990)

Control: Fogal and Lopushanski (1984); Churcher *et al.* (1985); Fogal *et al.* (1986a, 1986b); Prévost *et al.* (1988); Fogal and Plowman (1989)

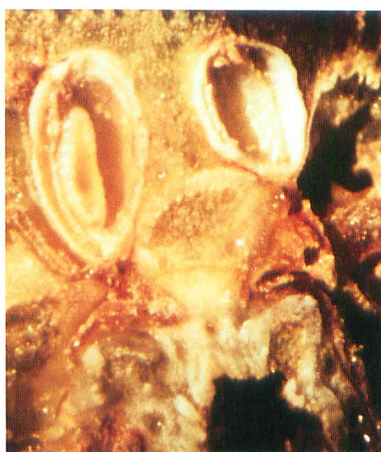
NOTES:

SPRUCE SEED MIDGE



Pupa

D Ruth



Larva in seed

D Ruth

TAXONOMY

Order (Family): Diptera (Cecidomyiidae)

Scientific name: *Mayetiola carpophaga* (Tripp)

Synonym(s): *Phytophaga carpophaga* Tripp

French name: Cécidomyie séminivore de l'épinette

INSECT DESCRIPTION

Egg: whitish; 0.3 by 0.1 mm; oblong; smooth **chorion**; laid near young seed ovules on receptive cone scale during pollination

Larva: three instars; yellowish-pink; about 3.0 mm long when fully developed; slightly dorso-ventrally flattened with small, faintly **sclerotized head capsule**; **spatula** present on underside near front end; head capsule no wider than spatula; without prominent lobes at hind end; antennae small; develops and overwinters in the seed, within the cone on the tree, or on the ground; capable of extended **diapause**

Pupa: brownish; about 3.0 mm long; **antennal horn** short, with two small teeth

Insect Stage	MONTH											
	J	F	M	A	M	J	J	A	S	O	N	D
Egg												
Larva												
Pupa												
Adult												

of unequal size, the larger of which has a small notch; found in a white cocoon in the seed

Adult: about 2.4 mm long; mosquito-like

HOSTS: SPRUCE (black, red, white)

DISTRIBUTION: found throughout the range of spruce

DAMAGE: the infested seed ovule becomes shiny brown, brittle, and distorted as the larva matures; infested seed is hollowed out and twice as large as normal seed, and cannot be extracted from the cone

IMPORTANCE: up to 35% of the seeds may be destroyed; individual trees can be heavily attacked; each larva destroys one seed

DETECTION AND MONITORING: dissect cone before it closes completely to find egg, and dissect seed thereafter for other life stages; no **attractant** available

CONTROL

Silvicultural: remove infested cones from seed orchard and destroy

Biological: none available

Chemical: stem injection of systemic insecticides has been effective in reducing damage

REFERENCES

Biology: Tripp (1955); Hedlin (1974); Ruth *et al.* (1980); Hedlin *et al.* (1981); Brown and Amirault (1985); Churcher *et al.* (1985)

Control: Churcher *et al.* (1985); Fogal and Plowman (1989)

NOTES:

CONE MIDGES



Larva

Y Prévost



Damaged scale

D Ruth

TAXONOMY

Order (Family): Diptera (Cecidomyiidae)

Scientific name: *Resseliella* spp.

Synonym(s):

French name: Cécidomyie des graines des cônes

INSECT DESCRIPTION

Egg: whitish; 0.5 mm long; cylindrical; on tamarack, laid on needles near seed cones, location unknown on spruce and pine

Larva: near white to orange; 1.5-3.5 mm long; slightly dorso-ventrally flattened with small, faintly **sclerotized head capsule**; **spatula** present on underside near front end; spatula with two lobes at front end; antennae small; two prominent, pointed lobes at hind end; develops in cone between scales

Pupa: brownish; overwinters in cones or in the forest litter

Adult: yellowish; about 2.0 mm long; mosquito-like

Insect Stage	MONTH											
	J	F	M	A	M	J	J	A	S	O	N	D
Egg												
Larva												
Pupa												
Adult												

Diptera

HOSTS: LARCH (eastern); SPRUCE (black, red, white); PINE (jack, red, eastern white);

DISTRIBUTION: widely distributed

DAMAGE: cone scale(s) shrivelled, and brown; dried resin flakes on exterior and fluid resin between scales; larva leaves no frass; damaged seeds become brownish black and dry or are completely empty

IMPORTANCE: up to 5% of eastern larch and jack pine seed crops can be destroyed; undetermined on other species

DETECTION AND MONITORING: examine foliage near cone to find egg, dissect cone to find larvae; no **attractant** available

CONTROL

Silvicultural: none available

Biological: none available

Chemical: none available; soil and foliar applications of systemic insecticides have been unsuccessful

REFERENCES

Biology: Hedlin (1974); Hedlin *et al.* (1981); Brown and Amirault (1985); Churcher *et al.* (1985); West (1985); Amirault and Brown (1986); de Groot (1986); Hartling and O'Shea (1989)

Control: Amirault and Brown (1986)

NOTES:

BLACK SPRUCE CONE MAGGOT



Female ovipositing

J Sweeney



Egg between cone scales

J Sweeney

TAXONOMY

Order (Family): Diptera (Anthomyiidae)

Scientific name: *Strobilomyia appalachensis* Michelsen

Synonym(s): *Lasiomma* (= *Hylemyia*= *Delia*= *Pegohylemyia anthracina* (Czerny) in part

French name: Mouche granivore de l'épinette noire

INSECT DESCRIPTION

Egg: pearl white; 1.4 by 0.5 mm with distinct bulge on one side; laid singly between cone scales after scales have closed

Larva: three instars, the first **moult** occurs within the egg; creamy white; 4.9 by 1.1 mm when mature; cylindrical without definite **head capsule**; with small black hook-like mouthparts; **tubercules** present; develops in cone

Puparium: reddish brown; 4.0-6.0 by 1.2-1.4 mm, nearly ovoid; overwinters in soil under the tree; capable of extended **diapause**

Adult: black; wing length 4-5 mm; resembles a housefly

Insect Stage	MONTH												
	J	F	M	A	M	J	J	A	S	O	N	D	
Egg													
Larva													
Pupa													
Adult													

Diptera

HOSTS: SPRUCE (black, red)

DISTRIBUTION: found throughout the range of black and red spruce

DAMAGE: infested cones usually smaller at maturity than healthy cones; small hole on cone surface in July after larva exits cone; larva tunnels around cone axis consuming scales and seeds; tunnel contains resin and frass

IMPORTANCE: between 5-100% of cones can be attacked; one larva can destroy 50-75% of filled seeds per cone; two or more larvae usually destroy 100% of seeds per cone;

DETECTION AND MONITORING: dissect cone when 1/2 to 3/4 pendant to find eggs, and thereafter until late July to find larvae; colour trap is being developed for adults

CONTROL

Silvicultural: none available

Biological: none available

Chemical: foliar applications and tree implants of systemic insecticides have been effective at reducing populations.

REFERENCES

Biology: Turgeon and Sweeney (1993); Sweeney and Turgeon (1994); Fidgeon and Sweeney (1996); Fidgeon *et al.* (1998, 1999)

Control: Churcher *et al.* (1985); Prévost *et al.* (1988); West and Sundaram (1992); Sweeney and Gesner (1995); Sweeney *et al.* (2002)

NOTES:

LARCH CONE MAGGOT



Egg between bud scales

J Turgeon



Larva

T Arcand

TAXONOMY

Order (Family): Diptera (Anthomyiidae)

Scientific name: *Strobilomyia laricis* Michelsen

Synonym(s): *Lasiomma laricicola* (Karl)

French name: Mouche granivore du mélèze

INSECT DESCRIPTION

Egg: creamy white; beige; 1.0 by 0.4 mm; nearly ovoid with a patterned surface and one end flat; laid singly between the seed cone curled bud scales

Larva: three instars, the first **moult** occurs within the egg; creamy white; 4.0-6.0 by 1.5 mm; cylindrical without definite **head capsule**; **tubercles** present; develops in cone

Puparium: reddish-brown; 3.0-5.0 by 1.2 mm; nearly ovoid; overwinters in soil under tree; capable of extended **diapause**

Adult: black; wing length 3.7-4.3 mm; resembles a housefly

Insect Stage	MONTH											
	J	F	M	A	M	J	J	A	S	O	N	D
Egg												
Larva												
Pupa												
Adult												

Diptera

HOST: LARCH (eastern)

DISTRIBUTION: found throughout the range of eastern larch

DAMAGE: attacked cone appears similar to healthy cone; larva tunnels around the cone **axis** and feeds on seeds and scales, leaving large amount of filamentous and coarse **frass**

IMPORTANCE: attacks are localized, with up to 100% of the cones attacked even when cones are abundant; one larva can destroy 100% of the filled seeds per cone

DETECTION AND MONITORING: examine the scales at the base of cone to find egg, and dissect cone for larva; colour trap is being developed for adults

CONTROL

Silvicultural: none available

Biological: none available

Chemical: foliar and soil applications of systemic insecticides have been effective in reducing damage

REFERENCES

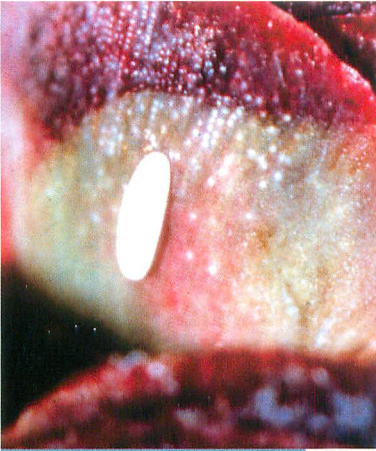
Biology: Popova and Elberg (1970); Stadnitsky *et al.* (1976); Hedlin *et al.* (1981); Amirault and Brown (1986); Ives and Wong (1988); Michelsen (1988);

Turgeon (1989); Chau (1993); McClure *et al.* (1996, 1998); Prévost (2002)

Control: Stadnitsky *et al.* (1976); Amirault and Brown (1986)

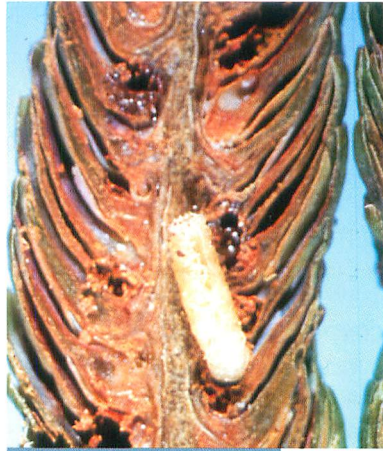
NOTES:

WHITE SPRUCE CONE MAGGOT



Egg between cone scales

T Arcand



Larva in damaged cone

T Arcand

TAXONOMY

Order (Family): Diptera (Anthomyiidae)

Scientific name: *Strobilomyia neanthracina* Michelsen

Synonym(s): *Lasiomma* (= *Hylemyia* = *Delia* = *Pegohylemyia*) *anthracina* (Czerny) in part

French name: Mouche granivore de l'épinette blanche

INSECT DESCRIPTION

Egg: pearl white; 1.6 by 0.5 mm; nearly ovoid with one end flat; laid singly between cone scales during pollination

Larva: three instars, the first **moult** occurs within the egg; creamy white; 5.0-7.0 by 1.5 mm when mature; cylindrical without definite **head capsule**; **tubercules** present; develops in cone

Puparium: reddish-brown; 4.0-6.0 by 1.2-1.4 mm; nearly ovoid; overwinters in soil under tree; capable of extended diapause

Adult: black; wing length 3.9-4.6 mm; resembles a housefly

Insect Stage	MONTH											
	J	F	M	A	M	J	J	A	S	O	N	D
Egg												
Larva												
Pupa												
Adult												

Diptera

HOST: SPRUCE (white)

DISTRIBUTION: found throughout the range of white spruce

DAMAGE: infested cone usually smaller than healthy one; small hole found on cone surface in late June or early July after larva leaves cone; larva tunnels around cone **axis** and fills it with **frass** and resin; larva consumes scales and seeds

IMPORTANCE: between 40-100% of the cones can be attacked; one larva can destroy 55-65% of the filled seeds per cone, respectively; two or more larvae usually destroy 100% of the seeds per cone

DETECTION AND MONITORING: dissect cone shortly after it closes to find egg, and thereafter until late July to find larvae; colour trap is being developed for adults

CONTROL

Silvicultural: none available

Biological: none available; additional work is required with *B. bassiana* (Bals.) Vuill

Chemical: foliar spray, tree implant, and stem injection of systemic insecticides have been effective in reducing populations

REFERENCES

Biology: Tripp (1954a); Popova and Elberg (1970); Hedlin *et al.* (1981); Brown and Amirault (1985); Churcher *et al.* (1985); West (1985); Fogal (1986); Fogal *et al.* (1986a); Ives and Wong (1988); Michelsen (1988); Prévost *et al.* (1988); Hartling and O'Shea (1989); Miller *et al.* (1995); Sweeney (1996a, 1996b); Fidgen *et al.* (1998); Sweeney and Quiring (1998); Quiring *et al.* (1998); Brockhoff *et al.* (1999)

Control: Timonin *et al.* (1980); Churcher *et al.* (1985); Fogal and Lopushanski (1984, 1989); Fogal (1986); Fogal *et al.* (1986a, 1986b); Prévost *et al.* (1988); Fogal and Plowman (1989); Sweeney *et al.* (1998, 2002)

NOTES:

TAMARACK CONE MAGGOT



Egg between cone scales

N Nelson



Larva attacking seed

J Sweeney

TAXONOMY

Order (Family): Diptera (Anthomyiidae)

Scientific name: *Strobilomyia viaria* (Huckett)

Synonym(s): *Lasiomma* (= *Hylemyia* = *Delia*) *viarium* Huckett

French name: Mouche granivore du mélèze laricin

INSECT DESCRIPTION

Egg: pearl white; 1.1 by 0.3 mm; nearly ovoid with a smooth surface and one end flat; laid singly on inner surface or between cone scales just above the ovules

Larva: three instars, the first **moult** occurs within the egg; creamy white; 4.0-6.0 by 1.5 mm; cylindrical without definite **head capsule**; can be differentiated from *S. laricis* by the shape of the mouthparts; **tubercules** present; develops in cone

Puparium: reddish-brown; 3.0-5.0 by 1.2 mm; nearly ovoid; overwinters in soil under tree; capable of extended **diapause**

Adult: black; wing length 3.3-4.0 mm; resembles a housefly

Insect Stage	MONTH											
	J	F	M	A	M	J	J	A	S	O	N	D
Egg												
Larva												
Pupa												
Adult												

Diptera

HOST: LARCH (eastern)

DISTRIBUTION: found throughout the range of eastern larch

DAMAGE: attacked cone appears similar to healthy cone; larva tunnels around the cone **axis** and feeds on seeds and scales, leaving large amount of filamentous **frass**

IMPORTANCE: attacks are localized, with up to 100% of the cones attacked; one larva can destroy 100% of the filled seeds per cone

DETECTION AND MONITORING: dissect the cone to find egg and larva; no trap available; colour trap is being developed for adults

CONTROL

Silvicultural: none available

Biological: none available

Chemical: foliar and soil applications of systemic insecticides have been effective in reducing damage

REFERENCES

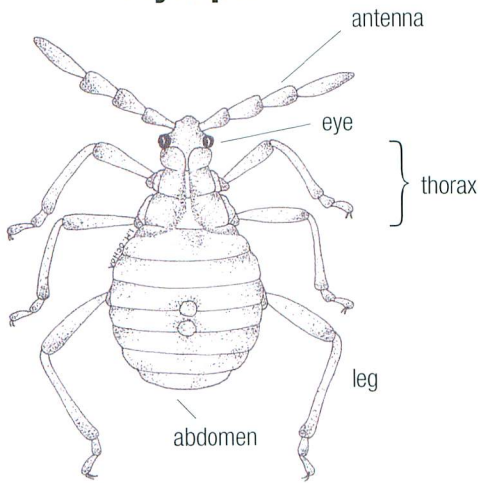
Biology: Popova and Elberg (1970); Stadnitsky *et al.* (1976); Hedlin *et al.* (1981); Brown and Amirault (1985); Amirault and Brown (1986); Ives and Wong (1988); Michelsen (1988); Turgeon (1989); Chau (1993); McClure *et al.* (1996,1998)

Control: Stadnitsky *et al.* (1976); Amirault and Brown (1986)

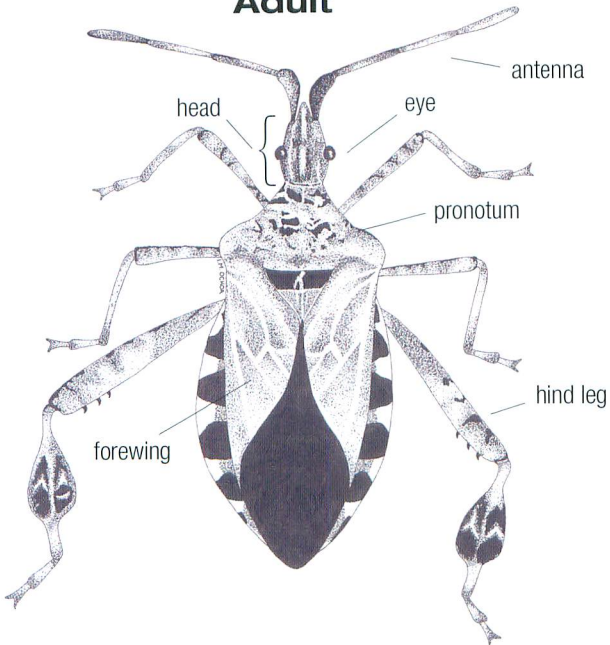
NOTES:

HEMIPTERA

Nymph



Adult



WESTERN CONIFER SEED BUG



Adult on cone

D Ruth



Eggs and nymph emerging

D Ruth

TAXONOMY

Order (Family): Hemiptera (Coreidae)

Scientific name: *Leptoglossus occidentalis* Heidemann

Synonym(s):

French name: Punaise séminivore de l'ouest

INSECT DESCRIPTION

Egg: light brown becoming reddish brown near hatch; about 2.0 mm long; barrel shaped; glued in a row of 4-5 per needle on host foliage

Nymph: five stages; orange to reddish brown; resembles miniature adult but without wings; found on cone surface

Adult: reddish brown to dark gray with distinctive white wavy line across the forewings and five dark patches down each side of the abdomen; 15.0 to 18.0 mm long with long, flattened hind legs; found on cone surface; makes loud buzzing sound when flying; overwinters in sheltered locations, including houses; emits noxious odour when disturbed

Insect Stage	MONTH											
	J	F	M	A	M	J	J	A	S	O	N	D
Egg												
Nymph												
Adult												

HOSTS: PINE (red, white); HEMLOCK (eastern)

DISTRIBUTION: found from British Columbia to as far east as Nova Scotia

DAMAGE: Exterior of cone appears normal; nymphs and adults pierce developing cones and seeds with needle-like mouthparts and feed on **endosperm**; damaged seeds evident only through use of X-rays and specialized biochemical antibody assays

IMPORTANCE: impact on eastern pines unknown but can damage up to 70% of seeds in lodgepole pine and Douglas-fir in western Canada; also damages pollen cones

DETECTION AND MONITORING: visual inspection for **nymphs** and adults on cones and foliage; no **attractant** available; evidence for male-produced aggregation pheromone

CONTROL

Silvicultural: none available

Biological: none available

Chemical: foliar applications of insecticides have been effective in reducing densities and seed losses. Stem-injections of systemic insecticides have reduced damage by *Leptoglossus corculus* (Say), in southern pines

REFERENCES

Biology: Koerber (1963); Hedlin *et al.* (1981); Rauf *et al.* (1985); Katovich and Kulman (1987b); Campbell and Shea (1990); McPherson *et al.* (1990); Connelly and Schowalter (1991); Marshall (1991); Gall (1992); Blatt and Borden (1996a, 1996b, 1999); Bates *et al.* (2000, 2001); Lait *et al.* (2001)
Control: Nord and DeBarr (1992); Rappaport *et al.* (1994); Strong *et al.* (2001); Grosman *et al.* (2002)

NOTES:

SHIELD-BACKED PINE SEED BUG



Adult

P de Groot



Damaged seed

G DeBarr

TAXONOMY

Order (Family): Hemiptera (Scutellaridae)

Scientific name: *Tetyra bipunctata* (Herrich-Schäffer)

Synonym(s):

French name: Télyre biponctuée

INSECT DESCRIPTION

Egg: pale green, changing to reddish as embryo develops; 1.7 by 1.4 mm; ovoid to nearly spherical; laid on cones or in two parallel rows on needles

Nymph: five stages; grayish when young, becoming reddish-brown with black mottling as they mature; broadly oval, flat in appearance; found on cone surface

Adult: yellowish to dark reddish-brown; densely marked with pits and gray-black mottling; 11.0-15.0 mm long; oval-shaped; overwinters in loose bark, logs, or soil

Insect Stage	MONTH											
	J	F	M	A	M	J	J	A	S	O	N	D
Egg												
Nymph												
Adult												

Hemiptera

HOSTS: PINE (eastern white, jack, red)

DISTRIBUTION: found throughout the range of pine

DAMAGE: exterior of cone appears normal; seeds attacked before the seed coat becomes hard are small and flat, those attacked after are completely or partially empty

IMPORTANCE: typically up to 10% of the cones, and 85% of seeds per cone, are damaged

DETECTION AND MONITORING: visual inspection or sieving of soil and litter for adults in fall; extract and irradiate (x-ray) the seed to assess seed loss; no **attractant** available

CONTROL

Silvicultural: none available

Biological: none available; ground and aerial applications of *B.t.* have been ineffective

Chemical: foliar and soil applications of systemic insecticides have been effective in reducing damage

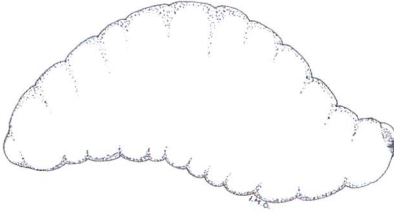
REFERENCES

Biology: Gilbert *et al.* (1967); DeBarr (1970); DeBarr and Ebel (1973); Cameron (1981); Goyer and Williams (1981); Hedlin *et al.* (1981); Brown and Amirault (1985); Rauf *et al.* (1985); Katovich and Kulman (1987a, 1987b)
Control: DeBarr (1978, 1979); Cameron (1981); Nord *et al.* (1984); Cameron *et al.* (1987); Fogal and Plowman (1989)

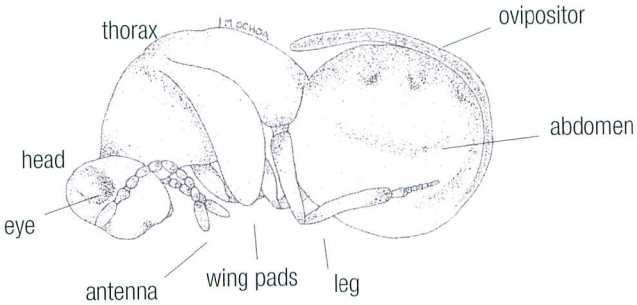
NOTES:

HYMENOPTERA

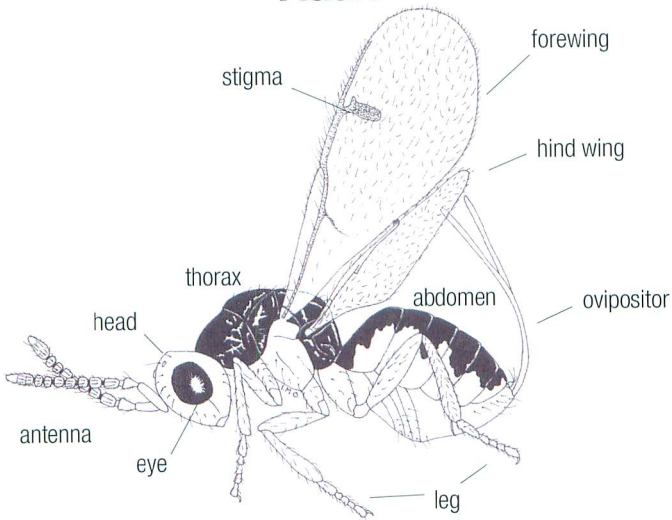
Larva



Pupa



Adult



SPRUCE SEED CHALCID



Adult female

T Arcand



Exit hole

T Arcand

TAXONOMY

Order (Family): Hymenoptera (Torymidae)

Scientific name: *Megastigmus atedius* Walker

Synonym(s): *Megastigmus piceae* Rohwer

French name: Chalcis granivore de l'épinette

INSECT DESCRIPTION

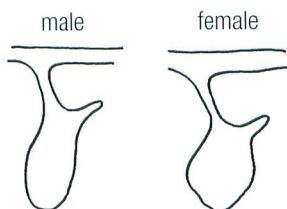
Egg: white; elliptical

Larva: five instars; 2.7-3.0 mm long at maturity;

white, with dark brown to black mandibles; curved; legless; segmented; feeds in one seed throughout the summer (6-8 weeks); overwinters in the seed within the cone on the tree, or on the ground; capable of extended **diapause**

Pupa: no description available

Adult: body black with yellow markings on thorax; female (2.5-3.0 mm long)-male (2.0-2.7 mm long); membranous wings with **stigma**; (see shape above);



Shape of stigma

Insect Stage	MONTH											
	J	F	M	A	M	J	J	A	S	O	N	D
Egg												
Larva												
Pupa												
Adult												

female has noticeably long **ovipositor**

HOSTS: SPRUCE (black, red, white); PINE (possibly eastern white)

DISTRIBUTION: found throughout the range of spruce

DAMAGE: attacked seeds are similar to healthy seeds;
content of each seed entirely consumed

IMPORTANCE: typically less than 10% of the cones are attacked;
each larva destroys one seed

DETECTION & MONITORING: dissect seed to find egg, larva and pupa;
extract and irradiate (x-ray) seed to assess infestation level; no **attractant** available

CONTROL

Silvicultural: none available

Biological: none available

Chemical: stem injection of systemic insecticides has been effective in
reducing damage; soil application of systemic insecticides has been unsuccessful

REFERENCES

Biology: Milliron (1949); Hedlin (1973, 1974); Speers (1974);
Ruth *et al.* (1980); Hedlin *et al.* (1981); Brown and Amirault (1985);
Churcher *et al.* (1985); Roques and Skrzypczynska (2003)
Control: DeBarr *et al.* (1982); Fogal and Plowman (1989)

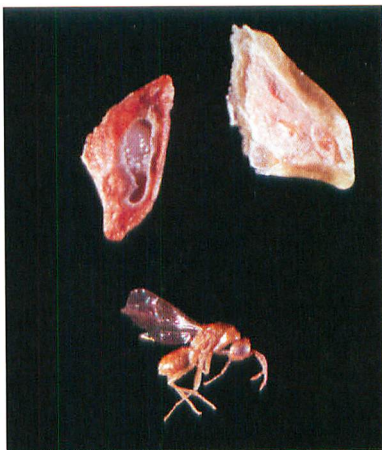
NOTES:

HEMLOCK SEED CHALCID



Adult male and female

C Jones



Seed infested

C Jones

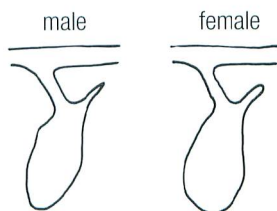
TAXONOMY

Order (Family): Hymenoptera (Torymidae)

Scientific name: *Megastigmus hoffmeyeri* Walley

Synonym(s):

French name: Chalcis séminivore de la pruche



Shape of stigma

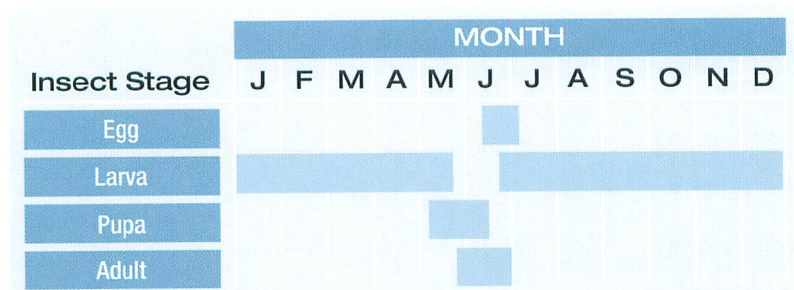
INSECT DESCRIPTION

Egg: no description available

Larva: five instars; white, with dark brown to black mandibles; curved; legless; segmented; feeds in one seed throughout the summer (6-8 weeks); overwinters in the seed within the cone on the tree, or on the ground; capable of extended **diapause**

Pupa: brown; found in seeds on the ground

Adult: body brownish yellow; female (1.9-3.3 mm long) - male (0.7-1.4 mm long); membranous wings with **stigma** (see shape above); female has noticeably long **ovipositor**



HOSTS: HEMLOCK (eastern, Carolina)

DISTRIBUTION: found throughout the range of eastern hemlock

DAMAGE: attacked seeds are similar to healthy seeds;
content of each seed entirely consumed

IMPORTANCE: cone attack can reach 40%; typically, less than 6% of the seed crop is attacked; each larva destroys one seed

DETECTION AND MONITORING: dissect seed to find egg, larva and pupa;
extract and irradiate (x-ray) seed to assess infestation level; no **attractant** available

CONTROL

Silvicultural: none available

Biological: none available

Chemical: none available

REFERENCES

Biology: Milliron (1949); Turgeon *et al.* (2004)

Control: none available

NOTES:

LARCH SEED CHALCID



Adult female

Canadian Forest Service



Exit hole

T Arcand

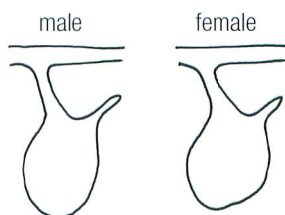
TAXONOMY

Order (Family): Hymenoptera (Torymidae)

Scientific name: *Megastigmus laricis* Marcovitch

Synonym(s):

French name: Chalcis séminivore du mélèze



Shape of stigma

INSECT DESCRIPTION

Egg: white; 0.22 mm long; spindle-shaped; smooth; laid in seed

Larva: five instars; 2.1 by 0.9 mm at maturity; white, with dark brown to black mandibles; curved; legless; mandible has 4 teeth; segmented; feeds in one seed throughout the summer (6-8 weeks); overwinters in the seed within the cone on the tree, or on the ground; capable of extended **diapause**

Pupa: brown; found in seeds within the cone on the tree or on the ground

Adult: body black and tawny yellow; female (2.1 mm long) - male (2.5 mm long);

Insect Stage	MONTH											
	J	F	M	A	M	J	J	A	S	O	N	D
Egg												
Larva												
Pupa												
Adult												

membranous wings with **stigma** (see shape above); female has noticeably long **ovipositor**

HOST: LARCH (eastern)

DISTRIBUTION: found throughout the range of eastern larch

DAMAGE: attacked seeds are similiar to healthy seeds;
content of each seed entirely consumed

IMPORTANCE: up to 20% of the cones can be attacked; up to 10% of seed crop can be destroyed; each larva destroys one seed

DETECTION AND MONITORING: dissect seed to find egg, larva and pupa;
extract and irradiate (x-ray) seed to assess infestation level; no **attractant** available

CONTROL

Silvicultural: none available

Biological: none available

Chemical: none available; foliar and soil applications of systemic insecticides have been unsuccessful

REFERENCES

Biology: Marcovitch (1914); Milliron (1949); Hedlin (1974);

Brown and Amirault (1985); Amirault and Brown (1986)

Control: Amirault and Brown (1986)

NOTES:

BALSAM FIR SEED CHALCID



Adult male and female

T Arcand



Adult exiting seed

T Arcand

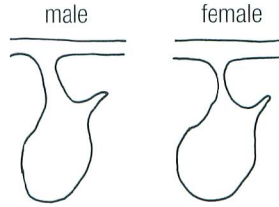
TAXONOMY

Order (Family): Hymenoptera (Torymidae)

Scientific name: *Megastigmus specularis* Walley

Synonym(s):

French name: Chalcis granivore du sapin baumier



Shape of stigma

INSECT DESCRIPTION

Egg: milky-white; 0.29 by 0.15 mm; elongate-oval with 2 **pedicels** (about 0.91 and 0.03 mm long, respectively); smooth and glossy; laid in seed

Larva: five instars; yellowish-white, with dark brown to black mandibles; 1.31-4.20 mm long at maturity; curved (strongly arched and tapered at both ends); legless; segmented; feeds in one seed throughout the summer (6-8 weeks); overwinters in the seed on the ground; capable of extended **diapause**

Pupa: entirely white when newly formed with eyes turning from pale orange

Insect Stage	MONTH											
	J	F	M	A	M	J	J	A	S	O	N	D
Egg												
Larva												
Pupa												
Adult												

Hymenoptera

to deep crimson within a few days; female (2.88 by 1.11 mm long)- male (2.50 by 0.98 mm long); found in seeds on the ground

Adult: body black and tawny yellow; female (2.2-3.8 mm long)- male (2.1-3.0 mm long); membranous wings with **stigma** (see shape on previous page); female has noticeably long **ovipositor**

HOSTS: Fir (balsam, Fraser)

DISTRIBUTION: found throughout the range of balsam fir

DAMAGE: attacked seeds are similar to healthy seeds; content of each seed entirely consumed

IMPORTANCE: up to 57% of seed crop can be attacked; each larva destroys one seed

DETECTION AND MONITORING: dissect seed to find egg, larva and pupa; extract and irradiate (x-ray) seed to assess infestation level; no **attractant** available

CONTROL

Silvicultural: none available

Biological: none available

Chemical: none available

REFERENCES

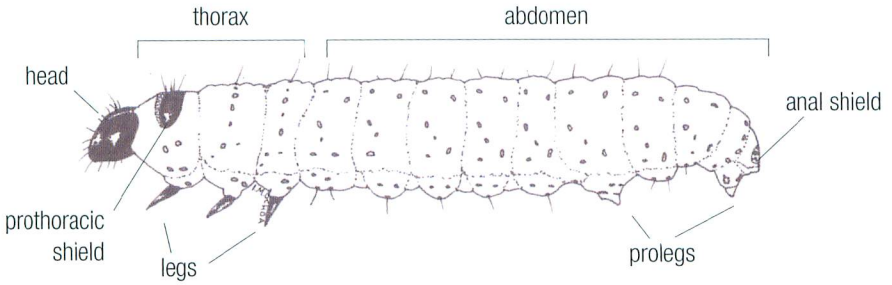
Biology: Milliron (1949); Hedlin (1956); Kettela (1967); Roques and Skrzypczynska (2003)

Control: none available

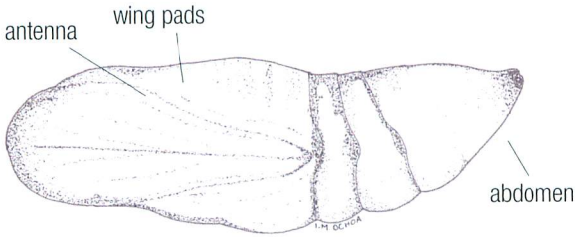
NOTES:

LEPIDOPTERA

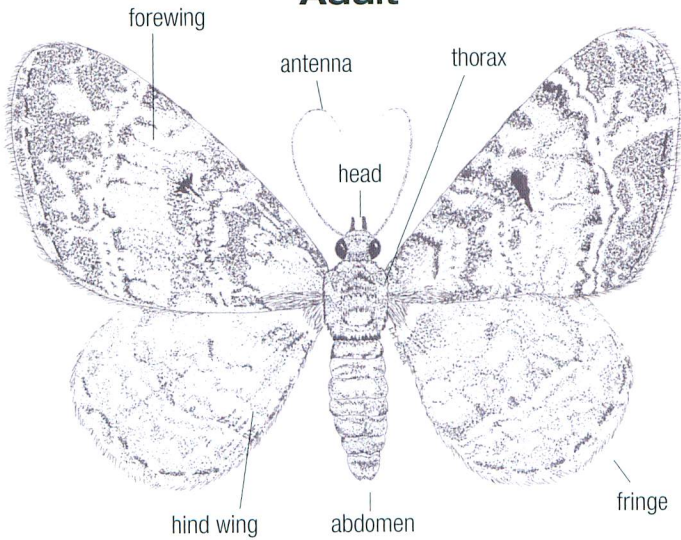
Larva



Pupa

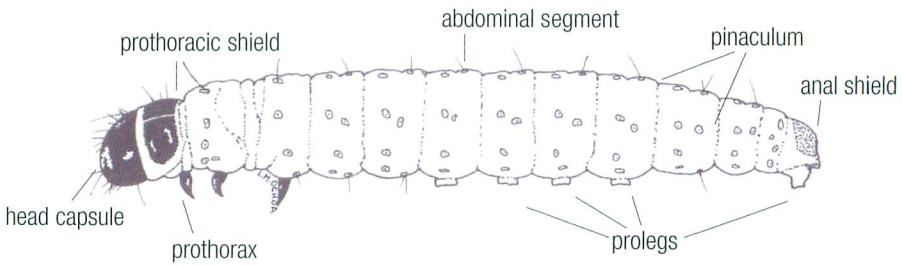


Adult

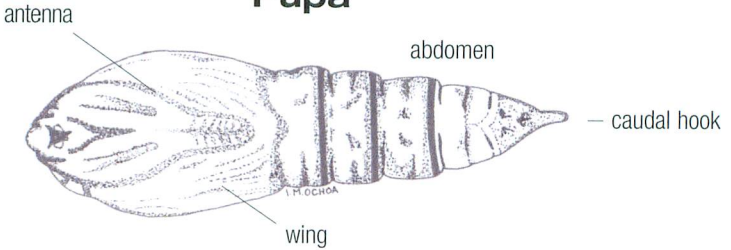


LEPIDOPTERA

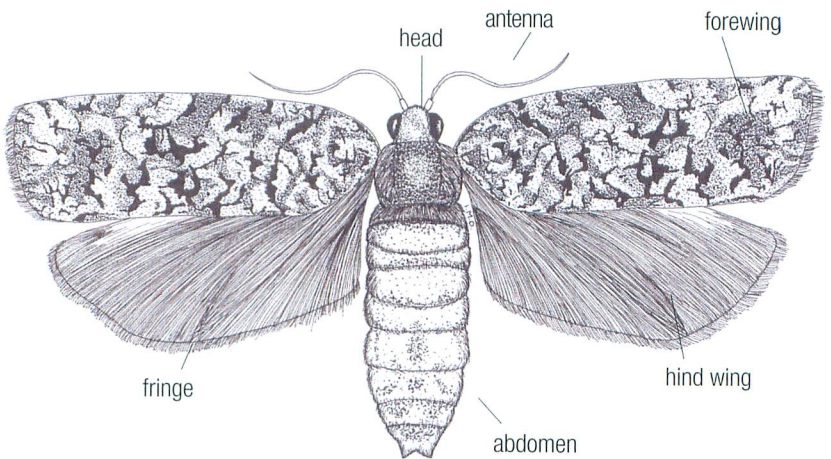
Larva



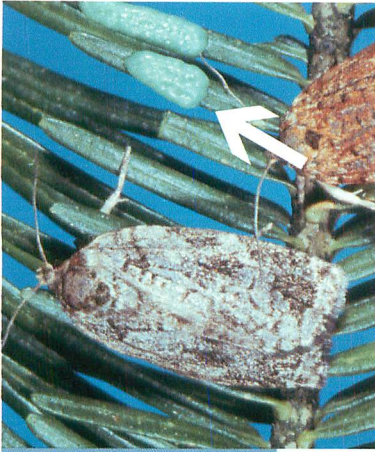
Pupa



Adult

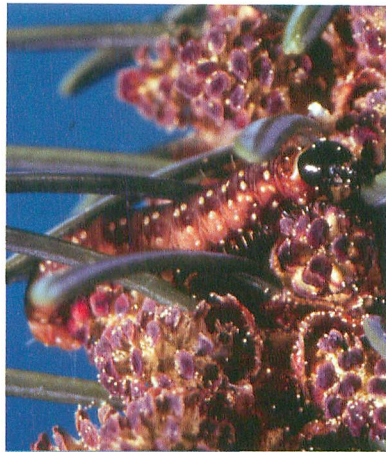


EASTERN SPRUCE BUDWORM



Adult and egg masses

E Rayner



Larva (last instar)

E Rayner

TAXONOMY

Order (Family): Lepidoptera (Tortricidae)
Scientific name: *Choristoneura fumiferana* (Clemens)
Synonym(s): *Archips fumiferana* Clemens
French name: Tordeuse des bourgeons de l'épinette

INSECT DESCRIPTION

Egg: bluish-green; about 1.0 mm long; flattened and ovoid; laid in masses of two to four rows, on the underside of the needles, with each mass containing about 20 eggs
Larva: six instars; first instar is yellowish with dark brown head; last instar is reddish-brown with two rows of whitish spots along the back and has dark brown **prothoracic shield** and legs; 18.0-24.0 mm long when mature; develops on foliage or in cone and overwinters as second instar in **hibernaculum**
Pupa: yellow to reddish-brown; attached to foliage
Adult: brownish-gray to gray, with mottled wing pattern; 20.0-30.0 mm wingspan

Insect Stage	MONTH												
	J	F	M	A	M	J	J	A	S	O	N	D	
Egg													
Larva													
Pupa													
Adult													

HOSTS: FIR (balsam); occasionally LARCH (eastern); SPRUCE (red, black, white)

DISTRIBUTION: found throughout the range of white spruce

DAMAGE: cone is partially to completely consumed; webbing and coarse frass adhering to surface of cone and surrounding needles

IMPORTANCE: up to 100% of the seed cones of certain tree species can be destroyed; when at epidemic levels, the spruce budworm is one of the most serious pests of cones of several conifers in eastern Canada

DETECTION AND MONITORING: examine foliage to find egg masses and larva; examine seed cone at bud burst and thereafter, to find larva; sticky or bucket trap baited with sex pheromone is available

CONTROL

Silvicultural: none available

Biological: foliar application of *B.t.* has been effective in reducing populations and defoliation

Chemical: foliar and soil applications of systemic insecticides have been effective in reducing damage

REFERENCES

Biology: Campbell (1953); Mackay (1953); Silk *et al.* (1980); Hedlin *et al.* (1981); Brown and Amirault (1985); Churcher *et al.* (1985); Prévost *et al.* (1988)

Control: Churcher *et al.* (1985); Fogal and Plowman (1989)

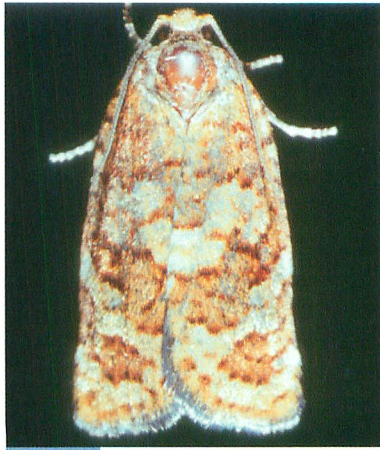
NOTES:

JACK PINE BUDWORM



Larva

E Rayner



Adult

E Rayner

TAXONOMY

Order (Family): Lepidoptera (Tortricidae)

Scientific name: *Choristoneura pinus pinus* Freeman

Synonym(s):

French name: Tordeuse du pin gris

INSECT DESCRIPTION

Egg: yellow-green; laid in two rows on underside of needles in clusters of about 40

Larva: seven instars; last instar has brownish to yellow head with two rows of white dots along the back, a dark brown almost black **prothoracic shield**, and a yellowish **anal shield**; 20.0-22.0 mm long; overwinters as second instar in **hibernaculum**

Pupa: dark gray or dark brown; attached to shoots or within webbed foliage

Adult: tawny gray with mottled wing patterns

Insect Stage	MONTH											
	J	F	M	A	M	J	J	A	S	O	N	D
Egg												
Larva												
Pupa												
Adult												

HOSTS: PINE (jack, red, scotch, eastern white)

DISTRIBUTION: found throughout the range of jack pine

DAMAGE: one or more holes can be present on cone surface; feeding on cone surface and surrounding needles, with **frass** and webbing adhering to remaining needles; cone can be distorted due to destroyed conductive tissue

IMPORTANCE: significant loss of young pollen and seed cones may occur

DETECTION AND MONITORING: dissect cone to find larva; sticky or bucket trap baited with sex **pheromone** is available

CONTROL

Silvicultural: none available

Biological: foliar application of *B.t.* has been effective in reducing populations and defoliation

Chemical: foliar applications of contact insecticides have been effective in reducing damage

REFERENCES

Biology: Hodson and Zehngroff (1946); Campbell (1953); MacKay (1953); Walley (1953); Benjamin and Drooz (1954); Drooz and Benjamin (1956); Kulman and Hodson (1961); Dixon and Benjamin (1963); Benyus (1983); Silk *et al.* (1985); Nealis (1990)

Control: Cadogan *et al.* (1986)

NOTES:

SPRUCE SEED MOTH



Larva in cone axis

T Arcand



Damage

T Arcand

TAXONOMY

Order (Family): Lepidoptera (Tortricidae)

Scientific name: *Cydia strobilella* Linnaeus

Synonym(s): *Cydia* (= *Laspeyresia*) *youngana* Kearfott

French name: Tordeuse des graines de l'épinette

INSECT DESCRIPTION

Egg: pale to dark orange; about 0.5 mm in diameter; spherical, but become flat after cone scales close; laid in small overlapping clusters between cone scales near apex of seed cone

Larva: four instars; creamy white with a brown head and **prothoracic shield**; about 10.0 mm long when mature; overwinters in cone **axis**; capable of extended diapause for up to 3 years

Pupa: light amber turning deep brown to black prior to emergence; about 5.5 mm long with males usually 0.8 mm shorter than females; found in cone axis

Insect Stage	MONTH											
	J	F	M	A	M	J	J	A	S	O	N	D
Egg												
Larva												
Pupa												
Adult												

Adult: smoky brown with four cross-bands of silver and four shining **coastal spots** on forewing; 8.0-11.0 mm wingspan

HOSTS: SPRUCE (white - occasionally black, red)

DISTRIBUTION: found throughout the range of spruce

DAMAGE: no external evidence of damage; internally, seeds are partially to completely consumed and fused to the scale; silken tunnels between seed pairs are evident

IMPORTANCE: up to 70% of the cone crop can be destroyed; each larva destroys about one third of the seeds in a cone

DETECTION AND MONITORING: dissect cone to find egg, larva, pupa; sticky trap baited with sex **pheromone** is available

CONTROL

Silvicultural: remove infested cones from the seed orchard and destroy

Biological: none available

Chemical: foliar and soil applications, stem injections and implants of systemic insecticides have been effective in reducing damage

REFERENCES

Biology: Tripp (1954b); Tripp and Hedlin (1956); Hedlin (1973); Ruth *et al.* (1980); Hedlin *et al.* (1981); Brown and Miller (1983); Fogal and Lopushanski (1984); Brown and Amirault (1985); Churcher *et al.* (1985); Grant *et al.* (1989)
Control: Fogal and Lopushanski (1984); Churcher *et al.* (1985); Fogal *et al.* (1986b) Fogal and Plowman (1989)

NOTES:

EASTERN PINE SEED MOTH



Larva feeding through scale

P de Groot



Larval exit hole

P de Groot

TAXONOMY

Order (Family): Lepidoptera (Tortricidae)

Scientific name: *Cydia toreuta* (Groté)

Synonym(s): *Laspeyresia toreuta* (Groté)

French name: Tordeuse séminivore des pins

INSECT DESCRIPTION

Egg: white; about 0.2 by 0.3 mm; ovoid with **reticulated** flat surface; laid between cone scales

Larva: four instars; yellowish-white; last instar is about 10.0 mm long; body devoid of easily visible **setae**; slender body; develops in second-year cones

Pupa: 6.0-8.0 mm long; pointed head; posteriorly projecting spines on the dorsum of the **abdominal segments**; remains in the cone or drops to the ground

Adult: chocolate brown with two black-bordered silver bands on **forewing**; 12.0-15.0 mm wingspan

Insect Stage	MONTH												
	J	F	M	A	M	J	J	A	S	O	N	D	
Egg													
Larva													
Pupa													
Adult													

HOSTS: PINE (jack, red)

DISTRIBUTION: found throughout the range of pine

DAMAGE: no external evidence of damage; internally, larva tunnels between seeds and cone **axis**, leaving a trail which appears as brown lines against the white internal cone material; larva invariably approaches a seed at its upper end; seed coat of attacked seeds is partially destroyed; the remainder of seed coat is glued to the scale and filled with a mixture of **frass** and resin

IMPORTANCE: 15-80% of the cones can be attacked; up to 75% of the seeds per cone can be destroyed; one larva can destroy as many as 8 seeds

DETECTION AND MONITORING: dissect cone to find egg and larva; no **attractant** available

CONTROL

Silvicultural: remove infested cones from the seed orchard and destroy

Biological: *B.t.* and *Beauveria bassiana* dusted on cones can be effective

Chemical: stem injection, implants, foliar sprays, and soil applications of systemic insecticides have been effective in reducing damage

REFERENCES

Biology: Lyons (1957b,1957c); Hard (1964); Kraft (1968); Ebel *et al.* (1980); Hedlin *et al.* (1981); Brown and Amirault (1985); Katovich and Kulman (1987a); Katovich *et al.* (1989)

Control: Cameron *et al.* (1987); Rush *et al.* (1987); Fogal and Plowman (1989)

NOTES:

FIR CONEWORM



Adult

T Arcand



Larva and coarse frass

T Arcand

TAXONOMY

Order (Family): Lepidoptera (Pyrilidae)

Scientific name: *Dioryctria abietivorella* Groté

Synonym(s): *Dioryctria abietella* D et S in part

French name: Pyrale des cônes du sapin

INSECT DESCRIPTION

Egg: whitish-green, turning orange as they mature; 0.6 by 1.0 mm; oval probably laid on bark near cones

Larva: five instars; brown head and amber body that becomes darker as it matures; rows of brown spots along the back; deep amber-brown head and **prothoracic shield** when mature; 18.0-20.0 mm long when mature; develops in cone

Pupa: amber to reddish-brown; about 11.0 mm long

Adult: gray, narrow **forewing** with transverse lighter bands bordered by black; whitish-gray hind wing without marking; about 25.0 mm wingspan

Insect Stage	MONTH											
	J	F	M	A	M	J	J	A	S	O	N	D
Egg												
Larva												
Pupa												
Adult												

HOSTS: FIR (balsam); SPRUCE (white, black, Norway, red);
PINE (eastern white, jack, red, scotch)

DISTRIBUTION: widely distributed

DAMAGE: two to three cones held together with coarse **frass** and webbing; one or more ragged holes; extensive tunnelling inside of cone usually free of debris
IMPORTANCE: damage highly variable; up to 100% of the seed and cone crop can be destroyed

DETECTION AND MONITORING: dissect cone to find larva; also feeds under bark on twigs and main stem; no **attractant** available

CONTROL

Silvicultural: none available

Biological: none available; larvae killed by *B. t.* in lab tests

Chemical: foliar applications of systemic insecticides have been effective in reducing damage

REFERENCES

Biology: Lyons (1957a,1957c); Hard (1964); Kulhavy *et al.* (1976); Hedlin *et al.* (1981); Lindquist (1982); Brown and Amirault (1985); Churcher *et al.* (1985); de Groot (1986); Prévost *et al.* (1988); Hartling and O'Shea (1989); Trudel *et al.* (1999a,1999b)
Control: Hard (1964); Haverty *et al.* (1986); Trudel *et al.* (1997); Weslien (1999)

NOTES:

WEBBING CONEWORM



Damaged cone

B Aelick



Sliced cone illustrating pupa and damage

E Rayner

TAXONOMY

Order (Family): Lepidoptera (Pyrilidae)

Scientific name: *Dioryctria disclusa* Heinrich

Synonym(s):

French name: Pyrale rousse des cônes du pin

INSECT DESCRIPTION

Egg: creamy white; 0.5 by 0.4 mm; oval; lightly **striated**; laid beneath bark scales

Larva: five instars; grayish-buff to olive green; first instar has eleven stripes; mature larva is 15.0-25.0 mm long; develops in cone; overwinters in **hibernaculum** beneath bark scale

Pupa: mahogany brown 9.0-14.0 mm long; rounded at the apex; heavily **sclerotized**; **caudal hooks** are lyre-shaped; found in cone

Adult: goldish-orange to reddish-brown, narrow forewing; pale smoky tan hind wing; 21.0-27.0 wingspan

Insect Stage	MONTH											
	J	F	M	A	M	J	J	A	S	O	N	D
Egg												
Larva												
Pupa												
Adult												

HOSTS: PINE (jack, red, scotch)

DISTRIBUTION: found throughout most of eastern Canada

DAMAGE: single conspicuous hole near cone base with tightly webbed semi-coarse reddish-brown **frass** over the entrance hole; large excavation deep within seed-bearing region of cone containing dried resin, frass, and webbing

IMPORTANCE: 40-60% cone loss can occur, with complete seed loss per attacked cone: each larva probably destroys 2 cones

DETECTION AND MONITORING: dissect cone to find larva; sticky trap baited with sex **pheromone** is available

CONTROL

Silvicultural: none available

Biological: none available

Chemical: foliar applications of systemic insecticides have been effective in reducing damage

REFERENCES

Biology: Lyons (1957a,1957c); Hard (1964); Mattson (1971, 1986); Meyer *et al.* (1982); Brown and Amirault (1985); Churcher *et al.* (1985); Rauf *et al.* (1985); Weatherby *et al.* (1985); de Groot (1986); Katovich and Kulman (1987)
Control: Nord *et al.* (1984); Rush *et al.* (1987); DeBarr (1989); Fogal and Plowman (1989)

NOTES:

SPRUCE CONEWORM



Larva

T Arcand



Cone with coarse frass

T Arcand

TAXONOMY

Order (Family): Lepidoptera (Pyrilidae)

Scientific name: *Dioryctria reniculelloides* Mutuura et Munroe

Synonym(s): *Dioryctria reniculella* Groté

French name: Pyrale des cônes de l'épinette

INSECT DESCRIPTION

Egg: creamy white; turning cinnamon brown before hatching; 1.0 by 0.7 mm; flat and **striated**; found in bark cracks and fissures of stems, and on twigs and needles

Larva: five instars; first instar is cinnamon brown with nine broken stripes; fifth instar has three cinnamon-coloured and two dark brown longitudinal stripes, a dark brown head; about 17.0 mm long when mature; develops in cone; overwinters as first instar

Pupa: dark brown; about 10.0 mm long; rounded to spined anterior projection; six even-length hooked **setae**

Adult: brownish-gray forewing with two sharp white crossbands; dark gray hind wing with pale subterminal bands and dark fringe; about 25.0 mm wingspan

Insect Stage	MONTH												
	J	F	M	A	M	J	J	A	S	O	N	D	
Egg													
Larva													
Pupa													
Adult													

HOSTS: LARCH (eastern); SPRUCE (white, black, red); possibly PINE (jack)

DISTRIBUTION: found throughout the range of spruce

DAMAGE: first instar mines one or two needles; infested cones and surrounding shoots are enveloped in coarse **frass** and webbing; severely infested cones are usually hollowed out and all seeds are destroyed; larva often feeds under surface of cone

IMPORTANCE: up to 100% cone mortality can occur

DETECTION AND MONITORING: dissect cone to find larva; sticky trap baited with sex **pheromone** is available

CONTROL

Silvicultural: none available

Biological: foliar application of *B.t.* has reduced populations

Chemical: foliar and soil applications, stem injections and implants, of systemic insecticides have been effective in reducing damage; generally, contact insecticides have provided little to no control

REFERENCES

Biology: MacKay (1943); McLeod and Daviault (1963); Ruth *et al.* (1980); Hedlin *et al.* (1981); Lindquist (1982); Brown and Amirault (1985); West (1985); Churcher *et al.* (1985); Grant *et al.* (1987); Prévost *et al.* (1988); Miller *et al.* (1995);
Control: Fogal and Lopushanski (1984); Brown and Amirault (1985); Churcher *et al.* (1985); Reardon *et al.* (1985); Prévost *et al.* (1988); Fogal and Plowman (1989); Hartling and O'Shea (1989)

NOTES:

RED PINE CONE BORER



Adult

E Rayner



Cone infested

E Rayner

TAXONOMY

Order (Family): Lepidoptera (Tortricidae)

Scientific name: *Eucosma monitorana* Heinrich

Synonym(s):

French name: Perce-cône du pin rouge

INSECT DESCRIPTION

Egg: orange; about 0.8 mm long; ovoid; laid on or near cone

Larva: five instars; grayish-white, with brown head and pronotum; about 12.0 mm long when mature; develops in cone

Pupa: dark brown; 7.0-8.0 mm long; found in the soil beneath tree

Adult: reddish-brown, with tan and silver markings on forewing; pale to dark gray hind wing with paler fringes; 13.0-16.0 mm wingspan

Insect Stage	MONTH												
	J	F	M	A	M	J	J	A	S	O	N	D	
Egg													
Larva													
Pupa													
Adult													

HOSTS: PINE (red and jack)

DISTRIBUTION: found throughout the range of red pine

DAMAGE: numerous small, round holes, or a few oblong holes in upper half of cone; exterior of cone almost always free of **frass**; no webbing found inside the cone; cone interior is packed with a mixture of frass and resin; extensive tunnelling in cone

IMPORTANCE: cone attack seldom exceeds 40%, but can reach up to 90%; each larva kills 1-2 cones, destroying all of the seeds

DETECTION AND MONITORING: examine cone to find egg; dissect cone to find larva; sex **pheromone** is available

CONTROL

Silvicultural: none available

Biological: none available

Chemical: soil applications of systemic insecticides have been effective in reducing damage

REFERENCES

Biology: Lyons (1957b,1957c); Barras and Norris (1967, 1969); Hedlin *et al.* (1981); Brown and Amirault (1985); Rauf *et al.* (1985); de Groot (1986); Katovich and Kulman (1987); Grant *et al.* (2002)
Control: Rush *et al.* (1987); Fogal and Plowman (1989)

NOTES:

WHITE PINE CONE BORER



Adult

T Arcand



Larva near exit hole

T Arcand

TAXONOMY

Order (Family): Lepidoptera (Tortricidae)

Scientific name: *Eucosma tocullionana* Heinrich

Synonym(s):

French name: Perce-cône du pin blanc

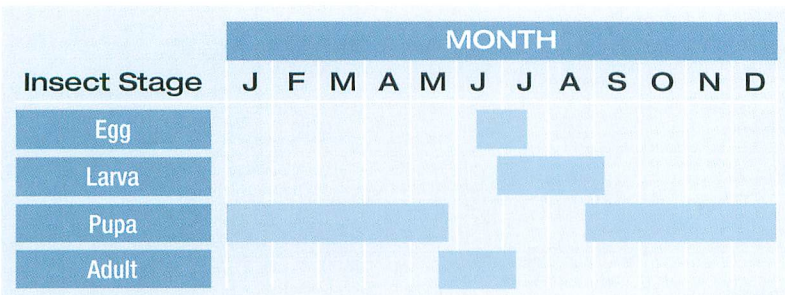
INSECT DESCRIPTION

Egg: yellow becoming orange-red; about 0.5 mm in diameter; oval to nearly circular; laid under exposed sides and tips of upturned cone scales (about 60% found in basal third of cone)

Larva: pale ivory-yellow to greenish-brown; pale **anal shield**; develops in cone

Pupa: brown; found in the soil beneath tree

Adult: distinct patches of alternating dark brown and light tan scales on **forewing**; dark brown hind wing with brownish-gray fringe; 12.0-19.0 mm wingspan



HOST: PINE (eastern white)

DISTRIBUTION: found throughout the range of eastern white pine

DAMAGE: cone peppered with many small holes and covered with patches of extruding frass; cone shrivels, discolours, hardens, turns brown and falls to the ground; cone interior is packed with a mixture of frass and resin as the larva feeds on scale and seed tissue, hollowing out and killing the cone

IMPORTANCE: up to 40-50% of the cone crop can be destroyed

DETECTION AND MONITORING: dissect cone to find egg and larva; sex pheromone is available

CONTROL

Silvicultural: none available

Biological: none available

Chemical: soil applications of systemic insecticides have been effective in reducing damage

REFERENCES

Biology: Ebel *et al.* (1980); Hedlin *et al.* (1981); de Groot (1998); Grant *et al.* (2002)

Control: DeBarr *et al.* (1982); Fogal and Plowman (1989)

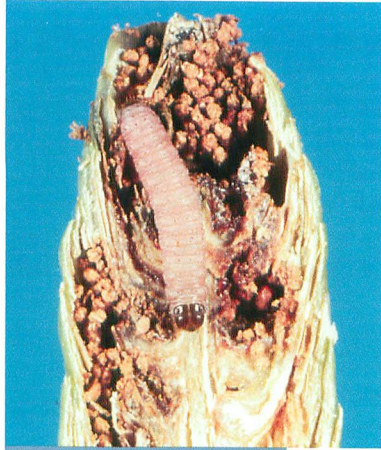
NOTES:

SPRUCE CONE LOOPERS



Adult

T Arcand



Larva in damaged cone

T Arcand

TAXONOMY

Order (Family): Lepidoptera (Geometridae)

Scientific name: *Eupithecia mutata* Pearsall and *Eupithecia albicapitata* Packard

Synonym(s):

French name: petite arpeuse des cônes de l'épinette et
petite arpeuse lignée des cônes de l'épinette

INSECT DESCRIPTION

Egg: no description available

Larva: *E. mutata* has a slender, pale pink body (without stripes) with small brown pinacula on thorax and abdomen; prominent black **prothoracic shield**; about 1.9 by 10.0 mm when fully grown; *E. albicapitata* is a stout grub-like larva with pale reddish stripes on a pale pink or brown body; about 2.5 by 10.0 mm when mature; both species have brown heads and only the 6th and 10th abdominal segments have **prolegs**

Pupa: brown for both species; overwinters in the soil

Insect Stage	MONTH											
	J	F	M	A	M	J	J	A	S	O	N	D
Egg												
Larva												
Pupa												
Adult												

Adult: *E. mutata* and *E. albicapitata* are smoky gray with intermittent tan bands at base and tip of the wing, bordered by black and gray markings; 17.0-23.0 mm wingspan

HOSTS: FIR (balsam) SPRUCE (black, red, white); HEMLOCK (eastern)

DISTRIBUTION: found throughout the range of spruce

DAMAGE: larva leaves ragged holes on exterior of cone with small amounts of frass and resinous material; larva burrows and tunnels through seeds and scales

IMPORTANCE: attacks are localized with up to 20% of the cones attacked; on hemlock, one larva can destroy up to 90% of the filled seeds per cone

DETECTION AND MONITORING: dissect cone to find larva; no **attractant** available

CONTROL

Silvicultural: none available

Biological: none available

Chemical: none available

REFERENCES

Biology: Mackay (1951); McGuffin (1958); Lindquist (1982); Churcher *et al.* (1985); Turgeon *et al.* (2004)

Control: none available

NOTES:

CONE AND SEED INSECTS IN NATURAL STANDS

Introduction

Seeds are often collected from natural stands and seed collectors should take some simple steps to ensure that insects do not adversely affect the quality of the seed harvested. As a matter of good practice, it is essential that seed collectors carefully examine a selection of cones prior to full-scale collection to determine if internal damage or loss to the seeds has occurred. As indicated in earlier sections, many insects have visible signs of damage on the outside of the cone or destroy the cone completely. By the time seed collection is undertaken, most of these damaged cones either have fallen to the ground or are still attached to the tree but, because of their damaged appearance, would not be harvested. Other insects feed entirely within the cone or seed and leave little or no visible sign of damage. Failing to carefully examine a sub-sample of cones prior to harvest could result in collecting a poor quality seed lot. Such seed lots may be rejected or offered a lower price by the seed buyer. For that reason it is also critical for seed collectors to familiarise themselves with the type of damage caused by these "hidden" insects to avoid collecting damaged or destroyed seeds.

Typically, light crops following medium to heavy crops are often severely attacked by insects. Therefore it is important that crops be evaluated every year to determine potential damage. The previous year's losses do not necessarily predict this year's losses, as some insects may seem to disappear in some years only to suddenly reappear a year or two later.

Assessing cone crops and insect damage

Scouting for locations to collect seed and estimating the potential size of the crop are part of the activities of seed collectors. During these times, the seed collector should also determine the potential impact of insects on the quality, quantity and economic viability of the seed crop.

In natural stands or plantations not managed for seed production, assessments should begin on the first visit by the seed collector. If this visit is done in early to mid-June, many insects are still feeding and it is a good time to find and identify the insects. Obviously, the closer the assessments are done to harvest time the more accurate the prediction of crop size will be. Waiting until the crop is ready to harvest to begin your first assessment of the seed crop could provide some costly surprises. Time and money spent to plan seed collection can be wasted if early assessments are not carried out. Surprisingly, this is a common occurrence.

Collect a sample of about 25 cones from several trees throughout the collection site. Sample from trees that will be your crop trees (dominant to co-dominant vigorous trees)-not from isolated trees where self-pollination is likely, or from small, unhealthy trees. Do not use roadside trees exclusively because these trees often have heavier cone crops and higher pest populations. Be sure to sample from the top and bottom of the tree.

Some insects have higher population densities at the top of the tree. Thus sampling from the bottom of the tree crown, which is most accessible, will underestimate the impact. Collect cones from all sides of the tree.

Once cones have been collected, slice the sample cones in half, length-wise along their axis. Look for signs of insect damage. Count the number of full seeds per half slice, and determine from industry standards if the number of seeds per cone is acceptable. Processing cones with low numbers of seed is not economical and is likely to result in rejection of the seed lot with no financial compensation to the seed collector for their work.

CONE AND SEED INSECTS IN SEED ORCHARDS

Introduction

Seed orchards present a great opportunity for insects to feed on abundant high quality seed but also an easier and cost effective opportunity for seed orchard managers to manage insect pests and reduce their damage. Because of the high value of seed in orchards, monitoring the size and health of a cone crop over time and protection of seed crops (which should go hand-in-hand) is often done in seed orchards. Cone crop monitoring is essentially inventory control and management. Like an apple orchard producing and selling apples, seed orchards produce and sell seeds and thus to be competitive seed orchard managers must know the size of the crop (inventory) and the condition of the inventory (e.g., healthy insect-free or riddled with insects), and must have pest management methods ready to use as necessary to ensure that the final product (seeds) meets the quality standards and target levels of production.

The detection of damage in the early stages of attack should provide the manager with enough time to assess potential damage and, if warranted, to undertake control actions. Unless obligatory insects are detected at the time they initiate cone attack, or before, there is little the seed orchard manager can do to protect the seed crop that year. Pheromone or colour traps have been developed to assist the seed orchard manager in detecting the early presence of adults before they begin laying eggs.

Evaluating the size and health of a cone crop can range from informal and casual trips to the orchard through to a formal inventory system combined with methods to detect specific insects (e.g., pheromones, colour traps). Casual methods are quick, easy and inexpensive, but lack quantification that is essential to determining if pest management is justified. The benefits of formal cone crop monitoring systems are that it enables: 1) the prediction of crop size at various intervals of crop development; 2) the identification of good and poor crop trees in the orchard; 3) the quantification of cone and seed losses as well as the identification of the damaging insect(s); 4) the estimation of the efficacy of control measures; and 5) an increased ability to estimate workloads and requirements. Formal cone crop monitoring systems take time and effort to set up but the payoffs are numerous.

Its beyond the scope of this manual to describe the specific detection and monitoring systems for insects (see section 3 of this manual where references to these are provided), but what is presented here is a brief outline of the various components of a formal cone crop monitoring system and a description of one such system (ConeSys) to combine a cone crop inventory with a decision support system for pest management.

Cone Crop Monitoring

Monitoring cone crops in seed orchards involves setting up permanent sample trees with permanently tagged sample cones and examining them over the course of their development from pollination through to seed maturity for losses and the cause of loss. It also includes estimating the maximum potential of cone to produce seeds and comparing these with the actual number of seeds produced to determine the cause of seed loss in a

cone. Recall that many insects feed internally in cones without leaving external signs of damage, thus examining cones internally determines the impact of these insects.

The basic 7 steps to monitor a cone crop are as follows:

Step 1

Select trees at random from the orchard. For an average-sized orchard, the selection of 50 trees is recommended. If there is interest in specific clones or families or an area of the orchard, trees would be selected from the population of interest.

Step 2

Count all the receptive seed cones on the sample trees including those dead or damaged, and use this count to estimate the potential number of cones, seeds, and seedlings that could be produced.

Step 3

Select at random a cone-bearing branch from the sample tree, permanently mark this branch for future monitoring and record the number of cones and their condition (e.g., unattacked, attacked or dead, aborted). At least 20 cones per tree are monitored.

Step 4

Monitor the condition of the tagged cones periodically, at least 2-3 times per year, and record the number of healthy and damaged cones. Schedule the first visit when insects begin cone attack, the second, when cones are about half their mature length, and the third when cones have reached their full length. The frequency and timing of the visits is usually based on the biology of the major pests encountered in the orchard.

Step 5

After each visit, use the information to update your predictions on cone (and seed) crop size, and conduct pest management when needed.

Step 6

Collect cones when they mature.

Step 7

Extract and germinate seeds, to calculate both the actual seed potential and efficiencies in seed extraction and germination, and compare these with the predictions made at the beginning of the season.

ConeSys

ConeSys is a computer-based system designed to assist seed orchard managers in collecting and processing data on the quality and quantity of cones and seeds from their orchard, and to assist in making informed decisions about the need for insect pest management. ConeSys was developed in collaboration with many seed orchard managers in Ontario, and although the system does have a few features developed specifically for Ontario seed orchards, it is flexible enough that it can be adapted or calibrated easily for use in any seed orchard.

ConeSys consists of three core programs that function independently: The Cone Crop Monitoring System (CCMS), the Information Management System (IMS), and the Decision Support System (DSS). Both the CCMS and the IMS provide data and information for the

DSS. The CCMS provides data on the size of the cone crop and expected damage. The IMS provides information on expected damage from insect pests of pine, spruce and tamarack in eastern Canada, pest control products registered in Canada for use against these cone and seed insects, and estimates of the efficacy of the products. The DSS uses this data and asks the seed orchard manager for additional information about cost of treatment and the value of the crop to be protected to help calculate the consequences of various decisions.

Cone Crop Monitoring System. The CCMS enables seed orchard managers to estimate and predict cone and seed crop size at various times from pollination to cone maturity and harvest. It also provides estimates of the impact of insects, together with other cone- and seed-mortality factors, such as diseases, natural abortion, squirrels, and frost. The data gathered during each field visit/assessment (Steps 1-4) of the monitoring are inputted into a data logger running the CCMSDAT program. After each visit the data is downloaded to an IBM compatible personal computer (PC) where it is stored and managed (Step 5) using a program called CCMSPC. By using previous cone and seed loss data from the orchard (or some best guess when running the program for the first time), the user can either make predictions on the cone and seed yield expected at harvest or update the yield predictions. At harvest, sample cones are processed to determine seed potential, actual yield of filled seed, and seed losses.

Information Management System. The IMS is a database that provides information on the insect pests of pine, spruce and tamarack in eastern Canada. There are three main modules in the IMS program. The Diagnosis module helps identify the pest or pests causing damage to the cone and seeds on the basis of damage characteristics. Next, the system identifies the pest and the user can view or print selected information about it. The Pest module provides information on the hosts, importance and distribution of the pests, a description of the damage and life stages of the pest, and the current control methods. The Control module provides information on the pest control products registered in Canada for use against cone and seed insects. This information includes the product name, registration number, registrant and Canadian agent, location of use, market type, formulation type, precautions, first aid, environment hazards, spill cleanup, toxicology, storage and disposal instructions, directions for use, active ingredient, species of insects controlled, and estimates of the efficacy of the product.

Decision Support System. The DSS is designed to help seed orchard managers make economically and environmentally appropriate pest and crop management decisions. DSS requires seed orchard managers to input data on the current cone crop size, cost of pest management, and the expected gain in cone and seed yields from pest management, among other data. DSS processes these data and provides a cost/benefit analysis of one or more pest management options.

The complete manual can be obtained from the Canadian Forest Service, Great Lakes Forestry Centre, in Sault Ste. Marie, Ontario. Please cite:

deGroot P, Schnekenburger F, Fleming RA, Turgeon JJ 1996. User's guide to ConeSys: A Cone crop monitoring and insect pest management decision support system for seed orchards. NODA Technical Report. TR-24.102p.

GLOSSARY

abdominal segment - a subdivision of the abdomen delineated by constrictions

abiotic - non-living environmental substances and gradients

aborted - having ceased development, so as to be unfit for normal function; atrophied

anal shield - the upper part of the last abdominal segment of Lepidoptera larvae; plate-like in appearance

antennal horn - a prominent point arising from the antennae

attractant - chemical substance having positive directive response (i.e., attraction) for animals such as insects, usually in low concentration and at considerable distance

axis - of cone, the central rod-like core of a cone to which scales and bracts are attached

caudal hook - hook found at, near, or toward the tip end of the abdomen of the pupa of various lepidoptera, frequently used as a means of attachment of a pupa to substrate material

chorion - the outer shell or covering of the insect egg

cocoon - a covering, made partially or entirely of silk or other fibres, spun by a larva as a protective envelope for the pupa

conophage, -ous - insect that feeds on cone and bract tissues, usually without damaging seeds directly, although it can occur occasionally

conophyte, -ous - insect that can feed or develop only in seed cones (including seeds)

conospermatophage, -ous - insect that consumes cone and seed tissues

in a clear and discriminate pattern

elytra - the chitinous wings of beetles, serving as coverings for the hindwings

endoconophyte, -ous - concophyte that spends its entire pre-imaginal development (egg, larva and pupa) within the cone or a seed

endosperm - a commonly used, but incorrect, term applied to the nutrient storage tissue surrounding the embryo in conifer seeds

exoconophyte, -ous - concophyte that exits the host as a mature larva to pupate elsewhere

forewing - the first pair of wings arising from the second thoracic segment (pages 69,79)

frass - solid larval excrement

gall - an abnormal swelling of a plant tissue

halteres - the wing balancers in Diptera, situated one on each side of the thorax and representing the hindwings

head capsule - the sutured segments or sclerites of the head which form a hard protective case

heteroconophyte, -ous - insect that feeds predominantly on foliage, shoots, twigs, cone bearing shoots and twigs and bark but that feeds or develops in seed cones when available

hibernaculum - a tent or sheath made out of foliage, or other material, in which a larva hides or hibernates

instar - the period or stage between moults in the larvae, numbered to designate the various periods; e.g., the first instar is the stage between the egg and the first moult

larva (pl. larvae) - the immature stage, between the egg and pupa, of an insect which undergoes complete metamorphosis (egg, larva, pupa, and adult)

lignification - the process by whereby plant cells become woody

mast year - a year in which, in respect of any area, there is abundant production of seed

moult - to cast off the outgrown skin when the larva or nymph changes from one instar to another

mouth hooks - cuticular claw-like structures, one on each side of the pre-oral opening; the substitute jaws of dipteran larvae

mycophagous - feeding on fungus

nymph - the immature stage of insects with an incomplete metamorphosis (e.g. Hemiptera); although similar in form to adults, nymphs have incompletely developed wings and genitalia

ovipositor - structure used to lay eggs (page 69)

oviposition - the act of depositing eggs

pedicel - a stalk or stem supporting an organ, egg or other structure

phenology - the study of the impact of climate on the seasonal occurrence of plants and animals

pheromone - a substance, secreted from a gland and released into the air by an insect, that causes a specific reaction in a receiving insect of the same species; e.g., sex pheromone

phytophagous - feeding on plants

pinaculum (pl. pinacula) - small chitinized plates on the outer covering of a larva to which body setae are attached

pitch tube - a cylinder of resin and often frass surrounding the entrance hole made by an insect

pollen cone - the male strobili

of conifers which produce pollen

proleg - the fleshy, unjointed abdominal legs of lepidoptera, and of some sawfly larvae (pages 79, 80)

pronotum - the upper (dorsal) surface of the prothorax

prothoracic shield - the plate-like upper part of the prothorax, especially of lepidoptera larvae

prothorax - the first segment of the thorax of an insect bearing the first pair of legs (page 80)

pubescence - a covering of short, fine, soft, erect hair (page 35)

pupa (pl. pupae) - the resting inactive stage between the larva and the adult in insects that undergo complete metamorphosis

puparium (pl. puparia) - the thickened, hardened barrel-like larval skin of diptera within which the pupa is formed

rachis - axis of cone, central rod-like core of a cone to which scales and bracts are attached

reticulated - covered with a network of lines; meshed; netted

saprophagous - feeding on decaying matter

sclerotized - portions of insect cuticle that are hardened by substances other than chitin

seed coat - the outer coat of the seed, usually hard and brittle

seed cone - the female strobili of conifers which receive pollen and produce seeds

seta (pl. setae) - a rather short, stiff, pointed hair

spatula - a spoon or spoon-shaped unicellular process, structure, or out-growth of the body wall; the breast of a cecidomyiid larvae

spermatophage, -ous - insect that feed and develop entirely within a seed

spiracle - external opening of the tracheal system (page 42)

stigma - a short vein extending posteriorly from the marginal vein of the forewing (page 69)

striated - marked with parallel, fine, impressed lines

subterminal - below the end, or not quite attaining the end

thorax - the intermediate region of the insect body between the head and the abdomen bearing the true legs and wings (pages 35, 41, 42, 69, 79)

tubercules - a small knoblike or rounded protuberance (page 42)

univoltine - having one generation in a year

REFERENCES

- Amirault PA, Brown NR. 1986. Cone and seed insects of tamarack, *Larix laricina* (Du Roi) K. Koch, and attempts to control damage using chemical insecticides. *The Canadian Entomologist* **118**: 589-596
- Barras SJ, Norris DM. 1967. Description of larval *Eucosma monitorana* (Lepidoptera: Tortricidae) from ovulate cones of *Pinus resinosa*. *Annals of the Entomological Society of America* **60**: 693-698
- Barras SJ, Norris DM. 1969. Bionomics of *Eucosma monitorana* (Lepidoptera: Tortricidae) attacking red pine in Wisconsin. *Annals of the Entomological Society of America* **62**: 1284-1290
- Bates SL, Borden JH, Savoie A, Blatt SE, Lait CG, Kermode A, Bennett R. 2000. Impact of feeding by *Leptoglossus occidentalis* (Hemiptera: Coreidae) on the major storage reserves of mature Douglas-fir (Pineaceae) seeds. *The Canadian Entomologist* **132**: 91-102
- Bates SL, Lait CG, Borden JH, Kermode A. 2001. Effect of feeding by the western conifer seed bug, *Leptoglossus occidentalis*, on the major storage reserves of developing seeds and on seedling vigor of Douglas-fir. *Tree Physiology* **21**: 481-487
- Benjamin DM, Drooz AT. 1954. Parasites affecting the jack pine budworm in Michigan. *Journal of Economic Entomology* **47**: 588-591
- Benyus JM. 1983. *Christmas Tree Pest Manual*. United States Department of Agriculture
- Birgersson G, DeBarr GL, de Groot P, Dalusky MJ, Pierce HD Jr, Borden JH, Meyer H, Francke W, Espelie K, Berisford CW. 1995 Pheromones in the white pine cone beetle, *Conophthorus coniperda* (Schwarz) (Coleoptera: Scolytidae). *Journal of Chemical Ecology* **21**: 143-167
- Blatt SE, Borden JH. 1996a. Evidence for a male-produced aggregation pheromone in the western conifer seed bug, *Leptoglossus occidentalis* Heidemann (Hemiptera: Coreidae). *The Canadian Entomologist* **128**: 777-778
- Blatt SE, Borden JH. 1996b. Distribution and impact of *Leptoglossus occidentalis* Heidemann (Hemiptera: Coreidae) in seed orchards in British Columbia. *The Canadian Entomologist* **128**: 1065-1076
- Blatt SE, Borden JH. 1999. Physical characteristics as potential host selection cues for *Leptoglossus occidentalis* (Heteroptera: Coreidae). *Environmental Entomology* **28**: 246-254

- Brockertoff EG, Turgeon JJ, Brockertoff A. 1999. Ovipositional phenology and behavior of the spruce cone fly, *Strobilomyia neanthracina* (Diptera: Anthomyiidae). *Journal of Insect Behavior* **12**: 47-65
- Brown NR, Amirault PA. 1985. Studies on the biology and control of cone and seed insects of selected conifers in the Maritime Provinces. Fredericton, New Brunswick, Agriculture Canada, Contract # O8SC-KH209-3-0137
- Brown RL, Miller WE. 1983. Valid names of the spruce seed moth and a related *Cydia* species (Lepidoptera: Tortricidae). *Annals of the Entomological Society of America* **76**: 110-111
- Cadogan BL, Zylstra BF, Nystrom C, Ebling PM, Pollock LB. 1986. Evaluation of a new Futura formulation of *Bacillus thuringiensis* on populations of jack pine budworm, *Choristoneura pinus pinus* (Lepidoptera: Tortricidae). *Proceedings of the Entomological Society of Ontario* **117**: 59-64
- Cameron RS. 1981. Toward insect pest management in southern pine seed orchards with emphasis on the biology of *Tetyra bipunctata* (Hem., Pentatomidae) and the pheromone of *Dioryctria clarioralis* (Lep., Pyralidae). Texas Forest Service, Publication 126
- Cameron RS, DeBarr GL, Godbee JF, Taylor JW. 1987. Potential alternative insecticides for insect control in southern pine seed orchard. Pages 182-189 in Proceedings of the 19th Southern Forest Tree Improvement Conference, College Station, Texas
- Campbell BC, PJ Shea. 1990. A simple staining technique for assessing feeding damage by *Leptoglossus occidentalis* Heidemann (Hemiptera: Coreidae) on cones. *The Canadian Entomologist* **122**: 963-968
- Campbell IM. 1953. Morphological differences between the pupae and egg clusters of *Choristoneura fumiferana* (Clem.) and *C. pinus* Free. (Lepidoptera: Tortricidae). *The Canadian Entomologist* **85**: 134-151
- Chau AMT. 1993. Feeding pattern, impact and monitoring of the cone flies, *Strobilomyia laricis* Michelsen and *S. viaria* (Huckett) (Diptera: Anthomyiidae) on Tamarack. MSc dissertation. Toronto: University of Toronto (Faculty of Forestry)
- Churcher JJ, Furdere RE, McGauley BH. 1985. Insects affecting seed production of spruce in Ontario. Ontario Ministry of Natural Resources, Pest Control Report 21
- Connelly AE, Schowalter TD. 1991. Seed losses to feeding by *Leptoglossus occidentalis* (Heteroptera: Coreidae) during two periods of second-year cone development in western white pine. *Journal of Economic Entomology* **84**: 215-217

- de Groot P. 1986. Mortality factors of jack pine, *Pinus banksiana* Lamb. strobili. Pages 39-52 in A Roques (compiler and editor), Proceedings of the 2nd Conference of the Cone and Seed Insects Working Party (IUFRO S2.07-01), Briançon, France
- de Groot P. 1991. Cone beetles in the boreal forest: At the cutting edge. *Proceedings of the Entomological Society of Ontario* **122**: 87-100
- de Groot P. 1998. Life history and habits of the white pine cone borer, *Eucosma tocollionana* (Lepidoptera: Tortricidae). *The Canadian Entomologist* **130**: 79-90
- de Groot P, Borden JH. 1991. Life history of the jack pine tip beetle, *Conophthorus banksianae* McPherson (Coleoptera: Scolytidae): implications for species status. *The Canadian Entomologist* **123**: 211-217
- de Groot P, Borden JH. 1992. Host acceptance behaviour of *Conophthorus resinosae* and *C. banksianae* (Coleoptera: Scolytidae). *Entomologica Experimentalis et Applicata* **65**: 149-155
- de Groot P, DeBarr GL. 1998. Factors affecting capture of the white pine cone beetle, *Conophthorus coniperda* (Coleoptera: Scolytidae) in pheromone traps. *Journal of Applied Entomology* **122**: 281-286
- de Groot P, DeBarr GL. 2000. Response of cone and twig beetles (Coleoptera: Scolytidae) and a clerid predator (Coleoptera: Cleridae) to pityol, conophthorin and verbenone. *The Canadian Entomologist* **132**: 843-852
- de Groot P, DeBarr GL, Birgersson G. 1998. Field bioassays of synthetic pheromones and host monoterpenes for *Conophthorus coniperda* (Coleoptera: Scolytidae). *Environmental Entomology* **27**: 382-387
- de Groot P, DeBarr GL, Birgersson GO, Pierce HD, Borden JH, Berisford YC, Berisford CW. 1991. Evidence for a female-produced pheromone in the white pine cone beetle, *Conophthorus coniperda* and in the red pine cone beetle, *C. resinosae* (Coleoptera: Scolytidae). *The Canadian Entomologist* **123**: 1057-1064
- de Groot P, Fleming RA. 1994. Analysis and modeling of cohort life tables of jack pine seed cones. *Canadian Journal of Forest Research* **24**: 1579-1592
- de Groot P, Harvey GT, Roden PM. 1992. Genetic divergence among eastern North American cone beetles, *Conophthorus* (Coleoptera: Scolytidae). *The Canadian Entomologist* **124**: 189-199
- de Groot P, MacDonald LM. 1999. Green leaf volatiles inhibit response of red pine cone beetle *Conophthorus resinosae* (Coleoptera: Scolytidae) to a sex pheromone. *Naturwissenschaften* **86**: 81-85

- de Groot P, Nott R, MacDonald LM. 2002. Influence of enantiomers of pinene on the response of red pine cone beetle, *Conophthorus resinosae* to its pheromone pityol. *Entomologia Experimentalis et Applicata* **105**: 169-174
- de Groot P, Schnekenburger F, Fleming RA, Turgeon JJ. 1995. A cone crop monitoring and decision support system for jack pine and black spruce seed orchards. Natural Resources Canada, Canadian Forest Service, Frontline Technical Note 85
- de Groot P, Schnekenburger F, Fleming RA, Turgeon JJ. 1996. User's guide to ConeSys: A Cone crop monitoring and insect pest management decision support system for seed orchards. NODA Technical Report TR-24
- de Groot P, Schnekenburger F, Fleming RA, Turgeon JJ. 1998. CONESYS: A data collection, data base and decision support system for making insect pest management decisions in seed orchards. *Northern Journal of Applied Forestry* **15**: 154-157
- de Groot P, Zylstra BF. 1995. Factors affecting capture of male red pine cone beetles, *Conophthorus resinosae* Hopkins (Coleoptera: Scolytidae), in pheromone traps. *The Canadian Entomologist* **127**: 851-858
- DeBarr GL. 1970. Characteristics and radiographic detection of seed bug damage to slash pine seed. *Florida Entomologist* **53**: 109-117
- DeBarr GL. 1978. Southwide tests of carbofuran for seed bug control in pine seed orchards. United States Department of Agriculture, Forest Service Research Paper SE-185
- DeBarr GL. 1979. Importance of the seed bugs *Leptoglossus corculus* (Say.) (Hemiptera: Coreidae) and *Tetyra bipunctata* (H. - S.) (Hemiptera: Pentatomidae) and their control in southern pine seed orchards. Pages 330-341 in Flowering and seed development in trees: a symposium. United States Department of Agriculture, Forest Service, Southeastern Forest Experiment Station; Mississippi State University, Department of Forestry and IUFRO
- DeBarr GL. 1989. Research on cone and seed insects in North America: past, present and future. Pages 1-7 in R West (editor): Proceedings - Cone and Seed Pest Workshop, Forestry Canada Information Report N-X-274
- DeBarr GL, Barber LR, Maxwell AH. 1982. Use of carbofuran for control of eastern white pine cone and seed insects. *Forest Ecology and Management* **4**: 1-18
- DeBarr GL, Ebel BH. 1973. How seed bugs reduce the quantity and quality of pine seed yields. Pages 97-103 in Proceedings of the 12th Southeastern Forest Tree Improvement Conference, Southeastern Forest Experiment Station, Forest Science Laboratory, Athens, Georgia

- Dixon JC, Benjamin DM. 1963. Natural control factors associated with the jack pine budworm, *Choristoneura pinus*. *Journal of Economic Entomology* **56**: 266-270
- Drooz AT, Benjamin DM. 1956. Parasites of two jack pine budworm outbreaks on the Upper Peninsula of Michigan. *Journal of Economic Entomology* **49**: 412-413
- Ebel BH, Flavell TH, Drake LE, Yates HO III and DeBarr GL. 1980. Seed and cone insects of southern pines. United States Department of Agriculture, Forest Service General Technical Report SE-8
- Fidgen LL, Quiring DT, Sweeney JD. 1998. Effect of cone size on adult and larval foraging behavior of *Strobilomyia neanthracina* and *Strobilomyia appalachensis* (Diptera: Anthomyiidae). *Environmental Entomology* **27**: 877-884
- Fidgen LL, Sweeney JD. 1996. Fir coneworm, *Dioryctria abietivorella* (Lepidoptera: Pyralidae) prefer cones previously exploited by the spruce cone maggots, *Strobilomyia neanthracina* and *Strobilomyia appalachensis* (Diptera: Anthomyiidae). *The Canadian Entomologist* **128**: 1221-1224
- Fidgen LL, Sweeney JD, Quiring DT. 1999. Stage-specific survival of *Strobilomyia appalachensis* Michelsen in the field. *The Canadian Entomologist* **131**: 483-494
- Fogal WH. 1986. Applying *Beauveria bassiana* (Bals.) Vuill to soil for control of the spruce cone maggot *Lasiomma anthracina* (Czerny). Pages 257-266 in A Roques (compiler and editor), Proceedings of the 2nd Conference of the Cone and Seed Insects Working Party (IUFRO S2.07-01), Briancon, France
- Fogal WH, Lopushanski SM. 1984. Stem injection of insecticides for control of white spruce seed and cone insects. Pages 157-167 in HO Yates III (compiler and editor), Proceedings of the Cone and Seed Insects Working Party Conference (IUFRO S2.07-01), Athens, Georgia
- Fogal WH, Lopushanski SM. 1989. Stem incorporation of systemic insecticides to protect white spruce seed trees. *The Forestry Chronicle* **65**: 359-364
- Fogal WH, Mitall RK, Thurston GS. 1986a. Production and evaluation of *Beauveria bassiana* for control of white spruce cone and seed insects. Agriculture Canada, Canadian Forestry Service Information Report PI-X-69
- Fogal WH, Plowman VC. 1989. Systemic insecticides for protecting northern spruce and pine seed trees. Forestry Canada Information Report PI-X-92
- Fogal WH, Thurston GS, Chant GD. 1986b. Reducing seed losses to insects by treating white spruce conelets with conidiospores of *Beauveria bassiana*. *Proceedings of the Entomological Society of Ontario* **117**: 95-98

- Gall WK. 1992. Further eastern extension and host records for *Leptoglossus occidentalis* (Heteroptera: Coreidae): well-documented dispersal of a household nuisance. *The Great Lakes Entomologist* **25**: 159-171
- Gilbert BL, Barras SJ, Norris DM. 1967. Bionomics of *Tetyra bipunctata* (Hemiptera: Pentatomidae: Scutellerinae) as associated with *Pinus banksiana* in Wisconsin. *Annals of the Entomological Society of America* **60**: 698-701
- Godwin PA, Odell TM. 1965. The life history of the white pine cone beetle, *Conophthorus coniperda*. *Annals of the Entomological Society of America* **58**: 213-219
- Goyer RA, Williams VG. 1981. The effects of feeding by *Leptoglossus corculus* (Say) and *Tetyra bipunctata* (Herrich and Schaffer) on loblolly pine (*Pinus taeda* L.) conelets. *Journal of the Georgia Entomological Society* **16**: 16-21
- Graber RE. 1964. Impact of the white pine cone beetle on a pine seed crop. *Journal of Forestry* **62**: 499-500
- Grant GG, de Groot, P, Langevin D, Katovich SA, Slessor KN, Miller WE. 2002. Sex attractant and seasonal flight patterns for three *Eucosma* (Lepidoptera: Tortricidae) species sympatric in eastern pine seed orchards and plantations. *The Canadian Entomologist* **134**: 391-401
- Grant GG, Fogal WH, West RJ, Slessor KN, Miller GE. 1989. A sex attractant for the spruce seed moth, *Cydia strobilella* (L.), and the effect of lure dosage and trap height on capture of male. *The Canadian Entomologist* **121**: 691-697
- Grant GG, Prévost YH, Slessor KN, King GGS, West RJ. 1987. Identification of the sex pheromone of the spruce coneworm, *Dioryctria reniculelloides* (Lepidoptera: Pyralidae). *Environmental Entomology* **16**: 905-909
- Grissell EE 1999. An annotated catalog of world Megastigminae (Hymenoptera: Chalcidoidea: Torymidae). Contributions of the American Entomological Institute **31**(4). Gainesville: The American Entomological Institute
- Grosman DM, Upton WW, McCook FA, Billings RF. 2002. Systemic insecticide injections for control of cone and seed insects in loblolly pine seed orchards – 2 year results. *Southern Journal of Applied Forestry* **26**: 146-152
- Hard JS. 1964. The identification of primary red pine cone insects. United States Department of Agriculture, Forest Service Research Paper LS-12
- Hartling L, O'Shea D. 1989. Report on pest monitoring program in seed orchards of New Brunswick. Forest Pest Management Sector, New Brunswick Department of Natural Resources and Energy

- Haverty MI, Shea PJ, Stipe LE. 1986. Single and multiple applications of fenvalerate to protect western white pine cones from *Dioryctria abietivorella* (Lepidoptera: Pyralidae). *Journal of Economic Entomology* **79**: 158-161
- Hedlin AF. 1956. Studies on the Balsam-Fir seed chalcid, *Megastigmus specularis* Walley (Hymenoptera, Chalcididae). *The Canadian Entomologist* **88**: 691-697
- Hedlin AF. 1973. Spruce cone insects in British Columbia and their control. *The Canadian Entomologist* **105**: 113-122
- Hedlin AF. 1974. Spruce cone insects in British Columbia. Canadian Forestry Service Information Report BCP-14
- Hedlin AF, Yates III HO, Tovar DC, Ebel BH, Koerber TW, Merkel EP. 1981. *Cone and seed insects of North American conifers*. Environment Canada, Canadian Forest Service; United States Department of Agriculture, Forest Service; Subsecretaría Forestal y de la Fauna, Secretaría de Agricultura y Recursos Hidráulicos, Mexico
- Henson WR. 1961. Laboratory studies on the adult behaviour of *Conophthorus coniperda* (Schwarz) (Coleoptera: Scolytidae). I. Seasonal changes in the internal anatomy of the adult. *Annals of the Entomological Society of America* **54**: 698-701
- Henson WR. 1966. *Conophthorus coniperda* (Coleoptera: Scolytidae) and the seed production of *Pinus strobus*. Pages 185-187 in HD Gerhold, EJ Schreiner, RE McDermott, JA Winieski (editors): *Breeding Pest Resistant Trees*. Oxford: Pergamon Press
- Hodson AC, Zehngroff PJ. 1946. Budworm control in jack pine by forest management. *Journal of Forestry* **44**: 198-200
- Ives WGH, Wong HR. 1988. Tree and shrub insects of the prairie provinces. Government of Canada, Canadian Forest Service Information Report NOR-X-292
- Katovich SA, Kulman HM. 1987a. Impact of cone and seed insects in red pine seed orchard. *Northern Journal of Applied Forestry* **4**: 204-206
- Katovich SA, Kulman HM. 1987b. *Leptoglossus corculus* and *Leptoglossus occidentalis* (Hemiptera: Coreidae) attacking red pine, *Pinus resinosa*, cones in Wisconsin and Minnesota. *The Great Lakes Entomologist* **20**: 119-120
- Katovich SA, Swedenborg PD, Giblin M, Underhill EW. 1989. Evidence for (E,Z)-8,10-dodecadienyl acetate as the major component of the sex pheromone of the eastern spruce seedworm, *Cydia toreuta* (Lepidoptera: Tortricidae). *Journal of Chemical Ecology* **15**: 581-590

Keen FP. 1958. Cone and seed insects of western forest trees. United States Department of Agriculture Technical Bulletin No. 1169

Kettela EG. 1967. The cone and seed insects of Balsam fir, *Abies balsamea* (L.) Mill. MSc dissertation. Fredericton: University of New Brunswick (Faculty of Forestry)

Kraft KJ. 1968. Ecology of cone moth *Laspeyresia toreuta* in *Pinus banksiana* stands. *Annals of the Entomological Society of America* **61**: 1462-1465

Koerber TW. 1963. *Leptoglossus occidentalis* (Hemiptera: Coreidae), a newly discovered pest of coniferous seed. *Annals of the Entomological Society of America* **56**: 229-234

Kulhavy DL, Schenk JA, Hudson TJ. 1976. Cone and seed insects of subalpine fir during a year of low cone production in northern Idaho. *Journal of the Entomological Society of British Columbia* **73**: 25-28

Kulman HM, Hodson AC. 1961. Feeding and oviposition habits of the jack pine budworm. *Journal of Economic Entomology* **54**: 1138-1140

Lait CG, Bates SL, Kermode AR, Morrissette KK, Borden JH. 2001. Specific biochemical marker-based techniques for the identification of damage to Douglas-fir seed resulting from feeding by the western conifer seed bug, *Leptoglossus occidentalis* Heidemann (Hemiptera: Coreidae). *Insect Biochemistry and Molecular Biology* **31**: 739-46

Lindquist OH. 1982. Keys to Lepidoptera larvae associated with the spruce budworm in northeastern North America. Ottawa: Canadian Forestry Service. Department of the Environment

Lyons LA. 1956. Insects affecting seed production in red pine. I. *Conophthorus resinosae* Hopk. (Coleoptera: Scolytidae). *The Canadian Entomologist* **88**: 599-608

Lyons LA. 1957a. Insects affecting seed production in red pine. II. *Dioryctria disclusa* Heinrich, *D. abietella* (D. and S.), and *D. cambicola* (Dyar) (Lepidoptera: Pyralidae). *The Canadian Entomologist* **89**: 70-79

Lyons LA. 1957b. Insects affecting seed production in red pine. III. *Eucosma monitorana* Heinrich, *Laspeyresia toreuta* Groté (Lepidoptera: Olethreutidae), *Rubsaamenia* sp. (Diptera: Cecidomyiidae), and other insects. *The Canadian Entomologist* **89**: 150-164

Lyons LA. 1957c. Insects affecting seed production in red pine. IV. Recognition and extent of damage to cones. *The Canadian Entomologist* **89**: 264-271

- Mackay MR. 1943. The spruce foliage worm and the spruce coneworm (*Dioryctria* spp., Lepidoptera, Pyralidae). *The Canadian Entomologist* **75**: 91-98
- Mackay MR. 1951. Species of *Eupithecia* reared in the forest insect survey in British Columbia (Lepidoptera: Geometridae). *The Canadian Entomologist* **83**: 77-91
- Mackay MR. 1953. The larvae of *Choristoneura fumiferana* (Clem.) and *C. pinus* Free. (Lepidoptera: Tortricidae). *The Canadian Entomologist* **35**: 128-153
- Marcovitch S. 1914. A species of *Megastigmus* reared from larch seeds. *The Canadian Entomologist* **46**: 435-438
- Marshall SA. 1991. A new Ontario record of a seed eating bug (Hemiptera: Coreidae) and other examples of the role of regional insect collections in tracking changes to Ontario's fauna. *Proceedings of the Entomological Society of Ontario* **122**: 109-111
- Mattson WJ. 1971. Relationship between cone crop size and cone damage by insects in red pine seed production areas. *The Canadian Entomologist* **103**: 617-621
- Mattson WJ. 1986. Competition for food between two principal cone insects of red pine, *Pinus resinosa*. *Environmental Entomology* **15**: 88-92
- McAlpine JF. 1956. Cone-infesting Lonchaeids of the genus *Earomyia* Zett., with descriptions of five new species from western North America (Diptera: Lonchaeidae). *The Canadian Entomologist* **88**: 178-196
- McAlpine JF, Steyskal GC. 1982. A revision of *Neosilba* McAlpine with a key to the world genera of *Lonchaeidae* (Diptera). *The Canadian Entomologist* **114**: 105-137
- McClure M, Quiring DQ, Turgeon JJ. 1996. Oviposition, temporal distribution and potential impact of *Strobilomyia laricis* Michelsen and *S. viaria* (Huckett) (Diptera: Anthomyiidae) on eastern larch, *Larix laricina* (Du Roi) K. Koch. *The Canadian Entomologist* **128**: 67-78
- McClure M, Quiring DQ, Turgeon JJ. 1998. Proximate and ultimate factors influencing oviposition site selection by endoparasites on conifer seed cones: Two sympatric dipteran species on larch. *Entomologia Experimentalis et Applicata* **87**: 1-13
- McGuffin WC. 1958. Larvae of the Nearctic Larentiinae (Lepidoptera: Geometridae). *The Canadian Entomologist* Suppl. 8
- McLeod JM, Daviault L. 1963. Notes on the life history and habits of the spruce coneworm, *Dioryctria reniculella* (Grt.) (Lepidoptera: Pyralidae). *The Canadian Entomologist* **95**: 309-316

- McPherson JE, Stehr FW, Wilson LF. 1970. A comparison between *Conophthorus* shoot-infesting beetles and *Conophthorus resinosae* (Coleoptera: Scolytidae). II. Reciprocal host and resin toxicity tests; with a description of a new species. *The Canadian Entomologist* **102**: 1016-1022
- McPherson JE, Packauskas RJ, Taylor SJ, O'Brien MF. 1990. Eastern range extension of *Leptoglossus occidentalis* with a key to *Leptoglossus* species of America north of Mexico (Heteroptera: Coreidae). *The Great Lakes Entomologist* **23**: 99-104
- Meyer WL, DeBarr GL, Berisford CW, Barber LR, Roelofs WL. 1982. Identification of the sex pheromone of the webbing coneworm moth, *Diorcytria disclusa* (Lepidoptera: Pyralidae). *Environmental Entomology* **11**: 986-988
- Michelsen V. 1988. A world revision of *Strobilomyia* gen.n.: the Anthomyiid seed pests of conifers (Diptera: Anthomyiidae). *Systematic Entomology* **13**: 271-314
- Miller GE, Turgeon JJ, de Groot P. 1995. Cone and Seed Insects. Pages 293-314 in JA Armstrong, WGH Ives (editors): *Forest Insects pests in Canada*. Ottawa: Natural Resources Canada, Canadian Forest Service, Science and Sustainable Development Directorate
- Miller WE. 1978. Use of prescribed burning in seed production areas to control red pine cone beetle. *Environmental Entomology* **7**: 698-702
- Milliron HE 1949. Taxonomic and biological investigations in the genus *Megastigmus* with particular reference to the taxonomy of the Nearctic species (Hymenoptera: Chalcidoidea: Callimomidae). *American Midland Naturalist* **41**: 257-420
- Morgan DF, Mailu M. 1976. Behavior and generation dynamics of the white pine cone beetle *Conophthorus coniperda* (Schwarz) in central Wisconsin. *Annals of the Entomological Society of America* **69**: 863-871
- Nealis VG. 1990. Jack pine budworm populations and staminate flowers. *Canadian Journal of Forest Research* **20**: 1255-1257
- Nord JC, DeBarr GL. 1992. Persistence of insecticides in a loblolly pine seed orchard for control of the leaf-footed pine seed bug, *Leptoglossus corculus* (Say) (Hemiptera: Coreidae). *The Canadian Entomologist* **124**: 617-629
- Nord JC, DeBarr GL, Overgaard NA, Neel WW, Cameron RS, Godbee JF. 1984. High-volume application of azinphosmethyl, fenvalerate, permethrin, and phosmet for control of coneworms (Lepidoptera: Pyralidae) and seed bugs (Hemiptera: Coreidae and Pentatomidae) in southern pine seed orchards. *Journal of Economic Entomology* **77**: 1589-1595

Odell TM, Godwin PA. 1964. White pine cone beetle. United States Department of Agriculture, Forest Service, Forest Pest Leaflet 83

Pierce HD Jr, de Groot P, Borden JH, Ramaswamy R, Oehlschlager AC. 1995. Pheromones in the red pine cone beetle, *Conophthorus resinosae* Hopkins and its synonym *C. banksianae* McPherson (Coleoptera: Scolytidae). *Journal of Chemical Ecology* **21**: 169-185

Popova AA, Elberg KJ. 1970. Species of the genus *Lasiomma* (Diptera: Anthomyiidae) which damage larch seeds and cones in the Baykal area. *Entomological Review* **49**: 340-345

Prévost YH. 1990. Spruce cone axis midge, *Dasineura rachiphaga* Tripp (Diptera: Cecidomyiidae) in cones of black spruce, *Picea mariana* (Mill.) B.S.P. *The Canadian Entomologist* **122**: 441-447

Prévost YH. 2002. Seasonal feeding patterns of insects in cones tamarack, *Larix laricina* (Du Roi) K. Koch (Pinaceae). *Forest Ecology and Management* **168**: 101-109

Prévost YH, Laing JE, Haavisto VF. 1988. Seasonal damage by insects and squirrels to female reproductive structures of black spruce, *Picea mariana* (Mill.) B.S.P. *The Canadian Entomologist* **120**: 1113-1121

Quiring DT, Sweeney JD, Bennett RG. 1998. Evidence for a host-marking pheromone in white spruce cone fly, *Strobilomyia neanthracina*. *Journal of Chemical Ecology* **24**: 709-721

Rappaport NG, Havery MI, Shea PJ, Sandquist RE. 1994. Efficacy of esfenvalerate for control of insects harmful to seed production in disease-resistant western white pines. *The Canadian Entomologist* **126**: 1-5

Rappaport NG, Stein JD, Del Rio Mora AA, DeBarr GL, de Groot P, Mori S. 2000. Responses of *Conophthorus* spp. (Coleoptera: Scolytidae) to behavioral chemicals in field trials: a transcontinental perspective. *The Canadian Entomologist* **132**: 925-938

Rauf A, Benjamin DM, Cecich RA. 1985. Insects affecting seed production of jack pine, and life tables of conelet and cone mortality in Wisconsin. *Forest Science* **31**: 271-281

Reardon RC, Barrett LJ, Koerber TW, Stipe LE, Dewey JE. 1985. Implantation and injection of systemics to suppress seed and cone insects in Douglas-fir in Montana. *The Canadian Entomologist* **117**: 961-969

- Roques A, Skrzypczynska M. 2003. Seed infesting chalcids of the genus *Megastigmus* Dalman, 1820 (Hymenoptera: Torymidae) native and introduced to the West Palearctic Region: taxonomy, host specificity and distribution. *Journal of Natural History* **37**: 127-238
- Rush PA, Overton RP, Guries RP, Hall DJ, Perry RS. 1987. Carbofuran trials in a red pine seed orchard. *Northern Journal of Applied Forestry* **4**: 177-180
- Ruth DS, Miller GE, Sutherland JR. 1980. A guide to common insect pests and diseases in spruce seed orchards in British Columbia. Canadian Forest Service Information Report BC-X-231
- Silk PJ, Kuenen LPS, Tan SH, Roelofs WL, Sanders CJ, Alford AR. 1985. Identification of the sex pheromone components of the jack pine budworm, *Choristoneura pinus pinus* Freeman. *Journal of Chemical Ecology* **11**: 159-167
- Silk PJ, Tan SH, Wiesner CJ, Ross RJ, Lonergan GC. 1980. Sex pheromone chemistry of the eastern spruce budworm, *Choristoneura fumiferana*. *Environmental Entomology* **9**: 640-644
- Speers CF. 1974. *Megastigmus atedius*: a newly discovered pest of eastern white pine seed in North America. *Annals of the Entomological Society of America* **68**: 559-560
- Stadnitsky GV, Golutivna LS, Grebenshchikova VP. 1976. Larch seed pests under conditions of seed-production forestry. *Forestry Journal* **19**: 151-155
- Strong WD, Bates SL, Stehr MU. 2001. Feeding by *Leptoglossus occidentalis* (Hemiptera: Coreidae) reduces seed set in lodgepole pine (Pinaceae). *The Canadian Entomologist* **133**: 857-865
- Sweeney JD, Brockerhoff EG, Kenis M, Turgeon JJ. 2002. *Strobilomyia neanthracina* and *S. appalachensis*, Spruce cone maggots. Pages 253-258 in P Mason, J Huber (editors): Biological Control Programmes in Canada, 1981-2000. New York: CABI Publishing
- Sweeney JD, Gesner GN. 1995. Susceptibility of the black spruce cone maggot, *Strobilomyia appalachensis* Michelsen (Diptera: Anthomyiidae), to entomopathogenic nematodes (Nematoda: Steinernematidae). *The Canadian Entomologist* **127**: 865-875
- Sweeney JD, Gesner G, Bennett R, Vrain T. 1998. Effect of mulches on persistence of entomopathogenic nematodes (*Steinernema* spp.) and infection of *Strobilomyia neanthracina* (Diptera: Anthomyiidae) in field trials. *Journal of Economic Entomology* **91**: 1320-1330

Sweeney JD, Quiring DT. 1998. Oviposition site selection and intraspecific competition influence larval survival and pupal weight of *Strobilomyia neanthracina* (Diptera: Anthomyiidae) in white spruce. *Ecoscience* **5**: 454-462

Sweeney JD, Turgeon JJ. 1994. Life cycle and phenology of a cone maggot, *Strobilomyia appalachensis* Michelsen (Diptera: Anthomyiidae), on black spruce, *Picea mariana* (Mill.) B.S.P., in eastern Canada. *The Canadian Entomologist* **126**: 49-59

Timonin MI, Fogal WH, Lopushanski SM. 1980. Possibility of using white and green muscardine fungi for control of cone and seed insect pests. *The Canadian Entomologist* **112**: 849-854

Tripp HA. 1954a. The instars of a maggot (*Pegohylemyia*) inhabiting white spruce cones. *The Canadian Entomologist* **86**: 185-189

Tripp HA. 1954b. Description and habits of the spruce seedworm, *Laspeyresia youngana* (Kft.) (Lepidoptera: Olethreutidae). *The Canadian Entomologist* **86**: 385-402

Tripp HA. 1955. Description and habits of Cecidomyiidae (Diptera) from white spruce cones. *The Canadian Entomologist* **87**: 253-263

Tripp HA, Hedlin AF. 1956. An ecological study and damage appraisal of white spruce cone insects. *The Forestry Chronicle* **32**: 400-410

Trudel R, Bauce É, Cabana J, Guertin C. 1997. Vulnerability of the fir coneworm, *Diorcytria abietivorella* (Groté) (Lepidoptera: Pyralidae), in different larval stages to the HD-1 strain of *Bacillus thuringiensis*. *The Canadian Entomologist* **129**: 197-198

Trudel R, Bauce É, Guertin C, Cabana J. 1999a. Diapause induction and overwintering stage in the fir coneworm (Lepidoptera: Pyralidae). *The Canadian Entomologist* **131**: 779-786

Trudel R, Bauce É, Guertin C, Cabana J. 1999b. Performance of the fir coneworm *Diorcytria abietivorella* (Groté) as affected by host species and presence or absence of seed cones. *Agricultural and Forest Entomology* **1**: 189-194

Turgeon JJ. 1989. Spatial distribution of tamarack cones and those infested by a cone maggot, *Strobilomyia* sp. (Diptera: Anthomyiidae), in Ontario: preliminary results. Pages 181-191 in GE Miller (compiler): Proceedings of the 3rd Cone and Seed Insects Working Party Conference (IUFRO S2.07-01), Victoria, British Columbia, Canada.

Turgeon JJ, Jones C, Bellocq I. 2004. Seed cone traits and insect damage in *Tsuga canadensis* (Pinaceae). *Canadian Journal of Forest Research* **34**: 261-265

- Turgeon JJ, Sweeney JD. 1993. Hosts and distribution of spruce cone maggots, *Strobilomyia* spp., (Diptera: Anthomyiidae) and first record of *Strobilomyia appalachensis* in Canada. *The Canadian Entomologist* **125**: 637-642
- Valenti MA, Abrahamson LP, Maynard CA. 1990. Control of white pine cone beetle (Coleoptera: Scolytidae) with carbofuran granules in a New York State white pine seed orchard. *Journal of Economic Entomology* **83**: 2349-2351
- Walley SG. 1953. Hymenopterous parasites of *Choristoneura pinus* Free. (Lepidoptera: Tortricidae) in Canada. *The Canadian Entomologist* **85**: 152
- Weatherby JC, DeBarr GL, Barber LR. 1985. Monitoring coneworms with pheromone traps: a valuable pest detection procedure for use in southern pine seed orchards. Pages 208-220 *in*: Proceedings of the 18th southern Forest Tree Improvement Conference, Publication 40
- Weslien J. 1999. Biological control of the spruce coneworm *Dioryctria abietella*: Spraying with *Bacillus thuringiensis* reduced damage in a seed orchard. *Scandinavian Journal of Forest Research* **14**: 127-130
- West RJ. 1985. Seasonal incidence of cone pests of black spruce in Newfoundland. Canadian Forest Service Information Report N-X-244
- West RJ, Sundaram KMS. 1992. First and second-year effects of ACECAP implants against cone and seed insects of black spruce. *The Canadian Entomologist* **124**: 577-585
- Zylstra BF, de Groot P, Helson BV. 1995. Evaluation of insecticides for control of the red pine cone beetle, *Conophthorus resinosae* Hopkins and the white pine cone beetle, *C. coniperda* (Schwarz). *Proceedings of the Entomological Society of Ontario* **126**: 85-90

ADDITIONAL READING

- Battisti A, Turgeon JJ (editors). 1997. Proceedings of the 5th cone and seed insects Working Party Conference (IUFRO S7.03-01). 2-6 September 1996, Monte Bondone, Italy. Padova. Institute of Agricultural Entomology, University of Padova
- Bramlett DL. 1987. Protection of pine and seed orchards in the southeastern United States. *Forest Ecology and Management* **19**: 199-208
- Bartram C, Miller GE. 1988. Estimation of seed orchard efficiencies by means of multistage variable probability sampling. *Canadian Journal of Forest Research* **18**: 1397-1404
- Bramlett DL, Godbee JF. 1982. Inventory monitoring system for southern pine seed orchard. Georgia Forest Research Paper 28
- de Groot P, Turgeon JJ, Miller GE. 1994. Status of cones and seed insect pest management in Canadian seed orchards. *The Forestry Chronicle* **70**: 745-761
- Fatzinger CW, Muse HD, Miller T, Bhattacharyya H. 1990. Survey and pest monitoring system for southern pine seed orchards. *Southern Journal of Applied Forestry* **14**: 147-154
- Grant GG. 1990. Use of semiochemicals for management of insect pests of coniferous seed orchards. Pages 47-62 in R West (editor): Proceedings - Cone and Seed Pest Workshop, Forestry Canada Information Report N-X-274
- Huffman GR. 1988. Use of the inventory-monitoring system for shortleaf and eastern white pine cone and seed crops at the Beech Creek Seed Orchard. *Tree Planters' Notes* **39**: 22-29
- Miller GE (compiler). 1989. Proceedings of the 3rd Cone and Seed Insects Working Party Conference, Working Party IUFRO S2.07-01, June 26-30, 1988, Victoria, British Columbia, Canada. Victoria: Forestry Canada, Pacific Forestry Centre
- Roques A (compiler and editor). 1986. Proceedings of the 2nd Conference of the Cone and Seed Insects Working Party IUFRO S2.07-01, September 3-5, 1986, Briançon, France. Olivet: Station de Zoologie Forestière
- Sweeney JD. 1994. Sampling insects and predicting impact in seed orchards. Pages 59-70 in JJ Turgeon, P de Groot (editors) Biology, damage and management of seed orchard pests. Natural Resources Canada Information Report FPM-X-89

Sweeney JD, de Groot P, Turgeon JJ, Smith R. 2004. Management of pests and other factors. Chapter 6 *in* RF Smith, CI Adams, A manual for managing conifer seed orchards in eastern Canada. Joint publication of Forest Genetics Ontario, Forest Ecosystem Science Coop, Living Legacy Trust, Ontario Ministry of Natural Resources, and Natural Resources Canada.

Sweeney JD, Miller GE, Ruth DS. 1990. Sampling seed and cone insects in spruce. Pages 63-75 *in* R West (editor): Proceedings - Cone and Seed Pest Workshop, Forestry Canada Information Report N-X-274

Turgeon JJ 1994. Insects exploiting seed cones of *Larix* spp., *Picea* spp., and *Pinus* spp.: species richness and patterns of exploitation. Pages 59-70 *in* JJ Turgeon, P de Groot (editors) Biology, damage and management of seed orchard pests. Natural Resources Canada Information Report FPM-X-89

Turgeon JJ, de Groot P. 1994 (editors). 1994. Biology, damage and management of seed orchard pests. Natural Resources Canada Information Report FPM-X-89

Turgeon JJ, Roques A, de Groot P. 1994. Insect fauna of coniferous seed cones: diversity, host plant interactions and management. *Annual Review of Entomology* **39**: 179-212

Yates III HO (compiler and editor). 1984. Proceedings of the Cone and Seed Insects Working Party Conference, Working Party IUFRO S2.07-01, 31 July-6 August 1983, Athens, Georgia. Ashville: Southeastern Forest Experiment Station

Appendix A. INSECTS OF CONES WITHOUT A FACT SHEET

	Association [†]	Family	English common name
COLEOPTERA			
<i>Ernobius bicolor</i> White	?	Anobiidae	
<i>Ernobius schedli</i> Brown	?	Anobiidae	
<i>Tenebroides</i> sp.	?	Trogositidae	
DIPTERA			
<i>Dasineura</i> sp.	O	Cecidomyiidae	
<i>Earomyia aquilonia</i> McAlpine	O	Lonchaeidae	
<i>Plemeliella</i> sp.	O	Cecidomyiidae	
<i>Strobilomyia abietis</i> (Huckett)	O	Anthomyiidae	
<i>Strobilomyia carbonaria</i> (Ringdahl)	O	Anthomyiidae	
HEMIPTERA			
<i>Adelges lariciatus</i> (Patch)	?	Phylloxeridae	spruce gall adelgid
<i>Adelges laricis</i> Vallot	?	Phylloxeridae	pale spruce gall adelgid
<i>Adelges piceae</i> (Ratzeburg)	?	Phylloxeridae	balsam woolly adelgid
<i>Mindarus abietinus</i> Koch	?	Aphididae	balsam twig aphid
<i>Mindarus</i> sp.	?	Aphididae	
LEPIDOPTERA			
<i>Acleris variana</i> (Fernald)	F	Tortricidae	eastern blackheaded budworm
<i>Archips packardiana</i> (Fernald)	F	Tortricidae	spring spruce needle moth
<i>Archips alberta</i> (McDonnough)	F	Tortricidae	
<i>Barbara mappana</i> Freeman	O	Tortricidae	
<i>Choristoneura rosaceana</i> (Harris)	F	Tortricidae	obliquebanded leafroller
<i>Coleophora laricella</i> (Hubner)	F	Coleophoridae	larch casebearer
<i>Coleotechnites atrupictela</i> (Dietz)	F	Gelechiidae	
<i>Coleotechnites blastovora</i> (McLeod)	F	Gelechiidae	
<i>Coleotechnites laricis</i> (Freeman)	F	Gelechiidae	orange larch tubemaker
<i>Coleotechnites piceaella</i> (Kraft)	F	Gelechiidae	orange spruce needleminer
<i>Endopiza piceana</i> (Freeman)	F	Tortricidae	
<i>Herculia thymetusalis</i> (Walker)	F	Pyralidae	spruce needleworm
<i>Holcocerina immaculella</i> (McDunnough)	F	Blastobasidae	
<i>Hypagyrtis piniata</i> Packard	F	Geometridae	
<i>Spilonota ocellana</i> (Denis and Schiffermüller)	F	Tortricidae	eye spotted budmoth
<i>Zeiraphera canadensis</i> Mutuura and Freeman	F	Tortricidae	spruce budmoth
<i>Zeiraphera improbana</i> (Walker)	F	Tortricidae	larch needleworm

[†] O, obligatory; F, facultative; ?, unknown or undetermined