



E3. SPECIAL-STATUS PLANT SURVEY REPORT



MASTER MANAGEMENT PLAN UPDATE AND ASSOCIATED PARK IMPROVEMENT PROJECTS
DRAFT ENVIRONMENTAL IMPACT REPORT

Bidwell Park
Proposed Disc Golf Course
Special-Status Plant Survey



Prepared for:
City of Chico

November 10, 2005



Bidwell Park
Proposed Disc Golf Course
Special-Status Plant Survey



Prepared for:

City of Chico
Park Department
411 Main Street, 3rd Floor
Chico, CA 95927

Contact:

Dennis Beardsley
530/896-7801

Prepared by:

EDAW
2022 J Street
Sacramento, CA 95814

Contact:

Tammie Beyerl or Petra Unger
916/414-5800

November 10, 2005



TABLE OF CONTENTS

Section	Page
INTRODUCTION	1
PROJECT DESCRIPTION	1
METHODS	1
Prefield Investigation	1
Field Surveys	4
RESULTS	4
Prefield Investigation Results	4
Field Survey Results	7
Results by Species	8
REFERENCES	11
EXHIBITS	
1 Regional Location	2
2 Project Location	3
3 Plant Communities	5
4 Special-Status Plant Locations	9
APPENDICES	
A Special-Status Plant Species Known to Occur or with Potential to Occur at the Proposed Disc Golf Course Study Area	
B Plant Species Observed at the Proposed Disc Golf Course Study Area	
C California Department of Fish and Game California Natural Diversity Database Forms	
D Representative Photographs	

INTRODUCTION

This report describes the methods and results of special-status plant surveys for the Bidwell Park proposed disc golf course study area (hereafter referred to as “project site”). The project site consists of approximately 70 acres located on the west side of State Route (SR) 32 in Upper Bidwell Park (Exhibits 1 and 2). Upper Bidwell Park is located in the foothills of the Sierra Nevada/Cascade Range in Butte County, California. Butte County is located within the California Floristic Province, which is characterized by a Mediterranean climate with cool, wet winters and hot, dry summers. This part of Bidwell Park is dominated by rolling hills but the western portion of the project site is relatively flat. The incision made by Big Chico Creek as it flows towards the valley floor creates dramatic topographic relief characterized by a steep canyon flanked with rocky outcrops and cliffs. This steep, rocky canyon constitutes the northern and western boundaries of the project site and SR 32 constitutes the eastern boundary. The elevation of the project site ranges from approximately 960 to 1,310 feet above mean sea level. The project site is surrounded primarily by undeveloped land including the remainder of Upper Bidwell Park. The principal historic land use on the project site was cattle grazing.

Blue oak woodland and wildflower field are the predominant plant communities on the project site but annual grassland, interior live oak woodland, foothill pine chaparral, foothill pine oak woodland, mixed oak woodland, and vernal pools are also present. The location and extent of plant communities present in the study area is provided in Exhibit 3. Soils on the project site are derived from volcanic mud flows of the 4 million-year-old Tuscan Formation.

The purpose of the special-status plant surveys was to identify occurrences of special-status plants that could be disturbed as a result of disc golf activities at the project site. In summary, one occurrence of Butte County checkerbloom (*Sidalcea robusta*) consisting of 16 separate locations and one occurrence of Bidwell’s knotweed (*Polygonum bidwelliae*) consisting of multiple locations were documented during the field surveys. Butte County checkerbloom is a California Native Plant Society (CNPS) List 1B species and Bidwell’s knotweed is a CNPS List 4 species. The methods and results of the surveys are discussed in detail below.

PROJECT DESCRIPTION

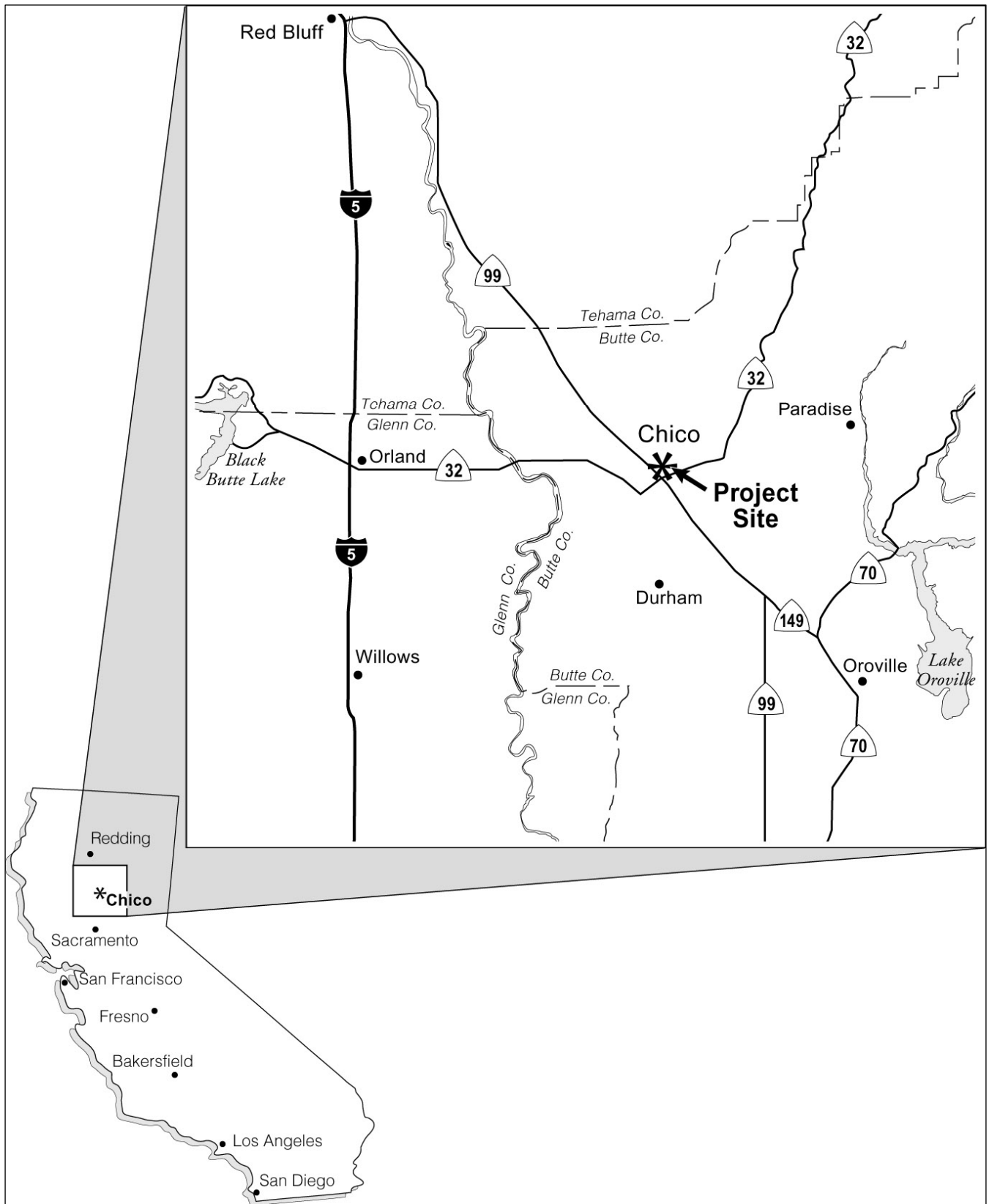
The disc golf course used today was established approximately in 1989 on approximately 40 acres of Bureau of Land Management (BLM) land along SR 32. In 1994, the City of Chico purchased the parcel from the BLM. In 1999, the Bidwell Park and Playground Commissions (BPPC) and City Council authorized the continued use of the site as a disc golf course pending environmental review.

The disc golf course currently consists of a short and long course with 39 “holes” in place over about a 25 acre area. The course offers no site improvements other than a few benches and tone poles. Parking to access this area is informal, located along an abandoned Caltrans right-of-way paralleling SR 32. The City of Chico Park Department is currently considering three conceptual alternatives for the development of an official disc golf course at the project site. These alternatives aim to accommodate disc golf as an acceptable recreational use within Upper Park while minimizing potential adverse effects on the site’s sensitive biological, soils, cultural and aesthetic resources and accommodating other uses of the site such as scenic viewing, mountain biking, picnicking, and hiking.

METHODS

PREFIELD INVESTIGATION

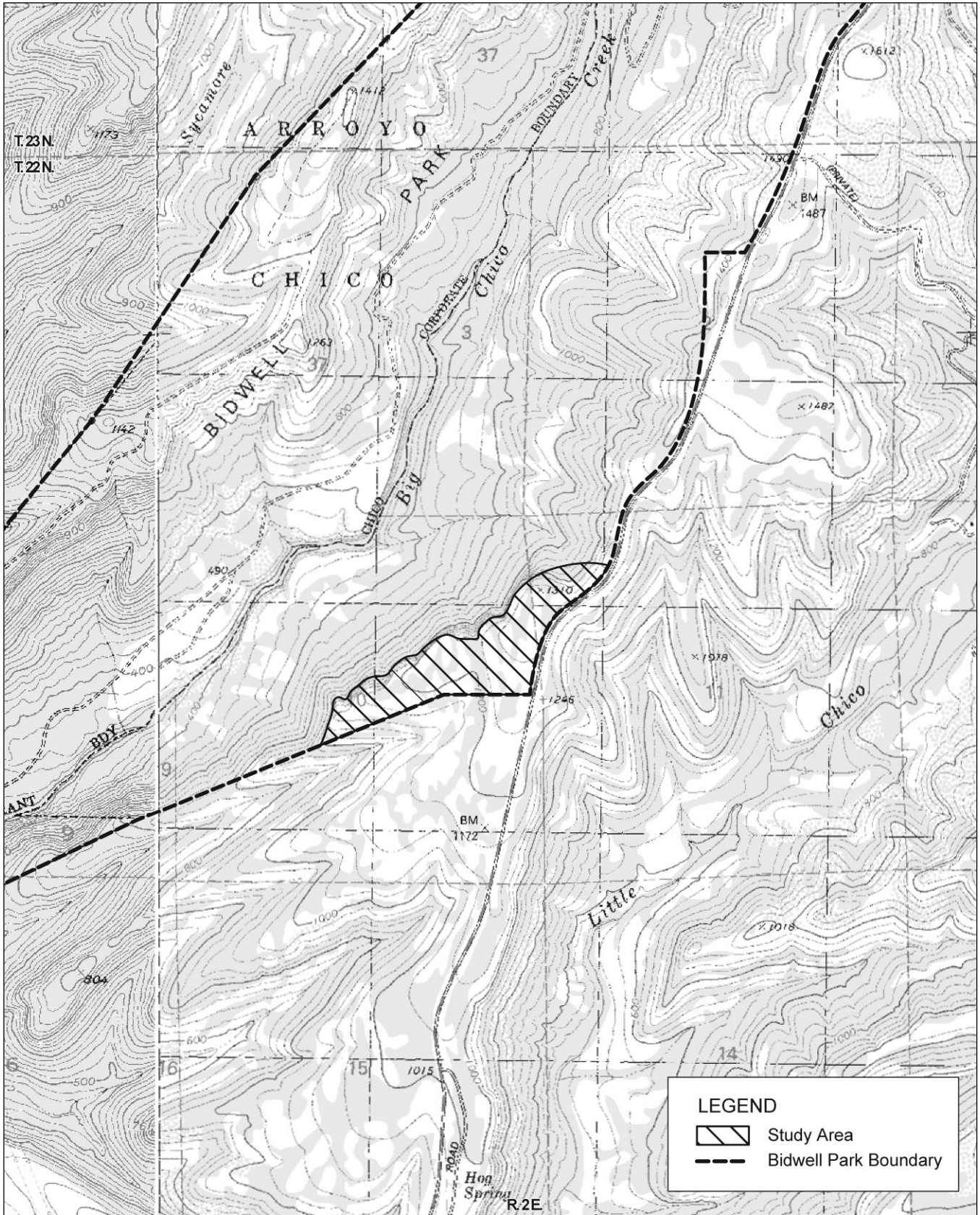
A list of special-status plant species with potential to occur on the project site was compiled by performing database searches of the CNPS’ Electronic Inventory of Rare and Endangered Vascular Plants of California



Source: EDAW 1997

Regional Location

Exhibit 1



Source: USGS Richardson Springs Quad 1969 / Paradise West Quad 1980
 USGS Chico Quad 1978 / Hamlin Canyon 1969

Project Location

Exhibit 2

(CNPS 2004) and California Department of Fish and Game's (DFG) California Natural Diversity Database (California Natural Diversity Database [CNDDDB] 2004). The Chico, Paradise West, Richardson Springs, Cohasset, Hamlin Canyon, Nord, Campbell Mound, Ord Ferry, Paradise East, Stirling City, Cherokee, Llano Seco, Nelson, and Shippee U.S. Geological Survey (USGS) 7.5 minute quadrangles were included in the database searches. Additional information was obtained by reviewing previously prepared environmental documents that address biological resources in or near the project site (CSU 2000, Stuart 2002, Stuart 2003), local floras (Oswald 1986 and Oswald 1994), the Specimen Management System for California Herbaria (SMASCH), and the Friends of Bidwell Park website (Friends of Bidwell Park 2005).

In order to evaluate the site's potential to support special-status plant species, aerial photographs of the project site were reviewed and a reconnaissance-level survey of the project site was conducted to identify areas supporting potentially suitable habitat for special-status plant species. A survey package, including photographs of each target species and their preferred habitats, was prepared prior to the surveys to familiarize field crews with the characteristics and blooming periods of target plant species. Plant communities present at the site were mapped from aerial photograph interpretation and were ground truthed during field surveys. The plant community polygons were later digitized onto a Geographic Information System (GIS) overlay and used to create a map exhibit showing the location and extent of each plant community present on the project site. Plant community classification is based on the *Preliminary Descriptions of the Terrestrial Natural Communities of California* (Holland 1986).

FIELD SURVEYS

EDAW botanists Tammie Beyerl and Richard Dwerlkotte conducted focused special-status plant surveys on March 22 and 23, May 4 and 5, June 2, and July 7, 2005 for a total of approximately 106 person-hours. Field surveys were conducted by walking meandering transects throughout the project site. The protocol for the special-status plant surveys on the project site followed DFG's "*Guidelines for Assessing the Effects of Proposed Development on Rare, Threatened, and Endangered Plants and Plant Communities*" (DFG 2000), which involves using systematic field techniques in all habitats on the site to ensure thorough coverage of potential impact areas. All habitats present on the project site were surveyed thoroughly in order to properly inventory and document any potential occurrences of special-status plants present. Special attention was given to those areas supporting habitat with high potential to support special-status plant species such as vernal pools and wildflower fields. All plants encountered during the surveys were identified to the highest taxonomic level necessary for a rare plant determination. Nomenclature used follows the Jepson Manual: Higher Plants of California (Hickman 1993).

The locations of all special-status plants encountered were mapped by hand as either points or polygons onto aerial photographs of the project site (scale 1" = 350'). In addition, GIS coordinates were recorded for each location while in the field. These location points and polygons were later digitized onto a GIS overlay to produce a map of the distribution of special-status plants on the project site. Locations that were mapped separately from one another were distinguished based on spatial distribution, as well as differences in common associated species and habitat type. Notes on habitat, topography, aspect, phenology, and associated species of the special-status plant species identified were recorded on California Native Species Field Survey Forms to be submitted to the CNDDDB upon completion of the final survey report. Representative photographs of the special-status plant species encountered on the project site were taken and will be submitted to the on-line CalFlora database.

RESULTS

PREFIELD INVESTIGATION RESULTS

Special-status plants are defined as plants that are legally protected or that are otherwise considered sensitive by federal, state or local resource conservation agencies and organizations. Special-status plant taxa are species,

Bidwell Park Master Plan

Proposed Disc Golf Course Study Area

Plant Communities

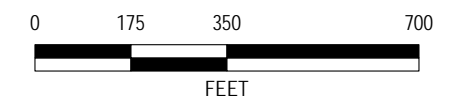
LEGEND

-  Disc Golf Course Boundary
-  Ephemeral Drainages
- Community Type**
-  Annual Grassland
-  Blue Oak Woodland
-  Foothill Pine Chaparral
-  Foothill Pine Oak Woodland
-  Interior Live Oak
-  Mixed Oak Woodland
-  Road
-  Vernal Pool
-  Vernal Pool Complex
-  Vernal Swale
-  Wildflower Field

Source: EDAW 2005



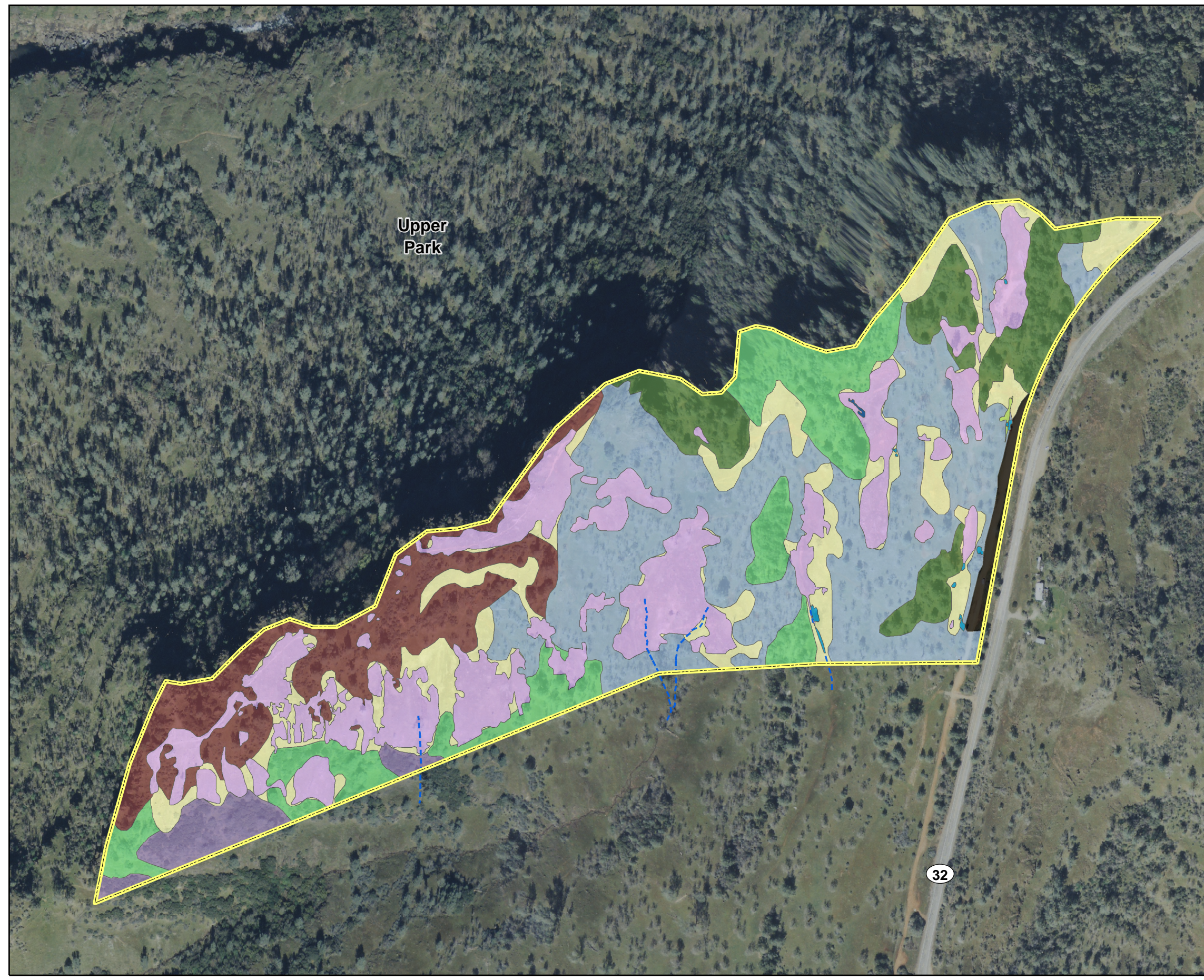
1 Inch = 350 Feet



32

September 6, 2005

Exhibit 3



subspecies or varieties that fall into one or more of the following categories, regardless of their legal or protection status:

- ▶ Officially listed by California or the federal government as Endangered, Threatened or Rare;
- ▶ A candidate for state or federal listing as Endangered, Threatened or Rare;
- ▶ Taxa which meet the criteria for listing, even if not currently included on any list, as described in Section 15380 of the California Environmental Quality Act (CEQA) Guidelines;
- ▶ Taxa designated as a special-status, sensitive or declining species by other state or federal agencies or non-governmental organizations; and
- ▶ Taxa considered by the CNPS to be “rare, threatened or endangered in California” (Lists 1B and 2).

The CNPS Inventory includes five lists for categorizing plant species of concern, which are summarized below. The plants listed on CNPS lists 1A, 1B, and 2 meet the definitions of Section 1901, Chapter 10 of the Native Plant Protection Act (NPPA) or Sections 2062 and 2067 (California Endangered Species Act [CESA]) of the California Department of Fish and Game Code and may qualify for state listing. Therefore, they are considered rare plants pursuant to Section 15380 of CEQA. DFG recommends and local government agencies may require that they be fully considered during preparation of environmental documents relating to CEQA. Some of the plants constituting CNPS Lists 3 and 4 meet the definitions of Section 1901, Chapter 10 or Sections 2062 and 2067 of the DFG Code and are eligible for state listing. DFG recommends that CNPS List 3 and List 4 plants be evaluated for consideration during preparation of environmental documents relating to CEQA (CNPS 2001). The CNPS lists are categorized as follows:

- ▶ List 1A - Plants presumed extinct in California;
- ▶ List 1B - Plants rare, threatened, or endangered in California and elsewhere;
- ▶ List 2 - Plants rare, threatened, or endangered in California but more common elsewhere;
- ▶ List 3 - Plants about which we need more information - a review list
- ▶ List 4 - Plants of limited distribution - a watch list

Two special-status plant species, Butte County checkerbloom and Bidwell’s knotweed, were previously documented at the project site. An additional 34 special-status plant species were identified as having the potential to occur at the project site based on the database searches, literature review, and habitat present on site. Appendix A provides a list of these species along with information on their listing status, habitat, distribution, flowering period and potential to occur at the project site. Detailed descriptions of special-status plants documented during field surveys are provided below. Special-status plant species information provided in Appendix A is from *California Native Plant Society’s Inventory of Rare and Endangered Plants of California* (CNPS 2001).

FIELD SURVEY RESULTS

SUMMARY

A comprehensive plant species list for the survey area is included in Appendix B. Two special-status plant species (Butte County checkerbloom and Bidwell’s knotweed) were documented within the boundaries of the project site. A total of forty-three locations were recorded and mapped (Exhibit 4). CNDDDB data forms for special-status plants encountered are provided in Appendix C and are cross-referenced to the plant locations mapped in Exhibit

4. Representative photographs of the species are provided in Appendix D. A description of the special-status plant species encountered, including their habitat and distribution in the survey area, is provided below.

RESULTS BY SPECIES

BIDWELL'S KNOTWEED

Bidwell's knotweed (*Polygonum bidwelliae*) is a CNPS List 4 species. This annual herb species is a member of the knotweed family (Polygonaceae) and has an erect reddish stem that is from 1 to 8 inches tall. Plants produce tiny pink flowers between April and June. This species occurs in thin volcanic soils on gravelly ridge tops and outcrops of the Tuscan Formation at elevations ranging from 200 to 4,000 feet. Several occurrences of Bidwell's knotweed have been documented within Upper Park (Stuart 2002 and 2003, EDAW 2005) including the original type specimen, which was collected at the project site. Five Bidwell's knotweed occurrence polygons were mapped within the project site by Stuart in 2002. Twenty seven locations of Bidwell's knotweed were mapped by EDAW botanists during surveys conducted in 2005. This species was abundant throughout most of the wildflower field habitat and, thus, all but two of the locations are mapped as polygons within wildflower field habitat. The two remaining locations are characterized by isolated individuals and are represented by points in Exhibit 4. One of these isolated locations is within a vernal pool in the southeast corner of the project site and the other is within foothill pine-oak woodland habitat near the center of the northern boundary of the project site. Each polygon contains from 20 to several thousand individuals. The five polygons shown in Exhibit 4 mapped by Stuart in 2002 overlap with and are mostly contained within the polygons mapped by EDAW in 2005. Two locations consisting of 11 individuals in the vegetative stage were identified during March 2005 surveys. Twenty-five additional locations of the species were documented during May 2005 surveys and the two small polygons identified in March had expanded into one large polygon consisting of thousands of individuals. Phenology of Bidwell's knotweed was close to 100 percent flowering during the May 2005 surveys. Because Bidwell's knotweed was abundantly distributed throughout the wildflower field habitat on the project site, it is described as one population occurrence and recorded on CNDDDB data form 10 in Appendix C.

BUTTE COUNTY CHECKERBLOOM

Butte County checkerbloom (*Sidalcea robusta*) is a Federal Species of Concern and a CNPS List 1B species. This perennial herb species is a member of the mallow family (Malvaceae) and has a robust stem that typically grows up to three feet in height. Pale pink flowers with petals measuring up to 1.5 inches bloom from April to June. Mapping of known and historic occurrences show that the species is restricted to the relatively young soils of the Tuscan Formation in the southern Cascade Range foothills (C. Hantelman, pers. comm., 2005). It is often found growing under blue oak trees or under shrubs (at dripline or base of trunk), against rocks or at the base of ledges or rock benches, in small drainages, and other similar habitats. Although it is found in a variety of slopes and exposures, it is found more frequently on north-facing slopes of 20% or more (C. Hantelman, pers. comm., 2005). This plant occurs almost exclusively in blue oak and blue oak/foothill pine woodland (C. Hantelman, pers. comm., 2005). Special-status plant surveys conducted in 2002 and 2003 (Stuart 2002 and 2003) documented Butte County checkerbloom at over 200 locations in Upper Park including 15 locations within the project site. Fifteen locations of Butte County checkerbloom were mapped within the project site boundary by EDAW botanists during surveys conducted in 2005. One more location was mapped just outside the northern boundary of the project site near the northeast corner of the site. Each location mapped is represented by a point in Exhibit 4. Location points consist of populations ranging in size from approximately 1 to 25 individuals occurring either in distinct clumps or diffuse patches. Seven of these locations are within a 500 by 250 foot area in the north central portion of the project site (Exhibit 4). This is the same area where Stuart documented the majority of locations in 2002. Three locations were found in the northeast corner of the project site and four locations were found in the south central portion of the project site. The final location was found in the eastern portion of the project site halfway between the northern

Bidwell Park Master Plan
Proposed Disc Golf Course Study Area
Special-Status Plant Locations

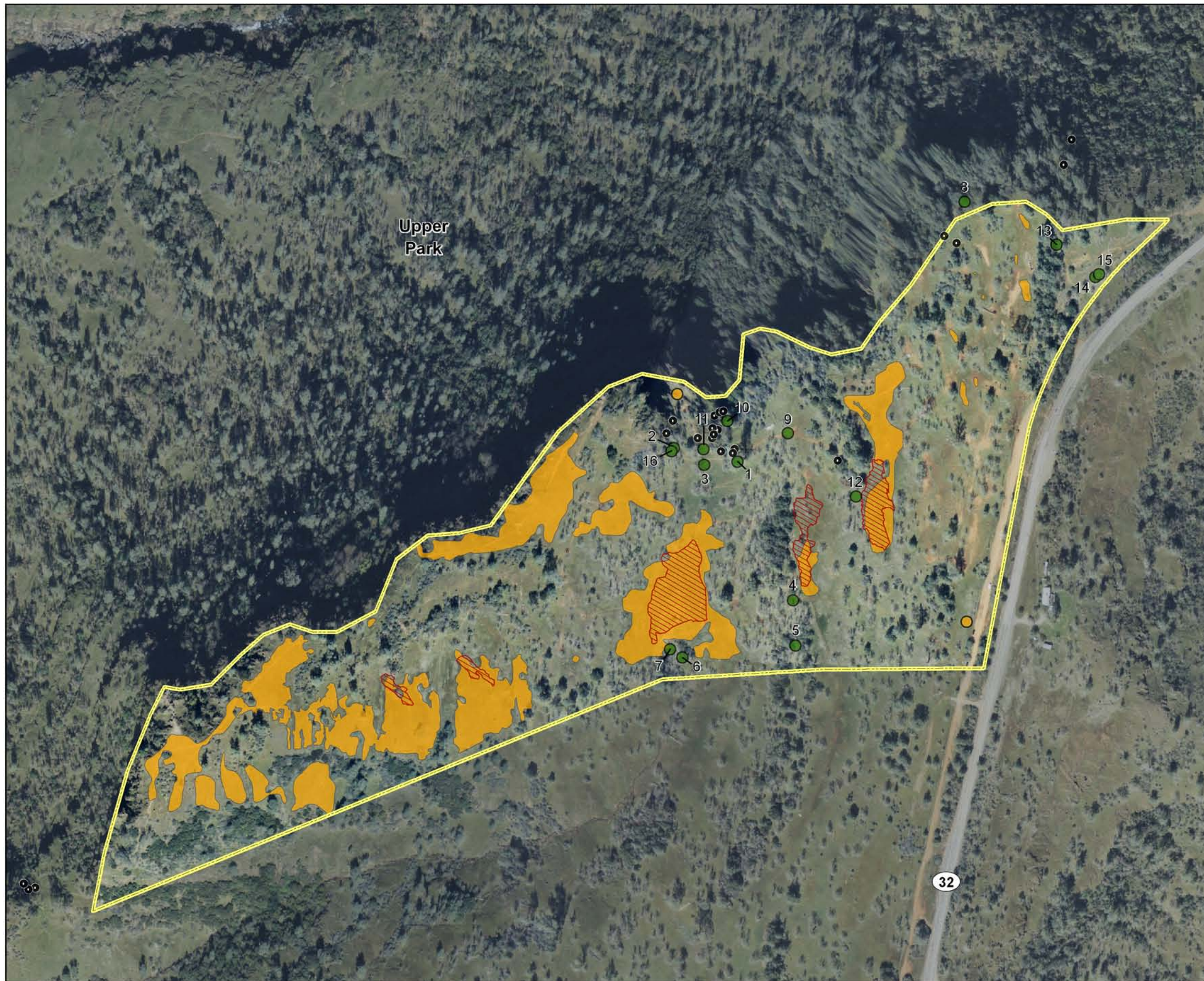
LEGEND

Stuart Data

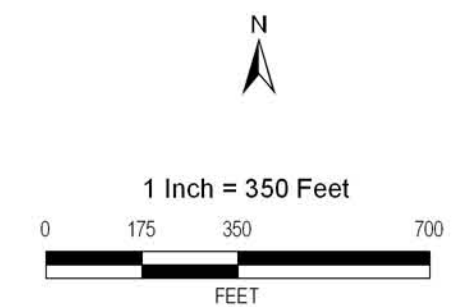
- Butte County Checkerbloom
- ▨ Bidwell's knotweed

EDAW Data

- Bidwell's Knotweed, March and May Surveys
- Butte County Checkerbloom, March and May Surveys
- Bidwell's Knotweed, May Survey
- ▭ Disc Golf Course Boundary



Source: Stuart Data 2002, EDAW 2005



October 25, 2005

and southern site boundaries at the edge of blue oak woodland. During March surveys, Butte County checkerbloom in the vegetative stage was mapped at five locations. These five locations were relocated during May surveys and 11 additional locations were identified.

Fourteen of these populations had at least 25 percent of individuals in the flowering stage while only two locations remained 100 percent vegetative. It is estimated that approximately 20 percent of flowers observed had survived and developed fruit by the final survey date of July 7, 2005. Data on the various locations of Butte County checkerbloom can be found on CNDDDB forms 1 through 9 in Appendix C.

REFERENCES

- California Department of Fish and Game (DFG). 2000. *Guidelines for Assessing the Effects of Proposed Projects on Rare, Threatened, and Endangered Plants and Natural Communities*. (Revision of 1983 Guidelines.) Sacramento, CA.
- California Natural Diversity Data Base (CNDDDB). 2004 [October]. Results of electronic record search. California Department of Fish and Game, Wildlife and Habitat Data Analysis Branch. Sacramento, CA.
- California Native Plant Society (CNPS). 2004. *Electronic Inventory of Rare and Endangered Vascular Plants of California*. Available: <http://northcoast.com/~cnps/cgi-bin/cnps/sensinv.cgi>
- _____. 2001. *Inventory of Rare and Endangered Plants of California* (sixth edition). Rare Plant Scientific Advisory Committee, David P. Tibor, Convening Editor. California Native Plant Society. Sacramento, CA.
- CSU - California State University Research Foundation. 2000. *A Resource Inventory of Upper Bidwell Park Expansion Area*. Prepared for the City of Chico, Parks Department.
- Hantelman, C. personal communication, 2005. Email to Matt Wacker of EDAW on August 9, 2005.
- Hickman, J. C. (ed). 1993. *The Jepson Manual: Higher Plants of California*. University of California Press, Berkeley and Los Angeles California.
- Holland, R. F. 1986. *Preliminary Descriptions of the Terrestrial Natural Communities of California*. California Department of Fish and Game; Non-game Heritage Division. Sacramento, CA.
- Oswald, V. H. 1986. *Vascular Plants of Upper Bidwell Park, Chico, California*. Herbarium Department of Biological Sciences, California State University, Chico.
- Oswald, V. H. 1994. *Manual of the Vascular Plants of Butte County, California*. Herbarium Department of Biological Sciences, California State University, Chico.
- Stuart, K. 2002. *Survey for Special-status Botanical Species for the City of Chico's Bidwell Park Trails Project*. Prepared for the City of Chico, Parks Department.
- Stuart, K. 2003. *Survey for Special-status Botanical Species for Selected Areas of Annie Bidwell and Yahí Trails of the City of Chico's Upper Bidwell Park*. Prepared for the City of Chico, Parks Department.

APPENDIX A

**SPECIAL-STATUS PLANT SPECIES KNOWN TO OCCUR
OR WITH POTENTIAL TO OCCUR AT THE
PROPOSED DISC GOLF COURSE STUDY AREA**

Special-Status Plant Species Known to Occur or with Potential to Occur at the Proposed Disc Golf Course Study Area

Species	Listing Status			Habitat	Distribution in California	Flowering Period	Potential for Occurrence
	Fed.	State	CNPS				
Jepson's onion <i>Allium jepsonii</i>	--	--	1B	Volcanic or serpentinite soils in chaparral, cismontane woodland, and lower montane coniferous forest; 980–3,800 feet elevation.	Butte and Tuolumne counties	May–August	Low; suitable habitat is present in the higher elevations but there are only two known occurrences of this species.
Sanborn's onion <i>Allium sanbornii</i> var. <i>sanbornii</i>	--	--	4	Chaparral, cismontane woodland, and lower montane coniferous forest usually on gravelly, granitic, volcanic, and serpentinite substrates; 850–4,600 feet elevation.	Butte, Calaveras, El Dorado, Nevada, Placer, Shasta, Tehama, and Yuba counties	May–September	High; known occurrences have been reported within the Park.
Henderson's bent grass <i>Agrostis hendersonii</i>	--	--	3	Mesic sites in valley and foothill grassland, vernal pools; 230–1,000 feet elevation.	Butte (?), Calaveras, Merced, Shasta, and Tehama counties	April–May	Low; suitable habitat is present but identity of Butte County plants is questionable. Species not documented within the quads surrounding the Park.
Depauperate milk-vetch <i>Astragalus pauperculus</i>	--	--	4	Vernally mesic sites and volcanic soils in chaparral, cismontane woodland, valley and foothill grassland; 195–2,800 feet elevation.	Butte, Placer, Shasta, Tehama, and Yuba counties	March–June	High; known occurrences have been documented within the Park.
Ferris's milk-vetch <i>Astragalus tener</i> var. <i>ferrisiae</i>	--	--	1B	Vernally mesic meadows and seeps, subalkaline flats in valley and foothill grassland; 15–250 feet elevation.	Butte, Colusa, Glenn, Solano, Sutter, and Yolo counties (believed extirpated from all but Butte and Glenn counties)	April–May	Low; suitable habitat is present in lower elevation seeps but the only known occurrences in Butte County are in the Butte Sink Wildlife Management Area.

Special-Status Plant Species Known to Occur or with Potential to Occur at the Proposed Disc Golf Course Study Area							
Species	Listing Status			Habitat	Distribution in California	Flowering Period	Potential for Occurrence
	Fed.	State	CNPS				
Butte County calycadenia <i>Calycadenia oppositifolia</i>	--	--	1B	Volcanic or serpentinite soils in chaparral, cismontane woodland, lower montane coniferous forest, meadows, and valley and foothill grassland; 700–2,800 feet elevation.	Butte County	Late April–July	High; known occurrences in Upper Park.
Butte County morning glory <i>Calystegia atriplicifolia</i> ssp. <i>buttensis</i>	--	--	1B	Rocky soils in chaparral and lower montane coniferous forest; 1,950–5,000 feet elevation.	Butte, Shasta, and Tehama counties	May–July	Moderate; one known occurrence very close to Upper Park but the known elevation range of this species is slightly higher than the Park elevation.
Dissected-leaved toothwort <i>Cardamine pachystigma</i> var. <i>dissectifolia</i>	--	--	3	Chaparral, lower montane coniferous forest; usually in serpentinite, rocky soils; 800–7,000 feet elevation.	Butte, Glenn, Mendocino, Placer, Sonoma, and Tehama counties	February–May	Moderate; suitable habitat is present and species is known from surrounding quads.
Pink creamsacs <i>Castilleja rubicundula</i> ssp. <i>rubicundula</i>	--	--	1B	Openings in chaparral, cismontane woodland, meadows and seeps, and valley and foothill grassland in serpentinite soils; 65–3,000 feet elevation.	Butte, Colusa, Lake, and Napa counties	April–June	Moderate; suitable habitat is present and species is known from surrounding quads.
Hoover’s spurge <i>Chamaesyce hooveri</i>	FT	--	1B	Vernal pools; 80–820 feet elevation.	Butte, Glenn, Merced, Stanislaus, Tehama, and Tulare counties	July–August	Moderate; suitable habitat is present and species is known from surrounding quads.
White–stemmed clarkia <i>Clarkia gracilis</i> ssp. <i>albicaulis</i>	--	--	1B	Chaparral and cismontane woodland; sometimes on serpentinite soils; 800–3,500 feet elevation.	Butte and Tehama counties	May–July	High; suitable habitat is present and there are known occurrences in the Park vicinity.
Mildred’s clarkia <i>Clarkia mildredia</i> ssp. <i>mildrediae</i>	--	--	1B	Sandy, usually granitic soil in cismontane woodland and lower montane coniferous forest; 800–5,600 feet elevation.	Butte and Plumas counties	May–August	Moderate; suitable habitat is present and species is known from surrounding quads.

Special-Status Plant Species Known to Occur or with Potential to Occur at the Proposed Disc Golf Course Study Area

Species	Listing Status			Habitat	Distribution in California	Flowering Period	Potential for Occurrence
	Fed.	State	CNPS				
Mosquin's clarkia <i>Clarkia mosquinii</i>	--	--	1B	Rocky roadsides in cismontane woodland and lower montane coniferous forest; 600–4,000 feet elevation.	Butte County	May–July	Moderate; suitable habitat is present and species is known from surrounding quads.
Round-leaved filaree <i>Erodium macrophyllum</i>	--	--	2	Clay soils in cismontane woodland and valley and foothill grassland; 50–4,000 feet elevation.	Distributed in 25 counties in California from Humboldt to San Diego County	March–May	Moderate; suitable habitat is present and species is known from surrounding quads.
Butte County fritillary <i>Fritillaria eastwoodiae</i>	--	--	3	Chaparral, cismontane woodland, lower montane coniferous forest; sometimes in serpentinite soils; 160–4,900 feet elevation.	Butte, Nevada, Placer, Shasta, Tehama, and Yuba counties	March–May	Moderate; suitable habitat is present and species is known from Park vicinity.
Adobe-lily <i>Fritillaria pluriflora</i>	--	--	1B	Chaparral, cismontane woodland, valley and foothill grassland; often in adobe soils; 200–2,300 feet elevation.	Butte, Colusa, Glenn, Lake, Napa, Solano, Tehama, and Yolo counties	February–April	Low; adobe soils that this species is most often associated with are lacking.
Bogg's Lake hedge-hyssop <i>Gratiola heterosepala</i>	--	CE	1B	Lake margin marshes and swamps and vernal pools in clay soils; 30–7,800 feet elevation.	Fresno, Lake, Lassen, Madera, Merced, Modoc, Placer, Sacramento, Shasta, Siskiyou, San Joaquin, Solano, and Tehama counties	April–August	Low; reported in a surrounding quad but not previously known from Butte County.
Rose-mallow <i>Hibiscus lasiocarpus</i>	--	--	2	Freshwater marshes and swamps; 0–400 feet elevation.	Butte, Contra Costa, Colusa, Glenn, Sacramento, San Joaquin, Solano, Sutter, and Yolo counties	June–September	High; known to occur in seep habitats in Upper Park.
Red Bluff dwarf rush <i>Juncus leiospermus</i> var. <i>leiospermus</i>	--	--	1B	Vernally mesic sites in chaparral, cismontane woodland, meadows and seeps, valley and foothill grassland, vernal pools; 100–3,350 feet elevation.	Butte, Shasta, and Tehama counties	March–May	Moderate; suitable habitat is present, known occurrences are in the Park vicinity.

Special-Status Plant Species Known to Occur or with Potential to Occur at the Proposed Disc Golf Course Study Area

Species	Listing Status			Habitat	Distribution in California	Flowering Period	Potential for Occurrence
	Fed.	State	CNPS				
Humboldt Lily <i>Lilium humboldtii</i> ssp. <i>humboldtii</i>	--	--	4	Openings in chaparral, cismontane woodland, and lower montane coniferous forest; 300–3,600 feet elevation.	Amador, Butte, Calaveras, El Dorado, Fresno, Madera, Mariposa, Nevada, Placer, Tehama, Tuolumne, and Yuba counties	May–July	High; known occurrences have been documented within the Park.
Butte County meadowfoam <i>Limnanthes floccosa</i> ssp. <i>californica</i>	FE	CE	1B	Mesic sites in valley and foothill grassland, vernal pools, ephemeral drainages; 160–3,050 feet elevation.	Butte County	March–May	Moderate; suitable habitat is present, known occurrences are in the park vicinity.
Woolly meadowfoam <i>Limnanthes floccosa</i> ssp. <i>floccosa</i>	--	--	4	Vernally mesic sites in chaparral, cismontane woodland, valley and foothill grassland, and vernal pools; 195–3,600 feet elevation.	Butte, Lake, Napa, Shasta, Siskiyou, Tehama, and Trinity counties	March–June	High; known occurrences have been documented within the Park.
Sebastopol meadowfoam <i>Limnanthes vinculans</i>	FE	CE	1B	Meadows and seeps, vernally mesic areas in valley and foothill grassland, vernal pools; 50–1,000 feet elevation.	Napa and Sonoma counties; Napa occurrence may be introduced	April–May	Low; reported in a surrounding quad but not previously known from Butte County.
Shield-bracted monkeyflower <i>Mimulus glaucescens</i>	--	--	4	Serpentinite seeps in chaparral, cismontane woodland, lower montane coniferous forest, and valley and foothill grassland; 200–4,000 feet elevation.	Butte, Colusa, Lake, Nevada, Shasta, and Tehama counties	February–August	High; known to occur in seeps and ephemeral drainages throughout Upper Park.
Veiny mondardella <i>Monardella douglasii</i> ssp. <i>venosa</i>	--	--	1B	Cismontane woodland and valley and foothill grassland in heavy clay soils; 200–1,350 feet elevation.	Extant in Butte and Tuolumne counties; extirpated in Sutter County	May–July	Moderate; suitable habitat is present and species is known from surrounding quads.
Tehama navarretia <i>Navarretia heterandra</i>	--	--	4	Mesic sites in valley and foothill grassland, vernal pools; 100–3,100 feet elevation.	Butte, Colusa, Lake, Shasta, Tehama, Trinity, and Yuba counties	April–June	High; known occurrences have been documented within the Park.

Special-Status Plant Species Known to Occur or with Potential to Occur at the Proposed Disc Golf Course Study Area							
Species	Listing Status			Habitat	Distribution in California	Flowering Period	Potential for Occurrence
	Fed.	State	CNPS				
Awl-leaved navarretia <i>Navarretia subuligera</i>	--	--	4	Rocky mesic sites in chaparral, cismontane woodland, and lower montane coniferous forest; 490–3,600 feet elevation.	Amador, Butte, Del Norte, Lake, Mendocino, Modoc, Napa, Shasta, and Tehama counties	April–August	Moderate; suitable habitat is present, there are known occurrences in the Park vicinity.
Hairy orcutt grass <i>Orcuttia pilosa</i>	FE	CE	1B	Vernal pools; 175–650 feet elevation.	Butte, Glenn, Madera, Merced, Stanislaus, and Tehama counties	May–September	Moderate; suitable habitat is present and species is known from surrounding quads.
Slender orcutt grass <i>Orcuttia tenuis</i>	FE	CE	1B	Vernal pools; 100–6,000 feet elevation.	Lake, Lassen, Plumas, Sacramento, Shasta, Siskiyou, and Tehama counties	May–October	Low; reported in a neighboring quad but not previously known from Butte County.
Ahart’s paronychia <i>Paronychia ahartii</i>	--	--	1B	Cismontane woodland, valley and foothill grassland, vernal pools; 100–1,700 feet elevation.	Butte, Shasta, and Tehama counties	March–June	Moderate; suitable habitat is present, known occurrences are in the Park vicinity.
Bidwell’s knotweed <i>Polygonum bidwelliae</i>	--	--	4	Chaparral, cismontane woodland, valley and foothill grassland / volcanic soils; 195–4,000 feet elevation.	Butte, Shasta, and Tehama counties	April–July	Known; documented at the disc golf course during surveys conducted in 2003.
California beaked-rush <i>Rhynchospora californica</i>	--	--	1B	Bogs and fens, lower montane coniferous forest, meadows and seeps, freshwater marshes and swamps; 150–3,300 feet elevation.	Butte, Mariposa, Marin, and Sonoma counties	May–July	High; known from three locations in Upper Park.
Brownish beaked-rush <i>Rhynchospora capitellata</i>	--	--	2	Lower montane coniferous forest, meadows and seeps, marshes and swamps, upper montane coniferous forest / mesic sites; 1,500–6,600 feet elevation.	Butte, Mariposa, Nevada, Plumas, Shasta, Sonoma, Tehama, and Trinity counties	July–August	Moderate; suitable habitat is present in the upper elevations of the Park, known occurrences are nearby.
Butte County checkerbloom <i>Sidalcea robusta</i>	SC	--	1B	Chaparral, cismontane woodland; 300–5,300 feet elevation.	Butte County	April–June	Known; documented at the disc golf course during surveys conducted in 2003.

Special-Status Plant Species Known to Occur or with Potential to Occur at the Proposed Disc Golf Course Study Area							
Species	Listing Status			Habitat	Distribution in California	Flowering Period	Potential for Occurrence
	Fed.	State	CNPS				
Butte County golden clover <i>Trifolium jokerstii</i>	--	--	1B	Mesic sites in valley and foothill grassland, vernal pools; 160–1,300 feet elevation.	Butte County	April–May	Low; suitable habitat is present but there are only seven known occurrences of this species.
Greene’s tuctoria <i>Tuctoria greenei</i>	FE	CR	1B	Vernal pools; 100–3,500 feet elevation.	Butte, Fresno, Glenn, Madera, Merced, Shasta, San Joaquin, Stanislaus, Tehama, and Tulare counties	May–September	Moderate; suitable habitat is present and species is known from surrounding quads.
Legal Status Definitions <u>U.S. Fish and Wildlife Service (USFWS)</u> E Endangered T Threatened FSC Federal Species of Concern <u>California Department of Fish and Game (DFG)</u> E Endangered R Rare				<u>California Native Plant Society (CNPS) Categories</u> 1B Plant species considered rare, threatened, or endangered in California and elsewhere 2 Plant species considered rare, threatened, or endangered in California but more common elsewhere 3 Plants about which we need more information – a review list 4 Plants of limited distribution – a watch list			

APPENDIX B

PLANT SPECIES OBSERVED AT THE PROPOSED DISC GOLF COURSE STUDY AREA

APPENDIX B PLANT SPECIES OBSERVED AT THE PROPOSED DISC GOLF COURSE STUDY AREA

Common Name	Scientific Name
Big-leaf maple	<i>Acer macrophyllum</i>
Blow-wives	<i>Achyrachaena mollis</i>
Venus-hair fern	<i>Adiantum capillus-veneris</i>
California maidenhair	<i>Adiantum jordanii</i>
California buckeye	<i>Aesculus californica</i>
Annual mountain dandelion	<i>Agoseris heterophylla</i>
Silver hairgrass	<i>Aira caryophyllea*</i>
Narrow-leaved onion	<i>Allium amplexans</i>
Mexicali onion	<i>Allium peninsulare</i> var. <i>peninsulare</i>
Common fiddleneck	<i>Amsinckia menziesii</i> var. <i>intermedia</i>
Menzie's fiddleneck	<i>Amsinckia menziesii</i> var. <i>menziesii</i>
Scarlet pimpernel	<i>Anagallis arvensis*</i>
Mayweed	<i>Anthemis cotula*</i>
Spurred snapdragon	<i>Antirrhinum cornutum</i>
Bur-chervil	<i>Anthriscus caucalis*</i>
Western lady's mantle	<i>Aphanes occidentalis</i>
Rebecca Austin's rockcress	<i>Arabis breweri</i> var. <i>austinae</i>
Foothill-pine dwarf mistletoe	<i>Arceuthobium occidentale</i>
Common manzanita	<i>Arctostaphylos manzanita</i>
California pipevine	<i>Aristolochia californica</i>
California mugwort	<i>Artemisia douglasiana</i>
Heart-leaf milkweed	<i>Asclepias cordifolia</i>
Gambel's dwarf milkvetch	<i>Astragalus gambelianus</i>
Common sandweed	<i>Athysanus pusillus</i>
Slender wild oats	<i>Avena barbata**</i>
Common wild oats	<i>Avena fatua**</i>
Black mustard	<i>Brassica nigra**</i>
Little quakinggrass	<i>Briza minor*</i>
California brodiaea	<i>Brodiaea californica</i>
Harvest brodiaea	<i>Brodiaea elegans</i>
Low brodiaea	<i>Brodiaea minor</i>
Ripgut brome	<i>Bromus diandrus**</i>
Soft chess	<i>Bromus hordeaceus*</i>
Red brome	<i>Bromus madritensis</i> ssp. <i>rubens**</i>
Poverty brome	<i>Bromus sterilis*</i>
Red maids	<i>Calandrinia ciliata</i>

Common Name	Scientific Name
Bolander's water starwort	<i>Callitriche heterophylla</i> ssp. <i>bolanderi</i>
Winged water starwort	<i>Callitriche marginata</i>
Yellow mariposa lily	<i>Calochortus luteus</i>
Superb mariposa lily	<i>Calochortus superbus</i>
Klamath calycadenia	<i>Calycadenia fremontii</i>
Rosin weed	<i>Calycadenia truncata</i>
Chaparral false bindweed	<i>Calystegia occidentalis</i>
Shepherd's purse	<i>Capsella bursa-pastoris</i> *
Bitter-cress	<i>Cardamine oligosperma</i>
Coast Indian paintbrush	<i>Castilleja affinis</i> ssp. <i>affinis</i>
Valley tassels	<i>Castilleja attenuata</i>
Buckbrush	<i>Ceanothus cuneatus</i>
Deerbrush	<i>Ceanothus integerrimus</i>
Tocalote	<i>Centaurea melitensis</i> **
Yellow starthistle	<i>Centaurea solstitialis</i> **
Muhlenberg's centaury	<i>Centaureum muhlenbergii</i>
Beautiful centaury	<i>Centaureum venustum</i>
Large mouse ears	<i>Cerastium glomeratum</i> *
Western redbud	<i>Cercis occidentalis</i>
Mountain mahogany	<i>Cercocarpus betuloides</i>
Contura Creek sandmat	<i>Chamaesyce ocellata</i> ssp. <i>ocellata</i>
Pineapple weed	<i>Chamomilla suaveolens</i> *
Soaproot	<i>Chlorogalum pomeridianum</i>
Knotweed spineflower	<i>Chorizanthe polygonoides</i> var. <i>polygonoides</i>
Starlet spineflower	<i>Chorizanthe stellulata</i>
Common microcalis	<i>Cicendia quadrangularis</i>
Venus thistle	<i>Cirsium occidentale</i> var. <i>venustum</i>
Bull thistle	<i>Cirsium vulgare</i> **
Dudley's clarkia	<i>Clarkia dudleyana</i>
Purple clarkia	<i>Clarkia purpurea</i> ssp. <i>quadrivulnera</i>
Diamond clarkia	<i>Clarkia rhomboidea</i>
Elegant clarkia	<i>Clarkia unguiculata</i>
Miner's lettuce	<i>Claytonia perfoliata</i>
Chaparral clematis	<i>Clematis lasiantha</i>
Chinese houses	<i>Collinsia heterophylla</i>
Few-flowered collinsia	<i>Collinsia sparsiflora</i>
Tincture plant	<i>Collinsia tinctoria</i>
Water pygmyweed	<i>Crassula aquatica</i>
Pygmyweed	<i>Crassula connata</i>
Smoothseed pygmyweed	<i>Crassula solieri</i>

Common Name	Scientific Name
Narrowleaf crucianella	<i>Crucianella angustifolia</i> *
Flaccid cryptantha	<i>Cryptantha flaccida</i>
Hedgehog dogtail grass	<i>Cynosurus echinatus</i> *
Tall flatsedge	<i>Cyperus eragrostis</i>
Rattlesnake weed	<i>Daucus pusillus</i>
Red larkspur	<i>Delphinium nudicaule</i>
Royal larkspur	<i>Delphinium variegatum</i>
Annual hairgrass	<i>Deschampsia danthonioides</i>
Bluedicks	<i>Dichelostemma capitatum</i>
Fork-toothed ookow	<i>Dichelostemma congestum</i>
Many-flowered brodiaea	<i>Dichelostemma multiflorum</i>
Twining snakelily	<i>Dichelostemma volubile</i>
Padre's shooting star	<i>Dodecatheon clevelandii</i> ssp. <i>patulum</i>
Canyon dudleya	<i>Dudleya cymosa</i>
Spikerush	<i>Eleocharis</i> sp.
Common spikerush	<i>Eleocharis macrostachya</i>
Squirreltail	<i>Elymus elymoides</i>
Blue wildrye	<i>Elymus glaucus</i>
Little willowherb	<i>Epilobium minutum</i>
Denseflower willowherb	<i>Epilobium densiflorum</i>
Turkey mullein	<i>Eremocarpus setigerus</i>
Rayless fleabane	<i>Erigeron inornatus</i> var. <i>inornatus</i>
Yerba santa	<i>Eriodictyon californica</i>
Nude buckwheat	<i>Eriogonum nudum</i>
Woolly sunflower	<i>Eriophyllum lanatum</i> ssp. <i>grandiflorum</i>
Longbeak stork's bill	<i>Erodium botrys</i> *
Short-fruit stork's bill	<i>Erodium brachycarpum</i> *
Red-stemmed filaree	<i>Erodium cicutarium</i> *
Fryingpans	<i>Eschscholzia lobbii</i>
California cottonrose	<i>Filago californica</i>
Fritillary	<i>Fritillaria</i> sp.
Common bedstraw	<i>Galium aparine</i>
Wall bedstraw	<i>Galium parisiense</i> *
Graceful bedstraw	<i>Galium porrigens</i> var. <i>tenu</i>
Nit grass	<i>Gastrium ventricosum</i> *
Carolina geranium	<i>Geranium carolinianum</i>
Cut-leaved geranium	<i>Geranium dissectum</i> *
Dove's-foot geranium	<i>Geranium molle</i> *
Bird's-eye gilia	<i>Gilia tricolor</i>
Sierra bluecup	<i>Githopsis pulchella</i> ssp. <i>campestris</i>

Common Name	Scientific Name
Cudweed	<i>Gnaphalium</i> sp.
Western marsh cudweed	<i>Gnaphalium palustre</i>
Fitch's tarweed	<i>Hemizonia fitchii</i>
Toyon	<i>Heteromeles arbutifolia</i>
Mediterranean barley	<i>Hordeum marinum</i> ssp. <i>gussoneanum</i> *
Hare barley	<i>Hordeum murinum</i> ssp. <i>leporinum</i> *
Klamath weed	<i>Hypericum perforatum</i> **
Smooth cat's ear	<i>Hypochaeris glabra</i> *
Long-tubed iris	<i>Iris macrosiphon</i>
Nuttall's quillwort	<i>Isoetes nuttallii</i>
Common toadrush	<i>Juncus bufonius</i> var. <i>bufonius</i>
Congested toadrush	<i>Juncus bufonius</i> var. <i>congestus</i>
Western toadrush	<i>Juncus bufonius</i> var. <i>occidentalis</i>
Leafy bracted dwarf rush	<i>Juncus capitatus</i> *
Redwood keckiella	<i>Keckiella corymbosa</i>
Annual junegrass	<i>Koeleria phleoides</i>
Prickly lettuce	<i>Lactuca serriola</i> *
Glandular hareleaf	<i>Lagophylla glandulosa</i>
California goldfields	<i>Lasthenia californica</i>
Fremont's goldfields	<i>Lasthenia fremontii</i>
Tidy-tips	<i>Layia fremontii</i>
Lesser hawkbit	<i>Leontodon taraxacoides</i> *
Shining peppergrass	<i>Lepidium nitidum</i>
Slender-stemmed lessingia	<i>Lessingia nemaclada</i>
Bicolor linanthus	<i>Linanthus bicolor</i>
Whiskerbrush	<i>Linanthus ciliatus</i>
Filiform linanthus	<i>Linanthus filipes</i>
Bolander's woodland star	<i>Lithophragma bolanderi</i>
Prairie woodland star	<i>Lithophragma parviflorum</i>
Italian ryegrass	<i>Lolium multiflorum</i> **
Common lomatium	<i>Lomatium utriculatum</i>
Chaparral honeysuckle	<i>Lonicera interrupta</i>
Foothill lotus	<i>Lotus humistratus</i>
Small-flowered lotus	<i>Lotus micranthus</i>
Spanish lotus	<i>Lotus purshianus</i> var. <i>purshianus</i>
Bicolored lupine	<i>Lupinus bicolor</i>
Sky lupine	<i>Lupinus nanus</i>
Hyssop loosestrife	<i>Lythrum hyssopifolium</i> *
Meager tarweed	<i>Madia exigua</i>
Bur clover	<i>Medicago polymorpha</i> *

Common Name	Scientific Name
California melicgrass	<i>Melica californica</i>
Torrey's melicgrass	<i>Melica torreyana</i>
Q-tips	<i>Micropus californicus</i>
Brownies	<i>Mimulus douglasii</i>
Common yellow monkeyflower	<i>Mimulus guttatus</i>
Kellogg's monkeyflower	<i>Mimulus kelloggii</i>
California sandwort	<i>Minuartia californica</i>
Coyote mint	<i>Monardella villosa</i>
Miner's lettuce	<i>Montia perfoliata</i>
Tiny mousetail	<i>Myosurus minima</i>
Purple needlegrass	<i>Nasella pulchra</i>
Mountain navarretia	<i>Navarretia divaricata</i> ssp. <i>vividior</i>
Interwoven navarretia	<i>Navarretia intertexta</i> ssp. <i>intertexta</i>
Downy pincushionplant	<i>Navarretia pubescens</i>
Sticky navarretia	<i>Navarretia viscidula</i>
Littlefoot nemophila	<i>Nemophila pedunculata</i>
Witchgrass	<i>Panicum capillare</i>
Dwarf stonecrop	<i>Parvisedum pumilum</i>
Coffee fern	<i>Pellaea andromedifolia</i>
Goldenback fern	<i>Pentagramma triangularis</i>
Yampah	<i>Perideridea</i> sp.
Pink grass	<i>Petrorhagia dubia</i> *
Kaweah River phacelia	<i>Phacelia egena</i>
Foothill pine	<i>Pinus sabiniana</i>
Austin's popcornflower	<i>Plagiobothrys austinae</i>
Greene's popcornflower	<i>Plagiobothrys greenei</i>
Common popcornflower	<i>Plagiobothrys fulvus</i>
Rusty popcornflower	<i>Plagiobothrys nothofulvus</i>
Stalked popcornflower	<i>Plagiobothrys stipitatus</i>
Dotseed plantain	<i>Plantago erecta</i>
English plantain	<i>Plantago lanceolata</i> *
Pink plecritis	<i>Plectritis ciliosa</i>
White plecritis	<i>Plectritis macrocera</i>
Annual bluegrass	<i>Poa annua</i> *
One-sided bluegrass	<i>Poa secunda</i> ssp. <i>secunda</i>
Sacramento mesamint	<i>Pogogyne zizyphoroides</i>
Common knotweed	<i>Polygonum arenastrum</i> *
Bidwell's knotweed	<i>Polygonum bidwelliae</i> +
California knotweed	<i>Polygonum californicum</i>
Nested polypody	<i>Polypodium calirhiza</i>

Common Name	Scientific Name
Ditch rabbitsfoot grass	<i>Polypogon interruptus*</i>
Rabbitsfoot grass	<i>Polypogon monspeliensis*</i>
Short woolly marbles	<i>Psilocarphus brevissimus</i> var. <i>brevissimus</i>
Granny's hairnet	<i>Pterostegia drymarioides</i>
Blue oak	<i>Quercus douglasii</i>
Interior live oak	<i>Quercus wislizenii</i> var. <i>wislizenii</i>
Vernal pool buttercup	<i>Ranunculus bonariensis</i> var. <i>trisepalus</i>
Spinyfruit buttercup	<i>Ranunculus muricatus*</i>
Western buttercup	<i>Ranunculus occidentalis</i>
Redberry	<i>Rhamnus crocea</i>
Hollyleaf redberry	<i>Rhamnus ilicifolia</i>
Hoary coffeberry	<i>Rhamnus tomentella</i> ssp. <i>tomentella</i>
Skunkbrush	<i>Rhus trilobata</i>
Curly dock	<i>Rumex crispus*</i>
Poison sanicle	<i>Sanicula bipinnata</i>
Snakeroot	<i>Sanicula bipinnatifida</i>
Pacific sanicle	<i>Sanicula crassicaulis</i>
California saxifrage	<i>Saxifraga californica</i>
Scleranthus	<i>Scleranthus annuus</i>
Scribner's grass	<i>Scribneria bolanderi</i>
Yellow stonecrop	<i>Sedum spathulifolium</i>
Hansen's spikemoss	<i>Selaginella hansenii</i>
Old man of spring	<i>Senecio vulgaris*</i>
Blue field madder	<i>Sherardia arvensis</i>
Hartweg's checkerbloom	<i>Sidalcea hartwegii</i>
Butte County checkerbloom	<i>Sidalcea robusta+</i>
Windmill pink	<i>Silene gallica*</i>
Parish's nightshade	<i>Solanum parishii</i>
Field burrweed	<i>Soliva sessilis*</i>
Prickly sow thistle	<i>Sonchus asper</i> ssp. <i>asper*</i>
Red sandspurrey	<i>Spergularia rubra*</i>
Common chickweed	<i>Stellaria media*</i>
Blessed milkthistle	<i>Silybum marianum**</i>
Common snowberry	<i>Symphoricarpos albus</i> var. <i>laevigatus</i>
Medusahead	<i>Taeniatherum caput-medusae**</i>
Dandelion	<i>Taraxacum officinale*</i>
Fringepod	<i>Thysanocarpus curvipes</i>
Hedge parsley	<i>Torilis arvensis*</i>
Knotted hedge parsley	<i>Torilis nodosa*</i>
Poison oak	<i>Toxicodendron diversilobum</i>

Common Name	Scientific Name
Vinegarweed	<i>Trichostema lanceolatum</i>
Indian clover	<i>Trifolium albopurpureum</i>
Pale sack clover	<i>Trifolium depauperatum</i> var. <i>amplectans</i>
Cowbag clover	<i>Trifolium depauperatum</i> var. <i>depauperatum</i>
Shamrock	<i>Trifolium dubium</i> *
Rose clover	<i>Trifolium hirtum</i> *
Small-headed clover	<i>Trifolium microcephalum</i>
Subterranean	<i>Trifolium subterraneum</i> *
White-tipped clover	<i>Trifolium variegatum</i>
Tomcat clover	<i>Trifolium wildenovii</i>
Butter'n'eggs	<i>Triphysaria eriantha</i>
Foothill tritelia	<i>Triteleia lilacina</i>
Wild hyacinth	<i>Triteleia hyacinthina</i>
Ithuriel's spear	<i>Triteleia laxa</i>
California bay	<i>Umbellularia californica</i>
Woolly mullein	<i>Verbascum thapsus</i> **
Hairy purslane speedwell	<i>Veronica peregrine</i> ssp. <i>xalapensis</i>
Birdeye speedwell	<i>Veronica persica</i> *
Spring vetch	<i>Vicia sativa</i> *
Few-flowered fescue	<i>Vulpia microstachys</i> var. <i>pauciflora</i>
Hairy rattail fescue	<i>Vulpia myuros</i> var. <i>hirsuta</i> *
Rough cocklebur	<i>Xanthium strumarium</i>
*Species is not native to California **Species is listed as invasive by Cal IPC +Species is listed as rare by CNPS	

APPENDIX C

**CALIFORNIA DEPARTMENT OF FISH AND GAME
CALIFORNIA NATURAL DIVERSITY DATABASE FORMS**

Mail to:
 California Natural Diversity Database
 Department of Fish and Game
 1807 13th Street, Suite 202
 Sacramento, CA 95814
 Fax: (916) 324-0475 email: WHDAB@dfg.ca.gov

For Office Use Only

Source Code _____ Quad Code _____
 Elm Code _____ Occ. No. _____
 EO Index No. _____ Map Index No. _____

Date of Field Work mm/dd/yyyy: 03/23/2005

Reset

California Native Species Field Survey Form

Send Form

Scientific Name: *Sidalcea robusta*

Common Name: Butte County checkerbloom

Species Found? Yes No _____ If not, why? _____

Total No. Individuals 38+ Subsequent Visit? yes no
 Is this an existing NDDB occurrence? 28 no unk.
 Yes, Occ. # _____

Collection? If yes: _____
 Number _____ Museum / Herbarium _____

Reporter: Tammie Beyerl

Address: 2022 J street
Sacramento, CA 95814

E-mail Address: beyerlt@edaw.com

Phone: (916) 414-5800

Plant Information

Phenology: 100 % % %
 vegetative flowering fruiting

Animal Information

# adults	# juveniles	# larvae	# egg masses	# unknown
<input type="checkbox"/>	<input type="checkbox"/>	<input type="checkbox"/>	<input type="checkbox"/>	<input type="checkbox"/>
breeding	wintering	burrow site	rookery	nesting
<input type="checkbox"/>	<input type="checkbox"/>	<input type="checkbox"/>	<input type="checkbox"/>	<input type="checkbox"/>
other				

Location Description (please attach map AND/OR fill out your choice of coordinates, below)

Upper Bidwell Park disc golf course area. Plants are growing among the woody debris from a large snag of Pinus sabiniana.

County: Butte Landowner / Mgr.: City of Chico Park Department

Quad Name: Paradise West Elevation: 1,000 feet

T R Sec , ¼ of ¼, Meridian: H M S Source of Coordinates (GPS, topo. map & type): GPS

T R Sec , ¼ of ¼, Meridian: H M S GPS Make & Model Coravallis Micro Technologies MC

Datum: NAD27 NAD83 WGS84 Horizontal Accuracy 1 to 3 meters _____ meters/feet

Coordinate System: UTM Zone 10 UTM Zone 11 OR Geographic (Latitude & Longitude)

Coordinates: Easting/Longitude 1996150.839 ft Northing/Latitude 14448201.25 ft

Habitat Description (plant communities, dominants, associates, substrates/soils, aspects/slope):

Foothill pine - oak woodland (Holland code 71410) on soils of the Tuscan Formation. Associates include Sanicula bipinnatifida, Sanicula bipinnata, Delphinium variegatum, Geranium molle, Triteleia laxa, Dichelostemma capitatum, and Bromus hordeaceus. Polygonum bidwelliae also occurs at this site but not in association with Sidalcea robusta - they occur in separate microhabitats.

Other rare taxa seen at THIS site on THIS date:

Site Information Overall site quality: Excellent Good Fair Poor

Current / surrounding land use: Recreational land uses including hiking, biking, and disc golf

Visible disturbances: On a subsequent visit to this site on June 2, 2005, it was discovered that this particular population had been dug up and removed from the site.

Threats:

Comments: Sixteen separate occurrences of Sidalcea robusta were recorded within this 70 acre site during spring and summer 2005. Occurrences ranged from clumps of 2 to 25 individuals to diffuse patches of approximately 40 to 50 individuals.

Determination: (check one or more, and fill in blanks)

Keyed (cite reference): Jepson Manual 1993

Compared with specimen housed at: _____

Compared with photo / drawing in: Cal Photos

By another person (name): _____

Other: _____

Photographs: (check one or more)

Slide	Print	Digital
Plant / animal	<input type="checkbox"/>	<input type="checkbox"/>
Habitat	<input checked="" type="checkbox"/>	<input type="checkbox"/>
Diagnostic feature	<input type="checkbox"/>	<input type="checkbox"/>

May we obtain duplicates at our expense? yes no

Mail to:
 California Natural Diversity Database
 Department of Fish and Game
 1807 13th Street, Suite 202
 Sacramento, CA 95814
 Fax: (916) 324-0475 email: WHDAB@dfg.ca.gov

For Office Use Only

Source Code _____ Quad Code _____
 Elm Code _____ Occ. No. _____
 EO Index No. _____ Map Index No. _____

Date of Field Work mm/dd/yyyy: 05/04/2005

Reset

California Native Species Field Survey Form

Send Form

Scientific Name: *Sidalcea robusta*

Common Name: Butte County checkerbloom

Species Found? Yes No _____
 If not, why? _____

Total No. Individuals 6 Subsequent Visit? yes no
Is this an existing NDDDB occurrence? 28 no unk.
 Yes, Occ. # _____

Collection? If yes: _____
 Number _____ Museum / Herbarium _____

Reporter: Tammie Beyerl

Address: 2022 J Street
Sacramento, CA 95814

E-mail Address: beyerlt@edaw.com

Phone: (916) 414-5800

Plant Information

Phenology: 75 % 25 % _____ %
 vegetative flowering fruiting

Animal Information

# adults	# juveniles	# larvae	# egg masses	# unknown
<input type="checkbox"/>	<input type="checkbox"/>	<input type="checkbox"/>	<input type="checkbox"/>	<input type="checkbox"/>
breeding	wintering	burrow site	rookery	nesting
<input type="checkbox"/>	<input type="checkbox"/>	<input type="checkbox"/>	<input type="checkbox"/>	<input type="checkbox"/>
other				

Location Description (please attach map AND/OR fill out your choice of coordinates, below)

Upper Bidwell Park in the north central portion of the disc golf course area.

County: Butte Landowner / Mgr.: City of Chico Park Department

Quad Name: Paradise West Elevation: 1,000 feet

T _____ R _____ Sec _____, _____ 1/4 of _____ 1/4, Meridian: H M S Source of Coordinates (GPS, topo. map & type): GPS

T _____ R _____ Sec _____, _____ 1/4 of _____ 1/4, Meridian: H M S GPS Make & Model Corvallis Micro Technologies MC

Datum: NAD27 NAD83 WGS84 Horizontal Accuracy 1 to 3 meters _____ meters/feet

Coordinate System: UTM Zone 10 UTM Zone 11 OR Geographic (Latitude & Longitude)

Coordinates: Easting/Longitude 1995924.498 ft. Northing/Latitude 14448433.70 ft.

Habitat Description (plant communities, dominants, associates, substrates/soils, aspects/slope):

Foothill pine - oak woodland (Holland Code 71410) on soils of the Tuscan Formation. Associates include Delphinium variegatum, Bromus diandrus, Cerastium glomeratum, Plectritis macrocera, Adiantum jordanii, and Linanthus ciliatus. Growing in the shade at the base of a Ceanothus cuneatus shrub. Polygonum bidwelliae also occurs at this site but not in association with Sidalcea robusta - they occur in different microhabitats.

Other rare taxa seen at THIS site on THIS date:

Site Information Overall site quality: Excellent Good Fair Poor

Current / surrounding land use: Recreational uses including hiking, biking, and disc golf.

Visible disturbances: Soil compaction and vegetation trampling along trails and disc golf fairways, tees, and holes.

Threats: Trampling from off-trail foot traffic is a threat but this occurrence is approximately 25 feet off the nearest trail and is somewhat protected by buckbrush.

Comments: Sixteen occurrences of Sidalcea robusta were recorded within this 70 acre site during spring and summer of 2005. All of these occurrences appear to correspond to existing CNDDDB occurrence number 28. This occurrence consists of six plants in one clump.

Determination: (check one or more, and fill in blanks)

Keyed (cite reference): Jepson Manual 1993

Compared with specimen housed at: _____

Compared with photo / drawing in: Cal Photos

By another person (name): _____

Other: _____

Photographs: (check one or more)

Slide	Print	Digital
<input type="checkbox"/>	<input type="checkbox"/>	<input type="checkbox"/>
<input type="checkbox"/>	<input type="checkbox"/>	<input checked="" type="checkbox"/>
<input type="checkbox"/>	<input type="checkbox"/>	<input type="checkbox"/>
May we obtain duplicates at our expense? <input checked="" type="checkbox"/> yes <input type="checkbox"/> no		

Mail to:
 California Natural Diversity Database
 Department of Fish and Game
 1807 13th Street, Suite 202
 Sacramento, CA 95814
 Fax: (916) 324-0475 email: WHDAB@dfg.ca.gov

For Office Use Only

Source Code _____ Quad Code _____
 Elm Code _____ Occ. No. _____
 EO Index No. _____ Map Index No. _____

Date of Field Work mm/dd/yyyy: 05/04/2005

Reset

California Native Species Field Survey Form

Send Form

Scientific Name: *Sidalcea robusta*

Common Name: Butte County checkerbloom

Species Found? Yes No _____ If not, why? _____

Total No. Individuals 9 Subsequent Visit? yes no
Is this an existing NDDDB occurrence? 28 no unk.
 Yes, Occ. # _____

Collection? If yes: _____
 Number _____ Museum / Herbarium _____

Reporter: Tammie Beyerl
Address: 2022 J Street
Sacramento, CA 95814
E-mail Address: beyerlt@edaw.com
Phone: (916) 414-5800

Plant Information

Phenology: 100 % % %
 vegetative flowering fruiting

Animal Information

# adults	# juveniles	# larvae	# egg masses	# unknown
<input type="checkbox"/>	<input type="checkbox"/>	<input type="checkbox"/>	<input type="checkbox"/>	<input type="checkbox"/>
breeding	wintering	burrow site	rookery	nesting
				other

Location Description (please attach map AND/OR fill out your choice of coordinates, below)

Upper Bidwell Park in the north central portion of the disc golf course area.

County: Butte Landowner / Mgr.: City of Chico Park Department
 Quad Name: Paradise West Elevation: 1,000 feet

T R Sec , ¼ of ¼, Meridian: H M S Source of Coordinates (GPS, topo. map & type): GPS
 T R Sec , ¼ of ¼, Meridian: H M S GPS Make & Model Corvallis Micro Technologies MC
 Datum: NAD27 NAD83 WGS84 Horizontal Accuracy 1 to 3 meters _____ meters/feet
 Coordinate System: UTM Zone 10 UTM Zone 11 OR Geographic (Latitude & Longitude)
 Coordinates: Easting/Longitude 1996036.399 ft. Northing/Latitude 14448190.50 ft.

Habitat Description (plant communities, dominants, associates, substrates/soils, aspects/slope):

Foothill pine - oak woodland (Holland Code 71410) on soils of the Tuscan Formation. Associates include Quercus douglasii, Bromus diandrus, Avena barbata, Trifolium hirtum, Dichelostemma multiflorum, and Cynosurus echinatus. Growing in the shade at the base of a Ceanothus cuneatus shrub. Polygonum bidwelliae also occurs at this site but not in association with Sidalcea robusta - they occur in different microhabitats.

Other rare taxa seen at THIS site on THIS date:

Site Information Overall site quality: Excellent Good Fair Poor

Current / surrounding land use: Recreational uses including hiking, biking, and disc golf.
 Visible disturbances: Soil compaction and vegetation trampling along trails and disc golf fairways, tees, and holes.
 Threats: Trampling from off-trail foot traffic is a threat but this occurrence is approximately 30 feet off the nearest trail and is somewhat protected by buckbrush and oaks.
 Comments: Sixteen occurrences of Sidalcea robusta were recorded within this 70 acre site during spring and summer of 2005. All of these occurrences appear to correspond to existing CNDDDB occurrence number 28. This occurrence consists of nine plants in one clump.

Determination: (check one or more, and fill in blanks)

Keyed (cite reference): Jepson Manual 1993
 Compared with specimen housed at: _____
 Compared with photo / drawing in: Cal Photos
 By another person (name): _____
 Other: _____

Photographs: (check one or more)

Slide	Print	Digital
Plant / animal	<input type="checkbox"/>	<input type="checkbox"/>
Habitat	<input type="checkbox"/>	<input checked="" type="checkbox"/>
Diagnostic feature	<input type="checkbox"/>	<input type="checkbox"/>

May we obtain duplicates at our expense? yes no

Mail to:
California Natural Diversity Database
Department of Fish and Game
1807 13th Street, Suite 202
Sacramento, CA 95814
Fax: (916) 324-0475 email: WHDAB@dfg.ca.gov

For Office Use Only

Source Code _____ Quad Code _____
Elm Code _____ Occ. No. _____
EO Index No. _____ Map Index No. _____

Date of Field Work mm/dd/yyyy: 05/04/2005

Reset

California Native Species Field Survey Form

Send Form

Scientific Name: *Sidalcea robusta*

Common Name: Butte County checkerbloom

Species Found? Yes No _____ If not, why? _____
Total No. Individuals 3 Subsequent Visit? yes no
Is this an existing NDDB occurrence? 28 no unk.
Yes, Occ. #
Collection? If yes: _____
Number _____ Museum / Herbarium _____

Reporter: Tammie Beyerl
Address: 2022 J Street
Sacramento, CA 95814
E-mail Address: beyerlt@edaw.com
Phone: (916) 414-5800

Plant Information
Phenology: _____ % vegetative 100 % flowering _____ % fruiting

Animal Information

# adults	# juveniles	# larvae	# egg masses	# unknown	
<input type="checkbox"/>	<input type="checkbox"/>	<input type="checkbox"/>	<input type="checkbox"/>	<input type="checkbox"/>	
breeding	wintering	burrow site	rookery	nesting	other

Location Description (please attach map AND/OR fill out your choice of coordinates, below)

Upper Bidwell Park in the southeast portion of the disc golf course area.

County: Butte Landowner / Mgr.: City of Chico Park Department
Quad Name: Paradise West Elevation: 1,000 feet
T _____ R _____ Sec _____, _____ 1/4 of _____ 1/4, Meridian: H M S Source of Coordinates (GPS, topo. map & type): GPS
T _____ R _____ Sec _____, _____ 1/4 of _____ 1/4, Meridian: H M S GPS Make & Model Corvallis Micro Technologies MC
Datum: NAD27 NAD83 WGS84 Horizontal Accuracy 1 to 3 meters meters/feet
Coordinate System: UTM Zone 10 UTM Zone 11 OR Geographic (Latitude & Longitude)
Coordinates: Easting/Longitude 1996341.108 ft. Northing/Latitude 14447726.54 ft.

Habitat Description (plant communities, dominants, associates, substrates/soils, aspects/slope):

Blue oak woodland (Holland Code 71140) on soils of the Tuscan Formation. Associates include Quercus wislizenii, Avena barbata, Trifolium hirtum, Cynosurus echinatus, Torilis arvensis, Bromus diandrus, and Medicago polymorpha. Growing in the shade at the base of an interior live oak tree. Polygonum bidwelliae also occurs at this site but not in association with Sidalcea robusta - they occur in different microhabitats.

Other rare taxa seen at THIS site on THIS date:

Site Information Overall site quality: Excellent Good Fair Poor

Current / surrounding land use: Recreational uses including hiking, biking, and disc golf.

Visible disturbances: Soil compaction and vegetation trampling along trails and disc golf fairways, tees, and holes.

Threats: Trampling from off-trail foot traffic is a threat. This occurrence is approximately 10 feet from nearest trail.

Comments: Sixteen occurrences of Sidalcea robusta were recorded within this 70 acre site during spring and summer of 2005. Occurrences ranged from clumps of 2 to 25 individuals to diffuse patches of approximately 40 to 50 individuals. This occurrence consists of one clump of three plants.

Determination: (check one or more, and fill in blanks)

Keyed (cite reference): Jepson Manual 1993
 Compared with specimen housed at: _____
 Compared with photo / drawing in: Cal Photos
 By another person (name): _____
 Other: _____

Photographs: (check one or more)

Slide	Print	Digital	
Plant / animal	<input type="checkbox"/>	<input type="checkbox"/>	<input type="checkbox"/>
Habitat	<input type="checkbox"/>	<input type="checkbox"/>	<input checked="" type="checkbox"/>
Diagnostic feature	<input type="checkbox"/>	<input type="checkbox"/>	<input type="checkbox"/>

May we obtain duplicates at our expense? yes no

Mail to:
 California Natural Diversity Database
 Department of Fish and Game
 1807 13th Street, Suite 202
 Sacramento, CA 95814
 Fax: (916) 324-0475 email: WHDAB@dfg.ca.gov

For Office Use Only

Source Code _____ Quad Code _____
 Elm Code _____ Occ. No. _____
 EO Index No. _____ Map Index No. _____

Date of Field Work mm/dd/yyyy: 05/04/2005

Reset

California Native Species Field Survey Form

Send Form

Scientific Name: *Sidalcea robusta*

Common Name: Butte County checkerbloom

Species Found? Yes No _____ If not, why? _____

Total No. Individuals 6 Subsequent Visit? yes no
 Is this an existing NDDDB occurrence? 28 no unk.
 Yes, Occ. # _____

Collection? If yes: _____
 Number _____ Museum / Herbarium _____

Reporter: Tammie Beverl

Address: 2022 J Street
Sacramento, CA 95814

E-mail Address: beyerlt@edaw.com

Phone: (916) 414-5800

Plant Information

Phenology: 50 % vegetative 50 % flowering _____ % fruiting

Animal Information

# adults	# juveniles	# larvae	# egg masses	# unknown
<input type="checkbox"/>	<input type="checkbox"/>	<input type="checkbox"/>	<input type="checkbox"/>	<input type="checkbox"/>
breeding	wintering	burrow site	rookery	nesting
<input type="checkbox"/>	<input type="checkbox"/>	<input type="checkbox"/>	<input type="checkbox"/>	<input type="checkbox"/>
breeding	wintering	burrow site	rookery	nesting
<input type="checkbox"/>	<input type="checkbox"/>	<input type="checkbox"/>	<input type="checkbox"/>	<input type="checkbox"/>
breeding	wintering	burrow site	rookery	nesting

Location Description (please attach map AND/OR fill out your choice of coordinates, below)

Upper Bidwell Park in the southeast portion of the disc golf course area near southern fence line.

County: Butte Landowner / Mgr.: City of Chico Park Department

Quad Name: Paradise West Elevation: 1,000 feet

T _____ R _____ Sec _____, _____ 1/4 of _____ 1/4, Meridian: H M S Source of Coordinates (GPS, topo. map & type): GPS

T _____ R _____ Sec _____, _____ 1/4 of _____ 1/4, Meridian: H M S GPS Make & Model Corvallis Micro Technologies MC

Datum: NAD27 NAD83 WGS84 Horizontal Accuracy 1 to 3 meters _____ meters/feet

Coordinate System: UTM Zone 10 UTM Zone 11 OR Geographic (Latitude & Longitude)

Coordinates: Easting/Longitude 1996348.859 ft. Northing/Latitude 14447570.73 ft.

Habitat Description (plant communities, dominants, associates, substrates/soils, aspects/slope):

Foothill pine - oak woodland (Holland Code 71410) on soils of the Tuscan Formation. Associates include Galium aparine, Cynosurus echinatus, Torilis arvensis, and Erodium cicutarium. Growing in the shade at the base of a Rhamnus ilicifolia shrub. Polygonum bidwelliae also occurs at this site but not in association with Sidalcea robusta - they occur in different microhabitats.

Other rare taxa seen at THIS site on THIS date:

Site Information Overall site quality: Excellent Good Fair Poor

Current / surrounding land use: Recreational uses including hiking, biking, and disc golf.

Visible disturbances: Soil compaction and vegetation trampling along trails and disc golf fairways, tees, and holes.

Threats: This occurrence is located well away from impact areas and is protected by fairly dense shrub cover.

Comments: Sixteen occurrences of Sidalcea robusta were recorded within this 70 acre site during spring and summer of 2005. All of these occurrences appear to correspond to existing CNDDB occurrence number 28. This occurrence consists of six plants in four clumps.

Determination: (check one or more, and fill in blanks)

Keyed (cite reference): Jepson Manual 1993

Compared with specimen housed at: _____

Compared with photo / drawing in: Cal Photos

By another person (name): _____

Other: _____

Photographs: (check one or more)

Slide	Print	Digital
Plant / animal	<input type="checkbox"/>	<input type="checkbox"/>
Habitat	<input type="checkbox"/>	<input checked="" type="checkbox"/>
Diagnostic feature	<input type="checkbox"/>	<input type="checkbox"/>

May we obtain duplicates at our expense? yes no

Mail to:
California Natural Diversity Database
Department of Fish and Game
1807 13th Street, Suite 202
Sacramento, CA 95814
Fax: (916) 324-0475 email: WHDAB@dfg.ca.gov

For Office Use Only

Source Code _____ Quad Code _____
Elm Code _____ Occ. No. _____
EO Index No. _____ Map Index No. _____

Date of Field Work mm/dd/yyyy: 05/04/2005

Reset

California Native Species Field Survey Form

Send Form

Scientific Name: *Sidalcea robusta*

Common Name: Butte County checkerbloom

Species Found? Yes No _____ If not, why? _____
Total No. Individuals 2 Subsequent Visit? yes no
Is this an existing NDDDB occurrence? 28 no unk.
Yes, Occ. # _____
Collection? If yes: _____
Number _____ Museum / Herbarium _____

Reporter: Tammie Beverl
Address: 2022 J Street
Sacramento, CA 95814
E-mail Address: beyerlt@edaw.com
Phone: (916) 414-5800

Plant Information
Phenology: _____% vegetative 100% flowering _____% fruiting

Animal Information
adults # juveniles # larvae # egg masses # unknown
breeding wintering burrow site rookery nesting other

Location Description (please attach map AND/OR fill out your choice of coordinates, below)

Upper Bidwell Park in the south central portion of the disc golf course area near fence line.
County: Butte Landowner / Mgr.: City of Chico Park Department
Quad Name: Paradise West Elevation: 1,000 feet
T _____ R _____ Sec _____, _____ 1/4 of _____ 1/4, Meridian: H M S Source of Coordinates (GPS, topo. map & type): GPS
T _____ R _____ Sec _____, _____ 1/4 of _____ 1/4, Meridian: H M S GPS Make & Model Corvallis Micro Technologies MC
Datum: NAD27 NAD83 WGS84 Horizontal Accuracy 1 to 3 meters _____ meters/feet
Coordinate System: UTM Zone 10 UTM Zone 11 OR Geographic (Latitude & Longitude)
Coordinates: Easting/Longitude 1995961.158 ft. Northing/Latitude 14447530.04 ft.

Habitat Description (plant communities, dominants, associates, substrates/soils, aspects/slope):
Blue oak woodland (Holland Code 71140) on soils of the Tuscan Formation. Associates include Lolium multiflorum, Galium porrigens, Cynosurus echinatus, Torilis arvensis, Allium peninsulare, and Toxicodendron diversilobum. Growing in the shade at the base of a blue oak tree. Polygonum bidwelliae also occurs at this site but not in association with Sidalcea robusta - they occur in different microhabitats.

Other rare taxa seen at THIS site on THIS date:

Site Information Overall site quality: Excellent Good Fair Poor
Current / surrounding land use: Recreational uses including hiking, biking, and disc golf.
Visible disturbances: Soil compaction and vegetation trampling along trails and disc golf fairways, tees, and holes.
Threats: Trampling by off-trail foot traffic from the nearby disc golf target is a threat but this occurrence is somewhat protected by a surrounding shrubs including poison oak.
Comments: Sixteen occurrences of Sidalcea robusta were recorded within this 70 acre site during spring and summer of 2005. All of these occurrences appear to correspond to existing CNDDDB occurrence number 28. This occurrence consists of two plants.

Determination: (check one or more, and fill in blanks)
 Keyed (cite reference): Jepson Manual 1993
 Compared with specimen housed at: _____
 Compared with photo / drawing in: Cal Photos
 By another person (name): _____
 Other: _____

Photographs: (check one or more) Slide Print Digital
Plant / animal
Habitat
Diagnostic feature
May we obtain duplicates at our expense? yes no

Mail to:
 California Natural Diversity Database
 Department of Fish and Game
 1807 13th Street, Suite 202
 Sacramento, CA 95814
 Fax: (916) 324-0475 email: WHDAB@dfg.ca.gov

For Office Use Only

Source Code _____ Quad Code _____
 Elm Code _____ Occ. No. _____
 EO Index No. _____ Map Index No. _____

Date of Field Work mm/dd/yyyy: 05/04/2005

Reset

California Native Species Field Survey Form

Send Form

Scientific Name: *Sidalcea robusta*

Common Name: Butte County checkerbloom

Species Found? Yes No _____ If not, why? _____

Total No. Individuals 3 Subsequent Visit? yes no
 Is this an existing NDDDB occurrence? 28 no unk.
 Yes, Occ. # _____

Collection? If yes: _____
 Number _____ Museum / Herbarium _____

Reporter: Tammie Beverl

Address: 2022 J Street
Sacramento, CA 95814

E-mail Address: beyerlt@edaw.com

Phone: (916) 414-5800

Plant Information

Phenology: _____ % vegetative 100 % flowering _____ % fruiting

Animal Information

# adults	# juveniles	# larvae	# egg masses	# unknown
<input type="checkbox"/>	<input type="checkbox"/>	<input type="checkbox"/>	<input type="checkbox"/>	<input type="checkbox"/>
breeding	wintering	burrow site	rookery	nesting
<input type="checkbox"/>	<input type="checkbox"/>	<input type="checkbox"/>	<input type="checkbox"/>	<input type="checkbox"/>
other				

Location Description (please attach map AND/OR fill out your choice of coordinates, below)

Upper Bidwell Park in the south central portion of the disc golf course area near fence line.

County: Butte Landowner / Mgr.: City of Chico Park Department

Quad Name: Paradise West Elevation: 1,000 feet

T _____ R _____ Sec _____, _____ 1/4 of _____ 1/4, Meridian: H M S Source of Coordinates (GPS, topo. map & type): GPS

T _____ R _____ Sec _____, _____ 1/4 of _____ 1/4, Meridian: H M S GPS Make & Model Corvallis Micro Technologies MC

Datum: NAD27 NAD83 WGS84 Horizontal Accuracy 1 to 3 meters _____ meters/feet

Coordinate System: UTM Zone 10 UTM Zone 11 OR Geographic (Latitude & Longitude)

Coordinates: Easting/Longitude 1995919.756 ft. Northing/Latitude 14447558.32 ft.

Habitat Description (plant communities, dominants, associates, substrates/soils, aspects/slope):

Blue oak woodland (Holland Code 71140) on soils of the Tuscan Formation. Associates include Quercus wislizenii, Avena barbata, Trifolium hirtum, Cynosurus echinatus, Torilis arvensis, and Bromus diandrus. Growing in the shade at the base of a Ceanothus cuneatus shrub. Polygonum bidwelliae also occurs at this site but not in association with Sidalcea robusta - they occur in different microhabitats.

Other rare taxa seen at THIS site on THIS date:

Site Information Overall site quality: Excellent Good Fair Poor

Current / surrounding land use: Recreational uses including hiking, biking, and disc golf.

Visible disturbances: Soil compaction and vegetation trampling along trails and disc golf fairways, tees, and holes.

Threats: Trampling by off-trail foot traffic from the nearby disc golf target is a threat but this occurrence is somewhat protected by a dense stand of shrubs.

Comments: Sixteen occurrences of Sidalcea robusta were recorded within this 70 acre site during spring and summer of 2005. All of these occurrences appear to correspond to existing CNDDDB occurrence number 28. Occurrences ranged from clumps of 2 to 25 individuals to diffuse patches of approximately 40 to 50

Determination: (check one or more, and fill in blanks)

Keyed (cite reference): Jepson Manual 1993

Compared with specimen housed at: _____

Compared with photo / drawing in: Cal Photos

By another person (name): _____

Other: _____

Photographs: (check one or more)

Slide	Print	Digital
Plant / animal	<input type="checkbox"/>	<input type="checkbox"/>
Habitat	<input type="checkbox"/>	<input checked="" type="checkbox"/>
Diagnostic feature	<input type="checkbox"/>	<input type="checkbox"/>

May we obtain duplicates at our expense? yes no

Mail to:
 California Natural Diversity Database
 Department of Fish and Game
 1807 13th Street, Suite 202
 Sacramento, CA 95814
 Fax: (916) 324-0475 email: WHDAB@dfg.ca.gov

For Office Use Only

Source Code _____ Quad Code _____
 Elm Code _____ Occ. No. _____
 EO Index No. _____ Map Index No. _____

Date of Field Work mm/dd/yyyy: 05/04/2005

Reset

California Native Species Field Survey Form

Send Form

Scientific Name: *Sidalcea robusta*

Common Name: Butte County checkerbloom

Species Found? Yes No _____ If not, why? _____

Total No. Individuals 25 Subsequent Visit? yes no
Is this an existing NDDDB occurrence? 28 no unk.
 Yes, Occ. # _____

Collection? If yes: _____
 Number _____ Museum / Herbarium _____

Reporter: Tammie Beverl
Address: 2022 J Street
Sacramento, CA 95814
E-mail Address: beyerlt@edaw.com
Phone: (916) 414-5800

Plant Information

Phenology: 100 % % %
 vegetative flowering fruiting

Animal Information

# adults	# juveniles	# larvae	# egg masses	# unknown
<input type="checkbox"/>	<input type="checkbox"/>	<input type="checkbox"/>	<input type="checkbox"/>	<input type="checkbox"/>
breeding	wintering	burrow site	rookery	nesting
<input type="checkbox"/>	<input type="checkbox"/>	<input type="checkbox"/>	<input type="checkbox"/>	<input type="checkbox"/>
breeding	wintering	burrow site	rookery	nesting
<input type="checkbox"/>	<input type="checkbox"/>	<input type="checkbox"/>	<input type="checkbox"/>	<input type="checkbox"/>
breeding	wintering	burrow site	rookery	nesting

Location Description (please attach map AND/OR fill out your choice of coordinates, below)

Upper Bidwell Park near the north boundary of the disc golf course area.

County: Butte Landowner / Mgr.: City of Chico Park Department

Quad Name: Paradise West Elevation: 1,000 feet

T _____ R _____ Sec _____, _____ 1/4 of _____ 1/4, Meridian: H M S Source of Coordinates (GPS, topo. map & type): GPS

T _____ R _____ Sec _____, _____ 1/4 of _____ 1/4, Meridian: H M S GPS Make & Model Corvallis Micro Technologies MC

Datum: NAD27 NAD83 WGS84 Horizontal Accuracy 1 to 3 meters _____ meters/feet

Coordinate System: UTM Zone 10 UTM Zone 11 OR Geographic (Latitude & Longitude)

Coordinates: Easting/Longitude 1996928.852 ft. Northing/Latitude 14449092.64 ft.

Habitat Description (plant communities, dominants, associates, substrates/soils, aspects/slope):

Foothill pine - oak woodland (Holland Code 71410) on soils of the Tuscan Formation. Associates include Quercus douglasii, Bromus diandrus, Allium peninsulare, Torilis arvensis, Dichelostemma volubile, Galium porrigens, Geranium molle, and Cynosurus echinatus. Growing in the shade of Quercus douglasii and Rhamnus ilicifolia. Polygonum bidwelliae also occurs at this site but not in association with Sidalcea robusta - they occur in different microhabitats.

Other rare taxa seen at THIS site on THIS date:

Site Information Overall site quality: Excellent Good Fair Poor

Current / surrounding land use: Recreational uses including hiking, biking, and disc golf.

Visible disturbances: Soil compaction and vegetation trampling along trails and disc golf fairways, tees, and holes.

Threats: Trampling from off-trail foot traffic is a threat but this occurrence is located well away from areas of impact within dense woodland.

Comments: Sixteen occurrences of Sidalcea robusta were recorded within this 70 acre site during spring and summer of 2005. All of these occurrences appear to correspond to existing CNDDB occurrence number 28. This occurrence consists of 25 plants in one clump.

Determination: (check one or more, and fill in blanks)

Keyed (cite reference): Jepson Manual 1993

Compared with specimen housed at: _____

Compared with photo / drawing in: Cal Photos

By another person (name): _____

Other: _____

Photographs: (check one or more)

Slide	Print	Digital
Plant / animal	<input type="checkbox"/>	<input type="checkbox"/>
Habitat	<input type="checkbox"/>	<input checked="" type="checkbox"/>
Diagnostic feature	<input type="checkbox"/>	<input type="checkbox"/>

May we obtain duplicates at our expense? yes no

Mail to:
 California Natural Diversity Database
 Department of Fish and Game
 1807 13th Street, Suite 202
 Sacramento, CA 95814
 Fax: (916) 324-0475 email: WHDAB@dfg.ca.gov

For Office Use Only

Source Code _____ Quad Code _____
 Elm Code _____ Occ. No. _____
 EO Index No. _____ Map Index No. _____

Date of Field Work mm/dd/yyyy: 05/04/2005

Reset

California Native Species Field Survey Form

Send Form

Scientific Name: *Sidalcea robusta*

Common Name: Butte County checkerbloom

Species Found? Yes No _____
If not, why?

Total No. Individuals 6 Subsequent Visit? yes no
Is this an existing NDDB occurrence? 28 no unk.
Yes, Occ. #

Collection? If yes: _____
Number Museum / Herbarium

Reporter: Tammie Beyerl
Address: 2022 J street
 Sacramento, CA 95814
E-mail Address: beyerlt@edaw.com
Phone: (916) 414-5800

Plant Information

Phenology: _____% vegetative 100% flowering _____% fruiting

Animal Information

# adults	# juveniles	# larvae	# egg masses	# unknown
<input type="checkbox"/>	<input type="checkbox"/>	<input type="checkbox"/>	<input type="checkbox"/>	<input type="checkbox"/>
breeding	wintering	burrow site	rookery	nesting
<input type="checkbox"/>	<input type="checkbox"/>	<input type="checkbox"/>	<input type="checkbox"/>	<input type="checkbox"/>
other				

Location Description (please attach map AND/OR fill out your choice of coordinates, below)

Upper Bidwell Park disc golf course area. Plants are growing at the base of a poison oak shrub beside a foot trail.

County: Butte Landowner / Mgr.: City of Chico Park Department

Quad Name: Paradise West Elevation: 1,000 feet

T _____ R _____ Sec _____, _____ ¼ of _____ ¼, Meridian: H M S Source of Coordinates (GPS, topo. map & type): GPS

T _____ R _____ Sec _____, _____ ¼ of _____ ¼, Meridian: H M S GPS Make & Model Coravallis Micro Technologies MC

Datum: NAD27 NAD83 WGS84 Horizontal Accuracy 1 to 3 meters meters/feet

Coordinate System: UTM Zone 10 UTM Zone 11 OR Geographic (Latitude & Longitude)

Coordinates: Easting/Longitude 1996323.686 ft Northing/Latitude 14448299.12 ft

Habitat Description (plant communities, dominants, associates, substrates/soils, aspects/slope):

Blue oak woodland (Holland code 71140) - open savanna on soils of the Tuscan Formation. Associates include Toxicodendron diversilobum, Bromus diandrus, Bromus hordeaceus, Galium aparine, Castilleja attenuata, Erodium cicutarium, and Trifolium hirtum. Polygonum bidwelliae also occurs at this site but not in association with Sidalcea robusta - they occur in different microhabitats.

Other rare taxa seen at THIS site on THIS date:

Site Information Overall site quality: Excellent Good Fair Poor

Current / surrounding land use: Recreational land uses including hiking, biking, and disc golf

Visible disturbances: Soil compaction and trampling due to recreational activities including biking, hiking, and disc golf.

Threats:

Comments: Sixteen separate occurrences of Sidalcea robusta were recorded within this 70 acre site during spring and summer 2005. Occurrences ranged from clumps of 2 to 25 individuals to diffuse patches of approximately 40 to 50 individuals.

Determination: (check one or more, and fill in blanks)

Keyed (cite reference): Jepson Manual 1993

Compared with specimen housed at: _____

Compared with photo / drawing in: Cal Photos

By another person (name): _____

Other: _____

Photographs: (check one or more)

Slide	Print	Digital
Plant / animal	<input type="checkbox"/>	<input type="checkbox"/>
Habitat	<input checked="" type="checkbox"/>	<input type="checkbox"/>
Diagnostic feature	<input type="checkbox"/>	<input type="checkbox"/>

May we obtain duplicates at our expense? yes no

Mail to:
 California Natural Diversity Database
 Department of Fish and Game
 1807 13th Street, Suite 202
 Sacramento, CA 95814
 Fax: (916) 324-0475 email: WHDAB@dfg.ca.gov

For Office Use Only

Source Code _____ Quad Code _____
 Elm Code _____ Occ. No. _____
 EO Index No. _____ Map Index No. _____

Date of Field Work mm/dd/yyyy: 03/22/2005

California Native Species Field Survey Form

Scientific Name: Sidalcea robusta Location 10

Common Name: Butte County checkerbloom

Species Found? Yes No If not, why?

Total No. Individuals 9785 Subsequent Visit? yes no
Is this an existing NDDB occurrence? 28 no unk.
Yes, Occ. #

Collection? If yes: _____
Number Museum / Herbarium

Reporter: Richard Dwerlkotte

Address: 815 Western Avenue, Suite 300
Seattle, WA 98104

E-mail Address: dwerlkotter@edaw.com

Phone: (206) 267-7722

Plant Information

Phenology: 100 % vegetative % flowering % fruiting

Animal Information

adults # juveniles # larvae # egg masses # unknown
 breeding wintering burrow site rookery nesting other

Location Description (please attach map AND/OR fill out your choice of coordinates, below)

County: Butte Landowner / Mgr.: City of Chico Parks Department

Quad Name: Paradise West Elevation: 1000 feet

T R Sec , ¼ of ¼, Meridian: H M S Source of Coordinates (GPS, topo. map & type): _____

T R Sec , ¼ of ¼, Meridian: H M S GPS Make & Model Corvallis Micro Technologies

Datum: NAD27 NAD83 WGS84 Horizontal Accuracy 1 to 3 meters/feet

Coordinate System: UTM Zone 10 UTM Zone 11 OR Geographic (Latitude & Longitude)

Coordinates: Easting/Longitude 199611.76819 Northing/Latitude 14448311.8034

Habitat Description (plant communities, dominants, associates, substrates/soils, aspects/slope):

Foothill Pine - Oak Woodland on soils of the Tuscan Formation. Associates include Delphinium variegatum, Toxicodendron diversilobum, Quercus douglasii, Q. wislizenii, Aesculus californica., Cynosurus echinatus, Galium portigenes

Within ca. 20 feet diameter areas are 3 large "plants" with many leafy shoots or clusters, and two other smaller, more discrete individual plants - all plants are growing under a shrub-edge canopy along margin of less-used yet well defined, narrow trail to bluffs.

Other rare taxa seen at THIS site on THIS date:

Site Information Overall site quality: Excellent Good Fair Poor

Current / surrounding land use: Recreational use including biking, hiking and disc golf.

Visible disturbances: Soil compaction and vegetation trampling along trails, bluff lookouts, and disc golf tees, holes and, off-trail travel on fairways.

Threats: Trampling from off-trail foot traffic is a threat although this particular location is somewhat off the more-beaten path. Should the trail be widened through increase use at this location then plants definitely will be trampled

Comments: This species was documented at 16 locations or occurrences within a 70 acre site during the spring/summer of 2005. All occurrences appear to be associated with the existing CNDDDB occurrence #28.

Determination: (check one or more, and fill in blanks)

Keyed (cite reference): Jenson Manual 1993

Compared with specimen housed at: _____

Compared with photo / drawing in: CalPhoto

By another person (name): _____

Other: _____

Photographs: (check one or more)

	Slide	Print	Digital
Plant / animal	<input type="checkbox"/>	<input type="checkbox"/>	<input type="checkbox"/>
Habitat	<input type="checkbox"/>	<input type="checkbox"/>	<input type="checkbox"/>
Diagnostic feature	<input type="checkbox"/>	<input type="checkbox"/>	<input type="checkbox"/>

May we obtain duplicates at our expense? yes no

FG/WHDAB/1747 Rev.10/20/03

Mail to:
 California Natural Diversity Database
 Department of Fish and Game
 1807 13th Street, Suite 202
 Sacramento, CA 95814
 Fax: (916) 324-0475 email: WHDAB@dfg.ca.gov

For Office Use Only

Source Code _____ Quad Code _____
 Elm Code _____ Occ. No. _____
 EO Index No. _____ Map Index No. _____

Date of Field Work mm/dd/yyyy: 03/22/2005

Reset

California Native Species Field Survey Form

Send Form

Scientific Name: Sidalcea robusta Location 11

Common Name: Butte County checkerbloom

<p>Species Found? <input checked="" type="checkbox"/> Yes <input type="checkbox"/> No If not, why?</p> <p>Total No. Individuals <u>25</u> Subsequent Visit? <input checked="" type="checkbox"/> yes <input type="checkbox"/> no Is this an existing NDDB occurrence? <u>28</u> <input type="checkbox"/> no <input type="checkbox"/> unk. <small>Yes, Occ. #</small></p> <p>Collection? If yes: _____ <small>Number Museum / Herbarium</small></p>	<p>Reporter: <u>Richard Dwerlkotte</u></p> <p>Address: <u>815 Western Avenue, Suite 300</u> <u>Seattle, WA 98104</u></p> <p>E-mail Address: <u>dwerlkotter@edaw.com</u></p> <p>Phone: <u>(206) 267-7722</u></p>
--	--

Plant Information

Phenology: 100 % vegetative % flowering % fruiting

Animal Information

# adults	# juveniles	# larvae	# egg masses	# unknown
<input type="checkbox"/>	<input type="checkbox"/>	<input type="checkbox"/>	<input type="checkbox"/>	<input type="checkbox"/>
breeding	wintering	burrow site	rookery	nesting
<input type="checkbox"/>	<input type="checkbox"/>	<input type="checkbox"/>	<input type="checkbox"/>	<input type="checkbox"/>

Location Description (please attach map AND/OR fill out your choice of coordinates, below)

County: Butte Landowner / Mgr.: City of Chico Parks Department

Quad Name: Paradise West Elevation: 1000 feet

T R Sec , % of % Meridian: H M S Source of Coordinates (GPS, topo. map & type): _____

T R Sec , % of % Meridian: H M S GPS Make & Model Corvallis Micro Technologies

Datum: NAD27 NAD83 WGS84 Horizontal Accuracy 1 to 3 meters meters/feet

Coordinate System: UTM Zone 10 UTM Zone 11 OR Geographic (Latitude & Longitude)

Coordinates: Easting/Longitude 1996030.30195 Northing/Latitude 14448215.3021

Habitat Description (plant communities, dominants, associates, substrates/soils, aspects/slope):

Foothill Pine - Oak Woodland on soils of the Tuscan Formation. Associates include Delphinium variegatum, Toxicodendron diversilobum, Quercus douglasii, Q. wislizenii, Aesculus californica., Cynosurus echinatus, Galium porrigens, Ceanothus cuneatus, Geranium molle.

Plant occur in an area roughly 50 feet (east-west) by 25 feet (north-south). A foot trail passes through occurrence. Roughly 25 clusters or more distinct individuals were observed under a shrub-edge canopy, at rock bases; almost all plants were in protected locations.

Other rare taxa seen at THIS site on THIS date:

Site Information Overall site quality: Excellent Good Fair Poor

Current / surrounding land use: Recreational use including biking, hiking and disc golf.

Visible disturbances: Soil compaction and vegetation trampling along trails, bluff lookouts, and disc golf tees, holes and, off-trail travel on fairways.

Threats: ling from off- or near-trail foot traffic is a threat with several individuals mere inches from the trail albeit at a protected rock base. Plants runner from trail rtainly exposed to fairway foot traffic

Comments: This species was documented at 16 locations or occurrences within a 70 acre site during the spring/summer of 2005. All occurrences appear to be associated with the existing CNDDB occurrence #28.

Determination: (check one or more, and fill in blanks)

Keyed (cite reference): Jepson Manual 1993

Compared with specimen housed at: _____

Compared with photo / drawing in: CalPhoto

By another person (name): _____

Other: _____

Photographs: (check one or more)

Plant / animal	Slide <input type="checkbox"/>	Print <input type="checkbox"/>	Digital <input type="checkbox"/>
Habitat	<input type="checkbox"/>	<input type="checkbox"/>	<input type="checkbox"/>
Diagnostic feature	<input type="checkbox"/>	<input type="checkbox"/>	<input type="checkbox"/>

May we obtain duplicates at our expense? yes no

FGWHDAB1747 Rev.10/20/03

Mail to:
 California Natural Diversity Database
 Department of Fish and Game
 1807 13th Street, Suite 202
 Sacramento, CA 95814
 Fax: (916) 324-0475 email: WHDAB@dfg.ca.gov

For Office Use Only

Source Code _____ Quad Code _____
 Elm Code _____ Occ. No. _____
 EO Index No. _____ Map Index No. _____

Date of Field Work mm/dd/yyyy: 05/04/2005

Reset

California Native Species Field Survey Form

Send Form

Scientific Name: Sidalcea robusta **Location 12**

Common Name: Butte County checkerbloom

<p>Species Found? <input checked="" type="checkbox"/> Yes <input type="checkbox"/> No _____ If not, why? _____</p> <p>Total No. Individuals <u>2</u> Subsequent Visit? <input checked="" type="checkbox"/> yes <input type="checkbox"/> no Is this an existing NDDDB occurrence? <u>28</u> <input type="checkbox"/> no <input type="checkbox"/> unk. Yes, Occ. # _____</p> <p>Collection? If yes: _____ Number _____ Museum / Herbarium _____</p>	<p>Reporter: <u>Richard Dwerlkotte</u></p> <p>Address: <u>815 Western Avenue, Suite 300</u> <u>Seattle, WA 98104</u></p> <p>E-mail Address: <u>dwerlkotter@edaw.com</u></p> <p>Phone: <u>(206) 267-7722</u></p>
---	--

Plant Information

Phenology: _____ % vegetative _____ % flowering 100 % fruiting

Animal Information

# adults	# juveniles	# larvae	# egg masses	# unknown
<input type="checkbox"/> breeding	<input type="checkbox"/> wintering	<input type="checkbox"/> burrow site	<input type="checkbox"/> rookery	<input type="checkbox"/> nesting
<input type="checkbox"/> other				

Location Description (please attach map AND/OR fill out your choice of coordinates, below)

County: Butte Landowner / Mgr.: City of Chico Parks Department

Quad Name: Paradise West Elevation: 1000 feet

T _____ R _____ Sec _____, _____ ¼ of _____ ¼, Meridian: H M S W Source of Coordinates (GPS, topo. map & type): _____

T _____ R _____ Sec _____, _____ ¼ of _____ ¼, Meridian: H M S W GPS Make & Model Corvallis Micro Technologies

Datum: NAD27 NAD83 WGS84 Horizontal Accuracy 1 to 3 meters/feet

Coordinate System: UTM Zone 10 UTM Zone 11 OR Geographic (Latitude & Longitude)

Coordinates: Easting/Longitude 1996553.12694 Northing/Latitude 14448052.7389

Habitat Description (plant communities, dominants, associates, substrates/soils, aspects/slope):

Foothill Pine - Oak Woodland on soils of the Tuscan Formation. Associates include Bromus hordeaceus, Cynosurus echinatus, Galium porrigens, nearby species include Pinus sabiniana, Toxicodendron diversilobum, Quercus douglasii, Ceanothus cuneatus.

Two discrete individual plants occur in an area roughly 20 feet in diameter - plants are in an area with no shrub or tree canopy cover among large rocks that provide protection from trampling.

Other rare taxa seen at THIS site on THIS date: _____

Site Information Overall site quality: Excellent Good Fair Poor

Current / surrounding land use: Recreational use including biking, hiking and disc golf.

Visible disturbances: Soil compaction and vegetation trampling along trails, bluff lookouts, and disc golf tees, holes and, off-trail travel on fairways.

Threats: Trampling is unlikely because plants are currently off the beaten path; large boulders currently provide protection for these plants.

Comments: This species was documented at 16 locations or occurrences within a 70 acre site during the spring/summer of 2005. All occurrences appear to be associated with the existing CNDDDB occurrence #28.

Determination: (check one or more, and fill in blanks)

Keyed (cite reference): Jepson Manual 1993

Compared with specimen housed at: _____

Compared with photo / drawing in: CalPhoto

By another person (name): _____

Other: _____

Photographs: (check one or more)

	Slide	Print	Digital
Plant / animal	<input type="checkbox"/>	<input type="checkbox"/>	<input type="checkbox"/>
Habitat	<input type="checkbox"/>	<input type="checkbox"/>	<input type="checkbox"/>
Diagnostic feature	<input type="checkbox"/>	<input type="checkbox"/>	<input type="checkbox"/>

May we obtain duplicates at our expense? yes no

FG/WHDAB/1747 Rev.10/2003

Mail to:
 California Natural Diversity Database
 Department of Fish and Game
 1807 13th Street, Suite 202
 Sacramento, CA 95814
 Fax: (916) 324-0475 email: WHDAB@dfg.ca.gov

For Office Use Only

Source Code _____ Quad Code _____
 Elm Code _____ Occ. No. _____
 EO Index No. _____ Map Index No. _____

Date of Field Work mm/dd/yyyy: 03/22/2005

Reset

California Native Species Field Survey Form

Send Form

Scientific Name: *Sidalcea robusta* Location 13

Common Name: Butte County checkerbloom

<p>Species Found? <input checked="" type="checkbox"/> Yes <input type="checkbox"/> No If not, why?</p> <p>Total No. Individuals <u>4</u> Subsequent Visit? <input checked="" type="checkbox"/> yes <input type="checkbox"/> no Is this an existing NDDB occurrence? <u>28</u> <input type="checkbox"/> no <input type="checkbox"/> unk. <small>Yes, Occ. #</small></p> <p>Collection? If yes: _____ <small>Number Museum / Herbarium</small></p>	<p>Reporter: <u>Richard Dwerlkotte</u></p> <p>Address: <u>815 Western Avenue, Suite 300</u> <u>Seattle, WA 98104</u></p> <p>E-mail Address: <u>dwerlkotter@edaw.com</u></p> <p>Phone: <u>(206) 267-7722</u></p>
---	--

Plant Information

Phenology: 100 % vegetative % flowering % fruiting

Animal Information

<u> </u> # adults	<u> </u> # juveniles	<u> </u> # larvae	<u> </u> # egg masses	<u> </u> # unknown
<input type="checkbox"/> breeding	<input type="checkbox"/> wintering	<input type="checkbox"/> burrow site	<input type="checkbox"/> rookery	<input type="checkbox"/> nesting
<input type="checkbox"/> other				

Location Description (please attach map AND/OR fill out your choice of coordinates, below)

County: Butte Landowner / Mgr.: City of Chico Parks Department

Quad Name: Paradise West Elevation: 1000 feet

T R Sec , ¼ of ¼, Meridian: H M S Source of Coordinates (GPS, topo. map & type): _____

T R Sec , ¼ of ¼, Meridian: H M S GPS Make & Model Corvallis Micro Technologies

Datum: NAD27 NAD83 WGS84 Horizontal Accuracy 1 to 3 meters meters/feet

Coordinate System: UTM Zone 10 UTM Zone 11 OR Geographic (Latitude & Longitude)

Coordinates: Easting/Longitude 1997239.88716 Northing/Latitude 14448917.3936

Habitat Description (plant communities, dominants, associates, substrates/soils, aspects/slope):

Foothill Pine - Oak Woodland on soils of the Tuscan Formation. Associates include Pinus sabiniana, Toxicodendron diversilobum, Quercus douglasii, Ceanothus cuneatus, Bromus hordeaceus; The understory receives ample light through its diffuse shrub and tree canopy. Four "plants" observed in a 35 ft by 15 ft area. Two larger clumps with many, leafy shoots occur within 15 feet of a well used through-trail in an area with virtually no off-trail traffic. The other two plants are smaller, more discrete individuals ca. 35 feet to north at shrub edge or small grassy opening.

Other rare taxa seen at THIS site on THIS date:

Site Information Overall site quality: Excellent Good Fair Poor

Current / surrounding land use: Recreational use including biking, hiking and disc golf.

Visible disturbances: Soil compaction and vegetation trampling along trails, bluff lookouts, and disc golf tees, holes and, off-trail travel on fairways.

Threats: Trampling is unlikely at this time because plants are currently off the beaten path and more or less protected by an intact shrub canopy .

Comments: This species was documented at 16 locations or occurrences within a 70 acre site during the spring/summer of 2005. All occurrences appear to be associated with the existing CNDDDB occurrence #28 .

Determination: (check one or more, and fill in blanks)

Keyed (cite reference): Jenson Manual 1993

Compared with specimen housed at: _____

Compared with photo / drawing in: CalPhoto

By another person (name): _____

Other: _____

Photographs: (check one or more)

	Slide	Print	Digital
Plant / animal	<input type="checkbox"/>	<input type="checkbox"/>	<input type="checkbox"/>
Habitat	<input type="checkbox"/>	<input type="checkbox"/>	<input type="checkbox"/>
Diagnostic feature	<input type="checkbox"/>	<input type="checkbox"/>	<input type="checkbox"/>

May we obtain duplicates at our expense? yes no

FG/WHDAB/1747 Rev.10/2003

Mail to:
 California Natural Diversity Database
 Department of Fish and Game
 1807 13th Street, Suite 202
 Sacramento, CA 95814

Fax: (916) 324-0475 email: WHDAB@dfg.ca.gov

For Office Use Only

Source Code _____ Quad Code _____
 Elm Code _____ Occ. No. _____
 EO Index No. _____ Map Index No. _____

Date of Field Work mm/dd/yyyy: 05/04/2005

Reset

California Native Species Field Survey Form

Send Form

Scientific Name: *Sidalcea robusta* Location 14 and 15

Common Name: Butte County checkerbloom

Species Found? Yes No If not, why?

Total No. Individuals 2 Subsequent Visit? yes no
 Is this an existing NDDDB occurrence? 28 no unk.
 Yes, Occ. #

Collection? If yes: _____
 Number _____ Museum / Herbarium _____

Reporter: Richard Dwerlkotte
Address: 815 Western Avenue, Suite 300
Seattle, WA 98104
E-mail Address: dwerlkotter@edaw.com
Phone: (206) 267-7722

<p>Plant Information</p> <p>Phenology: <u>100</u> % vegetative <u> </u> % flowering <u> </u> % fruiting</p>	<p>Animal Information</p> <table style="width: 100%; text-align: center;"> <tr> <td># adults</td> <td># juveniles</td> <td># larvae</td> <td># egg masses</td> <td># unknown</td> </tr> <tr> <td><input type="checkbox"/></td> <td><input type="checkbox"/></td> <td><input type="checkbox"/></td> <td><input type="checkbox"/></td> <td><input type="checkbox"/></td> </tr> <tr> <td>breeding</td> <td>wintering</td> <td>burrow site</td> <td>rookery</td> <td>nesting</td> </tr> <tr> <td><input type="checkbox"/></td> <td><input type="checkbox"/></td> <td><input type="checkbox"/></td> <td><input type="checkbox"/></td> <td><input type="checkbox"/></td> </tr> <tr> <td>breeding</td> <td>wintering</td> <td>burrow site</td> <td>rookery</td> <td>nesting</td> </tr> <tr> <td><input type="checkbox"/></td> <td><input type="checkbox"/></td> <td><input type="checkbox"/></td> <td><input type="checkbox"/></td> <td><input type="checkbox"/></td> </tr> </table>	# adults	# juveniles	# larvae	# egg masses	# unknown	<input type="checkbox"/>	<input type="checkbox"/>	<input type="checkbox"/>	<input type="checkbox"/>	<input type="checkbox"/>	breeding	wintering	burrow site	rookery	nesting	<input type="checkbox"/>	<input type="checkbox"/>	<input type="checkbox"/>	<input type="checkbox"/>	<input type="checkbox"/>	breeding	wintering	burrow site	rookery	nesting	<input type="checkbox"/>	<input type="checkbox"/>	<input type="checkbox"/>	<input type="checkbox"/>	<input type="checkbox"/>
# adults	# juveniles	# larvae	# egg masses	# unknown																											
<input type="checkbox"/>	<input type="checkbox"/>	<input type="checkbox"/>	<input type="checkbox"/>	<input type="checkbox"/>																											
breeding	wintering	burrow site	rookery	nesting																											
<input type="checkbox"/>	<input type="checkbox"/>	<input type="checkbox"/>	<input type="checkbox"/>	<input type="checkbox"/>																											
breeding	wintering	burrow site	rookery	nesting																											
<input type="checkbox"/>	<input type="checkbox"/>	<input type="checkbox"/>	<input type="checkbox"/>	<input type="checkbox"/>																											

Location Description (please attach map AND/OR fill out your choice of coordinates, below)

County: Butte Landowner / Mgr.: City of Chico Parks Department

Quad Name: Paradise West Elevation: 1000 feet

T R Sec , ¼ of ¼, Meridian: H M S Source of Coordinates (GPS, topo, map & type): _____

T R Sec , ¼ of ¼, Meridian: H M S GPS Make & Model Corvallis Micro Technologies

Datum: NAD27 NAD83 WGS84 Horizontal Accuracy 1 to 3 meters meters/feet

Coordinate System: UTM Zone 10 UTM Zone 11 OR Geographic (Latitude & Longitude)

Coordinates: Easting/Longitude 1997373.67241 Northing/Latitude 14448805.8900

Habitat Description (plant communities, dominants, associates, substrates/soils, aspects/slope):

Foothill Pine - Oak Woodland on soils of the Tuscan Formation. Associates include primarily open growing Pinus sabiniana and Quercus douglasii with a few Toxicodendron diversilobum and ample annual grassland herb layer of Bromus hordeaceus.

Two healthy fruiting plants observed as little "islands" growing 20 feet apart in dense annual grassland understory.

Coordinates of Location 15: Easting 1997386.01505 Northing 14448815.1470

Other rare taxa seen at THIS site on THIS date:

Site Information Overall site quality: Excellent Good Fair Poor

Current / surrounding land use: Recreational use including biking, hiking and disc golf.

Visible disturbances: Soil compaction and vegetation trampling along trails, bluff lookouts, and disc golf tees, holes and, off-trail travel on fairways.

Threats: Plants are adjacent to an old roadbed with boulder rip rap between the plants and the road bed. No disturbance is currently visible yet dense annual grasses growth has potential to smother these two plants or, at least, any potential regeneration.

Comments: This species was documented at 16 locations or occurrences within a 70 acre site during the spring/summer of 2005. All occurrences appear to be associated with the existing CNDDDB occurrence #28.

<p>Determination: (check one or more, and fill in blanks)</p> <p><input checked="" type="checkbox"/> Keyed (cite reference): <u>Jepson Manual 1993</u></p> <p><input type="checkbox"/> Compared with specimen housed at: _____</p> <p><input checked="" type="checkbox"/> Compared with photo / drawing in: <u>CalPhoto</u></p> <p><input type="checkbox"/> By another person (name): _____</p> <p><input type="checkbox"/> Other: _____</p>	<p>Photographs: (check one or more)</p> <table style="width: 100%; text-align: center;"> <tr> <td>Slide</td> <td>Print</td> <td>Digital</td> </tr> <tr> <td><input type="checkbox"/></td> <td><input type="checkbox"/></td> <td><input type="checkbox"/></td> </tr> <tr> <td>Plant / animal</td> <td><input type="checkbox"/></td> <td><input type="checkbox"/></td> </tr> <tr> <td>Habitat</td> <td><input type="checkbox"/></td> <td><input type="checkbox"/></td> </tr> <tr> <td>Diagnostic feature</td> <td><input type="checkbox"/></td> <td><input type="checkbox"/></td> </tr> </table> <p>May we obtain duplicates at our expense? <input type="checkbox"/> yes <input type="checkbox"/> no</p>	Slide	Print	Digital	<input type="checkbox"/>	<input type="checkbox"/>	<input type="checkbox"/>	Plant / animal	<input type="checkbox"/>	<input type="checkbox"/>	Habitat	<input type="checkbox"/>	<input type="checkbox"/>	Diagnostic feature	<input type="checkbox"/>	<input type="checkbox"/>
Slide	Print	Digital														
<input type="checkbox"/>	<input type="checkbox"/>	<input type="checkbox"/>														
Plant / animal	<input type="checkbox"/>	<input type="checkbox"/>														
Habitat	<input type="checkbox"/>	<input type="checkbox"/>														
Diagnostic feature	<input type="checkbox"/>	<input type="checkbox"/>														

FG/WHDAB/1747 Rev.10/20/03

Mail to:
 California Natural Diversity Database
 Department of Fish and Game
 1807 13th Street, Suite 202
 Sacramento, CA 95814
 Fax: (916) 324-0475 email: WHDAB@dfg.ca.gov

For Office Use Only

Source Code _____ Quad Code _____
 Elm Code _____ Occ. No. _____
 EO Index No. _____ Map Index No. _____

Date of Field Work mm/dd/yyyy: 05/04/2005

Reset

California Native Species Field Survey Form

Send Form

Scientific Name: Sidalcea robusta Location 16

Common Name: Butte County checkerbloom

Species Found? Yes No If not, why?

Total No. Individuals 2 Subsequent Visit? yes no
Is this an existing NDDB occurrence? 28 no unk.
Yes, Occ. #

Collection? If yes: _____
Number Museum / Herbarium

Reporter: Richard Dwerikotte
Address: 815 Western Avenue, Suite 300
Seattle, WA 98104
E-mail Address: dwerlkotter@edaw.com
Phone: (206) 267-7722

Plant Information

Phenology: 100 % % %
vegetative flowering fruiting

Animal Information

<u> </u> # adults <input type="checkbox"/>	<u> </u> # juveniles <input type="checkbox"/>	<u> </u> # larvae <input type="checkbox"/>	<u> </u> # egg masses <input type="checkbox"/>	<u> </u> # unknown <input type="checkbox"/>
<input type="checkbox"/> breeding	<input type="checkbox"/> wintering	<input type="checkbox"/> burrow site	<input type="checkbox"/> rookery	<input type="checkbox"/> nesting
<input type="checkbox"/>	<input type="checkbox"/>	<input type="checkbox"/>	<input type="checkbox"/>	<input type="checkbox"/>

Location Description (please attach map AND/OR fill out your choice of coordinates, below)

County: Butte Landowner / Mgr.: City of Chico Parks Department

Quad Name: Paradise West Elevation: 1000 feet

T R Sec , ¼ of ¼, Meridian: H M S Source of Coordinates (GPS, topo. map & type): _____

T R Sec , ¼ of ¼, Meridian: H M S GPS Make & Model Corvallis Micro Technologies

Datum: NAD27 NAD83 WGS84 Horizontal Accuracy 1 to 3 meters meters/feet

Coordinate System: UTM Zone 10 UTM Zone 11 OR Geographic (Latitude & Longitude)

Coordinates: Easting/Longitude 1995920.50326 Northing/Latitude 14448208.8009

Habitat Description (plant communities, dominants, associates, substrates/soils, aspects/slope):

Foothill Pine - Oak Woodland on soils of the Tuscan Formation. Associates include Delphinium variegatum, Toxicodendron diversilobum, Quercus douglasii, Cynosurus echinatus, Galium porrigens, Ceanothus cuneatus, Geranium molle.

Two large clumps approximately 15 feet apart growing under Ceanothus shrubs - individual plants, if present, within these large clumps are not distinguishable.

Other rare taxa seen at THIS site on THIS date:

Site Information Overall site quality: Excellent Good Fair Poor

Current / surrounding land use: Recreational use including biking, hiking and disc golf.

Visible disturbances: Soil compaction and vegetation trampling along trails, bluff lookouts, and disc golf tees, holes and, off-trail travel on fairways.

Threats: Off-trail foot traffic on fairways are a potential threat although plants currently are protected by dense shrub cover

Comments: This species was documented at 16 locations or occurrences within a 70 acre site during the spring/summer of 2005. All occurrences appear to be associated with the existing CNDDDB occurrence #28. Location 16 and location 2 are in close proximity to one another.

Determination: (check one or more, and fill in blanks)

Keyed (cite reference): Jepson Manual 1993

Compared with specimen housed at: _____

Compared with photo / drawing in: CalPhoto

By another person (name): _____

Other: _____

Photographs: (check one or more)

Slide	Print	Digital
<input type="checkbox"/>	<input type="checkbox"/>	<input type="checkbox"/>
Plant / animal	<input type="checkbox"/>	<input type="checkbox"/>
Habitat	<input type="checkbox"/>	<input type="checkbox"/>
Diagnostic feature	<input type="checkbox"/>	<input type="checkbox"/>

May we obtain duplicates at our expense? yes no

GWHDAB/1747 Rev.10/20/03

APPENDIX D

REPRESENTATIVE PHOTOGRAPHS



Bidwell's knotweed growing beside a fairway.



Wildflower field is the typical habitat of Bidwell's knotweed.

Representative Photographs

Appendix D



Bidwell's knotweed and associates in the wildflower field community.



Butte County checkerbloom growing beside a trail.

Representative Photographs

Appendix D



Butte County checkerbloom in vegetative stage.



Typical habitat of Butte County checkerbloom is at the edge of blue oak woodland such as shown here.

Representative Photographs

Appendix D



Butte County checkerbloom often grows at the base of trees or shrubs.



Butte County checkerbloom also often grows at the base of boulders.

Representative Photographs

Appendix D