

# HYPER INTEGRATION!

## LANCOM Management Cloud




SECURE. NETWORKS.

- > Automated
- > Software-defined
- > Hyper-integrated

**LANCOM**  
Systems

# Challenge Digitalization





## **A fully functional network is the heart of any business.**

And yet installing and managing it is highly complex. The shortage of skilled manpower makes things worse, as qualified network specialists are hard to find. At the same time, the conventional manual configuration is a time-consuming, error-prone, and thus very costly task.

Wouldn't it be great if there were an intelligent, higher instance that automates and controls the entire network from a central location? A kind of hyper-intelligence that networks all of the key components, dynamically responds to any new requirements, and which is also secure.

**What sounds like a future scenario is here today.**

# Welcome to the **LANCOM Management Cloud**

The LANCOM Management Cloud is the world's first hyper-integrated management system that intelligently organizes, optimizes, and controls your entire network architecture in terms of its WAN, LAN, WLAN, and Security. State-of-the-art software-defined technology (SD-WAN, SD-LAN, SD-WLAN, SD-SECURITY) drastically simplifies the provision of integrated networks and makes the manual configuration of individual devices a thing of the past. The system adapts dynamically to your requirements, it is future-proof, and offers maximum security.



Maximum agility  
and versatility



State-of-the-art  
security



Radical time and  
cost savings



Highly automated  
multi-service networks of  
the highest quality





Wi-Fi Users	SSID	Signal	Client IP	Client MAC	AP name	Frequency
Name						
android-Rau5e86342bc8a6	LANCOM-VISITOR	52%	192.168.2.249	f5dfab7c2ae1bb	lc-e321-ic-cloud	2.4 GHz
Galaxy-S8	LANCOM-VISITOR	64%	192.168.2.177	8c15a3fb177	lc-e321-ic-cloud	2.4 GHz
Galaxy-S8	LANCOM-VISITOR	65%	192.168.2.242	3007.4d1f1.69.24	lc-e326-ic-cloud	2.4 GHz
Galaxy-S6	LANCOM-VISITOR	67%	192.168.2.186	2c0e3dc079.6b	lc-e326-ic-cloud	2.4 GHz
HUAWEI_Mate_10_Pro-c5722	LANCOM-VISITOR	53%	192.168.2.155	74c021dc1f5f7	lc-e326-ic-cloud	2.4 GHz
IOS iPhone	LANCOM-VISITOR	88%	192.168.2.99	7049.0f76a9.6e	lc-e386-ic-cloud	5 GHz
android-48e59713d4ef4bbe	LANCOM-VISITOR	75%	192.168.2.82	4040a73ceb0e	lc-e386-ic-cloud	2.4 GHz
Galaxy-S8	LANCOM-VISITOR	59%	192.168.2.203	0405aae7fb122	lc-e386-ic-cloud	2.4 GHz
HUAWEI_P8 Lite	LANCOM-VISITOR	55%	192.168.2.247	8828b3d00237	lc-e386-ic-cloud	2.4 GHz

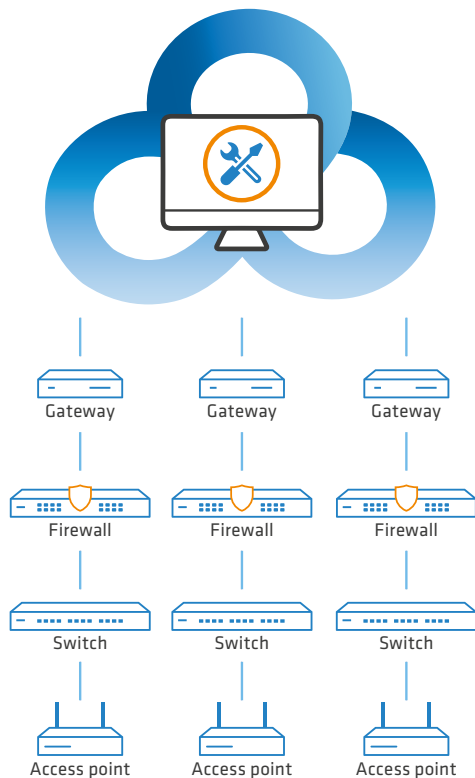
# Holistic network orchestration



## Hyper Integration means: Fully automated configuration

LANCOM has made the manual configuration of individual devices a thing of the past – software-defined technology (SD-WAN, SD-LAN, SD-WLAN, SD-SECURITY) now delivers fully automated network orchestration. All the administrator has to do is specify the framework conditions for the network's design and security policies.

Auto-configuration and zero-touch deployment implement an automated rollout with maximum security. Complex network configurations, previously the cause of intense manual effort by certified IT professionals, is now reduced to just a few minutes and a few clicks!



# The hyper-integrated premium portfolio





## Hyper Integration means: Routing, switching, Wi-Fi, security

The LANCOM Management Cloud is a holistic system that controls the entire network infrastructure. This is only possible through a perfectly compatible product portfolio: You can quickly and easily transfer all gateways, all routers, all switches, all access points, and all firewalls to the cloud-based network orchestration for a holistic SD-WAN, SD-LAN, SD-WLAN, and SD-SECURITY.

## The easiest way into the Cloud

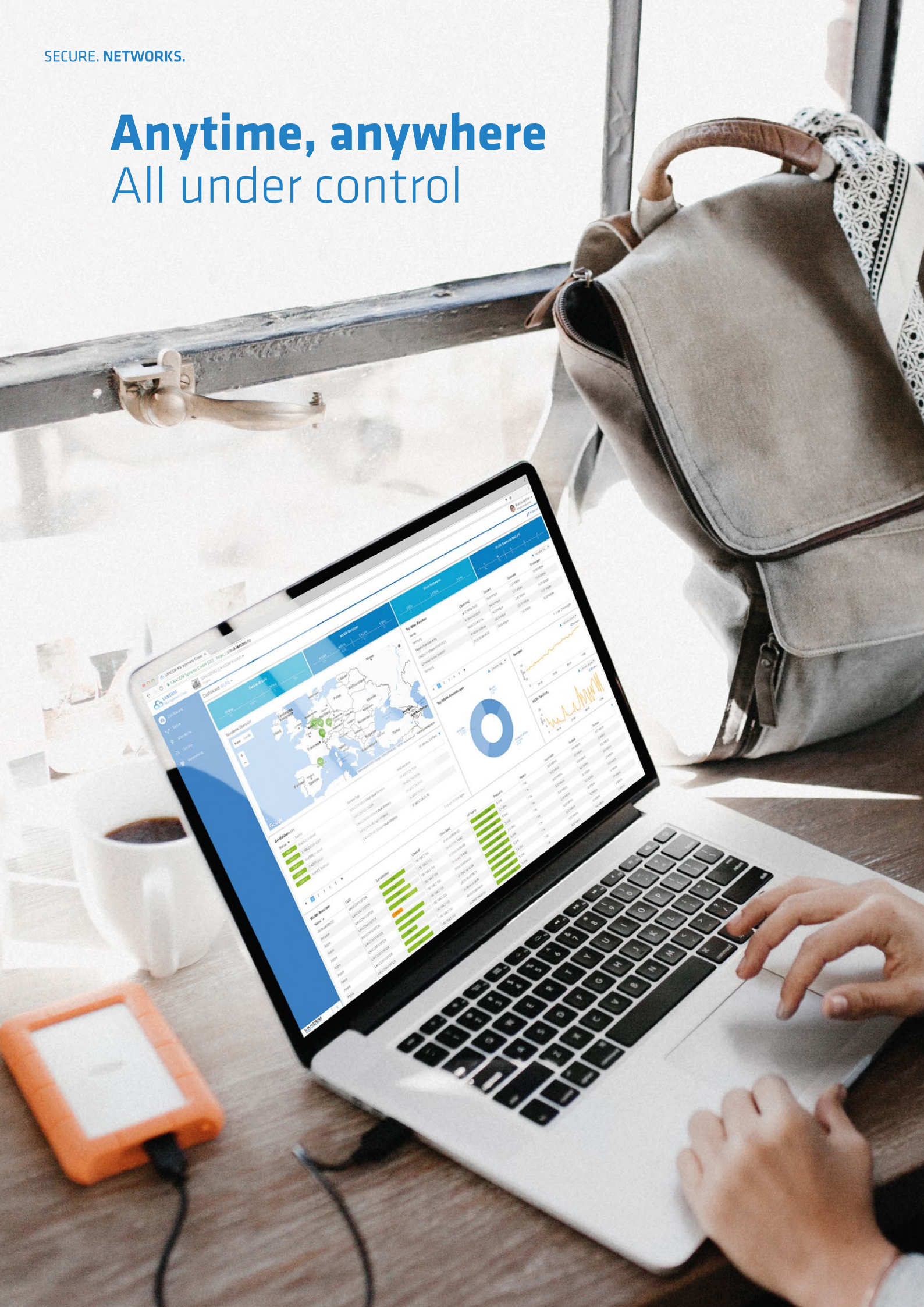
It takes just a few clicks to integrate your devices into the LANCOM Management Cloud – be they new devices or existing infrastructures. You decide whether to switch your entire network over to innovative SD-WAN, SD-LAN, SD-WLAN, and SD-SECURITY, or whether to take it step by step: A gradual transition of your different locations is easy to implement – so take a closer look at the full power of Hyper Integration.



SECURE. NETWORKS.

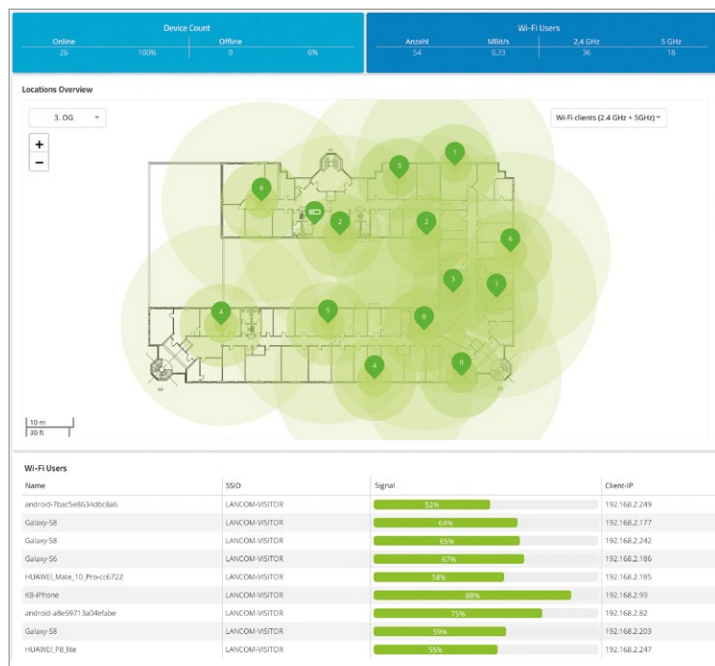
# Anytime, anywhere

## All under control



## Hyper Integration means: Central management & monitoring

The unique combination of state-of-the-art technology and the LANCOM premium portfolio encompasses all segments of the network infrastructure – the WAN, the LAN, the WLAN, and the security policies active on the network. These help you to create highly integrated, company-wide network scenarios at the click of a mouse: Interconnect your locations, home offices, and field staff, for instance. Define Wi-Fi networks for internal user groups or hotspots for guests. You can ensure maximum network security, for example through the central management of device passwords, content and application filtering, and protection from malware and viruses\*. All of this is centrally designed, rolled out, and monitored with just a few clicks – a web browser is all you need. Furthermore, you benefit from around-the-clock monitoring, diagnosis, and troubleshooting. You are constantly aware of any events or errors on the network, which helps with the immediate detection and rectification of problem sources. This saves valuable time and eliminates the need for manual reactive checks on network performance – and ensures that your data is fully protected at all times.



\* Integration in 2019

# The right solutions for different needs



## Public Cloud

For any scale of installation, hosted centrally and securely in Germany

## Private Cloud

For system vendors, service providers, and large enterprise installations

SecurITy

TeleTrust Quality Seal  
www.teletrust.de/itsmlg

made  
in  
Germany



## Hyper Integration means: Public Cloud or Private Cloud

You decide: Either you use the central and securely hosted Public Cloud based in Germany, which offers maximum scalability and data security for installations of all sizes.

Or you host the system yourself on the LMC Private Appliance. This is the ideal solution for observing corporate security policies that requires the operation of a private cloud without missing out on the features and convenience of the LANCOM Management Cloud. It allows companies to operate the LANCOM Management Cloud at their own data center or on-premises, without sharing an infrastructure with other client organizations. The solution package consists of a powerful hardware appliance, an installation service, and software maintenance by LANCOM Systems.

## Hyper Integration means: New licensing possibilities

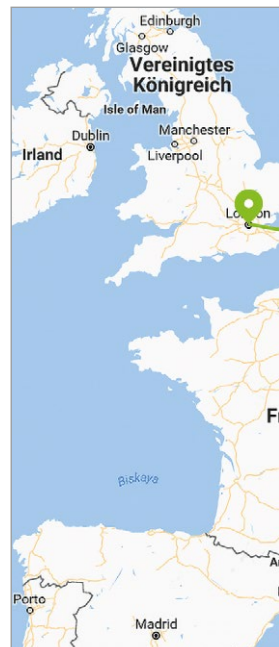
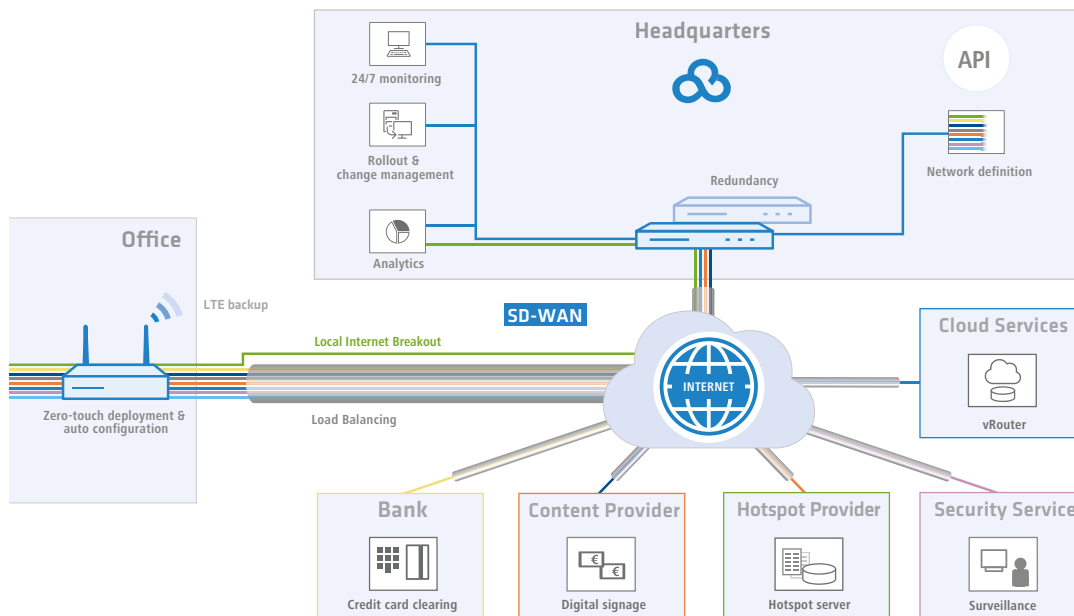
IT networks are often implemented using the conventional, static CAPEX model, i.e. the system vendor is involved in the planning of the network and the necessary hardware is then procured and put into operation. Later changes or upgrades are laborious and require the on-site presence of network specialists. In contrast to this static approach, the LANCOM Management Cloud not only makes your network agile, future-proof and easily expandable: it also provides license models that are billed as operating costs (OPEX) and that flexibly adapt to your requirements.

# SD-WAN



A software-defined wide-area network (SD-WAN) automatically and dynamically uses any type of wide-area network (WAN) for your site connectivity. The core element here are highly automated multi-service networks, which are realized via inexpensive Internet connections, so making expensive MPLS connections no longer necessary. New locations are installed automatically, securely networked with one another, and new applications are created and rolled out with just a few clicks. Backup, load balancing, and redundancy are supported as a matter of course. Software-defined WAN is replacing the conventional, static, and manually configured network infrastructures, and it is drastically reducing IT costs.

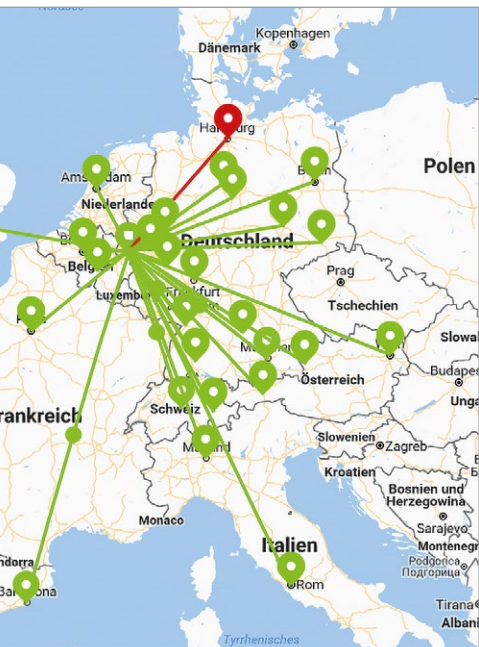
## SD-WAN application scenario





# vROUTER

(LANCOM VIRTUAL ROUTER)



+ Create new network

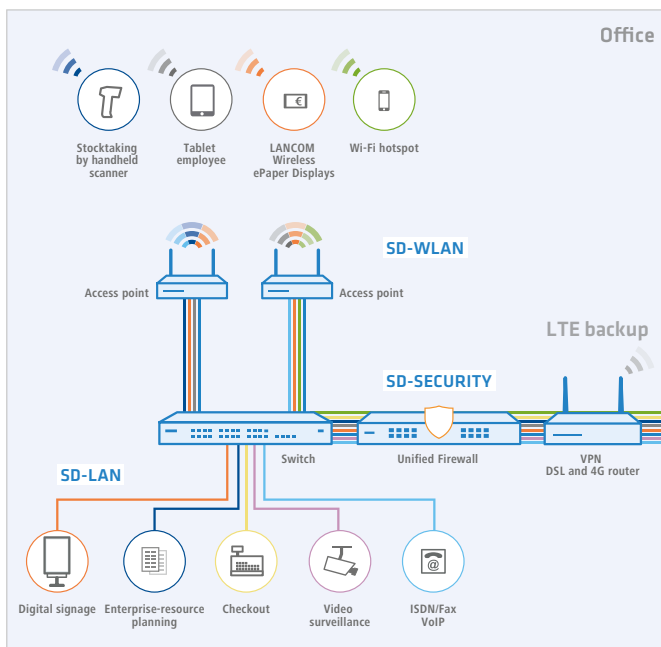
STATUS	NAME	IP RANGE	VLAN	INTERNET	VPN	HOTSPOT
Active	Alarm	10.6.0.0/16	6	✓	✓	—
Active	Intranet	10.8.0.0/16	8	✓	✓	—
Active	Hotspot	10.100.0.0/16	100	✓	—	✓
Active	Digital Signage	10.2.0.0/16	2	✓	✓	—
Active	ERP	10.1.0.0/16	untagged	✓	✓	—
Active	Voice	10.5.0.0/16	5	✓	—	—
Active	Management	10.3.0.0/16	3	—	✓	—
Active	DevOps	10.7.0.0/16	7	✓	✓	—
Active	Procurement	10.4.0.0/16	4	✓	✓	—

# SD-SECURITY

Software-defined security (SD-SECURITY) provides centrally managed cloud-orchestrated IT security for networks. Network-wide or site-specific security policies are configured by a central cloud management system, rolled out to the sites and monitored (cloud-managed security). Apart from LANCOM LCOS-based routers and VPN gateways LANCOM R&S® Unified Firewalls are integrated\* into the network providing state-of-the-art protection against cyber attacks, viruses, and malware. For global enterprise customers this protection is alternatively offered via a central cloud-based solution by Zscaler. Furthermore, a central dashboard provides a constant overview of whether security and compliance requirements are being met across the entire network.

\* Integration in 2019

## Cloud-managed Security





# Security

made  
in  
Germany



**Preview** Security definition in the LMC

Security level ||||| ✔ High security level

Malware protection (only RSUF) [modify whitelist](#)

SSL inspection (only RSUF) [modify whitelist](#)

Choose application, category, target server/ -address or service/port for which you want to add a rule.

Application, category, DNS name/IP or service/port

1	Application <input type="button" value="+"/> Office 365 <input type="button" value="x"/> Salesforce <input type="button" value="x"/> Creative cloud <input type="button" value="x"/>	Action Accept <input type="button" value="v"/>	Routing Local breakout <input type="button" value="v"/>
2	Category <input type="button" value="+"/> Ruidy <input type="button" value="x"/> Plagiarism <input type="button" value="x"/> Unauthorized software stores <input type="button" value="x"/> Extreme <input type="button" value="x"/> 10 more ...	Action Accept <input type="button" value="v"/>	
3	Services/ports <input type="button" value="+"/> ALL <input type="button" value="x"/>	Direction Intranet <input type="button" value="v"/> Incoming <input type="button" value="v"/>	Target <input type="button" value="+"/> Foreign Networks <input type="button" value="x"/>

Action

## Cloud-based Security by Zscaler\*\*

- > Cloud-based firewall features (antivirus, sandboxing, application control, bandwidth restriction)
- > No additional security appliances required at the sites
- > Real-time cloud updates for continual up-to-date protection
- > Data Loss Prevention (DLP)

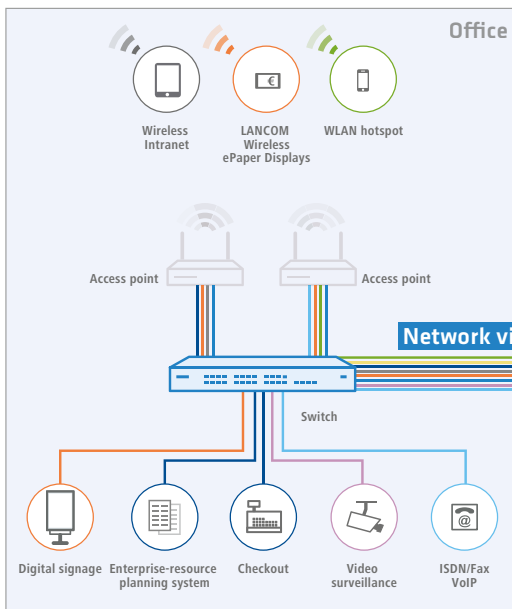
\*\* only for major customers & enterprise projects, separate Zscaler account mandatory

# SD-LAN



Short for software-defined local-area network, an SD-LAN supports the automated, dynamic, and secure provisioning of any type of multi-service network on switch ports. What used to be the extremely time-consuming and error-prone configuration of individual switches is now fully automated. For multi-site switch configurations, the required networks (VLANs) are defined once only, they are then assigned to the desired switch ports and made available by all of the switches on the network. You additionally modify the individual switch configurations with the user-friendly graphical VLAN assignment. An SD-LAN not only saves your valuable time, it completely eliminates manual configuration errors.

## SD-LAN application scenario



Selection: Video camera
Port labeling

1	2	3	4	5	6	7	8	9A	9B	10A	10B

**Details - Video camera**

Video camera

Connection: PoE

**Connection**

■ 10/100 Mbps   
 ■ 1/10 Gbps   
 ■ Deactivated   
 ■ Not connected

**PoE**

■ Active   
 ■ Deactivated   
 ■ No PoE devices connected

**Network profiles**

● Alarm   
 ● Intranet   
 ● Internet   
 ● Digital Signage   
 ● ERP   
 ● Voice



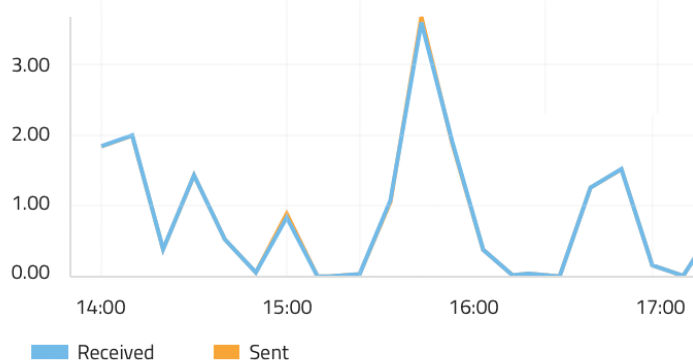
Graphical VLAN assignment

- Network profiles
  - Default
  - Deactivated
- Untagged network
  - Alarm (VLAN 5)
  - Intranet (VLAN 1)
  - Internet (VLAN 2)
  - Digital Signage (VLAN 10)
  - ERP (VLAN 5)
  - Voice (VLAN 12)

Port monitoring

Total Throughput (Mbps)

Hour Day Week

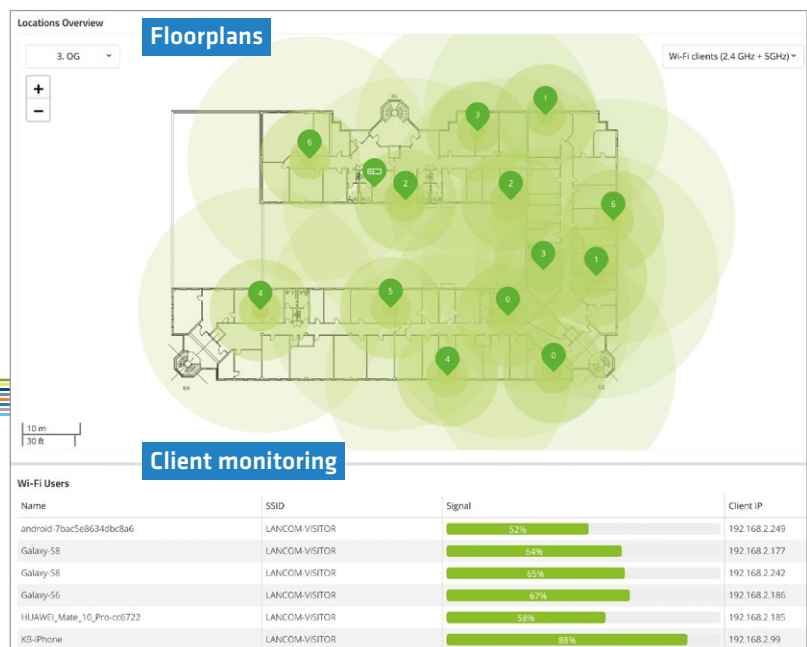
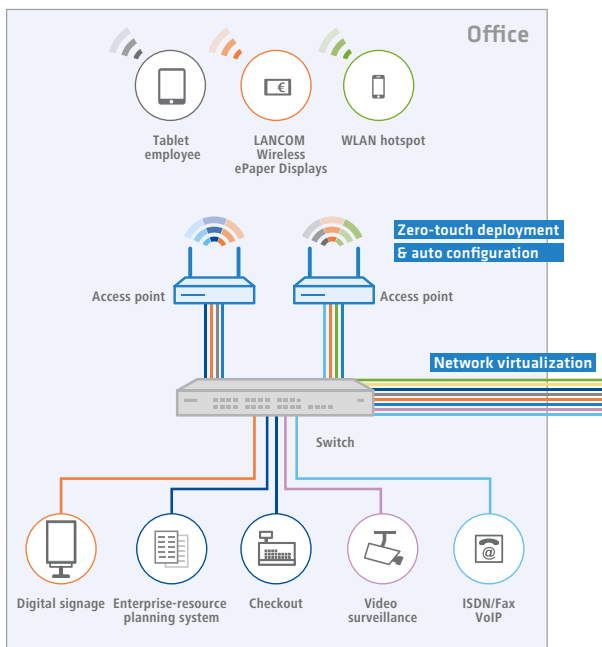


# SD-WLAN



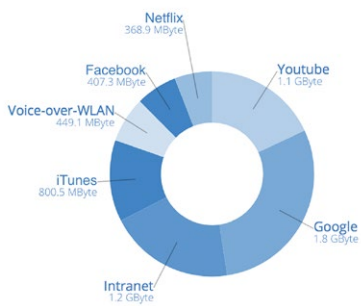
A software-defined wireless local-area network (SD-WLAN) combines the features of conventional WLAN controllers and cloud-managed Wi-Fis and supplements these with maximized automation and agility. Additional access points or new applications such as hotspots are easily integrated into the network, taking full account of all network policies relating to VLANs, security, bandwidth management or client management. At the same time, an SD-WLAN offers administrators a graphical all-around view of the Wi-Fi status as well as the application-level and client-level loads on the entire network – prerequisites for proactive, around-the-clock troubleshooting.

## Cloud-managed Wi-Fi





Layer-7 application detection



Usage statistics

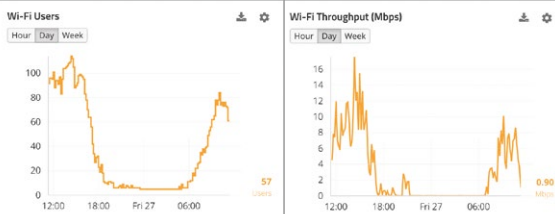


Image for desktop view



Select image

Image for mobile view



Select image

Login

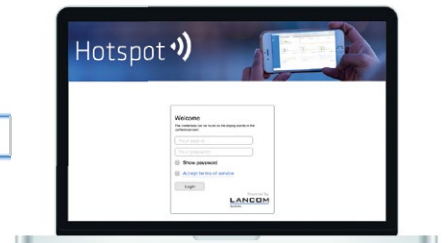
Show custom text on login page

English

Login text

Welcome!

Preview

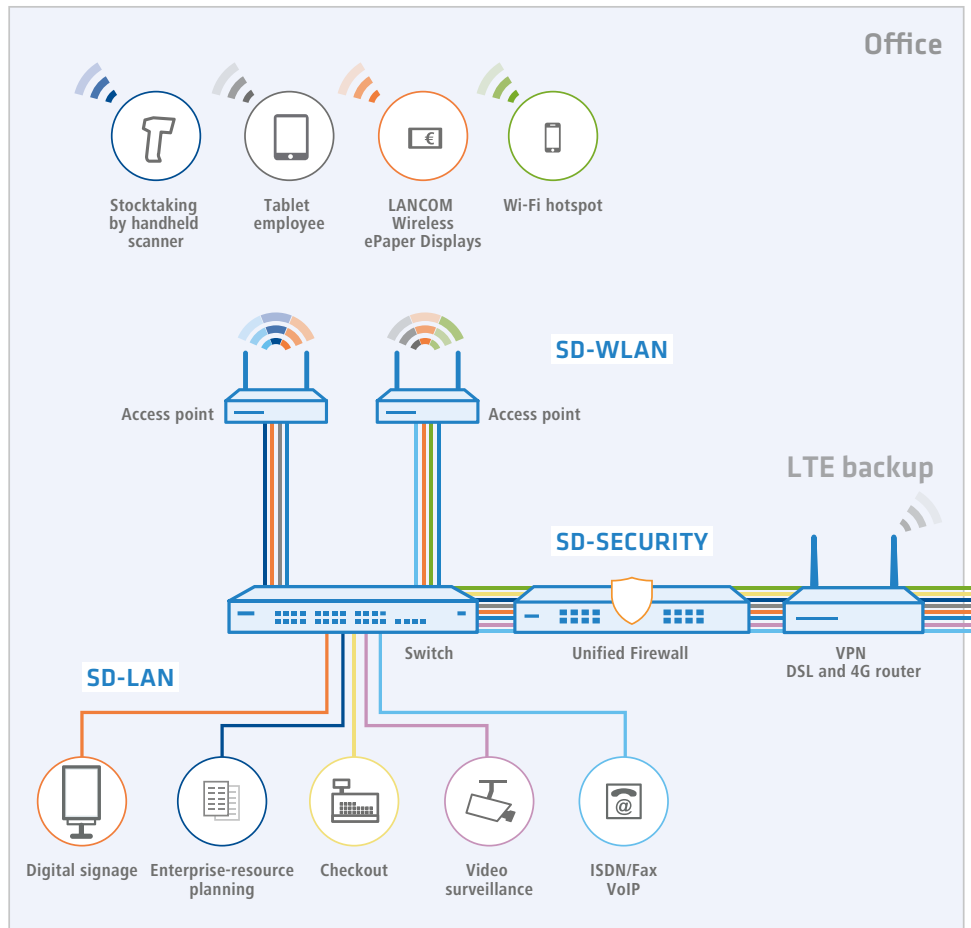
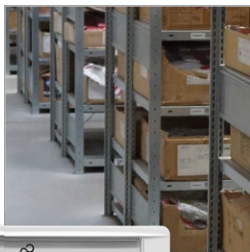


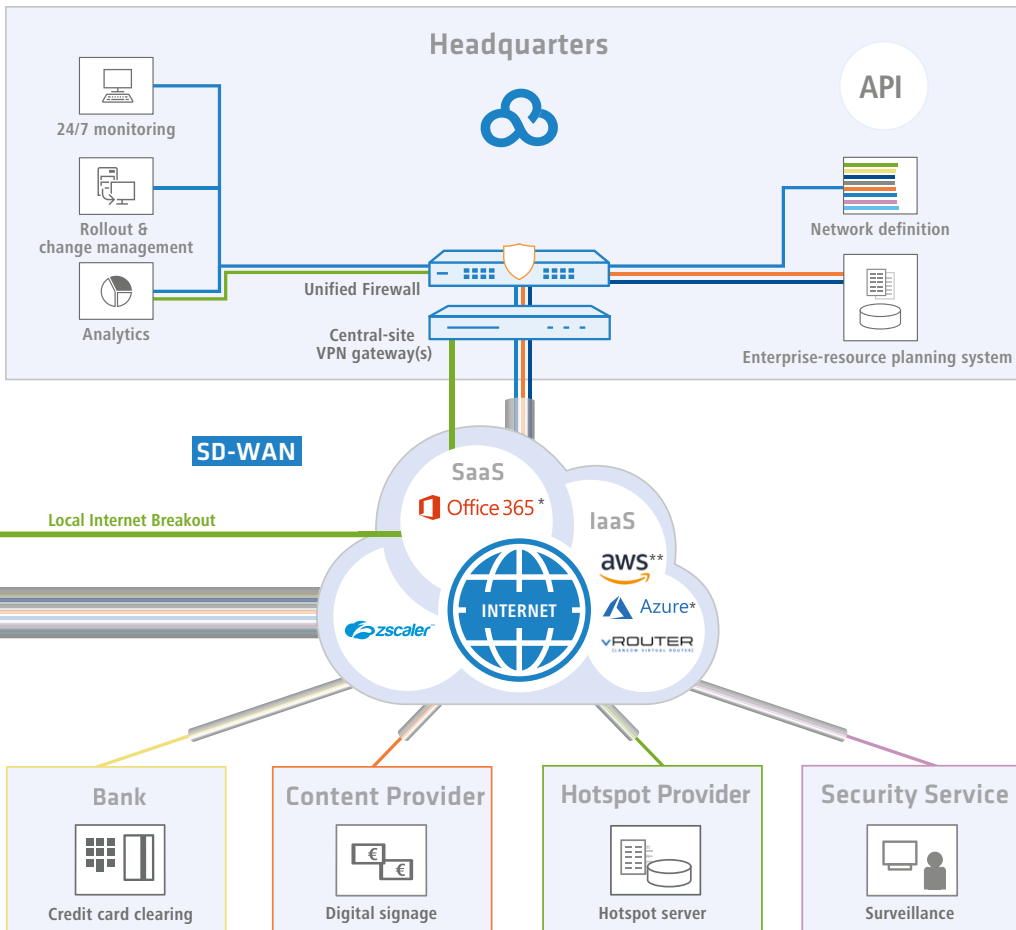
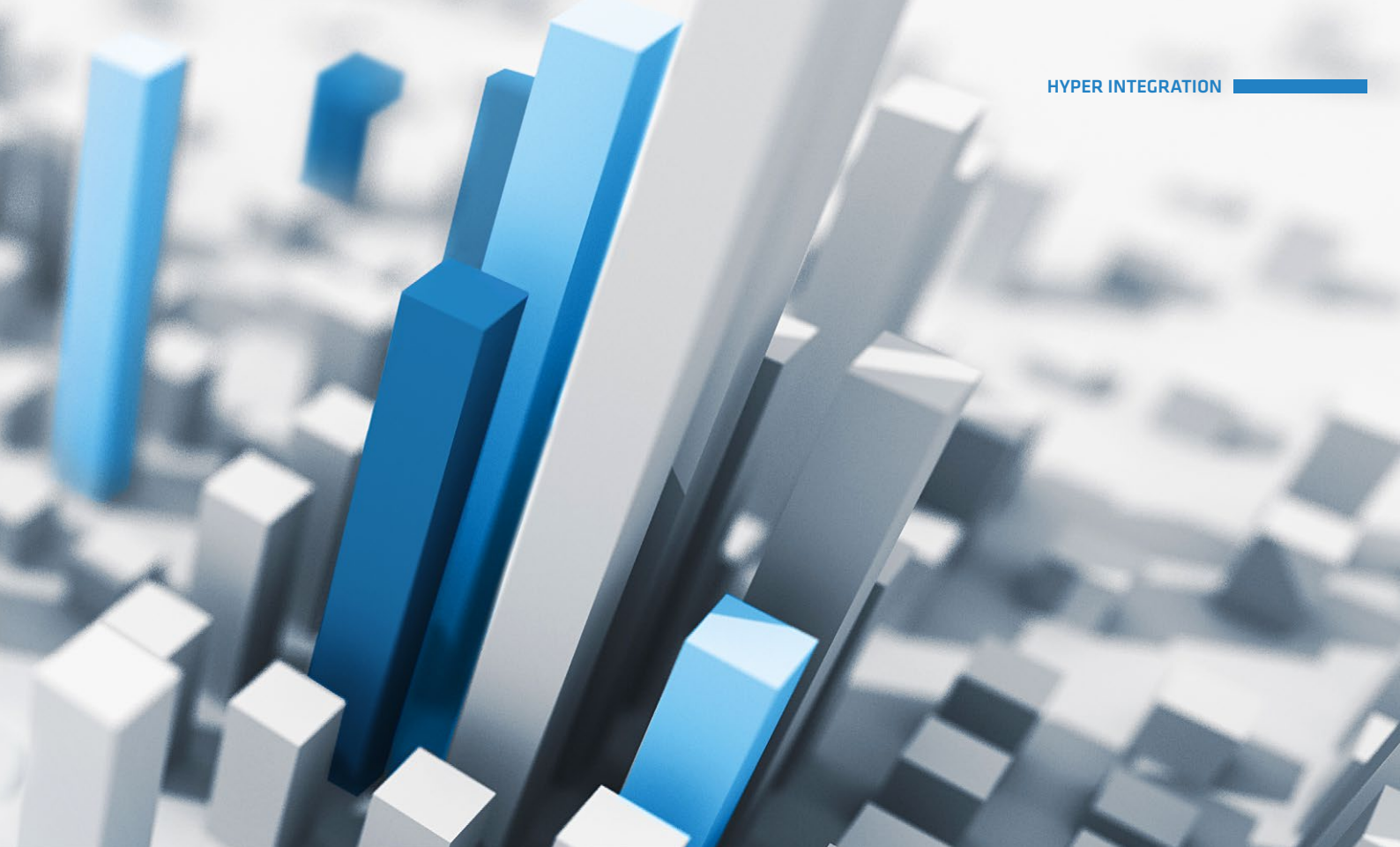
WLAN hotspot

# LANCOM Hyper Integration Software-defined Branch

## SD-BRANCH

Hyper Integration means combining SD-WAN-, SD-LAN-, SD-WLAN, and SD-SECURITY functionalities in one cloud-based management system. Through this, enterprises with many branch offices benefit from maximum automation, security, agility, and quality of your network operation. We call this: SD-Branch.





\* Microsoft Azure and Office 365 are either registered trademarks or trademarks of Microsoft Corporation in the U.S. and/or other countries.

\*\* Amazon Web Service is a trademark of Amazon.com, Inc. registered in the U.S. and other countries.

**Have we aroused your interest?  
Our Inside Sales Team is ready to help you.**

**Head office**

LANCOM Systems GmbH  
Adenauerstr. 20 / B2  
52146 Wuerselen  
Germany

**Telephone**

+49 (0)2405 49936-333

**Fax**

+49 (0)2405 49936-99

**E-mail**

[sales@lancom-systems.com](mailto:sales@lancom-systems.com)

**Internet**

[www.lancom-systems.com](http://www.lancom-systems.com)

LANCOM, LANCOM Systems, LCOS, LANcommunity and Hyper Integration are registered trademarks. All other names or descriptions used may be trademarks or registered trademarks of their owners. This document contains statements relating to future products and their attributes. LANCOM Systems reserves the right to change these without notice. No liability for technical errors and/or omissions.  
03/19