










25th Nelson Bay Sea Slug Census, 28-29th November 2020

Awesome results!

Incredible! **116** different species, the 2nd highest total ever!

Unbelievable! **9** new species found, taking the total for censuses to 261!

		
<p><i>Atagema osseosa</i> (Steve Smith & Matt Nimbs)</p>	<p><i>Cerberilla</i> sp. 3 (Steve Smith & Matt Nimbs)</p>	<p><i>Dendronotus</i> sp. ML1 (Meryl Larkin & Chris Westley)</p>
		
<p><i>Discodoris</i> sp. CL1 (Craig & Alex Lewis)</p>	<p><i>Hermaea</i> sp. DH1 (Meryl Larkin & Chris Westley)</p>	<p><i>Lamellaria</i> sp. KT1 (K. Tinson and C. Shorthouse)</p>
		
<p><i>Polybranchia</i> sp. ML1 (M. Larkin & C. Westley)</p>	<p><i>Polycera</i> sp. BM1 (M. Larkin & C. Westley)</p>	<p><i>Siphopteron</i> sp. DH1 (K. Tinson and C. Shorthouse)</p>

Calm sunny weather enticed 32 intertidal searchers and divers to join in. Thanks to;

Alex Lewis, Ashley Smith, Brett Touzell, Catherine Shorthouse, Chris Westley, Craig Lewis, David Atkinson, David Harasti, Hans Staub, Ian Marriner, James Wong, Jay Rawson, Karen Diehl, Kate Tinson, Kaz Hing, Kylie Brown, Margo Smith, Marty Hing, Matt Nimbs, Meryl Larkin, Nichole Lenton, Nicola Davis, Pam Steele, Peter Godfrey-Smith, Renee Hateley, Rob Wallis, Steve Smith, Tahryn Whately, Tom Davis, Trudie Campey, Warwick Jennings, Zara Boyce

25th Nelson Bay Sea Slug Census

The following album shows all the species found on the census.

Note: All photos were taken by participants in the census. Photos are in order from “most sighted” to “least sighted” with the number of teams sighting species shown in brackets.



Aphelodoris varia (14)



Doriprismatica atromarginata (14)



Ceratosoma brevicaudatum (13)



Coryphellina rubrolineata (13)



Goniobranchus splendidus (13)



Ceratosoma amoenum (12)



Goniobranchus daphne (12)



Pteraeolidia ianthina (12)



Hypselodoris bennetti (11)



Aplysia extraordinaria (10)



Dendrodoris krusensternii (10)



Goniodoridella savignyi (9)

25th Nelson Bay Sea Slug Census



Goniobranchus aureopurpureus (8)



Pleurobranchus peronii (8)



Doriopsilla peculiaris (7)



Hypselodoris obscura (7)



Mexichromis festiva (7)



Oxynoe viridis (7)



Plocamopherus imperialis (7)



Caloria indica (6)



Goniodoris cf. *violacea* (6)



Pleurobranchus hilli (6)



Thorunna daniellae (6)



Trapania brunnea (6)



Cratena lineata (5)



Diaphorodoris mitsuii (5)



Jorunna ramicola (5)

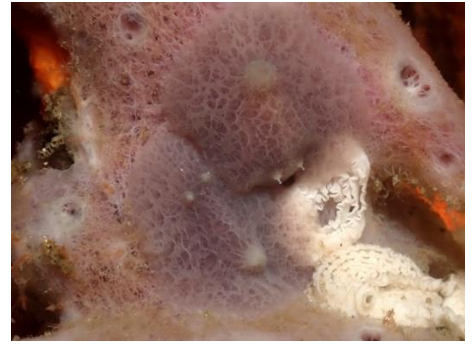
25th Nelson Bay Sea Slug Census



Kaloplocamus acutus (5)



Polycera capensis (5)



Rostanga crawfordi (5)



Thecacera pennigera (5)



Aplysia parvula (4)



Baeolidia australis (4)



Berthellina citrina (4)



Doris cameroni (4)



Elysia sp. 1 (4)



Elysia tomentosa (4)



Trinchesia sibogae (4)



Aplysia sydneyensis (3)



Austreaolis ornata (3)



Bulbaeolidia alba (3)



Coryphellina poenicia (3)

25th Nelson Bay Sea Slug Census



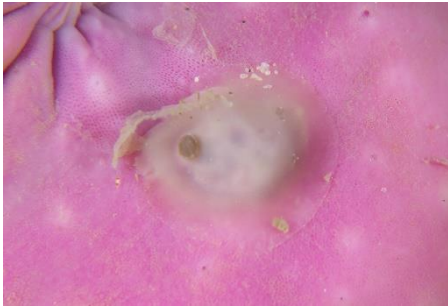
Dermatobranchus sp. 1 (3)



Elysia maoria (3)



Glossodoris angasi (3)



Hallaxa michaeli (3)



Hancockia burni (3)



Petalifera ramosa (3)



Phyllodesmium poindimiei (3)



Polycera sp.5 (3)



Tritonia sp. 1 (Carijoa) (3)



Tularia bractea (3)



Carminodoris nodulosa (2)



Chromodoris sp.1 (2)



Dendrodoris nigra (2)



Dermatobranchus dendronephthiphagus (2)



Doriopsilla carneola (2)

25th Nelson Bay Sea Slug Census



Elysia australis (2)



Elysia expansa (2)



Eubranchius sp.ML4 (2)



Facelina newcombi (2)



Favorinus tsuruganus (2)



Flabellina sp. 2 (2)



Goniobranchus albonares (2)



Goniobranchus collingwoodi (2)



Goniobranchus hunterae (2)



Goniobranchus setoensis (2)



Goniodoridella sp. 2 (2)



Kaloplocamus ramosus (2)



Lobiger viridis (2)

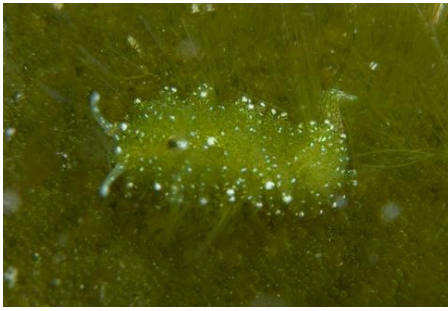


Okenia eolida (2)



Philinopsis speciosa (2)

25th Nelson Bay Sea Slug Census



Placida dendritica (2)



Pleurobranchaea maculata (2)



Rostanga arbutus (2)



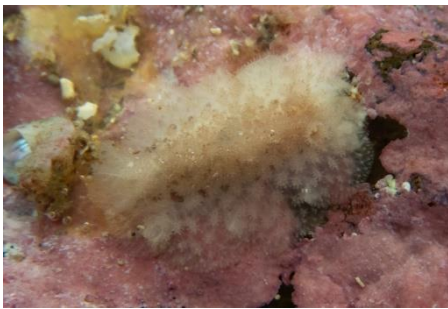
Syphonota geographica (2)



Thecacera pacifica (2)



Anteaeolidiella cacaotica (1)



Atagema osseosa (1)



Biuve fulvipunctata (1)



Cerberilla sp.3 (1)



Cuthona puellula (1)



Dendronotus sp.ML1 (1)



Discodoris sp. 3 (1)



Discodoris sp.CL1 (1)



Dolabella auricularia (1)



Dolabrifera brazieri (1)

25th Nelson Bay Sea Slug Census



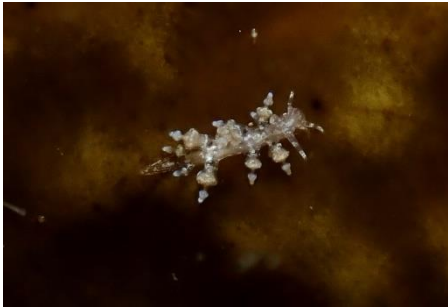
Elysia sp. 2 (1)



Eubranchus ocellatus (1)



Eubranchus sp. ML2 (1)



Eubranchus sp. ML3 (1)



Eubranchus sp. trd1 (1)



Goniobranchus tinctorius (1)



Gymnodoris alba (1)



Hancockia sp. ML1 (1)



Hermaea sp. DH1 (1)



Janolus sp. 1 (orange) (1)



Lamellaria sp. KT1 (1)



Marionia pustulosa (1)



Okenia echinata (1)



Okenia harastii (1)



Philinopsis lineolata (1)

25th Nelson Bay Sea Slug Census



Platydoris sp. TRD1 (1)



Plocamopherus tilesii (1)



Polybranchia sp. ML1 (1)



Polycera melanosticta (1)



Polycera sp. BM1 (1)



Samla bicolor (1)



Siphopteron_sp DH1 (1)



Spurilla macleayii (1)



Tayuva lilacina (1)



Trapania benni (1)



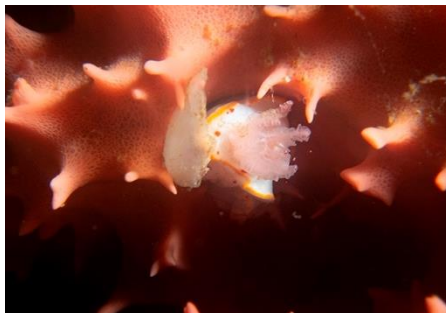
Trinchesia ornata (1)



Trinchesia thelmae (1)



Vayssierea felis (1)



Verconia haliclona (1)