

# AEG

## THE KITCHEN COLLECTION

PRODUCT RANGE





## WELCOME TO AEG

Great taste comes down to mastering the details in each step of the cooking process. At AEG we want to equip you with the right tools to create exceptional taste experiences and to perfect your culinary vision.

## CONTENTS

Mark Best, AEG Brand Ambassador	6
Cooking Demonstrations	7
Ovens	8
Cooktops	26
Rangehoods	48
Cooking Accessories	58
Specifications	64
First Klasse Care	78
AEG Garantie	79



# MARK BEST AEG BRAND AMBASSADOR



Mark Best started by discovering the stoves accidentally and ended up becoming an unquestionable symbol of the new Australian Cuisine. His perseverance and his 'eternal dissatisfaction' (as he calls it himself) are the vitamins for his spectacular personal development.

"I live in a melting pot of new ideas and cultures," says Mark Best. "We do not have the shackles of culinary history; we are free to be inventive, spirited, adaptive and progressive."

"I aim to bring the extraordinary produce of Australia to a point of celebration and unnatural expression".

These words accurately describe Best's approach to cooking. Food, focussed on flavour, with technology an integral ingredient.

Best started his working life as an electrician in the gold mines of Western Australia before embarking on his culinary career at the age of 25. He commenced an apprenticeship at the Macleay Street Bistro, Potts Point, in 1990. This was the beginning of his passion for French food. It was the heyday of modern Australian cuisine – the fusion of European techniques

and ingredients with the flavours of the Asian region – and a flourishing time for Sydney's food scene. In 1995 Best won the annual award for Sydney's best young chef, The Josephine Pignolet Award.

In 1995, he opened his own restaurant, Peninsula Bistro, Balmain, which soon developed a strong local following and rave critical acclaim. During this time he decided to further his study of French Cuisine in France. In 1998 he worked at 'L'Arpège' in Paris, (under Pascal Barbot) Alain Passard's three Michelin Star Gastro Temple. He followed this with a stint at Raymond Blanc's, 'Le Manoir Aux Quatre Saisons' in Great Milton, UK.

Mark Best has won Chef of the Year in the annual Sydney Morning Herald Good Food Guide, Restaurant of the Year in Australian Gourmet Traveller, Sydney Morning Herald, Time Out magazine and in the Restaurant and Catering Association's Awards for Excellence, featured for three years running in the San Pellegrino & Restaurant Magazine's World's 50 Best commencing with the 2010 "Breakthrough Award".

Best has previously owned Marque, Pei Modern, Melbourne & Sydney, and recently opened 'Bistro' by Mark Best on the Genting Dream part of the expanding Dream Cruise lines.



# COOKING DEMONSTRATIONS

At AEG, we believe our products deliver intelligent technology and exceptional performance, helping you to take anything you do in the kitchen to the next level.

We want to equip you with the right tools to create exceptional taste experiences. Why not attend one of our introductory cooking demonstrations at one of our participating retailers to see for yourself.

Our demonstrations are designed to showcase some of the many features and benefits of our product range. You will receive great tips and tricks from our knowledgeable chefs who will demonstrate a variety of recipes and answer any questions you may have.

Our demonstration program runs throughout the year at a number of national retailers. Please visit our website and enter the Inspire with AEG area for full details.



# OVENS

## ELEVATE YOUR COOKING WITH STEAM

Steam. It's the word on everyone's lips, from chefs to discerning home cooks. SteamPro with Steamify® is the secret ingredient that elevates your cooking to restaurant standards – you can even SousVide, with ease.

With the Steamify® function, set the desired temperature and the oven will adjust the steam level automatically. For healthier, tastier food, steam cooking brings out the richest flavours and preserves nutrition.

## SOUSVIDE IN JUST FOUR STEPS

Food cooked using the vacuum-sealed, lower temperature SousVide technique is tastier and healthier. You can cook with absolute purity, sealing the aromas, taste and nutrients within the vacuum bag, then applying gentle steam heat to cook delicious dishes.

### STEP 1

Clean, chop and season.



### STEP 2

Seal all the flavours in the PrecisionVac SousVide vacuum sealer drawer.



### STEP 3

Place in the oven and select the SousVide function.



### STEP 4

Plate and present.



## INTRODUCING MATTE BLACK

The Matte Black Collection from AEG brings a new tactile finish to the Mastery Range at a time when we are seeing matte textured finishes emerging across all interior surfaces, homeware and technology products. It brings together years of material engineering for an exclusive and premium execution, which will bring a new aesthetic to an increasingly sophisticated kitchen space.



## SLEEK, SEAMLESS, SUPERIOR

The process of creating Matte glass enhances the characteristics of tempered glass, and the stain resistant and anti-fingerprint properties of its' surface, makes it a perfect fit in the most demanding environment. Our designers have ensured that the display and interaction areas of the ovens have been left polished to enable clarity of view and effortless interaction through touch.



# STEAMPRO. MASTER EVEN THE MOST COMPLEX FLAVOURS

Now you can be sure of exactly the right amount of steam to create delicious results every time – effortlessly. The SteamPro oven features the Steamify® function to ensure the ideal taste, texture and colour when roasting meat, steaming vegetables, baking soufflés or making delicious SousVide dishes.

NEW

## STEAMPRO WITH STEAMIFY® BSK99733PT

**60cm matte black SteamPro oven**  
with Command Wheel control

### KEY FEATURES

- 70L nett capacity, 77L gross
- Steamify®
- 25 oven functions plus automatic assisted cooking
- SteamPro steam assisted cooking functions
- Command Wheel control with SousVide functions
- Humidity sensor
- Food Sensor
- Fully removable water drawer
- Steam cleaning functions
- SoftMotion door closing
- ThermiC°air technology
- FloodLight illumination system
- IsoFront quadruple glazed door
- Stain resistant and anti-fingerprint matte black finish

### Included accessories:

- 3 OptiFlex telescopic runner sets
- 2 stainless steel wire shelves
- Wire shelf trivet
- Dripping pan
- Cake tray
- Patissoire
- Steam set



### Steamify®

With the Steamify® function, set the desired temperature and the oven will adjust the steam level automatically. For healthier, tastier food. Steam cooking brings out the richest flavours and preserves nutrition.



### SousVide function

The SteamPro gives you the power of the SousVide technique that professional chefs swear by for the most tasty, tender and perfectly cooked food.



### Humidity sensor

The advanced humidity sensor ensures the precise amount of steam is used for every dish. It automatically adjusts temperature and moisture levels to match the type of food you're cooking for the very best taste and texture.



### Food sensor

The Food Sensor allows you to accurately control the cooking process, so every dish is finished just how you want it.



### SPECIFICATIONS

#### Product dimensions (HxWxD) in mm

594 x 595 x 567

#### Flush fit cut-out dimensions (HxWxD) in mm

600 x 600 x 580

# STEAMCRISP. YOUR NEW STANDARD FOR FLAVOUR

Take your dishes to the next level with the SteamCrisp function. How? Traditional oven heat is enhanced by the introduction of steam. So not only do you get crisp and golden on the outside, but thanks to the gentle flavour preserving nature of steam, food is juicy, succulent and consistently tasty on the inside.

NEW

## STEAMCRISP PYROLUXE™ BSK97733PT

**60cm matte black SteamCrisp oven**  
with Command Wheel control

### KEY FEATURES

- 70L nett capacity, 77L gross
- 19 oven functions plus automatic assisted cooking
- SteamCrisp steam assisted cooking functions
- PyroLuxe™ self-cleaning function
- Food Sensor
- SoftMotion door closing
- ThermiC°air technology
- FloodLight illumination system
- IsoFront quadruple glazed door
- Stain resistant and anti-fingerprint matte black finish

### Included accessories:

- 3 OptiFlex telescopic runner sets
- 2 chrome wire shelves
- Dripping pan
- Wire shelf trivet
- Cake tray



### Pyrolytic cleaning

With one touch, dirt, grease and food residue in the oven is converted into ash that you can easily wipe off with a damp cloth.



### Food sensor

The Food Sensor allows you to accurately control the cooking process, so every dish is finished just how you want it.



### Command wheel

With the responsive Command Wheel and TFT display you have complete control over the cooking process, whether adjusting the time, temperature or function of your oven.



### SPECIFICATIONS

#### Product dimensions (HxWxD) in mm

594 x 595 x 567

#### Flush fit cut-out dimensions (HxWxD) in mm

600 x 600 x 580

# STEAMBAKE. ADD STEAM FOR CRISPIER BAKING

The SteamBake function adds steam at the beginning of the baking process, keeping the dough moist on the surface to create a golden colour and tasty crust, while the heart stays soft and tender.



## STEAMBAKE PYROLUXE™ BPK556320M

**60cm SteamBake PyroLux™ oven**  
with Touch on Glass controls

### KEY FEATURES

- 71L nett capacity, 77L gross
- 10 oven functions
- SteamBake steam assisted baking function
- PyroLux™ self-cleaning function
- Food Sensor
- ThermiC°air technology
- SoftMotion door closing
- IsoFront quadruple glazed door
- Anti-fingerprint stainless steel

### Included accessories:

- 3 OptiFlex telescopic runner sets
- 2 chrome wire shelves
- Dripping pan
- Wire shelf trivet
- Cake tray



### Soft closing door technology

Ensures that the door always shuts softly and silently, to deliver both the look and feel of premium performance.



### XL baking tray

Compared with standard trays, this XL baking tray is 20% bigger, making it possible for you to prepare even larger batches of delicious baked goods.



### Safe to touch plus

The outside of this oven door stays cool to the touch. It reaches a maximum of 30°C above standard room temperature, allowing for a safe interaction under all circumstances.

### SPECIFICATIONS

#### Product dimensions (HxWxD) in mm

594 x 594 x 567

#### Flush fit cut-out dimensions (HxWxD) in mm

600 x 600 x 580



## STEAMBAKE PYROLUXE™ BPK552220M

**60cm SteamBake PyroLux™ oven**  
with Push Button control

### KEY FEATURES

- 71L nett capacity, 77L gross
- 10 oven functions
- SteamBake steam assisted baking function
- PyroLux™ self-cleaning function
- Food Sensor
- SoftMotion door closing
- ThermiC°air technology
- IsoFront quadruple glazed door
- Fully programmable timer
- Anti-fingerprint stainless steel

### Included accessories:

- 2 chrome wire shelves
- Dripping pan
- Wire shelf trivet

### SPECIFICATIONS

#### Product dimensions (HxWxD) in mm

594 x 595 x 567

#### Flush fit cut-out dimensions (HxWxD) in mm

600 x 600 x 580



## STEAMBAKE BEK455310M

**60cm SteamBake oven**  
with Touch on Glass control

### KEY FEATURES

- 71L nett capacity, 77L gross
- 9 oven functions
- SteamBake steam assisted baking function
- SoftMotion door closing
- ThermiC°air technology
- IsoFront quadruple glazed door
- Fully programmable timer
- Anti-fingerprint stainless steel

### Included accessories:

- 2 chrome wire shelves
- Dripping pan
- Wire shelf trivet
- Cake tray

### SPECIFICATIONS

#### Product dimensions (HxWxD) in mm

594 x 595 x 567

#### Flush fit cut-out dimensions (HxWxD) in mm

600 x 600 x 580



# SENSECOOK. COOK TO TASTE, EVERY TIME

By precisely measuring the core temperature of your food, the Food Sensor lets you know when your rare, medium or well done meat is ready. As well as cooking fish, casseroles and vegetables just the way you like them.

**NEW**

## SENSECOOK PYROLUXE™ BPK94733PT

**60cm matte black  
SenseCook PyroLuxe™ oven**  
with Command Wheel control

### KEY FEATURES

- 71L nett capacity, 77L gross
- 16 oven functions
- Automatic assisted cooking
- PyroLuxe™ easy cleaning
- Food Sensor
- ThermiC°air technology
- SoftMotion door closing
- FloodLight illumination system
- IsoFront quadruple glazed door
- Fully programmable timer
- Stain resistant and anti-fingerprint matte black finish

### Included accessories:

- 3 pyro proof OptiFlex telescopic runner sets
- 2 chrome wire shelves
- Wire shelf trivet
- Dripping pan
- Cake tray



### Pyrolytic cleaning

With one touch, dirt, grease and food residue in the oven is converted into ash that you can easily wipe off with a damp cloth.



### Pyro proof runners

Clean your oven with the pyrolytic cleaning program with the telescopic runners inside.



### Food sensor

The Food Sensor allows you to accurately control the cooking process, so every dish is finished just how you want it.



### Command wheel

With the responsive Command Wheel and TFT display you have complete control over the cooking process, whether adjusting the time, temperature or function of your oven.



## SENSECOOK PYROLUXE™ BPK742320M

**60cm SenseCook PyroLuxe™ oven**  
with Touch on Glass control

### KEY FEATURES

- 71L nett capacity, 77L gross
- 16 oven functions
- Automatic assisted cooking
- PyroLuxe™ easy cleaning
- Food Sensor
- ThermiC°air technology
- SoftMotion door closing
- FloodLight illumination system
- IsoFront quadruple glazed door
- Fully programmable timer
- Anti-fingerprint stainless steel

### Included accessories:

- 3 OptiFlex telescopic runner sets
- 2 chrome wire shelves
- Wire shelf trivet
- Dripping pan
- Cake tray

### SPECIFICATIONS

**Product dimensions (HxWxD) in mm**  
594 x 595 x 567

**Flush fit cut-out dimensions (HxWxD) in mm**  
600 x 600 x 580



### SPECIFICATIONS

**Product dimensions (HxWxD) in mm**  
594 x 595 x 567

**Flush fit cut-out dimensions (HxWxD)  
in mm**  
600 x 600 x 580

# HIGH PERFORMANCE. COMPACT SIZE

Our compact range offers powerful performance in a small design. Simply select the combination of appliances to best suit your needs and space, from combination steam or multifunction ovens, to combination and grill microwaves.

NEW



## COMPACT STEAMPRO WITH STEAMIFY® KSK99733PT

**45cm matte black SteamPro oven**  
with Command Wheel control

### KEY FEATURES

- 43L nett capacity, 49L gross
- 25 oven functions plus automatic assisted cooking
- SousVide functionality
- Humidity sensor
- Food Sensor
- Fully removable water drawer
- Steam cleaning function
- SoftMotion door closing
- ThermiC°air technology
- MaxiView expanded visibility
- FloodLight illumination system
- IsoFront quadruple glazed door
- Stain resistant and anti-fingerprint matte black finish

### Included accessories:

- Stainless steel wire shelf
- Roasting pan
- Cake tray
- Steam set



### Steamify®

With the Steamify® function, set the desired temperature and the oven will adjust the steam level automatically. For healthier, tastier food. Steam cooking brings out the richest flavours and preserves nutrition.



### SousVide function

The SteamPro gives you the power of the SousVide technique that professional chefs swear by for the most tasty, tender and perfectly cooked food.



### Humidity sensor

The advanced humidity sensor ensures the precise amount of steam is used for every dish. It automatically adjusts temperature and moisture levels to match the type of food you're cooking for the very best taste and texture.



### Food sensor

The Food Sensor allows you to accurately control the cooking process, so every dish is finished just how you want it.

### SPECIFICATIONS

#### Product dimensions (HxWxD) in mm

455 x 595 x 567

#### Flush fit cut-out dimensions (HxWxD) in mm

460 x 600 x 570

NEW



## COMPACT STEAMBOOST KSK782220M

**45cm SteamBoost oven**  
with Touch on Glass control

### KEY FEATURES

- 43L nett capacity, 49L gross
- 22 oven functions plus automatic programs
- Steam cleaning function
- Food Sensor
- SoftMotion door closing
- ThermiC°air technology
- IsoFront quadruple glazed door
- Anti-fingerprint stainless steel

### Included accessories

- Stainless steel wire shelf
- Cake tray
- Dripping pan
- Steam set

### SPECIFICATIONS

#### Product dimensions (HxWxD) in mm

455 x 595 x 567

#### Flush fit cut-out dimensions (HxWxD) in mm

460 x 600 x 570



## COMPACT COMBIQUICK KMK96708PT

**45cm matte black CombiQuick combi microwave oven**  
with Command Wheel control

### KEY FEATURES

- 7 oven functions, 8 special functions plus automatic assisted cooking
- 1000W microwave power
- Combination microwave and fan/grill cooking
- Quick start function
- 10 power levels
- Control lock
- IsoFront triple glazed door
- Stain resistant and anti-fingerprint matte black finish

### Included accessories

- Chrome wire shelf
- Cake tray
- Side racks

### SPECIFICATIONS

#### Product dimensions (HxWxD) in mm

455 x 594 x 567

#### Flush fit cut-out dimensions (HxWxD) in mm

460 x 600 x 570



**COMPACT COMBIQUICK**  
KMK761000M

**45cm CombiQuick combi microwave oven**  
with Touch on Glass control

KEY FEATURES

- 7 oven functions, 8 special functions plus automatic assisted cooking
- 1000W microwave power
- Combination microwave and fan/grill cooking
- Quick start function
- 10 power levels
- Control lock
- IsoFront quadruple glazed door
- Anti-fingerprint stainless steel

**Included accessories**

- Chrome wire shelf
- Cake tray
- Side racks

**SPECIFICATIONS**

**Product dimensions (HxWxD) in mm**  
455 x 594 x 567

**Flush fit cut-out dimensions (HxWxD) in mm**  
460 x 600 x 570

**NEW**



**BUILT IN MICROWAVE**  
MBE2658DEM

**46cm built in microwave oven**  
with grill

KEY FEATURES

- Fully integrated built in microwave
- Under-counter installation approved
- Cooking modes: Grill, Microwave, Microwave & Grill
- Microwave power: 900 watt, 5 levels
- Grill power: 800 watt
- Quick start function
- Automatic defrosting programs by weight
- Child lock
- Touch control
- Electronic clock with timer

**Included accessories**

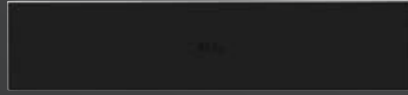
- Grill rack
- Low grill rack

**SPECIFICATIONS**

**Product dimensions (HxWxD) in mm**  
459 x 596 x 404

**Flush fit cut-out dimensions (HxWxD) in mm**  
450 x 562 x 500

NEW



### PRECISIONVAC KDK911423T

#### 14cm matte black vacuum sealer drawer

##### KEY FEATURES

- Vacuum chamber sealing system
- 5 functions; Marinating/infusing, Max vacuum, Med vacuum, Min vacuum, Seal only
- Adjustable sealing time (0-4 seconds)
- LED touch controls
- Pair with any SteamPro steam oven for SousVide cooking
- Preservation for extended food freshness
- Store and cook food in the supplied vacuum bags between 40°C and +100°C
- Stylish matte black finish

##### Included accessories:

- Volume reducer
- 25 SousVide bags (20x30cm)
- 25 SousVide bags (20x35cm)
- Oil filter & cap

##### SPECIFICATIONS

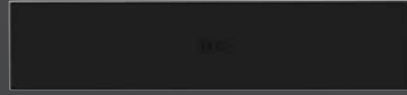
###### Product dimensions (HxWxD) in mm

140 x 595 x 510

###### Flush fit cut-out dimensions (HxWxD) in mm

141 x 600 x 570

NEW



### WARMING DRAWER KDK911424T

#### 14cm matte black warming drawer

##### KEY FEATURES

- Adjustable between 30°C & 80°C
- 6 place setting
- Ideal for dough proving at 40°C
- Warms cups and glasses at 40°C
- Plate warmer at 60°C
- Food warming at 60°C to 80°C
- SoftMotion™ drawer movement
- Stylish matte black finish

##### SPECIFICATIONS

###### Product dimensions (HxWxD) in mm

140 x 595 x 535

###### Flush fit cut-out dimensions (HxWxD) in mm

141 x 600 x 570

NEW



### WARMING DRAWER KDK911424M

#### 14cm stainless steel warming drawer

##### KEY FEATURES

- Adjustable between 30°C & 80°C
- 6 place setting
- Ideal for dough proving at 40°C
- Warms cups and glasses at 40°C
- Plate warmer at 60°C
- Food warming at 60°C to 80°C
- SoftMotion™ drawer movement
- Black glass & anti-fingerprint stainless steel

##### SPECIFICATIONS

###### Product dimensions (HxWxD) in mm

140 x 595 x 535

###### Flush fit cut-out dimensions (HxWxD) in mm

141 x 600 x 570

# 90CM SENSECOOK PYROLYTIC OVEN

The perfect combination of cutting-edge design and precision, the AEG 90cm oven with PyroLuxe™ Self Cleaning will be the standout performer in your kitchen. With spacious 125L capacity, you'll be able to execute several superior dishes simultaneously. Incorporating the very best in fan technology, the SurroundCook PLUS will ensure the heat is distributed evenly to your dishes no matter where they are placed, meaning great tasting food exactly the way you want it.



## SENSECOOK PYROLUXE™ BPK722910M

90cm SenseCook PyroLuxe™ oven  
with Touch on Glass control

### KEY FEATURES

- 116L nett capacity, 125L gross
- 19 oven functions
- PyroLuxe™ self-cleaning cycles
- SenseCook Food Sensor
- IsoFront quadruple glazed door
- SoftMotion door movement
- SurroundCook PLUS

### Included accessories:

- 2 OptiFlex telescopic runner sets
- 2 Chrome wire shelves
- 2 grill pans (half-width)
- 2 grill inserts (half-width)
- Grill pan support rack

## SPECIFICATIONS

Product dimensions  
(HxWxD) in mm  
596 x 895 x 572

Flush fit cut-out dimensions  
(HxWxD) in mm  
600 x 900 x 580



### SenseCook

Use the Food Sensor to tell the oven how you want your dish cooked using just the words you would in a restaurant, rare, medium, or well done. Without even opening the oven door, everything from tender joints of meat to molten chocolate fondants are controlled and mastered.



### PyroLuxe™ self cleaning

The advanced self-cleaning function takes all the effort out of keeping your oven clean. By heating the oven to 500°C, all food residue is turned to ash, which can then be simply wiped out with a damp cloth.



### SurroundCook PLUS

The advanced twin fan technology ensures that every part of your dish is getting exactly the heat it needs. Evenly. Consistently. Wherever it's placed. The fans rotate in opposite directions, distributing heat evenly throughout the extra wide oven.

# COOKTOPS

## PRECISION AND CONTROL

At AEG we believe a cooktop should look as good as it performs, which is why our new induction range has been designed with not only the latest assisted cooking technology, but also sleek and sophisticated finishes. Intuitive, precise, yet flexible and chic. Discover a new world of endless possibilities.

### Master food. To the exact degree.

The wireless probe on the SensePro measures the core temperature of food for precise results. It works without batteries so there's no upkeep required.

### SENSEPRO – YOUR PERSONAL SOUS CHEF

The SensePro cooktop gets every dish right. The wireless food sensor measures the core temperature of food. Boil pasta, simmer sauce, pan-fry a steak – whether rare, medium or well-done. It's even possible to SousVide on the cooktop. It's the personal sous chef for restaurant-style results at home.

### One touchscreen. Intuitive communication.

The touchscreen display provides an intuitive assisted cooking experience.



## SENSEFRY. RESULTS – WITHOUT THE GUESSWORK

Use the intelligent touchscreen on the SenseFry induction cooktop to select the food and desired result. The technology maintains an even heat for the best frying results. No more guessing when the pan is at the right temperature. And no need to adjust the settings during cooking.



**Hob2Hood** regulates the fan while you concentrate on the key moments involved in getting your dish just right. It will automatically control your cooker hood and lights. But if you'd rather adjust the fan speed, there are manual controls on the cooktop too.



### OptiHeat control

By monitoring each heat zone as it cools, the OptiHeat control helps you make the most efficient use of residual heat. The OptiHeat control advises 3 levels of residual heat – whether the heat zone is still hot enough to cook with, hot enough to keep food warm, or simply hot to touch.

### Pause function

When ready to resume, touch the Pause button again and all the zones return to their previous settings.

### CountUp timer

Set a reminder with the minute minder, or at a glance with the CountUp timer, keeping you in control of your cooking.

### AutoMax

The AutoMax function, once selected, will bring the zone up to the highest power level then reduces to the pre-selected power level for the remainder of the cooking time.

### Öko timer

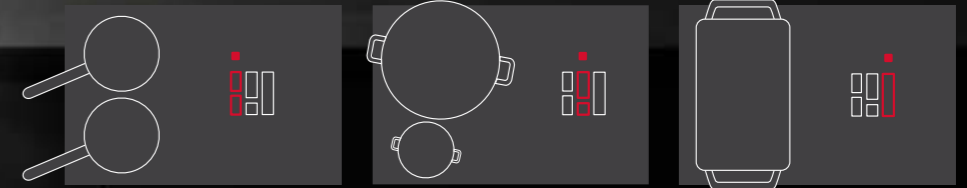
The Öko timer is an intelligent way for you to use resources more efficiently. When the time is pre-set on the cooktop, the Öko timer turns off the cooking zone and uses residual heat in the cookware to finish cooking the dish. The result? The same high quality food for lower energy bills.

**OptiZone** pure induction – your touch brings it to life. Imagine a glossy sheet of pure ebony glass. Add backlit touch controls and cooking zones, glowing red only when you turn them on. It's the ultimate induction cooktop for the modern kitchen. Now available with FlexiBridge technology.

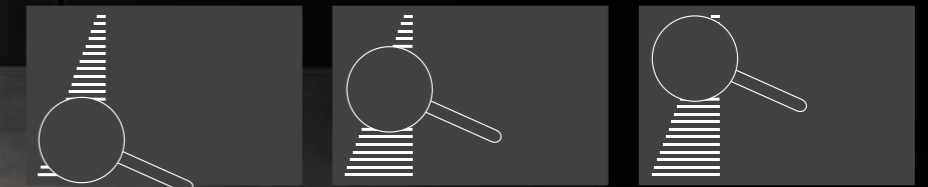
**FlexiBridge and PowerSlide.** Made for those occasions when you need more options with equally tasty results. The FlexiBridge feature means you can customise your own cooking area, combining up to 4 segments together with a consistent and even heat distribution ①.

At the touch of a button, the FlexiBridge cooking zone featuring PowerSlide switches to three pre-set temperature levels: high, medium and low, so you can simply move the pan to seamlessly go from boil to simmer ②.

① FlexiBridge function



② PowerSlide function



**High heat**  
when searing

**Medium heat**  
when low frying

**Low heat**  
when keeping warm



**DID YOU KNOW?**

A steak is mostly cooked by the meat itself rather than the heat surrounding it. This is why flipping a steak every 15 seconds cooks a steak better than flipping every few minutes.



# SENSEPRO. PRECISION AT ITS CORE

King salmon. Duck breast. A smooth hollandaise. When there is the confidence to cook anything, there's no stopping culinary genius. The SensePro gets every dish right. The wireless probe measures the core temperature of food. It's even possible to SousVide on the cooktop. Precision and control deliver perfect taste.

NEW



## SENSEPRO INDUCTION IAE84881FB

**80cm SensePro induction cooktop**  
with 4 cooking zones and  
colour TFT touchscreen

### KEY FEATURES

- Wireless food sensor
- SousVide function
- Fry sensor auto controlled heat levels
- Hob2Hood function
- Bridging function
- Colour TFT touchscreen
- Melting function
- OptiHeat control
- Pause function
- Minute minder
- Öko timer function
- Control lock
- Stylish bevelled edge trim



### Wireless food sensor

The Food Sensor allows you to accurately control the cooking process, so every dish is finished just how you want it.



### SousVide function

The SousVide cooking system provides superior control of the cooking process, delivering optimal results with the combination of induction technology and vacuum sealed food.



### Hob2Hood function

Leave Hob2Hood to regulate the fan while you concentrate on the key moments involved in getting your dish just right. It will automatically control your cooker hood and lights.

## SPECIFICATIONS

### Product dimensions (WxD) in mm

780 x 520

### Cut-out dimensions (WxD) in mm

750 x 490

NEW



## SENSEFRY INDUCTION IAE84851FB

**80cm SenseFry induction cooktop**  
with 4 cooking zones and TFT touchscreen

### KEY FEATURES

- Fry Sensor auto controlled heat levels
- Hob2Hood function
- PowerSlide function
- FlexiBridge 4 segment flexible cooking area
- TFT touchscreen
- Melting function
- OptiHeat control
- Pause function
- Minute minder
- Öko timer function
- Control lock
- Stylish bevelled edge trim

## SPECIFICATIONS

### Product dimensions (WxD) in mm

780 x 520

### Cut-out dimensions (WxD) in mm

750 x 490

NEW



## SENSEFRY INDUCTION IAE64851FB

**60cm SenseFry induction cooktop**  
with 4 cooking zones and TFT touchscreen

### KEY FEATURES

- Fry Sensor auto controlled heat levels
- Hob2Hood function
- PowerSlide function
- FlexiBridge 4 segment flexible cooking area
- TFT touchscreen
- Melting function
- OptiHeat control
- Pause function
- Minute minder
- Öko timer function
- Control lock
- Stylish bevelled edge trim

## SPECIFICATIONS

### Product dimensions (WxD) in mm

590 x 520

### Cut-out dimensions (WxD) in mm

560 x 490



### PURE FLEXIBRIDGE INDUCTION IPE84571FB

**80cm Pure FlexiBridge induction cooktop**  
with 4 cooking zones and touch controls

#### KEY FEATURES

- Pure black surface when off
- Hob2Hood function
- PowerSlide function
- FlexiBridge 4 segment flexible cooking area
- Touch slide controls
- OptiHeat control
- Pause function
- Minute minder
- Öko timer function
- Control lock

#### SPECIFICATIONS

**Product dimensions (WxD) in mm**  
780 x 520

**Cut-out dimensions (WxD) in mm**  
750 x 490



### PURE FLEXIBRIDGE INDUCTION IPE64571FB

**60cm Pure FlexiBridge induction cooktop**  
with 4 cooking zones and touch controls

#### KEY FEATURES

- Pure black surface when off
- Hob2Hood function
- PowerSlide function
- FlexiBridge 4 segment flexible cooking area
- Touch slide controls
- OptiHeat control
- Pause function
- Minute minder
- Öko timer function
- Control lock

#### SPECIFICATIONS

**Product dimensions (WxD) in mm**  
620 x 520

**Cut-out dimensions (WxD) in mm**  
590 x 490



### PURE OPTIZONE INDUCTION IPE84531FB

**80cm Pure OptiZone induction cooktop**  
with 4 cooking zones and touch controls

#### KEY FEATURES

- Pure black surface when off
- Hob2Hood function
- Touch slide controls
- OptiHeat control
- Pause function
- Minute minder
- Countdown timer
- Control lock

#### SPECIFICATIONS

**Product dimensions (WxD) in mm**  
780 x 520

**Cut-out dimensions (WxD) in mm**  
750 x 490



### PURE OPTIZONE INDUCTION IPE64551FB

**60cm Pure OptiZone induction cooktop**  
with 4 cooking zones and touch controls

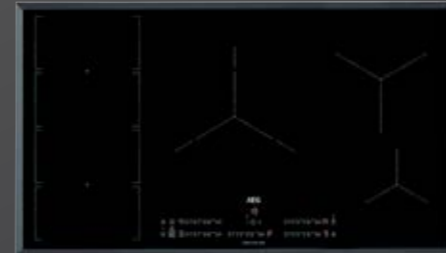
#### KEY FEATURES

- Pure black surface when off
- Bridging function
- Hob2Hood function
- Touch slide controls
- OptiHeat control
- Pause function
- Minute minder
- Countdown timer
- Control lock

#### SPECIFICATIONS

**Product dimensions (WxD) in mm**  
590 x 520

**Cut-out dimensions (WxD) in mm**  
560 x 490



### FLEXIBRIDGE INDUCTION IKE95471FB

**90cm FlexiBridge induction cooktop**  
with 5 cooking zones and touch controls

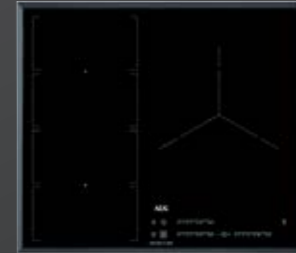
#### KEY FEATURES

- XL Zone
- Hob2Hood function
- PowerSlide function
- FlexiBridge 4 segment flexible cooking area
- Touch slide controls
- OptiHeat control
- AutoMax function
- Pause function
- CountUp timer
- Öko timer function
- Control lock
- Stylish bevelled edge trim

#### SPECIFICATIONS

**Product dimensions (WxD) in mm**  
910 x 520

**Cut-out dimensions (WxD) in mm**  
880 x 490



### FLEXIBRIDGE INDUCTION IKE63471FB

**60cm 3 FlexiBridge induction cooktop**  
with 3 cooking zones and touch controls

#### KEY FEATURES

- XL Zone
- Hob2Hood function
- PowerSlide function
- FlexiBridge 4 segment flexible cooking area
- Touch slide controls
- OptiHeat control
- AutoMax function
- Pause function
- CountUp timer
- Öko timer function
- Control lock
- Stylish bevelled edge trim

#### SPECIFICATIONS

**Product dimensions (WxD) in mm**  
590 x 520

**Cut-out dimensions (WxD) in mm**  
560 x 490

# COMBOHOB. UNPRECEDENTED FLEXIBILITY

ComboHob MultiBridge brings a powerful induction hob and extraction fan together into one masterful product. Kitchen design is no longer restricted as to where an overhead hood can be placed. Experience design freedom, with the convenience of a hybrid hob.

NEW

**COMBOHOB**  
IDK844541B

**83cm induction cooktop**  
with integrated downdraft extractor

#### KEY FEATURES

- Hob2Hood
- Flexible MultiBridge zone
- Direct Touch Control
- Easy clean, removable extractor
- Recirculation - 630m<sup>3</sup>/hr
- Optional: duct out

#### Optional accessories:

- Recirculation kit - KIT0171865



#### Cooking and extraction in one

ComboHob is an extraction fan and powerful induction cooktop in one for functional cooktop convenience with minimal form that will optimise kitchen design options.



#### Automated extraction

Hob2Hood technology delivers automatic extraction. The hood's fans will adjust themselves accordingly as you turn the heat up or down on the cooktop so you can focus on cooking.



#### Large meals cooked at once

The MultiBridge function allows you to customize your cooktop when required. The cooktop will rise to the occasion with automatic power alignment, even heat distribution and ability to accommodate large pots and pans.



#### SPECIFICATIONS

**Product dimensions (HxWxD) in mm**  
210 x 830 x 515

**Flush fit cut-out dimensions (WxD) in mm**  
805 x 490



# SENSITIVE CONTROLS FOR PRECISION COOKING

Our ceramic cooktop provides a variety of different sized cooking zones as well as extended cooking zones that allow a cooking area to precisely suit your needs.



## CERAMIC HK654070XB

**60cm ceramic cooktop**  
with touch controls

### KEY FEATURES

- 4 zones including 2 extended zones
- OptiHeat control
- Touch slide controls
- AutoMax function
- Stop + Go function
- CountUp timer
- Öko timer function
- Control lock

### SPECIFICATIONS

#### Product dimensions (WxD) in mm

576 x 516

#### Cut-out dimensions (WxD) in mm

560 x 490



#### OptiHeat control

By monitoring each heat zone as it cools, the OptiHeat control helps you make the most efficient use of residual heat. The OptiHeat control advises 3 levels of residual heat – whether the heat zone is still hot enough to cook with, hot enough to keep food warm, or simply hot to touch.



#### AutoMax

The AutoMax function, once selected, will bring the zone up to the highest power level then reduces to the pre-selected power level for the remainder of the cooking time.



#### Stop + Go

When ready to resume, touch the Pause button again and all the zones return to their previous settings.



# IGNITE. SEAR. CONTROL. WITH ABSOLUTE ASSURANCE

From king prawns to rib-eye, nothing compares to searing over a naked flame. Now, precise control over the intensity of that flame ensures perfectly charred flavours.

The advanced TouchSure cooktop comes with a range of reassuring safety features that provide absolute confidence in – and absolute command over – gas cooking. It's a traditional method harnessed with our responsive technology.



#### Hob2Hood

Leave Hob2Hood to regulate the fan while you concentrate on the key moments involved in getting your dish just right. It will automatically control your cooker hood and lights.



#### Pause function

With Pause cooking function, one touch pauses the cooking process – and restarts it again with the same settings.



#### Child lock

The child safety lock ensures that the hob cannot be accidentally switched on or its settings changed.



#### Display lights

LED indicators tell you if a burner is turned on or off. Residual heat indicators show whether pan supports are still hot after use.



#### Electronic touch controls

Full control of the flame. The hob's electronic touch controls react quickly and accurately to your every touch.



#### Timer

With the convenient timer, you can set your cooking time. Once it's over, the hob will switch itself off.

# PERFECT IN STYLE AND PERFORMANCE

The gas on black ceramic cooktop offers maximum stability for when cooking gets fast and furious. The striking grid design of trivets also offers you perfection in style and performance.



## ELECTRONIC GAS ON CERAMIC GLASS HVB954501B

**90cm 5 burner ceramic**  
with Touch on Glass control

### KEY FEATURES

- Electronic touch control
- Hob2Hood function
- Gas stop auto shut off
- Residual heat indicators
- 5 burners including wok burner
- 13.4MJ triple crown wok burner
- High quality vitreous ceramic glass
- Cast iron pan support
- Automatic integrated ignition
- Flame failure safety device
- Wok support trivet
- Child lock
- Timer
- Natural gas only



### Hob2Hood function

Leave Hob2Hood to regulate the fan while you concentrate on the key moments involved in getting your dish just right. It will automatically control your cooker hood and lights.



### Electronic touch control

Full control of the flame. The hob's electronic touch controls react quickly and accurately to your every touch.



### Multi-ring triple crown wok burner

Our gas cooktops have a multi-ring high output wok burner to produce high heat for wok cooking, intense frying or fast heating.



### Easy clean ceramic glass

With the seamless surface, our cooktops can be cleaned effortlessly.

## SPECIFICATIONS

**Product dimensions (WxD) in mm**  
890 x 510

**Flush fit cut-out dimensions (WxD) in mm**  
850 x 490



## GAS ON CERAMIC GLASS HG975550VB

**90cm 5 burner ceramic**

### KEY FEATURES

- 5 burners including wok burner
- 14.4MJ triple crown wok burner
- High quality vitreous ceramic glass
- Cast iron pan support
- Automatic integrated ignition
- Flame failure safety device
- Wok support trivet

## SPECIFICATIONS

**Product dimensions (WxD) in mm**  
880 x 510

**Flush fit cut-out dimensions (WxD) in mm**  
830 x 480



## GAS ON CERAMIC GLASS HG674550VB

**60cm 4 burner ceramic**

### KEY FEATURES

- 4 burners including wok burner
- 13.7MJ triple crown wok burner
- High quality vitreous ceramic glass
- Cast iron pan support
- Automatic integrated ignition
- Flame failure safety device
- Wok support trivet

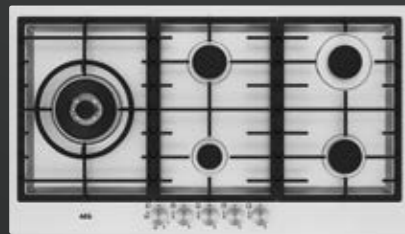
## SPECIFICATIONS

**Product dimensions (WxD) in mm**  
590 x 520

**Flush fit cut-out dimensions (WxD) in mm**  
560 x 480

# COMPLETE AND INSTANT CONTROL

Our gas cooktops are designed to be the focal point of your kitchen, providing instant and intense heat for precise control.

**NEW**

**GAS**  
HG90FXB

## 90cm stainless steel gas cooktop

### KEY FEATURES

- 5 burners including wok burner
- Powerful 22MJ dual valve wok burner
- High quality stainless steel
- Cast iron pan support
- Automatic integrated ignition
- Flame failure safety device
- Laser etched graphics

### Included accessories

- Wok support trivet
- Mini trivet



### 22MJ wok burner

Powerful triple ring dual valve wok burner, providing exceptional levels of control – from as low as 1MJ for simmering, or up to 22MJ of intense heat, perfect for searing, or stir fry cooking. (Selected models only)



### Cast iron pan support

Robust cast-iron pan supports take on the toughest kitchen conditions while complementing the cooktop's sleek aesthetic.



### Electronic ignition

Speedy electronic ignition gets you on the hobs in a flash, with a touch of the stylish stainless-steel controls.

### SPECIFICATIONS

#### Product dimensions (WxD) in mm

890 x 510

#### Flush fit cut-out dimensions (WxD) in mm

860 x 480


**GAS**  
HG75FXA

## 75cm stainless steel gas cooktop

### KEY FEATURES

- 5 burners including wok burner
- Powerful 18MJ dual valve wok burner
- High quality stainless steel
- Cast iron pan support
- Automatic integrated ignition
- Flame failure safety device
- Laser etched graphics

### Included accessories

- Wok support trivet
- Mini trivet

### SPECIFICATIONS

#### Product dimensions (WxD) in mm

750 x 510

#### Cut-out dimensions (WxD) in mm

720 x 480


**GAS**  
HG60FXA

## 60cm stainless steel gas cooktop

### KEY FEATURES

- 4 burners including wok burner
- 10.3MJ wok burner
- High quality stainless steel
- Cast iron pan support
- Automatic integrated ignition
- Flame failure safety device
- Laser etched graphics

### Included accessories

- Wok support trivet
- Mini trivet

### SPECIFICATIONS

#### Product dimensions (WxD) in mm

590 x 510

#### Cut-out dimensions (WxD) in mm

560 x 480



# RANGEHOODS

## POWERFUL EXTRACTION, WITHOUT COMPROMISE

Our cooking environments need to be fresh, bright and peaceful, enriching the time that we spend there. We use advanced technology to ensure that the design and build of our rangehoods give you the optimum combination of high-end design and powerful functionality.

### 8000 Series

The 8000 series of AEG rangehoods have been designed to take form and function to the next level. With a stylish dark stainless steel finish to elevate your kitchen's style to powerfully extracting vapours, odours and grease, air flow is optimized, quietly and efficiently, thanks to the high quality offboard motor and stainless-steel baffle filters.

### Hob2Hood

AEG's intelligent Hob2Hood system ensures your hood works in harmony with your hob as soon as you turn your hob on. A wireless signal is sent to the hood, switching on the lights and providing optimal visibility.

### LED indicators

Our new premium and modern user interface combines super responsive capacitive touch buttons along with back lit LED indicators. The LED turns red to show which feature is on or off.

### SilenceTech

Our more advanced hood technology reduces the noise level down to the lowest possible number of decibels so that you can cook powerfully and enjoy the experience without loud sounds from the appliance.

### Dimmable LED

Provides the possibility to adjust the intensity of the light according to your needs, creating a nice ambient illumination in your kitchen.

### Seamless

Aligned across our range, your choice of hood will integrate seamlessly with any of our hob models. Our top line models feature our signature flow line for design harmony, together with a sophisticated white LED display on layered glass and metal.



**JET AIRCRAFT**  
140dB



**SIREN**  
120dB



**MOTORBIKE**  
90dB



**HAIRDRYER**  
80dB



**TALKING**  
60dB



**54dB**  
SilenceTech Wall  
and vertical canopy  
rangehoods

**RAIN**  
50dB



**WHISPER**  
30dB



### Run it for less energy

Our hoods are highly efficient, using less energy than standard models. This is thanks to our brushless Inverter Technology. In fact, when you run the hood at its maximum speed, you'll use up to 40% less energy than standard models. And at the minimum setting, it needs less energy to run than a standard light bulb.



# STRIKING DESIGN. SEAMLESSLY MATCHED WITH YOUR KITCHEN

Our range of hoods with matte black or dark stainless steel finish make a striking aesthetic statement without intrusion, quietly and efficiently clearing the air while you prepare your meals. They are seamlessly designed to complement our new dark range of appliances, offering a sophisticated product suite to enhance your kitchen.



NEW



### INTEGRATED DGE7660HB

**60cm integrated hood**  
with Hob2Hood control

#### KEY FEATURES

- Dark stainless steel finish
- Hob2Hood control
- Durable, dishwasher safe baffle filter
- Intensive 680m<sup>3</sup>/hr extraction rate
- Long lasting, LED lighting

#### SPECIFICATIONS

**Product dimensions (HxWxD) in mm**  
520 x 300 x 329

**Flush fit cut-out dimensions (HxW) in mm**  
492 x 259 x 329

NEW



### INTEGRATED DGE7960HB

**90cm integrated hood**  
with Hob2Hood control

#### KEY FEATURES

- Dark stainless steel finish
- Hob2Hood control
- Durable, dishwasher safe baffle filter
- Intensive 710m<sup>3</sup>/hr extraction rate
- Long lasting, LED lighting

#### SPECIFICATIONS

**Product dimensions (HxWxD) in mm**  
860 x 300 x 329

**Flush fit cut-out dimensions (HxW) in mm**  
832 x 259 x 329

NEW



### CANOPY HOOD DBE7980HB

**90cm canopy hood**  
with Hob2Hood control

#### KEY FEATURES

- Dark stainless steel finish
- Hob2Hood control
- Breeze Function
- Durable, dishwasher safe baffle filter
- Intensive 700m<sup>3</sup>/hr extraction rate
- Long lasting, LED lighting

#### SPECIFICATIONS

**Product dimensions (HxWxD) in mm**  
898 x 470 x 950

Flue extension cover - AR990FD

NEW



### WALL HOOD DVK6981HB

**90cm inclined SilenceTech wall canopy hood**  
with Hob2Hood control

#### KEY FEATURES

- Stain resistant and anti-fingerprint matte black finish
- Hob2Hood control
- Breeze Function
- Dishwasher safe filters
- Intensive 750m<sup>3</sup>/hr extraction rate
- Long lasting, dimmable LED lighting

#### SPECIFICATIONS

**Product dimensions (HxWxD) in mm**  
915-1260 x 896 x 456



### CEILING HOOD DCE5280HM

**120cm ceiling hood**  
with Hob2Hood control

#### KEY FEATURES

- High quality stainless steel
- Dimmable LED lighting
- Hob2Hood control
- Remote control
- Dishwasher safe filters
- Indicator for cleaning filters
- Recirculating option
- 710m<sup>3</sup>/hr extraction (intensive)
- Remote control

#### SPECIFICATIONS

**Product dimensions (HxWxD) in mm**  
1200 x 500 x 311

**Flush fit cut-out dimensions (HxW) in mm**  
1172 x 470



### INTEGRATED DGE5160HM

**99cm integrated rangehood**  
with Hob2Hood control

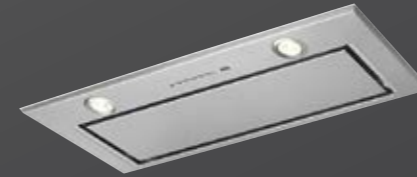
#### KEY FEATURES

- Suitable for 80-90cm cooktops
- LED lighting
- Hob2Hood control
- Remote control
- Indicator for cleaning filters
- Dishwasher safe filters
- Recirculating option
- 660m<sup>3</sup>/hr extraction (intensive)

#### SPECIFICATIONS

**Product dimensions (HxWxD) in mm**  
330 x 990 x 300

**Flush fit cut-out dimensions (HxW) in mm**  
273 x 944



### INTEGRATED DGE5860HM

**77cm integrated rangehood**  
with Hob2Hood control

#### KEY FEATURES

- Suitable for 70-80cm cooktops
- LED lighting
- Hob2Hood control
- Remote control
- Indicator for cleaning filters
- Dishwasher safe filters
- Recirculating option
- 660m<sup>3</sup>/hr extraction (intensive)

#### SPECIFICATIONS

**Product dimensions (HxWxD) in mm**  
330 x 770 x 300

**Flush fit cut-out dimensions (HxW) in mm**  
273 x 723



### INTEGRATED DGE5660HM

**54cm integrated rangehood**  
with Hob2Hood control

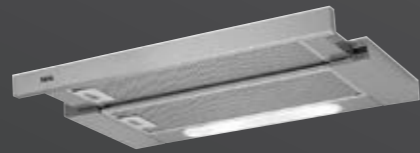
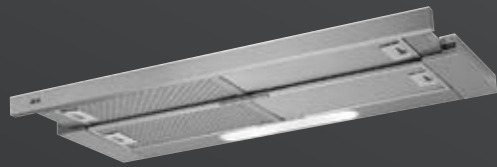
#### KEY FEATURES

- Suitable for 60-70cm cooktops
- LED lighting
- Hob2Hood control
- Remote control
- Indicator for cleaning filters
- Dishwasher safe filters
- Recirculating option
- 660m<sup>3</sup>/hr extraction (intensive)

#### SPECIFICATIONS

**Product dimensions (HxWxD) in mm**  
330 x 540 x 300

**Flush fit cut-out dimensions (HxW) in mm**  
273 x 493



**TELESCOPIC**  
DPB5950M/A

**90cm telescopic rangehood**  
with slide switch control

KEY FEATURES

- Suitable for 70-90cm cooktops
- LED lighting
- Dishwasher safe filters
- Recirculating option
- 605m<sup>3</sup>/hr extraction

**TELESCOPIC**  
DPB5650M/A

**60cm telescopic rangehood**  
with slide and switch control

KEY FEATURES

- Suitable for 60-70cm cooktops
- LED lighting
- Dishwasher safe filters
- Recirculating option
- 605m<sup>3</sup>/hr extraction

**SPECIFICATIONS**

**Product dimensions (HxWxD) in mm**  
396 x 898 x 300

**SPECIFICATIONS**

**Product dimensions (HxWxD) in mm**  
396 x 598 x 300



# COOKING ACCESSORIES

Nothing should get in the way of achieving beautiful results. That's why at AEG we're dedicated to creating products that help you pursue your passion – your own personal definition of perfection. It's this thinking that lies at the heart of everything we do... it shapes our design and our advancements in technology.

For over a hundred years we have been using cutting edge designers to help create and develop our products, recognising that good design doesn't just make things easy on the eye, but easier for you to use.

Our cooking accessories are designed to complement your AEG kitchen appliances with the same level of precision you would expect from any other AEG products.



INOX  
18/10

#### Professional grade

The magnetic steel outer gives superior induction and is simple to clean. At the core is three layer aluminium – an excellent heat conductor. While the outside is crafted from hygienic, easy clean, corrosion-resistant 18/10 stainless steel.



LONG  
LIFE  
QUALITY

#### Reliable technology

The materials are all perfectly combined to ensure heat spreads evenly over the entire surface, including the sides, for uniform, controlled cooking. Even when heated quickly, no deflection or deformation will occur (long life quality).



# MASTERY COLLECTION

At AEG, we were the first to launch the induction cooking hob over 25 years ago.

Today, we bring you our high performance cookware range of premium pots and pans that is designed to harness the power and precision of induction technology to bring out the best in any ingredient.



## Designed to fit perfectly on AEG induction cooktops

The Mastery Collection's multi-layer construction is optimised for AEG induction cooktops and also fits all other cooktop surfaces. Fully flat bases optimise adherence to the cooktop surface and maximise heat transfer efficiency.



## Dishwasher and Oven Safe

The entire Mastery Collection is dishwasher safe. All Mastery Collection pots and pans are oven safe up to 250°C.



## COOKWARE A9KLLC0

### Roasting pot with lid

Use the Roasting pot to cook everything from casseroles to roast meats, vegetables and poultry. Sear and simmer on the cooktop, then finish off the dish in the oven in one convenient process. Keeping all the rich flavours inside the Roasting pot for a juicy tender result every time.

### SPECIFICATIONS

**Product dimensions (HxWxD) in mm**  
280 x 390 x 80



## COOKWARE A9KL1

### Teppanyaki grill plate

Create authentic Asian recipes with the Teppanyaki grill plate. Garlic chicken with sizzling vegetables, chilli and soy-glazed beef or king prawns. Balance textures and fine-tune tastes.

### SPECIFICATIONS

**Product dimensions (HxWxD) in mm**  
255 x 470 x 25



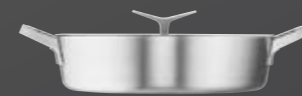
## COOKWARE A9HL33

### Plancha grill

Get perfect outdoor grill taste all year round with the Plancha grill. Steaks grilled to perfection, asparagus with the right crunch and seared scallops with the crispy crust and a tender inside.

### SPECIFICATIONS

**Product dimensions (HxWxD) in mm**  
220 x 432 x 18



## COOKWARE ACC133

### 4.5L low casserole

The 4.5 litre low casserole is a multipurpose pan. Braise, poach and simmer to create flavourful and exciting dishes.

### SPECIFICATIONS

**Diameter in mm**  
300



## COOKWARE ACC134

### 3L saucepan

The 3 litre saucepan is the superior choice of pan for making sauces, poaching, boiling as well as deglazing, caramelising and stewing.

### SPECIFICATIONS

**Diameter in mm**  
220



## COOKWARE ACC135

### 2L conical sauté

The 2 litre conical sauté is the optimal pan for sautéing and flash-frying small portions of meat and vegetables to achieve crisp yet moist results.

### SPECIFICATIONS

**Diameter in mm**  
220



## COOKWARE ACC136

### Frying pan

This frying pan's short sides and base are designed to deliver rapid, uniform heating and gentle, consistent moisture reduction.

### SPECIFICATIONS

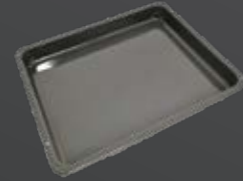
**Diameter in mm**  
280



**OVEN ACCESSORIES**  
ACC098

**Steam set**

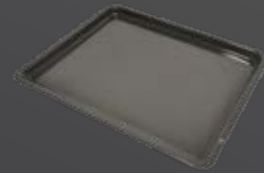
Ensures excess moisture is drawn away from your culinary creations whilst they are cooking in a steam environment.



**OVEN ACCESSORIES**  
ACC119

**Grill pan**

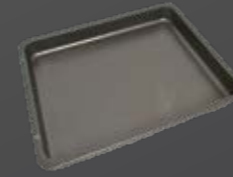
A custom enamelled grill pan helps to maintain the highest standards of cleanliness within your oven.



**OVEN ACCESSORIES**  
ACC118

**Baking tray**

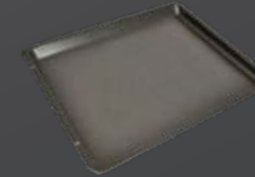
Designed to maximise your AEG oven to ensure an even bake.



**OVEN ACCESSORIES**  
ACC113

**Drip pan non-stick**

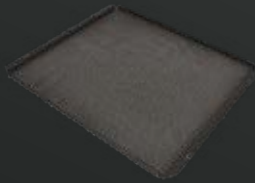
Sits perfectly in your AEG oven to catch unwanted liquid from your food, keeping your oven clean and looking new.



**OVEN ACCESSORIES**  
ACC112

**Baking tray non-stick**

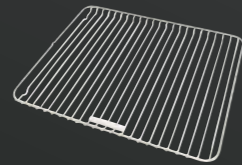
Designed exclusively for your oven.



**OVEN ACCESSORIES**  
ACC117

**Tray patisserie**

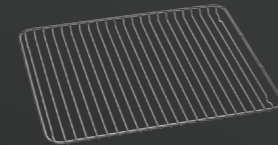
The perforated tray ensures a smooth and constant heat penetrates the base of pastry and dough creating a satisfying and noteworthy crust.



**OVEN ACCESSORIES**  
ACC116

**Grill grid**

Maximise your oven with additional oven grill shelves.



**OVEN ACCESSORIES**  
ACC111

**Grill pan insert non-stick**

Designed to work with your grill pan and ACC119.



**OVEN ACCESSORIES**  
ACC125

**SousVide vacuum sealer bags (50)**

The professional grade AEG SousVide bags have been specially designed to withstand the temperatures associated with SousVide cooking. Bags can withstand up to 120°C for 30 minutes whilst cooking.



## BUILT-IN OVEN SPECIFICATIONS

PRODUCT CODE	BSK99733PT	BSK97733PT	BPK94733PT	BPK556320M	BPK552220M	BEK455310M	BPK742320M	BPK722910M
<b>Product name</b>	60cm SteamPro oven with Steamify®	60cm SteamCrisp PyroLuxe™ oven	60cm SenseCook PyroLuxe™ oven	60cm SteamBake PyroLuxe™ oven	60cm SteamBake PyroLuxe™ oven	60cm SteamBake oven	60cm SenseCook PyroLuxe™ oven	90cm SenseCook PyroLuxe™ oven
<b>Features</b>								
Control type	Command wheel	Command wheel	Command wheel	Knob + Touch on glass	Knob + Touch on glass	Knob + Touch on glass	Touch on glass	Touch on glass
Finish	Matte Black	Matte Black	Matte black	Stainless steel	Stainless steel	Stainless steel	Stainless steel	Stainless steel
Oven capacity (gross)	77	77	77	77	77	77	77	125
Oven capacity (usable)	70	70	70	71	71	71	71	116
Number of functions	25	19	17	10	10	9	16	19
Recipe programmes	Yes	Yes	Yes				Yes	Yes
Fully programmable timer	Yes	Yes	Yes	Yes	Yes	Yes	Yes	Yes
Food sensor	Yes	Yes	Yes	Yes	Yes		Yes	Yes
SoftMotion door closing	Yes	Yes	Yes	Yes	Yes	Yes	Yes	Yes
ThermiC°air	Yes	Yes	Yes	Yes	Yes	Yes	Yes	
SurroundCook	Yes	Yes	Yes					Yes
FloodLight system	Yes	Yes	Yes				Yes	
Cleaning	Yes, Steam	Yes, Pyrolytic	Yes, Pyrolytic	Yes, Pyrolytic	Yes, Pyrolytic		Yes, Pyrolytic	Yes, Pyrolytic
Humidity sensor	Yes	Yes						
SousVide functions	Yes							
Steam function	Yes, SteamPro	Yes, SteamCrisp		Baking only	Baking only	Baking only		
Removable water drawer	Yes	Yes						
Layers of glass in oven door	4	4	4	4	4	3	4	4
<b>Product dimensions</b>								
Height (mm)	594	594	594	594	594	594	594	596
Width (mm)	595	595	595	595	595	595	595	895
Depth (mm)	567	567	567	567	567	567	567	572
<b>Flush fit cut-out dimensions</b>								
Height (mm)	600	600	600	600	600	600	600	600
Width (mm)	600	600	600	600	600	600	600	900
Depth (mm)	580	580	580	580	580	580	580	580
<b>Performance</b>								
Connected load (kW)	3.5	3.5	3.5	3.2	3.2	3.2	3.5	5.5
Minimum fuse rating (A)	16	16	16	16	16	16	16	24
Type of connection	Hardwired	Hardwired	Hardwired	Hardwired	Hardwired	Hardwired	Hardwired	Hardwired
Energy efficiency class	A	A	A	A+	A+	A	A+	B
Lights (W)	65	65	65	40	40	40	65	50
<b>Included accessories</b>								
OptiFlex telescopic runner sets	3	3	3, pyro proof	3			3	2
Dripping/grill pan	1	1	1	1	1	1	1	2 x 1/2 width
Wire shelf trivet/insert	1	1	1	1	1	1	1	2 x 1/2 width
Cake tray	1	1	1	1		1	1	
Patissoire	1							
Steam set	1							
Chrome wire shelves		2	2	2	2	2	2	2
Stainless wire shelves	2							

## COMPACT OVEN SPECIFICATIONS

PRODUCT CODE	KSK99733PT	KSK782220M
<b>Product name</b>	45cm SteamPro compact oven with Steamify®	45cm SteamBoost oven
<b>Features</b>		
Control type	Command wheel	Touch on glass
Finish	Matte black	Stainless steel
Oven capacity (gross)	51	51
Oven capacity (usable)	43	43
Number of functions	25	22
Recipe programmes	Yes	Yes
Fully programmable timer	Yes	Yes
Food sensor	Yes	Yes
SoftMotion soft close door	Yes	
ThermiC°air	Yes	Yes
FloodLight system	Yes	Yes
Cleaning	Yes, Steam	Yes, Steam
Humidity sensor	Yes	
SousVide functions	Yes	
Steam function	Yes, SteamPro	Yes, SteamBoost
Removable water drawer	Yes	Yes
Layers of glass in oven door	4	4
<b>Product dimensions</b>		
Height (mm)	455	455
Width (mm)	594	595
Depth (mm)	567	567
<b>Flush fit cut-out dimensions</b>		
Height (mm)	460	460
Width (mm)	600	600
Depth (mm)	570	570
<b>Performance</b>		
Connected load (kW)	3	3
Minimum fuse rating (A)	16	16
Type of connection	Hardwired	Hardwired
Energy efficiency class	A++	A+
Lights (W)	40	40
<b>Included accessories</b>		
OptiFlex telescopic runner sets		
Dripping pan	1	1
Wire shelf trivet	1	1
Cake tray	1	1
Steam set	1	1
Chrome wire shelves	1	
Stainless wire shelves		1

## MICROWAVE OVEN SPECIFICATIONS

PRODUCT CODE	KMK96708PT	KMK761000M	MBE2658DEM
<b>Product name</b>	45cm CombiQuick combi microwave	45cm CombiQuick combi microwave	46cm built in microwave with grill
<b>Features</b>			
SurroundCook	Yes		
Microwave oven with convection and grill	Yes	Yes	
Microwave oven and grill	Yes		Yes
Number of microwave functions	7	8	4
Number of programmed functions	23	19	3
Automatic weight defrost program	Yes	Yes	Yes
Automatic weight cook program	Yes	Yes	Yes
Favourite setting			Yes, plus 3 favourite settings
Quick start function	Yes	Yes	Yes
Function control lock	Yes	Yes	Yes
Active display control	Yes	Yes	
One touch cook program		Yes	Yes
Touch controls	Command wheel	Touch control	Electronic touch control
Timer	Programmable	Programmable	Digital, programmable
Isofront quadruple glazed door		Yes	
Under-counter installation			Yes
<b>Product dimensions</b>			
Height (mm)	455	455	459
Width (mm)	594	594	596
Depth (mm)	567	567	404
<b>Flush fit cut-out dimensions</b>			
Height (mm)	460	460	460
Width (mm)	600	600	600
Depth (mm)	570	570	520
Turntable diameter (mm)	325	325	325
<b>Performance</b>			
Connection load (kW)	3	3	1.4
Type of connection	Supply cord	Supply cord	10 amp plug
Microwave power (W)	1000	1000	900
Grill power (W)	1900	1900	800
Lights	1	1	1

## VACUUM SEALER DRAWER SPECIFICATIONS

PRODUCT CODE	KDK911423T
<b>Product name</b>	PrecisionVac vacuum sealer drawer
<b>Features</b>	
Controls	LED touch controls
Finish	Matte black
Handle	None. Push - Pull
Number of functions	5
Functions	Marinating/infusing, Max vacuum, Med vacuum, Min vacuum, Sealing time
<b>Product dimensions</b>	
Height (mm)	140
Width (mm)	540 (drawer front 595mm wide)
Depth (mm)	510
<b>Flush fit cut-out dimensions</b>	
Height (mm)	295
Width (mm)	600
Depth (mm)	570
<b>Performance</b>	
Connected load (kW)	1.1
Maximum current rating (A)	10
Type of connection	Cord only (no plug)
<b>Included accessories</b>	
20 x 30cm bags (pack of 25)	Yes
20 x 35cm bags (pack of 25)	Yes
Volume reducer	Yes

### REQUIREMENTS

#### Before first use

Ensure product is oiled using supplied oil kit and conditioning programme is performed.

#### Temperature of food

Ensure liquids are cold before sealing in the vacuum bag as hot liquids may boil over in the chamber at low pressure.

## WARMING DRAWER SPECIFICATIONS

PRODUCT CODE	KDK911424T	KDK911424M
<b>Product name</b>	14cm matte black warming drawer	14cm warming drawer
<b>Features</b>		
Finish	Matte black	Stainless steel
Handle	None. Push-Pull	None. Push-Pull
Place settings	6	6
<b>Features</b>		
Defrosting (30°C)	Yes	Yes
Dough proving (30°C)	Yes	Yes
Yogurt fermentation (30°C)	Yes	Yes
Cups & glass warming (45°C)	Yes	Yes
Plate warming (60°C)	Yes	Yes
Food warming (70°C)	Yes	Yes
Food reheating (80°C)	Yes	Yes
Heating element	Yes	Yes
Fan air circulation	Yes	Yes
Rotary knob control	Yes	Yes
Variable temperature control (30°C to 80°C)	Yes	Yes
On/Off LED	Yes	Yes
Anti-slip mat	Yes	Yes
SoftMotion™ drawer movement	Yes	Yes
<b>Product dimensions</b>		
Height (mm)	140	140
Width (mm)	595	595
Depth (mm)	535	535
<b>Flush fit cut-out dimensions</b>		
Height (mm)	141	141
Width (mm)	600	600
Depth (mm)	570	570
<b>Performance</b>		
Connection load (W)	430	430
Power connection	Cord	Cord
Suitable to complement any 45cm compact oven or 60cm oven listed in this brochure	Yes	Yes

## INDUCTION COOKTOP SPECIFICATIONS

PRODUCT CODE	IAE84881FB	IAE84851FB	IAE84851FB	IPE84571FB
<b>Product name</b>	80cm SensePro	80cm SenseFry	60cm SenseFry	80cm Pure FlexiBridge
<b>Features</b>				
Number of cooking zones	4	4	4	4
Control type	Colour TFT Touchscreen	TFT Touchscreen	TFT Touchscreen	Touch control
Position of controls	Front right	Front right	Front right	Front right
Pure black surface				Yes
Bevelled edge	Yes	Yes	Yes	
Grey glass surface	Yes	Yes	Yes	
Hob2Hood capable	Yes	Yes	Yes	Yes
Food sensor (Wireless)	Yes			
SousVide function	Yes			
Fry sensor (auto control heat)	Yes	Yes	Yes	
Bridging function	Yes	Yes, FlexiBridge	Yes, FlexiBridge	Yes, FlexiBridge
PowerSlide function		Yes	Yes	Yes
Melting (low even temp)	Yes	Yes	Yes	
XL Zone				
AutoMax automatic heat up				
OptiHeat Control	Yes	Yes	Yes	Yes
Pause function	Yes	Yes	Yes	Yes
Öko timer	Yes	Yes	Yes	Yes
CountUp timer				
Minute minder	Yes	Yes	Yes	Yes
Function control lock	Yes	Yes	Yes	Yes
<b>Product dimensions</b>				
Width (mm)	780	780	590	780
Depth (mm)	520	520	520	520
<b>Cut-out dimensions</b>				
Width (mm)	750	750	560	750
Depth (mm)	490	490	490	490
<b>Performance</b>				
Connection load (kW)	7.4	7.4	7.4	7.4
Type of connection	Hardwired	Hardwired	Hardwired	Hardwired
Left front zone	Bridge	FlexiBridge	FlexiBridge	FlexiBridge
Left front (W)	2300	2300	2300	2300
Left front boost (W)	3200	3200	3200	3200
Left rear zone	Bridge	FlexiBridge	FlexiBridge	FlexiBridge
Left rear (W)	2300	2300	2300	2300
Left rear boost (W)	3200	3200	3200	3200
Centre front zone	Single			
Centre front (W)	1400			
Centre front boost (W)	2500			
Centre rear zone		Single		Single
Centre rear (W)		2300		2300
Centre rear boost (W)		3200		3200
Right front zone		Single	Single	Single
Right front (W)		1800	1400	1800
Right front boost (W)		2800	2500	2800
Right rear zone	Single		Single	
Right rear (W)	2300		1800	
Right rear boost (W)	3600		2800	

IPE84571FB	IPE84531FB	IPE84551FB	IKE95471FB	IKE63471FB
60cm Pure FlexiBridge	80cm Pure 4 zone	60cm Pure 4 zone	90cm FlexiBridge 5 zone	60cm FlexiBridge 3 zone
4	4	4	5	3
Touch control	Touch control	Touch control	Touch control	Touch control
Front right	Front centre	Front centre	Front right	Front right
Yes	Yes	Yes		
			Yes	Yes
Yes	Yes	Yes	Yes	Yes
Yes, FlexiBridge		Yes	Yes, FlexiBridge	Yes, FlexiBridge
Yes			Yes	Yes
			Yes	Yes
Yes	Yes	Yes	Yes	Yes
Yes	Yes	Yes	Yes	Yes
Yes	Yes	Yes	Yes	Yes
Yes	Yes	Yes	Yes	Yes
620	780	590	910	590
520	520	520	520	520
590	750	560	880	560
490	490	490	490	490
7.4	7.4	7.4	7.4	7.4
Hardwired	Hardwired	Hardwired	Hardwired	Hardwired
FlexiBridge	Single	Bridge	FlexiBridge	FlexiBridge
2300	2300	2300	2300	2300
3200	3200	3200	3200	3200
FlexiBridge	Single	Bridge	FlexiBridge	FlexiBridge
2300	2300	2300	2300	2300
3200	3200	3200	3200	3200
			XL Zone	
			1800	
			3700	
Single	Single	Single	Single	XL Zone
1400	2300	2300	1400	1800
2500	3200	3200	2500	3700
Single	Single	Single	Single	
1800	2300	2300	2300	
2800	3200	3200	3200	

## COMBOHOB SPECIFICATIONS

PRODUCT CODE	IDK844541B
<b>Product name</b>	ComboHob Induction with downdraft extractor
<b>Features</b>	
Type	Induction
Control type	DirekTouch Slider
Display	LED
Bridge Function	Yes
Auto Heat Up	Yes
Stop & Go	Yes
Power Levels	9 + PowerBoost
Residual heat indicator	Yes
Timer	Yes
Pan Sensor	Yes
Child Lock	Yes
<b>Zone specification</b>	
Cooking zones	4
Front Left (kW)	2.1 - 3.0
Front Left diameter (mm)	110
Rear Left (kW)	2.1 - 3.0
Rear Left diameter (mm)	110
Front Right (kW)	2.1 - 3.0
Front Right diameter (mm)	110
Rear Right (kW)	2.1 - 3.0
Rear Right diameter (mm)	110
Bridge dimension (mm)	380 x 210
Bridge diameter (mm)	230
<b>Product dimensions</b>	
Hob2Hood	Yes
Timer	Yes
Filter type	Aluminium mesh
Filter indicator	Yes
Grease filters	1
Motor type	Brushless
Recirculation max, m3/h	650
Recirc sound power min, dB(A)	42
<b>Product dimensions</b>	
Height (mm)	210
Width (mm)	830
Depth (mm)	515
<b>Flush fit cut-out dimensions</b>	
Width (mm)	805
Depth (mm)	490
<b>Performance</b>	
Connection load (kW)	7.4
Frequency	50Hz - 60Hz
Voltage	220-240 V
Power connection	Cord

## CERAMIC COOKTOP SPECIFICATIONS

PRODUCT CODE	HK654070XB
<b>Product name</b>	60cm Ceramic
<b>Features</b>	
Number of cooking zones	4
Position of controls	Front
Control type	Touch control
AutoMax automatic heat up	Yes
3 level residual heat indication	Yes
Stop + Go	Yes
Öko timer	Yes
CountUp timer	Yes
Minute minder	Yes
Function safety lock	Yes
<b>Product dimensions</b>	
Width (mm)	576
Depth (mm)	516
<b>Cut-out dimensions</b>	
Width (mm)	560
Depth (mm)	490
<b>Performance</b>	
Connection load (kW)	7.1
Type of connection	Hardwired
<b>Zone Specification</b>	
Left front zone	Triple
Left front (W)	2300
Left front boost (W)	
Left rear zone	Single
Left rear (W)	1200
Left rear boost (W)	
Right front zone	Single
Right front (W)	1200
Right front boost (W)	
Right rear zone	Dual
Right rear (W)	2400
Right rear boost (W)	

## GAS ON GLASS SPECIFICATIONS

PRODUCT CODE	HG975550VB	HG674550VB	HVB954501B
<b>Product name</b>	90cm Gas on ceramic glass	60cm Gas on ceramic glass	90cm Gas on ceramic glass with Touch on Glass control
<b>Features</b>			
Number of cooking zones	5	4	5
Knob ignition	Yes	Yes	
Rotary controls	Yes	Yes	
Electronic touch slide controls			Yes
Position of controls	Front left	Front right	Front centre
Flame failure safety device	Yes	Yes	Yes
Cast iron pan supports	Yes	Yes	Yes
Hob2Hood capable			Yes
Flame light indicator			Yes
Stop & Go			Yes
Timer			Yes
Child lock			Yes
Auto shut off			Yes
Residual heat indicators			Yes
<b>Product dimensions (mm)</b>			
Width	880	590	890
Depth	510	520	510
<b>Flush fit cut-out dimensions</b>			
Width	830	560	850
Depth	480	480	490
<b>Performance</b>			
Maximum current rating (A)	10	10	10
Type of connection	Plug and lead	Plug and lead	Plug and lead
Maximum gas rating (NG)	37.8	31.0	37.8
<b>Zone specification</b>			
Left front zone	Triple crown wok	Triple crown wok	Semi-rapid
Left front MJ/h	14.4	13.7	6.8
Left rear zone		Semi-rapid	Semi-rapid
Left rear MJ/h		6.8	6.8
Centre front zone	Simmer		Triple crown wok
Centre front MJ/h	3.6		13.4
Centre rear zone	Semi-rapid		
Centre rear MJ/h	6.8		
Right front zone	Semi-rapid	Simmer	Auxiliary
Right front MJ/h	6.8	3.6	4
Right rear zone	Semi-rapid	Semi-rapid	Semi-rapid
Right rear MJ/h	6.8	6.8	6.8
<b>Included accessories</b>			
Wok support trivet	Yes	Yes	Yes

## GAS COOKTOP SPECIFICATIONS

PRODUCT CODE	HG90FXB	HG75FXA	HG60FXA
<b>Product name</b>	90cm Gas	75cm Gas	60cm Gas
<b>Features</b>			
Number of cooking zones	5	5	4
Knob ignition	Yes	Yes	Yes
Rotary controls	Yes	Yes	Yes
Position of controls	Front	Front	Front
Flame failure safety device	Yes	Yes	Yes
Cast iron pan supports	Yes	Yes	Yes
<b>Product dimensions</b>			
Width (mm)	890	750	590
Depth (mm)	510	510	510
<b>Cut-out dimensions</b>			
Width (mm)	860	720	560
Depth (mm)	480	480	480
<b>Performance</b>			
Maximum current rating (A)	10	10	10
Type of connection	Plug and lead	Plug and lead	Plug and lead
Maximum gas rating (MJ/h NG)	40.5	40.5	26.3
Maximum power rating (kW)	11.2	11.2	7.3
<b>Zone specification</b>			
Left front zone	Dual valve wok	Dual valve wok	Double ring wok
Left front MJ/h	22	18	10.3
Left rear zone			Semi-rapid
Left rear MJ/h			6.3
Centre front zone	Simmer	Simmer	
Centre front MJ/h	34	34	
Centre rear zone	Semi-rapid	Semi-rapid	
Centre rear MJ/h	6.3	6.3	
Right front zone	Semi-rapid	Semi-rapid	Simmer
Right front MJ/h	6.3	6.3	3.6
Right rear zone	Semi-rapid	Semi-rapid	Semi-rapid
Right rear MJ/h	6.3	6.3	6.3
<b>Included accessories</b>			
Wok support trivet	Yes	Yes	
Mini trivet	Yes	Yes	Yes

## RANGEHOOD SPECIFICATIONS

PRODUCT CODE	DGE7660HB	DGE7960HB	DBE7980HB	DVK6981HB
<b>Product name</b>	60cm Integrated rangehood	90cm Integrated rangehood	90cm Canopy rangehood	90cm Inclined wall canopy rangehood
<b>Features</b>				
Finish	Dark stainless steel	Dark stainless steel	Dark stainless steel	Matte black
Control type	Electronic push button	Electronic push button	Touch	
Remote control				
Hob2Hood capable	Yes	Yes	Yes	Yes
SilenceTech				Yes
Breeze mode			Yes	Yes
Lights	LED	LED	LED	LED
Dimmer-controlled lights				Yes
Grease filter	Stainless steel baffle	Stainless steel baffle	Stainless steel baffle	Aluminium mesh
Number of filters	1	2	3	2
Dishwasher safe	Yes	Yes	Yes	Yes
Number of fan motors	1	1	1	1
Number of fans speeds	3 + Power boost	3 + Power boost	3 + Power boost	3 + 2 Power boost
Ducted maximum air flow - intense (m <sup>3</sup> /h)	680m <sup>3</sup> /hr	710m <sup>3</sup> /hr	700m <sup>3</sup> /hr	750m <sup>3</sup> /hr
Noise (Low) dB(A)	53	50	52	43
<b>Product dimensions</b>				
Height (mm)	329	329	930-1210	915-1260
Width (mm)	520	520	898	896
Depth (mm)	300	300	460	456
<b>Cut-out dimensions</b>				
Height (mm)	329	329		
Width (mm)	492	492		
Depth (mm)	259	259		
<b>Minimum installation height</b>				
Gas cooktop (mm)	650	650	650	500
Electric/induction cooktop (mm)	600	600	600	500
<b>Other</b>				
Top or rear duct hole	Top	Top	Top	Top
Recirculation option	Yes	Yes	Yes	Yes

## RANGEHOOD SPECIFICATIONS

PRODUCT CODE	DCE5280HM	DGE5160HM	DGE5860HM
<b>Product name</b>	120cm Ceiling hood	99cm Integrated	77cm Integrated
<b>Features</b>			
Control type	Electronic push button	Electronic push button	Electronic push button
Remote control	Yes	Yes	Yes
Hob2Hood capable	Yes	Yes	Yes
SilenceTech			
Breeze mode			
Lights	4	4	2
Dimmer-controlled lights	Yes	Yes	
Micromesh filters	4	2	2
Number of fan motors	1	1	1
Number of fans speeds	3 (+1 intensive)	3 (+1 intensive)	3 (+1 intensive)
Charcoal filter included	Yes	Yes	Yes
Auto off	Yes	Yes	Yes
Ducted maximum air flow - intensive (m <sup>3</sup> /h)	710	660	660
Noise (High) ducted dB(A)	70	67	67
<b>Product dimensions</b>			
Height (mm)	311	330	330
Width (mm)	1200	990	770
Depth (mm)	500	300	300
<b>Minimum installation height</b>			
Gas cooktop (mm)	650	650	650
Electric/induction cooktop (mm)	600	600	600
<b>Other</b>			
Top or rear duct hole	Rear	Top	Top
Recirculation option	Yes	Yes	Yes

PRODUCT CODE	DGE5660HM	DPB5950M/A	DPB5650M/A
<b>Product name</b>	54cm Integrated	90cm Telescopic	60cm Telescopic
<b>Features</b>			
Control type	Electronic push button	Push button & slide	Push button & slide
Remote control	Yes		
Hob2Hood capable	Yes		
SilenceTech			
Breeze mode			
Lights	2	2	2
Dimmer-controlled lights			
Micromesh filters	2	4	2
Number of fan motors	1	1	1
Number of fans speeds	3 (+1 intensive)	3	3
Charcoal filter included	Yes	Yes	Yes
Auto off	Yes		
Ducted maximum air flow - intensive (m <sup>3</sup> /h)	660	603	603
Noise (High) ducted dB(A)	67	66	66
<b>Product dimensions</b>			
Height (mm)	330	40	40
Width (mm)	540	898	598
Depth (mm)	300	280	280
<b>Minimum installation height</b>			
Gas cooktop (mm)	650	650	650
Electric/induction cooktop (mm)	600	600	600
<b>Other</b>			
Top or rear duct hole	Top	Top	Top
Recirculation option	Yes	Yes	Yes

## FIRST KLASSE CARE

Perfection is an AEG hallmark, backed by our complete commitment to customer care.

We employ a dedicated service team ready to ensure your experience with AEG is nothing short of exceptional – every single day.

### Same-day service<sup>†</sup>

Our technicians are trained to the highest AEG factory standards, ready to be deployed at a moment's notice. Call from any major capital city before midday (12 noon EST) and we'll be with you that very same day, if requested. Call after midday and we guarantee next day service with the option to accept a preferred two-hour window between 8am - 5pm, Monday to Friday within the metropolitan area.\*

### Dedicated contact centre

Like our products, our dedicated First Klasse Care Team offers unrivalled dependability. Contact us for delivery enquiries, installation details, product features, service updates and even product dimensions.

### Prompt delivery & connection

At AEG, dedication to service begins long before your new appliance arrives. You can expect a call ten days prior to delivery to arrange the most suitable date, followed by a confirmation call on the eve of delivery to arrange the most suitable time of day.

Our professional AEG service personnel deliver to all major capital cities, and will unpack your new appliance and connect it to existing utilities<sup>^</sup>. We'll also remove your old appliance and all packaging to be environmentally recycled.

## AEG 5 YEAR GARANTIE

Perfection is nothing without endurance.

Every AEG product in our collection is equipped with our assurance that it will perform beyond expectations. It's called AEG – Garantie. You will receive a 5 year warranty with every product. Of course, it's nothing less than you'd expect of high performing German standards.

We Garantie it.

### Warranty

Electrolux Home Products Pty Ltd and Electrolux (NZ) Limited (collectively Electrolux) warrants that for domestic applications the Appliances featured in this brochure are free from defects in materials and workmanship for 5 years, and warrants that for featured accessories a period of 12 months, following the date of original purchase and subject to the conditions set out in the warranty card accompanying the product when purchased. This warranty is in addition to the other rights and warranties you may have under the Australian Consumer Law (ACL) and Electrolux will at all times comply with its obligations at law including the ACL. For New Zealand customers Electrolux will at all times comply with its obligations pursuant to law including the Consumer Guarantees Act, the Sale of Goods Act and the Fair Trading Act. Where appliances are purchased in NZ for commercial purposes the Consumer Guarantees Act does not apply.

### Product information

The descriptors and illustrations in this publication apply to the specific products and models described as at the date of issue. Under our policy of continuous product development, product specifications may change without notice. Prospective purchasers should therefore check with their retailer to ensure this publication correctly describes the products that are being offered for sale. All information supplied is to be used for general reference purposes only and is on the understanding that Electrolux Home Products Pty Ltd will not be liable for any loss, liability or damage of whatever kind arising as a result of reliance on such information. Colours of products illustrated are as close as printing limitations allow.

<sup>†</sup> Brisbane, Sydney, Melbourne, Adelaide, Perth.

<sup>\*</sup> Delivery to regional and country areas can be arranged with your local retail store.

<sup>^</sup> Only basic installations of laundry and dishwashers supported, limited to a 10 amp plug and lead. Please consult your relevant tradesperson.

**5** YEAR WARRANTY  
**AEG GARANTIE**







Electrolux Home Products

Australia

telephone: 1300 363 664

fax: 1800 350 067

customercare@aegaustralia.com.au

aeg.com/au

AEG. We are part  
of the Electrolux Family.  
To add a touch of professional  
inspiration to your home,  
visit [electrolux.com.au](http://electrolux.com.au)



Printed on Monza Satin Recycled Art stock containing  
99% recycled material & 1% Virgin wood fibre.

© 2021 Electrolux Home Products Pty Ltd. ABN 51 004 762 341  
A\_BRO\_KitchenColl\_210x265mm\_Feb21



YEAR WARRANTY  
**AEG GARANTIE**