

Big Idea
CONNECTpreneur
Investor Network

VIRTUAL ROCKET PITCH
+ POWER NETWORKING

February 24, 2022

[CONNECTpreneur.org](https://connectpreneur.org)

AGENDA

11:00-11:05am | VIRTUAL NETWORKING (via Private Message)

11:05-11:20am | WELCOME and INTRODUCTIONS

**-TIEN WONG, Founder and Host, CONNECTpreneur
Community**

**-PATRICK SHERIDAN, Co-Founder & Managing Partner,
Modus Create**

**11:20-12:20pm | ROCKET PITCH SESSION Companies will be
introduced by:**

- LARRY BARD, Partner, NEXT by Shulman Rogers

- ANDY TUCKER, Partner, Nelson Mullins

**12:20-1:00pm | BREAKOUT ROOMS & NETWORKING
(Breakout rooms hosted by presenting companies)**

February 24, 2022

CONNECTpreneur.org

PRESENTING COMPANIES

AtWork Systems LLC - Brian Seeling

Carocell Bio - Dr. Mike Davies

Dapt - Jim Keeney

Freeze Sleeve, LLC - Mike Riordan

Gander Technologies - Bill Henry

Inmedix, Inc. - Andrew Holman MD

Pulmostics Limited - William Wittmeyer

Rebuildee - Russell Tuchman

REALCODERZ - Ravi Singh

SST Wireless - Christopher Chong

SPEAKERS



TIEN WONG, CEO, OPUS8, INC. [@tienwong](#)

Tien is CEO of Opus8, an investment and advisory firm which helps technology companies and alternative investment fund managers raise capital. He is also Chairman of Lumious, a leader in corporate tech training and learning analytics, as well as Chairman of Lore Systems, a provider of network engineering, cloud computing, and strategic IT consulting. In 1991, Tien co-founded and served as CEO of CyberRep, Inc. until its acquisition in 2003 by Affiliated Computer Services. CyberRep was one of the largest CRM outsourcing companies in the world with over 2,300 employees and \$80 million in revenue. Today, the CyberRep/ACS business unit is one of the world's largest call center operations, with nearly \$3 billion in revenue as divisions of Xerox, Conduent, and Continuum. CyberRep was ranked for 4 consecutive years in INC. Magazine's "Inc. 500" as one of the fastest-growing companies in the USA. CyberRep was profitable for 11 straight years and was backed by Allied Capital Corporation.

Tien is a recognized international expert in CRM, direct marketing, and BPO, having presented at dozens of industry events around the world on CRM and BPO topics. He has provided industry commentary on the ABC, Fox, NBC, CNBC, Maryland Public Television, and China's CCTV networks, as well as Time Magazine, The Washington Post, Inc. Magazine, and Success Magazine. He serves on several boards including the Montgomery County (MD) Economic Development Corp., Center for Innovation Technology GAP Fund's Investment Advisory Board, Junior Achievement, and Refraction. He was appointed by Governor Martin O'Malley to the 9-member Maryland Venture Fund Authority which allocates and manages over \$130 million of capital which is invested into top-tier venture funds and startups. He is an Entrepreneur in Residence at Georgetown University's McDonough School of Business, and a graduate of Dartmouth College.



PAT SHERIDAN, CO-FOUNDER & MANAGING PARTNER, MODUS CREATE

Pat is focused on the intersection of design, technology, and business. He saw the need for a high-end product consulting firm built with open-source team design and the concept for Modus was born. Pat helps clients see new ways to tackle challenges with emerging technology and brings his unmatched passion to work every day. As a serial entrepreneur and active startup mentor, he's a co-organizer of NoVa.JS and NYC.JS. He is a 2011 graduate of Mind Share, received his MBA from Georgetown University, where he is currently an Entrepreneur-in-Residence, and holds a BFA from the Corcoran College of Art and Design, where he currently serves as an advisory council member for the George Washington University Columbian College of Arts and Sciences.

Value Proposition

Company Background: AtWork Systems has an echo system of compliant-focused products to support the SMB government contractor market. CyberPlan is the first total lifecycle security management solution that includes the solution, costs, project plan tracking capability, and access to cyber professionals to achieve and maintain certification.

Leadership Team: Our team has senior-level experiences providing enterprise-level security and technology solutions for government agencies and their supply chain: Ron Lewis - Partner & CEO, Rob Zamani- Partner & Cyber Expert, Jin Chun - CTO & Product Engineer, Brian Seeling – VP Cyber Sales & Strategy, Mike Bogdon – VP Accounting Managed Services.

Products/Services: Currently, no solution in the market includes the policies, technical solutions, planning, cost estimating, and resources required to achieve and maintain existing and emerging cyber requirements. We provide efficiencies, cost visibility, and controls that significantly reduce the time and costs for the GovCon community that are at risk of fines or not being able to participate in DoD solicitations.

Technologies/Special Know-how: We leverage proprietary technologies built into our CyberPlan platform to quickly configure and deliver solutions selected from a knowledge base created by our Center of Excellence cyber professionals. Projects are planned, estimated, and managed using our project management capabilities. These integrated features differentiate us from our competitors.

Market: A \$60B Cybersecurity market at a CAGR of 11% with a \$9B target of Government Contractors using a SaaS and professional services model.

Distribution Channels: We will have Direct Sales to target the entry to mid-market, and channel partners to support our mid to larger enterprise implementations.

Competition: Each of our competitors below only provide a partial solution focusing on assessments, as opposed to our total lifecycle certification platform that includes solution, resources, and planning.

- FutureFeed
- ComplyUp
- CyberSaint
- Exostar
- Apptega
- Coalfire

Financial Projections (Unaudited):

	2021	2022	2023	2024	2025
Revenue	\$715,755	\$2,004,000	\$7,681,000	\$16,680,000	\$30,400,000
EBIT (dollars in thousands)					

Quick Facts

Company Name: AtWork Systems. LLC
Contact: Brian Seeling
Address: 1530 Wilson Blvd Ste 650, Arlington, VA 22209
Phone: 571-376-5153
Email: brian.seeling@atworksys.com
Website: www.atworksys.com
Industry: B2B software
Domain: B2B SaaS
Bank: Bank of America
Law Firm: Anthony Millen
Patent Estate: N/A
Number of Employees: 2 Fulltime, 6 Contractors
Leadership Team: Ron Lewis - Partner & CEO
 Rob Zamani- Partner
 Jin Chun - CTO
 Brian Seeling – Cyber VP
 Mike Bogdon – VP Accounting
Amount of Financing Sought: \$500,000
Current Investors: CIT Gap Fund, 6 Angel Investors
Use of Funds: Sales and marketing, product enhancements, product expansion
Auditor: N/A

Value Proposition: Carocell Bio are developing novel peptides (small proteins) with nanoparticle delivery to more safely and effectively treat inflammatory diseases. **Our lead is to prevent the formation of a scar after an operation.** Everyone knows someone who has a scar. Every operation will lead to a scar. 234 million operations were registered in 2019. Every one of these will lead to a scar. Treatment of already formed scars cost \$37 billion per year. If we can prevent the formation of a scar, we can make this market huge. Our peptide platform could open the door to the \$119 billion inflammation market.

Leadership Team: Our founder and leadership team have over 55 years in the healthcare industry and have developed new medicines that are on the market now. We have taken 2 companies to exit. We have raised over \$200M in the past. The team has experts in healthcare, drug development, marketing and operations.

Challenge: There is nothing currently available to prevent the formation of a scar after an operation. Scars cause major psychological, physical and cosmetic discomfort.

Solution: Our anti-inflammatory peptide with nanoparticle delivery will be sprayed onto the incision at the end of the operation. The peptide will:

- modulate the inflammation seen after an operation, and so
- reduce the collagen deposition, and
- prevent the scar formation



Instead of the “birds-nest” of collagen that is seen currently, the collagen will be laid down in sheets, like normal skin.

Technology: By targeting MAP kinase (p38a), the orchestrator of inflammation, using a peptide that binds allosterically we have shown that we not only switch off inflammation we also prevent the activation of inflammation. Scientific rationale and surgical knowledge of the founder and CEO, Dr Mike Davies, has recognized that ameliorating the inflammation seen in the healing incision (seen as redness) will lead to reduced collagen deposition and so allow scar free healing.

Market: Currently \$37 billion is spent each year on methods to try and reduce already formed scars. This ranges from cold water, to pressure garments, to steroid creams, creams, oils and laser treatment. Nothing really works and there is nothing to prevent the formation of a scar after an operation.

Revenue Model: Development of the spray formulation thru to Clinical Proof of Concept over the next 3-5 years will increase the value of Carocell Bio to over \$350 million.

The \$3M sought here will develop the formulation and provide positive data that the formulation works in an recognized scar model.

Financial Projections (unaudited)

	Year 1	Year 2	Year 3	Year 4	Year 5
Investment	\$3M	\$6M	\$20M	0	0
Outcome	Formulation and scar study	Regulatory approval for clinical trials	Start clinical trials	Clinical Proof of Concept	Sale to Big Pharma (\$XXX million)

Website: www.carocellbio.com

Headquarters Office:

Suite 425, North Carolina
Biotechnology Center, 17 TW
Alexander Drive
Durham, NC 27709

Industry: Biotechnology

Leadership Team:

Founder. CEO:

Dr Mike Davies, MD

Chairman:

John Nicholson, PhD

Chief Financial Officer:

Ann Mackey, PhD

Business Development Director:

Graham Combe, PhD

Operations Advisor: Ines LeBow

Seeking Financing of \$3M

Previous Funding: \$1.5M

Use of Funds: formulation development, regulatory engagement, pre-clinical scar prevention study

Dapt Tech, Inc.

Jim Keeney, CEO 703.568.5887

dapt.tech | jim.keeney@dapt.tech



Business Description: Dapt is a FinTech B2B SaaS solution for project costing. SMBs still use spreadsheets and accounting staff to track projects. Dapt intelligently connects the tools they use for accounting, time tracking, and payroll for accurate, realtime project costing.

The Dapt Team: As owner of FitterWeb Consulting, **Jim Keeney** discovered the problem and developed the business. In november of 2020, **Dan Maisano** brought his experience in startup growth and together we launched Dapt in January of 2021. Over the last year we have grown to 10 employees bringing together industry knowledge and expertise in sales, technology and customer services. Between our founders and advisors we have been involved in 8 exits and raised over \$79 Million.

Solution: Intelligently connecting best-in-breed tools supports companies as they grow beyond the paper and manual systems they have used for years. With Dapt, payroll is simplified and project costing accurate and easy.

Technology: Dapt is a cloud-based platform using AWS services. Continuous integration and load based scaling are used to ensure that the infrastructure will scale horizontally depending on load. The application is developed in Javascript and AWS Postgres RDS is used for data storage. ElasticSearch is used for scalable data search, retrieval and reporting.

Market: Over 325,000 companies with 21-500 employees in construction and trades and other project based industries. With an average ACV of \$3,500 the TAM is \$1.1B

Competition: Most SMBs use a combination of accounting staff and spreadsheets for for project costing. This process is labor intensive and error prone. All-in-one alternatives - ERPs and Job Costing Software - are expensive and difficult to implement disrupting operations three months or more.

Distribution Channels: Dapt has partnerships with two of the largest service providers in the industry, Intuit and ADP. The average annual customer value for Dapt is \$3,500. In 2022 we will expand marketing campaigns to include accounting firms and construction companies.

Highlights

Management

Jim Keeney, CEO
Dan Maisano, COO
Adam Babbit, CTO

Domain: B2B SaaS
FinTech

Legal Representation:
Shulman Rogers

Now Seeking:
\$1.25 Million Convertible
Note

Current Investors:
\$300K - Founders
\$150K - F&F, Accredited

Use of Funds:
Expand platform offerings
Expand partnerships
Expand marketing

	2021	2022	2023	2024	2025
Customers	67	368	1,364	3,035	5,384
Revenue	\$175,535	\$519,960	\$1,897,680	\$4,203,660	\$7,439,088



COLD THERAPY AND
COMPRESSION REDEFINED

FREEZE IT. SLEEVE IT. RELIEVE IT.®

Background / Opportunity

Headquartered outside of Atlanta, GA, Freeze Sleeve, LLC (“Freeze Sleeve” or the “Company”, www.freezesleeve.com) is a leading branded, health and wellness product company focused on delivering cold therapy solutions for pain and recovery. The Company was founded in 2015 by Mike Riordan to initially develop a product for his daughter who was experiencing significant knee pain while training in a pre-Olympic gymnastics program.

Products

The Company’s products offer revolutionary cold therapy providing relief and recovery to aching muscles and joints while being scientifically designed to provide an amount of cold therapy consistent with medical protocol, without any risk of skin burn or muscle damage. Freeze Sleeve currently offers its core “360° sleeve” in 5 different colors and 6 different sizes and a Flatpak for each color for 36 SKUs. The Company also has a shoulder and eye mask product in final stages of development (to be released in early 2022). Freeze Sleeve is trademark protected patent pending.

Current Distribution Channels/Customers

The Company currently sells its products through 4 primary channels:

- Online Direct-to-Consumer through Company website;
- Amazon Direct to Consumer through an exclusive distributor relationship;
- “Direct” Wholesale Customers through internal sales and marketing efforts; and
- Professional channels primarily through distributor relationships including the medical, chiropractic, massage and cryotherapy markets

Significant Pending Revenue Growth Opportunities

Freeze Sleeve has several significant growth opportunities which are scheduled and forecasted to begin generating sales in the first half of 2022. These opportunities include:

- QVC – The Company is scheduled to launch on QVC late Q1 2022
- Licensing Agreement with Leading Branded Sports Recovery Products Company
- Multiple International Distribution Opportunities

Product Manufacturing

Freeze Sleeve currently manufactures all of its product with one contract manufacturer in the U.S. The Company is in active discussions with Asian manufacturing alternatives to lower costs and while also providing sufficient manufacturing capacity to support the Company’s substantial growth opportunities. We anticipate these manufacturing changes and savings to begin in the first half of 2022.

Financial Projection

Freeze Sleeve’s 2021-2025 Financial Projection is supported by a detailed projection model.



Gander Technologies Overview

Gander's AI driven facial recognition timekeeping system prevents time theft which creates an average annual savings of more than \$2,400 per employee and protects customers against hour and wage litigation exposure that exceeds \$5,000 annually per employee. Our solution leapfrogs traditional time keeping options by verifying the identity of the person clocking in using Gander's AI driven facial recognition, verifying the location where they are clocking in using geo fencing technology, and when they are clocking in using our platform time stamp. Customers use Gander's actionable timekeeping data to manage employees and subcontractors in both on-site and off-site environments. In addition, Gander provides meal and rest break documentation that demonstrates compliance with hour and wage laws that exist in California, New York, Washington, Oregon, Colorado, and a growing number of additional states. The Gander solution operates via an app downloaded to an employee mobile phone or an employer provided tablet and the facial recognition is performed in Gander's secure cloud so that customers can implement the solution quickly.

Gander is currently developing an AI driven facial recognition access control product using our proprietary facial recognition engine. We are in active discussions with lock manufactures to incorporate Gander's facial recognition technology into their access control solutions when we complete development this summer.

We have assembled an expert team to commercialize the Gander AI driven facial recognition software we have developed. Bill Henry, our CEO has 20+ years of experience growing and selling software companies and we have key investors including Afshin Safavi, the founder of a unicorn biotech company Bioagilytix, Rob Yahn, a veteran of many successful startups and key advisors, including Paul Cowie, who is a leading time and wage attorney practicing in California. Our development team is located in Vietnam which dramatically decreases the cost to build and maintain our products.

We will use the proceeds from this capital raise to expand our sales and marketing resources to accelerate sales, our customer service capabilities to implement and support our customers. In addition, we will use a portion of the fund to complete the development for our access control solution.

Inmedix Executive Summary



and subsidiary, Inmedix UK, Ltd.

17837 First Ave S, #6
Normandy Park, WA, 98148
USA

Inmedix UK Ltd. (subsidiary)
Riverside House
14 Prospect Place
Welwyn, Hertfordshire AL6 9EN
United Kingdom

Andrew J. Holman, MD, CEO
206-INMEDIX
andrew.holman@inmedix.com

Steven Daly, MBA, COO
steven.daly@inmedix.com

Daniel Austen, UK Manager
daniel.austen@inmedix.com

MANAGEMENT TEAM

Andrew J. Holman MD, CEO, co-founder
Steven Daly, MBA, BS (engineering), MS (medical engineering) COO
Doug Cooper (fmr Zachary Scott) Advisor
Leslie Bottorff (fmr GE Ventures) advisor
Lucy Lu, (fmr Crescendo Bio) BD Advisor
Dennis Takasugi, (fmr Exagen) BD advisor
Michael Blood, Sales & Marketing Advisor
Glynis Thakur, Director, Reimbursement
Rae Gleason, Director, MD Education
Dan Austen, Manager, Inmedix UK Ltd.

BOARD of DIRECTORS

Bernie Tobin, former President, Crescendo Bioscience, Andrew Holman and Steven Daly

SCIENTIFIC ADVISORS

From Harvard, Stanford, the Cleveland Clinic, Oxford, including 2 Past-Presidents of the American College of Rheumatology

FUNDING TO DATE

\$7,050,000 (co-founder \$2.55M)

FINANCING SOUGHT

\$3M Series Seed3 for preferred equity plus warrants at \$28 pre-money valuation

USE OF PROCEEDS

Hire core team, submit FDA pre-sub (done), submit 510K and clearance, launch ANS Neuroscan in the Pacific Northwest

COMPANY DESCRIPTION

On a proprietary, cloud platform with 90% gross margins, Inmedix will bring the only clinically validated, FDA-cleared diagnostic for fight-or-flight stress biology to reimbursed, point-of-service clinical care in order to solve poor outcomes and unsustainable costs in the most expensive component of healthcare: autoimmune diseases."



ANS Neuroscan™ prototype

Inmedix is solving the poor remission rate (25%) and unsustainable costs of autoimmune disease with:

- The most accurate measure of stress biology invented
- Trusted by professional sports and US Special Forces
- Exclusive 5-min. next-generation heart rate variability (HRV)
- On a cloud platform enabling 90% gross margins
- Projected rheumatology revenue of \$250M in 2025
- For clinician customers, new point-of-service income (≈ \$100K annually)
 - o Current HRV codes for doctor and Inmedix reimbursement per test
 - o Two recurrent revenue streams for Inmedix (lease and per test)
 - o 96% of 231 US clinical rheumatologists surveyed want it in their offices
 - o Supported by 9 Inmedix clinical studies
 - First/only to predict 52-week RA treatment outcome
 - First/only to increase RA remission from 25% to 79%
 - Up to \$34 B savings for 10-yr US RA treatment (2018 *J Med Econ*)
- For pharma customers, centralized data for AI drug label expansion and discovery
- Meeting with FDA in March and preparing for 510K submission in 2022
- Commercialization and revenue expected by early 2023.
- Exceptional team with deep rheumatology diagnostic C-level experience
- Attractive \$28M pre-money valuation, preferred equity, and warrants for targeting strategic acquisition or IPO by 2025

Summary Income Statement

	Product Development Period				Five Year Forecast				
	2017	2018	2019	2020	2021	2022	2023	2024	2025
Revenue	\$ -	\$ -	\$ -	\$ -	\$ -	\$ 795,027	\$ 19,539,515	\$ 89,482,438	\$ 253,978,949
COGS	-	-	-	-	-	554,041	3,647,747	8,093,055	15,741,471
Gross Profit	-	-	-	-	-	240,986	15,891,768	81,389,382	238,237,477
	0.0%	0.0%	0.0%	0.0%	0.0%	30.3%	81.3%	91.0%	93.8%
Personnel Expenses	36,804	84,832	90,974	54,894	58,125	570,589	15,482,215	27,111,403	46,445,542
Operating Expenses	3,993	285,876	350,954	302,326	299,374	525,854	1,914,507	4,231,472	9,516,901
Marketing	58,792	116,963	147,782	55,336	89,000	522,500	2,626,800	4,502,282	7,857,394
R&D Expense	148,683	390,719	541,545	474,946	1,437,100	1,588,900	1,826,100	10,128,819	30,594,039
Total Operating Expenses	248,272	878,389	1,131,256	887,502	1,883,599	3,207,843	21,849,623	45,973,976	94,413,876
Operating Income (EBIT)	(248,272)	(878,389)	(1,131,256)	(887,502)	(1,883,599)	(2,966,857)	(5,957,855)	35,415,406	143,823,601
	0.0%	0.0%	0.0%	0.0%	0.0%	-373.2%	-30.5%	39.6%	56.6%
EBITDA	\$ (248,272)	\$ (878,389)	\$ (1,131,256)	\$ (887,502)	\$ (1,866,200)	\$ (2,936,003)	\$ (5,804,789)	\$ 35,686,000	\$ 144,353,490
	0.0%	0.0%	0.0%	0.0%	0.0%	-369.3%	-29.7%	39.9%	56.8%

PULMOSTICS

Investor Highlights

Value Proposition: Pulmostics is a leader in the emerging field of medical breath analysis. Pulmostics has harnessed the power of breath analysis to detect breast cancer at an early stages. Early-stage treatments improve chances of surviving cancer while lowering the overall costs of care. In 2021, 12% of all cancer diagnosis was breast cancer, the most frequently diagnosed cancer globally. Breast cancer is the leading cause of cancer deaths in developing countries. 58% of deaths from *breast cancer* in these countries are due to late detection. 70% of all cases are diagnosed at stage 3 or later. Pulmostics designed the BreathSense 1000, a patient centric, economical, non-invasive, accurate and user-friendly instrument to detect breast cancer from breath. It delivers real-time actionable results at the point-of-care. Our technology has been used to identify breath biomarkers that are sensitive and specific for *breast cancer, lung cancer and active pulmonary tuberculosis*.

Company Background: Pulmostics' core sensing technology was originally developed to detect trace amounts of explosives, narcotics and illicit chemical substances that are present in the air. The solutions have been in use around the globe for over 10 years. This technology is sensitive and fast. It can perform real-time detection and analysis of chemical compounds that are present in human breath in very low concentration. BreathSense 1000 was designed around our proven core technology to focus on medical point-of-care applications aiming at real time patient screenings. Pulmostics spun-out from Electronic Sensor Technologies and was formed in late 2015, to solely focus on early medical diagnosis. The novel science of breath analysis has the potential to revolutionize the medical diagnostic and therapy monitoring industries.

Leadership Team: The leadership team has over 150 years in total combined expertise in designing and launching novel technologies. Dr. Jorge Leon incepted the biomolecular diagnostic division of Quest Diagnostics, growing it to \$1.4B in term in revenue over a period of 12 years. The team holds numerous patents. Dr. Sun authored and published several books on trace chemical compound detection and analysis. The team has previously collectively raised over \$50M for other start-ups and engineered several successful exits.

Products/Services: BreathSense 1000 is an economical, patient and clinician friendly screening platform focused on early detection of breast cancer. It delivers actionable results in real-time at the point of care.

Technologies/Special Know-How: Pulmostics currently has 3 issued patents protecting both the device apparatus and the breath capture device with other patents pending. There are no other existing commercial solution that have been successfully used in clinical trials.

Markets: Breast cancer has emerged as the most frequently diagnosed cancer worldwide. There is an urgent need for economical noninvasive early detection. Approximately 2 billion women remained unscreened for breast cancer every year, representing a global annual market opportunity of about \$16.8B. Our initial focus is lower middle income developing countries with an annual TAM of \$13.8B.

Distribution Channels: Hospital chains, centralized healthcare providers and international distribution companies will be using our solution.

Competition: There are other smaller companies These companies are focused on lung and colorectal cancers and asthma. Pulmostics' technology has already been used to conduct conducive clinical trials in numerous occasions. Affordability, accessibility, ease of use, noninvasiveness and real-time result delivery at the point of care make our solution unique.

Financial Projections (Unaudited):

	YEAR 1	YEAR 2	YEAR 3	YEAR 4	YEAR 5
Revenue	\$3.75	\$17	\$56	\$149	\$275
EBIT (dollars in thousands)	(\$2)	(\$2)	\$16	\$71	\$125

Quick Facts

Company Name: Pulmostics LTD

Contact: William Wittmeyer

Address: 1125-B-Business Center Circle, Newbury Park, CA 91320

Phone: +1 805 480 1994

Fax: +1 805 480 1984

Email:

w.b.wittmeyer@pulmostics.com

Website:

www.pulmostics.com

Industry: Medical Devices

Bank: Chase Bank/Bank of Ireland

Law Firm: Munck Wilson
Mandala LLP

Patent Estate: 3 Patents issued

Number of Employees: 8

Leadership Team:

CEO/Founder: William Wittmeyer

CTO: Dr. Yin Sun

CSO: Dr. Jorge Leon

EVP.: Bernard Picot

Amount of Financing Sought:
\$3M

Current Investors: Tan Sri Azmi
Wan Hamzah (Malaysia)

Use of Funds: Breast cancer
algorithm improvement, regulatory
approvals and go-to-market

Value Proposition: Our unique **AI based** Assessment and skill-building capabilities combined with core HR functions allow our clients to not only handle their day-to-day operations but build the next-generation talent pipeline with significantly improved employee satisfaction using our end-to-end solution.

Leadership Team: Our extensive experience in reskilling talent while working at fortune 100 companies, and then creating top talent for several fortune 100 companies, led us to believe there is a need for talent development software that can build a strong technology talent pipeline for companies.

Challenge: SMBs cobble together disparate point solutions to recruit, develop and manage talent within their organization. Many more are managing and engaging their employees manually.

Solution: RC teambuilder, HR Software with an emphasis on AI-based skills assessment and skill-building, enables organizations to hire top talent, and then onboard, engage, and continuously develop their skills.

Recruit top candidates based on the job profile

- AI to identify best candidates based on assessments and track-record
- Comprehensive candidate screening with code quality assessments
- AI-driven proctoring

Skill development based on individual needs

- Leverage AI to build personalized learning journeys
- Increase retention and create a learning organization-
- Coding Challenges, Study Groups, & on the spot quizzes

Simplified talent management

- Easy attendance, timesheet, leave & expense management
- Customizable recruiting and seamless onboarding
- Simplified payroll with early projections
- Ability to integrate with other platforms for a personalized experience

Technology: Our “digital native” SAAS platform was architected as an enterprise solution. Hire, onboard, engage and continuously develop talent on a single platform. Equally important is our ability to find and develop creative full stack developers. The combination of cloud and full stack developers gives us the confidence we can implement new capabilities quickly.

Market: In a bid to stem the Great Resignation, the Learning Management Systems industry is expected to grow to \$37.9 Bn by 2026. According to Gartner, 59% of HR leaders consider critical **skill-building** the top priority in 2022. Transition to hybrid workforce and need for a software-based skill assessments and skill building, combined with HR, provides a unique value proposition to provide end-to-end software for SMBs.

Revenue Model: SAAS software model with tiered pricing

Financial Projections(millions)

	2021	2022	2023	2024	2025
Revenue	NA	1.1	4.8	24	89
EBITDA	-1.6	-1.5	2.1	11	34

Website: www.realcoderz.com
Headquarters Office:
 8500 Leesburg Pike, #206
 Tysons Corner, VA 22182
Industry: Talent Management
Domain: Integrated HCM platform that focuses on software developer Up-skilling
Leadership Team:
Founder & CEO:
 Ravi Singh
Chief Product Officer:
 Mark Pettit
VP Services:
 Ritesh Misra
VP Sales:
 Rajat Munsri
Strategic Advisor:
 Vikram Makhija
Seeking Financing of \$2M
Previous Funding: Self-Funded
Use of Funds: Sales, Marketing, and Product.

Rebuildee

A For-Profit Disaster Recovery Platform And App To Aid Individuals And Families In Rebuilding Their Homes After A Disaster



BUSINESS DESCRIPTION

- Acts as a stopgap measure in-between the aftermath of a disaster and the completion of the insurance process
- Functions as a gift registry-like disaster recovery service where donations are earmarked for specific items / services



BUSINESS MODEL



Different Revenue Streams Built Out And Combined Over Time



PLATFORM

- Marketplace of requestors, donors, and suppliers designed to better aid those who've been affected by disasters
- Platform allows one to specifically request a range of home goods to rebuild their home

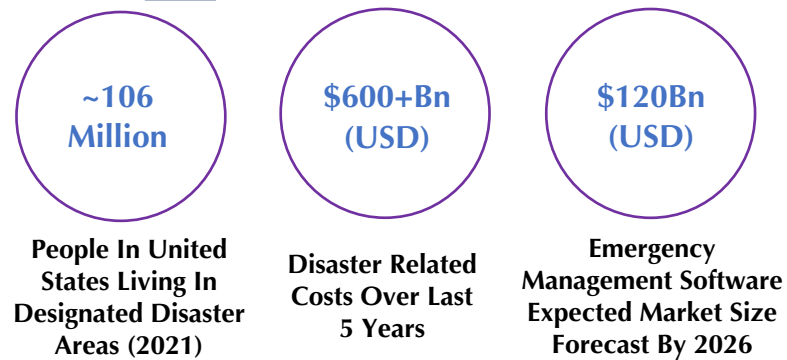


MISSION AND GOAL

- Fill a gap in the disaster recovery process by offering a more efficient and effective substitute to the Federal Aid Process
- Provide help for underinsured and uninsured who have most amount of challenges with this process



MARKET OPPORTUNITY



COMPETITIVE ADVANTAGE

- Subject Matter Experts / Advisors and Experienced Team
- Previous Founder Experience
- Extensive Professional and Personal Networks

GEORGETOWN UNIVERSITY

Wharton UNIVERSITY of PENNSYLVANIA



FUNDRAISING GOALS

Pre-Seed
\$250,000

Raise Date: Start Q1 2022,
Complete By Q2 2022

Seed
\$2,500,000

Raise Date: Start By Q2 / Q3 2022,
Complete By EOY 2022



TEAM



Russell Tuchman



Michael Pollinger



Adrian Baker-Kang



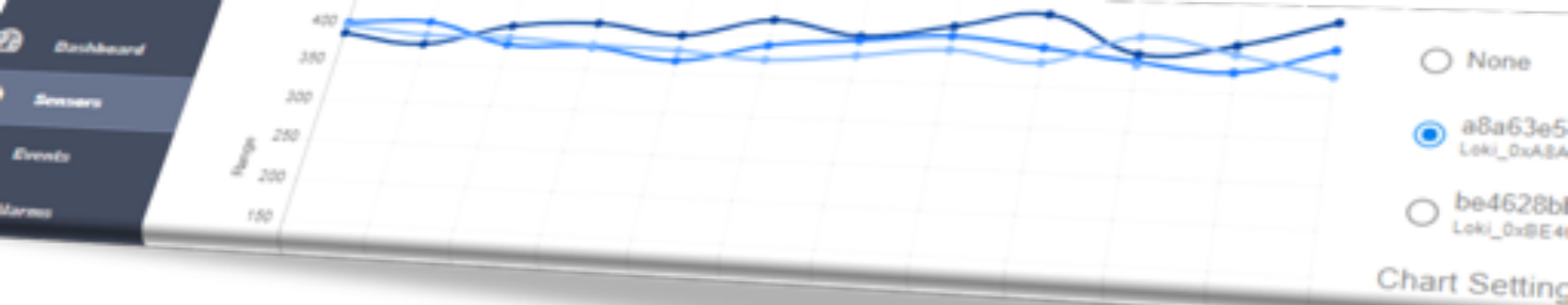
WHY US?



- The Rebuildee team has personally both witnessed and been affected by the devastation, destruction, and effect on local communities from wildfires, earthquakes, winter storms, and flooding (in California and New York).

NOTE: SEE EXECUTIVE SUMMARY, PITCH DECK, AND APPENDIX DECK FOR MORE DETAILS

CONTACT US: RUSSELL TUCHMAN | RUSSELL@REBUILDEE.COM | 818-620-7899



SST Wireless

Industrial IoT for Everyone

www.sstwireless.com

Funding:

Series A Preferred Round

\$ 1.75 M USD @ \$5 M Pre-money valuation

\$ 445K available

Revenue Forecast:

2022	2023	2024	2025	2026
\$3.3	\$9.7	\$19.9	\$35.6	\$56.2

Exit:

Strategic acquisition within 36 months at a minimum valuation of \$100 M USD.

Investors in round:

Momenta Ventures, Keiretsu Capital

SWAN Venture Fund II, Tech Coast Angels

Joirre Capital, US based Angels

Management Team & Board:

Christopher Chong, President & CEO

Murry Kopit, Director of Engineering & Process

Igor Vinovskyy, Director of Production

Philip Choo, Director of Finance & Admin

Stephen Berard, CTO, Momenta Ventures

Rick Tomfordhe, Vice Chair, Alliance of Angels

John Park, CEO, RCI Capital Group

News & Media:

Partnership with Precision and data driven results [\[Read\]](#)

New Flyer selects SST as only approved provider [\[Read\]](#)

Momenta Ventures invests in SST [\[Read\]](#)

Digital Leadership Series podcast with SST CEO [\[Listen\]](#)

Why we support a dirty industry social media [\[Read\]](#)

Techbrief coverage of SST at SensorsExpo SJC [\[Read\]](#)

Contact:

SST Wireless Inc.

Christopher Chong, President & CEO

(604) 946-0173 x 101 / (604) 240-7177 mobile

chris@sstwireless.com

Problem:

Small to medium sized industrial companies (SME) are being left behind on the “Industrie 4.0” revolution. Less than 10% of industrial SMEs have adopted Internet of Things (IoT) technologies, although they would benefit the most. The barriers are the legacy vendors and an overly complex ecosystem of certified channel. SMEs lack knowledge, budgets, useable data, and inhouse expertise.

Opportunity:

SME Industrials represent 98.6% of the market and play a vital role in the entire supply chain. The industrial sensor market is worth \$19 billion with wireless sensors at \$4.6 billion but growing at 24% CAGR. Legacy sensor market is ripe for disruption. SST is well positioned to capture a significant market share as clearly demonstrated through multiple use cases and customer adoption.

Solution:

SST has removed the barriers to IoT adoption by developing a robust line of industrial grade wireless plug & play sensors & gateways (pressure, high temperature, vibration, humidity) that is affordable or available as a subscription. Sensors and gateways are installed & configured by anyone using a smartphone. The sensor data is automatically hosted on SST’s ECMDash cloud platform where data is aggregated, and trainable events are captured and compared to accelerate time to analytics & machine learning.

Business Model:

Both the cloud-based monitoring & analytics services (SaaS) and the wireless sensors & gateways (EaaS) are offered as a self serve subscription service. Each sensor that is installed on a machine increases the value of the data repository that SST is building and the level of accuracy and intelligence. Access to a consistent, structured archive of machine condition data will be available to 3rd parties including analytics providers through an Application Interface (API).

Why Invest:

Products and technologies are validated with significant customers. SST’s focus on aggregating machine condition data is incredibly unique in the market and defensible. Revenue generating and accelerating. Growing patent portfolio & early acquisition interest.

PARTNERS



MODUS CREATE

Modus Create is a consulting firm that helps companies transform for success in the digital future. Through a collaborative engagement model, we help our clients with product strategy, application design/build, user experience, and process change.



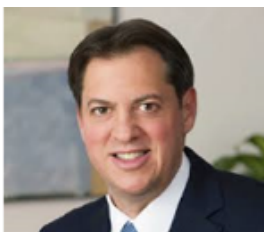
PAT SHERIDAN, CO-FOUNDER & MANAGING PARTNER, MODUS CREATE

Pat is focused on the intersection of design, technology, and business. He saw the need for a high-end product consulting firm built with open-source team design and the concept for Modus was born. Pat helps clients see new ways to tackle challenges with emerging technology and brings his unmatched passion to work every day. As a serial entrepreneur and active startup mentor, he's a co-organizer of NoVa.JS and NYC.JS. He is a 2011 graduate of Mind Share, received his MBA from Georgetown University, where he is currently an Entrepreneur-in-Residence, and holds a BFA from the Corcoran College of Art and Design, where he currently serves as an advisory council member for the George Washington University Columbian College of Arts and Sciences.



NEXT powered by SHULMAN ROGERS

NEXT disrupts the legacy legal industry by offering a broad range of fixed fee solutions (stand-alone products and annual legal plans) delivered by senior attorneys with valuable business expertise. NEXT solves the problem that startup and emerging growth companies face when launching their business as well as scaling: lack of access to predictable legal fees, seasoned attorneys, the latest technology and key business services. We use cutting edge technology platforms to deliver real efficiencies, transparency and a collaborative environment for clients, attorneys and investors. NEXT partners with its clients to de-risk their business and get to the NEXT level, together reaching each milestone of success. NEXT is powered by Shulman Rogers, a full-service law firm with nearly 100 attorneys offering superior service across a wide range of practice areas. The firm also offers robust personal services such as residential closings and trust and estate planning. Shulman Rogers has earned its reputation for providing quality representation, business insight and client value, serving as a highly attractive alternative to larger, higher-priced firms and smaller, less diverse firms. Learn more at ShulmanRogers.com.



ANTHONY MILLIN, NEXT CHAIR & PARTNER, SHULMAN, ROGERS

Anthony Millin is the Chair of NEXT and a trusted legal and business advisor to startup, early-stage, and emerging growth companies. As a corporate and securities attorney, a successful serial entrepreneur, and a venture capitalist, Anthony brings a unique legal and business perspective to advising his clients. Anthony understands firsthand what it takes to start, scale and manage a company, to successfully prepare for and run a fund-raising process, and to address the legal issues faced by a startup. Another specialized skill set Anthony brings to the table is his China-based experience, assisting early-stage and middle-market companies interested in conducting business in China or seeking direct foreign investment from China. Anthony also serves as a Venture Partner at Urban Us, a seed-stage VC firm. Contact Anthony at amillineshulmanrogers.com.

PARTNERS



NELSON MULLINS

Nelson Mullins delivers real value: experience and judgment at a reasonable cost. Flexibility, practical business sense, and tireless advocacy are among the firm's service hallmarks. That's what clients want. Our measured growth reflects what our clients need – a multidisciplinary platform that provides trusted advice to meet a broad range of business needs.



ANDY TUCKER, PARTNER, NELSON MULLINS

Andy is a corporate and securities advisor to growing companies, particularly in the technology and government contracting sectors. His clients maintain operations around the globe. He regularly advises companies in various industries such as cybersecurity, artificial intelligence, government services and contracting, REITs, telecommunications, managed services, renewable energy, oil and gas, medical devices, pharmaceuticals, aviation, consumer product, and financial technology companies. He advises SPACs on their initial formation and sponsor capital raise, through the IPO process and their initial business combination.



STELLAPOP

We build better businesses. Helping organizations improve their operations, people and brand. Like the brain, StellaPop's capabilities are divided into two halves: management and creative consulting. We specialize in functions within each while maintaining a deep understanding of how one affects the other. We know that within every company, the two sides must work together seamlessly to drive success. We're in the "creating solutions for your business" business. With tailor-made answers, we accelerate growth, expand markets, streamline operations, leverage technology, and activate brands. Our marketing expertise serves a diverse range of industries including public, private, manufacturing, retail, financial, science, medical, pharmaceutical, engineering, aerospace, real estate, education, and not-for-profit.



ANGIE O'GRADY, COO, PARTNER, STELLAPOP

As soon as my feet hit the floor in the morning, I'm running full speed, and that's the way I like it. I spent 15 years as employee number one, the President and COO for Carr Workplaces, building it into a 30 location multi-million dollar business. Before Carr, I spent 14 years at HQ Global Workplaces, now known as Regus. I was co-working when coworking was executive suites, and now I'm leading the charge into 2021 as the industry innovates to a more flexible office concept. In January 2015, I decided to join my husband, Mike, as a partner and thought leader on the business management consulting side. StellaPop's primary focus is assisting client CEO's in improving their people, operations, brand, and bottom line.

PARTNERS



AEG

AEG is a growing and profitable company that provides elite business advisors and midmarket CEOs unprecedented business development and peer-to-peer networking opportunities through an ecosystem of city-based communities. Deliberate culture and technology create deep personal relationships to drive fast and efficient business referrals that accelerate business development and growth for these advisors and CEO peer groups.



MARK HAAS, CEO, AEG

Mark Haas is President of Research and Organization Management, a strategy development and performance management consulting firm based in Washington, DC. His consulting includes leadership training for Tanzanian energy executives, developing curricula to train consultants in 40 countries for an international bank, crafting strategy and innovative business models for a \$120 million nonprofit, emerging two scientific associations, reorganizing a biomedical research agency, revitalizing a human service nonprofit and developing strategy for a national vital records enterprise.



NORTHERN VIRGINIA CHAMBER OF COMMERCE

The Northern Virginia Chamber of Commerce (Northern Virginia Chamber), the Voice of Business in Northern Virginia™, represents over 650 local employers with more than 500,000 regional employees. The Northern Virginia Chamber is the leader in advancing innovative solutions to the region's priorities in transportation, education, workforce, and economic opportunity. For 90-plus years, the Northern Virginia Chamber has been working hand-in-hand with companies in the region to build a strong business community.



JULIE COONS, PRESIDENT & CEO, NORTHERN VIRGINIA CHAMBER OF COMMERCE

Julie Coons is a transformative business leader who delivers unprecedented revenue and profit growth through innovation, operational excellence, and cultural change. She is President & CEO of the Northern Virginia Chamber of Commerce, the Voice of Business in Northern Virginia™, representing local employers with more than 500,000 regional employees. The Northern Virginia Chamber is the leader in advancing innovative solutions to the region's priorities in transportation, education, workforce, and economic opportunity.



MONTGOMERY COUNTY ECONOMIC DEVELOPMENT CORPORATION

The Montgomery County Economic Development Corporation (MCEDC) is a 501 (c)(3) nonprofit organization created to promote economic growth in Montgomery County, MD, and support companies in achieving business success. Our retention and recruitment professionals help find the ideal location, attract top talent, and understand current market conditions.

PARTNERS



BENJAMIN WU, PRESIDENT & CEO, MONTGOMERY COUNTY ECONOMIC DEVELOPMENT CORPORATION

Benjamin H. Wu is the President and CEO of MCEDC. Wu brings to MCEDC a dynamic portfolio of over three decades of professional experience working directly with industry around the world and leading operations at the highest levels of our nation and state. He has a distinguished career focused on technology-led economic development, as well as a proven record of driving transformative initiatives and creating collaborative alliances with industry, government, and academia throughout the country and in Maryland.



FIRST FINANCIAL GROUP

Headquartered in Bethesda, Maryland, First Financial Group is a complete financial services firm – one of the largest independently owned businesses of its kind in the Mid-Atlantic region. The firm employs over 140 representatives and 1,200 licensed brokers. Business services include Executive Benefits Planning, Key Person Planning, Qualified Retirement Plans, Deferred Compensation Planning, Group Benefits, Buy-Sell Planning, and Succession Planning.



DEVON CURY, CAP®, DIRECTOR ADVANCED PLANNING, FIRST FINANCIAL GROUP

Devon Cury is the Director of Advanced Planning for First Financial Group, with more than 25 years of experience in wealth management, investment management, and risk management. Before joining FFG in 2014, he held executive leadership roles at Advancement Concepts and AXA Advisors. He specializes in working with business owners and executives on strategies to reward, retain, and recruit top talent.



SUNTRUST BANK

SunTrust Bank is an American bank holding company. The largest subsidiary is SunTrust Bank. It had \$199 billion in assets as of March 31, 2018. SunTrust Bank's most direct corporate parent was established in 1891 in Atlanta, where its headquarters remain. As of September 2016, SunTrust Bank operates 1,400 bank branches and 2,160 ATMs across 11 southeastern states and Washington, D.C. The bank's primary businesses include deposits, lending, credit cards, and trust and investment services.



CHRISTOPHER ROSS, MANAGING DIRECTOR, SUNTRUST PRIVATE WEALTH MANAGEMENT

Chris Ross is a Client Advisor with SunTrust Private Wealth Management. Chris offers clients more than 25 years of comprehensive wealth management experience, leading a team of specialists in investments, financial planning, credit, and estate strategies. He received an MBA from the College of William & Mary. He is involved with several local and community activities, including coaching youth sports. Chris serves on the board of the Historical Society of Washington, DC, and is involved with the Maryland Historical Society.

PARTNERS

FORMICIDAE
Empowering Business

GROW YOUR
BUSINESS
WITH US.

FORMICIDAE

We take a consultancy-led approach in providing businesses the tools and resources they need to adapt and thrive in this technology driven world. We help small and medium-sized enterprises increase their revenue by improving their operations and maximizing their human and financial capital, all while lowering their operational expenses—enabling them to grow. It's our vision to see business owners get their time back to focus on what really matters. Our onshore and offshore capabilities help bridge the gap between entrepreneurs' visions and real-world results!



DANI CANUBAS, FOUNDER, CEO, & PRESIDENT, FORMICIDAE

Dani Canubas is an accomplished visionary and entrepreneur. Throughout his career, Dani has demonstrated an unwavering curiosity about business, learning from successful entrepreneurs, and defining successful new business ventures as a result. He enjoys building something out of nothing. He recognizes that great teams are built by leveraging talent and empowering individuals to succeed without fear of failure on the path to success. An international businessman with expertise in rain-making, leadership, marketing, and distribution. Dani built a substantial royalty when working with a \$10B global distribution company where he and his team generated over \$150M in sales.

REFRACTION

REFRACTION

Refraction is a leading innovation hub in Northern Virginia, focused on fostering innovation and entrepreneurship by nurturing and mentoring startups and high-growth companies to help create jobs in the greater Washington region. In five years, more than 100 member companies have collectively raised over \$250 million in capital. Refraction's partners include Amazon, Cox, Cvent, Fairfax County, Arlington County, Loudoun County, CIT, Blu Ventures, Smart City Works, Virginia Tech, and George Mason University



ESTHER LEE, PRESIDENT & CEO REFRACTION

Esther Lee is the President and CEO of Refraction, a technology innovation hub in Northern Virginia, focused on fostering innovation and entrepreneurship by nurturing and mentoring startups and high-growth companies. Prior to joining Refraction, Esther served as Secretary of Commerce and Trade for the Commonwealth of Virginia, where she oversaw 14 state agencies, responsible for economic development, job creation, innovation and entrepreneurship, small business, tourism, trade, housing, community development, and labor policies for the state. In that role, she led Virginia's successful bid for Amazon's second headquarters (HQ2).

PARTNERS



MARYLAND TECH COUNCIL VENTURE MENTORING SERVICE (MTC VMS)

The Maryland Tech Council Venture Mentoring Program (MTC VMS) is one of the leading team mentoring services available in the State of Maryland that is both highly sophisticated and results-driven. It exists to foster an environment that encourages innovation while expanding financial and business opportunities for tech, cyber, and life science start-ups. The MTC VMS Program provides free team-based mentoring services to qualified Maryland-based tech and life science venture CEOs who are accepted into the program. Since the MTC VMS program began, more than 45 ventures have enrolled & \$55.MM has been raised in capital & grants.



SALLY STERNBACH, FOUNDER, MD TECH COUNCIL VENTURE MENTORING SERVICES

Sally Sternbach retired in 2016 after leading both the Montgomery County Department of Economic Development and Rockville Economic Development, Inc. for 14 years. In her prior professional life, Sally spent 19 years with AT&T federal sector, taught accounting and finance, ran a social services non-profit in NYC and a tourism development organization in West Virginia. Her proudest accomplishments, aside from her family, include national and international gold medals in rowing.

DINGMAN CENTER FOR ENTREPRENEURSHIP, UNIVERSITY OF MARYLAND

The Dingman Center for Entrepreneurship is a top-tier entrepreneurial institute recognized around the world as a leader in enterprise creation. The Dingman Center is continuously pushing the boundaries of teaching and learning with its focus on practical entrepreneurship, global innovation, and international classroom experiences. The Center promotes opportunities that provide maximum resources to start-up businesses in terms of ideation, execution, and financing; and that support its mission to take entrepreneurs "from the back of a napkin to the first \$1 million in financing."



HOLLY DEARMOND, MANAGING DIRECTOR, DINGMAN CENTER FOR ENTREPRENEURSHIP

Holly DeArmond joined the Dingman Center in September 2012 as Assistant Director, Events and Marketing and in 2018 was named Interim Director. She is currently leading the Dingman Center in support of its mission to build a community that discovers, equips, connects, and celebrates entrepreneurs.

KEIRETSU



FORUM

KEIRETSU FORUM

Keiretsu Forum is a global investment community of accredited private equity angel investors, venture capitalists, and corporate/institutional investors. Keiretsu Forum was founded in the San Francisco East Bay in California in 2000 by Randy Williams. Keiretsu Forum is a worldwide network of capital, resources, and deal flow with 53 chapters on 3 continents. Keiretsu Forum members invest in high-quality, diverse investment opportunities.

PARTNERS



FITCI – FREDERICK INNOVATIVE TECHNOLOGY CENTER, INC

The Frederick Innovative Technology Center, Inc. (FITCI) is a business incubator and accelerator designed to cultivate entrepreneurship in Frederick, Maryland. FITCI specializes in the strategic business support of local entrepreneurs in the early stages of mostly science and technology-based businesses: Biotechnology, Information Technology, Renewable Energy, and Cyber Security. FITCI currently has two locations in Frederick, MD, and 52 client companies.



THE BALTIMORE ANGELS

The Baltimore Angels is an angel investor group based in Baltimore, MD. Founded in 2009, its mission is to invest profitably in the regional entrepreneurial ecosystem and advance early-stage innovators to the next stage of capital formation. Its vision is to be the most trusted resource for angel capital investment and entrepreneurial mentorship in the Greater Baltimore region. A new generation of angel investing comes to Baltimore. If you are a tech entrepreneur or community-minded investor, please be in touch with Baltimore Angels. This is not your father's (or your uncle's) investment group.



STARTUP GRIND-COLUMBIA, MD

Startup Grind-Columbia, mid-Maryland Chapter is part of the largest global community for innovation, entrepreneurship, and the startup community. We're actively educating, inspiring, and connecting more than 2MM+entrepreneurs, 600+ cities, and 130+ countries. We nurture startup ecosystems through mentorship, advisory services, education, inspiration, access to capital, and most importantly, connecting members with the resources we need to have the best opportunity to grow phenomenally successful ventures.



ANGELS + LIFE.SCI INVESTORS

Formed in 1996, the Angels + Life.Sci Investors Network is organized under NJAngels.net. We are a manager-led, loosely organized network of investors and accredited Angels, Coaches, and Experts who Sponsor world-class Entrepreneurs. Our colleagues have deep experience and technical domain expertise in all of the life sciences disciplines in which we are involved, including nanobio tools, materials, and devices: tele-diagnostics, augmented healthcare & remote patient monitoring, automation and robotics, & advanced chemistry for drug discovery.

INSTITUTE FOR EXCELLENCE IN SALES @IESBD

The Institute for Excellence in Sales (IES) helps sales professionals worldwide and in the DMV crush their quotas. IES is your trusted partner for the best sales services, products, and training in the world. We have monthly programs in Tyson's Corner, VA for sales pros featuring presentations and workshops by some of the greatest sales thought leaders and authors on the planet, such as Neil Rackham, Challenger Sale author Matt Dixon, and The Referral Coach Bill Cates.



PARTNERS

ANNUAL WHARTON DC INNOVATION SUMMIT

The Annual Wharton DC Innovation Summit brings together investors, innovators in industry and government, policymakers, entrepreneurs, academic leaders, and others. The Summit has earned a reputation as a high-value, high-impact resource for entrepreneurs, business executives, government officials, and others dedicated to improving their organizations by leveraging the power of innovation and entrepreneurship. The DC Summit offers an interactive environment to help you find public and private sector partners with the resources and interest to help you succeed.

ANNUAL WHARTON DC INNOVATION SUMMIT

Entrepreneurship is one of the world's most powerful forces for positive change. Georgetown Entrepreneurship seeks to instill an entrepreneurial mindset in students, foster an entrepreneurial culture across the university, support the successful growth of alumni ventures, and leverage the power of entrepreneurship to make an impact in the world beyond Georgetown. In the spirit of Georgetown's Jesuit roots, and from its home in the McDonough School of Business, the Initiative offers an array of courses and co-curricular programs to serve the campus-wide Georgetown University community. For alumni, offerings include mentorship, networking, the Georgetown Venture Lab, and an angel investment network, in partnership with the Georgetown Alumni Association.

JEFF REID, FOUNDING DIRECTOR, GEORGETOWN ENTREPRENEURSHIP INITIATIVE, GEORGETOWN UNIVERSITY'S MCDONOUGH SCHOOL OF BUSINESS

Jeff Reid is the Founding Director of the Georgetown Entrepreneurship Initiative and Professor of the Practice of Entrepreneurship at Georgetown University's McDonough School of Business. Reid is a catalyst for entrepreneurship and a well-known leader in entrepreneurship education. In 2009, Reid launched the Georgetown Entrepreneurship Initiative to catalyze entrepreneurial thinking and activities across Georgetown University and impact the growing DMV startup community. Previously, Reid founded UNC's Center for Entrepreneurship and grew it to a No. 1 national ranking by Forbes & Princeton Review, and was chosen by his peers and Entrepreneur magazine as one of the top five entrepreneurship center directors in the United States.

RYAN & WETMORE, P.C.

Ryan & Wetmore is a full-service accounting and management consulting firm, servicing the Northeast/ Mid-Atlantic region since 1988. What makes us different from other accounting firms is our proactive approach. We work hard to earn our clients' confidence by encouraging open communication year-round. This approach has enabled us to help clients become more efficient, more competitive, and more profitable. Through our numerous management engagements, we have become trusted, unbiased advisors.



PARTNERS



PETE RYAN, CO-FOUNDER & PARTNER, RYAN & WETMORE

Pete co-founded Ryan & Wetmore in 1988, a 3 office, 35-person firm serving the Mid-Atlantic region. He currently works with clients to address tax, audit, and accounting issues. He also has significant experience in international tax matters and business consulting services. His expertise extends to Healthcare organizations, Construction and Real Estate, Government contractors, Technology, Manufacturing, and High Net Worth Individuals. Pete has served on the Board of Directors for several organizations. He is an active member of the Healthcare Advisors Association, the Real Estate and Construction Association, the CPA Manufacturing Services Association, the Virginia Transportation Construction Alliance, and the Construction Financial Management Association.



ENTERPRISE TRANSFORMATION SOLUTIONS

INES LEBOW, FOUNDER AND PRINCIPAL

Ines LeBow is the Founder and Principal Startup Consultant at Enterprise Transformation Solutions (ETS), which advises entrepreneurs on how to position themselves for funding. Over the course of her 30+ years in the industry, Ines has helped companies secure more than \$800M in funding, led start-ups and turnarounds for companies with up to \$500M in revenue, managed 11 M&A transactions, and guided 9 companies to a successful exit. With expertise spanning Operations, Executive Leadership, and Mentoring, Turnarounds, Revenue implementation, Engineering, as well as Communications, Ines has helped many companies prepare for VC and angel investment.

ATTENDEES

As of 02 23 22

SPEAKERS

First Name	Last Name	Title	Company
Tien	Wong	CEO	Opus8, Inc.
Patrick	Sheridan	Co-Founder and Managing Partner	Modus Create

PRESENTERS

First Name	Last Name	Title	Company
Brian	Seeling	VP of Cybersecurity	AtWork Systems LLC
Dr. Mike	Davies	CEO & Founder	Carocell Bio
Jim	Keeney	CEO	Dapt
Mike	Riordan	CEO	Freeze Sleeve, LLC
Bill	Henry	CEO	Gander Technologies
Andrew	Holman MD	CEO & Co-founder	Inmedix, Inc.
William	Wittmeyer	Founder and CEO	Pulmostics Limited
Russell	Tuchman	CEO	Rebuildee
Ravi	Singh	Founder & CEO	REALCODERZ
Christopher	Chong	CEO	SST Wireless

ATTENDEES

First Name	Last Name	Title	Company
Gaith	Abdo	CEO	Cut2it
Yaseer	Abdussalam	CEO	Space10
David	Abelson	CEO	David Abelson
Tarek	Abousalem	Managing Partner	ElementOne Digital
Salim	Afshar	Venture Investor	W Health Ventures
Manish	Agarwal	Managing Partner	Attain Nextgen
Ana	Aguilár	Investor	AC Ventures
Dennis	Ahearn	Owner	Law Office of Dennis Ahearn
Jitin	Ahuja	Principal	Spacejet Media
Raphael	Aidane	Director	INSEAD Angels NY
Izzatunisaa	Ainunhusna	CEO	Up Liv
Nozomi	Akiyama	Senior Manager	KDDI America, Inc.
Maliha	Al Sulaimani	Head of Business Development	VIS Global , Ulektz
Hansilla	Alaigh	Senior Director	HANSILLA ALAIGH
Sharon	Alcazar	VP of Marketing	In The Pynk
Ali	Alhawajji	Founder	
Dr Ashik	Ali	Medical Officer	Mega Polyclinic
Bryan	Alintoff	CEO	Hayden Endeavors LLC
Sally	Allain	Regional Head	JLABS
WD	Allen	Adjunct Professor	University of Missouri
Zak	Ammar	Founder & CEO	Vixster
Michael	Anania	Advisor	360 SmarterCare
Claudia	Andahl	Sr Solutions Marketing Manager	Blue Prism
Bill	Anderson	President and CEO	Generations Advisors
Lekan	Anlugbua	Managing Director/CEO	Leks Environmental Ltd
Nida	Ansari	Investor	HG Ventures
Brad	Antle	Managing Director	Antle Advisors LLC
Doug	Applegate	Director	Gener8tor
Duff	Archie	Co-Founder, CEO	OffWeGo
Agustin	Argelich	Principal Consultant	ARGELICH NETWORKS MS S.L.
Margia	Arguello	Sr. Business Development Manager	Maryland Department of Commerce
Paul	Armijo	Chief Technical Officer	Avalanche Technology
Nick	Arnold	Associate	HG Ventures
Elif	Arsoy	Co-founder	Cravys
Elio	Assuncao	Director	Venture
Ayoub	Ateefa	CEO and Co-Founder	Estidama
Cihan Fuat	Atkin	Founder @ XCINEX.com	

Oni	Auer	Founder	In The Pynk
Marlon	August	CEO	Story Advantage PTY/LTD
Darrin	Auito	Partner	HEA Law PLLC
Marco	Avila	Director	WSP
Humza	Awan	Account Executive	TkXel
Amit	Ayare		
Bora	Aytun	VP of Strategic Partnerships	Keepnet Labs
Bill	Bader	Member	RHV
Kyle	Badgley	Investor	Perfect Balance Investments
Saerome	Bae	CEO	VWell
Jacob	Bailey	VP, Product Management	Everywhere Communications
Tonya	Bailey	Consultant	CSC
Rick	Bain	Director	ReCreation
David	Bain	EVP, Technology Standards	ITI / INCITS
Bert	Baker		
Adrian	Baker-Kang	Co-Founder	Rebuildee
Rebekah	Bakker	Business Development Partner	DISHER
Mark	Baldino	CEO	Firebot Suppression
Mercedes	Ballard	Founder	Heristic
Daniel	Ballin	Chief Executive	Ideas Crucible
Riko	Banardi	Investor	Robinhood Ventures
Jonathan	Bandel	Chief Innovation Officer	White Plains Hospital
Afua	Banful	CEO	Anetaed.com, Inc.
Julian	Banister	CEO	Banister Athletics and Green Lotus Society LLC
Anna	Baniuk	CEO	Your VIP World Ltd
Josh	Barnes	Owner	Harbor Designs & Manufacturing
Mark	Barry	President	Saltenna LLC
Matthew	Basirico	Owner	Frank Consulting Inc.
Jon	Bassford	Principal	Lateral Solutions
Todd	Batchelor	Partner	Cherry Bekaert LLP
Fernando	Batista	COO	InvestUSC
Cenk	Bayrakdar	Founding Partner & Managing Director	REVO CAPITAL
Jay	Beam	Managing Director	Adasel Global Partners LLC
Frank	Beckmann	CEO	GVI Germany GmbH
Tigist	Belayneh		
Everett	Bellamy	Interim Director	Georgetown University Law Center
PJ	Bellomo	CEO	P1ston, Inc.
Samantha	Bendt	CEO	Ageovisa
Elise	Bengtson	Executive Director	Greater Falls Church Chamber of Commerce
Tash	Benjamin	VP, Business Development	TKing Enterprises
Chris	Bennett	Founder/Attorney	T-I-L(R) Technology-Innovation-Law
Bruce	Berkoff	Chairman	BA LLC
Gus	Bessalel	President	Spectrum Partners
Sophia	Bhaumick	Founder	EndorseMe App
Lauren	Bigelow	CEO	GCN
Joe	Bishop	CPA	Snyder Cohn, PC
Josh	Bixler	Principal	Bixler
Debe	Black	President	Action Ignite Sales
Thomss	Blackburn	CRO	TPBIOVENTURES
Kirsten Hund	Blair	Co-founder and CEO	Lambent Data
Jascha	Blobel	Consultant	Freelancer
Eduardo	Bocock	CEO	SCALA Technologies
Somendra	Boddapati	Practioner	Gmc
Richard	Bodson	President & CEO	SysNet Technologies, Inc.
Hepsie	Bohman	Agent	New York Life
Beth	Bolus	Owner	Wellness Forged with Beth
Larry	Boodin	Agent	NY Life
Balazs	Borbely	Founder	Fuelitics
Charllene	Boshoff		American University
Mohamed Amine	Boudjouadi	CEO	Sarl Aerosun Farm
Russell	Brand	Managing Director	Responsible Solutions Limited.
James	Breyer	CEO	Hercules Electric Mobility
Richard	Bristol	President	Bristol Advisory LLC
Lora	Brown	Owner	ODAA Virtual Assistant
Jermaine	Brown	Partner	Outlander VC
Daniel	Bryan	CEO	Metaverse.webcam
Liam	Buchanan	Software Engineer	Amazon
Greg	Buckman	President	WorldCell Solutions LLC
Dwika	Budhyantara	CFO	PT Hata Indonesia Sejahtat
Damien	Budnick	Global IT Support	Amazon
Bea	Buntic	Co-Founder	Talksie
Adam	Burck	VP	GVW Group
Matias	Burdman	CEO	Civic

Dan	Burger	President	Be Your Best LLC
Jenn	Burka	Senior Associate	Evolv Ventures
Lauren	Burke	CEO co founder	Matchplicity
Emilio	Caamano	CTO	Multiple
Jose Luis	Cabal	Senior Investments VP	Teka Capital PE
Montréal	Cain	Founder	
Lena	Camara	Owner	Lottery
Christian	Camarce	Partner (Patent Law)	Sterne, Kessler, Goldstein & Fox PLLC
Rodolpho	Camargo	Learning Design Specialist	FutureFounder
Anthony	Cammarata	CEO	Startupcannon
Andre'	Campbell	CEO	The Franchise Executive
Adam	Caper	CEO	Social Dining, Inc. / dineoutwith.us
Piers	Carey	CEO	Teneo
Joe	Carlin	Principal	Jonxeone Capital
Eric	Carlson	President / Co-Founder	Blue Sky Cyber Inc
Sue	Carr	President	CarrTech Corp
Larry	Carver	CEO	Carver Institute
Enxhi	Caushaj	Business Development Representative	Attest
Chris	Ceresini	VP of Finance	Digital Envoy
Siu	Chac		American University
Mark	Chan	Venture Analyst	Vinaj Ventures
HC	Chan	Freelancer	
William	Chang	CEO	CEO
Saurabh	Channan	CEO	TerraPulse Inc
Manoj	Chaudhary	CEO	RankRiders Tech
Tamara	Chayo	CEO	MEDU Protection
George	Chen	Principal	Nautilus Venture Partners
Jon	Cheng		
Tony	Cheong	GM	CKD
Nelson Hyde	Chick	CAO	Foil Flyer
Joelle	Choe	Creative Director	JYC Group
June	Choi	Managing Partner	Serval Ventures
Tarek	Chowdhury	CEO	Rave
Peter	Chu	Director	AsiaTech
Matthew	Chung	CEO	Ekleer Co. Ltd
Jim	Chung	AVP for Research, Innovation & Entrepreneurship	George Washington University
Julie	Chung	Venture Associate	Chingona Ventures
Stephen	Cialdea	Partner	Sigma C
Samantha	Cicotello	Early Stage Ventures	Capital One
Madalina	Cioara	Co-Executive	PPB
William	Classen	AVP	Colliers International
Sylvia	Cohen-Kaminsky	Director of Research	INSERM, Universite Paris Saclay
Marcus	Cohn	CEO	Spectalix
Mollie	Coleman	CEO	High Caliber Events
Bill	Collins	Chairman & CEO	The Collins Companies
Dymond	Collins	Owner	Humangel
James	Colthart	Chairman	C3 Global Technologies, Inc
Charles	Colton	President, CEO	GovSources, LLC
Graham	Combe	Business Development Director	CarocellBIO
Laura	Congleton	Director Innovation Lab	Fearless
Dan	Conley	Active Angel	Angels + Life.Sci Investors by NJAngels.net
Jim	Cook	GM	Cook's Outsourcing Network
Dr Shelley	Cooper	Founder	Diversity Telehealth
Don	Cooper	President	Persona Biomed, Inc.
Laura	Croce	Business Coach and Consultant	Laura Croce Business Coaching and Consulting
Sean	Croteau	Director	CLA
Donivyn	Cruz		Boston University
Luis	Cuneo	CEO	Mojavie
Ryan	Curl	Chief Analyst	kBoulevard
Tanzeel	D	Director	TAS consulting
Lubna	Dajani	MD	Allternet
Darla	Davenport-Powell	CVO, Chief Visionary Officer	Greater Works LLC
Tim	Davis	Business Consultant	TandemHR
Bill	Dawes	COO	Breathe BioMedical
Stephen	Day	CEO	Day Capital Partners
Sam	De Smet	Co-founder	OTIV
Robert	Dean	Financial Professional	Synergy Wealth Solutions
Hank	Dearden	Principal	Group 3D
John	Degen	Consultant - Registered Rrepresentative	SHARENETT
Francis	Deppner	Producer	Business Benefits Group
Brian	Derickson	Investment Analyst	LDV Capital
Shantanu	Dev		Examd Inc.
Taylor	Devine	Founder & Managing Partner	The CDI Group

M	Dhillon		Witan Partners
Talabiou	Diallo		GWU
Robert	Dickey	VP	Edison Partners
Frank	Dickson	Director	Maryland Department of Housing
Bob	Dinkel	Director/Angel Investor	Pierce Capital Partners
Joe	DiRosa	Founder	Seedlings
Q	Do	CEO	AccelerateKID® Novi Center
Joseph	Donohue	President	Terrazas
Max	Donsky	Analyst	Impression Ventures
George	Doumar	Owner	Doumar Martin
Michael	Doyle	Managing Director	Goldin Ventures
Shouming	Du	CEO	BrainXell
Edward	DuCoin		Orpical Group
Amy	Dunn	Director, Business Development	Ryan & Wetmore, PC
Tanique	Easy	CEO	Dream Builders Global Coaching Solutions
Malik	Ebers	CPO / CTO	Kryptowerkstatt
Steven	Eddy	CEO, CPA	RESOURCEFUL BUSINESS ADVISORS LLC
John	Egan	Founder	Socraticx
LaTanya	Eggleston	Professor Coach Mentor	AACC
Rich	Ellinger	Partner / CTO	Cota Capital
Kingsley	Emezie	Copywriter	CKM Media
Tom	Ervin	CEO	Sunset Technologies, Inc. dba Noni
David	Esmie	Managing Director	VCA
Chris	Esposito	Vice President Sales and Marketing	StudioLabs
Sam	Evans		Cornell University
Matt	Evans	Mentor	SCORE
Francois	Even	Investment Director	Arkéa Capital
Joshua	Eyaru	Managing Director	Northeastern University
Herb	Ezrin	CEO & President	Potomac Business Group
Eugene	Faison	CEO	DGridEnergy, LLC
Seun	Falade	Principal, Corporate Finance	Falade LLC
Xi	Fang	Partner	Button
Lili	Farhandi	CEO	Razi Exchange
Shanell	Farmer	Associate VC Investor	VU Venture Partners
Alberto	Fattori	CEO	Qiao Lab
Michael	Faught	Managing Partner	Technology Capital Partners
Kate	Feeney	Senior Drug Discovery Specialist	EurofinsDiscovery
Elizabeth	Feidler	Principal	Noro-Moseley Partners
Frank	Felker	President	Digital Media Positioning
Edgar	Fernandez	Business Development Director	Great Western Technologies
Halsey	Filbin	COO	USEFUZE
Daniel	Fishman	CEO	Net Effect Technologies
Klara	Fisken	Business Development Executive	BDD Pharma
Jameson	Fitzgerald	Investment Analyst	AACE Venture Fund
Sharon	Flank	CEO	InfraTrac 3DNanoRx.com
Tilly	Fleming	Analyst	Venrex
James	Foley	HR and Benefits Advisor	FosterThomas
Mao	Foo	Founder	RealVantage
Lance	Ford	CFO	Commutyble
Scott	Fox	CEO	Stanford Angels
Monique	Fray	Washington DC City Leader	Founders Live
Lily	Friedman	Founder	Care Bloom
Fredrik	Gabriel	CEO	Hereafter Legacy inc.
Robert	Gahagan	Chief Success Officer and Founder	CCSI - Corporate Consulting Service, Inc.
Andrew	Galitzer	Creator and Director	ANDiDREW LLC
William	Galle	Principal	William Galle & Associates
Jyotin	Gambhir	Founder	SecureFLO
Settu	Ganesh	Founder	BeamIn XR
Ben	Gao	VP	Cast.era
Naiomi	Gardner	CEO	Bodhi Bar Inc
Jeff	Garibaldi	Chief Product Officer	Navvis
Caroline	Gash	Managing Director	IrishAngels
Daniel	Geselowitz	Patent Agent/Angel Investor	Kratz, Quintos & Hanson
Carlin	Gettliffe	Founder & COO	X Genesis
Ben	Gharbia	Architect	N.N.Co
Gregory	Giammittorio	Partner/Angel Investor	Potomac Law Group PLLC
Edith	Gibson	President & CEO	InCommunities Consulting
Shai	Gilboa	CEO, Co-Founder	Cropstimize
Eric	Giles	VP	DaVita
Cliff	Glier	CEO	SenCura
Michael	Gobes	Managing Director	OrchidLS
Simon	Godwin	Partner	Transfirm, LLC
Kate	Gofman	Medical Director	Astrazeneca

Robert Douglas Jonathan Jalen Ernest James Yuying Jay Mike Morag Jennifer James Steve Richard Stanley Josh James Harpal Singh Lisa Richard Julie Adam Yulia Virginie Fred Dahai Tavishi Tara Naman Anita Andres Rob Jeffrey Anshuman Anne Mark Sophie Fizie Kelly Paul Erin Jiarui Brian Malcolm Barb Michael Eric Tawanna Edgar David Satyen Qaizar Misako Angela Claude Jen William Brian Adriana Thomas YunYoung Browning Geelyn Michael Adi Cheryl Logan David Benny Tim Eddie Robert Felicia	Goldberg Goldstein Golner Gonel Gonzales Gordon Gosser Goth Grachev Grassie Gray Gray Greenberg Greene Greene Greene Greer Grewal Griffin Griffin Griggs Grill Gufranova Guignard Legros Gumbinner Guo Gupta Gupta Gupta Gupta Gutierrez Guzman Guzy Gwal Haack Haas Hagerty Haleem Hall Hallanoro Hallock Han Han Handelsman Hansen Hanson Hanson Hardy-Ventress Harrell Harris Harve Hassonjee Hata Hatch Hayn Hecht Heflin Heller Henao Henry Heo Herbert Herrero Hess Hettiarachchi Heusser Hicks Higdon Higginbotham Hijazi Hill Hinaman Hinton	Co founder Managing Director Senior Consultant CEO CEO Research Assistant Professor CEO Head of Trading Sr Assoc Director, OCR Founder COO Founder Chairman President Managing Partner Cofounder CEO and Group President CEO Founder Managing Partner/Private Investor Chairman & CEO Founder CEO Founder Founder Founder Managing Partner CEO Managing Partner CEO Managing Partner CEO CEO Principal Business Solutions Manager CEO COO Managing Partner CSO Co-Founder Consultant Recruiting Director Small Business Coach President/Private Investor Founder CoFounder President Laboratory Director CEO CEO CEO MD Partner CEO COO CEO Managing Director Investor Chairman Business Development Executive CPA Founder Managing Partner Owner Principal Consultant and Founder Director Managing Principal Business Owner	Prosper Digital Therapeutics, Inc Salt Flats Ventures A Better Consultant, LLC Northeastern University Belatz Endeavours LLC CULTIVA The City College of the City University of New York Murrieta Genomics, LLC Alfa Bank Yale IAMenterprise Ltd Quadrobot Resilient Scale RGA Israel/U.S. Venture Funding PowerThinking Corp The Mather Group Swan Venture Group Heavenly Farms Griffin Media Management Aiglon Capital Fourplay Social Odyssey Group Kiddy School REGENERATION MATRIX G2 GEM Finance Zennova Pharmaceutical Group Tern Map-Collective Inc EIDAR KiwiTech Action Growth Capital, LLC CoJax Oil and Gas Corporation BSP Cool Content AEG Good Growth Capital Montgomery College INHERET BCaster bp ventures Northeastern University X-System Inc Do It Right LLC Thinkin Blue Optimum Dynamics LLC PAX Momentum GO.BE. Edgar C Harrell Associates Inc Great Falls Finance Lab Examd Hass Tech Associates, LLC Ohio University TI-ACE Corp AdJumps The Dating Advisory Board Kinetic Ventures Outside GC Bekoherent Inc. Eunike Ventures Inc Marinebio Ringbolt Capital Angel to Exit ABS Advisory Services Group, Inc. Expert Republic Rootcode Labs Snyder Cohn, PC Eduarmor Inc Kern Venture Group The Iron Garden Ahead Consulting Services Mason Enterprise Center-Fairfax Pepper Run Capital Flower Therapy
---	--	---	--

Joy	Hoffman	Project Manager	Maryland Tech Coucil
Douglas	Holly	Principal	Eagle Management Group
Alyse	Holstein	CEO	HPG Partners, LLC
Rose	Hong	Executive Director	Global Dragon TV
Sarah	Horta	Business Development Director	Anne Arundel Economic Development Corporation
Darnley	Howard	President	Advansa International
Carry Michael	Howell	CEO	ROCKIT Industries LLC
Tami	Howie	General Counsel	Radius Networks
James	Huerta	Managing Partner	The Nessa Group
Trevor	Hughes	BDM	PS Solutions
Martin	Hughes	President	Second Chances and Prasad
Andraes	Hunn	President	Absaroka Advisors
Mark	Hunsmann	CEO	Styleriser Inc.
Paul	Iacovacci	CEO	Enarscor
Paul	Iaffaldano	General Partner	Panoramic Ventures
Tabassum	Ibrahim	Associate Director - Strategic Partnerships	KiwiTech
Fidle	Illustrations	CMO	Fidle
Gilga-Med	Inc.	Founder	Gilga-Med Inc.
Linda	Ingroia	Founder	HeadStrong Branding
Dave	Izuka	Partner	Venture Acceleration Services
Gloria	Jacobovitz	Researcher/Angel Investor	JHU APL
Tharani	Jaiprakash	Founder	Ethben Crypto projects
Indira	Jaiprakash	CEO and CFO	Ethben crypto projects
Shannon	Jameson	Director	KPMG
Smriti	Jayaraman	Founder and Managing Partner	Zila Ventures
Kenneth	Jayne	CEO	United Heart Monitoring Inc
Jim	Jeffery	Director Business Operations and Analysis	WorldCell Solutions LLC
Jonathan	Jennings	Associate	Framework Venture Partners
Won	Jeong	CEO & Founder	Smart Trainer, LLC
Gregory	Johnson	President/CEO	TECBOMO LLC
Brian	Jones	IT Business Analyst	Wave Welcome
Dean	Jones	Manager - Microsoft Startups	Microsoft Corp
Joy	Jones	CAO	Digital Dream Labs
Vladimira	Josefiova	Partner / Co-Founder	Reflex Capital / spaceti
James	Joseph	CEO	ELATED, INC.
Pamela	Jramoy	CMO, co-founder	Cropstimize
Darrell	Jung	Marketing VP	Immersivecast
Anna Hope	Kabongo	Associate	TiE Oregon
Shoshi	Kaganovsky	CEO	RingOn
Murali	Kalavapudi	Principal	Envirosys Technologies, LLC
Kobi	Kalderon	CEO	GVI
Shantanu	Kalia	Founder	GDEX India Private Limited
Michele	Kaliski	President	KFIFund
Sandra	Kalombo	Founder	FCGN
Marcel	Kaminstein	Director of Operations/Angel Investor	MediaLab Group
Lisa	Kammerman	Principal	Kammerman Consulting LLC
Steve	Kann	Partner	Ocean Street Partners
Alexandra	Kapelos-Peters	Founder	Cansulta
Stefanie	Karwoski	Investor	Silicon Road Ventures
Ritesh	Kathiriya	Partner	SOJITRA KATHIRIYA & COMPANY
Prateeksha	Kaushal	Associate-Strategic Partnerships	KiwiTech
Ron	Kazel	Managing Member	Kalliam Capital LLC
Michelino	Kekumba	Chairman & CEO	WDCOM
Alysha	Kelley	Director of Ecomm and Merchandising	In The Pynk
Sean	Kelly	COO	Solvus Global
Alvin	Kersting	Partner	Listing Partners
Nabil	Khalifa	CEO	CirclePay
Youngtae	Kim	Director	KBDC
Irena	King	Founder and CEO	Surgicure Technologies, Inc.
Ted	King	Managing Director	Saddlerock Advisors
Sid	Klein	CEO	SafeDate
Zakariya	Kmir	Founder	BIOKMIR
Ted	Koblick	Business Development Executive	AGL Media Group
Banu	Kocak Ozkaya	Cofounder	Cravy's
Martin	Koev	Managing Partner	Koev Brothers
Nelly	Kolodny	CEO/Founder	Mozzie Armor LLC
Tom	Komuro	VP	SVInnovations, Inc.
Carlos	Kondratowicz	Founder	Position 1 Services
Paul	Korkemaz	Principal	XPRT LLC
Nicholas	Koroly	VC	BTVC
Nick	Kovacic	President	Nicholas Companies LLC
John	Koziol	President	Koziol Insurance
David	Kratochvil	Managing Partner	Vista Capital

Adhithyan	Krishnan	CEO	AK Aveksha
Max	Kryzhanovskiy	President	MOS Creative
Connor	Kudirka	Founder	OnTap
Gary	kulesza	Chair / Investor	ShopRaise
Rajnesh	Kumar	Associate	KiwiTech
Sheshank	Kumar	Founder &CEO	ONI Stays
Sathish	Kumar	Partner	SBSS & Associates, Chartered Accountants
Bongani	Kupe	Director	Axios
Wallace	Kyle		Darden School of Business
George	L	Scientist	NIH
Aaron	Labreque	Lawyer	Labreque Law, PLLC
Ramesh	Ladwa	Manager	Ensim
Maria	Lamottke	Business Development	Bicoll
Ernest	Landrum	Founder/President & CEO	ALLUVO
Jeff	Lappin	CEO/Founder	Endurance Animation
Carmen	Larsen	President	Hispanic Chamber of Commerce Montgomery County, MD
Kalpesh	Lathiya	CEO	KING SALES
Ariel	Lavides	Property Consultant	Ortigas And Company Limited Partnership
Ben	Laya	Founder	Fractal Think
Bob	Leach	Business Advisor	Braintree Business Development Center
Ines	LeBow	CEO/Founder	Enterprise Transformation Solutions
Aquila	Lee	Senior Associate	Chenel Capital
Jack	Lee	Managing Director	Marketing Integration
Glen	Lee	President	WokMon Corp
Sarah	Lee	CEO	Relavo
Justin	Lee	Associate Director	TRIREC
Esther	Lee	CEO	Refraction
Bongmin	Lee	Business Development Manager	Kyocera
Olia	Legoshina	Advisor	Gemba Finance Ltd
Steven	Lehat	Principal	Regulatory World
Kristie	Lemauga	Project Manager	KL Consulting
Basile	Lemba	Owner	The Networking Institute
Michael	Lembck	Student	Northeastern University
George	Letscher	Swish IP	Swish IP
Paul	Levy	Chief Licensing Officer	ArtificialChat Inc.
Ronald	Lewis	Founder& CEO	AtWork Systems, Inc.
Catherine	Li	Manager	Great Texas Fund
Weirong	Li	Founder and CEO	Raw Culture
Eric	Li	Fellow	TSVC
Terri	Liggins	End-Of-Life Strategist	The Law Of Raw Institute for Balanced Healthy Living
Tao	Lin	CTO	Teloopa Inc
Andrew	Lindsey	CEO	Flexnode
Dawei	Liu	Senior Legal Counsel	Humane, Inc.
Lucy	Liu	Manager	DHG
Jiayan	Liu	Product	TSVC
Jeffrey	Liu		
Cody	Locke	Chief Innovation Officer	Center for Advancing Innovation
Larry	Long	Analysts	The Launch Place
Carissa	Long		American University
Effie	Lounta	Founder	Athleton Plus
Kristin	Love	Director of Product	In The Pynk
Andy	Lower	Founder	ADAP Capital LLC
Jet	Lu	Ambassador / Co-Host	CONNECTpreneur Community
Dennis	Lukey	Vice President / Angel Investor	AKIMA
Jackie	Luo	Principal	BAM Advisory LLC
Yvonne	Lutsch	Investment Principal	Robert Bosch Venture Capital
Idriss	M'Bodou	Account Manager	Jobilla
Bei	Ma	Founder and CEO	The Pinea Group, LLC
Chad	Macdonald	General Partner	Connected Ventures
Don	Maffei	VP, Finance & Administration	VT-ARC
Katherine	Mahan	CEO	Festive
Dmitry	Makdim	CEO	Makdim Inc.
Ali	Malihi	President	Back Bay Group
Casey	Mank	Co-Founder	Bold Type
David	Mann	CEO	Yule Capital Group
Patrick	Manning	CEO	Diagnostox
Or	Manor	Startup Success Manager	ThinkUp
Omar	Maratouk	Co-founder	MKO Advisors
Jeffrey	Marquis	Investor	Self Employed
Antônio	Martinez	Investment Manager	Portugal Ventures
Tumelo	Mashaba	Freelance Copywriter	Mashaba Industries LLC
TJ	Master	Technology Mentor	Virginia Innovation Commercialization Assistance Program
Certus	Matuta	CEO	FORM IT

Aditya	Maurya	CEO	Zelox Entertainment
Kalgi	Mavani	Business Development	Agile Infoways
Robert	Mazer	President	Flexnode
Jenny	Mbilu	Educator	OPOL
LaKendra	McClendon	CNA	DollShanne
Ben	McCright	Director of Strategic Initiatives	ABC FinTech
Alexander	McElfish	Partner	Argent Strategies
Mac	McMurray	Director of Business Development	SYNECTIC Engineering, Inc.
Liam	McNamara	General Partner	Blue Fox Partners
Willard	McNitt	Principal	Thurston Group
Matt	Meador	Consultant	MBD
Loren	Medrano	Co-Founder	WaitLess
Don	Megrath	Managing Director	VectorPoint Ventures
Robert	Mendralla	President, Investments	
Lina	Mezzine	Fellow - Cleantech & Advanced Materials	TDK Ventures
Alex	Michel	Managing Director	Generation Consulting
Keith	Miller	Founder	Vibe Consultancy
Donna	Miller	Co-Founder and CEO	Purse Power, Inc.
David	Miller	CEO	
Ali	Mirza	Entrepreneur	In Progress
Judy	Mod	Founder + CEO	Innovations Domain, LLC
Ishtiaque	Mohammad	Founder & CEO	SowFin Corporation
Bill	Moher	CEO	Complexity
Kay	Mok	Managing Partner	Gobi Partners
Sergey	Mokrousov	BDR	Erbis
Emily	Molstad	CEO	VALIS
Sumedha	Mongia	Co-Founder/CEO	WellUp Health
Fuchs	Monika	VP	DBAG
Jamie	Mooney	Vice President	Assured Partners
Terry	Moore	Managing Partner	MVP FUNDS
Drew	Moore	CEO	Undercurrent VR INC
Teresa	Moraska	President & Chief Innovation Officer	Pan Pacific Finance Group & SportsX Ventures
Joseph	Morena	Founder	Zapcow - Yoobux
Jose	Morey	CEO	Ad Astra Media, LLC
David	Morgan		
Shin	Mukai	Co-founder and Chief Scientific Officer	BeneRAS Pharma Inc.
Earle	Munns	Vice President	Mendoza Holdings LLC
Eduard	Musinschi	CEO	Telewellness
Abdul	Mustafa	Coordinator	Vineyard Free Clinic
David	Myers	CEO	Data Licensing Alliance, Inc.
Charles	Nahabedian	CEO	VK Digital Health
Silvana	Nani	CEO	Korabi Consulting
Nasrallah		Vice President	Nasrallah Housing Group
Prakash	Nayak	Freelancer	
Rod	Nenner	CEO	PostItPlayIt
Sherif	Nessim	Founding General Partner	Jedar Capital
Eliz	Nestorov	President	US-Bulgarian Chamber in America
Ronald	Newcomb	CEO	http://www.TheForgeStudios.com
Carey	Ng	Managing Director	Mesa Verde Venture Partners
Kurt	Nguyen	President	Tulu Systems, LLC.
Dawn	Nguyen	Associate	Hyde Park Venture Partners
Triet	Nguyen	Deal Flow Associate	MicroVentures
Khai	Nguyen	Founder	PE Fund
Maimi	Niina	Product Manager	Backed
Nicole	Nixon	Founder & CEO	Listing Central, LLC
Glenn	Noble	CEO	ProudlyGive
Michael	Nolan	Principal	Beverly Capital
Paul	Nolde	Managing Director	Riverflow Growth Fund
James	Nonato	President	Nonato Medical Inc.
Preston	Noon	General Partner	Agent capital
Yolanda	Nunn	Agency Owner	Farmers
Malika	Nurbekova	Founder	Tensorbox
Ben	Nurbekova	Founder	Tensorbox
Gulia	Nurmambetova		
Muyiwa	O	Product Manager	
Jamie	O'Connell	President	Blue Collar Scholars
Michael	O'Grady	CEO	StellaPop
Peter	O'Rourke	VP, Sales	ePlus Group IT Finance
David	Oarr	President	CytImmune Sciences
Mike	OGrady	CEO	StellaPop
Bill	Oldham	CEO	Thought Leadership & Innovation Foundation
Abolaji	Omitogun	CEO	CakeLagos
Favour	Onabanjo	Director	TalentsBrand Ltd

Sertac	Oral	Partner	GVI Turkey
Saul	Orbach	Managing Director	Beachhead Group
Johnny	Orlando	Founder	Douglass Commonwealth Technology
Raul Steven	Ossa		
Landon	Otsuji		UBC
Ozan	Ozer	R&D	Sisecam
Banu	Ozkaya	Co-founder	Cravy's
Atilla	Oztürk	CEO	Grawindy-Windagrotech-
Samu	Palani	COO	Ethben Crypto Projects
Gene	Panasenko	Financial Advisor	Moloney Securities
John	Parafinczuk	VP	Cata
Lydia	Parchue	Realtor	Better Homes & Gardens Real Estate Metro Brokers
Jean-Luc	Park	Director	TEDCO
George	Parrish	Executive Director	Entrepreneur Lab
Eshawn	Pascal	Investment Associate	Savano Capital
Mansi	Patel	Investment Analyst	Cortado Ventures
Kajal	Patel	Realtor® and Health and Beauty Consultant	Eesha Realty
Artur	Pawelko	Business Development	American Pillar Partners IR
Tim	Peara	President	Bridge Therapeutics, Inc.
Charles	Pelletier-Gagne	Senior Venture Scout	Funden
Valerie	Perlowitz	Partner	Cyber Capital Partners
Virginia	Perry	Designer	VP Consulting Event Design
Paul	Pessina	CFO	Vixster
Robert	Peterson-Fikes	Founder	Dynamic Dimenzions, LLC
Mark	Pettit	CPO	RealCoderz
Joel	Pevey	Start Up	
Kaylee	Philbrick	CEO/Founder	Exceptional Startups
Matthew	Philistine	Business Mentor	Northeastern Pennsylvania Score
Brandon	Phillips	Benefits Consultant	FosterThomas, Inc
Mali	Phonpadith	Founder & CEO	SOAR Community Network, LLC
Antonio	Picerno	Head of Operations Engineering	Natwest
Bernard	Picot	EVP Business Development	Pulmotics
Nalini	Pinto		Johns Hopkins University - Carey Business School
Isaac	Plumlee	Analyst	AACE Venture Fund
William	Podd	President	Landmark Family Office
Jeremy	Poland	CEO	Nutri-Genetix
Michael	Pollinger		Georgetown University
Sathibalan	Ponniah	CEO	Immune Analytics LLC
Slava	Popov	CEO	Abodity
Zyg	Porada	Managing Partner	CGZ Holdings, LLC
Doug	Poretz	Management	Eighth round investments
Jeffery	Potvin	GP/Founder	SUPPORTERS FUND/OPN
Nancy	Price	Business Investment Manager	VEDP
Kevin	Price	Investor	
Dr. Satyam	Priyadarshy	Technology Fellow and Board Advisor	Reignite Strategy
Pandu	Prudhivi	CEO Partner	Streamforce Solutions
Thomas	Quirk		Company
John	Rainey	Director of Client Engagement	Mindgrub Technologies
Skylar	Rallison	Community Manager	Opus8 / CONNECTpreneur
Suzanne	Reade	President	Chicago ArchAngels
Joe	Reddix	President and CEO	The Reddix Group, LLC
Erna	Redzepagic	Program Coordinator	Halcyon
James	Reed	Senior Managing Partner	SWAN Venture Group
Ervin	Reeves	CEO	NGO 1 Stop Corporation
Skye	Regan	Creative Strategist	Regan Strategic
Marc	Reich	Chairman	Ironwood Capital
Sherry	Rellan	President	Shazm Inc
Lil	Rhee	Investor	Lil Rhee
Catherine	Rhee	Partner	LEGENDARY
Victor	Rhoder	Director	AtWork Systems, Inc.
Bruna	Ribeiro		
John	Ricci	Managing Director	US Angels and Kytotech
Tim	Richey	Founder / CEO	Turrian
Michael	Riemer	CEO	Vocinity
Jaden	Risner	CEO	Family Proud
Deanna	Roberts	Owner	See No Bounds
Dean	Rodionoff	General Manager	Artezio
Francy	Romero	Financial & Administrative Director	
Mary	Rose	Technology Commercialization Office at GW	George Washington University
Robert	Rosenberg	President	S M C
Jay	Rosenblatt	CEO	Alpharank
Larry	Rosenfeld	Investor	McLean Partners
Chris	Ross	Managing Director	Truist

Andrea	Ross	Managing Partner	Gravitas
Thomas	Ross	Palm Beach Chapter Pres.	Keiretsu Forum
Todd	Rowley	President	ODNB
Toni Lee	Rudnicki	Founder	TLR Consulting
Don	Rudolph	Fixed Fee Fiduciary	flatfeecio.com
Dietrich	Ruehlmann	Partner	Gaiaxus
Kyesha	Ruffin	Founder/Executive Director	Science In The City Inc.
Igor	Ryabenkiy	Managing Partner	Altair Capital
Daniel	Ryan	Principal	Alikos Wealth Management
Mike	Ryan	Chairman	MGR Capital
Logan	Ryan	Owner	WebMax, LLC
Vikram	S	AI	Fusionx
Rana	Saad	Founder	Tuzmo, Inc.
Leat	Sacharowitz	Founder	GoGetta
Andrew	Sachs	CEO	Nobel Explorers
Charlotte	Safos	President and COO	ATI
Darien	Salehy	CEO	Hangouts, Inc.
Shahab	Samimi	MD	Equestrus
Lou	Sandoval	President/Managing Partner	Halo Advisory Group
Shanmugavel	Sankaran	CEO	FixNix
Alexandra	Saravia		American University
Lili	Sargsyan	Marketing Manager	Snyder Cohn, PC
Raffaele	Sarno	Strategic Partner	BeasyUP
Asya	Sayilgan		Upf
Chad	Scarborough	Founder	The Jet LLC
Alan	Schlaifer	Chairman	Wharton DC Innovation Summit
Kyle	Schoeppner	Venture Analyst	Quaker Capital Investments
Tom	Scholl	CEO/Private Investor	ShoalScrollSchool&Skull
Stefan	Schulz	COO	Orpical Group
Robert	Schumann	CEO	Blue Vigil LLC
Tai	Scott	Business Owner	Intailand
Michael	Script	CEO	In2Capital.com
Frank	Scudder	CEO / Founder	I-Group, LLC
Raymond	Sczudlo	Principal	Sczudlo Advisors LLC
Priyanka	Sehgal	Founder	Sparkles Dating
David	Selley	Founder & CEO	International Entrepreneurs Association
Daniel	Selli	Managing Partner	Stonegardens Advisory
Sergios	Sergiou	Owner	North London Hardware and Software Support
Tim	Sexton	Founder & CEO	VolumeUp
Lizandra	Sfredde	Business Owner	Brazilian by Brazilian
Mario	Shaffer	Principal	H.I.G. Capital
Peyman	Shahmirzadi	Partner, COO	Human Capital Ventures Corp
Jonathan	Shames		
Daniel	Shapiro	Director, Product Management	Fluence Energy
Stephen	Shapiro	US Partner	eHealth Venturies
Yagyadatt	Sharma	Director Technology	Hughes Systique
Deepak	Sharma	CEO	Anjay Venture Partners LLC
Devendra	Sharma	Founder	VRD
Kumar	Shash	Mentor	SK Telecom
Elizabeth	Shea	EVP Public Relations	REQ
Liya	Shen	Founder and President	Global Life System Exntension, LLC
Ron	Sheridan	Founder	BassGuitar.com
Becky	Shewbridge	M&A Lead	Opus8
Vitaly	Shlimovich	CEO	Sipple
Evan	Shubin	President and Director of Investments	Candlelight Partners LLC
Abubakar	Sial	CEO	OctiLearn
Jovan	Silva	Confounder	Matchplicity
Cal	Simmons	Chair, Tiger21	Tiger21
Mike	Simpson	CEO	Omura
Paul	Singh	CEO	Rezon8 Capital
Ravi	Singh	CEO	Realcoderz
R. Paul	Singh	CEO	Startup Strategies
Sudhir	Sinha	Founder & CEO	Inovogen Biotechnology pvt ltd
Per	Sjofors	CEO	Sjofors & Company Inc
Karl	Sjogren	Author	The Fairshare Model
William	Skannerup	Director	Stealth Govtech
Michael	Skvortsov	Co-founder	Bene Tipping, LLC
Anna	Skvortsova	Partner	EY
Karen	Smaw	Director	FCEDA
Roxann	Smikle	CEO	Ethel Maud
Angela	Smith	Investor	Origin Ventures
Mike	Smith	Strategic Partnerships	Wolters Kluwer
Mike	Smith	CEO	Yes& Agency

Scott Helberth	Smouse	President	Scott M. Smouse
Marc	Soares	CEO	BHS Kriptos
Pyi	Sobel	Executive Vice President	JM Zell Partners, Ltd
Neal	Soe	IT Consultant	
Dan	Sofian	CEO	Tuzag, Inc.
Danille	Solomon	CEO	Wise Action
Paul	Soria	Founder and CEO	Sociov
Paula	Sorkin	President	Perfect Balance Investments
Jeremy	Sorrell	Associate Vice President	George Mason University
Krystal	Spaulding	COO	Evolve Impact
Ajay	Spriggs	Venture Associate	Dingman Center Angels
Aru	Srivastava	President	eKuber Ventures Inc
Thomas	Srivastava	Director	SmartAnalyst
Justin	Stallone	Managing Partner	TapSec Consulting
Sam	Steigerwalt	Principal	Dealer Cortex LLC
Michael	Stein	Associate	Family Office
Ernest	Steiner	Executive	BEST Robotics Inc
Wendy	Stern	Partner	Culhane Meadows PLLC
Lorien	Stevens	VP of Sales	Vitalflo
Bryan	Stevens		University of Missouri
Kathryn	Stewart	Army	Goalraid
Gisele	Stewart	Founding Partner	Cranbrook Capital
Robin	Stolz	Director - Entrepreneurship Programs	George Mason University
Roland	Stonesifer	CoS	PeopleConnect
Dana	Storti	CEO	Minfo
Steve	Sun	Investor	OCA Ventures
Rama	Sunshine	President	Shower Clear, Corp.
Sean	Suresh	Executive Director	Info Soft Systems, Inc
Thomas	Sutherland	Chief Marketing Officer	Kapowza
Joseph	Swanson	President	TJSwanson Co.
Paulina	Swiader	CEO	Prosper Digital Therapeutics, Inc
Aksaraphak	Szyzdek	VC	
Venkat	T.	Owner	Real estate business
Peter	Tadakamalla	President	ITSYS, Inc.
Nobu	Tahoe	Writer/Director/Editor	petertahoe.com
Dennis	Takanuma	Partner	Joyance Partners
Amy	Takasugi	Rheumatology Diagnostic Expert	Inmedix
Sharon	Tang	CEO	Folio
Cha-Mei	Tang	Managing Director	Harvest Invertors Group Inc.
Manquel	Tang	CEO	Creatv MicroTech, Inc.
Sebastián	Tejeda	MD	YPV.International
Scott	Tello	Founder and CEO	Mexicrafts
Dinete	Thomas	Solution Architect	DST Consulting
Brandon	Thomas	Research Coordinator	IITS
Götz	Thompson	Business Development Executive	Zarttech
Mika Kristian	Thümecke	Founder	Bag ventures
Aleksandar	Tienhaara	CEO	ROCSOLE
Denis	Tisinovic	CFO	Cuculi
Wilfredo	Tomka	Analyst	Bitwide
Wilfred	Torres	Co-Founder	WaitLess
Tina	Torres	CEO	WaitLess
Alex	Tosukhowong	Investment Director	TDK Ventures
Vylan	Trader	Relationship Manager	Truefit
Nicole	Tran	Social Entrepreneur	Lovevolution Group
Siddhartha	Tripodi	Chief Operating Officer	Cyberline, Inc.
Austin	Trivedi	Founder	Atmos24 Foundation
Alan	Trombley	Co-Founder	Satschel
Allen	Trost	IT Specialist	FMCS
Kirsten	Tuchman	Sales	SG360
Syarifatul	Tucker	CEO	Itinafairy LLC
Suzy	Umam		University of Maryland
Campbell	Ure	Director	Cure Business Improvements Limited
Ani	Ure	Owner	The Alternative Board
Yossi	V	Cofounder	
Ivan	Vaknin	CEO	CommUnic
Sam	Valdez	Co-Founder	WaitLess
Benjamin	Valenti	Inventor	Freight Train Studios
Phoebe	Vali	Resident Agent and Sole Member	Seven Sigma Consulting
Richard	Van Duinen	Investment Manager	Halcyon
Sergo	Van Horn	Founder	Pseudo-NYM
Carlos	Vashakmadze	CEO	Rainmaker Partners
Roy	Vassallo	COO	PlanetM
	Vella	Managing Director	Vella Ventures

Swathi	Vijayasekar	Startup Advisor	Ethben Crypto Projects
Jim	Voeller	Of Counsel - Patent Attorney	Maier & Maier PLLC
Amy	Volas	Founder & CEO	Avenue Talent Partners
Sean	W	CGO	ABC FinTech
Carl	W	Principal	Walker Terrace
Judith	Walker	CEO	Nurselynx, Inc.
Michael	Walsh	CEO	GlobalCitizen.One
Delroy	Walters	Principal	Baobab Consultancy, LLC
Wan Mohd Hafiz	Wan Idris	Co-Founder & CEO	Lokein
Eddie	Washington	Operations Manager	Califia Gold
Mike	Watson	CEO	Miruminvest
David	Weaver	Chief Investment Officer	Great Lakes Angels Fund and Birmingham Angels
Arnold	Webster	CEO	CRISP LLC
Barry	Weinbaum	Financial Services Professional	New York Life
Eric	Wendler	Director of Business Development	Grant Thornton
Skip	West	President	MAXSA Innovations LLC
Albert	Whale	Founder & CEO	IT Security Solutions, Inc.
Matt	Whitaker	Managing Director	Quantive Advisors
Tommy	White	Director	AU Center for Innovation
Theresa	Whitfield	VP, Marketing Communications	Ethno Media Group
Susanne	Wilke	Managing Director	CrossBridge International
Albert	Williams	CEO	Perkforce
Tammy	Williams	Founder & CEO	Envision2bWell Inc, a Public Benefit Corporation
Vanessa	Williams-Harvey	Clinical Informatics Manager	DUES24
Scott	Wilson	Founder	Black Book of Outsourcing LLC
Mark	Wilson	CEO	Endure Biotherapeutics
Gloria	Wiss	VP Sales and Marketing	Zigron, Inc.
Ted	Wiss	VP Sales and Marketing	Zigron.com
Belinda	Wong	Director	Leader Corporate Services Limited
Heather	Wood	General Partner	Cultivation Capital
Carl	Wooten	CEO	GivGo
Kefei	Wu	Associate	VCL Law, LLP
Diana	Wyker	Director of Business Development	New Vertical Technologies
Li	Xia	Project manager	Smithers
Yigang	Yang	Managing Partner	WaterStar Capital
Peter	Yang	US Rep	JYTH
Vincent	Yang	Product Manager intern	Softsol
Apostolos	Yeorgaroudakis	Founder	Athleton Plus
Tomo	Yoshida	Director	SBI FTF SPC II
Marvin	Yueh	Executive Producer	HappyEcstatic Media
Jon	Zaikowski	Assistant Director	New York Angels
Narges	Zamani	CIO	Pactolus
Rob	Zamani	President	Intelligent Technologies Inc.
Lina	Zdruli	Founder	Dafero
Steve	Zeitchik	CEO	Agency 8200
Carlos	Zelaya		Montgomery College
Jiajia	Zhou	Analyst	EnerTech Capital
Xufan	Zhu		Johns Hopkins University
Jeff	Zika	CEO	AirGO.Ai
Yuri	Zinych	Account Executive	Erbis
Raymond	Zoeller	Investor and Advisor	Kyto Technology and Life Science Inc.
Bijan	Zougji	Founder and Chairman of the Board	Avid International, inc.
Jason	Zuker	CEO	Promus
Sthe	Zwane	Founder/Director	GoGetta
Nick	Zwierlein	Client Relationship Manager	Koffman Southern Tier Incubator

THANK YOU TO OUR PREP TEAM



MALI PHONPADITH
Founder & CEO
SOAR Community
Network



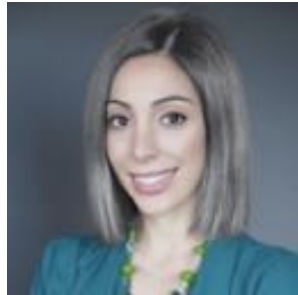
INES LEBOW
CEO
Enterprise
Transformation Solutions



JACKIE LUO
Principal
BAM Advisory LLC



EVAN SHUBIN
Pres. and Founder
Results.now, Inc. and
Candlelight Partners
LLC



LAURA HILL
General Partner
Opus8 Pheonix
Fund



BOB LONDON
CEO, Founder & Chief
Listener
Chief Listening
Officers



MARISSA LEVIN
Founder & CEO
Successful Culture
International



JET LU
Customer Solutions
Amazon Web
Services



**ESTEFANIA
PALOMINO**
CEO
Aleph Leadership

SPONSORS



Angels + Life.Sci Investors



Want to Present or Sponsor at our Virtual Events?

Email Skylar Rallison at
srallison@opus8.com
for more information

2022 Calendar

March 31	April 28	May 26
June 30	July 28	Aug. 26
Sept. 29	Oct. 27	Nov. 22
Dec. 21		



MELT IN YOUR MOUTH

How does the world view you? Your brand lets you stand out in a sea of flavors. Be bold. Be unique. Be more than the flavor of the day.
Be on point.

Management + Creative

Management | Branding | Marketing | HR & Talent Acquisition | Coworking

 StellaPop

stellapop.com | 703-956-3022

SUCCEED IN THE DIGITAL WORLD

Put beautiful digital experiences in the hands of your customers and change the way your business works.



DevOps & Security

- + Migration
- + DevOps
- + CI/CD
- + Risk assessment & remediation



Customer experience

- + Voice of customer
- + User research
- + Usability testing
- + World-class experience design



Atlassian

- + Licensing
- + Tool configuration
- + Migration
- + Training and support



Product strategy

- + Technology maturity audit
- + Learn product validation
- + Post-launch growth
- + Opportunity space analysis



Agile software delivery

- + Architecture
- + Project management
- + Design
- + Full stack engineering
- + Testing & automation