

Key to the Genus *Megachile* (females) of the Southern Lake Michigan Region

Laura Rericha/CRI & FPDCC
2020

1. Mandibles 5-dentate (Fig. 1).
 2. Mandibles lacking beveled cutting edges (Fig. 2) *Megachile montivaga* (in part)
 2. Mandibles possessing beveled cutting edges (Fig. 1).
 3. 4th mandibular tooth with lateral margins essentially parallel, the tooth shape long-ovate (Fig. 3).

Regionally rare; 4th mandibular tooth extremely narrow, 1/3 or less as wide as beveled cutting edge between 3rd and 4th teeth; S7 apically thickened and extended past apex of T6 *Megachile fortis*

Common; 4th mandibular tooth wider, about 1/2 as wide as beveled cutting edge between 3rd and 4th teeth; S7 not apically thickened and extended past apex of T6 *Megachile latimanus*
 3. 4th mandibular tooth with lateral margins apically converging, the tooth shape triangular (Fig. 1)
 4. T6 with appressed fulvous pubescence (Fig. 4) *Megachile relativa*
 4. T6 with appressed black or fuscous pubescence (Fig. 5).

T6 with erect, black hairs distributed throughout segment (Fig. 6); less than 15 mm in size
..... *Megachile centuncularis*

T6 with erect black hairs on lateral portion of segment only; size 15 mm or more *Megachile inermis*
1. Mandibles 4-dentate (Fig. 9 & 10) or obscurely 5-dentate (Fig. 2).
 5. Mandibles each with a long cutting edge separating 3rd and 4th teeth (Fig. 7) *Megachile rugifrons*
 5. Mandibles without a long cutting edge separating 3rd and 4th teeth.
 6. Teeth absent of beveled cutting edges between them (Fig 2).
 7. Abdominal scopa predominantly black-pubescent (S3-S6) (Fig. 8); size > 20 mm long *Megachile sculpturalis*
 7. Abdominal scopa pale-pubescent; size < 15 mm long.
 8. Clypeal margin weakly crenulate (Fig. 2) *Megachile montivaga* (in part)
 8. Clypeal margin strongly crenulate (Fig. 9).

T5 pale-fasciate; median portion of clypeus shallowly emarginate, the emargination beset centrally with a small, rounded projection or bead-like process *Megachile exilis*

T5 not fasciate; median portion of clypeus with a quadrangular emargination absent of a projection or bead-like process (Fig. 9) *Megachile campanulae*
 6. Teeth with at least one pair with a beveled cutting edge between them (Fig. 10).
 9. Beveled cutting edge absent between the inner teeth (teeth 3 & 4).
 10. Gena with pronounced ventral spine (Fig. 11) *Megachile pugnata*
 10. Gena not spinose.
 11. Clypeus beset with erect, black pubescence (Fig. 12) *Megachile frugalis*
 11. Clypeus beset with pale pubescence.

Clypeus without a blunt median angle (Fig. 13); S5 black-pubescent on apical half of segment
..... *Megachile policularis*

Clypeus with a blunt median angle (Fig. 14); S5 pale-pubescent throughout *Megachile inimica*

9. Beveled cutting edge present between the inner teeth (teeth 3 & 4) (Fig. 21).
12. Sterna apically white-fasciate (with short hairs) beneath long, suberect scopal hairs (Fig. 15); T2 with two lateral, opaque, ovate foveae (Fig. 16) *Megachile rotundata*
12. Sterna not fasciate beneath the scopal pubescence; T2 without foveae.
13. Abdominal scopa prevailingly black-pubescent; terga without white apical fasciae.
- 4th tooth truncate (Fig. 17) *Megachile gemula*
- 4th tooth rounded (Fig. 18) *Megachile mucida*
13. Abdominal scopa prevailingly pale-pubescent; terga with white apical fasciae.
14. 4th tooth truncate *Megachile ingenua*
14. 4th tooth not truncate, instead rounded to acute.
15. S6 with a distinct region (about $\frac{3}{4}$ length of segment) absent of scopal hairs (Fig. 19)
 *Megachile petulans*
15. S6 scopal hairs evenly distributed (or if an area absent of pubescence exists, then area much less than $\frac{3}{4}$ length of the segment).
16. T6 straight in profile (Fig. 20).
- Abdominal scopa prevailingly fulvous (Fig. 20); 4th tooth angulate anteriorly and posteriorly along its margin (Fig. 21 & 22) *Megachile mendica*
- Abdominal scopa prevailingly white; 4th tooth not angulate both anteriorly and posteriorly (Fig. 23) *Megachile dakotensis*
16. T6 concave or sinuate in profile, the apex slightly upturned (Fig. 24).
17. 4th tooth rounded; emargination between 3rd and 4th teeth deep (Fig. 10)
 *Megachile addenda*
17. 4th tooth acute; emargination between 3rd and 4th teeth shallow (Fig. 27).
- Lateral margins of terga beset with much black pubescence (Fig. 25); scopal hairs on S6 black *Megachile texana*
- Lateral margins of terga prevailingly pale-pubescent (Fig. 26); scopal hairs on S6 prevailingly pale, occasionally with some fuscous pubescence on the disc not restricted to the apical fringe *Megachile brevis*

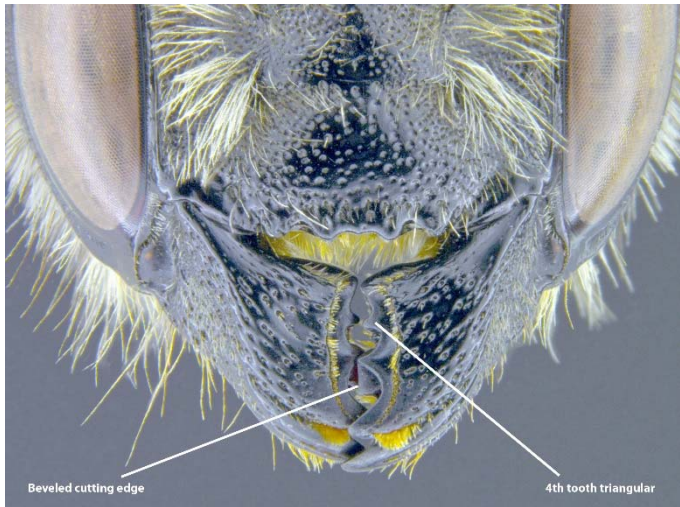


Fig. 1



Fig. 2

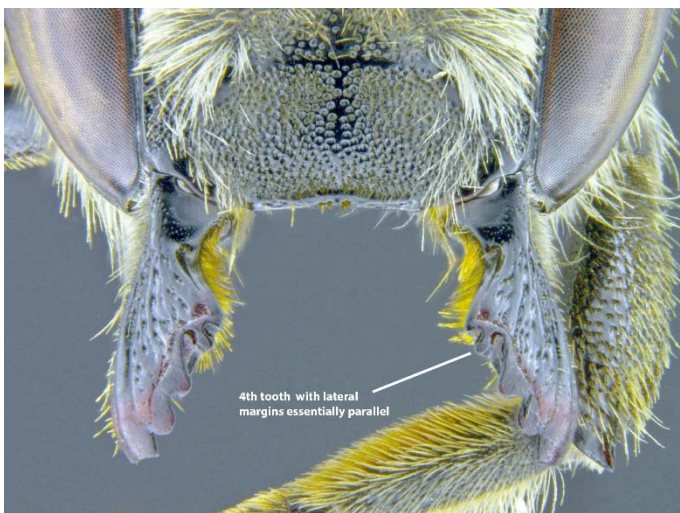


Fig. 3



Fig. 4



Fig. 5



Fig. 6



Fig. 7



Fig. 8

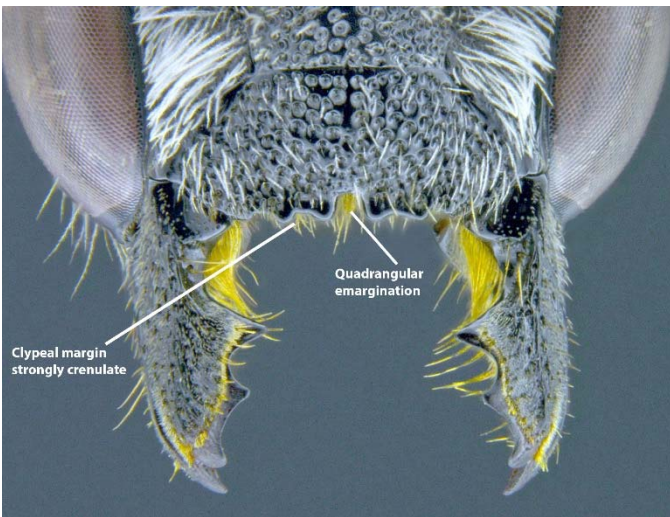


Fig. 9

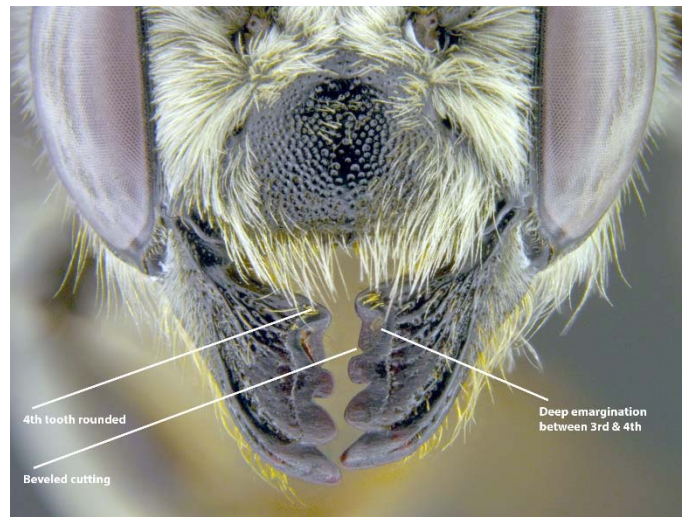


Fig. 10



Fig. 11



Fig. 12

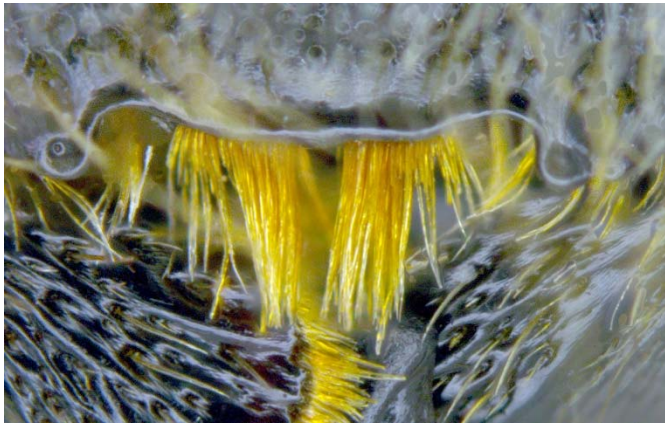


Fig. 13

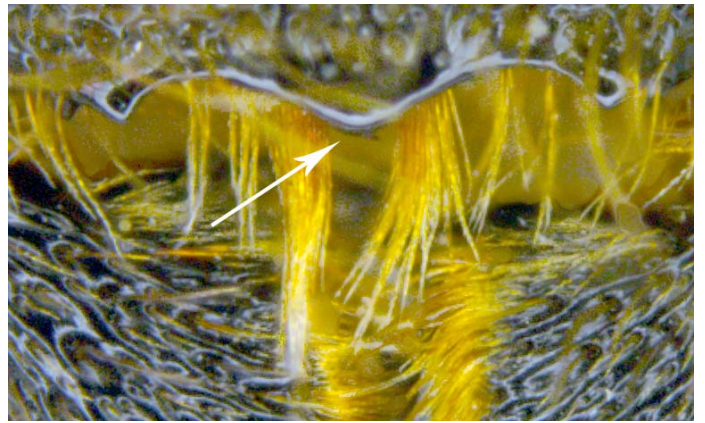


Fig. 14



Fig. 15



Fig. 16



Fig. 17

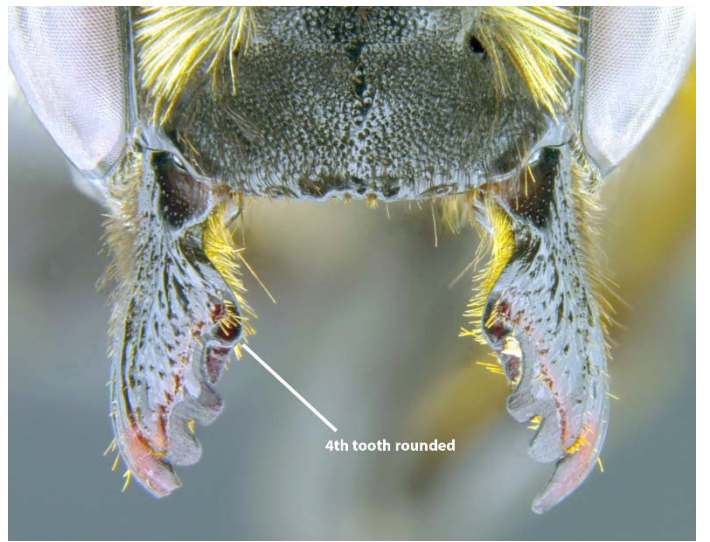


Fig. 18

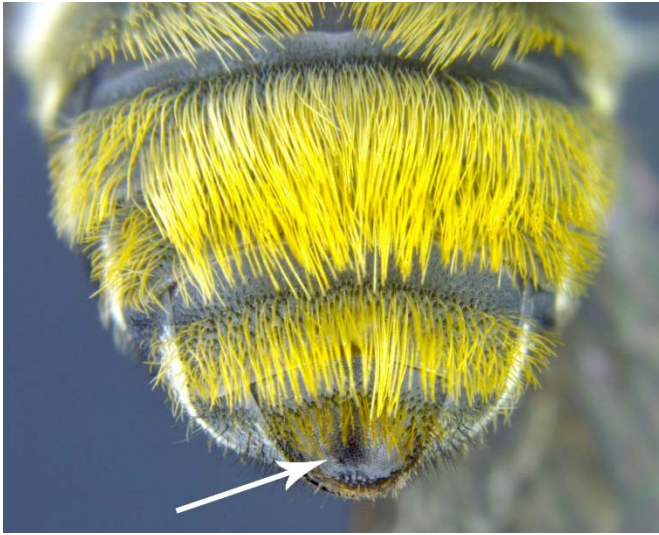


Fig. 19



Fig. 20

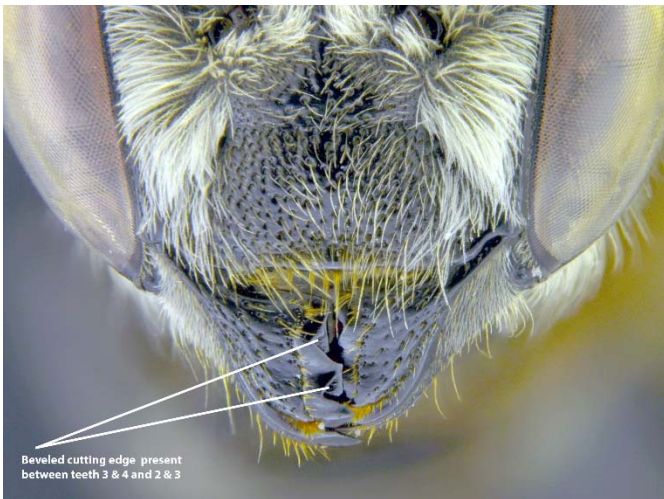


Fig. 21

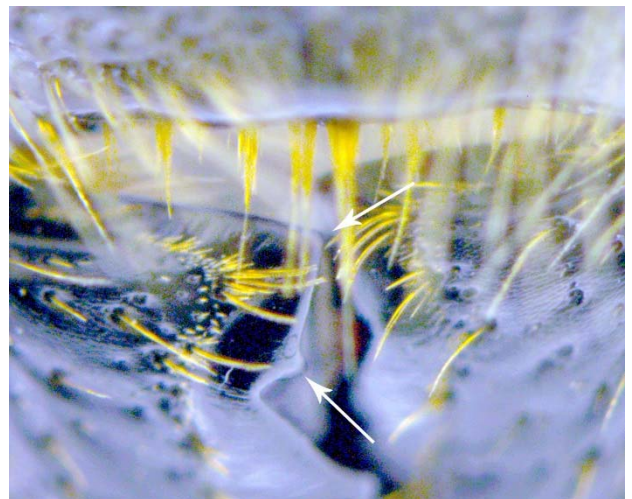


Fig. 22



Fig. 23

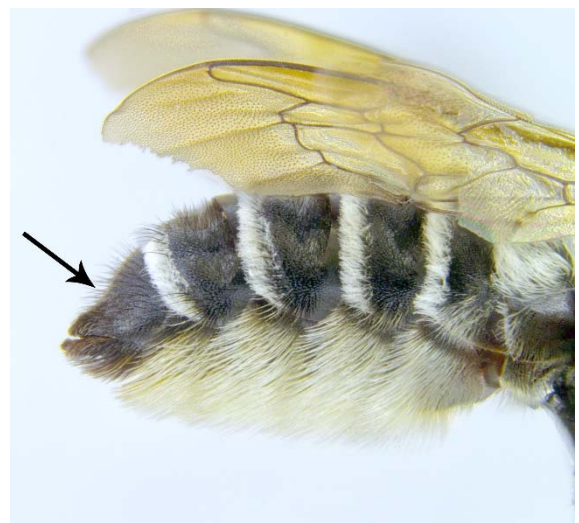


Fig. 24



Fig. 25



Fig. 26

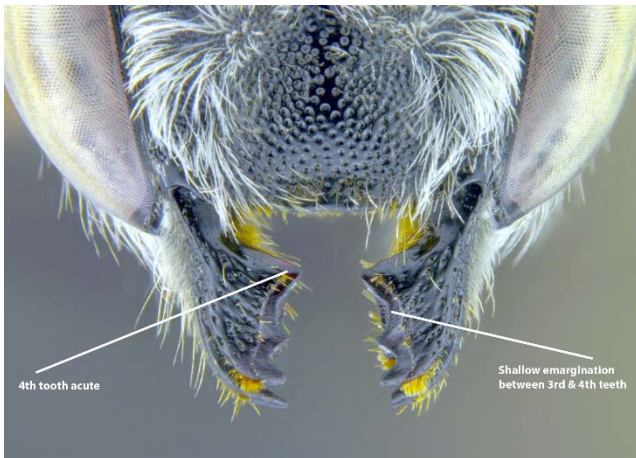


Fig. 27