



## FACT SHEET

# TEMBO PLAINS CAMP

SAPI PRIVATE RESERVE

GREATER MANA POOLS UNESCO WORLD HERITAGE SITE

“Tembo” meaning Elephant and reflects more than just a place and a name honouring the animals on these plains. It speaks to long and unique relationships we have with elephants. We draw on their pace and their essence for the atmosphere in camp.

The ‘territory’ of this camp is built into the thick riverine forest located on the Zambezi River’s edge, in the private 118,000 hectares (291,000 acres) Sapi Private Reserve east of Zimbabwe’s Mana Pools National Park. Tembo Plains fits into our highest level brand, the Réserve Collection of camps alongside our other camps like Zarafa Camp, Selinda Camp, Duba Plains in Botswana; Mara Nyika, Mara Plains and ol Donyo Lodge in Kenya. It is also a proud member of Relais & Châteaux – the only camp in the whole of Zimbabwe given this honour.

Tembo Plains has four double or twin bed configuration suite, each with its own private indoor lounge area, outdoor swimming pool, (with exercise bikes on a wide veranda) and outdoor dining area. Stunning, handmade bathtubs and indoor and outside showers give the tent a sense of ‘home’ where you can move in and live. The Wi-Fi and working areas also provide space for you to catch up on business or just manage the images from the day. Each tent comes complete with a professional camera and lenses, plus high quality binoculars for guests to use whilst they are with us in Sapi.

The beautiful 2-bedroomed family Tembo Suite comprises two suites with shared lounge and dining area and pool, ideal for two couples, a family or a couple looking for the ultimate private safari. All rooms enjoy expansive en-suite bathroom facilities as in the other suites, with indoor baths, showers and double vanities.

*“When I designed Tembo Plains’ it was with a view to reference the famous Zimbabwe Ruins but not lose sight of our love of canvas and exploring. So we ended up with a unique combination of canvas and stone walls. The semi-circular walls inside each suite isolate the bath and shower from the bedroom, and indoor lounge areas bringing that architectural reference inside as well. Outside this pack-stone wall design continues along the back of the guest bedroom, and that really gives you a greater sense of privacy, often an issue in tents. Still, I didn’t want a completely ‘built room’, so the front has these uninterrupted views of Zambezi river flowing just meters away from the canvas ‘tented’ portion.” - Dereck Joubert, Great Plains CEO*

In the main area, the wine cellar and interactive 5-star kitchen feature this stone design, including the spa and curio store which are hidden discreetly behind beautifully weathered Zanzibar doors.

*“There is a long history of exploration from the coast into this area, as traders came in search of gold, so we used these Arab influenced doors to reflect that in the design.” - Dereck Joubert, Great Plains CEO*





# TEMBO PLAINS CAMP

SAPI PRIVATE RESERVE,  
GREATER MANA POOLS UNESCO WORLD HERITAGE SITE

Painted dogs (wild dogs), lions and leopards are common around Tembo Plains whilst buffalo, and of course, elephants, are seen up and down the river, sometimes swimming the river itself.

The Sapi Private Reserve, established by Great Plains as part of our mission to convert vast tracts of Africa into pure conservation land, is now a beautiful private photographic reserve that borders the Mana Pools National Park. It is recognised as one of the finest wildlife destinations in Africa today. This fantastic wildlife sanctuary and the Mana Pools National Park that we can access if we want to, offer a combined range of over 337,000 hectares of prime, protected wilderness for our guests. It is a part of the UNESCO World Heritage Site and a core area of the middle-Zambezi biosphere reserve.

Enjoy the privacy of a safari, so rare today, in a wildlife-rich sanctuary along the Zambezi River with us where you don't have to worry about anything else except how best to soak up every moment. Your safari with us includes everything, day and night wildlife viewing drives, boating, and canoeing or tracking, drinks and of course our Relais & Chateaux level cuisine and service.

## ACTIVITIES

The focus of your stay is centred around exploration and adventure. Many activities involve day and night wildlife viewing drives and walking with some canoeing and boating opportunities on the Zambezi River. Your wildlife viewing vehicle is available to conduct safari drives for those who prefer to cover greater land distances and who do not wish to venture out into the wilds on foot.

We use custom-built, open Toyota Landcruisers specially designed for our conditions and photography, including fold-down windscreens, raised roofs, photographic bars, and multi-plug inverters. Each of the Landcruisers is fully stocked with reference books, drinks, and snacks. Guests have the opportunity to experience up-close encounters with elephants, lions, leopards, hyenas, wild dogs, buffalo, eland, zebra, and other ungulate species. This is a prime bird-watching country, and opportunities abound for guests to spot resident and migrant species, especially in the early morning and late afternoons.





# TEMBO PLAINS CAMP

SAPI PRIVATE RESERVE,  
GREATER MANA POOLS UNESCO WORLD HERITAGE SITE

Telephone and After-Hours emergency number:	+27 (0) 87 354 6591
Email:	reservations@greatplainsconservation.com
Website:	<a href="http://www.greatplainsconservation.com">www.greatplainsconservation.com</a>
Total Number of Bedrooms:	4 double or twin configuration suites, 1 x 2-bedroom family suite, 1 guide tent
Type of Lodge:	Réserve-styled Safari Camp
Lodge Season & Opening	Typically, April to November

## GEOGRAPHY

The African Rift is a geological zone where continental plates in Eastern Africa have developed a tectonic plate boundary. The African Plate is very slowly dividing into new tectonic plates, resulting in the Zambezi escarpment. The geology of the Middle Zambezi Valley and, by association, the Sapi Private Reserve correlates with the Jurassic and Triassic periods in the region of 190 to 200 million years old. Along the Sapi Private Reserve boundary, and within Chewore South, lies several dinosaur footprints, and on the south-eastern side of the Sapi Private Reserve are petrified wood forests.

This complex and yet magnificent landscape has special significance for its landscape and wildlife photographic tourism. The Zambezi River itself is wide and meandering, streaked with smaller water channels between the islands and speckled with the shapes of hippo, elephants, crocodiles, with other wildlife wading in the shallows. Zambia's high escarpment mountains form a dramatic backdrop to the idyllic river scenery from the Zimbabwean side.

Extending for an estimated 50 kilometres from the Zambezi escarpment, through the relatively flat Zambezi Valley, the terrain transforms from rocky mountainous outcrops down to the river itself to thick jesse bush vegetation. Amidst large dry riverbeds, year-round and seasonal natural springs and waterholes are found along with a system of alluvial river terraces that flank the river frontage. This narrow strip of fertile land supports mature indigenous woodlands of winter thorn and apple ring acacia, mahogany, ebony, and fig trees. The jesse scrub and dry deciduous lowland forest, botanically classified as Xylia torreana dry forest, are habitats identified as a conservation priority due to their small distribution areas and high biodiversity.





# TEMBO PLAINS CAMP

SAPI PRIVATE RESERVE,  
GREATER MANA POOLS UNESCO WORLD HERITAGE SITE

Renowned for its unique “blue hue” lighting as sunlight filters through the shady glades, large wildlife concentrations, particularly in the dry season, rest and feed beneath the trees. It is for these reasons that the area has become a photographer’s delight. The middle Zambezi is listed as an essential staging post for migratory birds, and an estimated 380 bird species have been recorded, making this an excellent option for birding safaris. Specialities include Shelly’s sunbird, Shelly’s francolin, rock pratincole, African skimmer, racket-tail roller, Arnott’s chat, white-breasted sunbird, broad-tailed paradise-wydah, and Pel’s fishing owl, amongst others.

Most large mammals synonymous with an African safari occur in the region. Elephants are numerous, and the majority shelter in the jesse during daylight hours and tend to wander down to the river during late afternoons and overnight. The Sapi Private Reserve is rich in wild ungulates, with the most notable being buffalo, eland, kudu, zebra, waterbuck, impala, duiker, bushbuck, and nyala. Specialities and rarely seen species include the Sharpes grysbok and Suni.

All the apex predators are well represented. Lion populations are ever-increasing, and there are a plethora of Spotted hyenas. Painted Dogs (wild dogs) are seen on the alluvial jesse bush ecotone. Cheetahs are rare but have been periodically recorded to date.

Interestingly, the Large Slit-Faced Bat (*Nycteris Grandis*) occurs along the Zambezi and is the only bat in Africa that eats fish and frogs. These bats have excellent eyesight and drop down on their prey from overhanging branches.

## ACCESS DIRECTIONS

- Light aircraft transfers from Harare International Airport and Victoria Falls International Airport available;
- Victoria Falls International Airport (2 hours);
- Private Air charters are available;
- Transfer time from a Sapi Private Reserve airstrip to camp is approximately 45 mins with wildlife viewing opportunities en-route;
- Please note that to fly from Sapi to Victoria Falls or Harare and then connect to some same-day International departure flights, guests may be required to book a private charter. We can confirm this at the time of enquiry.



# TEMBO PLAINS CAMP

SAPI PRIVATE RESERVE,  
GREATER MANA POOLS UNESCO WORLD HERITAGE SITE

## SUITE DETAILS

### BEDROOM

- Four large canvas suites with outdoor sitting area;
- Either twin or double bed configuration;
- Canvas is light sand coloured, with netted windows;
- Each bed has a mosquito net;
- Fans in bedrooms and electrical lights;
- Hairdryers;
- Charging facilities;
- Private plunge pool and wrap around decking;
- Professional camera set and high quality binoculars for guest use during their stay.

### FAMILY SUITE

- One large 2-bedroomed canvas suite with common outdoor sitting area;
- Each room can be either twin or double bed configuration;
- Canvas is light sand coloured, with netted windows;
- Each bed has a mosquito net;
- Fans in bedrooms and electrical lights;
- Hairdryers;
- Charging facilities;
- Private plunge pool and wrap around decking;
- Professional camera set and high quality binoculars for guest use during their stay.

### BATHROOM

- Each suite has an en-suite bathroom with an inside and outdoor shower, flush loo, and a basin;
- Soap, shampoo, conditioner, lotion provided.

## CONSTRUCTION

- Canvas exterior walls and roofing.

## TEMPERATURE CONTROL

- Solar powered Air Conditioning (heating and cooling) facility located over the guest's bed in each suite.

## DINING STYLE

- Group meals.

## FOOD & BEVERAGES

- All meals included;
- All drinks and beverages are included, including imported spirits and sparkling wines;
- Excellent three delicious meals a day are provided;
- We are incredibly flexible on timings;
- Picnic breakfasts or lunch (or both) are the norms due to wildlife viewing activities;
- All dietary requirements are catered for from regular to vegan to children, with prior warning requested.

## USUAL BOARD BASIS

- Full board including all meals, scheduled wildlife viewing activities, alcoholic and non-alcoholic beverages including imported spirits.

## DINING LOCATIONS

- Outdoor and/or under canvas.





# TEMBO PLAINS CAMP

SAPI PRIVATE RESERVE,  
GREATER MANA POOLS UNESCO WORLD HERITAGE SITE

## ROOM SERVICE

- No.

## EXTRAS

### POSSIBILITY OF DISABLED ACCESS

- The camp layout and experiences are not conducive to guests who use wheelchairs due to the terrain.

## LAUNDRY

- Laundry can be collected and will be returned within 24 hours (weather permitting).

## CENTRAL FACILITIES/ COMMON AREAS

- Tented safari main area, which includes the lounge, wellness and spa and dining areas;
- Coffee/tea station.

## PRIVATE GUIDES

- Private guides are encouraged and welcomed.

## CHILDREN

- Recommend for children older than 6 years;
- There is a dedicated 2-bedroom family suite available at this camp;
- Triples are possible;
- Walking from 8 years is possible and is at the discretion of the camp manager / guide in terms of safety and opportunity.
- Young Explorers program – thoughtfully designed to explore a range of experiences and topics from birding to cooking to art to tracking wildlife.

## POWER & COMMUNICATIONS SOURCE

- The camp is run by solar power;
- The system produces 220V, 24-hour electricity;
- Standing fans and solar powered air conditioning over the main bed areas in each suite;
- Low voltage hairdryer included

## PRIVATE VEHICLE

- Available at an extra charge.

## INTERNET & MOBILE

- Wi-Fi available. No mobile signal.

## FIRE SAFETY

- Fire extinguishers in the main camp areas and every suite.

## HEALTH & SAFETY

### MALARIA & TSETSE FLY

- Medium – Malaria prophylaxis is recommended.

## MEDICAL CARE

- Guests must hold comprehensive medical insurance and emergency evacuation insurance;
- Senior staff all have first aid training;
- The nearest decent medical facility is in Harare or Victoria Falls in Zimbabwe and then Johannesburg in South Africa.

# TEMBO PLAINS CAMP

SAPI PRIVATE RESERVE,  
GREATER MANA POOLS UNESCO WORLD HERITAGE SITE

## RISK OF DANGEROUS ANIMALS

- Moderate – high predator density area with potential for lion, leopard, hyena, buffalo, and elephant to walk through the camp.

## SECURITY MEASURES

- Night Watchmen for wildlife;
- There are no human populations nearby, and no uninvited guests can access the camps.

## MONEY MATTERS

### SAFES

- Safes are provided in the guest suite.

## ACCEPTED PAYMENT ON LOCATION

- All-inclusive;
- Staff gratuities can be paid in US Dollars (2004 bills or later only) Euro or GB Pounds;
- Visa and MasterCard credit cards are not accepted.

## THE TEAM

### LODGE OWNERS

Great Plains Conservation.



GREAT PLAINS  
**TEMBO PLAINS**  
SAPI PRIVATE RESERVE - ZIMBABWE

# GUEST SUITE



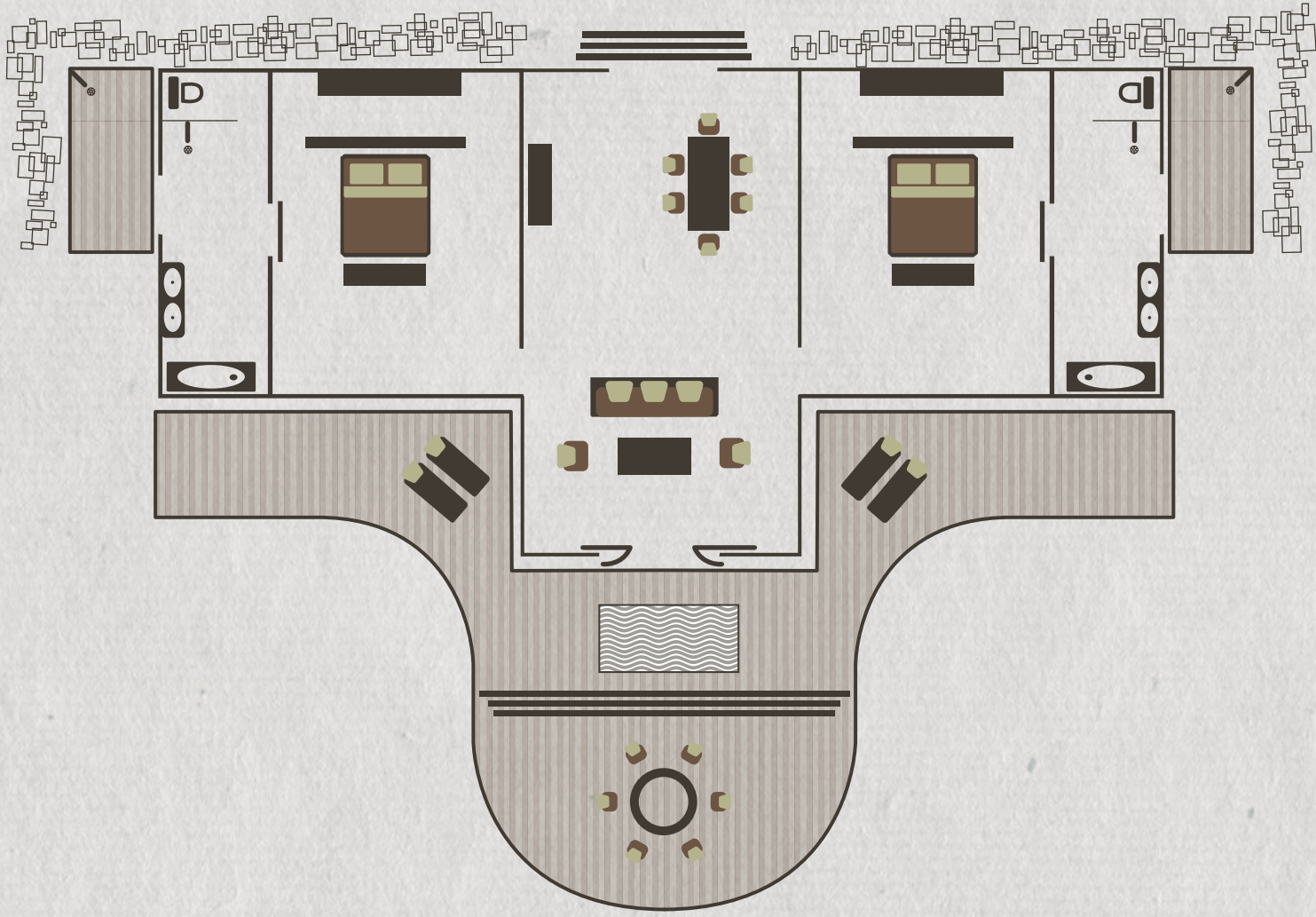
WWW.GREATPLAINSCONSERVATION.COM / RESERVATIONS@GREATPLAINSCONSERVATION.COM







# TEMBO PLAINS SUITE



WWW.GREATPLAINSCONSERVATION.COM / RESERVATIONS@GREATPLAINSCONSERVATION.COM



# GREAT PLAINS

CONSERVING AND EXPANDING NATURAL HABITATS



ZAMBIA

TEMBO PLAINS / TEMBO PLAINS SUITE ●●

SAPI PRIVATE RESERVE

MANA POOLS NATIONAL PARK

MPALA JENA CAMP ●

KASANE ★

ZAMBEZI NATIONAL PARK

LIVINGSTONE ★

VICTORIA FALLS ★

ZIMBABWE

★ HARARE

SELINDA CAMP / SELINDA SUITE ●●

SELINDA EXPLORERS CAMP ●●

ZARAFI CAMP / ZARAFI DHOW SUITE ●●

● DUBA EXPLORERS CAMP

● DUBA PLAINS CAMP / DUBA PLAINS SUITE

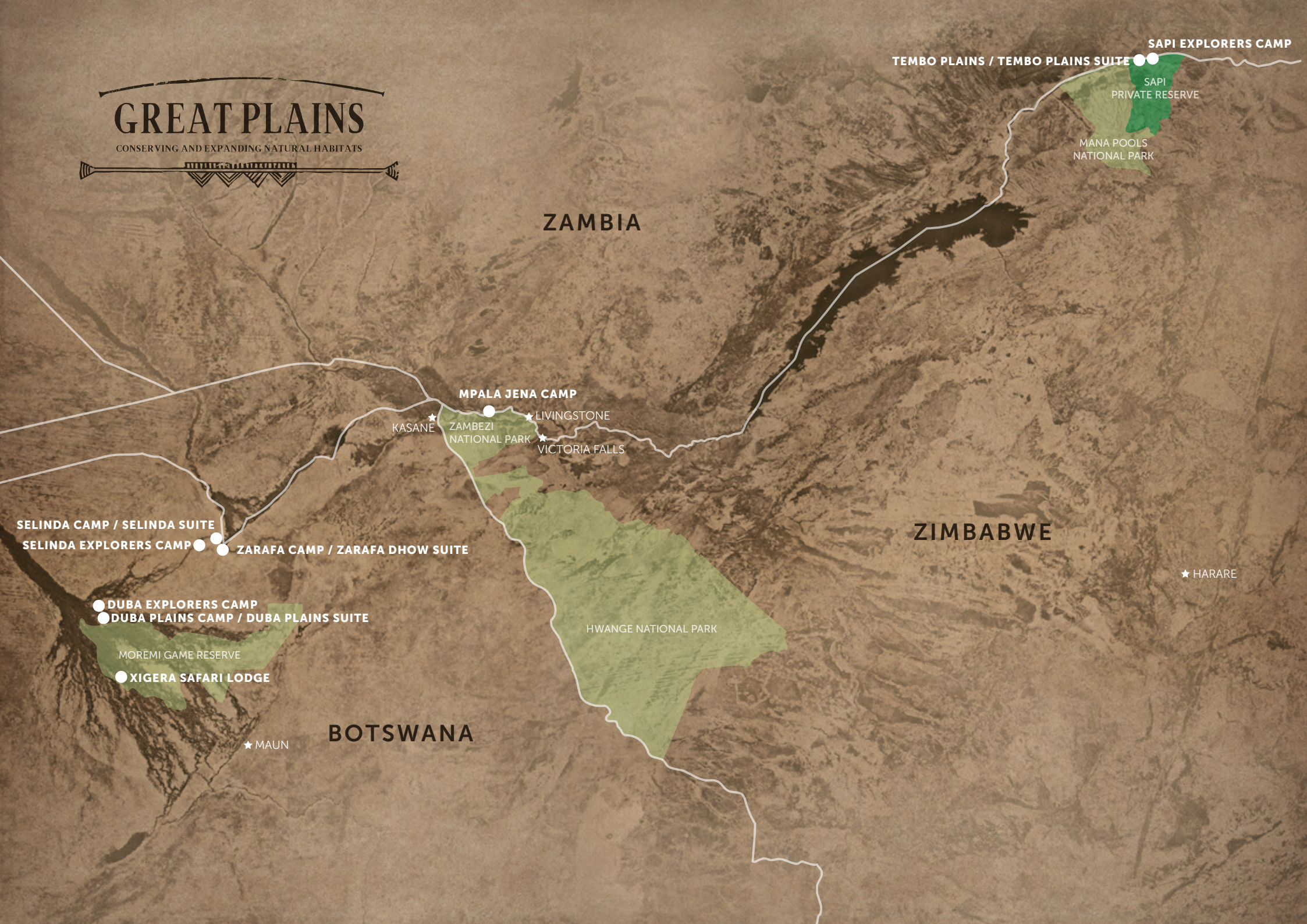
MOREMI GAME RESERVE

● XIGERA SAFARI LODGE

HWANGE NATIONAL PARK

BOTSWANA

★ MAUN



# GREAT PLAINS CONSERVATION

## QUICK CAMP FACTS

ACTIVITY	ZIMBABWE CAMPS		
	TEMBO PLAINS CAMP & TEMBO PLAINS SUITE	SAPI EXPLORERS CAMP	MPALA JENA CAMP
Day Drives	•	•	•
Night Drives	•	•	
Guided Walks	•	•	•
Boating	•	•	•
Mekoro			
Canoeing	•	•	*
Main Swimming Pool			•
Private Plunge Pools			
Horseback Riding			
Cultural Interaction			
Hot-Air Ballooning			
Spa/Massage			
Gym			
Fishing (Seasonal)	•	•	•
Mountain Biking			
Hide			

(\* ) This activity is available for an additional fee | (#) This activity is water level dependent

