



KONICA MINOLTA

bizhub PRESS 1052/1250/1250P COMMERCIAL PRINTERS

Professional black & white runners for digital printing



bizhub PRESS /
1052/1250/1250P

B/W PRODUCTION PRINTING SYSTEM



DIGITAL PRINTING AT ITS BEST

In the bizhub PRESS 1250 series, Konica Minolta has combined important assets with a truly amazing black & white print quality that effectively sets a new industry standard surpassing anything previously available.

- **As a commercial printer, you need to be well prepared for the future.** In times of drastic market changes, it is difficult to satisfy customer demands and stand out from competitors. With mobile communication and online ordering, printing is no longer purely a local business – it is therefore essential for you to differentiate your services with print products that go beyond the standard range in digital print production.
- **The demand for quality is high from and for commercial printers.** It is essential for you to be able to produce a complete range of print products to perfection. Being used to offset presses as well as offline finishing systems and the quality these achieve, you certainly expect a digital printing device to perform at least on that same level.
- **Commercial printers face a high pressure** to perform and have to keep tightest deadlines. This is why a system that secures fastest turnaround times is vitally important for you. As individual jobs are decreasing in volume, you need an efficient alternative for short run printing that only requires a minimum of manual intervention. And it also goes without saying that you want to reduce standstill times to a minimum.

If these are your requirements, don't hesitate to take a closer look at the bizhub PRESS 1250 series. You will most likely find that it can do more for you than you ever thought possible!

NO BUSINESS CAN SUCCEED WITHOUT PROFITABILITY

The essential ingredients for profitability in the production printing environment are quality, speed, efficiency, productivity and reliability. Together with flawless flexibility, these assets represent the foundations based on which a commercial printing operation can diversify its services, ensure top performance and get ahead of its competitors.

▀ New opportunities

Creating new print applications, providing new service opportunities, plus extreme cost savings for greater profits from higher margins – these are key aspects you benefit from with the bizhub PRESS 1250 series. And it's all thanks to Konica Minolta's digital press offering you a variety of inline finishing choices from stapling to perfect binding; highest media flexibility (up to 300 gsm duplex and 350 gsm simplex printing); and comprehensive variable data printing features as well as robust support of web to print workflows.

▀ Outstanding print quality

You can rely on getting the best print results for your print jobs – guaranteeing the satisfaction of your customers in return.

Konica Minolta's unique Simitri® HD polymerised toner ensures precise text and lines and consistent reproduction with the combination of 1,200 x 1,200 dpi LED print resolution. The Tone Curve Utility tool provides operators with complete control and flexible optimisation possibilities for each and every print job. It is these great features that work with you and for you to deliver the best print output results and form the basis for long-term customer satisfaction.

▀ Reliable productivity

Print providers can meet today's demands in black & white print products and work all markets more profitably backed by the unbeatable productivity of the bizhub PRESS 1250 series. With this system you gain productivity that you can rely on. With up to 125 ppm A4 / 70 ppm A3 with bizhub PRESS 1250/P and up to 105 ppm A4 / 60 ppm A3 with bizhub PRESS 1052, these digital presses provide maximised print performance while tools like CS Remote Care secure highest turnarounds in production environments where time pressure is a daily issue.





bizhub PRESS 1250 SERIES TECHNOLOGY

The bizhub PRESS 1250 series delivers success in print thanks to a wide choice of unique proprietary technologies which together ensure high-definition images as the basis for top-quality printouts. The image quality is truly consistent from the very first to the very last page, and from print job to print job. It is the ultimate guarantee of professional results that are able to impress even the most demanding customers.

▀ User-defined screens for setting and Tone Curve Utility

The introduction of predefined setting masks (two types with three patterns each) plus a choice of dot screen settings allow users to select the best screen for each specific print job. The print station also comes with a standard controller plus the proprietary Tone Curve Utility tool to help you adjust and correct print data to better match customer specifications. These techniques allow for adjustment of image brightness and contrast over a wide range, without affecting text, to still deliver 100% density. The system allows individual customer settings to be stored and recalled as and when needed.

For jobs that involve the reproduction of colour documents in black and white, the CIE colour space allows the operator to achieve highly accurate colour conversion by precise greyscale calibration and controlled collapse of shadowed areas.

▀ Belt transfer system

The bizhub PRESS 1250 series is equipped with a state-of-the-art belt transfer system designed from scratch to improve paper feeding as well as the quality of the transferred images. The full-area adherence of the paper to the belt eliminates any gaps and ensures that the toner is applied to the paper consistently and absolutely evenly.

▀ Multi-sheet detection sensor

The paper feed unit supplying the central print engine is fitted with a multi-feed paper detection sensor that prevents blank sheets getting mixed in with the printed output. The sensors use ultrasound technology to monitor paper feeding from all trays; if a blank sheet is detected, printing is automatically suspended to prevent misprints and wastage of high-quality paper.

▀ Paper skew detection sensor

The sensor installed to prevent paper skew measures the skew angle based on the time gap and the linear velocity of paper during transfer, and automatically stops printing as soon as the paper skew detected exceeds a preset limit. This pre-emptively printing errors and shuts the door on post-processing problems before they even happen.

▀ 1,200 x 1,200 dpi LED print head

The bizhub PRESS 1250 series achieves two-way 1,200 dpi print resolution thanks to the inclusion of a state-of-the-art LED print head (LPH). This technology improves the reproduction of even small fonts, while the high number of screen raster lines effectively smoothes the reproduction of half tones.



▀ Simitri® HD toner

Simitri® HD toner is a Konica Minolta in-house development which uses polymerised processing techniques to produce smaller, more consistently shaped particles to raise printing resolution. This polymerised toner also has a lower fixing temperature and helps reduce paper curl. And because fixing is oil-free, the result is a natural-looking gloss with reduced glare, producing an output of a quality that rivals even that of offset printers. The toner material recipe contains around 10% biomass, helping to reduce the environmental impact.

▀ Schedule management

The schedule management application implemented in the bizhub PRESS 1250 series gives operators an overview of the information needed to best handle all queued print jobs. The display includes all current jobs plus helpful detailed information including the kind of paper in use, and displays a timeline to indicate capacities. The operator can access updated and detailed overviews of suspended and reserved jobs.



bizhub PRESS 1250 SERIES

BUSINESS OPPORTUNITIES

The production print market is undergoing significant changes today. Accelerated by the recent economic downturn, the number of printing businesses is in decline, total print volume is decreasing and an increasing number of print applications are being transferred to electronic media.

Informed printing companies know that they need to grow their print business, increase profit margins and generate new revenues. To support customers in achieving this, Konica Minolta has launched Digital1234; a comprehensive business development program that puts the focus upon the customer's needs to enable his business.

The key question is 'How can we enable your business today?' The solution to most business challenges can simply be answered with "by saving you money, increasing your profit, adding new services and making you more productive." The Digital1234 business building program has been designed for simplicity and encourages businesses to take an opportunity-based approach – to start driving a better business. Using four practical steps the customer is guided and coached on how to identify, assess, justify and implement new business opportunities.

The basic concept features these four steps, giving advice through the business process: Why should I invest in this opportunity? How can I fit this into my existing business? Who has experienced it and can tell me about it? What steps should I take to be successful with this new opportunity?

Starting with "why", Digital1234 uses simple opportunity-based papers written by credible industry partners, who explore each business opportunity. The second step focuses upon the "how", by using simple assessment questions set by a panel of international and independent business experts. The third step, the "who", describes the story behind the business success while the fourth step provides business resources for download to help customers prosper in their business, such as business focused implementation guides written by industry consultants.

1234

DIGITAL1234
enabling your business

Digital1234

The Digital1234 business development program is designed to encourage print businesses to focus on the opportunities to save money, increase profits, add new services and to improve productivity.

Using four practical steps the customer is guided and coached on how to identify, assess, justify and implement new business opportunities.



▣ Web to print

- In the past all print jobs were submitted and processed manually.
- With the rise of Internet usage, most printer businesses have recognised the value to offer customers a web portal where they can submit their print jobs.
- Web submission includes: uploading the print data, getting a price quote, getting a proof, tracking information on the status of the print job, automatic link to payment and administration, etc.
- Web to print enables your company to be online 24/7, to automate the print job submission process, improve efficiency, eliminate manual elements in the job submission process.

▣ Variable data printing

- What is most unique about digital printing?
 - You can customise every page within one print run and thus create a unique, targeted and relevant message for each recipient.
 - This is called “Variable Data Printing” (or VDP).
- Direct mail can be more personal:
 - “Dear Sir or Madam” will become “Dear Paul”.
- This is the unique value proposition with digital printing that cannot be achieved with traditional printing.
- Studies have shown: the more you zoom in on your readers, the more effective your message will be.
- On average personalised marketing collateral leads to 31% greater profits compared to general marketing materials.
- As a print provider you can charge more for VDP jobs, and your customer gets a better response per piece.
- More profit for you – more business for your customer.



bizhub PRESS 1250 SERIES



VARIOUS INLINE FINISHING OPTIONS

- For highest modularity (more than 50 system configurations)
- For enormous productivity
- Thanks to smart (GBC) punch unit, folding and punching unit, 100 sheet stapling unit with cutting mechanism, 50 sheet booklet making unit with trimming, perfect binding unit for books of up to 30 mm thickness, auto ring binder for books of up to 102 sheets.

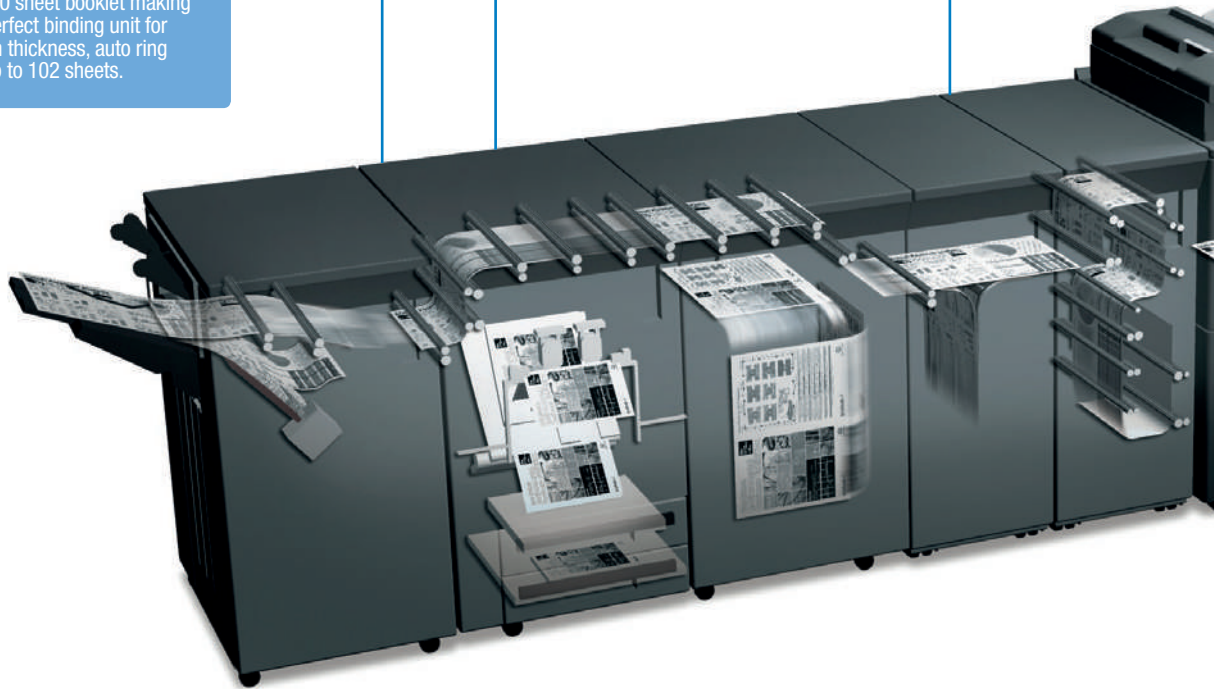
HIGHEST PAPER OUTPUT CAPACITY

- Thanks to 15,000 sheets trolley-based output capacity separate sub trays



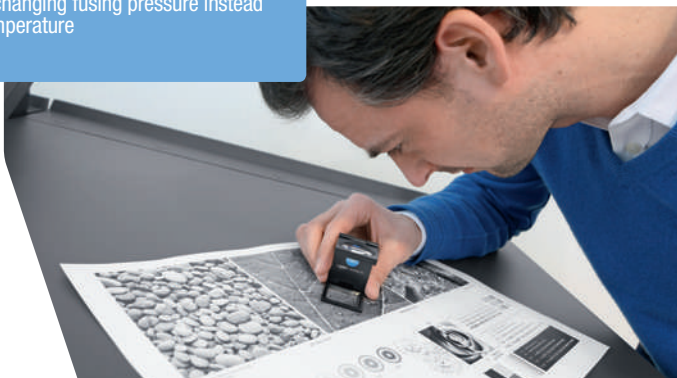
POST INSERTION UNIT

- For the production of high quality print products with preprinted colour inserts
- Thanks to 3 trays with vacuum feed technology for up to 5,000 sheets
- Additionally two post insertion trays with up to 1,000 sheets including punching and folding of post inserts



ENHANCED IMAGE TECHNOLOGY

- For outstanding media flexibility
- Thanks to soft roller and fusing NIP technology changing fusing pressure instead of fusing temperature



TRANSFER BELT TECHNOLOGY

- For outstanding image accuracy
- For lowest possible front to back registration tolerance



LARGE TOUCH SCREEN

- For easier operation
- Thanks to 38 cm touch screen operation, print queue control, schedule and paper catalogue functionality



PAPER STORAGE AND HANDLING

- For high productivity
- For enormous media variety and flexibility
- Total capacity of 18,000 sheets, 40 to 350 gsm paper weight range, a strong metal based design, as well as mix-plex and mixmedia functionality

HIGH END PRINT CONTROL

- For outstanding productivity and quality
- Easy printer driver operation, paper catalogue functionality and Tone Curve Utility
- Schedule function for detailed overview of queued jobs

HIGH END DEVELOPING UNIT

- For maximum image stability
- Thanks to enhanced Dmax and toner ratio control via TCR sensor

SIMITRI® HD TONER

- For highest print quality close to offset
- For enormous media flexibility





bizhub PRESS 1250 SERIES CONTROLLER

The bizhub PRESS 1250 series stands out because of its truly outstanding RIP and print performance, delivering the kind of capabilities which help commercial printers and print providers keep up with continuous production demands and satisfy customer specifications. The controller is fitted out with the very latest Intel platform and integrated into the main body.

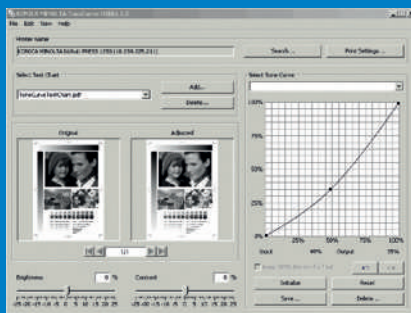
Optimised job processing

Featuring the kind of RIP speed previously unavailable in this class, the bizhub PRESS 1250 series easily handles even the most comprehensive of jobs, and features JDF-JMF compliance to ensure full and easy integration into any working environment. This is optimised job processing at its very best, boasting the kind of capacities needed to produce high volumes in minimum time. Featuring outstanding CIE functionality, the controller enhances the reproduction of colour-based documents wherever necessary. RGB colour data is transposed into the CIE colour space to produce much finer grey scaling with high degrees of differentiation, far exceeding what is achievable when printing colour data without transformation.

▀ Tone Curve Utility

Konica Minolta's unique Tone Curve Utility places a tool at your fingertips to help make intelligent RIP adjustments, such as screening and tone curves, along with the ability to customise the screening angle and dot shape. Operators have the choice of a variety of predefined tone curves and can quickly and simply create individual curves using

a straightforward drag&drop functionality, e.g. setting customised profiles such as the controller default or storing them on the RIP ready for instant recall in the printer driver. It is this level of comprehensive functionality which means operators have complete and flexible control over print quality optimisation.



Printed using default tone curve



Printed using new tone curve

This is 100% black text
This is 75% black text

Reducing the maximum density does not affect the text, which remains at 100% density.

▀ Paper catalogue

The paper catalogue is another feature of the bizhub PRESS 1250 series that complements the device's other outstanding capabilities to maximise operational speed and efficiency. After programming the paper catalogue just once, the operator no longer needs to think about whether the paper type required for a specific job is stored. When preparing production, the operator simply selects the desired type of media from the paper catalogue. The functionality includes the option of allocating individual names to different types of paper, like "Corporate Blue". This is a way of speeding up recognition and raises the benchmark of user convenience even higher.





INIMITABLE VERSATILITY FROM START TO FINISH

Professional finishing of the printed product is an integral part of any production run – with flexibility as the key for success. A comprehensive range of highly versatile finishing equipment facilitates suitable upgrading of Konica Minolta’s digital production printing presses for varied applications and ensures perfect integration into any production environment.

Paper feed unit PF-706 & PP-701

The large capacity paper feed unit PF-706 extends the paper capacity with three paper trays and capacities of up to 6,000 sheets, at the same time enhancing the media processing capabilities to cover paper weights between 40 and 350 gsm. Attractive additional flexibility comes from the ability to feed all paper sizes from all trays. The optional paper feed kit PP-701 for preprinted media provides enhanced take-up performance thanks to the application of airflow separation in the PFU tray.



Two-sided printing/
duplex



One-sided printing



Mixmedia white/colour sheets from different trays



Mixplex one-/two-sided during operation



Combined mixplex/mixmedia



Paper feed unit PF-703, PI-PFU & HT-505

The large capacity paper feed unit PF-703 extends the paper capacity by three paper trays holding up to 5,000 sheets and enables the processing of media between 40 and 350 gsm. All paper sizes can be fed from all trays. The PF-703 incorporates vacuum feed technology for continuous large capacity feeding even for imprints on preprinted media. The optional heating unit HT-505 can optimise the paper feeding on offset and coated stock and in high humidity zones.



Two-sided printing/
duplex



One-sided printing



Mixmedia white/colour sheets from different trays



Mixplex one-/two-sided during operation



Combined mixplex/mixmedia



Colour sheet insertion



Auto ring binder GP-502

The intelligent choice for customers who are looking for a unit to detect the right binding size and then bind sheets using a one-fits-all binding element. The GP-502 adds the ability to bind up to 102 sheets in one book, giving print providers the production technology to produce high value documents in a very short time.



Ring binding



Booklet making unit SD-506

The SD-506 is ideal to create saddle stitched and trimmed booklets with heavy covers, and speeds up inline production of the most diverse print products and in-house materials. The SD-506 produces brochures of up to 200 pages (50 sheets), including automatic image shift and trimming, and has an output capacity for up to 50 booklets. For a professional finish, booklets can be combined with heavy covers printed on up to 200 gsm paper. In addition, the SD-506's multi-letter fold-in and multi-half-fold functionality for up to 5 sheets accelerates the creation of mailings. For print providers being able to offer print products with such attractive enhancements means an interesting diversification and a boost to sales and profits.



Booklet (folding and saddle stitching)



Perfect binding with cover insertion



Perfect binding with sheet insertion



Trimming



Multi-letter fold-in



Multi-half-fold



Folding & punching unit FD-503

An ideal choice for the production of mailings, flyers, etc., the FD-503 is used to its best advantage in combination with the booklet maker, staple finisher or perfect binder. The folding and punching unit provides six different folding schemes, two- or four-hole punching with 100% productivity, and the post insertion of preprinted sheets and covers. With the FD-503, compiling even complex, professionally finished documents merely requires a single fully automatic operation, which saves key operators and print providers valuable time that can be used for more important tasks.



Two-hole punching



Four-hole punching



Half-fold



Letter fold-in



Letter fold-out



Gate-fold



Double-parallel-fold



Z-fold



Colour cover insertion



Sheet insertion



Multi (GBC) punching unit GP-501

The multi punching unit offers high performance multi-hole (GBC) punching of sheets at full system speed in preparation for offline spiral binding. Various available die sets correspond to the most popular punching schemes, such as metal-based coil (velo) and plastic (comb) binding. Gaining flexibility with the GP-501, print providers find it easy to diversify their portfolio of print products, thus satisfying the varying demands of existing as well as new customers.



Multi punching



Stacking unit LS-505

With the large capacity stacking unit, the Konica Minolta bizhub PRESS series are perfectly equipped for easy integration into environments with existing finishing facilities. Up to 5,000 sheets of offset, i.e. shifted, output can also be stacked in the trolley-mounted stacker; with an integrated paper clamp mechanism, transport is always safe. The trolley much enhances flexibility in the print shop: Being able to wheel the prints directly to an offline finishing or enveloping machine without having to let them dry or cool down saves key operators valuable time which can be better used for more complex tasks.



Trolley stacker



Shifted output



Perfect binding unit PB-503

This is the finisher for inline production of all kinds of perfect-bound books. The functionality includes Z-fold insertion and insertion of preprinted colour covers and sheets. Book binding is possible for books with up to 30 mm spine width and includes inline cover trimming. The integrated cover tray has a capacity for up to 1,000 sheets. The PB-503 incorporates a trolley stacker to output perfect bound books and can also be mounted in conjunction with the stapling unit, offering the combination of perfect binding and stapling in one system. With the PB-503, print providers wanting to surprise their customers with sophisticated bound books that e.g. combine different substrates have found the right solution for such challenging applications. They can offer enhanced flexibility and add attractive variety to their portfolio meeting any customer's needs and increasing orders, turnover and with that profit.



Perfect binding



Perfect binding with Z-fold



Stacking with trolley for perfect bound books



Perfect binding with cover insertion



Perfect binding with sheet insertion



Stapling unit FS-532

Equipping a bizhub production printing system with the FS-532 stapling unit gives print providers a multi-position stapling system with the capability to produce manuals, reports and other extensive documentation with ease and dependability. This unit can staple up to 100 sheets at a speed that is able to match the production capacity, and cuts the one-fits-all staple to size during processing. Auto-shift sorting and grouping is also available; this unit gives an output capacity of up to 4,200 sheets. The FS-532 can be upgraded with optional punching and post insertion.



Corner stapling



Two-point stapling



Two-hole punching



Four-hole punching



Colour cover insertion



Colour sheet insertion



Auto-shift sorting



Variable staple length



All-in-one finisher FS-532 & SD-510

The combination of the FS-532 with the SD-510 means the staple finisher is now able to make booklets. The fully automated booklet making capacity is up to 20 sheets (80 pages) per booklet, has two folding functions, centre fold and letter fold, with further options available, including punching and post insertion of printed sheets.



Corner stapling



Two-point stapling



Two-hole punching



Four-hole punching



Booklet



Colour sheet insertion



Letter fold



ALL-ROUND AVAILABILITY

Professional printers simply need dependable hardware and highly reliable printing technology. Which is why reliability was a top priority in the development of the bizhub production printing systems. Its quality of workmanship and robust metal construction guarantee absolutely sound and secure operation. Various tools and system features enhance the all-round usability further:

▀ Toner and paper refill on the fly

Toner and paper refill on the fly largely avoid production interruptions.

▀ Customer Maintenance Support

In addition, Konica Minolta's Customer Maintenance Support (CMS) concept permits the fast and simple exchange of certain system components and working parts by the operator. Print providers welcome being able to solve such minor system problems instantly in-house as this further enhances their flexibility.



CS Remote Care

▀ CS Remote Care

Via CS Remote Care, Konica Minolta's remote service tool for counter readings, system errors and maintenance requirements of bizhub PRESS and PRO systems can be automatically transmitted to the Konica Minolta service.

This enables early analysis of the system status and preventive maintenance if required, before concrete problems occur. It also helps minimise system downtimes and administrative efforts on user side, saving print providers time and money, helping them keep their sanity, and offering them the benefits of virtually all-round system availability and maximised productivity.

Technical specifications

PRINTER SPECIFICATIONS

Print speed A4	Up to 105 ppm (bizhub PRESS 1052) Up to 125 ppm (bizhub PRESS 1250/P)
Print speed A3	Up to 60 ppm (bizhub PRESS 1052) Up to 70 ppm (bizhub PRESS 1250/P)
Print resolution	1,200 x 1,200 dpi
Gradations	Up to 256 levels

SYSTEM SPECIFICATIONS

Paper weight	40–350 gsm
Duplex unit	Non-stacking type; 50–300 gsm
Paper sizes	A5 to A3+ (SRA3); min. 95 x 139 mm; max. 324 x 483 mm (with PF-703)
Maximum image area	314 x 483 mm (with PF-703)
Paper input capacity	Max.: 18,000 sheets; main unit: up to 3,000 sheets
Paper output capacity	Max.: 15,000 sheets (plus sub trays)
Warm-up time	Less than 420 sec.
Main unit dimensions (W x D x H)	990 x 780 x 1,233 mm
Main unit weight	375 kg

CONTROLLER SPECIFICATIONS

Hardware	Embedded controller
CPU	Pentium G69050 2.8 GHz
RAM	2 GB
HDD	250 GB or above
Page description languages	PCL 5e/XL (PCL 6); Adobe PS 3; TIFF; PDF

SCANNER SPECIFICATIONS

Scan speed A4	Up to 105 opm
Scan speed A3	Up to 60 opm
Scan resolution	Up to 1,200 x 1,200 dpi
Scan modes	TWAIN scan; Scan-to-HDD; Scan-to-FTP; Scan-to-SMB; Scan-to-eMail
Scan formats	PDF; TIFF; secured PDF; XPS

COPIER SPECIFICATIONS

Copy speed A4	Up to 105 ppm (bizhub PRESS 1052) Up to 125 ppm (bizhub PRESS 1250/P)
Copy speed A3	Up to 60 ppm (bizhub PRESS 1052) Up to 70 ppm (bizhub PRESS 1250/P)
Gradations	256 gradations
FCOT	Less than 2.8 sec. (A4 LEF)
Magnification	25–400% in 0.1% steps
Multiple copies	1–9,999

- All specifications refer to A4-size paper of 80 gsm quality.
- The support and availability of the listed specifications and functionalities varies depending on operating systems, applications and network protocols as well as network and system configurations.
- The stated life expectancy of each consumable is based on specific operating conditions such as page coverage for a particular page size (5% coverage of A4). The actual life of each consumable will vary depending on use and other printing variables including page coverage, page size, media type, continuous or intermittent printing, ambient temperature and humidity.
- Some of the product illustrations contain optional accessories.
- Specifications and accessories are based on the information available at the time of printing and are subject to change without notice.
- Konica Minolta does not warrant that any prices or specifications mentioned will be error-free.
- All brand and product names may be registered trademarks or trademarks of their respective holders and are hereby acknowledged.

ACCESSORIES

Automatic document feeder	Max.: 100 sheets
Paper feed unit PF-706	3 magazines; paper capacity: up to 6,000 sheets; paper weight: 40–350 gsm; standard paper sizes: A5 to A3+ (SRA3); min. paper size: 95 x 139 mm; max. paper size: 324 x 463 mm; optional preprinted paper feed kit PP-701 available
Paper feed unit PF-703	3 magazines with air-suction technology; paper capacity: up to 5,000 sheets; paper weight: 40–350 gsm; standard paper sizes: A5 to A3+; min. paper size: 95 x 139 mm; max. paper size: 324 x 483 mm; optional heating unit HT-505 available
Relay unit RU-510 *	Sheet reverser; adapts processing speed to 125 ppm
Folding and punching unit FD-503	Preprinted sheet insertion (PI); 2 PI trays for 500 sheets each punching (2 and 4 hole); folding (half-fold, Z-fold, gate-fold, letter fold-in, letter fold-out, double-parallel-fold); sub tray for up to 200 sheets
Multi (GBC) punching unit GP-501	Multi punching of A4 sheets; wire replaceable die sets for: velo bind, plastic comb, wire bind, colour coil, pro click; paper weight: 75–216 gsm
Auto ring binder GP-502	Stacking, punching and binding of books, up to 102 sheets; self-adjusting bind elements (one size fits all); paper weight: content 75–120 gsm; cover 163–216 gsm
Booklet making unit SD-506	Booklet making of up to 50 sheets (200 images); saddle stitching, trimming; output tray for up to 50 booklets; sub tray for up to 200 sheets; Multi-letter fold-in (up to 5 sheets); multi-half-fold (up to 5 sheets)
Stacking unit LS-505	Up to 5,000 sheets stacking capacity; up to three units can be installed; up to 15,000 sheets stacking capacity; trolley mounted stacker; auto-shift stacking; sub tray for up to 200 sheets; paper clamp mechanism
Perfect binding unit PB-503	Hot melt glue binding system; integrated 1-side trimming of cover sheets; books from A5 up to A4+ (307 x 221 mm); books from 10 sheets up to 30 mm spine width; cover paper tray for up to 1,000 sheets; sub tray for up to 200 sheets; book stacking capacity; 3,300 sheets; (2 stacks)
Stapling unit FS-532	Stapling of up to 100 sheets; two-point and corner stapling; variable staple length (cutting mechanism); output for up to 4,200 sheets (A4); sub tray for up to 200 sheets; auto-shift sorting and grouping
Saddle stitching kit SD-510 (for FS-532)	Booklet making of up to 20 sheets (80 images); saddle stitching; cover sheets from 50 to 300 gsm; output tray for booklets; multi-letter fold-in (up to 5 sheets); multi-half-fold (up to 5 sheets)
Punch kit PK-522 (for FS-532)	Punching (2 and 4 holes selectable)
Post insertion unit PI-502 (for FS-532)	Insertion of preprinted sheets; PI trays for 200 sheets each
Humidifier unit HM-102	Humidification decurler

Your Konica Minolta Business Solutions Partner:

Simitri HD
High Definition Polymerised Toner

Simitri
with Biomass

