



KONICA MINOLTA

bizhub PRO C6000L

✓ Economic colour for entry-level digital production



bizhub PRO 
C6000L



GO FOR **DIGITAL COLOUR**

The bizhub PRO C6000L gives you an easy start in entry-level colour production printing and ensures your growth – just what you need to persist in today’s competitive print market.

Growing demands from internal and external customers make it essential for you as a print provider or agency to be able to easily adapt and upgrade your portfolio to changing requirements. You need to expand your service offerings and find ways to attract new customers. At the same time, cost savings and economy in supplying high-quality print products are essential for you to remain competitive.

In today’s world of multimedia communication, colour is the key to success! However, by considering digital colour production you need to offer highest print quality not only for colour but for the complete print product. Consistency and reliability of your output must be first class; and tools to easily control and maintain the output quality are vital for you.

Meeting tightest deadlines, printing within hours rather than days and the flexible production of smaller-volume jobs are your other key requirements for digital print production. You must be able to rely on a system that supports these high productivity demands. And you want to keep operator intervention to a minimum, with manual operation steps in the print process reduced as much as possible.

If these are your requirements, don’t hesitate to take a closer look at the bizhub PRO C6000L. You will most likely find that it can do more for you than you ever thought possible!

COLOUR FOR NEW BUSINESS

The bizhub PRO C6000L is the perfect match for your economic entry into digital colour print production. It incorporates new opportunities, outstanding quality, reasonable performance and convenient operation.

▀ New opportunities

Creating new print applications, providing new service opportunities, plus extreme cost savings for greater profit – these are key aspects that you benefit from with the bizhub PRO C6000L. And it's all thanks to Konica Minolta's digital colour press offering you a variety of inline finishing; highest media flexibility (up to 300 gsm, also in duplex); plus comprehensive variable data printing features.

▀ Impressive quality

You can rely on Simitri® HD polymerised toner for the rendition of precise text and lines; automated density control for consistent colour reproduction; and highest registration for accurate duplex printing. Thus, you produce prints with maximum efficiency, can optimise your budget and take advantage of enhanced business opportunities with internal and external customers.

▀ Economic productivity

Higher profitability, more jobs in the shop and meeting tightest deadlines with ease – this is, how you can grow your business and nevertheless feel relaxed about the future. The bizhub PRO C6000L guarantees you economy and productivity with features such as a print speed of up to 60 pages per minute in colour as well as black & white; maximised uptime with intuitive user guidance and tools for the easy and automated adjustment of engine settings.





bizhub PRO C6000L TECHNOLOGY

The bizhub PRO C6000L features Konica Minolta's very own, advanced colour processing technology. Innovations like S.E.A.D., ITbit technology, CRS, Simitri® HD polymerised toner provide an unbeatable combination of outstanding quality and smooth processing, ensuring perfect results and highest reliability.

▀ S.E.A.D. II

Developed by Konica Minolta, S.E.A.D. stands for „Screen-Enhancing Active Digital Process“ and combines an array of technical innovations to guarantee truly exceptional colour reproduction at top speed. S.E.A.D. II represents the second generation of Konica Minolta’s advanced colour processing technology and includes these important capabilities:

- **1,200 x 1,200 dpi x 8 bit print resolution**
The impressive print resolution on the bizhub PRO C6000L reproduces finest characters and thinnest lines to perfection. In combination with proprietary Simitri® HD toner, this results in an almost offset-like print quality.
- **Screen technology**
Also thanks to the excellent resolution of 1,200 dpi, the bizhub PRO C6000L provides additional screens for higher quality prints, enabling smoother and more realistic image reproductions that are a perfect match to print data. In addition, the Frequency Modulated (FM) screen technology ensures smooth moiré- and jagged-free images.
- **ITbit technology**
Outline processing improves the appearance of characters by thinning them so they do not appear fat. Contour processing helps to reproduce white characters on backgrounds with ideal proportions and reduces jagged edges of half-tone characters.
- **Image stability**
An innovative short interval stability control monitors image consistency on the bizhub PRO C6000L during continuous printing. Corrections are fully automatic and improve the stability of the image quality, while the whole process considerably enhances production efficiency.
- **Automated colour management**
The bizhub PRO C6000L streamlines workflows with calibration that is completely hands-free and allows operators to focus fully on producing more outstanding quality jobs in less time.
- **Colour Retention and Stability (CRS)**
The exclusive CRS technology constantly monitors the status of the bizhub PRO C6000L. Receiving continuous feedback about changes in the print environment and the engine, CRS immediately makes the necessary adjustments to always maintain highest print quality.

▀ Paper convenient technologies

The bizhub PRO C6000L features fast and ultra-smooth paper processing with Konica Minolta’s “air-assist” paper feeding technology which separates sheets and feeds them individually – a process that double-feed detection sensors make even more reliable! Where required, an optional heating unit inside the paper magazine dries paper stock before printing. Thanks to an innovative printing and developing process, fusing temperatures are low, resulting in a considerable increase in media flexibility. Each individual print is cooled and decurled before output giving optimum results.

▀ Simitri® HD polymerised toner

An essential requirement in production printing, the bizhub PRO C6000L delivers a superior colour image quality as well as impressive black density with their unique Simitri® HD polymerised toner. Simitri® HD also ensures an unparalleled colour image stability and with its reduced fusing temperature supports a truly impressive range of media.



bizhub PRO C6000L

BUSINESS OPPORTUNITIES

The production print market is undergoing significant changes today. Accelerated by the recent economic downturn, the number of printing businesses is in decline, total print volume is decreasing and an increasing number of print applications are being transferred to electronic media.

Informed printing companies know that they need to grow their print business, increase profit margins and generate new revenues. To support customers in achieving this, Konica Minolta has launched Digital1234; a comprehensive business development program that puts the focus upon the customer's needs to enable his business.

The key question is 'How can we enable your business today?' The solution to most business challenges can simply be answered with "by saving you money, increasing your profit, adding new services and making you more productive." The Digital1234 business building program has been designed for simplicity and encourages businesses to take an opportunity-based approach – to start driving a better business. Using four practical steps the customer is guided and coached on how to identify, assess, justify and implement new business opportunities.

The basic concept features these four steps, giving advice through the business process: Why should I invest in this opportunity? How can I fit this into my existing business? Who has experienced it and can tell me about it? What steps should I take to be successful with this new opportunity?

Starting with "why", Digital1234 uses simple opportunity-based papers written by credible industry partners, who explore each business opportunity. The second step focuses upon the "how", by using simple assessment questions set by a panel of international and independent business experts. The third step, the "who", describes the story behind the business success while the fourth step provides business resources for download to help customers prosper in their business, such as business focused implementation guides written by industry consultants.

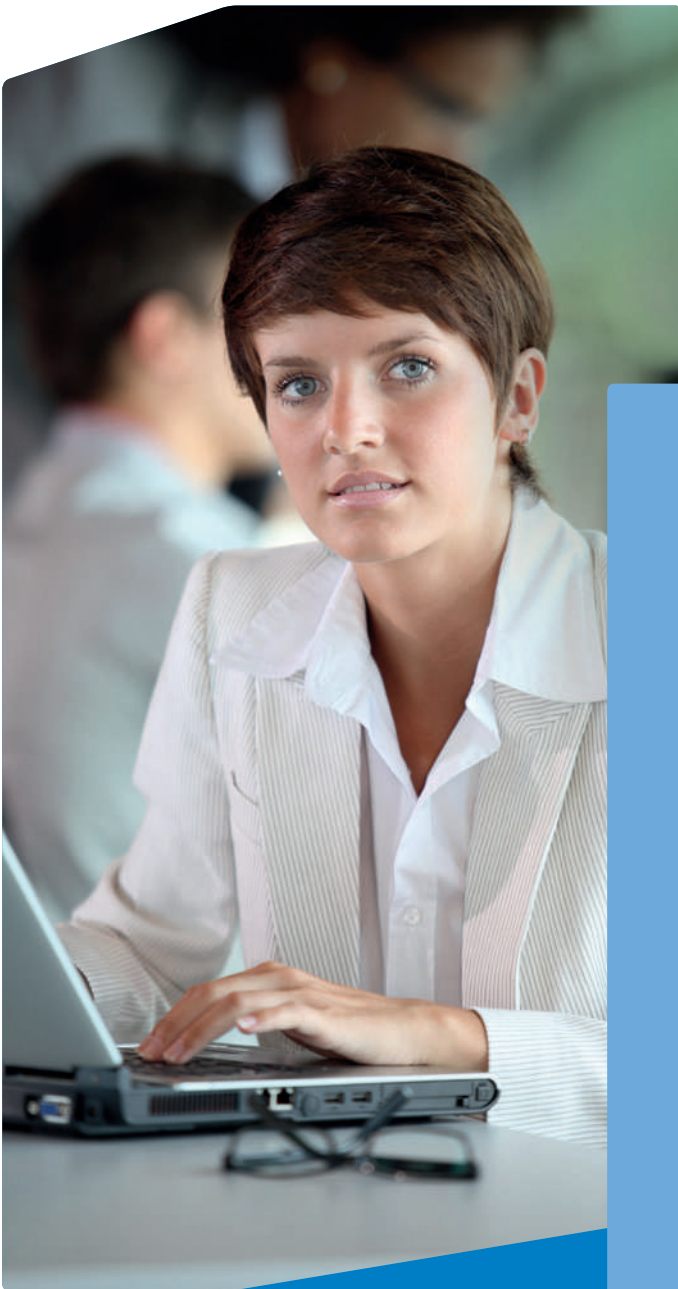
1234

DIGITAL1234
enabling your business

Digital1234

The Digital1234 business development program is designed to encourage print businesses to focus on the opportunities to save money, increase profits, add new services and to improve productivity.

Using four practical steps the customer is guided and coached on how to identify, assess, justify and implement new business opportunities.



Workflow

- Did you know that for every euro spent on print, another six euros is spent on the process surrounding the actual printing?
- This is often called “workflow” and is the key to achieving maximum efficiency and reducing manual touch points!
- The more you automate this process, the more improvements in efficiency you can achieve.
- Improving your workflow is the best place to focus your attention to get better business results.
- Workflow can shorten the distance between you and your customers.
- A good example of automation is a combined hybrid workflow.
 - It provides the ultimate production flexibility and maximises the utilisation of both your digital and offset equipment.
 - This allows you to calculate the financial cross over point between digital and offset; you can choose at the last minute which technology is most cost efficient.
- The essence of a good production workflow can be summarised in one sentence: The less time you spend on the technology of print production, the more time you can spend on your important tasks.

bizhub PRO C6000L



VARIOUS FINISHING ALTERNATIVES

- Booklet finisher for up to 2,600 sheets output capacity
- Staple finisher for up to 3,100 sheets output capacity
- Stapling for up to 50 sheets
- Booklet creation for up to 20 sheets
- Centre-fold; letter fold-in



COLOUR ENGINE

- Up to 60 ppm A4 colour/b&w
- 1,200 x 1,200 dpi x 8 bit:
1,200 x 3,600 equivalent
- Duplex up to 300 gsm



OPTIONAL PUNCHKIT AND POST INSERTION

- For 2 and 4 hole punching
- Post insertion

SIMITRI® HD TONER

- Polymerised toner for low temperature fusing and high image quality



2 CONTROLLER ALTERNATIVES

- IC-413 internal EFI Fiery controller
- IC-601 internal Konica Minolta controller



TOUCH PANEL

- Very easy to use, full-colour touch screen

OPTIONAL HEATING UNIT

- To support offset and coated paper

PAPER SOURCES

- Bypass tray: for up to 250 sheets, paper tray for up to 300 gsm paper
- Large capacity tray: for up to 2,500 sheets, paper tray for up to 300 gsm paper

3 PAPER TRAYS

- For up to 1,500 sheets of paper



S.E.A.D. II

- Screen-Enhancing Active Digital Processing, advanced colour processing technology for high quality output





bizhub PRO C6000L CONTROLLER

To satisfy the diverse requirements of the most varied professional printing environments, the bizhub PRO C6000L can be equipped with two different controllers.



▀ The IC-413 internal Fiery controller

The internal Fiery controller alternative IC-413 is a combination of affordability, versatile colour management and PCL support plus a wide range of security features. It helps improve the ease of use of bizhub PRO and PRESS systems and simplify workflows so that Konica Minolta's digital colour presses can deliver truly professional print results, making them the ideal business solution for a company's printing facilities in any configuration.

▀ The IC-601 Konica Minolta controller

The Konica Minolta IC-601 internal print controller brings powerful workflow benefits within reach of more print-for-pay and commercial printing applications – including 1,200 dpi printing at full rated engine speed, high-speed RIP processing, enhanced accuracy in colour reproduction, new colour management functions and full compatibility with print engine on-board job control and editing functions.

The IC-601 also supports Konica Minolta's PageScope® software, for interactive, cost-effective control of documents and individual print devices – as well as the Printgroove POD Suite, combining multiple print management, workflow and job ticketing functions that give you automated control of your entire production floor.



INIMITABLE VERSATILITY FROM START TO FINISH

Professional finishing of the printed product is an integral part of any production run – with flexibility as the key for success. A variety of finishing equipment facilitates suitable upgrading of Konica Minolta's digital production printing presses for varied applications and ensures perfect integration into any production environment.

Large capacity tray LU-202

When equipped with the large capacity cassette LU-202, a bizhub digital printer has an upgraded paper capacity of up to 4,250 sheets; is capable of printing on various types of media up to and including SRA3 format (330 x 487 mm); and handles paper weights between 64 and 300 gsm.



Mixplex one-/two-sided during operation



Combined mixplex/mixmedia



Mixmedia white/colour sheets from different trays



Stapling unit FS-531

Equipping a bizhub printing system with the FS-531 stapling unit gives print providers a multi-position stapling finisher with the capabilities to produce manuals, reports and other extensive documentation with ease and dependability. This unit provides an output capacity for up to 3,100 sheets; can staple up to 50 sheets; auto-shift sorting and grouping are also available. Additionally, the FS-531 can be upgraded with optional punching and post-insertion.



Corner stapling



Two-point stapling



Auto-shift sorting



All-in-one finisher FS-612

The compact alternative for environments where space is limited, this multifunctional finisher offers booklet making for up to 20 sheets (80 pages), two folding functions, i.e. centre-fold and letter fold, as well as optional punching and post insertion of printed sheets. A big benefit of this smart, multitasking option is its space saving design. Print providers no longer need to compromise due to lack of space but can produce professional print products to satisfy all their customers' needs.



Corner stapling



Two-point stapling



Booklet



Half-fold



Letter fold-in



Two-hole punching*



Four-hole punching*



Sheet insertion*



Cover insertion*

* optional





ALL-ROUND AVAILABILITY

Professional printers simply need dependable hardware and highly reliable printing technology. Which is why reliability was a top priority in the development of the bizhub production printing systems. Its quality of workmanship and robust metal construction guarantee absolutely sound and secure operation. Various tools and system features enhance the all-round usability further:

▀ Toner and paper refill on the fly

Toner and paper refill on the fly largely avoid production interruptions.

▀ Konica Minolta Color Care

Konica Minolta Color Care is a professional service offering to ensure that – within the scope of the bizhub PRESS and bizhub PRO colour presses – even highest quality demands of the most discerning customers can be satisfied. With regard to colour quality, Konica Minolta's.

Color Care tool defines a product-specific standard and includes the guarantee that every Konica Minolta product under the Color Care concept will achieve and maintain the agreed-upon standard. Konica Minolta Color Care comprises a specified installation process, which is carried out according to a compulsory procedure, and which will control and guarantee a predetermined quality standard.



Technical specifications

PRINTER SPECIFICATIONS

Print speed A4	Up to 60 ppm
Print speed A3	Up to 34 ppm
Print resolution	1,200 x 1,200 dpi x 8 bit; max.: 1,200 x 3,600 dpi equivalent
Gradations	256 gradations

SYSTEM SPECIFICATIONS

Paper weight	64–256 gsm; up to 300 gsm
Duplex unit	Non-stack type; 64–300 gsm
Paper sizes	A5–A3+ (330 x 487 mm)
Maximum image area	321 x 480 mm
Paper input capacity	Max.: 4,250 sheets Main unit: up to 1,500 sheets
Paper output capacity	Max.: 3,100 sheets
Main unit dimensions (W x D x H mm)	760 x 992 x 1,076 mm
Main unit weight	356 kg

CONTROLLER SPECIFICATIONS

IC-413 internal EFI Fiery controller

CPU	Intel® Dual Core @ 2.6 GHz
RAM	2 GB high-speed memory
HDD	160 GB SATA hard drive
Interface	Ethernet (10/100/1000-Base-T)
File formats	Adobe PostScript Level 1, 2, 3; Adobe PDF 1.4, 1.5, 1.6, 1.7; PDF/X-1a, 3; PCL; Fiery FreeForm v1 / Fiery FreeForm v2.1

IC-601 internal Konica Minolta controller

CPU	Intel® Core2 Duo @ 2.8 GHz
RAM	4 GB high-speed memory
HDD	2x 250 GB SATA disc space
Interface	Ethernet (10/100/1,000-Base-T)
File formats	Adobe PostScript 3; PCL 5c/6; Native PDF; PDF 1.7; PDF/X-1a, X-3 EPS; TIFF; TIFF/IT; JPEG; PPML

SCANNER SPECIFICATIONS

Scan speed A4	Up to 40 opm
Scan speed A3	Up to 22 opm
Scan resolution	600 x 600 dpi
Scan modes	TWAIN scan; Scan-to-HDD; Scan-to-FTP; Scan-to-SMB; Scan-to-eMail
Scan formats	TIFF (single and multi page); PDF

- All specifications refer to A4-size paper of 80 gsm quality.
- The support and availability of the listed specifications and functionalities varies depending on operating systems, applications and network protocols as well as network and system configurations.
- The stated life expectancy of each consumable is based on specific operating conditions such as page coverage for a particular page size (5% coverage of A4). The actual life of each consumable will vary depending on use and other printing variables including page coverage, page size, media type, continuous or intermittent printing, ambient temperature and humidity.
- Some of the product illustrations contain optional accessories.
- Specifications and accessories are based on the information available at the time of printing and are subject to change without notice.
- Konica Minolta does not warrant that any prices or specifications mentioned will be error-free.
- All brand and product names may be registered trademarks or trademarks of their respective holders and are hereby acknowledged.

COPIER SPECIFICATIONS

Copy speed A4	Up to 60 ppm
Copy speed A3	Up to 34 ppm
Gradations	256 gradations
FCOT	Less than 6.5 sec. (colour A4)
Magnification	25–400% in 0,1% steps
Multiple copies	1–9,999

ACCESSORIES

Automatic document feeder DF-622	Max.: 100 sheets
Large capacity tray LU-202	1 magazine; paper capacity: up to 2,500 sheets; paper weight: 64 to 300 gsm; standard paper sizes: B5–SRA3; min. paper size: 210 x 182 mm; max. paper size: 330 x 487 mm
Bypass tray MB-504	1 tray; paper capacity: up to 250 sheets; paper weight: 64 to 300 gsm; standard paper sizes: A6S–SRA3; min. paper size: 100 x 148 mm; max. paper size: 330 x 487 mm
Booklet finisher FS-612	Booklet making for up to 20 sheets (80 images); 2-point and corner stapling; stapling up to 50 sheets; centre-fold and letter fold-in; auto-shift sorting and grouping; output for up to 2,500 sheets; sub tray for up to 100 sheets
Staple finisher FS-531	2-point and corner stapling; stapling up to 50 sheets; auto-shift sorting and grouping; output for up to 3,000 sheets; sub tray for up to 100 sheets
Post inserter PI-502 (Option for FS-612/ FS-531)	Preprinted sheet insertion 2 PI trays for 200 sheets each
Punch kit PK-512 (Option for FS-612/ FS-531)	Punching (2 and 4 holes selectable)
Punch kit PK-513 (Option for FS-612/ FS-531)	Punching (4 holes)

Your Konica Minolta Business Solutions Partner:

Simitri HD
High Definition Polymerised Toner

Simitri
with Biomass

