



TASKalfa 500ci Series

Color Multifunctional Systems

EVERY DOCUMENT. EVERY TASK. EVERY TIME.



TASKalfa 500ci Series | Color Multifunctional Systems

Designed with people in mind, the Kyocera **TASKalfa 500ci Series** defines color multifunctional systems in a whole new way, delivering the **power, performance, quality** and **ultra-reliability** that your growing business demands. So whether you print, scan, copy or fax – in color or black & white – this series will become an essential partner to your business.

Engineered for the critical demands of any business, each TASKalfa Color MFP features a **sleek design** on the outside, but more importantly, **advanced imaging technology** on the inside. The powerful combination of fast output speeds, Kyocera's unique long life technology, solution integration capabilities, and consistent high-image quality engineered into every TASKalfa MFP assures **superior document imaging** every time. *That's TASKalfa's number one priority.*

Only from Kyocera

Since 1959, Kyocera has successfully developed innovative technologies that have helped set industry standards for engineering and quality. In the field of document imaging, Kyocera Mita Corporation is a well-known and respected provider of leading-edge multifunctional products and laser printers, as well as software and network solutions to organizations of all sizes and specializations. Our award-winning technology incorporates long life imaging components that can dramatically lower your total cost while providing the high productivity and exceptional image quality that your business demands. Kyocera continually strives to raise the bar for excellence in both products and service including:

- **Unparalleled, award-winning reliability**
- **Easy-to-use technology**
- **Environmentally friendly devices**
- **High integrity standards**
- **Commitment to quality control**



High Impact Color Meets Robust Performance

HIGH PERFORMANCE PLUS HIGH END DESIGN

- **Superior Color Imaging for a Solid Impression.** Kyocera's unique micro-particle toner combined with proven color technology brings brilliant color and enhanced quality control from the first print to the last.
- **Bring Speed to Your Office.** Four robust models with output speeds up to 40 pages per minute in color and 50 pages per minute in black will maximize your print and copy productivity.
- **Powerful Scanning.** Scan and process documents at speeds up to 100 images per minute with the Dual Scan Document Processor for efficient copying or effective electronic document storage and distribution.
- **Keep Sensitive Information Secure.** IPv6 compliance, PDF encryption, printed document guard option, and optional Data Security Kit provide the confidentiality and security your business demands.
- **Integrated Solutions.** Leverage the full potential of your MFP with Kyocera-developed tools and utilities designed to maximize document management and accounting capabilities.
- **Accessibility.** A wide array of Section 508 accessibility features include an adjustable control panel, enlarged high-contrast numbers, and easy-open drawers.

COLOR NEVER LOOKED SO GOOD

The TASKalfa 500ci Series brings the **WOW** factor to your business. Whether you want to persuade, present or just attract attention, adding color will raise the bar on your documents while helping to drive your company's message.

Powerful, intuitive and incredibly efficient, the **proven technology** engineered into every TASKalfa Color MFP delivers brilliant, high-impact color. In addition, an **intelligent color calibration system** puts you in control, while ensuring consistent color reproduction page after page. Colors are true, gradations are smooth, and shading is accurate. The result? Vivid color and crisp black & white documents that reflect your professionalism.



The user-friendly 8.5" color touch screen control panel provides advanced document handling and functionality at your fingertips.

EASE OF USE AT EVERY LEVEL

Packed with powerful features and capabilities, our large **8.5" color touch screen control panel** was designed with the user in mind, with an easy-to-read, bright LCD screen, making navigation simple every time you're at the device. And when you need it, TASKalfa's **on-board help guide** provides simple step-by-step instructions for any task. For added time-savings, you can create shortcuts for common job settings, so your everyday document imaging functions can be quickly accessed at the touch of a button!

From the **color touch screen**, users can access the **Document Box**, an on-board feature that utilizes the TASKalfa high capacity single and dual hard disk drives for efficient document storage in color and black & white. For added flexibility, you can take advantage of the print-from and scan-to capabilities of the **USB Host Interface** for portable and secure 'documents on the go'.

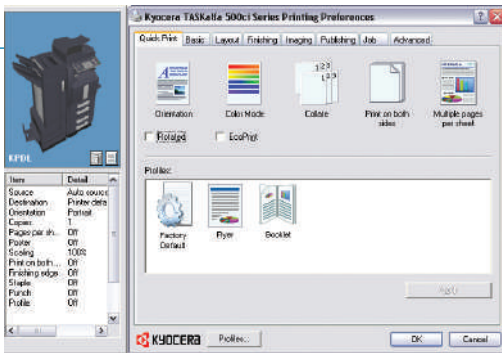
The TASKalfa 500ci Series adds that extra level of control to your document imaging needs to help you save time and become more efficient. **Every Document. Every Task. Every Time.**

POWER AT THE DESKTOP

Need to print color booklets for tomorrow's board meeting, as well as flyers for a direct mail campaign scheduled to go out by end of day? Count on the TASKalfa 500ci Series to deliver.

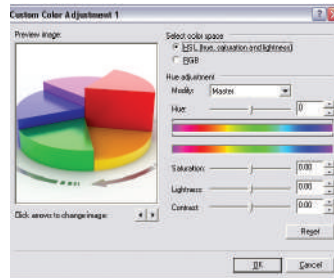
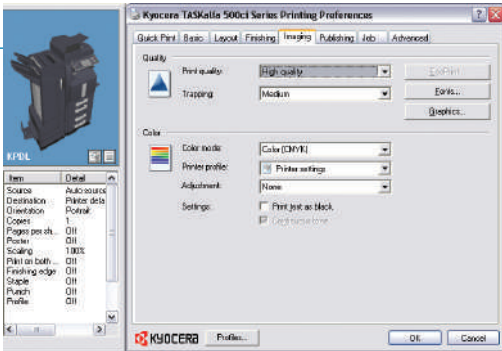
Kyocera's advanced **KX Driver** allows users to take full advantage of the unique features integrated into each TASKalfa MFP from one common print driver.

The **KX Driver** gives you access to commonly used print features from one screen. Create and save a custom profile for your flyers and another for those ever-important booklets. Professionally finished documents are only a click away!

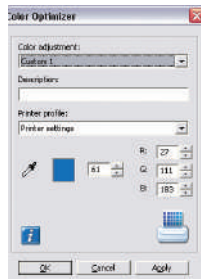
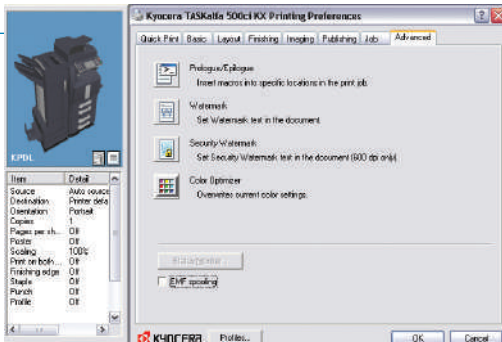


Color Mode

Have a new project that requires advanced color control? Easily modify color settings through the **KX Driver's Imaging Tab**. Advanced color settings for saturation, lightness or contrast of the overall document can be adjusted to maximize your output quality every time.



Or use the built-in Kyocera **Color Optimizer** to ensure that a specific color is always correct. The Color Optimizer lets you improve color selection for precise color replication when it matters most – for example, when printing your corporate logo. Simply sample a targeted color, print a corresponding matrix, and choose the appropriate selection for optimized document output.



FLEXIBILITY TO GROW WITH YOUR BUSINESS



Optional 1,000 Sheet Finisher

- Multi-Position Staple
- Document Sorting
- 16 lb Bond – 90 lb Index



Optional 3,000 Sheet Finisher

- Multi-Position Staple
- Optional 2 and 3 Hole Punch
- Optional 7 Bin Mailbox
- 16 lb Bond – 120 lb Index

Power, Performance, Flexibility



PERFORMANCE WHEN IT MATTERS MOST

- 1 Advanced Paper Handling** – An innovative paper path design allows for a variety of paper weights through the trays, giving you the flexibility to satisfy virtually all your print and copy needs.
- 2 Finishing** – Advanced finishing options including staple, hole punch and booklet making, help to bring the professional touch in-house.
- 3 Optional Dual Scan Document Processor** – At less than one second per page, the document processor's dual scan capability dramatically improves productivity and handles mixed originals with ease for a robust scanning solution in both full color and black & white.
- 4 Color Touch Screen Control Panel** – Hard key and touch screen access for ease of use and navigation to all system features and functions.
- 5 Document Box** – Create a simple way to store, secure and access critical documents at the device through TASKalfa's unique on-board document storage capability.
- 6 USB Host Interface** – Conveniently print-from and scan-to any USB drive right from the touch screen control panel in PDF, JPEG, TIFF and XPS file formats.
- 7 Kyocera Micro-Particle Toner** – Consistent size and shape toner particles deliver superior image quality in both color and black & white.
 - 500ci/400ci – 25,000 pages Black, 18,000 pages CMY@ 5% coverage
 - 300ci/250ci – 20,000 pages Black, 12,000 pages CMY@ 5% coverage
- 8 Optional Paper Trays** – Add either a 3,000 sheet large capacity tray to maximize your productivity or dual 500 sheet paper trays for the versatility to match your business needs.
- 9 Multi-Purpose Tray** – A standard 100 sheet multi-purpose paper tray can handle mixed media types, from statement to ledger, and up to 120 lb Index for your special jobs.
- 10 Optional Fax** – Add up to two optional G3 fax systems for one space-saving footprint. The standard multi-send feature combines fax and scanning for a truly efficient communication device.

DEMANDS



Two Document Processor Options

- 100 Sheet Dual Scan Document Processor with scan speeds up to 100 images per minute
- 100 Sheet Reversing Automatic Document Processor with scan speeds up to 75 images per minute



Dual 500 Sheet Trays

- Statement to Ledger Sized Sheets
- 16 lb Bond – 90 lb Index



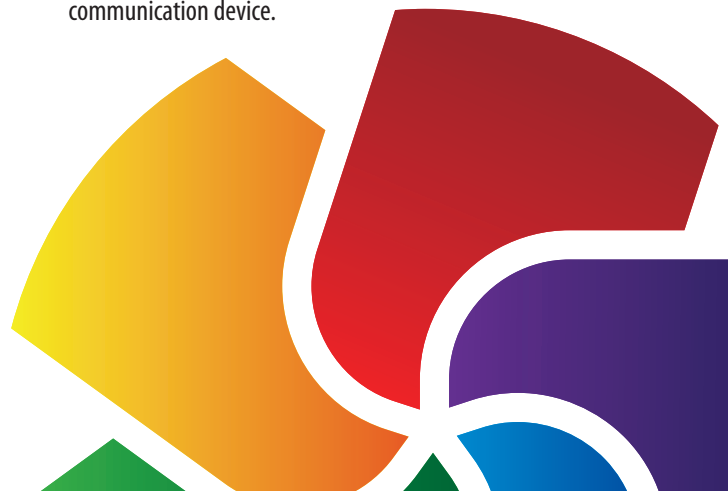
Optional Booklet Folder for 3,000 Sheet Finisher

- Folding up to 16 Sheets
- Saddle Stitch
- Letter to Ledger Sized Sheets
- 16 lb Bond - 120 lb Index



3,000 Sheet Large Capacity Tray

- Letter Sized Sheets
- 16 - 28 lb Bond



Leverage the Full Potential of Your TASKalfa MFP

BOOST EFFICIENCY PLUS SHARE AND STORE FILES WITH HIGH SPEED SCANNING

The ability to communicate and share documents efficiently and securely allows everyone in your company to be more productive and cost efficient. The TASKalfa 500ci Series' **high quality color scan** capabilities combined with **advanced multi-send** functionality allows users to deliver documents to **multiple destinations**, all from a simple click of the start button. **Full color PDF, JPEG, TIFF, and XPS** files, as well as **black & white PDF and TIFF files**, can be sent quickly and securely across your network.

Think Outside the Box

Scanning, storing and archiving electronic documents is a growing trend for many businesses. With the TASKalfa 500ci Series, your important documents can be preserved digitally, simplifying distribution and accessibility within your company.

- Scan full color documents at speeds up to 100 images per minute (ipm)
- Add Kyocera's optional document workflow and storage solutions for document management at your fingertips
- Optional KYOCapture Solutions offer you indexing and advanced document workflow capabilities

Configured to Your Business Needs

Is your office a scanning intensive environment, or are you just beginning a scanning workflow? In either case, the TASKalfa 500ci Series provides you the flexibility to choose the optional document processor that's right for you:

- 100 sheet Dual Scan Document Processor (DSDP) for consistent high speed, high performance scanning
- 100 sheet Reversing Automatic Document Processor (RADF) for less frequent scanning applications
- Flexibility to upgrade your document processor option as your business needs evolve

"Documents on the Go"

Typical scan-to locations, such as scan to folder and e-mail, are key in most office environments, but what if your business demands more? With the standard USB Host Interface you have true document portability!

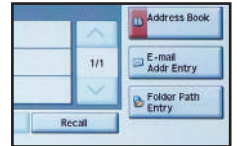
- Scan hardcopy originals conveniently and efficiently from the document processor option that best suits your business
- Save as PDF, JPEG, TIFF, and XPS file formats directly to a USB drive
- Ensure higher levels of security for sensitive information



Multiple "Scan-to" Locations

Whether your priority is for the highest scan quality or the smallest file size, the TASKalfa 500ci Series scan functionality can be set accordingly. Standard scanning capabilities include:

- Scan to e-mail, Scan to Folder (SMB), Scan to FTP, Scan to USB, WSD Scanning (Windows® Vista), TWAIN Scanning
- 200 - 600 dpi resolution
- High compression of scanned PDFs
- Password protection and encryption directly from the touch screen control panel



Kyocera Solutions to Maximize Performance

DOCUMENT CREATION & OUTPUT



Printing the business documents you create and use everyday is essential for effective communication, both inside and outside your company. Kyocera's Solutions for Document Creation & Output improve workplace productivity and efficiency. Kyocera's native page description language, **PRESCRIBE**, offers your business a flexible, on-demand printing solution for forms, letterhead and similar corporate documents. PRESCRIBE eliminates the cost and storage space associated with preprinted forms.

Enhance your Windows® desktop through Kyocera's **KX Driver** and **PDF Direct Print** for fast printing and full access to device features. Another robust output feature is **Kyocera's USB Host Interface**. At the control panel, users can print-from, and scan-to, a USB drive inserted into the device. This ensures both confidentiality and efficient output time after time.



SECURITY & COMPLIANCE

Securing your business assets and maintaining confidentiality of data is a growing strategic initiative for many companies. Kyocera's Solutions addressing Security & Compliance are incredibly flexible to fit the needs of your diverse network and your company's printing, copying or scanning requirements.

Kyocera provides a range of optional security solutions: Our **Data Security Kit** ensures your business critical information is never compromised; device printing features such as **Secure Print** and **Virtual Mailbox** requires passwords to enable output directly at the device, and the KX Driver allows you to add a **Security Watermark** to your documents to deter unauthorized copying. Kyocera's server-based **PrintQ Manager Secure Job Release** allows users to access their secured documents stored at a server from any PrintQ-enabled TASKalfa MFP; and for businesses and organizations instituting **IPv6** (Internet Protocol version 6) to their infrastructure, an IPv6-compliant network interface for Kyocera Printers and MFPs ensures compliance and security standards can be met.

DOCUMENT MANAGEMENT



Scanning, routing, archiving and retrieving documents streamline any company's workflow. The TASKalfa 500ci Series provides your business with easy-to-use scan features, while also offering more robust Document Management solutions such as our **KYOcapture** and **KYOcapture Express**. KYOcapture integrates with many of the industry's best recognized document management systems such as SentryFile, LaserFiche®, Documentum®, SharePoint® and more.

For businesses requiring 'on-demand' access of documents at the MFP, Kyocera's **Document Box** is a critical feature that allows users to scan-to, and print-from, the hard drive of your MFP.

Kyocera's Document Management Solutions are scalable and flexible for your business, delivering a solution that fits your company's requirements today, and an upgrade path for your growing requirements tomorrow.

NETWORK & DEVICE MANAGEMENT



Kyocera's suite of Network & Device Management Solutions provides your IT infrastructure with the essential tools it needs to manage and maintain your output devices, keeping your operation running efficiently. This comprehensive set of value-added utilities and software include the PC-based **KMnet Viewer** and web-based **KMnet Admin** for device management, cost control and department accounting; and **PrintQ Manager**, a device management solution that incorporates print queue monitoring and server-based security for output of documents.

Equitrac, a leading cost accounting and recovery software, integrates as an embedded solution. Both *Equitrac Express* and *Equitrac Office* are available to simplify print/copy tracking, enforce color output quotas, provide accurate document cost control, and much more.

CREATING PROACTIVE BUSINESS SOLUTIONS WHILE WORKING TO KEEP THE FUTURE GREEN

Kyocera is committed to pursuing a harmonious balance between economic development and environmental preservation. We adhere to the goals of our worldwide Environmental Action Plan in developing office solutions with environmentally-friendly and superior energy- and supply-saving features, without compromising your productivity.

- Long Life Components and Consumables
- Energy Star Compliant
- Restriction of Hazardous Substances (RoHS) Compliant
- Fast Warm-up Time
- Power-Saving Sleep Mode
- Duplex and Combine Copy Modes
- Low Noise Levels
- Minimal Ozone Emissions



Kyocera Mita America was awarded the 2008 Excellence in Partnership (EIP) award for Industry Green Contractor from the U.S. Government's General Services Administration (GSA) in recognition for its environmental commitment. In addition, our U.S. facility's Environmental Management System (EMS) has achieved ISO14001:2004 certification, which distinguishes corporations that effectively manage how their activities, products and services impact the environment.



TASKalfa 500ci Series



Shown with Optional DSDP, 500 x 2 Tray, and 3,000 Sheet Finisher
50.9 W x 26.8 D x 48.8 H



Shown with Optional DSDP, 500 x 2 Tray, and 1,000 Sheet Finisher
48.8 W x 26.8 D x 48.8 H



Shown with Optional DSDP and 3,000 Sheet LCT
23.8 W x 26.8 D x 48.8 H



Color Touch Screen Interface
Screen Dimensions: 8.5" measured diagonally

Basic Specifications

Configuration	Color Multifunctional Systems - Print/Scan/Copy/Optional Fax
Pages Per Minute	500ci - Letter: 50 ppm Black / 40 ppm Color; Legal and Ledger: 25 ppm Black / 19 ppm Color 400ci - Letter: 40 ppm Black / 40 ppm Color; Legal and Ledger: 19 ppm Black / 19 ppm Color 300ci - Letter: 30 ppm Black / 30 ppm Color; Legal and Ledger: 15 ppm Black / 15 ppm Color 250ci - Letter: 25 ppm Black / 25 ppm Color; Legal and Ledger: 13 ppm Black / 13 ppm Color
Warm-up Time	500ci / 400ci: 45 Seconds or Less; 300ci / 250ci: 30 Seconds or Less
First Copy/Print Out Time	500ci - Black: 4.9 Seconds; Color: 6.9 Seconds / 400ci - Black 5.3 Seconds; Color 6.9 Seconds / 300ci / 250ci - Black 6.2 Seconds; Color 8.1 Seconds
Resolution/Bit Depth	600 x 600 dpi / 8 Bit Color Depth
Memory/Hard Disk Drive	500ci / 400ci: 2 GB RAM / 160 GB x 2 HDDs; 300ci / 250ci: 2 GB RAM / 80 GB HDD
Duplex	Standard Stackless, Statement to Ledger, 16 lb Bond - 90 lb Index; 5.5" x 8.5" - 11" x 17"
Electrical Requirements/Weight	120V, 60Hz, 12 Amps / 233 lbs (mainframe only)
Max Monthly Duty Cycle	500ci: 200,000 Pages Per Month; 400ci: 160,000 Pages Per Month; 300ci: 130,000 Pages Per Month; 250ci: 100,000 Pages Per Month

Paper Supply

Standard Paper Sources	Dual 500 Sheet Trays, 100 Sheet MPT; Auto Selection / Switching, Add Paper While Running
Optional Paper Sources	Dual 500 Sheet Paper Trays (PF-720); 3,000 Sheet Large Capacity Tray (PF-760)
Paper Capacity	Standard: 1,100 Sheets; Maximum: 4,100 Sheets
Paper Size	5.5" x 8.5" - 11" x 17" (Statement to Ledger)
Paper Weight	Trays: 16 lb Bond - 90 lb Index; MPT: 16 lb Bond - 120 lb Index; (PF-760): 16 - 28 lb Bond
Input Materials	Bond Paper, Recycled Paper, Transparencies, Cardstock, Envelopes

Print Specifications

Controller	500ci / 400ci: IBM PowerPC 750 GL / 800 MHz; 300ci / 250ci: IBM PowerPC 750 FL / 600 MHz
PDLs/Emulations	PRESCRIBE, PCL6 (5c, XL), KPDL3 (PS3), XPS (Direct Print)
Fonts	136 KPDL3, 93 PCL6, 8 Windows Vista, 1 Bitmap
Windows OS Compatibility	Windows 2000 / XP / 2003 / Vista / 2008
Novell OS Compatibility	Novell NetWare® 3.x/4.x/5.x/6.x
MAC OS Compatibility	Mac OS 10.x
UNIX OS Compatibility	Sun OS 4.1.x; Solaris 2.x; AIX; HP-UX (LPR)
Interfaces	Standard: 10/100BaseTX, Hi-Speed USB 2.0, USB Host Interface, 2 Expansion Slots
Network Print and Supported Protocols	TCP/IP, IPX/SPX, AppleTalk, NetBEUI, IPv6, IPsec, SSL, WSD Print
Drivers	KX Driver, Mini Driver, KX Driver for XPS, XPS Mini Driver, Network Fax Driver, PPD for MAC
Utilities	PRESCRIBE, PDF Direct Print, KMnet Admin, KMnet for Accounting, KMnet Viewer, Kyocera Command Center

Scan Specifications

Scan Resolutions	200, 300, 400, 600 dpi
File Formats	Black & White: PDF, TIFF; Color: PDF, JPEG, TIFF, XPS
PDF Extension	High Compression PDF, Encrypted PDF
Connectivity/Supported Protocols	10/100BaseTX / TCP/IP
Scanning Functions	Scan to Folder (SMB), Scan to e-Mail, Scan to FTP, Scan to USB, WSD Scan, TWAIN Scan
Driver	TWAIN/W1A Driver

Color and Black & White Scanner

Image Mode	Text, Photo, Text / Photo, Auto, Manual, Map
Continuous Copy	1 - 999 / Auto Reset to 1
Additional Features	Positive / Negative Reverse, Mirror Image, Rotate Copy, Border Erase, Split Copy, Electronic Sort, Margin Shift, XY Zoom
Job Management	Job Interrupt, Job Build, 10 Job Programs, Repeat Copy, 1,000 Department Codes
Color Adjustment	One Touch, Color Balance, Hue, Auto Exposure, Sharpness, Color Calibration, ACS
Magnification/Zoom	Full Size, 5 Reduction, 5 Enlargement Preset Ratios, 25 - 400% in 1 step increments
Document Box	Custom Box, Job Box, Removable Memory Box, Fax Box (with optional Fax System)

Copy Specifications

Compatibility	G3 Fax
Data Compression	MMR, MR, MH, JBIG
Transmission Speed/Modem Speed	Approximately 3 seconds per page / 33.6 Kbps
Fax Memory	Standard: 12 MB; Maximum: 120 MB
Driver	KM Network Fax Driver
Fax Functions	Duplex TX/RX, Confidential RX/TX, F-Code RX/TX, Broadcasting, Fax Box, Dual Fax

Fax Specifications

Fax System (Q) / Internet Fax Kit (A) (requires Fax System Q)

Type/Capacity	(DP-760) Dual Scan Document Processor / 100 Sheets (DP-750) Reversing Automatic Document Processor / 100 Sheets
DSDP Scan Speed (DP-760)	500ci/400ci - Simplex: 75 ipm/Duplex: 100 ipm (300 dpi); 300ci/250ci - Simplex: 50 ipm/Duplex: 60 ipm (300 dpi)
RADF Scan Speed (DP-750)	500ci/400ci - Simplex: 75 ipm/Duplex: 45 ipm (300 dpi); 300ci/250ci - Simplex: 50 ipm/Duplex: 30 ipm (300 dpi)
Acceptable Originals/Weights	5.5" x 8.5" - 11" x 17", Mixed Size Originals / 9 - 42 lb Bond

Optional Document Processors

DP-760 or DP-750

Stack/Staple Capacity	Main Tray: 3,000 Sheets; Sub Tray(B): 200 Sheets; Sub Tray(C): 50 Sheets / 50 Sheets: 8.5" x 11"; 30 Sheets: 8.5" x 14", 11" x 17"
Paper Size	Main Tray: 8.5" x 11" - 11" x 17"; Sub Tray(B): 5.5" x 8.5" - 11" x 17"; Sub Tray(C): 8.5" x 11"
Paper Weight	Main Tray: 16 lb Bond - 90 lb Index Duplex; 16 lb Bond - 120 lb Index Simplex; Sub Tray (B/C): 16 - 24 lb Bond
Edge Staple Position	3 Positions: Top Left, Bottom Left, Center Bind
Optional Multi-Bin Mailbox	(MT-720) Includes 7 Trays; Supports 16 lb Bond - 90 lb Index Stack Capacity per Bin: 100 Sheets: 5.5" x 8.5", 8.5" x 11"; 50 Sheets: 8.5" x 14", 11" x 17"
Optional Punch	(PH-5A) 2 and 3 Hole Punch Unit, Supports 8.5" x 11" - 11" x 17", 16 lb Bond - 110 lb Index
Optional Saddle Stitch/Fold	(BF-720) Supports 8.5" x 11", 8.5" x 14", 11" x 17", 16 lb Bond - 120 lb Index; Over 20 lb Bond Single Sheet Folding Capacity: 1-3 Sheets - 30 Booklets; 4-6 Sheets - 20 Booklets; 7-16 Sheets - 10 Booklets

Optional 3,000 Sheet Finisher

DF-760 (Requires JS-720, AK-720)

Stack/Staple Capacity	1,000 Sheets; 50 Sheets: 8.5" x 11"; 30 Sheets: 8.5" x 14", 11" x 17"
Paper Size / Weight	8.5" x 11" - 11" x 17" / 16 - 28 lb Bond
Edge Staple Position	3 Position: Top Left, Bottom Left, 2 Point Long Edge

Optional 1,000 Sheet Finisher

DF-780 (Requires JS-720)

Stack/Staple Capacity	1,000 Sheets; 50 Sheets: 8.5" x 11"; 30 Sheets: 8.5" x 14", 11" x 17"
Paper Size / Weight	8.5" x 11" - 11" x 17" / 16 - 28 lb Bond
Edge Staple Position	3 Position: Top Left, Bottom Left, 2 Point Long Edge

Additional Options

KYOcapture, KYOcapture Express, Equitrac, Fax Memory, Platen Cover Type (E), Job Separator (**JS-720**), Attachment Kit (**AK-720**), Stand; Data Security Kit (E) Provides Security Overwrite and Encryption for Print, Copy, and Scan; Printed Document Guard KIT (A), Original Hard Copy Holder (DT-710)



Specifications and design are subject to change without notice. For the latest on connectivity visit www.kyoceramita.com
All trademarks are the property of their respective owners.

Kyocera Mita America, Inc. Headquarters: 225 Sand Road, Fairfield, NJ 07004-0008, USA ©2008 Kyocera Mita America, Inc
IC# 855D400181

