



> PRINT > COPY > SCAN > FAX

**TASKalfa 6551ci**  
**TASKalfa 7551ci**

COLOUR MULTIFUNCTIONALS  
FOR A3 FORMAT



**RELIABLE AND  
HIGHLY PRODUCTIVE  
COLOUR DEVICES.**



# PERFECT COLOUR PRINTS IN NO TIME.

The TASKalfa 7551ci series has been designed to master heavy workloads in colour easily. The innovative technology incorporated in these devices ensures that the prints are not only of outstanding colour accuracy, but also printed at high speed. To make sure your device can accomplish hours of non-stop printing while you can focus on other matters, it can be equipped with various paper cassettes for 8 different paper sources, giving a total capacity of up to 7,650 sheets.

You may choose to add an optional EFI Fiery Controller to your MFP to achieve the highest productivity in combination with professional ICC-based colour management. Of course, the renowned long-life KYOCERA components guarantee the outstanding reliability you can expect from such a sophisticated device.

## AN EASY-TO-USE ALL-ROUNDER.

Apart from their impressive printing abilities, these TASKalfa devices will also copy, scan and fax\* all your documents. Other features include printing in various formats up to 300 g/m<sup>2</sup>, banner printing and finishing options, such as tri-folding and booklet printing. To change from one setting to another, you

simply select the desired function on the large and easy-to-use colour touch panel. The MFP can be supplemented with an optional identification card system that significantly increases the security of all your documents.



## PRODUCT SUMMARY

- > UP TO 75/70 PAGES PER MINUTE A4 IN B/W AND COLOUR (TASKalfa 7551ci).
- > CONTINUOUSLY EXCELLENT IMAGE QUALITY DUE TO ADVANCED COLOUR TECHNOLOGY.
- > FIERY CONTROLLER\* FOR THE HIGHEST PRODUCTIVITY AND COLOUR QUALITY.
- > TIME REQUIRED FOR FIRST COPY IN COLOUR 5.9 SECONDS (TASKalfa 7551ci).
- > 4 GB RAM + 320 GB OR MORE HDD.
- > OPTIONAL EXPANDABLE FAX FUNCTIONS\*: DUAL FAX, NETWORK FAX, AND INTERNET FAX.
- > 270-SHEET ONE-PATH DUPLEX DOCUMENT PROCESSOR WITH 200/200 IPM COLOUR/ B/W SCANNING SPEED AS STANDARD.
- > INDIVIDUAL PAPER HANDLING INCLUDING PRODUCTIVE FINISHING OPTIONS AND VARIOUS PAPER FEEDERS FOR UP TO 7,650 SHEETS AND 8 MEDIA TYPES.
- > SECURITY ENHANCEMENTS\*: SUPPORT FOR ID CARD AUTHENTICATION WITH MULTIPLE CARD TECHNOLOGIES, DATA SECURITY KIT AND DOCUMENT GUARD KIT.
- > LONG-LIFE COMPONENTS PROVIDE EXCEPTIONAL EFFICIENCY, RELIABILITY AND SIGNIFICANTLY DECREASE THE AMOUNT OF WASTE.

\*Optional

---



## A FULLY CUSTOMISABLE DISPLAY.

For all its sophistication, the TASKalfa 6551ci/7551ci series was designed to be as simple as possible to use. It has an intuitive colour touch panel equipped with a “swipe” functionality and a customisable home screen allowing you to organise the screen according to your needs. This ensures that you will not spend more time than necessary in front of your device.



PRODUCT  
HIGHLIGHT



You can access all the print, copy, and scan settings as well as the optional fax function from the new colour touch panel. The large size of the panel and its movability ensure that your employees can easily select the functions they want to use. The panel features:

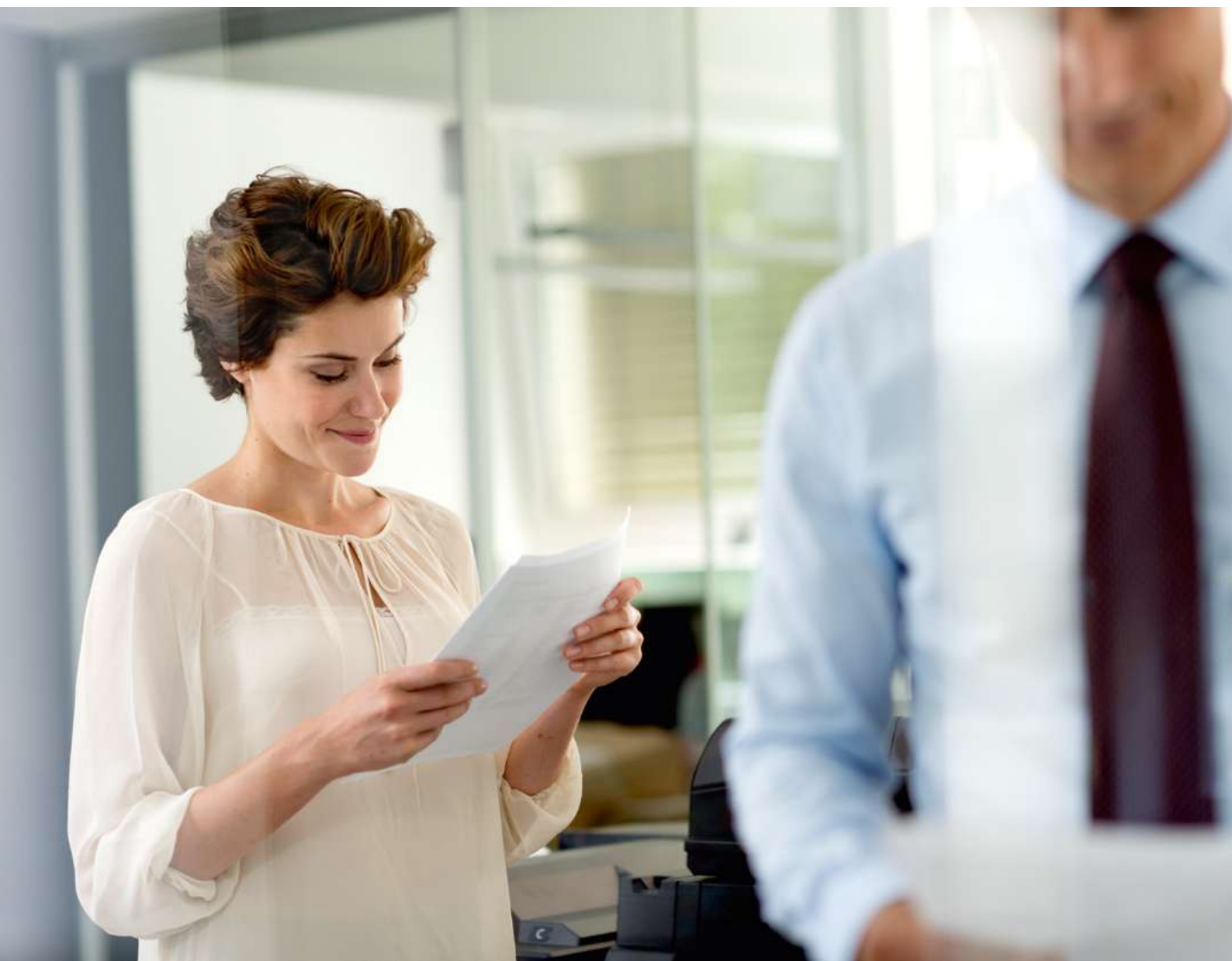
- > A CUSTOMISABLE HOME MENU SCREEN.
- > A USER-FRIENDLY DESIGN.
- > AN ADJUSTABLE SCREEN.

# YOUR DOCUMENTS IN UNMATCHED COLOUR QUALITY.

THE OPTIONAL EFI FIERY CONTROLLER FOR PREMIUM COLOUR PRINTS.

Your documents represent your business. Make the best impression possible with documents produced by one of our TASKalfa multifunctionals. Their level of colour consistency, accuracy, clarity and gradation will not only impress you, but your business partners, too.

You can add an EFI Fiery Controller to your TASKalfa 6551ci/7551ci to enhance the productivity of your device even further. The professional ICC-based colour management of the Fiery Controller allows you to turn even professionally created, complex data into detailed and precise printouts without having to turn to a professional printing shop.





## ECONOMY

- > Our long-life printer drum lasts for at least 600,000 prints.
- > The high reliability of all the components in our devices significantly reduces the possibility of downtime and the related costs.



## ENVIRONMENT

- > Uses as little energy as possible.
- > Uses energy only when needed.
- > Less waste as the components last longer.



## USABILITY

- > Customisable home screen with simple and intuitive menu structure.
- > Improved driver with enhanced functionality and usability.
- > Up to 4 USB hosts for devices, such as IC Card Readers, USB keyboards and USB devices to scan to or print from.

# OPTIMAL DATA PROTECTION AND WORKFLOW.

## MORE SECURITY FOR YOUR DATA.

The need for an efficient data protection system has never been greater than it is today. To protect against even the most determined data attacks, these new KYOCERA TASKalfa devices come equipped with IPsec and PDF encryption as standard. For even more security, you can add KYOCERA's optional Data Security Kit that effectively deletes and overwrites all data stored on the hard disk during the printing, copying or scanning process.

Additionally, with the optional Document Guard Kit, you can stop any documents embedded with the print guard pattern from being copied, scanned or faxed. The protection of your most sensitive data can be increased even further with an optional card authentication function that prevents unauthorised access of the data.

## TAILOR THE DEVICE TO YOUR INDIVIDUAL NEEDS.

HyPAS™, KYOCERA's open software development platform, allows you to integrate the device into your existing business workflow. You can easily set it up from the control panel of the

device to make it fit perfectly into your office environment when using ordinary business applications, such as Document Management Systems or Enterprise Resource Planning (ERP).

# PAPER HANDLING OPTIONS AT A GLANCE.

Productive high-quality colour output deserves first-class paper handling. The new KYOCERA TASKalfa multifunctionals come with a choice of options to answer all your possible needs.

You can for instance add a modular 4000-sheet finisher with a stapling function, to which an optional punching, booklet and tri-folding unit can be added. Additional paper trays can provide your device with a paper capacity of up to 7,650 sheets for hours of non-stop printing in eight different paper formats.

## 7 BINS MAILBOX SORTER MT-730

Ideal for large departments,  
separates different users'  
output into 7 trays.



## 4,000-SHEET FINISHER DF-790

Particularly suited for large  
outputs. With standard stapling  
and optional punching function.



BF-730  
OPTIONAL FOR DF-790  
Booklet and tri-folding unit.

**1 CARD AUTHENTICATION**

The optional card authentication function not only optimally protects your most sensitive documents; it also allows for personalised use of the device.



**2 OPTIONAL KEYBOARD**

The optional keyboard can be connected to the device wirelessly or via USB and complements the control panel. It enables the user to enter complex login data and email addresses more comfortably.



**3,000-SHEET PAPER FEEDER PF-770**

Ideal for large print runs in A4.



**500-SHEET MULTIMEDIA TRAY PF-780**

Paper feeder for special media types. To be combined with PF-730 and PF-740.



**1,000-SHEET PAPER FEEDER PF-730**

Ideal for paper sizes between A5 and 12 x 18 (305 x 457 mm).



**3,000-SHEET PAPER FEEDER PF-740**

Supports A4, B5 and letter formats.

## GENERAL

### Technology

KYOCERA Laser Colour, HyPAS™ solution platform

**Engine speed (pages per minute):** TASKalfa 6551ci: Up to 65/32 A4/A3 in colour and in b/w, TASKalfa 7551ci: Up to 70/35 A4/A3 in colour, up to 75/37 A4/A3 in b/w

**Resolution:** 600 x 600 dpi, Multi-bit technology for print quality of 9,600 dpi equivalent x 600 dpi

**Warm-up time from power on:** approx. 60 seconds or less

**Time to first page:** TASKalfa 6551ci: approx 5.4 sec. or less in b/w; 6.2 sec. or less in colour, TASKalfa 7551ci: approx 4.8 sec. or less in b/w; 5.9 sec. or less in colour

**CPU:** Freescale QorIQ P1022 Dual Core 1067 MHz

**Memory:** 4 GB RAM + 320 GB or more HDD

### Standard interfaces

USB 2.0 (Hi-Speed) x 4, USB Host 2.0, Fast Ethernet 10BaseT/100BaseTX/1000BaseT, slot for optional print server, slot for optional SD, SDHC card, slot for optional fax system

### Dimensions (W x D x H) – main unit

685 x 801 x 1,053 mm (DP, operation panel not included)  
1,039 x 801 x 1,347 mm (DP, operation panel included)

**Weight:** Main unit approx. 190 kg

**Power source:** AC 220 V – 240 V, 50/60 Hz

### Power consumption

Printing:

TASKalfa 6551ci: 1,480 W (in colour), 1,350 W (in b/w)

TASKalfa 7551ci: 1,630 W (in colour), 1,470 W (in b/w)

Ready mode: 300 W

Sleep mode: 1.8 W

### Noise (sound pressure level ISO 7779/ISO 9296)

TASKalfa 6551ci: Printing b/w 53.9 dB(A) LpA/colour

54.0 dB(A) LpA, Standby 37.9 dB(A) LpA

TASKalfa 7551ci: Printing b/w 54.4 dB(A) LpA/colour

54.0 dB(A) LpA, Standby 37.4 dB(A) LpA

**Safety standards:** GS, TÜV, CE

This unit is manufactured according to ISO 9001 quality standard and ISO 14001 environmental standard. RoHS compatibility

## PAPER HANDLING

All paper capacities quoted are based on paper thickness of max. 0.11 mm. Please use paper recommended by KYOCERA under normal environmental conditions.

### Input capacity

150-sheet multi-purpose tray, 60–300 g/m<sup>2</sup> (banner 135–165 g/m<sup>2</sup>), A6R–305 x 457 mm, banner max. 305 x 1,220 mm; 2 x 1,500-sheet high-capacity paper deck, 60–256 g/m<sup>2</sup>, A4, B5; 2 x 500-sheet universal paper cassette, 60–256 g/m<sup>2</sup>, A5R–305 x 457 mm incl. custom paper sizes  
Max. input capacity with options: 7,650 sheets A4

**Document processor:** (one-path duplex scanning) 270 sheets; 35–220 g/m<sup>2</sup> (simplex), 50–220 g/m<sup>2</sup> (duplex); A6R–A3

**Duplex unit:** Duplex as standard supports A5R–305 x 457 mm, 60–256 g/m<sup>2</sup>

**Output capacity:** Standard job separator tray 70 sheets, optional copy tray (D): upper 100 sheets, lower 250 sheets  
Max. optional output capacity 4,300 sheets

## PRINT FUNCTIONS

**Controller language:** PRESCRIBE IIc

**Emulations:** PCL6 (PCL5c/PCL-XL), KPDL3 (PostScript 3 compatible), PDF Direct Print, XPS Direct Print

**Operating systems:** All current Windows operating systems, Mac OS X Version 10.4 or higher, UNIX, LINUX, as well as other operating systems on request.

**Fonts/barcodes:** 93 outline fonts (PCL), 136 fonts (KPDL3), 8 fonts (Windows Vista), 1 Bitmap font, 45 types of one-dimensional barcodes plus two-dimensional barcode (PDF-417)

**Print features:** encrypted PDF Direct Print, IPP printing, e-mail printing, WSD print, secure printing via SSL, IPsec, SNMPv3, quick copy, proof and hold, Private Print, job storage and job management functionality

## COPY FUNCTIONS

**Max. original size:** A3

**Continuous copying:** 1–9,999

**Zoom range:** 25–400% in 1% steps

**Preset magnification ratios:** 5 reductions/5 enlargements

**Digital features:** Scan-once-copy-many, electronic sort, 2in1 and 4in1 function, image repeat copy, page numbering, cover mode, booklet copy, interrupt copy, form overlay plus poster mode, margin shift

**Exposure mode:** Auto, manual: 7 or 13 steps

**Image adjustments:** Text + photo, text, photo, map

## SCAN FUNCTIONS

**Functionality:** Scan-to-email, Scan-to-FTP, Scan-to-SMB, Scan-to-USB Host, Scan-to-box, Network TWAIN, WSD scan

**Scan speed:** (A4, 300 dpi, Dual Scan) b/w 200 images per minute, colour 200 images per minute

**Scan resolution:** 600 dpi, 400 dpi, 300 dpi, 200 dpi, 200 x 100 dpi, 200 x 400 dpi, (256 greyscales)

**Max. scan size:** A3

**Original recognition:** Text, photo, text + photo, optimised for OCR

**Network protocol:** TCP/IP

**File types:** PDF (high compression, encrypted, PDF/A), Searchable PDF, JPEG, TIFF, XPS

## FAX FUNCTIONS (OPTIONAL)

**Compatibility:** ITU-T Super G3

**Modem speed:** Max. 33.6 kbps

**Transmission speed:** Max. 3 seconds (JBIG)

### Fax resolution

Normal: 200 x 100 dpi

Fine: 200 x 200 dpi

Superfine: 200 x 400 dpi

Ultrafine: 400 x 400 dpi

**Max. original size:** A3

**Compression method:** JBIG, MMR, MR, MH

**Memory:** Standard 12 MB, max. 128 MB

**Features:** Opt. Internet-fax, network faxing, rotate transmission, rotate reception, duplex fax reception, memory reception, mailbox, remote diagnostics, dual fax with second fax system

## CONSUMABLES

Average continuous toner yield in accordance with 5% coverage A4.

**TK-8705K Toner-Kit:** Toner Black for 70,000 pages

**TK-8705C, TK-8705M, TK-8705Y Toner-Kits:** Toner cyan, magenta, yellow for 30,000 pages

**WT-861 Waste Toner Bottle:** 150,000 sheets

(in accordance with 5% coverage colour: b/w = 6:4)

**Staple cartridge:** SH-10 for BF-730, SH-12 for DF-790

## OPTIONS

**Fax System (W/B)**

**Internet Fax Kit (A)**

**Printing System (14):** Fiery Controller

**Printing System Interface Kit (B):** Interface board for Fiery

**Paper handling**

**PF-730(B) Paper feeder**

2 x 500 sheets, 60–256 g/m<sup>2</sup>, A5R–305 x 457 mm, folio

**PF-740(B) Paper feeder**

2 x 1,500 sheets, 60–256 g/m<sup>2</sup>, A4, B5, letter

**PF-770 A4 side deck:** 3,000 sheets, 60–300 g/m<sup>2</sup>, A4, B5

**PF-780(B) Multimedia tray and paper path unit**

500 sheets, 60–256 g/m<sup>2</sup>, A5R–305 x 457 mm

**DF-790(C) Document finisher**

Main tray: max. 4,000 sheets A4 (3,000 sheets with BF-730 attachment); max. 60–300 g/m<sup>2</sup>; max. B5R–305 x 457 mm

Sub-tray: 200 sheets A4; 60–300 g/m<sup>2</sup>; A6R–305 x 457 mm

Sub-tray (top): 100 sheets; 60–300 g/m<sup>2</sup>; A6R–A4

Stapling up to 65 sheets A4 or 30 sheets A3 at 3 positions, B5–305 x 457 mm

**PH-7C/PH-7D Punch unit for DF-790(C)**

2-hole/4-hole/Swedish type, 60–300 g/m<sup>2</sup>, A5R–A3

**MT-730(B) Mailbox sorter for DF-790(C)**

7 bins x 100 sheets A4, 50 sheets A3/B4, 60–163 g/m<sup>2</sup>

**BF-730 Booklet and tri-folding unit for DF-790(C)**

Half-folding: 60–256 g/m<sup>2</sup>, A3, B4, A4R

Booklet: max. 16 sheets (64 pages, 60–90 g/m<sup>2</sup>)

Non-staple folding: max. 5 sheets (60–90 g/m<sup>2</sup>)

Tri-folding: 60–105 g/m<sup>2</sup>, A4R

Multi tri-folding: 5 sheets (60–90 g/m<sup>2</sup>), 3 sheets (91–105 g/m<sup>2</sup>)

**Copy tray (D):** upper tray 100 sheets, lower tray 250 sheets

**Banner Guide (A)**

Banner paper feeding guide, up to 10 sheets

**Fax memory**

**MM-16-128:** Image memory (128 MB)

**Security**

**Data Security Kit (E)**

In line with ISO 15408 (Common Criteria) with security level EAL3

**Printed Document Guard Kit (B)**

**USB IC Card Reader:** Card Authentication Kit (B), Card Reader Holder (E)

**UG-33 AC:** ThinPrint support

**UG-34 AC:** Emulation (IBM Printer/EPSON LQ-850)

**Optional interface**

**IB-50:** Gigabit-Ethernet board 10BaseT/100BaseTX/1000BaseT

**IB-51:** Wireless Lan Interface



HyPAS™

KYOCERA Document Solutions Europe B.V. – Branch Office Germany  
Otto-Hahn-Straße 12 – 40670 Meerbusch – Germany  
Tel +49 (0) 2159 928-500 – Fax +49 (0) 2159 918-100  
www.kyoceradocumentsolutions.eu – info@deu.kyocera.com

KYOCERA Document Solutions Inc. – 2-28, 1-Chome – Tamatsukuri – Chuo-Ku  
Osaka 540-8585 – Japan – www.kyoceradocumentsolutions.com

KYOCERA Document Solutions does not warrant that any specifications mentioned will be error-free. Specifications are subject to change without notice. Information is correct at time of going to press. All other brand and product names may be registered trademarks or trademarks of their respective holders and are hereby acknowledged.