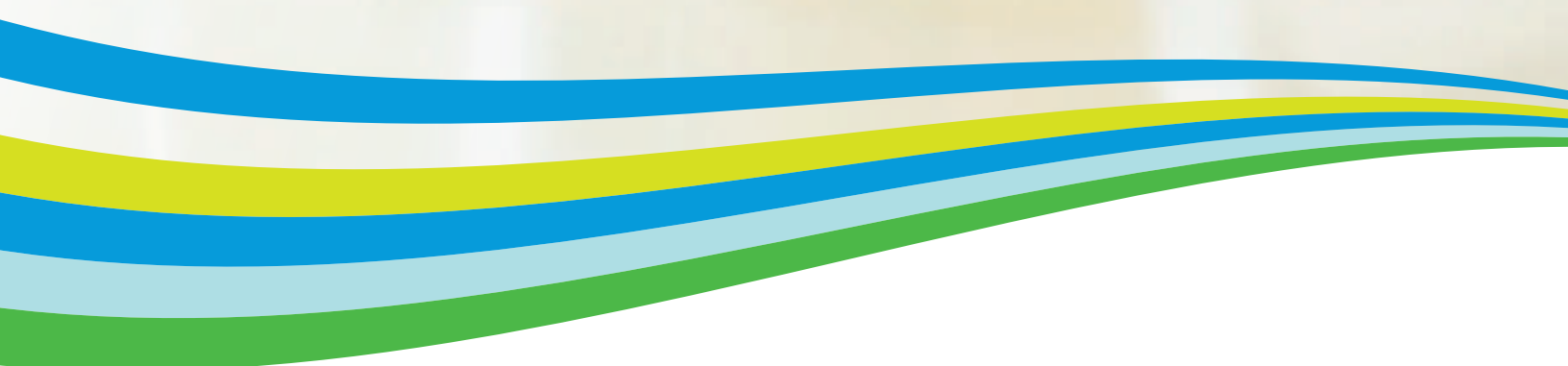


Xerox® ColorQube®
9302/9303
Tabloid-size
Color
Multifunction Printer



Xerox® ColorQube® 9302/9303 Color Multifunction Printer

Impact Color, Big Savings





Every successful business needs to reduce costs where it can while still providing the tools necessary to stay ahead of the competition.

Ideally, the technology you choose helps you promote your company while offering a significant return on your investment.

But you need more than a technology vendor. You need a partner who helps you find new ways to get more work done in less time – whether in the office or working remotely.

You need a complete solution that helps you solve problems, delivering efficiencies you never imagined. It's about helping your work stand out from the crowd with low-cost color printing that enhances your sustainability efforts.

The Xerox® ColorQube® 9302/9303 Color Multifunction Printer built on Xerox® ConnectKey® Technology. Problems solved.



Attention-grabbing color, for less.

To succeed, your work must impress. That's why color printing is a must – so your business is clearly superior not only in the minds of your existing customers, but those you hope to secure. Enable your business to work more effectively, while printing impressive color documents with amazing cost savings.

Color That Counts

The Xerox® ColorQube® 9302/9303 helps your office documents get noticed with vibrant, glossy colors.

- **Pick your paper.** With Solid Ink, there's no sacrificing print quality when you choose inexpensive office paper or recycled media.
- **Flexible print speeds.** Choose the perfect combination of speed, savings, and image quality for any output – from drafts, to photographs, to marketing material.
- **Make every document stand out.** Unlike laser printers, Solid Ink's printing process fills the gaps in your chosen media to create a new surface, while delivering a more consistent dot shape for superior print-quality uniformity and brilliant, saturated color.
- **User permissions.** Restrict access to print features by user, by group, by time of day, and by application. For example, allow color print jobs only during certain hours of the day, or emails always print in black-and-white.

Hybrid Color Plan

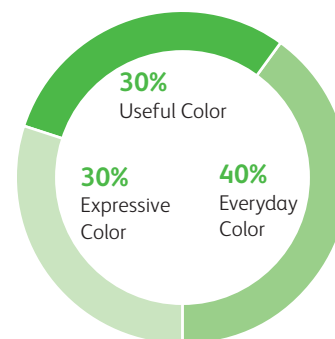
If you like the simplicity of metered billing, take advantage of high-impact color with the Hybrid Color Plan. It classifies documents based on the actual amount of color used – no more paying full-color prices for low-color documents!

The three tiers of the Hybrid Color Plan:

- **Black + Useful Color.** Billed at the black-only rate.
- **Everyday Color.** Billed at slightly more than the black-only rate.
- **Expressive Color.** Billed at the current market rate for color.

Typical Office Document Color Distribution

Office color documents can be classified by the amount of color used. According to Xerox research, the breakdown of color documents in a typical office environment is:





A focus on sustainability.

Reduce more than your color costs. With a wealth of features focused on energy and supplies conservation, the Xerox® ColorQube® 9300 series was designed to reduce your company's environmental impact and boost your bottom line.

Solid Ink Waste vs. Laser Waste

Cartridge-free Solid Ink is a true consumable; no empty toner cartridges to dispose or recycle. The ColorQube® 9300 series produces up to 90 percent less waste during use than a comparable laser device.



Solid Ink
40 lbs/18 kg



Laser
334 lbs/151 kg

Total waste produced from printing 12,500 pages per month for 4 years.

- **Less waste, lower impact.** Solid Ink sticks avoid the cartridge and the packaging, creating up to 90% less waste during use versus comparable laser devices. Plus, Solid Ink prints underwent an assessment according to the International Association of the Deinking Industry's Method 11 and were certified with a test result of "good deinkability," which means Solid Ink prints can be recycled alongside other recyclable paper.
- **Bio-derived ink.** Xerox® Solid Ink has been certified to have 30% bio-derived renewable material content by the National Association of Printing Ink Manufacturers.
- **Environmental paper options.** Solid Ink's full coverage allows effective use of a wide variety of paper, including recycled.
- **Ready when you are.** Intelligent Ready technology learns your usage patterns so it is ready to print when you need it.
- **Print responsibly.** By default, our print driver is set to two-sided printing, and the Earth Smart feature allows you to select other default settings that encourage responsible usage, such as no printing banner pages.
- **ENERGY STAR® and EPEAT qualified.** The ColorQube 9300 series meets the stringent ENERGY STAR requirements for energy use, and the EPEAT (United States) comprehensive environmental rating system.
- **Fewer consumables.** The long-life Cleaning unit – with an average life of 330,000 prints – is the only replaceable component, and can be recycled through the Xerox Green World Alliance program. Visit www.xerox.com/gwa for more information.



Ease-of-use that's truly easy.

Your office, simplified. Experience unparalleled ease-of-use and convenience, while working faster with features and capabilities that simplify the way you complete daily office tasks.

- **Remote monitoring and management.** The Remote Control Panel feature lets you operate the Xerox® ColorQube® 9300 series device's user interface from any office workstation as though you were standing at the device. Remotely train users and configure device settings with the peace of mind that integrated security allows only a single authorized operation at a time to prevent multiple remote procedures.
- **Single Touch Scanning.** Use the Single Touch Scan feature to create a dedicated, easy-to-locate scan button directly on the color touch screen interface. Assign the Single Touch Scan button its own scanning workflow for fast document distribution and archiving.
- **Helpful walk-up features.** Embedded help videos and online support from the UI or driver provide quick troubleshooting assistance right on the front panel.
- **Walk-up convenience.** Scan to and print from any standard USB memory device for easy portability.
- **Optional Wi-Fi connectivity.** Optional Wi-Fi connectivity lets administrators connect ColorQube 9300 series devices anywhere, without the need for network cabling.
- **Reliable operations.** A simple paper path and minimal moving parts keep the ColorQube 9300 series up and running in the most demanding environments. It can even diagnose potential problems and fix them proactively, reducing service calls.
- **Easy, accurate billing.** ColorQube 9300 series devices connect to the network to automatically submit meters reads and automate supplies replenishment.
- **Apple® AirPrint™.** Print email, photos and important office documents directly from your Apple iPhone® or iPad® with no drivers to install.
- **Mopria™ certified.** Mopria certification simplifies the mobile printing experience for tablets and smartphones to many printing devices, including the ColorQube 9302/9303.



Easy Ink Loading

Each ink stick color is uniquely shaped for simple drop-in loading. And ink can be topped off at any time – even if the device is running.



Comprehensive security for complete data protection.

For the success of your business it's critical that sensitive information stays protected. That's why we deploy the most complete set of features, technologies, and solutions from security-industry leaders that minimize risk by protecting vulnerable access points and critical business information.

- **Protect your confidential information.** Safeguard all sensitive data with encrypted PDF files for scanning; complete hard drive encryption, compliant with the 256-bit AES FIPS 140-2 standard; and Hard Drive Image Overwrite with a 3-pass scrub process to ensure total deletion of all data fragments.
- **Prevent unauthorized access.** Permit only authorized users to access the device with Xerox user permissions, network authentication, IP filtering, and smart card, role-based and function-level login.
- **Manage threats proactively.** As new threats emerge, Xerox proactively monitors security clearinghouses for new vulnerabilities and provides patches when necessary, ensuring your equipment stays current and your data is kept safe. Plus, you can receive up-to-the-minute updates via RSS feeds and stay informed via www.xerox.com/security.

Stay compliant with regulations. Xerox® ColorQube® 9300 series devices comply with the latest security standards across industries, including government, finance and healthcare. These include Common Criteria, HIPAA, Data Protection Act, COBIT and more. These devices can conform to any standard, with controls available to match your needs.

- **Gain complete visibility.** Prevent IP theft and ensure non-repudiation by having total visibility into the device and network. With security policy management and tracking of most activities on the device with Audit Log, you can know who accessed what, when and details of most interactions with the device.



Powerful Partnerships

The ColorQube 9300 series includes McAfee® technology integration, resulting in the industry's first lineup of multifunction printers that protect themselves from potential outside threats. McAfee's whitelisting technology ensures only safe, pre-approved files or functions are executed on your devices, minimizing the need to manually update software levels against new security threats. Also, seamless integration with the Xerox® Managed Print Services toolset and McAfee ePolicy (ePO) allows for easy tracking and monitoring.

Plus, automatic Cisco® TrustSec Identity Services Engine (ISE) integration provides comprehensive visibility of all Xerox® ConnectKey® enabled MFPS' endpoints to enforce IT-centric security policies and compliance.



Xerox® ColorQube® 9300 Series
Optimized for:



Sustainability



Scanning



Security



Networking



Solutions



Wi-Fi

- 1 Two 550-sheet universal-size trays hold paper sizes up to 11 x 17 in.
- 2 Tray 3 holds a total of 2,100 sheets of 8.5 x 11 in. paper.
- 3 100-sheet Bypass Tray handles media sizes up to 12 x 18 in. and weights up to 80 lb. cover.
- 4 For high-volume workgroups, add a 4,000-sheet letter-size High Capacity Feeder. Optional kits allow it to hold up to 2,000 sheets of 8.5 x 14 in. or 11 x 17 in. media.

- 5 Embedded help videos provide step-by-step directions for quick troubleshooting assistance right at the touch screen.
- 6 Three finisher options allow you to choose between basic features such as stapling and hole punch, and advanced capabilities including saddle stitched booklets and C- and Z-folded brochures.



6



Office Finisher



High Volume Finisher



High Volume Finisher with Booklet Maker



Powerful solutions that help you connect in the office or on the go.

Mobility Made Easy

Xerox® Mobile Print takes the mystery and anxiety out of wireless and mobile device printing. Xerox® Mobile Print enables secure, accurate printing from most mobile devices to any printer or multifunction device, regardless of brand. Get industry-leading accuracy when printing native PowerPoint, Word and other standard files. Learn more about why Xerox is the only choice for today's mobile professionals by visiting www.xerox.com/mobile.

Customize your solutions.

Xerox Extensible Interface Platform® Serverless technology allows creation of Xerox® ConnectKey® Apps to run on ConnectKey enabled MFPs without the need for additional IT infrastructure. This allows you to simplify and personalize the usability of your device with a range of capabilities from support applications to scanning.

- **Xerox® ConnectKey® for SharePoint® or Xerox® ConnectKey® for DocuShare®.** Scan files directly into Microsoft® SharePoint or Xerox® DocuShare® and other Windows® folders. Plus, you'll go beyond basic file storage and PDF creation by automatically converting documents to intelligent, structured data with easy file naming and routing tools.

- **Xerox® ConnectKey® Share to Cloud.** Our cloud-based scanning solution provides easy, secure document conversion and scanning to popular cloud-based repositories such as Google Docs™, Salesforce.com, Office 365 and Dropbox™, using custom-designed workflows that leverage our Xerox Extensible Interface Platform® technology.

Learn more about Xerox® Workflow Solutions at www.office.xerox.com/software-solutions.

The ColorQube 9302/9303 Color Multifunction Printer is built on Xerox® ConnectKey® Technology. For more information, go to www.connectkey.com.

Device Specifications		ColorQube 9302	ColorQube 9303
Speed		Up to 45 ppm color / 55 ppm black-and-white	Up to 55 ppm color / 60 ppm black-and-white
Flexible Print Speeds		From 35-70 ppm color / From 36-95 ppm black-and-white	From 38-85 ppm color / From 38-95 ppm black-and-white
Duty Cycle ¹		Up to 225,000 pages / month	Up to 300,000 pages / month
Hard Drive / Processor / Memory		Minimum 160 GB / 1.5 GHz Dual-core / 1 GB system plus 1 GB page memory	
Connectivity		10/100/1000Base-T Ethernet, High-Speed USB 2.0 Direct Print, Optional Wi-Fi (with Xerox® USB Wireless Adapter)	
Controller Features		Unified Address Book, Remote Control Panel, Online Support (accessed from the user interface and print driver), Configuration Cloning	
Copy and Print			
Copy and Print Resolution		Up to 600 x 600 dpi	
First-print-out Time (as fast as)		7.2 seconds color	
Page Description Languages		Adobe® PostScript® 3™, PDF, PCL® 5c / PCL 6, XML Paper Specification (XPS®)	
Print Features		Print from USB, Earth Smart Driver Settings, Job Identification, Booklet Creation, Store and Recall Driver Settings, Bi-directional Status, Scaling, Job Monitoring, Color By Words	
Mobile Printing		Apple® AirPrint™, Xerox® PrintBack, Xerox® Mobile Print (Optional), Xerox® Mobile Print Cloud (Optional), Mopria™ certified	
Scan	Standard	Destinations: Scan to Mailbox, Scan to USB, Scan to Email, Scan to Network; File Formats: PDF, PDF/A, XPS, JPEG, TIFF; Convenience Features: Scan to Home, Single Touch Scan, Searchable PDF, Single/Multi-Page PDF / XPS / TIFF, Encrypted / Password Protected PDF, Linearized PDF / PDF/A	
	Optional	Software Packages: ConnectKey® for SharePoint®, ConnectKey® for DocuShare®, ConnectKey® Share to Cloud, Xerox® Scan to PC Desktop® SE and Professional, other solutions available through various Xerox Business Innovation Partners	
Fax	Standard	Internet Fax, Fax Build Job, Network Server Fax Enablement	
	Optional	Fax Forward to Email or SMB, Walk-up Fax (one-line and two-line options, includes LAN Fax)	
Security	Standard	McAfee® Embedded, McAfee ePolicy (ePO) Compatible, Hard Drive Image Overwrite, 256-bit Encryption (FIPS 140-2 compliant), Common Criteria Certification (ISO 15408), Secure Print, Secure Fax, Secure Scan, Secure Email, Cisco® TrustSec Identity Services Engine (ISE) Integration, Network Authentication, SSL, SNMPv3, Audit Log, Access Controls, User Permissions	
	Optional	McAfee Integrity Control, Xerox Secure Access Unified ID System®, Smart Card Enablement Kit (CAC/PIV/.NET)	
Accounting	Standard	Xerox® Standard Accounting (Copy, Print, Scan, Fax, Email), Network Accounting Enablement	
	Optional	Equitrac Express®, Equitrac Office®, Equitrac Professional®, YSoft® SafeQ®, other network accounting solutions available through various Xerox Business Innovation Partners	
Paper Input	Standard	Duplex Automatic Document Feeder: 100 sheets; Sizes: 5.5 x 8.5 in. to 11 x 17 in. / 148 x 210 mm to 297 x 420 mm	
		Bypass Tray: 100 sheets; Custom sizes: 4.1 x 8.3 in. to 12 x 18 in. / 104 x 210 mm to 320 x 457 mm	
		Trays 1-2: 550 sheets each; Custom sizes: 5.5 x 8.3 in. to 11 x 17 in. / A5 to A3	
		Tray 3: 2,100 sheets; Size: 8.5 x 11 in. / A4	
	Optional	High Capacity Feeder (HCF): 4,000 sheets; Size 8.5 x 11 in. / A4 long edge feed HCF Kits (HCF required): 2,000 sheet 11 x 17 in. / A3 Short Edge Kit or 2,000 sheet Letter / Legal / A4 Short Edge Kit	
Paper Output / Finishing	Optional	Offset Catch Tray (OCT): 500 sheets Office Finisher: 250-sheet top tray, 2,000-sheet stacker tray, 50-sheet multiposition stapling, 2 or 3-hole punching (optional) High Volume Finisher: 250-sheet top tray, 3,000-sheet stacker tray, 100-sheet multiposition stapling, 2 or 3-hole punching (optional) High Volume Finisher w/ Booklet Maker: 250-sheet top tray, 3,000-sheet stacker tray, 100-sheet multiposition, stapling, saddle-stitch booklet maker, V-folding, 2 or 3-hole punching (optional) Z Fold / C Fold Unit with HVF w/ Booklet Maker: adds letter / A4-size Z- and C-folding Post Process Inserter with HVF and HVF w/ Booklet Maker: adds preprinted inserts Convenience Stapler: staples 50-sheets (based on 20 lb. bond)	

¹ Maximum volume capacity expected in any one month. Not expected to be sustained on a regular basis.

Other Awards



BLI 2013 Outstanding Achievement in Innovation Award for Xerox® ConnectKey® Share to Cloud

[Article](#) [Certificate](#)



BLI 2013 Pick of the Year Award for Xerox® Mobile Print Cloud – Outstanding Small Business Mobile Print Solution

[Article](#) [Certificate](#)



BLI 2014 Pick of the Year Award for Xerox® Mobile Print Solution – Outstanding Enterprise Mobile Print Solution

[Article](#) [Certificate](#)



BLI 2014 Document Imaging Solutions Line of the Year Award

[Article](#) [Certificate](#)

For more detailed specifications, go to www.xerox.com/office/CQ9300Specs.

To view a product video, visit www.xerox.com. Build and configure your own Xerox® ColorQube® 9302/9303 Color Multifunction Printer at www.buildyourownxerox.com/connectkey.