

## Original Article

# A new distributional record of flying barb, *Esomus metallicus* (Actinopterygii: Cyprinidae), from Kapalo Banda River, West Sumatra, Indonesia

Robin<sup>1</sup>, Fitri Sil Valen<sup>1\*</sup>, Destra Ramadhanu<sup>1</sup>, Aryok Nomleni<sup>2</sup>, Gilbert Turnip<sup>2</sup>, Liga Insani<sup>3</sup>

<sup>1</sup>Departement of Aquaculture, Faculty of Agriculture Fisheries and Biology, University of Bangka Belitung, Jl Kampus Terpadu UBB, Balunijuk 33127, Bangka Belitung, Indonesia.

<sup>2</sup>Republic of Indonesia Defense University, IPsec area, Sentul, Sukahati, Citeureup, Bogor, West Java, Indonesia.

<sup>3</sup>Marine and Fisheries Polytechnic of Jembrana, Fish Aquaculture Study Program, Jembrana 82218, Bali Indonesia.

**Abstract:** A new locality was reported for *Esomus metallicus* in Kapalo Banda River, 50 Kota Regency, West Sumatra Province, Indonesia, about 74 km from Maninjau Lake. Identification of species was made by morphological and molecular methods using the COI gene. We also applied the Neighbor-Joining method to construct the phylogenetic tree. Based on morphological analysis, the specimens from Kapalo Banda River were *E. metallicus* with the unique feature of having long maxillary barbels. Based on the DNA sequence, specimens of West Sumatra were identical to *E. metallicus* sequence of Thailand specimens with a similarity of 99-100%, suggesting the probable origination of the Kapalo Banda River from Thailand.

*Article history:*

Received 19 November 2022

Accepted 10 January 2023

Available online 25 February 2023

*Keywords:* COI, Cyprinidae, Distribution, DNA Barcoding, Phylogenetic.

## Introduction

The striped flying barb, *Esomus metallicus*, is a freshwater fish from Southeast Asia (Kottelat, 2013), including Thailand (Siriwan et al., 2018; Fu et al., 2021), Laos (Kottelat, 2015), Vietnam (Dao et al., 2017), and Malaysia (Ng et al., 2019; Jamaluddin et al., 2022). It is an introduced species in Indonesia that have recently been discovered (Arbsuwan et al., 2012; Hasan et al., 2020). In Indonesia, *E. metallicus* was accidentally released during the shipping of fry by local fish farmers (Hasan et al., 2020). In many cases, aquaculture is the cause of the exotic fish introduction (De Silva et al., 2009). The exotic fishes change the pattern of food and niche competition in inland waters (Albornoz-Garzón and Villa-Navarro, 2017), though so far, there are no reports of the negative impact of *E. metallicus* on aquatic communities (Arthur et al., 2010; Pulungan et al., 2011; Arbsuwan et al., 2012). However, more research is needed to ascertain the impact of *E. metallicus* on aquatic communities, especially

native fish.

Striped flying barb is found in three localities, including the Siak River, Sumatra (Pulungan et al., 2011), Reteh River, Riau Province (Arbsuwan et al., 2012), and Maninjau Lake, West Sumatra Province (Hasan et al., 2020). In this study, we report a new locality for *E. metallicus* in Kapalo Banda River, 50 Kota Regency, West Sumatra Province, Indonesia, about 74 km far from Maninjau Lake, 281 km from Siak River, and 503 km from Reteh River. Kapalo Banda River is a tourist spot and conservation area under customary law and societal rules. There is no punishment for fishing violations in this area; it is just a belief that has been passed down from generation to generation about the bad things that will happen if we damage the aquatic ecosystem, and catching fish is done only for personal use in that place. In this work, we also provide morphological and molecular data of the collected specimens to identify them. For molecular identification, we used DNA barcoding based on Cytochrome C Oxidase

\*Correspondence: Fitri Sil Valen  
E-mail: fitrisilvalen@ubb.ac.id



Figure 1. Kapalo Banda River, the location where *Esomus metallicus* found in 50 Kota District, West Sumatera, Indonesia.

subunit I (COI), a standard method for species identification with a high level of accuracy (Hubert et al., 2008; Luo et al., 2011; Valen et al. 2019a; Lutfiatunnisa et al., 2021).

### Material and Methods

Specimens were collected from an irrigation canal in Kapalo Banda Taram (Fig. 1), 50 Kota Regency, West Sumatra Province, Indonesia. The fish are protected by local customary law and societal rules called “Ikan Larangan”. In this case, research specimens need permission from the local customary head. We also use friendly fishing gear to protect the aquatic environment and the natural habitat. The study was conducted from 26-28 January 2022, and 15 specimens were captured using a cast net and fish trap (Serdiati et al., 2021). Ten specimens were fixed in 10% formalin (Serdiati et al., 2020) and deposited at the Laboratory of Universitas Bangka Belitung, Indonesia. For subsequent DNA analysis, five specimens were fixed in 95% ethanol (Valen et al., 2019b). Morphological identification of specimens was made based on Rainboth (1996), Arbsuwan et al. (2012), and Hasan et al. (2020).

**DNA Extraction:** DNA extraction was done using a Genomic DNeasy Blood and Tissue Kit (Qiagen). A

total of 25 mg of tissue samples were taken using sterile tweezers and put into a 1.5 ml tube, then 180  $\mu$ l of ATL buffer and 20  $\mu$ l of proteinase K were added. Afterward, the samples were vortexed and centrifuged for 20s and heated in a heating block at 56°C overnight. 200  $\mu$ l buffer AL was added, vortexed, and incubated at 56°C for 10 min. Then 200  $\mu$ l 96% ethanol was added and vortexed. The sample and reagent mixture was transferred to a DNeasy Mini spin column and placed in a 2 ml collection tube. Samples were centrifuged at 8000 rpm for 1 min. Then, the liquid was drained into the collection tube, and placed in the spin column in a new 2 ml collection tube, 500  $\mu$ l of buffer AW1 was added and centrifuged at 8000 rpm for 1 min. The spin column was placed into a new 2 ml collection tube, and added 500  $\mu$ l of buffer AW2, and centrifuged at 14,000 rpm for 3 min. The spin column was transferred to a new 1.5 ml tube. DNA was eluted by adding 100  $\mu$ l of ddH<sub>2</sub>O to the center of the membrane spin column, then was incubated at room temperature of 15-25°C for 1 min. Then centrifuge was done at 8,000 rpm for 1 min. The final step was repeated by adding 100  $\mu$ l of ddH<sub>2</sub>O to get a final volume of 200  $\mu$ l.

The extracted DNA was amplified using the

**Table 1.** DNA sequence of Genus *Mystacoleus* from Genbank.

Species	Location	Accession Number	Authors
<i>Esomus metallicus</i>	Thailand	JF915604.1	Collins et al. (2016)
<i>Esomus metallicus</i>	Thailand	FJ753495.1	Britz, et al. (2016)
<i>Esomus metallicus</i>	Thailand	KC456399.1	Panprommin et al. (2013)
<i>Esomus metallicus</i>	Thailand	MK049431.1	Panprommin et al. (2019)
<i>Esomus metallicus</i>	Thailand	KF805365.1	Phuttawongk et al. (2015)
<i>Esomus Longimanus</i>	Thailand	HM224169.1	Tang et al. (2015)
<i>Esomus Longimanus</i>	Vietnam	MK777274.1	Thu et al. (2020)
<i>Esomus thermoicos</i>	Sri Lanka	MK214872.1	Sudasinghe et al. (2018)
<i>Esomus thermoicos</i>	Sri Lanka	MK214871.1	Sudasinghe et al. (2018)
<i>Esomus cf ahli,</i>	-	EF452888.1	Mayden et al. (2016)
<i>Esomus danricus</i>	India	KF511504.1	Dhar et al. (2015)
<i>Esomus danricus</i>	India	KF511505.1	Dhar et al. (2015)
<i>Esomus danricus</i>	India	KF511506.1	Dhar et al. (2015)
<i>Castostomus commersonii</i>	America	HQ557394.1	April et al. (2011)

Hotstart method. The parameters used in this method are as follows: denaturation at 94°C for 3 min, denaturing at 94°C for 30s, annealing at 48°C for 30s, and extension at 72°C for 45s (Valen et al., 2021; Valen et al., 2022a), and the PCR process was repeated for 38 cycles. The two primers of FISH F1 TCA ACC AAC CAC AAA GAC ATT GGC AC and FISH R1 TAG ACT TCT GGG TGG CCA AAG AAT CA were used (Ward et al., 2005). The PCR product was visualized in 1% agarose gel via electrophoresis by staining Nucleic Acid Gel Stain (GelRed®) (Hasan et al., 2021). The samples were sequenced using the Sanger sequencing method at a sequencing service facility (Sanger and Nicklen, 1977).

**Data Analysis:** Molecular identification of species was done by comparing the sequences to the BOLD SYSTEM (<https://www.boldsystems.org>) and BLAST at NCBI (<https://blast.ncbi.nlm.nih.gov>) to analyze the homology and similarity between sequences. To reconstruct the phylogenetic tree, we downloaded the sequences of *Esomus* species from the Genbank and sequences of *Castostomus commersonii* as an outgroup (Table 1). All sequences were initially aligned using the Clustal W in MEGA6 software (Tamura et al., 2013). The phylogenetic tree was reconstructed using the Neighbor-Joining method (Saitou and Nei, 1987) with a bootstrap test of 10000 replications (Felsenstein, 1985). The evolutionary distance was calculated using the

uncorrected p-distance method (Nei and Kumar, 2000) in MEGA6 software (Tamura et al., 2013).

## Results and Discussion

A new record of *E. metallicus* was done from an irrigation canal of Kapalo Banda River, 50 Kota District, West Sumatera Province, Sumatera, Indonesia, during 26-28 January 2021 by collecting 15 specimens (470-590 mm) (Fig. 2).

**Diagnosis:** Meristic characters of *E. metallicus* are shown in Table 2. Body compressed and elongated; eye moderately large; head small; mouth superior, upper jaw shorter than lower jaw; snout moderately long; maxillary barbels long reaching to ventral body, rostral barbels quite long; lateral line incomplete.

**The color of fresh specimen:** Yellow body; a black band running at dorsal midline of body from posterior end of opercle to caudal fin base; two light yellow bands present at lateral side of body, running parallel to black lateral band just above it and attaching to it at around caudal peduncle. All fin membranes colorless or transparent.

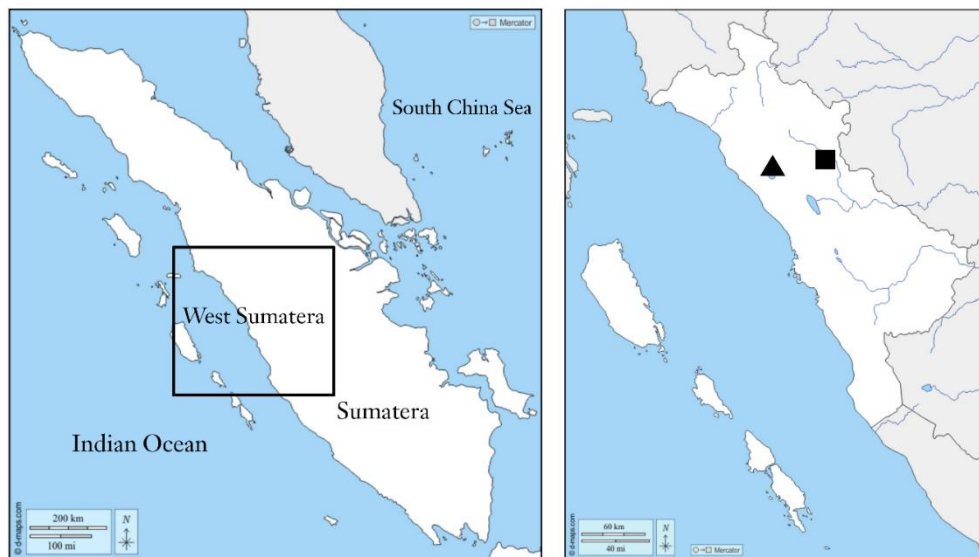
The discovery of *E. metallicus* in the Kapalo Banda River is a new record in addition to its previous records (Fig. 3). New records of fish contribute to understanding species biogeography (Valen et al., 2022b, c) and the distribution range of species (Ihwan et al., 2020; Valen et al., 2020).



**Figure 2.** Specimen of *Esomus metallicus* found in Kapalo Banda River in 50 Kota District West Sumatera Province.

**Table 2.** Meristic characteristics of *Esomus metallicus* collected from the Kapalo Banda River in 50 Kota District, West Sumatera Province, Indonesia (n=15).

Meristics (counts)	Present study	Hasan et al. (2020)	Rainboth (1996)
Pored Lateral line scales	13-14	-	10-14
Dorsal fin rays	8	8	8
Anal fin rays	8	8	8
Pectoral fin rays	14	14	-
Ventral fin rays	7	7	-
Caudal fin forked	Forked	Forked	forked



**Figure 3.** Distribution of an invasive *Esomus mettalicus* in Sumatra. The triangle circles are the previous record. The square is the recent record from Kapalo Banda River, 50 Kota District, West Sumatera, Indonesia.

Kapalo Banda River is not connected to Maninjau Lake, and their distance is about 74 km; therefore, *E. metallicus* are not naturally moved to this new record from that previously recorded site. Therefore, *E. metallicus* was probably released into Kapalo Banda River accidentally by local farmers, although this area is not an aquaculture area. However, several streams connected to the Kapalo Banda River have

some fish farming activities, so it is possible that fish have been introduced into Kapalo Banda River. *Esomus metallicus* is an exotic species with 2 long beards in the mouth and used as an ornamental fish.

*Esomus metallicus* is exotic to Indonesia and inhabits with natural and endemic fishes of Sumatra e.g. *Rasbora* spp. can be a competitor to those small fishes (Hasan et al., 2020; Albornoz-Garzón and

**Table 3.** Sequence of Striped flying Barb, *Esomus metallicus* from the Kapalo Banda River in 50 Kota District, West Sumatera Province, Indonesia.

DNA Barcoding	
AAGACATTGGCACCCCTTTATTAGTATTTGGTGCCCTGAGCTGGAATAGTGGGAACCCGCCCTGAGCCTTCTTATCCGAGCTGAA	
CTAAGCCAACCCGGATCACTTCTAGGCGATGACCAAATTTACAATGTTATTGTTACTGCCACGCTTTTGTAATAATCTTTTTT	
ATAGTTATAACCAATTCTTATTGGAGGATTGGAAACTGACTTGTACCATTAATGATTGGAGCACCAGACATAGCATTTCACG	
AATAAATAATATGAGTTTCTGACTCCTGCCCCATCATTCTTTTACTACTAGCCTCATCTGGGGTTGAGGCTGGAGCAGGAA	
CAGGTGAACAGTATATCCACCTCTTGCTGGAAACCTTGCCCATGCGGGAGCATCAGTAGATCTAACTATCTTTTCGTTACAC	
TTAGCAGGTGTTTCATCAATTTTAGGAGCAATTAATTTTACTACCATTATTAATATGAAGCCCCCTGCCATTCTCAATAT	
CAAAACCACTGTTTGTGTTGAGCCGTTTGTAGTAACAGCCGTTCTTCTCTACTATCACTACCAGTTTTGGCGGCTGGAATTACA	
ATGCTTCTTACAGACCGTAACCTCAATACCACCTTCTTTGACCCAGCAGGAGGAGGAGACCCAATTCTTTATCAACACTTATT	
CTGATTCTTTGGC	

**Table 4.** Species identification and similarity.

Specimen	Similarity	Species identified	Accession Number	Family	Genus
Striped flying Barb	100%	<i>Esomus metallicus</i>	FJ753495	Cyprinidae	<i>Esomus</i>
Striped flying Barb	100%	<i>Esomus metallicus</i>	MK049431	Cyprinidae	<i>Esomus</i>

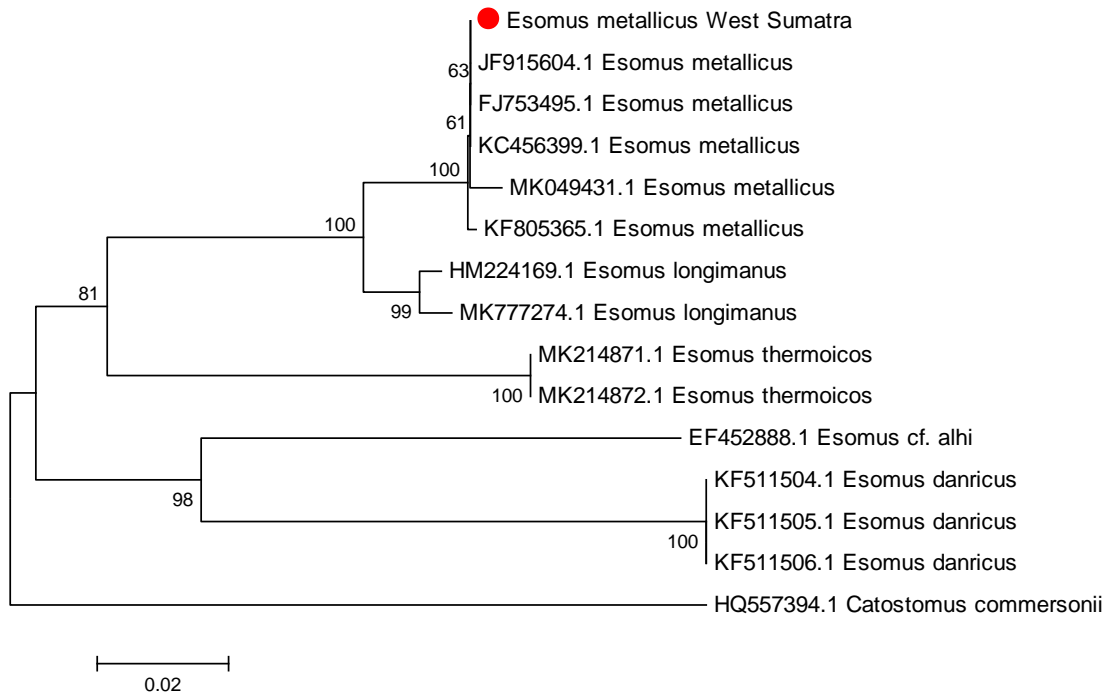
Villa-Navarro, 2017). Alien or invasive fishes enter new areas either intentionally or not and can potentially disrupt endemic fishes by adapting to new environments and competing with natural fishes (Radkhah et al., 2016; Insani et al., 2020; Bariyyah et al., 2021). Hence, there is a need for an in-depth study of the impact of *E. metallicus* in waterbodies on endemic fish and their habitats for making policies to control invasive fishes. The establishment of non-native species has a severe impact on ecosystem functioning by affecting community levels of native species (Sato et al., 2010; Mousavi-Sabet and Eagderi, 2016). Ecological risks of alien fishes are difficult to be estimated in the initial stages, but their harm is irreversible. Moreover, the Kapalo Banda River is protected by customary law to maintain native and endemic fish, an ancestral heritage that must be preserved.

DNA-Barcoding of striped flying Barb from Kapalo Banda River successfully sequenced with a base-pair length of 680 bp (Table 3). Fragments with more than 658 base pairs of COI genes can be used as a standard for differentiating animals (Hebert et al., 2003). The results revealed that the samples from the Kapalo Banda River are *E. metallicus* with a similarity of about 99-100% (Table 4). To ensure species validity, we also performed species identification by BOLD SYSTEM by specimen identification tools to check the species-level

barcode records. The submitted sequence has been matched to *E. metallicus* with a similarity of 100% to the BIN ID: BOLD: AAF2628. According to Hebert et al. (2003), species with 99-100% similarity levels are identical.

In the phylogenetic tree, striped flying Barb from West Sumatra, Indonesia (Red circle) clustered within *E. metallicus* species (Fig. 4) with 100% DNA similarity with those of Thailand. Therefore, specimens of West Sumatra probably originated from Thailand, or they are from the same ancestor. The Kapalo Banda River and Thailand were formerly connected to the Sundaland River; however, this species was not collected before in Sumatra (Kottelat et al., 1993), and since there is no difference between their sequences, as is common for long-distant species, therefore striped flying Barb from West Sumatra has originated from Thailand. According to Hasan et al. (2020), *E. metallicus* in Indonesia was introduced and accidentally released from fish farms.

There are nine *Esomus* species, including *E. danrica* (Shangningam and Kosygin, 2022; Abujam et al., 2021), *E. nimasowi* (Abujam et al., 2021), *E. metallicus* (Jamaluddin et al., 2022), *E. malayensis* (Kottelat et al., 2013), *E. thermoicos* (Sudasinghe et al., 2019), *E. longimanus* (Kottelat, 2001), *E. caudiocellatus* (Kottelat, 2013), *E. bengalensis* (Bhakat and Sinha, 2020), *E. altus*



**Figure 4.** Phylogenetic tree of *Esomus metallicus* based on COI Gene.

**Table 5.** The genetic distance of *Esomus metallicus*.

	1	2	3	4	5
1 <i>Esomus metallicus</i> West Sumatera					
2 <i>Esomus metallicus</i>	0.000				
3 <i>Esomus longimanus</i>	0.028	0.028			
4 <i>Esomus thermoicos</i>	0.120	0.120	0.115		
5 <i>Esomus danricus</i>	0.169	0.169	0.164	0.168	
6 <i>Esomus cf. alhi</i>	0.163	0.163	0.164	0.174	0.150

(Kottelat, 2013) and *E. ahli* (Kottelat, 2013). In the GenBank, there are only five *Esomus* species' COI genes, including *E. metallicus* (FJ753495) from Thailand, *E. danricus* (KF511504) from India, *Esomus cf. ahli* (EF452888), *E. thermoicos* (MK214871) from Sri Lanka and *E. longimanus* (HM224169) from Vietnam. The genetic distance of *E. metallicus* from Kapalo Banda River was 0.00 to that of Thailand. *Esomus metallicus* is the closest species to *E. longimanus*, with a genetic distance of 0.028 (Table 5). *Esomus metallicus* is native to Thailand (Beamish et al., 2006) and Southeast Asia, and *E. longimanus* is native to Asia (Doi, 1997) and is also found in Thailand, showing a close ancestor with *E. metallicus*.

#### Acknowledgments

We thank the Research and Community Service

Institute (LPPM) of the University of Bangka Belitung for facilitating research and publications and Indra Mayendra Dt. Marajo Nan Hitam as our guide.

#### References

- Abujam S., Gogoi B., Das A.N., Das D.N., Biwas S.P., Bleher H. (2021). *Esomus nimasowi* a new species of flying barb (Cypriniformes: Danionidae) from Assam north-eastern India. *International Journal of Ichthyology*, 27: 81-92.
- Albornoz-Garzón J.G. Villa-Navarro F.A. (2017). Range extension of the invasive fish *Xiphophorus maculatus* (Günther, 1866) (Cyprinodontiformes: Poeciliidae) in the upper Magdalena river basin, Colombia. *Check List*, 13: 1-7.
- April J., Mayden R.L., Hanner R.H., Bernatchez L. (2011). Genetic calibration of species diversity among North America's freshwater fishes. *Proceedings of the*

- National Academy of Sciences of the United States of America, 108: 10602-10607.
- Arbsuwan A., Musikasinthorn P., Marini M., Samhudi H. (2012). First record of the cyprinid fish, *Esomus metallicus* (Actinopterygii: Cyprinidae) from Sumatra. Natural History Bulletin of the Siam Society, 58: 59-65.
- Arthur R.I., Lorenzen K., Homekingkeo P., Sidavong K., Sengvilaikham B., Garaway C.J. (2010). Assessing impacts of introduced aquaculture species on native fish communities: Nile tilapia and major carps in SE Asian freshwaters. Aquaculture, 299: 81-88.
- Bariyyah S.K., Saleh S.M., Insani L., Seridati N., Valen F.S. (2021). Jaguar Cichlid, *Parachromis managuensis* (Günther, 1867) (Perciformes, Cichlidae): An introduced exotic fish in Grati Lake, East Java, Indonesia. Ecology, Environment and Conservation, 27: S272-S275
- Beamish F.W.H., Sa-Ardrit P., Tongnunui S. (2006). Habitat characteristics of the Cyprinidae in small rivers in Central Thailand. Environmental Biology of Fishes, 76: 237-253.
- Bhakat S., Sinha A.K. (2020). *Esomus bengalensis* (Cypriniformes: Cyprinidae), a new species of flying barb from West Bengal, India. International Journal of Fisheries and Aquatic Studies, 8: 44-49.
- Britz R., Conway K.W., Ruber L. (2009). Spectacular morphological novelty in a miniature cyprinid fish, *Danionella dracula* n. sp. Proceedings of the Royal Society B: Biological Sciences, 276: 2179-2186.
- Dao T.T.H., Nguyen T.T.G., Gabriël S., Bui K.L., Dorny P., Le T.H. (2017) Updated molecular phylogenetic data for *Opisthorchis* spp. (Trematoda: Opisthorchioidea) from ducks in Vietnam. Parasites Vectors, 10: 575 2017.
- De Silva S.S., Nguyen T.T.T., Turchini G.M., Amarasinghe U.S., Abery N.W. (2009). Alien species in aquaculture and biodiversity: A paradox in food production. Ambio, 38: 24-28.
- Dhar B., Ghosh S.K. (2015). Genetic assessment of ornamental fish species from North East India. Gene, 555: 382-92.
- Felsenstein J. (1985). Confidence limits on phylogenies: An approach using the bootstrap. Evolution, 39: 783-791.
- Fu G.Q., Qin T., Chen X.Y., Lei C.Y., Li G.H. (2021). Composition and species diversity of fishes in Xishuangbanna reach of Lancang River. Acta Ecologica Sinica, 41: 9557-9573.
- Hasan V., Valen F.S., Islamy R.A., Widodo M.S., Saptadjadja A.M., Islam I. (2021). Presence of the vulnerable freshwater goby *Sicyiopus auxilimentus* (Gobiidae, Sicydiinae) on Sangihe Island, Indonesia. Biodiversitas, 22: 573-581.
- Hasan V., Widodo M.S., Faqih A.R., Mahasri G., Valen F.S., Tamam M.B., Yonarta D., Pratama F.S., Fitriadi R. (2020). Presence of striped flying barb *Esomus metallicus* (Teleostei, Cyprinidae) from West Sumatra, Indonesia. Ecology, Environment and Conservation, 26, S73-S75.
- Hebert P.D.N., Cywinska A., Ball S.L., deWaard J.R. (2003). Biological identifications through DNA barcodes. Proceedings of the Royal Society of London, 270: 313-321.
- Hubert N., Hanner R., Holm E., Mandrak N.E., Taylor E., Burrige M., Watkinson D., Dumont P., Curry A., Bentzen P. (2008). Identifying Canadian freshwater fishes through DNA barcodes. PLoS ONE, 3: e2490.
- Ihwan., Pratama F.S., Yonarta D., Faqih R., Widodo M.S., Valen F.S., Tamam M.B., Hasan V. (2020). Presence of Asian catfish *Clarias batrachus* (Siluriformes, Clariidae) in Madura Island, Indonesia. AACL Bioflux, 13: 958-962.
- Insani L., Hasan V., Valen F.S., Pratama F.S., Widodo M.S., Faqih A.R., Islamy R.A., Mukti A.T., Isoni W., (2020). Presence of the invasive Nile tilapia *Oreochromis niloticus* Linnaeus, 1758 (Perciformes, Cichlidae) in the Yamdena Island, Indonesia. Ecology, Environment and Conservation, 26: 1115-1118.
- Jamaluddin J.A.F., Lavoué S., Alshari N.F.M.A.H., Ghazali S.Z., Ahmad A., Tan A., Leng C.L., Sam N. (2022). Reassessing fish diversity of Penang Island's freshwaters (northwest Peninsular Malaysia) through a molecular approach raises questions on its conservation status. Biodiversity and Conservation, 31: 1551-1576.
- Kottelat M. (2001). Fishes of Laos. WHT Publications, Colombo. 198 p.
- Kottelat M. (2013). The fishes of the inland waters of Southeast Asia: A catalogue and core bibliography of the fishes known to occur in freshwaters, mangroves and estuaries. Raffles Bulletin of Zoology Supplement, 27: 1-663.
- Kottelat M. (2015). The fishes of the Nam Theun and Xe Bangfai drainages, Laos. Hydroécologie Appliquée, 19: 271-320.

- Luo A., Zhang A., Ho S.Y., Xu W., Zhang Y., Shi W., Cameron S.L., Zhu C. (2011). Potential efficiency of mitochondrial genes for animal DNA barcoding: a case study using eutherian mammals. *BMC Genomics*, 12: 12-84.
- Lutfiatunnisa, Widodo M.S., Faqih A.R., Sari L.D., Valen F.S. (2020). Molecular approach for identification of Asian seabass (*Lates calcarifer* Bloch 1790) based on COI gene sequence from Java, Indonesia. *AACL Bioflux*, 13: 2828-2834.
- Mayden R.L., Tang K.L., Conway K.W., Freyhof J., Chamberlain S.M., Haskins L., Schneider M., Sudkamp R., Wood R.M., Agnew M., Bufalino A., Sulaiman Z., Miya M., Saitoh K., He S. (2007). Phylogenetic relationships of *Danio* within the order Cypriniformes: a framework for comparative and evolutionary studies of a model species. *Journal of Experimental Zoology Part B: Molecular and Developmental Evolution*, 308: 642-54.
- Mousavi-Sabet H., Eagderi S. (2016). First record of the convict cichlid, *Amatitlania nigrofasciata* (Günther, 1867) (Teleostei: Cichlidae) from the Namak Lake basin, Iran. *Iranian Journal of Ichthyology*, 3(1): 25-30.
- Nei M., Kumar S. (2000). *Molecular evolution and phylogenetics*. Oxford University Press, New York. 352 p.
- Ng C.K.C., Kim T.Y., Ahmad A. Khaironizam M.d.Z. (2019). Provisional checklist of freshwater fish diversity and distribution in Perak, Malaysia, and some latest taxonomic concerns. *Zootaxa*, 4567: 515-545.
- Panprommin D., Soontornprasit K., Tuncharoen S., Pithakpol S. Keereelang J. (2019). DNA barcodes for the identification of species diversity in fish from Kwan Phayao, Thailand. *Journal of Asia-Pacific Biodiversity*, 12: 328-389.
- Pulungan C.P., Zakaria I.J. (2011). Description of Pantau Janggut fish, *Esomus metallicus* Ahl 1924 (Cyprinidae) from tributaries of Siak River and canals in Riau Province. *Indonesian Journal of Ichthyology*, 11: 127-134.
- Radkhah A., Eagderi S., Mousavi-Sabet H. (2016). First record of the exotic species *Hemiculter leucisculus* (Pisces: Cyprinidae) in southern Iran. *Limnetica*, 35(1): 175-178.
- Saitou N., Nei M. (1987). The neighbor-joining method: A new method for reconstructing phylogenetic trees. *Molecular Biology and Evolution*, 4: 406-425.
- Sanger F., Nicklen S. (1977). DNA sequencing with chain-terminating inhibitors. *Proceedings of the National Academy of Sciences USA*, 74: 5463-5467.
- Sato M., Kawaguchi Y., Nakajima J., Mukai T., Shimatani Y., Onikura N. (2010). A review of the research on introduced freshwater fishes: New perspectives, the need for research and management implications. *Landscape Ecology and Engineering*, 6: 99-108.
- Serdiati N., Yonarta D., Pratama F.S., Faqih A.R., Valen F.S., Tamam M.B., Hamzah Y.I.G., Hasan V. (2020). *Andinoacara rivulatus* (Perciformes: Cichlidae), an introduced exotic fish in the upstream of Brantas River, Indonesia. *AACL Bioflux*, 13: 137-141.
- Serdiati, N., Insani L., Safir M., Rukka A.H., Mangitng F.S., Valen F.S., Tamam Hasan M.B., V. (2021). Range expansion of the invasive Nile Tilapia *Oreochromis niloticus* (Perciformes: Cichlidae) in Suawesi sea and first record for Sangihe Island, Tahuna, North Sulawesi, Indonesia. *Ecology, Environment and Conservation*, 27: 168-171.
- Serov, D.V., Nezdolij V.K., Pavlov D.S. (2006). *The freshwater fishes of central Vietnam*. KMK Scientific Press, Moscow.
- Shangningam B., Kosygin L. (2022). A new record of *Schistura reticulata* from Myanmar with a note on fish diversity of Yu River. *Records of the Zoological Survey of India*, 122: 57-63.
- Siriwan S. Boonsatien B. (2018). The post-larval and juvenile fish assemblage in the Sukhothai Floodplain, Thailand. *J. Ocean. Limnol*, 36: 1013-1024
- Sudasinghe H., Pethiyagoda R., Meegaskumbura M. (2019). A review of the genus *Esomus* in Sri Lanka (Teleostei: Cyprinidae). *Ichthyological Exploration of Freshwaters*, 29: 343-360.
- Tamura K., Stecher G., Peterson D., Filipski A., Kumar S. (2013). MEGA6: Molecular Evolutionary Genetics Analysis version 6.0. *Molecular Biology and Evolution*, 30: 2725-2729.
- Tang K.L., Agnew M.K., Hirt M.V., Sado T., Schneider L.M., Freyhof J., Sulaiman Z., Swartz E., Vidthayanon C., Miya M., Saitoh K., Simons A.M., Wood R.M., Mayden R.L. (2010). Systematics of the subfamily Danioninae (Teleostei: Cypriniformes: Cyprinidae). *Mol Phylogenet Evol*, 57: 189-214.
- Tautz D., Arctander P., Minelli A., Thomas R.H., Vogler A.P. (2002). DNA points the way ahead in taxonomy.



Nature, 418: 479.

- Thu P.T., Huang W.C., Chou T.K., Van Quan N., Van Chien P., Li F., Shao K.T., Liao T.Y. (2019). DNA barcoding of coastal ray-finned fishes in Vietnam. PLoS One, 14: e0222631.
- Valen F.S., Hasan V., Ottoni F.P., Nafisyah A.L., Erwinda M. (2022c). Description of Silver Barb *Barbonymus gonionotus* (Bleeker, 1849) (Cypriniformes: Cyprinidae) from Madura Island, Indonesia. IOP Conference Series: Earth and Environmental Science, 1036: 12011.
- Valen F.S., Hasan V., Ottoni F.P., Nafisyah A.L., Erwinda M., Annisa A.N., Adis M.A. (2022b). First country record of the bearded gudgeon *Pogoneleotris heterolepis* (Günther, 1869) (Teleostei: Eleotridae) from Indonesia. IOP Conf. Series: Earth and Environmental Science, 1036: 012074.
- Valen F.S., Sambah A.B., Wicaksono K.P., Widodo M.S., Soemarno Hasan V. (2021). Genetic diversity of yellow finned Barb *Mystacoleucus marginatus* (Valenciennes, 1842) (Teleostei, Cyprinidae) in Brantas Basin upstream, Indonesia. Ecology, Environment and Conservation, 26: 695-699.
- Valen F.S., Soemarno Widodo M.S., Wiadnya D.G.R., Hasan V. (2020). Contemporary distribution records of yellow finned Barb *Mystacoleucus marginatus* (Valenciennes, 1842) in Brantas Basin, Indonesia. Ecology, Environment and Conservation, 26: S40-S43
- Valen F.S., Widodo M.S., Islamy R.A., Wicaksono K.P., Soemarno., Insani L., Hasan V. (2022a.). Molecular phylogenetic of silver barb *Barbonymus gonionotus* (bleeker, 1849) (Cypriniformes: Cyprinidae) in Java, Indonesia. IOP Conf. Series: Earth and Environmental Science, 1036: 012011.
- Valen F.S., Widodo M.S., Kilawati Y. (2019a). Molecular identification and genetic characteristics of genus *Mystacoleucus* based on gene cytochrome oxidase c subunit I (COI) in Sengguruh Dam. The Journal of Experimental Life Science, 9: 40-46.
- Valen F.S., Widodo M.S., Kilawati Y. Islamy R.A. (2009b). Phylogenetic relationships of *Mystacoleucus marginatus* (Valenciennes 1842) based on Cytochrome Oxidase C Subunit I (COI) Gene. Research Journal of Life Science, 6: 19-28
- Ward R.D., Zemlak T.S., Innes B.H., Last P., Hebert P.D.N. (2005). DNA Barcoding Australia's Fish Species. Philosophical transactions of The Royal Society B, 360: 1847-1857.