

# AMERICAN MUSEUM *Novitates*

PUBLISHED BY THE AMERICAN MUSEUM OF NATURAL HISTORY  
CENTRAL PARK WEST AT 79TH STREET, NEW YORK, N.Y. 10024  
Number 2859, pp. 1-39, figs. 1-73, tables 1, 2      October 29, 1986

## An Annotated Checklist of Coral-Associated Bryozoans

JUDITH E. WINSTON<sup>1</sup>

### ABSTRACT

Bryozoans are known to be an important component of cryptic reef communities worldwide, with many species apparently circumtropical in distribution. Taxonomic work on reef bryozoans still lags behind work on their ecology. This checklist, which includes an illustration or a reference to an illustration for each species, is an attempt to assist both taxonomists and ecologists in identifying reef-associated species. To date, 284 species of bryozoans have been reported from coral substrata and/or reef environments in the following areas: Ca-

ribbean, Red Sea, East Africa, Indonesia, Great Barrier Reef, Eniwetak, Hawaii, Eastern Pacific. The majority of them (69%) are ascophoran cheilostomes. Anascan cheilostomes are also abundant (25%), while tubuliporates and ctenostomes have been recorded much less frequently. *Parasmittina*, *Celleporaria*, and *Rhynchozoon* are the most successful cheilostome genera in terms of number of species recorded from reefs. Most genera and many species are recorded from at least two tropical areas.

### INTRODUCTION

The facts described in the following pages indicate that a checklist of coral-associated bryozoans would be useful to coral reef workers worldwide. In the next section I present such a list, compiled from the published literature and supplemented by information from my own research. From this list it is possible to draw certain conclusions about the kinds of bryozoans apt to be abundant in

reef situations, and even to predict what genera are to be expected in a previously unexplored area (see Discussion). Of course, to know if the apparent broad distributions reported here are real, we need more detailed studies of species from reef environments. I hope that publication of this checklist will encourage such studies.

Bryozoans were once thought to be uncom-

<sup>1</sup> Associate Curator, Department of Invertebrates, American Museum of Natural History.

mon in reef environments (e.g., Stephenson et al., 1931; Hastings, 1932), but recent work has demonstrated the importance and ubiquity of bryozoans on coral reefs (e.g., Cuffey, 1973, 1978; Cuffey and Fonda, 1977; Cuffey et al., 1977; Jackson, 1977a, 1977b, 1984; Jackson and Winston, 1982; Schopf, 1974; Dumont, 1981). Their apparent rarity in early studies was primarily an artifact of collecting methods used. Great oceanographic expeditions like the *Siboga* Expedition (1899–1900) helped establish that bryozoans were abundant and diverse in tropical waters, where they had been supposed to be rare (Harmer, 1915), but these expeditions had no means of adequately sampling reef environments. For example, the cruise tracks of the *Siboga* covered more than 12,000 miles of the Indonesian archipelago. Collections were made at 323 stations, at depths ranging from low water to over 3000 m (Weber, 1902). Bryozoans were taken at about 134 stations (Harmer, 1915). But the *Siboga*, like most of the 19th century expeditions, was limited to depths in which the ship could pass, and to substrata from which the dredge or trawl could be recovered. The station records (in Weber, 1902) are informative. In the first third of the cruise inexperience showed. There are 16 stations where the bottom is listed as “hard—coral and stones,” “coral,” or “coral bottom.” At those stations either the scientists could not dredge or trawl, or they attempted to do so with negative results, e.g., “tore trawl” (Sta. 47b), “broke dredge” (Sta. 65a), “dredge broken and lost” (Sta. 73). Eventually they grew wiser or more cautious about risking their equipment on the uneven surfaces of reefs, and the station list records no more disasters. Ecological data for *Siboga* stations is scanty. Bottom information and depth in the station list appears to relate to the place the ship anchored (which might or might not be the same as the bottom where they dredged or trawled). At 41 stations in depths of 150 m or less, coral or coral reef is listed in the bottom description. At many of these stations the list also notes “shore exploration” or “reef exploration.” It appears that the “reef” collections were intertidal (no depth is given for these stations in the species accounts). Thus, reef-dwelling animals could have been collected only from very shallow

reef-flat habitats, or by dredging, which was mainly between reefs, but offered some chance of picking up coral fragments. Moreover, it is likely that the larger pieces of coral and calcareous algae obtained went into coral or algal collections and so were never examined for bryozoans.

Other early work from areas where coral reef species might have been collected is equally disappointing. In Osburn's collections from the Tortugas (1914) shell, dock pilings, sponges, gorgonians, and crabs are the substrata most commonly cited, while the substrata listed in the collection he worked up from Curaçao reads like a list of tropical harbor trash: shells, old bottles, mangrove roots, oysters, and a few shallow back-reef coral species. Pacific reefs are no better represented. In the collections from the Great Barrier Reef reported on by Hastings (1932), only one station lists “coral fragments” and one other lists “Reef.” Stephenson et al. (1931) are able to state that “bryozoans appear to be rather poorly represented in the Low Isles fauna” (even though pl. III, fig. 11 in T. A. Stephenson's 1931 paper on coral growth clearly shows an encrusting cheilostome overgrowing a young *Pocillopora* colony).

This intertidal bias prejudiced even authorities like Libby Hyman who claimed in volume 5 of *The Invertebrates* (1959) to have found “scarcely any gymnolaemates at Jamaica” (p. 422).

Though some ancient reefs had massive bryozoan components (Cuffey, 1974, 1977), with rare exceptions, Recent bryozoans are not primarily frame-builders. In open reef environments they are unable to compete for space with the more massive colonies of hermatypic corals. Most reef-dwelling bryozoans are found in cryptic habitats: on coral undersurfaces, the undersides of coral rubble, and in caves, crevices, and cavities within the reef framework. Their geological role in modern reefs appears to consist primarily of cementation and infilling of cavities (Soule and Soule, 1974; Cuffey, 1974, 1977; Choi, 1984). Ecologically, bryozoans are part of the crowded and diverse cryptic community so extensively studied on Jamaican reefs by Jackson and his associates (Jackson 1977a, 1977b, 1979b, 1984; Buss and Jackson, 1979; Jack-

son and Buss, 1975; Jackson and Winston, 1981, 1982; Palumbi and Jackson, 1982, 1983; Winston and Jackson, 1984). In this community, which is characterized by intense competition for space, bryozoans may occupy a significant percentage of that space (Jackson, 1984). This fact is significant to coral reef ecologists.

But what hampers the ecological study of reef bryozoans is a lack of taxonomic work, which has not caught up to studies on bryozoan distributions on reefs. Soule and Soule's 1973 monograph on Hawaiian smittinids set a high standard, but taxonomic work takes much time. For example, Cuffey (1973) promised systematic work on Eniwetak bryozoans, which still has not appeared. Ross (1974) mentioned a collection of over 200 species from the central part of the Great Barrier Reef, but no work has been published. Most recently, d'Hondt (1985) has pointed out that published information on bryozoans from French Polynesian reefs consists of only a few scattered records, for some of which specimens cannot be found for verification. Thus, it seemed both appropriate and useful at this intermediate stage of knowledge to compile a checklist of species recorded from reefs in the hope that this would stimulate both taxonomic and ecological work on reef bryozoans.

To attempt a checklist useful to workers worldwide would be impossible in the case of the corals themselves, for most scleractinian species are limited to a single geographic area, e.g., the Caribbean, or the Indo-Pacific. However, reef-dwelling bryozoans have much broader distributions than their substrata. Two-thirds of Caribbean reef-associated bryozoans are found in at least one of the other tropical regions. Seventeen percent appear to be truly circumtropical (Jackson et al., 1985).

This difference in distributional pattern between bryozoans and corals may relate to relative niche breadth. Many coral-reef bryozoans are also found on other calcareous substrata. Cook (1968) has pointed out how shell material, including large foraminiferan tests, provides calcareous substrata for bryozoans in deeper water, creating less discontinuity of habitat than would occur if species were limited to one kind of calcareous sub-

stratum. Not having algal symbionts, bryozoans are also less light/depth restricted. For example, at least a quarter of the Caribbean species found on reefs also occur in water deeper than 100 m (Jackson et al., 1985).

#### ACKNOWLEDGMENTS

I acknowledge with thanks Miss Patricia L. Cook, British Museum (Natural History), and Dr. Alan H. Cheetham, Smithsonian Institution, for their critical review of various versions of this manuscript and their valuable suggestions.

#### EXPLANATION OF CHECKLIST

The checklist is divided into three sections: Anasca, Ascophora, and Tubuliporata. Within each section the species are arranged in alphabetical order by genus rather than in systematic order. Each entry consists of the following: scientific name (including author and date), figure reference (to a published illustration or to an illustration in this paper), habitat, depth range, area (the number(s) pertain to references in which the species was recorded), and (when necessary) discussion.

#### SOURCES

The primary sources used in compiling this checklist were the published checklists of reef-associated species in Dumont (1981), Cuffey and Fonda (1977), and Schopf (1974); and unpublished lists of Jamaican and Panamanian (Winston and Jackson) and Venezuelan (Gleason and Jackson) species. These were supplemented by analysis of the papers listed in the Areas and Citations section. Due to differences in the amount of taxonomic work on bryozoans in different areas, some are more thoroughly covered than others. Many other papers were examined, but could not be used either because they lacked substrata data or did not pertain to reef environments.

#### NAME

Each species is listed by the name currently accepted for that species. Other usage is given in parentheses, or in the Discussion section. For example, what Schopf (1974) listed as *Hippoporina porcellana* is listed here under *Cleidochasma porcellanum*. If a species des-

ignation seemed doubtful, I checked the specimen, if possible, or an illustration if one was given. But since several of the sources were unillustrated checklists, it was not always possible to reach a firm conclusion. Question marks without parentheses denote the original authors' queries of assigned names. Question marks in parentheses denote my query as to the accuracy of the determination.

#### ILLUSTRATION

The illustration(s) cited for each species are SEM photographs whenever possible; otherwise the most adequate drawing of that species is cited. Thirty-two species are illustrated in this paper. All specimens illustrated here were prepared by the methods described in Winston and Heimberg (1986). In cases where the genus is known but the species is undetermined, e.g., *Membraniporella* sp., an illustration is listed only if it appeared in the original citation.

#### SUBSTRATA

Unless listed as having come from a coral reef, the only occurrences that were used in the list were those in which the substratum was cited as coral, or coral rubble, or in which those were the substrata given in the station information. This eliminated some species which may actually occur on reefs; it also meant that many papers on tropical areas were almost useless—if the author did not cite the substratum on which a species was found. In Osburn's later work and in Harmer's *Siboga* monographs, substratum is seldom mentioned unless a new species is being described. A better alternative to deleting all species with unknown substrata would have been to study all the collections involved, which would enable one to distinguish, for example, whether a Canu and Bassler "nulpore" substratum was dead coral, coralline alga, gorgonian stem, etc., but this would have been an extremely time-consuming project.

#### DEPTH

I used only occurrences at 100 m or less, as this is commonly accepted as the lower

limit of reef growth (Lang et al., 1975). This is a very broad definition, and specimens found in the deeper part of the range are often on ahermatypic coral (e.g., *Oculina*) or on dead subfossil or fossil reef coral remaining from a time of lower sea level. Occurrences of a species in water deeper than 100 m are not noted here (they are given for a number of the Caribbean species in Jackson et al., 1985). Depth range in this checklist refers to the depths in which the species was found in the references used here. The abbreviation "LW" is used for intertidal stations at the low water mark. If a station ran slightly over 100 m, the exact depth is given, if a reference listed a species as being found at stations ranging from 30 to 700 m, for example, I gave its range as 100+ m. When no depth was given for a reef station the abbreviation "ndg" is placed after the subheading.

#### AREAS AND CITATIONS

##### *Caribbean, Gulf of Mexico, Tropical West Atlantic*

1. St. Croix, Schopf (1974)
2. Belize, Winston (1984)
3. Caribbean coast of Panama, Powell (1971)
4. Bahamas, Cuffy and Fonda (1977)
5. Caribbean coast of Costa Rica, Banta and Carson (1977)
6. Off N Brazil, Canu and Bassler (1928a)
7. Gulf of Mexico, Canu and Bassler (1928b)
8. Puerto Rico, Osburn (1940)
9. Tortugas, Florida, Osburn (1914)
10. Curaçao, Osburn (1927)
11. Florida Reef Tract, Choi (1984)
12. Florida, Atlantic shelf, Winston (1982)
13. Alacran Reef, Campeche Bank, Kornicker et al. (1959)
14. Jamaica, Venezuela, Panama (Winston and Jackson, unpublished data)

##### *East Africa*

15. East Africa, Brood (1976)
16. Tulear, Madagascar, Vasseur (1984)

##### *Red Sea*

17. Sudanese Red Sea, Dumont (1981)
18. South Red Sea, Powell (1967)



*Indonesia*

19. Harmer (1915, 1926, 1934, 1957)  
20. Winston and Heimberg (1986)

*Great Barrier Reef*

21. Ryland (1974)  
22. Hastings (1932)  
23. Heron Island, Osborne (1984)

*Eniwetak*

24. Cuffey and McKinney (1982)

*Hawaii*

25. Soule and Soule (1973)  
26. Canu and Bassler (1927)

*Eastern Pacific*

27. Pacific coast of Panama, Powell (1971)  
28. Pacific coast of Costa Rica, Banta and Carson (1977)

*Philippine Region*

29. Canu and Bassler (1929)

## CHECKLIST OF CORAL-ASSOCIATED BRYOZOAN SPECIES

Numbers under AREAS refer to references in which the species was recorded. See above.

## CTENOSTOMATA

*Amathia vidovici* (Heller), 1867

FIGURED: Winston (1982), fig. 9. HABITAT: coral undersurfaces. DEPTH: 10 m or less. AREAS: Panama (14).

## CHEILOSTOMATA (ANASCA)

*Acanthocella clypeata*

Canu and Bassler, 1928

FIGURED: Canu and Bassler (1928b), pl. 4, figs. 9, 10. HABITAT: coral rubble. DEPTH: 40 m or less. AREAS: Florida (11).

*Aetea sica* (Couch), 1844

FIGURED: Winston (1982), figs. 20, 22. HABITAT: coral. DEPTH: ndg. AREAS: Curaçao (10).

*Aetea* sp.

HABITAT: reef. DEPTH: ndg. AREAS: Venezuela (14). DISCUSSION: Only colony bases present.

*Antropora compressa* (Osburn), 1927

FIGURED: as *Membrendoecium compressum* in Osburn (1927), fig. 1. HABITAT: coral. DEPTH: ndg. AREAS: Curaçao (10).

*Antropora granulifera* (Hincks), 1880

FIGURED: Osburn (1950), pl. 4, fig. 5. HABITAT: reef, rubble. DEPTH: 30 m or less. AREAS: Bahamas (4); Red Sea (17).

*Antropora marginella* (Hincks), 1884

FIGURED: as *Membrendoecium lagunculum* in Harmer (1926), pl. IV, fig. 15.

HABITAT: reef. DEPTH: 30 m or less. AREAS: Red Sea (17, 18). DISCUSSION: *Membrendoecium lagunculum* Canu and Bassler (1929), p. 96, appears to be a synonym of this species.

*Antropora typica* (Canu and Bassler), 1928

FIGURED: figs. 1, 2. HABITAT: reef. DEPTH: 20 m or less. AREAS: Jamaica (14).

*Aplousina errans* Canu and Bassler, 1928

FIGURED: Canu and Bassler (1928a), pl. 1, fig. 34. HABITAT: dead coral. DEPTH: 49 m. AREAS: off Brazil (6).

*Aplousina gigantea* Canu and Bassler, 1927

FIGURED: Winston (1982), fig. 34. HABITAT: *Oculina* rubble. DEPTH: 60–90 m. AREAS: Florida (12).

*Beania cupulariensis* Osburn, 1914

FIGURED: Marcus (1955), figs. 41–43. HABITAT: reefs. DEPTH: 30 m or less. AREAS: Red Sea (17).

*Beania discodermiae* (Ortmann), 1890

FIGURED: Gordon (1984), pl. II, D, E. HABITAT: reefs. DEPTH: 30 m or less. AREAS: Red Sea (17).

*Beania magellanica* (Busk), 1852

FIGURED: Harmer (1926), pl. XXVII, figs. 1–4. HABITAT: under reef crest boulders. DEPTH: LW. AREAS: Great Barrier Reef (23).

*Beania mirabilis* (Johnston), 1847

FIGURED: Harmer (1926), pl. XXXVIII, fig. 15. HABITAT: reefs. DEPTH: 30 m or less. AREAS: Red Sea (17).

*Bugula dentata* (Lamouroux), 1816

FIGURED: Ryland (1974), fig. 2. HABITAT: reef slope. DEPTH: sublittoral. AREAS: Great Barrier Reef (21). DISCUSSION: Ryland discusses the range of variation in this broadly distributed species.

*Bugula neritina* (Linnaeus), 1758

FIGURED: Winston (1982), fig. 52. HABITAT: in debris among shells and corals. DEPTH: ndg. AREAS: Curaçao (10). DISCUSSION: One of most common fouling bryozoans in warmer waters worldwide.

*Bugula robusta* MacGillivray, 1869

FIGURED: Harmer (1926), pl. XXXII, figs. 1-7. HABITAT: reefs. DEPTH: 54 m or less. AREAS: Red Sea (17); Indonesia (19).

*Canda arachnoides* Lamouroux, 1816

FIGURED: Busk (1852), pl. XXXIII. HABITAT: reef. DEPTH: 30 m or less. AREAS: Red Sea (17).

*Canda clypeata* (Haswell), 1880

FIGURED: Harmer (1926), pl. XXVI, figs. 19, 20. HABITAT: spur and groove zone. DEPTH: ndg. AREAS: Madagascar (16).

*Canda simplex* Busk, 1884

FIGURED: Winston (1984), figs. 22-24. HABITAT: coral undersurfaces. DEPTH: 5-20 m. AREAS: Belize (2); Jamaica (14).

*Caulibugula inermis* Harmer, 1926

FIGURED: Harmer (1926), pl. XXX, figs. 11-13. HABITAT: coral reef. DEPTH: ndg. AREAS: Indonesia (19).

*Caulibugula mortenseni* (Marcus), 1925

FIGURED: Winston and Heimberg (1986), figs. 9, 10. HABITAT: coral rubble. DEPTH: 1.5-2 m. AREAS: Indonesia (20).

*Caulibugula zanzibarensis* (Waters), 1913

FIGURED: figs. 3, 4. HABITAT: coral reef. DEPTH: 10 m or less. AREAS: Panama (14); Indonesia (19).

*Copidozoum tenuirostre* (Hincks), 1880

FIGURED: Marcus (1937), pl. IX, fig. 21. HABITAT: coral rock, broken coral. DEPTH: 24-30 fm. AREAS: Gulf of Mexico (7).

*Cranosina coronata* (Hincks), 1881

FIGURED: Winston and Heimberg (1986), figs. 13-16. HABITAT: coral reef. DEPTH: 30

m or less. AREAS: Venezuela (14); Red Sea (17); Indonesia (19, 20); Philippines (29).

*Crassimarginatella exilimargo*

(Canu and Bassler), 1928

FIGURED: Canu and Bassler (1928a), pl. 1, fig. 5. HABITAT: dead coral. DEPTH: 128 m. AREAS: off Brazil (6). DISCUSSION: This species is very similar to *C. tuberosa* except for a somewhat greater amount of gymnocyst.

*Crassimarginatella tuberosa*

(Canu and Bassler), 1928

FIGURED: Winston (1984), figs. 12, 13. HABITAT: coral undersurfaces. DEPTH: 5-20 m. AREAS: Belize (2).

*Crateropora falcata* Levinsen, 1909

FIGURED: Harmer (1957), pl. XXII, figs. 14, 15. HABITAT: coral undersurface. DEPTH: 36 m or less. AREAS: Indonesia (19).

*Cribrilaria flabellifera* (Kirkpatrick), 1888

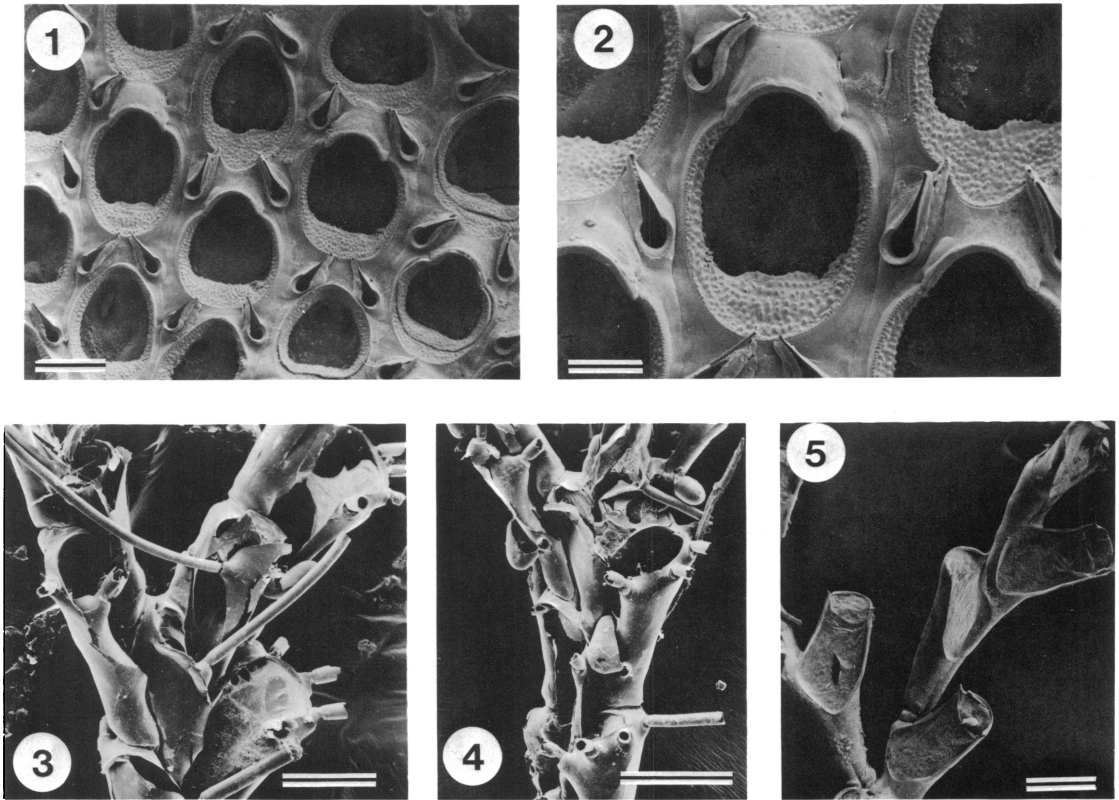
FIGURED: Winston (1984), figs. 25-27. HABITAT: coral undersurfaces, coral rubble. DEPTH: 5-20 m. AREAS: Belize (2); Costa Rica (Caribbean coast) (5); Indonesia (20).

*Cribrilaria innominata* (Couch), 1844

FIGURED: Hayward and Ryland (1979), fig. 17. HABITAT: rubble, dead shell and coral. DEPTH: 2-100+ m. AREAS: St. Croix (1); Florida, N. of Cuba (7). DISCUSSION: Hayward and Ryland (1979) discuss this species and its confusion with *radiata*. Variation of *Cribrilaria* in the Caribbean does not fit European patterns. Several species may be involved.

*Cribrilaria radiata* (Moll), 1803

FIGURED: a Caribbean specimen is illustrated in Winston (1984), fig. 28. HABITAT: reefs, coral undersurfaces, coral rubble. DEPTH: 90 m or less. AREAS: Bahamas (4); Florida, off Cuba (7); Belize (2); Costa Rica (Caribbean coast) (6); Jamaica, Venezuela (14); Red Sea (17); Indonesia (19); Philippines (29). DISCUSSION: Hayward and Ryland (1979) discuss some of the taxonomic difficulties with *Cribrilaria radiata* and describe *C. radiata* sensu strictu. Specimens from Jamaica, Belize, and Venezuela differ from their description in having 5-7 (usually 7) marginal spines, and in the distinctive serrated edge of the avicularian rostrum; they probably represent an undescribed species.



Figs. 1–5. 1. *Antropora typica*, zooids and avicularia (10-1-R25, Rio Bueno, Jamaica). Scale bar = 200  $\mu\text{m}$ . 2. *A. typica*. Scale bar = 100  $\mu\text{m}$ . 3. *Caulibugula zanzibarensis* (Galeta reef, Panama), note large avicularia. Scale bar = 200  $\mu\text{m}$ . 4. *C. zanzibarensis*. Scale bar = 200  $\mu\text{m}$ . 5. *Halophila johnstoniae* (20-1-R19, Rio Bueno, Jamaica). Scale bar = 400  $\mu\text{m}$ .

*Didymozoum triseriale* Harmer, 1926

FIGURED: Harmer (1926), pl. XIX, fig. 1. HABITAT: reef. DEPTH: 54 m or less. AREAS: Indonesia (13).

*Floridina antiqua* (Smitt), 1873

FIGURED: Winston (1982), fig. 38. HABITAT: *Oculina* rubble. DEPTH: 60–90 m. AREAS: Florida (12).

*Floridinella arculifera*

Canu and Bassler, 1927

FIGURED: Canu and Bassler (1927), pl. II, fig. 1. HABITAT: corals. DEPTH: 91–113 m. AREAS: Hawaii (26).

*Floridinella typica* Canu and Bassler, 1928

FIGURED: Winston (1982), fig. 40. HABITAT: reefs, *Oculina* rubble. DEPTH: 90 m or less. AREAS: Florida (12).

*Halophila johnstonae* Gray, 1843

FIGURED: fig. 5. HABITAT: coral undersur-

faces. DEPTH: 20 m or less. AREAS: Jamaica, Panama (14).

*Hiantopora* sp.

HABITAT: forereef slope. DEPTH: ndg. AREAS: Madagascar (16).

*Labioporella cornuta* Harmer, 1926

FIGURED: Harmer (1926), pl. XXI, figs. 1–3. HABITAT: coral. DEPTH: 45 m. AREAS: Indonesia (19).

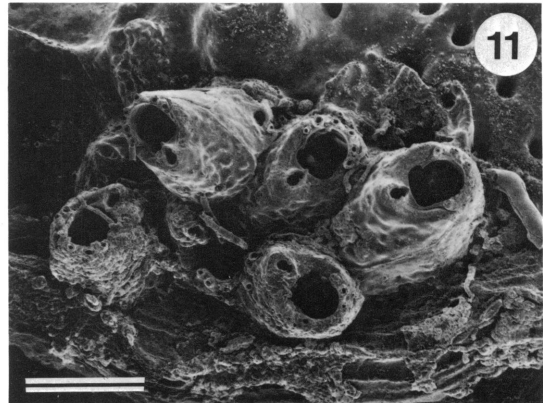
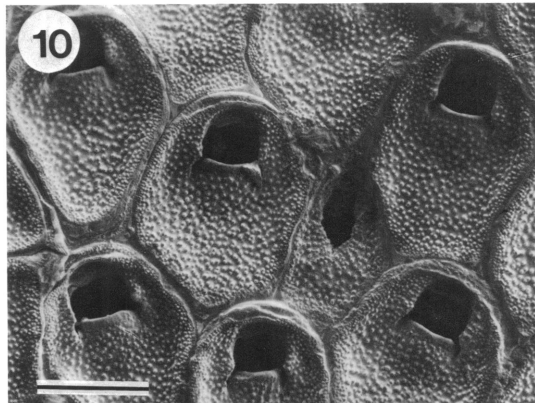
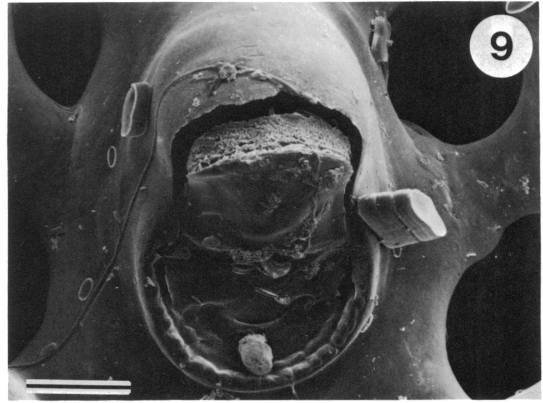
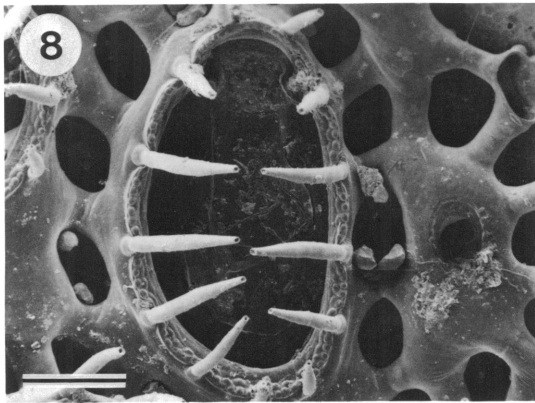
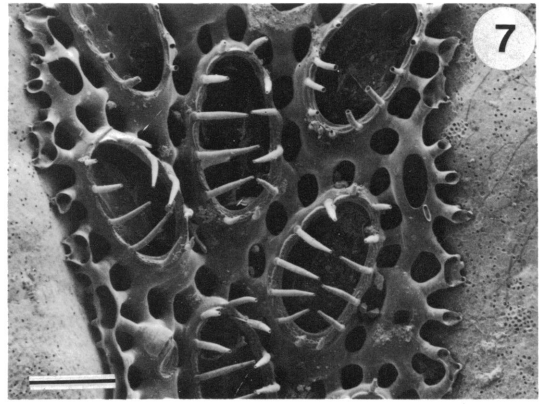
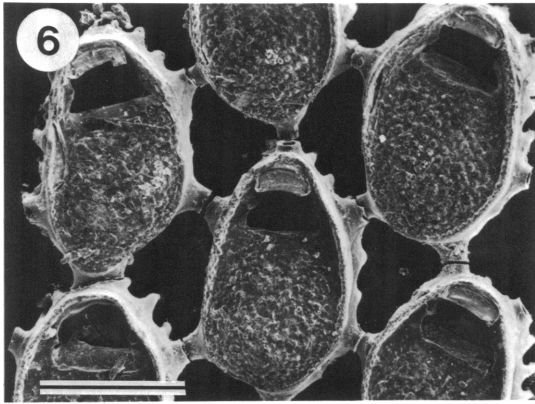
*Labioporella crenulata* (Levinsen), 1909

FIGURED: Harmer (1926), pl. XXI, figs. 1–3. HABITAT: reef. DEPTH: 30 m or less. AREAS: Red Sea (17).

*Labioporella granulosa*

(Canu and Bassler), 1928

FIGURED: Winston (1984), fig. 21. HABITAT: coral undersurfaces, coral rubble, dead coral. DEPTH: 5–100 m. AREAS: Bahamas (4); Belize (2); Florida, Gulf of Mexico (7).

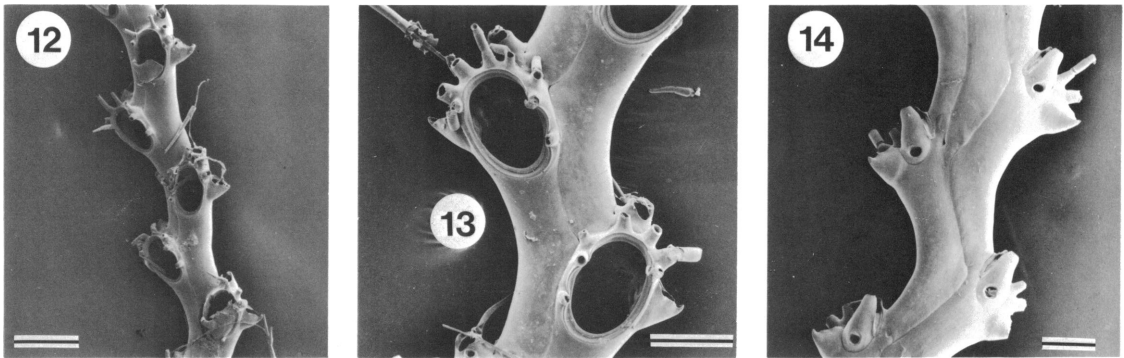


Figs. 6–11. 6. *Mollia patellaria* (Priory, Jamaica). Scale bar = 200  $\mu\text{m}$ . 7. *Retevirgula tubulata* (Priory, Jamaica), portion of colony. Scale bar = 200  $\mu\text{m}$ . 8. *R. tubulata*, close-up of zooid. Scale bar = 100  $\mu\text{m}$ . 9. *R. tubulata*, close-up of avicularium. Scale bar = 40  $\mu\text{m}$ . 10. *Smittipora levinseni* (20-1-R4, Rio Bueno, Jamaica). Scale bar = 400  $\mu\text{m}$ . 11. *Aimulosia palliolata* (20-1-R15, Rio Bueno, Jamaica). Scale bar = 200  $\mu\text{m}$ .

*Labioporella sinuosa* Osburn, 1940

FIGURED: Banta and Carson (1977), fig. 2D.  
HABITAT: coral rubble. DEPTH: less than 10

m. AREAS: Costa Rica (Caribbean coast) (5).  
DISCUSSION: May be synonymous with *L. granulosa* (see Banta and Carson, 1977).



Figs. 12–14. 12. *Scrupocellaria pusilla* (10-1-R19, Rio Bueno, Jamaica), portion of branch. Scale bar = 200  $\mu$ m. 13. *S. pusilla*, close-up of zooids. Scale bar = 100  $\mu$ m. 14. *S. pusilla*, basal view, showing vibracular chambers. Scale bar = 100  $\mu$ m.

*Membraniporella aragoi* (Audouin), 1826

FIGURED: Winston (1982), fig. 57. HABITAT: reefs. DEPTH: 30 m or less. AREAS: Red Sea (17).

*Membraniporella* sp.

HABITAT: reef. DEPTH: 20 m or less. AREAS: Venezuela (14).

*Micropora coriacea* (Johnston), 1847

FIGURED: Winston (1982), fig. 39. HABITAT: *Oculina* rubble. DEPTH: 60–90 m. AREAS: Florida (12).

*Mollia patellaria* (Moll), 1803

FIGURED: fig. 6. HABITAT: coral undersurfaces. DEPTH: 20 m or less. AREAS: Jamaica (14).

*Nellia tenella* (Lamarck), 1816

FIGURED: Winston and Cheetham (1984), fig. 2. HABITAT: coral. DEPTH: ndg. AREAS: Curaçao (10). DISCUSSION: Often listed as *Nellia oculata*; see Cheetham (1966) for discussion and synonymy.

*Nellia tenuis* Harmer, 1926

FIGURED: Harmer (1926), pl. XIV, figs. 16, 17, text fig. 5. HABITAT: reef. DEPTH: 30 m or less. AREAS: Red Sea (17).

*Parellisina curvirostris* Hincks, 1862

FIGURED: Winston (1984), fig. 14. HABITAT: coral undersurfaces, broken coral, coral. DEPTH: 4–113 m. AREAS: Belize (2); Jamaica (14); Panama (Pacific coast) (27); Hawaii (26); Indonesia (20).

*Parellisina latirostris* Osburn, 1940

FIGURED: Winston (1984), fig. 15. HABITAT: corals, coral undersurfaces, coral rubble. DEPTH: 2–90 m. AREAS: Bahamas (4); Belize (2); Florida (11, 12); St. Croix (1); Costa Rica (Caribbean coast) (5); Gulf of Mexico (13); Jamaica, Venezuela (14).

*Reginella floridana* (Smitt), 1873

FIGURED: Winston (1982), fig. 59. HABITAT: coral rubble. DEPTH: 90 m or less. AREAS: Florida (11, 12); Red Sea (17). DISCUSSION: Listed as *Cribrilaria floridana* in Choi, 1984.

*Retevirgula tubulata* (Hastings), 1930

FIGURED: figs. 7–9. HABITAT: corals, reef. DEPTH: 63 m or less. AREAS: Gulf of Mexico (7); Jamaica (14).

*Scrupocellaria bertholletii* (Audouin), 1826

FIGURED: Marcus (1938), pl. V, fig. 11. HABITAT: fore-reef talus. DEPTH: 18 m. AREAS: St. Croix (1).

*Scrupocellaria diadema* Busk, 1852

FIGURED: Harmer (1926), pl. XXV, figs. 20–25. HABITAT: reef. DEPTH: 30 m or less. AREAS: Red Sea (17); Indonesia (19).

*Scrupocellaria ferox* Busk, 1852

FIGURED: Harmer (1926), pl. XXV, figs. 1–6. HABITAT: coral-reef. DEPTH: ndg. AREAS: Indonesia (19).

*Scrupocellaria longispinosa* Harmer, 1926

FIGURED: Harmer (1926), pl. XXV, figs. 26–34. HABITAT: reef. DEPTH: 30 m or less. AREAS: Red Sea (17).

*Scrupocellaria maderensis* Busk, 1860

FIGURED: Gordon (1984), pl. 12F, G. HABITAT: reef. DEPTH: ndg. AREAS: Gulf of

Mexico (13). DISCUSSION: Specimen in Kornicker collection (USNM) examined and verified.

*Scrupocellaria pusilla* (Smitt), 1872

FIGURED: figs. 12–14. HABITAT: fore-reef talus, coral undersurfaces. DEPTH: 2–20 m. AREAS: St. Croix (1); Jamaica, Venezuela (14).

*Scrupocellaria spatulata* (D'Orbigny), 1851

FIGURED: Harmer (1926), pl. XXVI, figs. 1–10. HABITAT: reef. DEPTH: 54 m or less. AREAS: Indonesia (19, 20).

*Scrupocellaria* sp.

HABITAT: coral rubble. DEPTH: 40 m or less. AREAS: Florida (11).

*Smittipora acutirostris*

(Canu and Bassler), 1928

FIGURED: Winston (1984), fig. 16. HABITAT: coral undersurfaces. DEPTH: 20 m or less. AREAS: Belize (2); Jamaica (14).

*Smittipora cordiformis* Harmer, 1926

FIGURED: Harmer (1926), pl. XVI, figs. 14–18. HABITAT: reef. DEPTH: 30 m or less. AREAS: Red Sea (17).

*Smittipora harmeriana*

(Canu and Bassler), 1929

FIGURED: Winston and Heimberg (1986), figs. 23, 24. HABITAT: coral rubble. DEPTH: 2 m or less. AREAS: Indonesia (20).

*Smittipora levinseni*

(Canu and Bassler), 1917

FIGURED: fig. 10. HABITAT: coral undersurfaces, coral rubble. DEPTH: to 10+ m. AREAS: Bahamas (4); Florida, N of Cuba (7); Jamaica, Venezuela (14); Curaçao (10). DISCUSSION: Also known as *Velumella americana*, *Smittipora americana*, *Smittipora abyssicola*.

*Steginoporella buskii* (Harmer), 1900

FIGURED: Winston and Heimberg (1986), figs. 19–22. HABITAT: coral rubble. DEPTH: 2–3 m. AREAS: Indonesia (20).

*Steginoporella magnilabris* (Busk), 1854

FIGURED: Winston (1984), figs. 17, 18. HABITAT: coral undersurfaces, coral rubble (reef). DEPTH: 20 m or less. AREAS: Bahamas (4); Belize (2); Florida (11); Tortugas (9); St. Croix (1); Jamaica (14); Panama (Caribbean) (3).

*Steginoporella simplex* (Harmer), 1900

FIGURED: Powell (1967), pl. I, fig. 4. HABITAT: reef. DEPTH: 30 m or less. AREAS: Red Sea (17, 18).

*Steginoporella* sp.

FIGURED: Winston (1984), figs. 19, 20. HABITAT: coral undersurfaces. DEPTH: 20 m or less. AREAS: Belize (2); Jamaica (14).

*Synnotum aegyptiacum* (Audouin), 1826

FIGURED: Winston (1982), fig. 53. HABITAT: reef. DEPTH: 20 m or less. AREAS: Curaçao (10); Jamaica (14); Indonesia (19).

*Synnotum contortum* Waters, 1913

FIGURED: Harmer (1926), pl. XXVII, fig. 1, text fig. 18. HABITAT: reef. DEPTH: 36 m or less. AREAS: Indonesia (19).

*Thalamoporella komodoensis*

Winston and Heimberg, 1986

FIGURED: Winston and Heimberg (1986), figs. 17, 18. HABITAT: coral rubble. DEPTH: 1–2 m. AREAS: Indonesia (20).

*Thalamoporella mayori* Osburn, 1940

FIGURED: Osburn (1940), pl. VI, figs. 46, 47. HABITAT: coral rubble. DEPTH: 40 m or less. AREAS: Florida (11).

*Thalamoporella rozieri* (Audouin), 1826

FIGURED: Harmer (1926), pl. XIX, figs. 3–13. HABITAT: reef. DEPTH: 30 m or less. AREAS: Red Sea (17, 18); Great Barrier Reef (22).

*Thalamoporella stapifera* Levinsen, 1909

FIGURED: Winston and Heimberg (1986), figs. 13–16. HABITAT: reef rubble, backreef. DEPTH: 2–3 cm. AREAS: Indonesia (20).

*Thalamoporella tubifera* Levinsen, 1909

FIGURED: Osborne (1984), fig. 2. HABITAT: undersurfaces of reef-crest boulders. DEPTH: LW. AREAS: Great Barrier Reef (23).

*Thalamoporella* sp.

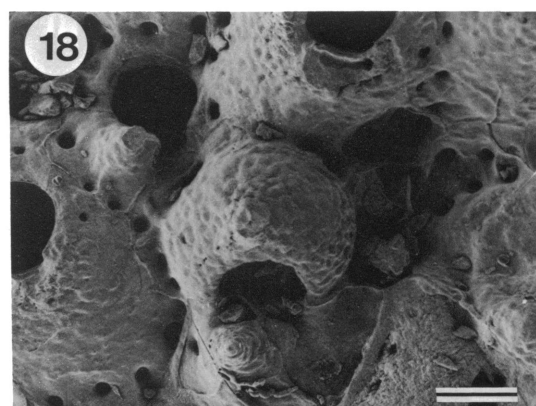
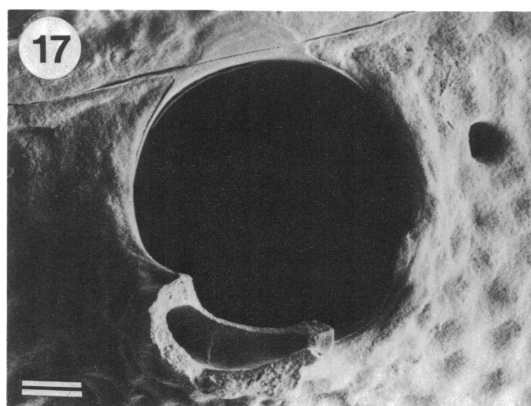
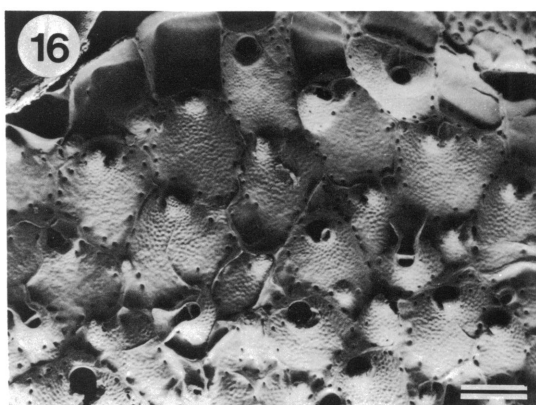
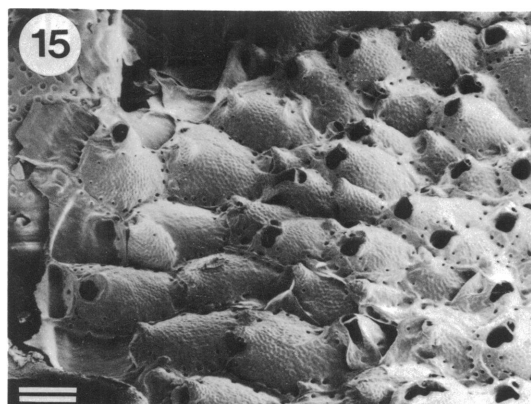
FIGURED: Ryland (1974), fig. 1. HABITAT: reef. DEPTH: ndg. AREAS: Great Barrier Reef (21). DISCUSSION: According to Ryland this is an undescribed species.

CHEILOSTOMATA (ASCOPHORA)

*Aimulosia palliolata*

(Canu and Bassler), 1928

FIGURED: fig. 11. HABITAT: coral under-



Figs. 15–18. 15. *Celleporaria albirostris* (Carrie Bow Cay, Belize), growing edge in side view. Scale bar = 400  $\mu\text{m}$ . 16. *C. albirostris*, growing edge in frontal view, showing interzooidal avicularia. Scale bar = 400  $\mu\text{m}$ . 17. *C. albirostris*, ovicell. Scale bar = 100  $\mu\text{m}$ . 18. *C. albirostris*, primary orifice. Scale bar = 40  $\mu\text{m}$ .

surfaces. DEPTH: 20 m or less. AREAS: Jamaica, Venezuela (14).

*Aimulosia uvulifera* (Osburn), 1914

FIGURED: Osburn (1914), figs. 19, 20. HABITAT: coral rubble. DEPTH: 10 m or less. AREAS: Bahamas (4).

*Anarthropora monodon* (Busk), 1869 (?)

HABITAT: coral and coral rubble. DEPTH: 10 m or less. AREAS: Bahamas (4). DISCUSSION: This identification seems doubtful. It may refer to *Tripurula stellata*.

*Arthropoma ceciliae* (Audouin), 1826

FIGURED: Gordon (1984), pl. 30A. HABITAT: coral rubble, reef. DEPTH: 30 m or less. AREAS: Bahamas (4); Jamaica, Venezuela (14); Red Sea (17).

*Arthropoma circinnatum*  
(MacGillivray), 1869

FIGURED: Wass and Yoo (1983), figs. 4, 5. HABITAT: reef. DEPTH: 30 m or less. AREAS: Red Sea (17).

*Calyptoecia insidiosa* Winston, 1984

FIGURED: Winston (1984), figs. 57, 58. HABITAT: coral undersurfaces. DEPTH: 20 m or less. AREAS: Belize (2); Jamaica (14).

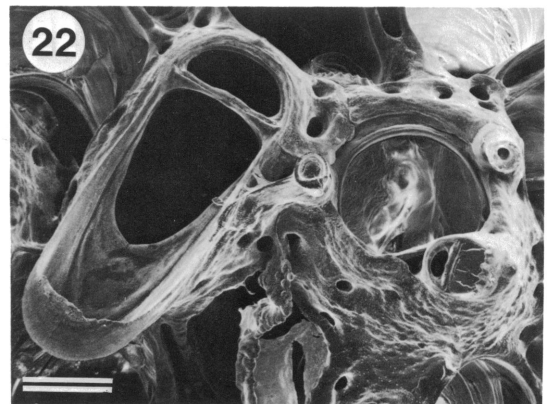
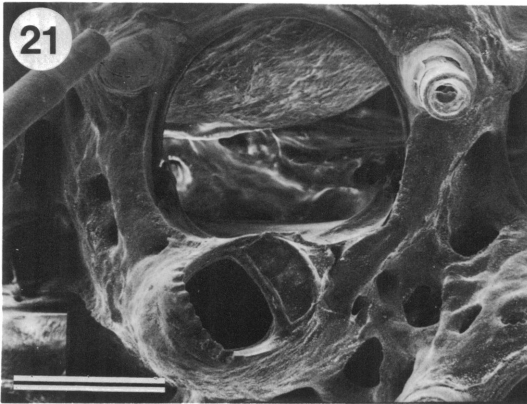
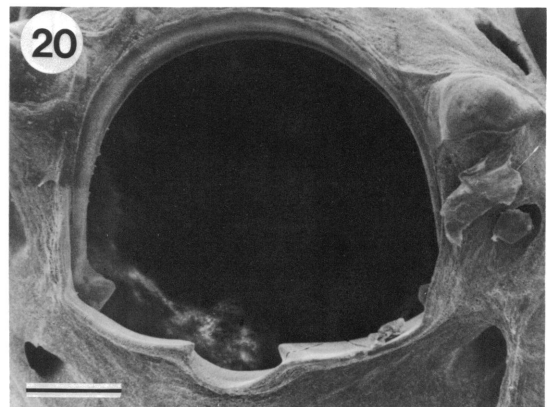
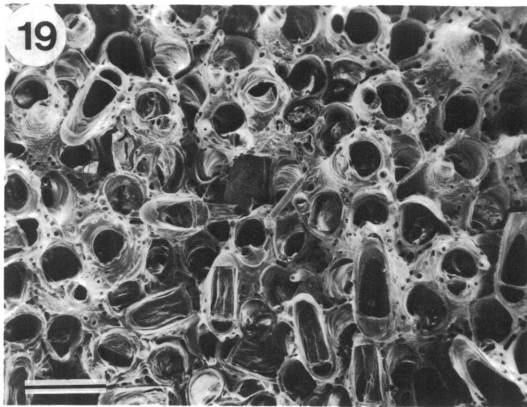
*Calyptotheca heteroavicularia*  
Dumont, 1981

FIGURED: Dumont (1981), fig. 1B. HABITAT: reef top. DEPTH: ndg. AREAS: Red Sea (17).

*Calyptotheca nigra* Dumont, 1981

FIGURED: Dumont (1981), fig. 2A. HABI-





Figs. 19–22. 19. *Celleporaria brunnea* (Monterey, California). Scale bar = 400  $\mu\text{m}$ . 20. *C. brunnea*, primary orifice. Scale bar = 40  $\mu\text{m}$ . 21. *C. brunnea*, suboral avicularium and oral spines. Scale bar = 100  $\mu\text{m}$ . 22. *C. brunnea*, interzoooidal avicularium. Scale bar = 100  $\mu\text{m}$ .

TAT: reef. DEPTH: 30 m or less. AREAS: Red Sea (17).

*Calypotheca sudanensis* Dumont, 1981

FIGURED: Dumont (1981), fig. 2A. HABITAT: reef. DEPTH: 20 m or less. AREAS: Red Sea (17).

*Calypotheca tenuata* Harmer, 1957

FIGURED: Harmer (1957), pl. LXVIII, figs. 16, 17. HABITAT: reef. DEPTH: 54 m or less. AREAS: Indonesia (19); Madagascar (16). DISCUSSION: Recorded as cf. *tenuata* in Vas-seur (1984).

*Calypotheca wasinensis* (Waters), 1913

FIGURED: Winston and Heimberg (1986), figs. 41, 42. HABITAT: reef. DEPTH: 54 m or less. AREAS: Red Sea (17); Indonesia (19, 20).

*Celleporaria albirostris* (Smitt), 1873

FIGURED: figs. 15–18 and Winston (1984),

figs. 33, 34. HABITAT: coral undersurfaces, coral rubble, reef. DEPTH: 40 m or less. AREAS: St Croix (1); Florida (11); Tortugas (9); Bahamas (4); Gulf of Mexico (13); Jamaica (14); Belize (2); Venezuela (14); Curaçao (10).

*Celleporaria aperta* (Hincks), 1882

FIGURED: Winston and Heimberg (1986), figs. 79–84. HABITAT: reef. DEPTH: 30 m or less. AREAS: Red Sea (17); Indonesia (20); Jamaica (19).

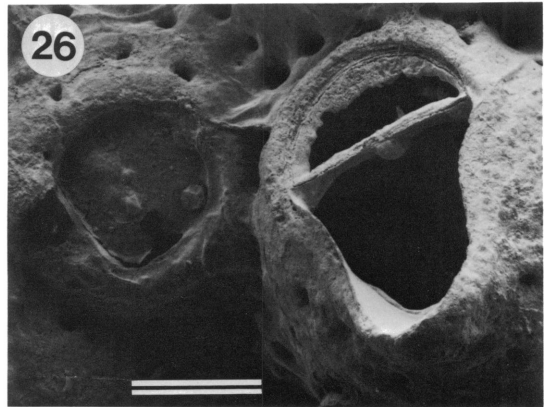
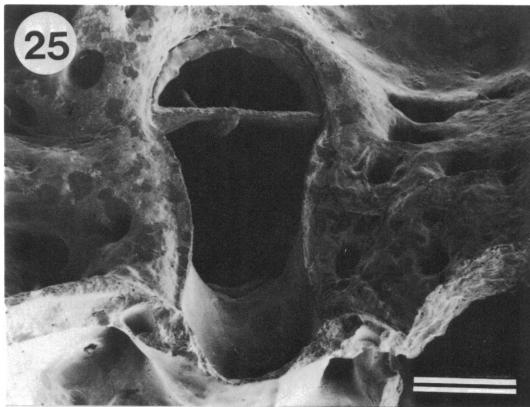
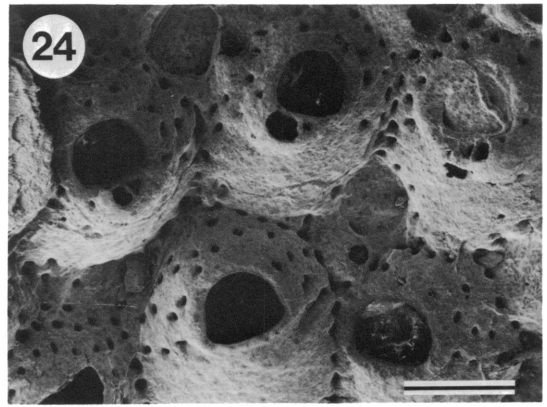
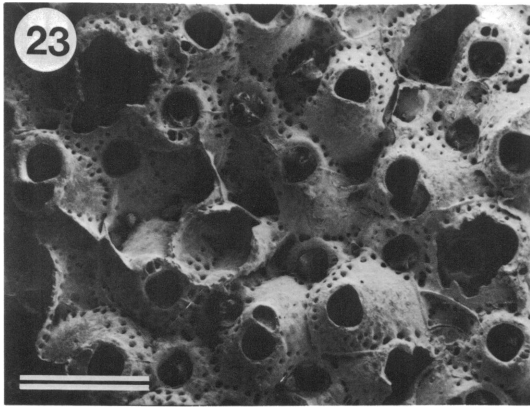
*Celleporaria brunnea* (Hincks), 1884

FIGURED: figs. 19–22. HABITAT: broken coral. DEPTH: 12–18 ft. AREAS: Panama (Pacific coast) (3).

*Celleporaria columnaris* (Busk), 1881

FIGURED: Harmer (1957), pl. XLII, figs. 18–21, 33. HABITAT: reef. DEPTH: 30 m or less. AREAS: Red Sea (17); Madagascar (16).





Figs. 23–26. 23. *Celleporaria magnaifica* (Gulf of Mexico, off Tampa, Florida). Scale bar = 1 mm. 24. *C. magnaifica*, showing shape of primary orifice. Scale bar = 400  $\mu$ m. 25. *C. magnaifica*, interzoooidal avicularium. Scale bar = 200  $\mu$ m. 26. *C. magnaifica*, interzoooidal avicularium. Scale bar = 100  $\mu$ m.

*Celleporaria granulosa* (Haswell), 1880

FIGURED: Harmer (1957), pl. XLIII, figs. 14–19. HABITAT: reef. DEPTH: 30 m or less. AREAS: Red Sea (17).

*Celleporaria intermedia*  
(MacGillivray), 1868

FIGURED: MacGillivray (1883), pl. 166, fig. 3. HABITAT: ?unattached. DEPTH: 14 m. AREAS: Great Barrier Reef (22). DISCUSSION: Mandibles and operculum illus. in Hastings (1932), text fig. 20.

*Celleporaria labelligera* Harmer, 1957

FIGURED: Harmer (1957), pl. XLII, figs. 14–17, 22, 24. HABITAT: reef. DEPTH: 30 m or less. AREAS: Red Sea (17).

*Celleporaria magnaifica* (Osburn), 1914

FIGURED: figs. 23–26. HABITAT: coral rock,

reef. DEPTH: 55 m or less. AREAS: Gulf of Mexico (7, 13).

*Celleporaria mordax* (Marcus), 1937

FIGURED: figs. 27–30. HABITAT: fore-reef talus. DEPTH: 2–25 m. AREAS: St. Croix (1); Jamaica (14).

*Celleporaria pigmentaria* (Waters), 1909

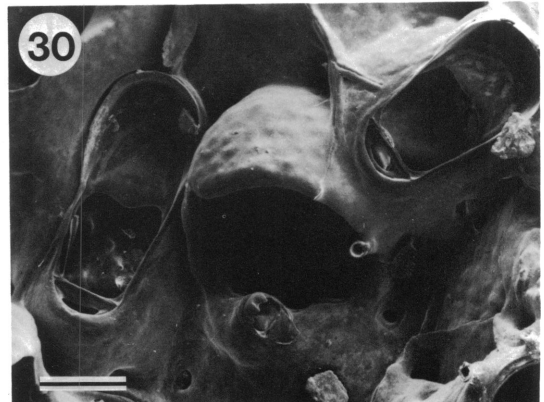
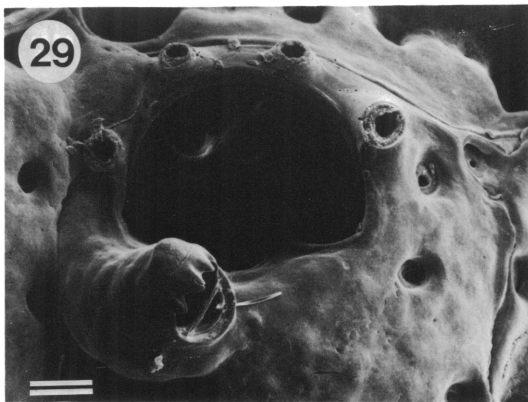
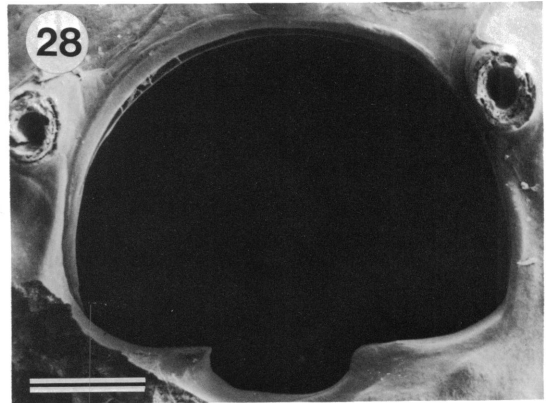
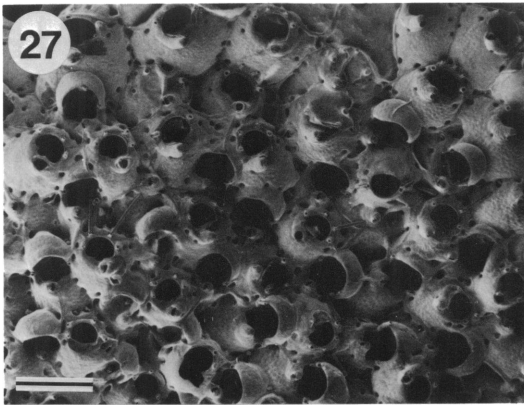
FIGURED: Harmer (1957), pl. XLIII, fig. 8, text fig. 58. HABITAT: reef. DEPTH: 17–37 m. AREAS: Red Sea (18).

*Celleporaria pilaefera*  
(Canu and Bassler), 1929

FIGURED: Harmer (1957), pl. XLII, fig. 25. HABITAT: reef. DEPTH: 30 m or less. AREAS: Red Sea (17).

*Celleporaria sibogae*

Winston and Heimberg, 1986



Figs. 27–30. 27. *Celleporaria mordax* (Port Royal Cays, Jamaica). Scale bar = 400  $\mu\text{m}$ . 28. *C. mordax*, primary orifice. Scale bar = 40  $\mu\text{m}$ . 29. *C. mordax*, showing suboral avicularium and oral spines. Scale bar = 40  $\mu\text{m}$ . 30. *C. mordax*, interzooidal avicularia and ovicell. Scale bar = 100  $\mu\text{m}$ .

FIGURED: Winston and Heimberg, 1986, pp. 73–78. HABITAT: reef, reef-flat cavities. DEPTH: 45 m or less. AREAS: Indonesia (13, 20); Madagascar (16). DISCUSSION: The *Celleporaria fusca* of Harmer (1957) is not the species described by Busk (1854). Vasseur (1984) lists *C. fusca* from Madagascar; it seems likely this is either *C. sibogae*, or another dark-pigmented species such as *C. pigmentaria*.

*Celleporaria subalba*  
(Canu and Bassler), 1928

FIGURED: figs. 31–35. HABITAT: white rock coral. DEPTH: 45 m or less. AREAS: Gulf of Mexico (7).

*Celleporaria* sp. A

FIGURED: Osborne (1984), fig. 3. HABITAT: undersurfaces of reef-crest boulders. DEPTH: LW. AREAS: Great Barrier Reef (23).

*Celleporina costazii* (Audouin), 1826

FIGURED: Harmer (1957), pl. LXII, figs. 1, 4–6. HABITAT: reef. DEPTH: 30 m or less. AREAS: Red Sea (17).

*Celleporina ignota* (Norman), 1909 (?)

HABITAT: corals, etc. DEPTH: 11–37 m. AREAS: Puerto Rico (8). DISCUSSION: Osburn (1940) states “I cannot be sure that this is Norman’s species, but it approaches it closely.” He supplies no illustration.

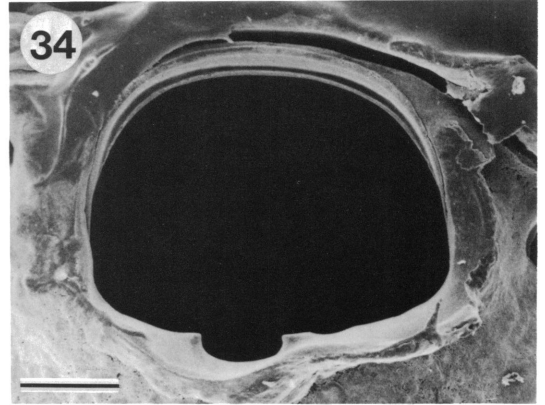
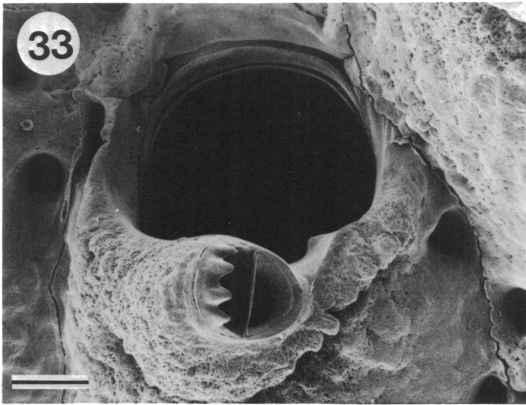
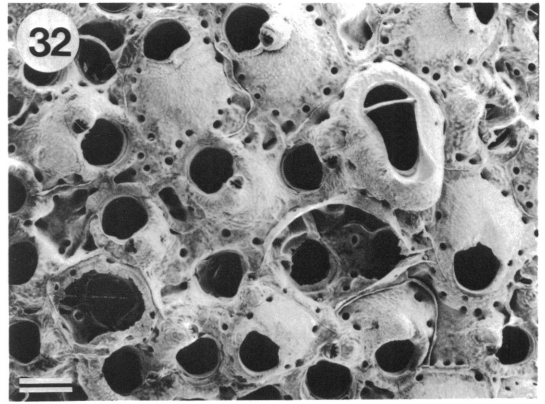
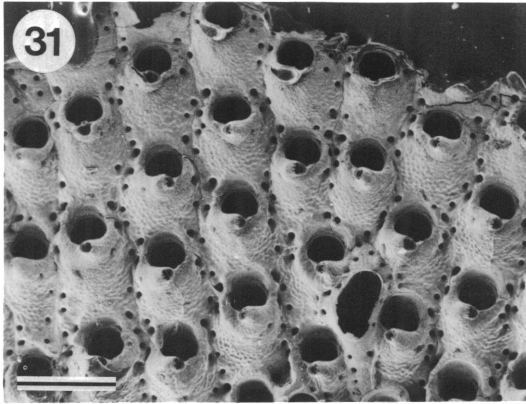
*Cheiloporina caerulea*

Canu and Bassler, 1929

FIGURED: Canu and Bassler (1929), pl. 54, figs. 2–4. HABITAT: coral. DEPTH: 42 m (Albatross Sta. 5145). AREAS: Philippines (290).

*Chorizopora brongniartii* (Audouin), 1826

FIGURED: figs. 36, 37. HABITAT: undercoral surfaces, reef. DEPTH: 30 m or less. AREAS: Red Sea (17); Jamaica, Venezuela (14).



Figs. 31–34. 31. *Celleporaria subalba* (Discovery Bay, Jamaica), zooids at growing edge of colony. Scale bar = 400  $\mu\text{m}$ . 32. *C. subalba*, inner region of colony with frontally budding zooids and interzooidal avicularia. Scale bar = 40  $\mu\text{m}$ . 33. *C. subalba*, suboral avicularium. Scale bar = 40  $\mu\text{m}$ . 34. *C. subalba*, primary orifice. Scale bar = 40  $\mu\text{m}$ .

*Cigclisula areolata* (Livingstone), 1926

FIGURED: Harmer (1957), pl. LXIX, figs. 19, 20. HABITAT: reef. DEPTH: ndg. AREAS: Great Barrier Reef (22).

*Cigclisula oclusa* (Busk), 1884

FIGURED: Harmer (1957), pl. LXIX, figs. 16–18. HABITAT: reef. DEPTH: 30 m or less. AREAS: Red Sea (17); Great Barrier Reef (21). DISCUSSION: Ryland (1974) lists this species with a question mark.

*Cleidochasma contractum* (Waters), 1899

FIGURED: Winston (1982), fig. 81. HABITAT: *Oculina* rubble, reefs. DEPTH: 90 m or less. AREAS: Florida (12); Jamaica, Venezuela (14).

*Cleidochasma laterale* Harmer, 1957

FIGURED: Harmer (1957), pl. LXXI, figs.

9–11. HABITAT: reef. DEPTH: 30 m or less. AREAS: Red Sea (17).

*Cleidochasma peristomarium* (Canu and Bassler), 1929

FIGURED: Winston and Heimberg (1986), figs. 88–90. HABITAT: coral rubble, reef. DEPTH: 2 m or less. AREAS: Indonesia (20).

*Cleidochasma porcellanum* (Busk), 1860

FIGURED: Winston (1984), fig. 56. HABITAT: coral undersurfaces, coral rubble, *Oculina*, reefs. DEPTH: 2–90 m. AREAS: Bahamas (4); St. Croix (1); Florida (11, 12); Gulf of Mexico (7, 13); Belize (2); Jamaica, Venezuela, Panama (Caribbean and Pacific coasts) (3, 14); Red Sea (17).

*Cleidochasma protrusum* (Thornely), 1905

FIGURED: Harmer (1957), pl. LXXI, figs.

1–4, text fig. 112. HABITAT: reefs. DEPTH: 30 m or less. AREAS: Red Sea (17).

*Codonellina anatina*

Canu and Bassler, 1927

FIGURED: Soule and Soule (1973), p. 431. HABITAT: corals. DEPTH: 90–113 m. AREAS: Hawaii (26). DISCUSSION: This species is discussed by Soule and Soule (1973).

*Codonellina montferrandii* (Audouin), 1826

FIGURED: Gordon (1984), pl. 26A. HABITAT: reefs. DEPTH: 30 m or less. AREAS: Red Sea (17).

*Coleopora americana* Osburn, 1940

FIGURED: Osburn (1940), fig. 50. HABITAT: coral undersurfaces. DEPTH: 20 m or less. AREAS: Jamaica, Venezuela (14).

*Coleopora corderoi* Marcus, 1949

FIGURED: figs. 68, 69. HABITAT: coral undersurfaces. DEPTH: 20 m or less. AREAS: Jamaica, Venezuela (14).

*Coleopora tubulosa*

(Canu and Bassler), 1928

FIGURED: Canu and Bassler (1928b), pl. 24, figs. 1–6. HABITAT: coral rubble. DEPTH: 40 m or less. AREAS: Florida (11).

*Coleopora verrucosa*

(Canu and Bassler), 1924

FIGURED: Winston and Heimberg (1986), figs. 33, 34. HABITAT: coral rubble, reef. DEPTH: 2 m or less. AREAS: Indonesia (20)

*Coleopora undescribed* sp.

FIGURED: Banta and Carson (1977), fig. 6C, as *Teuchopora* undescribed sp. HABITAT: coral rubble. DEPTH: 10 m or less. AREAS: Costa Rica (Caribbean) (5). DISCUSSION: According to Banta and Carson (1977) this species may be synonymous with *Coleopora tubulosa*.

*Coleopora undescribed* sp.

FIGURED: fig. 70. HABITAT: coral undersurfaces. DEPTH: 20 m. AREAS: Jamaica (14).

*Cosciniopsis globosa* Harmer, 1957

FIGURED: Harmer, 1957, pl. LXXII, figs. 22, 26. HABITAT: reefs. DEPTH: 30 m or less. AREAS: Red Sea (17).

*Cosciniopsis lonchaea* (Busk), 1884

FIGURED: Harmer (1957), pl. LXXII, figs. 16, 17, 19, 20. HABITAT: reefs. DEPTH: 30 m or less. AREAS: Red Sea (17).

*Crepidacantha carsioseta*

Winston and Heimberg, 1986

FIGURED: Winston and Heimberg (1986), figs. 64–66. HABITAT: coral rubble. DEPTH: 2–3 m. AREAS: Indonesia (20).

*Crepidacantha longiseta*

Canu and Bassler, 1928

FIGURED: Winston (1984), fig. 42. HABITAT: corals, coral undersurfaces. DEPTH: 122 m or less. AREAS: Belize (2); off Cuba (7); Panama (Caribbean) (3); Venezuela (14).

*Crepidacantha poissonii* (Audouin), 1826

FIGURED: Harmer (1957), pl. LXVII, fig. 22. HABITAT: coral and coral rubble, reefs. DEPTH: 30 m or less. AREAS: Bahamas (4); Jamaica (14); Red Sea (17).

*Crepidacantha setigera* (Smitt), 1873

FIGURED: Winston (1982), fig. 68. HABITAT: *Oculina*, coral undersurfaces. DEPTH: 90 m or less. AREAS: Florida (12); Jamaica (14).

*Cribellopora trichotoma* (Waters), 1918

FIGURED: Gordon (1984), pl. 31A. HABITAT: reefs. DEPTH: 30 m or less. AREAS: Red Sea (17).

*Drepanophora birbira* Powell, 1967

FIGURED: Powell (1967), text fig. 2. HABITAT: reef. DEPTH: 18–37 m. AREAS: Red Sea (18).

*Drepanophora incisor* (Thornely), 1905

FIGURED: Harmer (1957), pl. LXX, figs. 26–28. HABITAT: reefs. DEPTH: 30 m or less. AREAS: Red Sea (17, 18); Indonesia (20).

*Drepanophora longiuscula* Harmer, 1957

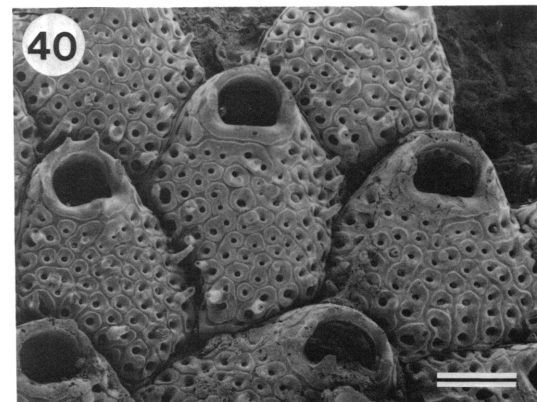
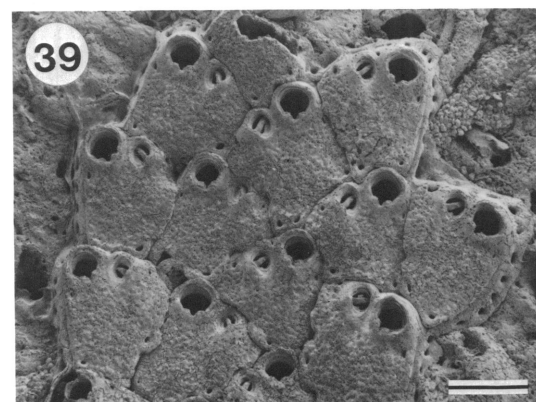
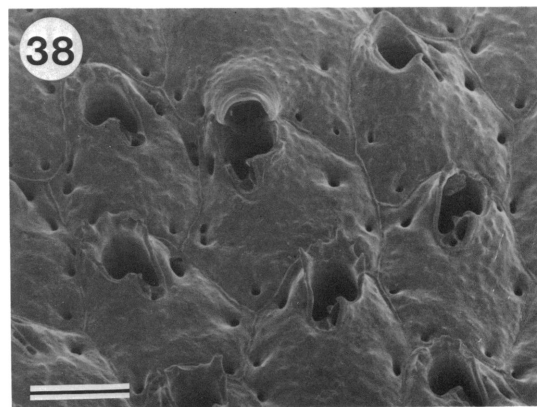
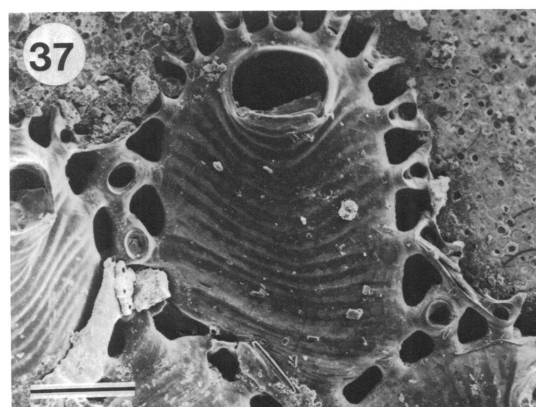
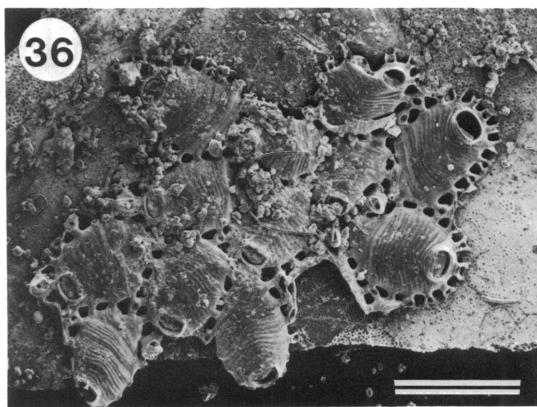
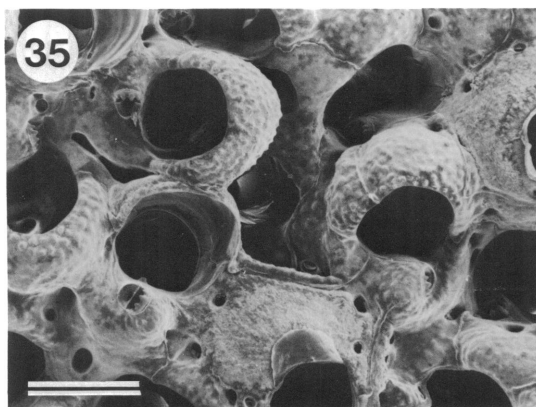
FIGURED: as *Rhynchozoon corrugatum* in Waters (1909), pl. XII, figs. 14–16. HABITAT: reefs. DEPTH: 30 m or less. AREAS: Red Sea (17, 18). DISCUSSION: Harmer gave a new name to the specimen described by Waters (1909) as *R. corrugatum*, chiefly on the basis of ovicell characteristics, but did not provide a new illustration.

*Drepanophora tuberculatum* (Osburn), 1914

FIGURED: fig. 38. HABITAT: coral undersurfaces, coral rubble. DEPTH: 20 m or less. AREAS: Bahamas (4); Curaçao (10); Jamaica, Venezuela (14).

*Drepanophora verrucosa*

Winston and Heimberg, 1986



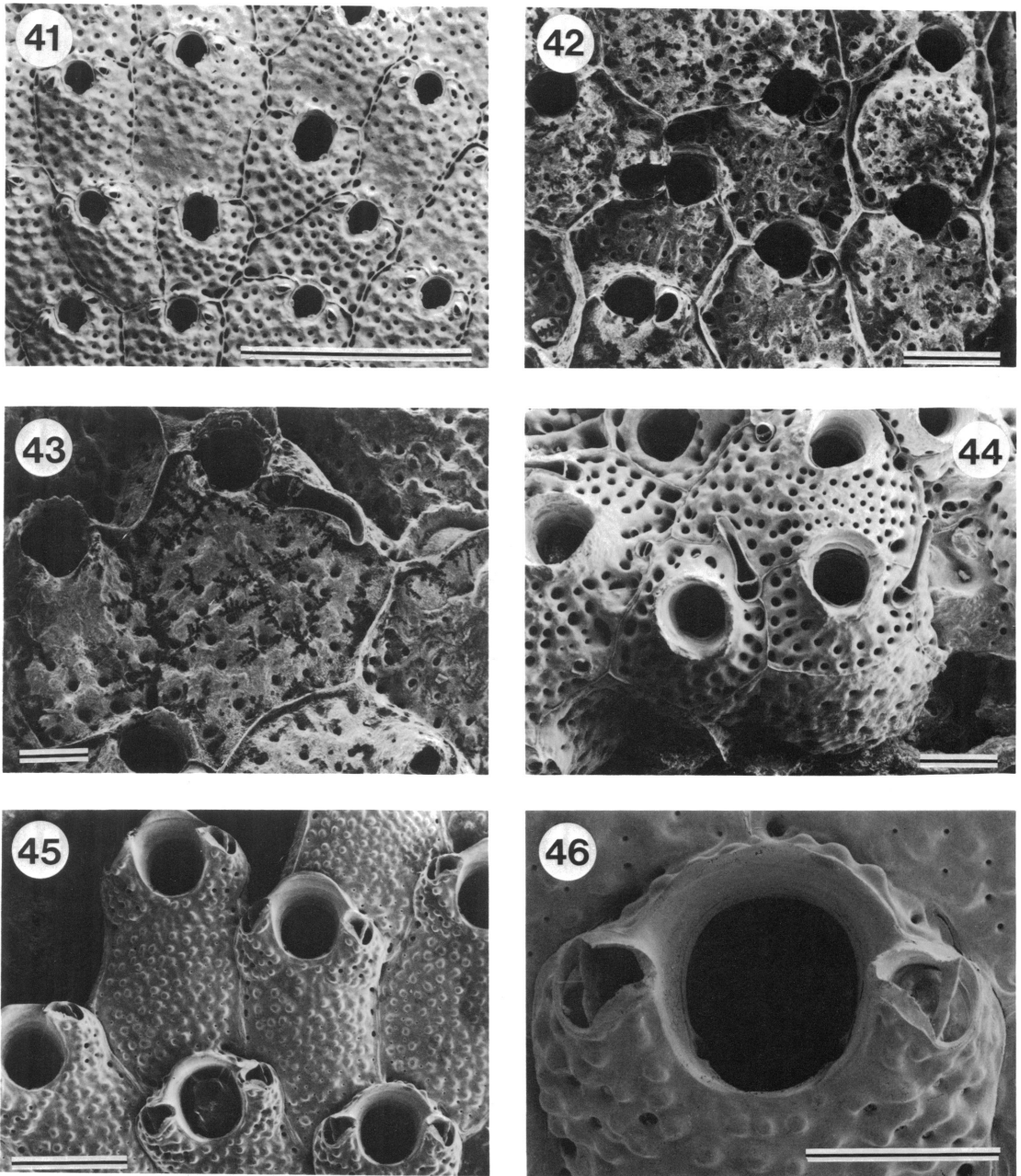
Figs. 35–40. 35. *Celleporaria subalba*, ovicelled zooids. Scale bar = 200  $\mu$ m. 36. *Chorizopora brogniartii* (Priory, Jamaica), young colony. Scale bar = 400  $\mu$ m. 37. *C. brogniartii*, close-up of zooid. Scale bar = 100  $\mu$ m. 38. *Drepanophora tuberculatum* (10-3-R3, Rio Bueno, Jamaica). Scale bar = 200  $\mu$ m. 39. *Escharina porosa* (10-1-R24, col. #2, Rio Bueno, Jamaica). Scale bar = 400  $\mu$ m. 40. *Exechonella antillea* (10-1-R8, Rio Bueno, Jamaica). Scale bar = 400  $\mu$ m.

FIGURED: Winston and Heimberg (1986), figs. 103–106. HABITAT: coral rubble. DEPTH: 2–3 m. AREAS: Indonesia (20).

*Emballotheca pacifica* Harmer, 1957

FIGURED: Harmer (1957), pl. LXVII, figs. 3–5. HABITAT: coral. DEPTH: 91–113 m.





Figs. 41–46. 41. *Gemelliporida magniporosa* (10-1-R22, Rio Bueno, Jamaica). Scale bar = 1 mm. 42. *G. multilamellosa* (Galeta reef, Panama). Zooids with ovicells and ovoid avicularia. Scale bar = 400  $\mu$ m. 43. *G. multilamellosa*, showing longer curved avicularia. Scale bar = 200  $\mu$ m. 44. *G. typica* (20-1-R15, Col. #1, Rio Bueno, Jamaica). Scale bar = 400  $\mu$ m. 45. *Gephyrophora rubra* (Rio Bueno, Jamaica). Scale bar = 400  $\mu$ m. 46. *G. rubra*, close-up of orifice. Scale bar = 200  $\mu$ m.

AREAS: Hawaii (26). DISCUSSION: Harmer (1957) put Canu and Bassler's (1927a) *Mucronella? quadrata* in synonymy with his new species.

*Escharina pesansensis* (Smitt), 1873

FIGURED: Winston (1984), figs. 53–55. HABITAT: coral undersurfaces, coral rubble, *Oculina*. DEPTH: 113 m or less. AREAS: Flor-

ida (12); Bahamas (4); Belize (2); Jamaica, Venezuela (14); Red Sea (17); Hawaii (26).

*Escharina porosa* (Smitt), 1873

FIGURED: fig. 39. HABITAT: coral undersurfaces, coral, coral rubble. DEPTH: 56 fm or less. AREAS: Florida, Gulf of Mexico (7); Costa Rica (Caribbean) (5); Jamaica, Venezuela (14).

*Escharoides coccinea* Abildgaard, 1806 (?)

FIGURED: Hayward and Ryland (1979), fig. 24. HABITAT: coral. DEPTH: 10 m or less. AREAS: Bahamas (4). DISCUSSION: This identification seems doubtful, since Hayward and Ryland describe *E. coccinea* as a boreal species. Perhaps the specimen belongs to the species recently described by Dumont (1981).

*Escharoides costifer* (Osburn), 1914

FIGURED: Winston (1982), fig. 61. HABITAT: reef. DEPTH: ndg. AREAS: Gulf of Mexico (13). DISCUSSION: Listed as *E. costifera*. This species usually occurs on algae.

*Escharoides longirostris* Dumont, 1981

FIGURED: Dumont (1981), fig. 1A. HABITAT: reef. DEPTH: 30 m or less. AREAS: Red Sea (17).

*Euthyrisella clathrata* (Harmer), 1902

FIGURED: Harmer (1902), pl. 16, figs. 18–31. HABITAT: reef slope. DEPTH: sublittoral. AREAS: Great Barrier Reef (21). DISCUSSION: Listed as *Euthyricella* in Ryland (1974).

*Exechonella antillea* (Osburn), 1927

FIGURED: fig. 40, and Winston (1982), fig. 60. HABITAT: corals, coral undersurfaces, coral rubble, reef. AREAS: Bahamas (4); Florida (11); Jamaica (14); Puerto Rico (8); Red Sea (17).

*Exechonella brasiliensis*

Canu and Bassler, 1928

FIGURED: Winston and Heimberg (1986), figs. 26, 27. HABITAT: coral rubble. DEPTH: 1.5–2 m. AREAS: Indonesia (20).

*Exechonella discoidea*

Canu and Bassler, 1929

FIGURED: Canu and Bassler (1929), pl. 20, figs. 5, 6. HABITAT: reef. DEPTH: 30 m or less. AREAS: Red Sea (17).

*Exechonella tuberculata*

MacGillivray, 1883

FIGURED: Gordon (1984), pl. 23D. HABITAT: reefs. DEPTH: 30 m or less. AREAS: Red Sea (17).

*Fenestrulina harmeri*

Winston and Heimberg, 1986

FIGURED: Winston and Heimberg (1986), figs. 67, 68. HABITAT: coral rubble. DEPTH: 1.5–2 m. AREAS: Indonesia (20).

*Gemelliporidra belikina* Winston, 1984

FIGURED: Winston (1984), figs. 51, 52. HABITAT: coral undersurfaces. DEPTH: 5–10 m. AREAS: Belize (2).

*Gemelliporidra magniporosa*

(Canu and Bassler), 1923

FIGURED: fig. 41. HABITAT: coral undersurfaces. DEPTH: 20 m or less. AREAS: Jamaica (14).

*Gemelliporidra multilamellosa*

(Canu and Bassler), 1923

FIGURED: figs. 42, 43. HABITAT: coral, coral undersurfaces (reef). DEPTH: 10 m or less. AREAS: Panama (Caribbean) (14).

*Gemelliporidra typica*

(Canu and Bassler), 1927

FIGURED: fig. 44. HABITAT: coral undersurfaces. DEPTH: 20 m or less. AREAS: Jamaica (14).

*Gephyrophora rubra* Osburn, 1940

FIGURED: figs. 45, 46. HABITAT: undercoral surfaces. DEPTH: 20 m or less. AREAS: Jamaica (14).

*Gigantopora fenestrata* (Smitt), 1873

FIGURED: as *Stenopsis fenestrata*, Canu and Bassler (1928b), pl. 14, figs. 9, 10. HABITAT: reefs. DEPTH: 30 m or less. AREAS: Red Sea (17).

*Gigantopora pupa* Jullien, 1903

FIGURED: Gordon (1984), pl. 26F. HABITAT: reefs. DEPTH: 30 m or less. AREAS: Red Sea (17).

*Gigantopora spiculifera*

Canu and Bassler, 1927

FIGURED: Harmer (1957), pl. LX, figs. 10, 11. HABITAT: corals. DEPTH: 91–113 m. AREAS: Hawaii (26).

*Hemismittoidea corallinea*

Soule and Soule, 1973

FIGURED: Soule and Soule (1973), fig. 1A-D. HABITAT: corals and black coral. DEPTH: 3-46 m. AREAS: Hawaii (25).

*Hippaliosina acutirostris*

Canu and Bassler, 1929

FIGURED: Harmer (1957), pl. LXXII, figs. 1-5. HABITAT: reef. DEPTH: 5-33 m. AREAS: Red Sea (18).

*Hippaliosina rostrigera* (Smitt), 1873

FIGURED: Winston (1982), fig. 65. HABITAT: coral, *Oculina* rubble. DEPTH: 15-90 m. AREAS: Florida (12); Tortugas (9); Gulf of Mexico (7).

*Hippopetraliella dorsiporosa* (Busk), 1884

FIGURED: Harmer (1957), pl. XLV, figs. 1-3. HABITAT: Spur and Groove Zone. DEPTH: ndg. AREAS: Madagascar (16).

*Hippopetraliella magna* (d'Orbigny), 1852

FIGURED: Harmer (1957), pl. LV, figs. 5, 6. HABITAT: reefs. DEPTH: 37 m or less. AREAS: Red Sea (17, 18).

*Hippopetraliella* sp.

HABITAT: fore-reef slope. DEPTH: ndg. AREAS: Madagascar (16).

*Hippopleurifera belizae* Winston, 1984

FIGURED: Winston (1984), figs. 29, 30. HABITAT: coral undersurfaces. DEPTH: 5-10 m. AREAS: Belize (2).

*Hippopodina feegeensis* (Busk), 1884

FIGURED: Winston and Heimberg (1986), figs. 28-30. HABITAT: coral rubble, coral undersurfaces, reef. DEPTH: 54 m or less. AREAS: Florida (11); Bahamas (4); St. Croix (1); Belize (2); Costa Rica (Caribbean) (5); Gulf of Mexico (13); Jamaica, Venezuela (14); Red Sea (17, 18); Indonesia (19, 20); Great Barrier Reef (21, 23).

*Hippopodinella adpressa* (Busk), 1854 (?)

FIGURED: Powell (1967), pl. 13, figs. d, e, text fig. 93. HABITAT: reefs. DEPTH: 30 m or less. AREAS: Red Sea (17, 18). DISCUSSION: According to Dumont (1981) Powell's specimens do not belong to Busk's species.

*Hippoporella gorgonensis* Hastings, 1930

FIGURED: Osburn (1952), pl. 45, figs. 10, 11. HABITAT: broken coral, coral undersur-

faces. DEPTH: 20 m or less. AREAS: Jamaica (14); Panama (Pacific coast) (3).

*Hippoporella multidentata* (Thornely), 1905

FIGURED: Harmer (1957), pl. LXXII, figs. 9-12. HABITAT: reefs. DEPTH: 30 m or less. AREAS: Red Sea (17).

*Hippoporella rimata* Osburn, 1952

FIGURED: Osburn (1952), pl. 45, figs. 6, 7. HABITAT: broken coral. DEPTH: 12-18 ft. AREAS: Panama (Pacific coast) (3).

*Hippoporella spinigera* (Phillipps), 1899

FIGURED: Harmer (1957), pl. LXXII, fig. 13. HABITAT: reefs. DEPTH: 30 m or less. AREAS: Red Sea (17).

*Hippoporidra* sp. A and B (?)

HABITAT: fore-reef talus. DEPTH: 2-4 m. AREAS: St. Croix (1). DISCUSSION: Specimens not in Schopf collection at USNM, thus identifications could not be verified.

*Hippoporina pertusa* (Esper), 1796

FIGURED: Winston (1984), figs. 39, 40. HABITAT: coral undersurfaces. DEPTH: 15 m. AREAS: Belize (2). DISCUSSION: Caribbean specimens probably do not belong to the European species (see Winston, 1984).

*Hippoporina verrilli*

Mature and Schopf, 1968

FIGURED: Winston (1982), fig. 69. HABITAT: coral. DEPTH: 10 m or less. AREAS: Bahamas (4).

*Hippothoa flagellum* Manzoni, 1870

FIGURED: Winston (1982), fig. 84. HABITAT: *Oculina* rubble. DEPTH: 40-90 m. AREAS: Florida (12).

*Hippothoa* sp.

HABITAT: reefs. DEPTH: 20 m or less. AREAS: Venezuela (14).

*Iodictyum buchneri* Harmer, 1934

FIGURED: Harmer (1934), pl. XXXV, figs. 1-5. HABITAT: reef. DEPTH: ndg. AREAS: Indonesia (19).

*Iodictyum* sp.

HABITAT: reef slope. DEPTH: sublittoral. AREAS: Great Barrier Reef (21). DISCUSSION: Found at Heron Island by Ryland (1974).



*Lagenipora verrucosa*

Canu and Bassler, 1928

FIGURED: Canu and Bassler (1928b), pl. 21, figs. 5–8. HABITAT: corals. DEPTH: 33–56 fm. AREAS: Florida, north of Cuba (7).

*Margaretta buski* Harmer, 1957

FIGURED: figs. 47, 48. HABITAT: coral undersurfaces. DEPTH: 20 m or less. AREAS: Jamaica, Panama (Caribbean) (14).

*Margaretta gracilior* (Ortmann), 1892

FIGURED: Harmer (1957), pl. LV, figs. 23–28. HABITAT: reefs. DEPTH: 30 m or less. AREAS: Red Sea (17); Indonesia (19).

*Margaretta opuntioides* (Pallas), 1766

FIGURED: Harmer (1957), pl. LV, figs. 1, 2, 4, 5. HABITAT: reef. DEPTH: ndg. AREAS: Indonesia (19).

*Margaretta tenuis* Harmer, 1957

FIGURED: Harmer (1957), pl. LV, figs. 13–18. HABITAT: reefs. DEPTH: 30 m or less. AREAS: Red Sea (17).

*Margaretta triplex* Harmer, 1957

FIGURED: Winston and Heimberg (1986), figs. 70–72. HABITAT: coral undersurfaces, outer reef flat; reef. DEPTH: intertidal. AREAS: Indonesia (19, 20); Great Barrier Reef (21).

*Microporella ciliata* (Pallas), 1766

FIGURED: Hayward and Ryland (1979), fig. 95. HABITAT: corals, coral undersurfaces, coral rubble. DEPTH: 40 m or less. AREAS: Florida (11); Tortugas (9); Gulf of Mexico (7); Curaçao (10). DISCUSSION: *Microporella ciliata* is considered by Hayward and Ryland (1979) to be a temperate boreal species. It has been listed from many other localities including the Caribbean, but only further study will show which, if any, of those specimens are *ciliata* and which belong to other species.

*Microporella mayensis* Winston, 1984

FIGURED: Winston (1984), figs. 59, 60. HABITAT: coral undersurfaces. DEPTH: 20 m or less. AREAS: Belize (2).

*Microporella orientalis* Harmer, 1957

FIGURED: Gordon (1984), pl. 39C. HABITAT: reefs. DEPTH: 33 m or less. AREAS: Red Sea (17, 18).

*Microporella umbracula* (Audouin), 1826

FIGURED: fig. 49. HABITAT: coral rubble,

coral undersurfaces, *Oculina*. DEPTH: 90 m or less. AREAS: Florida (12); Jamaica (14); Panama (Pacific coast) (3).

*Mucropetraliella echinata*

(Canu and Bassler), 1929

FIGURED: Harmer, 1957, pl. XLVI, figs. 14–16, text fig. 62F. HABITAT: reefs. DEPTH: 30 m or less. AREAS: Red Sea (17).

*Mucropetraliella loculifera* Harmer, 1957

FIGURED: Harmer (1957), pl. XLVI, figs. 3–7. HABITAT: Spur and Groove Zone. DEPTH: ndg. AREAS: Madagascar (16).

*Mucropetraliella philippinensis*

(Canu and Bassler), 1929

FIGURED: Harmer (1957), pl. XLV, figs. 19–21. HABITAT: reefs. DEPTH: 30 m or less. AREAS: Red Sea (17).

*Mucropetraliella robusta*

(Canu and Bassler), 1929

FIGURED: Harmer (1957), pl. XLVI, fig. 13, text fig. 65. HABITAT: reefs. DEPTH: 30 m or less. AREAS: Red Sea (17).

*Mucropetraliella thenardii* (Audouin), 1826

FIGURED: Harmer (1957), pl. XLVI, figs. 10–12, text figs. 62, 64. HABITAT: reefs. DEPTH: 30 m or less. AREAS: Red Sea (17).

*Parasmittina alanbanneri*

Soule and Soule, 1973

FIGURED: Soule and Soule (1973), fig. 3A–C. HABITAT: coral. DEPTH: 3–26 m. AREAS: Hawaii (25).

*Parasmittina areolata*

(Canu and Bassler), 1927

FIGURED: Soule and Soule (1973), fig. 4E–G. HABITAT: coral, coral undersurfaces. DEPTH: 3–100+ m. AREAS: Belize (2); Jamaica (14); Hawaii (25, 26). DISCUSSION: This species may be found to be synonymous with *P. spathulata* once a thorough comparative study has been made (see Soule and Soule, 1973; Winston, 1984).

*Parasmittina circularis*

Soule and Soule, 1973

FIGURED: Soule and Soule (1973), fig. 4A–D. HABITAT: ? coral (no substratum given). DEPTH: 3–120 m. AREAS: Hawaii (25).

*Parasmittina crosslandi* (Hastings), 1930

FIGURED: Soule and Soule (1973), fig. 2E,

F. HABITAT: broken coral. DEPTH: 18 ft. AREAS: Panama (Pacific coast). (3). DISCUSSION: See Soule and Soule (1973) for discussion of this species.

*Parasmittina decorata*

Soule and Soule, 1973

FIGURED: Soule and Soule (1973), fig. 6A–C. HABITAT: coral and black coral. DEPTH: 3–120 m. AREAS: Hawaii (25).

*Parasmittina egyptiaca* (Waters), 1909

FIGURED: Harmer (1957), pl. LXIV, figs. 21, 22, 29–31. HABITAT: reefs. DEPTH: 37 m or less. AREAS: Red Sea (17, 18).

*Parasmittina glomerata* (Thornely), 1912

FIGURED: Harmer (1957), pl. LXIV, figs. 18–20. HABITAT: reefs. DEPTH: 37 m or less. AREAS: Red Sea (17, 18).

*Parasmittina hastingiae*

Soule and Soule, 1973

FIGURED: Soule and Soule (1973), fig. 9C, D. HABITAT: ? coral (no substratum given). DEPTH: 3–15 m. AREAS: Hawaii (25); Indonesia (20).

*Parasmittina iloensis*

Soule and Soule, 1973

FIGURED: Soule and Soule (1973), fig. 10A–F. HABITAT: coral. DEPTH: 3–12 m. AREAS: Hawaii (25).

*Parasmittina kauaiensis*

Soule and Soule, 1973

FIGURED: Soule and Soule (1973), fig. 9A, B. HABITAT: ? coral (no substratum given). DEPTH: 6–16 m. AREAS: Hawaii (25).

*Parasmittina labellum*

(Canu and Bassler), 1928

FIGURED: as *Smittina labellum* Canu and Bassler (1928b), pl. 15, figs. 1–4. HABITAT: coral. DEPTH: 102 m or less. AREAS: Florida, Gulf of Mexico (7).

*Parasmittina leviavicularia*

Soule and Soule, 1973.

FIGURED: Soule and Soule (1973), fig. 7E–G. HABITAT: coral. DEPTH: 3–110 m. AREAS: Hawaii (25).

*Parasmittina marsupialis* (Busk), 1884

FIGURED: Soule and Soule (1973), fig. 7C, D. HABITAT: coral. DEPTH: 8–23 m. AREAS: Hawaii (25).

*Parasmittina munita* (Hincks), 1884

HABITAT: coral and coral rubble. DEPTH: 10 m or less. AREAS: Bahamas (4). DISCUSSION: Marcus (1937) describes and figures a *Smittina trispinosa* (Johnst.) var. *munita* (Hincks) which may be the species meant here.

*Parasmittina parsevaliformis*

Soule and Soule, 1973

FIGURED: Soule and Soule (1973), fig. 8A–F. HABITAT: ? coral (no substratum given). DEPTH: 6–26 m. AREAS: Hawaii (25).

*Parasmittina parsevalii* (Audouin), 1826

FIGURED: Winston and Heimberg (1986), figs. 55–58. HABITAT: reefs. DEPTH: 30 m or less. AREAS: Red Sea (17, 18); Indonesia (20).

*Parasmittina parviuncinata*

Soule and Soule, 1973

FIGURED: Soule and Soule (1973), fig. 5D–F. HABITAT: ? coral (no substratum given). DEPTH: 2–14 m. AREAS: Hawaii (25).

*Parasmittina raigiformis*

Soule and Soule, 1973

FIGURED: Soule and Soule (1973), fig. 9F, G. HABITAT: mostly on coral. DEPTH: 3–21 m. AREAS: Hawaii (25).

*Parasmittina raigii* (Audouin), 1826

FIGURED: Harmer (1957), pl. LXV, figs. 1–3. HABITAT: reefs. DEPTH: 30 m or less. AREAS: Red Sea (17).

*Parasmittina serrula*

Soule and Soule, 1973

FIGURED: Winston (1984), fig. 45. HABITAT: coral undersurfaces, coral. DEPTH: 3–100+ m. AREAS: Gulf of Mexico (13); Belize (2); Jamaica (14); Hawaii (25).

*Parasmittina signata* (Waters), 1889

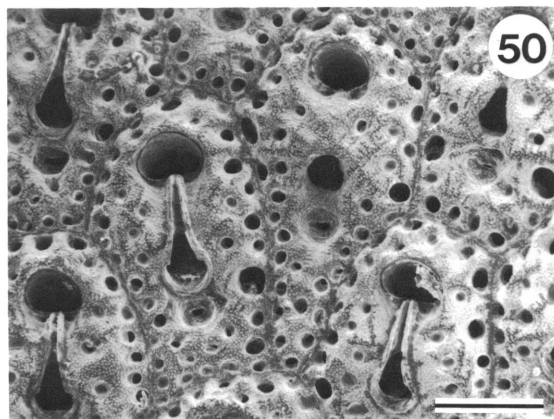
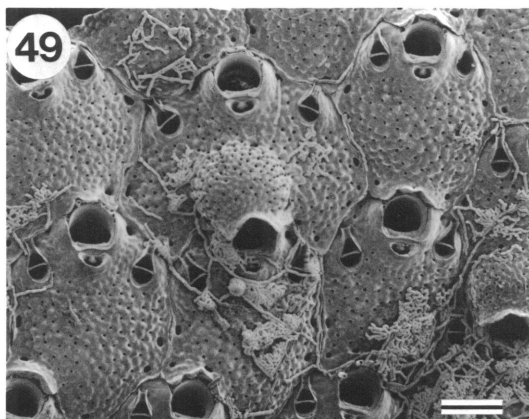
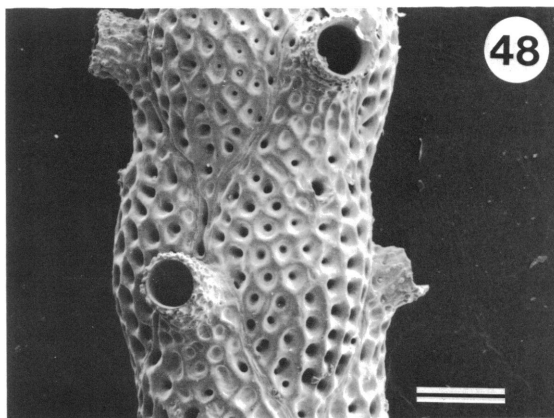
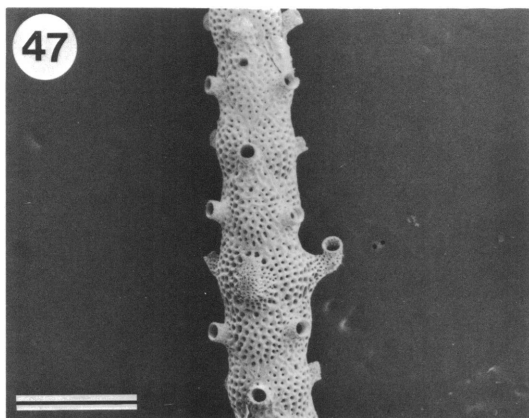
FIGURED: Winston and Heimberg (1986), figs. 51–54. HABITAT: coral. DEPTH: 10 m or less. AREAS: Bahamas (4); Indonesia (20).

*Parasmittina spathulata* (Smitt), 1873

FIGURED: Winston (1982), fig. 70. HABITAT: fore-reef talus, coral, *Oculina* rubble. DEPTH: 2 to 90 m. AREAS: Florida (12); St. Croix (1); Curaçao (10). DISCUSSION: See under *P. areolata*.

*Parasmittina trispinosa* (Johnston), 1838 (?)

HABITAT: fore-reef talus, reef. DEPTH: 2–4 m, ndg. AREAS: St. Croix (1); Gulf of Mexico



Figs. 47–50. 47. *Margaretta buski* (10-1-R8, Rio Bueno, Jamaica), portion of branch. Scale bar = 1 mm. 48. *M. buski*, close-up of zooids. Scale bar = 200  $\mu$ m. 49. *Microporella umbracula* (20-2-R12, Rio Bueno, Jamaica). Scale bar = 200  $\mu$ m. 50. *Reptadeonella bipartita* (10-1-R25, Rio Bueno, Jamaica). Scale bar = 200  $\mu$ m.

(13). DISCUSSION: *Parasmittina trispinosa* has been reported from many localities; the name seems to have been commonly used for any *Parasmittina* species with three oral spines. *Parasmittina trispinosa* Johnston (Hayward and Ryland, 1979, fig. 42) is, according to Hayward and Ryland, a cool temperate species found in the Eastern Atlantic and Western Mediterranean. Caribbean reports probably refer to one or more other species. For example, part of *Parasmittina trispinosa* (Johnston) in Kornicker, 1959 (13) is *P. serrula*, part belongs to unidentified species.

*Parasmittina tropica* (Waters), 1909

FIGURED: Gordon (1984), fig. 35D. HABITAT: reefs. DEPTH: 37 m or less. AREAS: Red Sea (17, 18). DISCUSSION: Harmer's illustra-

tions seem to include several species, including *P. serrula* (see Soule and Soule, 1973, p. 389).

*Parasmittina uncinata*  
Soule and Soule, 1973

FIGURED: Soule and Soule (1973), fig. 5A–C. HABITAT: coral. DEPTH: 3–52 m. AREAS: Hawaii (25).

*Parasmittina* spp.

HABITAT: undercoral surfaces. DEPTH: 20 m or less. AREAS: Jamaica (14).

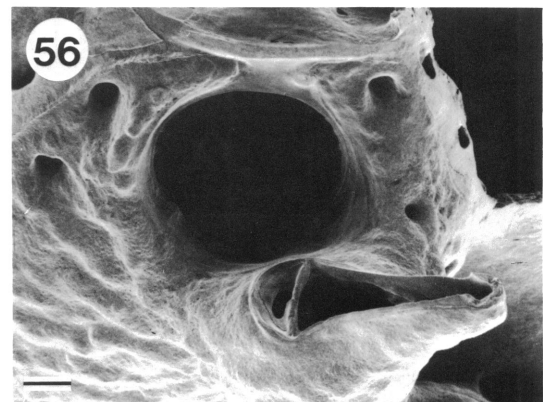
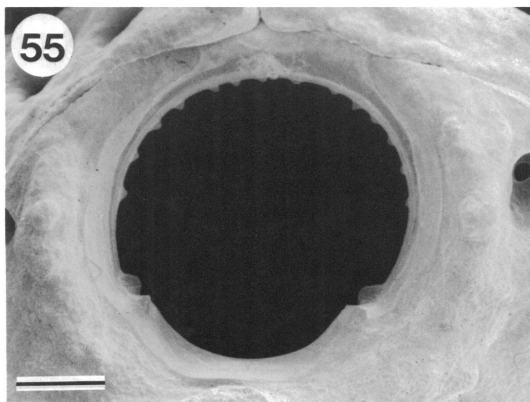
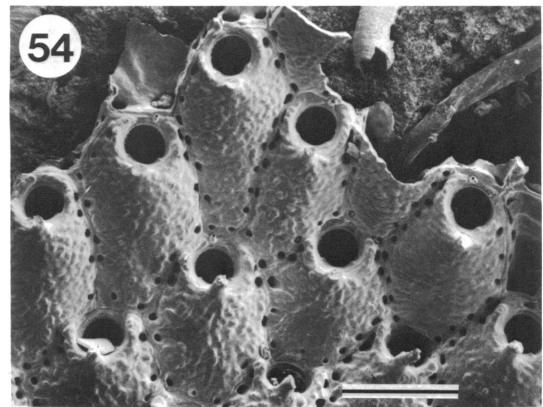
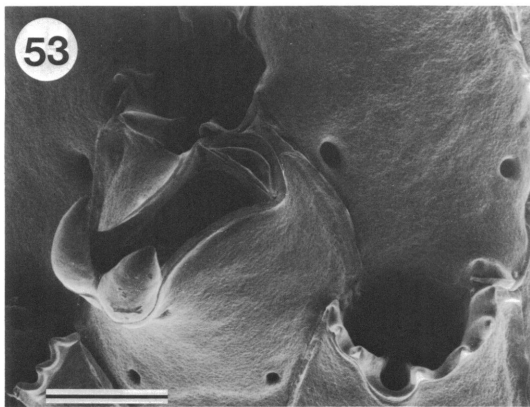
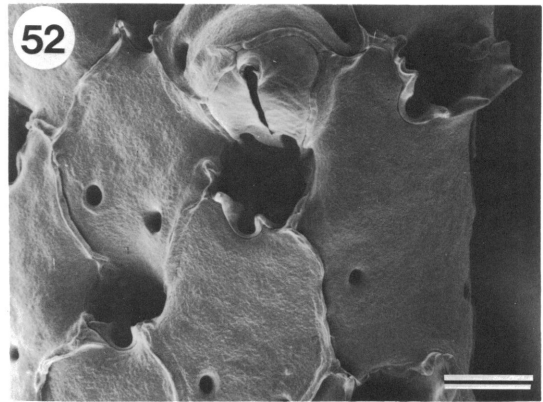
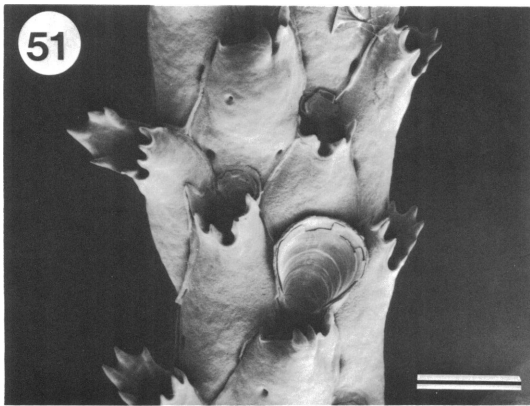
*Parasmittina* spp.

HABITAT: coral rubble (reef). DEPTH: 40 m or less. AREAS: Florida (11).

*Petraliella bisinuata* (Smitt), 1873

FIGURED: Harmer (1957), pl. XLIV, figs.

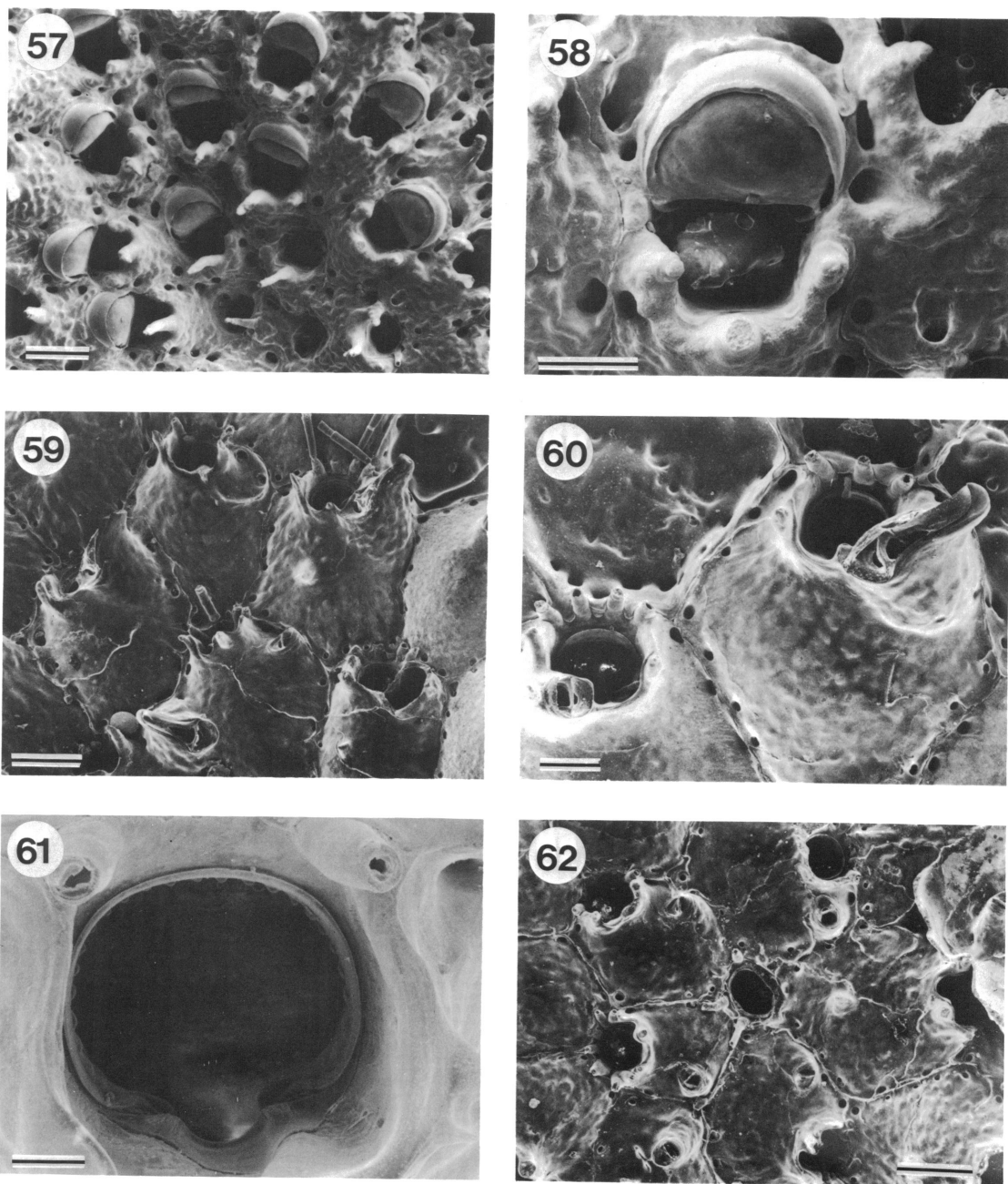
- 6, 7, 12, 14, 15. HABITAT: coral, coral undersurfaces. AREAS: Gulf of Mexico (7); Venezuela (14).
- Petraliella chuakensis* (Waters), 1913  
FIGURED: Winston and Heimberg (1986), figs. 31, 32. HABITAT: coral rubble. DEPTH: 1.5–2 m. AREAS: Indonesia (20).
- Pleurocodonellina lahainae*  
Soule and Soule, 1973  
FIGURED: Soule and Soule (1973), fig. 12A–E. HABITAT: coral. DEPTH: 15 m. AREAS: Hawaii (25).
- Psilopsella uniseriata*  
Canu and Bassler (1927)  
FIGURED: Canu and Bassler (1927b), pl. 57, figs. 1–3. HABITAT: corals. DEPTH: 42–44 m. AREAS: Philippines (29).
- Reptadeonella bipartita*  
(Canu and Bassler), 1928  
FIGURED: fig. 50. HABITAT: coral undersurfaces, fore-reef talus. DEPTH: 20 m or less. AREAS: St. Croix (1); Puerto Rico, Jamaica (14).
- Reptadeonella costulata*  
(Canu and Bassler), 1928  
FIGURED: Winston (1984), figs. 31, 32. HABITAT: coral undersurfaces. DEPTH: 20 m or less. AREAS: Belize (2); Jamaica (14).
- Reptadeonella hastingsae*  
Cheetham and Sandberg, 1964  
FIGURED: Winston (1982), fig. 63. HABITAT: *Oculina* rubble. DEPTH: 60–90 m. AREAS: Florida (12). DISCUSSION: listed as *R. costulata* in Winston (1982).
- Reptadeonella joloensis* (Bassler), 1936  
FIGURED: Harmer (1957), pl. LIV, figs. 1–3, text fig. 86A–C. HABITAT: reef. DEPTH: ndg. AREAS: Great Barrier Reef (21).
- Reptadeonella violacea* (Johnston), 1847 (?)  
HABITAT: coral rubble, coral. DEPTH: 40 m or less. AREAS: Bahamas (4); Florida (11); Panama (Pacific coast) (3). DISCUSSION: None of these records can refer to *Reptadeonella violacea*, which is an Eastern Atlantic and Mediterranean species. They could be any one of several other species including *R. costulata* and *R. bipartita*.
- Reteporella graffei* (Kirchenpauer), 1869  
FIGURED: Harmer (1934), pl. XXXV, figs. 12–15, pl. XXXVIII, figs. 13–15, text figs. 25E, 31, 32. HABITAT: coral boulder undersurfaces. DEPTH: intertidal to 16 m. AREAS: Great Barrier Reef (21, 22).
- Reteporellina denticulata* (Busk), 1884  
FIGURED: Harmer (1934), pl. XXXV, figs. 21–23, pl. XXXVIII, figs. 27–32, text figs. 25D, 33. HABITAT: reef, reef slope. DEPTH: intertidal? to sublittoral. AREAS: Great Barrier Reef (21); Indonesia (19).
- Reteporellina evelinae* Marcus, 1955  
FIGURED: figs. 51–53. HABITAT: undercoral surfaces. DEPTH: 20 m or less. AREAS: Panama (Caribbean) (14).
- ? *Rhamphostomella* sp.  
FIGURED: Banta and Carson (1977), fig. 9E, F. HABITAT: coral rubble. DEPTH: 10 m or less. AREAS: Costa Rica (Caribbean) (5).
- Rhynchozoon detectum* Harmer, 1957  
FIGURED: Winston and Heimberg (1986), figs. 99–102. HABITAT: reefs, undersurfaces of reef crest boulders. DEPTH: 30 m or less. AREAS: Red Sea (17); Great Barrier Reef (23); Indonesia (20).
- Rhynchozoon globosum* Harmer, 1957  
FIGURED: Harmer (1957), pl. LXX, figs. 1–5. HABITAT: reefs. DEPTH: 37 m or less. AREAS: Red Sea (17, 18).
- Rhynchozoon larreyi* (Audouin), 1826  
FIGURED: Harmer (1957), pl. LXX, figs. 12, 16–20. HABITAT: reefs. DEPTH: 30 m or less. AREAS: Red Sea (17); Madagascar (16).
- Rhynchozoon phrynoglossum* Marcus, 1937  
FIGURED: Marcus (1937), figs. 61, 61A. HABITAT: fore-reef talus. DEPTH: 2–4 m. AREAS: St. Croix (1).
- Rhynchozoon rostratum* (Busk), 1856  
FIGURED: Winston and Heimberg (1986), figs. 95–98. HABITAT: coral rubble, coral, reef. DEPTH: 40 m or less. AREAS: Florida (11); Bahamas (4); Gulf of Mexico (13); Panama (Pacific coast) (3); Indonesia (20). DISCUSSION: Banta and Carson (1977) discuss some of the taxonomic difficulties with this species which is similar to the Caribbean species called *verruculatum*. Further study may see many rec-



Figs. 51–56. **51.** *Reteporellina evelinae* (Galeta reef, Panama). Scale bar = 200  $\mu\text{m}$ . **52.** *R. evelinae*, close-up of ovicelled zooid. Scale bar = 100  $\mu\text{m}$ . **53.** *R. evelinae*, interzooidal avicularium. Scale bar = 100  $\mu\text{m}$ . **54.** *Rhynchozoon spicatum* (Pear Tree Bottom, Jamaica), zooids at growing edge of colony. Scale bar = 400  $\mu\text{m}$ . **55.** *R. spicatum*, primary orifice. Scale bar = 40  $\mu\text{m}$ . **56.** *R. spicatum*, orifice and avicularium. Scale bar = 40  $\mu\text{m}$ .

ords of *verruculatum* synonymized under *ros-tratum*. However, the species described by

Busk from Mazatlan does appear to be a valid species (see Winston and Heimberg, 1986).



Figs. 57–62. 57. *Rhynchozoon spicatum*, ovicelled zooids. Scale bar = 200  $\mu\text{m}$ . 58. *R. spicatum*, close-up of ovicell. Scale bar = 100  $\mu\text{m}$ . 59. *R. sp.* (Galeta reef, Panama), zooids near growing edge. Scale bar = 200  $\mu\text{m}$ . 60. *R. sp.*, avicularium. Scale bar = 100  $\mu\text{m}$ . 61. *R. sp.*, primary orifice. Scale bar = 40  $\mu\text{m}$ . 62. *R. sp.*, ancestrular region. Scale bar = 200  $\mu\text{m}$ .

*Rhynchozoon solidum* Osburn, 1914

FIGURED: Osburn (1914), figs. 10–12.  
HABITAT: coral and rubble. DEPTH: 10 m or less. AREAS: Bahamas (4).

*Rhynchozoon spicatum* Osburn, 1952

FIGURED: figs. 54–58. HABITAT: coral undersurfaces. DEPTH: 20 m or less. AREAS: Jamaica (14).

*Rhynchozoon tuberosum*

Canu and Bassler, 1927

FIGURED: Canu and Bassler (1927a), pl. VII, fig. 5. DEPTH: 91–113 m. AREAS: Hawaii (26).

*Rhynchozoon tubulosum* (Hincks), 1880

FIGURED: Gordon (1984), pl. 52, figs. C–E. HABITAT: reefs. DEPTH: 30 m or less. AREAS: Red Sea (17).

*Rhynchozoon verruculatum* (Smitt), 1873

FIGURED: Winston (1984), figs. 61–64. HABITAT: coral undersurfaces, coral rubble. DEPTH: 20 m or less. AREAS: St. Croix (1); Belize (2); Jamaica (14); Costa Rica (Caribbean) (5); Indonesia (20).

*Rhynchozoon* sp.

FIGURED: figs. 59–62. HABITAT: coral undersurfaces. DEPTH: 10 m or less. AREAS: Panama (Caribbean) (14). DISCUSSION: This may be an undescribed species.

*Rhynchozoon* sp.

HABITAT: coral undersurfaces. DEPTH: 20 m or less. AREAS: Venezuela (14).

*Robertsonidra argentea* (Hincks), 1881

FIGURED: Powell (1967), pl. 2, fig. 10. HABITAT: reefs. DEPTH: 30 m or less. AREAS: Red Sea (17, 18). DISCUSSION: The generic placement of this species is discussed by Powell (1967).

*Savignyella lafontii* (Audouin), 1826

FIGURED: Winston (1982), fig. 62. HABITAT: reef. DEPTH: ndg. AREAS: Indonesia (19).

*Savignyella otophora* (Kirkpatrick), 1890

FIGURED: Harmer (1957), pl. LI, figs. 19, 20. HABITAT: reefs. DEPTH: 30 m or less. AREAS: Red Sea (17).

*Schizobrachiella convergens* Harmer, 1957

FIGURED: Harmer (1957), pl. LXXIV, fig. 20. HABITAT: reefs. DEPTH: 30 m or less. AREAS: Red Sea (17).

*Schizomavella auriculata* (Hassall), 1842 (?)

HABITAT: coral. DEPTH: 10 m or less. AREAS: Bahamas (4). DISCUSSION: Probably not the species of Hassall, which Hayward and Ryland (1979) consider a temperate-boreal European species.

*Schizomavella australis* (Haswell), 1880

FIGURED: Harmer (1957), pl. LXVI, figs. 5, 9. HABITAT: reef. DEPTH: 5–33 m. AREAS: Red Sea (18).

*Schizomavella inclusa* (Thornely), 1906

FIGURED: Winston and Heimberg (1986), figs. 43, 44. HABITAT: coral rubble, reef. DEPTH: 2 m or less. AREAS: Indonesia (20).

*Schizomavella punctigerum*

(MacGillivray), 1883

FIGURED: figs. 63, 64. HABITAT: coral undersurfaces, reef. DEPTH: 45 m or less. AREAS: Jamaica, Venezuela (14); Indonesia (19). DISCUSSION: Gordon (1984) has placed this species in *Schizomavella* rather than *Arthropoma*.*Schizomavella sinapiformis* Harmer, 1957

FIGURED: Harmer (1957), pl. LXVII, fig. 8. HABITAT: reefs. DEPTH: 30 m or less. AREAS: Red Sea (17).

*Schizoporella cornuta*

(Gabb and Horn), 1862

FIGURED: Winston (1982), fig. 74. HABITAT: coral rubble. DEPTH: 40 m or less. AREAS: Florida (11); Bahamas (4).

*Schizoporella errata* (Waters), 1879

FIGURED: Hayward and Ryland (1979), fig. 68. HABITAT: coral rubble. DEPTH: 40 m or less. AREAS: Florida (11); Bahamas (4).

*Schizoporella floridana* Osburn, 1914

FIGURED: Winston (1982), fig. 75. HABITAT: coral rock, corals. DEPTH: 38 m. AREAS: Gulf of Mexico (7); Curaçao (10).

*Schizotheca fissa* (Busk), 1856

FIGURED: Hayward and Ryland (1979), fig. 16. HABITAT: coral rubble. DEPTH: 10 m or less. AREAS: Bahamas (4).

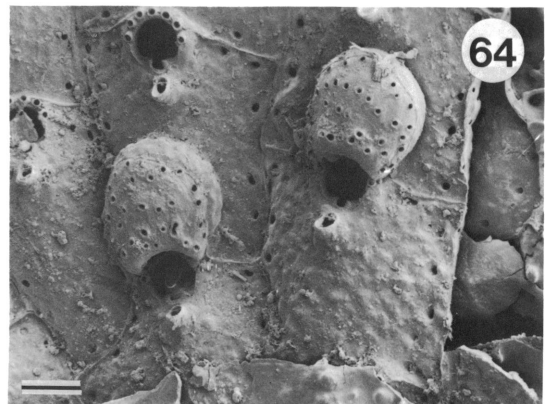
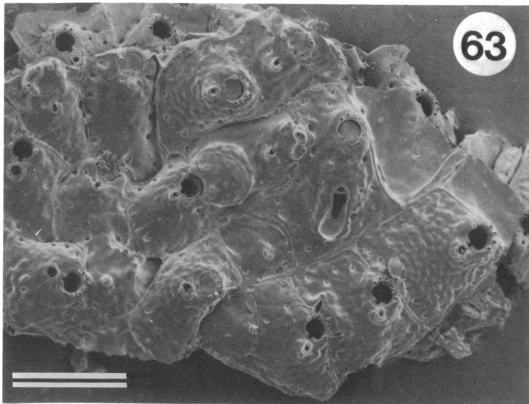
*Scorpiodinopora bernardii* (Audouin), 1826FIGURED: (as *Stephanosella bernardii*) Harmer (1957), pl. LXXIV, figs. 21–23. HABITAT: reefs. DEPTH: 30 m or less. AREAS: Red Sea (17).*Semihawswellia sinuosa*

Canu and Bassler, 1928

FIGURED: Canu and Bassler (1928b), pl. 15, figs. 1–4. HABITAT: coral undersurfaces. DEPTH: 20 m or less. AREAS: Jamaica (14).

*Sinupetraliella litoralis* (Hastings), 1932FIGURED: Harmer (1957), pl. XLV, figs. 11–13. HABITAT: under dead coral. DEPTH: intertidal to 16 m. AREAS: Great Barrier Reef (22). DISCUSSION: Described by Hastings as *Petralia litoralis*.





Figs. 63, 64. 63. *Schizomavella punctigerum* (10-1-R23, Rio Bueno, Jamaica). Scale bar = 400  $\mu$ m. 64. *S. punctigerum*, ovicelled zooids. Scale bar = 100  $\mu$ m.

*Smittina kukiula* Soule and Soule, 1973

FIGURED: Soule and Soule (1973), fig. 11E-G. HABITAT: coral, coral undersurfaces. DEPTH: 20 m or less. AREAS: Hawaii (25); Venezuela (14).

*Smittina nitidissima* (Hincks), 1880

FIGURED: Harmer (1957), pl. LXIII, figs. 7-10, as *Smittina maleolus*. HABITAT: reefs. DEPTH: 33 m or less. AREAS: Red Sea (17). DISCUSSION: Cook (1968) has synonymized this species with *S. malleolus* (Hincks, 1884b).

*Smittina protecta* (Thornely), 1905

FIGURED: Harmer (1957), pl. LXIV, figs. 12-17. HABITAT: fore-reef slope. DEPTH: ndg. AREAS: Madagascar (16).

*Smittoidea levis* (Kirkpatrick), 1890

FIGURED: Harmer (1957), pl. LXIII, figs. 1-5. HABITAT: reefs. DEPTH: 30 m or less. AREAS: Red Sea (17). DISCUSSION: Soule and Soule (1973) discuss Harmer's (1957) definition of *S. levis*, which probably includes several species.

*Smittoidea pacifica* Soule and Soule, 1973

FIGURED: Soule and Soule (1973), fig. 1F-I. HABITAT: coral, coral undersurfaces. DEPTH: 40 m or less. AREAS: Venezuela (14); Hawaii, Galapagos (25). DISCUSSION: This species include some specimens called *S. levis* by Harmer (see Soule and Soule, 1973).

*Stylopoma duboisii* (Audouin), 1826

FIGURED: Winston and Heimberg (1986), figs. 45-47. Ovicell figured in Osborne (1984), fig. 5. HABITAT: coral boulder undersurfaces;

reefs. DEPTH: intertidal to 37 m. AREAS: Red Sea (17, 18); Indonesia (20); Great Barrier Reef (21, 23).

*Stylopoma spongites* (Pallas), 1766

FIGURED: Winston (1984), figs. 49,50. HABITAT: coral undersurfaces, coral, coral rubble, *Oculina* rubble, reefs. DEPTH: low water to 90 m. AREAS: Bahamas, St. Croix (1); Belize (2); Gulf of Mexico (4, 7, 13); Florida (11, 12); Tortugas (9); Jamaica (14).

*Stylopoma viride* (Thornely), 1905

FIGURED: Winston and Heimberg (1986), figs. 48-50. HABITAT: reefs. DEPTH: 37 m or less. AREAS: Red Sea (17, 18); Madagascar (16); Indonesia (19, 20).

*Tetraplaria dichotoma* (Osburn), 1914

FIGURED: figs. 65-67. HABITAT: reef, coral undersurfaces. DEPTH: ndg. AREAS: Gulf of Mexico (13); Panama (Caribbean) (14).

*Thornleya ceylonica* (Thornely), 1905

FIGURED: Harmer (1957), pl. LXXII, figs. 15-17, text fig. 117. HABITAT: reefs. DEPTH: 30 m or less. AREAS: Red Sea (17).

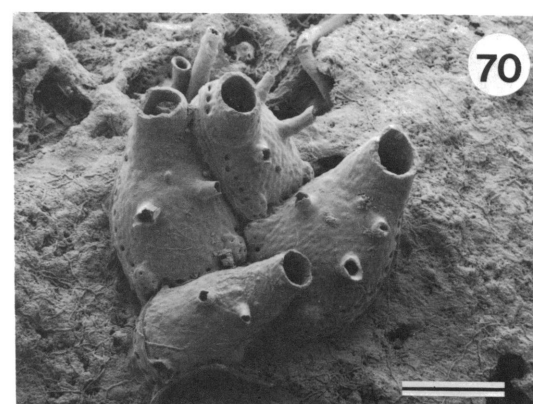
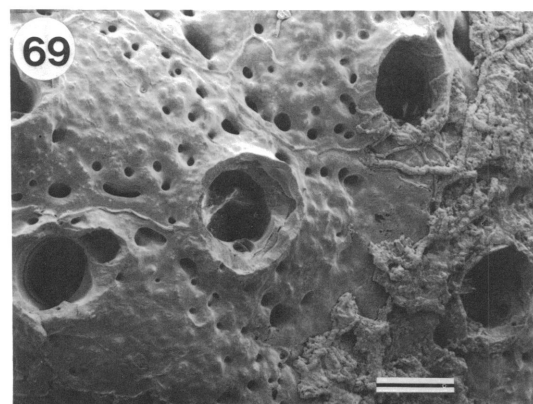
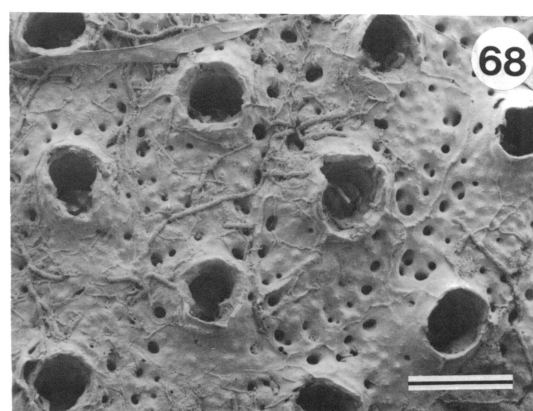
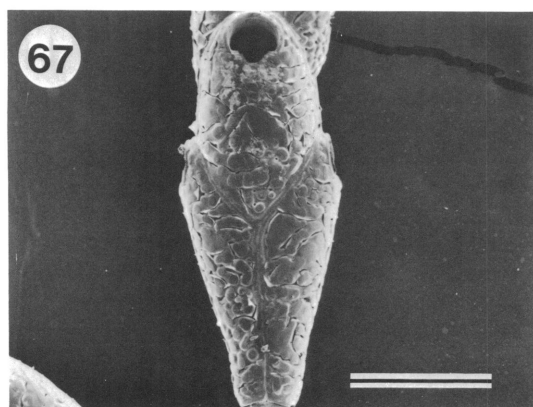
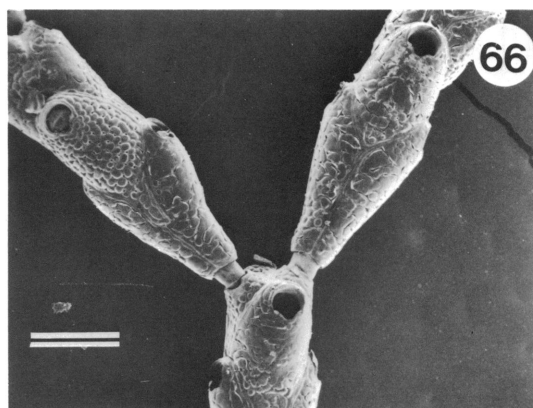
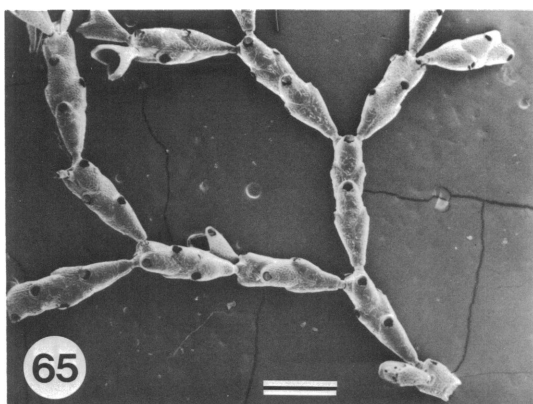
*Trematooecia aviculifera*  
(Canu and Bassler), 1923

FIGURED: Winston (1984), figs. 65, 66. HABITAT: coral rubble, coral undersurfaces. DEPTH: 20 m or less. AREAS: Belize (2); Jamaica, Venezuela, Panama (Caribbean) (3, 14); Costa Rica (Caribbean) (5).

*Trematooecia turrata* (Smitt), 1873

FIGURED: Winston (1984), figs. 67, 68.





Figs. 65–70. 65. *Tetraptaria dichotoma* (Galeta reef, Panama). Scale bar = 1 mm. 66. *T. dichotoma*, branch bifurcation. Scale bar = 400  $\mu$ m. 67. *T. dichotoma*, close-up of zooid. Scale bar = 400  $\mu$ m. 68. *Coleopora corderoi* (10-1-R24, Rio Bueno, Jamaica). Scale bar = 400  $\mu$ m. 69. *C. corderoi*. Scale bar = 200  $\mu$ m. 70. *C.* sp. (Rio Bueno, Jamaica), young colony. Scale bar = 400  $\mu$ m.

HABITAT: coral rubble, coral undersurfaces, *Oculina* rubble. AREAS: Florida (11, 12); Tortugas (9); Belize (2); Jamaica, Venezuela,

Panama (Caribbean) (3, 14); Costa Rica (Caribbean) (5); Curaçao (10); Gulf of Mexico (7); Red Sea (17).

*Tremogasterina mucronata* (Smitt), 1873

FIGURED: Winston (1984), figs. 35, 36. HABITAT: coral undersurfaces, coral rubble. DEPTH: 10 m or less. AREAS: Belize (2); Gulf of Mexico (13); Costa Rica (Caribbean coast) (5); Jamaica, Venezuela (14).

*Tremogasterina robusta* (Hincks), 1884

FIGURED: Cook (1977), pl. 5E. HABITAT: reefs. DEPTH: 30 m or less. AREAS: Red Sea (17, 18). DISCUSSION: Redescribed by Powell and Cook (1967).

*Tremogasterina spathulata* (Canu and Bassler), 1929

FIGURED: Cook (1977), fig. 8A. HABITAT: reefs. DEPTH: 37 m or less. AREAS: Red Sea (17, 18). DISCUSSION: The species is discussed by Cook (1977).

*Tremoschizodina lata* Smitt, 1873

FIGURED: Winston (1982), fig. 64. HABITAT: corals. DEPTH: 62–117 m. AREAS: Florida, Gulf of Mexico (7).

*Triphyllozoon benemunitum* Harmer, 1934

FIGURED: Harmer (1934), pl. XXXV, figs. 25, 26, pl. XXXIX, figs. 20–26, text fig. 28. HABITAT: coral fragments. DEPTH: 6 m. AREAS: Great Barrier Reef (22).

*Triphyllozoon hirsutum* (Busk), 1884

FIGURED: Harmer (1934), pl. XXXV, fig. 24, pl. XXXVI, fig. 1, pl. XXXIX, figs. 1–4. HABITAT: reef. DEPTH: 54 m or less. AREAS: Indonesia (19).

*Triphyllozoon philippense* (Busk), 1884

FIGURED: Harmer (1934), pl. XXXV, figs. 27, 28, pl. XXXIX, figs. 5–9. HABITAT: cavities of inner slope (lagoon). DEPTH: ndg. AREAS: Madagascar (16).

*Triphyllozoon tricuspdatum* (Harmer), 1933

FIGURED: as *Retepora monilifera* var. *umbonata* in MacGillivray (1885), Dec. X, pl. 97, figs. 1–3. HABITAT: coral undersurfaces. DEPTH: 28–34 m. AREAS: Eniwetak reefs (24).

*Trypostega venusta* (Norman), 1864

FIGURED: Winston (1984), figs. 37, 38. HABITAT: coral undersurfaces, *Oculina* rubble. DEPTH: 5–90 m. AREAS: Florida (12); Tortugas (9); Belize (2); Jamaica, Venezuela (14); Red Sea (17).

*Vitticella longicaudata* Harmer, 1957

FIGURED: Harmer (1957), pl. L, figs. 10, 18. HABITAT: reef. DEPTH: 54 m or less. AREAS: Indonesia (19).

*Watersipora edmondsoni*

Soule and Soule, 1968

FIGURED: Winston and Heimberg (1986), figs. 38–40. HABITAT: coral rubble. DEPTH: 2–3 m. AREAS: Hawaii, Indonesia (20).

*Watersipora subovoidea* (d'Orbigny), 1852

FIGURED: as *Watersipora "subovoidea fide Harmer,"* Winston and Heimberg (1986), figs. 35–37. HABITAT: reefs. DEPTH: 30 m or less. AREAS: Red Sea (17); Indonesia (20). DISCUSSION: Soule and Soule (1975) discuss taxonomic problems in *Watersipora*. The illustration given conforms to Harmer's concept of *subovoidea*, but more than one species may occur in the Indo-Pacific area.

*Watersipora subtorquata* (d'Orbigny), 1852

FIGURED: as *Watersipora subovoidea* in Winston (1984), fig. 66. HABITAT: under coral boulders, reef. DEPTH: intertidal, ndg. AREAS: Great Barrier Reef (21). DISCUSSION: The specimen illustrated seems to fit *W. subtorquata* as defined by Soule and Soule (1974). Ryland reported this species in Australia, but did not illustrate it.

## TUBULIPORATA

*Crisia elongata* Milne-Edwards, 1838

FIGURED: figs. 71–73. HABITAT: coral fragments, undercorals, outer reef slopes. DEPTH: 16–120 m. AREAS: East Africa (15); Great Barrier Reef (22).

*Crisina radians* (Lamarck), 1816

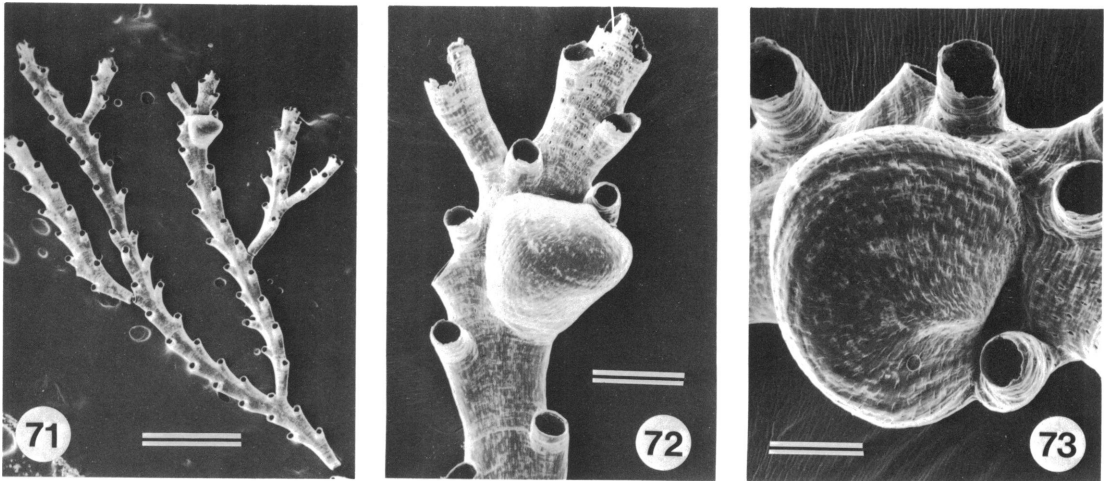
FIGURED: Brood (1976), fig. 15H–J. HABITAT: coral fragments, coral undersurfaces, outer reef slope. DEPTH: 16–100 m. AREAS: East Africa (15); Great Barrier Reef (22). DISCUSSION: *C. watersi* of Borg from Zanzibar is considered a synonym by Brood.

*Disporella fimbriata* (Busk), 1875

FIGURED: Winston (1984), figs. 3, 5, 7. HABITAT: coral undersurfaces. DEPTH: 5–20 m. AREAS: Belize (2); Jamaica (14).

*Disporella sibogae* Borg, 1944

FIGURED: Brood (1976), fig. 17A–C.



Figs. 71–73. 71. *Crisia elongata* (Galeta reef, Panama). Scale bar = 1 mm. 72. *C. elongata* zooids and gonozooid. Scale bar = 200  $\mu$ m. 73. *C. elongata*, opening of gonozooid. Scale bar = 100  $\mu$ m.

HABITAT: undercorals. DEPTH: 5–120 m. AREAS: East Africa (15).

*Disporella* sp.

HABITAT: fore-reef talus. DEPTH: 2–4 m. AREAS: St. Croix (1).

*Harmelinopora plana* Brood, 1976

FIGURED: Brood (1976), figs. 5N, 6, 8F. HABITAT: undercorals. DEPTH: 5 m. AREAS: East Africa (15).

*Idmonea murogensis* Brood, 1976

FIGURED: Brood (1976), fig. 9F, H–J. HABITAT: undercorals. DEPTH: 5 m. AREAS: East Africa (15).

*Lichenopora intricata* (Busk), 1856

FIGURED: Osburn (1953), pl. 76, figs. 5–9. HABITAT: broken coral. DEPTH: 4 m. AREAS: Panama (Pacific coast) (3).

*Lichenopora novae-zelandiae* (Busk), 1875

FIGURED: Brood (1976), fig. 17H, I. HABITAT: undercorals. DEPTH: 5–100+ m. AREAS: East Africa (15).

*Lichenopora radiata* (Audouin), 1826 (?)

HABITAT: coral rubble. DEPTH: 40 m or less. AREAS: Florida (11). DISCUSSION: Since no types exist for the species described by Audouin (1826) from the Red Sea, the identity of *Lichenopora radiata* remains problematic. It is probably distinct from the British species described by Hincks as *L. radiata*. However,

examination of Red Sea *Lichenopora* specimens in the collection of the British Museum (Nat. Hist.) showed that several species exist in the region, any one of which could be that described by Audouin.

*Lichenopora violacea*

Canu and Bassler, 1927

FIGURED: Winston (1984), figs. 4, 6, 8, 9. HABITAT: coral undersurfaces. DEPTH: 20 m or less. AREAS: Belize, Jamaica (2, 14).

*Lichenopora* sp.

HABITAT: fore-reef talus. DEPTH: 2–4 m. AREAS: St. Croix (1).

*Nevianopora pulcherrima*

(Kirkpatrick), 1890

FIGURED: Brood (1976), fig. 12H, L. HABITAT: coral undersurfaces. DEPTH: 20–100+ m. AREAS: East Africa (15).

*Proboscina robusta* Canu and Bassler, 1928

FIGURED: Winston, 1984, fig. 2. HABITAT: coral undersurfaces. DEPTH: 20 m or less. AREAS: Belize (2).

*Pustulopora danziensis* Brood, 1976

FIGURED: Winston (1984), fig. 1. HABITAT: coral undersurfaces. DEPTH: 5–15 m. AREAS: Belize (2); East Africa (15).

*Pustulopora delicatula* Busk, 1875

FIGURED: Brood (1976), fig. 13E, F. HAB-

ITAT: outer reef slope. DEPTH: 50–100+ m. AREAS: East Africa (16).

*Stomatopora papillosa* Brood, 1976

FIGURED: Brood (1976), fig. 9B, E. HABITAT: coral undersurfaces. DEPTH: 5 m. AREAS: East Africa (16).

## DISCUSSION

Jackson (1979a) identified six basic morphological strategies of sessile organisms: runners, sheets, plates, vines, and trees, and the conditions under which each morphology might flourish. Succession experiments in Jamaican cryptic reef environments (Jackson, 1977a) showed that early dominance by solitary organisms was followed by increasing dominance by sheet- and mound-shaped colonial animals, like those that dominate the natural undercoral community there.

In all studies of reef-associated bryozoans, encrusting two-dimensional, sheetlike forms (e.g., *Stylopoma*, *Reptadeonella*) are most abundant. Moundlike, frontally budding forms (e.g., *Celleporaria*) are also common. Most of them are firmly cemented to the coral substratum (Soule and Soule, 1974), but at least two families (Beaniidae and Petraliidae) form mats loosely attached to the substratum by radicles. Some primarily encrusting species (e.g., *Steginoporella*, *Thalamoporella*) can also form foliose plates. This often occurs in response to the threat of overgrowth by a competitor.

Vineline forms include the flexible and/or jointed tufts of crisiid cyclostomes and various cheilostomes (e.g., *Nellia*, *Scrupocellaria*, *Canda*, *Margaretta*, etc.). Rigid "trees" are found among the Sertellidae and a few other ascophoran families. These projecting forms seem in general to be less numerous than encrusters in reef environments. Cuffey (1973) found tuftlike cheilostomes and cyclostomes to be sparsely scattered over reef biotopes at both Eniwetak and Bermuda, while sertellids occurred rarely in deeper reef habitats at Eniwetak and were absent from Bermuda reefs. In Jamaican cryptic environments vineline colonies of *Halophila johnstoniae* and the loosely attached flexible fans of *Canda simplex* were the most common nonencrusting cheilostomes. Other branch-

ing species, e.g., *Synnotum aegypticum* and *Semihawswellia sinuosa* occurred rarely.

Sertellids seem less common on Caribbean than on Indo-Pacific reefs. However, on Galeta reef in Panama, one species, *Reteporellina evelinae*, was common under corals and occasionally growing out in the open in depths of 5–17 m. Galeta Reef had an abundance of cryptic vine and treelike forms, including *Margaretta buski* and *Arborella dichotoma*, as well as *Canda* and *Halophila*, on coral undersurfaces and overhanging ledges of steep walls. Colonies of *Caulibugula zanzibarensis* were not cryptic; the delicate colonies, up to 10 cm in height, grew upright on the open reef surface attached to coral heads. Bracket-shaped colonies of *Gemelliporida multilamellosa* and ruffled platy colonies of *Steginoporella buski* were abundant under ledges in 10 m depth (Winston, unpublished data). The reason for the abundance of tree and platelike forms here is still unknown, but could relate to predation levels, or nutrient regime.

Runners, with colonies committed to a fugitive strategy (Buss, 1979; Jackson, 1979a), are represented on reefs by cyclostomes (e.g., *Stomatopora*, *Proboscina*, *Idmonea*) and by aeteid cheilostomes. In the Jamaican and Belizean sites studied they appear to be rare. They are often found on secondary bare space, e.g., bivalve shells and serpulid tubes, rather than directly on coral undersurfaces (Buss, 1979). They may also persist on undercoral surfaces dominated by calcareous algae, rather than by encrusting sponges or cheilostomes. On these surfaces their colonies are often buried, but for their peristomes, in the surrounding algal crust. Cuffey (1973) found that idmoneid cyclostomes were quite frequent on the leeward ocean shore environment at Eniwetak and less common elsewhere, while at Bermuda they were rare on the ledge flats and lagoonal patch reefs.

A final category consists of species whose strategy might be described as pseudosolitary (Winston, 1985). On reefs this includes lichenopoid and (at least some) pustulopoid cyclostomes. Their colonies (in the same size range as small tubeworms) are short-lived, reaching a finite adult size, with a single feeding current, and often a single brood chamber for the whole colony. *Lichenopora* and *Disporella* species are discoid; the basal wall of

TABLE 1  
Genera with Greatest Number of Species Reported from Reefs<sup>a</sup>

Genus	No. species	More than 1 trop. area
<i>Antropora</i>	3	+
<i>Canda</i>	3	+
<i>Caulibugula</i>	3	+
<i>Cribrilaria</i>	3+	+
<i>Labioporella</i>	3 or 4	+
<i>Scrupocellaria</i>	7	+
<i>Smittipora</i>	4	+
<i>Steginoporella</i>	4	+
<i>Thalamoporella</i>	5	+
<i>Calypotheca</i>	5	+ (not Carib.)
<i>Celleporaria</i>	14	+
<i>Cleidochasma</i>	5	+
<i>Coleopora</i>	5	+
<i>Crepidacantha</i>	4	+
<i>Drepanophora</i>	5	+
<i>Exechonella</i>	4	+
<i>Gemelliporida</i>	4	- (only Carib.)
<i>Hippoporella</i>	4	+
<i>Margaretta</i>	5	+
<i>Microporella</i>	4	+
<i>Mucropetraliella</i>	5	+
<i>Parasmittina</i>	23-24	+
<i>Reptadeonella</i>	4+	+
<i>Rhynchozoon</i>	11-12	+
<i>Schizomavella</i>	3-4	+
<i>Schizoporella</i>	3	+
<i>Smittina</i>	3	+
<i>Stylopoma</i>	3	+
<i>Tremogasterina</i>	3	+
<i>Triphyllozoon</i>	4	- (not Carib.)
<i>Watersipora</i>	3+	+
<i>Lichenopora</i>	3-4	+

<sup>a</sup> Only named or clearly distinct species were counted for this table.

the colonies is attached to the coral with its circular outer margin often raised like a saucer to prevent overgrowth. *Pustulopora* colonies are erect. At Eniwetak, lichenoporidae cyclostomes occurred only on lagoonal pinnacle reefs. In Bermuda they were quite common, especially on the ledge flats (Cuffey, 1973). In other Caribbean reefs they are commonly encountered on coral undersurfaces and rubble, though never in large numbers.

The records collected in the checklist show for which genera the largest number of species have been reported from reef environments. Table 1 lists all genera represented by at least

TABLE 2  
Species Most Commonly Reported from Coral Substrata and/or Reefs

Species	No. citations	More than 1 trop. area
<i>Cranosina coronata</i>	4	+
<i>Cribrilaria flabellifera</i>	3	+
<i>Cribrilaria radiata</i>	9	+
<i>Labioporella granulosa</i>	3	- (Carib.)
<i>Parellisina curvirostris</i>	3	+
<i>Parellisina latirostris</i>	7	- (Carib.)
<i>Reginella floridana</i>	3	+
<i>Smittipora levinseni</i>	5	- (Carib.)
<i>Steginoporella magnilabris</i>	7	- (Carib.)
<i>Synnotum aegyptiacum</i>	3	+
<i>Arthropoma cecilii</i>	3	+
<i>Celleporaria aperta</i>	3	+
<i>Celleporaria albirostris</i>	8	- (Carib.)
<i>Cleidochasma porcellanum</i>	10	+
<i>Crepidacantha longiseta</i>	4	- (Carib.)
<i>Crepidacantha poissonii</i>	3	+
<i>Drepanophora tuberculatum</i>	3	- (Carib.)
<i>Escharina pesanseris</i>	6	+
<i>Exechonella antillea</i>	5	+
<i>Hippopodina feegeensis</i>	13	+
<i>Microporella ciliata</i> (?)	4	- (Carib.)
<i>Parasmittina areolata</i>	7 (incl. <i>spathulata</i> )	+
<i>Parasmittina parsevalii</i>	3	+
<i>Parasmittina serrula</i>	4	+
<i>Rhynchozoon rostratum</i>	4	+
<i>Rhynchozoon verruculatum</i>	4	- (Carib.)
<i>Stylopoma duboisii</i>	4	+
<i>Stylopoma spongites</i>	9	- (Carib.)
<i>Stylopoma viride</i>	5	+
<i>Thalamoporella rozieri</i>	3	+
<i>Trematoecia aviculifera</i>	5	- (Carib.)
<i>Trematoecia turrita</i>	10	+
<i>Trypostega venusta</i>	5	+

three species. In terms of number of species *Parasmittina* (23 species), *Celleporaria* (14 species), and *Rhynchozoon* (11-12 species) are by far the most successful genera. None of these are limited to reef environments. In fact, they all contain species best characterized as opportunistic, or fouling, species noted from man-made substrata: ships, concrete pilings, and artificial reefs, as well as coral (see Soule and Soule, 1973, for habitats of *Parasmittina* species). In Jamaican studies, colonies of these genera were much more abundant on panels than in the natural undercoral community, although in terms of

numbers of species they are important on Jamaican reefs (Winston and Jackson, unpublished data). Unlike the species commonly thought of as foulers, members of these groups are not necessarily poorly calcified or ephemeral. *Celleporaria* species employ frontal budding to produce massive, multilayered colonies that discourage overgrowth.

Colonies of *Parasmittina*, *Drepanophora*, and *Rhynchozoon* species often undergo heavy secondary calcification, which, in addition to irritating taxonomists by greatly changing specimens' appearance, may enable such species to survive abrasion by grazers (e.g., urchins, damselfish, and mollusks) in shallow reef environments (Best and Winston, 1984; Winston and Jackson, 1984). Ristedt and Schumacher (1985) have recently described the success of one such species, *Rhynchozoon larreyi* in spatial competition with other sessile organisms in Red Sea coral communities. In this environment *R. larreyi* may be aided by the presence of a mutualistic hydroid, *Zanclaea* sp., which offers the bryozoan protection from foulers and predators.

*Scrupocellaria* follows *Rhynchozoon* with seven species, while several genera, *Thalamoporella*, *Calyptotheca*, *Cleidochasma*, *Drepanophora*, *Margaretta*, and *Mucropetraliella* have five species. Of the 32 genera listed, only one, *Gemelliporidra* is limited to Caribbean reefs. Two other genera, *Calyptotheca* and *Triphyllozoon*, are not known from the Caribbean, although they, like the remaining genera in the table, occur in at least two tropical regions.

Table 2 shows the most commonly occurring species, based on this checklist—those reported in at least three sources. Because of the predominance of Caribbean sources, this list is biased toward Caribbean species, but it does give some idea of abundance. Of the species occurring in more than one area, *Hippopodina feegeensis* leads the list (13 citations). It is followed by *Cleidochasma porcellanum* (10), *Trematoecia turrita* (10), and *Cribrilaria radiata* (9).

The most commonly cited Caribbean species are *Stylopoma spongites* (9), *Celleporaria albirostris* (8), *Parellisina curvirostris* (7), *Steginoporella magnilabris* (7), *Trematoecia aviculifera* (5), and *Smittipora levinsoni* (5). It should be noted that all but

*Cleidochasma porcellanum* are species whose colonies may occupy large areas of under-coral surface.

#### LITERATURE CITED

- Abildgaard, P. C.  
1806. *In Zoologica Danica Seu Animalium Daniae et Norvegiae rariorum minus notorum descriptiones et historia*, vol. 4. Copenhagen, O. F. Muller, pp. 1–46.
- Audouin, J. V.  
1826. Explication sommaire des planches de polypes de L'Egypte, histoire naturelle, vol. 28. Paris, C. L. F. Panckouche, pp. 225–249.
- Banta, W. C., and R. J. M. Carson  
1977. Bryozoa from Costa Rica. *Pacific Sci.*, vol. 31, pp. 1–424.
- Bassler, R. S.  
1936. Nomenclatorial notes on fossil and recent Bryozoa. *Jour. Wash. Acad. Sci.*, vol. 26, pp. 156–162.
- Best, B., and J. E. Winston  
1984. Skeletal strength of encrusting cheilostome bryozoans. *Biol. Bull.*, vol. 167, pp. 390–409.
- Borg, F.  
1944. The stenolaematous Bryozoa. Further Zool. Results Swedish Antarctic Exped., vol. 3, pp. 1–276.
- Brood, K.  
1976. Cyclostomatous Bryozoa from the coastal waters of East Africa. *Zool. Scripta*, vol. 5, pp. 277–300.
- Busk, G.  
1852. Catalogue of marine Polyzoa in the collection of the British Museum, pt. I. London, British Mus., pp. 1–54.  
1854. Catalogue of marine Polyzoa in the collection of the British Museum, pt. II. London, British Mus., pp. 55–120.  
1856a. Zoophytology. *Quart. Jour. Micros. Sci.*, vol. 4, pp. 176–179.  
1856b. Zoophytology. *Quart. Jour. Micros. Sci.*, vol. 4, pp. 308–322.  
1860a. Zoophytology: catalogue of the Polyzoa collected by J. Y. Johnson, esq., at Madeira, in the years 1859 and 1860, with descriptions of new species. *Quart. Jour. Micros. Sci.*, vol. 8, pp. 280–285.  
1860b. Zoophytology: descriptions of new species of Polyzoa collected by George Barlee, esq. in Shetland. *Quart. Jour. Micros. Sci.*, vol. 8, pp. 213–214.  
1875. Catalogue of marine Polyzoa in the collection of the British Museum, Part III.

- Cyclostomata. London, British Mus., pp. 1-41.
1881. Descriptive catalogue of the species of *Cellepora* collected in the Challenger Expedition. Jour. Linn. Soc., Zool., vol. 15, pp. 341-356.
1884. Report on the Polyzoa collected by H. M. S. *Challenger* during the years 1873-1876. Part I. The Cheilostomata. Rpt. Challenger Exped., Zool., vol. 10, pp. 1-216.
- Buss, L. W.  
1979. Habitat selection, directional growth, and spatial refuges; why colonial animals have more hiding places. In G. Larwood and B. R. Rosen (eds.), Biology and systematics of colonial organisms. London, Academic Press, pp. 459-497.
- Buss, L. W., and J. B. C. Jackson  
1979. Competitive networks: nontransitive competitive relationships in cryptic coral reef environments. Amer. Nat., vol. 113, pp. 223-234.
- Canu, F., and R. S. Bassler  
1917. A synopsis of American early Tertiary Bryozoa. U.S. Natl. Mus. Bull., no. 196, pp. 1-87.  
1923. North American later Tertiary and Quaternary Bryozoa. U.S. Natl. Mus. Bull., no. 125, pp. 1-302.  
1924. Contribution de l'étude des Bryozoaires d'Autriche et de Hongrie. Bull. Soc. Geol. Fr., ser. 4, vol. 24, pp. 672-690.  
1927a. Bryozoaires des Iles Hawaii. Bull. Soc. Sci. Med. Seine-et-Oise, ser. 2, vol. 8, pp. 1-56.  
1927b. Classification of the cheilostomatous Bryozoa. Proc. U.S. Natl. Mus., vol. 69, pp. 1-42.  
1928a. Bryozoaires du Bresil. Bull. Soc. Sci. Med. Seine-et-Oise, ser. 2, vol. 9, pp. 58-100.  
1928b. Fossil and Recent Bryozoa of the Gulf of Mexico region. Proc. U.S. Natl. Mus., vol. 72, pp. 1-199.  
1929. Bryozoa of the Philippine region. Bull. U.S. Natl. Mus., no. 100, pp. 1-685.
- Cheetham, A. H.  
1966. Cheilostomatous Polyzoa from the upper Bracklesham beds (Eocene) of Sussex. Bull. British Mus. (Nat. Hist.) Geol., vol. 13, pp. 1-115.
- Cheetham, A. H., and P. A. Sandberg  
1964. Quaternary Bryozoa from Louisiana mudlumps. Jour. Paleont., vol. 38, pp. 1013-1046.
- Choi, D. R.  
1984. Ecological succession of reef cavity-dwellers (Coelobites) in coral rubble. Bull. Mar. Sci., vol. 35, pp. 72-79.
- Cook, P. L.  
1968. Bryozoa (Polyzoa) from the coasts of tropical west Africa. Atlantide Rpt. no. 10, pp. 115-262.  
1977. The genus *Tremogasterina* Canu (Bryozoa, Cheilostomata). Bull. British Mus. (Nat. Hist.). Zool., vol. 32, pp. 103-165.
- Couch, R. Q.  
1844. A Cornish fauna, being a compendium of the natural history of the country, pt. III. Truro, 164 pp.
- Cuffey, R. J.  
1973. Bryozoan distribution in the modern reefs of Eniwetok Atoll and the Bermuda Platform. Pacific Geol., vol. 6, pp. 25-50.  
1974. Delineation of bryozoan roles in reefs from comparison of fossil bioherms and living reefs. Proc. 2nd Int. Coral Reef Symp., vol. 1, pp. 357-364.  
1977. Bryozoan contributions to reefs and bioherms throughout geologic time. Amer. Assoc. Petrol. Geol. Stud. Geol., no. 4, pp. 181-194.  
1978. A note on bryozoans in the modern reefs of Eniwetok Atoll and the Australian Great Barrier Reef. Pacific Geol., vol. 13, pp. 65-76.
- Cuffey, R. J., and S. S. Fonda  
1977. Cryptic bryozoan species assemblages in modern coral reefs off Andros and Eleuthera, Bahamas. Proc. 3rd Int. Coral Reef Symp., vol. 1, pp. 81-86.
- Cuffey, R. J., S. S. Fonda, D. F. Kosich, C. D. Gebelein, D. M. Bliefnick, and L. G. Soroka  
1977. Modern tidal-channel bryozoan reefs at Joulter's Cays (Bahamas). Proc. 3rd Int. Coral Reef Symp., vol. 2, pp. 339-345.
- Cuffey, R. J., and F. K. McKinney  
1982. Reteporid cheilostome bryozoans from the modern reefs of Eniwetok Atoll, and their implications for paleozoic fenestrate bryozoan ecology. Pacific Geol., vol. 16, pp. 7-13.
- Dumont, J. P. C.  
1981. A report on the cheilostome Bryozoa of the Sudanese Red Sea. Jour. Nat. Hist., vol. 15, pp. 623-637.
- Esper, E. J. C.  
1791-1797. Fortsetzungen der Pflanzenthiere in Abbildungen nach der Natur mit Farberleuchtet nebst Beschreibungen, Theil 1, pp. 1-230.

- Gabb, W. M., and G. W. Horn  
1862. Monograph of the fossil Polyzoa of the Secondary and Tertiary formations of America. *Jour. Acad. Nat. Sci. Philadelphia*, vol. 5, pp. 111-179.
- Gordon, D. P.  
1984. The marine fauna of New Zealand: Bryozoa: Gymnolaemata from the Kermadec Ridge. *N.Z. Oceanogr. Inst. Mem.*, vol. 91, 198 pp.
- Gray, J. E.  
1843. Additional radiated animals and annelides. *In* E. Dieffenbach, *Travels in New Zealand*; with contributions to the geography, geology, botany, and natural history of that country, vol. 2. London, John Murray, pp. 292-295.
- Harmer, S. F.  
1900. A revision of the genus *Steganoporella*. *Quart. Jour. Micros. Sci.*, n.s., vol. 43, pp. 225-297.  
1902. On the morphology of the Cheilostomata. *Quart. Jour. Micros. Sci.*, n.s., vol. 46, pp. 263-350.  
1915. The Polyzoa of the *Siboga* Expedition. Part 1. Entoprocta, Ctenostomata and Cyclostomata. *Siboga-Exped.*, vol. 28a, pp. 1-180.  
1926. The Polyzoa of the *Siboga* Expedition. Part 2. Cheilostomata anasca. *Siboga-Exped.*, vol. 28b, pp. 181-501.  
1933. The genera of Reteporidae. *Proc. Zool. Soc. London*, pp. 115-627.  
1934. The Polyzoa of the *Siboga* Expedition. Part 3. Cheilostomata Ascophora I. Family Reteporidae. *Siboga-Exped.*, vol. 28c, pp. 503-640.  
1957. The Polyzoa of the *Siboga* Expedition. Part 4. Cheilostomata, Ascophora II. *Siboga-Exped.*, vol. 28d, pp. 641-1147.
- Hassall, A. H.  
1842. Remarks on the genus *Lepralia* of Dr. Johnston with descriptions of six undescribed species. *Ann. Mag. Nat. Hist.*, vol. 7, pp. 363-373.
- Hastings, A. B.  
1930. Cheilostomatous Polyzoa from the vicinity of the Panama Canal collected by Dr. C. Crossland on the cruise of the S. Y. "St. George." *Proc. Zool. Soc. London*, 1929, pp. 670-740.  
1932. The Polyzoa, with a note on an associated hydroid. Reports of the Great Barrier Reef Exped., vol. 4, pp. 399-458.
- Haswell, W. A.  
1880. On some Polyzoa from the Queensland Coast. *Proc. Linn. Soc. of New South Wales*, vol. 5, pp. 33-40.
- Hayward, P. J., and J. S. Ryland  
1979. *British ascophoran bryozoans*. London, Academic Press, 312 pp.
- Heller, C.  
1867. Die Bryozoen der adriatischen Meeres. *Verh. zool.-bot. Ges. Wien*, vol. 17, pp. 77-136.
- Hincks, T. H.  
1862. A catalogue of the zoophytes of South Devon and South Cornwall. *Ann. Mag. Nat. Hist.*, ser. 3, vol. 9, pp. 22-30.  
1880. Contributions towards a general history of the marine Polyzoa. X. *Ann. Mag. Nat. Hist.*, ser. 5, vol. 6, pp. 69-80.  
1881. Contributions towards a general history of the marine Polyzoa. IV. Foreign Membraniporina. *Ann. Mag. Nat. Hist.*, ser. 5, vol. 7, pp. 147-161.  
1882. Contributions towards a general history of the marine Polyzoa. IV. *Ann. Mag. Nat. Hist.*, ser. 5, vol. 9, pp. 116-126.  
1884a. Report on the Polyzoa of the Queen Charlotte Islands. V. *Ann. Mag. Nat. Hist.*, ser. 5, vol. 13, pp. 49-58.  
1884b. Contributions towards a general history of the marine Polyzoa. XLI. *Ann. Mag. Nat. Hist.*, ser. 5, vol. 13, pp. 356-369.
- Hondt, J.-L. d'  
1985. Bryozoa. *Proc. 5e Congrès. International sur les récifs coralliens, Tahiti*, vol. 1, pp. 407-411.
- Hyman, L. H.  
1959. *The invertebrates: smaller coelomate groups*, vol. 5. New York, McGraw-Hill, 783 pp.
- Jackson, J. B. C.  
1977a. Habitat area, colonization, and development of epibenthic community structure. *In* B. F. Keegan, P. O'Ceidigh, and P. J. Boaden (eds.), *Benthic marine organisms*. *Proc. 11th Eur. Mar. Biol. Symp.* Oxford, Pergamon Press, pp. 349-358.  
1977b. Competition on marine hard substrata: the adaptive significance of solitary and colonial strategies. *Amer. Nat.*, vol. 111, pp. 743-767.  
1979a. Morphological strategies of sessile animals. *In* G. P. Larwood and B. R. Rosen (eds.), *Biology and systematics of colonial organisms*. London, Academic Press, pp. 499-555.  
1979b. Overgrowth competition between encrusting cheilostome ectoprocts in a Jamaican cryptic reef environment. *Jour. Anim. Ecol.*, vol. 48, pp. 805-823.



1984. Ecology of cryptic coral reef communities. III. Abundance and aggregation of encrusting organisms with particular reference to cheilostome Bryozoa. *Jour. Exp. Mar. Biol. Ecol.*, vol. 75, pp. 37-57.
- Jackson, J. B. C., and L. W. Buss  
1975. Allelopathy and spatial competition among coral reef invertebrates. *Proc. Natl. Acad. Sci. U.S.A.*, vol. 72, pp. 5160-5163.
- Jackson, J. B. C., and J. E. Winston  
1981. Modular growth and longevity in bryozoans. *In* G. P. Larwood and C. Nielsen (eds.), *Recent and fossil Bryozoa*. Frederborg, Denmark, Olsen & Olsen, pp. 121-126.
1982. Ecology of cryptic coral reef communities. I. Distribution and abundance of major groups. *Jour. Exp. Mar. Biol.*, vol. 57, pp. 135-147.
- Jackson, J. B. C., J. E. Winston, and A. G. Coates  
1985. Niche-breadth, geographic range, and extinction of Caribbean reef-associated cheilostome Bryozoa and Scleractinia. *Proc. 5e Congrès Internat. sur les récifs coralliens, Tahiti*, vol. 4, pp. 151-158.
- Johnston, G.  
1838. A history of the British zoophytes, 1st ed. London, Van Voorst, 333 pp.
1847. A history of the British zoophytes, 2nd ed. London, Van Voorst, 2 vols.
- Jullien, J., and L. Calvet  
1903. Bryozoaires provenant des Campagnes de l'Hirondelle 1886-1888. *Result. Camp. Sci. Prince Albert I*, vol. 23, pp. 1-188.
- Kirchenpauer, G. H.  
1869. Beschreibung neuer Bryozoen. *Museum Godeffroy Catalog*, vol. 4, Hamburg, pp. 118-119.
- Kirkpatrick, R.  
1888. Polyzoa of Mauritius. *Ann. Mag. Nat. Hist.*, ser. 6, vol. 1, pp. 72-85.
1890. Reports on the zoological collection made in Torres Straits by Professor A. C. Haddon 1888-1889, Hydroidea and Polyzoa. *Royal Dublin Society Sci. Proc.*, vol. 6, pp. 603-626.
- Kornicker, L. S., F. Bonet, R. Cann, and C. M. Hoskin  
1959. Alacran Reef, Campeche Bank, Mexico. *Publ. Inst. Mar. Sci. Univ. Texas*, vol. 6, pp. 1-22.
- Lamarck, J. B. P. A.  
1816. Histoire naturelle des animaux sans vertèbres . . . precedee d'une introduction offrant la détermination des caractères essentiels de l'animal, sa distinction du végétal et des autres corps naturels, enfin, l'exposition des principes fondamentaux de la zoologie. Paris, Verdier. Polyzoa in vol. 2, 568 pp.
- Lamouroux, J. V. F.  
1816. Histoire des polypiers coralligenes flexibles, vulgairement nommes zoophytes. Caen, F. Poisson, 559 pp.
- Lang, J. C., W. D. Hartman, and L. S. Land  
1975. Sclerosponges, primary framework constructors on the Jamaica deep foreereef. *Jour. Mar. Res.*, vol. 33, pp. 223-230.
- Levinsen, G. M. R.  
1909. Morphological and systematic studies on the cheilostomatous Bryozoa. Copenhagen, Natl. Forfatteres Forlag, 431 pp.
- Linnaeus, C.  
1758. *Systema naturae*, 10th ed., vol. 1. Stockholm, pp. 789-821.
- Livingstone, A. A.  
1926. Studies on Australian Bryozoa. No. 3. *Rec. Australian Mus.*, vol. 15, pp. 79-99.
- MacGillivray, P. H.  
1868-1869. Description of some new genera and species of Australian Polyzoa. *Trans. Proc. Roy. Soc. Victoria*, vol. 9, pp. 126-148.
1883. Description of new, or little known Polyzoa, pt. II. *Trans. Proc. Roy. Soc. Victoria*, vol. 19, pp. 130-138.
1885. Polyzoa. *In* F. McCoy, *Prodromus of the zoology of Victoria*, vol. 1. Decade X, pp. 16-31.
- Manzoni, A.  
1870. Bryozoi Pliocenici Italiana. *Quarta Contribuzione. Sitzungsberichte der Akademie der Wissenschaften in Wien (Abt. 1)*, vol. 61, pp. 323-349.
- Marcus, E.  
1925. Bryozoa. *In* P. Schulze (ed.), *Biol. Tiere Deutschlands*, pt. 47 (Lief. 14). Berlin, pp. 1-46, 39 text figs.
1937. Bryozoarios marinhos brasileiros, 1. *Bol. da Faculdade de Filosofia, Ciencias e Letras, Univ. Sao Paulo*, vol. 1, Zoologia, no. 1, pp. 1-224.
1938. Bryozoarios marinhos brasileiros, 2. *Bol. da Faculdade de Filosofia, Ciencias e Letras, Univ. Sao Paulo*, vol. 4, Zoologia, no. 2, pp. 1-137.
1949. Some Bryozoa from the Brazilian coast. *Comun. Zool. Mus. Hist. Natur. Montevideo*, vol. 3, pp. 1-33.
1955. Notas sobre briozoos marinhos brasi-

- leiras. Ara. Mus. Nac. Rio de Janeiro, vol. 42, pp. 273–324.
- Maturo, F. J. S., and T. J. M. Schopf  
1968. Ectoproct and entoproct type material: re-examination of species from New England and Bermuda named by A. E. Verrill, J. W. Dawson, and E. Desor. Postilla, Peabody Mus. Nat. Hist., no. 120, pp. 1–95.
- Milne-Edwards, H.  
1838. Memoire sur les Crisies, les Horneres et plusieurs autres polypes vivans ou fossiles dont l'organisation est analogue a celle des Tubulipores. Ann. Sci. Nat. (Zool.), ser. 2, vol. 9, pp. 193–238.
- Moll, J. P. C.  
1803. Eschara zoophytozoorum seu phytozoorum ordinae pulcherrima ac notata dignissima genus, etc. Vincobonae, 70 pp.
- Norman, A. M.  
1864. On undescribed British Hydrozoa, Actinozoa and Polyzoa. Ann. Mag. Nat. Hist., ser. 3, vol. 13, pp. 82–90.  
1909. The Polyzoa of Madeira and neighboring islands. Jour. Linn. Soc., Zool., vol. 30, pp. 275–314.
- Orbigny, A. d'  
1850–1852. Paléontologie française. Description des animaux invertébrés. Terrain Crétacé. Tome cinquième. Bryozoaires. Paris, 1850–1852, 1192 pp.  
1851. Recherches zoologiques sur la classe de Mollusques Bryozoaires. Ann. Sci. Nat. (Zool.), ser. 3, vol. 16, pp. 292–339.
- Ortmann, A.  
1890. Die Japanische Bryozoenfauna. Arch. Naturgeschichte, vol. 54, pp. 1–74.  
1892. Die Korallriffe von Dar-es-Salaam und Umgegend. Zool. Jarb., Syst., vol. 6, pp. 631–670.
- Osborne, S.  
1984. Bryozoan interactions: observations on stolonial overgrowth. Australian Jour. Mar. Freshw. Res., vol. 35, pp. 453–462.
- Osburn, R. C.  
1914. Bryozoa of the Tortugas Islands, Florida. Carnegie Inst. Washington Publ., no. 182, pp. 181–222.  
1927. Bryozoa of Curaçao. Bijdr. Dierkunde, vol. 25, pp. 123–132.  
1940. Bryozoa of Porto Rico with resume of the West Indian Bryozoan fauna. N.Y. Acad. Sci., Sci. Survey Porto Rico and Virgin Islands, vol. 16, pp. 321–486.  
1950. Bryozoa of the Pacific coast of North America. Part 1. Cheilostomata Anas-  
ca. Allan Hancock Pacific Exped., vol. 14, p. 1–269.
1952. Ibid. Part 2. Cheilostomata Ascophora, pp. 271–611.
1953. Ibid. Part 3. Cyclostomata, Ctenostomata, Entoprocta and *Addenda*, pp. 613–841.
- Pallas, P. S.  
1766. Elenchus zoophytorum, sistens generum adumbrationes generaliores et specierum cognitarum succinctas descriptiones, cum selectis auctorum synonymis. Hagae-Comitum, Petrum van Cleef, 451 pp.
- Palumbi, S., and J. B. C. Jackson  
1982. Ecology of cryptic coral reef communities. II. Recovery from small disturbance events by encrusting Bryozoa: the influence of "host" species and lesion size. Jour. Exp. Mar. Biol. Ecol., vol. 64, pp. 103–115.  
1983. Aging in modular organisms: ecology of zooid senescence in *Steginoporella* sp. (Bryozoa; Cheilostomata). Biol. Bull. (Woods Hole, Mass.), vol. 164, pp. 267–278.
- Phillipps, E. G.  
1899. Report on the Polyzoa from the Loyalty Islands, New Guinea, and New Britain. Willey's Zool. Res. vol. 4, pp. 439–450.
- Powell, N. A.  
1967. Bryozoa (Polyzoa) from the South Red Sea. Cah. Biol. Mar., vol. 8, pp. 161–183.  
1971. The marine Bryozoa near the Panama Canal. Bull. Mar. Sci., vol. 21, pp. 766–778.
- Powell, N. A., and P. L. Cook  
1967. Notes on *Tremogasterina* Canu and *Tremogasterina robusta* (Hincks) (Polyzoa, Ascophora). Cah. Biol. Mar., vol. 8, pp. 7–20.
- Ristedt, H., and H. Schumacher  
1985. The bryozoan *Rhynchozoon larreyi* (Audouin, 1826)—a successful competitor in coral reef communities of the Red Sea. Mar. Ecol., vol. 6, pp. 167–179.
- Ross, J. R. P.  
1974. Reef associated Ectoprocta from central region, Great Barrier Reef. Proc. 2nd Int. Coral Reef Symp., vol. 1, pp. 349–352.
- Ryland, J. S.  
1974. Bryozoa in the Great Barrier Reef province. Proc. 2nd Int. Coral Reef Symp., vol. 1, pp. 341–348.
- Schopf, T. J. M.  
1974. Ectoprocts as associates of coral reefs:

- St. Croix, U.S. Virgin Islands. *Ibid.*, pp. 353–356.
- Smitt, F. A.  
 1872. Floridan Bryozoa collected by Count L. F. de Pourtales, pt. 1. *K. Svenska Vetensk-Akad., Handl.*, vol. 10, pp. 1–20.  
 1873. Floridan Bryozoa collected by Count L. F. de Pourtales, pt. 2. *K. Svenska Vetensk-Akad., Handl.*, vol. 11, pp. 1–20.
- Soule, D. F., and J. D. Soule  
 1968. Bryozoan fouling organisms from Oahu, Hawaii, with a new species of *Watersipora*. *Bull. S. Calif. Acad. Sci.*, vol. 64, no. 4, pp. 203–218.  
 1973. Morphology and speciation of Hawaiian and Eastern Pacific Smittinidae (Bryozoa, Ectoprocta). *Bull. Amer. Mus. Nat. Hist.*, vol. 152, pp. 365–440.  
 1974. The bryozoan-coral interface on coral and coral reefs. *Proc. 2nd Int. Coral Reef Symp.*, vol. 1, pp. 335–340.  
 1975. Species groups in Watersiporidae. *Docum. Lab. Géol. Fac. Sci. Lyon, H.S.* 3 (fasc. 2), pp. 299–309.
- Stephenson, T. A.  
 1931. Development and the formation of colonies in *Pocillopora* and *Porites*, pt. I. *Gt. Barrier Reef Exped. Sci. Rpts.*, vol. 3, pp. 113–134.
- Stephenson T. A., A. Stephenson, G. Tandy, and M. Spender  
 1931. The structure and ecology of Low Isles and other reefs. *Gt. Barrier Reef Exped. Sci. Rpts.*, vol. 3, pp. 17–112.
- Thornely, L. R.  
 1905. Report on the Polyzoa. *In* W. A. Herdman (ed.), *Rpt. Pearl Oyster Fisheries, Gulf of Manaar* (4), *Suppl. Rpt.*, vol. 26, pp. 279–429.  
 1906. Additions and correction. *Rpt. Pearl Oyster Fisheries, Gulf of Manaar* (4), *Suppl. Rpt.*, vol. 26.  
 1912. Marine Polyzoa of the Indian Ocean, from H.M.S. *Sealark*. *Trans. Linn. Soc. London*, ser. 2, *Zool.*, vol. 15, pp. 137–157.
- Vasseur, P.  
 1984. Les peuplements sessiles sciaphiles des récifs coralliens de la région de Tuléar (S.W. de Madagascar). *Oceanis*, vol. 10, pp. 51–83.
- Wass, R. E., and J. J. Yoo  
 1983. Cheilostome Bryozoa from the Southern Australian continental shelf. *Aust. Jour. Mar. Freshw. Res.*, vol. 34, pp. 303–354.
- Waters, A. W.  
 1879. On the Bryozoa (Polyzoa) of the Bay of Naples. *Ann. Mag. Nat. Hist.*, ser. 5, vol. 3, pp. 28–43.  
 1889. Bryozoa from New South Wales. *Ann. Mag. Nat. Hist.*, ser. 6, vol. 4, pp. 1–24.  
 1899. Bryozoa from Madeira. *Jour. Roy. Micros. Soc.* 1899, pp. 6–16.  
 1909. Reports on the marine biology of the Sudanese Red Sea . . . 12. The Bryozoa. Part 1. Cheilostomata. *Jour. Linn. Soc. (Zool.)*, vol. 31, pp. 123–181.  
 1913. The marine fauna of British East Africa and Zanzibar, from collections made by Cyril Crossland, M.A., B.Sc., F.Z.S. in the years 1901–1902, Bryozoa—Cheilostomata. *Proc. Zool. Soc. London*, vol. 2, pp. 458–537.  
 1918. Some collections of the littoral marine fauna of the Cape Verde Islands made by Cyril Crossland, M.A., B.Sc., F.Z.S. in the summer of 1904. *Bryozoa. Jour. Linn. Soc., Zool.*, vol. 34, pp. 1–45.
- Weber, M.  
 1902. Introduction et description de l'expédition. *Siboga-Exped.*, pt. 1, pp. 1–159.
- Winston, J. E.  
 1982. Marine bryozoans (Ectoprocta) of the Indian River Area (Florida). *Amer. Mus. Nat. Hist. Bull.*, vol. 173, art. 2, pp. 99–176.  
 1984. Shallow-water bryozoans of Carrie Bow Cay, Belize. *Amer. Mus. Novitates*, no. 2799, pp. 1–38.  
 1985. Life history studies of *Disporella* and *Drepanophora* in Jamaica (abstr.). *In* C. Nielsen and G. P. Larwood (eds.), *Bryozoa: Ordovician to Recent*. Fredensborg, Olsen & Olsen, p. 350.
- Winston, J. E., and A. H. Cheetham  
 1984. The bryozoan *Nellia tenella* as a living fossil. *In* N. Eldredge and S. Stanley (eds.), *Living fossils*. New York, Springer Verlag, pp. 257–265.
- Winston, J. E., and B. F. Heimberg  
 1986. Bryozoans from Bali, Lombok, and Komodo. *Amer. Mus. Novitates*, no. 2847, pp. 1–49.
- Winston, J. E., and J. B. C. Jackson  
 1984. Ecology of cryptic coral reef communities. IV. Life histories of encrusting cheilostomes. *Jour. Exp. Mar. Biol. Ecol.*, vol. 76, pp. 1–21.

Recent issues of the *Novitates* may be purchased from the Museum. Lists of back issues of the *Novitates*, *Bulletin*, and *Anthropological Papers* published during the last five years are available free of charge. Address orders to: American Museum of Natural History Library, Department D, Central Park West at 79th St., New York, New York 10024.



Recent issues of the *Novitates* may be purchased from the Museum. Lists of back issues of the *Novitates*, *Bulletin*, and *Anthropological Papers* published during the last five years are available free of charge. Address orders to: American Museum of Natural History Library, Department D, Central Park West at 79th St., New York, New York 10024.