

1977

## The Bulletin, School of Nursing Alumnae Association, 1977

Margaret Summers

Francis J. Sweeney

Doris E. Bowman

Terrie Metzger

Carmen Russo

*See next page for additional authors*

### Let us know how access to this document benefits you

Follow this and additional works at: [http://jdc.jefferson.edu/nursing\\_alumni\\_bulletin](http://jdc.jefferson.edu/nursing_alumni_bulletin) Part of the [Nursing Commons](#)

#### Recommended Citation

Summers, Margaret; Sweeney, Francis J.; Bowman, Doris E.; Metzger, Terrie; Russo, Carmen; Hutelmyer, Carol M.; Voss, Charlotte E.; Sweeney, Elizabeth J.; Mara, Joy Roff; O'Connor, Harriet K.; Hindson, Janet; Plasterer, Jeanette; Heckenberger, Dolores; Piersol, Betty; McCracken, Julia T.; Riland, Martha E.; Miller, Elizabeth S.; Craven, Ruth Thorp; Rupp, Beverly; and Herbut, Peter A., "The Bulletin, School of Nursing Alumnae Association, 1977" (1977). *Nursing Alumni Bulletins*. Paper 37.

[http://jdc.jefferson.edu/nursing\\_alumni\\_bulletin/37](http://jdc.jefferson.edu/nursing_alumni_bulletin/37)

---

**Authors**

Margaret Summers, Francis J. Sweeney, Doris E. Bowman, Terrie Metzger, Carmen Russo, Carol M. Hutelmyer, Charlotte E. Voss, Elizabeth J. Sweeney, Joy Roff Mara, Harriet K. O'Connor, Janet Hindson, Jeanette Plasterer, Dolores Heckenberger, Betty Piersol, Julia T. McCracken, Martha E. Riland, Elizabeth S. Miller, Ruth Thorp Craven, Beverly Rupp, and Peter A. Herbut

# **THE BULLETIN**

**SCHOOL OF NURSING  
ALUMNAE ASSOCIATION**



**1891-1977**

**COLLEGE OF ALLIED HEALTH SCIENCES  
THOMAS JEFFERSON UNIVERSITY**



## ALUMNAE CALENDAR — 1977-1978

September 13, 1977	Regular Meeting
October 11, 1977	Regular Meeting
November 8, 1977	Regular Meeting
December 1977	Christmas Dinner Time and place to be announced
January 10, 1978	Regular Meeting
February 14, 1978	Regular Meeting
March 14, 1978	Regular Meeting
April 11, 1978	Annual Meeting
<b>May 6, 1978</b>	<b>Annual Luncheon</b>
May 9, 1978	Regular Meeting

All regular meetings will be held at Jefferson Hall, 11th & Locust Streets, Philadelphia. Meetings begin at 7:00 P.M. Room number posted in the Lobby.

## THE BULLETIN

SCHOOL OF NURSING ALUMNAE ASSOCIATION  
COLLEGE OF ALLIED HEALTH SCIENCES  
THOMAS JEFFERSON UNIVERSITY

### PUBLICATION COMMITTEE

Julia T. McCracken '34  
Evelyn W. Frazier '34  
Beverly Rupp '56

### MAILING

Martha Riland '27

### CREDITS

Dept. of Public Relations  
Thomas Jefferson University  
Jefferson Alumni Association

### PUBLISHED ANNUALLY BY

Alumnae Association of the  
School of Nursing  
College of Allied Health Sciences  
Thomas Jefferson University  
11th & Walnut Streets  
Philadelphia, PA 19107



THE BULLETIN  
SCHOOL OF NURSING ALUMNAE ASSOCIATION  
COUNCIL OF NURSING FACULTY CHAIRS  
**THE SCHOOL OF NURSING ALUMNAE ASSOCIATION**

**EXTENDS A CORDIAL WELCOME**

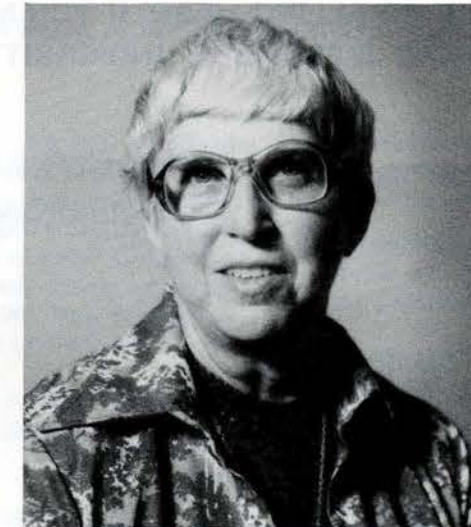
**TO**

**LEWIS W. BLUEMLE, JR., M.D., PRESIDENT OF THOMAS JEFFERSON UNIVERSITY**

**AND TO**

**MARTEN M. KERNIS, Ph.D., DEAN, COLLEGE OF ALLIED HEALTH SCIENCES**

ALUMNAE ASSOCIATION OF NURSING  
**A LETTER FROM THE PRESIDENT**



Dear Alumna,

*How time flies! it seems like I just finished my message to you for our 1976 Bulletin. Perhaps the time seems to move so swiftly because we are involved in such a varied number of activities.*

*One point of great concern to me is the poor attendance at our monthly Alumnae Meetings; I am thankful for the few faithful ones who always come, regardless of the weather, but it is disheartening and somewhat embarrassing to arrange programs and have only a few people attend.*

*On the brighter side - my faith in each one of you remains steadfast, your loyalty to your association is admirable and your financial support is most gratifying to those of us who to the best of our abilities try to keep the Alumnae affairs in order.*

*It is my hope that you will carefully read the Relief Fund and Scholarship Fund benefits as printed elsewhere in the Bulletin.*

*A big thank you to each one of you for your support and especially to my fellow officers and committee chairpersons for their untiring help.*

*Keep a smile on your face and a song in your hearts.*

Sincerely yours,

A handwritten signature in cursive script that reads "Margaret Summers".

Margaret Summers, Class of 1941



# ALUMNAE ASSOCIATION OF THE SCHOOL OF NURSING

COLLEGE OF ALLIED HEALTH SCIENCES  
THOMAS JEFFERSON UNIVERSITY

## OFFICERS

President  
MARGARET SUMMERS, '41

First Vice President  
MABEL PREVOST, '29

Second Vice President  
EVELYN R. CURRAN, '35

Recording Secretary  
BETTY PIERSOL, '34

Secretary Treasurer  
CAROLINE MASUDA, '37

Board of Directors  
DORIS BOWMAN, '42  
DOLORES T. HUGHES, '69  
DOLORES HECKENBERGER, '55  
BEVERLY RUPP, '56  
MARY ANN STAUFFER, '54

FLORENCE ROCHE, '56  
(ex-officio)

**COMMITTEE CHAIRMEN**

By-Laws  
EVELYN R. CURRAN, '35

Bulletin  
JULIA T. McCRACKEN, '34  
Nominating  
ELOISE HIPPENSTEEL, '52

Program  
DOLORES HECKENBERGER, '55

Scholarship  
DORIS BOWMAN, '42

Social  
JANET HINDSON, '50

Sick and Welfare  
JEANETTE PLASTERER, '51

Resource — Ways and Means  
BETTY PIERSOL, '34

Sesquicentennial  
HARRIETT K. O'CONNOR, '36

## FINANCIAL REPORT December 31, 1976

### RECEIPTS:

Dues .....	\$ 6,785.00
Annual Luncheon Reservations .....	2,060.00
Interest on Savings Accounts .....	2,408.75
Miscellaneous .....	7,947.00
Annual Giving Contributions:	
General Fund .....	4,659.00
Relief Fund .....	325.00
Scholarship Fund .....	554.00
<b>Total Receipts .....</b>	<b>24,738.95</b>

### DISBURSEMENTS:

Annual Luncheon Expenses .....	2,881.48
Printing, Mailing and Stationery .....	5,403.16
Sick Benefits for Members .....	2,778.50
Graduation Prizes .....	200.00
Contributions (United Fund, etc.) .....	400.00
Convention Expenses .....	600.00
Scholarship Granted .....	2,000.00
Christmas Gifts for Shut-Ins .....	1,000.00
Peter A. Herbert Memorial .....	1,000.00
Other Operating Expenses .....	4,008.40
<b>Total Disbursements .....</b>	<b>20,271.54</b>

### CASH BALANCE AS OF DECEMBER 31, 1976:

General Fund:	
Checking Account .....	2,172.87
Savings Account .....	12,806.69
Relief Fund .....	15,332.94
Scholarship Fund .....	12,666.98
<b>Total .....</b>	<b>42,979.48</b>

## PROGRESS

### THE NEW JEFFERSON HOSPITAL/CLINICAL TEACHING FACILITY 1977

One hundred years ago, in 1877, the first Jefferson Hospital, on the south side of Sansom Street between 10th and 11th Streets, was opened. One hundred and one years later, the New Jefferson Hospital/Clinical Teaching Facility will be opened directly across the street. The first Jefferson Hospital was hailed as a forerunner of medical care. Similarly the New Hospital is in the vanguard of health education and delivery.

The proposed Clinical Teaching Facility will support the described goals of Thomas Jefferson University which are:

1. The education of medical and allied health personnel at undergraduate and graduate levels.
2. The provision of continuing education to practicing health professionals.
3. The maintenance of a rich environment for the continuing search for knowledge in the medical sciences and in the art of health care delivery.
4. The development of educational and care services which will contribute to improved levels of health and well-being of our community.

The Clinical Teaching Facility will be an essential element of the University. It will not alone be a hospital or a hospital and some clinics, but rather it will be an instrument of the educational process which affords students and teachers alike an exemplary setting for the inter-action of superb patient care and the education of many professionals who must work together throughout their careers. It will be, as well, a mutual resource for clinical research programs and an important health resource for the community it serves.



Mr. William W. Bodine, Jr., Chairman of the Board of Trustees of Thomas Jefferson University, and Dr. Peter A. Herbut, President, join with officials of the City of Philadelphia and the Hospitals Authority of Philadelphia in turning over the first soil at the ground-breaking ceremony on November 13, 1975.



The gradual disappearance over the past several decades of the "clinic patient" from hospitals and the evident and predictable increase in the scope of ambulatory patient services has provided a significantly different environment for the clinical education of health professionals.

A multidisciplinary structure for care and teaching designed around physiological systems will be provided rather than continuing the traditional fractionated typical hospital organization and physical structure of today. These systems will permit the concentration of responsibility for delivering the ancillary services needed, for the provision of continuing care rather than episodic care to patients, and for the attainment of both personal and professional satisfaction for patients, teachers, students, and staff.

This new concept of medical education and patient care will combine the delivery of in-patient and ambulatory care in one physical complex and will, therefore, bring about significant economies in our teaching and in the delivery of patient care while permitting the delivery of primary, secondary, and tertiary care on the Jefferson campus.

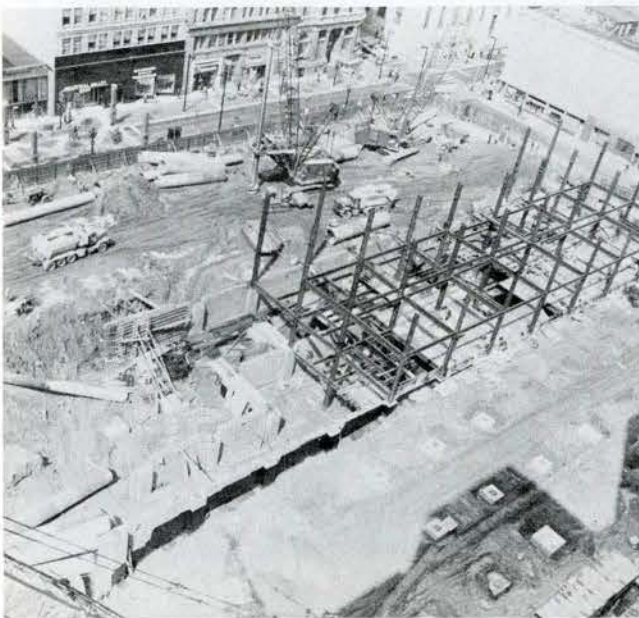
The Clinical Teaching Facility will be the result of a combination of the Foerderer Pavilion and a new building. The two will be bridged across Sansom Street.

The new building, which will encompass the city block between 10th and 11th Streets and Chestnut and

Sansom Streets, will contain 400 beds and 110 physician's offices. The major portion of diagnostic and therapeutic services will be provided in the southern half of the new building, and the in-patient programs in the Foerderer Pavilion and the northern half of the new building are designed to draw on these services at each respective level. Intensive Care Units will be provided on each level and will serve patients on that floor. The physicians' offices will be leased to the faculty and staff and all ambulatory care on campus will be delivered in that setting. Later the Foerderer Pavilion will be extensively remodeled and will contain 185 beds. Rehabilitation Medicine, pediatric services, obstetrical services, delivery rooms, and an enlarged and expanded Department of Clinical Laboratories will remain in this building.

At present, and for the next 12 to 28 months, extensive efforts are being made in the development of systems and methods to be employed in the giving of care and the methods of teaching. It is planned that the building will be fully occupied during the latter part of 1978. We hope all of you will visit your Alma Mater and see this new, innovative facility.

FRANCIS J. SWEENEY, Jr., M.D.  
Vice President for Health Services



Star floor Foerderer Pavilion



22nd floor Health Services Science Center



## SCHOOL OF NURSING REPORT TO THE ALUMNAE ASSOCIATION

Your school is living and well; responding to the challenges of change and continuing to strive for excellence in the quality of our graduates.

Campus changes this past year include the opening of the Barringer Residence Hall on the southeast corner of 10th and Walnut Streets. (No doubt many of you have fond memories of that spot, having spent time in the H. Royer Smith record shop.) In addition to 138 apartments there are shops and offices on the ground floor.

You may be interested to know that beginning with the next academic year students will have the option of living off or on campus.

At long last, the mock-up of the nursing unit on the ninth floor of the Health Sciences Center has been transformed into a student lounge with study carrels and a venditeria.

Classroom walls are still stark white, but not for long; a student committee is planning to paint a mural in at least one room. Speaking of brightening spaces, artists have painted graphics on a wall of each elevator lobby in our building; ours is a rainbow minus the proverbial pot of gold.



## SCHOOL OF NURSING

(continued)

More than ever students are using the Commons as a center of social activities. However, the parking plaza, completed last year, provides a great place for square dancing and cushion concerts under the stars and the supervision of Samuel Gross. As usual, the basketball team brought home honors, this time second place in the League and first place in the Jefferson Tournament as well as winning their big game at the Spectrum. The cheerleaders in winning the championship also won for the school a \$250 scholarship to be awarded to a student next October. Lori McCullough '78, newly elected Student Council Chairman, was elected 1977 Heart Queen of the Southeastern Pennsylvania Heart Association and reigned over the Association Ball.

Administratively there have been changes at all levels, most notably the naming of a new university president, a new dean of the College of Allied Health Sciences and within the school an assistant director for curriculum. Dr. Lewis W. Bluemle, former President, University of Oregon Health Sciences Center, will begin his presidency on or about August 1, 1977. Dr. Marten M. Kernis, formerly Associate Dean of the School of Basic Medical Sciences, College of Medicine, at the University of Chicago Medical School, assumed leadership of the college nearly a year ago. Together with the faculty these two men will provide the leadership effecting the future direction of the school. Having served as acting assistant director for curriculum, Eloise Hippensteel, '54, was promoted to assistant director last winter.

On top of everything else, we had a routine State Board visit in March. At this writing their report has not been received but we have no reason to believe that it will be other than favorable.

Although it cannot be said that we are inundated by males, our male students numbered five in the freshman class.

The 84th commencement for the School of Nursing on June 4, 1977, with 88 students in the graduating class, brings the total number of our graduates to 4,746. Dr. John W. Goldschmidt was the commencement speaker. The exercises were held in the Sheraton Ballroom at 1725 J. F. Kennedy Boulevard. 32 members of the graduating class are returning to positions in nursing service at Jefferson.

Best wishes for a happy, successful and healthy year ahead!

DORIS E. BOWMAN  
Director, School of Nursing 1976-77

## DIPLOMA STUDENT AFFAIRS COUNCIL

The 1976-77 officers of the Student Affairs Council held their first meeting on May 25, 1976 in the Rec Room of James R. Martin Residence. At this initial meeting, plans were made for the Annual Senior Party to be held June 2, 1976. Refreshments served at the party included pizza and sheet cake. During the year, Student Affairs Council planned for and funded a variety of parties. On September 30th, the Student Faculty Party was held in the Rec Room of the Martin Residence. The Halloween Party was held on October 28th, with a \$5 door prize awarded for the best costume.

In June, Student Affairs Council began additions and revisions on the present Student Handbook; Terry Locke designed the cover. Also on June 9th, Student Affairs Council assisted with Commencement held at the Sheraton Hotel.

The Council met with the freshman class in the beginning of September to introduce the students to Student Affairs Council. Two additional Student Body meetings were held in October and December; suggestions were made by the Student Body for future functions. It was decided at one of these meetings to give candy canes to each individual student instead of having a Christmas Party.

In October nominations were held for the Southeastern Pennsylvania Heart Association "Heart Queen". The nominees were Mindy Corn, Sue Garbus, Lorri McCullough, Joanne Stock and Joan Wolbert. Lorri McCullough was elected to represent the school and became Southeastern Pennsylvania Heart Association's "Heart Queen".

MaryAnne Mallee was Jefferson's SNAP Representative for the school year. Area #1 SNAP meetings were held during the year. The Student Affairs Council sponsored the January SNAP meeting held in the Rec Room of the Martin Residence. The program, "Colostomy Care", was presented by Lynn Dempsey, R.N., E.T. (a Jefferson graduate).

Student Affairs Council also met with Dorina Glick, Student Representative for the CAHS Bylaws Committee; she encouraged student input.

During the year, each class held various fund-raising activities to support their yearbook. The Senior class profited from a hoagie sale, a number of bake sales, the Hypertension Screening Project for the Philadelphia Reserve Bank, and the Annual Spaghetti Dinner. The Junior class raised funds by holding four bake sales, a Christmas cookie sale, an Easter candy sale, and a white elephant sale. The Freshman class, headed by Carmen Russo, sold candy bars during the month of March.

Eileen Roantree, Colleen Looby, and Jean Humphre-ville, were elected to be members of the Dean's Student Affairs Committee. It consists of student representatives from the CAHS. The Committee has planned a TJU weekend which is being held April 29-May 1st.

The School of Nursing's Basketball team went all out this year in representing our school. They were undefeated in the Southeastern Pennsylvania League for Nursing Students Nurses Basketball League Playoffs. They were defeated, however, by Lankenau in the finals and our school was awarded second place trophy. Ann Carson was the recipient of the Women's Board Award for Athletic Achievement. Their annual basketball dinner was held at Le Bistro.

The school's cheerleading squad with Cindy Brown and Karen Richards as co-captains urged the squad on to win the Southeastern Pennsylvania League Championship. The first place trophy was awarded by the American Legion along with a \$250 scholarship.

Student Affairs Council worked to foster student enthusiasm towards both the school and its activities. The Council worked to draw the student body and the faculty closer. We hope that in the future Student Affairs Council will continue along these lines.

Respectfully submitted,  
TERRIE METZGER, Chairman

## A MALE STUDENT NURSE'S VIEW

With all the discussion going on today concerning role playing, that of sex roles has taken priority. Men and women today are ridding themselves of the sex role stereotypes and entering careers of their choice, not those handed to them by a role oriented society. Females are becoming lawyers and doctors, while males are entering the fields of hair styling and nursing. Being a freshman in Jefferson's diploma nursing program, I feel very comfortable in my socially non-conforming role. Nursing places the care of the patient on a personal level, which gives me the most satisfaction. My patients are quick to ask me why I didn't want to become a doctor. Physicians have the money and prestige, but with their schedule, they have little time to enjoy them. Besides, most physicians have so many patients, that the idea of personal service is non-existent.

I "knew" at the age of ten that I wanted to enter the medical field, but finding my spot took some searching. I became a volunteer and then a nursing assistant at Nazareth Hospital. During this time I saw the many facets of the medical field open up before me, and I decided that nursing offered the most rewards. I chose to enter a diploma program based on my observations while working. I've seen four years of "new grads" coming

up to our floor to work, and the diploma nursing student was by far the best prepared. The associate degree programs appear to rush their students through the theory, with no time for actual experience. And as far as the baccalaureate program is concerned, they get the same nursing education as the associate degree program, with liberal arts given during the first two years. And I don't feel that two years of liberal arts makes for a more qualified nurse, as we are being led to believe.

Realizing, however, that college was a necessity, I did attend Temple University where I obtained my degree in Psychology before entering nursing school.

All in all, I have been well accepted at Jefferson; in addition to getting along well with both faculty and staff, my classmates have elected me president of the freshman class — a Jefferson first. As far as my plans for the future, I already have applications in at several schools for nurse anesthetist. I'm not sure where my head will be in two more years, I haven't gone through any "rotations" yet, so I don't know what each holds for me. I just want to be sure that all doors will be open to me by the time I graduate.

CARMEN RUSSO  
Student Nurse  
Class of 1979

## NURSING SERVICE REPORT

During the past year many programs have started and/or grown within nursing at Jefferson. Two programs which have expanded considerably over the past year and deserve mention are the stoma program, which is conducted by Lynne Dempsey, R.N., and the home care program, which receives its direction from Betty Piersol.

The home care program has been at Jefferson for a number of years and the focus of this program is to assist patients in their preparation for discharge and follow-up care. Over the past two years the number of visits to patients on a monthly basis has increased. The number of referrals to outside agencies has also increased. Miss Piersol receives referrals from the nursing staff and the Utilization Review Department. She will then visit patients and discuss their care with them and make the appropriate arrangements for care after discharge. She also assists the staff nurses in discharge planning for their patients.

Also this past year we initiated a task force to develop a method of improving our staff planning. Miss Piersol was a member of this task force and their recommendations include a discharge care plan which should begin on admission. The plan for patients' home care will be made early in their hospitalization and we can



then eliminate the delays in services which sometimes occur because referrals are received the day prior to discharge.

The stoma program, which was begun a number of years ago (approximately three) by Myrna Armstrong, R.N., and a group of staff nurses, has grown into a major teaching program for patients. About two years ago, Lynne Dempsey went to Cleveland Clinics to become a stoma therapist and returned to Jefferson to head the stoma care program for patients. Lynne visits a number of patients on an ongoing basis. She begins seeing them before surgery and assists them with the care of their stoma in the early phases of their recovery and after they go home.

This summer we hope to open an outpatient service for persons with stomas, in which Lynne will be able to care for patients who have gone home from Jefferson or patients from other hospitals who do not now have access to a stoma therapist. These patients will be able to come on a regular basis and receive nursing care related to their colostomies or ileostomies.

Another area which has been new to Nursing Service at Jefferson has been the nursing care of patients in the operating room. In August of last year the operating room became part of Nursing Service and since that time there have been many efforts made to provide continuity of care from admission to discharge for all patients, including the nursing care the patients receive in the operating room.

The program of planned postoperative visits which was started last year has been continued and expanded. This coming year we hope to develop a core of staff for each specialty area within the O.R. so that there may be truly an operating team caring for patients. Other efforts, of course, include the evaluation of quality of care before, during and after operation and these audits are integrated with the other nursing audits.

In February of this year, Mrs. Peace began an extended leave of absence for health reasons. In May Mrs. Carole Leomporra was named Assistant to the Director for Operating Room Nursing.

Educational programs for all nursing staff to assist changeover to the new hospital will begin in September of this year. Many of our activities over the next year will be centered around planning the move to the new building.

Of course, our main concern will be continued improvement of nursing care. Specific areas of patient care which we will address are (1) care of patient with short-term illness, (2) the patient with spinal cord injuries, and (3) care of women who have had mastectomies.

CAROL M. HUTELMYER  
Director, Nursing Service

## DEPARTMENT OF BACCALAUREATE NURSING

On Thursday and Friday, March 24 and 25, 1977, a Nursing Symposium on Myasthenia Gravis was offered by the Department and the Myasthenia Gravis Foundation. The response of those who attended was very positive and enthusiastic.

The multidisciplinary presentation included speakers from the fields of nursing, medicine, pharmacology and nutrition.

Suggested topics from Alumni for future programs should be directed to the Department of Baccalaureate Nursing.

At the University Commencement on June 10, 1977, 57 graduates received the B.S. in Nursing Degree.

CHARLOTTE E. VOSS  
Chairman

## SCHOOL OF PRACTICAL NURSING

The 1976-77 Academic year in the School of Practical Nursing has been a rather uneventful one as 66 beginning students were reduced to 56 students scheduled to graduate on August 31, 1977. The faculty has noted with pleasure that this class has been much more involved with the College activities as well as participating in such community sponsored activities as sponsored by the American Cancer Association when they conducted surveys in the center city area.

Graduates of this program find little difficulty being employed as licensed practical nurses when they choose a community or non-teaching hospital. During the past year a trend to exclude them from positions in the teaching hospitals in favor of professional registered nurses has stimulated increased attention in continuing education for those who are capable of attaining licensure as a registered nurse. Other graduates appear to have renewed interest in the care of chronically ill, convalescent patients which should eventually upgrade those institutions because of improved preparation of the members of the nursing staff.

The interest, quality and quantity of applicants to be admitted to this practical/vocational nursing education program appears to have reached a new high in 1977 which will result in a considerable number of applicants being deferred until the class beginning in 1978.

ELIZABETH J. SWEENEY  
Director, School of Practical Nursing

## BENEFIT CHANGES

The following amendments were voted on and accepted at the Annual Alumnae Meeting on April 8, 1975.

### ARTICLE VII—RELIEF FUND BENEFITS

**Section 1.**—Active and Life members are entitled up to five hundred dollars (\$500.00) annually toward their hospital bills (**it is no longer required to be hospitalized at Jefferson**) and/or bills incurred due to an extended illness at home, greater than of thirty days duration and requiring services of a physician.

Associate members are entitled up to three hundred dollars (\$300.00) annually toward their hospital bills (**it is no longer required to be hospitalized at Jefferson**) and/or bills incurred due to an extended illness at home, greater than of thirty days duration and requiring services of a physician.

Nursing homes will be given special consideration.

**Section 2.**—The said benefits are subject to the following rules and regulations:

1. Members are required to be in good standing with the Alumnae Association at the time of admission to a hospital, or an illness at home.
2. Any graduate must be a member of the Alumnae Association for one year before she/he is eligible to receive benefits.
3. Upon request to the Secretary-Treasurer a form will be submitted to the applicant member to be completed by the Medical Record Department to verify hospitalization. If at home, the attending physician will complete the form.
4. Pregnancy and its complications are completely excluded.
5. Cosmetic surgery entirely excluded.

6. Dental surgery and/or complications are entirely excluded.
7. If a member has not paid dues before April 1st she/he is not eligible for benefits from the Relief Fund.
8. Special cases due to adversities must be referred to the President for investigation and subsequently to the Board of Directors for consideration.

### ARTICLE XVI—CLARA MELVILLE-ADELE LEWIS SCHOLARSHIP FUND GRADUATE SCHOLARSHIP

**Section 1.**—Two graduate scholarships up to one thousand dollars each may be awarded annually from the Clara Melville-Adele Lewis Scholarship Fund, subject to the following rules and regulations:

1. The applicants must be members of the Alumnae Association for no less than one year prior to the time of application, a member of the American Nurses Association, have at least one year of professional experience, and have been admitted to an approved program in nursing or a related health program.
2. Applicants for the scholarship shall request and submit the application to the Chairman of the Scholarship Committee.
3. The closing dates for applications are April 1st for those desiring scholarships for fall or winter semester and September 1st for those desiring the scholarship for spring semester. The applications will be considered by the Scholarship Committee in April and September, and the recommendations for their award will be presented at the membership meetings in May and October for approval.
4. All other things being equal, preference will be given to the applicant who has been active in the Association and who has most nearly completed requirements for a degree.

MARGARET SUMMERS  
President



## A COMPREHENSIVE APPROACH TO HAND REHABILITATION

by JOY ROFF MARA

Reprinted courtesy of the Jefferson Medical College Alumni Association

The concept of a hand sculpture, a statue of a hand, seems at first an unusual one, makes one wonder before seeing such a figure what the hand is doing, what it can be saying. Is it horizontal or vertical, male or female, pianist's or baker's, in a fist or a peace sign, or, like the hand of Vonnegut's "Cat's Cradle" hero, frozen forever in gesture unmistakable?

"The Hand of Hope," a Joseph Greenberg sculpture in aluminum and plastic which currently dominates the occupational therapy facilities of the Hand Rehabilitation Center, seems by comparison natural, inevitable in its surroundings. Of Brobdingnagian dimensions, it is slightly cupped and outstretched, aesthetically striking, conveying both power and longing. It has become a symbol for the 3,723 new patients seen at the Center since it opened.

The Center, located on South Tenth Street in Philadelphia, opened in 1972. It had been envisioned for many years, however, by its founder and Director, Dr. James M. Hunter '53, a specialist in surgery of the hand. Dr. Hunter obtained private funding to buy the former Horn and Hardart bakery that he converted for the Center. The three-story building, which is still not finished to Dr. Hunter's satisfaction, contains offices and examining rooms with both physical and occupational therapy facilities. Practicing with a partner, Dr. Lawrence H. Schneider, also a trained specialist in hand surgery, Dr. Hunter has staffed the Center with full-time physical and occupational therapists. There are two Hand Fellows in training each year as well as Jefferson orthopaedic and general surgery residents and volunteers. Twelve Fellows thus far have come from, and moved on to active practice in hand surgery in places as diverse as Montreal and Johannesburg, South Africa. In addition to attracting physicians and, more recently, rehabilitation therapists from all parts of the world to study the Center's methods, the patient roster also is international in composition.

The Hand Center has gained its reputation in part through the innovative surgical techniques of its Director. The Hunter Tendon Prosthesis, for instance, has earned Dr. Hunter worldwide repute. In the two-stage procedure, an artificial, silicone rubber tendon of Dr. Hunter's invention is inserted into the hand to allow the tendon bed to rebuild. Some months later, the artificial tendon

is replaced by a natural tendon graft. The silicone tendon is considerably more flexible than its predecessors, and, as such, is a valuable tool in hand rehabilitation.

Dr. Hunter is the first to admit, however, that surgery is only one aspect of hand rehabilitation. The philosophy of the Center and one of the things that makes it unique, is based on an integrated approach to hand rehabilitation. Frequently, a hand surgeon will prescribe post-surgical therapy for a patient and perhaps even suggest a particular therapist, but the physician's personal involvement ends there. At the Hand Rehabilitation Center, the surgeons and the therapists consult at each stage of treatment. Restoring hand function is often a gradual and lengthy proposition, with surgery proceeding by degrees and appropriate therapy preceding and following it. Because the Center staff works as a team, the patient's original problem is not compounded by uncoordinated and perhaps even conflicting approaches. "We also can do more surgery and do it better," Dr. Hunter notes, "The rest of the staff is so sensitive and so professional that they are extensions of the surgeons' own hands."

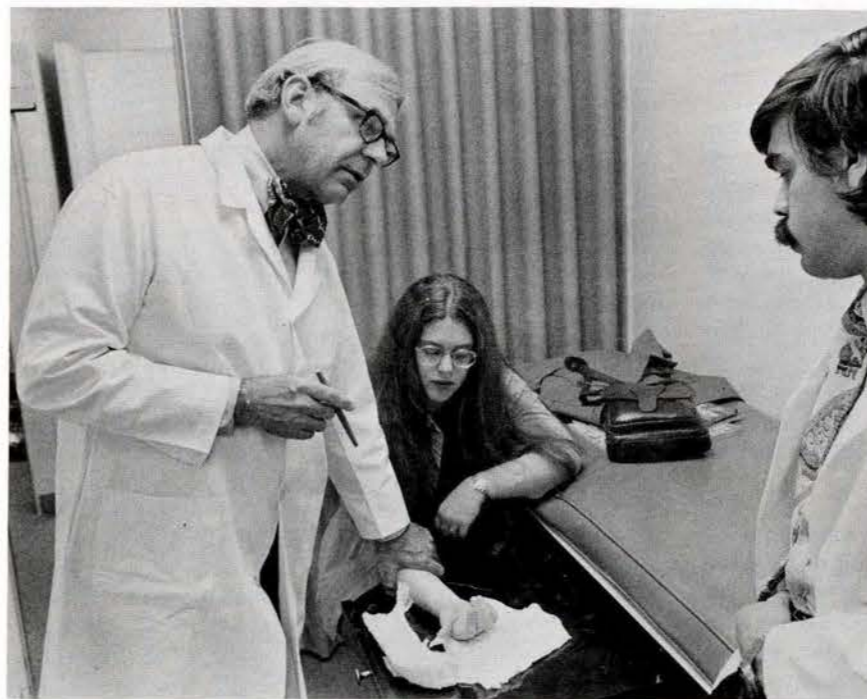
In addition to working as a team, the Center's staff also repudiates what some patients call torture therapy and offers instead gentle, nonpainful exercises that do not cause the post-exercise swelling which can doubly impede recovery. Talking to the patients at the Hand Clinic, one hears virtually the same story repeated time and again. "I went to other therapists and the sessions were agony. They'd tell me to exercise at home, but my hand swelled so badly after therapy that I couldn't begin to move it. I've been here six months and now look at it. I can make a fist, I can grip a tool, I can shake your hand."

The philosophy of the Center also extends to the atmosphere that was created consciously but which also seems a very natural function of the personalities of its staff. There is a sense of mission about the place, a tremendous enthusiasm and sincere concern for the patients as people. Like anything genuine, the concern communicates itself naturally to the patients, to the non-professional staff, to the visitor. With an inevitable hand awareness, people communicate with their hands,

they touch physically and they support each other emotionally. Patients give each other support and assistance. On a less deliberate level, the improvement of one patient can give another hope, just as the injuries of one can make another feel less like Job. Although the Center has no psychologist to deal with the mental stress attached to injury, the doctors and therapists are very sensitive to this area, and their whole concept is total patient care. Interaction among the patients themselves suffices to provide what is clearly an important part of the Center's treatment. Future plans include a social worker and job placement coordinator.

Orthopaedic hand research resident, Scott H. Jaeger '72, attributes the Center's super-charged atmosphere in great measure to James Hunter. "Dr. Hunter excites people," Jaeger notes in an unaffected fashion, "and he makes it both possible and easy for all of us to work together. He has created a very positive environment in all aspects of the Center's operation, so that everything works to the ultimate advantage of the patient." Director of Rehabilitation Evelyn Mackin adds that Dr. Hunter inspires great confidence in the patients due to his understanding of their problems. "When a musician or a professional athlete comes to us with an injured hand, Dr. Hunter can relate to their feelings. He himself plays bass with a group of other professional men in a jazz group, "The Red Peppers," and sculls and rows on the Schuylkill whenever he gets the chance."

Therapy at the Hand Center begins with the traditional physical modalities of whirlpool and paraffin treatments, which are designed to relieve stiffness and aid exercise.



Director James M. Hunter, M.D.

Naturally each course of physical therapy is individualized as are the various corrective splints. Although some of the splints used are prefabricated, many orthoplast splints are fashioned by Loretta Maioranno, the Center's occupational therapist. Dr. Hunter has designed many unorthodox splints to deal with special problems or to improve on traditional splints, and the patients themselves have conceived many of the exercises now in use. The homemade splints have the additional attraction of economy, many being constructed with common household materials like lampwick, velcro and wood.

Sensibility testing, measuring the ability of the hand to feel, is an important part of the patient's occupational therapy. But by far the most visible aspect of occupational therapy is the Center's activities program. With the aid of a mechanical engineer who plans, lays out, and assists, patients undertake specific goal-oriented projects for different therapeutic programs. Selected patients in more advanced phases of recovery may select a wood sculpture project supervised by Mr. Adolph Dioda, head of the Departments of Wood and Stone Sculpture at the Pennsylvania Academy of Fine Arts. Woodworking involves both the dominant and non-dominant hand, and the wood sculpture is particularly useful in improving grip and arm strength. Ceramics involve a different kind of resistance, and kneading and molding the stiff clay helps restore motion and strength. Painting the molded figures requires other skills. The Center has its own kiln, and also has facilities for weaving and sewing. For those as yet unable to participate in the crafts, there are blocks, puzzles and hand-oriented toys which are useful in improving grip and coordination.



"The Hand of Hope", a Joseph Greenberg sculpture in aluminum and bronze, dominates the Hand Center's occupational therapy room.



There are emotional benefits from the occupational therapy as well. Patients find they enjoy crafts they might otherwise never have tried, and mastering the practical skills brings an additional sense of accomplishment. Naturally not everyone has artistic talent, hidden or otherwise, but the Center displays some remarkably lovely examples of patients' work. A barnboard coat rack and a wood sculpture of a woman's trunk are two efforts that would not look out of place in a traditional art class. Patients in the Hand Rehabilitation Center are encouraged to prepare projects for display and sale at the annual Christmas Bazaar sponsored by the Emergency Aid of Pennsylvania. This goal adds a further sense of self-esteem and pride in goals accomplished during reconstruction and rehabilitation. Materials for the crafts are largely donated, another aspect of Dr. Hunter's ability to excite and direct enthusiasm.

One of the Center's most interesting therapy concepts is the new job-oriented nerve retraining. In a hand injury very often nerve endings will grow back in a different location from their normal position in the hand. Thus, even a hand that has been returned to working facility in strength and agility may not feel things in the same way it did before injury. Like a child with a learning disability who perhaps sees a D as a B, a hand patient may feel a touch to his index finger in his ring finger. This can be crucial to a man who works with tools or in any hand-sensitive occupation. Through a series of repetitive exercises involving physical stimuli to different parts of the hand, automatic responses to the brain are redirected. The patient will always actually feel the touch in his ring finger, but his brain will automatically make the switch and he will react as if he felt it in his index finger. Ms Mackin, who has shared Dr. Hunter's philosophy and worked with him for nine years, makes an analogy with a railroad system.

"Even if the main track is gone, a train can still reach its destination by switching to another track. In nerve retraining, we teach the brain to take that other track. A patient may make a good recovery from a nerve laceration and return to work. He may have all his range of motion and be able to make a good grip, however, if he is a machinist, he may find that he cannot use a micrometer due to the lack of sensibility in his fingertips. He is not able with his eyes closed to tell the difference between a paper clip, a dime, or perhaps a piece of string. The foreman on the job seeing what appears to be a normal hand may not understand, but the patient knows."

The Hand Center treats all manner of hand injuries from arthritic conditions to occupational injuries. Of the approximately 100 patients currently being treated, on any given day you might find a three-year-old child who put her hand through a storm door, a government worker whose hand was crushed by a fork lift, a mechanic whose injury was caused by severe burns, or a delayed polio,

brachial plexus or spinal cord victim whose hand was left paralyzed. College students who work with unfamiliar machinery on summer jobs are frequent accident victims, and the euphoria of the Flyers' victory parades produced its share of local injuries.

Patients have been referred to the clinic in a variety of ways. Many of the people who come to the Center from outside the Philadelphia area hear about it from physicians with Jefferson ties or from members of the International Hand Society, in which Dr. Hunter is active. A random survey of patients found that sources as diverse as "my sister" and "my gynecologist" had first suggested the Hand Center.

Rehabilitation centers of this sort are more common in Europe, but patients have come here for treatment from many other parts of the world. It is the only unit of its kind in the Delaware Valley, was the first in Pennsylvania and one of the first in the United States. As might be expected, many of its non-Philadelphia clients are from nearby surrounding states. Currently an arrangement with the Benjamin Franklin Hotel allows Hand Center patients special rates for their visits which, for local and non-local residents alike, may be one, three or five times a week as required and as possible. Naturally, frequent and consistent hand therapy has the greatest chance for success so patients are encouraged to come as often as they can. With intensified rehabilitation, patients can return to work faster and lessen the drain on taxpayer and insurance company.

Dr. Hunter has restored to occupational facility the hands of musicians, architects, surgeons and housewives, and, in fact, virtually all patients who maintain motivation improve to functional capacity through a program of surgery and therapy. In perhaps the most dramatic procedure, even hands without digits can be restored to usefulness by surgically removing two central metacarpals and making a cleft. When various digits have been lost, remaining ones may be brought around by osteotomy to oppose the others for pinch.

Seeing this kind of operation give an injured architect back his trade was the start of Center Fellow Tom Norris' interest in hand surgery as a specialty. "Specializing in the hand is a relatively recent phenomenon," he notes. "More hand injuries occur than any other single category of injuries, over two million per year, and more occupational displacement is caused by hand injury than by any other type of injury. So while the hand specialty is new, the need has always been there." Hand surgery is proving an attractive specialty. Dr. Hunter has many more qualified applicants for Fellowships than he can take on, and applications increase every year, both because it is new and because it is challenging in its complexity. While hand surgery confines its spectrum of skills to the upper extremity, involved in its mastery is the knowledge of general, neurologic, orthopaedic and plastic surgery.

Although the Hand Center is an independent, privately funded organization, it is related to Jefferson in a number of ways, to mutual benefit. Dr. Hunter and Dr. Schneider are JMC faculty members, Associate and Assistant Professors of Orthopaedic Surgery respectively. Twelve Jefferson general surgery and orthopaedic residents per year take a three-month rotation with Dr. Hunter. The Center is also a part of the orthopaedic rotation for Jefferson medical students.

Research is an important activity of the Hand Center. Although funding has been obtained independently from such sources as the U.S. Department of Defense, DuPont, the Zimmer and Extracorporeal Medical Specialties Corporations, the research is carried out in Jefferson facilities and under the auspices of Dr. John J. Gartland, Chairman of the Department of Orthopaedic Surgery. At present, in fact, the Center holds one of Jefferson's larger one-year grants, a \$93,000 renewal from the Department of the Army.

There are several research projects currently underway. The Hunter Tendon Prosthesis was conceived as a two-stage procedure with a temporary artificial tendon, in part because until now no suitable way of permanently attaching an artificial tendon has been devised. Dr. Hunter has been working with researchers at the University of Illinois in Chicago who have developed a new kind of attachment using titanium composites worked into a porous block. This attachment is thought to be more biocompatible than previous types since the bone can attach and actually grow into the block.

The permanent artificial tendons themselves will also be of a new material, Kevlar, made by DuPont. Kevlar is an extremely versatile substance, best known until now as a thin and flexible bulletproof clothing material. Although this is the first medical use of Kevlar, it appears to have many of the same properties as a human tendon, particularly in retaining proper elasticity and strength. Months of research determining the precise characteristics of the human tendon preceded the search for a permanent artificial substitute. The new artificial tendons are already in place in test group chimpanzees, and it is expected that implants in human hands under clinical research conditions began in May of 1976. The tendon research will probably be applicable to other areas of the body such as the elbow or knee once its success in human implantation is measured. It is hoped that eventually ligaments as well as tendons will be replaceable, progressing from the non-weight-bearing joints to the weight-bearing joints. If Kevlar lives up to expectation, ultimately even someone as active as a professional athlete could return to field or court after ligament replacement.

Approaching the injured tendon from another perspective, Dr. Tsune Miyaji, a research Fellow with the Center, from Tokyo University, studied the vascular

pattern of the hand. It is becoming clear that the early treatment of hand injuries is extremely important, and the focus of the research is tendon repair rather than prosthesis. Although Dr. Miyaji has returned to Japan, another Fellow from Japan is expected and will continue the project.

The Center's researchers are also working in conjunction with Dr. Robert J. Merklin, Associate Professor in the Department of Anatomy. Using selected hands and arms from fresh cadavers and acute traumatic amputations, they are studying the fine vessels for a better understanding of the nutrition of the tendon system. Very often, hand surgeons find that a surgical method which is successful in one area of the hand will have no result in another. It is hoped that this study may help explain why.

In the future, Dr. Hunter hopes to expand the functions of the Hand Center while retaining the one-to-one character of the patient-professional interaction. The development of replantation teams performing microvascular surgery to reattach traumatic amputations of the hand is beginning at Jefferson, but Dr. Hunter hopes to enlarge on the concept. He also plans to establish an assessment section at the Center to determine the physical, financial and occupational ramifications of an injury. In the spring, Dr. Hunter is chairing a Hand Symposium in Philadelphia, sponsored by the American Society for Surgery of the Hand, the first in the country to concentrate on rehabilitation. This is similar to his 1974 Symposium on Hand Tendon Surgery. A book of the proceedings was published by Mosby Co., November, 1975.

Some physical expansion is also planned on a restricted level. The presently unfinished third floor of the building will be converted for library and conference space, and it is possible that the therapy facilities will be enlarged as well. Dr. Hunter is determined, however, that the essential character of the place remain unchanged. The exposed brick walls and unpolished bare wood floors create a kind of unfinished atmosphere where formality or pretense seem out of place. There has been a conscious effort to keep the surroundings simple, scaled to people, warm and not antiseptically medical. "We will always have an atmosphere," affirms Dr. Hunter, "in which the working man can feel at home."



## PARKING GARAGE

Can a parking garage be beautiful? Yes, and dramatic. Philadelphia architects can sometimes be very clever in disguising the mundane functions of buildings by designing exciting exteriors.

When the officials of Thomas Jefferson University determined the need to build a new multi-level 410 car parking facility in the hub of their center city campus, they were determined it wouldn't look like a "garage".

The uniquely designed brick structure features a pedestrian esplanade which divides its two above-grade sections and offers an attractive route for traveling between university buildings, as well as a pleasant place to sit and relax.

The designers have brought a little of the country into the city with the attractive landscaping of the esplanade and grounds surrounding the facility. Trees, shrubs and park benches compliment the modern design of the structure.

The facility was built with the future in mind. The University has plans to build a classroom facility, using the parking structure as a base.

The facility is almost completely self-service and rates are competitive with those of other center-city commercial garages. Special discounts are offered to resident students and there are special all-night rates.

An "audio-sensor" security system is employed in addition to a regular security guard staff. The sensors pick up sounds from anywhere in the garage and pinpoint the exact location of problems.

The facility also includes a sophisticated sprinkler system and a special system to take care of unhealthy exhaust fumes.

There are entrances to the garage on 10th and 11th Streets, between Walnut and Locust, but exits must be made only onto 11th Street.



## Your Sesquicentennial Campaign

ONE HUNDRED FIFTY PLUS THREE

In the heart of Old Philadelphia there is created a beautiful oasis of medical education. It is called Jefferson. It is ours, and for its achievements we proudly work.

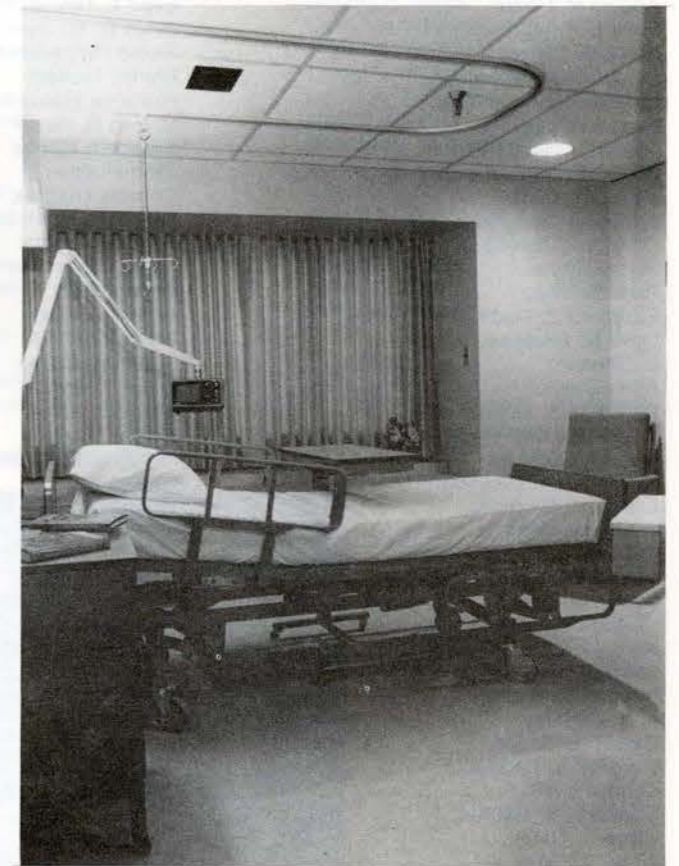
Phase I goal was \$15,800,000.00: gifts and subscriptions reached and passed that figure. May 31, 1977 total gifts and pledges are slightly more than three quarters of a million dollars beyond Phase I goal. There are 278 nurse alumnae who have made gifts to total \$87,140.00 toward our \$100,000.00 commitment. We proudly present their names below.

As we move to Phase II, a much greater emphasis will be placed on endowed chairs, distinguished professorships, fellowships, scholarships, loan funds, and money that the new facilities on the Jefferson campus enable the administration to introduce.

The new hospital building will have Memorial Tributes from you, our nurses, as you have selected. Two Classrooms at \$25,000.00 each. Three Nurses Lounges at \$15,000.00 each.

Please be a joiner and take positive action to achieve our goal by sending a check to Sesqui-Campaign in care of the Nurses Alumnae Association, Thomas Jefferson University.

HARRIET K. O'CONNOR '39  
Chairman



A Room in the New Hospital Building

## DONORS SESQUICENTENNIAL CAMPAIGN ALUMNAE, DIPLOMA SCHOOL

Barbara F. Ackerman  
Betty J. Alexy  
Marilyn Alley  
Helen D. Anderson, Dec'd.  
Evelyn R. Arnold  
Virginia Avery  
Emma Bahner  
Joanne M. Balmer  
Linda M. Barbour  
Margery Barger  
Hazel T. Barkdoll  
Minnie Bartash  
Margaret A. Bathurst  
Genevieve Batten  
Sally Baxter  
Hazel B. Beach  
Karen L. Bedell  
Adeline R. Benjamin  
Carolyn J. Bewsher  
Norma Bicking

Henriette Bigney  
Anna W. Billie  
Linda S. Bingaman  
Mina Birch  
Mary K. Bistline  
Suzanne Blackburn  
Margaret R. Blake  
Christina M. Blasius  
Eileen Blum  
Janet L. Blumberg  
Tracy V. Booth  
Jill S. Bower  
Doris Bowman  
Genevieve R. Bowman  
Nancy W. Bowman  
Denise A. Boyd  
Grace A. Braum  
Anne Breach  
Betty Breaw  
Barbara M. Breen

Marian R. Briggs  
Barbara H. Brodovsky  
Joann R. Brosious  
Dorothy F. Brown  
Viola C. Brubaker  
Clara M. Brunner  
Annette B. Bunting  
Jeanne Burkins  
Dorothy G. Butt  
Mary Ann Buzydlowski  
Vivian Caceres  
Ann W. Candler  
Margaret Carey  
Susann O. Carney  
Elmetta Y. Carter  
Maureen L. Cattie  
Mercedes F. Christ  
Martha B. Clark  
Hilda S. Cole  
Angela D. Clark



Catherine I. Clement  
 Alice L. Conte  
 M. M. Cossman  
 Phyllis Courtney  
 Catherine Cowen  
 Janice C. Cox  
 Angela R. Cozza  
 Mary E. Craig  
 Anna M. Craver  
 Evelyn J. Cunningham  
 Loretta Cunningham  
 Evelyn R. Curran  
 Joanne A. D'Alonzo  
 A. J. Sakella Daneman  
 Helen M. Daniel  
 Adrienne Daughenbaugh  
 Charlotte Davenport  
 Perma Davis  
 Ruth S. Davis  
 Elizabeth Z. Dedway  
 Lynn M. Dempsey  
 E. Denham  
 Ann Dewitt  
 Elizabeth S. Diamond  
 Josephine Dickerson  
 Mary T. Dickerson  
 Rosemary F. Dickson  
 Eileen M. DiLoreto  
 Filomena Doherty  
 Ruth M. Downey  
 Louise W. Dunn  
 Evelyn L. Dute  
 Charlotte S. Ellenbogen  
 Nancy Eng  
 Elizabeth Ent  
 Helen A. Eriksen  
 A. J. Eveland  
 Dawne P. Ferich  
 Dorothy A. Fessler  
 Sandra L. Fida  
 Elizabeth S. Fischer  
 Clara R. Flynn  
 Judy C. Flynn  
 Blanche Ford  
 Jane J. Fox  
 Elma C. Frampton  
 Patricia Frank  
 Evelyn W. Frazier  
 Virginia K. Fritz  
 Nora S. Fry  
 Alice Fulmer  
 Florence C. Fus  
 Nancy M. Gallagher  
 Patricia Gardner  
 Elizabeth Y. Gaul  
 Pauline M. Gillen  
 Mary E. Gillin  
 Madeline H. Glass  
 Mary R. Godfrey  
 Carolyn R. Goeffert  
 Eugenie J. Green  
 Ruth Greener  
 Dorothy Groman  
 Carole A. Hamilton  
 Dorothea Hamilton  
 Florence Hammond  
 Marian Hammond  
 Mary K. Hancock  
 Clara G. Hardy  
 Margaret Hargraves  
 Nancy J. Harrington  
 Elizabeth T. Heaton

Dolores Heckenberger  
 Blanche E. Henderson  
 Verna Herber  
 Effie B. Herring (Dec'd.)  
 Betty Heuston  
 Isabelle Heverly  
 Irene L. Hindle  
 Janet C. Hindson  
 Eloise Hippensteel  
 Shirley Hoffert  
 Florence Howanitz  
 Marian B. Howe  
 Elizabeth Hubbs  
 Jane Hudson  
 Dolores Hughes  
 Esther C. Huntsberger  
 June M. Jacobs  
 Karen Jaxheimer  
 Rhea Johns  
 Anne V. Jones  
 Irene R. Jones  
 Judith A. Jones  
 Linda T. Jones  
 Annie E. Kahn  
 Esther M. Kahn  
 Margaret F. Keates  
 C. Keating  
 Barbara Keller  
 Ella Kelsh  
 Barbara W. Kelso  
 Ruth E. Ketchell  
 Katherine K. Kinsey  
 Ann Kneidel  
 Madeline K. Knight  
 Frances M. Koniers  
 Nancy D. Konstanzer  
 Linda Korey  
 Anna Kuba  
 Jennie E. Kutz  
 Edith S. Lane  
 Jean H. Larkin  
 Paula Laros  
 Marian A. Lash  
 Margaret E. Lauchle  
 Jane R. Lemmon  
 Delilah H. Lloyd  
 Jacqueline M. Long  
 Anna Lucas  
 Josephine Lucas  
 Margaret Mac Kenzie  
 Mrs. Alton Malick  
 Mary Malick  
 Barbara H. Marks  
 Geraldine Martin  
 Kathleen Martin  
 Martina M. Martin  
 C. H. Masuda  
 Lorraine K. Mayers  
 Penelope A. McAlees  
 Clara McArthur  
 Ruth McClean  
 Evelyn McClellan  
 Betty McConnell  
 Jean A. McConnell  
 Julia T. McCracken  
 Betty McDonald  
 Mary E. McDonald  
 Mildred S. McGee  
 Zelda R. Mencer  
 Ruth S. Merroth  
 Adeline R. Miller  
 Elizabeth G. Miller

Elizabeth S. Miller  
 Luann Miller  
 Marilyn Miller  
 Virginia B. Miller  
 Carolee S. Mitchell  
 Olga D. Mitchell  
 Marcie G. Moore  
 Judith L. Moyse  
 Cheryl Mueller  
 Deidre C. Mullin  
 Helen R. Murray  
 Mary R. Murtha  
 Ruth F. Nemeth  
 Ann Nesbella  
 Elsie S. Nierle  
 Irene O'Brien  
 Harriet O'Connor  
 Mary O'Connor  
 Valerie M. O'Donnell  
 Mrs. John J. O'Hara  
 Mary K. Okavage  
 E. A. Ossman  
 Delma Oxenrider  
 Catherine G. Paine  
 Elvira G. Paoletti  
 Margaret M. Pargola  
 Christine L. Park  
 Nancy C. Parks  
 Joyce A. Payne  
 Dorothy Peterson  
 Susan E. Peterson  
 Lorraine P. Phillips  
 E. E. Piersol  
 Janet L. Plant  
 J. Plasterer  
 Frances Platt  
 Theresa B. Poli  
 Margaret Pontzer  
 Mrs. Henry T. Pratt  
 Mabel C. Prevost  
 Audrey T. Priga  
 Elizabeth K. Prisnock  
 Christine Quinn  
 Margaret P. Ransom  
 Elsie Rappaport  
 Elizabeth Reed  
 Dora Reynolds  
 Kathryn C. Rhule  
 Martha E. Riland  
 Shelva Rinehart  
 Nancy Ritzman  
 Florence Roche  
 Helen Rodewig  
 Rita M. Roeder  
 Marilyn A. Rourke  
 Beverly Rupp  
 Blanche Rushin  
 Jeanne F. Ryan  
 Thelma M. Saylor  
 Doris L. Schechter  
 Nancy L. Schmidt  
 Doris H. Schramm  
 Mary W. Schubel  
 Vera T. Scoggin  
 Edna Scott  
 Esther Scott  
 Germaine E. Scott  
 Gini-Ann Scott  
 Elizabeth Scotton  
 Anita G. Seltzer  
 Nancy J. Shaffer  
 Nelma F. Shaffer

Ruth Shaner  
 Pearl Shappell  
 Marianne P. Shinkevich  
 Laura Short  
 Wealthy Shutt  
 Jean H. Sloan  
 Emma M. Smeck  
 Barbara G. Smith  
 Margaret Jane Smith  
 Marion Smith  
 Mary Lou Smith  
 Norma Z. Smith  
 Roxie M. Smith  
 Margaret Y. Snear  
 Isabelle Snedaker  
 Sandra K. Snider  
 Della K. Speidel  
 Grace Ann Spena  
 Henrietta F. Spruance  
 Mary Ann Stauffer  
 Ellen M. Steward  
 Betty Stone  
 Louise D. Strayer  
 Margaret L. Summers

Jane Sunday  
 Marjorie L. Swindlehurst  
 Mary A. Taraskas  
 Ellen C. Teague  
 Dorothy F. Templeton  
 Nancy Thompson  
 Kathleen M. Tierney  
 Laura B. Tobia  
 Lois L. Toomey  
 Anna C. Trego  
 Eleanor J. Tullus  
 Margaret A. Tunnard  
 Mattie A. Turner  
 Paula J. Tyler  
 Madeline M. Ullom  
 Janice E. Valentine  
 Lillian V. VanHoy  
 Margaret VanKyke  
 Patricia S. Verbinski  
 Sarah A. Wagner  
 Virginia J. Waldron  
 Shirley W. Walker  
 Geraldine W. Waters  
 Dorothea B. Watson

Cheryl A. Weber  
 Mary B. Weller  
 Beverly D. Wentz  
 Harriet H. Werley  
 Grace M. Werner  
 Sara L. Werstler  
 Gladys R. White  
 Ellen Mary Whitehorne  
 Claudia Wiedlund  
 Frances Wildonger  
 Laura K. Williams  
 Naomi Wilson  
 Marjorie E. Workinger  
 Minnie Wright  
 Janet L. Wuerth  
 Susan B. Zamitis  
 M. E. Zarella  
 Patricia Zarella  
 Harriet Zeller  
 Mina Zimmerman

**LUNCHEON HEAD TABLE**



**Miss Summers, Miss Bowman, Mrs. Masuda, Miss Hindson**



**Miss Piersol, Dr. Voss, Miss Hutelmyer, Mrs. Carlson**



## SOCIAL REPORT

On December 15, 1976, the Alumnae held their Annual Christmas Party in the Faculty Club of Jefferson Alumni Hall. There were 33 members and guests in attendance.

On March 22, 1977, the Alumnae held a dinner and auction sale in the Jefferson Alumni Hall with 32 members and guests present. The auction sale was a success and many thanks to Auctioneer Mary Ann Stauffer. Proceeds from the auction sale were placed in the general fund.

The main event for the year was the Annual Luncheon held May 7, 1977 at the Benjamin Franklin Hotel. There were 367 in attendance.

The Graduation Class of 1977 were guests of the association. There were 46 members present.

The largest Anniversary Class present was the Class of 1947 with 40 members in attendance.

The 50th Anniversary Class were guests of the association. Present were Martha Riland, Clara Hardy, Margaret Carey, Esther Wilson, Frances Crosson, Anna Faust, Isabelle Heverly, Orpha Lucas, Lorraine Mayers, Pauline Cillen, Lillian Mertz, Mary McLaughlin, Myrtle Clough, Filomena Doherty

The guests at the Head Table were Miss Doris Bowman — Director of the Diploma School of Nursing; Dr. Charlotte Voss — Chairman, Department of Baccalaureate Nursing; Miss Carol Hutelmyer — Director of Nursing

Service and Operating Room; Mrs. Kathy Suber Carlson — Assistant Executive Director of P.N.A.

Guest speaker was Kathy Suber Carlson, Class of 1968, who spoke on the Continuing Education Units, an additional requirement for License Renewal that is before Pennsylvania Legislation at present (Senate Bill #684).

Flowers were presented to the following alumnae: Miss Elizabeth Heaton — Class of 1915, Mrs. Elizabeth Miller — Class of 1921, Mrs. Ann Craven — Class of 1921, Mrs. Grace Troutman — Class of 1922, Miss Clara Brunner — Class of 1923, Mrs. Julia Ganster — Class of 1924, Mrs. Marian Briggs — Class of 1925, Miss Clara Luchsinger — Class of 1925, Miss Marjorie Workinger — Class of 1926, Mrs. Pauline Still — Class of 1926, Miss Laura Gross — Class of 1926.

The flowers at the Head Table were given to Dr. Basil Giletto, husband of Ruth Kiefman Giletto, Class of 1941, who was hospitalized on the day of the luncheon.

The Social Committee extends their thanks to all members for their continued support and suggestions for future planning of the Annual Luncheon.

The Annual Luncheon for 1978 will be held May 6, 1978 at the Benjamin Franklin Hotel.

JANET HINDSON '50  
Chairman

## SCHOLARSHIP REPORT

### 1976-1977

Three applications for scholarship assistance were sent; two were returned and reviewed by the committee. Mary Ellen McDonald, Class of 1958, was granted a scholarship for the Spring semester.

A new scholarship award was recommended and approved at the October meeting. The new award is a \$300 scholarship granted to the junior student who has demonstrated the highest level of achievement at the end of the second quarter. The award for 1977 was granted to Joan Goertzen.

DORIS E. BOWMAN  
Director, School of Nursing

## SICK AND WELFARE COMMITTEE

Several alumnae members were hospitalized at Thomas Jefferson University Hospital during the past year. Cards were sent and visits made.

JEANETTE PLASTERER '51  
Chairman

## PROGRAM COMMITTEE

Some of the highlights of this past year included a variety of presentations covering a wide area of interesting topics.

Dr. Charles T. Peterson, Professor of Pharmacy, Temple University, gave an interesting presentation on the topic, "Are You a Drug Abuser?"

The field of Sociology and Family Life was well represented by Dr. Margaret M. Rappaport, Assistant Professor of Psychology, Temple University, in her remarks on the "Changes in the American Family."

In a less serious vein, a speaker representing Philadelphia Electric presented "The Philadelphia Belles and Women of Accomplishment." This included a 30-minute slide presentation of Philadelphia Women of distinction from 1776-1976. Among the famous women featured in the program were native Philadelphians, Louisa May Alcott and Margaret Mead.

If these, or any other topics appeal to you, come join us. We will be more than happy to see you again.

DOLORES HECKENBERGER, '55  
Program Chairman

## RESOURCE COMMITTEE OF THE BOARD OF TRUSTEES

Regular monthly meetings are held to discuss and report on investments made and the progress of Phase II which is now in progress. Discussions and reports on Bequests and Deferred Gifts and Foundation and Co-operate Relations Program.

The Jefferson Medical College Alumni and Nurses' Alumnae Association reports are also given at this time.

BETTY PIERSOL, '34

## BULLETIN

The Bulletin Committee changed the profile of the 1977 publication by the use of more pictures — especially ones of the luncheon, and by redesigning the cover. We wish to thank Dr. Sweeney for using several pictures with his article.

The Luncheon Committee members are to be commended on the excellent job they have done year after year. Talking the management of the Benjamin Franklin Hotel into giving us the Grand Ballroom the first Saturday in May — also a separate room for cocktails and conversation, a selection of either fish or meat on the menu, a guest speaker of note who is limited in time, and not the least feat — seating 366 women and 1 man in proper class position at this last luncheon. Congratulations!

For several years we have endeavored to enlist the help of the "younger girls" on committees. This year we were successful and wish to thank Beverly Rupp for coming to our aid, also congratulate Dolores Hughes on being elected to the Board of Directors.

Year after year, as I type the Class News items, am amazed that such a large number of alumnae members live in Philadelphia and/or its environs. To give monetary support to our organization is wonderful, but we do need your presence at meetings and your talents on committees. Why not give it a try? It's fun!

JULIA T. McCracken, '34  
Chairman



## ADMINISTRATION

The response this past year from the graduates sending in changes of addresses and married names, also names of classmates not receiving alumnae mail, has been gratifying. Please keep it up!

We have a current mailing list of 2700. Each year this list is smaller because we do not receive the proper new addresses. If you have married — please give us your new name and your husband's first name.

The officers of the Alumnae Association are very interested in recent information of any Jefferson Graduates who are in Nursing Homes. We have a list of some of those in nursing homes, but there may be others we are not aware of. Please write to the association if you have any information about them.

We began a collection of programs of Commencement Exercises in 1972. They have been placed in a special portfolio in the Alumnae Room. The following years are missing. Can you help us?

Years Missing:

1946 1948 1949  
1952 1953 1954 1955 1956 1958 1959  
1960 1961 1962

I am in the Alumnae Office on Tuesdays from 10 to 4 — each week. The Alumnae Office is on the Mezzanine Floor of Jefferson Alumni Hall, 1020 Locust Street, Room M-2. Telephone Number 829-8981.

MARTHA E. RILAND

Clerk Typist

## WAYS AND MEANS COMMITTEE REPORT

May 31, 1976 - May 31, 1977

Another year has passed and once again we thank you for your generous giving and continued support to your Alumnae Association. The contributions to the Relief Fund, Scholarship and General Fund brought the total amount to \$7,333.50. All contributions received after May 31, 1977 will be acknowledged in the Alumnae Bulletin for 1978.

Following is a list of contributions according to classes:

### 1909 - \$10.00

Mary R. Godfrey

### 1912 - \$20.00

Nora Parsons

### 1914 - \$15.00

Marguerite Barnett  
Irene Lesser

### 1915 - \$5.00

Elizabeth Heaton

### 1916 - \$10.00

Florence Browning

### 1919 - \$10.00

Nora Dwyer

### 1920 - \$55.00

Anna Trego  
Edith Cypher  
Bernice Ziegler  
Ann DeWitt

### 1921 - \$70.00

Jennie Kutz  
Henrietta Spruance  
Phyllis Zietler  
Della Speidel  
Frances Platt

### 1922 - \$85.00

Grace Troutman  
Helene Weber

### 1923 - \$36.00

Ruth K. Thompson  
Mathilda Peterson  
Clara Brunner  
Mary Benton

### 1924 - \$50.00

Beatrice O'Hara  
Kathryn Tash  
Nana L. Hopkins  
Lula Kuntz  
Julia Ganster  
Lillian Pratt

### 1925 - \$110.00

Clara Lucksinger  
Nora C. Fry  
Marian Briggs  
Edith Ogden  
Mildred Okunishi  
Elizabeth Scottin

### 1926 - \$210.00

Grace Kuhns  
Mary Bonenberger  
Eleanor Stewart  
Ruth Davis  
Margaret Sokolowski  
Ernestine Rowe  
Mary Breth  
Marjorie Workinger  
Elsie Chase  
Josephine Dickerson

### 1927 - \$300.00

Martha Riland  
Clara Hardy  
Isabelle Heverly  
Anna Faust  
Margaret Carey  
Lillian Mertz  
Pauline Gillen  
Anne Phillips  
Filomena Doherty  
Lorraine Mayers

### 1928 - \$140.00

Dorothy Bennett  
Margery Bargar  
Margaret Lauchle  
Edna Scott  
Doris Wise  
Marion Smith  
Anna Billie  
Laura Short

### 1929 - \$105.00

Mabel Prevost  
Hazel Beach  
Blanche Henderson  
Mabel Nutter  
Zelda Mencer  
Ann Chandler

### \$1930 - \$55.00

Ella Kelsh  
Elmira Hanges  
Ruth Johnson  
Blanche Ford  
Gertrude Evans  
Emma Smeck

### 1931 - \$240.00

Minnie Bartash  
Helen Rodewig  
Elizabeth Gaul  
Evelyn Arnold  
Emma Bahner  
Irene Jones  
Sue Wells

Virginia Leo  
Laura Matthews  
Madelyn Knapp  
Bernice Cottrell  
Marie DeStafano  
Agnes Henry  
Esther Huntsberger  
Mary Bistline

### 1932 - \$321.00

Lucille Harpel  
Mildred O'Connor  
Isabelle Lindecamp  
Adeline Miller  
Norma Ann Gould  
Erma Painter  
Mildred Getz  
Dorothea Watson  
Marie Maxwell  
Naomi Price  
Kate Wilson  
Emma Reinhart  
Thelma Morris  
Elizabeth Ent  
Gladys Blue  
Rose Dodson  
Virginia Fuller  
Mildred Jeffers  
Lee Hammond  
Evelyn Flickinger  
Dora Reynolds  
Ethel Taylor

### 1933 - \$180.00

Leona Gehris  
Kathryn Magin  
Vivian Murray  
Catherine Paine  
Kathryn Rhule  
Katherine Leach  
Marion Carey  
Carolyn Kaltenstein  
Anna Crofford  
Pauline Kough

### 1934 - \$315.00

Maude Metzger  
Evelyn Frazier  
Helen Motsay  
Betty Piersol  
Margaret Pargola  
Kathleen Armitage  
Mildred Smith  
Mildred Estrada  
Ruth Dunfee  
Elma Frampton  
Angela Cozza

Marie Lawton  
Anna Gehrke  
Verna Diehm  
Julia McCracken  
Margaret Clayton

### 1935 - \$82.00

Evelyn Curran  
Blanche Rushin  
Mary C. Moore  
Ellen C. Teague  
Pauline Thorp  
Esther Benner  
Mary Evans  
Arlene Walther  
Marian Howe

### 1936 - \$75.00

Elizabeth Miller  
Mary Menendez  
Mary Wiley  
Lydia Yerkes  
Caroline Masuda  
Margaret Semisch  
Margaret Ransom  
Evelyn Dute  
Elinor Brosious

### 1937 - \$154.00

Charlotte Burton  
Mildred Hawkesworth  
Gertrude Sessions  
Kathryn Rorabaugh  
Harriet Zeller  
Helen Romberg  
Laura Johnson  
Florence Keffer  
Alice Fulmer

### 1938 - \$53.00

Edith McCutcheon  
Ruth McLean  
Marie Ten Eyck  
Mary Copeland  
Elinor Wentzell

### 1939 - \$60.00

Barbara Schutt  
Hattie O'Connor  
Olga Mitchell  
Johanna Wagner  
Kathleen Hock

### 1940 - \$101.00

Marion Tracey  
Bernice Sprecher  
Sara Werstler  
Alice Moore





COCKTAILS  
AND  
CONVERSATION



**WAYS & MEANS (continued)**

Dorothy Talbot  
Judy Kesselring  
Stella Wawrynovic  
Goldie Pringle

**1941 - \$45.50**

Frances Rumberger  
Kathryn Quackenbush  
Gene Jerabek  
Margaret Summers  
Josephine Moellers

**1942 - \$515.00**

Viola Brubaker  
Dorothy Cloud  
Madaline Knight  
Doris DeLong  
Dorothy Burns  
Kathryn Beitel  
Lois Kelly  
Rhoda Weisz  
Doris Bowman  
Mary Jane Braid  
Gladys White  
Anna Krall  
Dorothy Nifong  
Myrtle Berman  
Grace Dunkleberger  
Ruth Craven  
Beatrice Snyder  
Dorothy Templeton  
Doris Schechter  
Gladys Keiper  
Alice Boehret  
Alice Massey  
Dolores Nelson  
Beatrice Staron  
Mildred DeKorte  
Mary Wartenburg  
Nancy Maxwell  
Doris DeLong  
Anna McCormick

**1943 - \$115.00**

Esther Kahn  
Jean Kehm  
Margaret Scull  
Marion Morris  
Vivian Moyer  
Betty Shaw

**1944 - \$44.00**

Rosie Mae Jones  
Mary Dickerson  
Maureen McCool

**1945 - \$95.00**

Evelyn Collett  
Ruth Covell  
Elizabeth Snyder  
Elaine Barrick  
Florence Howanitz  
Charlotte Phillips  
Esther Rothermel  
Patricia Crawford

**1946 - \$260.00**

Jean Collevchio  
Jeanne Supplee  
Betty Frommelt  
Betty Saunderlin

Idabelle Hartley  
Nelma Shaffer  
Josephine Warner  
Laura Hart  
Elaine Kimbel  
Dorothy Fessler

**1947 - \$520.00**

Dorothy Sturr  
Catherine Prendergast  
Elizabeth Prisnock  
Dorothy Van Vranken  
Elaine Hampton  
Margaret Cossman  
Judith Hess  
Barbara Marks  
Beryl Bashore  
Elizabeth Miller  
Irma Heller  
Mary Swan  
Sandy Schwab  
Betty McConnell  
Irene Werner  
Janet Maurer  
Virginia Lawrence  
Ruth McCormick  
Laura Tobia  
Helen Corrigan  
Hilda Lineweaver  
Jane Guerin  
Betty Cooper  
Elizabeth Traynor  
Iris Waters  
Ruth Goodin  
Muriel Rotherham  
Lois Custer  
Josephine Laird  
Marie Thiers  
Martha Hershberger  
Irene Reams  
Julia King  
Grace Mease  
Mary Nida  
Ruth Downey  
Betty Mathers  
Mildred Noll

**1948 - \$105.00**

Virginia McCrone  
Lillian VanHoy  
Mercedes Christ  
Nancy Ritzman  
Betty McDonald  
Aileen Wapner  
Rachel Herbert  
Sara Boydelatour  
Norma Bicking

**1949 - \$188.00**

Helen Barrett  
Phyllis Huntzinger  
Florence McAlpin  
Barbara Breen  
Lorraine McCall  
June Miller  
Ruth Wettig  
Joyce Price  
Jean Mease  
Elizabeth Fischer  
Hazel Kogler

**1950 - \$165.00**

Ruth Merroth  
Geraldine Strye  
Rose Mulligan  
Ann Breach  
Helen Righter  
Ellen Stahl  
Mary Louise Brumbaugh  
Shirley Hoffert  
Barbara Ackerman  
Joan Clauss  
Janet Hindson  
Jean Serena  
Wealthy Schutt

**1951 - \$95.00**

Lorraine Jeitner  
Jane Aires  
Nancy Kohut  
Mary Swan  
Jeanette Plasterer  
Shirley Weller  
Louise O'Neill  
Jeanne Holzbaur  
Barbara Beam  
Virginia Dorman

**1952 - \$118.00**

Eloise Hippensteel  
Margaret Keates  
Lillian Haerberlein  
Nancy Messick  
Ann Stout  
Florence Fus  
Jane Johnson  
C. Ann Brugger  
Cathy De Lucca  
Ann Andrews  
Nina Hoehn

**1953 - \$30.00**

Jane Lemmon  
Marilyn Bower  
Janet Meredith  
Cathleen Keating

**1954 - \$120.00**

Elisabeth Swartz  
Doris Schramm  
Betty Stone  
Patricia Yurick  
Jane Wilgus  
Mary Lee Adams  
Sarah Wagner  
Louisa Hoch  
Roberta Smith

**1955 - \$65.00**

Barbara Smith  
Nannette Smith  
Dawn John  
Naomi Wilson  
Audrey Priga

**1956 - \$60.00**

Joyce Hagopian  
Noreen Poole  
Florence Roche  
Shirley Doernte  
Norma Dawson

**1957 - \$130.00**

Rose Marie Tomasello  
Ann Snyder  
Jeanne Abbott  
Georgina Miller  
Carol Gray  
Peggy Hess

**1958 - \$200.00**

Doris Stephans  
Mulveena Baldauf  
Jeanne Metz  
Edith Green  
Sylvia House  
Jay Daneman  
Lois Toomey  
Geneva Bowman  
Shirley Walker  
Barbara Brodovsky  
Muriel Keller  
Joan Randles  
Barbara Kelso  
Mary Ellen McDonald  
Drosalina Riffle

**1959 - \$91.00**

Vera Myers  
Nancy Crawford  
Carol Wenzel  
Carol Strange  
Patricia Brown  
Judith Bloes  
Charlotte Hoerst

**1960 - \$68.00**

Martina Martin  
Judith Stauffer  
Madeline Glass  
Loretta Dempsey  
Carolyn Goepfert  
Sandra Manning  
Sally Ann Harris

**1961 - \$15.00**

Betty Lou Woods  
Loretta Cunningham

**1962 - \$80.00**

Carolee Mitchell  
Carolyn Bewsher  
Phyllis Johnson  
Susan Leake  
Marian Hammond  
Arlene Hillig  
Janet Blumberg  
Marcie Moore  
Carol Green

**1963 - \$112.00**

Mary Gillen  
Katherine Kinsey  
Mary Lou McGinn  
Maureen McKeever  
Nancy Gallagher  
Ann Musitano  
Judith Yost  
Frances McGill  
Margaret Bethanis  
Joy McGann  
Dorothy Brown  
Margaret Mackenzie

**1964 - \$75.00**

Barbara Tredick  
Patricia Block  
Barbara Anderson  
Elizabeth Reed  
Kathleen Jones  
Roanne Heise  
Geraldine Kohut

**1965 - \$117.00**

Bonnie Inglis  
Janet Respass  
Ellen Whitehorne  
Elisabeth Zenter  
Rita Mendel  
Dorothea Hamilton  
Carolyn Bohn  
Susan Smeltz  
Adrienne Daughenbaugh  
Barbara Keller  
Carolyn Walchak  
Judith Getz

**1966 - \$130.00**

Tracy Booth  
Margaret Connell  
Judith Endriss  
Judith Tracey  
Susanne Levine  
Patricia Welch  
Bonnie Ann Crofford  
Mary Lou Smith  
Judith Hoefle

Barbara Ruehl  
Clare Karabasz  
Marion Goodwin

**1967 - \$112.00**

Linda Lauria  
Carol Woodruff  
Joan Hampf  
Diedre Blank  
Carolyn Housman  
Joanne Balmer  
Karen Bedell  
Doris Silance  
Cheryl Markle  
Sally Fenlin

**1968 - \$165.00**

Nancy Harrington  
Ruth Penta  
Dolores Brown  
Shirley Poling  
Pat Frank  
Lynn Allison  
Regina Friedman  
Sandra Kenton  
Halina Warmbrod  
Eileen Fagnani  
Carol Leventhal  
Karen Barnum  
Virginia Waldron  
Mary Ann Taraskas

**1969 - \$192.00**

Annie Kahn  
Melody Beatty  
Jean Sloan  
Marie Panebianco  
Caroline Moriuchi  
Anne Hennessey  
Elvira Paoletti  
Kathleen Huffman  
Virginia Hunter  
Kristina Reede  
Marilyn Bergner  
Marilyn Rourke  
Nancy Argonish  
Linda Barbour  
Kay Jennings  
Carolyn Eberhart

**1970 - \$50.00**

Cynthia Grabowski  
Carol Phillips  
Margaret Connors  
Susan Wolfe  
Phyllis Randazzo  
Susan Lloyd  
Beverly Cockerham

**1971 - \$65.00**

Peggy Kuster  
Grace Spena  
Louise Sweeney  
Eileen Blum  
Lynn Streeper  
Carol Cleri

**1972 - \$112.00**

Cheryl Neff  
Denise Wychowanec  
Joyce Murschell  
Margaret Beattie  
Mary Hulick  
Deborah Waters  
Christine Hodder  
Nancy Bodner  
Catherine Lupinacci

**1973 - \$57.00**

Helene Donohue  
Kate Felix  
Phyllis Richman  
Joanne Peters  
Eugenie Green  
Karen Jaxheimer  
Susan Broadwater

**1974 - \$30.00**

Margaret Smith  
Debora Borkowski  
Margaret Ott

**1975 - \$35.00**

Linda Bingman  
Carol Baker  
Brenda Scott  
Jane Mueller

**1976 - \$45.00**

Paula Lyons  
Claudia DiMond  
Eleanor Cunningham  
Nancy Parks

**In Memory of:**

Florence Hawke, class of 1927 — \$25.00 to the General Fund by her sister, May E. Hawke.

V. Alma Kreise Tredick, class of 1928 — \$10.00 to the General Fund by her daughter-in-law, Barbara Tredick, class of 1964.

**In Name of:**

Robert Steward, M.D. — \$10.00 to the General Fund by Hazel Kogler, class of 1949.



## RESUME OF MINUTES OF ALUMNAE ASSOCIATION MEETINGS

September 14, 1976  
17 members present.

The Alumnae Association accepted the Nursing School Banner to be displayed in the Alumnae Room and used for Graduation Exercises.

Recommendations were made and approved as follows:

1. That we contribute \$200.00 to the United Fund.
2. That we contribute \$100.00 to the American Cancer Society.
3. That we send two representatives from the Alumnae Association to the P.N.A. convention.

October 12, 1976

12 members present.

Recommendations were made and approved as follows:

1. That the Alumnae Association give an award of \$300.00 to the Junior Student Nurse during the second quarter of the Junior year for the highest academic rank, including didactic and clinical experience.

A very interesting report on the P.N.A. convention was given by Beverly Rupp. The theme was "Celebrate Our Past" and "Declare Our Future."

November 9, 1976

16 members present.

Recommendations were made and approved as follows:

1. That we contribute \$100.00 to Christmas Seals.
2. That we give \$100.00 to those Nurses who are in Nursing Homes, for Christmas.

Program for the evening was a very interesting talk on "Changes in the American Family" given by Dr. Margaret Rappaport, Professor of Psychology at Temple University.

December 15, 1977

Christmas Party

January 11, 1977

10 members present.

The Christmas Party held on Wednesday, December 15, 1976, was enjoyed by everyone. A visit from Santa was the highlight of the evening as Santa had a package for everyone.

The Ballot was approved as follows:

1st Vice President: Mabel Prevost  
Recording Secretary: Betty Piersol  
Board of Directors: Doris Bowman  
Dolores Hughes  
Joanne O'Donnell  
(two to be elected)

There were 11 life membership cards sent this month. Program for the evening was a talk on "Are You a Drug Abuser?" given by Dr. Charles Peterson, Professor of Pharmacology at Temple University.

February 8, 1977

15 members present.

A dinner and auction sale will be held on Tuesday, March 22, 1977, in the Faculty Club at Jefferson Hall.

Reports of the different committees were given.

March 22, 1977

Dinner and Auction Sale

April 12, 1977

13 members present.

The Dinner and Auction Sale, held on March 22, 1977, was enjoyed by everyone. Proceeds from Auction Sale amounted to \$106.00. Reports of the different committees were given.

Results of the election were:

1st Vice President: Mabel Prevost  
Recording Secretary: Betty Piersol  
Board of Directors: Doris Bowman  
Dolores Hughes

May 10, 1977

13 members present.

There were 391 reservations for the Alumnae Luncheon and 367 attended. There were 19 states represented. A good time reported by everyone. A program followed of a slide presentation on "Belles of Philadelphia". It was presented by a representative from the Speakers Bureau at Philadelphia Electric.

There was a motion made and approved that the President and the Board of Directors conduct all business of an emergency nature during the summer until the regular business meeting in September 1977.

Respectfully submitted,

BETTY PIERSOL  
Recording Secretary

## DUKE UNIVERSITY DISTINGUISHED ALUMNA AWARD TO COL. CATHERINE T. BETZ, U.S.A. (Ret.)

Catherine T. Betz, retired Colonel of the United States Army, is a native of Elizabeth, N.J. A graduate (1945) of Jefferson Medical University where she received her basic nursing education, she was night superintendent of University Hospital in Philadelphia when, as a reservist, she was called to active duty during the Korean War. After serving as a Second Lieutenant during 1951-52 in the 171st Evacuation Unit in Yeagu, Korea, she left the Army to obtain a Bachelor of Science degree in nursing education from Temple University in Philadelphia. She returned to the Army in 1955 where she served until her retirement July 30, 1976.

Throughout these years of military service she served two years in Germany with subsequent assignments to Fort Sam Houston and Walter Reed Army Hospital. In 1962 she received a Master of Science in Nursing degree from Duke University School of Nursing. From 1963-66 she was placed in charge of the Army Nurse Corps officer basic course at Fort Sam Houston, Texas. Every new Army nurse during those years, approximately 3000, participated in this training. As a result, when she became Chief Nurse at the 3rd Field Hospital in Tan San Nhut near Saigon, Vietnam, all of her staff had been her students at one time. After her tour in Vietnam she became director, Clinical Specialist School, Letterman General Hospital, San Francisco in 1967. Under her leadership the program became accredited by the State of California — an accomplishment not achieved by others who had worked for it during several prior years. From California she moved to Martin Army Hospital, Fort Benning, Georgia, as Chief Nurse, and then was assigned as staff officer in the Surgeon General's Office in the Pentagon. From 1972 until her retirement in 1976 she was Chief, Department of Nursing, William Beaumont Army Medical Center, El Paso, Texas. In her final assignment she was not only responsible for staffing a 480 bed hospital, giving career and educational planning for an Army and civilian staff of over 600, but she was also responsible for administering six professional schools. The heaviness of administrative demands never removed the patient from being the centralized focus of care, however, and Colonel Betz' daily clinical rounds were highlights for both patients and staff.

During her Army career Colonel Betz received many awards, among them the Legion of Merit with Oak Leaf, the Meritorious Service Medal with Oak Leaf Cluster, and the Army Commendation Medal with two Oak Leaf Clusters. She has also been honored with membership in the Beta Epsilon Chapter of Sigma Theta Tau.

"Kitty", as she is affectionately known by her friends, provided strong and disciplined leadership in the effort to secure recognition of the capabilities of military nurses



Col. Catherine Betz, Chief, Department of Nursing, Fort Bliss, Texas, and Mr. Donald C. Brotman, Asst. Secretary of the Army. 3 March 1976 (U.S. Army Photograph).

as clinical nurse specialist. Her interpersonal skills, her intellect, and her knowledge were daily assets as she defended, clarified and explained the present, future and possible role of nursing in interdisciplinary settings. Colonel Betz was often asked to speak to military groups outside of nursing, a very real tribute to the esteem in which she was held by her military colleagues. She has been described by her colleagues as "innovative", "diplomatic", and "an excellent role model for younger officers".

Of her leadership in Vietnam, it was said, "Her presence was a major factor in developing and a source of strength for all members of the hospital staff, officers and enlisted, professional and non-professional, alike. In a time when many faltered, Kitty was a steadying influence."

A knowledgeable clinician, a respected teacher, a military stateswoman, an outstanding administrator, a patriotic citizen, and a responsive humanitarian, Colonel Betz is nationally known for her influential leadership on nursing as an Army Officer. Her retirement from the military is looked upon as only a change in setting where she will continue to make contributions to the profession of nursing.

DUKE UNIVERSITY SCHOOL OF NURSING  
March 31, 1977



## PATIENT REPRESENTATIVES

### Elizabeth S. Miller '36

Having pioneered the Patient Representative role at Jefferson and with others on a nationwide basis, my deep interest in the continued growth and success of the program remains. Though now retired almost two years, it was with pride that I accepted an appointment from the Hospital Association of Pennsylvania to be a member of the 1977 Committee on Patient Community Concerns. At a meeting of the Board of Trustees of the Association in January it was determined that the members would serve as an advisory group to assist staff in the development of a series of monographs on the amenities of patient care for distribution to the Membership. I was requested to write on "why executive officers of hospitals should press to have an Ombudsman or Patient Representative."

The following article contains excerpts from the paper presented.

A hospital cares. It cares about getting you well. It cares about keeping you that way.

Today there is an individual found in the health delivery system known as a patient representative. He may be called an advocate, an ombudsman, a patient coordinator. Title is given according to a hospital's own setting.

Personalizing care is not an easy job. Technical and professional care can realistically be provided by staffing with competent and well trained personnel. To show a patient there is really a personal concern for him can be a mountainous chore. Establishing a more positive relationship with the patient throughout his entire hospital stay would effect a similar positive reaction to his medical treatment. An ombudsman or patient representative's chief goal is improved patient care, so why not have such a person added to hospital staff?

The hospital must show it cares. Caring must start at the highest level and work all the way down to the most minute service. Administration should care enough to get the facts and then to do something about them. A patient representative can well be the eyes and ears of the administrator by being assigned to do this fact-finding. By using the representative in such a role by no means negates the responsibility of the administrator. In fact, with feed back from the Representative, he will enhance this responsibility.

Patient Representatives deal with the personal problems and attitudes of the hospitalized patient. These individuals provide information regarding hospital procedures and services available, provide assistance with personal matters, act in a liaison capacity with other



staff members and attempt to provide continuity throughout the hospitalization of the patient.

A Patient Representative explains procedures, calls the staff's attention to particular patients and problems, follows up on specific complaints, provides emotional support for individuals and families experiencing a crisis.

The representative concerns him/her self with patient comfort and convenience such as a room improperly cleaned or a misplaced dietary tray, cold food. Such problems often plague a patient but tend to be bypassed for the more challenging physiological dilemmas. Such concerns should not be designated as "complaints" but rather be considered as a way to reach management's representative so that the patient will be helped immediately as these quandaries confront him.

A representative must be skilled enough, tactful enough and forthright enough to prevent backfiring from his efforts by relieving the physician or the nurse of any of the primary responsibilities each of them carries as

providers of good patient care. It is readily understood that the professionals often carry a heavy work load and that his or her motivation to do well is great. But more than the physiological needs must be met. The patient's representative can well be the one who wisely includes the patient's very own definition of his needs.

The patient representative must stay out of technical incompetence. He/she merely reports such findings to the proper persons.

A representative must act carefully because some "complaints" will certainly be frivolous ones.

The Director of Nursing is informed immediately if the Representative seems to have a run on "poor attention to medical needs" of a patient such as late medications, compressing not done regularly as ordered, call bells not answered promptly.

A Patient Representative can be a force that will turn the negative to the positive. A shabby room, paint peeling, water dripping can all be taken immediately to the proper source to be corrected. What a Patient Rep reports back to administration and the way administration reacts sets the pace toward reaching the goal of the satisfied patient through better patient care. And patient care **does** include the non-clinical attentions as well as the clinical attentions. Why not use the Patient Representative to work with all staff members to make it possible to meet all the needs of the patient in a strange environment? By searching further one takes a good look also to the patient's spiritual and emotional needs through a strong Chaplaincy Service.

With all this going for the patient he gets the feeling that by using this centralized grievance mechanism backed by administration that he is really "cared about". He can "talk" and be listened to without fear of retaliation.

Of course the Patient Representative must perform in a kind and persuasive fashion knowing by daily experiences where his/her work begins and ends. To keep in mind that respect for human dignities is most important. There must be a parallel interest between all disciplines in a health care service. A search must go on for justified results in handling of patient grievances. A continuing effort toward proper patient understanding and with efforts toward reduced barriers to patient compliance by the Patient Representatives makes them a most valuable member of our health care team. Documentation of accurate and in-depth facts of their interactions with the patients gives the chief executive officer of the hospital a mirror image of what is going on around him as he reaches toward ideal patient care. As the role of the representative grows, institutions already using them recognize their integral part of an effective risk management program.

## THE JOYS AND SORROWS OF A DIRECTOR OF GERIATRIC NURSING

### Ruth Thorp Craven '42

The joys of a Director of Geriatric Nursing are many. Because our patients usually remain with us for a long period of time, we get to know them very well. We learn their likes and dislikes, their little idiosyncracies, and their special needs (for example, Mr. B. dislikes being treated like a child, Mrs. S. prefers such treatment. Mrs. A. dislikes an A.M. bath — while Mr. T. will refuse a bath at any other time. Mrs. B., 96 years young, and very dear to all, requires an amputation. The entire staff becomes involved in the special attentions and prayers of this precious little lady). The joys come in meeting those needs, for when the patients are happy, we are too.

However, the patients are not the only people we try to please. We realize the importance of keeping the patients' families assured that the care is both kind and efficient. We also try diligently to satisfy the administration and the staff. Everyone benefits from an efficiently run organization.

On the shoulders of the Director of Nursing falls the responsibilities of coping with the particulars: The staff must be considered concerning assignments, schedules, vacations, etc. Requests of the administration must be met — meetings attended — reports submitted on time, etc. The Physical Therapy Department must be notified in ample time when patients require crutches, braces, treatments, etc. There are various other departments, such as Maintenance, Housekeeping, Dietary and Personal Care, whose needs and reasonable requests require consideration. Cheerful cooperation with all the ancillary services is vitally important. The families of the patients deserve courtesy and consideration, which can involve phone messages or interviews — or both. And, always, first and foremost in the Director's mind, must be the well being and happiness of each individual patient.

Because we become so concerned and interested in each individual patient, when the inevitable occurs, there is a deep sadness about the loss of even the most difficult. That is the greatest sorrow.

Of course there are the daily crises the most conscientious of Directors meets. They are the small sorrows. The specter of strikes poses its kind of problems. Incontinent patients tend to upset people not trained to cope with the attendant problems. Just dealing with the personalities of the 106 patients and also the 127 residents — and keeping them all content — at times seems impossible.

And yet, when everything is running smoothly, the joys far outweigh the sorrows. When administrators, staff, families and, most especially patients — interact in harmony — all's well with the Director's world!



## HIGHLIGHTS 1976 P.N.A. CONVENTION Beverly Rupp '56

In October (3-8) 1976, Ann Kneidel and I had the pleasure of representing the alumnae at the P.N.A. Convention in Lancaster, Pa.

Highlights of the guest speakers are as follows:

### NURSING—HISTORICAL PERSPECTIVES OF A PROUD PROFESSION, OR HOW WE GOT HERE FROM THERE

**Keynote Address, Teresa Christy, R.N.Ed.D., Professor, College of Nursing, The University of Iowa**

Monopoly is a game based on economics, power and change. The system of health care delivery in this country is analogous to the game of Monopoly, in that the game is economics, and that the power lies in the hands of those that control the system. The single largest organized group of players in health delivery system — nurses — have not comprehended the power component and have continued to depend on the throw of the dice leaving almost everything to chance. The delivery of health care in this country has become a monopoly with organized medicine exerting the power and control, and with hospitals becoming expensive properties which literally force bankruptcy on the hapless individuals landing in one.

Some of the great women in nursing did understand the game, who gave us our heritage of which we can be proud and who devoted their lives moving us forward.

Nightingale was an independent practitioner — saw herself as the patient's advocate and not as a handmaid to the physician. She understood economics and the use of power.

With the good start that Nightingale gave us, why has nursing assumed such a subservient role, why are we floundering around trying to prove that nursing is important again in 1976? HOW DID WE GET HERE FROM THERE?

With all respect to those involved in Primary care, and the extended or expanded role — What has happened to the philosophy of nursing over the years? We are speaking more and more on health care, of primary intervention and the nursing role in the community. What has happened to illness care? "Have any of you been concerned with nursing in hospitals lately?" "We speak of expanded roles for the nurse, primary care in the community to help people live longer. For what — so that they can grow old, end up in nursing homes that have no nurses, or general hospitals that have no concept of what nursing is?"

We appear to have learned very little about the game we are playing or how to win it. We do not know who has the monopoly.

Adeline Nuttings believed that only in unity can come strength and strength is derived from mutual support and pride.

### LICENSING PROFESSIONALLY EDUCATED NURSES FOR INDEPENDENT PRACTICE: A FIRST

**Dr. McGriff, R.N. Ed.D.,  
Head, Division of Nursing, New York University**

There is a need to look ahead. People are ignoring the inevitable in nursing. There is a need for licensing nurses for the purpose of practicing independent nursing (I.N.). Nursing has no dependent or interdependent functions.

The reintroduction of the 1985 proposal will be presented to the N.Y.S.N.A. to revise the nursing education law which is going to cause more hostility than the last one.

There is an alternative to the '85 proposal requiring all candidates for licensure to hold a baccalaureate degree. The grandfather mechanism in this proposal would have nurses practicing in the year 2023 without the necessary qualifications and would be maintaining the status quo and therefore is rejected.

The P.N. should remain as it is, the associate degree and hospital nurse should also remain as is (R.N.) and recognize as a new license the new group as independent nurses (I.N.).

The question of mobility was discussed and under the '85 proposal, R.N.'s from other states would not qualify for positions in New York since they would not come under the New York grandfather clause.

There should be a new state board written specifically for the I.N. Nurses who already hold a B.S. or higher in Nursing would be grandfathered in R.N.'s who have a B.S. in another discipline would be allowed to write boards after they have acquired the necessary academic preparations. What should the I.N. do that is different? The following predictions are made: 1) they should qualify for third party reimbursement; 2) leadership in primary nursing care, including admitting and discharging patients from health care facilities; 3) meaningful certification with graduate study; and 4) facilitate collective bargaining.

The control of nursing must be by nurses and not any other group. A number of proposals are under consideration now to have nurses performing different functions but under doctor's supervision. This is not acceptable.

Applicants should be counseled into the appropriate field. All nurses do not need a baccalaureate degree and the public can't afford it. Excellence must be demanded in all programs.

### PROFESSIONALIZATION OF A MOST DESERVING OCCUPATION?

**Veronica Driscoll, R.N. Ed. D.,  
Executive Director, New York State Association**

The primary purpose of establishing the State Nurses Association is to bring about the standardization and elevation of the educational qualification of nursing practice.

In 1970, an attempt was made to reopen the Nurse Practice Act and to identify the two careers in nursing. The four groups representing Practical, A.D., Diploma and B.S. programs function independently of each other without communication. This fact lead the N.Y.S.N.A. to act to identify the careers. The title Practical Nurse was retained since it already is written into law. It should require an Associate Degree in a two year program. The second career, Professional Nurse, would require a Baccalaureate Degree in nursing with a grandfather clause for those holding a license in either career. They got the opposition that they anticipated. They got acceptance from the Directors of Nurses and staff nurses, those presenting most difficulties are certain segments of Nursing Education. Opposition also came from Vocational Educational groups which educate the practical nurse.

The grandfather mechanism has been called immoral by some and irresponsible by others and that it deceives the public. **Who is caring for the public today** — diploma, associate, practical and baccalaureate nurses. "When the automobile came in, we didn't shoot the horse, just gave him another role."

The concept of three careers will further confuse the public. The qualifier Independent is found objectionable. No other profession needs qualifiers. Nurse is sufficient.

There were accusations that the proposal for 1985 was passed by very few people at the convention, it hadn't been approved by the majority of members and practicing nurses. "The majority of nurses have never belonged to the professional organizations and therefore have no right to have a voice in the decision."

It was introduced in the 1976 legislation and "it bombed". They felt they included too many aspects and it tended to confuse.

They (N.Y.S.N.A.) were shocked when the Association of Practical Nurses said they would not support the '85 proposal but would introduce their own legislation.

The new legislation to be presented will focus on only one career, the professional nurse, which they feel will have less opposition with no change from the original and plan to take their position in stages concerning the other career.

### DECLARING OUR FUTURE

**Margretta Styles, R.N. Ed.D., Professor and Dean,  
College of Nursing, Wayne State University, Detroit, Mich.**

The volume of our numbers and of our services is our power. This power is only through unified action. With a million strong we could gain recognition if we stood together. We have chosen the Civil War on our professional battlefield. There is an artificial bifurcation between nursing education and nursing service.

There are no spectators, only losers. There are nurses who are not active participants in our nurses organizations, there are the "appliance nurses", who dabble in the job when they need a new dishwasher, etc., and there is the new elite who pride themselves in being purely clinical.

The problem and the answer are with our professional socialization.

To believe in ourselves as nurses, we must be technically trained as well as liberally educated. We need technical and cognitive ability and the research basis.

Our major strength is our unity in licensing. Change in our licensing and educational systems is necessary and inevitable. There are five types of nurses, no other profession can make that statement. There is a study in progress on the national level to study the systems on licensing. Individual states should refrain from any decision on licensing until there are national guidelines. Don't alienate any group — our power is in unity.

### WHO WILL CONTROL PRACTICE

**Shirley Smoyak, R.N. Ph.D., Chairperson,  
Graduate Psychiatric Nursing, College of Nursing,  
Rutgers University, New Brunswick, NJ**

Control is synonymous with direction, regulation coordination. "Control" stirs up anxiety in nurses. This anxiety is based on expected threats to one's self. Nurses' immediate assumption is that they will be controlled by others. Nurses have been making significant progress in their liberation from domination, discrimination and oppression. We still have a long way to go but the work is well under way.

Nurses must learn to become political, to become concerned by the rules by which they are governed or controlled. Rather than be simply rule followers, they must learn to be rule questioners, rule changers, rule



makers. Keep up with state and federal news, legislation, appropriations and the like, to be knowledgeable about health care issues.

Who will say what a competent nurse is and what she does — hopefully nurses. Who will control nursing — those with the most power. Control is acquired and kept by those that have a power base. A knowledge base of power politics is necessary, economically, interprofessionally wise, astute and powerful.

\*\*\*\*\*

A very controversial issue concerning the qualifications for candidates for initial licensure was resolved with the following:

Resolution submitted to the PNA Board of Directors from the Philadelphia County District and Approved for Presentation to the Voting Body.

**ENTRY INTO PROFESSIONAL NURSING PRACTICE**

WHEREAS, consumers of nursing are entitled to care based upon specific principles, and

WHEREAS, it is generally accepted that the first professional degree in nursing is the baccalaureate degree with a major in nursing, and

WHEREAS, the knowledge and skill required to deliver professional nursing care has increased in depth and complexity, and therefore be it

RESOLVED, that the Pennsylvania Nurses Association support the **Concept** that by 1985 all candidates for initial licensure to practice professional nursing hold a baccalaureate degree with a major in nursing, and be it further

RESOLVED, that the Pennsylvania Nurses Association actively support this position through all appropriate means such as statewide programming and communications with other states.

Please note that the P.N.A. is supporting the **CONCEPT** only. This was done by a vote of the 100 plus members attending the convention. (The organization has over 10,000 members.) The convention also approved of voting by mail on future issues.

**THEN . . .**



Miss Elizabeth Heaton — Class of 1915



Graduating Class of 1893-94

**NOW . . .**



CLASS OF 1927



CLASS OF 1932



CLASSES — 1915, 1921, 1922, 1923, 1924



CLASS OF 1952



CLASS OF 1942



## CLASS NEWS

### 1912

**Nora Shearer Parsons** (Houston H. Parsons, M.D.), 1036 W. Market Street, York, PA 17404. Living in retirement since 1954.

### 1914

**Irene Lesser** (Norman Hindle), 721 Orange Avenue, Yuma, Arizona. No family. We are retired.

### 1920

**Anna Campbell Trego** (Albert L.—deceased), Maple Gardens, Apt. F3, Pottstown, PA 19464. I spent many happy days at Jefferson and my thoughts are with you at the luncheon.

### 1921

**Frances Clendenin Platt** (Norman), 926 Lincoln Avenue, Pine Beach, NJ 08741. Retired!

### 1922

**Grace Maybee Troutman** (Glenn A.), 6600 Woodland Avenue, Philadelphia, PA 19142. My daughters Billie and Anna and their children visited me last summer. Billie and two daughters live in Denmark. Anna and three daughters live in Iowa.

### 1923

**Mary Esther Bowser Benton** (Perry E. Benton, Sr.), 920/w. N. York Avenue, Apt. 102B, DeLand, FL 32720. Long since retired.

**Mary Knoll Thompson and Matilda Knoll Peterson**, 233 Adams Avenue, Pitman, NJ 08071. We are both well and happy — looking forward to Spring. The enclosed check is from both of us.

### 1924

**Kathryn Tash**, 365 Newtown Road, Warminster, PA 18974. Only "retired" and "tired".

### 1925

**Elizabeth Scotton**, P.O. Box 36, Hartley, DE 19953. Since I have retired — am the busiest person doing nothing particularly constructive.

### 1926

**Ernestine Grundkouski Rowe** (James), 118A Kenville Road, Buffalo, NY 14215. It was a pleasure to attend our 50th Alumnae Luncheon last May and meet my classmates.

**Mary C. Breth**, 1415 Clearview Street, Suffolk Manor, Philadelphia, PA 19141. My only brother passed away last year and his wife and son are still living in Michigan, so I seldom see them. We are fortunate to have telephone service.

**Grace Waltman Kuhns** (Charles B.), Allentown, PA 18102. Volunteer 29 years — Allentown General Hospital.

**Eleanor Finn Stewart** (Harold L. Stewart, M.D.), 119 S. Adams Street, Rockville, MD 20850. Dr. Stewart, a graduate of Thomas Jefferson University, received the DHEW Distinguished Service Award for his efforts in Cancer Research in 1966. He has authored or co-authored more than 225 scientific papers. He is head of the NCI Registry of Experimental Cancers and has been named Scientist Emeritus of NIH. He is the 10th NIH scientist to receive the honor since its inception in 1974. The appointment is nonsalaried but provides Dr. Stewart with facilities and personnel to continue his research activities in the chemical causes of cancer. He has remained active in retirement as a part time consultant in charge of the Registry — a collection of histologic slides and protocols from all parts of the world on experimental animal cancers available to scientists studying chemical causes of cancer.

The World Health Organization recently designated the Registry as its international Collaborating Center for Reference on Tumours of Laboratory Animals. (Excerpts from an article submitted by Mrs. Stewart.)

**Margaret Crowley Sokolowski** (Joseph W. Sokolowski, M.D.), 719 Iron Post Road, Moorestown, NJ 08057. Son — Joseph W. Sokolowski, Jr., M.D. — Associate Professor Clinical Medicine at Jefferson; The Pulmonary Division — Our Lady of Lourdes Hospital.

### CLASS 1927 — 50th ANNIVERSARY

**Frances Baker Crossan**  
Landerberg, PA RD. #2  
Box 16. 19350  
Attended the luncheon.

**Viola Bishop Kane**  
900 Columbia Avenue  
Palmyra, NJ 08065

**Anna Brinkman Faust**  
513 Plymouth Road  
Glenside, PA 19038  
Attended luncheon.

**Margaret A. Carey**  
Box 22, 6319 Sherwood Road  
Philadelphia, PA 19151  
Attended luncheon.

**Pauline Dreisbach Crown**  
175 S. 2nd Street  
Lehighton, PA 18235

**Orpha Fairlamb Lucas**  
RD. Rising Sun, MD 21911  
Attended luncheon.

**Clara Gerber Hardy**  
51 Hurley Court  
Upper Darby, PA 19082  
Attended luncheon

**Isabella Kevel Heverly**  
250 S. 13th Street  
Philadelphia, PA 19107  
Attended luncheon

**Lorraine Knoll Mayers**  
9614 Dittman Street  
Philadelphia, PA  
Attended luncheon

**Pauline McElwee Gillen**  
247 North Main Street  
New Hope, PA 18938  
Attended luncheon

**Lillian Mertz**  
65 Linden Avenue  
Haddonfield, NJ 08033  
Attended luncheon

**Anne H. Phillips**  
Kendal at Longwood, Apt. 16  
Kennett Square, PA 19348

**Lillian Pletcher Holter**  
Howard, PA. Center C. 16341

**Martha E. Riland**  
2401 Penna. Avenue, Apt. 18-A-9  
Philadelphia, PA 19130  
Attended luncheon

**Mary Roesch McLaughlin**  
647 W. Diamond Street  
Hazelton, PA 18201  
Attended luncheon

**Helen Saylor Amelia**  
2729 4th Street, South  
St. Petersburg, FL 33705

**Myrtle Stickler Clough**  
45 Mary Street  
Doylestown, PA 18901  
Attended luncheon.

**Filomena Tirrachia Doherty**  
Glenwood Dr., Mt. Eyre Manor  
Washington Crossing, PA 18977  
Attended luncheon.

**Esther Weiss Wilson**  
1805 Devine Street, Apt. 810  
Columbia, S.C. 29201  
Attended luncheon.

**Myra White Hayes**  
1610 Dogwood Road  
Flourtown, PA 19031

### 1928

**Edna Scott**, 444 Old Lancaster Road, Haverford, PA 19041. Retired.

### 1929

**Zelda Rowe Mencer** (Howard), 910 S. 30th Street, Camp Hill, PA 17011. No information except both of us are retired.

**Joyce Frantz**, 17 Maple Place, Hicksville, NY 11801. Became an ordained minister October 1974 of Religious Science Church of Long Island.

### 1930

**Emma Maus Smeck** (Harry), 6235 Osage Avenue, Philadelphia PA 19143. Nothing new!

**Gertrude Geist Evans** (George W.—deceased 9/8/76), 9413 Glen Oaks Circle N. Sun City, Ariz. 85351. I answer to "Trudy".

**Virginia Muller Bruner** (Ed. C.), P.O. Box 548, Alamo, TX 78516. Retired

**Virginia Miller Brunner** (Ed. C.), P.O. Box 548, Alamo, TX 78516. Retired antique dealer and traveler. Part time resident R.D. 3, Somerset, PA 15501.

**Blanche Ford**, Box 13, Periwinkle Tr. Pk., Sanibel, FL 33957. (The following excerpts were taken from the "Island Reporter".) Sanibel's 40th Annual Shell Fair was held in March. Blanche Ford was Chairman of the Driftwood Shop Committee which is one of the major outdoor attractions. Since Christmas 40 to 50 volunteers (a total of 89 registered volunteers) worked each Monday creating shellcraft and other art works for sale. Proceeds from the sales went to Sanibel's Community Association.

Blanche Ford began going to Sanibel in 1954 on vacation and moved there permanently in 1969. Before moving to the island, she was Director of Nurses at Friends Hospital in Philadelphia. She still does volunteer nursing.

### 1931

**Mary Kalbach Bistline** (William), 5 Walnut Street, Newville, PA 17241. Mother died May 20, 1976 at age 97.

**Laura Parker Matthews** (O. J. Matthews, M.D.—deceased), 2504 Ocean City Road, Salisbury, MD 21801. At last! I am expecting to become a grandmother in late June! Father — Robert Matthews (my only child), Engineer with Delmarva Power. Wish me luck! I would love twins!

**Virginia Emmert Leo** (Clarence V.), R. 9, Emmert Road, Hagerstown, MD 21740. Our son and family (2 children) live in New York state; our daughter and family live in Villanove, PA. Ages of grandchildren range from 2 to 6 years. I missed the luncheon because I was "babysitting". I bowl in the winter and golf in summer to keep in shape!

**W. H. Marie Hosage DeStephano**, 740 Wood Avenue, Colonia, NJ 07067. Nothing new.

**Elizabeth Youngblood Gaul** (J. Anderson—deceased), 2148 Cherry Street, Philadelphia, PA 19103. Retired — nothing exciting. Grandchildren growing too fast. Daughter still single and lives in Denver.

**Evelyn Reeser Arnold** (Walter), 1201 Bahama Bend, Coconut Creek, FL 33066. Enjoying life in Florida and also traveling to visit our "children and grandchildren" in Kansas and California. Youngest daughter's husband died of cancer in November.

**Helen Rodewig**, 7024 Rising Sun Avenue, Apt. C 29, Philadelphia PA 19111. Retired.

### 1932

**Thelma Showers Morris**, 1406 Elmira Street, Williamsport, PA 17701. Retired — but busier than ever — 2 grandchildren — volunteer at hospital — ACS — Active — garden club — WMUU.

**Norma Ann Mangold Gould**, R.D. 2, Box 161, Effort, PA 18330. Retired January 1, 1977 as Administrator of Pleasant Valley Manor, Stroudsburg, PA 18360.

**Erma Coup Painter** (Paul), Pine Street, Mahoning Manor, R.D. #1, Milton, PA 17847. We are enjoying our retirement in Milton. We lead a very quiet life among our family, relatives and friends.

**Adeline Roth Miller** (Benjamin), 6704 Glen Avenue, Glenn Dale, MD 20769. 45th Reunion — 1932-1977!

### 1934

**Mildred Myers Smith** (Robert—deceased), 31 Stanford Place, Montclair, NJ 07042. Have become a Lay Church Worker in a Lutheran Church in Japan (volunteer). Received a Silver Pin for 25 years of Volunteer Service for the Red Cross.

**Anna Jacoby Gehrke** (Sam—deceased), 3404 Romig Avenue, Reading, PA 19606. I am planning to retire as an Occupational Health Nurse.

**Verna Hertzler Diehm** (Warren C. ), 930 Lititz Pike, Lititz, PA 17543. This is my 12th year as Lancaster County Court House Nurse. We are moving into a new building this spring.

**Marie Keene Lawton** (Benjamin), Old Littleton Road, Harvard, Mass. 01451. Really "Senior Citizens" now — as this year Ben was given Life Membership in American Dental Society and I in the Alumnae Association of the School of Nursing at Jefferson.

**Catherine Smulling Gair** (Angus), P.O. Box 287, Douglas, Alaska 99824. "Kitty" and her husband are retired and spend 6 months of the year on the mainland and 6 months in Alaska. They came East this spring visiting relatives and friends. She hopes to make our 45th Anniversary.

**Evelyn Wilson Frazier** (Earl W.—deceased), 1308 Park Blvd., Cherry Hill, NJ 08002. Son, James, graduated from the Philadelphia College of Pharmacy and Science, May 22nd.

**Julia Tyler McCracken** (A. W.—deceased), 524 Revere Road, Merion Station, PA 19066. Going on a World Seminar Tour this summer. Since an eye operation (cataract) is eminent — feel I had better get moving.

The following members of our class attended the luncheon this year: Mildred Dunkle Bowman, Verna Hertzler Diehm, Betty Piersol, Evelyn Wilson Frazier, Tillie Wall Ghares, Julie Tyler McCracken.

### START MAKING PLANS TO COME BACK TO JEFF IN 1979 FOR OUR 45th REUNION!!!

### 1935

**Esther Patton Benner** (Woodrow—deceased), 1314 Blooming Glen Road, Perkaskie, PA 18944. Doing volunteer work at our local hospital and active in church work.

**Blanche Ruskin**, 55A Locust Court, New Rochelle, NY 10802. Administrative Assistant of Nursing Service.

**Mary Rotz Evans** (William J.—deceased), 2505 Faulk Woods Road, Wilmington, DE 19810. I am now a grandmother — have a granddaughter 9 months old.

**Pauline Latsha Tharp** (Floyd), 5498 Belmont Road, Downers Grove, IL 60515. Husband, Floyd, retired 8 years ago. We spend winters at home and at Deland, FL; summers at the Dale Hollow Reservoir with the children and grandchildren.

**Ellen Crawford Teague** (Arthur—deceased), Oak Road and N.W. Avenue, Philadelphia, PA 19118. Trustee Mount Washington Observatory, New Hampshire. Director — Massachusetts Central Railway. Both for 1976 and 1977.

### 1936

**Margaret Pound Ranson** (Wayne W.), 406 Waveland Road, Catonsville, MD 21228. Husband retired after 30 years service with the state of Maryland. We are enjoying every minute of it.

**Margaret MacFarland Semisch** (Charles), 1010 Eldorado, Clearwater, FL 33515. Charles W. Semisch III, M.D. — retired.

**Mary Sevilla Radel Memdenz** (Henry L.—deceased), Harding Highway, Penns Grove, NJ 08069. My husband died December 17, 1976 of emphysema. Am now trying to pick up the pieces of my life.

**Elizabeth Stephan Miller** (John), Nox 14, Sadsburyville, PA 19369. Have been appointed to committee called "Patient and Community Concerns". (Excerpts from a paper "Patient Representative" are published in this issue of "The Bulletin"). Appointment came from Pennsylvania Hospital Association, Harrisburg. Though retired — interest remains in the health care delivery system.



**1937**

**Mildred Martha Woodhead Hawkesworth** (Norman Oliver), P.O. Box 166, Rockport, MA 01966. Our son, Denis, graduated from Fordham School of Law. As Chairman of the Pigeon Cove Community House Building Committee, I was responsible for all aspects of building our new meeting place which accommodates 200.

**Laura Zukowski Johnson** (Heisler), 121 Union Street, Mt. Holly, NJ 08060. Feel so honored by Life Membership in Jefferson Nurses Alumnae Association!

**W.H.**

**Mary Roshinko Nyland** (Arnold), 62 Farmers Avenue, Bethpage, NY 11714. Retired — am over 65 and widowed. Do voluntary work with Red Cross Association in my area.

**Florence Shive Keffer** (Harry B.), 3430 Galt Ocean Drive, Ft. Lauderdale, FL 33308.

**S. Kathryn Rorabaugh**, 20 West Lawrence Street, Albany, NY 12206. Retired August 1975.

**1938**

**Edith O. Owen McCutcheon** (Frank P.—deceased), 70 Collins Road, Trenton, NJ 08619. 1977 is my big year! After 25 years as an Occupational Health Nurse with Fairless Works of U.S. Steel Corp., I am retiring. Hopefully plan to spend the next 25 years catching up on home projects — started — but never completed due to necessarily minimal free time. Hope I make it!

**1939**

**Johanna Laise Wagner** (Albert), Star Route, Doylestown, PA 18901. Continued in Medicine — now 25 years of general medicine.

**1940**

**Dorothy McComb Talbot** (Raymond James), Apt. 1401, The Oaks, Chapel Hill, NC 27514. Since July 1974 have been Chairman Dept. of Public Health Nursing, School of Public Health, University of North Carolina. In 1976-77 am President of Southern Branch, American Public Health Association (18,000 members in 13 states).

**Judy Elliott Kesselring** (Sam E.), 5033 College Corner Road, Oxford, Ohio 45056. Working part time in two different Family Practice offices for three G.P.'s. Husband, Sam, had open heart surgery in Sept. 1974 with excellent prognosis. Hope to visit "Jeff" next summer while on vacation.

**1941**

**Josephine Barbour Moellers** (Harry), 7 E. Center Avenue, Maple Shade, NJ 08052. My son, Gary Moellers, will graduate from Juniata College, Huntingdon, PA in May 1977. My daughter, Marie Moellers, was married to Mr. Larry Stephenson of Richmond, VA. He will graduate from Richmond Medical Center May 15, 1977. She has a B.S. in Nursing and has a teaching position at the Medical Center.

**Geraldine Chamberlain Topping** (Felix), R.D. 2, Box 280 C, Montgomery, PA 17752. My husband is a pilot and we enjoy flying all over the country. Would enjoy hearing from classmates.

**Kathryn Duffy Quackenbush** (Charles), 16 Elvin Avenue, Penns Grove, NJ 08069. Husband and I both retired.

**Gene Roush Jerabek** (George), 3245 Southern Avenue, Kingman, AZ 86401. We retired at the end of 1976 and have moved to the above address. It's great and the weather is beautiful.

**Melba Kathryn Watkins Snyder** (Gordon E. Snyder, M.D.), 1945 Le France Avenue, So. Pasadena, CA 91030. New granddaughter born Feb. 19, 1977 — bringing total of grandchildren to 10.

**1942**

**Grace Jennings Dunkelberger** (J. Roland), 201 Huston Avenue, Stroudsburg, PA 18360. Still working full time for Dr. H. S. Pond, Jr., Pocono Medical Building, East Stroudsburg, PA (Internist).

**Ruth Thorp Graven** (Howard—deceased), 5726 Tackawanna Street, Philadelphia, PA 19135. My first grandchild was born Dec. 7, 1976. I was promoted to Director of Nursing of the Baptist Home of Philadelphia.

**Anna Alexander Krall** (Robert P. Krall, M.D.), 47 Elm Street, Eldred, PA 16731. Son, Robert A. Krall, M.D., serving first year Pathology Residency at Jefferson Hospital after finishing medical school there in June '76.

**Doris Mae Grash DeLong** (William—deceased), 590 Golf Course Road, Aliquippa, PA 15001. Carol DeLong Scott named one of the outstanding women of America by Fairmont State College, W. Va. She is a doctoral candidate at W.V.U. — majoring in health education.

**Gladys Reed White** (Robert E.), 301 S. 6th Street, North Wales, PA 19454. Oldest — Mary Sue is working at Northwestern Institute of Psychiatry. Jack is 3rd year at Slippery Rock State College. Bette Ann is a Freshman at Drexel University. I am still Health Officer for North Wales Boro.

**1943**

**Jean Farrell Kehm** (Vincent A. Kehm, M.D.), 107 S. Keeseey Street, York, PA 17402. I lost 70 pounds. I call that real progress!

**1944**

**Ann Lowe Hornstein**, 3427 W. Corrine, Phoenix, AZ 85029. Living in the GREAT South West working with the Indians — Great!

**Rosie Smith Jones** (William E.), 1888 Delaware, Beaumont, TX 77703. Now "Head Nurse" — Medical Services, Temple-Eastex, Eastex Division (same employer), also C.O.H.N. (Certified Occupation Health Nurse) — A.A. O.H.N. — Founders Group.

**1945**

**Patricia Crawford**, 1685 B 33rd Street, S.W., Allentown, PA 18103. Working as diet technician at Allentown and Sacred Heart Hospital Center, Allentown, PA.

**Margaret Esther Greenly Rothermel** (Wm. Shannon Rothermel, M.D.), 3750 Fulton Drive N.W., Canton, Ohio 44718. In April my husband will become a Fellow of the American College of Radiology.

**Charlotte A. Cooper Phillips** (Ernest A.), 201 Sierra Way, Auburn, CA 95603. Son, William E. Phillips, Research Chemist — Carnation Research Lab., Van Nuys, California.

**Evelyn Louise White Collett** (Milo James), 269 East - 9545 South, Sandy, Utah 84070. Oldest daughter, Robyn, is a Freshman at B.Y.U. Alyson and Carolyn — senior and freshman in H.S. — respectively.

**Ruth Laube Cavell** (Ralph), 1913 S. Michigan Way, Denver, CO 80219. My husband received his Ph.D. in History in 1975 from the U. of Denver.

**Col. Catherine T. Betz, USA Ret.**, 3402 Craigo Avenue, El Paso, TX 79904. Dear Alumnae: As I used to walk thru halls, wards and private floors of Jeff as night Supervisor, I never dreamed the day would finally come when I could retire at an age I could enjoy the easy life. But, thanks to the Army, I could pick my time, and here I am playing the role of a full time bum and here in the state of Texas. Jefferson was represented at my parade and many parties that followed, with the presence of my good friend, Col. Marjorie Wilson S 45 Class. Marjorie and I built a house in Spain and in the immediate years ahead hope to spend several months each year in that environment.

I shall never forget my student and graduate years at our Alma Mater because it was Jeff that molded me into the Nurse the Army Nurse Corps desires. Best wishes to those around the area that I know and also to the organization as well.

**Byrnice Byorick Hurt** (Gordon), 2815 Covington Lake Drive, Ft. Wayne, Ind. 46804. Received my masters degree in Library Sc. from Rosary College in River Forest, Illinois, in 1975 (MLS). I am a certified medical librarian working for the Ft. Wayne Medical Ed. Program. We are starting a consortium of medical libraries in the area.

**1946**

**Betty Kimmel Frommelt** (J. Calvin Frommelt, M.D.), 502 Ramapo Avenue, Pompton Lakes, NJ 07442. We welcomed our first grandchild (a girl) on St. Valentine's Day 1976. Our daughter, Lynn, is interning as a dietician at Cook County Hospital, Chicago.

**Jeanne L. Supplee**, 3343 Quaker Spring Road, Augusta, GA 30907. Assigned to Dwight David Eisenhower Army Medical Center, Ft. Gordon, GA. as Asst. Chief Department of Nursing in May 1977. Promoted to Colonel in Sept. 1977.

**Jacqueline Baer Coffroth** (Leroy W. Coffroth, M.D.), 541 Thornley Way, Sacramento, Calif. 95825. I am married to a Jefferson Alumnus — class of 1950 — so I get most of the news, and it is amazing how the old place has changed. I am busy in civic affairs. The children are all grown. We have lived here for 12 years.

**Anna Heishman Koert** (Edward W.), Meadowcroft, 1432 - 56th Street West, Bradenton, FL 33505. Have moved permanently to above address this month (March) and will not be able to attend the alumnae luncheon this year.

**Jeanne Null Collevchio** (Tom), 17 Linda Drive, Allendale, NJ 07401. Joanne, oldest daughter, has finished 3 years in the Army and will start graduate school in social work in Sept. at Rutgers University in NJ. Tom, Jr. graduated from Illinois State University Dec. 1976. Barbara is 19 years old and is a sophomore at Syracuse Univ. (Syracuse, NY) — majoring in nutrition.

**Helge Zundt Michael**, 211 W. Seminary Avenue, Lutherville, MD 21093. Daughter, Stacey, graduated Summa cum Laude from Webster College — took honors in French and Theatre — works as production assistant at Arena Stage, Washington, D.C.

**1947**

**Janet Elizabeth Edwards Maurer** (Calvin R.), 775 2 Carrleigh Pky, Springfield, VA 22152. Son, Calvin Jr., graduated valedictorian from high school and now attending Princeton University on a scholarship. I am working for an ophthalmologist and enjoying being back in the swing of things.

**Helen Walk Watson** (C.K.), 70 Old Oak Drive, Buffalo Grove, IL 60090. Am now Coordinator Health Service, Lake Forest College, Lake Forest, IL.

**Mary Pavulak Swan** (Reyer Swan, M.D.), 44 E. 3rd Avenue, Lititz, PA 17543. Tom Reyer Swan — son — graduated Lehigh University — honors — Journalism. David Michael Swan — son — graduated Juniata College — Magna Cum Laude — Freshman at Jefferson Medical College Sept. 1977.

**Irma Schuetz Heller** (Donald E.), 65 Dean Road, East Lyme, Conn. 06333. I work as a correctional nurse in the only women's prison in Conn. Oldest son, Scott, graduated from Bryant College, Smithfield, R.I. — now working on master's degree and employed at Electric Boat Co. Daughter, Doana, is a Junior at Ursinus College, Collegetown, PA. Keith is a sophomore in high school. Husband, Donald, Supv. in Nuclear Design at Electric Boat Co. (General Dynamics Corp., Groton, Conn.).

**Dorothy Harris Van Vranken** (Bruce), 1156 Hidden Springs, Glendora, CA 91740. I'm a part time instructor Citrus Community College. Son, Bruce, Jefferson Graduate 1975 — Resident in Family Medicine at Univ. of California at Irvine.

**1948**

**Mildred Franks Hines** (Floyd), 23 W. 254 Westchester Court, Glen Ellyn, IL 60137. Daughter, Debra Ann, graduates this year from East Carolina University, Greenville, NC, in Occupational Therapy.

**Norma Grunden Bicking** (George F.), 3560 Jacksonville Road, Bethlehem, PA 18017. Earned B.S. in Dec. 1974. Employed as Employee Health Nurse and I am working at Muhlenberg Medical Center, Bethlehem, PA.

**Shirley Darling McDonald** (Joseph), 29 Culberson Road, Basking Ridge, NJ 07920. Son, Tim Schott, married Sept. 1976. Daughter, Nancy Schott Gorczyński, became a mother Jan. 2, 1977 - daughter — Sarah Michelle. Husband, Joseph McDonald, had open heart surgery Dec. 1976.

**1949**

**Jean E. Mease**, 416 Edgewood Drive, Lebanon, PA 17042. Retired from USAF Nurse Corps after serving 20 wonderful years. Enjoying every minute of retirement. Everyone should try it!

**Hazel Sheckler Kogler** (Henry), 802 Rugby Road, Phillipsburg, NJ 08865. Daughter, Anna, is a Junior at Syracuse Univ. Son, Paul, is a Sophomore at Rider College.

**Barbara Brown Breen** (James), 1177 Omaha Road, North Brunswick, NJ 08902. Have been working as Family Planning Nurse Practitioner for Planned Parenthood, Middlesex County, since completing Practitioner Course (NJ College of Medicine and Dentistry) in Nov. 1975. Enjoying our 2 year old granddaughter; expecting a grand son in August!

**1950**

**Geraldine Stemler Strye** (Carl), 48 Washington St., Nazareth, PA 18064. Daughter, Susan, is a student at T.J.U. School of Practical Nursing.

**Ruth Swinehart Merroth**, 19 Franklin St., Warren, PA 16365. Back to nursing after 24 years. Have met another Jefferson graduate — June Van Lise — working at Warren General Hospital.

**Helen Louise Sheriff Rightor** (John Rightor, M.D.), 210 Beechwood Dr., Oil City, PA 16301. Husband, John, became a Fellow in the National Academy of Family Practice in 1976 in Boston. (See letter addressed to the Class of 1960.)

**1951**

**Lorraine Jeitner**, 5220 Lake Knoll Lane, Fair Oaks, CA 95628. I have been named Assistant Chief of Emergency Medical Services, California State Department.

**Virginia Wesley Dorman** (Frank, M.D.), 237 Rock Run Road, Elizabeth, PA 15037. Daughter, Kitty, age 20, sophomore at Penn State; made Dean's list first two terms this year (Fall and Winter) — Economics major. Husband, Frank, in Family Practice.

**1952**

**Catherine Matthews DeLuca** (Michael), 214 Haworth Avenue, Haworth, NJ 07641. Charge Nurse on ECF — Bergen Pines County Hospital.

**Eloise J. Hippenstele**, 2281 Old Berwick Road, Bloomsburg, PA 17815. Assistant Director — School of Nursing — Thomas Jefferson University.

**Ann Louise Savage Stout** (Benjamin—deceased), 233 Park Street, Morgantown, WV 26505. I am currently working at West Virginia University Health Service. I have three children in college and next year all four will be in college.

**1953**

**Frances Kazmer Balistrieri** (James), 2455 N. 116th Street, Wauwatosa, Milwaukee, Wisc. 53226. I will be unable to attend the Alumnae Luncheon on May 7, 1977, because I am extremely busy with my One-Family Life — ages 9, 11, 12, 13 years at this time. We did see the new Philadelphia in June of 1976 during the Bicentennial and we were impressed with the new big clean city there. Missed the Legionnaire's tragedy. We did tour the Treasury, Mint and the educational part of historical Phila. We came home with many tokens and all my debts paid off and cleared. Saw many familiar faces there and we enjoyed our stay at the Marriott.

**Jane Reimer Lemmon** (William M.), 1653 Mt. Pleasant Road, Villanova, PA 19085. Our oldest daughter, Jane, is graduating from the Boston Univ. School of Nursing in May and is currently doing her final Independent Study Rotation with the Frontier Nursing Service in Hyden, Kentucky.

**1954**

**Elizabeth Snyder Swartz** (Russell), 678 County Line, Telford, PA 18969. I am presently teaching in a diploma school. My oldest son, Frederick, is a senior in Art School — a "dean's list" student.

**Roberta Eleanore Mangotto Smith** (Thomas E.), Trooper Road, R.D. #1, Norristown PA 19401. I became Vice President of Montgomery County School Nurses Association this year and obtained instructors rating in C.P.R. training from American Heart Association.

**Betty Richards Stone** (James), 2019 S.E. 13th Street, Ocala, FL 32670. Our daughter, Mary, is a Junior at Vanderbilt School of Nursing. Our son, James, is a Sophomore at Vanderbilt School of Bis-Medical Engineering. Our son, Tom, is a Freshman at Penn State.

**Mary Lee Stoutenburg Adams** (Evan), 7406 Springdale Drive, Louisville, KY 40222. My daughter, Cheryl, is a Sophomore at Vanderbilt University, Nashville, Tennessee, in the School of Nursing.

**1957**

**Julia Fernandez Placendo** (John), R.D. 2, Box 71, Lake Road, Newfield, NJ 08344. Still working as School Nurse at Delsea Reg. Son, John, graduating from High School this year — planning on college. Daughter, Carmen, presently Junior in High School — planning on going to Nursing School — hopefully Jefferson or West Jersey.



**Key Eichmann Cowen** (Mac), 101 Roanoke Road, Cherry Hill, NJ 08003. Working for Doctors Wellenbach, Peris and Kendall. Husband is Capt. in the Navy with Philadelphia Naval Hospital. Have three teen-agers.

**Georgann Jacobs Miller** (C. David), 37 N. 17th Street, Allentown, PA 18104. First child, Cynthia, graduated with honors — William Allen High, Allentown, May 1976. She is in "Who's Who Among American High School Students 75-76". Presently a Freshman at Millersville State — Early Childhood — El. Ed. Major — Dean's List. Husband is in "Who's Who in Child Development".

**Constance Sierant Vetter** (John), 1911 Kennedy Drive, T-2, McLean, VA 22101. We have 2 sons: Stephen John is 3½ years and William Ernest was born July 6, 1976. They keep me busy!

**Margaret Milotich Martin** (John), 1761 92nd Avenue, N.E., Bellevue, WA 98004. I regret not being able to attend my 20th reunion this May. Please extend my greetings to my classmates and my good wishes. We moved to the Seattle area approximately 8 months ago. The northwest is rich in natural beauty that lends itself to many outdoor activities which are healthy and enjoyable. Living so far from the east coast is both exciting and at times lonely, but we hope it will be a growth experience for all. I am active in nursing and work part time at a co-op hospital in Seattle. The hospital offers excellent medical facilities and care to patients who belong to "Group Health Cooperative"— an all inclusive medical insurance group that covers completely all phases of medicine plus Rx, operations, etc., for one monthly fee.

## 1958

**Edith Wingate Green** (Edward—deceased) Box D-10, Washington Mills, NY 13479. Since the death of my husband two years ago, I have been busy doing volunteer nursing and taking care of my six children ages 11 through 18. Hope to get back in 1978 for our 20th Reunion!

**Drosaline Riccio Riffle** (John), 6180 S.W. 90th Court, Miami, FL 33173. Husband still employed with Delta Airlines — Pilot — now Assistant Chief Pilot in Miami. I am Clinic Coordinator for our Elementary School (Blue Lakes Elementary).

**Joan Ravicini Randles** (William), 61 Evergreen Drive, Willingboro, NJ 08046. I am enrolled in the B.S. for R.N.s Program at the Philadelphia College of Textiles and Science in preparation for Marriage and Family Counseling.

**B. Jeanne Bushey Metz** (Jerry), P.O. BOX 147, Cavetown, MD 21720. My husband and I have opened a Christian Coffee House — known as "The Shepherd's Inn". This is a Christian Interdenominational ministry proposing to reach and teach our community the Word of God. We do this through fellowship, song, praise, Bible study. At the present we are open on weekend nights since we both have full time jobs; however, in the future it may be a full time ministry.

**Mulveena Kovarie Baldauf** (Leonard Baldauf, M.D.), 4250 N. Swan, Tucson, AZ 85718. Not working as R.N. — but am Mobile Meals Chairman for Tucson Medical Center — serving meals daily to the elderly. Our three oldest sons are in high school, one son in 6th grade and our daughter will be starting kindergarten this year. Husband, a Jeff graduate 1959, still in family practice.

## 1959

**M. Patricia Sankey Brown** (Mark Brown, M.D.), 8900 S.W. 96th Street, Miami, FL 33176. Husband, Mark, now Assist. Prof. of Ortho. Surgery at Un. of Miami, I am back at school studying Criminology and loving it! Children — Christopher age 12, Tony age 9, Danny age 8, and Nicole age 3. They are growing fast and we all love Florida living.

**Vera Stevens Myers** (Harold), 209 Rodman Avenue, Jenkintown, PA 19046. My husband, Harold, has just finished a very busy but fulfilling term as President of the Penna. Taxi and Paratransit Association.

## 1960

To the Class of 1960: Twenty years ago I was married, and at the time was teaching Nursing Arts and good old E.M.M. (Elementary Materia Medica) to the last February Class at Jefferson (1960). They honored me with a surprise shower in the Nursing Arts Lab. Along with the very useful gifts was a poem they composed:

"Even when married the story holds true,  
In one fluid ounce there are tablespoonfuls two.  
And just as you told us, I know you'll agree,  
That with 15 minims you get one c.c.  
In measuring liquid, I know you'll be neater  
If you keep in mind that a quart is a liter.  
I don't mean to be psychic  
(If you'll pardon the phrase)  
That E.M.M. will haunt you the rest of your days."

I came across this the other day, tucked away in my wedding book. It gave me quite a chuckle! Yes, twenty years later, I'm still at it — trying to convince my own brood of 17, 16, 14, 13 and 10 years, the beauty and simplicity of the metric system. Thanks to the February Class of 1960 for many pleasant memories. Helen Sheriff Richtor — Class of 1950.

**Nancy Washburn Noe** (Lew), 1706 Arnold, Laramie, Wyo. 82070. Lew is a chemist in Murray Hill, NJ at Bell Lab. on a year's sabbatical. Son, Christopher, is in kindergarten and Matthew will go next year. Sister Liz is expecting number 8 in March.

**Carolyn Ressler Goepfert** (Joseph), 139 Westfield Road, Holyoke, MA 01040. My husband built our home in the country this past fall and we hope to be living there by this summer.

**Martina Mockaitis Martin** (John H.), 17 Dartmouth Lane, Haverford, PA 19041. Became a Fellow of the American College of Physicians. Gave a talk to the graduating class of Bryn Mawr Hospital School of Nursing.

**Judith Haas Stauffer** (Robert). Bob and I have two fine boys. Tod is 11 years and Tim is 8 years. We are enjoying travelling in our trailer — seeing the U.S.

## 1961

**Barbara Jaszczalt Birney** (John), 414 Scott Lane, Wallingford, PA 19086. New baby, Elizabeth Margaret, born Sept. 18, 1976.

**Loretta Davis Cunningham** (Henry G.), 914 Third Place, Plainfield, NJ 07060. "Progress".

**Bettylou Simonson Woods** (Jay), 700 Floret Avenue, Reading, PA 19605. I was recently elected to the sub area council of Health Services Council which affords me an opportunity as a Director of Nursing Service to assist in future planning for our area.

**Emily Lutz Hogan** (Thomas), 6807 Colonial Ct., Apt. 1, Anchorage, AK 99502. We moved to Anchorage in December '76 where my husband is stationed with the A.F. I am Charge Day Nurse at a facility for developmentally disabled children — Hope Cottage. Going back to work after 10 years at home is a new experience. It pays to be flexible at times like this.

## 1962

**Carolyn Welter Bewsher** (Robert), 1810 - 38th Avenue So., Seven Springs, FL 33552. I graduate May 1st, 1977 with B.A. in Psychology from St. Leo College in Florida. Will pursue in same, with Education as Major at Un. of South Florida in Sept. 1977.

**Mary Elizabeth Spelcher Gillin** (James J.), 26 East Langhorne Avenue, Havertown, PA 19083. We are back in this area after a year in Indiana, PA — while my husband, Jim, was attending Indiana Univ. of PA on a sabbatical and working on his Ph.D. in English Education.

**Susan Eckerd Leake** (Milton), 632 Cardamon Drive, Virginia Beach, VA 23462. We moved to Virginia Beach in October. I am currently teaching childbirth preparation classes at DePaul Hospital in their OB Clinic.

**Sue Lehman Rice** (Stephen), 1200 Seminole Drive, Richardson, TX 75080. Our children are in 1st and 3rd grades and doing quite well. Steve changed jobs in September and really has found a challenge. I have increased my days of work a week to 3 at the same doctor's office.

**Carolee J. Swalm Mitchell** (William), 303 Regalwood Drive, Jacksonville, NC 28540. Husband graduated Cum Laude from Northern Virginia Community College with associate degrees in Medical Technology and Business Administration — transferred to Camp Lejeune, NC.

**Marian L. Krahling Hammond** (Phillip R.), 1415 Barnett Road, Baltimore, MD 21207. Starte as general staff nurse part time — nights — April 1975 at Baltimore County General Hospital. In Jan. 1977 Hospital began decentralization and I am now part time charge nurse — nights — 24 beds medical-surgical. Our children are Philip, Jr., 13 years, Leslie 11 years Christine 10 years. Husband is Regional Manager for Peterson.

**Marcie Grieshaber Moore** (Robert F.), 26802 Calle Maria, Mission Viejo, CA 92675. Another transfer by Warren-Teed — so we have been living in Southern California since March 1976. Bob now Regional Manager of North Western States, so will be relocating north by June 1st. Our new address will be: 14490 Shadowlane Court, Morgan Hill, CA 95037. Mark (8 years) in second grade and swimming for Nadadores — a Junior teammate of Shirley Babashoff and Brian Goodell. I am active in PTA, Nadadore Booster Club and traded snow skiing for tennis.

## 1963

**Katherine Kingsley Kinsey** (Dean Kinsey, M.D.), 328 Newbold Avenue, Moorestown, NJ 08057. Since August 1976 Dean has been Assistant Prof. of Medicine at Jefferson. I am working full time as Public Health Coordinator at Osborn Family Health Center, Camden NJ. Karen is attending Westfield Friends School full time. We are enjoying Moorestown again.

**Judith Butler Yost** (Raymond), Route 4, Box 571, Scott Drive, Proctorville, OH 45669. Ray received a promotion with ACF — named manager of production. Subsequently we were transferred to Huntington, WV in Jan. 1977. I was doing industrial nursing at home, but have not looked for anything around here yet. I am kept busy with our new house and helping our 2 girls, Ann Marie age 9 (4th grade) and Kistin age 6 (1st grade) adjust to our new surroundings. Would love to hear from classmates!

**Barbara Wilson Starner** (Anthony), 115 Morton Road, Springfield, PA 19064. Husband, Stoney, promoted to Product Manager — DATA for Bell of PA. Daughter, Kristen, age 8; son, Tony, Jr., age 5.

**Loretta Rich Kurland** (Robert), 8822 Tidesebb Court, Columbia, MD 21045. Our 3 boys — Bobby (10), David (9), Mark (6), keep us constantly on the go with all their activities. I've recently completed a "Return to Nursing" refresher course at the Community College here.

**Maureen Anne Cassidy McKeever** (John D.), 223 Chandler Lane, Corpus Christi, TX 78404. Am working towards my B.S. presently. Plan to get my Masters in Social Work or Psychology eventually.

**Suzanne Vache Blackburn**, 543 Nettleton Drive, E. Windsor, NJ 08520. We are happy to announce that in March we added to our family when we adopted Kelly Lynn, age 2½ months. She joins brothers — Keith age 8 years, and Kyle age 4 years. A future Jeff grad????

**Mary Lou Kelm McGinn** (Howard), 2 Iris Drive, Norristown, PA 19401. Husband, Howard, Manager Audio Visual Sales, Division Higher Education, Lippincott Publishing Co. Children — Kristin age 4 years and Kevin born 11/19/76. I work part time Pediatrics in Community Hospital.

## 1964

**Elizabeth Reed**, 2036 Paradise Drive, Tiburon, CA 94920. I thoroughly enjoy living in California and taking advantage of being able to get out into the hills and coast as often as possible. Professionally, I am running for national office in A.O.R.N. this year, and have just finished revising three chapters for the 6th Edition of Alexander's Care of the Patient in Surgery.

**Barbara Nase Anderson** (Robert), 1139 Tilghman Street, Allentown, PA 18102. We are still living in Prospect Heights, IL. David Scott was born Dec. 10, 1976; Cheryl is now 4½ years old. I am temporarily retired.

**Carol Bailey Hiller**, Miller Apts. #115, Elkin, NC 28621. I am working as Head Nurse and/or Medication Nurse on the Surgical Floor at Hugh Chatham Memorial Hospital, Elkin, NC.

**Jeraldine Joanne Marasco Kohut** (Sylvester), 110 S. Bedford Street, Carlisle, PA 17013. I am Director of Staff Education at Blue Ridge Haven West Convalescent Center in Camp Hill, PA. Blue Ridge is the largest private convalescent program in PA. In December, 1976, I completed my studies for a BS degree in Nursing from Elizabethtown College in Elizabethtown, PA.

My husband and I co-authored an article titled "Reality Orientation Therapy" which appeared in the December '76 issue of Inservice Education. He is Sylvester Kohut, Jr., Ph.D., Coordinator of Teacher Education at Dickinson College in Carlisle, PA.

**Barbara Lenker Tredlick** (William H.), 101 Brentwood Circle, Virginia Beach, VA 23452. Husband promoted to Commander, U.S. Navy.

## 1965

**Dorothea Hamilton**, 24801 Daphne West, Mission Viejo, CA 92675. Promotion to LCDR. I have been transferred to NRMCC Long Beach where I am Head Nurse on a 40 bed Men's Surgical Unit. I also do hospital supervision.

**Adrienne Lowe Daughenbaugh** (Robert), 11 Forest Drive, Northfield, NJ 08225. I am still pursuing my studies in Health Care Administration, eagerly looking forward to getting my "B.S.". Lori is in kindergarten this year and doing very well. Craig is a typical 3 year old, keeping me on the run.

**Barbara Ott Keller** (Irvin Basil), 2383 Brookside Way, Indialantic, FL 23903. We have four beautiful daughters, ages 2, 3, 6, and 8. Basil maintains a busy practice and I maintain a busy home.

**Judith Abbott Getz** (Donald), 1101 Airlie Road, Wilmington, NC 28401. David 6, Travis 3½, Helayne 3¼, Kiba Lore 1½. We have moved into "Edgewater", our dream house on the inland waterway built in 1830. I'm busy with the Chinese program at the museum and now have a Chinese cooking school in my home.

**Carolyn N. McDowell Yasinski**, 727 Cortland Drive, Monroeville, PA 15146. Husband changed jobs — now Assistant Director of Braddock General Hospital. Expecting first baby in August '77.

**Carol Shockley Sowder** (Thomas), 740 N.W. 74 Terrace, Plantation, FL 33317. Another Alumna, Carol Johnson Harnish, Class of 1968, recently moved across the street from us. We enjoy exchanging childrearing experiences, as well as memories of Jeff.

**Dianna Scheingold Ketterer**, RR #2, Kempton, PA 19529. Our 115 acre dairy farm along the Appalachian Trail Area in Eastern PA and two children (daughter 9 years and son 5 years) keep us busy and happy. I also work two evenings a week in the Neonatal Intensive Care Nursery (NICN) at Allentown Hospital.

**Ellen May Whitehorne** (Joseph), 4204 Barret Drive, Newburgh, NY 12550. Joe will be starting the Armed Forces Staff College in August at Norfolk, VA. Everyone in the family is fine.

**Elizabeth Maule Zentner** (Karl), 22516 Calipatria Drive, Woodland Hills, CA 91364. Both sons — Eric age 5 and Christopher age 3 — are in Nursery School. We love southern California and the sunny weather.

**Rita Mickey Mendel** (Alfred), 121 Knox Boulevard, Marlton, NJ 08053. My husband, Al, is medically disabled, have been working full time from 11 to 7 as charge nurse in the Emergency Room at Garden State Community Hospital.

**Janet Walker Respass** (James), 215 Jules Avenue, San Francisco, CA 94112. My husband, Jim, will receive his Master's Degree in Molecular Biology from San Francisco State University in June. We are planning a visit to the East coast this summer and then will leave San Francisco.

**Susan Wilhour Smeltz** (James R.), 303 Glenwood Drive, Douglasville, PA 19518. Feb. 28, 1977, I suffered a moderate to severe myocardial infarction, at age 32 — this is all quite a shock. I shall be resting all summer and would like to hear from anyone.

**Mary Bennett Kendrick** (Kenneth), 3048 S. Race Street, Denver, CO 80210. I am working as Co-ordinator of Admissions and Records at the Presbyterian School of Nursing and I'm a full time student at Colorado Women's College. I will graduate in August 1977 with a B.S. in Allied Health Specialty Nursing and will go back to teaching.

## 1966

**Bonnie Ann Crofford**, 45 Sullivan Road, Wayne, PA 19087. Graduated in August '76 from Gwynedd Mercy College with B.S.N. degree, now applying to Graduate School. Took and passed State Board Examination for licensure as a Nursing Home Administrator in Pennsylvania. Presently employed as 1 of 2 Teaching Coordinators at Phoenixville Hospital, Phoenixville, PA.

**Clare Marie Karabas**, 1138 Babcock, San Antonio, TX 78201. (Apt. F-10). I am now attending Graduate School at the University of Texas.

**Mary Lou Smith**, 6600 Warner Avenue #147, Huntington Beach, CA 92667. I am presently Head Nurse Surgical Floor, Huntington Intercommunity Hospital in Huntington Beach, California.

**Susanne Barclay Levine** (David Levine, M.D.), 3350 E. Campbell Avenue, Phoenix, AZ 85018. On February 19, 1977, I was married to David Levine — a Fellow in Newborn Medicine at Good Samaritan Hospital.



**Judith Hagelgans Hoefle** (William), 1818 Ferndale Avenue, Ames, Iowa 50010. My husband was accepted for membership in the American College of Veterinary Surgeons in 1976.

**Barbara Shermer Ruehl** (Victor E. III), 531 Linden Avenue, Doylestown, PA 18901. My husband now manages the Fidelity Bank office in Doylestown. Stephanie is 5, Carrie is 2. Hope to return to work part time soon.

**Judith Hartman Endriss** (Carl), 1009 Anna Road, West Chester, PA 19380. Mark Hartman Endriss arrived from Seoul, Korea, on Sept. 7, 1976. He was just 12 months old and is a real joy to us. Laura (age 9) and Peter (age 7) were thrilled!

**Judith Kennett Tracy** (John), Rt. #1, Box 85, Whitewater, Wis. 53190. My husband, John, was promoted to President of Tracy Farms, Inc. I am planning to return to school in pursuit of a Master's in Hospital Administration. The children and I spent this terrible winter in Florida with my folks — certainly enjoyed it.

## 1967

**Joanne Balmer**, 241 Lexington Street (#14-1B), Woburn, MA 01801. I am now working in the operating room at Mass. General Hospital.

**Karen Lawer Bedell** (John), 840 Pretoria Ct., San Jose, CA 95129. We have a new son — Jeffrey Ian — born Sept. 15, 1976. Matthew is 2 and Patrick is 3½ years. I will finish my B.S. in Nursing this semester. John is in mortgage banking.

**Diane Jakabcin Perkins** (Thomas W.), 1167 Porter Road, Norfolk, VA 23511. Recently returned to the States from Japan. Currently living in Virginia but will move in July to Florida. Two boys — ages 4 and 7. They and other activities keep me busy.

**Cheryl Peters Markle** (Gary), 2419 Lyndale Drive, York, PA 17402. I am working full time from 11 to 7 in Surgical Unit as Charge Nurse. My two lovely daughters — Julie and Jenna — are now 5 and 3. Would love to hear from anyone in the Class of 1967.

**Kathleen Raab Fitzgerald** (James), 5811 Danforth, Hanover Park, IL 60103. Baby #4 due in July.

**Virginia May Buehler Taylor**, 10570 Jerry Coe Lane, Strongsville, OH 44136. My husband has taken a management position with Republic Steel Corp. in Cleveland. I have resigned my part time job as an industrial nurse at Lukens Steel Co. and hope to continue my education after we are settled. I was recently in downtown Philadelphia and was very impressed with Jefferson's new building. It has grown quite a bit in 10 years. I enjoy reading the literature sent out and wish to continue to receive the Alumnae Bulletin.

**Linda Valentine Russell** (Bill), 3307 Chippendale, Philadelphia, PA 19136. Our children are William Jude 5½ years, Patrick John 4 years, Jennifer Ann 1 year. I am working part time ICU. We are planning to return to Bermuda for our 10th wedding anniversary.

**Carolyn Senkowsky Housman** (Leland, M.D.), 4521 Trias Street, San Diego, CA 92103. My husband is a cardiac surgeon in private practice. Last October he and his partner won the doubles division of the International Am. Medical Tennis Assoc. Tournament in Austin, TX. This past January he won both the singles and doubles — National Doctors Tournament in Las Vegas.

**Doris Labbe Silance** (James), 220 Central Avenue, Madison, NJ 07940. Still working full time. Have taken up tennis. We just returned from vacation in California in Feb. I am also taking care of all business management of Jim's carpentry business.

**Deidre Watkins Blank** (Michael, M.D.), 1606-3 Donald Street, Winnipeg, Manitoba, Canada R3L2P6. I am presently employed with the Manitoba Association of Registered Nurses as a nursing consultant for standards of nursing practice. My work is now the priority of the association and am looking forward to presenting my work to the nurses at Brandon University in May, 1977. My husband, Michael, is in the second year of his postdoctoral fellowship at the University of Manitoba, Dept. of Physiology, where he is currently doing research in placental hormones. Despite our heavy work schedules, we are trying to see as much of the north as possible and have just recently returned from a trip to the subarctic regions of Canada.

## 1968

**Elizabeth Masten Cahall** (Arthur), 120 West Street, Harrington, DE 19952. We are settled in our new home. My husband was elected Mayor in Jan.

**Lynn Rittenhouse Allison** (Ronald), 1132 Devonshire Road, Lancaster, PA 17601. New addition — Katherine Lynn — born Feb. 26, 1976.

**Regina Rosenfeld Friedman** (Irwin, M.D.), 6301 Musket Ct., Cornwells Heights, PA 19020. We have two children — Lisa age 7 and Scott age 3½. My husband finished his residency in OB—Gyn at Albert Einstein Northern Div. in July and will be opening a practice in Yardley, PA.

**Mary E. Squires Getz** (Robert R.), R.D. #1, Box A-2, Headley Avenue, Dushore, PA 18614. Megan Kathleen — born June 5, 1976. Jesse Theodore was 2 years old Dec. 18, 1976. Continue to work part time at Towanda Memorial Hospital, Inc.

**Ruth Montgomery Penta** (John Penta, M.D.), 3117 Merritt Parkway, Reading, PA 19608. John has begun private practice in Otorhinolaryngology and we are enjoying our new home and Reading very much. Daughter — Jennifer age 5 — is in kindergarten.

**Shirley Dubis Poling** (James), 237 Sacred Heart Lane, Reisterstown, PA 21136. I am very honored to have been chosen by Sinai Hospital of Baltimore to represent them at the A.O.R.N. Convention being held in Anaheim, California, this year.

**Karen E. Barnum** (divorced—Delcampo), 431 Hummingbird Lane, Cornwells Heights, PA 19020. I have been divorced and retaken my maiden name.

**Virginia Bozarth Waldon** (Robert), Rt. 2, Box 226, Niceville, FL 32578. Our second child, Stephanie Ann, was born Feb. 12, 1977. I am a full time student at Troy State University, majoring in Social Sciences.

**Donna Buscher Libby** (James), 118 Hemlock Drive, R.F.D. #3, Scarborough, Maine 04074. Our darling daughter was born April 26, 1976 and growing quickly. Jimmy is now 5 and awaiting kindergarten. Jim is teaching 5th grade and has entered the Master's Program at U. of M. I enjoy my dual role as mother-wife and nurse. I am working in the Recovery Room of a local hospital — Mercy Hospital, Portland, Maine.

**Nancy Jones Harrington** (John), 14 Wilbur Street, S. River, NJ 08882. We are in the process of adopting a Korean child. Our son, Jerry, is awaiting his new brother or sister not too patiently!

**Carol Cohen Leventhal** (Jeff), 225 Welsh Hill Road, Clarks Summit, PA 18411. I have a 24 hour job being a housewife and mother to our two children: Scott 3½ and Cari 2½. Husband, Jeff, is constantly busy in our family owned Dental Supply Company.

**Halina Plekarska Warmbrod** (James, M.D.), 347 N. Edenwood, Jackson, TN 38301. Jim is busy with his practice in orthopedics and our three children keep me busy. Stephanie (6), Monica (4½) and James (20 mos.).

**Sandra Payne Kenton** (Edgar Kenton, M.D.), 54 Lakeside Avenue, Devon, PA 19333. I am Public Relations Dir. for (Human Relations Program), Green Circle, Program, Inc. and First Vice Pres. Service League Lankenau Hospital and also member of Lankenau Hospital's Women's Board. Husband, Ed, still chief of neurology at Lankenau and Associate Professor at Jeff. We have two children — Adrienne (6 years) and Brian (3 years). Hear from Peggy Kien, Ruth Penta, Karen Barnum, and Lynn Allison. Would enjoy hearing from and/or seeing other classmates!

**Mary Taraskas**, 1020 Spruce Street, Philadelphia, PA 19107. Will graduate in May '77 from Un. of Pennsylvania with MSN, as a Family Nurse Clinician.

## 1969

**Virginia Morris Hunter** (Paul), 6140 Lawndale Avenue, Philadelphia, PA 19111. My thymotomy in Jan. '76 was successful — I went into complete remission of Myasthenia Gravis in June of '76. Am in sort of forced retirement due to recently diagnosed M.S. I keep busy caring for Susie 3½, Kristin 2½ and Michael 1½, and with our work on Board of Directors of M.G. Foundation. Paul is super — doing well in financing for First Pennsylvania Bank.

**Kathleen Shahahan Huffman** (Gerald L.), 126 Prospect Street, Merchantville, NJ 08109. Husband, Jerry, finally graduates from Drexel UN. Evening Div. with degree in Electrical Eng. We now have three daughters — Rebecca 5 years, Jessica 4 years, and Adrienne born 7/8/76.

**Linda Barbour Borden**, Chalet Catamount D, Pine Hill, NJ 08021. Continue working on B.S.N. Began full time in ICU at Presbyterian last May — shortly thereafter became Head Nurse of CCU - a position I still hold.

**Irene Tachovsky Holly** (Robert), 946 J Street, Davis, CA 95616. Presently working at Sacramento Medical Center in Neonatal ICU. Plan to receive my B.S. in nursing July 1977 from Univ. of Cal. in Sac. My husband is doing research and working toward a PhD in Physiology. Love California!

**Jean Hillerstrom Sloan** (Terry), 1180 Sharon, Florissant, MO 63031. Part time work in emergency room.

**Annie Eldredge Kahn** (Joel), 7616 15th Avenue, Takoma Park, MD 20012. I resigned my position as Assistant Nurse Clinic at George Washington University Hospital — ER — to take a staff nurse position at the ER of the Washington Adventist Hospital — closer to home — no more commuting into the city every day! My dad was just starting to enjoy his retirement this year when he suffered a heart attack; fortunately he has recovered very nicely.

**Marie Seebauer Panebianco** (John), 242 Tilford Road, Somerdale, NJ 08083. Our first child, Julie Dawn, was born 5/28/76.

**Dawn Reppert Meek** (Thomas), 113 North Street, Gahanna, OH 43230. Two children ages 4 and 15 months.

**Carolyn Brown Eberhart** (David), 1110 W. Muhlenberg Street, Allentown, PA 18104. Member of American Association of Neurosurgical Nurses.

**Kay Hitchens Jennings** (Robert), R.D. #1, Box 285 B, Milton, DE 19968. Our third child, Karyn Lynne, was born Jan. 5, 1977. So I am retired from work for a while. Robbie (5) and Krista (4) really love our addition as we do.

**Elvira C. Paoletti**, 2333 S. Bouvier St., Philadelphia, PA 19145. Supervisor — Home Health Services.

**Mary Kristina Hancock Reede** (Lannie), 212 W. High Street, Apt. #7, Bellefonte, PA 16823. I am taking instructions to become a glider pilot and hope to get my glider Pilot's license by Sept. Recently elected to Board of Directors Center County Chapter of American Cancer Society — very active speaking for the ACS Public Information Comm.

**Marilyn Bergner**, 5243 Cottage Street, Philadelphia, PA 19124. Recently finished 18 months of Pulmonary Research and published an article in Nursing '76.

**Nancy Loury Argonish** (Michael), 825 Raines Street, Scranton, PA 18509. Nicky is 1½ years old and I am very happy in my full time role of wife and mother.

**Caroline Brunt Mariuchi** (Fred), Borton Landing Road, R.D. #2, Moorestown, NJ 08057. Our two sons are active; one is four years and the other one and one-half years. We are in the process of building a new packing house. It is nearer our orchards which will make packing our apples and peaches easier!

## 1970

**Janice Valentine O'Neil** (Jim), 635 Holly Drive, Medford, NJ 08055. We now have a daughter named Joyce. She was born April 23, 1976.

**Carol Ann Evans Phillips** (David), 780 Claynor Avenue, Collegeville, PA 19426. Dave is teaching at Ursinus. Scott is now 3 and Karen is 2 — we are enjoying them! I am full time staff nurse in the OR at Montgomery Hospital. We are glad to be back in Pennsylvania!

**Beverly Guise Cockerham** (David), 90 Virginia Avenue, Westmont, NJ 08108. Birth of a son, Andrew Brent, on Jan. 17, 1977.

**Catherine Randazzo Schanz** (Douglas), 147 Ambler Street, Westville, NJ 08093. Doug and I are proud to announce the birth of our first child — a girl — Melissa Sue — Jan. 11, 1977. We have purchased our first home which we hope to be in by May 1977. Always eager to hear from classmates!

**Phyllis Pasquini Randazzo** (Vincent Randazzo, M.D.), 18 Braeburn Drive, Lincroft, NJ 07738. Vince has been in private practice with a group of Internists for 1½ years now. Our second child, Vincent Peter, was born July 6, 1976; Paula was 4 years old in Sept. 1976.

**Gini-Ann Moyer Scott** (Gregory John), 437 East State Street, Coopersburg, PA 18036. Gregg is now an officially registered architect! I am working as a school nurse. Jenny will be going to Kindergarten in the fall. Johnny (age 2) is into everything and lots of fun!

**Susan MacMillan Lloyd** (Wayne), 3425 Mackland N.E., Albuquerque, NM 87106. I was graduated Cum Laude in May '76 with a BSN. Became a new member of Sigma Theta Tau. Husband, Wayne, doing Master's work in Architecture.

**Margaret Connors**, 11728 Darlington Avenue, W. Los Angeles, CA 90049. Presently working in the Pre-Op and Recovery Rooms at U.C.L.A. Medical Center.

**Cynthia Grabowski**, 230 S. 44th Street, Philadelphia, PA 19104. Promoted to 11-7 Supervisor at Graduate Hospital in 1976.

## 1971

**Carol Beck Cleri** (Dennis J. Cleri, M.D.), 1563 E. 33rd Street, Brooklyn, NY 11234. My husband was promoted from the rank of Captain to that of Major and is presently Chief of E.R. service at Kimbrough Army Hospital, Fort Meade, MD.

**Lynn Streeper**, 4096 Balwynne Park Road, Philadelphia, PA 19131. Am now Head Nurse CCU at Philadelphia College of Osteopathic Medicine. Looking forward to AACCN — 4 day seminar in New Orleans this April.

**Linda Smith Korey** (Joseph, M.D.), 515 York Road #2D, Willow Grove, PA 19090. My husband, Joe, is an OB-Gyn Resident at Abington Hospital. We have a one year old daughter and we are expecting our second baby in April.

**Grace Ann Spena**, 2551 S. Sartain Street, Philadelphia, PA 19148. Promoted to Evening Nursing Supervisor at the Hospital of the Medical College of Pennsylvania in June 1976. Became Certified in Critical Care Nursing in July 1976 by the American Association of Critical Care Nurses.

**Eileen Blum**, 5417 Tackawanna Street, Philadelphia, PA 19124. Married May 14, 1977 to Mr. James Moran. Graduated from University of Penna. Graduate School of Nursing with M.S.N. May 1977.

## 1972

**Mary Webb Hulick** (Peter Hulick, M.D.), 29 Windflower Drive, Newark, DE 19711. I will receive my B.S. degree from Wilmington College in June '77. My husband will finish his residency and will be starting a private practice in Virginia in August.

**Nancy J. Shaffer Bodner**, 1198 Maple Avenue, Elmira, NY 14904. Working as the head nurse on the Rehabilitation Nursing Unit at St. Joseph's Hospital in Elmira, NY.

**Joyce Payne Murschell** (Wayne), 446 Dickinson Road, Wenonah, NJ 08090. We have a 7 year old son — Wayne. I am presently working at the ICU-CCU at Underwood Memorial Hospital in Woodbury, NJ.

**Margaret Van Dyke Beattie** (David), Box 193D Sunnyhill Avenue, Williamstown, NJ 08094. Until February I was working as Advanced Staff Nurse in the Emergency Room at Jefferson. I am now at home awaiting the momentary birth of our first child — expected in April. I am still attending the University of Pennsylvania part time. My husband is a pharmacist at Millville Hospital.

**Donna Wunsch Stuurop** (Dirk Arie), 60 Remsen Street #8F, Brooklyn Heights, NY 11201. I retired from my position as Assistant Clinic Director with Planned Parenthood, N.Y. City in August to accompany my husband on a business trip to Japan. Dirk is an investment banker with Merrill, Lynch, Pierce, Fenner, and Smith. Our son, Charles, was born Nov. 17, 1976.

**Deborah Waters**, 210 Park Avenue, Collingswood, NJ 08108. Head Nurse on 6 Main at Jeff.

## 1973

**Susan Broadwater**, 9156 Spring Hill Ct. #204, Greenbelt, MD 20770. Am presently working in the IC Nursery at Children's Hospital National Medical Center in Washington, D.C.



**Helene Canney Donohue** (Edward), 1642 Crestview, Cornwells Heights, PA 19020. Expecting first child in July.

**JoAnne Bender Peters** (Lewis), 337 Linden Hill Apts., Lindenwold, NJ 08021. Lewis Peters and I were married on April 30, 1977.

**Kate Gillies Felix**, 371 E. Glenn Road, Hershey, PA 17033. Hello! Since I'm in the Navy and doing quite a bit of traveling, I think it would be less work for the Alumnae if all my correspondence was sent to my home of record which is 371 E. Glenn Road, Hershey, I hope completion of the hospital is coming along smoothly. Nursing in the Navy, on this tiny wind-swept island out on the Aleutian chain off the coast of Alaska, is quite exciting at times and requires a great deal of FLEXIBILITY!! We are quite isolated. Kate writes for information regarding tests for newborns in the ICN — which is being passed on to the proper authorities for answer — I hope.

**Cheryl Breder Wenger** (Warren), 150 Oakland Avenue, Lansdale, PA 19446. Warren and I had our first child — Jennifer Renee — on June 9, 1976. I've retired to become a full time wife and mother.

**Phyllis Heller Richman** (Steven), 614 Hopkinson House, Philadelphia, PA 19106. As of Jan. 1977 have been promoted to position of Head Nurse of Pennsylvania Hospital's Psychiatric Inpatient Unit.

**Eugenie (Genie) Goldfarb Green** (Zahav), 580 E. 17th Street, Apt. 6G, Brooklyn, NY 11226. I am Vice President of a chapter of Women's American ORT in Brooklyn. Husband, Zahav, is an agent with Provident Mutual Life Insurance Company.

#### 1974

**Margaret Jane "Peggy" Smith**, 6902 Lawnton Street, Philadelphia, PA 19128. I am working in the Pediatric-Adolescent Unit in Jefferson Hospital and have been promoted to advanced staff nurse. I am also attending Temple University full time — working for a degree in Nursing — and was named to the Dean's list there.

**Margaret Ott, U.S.N.R.M.C.** Japan, Box 65 — 1962 — FPO Seattle, WA 98761. Stationed in Japan, just South of Tokyo. Will be here another year. I am doing much traveling, going broke with all the buys in the different countries. It's really a different world.

#### 1975

**Brenda Scott**, 206 Park Brighton 1229 Brighton Ave., Modesto, CA 95355. Moved to California — engaged to Robert L. Goldberg, M.D., Jefferson — class of '76.

**Maria Triolo Glavey** (Gerard), 755 Montclair Drive, Apt. 10, Claymont, DE 19703. Gerry and I have moved from Washington, DC to Delaware. My husband is still working for the Government. I am employed at the Wilmington Medical Center Del. Dir. ICU.

**Florence Cox Zapolski** (Edward), 2330-7 Grove Avenue, San Diego, CA 92154. My husband, Ed, received his wings of Naval Aviator Oct. 15, '76. We are presently stationed in San Diego. I am currently employed at Bay General Community Hospital as an O.R. Staff Nurse and attended the 1977 AORN Congress as an Alternate Delegate.

**Nora Ann Stockmann Jens** (Kurt), 402 Lloyd Avenue, Providence, RI 02906. Charge Nurse of Pilot Alcoholism Program at Butler Hospital. Husband is first year Psych. Resident at Butler Hospital.

#### 1976

**Eleanor Hansell Cunningham** (John), 307 Gatewood Apts., Cornwells Heights, PA 19020. Married — July 3rd, 1976. Working Lower Bucks Hospital — OB-Gyn.



LUNCHEON GUESTS  
Class of 1977



## MARRIAGES

- 1934 Mildred D. Bowman to James Dumas  
1939 Marian Neil Weyandt to Harry L. Findley  
1947 Audrey Foster Hargreaves to John Bearer  
1958 Grace L. Witt to Albert C. Becker, Jr.  
1966 Suzanne Barclay to David Levine  
1971 Marianne Bartolone to Phillip Speno  
1971 Eileen Blum to James Moran  
1972 Kathleen Konrad to Mark Smith  
1973 JoAnne Bender to Lewis Peters  
1973 Mary Ann Roddy to Joseph Puglis  
1974 Jeanne Margraf to K. Thomas Wagner  
1974 Maureen Fernicola to William J. Bowe  
1975 Carol Craven to Robert Baker  
1975 Nora Ann Stockmann to Kurt Jens  
1975 Denise E. Bertram to Neil Capaldi  
1975 Mary Jo Winning to Mr. McMullin  
1976 Aileen Ishuin to Frederick Neil MacMillan  
1976 Anita Lyn Carter to Peter C. Campbell  
1976 Eleanor Ann Hansell to John Cunningham  
1976 Claudia J. Schmidt to Edward Dimond

## BIRTHS

- 1957 Constance Sierant Vetter, Baby Boy  
1963 Suzanne Vade Blackburn, Baby Girl  
1964 Barbara Nase Anderson, Baby Boy  
1966 Judith Hartman Endriss, Baby Boy  
1967 Karen Lawer Bedell, Baby Boy  
1968 Lynn Rittenhouse Allison, Baby Girl  
Virginia Bozarth Waldon, Baby Girl  
Mary Squires Getz, Baby Girl  
Donna Buscher Libby, Baby Girl  
1969 Marie Seebaure Panebianco, Baby Girl  
Kay Hitchens Jennings, Baby Girl  
Kathleen Shanahan Huffman, Baby Girl  
1970 Beverly Guise Cockerham, Baby Boy  
Phyllis Pasquini Randazzo, Baby Boy  
Catherine Randazzo Schanz, Baby Girl  
Cathleen Denes Webber, Baby Girl  
Janice Valentine O'Neil, Baby Girl  
1972 Donna Wunsch Stuurop, Baby Boy  
1973 Cheryl Breder Wenger, Baby Girl

## In Memoriam

- |                           |                              |
|---------------------------|------------------------------|
| 1914 Sarah Bergey         | 1928 Clara Cartwright Boyles |
| 1914 Mary Hallman Lindsey | 1930 Emma Skane Dabanian     |
| 1914 Effie Herring        | 1931 Isabelle Martin Gehr    |
| 1914 Mabel B. Miller      | 1932 Dorothy Kester Green    |
| 1916 Mae Williams         | 1934 Rhea Orner Kassay       |
| 1917 Ethel Faust          | 1935 Rita Kratzer Roeder     |
| 1921 Mae Fuller Spence    | 1939 Anna Novak Dutko (W.H.) |
| 1921 Freda Steinback      | 1947 Wanda Edgell Kinsey     |

## A LETTER FROM THE FORMER PRESIDENT

### THOMAS JEFFERSON UNIVERSITY

Office of the  
President



Philadelphia, 19107  
(215) 829-6617

October 5, 1971

Miss Elizabeth Piersol  
The Alumnae Association  
Thomas Jefferson University Hospital  
11th and Walnut Streets  
Philadelphia, Pennsylvania 19107

Dear Miss Piersol:

I want to thank you and, through you, the officers and Publication Committee of the Alumnae Association for the copy of the Alumnae Association Bulletin of the School of Nursing, 1891-1971.

This is the first copy of your Bulletin that I have ever received. It is beautifully compiled--in excellent taste.

Aside from revealing information on Jefferson graduates and members of the Alumnae Association, the pictures on pages 26 and 27 ("In Retrospect . . .") tell the whole fascinating story of Jefferson Hospital.

I am delighted that your Association is as vigorous as it is. In the future, I hope it becomes even more so. We need its support, as never before, in our newest academic division--the College of Allied Health Sciences. As you know, the cornerstone and the foundation of this College is, and always will be, education of nurses and the nursing profession. With over 2,700 living graduate nurses of Jefferson, there is no reason why your organization cannot rival the Jefferson Medical College Alumni Association in the affairs of your Alma Mater.

Congratulations and good luck!

Sincerely yours,

Peter A. Herbut, M.D.  
President

PAH:t



**CLASS ADDRESS LISTS**

Class address lists will be available from the Alumnae Office Clerk-Typist at a charge of \$2.50 per list. Enclose a long self-addressed stamped envelope.

**ALUMNAE BULLETIN**

The Alumnae Bulletin will be sent automatically to all association members; individuals who are not association members may obtain a copy of "The Bulletin" upon request at a cost of \$3.00 per copy. An order form will be mailed to all graduates in the Spring of 1978.

**MAIDEN NAME — YEAR OF GRADUATION**

Whenever you have occasion to write to your Alumnae Association, please use your first name, maiden name, then married name, and the year you graduated.

EXAMPLE: JANICE SMITH GREEN — 1972

"Mrs. John Green" makes it very difficult for the association to locate your card in the files. You are urged to notify the Secretary of the Alumni Association of any corrections, marriages, deaths, or changes of address. Please help us keep errors at a minimum and our files accurate.

**ALUMNAE DAY — MAY 6, 1978**

**HELP US — HELP YOU**

Want to help your Alumnae Association save money?

We try to keep up to date, but with nearly 3000 active members, it is a really big job.

The Postal Service returns every piece of Alumnae mail that is not delivered; this costs us money, and the cost of returned mail may soon double.

**Here is how you can HELP US — HELP YOU!**

Advise us if there has been any change whatsoever in the address we are currently using. Also send us the address of a classmate or friend who is not receiving mail from the Alumnae Association.

Name .....

Old Address: Street .....

City ..... State ..... Zip .....

New Address: Street .....

City ..... State ..... Zip .....

Class Year .....

**THOMAS JEFFERSON UNIVERSITY  
SCHOOL OF NURSING**

**CAPS**

Jefferson caps may be purchased from Student Profiles, Inc., 11 Jamestown Street, Philadelphia, Pennsylvania 19127. The minimum order is for two caps at a cost of \$2.50 each, plus a one dollar postage and handling charge.

Identification and an order blank may be obtained by directing correspondence to the Director, School of Nursing, Thomas Jefferson University, 130 South Ninth Street, Eighth Floor, Philadelphia, PA 19107.

**PINS**

Jefferson pins may be purchased from J. E. Caldwell and Company, Chestnut and Juniper Streets, Philadelphia, PA 19107 (graduates prior to 1969) and from Neff Jewelers, 742 Sansom Street (graduates 1969 and after).

Identification may be obtained by directing correspondence to the Director, School of Nursing, Thomas Jefferson University, 130 South Ninth Street, Eighth Floor, Philadelphia, PA 19107.

**TRANSCRIPTS**

All requests for transcripts must be submitted in writing to the Director, School of Nursing, Thomas Jefferson University, 130 South Ninth Street, Eighth Floor, Philadelphia, PA 19107. Transcripts are only sent to institutions of higher learning. Requests should be submitted at least a month prior to the date needed, giving the name of the institution to which you want them to be sent. There is a \$2.00 fee for each transcript. Checks should be made payable to the School of Nursing, Thomas Jefferson University.

**REFERENCES**

In view of recent legislation (The Family Educational Rights and Privacy Act of 1974), we maintain the confidentiality of student records as required by law. Therefore, if you need a reference sent to a prospective employer, you will need to write to the Director, School of Nursing giving your permission to write the reference. The form below may be used if you wish.

**RELEASE OF INFORMATION FORM**

I, ....., hereby give permission to the School of Nursing (Diploma Program) of the College of Allied Health Sciences, Thomas Jefferson University, to release information from my academic record to:

.....  
(NAME OF INSTITUTION OR PROSPECTIVE EMPLOYER)

.....  
(ADDRESS)

.....  
(SIGNATURE)

.....  
(DATE)



