

AMPLATZER® Vascular Plug II

AMPLATZER VASCULAR PLUG II - ORDERING AND DELIVERY SYSTEM REQUIREMENTS

AMPLATZER Vascular Plug II Order Number		AMPLATZER Vascular Plug II Diameter (mm)	Pre-Implanted Device Length (mm)	DELIVERY SYSTEM MINIMUM REQUIREMENTS		
			Sheath Minimum Size	Minimum ID Required (inches)	Guide Catheter Minimum Size	Maximum Length (cm)
9-AVP2-003		3	4 Fr	0.056"	5 Fr	100
9-AVP2-004		4	4 Fr	0.056"	5 Fr	100
9-AVP2-006		6	4 Fr	0.056"	5 Fr	100
9-AVP2-008		8	4 Fr	0.056"	5 Fr	100
9-AVP2-010		10	5 Fr	0.070"	6 Fr	100
9-AVP2-012		12	5 Fr	0.070"	6 Fr	100
9-AVP2-014		14	6 Fr	0.086"	8 Fr	100
9-AVP2-016		16	6 Fr	0.086"	8 Fr	100
9-AVP2-018		18	7 Fr	0.098"	9 Fr	100
9-AVP2-020		20	7 Fr	0.098"	9 Fr	100
9-AVP2-022		22	7 Fr	0.098"	9 Fr	100

To order, please call AGA Medical at 1-888-546-4407 and ask for customer service.

¹Data on file at AGA Medical

AMPLATZER® Vascular Plug II



The Singular Solution for Rapid¹ Embolization Technology



AGA Medical Corporation
5050 Nathan Lane North
Plymouth, MN 55442 U.S.A.

(888) 546-4407 **Toll Free**
(763) 513-9227 **Phone**
(763) 513-9226 **Fax**
info@amplatzer.com **Email**
www.amplatzer.com **Internet**

Rx Only

Note: Refer to Instructions For Use for complete listing of Indications and Usage, Contraindications, Warnings and Precautions. Contact AGA Medical Corporation for further information.

AMPLATZER and TorqVue are registered trademarks of AGA MEDICAL CORPORATION. © AGA MEDICAL CORPORATION, 2011. Not in any way connected with medical gas or equipment sold under the "AGA" brand by AGA AB or its successors.

*This device may not be available in the US.

MM00265 (01.2) Global 02/11



AGA MEDICAL CORPORATION
HOME OF AMPLATZER® PRODUCTS

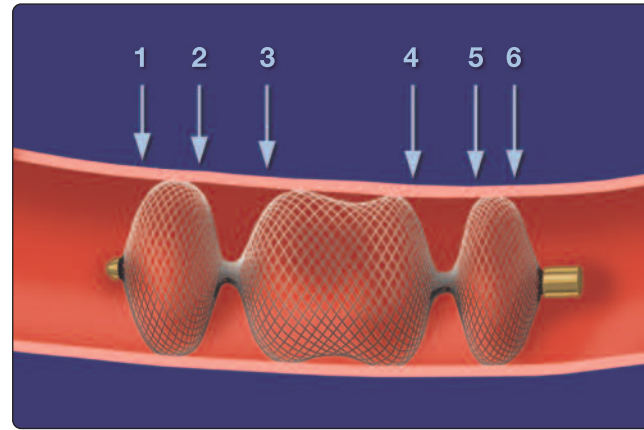
Now a part of St. Jude Medical

AMPLATZER® Vascular Plug II

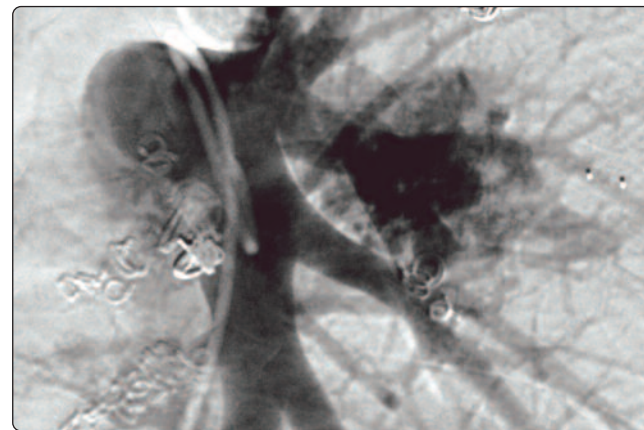
The Singular Solution for Rapid¹ Embolization Technology

The new AMPLATZER® Vascular Plug II's, an addition to the AMPLATZER® Plug family, unique multi-segmented, multi-layered design significantly reduces the time to occlusion¹ for transcatheter embolization procedures while maintaining complete control during positioning and delivery of the occluder.

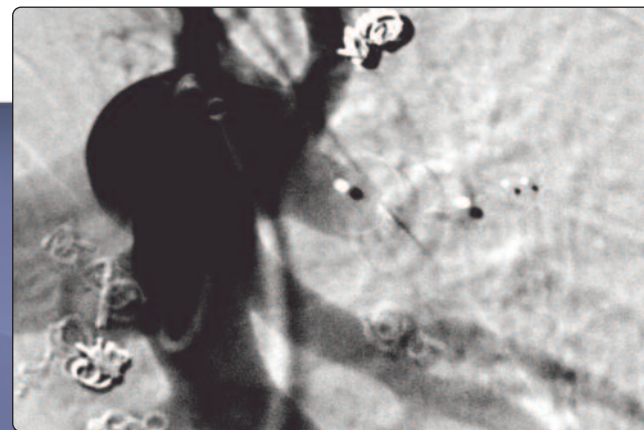
- Self expanding design provides full cross-sectional vessel coverage and reduced migration potential¹
- Multi-layered mesh lobes create 6 occlusive planes, inducing rapid¹ vessel occlusion
- Broad array of sizes (3 mm - 22 mm) to treat a wide range of vessels
- Can be deployed, recaptured and redeployed for precise placement



The AMPLATZER® Vascular Plug II provides six planes of occlusion.



Contrast injection to identify target vessel for occlusion.
Image courtesy of Dr. John F. Angle, University of Virginia Health System, Charlottesville, VA.



Contrast injection confirming complete occlusion of the targeted vessel with the AMPLATZER Vascular Plug II.
Image courtesy of Dr. John F. Angle, University of Virginia Health System, Charlottesville, VA.

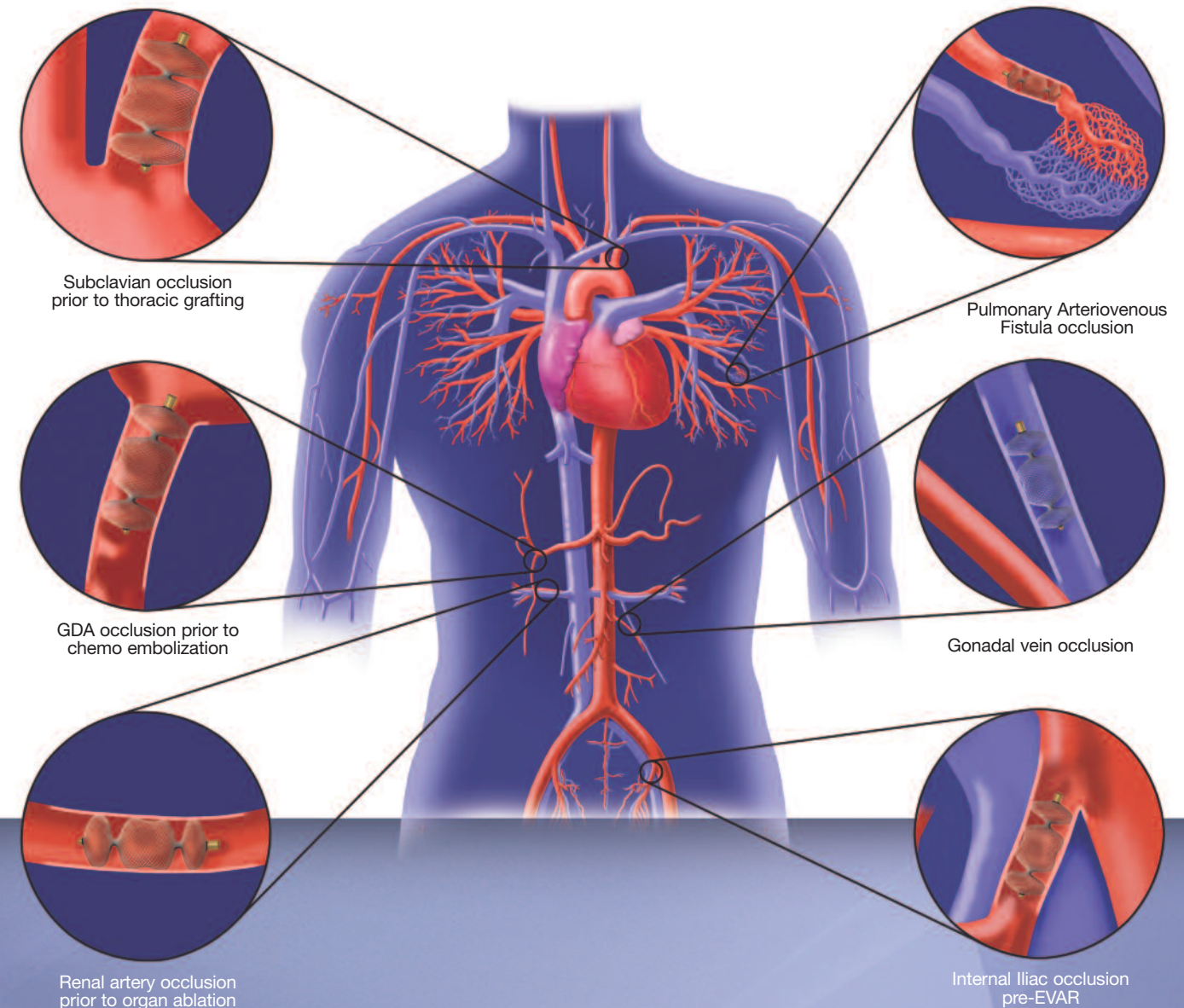


**AMPLATZER®
VASCULAR PLUG II**

¹Data on file at AGA Medical

The AMPLATZER Vascular Plug II has many potential applications as it is indicated for Arterial and Venous occlusions in the peripheral vasculature.

Common But Not Exclusive Applications:



The AMPLATZER Vascular Plug II May Be Used To Treat:

- Arteriovenous Fistulas
- Arteriovenous Malformations
- Aortopulmonary Collaterals
- Surgical Aortopulmonary Shunts
- Anomalous Venovenous Connections
- Additional Peripheral Vessels