



# MORPHOLOGY-LOBSTER

DR. SARITHA S

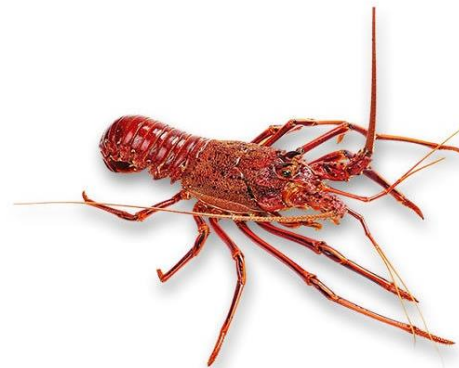
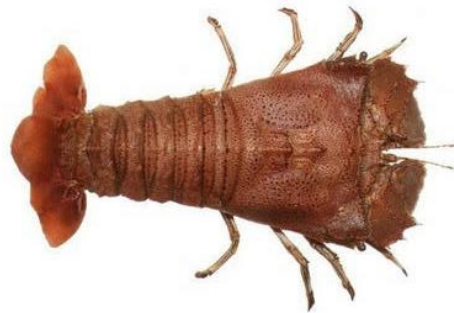
ASST. PROFESSOR

SCHOOL OF FISHERIES

CUTM, PARALAKHEMUNDI

# LOBSTER

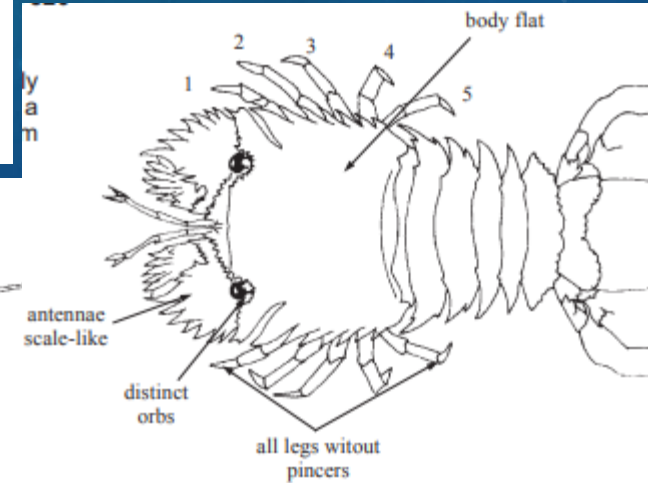
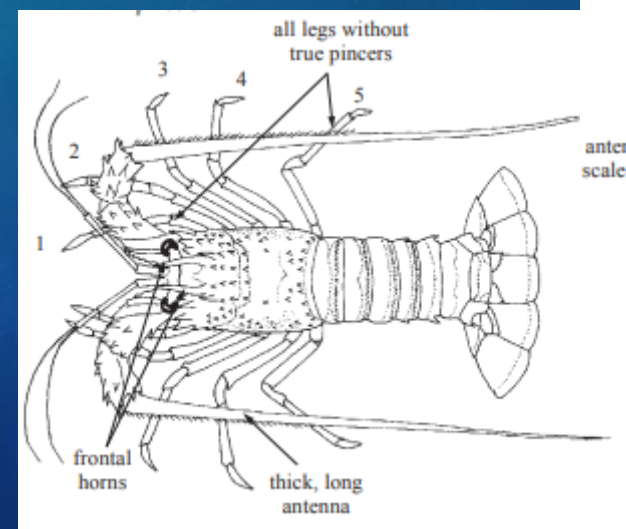
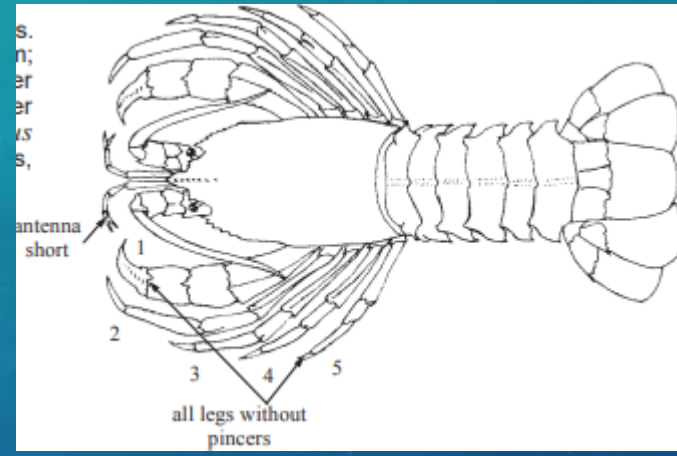
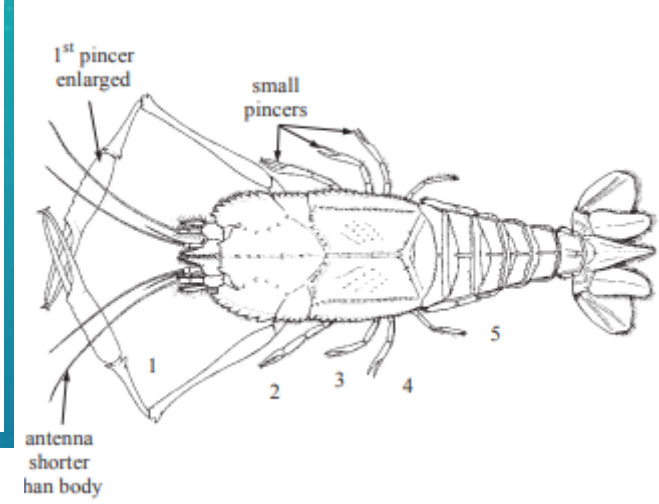
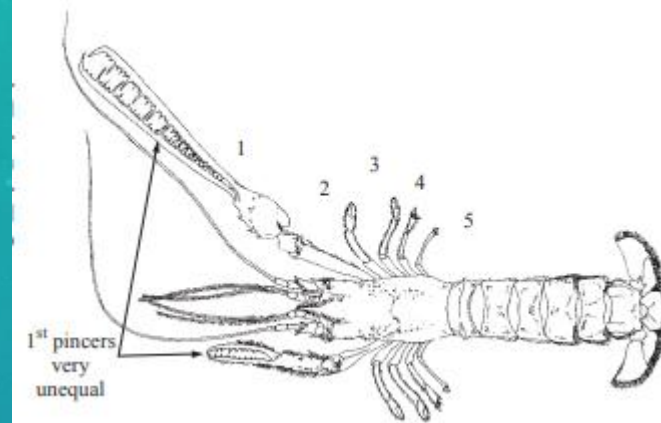
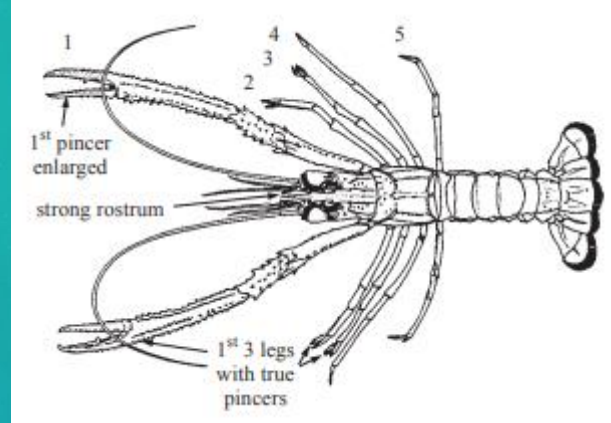
- The lobsters include a variety of crustaceans ranging in size from a few centimeters to over 1 m.
- They are more or less elongate animals with cylindrical or flattened bodies and a prominent abdomen consisting of 6 movable segments and a terminal fan which is usually about as long as the rigid and often spiny
- Tuberculate head or carapace.
- The eyes are stalked and usually movable in the sockets of the carapace, but reduced or even absent in some families (Thaumastocheilidae)



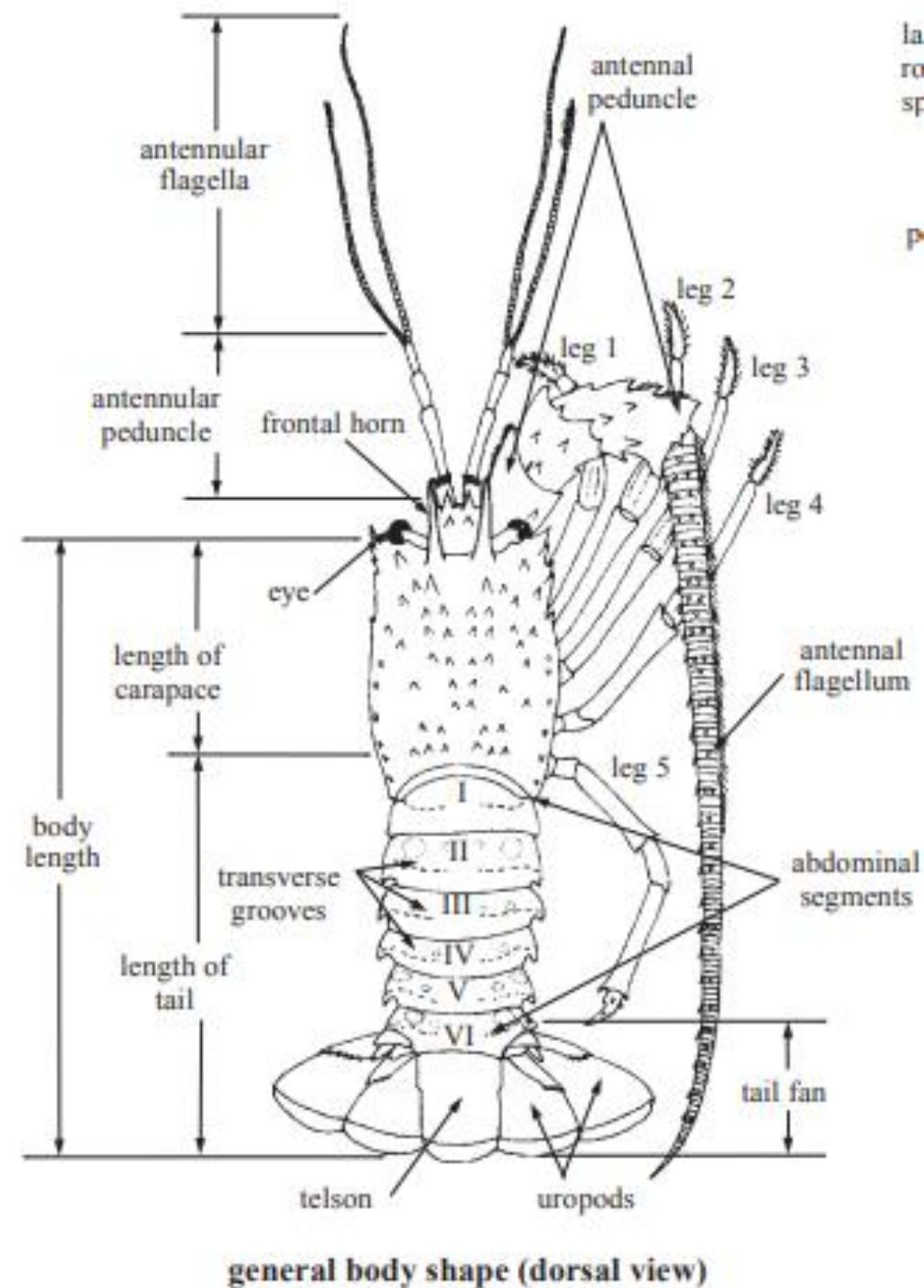


# FAMILY

1. Nephropidae (True lobsters)
2. Thaumastochelidae (Pincer lobsters)
3. Polychelidae (Blind lobsters)
4. Synaxidae (Furry lobsters)
5. Palinuridae (Spiny lobsters or langoustes)
6. Scyllaridae (Slipper lobsters)

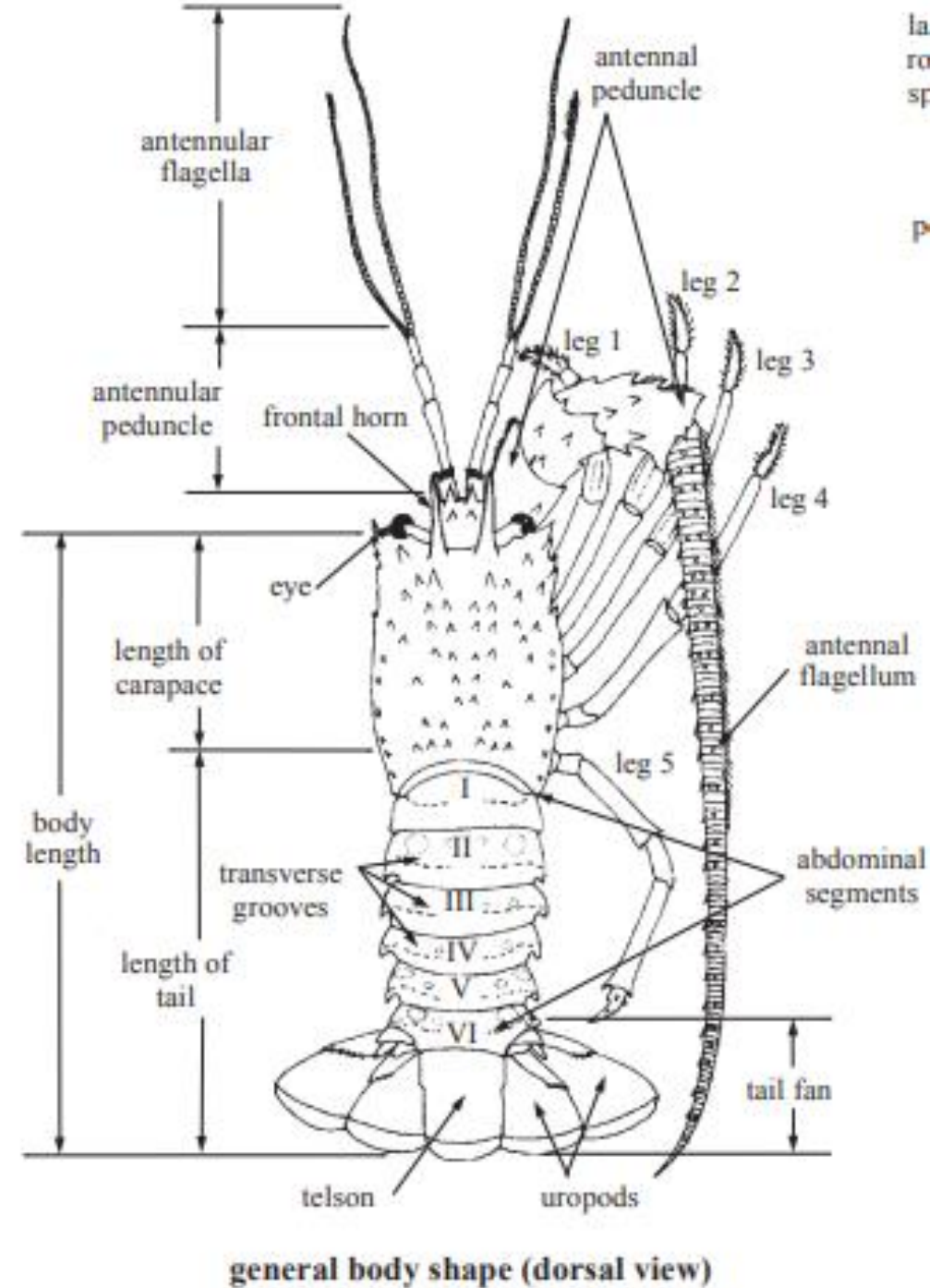


- The most conspicuous of the appendages of the anterior part of the body, under the carapace, are a pair of usually small, slender **antennules**, a pair of more robust **antennae** (long and cylindrical in most families, scale-like in the slipper lobsters or Scyllaridae) and 5 pairs of legs (**pereopods** or thoracic legs).
- The first pair of legs is enlarged in certain families (Nephropidae, Synaxidae) or in certain species of others (*Justitia* of Palinuridae)



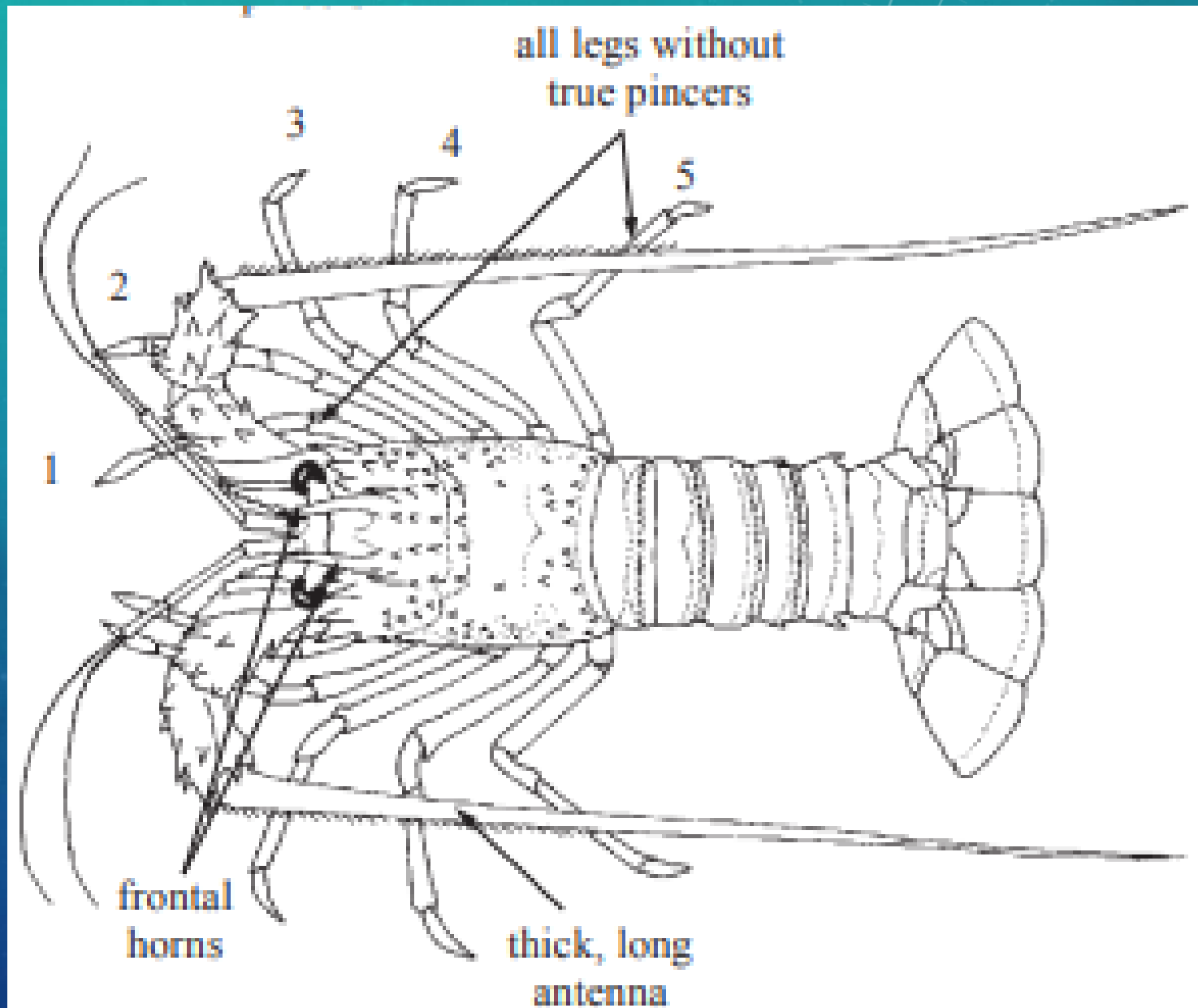


- The legs may all end in a simple curved dactyl (i.e., Palinuridae, Synaxidae, Scyllaridae) or some of them may terminate in true pincers or chelae (i.e. the first 3 pairs in Nephropidae, 4 or 5 pairs in Polychelidae).
- The abdominal appendages are short and biramous reduced abdominal legs or pleopods.
- Tail is broader
- Telson- Broader



# PALINURIDAE

- Body tubular
- carapace without a rostrum
- Legs without true pincers
- First pair not enlarged except in *Justitia*
- Antennae enlarged, cylindrical, longer than body.



# SCYLLARIDAE

- Body strongly flattened
- Carapace without a rostrum
- Legs without pincers, none of them enlarged
- antennae scale-like

