

# BUILDING A LEGACY

ANNUAL REPORT  
2017

FREDERIK  
*Meijer*  
GARDENS  
& SCULPTURE  
FOUNDATION  
*Celebrating 25 Years*

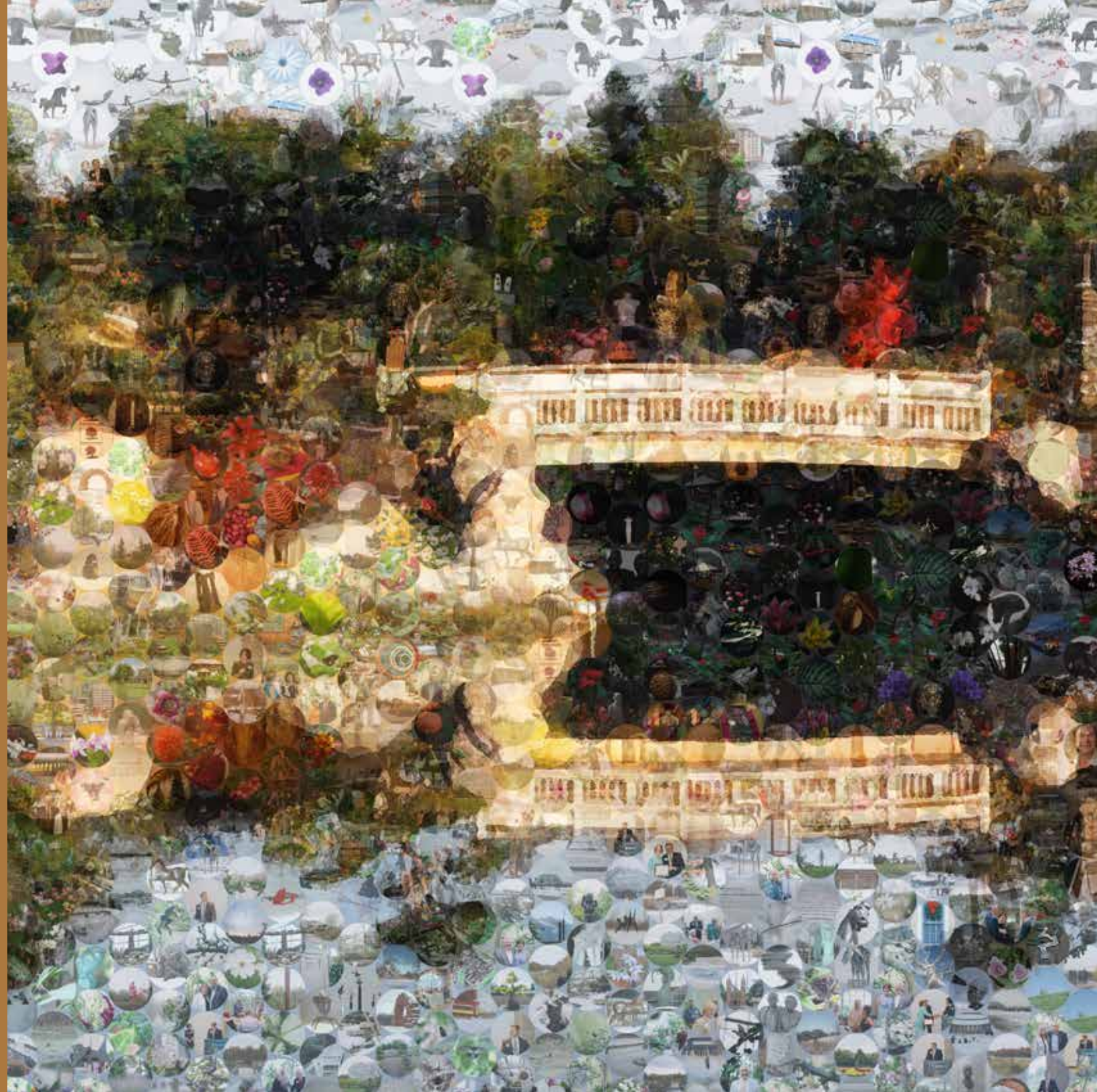


## ABOUT THE MOSAICS

Over the last 25 years the Fredrik Meijer Gardens & Sculpture Foundation has collected thousands of photos of the gardens and sculptures as well as of the people who support the Foundation.

Each image represents a single moment made possible by the Fredrik Meijer Gardens & Sculpture Foundation. These images capture the building of a legacy and a story of growth and community.

The cover for this year's annual report was inspired by all these photos. Together they create a mosaic, one picture of the gardens, showing how each moment builds on the next to create something truly beautiful.



## A LETTER FROM THE FOUNDATION'S PRESIDENT

Dear Friends of the Foundation,

Here's a little math teaser for you: What do 300 months, 1,300 weeks, 9,125 days, 219,000 hours all have in common?

More or less, each is a way to express the passing of 25 years. The Fredrik Meijer Gardens & Sculpture Foundation is proud to announce that this past December, we formally reached this celebratory milestone!

For some of us, it seems like only yesterday that heavy equipment was turning earth in order to create what then was little more than a vision coupled with the dreams of a handful of local activists and benefactors in the greater Grand Rapids area.

In reflecting on both the genesis and the future of the Fredrik Meijer Gardens & Sculpture Park and its Foundation, I find myself considering a brief but powerful poem authored by T. E. Hulme entitled "Images," in which he gave us this:

"Old houses were scaffolding once and workmen whistling."

I'm gently soothed by that rich image – of laborers scaling a building in progress, whistling while they work, likely caught up in the moment, possibly unaware of the legacy they're creating while slinging mortar and driving home nails.

It's fitting, then, that this year's Annual Report takes a page from Hulme, with "Building A Legacy" serving as our theme.

We're proud to share that we enjoyed a healthy 2017, during which the Foundation donated more than \$4 million to Meijer Gardens, which represents nearly 20 percent of its total operating revenue. Our return on investments was 17.8%.

Our success can be traced to two elements – our vision, and

your incredible generosity. The Foundation was instituted fully three years before Meijer Gardens opened, thanks largely to the leadership of Ray Loeschner, who created the Foundation and guided us through those formative years. And thanks to hundreds of people and organizations who have pitched in since, we have funds to both maintain and grow our beloved Meijer Gardens.

We've now got our eyes trained on 2018 and continued celebrations of the Foundation's 25th anniversary, an achievement that serves to inspire us in even more and greater ways to build on what we've already accomplished.

We hope to engage even more patrons to consider building their own legacies with gifts to the Foundation, including options to join either the Perennial or Bonsai societies, which create endowments in perpetuity.

We're also in a never-ending quest to attract a more diverse base of patrons of all ages and at all levels, eager to share with them the intrinsic rewards that blossom in the wake of a decision to partner with us so that Meijer Gardens might grow and bloom forever.

Our hope is that as you read this Silver Anniversary report and the accompanying stories, you'll see our passion reflected in efforts to help support a world-class attraction that deserves to be preserved for future generations.

For your generous hearts, we thank you!

Whistling while we work,

John G. Baab, President





## Donors Gather to Recall Fred Meijer and His Infectious “Spark”



Long after the last guests had finished attending the Foundation’s annual donor recognition event in June 2017 to honor major donors, Don Maine, the long-time president of Davenport University, was ruminating about the primary reason there is a Frederik Meijer Gardens & Sculpture Park. He focused in on just one word, “spark”, Fred Meijer possessed a certain “spark”.

Maine smiled recalling all the times he and wife, Kathleen, were privileged to chat with Fred. “He was such a joy to be around, and he always inspired you to want to join in on his vision for the future. Some people lose their spark. But Fred never lost his.”

Maine’s sentiments were echoed often and in many forms throughout that entire evening, as over 100 people showed to celebrate another year of what giving to the Foundation means to them and to a greater community at large.

Jeanne Kapenga, M.D., reminisced how she and her siblings were able to honor both Meijer Gardens and their deceased parents by commemorating an indoor bench in their name. She credited Meijer Gardens with “always expanding, always improving” in ways that tapped into one’s inner child. And she complimented administration and staff for “never doing anything halfway; it’s always fabulous.”

Indeed, many who knew Fred Meijer would argue that he was a child at heart. Noted Maine’s wife, Kathleen: “He was fundamentally a joyful person, and that’s what is reflected here.”

As if on cue, but across the room, Nancy Kennedy gazed out the windows at the vibrant grounds on a lovely first day of summer, and smiled. “Everything is so alive,” she said. “To be able to watch others enjoy the beauty of Meijer Gardens it lifts me up. Experiencing it myself and seeing it in others is just wonderful.” she added.

She and her husband, John, were recognized as new members of the Perennial Society, along with four other couples: Jesse and Gia Budrick, Ken and Judy Betz, Dick and Judy Morrison, and Helen and Fred Tallmadge. She added, “supporting Meijer Gardens was an easy decision to make, noting its 750,000 visitors last year. “When you look at an investment that benefits so many people, it’s a pleasure to give.”

Fred and Nellie Kooistra came as guests of their neighbors and longtime Perennial Society members George and Kerstin Trowbridge. The Kooistras are regulars at the summer Tuesday Evening Music Club concerts, free to members. Nellie said she first started coming to Meijer Gardens with her three children: “It was such a fun place.” I said, “We’re going on an adventure!” After seeing so many sculptures as they grew up, her children can now spot a Chihuly in other cities, Nellie added. “It’s been a very fun, interactive way for my kids to be introduced to art.”

The Fichter family was well represented in patriarch Fred, his grandson, Jesse Budrick and Jesse’s wife, Gia. They were reminiscing how Gia danced at Meijer Gardens in 1995 when she was just 15, as a member of the Grand Rapids Ballet company. “I remember that they wanted us to make sure we moved and used our bodies to mimic the butterflies,” said Gia. “It was such a joyous and colorful experience.”

Fred said he never tires of mulling the significance of donating to the Foundation so that the annual butterfly exhibit bears his late wife Dorothy’s and his name, especially when he visits to witness the wide-eyed kids on whose heads and shoulders the butterflies often land. “Such a thrill,” he said, “and very emotional.”

The Foundation’s long-time president and founder, Ray Loeschner, recalled that with inspiration from Fred Meijer, they were able to get the Foundation up and running even before the Gardens were finished. It meant sacrifice and ingenuity. In the beginning, there weren’t funds to buy stationery, until the late Peter Wege donated \$25,000 for start-up costs.

“One of the proudest days in my life,” said Loeschner, “was sitting down with Fred before he died, and assuring him that his Gardens would function in perpetuity because of the Foundation.”

Mary Ann Keeler remembered nudging Fred Meijer into expanding his love of sculpture from the traditional into major contemporary works. “Every time a new artist debuted,” she said, “We would have the artist over with Fred and Lena and a few other couples. “It was always so fun to listen to Fred talk about the Gardens and his love of so many things. The artists all loved him.”

No doubt borne of one man’s spark – a defining touchstone to his personality, and an element that is still imbued today in all that Meijer Gardens is and will ever be.



## “He was fundamentally a joyful person, and that’s what is reflected here.”







## FROM DIRT & DREAMS... TO A TOUCHSTONE FOR THE AGES

### *Celebrating 25+ Years of a Legacy-in-the-Making*

Which came first: The Frederik Meijer Gardens & Sculpture Park... or the Frederik Meijer Gardens & Sculpture Foundation established to help fund it?

You might guess that the Foundation was instituted after Meijer Gardens had time to bloom some, but you'd be wrong. In fact, the Foundation was established in December 1992, preceding the opening of Meijer Gardens by three years.

And few things have ever made Ray Loeschner happier.

"It was clear to me from the very start that if the Gardens was to be successful long into the future, there would need to be an endowment to support and maintain it in perpetuity" says Loeschner, whose love of growing things dates back to his youth.

What an uphill battle it was, but no hill is too high. What started with a gift of \$25,000 from Peter Wege for administrative needs and a \$500,000 challenge grant from Fred and Lena Meijer, the Foundation has grown its assets from \$1 million to \$130 million in 25 years.

Loeschner – along with Earl Holton, the former Meijer Inc. president picked to co-chair the Gardens' first capital campaign along with Tom Gleason– have long memories about how significant people in the community in Holton's words, "tended to throw cold water on it."

Part of the problem, Loeschner says, looking back, is that "no one, including Fred Meijer, completely envisioned what these Gardens might become."

Its genesis is rooted in a request from members of the West Michigan Horticultural Society to Fred Meijer, asking him to support their plan to build a botanical garden, possibly near the intersection of Alpine Avenue and 7 Mile Road NW.

Meijer – seeking a place to showcase a growing body of sculpture he'd

been collecting – countered with a plan to donate to the Society if they'd consider moving the venture to land Meijer Inc. owned on East Beltline Avenue, initially destined to host a Meijer store.

The rest is history – fully 25 years' worth.

Loeschner shakes his head and smiles broadly to remember that in the beginning, "it was just a piece of dirt and a wild dream." Today, "it ranks as one of the most satisfying and rewarding responsibilities of my life, and I've had a lot of adventures in my life," says the former president of Olivet College and Chief Administrative Officer of the C.S. Mott Foundation, just two roles where he emerged as a pivotal fundraiser.

During the Foundation's inaugural campaign, "One of the biggest challenges was that all the major fundraising focus was on downtown development," says Loeschner. "We were actually told that it wasn't our turn." Holton recalls how the greater Grand Rapids community was warm to funding a museum or school or theater, "but was less apt to give to botanical gardens, because they don't have the same appeal."

Loeschner remembers how "One influential person warned me that I was committing professional suicide in taking on this campaign, that nobody would give to a botanical garden. But I reminded him that three of the largest festivals in America are garden-related – the Tournament of Roses in Pasadena, the National Cherry Festival in Traverse City, and Tulip Time in Holland."

Loeschner and Holton and others leaned on motivational snippets like the one Fred Meijer used to toss out, namely that "The eye needs to be fed, too," and thanks to the generous hearts of 3,400 donors – and major gifts from Fred and Lena Meijer and a handful of area foundations – over \$13.5 million was initially raised.

Benefitting from Loeschner's sage influence, the boards of Meijer Gardens

and the Foundation created an agreement preventing any capital project from being built unless funds were simultaneously raised to be placed in the Foundation so that building projects and programs would be supported by endowments.

Loeschner went on to serve 15 years as president of the Foundation. Holton remains active on three committees and continues to serve as Honorary Director.

Their contagious verve helped convince businessman John Bower to join the Foundation Board in 2002, serving as its president for three years beginning in 2012. Bower is widely credited not only for moving the Board forward with its investment strategies, but strengthening the overall board and committee structure.

No stranger to hard work and an appreciation for the value of money, Bower was raised in a town of just several dozen people 23 miles from Cadillac, where his first job at the age of 12 was to arrive early each weekday to school and fire up the furnace by throwing a lit corn cob onto a mixture of coal and kerosene. The task earned him 50 cents a day.

Citing hard work performed by the Foundation's leadership team, Bower is understandably proud of how the Foundation annually spends a little more than one percent of its assets on administrative support, consulting, and all fund management fees and expenses. "That's phenomenally low," he emphasizes, "which is saying to our donors that when they provide funds, nearly 99 percent of their gift goes to programs and projects."

Bower also points to how over the last 25 years or so, money is managed "so that we grow almost always in the top quarter to 50 percent of like foundations." That ability to grow demonstrates savvy investment strategies, he says, and ensures that the Foundation will likely be able to continue funding upwards of 20 percent of Meijer Gardens'



annual operating costs.

In 2015, Bouwer handed over the presidential baton to attorney Dirk Hoffius, who was first elected to the Board in 2006, and that same year assumed chair of the development committee.

Under Hoffius' zestful leadership, the Foundation added a second society, the Bonsai Society, whose name was suggested by John Bouwer as it signifies the perpetuity of the gift. The Bonsai Society recognizes cumulative giving of \$100,000 or more. The Perennial Society was established in 2007 at the suggestion of Ray Loeschner to recognize donors with lifetime and estate gifts of \$10,000 or more. Both Societies accept gifts of cash and/or pledges, including pledges in estate plans. Hoffius lauds both options for their ability to recognize a person or a family "forever" in exchange for the minimum donation.

Hoffius also created the annual "September Friend Raising" campaign, which encourages patrons to consider membership in the Perennial Society, and those who already belong to consider moving up to the Bonsai level. Additionally, Hoffius has been instrumental in promoting both estate gifts and memorial gifts at large.

Hoffius is passionate about spreading the word so that others have the opportunity to invest in the Gardens through the Foundation and create their own legacies. He maintains that Meijer Gardens feeds a basic human need by serving up joy and contributing to one's quality of life in ways that are intrinsic and perhaps measured best via anecdotes.

Hoffius enjoys telling the story of a youngster who at the opening of the Lena Meijer Children's Garden groused about having to go, but once inside, wouldn't leave unless his parents promised to bring him back the very next day. "Everywhere you look," he says, "there's something special."

"Those special elements are sure to grow in exponential form", says

current Foundation President John Baab, "as long as we honor those visionaries and leaders who came before us and worked so hard to set the stage for future momentum".

"Our job now," says Baab, "and for all time moving forward, is to champion the very reasons the Foundation was founded by encouraging others to engage our mission and create their own legacies to become part of our incredible story." Baab, retired managing partner of Ernst & Young, followed Hoffius as President, serves on the investment committee, and continues to currently lead the growth and development of the Foundation.

As for the future of the Foundation, it's in capable hands, if Saralyn Coupe's involvement is any indication.

A board member since 2013, she immediately began serving on the investment committee and, under her leadership, the committee continues its focus on disciplined investing and diligent work to serve the greater good.

Coupe appreciates the "visionary" way in which the Foundation is set up separate from the Gardens, and is conscious of how the Gardens "are so unique with respect to the breadth of the people it serves".

Toward that end, she says it's paramount to honor "a dynamic process that always keeps in mind that we're managing other people's assets – and the future of the Gardens – so it requires a different mindset."

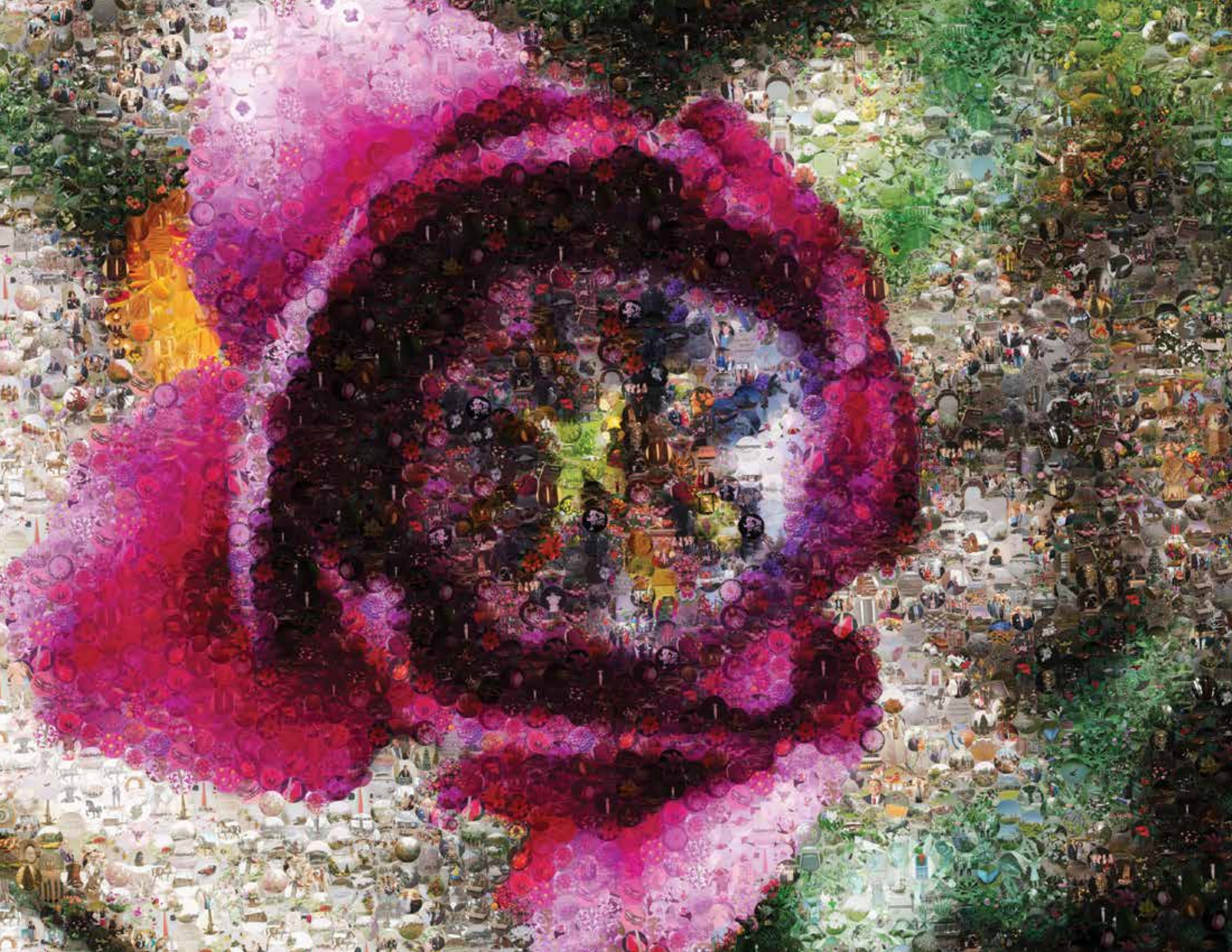
Her committee relies, in part, on an independent consultant to advise them on financial protocols, recommend managers with expertise in various asset classes, and propose shifts in allocation.

Coupe and her family enjoy the Gardens as much as anyone, and she's confident that with sound financial management, the Foundation will prosper to help serve countless future generations.

"It's such an important piece of our West Michigan culture," she says, "and along with so many others, I feel honored to be a part of it."







## A LETTER FROM MEIJER GARDENS' PRESIDENT

The wisdom of a decision can often take years to fully realize. Creating the Frederik Meijer Gardens & Sculpture Foundation to exclusively support Frederik Meijer Gardens & Sculpture Park was very wise indeed. The annual financial support the Foundation gives to Meijer Gardens is essential. The support represents nearly a quarter of our operating budget and provides reliable annual funding to allow us to serve the 750,000 people who visit each year.

On behalf of those 750,000 members, guests and students, I extend our sincere appreciation for the decisions Fred and Lena Meijer, Earl Holton and Ray Loeschner made before Meijer Gardens opened in 1995, to provide the structure and first gifts to build a major foundation in support of our unique mission of horticulture and sculpture. Meijer Gardens has been able to acquire a world class collection of modern and contemporary sculpture, create beautiful gardens and present thought provoking and enjoyable exhibitions. Our facilities are exceptional. However, all our fine art, gardens and facilities are merely a means to a greater purpose. That purpose is to bring joy to people.

It is indeed a privilege for me to witness the joy resulting from your giving here at Meijer Gardens. Seeing and listening to our guests learn new things and enjoy the beauty of our collections and exhibitions is truly rewarding.

The Frederik Meijer Gardens & Sculpture Foundation's support also allows us to pursue new initiatives. In 2017 we announced a capital campaign called Welcoming the World: Honoring a Legacy of Love. The \$115.0 million campaign is allowing us to build a new welcome center, the Covenant Learning Center, the Cook Transportation Center, an expanded and upgraded Frederik Meijer Gardens Amphitheater, create new gardens, renovate and

expand the existing building, build a new picnic pavilion, acquire more sculpture and further build the endowment fund. Reaching our ambitious \$115.0 million goal was a result of the amazing generosity of the Meijer Family and 361 individuals, organizations and foundations who gave generously to the effort.

We hope you visit Meijer Gardens often and see all the elements being built over the next four years. We are making every effort to bring our guests close enough to the construction areas to observe while remaining safe. While we are under construction, the conservatories, the Lena Meijer Children's Garden, the Richard & Helen DeVos Japanese Garden, the Sculpture Park, Michigan's Farm Garden, and all exhibitions will be open. There are a few pathways closed, but no major attraction will be completely closed. There are changes to be seen nearly every day and we hope you visit often.

Finally, we are deeply appreciative of the volunteers and staff of the Foundation who dedicate themselves to advancing the mission of the Foundation and supporting Meijer Gardens. Congratulations on a significant and successful first 25 years. Cheers for another 25 years and beyond.

David S. Hooker  
President  
Chief Executive Officer



## STATEMENT OF FINANCIAL POSITION

AS OF DECEMBER 31	2015	2016	2017
Investments at Market Value	\$98,126,845	\$101,831,583	\$116,111,392
Pledges, Gifts, Other Receivables	\$929,600	\$800,529	\$13,764,069
Total Assets	\$99,056,445	\$102,632,112	\$129,875,461
Less: Liabilities	\$1,867,584	\$1,729,768	\$1,585,556
Total Net Assets	\$97,188,861	\$100,902,344	\$128,289,905
Restricted Funds	\$34,545,503	\$36,522,912	\$55,788,438
Unrestricted Funds	\$62,643,358	\$64,379,432	\$72,501,467
Total Net Assets	\$97,188,861	\$100,902,344	\$128,289,905

## STATEMENT OF ACTIVITIES

AS OF DECEMBER 31	2015	2016	2017
Contributions Income	\$1,732,429	\$1,144,300	\$14,235,308
Investment Income or Loss	(\$1,917,033)	\$7,076,910	\$17,590,001
Total Revenues and Gains/Loss	(\$184,604)	\$8,221,210	\$31,843,309
Distributions to the Frederik Meijer Gardens & Sculpture Park	\$4,354,208	\$4,419,278	\$4,358,450
Other Expenses	\$95,782	\$88,447	\$97,298
Total Distributions and Expenses	\$4,449,900	\$4,507,727	\$4,455,748
Increase (Decrease) to Net Assets	(\$4,634,594)	\$3,713,483	\$27,387,561

## THE FOLLOWING DONORS HAVE MADE CUMULATIVE CONTRIBUTIONS TO THE FOUNDATION AND QUALIFY FOR PERMANENT RECOGNITION:

### BONSAI SOCIETY

#### \$1,000,000 or more

FRED & DOROTHY\* FICHTER  
 DIRK & VICTORIA\* HOFFIUS  
 FREDERIK\* & LENA MEIJER  
 HANK & LIESEL MEIJER  
 MEIJER, INC  
 THE MEIJER FOUNDATION  
 CHRIS\* & CHARLOTTE\* SOUTHWICK

#### \$500,000 - \$999,999

JAMES\* & JOAN HOFFMAN  
 BERNIE & ROSE ROSENTHAL  
 ARTHUR\* & ELIZABETH E.\* SNELL

#### \$250,000 - \$499,999

DR. DAVID G. DVORAK/MS. KAROL J. PETERSON  
 CLARE F. JARECKI\*  
 CHARLES G. SCHOENKNECHT & WARD A. PAUL  
 WEGE FOUNDATION

#### \$100,000 - \$249,999

L. DALE\* & JEAN\* ATKINSON  
 KENNETH BANDSTRA  
 JOHN D. & MARIAN F. BOUWER  
 EARL & DONNALEE HOLTON  
 MICHAEL & SARAH JULIEN  
 C. THOMAS & EVELYN KAPTEYN  
 THOMAS PETER KAPTEYN  
 MINER\* & MARY ANN KEELER/KEELER FOUNDATION  
 KELLER FOUNDATION  
 RAY & NANCY\* LOESCHNER

HANK & LIESEL MEIJER  
 THOMAS P. MERCHANT & GLEN W. JOHNSON  
 JOHN & GAIL NOWAK  
 RICHARD & VALERIE PEACOCK  
 ED\* & JUNE PREIN FAMILY  
 LYNN & JOHN P. VINKEMULDER

### PERENNIAL SOCIETY

#### \$50,000 - \$99,999

VERN & NORMA BOSS  
 FRED & SUSAN\* COOPER  
 DANIEL & PAMELLA DEVOS FOUNDATION  
 ABBY J. & MILO R. DEVRIES  
 EDIE FLEMING\*  
 GILLETT FAMILY FOUNDATION TRUST  
 THOMAS\* & MARGARET JACK  
 WAYNE & VICKI KORSON  
 DAVID R. & MARY A. MAPES  
 DONALD\* & KATHLEEN MAINE  
 MARSILJE FOUNDATION  
 JACK H. MILLER  
 HAROLD\* & PHOEBE\* PHELPS  
 DR. LEONARD\* & DORA C.\* ROSENZWEIG  
 BUDGE & MARILYN SHERWOOD

#### \$25,000 - \$49,999

ANONYMOUS  
 CHARLES & PATRICIA BLOOM  
 CONRAD\* & MOLLY BRADSHAW  
 THE BROOKS FAMILY – HOLLAND  
 JESSE & GIA BUDRICK  
 JAMES & JUDY DELAPA

NANCY MCKENZIE FROST  
SID & ELIZABETH HARKEMA  
SUE ANN JABIN  
THE KORFF FOUNDATION  
HARVEY LEMMEN  
ARLENE OBETTS  
HILARY F. & CONNIE\* SNELL  
JOHN & JUDY SPOELHOF  
JESSE & BECKY STEWART  
THE TASSELL-WISNER-BOTTRALL FOUNDATION  
GEORGE & KERSTIN TROWBRIDGE

**\$15,000 - \$24,999**

CHARLES & DEBBIE BECKWITH  
RICH & SHERI BROLICK  
JIM\* & JOAN BUCHANAN  
IN MEMORY OF SALLIE PETERSON FERGUSON  
FIRST OF AMERICA BANK  
GREGORY & KATHY FORZLEY  
JOHN & NANCY GORDON  
DEBORAH MEIJER  
RICHARD\* & JEANENNE MORTON  
JIM & MARIE PRESTON  
ALWYN & CHRISTINE ROUGIER-CHAPMAN  
HELEN & FRED TALLMADGE  
ROGER & LUELLE WARNSHUIS  
GWEN BOLT & DOROTHY WILLIAMSON

**\$10,000 - \$14,999**

JOHN & JANET BAAB  
BATTS FOUNDATION  
JUDY\* & KEN BETZ  
KARL F. & PATRICIA BETZ  
FRED A. BOGAERT  
GLEN & BETSY BORRE  
PAUL & CATHY BOYER  
DANIEL & BARBARA BRAUN  
HELEN BULL\*

ROBERT W. BURNHAM  
THE PULLEN-CHAMBERLAIN FAMILY  
ROBERT & SUSAN CONKLIN  
THOMAS B.\* CORNELL  
GLEN B. & EUNICE L.\* CORP  
GILBERT R. & PATRICIA K. DAVIS  
ELIZABETH TINNEY DONLEY  
CHRIS & DEANNA ECKERT  
HENRY FUHS FAMILY  
GRACE SPEARS CHADWICK  
MEMORIAL GARDEN CENTER  
WILLIAM & SUZANNE GREEN  
JOHN & GWEN HIBBARD  
DAVID S. & LESLIE A. HOOKER  
ROBERT & JUDITH\* HOOKER  
MARILYN & DAVE\* HUNTING, JR.  
MIKE & SUE JANDERNOA  
JEANNE M. KAPENGA M.D.  
JAMES & AMY KEANE  
DONALD & ANN KELLEY  
JOHN & NANCY KENNEDY  
KENT GARDEN CLUB  
DOUGLAS & RAYMONDE KRAMLICH  
DALE & PAM LARSON  
BARBARA MAYO-JOHNSON  
MAC & PINKY MCPHERSON  
LINDA & DAVID MEHNEY FOUNDATION  
RICHARD G. & MAUREEN J. MORRISON  
KATHARINE L. NEFF  
JEFF & PEG PADNOS  
STUART B. PADNOS\* & JEAN W. BARKIN  
RICHARD A. RASMUSSEN\* FAMILY  
DAVID & KATHLEEN RAY  
SHIRLEY J. ROSKAM  
CHUCK\* & STELLA ROYCE  
DR. WILLIAM\* & NORMA\* SPRAGUE  
ROSALYNN STUART\*  
FRANK & SHARON VAN HAVEN  
CONNIE WENGER

STEPHEN & CHERYL WONCH

**OTHER CONTRIBUTORS**

**\$5,000 - \$9,999**

WILLIAM E. ALT  
VIRGIL & MAY\* JOHANNINGSMEIER  
CHARLES R. & LINDA H. JOHNSON  
CHRISTINE M. LIEBROCK  
MAST FOUNDATION  
MARK SHERWOOD & SARALYN COUPE  
SHAWN TILSTRA  
MARILYN TITCHE  
THE STEVE VAN ANDEL FOUNDATION  
DANIEL & SUSANNE VEENEMAN FAMILY  
WOODS CONSTRUCTION

**\$1,000 - \$4,999**

ROBERT N. (ROB) ALT, JR.  
STANLEY\* & BLANCHE\* ASH FOUNDATION  
JANET R. BACON\*  
TAMMY & HOWIE BAILEY  
RITA CHAMPION BALCZAK  
JAMES & SHIRLEY BALK  
LOIS E. BECKERING  
DEAN & SANDIE BULL  
DON & FRAN BUSKE  
ANNA MOORE BUTZNER  
ROBERT L. BYTWERK  
CAMPBELL SALES COMPANY  
GREGORY C. CARNEVALE & DIANE MAHON  
KEN & JUDI CARPENTER  
CHARLOTTE A. RUNNELLS ESTATE  
CHRIS-TINA FOUNDATION/HOFFMAN FAMILY  
BETTY M. CLOUD  
BRIAN CLOYD & AGNES KEMPKER-CLOYD  
PAIGE CORNETET  
COMMERCE CORPORATION  
LIN CULVER IN MEMORY OF GARY CULVER\*

DOUGLAS DEBOER MEMORIAL FUND OF  
GRAND RAPIDS COMMUNITY FOUNDATION  
JAMES\* & JOY DEBOER  
ANNA & DAVID DETHMERS  
DENA & JAMES DEVORMER  
DOROTHY LANE MARKET, INC.  
DTE ENERGY  
MARK & JENNIFER ELLIS  
ROBERT & RUDEAN FAIRMAN  
FERRIS STATE UNIVERSITY-GRAND RAPIDS  
BETTY B. FORD\*  
DR. JEFFREY H. FRANK  
GLEA\* & W.D.\* FRANKFORTER  
CHARLES\* & ELIZABETH\* FRENCH  
REV. DR. CHARLES & BETTY JEAN FRY  
FUSIONARY MEDIA  
CARL\* & VIRGINIA\* GEIS  
GILSON GRAPHICS  
JAMES\* & BEBE\* GLERUM  
GRAND VALLEY INDOOR GARDENERS  
GRAND VALLEY ROSARIANS OF W. MI  
DORIS GRIFFITH/GRIFFITH FOUNDATION  
TERRY & MARGIE GRIFFITH  
MICHAEL D. HANKINSON FAMILY  
LARRY & CINDY HAVARD  
JANET A. HAYNES  
DONALD E.\* & PRISCILLA M.\* HAZELSWART  
WILLIAM\* & LUCILLE\* HICKS  
JACK\* & MARGE HIGHFIELD  
TOM & SHARON HILLIKER  
STEPHEN & SUSAN HOFFIUS  
JOHN R. HUNTING  
PHILLIP AND CHERRY JACOBUS  
DON & LOIS JANDERNOA  
JAROB, INC.  
F. MARTIN\* & DOROTHY A. JOHNSON FAMILY FUND  
CHLOE & LESTER\* JONES  
TOM & MARGY JONES



JIM & GINGER JURRIES  
CATHERINE KEANE  
EMMA C. KEANE  
HENRY & MAUREEN\* KEANE  
JAMES P. KEANE, JR.  
KEHE DISTRIBUTORS  
KATIE\* & BOB\* KIMBALL  
PETER & HELGA KLEINSCHMIDT  
DONALD KLOPCIC, SR.\*  
HERBERT & GLENNA KNAPE  
SAM\* & JANE\* KRAVITZ FOUNDATION  
JIM & NATALIE KURAS  
TOM & SALLY KYROS  
MARILYN LANKFER & JEFF SCHAD  
AARON LEE  
MARK. A. LOESCHNER  
MARK A. LOESCHNER, JR.  
MATTIE LOESCHNER  
THE LUKENS FAMILY FOUNDATION  
JON & MARY ANN MARCH  
JAMES & NORMA JEAN MCCORMICK  
WILLIAM G.\* & JERRE J.\* MCDANIEL  
LORRAINE R. MCDONALD  
JIM MCKAY\* & TWINK FREY  
WALTER\* & PAMELA MCVEIGH  
DOUG & SARAH MEIJER  
MAUREEN C. MEINERT  
WENDELL A. MILES\*  
BETTY R. MILLER  
MILLER JOHNSON, IN MEMORY OF BETTY SNELL  
KIM S. MITCHELL  
DANIEL & KATHLEEN MOLHOEK  
FRANK & NANCY MOORE  
RUTH LAGOW O'KEEFE\*  
DUANE & NANCY NAGEL  
JOANN F. OTT  
PAT\* & ARMEN OUMEDIAN  
MARTIN & ENID PACKARD  
WILLIAM\* & SUSAN PAPPAS

BRUCE N. & JEAN A. PARSONS  
MARY S. PETERSON  
MR.\* & MRS.\* ROBERT C. PEW II  
TODD & JAN POLAVIN  
MARK & MARTI PREIN  
RICHARD & JUDITH RATHBURN  
PETER P. & PATRICIA RENUCCI  
DR. DARREL\*, CARRIE\*, & SHERI ROSEN  
SAKURA BONSAI SOCIETY OF NORTHERN MICHIGAN  
JAMES & BONNIE SCARLETT  
DR. KENNETH & CAROLINE SCHULTZ  
MARTIN\* & EILEEN SHEDLESKI  
SOUTHLAND AUTO WASH  
NED & KRISTI SNELL  
STEELCASE FOUNDATION  
ROSALYN STUART\*  
JOSEPH & ANN\* SWEENEY  
THINKWISE, INC.  
IN MEMORY OF SETH SOLEIL THOMAS  
PETER M. TURNER  
LEWIS & NORMA VANKUIKEN  
MATT VAN VRANKEN  
RAY & WAVELET WEIGEL  
SARA R. FERGUSON & DAVID K. WHITMORE  
FRANCES R. WILLARD\*  
DR. MARY E. WILSBURG\*  
DR. GLENN & LINDA ZIMMERMANN

\* Indicates Deceased Donors

### THE FOLLOWING DONORS CONTRIBUTED TO THE FOUNDATION IN 2017 AND QUALIFY FOR ANNUAL RECOGNITION:

#### \$200 - \$999

BRUCE BAKER  
SUZANNE C. BOWMAN  
MR. AND MRS. JAMES W. FLESER  
PETER & CARROLL PEREZ

### THE FOLLOWING DONORS HAVE ALSO CONTRIBUTED TO THE FOUNDATION IN 2017:

ANONYMOUS  
KELLY BALLOR  
ERIC R. & ANITA B. BENNETT  
JOHN & HELEN BLYTHE  
EDWARD & CAROL BLANKESPOOR  
JAMES & KIMBERLY CHIAVARAS  
ROBERT G. & BARBARA A. CLARK  
LAURA JANE COLBER  
LYNN & ALICE FRANCIS  
M. KAY HANNAH  
RICHARD & KATRINA JENSEN  
JOHN & VIRGINIA KELLY  
JACK & MARTHA KETCHUM  
THOMAS & ANNE\* LOGAN  
FREDERICK H. OLERT, JR.  
RALPH PERNICE & NANCY ENGLANDER  
MARY RUZICKA-SAVAGE  
STANLEY & PHYLLIS SAGANSKI  
SANDY SWANSON  
DAVE & JAN THOMPSON  
SCOTT W. WEMMER, D.D.S.  
WEST BAY EXPLORATION

### OTHER INDIVIDUALS WHO HAVE REMEMBERED THE FOUNDATION IN THEIR ESTATE PLANS:

LOIS E. BECKERING  
NANCY MCKENZIE FROST  
DALE & CYNTHIA NELSON  
BRUCE & JEAN PARSONS  
FRANK & SHARON VAN HAVEN

## TRIBUTE CONTRIBUTIONS MADE IN 2017

**In Memory of Dale Atkinson**  
JESSE AND BECKY STEWART

**To Honor and Thank Bruce Baker**  
SAKURA BONSAI SOCIETY OF NOTHERN MICHIGAN

**In Memory of Leona Browne**  
WEST BAY EXPLORATION

**In Memory of Susan Cooper**  
LIN CULVER

**In Memory of Judy Hooker**  
EARL & DONNALEE HOLTON

**In Memory of William Pappas**  
EARL & DONNALEE HOLTON

**In Honor of Jon Ferguson and Sallie Peterson Ferguson's  
50th Anniversary**  
JON FERGUSON

**In Memory of Sallie Peterson Ferguson**  
SARA R. FERGUSON & DAVID K. WHITMORE









# STORIES OF GIVING



## BUILDING TO PRESERVE A LEGACY

David Grant Dvorak M.D. and Karol J. Peterson live across from one another on Gull Lake, a 10-minute drive by car, or a 5-minute jaunt by boat. But when this couple wants to visit Frederik Meijer Gardens & Sculpture Park, it means an hour and 15 minutes on the road in each direction.

The miles, however, are of little consequence when you're that much in love with Meijer Gardens and all it's given back to this twosome from Kalamazoo County. Karol says, "It's such a treasure."

David's origins are in Cedar Rapids, Iowa. After being raised by his paternal grandmother in Iowa, David moved to Elmhurst, Ill., but returned to Iowa every summer through high school. His maternal grandfather was a veterinarian, specializing in hog cholera, and David and his brother often travelled throughout eastern Iowa with him. They would catch the selected pigs for "posting".

He earned degrees in biology and chemistry from Valparaiso University, and then completed Medical School at the University of Michigan. He served a tour of duty with the U.S. Army in

Vietnam before completing his Ophthalmology Residency at Indiana University from 1967 until 1970, then started a practice in Kalamazoo. He co-founded Kalamazoo Ophthalmology PC in 1972, from which he retired in 2002.

Karol is a native "Youper" who grew up in Kingsford, and "came south to attend Western Michigan University and never left." It's where she earned a bachelor's degree in Special Education and Psychology. She received a Master's Degree in School Psychology from WMU. She then served as a school administrator some 28 years before retiring in 2003.

Karol grew up at her father's knee, whom she describes as "an environmentalist before it was popular." He worked with soil conservation and lumbering initiatives, and participated in forest management. Today, Karol and her sister manage the forest and wildlife "and all manner of birds" on 640 acres still in the family's possession northeast of Kingsford. And when she's not tending to her U.P. duties, she's back on Gull Lake, doting on everything from deer to hummingbirds to "30 ducks waiting for me every morning to feed them!"

Both were living in the Gull Lake area when they met, but have since purchased separate properties on the lake. They've been members of Meijer Gardens since the earliest days, and were inducted as Perennial members of the Foundation in 2007 and now qualify for membership in the Bonsai Society.

For David, giving back has been part of his persona since his early days at medical school, when he secured a grant from the Grand Rapids Community Foundation in exchange for a promise to practice medicine in West Michigan upon graduating. Ever since, he's been returning the favor, and joined the Friends of the Community Foundation during the 1980s.

David and Karol are proud owners of a Reynard Fox sculpture in bronze, fashioned by Oregon sculptor Shelly Smith Curtiss, that they bought after seeing the one Fred Meijer had bought for Meijer Gardens.

David and Karol are tethered to Meijer Gardens largely because of



their love of nature and art. And, they encourage a trip to Meijer Gardens as just the ticket for others seeking solace from a world that sometimes blows by too quickly.

Though they're more than an hour away, it hasn't stopped them from inviting friends and acquaintances near and far to experience Meijer Gardens. Says Karol, "It's easy talking others into coming on board once you bring them for a visit." And as for the Foundation that helps make it all possible, David emphasizes that "For such a gorgeous place, you want to see it kept alive and well for many generations to come."



## BUILDING DREAMS AS A TEAM

Some things were just meant to be – like Mary Vonk and David Mapes meeting – of all places – at a Meijer store.

Today, Dave and Mary Mapes have been married nearly 30 years, and their relationship with Meijer has grown into a love affair with the Frederik Meijer Gardens & Sculpture Foundation, where their generosity qualifies them for membership in the Perennial Society.

Of course, Meijer Gardens wasn't even a thought three decades ago, when the two met working as managers at the Meijer store on 28th Street and Kalamazoo Avenue SE.

But an appreciation for the Meijer culture – and Mary's love of all things flowers – helped launch for both a keen kinship with blooms. "According to my mother," says Mary, "I was the one who, as a one-year old, picked all the tulips, and I've been fascinated by flowers ever since."

Which you would completely understand if you were to visit where Dave and Mary now make their home, on Elmwood Drive SE in East Grand Rapids, on a parcel brimming with flora of all types.

"At our home, the goal is to be surrounded by flowers," says Mary,

and she rattles off a list of what you'll see: "Dogwoods, hellebores, hosta, day lilies, phlox, hydrangea, ferns, roses, boxwoods..."

"But," she cautions with a knowing smile, "flowers are like furniture, in that they can constantly be re-arranged. Like I always tell my plants, don't get too comfortable; you might not be in the same spot tomorrow!"

Though Dave delights in his partner's whimsy, he's more drawn to the sculpture at Meijer Gardens, but hastens to add that the marriage of the gardens and its sculpture "works wonderfully."

David and Mary both work as Realtors® for Coldwell Banker AJS-Schmidt, and it's not uncommon for both to conduct relocation tours for people considering the Grand Rapids area for their new home.

"The first thing we do is show them the area, because the job is not a good fit unless the community works for you," says David, emphasizing that a trip to Meijer Gardens is always part of the showcase.

More often than not, their guests come away with this trio of thoughts: What a clean place Grand Rapids is, what a friendly city it is, and how we have far more to see and do than we should, based on the size of our metro area. Clearly, Meijer Gardens is part of that assessment, and when people choose the Grand Rapids metro area over other areas they're considering, the couple often presents them with a gift membership to the Meijer Gardens.

Both David and Mary couldn't envision their lives without Meijer Gardens as a touchstone – enhancing their relationships with clients, but also serving as a personal balm.

"We've learned there's so much more to life than working," says Dave, "and there's so much to appreciate, whether it's walking around downtown or visiting a park out in the country. And when you come to a place like Meijer Gardens, it's a happy place.

"You don't have to know the names of all the flowers or the names

of the artists," he continues. "It's just quieting and gives you an appreciation for life."

Adds Mary: "You can come out here for an afternoon and really feel as though you've gotten away. It's great to be a member and invite some friends or bring kids. With a membership if there's a 2-year-old in the group and they get bored, no problem, just bring them back another day."

For the Mapes, giving to the Foundation feels right because "it's an organization in which we believe strongly." The same goes for Kids' Food Basket, God's Kitchen, Inner City Christian Federation and other non-profits to which they donate both as individuals and in a corporate way.

Mary and Dave already had provided for Meijer Gardens in their estate planning, but after reading about how to specify a gift for the Frederik Meijer Gardens & Sculpture Foundation, they set in motion the process to make sure the Foundation would receive their gift.

"We made one phone call to Sue Veeneman, Executive Director, and she told us what we needed to do." Mary recalls. "After that, it was simply a call to our attorney."

"West Michigan is very strong in philanthropy," says Dave, "and we're very proud to be part of that. We've worked hard for what we have, and we believe in giving back to the community. And for us, Meijer Gardens is a key part of that formula."







## BUILDING WITH A HEART FOR OTHERS

For Ken Terpstra and Ken Bandstra, the secret to the success of Frederik Meijer Gardens & Sculpture Park is that it “keeps moving forward”

“I was on a college board in Chicago,” remembers Bandstra, “and one of our wealthy contributors saw nothing going forward with our school...so he ended up giving a million dollars to a different college.” It was a sobering lesson for Bandstra, and one of the reasons Meijer Gardens is so special to him.

Terpstra was born in Walker and graduated from Grand Rapids Union High School in 1962. He earned a degree in biology and chemistry from Hope College, then a master’s degree from Michigan State University in microbiology and public health. He worked in public service for 40-plus years, partly for the Kent County Health Department, Holland Hospital, and other places.

Bandstra hails from a south Chicago suburb. He was schooled at Calvin, where he earned degrees in education music and art, with a minor in business. He taught for a short time, married, had kids,

and founded Bandstra Business Services, which he ran for three decades before retiring in 2016.

The two met through a support group for the LGBTQ community at a Grand Rapids church, and were friends for a number of years before dating. In fact, they cemented their relationship during a commitment ceremony on the grounds of Meijer Gardens, back in March of 1999, when the facility was just four years old. They married in 2015.

They’ve been cheerleading Meijer Gardens since they both set foot on the property, impressed with the leadership imbued in day-to-day operations, and in the mission of the Foundation, which exists to promote and preserve the property for future generations.



“To keep this going into perpetuity,” says Bandstra, “the Foundation is the only way you can do it. And I appreciate the fact that it keeps moving forward.”

Terpstra echoes that sentiment, nodding to Fred Meijer’s vision for bringing horticulture and sculpture to Grand Rapids in a way no one had before. “Just look at what’s happened in 20 plus years,” he says. “And it continues to expand, with a concert venue, the Japanese gardens and more. This really helped put Grand Rapids on the map.”

Bandstra enjoys how Meijer Gardens is “serving all of the community,” and it’s especially gratifying to see children from all walks of life visit, providing them with an experience that is arguably life-changing.

Indeed, Terpstra himself has worked as a volunteer at Meijer Gardens, shuffling kids from buses into the main entrance. He says with a smile, “as I was escorting them, I could sense their excitement. Many came from the inner city, and this was very possibly the only chance for them to experience culture like this.”

Bandstra nods his assent: “Both of my grandkids are from South Bend. Every year, the sixth grade arrive here on six buses. They’re seeing all his incredible green space, an experience their friends may never see otherwise.”

Bandstra hopes that experience continues to be repeated year after year, for more and more busloads of kids, among others. But it’s going to rely on an organization that embraces change, and recognizes the importance of moving forward.

“The reason the Foundation is so important,” he continues, “is that people change, people die. Fred and Lena Meijer may well have been crucial to establishing it, but all of us keeping it going is essential.”





# RESTRICTED & UNRESTRICTED NAMED FUNDS

Named funds, restricted or unrestricted, are established by making cumulative gifts and/or pledges of \$10,000 or more.

## **Karl F. & Patricia Betz**

For support of Vickie's Garden in memory of Victoria Johnson Hoffius

## **John D. & Marian F. Bower Fund**

Bird collection and maintenance in the Lena Meijer Conservatory and throughout Meijer Gardens

## **Molly Bradshaw Wetlands Management Fund**

Management of Wetlands embraced within Meijer Gardens

## **Rich & Sheri Brolick Fund**

Horticultural maintenance

## **Brooks Family – Holland Fund**

Maintenance of the Brooks Conference Center

## **Jesse & Gia Budrick Fund**

Support the “Who Am I? A Butterfly Ballet”

## **Thomas B. Cornell Fund**

Care and maintenance of the Water Lilies Sculpture and surrounding planting area

## **Eunice L. Corp of Cadillac Fund**

For the promotion of learning experiences in the art of bonsai

## **Daniel & Pamella DeVos Foundation (Visitor Center) Fund**

Maintenance of the DeVos Visitor Center

## **Abby J. & Milo R. DeVries Fund**

Bird collection and maintenance in the wetlands, Lena Meijer Conservatory and throughout Meijer Gardens

## **Harry & Elin Doehne Wildflower Meadow Fund**

Support Meijer Gardens which contains the Wildflower Meadow and sculpture site

## **Chris and Deanna Eckert Flower Fund**

Enhance fresh flowers on the Balk Café tables

## **The Sallie Peterson Ferguson Fund**

Support the ability of underprivileged children to visit Meijer Gardens including transportation, admission and materials

## **Fred & Dorothy Fichter Fund**

To provide title sponsorship of Meijer Gardens' annual exhibition, Butterflies Are Blooming

## **Gardens Maintenance Fund**

General Meijer Gardens maintenance

## **Grace F. Jarecki Seasonal Display Greenhouse Maintenance Fund**

Maintain high-quality and memorable displays on a monthly basis within the Jarecki Greenhouse

## **Grace Spears Chadwick Memorial Garden Center Fund**

Purchase of library books

## **Gwen & John Hibbard Fund**

For support of sculpture

## **Dirk & Victoria Hoffius Fund**

For support of the Varnum Families Log Cabin, Hoffius Hill and the Children's Garden

## **Hoffman Family Fund**

Modernization and technological updates of the Hoffman Auditorium

## **Hoffman Family Maintenance Fund**

Meijer Gardens & exhibit maintenance

## **Humanities Council Lecture Series Fund**

Writers & poets themed lecture series

## **Japanese Garden Fund**

Benefit of the Japanese Garden

## **Miner S. & Mary Ann Keeler Fund**

Purchase sculptures created by living artists

## **Keller Endowment Fund**

Provide transportation & scholarship admission to Meijer Gardens for underprivileged children

## **John & Nancy Kennedy Fund**

For support of the annual summer camps at Frederik Meijer Gardens & Sculpture Park

## **Kent Garden Club Fund**

Ram's Garden maintenance

## **Dale & Pamela Larson Fund**

Maintenance of the Children's Garden

## **Lecture Series Administration Fund**

Administrative support of the Frederik Meijer Gardens' Lecture Series

## **Lawrence & Katherine Lemmen Atrium Fund**

Maintenance of the Lawrence & Katherine Lemmen Atrium

## **Ray & Nancy Loeschner Annual Art Competition Fund**

Annual Art Competition inspired by the Frederik Meijer Gardens & Sculpture Park

## **The Marsilje Fund**

For support of the many educational programs at the Frederik Meijer Gardens & Sculpture Park

## **Fred & Lena Meijer Amphitheater Fund**

Support of the Amphitheater

## **Frederik & Lena Meijer Sculpture Acquisition Fund**

Support acquisition & installation of sculpture

## **Lena Meijer Children's Garden Maintenance Fund**

Maintenance of the Children's Garden

## **Meijer Sculpture Fund**

Support & enhance sculpture exhibits & programs, Curator's salary & sculpture acquisition

## **Meijer Sculpture Maintenance Fund**

Maintain & repair any sculpture exhibit of Meijer Gardens as well as its base & pedestal

## **Ed & June Prein Family Fund**

Maintenance of the Children's Garden

## **Ram's Garden Maintenance Fund**

Ram's Garden maintenance

## **Leonard & Dora Rosenzweig Orchid Wall & Exhibit Fund**

Perpetual care of the Orchid Wall & exhibit

## **Constance Z. & Hilary F. Snell Fund**

Support the annual Connie Snell Volunteer Recognition Dinner

## **Vickie's Garden Fund**

For support of Vickie's Garden in memory of Victoria Johnson Hoffius

## **L. Dale & Jean Atkinson Fund**

## **John & Janet Baab Fund**

## **Batts Foundation Fund**

## **Ken & Judy Betz Fund**

## **Fred Bogaert Fund**

## **Jim & Joan Buchanan Fund**

## **Helen Bull Fund**

## **Gilbert R. & Patricia K. Davis Fund**

## **James & Judy DeLapa Fund**

## **Daniel & Pamella DeVos Foundation Fund**

## **First of America Bank Fund**

## **Nancy McKenzie Frost Fund**

## **Gillette Family Foundation Trust Fund**

## **John & Nancy Gordon Fund**

## **Sid & Elizabeth Harkema Fund**

## **Earl & Donnalee Holton Fund**

## **Marilyn & Dave Hunting Jr. Fund**

## **Sarah & Michael Julien Fund**

## **Jim & Amy L. Keane Fund**

## **The Korff Foundation Fund**

## **Wayne & Vicki Korson Fund**

## **Douglas & Raymonde Kramlich Fund**

## **Harvey E. Lemmen Fund**

## **Deborah Hoffman Meijer Fund**

## **Linda & Dave Mehney Foundation Fund**

## **Fred & Lena Meijer Fund**

## **John & Lynn Vinkemulder Fund**

Creek & Plantoir sculptures

## **Volunteer Tribute Garden Fund**

Maintenance of the Volunteer Tribute Garden

## **Peter M. Wege Library Endowment Fund**

Library materials & maintenance

## **Wege Environmental Lecture Series Fund**

Environment lectures

## **Welcoming the World: Honoring a Legacy of Love Fund**

For support of all facilities, gardens and art created, modified or restored as part of the campaign

Restricted named funds demonstrate some of the ways members have chosen to make their gifts to the Frederik Meijer Gardens & Sculpture Foundation “gifts that grow and bloom forever”. If you are unable to establish a named, restricted fund for \$10,000 or more, but you wish to designate your gift to the Foundation for a specific purpose, it is possible. You can designate your gift to a specific area of interest by indicating that preference on the enclosed gift envelope.

## **Jack H. Miller Fund**

## **Richard G. & Maureen J. Morrison Fund**

## **Richard & Jeanenne Morton Fund**

## **John & Gail Nowak Fund**

## **Jeff & Peg Padnos Fund**

## **Stuart Padnos & Jean Barkin Fund**

## **The Richard A. Rasmussen Family Fund**

## **Chuck & Stella Royce Fund**

## **Arthur & Elizabeth Snell Fund**

## **Chris & Charlotte Southwick Fund**

## **John & Judy Spoelhof Fund**

## **Bill & Norma Sprague Fund**

## **Tassell-Wisner-Bottrall Foundation Fund**

## **Roger & Luella Warnshuis Fund**

Unrestricted contributions less than \$10,000 go the general fund.



# WAYS TO GIVE

## BONSAI SOCIETY

The Bonsai Society is made up of individuals who have made cumulative monetary gifts and/or pledges, including pledges in estate plans, of \$100,000 or more. Members of the Bonsai Society will be recognized on the Foundation's Donor Recognition Plaque, located in the foyer at the Frederik Meijer Gardens & Sculpture Park. They will also be presented a sterling silver bonsai pin and certificate of membership at the Annual Donor Recognition Event.



## PERENNIAL SOCIETY

The Perennial Society is made up of individuals who have made cumulative monetary gifts and/or pledges, including pledges in estate plans, of \$10,000 or more. Members of the Perennial Society will be recognized on the Foundation's Donor Recognition Plaque, located in the foyer at the Frederik Meijer Gardens & Sculpture Park, and will be presented a certificate of membership at the Annual Donor Recognition Event.



To qualify for membership in either the **Bonsai** or **Perennial Society** with estate plan gifts, donors must submit a copy of the gift provision in their estate plan, or have other written documentation, verifying that the minimum for a particular society has been met. Not all donors specify a dollar amount in their estate plan. If the plan calls for a percentage of the estate's remainder, and the amount will be over the minimum for a particular Society, a written statement from the estate planner, tax consultant or attorney would meet the requirement for membership.

## CHARITABLE GIFT ANNUITY: Tax Savings and Guaranteed Income for Life to Donor

A charitable gift annuity is part gift and part purchase of an annuity and results in an income tax deduction. Contributions are generally, but not exclusively, cash or securities. With this option, a donor can transfer cash or an asset to the Frederik Meijer Gardens & Sculpture Foundation and, in return, the Foundation will agree to make regular fixed payments to the donor for life. Regardless of market fluctuations, the donor will continue to receive fixed income payments from the Foundation. The annuity is paid out of the Foundation's unrestricted funds. The donor may also name a second beneficiary to receive payments at donor's death.

A charitable gift annuity offers attractive tax benefits including a charitable income tax deduction for a portion of the gift and deferment of capital gains tax (if funding the annuity with appreciated property). If a donor funds a charitable gift annuity for a third party with appreciated securities, the donor will have to pay the capital gain tax in the year of the gift.

Younger donors may benefit from a deferred gift annuity (i.e., as a way to prepare for future retirement).

**Charitable Gift Annuity Rates:** The charitable gift annuity rates are approved by the American Council on Gift Annuities. They change periodically, but the following rates were implemented in 2012 and were in effect when these materials were printed.

AGE	SINGLE RATE	RATE FOR HUSBAND/WIFE THE SAME AGE
60	4.4%	3.9%
65	4.7%	4.2%
70	5.1%	4.6%
75	5.8%	5.0%
80	6.8%	5.7%
85	7.8%	6.7%
90	9.0%	8.2%

\* Individual federal income tax rates vary.

\*\*Capital gain taxes are deferred. Capital gains taxes are paid as income is distributed to the donor.



## GIFT OF CASH: Income Tax Savings

A lifetime gift of cash is the most immediate and simple way to give to the Frederik Meijer Gardens & Sculpture Foundation. This donation may be claimed as a charitable tax deduction by those taxpayers who itemize their deductions. Non-itemizers do not benefit from a charitable

deduction. The deduction for cash contributions to qualifying charitable organizations is limited to 60% of the donor's adjusted gross income ("AGI"). Subject to certain limitations, the excess amount of the donation over the AGI ceiling may be carried forward over the next five years.

## GIFT OF APPRECIATED SECURITIES: Double Tax Savings

A lifetime gift of an appreciated asset to the Frederik Meijer Gardens & Sculpture Foundation can serve as an attractive tax savings to the donor. If assets have been owned for more than twelve months and have appreciated in value, they generally result in long-term capital gains tax. When transferred as a gift, these long-term appreciated assets:

- Give the donor a charitable income tax deduction for the full market value of the asset.
- Avoid the capital gains tax that would have occurred if the donor had sold the asset (a double benefit!).

Gifts of long-term appreciated assets provides a greater benefit to a donor who may otherwise be considering selling the asset and contributing after-tax proceeds. Gifts of short term capital gain property (i.e., property held one year or less) provide a deduction for only the donor's cost basis in the property.

## GIFT BY BEQUEST: Estate Tax Savings

A bequest is a popular way for donors to leave a significant gift to the Frederik Meijer Gardens & Sculpture Foundation. A bequest is an excellent choice for those who want to assist the Foundation but cannot make an immediate gift. Donors who choose this type of gift will reduce their estate subject to tax.

There are different types of bequests, all which are made at the donor's death:

**Specific Bequests** – outright gifts of money, securities or property. Example: A supporter bequeaths \$10,000 to the Foundation without restriction. The funds would be added to the Foundation's endowment in the name of the donor.

**Residuary Bequests** – allow the remainder of an estate to be left to designated persons or charities after all bequests have been made. Example: A donor bequeaths 50% of the residue of his entire estate to the Foundation for the creation

and maintenance of a rose garden. The fund would be used to create a rose garden named for the donor, with the balance put in a named endowment fund to maintain that garden.

**Contingent Bequests** – are effective only in the event that all other bequests fail. Example: A supporter leaves his entire estate to the Foundation, provided his wife, children and grandchildren fail to survive him.

*Tax Tip:* If you make a bequest to the Frederik Meijer Gardens & Sculpture Foundation, your taxable estate is reduced by 100% of the value of the bequeathed property. The tax savings could be as high as 40% of the value of the bequest, depending on the size of your taxable estate.

**Benefit to the Foundation:** The Foundation adds the gift to its endowment fund which provides annual support to the Frederik Meijer Gardens & Sculpture Park.



## CHARITABLE REMAINDER TRUST: Tax Savings and Guaranteed Income for Life to Donor

A charitable remainder trust provides the donor with a specified annual lifetime income and immediate tax savings. Donors receive a tax deduction for a portion of the charitable contribution and avoid payment of capital gains tax on contributed appreciated property. The underlying gifted assets go to the Frederik Meijer Gardens & Sculpture Foundation upon the donor's death. (Note: A charitable remainder trust can also be funded at death to benefit one or more persons during their lifetime(s) with the remaining gifted assets going to the Frederik Meijer Gardens & Sculpture Foundation upon the death of those individuals.)

There are two types of Charitable Remainder Trusts.

- 1 Charitable Remainder Annuity Trust ("fixed income"):** An annuity trust pays a fixed dollar amount of the initial fair market value of the trust, for life or a term of years (up to 20). Once the annuity terminates, the remainder passes to the charitable organization. The annual distribution amount cannot be less than 5% or greater than 50% of the trust assets' initial fair market value. For example, a 6% annuity trust funded with \$500,000 would pay the donor(s) \$30,000 per year for life. Subsequent gifts to an annuity trust are not permitted.
- 2 Charitable Remainder Unitrust ("variable income"):** A unitrust pays a fixed percentage of its principal, which is revalued annually, for life or a term of years (up to 20). Similar to the annuity trust, once the unitrust terminates, the remainder passes to the charitable organization. Most donors and charities prefer unitrusts invested for growth so that if the investments are successful, both the income increases for the donor and the remainder value increases for the charity. Older donors often prefer the security of a fixed annuity for the rest of their lives. Flexibility is often a key incentive in deciding to create a unitrust. Unlike the annuity trust, subsequent gifts to the unitrust are permitted.

Your personal needs will determine which type of trust provides you with the greatest benefit.



## The Foundation Mourns Loss of Richard Morton, Long-Time Benefactor

Untold number of people have left their indelible mark on the Frederik Meijer Gardens & Sculpture Foundation.

But few will be remembered as fondly for the profound ways in which Richard Morton contributed his time and talents especially during the formative years of the Meijer Gardens and the Foundation. He was one of the first volunteers to help with the original capital campaign for the Gardens as head of the corporate division. He later served as the Gardens' interim director.

Morton was elected to the Foundation's Board in 1997 and served until 2018, a tenure of more than 20 years. He chaired the Development Committee from 1997 until 2006, and served on the Investment Committee from 2007 until 2018.

Morton, who balanced his job as general manager of The Grand Rapids Press with service beyond measure to a host of organizations in the greater Grand Rapids area, died in January 2018 at the age of 82.

"The Gardens and the Foundation have lost one of their most loyal and dedicated supporters," said Ray Loeschner. "Dick was there from the beginning, and no one worked harder to bring that first Garden campaign to a successful conclusion. "He was a humble and hard-working man whose imprint will be forever felt. He will be greatly missed, but never forgotten."



# 2017 FREDRIK MEIJER GARDENS & SCULPTURE FOUNDATION BOARD OF DIRECTORS



John G. Baab  
*President*



Saralyn Coupe  
*Vice President*



Tamara R. Bailey  
*Secretary*



Michael R. Julien  
*Treasurer*



John D. Bower  
*Director*



Randall Damstra  
*Director*



Dirk C. Hoffius  
*Director*



Nancy Kennedy  
*Director*



Ray B. Loeschner  
*Director*



Kathleen P. Maine  
*Director*



Hendrik G. Meijer  
*Director*



Richard A. Morton  
*Director*  
1997-2018



Jeffrey Padnos  
*Director*



Michael Gaudino  
*Ex Officio*



Susanne T. Veeneman  
*Executive Director*

## FREDRIK MEIJER GARDENS & SCULPTURE FOUNDATION HONORARY BOARD OF DIRECTORS



Fred Meijer  
1992-2011



Lena Meijer



Earl Holton







## MISSION STATEMENT

Established in 1992, the Frederik Meijer Gardens & Sculpture Foundation is a single-purpose foundation with the goal of building and maintaining an endowment fund to support the Frederik Meijer Gardens & Sculpture Park.

Visit the Frederik Meijer Gardens & Sculpture Foundation: [fmgf.org](http://fmgf.org)

FREDERIK MEIJER GARDENS & SCULPTURE FOUNDATION  
2929 Walker NW Grand Rapids MI 49544

All photos by ShutterSam Photography and other collaborators