

◆ THE ◆
BAND'S
VISIT

A NEW MUSICAL

October 19-24, 2021 | TPAC's Jackson Hall



TENNESSEE
PERFORMING
ARTS
CENTER

WHAT'S NEXT? – TPAC.ORG • 615-782-4040

A Charlie Brown
Christmas Live on Stage
DEC 16-22

Disney's
The Lion King
JAN 6-23

Mean Girls
FEB 8-13

The Prom
FEB 22-27

Dear Evan
Hansen
MAR 2-6



ARTS • NASHVILLE

MEET THE MOMENT

with a bold new season of Brave New Art from vital contemporary artists



DANCE

RENNIE HARRIS PUREMOVEMENT

Nuttin' But a Word

OCTOBER 14-16 | TICKETS FROM \$25

CABARET

FABLE CRY

Festival of Ghouls

OCTOBER 30 | TICKETS \$20

MULTIMEDIA

MIWA MATREYEK

Infinitely Yours and Myth & Infrastructure
with live music by composer Morgan Sorne

NOVEMBER 11-13 | TICKETS FROM \$20

INTERDISCIPLINARY

DAVE RAGLAND & SHABAZ UJIMA

Steal Away

with Inversion Vocal Ensemble, Diaspora Orchestra,
and shackled feet DANCE

DECEMBER 2-5 | TICKETS FROM \$20

DANCE

RONALD K. BROWN / EVIDENCE

Grace, Mercy, and The Equality of Night and Day

FEBRUARY 10-12 | TICKETS FROM \$25

INTERDISCIPLINARY

VADIS TURNER

Portals: A Performance Party

MARCH 4-5 | TICKETS \$20

THEATER/MULTIMEDIA

GOB SQUAD (BERLIN, GERMANY)

Kitchen: You've Never Had it So Good

MARCH 24-27 | TICKETS FROM \$25

DANCE

MALPASO DANCE (HAVANA, CUBA)

APRIL 29-30 | TICKETS FROM \$30

INTERDISCIPLINARY

BRAVE NEW WORKS LAB

MAY 12-21 | TICKETS FROM \$20

CABARET

MEOW MEOW

JUNE 4 | TICKETS FROM \$30

Photo credits from top left to bottom right: *Steal Away*, Griffin Dunn; Gardening, Not Architecture, Tiffany Bessire; Miwa Matreyek, Gayle Laird; Grace, Julietta Cervantes; Fable Cry, Tiffany Bessire; Vadis Turner's *Undressed Stones Somewhere Between Unraveling and Revelation*, Wes Magyar; Malpaso Dance, Rose Eichenbaum; Gob Squad, David Baltzer; Rennie Harris, Photo Courtesy of the Artist; Meow Meow, Magnus Hastings.

“OZ ARTS LEADS THE WAY”

- NASHVILLE SCENE

TICKETS START AT \$20 | PACKAGES START AT \$100

OZARTSNASHVILLE.ORG | 615-350-7200 | 6172 COCKRILL BEND CIRCLE



Feature...3



When the opening notes from *The Band's Visit* play on the evening of October 19, it will have been almost 600 days since we presented a Broadway performance at Tennessee Performing Arts Center.

The longest "intermission" in our Broadway programming has ended, and we can't wait to share with you a spectacular 2021-22 HCA Healthcare/TriStar Health Broadway at TPAC season and the incomparable magic of live performances.

We have missed you.

We are excited for Broadway to be "roaring back" in Nashville with the highly anticipated return of Disney's *The Lion King* and seven Nashville premieres: *The Band's Visit*, *Mean Girls*, *The Prom*, *Come From Away*, *Summer: The Donna Summer Musical*, *What the Constitution Means to Me*, and *Oklahoma!*

Then, we'll close the season next summer by hosting the World Premiere of a new Country music musical, *May We All*. This project, co-produced by Brian Kelley of Florida Georgia Line, will sit down at TPAC for multiple weeks, giving Nashville audiences an exclusive first look before launching a National Tour.

Since we closed our theaters in March 2020, TPAC's focus has remained on bringing live performances back to the public while protecting our audiences, artists, and staff. Navigating the fluid COVID-19 situation so we can continue to engage our community through the arts safely is perhaps TPAC's greatest challenge since its founding.

Fortunately, we are aided by the guidance of our official health and safety partner, HCA Healthcare/TriStar Health, and a generous community of donors, patrons, and art lovers who continue to lift us up and aid our reopening.

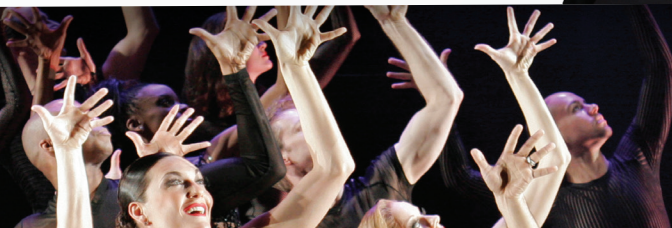
As your home for Broadway in Middle Tennessee, we are deeply grateful for your continued support and patience during our time apart. Your love of Broadway and your dedication to the arts sustains our mission and a vital ecosystem of artists, businesses, teachers, students, and volunteers.

Most of all, you have inspired us to reinvigorate our mission and develop new and exciting ways to enrich our community through the arts.

With gratitude for your shared love and support of our cherished arts and culture community, we toast to you and this new season of Broadway in Nashville!

Warmly,

Jennifer Turner
President and CEO
Tennessee Performing Arts Center



What's Next?

ON SALE NOW!

Disney's THE LION KING leaps back onto the TPAC stage Jan. 6-23



Circle of Life. Photo by Brinkhoff-Mogenburg

The Lion King will make its triumphant return to Music City Jan. 6-23 at Tennessee Performing Arts Center's Jackson Hall.

With nearly 24 years on Broadway, *The Lion King* continues to be one of the most popular stage musicals in the world. The production won six 1998 Tony Awards® and more than 70 major arts awards.

"It's hard to imagine anything to match the spectacle of the opening scene of Disney's *The Lion King*. The audience gasps, applauds and cheers – even those who've seen this parade before are still struck by its ingenious majesty," says Jim Carnes of *The Sacramento Bee*.

The Broadway score features Elton John and Tim Rice's songs from *The Lion King* animated film along with three new songs by John and Rice; additional musical material by South African Lebo M, Mark Mancina, Jay

Rifkin, Julie Taymor, and Hans Zimmer; and music from "Rhythm of the Pride Lands," an album inspired by the original music in the film, written by Lebo M, Mark Mancina, and Hans Zimmer.

The North American touring productions of *The Lion King* have been seen by more than 20 million theatergoers. Now it's time to add your name to the list! ♦

Tickets to *The Lion King* are on sale now at TPAC.org, by phone at 615-782-4040 and at the TPAC Box Office, 505 Deaderick St. For groups of 10 or more, call 615-782-4060.

Disney PRESENTS
THE LION KING
THE WORLD'S #1 MUSICAL

Broadway Season sponsored by



Part of the HCA Healthcare Family of Hospitals
Official Health and Safety Partner



ORIN WOLF STYLESFOUR PRODUCTIONS EVAMERE ENTERTAINMENT
ATLANTIC THEATER COMPANY

DAVID F. SCHWARTZ BARBARA BROCCOLI FREDERICK ZOLLO
GROVE•REG LASSEN BLUME THOMAS STEVEN PERAKOS MARC PLATT

THE SHUBERT ORGANIZATION THE BARUCH/ROUTH/FRANKEL/VIERTEL GROUP ROBERT COLE DEROY-CARR-KLAUSNER
FEDERMAN-MOELLENBERG FILMNATION ENTERTAINMENT ROY FURMAN FVSL THEATRICALS HENDEL-KARMAZIN
HORIPRO INC. IPN JAM THEATRICALS THE JOHN GORE ORGANIZATION DAVID MIRVISH JAMES L. NEDERLANDER
AL NOCCIOLINO ONCE UPON A TIME PRODUCTIONS SUSAN ROSE PAUL SHIVERICK

present

• THE •
BAND'S VISIT

A NEW MUSICAL

Music and Lyrics by
DAVID YAZBEK

Book by
ITAMAR MOSES

Based on the screenplay by ERAN KOLIRIN

with

JANET DACAL SASSON GABAY

JOE JOSEPH CLAY SINGER

YONI AVI BATTAT COBY GETZUG JOSHUA GROSSO KENDAL HARTSE DAVID STUDWELL
ALI LOUIS BOURZGUI BILLY COHEN LAYAN ELWAZANI MARC GINSBURG
LOREN LESTER DANA SALEH OMAR JAMES RANA
ARIEL REICH NICK SACKS HANNAH SHANKMAN

Scenic Design
SCOTT PASK

Costume Design
SARAH LAUX

Lighting Design
TYLER MICOLEAU

Sound Design
KAI HARADA

Hair & Wig Design
CHARLES G. LaPOINTE

Casting
TARA RUBIN CASTING
PETER VAN DAM, CSA

Israeli Dramaturg & Dialect Coach
ZOHAR TIROSH-POLK

Associate Director
SETH SIKES

Associate Choreographer
JESSE KOVARSKY

Orchestrations
JAMSHIED SHARIFI

Music Coordinator
DEAN SHARENOW

Additional Arrangements
ANDREA GRODY

Music Director
ADRIAN RIES

Tour Booking
THE ROAD COMPANY

Marketing & Publicity Direction
BOND THEATRICAL

General Management
GENTRY & ASSOCIATES
STEVE VARON

Production Management
NETWORKS PRESENTATIONS
WALKER WHITE

Production Stage Manager
JOHN M. ATHERLAY

Executive Producers
ALLAN WILLIAMS
CHARLIE STONE

Associate Producer
STEVEN CHAIKELSON

Company Manager
CHRIS DANNER

Music Supervisors

ANDREA GRODY & DEAN SHARENOW

Choreography by

PATRICK McCOLLUM

Directed by

DAVID CROMER

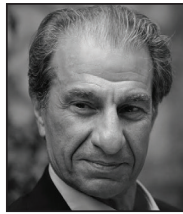
World Premiere presented by Atlantic Theater Company, New York City, 2016.

Original Broadway Cast Recording on Ghostlight Records.

Cast



**Janet
Dacal**



**Sasson
Gabay**



**Joe
Joseph**



**Clay
Singer**



**Yoni Avi
Battat**



**Coby
Getzug**



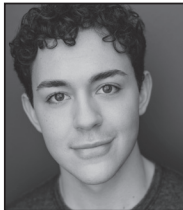
**Joshua
Grosso**



**Kendal
Hartse**



**David
Studwell**



**Ali Louis
Bourzgui**



**Billy
Cohen**



**Layan
Elwazani**



**Marc
Ginsburg**



**Loren
Lester**



**Dana Saleh
Omar**



**James
Rana**



**Ariel
Reich**



**Nick
Sacks**



**Hannah
Shankman**

Cast of Characters

Dina	JANET DACAL
Tewfiq	SASSON GABAY
Haled	JOE JOSEPH
Itzik	CLAY SINGER
Camal	YONI AVI BATTAT
Papi	COBY GETZUG
Telephone Guy	JOSHUA GROSSO
Iris	KENDAL HARTSE
Avrum	DAVID STUDWELL
Zelger	BILLY COHEN
Julia	LAYAN ELWAZANI
Sammy	MARC GINSBURG
Simon	JAMES RANA
Anna	ARIEL REICH
The Band	YONI AVI BATTAT, ROGER KASHOU, BRIAN KROCK, KANE MATHIS, WICK SIMMONS

STANDBYS

Standbys never substitute for the listed performers unless a specific announcement is made at the time of the appearance.

ALI LOUIS BOURZGUI, LOREN LESTER, DANA SALEH OMAR,
NICK SACKS, HANNAH SHANKMAN

Dance Captain: HANNAH SHANKMAN

THE BAND

Conductor/Keyboard: ADRIAN RIES
Associate Conductor/Keyboard: KELLY THOMAS
Violin: YONI AVI BATTAT; Cello: WICK SIMMONS
Clarinet/Saxophone/Flute: BRIAN KROCK
Darbouka/Riq: ROGER KASHOU; Oud/Guitar: KANE MATHIS
Electric & Acoustic Bass: MARK VAN ZIEGLER
Drums/Arabic Percussion: SHAI WETZER
Musician Swing: ALEX FARHA
Music Coordinator: DEAN SHARENOW
Music Preparation: PETER FOLEY
Electronic Music Design by BILLY JAY STEIN and
HIRO IIDA FOR STRANGE CRANIUM, INC.

SETTING: Israel, 1996.

An airport bus station, the town of Bet Hatikva,
the city of Petah Tikva.

THE BAND'S VISIT *WILL BE PERFORMED WITHOUT AN INTERMISSION.*

Musical Numbers

Overture	The Band
“Waiting”	The Residents of Bet Hatikva
“Welcome to Nowhere”	Dina, Itzik, Papi
“It Is What It Is”	Dina
“The Beat of Your Heart”	Avrum, Itzik, Simon, Camal
“Soraya”	The Band
“Omar Sharif”	Dina
“Haj-Butrus”	The Band
“Papi Hears the Ocean”	Papi
“Haled’s Song About Love”	Haled, Papi
“Something Different”	Tewfiq, Dina
“Itzik’s Lullaby”	Itzik, Camal
“Something Different” (reprise)	Dina
“Answer Me”	Telephone Guy, Ensemble
The Concert	The Band



THE BAND'S VISIT Tour Cast. Photo by Matthew Murphy.

FAMILY PROGRAMMING PREVIEW



A Charlie Brown Christmas Live On Stage December 16-22, 2021

Join Charlie Brown, Snoopy, Lucy, Linus, and the whole Peanuts gang as they produce their own Christmas play and ultimately learn the true meaning of the season. Adapted from Charles M. Schulz's timeless story of the spirit of Christmas, *A Charlie Brown Christmas Live On Stage!* features the unforgettable music of Vince Guaraldi, as well as a concert of beloved holiday carols performed by the Peanuts characters. There's no better way to discover the magic of the season.



What's Next...9



The Henry Ford's Innovation Nation – LIVE! February 26, 2022

The two-time Emmy® Award-winning Saturday morning show comes to life in a brand new production. Like the award-winning television show, *The Henry Ford's Innovation Nation – LIVE!* will inspire audiences with entertaining and educational stories about yesterday and today's visionaries and innovators – highlighting major turning points in the past and present that influenced the fields of science, technology, engineering, math, the environment, and social justice.



Don't Let the Pigeon Drive the Bus! *(The Musical)* | March 12, 2022

Whatever you do, don't let the Pigeon star in his own musical production! It's not easy being the Pigeon—you never get to do ANYTHING! But when the Bus Driver has a crisis that threatens to make her passengers (gasp!) late, maybe that wily bird CAN do something. Starring an innovative mix of actors, puppets, songs, and feathers, *Don't Let the Pigeon Drive the Bus! (The Musical)* is sure to get everyone's wings flapping.



SAVE THE DATE:

Family Day at TPAC | March 12, 2022



Share the wonder and magic of the arts with your entire family during TPAC's inaugural Family Day. Get ready to laugh-out-loud at a hilarious performance of *Don't Let the Pigeon Drive the Bus (The Musical!)* in TPAC's Polk Theater. Plus, your fun-filled day continues when your little ones giggle with delight at the special interactive festivities we're preparing in our War Memorial Auditorium, including up-close live performances, sensory-friendly crafts, movement activities, photo opportunities, and additional surprises.

Recommended for children ages 4-9. Purchase the 11:00 a.m. or 2:00 p.m. performance of Don't Let the Pigeon Drive the Bus (The Musical!), then add on the Family Day special event. Proceeds from Family Day support TPAC's nonprofit mission and cultural programming.

Who's Who in the Cast

JANET DACAL (*Dina*) is thrilled to be a part of this beautiful production. Broadway: *Prince of Broadway* (OBC), *Wonderland* (Alcice OBC), *In the Heights* (Nina, Carla OBC). Off-Broadway: *In the Heights* (Carla, Drama Desk Award). Other credits: *The Sting* (Paper Mill Playhouse opposite Harry Connick, Jr.), *Bye Bye Birdie* (Rosie) and *Lend Me A Tenor* (Maria Mirelli). Thank you to Stewart Talent Agency, Danielle Del @D2 Management, Defining Artists, Tara Rubin Casting, and everyone involved with *The Band's Visit*. Special thanks to Mami, Papi, all my loves and my number one, Emilio, for his endless support and encouragement. Download her solo debut album, *My Standards*, and follow her @janetdocal.

SASSON GABAY (*Tewfiq*) is an Israeli actor coming full circle by portraying Tewfiq on stage after starring in the film version of *The Band's Visit*, which won him many awards including the Best European Actor Award. He has been involved in theatre, film, and television for more than 40 years. Member of the Beit Lessin Theatre in Tel Aviv for 20 years. In memory of our friend Ronit Elkabetz.

JOE JOSEPH (*Haled*). Broadway: *The Band's Visit*. Off-Broadway: *Merrily We Roll Along*, *Loveless Texas*, *Baghdaddy*. Graduate of the University of Detroit Jesuit and the University of Michigan. Hear 'Haled's Song' and more on his EP, *Blu* at gojoejoseph.com / @gojoejoseph. For Andrea.

CLAY SINGER (*Itzik*) is proud to return to a beautiful production full of love, music, and connection. Credits: Barrington Stage, Westport Country Playhouse, Off-Broadway. When he's not performing, he's usually in the kitchen cooking a new recipe or working on a painting. Clay stands in solidarity with the LGBTQ+ and BIPOC communities. BFA, Carnegie Mellon University. Many thanks to Tara Rubin Casting, Robert Stein Management, Bloc, *The Band's Visit* company, friends, and family. Instagram: @claybsinger.

YONI AVI BATTAT (*Camal*) (he/him) is a multi-instrumentalist, vocalist, and composer, performing with numerous ensembles, including his Yiddish-Jazz band, Two Shekel Swing. This year, Yoni is releasing *Fragments*, an album exploring his Iraqi-Jewish identity through Arabic language and musical forms. Having played countless musicals, Yoni is thrilled to make his acting debut. www.yonibattat.com.

COBY GETZUG (*Papi*). Broadway/National Tour: *The Book of Mormon* (Elder Cunningham), *Spring Awakening* (Moritz), *Brighton Beach Memoirs* (Eugene). Regional: *The Lieutenant of Inishmore* (Mark Taper Forum), *Our Town* (Broad Stage), *The Black Suits* (Kirk Douglas Theatre). TV: *The Deuce*, *God Friended Me*, *Encore!* Deepest gratitude to David Cromer and the entire *The Band's Visit* family. Proud graduate of UCLA. For my Savta.

JOSHUA GROSSO (*Telephone Guy*) recently played Marius in the national tour of *Les Misérables*. He was also seen as Usvani in PCLO's production of *In the Heights*. He is a winner of the 2012 Jimmy Awards, featured in PBS's documentary of *Broadway or Bust*. Josh graduated from Carnegie Mellon University.

KENDAL HARTSE (*Iris*). Broadway/National Tour: *Summer, Cinderella*, *On a Clear Day...*, *Cabaret*. Select Regional/NYC: *Once* (Reza), *Hedwig...* (Yitzhak), *Pericles* (Thaisa), *Taming of the Shrew* (Lucentio), *Cabaret* (Sally Bowles). Development: Vineyard Theatre, Roundabout Theatre Company, New York Stage and Film, Center Theatre Group. BFA Boston Conservatory, student of Michael Howard.

DAVID STUDWELL (*Avrum*). Off-Broadway: *Applause* (Encores!). Select Regional: *Mary Stuart* (Burleigh, Chicago Shakespeare), *Sweeney Todd* (Sweeney, Ensemble Theatre Company), *Man of La Mancha* (Don Quixote, PCPA Theaterfest), *Fiddler on the Roof* (Tevey, Portland Center Stage). Fulbright Specialist to Pakistan 2015. MFA, Purdue; BFA, SUNY Fredonia. Love to Kathleen, Nat, Nate, and all my well-loved relations. www.davidstudwell.com.

ALI LOUIS BOURZGUI (*Standby*) is thrilled to be joining *The Band's Visit* family! Regional: Hope Summer Rep. Theatre, Barrington Stage Co., Berkshire Theatre Group, Titan Theatre Co., The Theater Barn, and GhostLit Rep. BFA Ithaca College. Original music on all streaming services. Much love to Mom, Baba & Driss! AliLouisBourzgui.com.

BILLY COHEN (*Zelger*) is thrilled to spend the year in Bet Hatikva. Regional: *Billy Elliot* (Goodspeed), *Once* (Geva), *Oklahoma!* (Weston Playhouse), *Peter and the Starcatcher* (Theatre Aspen), *Million Dollar Quartet* (Lyric Theatre of Oklahoma, The ZACH), *Soul Doctor* (San Diego Rep). Workshops/Concerts: *Huzzah!* (Nell Benjamin/Laurence O'Keefe), *Striking 12* (Prospect Theater). He is a graduate of Princeton University. @cohenbilly.

LAYAN ELWAZANI (*Julia*) (she/her) is dedicated to generating new work as an act of resistance. Broadway: *The Band's Visit*. Regional: *Noura* (Guthrie Theater), *We Live in Cairo* (American Repertory Theater), *Yasmina's Necklace* (Premiere Stages). Development: *Jeannette*, *We Live in Cairo*, *One Thousand Nights and One Day*, *First Down*, *Layalina*. TV: *The Code* (CBS). www.LayanElwazani.com, @LayanElwazani.

MARC GINSBURG (*Sammy*). Credits: *Ragtime* (Tateh), *Shrek* (Lord Farquaad), *Beauty and the Beast* (Lumiere), *First Date* (Aaron), *Evita* (Che), *Spamalot* (Lancelot), *The Producers* (Leo Bloom), and the first national tour of Cameron Mackintosh's *Oliver!* (understudied and performed Fagin). Love to Liza, Phoenix, Egon, and Baby #2! www.marcandliza.com. FB: marcginsburgspage, IG: @marc_ginsburg, TW: @m_ginsburg.

LOREN LESTER (*Standby*) returns to *The Band's Visit* after performances as Tewfiq, Avrum, and Simon during the 2019/2020 national tour. TV: 200+ credits including *The Orville*, *Curb Your Enthusiasm*, *Hung* (recurring), and *Batman: The Animated Series* (voice of Robin/Nightwing). Film Favorites: Wes Craven's *Red Eye*, *Rock 'n' Roll High School*. Select Regional: Pasadena Playhouse, North Coast Rep., Los Angeles Philharmonic. www.lorenlester.com.

DANA SALEH OMAR (*Standby*) (she/her) is a creator and proud child of immigrants. Off-Broadway: *We Live in Cairo* (Joe's Pub). Regional: *Frankenstein: A Ghost Story* (composer/musician, KC Rep.), *We Live in Cairo* (American Repertory Theatre), *Pirates of Penzance* (Pasadena Playhouse), *The Miraculous Journey of Edward Tulane* (People's Light), *One Hundred Dresses* (Chicago Children's Theatre), TV: *Chicago PD*. Thanks to my forever loves for their support.

JAMES RANA (*Simon*). Broadway: *The Band's Visit* (OBC). Off-Broadway: *The Government Inspector*, *Serendib*, *Shogun Macbeth*, *Marat/Sade*, *Macbeth*, *Mother Courage*, *Tartuffe*. International: *Loves Labor's Lost* (Royal Shakespeare Company), *Macbeth* (Bonn Biennale). Regional: Shakespeare Theatre Co., Contemporary American Theatre Festival, East Lynne Theater. Film/TV: *Law & Order: SVU*, *Madam Secretary*, *Chicago Fire*, *Conan O'Brien, A Girl Like You with A Boy Like Me*. Radio: *Poe: A Celebration* (NPR). MFA, Trinity Rep. Conservatory.

ARIEL REICH (*Anna*) is deeply humbled to share this story with you. She extends her love and gratitude to her family, both given and chosen. She would like to dedicate this performance to her grandmother, Tikvah (*Hope*) Melamed. בכל עת ובכל שולחן; בלל עת ובכל שולחן ~abundant peace; in every season, and at all times~

NICK SACKS (*Standby*) is stoked to be on tour! Broadway: *Dear Evan Hansen*. Select Regional: *A Walk on the Moon* (ACT), *Next to Normal* (TheaterWorks Hartford). Developmental: *Saved by the Bell*, *Irena*, *The Bad Years*. TV/Film: Amazon's *Z: The Beginning of Everything*. Training: The National Institute of Dramatic Arts, Carnegie Mellon School of Drama 16'. Many thanks to David Lillard at Industry Entertainment and to the most supportive family and amazing partner a guy

could ask for, love you Mom, Dad, and Madison. Go Jags. @nick_sacks

HANNAH SHANKMAN (*Standby*). Broadway: *Wicked*, *Les Misérables*, *Side Show*, *Hair*. West End: *Hair*. Tours: *Rent*, *Les Misérables*. Regional: La Jolla Playhouse, The Kennedy Center, Williamstown Theatre Festival, Syracuse Stage, Casa Manana. TV/Film: *The Last Five Years*. For her family, Shane, and Charlie. @hannahbshank.

DAVID YAZBEK (*Music & Lyrics*). Broadway: *The Full Monty* (Tony nom., Drama Desk Award), *Dirty Rotten Scoundrels* (Tony nom.), *Women on the Verge of a Nervous Breakdown* (Tony nom.). TV/Film: *Late Night with David Letterman* (Emmy Award), *Boardwalk Empire* (HBO), *Where in The World is Carmen Sandiego?* (theme song). Five solo albums. Four Grammy Award noms. Tony, Grammy, Obie, Drama Desk, and Lucille Lortel Awards for *The Band's Visit*.

ITAMAR MOSES (*Book*). Plays: *Outrage*, *Bach at Leipzig*, *Celebrity Row*, *The Four of Us*, *Yellowjackets*, *Back Back Back*, *Completeness*, *The Whistleblower*, the evening of short plays *Love/Stories (or But You Will Get Used to It)*. Musicals: *Nobody Loves You* (with Gaby Alter) and *The Fortress of Solitude* (with Michael Friedman). TV: *Men of a Certain Age*, *Boardwalk Empire*, *Outsiders*, *The Affair*. NYU MFA in Dramatic Writing.

ERAN KOLIRIN (*Original Screenplay*). Born in 1973, his feature film debut, *The Band's Visit*, won him worldwide critical acclaim. His second feature film, *The Exchange*, premiered at the Official Competition at the Venice Film Festival and won the FIPRESCI prize at the San Francisco Film Festival. His third film, *Beyond the Mountains and Hills*, premiered at Cannes 2016 to critical acclaim worldwide.

DAVID CROMER (*Director*). New York: *The Sound Inside*, *The Band's Visit*, *The Treasurer*, *The Effect*, *Nikolai and The Others*, *Tribes*, *The House of Blue Leaves*, *When the Rain Stops Falling*, *Brighton Beach Memoirs*, *Our Town*, *Adding Machine*, *Orson's Shadow*. Chicago: *Bug*, *Next to Normal*, *A Streetcar Named Desire*, *Picnic*, *The Price*, *The Hot I* Baltimore, *Sweet Bird of Youth*, *Come Back*, *Little Sheba*, *Angels in America*, *Cherrywood*, *The Cider House Rules*. 2018 Tony Award, 2010 MacArthur Foundation Fellow.

PATRICK MCCOLLUM (*Choreographer*). Credits: *The Band's Visit* (Broadway, National Tour, Atlantic Theater Company); *Angels in America* (Broadway 2018); *The Tempest* (L.A. Philharmonic); *Oh, Hello!* (Broadway, Cherry Lane Theatre); *The Lightning Thief* (National Tour, Lucille Lortel Theater); *Man From Nebraska* (Second Stage); *Blueprint Specials* (Public Theater); *Rain* (Old Globe); *Unknown Soldier* (Williamstown Theatre Festival); *You Are Here* (Goodspeed Opera House); *Savage Love* (Public Theater); *Wilderness* (Abrons Arts Center); *Permission* (MCC). Upcoming projects include *Fall Springs* (Barrington); *Unknown Soldier* (Playwrights Horizons). As associate choreographer for Broadway/Off-Broadway: *The Last Ship*, *Peter and the Starcatcher*, *Rocky*, *Murder Ballad* (Manhattan Theater Club), *Wicked* as North American Dance Supervisor.

ANDREA GRODY (*Music Supervisor & Additional Arrangements*). Broadway: *The Band's Visit*, *Tootsie*. Off-Broadway/Regional: *The Band's Visit* (Atlantic); *Assassins* (Yale Rep); *Public Works' As You Like It*; *The Fortress of Solitude*, *The Great Immensity*, *Love's Labour's Lost*, and *Venice* (Public Theater); *Robin Hood* as Composer/MD and *Unknown Soldier* (Williamstown). As writer/composer: *Strange Faces*. BA Princeton University, MA Royal Conservatoire of Scotland.

DEAN SHARENOW (*Music Supervisor & Music Coordinator*). Grammy-winning record producer/engineer. Broadway: *Girl From the North Country*, *Tootsie*, *The Cher Show*, *The Band's Visit*, *Amélie*, *The Last Ship*, *Women on the Verge of a Nervous Breakdown*. Off-Broadway: *Twelfth Night*, *The Total Bent*, *The Fortress of Solitude* (all Public Theater). Album producer/

engineer: *Girl From the North Country*, *Unknown Soldier*, *Tootsie*, *The Band's Visit*, *The Great Comet*, *Women on the Verge...*, *Bloody Bloody Andrew Jackson*, Shaina Taub, David Sanborn, Stephen Lynch, David Yazbek.

SCOTT PASK (*Scenic Design*) has designed over 50 Broadway productions, receiving three Tony Awards (*The Book of Mormon*, *The Coast of Utopia*, *The Pillowman*). Credits: *The Band's Visit* (Tony nom.); *Mean Girls* (Tony nom.); *Who's Afraid of Virginia Woolf?*; *The Prom*; *Waitress*; *Blackbird*; *Something Rotten!*; *Oh, Hello!*; *Pippin* (Tony nom.); *I'll Eat You Last*; *A Steady Rain*; *Nine*; *Promises, Promises*; *Pal Joey* (Tony nom.); *Les Liaisons Dangereuses* (Tony nom.); *Hair*; *Finding Neverland*; *Sweet Charity*; *Take Me Out*; *Little Shop of Horrors*; *Urinetown*; *Cirque du Soleil's Amaluna*; John Mulaney's Emmy Award-winning *Kid Gorgeous* at Radio City for Netflix.

SARAH LAUX (*Costume Design*). Broadway: *The Band's Visit*, *Fully Committed*, *The Humans*. Selected Off-Broadway/Regional: *Superhero* (2nd Stage), *Downstairs* (Primary Stages), *Blue Ridge* (Atlantic), *This Ain't No Disco* (Atlantic), *Jerry Springer: The Opera* (New Group: Obie Award), *On The Shore* (Atlantic), *Bad Dates* (Huntington), *The End of Longing* (MCC), *Bad Jews* (George Street), *Man From Nebraska* (2nd Stage), *The Band's Visit* (Atlantic), *Ultimate Beauty Bible* (Pg. 73), *The Effect* (Barrow Street), *The Humans* (Roundabout), *Thresh/ Hold* (Pilobolus Dance Theater), *Come Back*, *Little Sheba* (Huntington), *Women or Nothing* (Atlantic), *Really Really* (MCC). Feature Film: *Freakshow* (Maven). TV: *High Fidelity* (Hulu).

TYLER MICOLEAU (*Lighting Design*). Broadway: *Be More Chill*, *The Band's Visit* (2018 Tony Award). Recent Off-Broadway: *Hercules* (The Public Theater). Other notable Off-Broadway: *When the Rain Stops Falling* (Lincoln Center Theater, Lucille Lortel Award), *Blasted* (SoHo Rep, Hewes Award), *Bug* (Barrow Street Theater, Lucille Lortel and Obie Awards). 2010 Obie Award for Sustained Excellence.

KAI HARADA (*Sound Design*). 2018 Tony Award, Best Sound Design of a Musical for *The Band's Visit*. Broadway: *Head Over Heels*, *Amélie*, *Sunday in the Park with George*, *Allegiance*, *Gigi*, *Fun Home*, *On the Town*, *First Date*, *Follies* (Tony and Drama Desk noms.), and *Million Dollar Quartet*. Other regional, international work.

CHARLES G. LAPOINTE (*Hair & Wig Design*) is an award-winning designer. Numerous Broadway, Touring, Regional, West End, and international productions including *Hamilton* (Make-Up Artists & Hair Stylist Guild Award), *Ain't Too Proud*, *Beautiful – The Carole King Musical*, *Beetlejuice*, *The Cher Show* (Drama Desk Award), *Anastasia*, *SpongeBob SquarePants* (Drama Desk Award), *Jersey Boys*, *A Gentleman's Guide...*, *In the Heights*. TV: *The Wiz Live!* (Emmy nom.), *Jesus Christ Superstar Live!* (Emmy nom., Make-Up Artists & Hair Stylist Guild Award), *Hairspray Live!*

JAMSHIED SHARIFI (*Orchestrations*) has composed the scores for many studio and independent films; arranged music for Paula Cole, Ray Charles, Sting, Dream Theater and others, and produced recordings for several world music luminaries. He is thrilled to be a part of *The Band's Visit* family.

ADRIAN RIES (*Music Director*) (he/him). National Tour: *The Band's Visit*. Off-Broadway: *Sweeney Todd* (Barrow Street Theater). Regional: Gulfshore Playhouse, Axelrod PAC, Pioneer Theatre Co., Summer Repertory Theatre, North Shore Music Theatre, and Weathervane Theatre. He's arranged and music supervised for Norwegian Cruise Lines, The Randy Andys, and more. South Dakota native. www.adrianries.com.

ZOHAR TIROSH-POLK (*Israeli Dramaturg & Dialect Coach*). Translator and dialect coach for *Messiah* (Netflix). Her plays: *The Zionists*, *Six*, and *Home/Front* were presented at The New Group, Magic Theatre and Lincoln Center Theater (directors lab), among others.

Who's Who in the Cast

TARA RUBIN CASTING (*Casting*). Selected Broadway: *Ain't Too Proud*, *King Kong*, *Summer: The Donna Summer Musical*, *The Band's Visit*, *Prince of Broadway*, *Indecent*, *Bandstand*, *Sunset Boulevard*, *Miss Saigon*, *Dear Evan Hansen*, *A Bronx Tale*, *Cats*, *Falsettos*, *Disaster!*, *School of Rock*, *Les Misérables*, *The Heiress*, *The Phantom of the Opera*, *Billy Elliot*, *Shrek*, *Spamalot*, ... *Spelling Bee*, *The Producers*, *Mamma Mia!*, *Jersey Boys*. Off-Broadway: *Gloria: A Life*, *Smokey Joe's Café*, *Jersey Boys*, *Here Lies Love*, *Love, Loss and What I Wore*. Selected Regional: Berkeley Repertory Theatre, Yale Repertory Theatre, La Jolla Playhouse, The Old Globe, Asolo Rep. www.tararubincasting.com

FORESIGHT THEATRICAL (*Management Consultant*) is comprised of partners Allan Williams, Aaron Lustbader, and Mark Shackel who oversee and supervise *The Phantom of the Opera*, *Moulin Rouge! The Musical*, *Girl From the North Country*, *Diana the Musical*, David Byrne's *American Utopia* and *Thoughts of a Colored Man* on Broadway, the worldwide management of *Kinky Boots*, and the upcoming production of *Funny Girl*.

GENTRY & ASSOCIATES (*General Management*) has managed more than 100 touring theatrical productions globally over the past 25 years. Current and upcoming productions include *1776*, *Anastasia*, *The Band's Visit*, *Blue Man Group*, *Charlie and the Chocolate Factory*, *Fiddler on the Roof*, *Hairspray*, *Les Misérables*, *The Prom*, *To Kill a Mockingbird*, and *Waitress*.

SETH SIKES (*Associate Director*). Broadway/Off-Broadway associate credits include: *The Band's Visit*, *The Nance*, *Tribes*, and *Pageant*. As a cabaret singer, he performs solo acts regularly at Feinstein's/54 Below and other venues.

JESSE KOVARSKY (*Associate Choreographer*). Broadway: *The Bands Visit*, *Fiddler on the Roof*. Off-Broadway: *Sleep No More*, *Seeing You*, *Lost Mountain*, *The Death of Klinghoffer* at The Metropolitan Opera. Film/TV: *Anna Karenina*, *The Muppets Most Wanted*, *OITNB*, Paul McCartney's music video "Who Cares."

JOHN M. ATHERLAY (*Production Stage Manager*). Broadway: *Fela!*, *Xanadu*, *Beauty And The Beast*, *A Small Family Business*, *The Seagull* with Tyne Daly and Jon Voight and *Prelude To A Kiss*. National Tour: *Cabaret*, *Blithe Spirit* with Angela Lansbury, *The Gershwins' Porgy and Bess*, *Anything Goes*, *Fela!*, *Young Frankenstein*, *Fiddler On The Roof* with Topol, *Little Shop of Horrors*, *The Producers*, and *Stardust* with Betty Buckley.

NIKKI LINT (*Stage Manager*). Broadway: *School of Rock* (Sub SM), *King Kong* (Sub SM). National Tours: *Mary Poppins* (PA), *Cabaret* (ASM). Select Regional PSM: *Billy Elliot*, *West Side Story* (Ogunquit Playhouse); *42nd Street*, *Memphis* (Gateway Playhouse); *9 to 5*, *Young Frankenstein*, *Saturday Night Fever* (OPH/ GWP); *Les Misérable*, *The Wiz*, *Annie*, *Red* (Maltz Jupiter Theatre).

SEAN FRANCIS PATRICK (*Assistant Stage Manager*) is elated to be rejoining *The Band's Visit* after our 19-month shutdown! Previous tours include Roundabout Theatre Company's revival of *Cabaret*, *Anything Goes*, and *The Gershwins' Porgy and Bess*. Numerous regional theatre credits from coast to coast. Proud member of Actors Equity Association! www.SeanFrancisPatrick.com.

CHRIS DANNER (*Company Manager*). National Tour: *Dear Evan Hansen*, Disney's *The Lion King*, *Kinky Boots*, Disney's *Newsies*, *Once*, *50 Shades*, *The Addams Family*, *9 to 5*, *Legally Blonde*, *The Color Purple*, *My Fair Lady*, *Blue Man Group*, *The Light in the Piazza*, *Annie*, *Oliver!*, *Cover Girls*, *Blue's Clues Live!*, and *the Magic of David Copperfield*.

BOND THEATRICAL (*Marketing & Publicity Direction*) is an independently-owned booking, marketing and publicity company for live entertainment productions. Current marketing and publicity shows include *1776*, *Anastasia*, *Dear Evan Hansen*, *Diana*, *Escape to Margaritaville*, *Fiddler on the Roof*, *Jagged Little Pill*, *Moulin Rouge! The Musical*, *Rodgers & Hammerstein's Oklahoma!*, *The Band's Visit*, *The Phantom of the Opera* on Broadway, *The Prom* and *Tina: The Tina Turner*

Musical. Current tour marketing and booking shows include *9 to 5: The Musical*, *A Soldier's Play*, *An Officer and a Gentleman*, *Annie*, *Blue Man Group*, *CATS*, *Clue*, *Clueless*, *Company*, *Diana*, *Dr. Seuss' How The Grinch Stole Christmas! The Musical*, *Dick Clark's American Bandstand Rockin' On*, *Girl from the North Country*, *Jesus Christ Superstar*, *Kathleen Turner: Finding My Voice*, *Lempicka*, *Love Actually Live*, *The Lehman Trilogy*, *May We All*, *Spamilton*, *The Brat Pack* and *What the Constitution Means to Me*.

THE ROAD COMPANY (*Tour Booking*). Founded in 1997 by Stephen Lindsay and Brett Sirota. In addition to *The Band's Visit*, current representation includes *Wicked*, *Moulin Rouge! The Musical*, *Jagged Little Pill*, *Ain't Too Proud*, *Oklahoma!*, *The Prom*, *Beetlejuice*, *Charlie and the Chocolate Factory*, and more.

ALLAN WILLIAMS (*Executive Producer*). A partner in Foresight Theatrical, who general manage *The Phantom of the Opera*, *Moulin Rouge*, David Byrne's *American Utopia*, *The Girl From the North Country*, *Thoughts of a Colored Man*, and *Diana*.

CHARLIE STONE (*Executive Producer*). Broadway: *The Band's Visit* (Tony), *A Bronx Tale*, *The Glass Menagerie* (Tony nom.), *Dead Accounts*, *Once* (Tony), and *Seminar*. Current national tours: *Charlie and the Chocolate Factory*, *Fiddler on the Roof* and *The Band's Visit*. He is a graduate of Roger Williams University and resides in New Jersey.

ORIN WOLF (*Producer*). Lead producer of the *The Band's Visit* and the president of NETWORKS Presentations. Additional Broadway producing credits include *Fiddler on the Roof* (Tony nom.), *Beautiful – The Carole King Musical* (Tony nom.), *Orphans* (Tony nom.), *Once* (Tony), *That Championship Season*, *A View from the Bridge* (Tony nom.). Initial recipient and current director of the Prince Fellowship at Columbia created in conjunction with Hal Prince. For and with Shiri, Nomi and Ruben.

STYLESFOUR PRODUCTIONS (*Producer*). Broadway: *The Band's Visit* (Tony), *Beautiful – The Carole King Musical* (Tony nom.), *Orphans* (Tony nom.), *Once* (Tony), *Driving Miss Daisy*, *The Pee-wee Herman Show*, *Talk Radio* (Tony nom.), *Spring Awakening* (Tony). Numerous Off-Broadway, London, and Tour credits. Love to Bridget, Stephanie, John Henry, Shelby, and Sadie our Cavalier.

EVAMERE ENTERTAINMENT (*Producer*). Founded in 2007 by veteran theater and film producer John N. Hart Jr., Evamere has produced *Once*, *A Bronx Tale*, *Seminar*, and *The Glass Menagerie* starring Cherry Jones. Hart's Broadway credits include *Chicago*, *The Who's Tommy*, *Guys and Dolls* starring Nathan Lane, and *H2\$* starring Matthew Broderick. John has also produced over 20 films including *Boys Don't Cry*, *You Can Count on Me*, and *Revolutionary Road*. Evamere is joined by Ian Prince as Head of Business Affairs and Ayaka Shimada as Executive Assistant.

ATLANTIC THEATER COMPANY (*Producer*). Neil Pepe, Artistic Director; Jeffery Lawson, Managing Director. At Atlantic, our aim is singular—to empower simple and honest storytelling that fosters greater understanding of our shared world. We are a family of artists dedicated to exploring essential truths onstage, be it a show at Atlantic Theater Company or a class at Atlantic Acting School. Founded as an ensemble of impassioned artists in 1985, Atlantic Theater Company has grown into a powerhouse Off-Broadway company, premiering 200+ works from new and established writers. From our Tony Award and Pulitzer Prize-winning productions to our community-based education programs, we are committed to uncovering and celebrating the stories of our varied human existence.

DAVID F. SCHWARTZ (*Producer*). Proud to have produced *The Band's Visit* from inception with Orin Wolf. Other Broadway: *Once*, *Hands on a Hardbody*. Theatre/film attorney at Gray Schwartz LLP.

BARBARA BROCCOLI (*Producer*). Producer of the James Bond film franchise. Her stage credits include *A Steady Rain* (Broadway), *Once* (Broadway, West End), *Othello* (New York Theatre Workshop), *The Band's Visit* (Broadway) and *Fleabag* (Soho Playhouse NYC).

FREDERICK ZOLLO (*Producer*).

GROVE•REG (*Producer*). Current and recent: *The Band's Visit*, *Company* (London), *Cats* (Broadway and Tour), *On Your Feet!* (Broadway and Tour), *Escape to Margaritaville*, *Angels in America*. Upcoming: *Diana*

LASSEN BLUME (*Producer*). Cody Lassen and Brad Blume are thrilled to be co-producing *The Band's Visit*. Learn about them and their upcoming projects at www.LassenBlumeBaldwin.com.

THOMAS STEVEN PERAKOS (*Producer*) performed with Connecticut's Repertory Theatre in the '60s. His theatre passion has never wavered. Perakos has produced more than 40 shows from London to Broadway. Currently a producer on *Ain't Too Proud* on Broadway.

MARC PLATT (*Producer*). Theatre: *War Paint*; *Wicked*; *Oh, Hello*; *If/Then*; *Three Days of Rain*. Films: *Mary Poppins Returns*, *La La Land*, *Bridge of Spies*, *Into the Woods*, *Drive*, *Wanted*, *Legally Blonde*. TV: *Jesus Christ Superstar Live in Concert*, *Grease Live!*.

THE SHUBERT ORGANIZATION (*Producer*). Under the leadership of Philip J. Smith, Chairman, and Robert E. Wankel, President, the Shubert Organization owns and operates 17 Broadway and 6 Off-Broadway theatres, and has produced and co-produced hundreds of productions.

THE BARUCH/ROUTH/FRANKEL/VIERTEL GROUP (*Producer*). Steven Baruch, Marc Routh, Richard Frankel, and Tom Viertel have produced 85 shows. They've won Tony Awards in all Best categories: Play, Musical, Play/Musical Revival.

ROBERT COLE (*Producer*) has produced more than 30 productions including the original Broadway productions of *Ma Rainey's Black Bottom*, *Angels in America*, and *Once*. Recipient of five Tony Awards.

DEROY-CARR-KLAUSNER (*Producer*). Tony Award winners Jamie deRoy, Sharon Carr, and Patricia Klausner are thrilled to be part of this timely production that underscores humanity, compassion, and kindness.

FEDERMAN-MOELLENBERG (*Producer*). Wendy Federman and Carl Moellenberg have won 18 Tony Awards. Proud to be part of this exquisite musical which celebrates two cultures coming together.

ROY FURMAN (*Producer*). Tony Award-winning productions include: *Dear Evan Hansen*; *Hello, Dolly!*; *The Book of Mormon*; *The Color Purple*; *The Humans*; *War Horse*; *Curious Incident...*; *Spamalot* and *The History Boys*. Current: *Tootsie*, *King Kong*, *Pretty Woman*, *Mean Girls*.

FVSL THEATRICALS (*Producer*). Shira Friedman, Nathan Vernon, Benjamin Simpson, and Joseph Longthorne. Previous credits: *A Doll's House, Part 2*; *Hello, Dolly!*; *Oh, Hello*; *Waitress*; *Fun Home*; *Peter and The Starcatcher*.

HENDEL-KARMAZIN (*Producer*). Ruth Hendel: *Ain't Too Proud*, *Beetlejuice*, *Mean Girls*, *Fiddler* (Yiddish), *A Walk on the Moon*. Sharon Karmazin is a Tony-winning producer. Current: *Dear Evan Hansen* and *Ain't Too Proud*.

HORIPRO INC. (*Producer*). Founded by Takeo Hori in 1960. One of the leading Japanese entertainment companies, representing musicians and actors, producing films and TV programs besides its successful theatrical works.

INDEPENDENT PRESENTERS NETWORK (*Producer*) is a consortium of 40 of the leading touring Broadway presenters in cities throughout America. Recent Broadway: *Dear Evan Hansen*; *Hello, Dolly!*; *On Your Feet!*; *Waitress*; and *Kinky Boots*.

JAM THEATRICALS (*Producer*), under the direction of co-founder Steve Traxler, presents theater series in 26 cities, produces on Broadway, and is the recipient of 10 Tony Awards.

THE JOHN GORE ORGANIZATION (*Producer*). Owned by 11-time Tony-winning producer John Gore. It includes Broadway Across America, Broadway.com, and The Broadway Channel.

DAVID MIRVISH (*Producer*) is a producer based in Toronto where he operates four theatres. Mirvish Productions produces and presents plays and musicals in Canada, on Broadway, and in London's West End.

JAMES L. NEDERLANDER (*Producer*). President of Nederlander Organization. *Tootsie*, *Oklahoma!*, *My Fair Lady*, *On Your Feet*, *The Humans*, *The Elephant Man*, *Movin' Out*, the upcoming *Tina* among many others.

AL NOCCIOLINO (*Producer*). President of NAC Entertainment, a theatrical company specializing in the presentation of touring Broadway shows. He has been presenting and producing Broadway shows for over 35 years.

IRIS SMITH (*Producer*). CEO of Once Upon a Time Productions. Broadway: *On Your Feet!*, *Dangerous Liaisons*. Film: *People You May Know*, *Wakefield*.

SUSAN ROSE (*Producer*). Tony-winning and Emmy-nominated producer. Member of the Academy of Television Arts and Sciences and the Producers Guild of America.

Opening Night: June 27, 2019

STAFF FOR *THE BAND'S VISIT*

EXECUTIVE PRODUCERS

Allan Williams
Charlie Stone

**MANAGEMENT CONSULTANT
FORESIGHT THEATRICAL**

Allan Williams Jalaina Ross
Aaron Lustbader Mark Shacket

**GENERAL MANAGEMENT
GENTRY & ASSOCIATES**

Gregory Vander Ploeg
Elisabeth Bayer Steve Varon
Pearce Landry-Wegener

**PRODUCTION MANAGEMENT
NETWORKS PRESENTATIONS**

Jason Juenker
Hector Guivas Shelby Stark
Walker White pesci

**MARKETING & PUBLICITY DIRECTION
BOND THEATRICAL**
bondtheatrical.com

DJ Martin Temah Higgins Mollie Mann
Marc Viscardi Wendy Roberts
Melissa Cohen Simon Rosales
Phillip Aleman Steph Kelleher
Adrienne Richards Jacob Rivera-Sanchez
Janiya Wade

**EXCLUSIVE TOUR DIRECTION
THE ROAD COMPANY**

Stephen Lindsay Brett Sirota
trc.nyc

Who's Who in the Cast

CASTING

TARA RUBIN CASTING

Tara Rubin, CSA Merri Sugarman, CSA
Kaitlin Shaw, CSA Laura Schutzzel, CSA
Clare Burke, CSA Peter Van Dam, CSA
Felicia Rudolph, CSA Xavier Rubiano, CSA
Louis DiPaolo, Kevin Metzger-Timson, Juliet Auwaeter

COMPANY MANAGER: Chris Danner
Assistant Company Manager: Justin T. Scholl

Production Stage Manager..... John M. Atherlay
Stage Manager Nikki Lint
Assistant Stage Manager..... Sean Francis Patrick
COVID Safety Manager..... Toni Ostini
Associate Scenic Designers..... Stephen Carmody,
Orit Jacoby Carroll, Jerome Martin,
Gabriel Firestone
Associate Costume Designers Genevieve Beller,
Justin Hall
Associate Lighting Designers..... Jimmy Lawlor
Kirk Fitzgerald
Assistant Lighting Designer Zachary Heffner
Associate Sound Designers Isabella Curry,
Josh Millican, J. Patrick Pummill
Associate Hair Designer Rachael Geier
Production Electrician..... Barrett Roberts
Production Sound..... Colin Braeger
Moving Light Programmer Jay Penfield

TOURING CREW

Head Carpenter Joseph Spratt
Head Carpenter (October 19-24) Jamie Kurtz
Flyman Nathaniel Reindl
Automation..... Lisa LePoidevin
Head Electrician Jessica Kohn
Assistant Electricians..... Delaney McCowen,
Erin Carlson
Head Sound..... Gavin Little
Assistant Sound..... Parker Stegmaier
Head Props..... Sara Schultz
Assistant Props..... Jakey Hicks
Head Wardrobe..... Emily Staloch
Wig and Makeup Supervisor..... Amanda Levens
Crew Swing..... Keefe Kennedy
Production Assistants Griffin Dohr, Eric Nolan Mattingly,
Meena Shayesteh
Electronic Music Design..... Billy Jay Stein, Hiro Iida
Physical Therapy NEURO TOUR Physical Therapy, Inc.
Advertising/Marketing Materials..... AKA
Video Production HMS Media
Production Photographer..... Matthew Murphy
Social Media..... Andy Drachenberg
Merchandising..... Matt Murphy Productions, LLC
Legal Services..... Rick Pappas, Esq.
Accounting NETWORKS Presentations LLC
HR Support..... Global Solutions, Inc.
Equity, Diversity, Inclusion Consultants Production
on Deck, Cornerstone HR Consulting
Housing..... Road Concierge, an ALTOUR Company
Travel Agency Janice Kessler,
Carson Wagonlit Travel
Trucking Clark Transfer

INSURANCE BROKER SERVICES

Maury Donnelly and Parr, Inc.
Robert B. Middleton, Sr and Meghan Coleman

FINANCIAL SERVICES AND BANKING ARRANGEMENTS BY

Signature Bank

Rehearsed at The New 42nd Street Studios and Boulevard
Carroll Rehearsal Studios

CREDITS

Band uniforms by John Kristiansen New York, Inc./John
Kristiansen Brian Blythe, Custom painting: Jeff Fender.
Lighting equipment: PRG Lighting. Audio equipment: PRG
Audio. Scenic items fabricated, and show control and scenic
motion control featuring stage command systems® by PRG-
Scenic Technologies, a division of PRG Broadway, LLC, New
Windsor, NY. Props: BrenBri Properties, Prop N Spoon. Drum
kit courtesy of Garrison at Drum Workshop.

SPECIAL THANKS TO

Providence Performing Arts Center - Norbert Mongeon &
J.L. "Lynn" Singleton, The Consulate General of Israel in NY,
Israel's Office of Cultural Affairs, Darisu Suyama,
45th St Fund, Rebecca Stone, Maxwell Williams, Tom Hulce,
Lameece Isaac, Hartford Stage, Harold Prince, Ellen Pilipski,
Joshua Pilipski, Sarah Pilipski, Gabrielle d'Entremont

www.TheBandsVisitMusical.com



@TheBandsVisit
#TheBandsVisit



The Actors and Stage Managers employed in
this production are members of Actors' Equity
Association, the Union of Professional Actors
and Stage Managers of the United States.



The Musicians employed in this production are
members of the American Federation of Musicians
of the United States and Canada.



The Director and Choreographer are members of
the Society of Stage Directors and Choreographers,
Inc., an independent national labor union



The Press Agents and Company Managers
employed in this production are represented by the
Association of Theatrical Press Agents & Managers.



Backstage employees are represented by
the International Alliance of Theatrical Stage
Employees (or I.A.T.S.E.).



United Scenic Artists represents designers and
scenic artists for the American Theatre.



InsideOut THEATRE WORKSHOPS

Welcome to a new series of workshops for adults who want to learn more about the art and practice of theatre.

Register for one or the entire series.
Each workshop is \$25 and includes two 90-minute sessions.

Creating a Character with Mark Cabus

ZOOM Event | DEC 6 & 13 | 6:30-8:00 p.m.

Curious about how theater professionals get stage ready for performances? Using his solo production of *A Christmas Carol*, during which he plays 18 different characters, Mark Cabus will guide us through the process of creating and perfecting characters for a performance. From Ebenezer Scrooge to Tiny Tim, and all the ghosts in between, Mark will demonstrate and discuss researching and finding the essence of a character. No acting or theater experience required - this class is for those who love watching great theater and are looking for an in depth look at the actor's process.



African American Plays & Playwrights with Jon Royal

ZOOM Event | JAN 24 & 31 | 6:30-8:00 p.m.

Actor and director Jon Royal will guide us through both well-known and obscure African American playwrights. We'll examine style and genre, and compare two plays that tell similar stories from different perspectives.

TPAC INSIDEOUT PROGRAMS



InsideOut is for adults who want to grow in their knowledge and enjoyment of the performing arts. InsideOut events come in many shapes and sizes and in many different places both inside and out of TPAC's downtown theaters. The TPAC Education program offers a series of lunch seminars, performance excerpts, discussions, workshops, and sneak previews behind the scenes.

THANK YOU



TENNESSEE
PERFORMING
ARTS
CENTER

TPAC.ORG

...ud E. Panther • 50th Anniversary • Nickalette Hamlet • Mishla Peña • Mr. & Mrs. John
Jeffrey T. Adams • Mrs. Annie Laurie Berry • Mary Hill • Robert Lane & Emily Viver
Regina Anderson • Marilyn Hartz • Mr. & Mrs. Aubrey B. Harwell Jr. • Mitzi Cross
om Bateman • Thomas Wright • Lorraine Sutton • Gary M. Bynum • David Borowski
Eskind • Jon Backstrom & Maureen Gannon • Virginia Spini • Wanda Wade • Car
Cecilia Bruton • Joyce & Preston Quirk • John & Gina Davis • Dr. & Mrs. Tyler
burn • Elin Mulron Eifler • Diane Becker • Elizabeth Fisher • Cindi Ballard • Har
n • James Howard • Mr. & Mrs. Joseph Barker • Jean & Dick Renfro • Council M
ven & Esther Remer • William B. King • Alyse Sprintz • Jack & Dana Fleischer • M
uire • Diane K. Honda & David P. Reiland • Christine & John M. Marthys • M
len R. Houston • Dr. & Mrs. Timothy P. Schoettle • Andrea Musey • Elizab
Pamela Palmer • Wells Richardson & Jane Bowlin • M. & L. Linda Gil
ford • Roz Highfill • Patsy & Peter Curry • Dr. Norman S. Borov
rts • Evelyn & William Rodgers • Rick Isaacson • Dr. Bruce & Eri
rz • Vanderbilt University • Joel & Rebecca Spoon • Lind
Cole • Amanda Roche • Nancy Ezell • Jesse & Amy C
Susan Barnes • Alexandra Bettig • Perry • Rand
urgner & Mr. Kurt Zettel • Ch. Mac • nell
enstein • Daniel & Isabell Maxwell • John
andy Beeson • Mark Cabani • Vict
EBS Foundation • Delta Mental
arr • Carol Thigpin • Richa
Seabury III • M. & Mrs
n & Leigh • es • F
March • Phil W
n • Arrey
Elizabeth
es

We express our deepest
gratitude to the many donors
who supported TPAC's
Forward! Recovery Fund.
Your generosity sustains and
reinvigorates our commitment
to the power of the arts,
education, and community.

...Gary
...Ma
...n Cook
...ward & Emily
...hitney Beard • ...Ma



615.309.8200
castlehomes.com

YOUR JOURNEY HOME BEGINS HERE.
CUSTOM HOMES ■ REMODELING ■ INTERIOR DESIGN

Custom Homes with
Guaranteed Pricing

ACCESSIBLE SERVICES



TPAC strives to present diverse experiences in the arts and education which are accessible to everyone.

TPAC.ORG/Access

American Sign Language:
Karin Kalodimos & Forest Sponseller

Audio Description:
Julia Cawthon

Open Captioning:
Tennessee Captioning



Our Partners

Thank you for supporting our nonprofit mission. For more information or to notify us of any errors or omissions, call 615-782-6579.

Donations received from Aug. 1, 2020 – Sept. 9, 2021

Institutional Contributors as of September 9, 2021

\$50,000+
Amazon
Bank of America
Delta Dental of Tennessee
Google, Inc.
HCA Healthcare/ TriStar Health
Metro Nashville
Arts Commission
Nissan North America, Inc.
PNC Financial Services Group
Regions Bank
Tennessee Arts Commission

\$25,000 – \$49,999
CMA Foundation
Disney Worldwide Services, Inc.
Dollar General Literacy
Foundation
The NewsChannel 5 Network
Vanderbilt University

\$10,000 – \$24,999
Al. Neyer
Cinemasins, LLC
The Community Foundation
of Middle Tennessee
Delek Fund For Hope*
Dollar General Corporation
Enterprise Solutions
Hardaway Construction
Ingram Charities
JPMorgan Chase & Co.
The Memorial Foundation
Mary C. Ragland Foundation
Washington Foundation
Woodmont Investment
Counsel, LLC

\$5,000 – \$9,999
Ajax Turner Company, Inc.
Aladdin Industries
Foundation, Inc.
AllianceBernstein
Brown-Forman
Butler Snow
Coca-Cola Bottling
Company Consolidated
Dettwiller Foundation
Duke Energy Foundation
Earl Swensson Associates, Inc.
East Tennessee Foundation
The Enchiridion Foundation
First Horizon Foundation
Samuel M. Fleming
Foundation
JohnsonPossKirby
Middle Tennessee Performing
Arts H.O.T. Support Fund*
Nelson's Green Brier Distillery
Novatech
Premiere Transportation
Publix Super Markets Charities

\$2,500 – \$4,999
Caterpillar Financial
Services Corporation
Cumberland Trust and
Investment Company
Enterprise Holdings
Foundation
HUB International
Kraft CPAs

\$1,500 – \$2,499
American Constructors
Apple & Company, Inc.
C Tech Controls
Deloitte & Touche, LLP
Japan-America Society
of Tennessee
Wright Airport Business Center

Individual Contributors as of September 9, 2021

\$10,000 +
John Reginald Hill
Mrs. Martha R. Ingram,
Martha Rivers Ingram
Advised Fund*
Maria and Bernard Pargh
Michele Priddy
Judy and Steve Turner

\$5,000 - \$9,999
Julie and Dale Allen
Baulch Family Foundation
Victor D. Berrios
Brad Bowlin
Jackie L. Crabtree
Dr. and Mrs. Jeffrey Eskind
Patricia C. and Thomas F.
Frist, Jr. Fund *
Sherri and Chris Hamby
Mr. and Mrs. Victor S.
Johnson III
Tracy and Jeremy Kane
Dr. and Mrs. David Mastran
Dick and Sharalena Miller
Michelle and Jim Schmitz
Neil and Chris Tyler
Dr. and Mrs. Philip A. Wenk

\$2,500 - \$4,999
Anonymous (1)
Dr. Lisa and Gerry Altieri
Nicole Babu
Barbara and Jack Bovender
Ms. Andrea Conte and
Honorable Phil Bredesen
Ron and Mary Buck
Mr. and Mrs. Frank
M. Bumstead
Mr. and Mrs. Christopher
John Casa Santa
Mary and Joe Cavarra
Linda Cochran
Marjorie and Allen Collins
Ronald L. and Brenda
J. Corbin
Pamela Dishman
The Corner
EBS Foundation
Wendy and Mark Eddy
Laurie and Steven Eskind
Diane and Gary Gober
Mary Frances Rudy
Carolyn and Terry Hamby
Sara and Kevin Hartley
Brian and Joy Heinrichs
Hank and Mary Hildebrand
Rick Isaacson
Susan and Bill Joy
Bill and Debby Koch
J. Mark Lee
Melvin Malone
Steve and Amy-Beth Mason
David Mosley
Robert and Laura Pittman



Charley and Alexia Poe
Adam Sansiveri
Edward and Karen Scott
Mr. and Mrs. James C.
Seabury III
Ms. Sherry D. Shaver
Irvin and Beverly Small
Foundation
Michael Stayton
Lauren and Andrew Tavi
Claire Whitfield Tucker
Jennifer C. Turner
Greta and Jim Walsh
Kevin and Elizabeth Warren
Gail Williams
Gill and Marcia Wright
Dr. and Mrs. Victor Zirilli
Kerndt and Theresa
Zuckowsky

\$1,500 - \$2,499
Anonymous (2)
Candalee and
Samantha Abbott
Jason Adkins
Linda Albertalli
Lainie and Roger Allbee
Dr. Gregg and Mrs. Leora Allen
Alpers Family
Jose and Jessica Amden
David Anderson
Linda and James Anderson
Jennifer Appelt
Kerry Zebick
Fouad and Margaret Atalla
Colleen and Beth Atwood
Jan Babiak
Melinda and Jeff Balser
Mr. and Mrs. Joseph Barker
Dr. and Mrs. Tyler
and Kelly Barrett
A. Bass
Eric and Danielle Beasley
Dr. and Mrs. Steven
Bengelsdorf
Todd and Kelly Bennett
Donna P. Benning and
Thomas R. Benning
Mike Binkley
Mark and Valerie Blackburn
Trevor R. Bonnstetter
Dr. and Mrs. Barry W. Brasfield
Andy Brashier
Kimberly and Don
Gooch-Brooks
Lorrie Brouse and
Richard Piazza
Joan Bruce
Meredith and Scott Burns
Timothy Bush
Cindy and Ken Butler
Gary M. Bynum
Ryan Cain
Joyce Callaway
Dana and Charlie Campbell
Anthony and Diane Carroccia
Austin Casselman
Julie and Tim Choate
Daniel Coker
Kevin Collen
John and Shelly Cook
Joel and Rebecca Cooper
Kelly Pappas Crockett
Christa Cruikshank and
Stephanie Wagner

Our Partners *continued*

Drs. Michael and Rowena Cuffe
Anna Catherine Davenport
Steve Sirls and Allen DeCuyper
Dr. and Mrs. Matthew DeFelice
David and Amy Dempe
Marty and Betty Dickens
Tor Dixon
Mark Donnell
Mr. and Mrs. Robert Doochin
Dr. Peggy Smith Duke
Ryan and Melanie Durham
Kim Farley and
Jennifer McMillan
Anita G. Fielder
Jack and Daniella Fleischer
William and Sandy Heitz
Family Foundation
Steve Ford
Mr. and Mrs. Ryan T. Foster
Mrs. Charles C. Fowler Jr.
Al and Rhonda Fraser
Jennifer and Billy Frist
Kelli Gabriel
Hillary and Brian Gainous
Mrs. Ashley and
Mr. Jonathan Gensler
Martin and Lynda Gilmore
Mary Gingrass, MD
The Goad Family Foundation
Dr. and Mrs. Michael H.
Gold and Family
Darren and Terri Gottschalk
Dr. Edward R. Gould
Michael Grainger
Kat and Jeff Greene
John and Kathy Griffin
Lance Gruner and
Shawn Wilson
Becky Harrell
Dr. and Mrs. J. B. Haynes
Martin and Kari Henehan
Amanda and Trip Hereford
Hickman/Hurst/Taylor Families
Joel and Terrie Hill
Trish and Andy Holliday
Jim Humphreys
Susan and Mark Isaacs
Edmund and Lauren Jackson
John Jackson
Robert Turner and Jay Jones
Mr. Mrs. Philip H. (Trey)
Judd III, CPA
Jacqueline Kelly
Marlene Key
William B. King
Darrell Kirby
Valorie Kirby and
Robert Green
Howard and Carol Kirshner
David and Beverly Klintworth
Lita Kobsombut
Lee and Glenda Kraft
Katherine Landsberg
Bob and Suzanne Langford
Michael D. and Kimberly M. Law
Dan and Allison Lechleiter
Bettye Leiby
John and Wendy Leonard
Johnny and Alice Lindahl
Joseph Longmire
Jessica Lutts and Nikki Kubly
Teresa Major and
Stephen Robson
Katie Malnati
Mr. and Mrs. Dan J. Marcum
Ross Margulies and
Leah Puttkamer
Debi Martin and Friends
Red and Shari Martin

Jeffrey Mathis
Lynne and Tony McAlister
Christine and John McCarthy
Sheila and Richard McCarty
Will and Jennifer McCormick
Stephen and Callie McDonald
Dr. and Mrs. Jeremy McDuffie
Mick and Ann McGauran
Molly McGill and
Beth Bradford
Mr. and Mrs. Michael
Ray McWherter
Robert and Yin Mericle
Cindy and Danielle Mezera
Susan Baker Mezger
Alisa Miles
Francesca Miller
Sameena and Fahad Mirza
Diana and Jeffrey Mobley
Julia and Joseph Moore
Deborah and Dustin Moss
Mickeye M. Murphy
Bob and Kay Musgrove
Teresa and Mike Nacarato
Stacy and Kelly Newton
in honor of Cynthia
Ann Newton
Dr. Charles and Eily Nicholson
Matthew Niehoff and
Jason Jenkins
Brad and Sara Nolan
Perry and Wanda Ogletree
Melissa Ohsfeldt and
Bennett Landman
David and Pamela Palmer
Amy Parsons
Sherry and Harry Parsons
Richard Patterson
Philip and Susan Perdue
Charles Perry
Elizabeth Phillips and
Simon Mallal
Rosemary Plorin
Vicki Ponder
Dave and Melissa Porch
G. and M. Porter
Laura Purdy
Christine Quinn
Sasan Raissi
Wallace Ralph
Sara Ravin
Brooke and Jason Reusch
Susan and Thomas Richardson
Wells Richardson and
Jane Bowlin
Ms. Julia Roberts
Walter and Wendy Robertson
Marc and Karen Rosen
Gary and Donna Rosenthal
Karen and Tyler Russell
Scott and Laura Beth Russell
Teresa Sadler
Dr. Norman Scarborough and
Ms. Kimberly Hewell
Tom Schiller
Mark and Terri Schmidt
Dr. and Mrs. Timothy
P. Schoettle
Gina and Stephen Scott
Nita and Mike Shea
Beth and Jerry Sims
Earnest and Diane Smith
Marcus and Suzanne Smith
Mr. Benjamin and Mr.
Matthew Smith-Metz
Patricia Smith
Chris and Jennette Sockwell
Rickey and Lisa South
Robert and Jane Stammer

Mark Stillman
Deborah and James
Stonehocker
Roddy and Crandall Story
Brenda Swift
Kelley and Scott Tansil
Andrea and Jim Tothacer
Byron and Aleta Trauger
Wade and Michelle Tripp
Dianne and Tom True
James D. Turner and
Bruce D. Gill
Nina Turner
Terry Vaughan
Whitney Waddell in Memory
of Janice Dawn Waddell
Rob and Liz Waggener
Reid and Emily Wakefield
Lyn N. Walker
Linda Ware
Chrissy Washburn
David and Annita Watson
Jim and Shelly Weatherly
Karen and Howard Weil
Carman and Elaine Wenkoff
Mrs. John Warner White
Jeff P. White
Theater Chicks
Dr. and Mrs. Joseph Wieck
Michael and Larson Williamson
Frances Wolf
Susan R. Woods
Elaine and Ira Work
Mickey and Phyllis Wright
Ms. Pamela J. Wright
Kathie Zuccaro
Zeus and Jedi
\$1,000 - \$1,499
Anonymous (4)
Dr. and Mrs. Jeffrey T. Adams
Susan Andrews
Mr. and Mrs. Clark D. Baker
Dr. and Mrs. Billy R. Ballard
Diane Becker
Bobby Bodenheimer and
Jeanne Larose
Elizabeth Brandau
Autumn and Rhett Bruner
Poppy P. Buchanan
Wilmot C. Burch Jr.
Michael Burrei
Eric Bymaster
Chris and Valerie Cantrell
Thomas Carey
Greer and Paige Carr
Jo Nan Carr In Honor Of Emily
Winkelman
Steve and Lyn Cates
Dr. John and Melanie
Chambers In Memory Of
Carole Barber
Mark Chambers
Beth Scott Clayton Amos,
LUTCF, CLTC
Robin Cohn and
Jennifer Knight
Deborah Coleman
Trip Conrad and Caroline Spore
Renette Corens wet
Janet Corum
Susan Cox
Mr. and Mrs. James Croy
Rosemary and Donald
Cunningham
Matthew Cushing
Bethany Breeze Davenport
Kathleen Davidson
John and Gina Davis

THANK YOU TO
OUR HIGH-IMPACT
PARTNERS

Broadway Season Supported by



Official Health and Safety Partner



BANK OF AMERICA

BUTLER | SNOW



NewsChannel 5
NETWORK



THANK YOU TO
OUR PUBLIC
FUNDERS

NATIONAL
ENDOWMENT
for the
ARTS
arts.gov



METRO ARTS
NASHVILLE OFFICE OF ARTS + CULTURE

TENNESSEE
SPECIALTY
LICENSE PLATES

tnspecialtyplates.org



SUPPORT ARTS
AND EDUCATION
IN TENNESSEE



Laura Denison
Stephen and Candee Duggan
Joanne Elston
Patrick G. Emery
Annette S. Eskind
Kristen D. Faircloth
Brad Fisher
Karen and David Ford
Beth Fortune and
Debbie Turner
Richard and Sarah Fremont
Eileen George
Julie Gillen
Gwen and Frank Gordon
Julie and Bob Gordon
Elena Goss
Patricia Grillos
Tim and Laurie Hall
Sam and Erin Hancock
Michael Harrison
Mr. and Mrs. Aubrey
B. Harwell Jr.
Michelle W. Haynes
Tammy Helms
Mr. and Mrs. Michael Herman
Lex and Rick Highsmith
Jackie Hill
Louis and Joyce Hines
Mr. and Mrs. M. Bruce Hirsch
Richard T. Hoos
Gail Jacobs
Belle Johnson and
Pepper Magargee
Susan and Roland L. Jones
Shelley Jones
Marshall H. Kemp
Lloyd King
Mike Kissner
Carole Koonce
Debra and James Kovanda
Steve and Leslye Lapidus
Timothy Larson
Dr. Dana Latour
Beau and Emi LeJeune
Mr. John D. Lepter
Sharon Lesain-Edwards in
Memory of Clematine Miller
Ann Loffi
Heather Logan
Charles Looper
Cindy Luna
Mr. and Mrs. John Malatak
Rebecca Martino
Ralph and Louise Mason
Sally and John McDougall
Justin and Nathan McIntosh,
Jeremy Mercer, JT Landry
Garry McNabb
Dr. Ingrid Meszoezy
Mark Miccioli and Angela Lynn
David and Lisa Minnigan
Hunter Mobley
Janice B. Moore
Mr. and Mrs. Robert M. Moses
Mr. and Mrs. John Muchukot
Marie Murphy
Mr. and Mrs. Jack Nadeau
Dave and Donna Nock
Dr. Agatha Nolen
Joel Nulty
Abby Okeeffe
Sulinda and Scott Osters
Terry and Karen Page
Diana and Zach Pelham
William Pfohl
Nathan Poss
Darek Potter
Pat and Doug Ralls
Diane K. Honda and
David P. Reiland
Steven and Esther Remer
Jeremy and Jessica Robb
Evelyn and William Rodgers

Cheryl Rudnicke and
Kris Atkins
Lee Anne and Ryan Sanford
Craig and Sue Seifert
Brian Sharp
Jane and Ken Sharp
Kristen-Leigh Sheft
Sharon and Bill Sheriff
Patricia Seigfried
Linda Simmons and
Ronald Runyeon
Dr. Neil and Ruth Smith
Mary Speciale
Ray Steinkerchner
Kim Stokes
W. A. Stringer
Paul Stumb
Ray Tarkington and
Janet Jones
William Taylor and Richard Bird
Laura Thomason
Thomsen/Williams
David and Lara Tresch
Lewis and Julie Walling
Jim Walsh
Susan Walsworth
Karen Watkins
Bryan and Sigrun Watson
Jennifer and Wesley Weeks
In Memory Of Jerry and
Connie Weeks
Bradley and Susan Widmann
Judy Wiens
Anne Kristin Wilhite
Larry and Carolyn Williams
Karey and Jonie Witty
Christy Wood
Ed Woodside
Janice and James Wright
Michael and Sheila Yarbrough
Dr. Anna Burgner and
Mr. Kurt Zettel
Dr. and Mrs. Carl W.
Zimmerman

\$500 - \$999

Anonymous (4)
Mr. and Mrs. Lewis Agnew
Karen Ahrend
Emily Alcorn
Sheri "Sassy" Vose
Jimmy Armistead
Barbara and Stephen Asbury
James and Theresa Bachstein
David Baird
Cheryl and Samuel Ballesteros
Marni Barnes
Brently Baxter
Dr. and Mrs. Victor Beck
Betty Bellamy
Britany Binkowski
Anita and Michael Blackmer
Rose and Al Bleich
Joe and Allison Boever
Sally and Paul Boklage
David Bone and Arlen Becton
Julia Bono
Bo and Jill Bowling
Jan and Katie Boyer
Steve and Kristin Braaksma
Douglas Brace
Donna Bradley
Gary Bradshaw
Lisa Brannan
Mr. and Mrs. Gordon L. Brewer
Virginia Brogli
Elaine Brooks
Barry and Cathy Brown
Patsy and G. William Brown
Wesley and Katie Bryant
Michael and Marcy Buckley
Melanie Johnson and
Richard Cale

Lauren and Adam Campbell
Christopher Canlas
The Carlo Family
Matthew Carr and
Victoria McGowen
Michael and Pamela Carter
Dr. and Mrs. Paul M. Carter
Letha Casella
Richard Cashion
Mr. Lee and Jean Cherry
Tristan Christian
Amy and Douglas Christiansen
Brenda Clampitt
Mr. and Mrs. Roy E.
Claverie Sr.
Kevin Clifford
Kim Cochrane
J. Chase Cole
Christopher K. and
Veronica Coleman
Neil Collins
Jennifer Colquitt
Jon Conlin
Jeff and Anita Conn
Cheryl and John Cooper
Mike Coyne
Richard Daft
Stephanie Dahmer and
Lee Brewer
Joshua Daiagi
Georganne Parr
Nancy and Bob Darnall
Jane Davis
Mr. and Mrs. W Kirby Davis Jr.
Troy and Karissa Deaton
Andrew and CJ Dickson
Joan and Terry Dison
Caryn Dixon
Tim and Tiffany Dodge
Kathy Doman
Tom and Frankie Dowdle
Cheryl McDaniel Duckworth
Brian and Cindy Dunphy
Mr. and Mrs. David Duquette
Keith and Tracy Dyer
Brenda Clampitt
Georgette and Shervin
Eftekhari
Kris Ehrlich
Heather Eisenmann
Dr. Noelle Daugherty and
Dr. Jack Erter
Jeff Eubanks
Janice N. Evers
Hilda Fehd
Henry, Jenni and
Jennifer Feldhaus and
Dr. Manish Patel
Joan Felts
J. Fincannon Family
Sara Finley
Dr. and Mrs. Kevin Finnegan
Judith Finnerty
Ken Fitzpatrick
Phil and Lynndel Flack
Linda Fletcher
Garry and Brenda Floeter
John and Karen Folan
Ginna Follis, Kathy Reeves,
Rhonda Foley
David Fortunato and
Kate Dundon
Scott and Amanda Foster
Dr. Zach and
Mrs. Sherida Foster
Martha P. Fouce
Peggy Fragopoulos
Bruce and Donna Franklin
Debi and Lance Fusacchia
Caren Gabriel
Jeannie and Gary Gallant
Jill Gallemore
Linda Gaulden

Our Partners *continued*

Jeanne Gavigan
Dr. and Mrs. David Gaw
Carman and Keith Gery
Dr. and Mrs. Matt Gorham
Diana Granese, MD
Sandy Gregory
Jessica Grover
Charles and Rupa Grummon
Cathy B. Guenther
Richard Hall and Lori McElroy
Robert Harding
Marilyn Hayes
Carolyn Head
Rob and Layla Hebert
William Hegger
Mr. and Mrs. Kevin R.
Hennessy
Greg and Katrina Herman
Philip and Amber Hertik
Kricky Heyer
Elliot and Cynthia Himmelfarb
Cathy Hogan
Brenda Hogshead
Chris J. Hohl
Claire Holland
Deborah Hollenstein
Greg and Becca Hollis
Ashley and Amanda
Chris and Susan Holmes
Deborah and Donald Holmes
Joan and George Hornberger
Ken Horner
Justin and Celia Hughes
Sara and David Hunt
Dan and Crystal Hunter
Dr. and Mrs. Douglas
Hunter in memory of
Molly Smoot Blair
Catharine Husbands
Mr. and Mrs. Shandy
Husmann
Forrest Hutchinson
Burton Jablin and
Barron Patterson
Dr. and Mrs. C. H. Jameson III
Gary and Debbie Janke
Joe Jerles
Leigh Ann and Guy Jones
Arvinhd and Candace
Kanagasundram
Ilene Karp and Seth Kornblum
Larry and Marsha Kedigh
Donna Keller
Amit and Nicole Keswani
Nicholas Kilen
Carol King
David King
Thomas and Debbie King
David and Janet Kleinfelter
Mr. Bobby Knight
Rodney M. Kochtitzky
Neil and Emily Konouchi
Stephen Kulinski
Elsie LaCasse
Mr. and Mrs. Randolph
M. Lagasse
Steve and Kathy Lake
Charles E. Lamb
David and Teresa Lance
Sharon H. Lassiter
Bob and Lisa Lawhon
Kelly Lebel
Tal and Mary Lefler
Andrea Lindsey
Richard and Tad Lisella
Beverly and Thomas Little
Arthur and Rebecca Lowen
Debbie and Jim Lundy

Tina Lynch and
Gail Tucciarone
Tree and Amy Maddux
Michael and Mallory
Magnauk
Martin and Andrea Maguire
Jill Marciniak
Annie Marks
Jo Marshall
Quinta Martin
Christopher Massey
Richard and Susan Mattson
Wendell McAbee
Pat and Brenda McAfee
Patsy McCall
Peter McCarty and
Jayshree Mahajan
Jeff McCue and Valerie Jacobs
Ms. Mary Ann McGinn
Diane E. McIntyre
Joe Medlin
Laurie A. Miller
Susanne Miller and Friends
William Miller
Vanessa Mills
Denise Minatoya
Harry and Patricia
Money Penny
Tom and Vicki Moon
Chris and Mary Sue Moore
Jack Isenhour and
Dana Moore in Honor of
Senator Carl R. Moore
JoAnn Morris
Diane Mosley
Arturo Neto
Bill and Glenda Newton
Lucy Nichols
Laura and Keith Nord
Kevin and Shari O'dea
Dr. Andre and Jeani Olivier
Jeff and Leslie Overby
Mr. and Mrs. Todd E. Panther
William and Penny Paparteyes
Paul and Diane Parker
J. Russell and Phyllis Parkes
Chip and Deborah Parrott
Candace Partee
Marshall Payton
William Pennell
John and Kandace Peppers
Jaime and Barbara Perez
Lawrence D. Phillips
Nancy and Skipper Phipps
Rose and Kip Pierce
Jonathan and Jennifer Pike
Jack and Beverly Polson
Rob and Cindy Porter
Hayley Preston
Tim and Linda Priddy
Nancy Rainier
Barbara Willis
Anita Rich
Cindy and Steve Richmond
Carolyn Ricketts
H. Paul Ritchie
Lisa Rivera
Alejandro Rivera
Worrick and Leslie Robinson
Jason and Rhonda Ronnow
Jeanne Rybolt
Kristen Sand
Mark and Patricia Sanders
Debbie Sanford
Randi Sansom
Amanda Scales
Libby and Matthew Scanlan
Jeff and Leah Schmidt

Christopher Schneider
Carol and Alvin Scott
Thomas and Heather
Seabrooks
Laura Searcy
Lynn Seifert
Kelly and Kevin Sekuterski
Charles Selke
Jeanne Sellars
Pat Shacklett
Ms. Leslie K. Sheldon
John and Cindy Shields
Vivian and Justin Shields
Allen and Shawne Shields
Mr. and Mrs. Daniel
S. Slipkovich
Cynthia and Chris Slobogin
Amy F. Smartt
Debbie Smith
Jeffrey Smith
Kelsey and Kirby Smith
Dr. and Mrs. Duane T. Smoot
Stephanie Sorrell
Mrs. Louise Spann
Angela Spiller
John and Jennifer Starcke
Joe N. and Brenda Steakley
Shelly Stem and Jo Stanifer
Joy Strange
Schelle Swift
Glen and Jennifer Tackett
Tom and Keipp Talbot
Dr. Bill and Erin Taylor
Joyce Taylor
Rhonda Taylor and
Kevin Forbes
Brian Thines
Julie Thinner
Gloria F. Thurman
Brian and Katie Toungette
Ken and Rhonda Travis
Margaret and George Uribe
Ann Waddey and
Deborah Saunders
Mary Wade
Chelsea Freemon and
Matthew Walker
Shawn Walker
Dr. and Mrs. William H. Wall III
Rosemary and Bayard Walters
Mrs. and Mr. Alisha Warner
Mr. and Mrs. Quinton Wasden
Ken and Carla Webb
Chris Weinberg
Kenneth and Julia Weiss
Kathleen Whalen
Stephen White
Dr. Brian Widmar and
Mr. Brad Bennett
Ouida Wilkes
Jerry and Ernie Williams
Dr. Susan G. Williams
Charles Wilson
Kevin Wilson
Dr. and Mrs. William R. Wilson
Betsy and Lang Wiseman
Kasey Woods, PMHNP
Charles and Rose Wright
Stacy Wright
Tim and Marlena Wright
Jody Wylie
Andy and Jamie Young
Shirley Zeitlin



TENNESSEE
PERFORMING
ARTS
CENTER

Concerns or compliments?
PatronServices@TPAC.org

Accessible Services at Tennessee Performing Arts Center (TPAC) include parking, elevators, wheelchair seating, use of a TPAC wheelchair, designated restrooms, and services for patrons with limited hearing and vision. Infrared assisted listening devices are available at no charge at the entrance to each theater. TPAC offers American Sign Language, Open Captioning, Audio Description, and Braille programs on the Sunday matinee in the HCA Healthcare / TriStar Health Broadway at TPAC season. Large print programs are available for Broadway at TPAC shows. Special accessibility requests and concerns may be discussed in advance by calling 615-782-6577. Your message will be returned the next business day. Wheelchair reservations are made 48 hours in advance of the performances.

Restrooms for Jackson Hall are located one level down from the 6th Avenue entrance, and on each level inside the theater. Restrooms for Polk Theater are located down the stairs to the left of the entrance to the orchestra level and on the tier level.

Bars are located in the lobbies and inside the orchestra level of Jackson Hall.

An ATM is on G-Level, near the security desk at the Deaderick Street entrance to the building.

All electronic devices including cell phones, watch alarms, cameras, and recorders should be turned off prior to the show. For those expecting emergency calls, please call 615-782-4087 and speak with the House Manager 48 hours in advance of the performance.

Call Lost and Found at 615-782-4098 to report an item you might have left at TPAC.

BOARD OF DIRECTORS

OFFICERS

Dr. Phil Wenk, Chair
James Schmitz, Vice Chair
J. Reginald Hill, Treasurer
Sheila Gibson, Secretary
Martha Ingram, At-Large Executive
Tracy Kane, Immediate Past Chair

EXECUTIVE COMMITTEE

Sheila Gibson
Kevin Hartley
J. Reginald Hill
Martha Ingram
Tracy Kane
Melvin Malone
James Schmitz
Claire Tucker
Dr. Phil Wenk
Gail Williams

MEMBERS, BOARD OF DIRECTORS

Harry Allen
Victor Berrios
Ronald L. Corbin
Ansel L. Davis
Emanuel J. Eads
Robert Hebert
Steve Mason
Alexia Poe
Nathan Poss
Adam Sansiveri
Todd Shipley
Andrew Tavi
Rhonda Taylor

EXECUTIVE & ARTISTIC

Jennifer Turner, President & CEO

Director of Programming,
Christian Lyhus
Senior Manager of Programming,
Caroline Morris
Executive Assistant to the President
& CEO and Board Liaison,
Caitlin Cuppernull
Contract Administrator, Tanza Farr

EDUCATION & COMMUNITY ENGAGEMENT

Roberta Ciuffo West, Executive Vice President of Education and Community Engagement

Senior Vice President of Education
and Community Engagement,
Susan Sanders
Senior Director of Education
Special Projects, Lattie Brown
Senior Director of Education Outreach,
Kristin Dare-Horsley
Director of Education Enrichment,
Cassie LaFevor
Education Enrichment Manager,
Treyasia Jackson

INSTITUTIONAL EFFECTIVENESS & CULTURE

Dr. Mary E. Clark, Chief Diversity and Inclusion Officer

Vice President of Human Resources,
Kim Marrone
Senior Payroll Manager and HR
Specialist, Mary Huffman

FINANCE & ADMINISTRATION

Julie Gillen, Chief Financial Officer

INFORMATION TECHNOLOGY

Vice President of Information
Technology, Jeff Condon
IT Operations Manager,
Andrew Astorino
Database Administrator,
Jeff Stahel
Helpdesk Technician,
Aaron Patterson

FINANCE

Controller, Dana Nolen
Accountant, Lindsay Johnson
Accountant, Bryan Leftwich

EXTERNAL RELATIONS & ADVANCEMENT

James Timm, Chief Strategy Officer and Executive Vice President of External Relations

TICKETING & CUSTOMER SERVICE

Senior Vice President of Ticketing
and Customer Service,
Kimberly Darlington
Senior Manager of Patron Services,
Akil Lyle
Senior Manager of Ticket Operations,
Jeremy Painter
Senior Patron Services Specialist,
Leroy Loyal
Assistant Manager of Patron Services,
Kyle Yandow
Tessitura Systems Manager,
Daniel Harris
Ticket Operations Supervisor,
Charles Marczynski
Ticket Sales Supervisor, Rick Forshee

MARKETING & COMMUNICATIONS

Vice President of Marketing and
Communications, Tony Marks
Director of Marketing, Emily Sitton
Senior Manager of Digital Marketing
and Sales Analytics, Rebecca Bourne
Senior Manager of Communications,
Lisa Kennedy
Public Relations Manager,
Presentations, Danielle Allen
Group Sales Manager, Lindsay Baleka
Social Media Manager, Michael Payne
Graphic Designer, Rachel Krantz

DEVELOPMENT

Senior Director of Leadership Giving,
Diana Pelham
Director of Grants, Nicholas Gulick
Manager of Development Information,
Kelsey Daly
Manager of Corporate Relations,
Janyl Igadna
Manager of Individual Giving,
Sarah Martino
Manager of Special Events, Kristen Sheft

OPERATIONS & FACILITIES

Denise Minatoya, Chief Operating Officer

EVENT OPERATIONS & MANAGEMENT

Vice President of Event Operations,
Jim Kelly
Director of Event Management,
Shannon White
Senior Event Manager,
Kristen Oakes
Lead Event Manager,
Elyse Chamberlain
Event Operations Manager,
Morgan Miller

GUEST SERVICES

Director of Guest Services, Mary Blair
Guest Services Manager, Emily Rich
Guest Services Manager,
Kelley Ramirez

SECURITY & SAFETY

Director of Security and Safety,
Alan Roberts
Security and Safety Manager,
Brent Swanson
Security and Safety Coordinator,
Jamesha Shelton
Security and Safety Manager,
Yesenia Bermudez
Stage Door Officer,
Jason Walton
Safety & Security Officer UA,
Troy Lucas

BUILDING OPERATIONS

Director of Building Operations,
Joel Rozelle

FOOD & BEVERAGE

Director of Food and Beverage,
Beth Antram
Food and Beverage Manager,
Nicholas Fleming

TECHNICAL OPERATIONS

Director of Production,
Stephanie Weinzapfel
Production Manager, Jacob Sanders
Master Electrician, Brent Smith
Senior Electrician, Tyler Rose
Chief Audio Engineer, Ian Ratzlaff
Senior Audio Engineer, Timothy Grace

VERRAGIO

UNLIKE ANY OTHER RING



EXCLUSIVELY AT

Genesis Diamonds



Best Jewelry Store

Best Place To Buy An Engagement Ring

10 YEARS IN A ROW