

FOTO TRANSFER POTCH + Candles design



Candle design with

my favorite photographs

Hobby Line FOTO TRANSFER POTCH varnishes for candles

Transparent varnishes on wax base with satin or glimmer effect. **Flame-retardant.** Evenly spread the varnish on dried photographs, transferred onto candles with FOTO TRANSFER POTCH. The fine white residue paper fibers will disappear, the colors of the picture will become more brilliant and protected from dust and dirt.



49971 FOTO TRANSFER POTCH Satin Varnish for candles 50 ml

49972 FOTO TRANSFER POTCH Glimmer Varnish for candles 50 ml

Complete sets
ideal for
beginners



Hobby Line FOTO TRANSFER POTCH SET „Candle decoration“

In an attractive cardboard box

- 49970** Content:
- 1 FOTO TRANSFER POTCH 50 ml
 - 1 Satin Varnish for candles 50 ml
 - 1 Synthetic hair brush
 - 1 Wiper

Instruction

STEP

1



For priming the smooth wax surface, apply the FOTO TRANSFER POTCH on the area that you want to design. Let dry (approx. 20 minutes).

STEP

2



Print the digital photo with a **laser printer** or create a **laser copy** from the original photo. Using a synthetic brush spread the FOTO TRANSFER POTCH on the printed picture side + the candle. Work quickly!

STEP

3



Immediately place the coated picture side down on the candle. Evenly and smoothly press the entire picture with a wiper or ruler. Remove left-over glue with a cloth immediately. Let it dry for 24 hours at room temperature or blow dry for 10 minutes on the lowest setting.

STEP

4



Moisten the paper layer; wait a little until the paper is soaked. Now rub the paper off with your fingers. The waterproof print color which is embedded in the FOTO TRANSFER POTCH remains.

STEP

5

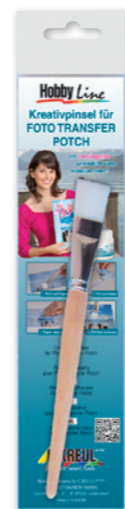


Fine white paper fibre residue will vanish when the picture is painted with varnish for candles. The candle can be further decorated and painted with the PicTixx CandlePen.

It is even simpler to transfer photographs with FOTO TRANSFER POTCH on to wax tablets. After varnishing it, let it dry. Afterwards attach the created wax tablet hand warm to the candle.



Accessories



Hobby Line Paint Brush for FOTO TRANSFER POTCH

49916 For spreading the POTCH, to press the picture on to smooth, curved surfaces e.g. porcelain plate, candles) and for covering the design with FOTO TRANSFER POTCH varnishes. Synthetic hair paint brush, size 16

Home Design Stencil Roller

722810 To spread the POTCH and to press the picture on to a smooth, even surface.



Home Design Wiper

722830 To press the picture on.

Hobby Line POTCH Plus 3D effect

49080 Transparently drying lacquer on water base forms highlighting 3D effects on the finished designed picture. Simply use the bottle to spread on the entire picture or only some areas of it. Not suitable for candles.



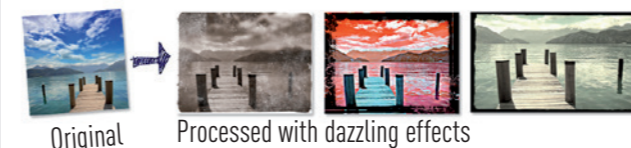
FOTO TRANSFER POTCH Online-World



You may find ideas, information and inspirations around the FOTO TRANSFER POTCH world on www.fototransferpotch.com

Here you can effectively stage your photograph in the image processing tool: Improve, retouch, play with dazzling effects (e.g. insert writings), completely change the colors of the photograph and create collages. Afterwards you can mirror your photo, so it corresponds with the original motif after it has been transferred with FOTO TRANSFER POTCH.

1 photo – an infinite multitude of possibilities



C. KREUL GmbH & Co. KG
KÜNSTLER.FARBEN.FABRIK.
Carl-Kreul-Str. 2
D-91352 Hallertendorf
Germany
Phone +49 (0)9545 / 925-0
Fax +49 (0)9545 / 925-511
info@c-kreul.de



... more information: www.c-kreul.com

Hobby Line

ALSO FOR
CANDLES
DESIGN



FOTO TRANSFER POTCH

For creating decorative individual
photo gifts and
home accessories

Made in Germany.



Art.-No.: 0-92018100 2 Print

FOTO TRANSFER POTCH



Glass lantern, acrylic pane and cardboard styled with FOTO TRANSFER POTCH



FOTO TRANSFER POTCH + Varnishes

Hobby Line FOTO TRANSFER POTCH

- 49951 150 ml jar
- 49952 250 ml jar
- 49953 750 ml plastic bottle



Hobby Line FOTO TRANSFER POTCH Varnishes, water-based

Transparent varnishes gloss or with glimmer effect. Spread the top coat evenly on the picture transferred with FOTO TRANSFER POTCH. The fine white residue paper fibers will disappear, the colors of the picture will become more brilliant, weather-proof and protected from dust and dirt.

- 49981 FOTO TRANSFER POTCH Gloss Varnish 50 ml

- 49982 FOTO TRANSFER POTCH Glimmer Varnish 50 ml



Set and Creative Tips



Hobby Line FOTO TRANSFER POTCH SET

In an attractive cardboard box

- 49960 Content:
- 1 FOTO TRANSFER POTCH 50 ml
 - 1 Gloss Varnish 50 ml
 - 1 Synthetic hair brush
 - 1 Wiper

Complete sets ideal for beginners



- The surface must be light-colored, clean and dry
- For the photo print use normal printer paper (no photo paper!).
- Photo prints from an inkjet printer are not suitable, because they are not waterproof.
- Use copies of photos and prints mirrored, so the finished created picture renders the original motif exactly.
- When creating a canvas place a book or something similar underneath for support
- For water-sensitive surfaces (e.g. carton) also spread the entire surface surrounding the photo with waterproof FOTO TRANSFER POTCH. This will protect the surface, when the picture is later moistened to remove the paper layer.
- Suitable for all textiles free of waterproof dressing (hand wash only)
- The motif created with FOTO TRANSFER POTCH is not heat-proof.
- Do not let FOTO TRANSFER POTCH dry on the picture or surface; fit them together wet on wet. Work quickly.
- Remove left-over glue around the picture immediately with a cloth.
- After blow-drying, let the surface cool off completely, before the paper layer is moistened for removal.
- Create attractive 3-dimensional effects with Hobby Line Plus 3D Effect (item no. 49080).
- Clean the utensils with clear water.

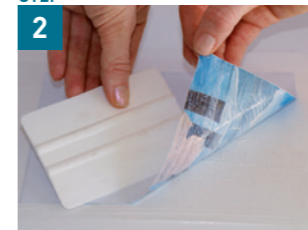
Instruction

STEP 1



Print the digital photo with a **laser printer** or create a **laser copy** from the original photo. Using a synthetic brush or stencil roller spread the FOTO TRANSFER POTCH on the printed picture side + the surface. Work quickly!

STEP 2



Immediately place the coated picture side down on the surface. Evenly and smoothly press the entire picture with a wiper, ruler or dry stencil roller. Remove left-over glue with a cloth immediately.

STEP 3



Blow-dry for 10 minutes (at the highest level!). Let cool off! Alternatively let it dry for 24 hours at room temperature.

STEP 4



Moisten the paper layer until the paper is soaked. Now rub the paper off with your fingers or with a soft sponge. The waterproof print color which is embedded in the FOTO TRANSFER POTCH remains.

STEP 5



Fine white paper fibre residue will vanish when the picture is painted with FOTO TRANSFER POTCH varnishes.

Design ideas with FOTO TRANSFER POTCH



Your favourite photograph on your nameplate: At first the photograph is transferred and then it is painted by you with Hobby Line Acrylic matt colors

Fancy place cards (photograph on a mini-canvas) + storage box for small collectors



Noble photograph present: Tea-light holder decorated with your own photograph



The perfect combination: An artistic collage created with FOTO TRANSFER POTCH and acrylic colors

Individually created photo decorations are absolutely in vogue!

Hobby Line FOTO TRANSFER POTCH

- For creating decorative individual photo gifts and home accessories
- Opens new possibilities for the artistic creation of collages through combination of photo and acrylic paint and stencil technique etc.
- For the transfer of photo prints and **copies from the laser printer**, newspaper articles and magazine pictures e.g. to canvas, wood, metal, ceramic, glass, porcelain and fabric (hand wash only)
- Also suitable for candles design (use FOTO TRANSFER POTCH Varnishes for candles)
- Water-based
- Dries with a satin gloss and transparent
- Waterproof