

# CSB1 P21

## SPARE PARTS LIST



**NORTON**  
SAINT-GOBAIN®

**clipper®**



## 1 Spare parts list

POS.	PAGE	CODE	DENOMINATION	TYP (*)	REMARKS
2	EC07	00310005214	Rear axle	S	
3	EC07	00310004373	Alignment bearing	W	
4	EC07	00310004849	Screws for bearing	S	
5	EC07	00310004873	Rear wheel	W	
7	EC07	00310004851	Screws for front wheel	S	
8	EC07	00310004260	Front wheel	W	
11	EC07	00310031862	Pivoting frame	S	
12	EC01	00310005218	Blade shaft	W	
13	EC01	00310004506	Fixed collar key	S	
14	EC01	00310005163	Fixed collar	S	
15	EC01	00310004013	Loose collar	S	
16	EC01	00310004235	Drive pin	S	
17	EC01	00310005220	Blade shaft screw and washer	S	
18	EC01	00310004295	Blade shaft bearing	W	
19	EC01	00310004852	Blade shaft bearing fixings	S	
20	EC01	00310031266	Blade shaft pulley	S	
21	EC01	00310004323	Key	S	
22	EC02	00310002338	Honda engine GX 620 QX C4	S	
24	EC02	00310003975	Key	S	
25	EC02	00310031264	Engine pulley	S	
26	EC02	00310002221	Motor support plate	S	
29	EC10	00310005223	Belt guard	S	
30	EC10	00310005224	Guard	S	
31	EC10	00310005225	Pulley guard	S	
32	EC10	00310004283	Tensioning pulley bearings	W	
33	EC10	00310002294	Belt tensioning pulley assy	S	
34	EC10	00310005226	Belt tensioning pulley	S	<= 405999
		00310005851	Belt tensioning pulley		> 405999
35	EC10	00310031861	V Belts XPZ 812 LW (set of 5)	W	
41	EC06	00310005230	Release valve knob	S	
42	EC06	00310005231	Hydraulic pump aasy	S	
43	EC06	00310004073	Hydraulic hose	W	
44	EC06	00310004839	Hydraulic ram	S	
45	EC06	00310002226	Ram bracket	S	
51	EC03	00310004686	Pointer arm	S	
52	EC03	00310004244	Pointer needle	S	
53	EC03	00310004622	Pointer wheel	W	
54	EC03	00310002228	Pointer rope with hardware	S	
55	EC03	00310004678	Bushing with hardware	W	
56	EC03	00310002084	Locking ring	S	
57	EC04	00310004080	Hose connector 1/2"	W	
58	EC04	00310002229	Hose with clips	W	
59	EC04	00310004093	Elbow 1/2"	W	

310002211 THROTTLE LEVER CK27B

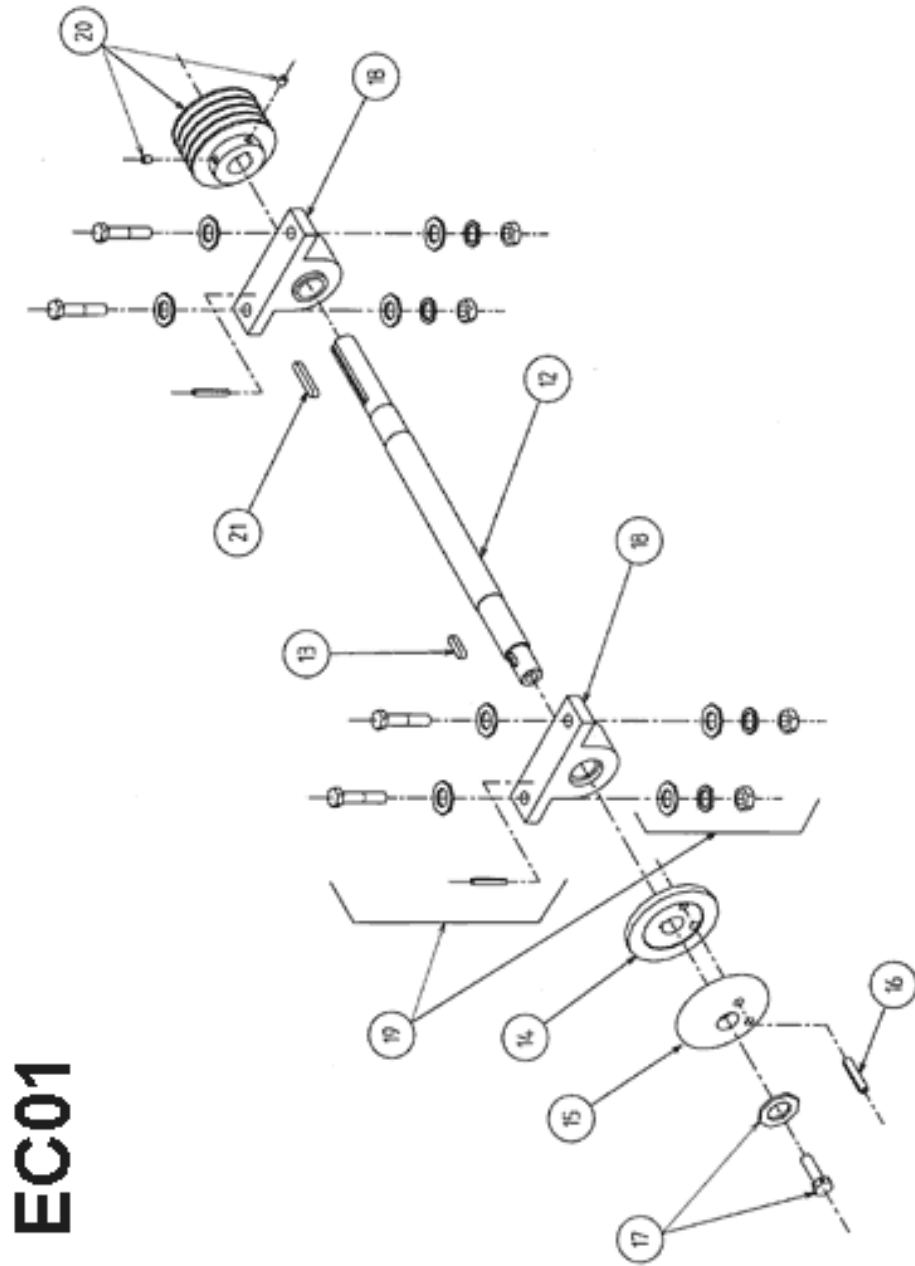
60	EC04	00310004081	Bayonet connector 1/2"	W	
61	EC04	00310004009	Water tap	W	
62	EC04	00310005233	Reduction 1/2"-3/8"	W	
63	EC04	00310005234	T 3/8"	W	
64	EC04	00310002230	Quick coupling	W	
65	EC04	00310002231	Water hose with clips	W	
66	EC04	00310004297	Hose union 3/8"	W	
67	EC04	00310005235	Elbow 1/2"	W	
68	EC04	00310002232	Blade shaft cover	S	
69	EC04	00310006731	Blade guard	S	
70	EC04	00310006732	Blade guard assy	S	
71	EC04	00310005237	Splash guard and screws	W	
72	EC08	00310002211	Speed adjustment handle	S	
73	EC08	00310002234	Clutch bracket	W	
74	EC08	00310004051	Plastic grip	S	
75	EC08	00310005238	Clutch handle	S	
76	EC08	00310005239	Sprocket	S	
77	EC08	00310005240	Chain tensioning wheel assy	S	
78	EC08	00310005241	Hydrostatic drive support	S	
79	EC08	00310004526	Hydrostatic drive	S	
80	EC08	00310005242	Bracket ,speed adjustment	S	
81	EC08	00310004462	Hydrostatic drive pulley	S	
82	EC08	00310004527	Fan	S	
83	EC08	00310004455	V belt XPZ 1250 LW	W	
84	EC08	00310002106	Pulley,belt tensioning	S	
85	EC08	00310005244	Bracket for belt tension.pulley	S	
87	EC08	00310004674	Bearing	W	
88	EC08	00310006267	Axle	S	
89	EC08	00310005246	Key A6x6x40 DIN 6885	S	
90	EC08	00310005247	Spocket	S	
91	EC08	00310005248	Transmission chain	W	
92	EC08	00310004283	Pulley belt tensioning	S	
93	EC05	00310005320	Tank cover	W	
94	EC08	00510099297	Key+Cap Tank	S	
95	EC08	00510099229	Tank	S	
96	EC05	00310004229	Wrench 17 mm	S	
97	EC05	00310004031	Wrench 13 mm	S	
98	EC05	00310004053	Wrench 19 mm	S	
99	EC09	00310004033	Battery	W	
101	EC04	00310005321	1/4 turn camlock bolt assy	S	
109	EC02		Engine stop	W	
111	EC07	00310006269	Pinion	S	
112	EC06	00310002088	O ring and ball for hydr.pump	W	
113	EC06	00310006167	Lowering valve	W	
114	EC06	00310005968	O ring 13x3 (set of 2)	W	
115	EC10	00310031864	V belts tensioner	S	

116	EC08	00310006268	Pinion	S	
117	EC05	00310002327	Rear door	S	

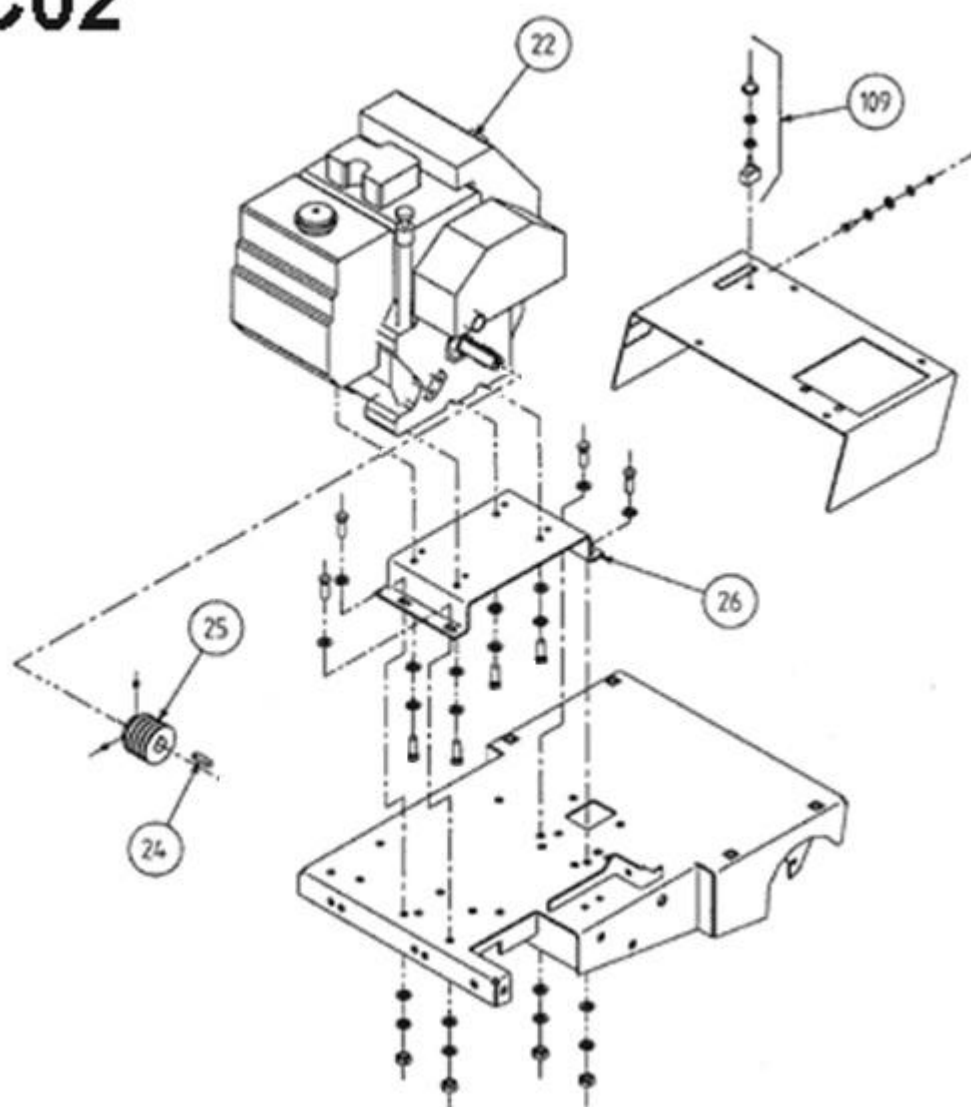
(\*): S = Spare part, W = Wear part

Wear parts are worn out through normal use of the machine. The wear period depends a lot on the intensity of use of the machine. Wear parts must be serviced, used and eventually changed following the indications of the manufacturer. Any wear due to normal use of the machine will not be considered as a case of warranty. Genuine Clipper replacement parts should always be used.

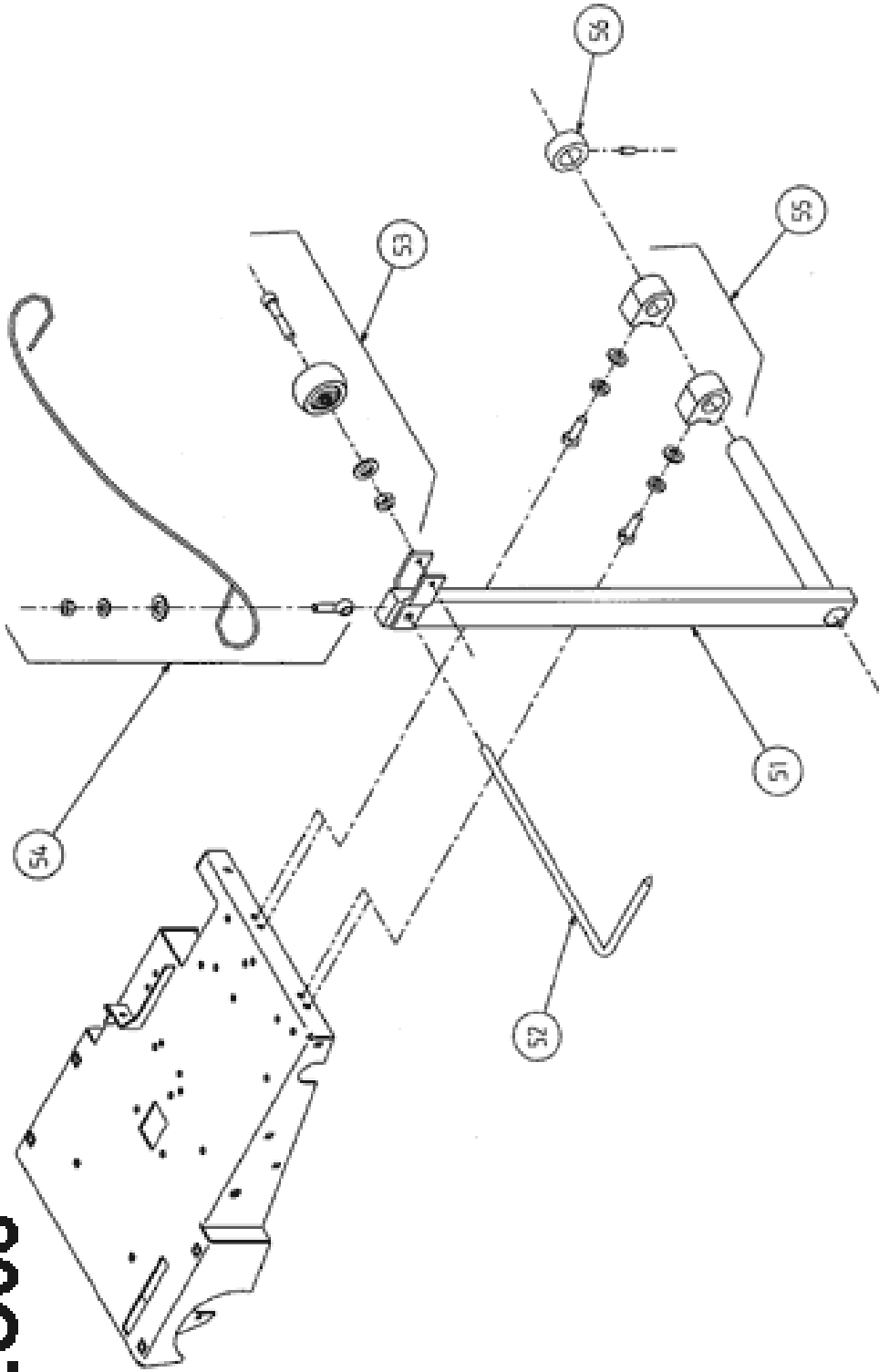
## 2 Exploded part drawings



# EC02

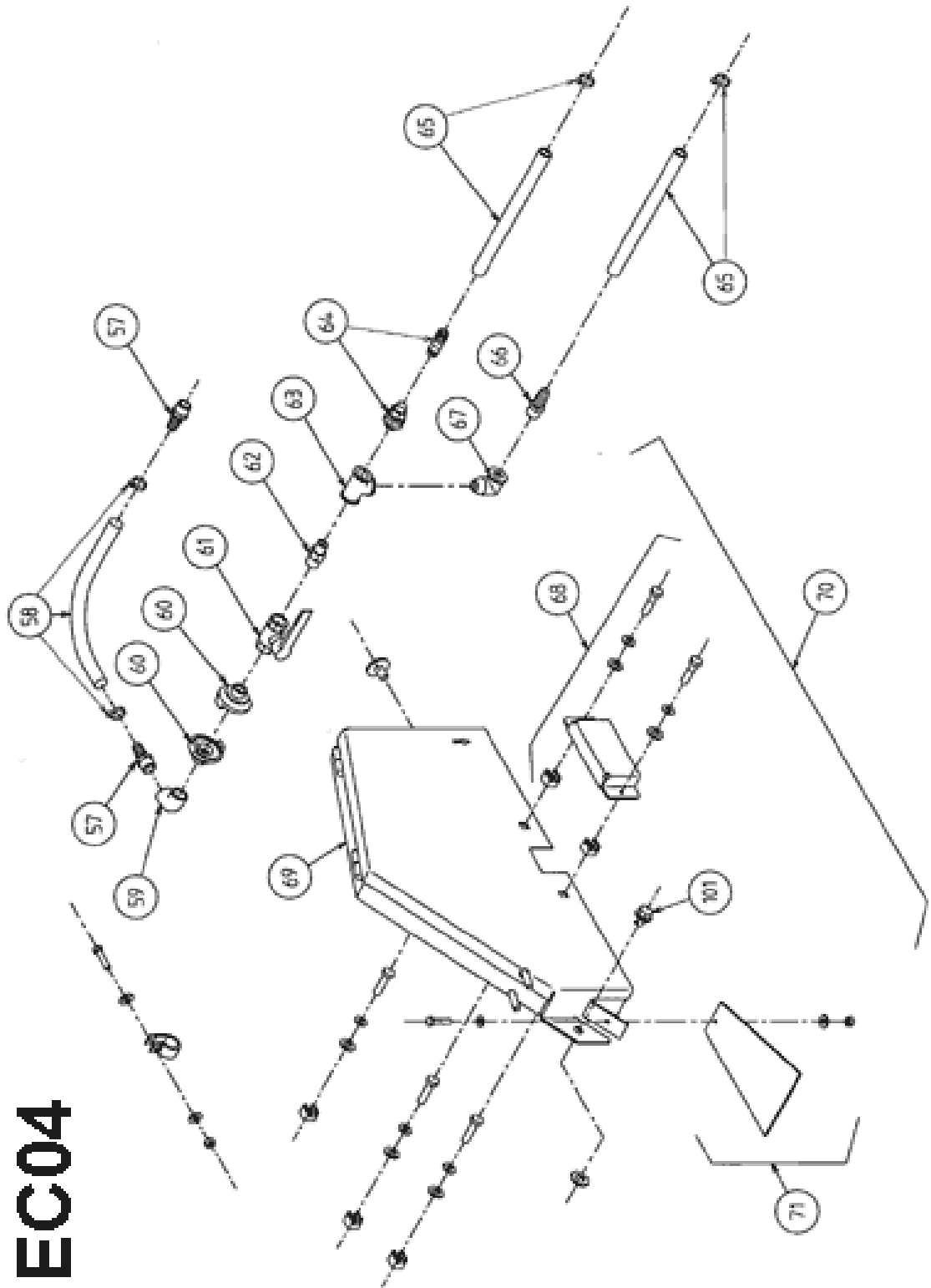


# EC03

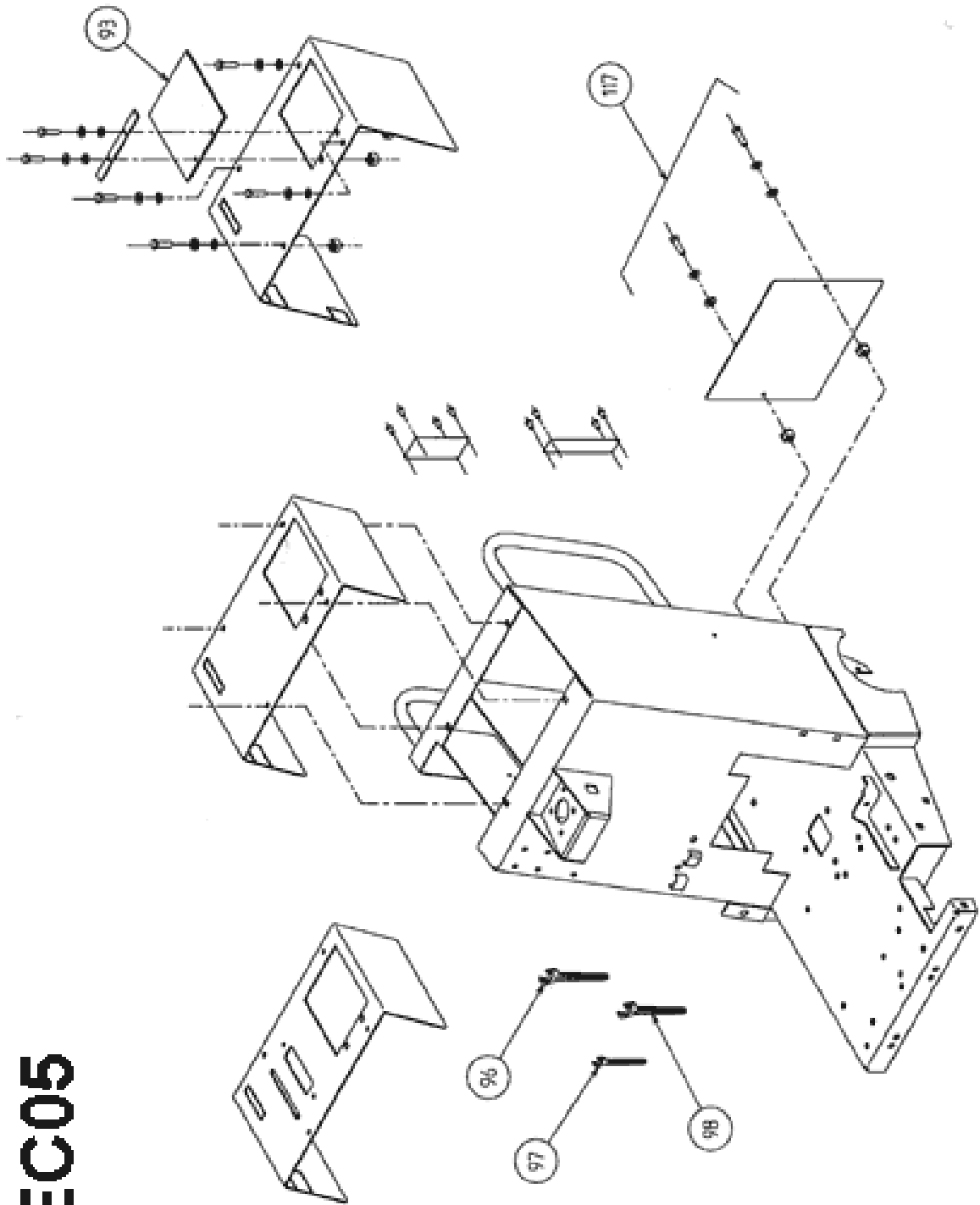




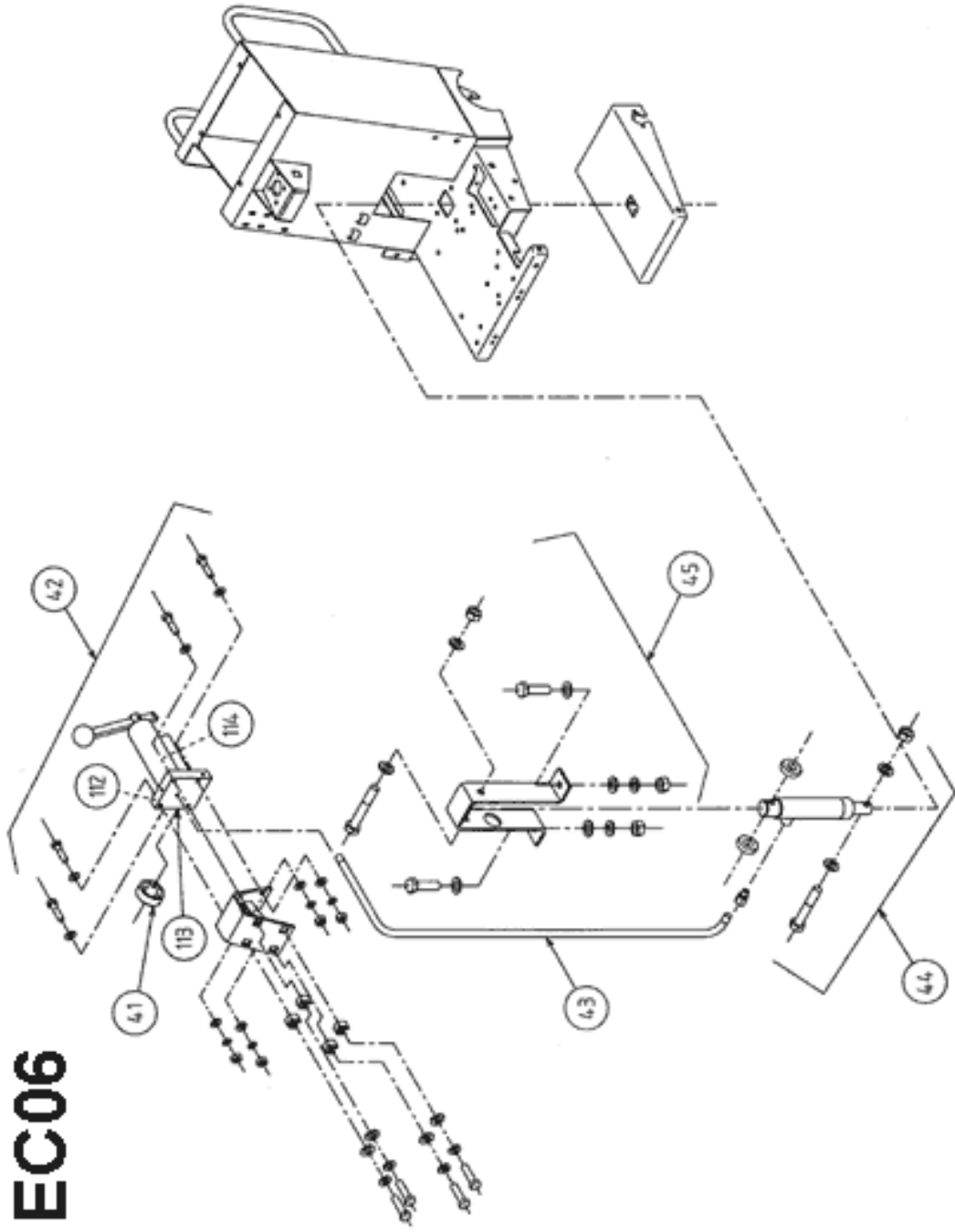
# EC04



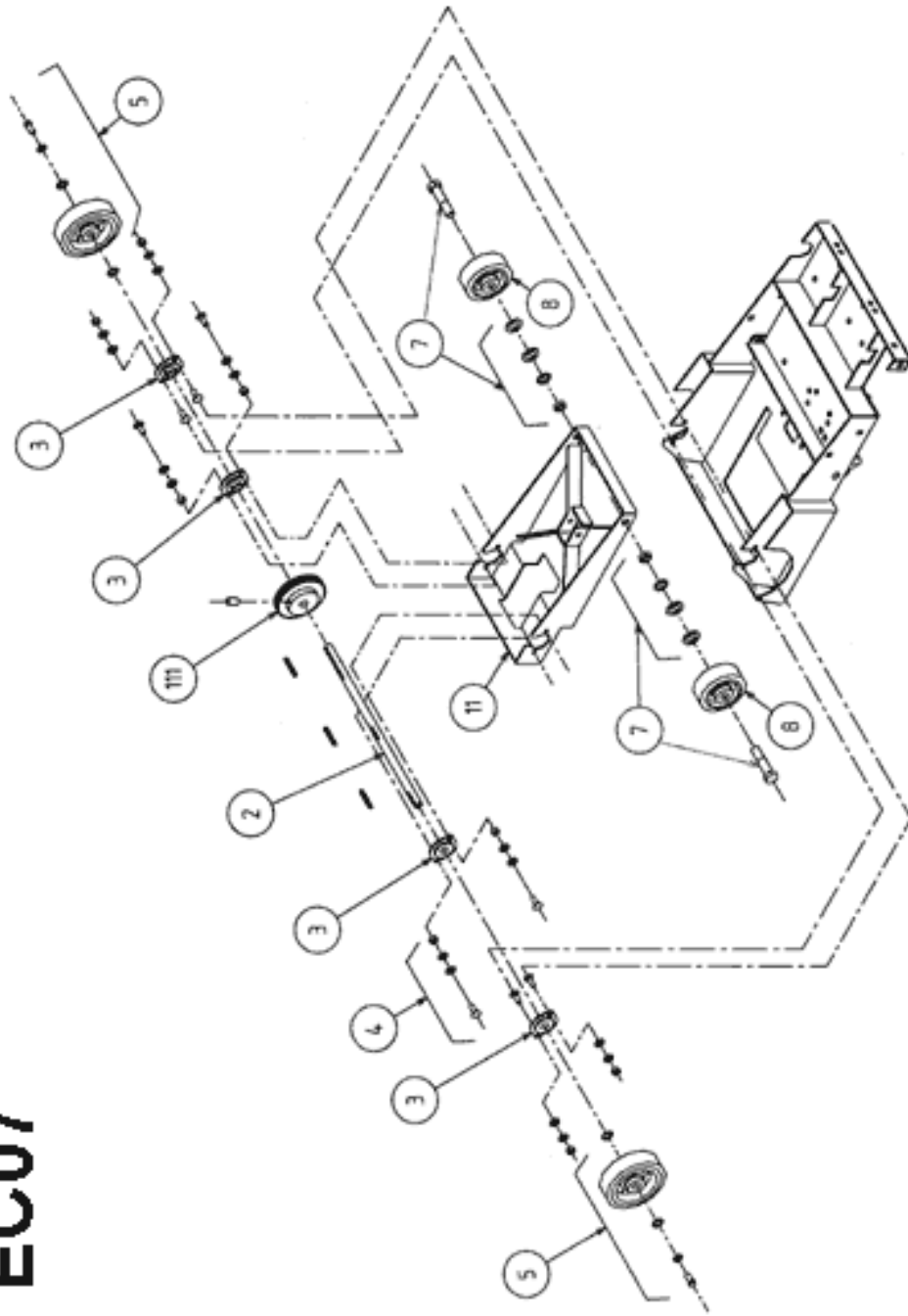
# EC05



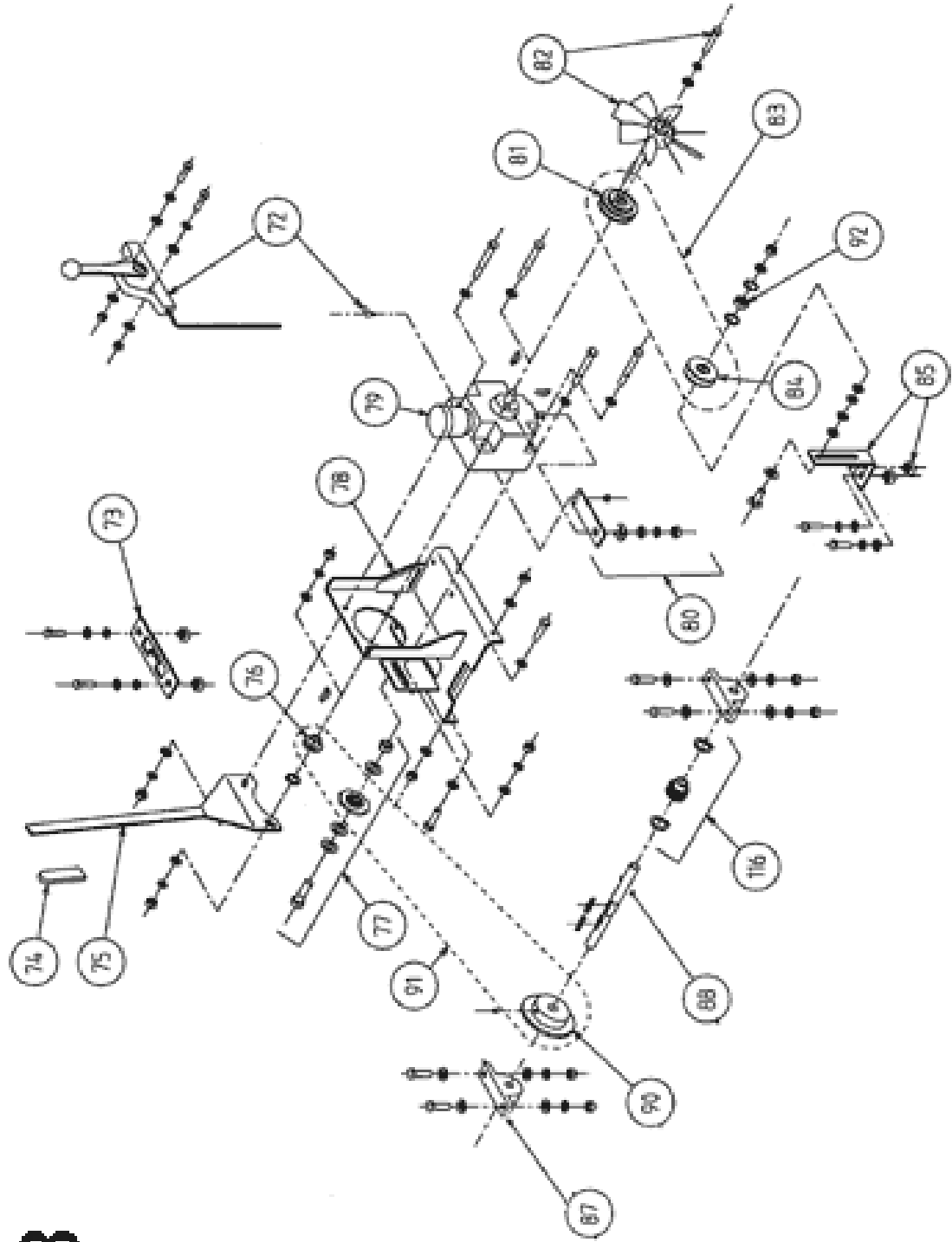
# EC06



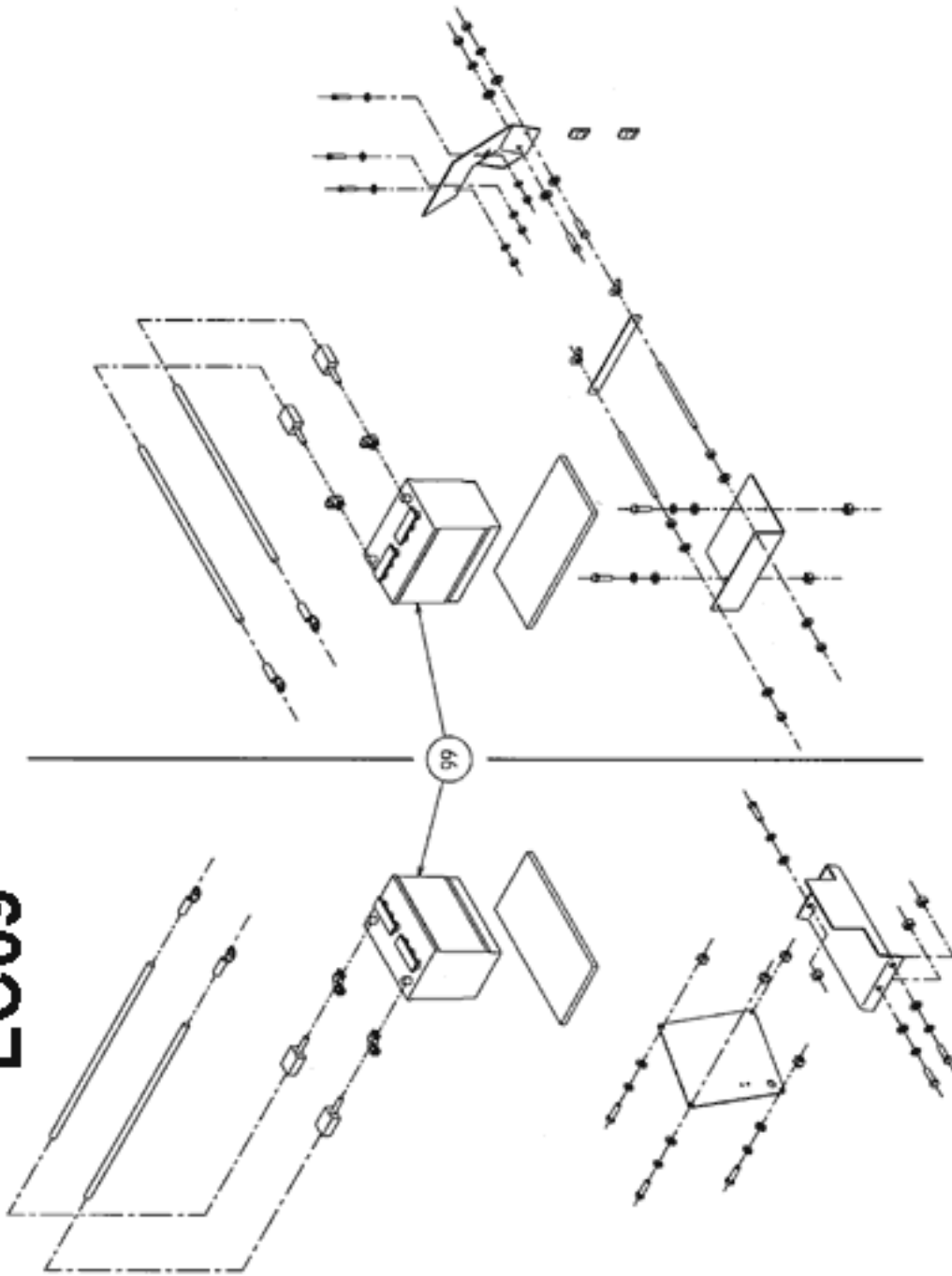
# EC07

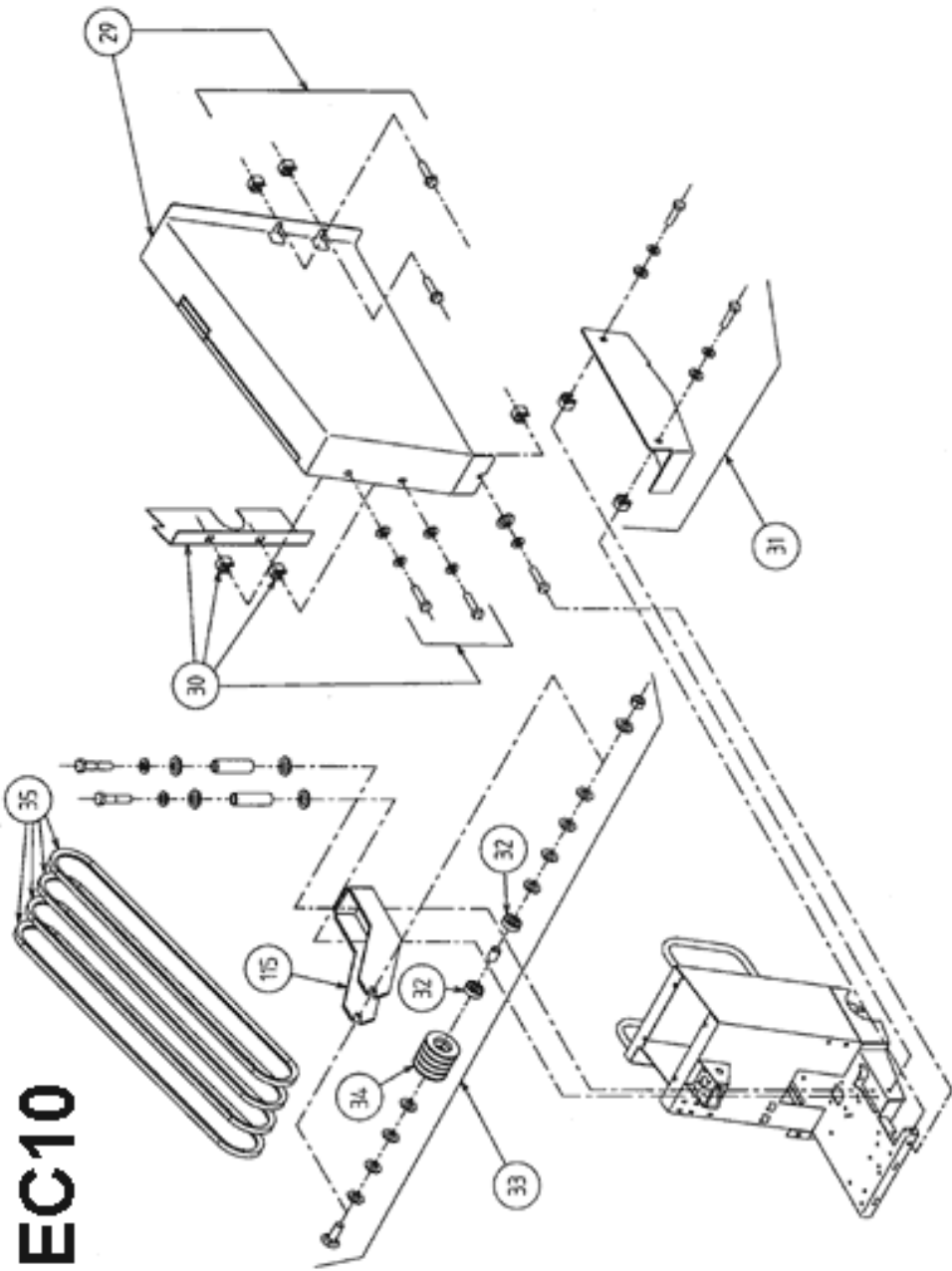


# EC08



# EC09





[www.construction.norton.eu](http://www.construction.norton.eu)

**Saint-Gobain Abrasives**

190, Bd. J. F. Kennedy  
L-4930 BASCHARAGE  
LUXEMBOURG

Tel: ++352 50401-1

Fax: ++352 501633

e-mail: [sales.nlx@saint-gobain.com](mailto:sales.nlx@saint-gobain.com)