



Expansion of Diplopterys at the Expense of Banisteriopsis (Malpighiaceae)

Citation

Anderson, William R. and Charles C. Davis. 2006. Expansion of Diplopterys at the expense of Banisteriopsis (Malpighiaceae). *Harvard Papers in Botany* 11(2): 1-16.

Published Version

[http://dx.doi.org/10.3100/1043-4534\(2006\)95\[1:EODATE\]2.0.CO;2](http://dx.doi.org/10.3100/1043-4534(2006)95[1:EODATE]2.0.CO;2)

Permanent link

<http://nrs.harvard.edu/urn-3:HUL.InstRepos:2710468>

Terms of Use

This article was downloaded from Harvard University's DASH repository, and is made available under the terms and conditions applicable to Other Posted Material, as set forth at <http://nrs.harvard.edu/urn-3:HUL.InstRepos:dash.current.terms-of-use#LAA>

Share Your Story

The Harvard community has made this article openly available. Please share how this access benefits you. [Submit a story](#).

[Accessibility](#)

EXPANSION OF *DIPLOPTERYIS* AT THE EXPENSE OF *BANISTERIOPSIS* (MALPIGHIACEAE)

WILLIAM R. ANDERSON¹ AND CHARLES C. DAVIS²

Abstract. Phylogenetic analyses of molecular and morphological data have shown the genus *Banisteriopsis* to be polyphyletic and the genus *Diplopterys* to be nested within *Banisteriopsis* subg. *Pleiopterys*, which is not in the clade that contains the type of the name *Banisteriopsis*. Therefore, it is necessary to take up the name *Diplopterys* for the small genus formerly called that plus subg. *Pleiopterys* of *Banisteriopsis*. A description of the amplified genus *Diplopterys* is provided, two new species are described (*D. bahiana* and *D. carvalhoi*), and the following new combinations in *Diplopterys* are proposed, with all combinations by W. R. Anderson and C. Cav. Davis: *D. amplectens*, *D. cachimbensis*, *D. caduciflora*, *D. cristata*, *D. erianthera*, *D. heterostyla*, *D. hypericifolia*, *D. kruckhoffii*, *D. leiocarpa*, *D. longialata*, *D. lucida*, *D. lutea*, *D. nigrescens*, *D. nutans*, *D. patula*, *D. peruviana*, *D. platyptera*, *D. populifolia*, *D. pubipetala*, *D. rondoniensis*, *D. schunkei*, *D. sepium*, *D. valvata*, *D. virgultosa*, and *D. woytkowskii*. Illustrations are provided for *D. bahiana*, *D. cabrerana*, *D. carvalhoi*, *D. pauciflora*, *D. pubipetala*, and *D. valvata*.

Keywords: *Banisteriopsis*, *Diplopterys*, Malpighiaceae.

Malpighiaceae are a largely Neotropical family of flowering plants, many of which produce wind-dispersed samaras. In most of the larger genera that produce samaras, some species “have had the principal wing(s) reduced or lost, often augmented by new supernumerary winglets or various kinds of aerenchyma or air-filled chambers” (Anderson, 2001: 85). One example of such reduction is *Diplopterys* A. Juss., which resembles species of *Banisteriopsis* C. B. Rob. in its flowers but produces a mericarp that lacks the dorsal wing of *Banisteriopsis*. Niedenzu (1928) muddied the waters by adding to *Diplopterys* three genera that are not closely related to it, *Jubelina* A. Juss., *Malpighiodes* Nied., and *Mezia* Nied. (Anderson, 1981, 1990, 2006). Gates (1982) clarified the situation by restricting *Diplopterys* to its type, *D. paralias* A. Juss. [*D. pauciflora* (G. Mey.) Nied.], plus three species that were unknown to Niedenzu. She recognized the close relationship of *Diplopterys* and *Banisteriopsis* but chose to maintain them as separate genera because of their strikingly different fruits.

Gates recognized three subgenera in *Banisteriopsis*: *Banisteriopsis*, *Hemiramma* (Griseb.) B. Gates, and *Pleiopterys* (Nied.) B. Gates. She identified the closest relatives of *Diplopterys* as species in *Banisteriopsis* subg. *Pleiopterys* sect. *Anisopterys* (Griseb.) B. Gates. Our recent phylogenetic analysis of Malpighiaceae from combined molecular and morphological data (C. Davis and W. Anderson, unpubl. data) has revealed that *Banisteriopsis* is not monophyletic, even if *Diplopterys* is included in *Banisteriopsis*. Although the proper disposition of subgenera *Banisteriopsis* and *Hemiramma* is not entirely clear, we know from the available data that *Diplopterys* is embedded in *Banisteriopsis* subg. *Pleiopterys* (Fig. 1) and that this clade is distinct from the one containing the lectotype of *Banisteriopsis*; the latter clade is more closely related to the gaudichaudioids (sensu Davis et al., 2001). Of the species included in our analyses, *D. cabrerana* (Cuatrec.) B. Gates is a strongly supported sister to *B. hypericifolia* (A. Juss.) W. R. Anderson & B. Gates, a species of subg. *Pleiopterys* sect. *Anisopterys*, and that

We thank Kenneth J. Wurdack for sequencing *Banisteriopsis cornifolia*, André Amorim (CEPEC) and Gert Hatschbach (MBM) for sending specimens to serve as the types for our new species, and Christiane Anderson and Kanchi Gandhi for contributing helpful comments on the manuscript. Karin Douthit drew the beautiful illustrations.

¹University of Michigan Herbarium, 3600 Varsity Drive, Ann Arbor, Michigan 48108-2287, U.S.A. E-mail: wra@umich.edu

²Department of Organismic and Evolutionary Biology, Harvard University Herbaria, 22 Divinity Avenue, Cambridge, Massachusetts 02138-2094, U.S.A. E-mail: cdavis@oeb.harvard.edu

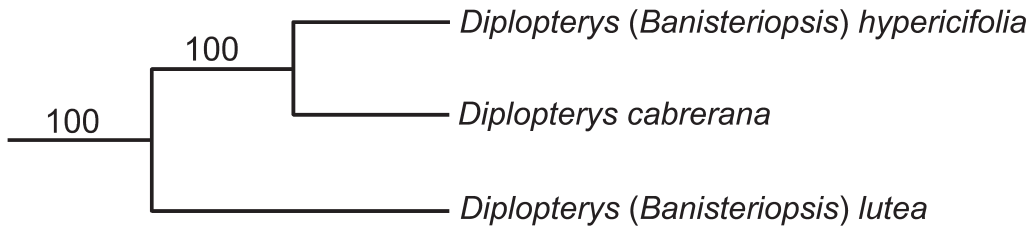


FIGURE 1. Phylogenetic tree for three species of Malpighiaceae, representing *Diplopterys* in the expanded sense adopted in this paper (*Diplopterys* plus *Banisteriopsis* subg. *Pleiopterys*). The parsimony tree shown here is extracted from a larger phylogenetic analysis of Malpighiaceae using combined DNA sequences from plastid *matK*, *ndhF*, and *rbcL*, nuclear *PHYC*, and morphology; all genes were sequenced for all taxa (C. Davis and W. Anderson, unpubl. data). Bootstrap values are given above branches. Vouchers for collections sequenced: *D. cabrerana*, Burnham 1774 (MICH); *D. hypericifolia*, Anderson 13638 (MICH); *D. lutea*, Fairchild Tropical Garden 60-85 (FTG).

pair is strongly supported as sister to *B. lutea* (Griseb.) Cuatrec., a species of subg. *Pleiopterys* sect. *Sciurostylis* (Skottsb.) B. Gates (Fig. 1). From these observations we can conclude that (1) Gates was correct in her assessment of the systematic position of *Diplopterys*; it does belong with the species she assigned to *Banisteriopsis* subg. *Pleiopterys*; (2) *Banisteriopsis* as she recognized it is polyphyletic and must be reconfigured, excluding the species of subg. *Pleiopterys* as well as *Diplopterys*. There are two generic names available for that group of species, *Diplopterys* and *Jubistylis* Rusby, with *Diplopterys* having priority. In this paper we provide a description of the amplified *Diplopterys*, transfer to *Diplopterys* all of the species assigned by Gates to *Banisteriopsis* subg. *Pleiopterys* except for one that we do not accept as distinct, and describe two new species of *Diplopterys*.

Gates (1982) pointed out in defense of *Diplopterys* that in addition to having fruits without dorsal wings, the species she assigned to the genus also differ from most species of *Banisteriopsis* in their lingulate, spreading bracts and bracteoles, although she readily admitted that identical bracts and bracteoles are found in two species of *Banisteriopsis* subg. *Pleiopterys* that have a samara with a well-developed dorsal wing, *B. krukoffii* B. Gates and *B. patula* B. Gates. One of her four species of *Diplopterys*, however, *D. mexicana* B. Gates, was (and still is) known only from its type, which bore no fruits. Given that *Diplopterys* is embedded in *Banisteriopsis* subg. *Pleiopterys*, it seems quite possible that when *D. mexicana* is

collected with fruits, they will prove to be samaras with a dorsal wing like those of *B. krukoffii* and *B. patula*, rather than reduced fruits like those of the three South American species of *Diplopterys* sensu stricto. Indeed, the disjunction of the Mexican endemic *D. mexicana* (the nearest species with lingulate bracts and bracteoles is in Amazonian Colombia) will be easier to understand if it bears a winged samara, which might have helped it achieve such a surprising range extension.

Because our taxonomy so closely mirrors that in the excellent monograph by Gates (1982), we are not providing a key to species here. Gates's key to flowering specimens will lead the user of that paper to *Diplopterys* or *Banisteriopsis* subg. *Pleiopterys*, and her key to fruiting specimens of *Banisteriopsis* will identify all the species treated here except those with reduced fruit wings, which are distinguished in her key to the species of *Diplopterys*. The only exceptions are our new species, *D. bahiana* W. R. Anderson & C. Cav. Davis, which comes out in Gates's key with *B. virgultosa* (A. Juss.) W. R. Anderson & B. Gates or *B. nigrescens* (A. Juss.) B. Gates, and *D. carvalhoi* W. R. Anderson & C. Cav. Davis, which will key in Gates's paper to *B. nutans* (Nied.) B. Gates or *B. peruviana* (Nied.) B. Gates. The distinguishing characteristics of these two new species are discussed below in their protologues. Our other departure from the taxonomy of Gates is to place one of her names, *B. parvifolia* (Nied.) B. Gates, in synonymy under *B. leiocarpa* (A. Juss.) B. Gates, which is treated here as a species of *Diplopterys*.

Diplopterys A. Juss. in Deless., *Icon. Sel. Pl.* 3: 20, pl. 33. 1838 [“1837”]. TYPE: *Diplopterys paralias* A. Juss. in Deless. [*Diplopterys pauciflora* (G. Mey.) Nied. in Engl.].

Synonyms: *Banisteria* sect. *Anisopterys* Griseb., *Linnaea* 13: 201. 1839. *Banisteriopsis* sect. *Anisopterys* (Griseb.) B. Gates, *Fl. Neotrop. Monogr.* 30: 176. 1982. TYPE: *Banisteria pubipetala* A. Juss. in A. St.-Hil. [*Diplopterys pubipetala* (A. Juss.) W. R. Anderson & C. Cav. Davis].

Banisteria subg. *Pleiopterys* Nied., *Banisteria* 2: 12. 1901. *Banisteriopsis* subg. *Pleiopterys* (Nied.) B. Gates, *Fl. Neotrop. Monogr.* 30: 164. 1982. LECTOTYPE, designated by Gates, 1982, p. 164: *Banisteria pubipetala* A. Juss. in A. St.-Hil. [*Diplopterys pubipetala* (A. Juss.) W. R. Anderson & C. Cav. Davis].

Banisteria subg. *Sciurostylis* Skottsbg., *Kongl. Svenska Vetenskapsakad. Handl.* 35(6): 15. 1901. *Banisteriopsis* sect. *Sciurostylis* (Skottsbg.) B. Gates, *Fl. Neotrop. Monogr.* 30: 164. 1982. TYPE: *Banisteria hassleriana* Chodat [*Diplopterys lutea* (Griseb.) W. R. Anderson & C. Cav. Davis].

Banisteria sect. *Actinoctenia* Nied., *Banisteria* 2: 12. 1901. LECTOTYPE, designated by Gates, 1982, p. 176: *Banisteria lucida* Rich. [*Diplopterys lucida* (Rich.) W. R. Anderson & C. Cav. Davis].

Banisteria subsect. *Anadenia* Nied., *Banisteria* 2: 22. 1901. LECTOTYPE, designated by Gates, 1982, p. 176: *Banisteria eglandulosa* A. Juss. [*Diplopterys patula* (B. Gates) W. R. Anderson & C. Cav. Davis].

Banisteria subsect. *Octadenia* Nied., *Banisteria* 2: 18. 1901. LECTOTYPE, designated by Gates, 1982, p. 176: *Banisteria pubipetala* A. Juss. in A. St.-Hil. [*Diplopterys pubipetala* (A. Juss.) W. R. Anderson & C. Cav. Davis].

Banisteria subsect. *Psilopetalum* Nied., *Banisteria* 2: 16. 1901. LECTOTYPE, designated by Gates, 1982, p. 164: *Banisteria nitrosiodora* Griseb. [*Diplopterys lutea* (Griseb.) W. R. Anderson & C. Cav. Davis].

Banisteria subsect. *Sericopetalum* Nied., *Banisteria* 2: 12. 1901. LECTOTYPE, designated by Gates, 1982, p. 176: *Banisteria lucida* Rich. [*Diplopterys lucida* (Rich.) W. R. Anderson & C. Cav. Davis].

Banisteria ser. *Cyrtanthele* Nied., *Banisteria* 2: 14. 1901. LECTOTYPE, designated by Gates, 1982, p. 176: *Banisteria lucida* Rich. [*Diplopterys lucida* (Rich.) W. R. Anderson & C. Cav. Davis].

Banisteria ser. *Orthanthele* Nied., *Banisteria* 2: 12. 1901. LECTOTYPE, designated by Gates, 1982, p. 176: *Banisteria hypericifolia* A. Juss. in A. St.-Hil. [*Diplopterys hypericifolia* (A. Juss.) W. R. Anderson & C. Cav. Davis].

Jubistylis Rusby, *Mem. New York Bot. Gard.* 7: 273. 1927. TYPE: *Jubistylis mollis* Rusby [*Diplopterys lutea* (Griseb.) W. R. Anderson & C. Cav. Davis].

The following description of *Diplopterys* sensu lato is based for the most part on the descriptions of *Diplopterys* sensu stricto and *Banisteriopsis* subg. *Pleiopterys* found in Gates (1982).

Woody vines or shrubs, when shrubby the branches often twining. Leaves opposite; petiole eglandular or bearing 2 (rarely 4) glands on distal half; lamina with glands (often minute) on or just within margin (on the abaxial surface in 1 species); stipules interpetiolar, distinct, small to minute. Inflorescence axillary or occasionally terminal, of 4- to 6-flowered umbels borne singly or in short racemes or cymes, or condensed axillary racemes of up to 8 pairs of flowers; bracts and bracteoles eglandular, persistent; pedicels sessile. Flowers bilaterally symmetrical in both corolla and androecium. Sepals all eglandular or the lateral 4 biglandular and the anterior eglandular, the glands when present mostly attached below free part of sepal. Petals yellow, glabrous or abaxially sparsely to densely sericeous, the posterior petal different in size, shape, and stance from the lateral 4. Stamens 10, all fertile, the connective with projecting convex cells or papillae. Gynoecium 3-carpellate, the carpels distinct in the ovary, 1 anterior and 2 posterior; styles 3, distinct, hairy at least at base or up to 2/3 of their length; stigmas terminal and capitate or occasionally truncate. Fruit dry, schizocarpic,

comprising 3 mericarps (or fewer by abortion) separating from a low pyramidal torus; nut of mericarp smooth-sided, rugose, ribbed, or bearing diverse winglets, and in most species bearing a well-developed dorsal wing thickened on the adaxial edge with the veins bending toward the thinner abaxial edge, usually bearing a triangular or rounded appendage on adaxial edge at base; dorsal wing reduced to a crest in 4 species; locule of mericarp glabrous within; carpophore present or absent. Chromosome number: $n = 10$ (in *D. hypericifolia* [Gates, 1982] and *D. valvata* [Anderson, 1993]).

Diplopterys in the expanded sense adopted here comprises 31 species of the Neotropics (one in Mexico, one in Costa Rica, two in Panama, one in Trinidad, and 30 in South America).

Diplopterys amplectens (B. Gates) W. R. Anderson & C. Cav. Davis, *comb. nov.*

Basionym: *Banisteriopsis amplectens* B. Gates, Fl. Neotrop. Monogr. 30: 189. 1982. TYPE: BRAZIL. Mato Grosso: Mun. Alto Araguaia, 22 Jul. 1974, G. Hatschbach 34693 (Holotype: MBM; Isotypes: MICH, Z).

Distribution: eastern and southern Brazil.

Diplopterys bahiana W. R. Anderson & C. Cav. Davis, *sp. nov.* TYPE: BRAZIL. Bahia: Mun. Macaúbas, Rodovia Macaúbas a Bom Jesus da Lapa, entre o alto da Serra Poções e a Lagoa do Maurício [ca. 13°S, 42°50'W]; caatinga; 15 Jun. 2004 (fl/fr), G. Hatschbach, M. Hatschbach & O. S. Ribas 77886 (Holotype: MBM; Isotype: MICH). Fig. 2.

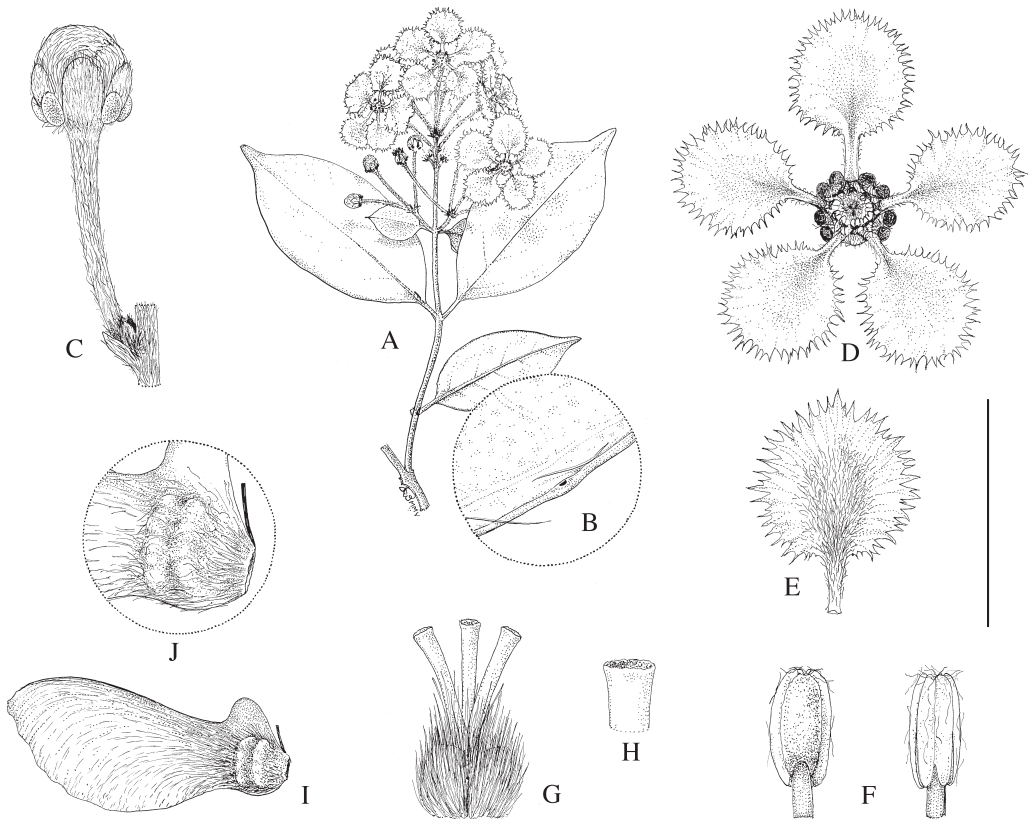


FIGURE 2. *Diplopterys bahiana*. A, flowering branch; B, enlargement of abaxial leaf surface to show minute marginal gland; C, flower bud; D, flower, posterior petal uppermost; E, lateral petal, abaxial view; F, anthers, abaxial view (left) and adaxial view (right); G, gynoecium; H, apex of style; I, samara (most hairs removed from nut); J, enlargement of nut of samara. Scale bar = 6 cm (A); 2 mm (B, H); 1 cm (C, J); 2 cm (D, I); 1.5 cm (E); 4 mm (F, G). Drawn from Hatschbach et al. 77886 (MICH).

Liana lignosa, caulibus sericeis vel demum glabrescentibus; lamina foliorum majorum 3.7–6.3 cm longa, 2.0–2.8 cm lata; petiolus 3–4 mm longus, aureo-sericeus vel demum glabrescens; axis inflorescentiae sericeus; flores in umbella 4-flora portati; pedicelli 19–22 mm longi, sericei; petala lutea, abaxialiter dense sericea, margine lacerata; antherae sparsim tomentosae; styli ca. 2 mm longi, subaequales; samara 21–24 mm longa, ala dorsali 16–20 mm longa, 9–12 mm lata, basi appendice 1.5–3.0 mm alta instructa, nuce in quoque latere 2 cristis crassis ala dorsali parallelis instructa.

Woody vine; stems initially loosely sericeous, glabrescent (in second year?) and developing lenticels. Lamina of larger leaves 3.7–6.3 cm long, 2.0–2.8 cm wide, elliptical, cuneate at base, acuminate at apex, flat or slightly falcate, glabrescent at maturity with the abaxial midrib thinly sericeous and with scattered straight appressed hairs on abaxial surface, especially at base, several minute glands impressed in margin, the principal lateral veins 7–9 on each side; petiole 3–4 mm long, golden-sericeous or eventually glabrescent, eglandular; stipules 0.3–0.5 mm long, triangular, borne on stem beside petioles, persistent or deciduous. Inflorescences axillary or terminal, an umbel of 4 flowers raised on a sericeous stalk 3–6 mm long, occasionally (?) with an additional pair of flowers borne slightly below the terminal umbel; bracts and bracteoles ca. 1 mm long and wide, ovate, appressed, abaxially sericeous, adaxially glabrous, eglandular, persistent; pedicel sessile, 19–22 mm long, sericeous with the hairs whitish. Sepals 1.0–1.5 mm long beyond glands, 1.5–1.7 mm wide, rounded, abaxially densely sericeous, adaxially glabrous, appressed in anthesis, the lateral 4 biglandular with the glands 1.5–2.0 mm long and 1.0–1.3 mm wide, the glands attached mostly below free part of sepal, the anterior sepal eglandular; petals yellow, abaxially densely but loosely sericeous on claw and limb (especially proximally and on margin), adaxially glabrous, deeply lacerate; lateral petals with limb 8.0–9.5 mm long, 8.5–10.0 mm wide, orbicular, the claw 3 mm long; posterior petal similar to lateral petals but with a thicker claw (not constricted at apex) and often a somewhat smaller limb, more deeply and finely divided on margin; filaments glabrous, distinct or connate at base, \pm straight, 1.5–2.5 mm long, shortest

opposite anterior-lateral petals; anthers sparsely tomentose distally on locules, 1.3–1.8 mm long, those opposite sepals longer and with apically more swollen connectives than those opposite petals, the connectives not exceeding locules; ovary ca. 1.5 mm high, densely dark-brown-sericeous; styles subequal, ca. 2 mm long, erect and straight, sericeous proximally with straight erect hairs and distally glabrous, the stigmas capitate or truncate. Samara (slightly immature?) densely sericeous, especially on nut, 21–24 mm long; dorsal wing 16–20 mm long, 9–12 mm wide, bearing at adaxial base a rounded-triangular appendage 3–4 mm long, 1.5–3.0 mm high; nut 3–4 \times 2–3 mm, bearing on both sides 2 thick dissected ridges parallel to each other and to base of dorsal wing; carpophore rudimentary, ca. 0.7 mm long and 0.3 mm wide.

Phenology: the only known collection was found with flowers and fruits in June.

Ecology and Distribution: known from open dry vegetation in central Bahia, Brazil.

This species is named for the Brazilian state of Bahia, source of the type. In the key by Gates (1982) it comes out to *Banisteriopsis virgultosa* (A. Juss.) W. R. Anderson & B. Gates [*Diplopterys virgultosa* (A. Juss.) W. R. Anderson & C. Cav. Davis] or *B. nigrescens* (A. Juss.) B. Gates [*D. nigrescens* (A. Juss.) W. R. Anderson & C. Cav. Davis]. The samara of *D. virgultosa* is similar in size to that here, but its nut is smooth-sided and the leaf has a very short petiole and an orbicular lamina that is cordate at the base. In *D. nigrescens* the ridges on the nut of the samara radiate from the areole, rather than lying parallel to the dorsal wing as in this species, and its petals are only sparsely sericeous. In flower *D. bahiana* resembles *D. pubipetala* (A. Juss.) W. R. Anderson & C. Cav. Davis, which is common in Bahia, but the samara of that species bears several well-developed winglets on the sides of the nut, very different from the thick ridges found in *D. bahiana*.

A possible second collection of *Diplopterys bahiana* is Lewis *et al.* SPF 37240 (MICH), from Rio de Contas, in the same region of Bahia as that where the type was collected. We are not treating it as a paratype because it differs in some respects from the type of *D. bahiana*. In 1980, Gates identified this collection as *Banisteriopsis nigrescens*, but it does not fit her description of *B. nigrescens*. Its very immature

fruits seem to have lateral crests similar to those of *D. bahiana*. A decision as to the identity of the collection by Lewis et al. will have to await the availability of more and better collections.

Diplopterys cabrerana (Cuatrec.) B. Gates, *Brittonia* 31: 109. 1979.

Basionym: *Banisteriopsis cabrerana* Cuatrec., *Webbia* 13: 493. 1958. TYPE: COLOMBIA. Vaupés: Río Piraparaná, 9 Sep. 1952, R. E. Schultes & I. Cabrera 17297 (Holotype: US). Fig. 3.

Distribution: Amazonian South America.

Diplopterys cachimbensis (B. Gates) W. R. Anderson & C. Cav. Davis, *comb. nov.*

Basionym: *Banisteriopsis cachimbensis* B. Gates, *Fl. Neotrop. Monogr.* 30: 185. 1982. TYPE: BRAZIL. Pará: Serra do Cachimbo, 21 Feb. 1977, J. Kirkbride & E. Lleras 2957 (Holotype: INPA; Isotype: MICH).

Distribution: central and southern Brazil.

Diplopterys caduciflora (Nied.) W. R. Anderson & C. Cav. Davis, *comb. nov.*

Basionym: *Banisteria caduciflora* Nied., *Banisteria* 2: 22. 1901. *Banisteriopsis caduciflora* (Nied.) B. Gates, *Fl. Neotrop. Monogr.* 30: 198. 1982. TYPE: PERU. Loreto: Maynas, Yurimaguas, E. F. Poeppig 2474 (Holotype: B†; Isotypes: F, W).

Distribution: western Amazonian South America.

Diplopterys carvalhoi W. R. Anderson & C. Cav. Davis, *sp. nov.* TYPE: BRAZIL. Bahia: Mun. Ilhéus, Fazenda Sultão, ramal que liga Rod. BR 415 (Ilhéus/Itabuna) ao povoado Japu, desvio a esquerda, a 2 km da entrada, mata estragada, 17 Feb. 1982 (fr), L. A. M. Silva, A. M. V. de Carvalho & T. S. dos Santos 1561 (Holotype: CEPEC; Isotypes: MBM, MICH). Fig. 4.

Liana lignosa, caulibus mox glabratis; lamina foliorum majorum 7–12 cm longa, 3.0–7.5 cm lata, mox glabrata; petiolus 11–23 mm longus, glaber; axis inflorescentiae sparsissime sericeus vel glabratus; flores in umbella 4(–5)-flora portati; pedicelli 20–35 mm longi, sparsissime sericei vel glabrati; calycis glandulae 4.3–4.5 mm longae, 1.5–2.5 mm latae; petala

lutea, abaxialiter dense sericea; antherae tomentosae; styli 3.0–3.5 mm longi, aequales vel subaequales; samara 83–108 mm longa, ala dorsali 70–95 mm longa, 26–34 mm lata, basi appendice 8–10 mm alta instructa, nuce in quoque latere 8–12 alulis 3–6 mm latis e areola ventrali radiantibus instructa.

Woody liana; stems smooth, shining, apparently glabrous but actually very sparsely sericeous with scattered straight appressed hairs 0.2–0.3 mm long, soon nearly or quite glabrate. Lamina of larger leaves 7–12 cm long, 3.0–7.5 cm wide, elliptical or somewhat obovate, cuneate to rounded at base, abruptly acuminate at apex, falcate, glabrous at maturity or bearing a few minute appressed hairs on abaxial midrib, with many tiny glands impressed in margin and evenly distributed between base and apex, the principal lateral veins 4–6 on each side; petiole 11–23 mm long, glabrous, eglandular; stipules 0.3–0.5 mm long, triangular, borne on stem between petioles, mostly soon deciduous and leaving a scar. Inflorescences axillary or terminal, unbranched or ternate, terminating in an umbel of 4(–5) flowers subtended by a proximal pair of flowers up to 6 mm below, the axis very sparsely sericeous to glabrate; bracts 1.0–1.6 mm long and wide, triangular or ovate, appressed, abaxially sparsely sericeous, adaxially glabrous, eglandular, persistent; bracteoles like bracts but mostly smaller; pedicel sessile, 20–35 mm long, very sparsely sericeous with the scattered hairs like those on stem, to glabrate. Sepals 0.5–1.0 mm long beyond glands, 1.5–2.0 mm wide, broadly rounded, appressed in anthesis, abaxially thinly sericeous, adaxially glabrous, the lateral 4 biglandular with the crowded glands 4.3–4.5 mm long and 1.5–2.5 mm wide, the anterior eglandular but mostly hidden by glands on adjacent sepals, the glands 1/3–1/2 attached to free part of sepal and 1/2 or more decurrent onto receptacle; petals yellow, abaxially densely appressed-sericeous on limb and claw, adaxially glabrous, the lateral 4 strongly reflexed in anthesis, the posterior with the claw erect and the limb reflexed; anterior-lateral petals with limb 9–11 mm long, 8–11 mm wide, erose on margin, the claw 2.5–3.0 mm long; posterior-lateral petals with limb smaller, 8 mm long, 7–8 mm wide, short-fimbriate, the claw 2.0–2.5 mm long; posterior petal with limb 7.5–8.0 mm long, 6.5–7.5 mm wide, short-fimbriate with some proximal fimbriae glandular-thickened,

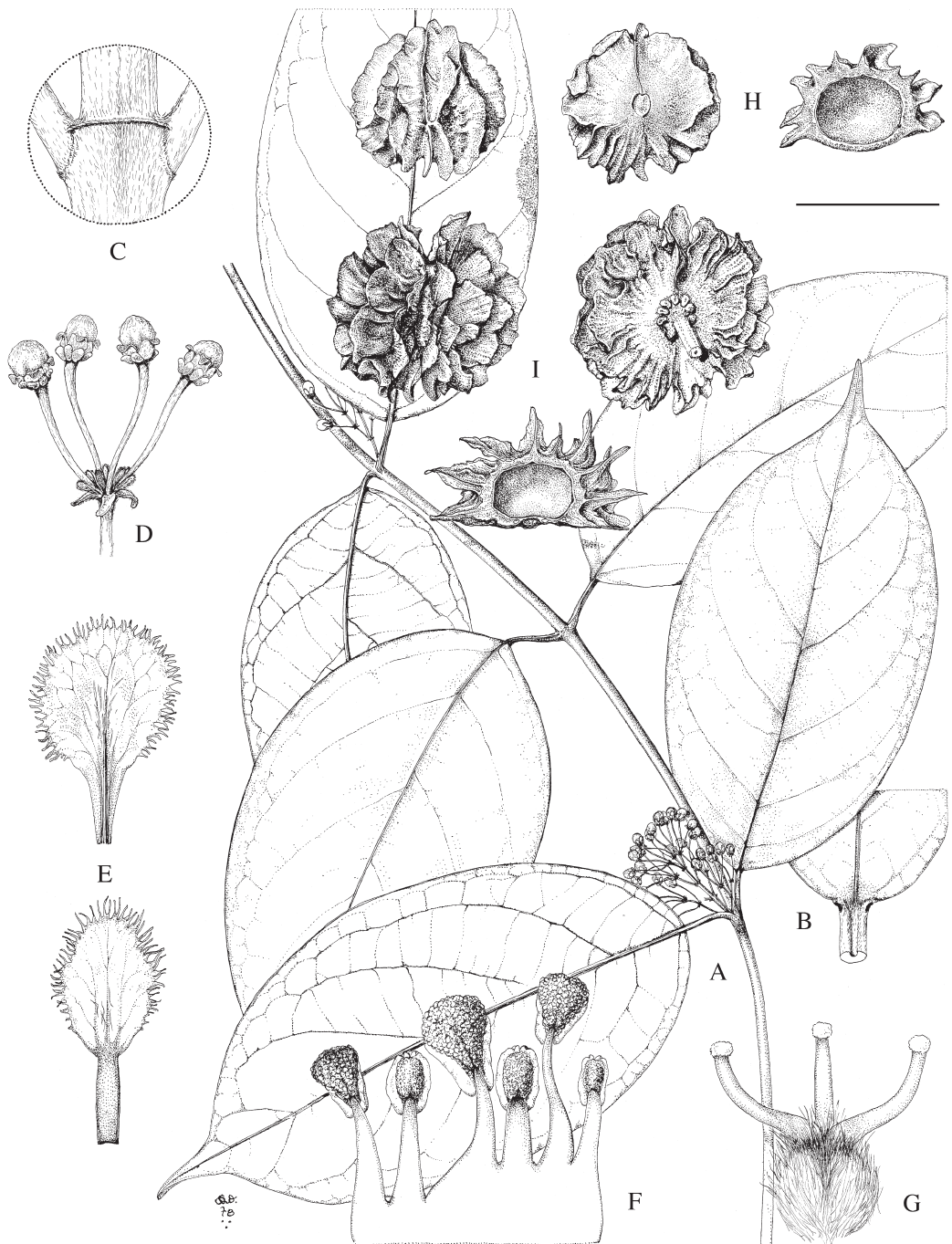


FIGURE 3. *Diplopterys cabrerana*. A, flowering branch; B, leaf base with marginal glands, adaxial view; C, node to show interpetiolar stipular ridge; D, umbel of four flower buds; E, petals, posterior-lateral (above) and posterior (below), abaxial view; F, part of androecium laid out, abaxial view, the stamen to right opposite posterior petal; G, gynoecium, anterior style in center; H, mericarp with short wings, abaxial view (left), adaxial view (center), cross section (right); I, mericarp with longer wings, abaxial view (left), adaxial view (right), cross section (below). Scale bar = 4 cm (A); 1.3 cm (B); 4 mm (C); 1 cm (D); 5 mm (E); 2 mm (F, G); 2 cm (H, I). A, B, and D–G drawn from *Schultes & Cabrera 17297* (US); C from *Burnham 1900* (MICH); H from *Krukoff 8971* (MICH); and I from *Williams 14965* (US). Modified from a drawing first published in *Mem. New York Bot. Gard.* 32: 166. 1981.

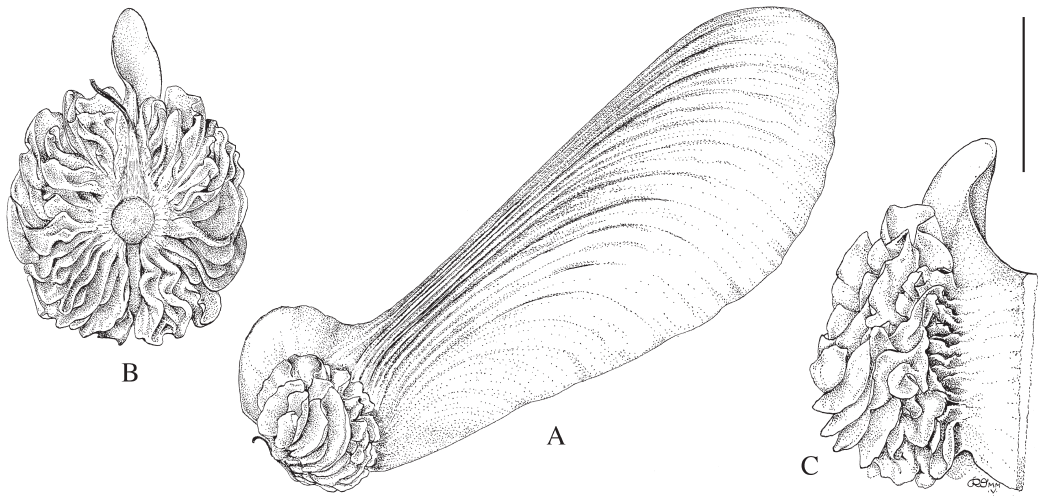


FIGURE 4. *Diplopterys carvalhoi*. A, samara; B, nut of samara from below, with ventral areole in center and carpophore below areole; C, nut of samara from above, looking down dorsal wing. Scale bar = 2 cm (A); 1.3 cm (B, C). Drawn from *Carvalho et al. 4118* (MICH).

the claw 3.5 mm long, not constricted at apex; filaments glabrous, connate at base, \pm straight, 2–3 mm long, longest opposite anterior sepal, shortest opposite anterior-lateral and posterior petals; anthers tomentose on locules, 1.5–2.2 mm long, longer opposite sepals than opposite petals, smallest opposite posterior petal, the connective glandular-swollen and, opposite sepals, \pm exceeding locules; ovary 1.3 mm high, short-sericeous, all 3 locules fertile; styles equal or subequal, 3.0–3.5 mm long, erect or curved toward posterior petal, sericeous at base with long straight erect hairs and distally glabrous, the stigmas capitate. Samara very sparsely sericeous like stem, to glabrate, 83–108 mm long; dorsal wing 70–95 mm long, 26–34 mm wide, bearing at adaxial base a rounded appendage 14–20 mm long, 8–10 mm high; nut 12–20 \times 10–15 mm, bearing on both sides 8–12 winglets 3–6 mm wide, radiating from ventral areole and distally interconnected to form a ruffled complex; carpophore 1.0–1.5 mm long and ca. 0.4 mm wide.

Phenology: collected once with flowers in December, and twice with fruits in February.

Ecology and Distribution: known only from wet forest near the Atlantic coast of southern Bahia, Brazil.

Paratypes. BRAZIL. Bahia: Mun. Itacaré, estrada Itacaré-Taboquinhas, 6 km SW de

Itacaré, loteamento da Marambaia, mata higrófila sul baiana, Dec. (fl), *Amorim et al. 915* (MICH), Feb. (fr), *Carvalho et al. 4118* (MICH).

We are happy to name this species in honor of André Maurício Vieira de Carvalho (1951–2002), a fine botanist who made a splendid contribution to our knowledge of the flora of Bahia.

Diplopterys carvalhoi is evidently close to *D. nutans* and *D. peruviana*, which were treated as part of the *Banisteriopsis lucida* group by Gates (1982). The most dramatic distinguishing character of *D. carvalhoi* is the enormous samara, its dorsal wing much longer and wider than that of any other species of *Diplopterys* (indeed, this is probably the largest banisterioid samara known). The many large winglets radiating from the areole also set it apart, as does the large appendage at the base of the dorsal wing. The species is also distinguished from its close congeners by its long petioles, pedicels, and calyx glands, and by being glabrate or nearly so on the stem, inflorescence axis, and pedicels. Gates described the claw of the posterior petal in *D. lucida* as constricted at the apex, which does not seem to be the case in the only flowering material of *D. carvalhoi* available to us. *Diplopterys peruviana* is known from a single collection made in Peru, whereas *D. nutans*

is known from several collections made in Panama, Venezuela, Peru, and Bolivia (Gates, 1982).

The fruit of this species is especially interesting in the context of a comparison of *Banisteriopsis* and *Diplopterys*. Gates (1982: 209) maintained that the complex of interconnected winglets found in *Diplopterys* sensu stricto is not found in *Banisteriopsis*, but just such interconnections are present in the fruit of *D. carvalhoi*, a species that Gates surely would have included in *Banisteriopsis*. Indeed, comparison of our Figs. 3 and 4 will show how similar are the mericarps of *D. cabrerana* and *D. carvalhoi* when the dorsal wing of the latter is excluded from consideration. Because *D. carvalhoi* does not have the lingulate spreading bracts and bracteoles found in *Diplopterys* sensu stricto, we are not suggesting that it be considered a close sister to those species, but its fruit certainly serves as a good model for what was probably found in the ancestor of *Diplopterys* sensu stricto before the loss of the dorsal wing.

Diplopterys cristata (Griseb.) W. R. Anderson & C. Cav. Davis, *comb. nov.*

Basionym: *Banisteria cristata* Griseb., *Linnaea* 22: 16. 1849. *Banisteriopsis cristata* (Griseb.) Cuatrec., *Ciencia (México)* 23: 141. 1964. TYPE: GUYANA [British Guiana]. [Pirara], *M. Richard Schomburgk 594* (Holotype: GOET; Isotype: K).

Synonym: *Banisteria orbicularis* Nied., *Repert. Spec. Nov. Regni Veg.* 33: 69. 1933. TYPE: VENEZUELA. Anzoátegui: Soledad, 21 Nov. 1929, *E. G. Holt & W. Gehriger 155* (Holotype: B†; Isotypes: G, NY, US).

Distribution: Venezuela, Guyana, Suriname.

Diplopterys cururuënsis B. Gates, *Fl. Neotrop. Monogr.* 30: 215. 1982. TYPE: BRAZIL. Pará: Alto Tapajós, Rio Cururú, 12 Feb. 1974, *W. R. Anderson 10803* (Holotype: IAN; Isotypes: MICH, NY).

Distribution: Bolivia and Pará, Brazil.

Diplopterys erianthera (A. Juss.) W. R. Anderson & C. Cav. Davis, *comb. nov.*

Basionym: *Banisteria erianthera* A. Juss., *Ann. Sci. Nat. Bot.*, sér. 2, 13: 284. 1840. *Banisteriopsis erianthera* (A. Juss.) B.

Gates, *Fl. Neotrop. Monogr.* 30: 197. 1982. TYPE: BRAZIL. Amazonas: Rio Japurá, *C. F. P. Martius s.n.* (Holotype: M; Isotype: M).

Synonym: *Banisteria platyptera* f. *grandifolia* Nied., *Malp. Amer.* 2: 21. 1912. TYPE: PERU. Loreto: *E. H. G. Ule 6705* (Holotype: B†; Isotypes: G, L, MG).

Distribution: western Amazonian South America.

Diplopterys heterostyla (A. Juss.) W. R. Anderson & C. Cav. Davis, *comb. nov.*

Basionym: *Banisteria heterostyla* A. Juss., *Ann. Sci. Nat. Bot.*, sér. 2, 13: 283. 1840. *Banisteriopsis heterostyla* (A. Juss.) Cuatrec., *Webbia* 13: 491. 1958. TYPE: COLOMBIA. Magdalena: Santa Marta, *C. G. Bertero 2201* (Holotype: P-JU; Isotypes: G-DC, M, NY, P).

Synonym: *Banisteria jasminellum* A. Juss., *Ann. Sci. Nat. Bot.*, sér. 2, 13: 283. 1840. TYPE: COLOMBIA. Bolívar: Cartagena, *Watts s.n.* (Holotype: K; Isotype: P).

Distribution: Northern Colombia.

Diplopterys hypericifolia (A. Juss.) W. R. Anderson & C. Cav. Davis, *comb. nov.*

Basionym: *Banisteria hypericifolia* A. Juss. in *A. St.-Hil., Fl. Bras. Merid.* 3: 42. 1833 ["1832"]. *Banisteriopsis hypericifolia* (A. Juss.) W. R. Anderson & B. Gates, *Contr. Univ. Michigan Herb.* 11: 54. 1975. TYPE: BRAZIL. Minas Gerais: Sobrado, *A. St.-Hilaire Catal. B¹ 1691* (Holotype: P; Isotypes: F, P).

Synonym: *Banisteria rigida* A. Juss., *Ann. Sci. Nat. Bot.*, sér. 2, 13: 284. 1840. TYPE: BRAZIL. Minas Gerais: Tijuco, *Vauthier 448* (Holotype: P-JU; Isotypes: F, G, P).

Distribution: eastern Brazil.

Diplopterys krukoffii (B. Gates) W. R. Anderson & C. Cav. Davis, *comb. nov.*

Basionym: *Banisteriopsis krukoffii* B. Gates, *Fl. Neotrop. Monogr.* 30: 200. 1982. TYPE: BRAZIL. Amazonas: Mun. Humaitá, 23 Oct. 1934, *B. A. Krukoff 6791* (Holotype: RB; Isotypes: A, BR, F, G, MICH, MO, NY, S, U, US).

Distribution: Amazonian Brazil and Venezuela.

Diplopterys leiocarpa (A. Juss.) W. R. Anderson & C. Cav. Davis, *comb. nov.*

Basionym: *Banisteria leiocarpa* A. Juss., Arch. Mus. Hist. Nat. 3: 395. 1843. *Banisteriopsis leiocarpa* (A. Juss.) B. Gates, Fl. Neotrop. Monogr. 30: 172. 1982. TYPE: PERU. Amazonas: Chachapoyas, A. Mathews 2126 (Holotype: P; Isotypes: BM, BR, G, K).

Synonym: *Banisteria leiocarpa* var. *parvifolia* Nied. in Engl., Pflanzenz. IV, 141 [Heft 93]: 451. 1928. *Banisteriopsis parvifolia* (Nied.) B. Gates, Fl. Neotrop. Monogr. 30: 174. 1982. TYPE: PERU. Piura: Río Huancabamba, Apr. 1912, A. Weberbauer 6063 (Lectotype, designated by Gates, 1982, p. 175: NY; Isolectotypes: F, GH, US).

Distribution: Amazonian Peru.

Diplopterys longialata (Nied.) W. R. Anderson & C. Cav. Davis, *comb. nov.*

Basionym: *Banisteria longialata* Nied., *Banisteria* 2: 19. 1901. *Banisteriopsis longialata* (Nied.) B. Gates, Fl. Neotrop. Monogr. 30: 195. 1982. TYPE: PERU. Huánuco: Ponuzo, 1784, H. Ruiz *s.n.* (Holotype: B†; Isotypes: F, G).

Synonyms: *Banisteria rusbyana* Nied., *Banisteria* 2: 19. 1901. *Banisteriopsis rusbyana* (Nied.) C. V. Morton, J. Wash. Acad. Sci. 21: 487. 1931. TYPE: BOLIVIA. Beni River, 1 Jul. 1886, H. H. Rusby 2171 (Holotype: B†, fragment NY; Isotypes: F, GH, MICH, MO, NY, US).

Banisteria bopiana Rusby, Mem. New York Bot. Gard. 7: 275. 1927. *Heteropterys bopiana* (Rusby) Nied. in Engl., Pflanzenz. IV, 141 [Heft 93]: 377. 1928. TYPE: BOLIVIA. Bopi River Valley, 12 Sep. 1921, H. H. Rusby 663 (Holotype: NY; Isotype: MICH).

Distribution: Amazonian Colombia, Peru, and Bolivia.

Diplopterys lucida (Rich.) W. R. Anderson & C. Cav. Davis, *comb. nov.*

Basionym: *Banisteria lucida* Rich., Actes Soc. Hist. Nat. Paris 1: 109. 1792. *Banisteriopsis lucida* (Rich.) Small, N. Amer. Fl. 25: 133. 1910. TYPE: FRENCH

GUIANA. J. B. Leblond *s.n.* (Holotype: G; Isotypes: P, P-LAM).

Synonyms: *Heteropterys appendiculata* DC., Prodr. 1: 592. 1824. *Banisteria appendiculata* (DC.) A. Juss., Ann. Sci. Nat. Bot., sér. 2, 13: 284. 1840. TYPE: ST. VINCENT. Cultivated?, without collector or number (Holotype: G-DC; Isotype: P-JU 11597).

Banisteria lobulata E. Mey., Nova Acta Phys.-Med. Acad. Caes. Leop.-Carol. Nat. Cur. 12: 813. 1825. TYPE: SURINAME. E. Meyer *s.n.* (Holotype: B†).

Banisteria divaricata A. Juss., Ann. Sci. Nat. Bot., sér. 2, 13: 284. 1840. TYPE: FRENCH GUIANA. L. C. M. Richard *s.n.* (Holotype: P; Isotype: P).

Banisteria calocarpa Miq., Linnaea 18: 53. 1844. TYPE: SURINAME. H. C. Focke 329 (Holotype: U).

Banisteria polita Miq., Stirp. Surinam. Select. 80. 1851. TYPE: SURINAME. A. Kappler 1900 (Holotype: U; Isotype: P).

Diplopterys marshalliana L. Riley, Bull. Misc. Inform. [Kew] 1925: 135. 1925. TYPE: TRINIDAD. Arena Reserve, 28 May 1924, L. A. M. Riley 94 (Holotype: K; Isotypes: BM, NY).

Distribution: Trinidad and South America south to Bolivia and southern Brazil.

Diplopterys lutea (Griseb.) W. R. Anderson & C. Cav. Davis, *comb. nov.*

Basionym: *Banisteria lutea* Griseb., Linnaea 22: 15. 1849. *Banisteriopsis lutea* (Griseb.) Cuatrec., Ciencia (México) 23: 141. 1964. TYPE: PERU. Andes, H. Ruiz *s.n.* (Isotypes: F, G).

Synonyms: *Banisteria praecox* Griseb., Vidensk. Meddel. Dansk. Naturhist. Foren. Kjøbenhavn 1875: 133. 1876. TYPE: BRAZIL. Minas Gerais: Lagoa Santa, E. Warming [31] (Lectotype, designated by Gates, 1982, p. 168: C).

Banisteria nitrosiodora Griseb., Abh. Königl. Ges. Wiss. Göttingen 24: 65. 1879. *Banisteriopsis nitrosiodora* (Griseb.) O'Donnell & Lourteig, Lilloa 9: 260. 1943. TYPE: ARGENTINA. Salta:

Orán, Sep. 1876, *E. G. Lorentz* & *G. Hieronymus* 486 (Holotype: GOET; Isotypes: CORD, G, GOET, NY).

Banisteria hassleriana Chodat, Bull. Herb. Boissier 6, app. 1: 16. 1898. TYPE: PARAGUAY. Central: near Ypacaray, *E. Hassler* 812 (Lectotype, designated by Gates, 1982, p. 168; G; Isolectotypes: G, MICH, NY).

Banisteria hispida Nied., Malp. Amer. 2: 21. 1912. TYPE: PARAGUAY. Concepción: near Centurión, between Ríos Apa and Aquidabán, *K. Fiebrig* 4193 (Holotype: G; Isotype: G).

Jubistylis mollis Rusby, Mem. New York Bot. Gard. 7: 274. 1927. TYPE: BOLIVIA. Bopi River, 6 Sep. 1921, *H. H. Rusby* 732 (Holotype: NY; Isotypes: GH, MICH, US).

Distribution: central and southern South America to Argentina.

Diplopterys mexicana B. Gates, Fl. Neotrop. Monogr. 30: 215. 1982. TYPE: MEXICO. Veracruz: Mun. Hidalgotitlán, 18 Aug. 1974, *M. Vázquez* 951 (Holotype: XAL; Isotypes: F, MEXU, MICH, XAL).

Distribution: Veracruz, Mexico.

Diplopterys nigrescens (A. Juss.) W. R. Anderson & C. Cav. Davis, *comb. nov.*

Basionym: *Banisteria nigrescens* A. Juss. in A. St.-Hil., Fl. Bras. Merid. 3: 44. 1833 ["1832"]. *Stigmaphyllon nigrescens* (A. Juss.) Kuntze, Rev. Gen. Pl. 1: 89. 1891. *Banisteriopsis nigrescens* (A. Juss.) B. Gates, Fl. Neotrop. Monogr. 30: 183. 1982. TYPE: BRAZIL. São Paulo; near São Paulo, *A. St.-Hilaire* Catal. C² 1186 (Holotype: P; Isotypes: F, P).

Synonym: *Banisteria fimbriata* Griseb., Linnaea 13: 191. 1839, non *B. fimbriata* Vell., 1829. TYPE: BRAZIL. São Paulo: *F. Sellow* [VI it. 304] (Holotype: B†; Lectotype, designated by Gates, 1982, p. 183; NY).

Distribution: Rio de Janeiro and São Paulo, Brazil.

Diplopterys nutans (Nied.) W. R. Anderson & C. Cav. Davis, *comb. nov.*

Basionym: *Banisteria nutans* Nied., *Banisteria* 2: 15. 1901. *Banisteriopsis nutans* (Nied.) B. Gates, Fl. Neotrop. Monogr. 30: 179. 1982. TYPE: PERU. Huánuco: Cuchero, *E. F. Poeppig* 1497 (Holotype: B†; Isotypes: F, W).

Synonym: *Banisteriopsis panamensis* Cuatrec. & Croat, Ann. Missouri Bot. Gard. 67: 860. 1981 ["1980"]. TYPE: PANAMA. Panamá: Cerro Jefe, 1 Aug. 1972, *W. G. D'Arcy* & *J. J. D'Arcy* 6260 (Holotype: MO).

Distribution: Panama, Venezuela, Ecuador, Peru, Bolivia.

Diplopterys patula (B. Gates) W. R. Anderson & C. Cav. Davis, *comb. nov.*

Basionym: *Banisteriopsis patula* B. Gates, Fl. Neotrop. Monogr. 30: 201. 1982, *nom. nov.* for *Banisteria eglandulosa* A. Juss., Ann. Sci. Nat. Bot., sér. 2, 13. 283. 1840, non *B. eglandulosa* DC., 1824. TYPE: BRAZIL. Bahia: *J. S. Blanchet* 1632 (Holotype: G; Isotypes: BM, F).

Distribution: eastern Brazil.

Diplopterys pauciflora (G. Mey.) Nied. in Engl., Pflanzenz. IV, 141 [Heft 91]: 230. 1928.

Basionym: *Triopterys pauciflora* G. Mey., Prim. Fl. Esseq. 183. 1818. *Tetrapteryx pauciflora* (G. Mey.) DC., Prodr. 1: 587. 1824. *Mascagnia pauciflora* (G. Mey.) Cuatrec., Webbia 13: 372. 1958. TYPE: GUYANA [British Guiana]. Essequibo, *G. Meyer* 332 (Holotype: GOET). Fig. 5.

Synonyms: *Diplopterys paralias* A. Juss. in Deless., Icon. Sel. Pl. 3: 20, pl. 33. 1838 ["1837"]. TYPE: FRENCH GUIANA. *L. C. M. Richard* s.n. (Lectotype, designated here: P-JU 11738+A; Isotypes: G, P).

Diplopterys paralias var. *latifolia* Nied., Malpigh. Amer. 22. 1912. *Diplopterys pauciflora* var. *latifolia* (Nied.) Nied. in Engl., Pflanzenz. IV, 141 [Heft 91]: 230. 1928. TYPE: FRENCH GUIANA. No collector or number cited (Holotype: B†).

Distribution: eastern Brazil, Guyana, French Guiana.

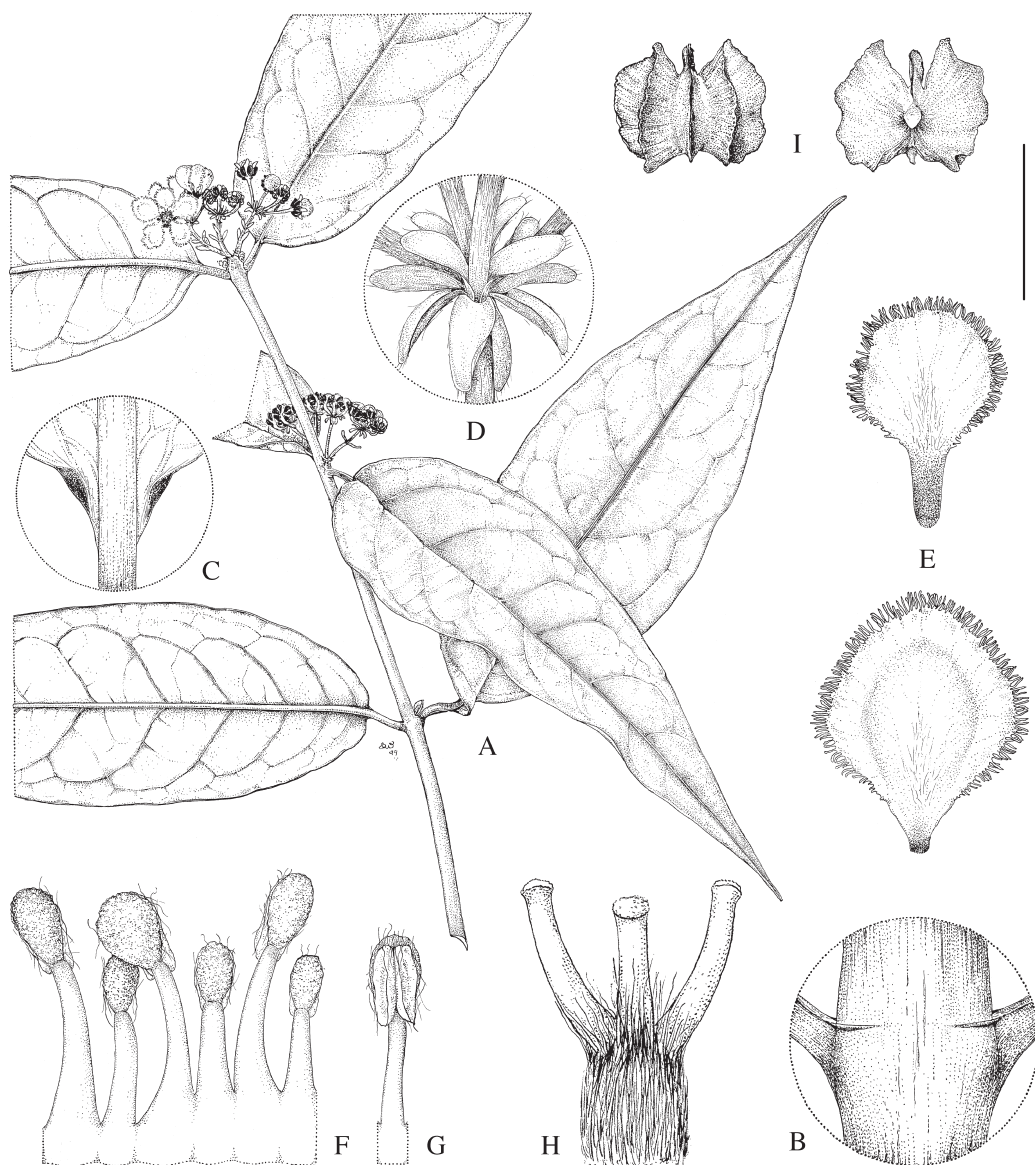


FIGURE 5. *Diplopterys pauciflora*. A, flowering branch; B, node to show interpetiolar stipular ridges; C, base of lamina to show marginal glands; D, base of umbel to show bracts and bracteoles; E, petals, posterior (above) and lateral (below), abaxial view; F, partial androecium laid out, abaxial view, the stamen to right opposite posterior petal; G, stamen from opposite a petal, adaxial view; H, gynoecium, anterior style in center; I, mericarps, abaxial view (left) and adaxial view (right). Scale bar = 4 cm (A); 4 mm (B–D); 5 mm (E); 2 mm (F–H); 2 cm (I). A and D–G drawn from *Jacquemin 2596* (MICH); B from *Arquembourg & Dervaux 38* (MICH); and C, H, and I from *Granville 6856* (MICH).

Diplopterys peruviana (Nied.) W. R. Anderson & C. Cav. Davis, *comb. nov.*

Basionym: *Banisteria peruviana* Nied., *Banisteria* 2: 15. 1901. *Banisteriopsis peruviana* (Nied.) B. Gates, *Fl. Neotrop.*

Monogr. 30: 180. 1982. TYPE: PERU. Cajamarca: Tambillo, 18 Sep. 1878, *C. Jelski 343* (Holotype: B†; Isotypes: US, W).

Distribution: Cajamarca, Peru.

Diplopterys platyptera (Griseb.) W. R. Anderson & C. Cav. Davis, *comb. nov.*

Basionym: *Banisteria platyptera* Griseb., *Linnaea* 22: 17. 1849. *Banisteriopsis platyptera* (Griseb.) Cuatrec., *Webbia* 13: 494. 1958. TYPE: VENEZUELA. Zulia: Perija, *H. Karsten* 55 (Holotype: GOET; Isotypes: NY, S).

Distribution: Costa Rica, Panama, Venezuela.

Diplopterys populifolia (Nied.) W. R. Anderson & C. Cav. Davis, *comb. nov.*

Basionym: *Banisteria populifolia* Nied., *Bot. Jahrb. Syst.* 40: 281. 1908. *Banisteria leiocarpa* var. *populifolia* (Nied.) Nied. in Engl., *Pflanzenr.* IV, 141 [Heft 93]: 451. 1928. *Banisteriopsis populifolia* (Nied.) B. Gates, *Fl. Neotrop. Monogr.* 30: 175. 1982. TYPE: PERU. Amazonas: valley of Río Marañón, A. *Weberbauer* 4794 (Holotype: B†, fragment NY; Isotypes: G, MICH).

Distribution: Amazonian Peru.

Diplopterys pubipetala (A. Juss.) W. R. Anderson & C. Cav. Davis, *comb. nov.*

Basionym: *Banisteria pubipetala* A. Juss. in A. St.-Hil., *Fl. Bras. Merid.* 3: 41, pl. 169. 1833 ["1832"]. *Banisteriopsis pubipetala* (A. Juss.) Cuatrec., *Ciencia (México)* 23: 142. 1964. TYPE: BRAZIL. Goiás: Villa Boa, A. *St.-Hilaire Catal. C^I* 762 (Lectotype, designated by Gates, 1982, p. 193; P; Isolectotypes: P). Fig. 6.

Synonyms: *Banisteria spruceana* Griseb. in Mart., *Fl. Bras.* 12(1): 45. 1858. *Banisteria pubipetala* f. *spruceana* (Griseb.) Nied., *Banisteria* 2: 20. 1901. TYPE: BRAZIL. Pará: near Caripi, Aug. 1849, R. *Spruce* [240] (Lectotype, designated by Gates, 1982, p. 191; GOET; Isolectotypes: C, G, GH, M, MG, NY, P, W).

Banisteria constricta Griseb. in Mart., *Fl. Bras.* 12(1): 46. 1858. *Banisteria pubipetala* f. *constricta* (Griseb.) Nied., *Banisteria* 2: 20. 1901. *Banisteria pubipetala* var. *constricta* (Griseb.) J. F. Macbr., *Field Mus. Publ. Bot.* 13(3): 837. 1950. TYPE: BRAZIL. Amazonas: near Barra [=Manaus], R. *Spruce* [1727] (Holotype: GOET; Isotypes: F, G, GH, M, P, W).

Banisteria pubipetala var. *oblongata* Griseb., *Vidensk. Meddel. Dansk. Naturhist. Foren. Kjøbenhavn* 1875: 129. 1876. TYPE: BRAZIL. Minas Gerais: Lagoa Santa, E. *Warming* [1022] (Holotype: C).

Banisteria pubipetala var. *scandens* Griseb., *Vidensk. Meddel. Dansk. Naturhist. Foren. Kjøbenhavn* 1875: 129. 1876. TYPE: BRAZIL. Minas Gerais: Lagoa Santa, E. *Warming s.n.* (Holotype: presumably at C [not seen]).

Banisteria pearcei Rusby, *Bull. New York Bot. Gard.* 4: 334. 1907. TYPE: BOLIVIA. "Chailla" [Challa], M. *Bang* 2811 p.p. (Lectotype, designated by Gates, 1982, p. 191; NY; Isolectotype: NY).

Banisteria pubipetala f. *cordata* Nied. in Engl., *Pflanzenr.* IV, 141 [Heft 93]: 447. 1928. TYPE: PARAGUAY. Amambay: Sierra de Amambay, Aug. 1908, E. *Hassler* [Rojas] 10562 (Lectotype, designated by Gates, 1982; G; Isolectotypes: A, G, GH, MO, NY, P, S).

Distribution: much of South America, from Colombia and Venezuela south to northern Paraguay.

Diplopterys rondoniense (B. Gates) W. R. Anderson & C. Cav. Davis, *comb. nov.*

Basionym: *Banisteriopsis rondoniense* B. Gates, *Fl. Neotrop. Monogr.* 30: 189. 1982. TYPE: BRAZIL. Rondônia: Guajará-Mirim, 28 Apr. 1976, M. R. *Cordeiro* 903 (Holotype: IAN; Isotype: MICH).

Distribution: Rondônia, Brazil.

Diplopterys schunkei (B. Gates) W. R. Anderson & C. Cav. Davis, *comb. nov.*

Basionym: *Banisteriopsis schunkei* B. Gates, *Fl. Neotrop. Monogr.* 30: 198. 1982. TYPE: PERU. San Martín: Tocache Nuevo, 10 Jan. 1971, J. *Schunke* V. 4635 (Holotype: F; Isotypes: G, GH, MO, NY).

Distribution: San Martín, Peru.

Diplopterys sepium (A. Juss.) W. R. Anderson & C. Cav. Davis, *comb. nov.*

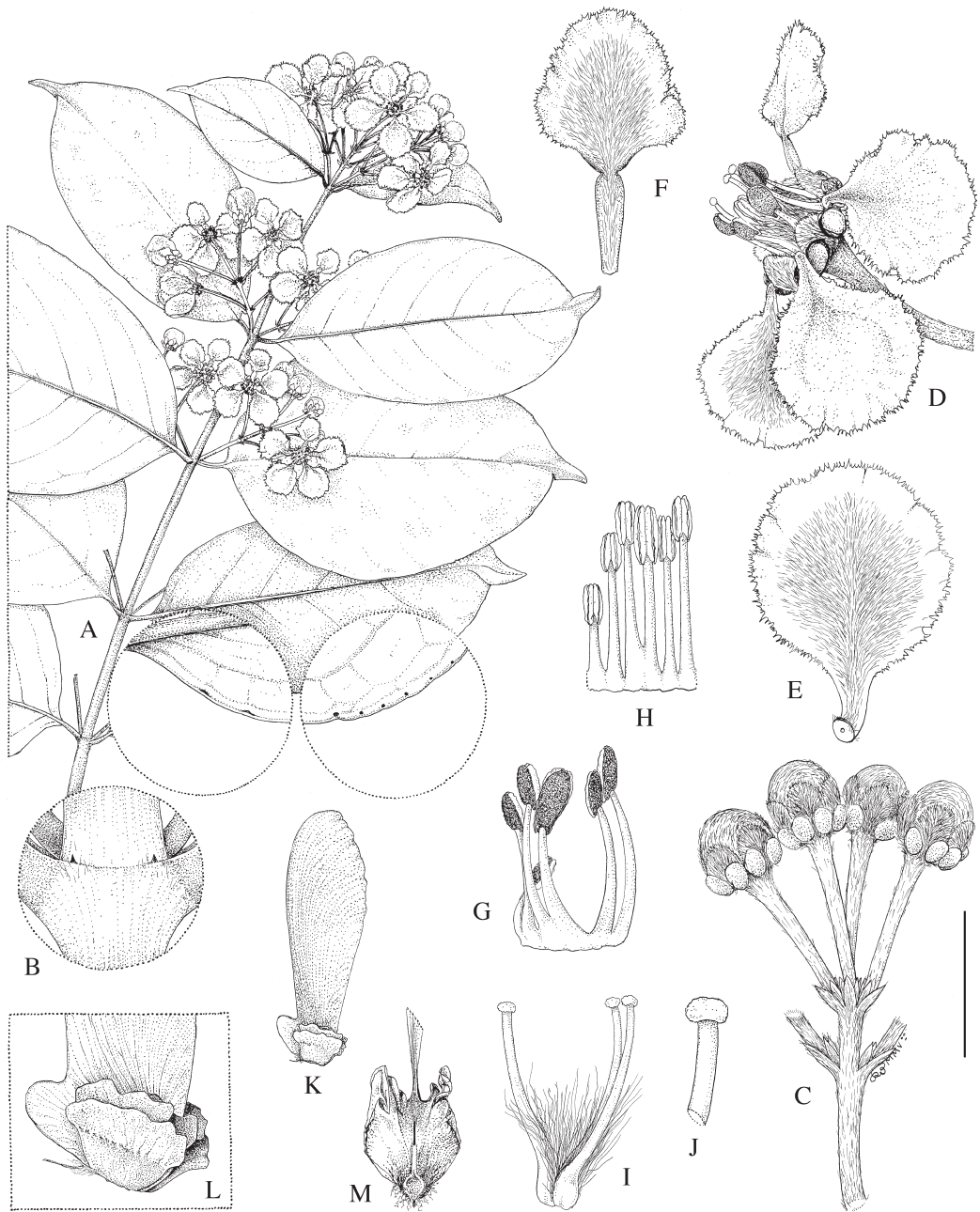


FIGURE 6. *Diplopterys pubipetala*. A, flowering branch (with enlargements of abaxial margin to show glands); B, node to show interpetiolar stipules; C, umbel of four flower buds with subtending pair cut away; D, flower, lateral view, posterior petal uppermost; E, lateral petal, abaxial view; F, posterior petal, abaxial view; G, portion of androecium, abaxial view, the stamen to left opposite posterior petal; H, portion of androecium, adaxial view, with filaments straightened to show their relative lengths, the stamen to left opposite posterior petal; I, gynoecium; J, distal portion of style; K, samara; L, nut of samara enlarged to show lateral winglets; M, nut of samara, abaxial view to show carpophore. Scale bar = 4 cm (A); 4 mm (B, G–I); 8 mm (C, D, L, M); 5.7 mm (E, F); 1.3 mm (J); 2 cm (K). A and B drawn from *Oliveira et al. 104* (MICH); C from *Macedo 5448* (MICH); D–J from *Fonseca et al. 1130* (MICH); and K–M from *Kral & Wanderley 75349* (MICH).

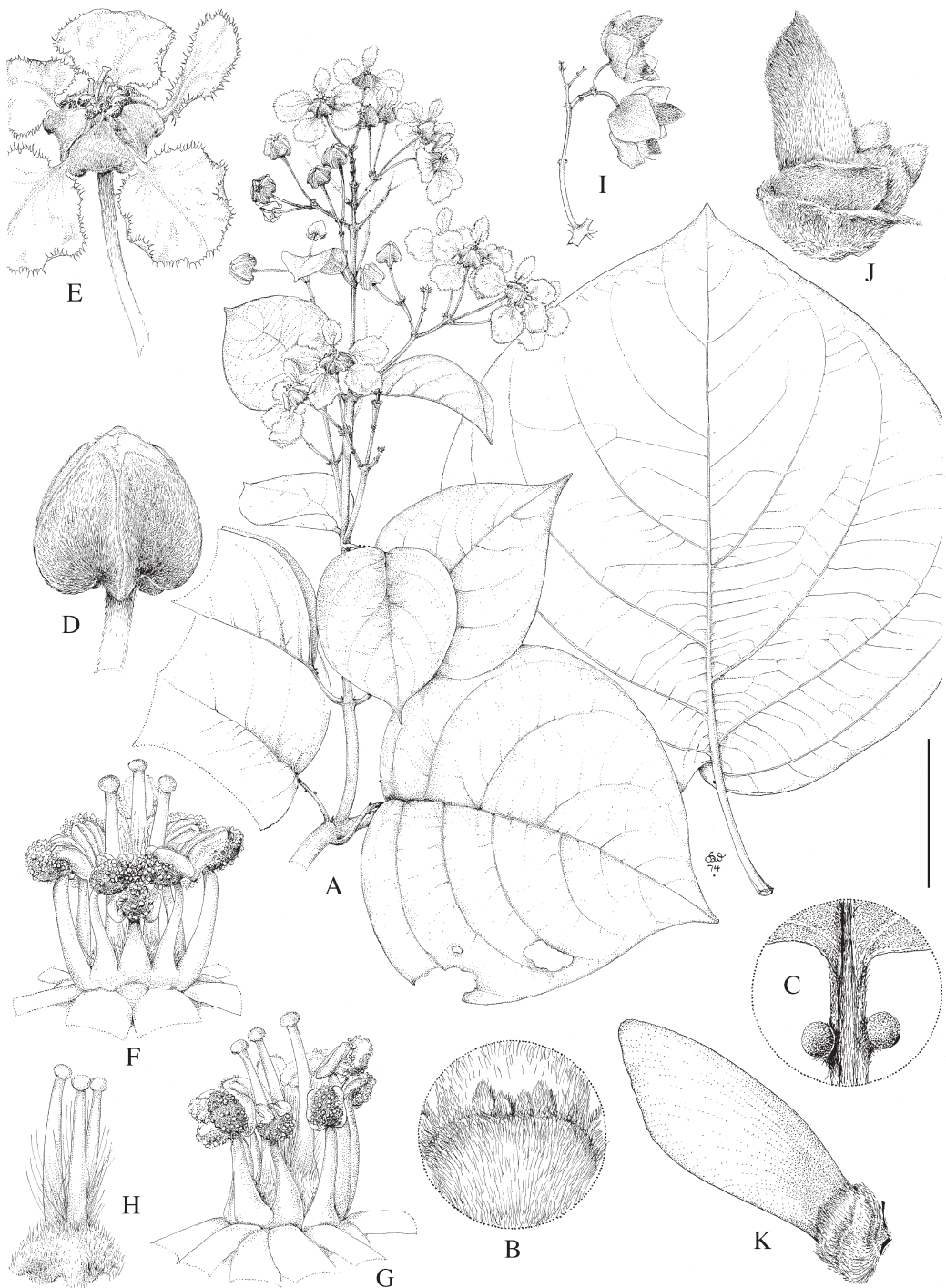


FIGURE 7. *Diplopterys valvata*. A, flowering branch, and abaxial view of detached large leaf; B, node with interpetiolar ridge bearing stipules; C, apex of petiole, adaxial view, to show large glands; D, flower bud; E, flower, posterior petal to right; F, androecium and gynoecium, view from behind with short stamen opposite posterior petal in foreground; G, androecium and gynoecium, lateral view, posterior petal to left; H, gynoecium; I, enlarging fruits enclosed by accrescent sepals; J, immature fruit; K, samara. Scale bar = 4 cm (A, D); 4 mm (B, C, F–H); 8 mm (D); 1.3 cm (E, J); 2 cm (K). A–J drawn from Anderson *et al.* 36981 (MICH); K from Harley 21676 (MICH). Modified from a drawing first published in *Contr. Univ. Michigan Herb.* 11: 52. 1975.

Basionym: *Banisteria sepium* A. Juss., Ann. Sci. Nat. Bot., sér. 2, 13: 284. 1840. *Banisteriopsis sepium* (A. Juss.) B. Gates, Fl. Neotrop. Monogr. 30: 203. 1982. TYPE: BRAZIL. Piauí: *C. F. P. Martius s.n.* (Holotype: M).

Distribution: Piauí and Bahia, Brazil.

Diplopterys valvata (W.R. Anderson & B. Gates) W. R. Anderson & C. Cav. Davis, *comb. nov.*

Basionym: *Banisteriopsis valvata* W. R. Anderson & B. Gates, Contr. Univ. Michigan Herb. 11: 51. 1975. TYPE: BRAZIL. Bahia: S of Cocos, 15 Mar. 1972, *W. R. Anderson et al. 36981* (Holotype: UB; Isotypes: F, IAN, K, MICH, MO, NY, P, RB, SP, U, US). Fig. 7.

Distribution: eastern and southern Brazil.

Diplopterys virgultosa (A. Juss.) W. R. Anderson & C. Cav. Davis, *comb. nov.*

Basionym: *Banisteria virgultosa* A. Juss., Ann. Sci. Nat. Bot., sér. 2, 13: 284. 1840. *Banisteria pubipetala* var. *virgultosa* (A. Juss.) Griseb. in Mart., Fl. Bras. 12(1): 45. 1858. *Banisteriopsis virgultosa* (A. Juss.) W. R. Anderson & B. Gates, Contr. Univ. Michigan Herb. 11: 54. 1975. TYPE: BRAZIL. Tocantins ["Minas Gerais"]: Chapada do Paranã, Rio Formoso, *C. F. P. Martius [1761]* (Holotype: M).

Distribution: eastern Brazil.

Diplopterys woytkowskii (B. Gates) W. R. Anderson & C. Cav. Davis, *comb. nov.*

Basionym: *Banisteriopsis woytkowskii* B. Gates, Fl. Neotrop. Monogr. 30: 181. 1982. TYPE: PERU. Pasco: Villa Rica, 13 Jun. 1962, *F. Woytkowski 7328* (Holotype: MO; Isotypes: F, NY).

Distribution: Amazonian Peru.

LITERATURE CITED

- ANDERSON, W. R. 1981. Malpighiaceae. The botany of the Guayana Highland. Part XI, Malpighiaceae. Mem. New York Bot. Gard. 32: 21–305.
- . 1990. The taxonomy of Jubelina (Malpighiaceae). Contr. Univ. Michigan Herb. 17: 21–37.
- . 1993. Chromosome numbers of neotropical Malpighiaceae. Contr. Univ. Michigan Herb. 19: 341–354.
- . 2001. Malpighiaceae. Pages 82–185 in P. E. BERRY, K. YATSKIEVYCH, AND B. K. HOLST, EDS., *Flora of the Venezuelan Guayana*. Vol. 6. Missouri Botanical Garden Press, St. Louis.
- . 2006. Eight segregates from the neotropical genus *Mascagnia* (Malpighiaceae). Novon 16: 168–204.
- DAVIS, C. C., W. R. ANDERSON, AND M. J. DONOGHUE. 2001. Phylogeny of Malpighiaceae: Evidence from chloroplast *NDHF* and *TRNL-F* nucleotide sequences. Amer. J. Bot. 88: 1830–1846.
- GATES, B. 1982. *Banisteriopsis*, *Diplopterys* (Malpighiaceae). Flora Neotropica, Monograph 30. New York Botanical Garden, New York. 237 pp.
- NIEDENZU, F. 1928. Malpighiaceae. Pages 1–870 in A. ENGLER, ED., *Das Pflanzenreich*. Vol. IV, 141. Wilhelm Engelmann, Leipzig.