

UK Overseas Territories and Crown Dependencies: 2011 Biodiversity snapshot.

St. Helena: Appendices.

Author: Isabel Peters, Environmental Coordinator and Annalea Beard, Environmental Assistant, Environmental Planning and Development Section, Secretariat, St. Helena Government.

More information available at: www.sainthelena.gov.sh

This section includes a series of appendices that provide additional information relating to that provided in the St. Helena chapter of the publication: UK Overseas Territories and Crown Dependencies: 2011 Biodiversity snapshot.

All information relating to St. Helena is available at <http://jncc.defra.gov.uk/page-5753>

The entire publication is available for download at <http://jncc.defra.gov.uk/page-5821>

Table of Contents

Appendix 1: Multilateral Environmental Agreements (MEA's) Ratified or Extended to St Helena	3
Appendix 2: National Legislation	6
Appendix 3: Protected Areas	9
Appendix 4: St Helena's Biodiversity Research Priorities for 2011	10
Appendix 5: Institutional Arrangements	11
Government.....	11
Non-governmental organisations:.....	11
Appendix 6. : Habitats.....	12
Broad Habitat Categories.....	12
Detailed Habitat Types on St Helena	15
Appendix 7: Species	17
Appendix 8: Threats.....	69
Endemic Species and Habitats	69
Invasive Species	69
Climate Change	70
Tourism.....	70
Air Access	70
Commercial Development.....	70
Resources and Funding	70
Appendix 9 : PAST AND PRESENT ENVIRONMENTAL PROJECTS EXTERNALLY FUNDED	71
Appendix 10: Bibliography.....	74

Table of Figures:

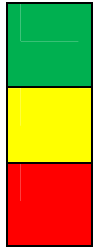
Table 1: Habitats on St. Helena - Determined as part of the South Atlantic Invasive Species projects.....	15
Table 2: the endemic flora and fauna on St. Helena.....	17
Table 3: Summary of species	18
Table 4: Plant species list	19
Table 5: Fungi species list	44
Table 6: Invertebrate species list.....	45
Table 7: Reptile species list.	53
Table 8: Amphibian species list.	54
Table 9: Mammals species list.	55
Table 10: Fish species list	56
Table 11: Marine mammals species list	62
Table 12: Marine Invertebrates species list.....	62
Table 13: Marine plants species list	65
Table 14: Birds species list.....	67
Table 15: Wirebird Distribution	68
Table 16: List of Key Invasive Species Identified during the South Atlantic Invasive Species Project 2009.....	69

Appendix 1: Multilateral Environmental Agreements (MEA's) Ratified or Extended to St Helena

There are 17 Conventions to date that are applicable to St Helena; many of these include amendments and protocols to conventions that were developed at a later date (Appendix 1). They cover topics such as desertification, conservation, biodiversity, marine pollution, fisheries, nuclear energy and the ozone layer. The MEAs are at various stages of implementation

Multilateral Environmental Agreement	Ratified	Extended	Status
Convention on the Conservation of Migratory Species of Wild Animals	✓		
• Agreement on the Conservation of African-Eurasian Migratory Waterbirds		✓	
Convention on Biological Diversity	✓		
The Convention on Wetlands of International Importance, especially as waterfowl habitat		✓	
• Amendments to articles 6 & 7 of the Convention on Wetlands of International Importance (of 2.2.1971) especially as waterfowl habitat		✓	
• Protocol to amend the Convention on Wetlands of International Importance of 2.2.1971 especially as waterfowl habitat	✓		
International Convention on International Trade in Endangered Species (CITES) of wild fauna and flora	✓		
Convention for the Protection of World Cultural and Natural Heritage	✓		
Convention on the Conservation and Management of Fishery Resources in the South East Atlantic Ocean	✓		
Convention on the Prevention of Marine Pollution by Dumping of Wastes and Other Matter	✓		
• Amendments to Articles XI, XIV (4)(A) and XV(1)(A) of the Convention on the Prevention of Marine Pollution by Dumping of Wastes and Other Matter of 29.12.1972		✓	
• 1996 Protocol to the Convention on the Prevention of Marine Pollution by Dumping of Wastes and Other Matter, 1972		✓	
• Amendments to Articles I & II of the Convention on the Prevention of Marine Pollution by Dumping of Wastes and Other Matter of 29.12.1972		✓	
United Nations Convention on the Law of the Sea		✓	
• Agreement for the Implementation of the Provisions of the United Nations Convention on the Law of the Sea of 10 December 1982 relating to the Conservation and Management of Straddling Fish Stocks and Highly		✓	

Migratory Fish Stocks			
<ul style="list-style-type: none"> Agreement relating to the implementation of Part XI of the United Nations Convention on the Law of the Sea of 10 December 1982 		✓	
United Nations Convention to Combat Desertification in Countries experiencing serious drought and/or desertification, particularly Africa	✓		
Vienna Convention for the Protection of the Ozone Layer	✓		
<ul style="list-style-type: none"> Montreal Protocol on Substances that Deplete the Ozone Layer 	✓		
International Convention relating to Intervention on the High Seas in cases of Oil Pollution Casualties		✓	
<ul style="list-style-type: none"> Protocol relating to intervention on the high seas in cases of oil pollution by substances other than oil 		✓	
<ul style="list-style-type: none"> Protocol to amend the International Convention on the Establishment of an International Fund for Compensation for Oil Pollution Damage of 18th December 1971 		✓	
<ul style="list-style-type: none"> Protocol to amend the International Convention on Civil Liability for Oil Pollution Damage of 29th November 1969 		✓	
Convention on Fishing and Conservation of the Living Resources of the High Seas	✓		
Convention on the Continental Shelf	✓		
Convention on the High Seas	✓		
<ul style="list-style-type: none"> Optional Protocol of Signature concerning the settlement of disputes arising out of the United Nations Conference on the Law of the Sea Convention of 29.4. 1958 		✓	
Convention on the Territorial Sea and Contiguous Zone	✓		
International Convention on the Regulation of Whaling		✓	
Convention on Third Party Liability in the Field of Nuclear Energy		✓	
<ul style="list-style-type: none"> Protocol to Amend the Convention on third party liability in the field of nuclear energy of 29.7. 1960, as amended by the Additional Protocol of 28.1.1964 		✓	
<ul style="list-style-type: none"> Additional Protocol to the Convention on third part liability in the field of nuclear energy 		✓	
<ul style="list-style-type: none"> Protocol on Environmental Protection to the Antarctic Treaty 		✓	



= MEA extended and legislation and other implementation measures fully meet MEA requirements.

= MEA extended but only some elements of legislation or other implementation measure meet MEA requirements.

= MEA extended but no legislation or other implementation measures have been put into place to meet the MEA requirements.

Appendix 2: National Legislation

St Helena's environmental legislation is rather fragmented with different aspects incorporated in various Ordinances these include (in alphabetical order) the following:

Animals' Trespass Ordinance

An ordinance to provide for the prevention of trespass by animals which includes prevention of dogs hounding other animals, earmarking cattle, sheep, donkeys, goats and swine. Shooting and impounding of trespassing animals, and penalties incurred for trespassing.

The Agriculture and Livestock Improvement Ordinance.

An ordinance to make for the provision for the preservation and protection of the soil and for the control and improvement of crop production and livestock and the marketing thereof. It includes land usage and protection rules, rules on reporting, clearance and eradication of noxious weeds, Phormium crop protection and soil conservation rules. Rodent control and destruction rules, livestock improvement and donkey registration rules.

The Bees Ordinance

An ordinance for the control of pests and disease affecting bees which includes regulations of the importation of bees and associated products.

The Birds Protection Ordinance, 1996

An ordinance to protect game birds (partridges and pheasants) and non-indigenous bird species (excluding domestic birds).

The Conservation and Management of Fishery Resources Ordinance, 2003

An ordinance to provide for the implementation of the Convention on the Conservation and Management of fishery Resources in the South-East Atlantic Ocean.

The Endangered Species Protection Ordinance, 2003

An ordinance to provide for the protection of endangered, endemic and indigenous species of animals and plants and to regulate the trade in endangered species.

The Fishery Limits Ordinance (revised edition, as at 2001)

An ordinance to define the fishery limits of St Helena and to make provision for the regulation of fishing within those limits and for other matters connected therewith.

The Forestry Ordinance (revised edition, as at 2001)

An ordinance to provide for the constitution, management and protection of forests, for the preservation of tree growth and of indigenous trees and plants and for other purposes connected therewith.

The Harbours Ordinance (revised edition, as at 2001)

An ordinance to provide for the regulation, management and control of harbours in St Helena, and of vessels therein, and for matters connected therewith or incidental thereto. Including regulation of removal of sand, landing of fish, discharging missiles at birds or wild animals, and removal of projections.

The High Seas Fishing Ordinance, 2001

An ordinance to make provision for the implementation of the Agreement to Promote Compliance with international Conservation and Management Measures by Fishing Vessels on the High Seas adopted by the Conference of the Food and Agricultural Organisation of the United Nations on the twenty fourth day of November 1993 and the Agreements for the implementation of the provisions of the United Nations Convention on the Law of the Sea of 10 December 1982 relating to the Conservation of Straddling Fish Stocks and Highly Migratory Fish Stocks.

The Land Planning and Development Control Ordinance (2008)

This Ordinance makes provision for the planning and regulation of the development and use of land and for matters connected therewith or incidental thereto. Also included in this Ordinance is the provision for mandatory Environmental Impact Assessment.

The Merchant Shipping (Oil Pollution) (Overseas Territories) (Amendment) Order 1981 (Commencement) Order 1995.

This Order brings into operation in St Helena and its Dependencies, Parts I and II of the schedule to the Merchant Shipping (Oil Pollution) (Overseas Territories) (Amendment) Order 1981. The order gives effect to the Protocol of 19.11.1976 to the International Convention on Civil Liability for Oil Pollution Damage of 29.11.1969 and the protocol of the 19.11.1976 to the International Convention on the Establishment of an International Fund for Compensation for Oil Pollution Damage of 18.12.1976.

The National Parks Ordinance, 2003

This Ordinance has not yet been brought into force but provides powers to permit the establishment of parks, nature reserves, sanctuaries and areas of historical interest, and generally for the conservation of the natural environment and ecology of St Helena and for purposes connected therewith.

Plant Protection Ordinance (revised edition, as at 2001)

An ordinance for the protection of plants in St Helena including regulations on importation and exportation of plants and plant materials, prevention of plant diseases and seed regulations.

The Spear Guns Control Order, 2006

An ordinance to control the use of spear guns.

The St Helena National Trust Ordinance, 2001

An ordinance to establish and make provision for the St Helena National Trust.

The Whale Fisheries Ordinance, 1912

An ordinance to regulate Whale Fisheries in St Helena.

Appendix 3: Protected Areas

St. Helena is currently developing a Protected Areas Network. To date work has been done on developing a new protected areas classification; developing selection criteria; reviewing existing proposed protected areas and designating new ones; and identifying permitted activities in each area. This is all detailed in a Phase 1 report which is currently being considered. It is recognised that further work needs to be done to build on the Phase 1 works to fully develop and implement an island wide plan for protected areas designation (including legal designation) and management.

Appendix 4: St Helena's Biodiversity Research Priorities for 2011

The top three biodiversity research priorities for St Helena for 2011, in order of priority are;

1. Baseline flora and fauna surveying and monitoring of terrestrial and marine habitats and analysis and subsequent utilisation of data.

- Survey and research to establish invertebrate baseline data.
- Botanisation of inaccessible areas.
- Analysis of all flora and fauna baseline survey and monitoring data.
- Development of species/Habitat management plans.
- Incorporation of data in decision making.

2. Terrestrial Ecological Restoration.

- To support existing ecological and restoration initiatives, looking at the ecosystem approach.
- Plant health issues including analysis of plant and soil pathogens.
- Research into hybrid prone species and conservation of hybrids.
- The potential for micopropagation.

3. Climate Change Implications on terrestrial and marine species, habitats and ecosystems.

- Biological and ecological implications of climate change on native biota, ecosystems and services.

Appendix 5: Institutional Arrangements

Government

There are currently four Sections within the St Helena Government that deal with St Helena's conservation and wider environmental issues. In the Agriculture and Natural Resources Directorate, the Environmental Conservation and Marine Sections; In the Secretariat the Environmental Planning and Development Section and in the Health and Social Welfare Directorate, the Environmental Health Section.

Environmental functions are therefore fragmented and environment has no powerful "voice" within the St Helena Government, hence full consideration of environmental issues during policy and strategic planning is weak. To address this, a review of the Institutional Arrangements for Environmental Management on St Helena was done and has just been completed. The review recommends the formation of an Environmental Management Department that will operate primarily at the strategic level providing policy advice and assessment, regulations and education to the St Helena Government, its stakeholders and the general public. The Department will also have monitoring and enforcement responsibilities. Acceptance of the review recommendations and a final decision on the way forward is expected shortly.

Non-governmental organisations:

The St Helena National Trust which was established in 2002 has brought together all the Non-Governmental organisations that were involved in environment and/or conservation matters under one umbrella organisation. The Trust aims to promote the application, protection and enhancement of St Helena's unique built, natural and cultural heritage.

Appendix 6: Habitats

Before man's arrival in 1502, St Helena was a heavily wooded Island. However, with overgrazing, deforestation for timber and fuel, alien plant introduction and clearance for cultivations, plantations and pasture, man and his animals ecologically *transformed* the Island. This resulted in the disappearance of the Island's original native vegetation zones and significant loss of native biodiversity (Cronk, 1989; Ashmole & Ashmole, 2000). Less than 1% of the Island is now covered in native habitat.

The Island's native flora, from the species tolerant of arid sea cliffs to those of wet misty cloud forest habitat, have been pushed to their limits and now exist in drastically reduced, highly fragmented and threatened habitat. We have some knowledge of the Island's more conspicuous habitats and ecosystems but much remains unknown about the original ecosystems which existed at middle altitudes and have now almost completely vanished. We also know little about the habitats of smaller organisms such as infaunal communities of marine and coastal soft sediments.

Broad Habitat Categories

St Helena's habitats can be broadly categorised as:

Off-shore Waters:

Tunas (*Thunnus albacares*, *Thunnus alalunga* & *Thunnus obesus*), Dolphins (*Stenella attenuata*, *Steno bredanensis* & *Tursiops truncatus*), Whales (*Megaptera novaeangliae* & *Physeter macrocephalus*), Wahoo (*Acanthocybium solandri*), Sharks (Alopiidae, Pseudocarchariidae, Lamnidae, Carcharhinidae & Sphyrnidae) and Turtles (*Chelonia mydas* & *Eretmochelys imbricata*) are amongst the larger species found in St Helena's pelagic waters (waters that extend within half a mile of the shoreline to the outer limits of the Island's exclusive economic zone).

Stacks and Off-shore Islands:

The stacks and islands around the coast of St Helena provide important habitat for sea-bird populations. A home and breeding ground for birds such as the Madeiran Storm Petrel (*Oceanodroma castro*), Masked Booby (*Sula dactylatra*), Sooty Tern (*Sterna fuscata*), Red-billed Tropic bird (*Phaethon aethereus*) and Black and Brown Noddy (*Anous minutus* & *Anous stolidus*), these outliers offer a safe haven from mammalian predators (Ashmole & Ashmole, 2000). The largest of the Island's stacks are Speery, George, Shore and Egg Islands: the latter holding the largest colony of Black Noddies (McCulloch, 2004).

Coastal and In-shore Waters:

Grapsid crabs and the endemic St Helena Shore Crab (*Platypodiella georgei*) live on tidal rocks around the Island (Christoforou, 1994; Tremayne, 1998). Rock-pools provide a home to small

fish species, such as blennies (*Scartella springeri* & *Entomacrodus textilis*), Five Finger (*Abudefduf saxatilis*) and Green Fish (*Thalassoma sanctahelenae*) and are also nursery grounds for young of the Surgeon Fish, *Acanthurus bahianus*. Oxypodid and xantid crabs, echinoderms such as starfish and sea urchins, anemones and octopuses can also be found in the rock-pools. The rocks of shallow water provide a sheltered habitat for Moray Eels (*Gymnothorax moringa* & *Gymnothorax unicolor*) (Ashmole & Ashmole, 2000).

The neritic province (inshore waters shallower than 300m) provides a habitat for the 82 bottom-dwelling fishes found at St Helena, of which 10 are endemic to the Island (Tremayne, 1998). Wrecks and craggy rocks around the Island provide habitat for cleaner shrimps (*Hippolysmata grabhami*) and the shallow waters provide habitat for the Spiny Lobster (*Panulirus echinatus*) and Slipper Lobster (*Scyllarides herklotsii*) (Edwards, 1990; Tremayne, 1998).

Cliffs:

The Island's cliffs are composed of eroding rock and loose volcanic ash, conditions that hamper the establishment of vegetation. The dry western cliffs of the Island remain relatively barren but the south and east exposed coastal cliffs are able to support more vegetation and are rich in lichen populations, which benefit from the deposition of moisture from incoming cloud (Ashmole & Ashmole, 2000; Aptroot, 2007). Small populations of endemic plants capable of coping with exposure and little soil can also be found growing in pockets on inaccessible cliff faces. These precipices represent one of the few examples of semi-natural habitat and maintain some endemic plant populations that are rare or extinct elsewhere in the wild (examples are Scrubwood *Commidendrum rugosum* & Old Father Live Forever *Pelargonium cotyledonis*) (Ashmole & Ashmole, 2000). Cliffs allow isolated and fragmented endemic flora populations safety from grazers but invasive vegetation also grows on these cliffs, their seed is spread by the invasive Mynah bird (*Acridotheres tristis*) and other sources.

Ledges and crevices of the Island's cliffs provide nest and roost sites for sea-birds such as the Madeiran Storm Petrel, Red Billed Tropic Bird and the Black and Brown Noddies. Introduced land birds such as the Common Waxbill (*Estrilda astrild*) and Java sparrow (*Padda oryzivora*) also roost on cliffs (McCulloch, 2004).

Semi-desert zone: (extends from near sea level to around 250m)

The Island's arid outer fringes are badly eroded and receive less than 300mm of rainfall a year. The zone is characterised by eroded semi-desert, steep rocky slopes and gullies. It encompasses the Island's Badlands and Crown Wastes and supports only scattered vegetation. This includes small populations of indigenous and endemic dry-land species e.g. St Helena Goosefoot (*Chenopodium helenense*) and Babies' Toes (*Hydrodea cryptantha*) and introduced plants. The semi-desert area supports interesting invertebrate fauna including a number of detritivores, seed feeders and predators such as spiders and is the main area of lichenological interest, with all lichens endemic to the Island found in this zone (Aptroot, 2007). A large area in the west has been invaded by dense stands of African Fountain Grass (*Pennisetum setaceum*).

Scrub Zone:

This zone lies between 200-400m and is generally covered in introduced scrub species. The zone provides a habitat to a diverse introduced invertebrate fauna and all of the Island's small bird species can be found here. The dominant shrub species are Lantana (*Lantana camara*), Tunny (*Opuntia* sp.) and Wild Coffee (*Chrysanthemoides monilifera*) (Cronk, 1989; Ashmole & Ashmole, 2000).

Creeper Waste:

This habitat is found mainly on the east of the Island and is highly degraded with very few species. Creeper Waste is characterised by large expanses of eroded saline lands dominated by spreading mats of the succulent Creeper, *Carprobrotus edulis* (Ashmole & Ashmole, 2000).

Arable Land, Pasture and New Zealand Flax:

Lying at an altitude of 450-700m, this area is used predominately for agricultural and forestry purposes. The Island's pasture lands are variable, ranging from rich upland pastures with high rainfall to those of low productivity in drier low-land areas. The drier and flat pastures such as Deadwood Plain provide essential habitat for the endemic Wirebird. Small arable plots can be found in this area and large swathes of upland are covered in redundant flax (*Phormium tenax*) plantation (Ashmole & Ashmole, 2000). Large areas of forestry plantation have been planted at mid to high altitudes, which mainly comprise Pine, Eucalyptus and Australian Blackwood (*Acacia melanoxylon*) and often have a dense understorey of Whiteweed (*Austroeupatorium inulaefolium*) and other vigorous invasive weeds.

Woodland:

Woodland on St Helena is composed of a number of introduced tree species and is found in small patches in the upper and middle altitudes (400-700m). At lower altitudes, dry stands of Port Jackson Willow (*Acacia longifolia*), Black Wattle (*Acacia mearnsii*) and other species are used for erosion control. From mid-altitudes up, stands of Bermudan Cedar (*Juniperus bermudiana*), Wild Mango (*Schinus terebinthifolius*), Spoor (*Pittosporum viridiflorum*) and Maritime Pine (*Pinus pinaster*) begin to dominate, where as in upland areas, patches of Thorn Tree (*Erythrina caffra*) and Ink Bush (*Cestrum laevigatum*) woodland, bamboo thicket and Bilberry (*Solanum mauritianum*) are frequently found. Peak Dale, towards the south of the Island is an example of relict woodland, providing the only native remnant forest of the endemic Gumwood (*Commidendrum robustum*) (Ashmole & Ashmole, 2000).

The Central Ridge (Cloud Forest) - the highest ridges of St Helena

The sickle shaped Central Ridge forms the backbone of the Island and encompasses the Island's only National Park. The ridge, which peaks at 826m, is often covered in mist and receives the highest rainfall on the Island (Benjamin *et al.*, 1986; Cronk, 2000). Areas along the Ridge, particularly the eastern section, support the last fragments of the Island's cloud forest and provide a critically important habitat for a high proportion of the Island's endemic moist plant species, ferns, bryophytes and invertebrate fauna. These ancient species live in specialised fragile communities. Pasture, forestry and redundant flax plantations are found on the west slopes of the Ridge. Aggressive invasive vegetation, such as Bilberry, Whiteweed, Fuchsia

(*Fuchsia coccinea*) and Blackberry (*Rubus pinnatus*) fast encroach on the already restricted habitat range of endemic populations (Ashmole & Ashmole, 2000).

Wet Guts and Fresh Water:

Wet guts, some of which contain streams that enter the sea, are now densely vegetated with introduced plant species and have lost most of their original character and native biodiversity. Streams, gut bottoms, springs and seepage pools provide areas of freshwater habitat on the Island. Damp, boggy valleys provide a habitat for the (now rare) indigenous Moorhen *Gallinula chloropus* and the introduced Grass Frog (*Rana grayi*). Springs and seepage pools in higher altitudes of the Island, namely Lemon Tree Gut, High Peak and on the Central Ridge, provide an environment for tiny freshwater crustaceans and free-living flat-worms (of which, two species are endemic). Streams provide a habitat for larvae of the endemic Black-fly species (*Simulium sp.*) (Ashmole & Ashmole, 2000). Many aquatic invertebrates, such as the St Helena Dragonfly (*Sympetrum dilatatum*) are now probably extinct.

Subterranean environments

Narrow spaces between small rocks, within scree slopes and rubble rock, provide habitat for soil dwelling invertebrates such as woodlice, millipedes, centipedes and spiders etc. (Ashmole & Ashmole, 2000). Some of these are endemic, but the fauna is still poorly known.

Detailed Habitat Types on St Helena

Table 1: Habitats on St. Helena - Determined as part of the South Atlantic Invasive Species projects

Habitat Name	Description
Tree-fern thicket	High altitude vegetation dominated by tree fern
Succulent scrub	Arid scrub dominated by <i>Opuntia</i>
Scrubwood scrub	Native arid scrub dominated by <i>Commidendron rugosum</i>
Creepers waste	Barren arid areas dominated by <i>Carpobrotus</i> and <i>Atriplex semibaccata</i>
Fern swards	Dense stands of fern (any species except tree-fern)
Lantana scrub	Arid areas dominated by <i>Lantana/Asclepias cancellatus/Atriplex semibaccata/Nicotiana glauca</i>
Chrysanthemoides-Diospyros scrub	Arid areas dominated by <i>Chrysanthemoides/Diospyros/Olea africana</i>
Juniperus scrub	Semi-arid areas dominated by <i>Juniperus</i>
Waterfall	Waterfalls
Permanent stream	Limnic zone of watercourses flowing permanently or for most of the year
Riparian margins	Littoral zone of (semi-)permanent watercourses
Dry gully	Watercourses running dry for most of the year and any margins influenced by water seepage
Riparian Schinus scrub	Dense stands of <i>Schinus terebinthifolius</i> along watercourses
Other riparian scrub	Other scrub along watercourses
Marshy areas	Areas subject to regular inundation forming (temporary) marsh patches
Inland cliffs	Inland cliffs
Rocky Areas	Exposed rock or bare rocky ground other than on cliff faces
Scree	Scree
Sparsely vegetated hillside	Barren hillsides with some soil not and dominated by recognized

	community types
Semi-desert	Barren areas dominated by Hydrodea/Mesembryanthemum/Suaeda
Sand deposits	Areas of pure sand
Rocky shore	Rocky coastal margins
Shingle shore	Shingle or gravel beaches
Sea cliffs	Coastal cliffs
Seabird colonies	Coastal areas heavily influenced by guano
Cultivated land	All forms of cultivated land
Mid-level pasture	Seasonally-dry or poor pasture: mainly at mid-altitudes
Upland pasture	Productive grazed pasture: mainly at higher altitudes
Native plantations	Areas planted with native trees which have not yet formed mature woodland (e.g. Millenium forest)
Fruit tree/ banana groves	Orchards/fruit groves/banana plantations
Podocarpus woodland	Podocarpus woodland including where naturally regenerant
Eucalyptus woodland	Eucalyptus woodland including where naturally regenerant
Pinus/other conifer woodland	Conifer plantations (e.g. Araucaria/Pinus)
Lowland Acacia forest/scrub	Dry low-mid level areas planted or colonized extensively with Acacia
Gardens and parks	Gardens and parks
Urban areas	Urban areas and buildings with extensive concrete standing
Farmsteads	Farms and other low density buildings
Derelict buildings	Derelict buildings which have been partially colonized by vegetation
Ruderal	Disturbed waste ground
Walls	Free-standing walls
Tarmac	Tarmac
Tracks	Unsurfaced tracks
Vegetated/banked roadsides	Roadsides and roadside banks with a cover of vegetation
Ruderal roadsides	Roadsides with sparse vegetation
Organic refuse	Organic refuse (e.g. compost heaps and manure piles)
Reservoirs	Artificial water bodies
Excavations	Quarries and construction sites
Sewage farms	Sewage farms and rubbish dumps
Ditches	Artificial ditches used at least intermittently as water conduits
Tall grass/bamboo stands	Tall stands of grass/Arundo/bamboo
Tall semi-woody alien stands	Tall stands of vigorous semi-woody alien species e.g. Austroepatorium/Solanum mauritanianum/Cestrum laevigatum
Neglected tall alien herb areas	Overgrown grassy or herb-rich patches of alien species
Alien thickets/hedges	Thickets or hedges of alien trees not covered elsewhere (e.g. non-riparian Schinus/Tecoma/Diospyros)
Other	Not covered in list: please add a description in the notes field
Sclerophyllous shrubland	Shrubland or forests dominated by sclerophyllous woody species (e.g. Olea europaea ssp. africana, Pittosporum viridiflorum, Schinus terebinthifolius)
Tussock grassland	Tussocky grasslands e.g. dominated by Pennisetum macrurum
Flax plantations	Plantations of Phormium tenax
Other broadleaf	Plantations of broadleaf species not included elsewhere (e.g. upland Acacia melanoxyton)
Clearfells	Areas formerly planted with trees but recently cleared
Seepage areas	Slopes damp or dripping with water
Litter	
Bare ground	
Semi-natural grassland	Unmanaged grassy areas
Furze scrub	Dense stands of Ulex europaeus

Appendix 7: Species

St Helena has a high level of endemism, which defines its natural environment and is our greatest asset. The islands endemic flora consists of approximately 51 flowering plants and ferns and 25 bryophytes (mosses, liverworts and hornworts). The lichen flora is highly diverse with approximately 223 species occurring on the island, this includes 9 endemic species.

Most of our endemic plant species and our endemic wirebird are endangered with some species having reached critical population levels. The degradation of their associated habitats has played a major role in this. In order to save these species more resources are needed to be put into species conservation.

St Helena has an exceptional diverse invertebrate fauna with over 400 of the 1000+ invertebrates being endemic. The most notorious the endemic giant earwig *Labidura herculeana* and ground beetle *Aplothorax burchelli* are thought to have been driven to extinction through destruction of habitat and human interference.

St Helena has only one endemic land bird species. This has become the islands National Bird and is the Critically Endangered St Helena plover or “Wirebird” *Charadrius sanctaehelenae*. When the island was discovered there were possibly 5-7 endemic bird species which became extinct through the introduction of predators such as cats and rats.

Table 2: the endemic flora and fauna on St. Helena

	Extinct	Extinct In The Wild	Critically Endangered	Endangered	Vulnerable	Lower Risk Near Threatened	Least Concern	Data Deficient	Not IUCN Listed	Total Endemic Species
Plants	3	2	8	7	5	-	-	-	60	85
Inverts		-	1	-	-	1	-	-	402	404
Fish		-	2	-	3	-	-	-	5	10
Birds		-	1	-	-	-	-	-	-	1
Fungi		-	-	-	-	-	-	-	2	2

Table 3: Summary of species

Taxa	Endemic Species	Native and Invasive Species	Total
Plants	85	767	852
Fungi	2	11	13
Invertebrates	413	700	1113
Fish	10	128	138
Reptiles	0	3	3
Birds	1	18	19
Mammals	0	15	15
Amphibians	0	1	1
	Total Endemic Species		511
	Total Native and Invasive		1643
	Approximate Species		
	Biodiversity		2154

Table 4: Plant species list

Class	Family	Genus	Species	Local name	Global name	Island Status	IUCN Status
Lycopsidea	Lycopodiaceae	<i>Lycopodiella</i>	<i>cernua</i>	buck's-horn	tropical clubmoss	Native	
Lycopsidea	Lycopodiaceae	<i>Huperzia</i>	<i>saurus</i>	large buck's-horn		Native	
Pteridopsida	Ophioglossaceae	<i>Ophioglossum</i>	<i>polyphyllum</i>	lily fern		Native	
Pteridopsida	Hymenophyllaceae	<i>Hymenophyllum</i>	<i>capillaceum</i>	St. Helena filmy fern	St. Helena filmy fern	Endemic	Not assessed
Pteridopsida	Dicksoniaceae	<i>Dicksonia</i>	<i>arborescens</i>	tree-fern	St. Helena tree-fern	Endemic	Not assessed
Pteridopsida	Pteridaceae	<i>Pteris</i>	<i>dentata</i>	toothed comb-fern		Probably native	
Pteridopsida	Pteridaceae	<i>Pteris</i>	<i>paleacea</i>	lays back fern		Endemic	Not assessed
Pteridopsida	Dennstaedtiaceae	<i>Hypolepis</i>	<i>rugosula</i>	sticky fern		Native	
Pteridopsida	Aspleniaceae	<i>Asplenium</i>	<i>aethiopicum</i>	African spleenwort	African spleenwort	Native	
Pteridopsida	Aspleniaceae	<i>Asplenium</i>	<i>platybasis</i>			Native	
Pteridopsida	Aspleniaceae	<i>Asplenium</i>	<i>compressum</i>	hen and chicks fern		Endemic	Not assessed
Pteridopsida	Aspleniaceae	<i>Asplenium</i>	<i>erectum</i>	ladder fern		Native	
Pteridopsida	Aspleniaceae	<i>Ceterach</i>	<i>haughtonii</i>	Barn fern		Endemic	Not assessed
Pteridopsida	Adiantaceae	<i>Adiantum</i>	<i>raddianum</i>	maidenhair fern	Brazilian maidenhair fern	Naturalized	
Pteridopsida	Adiantaceae	<i>Cheilanthes</i>	<i>multifida</i>	crevice fern		Native	
Pteridopsida	Woodsiaceae	<i>Diplazium</i>	<i>filamentosum</i>	black-scale fern		Endemic	Not assessed
Pteridopsida	Thelypteridaceae	<i>Christella</i>	<i>parasitica</i>			Probably native	
Pteridopsida	Thelypteridaceae	<i>Pseudophegopteris</i>	<i>dianae</i>	brown-scale fern		Endemic	Not assessed
Pteridopsida	Dryopteridaceae	<i>Dryopteris</i>	<i>cognata</i>	large kidney-fern		Endemic	Not assessed
Pteridopsida	Dryopteridaceae	<i>Dryopteris</i>	<i>napoleonis</i>	lesser kidney fern		Endemic	Not assessed
Pteridopsida	Polypodiaceae	<i>Phlebodium</i>	<i>aureum</i>	African polypody		Naturalized	
Pteridopsida	Polypodiaceae	<i>Pleopeltis</i>	<i>macrocarpa</i>	spotted tongue fern		Native	
Pteridopsida	Lomariopsidaceae	<i>Elaphoglossum</i>	<i>nervosum</i>	veined tongue fern		Endemic	Endangered D
Pteridopsida	Lomariopsidaceae	<i>Elaphoglossum</i>	<i>dimorphum</i>	toothed tongue fern		Endemic	Critically Endangered D
Pteridopsida	Lomariopsidaceae	<i>Elaphoglossum</i>	<i>conforme</i>	common tongue fern		Native	
Pteridopsida	Lomariopsidaceae	<i>Elaphoglossum</i>	<i>furcatum</i>	mossy fern		Endemic	Vulnerable D2
Pteridopsida	Nephrolepiaceae	<i>Nephrolepis</i>	<i>exaltata</i>	pheasant-tail		Naturalized	

				fern			
Pteridopsida	Grammitidaceae	<i>Grammitis</i>	<i>ebenina</i>	strap fern	St. Helena strap fern	Endemic	Not assessed
Gymnospermopsida	Taxodiaceae	<i>Cunninghamia</i>	<i>lanceolata</i>	Chinese fir		Forestry species	
Gymnospermopsida	Podocarpaceae	<i>Afrocarpus</i>	<i>falcata</i>	Cape yew	small-leaved yellow-wood	Naturalized	
Gymnospermopsida	Araucariaceae	<i>Araucaria</i>	<i>excelsa</i>	Norfolk Island pine	Norfolk Island pine	Forestry species	
Gymnospermopsida	Cupressaceae	<i>Callitris</i>	<i>endlicheri</i>			Forestry species	
Gymnospermopsida	Cupressaceae	<i>Cupressus</i>	<i>lusitanica</i>	Mexican cypress	Mexican cypress	Forestry species	
Gymnospermopsida	Cupressaceae	<i>Cupressus</i>	<i>macrocarpa</i>	Monterrey cypress	Monterrey cypress	Forestry species	
Gymnospermopsida	Cupressaceae	<i>Juniperus</i>	<i>bermudiana</i>	Bermudan cedar	Bermudan cedar	Naturalized	
Gymnospermopsida	Pinaceae	<i>Pinus</i>	<i>maximinoi</i>	Mexican ocote pine	Mexican ocote pine	Forestry species	
Gymnospermopsida	Pinaceae	<i>Pinus</i>	<i>pinaster</i>	maritime pine	maritime pine	Naturalized	
Gymnospermopsida	Pinaceae	<i>Pinus</i>	<i>elliottii</i>	slash pine	slash pine	Forestry species	
Gymnospermopsida	Pinaceae	<i>Pinus</i>	<i>rigida</i>		Japanese pine	Forestry species	
Monocotyledonae	Araceae	<i>Alocasia</i>	<i>macrorhiza</i>	elephant's ears	elephant's ears, giant taro	Naturalized	
Monocotyledonae	Araceae	<i>Colocasia</i>	<i>esculenta</i>	yam	taro	Naturalized	
Monocotyledonae	Araceae	<i>Monstera</i>	<i>deliciosa</i>	breadfruit	Swiss-cheese plant	Adventive	
Monocotyledonae	Araceae	<i>Pistia</i>	<i>stratiotes</i>	water lettuce	water lettuce	Naturalized	
Monocotyledonae	Araceae	<i>Zantedeschia</i>	<i>aethiopica</i>	arum lily	arum lily	Naturalized	
Monocotyledonae	Lemnaceae	<i>Lemna</i>	<i>minor</i>	common duckweed	common duckweed	Naturalized	
Monocotyledonae	Alliaceae	<i>Agapanthus</i>	<i>praecox</i>	African lily	African lily	Naturalized	
Monocotyledonae	Alliaceae	<i>Nothoscordum</i>	<i>gracile</i>	honey bells	honey bells, onion garlic	Naturalized	
Monocotyledonae	Iridaceae	<i>Chasmanthe</i>	<i>floribunda</i>	cobra lily	African flag, cobra lily	Adventive	
Monocotyledonae	Iridaceae	<i>Dietes</i>	<i>iridioides</i>	African iris	African iris, butterfly iris, fortnight lily	Naturalized	
Monocotyledonae	Iridaceae	<i>Homeria</i>	<i>collina</i>	poison lily	Cape tulip	Naturalized	
Monocotyledonae	Iridaceae	<i>Romulea</i>	<i>rosea</i>			Naturalized	
Monocotyledonae	Iridaceae	<i>Watsonia</i>	<i>meriana</i>	sour bulb		Naturalized	
Monocotyledonae	Hyacinthaceae	<i>Ornithogalum</i>	<i>longibracteatum</i>		false sea-onion	Naturalized	
Monocotyledonae	Orchidaceae	<i>Epidendrum</i>	<i>ibaguense</i>	crucifix orchid	crucifix orchid	Naturalized	
Monocotyledonae	Agavaceae	<i>Agave</i>	<i>angustifolia</i>	hedge aloe		Naturalized	
Monocotyledonae	Agavaceae	<i>Agave</i>	<i>americana</i>	century plant	variegated century plant	Adventive	
Monocotyledonae	Agavaceae	<i>Agave</i>	<i>sisalana</i>	sisal	sisal hemp	Naturalized	
Monocotyledonae	Agavaceae	<i>Chlorophytum</i>	<i>comosum</i>	spiderplant	spiderplant	Adventive	
Monocotyledonae	Agavaceae	<i>Furcraea</i>	<i>foetida</i>	English aloe		Naturalized	

Monocotyledonae	Asparagaceae	<i>Asparagus</i>	<i>densiflorus</i>	foxtail asparagus	foxtail asparagus	Naturalized	
Monocotyledonae	Asphodelaceae	<i>Aloe</i>	<i>grandidentata</i>	wild sicreviver		Naturalized	
Monocotyledonae	Asphodelaceae	<i>Aloe</i>	<i>vera</i>	sicreviver	aloe vera	Naturalized	
Monocotyledonae	Asphodelaceae	<i>Phormium</i>	<i>tenax</i>	flax	New Zealand flax	Naturalized	
Monocotyledonae	Ruscaceae - Dracaenoideae	<i>Sansevieria</i>	<i>trifasciata</i>		mother-in-law's tongue	Adventive	
Monocotyledonae	Poaceae	<i>Agrostis</i>	<i>capillaris</i>	hay grass	common bent	Naturalized	
Monocotyledonae	Poaceae	<i>Anthoxanthum</i>	<i>odoratum</i>	hay grass	sweet vernal grass	Naturalized	
Monocotyledonae	Poaceae	<i>Arundo</i>	<i>donax</i>	giant reed	giant reed	Naturalized	
Monocotyledonae	Poaceae	<i>Bamboo sp.</i>	*	bamboo		Naturalized	
Monocotyledonae	Poaceae	<i>Bamboo sp.</i>	*	bamboo		Adventive	
Monocotyledonae	Poaceae	<i>Bothriochloa</i>	<i>radicans</i>	savannah grass		Naturalized	
Monocotyledonae	Poaceae	<i>Briza</i>	<i>minor</i>	small quaking-grass	small quaking-grass	Adventive	
Monocotyledonae	Poaceae	<i>Bromus</i>	<i>catharticus</i>	rescue brome	rescue brome	Naturalized	
Monocotyledonae	Poaceae	<i>Bromus</i>	<i>hordeaceus</i>	soft brome	soft brome	Adventive	
Monocotyledonae	Poaceae	<i>Bromus</i>	<i>pectinatus</i>			Naturalized	
Monocotyledonae	Poaceae	<i>Chloris</i>	<i>pycnothrix</i>	spreading windmill grass		Naturalized	
Monocotyledonae	Poaceae	<i>Chloris</i>	<i>virgata</i>	feathery windmill grass		Naturalized	
Monocotyledonae	Poaceae	<i>Chloris</i>	<i>gayana</i>	Rhodes grass	Rhodes grass	Naturalized	
Monocotyledonae	Poaceae	<i>Cynodon</i>	<i>dactylon</i>	wire grass	Bermuda grass	Naturalized	
Monocotyledonae	Poaceae	<i>Dactyloctenium</i>	<i>aegyptium</i>	crow's-foot grass		Naturalized	
Monocotyledonae	Poaceae	<i>Danthonia</i>	<i>decumbens</i>	heath grass	heath grass	Naturalized	
Monocotyledonae	Poaceae	<i>Dendrocalamus</i>	<i>gigantea</i>	giant bamboo		Naturalized	
Monocotyledonae	Poaceae	<i>Dichanthium</i>	<i>aristatum</i>			Naturalized	
Monocotyledonae	Poaceae	<i>Digitaria</i>	<i>violascens</i>	slender finger-grass		Naturalized	
Monocotyledonae	Poaceae	<i>Digitaria</i>	<i>abyssinica</i>	meadow finger-grass		Naturalized	
Monocotyledonae	Poaceae	<i>Digitaria</i>	<i>ciliaris</i>	tropical finger-grass	tropical finger-grass	Naturalized	
Monocotyledonae	Poaceae	<i>Dinebra</i>	<i>retroflexa</i>	pagoda grass		Adventive	
Monocotyledonae	Poaceae	<i>Echinochloa</i>	<i>pyramidalis</i>	antelope grass	antelope grass	Naturalized	
Monocotyledonae	Poaceae	<i>Ehrharta</i>	<i>longiflora</i>	two-pronged veldt-grass		Adventive	
Monocotyledonae	Poaceae	<i>Ehrharta</i>	<i>erecta</i>	summer grass		Naturalized	
Monocotyledonae	Poaceae	<i>Eleusine</i>	<i>indica</i>	fowl's-foot grass		Naturalized	
Monocotyledonae	Poaceae	<i>Enneapogon</i>	<i>cenchrroides</i>		softfeather pappus	Naturalized	

					grass		
Monocotyledonae	Poaceae	<i>Eragrostis</i>	<i>minor</i>		small love grass	Naturalized	
Monocotyledonae	Poaceae	<i>Eragrostis</i>	<i>curvula</i>	weeping love grass	weeping love grass	Adventive	
Monocotyledonae	Poaceae	<i>Eragrostis</i>	<i>saxatilis</i>	hair grass	St. Helena hair grass	Endemic	Not assessed
Monocotyledonae	Poaceae	<i>Eragrostis</i>	<i>cilianensis</i>	fish-bone grass		Naturalized	
Monocotyledonae	Poaceae	<i>Eragrostis</i> sp.	*	cliff hair grass	cliff hair grass	Endemic	Not assessed
Monocotyledonae	Poaceae	<i>Eriochloa</i>	<i>procera</i>	coastal cup-grass		Naturalized	
Monocotyledonae	Poaceae	<i>Holcus</i>	<i>lanatus</i>	Yorkshire fog	Yorkshire fog	Adventive	
Monocotyledonae	Poaceae	<i>Lolium</i>	<i>rigidum</i>	annual rye-grass	annual rye-grass	Naturalized	
Monocotyledonae	Poaceae	<i>Oplismenus</i>	<i>hirtellus</i>	brittle basket grass		Naturalized	
Monocotyledonae	Poaceae	<i>Panicum</i>	<i>coloratum</i>			Probably native	
Monocotyledonae	Poaceae	<i>Panicum</i>	<i>maximum</i>	Guinea grass	Guinea grass	Naturalized	
Monocotyledonae	Poaceae	<i>Panicum</i> sp.	*			Probably native	
Monocotyledonae	Poaceae	<i>Paspalum</i>	<i>geminatum</i>			Naturalized	
Monocotyledonae	Poaceae	<i>Paspalum</i>	<i>scrobiculatum</i>	cow grass		Naturalized	
Monocotyledonae	Poaceae	<i>Paspalum</i>	<i>vaginatum</i>	water finger-grass		Adventive	
Monocotyledonae	Poaceae	<i>Paspalum</i>	<i>urvillei</i>	cardinal grass	Urville's paspalum	Naturalized	
Monocotyledonae	Poaceae	<i>Pennisetum</i>	<i>macrourum</i>	thatching grass		Naturalized	
Monocotyledonae	Poaceae	<i>Pennisetum</i>	<i>clandestinum</i>	kikuyu	kikuyu	Naturalized	
Monocotyledonae	Poaceae	<i>Pennisetum</i>	<i>setaceum</i>	African fountain grass	African fountain grass	Naturalized	
Monocotyledonae	Poaceae	<i>Pennisetum</i>	<i>purpureum</i>	elephant grass	elephant grass	Naturalized	
Monocotyledonae	Poaceae	<i>Phalaris</i>	<i>minor</i>	Mediterranean canary grass	Mediterranean canary grass	Adventive	
Monocotyledonae	Poaceae	<i>Poa</i>	<i>annua</i>	annual meadow-grass	annual meadow-grass	Naturalized	
Monocotyledonae	Poaceae	<i>Poa</i>	<i>pratensis</i>	spreading meadow-grass	spreading meadow-grass	Naturalized	
Monocotyledonae	Poaceae	<i>Polypogon</i>	<i>monspeliensis</i>	annual beard grass	annual beard grass	Probably native	
Monocotyledonae	Poaceae	<i>Polypogon</i>	<i>tenuis</i>	slender beard-grass		Probably native	
Monocotyledonae	Poaceae	<i>Semiarundinia</i>	*	bamboo		Naturalized	
Monocotyledonae	Poaceae	<i>Setaria</i>	<i>verticillata</i>	love grass	rough bristle-grass	Naturalized	
Monocotyledonae	Poaceae	<i>Setaria</i>	<i>pumila</i>	yellow bristle-grass		Naturalized	
Monocotyledonae	Poaceae	<i>Setaria</i>	<i>welwitschii</i>	Angolan bristle-grass		Probably native	

Monocotyledonae	Poaceae	<i>Setaria</i>	<i>sphacelata</i>	tall bristle-grass		Adventive	
Monocotyledonae	Poaceae	<i>Sorghum</i>	<i>halepense</i>	Johnson grass	Johnson grass	Adventive	
Monocotyledonae	Poaceae	<i>Sporobolus</i>	<i>natalensis</i>	giant rat's-tail grass	giant rat's-tail grass	Naturalized	
Monocotyledonae	Poaceae	<i>Sporobolus</i>	<i>africanus</i>	Cape grass	African drop-seed	Naturalized	
Monocotyledonae	Poaceae	<i>Stenotaphrum</i>	<i>secundatum</i>	mat grass		Naturalized	
Monocotyledonae	Poaceae	<i>Stipa</i>	<i>neesiana</i>	common feather grass		Adventive	
Monocotyledonae	Poaceae	<i>Trachynia</i>	<i>distachya</i>			Naturalized	
Monocotyledonae	Poaceae	<i>Tragus</i>	<i>berteronianus</i>	bur-grass		Adventive	
Monocotyledonae	Poaceae	<i>Tribolium</i>	<i>obliterum</i>	bayonet grass		Possibly native	
Monocotyledonae	Poaceae	<i>Urochloa</i>	<i>panicoides</i>	signal grass		Adventive	
Monocotyledonae	Poaceae	<i>Vulpia</i>	<i>bromoides</i>	squirrel's-tail fescue	rat's-tail fescue	Naturalized	
Monocotyledonae	Juncaceae	<i>Juncus</i>	<i>effusus</i>	soft rush	soft rush	Naturalized	
Monocotyledonae	Juncaceae	<i>Juncus</i>	<i>capillaceus</i>	bull grass		Naturalized	
Monocotyledonae	Juncaceae	<i>Juncus</i>	<i>bufonius</i>	toad rush	toad rush	Naturalized	
Monocotyledonae	Juncaceae	<i>Juncus</i>	<i>tenuis</i>	slender rush	slender rush	Naturalized	
Monocotyledonae	Cyperaceae	<i>Bulbostylis</i>	<i>lichtensteiniana</i>	tussock sedge	St. Helena tussock-sedge	Endemic	Not assessed
Monocotyledonae	Cyperaceae	<i>Bulbostylis</i>	<i>neglecta</i>	neglected tuft sedge	neglected tuft sedge	Endemic	Not assessed
Monocotyledonae	Cyperaceae	<i>Carex</i>	<i>dianae</i>	Diana's Peak grass	Diana's Peak sedge	Endemic	Not assessed
Monocotyledonae	Cyperaceae	<i>Cyperus</i>	<i>laevigatus</i>	salt-drip sedge		Probably native	
Monocotyledonae	Cyperaceae	<i>Cyperus</i>	<i>esculentus</i>	yellow nut sedge	yellow nut sedge	Naturalized	
Monocotyledonae	Cyperaceae	<i>Cyperus</i>	<i>alternifolius</i>	umbrella sedge	umbrella sedge	Naturalized	
Monocotyledonae	Cyperaceae	<i>Cyperus</i>	<i>polystachyos</i>	field sedge		Possibly native	
Monocotyledonae	Cyperaceae	<i>Cyperus</i>	<i>distans</i>	graceful sedge		Possibly native	
Monocotyledonae	Cyperaceae	<i>Cyperus</i>	<i>cyperoides</i>	bottle-brush sedge		Possibly native	
Monocotyledonae	Cyperaceae	<i>Cyperus</i>	<i>rotundus</i>	nut grass	purple nut sedge	Naturalized	
Monocotyledonae	Cyperaceae	<i>Ficinia</i>	<i>nodosa</i>	thatching rush		Probably native	
Monocotyledonae	Cyperaceae	<i>Isolepis</i>	<i>prolifer</i>	proliferous spike-rush		Probably native	
Monocotyledonae	Cyperaceae	<i>Isolepis</i>	<i>setacea</i>	bristle club-rush	bristle club-rush	Possibly native	
Monocotyledonae	Cyperaceae	<i>Kyllinga</i>	<i>brevifolia</i>	running sedge		Naturalized	
Monocotyledonae	Commelinaceae	<i>Commelina</i>	<i>diffusa</i>	tallow-vine		Naturalized	
Monocotyledonae	Commelinaceae	<i>Tradescantia</i>	<i>zebrina</i>	wandering jew	wandering jew	Naturalized	
Monocotyledonae	Commelinaceae	<i>Tradescantia</i>	<i>fluminensis</i>	Asiatic day-	Asiatic day-flower	Naturalized	

				flower			
Monocotyledonae	Zingiberaceae	<i>Alpinia</i>	<i>zerumbet</i>	shell ginger	shell ginger	Naturalized	
Monocotyledonae	Zingiberaceae	<i>Hedychium</i>	<i>coronarium</i>	yellow ginger		Naturalized	
Monocotyledonae	Musaceae	<i>Musa sp.</i>	*	banana		Adventive	
Monocotyledonae	Cannaceae	<i>Canna</i>	<i>indica</i>	Indian shot	canna lily	Naturalized	
eu-Dicteledonae	Fumariaceae	<i>Fumaria</i>	<i>muralis</i>	wall fumitory	wall fumitory	Naturalized	
eu-Dicteledonae	Papaveraceae	<i>Argemone</i>	<i>mexicana</i>	Mexican poppy	Mexican poppy	Naturalized	
eu-Dicteledonae	Ranunculaceae	<i>Ranunculus</i>	<i>parviflorus</i>	small-flowered buttercup	small-flowered buttercup	Naturalized	
eu-Dicteledonae	Proteaceae	<i>Grevillea</i>	<i>robusta</i>	silky-oak		Naturalized	
eu-Dicteledonae	Proteaceae	<i>Hakea</i>	<i>purpurea</i>			Forestry species	
eu-Dicteledonae	Amaranthaceae	<i>Achyranthes</i>	<i>aspera</i>	double gee		Naturalized	
eu-Dicteledonae	Amaranthaceae	<i>Alternanthera</i>	<i>pungens</i>	triple gee		Naturalized	
eu-Dicteledonae	Amaranthaceae	<i>Amaranthus</i>	<i>lividus</i>	prostrate amaranth		Naturalized	
eu-Dicteledonae	Amaranthaceae	<i>Amaranthus</i>	<i>dubius</i>	cat's-tail amaranth		Naturalized	
eu-Dicteledonae	Amaranthaceae	<i>Amaranthus</i>	<i>muricatus</i>	African amaranth	African amaranth	Naturalized	
eu-Dicteledonae	Amaranthaceae	<i>Amaranthus</i>	<i>graecizans</i>	Greek amaranth		Possibly native	
eu-Dicteledonae	Amaranthaceae	<i>Amaranthus</i>	<i>viridis</i>	slender amaranth	slender amaranth	Naturalized	
eu-Dicteledonae	Aizoaceae	<i>Aptenia</i>	<i>cordifolia</i>	heart-leaf ice- plant	heart-leaf ice-plant	Naturalized	
eu-Dicteledonae	Aizoaceae	<i>Carpobrotus</i>	<i>edulis</i>	creeper	Hottentot fig	Naturalized	
eu-Dicteledonae	Aizoaceae	<i>Hydrodea</i>	<i>cryptantha</i>	babies' toes	babies' toes	Endemic	Not assessed
eu-Dicteledonae	Aizoaceae	<i>Malephora</i>	<i>purpureo-crocea</i>			Adventive	
eu-Dicteledonae	Aizoaceae	<i>Mesembryanthemum</i>	<i>crystallinum</i>	ice plant	ice plant	Native	
eu-Dicteledonae	Aizoaceae	<i>Tetragonia</i>	<i>tetragonoides</i>	New Zealand spinach	New Zealand spinach	Naturalized	
eu-Dicteledonae	Aizoaceae	<i>Tetragonia</i>	<i>microptera</i>			Naturalized	
eu-Dicteledonae	Aizoaceae	<i>Trianthema</i>	<i>portulacastrum</i>	horse purslane	black pigweed, horse purslane	Adventive	
eu-Dicteledonae	Cactaceae	<i>Hylocereus</i>	<i>triangularis</i>	night-flowering cactus	night-flowering cactus	Naturalized	
eu-Dicteledonae	Cactaceae	<i>Opuntia</i>	<i>ficus-indica</i>	white tungy	common prickly-pear	Naturalized	
eu-Dicteledonae	Cactaceae	<i>Opuntia</i>	<i>stricta</i>	red tungy	red prickly-pear, pest prickly-pear	Naturalized	
eu-Dicteledonae	Cactaceae	<i>Pilocereus</i>	<i>keyensis</i>			Adventive	
eu-Dicteledonae	Caryophyllaceae	<i>Cerastium</i>	<i>fontanum</i>	common mouse-ear	common mouse-ear	Naturalized	
eu-Dicteledonae	Caryophyllaceae	<i>Cerastium</i>	<i>glomeratum</i>	sticky mouse- ear	sticky mouse-ear	Naturalized	

eu-Dictoledonae	Caryophyllaceae	<i>Polycarpon</i>	<i>tetraphyllum</i>	four-leaved allseed	four-leaved allseed	Naturalized	
eu-Dictoledonae	Caryophyllaceae	<i>Sagina</i>	<i>apetala</i>	annual pearlwort	annual pearlwort	Naturalized	
eu-Dictoledonae	Caryophyllaceae	<i>Stellaria</i>	<i>uliginosa</i>	bog stitchwort	bog stitchwort	Naturalized	
eu-Dictoledonae	Caryophyllaceae	<i>Stellaria</i>	<i>media</i>	common chickweed	common chickweed	Naturalized	
eu-Dictoledonae	Chenopodiaceae	<i>Atriplex</i>	<i>semibaccata</i>	saltbush		Naturalized	
eu-Dictoledonae	Chenopodiaceae	<i>Atriplex</i>	<i>suberecta</i>	green saltbush		Naturalized	
eu-Dictoledonae	Chenopodiaceae	<i>Atriplex</i>	<i>nummularia</i>	old man saltbush	old man saltbush	Naturalized	
eu-Dictoledonae	Chenopodiaceae	<i>Chenopodium</i>	<i>murale</i>	striped goosefoot	striped goosefoot	Naturalized	
eu-Dictoledonae	Chenopodiaceae	<i>Chenopodium</i>	<i>helenense</i>	St. Helena goosefoot	St. Helena goosefoot	Endemic	Not assessed
eu-Dictoledonae	Chenopodiaceae	<i>Chenopodium</i>	<i>ambrosioides</i>	Mexican tea	Mexican tea	Naturalized	
eu-Dictoledonae	Chenopodiaceae	<i>Manochlamys</i>	<i>albicans</i>	Melliss's saltbush		Probably native	
eu-Dictoledonae	Chenopodiaceae	<i>Suaeda</i>	<i>fruticosa</i>	samphire		Native	
eu-Dictoledonae	Basellaceae	<i>Anredera</i>	<i>cordifolia</i>	Madeira vine	Madeira vine	Naturalized	
eu-Dictoledonae	Portulacaceae	<i>Portulaca</i>	<i>oleracea</i>	purslane	purslane	Native	
eu-Dictoledonae	Portulacaceae	<i>Talinum</i>	<i>paniculatum</i>	wood-purslane		Naturalized	
eu-Dictoledonae	Polygonaceae	<i>Emex</i>	<i>australis</i>	double gee		Adventive	
eu-Dictoledonae	Polygonaceae	<i>Persicaria</i>	<i>capitata</i>	pink-headed knotweed		Adventive	
eu-Dictoledonae	Polygonaceae	<i>Rumex</i>	<i>acetosella</i>	sheep's sorrel	sheep's sorrel	Adventive	
eu-Dictoledonae	Polygonaceae	<i>Rumex</i>	<i>crispus</i>	curled dock	curled dock	Naturalized	
eu-Dictoledonae	Polygonaceae	<i>Rumex</i>	<i>pulcher</i>	fiddle dock	fiddle dock	Naturalized	
eu-Dictoledonae	Plumbaginaceae	<i>Plumbago</i>	<i>auriculata</i>	Cape leadwort	Cape leadwort	Adventive	
eu-Dictoledonae	Nyctaginaceae	<i>Commicarpus</i>	<i>helenae</i>	hogweed		Native	
eu-Dictoledonae	Nyctaginaceae	<i>Mirabilis</i>	<i>jalapa</i>	four o'clock flower	four o'clock flower	Adventive	
eu-Dictoledonae	Molluginaceae	<i>Hypertelis</i>	<i>acida</i>	salad plant	St. Helena salad plant	Endemic	Not assessed
eu-Dictoledonae	Frankeniaceae	<i>Frankenia</i>	<i>portulacifolia</i>	tea plant	St. Helena tea-plant	Endemic	Vulnerable D2
eu-Dictoledonae	Crassulaceae	<i>Cotyledon</i>	<i>orbiculata</i>	pig's ear		Naturalized	
eu-Dictoledonae	Crassulaceae	<i>Crassula</i>	<i>ovata</i>	jade plant	jade plant	Adventive	
eu-Dictoledonae	Crassulaceae	<i>Kalanchoe</i>	<i>daigremontianum</i>	mother-of-thousands	mother-of-thousands, alligator plant	Naturalized	
eu-Dictoledonae	Crassulaceae	<i>Kalanchoe</i>	<i>delagoensis</i>			Naturalized	
eu-Dictoledonae	Crassulaceae	<i>Kalanchoe</i>	<i>pinnata</i>	chandelier plant		Naturalized	
eu-Dictoledonae	Vitaceae	<i>Rhoicissus</i>	<i>tomentosa</i>	Cape vine	Cape grape	Adventive	
eu-Dictoledonae	Geraniaceae	<i>Erodium</i>	<i>acaule</i>	stemless	stemless stork's-bill	Adventive	

				stork's-bill			
eu-Dictoledonae	Geraniaceae	<i>Pelargonium</i>	<i>cotyledonis</i>	old father live forever	old father live forever	Endemic	Not assessed
eu-Dictoledonae	Geraniaceae	<i>Pelargonium</i>	<i>inquinans</i>	scarlet geranium		Naturalized	
eu-Dictoledonae	Melanthaceae	<i>Melianthus</i>	<i>major</i>	honeyflower	honeyflower	Adventive	
eu-Dictoledonae	Lythraceae	<i>Punica</i>	<i>granatum</i>	pomegranate	pomegranate	Adventive	
eu-Dictoledonae	Melastomataceae	<i>Tibouchina</i>	<i>urvilleana</i>	glory bush	glory bush	Adventive	
eu-Dictoledonae	Myrtaceae	<i>Corymbia</i>	<i>ficifolia</i>			Forestry species	
eu-Dictoledonae	Myrtaceae	<i>Eucalyptus</i>	<i>robusta</i>	swamp mahogany	swamp mahogany	Forestry species	
eu-Dictoledonae	Myrtaceae	<i>Eucalyptus</i>	<i>viminalis</i>			Forestry species	
eu-Dictoledonae	Myrtaceae	<i>Eucalyptus</i>	<i>lehmannii</i>	lehmann's gum	lehmann's gum	Forestry species	
eu-Dictoledonae	Myrtaceae	<i>Eucalyptus</i>	<i>grandis</i>			Forestry species	
eu-Dictoledonae	Myrtaceae	<i>Eucalyptus</i>	<i>globulus</i>	blue gum	blue gum	Forestry species	
eu-Dictoledonae	Myrtaceae	<i>Eucalyptus</i>	<i>crebra</i>	ironbark	ironbark	Forestry species	
eu-Dictoledonae	Myrtaceae	<i>Eucalyptus</i>	<i>cladocalyx</i>			Forestry species	
eu-Dictoledonae	Myrtaceae	<i>Lophostemon</i>	<i>confertus</i>			Forestry species	
eu-Dictoledonae	Myrtaceae	<i>Psidium</i>	<i>guajava</i>	guava	guava	Naturalized	
eu-Dictoledonae	Myrtaceae	<i>Psidium</i>	<i>cattleianum</i>	strawberry guava	strawberry guava	Naturalized	
eu-Dictoledonae	Myrtaceae	<i>Syzygium</i>	<i>jambos</i>	rose apple		Adventive	
eu-Dictoledonae	Onagraceae	<i>Fuchsia</i>	<i>coccinea</i>	small fuchsia		Naturalized	
eu-Dictoledonae	Onagraceae	<i>Fuchsia</i>	<i>boliviana</i>	Bolivian fuchsia		Naturalized	
eu-Dictoledonae	Zygophyllaceae	<i>Tribulus</i>	<i>terrestris</i>	puncture vine	puncture vine	Adventive	
eu-Dictoledonae	Zygophyllaceae	<i>Tribulus</i>	<i>cistoides</i>			Possibly native	
eu-Dictoledonae	Celastraceae	<i>Elaeodendron</i>	<i>croceum</i>	white olive		Naturalized	
eu-Dictoledonae	Euphorbiaceae	<i>Acalypha</i>	<i>amentacea</i>			Adventive	
eu-Dictoledonae	Euphorbiaceae	<i>Clutia</i>	<i>pulchella</i>	wild pepper		Naturalized	
eu-Dictoledonae	Euphorbiaceae	<i>Euphorbia</i>	<i>cyathophora</i>	Mexican fireplant	Mexican fireplant	Naturalized	
eu-Dictoledonae	Euphorbiaceae	<i>Euphorbia</i>	<i>serpens</i>	matted spurge		Naturalized	
eu-Dictoledonae	Euphorbiaceae	<i>Euphorbia</i>	<i>peplus</i>	petty spurge	petty spurge	Naturalized	
eu-Dictoledonae	Euphorbiaceae	<i>Euphorbia</i>	<i>heleniana</i>	French grass	St. Helena spurge	Endemic	Not assessed
eu-Dictoledonae	Euphorbiaceae	<i>Euphorbia</i>	<i>helioscopia</i>	sun spurge	sun spurge	Adventive	
eu-Dictoledonae	Euphorbiaceae	<i>Euphorbia</i>	<i>prostrata</i>	prostrate spurge	prostrate spurge	Naturalized	
eu-Dictoledonae	Euphorbiaceae	<i>Mercurialis</i>	<i>annua</i>	annual mercury	annual mercury	Naturalized	
eu-Dictoledonae	Euphorbiaceae	<i>Ricinus</i>	<i>communis</i>	castor oil plant	castor oil plant	Naturalized	
eu-Dictoledonae	Passifloraceae	<i>Passiflora</i>	<i>x</i>			Naturalized	

			<i>caeruleoracemosa</i>				
eu-Dictoledonae	Passifloraceae	<i>Passiflora</i>	<i>racemosa</i>	red passion-flower			Adventive
eu-Dictoledonae	Passifloraceae	<i>Passiflora</i>	<i>edulis</i>	grenadilla	passion-fruit		Adventive
eu-Dictoledonae	Salicaceae - Flacourtoideae	<i>Dovyalis</i>	<i>caffra</i>	kei apple			Naturalized
eu-Dictoledonae	Salicaceae - Salicoideae	<i>Populus</i>	<i>alba</i>	white poplar	white poplar		Naturalized
eu-Dictoledonae	Oxalidaceae	<i>Oxalis</i>	<i>latifolia</i>				Adventive
eu-Dictoledonae	Oxalidaceae	<i>Oxalis</i>	<i>pes-caprae</i>	yellow sour bell	Bermuda buttercup, soursop		Naturalized
eu-Dictoledonae	Oxalidaceae	<i>Oxalis</i>	<i>corymbosa</i>	pink sorrel			Naturalized
eu-Dictoledonae	Oxalidaceae	<i>Oxalis</i>	<i>corniculata</i>	creeping sorrel	creeping sorrel		Naturalized
eu-Dictoledonae	Fabaceae - Faboideae	<i>Desmodium</i>	<i>intortum</i>				Naturalized
eu-Dictoledonae	Fabaceae - Faboideae	<i>Desmodium</i>	<i>uncinatum</i>				Adventive
eu-Dictoledonae	Fabaceae - Faboideae	<i>Desmodium</i>	<i>incanum</i>	legume			Naturalized
eu-Dictoledonae	Fabaceae - Faboideae	<i>Erythrina</i>	<i>caffra</i>	Caffra thorn	Caffra thorn		Naturalized
eu-Dictoledonae	Fabaceae - Faboideae	<i>Lotus</i>	<i>corniculatus</i>	bird's-foot trefoil	bird's-foot trefoil		Adventive
eu-Dictoledonae	Fabaceae - Faboideae	<i>Macroptilium</i>	<i>atropurpureum</i>	siratro	siratro, purple bush-bean		Naturalized
eu-Dictoledonae	Fabaceae - Faboideae	<i>Medicago</i>	<i>polymorpha</i>	toothed medick	toothed medick		Naturalized
eu-Dictoledonae	Fabaceae - Faboideae	<i>Melilotus</i>	<i>indicus</i>	ribbed melilot	ribbed melilot		Adventive
eu-Dictoledonae	Fabaceae - Faboideae	<i>Psoralea</i>	<i>pinnata</i>	gobblegheer			Possibly native
eu-Dictoledonae	Fabaceae - Faboideae	<i>Trifolium</i>	<i>repens</i>	red clover	white clover		Adventive
eu-Dictoledonae	Fabaceae - Faboideae	<i>Ulex</i>	<i>europaeus</i>	furze	gorse		Naturalized
eu-Dictoledonae	Fabaceae - Faboideae	<i>Vicia</i>	<i>sativa</i>	common vetch	common vetch		Naturalized
eu-Dictoledonae	Fabaceae - Caesalpinioideae	<i>Senna</i>	<i>occidentalis</i>				Adventive
eu-Dictoledonae	Fabaceae - Mimosoideae	<i>Acacia</i>	<i>longifolia</i>	Port Jackson willow	longleaf acacia		Naturalized
eu-Dictoledonae	Fabaceae - Mimosoideae	<i>Acacia</i>	<i>decurrens</i>	green wattle	green wattle		Forestry species
eu-Dictoledonae	Fabaceae - Mimosoideae	<i>Acacia</i>	<i>elata</i>	cedarwood acacia	cedarwood acacia		Forestry species
eu-Dictoledonae	Fabaceae - Mimosoideae	<i>Acacia</i>	<i>mearnsii</i>	black wattle	black wattle		Naturalized
eu-Dictoledonae	Fabaceae -	<i>Acacia</i>	<i>melanoxyton</i>	blackwood			Naturalized

	Mimosoideae						
eu-Dictoledonae	Fabaceae - Mimosoideae	<i>Acacia</i>	<i>saligna</i>			Forestry species	
eu-Dictoledonae	Fabaceae - Mimosoideae	<i>Acacia</i>	<i>cyclops</i>	red-eye acacia	red-eye acacia	Naturalized	
eu-Dictoledonae	Fabaceae - Mimosoideae	<i>Acacia</i>	<i>baileyana</i>	blue-leaved wattle		Adventive	
eu-Dictoledonae	Fabaceae - Mimosoideae	<i>Acacia</i>	<i>karroo</i>	sweet thorn	sweet thorn	Naturalized	
eu-Dictoledonae	Fabaceae - Mimosoideae	<i>Albizia</i>	<i>lopantha</i>	black boy		Naturalized	
eu-Dictoledonae	Fabaceae - Mimosoideae	<i>Leucaena</i>	<i>leucocephala</i>	seed work acacia		Naturalized	
eu-Dictoledonae	Polygalaceae	<i>Polygala</i>	<i>myrtifolia</i>	Cape milkwort		Naturalized	
eu-Dictoledonae	Moraceae	<i>Ficus</i>	<i>benghalensis</i>	banyan	banyan	Naturalized	
eu-Dictoledonae	Moraceae	<i>Ficus</i>	<i>carica</i>	fig	edible fig	Adventive	
eu-Dictoledonae	Moraceae	<i>Ficus</i>	<i>microcarpa</i>	Chinese banyan	Chinese banyan	Adventive	
eu-Dictoledonae	Moraceae	<i>Morus</i>	<i>nigra</i>	black mulberry		Adventive	
eu-Dictoledonae	Rosaceae	<i>Eriobotrya</i>	<i>japonica</i>	loquat	loquat	Adventive	
eu-Dictoledonae	Rosaceae	<i>Prunus</i>	<i>persica</i>	peach	peach	Adventive	
eu-Dictoledonae	Rosaceae	<i>Rosa sp.</i>	*	rose	rose	Naturalized	
eu-Dictoledonae	Rosaceae	<i>Rubus</i>	<i>rosifolius</i>	rasberry	rose-leaved bramble	Naturalized	
eu-Dictoledonae	Rosaceae	<i>Rubus</i>	<i>pinnatus</i>	blackberry		Naturalized	
eu-Dictoledonae	Rhamnaceae	<i>Phylica</i>	<i>polifolia</i>	rosemary	St. Helena rosemary	Endemic	Critically Endangered B2ab(v)
eu-Dictoledonae	Begoniaceae	<i>Begonia sp.</i>	*			Adventive	
eu-Dictoledonae	Begoniaceae	<i>Begonia sp.</i>	*			Adventive	
eu-Dictoledonae	Cucurbitaceae	<i>Cucurbita</i>	<i>pepo</i>	courgette	marrow, courgette	Naturalized	
eu-Dictoledonae	Cucurbitaceae	<i>Sechium</i>	<i>edule</i>	chow-chow	chayotte	Naturalized	
eu-Dictoledonae	Fagaceae	<i>Quercus</i>	<i>robur</i>	English oak	English oak	Adventive	
eu-Dictoledonae	Fagaceae	<i>Quercus</i>	<i>ilex</i>	holm oak	holm oak	Adventive	
eu-Dictoledonae	Fagaceae	<i>Quercus</i>	<i>suber</i>	cork oak	cork oak	Adventive	
eu-Dictoledonae	Casuarinaceae	<i>Casuarina</i>	<i>equisetifolia</i>	she-oak	she-oak	Forestry species	
eu-Dictoledonae	Brassicaceae	<i>Cardamine</i>	<i>hirsuta</i>	hairy bittercress	hairy bittercress	Naturalized	
eu-Dictoledonae	Brassicaceae	<i>Coronopus</i>	<i>didymus</i>	swinecress	swinecress	Naturalized	
eu-Dictoledonae	Brassicaceae	<i>Lepidium</i>	<i>africanum</i>	African pepperwort	African pepperwort	Naturalized	
eu-Dictoledonae	Brassicaceae	<i>Raphanus</i>	<i>raphanistrum</i>	wild raddish	wild radish	Naturalized	
eu-Dictoledonae	Brassicaceae	<i>Rorippa</i>	<i>nasturtium-aquaticum</i>	watercress	watercress	Adventive	
eu-Dictoledonae	Tropaeolaceae	<i>Tropaeolum</i>	<i>majus</i>	nasturtium	nasturtium	Naturalized	
eu-Dictoledonae	Malvaceae -	<i>Triumfetta</i>	<i>rhomboidea</i>	Chinese burr	Chinese burr	Naturalized	

	Grewioideae						
eu-Dictoledonae	Malvaceae - Malvoideae	<i>Gossypium</i>	<i>herbaceum</i>	cotton	cotton	Naturalized	
eu-Dictoledonae	Malvaceae - Malvoideae	<i>Hibiscus</i>	<i>rosa-sinensis</i>	Chinese hibiscus	Chinese rose, Chinese hibiscus	Naturalized	
eu-Dictoledonae	Malvaceae - Malvoideae	<i>Hibiscus</i>	<i>diversifolius</i>	swamp hibiscus	swamp hibiscus	Naturalized	
eu-Dictoledonae	Malvaceae - Malvoideae	<i>Hibiscus</i>	<i>trionum</i>	bladder ketmia	bladder ketmia	Naturalized	
eu-Dictoledonae	Malvaceae - Malvoideae	<i>Malva</i>	<i>parviflora</i>	small-flowered mallow	small-flowered mallow	Naturalized	
eu-Dictoledonae	Malvaceae - Malvoideae	<i>Sida</i>	<i>rhombofolia</i>			Naturalized	
eu-Dictoledonae	Malvaceae - Malvoideae	<i>Sida</i>	<i>cordifolia</i>	sage mallow		Naturalized	
eu-Dictoledonae	Malvaceae - Malvoideae	<i>Thespesia</i>	<i>polpulnea</i>	Indian tulip tree	Indian tulip tree, Pacific rosewood, Seaside mahoe	Adventive	
eu-Dictoledonae	Malvaceae - Malvoideae	<i>Urena</i>	<i>lobata</i>	caesarweed	caesarweed	Adventive	
eu-Dictoledonae	Malvaceae - Dombeyoideae	<i>Trochetiopsis</i>	<i>erythoxylon</i>	redwood	St. Helena redwood	Endemic	Extinct in the Wild
eu-Dictoledonae	Malvaceae - Dombeyoideae	<i>Trochetiopsis</i>	<i>ebenus</i>	dwarf ebony	St. Helena dwarf ebony	Endemic	Critically Endangered D
eu-Dictoledonae	Malvaceae - Dombeyoideae	<i>Trochetiopsis</i>	<i>x benjaminii</i>	rebony	rebony	Wild planted	
eu-Dictoledonae	Anacardiaceae	<i>Harpephyllum</i>	<i>caffrum</i>	sour date	sour date	Naturalized	
eu-Dictoledonae	Anacardiaceae	<i>Mangifera</i>	<i>indica</i>	mango	mango	Adventive	
eu-Dictoledonae	Anacardiaceae	<i>Schinus</i>	<i>terebinthifolius</i>	wild mango	Brazilian pepper tree	Naturalized	
eu-Dictoledonae	Anacardiaceae	<i>Schinus</i>	<i>molle</i>	Peruvian pepper tree	Peruvian pepper tree	Naturalized	
eu-Dictoledonae	Meliaceae	<i>Melia</i>	<i>azedarach</i>	Perian lilac	Perian lilac	Naturalized	
eu-Dictoledonae	Sapindaceae	<i>Cardiospermum</i>	<i>halicacabum</i>	balloon-vine	balloon vine	Adventive	
eu-Dictoledonae	Sapindaceae	<i>Dodonaea</i>	<i>viscosa</i>	hopseed	hopseed	Forestry species	
eu-Dictoledonae	Cornaceae	<i>Curtisia</i>	<i>dentata</i>	assegai tree	assegai tree	Adventive	
eu-Dictoledonae	Ebenaceae	<i>Diospyros</i>	<i>dichrophylla</i>	poison peach		Naturalized	
eu-Dictoledonae	Balsaminaceae	<i>Impatiens</i>	<i>walleriana</i>	busy lizzie	busy lizzie	Naturalized	
eu-Dictoledonae	Primulaceae	<i>Anagallis</i>	<i>arvensis</i>	blue pimpernel	blue pimpernel	Naturalized	
eu-Dictoledonae	Rubiaceae	<i>Canthium</i>	<i>lividum</i>	St. Helena privet		Naturalized	
eu-Dictoledonae	Rubiaceae	<i>Cinchona</i>	<i>officinalis</i>	quinine tree	quinine	Naturalized	
eu-Dictoledonae	Rubiaceae	<i>Cinchona</i>	<i>pubescens</i>	large-leaved quinine		Naturalized	
eu-Dictoledonae	Rubiaceae	<i>Coffea</i>	<i>arabica</i>	coffee	coffee	Adventive	
eu-Dictoledonae	Rubiaceae	<i>Nesohedyotis</i>	<i>arborea</i>	dogwood	St. Helena dogwood	Endemic	Endangered D

eu-Dictoledonae	Asclepiadaceae	<i>Asclepias</i>	<i>rotundifolia</i>	milkweed		Naturalized	
eu-Dictoledonae	Asclepiadaceae	<i>Gomphocarpus</i>	<i>physocarpus</i>			Adventive	
eu-Dictoledonae	Apocynaceae	<i>Catharanthus</i>	<i>roseus</i>	Madagascar periwinkle	Venus rose	Naturalized	
eu-Dictoledonae	Apocynaceae	<i>Vinca</i>	<i>minor</i>	lesser periwinkle	lesser periwinkle	Naturalized	
eu-Dictoledonae	Boraginaceae	<i>Echium</i>	<i>pininana</i>	bee flower		Naturalized	
eu-Dictoledonae	Bignoniaceae	<i>Campsis</i>	<i>grandiflora</i>	trumpet vine	trumpet vine	Adventive	
eu-Dictoledonae	Bignoniaceae	<i>Pithecoctenium</i>	<i>crucigerum</i>	Monkey's comb	Monkey's comb	Naturalized	
eu-Dictoledonae	Bignoniaceae	<i>Pyrostegia</i>	<i>venusta</i>	flame vine	flame vine, flaming trumpet vine	Adventive	
eu-Dictoledonae	Bignoniaceae	<i>Tecoma</i>	<i>stans</i>	yellowboy		Naturalized	
eu-Dictoledonae	Bignoniaceae	<i>Tecomaria</i>	<i>capensis</i>	monkey's toes		Naturalized	
eu-Dictoledonae	Acanthaceae	<i>Justicia</i>	<i>carnea</i>	Brazilian plume flower	Brazilian plume flower, flamingo flower	Naturalized	
eu-Dictoledonae	Buddlejaceae	<i>Buddleja</i>	<i>madagascariensis</i>	Madagascar buddleja	Madagascan buddleja	Naturalized	
eu-Dictoledonae	Buddlejaceae	<i>Buddleja</i>	<i>brasiliensis</i>	Brazilian buddleja		Naturalized	
eu-Dictoledonae	Lamiaceae	<i>Cedronella</i>	<i>canariensis</i>	balm of Gilead		Adventive	
eu-Dictoledonae	Lamiaceae	<i>Lamium</i>	<i>amplexicaule</i>	henbit dead-nettle	henbit dead-nettle	Adventive	
eu-Dictoledonae	Lamiaceae	<i>Leonotis</i>	<i>nepetifolia</i>	Nargyweed	wild dagga	Naturalized	
eu-Dictoledonae	Lamiaceae	<i>Leonurus</i>	<i>sibiricus</i>	Chinese motherwort		Naturalized	
eu-Dictoledonae	Lamiaceae	<i>Plectranthus</i>	<i>barbatus</i>	Indian coleus	Indian coleus	Naturalized	
eu-Dictoledonae	Lamiaceae	<i>Plectranthus</i>	<i>verticillatus</i>	ivy-leaved stinking-sage		Naturalized	
eu-Dictoledonae	Lamiaceae	<i>Stachys</i>	<i>arvensis</i>	annual woundwort	annual woundwort	Naturalized	
eu-Dictoledonae	Verbenaceae	<i>Duranta</i>	<i>erecta</i>	Brazilian skyflower	lilac-flowered golden dewdrop; Brazilian skyflower	Naturalized	
eu-Dictoledonae	Verbenaceae	<i>Lantana</i>	<i>camara</i>	lantana	lantana	Naturalized	
eu-Dictoledonae	Verbenaceae	<i>Lippia</i>	<i>nodiflora</i>			Naturalized	
eu-Dictoledonae	Verbenaceae	<i>Verbena</i>	<i>bonariensis</i>	purple vervain		Naturalized	
eu-Dictoledonae	Scrophulariaceae	<i>Cymbalaria</i>	<i>muralis</i>	ivy-leaved toadflax	ivy-leaved toadflax	Naturalized	
eu-Dictoledonae	Scrophulariaceae	<i>Lophospermum</i>	<i>erubescens</i>	Mexican creeper		Naturalized	
eu-Dictoledonae	Scrophulariaceae	<i>Verbascum</i>	<i>virgatum</i>	twiggy mullein	twiggy mullein	Naturalized	
eu-Dictoledonae	Scrophulariaceae	<i>Veronica</i>	<i>anagallis-aquatica</i>	water speedwell	water speedwell	Naturalized	
eu-Dictoledonae	Scrophulariaceae	<i>Veronica</i>	<i>serpyllifolia</i>	thyme-leaved	thyme-leaved	Naturalized	

				speedwell	speedwell		
eu-Dictoledonae	Scrophulariaceae	<i>Veronica</i>	<i>officinalis</i>	heath speedwell	heath speedwell	Naturalized	
eu-Dictoledonae	Scrophulariaceae	<i>Veronica</i>	<i>persica</i>	common field speedwell	common field speedwell	Naturalized	
eu-Dictoledonae	Scrophulariaceae	<i>Veronica</i>	<i>agrestis</i>	green field speedwell	green field speedwell	Naturalized	
eu-Dictoledonae	Scrophulariaceae	<i>Veronica</i>	<i>arvensis</i>	wall speedwell	wall speedwell	Adventive	
eu-Dictoledonae	Oleaceae	<i>Ligustrum</i>	<i>ovalifolium</i>	privet	privet	Naturalized	
eu-Dictoledonae	Oleaceae	<i>Olea</i>	<i>europaea</i>	black olive	African olive	Naturalized	
eu-Dictoledonae	Plantaginaceae	<i>Plantago</i>	<i>major</i>	greater plantain	greater plantain	Naturalized	
eu-Dictoledonae	Plantaginaceae	<i>Plantago</i>	<i>robusta</i>	St. Helena plantain	St. Helena plantain	Endemic	Not assessed
eu-Dictoledonae	Convolvulaceae	<i>Dichondra</i>	<i>repens</i>	kidneyweed	kidneyweed	Naturalized	
eu-Dictoledonae	Convolvulaceae	<i>Ipomoea</i>	<i>pes-caprae</i>	camel's-foot creeper	camel's-foot creeper	Possibly native	
eu-Dictoledonae	Convolvulaceae	<i>Ipomoea</i>	<i>indica</i>	blue morning-glory	blue morning-glory	Naturalized	
eu-Dictoledonae	Convolvulaceae	<i>Ipomoea</i>	<i>batatas</i>	sweet potato	sweet potato	Adventive	
eu-Dictoledonae	Solanaceae	<i>Brugmansia</i>	<i>suaveolens</i>	angel's trumpet; ladies' peticoats	angel's trumpet; ladies' peticoats	Naturalized	
eu-Dictoledonae	Solanaceae	<i>Capsicum</i>	<i>annuum</i>	chilli	chilli	Adventive	
eu-Dictoledonae	Solanaceae	<i>Cestrum</i>	<i>laevigatum</i>	ink bush		Naturalized	
eu-Dictoledonae	Solanaceae	<i>Datura</i>	<i>stramonium</i>	thorn apple	thorn apple	Naturalized	
eu-Dictoledonae	Solanaceae	<i>Lycopersicon</i>	<i>esculentum</i>	scrunchy apple	wild tomato	Naturalized	
eu-Dictoledonae	Solanaceae	<i>Melissia</i>	<i>begoniifolia</i>	boxwood	St. Helena boxwood	Endemic	Critically Endangered B2ac(iv); D
eu-Dictoledonae	Solanaceae	<i>Nicandra</i>	<i>physalodes</i>	apple of Peru	apple of Peru	Naturalized	
eu-Dictoledonae	Solanaceae	<i>Nicotiana</i>	<i>tabacum</i>	wild tobacco	wild tobacco	Naturalized	
eu-Dictoledonae	Solanaceae	<i>Nicotiana</i>	<i>glauca</i>	tree tobacco	tree tobacco	Naturalized	
eu-Dictoledonae	Solanaceae	<i>Nicotiana</i>	<i>rustica</i>	sacred tobacco	mapacho, sacred tobacco	Adventive	
eu-Dictoledonae	Solanaceae	<i>Physalis</i>	<i>peruviana</i>	wild bilberry	Cape gooseberry	Naturalized	
eu-Dictoledonae	Solanaceae	<i>Solanum</i>	<i>nigrum</i>	diddly dight	black nightshade	Naturalized	
eu-Dictoledonae	Solanaceae	<i>Solanum</i>	<i>mauritanum</i>	bilberry		Naturalized	
eu-Dictoledonae	Solanaceae	<i>Solanum</i>	<i>linnaeanum</i>	apple of Sodom	apple of Sodom	Naturalized	
eu-Dictoledonae	Apiaceae	<i>Apium</i>	<i>graveolens</i>	celery	celery	Naturalized	
eu-Dictoledonae	Apiaceae	<i>Centella</i>	<i>asiatica</i>	monkey's ears		Naturalized	
eu-Dictoledonae	Apiaceae	<i>Foeniculum</i>	<i>vulgare</i>	fennel	fennel	Adventive	
eu-Dictoledonae	Apiaceae	<i>Petroselinum</i>	<i>crispum</i>	parsley	parsley	Adventive	

eu-Dictoledonae	Apiaceae	<i>Sium</i>	<i>bracteatum</i>	jellico	jellico	Endemic	Vulnerable D2
eu-Dictoledonae	Apiaceae	<i>Sium</i>	<i>burchellii</i>	dwarf jellico	dwarf jellico	Endemic	Endangered D
eu-Dictoledonae	Apiaceae	<i>Torilis</i>	<i>arvensis</i>	spreading hedge-parsley	spreading hedge-parsley	Adventive	
eu-Dictoledonae	Pittosporaceae	<i>Pittosporum</i>	<i>viridiflorum</i>	spoor		Naturalized	
eu-Dictoledonae	Pittosporaceae	<i>Pittosporum</i>	<i>undulatum</i>	sweet spoor		Naturalized	
eu-Dictoledonae	Araliaceae	<i>Tetrapanax</i>	<i>papyrifer</i>	rice-paper plant	rice-paper plant	Naturalized	
eu-Dictoledonae	Campanulaceae	<i>Trimeris</i>	<i>scaevolifolia</i>	lobelia	St. Helena lobelia	Endemic	Endangered D
eu-Dictoledonae	Campanulaceae	<i>Wahlenbergia</i>	<i>linifolia</i>	large bellflower	large St. Helena bellflower	Endemic	Critically Endangered B2ab(ii,iii,iv,v); C2a(i); D
eu-Dictoledonae	Campanulaceae	<i>Wahlenbergia</i>	<i>angustifolia</i>	small bellflower	small St. Helena bellflower	Endemic	Endangered B2ab(i,iii)
eu-Dictoledonae	Asteraceae	<i>Ageratum</i>	<i>conyzoides</i>	blueweed		Naturalized	
eu-Dictoledonae	Asteraceae	<i>Austro eupatorium</i>	<i>inulaefolium</i>	whiteweed		Naturalized	
eu-Dictoledonae	Asteraceae	<i>Bidens</i>	<i>pilosa</i>	French needles	beggar's ticks	Naturalized	
eu-Dictoledonae	Asteraceae	<i>Blainvillea</i>	<i>acmella</i>	small-flowered goatweed		Naturalized	
eu-Dictoledonae	Asteraceae	<i>Chrysanthemoides</i>	<i>monilifera</i>	wild coffee		Naturalized	
eu-Dictoledonae	Asteraceae	<i>Cineraria</i>	<i>saxifraga</i>	rock ragwort		Naturalized	
eu-Dictoledonae	Asteraceae	<i>Commidendrum</i>	<i>robustum</i>	gumwood	gumwood	Endemic	Endangered B2ac(iii,iv)
eu-Dictoledonae	Asteraceae	<i>Commidendrum</i>	<i>spurium</i>	false gumwood	false gumwood	Endemic	Critically Endangered B1ab(iv,v)+2ab(iv,v); C2a(i); D
eu-Dictoledonae	Asteraceae	<i>Commidendrum</i>	<i>rotundifolium</i>	bastard gumwood	bastard gumwood	Endemic	Extinct in the Wild
eu-Dictoledonae	Asteraceae	<i>Commidendrum</i>	<i>rugosum</i>	scrubwood	scrubwood	Endemic	Vulnerable D2
eu-Dictoledonae	Asteraceae	<i>Conyza</i>	<i>bonariensis</i>	fleabane	tropical fleabane	Naturalized	
eu-Dictoledonae	Asteraceae	<i>Cotula</i>	<i>australis</i>	small mayweed		Naturalized	
eu-Dictoledonae	Asteraceae	<i>Cotula</i>	<i>coronopifolia</i>	brass buttons	buttonweed, pagoda plant	Naturalized	
eu-Dictoledonae	Asteraceae	<i>Gnaphalium</i>	<i>luteoalbum</i>	yellow-tipped cudweed		Naturalized	
eu-Dictoledonae	Asteraceae	<i>Hypochaeris</i>	<i>radicata</i>	dandelion	cat's-ear	Naturalized	
eu-Dictoledonae	Asteraceae	<i>Hypochaeris</i>	<i>glabra</i>	smooth cat's-ear	smooth cat's-ear	Naturalized	
eu-Dictoledonae	Asteraceae	<i>Lachanodes</i>	<i>arborea</i>	she cabbage	she cabbage tree	Endemic	Critically Endangered C2a(i); D
eu-Dictoledonae	Asteraceae	<i>Melanodendron</i>	<i>integrifolium</i>	black cabbage	black cabbage tree	Endemic	Vulnerable D2
eu-Dictoledonae	Asteraceae	<i>Osteospermum</i>	<i>sanctae-helenae</i>	boneseed	St. Helena boneseed	Endemic	Not assessed
eu-Dictoledonae	Asteraceae	<i>Petrobium</i>	<i>arboreum</i>	whitewood	St. Helena whitewood	Endemic	Endangered D

eu-Dictoledonae	Asteraceae	<i>Pladaroxylon</i>	<i>leucadendron</i>	he cabbage	he cabbage tee	Endemic	Critically Endangered C2a(i)b
eu-Dictoledonae	Asteraceae	<i>Schkurhia</i>	<i>pinnata</i>	dwarf thread- leaf		Adventive	
eu-Dictoledonae	Asteraceae	<i>Senecio</i>	<i>mikanioides</i>	devil's guts		Naturalized	
eu-Dictoledonae	Asteraceae	<i>Senecio</i>	<i>sylvaticus</i>	wood groundsel	wood groundsel	Naturalized	
eu-Dictoledonae	Asteraceae	<i>Senecio</i>	<i>tamoides</i>	Canary creeper	Canary creeper	Adventive	
eu-Dictoledonae	Asteraceae	<i>Soliva</i>	<i>sessilis</i>	lawnweed	lawnweed	Naturalized	
eu-Dictoledonae	Asteraceae	<i>Sonchus</i>	<i>tenerimus</i>	Mediterranean sow-thistle		Naturalized	
eu-Dictoledonae	Asteraceae	<i>Sonchus</i>	<i>oleraceus</i>	smooth sow- thistle	smooth sow-thistle	Naturalized	
eu-Dictoledonae	Asteraceae	<i>Sonchus</i>	<i>asper</i>	prickly sow- thistle	prickly sow-thistle	Naturalized	
eu-Dictoledonae	Asteraceae	<i>Tagetes</i>	<i>minuta</i>	small-flowered marigold		Naturalized	
eu-Dictoledonae	Asteraceae	<i>Xerochrysum</i>	<i>bracteatum</i>	everlasting		Naturalized	
eu-Dictoledonae	Caprifoliaceae	<i>Lonicera</i>	<i>japonica</i>	Japanese honeysuckle	Japanese honeysuckle	Naturalized	
eu-Dictoledonae	Polygonaceae	<i>Persicaria</i>	<i>glabra</i>	knotweed		Native	
eu-Dictoledonae	Euphorbiaceae	<i>Acalypha</i>	<i>rubrinervis</i>	stringwood		Endemic	Extinct
eu-Dictoledonae	Euphorbiaceae	<i>Heliotropium</i>	<i>pannifolium</i>	St. Helena heliotrope		Endemic	Not assessed
eu-Dictoledonae	Rhamnaceae	<i>Nesiota</i>	<i>elliptica</i>	St. Helena olive		Endemic	Extinct
eu-Dictoledonae	Malvaceae - Dombeyoideae	<i>Trochetiopsis</i>	<i>melanoxyton</i>	ebony	St. Helena ebony	Endemic	Extinct
eu-Dictoledonae	Campanulaceae	<i>Wahlenbergia</i>	<i>roxburghii</i>	Roxburgh's bellflower	Roxburgh's bellflower	Endemic	Not assessed
eu-Dictoledonae	Campanulaceae	<i>Wahlenbergia</i>	<i>burchellii</i>	Burchell's bellflower	Burchell's bellflower	Endemic	Not assessed
eu-Dictoledonae	Asteraceae	<i>Commidendrum</i>	<i>robustum</i>	Burchell's gumwood	Burchell's gumwood	Endemic	Not assessed
Anthocetatospida	Anthocerotaceae	<i>Anthoceros</i> sp.	*			Non-Native	
Anthocetatospida	Dendrocerotaceae	<i>Dendroceros</i>	<i>adglutinatus</i>			Endemic	Not assessed
Anthocetatospida	Anthocerotaceae	<i>Phaeoceros</i>	<i>carolinianus</i>			Non-Native	
Marchantiospida	Adelanthaceae	<i>Adelanthus</i>	<i>decipiens</i>				
Marchantiospida	Jungermanniaceae	<i>Anastrophyllum</i>	<i>subcomplicatum</i>				
Marchantiospida	Lejeuneaceae	<i>Aphanolejeunea</i>	<i>microscopica</i> var. <i>exigua</i>				
Marchantiospida	Lejeuneaceae	<i>Aphanolejeunea</i>	<i>microscopica</i> var. <i>microscopica</i>			Non-Native	
Marchantiospida	Lejeuneaceae	<i>Aphanolejeunea</i> sp.	*				
Marchantiospida	Lejeuneaceae	<i>Aureolejeunea</i>	<i>rotalis</i> (aff.			Endemic	Not assessed

			<i>Leucolejeunea xantho</i>)			
Marchantiospida	Lejeuneaceae	<i>Aureolejeunea sp.</i>	*			Endemic Not assessed
Marchantiospida	Lepidoziaceae	<i>Bazzania aff.</i>	<i>praerupta</i>			
Marchantiospida	Cephaloziaceae	<i>aff. Cephaloziaceae</i>	*			
Marchantiospida	Cephaloziaceae	<i>Cephalozia aff.</i>	<i>connivens</i>			
Marchantiospida	Cephaloziellaceae	<i>Cephaloziella aff.</i>	<i>divaricata</i>			
Marchantiospida	Cephaloziellaceae	<i>Cephaloziella aff.</i>	<i>stellulifera</i>			Non-Native
Marchantiospida	Cephaloziellaceae	<i>Cephaloziella</i>	*			Non-Native
Marchantiospida	Lejeuneaceae	<i>Cheilolejeunea</i>	<i>ascensionis</i>			Endemic Not assessed
Marchantiospida	Lejeuneaceae	<i>Cheilolejeunea sp.</i>	*			
Marchantiospida	Geocalycaceae	<i>Chiloscyphus</i>	<i>angustistipulus (Lophocolea a.)</i>			Endemic Not assessed
Marchantiospida	Geocalycaceae	<i>Chiloscyphus</i>	<i>coadunatus (Lophocolea bidentata)</i>			Non-Native
Marchantiospida	Geocalycaceae	<i>Chiloscyphus</i>	<i>humistratus (Lophocolea h.)</i>			Endemic Not assessed
Marchantiospida	Lejeuneaceae	<i>Cololejeunea</i>	<i>dianae</i>			Endemic Not assessed
Marchantiospida	Lejeuneaceae	<i>Cololejeunea</i>	<i>grossestylia</i>			Endemic Not assessed
Marchantiospida	Lejeuneaceae	<i>Cololejeunea</i>	<i>sanctae-helenae</i>			Endemic Not assessed
Marchantiospida	Lejeuneaceae	<i>Colura</i>	<i>calyptrifolia</i>			
Marchantiospida	Lejeuneaceae	<i>Colura</i>	<i>tenuicornis</i>			
Marchantiospida	Cephaloziellaceae	<i>Cylindrocolea</i>	<i>gracile</i>			Endemic Not assessed
Marchantiospida	Cephaloziellaceae	<i>Cylindrocolea aff.</i>	<i>nigerica</i>			
Marchantiospida	Cephaloziellaceae	<i>Cylindrocolea sp.</i>	*			
Marchantiospida	Exormothecaceae	<i>Exormotheca</i>	<i>pustulosa</i>			
Marchantiospida	Frullaniaceae	<i>Frullania aff.</i>	<i>dilatata</i>			
Marchantiospida	Frullaniaceae	<i>Frullania aff.</i>	<i>ericoides</i>			
Marchantiospida	Frullaniaceae	<i>Frullania aff.</i>	<i>obscurifolia</i>			Non-Native
Marchantiospida	Pallaviciniaceae	<i>Jensenia</i>	<i>spinosa</i>			
Marchantiospida	Lepidoziaceae	<i>Kurzia</i>	<i>nemoides</i>			Endemic Not assessed
Marchantiospida	Lejeuneaceae	<i>Lejeunea</i>	<i>aloba</i>			
Marchantiospida	Lejeuneaceae	<i>Lejeunea.</i>	<i>eckloniana agg</i>			
Marchantiospida	Lejeuneaceae	<i>Lejeunea</i>	<i>sanctae-helenae</i>			Endemic Not assessed
Marchantiospida	Lejeuneaceae	<i>Lejeunea</i>	*			
Marchantiospida	Lepidoziaceae	<i>Lepidozia</i>	*			
Marchantiospida	Marchantiaceae	<i>Marchantia</i>	<i>berteroana</i>			
Marchantiospida	Marchantiaceae	<i>Marchesinia</i>	<i>brachiata</i>			
Marchantiospida	Lejeuneaceae	<i>Microlejeunea</i>	<i>africana</i>			
Marchantiospida	Lejeuneaceae	<i>Microlejeunea</i>	<i>kamerunensis</i>			

Marchantiospida	Calypogeiaceae	<i>Mnioloma</i>	<i>fuscum</i>			
Marchantiospida	Aytoniaceae	<i>Plagiochasma</i>	<i>rupestre</i>			
Marchantiospida	Plagiochilaceae	<i>Plagiochila</i> aff.	<i>spinulosa</i>			
Marchantiospida	Plagiochilaceae	<i>Plagiochila</i>	<i>insularia</i>		Endemic	Not assessed
Marchantiospida	Pleuroziaceae	<i>Pleurozia</i>	<i>gigantea</i>			
Marchantiospida	Radulaceae	<i>Radula</i>	<i>fulvifolia</i>			
Marchantiospida	Aneuraceae	<i>Riccardia</i> aff.	<i>multifida</i>		Non-Native	
Marchantiospida	Aneuraceae	<i>Riccardia</i>	<i>chamedryfolia</i>			
Marchantiospida	Pallaviciniaceae	<i>Symphygyna</i>	<i>brasiliensis</i>			
Marchantiospida	Acrobolbaceae	<i>Tylimanthus</i>	<i>anisodontus</i>		Endemic	Not assessed
Bryopsida	Brachytheciaceae	<i>Brachythecium</i>	<i>athrocladum</i>		Endemic	Not assessed
Bryopsida	Bryaceae	<i>Bryum</i> aff.	<i>coronatum</i>		Non-Native	
Bryopsida	Bryaceae	<i>Bryum</i>	<i>hillense</i>			
Bryopsida	Bryaceae	<i>Bryum</i>	<i>argenteum</i> var. <i>argenteum</i>		Non-Native	
Bryopsida	Bryaceae	<i>Bryum</i>	<i>bornholmense</i>		Non-Native	
Bryopsida	Bryaceae	<i>Bryum</i>	<i>dichotomum</i>			
Bryopsida	Bryaceae	<i>Bryum</i>	<i>klinggraeffii</i>			
Bryopsida	Bryaceae	<i>Bryum</i>	<i>radiculosum</i>		Non-Native	
Bryopsida	Bryaceae	<i>Bryum</i>	<i>sauteri</i>		Non-Native	
Bryopsida	Bryaceae	<i>Bryum</i> sp.	*		Non-Native	
Bryopsida	Dicranaceae	<i>Campylopus</i> sp.	*			
Bryopsida	Dicranaceae	<i>Campylopus</i> sp.	*			
Bryopsida	Dicranaceae	<i>Campylopus</i>	<i>arcuatus</i>			
Bryopsida	Dicranaceae	<i>Campylopus</i>	<i>flexuosus</i> var. <i>flexuosus</i>		Non-Native	
Bryopsida	Dicranaceae	<i>Campylopus</i>	<i>introflexus</i>			
Bryopsida	Dicranaceae	<i>Campylopus</i>	<i>pilifer</i>			
Bryopsida	Dicranaceae	<i>Campylopus</i>	<i>thwaitesii</i>		Endemic	Not assessed
Bryopsida	Ditrichiaceae	<i>Ceratodon</i>	<i>purpureus</i> ssp. <i>stenocarpus</i>			
Bryopsida	Daltoniaceae	<i>Daltonia</i> sp.	*			
Bryopsida	Dicranaceae	<i>Dicranella</i>	<i>proscripta</i>			
Bryopsida	Pottiaceae	<i>Didymodon</i> sp.	*			
Bryopsida	Entodontaceae	<i>Entodon</i>	<i>dregeanus</i>			
Bryopsida	Funariaceae	<i>Entosthodon</i> sp.	*			
Bryopsida	Entodontaceae	<i>Erythrodontium</i>	<i>julaceum</i>			
Bryopsida	Fissidentaceae	<i>Fissidens</i>	<i>curvatus</i> / <i>F.</i> <i>perigonialis</i>			
Bryopsida	Fissidentaceae	<i>Fissidens</i>	<i>helenicus</i>		Endemic	Not assessed
Bryopsida	Fissidentaceae	<i>Fissidens</i>	<i>pygmaeus</i>		Non-Native	

Bryopsida	Fissidentaceae	<i>Fissidens</i>	<i>reimersii</i>			Endemic	Not assessed
Bryopsida	Fissidentaceae	<i>Fissidens</i>	<i>taxifolius</i>			Non-Native	
Bryopsida	Fissidentaceae	<i>Fissidens sp.</i>	*			Non-Native	
Bryopsida	Fissidentaceae	<i>Fissidens sp.</i>	*				
Bryopsida	Fissidentaceae	<i>Fissidens sp.</i>	*				
Bryopsida	Fissidentaceae	<i>Fissidens sp.</i>	*				
Bryopsida	Fissidentaceae	<i>Fissidens sp.</i>	*				
Bryopsida	Grimmiaceae	<i>Grimmia sp.</i>	*				
Bryopsida	Hookeriaceae	<i>Hookeriopsis</i>	<i>pallidifolia</i>			Endemic	Not assessed
Bryopsida	Neckeraceae	<i>Himantocladium aff.</i>	<i>implanum</i>				
Bryopsida	Hypnaceae	<i>Hylocomium</i>	<i>splendens</i>			Non-Native	
Bryopsida	Hypnaceae	<i>Hypnum</i>	<i>cupressiforme</i>				
Bryopsida	Hypnaceae	<i>Hypnum</i>	<i>jutlandicum</i>				
Bryopsida	Hypnaceae	<i>Isopterygium sp.</i>	*				
Bryopsida	Hypnaceae	<i>Kindbergia</i>	<i>praelonga var. stokesii</i>			Non-Native	
Bryopsida	Bryaceae	<i>Leptobryum</i>	<i>pyriforme</i>				
Bryopsida	Pottiaceae	<i>Leptophascum</i>	<i>leptophyllum</i>				
Bryopsida	Orthotricaceae	<i>Macrocoma</i>	<i>tenuis ssp. tenuis</i>				
Bryopsida	Orthotricaceae	<i>Macromitrium</i>	<i>microstomum</i>				
Bryopsida	Orthotricaceae	<i>Macromitrium</i>	<i>urceolatum</i>				
Bryopsida	Dicranaceae	<i>Microcampylopus</i>	<i>laevigatus</i>				
Bryopsida	Brachytheciaceae	<i>Oxyrrhynchium</i>	<i>hians</i>				
Bryopsida	Bartramiaceae	<i>Philonotis</i>	<i>fontana</i>			Non-Native	
Bryopsida	Bartramiaceae	<i>Philonotis</i>	<i>helenica</i>			Endemic	Not assessed
Bryopsida	Ditrichiaceae	<i>Pleuridium sp.</i>	*				
Bryopsida	Pottiaceae	<i>Physcomitrium</i>	<i>flexifolium</i>			Endemic	Not assessed
Bryopsida	Bryaceae	<i>Pohlia sp.</i>	*			Non-Native	
Bryopsida	Hypnaceae	<i>Pseudoscleropodium</i>	<i>purum</i>			Non-Native	
Bryopsida	Calymperaceae	<i>Syrrophodon</i>	<i>gaudichaudii</i>				
Bryopsida	Pottiaceae	<i>Tortula</i>	<i>atrovirens</i>			Non-Native	
Bryopsida	Ptycomitriaceae	<i>Ptychomitrium</i>	<i>helenicum</i>			Endemic	Not assessed
Bryopsida	Pottiaceae	<i>Tortella</i>	<i>humilis</i>				
Bryopsida	Sematophyllaceae	<i>Sematophyllum</i>	<i>erythrocaulon</i>			Endemic	Not assessed
Bryopsida	Pottiaceae	<i>Tortula</i>	<i>muralis</i>				
Bryopsida	Sematophyllaceae	<i>Sematophyllum</i>	<i>helenicum</i>			Endemic	Not assessed
Bryopsida	Sphagnaceae	<i>Sphagnum</i>	<i>helenicum</i>			Endemic	Not assessed
Bryopsida	Pottiaceae	<i>Trichostomum</i>	<i>brachydontium var.</i>				

			<i>brachydontium</i>			
Bryopsida	Pottiaceae	<i>Trichostomum</i>	<i>crispulum</i> var. <i>crispulum</i>			
Bryopsida	Pottiaceae	<i>Weissia</i> sp.	*			Non-Native
Ascomycotina	Acarosporaceae	<i>Acarospora</i>	<i>citrina</i>			Native
Ascomycotina	Acarosporaceae	<i>Acarospora</i>	<i>impressula</i>			Native
Ascomycotina	Verrucariaceae	<i>Agonimia</i>	<i>pacifica</i>			Native
Ascomycotina	Verrucariaceae	<i>Agonimia</i>	<i>papillata</i>			Native
Ascomycotina	Caliciaceae	<i>Amandinea</i>	<i>lecideina</i>			Native
Ascomycotina	Caliciaceae	<i>Amandinea</i>	<i>submontana</i>			Native
Ascomycotina	Strigulaceae	<i>Anisomeridium</i>	<i>distans</i>			Native
Ascomycotina	Arthoniaceae	<i>Arthonia</i>	<i>antillarum</i>			Native
Ascomycotina	Arthoniaceae	<i>Arthonia</i>	<i>complanata</i>			Native
Ascomycotina	Hymeneliaceae	<i>Aspicilia</i>	<i>contorta</i>			Native
Ascomycotina	Bacidiaceae	<i>Bacidia</i>	<i>laurocerasi</i>			Native
Ascomycotina	Bacidiaceae	<i>Bacidia</i>	<i>medialis</i>			Native
Ascomycotina	Brigantiaceae	<i>Brigantiaea</i>	<i>leucoxantha</i>			Native
Ascomycotina	Physciaceae	<i>Buellia</i>	<i>aethalea</i>			Native
Ascomycotina	Physciaceae	<i>Buellia</i>	<i>halonia</i>			Native
Ascomycotina	Physciaceae	<i>Buellia</i>	<i>mamillana</i>			Native
Ascomycotina	Physciaceae	<i>Buellia</i>	<i>stellulata</i>			Native
Ascomycotina	Physciaceae	<i>Buellia</i>	<i>subaethalea</i>			Native
Ascomycotina	Physciaceae	<i>Buellia</i>	<i>subalbula</i>			Native
Ascomycotina	Physciaceae	<i>Buellia</i>	<i>tesserata</i>			Native
Ascomycotina	Parmeliaceae	<i>Bulbothrix</i>	<i>decurtata</i>			Native
Ascomycotina	Pilocarpaceae	<i>Byssoloma</i>	<i>leucophthalmum</i>			Native
Ascomycotina	Pilocarpaceae	<i>Byssoloma</i>	<i>subdiscordans</i>			Native
Ascomycotina	Teloschistaceae	<i>Caloplaca</i>	<i>bolacina</i>			Native
Ascomycotina	Teloschistaceae	<i>Caloplaca</i>	<i>crenularia</i>			Native
Ascomycotina	Teloschistaceae	<i>Caloplaca</i>	<i>dalmatica</i>			Native
Ascomycotina	Teloschistaceae	<i>Caloplaca</i>	<i>flavocitrina</i>			Native
Ascomycotina	Teloschistaceae	<i>Caloplaca</i>	<i>flavovirescens</i>			Native
Ascomycotina	Teloschistaceae	<i>Caloplaca</i>	<i>haematodes</i>			Native
Ascomycotina	Teloschistaceae	<i>Caloplaca</i>	<i>holocarpa</i>			Native
Ascomycotina	Teloschistaceae	<i>Caloplaca</i>	<i>sublobulata</i>			Native
Ascomycotina	Candelariaceae	<i>Candelaria</i>	<i>concolor</i>			Native
Ascomycotina	Candelariaceae	<i>Candelariella</i>	<i>efflorescens</i>			Native
Ascomycotina	Catillariaceae	<i>Catillaria</i>	<i>chalybeia</i>			Native
Ascomycotina	Catillariaceae	<i>Catillaria</i>	<i>nigroisidiata</i>			Native
Ascomycotina	Chrysothricaceae	<i>Chrysothrix</i>	<i>xanthina</i>			Native

Ascomycotina	Cladoniaceae	<i>Cladonia</i>	<i>corniculata</i>			Native	
Ascomycotina	Cladoniaceae	<i>Cladonia</i>	<i>nana</i>			Native	
Ascomycotina	Cladoniaceae	<i>Cladonia</i>	<i>marionii</i>			Native	
Ascomycotina	Cladoniaceae	<i>Cladonia</i>	<i>mauritiana</i>			Native	
Ascomycotina	Coccocarpiaceae	<i>Coccocarpia</i>	<i>palmicola</i>			Native	
Ascomycotina	Collemataceae	<i>Collema</i>	<i>coccophorum</i>			Native	
Ascomycotina	Caliciaceae	<i>Dermaticscum</i>	<i>pusillum</i>			Endemic	Not assessed
Ascomycotina	lcmadophilaceae	<i>Dibaeis</i>	<i>sorediata</i>			Native	
Ascomycotina	Caliciaceae	<i>Dimelaena</i>	<i>oreina</i>			Native	
Ascomycotina	Caliciaceae	<i>Dimelaena</i>	<i>radiata</i>			Native	
Ascomycotina	Caliciaceae	<i>Dimelaena</i>	<i>triseptata</i>			Endemic	Not assessed
Ascomycotina	Physciaceae	<i>Diploicia</i>	<i>canescens</i>			Native	
Ascomycotina	Thelotremataceae	<i>Diploschistes</i>	<i>caesioplumbeus</i>			Native	
Ascomycotina	Thelotremataceae	<i>Diploschistes</i>	<i>euganeus</i>			Native	
Ascomycotina	Thelotremataceae	<i>Diploschistes</i>	<i>muscorum</i>			Native	
Ascomycotina	Thelotremataceae	<i>Diploschistes</i>	<i>prominens</i>			Native	
Ascomycotina	Roccellaceae	<i>Dirina</i>	<i>insulana</i> s.s.			Native	
Ascomycotina	Roccellaceae	<i>Dirina</i>	<i>insulana</i> f. <i>soralifera</i>			Native	
Ascomycotina	Roccellaceae	<i>Dirinaria</i>	<i>applanata</i>			Native	
Ascomycotina	Roccellaceae	<i>Dirinaria</i>	<i>flava</i>			Native	
Ascomycotina	Roccellaceae	<i>Dirinaria</i>	<i>picta</i>			Native	
Ascomycotina	Roccellaceae	<i>Dolichocarpus</i>	<i>seawardii</i>			Endemic	Not assessed
Ascomycotina	Verrucariaceae	<i>Endocarpon</i>	<i>pallidum</i>			Native	
Ascomycotina	Verrucariaceae	<i>Endocarpon</i>	<i>pusillum</i>			Native	
Ascomycotina	Opegraphaceae	<i>Enterographa</i>	<i>anguinella</i>			Native	
Ascomycotina	Opegraphaceae	<i>Enterographa</i>	<i>multilocularis</i>			Native	
Ascomycotina	Pannariaceae	<i>Erioderma</i>	<i>sorediatum</i>			Native	
Ascomycotina	Pilocarpaceae	<i>Eugeniella</i> sp.	*			Native	
Ascomycotina	Lichinaceae	<i>Euopsis</i>	<i>pulvinata</i>			Native	
Ascomycotina	Pilocarpaceae	<i>Fellhanera</i>	<i>bouteillei</i>			Native	
Ascomycotina	Pilocarpaceae	<i>Fellhanera</i>	<i>montana</i>			Native	
Ascomycotina	Graphidaceae	<i>Fissurina</i>	<i>inquinata</i>			Native	
Ascomycotina	Graphidaceae	<i>Fissurina</i> sp.	*			Native	
Ascomycotina	Parmeliaceae	<i>Flavoparmelia</i>	<i>soredians</i>			Native	
Ascomycotina	Parmeliaceae	<i>Flavopunctelia</i>	<i>flaventior</i>			Native	
Ascomycotina	Caliciaceae	<i>Gassicurtia</i>	<i>acidobaeomyceta</i>			Native	
Ascomycotina	Graphidaceae	<i>Graphis</i>	<i>assimilis</i>			Native	
Ascomycotina	Graphidaceae	<i>Graphis</i>	<i>crebra</i>			Native	
Ascomycotina	Graphidaceae	<i>Graphis</i>	<i>elegans</i>			Native	

Ascomycotina	Graphidaceae	<i>Graphis</i>	<i>furcata</i>			Native	
Ascomycotina	Graphidaceae	<i>Graphis</i>	<i>marginata</i>			Native	
Ascomycotina	Haematommataceae	<i>Haematomma</i>	<i>fenzlianum</i>			Native	
Ascomycotina	Physciaceae	<i>Hafellia</i>	<i>leptoclinoides</i>			Native	
Ascomycotina	Heppiaceae	<i>Heppia</i>	<i>lutosa</i>			Native	
Ascomycotina	Physciaceae	<i>Heterodermia</i>	<i>circinalis</i>			Native	
Ascomycotina	Physciaceae	<i>Heterodermia</i>	<i>galactophylla</i>			Native	
Ascomycotina	Physciaceae	<i>Heterodermia</i>	<i>isidiophora</i>			Native	
Ascomycotina	Physciaceae	<i>Heterodermia</i>	<i>leucomela</i>			Native	
Ascomycotina	Physciaceae	<i>Heterodermia</i>	<i>podocarpa</i>			Native	
Ascomycotina	Physciaceae	<i>Heterodermia</i>	<i>propagulifera</i>			Native	
Ascomycotina	Physciaceae	<i>Heterodermia</i>	<i>speciosa</i>			Native	
Ascomycotina	Physciaceae	<i>Heterodermia</i>	<i>verruculifera</i>			Native	
Ascomycotina	Physciaceae	<i>Hyperphyscia</i>	<i>adglutinata</i>			Native	
Ascomycotina	Physciaceae	<i>Hyperphyscia</i>	<i>granulata</i>			Native	
Ascomycotina	Opegraphaceae	<i>Lecanactis</i>	<i>subabietina</i>			Native	
Ascomycotina	Opegraphaceae	<i>Lecanactis</i>	<i>epileuca</i>			Native	
Ascomycotina	Roccellaceae	<i>Lecanographa</i>	<i>farinulenta</i>			Native	
Ascomycotina	Lecanoraceae	<i>Lecanora</i>	<i>barkmaniana</i>			Native	
Ascomycotina	Lecanoraceae	<i>Lecanora</i>	<i>compallens</i>			Native	
Ascomycotina	Lecanoraceae	<i>Lecanora</i>	<i>confusa</i>			Native	
Ascomycotina	Lecanoraceae	<i>Lecanora</i>	<i>expallens</i>			Native	
Ascomycotina	Lecanoraceae	<i>Lecanora</i>	<i>jamesii</i>			Native	
Ascomycotina	Lecanoraceae	<i>Lecanora</i>	<i>leprosa</i>			Native	
Ascomycotina	Lecanoraceae	<i>Lecanora</i>	<i>pseudistera</i>			Native	
Ascomycotina	Lecanoraceae	<i>Lecanora</i>	<i>sanctae-helenae</i>			Endemic	Not assessed
Ascomycotina	Lecanoraceae	<i>Lecanora</i>	<i>sulfurescens</i>			Native	
Ascomycotina	Lecanoraceae	<i>Lecanora</i>	<i>tropica</i>			Native	
Ascomycotina	Lecideaceae	<i>Lecidea</i>	<i>leucothallina</i>			Native	
Ascomycotina	Lecanoraceae	<i>Lecidella</i>	<i>buelliastrum</i>			Native	
Ascomycotina	Lecanoraceae	<i>Lecidella</i>	<i>chodati</i>			Native	
Ascomycotina	Undetermined	<i>Lepraria</i>	<i>lobificans</i>			Native	
Ascomycotina	Undetermined	<i>Lepraria</i>	<i>sipmanianum</i>			Native	
Ascomycotina	Undetermined	<i>Lepraria</i>	<i>usnica</i>			Native	
Ascomycotina	Undetermined	<i>Lepraria</i>	<i>xerophila</i>			Native	
Ascomycotina	Undetermined	<i>Leprocaulon</i>	<i>arbusculum</i>			Native	
Ascomycotina	Undetermined	<i>Leprocaulon</i>	<i>tenellum</i>			Native	
Ascomycotina	Collemaataceae	<i>Leptogium</i>	<i>azureum</i>			Native	
Ascomycotina	Collemaataceae	<i>Leptogium</i>	<i>cochleatum</i>			Native	

Ascomycotina	Collemataceae	<i>Leptogium</i>	<i>cyanescens</i>			Native	
Ascomycotina	Collemataceae	<i>Leptogium</i>	<i>millegranum</i>			Native	
Ascomycotina	Peltigerales	<i>Lobaria</i>	<i>patinifera</i>			Native	
Ascomycotina	Lecanoraceae	<i>Megalaria</i>	<i>albocincta</i>			Native	
Ascomycotina	Megalosporaceae	<i>Megalospora</i>	<i>tuberculosa</i>			Native	
Ascomycotina	Undetermined	<i>Milospium</i>	<i>graphideorum</i>			Native	
Ascomycotina	Undetermined	<i>Normandina</i>	<i>pulchella</i>			Native	
Ascomycotina	Pertusariaceae	<i>Ochrolechia</i>	<i>africana</i>			Native	
Ascomycotina	Opegraphaceae	<i>Opegrapha</i>	<i>corticola</i>			Native	
Ascomycotina	Opegraphaceae	<i>Opegrapha</i>	<i>culmigena</i>			Native	
Ascomycotina	Opegraphaceae	<i>Opegrapha</i>	<i>saxigena</i>			Native	
Ascomycotina	Opegraphaceae	<i>Opegrapha</i>	<i>subelevata</i>			Native	
Ascomycotina	Pannariaceae	<i>Pannaria</i>	<i>conoplea</i>			Native	
Ascomycotina	Pannariaceae	<i>Pannaria</i>	<i>fulvescens</i>			Native	
Ascomycotina	Pannariaceae	<i>Pannaria</i>	<i>tavaresii</i>			Native	
Ascomycotina	Parmeliaceae	<i>Parmelinopsis</i>	<i>horrescens</i>			Native	
Ascomycotina	Parmeliaceae	<i>Parmelinopsis</i>	<i>minarum</i>			Native	
Ascomycotina	Parmeliaceae	<i>Parmelinopsis</i>	<i>spumosa</i>			Native	
Ascomycotina	Parmeliaceae	<i>Parmotrema</i>	<i>austrosinense</i>			Native	
Ascomycotina	Parmeliaceae	<i>Parmotrema</i>	<i>crinitum</i>			Native	
Ascomycotina	Parmeliaceae	<i>Parmotrema</i>	<i>grayanum</i>			Native	
Ascomycotina	Parmeliaceae	<i>Parmotrema</i>	<i>mellissii</i>			Native	
Ascomycotina	Parmeliaceae	<i>Parmotrema</i>	<i>tinctorum</i>			Native	
Ascomycotina	Peltulaceae	<i>Peltula</i>	<i>euploca</i>			Native	
Ascomycotina	Peltulaceae	<i>Peltula</i>	<i>impressa</i>			Native	
Ascomycotina	Peltulaceae	<i>Peltula</i>	<i>obscurans</i>			Native	
Ascomycotina	Pertusariaceae	<i>Pertusaria</i>	<i>hymenea</i>			Native	
Ascomycotina	Pertusariaceae	<i>Pertusaria</i>	<i>pertusa</i>			Native	
Ascomycotina	Pertusariaceae	<i>Pertusaria</i>	<i>subventosa</i>			Native	
Ascomycotina	Roccellaceae	<i>Peterjamesia</i>	<i>circumscriptum</i>			Native	
Ascomycotina	Physciaceae	<i>Phaeophyscia</i>	<i>hispidula</i>			Native	
Ascomycotina	Basidiaceae	<i>Phyllopsora</i>	<i>buettneri</i>			Native	
Ascomycotina	Physciaceae	<i>Physcia</i>	<i>atrostriata</i>			Native	
Ascomycotina	Physciaceae	<i>Physcia</i>	<i>dimidiata</i>			Native	
Ascomycotina	Physciaceae	<i>Physcia</i>	<i>sorediosa</i>			Native	
Ascomycotina	Trichotheliaceae	<i>Porina</i>	<i>chlorotica</i>			Native	
Ascomycotina	Trichotheliaceae	<i>Porina</i>	<i>coralloidea</i>			Native	
Ascomycotina	Trichotheliaceae	<i>Porina</i>	<i>nucula</i>			Native	
Ascomycotina	Pannariaceae	<i>Protopannaria</i>	<i>pezizoides</i>			Native	

Ascomycotina	Lobariaceae	<i>Pseudocyphellaria</i>	<i>aurata</i>			Native	
Ascomycotina	Lobariaceae	<i>Pseudocyphellaria</i>	<i>crocata</i>			Native	
Ascomycotina	Trypetheliaceae	<i>Pseudopyrenula</i>	<i>diluta</i>			Native	
Ascomycotina	Micariaceae	<i>Psilolechia</i>	<i>lucida</i>			Native	
Ascomycotina	Psoraceae	<i>Psora</i>	<i>cerebriformis</i>			Native	
Ascomycotina	Verrucariaceae	<i>Psoroglaena</i>	<i>cubensis</i>			Native	
Ascomycotina	Lichinaceae	<i>Psorotichia</i>	<i>schaereri</i>			Native	
Ascomycotina	Parmeliaceae	<i>Punctelia</i>	<i>stictica</i>			Native	
Ascomycotina	Pyrenulaceae	<i>Pyrenula</i>	<i>acutispora</i>			Native	
Ascomycotina	Pyrenulaceae	<i>Pyrenula</i>	<i>laevigata</i>			Native	
Ascomycotina	Pyrenulaceae	<i>Pyrenula</i>	<i>macrocarpa</i>			Native	
Ascomycotina	Pyrenulaceae	<i>Pyrenula sp.</i>	*			Native	
Ascomycotina	Caliciaceae	<i>Pyxine</i>	<i>cocoes</i>			Native	
Ascomycotina	Caliciaceae	<i>Pyxine</i>	<i>daedalea</i>			Native	
Ascomycotina	Caliciaceae	<i>Pyxine</i>	<i>petricola</i>			Native	
Ascomycotina	Caliciaceae	<i>Pyxine</i>	<i>subcinerea</i>			Native	
Ascomycotina	Ramalinaceae	<i>Ramalina</i>	<i>arabum</i>			Native	
Ascomycotina	Ramalinaceae	<i>Ramalina</i>	<i>canariensis</i>			Native	
Ascomycotina	Ramalinaceae	<i>Ramalina</i>	<i>geniculatella</i>			Endemic	Not assessed
Ascomycotina	Ramalinaceae	<i>Ramalina</i>	<i>ketner-oostrae</i>			Endemic	Not assessed
Ascomycotina	Ramalinaceae	<i>Ramalina</i>	<i>lacera</i>			Native	
Ascomycotina	Ramalinaceae	<i>Ramalina</i>	<i>maderensis</i>			Native	
Ascomycotina	Ramalinaceae	<i>Ramalina</i>	<i>nervulosa</i>			Native	
Ascomycotina	Ramalinaceae	<i>Ramalina</i>	<i>peruviana</i>			Native	
Ascomycotina	Ramalinaceae	<i>Ramalina</i>	<i>rigidella</i>			Endemic	Not assessed
Ascomycotina	Ramalinaceae	<i>Ramalina</i>	<i>sanctae-helenae</i>			Endemic	Not assessed
Ascomycotina	Parmeliaceae	<i>Rimelia</i>	<i>clavulifera</i>			Native	
Ascomycotina	Parmeliaceae	<i>Rimelia</i>	<i>pseudoreticulata</i>			Native	
Ascomycotina	Parmeliaceae	<i>Rimelia</i>	<i>reticulata</i>			Native	
Ascomycotina	Physciaceae	<i>Rinodina</i>	<i>oxydata</i>			Native	
Ascomycotina	Roccellaceae	<i>Roccella</i>	<i>allorgei</i>			Native	
Ascomycotina	Roccellaceae	<i>Roccella</i>	<i>endocrocea</i>			Native	
Ascomycotina	Roccellaceae	<i>Roccella</i>	<i>montagnei</i>			Native	
Ascomycotina	Roccellaceae	<i>Roccellina</i>	<i>accedens</i>			Native	
Ascomycotina	Roccellaceae	<i>Roccellina</i>	<i>jamesii</i>			Native	
Ascomycotina	Graphidaceae	<i>Sarcographa</i>	<i>tricosa</i>			Native	
Ascomycotina	Lobariaceae	<i>Sticta</i>	<i>fuliginosa</i>			Native	
Ascomycotina	Lobariaceae	<i>Sticta</i>	<i>tomentosa</i>			Native	
Ascomycotina	Roccellaceae	<i>Syncesia</i>	<i>decussans</i>			Native	

Ascomycotina	Roccellaceae	<i>Syncesia</i>	<i>effusa</i>			Native	
Ascomycotina	Teloschistaceae	<i>Teloschistes</i>	<i>flavicans</i>			Native	
Ascomycotina	Leconoraceae	<i>Tephromela</i>	<i>atra</i>			Native	
Ascomycotina	Stictidaceae	<i>Thelopsis</i>	<i>isiaca</i>			Native	
Ascomycotina	Thelotremataceae	<i>Thelotrema</i>	<i>lepadinum</i>			Native	
Ascomycotina	Bacidiaceae	<i>Toninia</i>	<i>aromatica</i>			Native	
Ascomycotina	Bacidiaceae	<i>Toninia</i>	<i>austroafricana</i>			Native	
Ascomycotina	Bacidiaceae	<i>Toninia</i>	<i>ruginosa</i>			Native	
Ascomycotina	Bacidiaceae	<i>Toninia</i>	<i>sedifolia</i>			Native	
Ascomycotina	Trapeliaceae	<i>Trapelia</i>	<i>coarctata</i>			Native	
Ascomycotina	Trapeliaceae	<i>Trapeliopsis</i>	<i>gelatinosa</i>			Native	
Ascomycotina	Parmeliaceae	<i>Usnea</i>	<i>baileyi</i>			Native	
Ascomycotina	Parmeliaceae	<i>Usnea</i>	<i>dasaea</i>			Native	
Ascomycotina	Parmeliaceae	<i>Usnea</i>	<i>exasperata</i>			Native	
Ascomycotina	Parmeliaceae	<i>Usnea</i>	<i>firmula</i>			Native	
Ascomycotina	Parmeliaceae	<i>Usnea</i>	<i>leprosa</i>			Native	
Ascomycotina	Parmeliaceae	<i>Usnea</i>	<i>liechtensteinii</i>			Native	
Ascomycotina	Parmeliaceae	<i>Usnea</i>	<i>pulvinata</i>			Native	
Ascomycotina	Parmeliaceae	<i>Usnea</i>	<i>rubicunda</i>			Native	
Ascomycotina	Verrucariaceae	<i>Verrucaria</i>	<i>fuscella</i>			Native	
Ascomycotina	Ramalinaceae	<i>Waynea</i>	<i>stoechadiana</i>			Native	
Ascomycotina	Parmeliaceae	<i>Xanthoparmelia</i>	<i>alabamensis</i>			Native	
Ascomycotina	Parmeliaceae	<i>Xanthoparmelia</i>	<i>beccae</i>			Endemic	Not assessed
Ascomycotina	Parmeliaceae	<i>Xanthoparmelia</i>	<i>caliginosa</i>			Native	
Ascomycotina	Parmeliaceae	<i>Xanthoparmelia</i>	<i>molybdiza</i>			Native	
Ascomycotina	Parmeliaceae	<i>Xanthoparmelia</i>	<i>phaeophana</i>			Native	
Ascomycotina	Parmeliaceae	<i>Xanthoparmelia</i>	<i>pseudocongensis</i>			Native	
Ascomycotina	Parmeliaceae	<i>Xanthoparmelia</i>	<i>squamans</i>			Native	
Ascomycotina	Parmeliaceae	<i>Xanthoparmelia</i>	<i>subramigera</i>			Native	
Ascomycotina	Parmeliaceae	<i>Xanthoparmelia</i>	<i>wildeae</i>			Native	
Ascomycotina	Teloschistaceae	<i>Xanthoria</i>	<i>parietina</i>			Native	
Bryopsidophyceae	Bryopsidaceae	<i>Bryopsis</i>	<i>pinnate</i>			Native	
Bryopsidophyceae	Bryopsidaceae	<i>Bryopsis</i>	<i>plumose</i>			Native	
Bryopsidophyceae	Codiaceae	<i>Codium</i>	<i>spongiosum</i>			Native	
Bryopsidophyceae	Codiaceae	<i>Codium</i>	<i>taylorii</i>			Native	
Compsopogonophyceae	Erythrotrichiaceae	<i>Erythrotrichia</i>	<i>camea</i>			Native	
Flordeiophyceae	Corallinaceae	<i>Amphiroa</i>	<i>beauvoisii</i>			Native	
Flordeiophyceae	Corallinaceae	<i>Amphiroa</i>	<i>fragilissima</i>			Native	
Flordeiophyceae	Wrangeliaceae	<i>Anotrichium</i>	<i>tenue</i>			Native	

Florideophyceae	Corallinaceae	<i>Arthrocardia</i>	<i>carinata</i>			Native	
Florideophyceae	Bonnemaisoniaceae	<i>Asparagopsis</i>	<i>taxiformis</i>		supreme limu	Native	
Florideophyceae	Acrochaetiaceae	<i>Audouinella</i> sp.	*			Native	
Florideophyceae	Rhodomelaceae	<i>Bostrychia</i>	<i>radicans</i>			Native	
Florideophyceae	Ceramiaceae	<i>Callithamniella</i> sp.	*			Native	
Florideophyceae	Callithamniaceae	<i>Callithamnion</i>	<i>mildbraedii</i>			Native	
Florideophyceae	Delesseriaceae	<i>Caloglossa</i>	<i>leprieurii</i>			Native	
Florideophyceae	Ceramiaceae	<i>Centroceras</i>	<i>clavulatum</i>			Native	
Florideophyceae	Ceramiaceae	<i>Ceramium</i>	<i>codii</i>			Native	
Florideophyceae	Ceramiaceae	<i>Ceramium</i> aff.	<i>flaccidum</i>			Native	
Florideophyceae	Ceramiaceae	<i>Ceramium</i> aff.	<i>circinnatum</i>			Native	
Florideophyceae	Champiaceae	<i>Champia</i>	<i>parvula</i>			Native	
Florideophyceae	Corallinaceae	<i>Fosliella</i>	<i>farinose</i>			Native	
Florideophyceae	Galaxauraceae	<i>Galaxaura</i>	<i>lapidescens</i>			Native	
Florideophyceae	Gelidiellaceae	<i>Gelidiella</i>	<i>pannosa</i>			Native	
Florideophyceae	Gelidiaceae	<i>Gelidium</i>	<i>crinale</i>			Native	
Florideophyceae	Gelidiaceae	<i>Gelidium</i>	<i>pusillum</i>			Native	
Florideophyceae	Gigartinales	<i>Gigartina</i>	<i>acicularis</i>			Native	
Florideophyceae	Gracilariaceae	<i>Gracilaria</i>	<i>verrucosa</i>		ceylon moss	Native	
Florideophyceae	Halymeniaceae	<i>Gratelopia</i>	<i>filicina</i>		chop-chop	Native	
Florideophyceae	Wrangeliaceae	<i>Griffithsia</i>	<i>flosculosa</i>			Native	
Florideophyceae	Cystocloniaceae	<i>Hypnea</i>	<i>spinella</i>			Native	
Florideophyceae	Corallinaceae	<i>Jania</i>	<i>adhaerens</i>			Native	
Florideophyceae	Rhodomelaceae	<i>Laurencia</i>	<i>cruciata</i>			Native	
Florideophyceae	Rhodomelaceae	<i>Laurencia</i>	<i>nidifica</i>			Native	
Florideophyceae	Rhodomelaceae	<i>Laurencia</i>	<i>tenera</i>			Native	
Florideophyceae	Liagoraceae	<i>Liagora</i>	<i>viscida</i>			Native	
Florideophyceae	Rhodomelaceae	<i>Lophosiphonia</i>	<i>adhaerens</i>			Native	
Florideophyceae	Rhodomelaceae	<i>Lophosiphonia</i>	<i>reptabunda</i>			Native	
Florideophyceae	Hapalidiaceae	<i>Mesophyllum</i>	<i>brachycladum</i>			Native	
Florideophyceae	Corallinaceae	<i>Neogoniolithon</i>	<i>mammilare</i>			Native	
Florideophyceae	Rhodomelaceae	<i>Polysiphonia</i>	<i>ferulacea</i>			Native	
Florideophyceae	Rhodomelaceae	<i>Polysiphonia</i> sp.	*			Native	
Florideophyceae	Pyraloidea	<i>Predaea</i>	<i>feldmannii</i>			Native	
Florideophyceae	pterocladiaceae	<i>Pterocladia</i>	<i>lucida</i>		driftweed	Native	
Florideophyceae	Wrangeliaceae	<i>Spermothamnion</i> sp.	*			Native	
Florideophyceae	Spyridiaceae	<i>Spyridia</i>	<i>filamentosa</i>			Native	
Florideophyceae	Stylonemataceae	<i>Stylonema</i>	<i>alsidii</i>			Native	
Florideophyceae	Wrangeliaceae	<i>Wrangelia</i>	<i>argus</i>			Native	

Floriophyceae	Wrangeliaceae	<i>Wrangelia</i>	<i>penicillata</i>			Native	
Phaeophyceae	Scytosiphonaceae	<i>Colpomenia</i>	<i>sinuosa</i>			Native	
Phaeophyceae	Dictyotaceae	<i>Dictyota</i>	<i>dichotoma</i>			Native	
Phaeophyceae	Lessoniaceae	<i>Ecklonia</i>	<i>maxima</i>		sea bamboo	Native	
Phaeophyceae	Ectocarpaceae	<i>Ectocarpus</i>	<i>breviarticulatus</i>			Native	
Phaeophyceae	Scytosiphonaceae	<i>Endarachne</i>	<i>binghamiae</i>			Native	
Phaeophyceae	Acinetosporaceae	<i>Hincksia</i>	<i>mitchelliae</i>			Native	
Phaeophyceae	Acinetosporaceae	<i>Hincksia</i>	<i>rallsiae</i>			Native	
Phaeophyceae	Chordariaceae	<i>Levringia</i> sp.	*			Native	
Phaeophyceae	Dictyotaceae	<i>Padina</i>	<i>pavonica</i>		peacocks tail	Native	
Phaeophyceae	Sphacelariaceae	<i>Sphacelaria</i>	<i>tribuloides</i>			Native	
Ulvophyceae	Ulvellaceae	<i>Acrochaete</i>	<i>viridis</i>			Native	
Ulvophyceae	Cladophoraceae	<i>Chaetomorpha</i>	<i>brachygona</i>			Native	
Ulvophyceae	Cladophoraceae	<i>Cladophora</i>	<i>coelothrix</i>			Native	
Ulvophyceae	Siphonocladaceae	<i>Cladophoropsis</i>	<i>membranacea</i>			Native	
Ulvophyceae	Ulvaceae	<i>Enteromorpha</i>	<i>clathrata</i>		bright green nori	Native	
Ulvophyceae	Siphonocladaceae	<i>Ernodesmis</i>	<i>verticillata</i>			Native	
Ulvophyceae	Ulvaceae	<i>Percursaria</i>	<i>percursa</i>			Native	
Ulvophyceae	Ulvaceae	<i>Ulva</i>	<i>lactuca</i>		chicory sea lettuce	Native	
Ulvophyceae	Ulvaceae	<i>Ulva</i>	<i>parvula</i>			Native	

Table 5: Fungi species list

Class	Family	Genus	Species	Local name	Global name	Island Status	IUCN Status
Agaricomycetes	Agaricales	Agaricus	campestris		field mushroom		
Agaricomycetes	Agaricales	Agaricus sp.	*				
Agaricomycetes	Agaricales	Agaricus sp.	*				
Agaricomycetes	Geastrales	Geastrum sp.	*				
Agaricomycetes	Phallaceae	Phallus	impudicus		common stinkhorn		
Basidiomycetes	Polyporales	Polyporus sp.	*				
Basidiomycetes	Polyporales	Polyporus sp.	*				
Basidiomycetes	Polyporales	Polyporus sp.	*				
Basidiomycetes	Polyporales	Polyporus	induratus			Endemic	

Basidiomycetes	Schizophyllaceae	Schizophyllum	commune		split gill		
Basidiomycetes	Sclerodermataceae	Scleroderma	vulgare				
Sordariomycetes	Xylariaceae	Xylaria	mellissii				Endemic
Urediniomycetes	Melampsoraceae	Phakospora	apoda				

Table 6: Invertebrate species list

Class	Order	Family	Common Family Name	Endemic Species	Other Species	Non Native
Arachnida	Mesostigmata	?		6	12	
Clitellata	Opisthopora	Acanthodrilidae			1	
Arachnida	Sarcoptiformes	Achipteriidae			2	
Insecta	Orthoptera	Acrididae	Grasshoppers and locusts	2		
Anthozoa	Actiniaria	Actiniidae			1	
Arachnida	Araneae	Agelenidae	Funnel-web spiders			2
Insecta	Diptera	Agromyzidae	Leafminer flies			1
Insecta	Heteroptera	Aleyrodidae	whiteflies			1
Arachnida	Astigmata	Alloptidae			1	
Maxillopoda	Copepoda	Ameiridae			2	
Arachnida	Sarcoptiformes	Amerobelbidae		1		
Ophiuroidea	Ophiurida	Amphiuridae		1	2	
Arachnida	Sarcoptiformes	Analgidae			1	
Insecta	Diptera	Anisopodidae	Wood gnats		1	
Insecta	Coleoptera	Anobiidae	Anobiids	2	2	1
Insecta	Coleoptera	Anthiidae	Antlike flower beetles	2		
Insecta	Heteroptera	Anthocoridae	Minute pirate bugs	2	3	
Insecta	Coleoptera	Anthribidae	Fungus weevils	27		1
Anthozoa	Antipatharia	Antipathidae			1	
Arachnida	Prostigmata	Anystidae		4	3	
Insecta	Heteroptera	Aphididae	Aphids			17
Insecta	Hymenoptera	Apidae	Honey bees and bumble bees			1
Arachnida	Araneae	Aranidae	Orb-web spiders		3	
Gastropoda	Stylommatophora	Arionidae	Roundback slugs			2
Malacostraca	Isopoda	Armadillidae	armadillids	4	1	
Malacostraca	Isopoda	Armadillidiidae	armadillidiids			1

Insecta	Diptera	Asteiidae	Asteiids	1		
Asteroidea	Forcipulatida	Asteriidae			1	
Asteroidea	Valvatida	Asterinidae			1	
Asteroidea	Paxillosida	Astropectinidae		2	1	
Arachnida	Sarcoptiformes	Avenzoariidae			3	
Arachnida	Trombidiformes	Bdellidae	Snout mites	2	1	
Insecta	Heteroptera	Berytidae	Stilt bugs	2		
Insecta	Hymenoptera	Bethylidae	bethylids	4		
Turbellaria	Tricladida	Bipaliidae	Bipaliids		1	
Insecta	Blattodea	Blaberidae				1
Diplopoda	Julida	Blaniulidae			3	
Insecta	Blattodea	Blatellidae				1
Insecta	Blattodea	Blattidae				1
Insecta	Coleoptera	Bostrichidae	Branch borers			2
Entognatha	Collembola	Brachystomellidae			1	
Insecta	Hymenoptera	Braconidae	braconids		2	
Echinoidea	Spatangoida	Brissidae			1	
Insecta	Coleoptera	Bruchidae	Seed beetles		3	
Gymnolaemata	Cheilostomata	Bugulidae			1	
Arachnida	Scorpiones	Buthidae			1	
Insecta	Psocoptera	caeciliidae		1		
Insecta	Diptera	Calliphoridae	Blow flies			7
Diplopoda	Spirostreptida	Cambalidae			1	
Arachnida	Sarcoptiformes	camisiidae			1	
Diplura	Diplura	Campodeidae			4	
Insecta	Coleoptera	Cantharidae	Solider beetles		1	
Insecta	Coleoptera	Carabidae	Ground beetles	17	3	
Arachnida	Sarcoptiformes	carabodidae		5	1	
Insecta	Dermaptera	Carcinophoridae			2	
Insecta	Siphonaptera	Ceratophyllidae	ceratophyllids			1
Arachnida	Sarcoptiformes	ceratozetidae			1	
Asteroidea	Valvatida	Chaetasteridae			1	
Insecta	Hymenoptera	Chalcidoidea	chalcids	6	15	1
Insecta	Diptera	Chamaemyiidae	Aphid flies		1*	
Crinoidea	Comatulida	Charitometridae			1	
Gastropoda	Stylommatophora	Charopidae	charopids	5		
Arachnida	Pseudoscorpiones	Cheliferidae		3		1
Insecta	Diptera	Chloropidae	Chloropids		5	
Demospongiae	Chondrosida	Chondrillidae			1	

Insecta	Coleoptera	Chrysomelidae	Leaf beetles	3		
Insecta	Neuroptera	Chrysopidae	Green lacewings	1	2	1
Arachnida	Pseudoscorpiones	Chthoniidae		1		1
Insecta	Diptera	Chyromyidae	Chyromyids		2	
Diplopoda	Polydesmida	Chytodesmidae			2	
Insecta	Heteroptera	Cicadellidae	Leafhoppers	13		
Echinoidea	Cidaroida	Cidaridae		1	2	
Insecta	Heteroptera	Cimicidae	Bed bugs		1	
Insecta	Heteroptera	Cixiidae	planthoppers	2		
Insecta	Coleoptera	Cleridae	Checkeder beetles			1
Arachnida	Araneae	Clubionidae	Sac spiders	1		
Insecta	Coleoptera	Coccinellidae	Labybird beetles	1	7	
Insecta	Heteroptera	Coccoidea	Scale insects	1		29
Gastropoda	Pulmonata	Cochlicopidae	Agate snails			1
Insecta	Coleoptera	Colydiidae	Cylindrical bark beetles		1	1
Arachnida	Araneae	Corinnidae	Corinnids	1		
Insecta	Coleoptera	Corylophidae	Minute fungus beetles			2
Insecta	Lepidoptera	Cosmopterigidae	Comopterigid moths	1	1	
Insecta	Coleoptera	Cossyphodidae	Cossyphodids			1
Arachnida	Sarcoptiformes	Crotoniidae		1		
Insecta	Coleoptera	Cryptophagidae	Silken fungus beetles	1	1	
Chilopoda	Scolopendromorpha	Cryptopidae		1	1	
Insecta	Coleoptera	Cucujidae	Flat bark beetles		2	
Insecta	Diptera	Culicidae	Mosquitoes		2	
Insecta	Coleoptera	Curculionidae	weevils	77		14
Malacostraca	Isopoda	Cyclisticidae	cyclisticids			1
Maxillopoda	Copepoda	Cyclopidae			1	
Insecta	Heteroptera	Cydnidae	Burrower bugs		1	
Arachnida	Sarcoptiformes	Cymbaeremaeidae			1	
Insecta	Hymenoptera	Cynipidae	gall wasps	1	2	
Ostracoda	Podocopida	Cyprididae	Cypridids	1		
Ostracoda	Podocopida	Cytheridae	Cytherids	1		
Arachnida	Sarcoptiformes	Damaeidae			1	
Insecta	Lepidoptera	Danaidae	monarchs		1	
Insecta	Heteroptera	Delphacidae	planthoppers	2	1	
Anthozoa	Scleractinia	Dendrophylliidae			1	
Insecta	Coleoptera	Dermestidae	Dermestid beetles		4	
Echinoidea	Diadematoida	Diadematidae			1	
Insecta	Hymenoptera	Diapriidae	Diapriids		3*	

Arachnida	Araneae	Dictynidae	Hackled-web spiders	2		
Chilopoda	Geophilomorpha	Dignathodontidae			1	
Insecta	Diptera	Dolichopodidae	Long-legged flies		21	
Insecta	Diptera	Drosophilidae	Vinegar flies	3		7
Arachnida	Araneae	Dysderidae	Dysderids			1
Echinoidea	Echinoida	Echinidae			1	
Echinoidea	Echinoida	Echinometridae			1	
Insecta	Psocoptera	Ectopsocidae			2	
Insecta	Coleoptera	Elateridae	Click beetles	2		
Gastropoda	Pulmonata	Ellobiidae	Hollow shelled snails			1
Insecta	Coleoptera	Endomychidae	Handsome fungus beetles			1
Entognatha	Collembola	Entomobryidae			7	
Insecta	Diptera	Ephydriidae	Shore flies	2	4	
Arachnida	Sarcoptiformes	Epilohmanniidae			1	
Arachnida	Prostigmata	Erythraeidae		3		
Malacostraca	Anthoathecata	Eudendriidae			1	
Clitellata	Haplotaxida	Eudriidae			1	
Insecta	Blattodea	Euthyrrhaphidae				2
Insecta	Hymenoptera	Evaniidae	Ansign wasps			1
Anthozoa	Scleractinia	Faviidae			2	
Arachnida	Araneae	Filistatidae	Filistatids		1	
Insecta	Hymenoptera	Formicidae	ants			16
Arachnida	Sarcoptiformes	Galumnidae		3	2	
Insecta	Diptera	Gasterophilidae	Horse bot flies			1
Insecta	Lepidoptera	Gelechiidae	gelechiids			1
Insecta	Lepidoptera	Geometridae	geometrids	1	1	
Chilopoda	Geophilomorpha	Geophilidae		1	2	
Clitellata	Haplotaxida	Glossoscolecidae			1	
Insecta	Lepidoptera	Glyphipterigidae	glyphipterigids	1		
Arachnida	Araneae	Gnaphosidae	Mouse spiders	4		1
Insecta	Lepidoptera	Gracillariidae	Leaf blotch miners	1		
Malacostraca	Decapoda	Grapsidae	shore crabs		1	
Malacostraca	Decapoda	Grapsidae			1	
Insecta	Orthoptera	Gryllidae	crickets	1	5	
Arachnida	Sarcoptiformes	Haplozetidae		1		
Gastropoda	Stylommatophora	Helicidae	Typical snails			1
Insecta	Neuroptera	Hemerobiidae	Brown lacewings	1		
Chilopoda	Lithobiomorpha	Henicopidae		1		
Insecta	Lepidoptera	Hepialidae	Ghost moths	1		

Insecta	Diptera	Hippoboscidae	Louse flies		2	
Malacostraca	Decapoda	Hippolytidae			2	
Insecta	Coleoptera	Histeridae	Hister beetles		4	
Holothuroidea	Aspidochirotda	Holothuriidae			1	
Insecta	Coleoptera	Hydrophilidae	Water scavenger beetles			1
Entognatha	Collembola	Hypogastruroidea			3	
Insecta	Hymenoptera	Ichneumonidae	ichneumons	4	2	
Entognatha	Collembola	Isotomidae			5	
Insecta	Heteroptera	Issidae	planthoppers			1
Arachnida	Ixodida	Ixodidae	ticks		2	
Malacostraca	Isopoda	Janiridae	Janitids	1		
Diplopoda	Julida	Julidae			4	
Insecta	Isoptera	Kalotermitidae				1
Insecta	Dermaptera	Labiduridae	Striped earwigs	1	1	
Insecta	Coleoptera	Lathridiidae	Minute brown scavenger beetles			3
Insecta	Zygentoma	Lepismatidae	lepismatids	1	3	
Arachnida	Sarcoptiformes	Liacaridae			1	
Insecta	Odonata	Libellulidae	damselflies	1	1	
Gastropoda	Stylommatophora	Limacoidae	keelback slugs			1
Arachnida	Araneae	Linyphiidae	Sheetweb weavers	3	6	
Arachnida	Sarcoptiformes	Liodidae		1		
Insecta	Psocoptera	Liposcelidae			1	
Chilopoda	Lithobiomorpha	Lithobiidae			2	1
Insecta	Diptera	Lonchaeidae	Spear-winged flies			2
Diplopoda	Polyxenida	Lophoproctidae			2	
Echinoidea	Spatangioida	Loveniidae		1		
Arachnida	Araneae	Loxoscelidae	Brown spiders		2	
Asterozoa	Paxillosida	Luidiidae		1		
Clitellata	Opisthopora	Lumbricidae			10	
Insecta	Lepidoptera	Lycaenidae	blues		1	
Arachnida	Araneae	Lycosidae	Wolf spiders	7		
Insecta	Heteroptera	Lygaeidae	Seed bugs	1	1	
Insecta	Lepidoptera	Lyonetiidae	lyonetiids	1		
Turbellaria	Macrostomidae	Macrostomidae	macrostomids	1		
Arachnida	Sarcoptiformes	Malaconothridae		1	1	
Clitellata	Opisthopora	Megascolecidae			6	
Insecta	Hymenoptera	Megaspilidae	megaspilids	1		
Insecta	Mallophaga	Menoponidae				2
Insecta	Diptera	Milichiidae	milichiids		2	

Arachnida	Araneae	Minetidae				
Insecta	Heteroptera	Miridae	Plant bugs	10	4	
Arachnida	Araneae	Miturgidae	Miturgids	4		
Insecta	Lepidoptera	Momphidae	momphids	1		
Insecta	Coleoptera	Mordellidae	Tumbling flower beetles	1		
Insecta	Diptera	Muscidae	House and stable flies	1		13
Insecta	Coleoptera	Mycetophagidae	Hairy fungus beetles		1	
Insecta	Diptera	Mycetophilidae	Fungus gnats		1*	
Insecta	Psocoptera	Myopsocidae			1	
Insecta	Heteroptera	Nabidae	Damsel bugs	2	1	
Arachnida	Sarcoptiformes	Nanhermanniidae			1	
Entognatha	Collembola	Neanuroidea			1	
Arachnida	Pseudoscorpiones	Neobisiidae				1
Arachnida	Araneae	Nesticidae	Scaffold-web spiders	1		
Insecta	Zygentoma	Nicoletiidae	nicoletiids		1	
Insecta	Coleoptera	Nitidulidae	Sap beetles			4
Insecta	Lepidoptera	Noctuidae	Noctuids	4		26
Arachnida	Sarcoptiformes	Nothridae			1	
Insecta	Lepidoptera	Nymphalidae	Bush-footed butterflies		2	
Clitellata	Haplotaxida	Ocnerodrilidae			1	
Clitellata	Haplotaxida	Octochaetidae			1	
Anthozoa	Scleractinia	Oculinidae			1	
Malacostraca	Decapoda	Ocypodidae			1	
Arachnida	Araneae	Oecobiidae	Oecobiids		3	
Insecta	Lepidoptera	Oecophoridae	Oecophorids	2		1
Insecta	Embioptera	Oligotomidae				1
Arachnida	Pseudoscorpiones	Olpiidae		1		
Malacostraca	Isopoda	Oniscidae	oniscids			1
Entognatha	Collembola	Onychiuroidea			1	
Arachnida	Araneae	Oonopidae	Oonpids	2	3	
Ophiuroidea	Ophiurida	Ophiacanthidae			5	
Ophiuroidea	Ophiurida	Ophiactidae			3	
Asteroidea	Valvatida	Ophidiasteridae		2	2	
Ophiuroidea	Ophiurida	Ophiolpididae			1	
Ophiuroidea	Ophiurida	Ophiomyxidae			1	
Ophiuroidea	Ophiurida	Ophiothrichidae		1		
Ophiuroidea	Ophiurida	Ophiuridae			3	
Arachnida	Sarcoptiformes	Oppiidae		2	1	
Arachnida	Sarcoptiformes	Oribatulidae			1	

Arachnida	Sarcoptiformes	Oribotritiidae		1		
Insecta	Blattodea	Oxyhaloidae				2
Arachnida	Araneae	Oxyopidae	Lynx spiders		1	
Malacostraca	Decapoda	Palinuridae	spiny lobsters		1	
Diplopoda	Polydesmida	Paradoxosomatidae			1	
Insecta	Heteroptera	Pentatomidae	Stink bugs	1	1	
Insecta	Psocoptera	Peripsocidae		2	1	
Insecta	Mallophaga	Philopteridae			9	
Malacostraca	Isopoda	Philosciidae	philosciids	1	3	
Insecta	Thysanoptera	Phlaeothripidae		1	1	
Arachnida	Araneae	Pholcidae	Daddy-long-legs spiders		3	
Insecta	Diptera	Phoridae	Humpbacked flies			3
Crinoidea	Comatulida	Phryncrinidae			1	
Arachnida	Sarcoptiformes	Phthiracaridae		2	2	
Maxillopoda	Copepoda	Phyllognathopodidae			1	
Hydrozoa	Siphonophora	Physaliidae			1	
Malacostraca	Isopoda	Platyarthridae	platyarthrids		1	1
Insecta	Lepidoptera	Plutellidae	Diamondback moths		1	1
Anthozoa	Scleractinia	Pocilloporidae			1	
Diplopoda	Polyxenida	Polyxenidae			1	
Malacostraca	Isopoda	Porcellionidae	Porcellionids		2	3
Anthozoa	Scleractinia	Poritidae			1	
Malacostraca	Anthoathecata	Porpitidae			1	
Turbellaria	Tricladida	Procerodidae	procerodids	2		
Arachnida	Araneae	Prodidomidae	Prodidomids	1		
Insecta	Psocoptera	Psocidae		1		
Insecta	Diptera	Psychodidae	Owl midges			3
Insecta	Heteroptera	Psyllidae	Jumping plantlice			1
Insecta	Psocoptera	Psyllipsocidae			1	
Insecta	Lepidoptera	Pterophoridae	Plume moths	2	2	
Insecta	Coleoptera	Ptiliidae	Feather winged beetles	2		
Insecta	Coleoptera	Ptinidae	Spider beetles			3
Insecta	Siphonaptera	Pulicidae	pulicids			5
Gastropoda	Stylommatophora	Pupillidae	Pupillids		1	1
Insecta	Blattodea	Pycnoscelidae				1
Arachnida	Prostigmata	Pygmephoridae			2	
Insecta	Lepidoptera	Pyralidae	Snout and grass moths	8	6	6
Insecta	Heteroptera	Reduviidae	Assain bugs	1	2	
Insecta	Isoptera	Rhinotermitidae				1

Insecta	Coleoptera	Rhizophagidae	rhizophagid beetles			2
Turbellaria	Tricladida	Rhynchodemidae	rhynchodemids		2	
Insecta	Heteroptera	Saldidae	shore bugs	1		
Arachnida	Araneae	Salticidae	Jumping spiders	7	3	
Insecta	Coleoptera	Scarabaeidae	Scarab beetles	3	3	2
Insecta	Diptera	Scatopsidae	Minute black scavenger flies			1
Insecta	Hymenoptera	Scelionidae	Scelionids	1	3*	
Insecta	Diptera	Scenopinidae	Window flies			1
Arachnida	Sarcoptiformes	Schelorbataidae		10	1	
Insecta	Diptera	Sciaridae	Dark winged fungus gnats		1*	
(Not Assigned)	Symphyla	Scolopendrellidae			1	
Chilopoda	Scolopendromorpha	Scolopendridae				1
Insecta	Coleoptera	Scolytidae	Bark beetles		2	
(Not Assigned)	Symphyla	Scutigrellidae			2	
Chilopoda	Scutigromorpha	Scutigridae			1	
Malacostraca	Decapoda	Scyllaridae	slipper lobsters		1	
Arachnida	Araneae	Scytodidae	Spitting spiders		3	
Arachnida	Araneae	Segestriidae	Six-eyed tunnel spiders			1
Arachnida	Araneae	Selenopidae	Selenopid crab spiders			1
Anthozoa	Scleractinia	Siderastreidae			1	
Insecta	Coleoptera	Silvanidae	Silvanids		1	1
Insecta	Diptera	Simuliidae	blackflies	3		
Diplopoda	Polyzoniida	Siphonotidae			1	
Insecta	Diptera	Sphaeroceridae	Small dung flies	1		10
Insecta	Psocoptera	Sphaeropsocidae		1		
Insecta	Hymenoptera	Sphecidae	Sphecid wasps	1	1	1
Insecta	Lepidoptera	Sphingidae	hawkmoths		2	1
Insecta	Coleoptera	Staphylinidae	Rove beetles	2	21	
Gastropoda	Stylommatophora	Subulinidae	Spire snails			1
Gastropoda	Stylommatophora	Succineidae	Amber snails	1		
Arachnida	Araneae	Symphytognathidae	Midget spiders	1		
Holothuroidea	Apodida	Synaptidae			1	
Arachnida	Astigmata	Syringobiinae			1	
Insecta	Diptera	Syrphidae	Hover flies	1	6	
Insecta	Diptera	Tachinidae	tachinids	1		1
Malacostraca	Amphipoda	Talitridae	talitrids	1	1	1
Malacostraca	Tanaidacea	Tanaidae	Tanaids		1	
Insecta	Coleoptera	Tenebrionidae	Barkling beetles	8	9	
Insecta	Diptera	Tephritidae	Fruit flies			2

Insecta	Diptera	Tethinidae	tethinids		1	
Arachnida	Araneae	Tetrablemmidae	tetrablemmids	1		
Arachnida	Araneae	Tetragnathidae	tetragnathids	4	1	
Arachnida	Prostigmata	Tetranychidae	Spider mites		1	
Enopla	Hoploneuridae	Tetrastemmatidae			1	
Insecta	Orthoptera	Tettigoniidae	Bush cricket	2	1	
Arachnida	Araneae	Theridiidae	Comb-footed spiders	5	15	
Arachnida	Araneae	Thomisidae	Small crab spiders	2	1	
Demospongiae	Dictyoceratida	Thorectidae			1	
Insecta	Thysanoptera	Thripidae		1	1	
Insecta	Lepidoptera	Tineidae	Clothes moths	28	2	
Insecta	Heteroptera	Tingidae	Lace bugs		1	
Insecta	Diptera	Tipulidae	Crane flies	3	1	
Entognatha	Collembola	Tomoceridae			1	
Insecta	Lepidoptera	Tortricidae	Tortricids		1	2
Echinoidea	Temnopleuroidea	Toxopneustidae			1	
Arachnida	Sarcoptiformes	Trhypochthoniellidae			1	
Malacostraca	Isopoda	Trichoniscidae	trichoniscids			2
Insecta	Psocoptera	Trichopsocidae			1	
Insecta	Coleoptera	Trogidae	Trogids			1
Insecta	Psocoptera	Trogiidae			2	
Insecta	Coleoptera	Trogositidae			1	
Crinoidea	Comatulida	Tropiometridae			1	
Arachnida	Astigmata	Trouessartiidae			1	
Arachnida	Araneae	Uloboridae	uloborids		2	
Gastropoda	Stylommatophora	Valloniidae	Grass snails		1	
Insecta	Heteroptera	Veliidae	watercrickets		1	
Gastropoda	Stylommatophora	Vertiginidae	Whorl snails			1
Insecta	Hymenoptera	Vespidae	Vespid wasps			1
Malacostraca	Decapoda	Xanthidae	mud crabs	1	1	
Gastropoda	Stylommatophora	Zonitidae	Glass snails			3

Table 7: Reptile species list.

Class	Order	Family	Scientific Name	Local Name	Global Name	Island Status	IUCN status
Reptilia	Testudines	Cheloniidae	<i>Eretmochelys imbricata</i>	Hawksbill turtle	Hawksbill turtle	Native	Critically Endangered A2bd

Reptilia	Testudines	Cheloniidae	<i>Chelonia mydas</i>	Green turtle	Green turtle	Native	Endangered A2bd
Reptilia	Squamata	Gekkonidae	<i>Hemidactylus frenatus</i>	gecko	Java gecko	invasive	Not assessed

Table 8: Amphibian species list.

Class	Order	Family	Scientific Name	Local Name	Global Name	Island Status	IUCN status
Amphibia	Anura	Ranidae	<i>Rana grayi</i>	frog	grass frog	invasive	Not assessed

Table 9: Mammals species list.

Class	Order	Family	Scientific Name	Local Name	Global Name	Island Status	IUCN status
Mammalia	Carnivora	Felidae	<i>Felis catus</i>	cat	Domestic cat	Invasive	Not assessed
Mammalia	Artiodactyla	Bovidae	<i>Capra hircus</i>	goat	Domestic goat	Invasive	Not assessed
Mammalia	Artiodactyla	Bovidae	<i>Ovis aries</i>	Sheep	Domestic sheep	Invasive	Not assessed
Mammalia	Carnivora	Caniformia	<i>Canis familiaris</i>	dog	Domestic dog	Invasive	Not assessed
Mammalia	Cetartiodactyla	Balaenopteridae	<i>Megaptera novaeangliae</i>	Humpback whale	Humpback whale	Native	Least concern
Mammalia	Cetartiodactyla	Delphinidae	<i>Stenella attenuata</i>	Porpoise	Pantropical spotted dolphin	Native	Least concern
Mammalia	Cetartiodactyla	Delphinidae	<i>Tursiops truncatus</i>	Cow porpoise	Bottlenose dolphin	Native	Least concern
Mammalia	Cetartiodactyla	Delphinidae	<i>Steno bredanensis</i>	Angerline	Rough-toothed dolphin	Native	Least concern
Mammalia	Cetartiodactyla	Delphinidae	<i>Stenella longirostris</i>	spinner	spinner dolphin	Native	data deficient
Mammalia	Lagomorpha	Leporidae	<i>Oryctolagus cuniculus</i>	Rabbit	European rabbit	Invasive	Near threatened
Mammalia	Perissodactyla	Equidae	<i>Equus asinus</i>	donkey	Domestic donkey	Invasive	Not assessed
Mammalia	Rodentia	Muridae	<i>Mus musculus</i>	House mouse	House mouse	Invasive	Least concern
Mammalia	Rodentia	Muridae	<i>Rattus rattus</i>	Black rat	Black rat	Invasive	Least concern
Mammalia	Rodentia	Muridae	<i>Rattus norvegicus</i>	Brown rat	Brown rat	Invasive	Least concern
Mammalia	Cetartiodactyla	Physeteridae	<i>Physeter macrocephalus</i>	sperm whale	sperm whale	Native	Vulnerable A1d

Table 10: Fish species list

Class	Order	Family	Scientific Name	Local Name	Global Name	Island Status	IUCN status
Actinopterygii	Anguilliformes	Congridae	<i>Ariosoma mellissii</i>	Silver Eel		Endemic	Not Assessed
Actinopterygii	Anguilliformes	Congridae	<i>Conger oceanicus</i>	Dog Eel	conger eel	Native	Not Assessed
Actinopterygii	Anguilliformes	Muraenidae	<i>Enchelycore anatina</i>	Bird-eye Conger	fangtooth moray	Native	Not Assessed
Actinopterygii	Anguilliformes	Muraenidae	<i>Gymnothorax miliaris</i>	Bastard Eel	goldentail moray	Native	Not Assessed
Actinopterygii	Anguilliformes	Muraenidae	<i>Gymnothorax moringa</i>	Common conger	spotted moray	Native	Not Assessed
Actinopterygii	Anguilliformes	Muraenidae	<i>Gymnothorax unicolor</i>	Greek	brown moray	Native	Not Assessed
Actinopterygii	Anguilliformes	Muraenidae	<i>Gymnothorax vicinus</i>	Deepwater conger	purplemouth moray	Native	Not Assessed
Actinopterygii	Anguilliformes	Myrocongridae	<i>Myroconger compressus</i>	Red Eel	Red Eel	Native	Not Assessed
Actinopterygii	Anguilliformes	Ophichthidae	<i>Apterichthys kendalli</i>	Finless Eel		Native	Not Assessed
Actinopterygii	Anguilliformes	Ophichthidae	<i>Callechelys bilinearis</i>	Twostripe Snake Eel	Twostripe Snake Eel	Native	Not Assessed
Actinopterygii	Anguilliformes	Ophichthidae	<i>Herpetoichthys regius</i>	Sea snake		Native	Not Assessed
Actinopterygii	Anguilliformes	Ophichthidae	<i>Ichthyapus ophioneus</i>	Sand Eel	surf eel	Native	Not Assessed
Actinopterygii	Anguilliformes	Ophichthidae	<i>Phaenomonas longissimus</i>	Short-maned San Eel		Native	Not Assessed
Actinopterygii	Anguilliformes	Ostraciidae	<i>Acanthostracion notacanthus</i>	Hogfish	island cowfish	Native	Not Assessed
Actinopterygii	Anguilliformes	Synaphobranchidae	<i>Simenchelys parasiticus</i>	Pug-nosed Eel		Native	Not Assessed
Actinopterygii	Aulopiformes	Alepisauridae	<i>Alepisaurus ferox</i>	Day Sarpon	lancetfish	Native	Not Assessed
Actinopterygii	Aulopiformes	Syngnathidae	<i>Synodus synodus</i>	Rockspear	diamond lizardfish	Native	Not Assessed
Actinopterygii	Aulopiformes	Syngnathidae	<i>Trachinocephalus myops</i>	Sandspear	snakefish	Native	Not Assessed
Actinopterygii	Beloniformes	Belonidae	<i>Platybelone argalus trachura</i>	Pipefish	keeltail needlefish	Native	Not Assessed
Actinopterygii	Beloniformes	Exocoetidae	<i>Cheilopogon nigricans</i>	African flyingfish		Native	Not Assessed
Actinopterygii	Beloniformes	Exocoetidae	<i>Cheilopogon pinnatibarbatus</i>	Flyingfish		Native	Not Assessed
Actinopterygii	Beloniformes	Exocoetidae	<i>Exocoetus obtusirostris</i>	Oceanic Two-wing Flyingfish	Oceanic Two-wing Flyingfish	Native	Not Assessed

Actinopterygii	Beloniformes	Exocoetidae	<i>Exocoetus volitans</i>	Tropical Two-wing Flyingfish		Native	Not Assessed
Actinopterygii	Beloniformes	Exocoetidae	<i>Hirundichthys speculiger</i>	Mirrorwing Flyingfish	Mirrorwing Flyingfish	Native	Not Assessed
Actinopterygii	Beloniformes	Scomberesocidae	<i>Nanichthys simulans</i>	Dwarf Saury		Native	Not Assessed
Actinopterygii	Beryciformes	Holocentridae	<i>Coringer spinosus</i>	Red Roman		Native	Not Assessed
Actinopterygii	Beryciformes	Holocentridae	<i>Holocentrus adscensionis</i>	Hardback Soldier	squirrelfish	Native	Not Assessed
Actinopterygii	Beryciformes	Holocentridae	<i>Myripristis jacobus</i>	Softback/Bastard Soldier	blackbar soldierfish	Native	Not Assessed
Chondrichthyes	Carcharhiniformes	Carcharhinidae	<i>Carcharhinus galapagensis</i>	Mackerel shark	Galapagos shark	Native	Near Threatened
Chondrichthyes	Carcharhiniformes	Carcharhinidae	<i>Carcharhinus longimanus</i>	Whitetip	Oceanic whitetip shark, Whitetip whaler	Native	Vulnerable A2ad+3d+4ad
Chondrichthyes	Carcharhiniformes	Carcharhinidae	<i>Prionace glauca</i>	Blue Shark	blue shark	Native	Near Threatened
Chondrichthyes	Carcharhiniformes	Sphyrnidae	<i>Sphyrna sp.</i>	Shovel-nose shark		Native	*
Actinopterygii	Gadiformes	Moridae	<i>Laemonema robustum</i>	Robust Mora		Native	Not Assessed
Actinopterygii	Gadiformes	Moridae	<i>Physiculus helenaensis</i>	Skulpin	Skulpin	Endemic	Critically Endangered D
Actinopterygii	Gadiformes	Moridae	<i>Physiculus karrerae</i>	Karrer's Mora		Native	Not Assessed
Actinopterygii	Gonorynchiformes	Gonorynchidae	<i>Gonorynchus gonorynchus</i>	Beaked sandfish		Native	Not Assessed
Chondrichthyes	Lamniformes	Alopiidae	<i>Alopias superciliosus</i>	Whiptail	bigeye thresher	Native	Vulnerable A2bd
Chondrichthyes	Lamniformes	Lamnidae	<i>Isurus oxyrinchus</i>	Dog shark	shortfin Mako	Native	Vulnerable A2abd+3bd+4abd
Chondrichthyes	Lamniformes	Pseudocarchariidae	<i>Pseudocarcharias kamoharai</i>	Crocodile shark	crocodile shark	Native	Near Threatened
Actinopterygii	Lampriformes	Lampridae	<i>Lampris guttatus</i>	Spotted Opah	opah	Native	Not Assessed
Actinopterygii	Lampriformes	Trachipteridae	<i>Trachipterus trachipterus</i>	Peregrine Ribbonfish		Native	Not Assessed
Actinopterygii	Lophiiformes	Antennariidae	<i>Antennarius nummifer</i>	Coin-bearing Frogfish	spotfin frogfish	Native	Not Assessed
Actinopterygii	Lophiiformes	Antennariidae	<i>Antennarius striatus</i>	Striated Frogfish	Striated Frogfish	Native	Not Assessed
Chondrichthyes	Myliobatiformes	Myliobatidae	<i>Mobula sp.</i>	Diamondfish		Native	*
Actinopterygii	Perciformes	Acanthuridae	<i>Acanthurus bahianus</i>	Shitty Trooper	ocean surgeon	Native	Not Assessed
Actinopterygii	Perciformes	Apogonidae	<i>Apogon axillaris</i>	Red Mullet		Native	Not Assessed
Actinopterygii	Perciformes	Blenniidae	<i>Entomacrodus textilis</i>	Textile Blenny	Textile Blenny	Native	Not Assessed

Actinopterygii	Perciformes	Blenniidae	<i>Ophioblennius atlanticus atlanticus</i>	Devilfish	redlipped blenny	Native	Not Assessed
Actinopterygii	Perciformes	Blenniidae	<i>Scartella springeri</i>	Springer's Blenny		Endemic	Not Assessed
Actinopterygii	Perciformes	Callionymidae	<i>Callionymus sanctaehelenae</i>	St Helena Dragonet		Endemic	Critically Endangered D
Actinopterygii	Perciformes	Caproidae	<i>Antigonia capros</i>	Deepbody Boarfish	Deepbody Boarfish	Native	Not Assessed
Actinopterygii	Perciformes	Carangidae	<i>Caranx crysos</i>	Blue Runner	Blue Runner	Native	Not Assessed
Actinopterygii	Perciformes	Carangidae	<i>Caranx hippos</i>	Crevalle Jack	common jack	Native	Not Assessed
Actinopterygii	Perciformes	Carangidae	<i>Caranx lugubris</i>	Coalfish	black jack, black trevally	Native	Not Assessed
Actinopterygii	Perciformes	Carangidae	<i>Caranx ruber</i>	Bar Jack	Bar Jack	Native	Not Assessed
Actinopterygii	Perciformes	Carangidae	<i>Decapterus macarellus</i>	Kingston	Mackerel scad	Native	Not Assessed
Actinopterygii	Perciformes	Carangidae	<i>Decapterus muroadsi</i>	Stonebrass		Native	Not Assessed
Actinopterygii	Perciformes	Carangidae	<i>Decapterus punctatus</i>	Summer Stonebrass	round scad	Native	Not Assessed
Actinopterygii	Perciformes	Carangidae	<i>Decapterus tabl</i>	Greater Kingston	roughear scad	Native	Not Assessed
Actinopterygii	Perciformes	Carangidae	<i>Elagatis bipinnulata</i>	Striped Fish	rainbow runner	Native	Not Assessed
Actinopterygii	Perciformes	Carangidae	<i>Naucrates ductor</i>	Pilotfish	Pilotfish	Native	Not Assessed
Actinopterygii	Perciformes	Carangidae	<i>Pseudocaranx dentex</i>	Cavalley	white trevally	Native	Not Assessed
Actinopterygii	Perciformes	Carangidae	<i>Selar crumenophthalmus</i>	Steenbrass	bigeye scad	Native	Not Assessed
Actinopterygii	Perciformes	Carangidae	<i>Seriola fasciata</i>	Lesser Amberjack	Lesser Amberjack	Native	Not Assessed
Actinopterygii	Perciformes	Carangidae	<i>Seriola lalandi</i>	Yellowtail	yellowtail amberjack	Native	Not Assessed
Actinopterygii	Perciformes	Carangidae	<i>Trachinotus ovatus</i>	Silverfish		Native	Not Assessed
Actinopterygii	Perciformes	Carangidae	<i>Uraspis helvola</i>	Whitetongue Jack		Native	Not Assessed
Actinopterygii	Perciformes	Centrolophidae	<i>Schedophilus ovalis</i>	Deepwater Codfish		Native	Not Assessed
Actinopterygii	Perciformes	Chaetodontidae	<i>Prognathodes dichrous</i>	Bastard Cunningfish		Native	least concern
Actinopterygii	Perciformes	Chaetodontidae	<i>Chaetodon sanctaehelenae</i>	Cunningfish		Native	least concern
Actinopterygii	Perciformes	Cirrhitidae	<i>Amblycirrhitus pinos</i>	Grannyfish		Native	Not Assessed
Actinopterygii	Perciformes	Coryphaenidae	<i>Coryphaena equiselis</i>	Dolphin	pompano dolphinfish	Native	Not Assessed
Actinopterygii	Perciformes	Echeneididae	<i>Echeneis naucrates</i>	Live Sharksucker		Native	Not Assessed

Actinopterygii	Perciformes	Echeneididae	<i>Remora osteochir</i>	Marlinsucker		Native	Not Assessed
Actinopterygii	Perciformes	Echeneididae	<i>Remora remora</i>	Remora	suckerfish, sharksucker	Native	Not Assessed
Actinopterygii	Perciformes	Echeneididae	<i>Remorina albescens</i>	White Suckerfish		Native	Not Assessed
Actinopterygii	Perciformes	Eleotrididae	<i>Eleotris sp.</i>	Sleeper		Native	*
Actinopterygii	Perciformes	Emmelichthyidae	<i>Emmelichthys ruber</i>	Red Rover		Native	Not Assessed
Actinopterygii	Perciformes	Gempylidae	<i>Promethichthys prometheus</i>	Sarpon	roudi escolar	Native	Not Assessed
Actinopterygii	Perciformes	Gempylidae	<i>Ruvettus pretiosus</i>	Night Barracuda	oilfish	Native	Not Assessed
Actinopterygii	Perciformes	Gobiidae	<i>Gnatholepis thompsoni</i>	Goldspot Goby	Goldspot Goby	Native	Not Assessed
Actinopterygii	Perciformes	Gobiidae	<i>Priolepis ascensionis</i>	Ascension Goby		Native	Not Assessed
Actinopterygii	Perciformes	Grammistidae	<i>Rypticus saponaceus</i>	Soapfish	greater soapfish	Native	Not Assessed
Actinopterygii	Perciformes	Istiophoridae	<i>Istiophorus albicans</i>	Atlantic Sailfish	Atlantic Sailfish	Native	Not Assessed
Actinopterygii	Perciformes	Istiophoridae	<i>Makaira indica</i>	Black Marlin	Black Marlin	Native	Not Assessed
Actinopterygii	Perciformes	Istiophoridae	<i>Makaira nigricans</i>	Atlantic Blue Marlin	Atlantic Blue Marlin	Native	Not Assessed
Actinopterygii	Perciformes	Istiophoridae	<i>Tetrapturus albidus</i>	White Marlin	White Marlin	Native	Not Assessed
Actinopterygii	Perciformes	Kyphosidae	<i>Kyphosus sectatrix</i>	Brim		Native	Not Assessed
Actinopterygii	Perciformes	Labridae	<i>Bodianus insularis</i>	Parrotfish	Parrotfish	Native	Not Assessed
Actinopterygii	Perciformes	Labridae	<i>Thalassoma sanctaehelenae</i>	Greenfish		Endemic	Data Deficient
Actinopterygii	Perciformes	Labridae	<i>Xyrichtys blanchardi</i>	Marmalade Razorfish	Marmalade Razorfish	Native	least concern
Actinopterygii	Perciformes	Labridae	<i>Xyrichtys sanctaehelenae</i>	Sand Greenfish	yellow razorfish	Native	least Concern
Actinopterygii	Perciformes	Mullidae	<i>Mulloidichthys martinicus</i>	Yellow Goatfish	Yellow Goatfish	Native	Not Assessed
Actinopterygii	Perciformes	Pomacentridae	<i>Abudefduf saxatilis</i>	Five Finger	sergeant major, pintano	Native	Not Assessed
Actinopterygii	Perciformes	Pomacentridae	<i>Chromis multilineata</i>	Cavalley Pilot	brown chromis	Native	Not Assessed
Actinopterygii	Perciformes	Pomacentridae	<i>Chromis sanctaehelenae</i>	Bastard Five Finger		Endemic	Vulnerable D2
Actinopterygii	Perciformes	Pomacentridae	<i>Stegastes sanctaehelenae</i>	Bastard Cavalley Pilot		Endemic	Vulnerable D2
Actinopterygii	Perciformes	Porgies	<i>Diplodus sargus helenae</i>	Old Wife		Native	Not Assessed
Actinopterygii	Perciformes	Priacanthidae	<i>Cookeolus japonicus</i>	Deepwater Bullseye	longfinned bullseye	Native	Not Assessed

Actinopterygii	Perciformes	Priacanthidae	<i>Heteropriacanthus cruentatus</i>	Rock Bullseye	glasseye	Native	Not Assessed
Actinopterygii	Perciformes	Scaridae	<i>Sparisoma strigatum</i>	Rockfish	strigate parrotfish	Native	least concern
Actinopterygii	Perciformes	Scombridae	<i>Acanthocybium solandri</i>	Wahoo	Barracuda	Native	Not Assessed
Actinopterygii	Perciformes	Scombridae	<i>Auxis rochei</i>	Mackerel Tuna	bullet tuna	Native	Not Assessed
Actinopterygii	Perciformes	Scombridae	<i>Auxis thazard</i>	Mackerel Tuna	frigate tuna	Native	Not Assessed
Actinopterygii	Perciformes	Scombridae	<i>Euthynnus alletteratus</i>	Little Tunny	Little Tunny	Native	Not Assessed
Actinopterygii	Perciformes	Scombridae	<i>Katsuwonus pelamis</i>	Bonito	skipjack tuna	Native	Not Assessed
Actinopterygii	Perciformes	Scombridae	<i>Scomber japonicus</i>	Mackerel	chub mackerel	Native	Not Assessed
Actinopterygii	Perciformes	Scombridae	<i>Scomberomorus commerson</i>	Narrow-barred Spanish Mackerel	Narrow-barred Spanish Mackerel	Native	Not Assessed
Actinopterygii	Perciformes	Scombridae	<i>Thunnus alalunga</i>	Bastard Albacore	Bastard Albacore	Native	Data Deficient
Actinopterygii	Perciformes	Scombridae	<i>Thunnus albacares</i>	Yellowfin Tuna	Pacific long-tailed tuna	Native	Lower Risk/least concern
Actinopterygii	Perciformes	Scombridae	<i>Thunnus obesus</i>	Coffrey	bigeye tuna	Native	Vulnerable A1bd
Actinopterygii	Perciformes	Serranidae	<i>Epinephelus adscensionis</i>	Jack	rock hind	Native	Not Assessed
Actinopterygii	Perciformes	Serranidae	<i>Holanthias fronticinctus</i>	Deepwater Greenfish	St Helena perch	Endemic	Not Assessed
Actinopterygii	Perciformes	Serranidae	<i>Serranus sanctaehelenae</i>	Deepwater Brown Mullet	St Helena comber	Native	Not Assessed
Actinopterygii	Perciformes	Tripterygiidae	<i>Helcogramma ascensionis</i>	Ascension Triplefin		Native	Not Assessed
Actinopterygii	Perciformes	Xiphiidae	<i>Xiphias gladius</i>	Swordfish	Broadbill swordfish	Native	Data Deficient
Actinopterygii	Pleuronectiformes	Bothidae	<i>Arnoglossus capensis</i>	Cape Scaldfish	Cape Scaldfish	Native	Not Assessed
Actinopterygii	Pleuronectiformes	Bothidae	<i>Bothus mellissi</i>	Solefish/Flounder		Native	Not Assessed
Actinopterygii	Pleuronectiformes	Cynoglossidae	<i>Symphurus nigrescens</i>	Dark Tonguefish	tonguefish	Native	Not Assessed
Actinopterygii	Pleuronectiformes	Cynoglossidae	<i>Symphurus sp.</i>	Reticulate Tonguefish		Native	*
Actinopterygii	Polymixiiformes	Polymixiidae	<i>Polymixia nobilis</i>	Beardfish	stout beardfish	Native	Not Assessed
Actinopterygii	Scorpaenidae	Scorpaenidae	<i>Pontinus nigropunctatus</i>	Deepwater Jack	St Helena Deepwater Scorpionfish	Endemic	Vulnerable D2
Actinopterygii	Scorpaenidae	Scorpaenidae	<i>Scorpaena mellissii</i>	Deepwater Gurnard		Endemic	Not Assessed
Actinopterygii	Scorpaenidae	Scorpaenidae	<i>Scorpaena plumieri</i>	Gurnard	pacific spotted scorpionfish	Native	Not Assessed
Actinopterygii	Scorpaenidae	Scorpaenidae	<i>Scorpaenodes insularis</i>	Red Scorpionfish	Red Scorpionfish	Native	Not Assessed

Actinopterygii	Syngnathiformes	Aulostomidae	<i>Aulostomus strigosus</i>	Trantran	Atlantic cornetfish	Native	Not Assessed
Actinopterygii	Syngnathiformes	Syngnathidae	<i>Hippocampus erectus</i>	Seahorse	lined seahorse, northern seahorse	Native	Vulnerable A4cd
Actinopterygii	Tetraodontiformes	Balistidae	<i>Canthidermis maculatus</i>	Rough Triggerfish	spotted oceanic triggerfish	Native	Not Assessed
Actinopterygii	Tetraodontiformes	Balistidae	<i>Canthidermis sufflamen</i>	Filefish	ocean triggerfish	Native	Not Assessed
Actinopterygii	Tetraodontiformes	Balistidae	<i>Melichthys niger</i>	Blackfish	black triggerfish	Native	Not Assessed
Actinopterygii	Tetraodontiformes	Diodontidae	<i>Chilomycterus reticulatus</i>	Lanternfish	spotfin porcupinefish	Native	Not Assessed
Actinopterygii	Tetraodontiformes	Diodontidae	<i>Diodon holocanthus</i>	Porcupine	long-spine porcupinefish	Native	Not Assessed
Actinopterygii	Tetraodontiformes	Molidae	<i>Mola mola</i>	Ocean Sunfish	Ocean Sunfish	Native	Not Assessed
Actinopterygii	Tetraodontiformes	Monacanthidae	<i>Aluterus monoceros</i>	Batfish	unicorn leatherjacket	Native	Not Assessed
Actinopterygii	Tetraodontiformes	Monacanthidae	<i>Aluterus scriptus</i>	Scrawled Filefish	Scrawled Filefish	Native	Not Assessed
Actinopterygii	Tetraodontiformes	Tetraodontidae	<i>Canthigaster sanctaehelenae</i>	Bastard Hogfish		Native	Not Assessed
Actinopterygii	Tetraodontiformes	Tetraodontidae	<i>Lagocephalus lagocephalus</i>	Oceanic Puffer	Oceanic Puffer	Native	Not Assessed
Actinopterygii	Tetraodontiformes	Tetraodontidae	<i>Sphaeroides pachygaster</i>	Bottlefish	blunthead puffer	Native	Not Assessed

Table 11: Marine mammals species list

Class	Order	Family	Scientific Name	Local Name	Global Name	Island Status	IUCN status
Mammalia	Cetartiodactyla	Balaenopteridae	<i>Megaptera novaeangliae</i>	Humpback whale	Humpback whale	Native	Least concern
Mammalia	Cetartiodactyla	Delphinidae	<i>Stenella attenuata</i>	Porpoise	Pantropical spotted dolphin	Native	Least concern
Mammalia	Cetartiodactyla	Delphinidae	<i>Tursiops truncatus</i>	Cow porpoise	Bottlenose dolphin	Native	Least concern
Mammalia	Cetartiodactyla	Delphinidae	<i>Steno bredanensis</i>	Angerline	Rough-toothed dolphin	Native	Least concern
Mammalia	Cetartiodactyla	Delphinidae	<i>Stenella longirostris</i>	spinner	spinner dolphin	Native	data deficient
Mammalia	Cetartiodactyla	Physeteridae	<i>Physeter macrocephalus</i>	sperm whale	sperm whale	Native	Vulnerable A1d

Table 12: Marine Invertebrates species list

Class	Order	Family	Genus	Species	Former Scientific Name	Local Name	Global name	Island Status	IUCN Status
Anthozoa	Antipatharia	Antipathidae	<i>Antipathes</i>	<i>pinnatifida</i>		sea tree		Native	Not Assessed
Anthozoa	Scleractinia	Dendrophylliidae	<i>Balanophyllia</i>	<i>helenae</i>		golden cup coral		Native	Not Assessed
Anthozoa	Scleractinia	Faviidae	<i>Favia</i>	<i>fragum</i>		star coral	golfball coral	Native	Not Assessed
Anthozoa	Scleractinia	Pocilloporidae	<i>Madracis sp.</i>	*		encrusting and small massive coral		Native	*
Anthozoa	Actiniaria	Actiniidae	<i>Phymactis</i>	<i>sanctae-helenae</i>				Native	Not Assessed
Anthozoa	Scleractinia	Faviidae	<i>Platygyra sp.</i>	*				Native	*
Anthozoa	Scleractinia	Poritidae	<i>Porites sp.</i>	*				Native	*
Anthozoa	Scleractinia	Oculinidae	<i>Sclerelia</i>	<i>hirtella</i>				Native	Not Assessed
Anthozoa	Scleractinia	Siderastreaeidae	<i>Siderastrea</i>	<i>radians</i>		starlet coral	lesser starlet coral	Native	Not Assessed
Astrozoidea	Paxillosida	Astropectinidae	<i>Astropecten</i>	<i>sanctae-helenae</i>				Endemic	Not Assessed
Astrozoidea	Paxillosida	Astropectinidae	<i>Astropecten</i>	<i>variegatus</i>				Endemic	Not Assessed
Astrozoidea	Valvatida	Chaetasteridae	<i>Chaetaster</i>	<i>longpipes</i>				Native	Not Assessed
Astrozoidea	Forcipulatida	Asteriidae	<i>Coscinasterias</i>	<i>tenuispina</i>				Native	Not Assessed
Astrozoidea	Valvatida	Ophidiasteridae	<i>Hacelia</i>	<i>superba</i>				Native	Not Assessed
Astrozoidea	Valvatida	Ophidiasteridae	<i>Linckia</i>	<i>nodosa</i>	<i>Linckia formosa</i>			Endemic	Not Assessed

Asteroidea	Paxillosida	Luidiidae	<i>Luidia</i>	<i>sagamina aciculata</i>	<i>Luidia aciculata</i>			Endemic	Not Assessed
Asteroidea	Valvatida	Ophidiasteridae	<i>Narcissia</i>	<i>trigonaria helenae</i>				Endemic	Not Assessed
Asteroidea	Valvatida	Ophidiasteridae	<i>Ophidiaster</i>	<i>ophidianus</i>				Native	Not Assessed
Asteroidea	Valvatida	Asterinidae	<i>Patiriella</i>	<i>exigua</i>	<i>Asterina exigua</i>			Native	Not Assessed
Asteroidea	Paxillosida	Astropectinidae	<i>Tethyaster</i>	<i>magnificus</i>	<i>Moriaster magnificus</i>			Native	Not Assessed
Crinoidea	Comatulida	Charitometridae	<i>Crinometra</i>	<i>transversa</i>				Native	Not Assessed
Crinoidea	Comatulida	Phrynocrinidae	<i>Porphyrocrinus</i>	<i>incrassatus</i>	<i>Monachocrinus incrassatus</i>			Native	Not Assessed
Crinoidea	Comatulida	Tropiometridae	<i>Tropiometra</i>	<i>carinata carinata</i>			black and white sea lily	Native	Not Assessed
Demospongiae	Chondrosida	Chondrillidae	<i>Chondrosia</i>	<i>plebeja</i>				Native	Not Assessed
Demospongiae	Dictyoceratida	Thorectidae	<i>Halispongia</i> sp.	*				Native	*
Echinoidea	Cidaroida	Cidaridae	<i>Cidaris</i>	<i>Cidaris</i>				Native	Not Assessed
Echinoidea	Diademotoida	Diadematidae	<i>Diadema</i>	<i>antillarum ascensionis</i>				Native	Not Assessed
Echinoidea	Spatangoida	Loveniidae	<i>Echinocardium</i>	<i>connectens</i>				Endemic	Not Assessed
Echinoidea	Echinoidea	Echinometridae	<i>Echinometra</i>	<i>lucunter polypora</i>			rock boring urchin	Native	Not Assessed
Echinoidea	Echinoidea	Echinidae	<i>Echinus</i>	<i>atlanticus</i>				Native	Not Assessed
Echinoidea	Cidaroida	Cidaridae	<i>Eucidaris</i>	<i>clavata</i>				Endemic	Not Assessed
Echinoidea	Spatangoida	Brissidae	<i>Plagiobrissus</i>	<i>costae</i>				Native	Not Assessed
Echinoidea	Temnopleuroida	Toxopneustidae	<i>Pseudoboletia</i>	<i>maculata atlantica</i>	<i>Pseudoboletia atlantica</i>			Native	Not Assessed
Echinoidea	Cidaroida	Cidaridae	<i>Tretocidaris</i>	<i>spinosa</i>				Native	Not Assessed
Gymnolaemata	Cheilostomata	Bugulidae	<i>Bugula</i>	<i>neritina</i>				Native	Not Assessed
Holothuroidea	Apodida	Synaptidae	<i>Euapta</i>	<i>lappa</i>				Native	Not Assessed
Holothuroidea	Aspidochirotida	Holothuriidae	<i>Holothuria</i>	<i>(platyperona) sanctori</i>	<i>Holothuria farcimen</i>			Native	Not Assessed
Hydrozoa	Anthoathecata	Eudendriidae	<i>Eudendrium</i>	<i>carneum</i>				Native	Not Assessed
Hydrozoa	Siphonophora	Physaliidae	<i>Physalia</i>	<i>physalis</i>		Portuguese man of war	Portuguese man of war	Native	Not Assessed
Hydrozoa	Anthoathecata	Porpitidae	<i>Verella</i> sp.	*				Native	*
Malacostraca	Decapoda	Geryoniidae	*	*				Native	*
Malacostraca	Decapoda	Ocypodidae	*	*				Native	*
Malacostraca	Decapoda	Xanthidae	*	*				Native	*
Malacostraca	Decapoda	Grapsidae	<i>Grapsus</i>	<i>grapsus</i>		Red shore crab	Red shore crab	Native	Not Assessed
Malacostraca	Decapoda	Hippolytidae	<i>Hippolysmata</i>	<i>grabhami</i>		Peppermint shrimp		Native	Not Assessed

Malacostraca	Decapoda	Hippolytidae	<i>Lysmata</i>	<i>wurdemanni</i>			Peppermint shrip	Native	Not Assessed
Malacostraca	Decapoda	Scyllaridae	<i>Panulirus</i>	<i>echinatus</i>		longlegs	Brown spiny lobster	Native	Not Assessed
Malacostraca	Decapoda	Xanthidae	<i>Platypodiella</i>	<i>georgei</i>		St Helena shore crab		Endemic	Not Assessed
Malacostraca	Decapoda	Palinuridae	<i>Scyllarides</i>	<i>herklotsii</i>		stump	Red locust lobster	Native	Not Assessed
Malacostraca	Decapoda	Alpheidae	<i>Alpheus</i>	<i>macrocheles</i>					
Malacostraca	Decapoda	Palaemonidae	<i>Brachycarpus</i>	<i>biunguiculatus</i>		twoclaw shrimp			
Malacostraca	Decapoda	Gnathophylleptum	<i>Gnathophylleptum</i>	<i>tellei?</i>					
Malacostraca	Decapoda	Alpheidae	<i>Metalpheus</i>	<i>paragracilis</i>					
Malacostraca	Decapoda	Palaemonoidea	<i>Pontonia</i>	<i>pinnophylax</i>					
Malacostraca	Decapoda	Alpheidae	<i>Synalpheus</i>	<i>fritzmuelleri</i>		speckled snapping shrimp			
Malacostraca	Decapoda	Hippolytidae	<i>Trachycaris</i>	<i>restricta</i>					
Ophiuroidea	Ophiurida	Amphiuridae	<i>Amphipholis</i>	<i>squamata</i>				Native	Not Assessed
Ophiuroidea	Ophiurida	Amphiuridae	<i>Amphiura</i>	<i>(amphiura) atlantica</i>				Endemic	Not Assessed
Ophiuroidea	Ophiurida	Amphiuridae	<i>Amphiura</i>	<i>(amphiura) grandisquama</i>				Native	Not Assessed
Ophiuroidea	Ophiurida	Ophiacanthidae	<i>Ophiacantha</i>	<i>prolata</i>				Native	Not Assessed
Ophiuroidea	Ophiurida	Ophiacanthidae	<i>Ophiacantha</i>	<i>nitens</i>				Native	Not Assessed
Ophiuroidea	Ophiurida	Ophiacanthidae	<i>Ophiacantha</i>	<i>trivialis</i>				Native	Not Assessed
Ophiuroidea	Ophiurida	Ophiacanthidae	<i>Ophiacantha</i>	<i>helenae</i>				Native	Not Assessed
Ophiuroidea	Ophiurida	Ophiactidae	<i>Ophiactis</i>	<i>abyssicola</i>				Native	Not Assessed
Ophiuroidea	Ophiurida	Ophiactidae	<i>Ophiactis</i>	<i>savignyi</i>				Native	Not Assessed
Ophiuroidea	Ophiurida	Ophiactidae	<i>Ophiactis</i>	<i>lymani</i>				Native	Not Assessed
Ophiuroidea	Ophiurida	Ophiolepididae	<i>Ophiomusium</i>	<i>spinigerum</i>				Native	Not Assessed
Ophiuroidea	Ophiurida	Ophiuridae	<i>Ophiophycis</i>	<i>gracilis</i>				Native	Not Assessed
Ophiuroidea	Ophiurida	Ophiomyxidae	<i>Ophioscolex</i>	<i>(Ophiolycus) dentatus</i>	<i>Ophioscolex dentatus</i>			Native	Not Assessed
Ophiuroidea	Ophiurida	Ophiuridae	<i>Ophiostriatus</i>	<i>atlanticus</i>	<i>Ophiopyren atlanticum</i>			Native	Not Assessed
Ophiuroidea	Ophiurida	Ophiothrichidae	<i>Ophiothrix</i>	<i>roseocoerulans</i>				Endemic	Not Assessed
Ophiuroidea	Ophiurida	Ophiacanthidae	<i>Ophiotreta</i> sp.	*				Native	*
Ophiuroidea	Ophiurida	Ophiuridae	<i>Ophiura</i>	<i>ljungmani</i>				Native	Not Assessed

Table 13: Marine plants species list

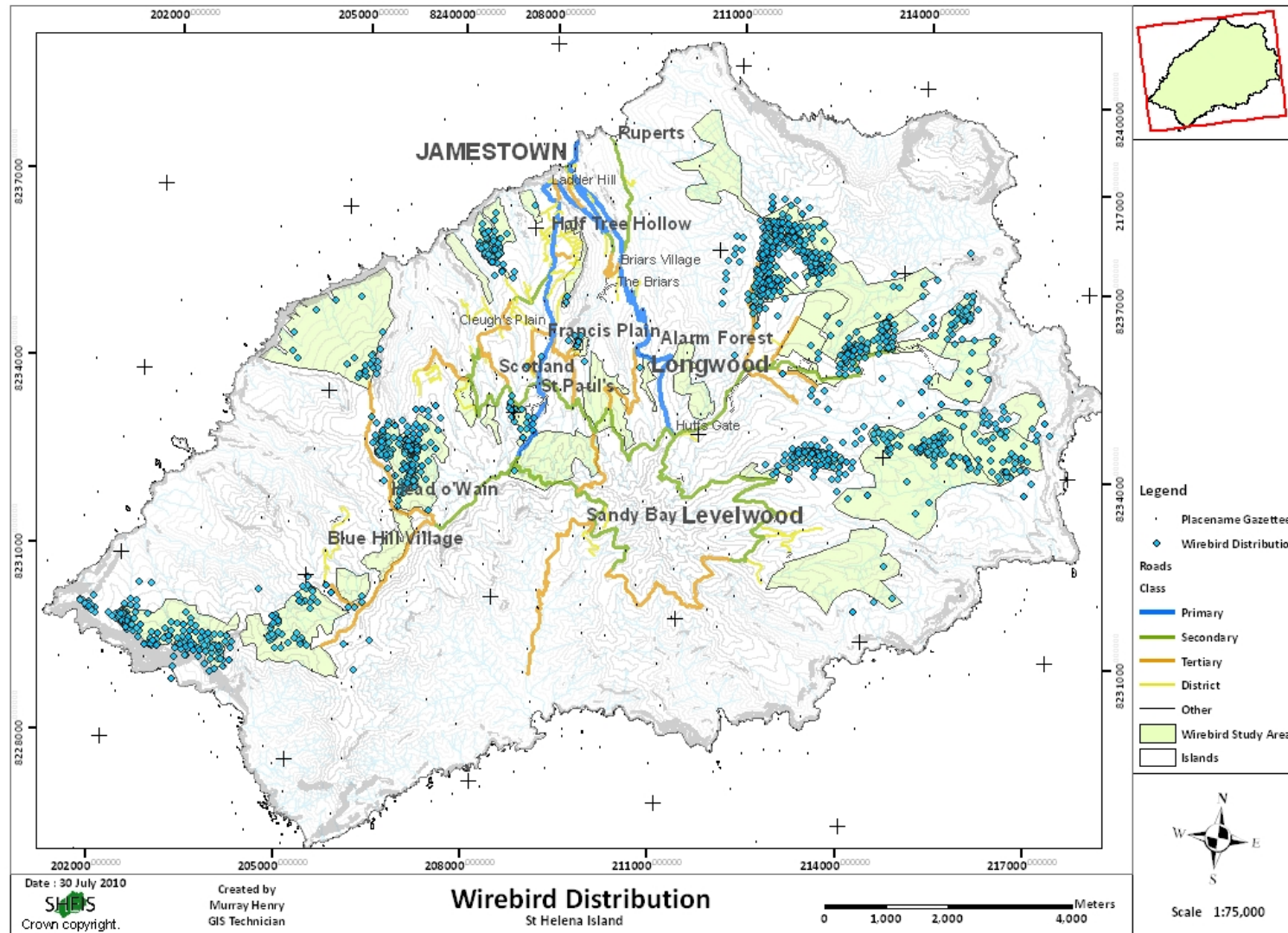
Class	Family	Genus	Species	Local name	Global name	Island Status	IUCN status
Bryopsidophyceae	Bryopsidaceae	<i>Bryopsis</i>	<i>pinnate</i>			Native	Not Assessed
Bryopsidophyceae	Bryopsidaceae	<i>Bryopsis</i>	<i>plumose</i>			Native	Not Assessed
Bryopsidophyceae	Codiaceae	<i>Codium</i>	<i>spongiosum</i>			Native	Not Assessed
Bryopsidophyceae	Codiaceae	<i>Codium</i>	<i>taylorii</i>			Native	Not Assessed
Compsopogonophyceae	Erythrotrichiaceae	<i>Erythrotrichia</i>	<i>carnea</i>			Native	Not Assessed
Flordeophyceae	Corallinaceae	<i>Amphiroa</i>	<i>beauvoisii</i>			Native	Not Assessed
Flordeophyceae	Corallinaceae	<i>Amphiroa</i>	<i>fragilissima</i>			Native	Not Assessed
Flordeophyceae	Wrangeliaceae	<i>Anotrichium</i>	<i>tenue</i>			Native	Not Assessed
Flordeophyceae	Corallinaceae	<i>Arthrocardia</i>	<i>carinata</i>			Native	Not Assessed
Flordeophyceae	Bonnemaisoniaceae	<i>Asparagopsis</i>	<i>taxiformis</i>		supreme limu	Native	Not Assessed
Flordeophyceae	Acrochaetiaceae	<i>Audouinella sp.</i>	*			Native	*
Flordeophyceae	Rhodomelaceae	<i>Bostrychia</i>	<i>radicans</i>			Native	Not Assessed
Flordeophyceae	Ceramiaceae	<i>Callithamniella sp.</i>	*			Native	*
Flordeophyceae	Callithamniaceae	<i>Callithamnion</i>	<i>mildbraedii</i>			Native	Not Assessed
Flordeophyceae	Delesseriaceae	<i>Caloglossa</i>	<i>lepieurii</i>			Native	Not Assessed
Flordeophyceae	Ceramiaceae	<i>Centroceras</i>	<i>clavulatum</i>			Native	Not Assessed
Flordeophyceae	Ceramiaceae	<i>Ceramium</i>	<i>codii</i>			Native	Not Assessed
Flordeophyceae	Ceramiaceae	<i>Ceramium aff.</i>	<i>flaccidum</i>			Native	*
Flordeophyceae	Ceramiaceae	<i>Ceramium aff.</i>	<i>circinnatum</i>			Native	*
Flordeophyceae	Champiaceae	<i>Champia</i>	<i>parvula</i>			Native	Not Assessed
Flordeophyceae	Corallinaceae	<i>Fosliella</i>	<i>farinose</i>			Native	Not Assessed
Flordeophyceae	Galaxauraceae	<i>Galaxaura</i>	<i>lapidescens</i>			Native	Not Assessed
Flordeophyceae	Gelidiellaceae	<i>Gelidiella</i>	<i>pannosa</i>			Native	Not Assessed
Flordeophyceae	Gelidiaceae	<i>Gelidium</i>	<i>crinale</i>			Native	Not Assessed
Flordeophyceae	Gelidiaceae	<i>Gelidium</i>	<i>pusillum</i>			Native	Not Assessed
Flordeophyceae	Gigartinaceae	<i>Gigartina</i>	<i>acicularis</i>			Native	Not Assessed
Flordeophyceae	Gracilariaceae	<i>Gracilaria</i>	<i>verrucosa</i>		ceylon moss	Native	Not Assessed
Flordeophyceae	Halymeniaceae	<i>Grateloupia</i>	<i>filicina</i>		chop-chop	Native	Not Assessed
Flordeophyceae	Wrangeliaceae	<i>Griffithsia</i>	<i>flosculosa</i>			Native	Not Assessed
Flordeophyceae	Cystocloniaceae	<i>Hypnea</i>	<i>spinella</i>			Native	Not Assessed
Flordeophyceae	Corallinaceae	<i>Jania</i>	<i>adhaerens</i>			Native	Not Assessed

Florideophyceae	Rhodomelaceae	<i>Laurencia</i>	<i>cruciata</i>			Native	Not Assessed
Florideophyceae	Rhodomelaceae	<i>Laurencia</i>	<i>nidifica</i>			Native	Not Assessed
Florideophyceae	Rhodomelaceae	<i>Laurencia</i>	<i>tenera</i>			Native	Not Assessed
Florideophyceae	Liagoraceae	<i>Liagora</i>	<i>viscida</i>			Native	Not Assessed
Florideophyceae	Rhodomelaceae	<i>Lophosiphonia</i>	<i>adhaerens</i>			Native	Not Assessed
Florideophyceae	Rhodomelaceae	<i>Lophosiphonia</i>	<i>reptabunda</i>			Native	Not Assessed
Florideophyceae	Hapalidiaceae	<i>Mesophyllum</i>	<i>brachycladum</i>			Native	Not Assessed
Florideophyceae	Corallinaceae	<i>Neogoniolithon</i>	<i>mammilare</i>			Native	Not Assessed
Florideophyceae	Rhodomelaceae	<i>Polysiphonia</i>	<i>ferulacea</i>			Native	Not Assessed
Florideophyceae	Rhodomelaceae	<i>Polysiphonia</i> sp.	*			Native	*
Florideophyceae	Pyraloidea	<i>Predaea</i>	<i>feldmannii</i>			Native	Not Assessed
Florideophyceae	pterocladiaceae	<i>Pterocladia</i>	<i>lucida</i>		driftweed	Native	Not Assessed
Florideophyceae	Wrangeliaceae	<i>Spermothamnion</i> sp.	*			Native	*
Florideophyceae	Spyridiaceae	<i>Spyridia</i>	<i>filamentosa</i>			Native	Not Assessed
Florideophyceae	Stylonemataceae	<i>Stylonema</i>	<i>alsidii</i>			Native	Not Assessed
Florideophyceae	Wrangeliaceae	<i>Wrangelia</i>	<i>argus</i>			Native	Not Assessed
Florideophyceae	Wrangeliaceae	<i>Wrangelia</i>	<i>penicillata</i>			Native	Not Assessed
Phaeophyceae	Scytosiphonaceae	<i>Colpomenia</i>	<i>sinuosa</i>			Native	Not Assessed
Phaeophyceae	Dictyotaceae	<i>Dictyota</i>	<i>dichotoma</i>			Native	Not Assessed
Phaeophyceae	Lessoniaceae	<i>Ecklonia</i>	<i>maxima</i>		sea bamboo	Native	Not Assessed
Phaeophyceae	Ectocarpaceae	<i>Ectocarpus</i>	<i>breviarticulatus</i>			Native	Not Assessed
Phaeophyceae	Scytosiphonaceae	<i>Endarachne</i>	<i>binghamiae</i>			Native	Not Assessed
Phaeophyceae	Acinetosporaceae	<i>Hincksia</i>	<i>mitchelliae</i>			Native	Not Assessed
Phaeophyceae	Acinetosporaceae	<i>Hincksia</i>	<i>rallsiae</i>			Native	Not Assessed
Phaeophyceae	Chordariaceae	<i>Levringia</i> sp.	*			Native	*
Phaeophyceae	Dictyotaceae	<i>Padina</i>	<i>pavonica</i>		peacocks tail	Native	Not Assessed
Phaeophyceae	Sphacelariaceae	<i>Sphacelaria</i>	<i>tribuloides</i>			Native	Not Assessed
Ulvophyceae	Ulvellaceae	<i>Acrochaete</i>	<i>viridis</i>			Native	Not Assessed
Ulvophyceae	Cladophoraceae	<i>Chaetomorpha</i>	<i>brachygona</i>			Native	Not Assessed
Ulvophyceae	Cladophoraceae	<i>Cladophora</i>	<i>coelothrix</i>			Native	Not Assessed
Ulvophyceae	Siphonocladaceae	<i>Cladophoropsis</i>	<i>membranacea</i>			Native	Not Assessed
Ulvophyceae	Ulvaceae	<i>Enteromorpha</i>	<i>clathrata</i>		bright green nori	Native	Not Assessed
Ulvophyceae	Siphonocladaceae	<i>Ernodesmis</i>	<i>verticillata</i>			Native	Not Assessed
Ulvophyceae	Ulvaceae	<i>Percursaria</i>	<i>percursa</i>			Native	Not Assessed
Ulvophyceae	Ulvaceae	<i>Ulva</i>	<i>lactuca</i>		chicory sea lettuce	Native	Not Assessed
Ulvophyceae	Ulvaceae	<i>Ulva</i>	<i>parvula</i>			Native	Not Assessed

Table 14: Birds species list

Class	Order	Family	Scientific Name	Local Name	Global Name	Island Status	IUCN status
Aves	Charadriiformes	Charadriidae	<i>Charadrius sanctaehelenae</i>	Wirebird	St Helena Plover	Endemic	Critically Endangered C2a(ii)
Aves	Procellariiformes	Hydrobatidae	<i>Oceanodroma castro</i>	Maderian storm petrel	Maderian storm petrel	native	Least concern
Aves	Pelecaniformes	Phaethontidae	<i>Phaethon aethereus</i>	Trophy bird	Red billed tropic bird	native	Least concern
Aves	Pelecaniformes	Sulidae	<i>Sula dactylatra</i>	Masked booby	Gannet	native	Least concern
Aves	Pelecaniformes	Sulidae	<i>Sula leucogaster</i>	duck	Brown booby	native	Least concern
Aves	Gruiformes	Rallidae	<i>Gallinule chloropus</i>	Water bird	Moorhen	native	Not assessed
Aves	Charadriiformes	Laridae	<i>Sterna fuscata</i>	Wideawake	Sooty tern	native	Least concern
Aves	Charadriiformes	Laridae	<i>Anous stolidus</i>	Common noddy	Brown noddy	native	Least concern
Aves	Charadriiformes	Laridae	<i>Anous minutus</i>	Egg bird	Black noddy	native	Least concern
Aves	Charadriiformes	Laridae	<i>Gygis alba</i>	White bird	Fairy tern	native	Least concern
Aves	Passeriformes	Sturnidae	<i>Acridotheres tristis</i>	Common myna	Indian myna	invasive	Least concern
Aves	Columbiformes	Columbidae	<i>Columba livia</i>	Pigeon	Feral pigeon	invasive	Least concern
Aves	Columbiformes	Columbidae	<i>Geopelia striata</i>	Turtle dove	Peaceful dove	invasive	Least concern
Aves	Passeriformes	Ploceidae	<i>Foudia madagascariensis</i>	cardinal	Madagascar fody	invasive	Least concern
Aves	Passeriformes	Estrildidae	<i>Padda oryzivora</i>	sparrow	Java sparrow	invasive	Vulnerable A2bde+3bde+4bde; C1
Aves	Passeriformes	Estrildidae	<i>Estrilda astrild</i>	Avadavat	Common waxbill	invasive	Least concern
Aves	Passeriformes	fringillidae	<i>Serinus flavertris</i>	Canary	Yellow canary	invasive	Not assessed
Aves	Galliformes	Phasianidae	<i>Alectoris chukar</i>	Partridge	Chukar partridge	invasive	Least concern
Aves	Galliformes	Phasianidae	<i>Phasianus colchicus</i>	Pheasant	Ring-necked pheasant	invasive	Least concern

Table 15: Wirebird Distribution



Appendix 8: Threats.

Table 16: List of Key Invasive Species Identified during the South Atlantic Invasive Species Project 2009.

Class	Order	Family	Scientific Name	Local Name	Global Name
Mammalia	Carnivora	Felidae	<i>Felis catus</i>	cat	Domestic cat
Mammalia	Artiodactyla	Bovidae	<i>Capra hircus</i>	goat	Domestic goat
Mammalia	Rodentia	Muridae	<i>Rattus rattus</i>	Black rat	Black rat
Mammalia	Rodentia	Muridae	<i>Rattus norvegicus</i>	Brown rat	Brown rat
Aves	Passeriformes	Sturnidae	<i>Acridotheres tristis</i>	Common myna	Indian myna
Aves	Columbiformes	Columbidae	<i>Columba livia</i>	Pigeon	Feral pigeon
Insecta	Hymenoptera	Vespidae	<i>Vespula vulgaris</i>	Common wasp	
Insecta	Heteroptera	Coccoidea	<i>Orthezia insignis</i>	Jacaranda bug	
Chilopoda	Scolopendromorpha	Scolopendridae	<i>Scolopendra morsitans</i>	centipede	
Monocotyledonae	Poales	Cyperaceae	<i>Cyperus rotundus</i>	nut grass	purple nut sedge
eu-Dicteledonae	Sapindales	Anacardiaceae	<i>Schinus terebinthifolius</i>	wild mango	Brazilian pepper tree
eu-Dicteledonae	Solanales	Solanaceae	<i>Solanum mauritianum</i>	bilberry	
Monocotyledonae	Asparagales	Asparagaceae	<i>Asparagus densiflorus</i>	foxtail asparagus	foxtail asparagus
eu-Dicteledonae	Caryophyllales	Aizoaceae	<i>Carpobrotus edulis</i>	creeper	Hottentot fig
eu-Dicteledonae	Lamiales	Lamiaceae	<i>Leonotis nepetifolia</i>	Nargyweed	wild dagga
Monocotyledonae	Poales	Juncaceae	<i>Juncus capillaceus</i>	bull grass	
eu-Dicteledonae	Fabales	Fabaceae - Faboideae	<i>Ulex europaeus</i>	furze	gorse
eu-Dicteledonae	Asterales	Asteraceae	<i>Austroeuatorium inulaefolium</i>	whiteweed	
eu-Dicteledonae	Myrtales	Onagraceae	<i>Fuchsia coccinea</i>	small fuchsia	
eu-Dicteledonae	Myrtales	Onagraceae	<i>Fuchsia boliviana</i>	Bolivian fuchsia	
eu-Dicteledonae	Scrophulariales	Scrophulariaceae	<i>Lophospermum erubescens</i>	Mexican creeper	
Pteridopsida	Polypodiales	Nephrolepiaceae	<i>Nephrolepis exaltata</i>	pheasant-tail fern	Boston swordfern

The following have been identified as key issues for the environment sector on St Helena:

Endemic Species and Habitats

Most of our endemic plant species and our endemic wirebird are endangered with some species having reached critical population levels. The degradation of their associated habitats has played a major role in this. In order to save these species more resources are needed to be put into species conservation.

Invasive Species

St Helena has a wide range of invasive species both plants and animals which encroach on our

endemic species and out compete them for resources. The EU funded South Atlantic Invasive Species project completed in 2009 has helped to increase the island understanding and capacity to reduce the impacts of invasive species but it is now left to SHG to take it further, and there are financial and (human) capacity constraints.

Climate Change

At present the extent to which St Helena's natural environment will be affected by climate change is uncertain. It would be beneficial for the island to assess the biological and ecological implications of climate change on native biota and ecosystems.

Tourism

At the moment the impact of tourism on St Helena's environment is minimal. However as the tourism industry develops on the island which will be much easier with air access we will need to put in place measures to ensure its protection. Carrying capacity analysis of key sites will need to be conducted.

Air Access

Prosperous Bay Plain and specifically the Central Basin are unique desert environments that have a high diversity of rare endemic invertebrates inhabiting the area as well as being one of the main breeding sites for the endemic and Critically Endangered wirebird. The impact developing this area will have on the environment needs careful consideration and a full Environmental Impact Assessment is in progress.

Commercial Development

It is probable that with air access and increased tourism potential inward investment will increase which will lead to increased commercial development and pressure on natural resources that is highly likely to impact on the environment in some way. Development of the island is currently controlled by the Land Development Control Plan 2006 but this is currently being revised (along with a number of other lands related reforms) to achieve a more development –friendly, non-discretionary planning regime.

Resources and Funding

This is a major issue facing the environmental sector on St Helena. At present Overseas Territories are ineligible for many international funds, including the global environment facility (GEF) - the key funding mechanism for the Convention on Biological Diversity. Many of the European funds available to metropolitan UK are also not available to the Overseas Territories. whilst there are limited funds to tackle environmental issues there are also limited resources on island to carry out conservation work. Due to the island being part of the UK it limits the amount of potential funding opportunities that can be applied for.

Appendix 9 : PAST AND PRESENT ENVIRONMENTAL PROJECTS EXTERNALLY FUNDED

There have been a number of externally funded environmental projects carried out on St Helena over the past five years. The table below provides a summary (in chronological order of start date) of these.

Projects in italics are on-going.

Project Date	Project name	Funded by	Main Outputs
April 2004 – March 2005	Facilitation of a Strategy for Action to Implement the Environment Charter	Overseas Territories Environment Programme (OTEP)	Production of a Strategy for Action to implement the Environment Charter.
June 2004 – March 2005	A Protected Area Plan for St Helena's Central Peaks	OTEP	Formulation and publication of a Protected Area Plan for the Central Peaks of St Helena, including the control of alien invasive plant species and replanting of endemic and native species.
April 2004 – March 2006	The establishment of a monitoring scheme for seabirds and turtles at St Helena and an associated awareness programme	OTEP	Collection of baseline data on the seabirds and turtles of St Helena, raising public awareness and stimulating interest in the marine environment of St Helena.
April 2005 – March 2006	Developing and integrating cross sector management of nature trails and tours both terrestrial and marine	OTEP	Establishing best practice for providing services and improving the quality of St Helena's Nature trails and tours (both terrestrial and marine) to ensure enjoyable and safe experiences for all.
April 2006 – March 2007	Monitoring and raising public awareness of Grouper at St Helena using Ascension Island as a control	OTEP	Collection of baseline data on the Grouper, formulation of a management strategy and raising greater awareness of the marine environment.
April 2006 – March 2007	St Helena Environmental Information System (SHEIS)	OTEP	Synthesis of existing information (on land management, heritage projects, environmental mapping, land and sea monitoring, fisheries data) and provide protocols for updating, managing and applying information using Geographical Information Systems, internet and database technology. Development of an educational GIS portal available to schools.
April 2006 – June 2007	Enabling the people of St Helena to conserve the St Helena Wirebird	OTEP	To undertake research to better understand the ecology of St Helena's only surviving endemic land bird, the endangered St Helena Wirebird.

			Strengthening the capacity on St Helena to implement a species action plan which will be produced at the end of the research.
1 st – 31 st March 2006	Irrigation Pipe gravity feeding waste water to the Millennium Forest	OTEP	Replacement of the irrigation pipe that gravity feeds effluent water from the waste stabilisation ponds to the Millennium Forest.
December 2006 - December 2009	Increasing regional capacity to reduce the impacts of invasive species on the South Atlantic United Kingdom Overseas Territories	European Union	Establishment of an effective management structure for a regionally co-ordinated invasive alien species programme. Assessment of existing invasive species and prioritisation of recommendations for action. Strengthening of local operational capacity to control the introduction and spread of invasive alien species. Key invasive alien species controlled and/or eradicated effectively. Increase in awareness of the benefits of controlling and/or eradication of invasive alien species through a range of activities. Integration of control and management of invasive species into development plans, policies and legislation.
1 st April 2007 – 30 th November 2010	Conserving St Helena's Gumwoods	OTEP	To provide much needed investment for the conservation of the endemic Gumwood at Peak Dale and the Millennium Forest – to provide infrastructure and organisational management at these two key Gumwood Sites to improve education and awareness.
May 2008 – October 2010	Supporting Critical Species Recovery and Horticultural Needs on St Helena	OTEP	Implementation of a capacity building programme to support critical species recovery and horticultural needs on St Helena. This will include specialist technical input from RBG Kew, recruitment of staff, upgrading of the nursery at the Agriculture and Natural Resources Department, and a skills development programme through training to address medium to long term species conservation and plant production requirements.
April 2008 – September 2010	Heart Shaped Waterfall – public access and amenities	OTEP	Clearance and control of invasive species from the approach to the Heart Shaped Waterfall, cultivation of endemic plants, provision of information boards, ultimately creating access to one of St Helena's foremost geological features and landmarks of natural beauty.
August 2008 to September 2011	<i>Mitigation for the Impacts on the Wirebird Population on St Helena</i>	DFID (Air Access Mitigation Project)	Improved licensing system developed and implemented for crown pastures; suitable sites for restoration as potential wirebird habitat identified and restored; significant progress made towards protecting from future development those sites restored and managed as wirebird habitat; awareness and appreciation of the wirebird is raised locally and internationally.
July 2009 – April 2011	<i>Illustrated field guides to the flora of St Helena</i>	OTEP	Production of an illustrated higher plants guidebook and an illustrated lower plants guidebook. Promotion of the guidebook through local media and use of the guides to identify species.

April 2010 until March 2011	Bastard Gumwood Recovery Project	Joint Nature Conservation Committee (JNCC)	Save the Bastard Gumwood from the brink of extinction through mass production of trees, restoration of Bastard Gumwood forests and production of a species recovery plan.
April 2010 until March 2011	Pheasant Tail Fern Control Programme	JNCC	Clearance of Pheasant tail fern from priority areas in the Peaks National Park, development of effective control techniques and implementation of public awareness programme.
June 2010 until May 2011	<i>St Helena Gumwood project</i>	Flagship Species Fund (DEFRA/Flora & Fauna International)	To increase species diversity and recreate a functioning ecosystem in the Millennium Forest; to improve nursery capacity; to increase community engagement in the Millennium Forest planting project.
April 2010 until March 2011	<i>Laying the foundations for invertebrate conservation on St Helena</i>	Darwin Initiative	To ensure that the requirements of invertebrates are integrated into the ongoing habitat-based conservation effort on St Helena through the following: Existing baseline knowledge of invertebrates collated and reviewed. Local training needs are identified. Priority sites for surveying identified. Information requirements at known hotspots of endemism identified. Opportunities to integrate invertebrates into conservation management and planning policies identified. Invertebrate and biodiversity education requirements identified and a draft action plan developed. Optimal invertebrate sampling techniques trialled and agreed. Taxonomic expertise and resource requirements for the processing of survey samples assessed.
October 2010 until September 2013	<i>Increasing local capacity to conserve St Helena's threatened native biodiversity</i>	Darwin Initiative	Delivery of a training programme to increase local capacity and skill base in the restoration and sustainable management of natural resources. Restoration of native habitats at High Peak and Blue Point. Delivery of an education programme to increase awareness and appreciation of St Helena's natural resources. Research information on the importance and potential socio-economic value of St Helena's natural resources produced and disseminated.

Appendix 10: Bibliography

- Aptroot, A. (2008). Lichens of St Helena and Ascension Island. *Botanical Journal of the Linnean Society*, 158. 147-171.
- Aptroot, A. (2010) Provisional checklist of bryophytes on St. Helena. Unpublished data compiled as part of the St. Helena Field Guides project (OTEP Project N° SH603).
- Ashmole, N. & Ashmole, M. (2000). *St Helena and Ascension Island: A natural history*. Antony Nelson, Oswestry.
- Basilewsky, P. (1970). La faune terrestre de L'île de Sainte-Hélène (Première partie). *Annales Musée Royal de l'Afrique Centrale, Tervuren*, 8(181).
- Basilewsky, P. (1972). La faune terrestre de l'île de Sainte Helene, (Deuxième partie). *Annales Musée Royal de l'Afrique Centrale, Tervuren*, 8(192).
- Basilewsky, P. (1976). La faune terrestre de l'île de Sainte Helene, (Troisième partie). *Annales Musée Royal de l'Afrique Centrale, Tervuren*, 8(215).
- Basilewsky, P. (1977). La faune terrestre de l'île de Sainte Helene, (Quatrième partie). *Annales Musée Royal de l'Afrique Centrale, Tervuren*, 8(220).
- Benjamin, G.A., Cronk, Q.C.B., MacDonald, D.J. & Holland, M.D. (1986). *The Endemic Flora of St Helena: A Struggle for Survival*. The Department of Agriculture and Forestry, the Department of Education and the Government of St. Helena.
- Cairns-Wicks, R. (2008) *Protected Area Plan for the Central Peaks 2007-2010*.
- Christoforou, C. (1994). Poster: *Save them from Extinction: Invertebrate Wonders of St Helena*.
- Cronk, Q.C.B. (1989). The Past and Present Vegetation of St Helena. *Journal of Biogeography* 16:47-64.
- Cronk, Q.C.B. (2000). *The endemic flora of St Helena*. London: Anthony Nelson.
- Edwards, A.J. (1990). A preliminary note on the echinoderms of the St Helena shelf. In: Pearce-Kelly, P. and Cronk, Q.C.B. 1990. *St Helena: National Treasury*. London: Zoological Society London.
- Edwards, A. (1990). *Fish and Fisheries of Saint Helena Island*. Government of Saint Helena and the University of Newcastle upon Tyne.

- Ellick, G. (2000). *Fact-sheet: Wirebirds on Deadwood Plain*. St Helena National Trust.
- Hartog, J.C. den & Turkay, M. (1991). *Platypodiella georgei* spec. nov. (Brachyura: Xanthidae), a New Crab from the Island of St Helena, South Atlantic Ocean, with Notes on the Genus *Platypodiella* Guinot, 1967. *Zoologische Mededelingen* **65**(15): 209-220.
- Karisch, T. 2001. Zur Schmetterlingdafauna von St. Helena. 1. Teil: Grobschmetterlinge (Insecta: Lepidoptera). *Linzer biologische Beitäge* **33**: 407-434.
- Karisch, T. 2003. Zur Schmetterlingdafauna von St. Helena. 2. Teil: Kleinschmetterlinge (1) (Insecta: Lepidoptera: Tortricidae, Glyphipterigidae, Cosmopterigidae, Plutellidae, Pterophoridae). *Linzer biologische Beitäge* **35**: 1081-1085.
- Karisch, T. 2007. Zur Schmetterlingdafauna von St. Helena. 3. Teil: Kleinschmetterlinge (2) (Insecta: Lepidoptera: Pyraloidea). *Linzer biologische Beitäge* **39**: 405-414.
- Lambdon, P. & Darlow, A. (2010) Provisional database of vascular plants on St. Helena. Unpublished data compiled as part of the South Atlantic Invasive Species Project (EU Project N° 9 PTO REG 5/1; PTR 003/05/EDF IX).
- Lawson, G.W., John, D.M., and Price, J.H. (1993). The marine algal flora of St Helena: its distribution and biogeographical affinities. *Courier Forsh-Inst. Senckenberg*, 159: 103-107.
- Lessios, H. A., Kessing, B.D., Robertson, D.R. & Paulay, G. (1999). Phylogeography of the Pantropical Sea Urchin *Eucidaris* in Relation to Land Barriers and Ocean Currents. *Evolution* **53**(3): 806-817.
- McCulloch, N. (2004) *A Guide to the birds of St Helena and Ascension Island*. The RSPB, Sandy, U.K.
- McCulloch, N. (2009). Recent Decline of the St. Helena Wirebird *Charadrius sanctaehelenae*. *Bird Conservation International* **19**: 33-48.
- Pawson, D.L. (1978). The Echinoderm Fauna of Ascension Island, South Atlantic Ocean. *Smithsonian Contributions to the Marine Sciences* **2**: 1-31.
- Tremayne, J. (1998). *Marine and Coastal Resources Management Plan*. Directorate of Fisheries, Agriculture and Natural Resources Department, Government of St Helena.
- Varnham, K. (2005). Non-native species in UK Overseas Territories: a review. JNCC Report 372. Peterborough, United Kingdom.
- Wigginton, M.J. (2008) Provisional checklist of bryophytes on St. Helena. Unpublished data compiled as part of the St. Helena Field Guides project (OTEP Project N° SH603).

Wollaston, T.V. (1877). *Coleoptera Sanctae-Helenae*. John Van Voorst, London.

Zibrowius, K. (1974). Redescription of *Sclerhelia hirtella* from Saint Helena, South Atlantic, and Remarks on Indo-Pacific Species Erroneously referred to the Same Genus (Scleractinia). *Journal of Natural History*, **8**(5): 563-575.