

Final

Biological Survey Summary Report

Volume II

**Battle Creek Salmon and
Steelhead Restoration Project**

Prepared for:

Navigant Consulting, Inc.
3100 Zinfandel Drive, Suite 600
Rancho Cordova, CA 95670
Contact: Don Wagenet
916/852-1300

and

U.S. Bureau of Reclamation
2800 Cottage Way
Sacramento, CA 95825
Contact: Mary Marshall
916/978-5248

Prepared by:

Jones & Stokes
2600 V Street
Sacramento, CA 95818-1914
Contact: Steve Centerwall
916/737-3000

April 2001

Final

**Biological Survey Summary Report
Volume II**

Battle Creek Salmon and
Steelhead Restoration Project

Submitted to:

Navigant Consulting, Inc.

In association with:

U.S. Bureau of Reclamation

Submitted by:



Jones & Stokes

Sacramento, California

April 2001

This document should be cited as:

Jones & Stokes. 2001. Biological Survey Summary Report, Volume II, Battle Creek Salmon and Steelhead Restoration Project. Final. April. (J&S 00-050.) Sacramento, CA. Prepared for Navigant Consulting, Inc., Rancho Cordova, CA, and U.S. Bureau of Reclamation, Sacramento, CA.

Table of Contents

Map Legend

Map Index

Wetland and Drainage Resources

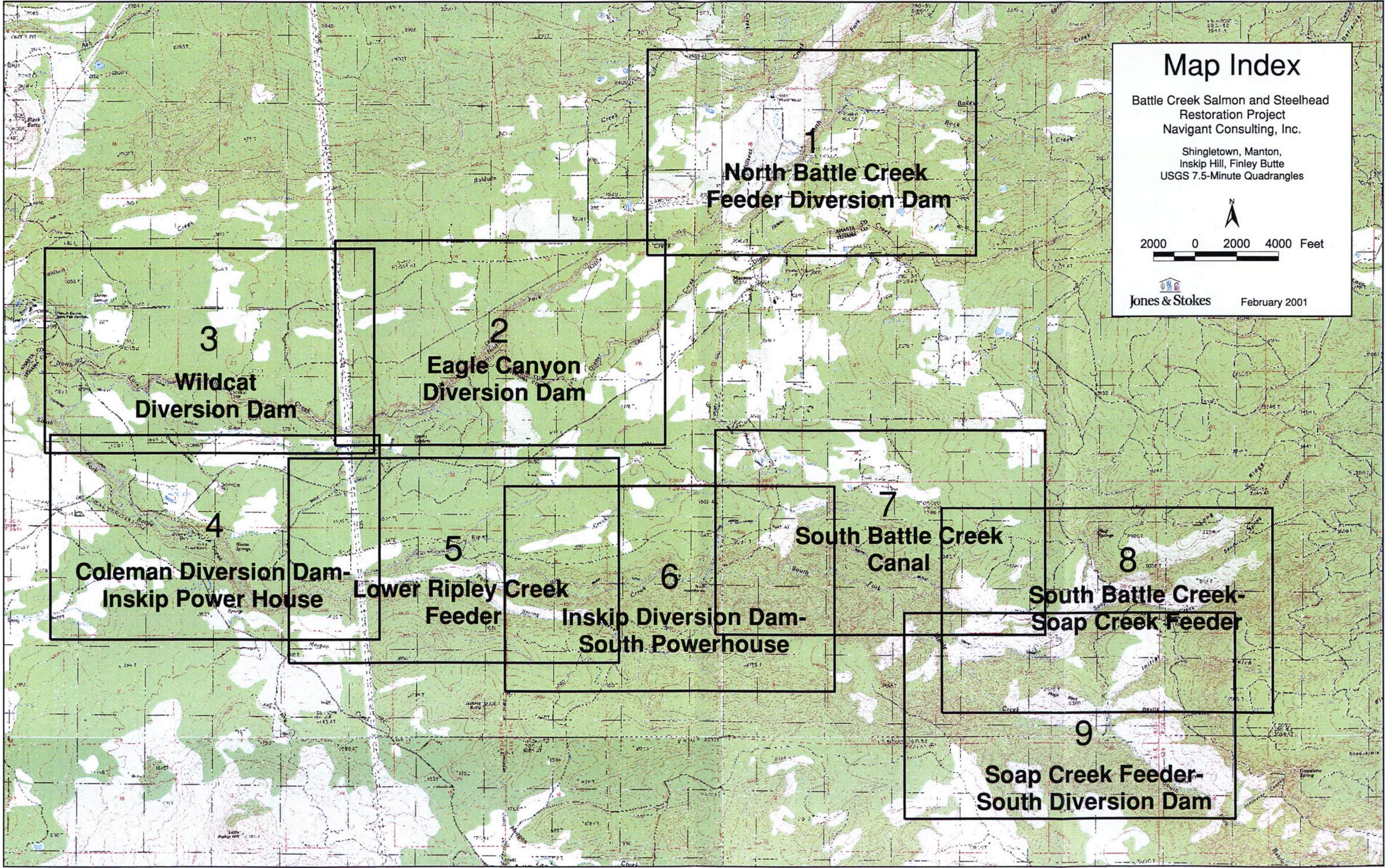
Table II-1	Wetlands and Other Waters of the United States Documented in the Battle Creek Salmon and Steelhead Restoration Project Area
Map D-1	North Battle Creek Feeder Diversion Dam
Map D-2	Eagle Canyon Diversion Dam
Map D-3	Wildcat Diversion Dam
Map D-4	Coleman Diversion Dam/Inskip Powerhouse
Map D-5	Lower Ripley Creek Feeder
Map D-6	Inskip Diversion Dam/South Powerhouse
Map D-7	South Battle Creek Canal
Map D-8	South Battle Creek Canal/Soap Creek Feeder
Map D-9	Soap Creek Feeder/South Diversion Dam

Botanical Resources

Table II-2	Special-Status Plant Occurrences Documented in the Battle Creek Salmon and Steelhead Restoration Project Area
Map B-1	North Battle Creek Feeder Diversion Dam
Map B-2	Eagle Canyon Diversion Dam
Map B-3	Wildcat Diversion Dam
Map B-4	Coleman Diversion Dam/Inskip Powerhouse
Map B-5	Lower Ripley Creek Feeder
Map B-6	Inskip Diversion Dam/South Powerhouse
Map B-7	South Battle Creek Canal
Map B-8	South Battle Creek Canal/Soap Creek Feeder
Map B-9	Soap Creek Feeder/South Diversion Dam

Wildlife Resources

Table II-3	Special-Status Wildlife Occurrences Documented in the Battle Creek Salmon and Steelhead Restoration Project Area
Map WL-1	North Battle Creek Feeder Diversion Dam
Map WL-2	Eagle Canyon Diversion Dam
Map WL-3	Wildcat Diversion Dam
Map WL-4	Coleman Diversion Dam/Inskip Powerhouse
Map WL-5	Lower Ripley Creek Feeder
Map WL-6	Inskip Diversion Dam/South Powerhouse
Map WL-7	South Battle Creek Canal
Map WL-8	South Battle Creek Canal/Soap Creek Feeder
Map WL-9	Soap Creek Feeder/South Diversion Dam



Map Index

Battle Creek Salmon and Steelhead
Restoration Project
Navigant Consulting, Inc.

Shingletown, Manton,
Inskip Hill, Finley Butte
USGS 7.5-Minute Quadrangles



2000 0 2000 4000 Feet

Jones & Stokes

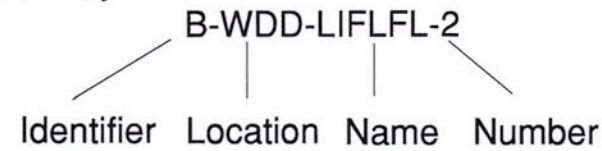
February 2001

Map Legend



Jones & Stokes

Resource Label Key:



Resource Identifier Key:

B				Botanical Resource
WL				Wildlife Resource
D				Drainage Resource
DR				Drainage and Riparian Resource
DW				Drainage and Wetland Resource
W				Wetland Resource
				Outline of Project Study Area

Note: Drainages and wetland resources do not have a resource name in its label.

Resource Location Key:

CDD	Coleman Diversion Dam-Inskip Powerhouse (also includes Penstock Junction Box)
ECDD	Eagle Canyon Diversion Dam
IDD	Inskip Diversion Dam-South Powerhouse
RCF	Lower Ripley Creek Feeder
RCFAR	Lower Ripley Creek Feeder Access Road
NBCF	North Battle Creek Feeder
SBCC	South Battle Creek Canal
SBCCAR	South Battle Creek Canal Access Road
SCF	Soap Creek Feeder
SCFAR	Soap Creek Feeder Access Road
SDD	South Diversion Dam
SDDAR	South Diversion Dam Access Road
SPHAR	South Powerhouse Access Road
WDD	Wildcat Diversion Dam-Wildcat Pipeline
WDDAR	Wildcat Diversion Dam Access Road

Map Index

Map No.	Map Title
1	North Battle Creek Diversion Dam
2	Eagle Canyon Diversion Dam
3	Wildcat Diversion Dam
4	Coleman Diversion Dam-Inskip Powerhouse
5	Lower Ripley Creek Feeder
6	Inskip Diversion Dam-South Powerhouse
7	South Battle Creek Canal
8	South Battle Creek Canal-Soap Creek Feeder
9	Soap Creek Feeder-South Diversion Dam

Botanical Resource Names:

ASPA	<i>Astragalus pauperculus</i> , Depauperate milk-vetch (CNPS List 4)
LIFLFL	<i>Limnanthes floccosa ssp. floccosa</i> , Woolly meadowfoam (CNPS List 4)
MIGL	<i>Mimulus glaucescens</i> , Shield-bracted monkeyflower (CNPS List 4)
POBI	<i>Polygonum bidwelliae</i> , Bidwell's knotweed (CNPS List 4)

Wildlife Resource Names:

BE	bald eagle
FYLF	foothill yellow-legged frog
GE	golden eagle
ORN	old raptor nest
OS	osprey
OSN	osprey nest
SAME	<i>Sambucus mexicana</i> , blue elderberry (potential habitat for the valley elderberry longhorn beetle)
WF	willow flycatcher
WPT	western pond turtle
YBC	yellow-breasted chat

**WETLAND AND DRAINAGE
RESOURCES**

Table II-1. Wetlands and Other Waters of the United States Documented in the Battle Creek Salmon and Steelhead Restoration Project Area

Resource Number ¹	OHW ² or Wetland Acreage	Seasonal/Perennial Drainage or Wetland Type	Project Site	Dominant Vegetation	County/ Quadrangle/ T/R/S
Project Sites					
D/R-NBCF-1	50 feet	Perennial drainage North Fork Battle Creek	North Battle Creek Feeder Diversion Dam	<i>Alnus rhombifolia, Umbellularia californica, Fraxinus latifolia, Calycanthus occidentalis, Ficus carica, Acer circinatum, Rubus discolor, Vitis californica, Equisetum sp., Darmera peltata, Artemisia douglasiana</i>	Shasta Manton 30N/1E/15
D-NBCF-2	3 feet	Perennial drainage	North Battle Creek Feeder Diversion Dam	Channel unvegetated, connected to D/R-NBCFDD-1, and fed by a groundwater spring	Shasta Manton 30N/1E/15
D/R-ECDD-1	75 feet	Perennial drainage North Fork Battle Creek	Eagle Canyon Diversion Dam	<i>Alnus rhombifolia, Salix sp., Rubus discolor, Sambucus mexicana, Calycanthus occidentalis, Vitis californica</i>	Shasta and Tehama Shingletown 30N/1W/25
W-ECDD-1	0.827 acre	Groundwater seep	Eagle Canyon Diversion Dam	<i>Rubus discolor, Rorripa nasturtium-aquaticum, Mimulus guttatus, Carex sp., Liverworts, Wolffia sp.</i>	Tehama Shingletown 30N/1W/25
W-ECDD-2	0.280 acre	Groundwater seep	Eagle Canyon Diversion Dam		Tehama Shingletown 30N/1W/25
D/R-WDD-1	55 feet	Perennial drainage North Fork Battle Creek	Wildcat Diversion Dam/Pipeline	<i>Umbellularia californica, Salix spp., Alnus rhombifolia, Quercus chrysolepis, Cornus glabrata, Rubus discolor, Vitis californica, Carex nudata</i>	Shasta and Tehama Shingletown 30N/1W/27
D-WDD-2	4 feet	Seasonal drainage	Wildcat Diversion Dam/Pipeline	Channel mostly unvegetated	Shasta Shingletown 30N/1W/27
D/R-WDD-3	55 feet	Perennial drainage North Fork Battle Creek	Wildcat Diversion Dam/Pipeline	<i>Alnus rhombifolia, Salix spp., Rubus discolor, Vitis californica, Calycanthus occidentalis</i>	Shasta and Tehama Shingletown 30N/1W/27

Table II-1. Continued

Resource Number ¹	OHW ² or Wetland Acreage	Seasonal/Perennial Drainage or Wetland Type	Project Site	Dominant Vegetation	County/ Quadrangle/ T/R/S
D/R-WDD-4	14 feet	Seasonal drainage	Wildcat Diversion Dam/Pipeline	<i>Alnus rhombifolia</i> , <i>Salix</i> spp., <i>Rubus discolor</i> , <i>Vitis californica</i> , <i>Calycanthus occidentalis</i> , <i>Cornus glabrata</i> , <i>Carex</i> sp.	Tehama Shingletown 30N/1W/28
D/R-WDD-5	14 feet	Seasonal drainage	Wildcat Diversion Dam/Pipeline	<i>Cornus glabrata</i> , <i>Rubus discolor</i> , <i>Vitis californica</i> , <i>Salix</i> spp.	Tehama Shingletown 30N/1W/28
D-WDD-6	4 feet	Seasonal drainage	Wildcat Diversion Dam/Pipeline	Channel mostly unvegetated	Tehama Shingletown 30N/1W/28
D-WDD-7	3 feet	Seasonal drainage	Wildcat Diversion Dam/Pipeline	Channel mostly unvegetated	Tehama Shingletown 30N/1W/28
W-CDD-1	1.15 acres	Emergent wetland	Coleman Diversion Dam/Inskip Powerhouse	<i>Mimulus guttatus</i> , <i>Typha angustifolia</i> , <i>Eleocharis parishii</i> , <i>Juncus effusus</i> , <i>Mimulus moschatus</i>	Tehama Shingletown 30N/1W/34
W-CDD-2	0.216 acre	Seasonal wetland	Coleman Diversion Dam/Inskip Powerhouse	<i>Lolium multiflorum</i> , <i>Mimulus guttatus</i> , <i>Polypogon monspeliensis</i> , <i>Juncus effusus</i>	Tehama Shingletown 29N/1W/3
W-CDD-3	0.91 acre	Emergent wetland	Coleman Diversion Dam/Inskip Powerhouse	<i>Scirpus acutus</i> , <i>Eleocharis parishii</i> , <i>Mimulus guttatus</i> , <i>Paspalum dilatatum</i>	Tehama Shingletown 29N/1W/3
W-CDD-4	1.569 acres	Emergent scrub wetland	Coleman Diversion Dam/Inskip Powerhouse	<i>Alnus rhombifolia</i> , <i>Salix</i> spp., <i>Rubus discolor</i> , <i>Calycanthus occidentalis</i> , <i>Vitis californica</i> , <i>Juncus effusus</i> , <i>Mimulus guttatus</i> , <i>Mimulus moschatus</i>	Tehama Shingletown 29N/1W/3
D-CDD-1	4 feet	Seasonal drainage	Coleman Diversion Dam/Inskip Powerhouse	<i>Mimulus guttatus</i> , <i>Eleocharis parishii</i> , <i>Rorippa nasturtium-aquaticum</i> , <i>Polypogon monspeliensis</i> , <i>Epilobium ciliatum</i>	Tehama Shingletown 29N/1W/3

Table II-1. Continued

Resource Number ¹	OHW ² or Wetland Acreage	Seasonal/Perennial Drainage or Wetland Type	Project Site	Dominant Vegetation	County/ Quadrangle/ T/R/S
D-CDD-2	4 feet	Seasonal drainage	Coleman Diversion Dam/Inskip Powerhouse	<i>Lolium multiflorum</i> , <i>Hordeum marinum</i> ssp. <i>gussoneanum</i> , <i>Juncus bufonius</i> , <i>Deschampsia danthonioides</i>	Tehama Shingletown 29N/1W/3
D/R-CDD-3	10 feet	Seasonal drainage	Coleman Diversion Dam/Inskip Powerhouse	<i>Salix</i> spp., <i>Alnus rhombifolia</i> , <i>Rubus discolor</i> , <i>Vitis californica</i> , <i>Calycanthus occidentalis</i>	Tehama Shingletown 29N/1W/3
D/R-CDD-4	50 feet	Perennial drainage South Fork Battle Creek	Coleman Diversion Dam/Inskip Powerhouse	<i>Alnus rhombifolia</i> , <i>Salix exigua</i> , <i>Salix lasiolepis</i> , <i>Salix</i> sp., <i>Quercus lobata</i> , <i>Populus fremontii</i> , <i>Platanus racemosa</i> , <i>Rubus discolor</i> , <i>Vitis californica</i> , <i>Melilotus alba</i> , <i>Equisetum</i> sp. <i>Carex nudata</i>	Tehama Shingletown 29N/1W/3
D-CDD-5	3 feet	Seasonal drainage	Coleman Diversion Dam/Inskip Powerhouse	<i>Lolium multiflorum</i> , <i>Hordeum marinum</i> ssp. <i>gussoneanum</i> , <i>Deschampsia danthonioides</i> , <i>Lythrum hyssopifolium</i>	Tehama Shingletown 29N/1W/3
D-CDD-6	3 feet	Seasonal drainage	Coleman Diversion Dam/Inskip Powerhouse	<i>Lolium multiflorum</i> , <i>Juncus bufonius</i> , <i>Hordeum marinum</i> ssp. <i>gussoneanum</i> , <i>Deschampsia danthonioides</i> , <i>Lythrum hyssopifolium</i>	Tehama Shingletown 29N/1W/3
D-CDD-7	3 feet	Seasonal drainage	Coleman Diversion Dam/Inskip Powerhouse	<i>Lolium multiflorum</i> , <i>Hordeum marinum</i> ssp. <i>gussoneanum</i> , <i>Deschampsia danthonioides</i> , <i>Pogogyne zizyphoroides</i> , <i>Lythrum hyssopifolium</i> , <i>Juncus bufonius</i>	Tehama Shingletown 29N/1W/3
D/R-RCF-1	12 feet	Perennial drainage Ripley Creek	Lower Ripley Creek Feeder	<i>Salix</i> spp., <i>Rubus discolor</i> , <i>Juncus effusus</i> , <i>Stachys</i> sp. <i>Eleocharis</i> sp.	Tehama Shingletown 29N/1W/1
D/R-RCF-2	25 feet	Perennial drainage Wilcox Spring	Lower Ripley Creek Feeder	<i>Salix</i> sp., <i>Rubus discolor</i> , <i>Juncus effusus</i> , <i>Eleocharis</i> sp.	Tehama Shingletown 29N/1W/1
W-IDD-1	1.072 acres	Emergent wetland	Inskip Diversion Dam/South Powerhouse	<i>Typha angustifolia</i> , <i>Rubus discolor</i> , <i>Juncus effusus</i> , <i>Scirpus acutus</i> , <i>Mimulus guttatus</i>	Tehama Shingletown 29N/1E/5

Table II-1. Continued

Resource Number ¹	OHWM ² or Wetland Acreage	Seasonal/Perennial Drainage or Wetland Type	Project Site	Dominant Vegetation	County/ Quadrangle/ T/R/S
W-IDD-2	0.191 acre	Seasonal wetland	Inskip Diversion Dam/South Powerhouse	<i>Salix lasiolepis, Rubus discolor, Melilotus alba</i>	Tehama Shingletown 29N/1E/5
W-IDD-3	0.011 acre	Seasonal wetland	Inskip Diversion Dam/South Powerhouse	<i>Andropogon glomeratus, Polypogon monspeliensis, Mimulus glaucescens, Lotus corniculatus</i>	Tehama Shingletown 29N/1E/5
W-IDD-4	0.031 acre	Seasonal wetland	Inskip Diversion Dam/South Powerhouse	<i>Andropogon glomeratus, Polypogon monspeliensis, Mimulus glaucescens, Lotus corniculatus</i>	Tehama Shingletown 29N/1E/5
W-IDD-5	0.062 acre	Seasonal wetland	Inskip Diversion Dam/South Powerhouse	<i>Juncus effusus, Stachys sp., Carex sp.</i>	Tehama Shingletown 29N/1E/5
W-IDD-6	0.502 acre	Seasonal wetland	Inskip Diversion Dam/South Powerhouse	<i>Holcus lanatus, Trifolium variegatum, Mimulus guttatus, Mimulus glaucescens</i>	Tehama Shingletown 29N/1E/5
D/R-IDD-1	50 feet	Perennial drainage South Fork Battle Creek	Inskip Diversion Dam/South Powerhouse	<i>Alnus rhombifolia, Salix exigua, Quercus lobata, Salix laevigata</i>	Tehama Shingletown 29N/1E/5
D/R-IDD-2	30 feet	Perennial drainage	Inskip Diversion Dam/South Powerhouse	<i>Spartium junceum, Rubus discolor, Quercus wislizenii</i>	Tehama Shingletown 29N/1E/5
D-IDD-3	1 foot	Seasonal drainage	Inskip Diversion Dam/South Powerhouse	<i>Rumex crispus, Mimulus glaucescens, Polypogon monspeliensis, Cyperus eragrostis</i>	Tehama Shingletown 29N/1E/5
D-IDD-4	8 feet	Seasonal drainage	Inskip Diversion Dam/South Powerhouse	<i>Mimulus guttatus, Rumex crispus, Lolium multiflorum</i>	Tehama Shingletown 29N/1E/5

Table II-1. Continued

Resource Number ¹	OHW ² or Wetland Acreage	Seasonal/Perennial Drainage or Wetland Type	Project Site	Dominant Vegetation	County/ Quadrangle/ T/R/S
D/R-IDD-5	40 feet	Perennial drainage	Inskip Diversion Dam/South Powerhouse	<i>Alnus rhombifolia</i> , <i>Salix</i> spp., <i>Rubus discolor</i> , <i>Equisetum</i> sp.	Tehama Shingletown 29N/1E/5
D/R-SCF-1	20 feet	Perennial drainage Soap Creek	Soap Creek Feeder	Unvegetated channel; woody riparian vegetation along upper edge	Tehama Shingletown 29N/1E/
D-SBCC-1	3 feet	Seasonal drainage	South Battle Creek Canal	Unvegetated channel	Tehama Finley Butte 29N/2E/18
D-SBCC-2	2 feet	Seasonal drainage	South Battle Creek Canal	Unvegetated channel	Tehama Finley Butte 29N/2E,1E/13,18
D-SBCC-3	3 feet	Seasonal drainage	South Battle Creek Canal	Unvegetated channel	Tehama Finley Butte 29N/1E/13
D-SBCC-4	3 feet	Seasonal drainage	South Battle Creek Canal	Unvegetated channel	Tehama Finley Butte 29N/1E/13
D-SBCC-5	3 feet	Seasonal drainage	South Battle Creek Canal	Unvegetated channel	Tehama Finley Butte 29N/1E/13
D-SBCC-6	2 feet	Seasonal drainage	South Battle Creek Canal	Unvegetated channel	Tehama Finley Butte 29N/1E/7
D/R-SBCC-7	25 feet	Seasonal drainage	South Battle Creek Canal	Scattered <i>Salix</i> spp, and <i>Rubus discolor</i>	Tehama Finley Butte 29N/1E/7

Table II-1. Continued

Resource Number ¹	OHWM ² or Wetland Acreage	Seasonal/Perennial Drainage or Wetland Type	Project Site	Dominant Vegetation	County/ Quadrangle/ T/R/S
D-SBCC-8	4 feet	Seasonal drainage	South Battle Creek Canal	Unvegetated	Tehama Manton 29N/1E/11
D-SBCC-9	3 feet	Seasonal drainage	South Battle Creek Canal	Unvegetated	Tehama Manton 29N/1E/11
D-SBCC-10	1 foot	Seasonal drainage	South Battle Creek Canal	Unvegetated	Tehama Manton 29N/1E/11
D-SBCC-11	4 feet	Seasonal drainage	South Battle Creek Canal	Unvegetated	Tehama Manton 29N/1E/2
D-SBCC-12	2 feet	Seasonal drainage	South Battle Creek Canal	Unvegetated	Tehama Manton 29N/1E/3
D-SBCC-13	3 feet	Seasonal drainage	South Battle Creek Canal	Unvegetated	Tehama Manton 29N/1E/3
D-SBCC-14	3 feet	Seasonal drainage	South Battle Creek Canal	Unvegetated	Tehama Manton 29N/1E/3
D/R-SBCC-15	4 feet	Seasonal drainage	South Battle Creek Canal	<i>Salix</i> spp., <i>Vitis californica</i> , <i>Rubus discolor</i> , <i>Rubus laciniatus</i>	Tehama Manton 29N/1E/34
D/R-SDD-1	8 feet	Seasonal drainage	South Diversion Dam	Canyon live oak overstory, connects with D/R-SDD-2	Tehama Finley Butte 29N/2E/18

Resource Number ¹	OHW ² or Wetland Acreage	Seasonal/Perennial Drainage or Wetland Type	Project Site	Dominant Vegetation	County/ Quadrangle/ T/R/S
D/R-SDD-2	150 feet	Perennial drainage South Fork Battle Creek	South Diversion Dam	<i>Alnus rhombifolia</i> , <i>Salix exigua</i> , <i>S. lasiolepis</i> , <i>Salix</i> spp., <i>Rubus discolor</i> , <i>Vitis californica</i> , <i>Melilotus alba</i>	Tehama Finley Butte 29N/2E/18
D/R-SDD-3	6 feet	Seasonal drainage	South Diversion Dam	Canyon live oak woodland overstory, connects with D/R/- SDD-2	Tehama Finley Butte 29N/2E/18
D-SDD-4	6 feet	Seasonal drainage	South Diversion Dam	Channel unvegetated; overstory is canyon live oak woodland	Tehama Finley Butte 29N/2E/18
Access Roads					
D-WDDAR-1	4 feet	Seasonal drainage	Wildcat Diversion Dam Access Road	Channel unvegetated	Shasta Shingletown 30N/1W/27
D-WDDAR-2	3 feet	Seasonal drainage	Wildcat Diversion Dam Access Road	Channel unvegetated	Shasta Shingletown 30N/1W/27
D-RCFAR-1	3 feet	Seasonal drainage	Lower Ripley Creek Feeder Access Road	Channel unvegetated	Tehama Shingletown 29N/1W/2
D-RCFAR-2	3 feet	Seasonal drainage	Lower Ripley Creek Feeder Access Road	Channel unvegetated	Tehama Shingletown 29N/1W/2
D-RCFAR-3	2 feet	Seasonal drainage	Lower Ripley Creek Feeder Access Road	Channel unvegetated	Tehama Shingletown 29N/1W/2
D/R-SPHAR-1	3 feet	Perennial drainage	South Powerhouse Access Road	<i>Alnus rhombifolia</i> , <i>Salix</i> sp., <i>Juglans</i> sp.	Tehama Manton 30N/1E/33

Table II-1. Continued

Resource Number ¹	OHW ² or Wetland Acreage	Seasonal/Perennial Drainage or Wetland Type	Project Site	Dominant Vegetation	County/ Quadrangle/ T/R/S
D/R-SPHAR-2	25 feet	Perennial drainage	South Powerhouse Access Road	<i>Alnus rhombifolia</i> , <i>Salix</i> sp., <i>Juglans</i> sp.	Tehama Manton 30N/1E/33
D/W-SPHAR-3	2 feet	Perennial drainage/emergent wetland	South Powerhouse Access Road	<i>Cyperus</i> sp.	Tehama Manton 30N/1E/33
D-SPHAR-4	4 feet	Seasonal drainage	South Powerhouse Access Road	Channel unvegetated	Tehama Manton 29N/1E/4
D-SPHAR-5	1 foot	Seasonal drainage	South Powerhouse Access Road	Channel unvegetated	Tehama Manton 29N/1E/4
D-SPHAR-6	1 foot	Seasonal drainage	South Powerhouse Access Road	Channel unvegetated	Tehama Manton 29N/1E/4
D-SCFAR-1	2 feet	Seasonal drainage	Soap Creek Feeder Access Road	Channel unvegetated	Tehama Finley Butte 29N/1E/11
D-SCFAR-2	2 feet	Seasonal drainage	Soap Creek Feeder Access Road	Channel unvegetated	Tehama Finley Butte 29N/1E/1
W-SBCCAR-1	0.363 acre	Emergent scrub wetland	South Battle Creek Canal Access Road	<i>Salix</i> sp., <i>Juncus</i> sp., <i>Mimulus guttatus</i>	Tehama Manton 29N/1E/1
W-SBCCAR-2	0.045 acre	Emergent wetland	South Battle Creek Canal Access Road	<i>Eleocharis parishii</i> , <i>Mimulus guttatus</i>	Tehama Manton 29N/1E/1

Table II-1. Continued

Resource Number ¹	OHW ² or Wetland Acreage	Seasonal/Perennial Drainage or Wetland Type	Project Site	Dominant Vegetation	County/ Quadrangle/ T/R/S
D-SBCCAR-1	4 feet	Seasonal drainage	South Battle Creek Canal Access Road	Channel unvegetated	Tehama Manton 29N/1E/2
D-SBCCAR-2	2 feet	Seasonal drainage	South Battle Creek Canal Access Road	Channel unvegetated	Tehama Manton 29N/1E/2
D/R-SDDAR-1	2 feet	Seasonal drainage	South Diversion Dam Access Road	<i>Salix</i> sp., <i>Rubus discolor</i> , <i>Vitis californica</i>	Tehama Manton 29N/1E/1
D-SDDAR-2	1 foot	Seasonal drainage	South Diversion Dam Access Road	Channel unvegetated	Tehama Manton 29N/1E/12
D/R-SDDAR-3	1 foot	Seasonal drainage	South Diversion Dam Access Road	<i>Salix</i> sp., <i>Rubus discolor</i> , <i>Vitis californica</i>	Tehama Manton 29N/1E/12
D/R-SDDAR-4	10 feet	Seasonal drainage	South Diversion Dam Access Road	<i>Salix</i> sp., <i>Quercus</i> sp., <i>Vitis californica</i>	Tehama Finley Butte 29N/1E/13
D-SDDAR-5	3 feet	Seasonal drainage	South Diversion Dam Access Road	Channel unvegetated	Tehama Finley Butte 29N/1E/13

Table II-1. Continued

Resource Number ¹	OHWM ² or Wetland Acreage	Seasonal/Perennial Drainage or Wetland Type	Project Site	Dominant Vegetation	County/ Quadrangle/ T/R/S
D-SDDAR-6	3 feet	Seasonal drainage	South Diversion Dam Access Road	Channel unvegetated	Tehama Finley Butte 29N/1E/13

Notes:

¹ Resource numbers presented in this table correspond to the locations of resources on maps presented in Volume II of this report.

² OHWM = ordinary high water mark (as measured in feet).

BOTANICAL RESOURCES

Table II-2. Special-Status Plant Occurrences Documented in the Battle Creek Salmon and Steelhead Restoration Project Area

Resource Number ¹	Species and Legal Status	Project Site	Quadrangle T/R/S	Comments
Project Sites				
B-WDD-LIFLFL-14	<i>Limnanthes floccosa</i> ssp. <i>floccosa</i> CNPS List 4	Wildcat Diversion Dam/Wildcat Pipeline	Shingletown T30N R1W NE ¼ SE ¼ Section 28	Several thousand plants on south side of pipe, within 6 feet of pipe, extends 40 feet west
B-CDD-LIFLFL-4	<i>Limnanthes floccosa</i> ssp. <i>floccosa</i> CNPS List 4	Coleman Diversion Dam /Inskip Powerhouse	Shingletown T30N R1W SW ¼ SW ¼ Section 34	Large population scattered along road and depressions north of penstock and access road. Numbers vary from a few clusters to several thousand plants
B-CDD-LIFLFL-5	<i>Limnanthes floccosa</i> ssp. <i>floccosa</i> CNPS List 4	Coleman Diversion Dam /Inskip Powerhouse	Shingletown T29N R1W NE ¼ NE ¼ Section 3	30 plants, south of pipe and road, 200 feet southeast of building
B-CDD-LIFLFL-6	<i>Limnanthes floccosa</i> ssp. <i>floccosa</i> CNPS List 4	Coleman Diversion Dam /Inskip Powerhouse	Shingletown T29N R1W NE ¼ NE ¼ Section 3	Plants in swale, mixed with upland and hydrophytic vegetation
B-CDD-MIGL-7	<i>Mimulus glaucescens</i> CNPS List 4	Coleman Diversion Dam /Inskip Powerhouse	Shingletown T29N R1W NE ¼ NE ¼ Section 3	
B-IDD-MIGL-1	<i>Mimulus glaucescens</i> CNPS List 4	Inskip Diversion Dam/South Powerhouse	Shingletown T29N R1E SE ¼ NW ¼ Section 5	Several thousand plants in ephemeral drainage
B-IDD-MIGL-2	<i>Mimulus glaucescens</i> CNPS List 4	Inskip Diversion Dam/South Powerhouse	Shingletown T29N R1E SE ¼ NW ¼ Section 5	200 plants in seep west of ephemeral drainage
B-IDD-MIGL-4	<i>Mimulus glaucescens</i> CNPS List 4	Inskip Diversion Dam/South Powerhouse	Shingletown T29N R1E NE ¼ SW ¼ Section 5	+/- 50 in seep, most not in flower yet
B-IDD-MIGL-5	<i>Mimulus glaucescens</i> CNPS List 4	Inskip Diversion Dam/South Powerhouse	Shingletown T29N R1E NE ¼ SW ¼ Section 5	Extension of 22, most eastern point, unable to determine numbers at this time
B-IDD-ASPA-6	<i>Astragalus pauperculus</i> CNPS List 4	Inskip Diversion Dam/South Powerhouse	Shingletown T29N R1E SE ¼ NE ¼ Section 5	30 plants, 95% in fruit; there may be more plants present, but overlooked due to late phenology

Table II-2. Continued

Resource Number ¹	Species and Legal Status	Project Site	Quadrangle T/R/S	Comments
B-IDD-MIGL-7	<i>Mimulus glaucescens</i> CNPS List 4	Inskip Diversion Dam/South Powerhouse	Shingletown T29N R1E SE ¼ NE ¼ Section 5	+/- 5,000 plants in ephemeral seep on rock outcrop (marginal wetland), 95% in flower
B-IDD-ASPA-8	<i>Astragalus pauperculus</i> CNPS List 4	Inskip Diversion Dam/South Powerhouse	Shingletown T29N R1E SE ¼ NE ¼ Section 5	6 plants observed north of cattle trail, in both fruit and flower
B-IDD-MIGL-9	<i>Mimulus glaucescens</i> CNPS List 4	Inskip Diversion Dam/South Powerhouse	Shingletown T29N R1E SE ¼ NE ¼ Section 5	+/- 1,500 plants throughout seep and seasonal drainage, more seeps above with MIGL
B-IDD-MIGL-11	<i>Mimulus glaucescens</i> CNPS List 4	Inskip Diversion Dam/South Powerhouse	Shingletown T29N R1E SE ¼ NE ¼ Section 5	+/- 40 plants in small area north of road
B-IDD-MIGL-12	<i>Mimulus glaucescens</i> CNPS List 4	Inskip Diversion Dam/South Powerhouse	Shingletown T29N R1E SE ¼ NE ¼ Section 5	200 to 300 plants in seep west of cottonwood tree, 3 by 10 feet
B-IDD-MIGL-13	<i>Mimulus glaucescens</i> CNPS List 4	Inskip Diversion Dam/South Powerhouse	Shingletown T29N R1E NE ¼ SW ¼ Section 5	100 to 200 plants in a seep near the west wasteway, west of Inskip Dam
B-IDD-MIGL-14	<i>Mimulus glaucescens</i> CNPS List 4	Inskip Diversion Dam/South Powerhouse	Shingletown T29N R1E NE ¼ SE ¼ Section 5	Several hundred plants located in a seep on the south side of battle creek
B-IDD-MIGL-15	<i>Mimulus glaucescens</i> CNPS List 4	Inskip Diversion Dam/South Powerhouse	Shingletown T29N R1E NE ¼ SE ¼ Section 5	Several hundred plants located in a seep on the north side of battle creek
B-IDD-MIGL-16	<i>Mimulus glaucescens</i> CNPS List 4	Inskip Diversion Dam/South Powerhouse	Shingletown T29N R1E SE ¼ NE ¼ Section 5	
B-SBCC-MIGL-2	<i>Mimulus glaucescens</i> CNPS List 4	South Battle Creek Canal	Shingletown T29N R1E SE ¼ NE ¼ Section 11	+/- 500 plants 30 feet upslope and north of flume; another spot is 50 feet west and 30 feet lateral

Resource Number ¹	Species and Legal Status	Project Site	Quadrangle T/R/S	Comments
B-SBCC-MIGL-3	<i>Mimulus glaucescens</i> CNPS List 4	South Battle Creek Canal	Shingletown T29N R1E SE ¼ NE ¼ Section 11	Western patch is isolated
B-SBCC-MIGL-4	<i>Mimulus glaucescens</i> CNPS List 4	South Battle Creek Canal	Shingletown T29N R1E SE ¼ NE ¼ Section 11	Middle patch, 35 feet lateral
B-SBCC-MIGL-5	<i>Mimulus glaucescens</i> CNPS List 4	South Battle Creek Canal	Manton T29N R1E SE ¼ NE ¼ Section 11	+/- 300 plants 45 feet upslope of canal, ephemeral seep
B-SBCC-ASPA-6	<i>Astragalus pauperculus</i> CNPS List 4	South Battle Creek Canal	Manton T29N R1E SW ¼ NE ¼ Section 11	15 plants on bank flat above channel, 10 feet lateral on north side
B-SBCC-ASPA-7	<i>Astragalus pauperculus</i> CNPS List 4	South Battle Creek Canal	Manton T29N R1E SW ¼ NE ¼ Section 11	Plants scattered along volcanic shelf
B-SBCC-ASPA-8	<i>Astragalus pauperculus</i> CNPS List 4	South Battle Creek Canal	Manton T29N R1E SW ¼ NE ¼ Section 11	Start linear file and walked west to seasonal drainage
B-SBCC-ASPA-9	<i>Astragalus pauperculus</i> CNPS List 4	South Battle Creek Canal	Manton T29N R1E SW ¼ NE ¼ Section 11	Plants scattered along volcanic shelf up to edge
B-SBCC-ASPA-10	<i>Astragalus pauperculus</i> CNPS List 4	South Battle Creek Canal	Manton T29N R1E NE ¼ NW ¼ Section 11	Scattered along basalt bench
B-SBCC-ASPA-11	<i>Astragalus pauperculus</i> CNPS List 4	South Battle Creek Canal	Manton T29N R1E NE ¼ NW ¼ Section 11	Approximately 20 plants
B-SBCC-ASPA-13	<i>Astragalus pauperculus</i> CNPS List 4	South Battle Creek Canal	Manton T29N R1E NW ¼ SW ¼ Section 2	Scattered along slope above canal

Resource Number ¹	Species and Legal Status	Project Site	Quadrangle T/R/S	Comments
B-SBCC-ASPA-14	<i>Astragalus pauperculus</i> CNPS List 4	South Battle Creek Canal	Manton T29N R1E NE ¼ SE ¼ Section 3	Scattered along north side of canal
B-SBCC-MIGL-15	<i>Mimulus glaucescens</i> CNPS List 4	South Battle Creek Canal	Manton T29N R1E SE ¼ NW ¼ Section 3	+/- 25 plants on cut bank, north side of canal
B-SBCC-ASPA-16	<i>Astragalus pauperculus</i> CNPS List 4	South Battle Creek Canal	Manton T29N R1E SE ¼ NW ¼ Section 3	Scattered along tuscan shelf, several hundred plants
B-SBCC-ASPA-17	<i>Astragalus pauperculus</i> CNPS List 4	South Battle Creek Canal	Manton T29N R1E SE ¼ NW ¼ Section 3	Scattered along tuscan shelf, several hundred plants
B-SBCC-ASPA-18	<i>Astragalus pauperculus</i> CNPS List 4	South Battle Creek Canal	Manton T29N R1E SE ¼ NE ¼ Section 3	Scattered along tuscan shelf, several hundred plants
B-SBCC-ASPA-19	<i>Astragalus pauperculus</i> CNPS List 4	South Battle Creek Canal	Manton T29N R1E SE ¼ NE ¼ Section 3	Scattered along tuscan shelf, several hundred plants
B-SBCC-ASPA-20	<i>Astragalus pauperculus</i> CNPS List 4	South Battle Creek Canal	Manton T29N R1E SE ¼ NE ¼ Section 4	Scattered along tuscan shelf, several hundred plants
B-SBCC-ASPA-21	<i>Astragalus pauperculus</i> CNPS List 4	South Battle Creek Canal	Manton T29N R1E SE ¼ NE ¼ Section 4	Scattered along tuscan shelf, several hundred plants
B-SDD-ASPA-3	<i>Astragalus pauperculus</i> CNPS List 4	South Diversion Dam	Finley Butte T29N R2E SW ¼ NW ¼ Section 18	3 plants in road and parking area, all in flower

Resource Number ¹	Species and Legal Status	Project Site	Quadrangle T/R/S	Comments
Access Roads				
B-WDDAR-LIFLFL-1	<i>Limnanthes floccosa</i> ssp. <i>floccosa</i> CNPS List 4	Wildcat Diversion Dam Access Road	Shingletown T30N R1W NW ¼ SE ¼ Section 27	Several hundred plants in depression
B-WDDAR-LIFLFL-2	<i>Limnanthes floccosa</i> ssp. <i>floccosa</i> CNPS List 4	Wildcat Diversion Dam Access Road	Shingletown T30N R1W NW ¼ SE ¼ Section 27	Several hundred plants, in flower, 2 dense patches immediately northeast of access road, under blue oaks
B-RCFAR-LIFLFL-1	<i>Limnanthes floccosa</i> ssp. <i>floccosa</i> CNPS List 4	Lower Ripley Creek Feeder Access Road	Shingletown T29N R1W SW ¼ NE ¼ Section 2	
B-RCFAR-LIFLFL-2	<i>Limnanthes floccosa</i> ssp. <i>floccosa</i> CNPS List 4	Lower Ripley Creek Feeder Access Road	Shingletown T29N R1W SW ¼ NE ¼ Section 2	+/- 40 plants scattered under power lines adjacent to a seasonal drainage, only on north side of road, in full flower
B-RCFAR-LIFLFL-3	<i>Limnanthes floccosa</i> ssp. <i>floccosa</i> CNPS List 4	Lower Ripley Creek Feeder Access Road	Shingletown T29N R1W SE ¼ NE ¼ Section 2	+/- 50 plants scattered lightly on both sides of the road along a seasonal drainage
B-RCFAR-LIFLFL-4	<i>Limnanthes floccosa</i> ssp. <i>floccosa</i> CNPS List 4	Lower Ripley Creek Feeder Access Road	Shingletown T29N R1W SE ¼ NE ¼ Section 2	Few plants adjacent to small drainage
B-RCFAR-LIFLFL-5	<i>Limnanthes floccosa</i> ssp. <i>floccosa</i> CNPS List 4	Lower Ripley Creek Feeder Access Road	Shingletown T29N R1W NW ¼ NW ¼ Section 1	+/- 100 plants scattered in seasonal drainage
B-RCFAR-LIFLFL-6	<i>Limnanthes floccosa</i> ssp. <i>floccosa</i> CNPS List 4	Lower Ripley Creek Feeder Access Road	Shingletown T29N R1W NW ¼ NW ¼ Section 1	2 plants on north side of road
B-RCFAR-LIFLFL-7	<i>Limnanthes floccosa</i> ssp. <i>floccosa</i> CNPS List 4	Lower Ripley Creek Feeder Access Road	Shingletown T29N R1W NW ¼ NW ¼ Section 1	+/- 150 plants on north side of road, 1 plant on south side, 50 feet by 25 feet
B-RCFAR-LIFLFL-8	<i>Limnanthes floccosa</i> ssp. <i>floccosa</i> CNPS List 4	Lower Ripley Creek Feeder Access Road	Shingletown T29N R1W NE ¼ NW ¼ Section 1	+/- 300 plants scattered lightly in seasonal drainage, both sides of road

Table II-2. Continued

Resource Number ¹	Species and Legal Status	Project Site	Quadrangle T/R/S	Comments
B-RCFAR-LIFLFL-9	<i>Limnanthes floccosa</i> ssp. <i>floccosa</i> CNPS List 4	Lower Ripley Creek Feeder Access Road	Shingletown T29N R1W NE ¼ NW ¼ Section 1	+/- 75 plants along seasonal drainage, mostly on north side of road
B-IDDAR-POBI-1	<i>Polygonum bidwelliae</i> CNPS List 4	Inskip Diversion Dam/New Proposed Access Road	Shingleton T29N R1E NW ¼ SE ¼ Section 5	Several hundred plants scattered along tuscan shelf
B-IDDAR-ASP-1	<i>Astragalus pauperculus</i> CNPS List 4	Inskip Diversion Dam Access Road	Manton T29N R1E NW ¼ SW ¼ Section 4	Few plants lightly scattered on both sides of road, extends 50 feet out on both sides of road
B-SPHAR-ASP-1	<i>Astragalus pauperculus</i> CNPS List 4	South Powerhouse Access Road from Bluff Springs	Manton T29N R1E SE ¼ NW ¼ Section 3	80–100 plants, 90% in fruit, 5% flowering, 5% vegetative, both sides of road
B-SPHAR-ASP-2	<i>Astragalus pauperculus</i> CNPS List 4	South Powerhouse Access Road from Bluff Springs	Manton T29N R1E SW ¼ NW ¼ Section 3	Extends 50 feet out on both sides of road
B-SPHAR-ASP-3	<i>Astragalus pauperculus</i> CNPS List 4	South Powerhouse Access Road from Bluff Springs	Manton T29N R1E SW ¼ NE ¼ Section 4	Extends 50 feet out, both sides of road, sparsely scattered
B-SCFAR-ASP-1	<i>Astragalus pauperculus</i> CNPS List 4	Soap Creek Feeder Access Road	Manton T29N R1E NE ¼ NE ¼ Section 11	Few plants lightly scattered on both sides of road, extends 50 feet out on both sides of road
B-SCFAR-ASP-2	<i>Astragalus pauperculus</i> CNPS List 4	Soap Creek Feeder Access Road	Manton T29N R1E NE ¼ NE ¼ Section 11	Few plants lightly scattered on both sides of road, extends 50 feet out on both sides of road, mostly on south side
B-SCFAR-ASP-3	<i>Astragalus pauperculus</i> CNPS List 4	Soap Creek Feeder Access Road	Manton T29N R1E Section 11 SE ¼ NE ¼	Scattered along tuscan shelf, several hundred plants
B-SDDAR-ASP-1	<i>Astragalus pauperculus</i> CNPS List 4	South Diversion Dam Access Road	Manton T29N R1E SE ¼ NW ¼ Section 12	+/- 200 plants, 85% in fruit, 15% flowering, extends upslope 50 feet, easily avoided

Resource Number ¹	Species and Legal Status	Project Site	Quadrangle T/R/S	Comments
B-SDDAR-MIGL-2	<i>Mimulus glaucescens</i> CNPS List 4	South Diversion Dam Access Road	Manton T29N R1E SE ¼ NE ¼ Section 12	Approximately 50 plants, in road margin and upslope 2 feet
B-SDDAR-MIGL-3	<i>Mimulus glaucescens</i> CNPS List 4	South Diversion Dam Access Road	Manton T29N R1E SE ¼ NE ¼ Section 12	+/- 1,000 feet, 10 feet along road and within road, extends upslope 30 feet
B-SDDAR-ASPA-6	<i>Astragalus pauperculus</i> CNPS List 4	South Diversion Dam Access Road	Finley Butte T29N R1E SE ¼ NE ¼ Section 13	Plants lightly scattered 50 feet upslope, few in road shoulder, 98% in fruit, easily avoided
B-SDDAR-ASPA-7	<i>Astragalus pauperculus</i> CNPS List 4	South Diversion Dam Access Road	Finley Butte T29N R1E SE ¼ NE ¼ Section 13	Plants lightly scattered on both sides of road, extends 50 feet

Notes:

¹ Resource numbers presented in this table correspond to the locations of resources on the project site maps in Volume II of this report.

CNPS = California Native Plant Society.

WILDLIFE RESOURCES

Table II-3. Special-Status Wildlife Occurrences Documented in the Battle Creek Salmon and Steelhead Restoration Project Area

Resource Number ¹	Species	Project Area	Date Observed	Quadrangle T/R/S	Comments
Project Sites					
NA	Yellow-breasted chat	Darrah Springs ²	13 June 2000	Shingletown T30N R1W SW ¼ SW ¼ Section 20	Two singing territorial males in riparian habitat
WL-NBCF-GE-1	Golden eagle	North Battle Creek Feeder Diversion Dam	20 April 2000	Manton T30N R1E NW ¼ SW ¼ Section 15	A pair of adults flew over the project site
WL-ECDD-SAME-1	Blue elderberry ³	Eagle Canyon Diversion Dam	24 July 2000	Shingletown T30N R1W SW ¼ NE ¼ Section 25	20 feet up cliff, south of canal, 15 feet tall, no exit holes, very few leaves on plant, unable to get GPS reading, 1:1–3"
WL-ECDD-SAME-2	Blue elderberry ³	Eagle Canyon Diversion Dam	24 July 2000	Shingletown T30N R1W SW ¼ NE ¼ Section 25	20 feet west of stairs, 18 feet tall, no exit holes, very large and bushy, unable to get GPS reading, 2:>5"
WL-ECDD-SAME-3	Blue elderberry ³	Eagle Canyon Diversion Dam	24 July 2000	Shingletown T30N R1W SW ¼ NE ¼ Section 25	12 feet north of hand rail, small, no stems greater than 1 inch, no exit holes
WL-ECDD-WF-1	Willow flycatcher	Eagle Canyon Diversion Dam	16 June 2000	Shingletown T30N R1W SW ¼ NE ¼ Section 25	Two singing males in oak scrub at top of canyon lip, near car parking area
WL-ECDD-BE-2	Bald eagle	Eagle Canyon Diversion Dam	16 June 2000	Shingletown T30N R1W SW ¼ NE ¼ Section 25	An adult flew over the project site
WL-CDD-SAME-1	Blue elderberry ³	Coleman Diversion Dam/Inskip Power House	25 July 2000	Shingletown T29N R1W NW ¼ NW ¼ Section 5	18 to 20 feet north of pipe, unable to see base
WL-CDD-SAME-2	Blue elderberry ³	Coleman Diversion Dam/Inskip Power House	25 July 2000	Shingletown T29N R1W NW ¼ NW ¼ Section 5	2 bushes south of pipe, unable to see base

Table II-3. Continued

Resource Number ¹	Species	Project Area	Date Observed	Quadrangle T/R/S	Comments
WL-CDD-SAME-3	Blue elderberry ³	Coleman Diversion Dam/Inskip Power House	25 July 2000	Shingletown T29N R1W NW ¼ NW ¼ Section 5	South of pipe, 2 bushes, unable to see base, 5 feet tall, potentially 2:1–3"
WL-CDD-SAME-4	Blue elderberry ³	Coleman Diversion Dam/Inskip Power House	25 July 2000	Shingletown T29N R1W NW ¼ NW ¼ Section 5	16 feet south of point and pipe, unable to see base
WL-CDD-YBC-1	Yellow-breasted chat	Coleman Diversion Dam/Inskip Powerhouse	13 June 2000 25 July 2000	Shingletown T29N R1W NW ¼ NW ¼ Section 3	Four singing, territorial males in riparian habitat
WL-CDD-BE-2	Bald eagle	Coleman Diversion Dam/Inskip Powerhouse	17 April 2000	Shingletown T29N R1W NW ¼ NW ¼ Section 3	An immature, second-year bird perched on rocks along river channel
WL-CDD-YBC-3	Yellow-breasted chat	Coleman Diversion Dam/Inskip Powerhouse	13 June 2000 25 July 2000	Shingletown T29N R1W NW ¼ NW ¼ Section 3	Two singing, territorial males along penstock in riparian habitat
WL-RCF-SAME-1	Blue elderberry ³	Lower Ripley Creek Feeder	25 July 2000	Shingletown T29N R1W NW ¼ NE ¼ Section 1	East of creek, 20 feet tall, 4 huge trunks, no exit holes, 3:>5", 1:3–5"
WL-RCF-SAME-2	Blue elderberry ³	Lower Ripley Creek Feeder	25 July 2000	Shingletown T29N R1W NW ¼ NE ¼ Section 1	West of creek, 12 feet tall, large trunks from base, no exit holes, 6:3–5"
WL-RCF-SAME-3	Blue elderberry ³	Lower Ripley Creek Feeder	25 July 2000	Shingletown T29N R1W NW ¼ NE ¼ Section 1	
WL-RCF-WF-1	Willow flycatcher	Lower Ripley Creek Feeder	16 June 2000	Shingletown T29N R1W NW ¼ NE ¼ Section 1	Three individuals, including at least one singing male in riparian habitat

Table II-3. Continued

Resource Number ¹	Species	Project Area	Date Observed	Quadrangle T/R/S	Comments
WL-RCF-FYLF-2	Foothill yellow-legged frog	Lower Ripley Creek Feeder	15 June 2000	Shingletown T29N R1W NW ¼ NE ¼ Section 1	Two adults found along the creek upstream from the small diversion dam; bullfrogs were also found in this section of the creek and may negatively affect the yellow-legged frog population
WL-RCF-WPT-3	Western pond turtle	Lower Ripley Creek Feeder	15 June 2000	Shingletown T29N R1W NW ¼ NE ¼ Section 1	One found upstream from the small diversion dam
WL-IDD-ORN-1	Old raptor nest	Inskip Diversion Dam/South Powerhouse	17 April 2000	Shingletown T29N R1E NE ¼ SE ¼ Section 5	
WL-IDD-ORN-2	Old raptor nest	Inskip Diversion Dam/South Powerhouse	17 April 2000	Shingletown T29N R1E NE ¼ SE ¼ Section 5	
WL-IDD-GE-3	Golden eagle	Inskip Diversion Dam/South Powerhouse	17 April 2000	Shingletown T29N R1E NE ¼ SW ¼ Section 5	One adult and one immature flew over the project site
WL-IDD-FYLF-4	Foothill yellow-legged frog	Inskip Diversion Dam/South Powerhouse	15 June 2000	Shingletown T29N R1E NE ¼ SW ¼ Section 5	Two juveniles and many tadpoles observed in the creek adjacent to the South Powerhouse
WL-IDD-OS-5	Osprey	Inskip Diversion Dam/South Powerhouse	14 June 2000	Shingletown T29N R1E SE ¼ NW ¼ Section 5	An adult hunting for fish along South Fork Battle Creek
WL-SCF-FYLF-1	Foothill yellow-legged frog	Soap Creek Feeder	15 June 2000	Manton T29N R1E NE ¼ NE ¼ Section 11	Two adults found in the pool below the dam; one adult and one juvenile observed about 50 feet downstream of the dam in some small pools
WL-SDD-ORN-1	Old raptor nests	South Diversion Dam	17 April 2000	Finley Butte T29N R2E NW ¼ SW ¼ Section 18	Three old raptor nests on cliff faces; well above project site on hillside

Table II-3. Continued

Resource Number ¹	Species	Project Area	Date Observed	Quadrangle T/R/S	Comments
WL-SDD-FYLF-2	Foothill yellow-legged frog	South Diversion Dam	15 June 2000	Finley Butte T29N R2E SW ¼ NW ¼ Section 18	One juvenile observed 100 feet upstream of the dam
WL-SDD-OSN-3	Osprey nest	South Diversion Dam	17 April 2000	Manton T29N R1E SW ¼ SW ¼ Section 12	Active Osprey nest, adult perched on nest, could not see how many young were present; observed about 0.7 mile north of access road to South Diversion Dam
Access Roads					
WL-SPHAR-SAME-1	Blue elderberry ³	South Powerhouse Access Road	24 July 2000	Shingletown T29N R1E SE ¼ NE ¼ Section 5	At gate near staging area, adjacent to right-of-way, small shrub, 1:>5", 3:1-3"
WL-SPHAR-SAME-2	Blue elderberry ³	South Powerhouse Alternative Access Road	24 July 2000	Manton T30N R1E SE¼ SE¼ Section 33	50 feet west of road, just north of gate, old dead tree with numerous resprouts, less than 3 feet tall, no stems greater than 1 inch, no exit holes
WL-SPHAR-SAME-3	Blue elderberry ³	South Powerhouse Alternative Access Road	24 July 2000	Manton T30N R1E SE¼ SE¼ Section 33	30 feet west of road, large cluster around black oak, approximately 30 large trees, some up to 30 feet tall, numerous sapling under canopy, a few stems with <i>possible</i> exit holes, 36:>5"
WL-SPHAR-SAME-4	Blue elderberry ³	South Powerhouse Alternative Access Road	24 July 2000	Manton T30N R1E SE¼ SE¼ Section 33	20 feet west of road; large dead trees with live stems growing off them: 3:1-3"
WL-SPHAR-SAME-5	Blue elderberry ³	South Powerhouse Alternative Access Road	24 July 2000	Manton T30N R1E SE¼ SE¼ Section 33	Large cluster 65 feet east of road, some trees 20 feet tall, 12 individuals scattered under black oak and plum trees, <i>possible</i> exit holes, 11:>5", 7:3-5", 21:1-3"
WL-SPHAR-SAME-6	Blue elderberry ³	South Powerhouse Alternative Access Road	24 July 2000	Manton T30N R1E SE¼ SE¼ Section 33	45 feet west of road, numerous saplings also present, 3:>5"

Table II-3. Continued

Resource Number ¹	Species	Project Area	Date Observed	Quadrangle T/R/S	Comments
WL-SPHAR-SAME-7	Blue elderberry ³	South Powerhouse Alternative Access Road	24 July 2000	Manton T30N R1E SE¼ SE¼ Section 33	75 feet west of road, three trees in clump, two are 14 feet tall, one is 8 feet tall, 4:1-3", 2:>5"
WL-SPHAR-SAME-8	Blue elderberry ³	South Powerhouse Alternative Access Road	24 July 2000	Manton T30N R1E SW¼ SW¼ Section 34	40 feet southeast of road, some greater than 50 feet not included, 20 feet tall, 1:>5", 1:1-3"
WL-SPHAR-SAME-9	Blue elderberry ³	South Powerhouse Alternative Access Road	24 July 2000	Manton T30N R1E SE¼ SE¼ Section 33	22 feet west of road, 10 feet tall, 2:1-3"
WL-SPHAR-SAME-10	Blue elderberry ³	South Powerhouse Alternative Access Road	24 July 2000	Manton T30N R1E SW¼ SW¼ Section 34	25 feet east of road, 8 feet tall
WL-SPHAR-SAME-11	Blue elderberry ³	South Power House Access Road from Bluff Springs	24 July 2000	Manton T29N R1E SW ¼ NE ¼ Section 4	20 feet south of road, 20 feet tall, 3:3-5", 3:1-3"
WL-SPHAR-SAME-12	Blue elderberry ³	South Power House Access Road from Bluff Springs	24 July 2000	Manton T29N R1E SW ¼ NE ¼ Section 4	3 shrubs, 10 feet tall, no exit holes (A has 1 large stem, B has 1 large stem, C has 6 stems greater than 1 inch), 2:>5", 2:3-5", 3:1-3"
WL-SPHAR-SAME-13	Blue elderberry ³	South Power House Access Road from Bluff Springs	24 July 2000	Manton T29N R1E SW ¼ NE ¼ Section 4	15 feet tall, 2:3-5", 4:1-3"
WL-SPHAR-SAME-14	Blue elderberry ³	South Power House Access Road from Bluff Springs	24 July 2000	Manton T29N R1E SW ¼ NE ¼ Section 4	No exit holes, 2:>5", 4:3-5", 2:1-3"
WL-SPHAR-SAME-15	Blue elderberry ³	South Power House Access Road from Bluff Springs	24 July 2000	Manton T29N R1E SW ¼ NE ¼ Section 4	Next to road edge, 6 feet tall, 2 stems greater than 1 inch

Table II-3. Continued

Resource Number ¹	Species	Project Area	Date Observed	Quadrangle T/R/S	Comments
WL-SPHAR-SAME-16	Blue elderberry ³	South Power House Access Road from Bluff Springs	24 July 2000	Manton T29N R1E SW ¼ SE ¼ Section 4	10 feet west of road, 10 feet tall, 4 stems greater than 1 inch, in poison oak thicket, 3:>5"
WL-SPHAR-SAME-17	Blue elderberry ³	South Power House Access Road from Bluff Springs	24 July 2000	Manton T29N R1E SW ¼ SE ¼ Section 4	West side of road, 12 feet tall, no exit holes, 2:3–5", 6:1–3"
WL-SPHAR-SAME-18	Blue elderberry ³	South Power House Access Road from Bluff Springs	24 July 2000	Manton T29N R1E SW ¼ SE ¼ Section 4	Possibly 2 plants, approximately 8 feet tall, no exit holes, 2:1–3"
WL-SPHAR-SAME-19	Blue elderberry ³	South Power House Access Road from Bluff Springs	24 July 2000	Manton T29N R1E SW ¼ SE ¼ Section 4	12 feet tall, 20 feet south of road, cluster of trees in poison oak, 1:>5", 5:3–5", 5:1–3"
WL-SPHAR-SAME-20	Blue elderberry ³	South Power House Access Road from Bluff Springs	24 July 2000	Manton T29N R1E SW ¼ NW ¼ Section 2	20 feet north of road, east of power lines, cluster with 8 main trunks greater than 1 inch, 2:>5", 4:3–5", 1:1–3"
WL-SPHAR-SAME-21	Blue elderberry ³	South Power House Access Road from Bluff Springs	24 July 2000	Manton T29N R1E SW ¼ NW ¼ Section 1	12 feet tall, 1: >5", 3:3–5", 5:1–3"
WL-SPHAR-SAME-22	Blue elderberry ³	South Power House Access Road from Bluff Springs	24 July 2000	Manton T29N R1E SW ¼ NW ¼ Section 1	7 feet tall, no exit holes, 7: 1–3"; observed near gate at beginning of access road
WL-SCFAR-SAME-1	Blue elderberry ³	Soap Creek Feeder Access Road	24 July 2000	Manton T29N R1E SW ¼ SW ¼ Section 1	2 bushes on ridgetop, 28 feet east of road, 7:1–3", no exit holes, 1: 1–3"
WL-SDDAR-SAME-1	Blue elderberry ³	South Diversion Dam Access Road	24 July 2000	Manton T29N R1E NW ¼ SE ¼ Section 12	16 feet tall, 1 large root crown, no exit holes, 16 stems, all from crown, 4 outliers, 2: >5", 5:3–5", 9:1–3"

Resource Number ¹	Species	Project Area	Date Observed	Quadrangle T/R/S	Comments
WL-SDDAR-ORN-1	Old raptor nest	South Diversion Dam Access Road	17 April 2000	Manton T29N R2E SW ¼ NW ¼ Section 6	One first-year, immature bird perched on ledge for shelter from rain; appears to be an old eagle nest structure; observed at the headwaters of Soap Creek, along access road to South Diversion Dam

Notes:

- ¹ Resource numbers presented in this table correspond to the locations of resources on maps in Volume II of this report.
- ² Darrah Springs is located approximately 1.5 miles northwest of the Wildcat Diversion Dam site and is not shown on the maps following this table.
- ³ The blue elderberry is not listed as a special-status species; however, this plant may provide potential habitat for the valley elderberry longhorn beetle, a federally listed threatened, species of concern.