

PLATE CXXI.

*Kyptocaris stylofrontalis* (p. 690).

Fig. 1. Lateral view ; enlarged twelve times.

„ 1*i*. Second gnathopod.

„ 1*k*. First pereopod.

„ 1*l*. Second pereopod.

„ 1*m*. Third pereopod.

*Caricyphus cornutus* (p. 712).

„ 2. Lateral view ; enlarged twenty-four times.

„ 2*i*. Second gnathopod.

„ 2*k*. First pereopod.

*Caricyphus serramarginis* (p. 714).

„ 3. Lateral view ; enlarged twelve times.

*Caricyphus gibberosus* (p. 716).

„ 4. Lateral view ; enlarged ten times.

*Caricyphus turgidus* (p. 717).

„ 5. Lateral view ; enlarged twenty-two times.

„ 5*c*. Lateral view of rostral crest.

*Caricyphus angulatus* (p. 718).

„ 6. Lateral view ; enlarged eight times.

PLATE CXXII.

*Alpheus* (Brephalos) (p. 538).

- Fig. 1. Megalopa stage, lateral aspect; enlarged twenty times.  
,, 1c. Second antenna; 1*f*, second siagnopod; 1*g*, third siagnopod; 1*h*, first gnathopod; 1*i*, second gnathopod; 1*k*, first pereopod, right side; 1*k'*, first pereopod, left side.

*Atya* (Brephalos) (p. 692).

- ,, 2. Ventral aspect; enlarged twenty times.  
,, 2ov. Ovum; enlarged twenty times.

*Campylonotus vagans* (p. 775).

- ,, 3. Lateral view.  
,, 3b. First antenna.  
,, 3c. Second antenna.  
,, 3*d*, 3*d'*. Mandible; inner and outer aspects.  
,, 3e. First siagnopod.  
,, 3*f*. Second siagnopod.  
,, 3*g*. Third siagnopod.  
,, 3*h*. First gnathopod.  
,, 3*i*. Second gnathopod.

PLATE CXXIII.

*Anebocaris quadroculus* (p. 722).

- Fig. 1. Lateral view ; enlarged nine times.  
,, 1*k*. First pereopod.  
,, 1*l*. Second pereopod.  
,, 1*o*. Fifth pereopod.

*Rhomaleocaris hamulus* (p. 720).

- ,, 2. Lateral view ; enlarged nine times.  
,, 2*c*. Rostrum.  
,, 2*c''*. Antennal tooth.  
,, 2*k*. First pereopod.

*Bentheocaris exuens* (p. 724).

- ,, 3. Lateral view ; enlarged five times.  
,, 3*c*. Rostrum ; magnified.  
,, 3*a*. Ophthalmopod.  
,, 3*b*. First antenna.  
,, 3*c''*. Margin of scaphocerite.  
,, 3*m*. Third pereopod.  
,, 3*n*. Fourth pereopod.  
,, 3*o*. Fifth pereopod.

*Bentheocaris stylorostratis* (p. 726).

- ,, 4. Lateral view ; enlarged three times.  
,, 4*a*. Ophthalmopod.  
,, 4*d*. Mandible.  
,, 4*o*. Fifth pereopod.

PLATE CXXIV.

*Pontonia meleagrinae* (p. 707).

- Fig. 1. Lateral view ; enlarged three times.  
,, 2. Dorsal view.  
,, 1*b*. First antenna.  
,, 1*c*. Scaphocerite.  
,, 1*d*. Mandible.  
,, 1*e*. First siagnopod.  
,, 1*f*. Second siagnopod.  
,, 1*g*. Third siagnopod.  
,, 1*h*. First gnathopod.  
,, 1*i*. Second gnathopod.  
,, 1*p*. First pleopod.

*Acanthephyra purpurea* (p. 733).

- ,, 3. Lateral view ; enlarged twice.

*Acanthephyra longidens* (p. 735).

- ,, 4. Lateral view ; enlarged twice.  
,, 4*a*. Ophthalmopod.

*Acanthephyra media* (p. 736).

- ,, 5. Lateral view ; enlarged twice.  
,, 5*c*. Rostrum of another specimen.

*Acanthephyra angusta* (p. 737).

- ,, 6. Lateral view.  
,, 6*a*. Ophthalmopod.

*Systellaspis lanceocaudata* (p. 758).

- ,, 7. Lateral view ; enlarged a half.  
,, 7*z*. Telson.

PLATE CXXV.

*Acanthephyra sica* (p. 739).

Fig. 1. Lateral view of female.

- „ 1a. Ophthalmopod.
- „ 1b. First antenna.
- „ 1c. Second antenna; under surface of scaphocerite.
- „ 1c''. Upper surface of scaphocerite.
- „ 1d. Mandible; *ch.a*, cheiloglossa; *d*, mandible; *ma*, metastoma.
- „ 1e. First siagnopod.
- „ 1f. Second siagnopod.
- „ 1g. Third siagnopod.
- „ 1i. Second gnathopod.
- „ 1z. Telson.

*Acanthephyra armata* (p. 744).

- „ 2. Lateral view of male.
- „ 2p. First pleopod.

*Acanthephyra acanthitelsonis* (p. 745).

- „ 3. Lateral view of male.
- „ 3b. First antenna.
- „ 3c. Second antenna, showing the scaphocerite with the flagellum undergoing reproduction.
- „ 3z. Telson.

PLATE CXXVI.

*Acanthephyra edwardsii* (p. 747).

Fig. 1. Lateral view of male.

„ 1z. Telson.

*Acanthephyra carinata* (p. 748).

„ 2. Lateral view of male.

„ 2a. Ophthalmopod.

„ 2z. Telson.

*Acanthephyra acutifrons* (p. 749).

„ 3. Lateral view of male.

„ 3a. Ophthalmopod.

„ 3z. Telson.

*Acanthephyra kingsleyi* (p. 751).

„ 4. Lateral view of male.

„ 4a. Ophthalmopod.

„ 4z. Telson.

*Acanthephyra brevirostris* (p. 751).

„ 5. Lateral view of male.

„ 6. Lateral view of a variety (p. 752).

„ 6a. Ophthalmopod.

„ 6p. First pleopod.

„ 6z. Telson.

*Acanthephyra brachytelsonis* (p. 733).

„ 7. Lateral view of female.

„ 7a. Ophthalmopod.

*Acanthephyra approxima* (p. 755).

„ 8. Lateral view of male.

„ 8a. Ophthalmopod.

„ 8z. Telson.

PLATE CXXVII.

*Oplophorus typus* (p. 762).

Fig. 1. Lateral view of female; enlarged twice.

„ 1*a*. Ophthalmopod.

„ 1*b*. First antenna.

„ 1*c*. Second antenna.

„ 1*d*. Mandible.<sup>1</sup>

„ 1*g*. Third siagnopod.

„ 1*h*. First gnathopod.

„ 1*i*. Second gnathopod.

„ 1*k*. First pereopod.

„ 1*l*. Telson.

*Oplophorus longirostris* (p. 765).

„ 2. Lateral view of female; enlarged twice.

*Oplophorus brevirostris* (p. 766).

„ 3. Lateral view; enlarged twice.

*Proclites biangulatus* (p. 884).

„ 4. Lateral view; enlarged four times.

„ 4*c*. Dorsal view of carapace; *a*, ophthalmopod; *b*, first, and *c*, second antenna.

<sup>1</sup> The mandible is drawn from an imperfect specimen; the synnhipod is triarticulate.

PLATE CXXVIII.

*Campylonotus semistriatus* (p. 768).

- Fig. 1. Lateral view of female ; enlarged.  
,, 2. Ventral aspect of pereion.

*Campylonotus capensis* (p. 773).

- ,, 3. Lateral view of female.

*Palæmonella orientalis* (p. 787).

- ,, 4. Lateral view ; enlarged twenty times.  
,, 4i. Second gnathopod.

*Palæmon affinis* (p. 782).

- ,, 5. Lateral view of female ; enlarged three times.  
,, 5a. Ophthalmopod.  
,, 5d. Mandible.  
,, 5i. Second gnathopod.

*Palæmon natator* (p. 784).

- ,, 6. Lateral view of female ; enlarged twice.  
,, 7. Lateral view of male ; enlarged two and a half times.



PLATE CXXIX.

*Bithynis lar* (p. 789).

Fig. 1. Lateral view of male.

*Bithynis grandimanus* (p. 793).

„ 2. Lateral view.

„ 2'. Second pereopod, left.

„ 3. Lateral view of variety (p. 795).

*Brachycarpus savignyi* (p. 795).

„ 4. Lateral view ; enlarged twice.

*Brachycarpus audouini* (p. 798).

„ 5. Lateral view of female ; enlarged eight times.

„ 5k. First pereopod, right.

PLATE CXXX.

*Nematocarcinus undulatipes* (p. 801).

Fig. 1. Lateral view of female ; enlarged half.

*d.* Mandible.

*e.* First siagnopod.

*f.* Second siagnopod.

*g.* Third siagnopod.

*h.* First gnathopod.

*i.* Second gnathopod, terminal joints.

*k.* First pereopod, terminal joints.

*q.* Second pleopod, with ova attached.

PLATE CXXXI.

*Nematocarcinus lanceopes* (p. 804).

Fig. 1. Lateral view.

♀. Ventral surface of pereion of female.

♂. Ventral surface of pereion of male.

*k*. First pereopod ; chela.

*m*. Third pereopod ; coxal and basal joints, with arthrobranchial plumes and ephysis attached.

*n*. Fourth pereopod ; ischio-mæral articulation, inner surface ; *n'*, outer surface.

*o*. Fifth pereopod ; terminal joints.

*p* ♂. First pleopod of male.

*p* ♀. First pleopod of female.

*q* ♀. Second pleopod of female, with ova attached.

PLATE CXXXII.

- Nothocaris spiniserratus* (p. 663).  
 Fig. 1. Lateral view; enlarged sixteen times.  
 „ 1c. Rostrum; magnified.
- Nematocarcinus longirostris* (p. 806).  
 „ 2. Carapace, lateral view.
- Nematocarcinus proximatus* (p. 808).  
 „ 3. Carapace, lateral view.
- Nematocarcinus altus* (p. 809).  
 „ 4. Carapace, lateral view.
- Nematocarcinus productus* (p. 810).  
 „ 5. Carapace, lateral view.
- Nematocarcinus tenuipes* (p. 812).  
 „ 6. Carapace, lateral view.
- Nematocarcinus parvidentatus* (p. 814).  
 „ 7. Carapace, lateral view.
- Nematocarcinus gracilis* (p. 815).  
 „ 8. Carapace, lateral view.
- Nematocarcinus paucidentatus* (p. 819).  
 „ 9. Carapace, lateral view.
- Nematocarcinus tenuirostris* (p. 817).  
 „ 10. Carapace, lateral view.
- Nematocarcinus serratus* (p. 819).  
 „ 11. Rostrum.
- Nematocarcinus hiatus* (p. 821).  
 „ 12. Carapace, lateral view.
- Nematocarcinus intermedius* (p. 821).  
 „ 13. Carapace, lateral view.
- Stochasmus exilis* (p. 823).  
 „ 14. Lateral view; enlarged three times.  
 „ 14i. Second gnathopod.

PLATE CXXXIII.

*Notostomus patentissimus* (p. 826).

Fig. 1. Lateral view.

*d.* Mandible.

*e.* First siagnopod.

*f.* Second siagnopod.

*g.* Third siagnopod.

*h.* First gnathopod.

*i.* Second gnathopod.

*m.* Third pereopod; with arthrobranchia, mastigobranchia, and basecphysis attached.

*o.* Fifth pereopod; terminal joints.

*p.* First pleopod.

*q.* Second pleopod.

*br.* Section of a branchial plume.

PLATE CXXXIV.

*Notostomus patentissimus* (p. 826).

Fig. 1. Ventral surface.

„ 1*a*. Ophthalmopod.

„ 1*b*. First antenna; 1*b*<sup>''</sup>, portion of flagellum; 1*b*<sup>'''</sup>, section of flagellum.

„ 1*c*. Second antenna.

„ 2. Branchiæ in position.

*Notostomus murrayi* (p. 829).

„ 3. Lateral view; enlarged twice.

PLATE CXXXV.

*Notostomus japonicus* (p. 830).

Fig. 1. Lateral view of male.

*Notostomus perlatus* (p. 831).

„ 2. Lateral view of female.

*Notostomus brevirostris* (p. 832).

„ 3. Lateral view of male.

*Notostomus longirostris* (p. 833).

„ 4. Lateral view of female.

PLATE CXXXVI.

*Tropiocaris planipes* (p. 835).

Fig. 1. Lateral view ; enlarged twice.

*Tropiocaris tenuipes* (p. 836).

„ 2. Lateral view ; enlarged twice.

*Hymenodora duplex* (p. 843).

„ 3. Lateral view ; enlarged one and a half times.

„ 3c. Second antenna ; scaphocerite.

„ 3d. Mandible.

„ 3f. Second siagnopod.

„ 3g. Third siagnopod.

„ 3h. First gnathopod.

„ 3i. Second gnathopod ; basal joints with branchiæ attached.

„ 3o. Fifth pereopod ; terminal joint.

*Hymenodora rostrata* (p. 847).

„ 4. Lateral view ; enlarged twice.

*Hymenodora mollis* (p. 841).

„ 5. Lateral view ; enlarged twice.



PLATE CXXXVII.

*Hymenodora glauca* (p. 847).

- Fig. 1. Lateral view ; enlarged twice.
- „ 1*d*. Mandible.
  - „ 1*m.a*. Metastoma.
  - „ 1*e*. First siagnopod.
  - „ 1*f*. Second siagnopod.
  - „ 1*g*. Third siagnopod.
  - „ 1*h*. First gnathopod.
  - „ 1*i*. Second gnathopod.
  - „ 1*k*. First pereopod.
  - „ 1*m*. Third pereopod.
  - „ 1*o*. Fifth pereopod ; terminal extremity.

*Hymenodora mollicutis* (p. 848).

- „ 2. Lateral view ; enlarged a half.
- „ 2*i*. Second gnathopod.
- „ 2*k*. First pereopod ; chela.
- „ 2*br*. Section of branchia.

PLATE CXXXVIII.

*Stylodactylus discissipes* (p. 851).

- Fig. 1. Lateral view of male; enlarged twice.  
,, 1c. Second antenna; peduncle and part of frontal margin.  
,, 1i. Second gnathopod; 1i', dactylos.  
,, 1k. First pereopod.  
,, 1k'. First pereopod; articulation of chela reversed.  
,, 1vzv. Rhipidura.

*Stylodactylus orientalis* (p. 854).

- ,, 2. Branchiæ in position.  
,, 2d. Mandible.  
,, 2e. First siagnopod.  
,, 2f. Second siagnopod.  
,, 2g. Third siagnopod.

*Stylodactylus bimaxillaris* (p. 855).

- ,, 3. Lateral view of female; enlarged twice.  
,, 3h. First gnathopod.

PLATE CXXXIX.

*Leptochela serratorbita* (p. 859).

Fig. 1. Lateral view ; enlarged five times.

- „ 1c. Frontal margin of carapace, showing ophthalmopod in position.
- „ 1d. Mandible.
- „ 1e. First siagnopod.
- „ 1f. Second siagnopod.
- „ 1h. First gnathopod.
- „ 1i. Second gnathopod.
- „ 1k. First pereopod ; chela.
- „ 1o. Fifth pereopod.
- „ 1z. Telson.

*Leptochela gracilis* (p. 860).

- „ 2. Lateral view of male ; enlarged.
- „ 2o. Fifth pair of pereiopoda.
- „ 2br. Branchial plume ; br'', section of same.

*Leptochela robusta* (p. 862).

- „ 3. Lateral view of female ; enlarged three times.
- „ 4. Lateral view of male ; enlarged three times.

PLATE CXL.

*Pasiphæa cristata* (p. 865).

Fig. 1. Lateral view of female; enlarged a half.

*k.* First pereopod; chela.

*k'.* First pereopod; extremity of pollex and dactylos magnified.

*m.* Third pereopod.

*n.* Fourth pereopod.

*o.* Fifth pereopod.

*p.* First pleopod; inner ramus in position.

*q.* Second pleopod with stylamblys.

*v.* Sixth pleopod; portion enlarged, showing the diæresis.

*br.* Section of branchial plume.

„ 2. Branchiæ in position.

„ 3. Parasite; 3', the same, enlarged.

PLATE CXLI.

*Pasiphæa cristata* (p. 865).

Fig. 1*d*. Mandible.

„ 1*e*. First siagnopod.

„ 1*f*. Second siagnopod; 1*f*'', two hairs, enlarged.

„ 1*g*. Third siagnopod.

„ 1*h*. First gnathopod.

*Pasiphæa amplidens* (p. 870).

„ 2. Lateral view of carapace.

*Pasiphæa acutifrons* (p. 871).

„ 3. Lateral view.

„ 3*z*. Telson.

*Oryphania tenuimana* (p. 872).

„ 4. Lateral view; enlarged.

„ 4*k*. First pereopod.

„ 4*l*. Second pereopod.

„ 4*z*. Telson.

PLATE CXLII.

*Oodeopus geminidentatus* (p. 876).

Fig. 1. Lateral view ; enlarged twenty-five times.

„ 1z. Telson.

*Oodeopus serratus* (p. 877).

„ 2. Lateral view ; enlarged twenty-five times.

„ 2z. Telson.

*Oodeopus serratus*, var. (p. 878).

„ 3. Lateral view ; enlarged fifteen times.

*Oodeopus armatus* (p. 879).

„ 4. Lateral view ; enlarged twenty times.

*Oodeopus longispinus* (p. 881).

„ 5. Lateral view ; enlarged twenty times.

„ 5z. Telson.

PLATE CXLIII.

*Oodeopus intermedius* (p. 879).

Fig. 1. Lateral view ; enlarged twenty times.

„ 1v.z.v. Rhipidura.

*Oodeopus duplex* (p. 880).

„ 2. Lateral view ; enlarged twenty times.

*Oodeopus gibbosus* (p. 882).

„ 3. Lateral view ; enlarged twenty-two times.

„ 3v.z.v. Rhipidura.

„ 4. Dorsal view.

PLATE CXLIV.

*Icotopus arcurostris* (p. 886).

- Fig. 1. Lateral view ; enlarged ten times.  
,, 1d. Mandible.  
,, 1f. Second siagnopod.  
,, 1g. Third siaguopod.  
,, 1br. Branchial plume.  
,, 1c. Cephalon.

*Hectarthropus exilis* (p. 889).

- ,, 2. Lateral view ; enlarged ten times.  
,, 2t. Fifth somite ; dorsal aspect.

*Hectarthropus compressus* (p. 891).

- ,, 3. Lateral view ; enlarged eleven times.

*Hectarthropus expansus* (p. 892).

- ,, 4. Dorsal view ; enlarged twelve times.  
,, 5. Lateral view ; enlarged twelve times.

*Hectarthropus tenuis* (p. 893).

- ,, 6. Lateral view ; enlarged ten times.



PLATE CXLV.

*Eretmocarís remípes* (p. 895).

Fig. 1. Lateral view; enlarged ten times.

*Eretmocarís longicaulis* (p. 897).

„ 2. Lateral view; enlarged eighteen times.

*Eretmocarís stýlorostris* (p. 898).

„ 3. Lateral view; enlarged fifteen times.

*Eretmocarís corníger* (p. 900).

„ 4. Lateral view; enlarged eighteen times.

PLATE CXLVI.

*Amphion—Development (p. 902).*

- Fig. 1. Zoea with two pairs of legs; ventral aspect; enlarged thirty times; *h*, first gnathopod; *i*, second gnathopod.
- „ 2z. Telson of a second specimen (pp. 903, 915).
- „ 3. Young with three pairs of legs; ventral aspect of cephalon and pereion; *ph*, *ph*, phymacerite (pp. 903, 915).
- „ 3d. Oral appendages.
- „ 4. Young with fourth pair of legs (*l*) in process of development; ventral aspect; enlarged twenty times (pp. 905, 915).
- „ 5. A second specimen; portion of pereion showing the fourth pair (*l*) biramose (p. 905).
- „ 6. Cephalon of a specimen with five pairs of legs attached to the pereion; ventral surface, magnified; *ph*, *ph*, phymacerite.

PLATE CXLVII.

*Amphion reynaudii* (p. 906).

- Fig. 1. Female with six pairs of legs ; ventral aspect ; enlarged thirteen times ; *h, i*, first and second gnathopods ; *k, l, m, n*, first to fourth pereopods ; *n.c.* nucleated cells near the fourth pair of legs ; *n.c'*, the same more magnified.
- „ 1*br.* Branchial plume.
- „ 1*d.* Mandible.
- „ 1*e.* First siagnopod.
- „ 1*f.* Second siagnopod.
- „ 1*g.* Third siagnopod.
- „ 1*z.* Telson.
- „ 2. Cephalon and pereion of a specimen (adult male ?) with seven pairs of legs ; ventral aspect ; enlarged sixteen times ; *h, i*, first and second gnathopods ; *k-o*, pereiopoda ; *te*, testes (?) ; *te''*, structure believed by Suhm to be testes ; *h.c.*, hepatic cells ; *h.c''*, the same, magnified (p. 910).
- „ 2*br.* Branchial plume, enlarged.

PLATE CXLVIII.

*Amphion provocatoris* (p. 913).

- Fig. 1. Ventral aspect ; enlarged seven times.  
,, 2. Cephalon of the same ; dorsal aspect.  
,, c. Tooth on dorsal surface of carapace.  
,, *p*. First pleopod of male (?).  
,, *q*. Second pleopod of same.  
,, z. Telson ; extremity.

PLATE CXLIX.

- Fig. 1. *Sylon challenger*, attached to *Spirontocaris spinus*, a part of the right side of the Shrimp having been taken away; *x*, the injured part at the surface of the sac; I., II., III., IV., and V., the first to the fifth pleopods of the left side of the Shrimp; *Va*, the fifth pleopod of the right side. Magnified 13 diameters.
- „ 2. *Sylon challenger*, seen from below, with a part of the wall of the host attached; *e*, the ovary of the parasite. Magnified 12 diameters.
- „ 3. *Sylon challenger*, front view; *x*, the injured part at the surface. Magnified 12 diameters.
- „ 4. *Sylon schneideri*, front view; *a*, openings leading into the mantle-cavity; B, transverse section of *Hippolyte pusiola*. Magnified 12 diameters.
- „ 5. *Sylon schneideri*, seen from the side, the lateral parts of the exoskeleton of the second and third abdominal segment of the *Hippolyte* being taken away; *a* and B as in fig. 4; II.-IV., second to fourth pleopod. Magnified 12 diameters.

## PLATE CL.

- Fig. 1. *Sylon challengeri*, part of a transverse section, passing through the ovary, *e*, and the "Eikittdruse," A; *a*, connective tissue of the mantle; *b*, epithelium surrounding the visceral mass; *c*, ramified tubes of the gland; *d*, female genital pore. Magnified 136 diameters.
- „ 2. Part of the mantle and visceral mass of *Sylon schneideri*; *a*, connective tissue of the mantle; *b*, epithelium surrounding the visceral mass; *e*, ovary; *f*, chitinous outer wall of the mantle; *g*, thickening of the chitinous outer wall at the place where later on the openings of the mantle-cavity occur; *h*, epithelium of the outer side of the mantle; *i*, epithelium at the inner side of the mantle; *l*, blood-plasma (?); *n*, nervous system. Magnified 136 diameters.
- „ 3. Part of the visceral mass of *Sylon schneideri*; *b* and *e* as in fig. 2; *c*, connective tissue; *l*, blood-plasma (?). Magnified 136 diameters.
- „ 4. Section through a part of *Hippolyte pusiola*, with *Sylon schneideri* attached to it; *e*, ovary of the parasite; *n*, nervous system of the *Hippolyte*; B, basilar membrane; *r*, roots of the *Sylon*; *m*, abdominal flexor muscles of the host. Magnified 30 diameters.
- „ 5. Section in front of the attachment of *Sylon schneideri* to *Hippolyte pusiola*; *e*, *m*, *n*, and *r* as in fig. 4; *t*, testis. Magnified 30 diameters.
- „ 6. Section of the same *Sylon* as in the two foregoing figures; *e*, *t*, as in fig. 5; *t'*, communication of the interior of the testis with the mantle-cavity. Magnified 41 diameters.

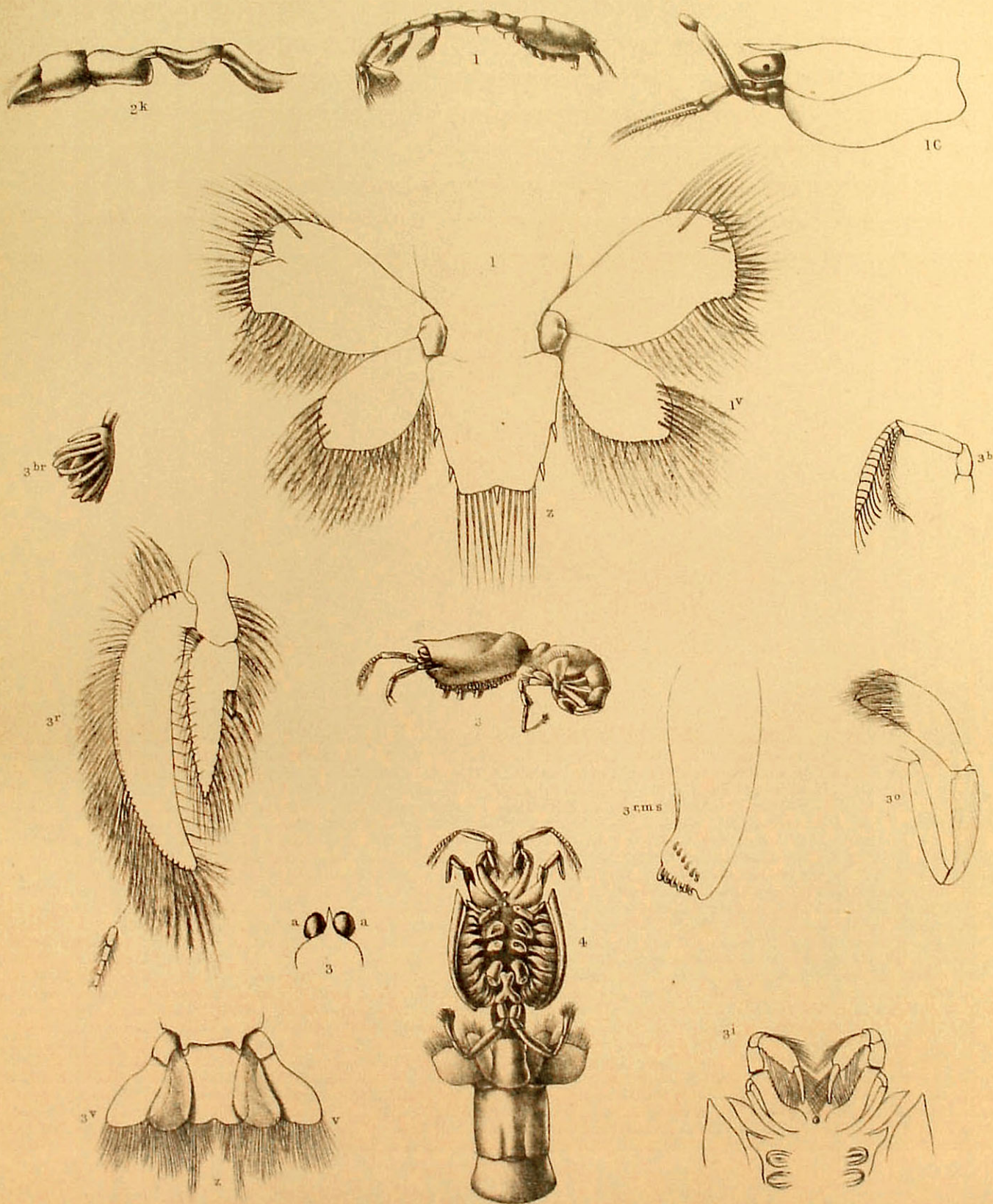


C.S.B. ad. nat., J. Hawkins, lith.

Bredden & Son, Plymouth, imp.

1. CHEIROPLATEA CENOBITA.

2. CHERAMUS ORIENTALIS.



1. CHERAMUS OCCIDENTALIS      2. CALLIANASSA OCCIDENTALIS.  
 3 & 4. SCALLASIS AMBOYNÆ.





C.S. B. ad nat., J. Hawkins lith.

THALASSINA SCORPIONOIDES.

Branden & Sen. Plymouth, imp.

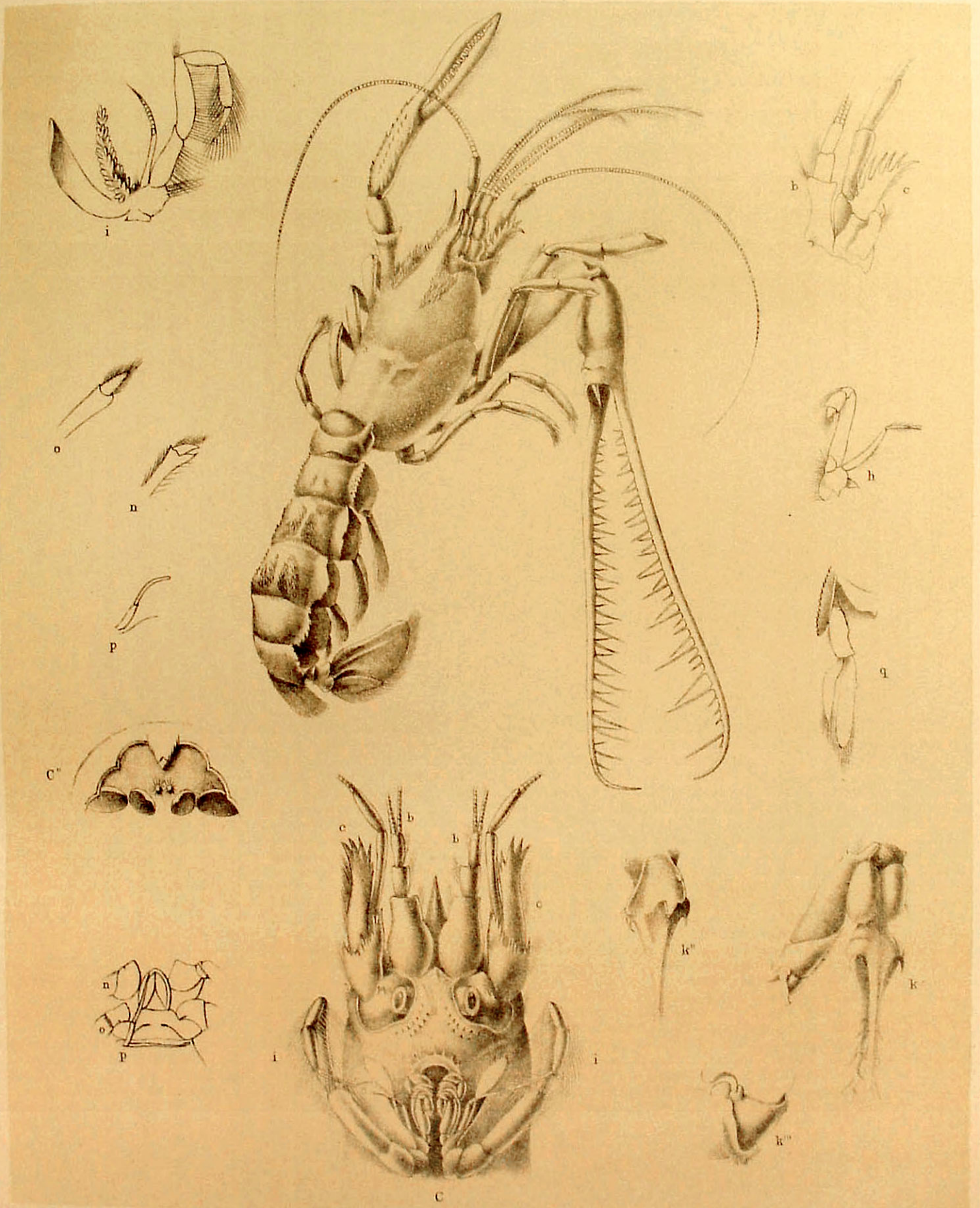


C. S. B. ad nat., J. Hawkins, lith.

Brendon & Son, Plymouth, imp.

THALASSINA SCORPIONIDES, (BRANCHIA.)

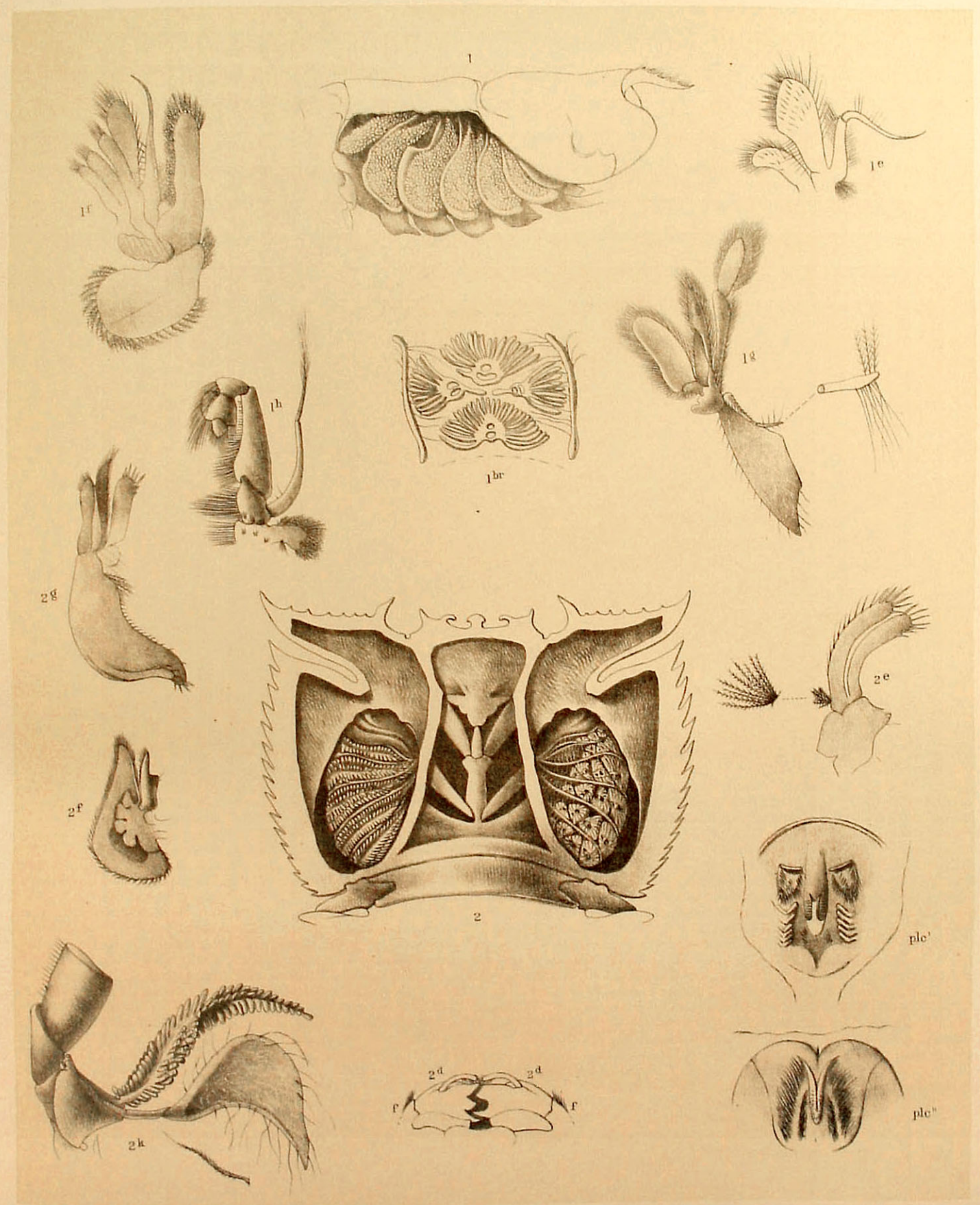




C.S.B. ad nat. J. Hawkins lith

Breeden & Son, Plymouth, imp.

THAUMASTOCHELES.

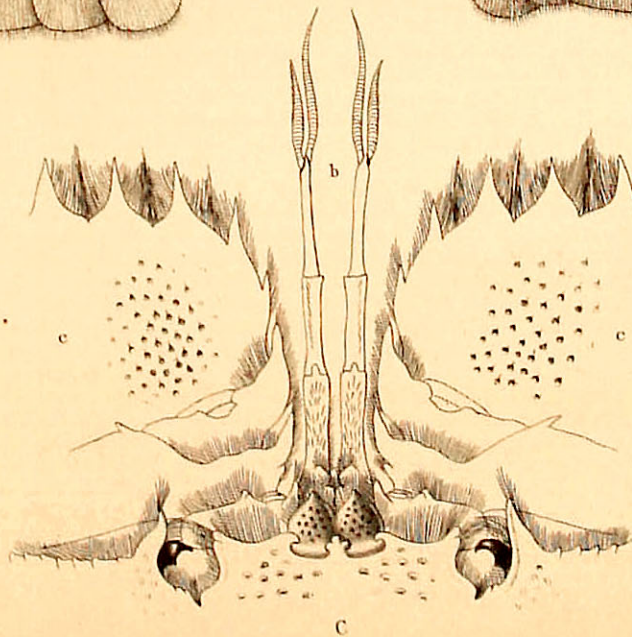
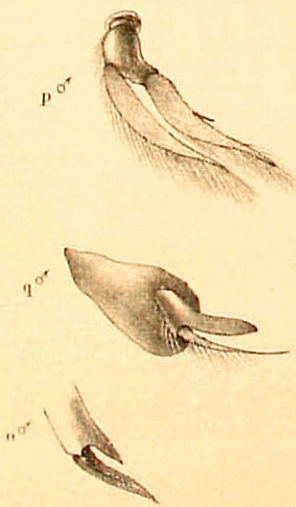
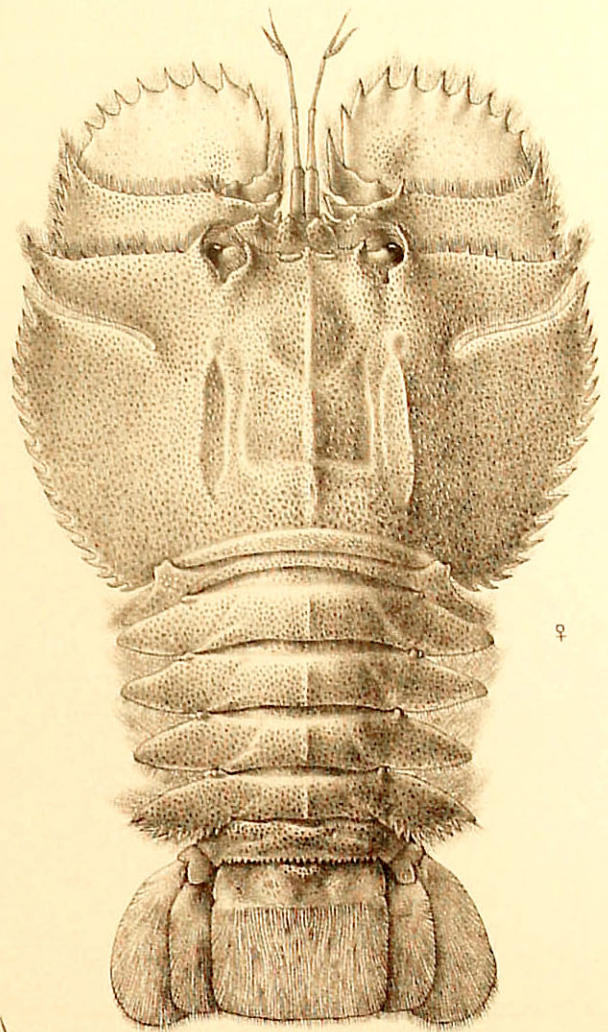
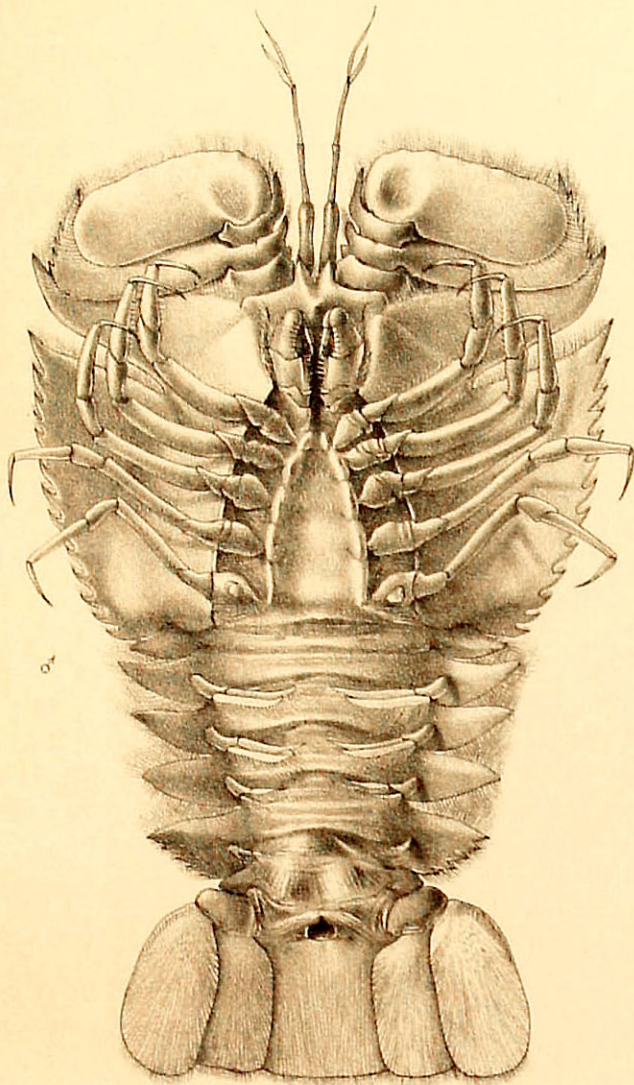


C. S. B. ad. nat., J. Hawkins, lith.

Brendon & Son, Plymouth, imp.

1. THAUMASTOCHELES ZALEUCUS.

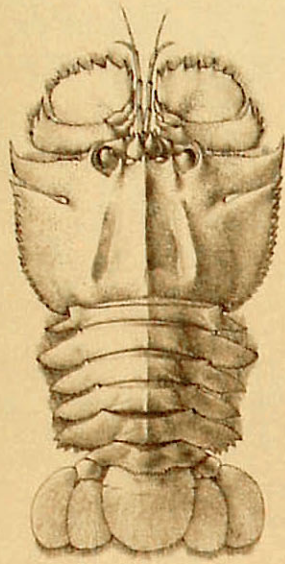
2. IBACCUS VERDI.



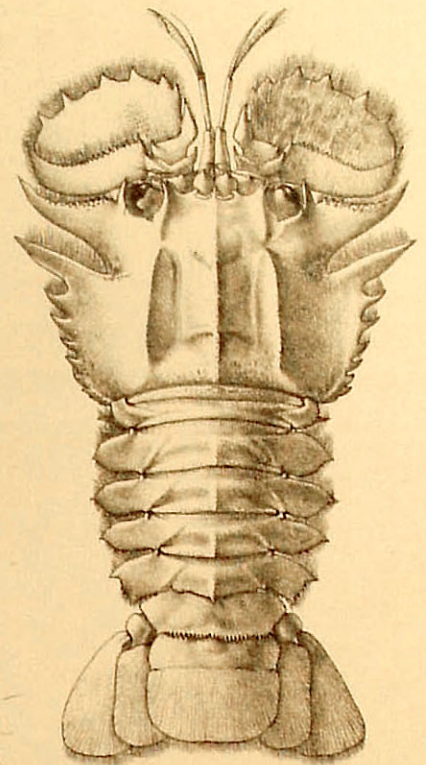
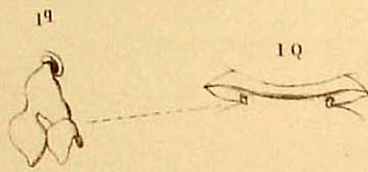
C.S.B. del. nat. J. Hawkins, lith.

Brendon & Son, Plymouth, imp.

IBACCUS VERDI.



1



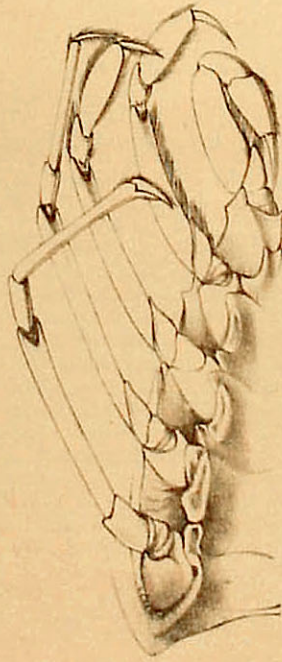
2 ♀



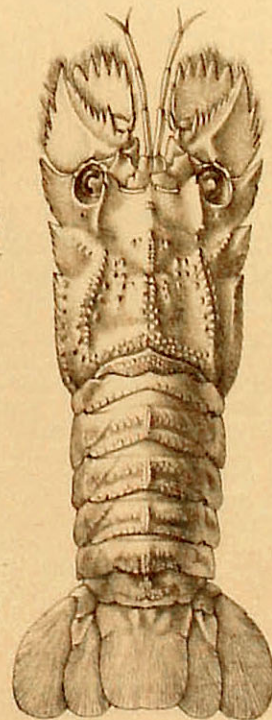
3



3



4



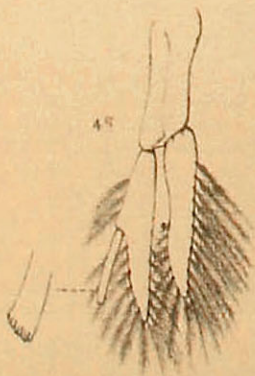
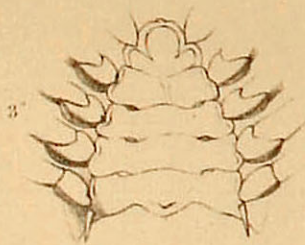
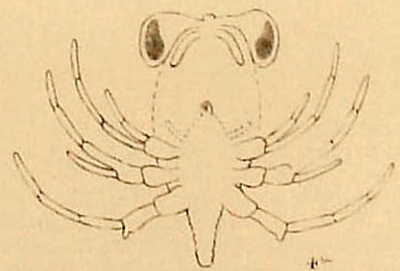
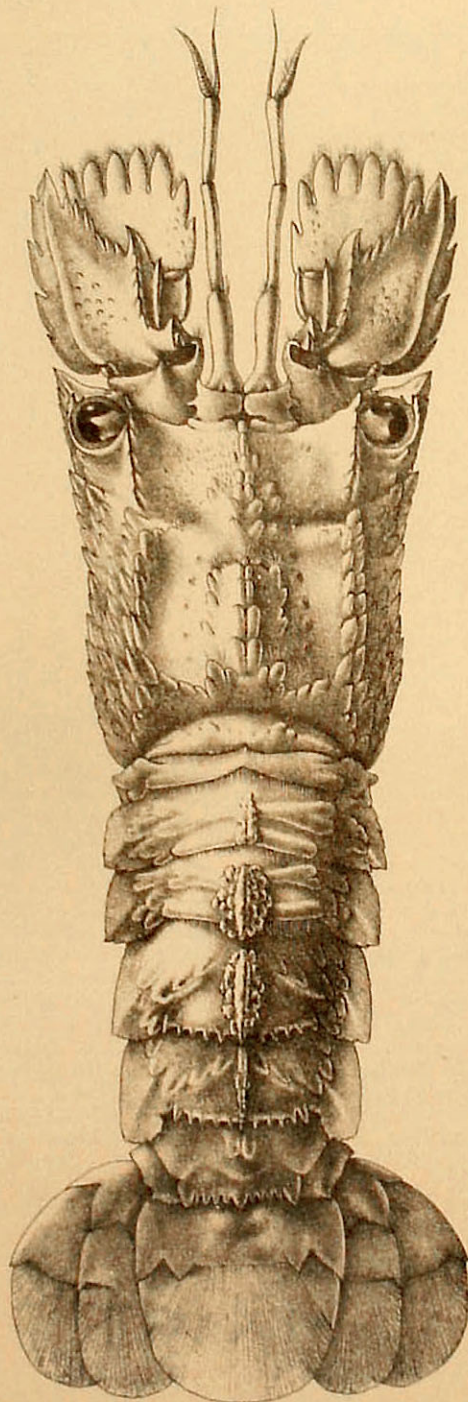
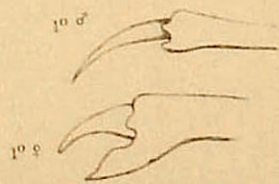
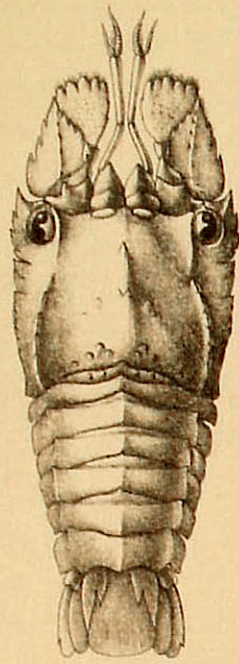
4

C.S.B. ad nat. J. Hawkins, lith.

Bresiden & Son Plymouth, imp.

- 1. IBACCUS BREVIPES.
- 2. " ALTICRENATUS. ♀

- 3. ARCTUS SORDIDUS ♀
- 4. " ORIENTALIS. ♀



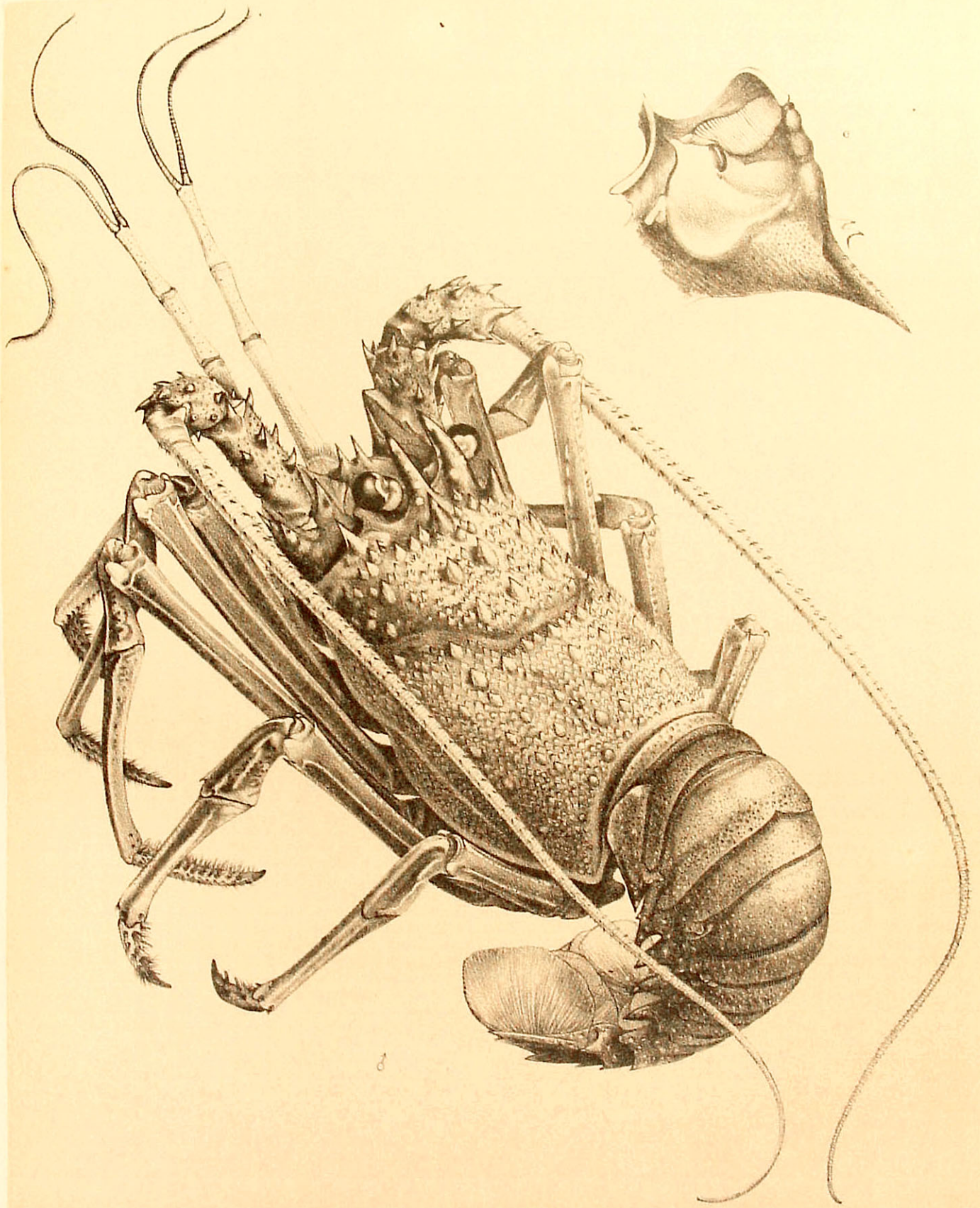
C.S.B. ad. nat. J. Hawkins, 1891.

Brendon & Son, Plymouth, Imp.

1 ARCTUS TUBERCULATUS.  
2. " " ENLARGED.

3. ARCTUS IMMATURUS.  
4. " " PYGMÆUS.

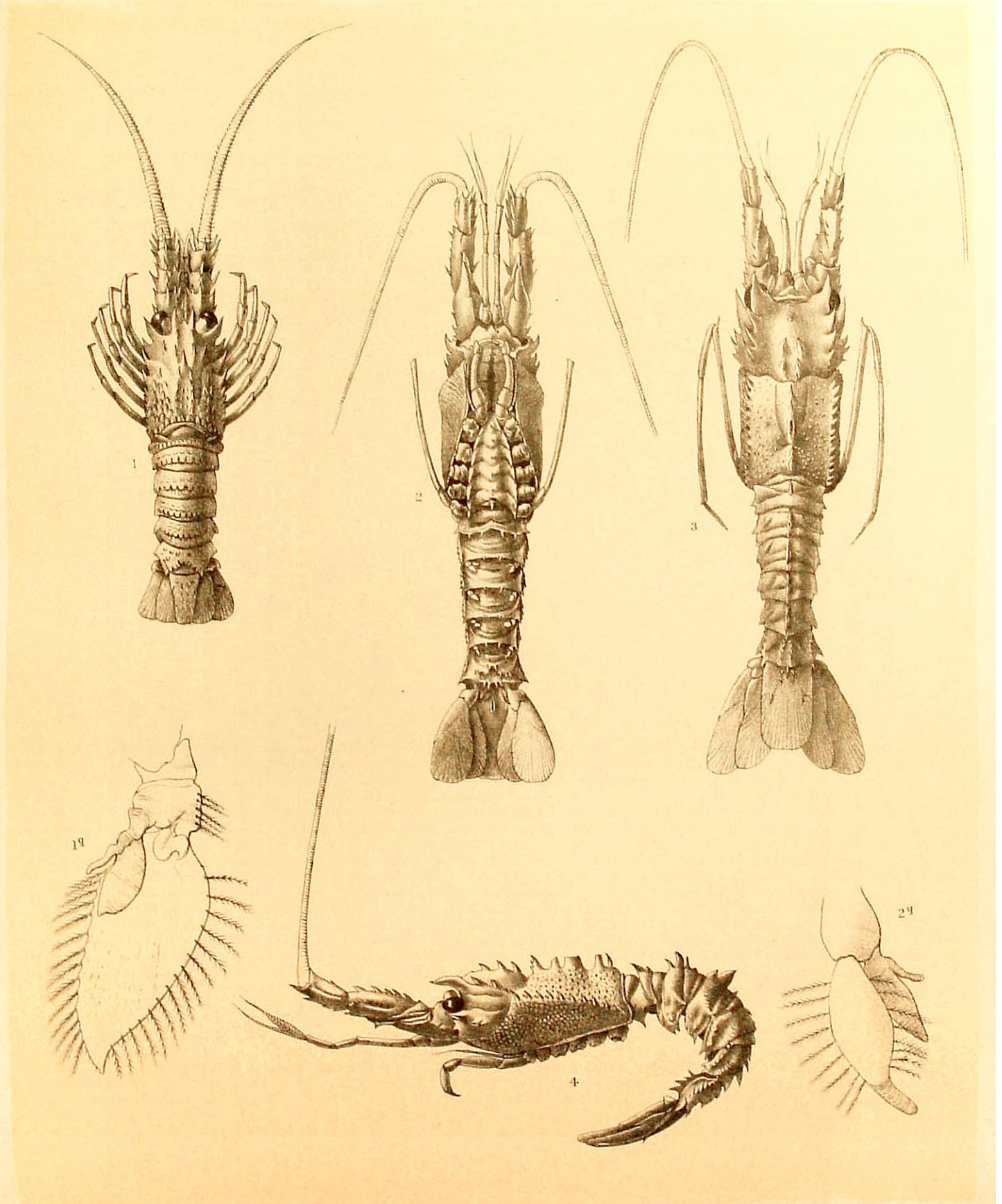




J. C. Richard del. ad nat.

Hartnert imp.

PANULIRUS GUTTATUS, var.

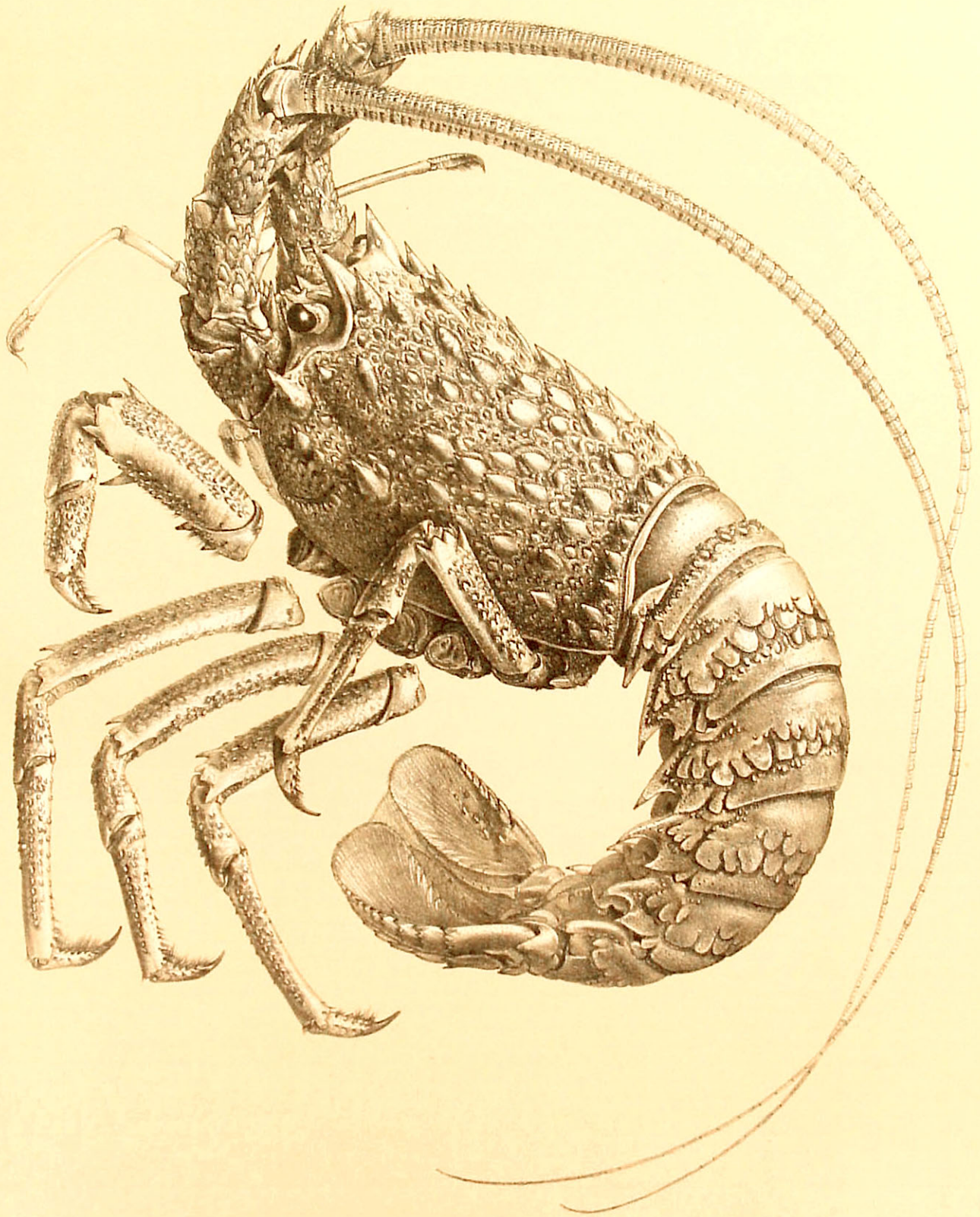


C.S.B. ad nat., J. Hawkins, lith.

Brenden & Son, Plymouth, imp.

1. PALINURUS LALANDII.  
2. PANULIRUS ANGULATUS. (VENTRAL)

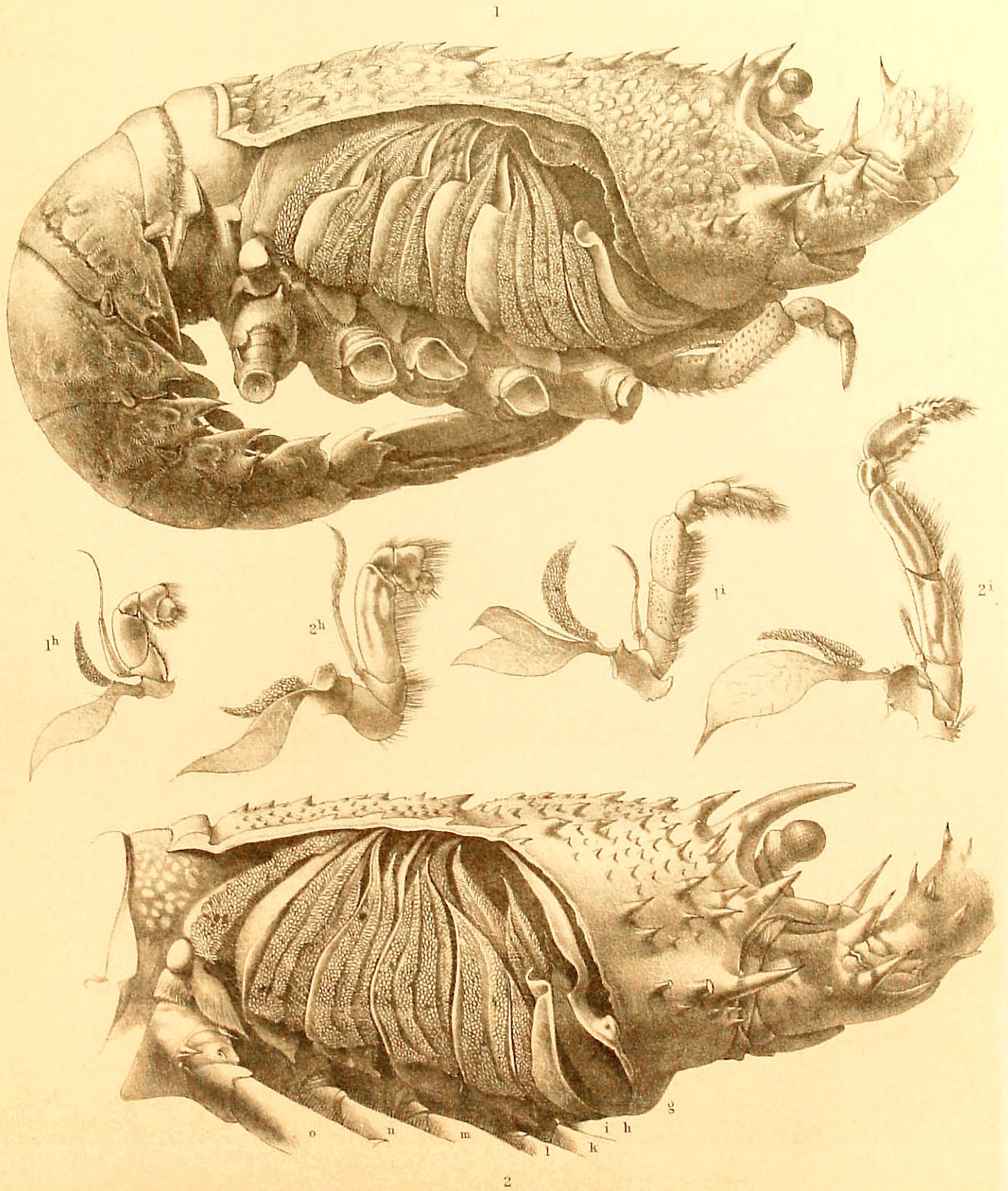
3. PANULIRUS ANGULATUS. (DORSAL)  
4. " " LATERAL)



J.C. Stead's del.

PALINOSTUS LALANDII.

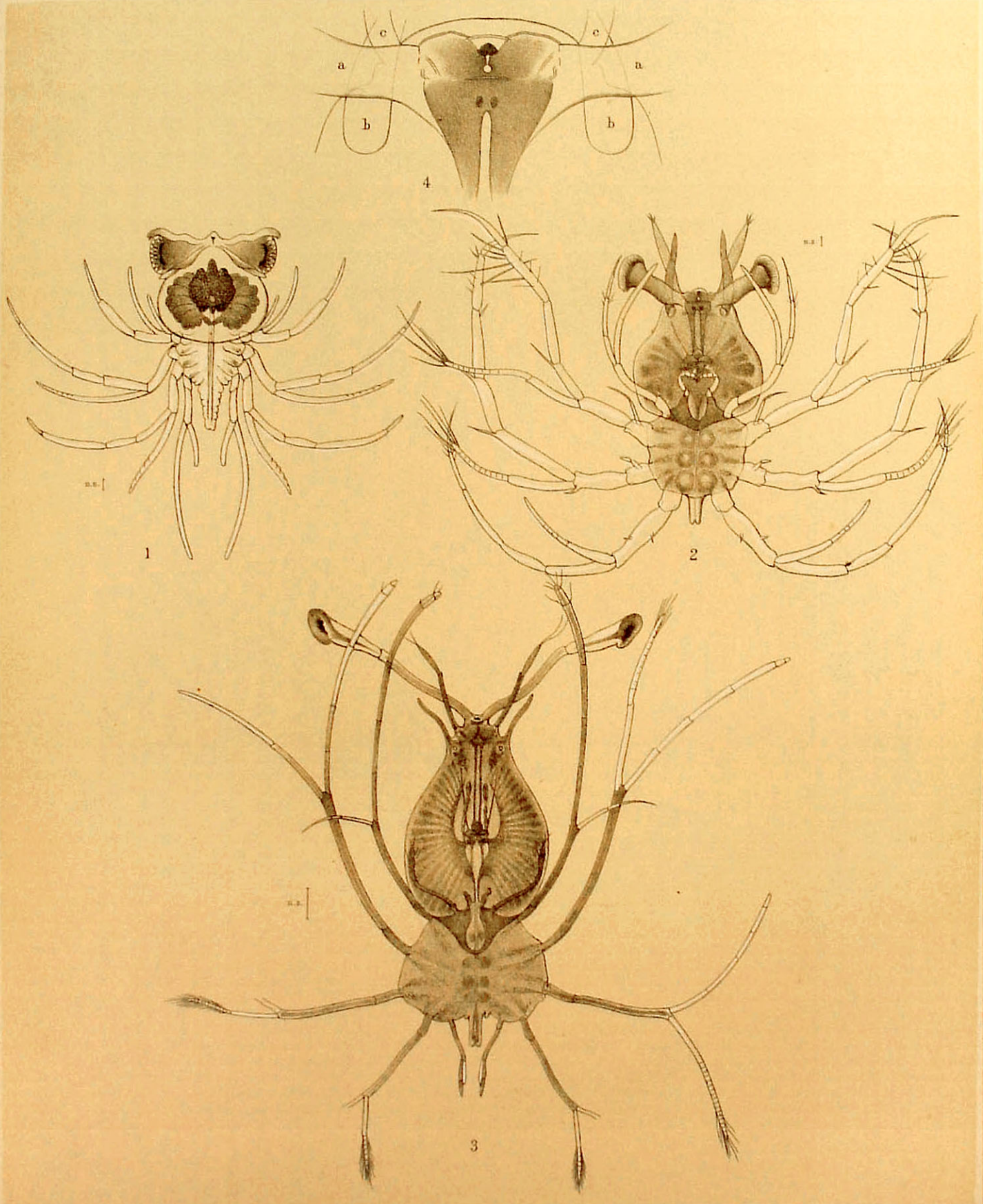
Barham imp.



C. S. B. ad. nat., J. Hawkins, lith.

Breulon & Son, Plymouth, eng.

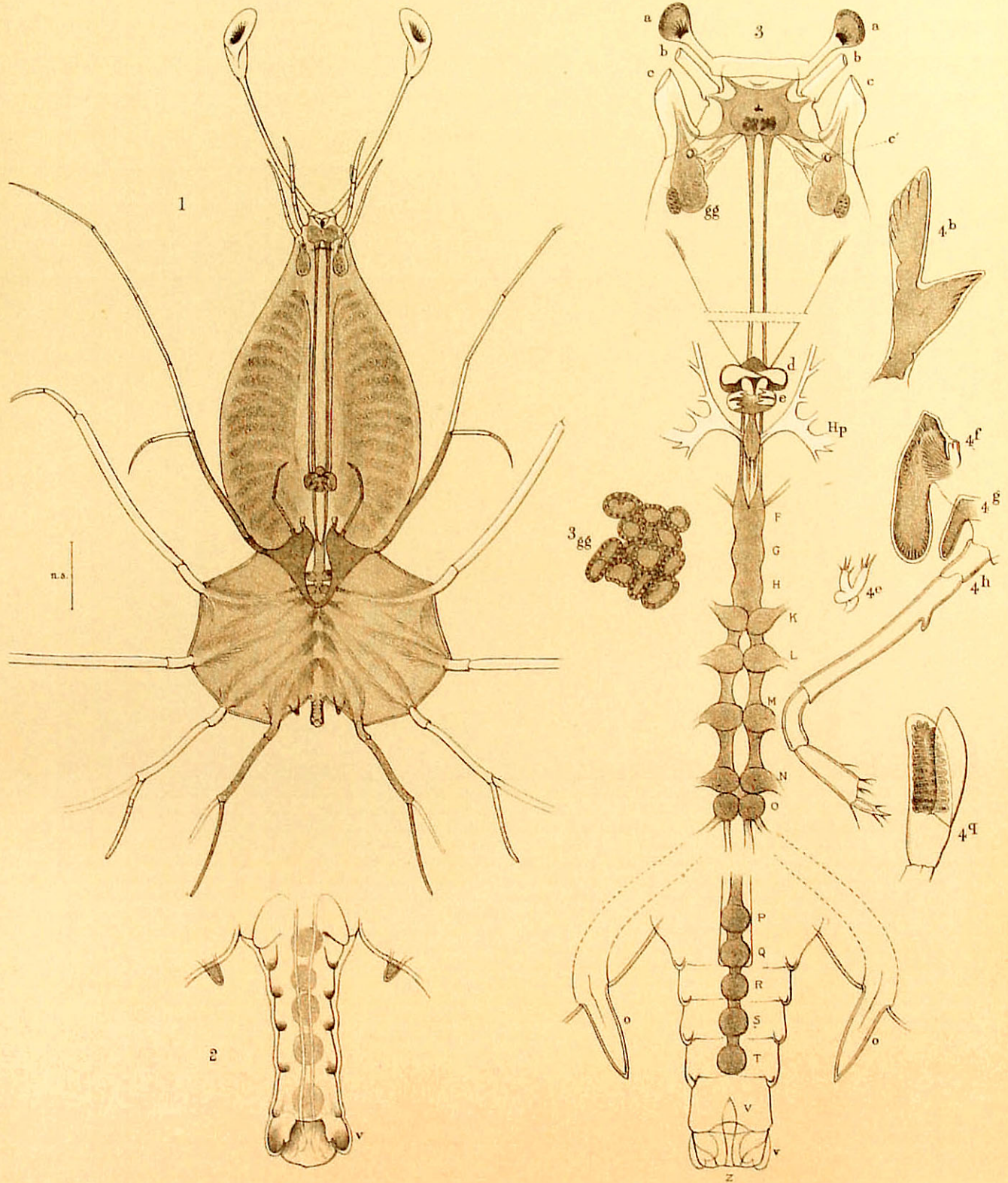
1. PALINURUS LALANDII. (BRANCHIÆ)  
 2. PANULIRUS PENICILLATUS, (D°)



G. S. P. sc. nat.

M<sup>r</sup> Farlane & Evesque, Lith<sup>r</sup> Edou<sup>r</sup>

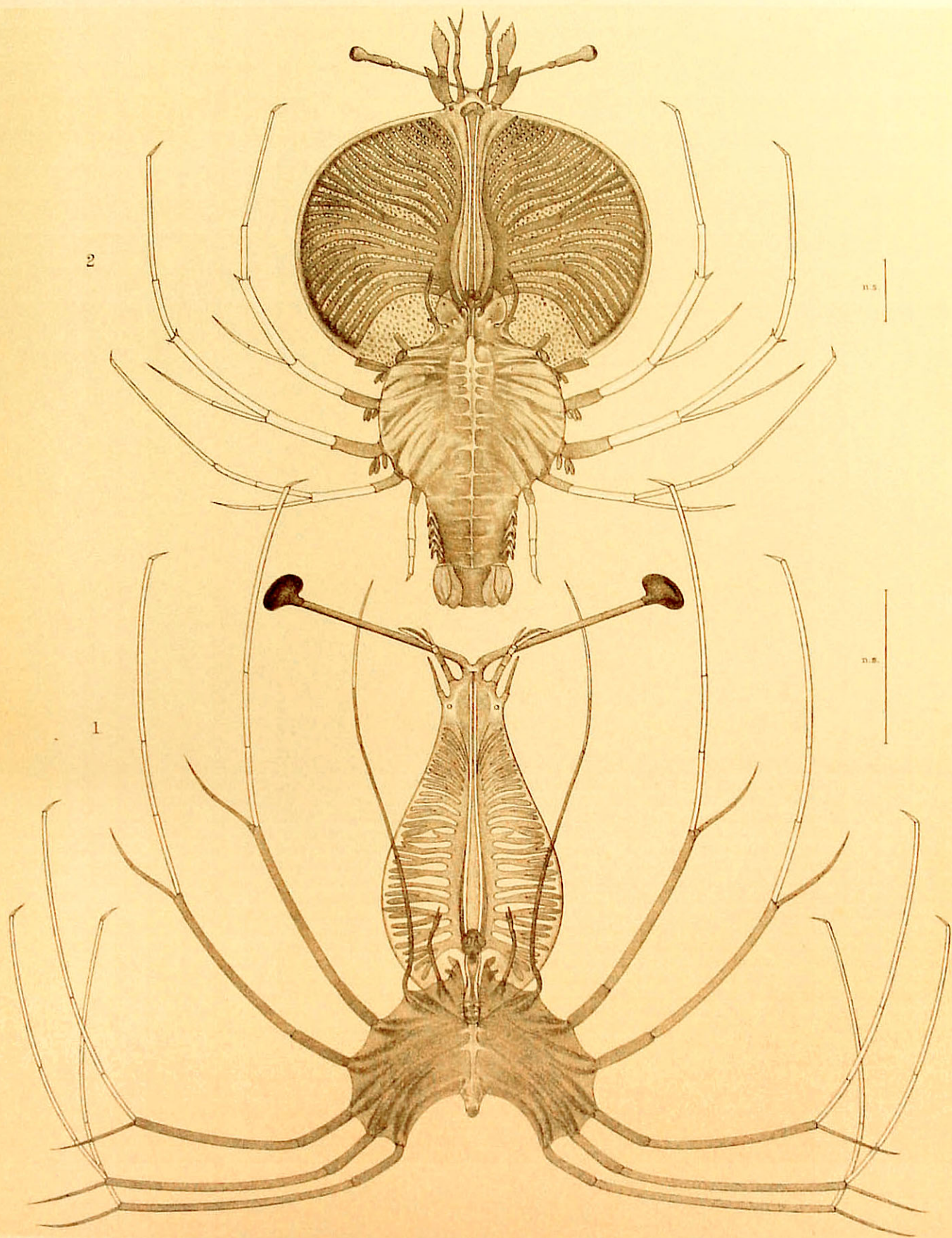
PALINURIDÆ, PHYLLOSOMA. (DEVELOPMENT)



C. B. D. ad. nat.

McFarlane & Evans, Lith. Edin.

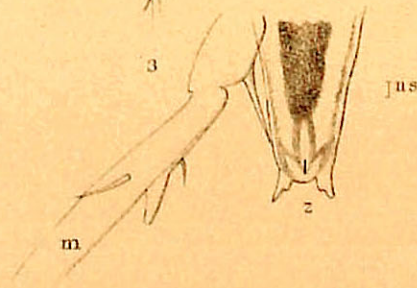
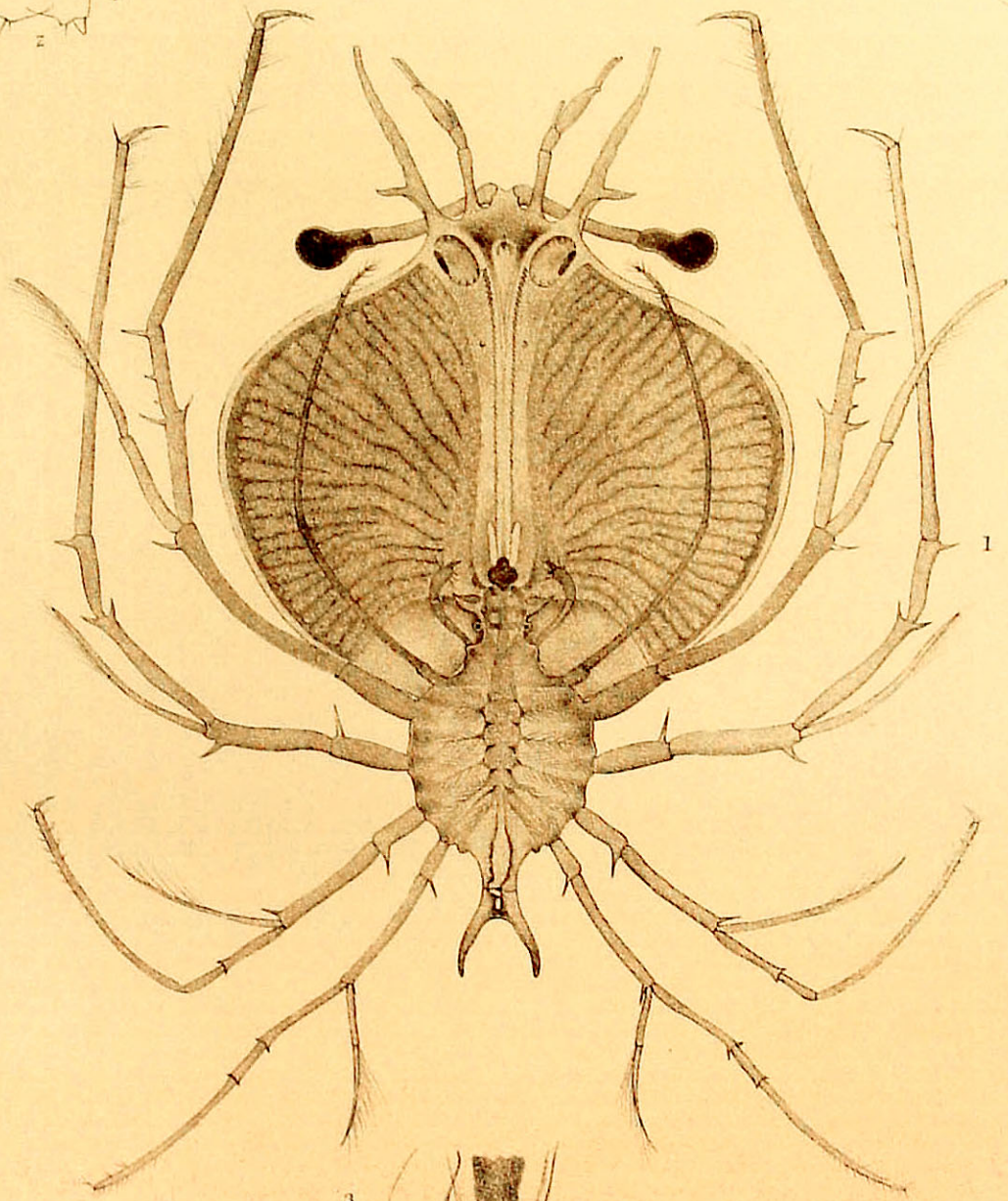
1-3. PALINURIDÆ, PHYLLOSOMA, (DEVELOPMENT)  
4. SCYLLARIDÆ, " " " ( D° )



C.S.B. ad nat.

M. Farlane & Erskine, Lithrs. Edin.

2 SCYLLARIDÆ, PHYLLOSOMA, (DEVELOPMENT)  
1 PALINURIDÆ, " " " (D♀)

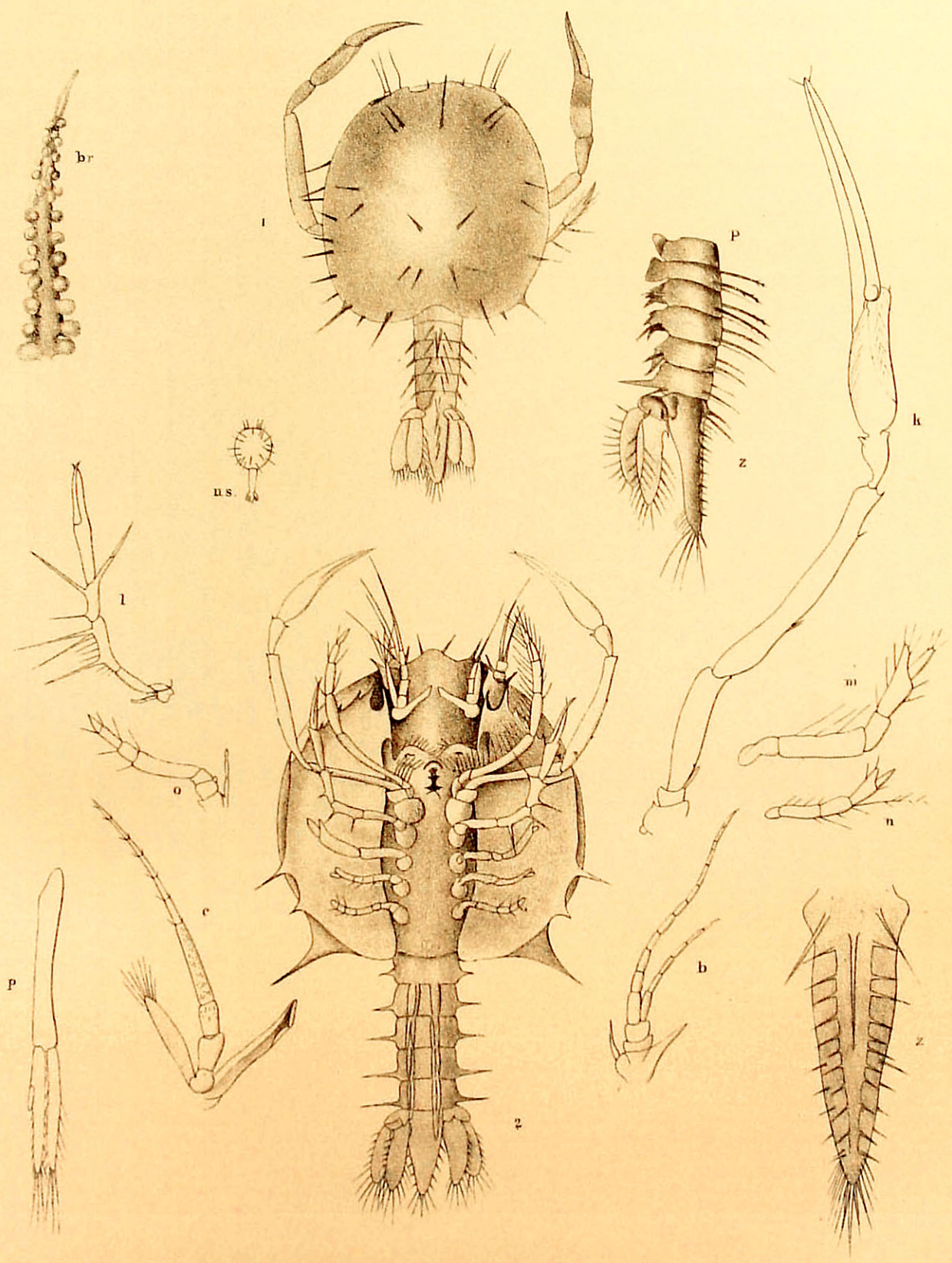


C.S. Balzani. W. Purkiner del.

Hartnagel imp.

SCYLLARIDAE (Development)  
 1. PHYLLOSOMA FURCICAUDATUM.  
 2.    D<sup>o</sup>    VERDENSE.  
 3.    D<sup>o</sup>    PHILIPPINENSE.

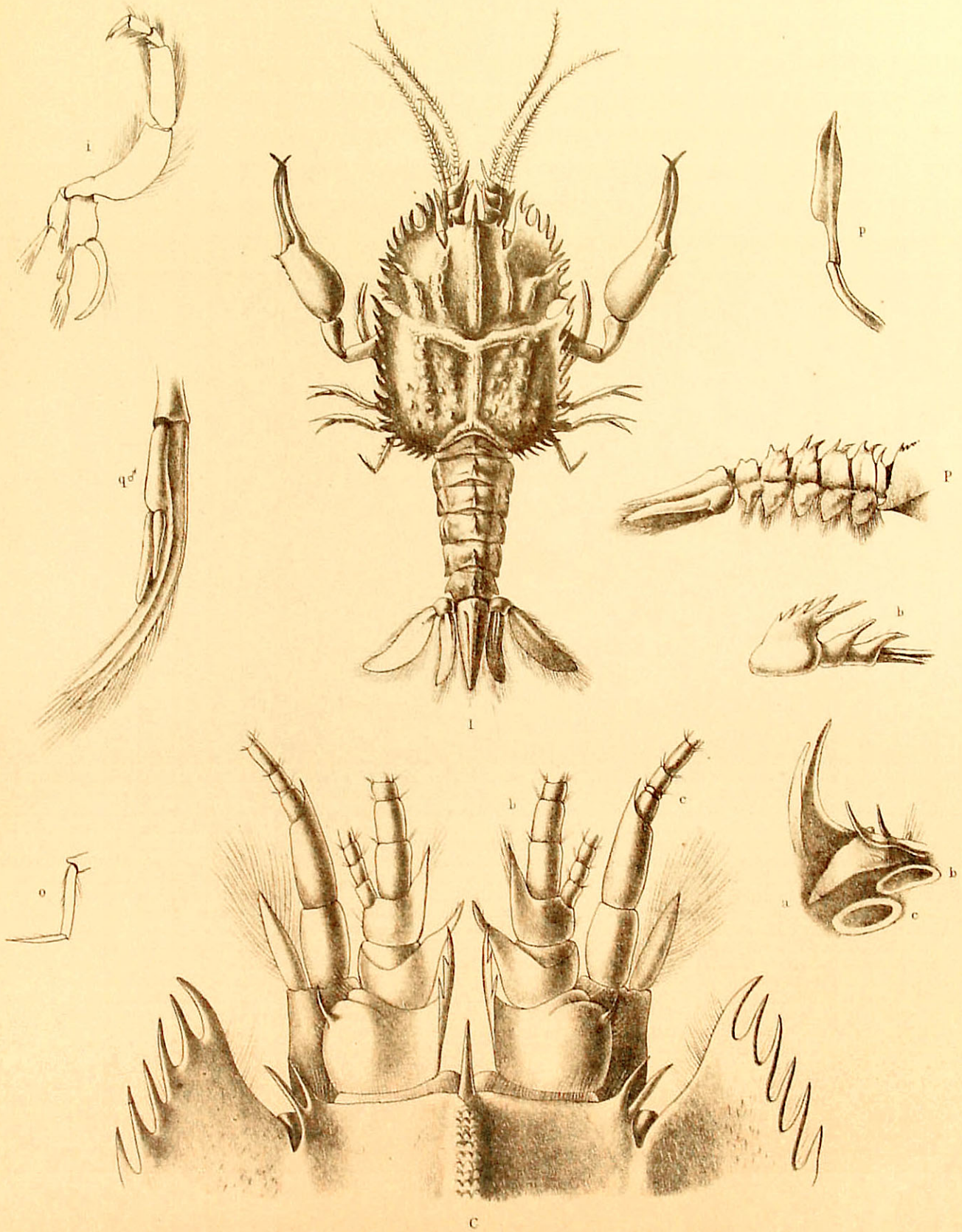


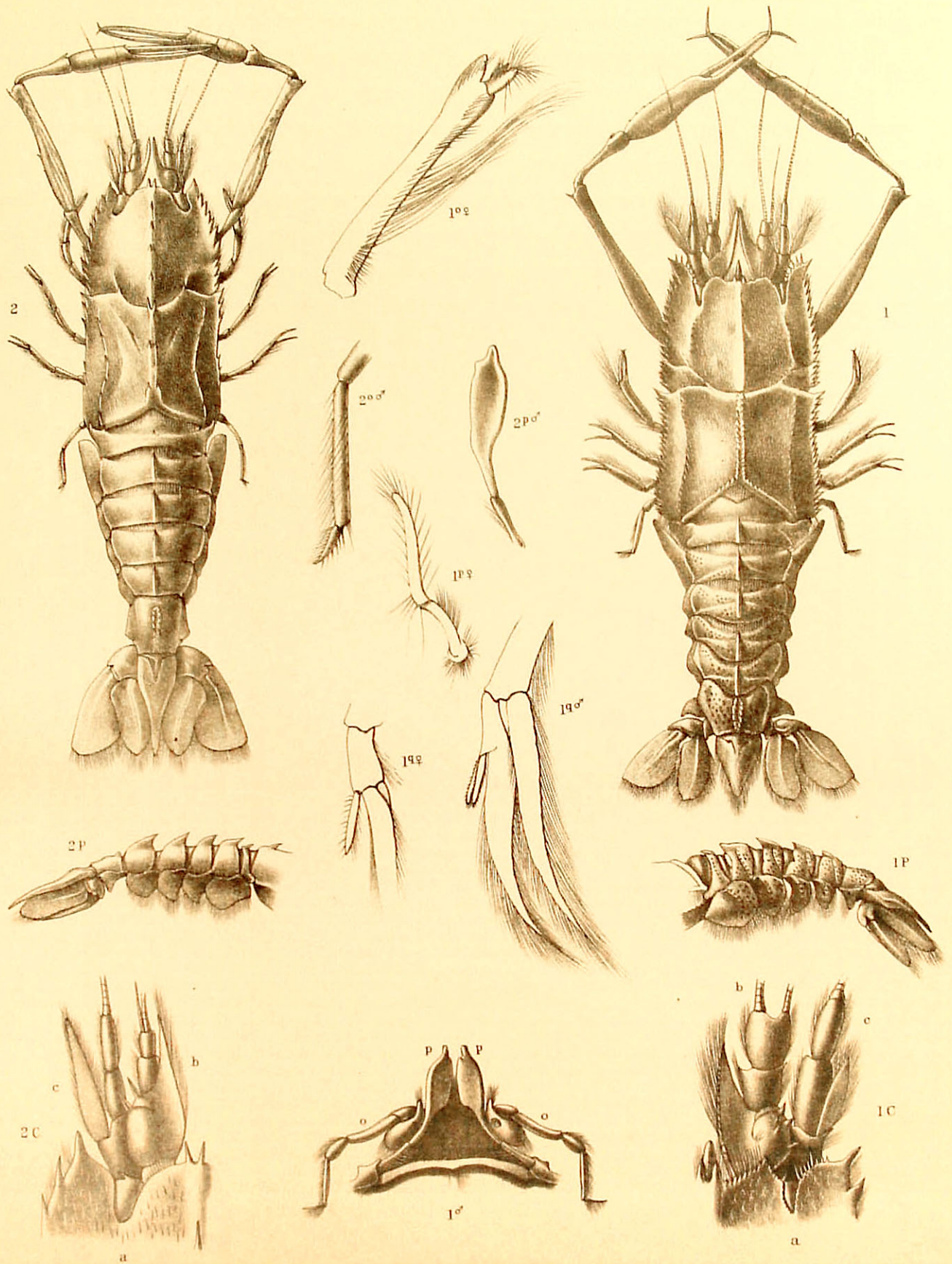


C.S.B. del. nat. W. Purkiss. lith.

Hanbart imp.

1. ERYONEICUS CÆCUS  
 2. D<sup>o</sup> D<sup>o</sup> (VENTRAL)

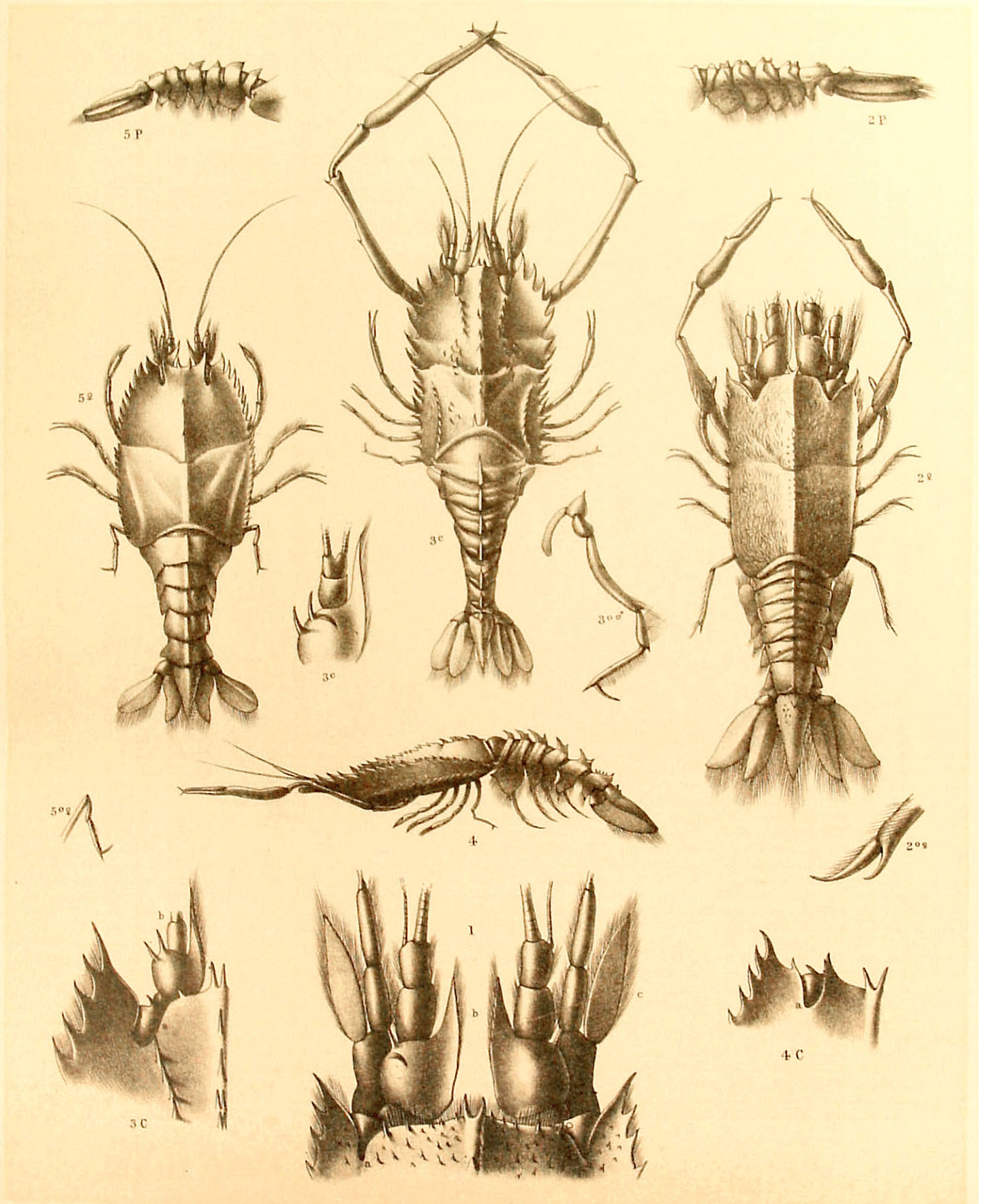




CSB ad nat. J. Hawkins, lith.

Reagan & Son, Plymouth, Mass.

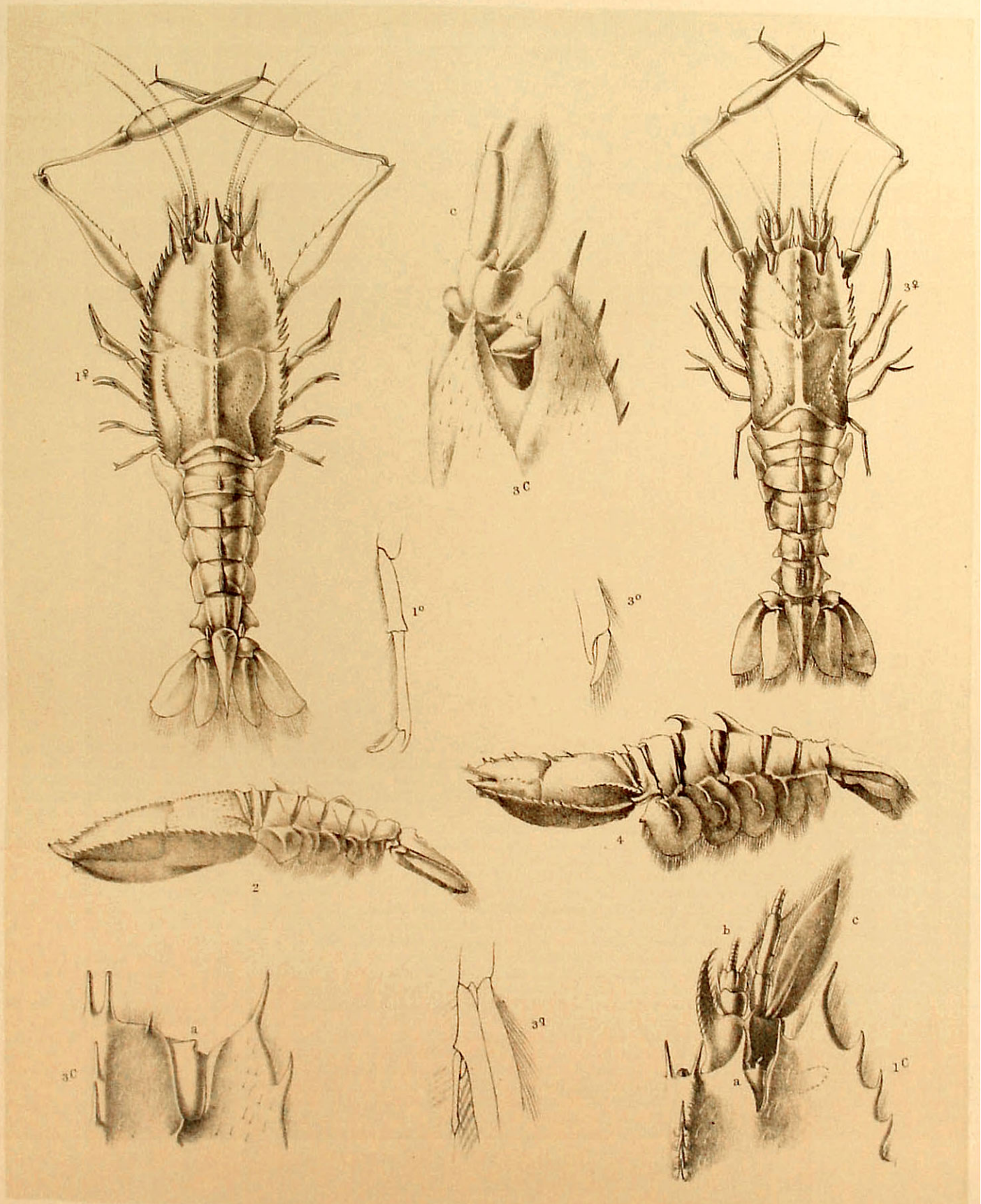
1. POLYCHELES BACCATA.  
 2. " " HELLERI.



C.S.B. ad nat. J. Hawkins, lith.

Brendon & Son Plymouth, imp.

1. PENTACHELES HELLERI.      3 & 4. PENTACHELES SUHMI.  
 2. " " OBSCURA.            5. " " LAEVIS.

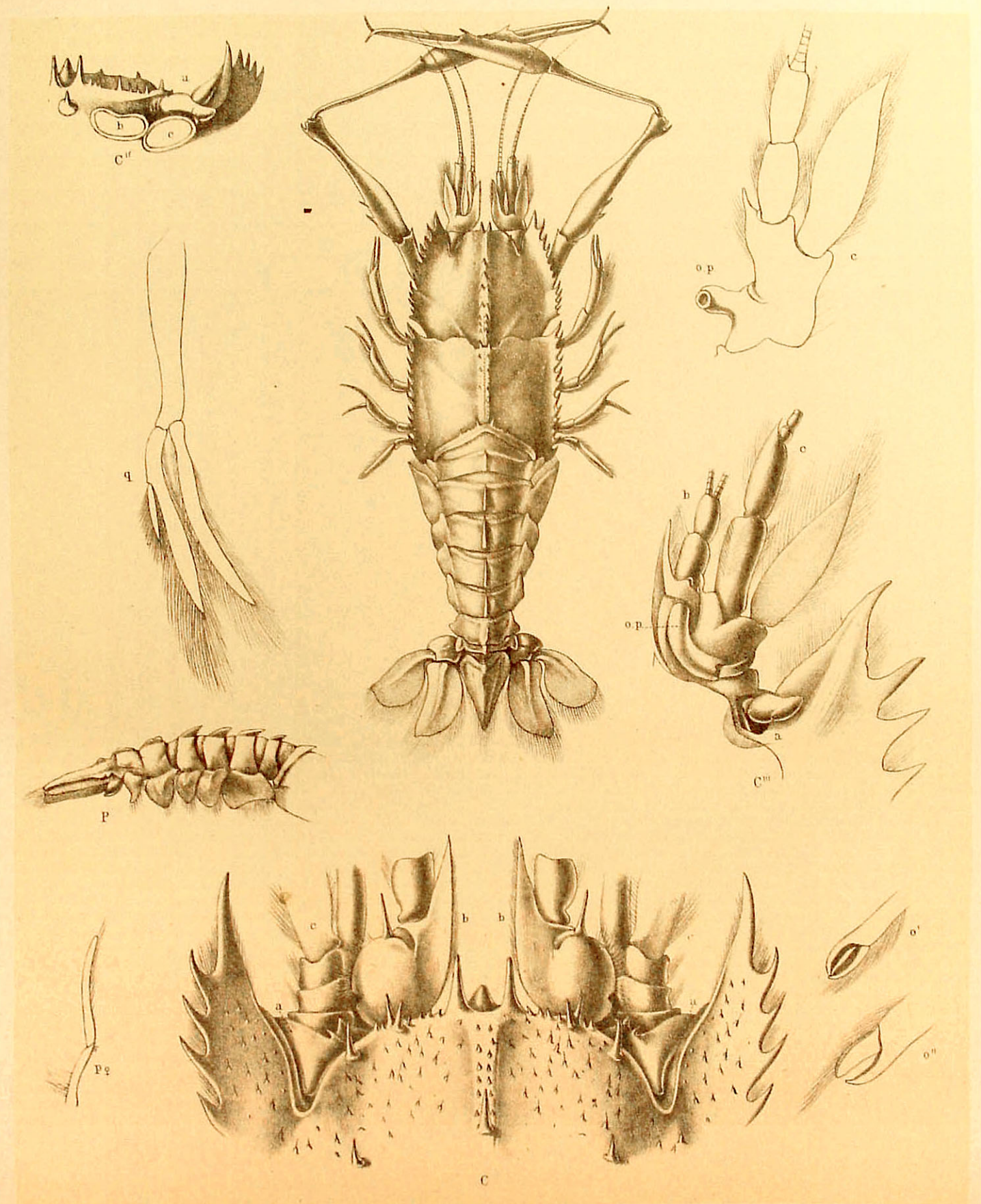


CSB and nat. J. Hawkins, lith.

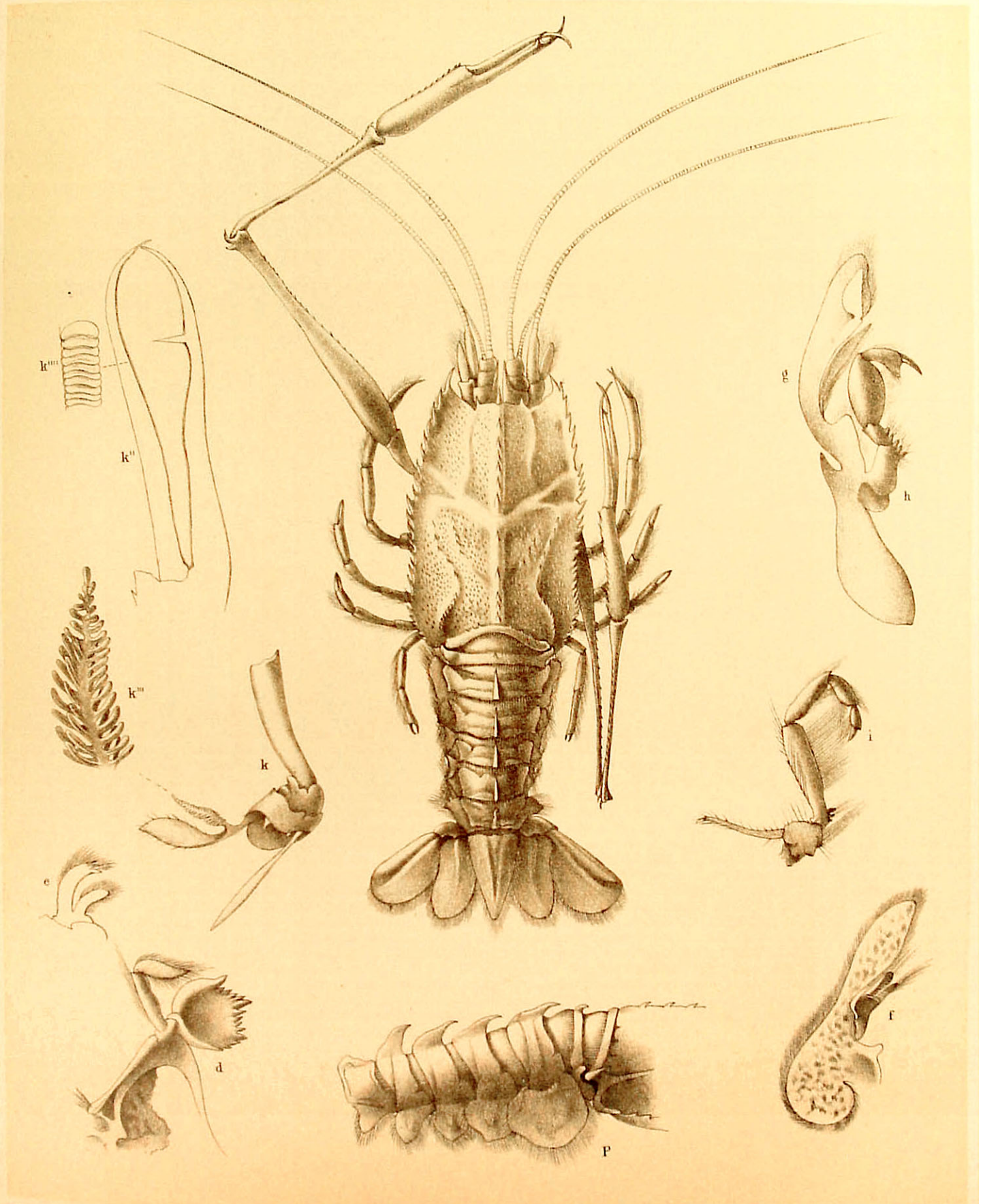
Brendon & Son, Plymouth, imp.

1. PENTOCHELES GRACILIS ♀ (DORSAL)  
 2. " " (LATERAL)

3. PENTOCHELES AURICULATA ♀ (DORSAL)  
 4. " " (LATERAL)



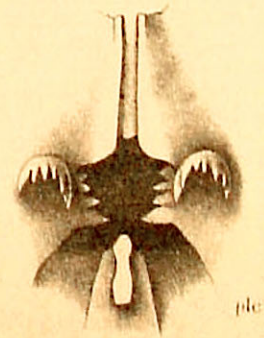
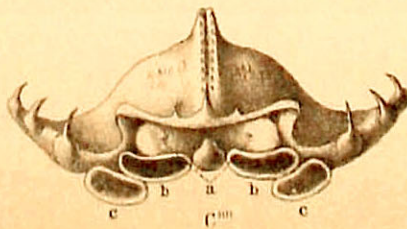
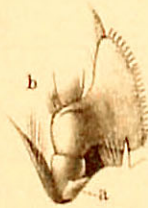
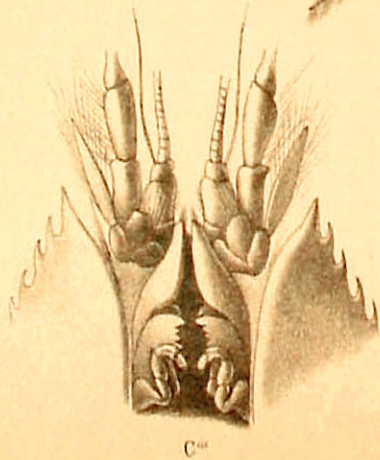
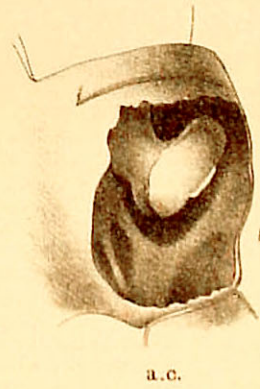
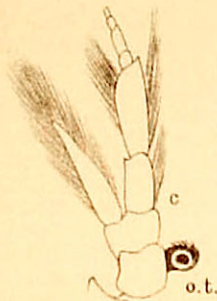
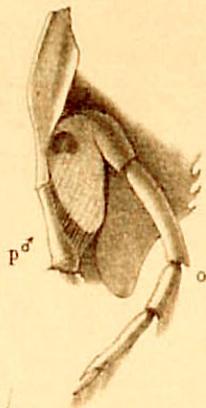
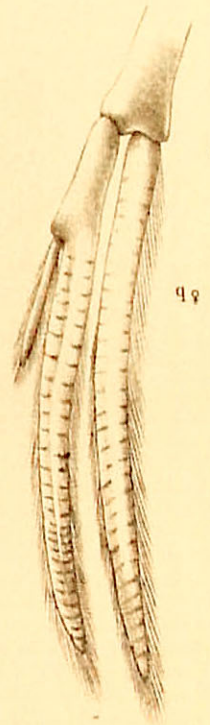
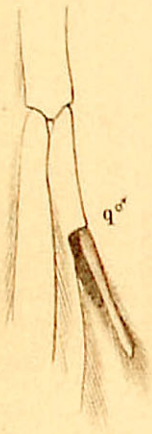
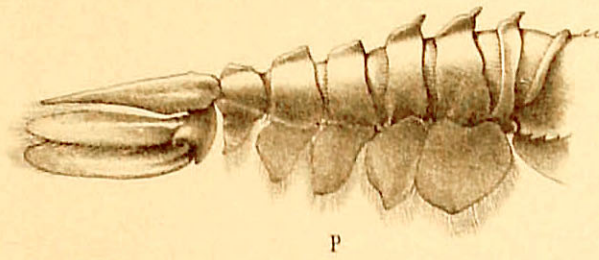
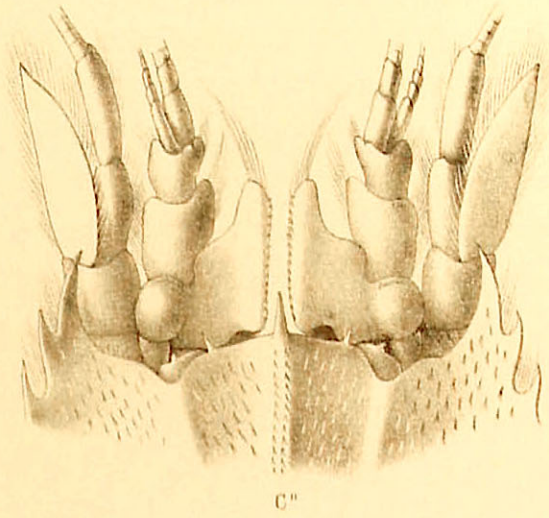
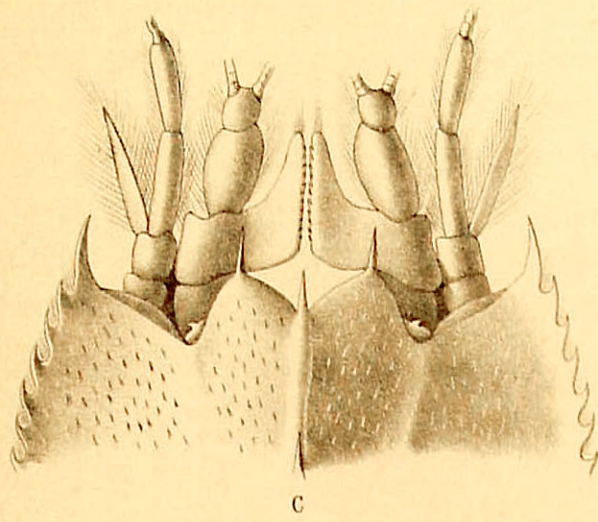
PENTOCHELES ENTHRIX. ♀



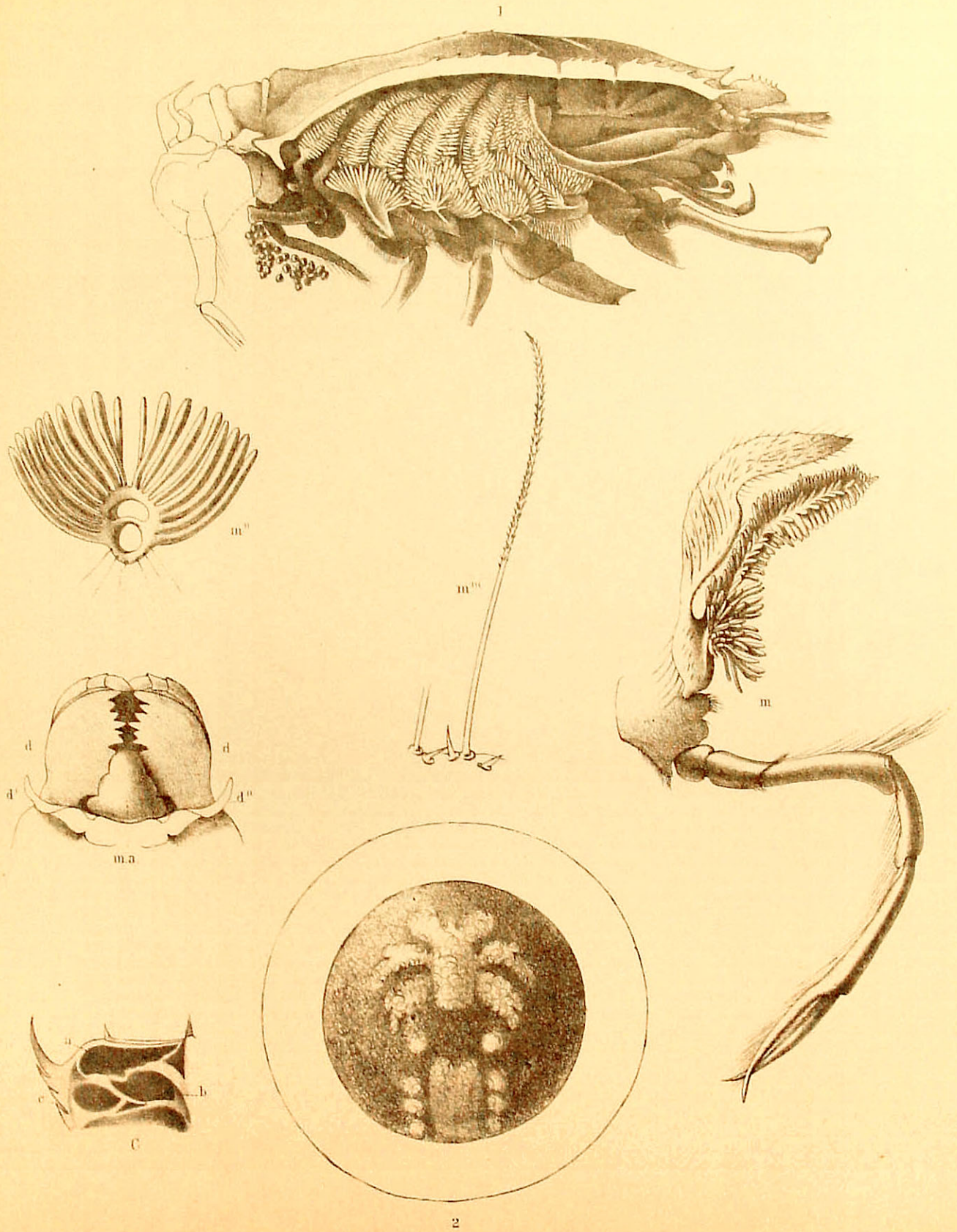
CSB adnat J Hawkins, lith.

Brendan & Son, Plymouth, imp.

WILLEMOESIA TEPTODACTYLA.







CSB ad nat., J. Hawkins lith.

Brooklyn & Son, Plymouth, Mass.

1. WILLEMOESIA LEPTODACTYLA.  
 2. " " (OVUM WITH EMBRYO)