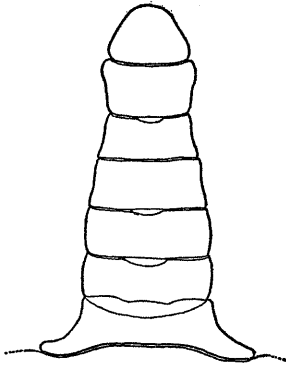


PLATE 59

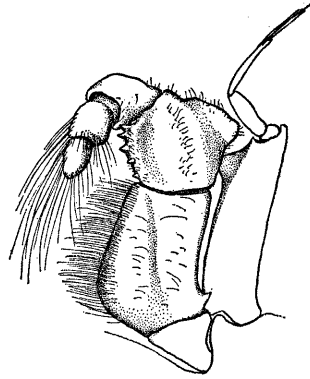
Pilumnus xantusii Stimpson (p. 471)

- Fig. 1 Dorsal view, female
- Fig. 2 Abdomen, male
- Fig. 3 Left outer maxilliped
- Fig. 4 Right chela, male
- Fig. 5 Right chela, female



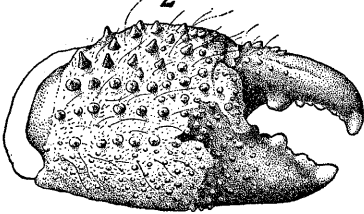
2 mm.

2



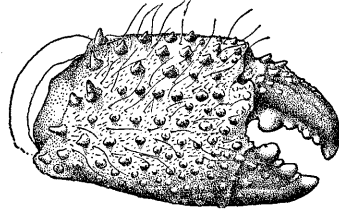
2 mm.

3



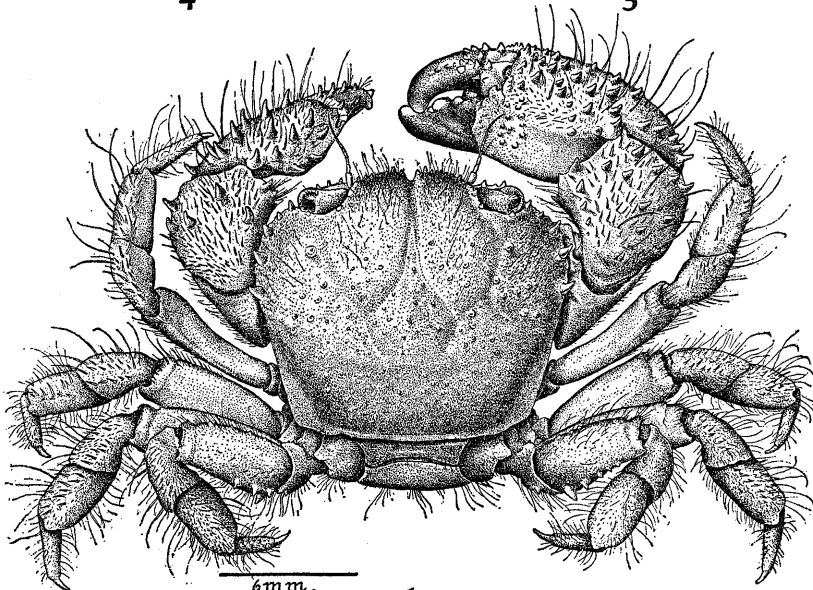
4 mm.

4



4 mm.

5



6 mm.

1

PLATE 60

- Fig. 1 *Ranilia fornicata* (Faxon), male, dorsal view (p. 345)
Fig. 2 *Ranilia fornicata* (Faxon), male, ventral view
Fig. 3 *Ethusa lata* Rathbun, male, dorsal view (p. 352)
Fig. 4 *Uhlias ellipticus* Stimpson, male, dorsal view (p. 357)
Fig. 5 *Uhlias ellipticus* Stimpson, male, ventral view

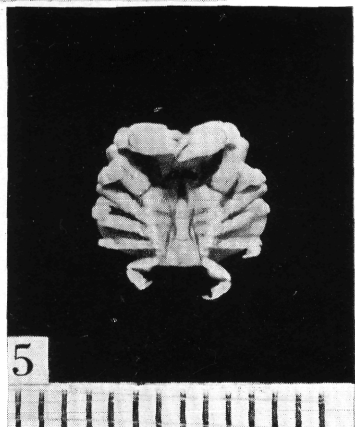
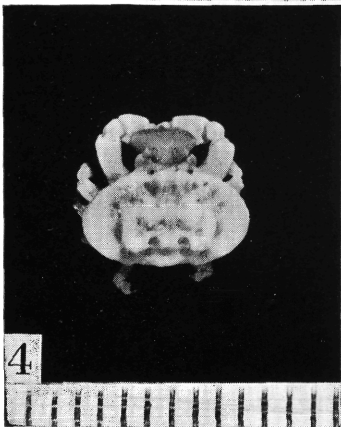


PLATE 61

- Fig. 1 *Dromidia larraburei* Rathbun, female, dorsal view (p. 346)
Fig. 2 *Dromidia larraburei* Rathbun, female, ventral view,
showing sponge carried for concealment
Fig. 3 *Hypoconcha panamensis* Smith, male, dorsal view (p. 348)
Fig. 4 *Hypoconcha panamensis* Smith, male, ventral view
Fig. 5 *Dynomene ursula* Stimpson, male, dorsal view (p. 349)
Fig. 6 *Dynomene ursula* Stimpson, male, ventral view

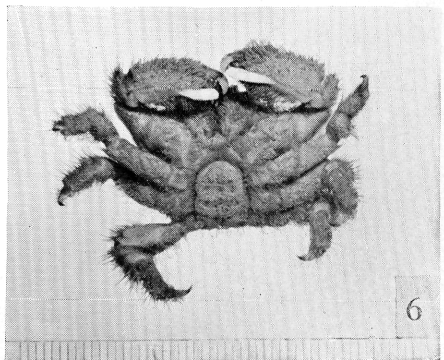
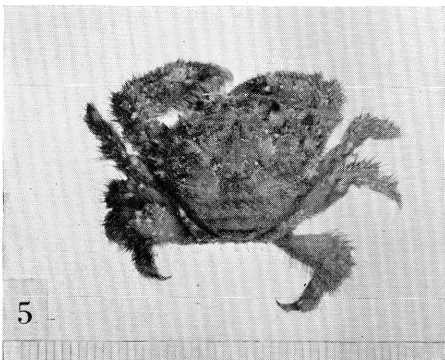
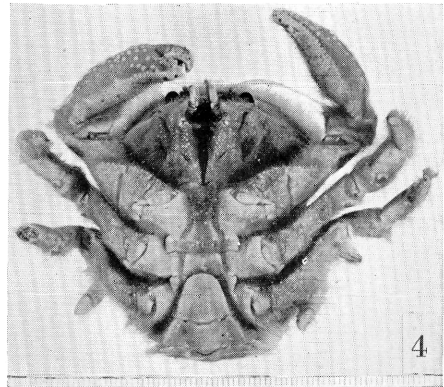
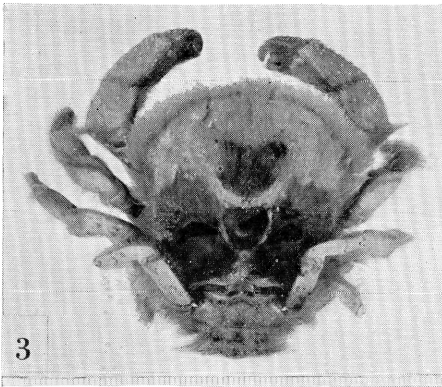
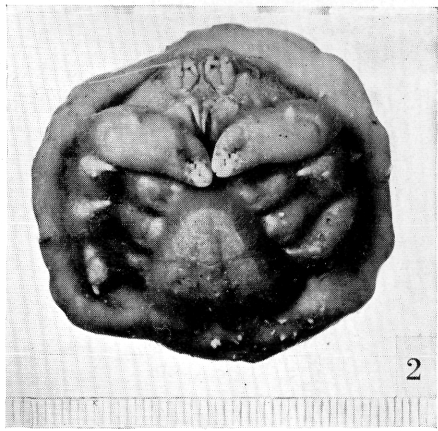
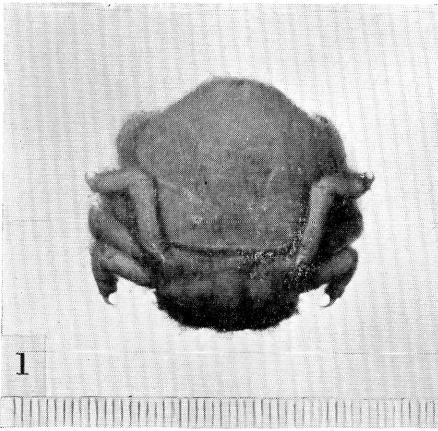


PLATE 62

- Fig. 1 *Lithadia cumingii* Bell, male, dorsal view (p. 356)
Fig. 2 *Randallia agaricias* Rathbun, male, dorsal view (p. 359)
Fig. 3 *Mursia gaudichaudii* (Milne Edwards), male, dorsal view
(p. 361)
Fig. 4 *Mursia gaudichaudii* (Milne Edwards), male, ventral view
Fig. 5 *Osachila levis* Rathbun, male, dorsal view (p. 365)
Fig. 6 *Calappa convexa* Saussure, young, dorsal view (p. 360)
Fig. 7 *Cycloës bairdii* Stimpson, male, dorsal view (p. 362)
Fig. 8 *Cycloës bairdii* Stimpson, male, ventral view

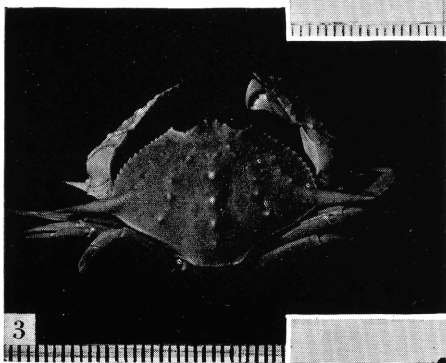
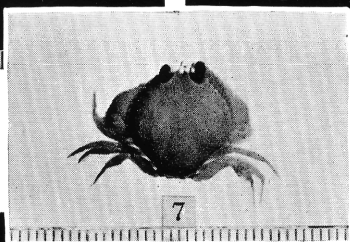
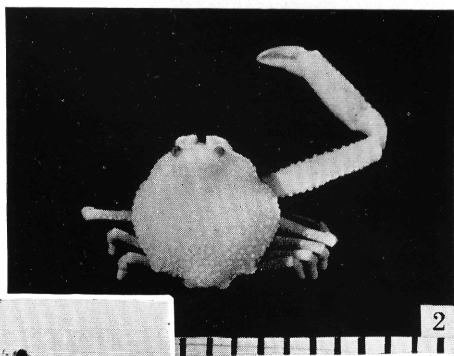


PLATE 63

- Fig. 1 *Stenorynchus debilis* (Smith), female, dorsal view (p. 366)
Fig. 2 *Sphenocarcinus agassizi* Rathbun, female, dorsal view (p. 379)
Fig. 3 *Herbstia pyriformis* (Bell), male, dorsal view (p. 383)
Fig. 4 *Acanthonyx petiverii* Milne Edwards, male, dorsal view (p. 376)
Fig. 5 *Microphrys aculeatus* (Bell), female, dorsal view (p. 402)
Fig. 6 *Microphrys triangulatus* (Lockington), male, dorsal view (p. 403)

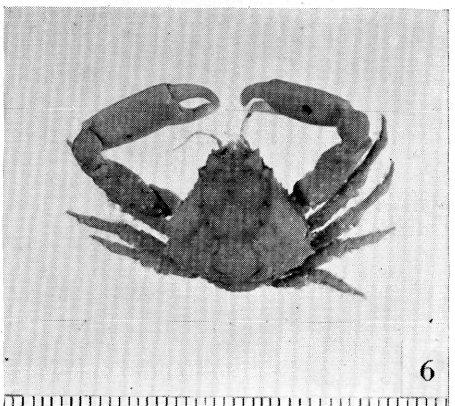
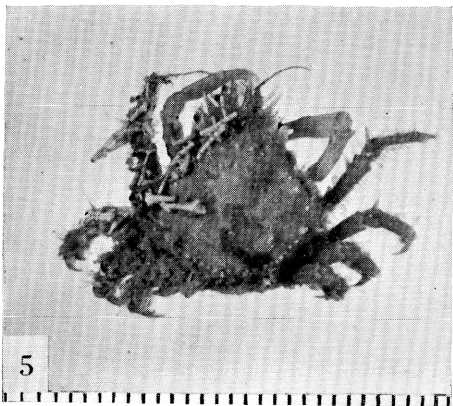
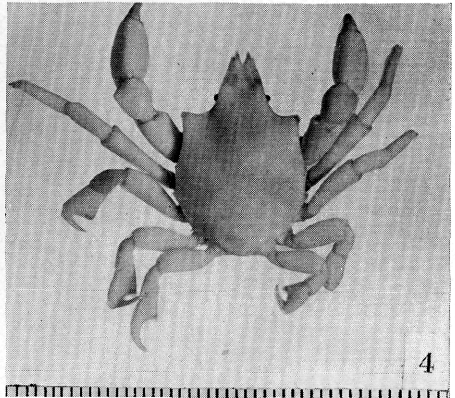
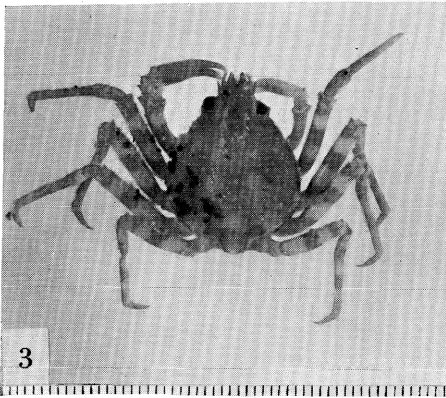
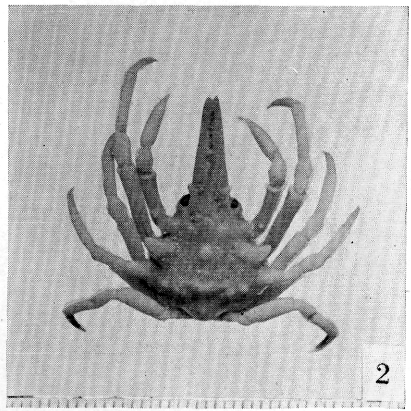
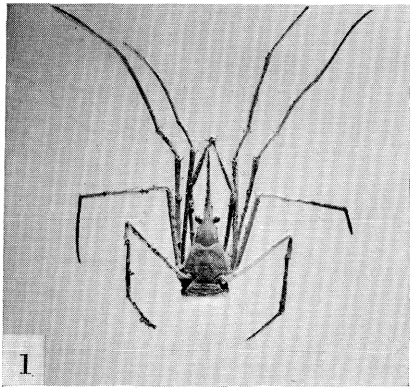


PLATE 64

- Fig. 1 *Anomalothir hoodensis* Garth, female holotype, dorsal view (p. 368)
Fig. 2 *Anomalothir hoodensis* Garth, female holotype, ventral view
Fig. 3 *Podochela schmitti* Garth, male holotype, dorsal view (p. 371)
Fig. 4 *Podochela schmitti* Garth, male holotype, ventral view
Fig. 5 *Podochela margaritaria* Rathbun, female, dorsal view (p. 369)
Fig. 6 *Podochela margaritaria* Rathbun, female, ventral view

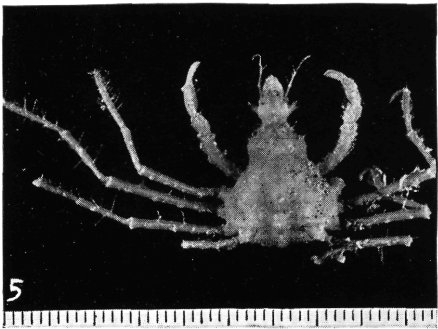
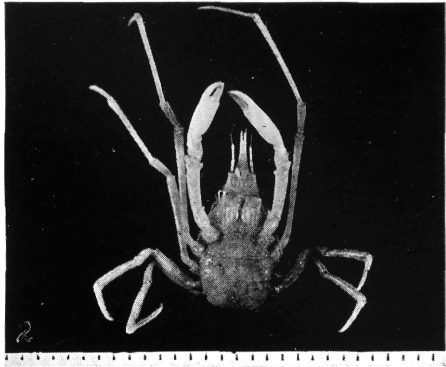
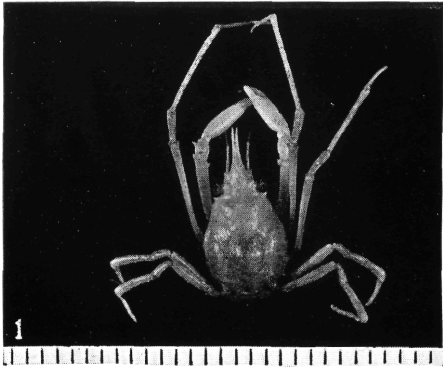


PLATE 65

- Fig. 1 *Herbstia edwardsii* Bell, male, dorsal view (p. 381)
Fig. 2 *Herbstia edwardsii* Bell, male, ventral view
Fig. 3 *Lissa aurivilliusi* Rathbun, female, dorsal view (p. 384)
Fig. 4 *Lissa aurivilliusi* Rathbun, female, ventral view
Fig. 5 *Mithrax (Mithrax) spinipes* (Bell), male, dorsal view (p. 388)
Fig. 6 *Mithrax (Mithrax) spinipes* (Bell), male, ventral view