

1



2



3



4

## PLATE 32

- Fig. 1. *Libidoclaea granaria* Milne Edwards and Lucas, male (U.S.N.M. No. 21919), dorsal view.
- Fig. 2. *Libidoclaea granaria smithi* (Miers), female (U.S.N.M. No. 21923), dorsal view.



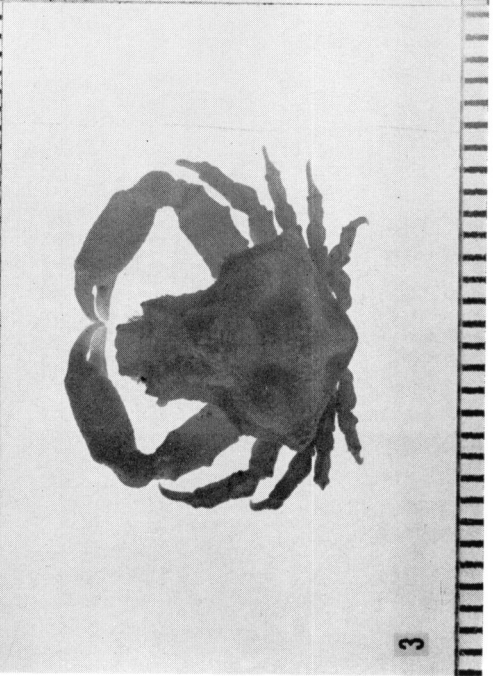
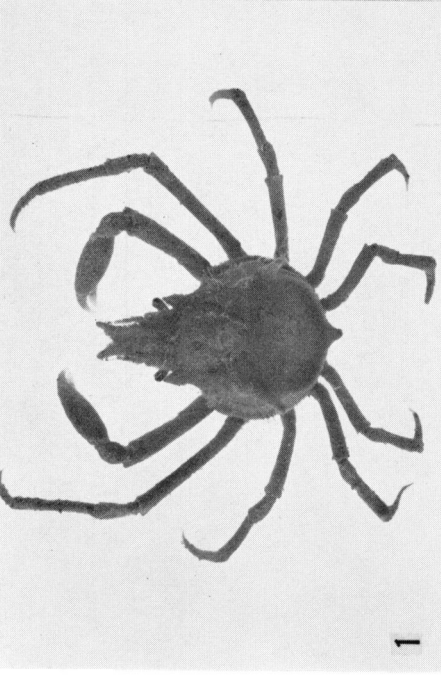
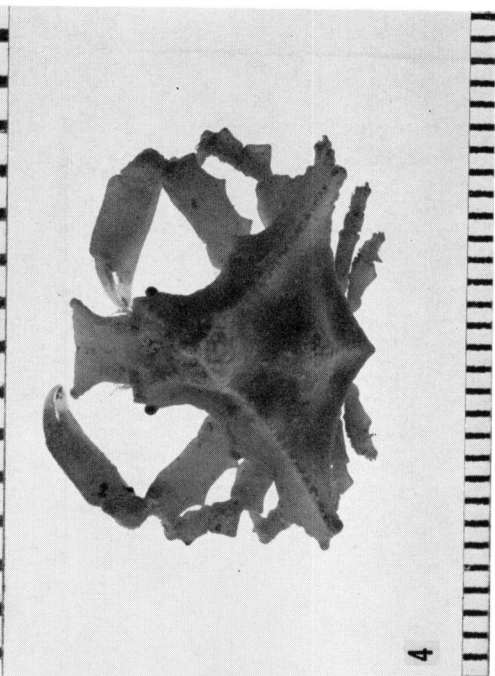
1



2

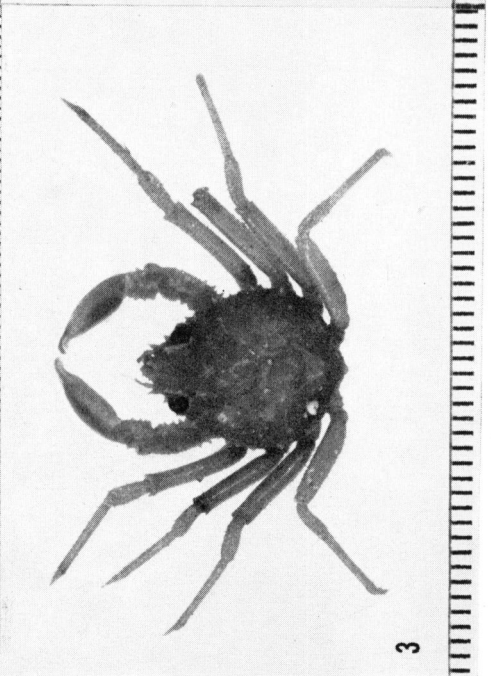
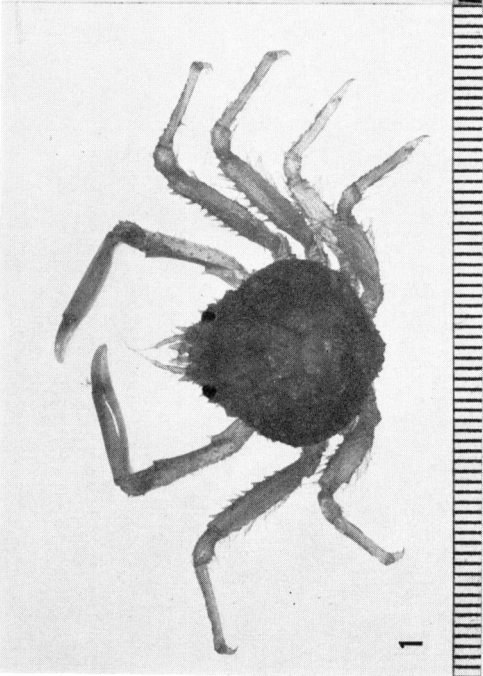
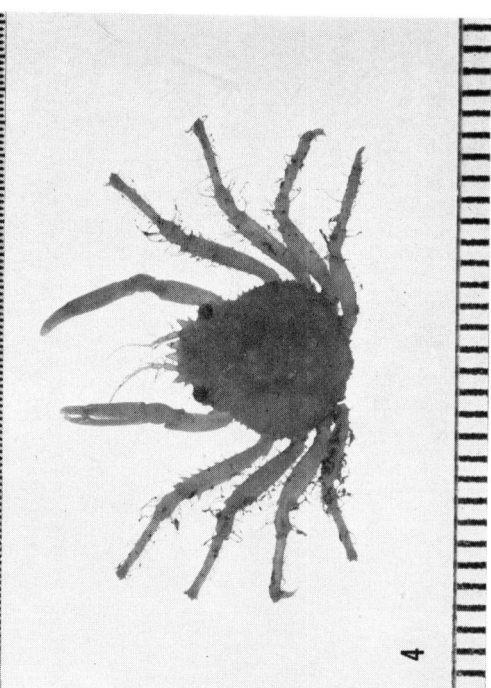
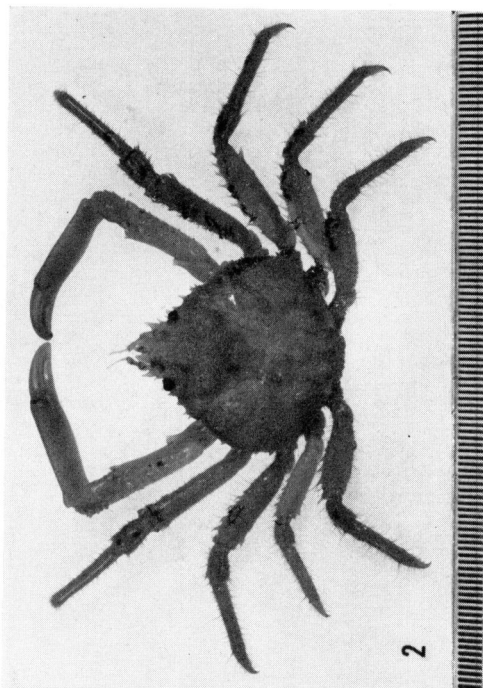
## PLATE 33

- Fig. 1. *Notolopas lamellatus* Stimpson, male (*Velero III* Sta. 850-38), dorsal view.
- Fig. 2. *Notolopas mexicanus* Garth, ovigerous female (*Velero III* Sta. 487-35), dorsal view.
- Fig. 3. *Lissa tuberosa* Rathbun, male (*Velero III* Sta. 780-38), dorsal view.
- Fig. 4. *Lissa aurivilliusi* Rathbun, male (*Velero III* Sta. 209-34), dorsal view.



## PLATE 34

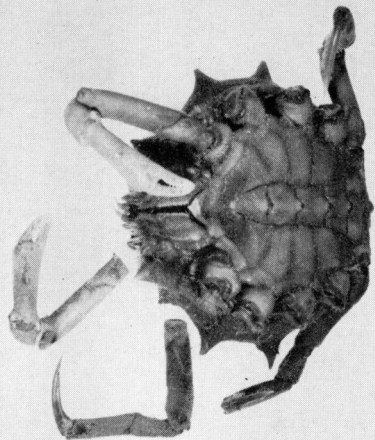
- Fig. 1. *Herbstia camptacantha* (Stimpson), male (*Velero III* Sta. 1083-40), dorsal view.
- Fig. 2. *Herbstia parvifrons* (Randall), male (*Velero III* Sta. 904-38), dorsal view.
- Fig. 3. *Herbstia pubescens* Stimpson, male (*Velero III* Sta. 464-35), dorsal view.
- Fig. 4. *Herbstia tumida* (Stimpson), male (*Velero III* Sta. 252-34), dorsal view.



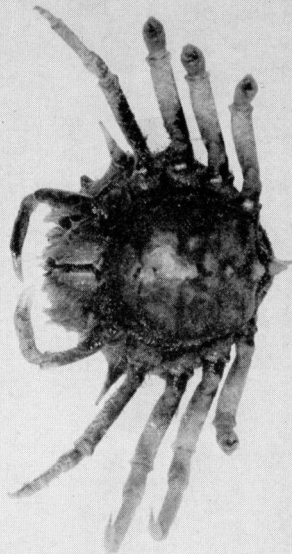
## PLATE 35

- Fig. 1. *Neodoclea boneti* Buitendijk, male lectotype (Macapule, Sinaloa) (R.M.N.H. No. 7604), dorsal view.
- Fig. 2. Same specimen, ventral view.
- Fig. 3. Same species, female paratype (*Velero III* Sta. 770-38), dorsal view.
- Fig. 4. Same specimen, ventral view.

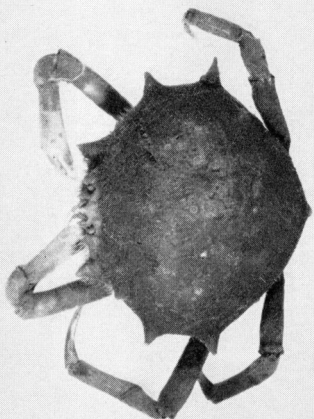




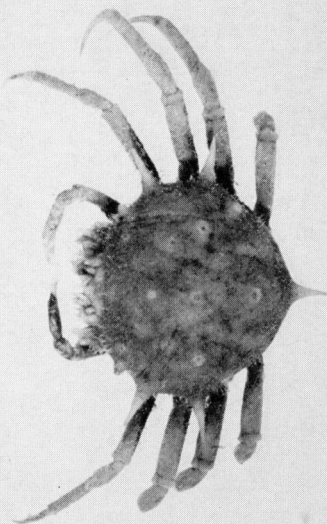
2



4



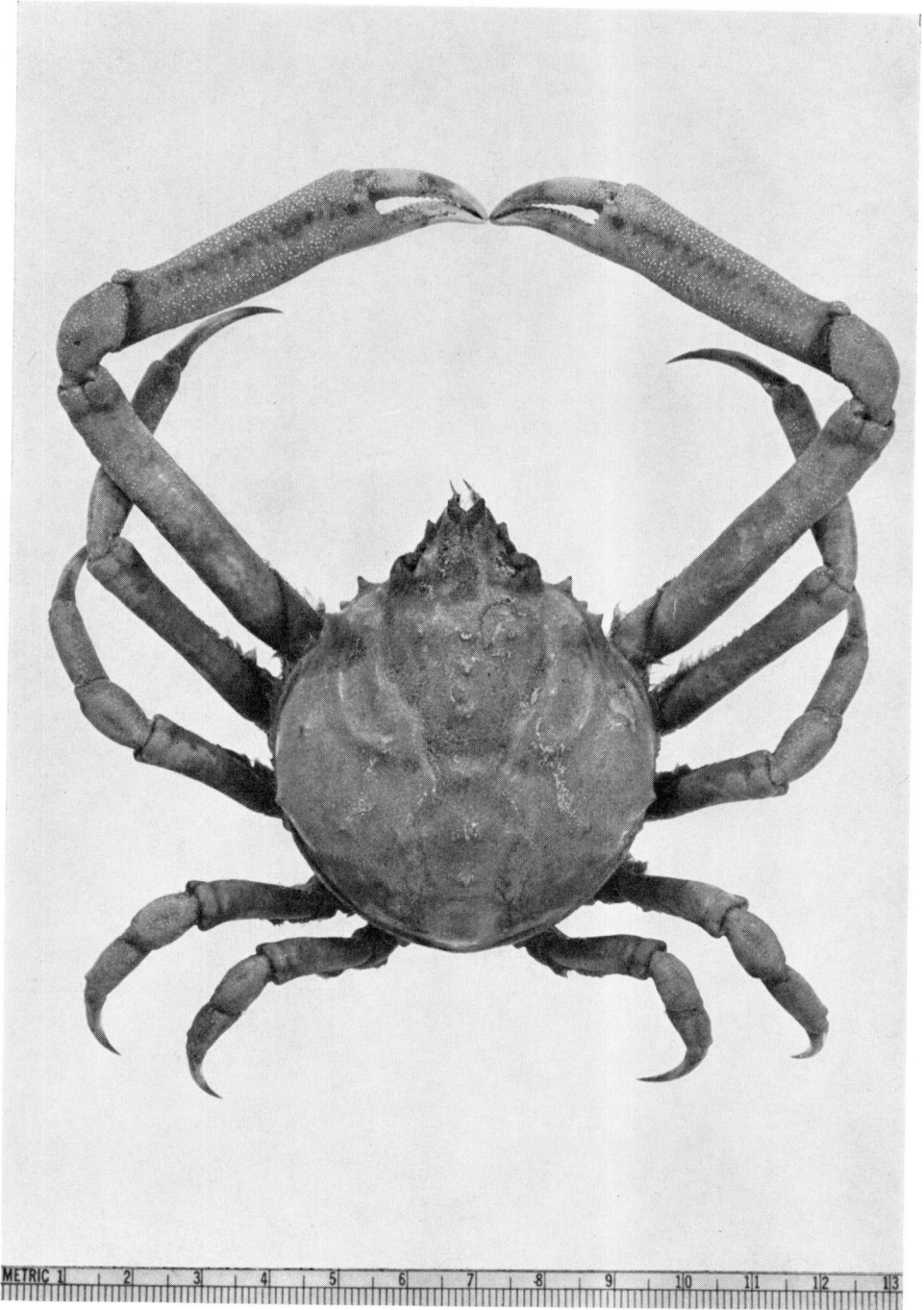
1



3

## PLATE 36

*Libinia setosa* Lockington, male neotype (Santa Maria Bay, Lower California) (C.A.S. Loc. 27594), dorsal view.



## PLATE 37

- Fig. 1. *Libinia mexicana* Rathbun, male (San Felipe, Gulf of California), dorsal view.
- Fig. 2. *Libinia rostrata* Bell, male neotype (U.S.N.M. No. 100916), dorsal view.

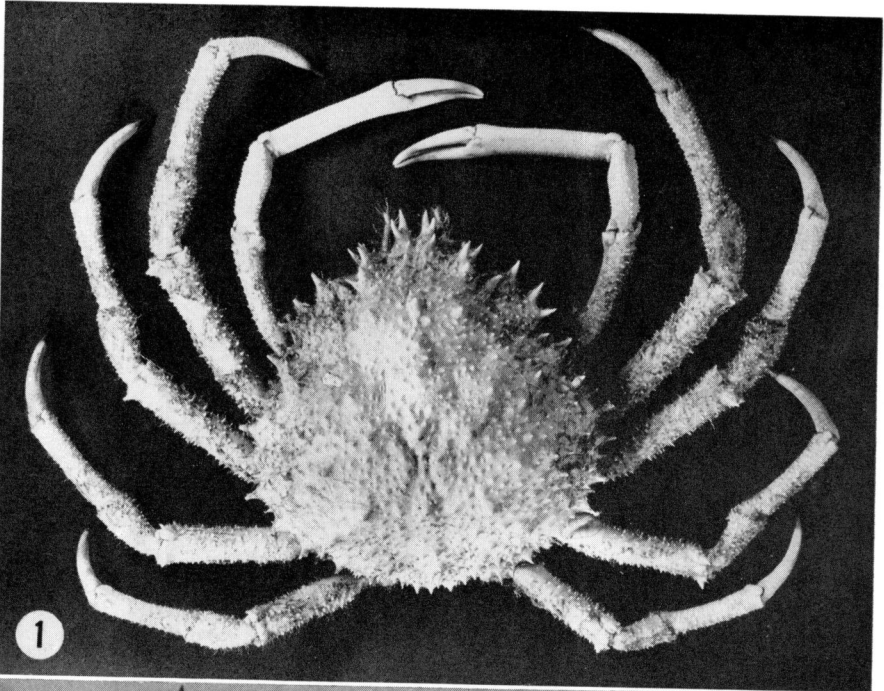


2

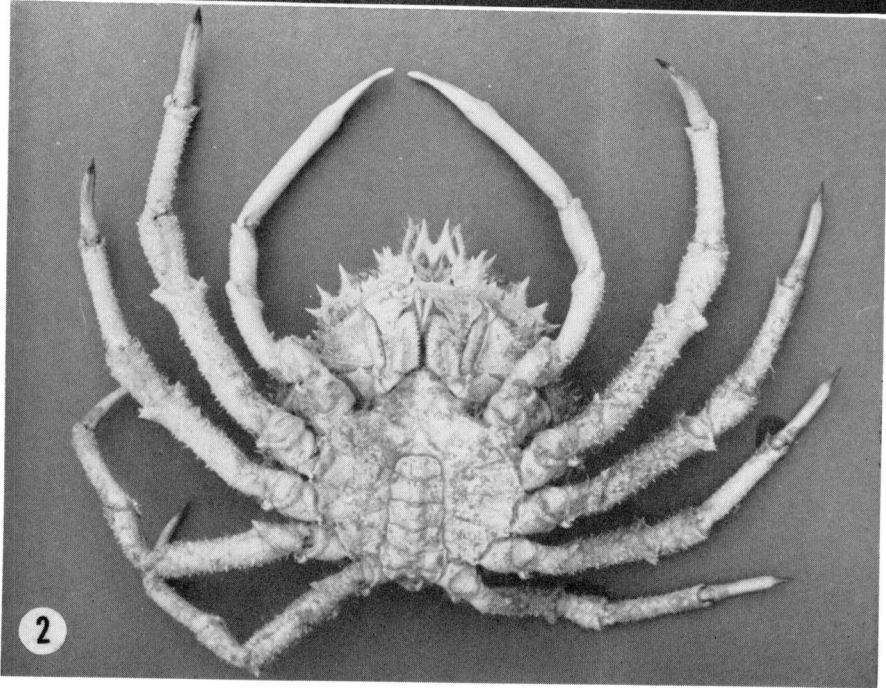
1

## PLATE 38

- Fig. 1. *Maiopsis panamensis* Faxon, male (Manta, Ecuador)  
(Z.M.H.), dorsal view, x .36.
- Fig. 2. Same, ventral view, x .36.



1

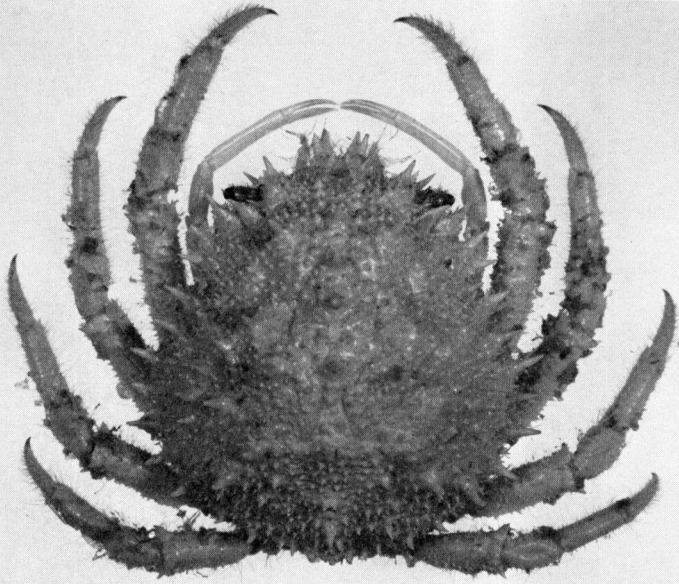


2

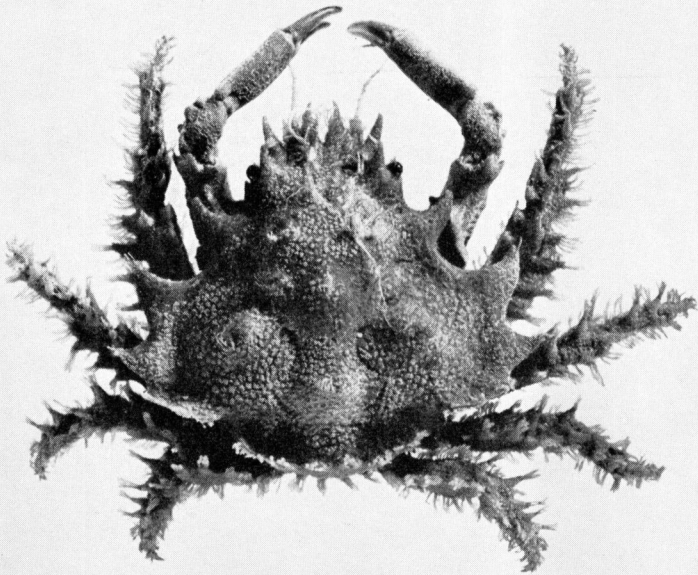
## PLATE 39

- Fig. 1. *Maiopsis panamensis* Faxon, female (*Velero III* Sta. 918-39), dorsal view.
- Fig. 2. *Ala cornuta* (Stimpson), male (*Velero III* Sta. 1083-40), dorsal view.





1



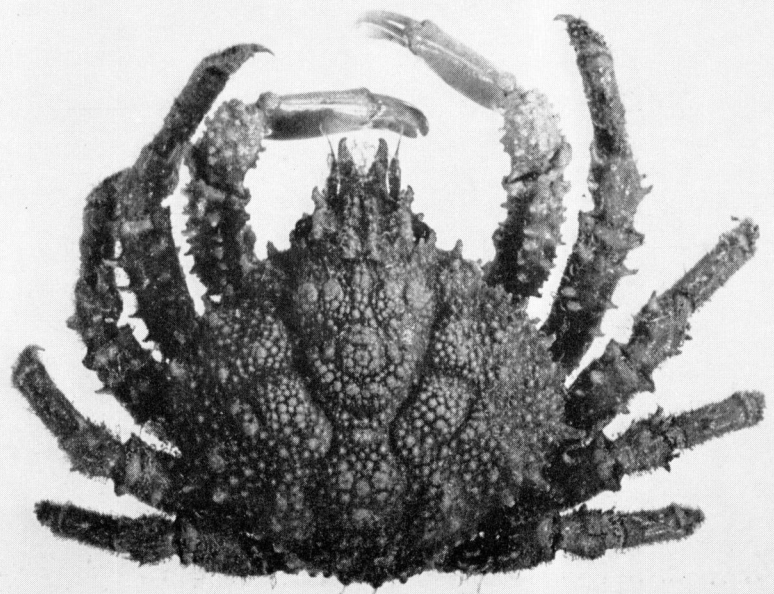
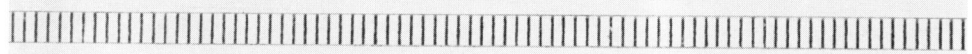
2

## PLATE 40

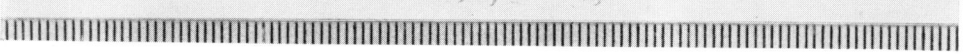
- Fig. 1. *Mithrax (Mithrax) tuberculatus* Stimpson, male (*Felero III* Sta. 444-35), dorsal view.
- Fig. 2. *Mithrax (Mithrax) armatus* Saussure (= *M. (M.) orcutti* Rathbun), male (*Felero III* Sta. 1-32), dorsal view.



1



2



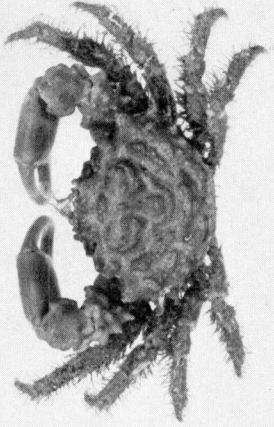
## PLATE 41

- Fig. 1. *Mithrax (Mithrax) sinensis* Rathbun, male (*Velero III* Sta. 856-38), dorsal view.
- Fig. 2. *Paramithrax baeckstroemi* Balss, male (M.C.Z. No. 2048), dorsal view.
- Fig. 3. *Mithrax (Mithrax) sinensis clarionensis* Garth, male (*Velero III* Sta. 917-39), dorsal view.
- Fig. 4. *Mithrax (Mithrax) pygmaeus* Bell, male (*Velero III* Sta. 958-39), dorsal view.



## PLATE 42

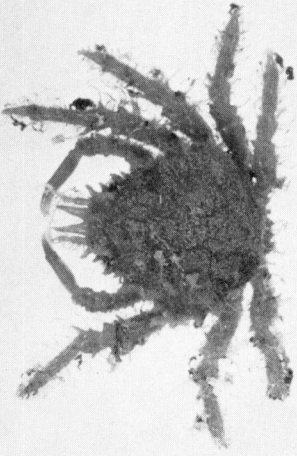
- Fig. 1. *Mithrax (Mithrax) spinipes* (Bell), female (*Velero III* Sta. 518-36), dorsal view.
- Fig. 2. *Mithrax (Mithraculus) denticulatus* Bell, male neotype (*Velero III* Sta. 400-35) (A.H.F. No. 353), dorsal view.
- Fig. 3. *Teleophrys cristulipes* Stimpson, male (*Velero III* Sta. 859-38), dorsal view.
- Fig. 4. *Teleophrys tumidus* (Cano), male (*Velero III* Sta. 844-38), dorsal view.



2



4



1



3

## PLATE 43

- Fig. 1. *Microphrys weddelli* Milne Edwards, male (U.S.N.M. No. 71229), dorsal view.
- Fig. 2. *Microphrys aculeatus* (Bell), male (*Velero III* Sta. 391-35), dorsal view.
- Fig. 3. *Microphrys platysoma* (Stimpson), male (*Velero III* Sta. 971-39), dorsal view.
- Fig. 4. *Microphrys triangulatus* (Lockington), male (*Velero III* Sta. 745-37), dorsal view.





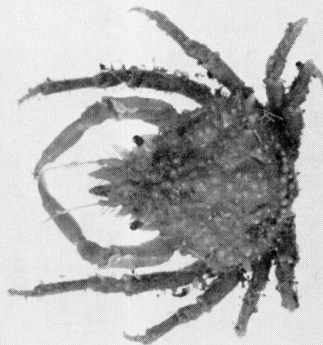
2



4



1



3

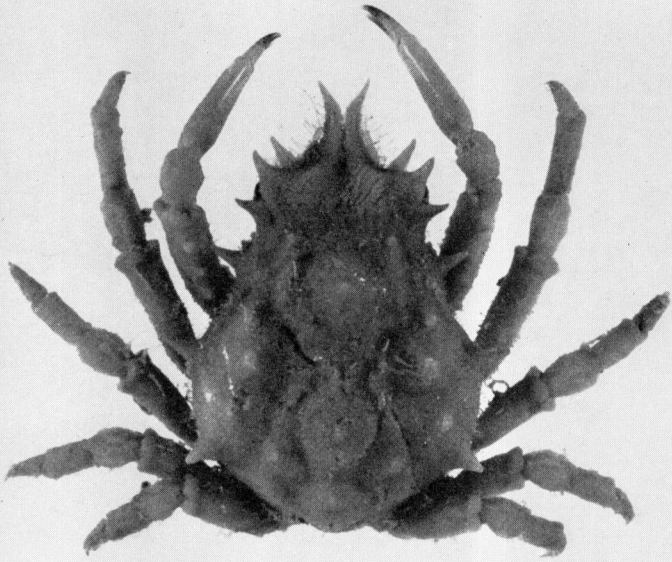
## PLATE 44

- Fig. 1. *Microphrys branchialis* Rathbun, male (*Velero IV* Sta. 1957-50), dorsal view.
- Fig. 2. *Stenocionops ovata* (Bell) (= *S. triangulata* Rathbun), male (*Velero III* Sta. 244-34), dorsal view; right rostral horn broken.



## PLATE 45

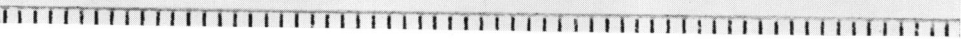
- Fig. 1. *Stenocionops angusta* (Lockington) [= *S. contigua* (Rathbun)], male (*Velero III* Sta. 564-36), dorsal view.
- Fig. 2. *Stenocionops beebei* Glassell, male (*Velero III* Sta. 702-37), dorsal view.



1

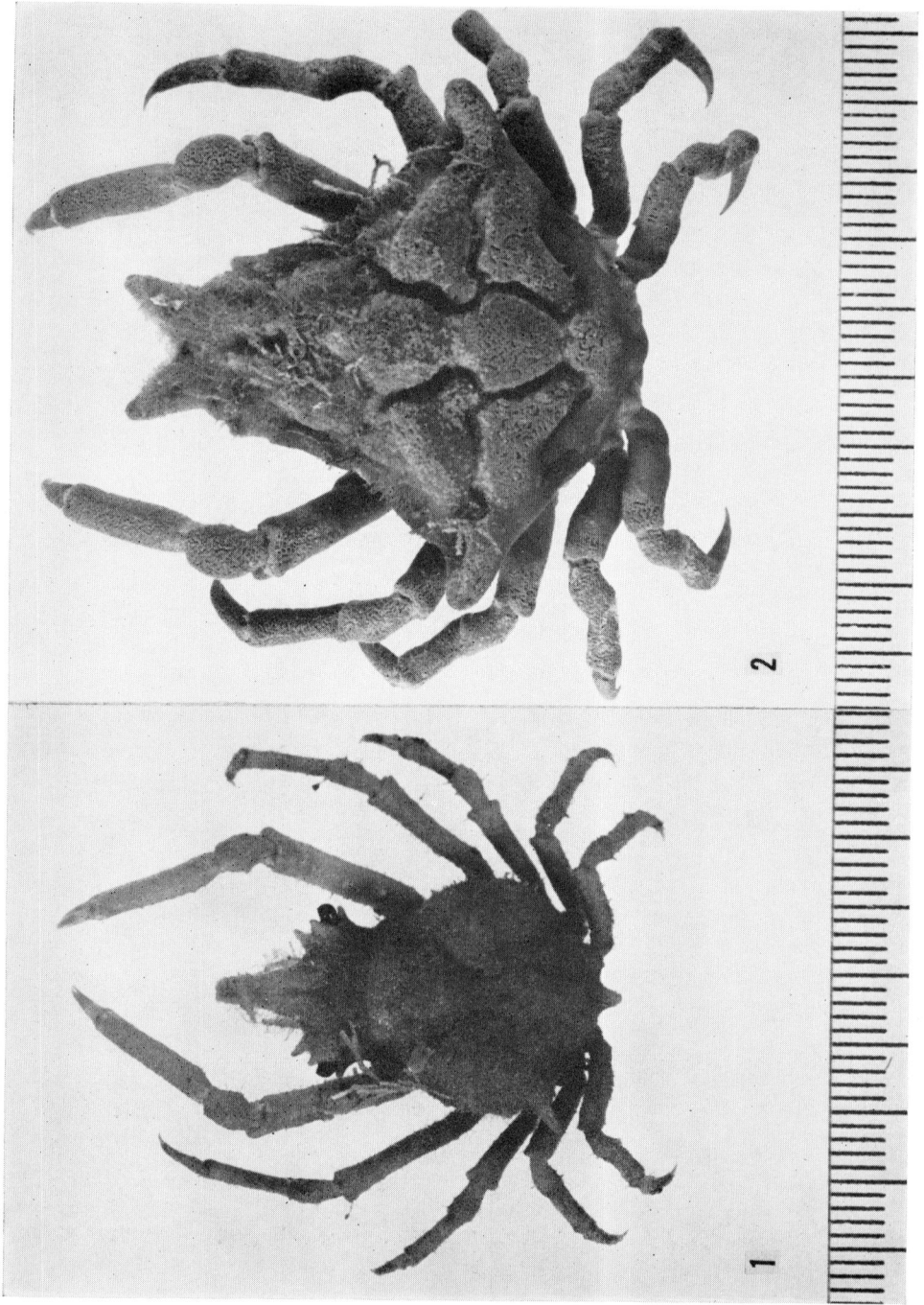


2



## PLATE 46

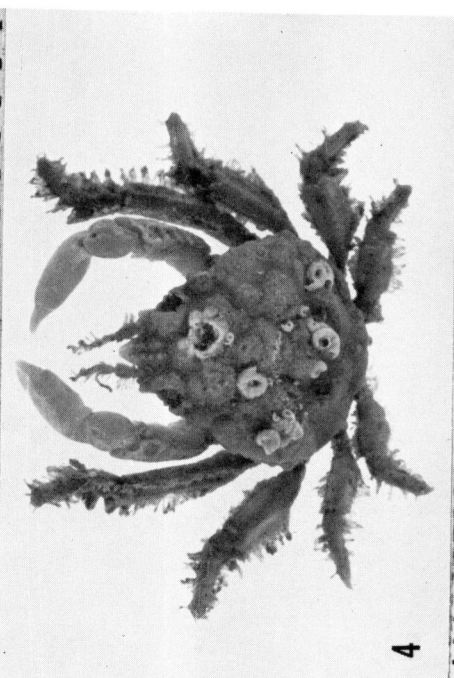
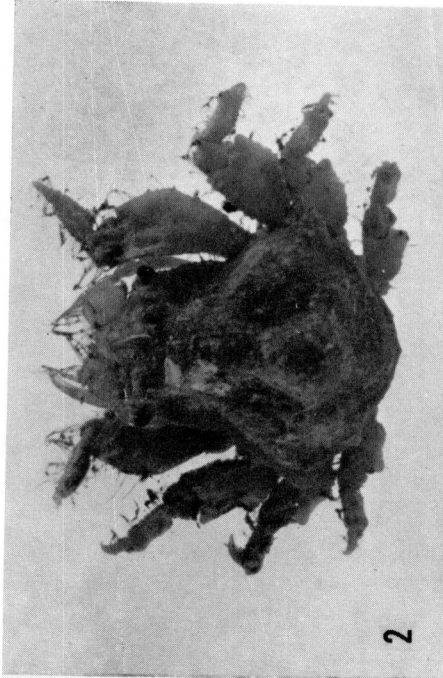
- Fig. 1. *Macrocoeloma maccullochae* Garth, male holotype (*Velero III* Sta. 747-37) (A.H.F. No. 372), dorsal view.
- Fig. 2. *Macrocoeloma villosum* (Bell), male (*Velero III* Sta. 403-35), dorsal view.



## PLATE 47

- Fig. 1. *Hemus analogus* Rathbun, female (Perdita [Partida?] Island, Gulf of California), dorsal view.
- Fig. 2. *Hemus finneganae*, new species, female (Velero III Sta. 1091-40), dorsal view.
- Fig. 3. *Thoe sulcata* Stimpson, male (Velero III Sta. 646-37), dorsal view.
- Fig. 4. *Thoe sulcata panamensis* Nobili, male (Velero III Sta. 465-35), dorsal view.





## PLATE 48

- Fig. 1. *Parthenope (Parthenope) hyponca* Stimpson, female (*Velero III* Sta. 965-39), dorsal view.
- Fig. 2. *Parthenope (Platylambrus) exilipes* Rathbun, male (*Velero III* Sta. 843-38), dorsal view.