

Family PANDALIDAE

Pandalinae Dana, 1852, Proc. Acad. nat. Sci. Phila. 6: 17, 24.

Pandalidae Bate, 1888, Rep. Voy. Challenger, Zool. 24: xii, 480, 625.

The genera of this family may be distinguished with the help of the following key, which is largely based on the key given by De Man (1920, Siboga Exped. 39 (a3): 101, 102); use has also been made of Kemp's (1925, Rec. Indian Mus. 27: 271, 272) key to the *Chlorotocus* section of this family.

1. Carpus of second pereopods consisting of more than three joints. 2
- Carpus of second pereopods consisting of 2 or 3 joints. 13
2. No longitudinal carinae on the carapace except for the postrostral crest. 3
- Carapace with longitudinal carinae on the lateral surfaces. Integument very firm. 12
3. Rostrum movably connected with the carapace *Pantomus*
- Rostrum not movable 4
4. Eyes poorly developed, cornea narrower than the eyestalk *Dorodotes*
- Eyes well developed, cornea much wider than the eyestalk 5
5. Third maxilliped with an exopod. 6
- Third maxilliped without exopod 8
6. Epipods on at least the first two pereopods 7
- No epipods on any of the pereopods *Parapandalus*
7. Posterior lobe of scaphognathite broadly rounded or truncate. Stylocerite pointed anteriorly. Rostrum with at least some fixed teeth dorsally. *Plesionika*
- Posterior lobe of scaphognathite acutely produced. Stylocerite broad and rounded. Rostrum with only movable spines dorsally. *Dichelopandalus*
8. Laminar expansion of the inner border of the ischium of the first pair of pereopods very large *Pandalopsis*
- Laminar expansion of the inner border of the ischium of the first pair of pereopods wanting or inconspicuous. 9
9. No epipods at the bases of the pereopods *Peripandalus*
- The first four pereopods with epipodes 10
10. No arthrobranchs at the bases of the pereopods *Pandalina*
- Arthrobranchs present at the bases of the first four pereopods. 11
11. Posterior lobe of scaphognathite acutely produced. Upper margin of rostrum with movable spines only *Pandalus*
- Posterior lobe of scaphognathite truncate. Upper margin of rostrum with both movable spines and fixed teeth *Austropandalus*
12. Pereopods of the second pair very unequal *Heterocarpus*
- Second pereopods equal, carpus 6-jointed *Heterocarpoides*
13. Arthrobranchs and epipods present at the bases of the first 4 pereopods. Third maxilliped with an exopod. Carpus of second pereopod 2-jointed. 14
- Pereopods without arthrobranchs and epipods. Third maxilliped without an exopod. Carpus of second leg 3-jointed 15
14. First four abdominal pleurae rounded. Sixth abdominal segment without median spine. Apex of telson pointed. *Chlorotocus*
- Abdominal pleurae acutely pointed beneath. Sixth abdominal segment with a large spine in the middle of the distal margin. Apex of telson forked. *Chlorotocoides*
15. Supra-orbital spine present. Mandible with 3-jointed palp. Rostrum long and very slender *Chlorotocella*
- Supra-orbital spine absent. Mandible without palp. Rostrum short and deep. *Chlorocurtis*

Pantomus A. Milne Edwards, 1883 (fig. 83a)

Pantomus A. Milne Edwards, 1883, Rec. Fig. Crust. nouv. peu conn.: pl. 26 fig. 1. Type species, by monotypy: *Pantomus parvulus* A. Milne Edwards, 1883, Rec. Fig. Crust. nouv. peu conn.: pl. 26 fig. 1. Gender: masculine.

Dorodotes Bate, 1888 (fig. 83b)

Dorodotes Bate, 1888, Rep. Voy. Challenger, Zool. 24:627, 677. Type species, by present selection: *Dorodotes reflexus* Bate, 1888, Rep. Voy. Challenger, Zool. 24:678. Gender: masculine.

Parapandalus Borradaile, 1899 (fig. 83c)

Parapandalus Borradaile, 1899, Willey's Zool. Res. 4:411. Type species, selected by Alcock, 1901, Descr. Catal. Indian Deep Sea Crust. Macr. Anom.: 94, : *Pandalus (Parapandalus) serratifrons* Borradaile, 1899, Willey's Zool. Res. 4:411 (= *Plesionika spinipes* Bate, 1888, Rep. Voy. Challenger, Zool. 24:646). Gender: masculine.

Stylopandalus Coutière, 1905, C. R. Acad. Sci. Paris 140:1115. Type species, by monotypy: *Pandalus (Stylopandalus) Richardi* Coutière, 1905, C. R. Acad. Sci. Paris 140:1115. Gender: masculine.

Parapanalus Urita, 1921, Zool. Mag. Tokyo 33:216. Erroneous spelling of *Parapandalus* Borradaile, 1899.

Nisea (Risso MSS) Monod, 1931, Arch. Mus. Hist. nat. Paris (6)7:122, 123. Type species, by monotypy: *Nisea formosa* (Risso MSS) Monod, 1931, Arch. Mus. Hist. nat. Paris (6)7:122, 123 (= *Astacus Narval* Fabricius, 1787, Mant. Ins. 1:331). Nomen nudum.

Plesionika Bate, 1888 (fig. 84a)

Plesionika Bate, 1888, Rep. Voy. Challenger, Zool. 24:626, 640. Type species, selected by Alcock, 1901, Descr. Catal. Indian Deep Sea Crust. Macr. Anom.: 93, : *Plesionika uniproducta* Bate, 1888, Rep. Voy. Challenger, Zool. 24:641 (= *Acanthephyra ensis* A. Milne Edwards, 1881, Ann. Sci. nat. Zool. (6)11(4):14). Gender: feminine.

Nothocaris Bate, 1888, Rep. Voy. Challenger, Zool. 24:626, 650. Type species, selected by Fowler, 1912, Ann. Rep. New Jersey State Mus. 1911:551, : *Nothocaris rostricrescentis* Bate, 1888, Rep. Voy. Challenger, Zool. 24:653. Gender: feminine.

Plesionica Alcock, 1899, Sci. Mem. med. Off. Army India 11:31. Erroneous spelling of *Plesionika* Bate, 1888.

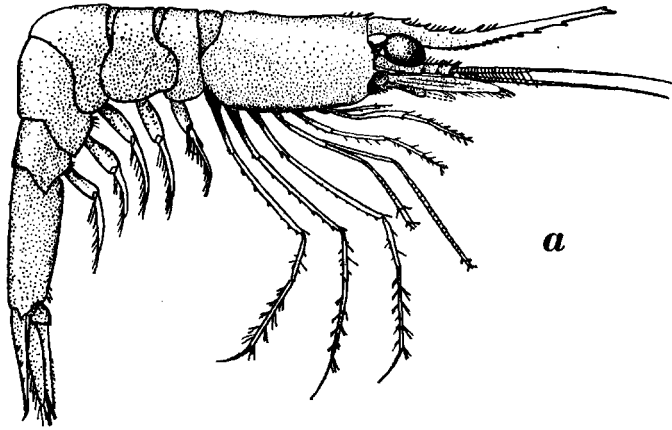
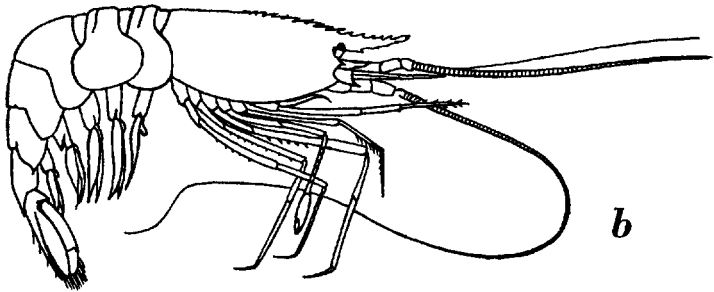
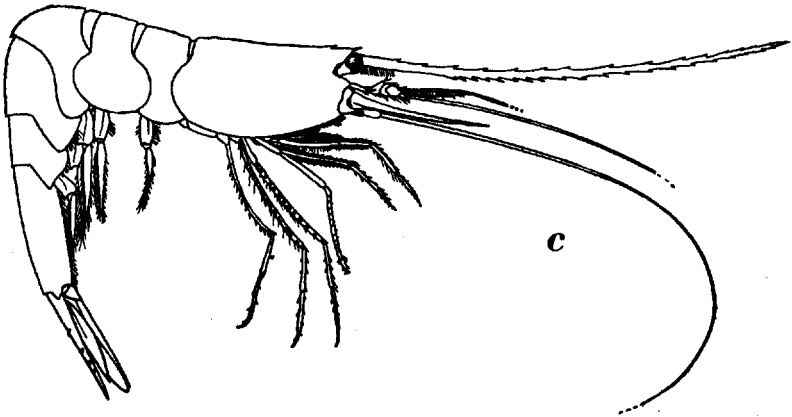
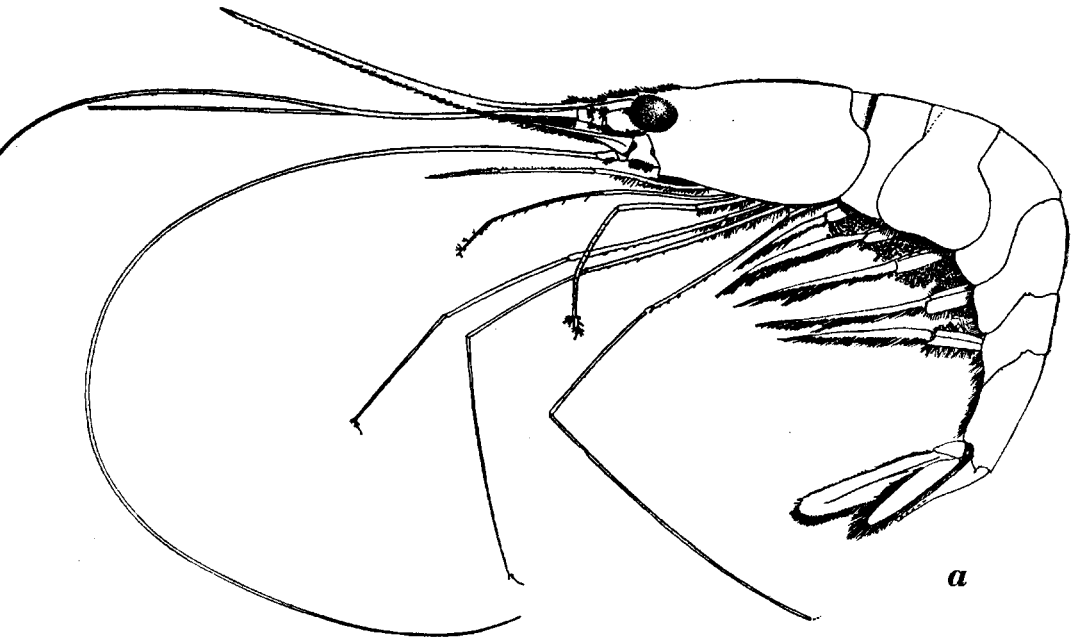
*a**b**c*

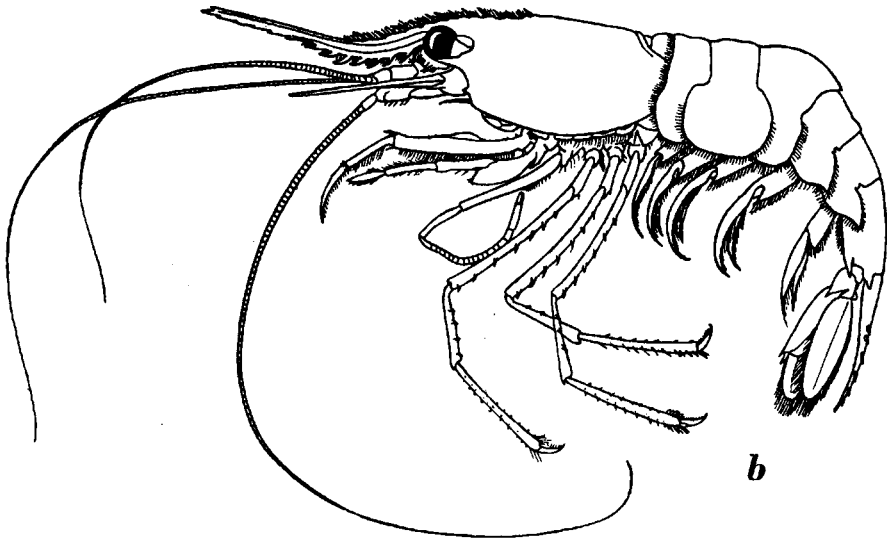
Fig. 83a. *Pantomus affinis* Chace. After Chace, 1937.

Fig. 83b. *Dorodotes reflexus* Bate. After Bate, 1888.

Fig. 83c. *Parapandalus richardi* (Coutière). After Chace, 1940.



a



b

Fig. 84a. *Plesionika martia* (A. Milne Edwards). After Kemp, 1910.
 Fig. 84b. *Pandalopsis ampla* Bate. After Bate, 1888.

Dichelopandalus Caullery, 1896 (fig. 85a)

Dichelopandalus Caullery, 1896, Ann. Univ. Lyon 26: 379. Type species, by monotypy: *Dichelopandalus Bonnierii* Caullery, 1896, Ann. Univ. Lyon 26: 379. Gender: masculine.

Dickelopandalus Fowler, 1912, Ann. Rep. New Jersey State Mus. 1911: 551. Erroneous spelling of *Dichelopandalus* Caullery, 1896.

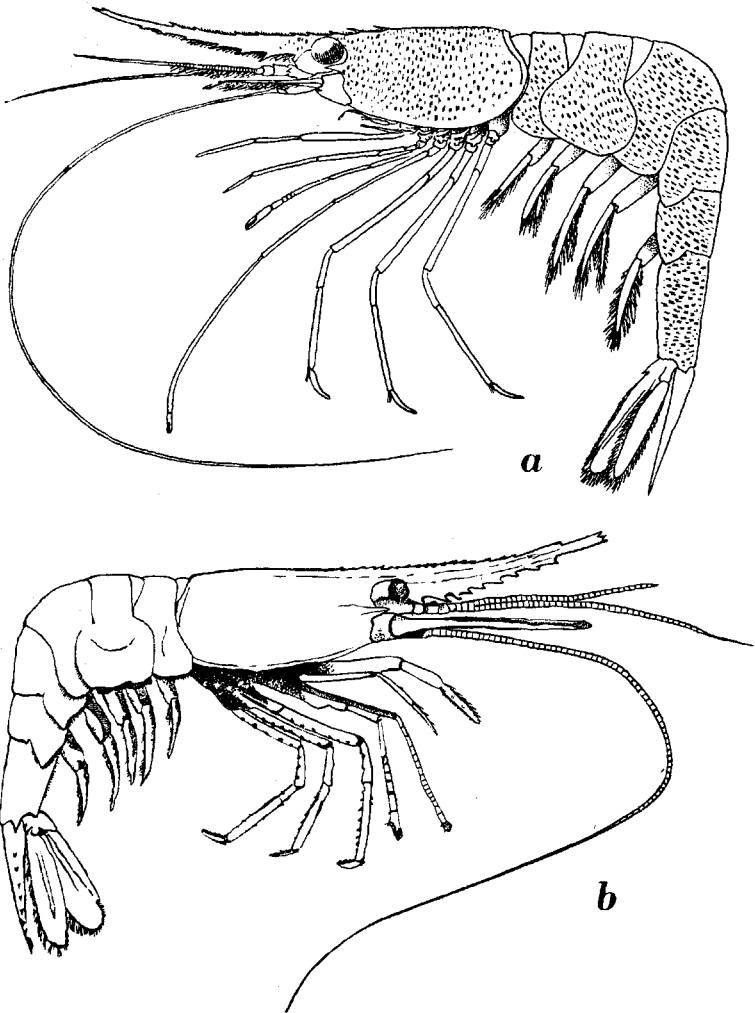


Fig. 85a. *Dichelopandalus leptocerus* (Smith). After Smith, 1884.

Fig. 85b. *Peripandalus serratus* (A. Milne Edwards). After A. Milne Edwards, 1883.

Pandalopsis Bate, 1888 (fig. 84b)

Pandalopsis Bate, 1888, Rep. Voy. Challenger, Zool. 24:627, 671. Type species, by monotypy: *Pandalopsis ampla* Bate, 1888, Rep. Voy. Challenger, Zool. 24:671. Gender: feminine.

Peripandalus De Man, 1917 (fig. 85b)

Peripandalus De Man, 1917, Zool. Meded. Leiden 3:281. Type species, by monotypy: *Pandalus serratus* A. Milne Edwards, 1873, Journ. Mus. Godeffroy 1(4):87. Gender: masculine.

Pandalina Calman, 1899 (fig. 86)

Pandalina Calman, 1899, Ann. Mag. nat. Hist. (7)3:37. Type species, by monotypy: *Pandalus brevisrostris* Rathke, 1843, Nova Acta Acad. Leop. Carol. 20(1):17. Gender: feminine.

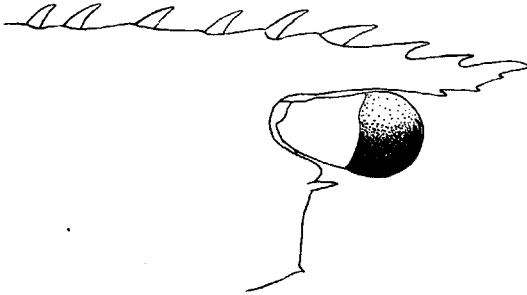


Fig. 86. *Pandalina brevisrostris* (Rathke). Rostrum. After Holthuis, 1950.

Paladina Collings, 1935, Trans. Suffolk Nat. Soc. 3:77. Erroneous spelling of *Pandalina* Calman, 1899.

Pandolina Vinogradov, 1938, Bull. Pacific sci. Inst. Fish. Oceanogr. Vladivostok 14:8. Erroneous spelling of *Pandalina* Calman, 1899.

Pandalus Leach, 1814 (fig. 87a)

Pandalus Leach, 1814, Edinb. Encycl. 7(2):432. Type species, by monotypy: *Pandalus Montagu* Leach, 1814, Edinb. Encycl. 7(2):432. Gender: masculine.

Dymas Krøyer, 1861, Naturhist. Tidsskr. (3)1:63. Type species, by monotypy: *Dymas typus* Krøyer, 1861, Naturhist. Tidsskr. (3)1:63 (= *Pandalus borealis* Krøyer, 1838, Naturhist. Tidsskr. 2:254). Gender: masculine.

Padnalus Scott, 1889, Ann. Rep. Fish. Board Scotland 6 (app.):261. Erroneous spelling of *Pandalus* Leach, 1814.

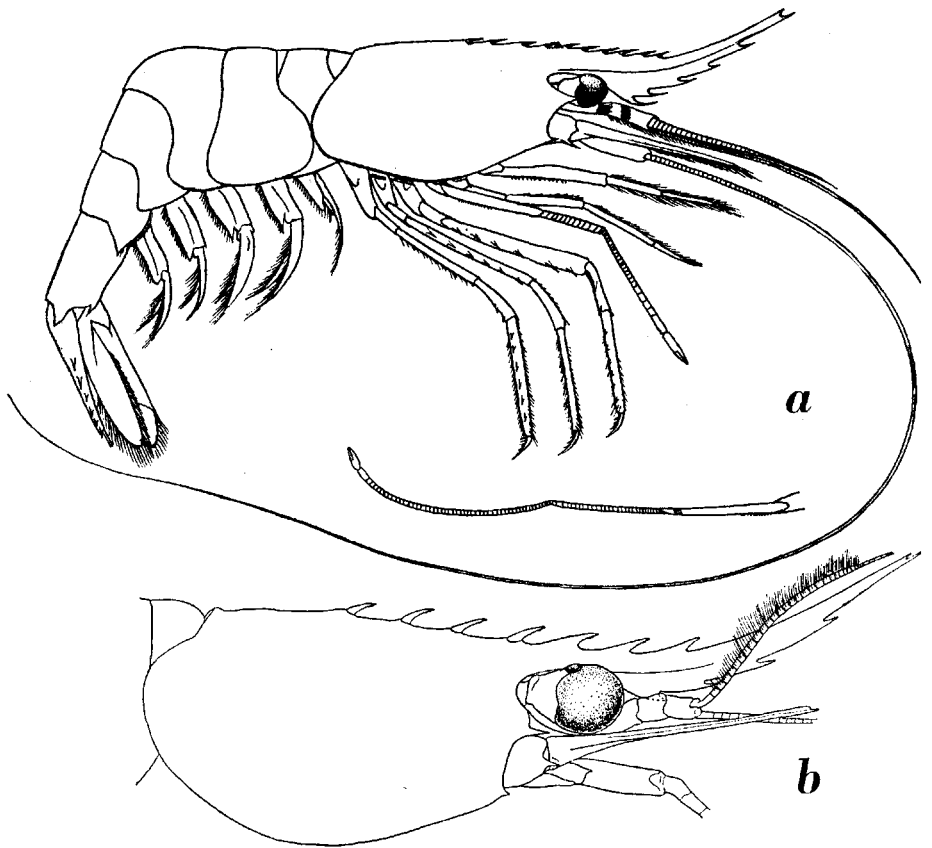


Fig. 87a. *Pandalus montagui* Leach. After Holthuis, 1950.

Fig. 87b. *Austropandalus grayi* (Cunningham). Anterior part of body. After Holthuis, 1952c.

Boreocaris Ortmann, 1893, *Ergebn. Plankton-Exped.* 2 (Gb): 73, 84. Type species, by monotypy: *Boreocaris möbiusi* Ortmann, 1893, *Ergebn. Plankton-Exped.* 2 (Gb): 84 (? = *Pandalus montagui* Leach, 1814, *Edinb. Encycl.* 7(2): 432). Gender: feminine.

Pandalas Riggio, 1905, *Natural. Sicil.* 17: 282. Erroneous spelling of *Pandalus* Leach, 1814.

Pandulus Taylor, 1912, *Contr. Canad. Biol.* 1906-1910: 194. Erroneous spelling of *Pandalus* Leach, 1814.

Candalus Kuznetsov, 1950, *C. R. Acad. Sci. Moscow*, (n. ser.) 75: 316. Erroneous spelling of *Pandalus* Leach, 1814.

Austropandalus Holthuis, 1952 (fig. 87b)

Austropandalus Holthuis, 1952, Lunds Univ. Årsskr. (n. ser.) (2)47(10): 16. Type species, by monotypy: *Hippolyte Grayi* Cunningham, 1871, Trans. Linn. Soc. Lond. 27: 496. Gender: masculine.

Heterocarpus A. Milne Edwards, 1881 (fig. 88a)

Heterocarpus A. Milne Edwards, 1881, Ann. Sci. nat. Zool. (6)11(4): 8. Type species, by original designation: *Heterocarpus ensifer* A. Milne Edwards, 1881, Ann. Sci. nat. Zool. (6)11(4): 8. Gender: masculine.

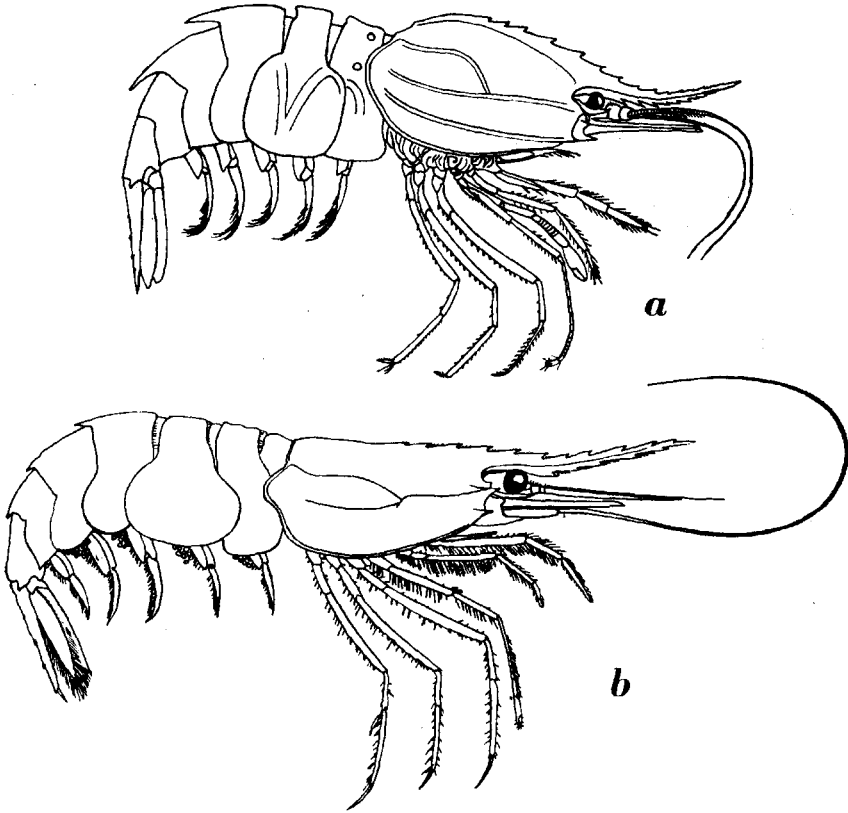


Fig. 88a. *Heterocarpus sibogae* De Man. After De Man, 1920.

Fig. 88b. *Heterocarpoides levicarina* (Bate). After De Man, 1920.

Procletes Bate, 1888, Rep. Voy. Challenger, Zool. 24: 883. Type species, by present selection: *Procletes biangulatus* Bate, 1888, Rep. Voy. Challenger, Zool. 24: 884. Gender: masculine.

Atlantocaris Ortmann, 1893, Ergebn. Plankton-Exped. 2 (Gb): 73, 79. Type

species, by present selection: *Atlantocaris gigas* Ortmann, 1893, *Ergebn. Plankton-Exped. 2 (Gb):80* (= *Heterocarpus ensifer* A. Milne Edwards, 1881, *Ann. Sci. nat. Zool. (6)11(4):8*). Gender: feminine.

Heterocarpoides De Man, 1917 (fig. 88b)

Heterocarpoides De Man, 1917, *Zool. Meded. Leiden 3:284*. Type species, by monotypy: *Dorodotes levicarina* Bate, 1888, *Rep. Voy. Challenger, Zool. 24:680*. Gender: masculine.

Chlorotocus A. Milne Edwards, 1882 (fig. 89a)

Chlorotocus A. Milne Edwards, 1882, *Arch. Miss. sci. litt. (3)9:14*. Type species, by monotypy: *Chlorotocus gracilipes* A. Milne Edwards, 1882,

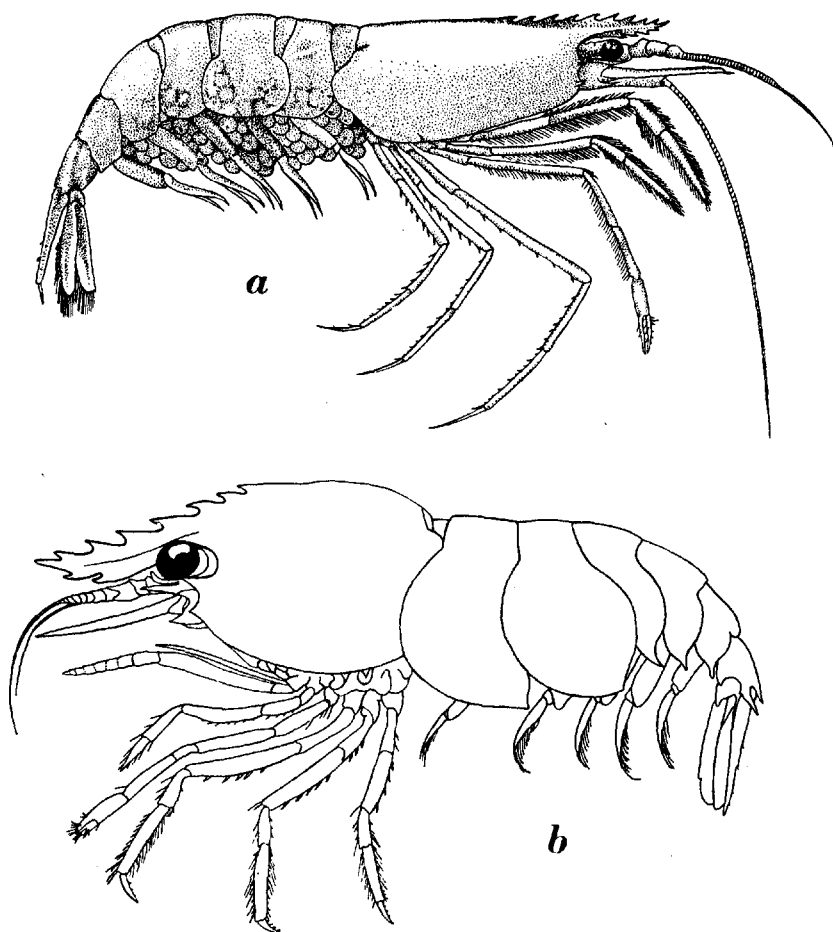


Fig. 89a. *Chlorotocus novae-zealandiae* (Borradaile). After Borradaile, 1916.

Fig. 89b. *Chlorotocoides spinicauda* (De Man). After De Man, 1920.

Arch. Miss. sci. litt. (3)9:14 (= *Pandalus crassicornis* Costa, 1871, Annu. Mus. zool. Univ. Napoli 6:89). Gender: masculine.

Chlorotocoides Kemp, 1925 (fig. 89b)

Chlorotocoides Kemp, 1925, Rec. Indian Mus. 27:271, 276. Type species, by monotypy: *Chlorotocus spinicauda* De Man, 1902, Abh. Senckenb. naturf. Ges. 25:856. Gender: masculine.

Chlorotocella Balss, 1914 (fig. 90)

Chlorotocella Balss, 1914, Abh. Bayer. Akad. Wiss. (suppl.) 2(10):33. Type species, by monotypy: *Chlorotocella gracilis* Balss, 1914, Abh. Bayer. Akad. Wiss. (suppl.) 2(10):33. Gender: feminine.

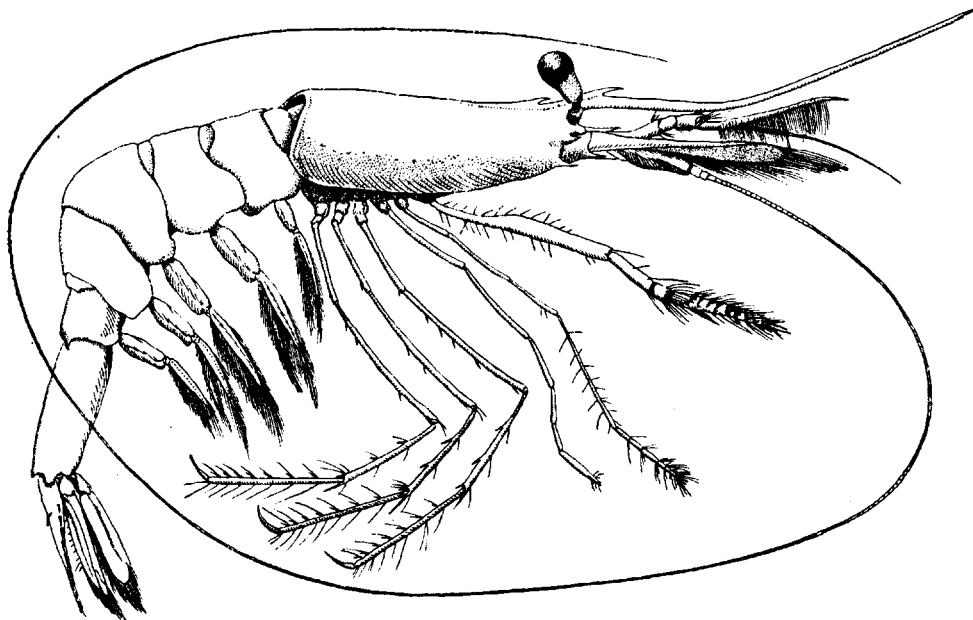


Fig. 90. *Chlorotocella gracilis* Balss. After Balss, 1914.

Chlorocurtis Kemp, 1925 (fig. 91)

Chlorocurtis Kemp, 1925, Rec. Indian Mus. 27:272, 279. Type species, by monotypy: *Chlorocurtis miser* Kemp, 1925, Rec. Indian Mus. 27:280 (= *Virbius* (?) *jactans* Nobili, 1904, Bull. Mus. Hist. nat. Paris 10:230). Gender: masculine.

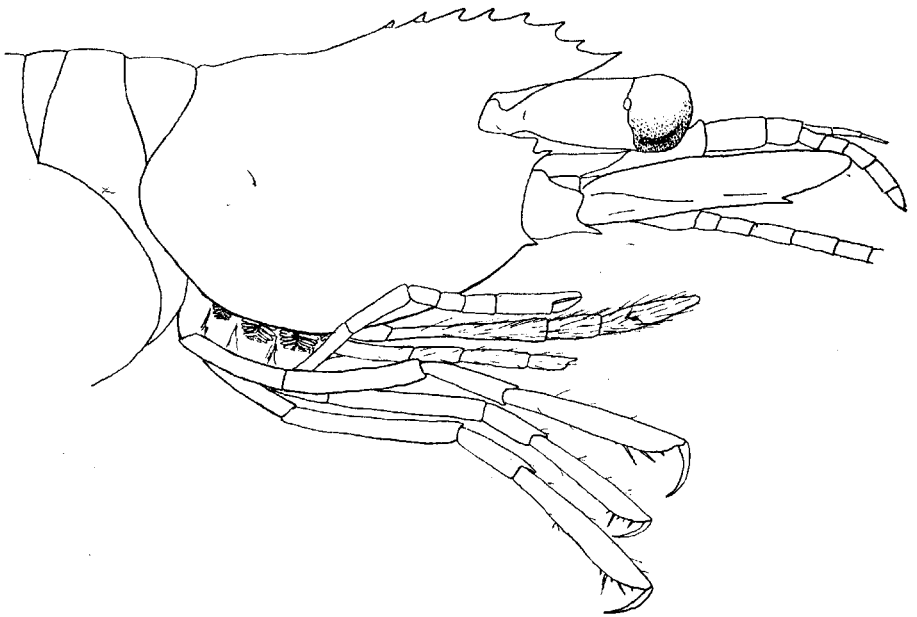


Fig. 91. *Chlorocurtis jactans* (Nobili). Anterior part of body. Original.

Family THALASSOCARIDIDAE

Thalassocaridae Bate, 1888, Rep. Voy. Challenger, Zool. 24: lxxvii, 481, 682.

Thalassocarinae Ortmann, 1896, Zool. Jb. Syst. 9: 423.

Only genus:

Thalassocaris Stimpson, 1860 (fig. 92)

Regulus Dana, 1852, Proc. Acad. nat. Sci. Phila. 6: 18, 27. Type species, selected by Kingsley, 1880, Proc. Acad. nat. Sci. Phila. 1879: 426, : *Regulus lucidus* Dana, 1852, Proc. Acad. nat. Sci. Phila. 6: 27. Gender: masculine. Invalid junior homonym of *Regulus* Cuvier, 1800, Leçons Anat. comp. 1: tabl. 2 (Aves).

Thalassocaris Stimpson, 1860, Proc. Acad. nat. Sci. Phila. 1860: 42 Substitute name for *Regulus* Dana, 1852. Gender: feminine.

Family PHYSETOCARIDIDAE

Physetocaridae Chace, 1940, Zoologica, New York 25: 196.

Only genus:

Physetocaris Chace, 1940 (fig. 93)

Physetocaris Chace, 1940, Zoologica, New York 25: 196. Type species, by monotypy: *Physetocaris microphthalma* Chace, 1940, Zoologica, New York 25: 196. Gender: feminine.

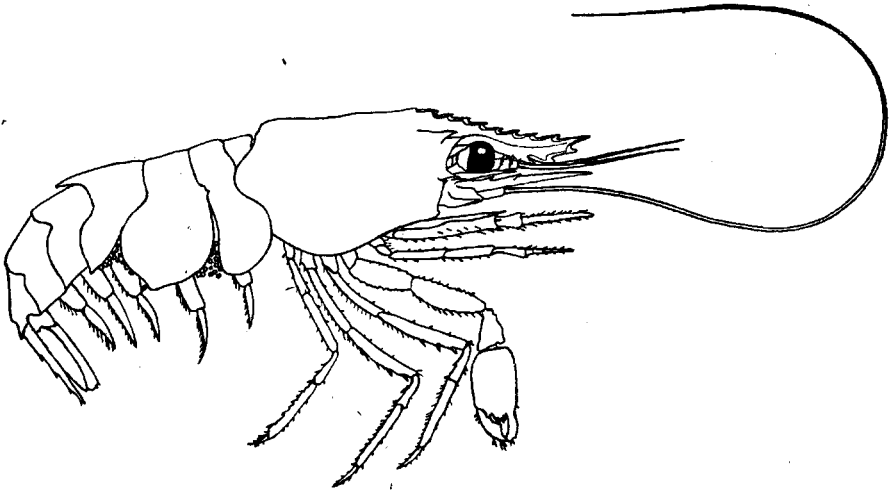


Fig. 92. *Thalassocaris crinita* (Dana). After De Man, 1920.

Superfamily CRANGONOIDA

Crangonidea Bate, 1888, Rep. Voy. Challenger, Zool. 24: lxxvi, 480, 481.

Crangoninea Stebbing, 1893, Hist. Crust.: 224.

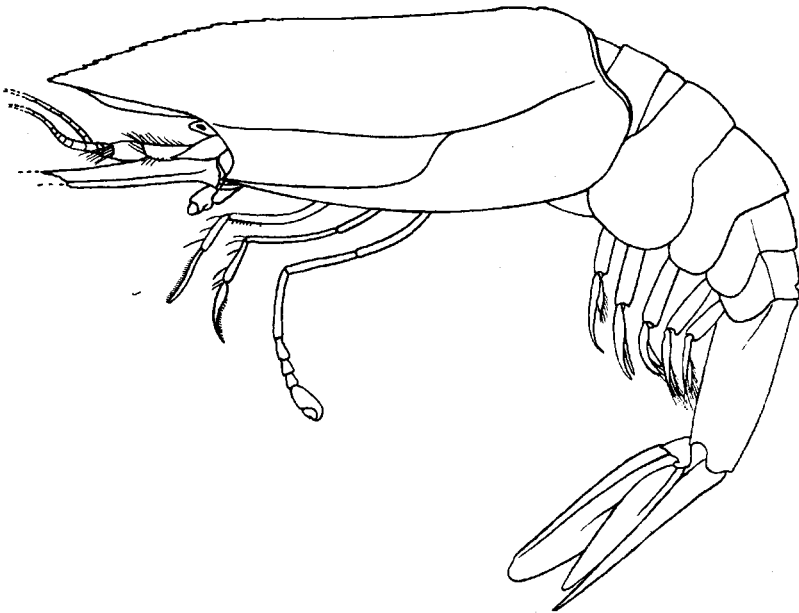


Fig. 93. *Physetocaris microphthalmalma* Chace. After Chace, 1940.

Crangonoida Alcock, 1901, Descr. Catal. Indian Deep Sea Crust. Macr. Anom.: 56.

Crangonoidea Balss, 1915, Denkschr. Akad. Wiss. Wien 91: 32.

Crangonoida Hale, 1927, Crust. S. Aust. (1): 60.

Crangonida Sivertsen, 1933, Nyt Mag. Naturvidensk. 74: 6.

After the removal of the families Anchistioididae, Gnathophyllidae, and Processidae to other subfamilies, only two remain of the five families assigned by Borradaile and Balss to this superfamily. These families are the Crangonidae and the Glyphocrangonidae.

Family GLYPHOCRANGONIDAE

Rhachocarinae Smith, 1882, Bull. Mus. comp. Zoöl. Harvard 10: 41.

Glyphocrangonidae Smith, 1884, Rep. U. S. Fish Comm. 10: 364.

Only one genus:

Glyphocrangon A. Milne Edwards, 1881 (fig. 94)

Glyphocrangon A. Milne Edwards, 1881, Ann. Sci. nat. Zool. (6)11(4): 3.

Type species, by original designation: *Glyphocrangon spinicauda* A. Milne Edwards, 1881, Ann. Sci. nat. Zool. (6)11(4): 3. Gender: feminine.

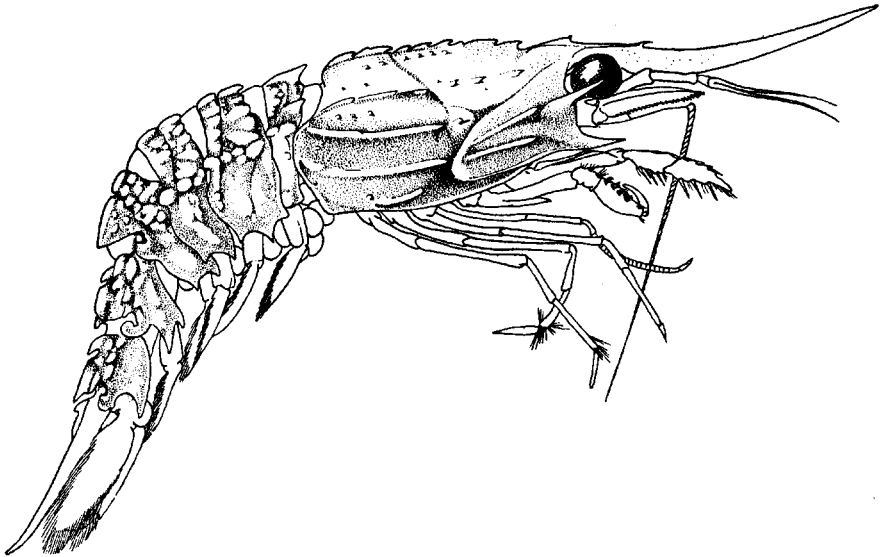


Fig. 94. *Glyphocrangon dentatus* Barnard. After Calman, 1939.

Rhachocaris Smith, 1882, Bull. Mus. comp. Zoöl. Harvard 10: 41. Type species, selected by Fowler, 1912, Ann. Rep. New Jersey State Mus. 1911: 556, : *Rhachocaris Agassizii* Smith, 1882, Bull. Mus. comp. Zoöl.

- Harvard 10:43 (= *Glyphocrangon aculeatum* A. Milne Edwards, 1881, Ann. Sci. nat. Zool. (6)11(4):5). Gender: feminine.
- Plastocrangon* Alcock, 1901, Descr. Catal. Indian Deep Sea Crust. Macr. Anom.: 125, 133. Type species, selected by Fowler, 1912, Ann. Rep. New Jersey State Mus. 1911: 556, : *Glyphocrangon caecescens* Wood Mason & Alcock, 1891, Ann. Mag. nat. Hist. (6)8: 357. Gender: feminine.
- Rhacocaris* Alcock, 1901, Descr. Catal. Indian Deep Sea Crust. Macr. Anom.: 125. Erroneous spelling of *Rhachocaris* Smith, 1882.
- Glyptocrangon* Norman, 1905, Mus. Norm. (ed. 2)3: 9. Erroneous spelling of *Glyphocrangon* A. Milne Edwards, 1881.

Family CRANGONIDAE

- Crangoniens H. Milne Edwards, 1837, Hist. nat. Crust. 2: 339.
- Crangonidae White, 1847, List Crust. Brit. Mus.: 73.
- Crangonidea De Haan, 1849, Fauna Japon., Crust. (6): 168, 181.
- Crangoniana Gibbes, 1850, Proc. Amer. Ass. Adv. Sci. 3: 195.
- Crangonina Brandt, 1851, Middendorff's Reise Sibir. 2(1): 112.
- Crangoninae Dana, 1852, Proc. Acad. nat. Sci. Phila. 6: 15, 20.
- Crangonidi Acloque, 1899, Faune de France, Thysan.-Protoz.: 155, 159.
- Crangonidae Rathbun, 1904, Proc. biol. Soc. Wash. 17: 172.

Our knowledge of the status of the various genera of this family still is very imperfect and many changes may be expected in our present conception of the size of these genera, especially in the *Crangon-Notocrangon-Sclerocrangon* and the *Pontophilus-Pontocaris* groups. Therefore the present key, which is chiefly based on that given by De Man (1920, Siboga Exped. 39 (a3): 248), necessarily is not very satisfactory as far as these groups of genera are concerned.

- | | |
|---|----------------------|
| 1. Second pereiopods wanting | <i>Paracrangon</i> |
| — Second pereiopods present | 2 |
| 2. Second pereiopods simple, not chelate | 3 |
| — Second pereiopods chelate | 5 |
| 3. Eyes reduced to small pointed processes. Cornea absent | <i>Prionocrangon</i> |
| — Eyes well developed. Cornea present, large. | 4 |
| 4. Second pereiopods rudimental, thin and short, failing to reach the end of the merus of the first pereiopods. Scaphocerite with a terminal tooth. | <i>Sabinea</i> |
| — Second pereiopods rather well developed, with broad joints, reaching beyond the merus of the first pereiopods. Scaphocerite without a terminal tooth. | <i>Vercoia</i> |
| 5. Dactylus of fourth and fifth pereiopods flat and broadened, natatorial. | <i>Argis</i> |
| — Dactylus of fourth and fifth pereiopods normal, not broadened. | 6 |
| 6. Second pereiopods subequal in length to the other pereiopods. | 7 |
| — Second pereiopods much shorter than the other legs. | 9 |
| 7. Third maxillipeds with an arthrobranch | <i>Crangon</i> |
| — Third maxillipeds without arthrobranches. | 8 |
| 8. Slender animals. Antarctic. | <i>Notocrangon</i> |
| — Broad and heavy animals. Arctic. | <i>Sclerocrangon</i> |

9. Six or seven branchiae on each side of the body. Apices of these branchiae directed backwards *Pontophilus*
 — Eight branchiae on each side of the body. Apices of these branchiae turned forwards. *Pontocaris*

Paracrangon Dana, 1852 (fig. 95a)

Paracrangon Dana, 1852, Proc. Acad. nat. Sci. Phila. 6: 16, 20. Type species, by monotypy: *Paracrangon echinatus* Dana, 1852, Proc. Acad. nat. Sci. Phila. 6: 20. Gender: feminine.

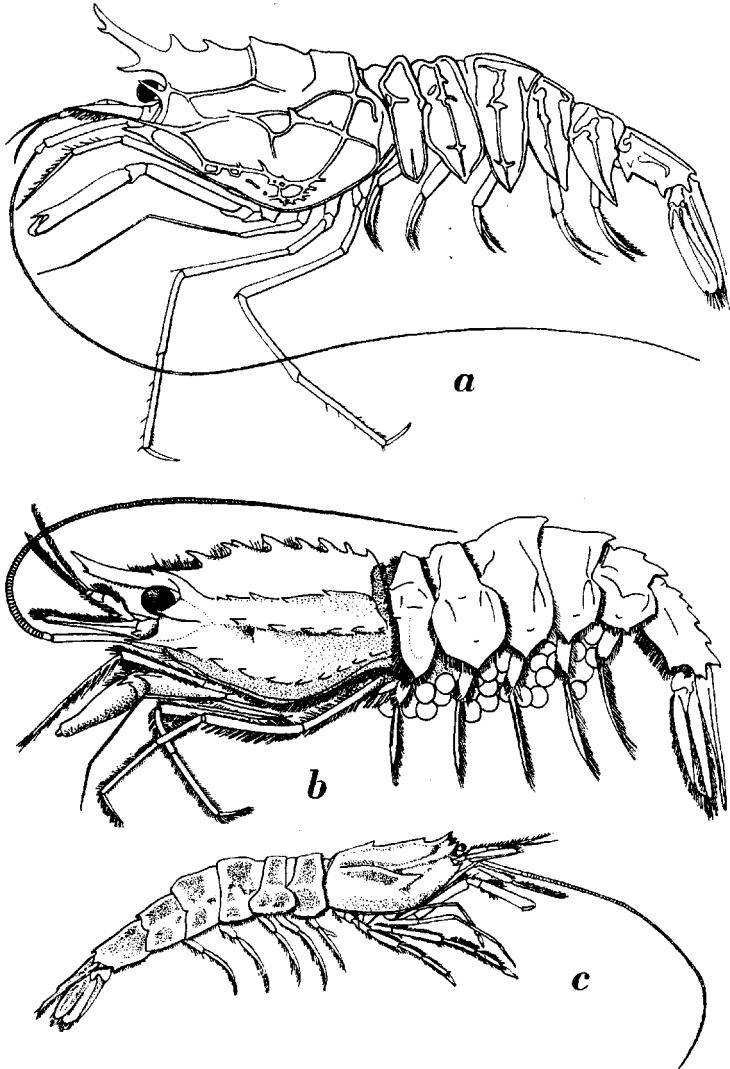


Fig. 95a. *Paracrangon areolata* Faxon. After Faxon, 1895.
 Fig. 95b. *Sabinea hystrix* (A. Milne Edwards). After Smith, 1882.
 Fig. 95c. *Argis toyamaensis* (Yokoya). After Yokoya, 1933.

Prionocrangon Wood Mason & Alcock, 1891

Prionocrangon Wood Mason & Alcock, 1891, Ann. Mag. nat. Hist. (6)8: 361. Type species, by monotypy: *Prionocrangon ommatosteres* Wood Mason & Alcock, 1891, Ann. Mag. nat. Hist. (6)8: 362. Gender: feminine.

Sabinea J. C. Ross, 1835 (fig. 95b)

Sabinea J. C. Ross, 1835, J. Ross's App. Narrat. 2nd Voy. N.W. Pass.: lxxxii. Type species, by monotypy: *Crangon Septemcarinatus* Sabine, 1824, Suppl. App. Parry's Voy. N. W. Pass.: ccxxxvi. Gender: feminine.

Myto Krøyer, 1845, Naturhist. Tidsskr. (2)1: 470, 476. Type species, by monotypy: *Myto Gaimardii* Krøyer, 1845, Naturhist. Tidsskr. (2)1: 470, 476 (= *Crangon Septemcarinatus* Sabine, 1824, Suppl. App. Parry's Voy. N. W. Pass.: ccxxxvi). Gender: masculine.

Sabinaea Norman, 1869, Rep. Brit. Ass. Adv. Sci. 38: 255, 256, 260, 265. Erroneous spelling of *Sabinea* J. C. Ross, 1835.

Sabenea Alpatov, 1923, Ber. wiss. Meeresinst. Moskau 1(7): 4. Erroneous spelling of *Sabinea* J. C. Ross, 1835.

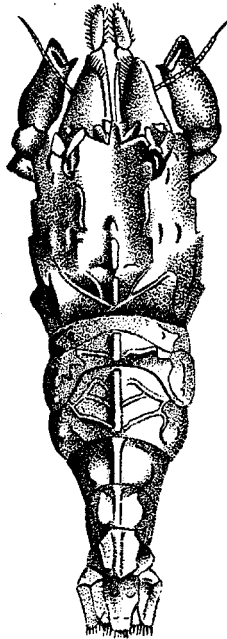


Fig. 96. *Vercoia gibbosa* Baker. After Baker, 1904.

Vercoia Baker, 1904 (fig. 96)

Vercoia Baker, 1904, Trans. Roy. Soc. S. Aust. 28: 157. Type species, by

monotypy: *Vercoia gibbosa* Baker, 1904, Trans. Roy. Soc. S. Aust. 28: 158. Gender: feminine.

Argis Krøyer, 1842 (fig. 95c)

Argis Krøyer, 1842, Naturhist. Tidsskr. 4: 255, 267. Type species, by monotypy: *Crangon Lar* Owen, 1839, Zool. Beechey's Voy. Blossom: 88. Gender: feminine.

Nectocrangon Brandt, 1851, Middendorff's Reise Sibir. 2(1): 114. Type species, by monotypy: *Crangon Lar* Owen, 1839, Zool. Beechey's Voy. Blossom: 88. Gender: feminine.

Nectocranagon Smith, 1928, Canad. Field Nat. 42: 165. Erroneous spelling of *Nectocrangon* Brandt, 1851.

Crangon Fabricius, 1798 (fig. 97)

Crangon Fabricius, 1798, Suppl. Ent. Syst.: 387, 409. Type species, by absolute tautonymy: *Cancer Crangon* Linnaeus, 1758, Syst. Nat. (ed. 10) 1: 632. Gender: feminine. Junior homonym of *Crangon* Weber, 1795, Nomencl. Ent.: 94 (Crustacea Decapoda Macrura).

Crago Lamarck, 1801, Syst. Anim. sans Vertèbr.: 159. Type species, by monotypy: *Cancer Crangon* Linnaeus, 1758, Syst. Nat. (ed. 10) 1: 632. Gender: masculine.

Crangonus Rafinesque, 1815, Anal. Nature: 98. Substitute name for *Crangon* Fabricius, 1798. Gender: masculine.

Crango Voigt, 1836, Cuvier's Thierreich 4: 179. Erroneous spelling of *Crangon* Fabricius, 1798.

Steiracrangon Kinahan, 1862 (sep. 1861), Trans. Roy. Irish Acad. 24(1): 56, 57, 58, 64. Type species, selected by Fowler, 1912, Ann. Rep. New Jersey State Mus. 1911: 319, : *Crangon Allmanni* Kinahan, 1857, Proc. nat. Hist. Soc. Dublin 2: 28. Gender: feminine.

Cragnon Leach, 1875, Malac. Podophth. Brit. (19): pl. 37C. Erroneous spelling of *Crangon* Fabricius, 1798.

Cangron Filhol, 1886, Miss. Ile Campbell, Zool. 3(2): 430. Erroneous spelling of *Crangon* Fabricius, 1798.

Crangoi Taylor, 1912, Contr. Canad. Biol. 1906-1910: 199. Erroneous spelling of *Crangon* Fabricius, 1798.

Cragon Hilton, 1916, Journ. Entom. Zool. Pomona Coll. 8: 67. Erroneous spelling of *Crangon* Fabricius, 1798.

Grangon Boudarel, 1948, Encycl. biol. 29: 260. Erroneous spelling of *Crangon* Fabricius, 1798.

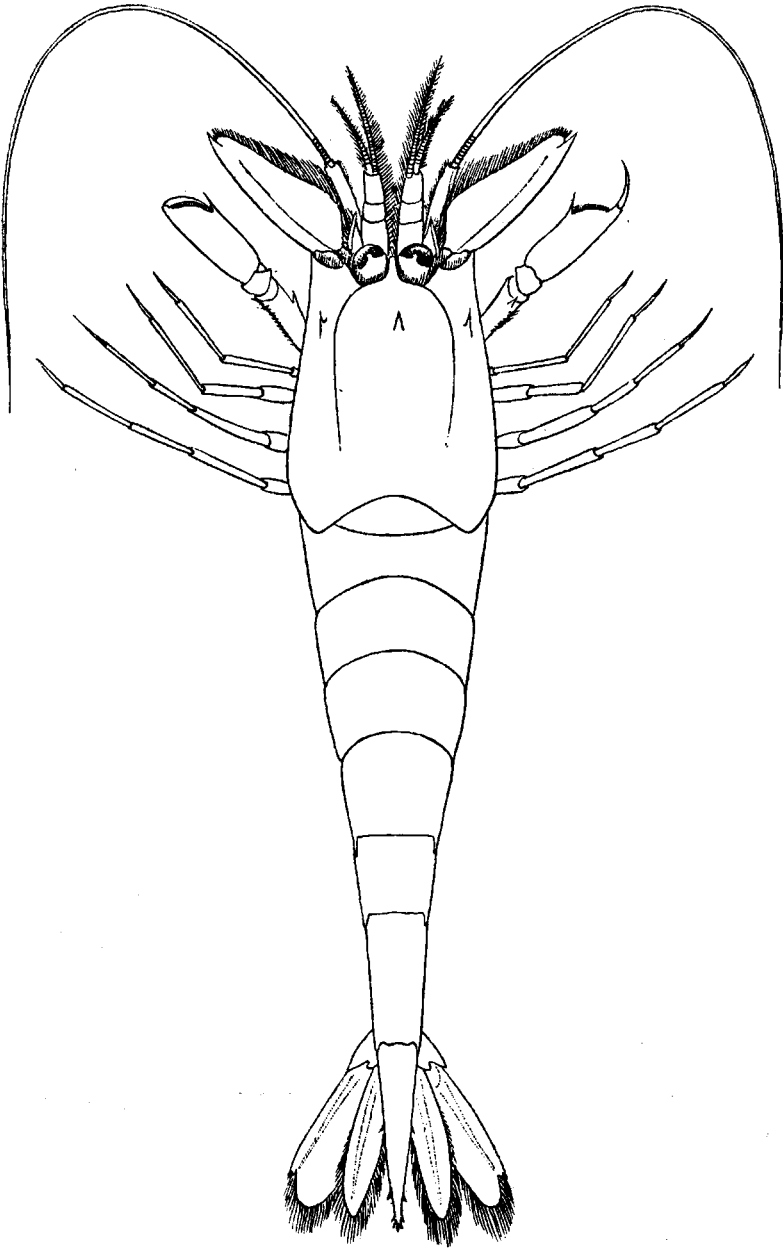


Fig. 97. *Crangon crangon* (Linnaeus). After Holthuis, 1950.

Notocrangon Coutière, 1900 (fig. 98)

Notocrangon Coutière, 1900, C. R. Acad. Sci. Paris 130: 1640. Type species, by monotypy: *Crangon antarcticus* Pfeffer, 1887, Jb. Hamb. wiss. Anst. 4: 45. Gender: feminine.

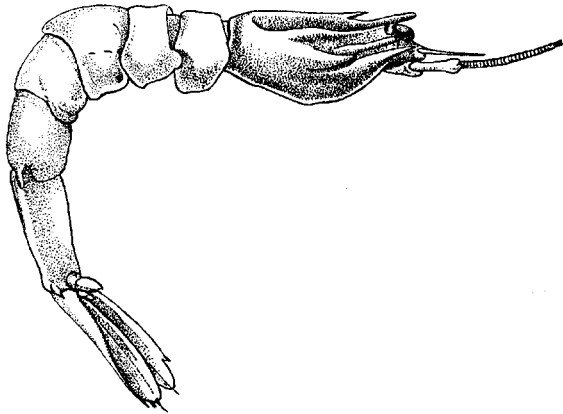


Fig. 98. *Notocrangon antarctica* (Pfeffer). After Pfeffer, 1887.

Sclerocrangon Sars, 1883 (fig. 99a)

Sclerocrangon Sars, 1883 (sep. 1882), Forh. Vidensk. Selsk. Christiania 1882 (18): 7, 45. Type species, by monotypy: *Cancer Boreas* Phipps, 1774, Voy. North Pole: 190. Gender: feminine.

Pontophilus Leach, 1817 (fig. 100)

Mesapus Rafinesque, 1814, Préc. Découv. somiol.: 22. Type species, by monotypy: *Mesapus fasciatus* Rafinesque, 1814, Préc. Découv. somiol.: 23 (= *Crangon Fasciatus* Risso, 1816, Hist. nat. Crust. Nice: 82). Gender: masculine.

Pontophilus Leach, 1817, Malac. podophthal. Brit. (15): pl. 37A. Type species, by monotypy: *Crangon spinosus* Leach, 1815, Trans. Linn. Soc. Lond. 11: 346. Gender: masculine.

Pontophilus H. Milne Edwards, 1837, Cuvier's Règne anim. (ed. 4, Discip. ed.) 18: expl. pl. 54. Erroneous spelling of *Pontophilus* Leach, 1817.

Cheraphilus Kinahan, 1862 (sep. 1861), Trans. Roy. Irish Acad. 24(1): 54, 55, 57, 59, 60, 66-75. Substitute name for *Pontophilus* Leach, 1817. Gender: masculine.

Cheiraphilus Meinert, 1877, Naturhist. Tidsskr. (3) 11: 199. Erroneous spelling of *Cheraphilus* Kinahan, 1862.

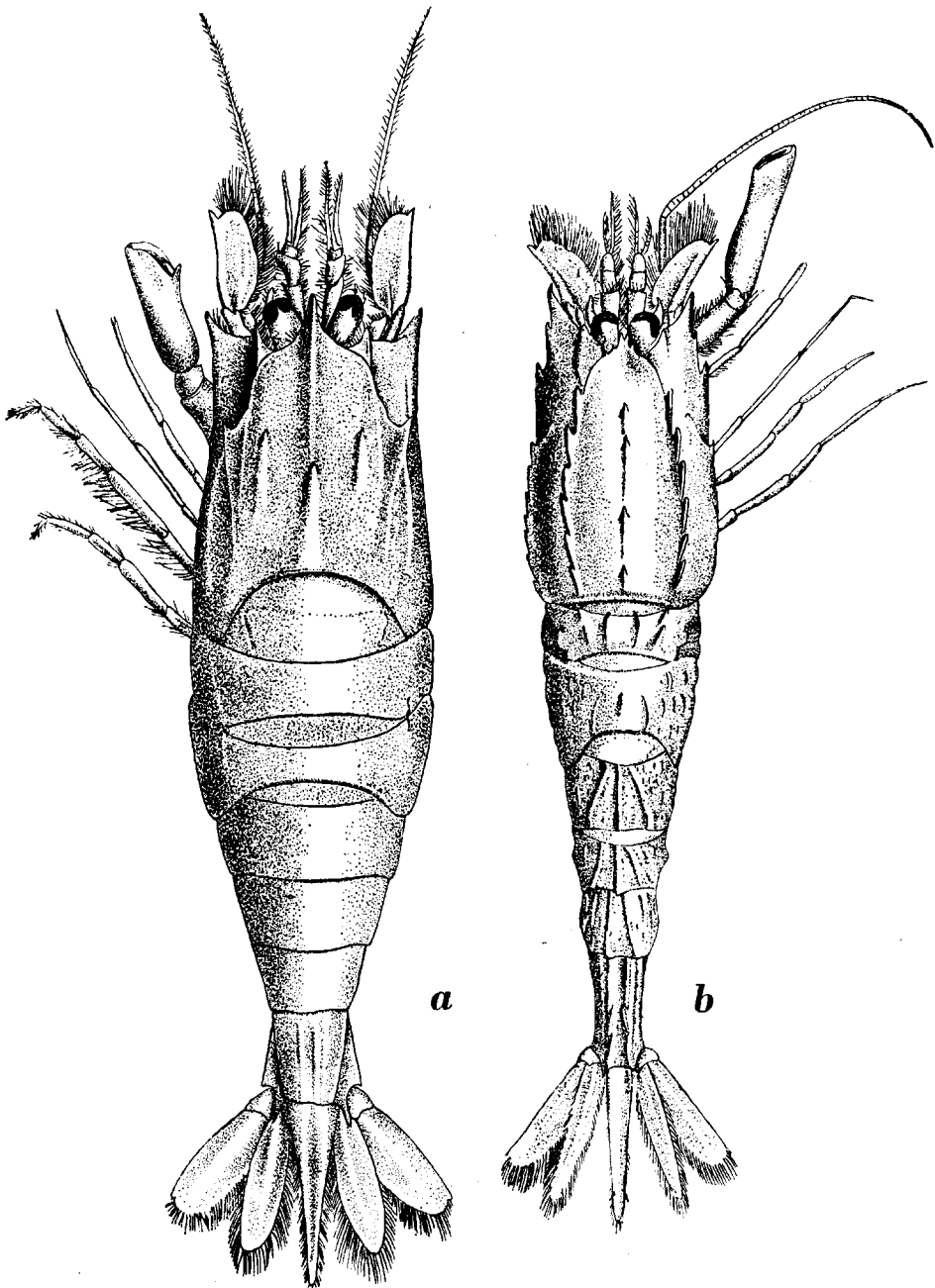


Fig. 99a. *Sclerocrangon jacqueti* (A. Milne Edwards). After Kemp, 1910.

Fig. 99b. *Pontocaris lacazei* (Gourret). After Kemp, 1910.

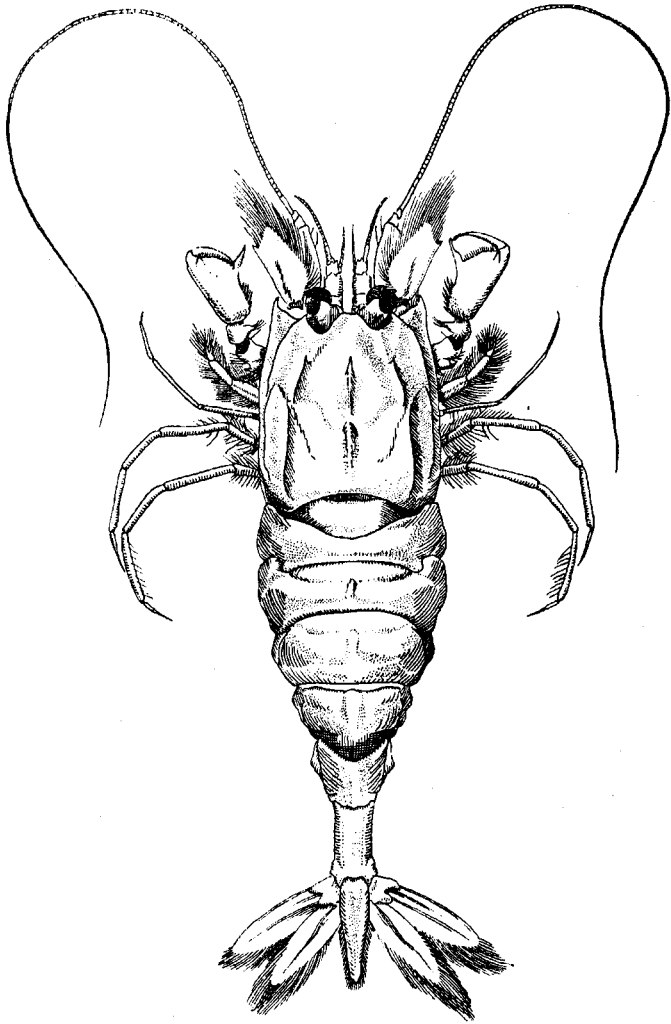


Fig. 100. *Pontophilus bidentatus* (De Haan). After Balss, 1914.

Ceraphilus Smith, 1882, Bull. Mus. comp. Zoöl. Harvard 10: 32. Erroneous spelling of *Cheraphilus* Kinahan, 1862.

Cherophilus Meinert, 1893, Vidensk. Udb. "Hauchs" Togter: 223. Erroneous spelling of *Cheraphilus* Kinahan, 1862.

Philocheras Stebbing, 1900, Mar. Invest. S. Afr. 1: 48. Type species, by present selection: *Crangon nanus* Krøyer, 1842, Naturhist. Tidsskr. 4: 231 (= *Pontophilus bispinosus* Hailstone, 1835, Mag. nat. Hist. 8: 271). Gender: masculine.

- Pantophilus* Dons, 1915, Tromsø Mus. Aarsh. 37: 55. Erroneous spelling of *Pontophilus* Leach, 1817.
- Pontophyllus* (Risso MSS) Monod, 1931, Arch. Mus. Hist. nat. Paris (6)7: 123. Erroneous spelling of *Pontophilus* Leach, 1817.
- Pontophilus* Collings, 1934, Trans. Suffolk Nat. Soc. 2: 270. Erroneous spelling of *Pontophilus* Leach, 1817.
- Pnotophilus* Zariquiey Alvarez, 1952, Crust. Decap. Rutlant Mellila: 17. Erroneous spelling of *Pontophilus* Leach, 1817.

Pontocaris Bate, 1888 (fig. 99b)

- Egeon* Bosc, 1813, Nouv. Bull. Sci. Soc. philom. Paris 3(66): 233. Type species, by monotypy: *Cancer cataphractus* Olivi, 1792, Zool. Adriat.: 50. Gender: masculine. Invalid junior homonym of *Egeon* Montfort, 1808, Conch. Syst. 1: 166 (Protozoa).
- Aegaeon* Agassiz, 1846, Nomencl. Zool. Index Univ.: 8, 134. Invalid emendation of *Egeon* Risso, 1813.
- Aegeon* Kinahan, 1862 (sep. 1861), Trans. Roy. Irish Acad. 24: 53, 54, 55, 57, 58, 60, 73, 74, 76, 78, 79, 80. Erroneous spelling of *Egeon* Risso, 1813.
- Pontocaris* Bate, 1888, Rep. Voy. Challenger, Zool. 24: 495. Type species, selected by Holthuis, 1947, Zool. Meded. Leiden 27: 320, : *Pontocaris propensalata* Bate, 1888, Rep. Voy. Challenger, Zool. 24: 496. Gender: feminine.
- Parapontocaris* Alcock, 1901, Descr. Catal. Indian Deep Sea Crust. Macr. Anom.: 114, 120. Type species, by present selection: *Crangon bengalensis* Wood Mason & Alcock, 1891, Ann. Mag. nat. Hist. (6)8: 360. Gender: feminine.

GENERA DUBIA CARIDEORUM

- Amphion* H. Milne Edwards, 1833, Ann. Soc. entom. France 1: 336. Type species, by monotypy: *Amphion Reynaudii* H. Milne Edwards, 1833, Ann. Soc. entom. France 1: 336. Gender: masculine. Invalid junior homonym of *Amphion* Huebner, 1819, Verz. bekannt. Schmett. (9): 135 (Lepidoptera), and of *Amphion* Pander, 1830, Beitr. Geogn. Russ.: 139 (Trilobita). (Family Amphionididae; see under *Amphionides* Zimmer).
- Amphionides* Zimmer, 1904, Zool. Anz. 28: 225. Type species, by monotypy: *Amphionides valdiviae* Zimmer, 1904, Zool. Anz. 28: 225. Gender: masculine. (Family Amphionididae (often spelled: Amphionidae); Gurney, 1942, Ray Soc. 129: 223-225, points out that *Amphion* H. Milne Edwards

- is the larva of *Amphionides* Zimmer; the status of the Amphionididae is uncertain, Gurney, 1942, considers it to belong to the Caridea).
- Amphiplectes* Carus, 1888, Zool. Anz. 11: 461. Erroneous spelling of *Amphiplectus* Bate, 1888.
- Amphiplectus* Bate, 1888, Rep. Voy. Challenger, Zool. 24: 578, 622. Type species, by monotypy: *Amphiplectus depressus* Bate, 1888, Rep. Voy. Challenger, Zool. 24: 623. Gender: masculine. (Assigned by Bate, 1888, to the Hippolytidae, but Calman, 1906, Ann. Mag. nat. Hist. (7)17: 34, doubts this and is inclined to consider the genus more closely related to *Nematocarcinus*).
- Anebocaris* Bate, 1888, Rep. Voy. Challenger, Zool. 24: 722. Type species, by monotypy: *Anebocaris quadroculus* Bate, 1888, Rep. Voy. Challenger, Zool. 24: 722. Gender: feminine. (Family Alpheidae; based on a larval stage).
- Camptocaris* Ortmann, 1893, Ergebn. Plankton-Exped. 2 (Gb): 73, 81. Type species, by monotypy: *Camptocaris maxima* Ortmann, 1893, Ergebn. Plankton-Exped. 2 (Gb): 87. Gender: feminine. (Based on a larval stage).
- Caricyphus* Bate, 1888, Rep. Voy. Challenger, Zool. 24: 712. Type species, by present selection: *Caricyphus gibberosus* Bate, 1888, Rep. Voy. Challenger, Zool. 24: 716. Gender: masculine. (Family Oplophoridae; based on a larval stage).
- Chiereghina* Nardo, 1869. See *Processa* (p. 116).
- Copiocaris* Thiele, 1905, Zool. Jb. Suppl. 8: 454. Type species, by monotypy: *Copiocaris messinensis* Thiele, 1905, Zool. Jb. Suppl. 8: 454. Gender: feminine. (Pandalidae; based on a larval stage).
- Coronocaris* Ortmann, 1893, Ergebn. Plankton-Exped. 2 (Gb): 73, 81. Type species, by present selection: *Coronocaris gracilis* Ortmann, 1893, Ergebn. Plankton-Exped. 2 (Gb): 81. Gender: feminine. (Palaemonidae, based on a larval stage).
- Cryptoleander* Gurney, 1938, Sci. Rep. Great Barrier Reef Exped. 6(1): 35. Type species, being first nominate species to be placed in this genus, which was described without any included nominate species: *Palaemon tenuicornis* Say, 1818, Journ. Acad. nat. Sci. Phila. 1: 249; first assigned to *Cryptoleander* by Gurney & Lebour, 1941, Journ. Linn. Soc. Lond. Zool. 41: 145, 159. Gender: masculine. (It is doubtful whether *Cryptoleander* actually can be considered to be a true generic name, since Gurney, 1938, when proposing this name stated: "I have coined a name [*Cryptoleander*] which is not intended as a generic designation but simply as a convenient term for reference".)
- Diaphoropus* Bate, 1888, Rep. Voy. Challenger, Zool. 24: 686. Type species,

- by present selection: *Diaphoropus versipellis* Bate, 1888, Rep. Voy. Challenger, Zool. 24: 687. Gender: masculine. (Alpheidae; based on a larval stage).
- Falcicaris* Ortmann, 1893, Ergebn. Plankton-Exped. 2 (Gb): 72, 74. Type species, by monotypy: *Falcicaris tenuis* Ortmann, 1893, Ergebn. Plankton-Exped. 2 (Gb): 74. Gender: feminine. (?Pasiphaeidae; based on a larval stage).
- Hippocaricyphus* Coutière, 1907, Bull. Inst. océanogr. Monaco 104: 14. Type species, by present selection: *Hippocaricyphus acutus* Coutière, 1907, Bull. Inst. océanogr. Monaco 104: 14. Gender: masculine. (Hippolytidae; based on a larval stage).
- Icotopus* Bate, 1888, Rep. Voy. Challenger, Zool. 24: 886. Type species, by monotypy: *Icotopus arcurostris* Bate, 1888, Rep. Voy. Challenger, Zool. 24: 886. Gender: masculine. (Pandalidae; based on a larval stage).
- Kyptocaris* Bate, 1888, Rep. Voy. Challenger, Zool. 24: 689. Type species, by monotypy: *Kyptocaris stylofrontalis* Bate, 1888, Rep. Voy. Challenger, Zool. 24: 690. Gender: feminine. (Pandalidae; based on a larval stage).
- Mesocaris* Ortmann, 1893, Ergebn. Plankton-Exped. 2 (Gb): 73, 82. Type species, by monotypy: *Mesocaris recurva* Ortmann, 1893, Ergebn. Plankton-Exped. 2 (Gb): 82. Gender: feminine. (Palaemonidae; based on a larval stage).
- Odontolophus* Bate, 1888, Rep. Voy. Challenger, Zool. 24: 665. Type species, by monotypy: *Odontolophus serratus* Bate, 1888, Rep. Voy. Challenger, Zool. 24: 665. Gender: masculine. (Palaemonidae; based on a larval stage).
- Oligocaris* Ortmann, 1893, Ergebn. Plankton-Exped. 2 (Gb): 73, 85. Type species, by monotypy: *Oligocaris bispinosa* Ortmann, 1893, Ergebn. Plankton-Exped. 2 (Gb): 85. Gender: feminine. (Pandalidae; based on a larval stage).
- Pandacaricyphus* Coutière, 1907, Bull. Inst. océanogr. Monaco 104: 21. Type species, by monotypy: *Pandacaricyphus pandaliformis* Coutière, 1907, Bull. Inst. océanogr. Monaco 104: 21. Gender: masculine. (Pandalidae; based on a larval stage).
- Parathanas* Bate, 1888, Rep. Voy. Challenger, Zool. 24: 530. Type species, by present selection: *Parathanas decorticus* Bate, 1888, Rep. Voy. Challenger, Zool. 24: 530. Gender: masculine. (Alpheidae; based on a larval stage).
- Rhomaleocaris* Bate, 1888, Rep. Voy. Challenger, Zool. 24: 720. Type species, by monotypy: *Rhomaleocaris hamulus* Bate, 1888, Rep. Voy. Challenger,

Zool. 24: 720. Gender: feminine. (? Palaemonidae: based on a larval stage).

Stylo-rostris Gurney, 1939, Ray Soc. 125: 76. Typographical error: In Gurney's paper, under *Eretmocaris*, is printed "*E. remipes, longicaulis, Stylo-rostris corniger*" instead of "*E. remipes, longicaulis, stylo-rostris, corniger*".
Vianellia Nardo, 1847. See *Thoralus* (p. 109).

Section STENOPODIDEA

Stenopidea Bate, 1888, Rep. Voy. Challenger, Zool. 24: 206.
 Stenopides Borradaile, 1907, Ann. Mag. nat. Hist. (7) 19: 469.
 Stenopodea Sclater, 1936, Zool. Rec. 73: 39.
 Stenopodidea Holthuis, 1946, Temminckia 7: 2.

Until 1878 the Stenopodidea were placed in the family Penaeidae. Huxley (1878) raised the group to the rank of a separate family, and Bate (1888) made them a separate tribe in his Trichobranchiata. Though the various authors differed about the place of the Stenopodidea in the classification of the Decapoda (see introduction Natantia), there was no difference of opinion about the systematics within the section itself. All authors are unanimous in assigning only one family to the Stenopodidea.

Family STENOPODIDAE

Stenopidae Huxley, 1878, Proc. zool. Soc. Lond. 1878: 785.
 Stenopodidae Smith & Weldon, 1909, in Harmer & Shipley, Cambridge nat. Hist. 4: 162.

The genera of this family may be distinguished as follows:

1. Body compressed. Telson elongate lance-shaped, ending in two strong spines, sometimes with a minute median spinule in between. Endopod of uropod with two dorsal ridges, a strong median and a weaker inner one, the inner ridge with some dorsal hairs. Third maxilliped with a distinct exopod 2
- Body depressed. Telson broadly lance-shaped or quadrangular, ending in three or five spines of equal size (sometimes without terminal spines). Endopod of uropod with one median dorsal ridge. Third maxilliped without or with a rudimentary exopod (exopod sometimes well developed). 5
2. Dactylus of fourth and fifth pereopod biunguiculate, short. 3
- Dactylus of fourth and fifth pereopod simple, relatively long and slender. 4
3. Carapace and abdomen densely covered with uniformly distributed strong spines, which sometimes are arranged in longitudinal rows. Spines erect, curved forward. Ischium of third maxilliped with external spinules *Stenopus*
- Abdomen without spines dorsally, sometimes with some spinules near the lateral margins of the pleurae. Carapace with a cincture of spines along the posterior margin of the cervical groove; often more parallel cinctures present. These spines are straight, directed forwards and are pressed against the surface of the carapace. Ischium of third maxilliped without external spinules. *Odontozona*

4. Carapace with a distinct dorsal cincture of spines along the posterior margin of the cervical groove. Propodus of third pereiopod not more than twice as broad as the carpus. Fingers of third pereiopod without teeth. *Richardina*
 — Carapace glabrous or with evenly placed spines, no distinct cincture of spines along posterior margin of cervical groove. Propodus of third pereiopod more than twice as broad as the carpus. Fingers of third pereiopod with distinct teeth on the cutting edges *Engystenopus*
5. Third maxilliped with the exopod long and slender. Carapace covered with many spines. First pereiopod with setiferous organ at ventral side of anterior part of carpus and posterior part of propodus. *Microprosthemata*
 — Third maxilliped with the exopod rudimentary or absent. Carapace glabrous or with some spines near the anterior margin. First pereiopods without setiferous organs. 6
6. Chela of third pereiopod with upper and lower margin serrate. Exopod of second maxilliped present, that of third maxilliped rudimentary. *Spongiicola*
 — Chela of third pereiopod with upper and lower margin entire. Exopod of second and third maxillipeds absent *Spongiocoloides*

Stenopus Latreille, 1819 (fig. 101a)

Byzenus Rafinesque, 1814, Préc. Découv. somiol.: 23. Type species, by monotypy: *Byzenus scaber* Rafinesque, 1814, Préc. Découv. somiol.: 23 (= *Stenopus spinosus* Risso, 1826, Hist. nat. Europ. mérid. 5: 66). Gender: masculine.

Stenopus Latreille, 1819, Nouv. Dict. Hist. Nat. (ed. 2) 30: 71. Type species, by monotypy: *Palaemon hispidus* Olivier, 1811, Encycl. méthod. Hist. nat. 8: 666. Gender: masculine.

Bizenus Desmarest, 1823, Dict. Sci. nat. 28: 312. Erroneous spelling of *Byzenus* Rafinesque, 1814.

Stenops Desmarest, 1823, Dict. Sci. nat. 28: tab. 5, footnote 1. Erroneous spelling of *Stenopus* Latreille, 1819.

Stenope H. Milne Edwards, 1838, Ann. Sci. nat. Zool. (2) 10: 164. Erroneous spelling of *Stenopus* Latreille, 1819.

Embryocaris Ortmann, 1893, Ergebn. Plankton-Exped. 2 (Gb): 73, 85. Type species, by monotypy: *Embryocaris stylicauda* Ortmann, 1893, Ergebn. Plankton-Exped. 2 (Gb): 85 (= *Palaemon hispidus* Olivier, 1811, Encycl. méthod. Hist. nat. 8: 666). Gender: feminine.

Stenopsus Maluquer, 1917, Junta Ci. nat. Barcelona 2: 225. Erroneous spelling of *Stenopus* Latreille, 1819.

Odontozona Holthuis, 1946 (fig. 101b)

Odontozona Holthuis, 1946, Temminckia 7: 5, 31. Type species, by original designation: *Stenopus ensiferus* Dana, 1852, Proc. Acad. nat. Sci. Phila. 6: 27. Gender: feminine.

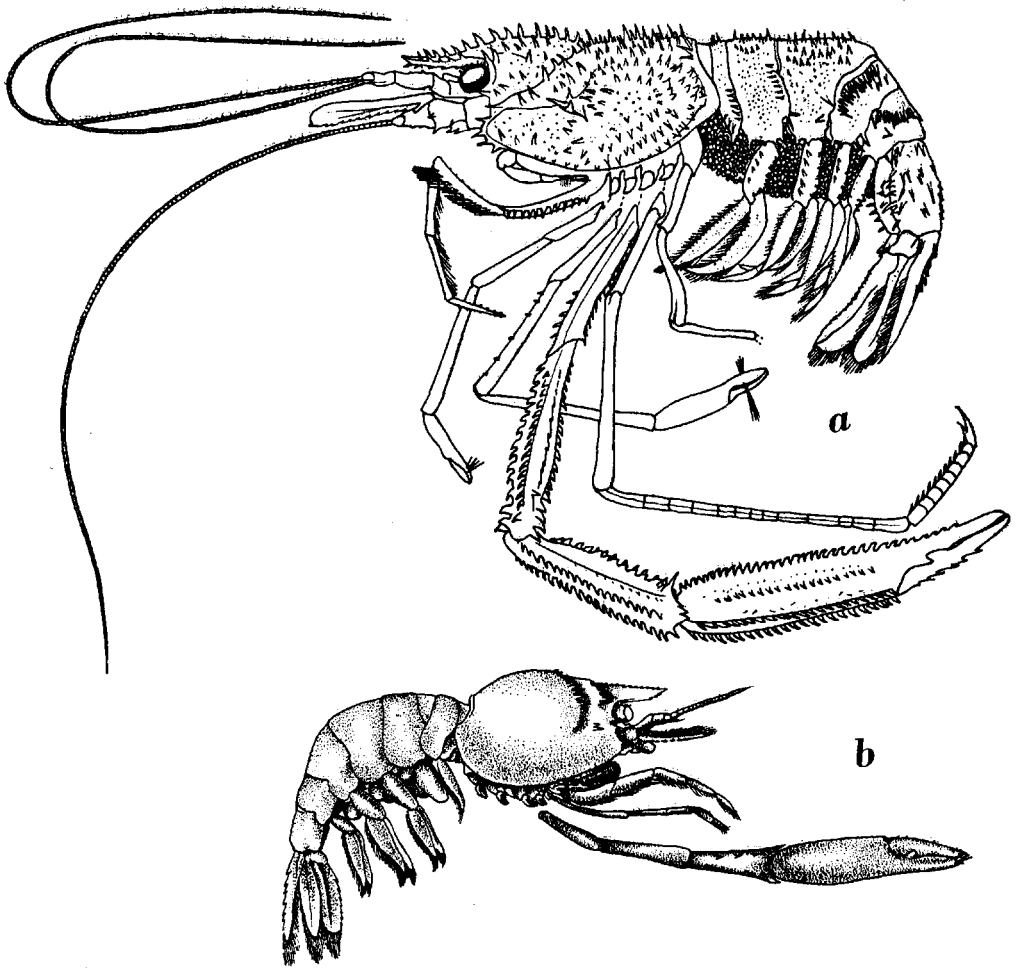


Fig. 101a. *Stenopus hispidus* (Olivier). After Bate, 1888.

Fig. 101b. *Odontozona spongicola* (Alcock & Anderson). After Alcock, 1899.

Richardina A. Milne Edwards, 1881 (fig. 102)

Richardina A. Milne Edwards, 1881, C. R. Acad. Sci. Paris 93: 933. Type species, by monotypy: *Richardina spinicineta* A. Milne Edwards, 1881, C. R. Acad. Sci. Paris 93: 933. Gender: feminine.

Engystenopus Alcock & Anderson, 1894 (fig. 103)

Engystenopus Alcock & Anderson, 1894, Journ. Asiat. Soc. Bengal 63(2): 149. Type species, by monotypy: *Engystenopus palmipes* Alcock & Anderson, 1894, Journ. Asiat. Soc. Bengal 63(2): 149. Gender: masculine.

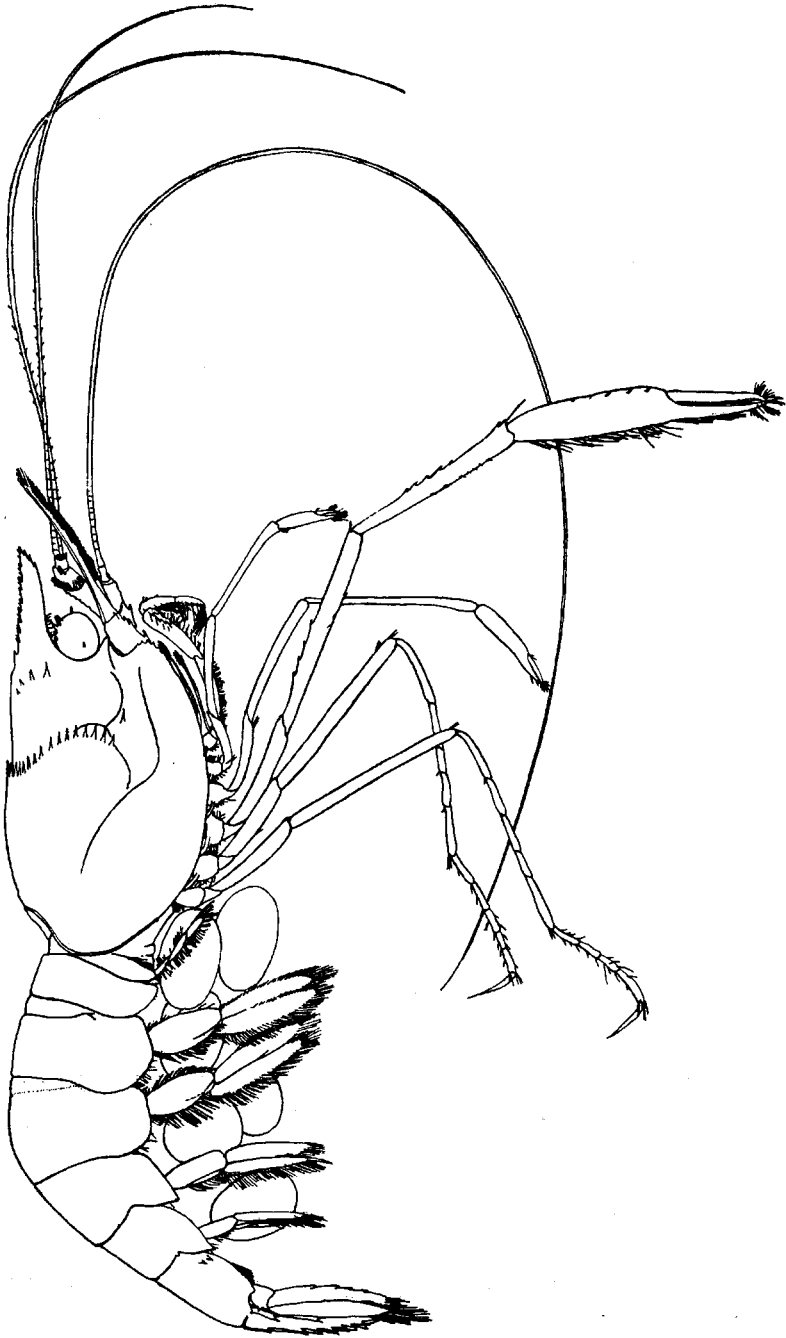


Fig. 102. *Richardina spinicincta* A. Milne Edwards. After Kemp, 1910.

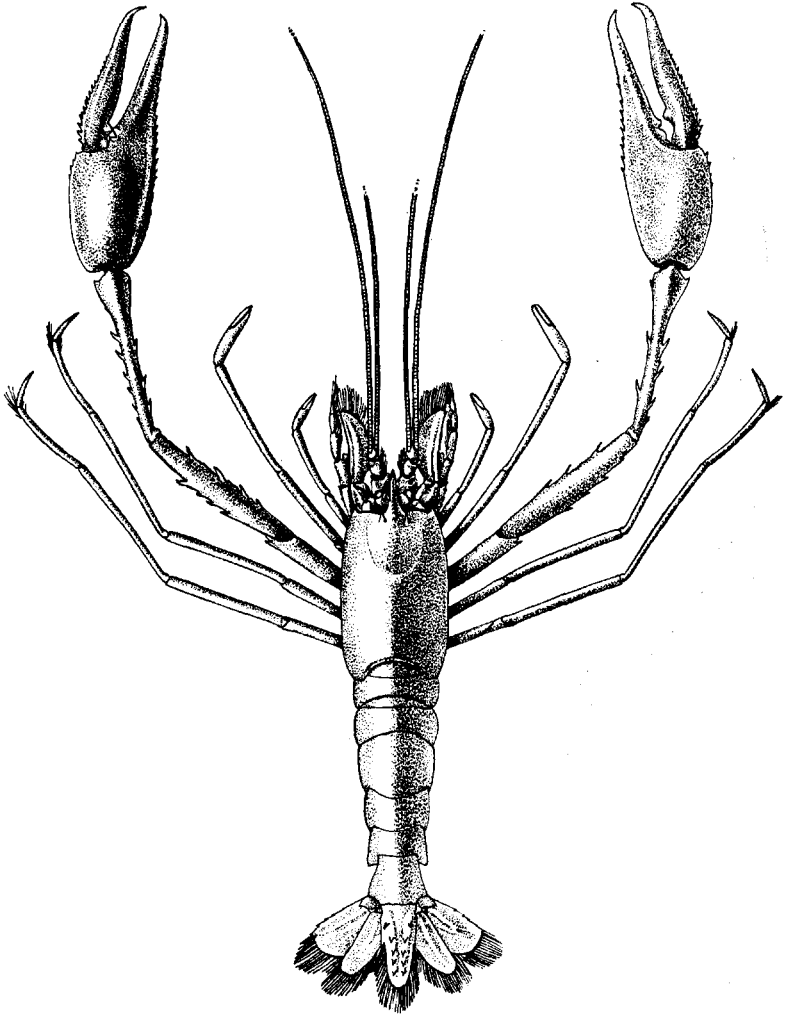


Fig. 103. *Engystenopus palmipes* Alcock & Anderson. After Alcock & McArdle, 1901.

Microprosthema Stimpson, 1860 (fig. 104)

Microprosthema Stimpson, 1860, Proc. Acad. nat. Sci. Phila. 1860: 44. Type species, by monotypy: *Microprosthema valida* Stimpson, 1860, Proc. Acad. nat. Sci. Phila. 1860: 45. Gender: neuter.

Stenopusculus Richters, 1880, Möbius's Beitr. Kenntn. Meeresf. Mauritius: 167. Type species, by present selection: *Stenopusculus crassimanus* Richters, 1880, Möbius's Beitr. Kenntn. Meeresf. Mauritius: 168 (= *Microprosthema valida* Stimpson, 1860, Proc. Acad. nat. Sci. Phila. 1860: 45). Gender: masculine.

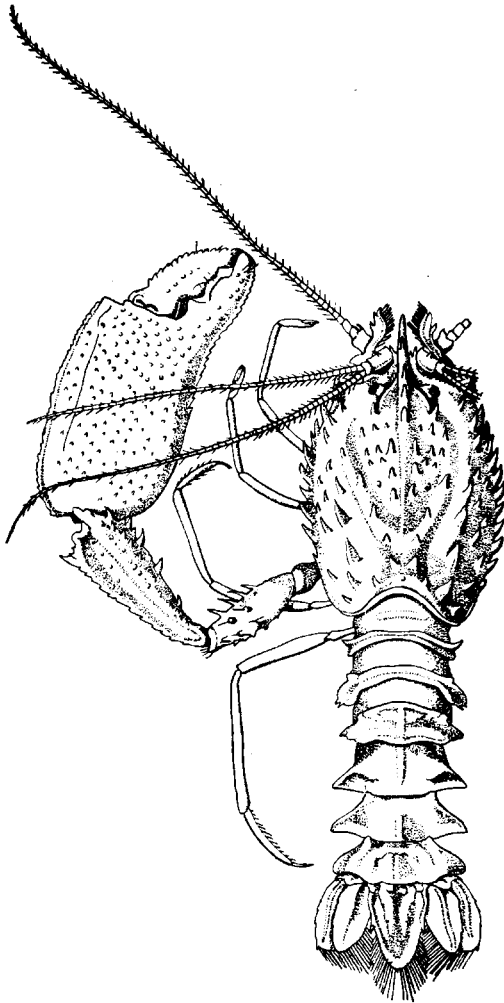


Fig. 104. *Microprosthema validum* Stimpson. After Borradaile, 1910.

Stenopunculus Lebour, 1941, in Gurney & Lebour, Journ. Linn. Soc. Lond. Zool. 41: 181. Erroneous spelling of *Stenopusculus* Richters, 1880.

Spongicola De Haan, 1844 (fig. 105a)

Spongicola De Haan, 1844, Fauna Japon., Crust. (6/7 p.p.): pl. 46 fig. 9.

Type species, by monotypy: *Spongicola venusta* De Haan, 1844, Fauna Japon., Crust. (6/7 p.p.): pl. 46 fig. 9. Gender: masculine.

Spongicolas A. Milne Edwards & Bouvier, 1909. Mem. Mus. comp. Zoöl. Harvard 27 (3): expl. pl. 9. Erroneous spelling of *Spongicola* De Haan, 1844.

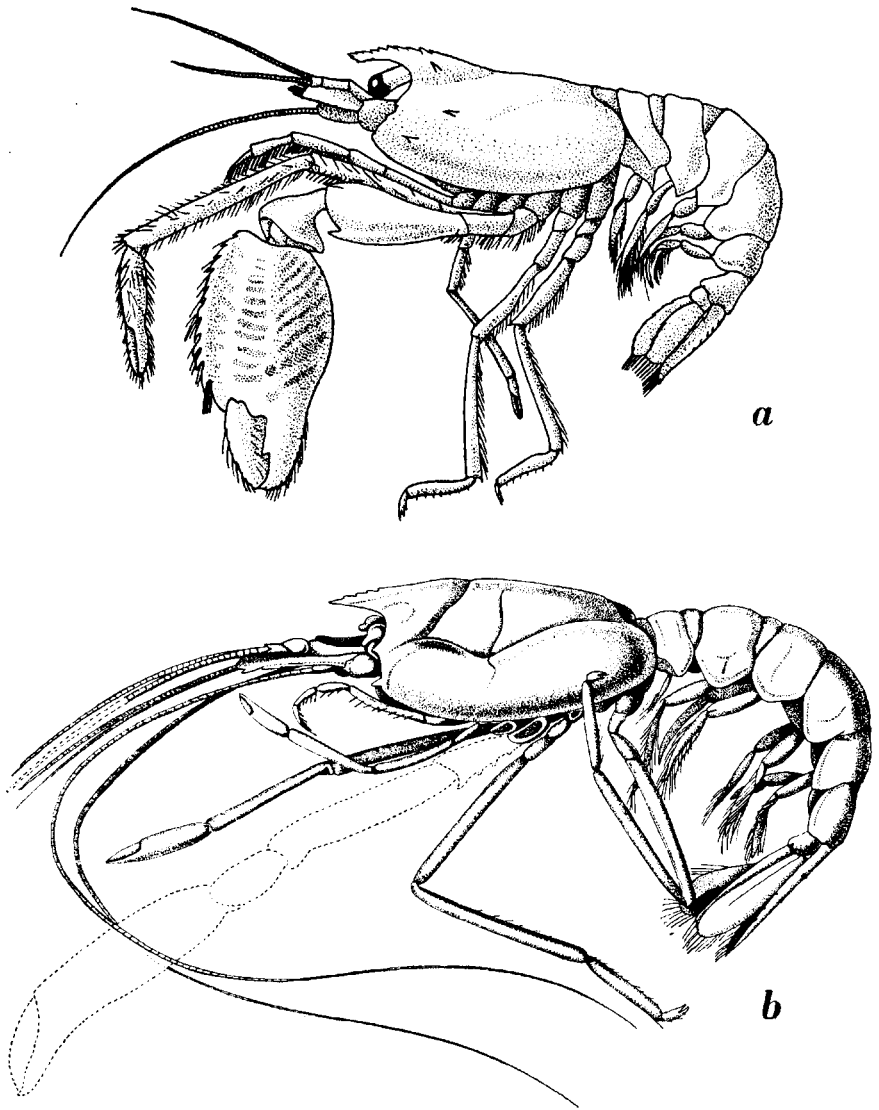


Fig. 105a. *Spongicola venusta* De Haan. After Bate, 1888.

Fig. 105b. *Spongicoloides inermis* (Bouvier). After A. Milne Edwards & Bouvier, 1909.

Spongicoloides Hansen, 1908 (fig. 105b)

Spongicoloides Hansen, 1908, Danish Ingolf Exped. 3(2): 44. Type species, by monotypy: *Spongicoloides profundus* Hansen, 1908, Danish Ingolf Exped. 3(2): 45. Gender: masculine.

LIST OF PUBLICATIONS FROM WHICH ILLUSTRATIONS ARE
REPRODUCED HERE

- ALCOCK, A., 1899. Illustrations of the Zoology of the Royal Indian Marine Survey Ship Investigator, under the Command of Commander T. H. Heming, R. N. Crustacea. Pt. 7, pls. 36-45.
- ALCOCK, A. & MCARDLE, A. F., 1901. Illustrations of the Zoology of the Royal Indian Marine Survey Ship Investigator, under the Command of Commander T. H. Heming, R. N. Crustacea. Pt. 9, pls. 49-55.
- ARMSTRONG, J. C., 1949. New Caridea from the Dominican Republic. Amer. Mus. Novit., n. 1410, pp. 1-27, figs. 1-9.
- AURIVILLIUS, C. W. S., 1898. Krustaceen aus dem Kamerun-Gebiete. Bih. Svenska Vetensk. Akad. Handl., vol. 24 pt. 4 n. 1, pp. 1-31, pls. 1-4.
- BAKER, W. H., 1904. Notes on South Australian Decapod Crustacea. Part. 1. Trans. Roy. Soc. S. Aust., vol. 28, pp. 146-161, pls. 27-31.
- BALSS, H., 1914. Ostasiatische Decapoden II. Die Natantia und Reptantia. In: Doflein, F., Beiträge zur Naturgeschichte Ostasiens. Abh. Bayer. Akad. Wiss., suppl. vol. 2 pt. 10, pp. 1-101, textfigs. 1-50, pl. 1.
- , 1915. Die Decapoden des Roten Meeres. I. Die Macruren. Expeditionen S. M. Schiff „Pola“ in das Rote Meer. Nördliche und südliche Hälfte 1895/96-1897/98. Zoologische Ergebnisse XXX. Berichte der Kommission für ozeanographische Forschungen. Denkschr. Akad. Wiss. Wien, vol. 91 suppl., pp. 1-38, textfigs. 1-30.
- , 1921. Stomatopoda, Macrura, Paguridea und Galatheidea. In: Results of Dr. E. Mjöberg's Swedish Scientific Expeditions to Australia 1910-13. XXIX. K. Svenska Vetensk. Akad. Handl., vol. 61 pt. 10, pp. 1-24, textfigs. 1-12.
- , 1925. Macrura der Deutschen Tiefsee-Expedition. 2. Natantia, Teil A. Wiss. Ergebn. Valdivia Exped., vol. 20, pp. 217-315, textfigs. 1-75, pls. 20-28.
- BANNER, A. H., 1953. The Crangonidae, or Snapping Shrimp, of Hawaii. Pacific Science, vol. 7, pp. 2-144, 147, frontisp., figs. 1-50.
- BARNARD, K. H., 1950. Descriptive Catalogue of South African Decapod Crustacea. Ann. S. Afr. Mus., vol. 38, pp. 1-837, figs. 1-154.
- BATE, C. S., 1888. Report on the Crustacea Macrura collected by H. M. S. Challenger during the years 1873-76. Rep. Voy. Challenger, Zool., vol. 24, pp. i-xc, 1-942, textfigs. 1-76, pls. 1-150.
- BOONE, L., 1927. Crustacea from tropical east American Seas. Scientific Results of the First Oceanographic Expedition of the "Pawnee". Bull. Bingham oceanogr. Coll., vol. 1 pt. 2, pp. 1-147, figs. 1-33.
- BORRADAILE, L. A., 1910. Penaeidea, Stenopidea, and Reptantia from the Western Indian Ocean. The Percy Sladen Trust Expedition to the Indian Ocean in 1905, under the leadership of Mr. J. Stanley Gardiner. Trans. Linn. Soc. Lond. Zool., ser. 2 vol. 13, pp. 257-264, pl. 16.
- , 1916. Crustacea, Part I. — Decapoda. Nat. Hist. Rep. Brit. Antarct. Exped., vol. 3 pt. 2, pp. 75-110, figs. 1-16.
- , 1917a. On Carides from the Western Indian Ocean. The Percy Sladen Trust Expedition to the Indian Ocean in 1905, under the leadership of Mr. J. Stanley Gardiner. Trans. Linn. Soc. Lond. Zool., ser. 2 vol. 17, pp. 397-412, pls. 58, 59.
- , 1917b. On the Pontoniinae. The Percy Sladen Trust Expedition to the Indian Ocean in 1905, under the leadership of Mr. J. Stanley Gardiner. Trans. Linn. Soc. Lond. Zool., ser. 2 vol. 17, pp. 323-396, pls. 52-57.
- BOUVIER, E. L., 1925. Recherches sur la morphologie, les variations, la distribution géographique des Crevettes de la famille des Atyidés. Encycl. ent., ser. A vol. 4, pp. 1-370, figs. 1-716.
- BROOKS, W. K. & HERRICK, F. H., 1893. The Embryology and Metamorphosis of the Macroura. Mem. Nat. Acad. Sci., vol. 5, pp. 321-576, textfigs. 1-13, pls. 1-57.

- CALMAN, W. T., 1896. On Deep-Sea Crustacea from the South West of Ireland. *Trans. Roy. Irish Acad.*, vol. 31, pp. 1-20, pls. 1, 2.
- , 1899. On two Species of Macrurous Crustaceans from Lake Tanganyika. *Proc. zool. Soc. Lond.*, 1899, pp. 704-712, pls. 39, 40.
- , 1906. Report on the Macrurous Crustacea. Zoological Results of the Third Tanganyika Expedition, conducted by Dr. W. A. Cunnington, 1904-1905. *Proc. zool. Soc. Lond.*, 1906, pp. 187-206, pls. 11-14.
- , 1909. On a Blind Prawn from the Sea of Galilee (*Typhlocaris galilea* g. et sp. n.). *Trans. Linn. Soc. Lond. Zool.*, ser. 2 vol. 11, pp. 93-97, pl. 19.
- , 1926. On Freshwater Prawns of the Family Atyidae from Queensland. *Ann. Mag. nat. Hist.*, ser. 9 vol. 17, pp. 241-246, figs. 1-3.
- , 1939. Crustacea: Caridea. *Sci. Rep. John Murray Exped.*, vol. 6, pp. 183-224, figs. 1-8.
- CAULLERY, M., 1896. Crustacés Schizopodes et Décapodes. In: Koehler, R., *Résultats scientifiques de la Campagne du „Caudan” dans le Golfe de Gascogne — Août-Septembre 1895* —. *Ann. Univ. Lyon*, vol. 26, pp. 365-419, pls. 13-17.
- CHACE, F. A., 1937. Caridean Decapod Crustacea from the Gulf of California and the West Coast of Lower California. *The Templeton Crocker Expedition. VII. Zoologica New York*, vol. 22, pp. 109-138, figs. 1-9.
- , 1940. The Bathypelagic Caridean Crustacea. *Plankton of the Bermuda Oceanographic Expeditions. IX. Zoologica New York*, vol. 25, pp. 117-209, figs. 1-64.
- , 1942a. A new Cave Shrimp from Cuba. *Proc. New Engl. zool. Cl.*, vol. 19, pp. 99-102, pl. 29.
- , 1942b. Six new Species of Decapod and Stomatopod Crustacea from the Gulf of Mexico. *Proc. New Engl. zool. Cl.*, vol. 19, pp. 79-92, pls. 23-28.
- , 1943. Two new blind Prawns from Cuba with a Synopsis of the subterranean Caridea of America. *Proc. New Engl. zool. Cl.*, vol. 22, pp. 25-40, pls. 5-7.
- COUTIÈRE, H., 1899. Les "Alpheidae", morphologie externe et interne, formes larvaires, bionomie. *Ann. Sci. nat. Zool.*, ser. 8 vol. 9, pp. 1-559, textfigs. 1-409, pls. 1-6.
- , 1901. Note sur *Coralliocaris Agassizi* n. sp. provenant des dragages du Blake (1878-1879). *Bull. Mus. Hist. nat. Paris*, vol. 7, pp. 115-117, 1 fig.
- , 1905. Les Alpheidae. In: Gardiner, J. S., *The Fauna and Geography of the Maldive and Laccadive Archipelagoes. Being the Account of the Work carried on and of the Collections made by an Expedition during the years 1899 and 1900*, vol. 2 pt. 4, pp. 852-918, pls. 70-79.
- CREASER, E. P., 1936. Crustaceans from Yucatan. In: Pearse, A. S., Creaser, E. P. & Hall, F. G., *The Cenotes of Yucatan. A zoological and hydrographic Survey. Publ. Carnegie Inst.*, n. 457, pp. 117-132, figs. 1-43, tabs. 1-3.
- DANA, J. D., 1855. Crustacea. *United States Exploring Expedition during the years 1838, 1839, 1840, 1842 under the command of Charles Wilkes, U.S.N.*, vol. 13 atlas, pp. 1-27, pls. 1-96.
- EDMONDSON, C. H., 1935. New and rare Polynesian Crustacea. *Occ. Pap. Bishop Mus. Honolulu*, vol. 10 pt. 24, pp. 1-38, textfigs. 1-11, pls. 1, 2.
- FAGE, L., 1931. Crustacés Amphipodes et Décapodes. *Campagne spéologique de C. Bolivar et R. Jeannel dans l'Amérique du Nord (1928)*. *Biospeologica. LVI. Arch. Zool. exp. gén.*, vol. 71, pp. 361-374, figs. 1-21.
- FAXON, W., 1895. The Stalk-eyed Crustacea. *Reports on an Exploration off the west Coasts of Mexico, Central and South America, and off the Galapagos Islands, in charge of Alexander Agassiz, by the U. S. Fish Commission Steamer "Albatross", during 1891*, Lieut. Commander Z. L. Tanner, U.S.N., commanding. *Mem. Mus. comp. Zool. Harvard*, vol. 18, pp. 1-292, textfigs. 1-6, pls. A-K, 1-57, 1 map.
- GORDON, I., 1935. On new or imperfectly known species of Crustacea Macrura. *Journ. Linn. Soc. Lond. Zool.*, vol. 39, pp. 307-351, figs. 1-27.

- HELLER, C., 1862. Beiträge zur näheren Kenntniss der Macrouren. S. B. Akad. Wiss. Wien, vol. 45 pt. 1, pp. 389-426, pls. 1, 2.
- HOLTHUIS, L. B., 1949. The Caridean Crustacea of the Canary Islands. Zool. Meded., vol. 30, pp. 227-255, figs. 1-8.
- , 1950. Decapoda (K IX) A. Natantia, Macrura Reptantia, Anomura en Stomatopoda (K X). In: Boschma, H., Fauna van Nederland, vol. 15, pp. 1-166, figs. 1-54, 1 map.
- , 1951a. The Caridean Crustacea of Tropical West Africa. Atlantide Rep., vol. 2, pp. 7-187, figs. 1-34.
- , 1951b. The Subfamilies Euryrhynchinae and Pontiinae. A general Revision of the Palaemonidae (Crustacea Decapoda Natantia) of the Americas. I. Occ. Pap. Allan Hancock Found. Publ., vol. 11, pp. 1-332, pls. 1-63.
- , 1952a. The Subfamily Palaemoninae. A general Revision of the Palaemonidae (Crustacea Decapoda Natantia) of the Americas. II. Occ. Pap. Allan Hancock Found. Publ., vol. 12, pp. 1-396, textfig. 1, pls. 1-55.
- , 1952b. Subfamily Pontiinae. The Palaemonidae collected by the Siboga and Snellius Expeditions with Remarks on other Species. II. The Decapoda of the Siboga Expedition. Part XI. Siboga Exped., mon. 39a10, pp. 1-253, figs. 1-110, 1 tab.
- , 1952c. The Crustacea Decapoda Macrura of Chile. Reports of the Lund University Chile Expedition 1948-49. 5. Con resumen en Español. Lund Univers. Årsskr., n. ser. sect. 2 vol. 47 pt. 10, pp. 1-110, figs. 1-19.
- KEMP, S., 1910. The Decapoda Natantia of the Coasts of Ireland. Sci. Invest. Fish. Br. Ire., 1908, pt. 1, pp. 3-190, pls. 1-23.
- , 1914. Hippolytidae. Notes on Crustacea Decapoda in the Indian Museum. V. Rec. Indian Mus., vol. 10, pp. 81-129, pls. 1-7.
- , 1916. Further Notes on Hippolytidae. Notes on Crustacea Decapoda in the Indian Museum. VII. Rec. Indian Mus., vol. 12, pp. 385-405, textfigs. 1-5, pl. 36.
- , 1917. Leander styliferus, Milne-Edwards, and related forms. Notes on Crustacea Decapoda in the Indian Museum. IX. Rec. Indian Mus., vol. 13, pp. 203-231, textfigs. 1-7, pls. 8-10.
- , 1920. On the occurrence of the Caridean genus Discias in Indian waters. Notes on Crustacea Decapoda in the Indian Museum. XIV. Rec. Indian Mus., vol. 19, pp. 137-143, textfigs. 1-3, pl. 8.
- , 1922. Pontiinae. Notes on Crustacea Decapoda in the Indian Museum. XV. Rec. Indian Mus., vol. 24, pp. 113-288, textfigs. 1-105, pls. 3-9.
- , 1925. On various Caridea. Notes on Crustacea Decapoda in the Indian Museum. XVII. Rec. Indian Mus., vol. 27, pp. 249-343, figs. 1-24.
- KEMP, S. & SEWELL, R. B. S., 1912. The Species obtained by R.I.M.S.S. "Investigator" during the Survey Season 1910-11. Notes on Decapoda in the Indian Museum. III. Rec. Indian Mus., vol. 7, pp. 15-32, pl. 1.
- KUBO, I., 1938. On the Japanese Atyid Shrimps. Journ. Imp. Fish. Inst. Tokyo, vol. 33, pp. 67-100, figs. 1-24.
- , 1940a. Pontiinae. Studies on Japanese Palaemonoid Shrimps. II. Journ. Imp. Fish. Inst. Tokyo, vol. 34, pp. 31-75, figs. 1-36.
- , 1940b. A New Shrimp, Harpilius imperialis. Journ. Imp. Fish. Inst. Tokyo, vol. 34, pp. 1-4, figs. 1-3.
- , 1940c. On Some Littoral Shrimps Collected from Micronesia. Journ. Imp. Fish. Inst. Tokyo, vol. 34, pp. 77-99, figs. 1-15.
- , 1951. Some macrurous Decapod Crustacea found in Japanese Waters, with Descriptions of four new Species. Journ. Tokyo Univ. Fish., vol. 38, pp. 259-289, figs. 1-16.
- LEBOUR, M. V., 1939. Decapod Crustacea associated with the Ascidian Herdmania. Proc. zool. Soc. Lond., vol. 108 B, pp. 649-653, pls. 1, 2.

- LENZ, H., 1910. Dekapode Crustaceen Aequatorialafrikas. *Wiss. Ergebn. Deutsch. Zentral-Afr. Exped.*, vol. 3, pp. 121-134, pl. 3.
- MCCLENDON, J. F., 1911. On Adaptations in Structure and Habits of some marine Animals of Tortugas, Florida. *Pap. Tortugas Lab. Carnegie Inst.*, vol. 3, pp. 55-62, pls. 1, 2.
- MAN, J. G. DE, 1888. Report on the Podophthalmous Crustacea of the Mergui Archipelago, collected for the Trustees of the Indian Museum, Calcutta, by Dr. John Anderson, F.R.S., Superintendent of the Museum. *Journ. Linn. Soc. Lond. Zool.*, vol. 22, pp. 1-312, pls 1-19.
- , 1890. Carcinological Studies in the Leyden Museum. No. 4. *Notes Leyden Mus.*, vol. 12, pp. 49-126, pls. 3-6.
- , 1915. The Decapoda of the Siboga Expedition. Plates of Part II Family Alpheidae. *Siboga Exped.*, mon. 39a1 suppl., pls. 1-23.
- , 1920. The Decapoda of the Siboga Expedition. Part IV. Families Pasiphaeidae, Styliodactylidae, Hoplophoridae, Nematocarcinidae, Thalassocaridae, Pandalidae, Psalidopodidae, Gnathophyllidae, Processidae, Glyphocrangonidae and Crangonidae. *Siboga Exped.*, mon. 39a3, pp. 1-318, pls. 1-25.
- MILNE EDWARDS, A., 1883. *Recueil de Figures de Crustacés nouveaux ou peu connus*, pp. 1-3, pls. 1-44.
- MILNE EDWARDS, A. & BOUVIER, E. L., 1909. Les Pénéides et Sténopides. Reports on the Results of Dredging, under the Supervision of Alexander Agassiz, in the Gulf of Mexico (1877-78), in the Caribbean Sea (1878-79), and along the Atlantic Coast of the United States (1880), by the U. S. Coast Survey Steamer "Blake", Lieut.-Com. C. D. Sigsbee, U.S.N., and Commander J. R. Bartlett, U.S.N., Commanding. XLIV. *Mem. Mus. comp. Zoöl. Harvard*, vol. 27, pp. 177-274, textfigs. 1-91, pls. 1-9.
- NOBILI, G., 1903. Contributo alla fauna carcinologica di Borneo. *Boll. Mus. Zool. Anat. comp. Torino*, vol. 18 n. 447, pp. 1-32, figs. 1-3.
- PAULSON, O., 1875. Investigations on the Crustacea of the Red Sea with Notes on Crustacea of the adjacent Seas. Part I. Podophthalmata and Edriophthalmata (Cumacea), pp. i-xiv, 1-144, pls. 1-21.
- PFEFFER, G., 1887. Die Krebse von Süd-Georgien nach der Ausbeute der Deutschen Station 1882-83. I. Teil. *Jb. Hamb. wiss. Anst.*, vol. 4, pp. 41-150, pls. 1-7.
- RATHBUN, M. J., 1904. Decapod Crustaceans of the Northwest Coast of North America. *Harriman Alaska Exped.*, vol. 10, pp. 1-190, textfigs. 1-95, pls. 1-10.
- SARS, G. O., 1885. Crustacea I. *Norske Nordhavs-Exped.*, vol. 14, pp. 1-280, pls. 1-21, 1 map.
- , 1912. On the Genera *Cryptocheles* and *Bythocaris* G. O. Sars with Description of the Type Species of each Genus. *Arch. Math. Naturvidensk.*, vol. 32 pt. 5, pp. 1-19, pls. 1, 2.
- SCHMITT, W. L., 1926. Report on the Crustacea *Macrura* (Families Peneidae, Campylonotidae and Pandalidae) obtained by the F.I.S. "Endeavour" in Australian Seas. With notes on the species of "Penaeus" described by Haswell and contained, in part, in the collections of the MacLay Museum, at the University of Sydney. *Biol. Res. Endeavour*, vol. 5, pp. 311-381, pls. 57-68.
- SENNA, A., 1903. Nota sui Crostacei Decapodi. Le esplorazioni abissali nel Mediterraneo del R. Piroscrafo Washington nel 1881. II. *Bull. Soc. ent. Ital.*, vol. 34, pp. 235-367, textfigs. 1-7, pls. 4-18.
- SMITH, S. L., 1882. Report on the Crustacea. Part I. Decapoda. Reports on the Results of Dredging, under the Supervision of Alexander Agassiz, on the East Coast of the United States, during the Summer of 1880, by the U. S. Coast Survey Steamer "Blake", Commander J. R. Bartlett, U.S.N., Commanding. *Bull. Mus. comp. Zoöl. Harvard*, vol. 10, pp. 1-108, pls. 1-15.

- SMITH, S. I., 1884. Report on the Decapod Crustacea of the Albatross Dredgings off the East Coast of the United States in 1883. Rep. U. S. Fish Comm., vol. 10, pp. 345-426, pls. 1-10.
- STAMMER, H. J., 1932. Die Fauna des Timavo. Ein Beitrag zur Kenntnis der Höhlen-gewässer, des Süß- und Brackwassers im Karst. Zool. Jb. Syst., vol. 63, pp. 521-656, figs. 1-16.
- THOMSON, G. M., 1903. On the New Zealand Phyllobranchiate Crustacea-Macrura. Trans. Linn. Soc. Lond. Zool., ser. 2 vol. 8, pp. 433-453, pls. 27-29.
- WHITELEGGE, T., 1897. The Crustacea of Funafuti. The Atoll of Funafuti, Ellice Group: its Zoology, Botany, Ethnology, and General Structure based on collections made by Mr. Charles Hedley, of the Australian Museum Sydney, N.S.W. Mem. Aust. Mus., vol. 3, pp. 125-151, pls. 6, 7.
- WOOD MASON, J. & ALCOCK, A., 1893. On the Results of Deep-sea Dredging during the season 1890-91. Natural History Notes from H. M. Indian Marine Survey Steamer "Investigator", Commander R. F. Hoskyn, R.N., commanding. — Series II, No. 1. Ann. Mag. nat. Hist., ser. 6 vol. 11, pp. 161-172, textfigs. 1, 2, pls. 10, 11.
- YOKOYA, Y., 1930. Macrura of Mutsu Bay. Report of the Biological Survey of Mutsu Bay. 16. Sci. Rep. Tohoku Univ., ser. 4 vol. 5, pp. 525-548, textfigs. 1-5, pl. 16.
- , 1933. On the Distribution of Decapod Crustaceans inhabiting the Continental Shelf around Japan, chiefly based upon the Materials collected by S. S. Sôyô-Marû, during the Years 1923-1930. Journ. Coll. Agric. Tokyo, vol. 12, pp. 1-226, textfigs. 1-71.
- ZARIQUIEY CENARRO, R., 1935. *Balssia gasti* (Balss), en la costa Catalana (España-Mediterráneo) (Crust. Decap.). Eos Madrid, vol. 11, pp. 101-107, figs. 1-14.

INDEX

- Acanethephyra 17
 Acantephyra 14
 Acanthephira 16
 Acanthephyrya 16
 Acanthephyra 13, 14
 Acathephyra 17
 Acilius 23
 Aegaeon 139
 Aegeon 139
 Aglaope 113
 Alaocaris 51
 Alciope 64
 Allocaris 49
 Alope 103
 Alphaeus 89
 Alpheinus 93
 Alpheus 91
 Alpheodes 91
 Alpheoides 91
 Alpheopsis 84
 Alpheus 89
 Alpheus 90
 Alphous 91
 Amphibetaeus 88
 Amphion 139
 Amphionides 139
 Amphipalaemon 71
 Amphiplectes 140
 Amphiplectus 140
 Anchista 61
 Anchistia 58
 Anchistiella 41
 Anchistioides 71
 Anchistus 62
 Anchystia 61
 Ancylocaris 61
 Ancylocaris 61
 Anebocaris 140
 Angasia 112
 Anisocaris 38
 Antecaridina 25
 Antonomea 91
 Arete 86
 Arethusa 88
 Aretopsis 86
 Argis 134
 Arno 114
 Asphalius 90
 Athanas 85
 Athanasus 85
 Athanias 85
 Athanopsis 86
 Athanus 85
 Athas 85
 Athejaephira 24
 Athejëphira 24
 Athyaephyra 24
 Athyaepora 24
 Atia 26
 Atlantocaris 125
 Atya 26
 Atyaephira 24
 Atyaephrya 24
 Atyaephyra 22, 23
 Atyaëphira 24
 Atyalphyra 24
 Atyella 29
 Atyephira 23
 Atyephyra 23
 Atyoida 26
 Atys 26
 Austropandalus 125
 Automata 88
 Automate 88
 Automea 91
 Automomea 91
 Autonomaea 90
 Autonomiea 90, 91
 Balssia 73
 Balssiola 29
 Barbouria 99
 Batella 92
 Bathypalaemonella 41
 Bellidia 107
 Benteocaris 14
 Betaeus 88
 Birulaecaris 104
 Birulia 105
 Bithynis 51
 Bizenus 143
 Boreocaris 124
 Brachicarpus 53
 Brachycarpus 51
 Brachyrarpus 53
 Bresilia 37
 Bythocaris 112
 Byzenus 143
 Calmania 29, 53
 Calymarina 17
 Camptocaris 140
 Campylonotus 41
 Candalus 124
 Cangron 134
 Caradina 27
 Caradrina 27
 Cardina 27
 Caricyphus 140
 Caridella 29
 Caridina 27
 Caridine 27
 Caridinides 27
 Caridinopsis 29
 Caridion 99
 Caridium 99
 Carinida 27
 Caricheles 70
 Ceraphilus 137
 Cheiraphilus 136
 Cheirothrix 92
 Cheraphilus 136
 Cherophilus 137
 Chieregghina 117, 140
 Chlorocurtis 127
 Chlorotocella 127
 Chlorotocoides 127
 Chlorotocus 126
 Chorismus 99
 Clyclorhynchus 111
 Conchodites 70
 Conchodytes 69
 Conchordia 112
 Conchyodytes 70
 Concordia 111
 Copiocaris 140
 Coralliocaris 66, 67
 Coralloccaris 67
 Corniger 61
 Coronocaris 140
 Coutierea 75
 Coutiërea 75
 Coutierella 50
 Crachycarpus 53

- Cragnon 134
 Crago 134
 Cragon 91, 134
 Crango 134
 Crangoi 134
 Crangon 89, 134
 Crangonus 134
 Creaseria 44
 Criptophthalmus 91
 Cristiger 61
 Cryphiops 51
 Cryptocheles 109
 Cryptoleander 46, 140
 Cryptophalmus 90
 Cryptophthalmus 90
 Cryptophthalmus 90
 Cryptophthalmus 91
 Cuapetes 61
 Cyclorhynchus 109

 Dantecia 35
 Dasella 70
 Dasia 70
 Dasycaris 65
 Dennisia 60
 Desmocarid 44
 Diaphoropus 140
 Dichelopandalus 122
 Dickelopandalus 122
 Dienecia 91
 Discias 38
 Dorodotes 119
 Doryphorus 99
 Drimo 79
 Dugastella 24
 Dymas 123

 Egeon 139
 Embryocaris 143
 Engystenopus 144
 Ensiger 62
 Ephyra 13
 Ephyrina 17
 Eretmocarid 114
 Euales 100
 Eualus 100
 Euatya 27
 Eugonatonotus 39, 40
 Eumiersia 18
 Eupalaemon 53
 Eupasiphaë 36
 Eupasiphaea 36
 Euryrhynchus 76

 Evatya 26
 Exhippolysmata 115
 Exopalaemon 49

 Falcicaris 141
 Falciger 61
 Fennera 66

 Gelastocaris 109
 Glyphocrangon 130
 Glyphus 36
 Glyptocrangon 131
 Gnathophillum 79
 Gnathophyllum 79
 Gnathophylloides 79
 Gnathophyllum 78, 79
 Gnathophyllum 79
 Gnathoptylus 79
 Gnathopyllum 79
 Gnatophillum 79
 Gnatophilum 79
 Gnatophyllum 79
 Gomphonotus 40
 Gonatonotus 39
 Grangon 92, 134
 Guatophyllum 79

 Halopsyche 91
 Hamiger 63
 Hamodactylus 70
 Harpiliopsis 65
 Harpilius 58
 Hectarthropus 117
 Helia 100
 Hemicaridina 23
 Heptacarpus 102
 Heptacartus 102
 Heptocartus 102
 Hetairocaris 103
 Hetairus 103
 Hetavius 104
 Heterius 105
 Heterocarpoides 126
 Heterocarpus 125
 Hippocarcyphus 141
 Hippolite 107
 Hippolithe 107
 Hippolysmata 115
 Hippolyta 107
 Hippolyte 106
 Hippolytes 107
 Hippolytus 107
 Homaralpheus 93

 Homaralpheus 93
 Hoplocarcyphus 16
 Hoplophorus 13
 Hymenocera 80
 Hymenodora 17
 Hypolyte 107
 Hyppolite 107
 Hyppolyte 108
 Hyppolyte 108
 Hyppolyte 107

 Icotopus 141
 Ippolyte 108

 Jocaste 69
 Jousseamea 88

 Kryptocaris 141

 Leander 45
 Laomenes 61
 Laterlutes 112
 Latrentes 112
 Latreutes 109, 110
 Leander 44
 Leandrites 46
 Lebbeus 103
 Lemnicaridina 23
 Lenader 46
 Leontocaris 100
 Leptocarpus 51
 Leptocheila 36
 Ligur 97, 98
 Ligus 98
 Limnocaridella 29
 Limnocaridina 31
 Lismata 114
 Lucaya 38
 Lybia 97
 Lysimata 114
 Lysippe 109
 Lysmata 113
 Lysmatella 115

 Macrobachium 53
 Macrobrachion 53
 Macrobrachium 53
 Macrobrachium 54
 Macrobracium 53
 Macrobranchium 53
 Macroterochair 53
 Marygrande 62
 Melicerta 113

- Meningodora 17
 Merguia 112
 Merhippolyte 97
 Merhyppolyte 97
 Mesapus 136
 Mesocaris 25, 141
 Metabetaeus 88
 Metalpheus 91
 Micratya 29
 Microprosthemata 146
 Miersia 14
 Milicerta 114
 Mimocaris 112
 Myersia 15
 Myto 133

 Nauticaridius 97
 Nectoceras 106
 Nectocerus 106
 Nectocranagon 134
 Nectocrangon 134
 Nematocarcinus 18
 Nematopalaemon 48
 Nematophyllum 80
 Neopalpheopsis 85
 Neocaridina 27
 Neopontonides 72
 Nica 117
 Nicoides 117
 Nika 117
 Niki 117
 Nikoides 117
 Niphea 113
 Nisea 119
 Nothocaris 119
 Notocranagon 136
 Notostomus 17

 Odontolophus 141
 Odontozona 143
 Oedipus 66
 Ogyrides 93
 Ogyris 93
 Oligocaris 141
 Onychocaris 63
 Onycocaris 63
 Oplophorus 13
 Orphanina 33
 Orthmannia 27
 Ortmannia 27

 Padnalus 123
 Paladina 123

 Palaeander 49
 Palaeman 48
 Palaemaon 48
 Palaemon 46
 Palaemonella 57
 Palaemonetes 49
 Palaemonetus 51
 Palaemonias 24
 Palaemonies 24
 Palaemonites 49
 Palaemonopsis 49, 71
 Palaemontes 50
 Palaemou 47
 Palaemonoh 48
 Palaenon 48
 Palaeomonetes 49
 Paleander 49
 Palemon 47
 Palemonella 57
 Palemonias 24
 Paleomonetes 50
 Pandacaricyphus 141
 Pandalas 124
 Pandalina 123
 Pandalopsis 123
 Pandalus 123
 Pandolina 123
 Pandulus 124
 Panthonia 65
 Pantomus 119
 Pantophilus 139
 Parabetaeus 88
 Paracrangon 132
 Paralaemon 53
 Paralatreutes 112
 Paralpheus 91
 Paranchistus 62
 Parapalaemon 53
 Parapanalus 119
 Parapandalus 119
 Parapasiphaë 33
 Parapasiphaea 35
 Parapontocaris 139
 Parasiphaea 35
 Paraspirentocaris 106
 Parathanas 141
 Paratya 21
 Paratypton 75
 Parhippolyte 98
 Paschocaris 109
 Pasiphae 33
 Pasiphaë 33
 Pasiphaea 33

 Pasiphaerea 33
 Pasiphea 33
 Pasipheia 33
 Passiphaea 33
 Passive 33
 Pasyphaea 33
 Pelias 57
 Periclemenes 61
 Periclimenaeus 62
 Periclimenes 57
 Periclimens 62
 Periclimines 61
 Peripandalus 123
 Phasiphae 33
 Philarius 64
 Philocheras 138
 Phleusa 91
 Phycocaris 106
 Phye 33
 Phyllognathia 80
 Phyetocaris 128
 Plastocranagon 131
 Platybema 111
 Platyblema 112
 Platycaris 65
 Plesionica 119
 Plesionika 119
 Pnotophilus 139
 Poitmonias 24
 Pomagnathus 93
 Pomtophilus 139
 Pontocaris 139
 Pontonella 75
 Pontonia 64, 65
 Pontonides 71
 Pontoniopsis 64
 Pontophilus 136
 Pontophilus 136
 Pontophyllus 139
 Potimirim 29
 Prionocranagon 133
 Processa 116
 Procletes 125
 Psalidopus 81
 Psathyrocaris 36
 Pseudatya 27
 Pseudocoutiërea 75
 Pseudopalaemon 51
 Pterocaris 84

 Racilius 89
 Regulus 128
 Retrocaris 51