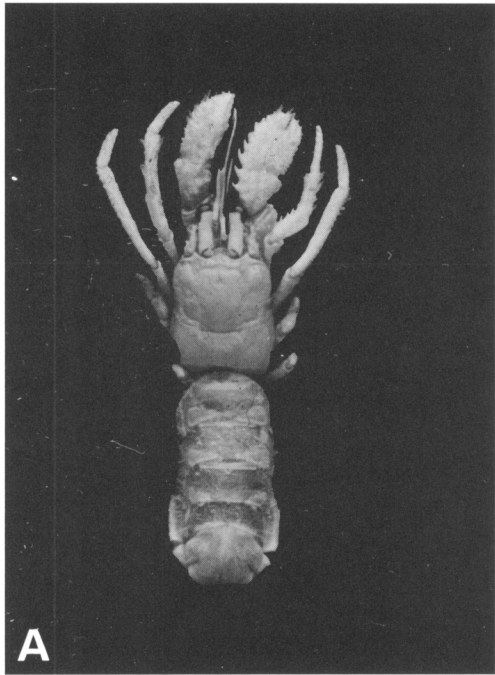


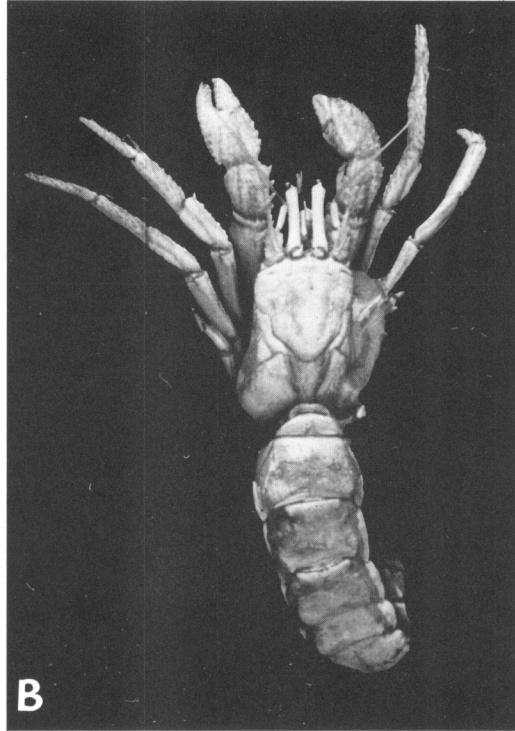
PLANCHE I

PLANCHE II

- A. *Trizocheles spinosus bathamae* Forest et de Saint Laurent ssp. nov., Nouvelle-Zélande, ♀ 12,5 mm.
- B. *Mixtopagurus paradoxus* A. Milne Edwards, *Fish Hawk*, st. 7282, ♀ ovig. 17,0 mm.
- C. *Pylocheles (Pylocheles) mortensenii* Boas, baie de Tosa, ♂ 12 mm, en place, dans un fragment de pierre ponce.
- D. *Cheiroplatea laticauda* Boas, *Albatross*, st. 5623, ♂ 12,5 mm, dans un logement similaire.



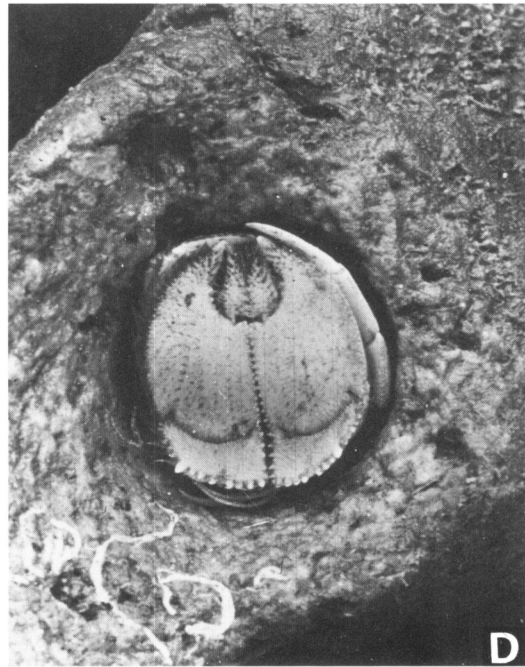
A



B



C



D

PLANCHE II

PLANCHE III

Sixième tergite abdominal, telson et uropodes, vue dorsale

- A. *Pylocheles (Xylocheles) macrops* sp. nov., MUSORSTOM I, st. 24, ♀ 22 mm.
- B. *Cheiroplatea laticauda*, Boas, *Albatross*, st. 5623, ♂ 12,5 mm.
- C. *Pomatocheles jeffreysii* Miers, baie de Tosa, ♀ 10,5 mm.
- D. *Trizocheles spinosus bathamae* Forest et de Saint Laurent ssp. nov., Nouvelle-Zélande, ♂ 13 mm.
- E. *Parapylocheles scorpio* (Alcock), *Albatross*, st. 5122, ♂ 24,5 mm.
- F. *Cancellocheles sculptipes* (Miyake), baie de Tosa, au large de Mimase, ♂ 16 mm.
- G. *Mixtopagurus paradoxus* A. Milne Edwards, au large de Ste Lucie (Antilles), ♂ 20,5 mm.
- H. *Id.*, sans localité, ♀ 16 mm.

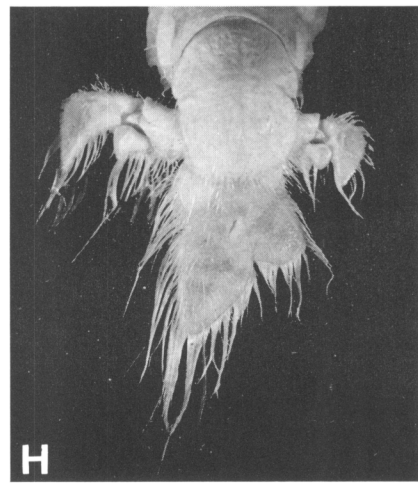
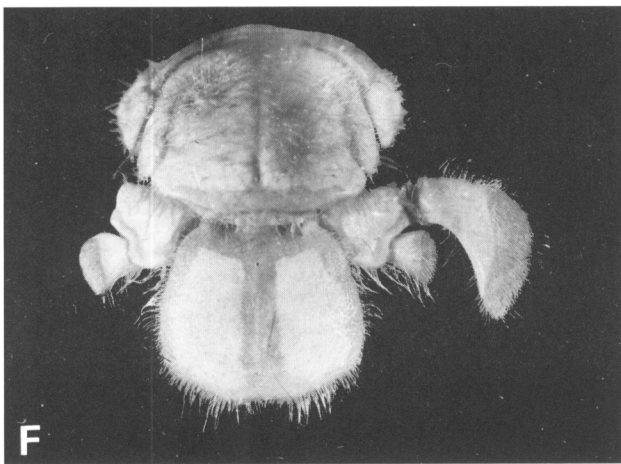
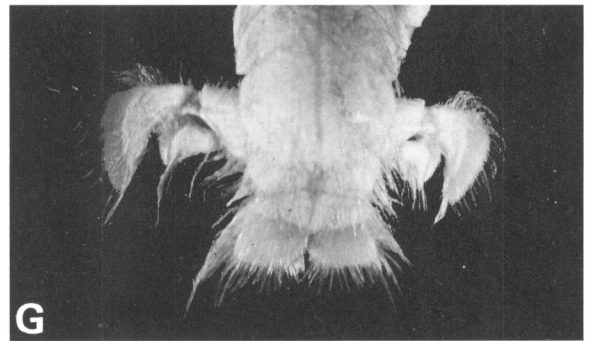
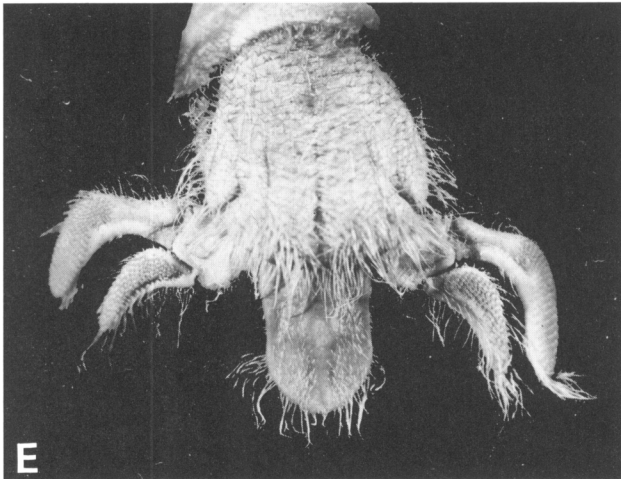
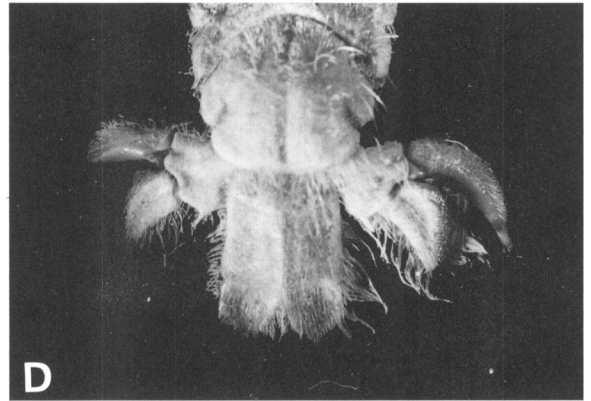
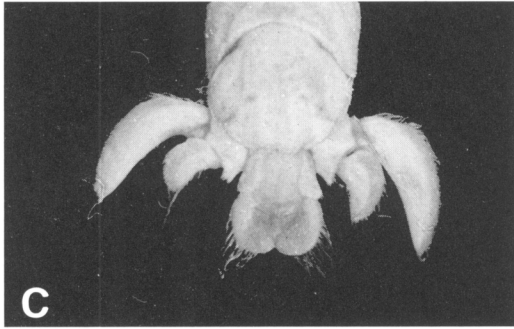
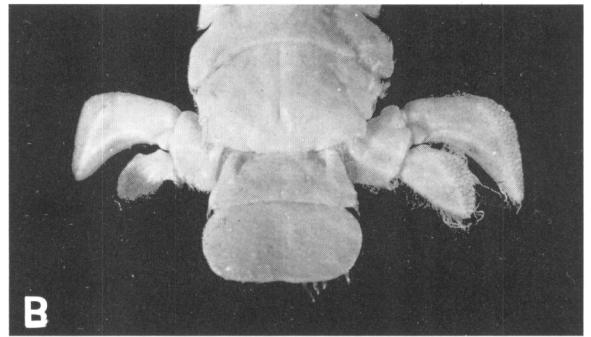
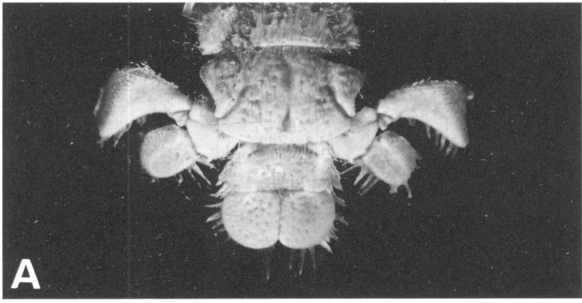


PLANCHE III

PLANCHE IV

A, B, C. *Pylocheles (Bathycheles) incisus* sp. nov., MUSORSTOM II, st. 81, ♂ 10,5 mm.

D, E. *Pylocheles (Xylocheles) macrops* sp. nov., CORINDON II, st. 267, ♂ 12,5 mm.

A, D : vues dorsales partielles du chélicépède, montrant les râpes de tubercules sur le carpe ; B : poils en massues ;  
C, E : tubercules de la râpe.

(A, D : × 11 ; B : × 250 ; C : × 110 ; E : × 75).