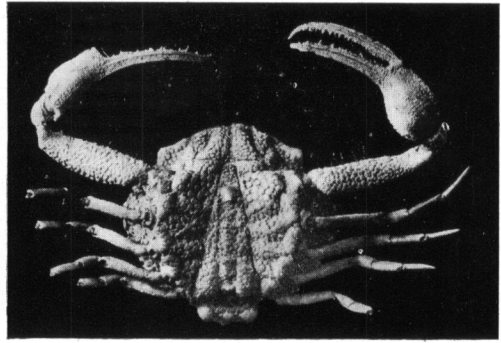
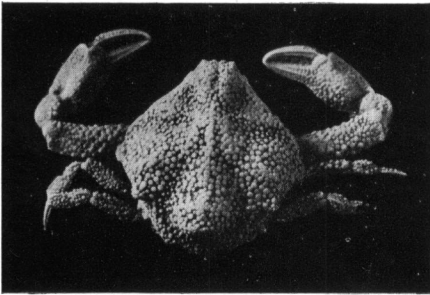


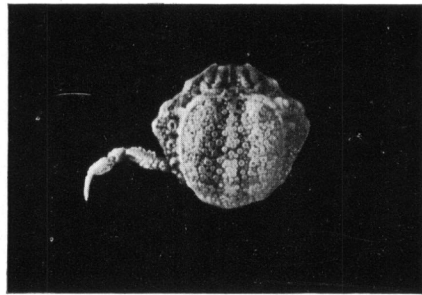
1



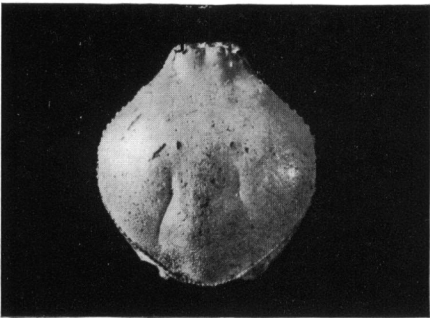
2



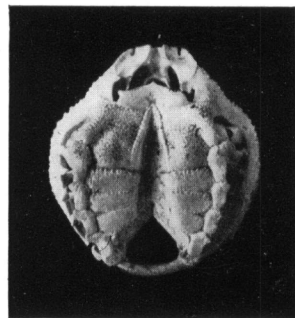
3



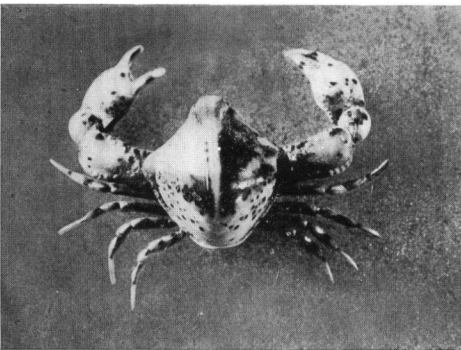
4



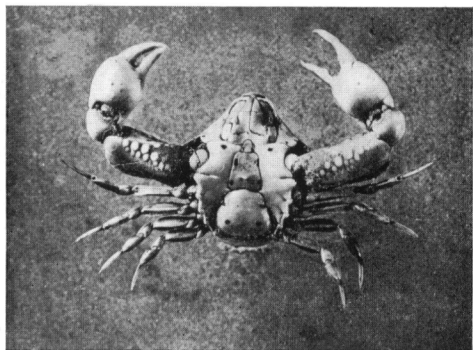
5



6



7



8

EXPLANATION OF PLATE LXI.

*Ebaliopsis erosa* (A. Milne Edwards).

Fig. 1.—Female specimen from 11 fathoms, near Michaelmas Reef cay, Great Barrier Reef, off Cairns, Queensland. Carapace 10 mm. wide.

Fig. 2.—Ventral view of same.

*Cancer nova-zealandiæ* (Jacquinot and Lucas).

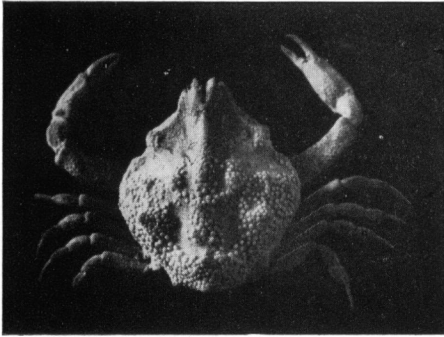
Fig. 3.—Juvenile female specimen from Portobello, Port Chalmers, New Zealand. Carapace 28 mm. wide.

Fig. 4.—Juvenile male specimen from same locality. Carapace 30 mm. wide.

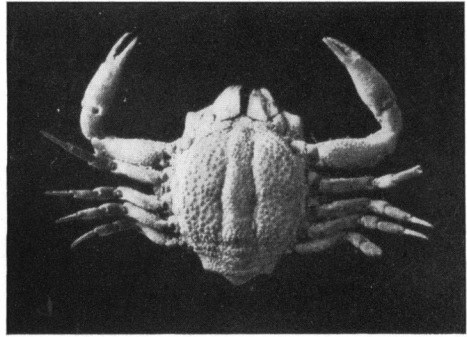
Fig. 5.—Juvenile male specimen from same locality. Carapace 39 mm. wide.

Fig. 6.—Young male specimen from Blueskin Bay, near Port Chalmers, New Zealand. Carapace 52 mm. wide.

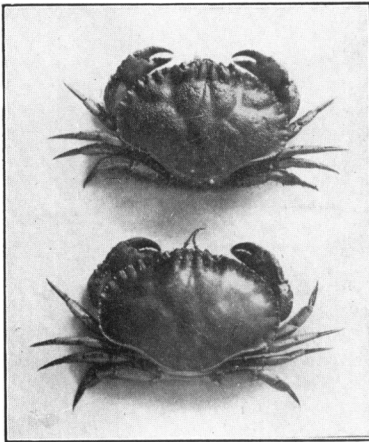
Fig. 7.—Adult male specimen from Derwent River, Hobart, Tasmania. Carapace 108 mm. wide.



1

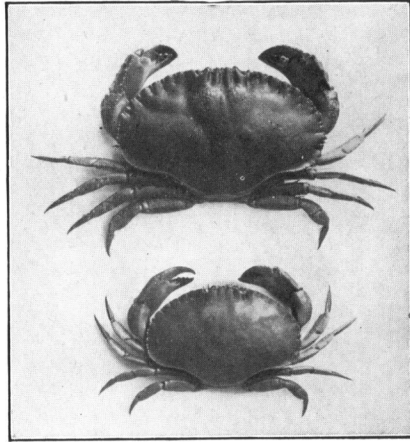


2



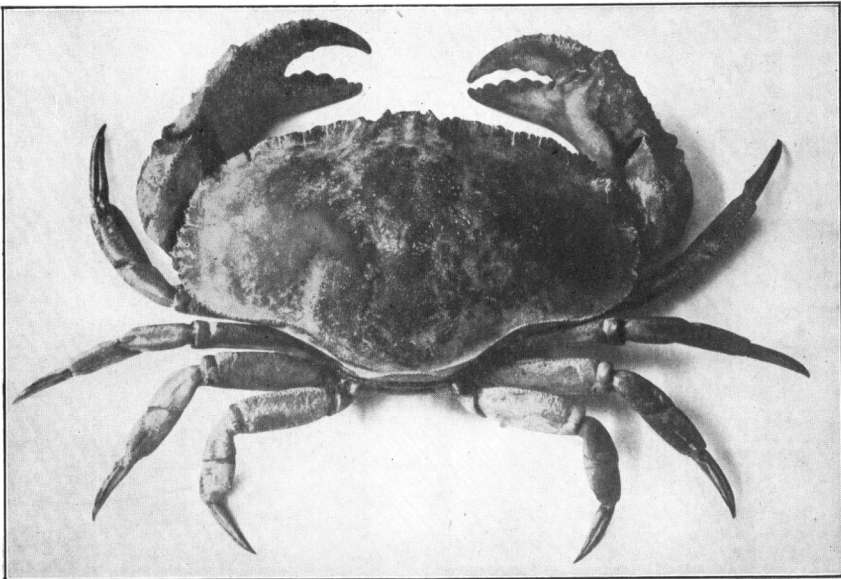
3

4



6

5



7

G. C. CLUTTON, photo.