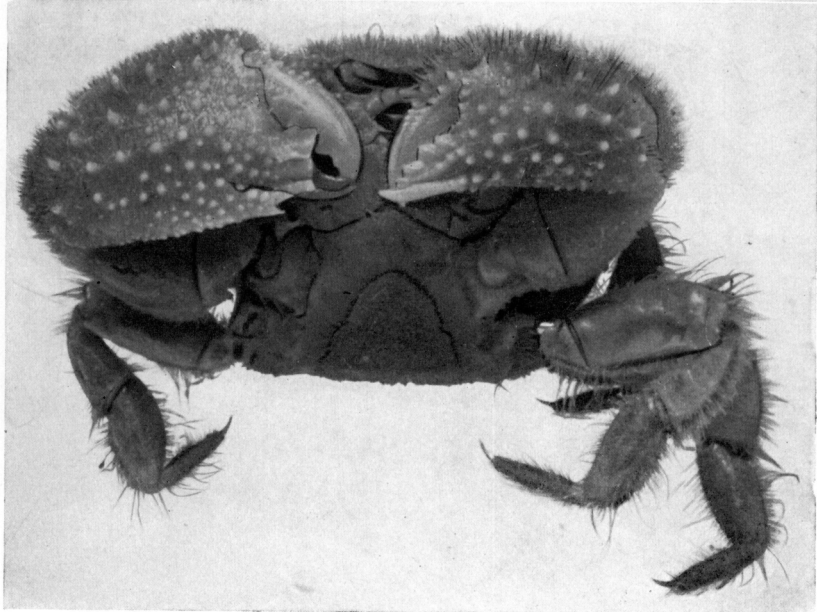


1

2



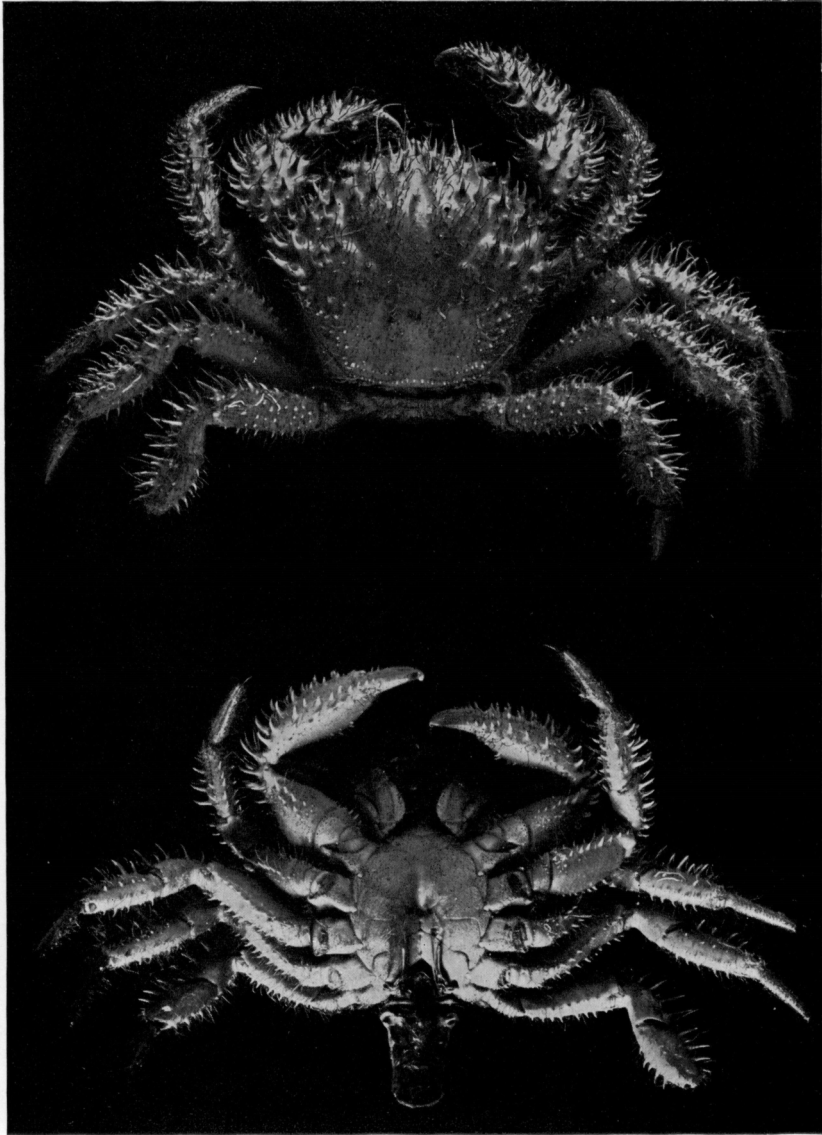
3

EXPLANATION OF PLATE XXXI.

Acanthodes armatus, de Haan. Male (E.3674). Carapace
38.1 mm. wide.

Fig. 1.—Dorsal view.

Fig. 2.—Ventral view, to show sternal openings.



G. C. CLUTTON, photo.

EXPLANATION OF PLATE XXXII.

Acanthodes armatus, de Haan. Male juv. (E.3179). Carapace 18.8 mm. wide.

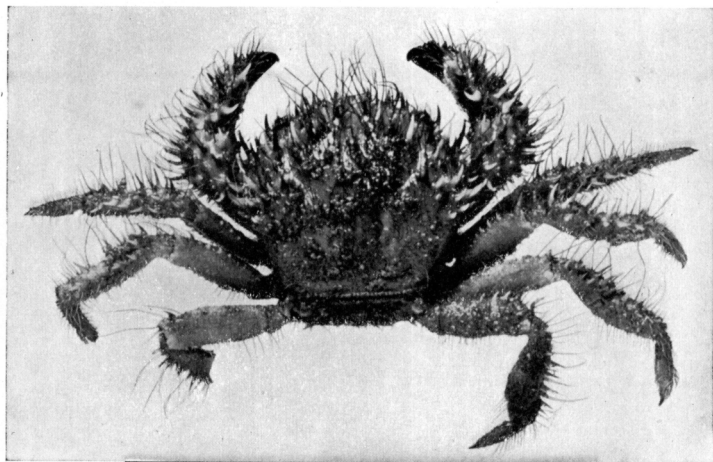
Fig. 1.—Dorsal view.

Merocryptus lambriformis, A. Milne Edwards. Female (E.5193). Carapace 19.3 mm. wide.

Fig. 2.—Dorsal view.

Merocryptus lambriformis, A. Milne Edwards. Male (E.5193). Carapace 14.3 mm. wide.

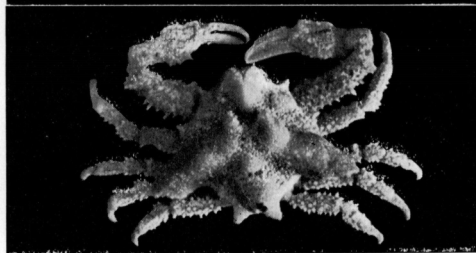
Fig. 3.—Dorsal view.



1



2



3

C. R. SHOEMAKER (1) } photos.
G. C. CLUTTON (2-3) }

EXPLANATION OF PLATE XXXIII.

Charybdis (Charybdis) incisa, sp. nov. Female holotype.
Carapace 26 mm. wide.

Fig. 1.—Dorsal view, right half denuded.

Fig. 2.—Right chela.

Fig. 3.—Ventral view.