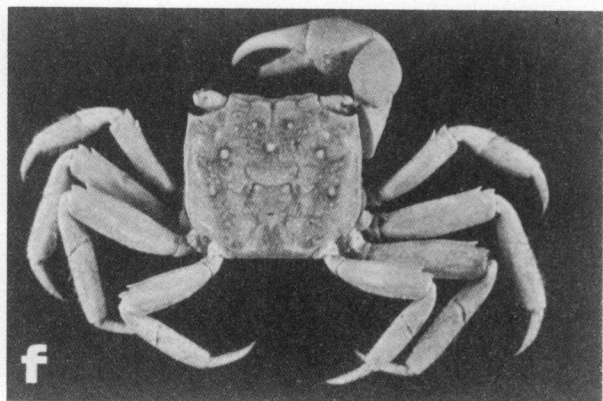
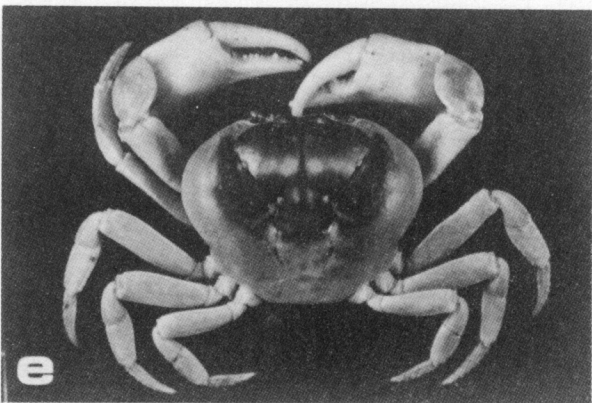
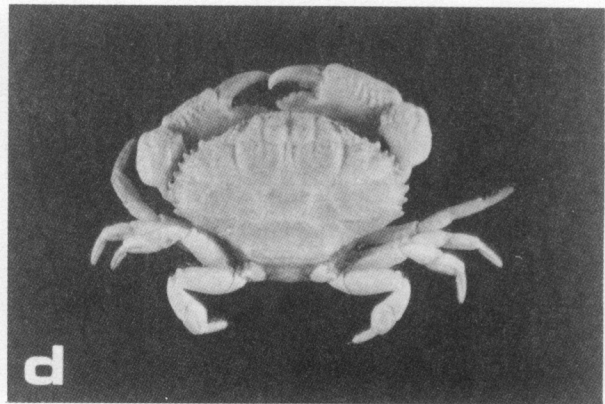
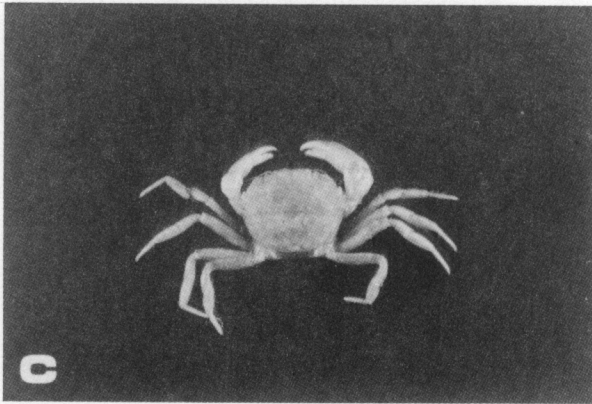
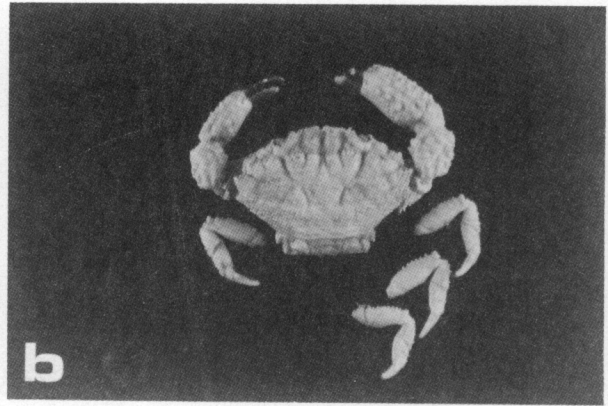
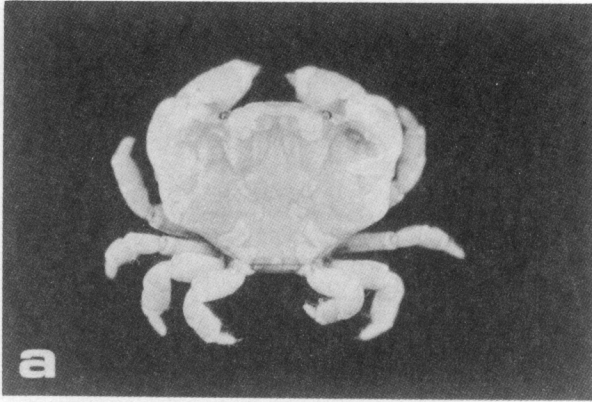


LAMINA 13

- a.- *Paraliomera longimana* (A. Milne Edwards, 1865) ♂, 7.9 x 13.6 mm, SMIOM-01176.
- b.- *Pilumnus gemmatus* Stimpson, 1860 ♀, 9.0 x 12.4 mm, SMIOM-01389.
- c.- *Pilumnus lacteus* Stimpson, 1871 ♂, 5.8 x 8.0, SMIOM-01156.
- d.- *Pilumnus marshi* Rathbun, 1901 ♂, 9.8 x 12.9 mm, SMIOM-ICMyLUNAM-00952.
- e.- *Pilumnus sayi* Rathbun, 1897 ♂, 15.1 x 19.7 mm, SMIOM-00137.
- f.- *Platyactaea setigera* H. Milne Edwards, 1834 ♂, 11.4 x 17.3, SMIOM-04007.



LAMINA 14

- a.- *Platypodiella spectabilis* (Herbst, 1794) ♂, 7.4 x 10.4 mm, SMIOM-FCUNAM-04127.
- b.- *Pseudomedeus agassizii* (A. Milne Edwards, 1880) ♂, 10.4 x 16.2 mm, SMIOM-00694.
- c.- *Rhithropanopeus harrisii* (Gould, 1841) ♂, 5.2 x 6.3 mm, SMIOM-01454.
- d.- *Xantho denticulata* White, 1847 ♀, 10.0 x 15.1 mm, SMIOM-01201.
- e.- *Gecarcinus lateralis* (Fremenville, 1835) ♂, 52.1 x 66.6 mm, SMIOM-FCUNAM-01470.
- f.- *Armases americanum* (Saussure, 1858) ♂, 19.7 x 21.8 mm, SMIOM-01365.