

Dataportal Platform

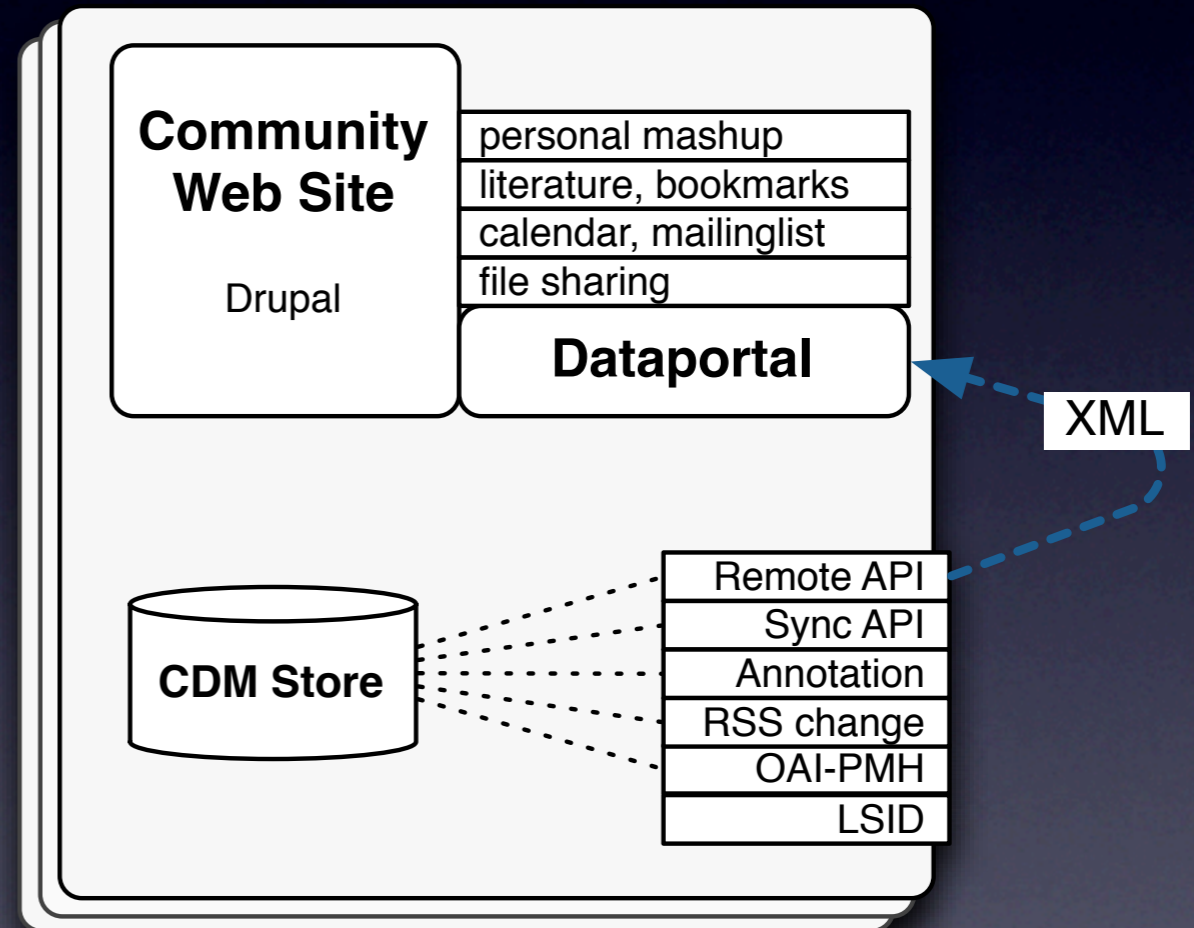
and the Common Data Model

Markus Döring
BGBM, FU-Berlin
October 2007



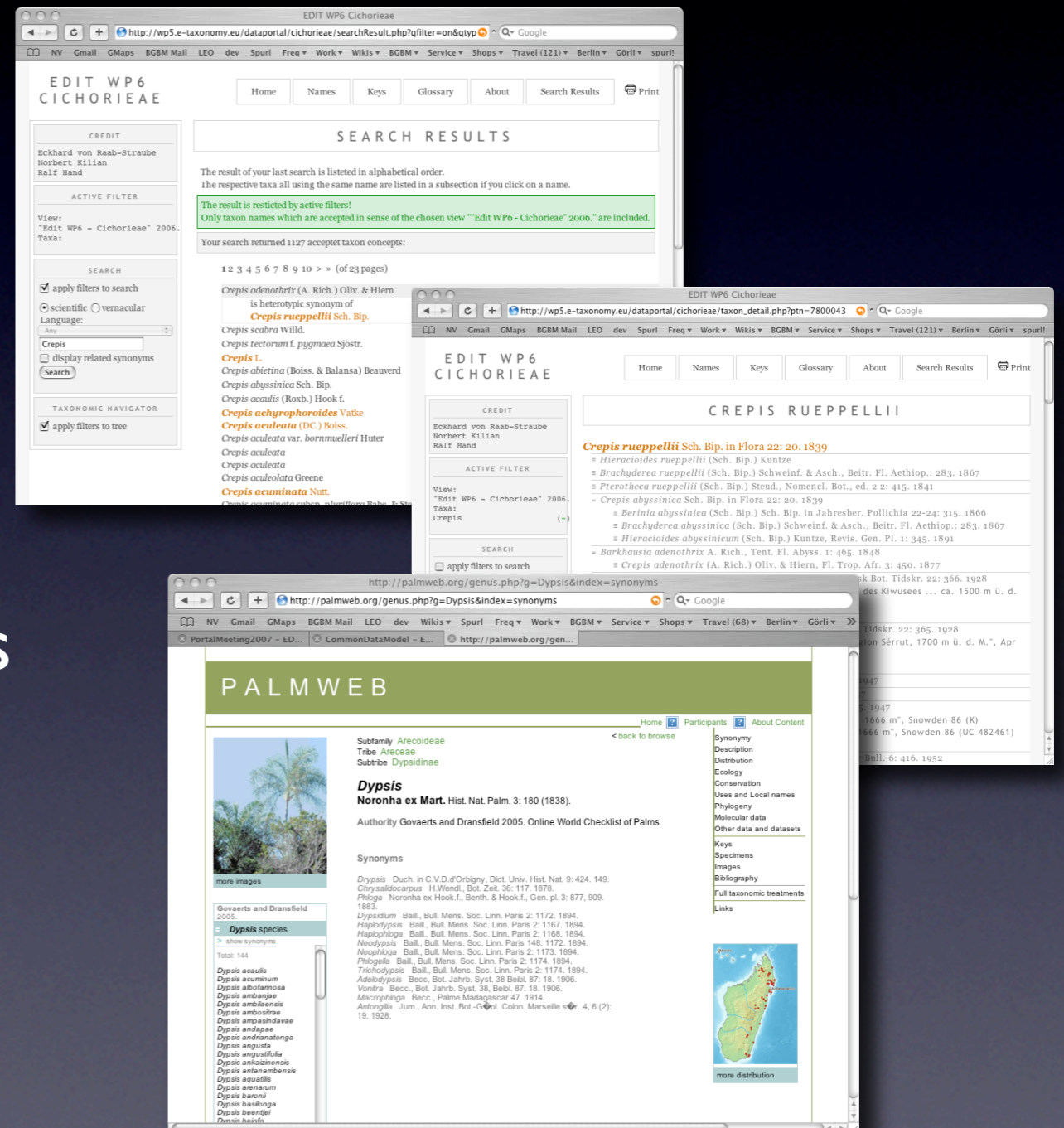
Community Sites

- **Drupal Website**
 - webpages, forum, blog
 - image+document hosting
- **Dataportal**
 - webpublication
- **CDM Store**
 - shared database
 - webservice



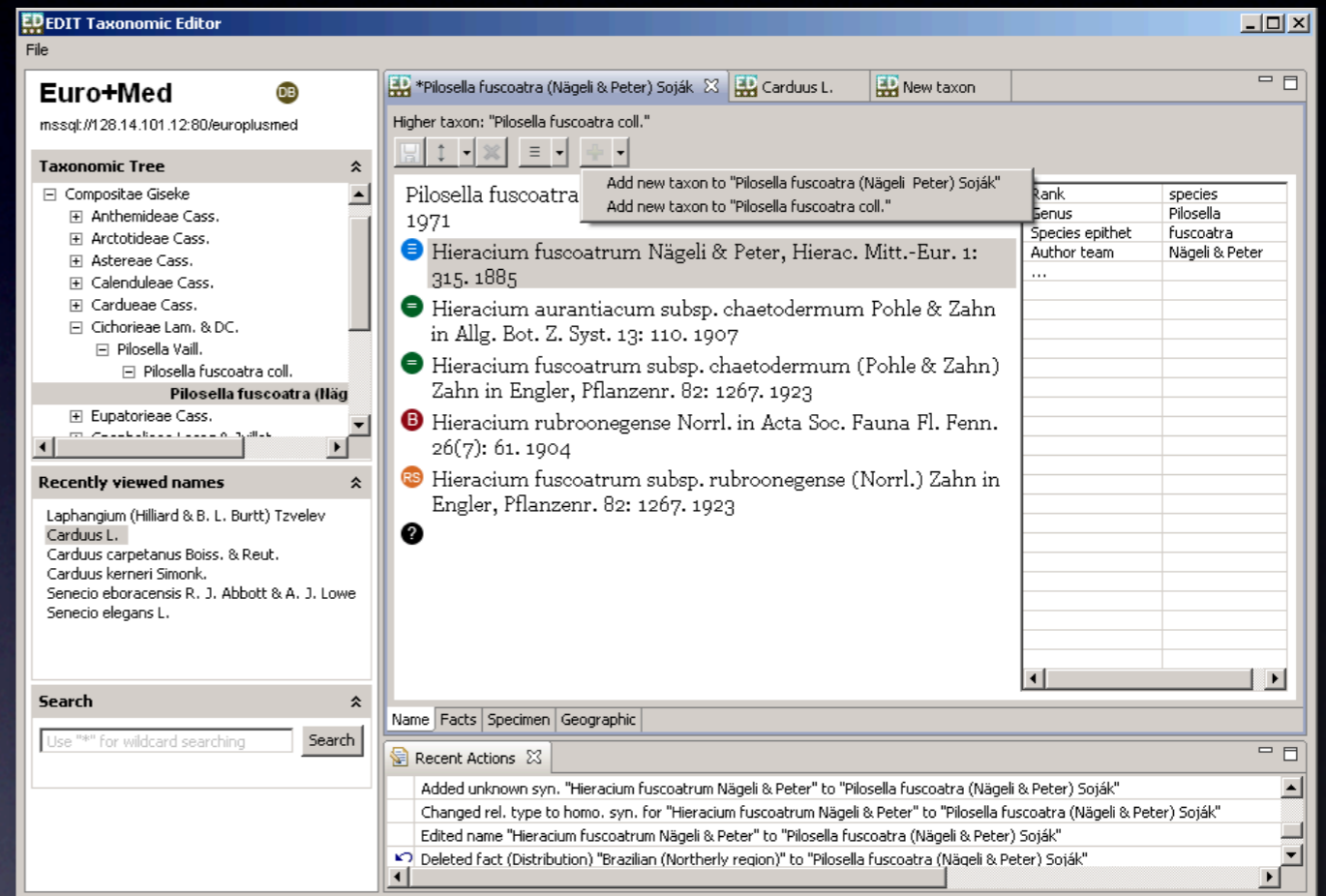
Planned Dataportal

- Publication, no editing
 - concurrent concepts
- Drupal integration
- Uses CDM webservice
- Allows annotations



Taxonomic Editor

- Desktop App
 - offline work
 - Syncs w/ CDM Store
- Based on
 - Eclipse RCP
 - CDM library
 - embedded or LAN db
- Descriptions/Keys
 - initially via Xpert2 ?



Community CDM Store

- Central datastore for a community of users
- Uses CDM library w/ versioning
- Provides different APIs to interact with
 - REST read operations for portals
 - search/get for all identifiable classes. Specialised operations as required
 - RSS search feeds for subscriptions
 - Sync API, likely based on SyncML
 - OAI-PMH for aggregation
 - LSID resolver exposing objects in RDF as TDWG LSID voc

Other Components

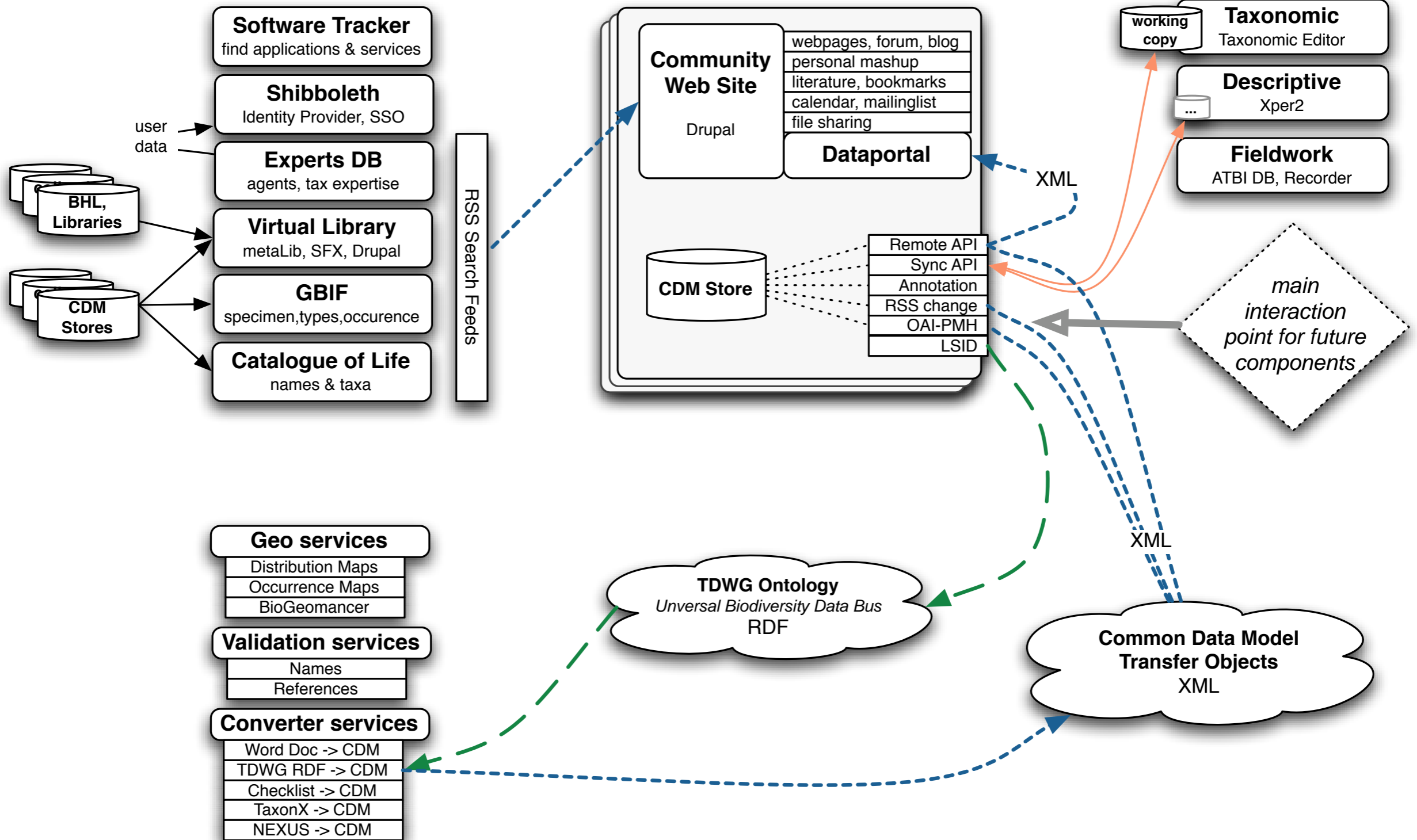
- Converter:
 - TDWG, BibTex, NEXUS, Excel/CSV checklist, TaxonX, Word?
- Image server -> morphbank.org
- Geo services: online GIS app, distribution & occurrence map generation
- RSS search feeds: GBIF, ViTaL, Experts, Cat.of Life
- Virtual library (ViTaL)
- Experts DB (WP2)

EDIT Platform Components

Central Components

Community Components

Personal Components

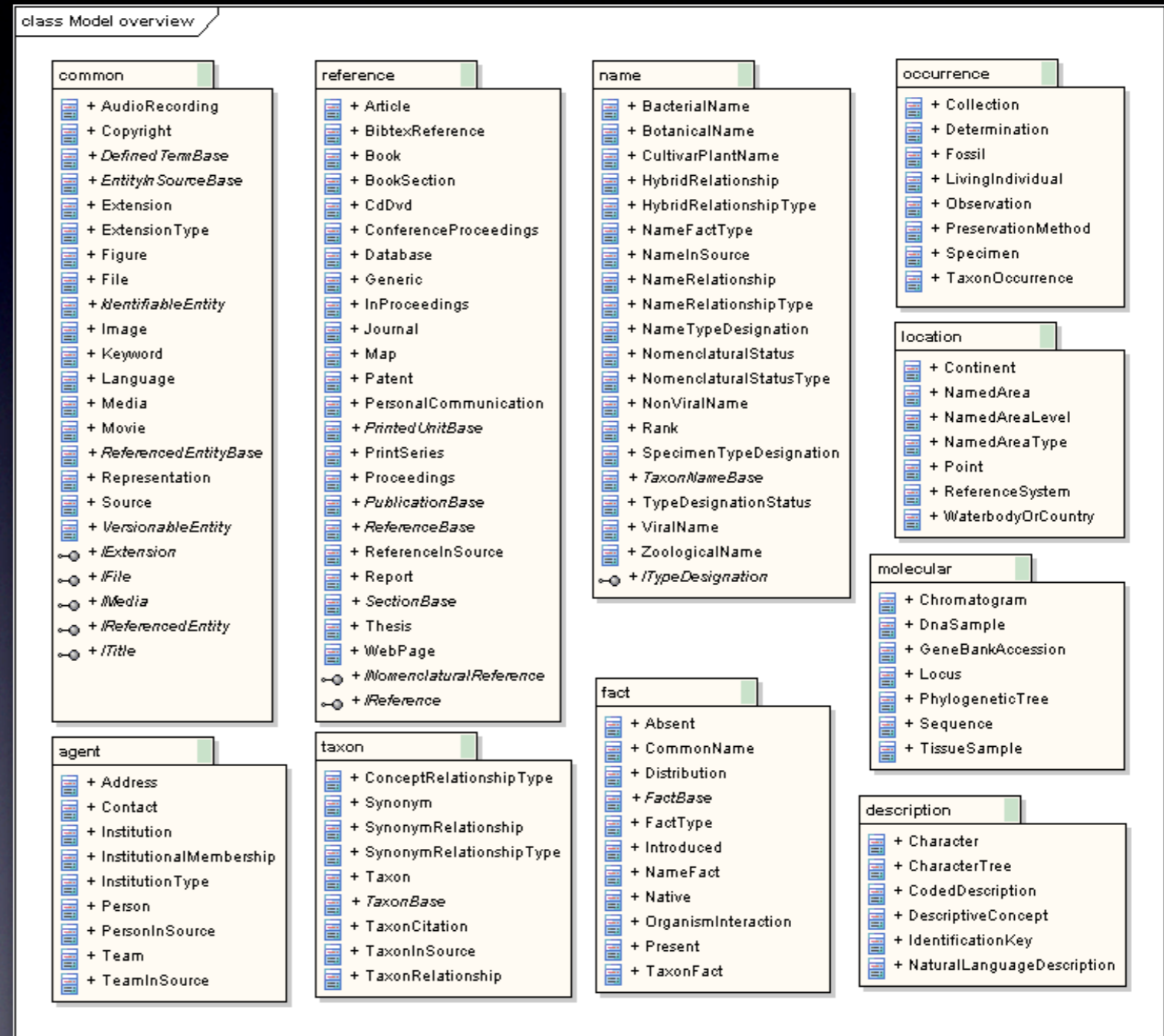


Common Data Model (CDM)

- UML class model in Enterprise Architect
 - <http://dev.e-taxonomy.eu/CommonDataModel>
- Semantically aligns primarily with TDWG ontology.
 - but other standards like BibTex, SDD, DarwinCore considered
 - naming of classes & attributes
 - source for defined terms with identifiers. E.g. name ranks
- Roadmap
 - 4Q/2007 freeze model
 - 1Q/2008 release library and basic store

CDM Packages / Scope

- Common
- Reference
- Agent
- Name
- Taxon
- Location
- Occurrence
- Description
- Fact
- Molecular



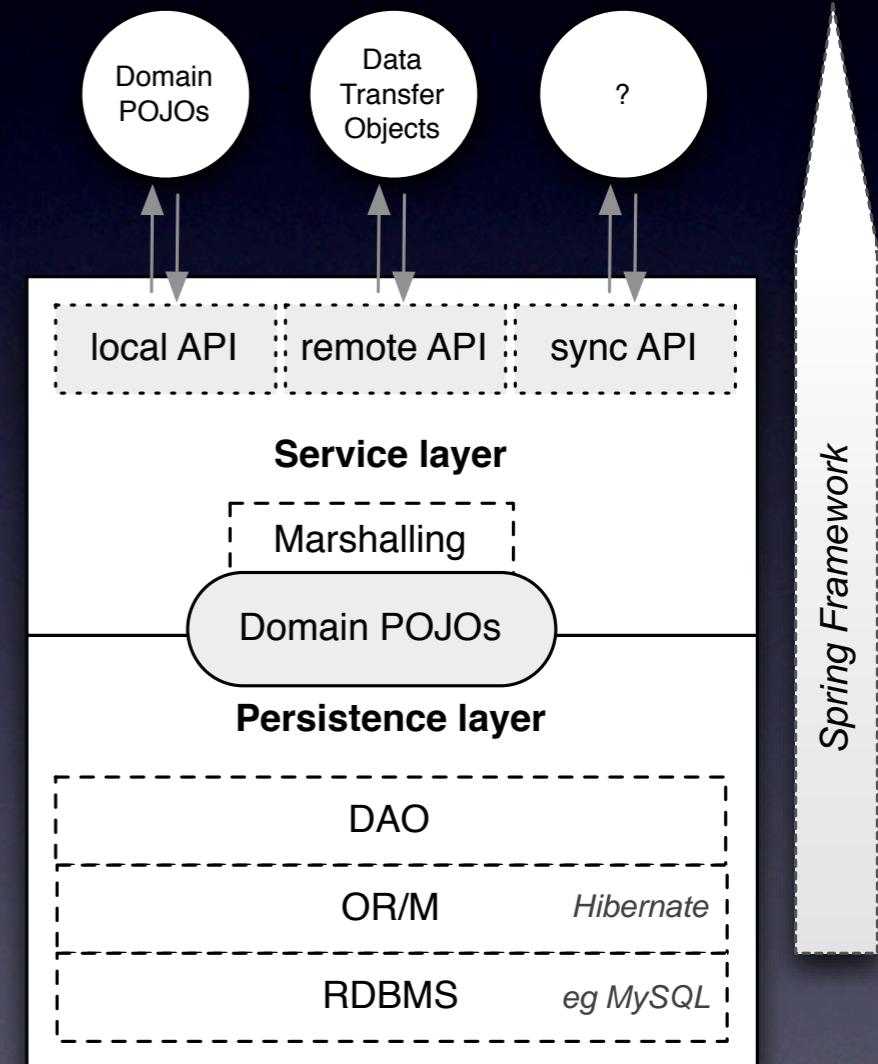
CDM Vocabularies

- **Extendible core terms**
 - ranks, name & taxon relationship types, type designation
 - regions (TDWG), countries (ISO), languages (ISO)
 - occurrence status, collection & institution types
- **Fixed terms as *classes***
 - nomenclatural code
 - reference type
- **Still needed**
 - “Fact” categories, species profile model categories:
Economic Use, Morphology, Cytology, Biochemistry, ...

JUST IN CASE ...

CDM Java Library

- Persistent domain model
 - Plain Old Java Objects
 - Hibernate & Spring framework
 - XML marshalling
 - logic & methods
 - validation, matching, ...
- Flexible use
 - several APIs
 - chose backend, incl. embedded



Geo Services

- Map services
 - Occurrence points
 - Distribution per region presence/absence
- Online GIS app
 - multi species
 - targeted at ATBI sites

